

Sievert, Maximiliane

Working Paper

Rural electrification and domestic violence in Sub-Saharan Africa

Ruhr Economic Papers, No. 570

Provided in Cooperation with:

RWI – Leibniz-Institut für Wirtschaftsforschung, Essen

Suggested Citation: Sievert, Maximiliane (2015) : Rural electrification and domestic violence in Sub-Saharan Africa, Ruhr Economic Papers, No. 570, ISBN 978-3-86788-656-7, Rheinisch-Westfälisches Institut für Wirtschaftsforschung (RWI), Essen, <https://doi.org/10.4419/86788656>

This Version is available at:

<https://hdl.handle.net/10419/114184>

Standard-Nutzungsbedingungen:

Die Dokumente auf EconStor dürfen zu eigenen wissenschaftlichen Zwecken und zum Privatgebrauch gespeichert und kopiert werden.

Sie dürfen die Dokumente nicht für öffentliche oder kommerzielle Zwecke vervielfältigen, öffentlich ausstellen, öffentlich zugänglich machen, vertreiben oder anderweitig nutzen.

Sofern die Verfasser die Dokumente unter Open-Content-Lizenzen (insbesondere CC-Lizenzen) zur Verfügung gestellt haben sollten, gelten abweichend von diesen Nutzungsbedingungen die in der dort genannten Lizenz gewährten Nutzungsrechte.

Terms of use:

Documents in EconStor may be saved and copied for your personal and scholarly purposes.

You are not to copy documents for public or commercial purposes, to exhibit the documents publicly, to make them publicly available on the internet, or to distribute or otherwise use the documents in public.

If the documents have been made available under an Open Content Licence (especially Creative Commons Licences), you may exercise further usage rights as specified in the indicated licence.

Maximiliane Sievert

**Rural Electrification and Domestic
Violence in Sub-Saharan Africa**

Imprint

Ruhr Economic Papers

Published by

Ruhr-Universität Bochum (RUB), Department of Economics
Universitätsstr. 150, 44801 Bochum, Germany

Technische Universität Dortmund, Department of Economic and Social Sciences
Vogelpothsweg 87, 44227 Dortmund, Germany

Universität Duisburg-Essen, Department of Economics
Universitätsstr. 12, 45117 Essen, Germany

Rheinisch-Westfälisches Institut für Wirtschaftsforschung (RWI)
Hohenzollernstr. 1-3, 45128 Essen, Germany

Editors

Prof. Dr. Thomas K. Bauer
RUB, Department of Economics, Empirical Economics
Phone: +49 (0) 234/3 22 83 41, e-mail: thomas.bauer@rub.de

Prof. Dr. Wolfgang Leininger
Technische Universität Dortmund, Department of Economic and Social Sciences
Economics – Microeconomics
Phone: +49 (0) 231/7 55-3297, e-mail: W.Leininger@wiso.uni-dortmund.de

Prof. Dr. Volker Clausen
University of Duisburg-Essen, Department of Economics
International Economics
Phone: +49 (0) 201/1 83-3655, e-mail: vclausen@vwl.uni-due.de

Prof. Dr. Roland Döhrn, Prof. Dr. Manuel Frondel, Prof. Dr. Jochen Kluge
RWI, Phone: +49 (0) 201/81 49-213, e-mail: presse@rwi-essen.de

Editorial Office

Sabine Weiler
RWI, Phone: +49 (0) 201/81 49-213, e-mail: sabine.weiler@rwi-essen.de

Ruhr Economic Papers #570

Responsible Editor: Manuel Frondel

All rights reserved. Bochum, Dortmund, Duisburg, Essen, Germany, 2015

ISSN 1864-4872 (online) – ISBN 978-3-86788-656-7

The working papers published in the Series constitute work in progress circulated to stimulate discussion and critical comments. Views expressed represent exclusively the authors' own opinions and do not necessarily reflect those of the editors.

Ruhr Economic Papers #570

Maximiliane Sievert

**Rural Electrification and Domestic
Violence in Sub-Saharan Africa**

Bibliografische Informationen der Deutschen Nationalbibliothek

Die Deutsche Bibliothek verzeichnet diese Publikation in der deutschen Nationalbibliografie; detaillierte bibliografische Daten sind im Internet über:
<http://dnb.d-nb.de> abrufbar.

<http://dx.doi.org/10.4419/86788656>

ISSN 1864-4872 (online)

ISBN 978-3-86788-656-7

Maximiliane Sievert¹

Rural Electrification and Domestic Violence in Sub-Saharan Africa

Abstract

One third of all women experience violence within their lifetime, most frequently perpetrated by their intimate partner (IPV). It impacts women's sexual, reproductive, and mental health, and increases the risk of chronic disease. Ways to reduce IPV are less obvious, though. Especially in rural areas, electrification is frequently said to foster women's development and contribute to a modernization of gender roles. Using Demographic and Health Survey (DHS) data from rural areas in 22 Sub-Saharan countries, the present paper analyses the effect of electrification on IPV by means of pseudo-panel and propensity score matching approaches. Women in households with electricity report significantly lower acceptance of IPV. It is especially access and higher exposure to information via TV sets that causes the difference in IPV acceptance. Accordingly, rural electrification might potentially play an important role in eliminating violence against women.

JEL Classification: J12, J16, O13, O18

Keywords: Rural electrification; domestic violence; intimate partner violence; pseudo-panel; propensity score matching

July 2015

¹ Maximiliane Sievert, RWI. - I thank Michael Grimm, Jörg Peters and Christoph M. Schmidt for valuable comments. Vanessa Fluhr and Sophie Wannemacher provided excellent research assistance. I gratefully acknowledge the support of a special grant (Sondertatbestand) from the German Federal Ministry for Economic Affairs and Energy and the Ministry of Innovation, Science, and Research of the State of North Rhine-Westphalia. - All correspondence to: Maximiliane Sievert, RWI, Hohenzollernstraße 1-3, 45128 Essen, Germany, e-mail: sievert@rwi-essen.de

1. Introduction

One third of all women experience violence within their lifetime, most frequently perpetrated by their intimate partner. Since the 1993 World Conference on Human Rights and the Declaration on the Elimination of Violence against Women it is officially recognized as a violation of human rights. Intimate partner violence (IPV) impacts women's sexual, reproductive, and mental health, and increases the risk of chronic diseases (WHO 2013). It is the leading cause of homicide death in women globally and is associated with increased levels of depression and suicidal behaviour (DEVRIES et al. 2013). Ways to reduce IPV are less obvious, though. Evidence suggests that socio-economic factors that reinforce a culture of violence against women need to be addressed. This includes challenging social norms that support male authority over women as well as strengthening women's economic position and legal rights (KLUGMAN et al. 2014).

Especially in rural areas, electrification is frequently said to foster women's development and contribute to a modernization of gender roles (KÖHLIN et al. 2011). Better access and exposure to information, especially through increased availability of television, has been shown to influence attitudes and behaviour. Most prominently, JENSEN AND OSTER (2009) show that women's attitudes and behaviour are influenced through the introduction of cable TV in rural India. Amongst others, acceptance of IPV is reduced. Moreover, access to electricity is often expected to change women's relative status in the household due to higher female labour participation. Some evidence from South Africa and Nicaragua exists that income generation opportunities for women are improved by electrification (DINKELMAN 2011, GROGAN AND SADANAND 2012).

Against this background, the present paper analyses patterns of IPV in relation to electricity access in rural Africa. Using Demographic and Health Survey (DHS) data from rural areas in 22 Sub-Saharan countries collected between 1999 and 2014, it examines determinants of attitudes toward IPV, the correlation between attitudes

and occurrence of IPV, and differences in IPV cross-country prevalence. For analysing the role of electricity access, the identification strategy relies on pseudo-panel and propensity score matching approaches. I furthermore probe into the two potential underlying transmission channels, increased media access and higher female labour participation.

According to the definition of the WHO “World report on violence and health”, IPV is behaviour within an intimate relationship that causes physical, psychological or sexual harm (KRUG et al. 2002). I focus here on acts of physical aggressions – such as slapping, hitting, kicking, and beating. The DHS data is the largest source for nationally representative data about violence at home in developing countries. It provides information both on attitudes toward IPV and its occurrence. In my analysis, I focus on attitudes as my main outcome indicator. While the DHS has information on attitudes toward IPV for almost all survey waves collected since 1999, data of effective experience of physical aggressions is available only for a subset of countries and survey waves. Furthermore, the indicator for occurrence of IPV that is elicited in the DHS only captures whether a woman has ever experienced IPV in her life. The indicator hence is not very sensitive to a decrease in IPV occurrence since it can only change through cohort replacement. It can be seen in those data sets that have information both on attitudes and occurrence of IPV that women who believe that IPV is justified are more prone to being physically abused by their partner. The literature confirms this finding based on other data sets (ALIO et al. 2011, UTHMAN 2011). Hence, changes in attitudes can be assumed to induce changes in prevalence of IPV.

Existing research has pointed out that levels of IPV largely vary across regions and countries. In Sub-Saharan Africa, 40 percent of women have experienced physical or sexual violence by an intimate partner. It is the region with the second-highest prevalence worldwide, only exceeded by South Asia with a prevalence rate of 43 percent (KLUGMAN et al. 2014). At the same time, the region is where most of the

remaining non-electrified people live. Around 590 million of the total 1.3 billion non-electrified people live in Africa (IEA 2014).

The remainder of this paper is organized as follows. Section 2 elaborates the theory of change on how electricity access might influence attitudes toward IPV. Section 3 presents the data. Section 4 provides descriptive statistics on IPV prevalence and attitudes toward IPV, cross-country differences, and individual risk and protection factors for IPV. Section 5 specifies the empirical strategy and Section 6 presents the results of multivariate regressions to estimate the relationship of electricity and attitudes toward IPV. Section 7 concludes.

2. Theoretical background and literature

This section presents the potential underlying mechanisms how rural electrification might lead to changes in IPV prevalence. In particular, rural electrification enables changes at the household and the enterprise level that ultimately might affect attitudes toward IPV (see Figure 1). Once households in rural areas connect to the electricity grid, they acquire primarily electric lighting, information, and entertainment devices. To a lower extent, households also invest into appliances that facilitate housework like electric irons and refrigerators. Electric stoves are rarely used in rural Sub-Sahara Africa.¹ This leads to better access and thus higher exposure to information.

Moreover, it gives household members higher flexibility to exercise their daily duties, and housework can be done more efficiently. Women released from housework can use the additional time for productive purposes and hence increase their labour supply. At the same time, electricity can drive enterprise creation and cause productivity gains in existing enterprises. A resulting increase in labour

¹ South-Africa is an exception as can be seen in DINKELMAN 2011.

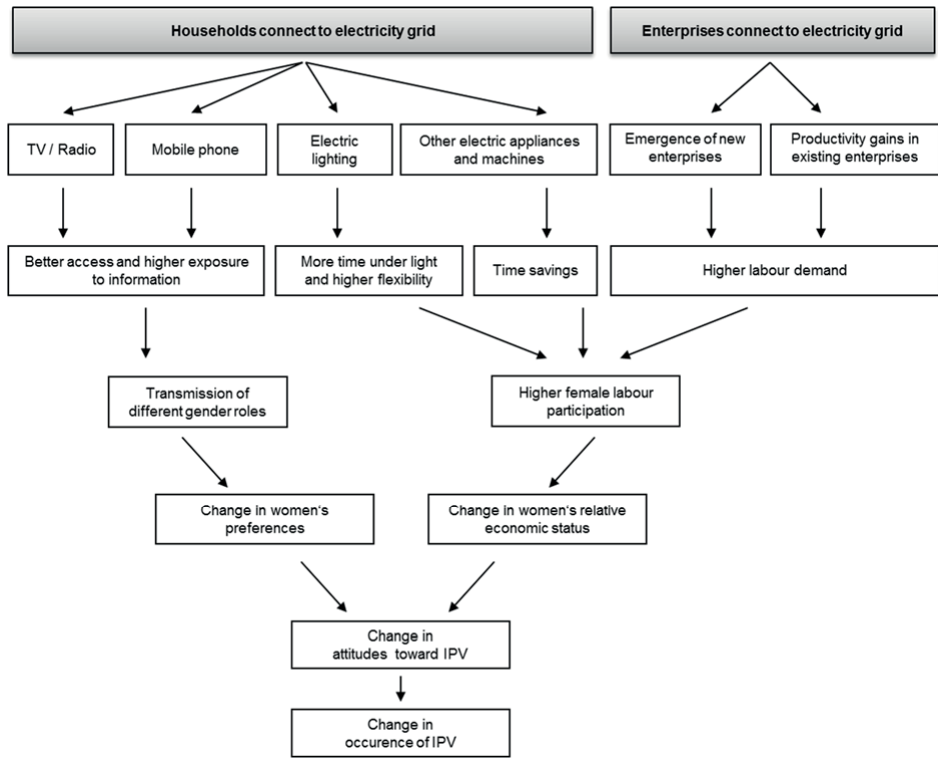
demand might lead to higher female labour participation, which might improve women's economic situation and change traditional gender roles.

Several studies show empirically that household effectively gain better access to information through electrification (see for example IEG 2008, KHANDKER, BARNES AND SAMAD 2012, LENZ et al. 2015). A change in female labour participation following electrification has most prominently been shown by DINKELMAN 2011 in South Africa and GROGAN AND SADANAND 2012 in Nicaragua, while evidence from Africa is more pessimistic (BERNARD 2012; PETERS, VANCE AND HARSDORFF 2011; NEELSEN AND PETERS 2011).

Traditional economic models of domestic violence suggest that educational, economic and social empowerment is protecting women against violence (FARMER AND TIEFENTHALER 1997, TAUCHEN, WITTE AND LONG 1991). Domestic violence is assumed to be driven either because of a direct gratification of the perpetrator (e.g. direct enjoyment of the pain of another or release of frustration) or in order to execute control. In most Sub-Saharan countries, where IPV is often socially accepted, the latter reason seems to be the dominant.² According to the models, a woman accepts IPV as long as the utility she gains from being in a violent relationship is at least as high as her utility when leaving the relationship. Greater economic independence increases the possibility of a woman to leave a relationship without losing utility. Knowledge on different gender roles might shift her preferences whereby the utility she obtains from a violent relationship might decrease. Accordingly, since electricity might affect both the economic opportunities outside the relationship and knowledge on different gender roles, one would expect that women with electricity access are less likely to accept IPV.

² In developed countries, the earlier reason seems to be dominant. See for example CARD AND DAHL (2011) who explain domestic violence in the US by emotional cues.

Figure 1: Theory of Change



Source: own illustration

The empirical evidence is not that clear, though. Analysing the effect of mass media on several indicators for women’s status, JENSEN AND OSTER (2009) show that acceptance of IPV is reduced through the introduction of cable TV in rural India. This study uses very similar outcome indicators for attitudes toward IPV as the ones used in this paper. It furthermore observes changes in son preference, increases in women’s autonomy and decreases in fertility. Also PIEROTTI (2013) shows that women who are in regular contact with mass media, i.e. newspaper, radio, or television, are less likely to accept IPV. WAKUNUMA (2012), by contrast, observes an increase in social conflict and violence in relationships induced by mobile phone ownership.

Also for the relationship between women’s employment and IPV, empirical studies show both positive and negative effects. KRISHNAN et al. (2010) look at the effect of spousal employment status and physical domestic violence in Bangalore, India.

Using panel data, they detect that the risk of violence increases for women who become employed in comparison to women who stay unemployed. Similarly, HEATH (2012) finds a positive correlation between work and domestic violence in Dhaka, Bangladesh. Yet, this correlation is only present among women with less education or who were younger at first marriage. With data from the US, AIZER (2010) shows that an increase in relative female wages decreases domestic violence.

One attempt to explain these conflicting results is that effects differ depending on the bargaining power of a woman. This relationship is often described as an inverted U-shaped relation with women at higher levels of empowerment challenging traditional sex roles, which increases the risk of violence. Only if a woman has realistic opportunities to leave the relationship, protective effects predominate. The bargaining power of a woman is determined both by individual factors such as the relative economic position or cultural expectations regarding male and female gender roles. (ESWARAN AND MALHOTRA 2011, GOODE 1971, HEISE 2012, JEWKES 2002, LEVINSON 1989).

In cross-country comparisons, two factors for differences in IPV stand out: cultural expectations and economic development. Cultural expectations refer to institutions like patrilocality and patrilineality, dowry systems, or “collectivist” cultures compared to “individualist” cultures (see for example ARCHER 2006, JAYACHANDRAN 2014, ALMOND AND EDLUND 2008; ABREVAYA 2009; FERNÁNDEZ AND FOGLI 2009; and FERNÁNDEZ et al. 2004). With regard to economic development, studies highlight the bidirectional relationship between a country’s GDP and levels of IPV (see for example JAYACHANDRAN (2014) and DUFLO 2012).

3. Data

This paper uses data from the Demographic and Health Surveys (DHS). DHS data is nationally representative data on population, health, and nutrition from over 90

developing countries.³ It is the largest source of nationally representative data on domestic violence and provides up to six nationally representative cross-sectional survey waves per country, collected since 1984. Individuals are not tracked over time. The surveys collect basic socio-economic household information and elicit information on health aspects among all female household members of reproductive age (15 and 49). Since 1999, these woman interviews have collected information on attitudes toward IPV.

Table 1: DHS data used

	First wave			Second Wave		
	year	Sample size for		year	Sample size for	
		attitudes toward IPV	experience of IPV		attitudes toward IPV	experience of IPV
Benin	2001	3,170	n.a.	2011-12	7,757	n.a.
Burkina Faso	2003	7,994	n.a.	2010	10,179	7,274
Cameroon	2004	4,171	1,346	2011	5,787	2,087
DRC Congo	2007	4,241	1,717	2013-14	9,680	4,038
Ethiopia	2005	7,766	n.a.	2011	8,677	n.a.
Ghana	2003	2,680	n.a.	2008	2,029	1,112
Guinea	2005	4,840	n.a.	2012	4,786	n.a.
Kenya	2003	3,835	2,976	2008-9	4,127	3,457
Lesotho	2004	3,492	n.a.	2009	3,674	n.a.
Liberia	2007	3,122	2,541	2013	4,289	n.a.
Malawi	2004	8,456	7,255	2010	16,007	4,685
Mali	2006	7,034	4,885	2012-13	6,504	2,247
Mozambique	2003	6,135	n.a.	2011	6,732	3,801
Namibia	2006-07	2,270	n.a.	2013	2,246	669
Niger	2006	5,490	n.a.	2012	7,372	n.a.
Nigeria	2008	18,119	13,589	2013	18,665	14,057
Rwanda	2000	5,190	n.a.	2005	5,561	2,118
Senegal	2005	6,559	n.a.	2010-11	7,521	n.a.
Tanzania	2004-05	5,856	n.a.	2010	5,511	4,318
Uganda	2000-01	3,805	n.a.	2011	4,686	1,269
Zambia	2001-02	3,908	n.a.	2007	3,099	2,676
Zimbabwe	2005	4,290	3,413	2010-11	4,374	3,521
Total		123,866	38,942		149,263	57,329

Source: DHS all country data set.

³ For more information, see <http://www.dhsprogram.com>

I use all Sub-Saharan country data sets since 1999 in which information on attitude toward IPV is available for at least two waves.⁴ In some of these surveys, a subsample of women were asked in detail about domestic violence experiences. I restrict the sample to households in rural areas and women who have ever been married or lived in a partnership. Countries, survey waves, and sample sizes used in this paper are displayed in Table 1. In some households, more than one woman is interviewed. I account for this fact in the following by clustering standard errors on the household level.

Attitudes

For eliciting attitudes toward domestic violence, women are asked about acceptability of IPV in five different situations.

They are asked whether they think it is acceptable that a husband beats his wife if

- i) she goes out without telling him
- ii) she neglects the children
- iii) she argues with him
- iv) she refuses to have sex with him or
- v) she burns the food.

My dependent variable for measuring acceptance of domestic violence in the following analysis aggregates this information into a binary variable indicating whether the woman accepts being beaten in any of these five situations. I chose this indicator since it is the most common way to aggregate the five DHS questions that can be found in the literature.⁵ Two alternative ways can be found in the literature: The first one is to code only those women who accept IPV in all five situations as

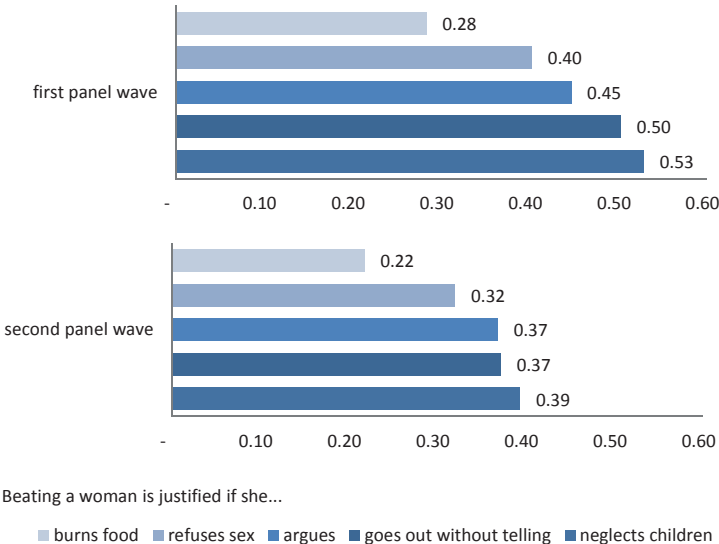
⁴ For Ethiopia, Mali, Nigeria, and Zimbabwe three waves with information on attitudes exist. I only use the most recent two.

⁵ See http://www.dhsprogram.com/publications/article-results.cfm?T_id=10&tnm=Domestic%20violence for all articles that have been published in scientific journals using DHS data on domestic violence.

accepting IPV. The second is a count variable that measures the number of situations in which the woman accepts IPV (0-5). As I will show below and in the Annex, both alternative indicators perform worse in predicting occurrence of IPV and therefore I use the indicator described first.

Female consent to IPV depends on the reason for beating a woman. The DHS data from all Sub-Saharan countries shows that it is most accepted to beat a woman if she neglects her children and it is less accepted if she burns food (see Figure 2). Over time, we can see a general decrease in acceptability of IPV, no matter for what reason. The decrease is strongest for a wife going out without telling her husband and lowest if a wife argues with the husband. Almost 60 percent of all women accept IPV in at least one situation. 15 percent accept it in all five situations. The intermediate steps of accepting four, three, two, or one situation are almost evenly distributed with around 10 percent at each step.

Figure 2: Justification of IPV, by situation



Source: DHS all country data set

Occurrence

For measuring occurrence of domestic violence, DHS asks about a set of behaviourally specific acts that women have ever experienced. Two forms of physical violence are distinguished: less severe violence and severe violence. Each of the two are elicited by asking women whether they have ever experienced any of the following situations: For less severe violence women are asked whether they have ever been slapped, have been punched with fist or hit with something harmful, or have been pushed or shook or have had something thrown by the husband/partner. For severe violence, women are asked whether they have ever been kicked or dragged, have been strangled or burnt, or have been threatened with a weapon. These questions are adapted from the *Conflict Tactics Scale* that has widely been used also in industrialized countries. The instrument is considered a valid and reliable measure of intimate partner violence (WHO 2013).

In order to establish an indicator on experience of domestic violence in my analysis, I aggregate all questions into two binary variables indicating whether the woman has ever experienced any less severe violence or any severe violence. Unfortunately, I do not have the information for all data sets when exactly this experience of IPV has occurred. In most countries it is only recorded whether a woman has ever experienced IPV in her lifetime. The indicator hence is not very sensitive to a decrease in IPV occurrence since it can only change through cohort replacement. For this reason, I use changes in attitudes toward domestic violence as my main outcome indicator. This information is available for all 22 countries, can be expected to change also over a short period of time and is relevant, since it can be expected to be positively correlated with effective experience of domestic violence.

As also suggested by the literature (e.g. ALIO et al. 2011, UTHMAN 2011), attitudes toward IPV are effectively correlated with its occurrence. In the sub-sample of countries where information on occurrence of IPV exists, a total of almost 26 percent has ever experienced any severe or less severe form of violence through her husband.

18 percent of all women have experienced a less severe form of violence. Seven percent have additionally also experienced severe violence.

The correlation coefficients for accepting IPV and experiencing less severe violence is 0.09 when controlling for country dummies and is significant at the 1 percent level. The corresponding correlation coefficient for severe violence is 0.03, also significant at the 1 percent level. Among women who have ever experienced violence, the share of women accepting violence is with 62 percent clearly higher as compared to 48 percent among women who have not experienced violence.⁶

Electricity access

Finally, access to electricity is measured by a binary variable that indicates whether the household is connected to the national electricity grid. DHS does not contain systematically information on whether households have decentralized electricity sources like solar panels and generators.

4. Prevalence and determinants of domestic violence

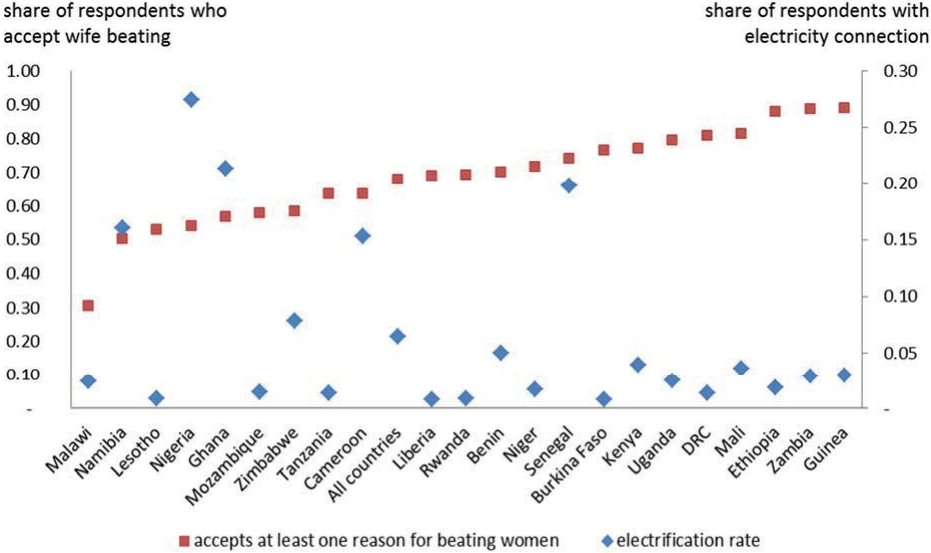
4.1 Cross-country differences

The degree of consent to IPV varies strongly between countries of Sub-Saharan Africa, from less than 30 percent in Malawi to almost 90 percent in Guinea. At country level, no clear correlation with national rural electrification rates exists (see Figure 3).⁷

⁶ Correlations for the two alternative measure of attitudes discussed are displayed in the Annex.

⁷ The correlation coefficient is -0.3142 but statistically not significant.

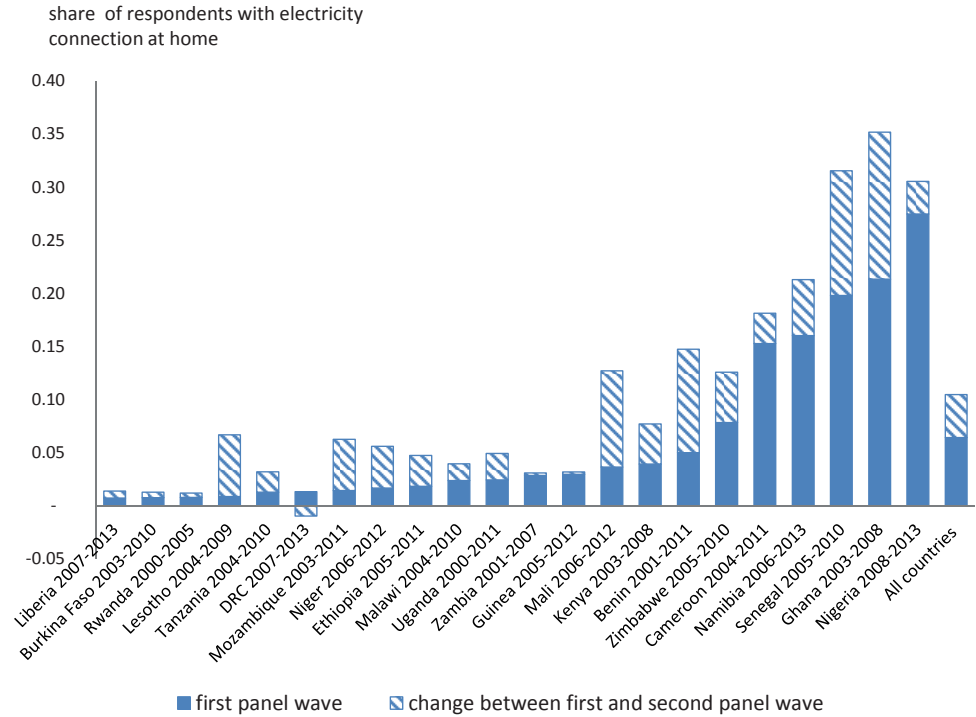
Figure 3: Acceptance of IPV and electrification rates, by country



Source: DHS country data sets, first panel wave

Rural electrification rates vary considerably between countries as well. While in countries like Liberia, Burkina Faso, Rwanda, or Lesotho only around one percent of the respondents lived in households connected to the electricity grid in the first panel wave, more than 15 percent of respondents in Cameroon, Namibia, Senegal, Ghana, and Nigeria did. Also when looking at changes in electrification rates over time, large differences can be observed (see Fehler! Ungültiger Eigenverweis auf Textmarke.). Most progress has been made in Ghana, Senegal, Benin, and Mali with increases in the rural electrification rates of around 10 percentage points. DRC performed worst with even a decrease of the electrification rate which had already been extraordinarily low in the first wave.

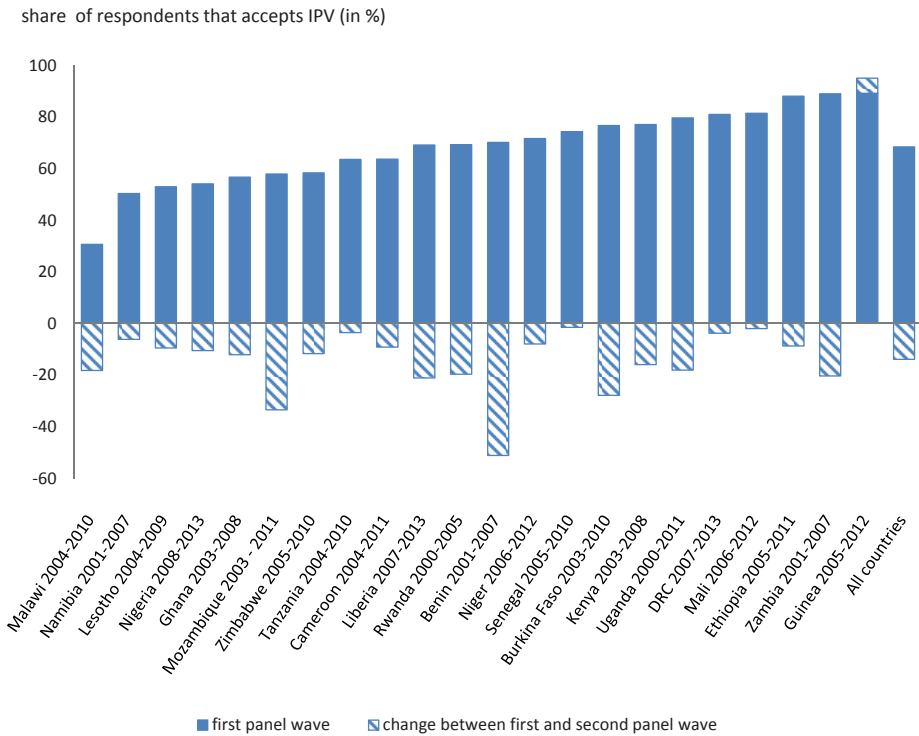
Figure 4: Electrification rates by country



Source: DHS all country data.

Acceptability of IPV has decreased in virtually all countries over time (see Figure 5). However, the magnitude of the decrease differs strongly between countries. In Senegal, for example, the decrease is negligible at only 2 percentage points. The biggest decrease can be observed in Benin, where acceptance levels went down by 51 percentage points. Remember that both countries are among the best performing countries in terms of rural electrification. Apparently, at the country level, electrification rates are a poor predictor of attitudes toward IPV.

Figure 5: Change over time in acceptance of IPV, by country



Source: DHS all country data

For studying the influence of GDP on the acceptance of IPV at the country level, I merge the DHS data with country level data from the World Development Indicators (WDI 2015). A statistically significant correlation between GDP and acceptance of IPV cannot be observed. A general tendency of higher acceptance in poorer countries can nevertheless be observed (see Table 2). I furthermore observe a high negative correlation between acceptance of IPV and female school enrolment as a strong indicator for gender empowerment (not displayed in the table).

Table 2: Acceptance of IPV at country level, by GDP

GDP per capita quintile	Share of women accepting IPV
1 st (163 – 235 current USD)	0.61
2 nd (255 – 332 current USD)	0.80
3 rd (348 – 440 current USD)	0.71
4 th (453 – 773 current USD)	0.66
5 th (893 – 3886 current USD)	0.61

Source: DHS all country data set, first panel wave and WDI (2015)

4.2 Characteristics of women who accept IPV

Comparing characteristics of women who accept IPV with those who do not (see Table 3, column 2) the following patterns stand out:

- (i) Women who accept IPV live farther away from urban areas and have less modern infrastructure in their villages.
- (ii) They generally live in poorer households. These households possess less high-value assets (i.e. a car) and have poorer infrastructure (no piped water).
- (iii) Higher education decreases the likelihood of accepting IPV. Respondents who accept IPV attended secondary school less often than women who do not accept IPV. The difference for primary school attendance is less pronounced. Moreover, women who accept IPV have less educated partners.
- (iv) Accepting IPV is more common among younger women, and among women in more traditional partnerships who marry earlier and have a higher age difference with her partner.
- (v) Women living in larger households are more likely to accept IPV. Also the respondents' number of children increases the likelihood of accepting violence.
- (vi) Muslim women are more likely to accept IPV as well as women living in a polygamous relationship, which is most frequent in Muslim relationships.
- (vii) Among a smaller sample of women for whom we have more details concerning domestic violence, we see that women who witnessed her father beating her mother in childhood are more likely to accept violence.

Table 3: Descriptives on sample (only first wave)

	(1) all respondents, all countries		(2) Respondents who accept IPV	(3) Respondents with electricity
	N	mean (sd)	difference* (p-value)	difference** (p-value)
Village characteristics				
Distance to nearest urban cluster	103,520	27.8 (22.9)	1.78 (0.000)	-9.133 (0.000)
Village has electricity	122,371	0.23 (0.42)	-0.028 (0.000)	1
Share of HH in village with water tap	122,371	0.16 (0.07)	-0.001 (0.045)	0.013 (0.000)
Share of HH in village went to hospital last 12 month	122,371	0.4 (0.067)	-0.001 (0.007)	0.007 (0.000)
Share of HH visited by family planning worker last 12 month	122,371	0.07(0.03)	0 (0.086)	0.006 (0.000)
HH characteristics				
Respondents per HH	122,371	1.43 (0.86)	0.047 (0.000)	0.03 (0.003)
HH has electricity	122,151	0.059 (0.24)	-0.023 (0.000)	1
HH uses tap water	122,313	0.127 (0.33)	- 0.02 (0.000)	0.16(0.000)
Age head of HH	122,233	42.6 (13.8)	-0.08 (0.416)	0.164 (0.302)
Head of HH is female	122,371	0.18 (0.38)	-0.014 (0.000)	0.041 (0.000)
Number of HH members	122,371	6.96 (4.45)	0.251 (0.000)	0.419 (0.000)
HH owns bike	122,121	0.35 (0.48)	0.01 (0.001)	-0.033 (0.000)
HH owns motorcycle	122,055	0.098 (0.3)	-0.002 (0.194)	0.055 (0.000)
HH owns car	121,981	0.015 (0.12)	-0.01 (0.000)	0.037 (0.000)
Respondent characteristics				
Respondent is muslim	121,002	0.42 (0.49)	0.033 (0.000)	-0.075 (0.000)
Age of respondent	122,371	30.9 (8.95)	-0.681 (0.000)	0.571 (0.000)
Respondent attended secondary school	122,368	0.078 (0.27)	-0.041 (0.000)	0.121 (0.000)
Respondent attended primary school	122,368	0.4 (0.49)	-0.028 (0.000)	0.215 (0.000)
Respondent is married	122,371	0.8 (0.4)	0.013 (0.000)	-0.036 (0.000)
Number of children	122,371	4.17 (2.91)	0.01 (0.637)	-0.422 (0.000)
Age at first cohabitation	122,371	17 (3.61)	-0.356 (0.000)	1.309 (0.000)
Exposed to violence in childhood	30,178	0.22 (0.41)	0.041 (0.000)	0.019 (0.015)
Characteristics current partnership				
Age difference between partners	108,537	9.97 (8.56)	0.344 (0.000)	-0.605 (0.000)
Partner attended secondary school	119,378	0.16 (0.37)	-0.04 (0.000)	0.167 (0.000)
Relationship is polygamous	105,734	0.34 (0.47)	0.032 (0.000)	-0.05 (0.000)
Partner drinks alcohol	35,488	0.26 (0.44)	0.001 (0.819)	0.051 (0.000)

Source: DHS all country data set, first wave. * difference in means between women who accept IPV and those who do not. Country dummies included. **difference in means between women in HHs with and without electricity connection. Country dummies included.

Women who live in households with electricity are generally better off than women in non-connected households (Table 3, Column 3). For example, they own more assets and have better education. They seem to be more modern, as indicated by the age of first cohabitation or the age difference between partners.

5. Empirical strategy

The aim of this paper is to analyse the relationship between having electricity at home and attitudes toward IPV. The main difficulty in interpreting this relationship causally lies in the household's connection status not being exogenous but rather a result of a twofold selection process:

First, to connect to the grid the household has to be located in an area that is served by the electricity grid. Electrification rates are normally highest in the countries' capital and urban centres and rapidly decrease with the distance to urban centres. Out of economic considerations, rural areas with an above-average demand for electricity are the priority for rural electrification in order to make investments into rural electrification as profitable as possible. Rural areas with electricity can hence be expected to be the livelier places with comparably high economic activity. Furthermore, rural electrification is often a highly politicised process. Rural electrification is a means to secure electoral support and regions selected for electrification might be politically privileged regions in other regards too.

Second, a household in a grid connected area decides whether to connect or not. Since electricity has very high priority for rural households, the decision to connect is mainly driven by affordability considerations and connected households can be expected to be the economically better off households. Furthermore, other household characteristics like educational level or modernity drive the households' decision to connect.⁸ These regional and household characteristics are likely to be correlated with attitudes toward IPV and thereby make a causal interpretation of an observed correlation difficult.

⁸ See Section 5.3 for characteristics of connected vs. non-connected households.

5.1 Linear Probability Estimation

As a first attempt to address the endogeneity problem, I estimate a simple multivariate linear probability model (LPM), regressing the binary attitudes indicator on electrification status and further control variables.⁹ The included variables can capture a substantial number of potential confounding factors. Since the DHS data is not a panel, I assume in a first step that no unobserved heterogeneity exists and pool all observations across the two waves of data. Country dummies are included and standard errors clustered at the household level.

At the regional level, I control for the distance of the sampled village to the nearest urban cluster that has also been surveyed by DHS. This information is obtained from GPS data provided by DHS.¹⁰ In order to control for general infrastructure availability in the neighbourhood, I control for the availability of piped water and health services in the village.¹¹ At the household level, I include a set of household characteristics like the age and sex of the head of household and number of household members. Also indicators for the economic situation of the household like ownership of bikes, motorcycles, cars, and usage of tapped water are included.

At the individual level, I control for the respondent's religion, age, education, marital status, and number of children, the partner's education, and whether the respondent lives in a polygamous relationship. Moreover, the age at first cohabitation and the age difference between the respondent and her partner serve as an approximation for whether the respondent comes from a rather traditional or modern background. I

⁹ Despite the binary character of the attitudes indicator, an LPM seems to give good estimates, since the explanatory variable of interest, electrification status, is discrete as well (see WOOLDRIDGE 2002, p.456). Results of a probit estimation of the simple multivariate model confirm the results from the LPM estimation.

¹⁰ In order to guarantee respondent confidentiality, DHS displaces randomly the GPS data coordinates of interviewed clusters. Urban clusters are displaced up to 2 kilometres. Rural clusters are displaced up to 5 kilometres, with 1% of the rural clusters displaced up to 10 kilometres. Accordingly, the calculated distances to urban areas are only approximations.

¹¹ Since DHS does not provide information on infrastructure in the village, I calculate the share of interviewed households that uses water from a tap, that has visited a hospital in the last 12 month, and that has been visited by a family planning worker in the last 12 month.

furthermore control for the presence of other persons, especially men and children, during the interview.

5.2 Propensity Score Matching

In this approach, I restrict the analysis to households connected to the grid and non-connected household that are as similar as possible to the connected household by means of a Propensity Score Matching (PSM) approach. Matching builds on the Conditional Independence Assumption (CIA) that dictates that the outcome variables must be independent of the treatment, conditional on the observed covariates. The treatment in the present case is whether the household has connected to the grid. The CIA requires that the covariates are non-responsive to the connection status (ROSENBAUM 1984). The covariates to be included should only be those that affect the decision to connect and the outcome variable (SCHMIDT AND AUGURZKY 2001, CALIENDO AND KOPEINIG 2008).

Finding variables that fulfil this requirement is somewhat challenging, since I do not have pre-electrification information for households connected to the grid. This is why I have to rely on variables that I assume to be non-responsive to the electricity connection. I use the distance to the nearest urban cluster, sex of the head of the household, availability of tapped water in the village, and whether the head of household attended at least secondary school as covariates. One might argue that these variables as well are influenced by electrification. However, the influence seems to be very subtle and only perceivable in the very long run. For example, the educational level of the household could be influenced by electrification, as investments into education might be affected by electrification in the longer run. The educational decision, though, is too long ago to have been influenced by electrification since on average the head of household is 43 years old and school attendance already around 30 years ago. It is plausible that very few rural areas in my sample had already been electrified 30 years ago.

I use a nearest neighbour matching algorithm¹² without replacement and restrict possible matching partners to households living in villages where no household has electricity. Households in grid access areas that have deliberately decided not to connect are thereby excluded. The PSM approach is able to increase the comparability of the treatment and control group substantially, although balance of covariates cannot be completely achieved. Balancing tests are displayed in the Annex.

5.3 Pseudo-panel

In a third attempt to reduce the endogeneity problem, I construct a pseudo-panel following cohorts over time (DEATON 1985). I define cohorts based on geographical entities and use the lowest administrative entity that is representatively covered by DHS over two waves. Between three and 15 of these geographical areas exist per country. On average, each country is divided into nine regions.

The cohort has to be defined by characteristics that stay constant over all survey waves (DEATON 1985). The pseudo-panel approach allows then for controlling for fixed cohort effects that might be correlated with the electrification status and attitudes toward IPV that otherwise would induce distortions. By using regions as cohorts, the pseudo-panel is able to control for time-invariant, unobservable characteristics of a region that might be correlated with attitudes toward IPV. These might be for example cultural traits like attitudes with regards to technological innovations and gender roles. Obviously, the pseudo-panel is not able to control for time-variant, unobservable characteristics. In the present case, the risk that regions might be on different secular trends cannot be fully ruled out. The approach might be furthermore threatened, if people with high entrepreneurial spirit or aspirations

¹² The decision for a matching algorithm involves a trade-off between bias and efficiency (see CALIENDO AND KOPEINIG 2008). The nearest neighbour algorithm reduces bias at the cost of higher variance compared to algorithms that use multiple neighbours. Restricting replacement has the opposite effect. Robustness tests show that applying algorithms with replacement and using multiple neighbours does not alter the results.

moved to electrified areas. I argue that this happens only to a very low extent since the vast majority of people in rural areas are subsistence farmers and therefore depend on arable land. Even rural dwellers who work in non-agricultural jobs depend additionally on subsistence farming and hence are fairly immobile. Moreover, this kind of migration would normally occur within the geographical area defined here as one cohort and therefore does not bias my results.

Furthermore, DEATON (1985) argues that cohort means can be interpreted as measurement error-ridden cohort population means if one can observe successive random samples of each cohort. The larger the cohort sizes, the lower the possible measurement error. VERBEEK AND NIJMAN (1992) suggest that cohorts comprising around 100 individuals are enough to nearly eliminate the bias arising from measurement errors. In my dataset, a total of 201 regions exist across all countries with on average 675 observations.¹³ Since the DHS data are sampled in order to provide representative population means at the region level I use here for constructing the panel, I deem measurement errors to be negligible.

6. Causal relationship between electricity and IPV

6.1 Electricity and intimate partner violence

Table 4 displays the results from four different regression models. Column 1 and 2 show results from a simple Linear Probability Model with and without controlling for the village, household, respondent, and partnership characteristics discussed in Section 5.1. Additionally, I control for the presence of other persons during the interview. Since this information is not available in Cameroon, Ethiopia, and Malawi, these countries are excluded from the analysis. Furthermore, Mozambique, Niger, Rwanda, and Zambia are excluded since GPS data is not available for all waves.

¹³ Possible heteroskedasticity arising from differing number of observations per cohort is accounted for through robust standard errors.

Lesotho is excluded because no information on polygamy exists.¹⁴ Column 3 displays results of the matching approach and Column 4 shows the results of the pseudo-panel approach.

Table 4: Effect of electricity access on attitudes toward IPV (P-values in parentheses)

	(1) all observations	(2) all observations	(3) matching	(4) pseudo-panel based on regions
HH has electricity	-0.096 (0.000)***	-0.046 (0.000)***	-0.030 (0.000)***	-0.035 (0.000)***
Village characteristics	No	Yes	Yes	Yes
HH characteristics	No	Yes	Yes	Yes
Respondent characteristics	No	Yes	Yes	Yes
Partnership characteristics	No	Yes	Yes	Yes
Country dummies	Yes	Yes	Yes	-
Region dummies	No	No	No	Yes
Presence of other persons	No	Yes	Yes	Yes
Year of data collection	No	Yes	Yes	Yes
Adj. R-Squared	0.10	0.13	0.12	0.15
Number of observations	138,802	138,802	28,739	138,802

Source: DHS all country data set. *Notes:* Coefficients are estimated by a Linear Probability Model with robust standard errors clustered at the household level. For the pseudo-panel, standard errors are additionally clustered at the region level. Detailed results can be found in the Annex.

All approaches consistently show a negative and significant effect of electricity access on attitudes toward IPV. The slightly smaller coefficients for electricity access in the matching and region-panel approaches indicate that the simple Linear Probability Model is suffering from endogeneity that can at least partially be reduced through the two alternative approaches.¹⁵ Complete results can be found in the Annex. The coefficients of the matching and pseudo-panel approach are quite similar and indicate that having electricity at home reduces the probability of accepting IPV by

¹⁴ The general tendency of the result does not change if these control variables are dropped and more countries included instead.

¹⁵ In order to check the validity of the results of the pseudo-panel approach, I alternatively construct a pseudo-panel based on randomly generated cohorts. This approach does not alter the results with regard to a pooled Linear Probability Model.

three to four percent. In light of the general decline in IPV acceptance discussed in Section 4.1 amounting to 14 percentage points between the first and the second panel wave, the size of the reduction induced by electricity seems very relevant.

6.2 Transmission channels

According to the theory of change, a change in attitudes toward IPV after electrification can either be induced through better media access or via higher female labour participation. In the following, I analyse in the DHS data set whether women in connected households indeed show differing patterns regarding these characteristics and include interaction terms in the multivariate regression models.

Table 5: Media access of connected and non-connected households (p-values in parentheses)

Indicator	N	(1)	(2)
	Whole sample	Mean non-connect. HH	Difference connect. vs. non-connect. HH*
TV	267,383	0.06	0.148 (0.000)
watches TV	267,204	0.18	0.186 (0.000)
watches TV at least weekly	267,204	0.07	0.132 (0.000)
watches TV at least daily	267,204	0.02	0.047 (0.000)
Radio	267,530	0.56	0.110 (0.000)
Listens to radio	267,327	0.65	0.096 (0.000)
Listens to radio at least weekly	267,327	0.49	0.103 (0.000)
Listens to radio at least daily	267,327	0.15	0.031 (0.000)
Mobile phone	185,154	0.37	0.164 (0.000)

Source: DHS all country data set.

Notes: *difference between households with and without electricity estimated by means of a probit estimation, controlling for all village, household, and respondent characteristics presented above.

As displayed in Table 5, column 1, also non-electrified household watch TV, listen to the radio, and have mobile phones. They either operate these appliances on dry-cell batteries (radios) or have a generator or solar panel to power a TV set. Households without electricity source at home visit neighbours, bars, or shops to watch TV or listen to the radio. They charge their mobile phone at neighbours', schools, health stations or in shops where phones can be charged for a fee. Yet, connected

households have significantly better access to these information and entertainment sources (see Table 5, column 2). They own more TV sets and watch TV more frequently, own more radios and have more mobile phones.

Regarding female labour participation, it can be observed that virtually all women pursue some kind of work apart from housework (see Table 6). These activities comprise working on the family's fields, selling things, helping in the family business, and salaried work. Of course, not all of these activities can be expected to influence attitudes toward IPV. The strongest effect can be expected from non-agricultural jobs outside the household. Earning money with the job can furthermore be expected influence attitudes toward IPV.

Table 6: Female labour participation in connected and non-connected households (p-values in parentheses)

Indicator	N whole sample	(1)	(2)
		Mean non-connect. HH	Difference connect. vs. non-connect. HH ^a
Woman works	262,516	0.99	0.023 (0.000)
Woman works in non-agricultural job	262,516	0.25	0.065 (0.000)
Works at home	177,482	0.33	0.012 (0.001) ^b
Works self-employed	184,856	0.47	0.007 (0.164)
Earns money	266,981	0.70	0.054 (0.000)

Source: DHS all country data set.

Notes: ^a difference between households with and without electricity estimated by means of a probit model, controlling for all village, household, and respondent characteristics presented above. ^b Convergence problems with probit estimation. An OLS model is estimated instead.

A quarter of all women in non-connected households work in non-agricultural jobs, which are above all sales jobs (61 percent – not displayed in the table). Around 17 percent are skilled manual workers, six percent work as unskilled workers. The service sector employs further eight percent and five percent work in professional, technical or managerial occupations. Around one third of all women exercise the work at home, almost half of the jobs are self-employment and 70 percent earn money with their work. Women in grid connected households work significantly more often in non-agricultural jobs (see Table 6, column 2). Compared to women in non-connected households, these non-agricultural jobs are more frequently in the

services sector and less often sales activities. Moreover, they are more likely to have a paid job.

Table 7: Results - Transmission channels (p-values in parentheses)

	(1) matching	(2) pseudo-panel based on regions
HH has electricity	-0.020 (0.250)	0.003 (0.529)
Interactions		
TV & electricity	-0.049 (0.013)**	-0.039 (0.000)***
radio & electricity	0.001 (0.952)	-0.011 (0.003)***
Non-agricultural job & electricity	0.040 (0.041)**	0.001 (0.840)
Earns money & electricity	-0.012 (0.549)	-0.003 (0.446)
TV	0.021 (0.228)	-0.015 (0.000)***
Radio	-0.033 (0.004)***	-0.005 (0.000)***
Non-agricultural job	-0.012 (0.367)	0.002 (0.558)
Earns money	-0.017 (0.226)	-0.007 (0.009)***
Village characteristics	Yes	Yes
HH characteristics	Yes	Yes
Respondent characteristics	Yes	Yes
Partnership characteristics	Yes	Yes
Country dummies	Yes	-
Presence of other persons	Yes	Yes
Year of data collection	Yes	Yes
Adj. R-Squared	0.12	0.15
Number of observations	28,739	136,228

Source: DHS all country data set. *Notes:* Coefficients are estimated by a Linear Probability Model with robust standard errors clustered at the household level. For the pseudo-panel, standard errors are additionally clustered at the region level. Detailed results can be found in the Annex.

In order to analyse the identified transmission channels in the regression analysis, I include corresponding interaction terms for all characteristics that are available in all

waves and countries (see Table 7)¹⁶. In general, the results show that access to information is the main driver of changes in attitudes while the effect of female labour participation is not that clear. Especially TV exposure has a strong effect on attitudes. Having electricity and a TV set at home decreases the probability of accepting IPV by four to five percent. Radio ownership induces a significantly negative effect in the pseudo-panel approach only. The effect is substantially smaller than the effect of TV and non-significant in the matching approach.

Results for women working in non-agricultural jobs show a higher level of acceptance of IPV in the matching approach. However, these effects turn insignificant in the pseudo-panel model. Having a paid job does not seem to affect attitudes toward IPV.

Apart from the transmission channels studied in detail here, two confounding factors stand out to have a strong effect on attitudes toward IPV. As displayed in the detailed results tables in the Annex, living in a village with presence of family planning workers decreases acceptability of IPV substantially and seems to be a very important driver of attitudes toward IPV. Moreover, the presence of other persons, especially men listening to the interview has a strong positive effect on acceptability of IPV. This illustrates the sensitivity of the subject and highlights that attitudes toward IPV as measured in this study might not be a static and objective measure of personal opinions. Instead, it might also mirror socially expected behaviour. One way or the other, the decrease in acceptability of IPV hints at social transformations either at the individual or collective level that can be expected to also influence occurrence of IPV.

¹⁶ Introducing the interaction terms one by one does not lead to different results.

7. Conclusion

This paper analysed the relationship between rural electrification and domestic violence in 22 Sub-Saharan countries. As an indicator for occurrence of domestic violence, it focussed on attitudes toward IPV among women between 15 and 49 years elicited by the Demographic and Health Surveys between 1999 and 2014. Descriptive analyses showed that the level of domestic violence varies substantially between countries and over time. In all but one country, levels of consent to IPV decreased over the last 15 years, but to very differing degrees. Differences in prevalence can be explained by individual and community and macro-level factors. Among individual factors, especially education and the woman's age stand out as the main protecting factor against IPV. Risk factors are associated with being Muslim and having been exposed to domestic violence during childhood. Furthermore, women in larger households and more traditional relationships with a higher age difference between the partners and who entered cohabitation at younger ages are more likely to accept IPV.

Women in households with electricity report significantly lower acceptance of IPV. It is especially access and higher exposure to information via TV sets that causes the difference in IPV acceptance. However, this relationship can be assumed to be substantially driven by unobservables. Matching and pseudo-panel approaches are able to control for parts of this endogeneity and reduce the effect of electricity on IPV acceptance substantially. The effect remains significant, though. These results have to be interpreted with some care since it cannot be fully ruled out that households that connect to the grid are not on the same secular trend compared to those that do not connect. Thus, results may still suffer from endogeneity. As for the results of the matching approach, balancing tests show that even for observable characteristics still some differences between connected and non-connected households persist.

In order to eliminate this caveat, stronger identification strategies are needed such as household panel data, natural experiments or even randomized controlled trials

(RCTs). Implementing RCTs is especially challenging, since large infrastructure investments like grid extension normally follow dominating geographical and economic considerations. One option could be to randomly phase in electrification interventions and observe differences between immediately and later served areas. As shown by JENSEN AND OSTER (2009), even a time span of two years can be sufficient to observe important changes in attitudes and behaviour.

Empirical studies on impacts of electrification often emphasize the weak effect of electrification on economic development, at least in the short run. It is sometimes argued that the strong take-up of information and entertainment devices is only of consumptive nature and does not contribute to poverty alleviation. However, it seems worth to understand properly how access to information and media changes attitudes and behaviour. If it could be confirmed that access to electricity effectively decreases IPV, it would also have huge implications on social cost.

Violence against women and girls are often estimated to generate costs amounting to billions of dollars and go up to more than 4,000 billion USD, which is equivalent to 5% of the world's GDP in 2013 (DAY et al. 2005 and HOEFFLER AND FEARON 2014). If these numbers are true, even the high investment costs of rural electrification appear to be acceptable. Also the Proposal of the Open Working Group for a new set of Post-2015 Sustainable Development Goals (OPEN WORKING GROUP 2014) asks to "eliminate all forms of violence against all women and girls in the public and private spheres". The goal is clear, the way to reach it is not. Rural electrification might potentially play an important role in this process.

References

- Abrevaya, Jason. 2009. "Are There Missing Girls in the United States? Evidence from Birth Data." *American Economic Journal: Applied Economics*, 1(2): 1–34.
- Aizer, Anna. 2010. "The gender wage gap and domestic violence." *American Economic Review*, 100(4): 1847–59.
- Alio, Amina P., Heather B. Clayton, Madeleine Garba, Alfred K. Mbah, Ellen Daley, and Hamisu M. Salihu. 2011. "Spousal concordance in attitudes toward violence and reported physical abuse in African couples." *Journal of interpersonal violence*, 26(14): 2790–810.
- Almond, Douglas and Lena Edlund. 2008. "Son-biased sex ratios in the 2000 United States Census." *Proceedings of the National Academy of Sciences*, 105(15): 5681–82.
- Archer, John. 2006. "Cross-cultural differences in physical aggression between partners: A social-role analysis." *Personality and Social Psychology Review*, 10(2): 133–53.
- Bernard, Tanguy. 2012. "Impact Analysis of Rural Electrification Projects in Sub-Saharan Africa." *World Bank Research Observer*, 27(1): 33–51.
- Caliendo, Marco and Sabine Kopeinig. 2008. "Some Practical Guidance for the Implementation of Propensity Score Matching." *Journal of Economic Surveys*, 22: 31–72.
- Card, David and Gordon B. Dahl. 2011. "Family Violence and Football: The Effect of Unexpected Emotional Cues on Violent Behavior." *The Quarterly Journal of Economics*, 126(1): 103–43.
- Day, Tanis, Katherine McKenna, and Audra Bowlus. 2005. *The Economic Cost of Violence Against Women: An Evaluation of the Literature. Expert brief compiled in preparation for the Secretary-General's in-depth study on all forms of violence against women.* New York: United Nations.
- Deaton, Angus. 1985. "Panel data from time series of cross-sections." *Journal of Econometrics*, 30(1-2): 109–26.
- Dinkelman, Taryn. 2011. "The Effects of Rural Electrification on Employment: New Evidence from South Africa." *American Economic Review*, 101(7): 3078–108.
- Duflo, Esther. 2012. "Women Empowerment and Economic Development." *Journal of Economic Literature*, 50: 1051–79.
- Eswaran, Mukesh and Nisha Malhotra. 2011. "Domestic violence and women's autonomy in developing countries: theory and evidence." *Canadian Journal of Economics/Revue canadienne d'économique*, 44(4): 1222–63.
- Farmer, Amy and Jill Tiefenthaler. 1997. "An Economic Analysis of Domestic Violence." *Review of Social Economy*, 55(3): 337–58.

- Fernández, Raquel and Alessandra Fogli. 2009. "Culture: An Empirical Investigation of Beliefs, Work, and Fertility." *American Economic Journal: Macroeconomics*, 1(1): 146–77.
- Fernández, Raquel, Alessandra Fogli, and C. Olivetti. 2004. "Mothers and Sons: Preference Formation and Female Labor Force Dynamics." *Quarterly Journal of Economics*, 119: 1249–99.
- Goode, William J. 1971. "Force and Violence in the Family." *Journal of Marriage and Family*, 33(4): 624–36.
- Grogan, Louise and Asha Sadanand. 2012. "Electrification and Labour Supply in Poor Households: Evidence from Nicaragua." *World Development*, 43: 252–65.
- Heath, Rachel. 2012. "Women's Access to Labor Market Opportunities, Control of Household Resources, and Domestic Violence." *World Bank Policy Research Working Paper*(6149).
- Heise, Lori. 2012. *Determinants of partner violence in low and middle-income countries. Exploring variation in individual and population-level risk*. Doctoral Thesis: London School of Hygiene & Tropical Medicine.
- Hoeffler, Anke and James Fearon. 2014. "Benefits and Costs of the Conflict and Violence Targets for the Post-2015 Development Agenda. Post-2015 Consensus." *Copenhagen Consensus Working Paper*.
- IEA. 2014. *World Energy Outlook 2014*. Paris.
- IEG. 2008. *The Welfare Impacts of Rural Electrification – An IEG Impact Evaluation*.: Independent Evaluation Group, World Bank.
- Jayachandran, Seema. 2014. "The Roots of Gender Inequality in Developing Countries." *Annual Review of Economics*(7): submitted.
- Jensen, Robert and Emily Oster. 2009. "The power of TV: cable television and women's status in rural India." *Quarterly Journal of Economics*, 124(3): 1057–94.
- Jewkes, Rachel. 2002. "Intimate partner violence: causes and prevention." *The Lancet*, 359(9315): 1423–29.
- Khandker, Shahidur R., Douglas F. Barnes, and Hussain A. Samad. 2012. "The Welfare Impacts of Rural Electrification in Bangladesh." *The Energy Journal*, 33(1).
- Klugman, Jeni, Lucia Hanmer, Sarah Twigg, Tazeen Hasan, Jennifer McCleary-Sills, and Julieth Santamaria. 2014. "Voice and Agency. Empowering Women and Girls for Shared Prosperity." World Bank.
- Kohlin, Gunnar, Erin Sills, Subhrendu Pattanayak, and Christopher Wilfing. 2011. "Energy, Gender and Development. What are the Linkages? Where is the Evidence? A background paper for the World Development Report 2012 on Gender Equality and Development." *Social Development Papers, World Bank*(Paper No. 125).

- Krishnan, Suneeta, Corinne H. Rocca, Alan E. Hubbard, Kalyani Subbiah, Jeffrey Edmeades, and Nancy S. Padian. 2010. "Do Changes in Spousal Employment Status Lead to Domestic Violence? Insights from a Prospective Study in Bangalore, India." *Social science & medicine*, 70(1): 136–43.
- Krug, Etienne G., Linda L. Dahlberg, James A. Mercy, Zwi, Anthony B. Zwi, Rafael Lozano, and eds. 2002. *World report on violence and health*. Geneva.
- Lenz, Luciane, Anicet Munyehirwe, Jörg Peters, and Maximiliane Sievert. 2015. "Does Large Scale Infrastructure Investment Alleviate Poverty? Impacts of Rwanda's Electricity Access Roll-Out Program." *Ruhr Economic Papers* #555. RWI.
- Levinson, David. 1989. *Violence in cross-cultural perspective*. Newbury Park, California: Sage Publishers.
- Neelsen, Sven and Jörg Peters. 2011. "Electricity usage in micro-enterprises – Evidence from Lake Victoria, Uganda." *Energy for Sustainable Development*, 15(1): 21–31.
- Open Working Group for Sustainable Development Goals. 2014. *Proposal of the Open Working Group for Sustainable Development Goals*. New York.
- Peters, Jörg, Colin Vance, and Marek Harsdorff. 2011. "Grid Extension in Rural Benin: Micro-Manufacturers and the Electrification Trap." *World Development*, 39(5): 773–83.
- Pierotti, Rachel. 2013. "Increasing Rejection of Intimate Partner Violence: Evidence of Global Cultural Diffusion." *American Sociological Review*, 78(2): 240–65.
- Rosenbaum, P. R. 1984. "The Consequences of Adjustment for a Concomitant Covariate that has been Affected by the Treatment." *Journal of the Royal Statistical Society (Ser. A)*, 147: 656–66.
- Schmidt, Christoph M. and Boris Augurzky. 2001. "The Propensity Score: A Means to An End." *IZA Discussion Paper Series*(271).
- Tauchen, Helen, Anne D. Witte, and Sharon K. Long. 1991. "Domestic Violence: A Non-random Affair." *International Economic review*, 32: 491–511.
- Uthman, Olalekan A., Tahereh Moradi, and Stephen Lawoko. 2011. "Are individual and community acceptance and witnessing of intimate partner violence related to its occurrence? Multilevel structural equation model." *PloS one*, 6(12): e27738.
- Verbeek, Marno and Theo Nijman. 1992. "Can cohort data be treated as genuine panel data?" *Empirical Economics*(17): 9–23.
- Wakunuma, Kutoma J. 2012. *Implicating mobile phones in violence against women: What's gender got to do with it?: GenderIT.org*.
- WHO, Department of Reproductive Health and Research, London School of Hygiene and Tropical Medicine, South African Medical Research Council. 2013. *Global and regional estimates of violence against women*. Prevalence and health effects of intimate

partner violence and non-partner sexual violence. Geneva: World Health Organization.

Wooldridge, Jeffrey 2002. *Econometric Analysis of Cross Section and Panel Data*, MIT Press. London.

World Development Indicators (WDI). 2015. "Available at <http://data.worldbank.org/data-catalog/world-development-indicators>."

Annex 1: Details on Propensity Score Matching Approach

Since the decision to connect to the electricity grid is a household decision, I use households rather than women as the matching unit. In the first step I estimate a probit model and regress the connection status of a household on a number of covariates for all countries separately. Results are displayed in the first column of Figure A1_1 below. In a second step, I use the coefficients from this regression to predict the probability to connect among all households that live in villages without electricity access. A village is considered to have no electricity access if none of the households surveyed within the village has a grid connection. I thereby exclude as matching partners households in electricity access areas that have deliberately decided not to connect since they might be affected by the treatment through spill-overs and can be assumed to be substantially different from connected households. The estimated probabilities, also known as the propensity scores, are then used to identify matching partners using a nearest neighbor algorithm without replacement.

Figure A1_1: Probit estimations before and after matching (p-values in parentheses)

	Before matching	After matching
distance_nearesturban	-0.001 (0.000)	-0.001 (0.000)
water_piped_vill	0.098 (0.000)	0.120 (0.000)
hoh_higher_edu	0.090 (0.000)	0.080 (0.000)
head_hh_female	0.017 (0.000)	0.042 (0.000)
age_firstcohabitation	0.003 (0.000)	0.004 (0.000)
Pseudo R-Squared	0.26	0.04
Wald test	20,333.76	1,393.59
p value	0.00	0.00
Number of observations	224,598	43,151

Note: Country dummies included. *, ** and *** indicate significance levels of 10%, 5% and 1%, respectively.

The distribution of the propensity scores among connected households and non-connected household in non-electrified areas is displayed in Figure A1_2.

In order to assess whether the comparability of the groups has improved through the matching approach I look at differences in means of the covariates between the connected households and the control households. As can be seen in Figure A1_3, the difference between the groups to be compared becomes substantially smaller if we only use the matched sample. However, differences stay statistically significant. As a second way to test the quality of the matching process, we look at the pseudo-R² of the probit model, regressing the connection status on covariates used for the matching. First, we use all non-connected HH as counterfactual (see Figure A1_1, column 1) and then we use only the matched non-connected ones (Figure A1_1, column 2). The pseudo-R² is expected to fall if a balance

improvement is achieved. This is what we see in our data: the pseudo-R² falls from 0.26 to 0.04. However, the respective Wald test shows a joint significant influence of the covariates in the non-matched and matched case. Accordingly, the matching approach is able to increase the comparability substantially. Differences between the two groups still exist, though.

Figure A1_2: Distribution of propensity scores among connected households (1. Yes) and non-connected households in non-electrified areas (0. No)

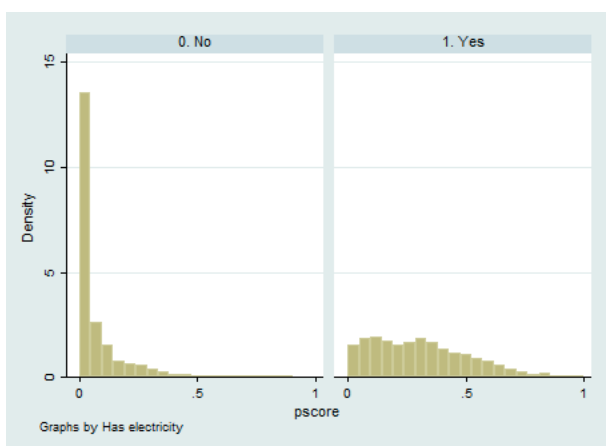


Figure A1_3: Balancing of covariates between treatment and control group

Difference in means of covariates	Before matching	After matching
distance_nearesturban	-8.09***	-2.19***
water_piped_vill	0.21***	0.08***
hoh_higher_edu	0.23***	0.08***
head_hh_female	0.03***	0.02***
age_firstcohabitation	1.22***	0.54***

Note: difference in means between connected and non-connected households. Country dummies included. *, ** and *** indicate significance levels of 10%, 5% and 1%, respectively.

Annex 2: Correlation between attitudes and occurrence of IPV

Indicator	Correlation coefficient less severe violence	Correlation coefficient severe violence
Accepts beating in at least one situation	0.084***	0.028**
Accepts beating in all situations	0.041***	0.019***
Accepts beating in X situations (X=0-5)	0.02***	0.007***

Notes: Coefficients are estimated by a probit model with country dummies. *, ** and *** indicate significance levels of 10%, 5% and 1%, respectively.

Annex 3: Details on results in Section 6

	All observations	All observations	Matching	Matching with interactions
HH has electricity connection	-0.096 (0.000)***	-0.046 (0.000)***	-0.030 (0.000)***	-0.020 (0.230)
Village Characteristics				
Follow-up		0.082 (0.000)***	0.085 (0.014)**	0.086 (0.015)**
Distance to nearest urban cluster		0.001 (0.000)***	0.002 (0.000)***	0.002 (0.000)***
Share of HH in village with water tap		-0.026 (0.236)	-0.057 (0.177)	-0.059 (0.163)
Share of HH in village went to hospital last 12 month		-0.032 (0.185)	0.013 (0.811)	-0.001 (0.985)
Share of HH visited by family planning worker last 12 mth		-0.192 (0.001)***	-0.328 (0.002)***	-0.305 (0.005)***
Household Characteristics				
Household uses water from tap		-0.017 (0.001)***	-0.015 (0.134)	-0.010 (0.341)
Age head of HH		-0.000 (0.389)	-0.001 (0.136)	-0.001 (0.102)
Head of HH is female		-0.021 (0.000)***	-0.029 (0.010)***	-0.033 (0.004)***
Number of HH members		0.003 (0.000)***	0.002 (0.061)*	0.002 (0.026)**
HH has bike		0.012 (0.000)***	0.017 (0.039)**	0.020 (0.014)**
HH has motorcycle		-0.001 (0.815)	-0.010 (0.218)	-0.004 (0.658)
HH has car		-0.044 (0.000)***	-0.026 (0.070)*	-0.018 (0.220)
HH has television				0.021 (0.228)
HH has radio				-0.033 (0.004)***
Respondent Characteristics				
Respondent is muslim		0.031 (0.000)***	-0.008 (0.410)	-0.008 (0.477)
Age of respondent		-0.002 (0.000)***	-0.004 (0.000)***	-0.004 (0.000)***
Respondent attended secondary school		-0.064 (0.000)***	-0.077 (0.000)***	-0.074 (0.000)***
Respondent attended primary school		0.009 (0.039)**	-0.001 (0.917)	0.002 (0.867)
Respondent is married		-0.007 (0.188)	-0.023 (0.149)	-0.024 (0.139)
Respondent's number of children		0.004 (0.000)***	0.007 (0.001)***	0.007 (0.001)***
Age at first cohabitation		-0.002 (0.000)***	-0.001 (0.209)	-0.001 (0.312)
Respondent earns money				-0.017 (0.226)
Respondent works in non-agricultural job				-0.012 (0.367)
Partnership				
Age difference between partners		-0.000 (0.833)	-0.000 (0.420)	-0.000 (0.408)
Partner attended secondary school		-0.014 (0.002)***	-0.043 (0.000)***	-0.041 (0.000)***
Relationship is polygamous		0.023 (0.000)***	0.028 (0.001)***	0.028 (0.001)***
Intention Terms				
Non-agricultural job & electricity				0.040 (0.041)**
Earns money & electricity				-0.012 (0.549)
TV & electricity				-0.049 (0.013)**
Radio & electricity				0.001 (0.952)
Presence of other persons during interview				
Husband present		-0.047 (0.000)***	-0.007 (0.802)	-0.008 (0.795)
Husband listening		0.030 (0.183)	-0.043 (0.481)	-0.049 (0.427)
Other man present		-0.057 (0.000)***	-0.049 (0.139)	-0.049 (0.158)
Other man listening		0.116 (0.000)***	0.105 (0.101)	0.123 (0.058)*
Other woman present		0.011 (0.255)	0.033 (0.181)	0.034 (0.188)
Other woman listening		0.049 (0.000)***	-0.000 (0.999)	-0.005 (0.883)
Children present		0.026 (0.000)***	0.062 (0.000)***	0.065 (0.000)***
Children listening		0.025 (0.014)**	-0.010 (0.726)	-0.017 (0.545)
Year of data collection		-0.031 (0.000)***	-0.031 (0.000)***	-0.032 (0.000)***
Country dummies included	Yes	Yes	Yes	Yes
_cons	0.695 (0.000)***	62.135 (0.000)***	62.948 (0.000)***	64.237 (0.000)***
Adj. R-Squared	0.10	0.13	0.12	0.12
Number of observations	138,802	138,802	28,739	28,134

	Pseudo-panel regions	Pseudo-panel regions with interactions
Hh has electricity connection	-0.035 (0.000)***	0.003 (0.529)
Village Characteristics		
Follow-up	0.086 (0.000)***	0.087 (0.000)***
Distance to nearest urban cluster	0.000 (0.000)***	0.000 (0.000)***
Share of HH in village with water tap	-0.019 (0.301)	-0.018 (0.340)
Share of HH in village went to hospital last 12 month	-0.072 (0.000)***	-0.079 (0.000)***
Share of HH visited by family planning worker last 12 month	-0.092 (0.001)***	-0.076 (0.003)***
Household uses water from tap	-0.005 (0.050)*	-0.005 (0.088)*
Age head of HH	-0.000 (0.029)**	-0.000 (0.006)***
Head of HH is female	-0.020 (0.000)***	-0.021 (0.000)***
Household Characteristics		
Number of HH members	0.002 (0.000)***	0.002 (0.000)***
HH has bike	0.007 (0.000)***	0.009 (0.000)***
HH has motorcycle	-0.004 (0.002)***	-0.001 (0.602)
HH has car	-0.034 (0.000)***	-0.025 (0.000)***
HH has television		-0.015 (0.000)***
HH has radio		-0.005 (0.000)***
Respondent is muslim	0.024 (0.000)***	0.023 (0.000)***
Age of respondent	-0.002 (0.000)***	-0.002 (0.000)***
Respondent attended secondary school	-0.062 (0.000)***	-0.060 (0.000)***
Respondent attended primary school	0.007 (0.001)***	0.008 (0.000)***
Respondent is married	-0.008 (0.065)*	-0.010 (0.035)**
Number of children	0.003 (0.000)***	0.003 (0.000)***
Age at first cohabitation	-0.002 (0.000)***	-0.002 (0.000)***
Respondent earns money		-0.007 (0.009)***
Respondent works in non-agricultural job		0.002 (0.558)
Partner-ship		
Age difference between partners	-0.000 (0.128)	-0.000 (0.045)**
Partner attended secondary school	-0.016 (0.000)***	-0.014 (0.000)***
Relationship is polygamous	0.021 (0.000)***	0.021 (0.000)***
Non-agricultural job & electricity		0.001 (0.840)
Interaction Terms		
Earns money & electricity		-0.003 (0.446)
TV & electricity		-0.039 (0.000)***
Radio & electricity		-0.011 (0.003)***
Presence of other persons during interview		
Husband present	-0.051 (0.000)***	-0.049 (0.000)***
Husband listening	0.030 (0.004)***	0.014 (0.188)
Other man present	-0.055 (0.000)***	-0.057 (0.000)***
Other man listening	0.109 (0.000)***	0.116 (0.000)***
Other woman present	0.013 (0.053)*	0.015 (0.021)**
Other woman listening	0.035 (0.000)***	0.032 (0.000)***
Children present	0.027 (0.000)***	0.027 (0.000)***
Children listening	0.026 (0.000)***	0.024 (0.000)***
Year of data collection	-0.032 (0.000)***	-0.032 (0.000)***
Country dummies included	Yes	Yes
Region dummies included	Yes	Yes
_cons	64.351 (0.000)***	64.854 (0.000)***
Adjusted R-Squared	0.15	0.15
Number of observations	138,802	136,228