

Grimm, Michael

**Working Paper**

## The medium- and long-term effects of an expansion of education on poverty in Côte d'Ivoire: A dynamic microsimulation study

WIDER Research Paper, No. 2004/32

**Provided in Cooperation with:**

United Nations University (UNU), World Institute for Development Economics Research (WIDER)

*Suggested Citation:* Grimm, Michael (2004) : The medium- and long-term effects of an expansion of education on poverty in Côte d'Ivoire: A dynamic microsimulation study, WIDER Research Paper, No. 2004/32, ISBN 9291906190, The United Nations University World Institute for Development Economics Research (UNU-WIDER), Helsinki

This Version is available at:

<https://hdl.handle.net/10419/63600>

**Standard-Nutzungsbedingungen:**

Die Dokumente auf EconStor dürfen zu eigenen wissenschaftlichen Zwecken und zum Privatgebrauch gespeichert und kopiert werden.

Sie dürfen die Dokumente nicht für öffentliche oder kommerzielle Zwecke vervielfältigen, öffentlich ausstellen, öffentlich zugänglich machen, vertreiben oder anderweitig nutzen.

Sofern die Verfasser die Dokumente unter Open-Content-Lizenzen (insbesondere CC-Lizenzen) zur Verfügung gestellt haben sollten, gelten abweichend von diesen Nutzungsbedingungen die in der dort genannten Lizenz gewährten Nutzungsrechte.

**Terms of use:**

*Documents in EconStor may be saved and copied for your personal and scholarly purposes.*

*You are not to copy documents for public or commercial purposes, to exhibit the documents publicly, to make them publicly available on the internet, or to distribute or otherwise use the documents in public.*

*If the documents have been made available under an Open Content Licence (especially Creative Commons Licences), you may exercise further usage rights as specified in the indicated licence.*



United Nations  
University

**WIDER**

World Institute for Development Economics Research

Research Paper No. 2004/32

## **The Medium- and Long-term Effects of an Expansion of Education on Poverty in Côte d'Ivoire**

A Dynamic Microsimulation Study

Michael Grimm\*

May 2004

### **Abstract**

I use a dynamic microsimulation model to analyse the distributional effects of an expansion of education in Côte d'Ivoire in the medium and long term. The simulations are performed in order to replicate several policies in force or subject to debate in this country. Various hypotheses concerning the evolution of returns to education and labour demand are tested. The direct effects between education and income as well as the different transmission channels, such as occupational choices, fertility, and household composition, are analysed. The effects of educational expansion on the growth of household incomes, their distribution and poverty depend very crucially on the hypothesis made on the evolution of returns to education and labour demand. If returns to education remain constant and the labour market segmented, the effects will be very modest.

Keywords: education policy, human capital, inequality, Kuznets curve, microsimulation, poverty

JEL classification: C15, D10, D31, I20, J11, J24, J31, O12

Copyright © Author(s) 2004

\* University of Göttingen, Department of Economics and DIAL, Paris; Email: mgrimm@uni-goettingen.

This is a revised version of the paper originally prepared for the UNU-WIDER Conference on Inequality, Poverty and Human Well-Being, 30-31 May 2003, Helsinki.

UNU-WIDER acknowledges the financial contributions to the research programme by the governments of Denmark (Royal Ministry of Foreign Affairs), Finland (Ministry for Foreign Affairs), Norway (Royal Ministry of Foreign Affairs), Sweden (Swedish International Development Cooperation Agency—Sida) and the United Kingdom (Department for International Development).

ISSN 1810-2611      ISBN 92-9190-619-0 (internet version)

## Acknowledgement

I thank Denis Cogneau for his extremely useful comments and discussions. The paper also benefited from comments made at the International Conference on Staying Poor: Chronic Poverty and Development Policy, held in April 2003 in Manchester (UK) as well as at the UNU-WIDER conference on Inequality, Poverty and Human Well-Being, held in May 2003 in Helsinki. The labour supply and earnings model used in this study was constructed jointly with Denis Cogneau. It is also used in a paper where we study the distributional impact of AIDS in Côte d'Ivoire. This working paper is a shorter version of chapter six of my doctoral dissertation. The original text (in French) can be obtained upon request from the author.

*The World Institute for Development Economics Research (WIDER) was established by the United Nations University (UNU) as its first research and training centre and started work in Helsinki, Finland in 1985. The Institute undertakes applied research and policy analysis on structural changes affecting the developing and transitional economies, provides a forum for the advocacy of policies leading to robust, equitable and environmentally sustainable growth, and promotes capacity strengthening and training in the field of economic and social policy making. Work is carried out by staff researchers and visiting scholars in Helsinki and through networks of collaborating scholars and institutions around the world.*

*[www.wider.unu.edu](http://www.wider.unu.edu)*

*[publications@wider.unu.edu](mailto:publications@wider.unu.edu)*

UNU World Institute for Development Economics Research (UNU-WIDER)  
Katajanokanlaituri 6 B, 00160 Helsinki, Finland

Camera-ready typescript prepared by Liisa Roponen at UNU-WIDER  
Printed at UNU-WIDER, Helsinki

The views expressed in this publication are those of the author(s). Publication does not imply endorsement by the Institute or the United Nations University, nor by the programme/project sponsors, of any of the views expressed.

## Introduction

It is widely recognized today that human capital, in particular that acquired through schooling, is a key factor of development. The link is clearly established at the microeconomic level. Individuals with more education receive on average more income (for example, Mincer 1974; Schultz 1994, 1999). This implies that a more egalitarian distribution of education may constitute an efficient means for reducing inequality of income distribution. At the macroeconomic level, the ‘new growth theory’, pioneered by Lucas (1988) and Romer (1990), suggests that the accumulation of human capital may have externalities which drive the economy on a continuous path of growth. Empirically, however, the link seems less clear. Whereas Krueger and Lindahl (2000) find that faster growth of the human capital stock also leads to faster growth of per capita income, other authors are more sceptical. Pritchett (2001), for instance, claims that a rise of education can only play the ‘engine of growth’ role if that rise is accompanied by a higher demand for education, if education satisfies a certain quality standard, and if education is not allocated to socially inefficient tasks. Education is thus viewed as a necessary, but not sufficient condition, or as Pritchett writes, ‘Education is no magic bullet’. Benhabib and Spiegel (1994), and more recently Bils and Klenow (2000), even completely deny this link putting forward the argument of inverse causality, that is, that economic growth accelerates human capital investments and not the other way around.

In any case, besides the link from education to income, one attributes numerous positive external effects to education, in particular to women’s education: less, albeit healthier and better educated, children, higher autonomy of women, and increased labour supply outside the household (e.g., Cleland and Rodriguez 1988; Jejeebhoy 1995; Schultz 1997). Some authors even argue that an improvement of women’s circumstances may be a source of economic growth (e.g., Behrman *et al.* 1999; Blackden and Bhanu 1999; Forsythe, Korzeniewicz and Durrant 2000; Klasen 1999). Likewise, in the Millennium Development Goals, education is seen as a powerful instrument not only ‘for reducing poverty and inequality’, but also ‘for improving health and social well-being, laying the basis for sustained economic growth, and being essential for building democratic societies and dynamic, globally competitive economies’ (United Nations 2000).

Whereas East and South-East Asia as well as Latin America have experienced significant progress in terms of education over the last decades, Sub-Saharan Africa is still far behind. This region has the lowest enrolment ratios at each level and the average African adult has acquired less than three years of schooling (World Bank 2001). This fact raises several important questions: (i) Why are enrolment rates at this low level? (ii) What kind of policies may be appropriate to increase them? Should policies focus more on the demand side, more on the supply side, or consider both? (iii) What are the effects on growth and the distribution of income once enrolment rates do really rise? This paper focuses on the third question. More precisely, I analyse the effects in the medium and long term of a significant expansion of education in Sub-Saharan Africa on income distribution and poverty. What would be the magnitude of the direct effects between education and income? What would be the role of the different transmission channels, such as fertility, age at marriage, formation and composition of households, and labour supply? An attempt will be made to answer these questions for the case of

Côte d'Ivoire using a dynamic microsimulation model. The simulations consider policies which are in force or subject to debate in this country.<sup>1</sup> Their impact on household incomes and their distribution are examined from 1998 until 2015 under several assumptions concerning the evolution of labour demand and returns to education.<sup>2</sup>

Section 1 provides a brief summary of education policies and the evolution of the distribution of education in Côte d'Ivoire. Section 2 presents the microsimulation model used and the main transmission channels between education and income distribution. Section 3 outlines the policy experiments that are simulated. Section 4 analyses the simulation results. Section 5 concludes.

## 1 Education in Côte d'Ivoire

### 1.1 Education system and education policy since independence

The education system in Côte d'Ivoire is based on the model inherited from the French colonial era. School normally starts at the age of five, but many children enter later. Children stay in primary school for a total of six years then move to junior secondary school (four years) and to upper secondary school (three years). Entrance to junior secondary school is permitted upon success to the *Certificat d'Etudes Primaires et Elementaire* (CEPE) examination and access to upper secondary school is controlled by the *Brevet d'Etudes du Premier Cycle* (BEPC). At the end of secondary school, each student has to pass the *Baccalauréat* examination before going to university. Professional training and technical education are situated mainly at the secondary level (Kouadio and Mouanda 2001).

After independence, Côte d'Ivoire allocated approximately 40 per cent of public expenditures to education, more than twice the share allocated in Burkina Faso or Senegal. However, with the onset of the economic crisis in the beginning of the 1980s, this share decreased progressively preventing an improvement of the efficiency of the school system which was already judged as unsatisfactory. A large part of education expenditure has been used for salaries. The primary school sector has been systematically neglected. This explains to some extent why a large part of the population, in particular rural and female, has received no education. Furthermore, repetition rates of 30 per cent are frequent and only about 35 per cent pass the BEPC successfully (Cogneau and Mesplé-Somps 2002).

---

<sup>1</sup> Today we have to say 'policies which "were" subject to debate in this country'. Côte d'Ivoire has experienced a civil war since September 2002. Given this crisis, the relevance of analysing education policies for this country may seem low. However, the framework and the results of this study may apply to other Sub-Saharan countries as well.

<sup>2</sup> The purpose of this study is similar to that of Ferreira and Leite (2002) who analyse the case of the Ceará Region (Brazil). However, they work with a constant population structure. Among the demographic variables such as fertility, mortality, migration and marriage, only the distribution of education and the size of the households are taken into account. Furthermore, their analysis uses a comparative static framework, therefore it does not allow reproducing the trajectory between the point of departure and arrival of individuals and households.

## 1.2 Enrolment ratios and education level

The following descriptive statistics are based on two household surveys, the *Enquête Prioritaire* of 1993 and the *Enquête de Niveau de Vie* of 1998 (called EP 1993 and ENV 1998 hereafter), both carried out by the *Institut National de la Statistique de la Côte d'Ivoire* (INS) and the World Bank.

Table 1 shows that a large part of the Ivorian population is still unable to read and write. Illiteracy is particularly high in rural areas and among women. However, the evolution between 1993 and 1998 shows that illiteracy is decreasing. The enrolment ratios also show a significant inequality between cities and rural areas. One can also state an abrupt

Table 1  
Illiteracy rates  
(population 15 years and older)

	Abidjan		Other urban		Rural	
	1993	1998	1993	1998	1993	1998
Men	0.28	0.25	0.43	0.37	0.63	0.58
Women	0.48	0.42	0.63	0.57	0.83	0.80
All	0.38	0.33	0.53	0.47	0.73	0.69

Source: EP (1993), ENV (1998); computations by the author.

Table 2  
Enrolment ratios

	Abidjan		Other urban		Rural	
	1993	1998	1993	1998	1993	1998
GERP	1.04	1.05	0.79	0.99	0.49	0.67
NERP	0.69	0.69	0.52	0.63	0.32	0.45
Girls-ratio	0.47	0.49	0.47	0.45	0.37	0.41
GERJS	0.46	0.60	0.43	0.61	0.13	0.17
NERPJS	0.14	0.24	0.12	0.21	0.04	0.04
Girls-ratio	0.41	0.44	0.37	0.39	0.22	0.28
GERUS	0.25	0.47	0.25	0.23	0.08	0.08
NERUS	0.05	0.10	0.04	0.05	0.01	0.02
Girls-ratio	0.36	0.39	0.30	0.32	0.12	0.30
GERHE	0.03	0.09	0.01	0.02	0.01	0.01
NERHE	0.02	0.07	0.01	0.01	0.00	0.00
Girls-ratio	0.18	0.36	0.14	0.45	0.13	0.17

Notes: GERP/NERP = Gross/net enrolment ratio in primary school; GERJS/NERJS = Gross/net enrolment ratio in junior secondary school; GERUS/NERUS = Gross/net enrolment ratio in upper secondary school; GERHE/NERHE = Gross/net enrolment ratio in higher education.

Source: EP (1993), ENV (1998); computations by the author.

fall of enrolment ratios after primary school and a strong difference between gross and net enrolment ratios.<sup>3</sup> This difference can be explained by delayed entries in the schooling system, frequent schooling interruptions, and high repetition rates, in particular during the last two years of primary schooling. Girls are strongly underrepresented in secondary school and university. Enrolment ratios, however, increase at all schooling levels.<sup>4</sup>

### **1.3 Current education programmes**

The current education policy of Côte d'Ivoire focuses principally on three objectives (INS 2001a):<sup>5</sup> first, to achieve almost universal primary school enrolment, according to the aim fixed at the World Conference on Education for All, held in Jomtien, Thailand in 1990; second, to reduce gender inequality in terms of education; and third, to literate the adult population. The means by which the Ivorian authorities want to achieve these objectives are mainly orientated to the supply side. They contain, among others things, the construction of primary schools and education centres for adults, the reorganization of education management, the pre-service and in-service training of teachers, the larger distribution of schooling materials such as textbooks, and the revision of curriculum content and implementation. These measures are supported by several World Bank programmes (see World Bank 2002a, 2002b).

## **2 Model structure**

### **2.1 Key characteristics of the model**

I use a dynamic microsimulation model designed to simulate at the individual level the most important demographic and economic events through time. The microsimulation approach allows to take individual heterogeneity into account, in particular regarding the capacity of accumulating human capital and earning income. Furthermore, it allows the analysis of policy outcomes in terms of inequality and poverty, and not only in terms of growth, as does an aggregated model. The dynamic approach is important to account for the time it takes to accumulate human capital and the occurring interactions with other economic and demographic variables during this period. The applied model is similar to simulation models used in industrialized countries to analyse pension reforms,

---

<sup>3</sup> The gross enrolment ratio is the ratio of total enrolment, regardless of age, to the population of the age group that officially corresponds to the level of education shown. The net enrolment ratio is the ratio of the number of children of official school age (as defined by the education system) enrolled in school to the number of children of official school age in the population.

<sup>4</sup> A part of the increase may be due to measurement errors. In contrast to the ENV 1998, the EP 1993 was carried out in rural areas and in cities other than Abidjan during the summer holidays. It is thus possible that some children have been declared not enrolled even when enrolment for the following schooling year was envisaged. In other cases, parents perhaps may have not decided.

<sup>5</sup> The increase of educational attainment is not only an auto-declared objective of the Ivorian authorities. The criteria of the Highly Indebted Poor Countries (HIPC) Initiative also stipulate a rise in the budget allocated to education.

the distribution of life-cycle incomes, or the accumulation of wealth.<sup>6</sup> The base unit is the individual, but each individual belongs in each period to a specific household. The model is a discrete time model. Each period corresponds to one year. I assume a fixed order concerning the different events: marriage, household formation, school enrolment, fertility, mortality, international immigration, reallocation of land, occupational choices, generation of individual earnings and household income. The population of departure is constructed using the EP 1993. This survey contains information about the sociodemographic characteristics of households and its members, their housing, education, employment, agricultural and non-agricultural enterprises, earnings, expenditures, and assets. From March to June 1992, 1680 households in Abidjan (economic capital of Côte d'Ivoire), and from June to November 1993, 7920 households from the rest of the country (among them 3360 in other Ivorian towns) were interviewed. The total sample covers 58014 individuals. The sample was calibrated on 1st January 1993. Other data sources used are census data, United Nations' demographic projections, a demographic and health survey, a migration survey and another household income survey conducted in 1998. In what follows I briefly present the modelling of schooling, occupational choices, and earnings which constitute the central modules of the model. The modelling of the other behaviours is presented in appendix. For more detail, the reader can refer to Grimm (2002). Due to a lack of longitudinal data, most regressions are based on information derived from cross-section data. When using these regressions to simulate dynamic behaviour, we must of course make the strong assumption that individuals behave over time as individuals of different ages observed in the base year. The most critical reason for doing this is that with cross-section data we cannot separate age, period, and cohort effects.

## 2.2 Modelling of schooling decisions

I use the information on current enrolment and enrolment in the previous year in the EP 1993 and the ENV 1998 to estimate transition rates into and out of schooling. The models are estimated separately for boys and girls 5 to 25 years old, using age, household composition, Ivorian citizenship, educational level already attained, matrimonial status, relation to the household head, land owned by the household, region of residence, and educational attainment of the father and the mother as explicative variables. Unfortunately, the dataset used contains no information on the quality of the school, the distance to the school and the cost of schooling. The estimated coefficients of the corresponding probit models as well as a comparison of observed and simulated enrolment ratios for 1998 figure are given in Tables A1 and A2 in the appendix. They show that the probability of school entry depends strongly, as one can expect, on age. It is higher for children with educated parents (notably for girls), and is lower for children in non-Ivorian households. Furthermore, the probability of entry is higher if the child has already acquired some education in the past. The probability of staying in school depends positively on the educational level already attained, negatively on marriage and the quantity of land owned by the household, and is higher in urban areas, especially Abidjan. During the simulation, enrolment status is updated in each period for all children from 5 to 25 years old using the estimated coefficients and either a Monte

---

<sup>6</sup> See, for example, Harding (2000) on dynamic microsimulation models and policy analysis.



Carlo lottery<sup>7</sup> or fixed progression rates imposed according to the performed policy experiment. In the latter case, the estimated parameters are used to select the children with the highest empirical probability of experiencing the respective transition. As mentioned above, repetition of classes is very frequent in Côte d'Ivoire, especially before entry to junior secondary school. To account for this phenomenon, I fixed the repetition rates at 20 per cent for the fifth year of primary school, at 50 per cent for the sixth year of primary school and at 10 per cent for all other classes. However, when the school policy reforms become effect in 1998, it is assumed that these repetition rates are zero (see below).

### 2.3 Modelling of occupational choices and earnings

The labour income model draws from Roy's model (1951) as formalized by Heckman and Sedlacek (1985). It is competitive in the sense that no segmentation or job rationing prevails, but only slightly, because labour mobility across sectors does not equalize returns to observed and unobserved individual characteristics. The model is estimated using the EP 1993. It is assumed that each individual older than eleven years and out of school faces three kinds of work opportunities: (i) family work, (ii) self-employment, or (iii) wage work. Family work includes all kinds of activities under the supervision of the household head, that is, family help in agricultural or informal activities, but also domestic work, non-market labour and various forms of declared 'inactivity'. Self-employment corresponds to informal independent activities. In agricultural households (households where some independent agricultural activity is carried out), the household head may be considered as a self-employed worker bound to the available land or cattle. Wage work concerns dependent employment principally in the formal public and private sectors.

To both non-agricultural self-employment and wage work, individual potential earnings functions are associated which only depend on individual characteristics and on task prices:

$$\ln w_{1i} = \ln p_1 + X_{1i} \beta_1 + t_{1i} \quad (1)$$

$$\ln w_{2i} = \ln p_2 + X_{2i} \beta_2 + t_{2i} \quad (2)$$

where for each individual  $i$  and for each labour market segment  $j=1,2$ ,  $w_{ji}$  are individual potential earnings,  $X_{ji}$  are observable individual characteristics (human capital, place of dwelling, sex, nationality),  $t_{ji}$  are sector-specific unobservable individual productive abilities, and  $p_j$  the price paid for each efficiency unit of labour.

---

<sup>7</sup> Monte Carlo lotteries within a microsimulation model consist of assigning to each individual  $i$  in the current period a certain probability for the occurrence of a given event, say a birth. This probability is drawn from an uniform law comprised between zero and one. The empirical probability that a woman experiences a birth during this period is calculated using a formerly estimated (econometrically, for instance) function, where her individual characteristics enter as arguments. If the randomly drawn number is lower than the empirical probability, then a birth is simulated. If the number of women is sufficiently high, the aggregated number of births should be equal or very close to the sum of the individual empirical probabilities.

For family work, an unobserved individual value is associated, which also depends on household characteristics, and on other members' labour supply decisions:

$$\ln w_{0i} = (X_{0i}, Z_{0h})\beta_0 + t_{0i} \quad (3)$$

where for each individual  $i$  pertaining to household  $h$ ,  $Z_{0h}$  summarizes invariant household characteristics and other members decisions which influence labour market participation.

For agricultural households, a reduced farm profit function derived from a Cobb-Douglas technology is associated:

$$\ln \Pi_{0h} = \ln p_0 + \alpha \ln L_h + Z_h \theta + u_{0h} \quad (4)$$

where  $\Pi_{0h}$  is the farm profit of household  $h$  (including self-consumption and minus hired labour)  $p_0$  is the price of the agricultural good,  $L_h$  the total amount of labour available for agricultural activity,  $Z_h$  other household characteristics like arable land, and  $u_{0h}$  stands for unobservable idiosyncratic factors' global productivity.

Then, when the household head is a farmer, secondary members may participate in farm work and therefore  $w_{0i}$  is assumed to depend on the 'individual's contribution' to farm profits. This contribution is evaluated while holding other members' decisions as fixed and the global factor productivity of the farm  $u_{0h}$ :

$$\ln \Delta \Pi_{0i} = \ln p_0 + \ln (L_{h+i}^\alpha - L_{h-i}^\alpha) + Z_h \theta + u_{0h} \quad (5)$$

where  $L_{h+i} = L_h$  and  $L_{h-1} = L_h - 1$  if  $i$  is actually working on the farm in  $h$ , and  $L_{h+i} = L_h + 1$  and  $L_{h-1} = L_h$  alternatively.

This means that the labour decision model is hierarchical between the household head and secondary members, and simultaneous à la Nash among secondary members (secondary members do not take into account the consequences of their activity choice on that of other secondary members). In the case of agricultural households, one may then rewrite the family work value as follows:

$$\ln w_{0i} = (X_{0i}, Z_{0h})\beta_0 + \gamma [\ln p_0 + \ln (L_{h+i}^\alpha - L_{h-i}^\alpha) + Z_h \theta] + t_{0i} \quad (6)$$

$\gamma$  stands for the (non-unitary) elasticity of the value of family work in agricultural households to the price of agricultural products. For non-agricultural household members,  $w_0$  may be seen as a pure reservation wage, where the household head's earnings and other non-labour income of the household are introduced in order to account for an income effect on participation in the labour market.

Comparing the respective values attributed to the three labour opportunities, workers allocate their labour force according to their individual comparative advantage:

$$i \text{ chooses family work iff } w_{0i} > w_{1i} \text{ and } w_{0i} > w_{2i} \quad (7)$$

$$i \text{ chooses self-employment iff } w_{1i} > w_{0i} \text{ and } w_{1i} > w_{2i} \quad (8)$$

$$i \text{ chooses wage work iff } w_{2i} > w_{0i} \text{ and } w_{2i} > w_{1i} \quad (9)$$

The following estimation strategy is adopted: (i) For non-agricultural households, the occupational choice/labour income model represented by equations (1)-(3) and the series of selection conditions (7)-(9) is estimated simultaneously by maximum likelihood techniques; one obtains a bivariate tobit, like in Magnac (1991). (ii) For agricultural households, a limited information approach is followed: in a first step, the reduced form profit function (4) is estimated, then an estimate for the individual potential contribution to farm production (5) is derived; in a second step, the reservation wage equation (6) is estimated and the individual potential contribution included, and, because of the small sample of rural wage workers, the wage functions (1) and (2) estimated for non-agricultural households are retained. Using this set of equations, occupational choices and earnings are simulated in each period for each individual and household. The residual terms  $t_{1i}$ ,  $t_{2i}$ ,  $t_{0i}$ , and  $u_{0h}$  are first estimated for each individual/household and then kept constant over the whole simulation horizon. For individuals joining the sample by birth or migration, these error terms are drawn according to the estimated variance of these residuals and the correlation between them.

Table A4 (appendix) shows the estimation results for non-agricultural household members, including the head. For education, returns are ordered as expected: the highest in the wage sector with a 17 per cent increase for each additional year, and the lowest in the informal sector with only 7 per cent. The impact of education on the reservation wage lies between but close to the self-employment coefficient (10 per cent). Returns to experience are similar in both the informal and formal sectors, while the reservation value follows an ever-increasing parabola. All three values are higher in towns than in rural areas, wages getting a premium in Abidjan. Non-Ivorians have, as expected, a lower reservation value and are discriminated in the wage sector. Other things equal, they get 26 per cent less than Ivorians, but not in self-employment. Again, this is the case for women for whom, other things being equal, the competitive potential wage appears to be 83 per cent lower than for men. The reservation value for women is 22 per cent lower than for men, but the effect of this variable should not be interpreted in isolation from the variables describing the relation to the head. Indeed household heads tend to participate most of the time and more frequently if they are female. Among household variables which influence only the reservation value, household head's income has the expected positive sign for secondary household members, although it is only hardly significant. The number and age structure of children have a small and mixed influence on participation on the labour market. The number of men in working age, but not that of women, tends to decrease participation. Table A3 (appendix) shows the agricultural profit function, associated to the heads of agricultural households. The number of family workers has a coefficient that is consistent with usual values: a doubling of the work force leads to an approximately 50 per cent increase in agricultural profits. The amount of arable land also comes out with a decreasing marginal productivity. Potential experience and sex of the household head are both significant, whereas education of the household is not significant and was withdrawn from the set of explanatory variables. All regions reveal a negative sign with respect to the Savannah region (north), a fact which reflects the low relative prices for cocoa and coffee in contrast to cotton in the year of estimation 1992/93. Table A4 (appendix) shows the estimation results for secondary members of agricultural households. As noted before, self-employment benefit and wage functions have been constrained to be equal to those for non-agricultural households. Not surprisingly, people living in towns tend to work more often outside the family. This is also the case for women and immigrants, whatever their relation to the household head. The presence of children has no effect,

while the number of working age men in the household still increases the reservation value of an individual. The above defined potential individual contribution to the agricultural profit increases the propensity to work on the farm with a reasonable elasticity of +0.3.

Land is, of course, a key variable in the generation of agricultural income. Land is attributed in each household to the household head. If the household head leaves the household, to marry, for instance, land is attributed to the new household head. If the first-born boy of a household leaves to marry, he receives 50 per cent of the household's land. The land of households which disappears, due to the demise of all its members, is reallocated within each strata among the households without land in equal parts and so that the proportions of households owning land remain constant with respect to 1993. At the end of each period, the quantity of land is increased for each household by 3 per cent, which is the approximate natural population growth rate in the model. Households switch to the agricultural sector—that is, become an agricultural household—if the land they own exceeds a certain threshold level which I fix at 0.1 ha, and in the opposite, they exit the agricultural sector—that is, become a non-agricultural household—if land size falls under this threshold (in the base sample 45.6 per cent of the households are involved in independent agricultural activity [18.3 per cent urban and 81.7 per cent rural] and 54.4 per cent are not [86.9 per cent urban and 13.1 per cent rural]).

#### **2.4 Transmission channels between education and income distribution in the model**

As a key determinant of wages and non-farm profits, education has, of course, direct effects on household income. Then education determines, besides other individual and household characteristics, activity choices of individuals who compare their potential remunerations in the two market activities with their reservation wage. Given that wage work offers the highest return to education, this activity becomes more and more lucrative as education increases. Furthermore, education influences negatively on fertility. Fertility is a key variable of the reservation wage and modifies the number of consumption units in the household and, in the long term, the quantity of labour supply available in the household. Finally, parental education influences schooling choices of the children and therefore also modifies the income and demographic behaviour of the children's generation. However, the model does not account for direct effects from education on mortality, and especially from mother's education on child mortality.

### **3 Policy experiments**

Three education policies, of which the last in four variants, plus a reference case are simulated. These experiments are in line with the education programmes debated or already in effect in Côte d'Ivoire. They are summarized in Table 3 and explained in detail in what follows. The simulations start in 1993 and end in 2015. They are identical for all experiments until 1998.

REFSIM, the reference simulation or baseline, consists in maintaining the enrolment ratios at the different schooling levels at levels which Côte d'Ivoire would experience if

the observed conditions in 1998 persisted, that is 50 per cent of all children having achieved no schooling or less than six years, 22 per cent having achieved primary education, 20 per cent having achieved junior secondary education, 6 per cent having achieved upper secondary education and a little less than 2 per cent having achieved at least one year of university education. These proportions imply progression rates between the different schooling levels of 40 per cent, 30 per cent, and 30 per cent. The simulation works as follows: In 1998, 50 per cent of all six-year old children enter primary school and stay for six years until they obtain the CEPE. Those children with the highest empirical probability to be enrolled are selected. This probability is calculated using the estimated equation linking enrolment status to individual and household characteristics (see Table A1, appendix). Then 40 per cent are selected out of those having achieved primary school, likewise according to their empirical probability to be enrolled. They will complete junior secondary school. Then the simulation continues in the same way for the following schooling levels. Furthermore, in the reference case as well as in all other simulations, the repetition rates are set at zero from 1998 on.

Table 3  
Summary of the policy experiments, in per cent

Simulation	Schooling level	Progress rate from 1998 on	1998		2005		2010	
			GER	NER	GER	NER	GER	NER
REFSIM	Primary	50	77	41	59	50	50	50
	Junior secondary	40	33	7	34	25	20	20
	Upper secondary	30	14	2	10	5	6	6
	University	30	2	2	2	2	2	2
PRIMED	Primary	90	77	41	100	90	90	90
	Junior secondary	22	33	7	23	20	20	20
	Upper secondary	30	14	2	5	3	6	6
	University	30	2	2	2	2	1	1
HIGHED	Primary	90	77	41	100	90	90	90
	Junior secondary	60	33	7	61	47	54	54
	Upper secondary	60	14	2	27	12	34	34
	University	30	2	2	3	3	7	7
ALPH—	HIGHED + From 1998 on, in each period selection of 10% of men and 20% of women between 15 and 40 years old and illiterate. Duration of programme: three years, then the years of schooling are set to two (literate).							
—CR	Constant return to education.							
—DR	Decreasing return to education: elasticity between the return to education in each sector and the share of the work force having more than five years of schooling of $-1/3$ .							
—IR	Increasing return to education: elasticity between the return to education in each sector and the share of the work force having more than five years of schooling of $+1/3$ .							
—SM	Maintenance of the share of the work force employed in the (formal) wage earner sector at the share simulated for 1997, which is 11.34%.							

Note: GER/NER = Gross/net enrolment ratio.

PRIMED simulates the case of an almost universal primary school by assuming an entry rate of 90 per cent for the generations of six-year olds and younger, in 1998. The desired net enrolment ratio is attained in 2003 when the sixth cohort enters in primary school. The selection of children and the simulation process resemble the reference case.

HIGHED assumes, in addition to the 90 per cent entry rate to primary school, progression rates between the following schooling levels of 60 per cent, 60 per cent, and 30 per cent instead of 40 per cent, 30 per cent, and 30 per cent.

ALPH completes the former simulation with an adult literacy programme. From 1998 on, in each period 10 per cent of men and 20 per cent of women between 15 and 40 years old and having less than two years of schooling are randomly selected. The literacy programme is supposed to last three years. Then the years of schooling of all participants are set to two. It is assumed that participants are able to work full-time while following the programme. To reduce gender inequality, I select more women than men. This last experiment is performed under four different assumptions, three concerning the evolution of the return to education and one concerning the evolution of labour demand in the (formal) wage earner sector.

- First, one may think, according to neoclassical theory, that the entry of more and more educated individuals to the labour market reduces the return to education. Bils and Klenow (2000), for instance, find that countries with higher education levels experience lower returns. For example, as years of schooling go from two to six to ten, the implied income growth for one additional year of schooling falls from 21.6 per cent, to 11.4 per cent to 8.5 per cent. In contrast, one may assume that the return to education increases if the expansion of education is accompanied by an increased demand of education, due to technological progress or international trade, for instance. This last hypothesis was put forward by Katz and Murphy (1992) for the case of the United States. Finally, one may assume that the return to education remains constant (Card 1995). For the decreasing-return scenario, ALPHDR, I set an elasticity between the return to education in each sector and the share of the work force (20 years and older) having more than five years of schooling to  $-1/3$ . That means if that share increases by 1 per cent, the return to education decreases by 0.33 per cent. In the case of increasing returns, ALPHIR, the elasticity is supposed to be  $+1/3$ . The share of the work force having more than five years of schooling increases in the simulation ALPH by approximately 3 per cent per year. This implies that the return to education between 1998 and 2015 in the wage earner sector, for instance, increases from 17.1 per cent to 20.5 per cent under the hypothesis of increasing returns and decreases from 17.1 per cent to 14.3 per cent under the hypothesis of decreasing returns. ALPHCR indicates the constant-return-scenario.
- Another variant, ALPHSM, simulates the case of a segmented labour market. As mentioned in section 2 (see also Table A4, appendix), more education renders wage work more and more lucrative compared to work in other sectors. However, in the Ivorian context it is less likely that labour demand in the wage earner sector, principally formal, increases without limit. The simulation consists in maintaining the share of the work force employed in the wage earner sector at the level simulated for 1997, which is 11.34 per cent. The individuals who are

Table 4  
Illiteracy rate and average years of schooling  
(simulations 1993 to 2015)

	1998	2005	2010	2015	Growth p. a. 1997-2015
Illiteracy rate—men, 15 years and older					
REFSIM	0.46	0.43	0.43	0.44	-0.003
PRIMED	0.46	0.44	0.39	0.35	-0.016
HIGHED	0.46	0.44	0.39	0.34	-0.017
ALPHCR	0.46	0.35	0.25	0.17	-0.054
Illiteracy rate—women, 15 years and older					
REFSIM	0.64	0.60	0.59	0.59	-0.006
PRIMED	0.64	0.60	0.53	0.47	-0.017
HIGHED	0.64	0.60	0.53	0.48	-0.017
ALPHCR	0.64	0.39	0.23	0.15	-0.078
Average years of schooling—men, 20-25 years old					
REFSIM	5.50	4.81	5.05	5.18	-0.001
PRIMED	5.51	4.30	4.45	6.69	0.013
HIGHED	5.52	5.53	6.05	9.41	0.032
ALPHCR	5.57	5.85	6.36	9.22	0.031
Average years of schooling—women, 20-25 years old					
REFSIM	3.29	3.85	4.01	3.59	0.004
PRIMED	3.29	3.62	3.48	5.90	0.032
HIGHED	3.27	4.27	4.42	7.56	0.047
ALPHCR	3.30	4.61	5.04	7.78	0.048

Note: During the simulations it is assumed that individuals with less than two years of schooling are illiterate.

Source: Simulations by the author.

Table 5  
Average years of schooling by birth cohort simulated for Côte d'Ivoire  
for 2015 and observed for some other countries and regions in the 1990s

	1940	1950	1960	1970	1980	1990	1995
Simulation for Côte d'Ivoire							
REFSIM			2.8	3.6	4.4	4.5	4.0
PRIMED			3.0	3.5	4.3	4.7	6.4
HIGHED			3.0	3.5	4.8	6.2	8.7
ALPHCR			3.3	4.3	5.6	6.6	8.9
Observation for some other countries and regions							
Brazil	3.6	5.2	6.2	6.7			
Mexico	4.2	6.7	8.2	9.3			
Chile	7.1	8.9	10.1	11.1			
Latin America (Average)	5.3	6.9	8.2	8.8			
South Korea	7.7	9.5	11.0	12.0			
Taiwan	5.8	8.9	11.0	12.3			

Note: For the simulations, five-year birth cohorts are considered, 1958-62, 1968-72 ...

Source: For Côte d'Ivoire, simulations by the author. The data for the other countries and regions are taken from Behrman *et al.* (1999: Table 1).

rationed are, according to the efficiency wage theory (Bulow and Summers 1986), those where the difference between their potential wage (given their individual characteristics) and their opportunity cost, which is  $\ln(w_{\text{wage}}) - \max[\ln(w_{\text{self-empl.}}), \ln(w_{\text{reserv. wage}})]$ , is the lowest. The persons who are not selected are employed in the non-agricultural self-employment sector, if  $\ln(w_{\text{self-empl.}}) > \ln(w_{\text{reserv. wage}})$ , or they remain inactive or work on the family farm if  $\ln(w_{\text{self-empl.}}) < \ln(w_{\text{reserv. wage}})$ . In this variant the return to education decreases because of rationing in the wage earner sector, the sector offering the highest return to education. The assumptions of this scenario correspond thus to another model than that implied by the simulations ALPHDR/IR.

## 4 Results

The following results are the output of simulations over a sub-sample of 10 per cent of the EP 1993. The sample of departure comprises 5296 individuals living in 918 households. At the end of 2015, the sample comprises, depending on the experiment, between 11454 and 11739 individuals living in 2234 and 2375 households, which corresponds to a demographic growth rate of approximately 3.4 per cent per year.<sup>8</sup> Each simulation is performed three times and the results are the averages of these three repetitions. Stocks are always measured at the end of the year. All values are in CFA Francs 1998-Abidjan, that is, adjusted for regional price differences.

### 4.1 Evolution of the level and the distribution of education

Table 4 shows that a persistence of the conditions in the education system from 1998 (REFSIM) until 2015 leads to a decrease of the illiteracy rate by two percentage points for men and five points for women. This is due to the disappearance of older, less educated generations and the apparition of younger, more educated generations. If primary education becomes almost universal (PRIMED), then these rates will even decline to 35 per cent and 47 per cent. However, only a huge adult literacy programme with a particular attention to women will reduce the illiteracy rate below 20 per cent in the considered time scale (ALPHCR). The increase of enrolment ratios at all schooling levels (HIGHED) increases significantly the average years of schooling and reduces the gender gap in particular.

Table 5 shows the policy outcome by generation. The experiment HIGHED conducts the generation born in 1995, being thus 20 years old in 2015, to an average schooling level of 8.7 years, which approximately corresponds to the average in Latin America of the generation born in 1970. The progress made by the Ivorian generations born between 1960 and 1990 under the assumption HIGHED is similar to that made by the Brazilian generations born between 1940 and 1970. However, to attain the level of Chile, South Korea or Taiwan, a much longer time scale would be necessary.

---

<sup>8</sup> Ivorian Census data indicate a demographic growth rate of 3.3 per cent for the period 1988 to 1998 (INS 2001b).



## 4.2 Impact on growth and the distribution of income

The reader should note that even in the reference simulation, income, inequality, and poverty are changing due to shifts in the population structure.<sup>9</sup> All scenarios draw a rather optimistic picture of the evolution of the Ivorian economy, but given the difficulty to predict the long-run evolution of the economy and the structure of economic growth, the results should be interpreted principally in relation to the reference scenario and not in absolute terms. Over the period 1992 to 2015, the growth gain per capita of the most optimistic policy (ALPH) relative to the persistence of the status quo (REFSIM) is about 0.3 points per year if the return to education remains constant (ALPHCR), -0.9 points per year if the return to education decreases (ALPHDR) and 1.8 points per year if the return increases (ALPHIR) (see Table 6). As emphasized in section 3, the empirical evidence concerning the relation between the stock of education and returns to education is very controversial. In consequence the uncertainty of the possible results is very high. However, if the share of the work force employed in the (formal) wage sector remains rationed to that of 1997 (ALPHSM), which seems a rather likely scenario, no growth gain will be generated at all. The simulations show also that a policy which is limited to universal primary education (PRIMED) does not contribute to further poverty reduction relative to the reference case. One explanation is that, in the early stages, the rise in schooling reduces the work force. The average household income per capita starts rising faster only after 2005, when the first better educated cohorts enter the labour market. Furthermore the return to education for up to six years of schooling is not sufficient to achieve significantly higher income. Purely universal primary education may foster growth only in the very long run, when a large part of the population has benefited from it.

With exception of the experiment where the return to education rises (ALPHIR), the increase in inequality of the income distribution remains rather moderate.<sup>10</sup> The policy HIGHED produces a distribution slightly more unequal than that of the reference case. However, if HIGHED is complemented with adult literacy programmes this difference disappears. Figure 1 superposes the evolution of income and that of the Gini index for the three return scenarios. Decreasing returns produce an inverse U-shaped evolution of inequality in the spirit of Kuznets (1955). Constant returns lead to a stabilization of income inequality from 2004 on and to an expected decrease in inequality in the long term. Finally, increasing returns produce an ever-increasing Gini index. The Kuznets effect is usually considered in relation with the passage of workers from rural and poor areas to urban and richer areas. Kuznets (1955) concentrates only on the composition effect, that is, the fact that an increased offer of skilled individuals raises, at least for a certain time and if the initial share of unskilled is not already too high, the inequality of income distribution. The simulations show, however, that a contraction of the returns to education accelerates the arrival of the phase of decreasing inequalities.

---

<sup>9</sup> For a retrospective analysis of poverty and inequality changes in Côte d'Ivoire, see, for instance, Grootaert (1996), Grimm *et al.* (2002), and Grimm (2004).

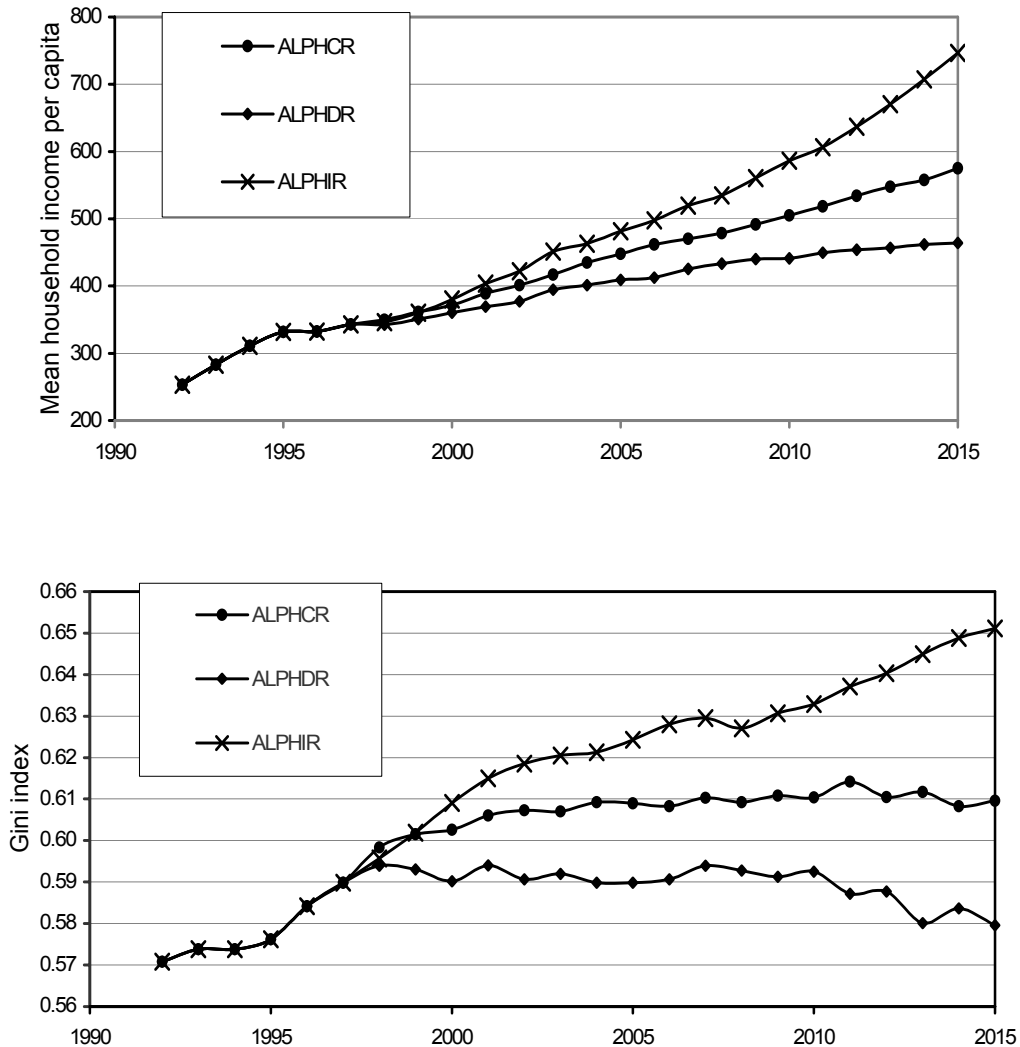
<sup>10</sup> Although the level of inequality has to be considered as very high, Sit should be noted that in this model neither transfer income nor capital income is taken into account. The only income source is labour.

Table 6  
Income, inequality and poverty (simulations 1993 to 2015)  
REFSIM in levels, other for levels in percentage deviations from REFSIM,  
and for growth rate in absolute deviations  
Income in 1000 CFA Francs 1998-Abidjan

	1998	2005	2010	2015	Growth p.a. 1997-2015
<b>Mean household income</b>					
REFSIM	1465	1664	1752	1852	1.42%
PRIMED	-0.1%	-1.0%	-1.0%	-1.8%	-0.10
HIGHED	0.5%	-1.7%	-0.4%	0.5%	0.03
ALPHCR	-1.4%	-0.8%	0.8%	4.1%	0.23
ALPHDR	-2.0%	-9.7%	-11.7%	-15.8%	-0.96
ALPHIR	-1.1%	8.1%	18.7%	37.9%	1.83
ALPHSM	-0.6%	-2.3%	-2.4%	-1.8%	-0.10
<b>Mean household income per capita</b>					
REFSIM	351	457	498	546	2.61%
PRIMED	-0.3%	-0.7%	-0.6%	-2.6%	-0.15
HIGHED	2.0%	-2.2%	-0.6%	-0.5%	-0.02
ALPHCR	-0.3%	-2.0%	1.4%	5.3%	0.30
ALPHDR	-2.6%	-10.5%	-11.4%	-15.0%	-0.92
ALPHIR	-1.1%	5.3%	17.9%	36.8%	1.80
ALPHSM	0.0%	-4.2%	0.6%	0.9%	0.06
<b>Gini index of income per capita (households)</b>					
REFSIM	0.598	0.609	0.609	0.609	0.18%
PRIMED	-0.2%	-0.8%	-0.7%	-1.0%	-0.06
HIGHED	-0.8%	0.2%	1.0%	1.3%	0.07
ALPHCR	0.0%	0.0%	0.2%	0.2%	0.00
ALPHDR	-0.7%	-3.1%	-2.6%	-4.8%	-0.28
ALPHIR	-0.3%	2.5%	3.9%	6.9%	0.37
ALPHSM	-0.3%	-0.8%	0.2%	0.0%	0.00
<b>Headcount ratio (\$US 1 PPP) for income per capita (households)</b>					
REFSIM	0.348	0.300	0.271	0.254	-1.75%
PRIMED	0.0%	-2.0%	-2.2%	0.0%	-0.01
HIGHED	-0.3%	-0.7%	4.8%	4.3%	0.22
ALPHCR	1.7%	-1.0%	-0.7%	-0.8%	-0.05
ALPHDR	0.6%	3.3%	7.0%	5.1%	0.27
ALPHIR	0.0%	-3.0%	-5.5%	-10.6%	-0.62
ALPHSM	0.6%	0.7%	2.2%	2.4%	0.12
<b>Headcount ratio (\$US 1 PPP) for income per capita (individuals)</b>					
REFSIM	0.411	0.384	0.362	0.345	-1.02%
PRIMED	1.3%	1.1%	0.6%	2.5%	0.14
HIGHED	1.8%	2.4%	5.1%	6.6%	0.35
ALPHCR	1.8%	1.6%	-1.2%	1.7%	0.09
ALPHDR	2.0%	5.7%	6.9%	7.7%	0.41
ALPHIR	2.6%	-2.6%	-6.2%	-7.9%	-0.45
ALPHSM	2.5%	1.4%	3.3%	4.0%	0.21

Source: Simulations by the author.

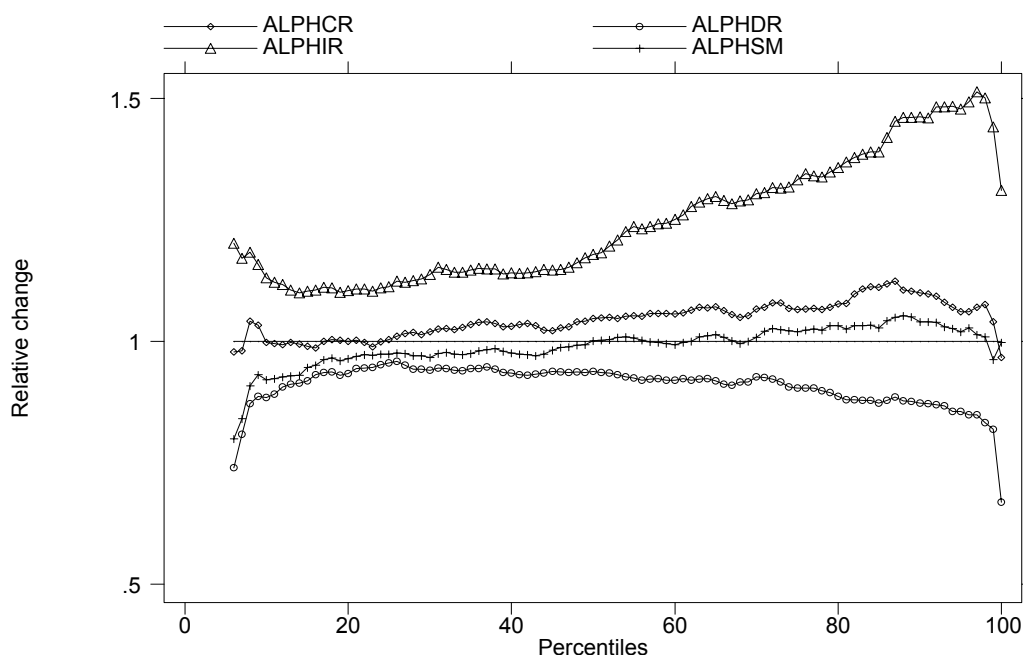
Figure 1  
Level and inequality of household income per capita



Source: Simulations by the author.

Figure 2 shows the relative changes with respect to REFSIM of mean household income per capita for each percentile of the distribution in 2015. ALPHCR leads to an improvement beyond the 25th percentile. Increasing returns have a clear positive effect over the total distribution with huge relative income changes at the top of the distribution. In contrast, decreasing returns lead to income losses relative to the reference scenario over the entire distribution. For the experiment ALPHSM, the potential gains stemming from the education expansion are over compensated until the 60th percentile through the rationing of (formal) wage work, only above incomes exceeding those of the reference case.

Figure 2  
Relative changes of mean household income per capita by percentiles  
(income in 2015 relative to REFSIM)



Note: The distributions are truncated for the first five percentiles, because zero incomes at the bottom of the distribution lead to very erratic relative changes.

Source: Simulations by the author.

### 4.3 Indirect effects through the different transmission channels

Inactivity decreases in all policy experiments (Table 7), but this decrease is the more pronounced the more individuals have acquired education, the better education is remunerated, and the easier (formal) wage work is accessible. Particularly interesting is the difference between the policies PRIMED, on the one hand, and HIGHED and ALPHCR, on the other hand: an expansion of education up to primary school does not render the entry on the labour market sufficiently attractive. This is, in particular, the case for women. According to the used labour supply model, an 'average women' living in a non-agricultural household has to achieve at least upper secondary school so that her potential earnings drawn from wage work compensate her reservation wage. This result is in line with those of other studies. Lam and Duryea (1999) show, for instance, that in Brazil the increase in domestic productivity following an expansion of education is sufficiently high to compensate for the increase of potential earnings on the labour market corresponding to eight years of schooling. Likewise, Behrman *et al.* (1999) find for the case of India positive and high returns to education for women in domestic activity.

The decrease of inactivity results principally in an increase of wage work and non-farm self-employment. Wage work is more attractive the higher the return to education. For the experiment ALPHIR, the share of wage earners grows from 11.3 to 16.4 per cent between 1997 and 2015 reducing inactivity and domestic work (including work on the family farm). In contrast, the rationing of wage work to 11.3 per cent of the total work

force (ALPHSM) increases particularly the inactivity rate, and to a smaller extend the share of non-farm self-employment.

Concerning the demographic transmission channels (see Table 8), one can state a decrease of the total fertility rate (TFR) from 5.0 to 4.3 children per woman between 1997 and 2015. Given that women's education is a key determinant in the fertility model used, this decrease is stronger, the higher the schooling level of women. In the long term, the difference of 0.33 children between the experiments REFSIM and ALPHCR will increase, because the cohort of six-year olds in 1998 reaches the age of only 24 in 2015 and is therefore still at the beginning of its fertility cycle.

Furthermore, in the model it is assumed that the preferences regarding fertility are constant, which is less likely to happen in reality. A significant expansion of education will probably change fertility behaviour in general, by diffusion of knowledge and contraception technologies for instance, and incite couples, independently of their

Table 7  
Employment structure, individuals older than 11 years, not enrolled  
(simulation in 1997 and 2015)

	Inactive 1997=0.194	Wage worker 1997=0.113	Non-farm self. 1997=0.112	Indep. farmer 1997=0.179	Agric. family help 1997=0.402
REFSIM	0.158	0.120	0.127	0.174	0.421
PRIMED	0.165	0.121	0.125	0.171	0.418
HIGHED	0.148	0.128	0.120	0.184	0.420
ALPHCR	0.147	0.136	0.122	0.181	0.414
ALPHDR	0.167	0.115	0.118	0.184	0.417
ALPHIR	0.129	0.164	0.121	0.183	0.403
ALPHSM	0.163	0.114	0.122	0.185	0.416

Source: Simulations by the author.

Table 8  
Total fertility rate (TFR)<sup>a</sup>, mean household size, and dependency ratio<sup>b</sup>  
(simulation in 1997 and 2015)

	TFR 1997=5.041	Mean household size 1997=5.642	Dependency ratio 1997=1.545
REFSIM	4.305	4.933	1.008
PRIMED	4.315	4.963	1.035
HIGHED	4.124	4.968	1.095
ALPHCR	3.977	4.914	1.053
ALPHDR	3.955	4.886	1.119
ALPHIR	3.955	4.868	0.979
ALPHSM	3.876	4.856	1.118

Note: <sup>a</sup> Average number of children born to a woman who would be exposed during her entire fertility cycle to the currently observed age-specific fertility rates. The numbers presented are the averages over the period 2013-15.

<sup>b</sup> Ratio between inactive household members and active household members (agricultural family workers count as active).

Source: Simulations by the author.

own education, to limit the number of children. The mean household size decreases by about 0.75 persons between 1992 and 2015 for every scenario considered. In contrast, the dependency ratio decreases strongly, but differently for the considered experiments. As already mentioned, the expansion of education has two effects: (i) an increase of enrolment rates reduces in the early stages the work force, but (ii) raises, once the cohorts attain the age of activity, their propensity to work on the labour market because of the positive return to education. This can explain why the dependency ratio decreases the most under ALPHIR and the less under ALPHDR and ALPHSM.

To sum up, in the medium and long term more education decreases fertility and increases the participation rates on the labour market, in particular for women, if the education expansion is sufficiently strong. This results in a contraction of the dependency ratio which finally raises mean household income per capita. These are the indirect effects which complete the increase of income due to higher schooling, holding participation behaviour and demographic behaviour constant.

## 5 Conclusion

If the most optimistic policy considered in this study were to be put into effect, the cohorts born in 1995 and thereafter would have achieved an education level by the time they enter the labour market which would correspond to the Latin American average of cohorts born in 1970. The effect of such an expansion of education in terms of income growth, inequality and poverty in the coming 15 years depends very crucially on the assumptions made for the evolution of returns to education and labour demand. Over the period 1992-2015, the growth gain per capita relative to the persistence of the 1998 age-schooling pattern is about 0.3 points per year if returns to education remain constant, about -0.9 point per year if returns decrease by about 20 per cent, and about 1.8 points per year if returns increase by about 20 per cent. If the labour demand in the (formal) wage earner sector remains rationed to the share of the total work force observed in 1997 (11.34 per cent), no growth gain at all will be generated. A much quicker poverty reduction relative to the reference scenario may only be possible with rising returns to education and an increasing demand for skilled work. Otherwise the expansion of education will have only a minor effect, at least in the considered time scale, on the headcount index, among other things, because the poor population is only marginally concerned by higher enrolment rates in secondary and higher education.<sup>11</sup> In other words, the simulations show that a policy, which is limited to universal primary education, is not sufficient to eradicate poverty. These results thus suggest that an expansion of education has to be accompanied by a policy attracting investment and creating demand for skilled labour. To achieve increasing returns to education, it is necessary that other production factors, complementary to education, such as physical capital and technological progress, increase simultaneously. Furthermore, expanding school enrolment may lead to a decline in school quality, since new teachers must be

---

<sup>11</sup> This is in line with the evidence presented in Li *et al.* (1999). They found in a study based on relatively large sample of developing countries that the share of the richest income quintile in public spending on education (28 per cent) was more than double that of the poorest income quintile (13 per cent).

hired and teacher training standards may have to be lowered to find enough teachers.<sup>12</sup> Therefore measures have to be undertaken to ensure a certain quality standard of schooling so that returns to education do not fall. The fact that education is not a sufficient condition for poverty alleviation does not lessen its importance, but rather raises the importance of undertaking complementary reforms that will lead to education paying off. Furthermore, as emphasized in the introduction, education induces many other beneficial effects, such as lower child mortality.

The picture drawn by this study may have been even more pessimistic, if I had taken into account possible general equilibrium effects and the negative effects of financing the considered policies. Future work should also investigate what precise type of policy may be adapted in the case of Côte d'Ivoire to achieve the expansion of education simulated in this study.<sup>13</sup>

---

<sup>12</sup> This may pose a problem especially in Côte d'Ivoire, given that this country is severely burdened with the AIDS epidemic.

<sup>13</sup> Glewwe (2002) analyses a large number of studies to identify the most efficient education policies in developing countries.

## Appendix

### A1 Estimated parameters used for the schooling decisions model

Table A1  
Probit estimations of the probability of being enrolled in t conditional on the state in t-1  
(children between 5 and 25 years old)

Variables	Children not enrolled in t -1			
	Boys		Girls	
Age	1.352*	(0.135)	0.932*	(0.108)
Age <sup>2</sup> /100	-12.872*	(1.286)	-9.304*	(0.993)
Age <sup>3</sup> /1000	3.048*	(0.312)	2.287*	(0.239)
No diploma (ref.)				
Attained primary schooling	1.584*	(0.271)	0.873*	(0.252)
Attained junior secondary <sup>a</sup> schooling	2.214*	(0.436)	1.542*	(0.326)
Attained upper secondary schooling	2.011*	(0.570)		
Married				
Non-Ivorian	-0.394*	(0.063)	-0.291*	(0.066)
Not child of the head	0.299*	(0.063)	0.209*	(0.067)
Father illiterate (ref.)				
Father knows read and write	0.327*	(0.085)	0.305*	(0.092)
Father attained primary schooling	0.481*	(0.080)	0.647*	(0.081)
Father attained junior secondary schooling	0.788*	(0.110)	0.652*	(0.110)
Father attained upper secondary or more	0.986*	(0.178)	1.193*	(0.179)
Mother illiterate (ref.)				
Mother knows read and write	0.242*	(0.096)	0.429*	(0.096)
Mother attained primary schooling	0.390*	(0.103)	0.416*	(0.108)
Mother attained junior secondary schooling	0.242	(0.202)	0.774*	(0.186)
Mother attained upper secondary or more	1.815*	(0.576)	0.700*	(0.275)
Household head male			-0.124	(0.104)
No. of household members ≥ 60 years	-0.086	(0.048)		
Household size			0.014*	(0.005)
Abidjan (ref.)				
Other urban	-0.310*	(0.071)	-0.311*	(0.068)
East Forest	-0.608*	(0.089)	-0.668*	(0.087)
West Forest	-0.636*	(0.090)	-0.536*	(0.089)
Savannah	-0.608*	(0.086)	-0.659*	(0.085)
ENV 1998	0.319*	(0.051)	0.430*	(0.051)
Constant	-4.833*	(0.401)	-3.810*	(0.348)
Number of observations	11861		14680	
Log likelihood	-2048		-1793	

Table 1 continues



Table A1 (con't)

Probit estimations of the probability of being enrolled in t conditional on the state in t-1  
(children between 5 and 25 years old)

Variables	Children enrolled in t -1			
	Boys		Girls	
Age	0.062*	(0.030)	-0.043*	(0.012)
Age <sup>2</sup> /100	-0.424*	(0.106)		
No diploma (ref.)				
Attained primary schooling schooling	-0.005	(0.075)	-0.022	(0.087)
Attained junior secondary schooling	0.372*	(0.126)	0.517*	(0.165)
Attained upper secondary schooling	0.499*	(0.197)	0.232	(0.287)
Married	-0.980*	(0.179)	-0.884*	(0.161)
Not child of the head			-0.155*	(0.071)
Mother illiterate (ref.)				
Mother knows read and write			0.242	(0.132)
Mother attained primary schooling			-0.119	(0.133)
Mother attained junior secondary schooling			0.324	(0.244)
Mother attained upper secondary or more			0.659	(0.400)
No. of household members ≥ 60 years			-0.105	(0.057)
Household size	0.023*	(0.008)		
Household without land (ref.)				
0ha < lands. < 1ha	-0.068	(0.126)	0.364*	(0.148)
1ha ≤ lands. < 2ha	-0.307*	(0.117)	-0.432*	(0.145)
2ha ≤ lands. < 5ha	-0.371*	(0.114)	-0.216	(0.120)
5ha ≤ lands. < 10ha	-0.228*	(0.126)	-0.060	(0.133)
10ha ≤ lands.	0.032	(0.135)	0.096	(0.136)
Abidjan (ref.)				
Other urban	-0.267*	(0.081)	-0.262*	(0.085)
East Forest	-0.520*	(0.127)	-0.519*	(0.135)
West Forest	-0.448*	(0.129)	-0.366*	(0.150)
Savannah	-0.193	(0.142)	-0.243	(0.155)
ENV 1998	0.574*	(0.064)	0.588*	(0.074)
Constant	1.388*	(0.201)	2.111*	(0.132)
Number of observations	8535		5835	
Log likelihood	-2146		-1471	

Notes: <sup>a</sup> The categories 'junior secondary' and 'upper secondary' have been aggregated for girls non-enrolled in t-1 \* significant at 5 per cent. Standard errors in parentheses. Standard errors have been corrected for clustering within the household. During the simulations the dummy for the 1998 survey (ENV 1998) comes successively into play by multiplying its coefficient in each period by  $t/5$  so that the coefficient has no effect in 1993 and an effect of 100 per cent in 1998. From 1998 on this dummy variable is fixed to one.

Source: EP 1993, ENV 1998; estimations by the author.

Table A2  
Observed and simulated enrolment ratios in 1998

	obs.	sim.		obs.	sim.
GERP	0.81	0.84	GERUS	0.21	0.15
NERP	0.53	0.51	NERUS	0.05	0.02
Girls-ratio	0.44	0.43	Girls-ratio	0.35	0.27
GERJS	0.39	0.39	GERHE	0.03	0.01
NERJS	0.13	0.08	NERHE	0.02	0.01
Girls-ratio	0.38	0.40	Girls-ratio	0.35	0.08

Notes: GERP/NERP = Gross/net enrolment ratio in primary school; GERJS/NERJS = Gross/net enrolment ratio in junior secondary school; GERUS/NERUS = Gross/net enrolment ratio in upper secondary school; GERHE/NERHE = Gross/net enrolment ratio in higher education.

Source: ENV 1998; computations and simulations by the author.

## A2 Estimated parameters used for the of occupational choices and earnings model

Table A3  
Agricultural profit function  
(Dependent variable log profit last 12 month)  
(OLS estimation)

Variables		
Log of no. of household members involved in farm work	0.531 *	(0.026)
Land: no land or less than 1 ha (ref.)		
Land: from 1 to 2 ha	0.349 *	(0.043)
Land: from 2 to 5 ha	0.553 *	(0.042)
Land: from 5 to 10 ha	0.897 *	(0.047)
Land: more than 10 ha	0.964 *	(0.052)
Experience	0.012 *	(0.004)
Experience <sup>2</sup> /100	-0.022 *	(0.005)
Woman	-0.136 *	(0.042)
Savannah (ref.)		
Urban	-0.554 *	(0.038)
East Forest	-0.329 *	(0.035)
West Forest	-0.230 *	(0.035)
Intercept	12.304 *	(0.089)
Number of observations		4204
Adj. R <sup>2</sup>		0.319

Note: \* significant at 5 per cent. Standard errors in parentheses.

Source: EP 1993; estimations by the author.

Table A4  
Activity choice and labour income model  
(Dependent variable log monthly earnings)  
(Bivariate Tobit estimation, i.e. all three equations are estimated simultaneously)

Variables	Non-farm self-employed		Wage earner		Reserv. wage	
<b>Non-agricultural households</b>						
Schooling	0.069 *	(0.004)	0.171 *	(0.004)	0.101 *	(0.005)
Experience	0.078 *	(0.005)	0.080 *	(0.005)	-0.011 *	(0.006)
Experience <sup>2</sup> /100	-0.074 *	(0.007)	-0.094 *	(0.008)	0.059 *	(0.008)
Abidjan	0.348 *	(0.047)	0.529 *	(0.042)	0.358 *	(0.056)
Other urban	0.300 *	(0.043)	0.257 *	(0.038)	0.100 *	(0.052)
Woman	0.042	(0.038)	-0.830 *	(0.035)	-0.217 *	(0.045)
Non-Ivorian	-0.030	(0.032)	-0.261 *	(0.030)	-0.215 *	(0.036)
No. childr. 0-1 years old in hh.					0.038	(0.024)
No. childr. 1-3 y. old in hh.					-0.018	(0.018)
No. childr. 3-9 y. old in hh.					-0.035 *	(0.017)
No. childr. 9-12 y. old in hh.					0.028 *	(0.013)
No. men >11 y. old in hh. <sup>1</sup>					0.026 *	(0.007)
No. women >11 y. old in hh. <sup>1</sup>					-0.002	(0.007)
Household head					-1.177 *	(0.040)
Spouse of household head					-0.168 *	(0.033)
Child of household head					0.189 *	(0.036)
Other hh. member (ref.)						
Income of hh. head/1000000					0.009	(0.006)
Intercept	8.472 *	(0.109)	8.600 *	(0.100)	10.586 *	(0.115)
Number of observations				14369		
Log likelihood				-87881		
<b>Agricultural households</b>						
Schooling	0.069	(—)	0.171	(—)	0.026	(0.020)
Experience	0.078	(—)	0.080	(—)	-0.005	(0.016)
Experience <sup>2</sup> /100	-0.074	(—)	-0.094	(—)	0.033	(0.022)
Abidjan	0.348	(—)	0.529	(—)	-0.241	(0.259)
Other urban	0.300	(—)	0.257	(—)	-0.576 *	(0.155)
Woman	0.042	(—)	-0.830	(—)	-0.764 *	(0.108)
Non-Ivorian	-0.030	(—)	-0.261	(—)	-0.513 *	(0.095)
No. childr. 0-1 years old in hh.					0.067	(0.056)
No. childr. 1-3 y. old in hh.					-0.050	(0.040)
No. childr. 3-9 y. old in hh.					-0.003	(0.047)
No. childr. 9-12 y. old in hh.					0.036	(0.037)
No. men >11 y. old in hh. <sup>1</sup>					0.056 *	(0.022)
No. women >11 y. old in hh. <sup>1</sup>					-0.018	(0.018)
Spouse of household head					-0.002	(0.074)
Child of household head					0.022	(0.077)
Other hh. member (ref.)						
ln $\Delta\Pi_{0i}$					0.316 *	(0.095)
Intercept	8.472	(—)	8.600	(—)	9.095 *	(0.905)
Number of observations				9884		
Log likelihood				-7660		

Notes: The estimates of the corresponding variance and correlation parameters can be obtained on request from the author. \* significant at 5 per cent. (—) coefficient constrained. <sup>1</sup> without accounting for the individual itself.

Source: EP 1993; estimations by the author.

### **A3 Modelling of fertility, mortality, marriage, and immigration**

In what follows I briefly explain how fertility, mortality, marriage and immigration are modelled. For more details, regarding the data used, estimation techniques and estimation results, the reader can refer to Grimm (2002).

#### *Fertility*

I use the Ivorian Demographic and Health Survey (DHS) of 1994 (INS 1995a) to model births. The weighted sample is representative of the national level and covers 5935 households, comprising 8099 women between 15 and 49 years old. The survey contains questions concerning the sociodemographic structure of households, fertility, health, education, employment and some assets owned by households. Fertility is estimated by a reduced form probit equation. The dependant latent variable measures the probability that woman  $i$  had a birth the twelve months preceding the survey. The observed dependant variable is whether or not the woman had a birth during this period. Among the exogenous variables are matrimonial status, region of residence, both interacted with age and age squared, and education. To control for polygamy, I also introduce the number of other women between 15 and 49 years old in the household. The main characteristics of the estimated model are, that the birth probability increases with marriage, rural residence, and age (at a decreasing rate). In contrast, it decreases with education, the number of other women in the household, and residence in Abidjan. Using the estimated equation and a Monte Carlo lottery, it is determined if a women gives birth in a specific period or not. The sex of a child is coded with a probability of 48.8 per cent female.

#### *Mortality*

To model mortality, I compute mortality tables using (i) the Ivorian United Nations' projections (United Nations 2001) for infant mortality, juvenile mortality and life expectancy at birth for the period 1990 to 2020, and (ii) Ledermann model life tables (Ledermann 1969). The United Nations' projections include scenarios with AIDS and without AIDS. AIDS mortality is introduced in the mortality tables so that it concerns children only up to five years and adults between 20 and 59 years old. These tables together with a Monte Carlo lottery are used to simulate in deaths in each period. For survivors, the age variable is increased in each period by one year.

#### *Marriage*

Only the first marriage is modelled. All single men between 18 and 49 years old and all single women between 13 and 43 years old are considered as at risk of marrying. Those who 'search' are selected among them using a Monte Carlo lottery and marriage rates stratified by age, sex, and residence (urban, rural) estimated by the INS (1992) using census data. To arrange marriages, I first stock the chosen men and women for each stratum (Abidjan, other cities, West Forest, East Forest, Savannah) in a matrix representing the different marriage markets. Then each matrix is sorted by education in descending order. I assume that men choose women. A parameter  $0 \leq \phi \leq 1$  defines the degree of 'assortive mating' Becker (1991). If  $\phi$  is equal to one, the most educated man chooses the most educated woman in the corresponding stratum, under the condition

that the man is not younger than the woman, and that the woman does not live in the same household as the man, otherwise he chooses the second most educated woman and so on. The second most educated man chooses then the next 'available' of the most educated women and so on. For  $\phi=0.5$ , 50 per cent of men choose their wife conditional on education and 50 per cent choose randomly. For  $\phi=0$  all men choose randomly. The 'homogeneous' men are selected randomly and independently of their education. However, the selection process always runs in descending order, with the most educated man choosing first. This modelling is coherent with matching models in the sense that it is assumed that individuals act in an environment where information is perfect. There are no search costs. Matches are influenced by conditions on the marriage markets, that is, the dispersion of potential spouses and the ratio between potential spouses and competitors. For the simulations  $\phi$  was calibrated at 0.8. The marriage is concluded by an exchange of identification codes. Individuals who find no partner remain single and have a chance to be selected in the next period. For married couples there are three modes of cohabitation: (i) the couple forms their own new household, (ii) the couple lives with his parents, and (iii) the couple lives with her parents. The probabilities for these three possibilities are calibrated at 70 per cent, 15 per cent, and 15 per cent respectively. In the new household the man is coded household head.

### *Immigration*

To model net immigration into Côte d'Ivoire, I use immigration matrices stratified by age and sex based on the *Enquête Ivoirienne sur les Migrations et l'Urbanisation* of 1993 (EIMU) (INS 1995b). This survey covers 16125 households (58378 individuals) and is considered representative of the national level. The number of immigrants is determined in each period by applying the net immigration rate by age group and sex to the number of resident individuals of the same age group and sex. The entrants are created by duplicating already resident immigrants (only matrimonial status is systematically coded as not married). Then the immigrant is affected with a 70 per cent probability of a randomly chosen resident, but from a former immigrated family (of course not that of his/her double) and with a 30 per cent probability that he/she creates his/her own single household. The link to a formerly immigrated family conveys the idea of migration networks, which are of particular important in Côte d'Ivoire.

## References

- Becker, G. S. (1991). *A Treatise on the Family. A Theory of Social Interactions* (enlarged edition). Cambridge, MA: Harvard University Press.
- Behrman, J. R., S. Duryea, and M. Székely (1999). 'Schooling Investments and Aggregate Conditions: A Household-Survey based Approach for Latin America and the Caribbean'. GDN Global Research Project Paper. Philadelphia: University of Pennsylvania.
- Behrman, J. R., A. D. Foster, M. R. Rosenzweig, and P. Vashishtha (1999). 'Women's Schooling, Home Teaching, and Economic Growth'. *Journal of Political Economy*, 107 (4): 682-714.
- Benhabib, J., and M. Spiegel (1994). 'Role of Human Capital in Economic Development: Evidence from Aggregate Cross-Country Data'. *Journal of Monetary Economics*, 34: 143-73.
- Bils, M., and P. J. Klenow (2000). 'Does Schooling Cause Growth?'. *American Economic Review*, 90 (5): 1160-83.
- Blackden, C. M., and C. Bhanu (1999). 'Gender Growth and Poverty Reduction'. World Bank Technical Paper No S428. Washington, DC: World Bank.
- Bulow, J. I., and L. H. Summers (1986). 'A Theory of Dual Labor Markets with Application to Industrial Policy, Discrimination, and Keynesian Unemployment'. *Journal of Labor Economics*, 4 (3): 376-414.
- Card, D. (1995). 'Earnings, Schooling, and Ability Revisited', in S. W. Polachek (ed.), *Research in Labor Economics*, 14. Greenwich, CN and London: JAI Press, 23-48.
- Cleland, J., and G. Rodriguez (1988). 'The Effect of Parental Education on Marital Fertility in Developing Countries'. *Population Studies*, 42 (3): 419-42.
- Cogneau, D., and S. Mesplé-Somps (2002), *L'économie ivoirienne, la fin du mirage?* DIAL Working Paper, DT/2002/18, DIAL, Paris.
- Ferreira, F. H. G., and P. G. Leite (2002). 'Educational Expansion and Income distribution. A Micro-Simulation for Ceará'. PUC-RIO Texto para discussão No 456, Rio de Janeiro: Departamento de Economica, PUC-RIO.
- Forsythe, N., R. P. Korzeniewicz, and V. Durrant (2000) 'Gender Inequalities and Economic Growth: A Longitudinal Evaluation'. *Economic Development and Cultural Change*, 48 (3): 573-617.
- Glewwe, P. (2002). 'Schools and Skills in Developing Countries: Education Policies and Socio-Economic Outcomes'. *Journal of Economic Literature*, 40: 436-82.
- Grimm, M. (2002). 'Demo-Economic Behaviour, Income Distribution, and Development. Dynamic Micro-Simulations Applied to Côte d'Ivoire'. Paris: Institut d'Etudes Politiques de Paris. PhD thesis in economics.
- Grimm, M. (2004). 'A Decomposition of Inequality and Poverty Changes in the Context of Macroeconomic Adjustment. A Microsimulation Study for Côte d'Ivoire, in A. Shorrocks and R. van der Hoeven (eds), *Growth, Inequality and Poverty: Prospects for Pro-poor Economic Development*. Oxford: Oxford University Press for UNU-WIDER.

- Grimm, M., C. Guénard, and S. Mesplé-Somps (2002). 'What Has Happened to the Urban Population in Côte d'Ivoire since the Eighties? An Analysis of Monetary Poverty and Deprivation over 15 Years of Household Data'. *World Development*, 30 (6): 1073-95.
- Grootaert, C. (1996). *Analyzing Poverty and Policy Reform. The Experience of Côte d'Ivoire*. London: Arebury Press.
- Harding, A. (2000). 'Dynamic Microsimulation: Recent Trends and Future Prospects', in A. Gupta and V. Kapur (eds), *Microsimulation in government policy and forecasting*. Amsterdam: North Holland, 297-312.
- Heckman, J., and G. Sedlacek (1985). 'Heterogeneity, Aggregation, and Market Wages Functions: An Empirical Model of Self-Selection in the Labor Market'. *Journal of Political Economy*, 93: 1077-25.
- Institut National de la Statistique (INS) (1992). *Recensement général de la population et de l'habitat 1988. Tome 1: Structure, état matrimonial, fécondité et mortalité*. Abidjan: Institut National de la Statistique, République de Côte d'Ivoire.
- Institut National de la Statistique (INS) (1995a). *Enquête Démographique et de Santé 1994*. Abidjan: Institut National de la Statistique, République de Côte d'Ivoire.
- Institut National de la Statistique (INS) (1995b). *Enquête ivoirienne sur les migrations et l'urbanisation (EIMU). Rapport national descriptif*. Abidjan: Institut National de la Statistique, République de Côte d'Ivoire.
- Institut National de la Statistique (INS) (2001a). *Recensement Général de la Population et de l'Habitation de 1998. Rapport d'analyse. Thème 6: Alphabétisation, niveau d'instruction et fréquentation scolaire*. Abidjan: Institut National de la Statistique, République de Côte d'Ivoire.
- Institut National de la Statistique (INS) (2001b). *Premier Résultats Définitifs du Recensement Général de la Population et de l'Habitation de 1998*. Abidjan: Institut National de la Statistique, République de Côte d'Ivoire.
- Jejeebhoy, S. J. (1995), *Women's Education, Autonomy, and Reproductive Behaviour: Experience from Developing Countries*. Oxford: Clarendon Press.
- Katz, L., and K. Murphy (1992). 'Changes in the Wage Structure 1963-87: Supply and Demand Factors'. *Quarterly Journal of Economics*, 107: 35-78.
- Klasen, S. (1999). 'Does Gender Inequality Reduce Growth and Development: Evidence from Cross-Country Regressions'. Gender and Development Working Paper Series No 7. Washington, DC: World Bank.
- Kouadio, A., and J. Mouanda (2001). 'La Côte d'Ivoire. Politiques éducatives et système éducatif actuel', in M. Pilon and Y. Yaro (eds), *La demande d'éducation en Afrique état des connaissances et perspectives de recherche*. Réseau thématiques de recherche de l'UEPA. Dakar: Union pour l'Etude de la Population Africaine (UEPA), No1, January, 135-50.
- Krueger, A. B., and M. Lindahl (2000). 'Education for Growth: Why and for Whom?'. NBER Working Paper No7591. Cambridge, MA: National Bureau of Economic Research.
- Kuznets, S. (1955). 'Economic Growth and Income Inequality'. *American Economic Review*, 45: 1-28.

- Lam, D., and S. Duryea (1999). 'Effects of Schooling on Fertility, Labour Supply, and Investment in Children, with Evidence from Brazil'. *Journal of Human Resources*, 34 (1): 160-92.
- Ledermann, S. (1969). *Nouvelles tables-types de mortalité*. Travaux et documents, cahier No 53. Paris: INED and PUF.
- Li, G., D. Steele, and P. Glewwe (1999). 'The Distribution of Government Education Expenditure in Developing Countries'. Washington, DC: Development Research Group, World Bank. Mimeo.
- Lucas, R. E., Jr. (1988). 'On the Mechanics of Economic Development'. *Journal of Monetary Economics*, 22: 3-42.
- Magnac, T. (1991). 'Segmented or Competitive Labor Markets?'. *Econometrica*, 59 (1): 165-87.
- Mincer, J. (1974). *Schooling, Experience and Earnings*. New York: Columbia University Press.
- Pritchett, L. (2001). 'Where Has All the Education Gone?', *World Bank Economic Review*, 15 (3): 367-91.
- Romer, P. (1990). 'Endogenous Technical Change'. *Journal of Political Economy*, 94 (5): S71-S102.
- Roy, A. (1951). 'Some Thoughts on the Distribution of Earnings'. *Oxford Economic Papers*, 3: 135-46.
- Schultz, T. P. (1994). 'Human Capital and Economic Development'. Center Discussion Paper No711. New Haven, CT: Economic Growth Center, Yale University.
- Schultz, T. P. (1997). 'Demand for Children in Low Income Countries', in M. R. Rosenzweig and O. Stark (eds), *Handbook of Population and Family Economics*. Amsterdam: North-Holland, 349-430.
- Schultz, T. P. (1999). 'Health and Schooling Investments in Africa'. *Journal of Economic Perspectives*, 13 (3): 67-88.
- United Nations (2000). 'Millennium Development Goals'. Available at: [www.developmentgoals.org](http://www.developmentgoals.org).
- United Nations (2001) 'World Population Prospects: The 2000 Revision (version February 2001, data files)'. New York: Population Division, Department of Economic and Social Affairs, United Nations.
- World Bank (2001). 'A Chance to Learn. Knowledge and Finance for Education in Sub-Saharan Africa'. Washington, DC: Africa Region Human Development Series, World Bank.
- World Bank (2002a). 'Pilot Literacy Project'. Available at: [www4.worldbank.org/sprojects/Projects.asp?pid=P055073](http://www4.worldbank.org/sprojects/Projects.asp?pid=P055073).
- World Bank (2002b). 'Education and Training Support Project'. Available at: [www4.worldbank.org/sprojects/Projects.asp?pid=P035655](http://www4.worldbank.org/sprojects/Projects.asp?pid=P035655).