

Adrian, Tobias; Moench, Emanuel; Shin, Hyun Song

**Working Paper**

## Macro risk premium and intermediary balance sheet quantities

Staff Report, No. 428

**Provided in Cooperation with:**  
Federal Reserve Bank of New York

*Suggested Citation:* Adrian, Tobias; Moench, Emanuel; Shin, Hyun Song (2010) : Macro risk premium and intermediary balance sheet quantities, Staff Report, No. 428, Federal Reserve Bank of New York, New York, NY

This Version is available at:

<https://hdl.handle.net/10419/60849>

**Standard-Nutzungsbedingungen:**

Die Dokumente auf EconStor dürfen zu eigenen wissenschaftlichen Zwecken und zum Privatgebrauch gespeichert und kopiert werden.

Sie dürfen die Dokumente nicht für öffentliche oder kommerzielle Zwecke vervielfältigen, öffentlich ausstellen, öffentlich zugänglich machen, vertreiben oder anderweitig nutzen.

Sofern die Verfasser die Dokumente unter Open-Content-Lizenzen (insbesondere CC-Lizenzen) zur Verfügung gestellt haben sollten, gelten abweichend von diesen Nutzungsbedingungen die in der dort genannten Lizenz gewährten Nutzungsrechte.

**Terms of use:**

*Documents in EconStor may be saved and copied for your personal and scholarly purposes.*

*You are not to copy documents for public or commercial purposes, to exhibit the documents publicly, to make them publicly available on the internet, or to distribute or otherwise use the documents in public.*

*If the documents have been made available under an Open Content Licence (especially Creative Commons Licences), you may exercise further usage rights as specified in the indicated licence.*

Federal Reserve Bank of New York  
Staff Reports

Macro Risk Premium and Intermediary Balance Sheet Quantities

Tobias Adrian  
Emanuel Moench  
Hyun Song Shin

Staff Report no. 428  
January 2010

This paper presents preliminary findings and is being distributed to economists and other interested readers solely to stimulate discussion and elicit comments. The views expressed in the paper are those of the authors and are not necessarily reflective of views at the Federal Reserve Bank of New York or the Federal Reserve System. Any errors or omissions are the responsibility of the authors.

## **Macro Risk Premium and Intermediary Balance Sheet Quantities**

Tobias Adrian, Emanuel Moench, and Hyun Song Shin

*Federal Reserve Bank of New York Staff Reports*, no. 428

January 2010

JEL classification: E44, E52, G00

### **Abstract**

The macro risk premium measures the threshold return for real activity that receives funding from savers. We base our argument in this paper on the relationship between the macro risk premium and the growth of financial intermediaries' balance sheets. The spare capacity of their balance sheets determines the intermediaries' risk appetite, which in turn determines the real projects that receive funding and, hence, the supply of credit. Monetary policy affects risk appetite by changing the ability of intermediaries to leverage their capital. We estimate the time-varying risk appetite of financial intermediaries for the United States, Germany, the United Kingdom, and Japan, and study the joint dynamics of risk appetite using macroeconomic aggregates for the United States. We argue that risk appetite is an important indicator of monetary conditions.

Key words: monetary policy, financial intermediation, capital markets

---

Adrian: Federal Reserve Bank of New York (e-mail: [tobias.adrian@ny.frb.org](mailto:tobias.adrian@ny.frb.org)). Moench: Federal Reserve Bank of New York (e-mail: [emanuel.moench@ny.frb.org](mailto:emanuel.moench@ny.frb.org)). Shin: Princeton University (e-mail: [hsshin@princeton.edu](mailto:hsshin@princeton.edu)). This paper was prepared for the Tenth Annual Jacques Polak Research Conference held at the International Monetary Fund, Washington, D.C., November 5-6, 2009. The authors thank Vasco Curdia, Simon Gilchrist, Pierre-Olivier Gourinchas, Ayhan Kose, Michael Woodford, two anonymous referees, and conference participants for comments and discussions. The authors also thank Egon Zakrajsek for sharing the excess bond premium data and Casidhe Horan for valuable research assistance. The views expressed in this paper are those of the authors and do not necessarily reflect the position of the Federal Reserve Bank of New York or the Federal Reserve System.

# 1. Introduction

Financial intermediaries often take the back seat in aggregate macro models that focus on inflation and output. The main objective of this paper is to focus attention more squarely on the financial intermediary sector, and explore the extent to which banks and other intermediaries play the role of the engine of macroeconomic fluctuations through the determination of risk premia. Our hope is to shed light on the mechanisms that drive financial cycles that have wider economic impact.

Our argument rests on the relationship between the macro risk premium and the growth of financial intermediary balance sheets. Financial intermediaries who manage their balance sheets actively in response to changing economic conditions will tailor their credit supply decisions on the spare capacity of their balance sheets, as measured by the availability of equity capital and the measured risks associated with new lending. In this way, the tightness of balance sheet constraints of financial intermediaries determine the intermediaries' risk appetite, and hence the supply of credit. The greater is the risk taking capacity of the intermediary sector, the greater is the range of real activity that receives funding. Thus, we may expect a close relationship between three things.

- Rapid growth of intermediary balance sheets
- Lower risk premia
- Higher real activity

We show that such relationships do indeed exist, and explore their empirical magnitudes as well as their dynamic properties. We measure higher real activity by GDP growth. Once the criterion for real activity is set in this way, we turn to the appropriate measures of intermediary risk appetite and risk premia.

We start by making the second bullet point above empirically operational – the notion of a risk premium that is relevant for GDP growth. We estimate a “macro risk premium”  $r$ , by selecting a combination of financial market spreads from fixed income securities that perform well in tracking GDP growth. We document that our measure of the macro risk premium is

closely related to the term spread of interest rates and to credit spreads, but that it only has a loose, negative relationship to the *level* of interest rates.

We then make operational the first bullet point above – the notion of financial intermediary risk appetite, by means of measures of the growth of balance sheet quantities. We identify the set of financial intermediaries for which their balance sheet growth best predict changes in the macro risk premium. We show that for the US, the market-based financial intermediaries such as the broker dealers and the “shadow banks” fit this role. In this way, market-based intermediaries play an important role in the empirical exercise of finding the summary measure of balance sheet growth that best captures the fluctuations in the macro risk premium.

Having taken the first two bullet points in the three-part relationship described above, we close the circle by showing that our summary measure of risk appetite, in turn, does a good job of explaining GDP growth directly. We document the relationship between risk appetite, GDP growth, and the level of the short rate. Finally, we document that the setting of short rates by central banks have been determined not only by GDP growth and inflation, but also by the degree of risk appetite.

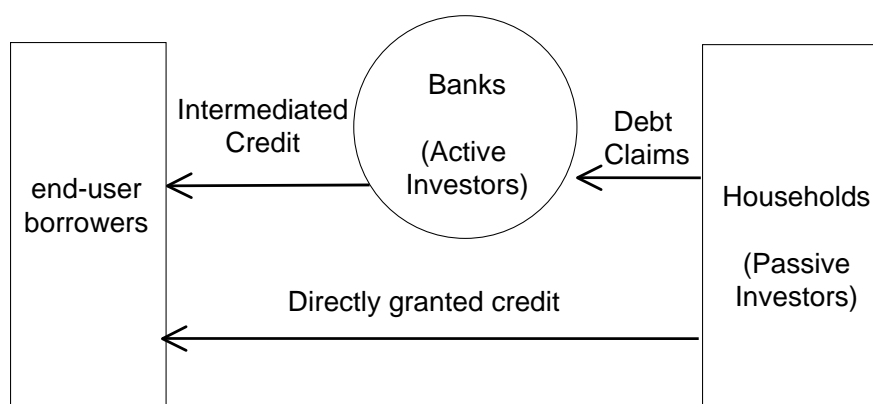
Our approach suggests that a fruitful extension of the standard New Keynesian macro model would be to incorporate balance sheet variables and measures of the macro risk premium. In this way, the role of financial intermediaries may be better captured within macro models that build on those already in use at central banks and other policy organizations. Our finding that spreads matter more than the level of interest rates ties in well with the nature of financial intermediation, which is to borrow in order to lend. As such, we may expect the yield difference on the two sides of the intermediary balance sheet to influence their willingness to lend.

The remainder of the paper is organized as follows. In Section 2, we present a brief overview of the rationale for examining the relationship between intermediary balance sheet growth and the macro risk premium. In Section 3, we implement the first step in our empirical exercise by estimating the macro risk premium that best captures fluctuations in GDP growth. We follow in Section 4 with the estimation of the risk appetite variable, discuss its microeconomic foundations, and show the empirical link to real economic variables. In Section 5, we present the vector autoregression (VAR) analysis of the macro-finance dynamics of our model, and discuss implications for monetary and financial stability policy. In Section 6, we present the international comparison of the results. Section 7 concludes.

## 2. The Macro Risk Premium and Intermediary Balance Sheets

We begin with a brief overview of the rationale for why the macro risk premium will be related to the size of financial intermediary balance sheets. Figure 1 depicts a stylized financial system that we will use to explain the main ideas. We focus on the credit market, which channels savings from *ultimate creditors* – the household sector and financial institutions such as mutual funds and pension funds that lend on behalf of the households – to the *ultimate borrowers*, such as non-financial firms or young households who wish to borrow to buy a house.

**Figure 1: Stylized Financial System**

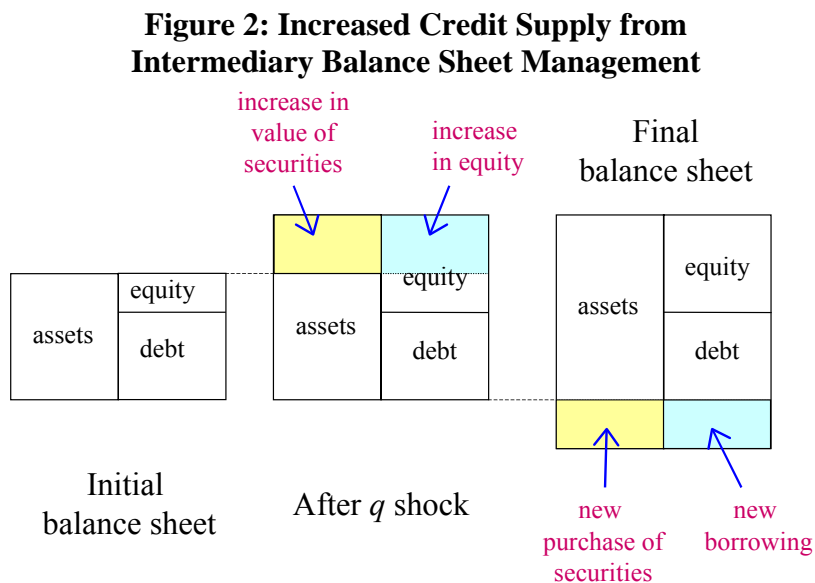


The lending can be channeled through two routes. Credit could be granted directly. For example, households buy corporate bonds and equity issued by non-financial firms directly. Alternatively, the credit can be granted indirectly through the financial intermediary sector, which borrows from the household sector in order to lend to the ultimate borrowers.

We can think of the two alternative ways of provision of credit in terms of the actions of two groups of investors---passive investors and active investors. The passive investors can be thought of as non-leveraged investors such as households, pension funds and mutual funds, while the active investors can be interpreted as leveraged institutions such as banks and securities firms who manage their balance sheets actively. The risky securities can be interpreted as loans granted to ultimate borrowers or securities issued by the borrowers, but where there is a risk that the borrowers do not fully repay the loan.

Under this interpretation, the market value of the risky securities can be thought of as the marked-to-market value of the loans granted to the ultimate borrowers. The passive investors' holding of the risky security can then be interpreted as the credit that is granted directly by the household sector (through the holding of corporate bonds, for example), while the holding of the risky securities by the active investors can be given the interpretation of intermediated finance where the active investors are banks that borrow from the households in order to lend to the ultimate borrowers.

The main distinguishing feature of banks and other financial intermediaries is that they manage their balance sheets actively in response to changes in capital market conditions and the size of equity capital. One way to formalize the active management is in terms of banks keeping enough capital to meet their Value-at-Risk, although other formalizations would yield similar conclusions. As shown in Adrian and Shin (2009a) and Shin (2009b), such management of balance sheets by active investors leads to portfolio choices that induce fluctuations in the risk premium for risky assets, and thereby influence the price of risk in the economy. Adrian and Shin (2009a) also analyze the implications of the intermediaries balance sheet management for the supply of credit and real activity.<sup>1</sup>



<sup>1</sup> The model in Adrian and Shin (2009a) which is outlined in this section does derive equilibrium in capital markets, but it is not a fully developed general equilibrium model. However, the mechanisms outlined in this sections are inherently equilibrium effects.

Figure 2 illustrates the effect of a positive shock to the price of assets already held by the banking sector. Suppose that the initial balance sheet of the banking sector is on the left. Now, suppose that there is a positive shock to the price of the assets already held by the banking sector. We envisage an increase in the expected return from the assets, denoted by  $q$ . Since the banks are leveraged, there is a mark-to-market increase in the capital position of the banking sector. The middle balance sheet in Figure 2 shows the effect of an improvement in fundamentals that comes from an increase in asset values, but before any adjustment in the portfolio by the banking sector.

Although the liabilities of the banks will also change in value due to marked-to-market effects of debt, they will be small, and so we approximate the effect by assuming that there is no change in the debt value. So, the increase in asset value flows through entirely to an increase in equity. Moreover, since the bank is leveraged, the percentage increase in the value of equity is much larger than the percentage increase in the value of assets.

The increase in equity relaxes the Value-at-Risk constraint, and the leveraged sector can increase its holding of risky securities, or alternatively, increase its supply of loans to the ultimate borrowers. The new holding of risky securities is larger, and is enough to make the VaR constraint bind at the higher equity level, with a higher fundamental value.

In other words, after the positive shock to asset values, banks' balance sheets have strengthened, in that capital has increased. There is an erosion of leverage, leading to spare capacity on the balance sheet in the sense that equity is now larger than is necessary to meet the Value-at-Risk. In order to utilize the slack in balance sheet capacity, the banks take on additional debt to purchase additional risky securities. The demand response is upward-sloping. The right hand side balance sheet in Figure 2 illustrates the expansion of lending that comes from the increased capacity on banking sector balance sheets. Adrian and Shin (2007) document such procyclical behavior of financial intermediaries empirically.

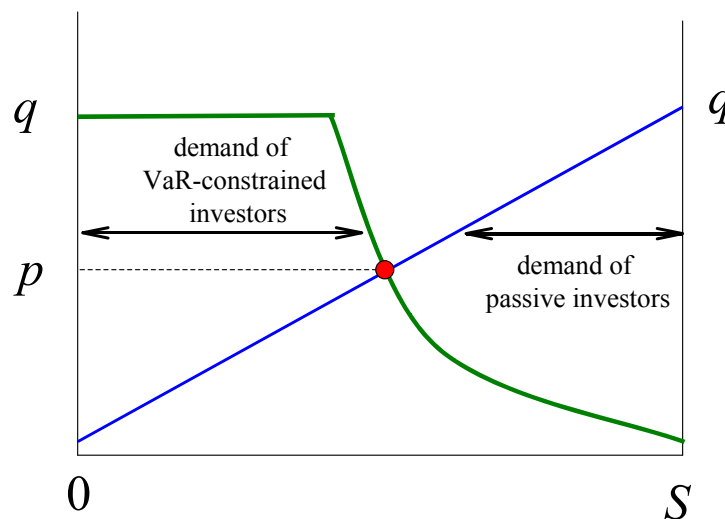
It is important to distinguish the increase in the balance size between the middle balance sheet in Figure 2 and the balance sheet on the right in Figure 2. In the middle balance sheet, the assets increase in value due to the increase in the price of the risky asset. It is a pure valuation effect. However, the right-side increase in the balance sheets is due to the increase in quantity of risky asset holdings. For a bank, such an increase will come through new lending or through the purchase of new securities.



Without the quantity response from the banking sector, the increase in the balance sheet size of the banking sector would purely mirror the asset prices in the economy – say, due to the prospect of greater real activity in the future. It is the additional quantity adjustment that sets in motion the amplifying effect of financial intermediaries. It is in this sense that banks and other financial intermediaries are the engine that drives the boom-bust cycle. They are the primary channel for the amplification of real shocks. In this respect, our argument should be distinguished from New Keynesian DSGE models such as Curdia and Woodford (2009) which introduce a credit spread into a macro model, but where the intermediaries remain passive entities that provide a risk sharing service to households with differing shocks to wealth.

The consequences of the increased lending for risk premia can be illustrated in Figures 3 and 4. Suppose to begin with that the supply of risky securities is fixed at  $S$ . The demand for the risky security (the supply of lending) by the passive sector is measured from right to left, and is illustrated as a linear demand curve. The intercept is at  $q$ , which we assume is the expected payoff of the risky security.

**Figure 3: Determination of Risk Premium**



The demand curve for the risky security by the banking sector is illustrated by the kinked curve that measures the demand for risky securities from the banking sector. A bank's objective is to maximize the expected return to its portfolio subject to a Value-at-Risk constraint, in the

sense that the bank must keep enough capital to meet its worst-case loss. Its demand for the risky security (its supply of lending) is then fully determined by its capital position, since as long as the expected return from the portfolio is strictly positive, it will expand its lending until its VaR constraint binds.

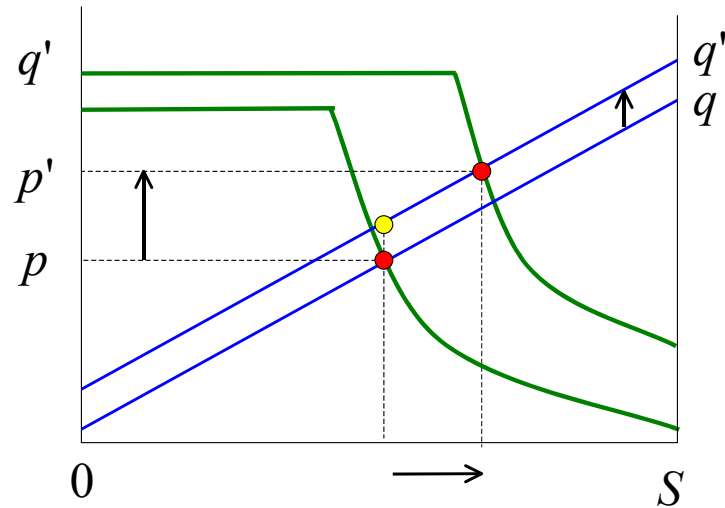
Figure 3 illustrates the determination of the equilibrium price of the risky security, which is denoted by  $p$ . Since  $q$  is our notation for the expected payoff from the risky security, the expected return from the risky security (expected return from lending) is given by  $r = (q/p) - 1$ . Because the model only has one period, the expected excess return is equivalent to a yield spread.

Now consider a possible scenario involving an improvement in the fundamentals of the risky security where the expected payoff of the risky securities rises from  $q$  to  $q'$ . In our banking interpretation of the model, an improvement in the expected payoff should be seen as an increase in the marked-to-market value of bank assets. Although the scenario sketched here is a static one, we could motivate the increase in the expected payoff in terms of the anticipation of greater real activity in the future. We mention later the role of monetary policy in affecting  $q$ . Figure 4 illustrates the scenario. The improvement in the fundamentals of the risky security pushes up the demand curves for both the passive and active investors, as illustrated in Figure 4. However, there is an amplified response from the leveraged institutions as a result of marked-to-market gains on their balance sheets and (crucially) the balance sheet quantity adjustments entailed by it.

In such a setting, it is possible to show that the risk spread, as given by the expected excess return  $r = (q/p) - 1$  is decreasing in the size of the banking sector's holding of the risky security (see Adrian and Shin (2009a)). One immediate consequence is that risk premia are low when the size of the leveraged sector is large relative to the passive, non-leveraged sector.

The amplifying mechanism works exactly in reverse on the way down. A negative shock to the fundamentals of the risky security drives down its price, which erodes the marked-to-market capital of the leveraged sector. The erosion of capital induces the sector to shed assets so as to reduce leverage down to a level that is consistent with the VaR constraint. Consequently, the risk premium increases when the leveraged sector suffers losses, since  $r = (q/p) - 1$  increases. Adrian and shin (2009a) furthermore show that the variation in risk premia can be interpreted as variations in the shadow value of intermediaries' capital. When intermediaries are more capital constraint, their "risk appetite" declines, and equilibrium risk premia increase.

**Figure 4: Compression of Risk Premium From Increase in Intermediary Balance Sheets**



Up to this point, we have treated the total endowment of the risky securities  $S$  as being fixed. However, as the risk spread on lending becomes compressed, the leveraged investors (the banks) will be tempted to search for new borrowers they can lend to. In terms of our scenario, if we allow  $S$  to be endogenously determined, we can expect credit supply to be increasing when the risk premium falls. To explore this idea further, suppose there is a large pool of potential borrowers who wish to borrow to fund a project, from either the active investors (the banks) or the passive investors (the households). Assume for the moment that potential borrowers are identical, and each has identical projects relative to those which are already being financed by the banks and households. In other words, the potential projects that are waiting to be financed are perfect substitutes with the projects already being funded. Denote the profitability associated with the pool of potential projects by  $r^*$ . If the market risk premium were ever to fall below  $r^*$ , the investors in the existing projects would be better off selling the existing projects to fund the projects that are sitting on the sidelines.

The assumption that the pool of potential borrowers have projects that are perfect substitutes for the existing projects being funded is a strong one, and unlikely to hold in practice. Instead, it would be reasonable to suppose that the project quality varies within the pool of potential borrowers, and that the good projects are funded first. For instance, the pool of borrowers would

consist of households that do not yet own a house, but would like to buy a house with a mortgage. Among the potential borrowers would be good borrowers with secure and verifiable income.

However, as the good borrowers obtain funding and leave the pool of potential borrowers, the remaining potential borrowers will be less good credits. If the banks' balance sheets show substantial slack, they will search for borrowers to lend to. As balance sheets continue to expand, more borrowers will receive funding. When all the good borrowers already have a mortgage, then the banks must lower their lending standards in order to generate the assets they can put on their balance sheets. In the sub-prime mortgage market in the United States in the years running up to the financial crisis of 2007, we saw that when balance sheets are expanding fast enough, even borrowers that do not have the means to repay are granted credit – so intense is the urge to employ surplus capital. The seeds of the subsequent downturn in the credit cycle are thus sown.

The discussion so far on the relationship between risk premia and balance sheet size of the intermediary sector suggests a way to modify the monetary models of the New Keynesian tradition that is in wide use in central banks and other policy organizations. Let us first review a very simplified version of the standard New Keynesian model (NK model, see Woodford (2003) for a definitive overview of the literature).

A reduced form of the NK model consists of three equations that determine three macro state variables  $i$  (short term interest rate),  $y$  (real GDP growth), and  $\pi$  (PCE inflation):

$$\text{IS curve:} \quad y = a_y + b_y(i - \pi) \quad (1a)$$

$$\text{Phillips curve:} \quad \pi = a_\pi + b_\pi y \quad (1b)$$

$$\text{Taylor Rule:} \quad i = a_i + b_i y + c_i \pi \quad (1c)$$

In this set-up, output  $y$  is determined by the real short term interest rate  $i - \pi$  (the IS curve in equation 1a). The short rate  $i$  is set by the central bank, which follows a Taylor (1993) rule (equation 1c). Inflation is determined by the Phillips curve (1b). Financial intermediaries play no role in the NK model. The level of the real interest rate ( $i - \pi$ ) pins down consumption and investment, independently of any financial intermediary balance sheet, risk, or net worth considerations.

The model described in our earlier discussion suggests augmenting the standard New Keynesian model by two endogenous variables and two further equations. First, we include the feature that asset prices are influenced by the tightness of balance sheet constraints of financial intermediaries. We label such looseness of balance sheet constraints “risk appetite”. Formally, risk appetite could be defined by reference to the Lagrange multiplier associated with the capital constraint of the banking sector. The Lagrange multiplier would indicate the additional profit that the banking sector may earn by having one dollar of extra bank capital. The looser is the capital constraint, the lower is the Lagrange multiplier, and hence the higher is the risk appetite.

The terminology of “risk appetite” is intended to highlight the apparent change in preferences of the banking sector. We say “apparent” change in preferences, since the fluctuations in risk appetite are due to the constraints faced by the banks rather than their preferences as such. However, to an outside observer, the fluctuations in risk appetite would have the outward signs of fluctuations in risk preferences of the investor.

Risk appetite is a determinant of expected returns and of the availability of credit to the real economy, which we denote by the “macro risk premium”  $r$ . Our reduced form augmented macro model can be summarized by means of the following four equations:

$$\text{IS curve:} \quad y = a_y + b_y(i - \pi) + c_y r \quad (2a)$$

$$\text{Macro risk premium:} \quad -\Delta r = a_r + b_r y_{lag} + c_r i_{lag} + d_r \lambda_{lag} \quad (2b)$$

$$\text{Risk appetite:} \quad \lambda = a_\lambda + b_\lambda y + c_\lambda i_\lambda + d_\lambda \pi \quad (2c)$$

$$\text{Phillips curve:} \quad \pi = a_\pi + b_\pi y + c_\pi r \quad (2d)$$

$$\text{Target rate rule:} \quad i = a_i + b_i y + c_i \pi + d_i r + e_i \lambda \quad (2e)$$

Relative to the standard NK model, there are two new variables: the macro risk premium  $r$ , and risk appetite  $\lambda$ . There are also two additional equations. Equation (2b) links the return to the macro risk premium to risk appetite, while equation (2c) links risk appetite to macroeconomic conditions. Whereas only the real short rate ( $i - \pi$ ) is determining real activity in the standard NK model, we assume that GDP is additionally pinned down by the macro risk premium  $r$ . Returns to the macro risk premium (the negative of the changes in the macro risk premium,  $-\Delta r$ ) are in turn determined by the lagged macro variables  $y_{lag}$  and  $i_{lag}$ ; as well as the financial intermediary

risk appetite variable  $\lambda_{lag}$ . The Taylor rule is augmented by the macro risk premium  $r$ , and the risk appetite variable  $\lambda$ .<sup>2</sup> Note that our approach differs from the literature on financial frictions that have focused on the demand for credit, arising from fluctuations in the strength of the borrower's balance sheet (see Bernanke and Gertler (1989) and Kiyotaki and Moore (1997)). Instead, the effects described here rely on the supply of credit that is driven by fluctuations in the strength of the lender's balance sheet.<sup>3</sup>

### 3. Measuring the Macro Risk Premium

We now turn to the task of operationalizing our notion of the macro risk premium. The macro risk premium is the analogue of the yield spread  $r$  in the discussion of the simplified financial system in Section 2. The risk premium measures the hurdle rate of return for new projects that are financed in the economy, and hence reflects the ease of credit conditions. It is therefore natural to measure the risk premium from yield spreads of fixed income securities.

We give empirical meaning to the macro risk premium by estimating a linear combination of spreads that is tracking GDP growth most closely. In doing so, we allow both term spreads of the Treasury yield curve and credit spreads to enter. Both term spreads and credit spreads are measures of hurdle rates – the additional yields on longer-dated or riskier bonds that induce market investors to fund additional investment or consumption.

Much of the macro literature focuses on the relationship between the *level* of interest rates and measures of real activity such as GDP growth. For example, Bernanke and Blinder (1992) argue for a model of monetary policy transmission where expansion and contraction of the balance sheets of commercial banks are determined by the level of interest rates. The level of the nominal federal funds rate as a measure of monetary policy stance is investigated in Bernanke

---

<sup>2</sup> Curdia and Woodford (2009) present a model that is giving rise to a reduced form very similar to equations (2a)-(2e). However, as mentioned already, the type of financial intermediary frictions they introduce differs from the model that we described earlier.

<sup>3</sup> Besides the model by Curdia and Woodford (2009), recent papers that derive general equilibrium models which give rise to reduced form models analogues to equations (2a)-(2e) can be found in Gertler and Kiyotaki (2010), Brunnermeier and Sannikov (2010), and Garleanu and Pedersen (2010).

and Mihov (1998) in an identified VAR framework. Laubach and Williams (2003) propose the gap between the current real interest rate and the natural rate of interest as measure of monetary tightness. In the current benchmark NK models, the level of interest rates is often the only relevant financial state variable (see Woodford 2003).

However, the economics of financial intermediation suggest that it is both the level of interest rates and the various spreads that determine the profitability of lending, and hence the willingness of the bank to supply the marginal new loan. The relevant spreads are the rates of return on the two sides of the bank's balance sheet. Since banks borrow short term and lend long term, term spreads are likely to be relevant. Consistent with this observation, Estrella and Hardouvelis (1991) show that the term spread of interest rates forecasts recessions, while the levels of nominal or real interest rates do not. Moreover, Adrian and Estrella (2008) show that the gap between the real rate of interest and the "equilibrium real rate of interest" is not a predictor of recessions, while the term spread is.<sup>4</sup> In addition, the loans granted by the bank will be subject to credit risk. Measures of excess credit spreads (in excess of expected losses) will determine the expected payoff of the loan. Hence, credit spreads can also be expected to enter in the loan supply decision of the bank.

In standard macroeconomic models, the IS curve is derived from an Euler equation that describes the behavior of households or firms. In these models, consumption growth is tied to the level of real interest rates. In reality, firms and households face a variety of interest rates for their lending and borrowing decisions. Borrowing households and firms have different risk characteristics, different maturities of investment, and more or less liquid collateral. In addition, the NPV of a marginal investment or consumption project might well vary over the business cycle. As a result, the real overnight interest rate that is often used as a proxy for the marginal interest rate in simple macroeconomic models might not be the best proxy for the marginal cost of additional investment projects. Moreover, some important interest rates --- for example on corporate loans --- might not be directly observable.

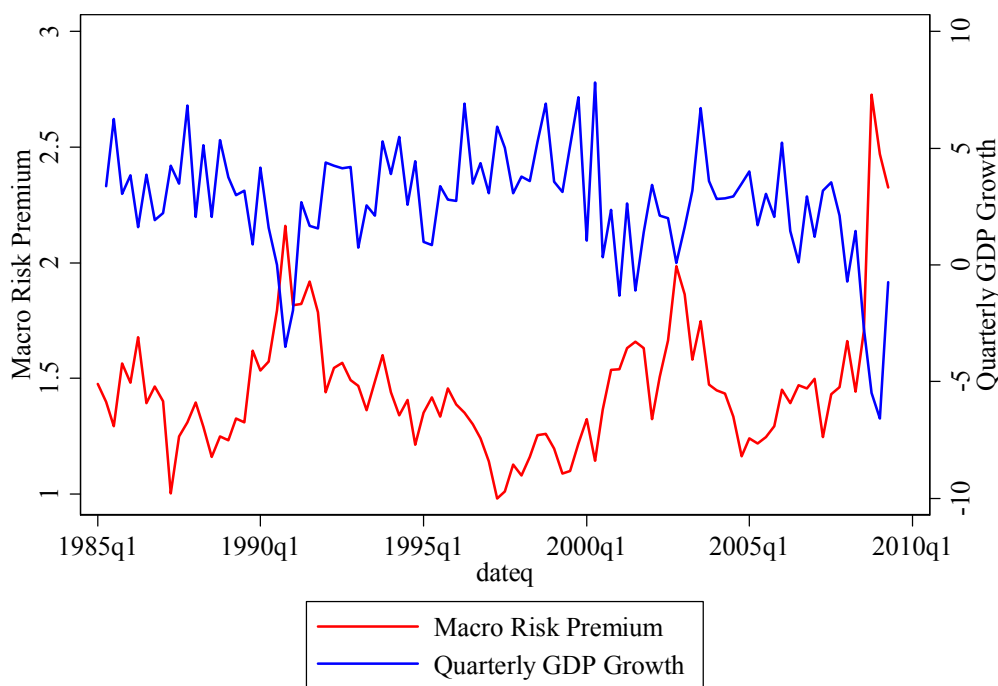
We turn now to the empirical task. We define the macro risk premium as the component of GDP that is contemporaneously correlated with the various Treasury term spreads and credit

---

<sup>4</sup> Adrian, Estrella, and Shin (2009) investigate the relationship between the level of short term interest rates, the slope of the yield curve, financial intermediary profitability, and real activity in more detail.

spreads. To estimate the macro risk premium, we contemporaneously regress GDP growth on a wide variety of Treasury and credit spreads. We use the seven constant maturity yields published in the H.15 release of the Federal Reserve Board and compute spreads relative to the Fed Funds target. We use corporate bond spreads for credit ratings AAA, AA, A, BBB, BB, and B from Standard & Poors (We construct spreads by subtracting the 10-year constant maturity Treasury yield from the respective corporate bond yields). Our empirical analysis starts in the first quarter of 1985, and ends in the fourth quarter of 2009. We choose 1985 as the beginning of our sample because the nature of financial intermediation changed dramatically in the early 1980s.

**Figure 5: The Macro Risk Premium and GDP Growth**



Sources: Bureau of Economic Analysis, Standard & Poors, Federal Reserve Board of Governors

We obtain an estimate of the macro risk premium as the fitted value of a linear regression of GDP growth on these corporate bond spreads and Treasury spreads. Hence, empirically, our macro risk premium is a weighted average of spreads where the weights are given by the regression coefficients. The weights can be interpreted as portfolio weights of a portfolio that is



tracking GDP growth. Conceptually, the macro risk premium represents the analogue of the risk premium term  $r = (q/p) - 1$  discussed in Section 2 above. Our measure of the macro risk premium together with GDP growth, are plotted in Figure 5. For ease of interpretation, the macro risk premium is rotated using an affine transformation so as to match the average level and the volatility of the AA credit spread. We can see that the macro risk premium is strongly negatively correlated with GDP growth.

**Table 1: Determinants of the Macro Risk Premium**

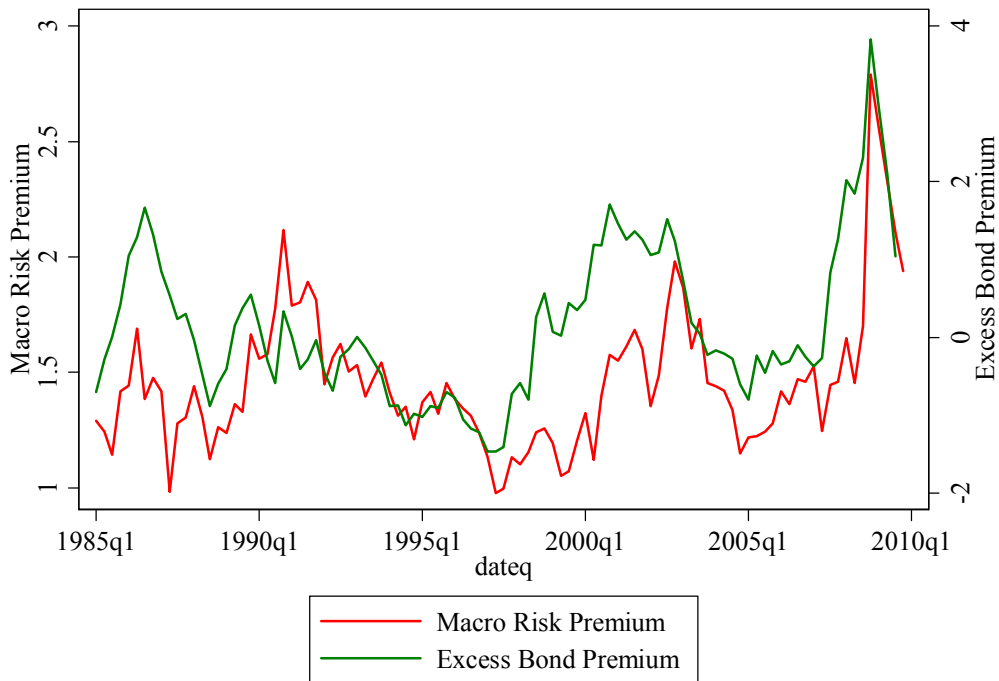
	(1)	(2)	(3)	(4)
Yield Level Factor	-0.06***			
Yield Slope Factor	0.06***			
Credit Spread Level Factor	0.23***			
Credit Spread Slope Factor	0.24***			
Real Fed Funds Target		-0.09***		
PCE Inflation			0.00	
Excess Bond Premium				0.19***
Constant	0.76***	1.66***	1.45***	1.43***
Observations	100	99	99	99
Adjusted R-squared	0.795	0.313	-0.010	0.360

P-values are computed from robust standard errors. \*\*\* p<0.01, \*\* p<0.05, \* p<0.1

In Table 1, we show results of regressing the macro risk premium on the level and slope factors obtained from the principal components of the cross section of Treasury yields, and the first two principal components of credit spreads (column 1). We label these the credit spreads level and slope factors. The coefficients that we obtain in the regression can be interpreted as portfolio weights of a financial intermediary balance sheet. We can see that these four factors explain 80% of the times series variation of the macro risk premium.

As predicted, the macro risk premium loads positively on the credit spread and credit slope factors. It also loads positively on the interest rate slope factor, but negatively on the interest rate level factor. These loadings look just like sensitivities of financial intermediary balance sheets, who typically have positive exposures to spreads and a negative exposure to the level of interest rates. The second column of Table 1 shows that the macro risk premium is not just negatively related to the nominal level of interest rates, but also to the real level of interest rates. The third column of Table 1 shows that the macro risk premium is essentially uncorrelated with inflation.

**Figure 6: The Macro Risk Premium and Excess Bond Premium**



Sources: Standard & Poors, Federal Reserve Board of Governors, Gilchrist and Zakrasjek (2009)

Finally, column four of Table 1 shows that the macro risk premium is also quite strongly positively correlated with the “Excess Bond Premium” of Gilchrist and Zakrasjek (2009). These authors construct a measure of credit risk premia by fitting a corporate bond pricing model to issue-level credit spreads and averaging the residuals of that model cross-sectionally. The rationale behind this approach is that movements in credit spreads that are orthogonal to expected default risk are likely to reflect variation in the price of default risk which they label the

excess bond premium (EBP). They find that the predictive content of credit spreads for real activity variables is entirely due to movements in the excess bond premium. The fact that our measure of the macro risk premium which is constructed to capture the information in bond spreads that tracks GDP growth is strongly correlated with the EBP can be seen as a corroboration of their result. Figure 6 visualizes the correlation between the two measures by plotting the macro risk premium along with the EBP. While Gilchrist and Zakrajsek (2009) emphasize that the EBP has powerful forecasting properties for GDP growth, the Macro risk premium tracks GDP growth contemporaneously, per construction.

#### **4. Intermediary Risk Appetite Factor**

We now turn to our measure of the looseness of financial intermediary capital constraints, which we have called “risk appetite” as shorthand. As sketched in Section 2, the willingness of banks to lend will be positively associated with the size of intermediary balance sheets. The scenario outlined in Section 2 is that financial intermediaries manage their balance sheets actively by employing a Value-at-Risk constraint when choosing the size and composition of their portfolio. The fluctuations in the willingness to lend have been examined theoretically in Adrian and Shin (2009b) and Danielsson, Shin, and Zigrand (2009); and empirically in Adrian, Moench, and Shin (2009), Adrian, Etula, and Shin (2009), and Etula (2009).

Intuitively, the relationship between the macro risk premium, financial intermediary balance sheets, and real activity goes as follows. When financial intermediaries easily obtain funding, their balance sheet constraints are loose, risk premia are compressed (the risk appetite equation 2b), the supply of credit is plentiful, which in turn leads to higher GDP growth (equation 2a). Effective risk aversion is low, and real growth is high. In reverse, when financial intermediary funding conditions worsen, their risk appetite declines, leading to lower real growth. Although the typical financial intermediary is considered to be a bank, a variety of institutions provide credit to the real economy. For example, over the past 30 years, the market based financial system has gained more and more importance, particularly in the U.S. The market based financial system has a number of distinctive features relative to traditional banking. First, it is primarily funded in wholesale money markets, by issuing securities such as repurchase

agreements (repo) or commercial paper (CP). Second, it is typically using fair value accounting for the majority of their balance sheets. Important financial institutions of the market based financial system include security broker-dealers, finance companies, as well as asset backed security (ABS) issuers.<sup>5</sup>

Recall from the discussion above that our macro risk premium measure can be interpreted as a portfolio of Treasury and corporate bond yields where the portfolio weights are chosen so as to maximize the contemporaneous correlation with real GDP growth. In a similar vein, we obtain our measure of intermediary risk appetite by finding the linear combination of one-year lagged balance sheet variables that best predicts the negative one-year change of the macro risk premium. To a good approximation, the negative change reflects the return on the GDP tracking portfolio. A priori, it is not clear which institutions are the most important ones in determining risk premia for the different asset classes. We therefore build on our related work in Adrian, Moench, and Shin (2009) in which we use subset selection methods to identify the best predictors for excess returns on different asset classes among a large number of potential explanatory balance sheet proxies for various types of financial institutions. We document in Adrian, Moench, and Shin (2009) that annual leverage growth of security brokers and dealers is a strong predictor of excess returns on equity and corporate bond portfolios and that quarterly shadow bank asset growth is a strong forecasting variable for excess returns on corporate and Treasury bonds. We therefore restrict our set of right-hand side variables to these two types of institutions. We complement them by commercial banks so as to highlight the differential impact that balance sheets of market based intermediaries have with respect to traditional banks.

For each of these three types of institutions, we include one-year lagged asset growth and the growth of net worth as potential variables (the only exception to this rule is in the case of security broker dealers, whose leverage growth we include in order to allow comparison of the results with the regressions of Adrian, Moench, and Shin (2009)). We weight the growth rates of assets and net worth by the relative size of total assets of each intermediary in order to capture the trends of assets under management across different institutions.

---

<sup>5</sup> See Adrian and Shin (2007) for an overview of the investment banking sector, Adrian and Shin (2009c) for an introduction to shadow banking, and Adrian, Ashcraft, Boesky and Pozsar (2010) for a comprehensive overview of shadow banking.

**Table 2: The Intermediary Risk Appetite Factor**

	Macro Risk Premium (Negative Change) (1)	Excess Bond Premium (Negative Change) (2)
Broker-Dealer Leverage Growth (one year lag, weighted)	-0.08***	-0.21***
Broker-Dealer Equity Growth (one year lag, weighted)	-0.07	-0.97
Shadow Bank Asset Growth (one year lag, weighted)	0.00	-0.65***
Shadow Bank Equity Growth (one year lag, weighted)	-0.78**	0.78
Commercial Bank Asset Growth (one year lag, weighted)	-0.04	0.40***
Commercial Bank Equity Growth (one year lag, weighted)	-0.13*	0.02
Left Hand Side Variable (one year lag)	-0.41***	-0.09
GDP Growth (one year lag)	-0.01	-0.02
Constant	0.10	0.70**
Observations	92	91
Adjusted R-squared	0.215	0.284

Note: Shadow banks are ABS issuers, finance companies, and funding corporations. All balance sheet measures are from the Flow of Funds. The Excess Bond Premium is from Gilchrist and Zakrajsek (2009).

The left hand side variable in Table 2 is the negative change of the macro risk premium over one year in column one, and the negative change of the excess bond risk premium over one year in column 2. These negative changes capture returns to the risk premia. When the negative change of a risk premium is positive, prices today increase, leading to lower expected returns.

We note that the financial sectors that do best in predicting the change in the macro risk premium are sectors consisting of market-based intermediaries such as the broker-dealer sector and the shadow banks. The sign of the forecasting is negative in all cases where the balance sheet variables are significant: increasing balance sheets are associated with lower effective risk aversion, higher asset prices, and thus lower future returns. The one exception to this regularity is in the case of commercial banks, whose equity forecasts positive future changes to the EBP.

We attribute this result to the relatively large pre-committed credit lines of commercial banks. As the economy slows down or a financial crisis hits, borrowers draw on their pre-committed credit lines, leading to an erosion of commercial bank equity. Therefore, lower commercial bank equity may forecast lower future returns.

From these regressions we conclude that broker-dealer and shadow bank balance sheets capture potentially useful information on underlying financial conditions. At the margin, all financial intermediaries (including commercial banks) have to borrow in markets (for instance via commercial paper or repos) in order to lend. This is because commercial bank deposit liabilities are insufficiently flexible to fund expanding balance sheets. For a commercial bank, even though only a small fraction of its total liabilities are market based, at the margin, it has to tap the capital markets. But for commercial banks, their large balance sheets mask the effects operating at the margin. Broker-dealers or shadow banks, in contrast, give a purer signal of marginal funding conditions, as their liabilities are short term, and their balance sheets are closer to being fully marked to market.

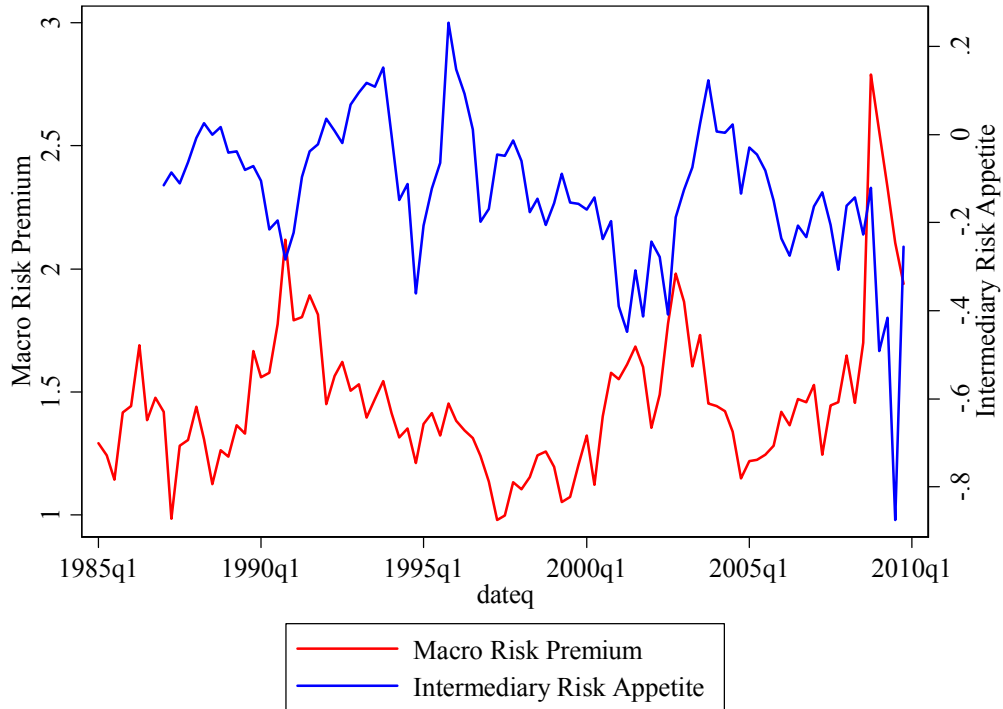
In addition, broker-dealers originate and make markets for securitized products, whose availability determines the credit supply for consumers and non-financial firms (e.g. for mortgages, car loans, student loans, etc.). So broker-dealers are important institutions for two reasons. First, they are the marginal suppliers of credit. Second, their balance sheets reflect the financing constraints of the market-based financial system.

To the extent that balance sheet dynamics affect the supply of credit, they would have the potential to affect real economic variables. Adrian and Shin (2008) exhibit some evidence that broker dealer asset growth is a good predictor of future real activity, especially in sectors such as housing investment and durable consumption that are sensitive to financial market conditions. In Adrian, Moench, and Shin (2009), we further document that the same balance sheet variables that predict excess returns on stocks, corporate and Treasury bonds, most importantly the asset growth of shadow banks, also forecasts real economic activity and inflation.

We obtain our measure of risk appetite as the fitted value of the regression reported in column (1) of Table 2 predicted by the intermediary balance sheet variables (i.e. excluding the lagged left hand side variable, and the lagged GDP growth). We display the risk appetite measure together with the macro risk premium in Figure 7. The plot shows that risk appetite is highly negatively correlated with changes to the macro risk premium. Higher risk appetite leads

to balance sheet expansions, which are associated with increases in asset prices and hence declines in spreads. Movements in risk appetite are thus strongly negatively correlated with the macro risk premium, which we saw earlier is closely associated with interest rate spreads.

**Figure 7: Intermediary Risk Appetite and the Macro Risk Premium**



In Table 3, we report the results of regressing annual GDP growth on the four quarter lags of standard macro variables, as well as the intermediary risk appetite factor. The results in the first column of the table demonstrate that risk appetite forecasts GDP growth. Column (2) shows that this results still holds when controlling for the level of the Fed Funds target and inflation.

In column (3), we add the excess bond risk premium of Gilchrist and Zakrajsek (2009) as an explanatory variable. We find that both the intermediary risk appetite and the excess bond premium have significant predictive power in a joint regression. This finding that our risk appetite measure and the excess bond premium contain complementary predictive information is furthered in column (4), where we add the risk appetite associated with the excess bond premium to the regression (the latter is computed as the predicted value from the balance sheet variables of column (2) in Table 2). While the risk appetite associated with the macro risk premium is

significant at the 1% level, the risk appetite associated with the excess bond return is significant at the 5% level. Finally, in column (5) we document that the predictive power of intermediary risk appetite prevails when we control for other risk factors.

**Table 3: Forecasting Annual GDP Growth**

	(1)	(2)	(3)	(4)	(5)
Annual GDP Growth (one year lag)	0.24*	0.08	0.01	0.07	-0.10
Intermediary Risk Appetite (one year lag)	4.92***	6.04***	3.64***	4.41***	5.33***
PCE Inflation (one year lag)		-0.61**	-0.55**	-0.85***	-0.99***
Fed Funds Target (one year lag)		0.13	0.05	0.20	0.24
VIX (one year lag)					0.09***
BAA / 10-Year Treasury Spread (one year lag)					-1.49**
10-year / 3-month Treasury spread (one year lag)					0.52**
Excess Bond Premium (one year lag)			-0.86***		
Excess Bond Premium Risk Appetite (one year lag)				1.44**	
Constant	2.55***	4.07***	4.23***	5.16***	5.48***
Observations	86	86	86	86	86
R-squared	0.197	0.237	0.343	0.359	0.349

P-values are computed from robust standard errors. \*\*\* p<0.01, \*\* p<0.05, \* p<0.1. 1987Q1-2009Q2.

## 5. Macro Dynamics

So far, we have shown a connection between three concepts.

- Rapid growth of intermediary balance sheets
- Lower risk premia
- Higher real activity

The first bullet point (rapid growth of intermediary balance sheets) carries information on the risk appetite of the financial intermediation sector, which includes traditional commercial banks



as well as market based intermediaries such as security broker dealers and institutions from the shadow banking sector. The second bullet point has been addressed by examining various Treasury term spreads and credit spreads. We now turn to examine the dynamic properties of the three notions, and the time signature of their relationships.

### **5.1. Vector Autoregressions**

Table 4 reports coefficients of a non-structural VAR with quarterly GDP growth, PCE inflation, the Fed Funds Target, the macro risk premium and the risk appetite factor. Table 5 reports the results for the standard model with GDP growth, PCE inflation, and the Fed Funds target as endogenous variables. Each of the VARs is estimated using data from 1987Q1 through 2009Q2. According to the Bayesian Information Criterion we use one lag in the VAR.

We acknowledge from the outset that inferences concerning causality by means of non-structural vector autoregression analyses are difficult without further identifying restrictions. Although we have sketched a scenario where the fluctuations in risk appetite are the driving force of macro fluctuations, we have not shown conclusively that our preferred hypothesis is backed up by the empirical evidence to the exclusion of other possible hypotheses.

The more ambitious task (not attempted in this paper) is to test the hypothesis that it is the fluctuations in the *supply of credit* emanating from the banking sector that drives the business cycle. One possibility would be to run an instrumental variables regression of GDP growth on credit availability as an endogenous variable, with a first stage linking credit conditions to balance sheet variables.<sup>6</sup> One would have to justify, and then test, the exclusion restrictions. We fully acknowledge that we have not done this in the current exercise, and so the interpretation of our results is still less than fully conclusive. However, our desired interpretation of the results is that stronger balance sheet growth of financial intermediaries is associated with more ready supply of credit, which leads to lower spreads and higher real activity. The sense of causality that can be applied to our analysis is that of “Granger Causality”. We constructed the risk appetite variable via forecasting regressions of balance sheet variables on future returns to the macro risk premium. The risk appetite variable thus captures a temporal causation from the intermediary balance sheets to future asset price movements.

---

<sup>6</sup> We are grateful to a referee for this suggestion.

**Table 4: Risk Appetite Vector Autoregression**

	(1)	(2)	(3)	(4)	(5)
	GDP Growth (Quarterly)	PCE Inflation	Fed Fund	Macro Risk premium	Risk Appetite
GDP Growth Quarterly (lag)	-0.00	0.02	0.02	-0.01	0.00
PCE Inflation (lag)	-0.35	0.94***	0.09	0.05*	0.04***
Fed Funds Target (lag)	0.05	0.02	0.92***	-0.02	-0.02**
Macro Risk Premium (lag)	-3.68***	0.03	-0.70**	0.67***	-0.09
Risk Appetite Factor (lag)	5.34***	0.03	0.73*	-0.36**	0.65***
Constant	9.24***	-0.02	1.11**	0.42**	0.03
Observations	89	89	89	89	89

\*\*\* p<0.01, \*\* p<0.05, \* p<0.1, estimates are based on data from 1987Q1 to 2009Q2.

As we can see in column (1) of Table 4, the risk appetite factor forecasts GDP growth with significance at the 1% level. This result is to be expected: as the risk appetite factor is constructed by forecasting changes in the macro risk premium, and the macro risk premium tracks GDP growth, we would expect the risk appetite factor to predict GDP growth. The macro risk premium also forecasts GDP growth and actually captures any autocorrelation of GDP (the own lag of GDP growth is insignificant). The signs of the relationships go in the expected direction: higher risk appetite, and a lower macro risk premium both forecast higher real activity. We find in both the financial intermediary VAR of Table 4 and the small VAR of Table 5 that the Fed funds target and PCE inflation do not forecast GDP growth (columns (1)). While PCE inflation is strongly serially correlated, it is not forecasted by any of the other state variables in both the small VAR and the VAR with risk appetite (column (2) of Tables 4 and 5).

Column (3) of Tables 4 and 5 can be interpreted as policy rules. As expected, we find that the Fed Funds target loads positively on GDP growth and on inflation (though we do not find the coefficient on inflation to be significant). In addition, Column (3) of Table 4 shows that the macro risk premium and intermediary risk appetite have weak forecasting power for the Fed

Funds target: the target tends to be cut when interest rate spreads increase, and when risk appetite declines.

**Table 5: Baseline Vector Autoregression**

	(1)	(2)	(3)
	GDP Growth	PCE Inflation	FedFunds
GDP Growth (lag)	0.39***	0.02	0.09***
PCE Inflation (lag)	-0.43	0.95***	0.05
Fed Funds Target (lag)	0.18	0.01	0.95***
Constant	1.85***	0.01	-0.20
Observations	94	94	94

\*\*\* p<0.01, \*\* p<0.05, \* p<0.1, estimates are based on data from 1987Q1 to 2009Q2.

The most interesting findings of Table 4 concern the determination of financial intermediary risk appetite (column (5)). A lower Fed funds target precedes higher risk appetite. This can be interpreted as evidence in favor of the risk taking channel of monetary policy. As described earlier, lower short term rates lower the cost of funding of financial intermediaries, thus relax their funding constraints, and increase their effective risk taking.

The logic of monetary policy transmission via the balance sheets of financial intermediaries suggested by the VAR of Table 5 is therefore the following. A higher Fed Funds target increases the costs of leverage of financial intermediaries, and thus lowers their risk appetite. A lower risk appetite reduces the supply of credit and is hence associated with higher spreads and lower real activity.

## 5.2. Impulse Response Functions

Impulse response functions to risk appetite shocks implied by the VAR estimates reported in Table 4 are plotted in Figures 8 to 11. Impulse response functions are computed from a Cholesky decomposition, where the recursive ordering corresponds to the ordering of the variables in Table 4.

Figure 8 plots the impulse response of the macro risk premium to a risk appetite shock. Per construction, the response is negative: larger risk appetite leads to an expansion of intermediary balance sheets, and a compression of credit spreads. The response of the macro risk premium peaks at four quarters, and then subsequently reverts slowly towards zero. However, the significance of the risk appetite shock on the macro premium is fairly persistent, and only becomes insignificant after about six quarters.<sup>7</sup>

**Figure 8: Impulse Response of Macro Risk Premium to Risk Appetite Shock**

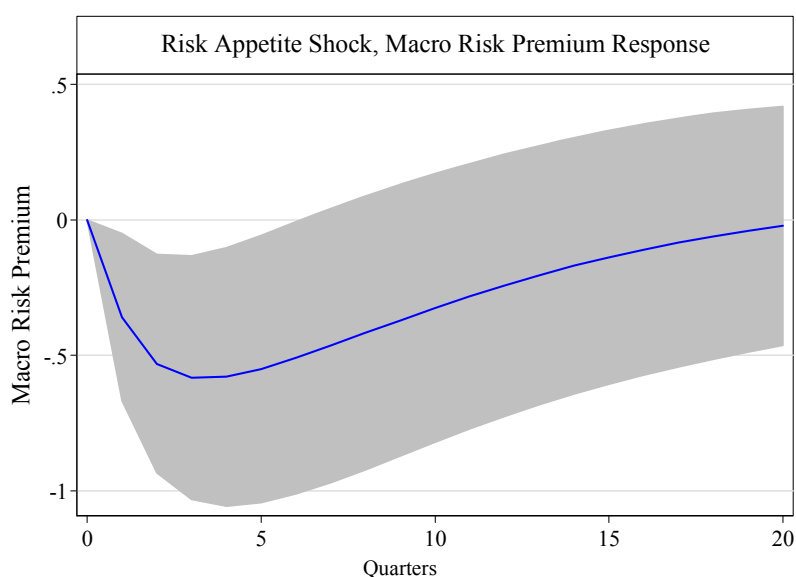
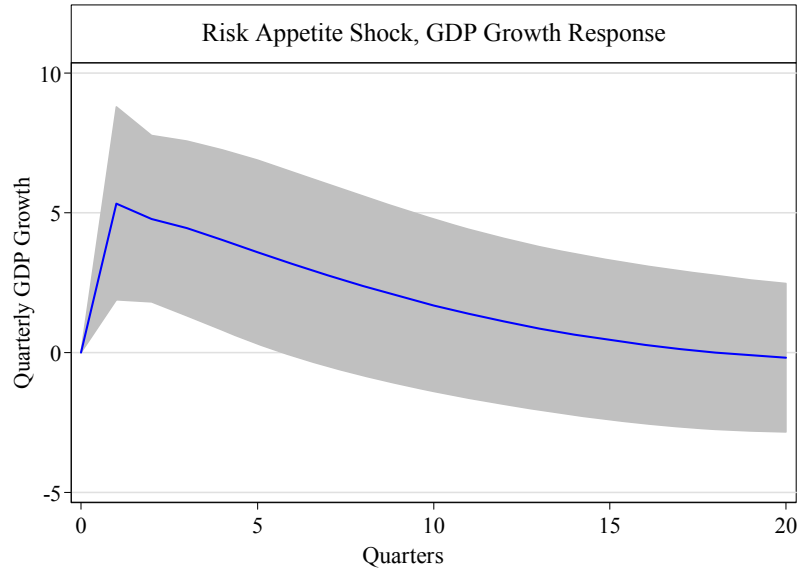


Figure 9 plots the response of GDP to a risk appetite shock. Higher risk appetite is followed by stronger GDP growth. The response of GDP is again persistent and significant for up to six quarters. As explained in earlier sections, higher risk appetite tends to lead to an increase in the supply of credit, which in turn fuels economic growth. The channel for this finding is that higher risk appetite is associated with lower spreads, which in turn leads to higher credit supply and higher GDP growth.

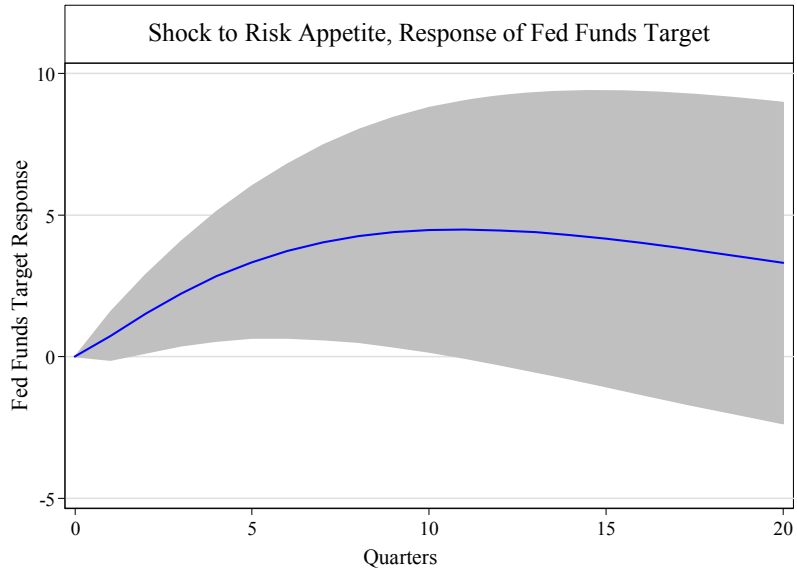
---

<sup>7</sup> The standard errors from our VAR estimates do not take into account the sampling uncertainty in the macro risk premium and the risk appetite measures.

**Figure 9: Impulse Responses  
of GDP Growth to Risk Appetite Shock**



**Figure 10: Impulse Responses  
of Fed Funds Target to Risk Appetite Shock**



**Figure 11: Impulse Responses  
of Risk Appetite to Fed Funds Target Shock**

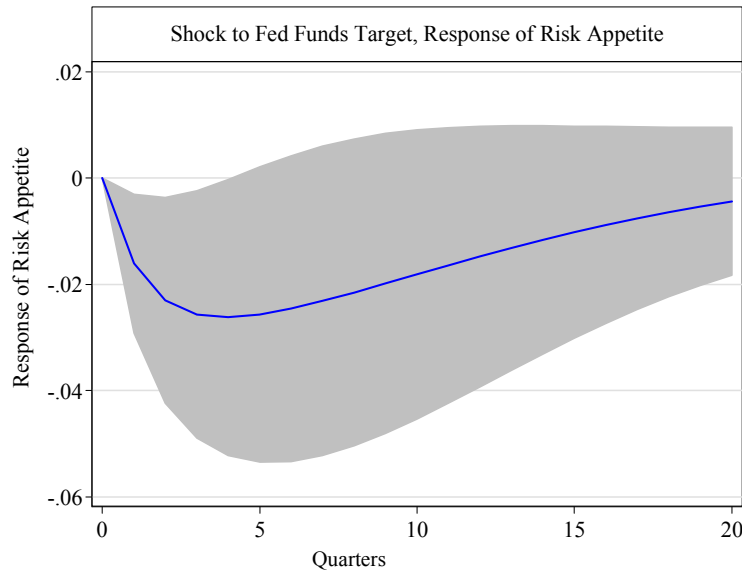


Figure 10 traces out the response of the Fed Funds target to a risk appetite shock, while Figure 11 displays the reverse, i.e. the response of risk appetite to a Fed Funds shock. Figure 10 shows that higher risk appetite tends to be followed by monetary tightenings. This finding can be viewed as countercyclical monetary policy.<sup>8</sup> As stronger risk appetite is associated with stronger balance sheet growth, lower credit spreads, and faster GDP growth, the Fed Funds target is eventually tightened to slow the resulting upward pressure on inflation. Interestingly, the causality goes the other way when considering the response of risk appetite to a Fed Funds target shock. A lower target loosens the funding constraint of intermediaries, thus increasing their effective risk appetite, which in turn leads to an amplification of monetary policy. The effect of the Fed Funds target on risk appetite appears to be highly persistent, lasting for more than four quarters.

---

<sup>8</sup> Adrian and Shin (2008) separately examine the interaction between balance sheet growth and the Fed Funds Target separately for “normal” and for crisis periods, and show that the countercyclical monetary policy response is due to cuts in the target following episodes of financial crisis.

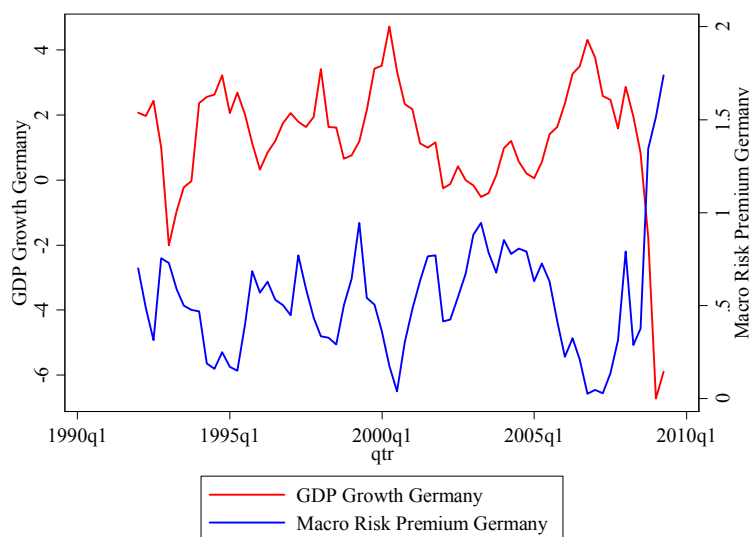
## 6. International Comparison: Germany, Japan, and the UK

### 6.1. The Macro Risk Premium and Risk Appetite Across Countries

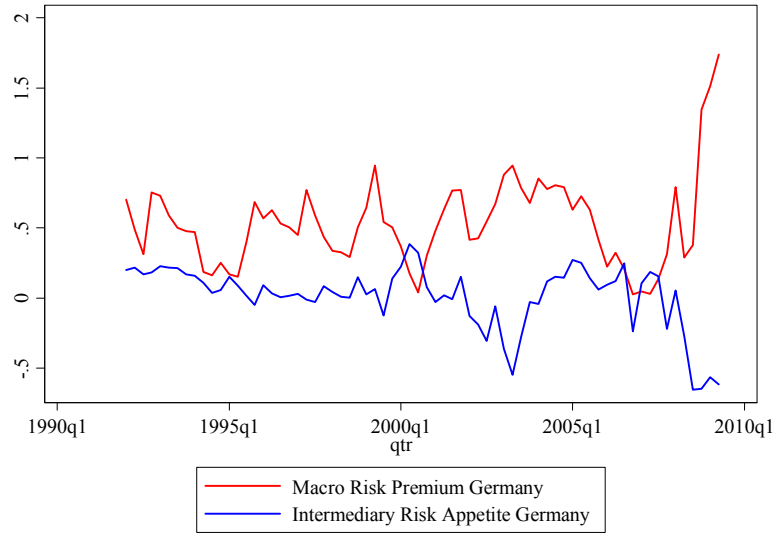
We now broaden our discussion to examine the same exercise we have conducted above generalized to three further countries—Germany, the United Kingdom and Japan. The results for Germany are reported first.

In the case of Germany, we see that the recent increase in the macro risk premium is closely mirrored in the decline in GDP growth. The magnitudes are comparable to the United States, although compared to the past fluctuations in the macro risk premium the current episode is not such a glaring outlier. One hypothesis we can entertain is that for a bank-dominated financial system such as Germany, the fluctuations in the intermediary risk appetite should be less pronounced, compared to the large fluctuations we saw for the United States. Indeed, this is what we see reflected in the data. Compared to the large fall in the GDP growth rate, the fluctuations in the intermediary risk appetite is comparatively small. This finding would be consistent with the result we observed earlier that the fluctuations in the commercial bank assets in the United States has the opposite sign to the fluctuations in the assets of market-based intermediaries. The role of banks as a buffer against shocks is evident here.

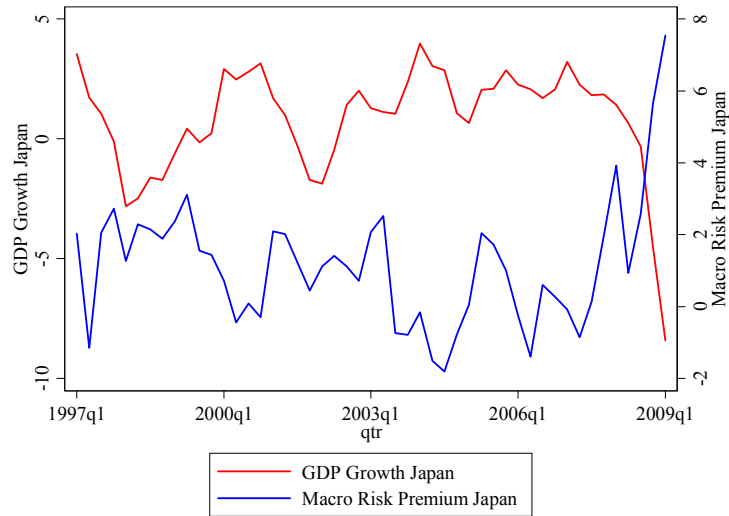
**Figure 12: GDP Growth and Macro Risk Premium for Germany**



**Figure 13: Macro Risk Premium and Intermediary Risk Appetite for Germany**

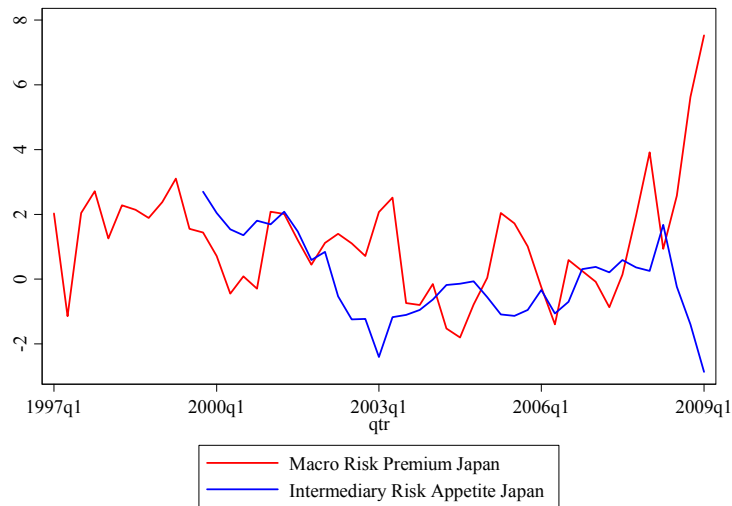


**Figure 14: GDP Growth and Macro Risk Premium for Japan**





**Figure 15: Macro Risk Premium and Intermediary Risk Appetite for Japan**



Similar results can be seen for Japan. The financial crisis of 2008 is clearly evident in the rise in macro risk premium and the fall in the GDP growth rate, but the main characteristic of Japan is that the recent increase in the macro risk premium is not so large compared to the higher frequency fluctuations seen since 1997. The fact that Japan was emerging from a long banking crisis where the banks were nursed back to health through publicly funded recapitalizations may be put forward as a possible explanation.

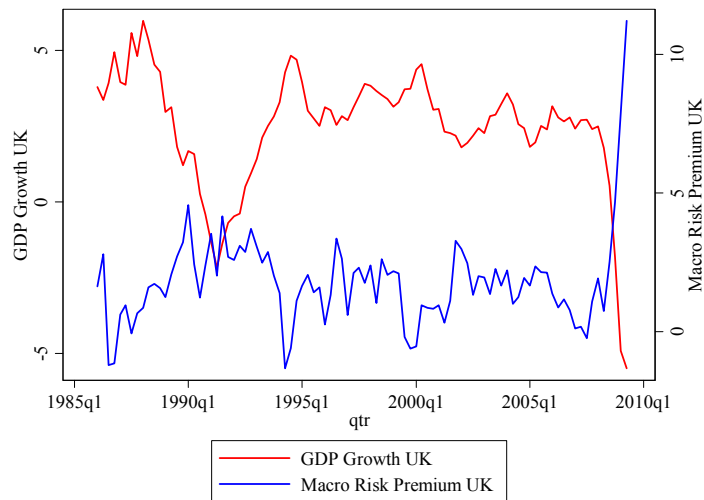
The most dramatic evidence comes from the United Kingdom. The increase in the macro risk premium associated with the current crisis is much higher compared to the dynamics in risk premia before the crisis. The fall in GDP growth is similarly much sharper than the higher frequency movements before the crisis.

The UK has suffered a much sharper property downturn, and has seen greater distress in the banking sector. Although the UK's financial system had not progressed as far as the US toward a fully market-based intermediary system, the experience with Northern Rock and HBOS has shown that the rapid accumulation of banking sector assets in the years leading up to the current crisis was funded mainly from the wholesale capital markets, rather than through domestic household deposits (Shin (2009c) is a study of Northern Rock, and its failure in 2007).

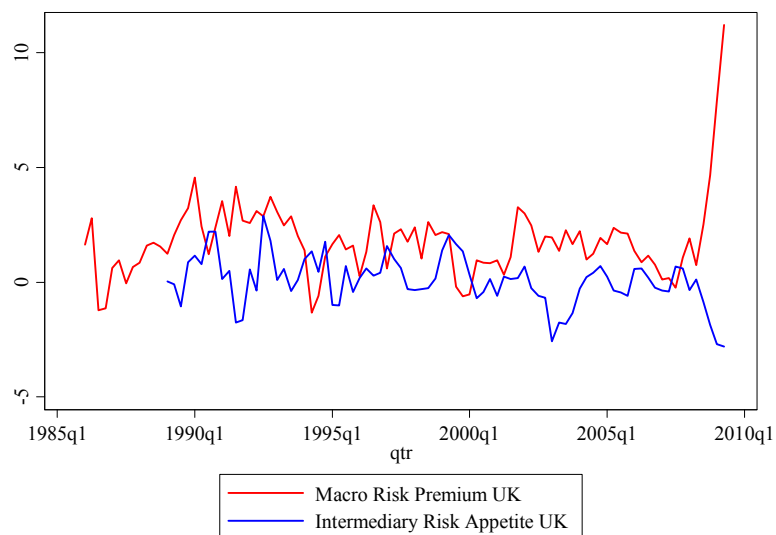
Nevertheless, we see from the chart on the risk appetite series for the UK that the time signature bears some similarities to that of Germany and Japan. The fact that banking sector

assets have not declined very sharply in spite of the crisis can be put forward as a possible explanation for the comparatively mild fluctuations in risk appetite. The conjunction of (i) a sharp increase in the macro risk premium and (ii) the comparatively mild fluctuations in risk appetite reflects both the fact that the UK is still a bank-based financial intermediary system, but that the banking sector in the UK has suffered sharp setbacks from the decline in housing prices and real activity.

**Figure 16: GDP Growth and Macro Risk Premium for the UK**



**Figure 17: Macro Risk Premium and Intermediary Risk Appetite for the UK**



## 6.2. VAR Analysis for Germany, Japan, and the UK

Tables 6-8 show the vector autoregressions for Germany, Japan, and the UK. Qualitatively, the VAR results for Germany, Japan and the UK are similar to those of the United States. However, there is a glaring difference with respect to the risk appetite factor. For both Germany and the UK, the risk appetite factor is insignificant in the VAR for GDP growth (see the respective column (1)) in Tables 6-8. More surprisingly, in Japan, the risk appetite factor enters with the “wrong sign” in that higher risk appetite apparently predicts subdued GDP growth. The correct way to interpret our results is to consider the role of commercial banks as a buffer in a downturn. As we have already commented, commercial bank asset growth is maintained in economic downturns even as market-based financial intermediaries curtail their credit. The apparent absence of an effect of risk appetite on GDP growth can be interpreted as the commercial banks playing this economic buffer role.

**Table 6: Risk Appetite Vector Autoregression Germany**

	(1)	(2)	(3)	(4)	(5)
	GDP	Core CPI	Discount	Risk	Risk
	Growth	Inflation	Rate	Premium	Appetite
GDP Growth (lag)	0.66***	0.09	0.17***	-0.08***	0.02
Core CPI Inflation (lag)	-0.04	0.87***	0.06	-0.03	0.01
Discount Rate (lag)	-0.08	0.07	0.87***	0.03	0.01
Macro risk premium (lag)	-0.92	0.44	0.63***	0.42***	0.02
Risk Appetite Factor (lag)	0.29	-0.14	-0.09	-0.21	0.49***
Constant	1.43**	-0.51*	-0.12	0.34***	-0.07
Observations	65	65	65	65	65

\*\*\* p<0.01, \*\* p<0.05, \* p<0.1, estimates are from 1992Q1 to 2008Q2

**Table 7: Risk Appetite Vector Autoregression Japan**

	(1)	(2)	(3)	(4)	(5)
	GDP	Core CPI	Discount	Risk	Risk
	Growth	Inflation	Rate	Premium	Appetite
GDP Growth (lag)	0.65***	0.04	0.02	-0.26	0.12
Core CPI Inflation (lag)	-0.56	0.69***	0.01	0.08	0.29
Discount Rate (lag)	1.51**	0.64**	0.94***	0.65	0.50
Macro risk premium (lag)	0.03	0.07	0.04**	0.45***	0.16**
Risk Appetite Factor (lag)	-0.37**	-0.11*	-0.02	-0.06	0.80***
Constant	-1.00	-0.74**	0.00	0.15	-0.68
Observations	34	34	34	34	34

\*\*\* p<0.01, \*\* p<0.05, \* p<0.1, estimates are from 1999Q4 to 2008Q2

**Table 8: Risk Appetite Vector Autoregression the UK**

	(1)	(2)	(3)	(4)	(5)
	GDP	Core CPI	Discount	Risk	Risk
	Growth	Inflation	Rate	Premium	Appetite
GDP Growth (lag)	0.79***	0.11	0.34***	-0.42***	-0.09
Core CPI Inflation (lag)	-0.11	0.94***	0.31***	-0.29*	-0.23
Discount Rate (lag)	-0.03	0.05	0.84***	0.22**	0.18**
Macro risk premium (lag)	-0.01	0.09	0.07	0.35***	0.03
Risk Appetite Factor (lag)	0.02	-0.04	-0.05	-0.04	0.43***
Constant	1.02***	-0.61*	-0.80**	1.50***	-0.35
Observations	77	77	77	77	77

\*\*\* p<0.01, \*\* p<0.05, \* p<0.1, estimates are from 1989Q1 to 2008Q2

## 7. Concluding Remarks

According to the perspective outlined here, fluctuations in the supply of credit arise from how much slack there is in financial intermediary balance sheet capacity. The cost of leverage of market-based intermediaries is determined by two main variables – risk, and short term interest rates. The expected profitability of intermediaries is proxied by spreads such as term spreads and various credit spreads. Variations in the policy target determine short term interest rates, have a direct impact on interest rate spreads, and hence the profitability of intermediaries. Moreover, for financial intermediaries who tend to fund long-term assets with short-term liabilities, movements in the yield curve may also have valuation effects due to the fact that assets are more sensitive to discount rate changes than liabilities.

Monetary policy actions that affect the risk-taking capacity of the banks will lead to shifts in the supply of credit. Borio and Zhu (2008) have coined the term "risk-taking channel" of monetary policy to describe this set of effects working through the risk appetite of financial intermediaries.

In the run-up to the global financial crisis of 2007 to 2009, the financial system was said to be "awash with liquidity", in the sense that credit was easy to obtain. In an earlier study (Adrian and Shin (2007)) the authors showed how liquidity in this sense is closely related to the growth of financial intermediary balance sheets. The estimates of a reduced form macroeconomic model presented here capture the notion that liquidity in the sense of the ease of credit conditions is tightly linked to real economic activity and monetary policy. When asset prices rise, financial intermediaries' balance sheets generally become stronger, and – without adjusting asset holdings – their leverage becomes eroded. The financial intermediaries then hold surplus capital, and they will attempt to find ways in which they can employ their surplus capital. Monetary policy can affect the balance sheet behavior of financial intermediaries, which in turn influence the supply of credit, risk premia, and ultimately the level of real activity.

## References

- Adrian, Tobias, Adam Ashcraft, Hayley Boesky, and Zoltan Pozsar (2010) “Shadow Banking,” unpublished working paper, Federal Reserve Bank of New York.
- Adrian, Tobias and Arturo Estrella (2008) “Monetary Tightening Cycles and the Predictability of Economic Activity,” *Economics Letters* 99, 260 – 264.
- Adrian, Tobias, Arturo Estrella, and Hyun Song Shin (2010) “Monetary Cycles, Financial Cycles, and the Business Cycle,” *Federal Reserve Bank of New York Staff Reports* 421.
- Adrian, Tobias and Hyun Song Shin (2009a) “Money, Liquidity and Monetary Policy,” *American Economic Review, papers and proceedings*, volume 99, issue 2.
- Adrian, Tobias and Hyun Song Shin (2009b) “Money, Liquidity and Monetary Policy,” Financial Intermediaries,” *Handbook of Monetary Economics*, volume 3, North-Holland.
- Adrian, Tobias and Hyun Song Shin (2007) “Liquidity and Leverage,” working paper, Federal Reserve Bank of New York and Princeton University. Available as *Federal Reserve Bank of New York Staff Reports* 328. Previous version “Liquidity and Financial Cycles,” presented at the Sixth BIS Annual Conference on Financial System and Macroeconomic Resilience, 18-19 June 2007, *BIS Working Paper* No. 256.
- Adrian, Tobias and Hyun Song Shin (2008a) “Liquidity, Monetary Policy, and Financial Cycles,” *Federal Reserve Bank of New York Current Issues in Economics and Finance*, Volume 14 (1).
- Adrian, Tobias and Hyun Song Shin (2008b) “Financial Intermediary Leverage and Value at Risk,” working paper, Federal Reserve Bank of New York and Princeton University. *Federal Reserve Bank of New York Staff Reports*, 338.
- Adrian, Tobias and Hyun Song Shin (2008c) “The Shadow Banking System: Implications for Financial Regulation,” *Banque de France Financial Stability Review*, No. 13, September 2009, pp. 1-10.
- Adrian, Tobias, Erkki Etula and Hyun Song Shin (2009) “Risk Appetite and Exchange Rates” *Federal Reserve Bank of New York Staff Reports* 361.

- Adrian, Tobias, Emanuel Moench and Hyun Song Shin (2009) "Financial Intermediation, Asset Prices and Macroeconomic Dynamics," Federal Reserve Bank of New York Staff Reports 422.
- Bernanke, Ben S., and Alan S. Blinder (1992) "The federal funds rate and the channels of monetary transmission," *The American Economic Review* 82(4), 901-921.
- Bernanke, Ben S. and Mark Gertler (1989) "Agency Costs, Net Worth, and Business Fluctuations," *American Economic Review* 79, pp. 14 - 31.
- Bernanke, Ben .S., and Ilian Mihov (1998) "Measuring Monetary Policy," *Quarterly Journal of Economics* 113(3), 869-902.
- Blinder, Alan (1998) *Central Banking in Theory and Practice*, MIT Press, Cambridge.
- Borio, Claudio and Haibin Zhu (2008) "Capital regulation, risk-taking and monetary policy: a missing link in the transmission mechanism?" Bank for International Settlements Working Paper 268.
- Brunnermeier, Markus K., and Yuliy Sannikov (2010) "A Macroeconomic Model with a Financial Sector," unpublished working paper, Princeton University.
- Curdia, Vasco and Michael Woodford (2009) "Credit Frictions and Optimal Monetary Policy", unpublished manuscript.
- Estrella, Arturo and Gikas Hardouvelis (1991) "The term structure as a predictor of real economic activity," *Journal of Finance* 46, 555-576.
- Garleanu, Nicolae, and Lasse Pedersen (2010) "Credit Supply Frictions," unpublished working paper, University of California and New York University.
- Gertler, Mark, and Nobu Kiyotaki (2010) "Financial Intermediation and Credit Policy in Business Cycle Analysis," unpublished working paper, New York University and Princeton University.
- Gilchrist, Simon and Egon Zakrasjek (2009) "The Price of Default Risk and Business Cycle Fluctuations", unpublished manuscript.
- Kiyotaki, Nobuhiro, and John Moore (1997) "Credit Cycles," *Journal of Political Economy* 105, pp. 211-248.

- Laubach, Thomas and John C. Williams (2003) "Measuring the natural rate of interest," *Review of Economics and Statistics* (85), 1063-1070.
- Shin, Hyun Song (2009a) "Securitisation and Financial Stability," *Economic Journal*, 119, pp. 309 -- 332.
- Shin, Hyun Song (2009b) *Risk and Liquidity*, Clarendon Lectures in Finance, forthcoming, Oxford University Press.
- Shin, Hyun Song (2009c) "Reflections on Northern Rock: The Bank Run that Heralded the Global Financial Crisis" *Journal of Economic Perspectives*, 23-1, 101-119 (Winter 2009)
- Taylor, John (1993) "Discretion Versus Policy Rules in Practice," *Carnegie-Rochester Series on Public Policy* 39, pp. 195-214.
- Woodford, Michael (2003) *Interest and Prices: Foundations of a Theory of Monetary Policy*, Princeton University Press.