

Bartolini, Leonardo; Prati, Alessandro

Working Paper

Cross-country differences in monetary policy execution and money market rates' volatility

Staff Report, No. 175

Provided in Cooperation with:
Federal Reserve Bank of New York

Suggested Citation: Bartolini, Leonardo; Prati, Alessandro (2003) : Cross-country differences in monetary policy execution and money market rates' volatility, Staff Report, No. 175, Federal Reserve Bank of New York, New York, NY

This Version is available at:

<https://hdl.handle.net/10419/60603>

Standard-Nutzungsbedingungen:

Die Dokumente auf EconStor dürfen zu eigenen wissenschaftlichen Zwecken und zum Privatgebrauch gespeichert und kopiert werden.

Sie dürfen die Dokumente nicht für öffentliche oder kommerzielle Zwecke vervielfältigen, öffentlich ausstellen, öffentlich zugänglich machen, vertreiben oder anderweitig nutzen.

Sofern die Verfasser die Dokumente unter Open-Content-Lizenzen (insbesondere CC-Lizenzen) zur Verfügung gestellt haben sollten, gelten abweichend von diesen Nutzungsbedingungen die in der dort genannten Lizenz gewährten Nutzungsrechte.

Terms of use:

Documents in EconStor may be saved and copied for your personal and scholarly purposes.

You are not to copy documents for public or commercial purposes, to exhibit the documents publicly, to make them publicly available on the internet, or to distribute or otherwise use the documents in public.

If the documents have been made available under an Open Content Licence (especially Creative Commons Licences), you may exercise further usage rights as specified in the indicated licence.

Federal Reserve Bank of New York
Staff Reports

Cross-Country Differences in Monetary Policy Execution and Money
Market Rates' Volatility

Leonardo Bartolini
Alessandro Prati

Staff Report no. 175
October 2003

This paper presents preliminary findings and is being distributed to economists and other interested readers solely to stimulate discussion and elicit comments. The views expressed in the paper are those of the authors and are not necessarily reflective of views at the Federal Reserve Bank of New York or the Federal Reserve System. Any errors or omissions are the responsibility of the authors.

Cross-Country Differences in Monetary Policy Execution and Money Market Rates' Volatility

Leonardo Bartolini and Alessandro Prati

Federal Reserve Bank of New York Staff Reports, no. 175

October 2003

JEL classification: E43, E44, E52

Abstract

The volatility patterns of overnight interest rates differ across industrial countries in ways that existing models, designed to replicate the features of the U.S. federal funds market, cannot explain. This paper presents an equilibrium model of the overnight interbank market that matches these different patterns by incorporating differences in policy execution by the world's main central banks, including differences in central banks' management of marginal lending and deposit facilities in response to shocks. Our model is consistent with central banks' observed practice of rationing access to marginal facilities when the objective of stabilizing short-term interest rates conflicts with another high-frequency objective, such as the targeting of exchange rates.

Key words: interbank market, interest volatility, central bank procedures

Bartolini: Research and Market Analysis Group, Federal Reserve Bank of New York, 33 Liberty Street, New York, NY 10045 (telephone: 212-720-2291; e-mail: leo.bartolini@ny.frb.org); Prati: Research Department, International Monetary Fund, 700 19th Street NW, Washington, DC 20431 (telephone: 202-623-6275; e-mail: apрати@imf.org). The authors thank participants in seminars at the University of Amsterdam, University of Piraeus, Bank of England, Bank of Finland, and Federal Reserve Bank of New York for their comments and Raymond Guiteras for research assistance. The views expressed in the paper are those of the authors and do not necessarily reflect the position of the Federal Reserve Bank of New York, the Federal Reserve System, or the International Monetary Fund. Errors and omissions are the authors' responsibility.

1 Introduction

The overnight market for unsecured interbank loans plays a key role in the financial structure of most industrial countries. It anchors the term structure of interest rates and serves as the channel through which monetary policy is executed and liquid funds are funneled to the non-bank sector. To make models tractable for term-structure analysis and asset-pricing, most models of this market have not allowed for an explicit role of monetary policy in determining short-term interest rates. In fact, the few studies that have taken into explicit account the role of central banks in the interbank market, have done so with the goal of replicating key features of individual markets (typically, the U.S. federal funds market). Cross-country evidence (see, for instance, BIS, 1997, Ball and Torous, 1999, and Prati *et al.*, 2002), however, points to patterns in interest rate behavior in the main industrial countries that call for a more unified framework than available from models tailored to fit individual money markets.

In this paper, after building on previous empirical studies to present more comprehensive evidence on cross-country patterns in short-term interest volatility, we develop an equilibrium model of the overnight interbank market that replicates these patterns. The main ingredient of our analysis is to allow for central banks' varying degree of accommodation of liquidity shocks, specifically: for varying degree of access by banks to official marginal liquidity-management facilities. This feature plays a central role in our analysis as it does in actual policy execution in the industrial world, whereby central banks routinely ration market participants' access to official lending and borrowing when the day-to-day goal of stabilizing interest rates conflicts with another high-frequency objective, such as an exchange rate target.

By incorporating this ingredient, our model provides a unified analytical framework that accounts for key similarities and differences in overnight interest volatility patterns in the main industrial countries. Specifically, like previous models (see, for instance, Spindt and Hoffmeister, 1988, and Griffiths and Winters, 1995), our model can replicate the observed cyclical behavior of interest rate volatility associated with periodic reserve requirements. The model also accommodates the observed *decline* in interest rate volatility as market rates

approach rates on marginal official facilities, which is typical of the United States and other countries whose central banks are committed to stabilizing interest rates at high frequency. Differently from previous studies, however, our model can also reproduce an *increase* in volatility as market rates approach rates on marginal facilities, which is typical of countries where access to these facilities is rationed, for instance, because interest rate targeting is subordinated to exchange rate targeting. We show that this result is also consistent with evidence of rising interest volatility as a currency's exchange rate departs from its target level, when the central bank adheres to a recognizable exchange rate target.

Our work contributes to recent research on the equilibrium determination of short-term interest rates and on the micro-foundations of monetary policy execution. The standard reference for this research is Hamilton (1996), whose model, however, allows only for bank-level uncertainty and deterministic interest rates. As most other models in the literature (for instance, Clouse and Dow, 1999 and 2002, and Hayashi, 2001 and, earlier, Ho and Saunders, 1985, and Campbell, 1987), Hamilton focuses only on the demand side of the money market, leaving no role for central bank intervention.

Models allowing for central bank intervention are offered by Nautz (1998), Bartolini *et al.* (2002), and Valimaki (2003). These models, however, are tailored to the specific features of German, U.S., and Euro Zone markets, respectively, and lack the flexibility needed to explain cross-country differences in interest rate behavior. In particular, they assume that banks can borrow and lend funds freely at official marginal facilities. By contrast, our analysis shows that rationing of marginal borrowing and lending is crucial to capture the cross-country behavior of interest rate volatility.

More than other studies in this area, Farnsworth and Bass (2000) shares our concern with the effects of partial commitment of central banks to stabilize short rates' behavior. Farnsworth and Bass assume, as we do, a central bank to intervene to target very short rates only imperfectly. Aside from technical differences, their model focuses on the dynamics of target rates, while our model focuses on higher-frequency dynamics of market rates for given targets, viewing the latter as determined, at lower frequency, by central banks' response

to changes in inflation, employment, and other macro aggregates. Also, Farnsworth and Bass's interest in a model numerically tractable for bond pricing leads them to abstract from institutional features such as periodic reserve requirements and the distinction between marginal and intra-marginal liquidity provision. We include these details explicitly, and assign to central banks' willingness to provide funds in response to shocks a key role in shaping the behavior of the main industrial countries' interbank markets.

2 The Empirical Behavior of Overnight Interest Rates

Although our paper is mostly concerned with explaining the behavior of overnight interest rates in industrial countries, in this section we offer also a more comprehensive empirical account of this behavior than available in previous research. With few exceptions, previous studies of interest rates have focussed on individual-country data (typically, the United States; see Spindt and Hoffmeister, 1988, Rudebusch, 1995, Hamilton, 1996, and Balduzzi *et al.*, 1997, 1998). This one-country/one-model approach is not well suited to analyze the behavior of interest rates across policy regimes, however. Model heterogeneity makes cross-country results essentially impossible to compare, a shortcoming that we tackle by first imposing on all our sample countries a common general specification and then adapting this specification to each sample following a standard model-search methodology.

One of the few studies examining cross-country differences in interest rate behavior is Prati *et al.* (2002). Our work here improves on that study in two main respects. First, we follow a formal general-to-specific model selection procedure, which is absent from that study and which allows us to provide more solid econometric evidence for our subsequent modeling effort. Second, we link the volatility of interest rates to past levels of interest rates (as opposed to interest rate targets, which are rarely available and are often insufficiently variable to allow identifying their effects on interest volatility). These changes increase the estimation effort by an order of magnitude, given the computer-intensive nature of our non-linear estimation. They lead, however, to a description of interest rate behavior that is both

more satisfactory and more coherent with the model that follows.

Another study with an international focus is Ball and Torous (1999) which, however, analyzes *one-month* interbank rates, without controlling for reserve requirements, interest rate corridors, and other institutional features of the interbank market. Despite differences in data and focus, this and other studies (including Brenner *et al.*, 1996, and Andersen and Lund, 1997) document properties of short rates such as fat tails, GARCH effects, and dependence of volatility on interest rate levels, which we must incorporate in our empirical model to provide an accurate characterization of interest rate behavior.

2.1 Empirical Model

To study the main high-frequency patterns in overnight interest rate volatility in the seven largest industrial countries and the integrated Euro Zone, we follow Hamilton (1996) and select a model that nests the benchmark “martingale” hypothesis for overnight rates into a more general model that allows for predictable day-to-day rate changes.¹ Specifically, our model allows for effects of reserve requirements and calendar time on both mean and volatility of interest rates, for fat-tailed and asymmetric distribution of errors, and for GARCH effects and dependence of volatility on the rate’s level (measured, as explained below, as the position of the market rate within a corridor defined by rates on official borrowing/deposit facilities).

We specify the dynamics of the overnight rate r_t as

$$r_t = \mu_t + \sigma_t \nu_t , \tag{1}$$

where ν_t is a mean-zero, unit-variance i.i.d. error term; μ_t is the conditional mean of r_t ; and σ_t is the conditional Exponential GARCH (EGARCH) volatility parameter. As we now explain, the evolution of μ_t and σ_t^2 is governed by Equations (2) and (3) below.

¹The “martingale hypothesis” rests on the role of periodic reserve requirements in determining the time-series behavior of mean overnight rates. According to this hypothesis, these rates should not display predictable daily changes within each reserve-averaging period, otherwise banks could profit by selling reserves on “high” rate days and buying them on “low” rate days, while still satisfying reserve requirements.

To model μ_t and σ_t , we first control for calendar effects by including fixed-effect dummies δ_{c_t} and ξ_{c_t} in the mean and variance equations, respectively, for each weekday and for holidays, end-months, end-quarters, end-years, and the days before and after them.

Next we incorporate differences in reserve requirements in our eight samples, requiring banks to maintain minimum average reserve balances over reserve periods lasting as long as one month in Japan, Germany, the Euro Zone, France, and Italy, or as short as one day in Canada and the United Kingdom. (The United States is in intermediate position with a reserve period of two weeks.) We capture this periodicity by including fixed-effect dummies for each day of the reserve period, δ_{m_t} and ξ_{m_t} , in the equations for μ_t and σ_t^2 , respectively, where $m_t = 0, 1, \dots, T - 1$ counts days left until the end of a reserve period of length T .

One of the main goals of our work is to study the high-frequency impact on interest volatility of central banks' liquidity-management procedures. Liquidity provision by central banks usually involves *intra-marginal* draining and injection of funds through repo operations at a key policy (or "target") rate r_t^* , often combined with *marginal* draining and injection of funds at r_t^F and r_t^C , the "floor" and "ceiling," respectively, of corridors for market rates around target, with $r_t^F < r_t^* < r_t^C$. To study the volatility impact of these arrangements, we first control for level-shift effects of changes in official rates by including series of changes in floor, target, and ceiling rates, $\Delta_t = \{(r_t^F - r_{t-1}^F), (r_t^* - r_{t-1}^*), (r_t^C - r_{t-1}^C)\}$, as determinants of mean rates. We also include in the variance equation a set of constant terms Σ_t to control for unusual volatility on days when floor, target, and ceiling rates change (that is, on days when the corresponding term in Δ_t is not zero). More important, we include as a determinant of σ_t^2 the (centered) position of the overnight rate in its fluctuation corridor, $h_t = \frac{r_{t-1} - (r_t^F + r_t^C)/2}{r_t^C - r_t^F}$.² (Corridor rates are defined for each country in Appendix A.)

Finally, for countries explicitly targeting exchange rates, we include in the variance equa-

²Our results are essentially unchanged if h_t is defined using lagged corridor rates in stead of contemporaneous rates, as in $h_t = \frac{r_{t-1} - (r_{t-1}^F + r_{t-1}^C)/2}{r_{t-1}^C - r_{t-1}^F}$. This robustness is intuitive, since the two definitions differ only over the few days when corridor rates change. We present results with h_t defined as in the text, since this is more consistent with the presumed dependence of the conditional volatility of r_t on its corridor at t .

tion a variable x_t measuring the position of the exchange rate in its own target corridor.³ This variable proxies for circumstances in which a central bank may be reluctant to offset inflows or outflows of liquidity from the interbank market. Our particular proxy is motivated by the fact that central banks targeting exchange rates typically ration interbank liquidity in periods of exchange rate pressure to discourage flows of funds from (occasionally into) the domestic financial sector. This conflict at high frequency between interest rate targeting and another (possibly overriding) target may lead to greater interest rate volatility.

The resulting equations for the mean and the variance of overnight rates are

$$\mu_t = r_{t-1} + \delta_{m_t} + \delta_{c_t} + \gamma \Delta_t, \quad (2)$$

$$\log(\sigma_t^2) = \lambda \log(\sigma_{t-1}^2) + (1 - \lambda L)(\xi_{m_t} + \xi_{c_t} + \omega \Sigma_t + \beta h_t^2 + \eta x_t^2) + \kappa |\nu_{t-1}| + \theta \nu_{t-1}, \quad (3)$$

where λ is the autoregressive EGARCH coefficient, L is the lag operator, and we allow for asymmetric response of $\log(\sigma_t^2)$ to positive and negative shocks when $\theta \neq 0$. In (3), both h_t and x_t are included as *squared* deviations of interest and exchange rates from their mid-corridor levels, since the testable hypothesis is that interest volatility should rise when interest and exchange rates approach either of their corridors' margins.

Since banks' ability to arbitrage over cross-period interest rate gaps by carrying reserve imbalances over to the next reserve period is restricted,⁴ a different model should be used to describe the behavior of overnight rates on the first day of each reserve period. To this end, we follow Hamilton (1996) by including a more general auto-regressive term in the equation of the mean when $m_t = 1$. In particular, we include changes in r_t in the previous five days, that is, the term $\sum_{i=1}^5 \phi_i(r_{t-i} - r_{t-i-1})$. For the first day of each period, we also include a constant in the variance equation and, for countries publishing an explicit interest rate target, the difference between the overnight rate on the last day of the maintenance period and the target rate on the first day, $r_{t-1} - r_t^*$, in the equation of the mean.

³For these countries (i.e., European countries that participated in the Exchange Rate Mechanism [ERM]), we use the official indicator of divergence between a currency's market rate and its central ERM parity.

⁴In our sample, only France and the United States allow some carryover of imbalances across periods.

2.2 Results

Figure 1 plots the overnight market rate and marginal rate series used in the empirical analysis documented in detail in Appendix A. We discuss here in detail the results most relevant for the theoretical analysis that follows, namely, those pertaining to the link between interest rate volatility and monetary policy execution frameworks. The remaining results, concerning estimated mean coefficients and statistical properties of the error terms, are reviewed in Appendix A.

A first set of results from our multi-country analysis matches earlier findings for U.S. data (Spindt and Hoffmeister, 1988; Hamilton, 1996; Bartolini *et al.*, 2002). In all countries relying on periodic reserve requirements to stabilize interbank rates (that is, in all our sample countries except Canada and the United Kingdom), settlement-day rates are significantly more volatile than non-settlement-day rates. This finding, formally documented in Table A1, is clearly apparent in Figure 2, which plots estimates of reserve-period effects on volatility (the coefficients ξ_{m_t} in (3)) for all our countries except the United Kingdom.⁵

In addition, higher settlement-day volatility tends to propagate to the days immediately preceding settlement: the last seven days of the reserve period in Germany, the last five days in the Euro Zone, the last four days in Italy, the last three days in the United States, and the last two days in Japan display interest volatility higher than the average of the previous days in the period. (Statistical significance, at the 5 percent level, reflects Wald tests, details of which are available on request.) Even in France, where we estimate a rather unstable pattern of volatility, there is a clear tendency for volatility to rise from mid-period to end-period.

Our subsequent model shows that propagation of settlement-day volatility to previous days is to be expected in a regime of reserve averaging in which the central bank does not provide liquidity in a fully elastic way in response to shocks: when central banks do not fully

⁵No reserve averaging was in place throughout our U.K. sample; hence, we estimated no reserve-period effects for this sample. Reserves were averaged over a two-week period in Canada until February 1999. This allowed us to estimate reserve period coefficients from pre-1999 data. Not surprisingly, since Canadian reserve ratios were already zero over this period, these coefficients displayed no reserve-related cycle.

offset aggregate shocks to banks' liquidity, shocks occurring in the middle of a reserve period become correlated with banks' end-period reserve balances. Mid-period rates then tend to fall in response to positive shocks to liquidity and rise in response to negative shocks, with a stronger response in rates as settlement day nears. If, instead, the central bank is expected to offset fully aggregate reserve imbalances before end-period, then mid-period shocks have no predictive power for end-period rates and induce no response in current rates.

There are several reasons why a central bank might not provide liquidity fully elastically in response to shocks. The simplest — and most pragmatic — reason is that many central banks, especially in Europe, have committed to infrequent intervention schedules. This commitment prevents them from offsetting shocks occurring before period-end if no intervention is scheduled before then.⁶ More subtle reasons include some central banks' reluctance — or inability — to fully accommodate large shocks (as has been the case in the United States),⁷ or their desire to let interest rates partly absorb shocks, to induce banks to manage liquidity prudently (a practice historically followed by the Bundesbank). Still another reason is the existence of conflicts between interest rate targeting and other operational goals for monetary policy, an issue we discuss next.

The next set of results points to diverse effects on volatility exerted by interest rate corridors in our sample's "large" (United States, Euro Zone, Japan, and Germany) and "small" (France, United Kingdom, Italy, and Canada) countries. As shown in Table 1, as

⁶In this respect, our results parallel those of Harvey and Huang (2001), who document higher volatility of short-rate futures on days without Fed intervention. Harvey and Huang also interpret their finding as reflecting lack of interest rate smoothing by the Fed.

⁷The Federal Reserve has found it difficult to implement unusually large operations, in part because the collateral needed to execute repos is not freely available. Indeed, to mitigate thinness in the repo market at intervention time, the Fed shifted its intervention from 11:30 a.m. to 9:30 a.m. in the late 1990s and expanded the set of securities accepted under repo. Like other central banks, the Fed has also feared that large operations could pressure banks against their daily overdrafts limits: a large reserve drain in a single day may induce many banks to scramble to avoid daily overdrafts; a large injection may soften the market as banks try to avoid excess reserves that may be difficult to unwind before settlement.

the (lagged) interest rate moves to the margins of its fluctuation corridor, interest volatility *falls* in the first group of countries, but *rises* in the second: the coefficient β of the centered, squared position of the overnight rate in its corridor, h_t , is estimated as significantly negative for the first four countries, but as significantly positive for the latter four.

We propose the following interpretation of this finding. Monetary policy is executed in essentially different ways in our large and small countries. Central banks in the latter group of countries tend to ration the provision of liquid funds in response to shocks, especially at marginal facilities, a practice that causes interest rates to respond more strongly to shocks as they depart from their target level. The opposite is true for our large countries.

The main reason for this difference is that in our four large countries, the operational goal of monetary policy — to stabilize very short interest rates — does not conflict with other high-frequency objectives: The day-to-day goal of the central bank *is* to keep interbank rates near target (which itself stays constant until new information accrues, at lower frequency, on the evolution of macro aggregates such as inflation and unemployment). This policy truncates further movements of market rates as they sway away from target, causing them to become less responsive to shocks as they approach the corridor's margins. This pattern results in a negative coefficient β for the squared position of the interest rate in its corridor, for the United States, the Euro Zone, Japan, and Germany.

Monetary policy operates very differently when interest rate stabilization is subordinated to an alternative high-frequency objective. Such is typically the case with central banks of small, open economies, whose operational goals often include stabilizing the exchange rate. In these countries, deviations of interest rates from target correlate with outflows of funds from the domestic banking sector that pull the exchange rate away from its own target. To stem such flows, central banks ration access to marginal liquidity, curb intra-marginal intervention, and occasionally adjust target rates. These rationing strategies cause interest rates to become *more* responsive to shocks as they depart from target. This is the essence of so-called interest rate defenses of exchange rates (see Drazen, 2001, for a review), which are picked up in Table 1 by positive estimates for β for the textbook cases of Italy and France,

and — to a lesser extent — Canada.⁸ In fact, as our later model shows, a U-shaped link between the interest rate’s position in its corridor and interest volatility should be expected whenever marginal liquidity provision is rationed, irrespective of a central bank’s motives for doing so, as exemplified by the case of the Bank of England.⁹

The final set of results that we discuss here relates to another dimension along which a central bank’s commitment to stabilize interest rates affects interest volatility. As noted above, we included in the variance equation the (squared) distance of the exchange rate from its target for countries linked in an explicit exchange rate arrangement (Germany, France, Italy until 1992 and after 1996, and the United Kingdom from 1990 to 1992). Our conjecture is that, for these countries, overnight rates’ volatility should be higher in periods with stronger “exchange rate pressure” (irrespective of the shape of the link between volatility and the rate’s position in its corridor), because at these times a central bank may be more reluctant to provide funds to banks in response to shocks.

Indeed, we find strong evidence that in countries explicitly targeting exchange rates, overnight interest rates were more volatile during periods in which the exchange rate was further away from target than at other times: the coefficient η linking interest volatility to the

⁸Notably, we focus on *de facto* — rather than formal — cross-country differences in policy execution. For instance, while the Bundesbank was formally committed to an exchange rate target within the ERM, exchange rate targeting played a minor role in its policy execution: it was the task of Germany’s ERM partners to anchor their currencies to the Deutsche mark. Conversely, while not formally committed to an exchange rate target, the Bank of Canada has historically assigned to the exchange rate an important role in policy execution: the exchange rate weighs one-third in the Bank’s monetary condition index, and its movements have often led the Bank to adjust policy. (The textbook case is the rate hike of August 1998 after the sudden weakening of the Canadian dollar in the wake of the Russia/LTCM crisis.)

⁹The Bank of England targeted exchange rates only from October 1990 to September 1992. However, the “late lending facility” designed to limit interest rates’ upward fluctuations has been, historically, tightly rationed. To confirm the role of this arrangement in shaping interest rate dynamics, we tested for a break in interest volatility in June 1998, when the rationing of the late-lending facility was relaxed. We expected, and found, the overall level of volatility to fall significantly at that time. (For comparability with other samples, we omit the level-split dummy from our final specification, but details are available upon request.)

squared ERM divergence indicator was precisely estimated with a positive sign in Germany, France, and Italy (see Table 1); it was also positive, though statistically insignificant, in the U.K. sample, which included only a short ERM period. Explaining these results, along with our findings on the cyclical behavior of interest volatility and on volatility patterns over interest rate corridors, is on the agenda for the next sections.

3 Interbank Markets with Central Bank Intervention

3.1 The Model

We now present an equilibrium model of an interbank market that captures the stylized facts documented above. The model is stylized, and simplifies the operation of the interbank market in two main ways. First, it abstracts from cross-bank heterogeneity, including in size and exposure to shocks, that has played a role in previous studies of interbank markets (see, for instance, Allen and Saunders, 1986, and Hamilton, 1996). This simplification allows us to apply a representative-agent solution method that greatly simplifies the analysis. Second, the model assumes a hybrid trading environment that captures the main common features of our eight sample markets, leaving two parameters measuring the commitment of the central bank to interest rate stabilization as the main degrees of freedom to capture cross-country differences in central bank behavior.

We consider a market populated by competitive, identical, risk-neutral banks, whose stocks of liquid funds (“reserves”) are exposed to common shocks. We study this market’s equilibrium over a reserve period lasting T days. We denote aggregate bank reserves at the end of day t by z_t and cumulative holdings of reserves since the beginning of the period by $c_t \equiv z_1 + \dots + z_t$. Banks’ reserves are subject to the end-period requirement $c_T \geq C$. (We consider the case of an additional daily requirement $z_t \geq Z$, which is superfluous for our main results, in Section 4.)

Each day $t = 1, \dots, T$, the sequence of events is as follows.

At the beginning of the day (at 9:00 a.m., say), the central bank intervenes by injecting a net amount of reserves m_t into the banking sector ($m_t < 0$ for a reserve drain). The central bank chooses m_t to keep the equilibrium interbank overnight rate for day t , expected as of its “a.m.” intervention time, $E_{t^{a.m.}}[r_t]$, as close as possible to the target r^* , choosing m_t from the interval $[-m, m]$. Thus, m parameterizes the central bank’s commitment to r^* through intra-marginal intervention: the higher is m , the stronger is the adherence to the target.

At 10:00 a.m., a random shock to reserves ν_t , with cumulative distribution $G(\nu)$, mean μ_ν , and variance σ_ν^2 , reaches banks from the nonbank sector.

At 12:00 p.m. the interbank market opens, allowing banks to trade reserves through unsecured overnight loans at the rate r_t .

At 3:00 p.m., after the market has cleared, a second random shock to reserves ϵ_t is realized, with cumulative distribution $F(\epsilon)$, mean μ_ϵ , and variance σ_ϵ^2 .¹⁰

At day’s close, banks’ daily reserves z_t are computed and added to the cumulative balance for the period, c_t .

This routine is repeated each day $t = 1, \dots, T$. At the end of (settlement) day T , cumulative reserves c_T are assessed against required reserves C , and banks can access rationed “marginal” borrowing and deposit facilities: they must fill reserve deficiencies by borrowing up to k from the central bank at the ceiling rate r^C , and can dispose of excess reserves by depositing up to k at the floor rate r^F . Excess reserves beyond k are worthless; reserve deficiencies in excess of k can be filled only at a much higher cost R .¹¹ Thus, k parameterizes the central bank’s commitment to the corridor $[r^F, r^C]$ (with $r^F < r^* < r^C$) through marginal provision/drain of liquidity: the higher is k , the stronger is the adherence to the corridor.

¹⁰We assume that both $G(\mu)$ and $F(\epsilon)$ satisfy standard regularity conditions, in particular, that they are continuous and strictly increasing over an infinite support (e.g., they are distributed as normal variables).

¹¹ R plays no essential role in the analysis, but must be bounded away from infinity to secure a bounded solution for r_t . To fix ideas, R can be thought of as the cost of emergency funds available from the central bank at a very high penalty, as the charge on alternative, very costly, funds available to banks from the non-bank sector, or as the prorated cost of shutting down a bank unable to meet reserve requirements.

3.2 Market equilibrium on settlement day

Our assumption of identical, competitive banks allows us to study the market's equilibrium as it results from the behavior of a single representative bank, which competitively takes the rate r_t as given. To study this equilibrium, we proceed backward from settlement day, T , to day 1 of the reserve period.

Denote by \tilde{c}_T the representative bank's cumulative reserve position at the opening of the market on day T . That is, $\tilde{c}_T = c_{T-1} + m_T + \nu_T$ equals the cumulative reserve balance inherited from day $T - 1$, c_{T-1} , plus the reserve flows m_T and ν_T recorded earlier in day T .

Given r_T and \tilde{c}_T , the representative bank chooses how much to borrow in the interbank market, b_T , to maximize the profits generated by its overnight interbank position, net of penalties and returns associated with borrowing and lending funds from and to the central bank at day's end. That is, its problem is to maximize over b_T :

$$\begin{aligned}
 V_T = & -r^C \int_{-\infty}^{C-\tilde{c}_T-b_T} [C-\tilde{c}_T-b_T-\varepsilon]dF(\varepsilon) - (R-r^C) \int_{-\infty}^{C-\tilde{c}_T-b_T-k} [C-\tilde{c}_T-b_T-k-\varepsilon]dF(\varepsilon) \\
 & + r^F \int_{C-\tilde{c}_T-b_T}^{C-\tilde{c}_T-b_T+k} [(\tilde{c}_T + b_T + \varepsilon - C)dF(\varepsilon) + r^F \int_{C-\tilde{c}_T-b_T+k}^{\infty} kdF(\varepsilon) - r_T b_T]. \quad (4)
 \end{aligned}$$

Equation (4) sums the representative bank's costs and returns over each possible realization of $\tilde{c}_T + b_T + \varepsilon$, the bank's end-period reserve balance, relative to the required level C . Specifically, the first term in (4) measures the expected cost (at the rate r^C) of a reserve deficiency $C - \tilde{c}_T - b_T - \varepsilon$. The second term in (4) adds the cost of incurring a deficiency larger than k , since only up to k can be borrowed from the central bank at r^C , while additional deficiencies cost $(R - r^C)$ per unit. The third term in (4) measures the return, at the rate r^F , to depositing funds in amount up to k at the central bank. The fourth term in (4) adds the fixed (per unit) amount $r^F k$ earned when excess reserves exceed k . Finally, (4) includes the cost of borrowing b_T in the interbank market at the rate r_T .

The first-order condition for (4) yields the representative bank's optimal borrowing, b_T^* :

$$0 = -r^C \int_{-\infty}^{C-\tilde{c}_T-b_T^*} dF(\varepsilon) - (R-r^C) \int_{-\infty}^{C-\tilde{c}_T-b_T^*-k} dF(\varepsilon) + r^F \int_{C-\tilde{c}_T-b_T^*}^{C-\tilde{c}_T-b_T^*+k} dF(\varepsilon) - r_T. \quad (5)$$

Setting $b_T^* = 0$, since the market must clear with no net borrowing or lending,

Result 1. *The market-clearing rate on settlement day T is*

$$r_T = (R - r^C)F(C - \tilde{c}_T - k) + (r^C - r^F)F(C - \tilde{c}_T) + r^F F(C - \tilde{c}_T + k) , \quad (6)$$

a continuous, decreasing function $r_T(\tilde{c}_T)$ of \tilde{c}_T .

Intuitively, r_T equals a weighted average of R , r^C , and r^F (and zero); rises with R , r^C , and r^F ; and it falls with the representative bank's reserve position at market opening, \tilde{c}_T .

Consider next the central bank's problem of deciding, on the morning of day T , how much liquidity to inject into (or drain from) the market, to bring the expected rate for day T as close as possible to the target rate r^* . m_T solves

$$m_T = \min\{m, \max\{-m, m^* : \mathbb{E}_{T \text{ a.m.}}[r_T | m^*] \equiv r^*\}\} , \quad (7)$$

where the expectation is taken over ν_T , since it is conditional on information available to the central bank at its 9:00 a.m. intervention time. In (7), m^* is the amount of intervention that equalizes r^* to the rate expected for day T , while the operator $\min\{m, \max\{-m, m^*\}\}$ truncates m^* to the interval $[-m, m]$. Equation (7) yields $m_T(c_{T-1})$ as an implicit function of c_{T-1} , with the following properties (proof is in Appendix B):

Result 2. *There is a unique solution $m_T(c_{T-1})$, continuous and non-increasing in c_{T-1} .*

3.3 Market equilibrium on non-settlement days

For a generic day $t < T$, the representative bank's problem is

$$V_t^* = \max_{b_t} -r_t b_t + \frac{1}{1 + r_t} \mathbb{E}_t[V_{t+1}^*] , \quad (8)$$

where V_{t+1}^* is the continuation value function, with terminal value given by its value V_T^* for settlement day; and the expectation $\mathbb{E}_t[\cdot]$ is taken, conditionally on information available at market opening on day t , over ε_t (the shock realized after market closing on day t) and ν_{t+1} (the shock realized before market opening on day $t + 1$). The expectation also incorporates the known central bank's intervention policy at $t + 1$, $m_{t+1}(c_t)$.

The first-order condition for this standard dynamic programming problem is that the derivative with respect to b_t^* of the single-period payoff at t , $r_t b_t^*$, should equal the expected, discounted derivative with respect to b_{t+1}^* of the single-period payoff at $t + 1$, $r_{t+1} b_{t+1}^*$:

$$r_t = \frac{1}{1 + r_t} E_t[r_{t+1}] . \quad (9)$$

Intuitively, (9) expresses the condition that a bank should not expect to profit by borrowing one more dollar in the interbank market at t and one less dollar at $t + 1$. From this condition, we obtain the following result (proof is in Appendix B):

Result 3. *There is a unique solution $r_t(\tilde{c}_t)$, continuous and decreasing in \tilde{c}_t .*

Stepping back to the morning of day t , the central bank's problem is, as in day T ,

$$m_t = \min\{m, \max\{-m, m^* : E_{t a.m.}[r_t | m^*] \equiv r^*\}\} . \quad (10)$$

Equation (10) defines the intervention policy m_t as a function $m_t(c_{t-1})$ of cumulative reserves at the end of day $t - 1$. For day t , the analog of Result 2 also holds (with proof identical to that of Result 2, except for a change in time subscripts from T to t):

Result 4. *There is a unique solution $m_t(c_{t-1})$, continuous and non-increasing in c_{t-1} .*

4 The Behavior of Interest Rate Volatility

Results 1-4 show that the model exhibits a single daily equilibrium for the market rate r_t and the intervention policy m_t , as a function of the state variables \tilde{c}_t and c_t . In general, it is difficult to advance analytically beyond these results, since $m_t(c_{t-1})$ is defined by (10) only in implicit form. Complete analytic solutions are available in limiting cases, such as when $m = \infty$ or $m = 0$, but are of limited practical interest.

Given Results 1-4, however, it is legitimate to seek the model's unique solutions by numerical methods. We do this using a standard backward-recursive grid method (details are

in Appendix C). To illustrate the model’s properties, we then let ε_t and ν_t be distributed as normal, i.i.d. random variables, with zero mean and variance $\sigma_\varepsilon = 0.5$ and $\sigma_\nu = 2$; and let $r^C = 0.06$, $r^* = 0.05$, $r^F = 0.04$, $R = 0.10$, $C = 0$, and $m = 1$. Although these are plausible parameters,¹² we did not choose them to replicate the magnitude of empirical interest volatilities, since this reflects also factors — such as intra-day and cross-bank dispersion of liquidity — that our representative-agent model with instantaneous market clearing is clearly not designed to capture. Also, reality is clearly more complicated than the crisp, symmetric examples discussed below. (For instance, U.S. rates have moved mostly in the upper part of their corridor, while our examples assume target rates in the middle of the corridor.) Our purpose is to illustrate the economic forces at work on average over our eight sample markets, more than to capture accurately the reality of any single market.

The demand for overnight funds. Figure 3 plots families of interest rate curves $r_t(\tilde{c}_t)$ as a function of cumulative reserves at market opening, \tilde{c}_t , for each of the five days of our hypothetical reserve period. Each panel is parameterized by a different value of k , $k = \{0, 5, 10, 20\}$, the maximum amount of funds that banks can trade with the central bank at r^F and r^C . For our choice of parameters, $k = 20$ effectively approximates the case $k = \infty$.

The first notable property of the curves $r_t(\tilde{c}_t)$ is their negative slope, which conforms with Results 1 and 3 and reflects the lower likelihood of penalties on reserve overdrafts associated with higher values of \tilde{c}_t . $r_t(\tilde{c}_t)$ also becomes flatter as t goes from settlement day, $T = 5$, to day 1. Formally, this feature reflects the iterative application of the expectation operator in (9): at each step $t = T - 1, \dots, 1$, Jensen’s inequality makes $E_t[r_{t+1}]$ smoother than r_{t+1} . The economic intuition, discussed in Section 2.2, is that shocks to liquidity occurring early

¹²With these parameters, the interest corridor of 2 percent is in line with those prevailing in several industrial countries; $\sigma_\varepsilon/\sigma_\nu$, which parameterizes the ratio of relevant information available daily to the central bank, is set at $1/4$, in line with the case of a central bank intervening daily around mid-morning; $m = 1$, in turn, yields the case of a central bank that offsets by intra-marginal intervention about $3/4$ of the shocks experienced by banks over a typical reserve period.

in the period (plotted as movements on the horizontal axis of Figure 3) provide only a very imprecise signal of banks' likely end-period penalties on reserve deficiencies. Hence, they cause only a small response in rates, that is, curves that are flatter for early days of the period than for late days.

Another property displayed in Figure 3 is the inflection of the curves $r_t(\tilde{c}_t)$ around the target r^* (here set at 0.05). This inflection illustrates the stabilizing role of *intra-marginal* intervention, which partly offsets the exogenous shocks ε_t and ν_t . This offset is relatively more complete the smaller are the shocks, that is, the smaller is the departure of r_t from r^* . By contrast, larger shocks are more likely to push the central bank against the limit m that parameterizes its commitment to r^* . Hence, they cause a proportionally stronger response in rates, that is, curves that initially steepen as r_t moves away from r^* .

The behavior of $r_t(\tilde{c}_t)$ at the corridor's margins, r^F and r^C , illustrates the role of *marginal* liquidity provision by the central bank. As a central bank's commitment to the corridor $[r^F, r^C]$ becomes stronger — that is, as k rises — the amount of trading between the representative bank and the central bank at marginal rates increases, truncating realizations of r_t outside the corridor. For high values of k , the curves $r_t(\tilde{c}_t)$ approach the corridor's margins asymptotically. Shocks to reserves when r_t is close to r^C and r^F then are almost fully absorbed by injection or drainage of liquidity at corridor rates, causing a negligible response in market rates. The converse holds for low values of k .

Volatility over and across reserve periods. The previous properties can be mapped into predictions matching the empirical results of Section 2.

We begin by plotting in Figure 4 the conditional volatility of interest rates (the standard deviation of $r_t - r_{t-1}$) over a typical reserve period for various values of k . In accord with Figure 3, it is intuitive that steepening interest rate curves as $t \rightarrow T$ should cause volatility to rise over the period. This is indeed the case, as shown in Figure 4 for all values of k . This prediction is consistent with evidence of cyclical volatility behavior provided, for the United States, by Spindt and Hoffmeister (1988), Griffith and Winters (1995), and Bartolini *et al.*

(2002) and others, and — for other industrial countries — in Section 2 above.

Figure 4 also shows that volatility falls in reserve periods when banks can borrow and deposit more funds at the marginal facilities (that is, when k is higher): flatter interest curves within the corridor and reduced scope for rates to sway outside the corridor dampen volatility over the whole reserve period. This prediction also parallels our results in Section 2. There, we used a measure of the exchange rate’s distance from its target to proxy for a specific cause for a central bank’s reluctance to provide funds in response to shocks. The model shows this prediction to be more general: whenever a central bank is reluctant to drain or inject funds at its marginal facilities in response to shocks, and irrespective of its motives for doing so, very short rates’ volatility should rise.

Volatility over the corridor. Figure 5 illustrates one of the most interesting properties of the model. In the figure, volatility is plotted as a function of the position of the interest rate in its target corridor, $[r^F, r^C]$, for two regimes: a regime of “low commitment” by the central bank to the corridor, $k = 5$, and a regime of “high commitment,” $k = 20$. The panels on the left side plot volatility without controlling for the effect of changes in days of the reserve period; in the panels on the right side, these effects are instead controlled for, by plotting the volatility profile separately for each day of the period.

In the figure, the low-commitment regime displays a straight U-shaped pattern in volatility over the corridor, in sharp contrast with the inverted U-shaped pattern displayed in the high-commitment regime. (The pattern in the lower-left panel actually displays a double hump, in good part because it does not control for the larger share of observations drawn, in the middle of the corridor, from early-in-the-period days with low volatility.)

Clearly, these patterns reflect the curvature properties of $r_t(\tilde{c}_t)$ in Figure 3. In particular, the asymptotic behavior of $r_t(\tilde{c}_t)$ around r^F and r^C for high k causes volatility to fall to zero as r_t approaches r^F and r^C : near the corridor’s margins, shocks to liquidity are almost-fully absorbed at the marginal facilities if k is high, causing a negligible response in interest rates. Conversely, the “fanning” behavior of $r_t(\tilde{c}_t)$ through r^F and r^C for low k causes volatility

to rise as r_t approaches these rates: given a limit on funds tradable at the facilities, the larger are the shock to banks' liquidity, the stronger is — proportionally — the response of market rates. This split prediction parallels our finding of a qualitatively different behavior of volatility in markets where the central bank is committed to interest rate stability at high frequency, and markets where the central bank — for any reason — rations banks' access to marginal facilities, for instance, because interest rate stability conflicts with an alternative, high-frequency objective (such as for the exchange rate).

Intra-marginal intervention and volatility. Finally, how does interest volatility behave for different central bank commitment to the target r^* by *intra-marginal* intervention, here parameterized by m ? Our benchmark is given by Figures 3-5, which illustrate the model's predictions when $0 < m < \infty$. What happens when m falls to zero, or rises to infinity?

When $m = 0$, the central bank does not intervene *at all* intra-marginally at r^* : the task of keeping rates within a corridor around r^* is assigned solely to marginal provision of liquidity at r^F and r^C . In this case — we omit details for brevity — the model yields interest rate curves that look very similar to those of Figure 3, except for their lack of inflection around r^* . This lack of inflection, which reflects the lack of *any* interest stabilization at r^* , causes interest rate volatility to display always an inverted U-shaped pattern over the corridor, since the curves $r_t(\tilde{c}_t)$ are steepest in the middle of the corridor and flatter near the corridor's margins. Yet, aside from its analytical properties, the case $m = 0$ is utterly unrealistic. Intra-marginal intervention is the chief means of stabilizing interest rates in industrial countries. If anything, the opposite case of $m = \infty$ is closer to reality.

When $m = \infty$, the central bank provides funds infinitely elastically at r^* . From (9) and (10), then, $r_t = r^*$ for all days before settlement: Banks have no incentive to trade among themselves at rates other than r^* , if they can count on the central bank to offset all imbalances — and secure funds at the expected rate r^* — until the morning of settlement day. Hence, there is no interest rate volatility for all $t < T$. Only on settlement day is r_T bid away from r^* and its volatility becomes positive. Thus, in contrast with the standard reference in the

literature (Spindt and Hoffmeister, 1998), a pattern of gradually rising volatility such as the one displayed in Figure 4 and those estimated in Section 2, is *not* a necessary offspring of average reserve requirements. For volatility to propagate from settlement to pre-settlement days, a central bank should not be expected to intervene, in defense of a known target, to eliminate *all* risk of aggregate liquidity imbalances.

5 High-Frequency Liquidity Effects

Recent research (including Furfine, 2000, Pérez Quirós and Rodríguez Mendizábal, 2000, and Clouse and Dow, 2002) has suggested that restrictions on banks' ability to allocate reserve holdings across days may help explain patterns in means and volatilities of overnight rates such as the prevalence of high *and* volatile rates on settlement days, Mondays, and other calendar days. In particular, these studies suggest that penalties on low daily reserve balances — normally imposed on banks — contribute to predictable patterns in mean overnight rates by limiting banks' ability to shift holdings of reserves between days.

To incorporate these effects in our model, assume that banks ending a day with reserves less than Z face a cost r^D per unit of overdraft $Z - z_t$, in addition to the penalty on end-period *cumulative* overdrafts considered in our basic model.

In this case, when trading in the interbank market, a bank must forecast the effect of its decisions on both end-day and end-period balances. As in Section 3, at the equilibrium rate r_t , a bank should expect no gain from borrowing one dollar less on day t and one additional dollar on day $t + 1$ than on the equilibrium path. On day t this perturbation would yield lower borrowing costs by r_t , but also an additional expected penalty $r^D F_t(Z - \nu_t - m_t)$ on end-day overdrafts. On day $t + 1$, the same perturbation would yield additional (expected) borrowing costs $E_t[r_{t+1}]$, but also a decline in (expected) end-day penalties by $r^D \int F_t(Z - \nu - m_{t+1})dG(\nu)$. Setting total expected profits at zero,

$$r_t - \frac{1}{1 + r_t} E_t[r_{t+1}] = r^D [F_t(Z - \nu_t - m_t) - \frac{1}{1 + r_t} \int F_t(Z - \nu_{t+1} - m_{t+1})dG(\nu_{t+1})] . \quad (11)$$

Equation (11) has two main implications, both of which reflect the failure of the martingale hypothesis $r_t - \frac{E_t[r_{t+1}]}{1+r_t} = 0$ in the extended model with costs of daily liquidity overdrafts.

First, there is now scope for high-frequency liquidity effects of monetary policy: an injection of funds of size Δ , shifting $m_t(c_{t-1})$ to $m_t(c_{t-1}) + \Delta$, lowers r_t below $\frac{E_t[r_{t+1}]}{1+r_t}$. By contrast, in our previous model, $r_t = \frac{E_t[r_{t+1}]}{1+r_t}$ at all times, as r_t and $\frac{E_t[r_{t+1}]}{1+r_t}$ depend only on projected *cumulative* end-period balances.

Second, days with greater variance of shocks should display higher mean rates, since they are associated with a higher probability of end-day overdrafts. For instance, if we allow the distributions F_t and F_{t+1} to differ, and substitute $F_t(\cdot)$ with a mean-preserving spread $\tilde{F}_t(\cdot)$, then, everything else constant, the probability $\tilde{F}_t(Z - \nu_{t+1} - m_{t+1})$ of a daily balance in the lower tail of the distribution rises, for low values of Z . Days with greater volatility of shocks will then exhibit rates that are both higher ($r_t > \frac{E_t[r_{t+1}]}{1+r_t}$) and more volatile.

How consistent are these predictions with the behavior of very short-term rates in industrial countries' interbank markets?

The first prediction finds considerable support in several studies of high-frequency liquidity effects of monetary policy, including Hamilton (1997) for the United States, Hayashi (2001) for Japan, and Angeloni and Bisagni (2002) for the Euro Zone. These studies document that, in violation of the martingale hypothesis and in accord with the view that reserves are non-substitutable for banks between days of the same reserve period, monetary policy can drive predictable wedges in overnight rates across any two days.

The second prediction is fairly consistent with U.S. data, which display a clear correlation of means and volatilities of overnight rates for each reserve period (see Tables A1-A2, and the extended discussion in Furfine, 2000) and for other calendar days. In particular, high and volatile rates tend to cluster on settlement and end-quarter days. However, non-U.S. markets provide little support for the same prediction: our estimates show almost no sign correlation between mean and variance coefficients. For instance, while settlement days display pervasively high interest volatility, they display above-average mean rates only in the United States and Germany. Along the workweek, the only highest-volatility day that is

also the highest-mean day is Thursday in the United Kingdom; in no market is the lowest-volatility day also the lowest-mean day. There is some correlation in sign between mean and variance coefficients at end-months, end-quarters, and end-years: in 12 instances where both mean and volatility coefficients were statistically significant (out of 24 possible instances), 11 agreed in sign, showing both higher mean and volatility. On the other hand, we found mean and variance coefficients for days before and after holidays to be either insignificant or to display no correlation in sign. Altogether, this evidence suggests that introducing penalties on daily liquidity overdrafts or other frictions on banks' ability to shift reserve holdings across days contributes (at best) marginally to explaining overnight interest rate behavior in the world's largest money markets.

6 Conclusions

A simple model of an interbank market in which a central bank intervenes — with limited commitment — to stabilize interest rates around a target, can replicate the main qualitative properties of money market rates' volatility in the world's largest interbank markets. These properties include a tendency for interest rate volatility to behave cyclically in countries with reserve averaging, a tendency for volatility to rise in periods when a central bank is less likely to accommodate shocks to banks' liquidity, and — most interesting — a non-linear response of volatility to movements of market rates within official interest rate corridors. To replicate these properties, our model relies only on parameterized differences in central banks' commitment to interest rate smoothing at high frequency, pointing to this aspect of monetary policy execution as a key factor shaping the behavior of money markets and short-term interest rates around the world.

Our agenda for further research is topped by two items. First, allowing for heterogeneity in banks' behavior and exposure to shocks should be useful to capture features of the interbank trading environment that our representative-agent model with instantaneous trading is not designed to emulate. Chief among these features are a tendency for small banks to

be lenders and large banks to be borrowers in the market, and the sharp changes in interest volatility observed in intra-day data (including a systematic rise in volatility at day's end).

A second goal should be to incorporate the high-frequency, institution-driven perspective of our and of related studies, into a framework more suitable for asset pricing. At this stage, our contribution should be seen as complementary to that of studies such as Piazzesi (2001) and Farnsworth and Bass (2002), whose focus on asset pricing accompanies a much more stylized description of banks' trading environment than that provided by our study. A first step for future research bridging these two perspectives would be to parameterize the nonlinearities in interest rate behavior that we document and explain here, use them to augment otherwise-standard pricing models, and see if this improves the empirical performance of the model against short-term bond price data.

Appendix A. Data, estimation, and technical results

Data. We collected daily transaction-weighted rates on unsecured overnight interbank loans and official interest rate corridors for the G-7 countries and the Euro Zone. The main source of data was Datastream, integrated by series of official rates (and, for Canada, of market rates) obtained from the relevant central banks. We also assembled information on central banks' procedures, reserve requirements, starting and ending dates of reserve periods, target interest rates, and market and target exchange rates. We collected data beginning as early as January 1, 1985, until April 4, 2002, but estimated each country's model only over the most recent period without major institutional change. Accordingly, the U.S. sample begins in January 1991, when reserve requirements for non-transaction deposits were eliminated. The Japanese sample ends in March 1999, when the "zero interest policy" was implemented. The German and Italian samples end at end-1998, when the Euro Zone sample begins. The French sample ends in June 1994, when changes in data reporting and in Banque de France procedures eliminated virtually all volatility in overnight rates. The Italian sample begins in December 1990, when reserve averaging was introduced. The Canadian sample begins in July 1994, when reserve requirements were lowered to zero.

We defined ceilings and floors of interest rate corridors in accord with definitions provided in BIS (1997) and individual central banks' publications. We used rates on standing facilities as ceiling rates for the Euro Zone, Germany, France, the United Kingdom, Italy, and Canada, and as floor rates for the Euro Zone and Canada. We used, as ceiling rates, penalty rates on end-period reserve overdrafts for the United States and pre-1995 Japan, and the discount rate — which has been used as a cap for market rates since March 1995 — for Japan in more recent years; and, for floor rates, we used the compensatory rate on end-period excess reserves for Italy, the official reverse-repo rate for France, and the discount rate for Germany. For countries lacking facilities aimed at keeping rates above zero — the United States, Japan, and the United Kingdom — we set the floor rate at zero.¹³

¹³The German and Japanese discount windows operated very differently. Since 1995, Japan's discount

Estimation. We assumed the error terms ν_t to be distributed as Student- t variables, and estimated the model by maximum likelihood, using numerical optimization.¹⁴

We estimated our model independently for each country. To a large extent, this was the only possible choice, since most of our samples did not overlap in time.¹⁵ Another problem, however, was that our non-linear, highly-parameterized model was computationally very intensive to estimate, requiring more than a day per regression, for some of our samples, on a standard desktop computer. Convergence and identification of global maximum likelihood certainly would have been a problem in simultaneous estimation.

For each sample, we followed a general-to-specific search to obtain our final specification. We started by estimating a model encompassing all variables in (2) and (3). We then dropped the least significant variables (in groups of three or four at a time) and re-estimated the model, iteratively, until we obtained specifications with all parameters significant at least at the 0.10 percent level, with the following exceptions to this rule. First, we retained the full set of reserve-period coefficients δ_{m_t} in the mean equation if the coefficients were jointly significant. We did the same for the coefficients ξ_{m_t} in the variance equation and for the five week-day coefficients in both the mean and variance equations. We also retained all rate has been set at a penalty, thus effectively capping market rates. The German window, instead, was a rationed, below-market facility, providing a floor to market rates, as banks could repay outstanding loans before lending in the market at below-discount rates. Until January 2003, the U.S. discount rate was also set below market. However (see Peristiani, 1998), borrowing banks incurred additional non-pecuniary costs, including special Fed scrutiny, limits on further loans, and the cost of revealing financial weakness by being supported by the Fed. These costs suggest that U.S. market rates could be capped at a level equal to the discount rate *plus* non-pecuniary costs of discount borrowing. However, we preferred to use the penalty rate on reserve deficiencies as a ceiling for U.S. rates, since this is a readily available measure, while non-pecuniary costs of discount borrowing are difficult to estimate and are both bank-specific and time-varying.

¹⁴As in Andersen and Lund (1997), we smoothed the function $|\nu_t|$ at the origin by using, for $|\nu_t| < \frac{\pi}{2K}$, the twice-differentiable approximation $|\nu_t| = \frac{\frac{\pi}{2} - \cos(K\nu_t)}{K}$, with K set at 20.

¹⁵Notably, the Euro Zone sample was wholly disjoint from those of Germany, France, and Italy. However, because we used for each country the longest, most recent sample of institutionally homogeneous data, problems of non-overlapping samples were pervasive.

the EGARCH parameters in our final specification, even when, for instance, the asymmetric response parameter θ was not statistically significant.

To select the autoregressive EGARCH structure, we analyzed sample-by-sample the correlogram of squared standardized residuals. The result was an EGARCH(1,1) model for all countries except the United Kingdom, which required an EGARCH(2,2). Standard tests revealed insignificant coefficients for higher lags and no residual conditional heteroskedasticity.

We generally avoided testing for structural breaks in the coefficients, since the large number of observations would have led us to accept almost any break. Again, we made one exception to this rule. For France, even casual visual inspection of the data revealed a dramatic decline in volatility beginning in May 1992. At this time, the Banque de France had modified its operating procedures by intervening much more aggressively to reduce interest volatility and by clearly indicating to market participants its plan to provide funds at a stable repo rate. Accordingly, we introduced a constant shift dummy in the level of the variance as of May 1992 and allowed the EGARCH parameters to break at this time.

Technical results. We briefly review the results not discussed in the text. These are reported in Tables A1-A5 which, along with Table 1, completely document our estimation.

We found fixed effects on mean interest rates (the coefficients δ_{m_t} and δ_{c_t} in (2); see Table A2-A3) to be erratic in sign and significance across countries. The only fairly robust cross-country pattern in mean rates was the tendency for rates to rise at end-quarters (Table A3), a feature likely to reflect, in part, window-dressing effects previously recognized in U.S. data.¹⁶ Week-day and holiday-related patterns in volatility (the coefficients ξ_{c_t} in Table A4) also proved rather non-robust across countries, except for greater end-quarter and end-year volatility in most samples, and greater volatility in the first day of each reserve period.

Changes in official rates had generally predictable effects on market rates (Table A5). Target, floor, and ceiling rate changes, in particular, were positively correlated with changes in market rates, with coefficients all ranging between zero and one. In countries for which

¹⁶See, for instance, Allen and Saunders (1992).

we had access to interest rate targets, we found most end-period gaps of market rates from target rates to disappear in the first day of the following period.

Estimated features of the error terms were qualitatively similar to those documented by Ball and Torous (1999) for one-month rates. In particular, we found pervasive GARCH effects, with evidence of persistent volatility: the coefficients λ and α in Table A4 are everywhere strongly significant. We also found the error terms to display clear fat tails, with degrees of freedom of the t -distribution estimated mostly between 2 and 4. Finally, we found some evidence of asymmetric effects of positive and negative shocks to rates (the coefficient θ is significant in five of the eight regressions).

Appendix B. Proofs of Results 2 and 3

Proof of Result 2: Since, by Result 1, $r_T(\tilde{c}_T)$ is continuous and decreasing in \tilde{c}_T , then $E_{T^{a.m.}}[r_T(\tilde{c}_T)] = \int r_T(c_{T-1} + m_T + \nu)dG(\nu)$ is continuously decreasing in $(c_{T-1} + m_T)$ over the whole range $[0, R]$, and therefore over the sub-range $[r^F, r^C]$ as well. Then, by the intermediate value theorem, there is a unique m^* that solves $E_{T^{a.m.}}[r_T] = r^*$, and this is continuous and strictly decreasing in c_{T-1} over $c_{T-1} = [-\infty, \infty]$. Since the truncation $m_T = \min\{\max\{m^*, -m\}, m\}$ is a weakly monotonic transformation, Result 2 follows. \square

Remark. For reference below, note that truncating $m^*(c_{T-1})$ to $[-m, m]$ divides the support $c_{T-1} = [-\infty, \infty]$ into three intervals: **i)** a lower interval $c_{T-1} = [-\infty, \underline{c}^T]$, where $m_T(c_{T-1}) = m$, and $E_{T^{a.m.}}[r_T]$ is strictly decreasing in c_{T-1} : for these values of c_{T-1} , intervention is already as high as possible, so that the rate expected for day T at intervention time rises as c_{T-1} falls from \underline{c}^T to $-\infty$; **ii)** an upper interval $c_{T-1} = [\bar{c}^T, \infty]$, where $m_T(c_{T-1}) = -m$, and $E_{T^{a.m.}}[r_T]$ is also strictly decreasing in c_{T-1} : intervention is already as low as possible, so that the rate expected for day T falls as c_{T-1} rises from \bar{c}^T to ∞ ; and **iii)** an intermediate interval $c_{T-1} = [\underline{c}^T, \bar{c}^T]$, where $m_T(c_{T-1}) = m^*(c_{T-1})$ is decreasing in c_{T-1} , and $E_{T^{a.m.}}[r_T] = r^*$: intervention equals the level needed keep $E_{T^{a.m.}}[r_T]$ fixed at r^* . (The time superscripts in \underline{c}^T and \bar{c}^T denote the dependence of \underline{c}^T and \bar{c}^T on

time, but not on the state variables: \underline{c}^T and \bar{c}^T are day-specific functions of parameters only.) Therefore, $E_{T^{a.m.}}[r_T \mid m_T(c_{T-1})]$ is everywhere non-increasing in c_{T-1} , and strictly decreasing over non-degenerate intervals. The same remark applies by replacing T everywhere with t .

Proof of Result 3: The proof is by recursion: We assume Result 3 to hold at $t + 1$, and show that it also holds at t . The recursion is completed by observing that, by Result 1, Result 3 holds at T .

To establish uniqueness we only need to observe that the quadratic equation (9) has a unique positive, increasing solution for r_t as a function of $E_t[r_{t+1}]$, and that $E_t[r_{t+1}]$ is unique by the uniqueness property of conditional expectations.

To establish the monotonicity of $r_t(\tilde{c}_t)$, then, we only need to establish that $E_t[r_{t+1}]$ is strictly decreasing in \tilde{c}_{t+1} . But this follows from $E_t[r_{t+1}] = E_t[E_{t+1^{a.m.}}[r_{t+1}]] = \int_{-\infty}^{\infty} E_{t+1^{a.m.}}[r_{t+1}(c_t + \varepsilon + m_t + \nu_t)]dF(\varepsilon)$, since $E_{t+1^{a.m.}}[r_{t+1}(c_t + \varepsilon + m_t + \nu_t)]$ is non-increasing in $c_t + \varepsilon + m_t + \nu_t$, it is strictly decreasing on a positive-probability range of $c_t + \varepsilon + m_t + \nu_t$ (see the Remark at the end of the previous proof), and $F(\varepsilon)$ is strictly increasing over $[-\infty, \infty]$. \square

Appendix C. Outline of the solution method

To solve our model numerically, we begin by defining grids for the state variables c_t and \tilde{c}_t , $t = 1, \dots, T$, and a discrete approximation for the normal distributions of ν_t and ε_t . We then start with the analytical solution for $r_T(\tilde{c}_T)$ in (6) to solve for $m_T(c_{T-1})$. To this end, for each node on the grid for c_{T-1} , we obtain $m_T(c_{T-1})$ by computing the expectation $E_{T^{a.m.}}[r_T(\tilde{c}_T)]$ in (7) over the possible realizations of ν_T , given the known values of $r_T(\tilde{c}_T)$. Whenever simulated realizations of ν_t (and, later, of ε_t), added to c_{T-1} , yield a value of \tilde{c}_T not on the grid's nodes (which happens with probability one), the appropriate value of $r_T(\tilde{c}_T)$ is linearly interpolated from the adjacent nodes.

Stepping back to day $T - 1$, we solve for $r_{T-1}(\tilde{c}_{T-1})$ for each node on the grid for \tilde{c}_{T-1} , by computing the expectation $E_{T-1}[r_T(\tilde{c}_T)]$ in (9) over the possible realizations of ε_{T-1} and

ν_T , given the known values of $r_T(\tilde{c}_T)$. To calculate $c_T = \tilde{c}_{T-1} + \varepsilon_{T-1} + m_T + \nu_T$ we also include, for each realization of $c_{T-1} = \tilde{c}_{T-1} + \varepsilon_{T-1}$, the value of $m_T(c_{T-1})$ obtained above.

We then step back to the morning of $T-1$ to solve for $m_{T-1}(c_{T-2})$, then to the afternoon of $T-2$ to solve for $r_{T-2}(\tilde{c}_{T-2})$, and so on, for $t = T-3, \dots, 2, 1$. This yields a complete family of solutions for the T vectors $r_1(\tilde{c}_1), \dots, r_T(\tilde{c}_T)$.

This solution can be used to compute volatility statistics by Montecarlo. In the examples discussed in the text, we simulated 50,000 reserve periods by drawing 50,000 sequences $\{\varepsilon_t\}$ and $\{\nu_t\}$, each including T i.i.d., normally-distributed values of ε_t and ν_t , and simulating the resulting sequences of $\{r_t(\tilde{c}_t)\}$. Importantly, since the solution method does not suffer from curse of dimensionality (the solution's time rises linearly with both T and the precision of the grids), the grids for c_t and \tilde{c}_t can be chosen — essentially — as fine as desired. (We chose grids for c_t and \tilde{c}_t mapping into grids for r_t with steps no larger than 1 basis point.)

Figure 1
Corridor and Overnight Market Rates

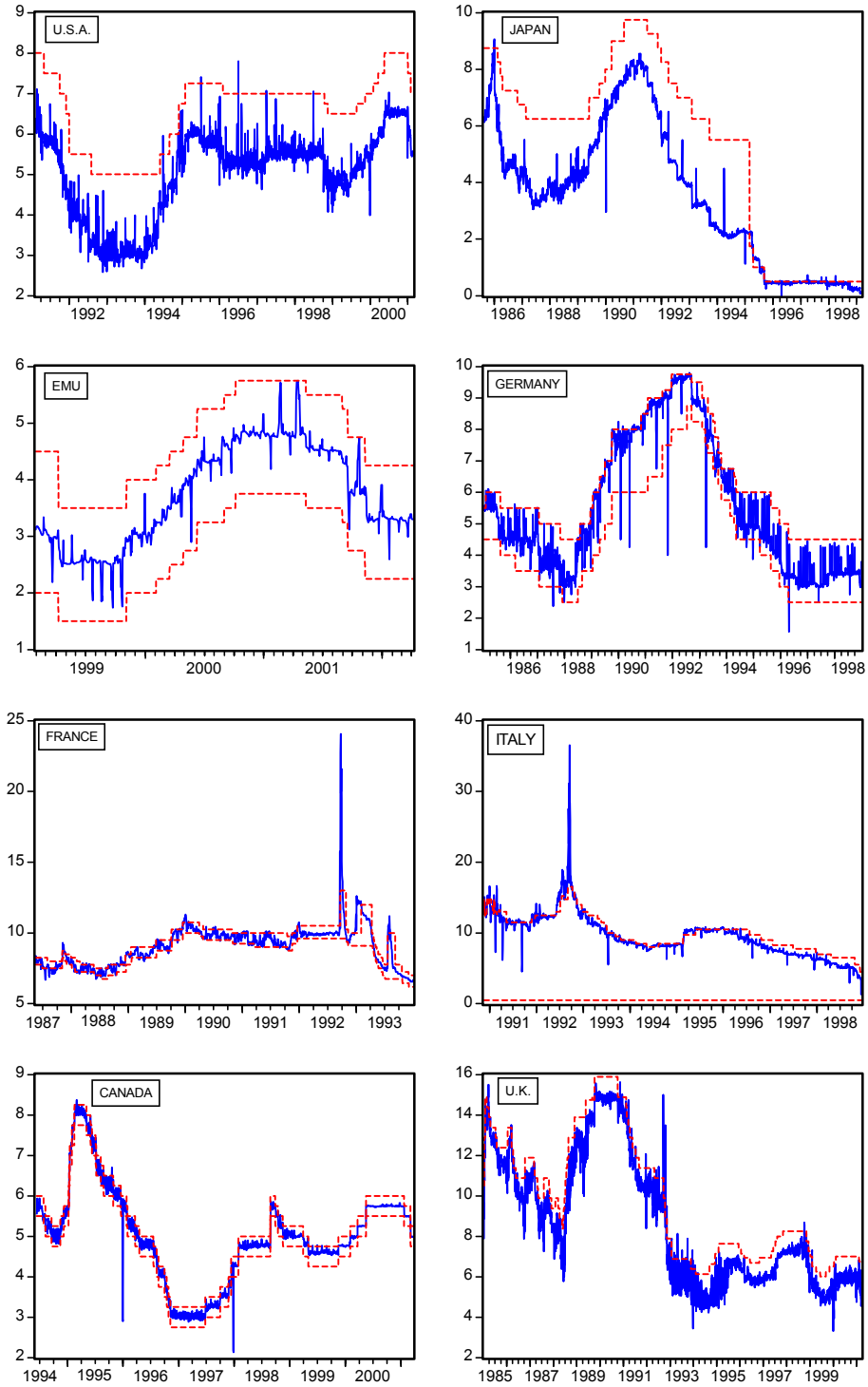


Figure 2
 Estimated standard deviation of overnight rates
 (ratio to standard deviation in the last day and 95 percent confidence band)

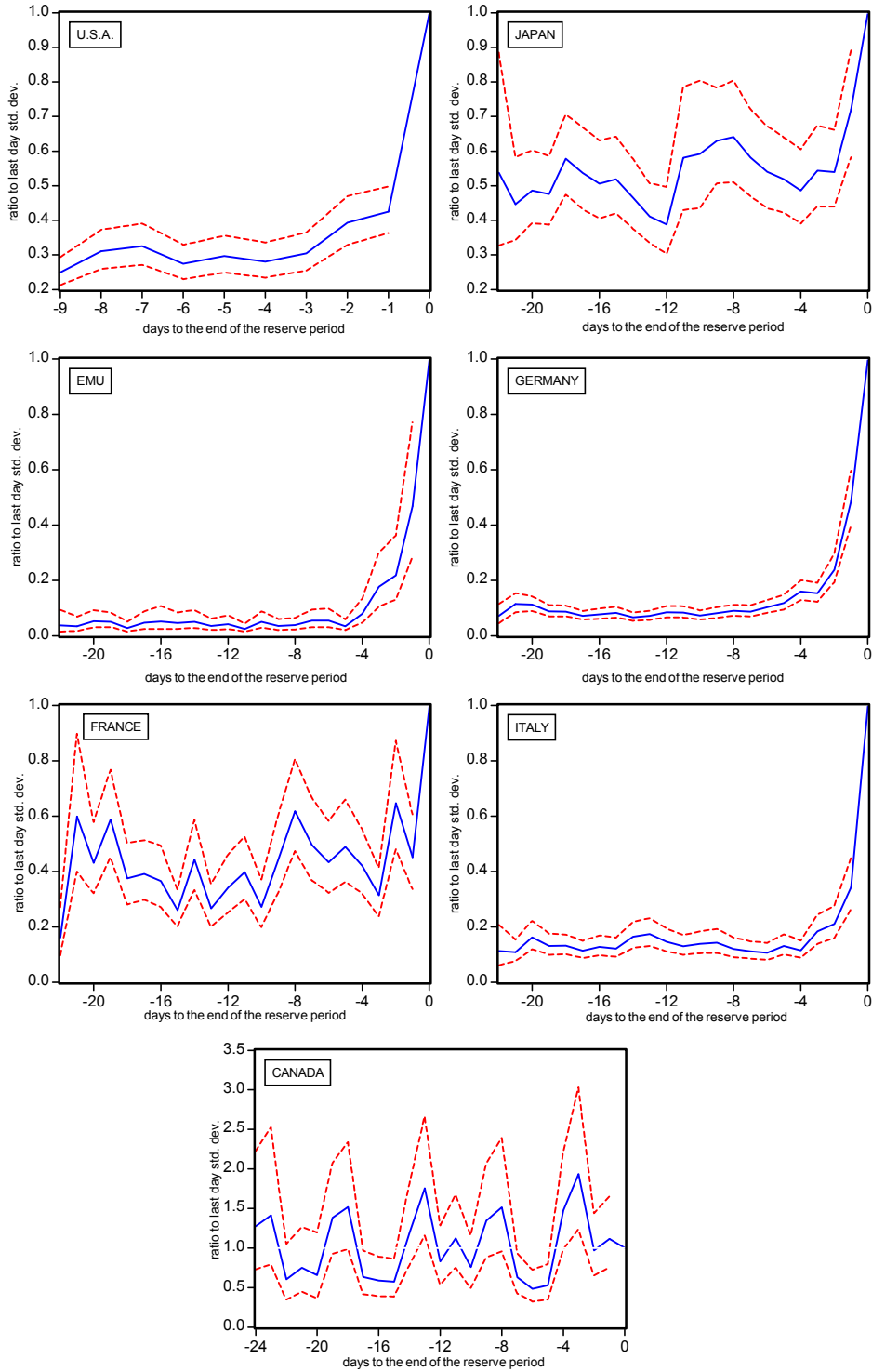


Figure 3

Overnight interest rate curves for different values of k

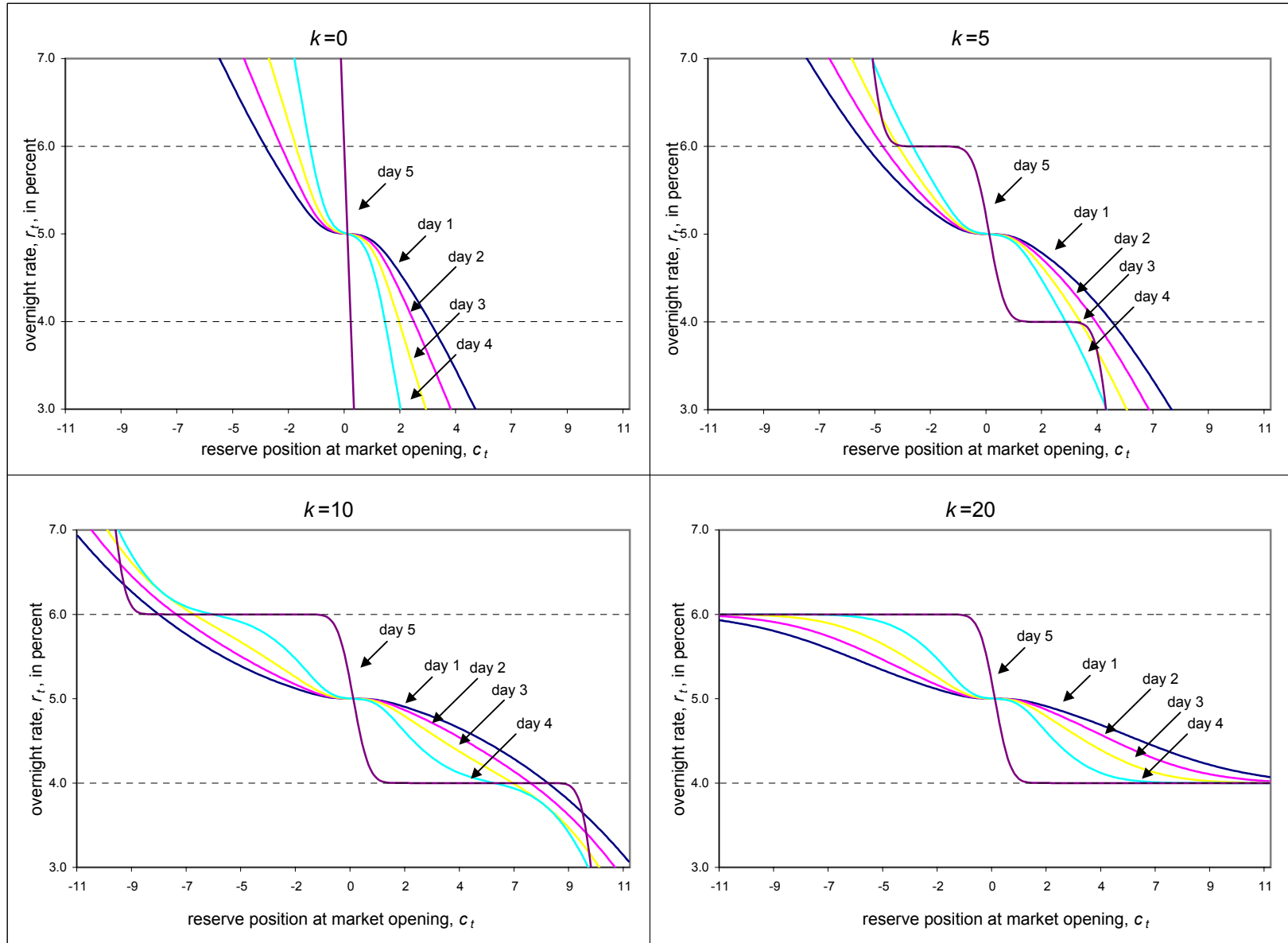


Figure 4

Conditional volatility of overnight rates over the reserve period

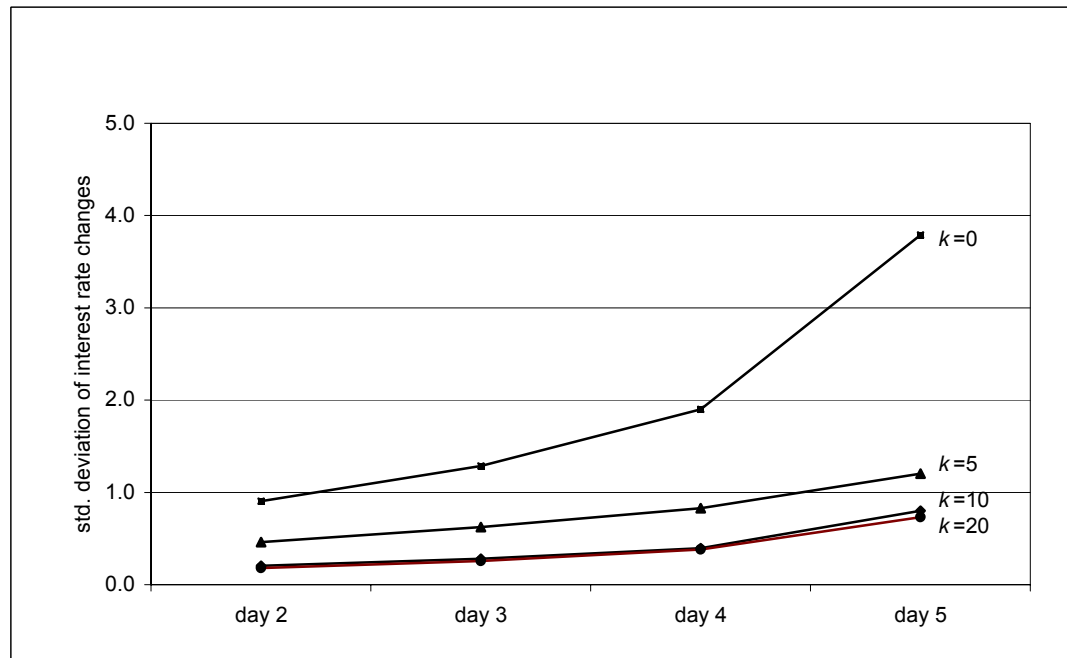


Figure 5

Conditional volatility of overnight rates over the corridor

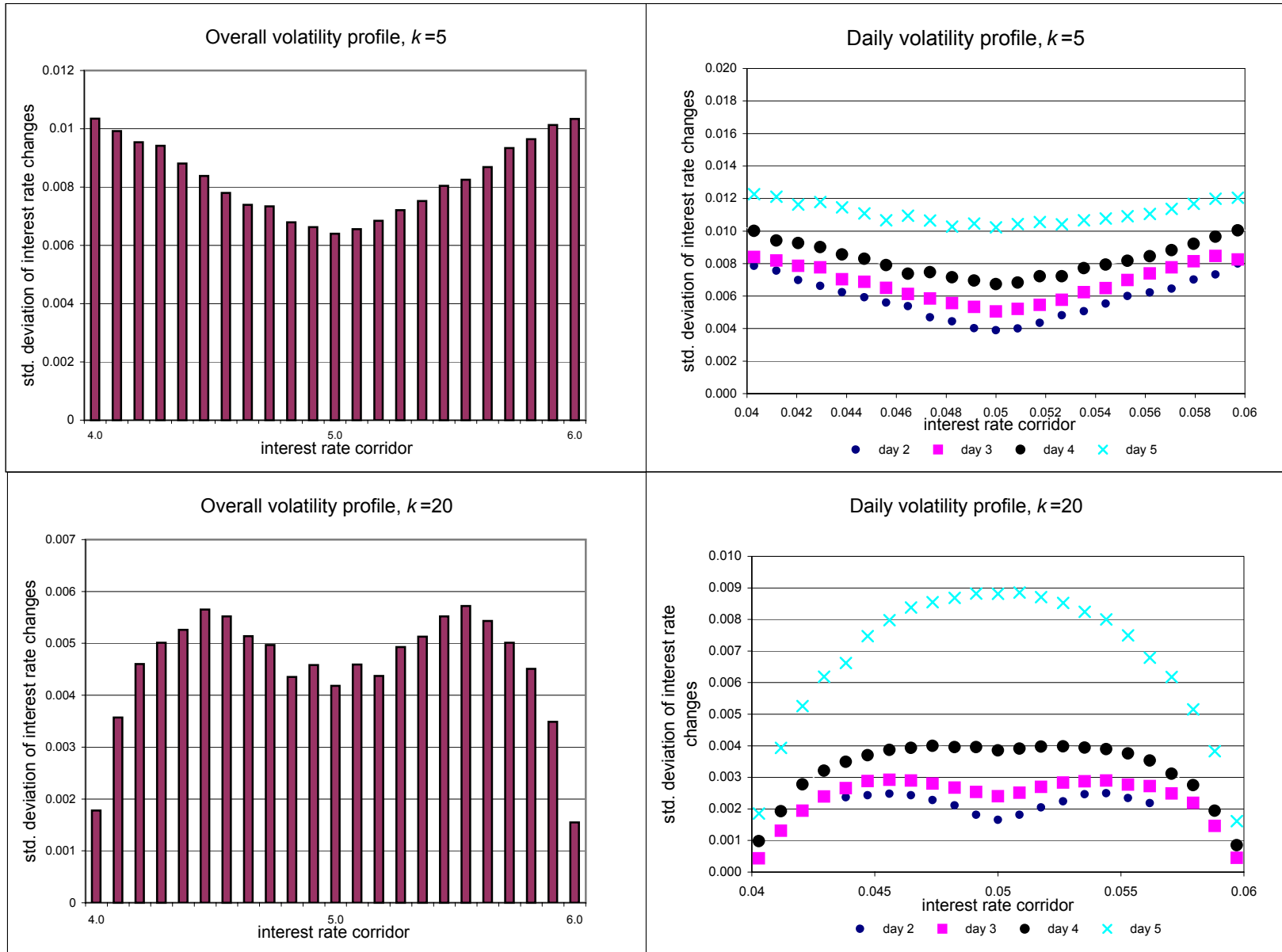


Table 1

Interest and Exchange Rate Corridor Effects on Volatility
(standard errors in parentheses; ** and * indicate significance at 5% and 10% level)

	United States	Japan	Euro Zone	Germany	France	Italy	Canada	United Kingdom
Position of exchange rate in its corridor (ERM divergence indicator), x_t				0.032 ** (0.008)	0.021 ** (0.005)	0.050 ** (0.015)		0.008 (0.006)
Position of overnight rate in its corridor, h_t	-4.581 ** (1.669)	-1.223 * (0.662)	-7.117 ** (3.307)	-0.534 ** (0.248)	0.095 ** (0.038)	2.049 ** (0.596)	0.402 ** (0.055)	3.529 ** (0.913)

Table A1

Reserve Period Effects on Volatility, ξ_{mt}

(ratio to standard deviation of last day of reserve period, standard errors in parentheses;

** and * indicate significance at 5% and 10% level of difference from 1)

	United States	Japan	Euro Zone	Germany	France	Italy	Canada
Days from end-period:							
0	1	1	1	1	1	1	1
1	0.425 ** (0.033)	0.720 ** (0.077)	0.468 ** (0.122)	0.486 ** (0.050)	0.451 ** (0.068)	0.343 ** (0.046)	1.116 (0.225)
2	0.393 ** (0.035)	0.539 ** (0.055)	0.218 ** (0.058)	0.238 ** (0.026)	0.647 ** (0.098)	0.210 ** (0.029)	0.969 (0.197)
3	0.305 ** (0.028)	0.544 ** (0.059)	0.177 ** (0.049)	0.153 ** (0.017)	0.313 ** (0.044)	0.183 ** (0.026)	1.937 ** (0.449)
4	0.280 ** (0.025)	0.486 ** (0.054)	0.079 ** (0.022)	0.160 ** (0.018)	0.420 ** (0.058)	0.115 ** (0.016)	1.476 (0.308)
5	0.297 ** (0.027)	0.519 ** (0.054)	0.034 ** (0.009)	0.118 ** (0.013)	0.489 ** (0.074)	0.131 ** (0.018)	0.528 ** (0.112)
6	0.275 ** (0.025)	0.540 ** (0.059)	0.054 ** (0.017)	0.103 ** (0.011)	0.433 ** (0.065)	0.106 ** (0.015)	0.482 ** (0.101)
7	0.325 ** (0.030)	0.582 ** (0.063)	0.054 ** (0.016)	0.086 ** (0.010)	0.495 ** (0.075)	0.111 ** (0.016)	0.630 ** (0.128)
8	0.310 ** (0.028)	0.641 ** (0.073)	0.038 ** (0.010)	0.089 ** (0.010)	0.618 ** (0.083)	0.120 ** (0.018)	1.513 (0.359)
9	0.249 ** (0.020)	0.629 ** (0.069)	0.035 ** (0.010)	0.081 ** (0.010)	0.443 ** (0.070)	0.142 ** (0.022)	1.347 (0.297)
10		0.591 ** (0.092)	0.050 ** (0.015)	0.072 ** (0.008)	0.271 ** (0.043)	0.138 ** (0.020)	0.757 (0.166)
11		0.581 ** (0.089)	0.025 ** (0.007)	0.083 ** (0.010)	0.397 ** (0.056)	0.129 ** (0.018)	1.124 (0.231)
12		0.388 ** (0.048)	0.042 ** (0.013)	0.084 ** (0.010)	0.341 ** (0.052)	0.146 ** (0.021)	0.829 (0.188)
13		0.411 ** (0.043)	0.035 ** (0.010)	0.071 ** (0.008)	0.267 ** (0.039)	0.173 ** (0.025)	1.757 ** (0.377)
14		0.465 ** (0.051)	0.050 ** (0.016)	0.067 ** (0.008)	0.442 ** (0.063)	0.164 ** (0.023)	1.193 (0.257)
15		0.519 ** (0.056)	0.045 ** (0.015)	0.082 ** (0.010)	0.259 ** (0.033)	0.121 ** (0.017)	0.575 ** (0.118)
16		0.505 ** (0.056)	0.051 ** (0.021)	0.077 ** (0.009)	0.365 ** (0.056)	0.127 ** (0.018)	0.588 ** (0.125)
17		0.537 ** (0.059)	0.046 ** (0.016)	0.071 ** (0.008)	0.390 ** (0.054)	0.113 ** (0.016)	0.635 ** (0.137)
18		0.578 ** (0.058)	0.027 ** (0.009)	0.086 ** (0.010)	0.375 ** (0.056)	0.132 ** (0.018)	1.519 (0.338)
19		0.476 ** (0.049)	0.050 ** (0.013)	0.087 ** (0.010)	0.588 ** (0.079)	0.131 ** (0.019)	1.385 (0.288)
20		0.486 ** (0.053)	0.052 ** (0.016)	0.112 ** (0.013)	0.431 ** (0.064)	0.162 ** (0.025)	0.657 * (0.208)
21		0.447 ** (0.060)	0.033 ** (0.013)	0.114 ** (0.017)	0.598 ** (0.125)	0.108 ** (0.019)	0.750 (0.204)
22		0.538 ** (0.140)	0.037 ** (0.019)	0.071 ** (0.018)	0.161 ** (0.044)	0.112 ** (0.037)	0.604 * (0.177)
23							1.413 (0.434)
24							1.274 (0.373)

Table A2

Reserve Period Effects on Mean, δ_{mt}

(mean difference from first day of the reserve period; standard errors in parentheses;
****** and ***** indicate significance at 5% and 10% level)

	United States	Japan	Euro Zone	Germany	France	Italy	Canada
Days from end-period:							
0	-1.255 (2.080)	-3.132 ** (1.356)	-8.326 * (4.419)	8.522 * (4.622)	-7.082 (7.126)	-8.623 (6.323)	-6.839 (5.008)
1	-10.617 ** (1.483)	-3.342 ** (1.290)	-10.556 ** (2.690)	-5.519 ** (2.161)	-6.394 (6.184)	-6.172 (3.884)	-7.479 (4.949)
2	-2.863 ** (1.323)	-2.856 ** (1.259)	-4.085 ** (1.990)	-9.744 ** (1.531)	-7.227 (6.048)	-7.685 ** (3.470)	-6.412 (4.881)
3	-12.102 ** (1.161)	-3.127 ** (1.231)	-3.410 * (1.726)	-10.450 ** (1.362)	-6.961 (5.773)	-7.692 ** (3.294)	-9.546 * (4.814)
4	-7.076 ** (1.044)	-3.371 ** (1.207)	-2.699 * (1.522)	-10.218 ** (1.292)	-8.892 (5.710)	-8.930 ** (3.177)	2.521 (4.563)
5	-9.298 ** (0.941)	-3.139 ** (1.194)	-2.703 * (1.505)	-9.508 ** (1.197)	-8.410 (5.592)	-8.068 ** (3.097)	-9.636 ** (4.439)
6	-7.004 ** (0.827)	-3.184 ** (1.174)	-2.614 * (1.499)	-9.161 ** (1.157)	-3.624 (5.409)	-8.075 ** (3.012)	-9.168 ** (4.425)
7	-1.186 * (0.694)	-2.957 ** (1.157)	-2.240 (1.493)	-8.744 ** (1.121)	1.033 (5.301)	-7.094 ** (2.961)	-9.022 ** (4.411)
8	-8.171 ** (0.443)	-2.231 * (1.130)	-2.157 (1.459)	-8.244 ** (1.096)	2.285 (5.115)	-8.266 ** (2.908)	-11.034 ** (4.388)
9	0	-1.827 * (1.102)	-2.187 (1.448)	-7.537 ** (1.061)	1.897 (4.710)	-10.549 ** (2.850)	2.002 (4.220)
10		-1.335 (1.071)	-2.178 (1.441)	-6.770 ** (1.038)	3.082 (4.528)	-8.328 ** (2.764)	-8.670 ** (4.113)
11		0.218 (0.942)	-1.976 (1.432)	-6.230 ** (1.019)	5.307 (4.428)	-7.476 ** (2.639)	-5.468 (4.066)
12		1.330 * (0.715)	-1.940 (1.416)	-5.951 ** (0.993)	5.986 (4.269)	-6.782 ** (2.560)	-3.670 (3.918)
13		1.623 ** (0.667)	-1.444 (1.408)	-5.269 ** (0.962)	7.933 * (4.153)	-5.274 ** (2.451)	-5.428 (3.811)
14		1.709 ** (0.649)	-0.839 (1.406)	-5.047 ** (0.940)	7.117 * (4.066)	-7.502 ** (2.278)	3.366 (3.417)
15		1.665 ** (0.623)	-0.036 (1.372)	-4.713 ** (0.924)	3.639 (3.850)	-8.006 ** (2.049)	-9.065 ** (3.254)
16		1.330 ** (0.594)	0.666 (1.314)	-4.566 ** (0.895)	-1.624 (3.775)	-7.543 ** (1.950)	-10.029 ** (3.215)
17		0.638 (0.550)	1.395 (0.876)	-4.344 ** (0.867)	-4.646 (3.651)	-7.416 ** (1.827)	-10.694 ** (3.169)
18		0.741 (0.506)	1.389 * (0.658)	-3.796 ** (0.840)	-1.983 (3.496)	-6.292 ** (1.721)	-13.736 ** (3.128)
19		0.281 (0.433)	1.201 * (0.633)	-2.922 ** (0.806)	0.223 (3.347)	-4.833 ** (1.607)	-1.831 (2.920)
20		0.320 (0.375)	0.916 (0.610)	-1.484 * (0.753)	0.041 (2.908)	-3.897 ** (1.456)	-10.804 ** (2.733)
21		-0.122 (0.289)	0.543 (0.358)	-0.176 (0.609)	-0.806 (2.542)	-3.388 ** (1.060)	-11.174 ** (2.568)
22		0	0	0	0	0	-11.176 ** (2.292)
23							-12.764 ** (2.084)
24							0

Table A3

Calendar Effects on Mean, δ_{ct} , and Previous Period's Effects on First Day's Mean
(standard errors in parentheses; ** and * indicate significance at 5% and 10% level)

	United States	Japan	Euro Zone	Germany	France	Italy	Canada	United Kingdom
Monday		0		0		0		0
Tuesday ¹		0.049 (0.111)		0.376 ** (0.116)		-0.440 (0.331)		-0.910 (1.172)
Wednesday ¹		0.225 * (0.131)		-0.346 ** (0.144)		-1.386 ** (0.401)		-1.197 (1.071)
Thursday ¹		0.219 * (0.126)		-1.323 ** (0.149)		-1.162 ** (0.402)		0.946 (0.894)
Friday ¹		-0.501 ** (0.105)		-1.237 ** (0.133)		-0.383 (0.337)		-3.187 ** (0.634)
Day before end of months 1,2,4,5,7,8,10,11	0.023 ** (0.007)	0.010 ** (0.003)						
End of months 1,2,4,5,7,8,10,11	0.119 ** (0.008)	0.027 ** (0.005)	0.051 ** (0.007)				0.014 ** (0.003)	0.061 ** (0.013)
Day after end of months 1,2,4,5,7,8,10,11	-0.027 ** (0.009)		-0.035 ** (0.006)					-0.029 * (0.016)
Day before end of quarter								
End of quarter	0.280 ** (0.039)	0.067 ** (0.019)	0.069 ** (0.016)	0.145 ** (0.073)		0.030 ** (0.015)	0.019 ** (0.006)	0.153 ** (0.024)
Day after end of quarter	-0.176 ** (0.042)	-0.060 ** (0.016)	-0.076 ** (0.015)	0.039 * (0.023)				-0.102 ** (0.023)
Day before end of year								
End of year	-0.572 ** (0.067)		0.279 ** (0.056)	0.354 ** (0.149)	0.125 ** (0.005)	0.225 ** (0.077)		0.120 ** (0.053)
Day after end of year	0.830 ** (0.095)		-0.325 ** (0.053)	0.158 ** (0.034)	-0.188 ** (0.007)	-0.246 ** (0.105)		
Day before 1-day holiday								
Day after 1-day holiday	0.063 ** (0.027)					-0.061 ** (0.019)		
Day before 3-day holiday	-0.032 ** (0.010)	-0.009 ** (0.004)						-0.198 ** (0.037)
Day after 3-day holiday	0.244 ** (0.013)	0.006 ** (0.004)		0.030 ** (0.013)				0.167 ** (0.031)
Day before 4-day holiday								-0.120 ** (0.048)
Day after 4-day holiday				0.029 ** (0.009)	-0.113 ** (0.023)			0.125 ** (0.055)
Effect on first day of the period of difference from target rate in previous day, M	-0.796 ** (0.019)		-1.013 ** (0.022)				-0.583 ** (0.174)	
Effects on first day of the period of change in previous period's:								
last day, ² ϕ_1	-0.054 ** (0.022)	-0.847 ** (0.059)		-0.958 ** (0.018)	-0.347 ** (0.088)	-0.927 ** (0.030)		
day before last, ϕ_2		-0.708 ** (0.082)		-0.980 ** (0.041)		-0.791 ** (0.073)		
second day before last, ϕ_3		-0.560 ** (0.088)		-0.629 ** (0.053)		-0.588 ** (0.113)		
third day before last, ϕ_4				-0.786 ** (0.092)		-0.716 ** (0.109)		
fourth day before last, ϕ_5				-0.611 ** (0.079)				

¹ Mean difference from Monday (basis points).

² For France, coefficient estimated from pre-May 1992 data.

Table A4

Calendar Effects on Variance, ξ_{ct} , and EGARCH Parameters
(standard errors in parentheses; ** and * indicate significance at 5% and 10% level)

	United States	Japan	Euro Zone	Germany	France	Italy	Canada	United Kingdom
Monday		1	1	1	1		1	1
Tuesday ²		0.869 ** (0.046)	1.239 ** (0.131)	0.935 (0.049)	1.066 (0.079)		1.053 (0.118)	0.792 ** (0.032)
Wednesday ²		0.888 ** (0.049)	1.527 ** (0.168)	1.165 ** (0.062)	0.969 (0.070)		1.195 (0.139)	0.905 ** (0.039)
Thursday ²		0.886 ** (0.046)	1.273 ** (0.139)	1.037 (0.058)	0.908 (0.066)		1.305 ** (0.147)	1.024 (0.045)
Friday ²		0.942 (0.050)	1.251 ** (0.130)	1.160 ** (0.063)	1.113 (0.078)		1.316 ** (0.157)	0.992 (0.043)
End of months 1,2,4,5,7,8,10,11, or the previous and following days		0.391 * (0.219)	2.063 ** (0.430)				0.494 ** (0.172)	
End of quarter, or the previous and following days	2.138 ** (0.202)	2.928 ** (0.265)	3.154 ** (0.538)	0.438 ** (0.222)	1.015 ** (0.248)		1.032 ** (0.269)	
End of year, or the previous and following days	2.009 ** (0.396)	1.609 ** (0.244)	2.390 ** (0.726)		0.829 * (0.470)	1.982 ** (0.436)		
Day before 1-day holiday	1.252 ** (0.361)							
Day after 1-day holiday	1.259 ** (0.351)							
Day before 3-day holiday	0.420 * (0.262)			0.971 ** (0.344)				0.889 ** (0.297)
Day after 3-day holiday	0.812 ** (0.236)			1.212 ** (0.376)				0.862 ** (0.250)
Day before 4-day holiday				0.980 * (0.537)				0.668 ** (0.326)
Day after 4-day holiday								0.909 ** (0.389)
Post-May 1992 period					-8.067 ** (0.278)			
First day of the maintenance period, ψ_1		0.809 ** (0.230)	3.643 ** (0.485)	2.584 ** (0.252)	1.208 ** (0.326)	1.218 ** (0.294)		
EGARCH parameters:								
λ	0.429 ** (0.047)	0.966 ** (0.005)	0.778 ** (0.033)	0.895 ** (0.011)	0.980 ** (0.001)	0.937 ** (0.010)	0.971 ** (0.007)	1.329 ** (0.093)
α	0.957 ** (0.119)	0.474 ** (0.035)	1.642 ** (0.440)	0.673 ** (0.101)	0.169 ** (0.017)	0.706 ** (0.078)	0.205 ** (0.030)	0.604 ** (0.041)
θ	0.456 ** (0.075)	0.032 (0.024)	0.121 (0.105)	-0.030 (0.032)	0.171 ** (0.018)	-0.102 ** (0.042)	0.181 ** (0.029)	-0.103 ** (0.039)
$\lambda(2)$								-0.335 ** (0.092)
$\alpha(2)$								-0.456 ** (0.044)
$\theta(2)$								0.070 * (0.035)
Degrees of freedom of t -distribution	2.623 ** (0.188)	2.848 ** (0.155)	2.332 * (0.221)	2.279 ** (0.094)	2.130 ** (0.028)	2.641 ** (0.171)	3.798 ** (0.325)	4.263 ** (0.270)

² Ratio to standard deviation of Monday, with ** and * indicating significance at 5% and 10% level of difference from 1.

Table A5**Effects of Changes in Official Rates**

(standard errors in parentheses; ** and * indicate significance at 5% and 10% level)

	United States	Japan	Euro Zone	Germany	France	Italy	Canada	United Kingdom
Effects on mean, (:								
day t change when target is changed by 1 on the same day	0.438 ** (0.044)	0.871 ** (0.227)	0.306 ** (0.067)	0.062 ** (0.019)			0.842 ** (0.028)	0.552 ** (0.067)
day t change when ceiling is changed by 1 on the same day				0.215 ** (0.037)	0.048 ** (0.007)	0.252 ** (0.087)	0.106 ** (0.022)	
day t change when floor is changed by 1 on the same day		0.729 ** (0.066)				0.167 * (0.096)		
Effects on variance, T :								
t is the day of a target change		2.501 ** (1.122)	1.334 ** (0.659)				0.767 ** (0.179)	0.841 ** (0.182)
t is the day of a ceiling change	1.213 ** (0.401)			1.373 ** (0.351)	1.814 ** (0.179)	0.733 ** (0.243)		
t is the day of a floor change		2.672 ** (0.493)						

References

- Allen, Linda, and Anthony Saunders (1986), "The Large-Small Bank Dichotomy in the Federal Funds Market," *Journal of Banking and Finance* 10, 219-230.
- Andersen, Torben G., and Jesper Lund (1997), "Estimating Continuous-Time Stochastic Volatility Models of the Short-term Interest Rate," *Journal of Econometrics* 77, 343-377.
- Angeloni, Ignazio, and Elena Bisagni (2002), "Liquidity Effects in the Euro Area," manuscript, European Central Bank, and University of California, San Diego.
- Balduzzi, Pierluigi, Giuseppe Bertola, and Silverio Foresi (1997), "A Model of Target Changes and the Term Structure of Interest Rates," *Journal of Monetary Economics* 39, 223-49.
- Balduzzi, Pierluigi, Giuseppe Bertola, Silverio Foresi, and Leora Klapper (1998), "Interest Rate Targeting and the Dynamics of Short-term Rates," *Journal of Money, Credit, and Banking* 30, 26-50.
- Ball, Clifford A., and Walter N. Torous (1999), "The Stochastic Volatility of Short-Term Interest Rates: Some International Evidence," *Journal of Finance* 54, 2339-2359.
- Bank for International Settlements (1997), *Implementation and Tactics of Monetary Policy*, BIS Conference Papers Vol. 3, Basle.
- Bartolini, Leonardo, Giuseppe Bertola, and Alessandro Prati (2002), "Day-to-Day Monetary Policy and the Volatility of the Federal Funds Rate," *Journal of Money, Credit, and Banking* 34, 137-159.
- Brenner, Robin J., Richard H. Harjes, and Kenneth F. Kroner (1996), "Another Look at Models of the Short-Term Interest Rate," *Journal of Financial and Quantitative Analysis* 31, 85-107.
- Campbell, John Y. (1987), "Money Announcements, the Demand for Bank Reserves, and the Behavior of the Federal Funds Rate within the Statement Week," *Journal of Money, Credit, and Banking* 19, 56-67.

- Chan, K. C., G. Andrew Karolyi, Francis Longstaff, and Anthony Sanders (1992), "The Volatility of Short-Term Interest Rates: An Empirical Comparison of Alternative Models of the Term Structure of Interest Rates," *Journal of Finance* 47, 1209-1227.
- Clouse, James A., and James P. Dow, Jr. (1999), "Fixed Costs and the Behavior of the Federal Funds Rate," *Journal of Banking and Finance* 23, 1015-29.
- Clouse, James A., and James P. Dow, Jr. (2002), "A Computational Model of Banks' Optimal Reserve Management Policy," *Journal of Economic Dynamics and Control* 26, 1787-1814.
- Drazen, Allan (2001), "Interest Rate Defense Against Speculative Attack: A Primer," University of Maryland, manuscript.
- El-Jahel, Lina, Hans Lindberg, and William Perraudin (1997), "Interest Rate Distributions, Yield Curve Modelling and Monetary Policy," in *Mathematics of Derivatives Securities*, M.A.H. Dempster and Stanley R. Pliska (eds.), 423-453, Cambridge University Press.
- Farnsworth, Heber, and Richard Bass (2002), "The Term-Structure with Semi-Credibile Targeting," *Journal of Finance*, forthcoming.
- Furfine, Craig H. (2000), "Interbank Payments and the Daily Federal Funds Rate," *Journal of Monetary Economics* 46, 535-53.
- Griffiths, Mark D., and Drew B. Winters (1995), "Day-of-the-Week Effects in Federal Funds Rates: Further Empirical Findings," *Journal of Banking and Finance* 19, 1265-1284.
- Hamilton, James D. (1996), "The Daily Market for Fed Funds," *Journal of Political Economy*, 26-56.
- Hamilton, James D. (1997), "Measuring the Liquidity Effect," *American Economic Review* 87, 80-97.
- Harvey, Campbell R., and Roger D. Huang (2001), "The Impact of the Federal Reserve Bank's Open Market Operations," working paper, Duke University.
- Hayashi, Fumio (2001), "Identifying a Liquidity Effect in the Japanese Interbank Market," *International Economic Review* 42, 287-315.

- Ho, Thomas S.Y., and Anthony Saunders (1985), "A Micro Model of the Federal Funds Market," *Journal of Finance* 40, 977-988.
- Nautz, Dieter (1998), "Banks' Demand for Reserves When Future Monetary Policy is Uncertain," *Journal of Monetary Economics* 42, 161-183.
- Pérez Quirós, Gabriel, and Hugo Rodríguez Mendizábal (2000), "The Daily Market for Funds in Europe," Universitat Pompeu Fabra, manuscript.
- Peristiani, Stavros (1998), "The Growing Reluctance to Borrow at the Discount Window: An Empirical Investigation," *Review of Economics and Statistics* 80, 611-620.
- Piazzesi, Monika (2001), "An Econometric Model of the Yield Curve with Macroeconomic Jump Effects," NBER Working Paper No. 8246.
- Prati, Alessandro, Leonardo Bartolini, and Giuseppe Bertola (2002), "The Overnight Interbank Market: Evidence from the G-7 and the Euro Zone," *Journal of Banking and Finance*, forthcoming.
- Spindt, Paul A., and Ronald J. Hoffmeister (1988), "The Micromechanics of the Federal Funds Market: Implications for Day-of-the-Week Effects in Funds Rate Variability," *Journal of Financial and Quantitative Analysis* 23:4, 401-416.
- Valimaki, Tuomas (2003), "Fixed Rate Tenders and the Overnight Money Market Equilibrium," in *Central Bank Tenders: Three Essays on Money Market Liquidity Auctions*, Helsinki School of Economics and Bank of Finland.