

Gerdtham, Ulf-G.; Zethraeus, Niklas

**Working Paper**

## Predicting survival in cost-effectiveness analyses based on clinical trials

SSE/EFI Working Paper Series in Economics and Finance, No. 442

**Provided in Cooperation with:**

EFI - The Economic Research Institute, Stockholm School of Economics

*Suggested Citation:* Gerdtham, Ulf-G.; Zethraeus, Niklas (2001) : Predicting survival in cost-effectiveness analyses based on clinical trials, SSE/EFI Working Paper Series in Economics and Finance, No. 442, Stockholm School of Economics, The Economic Research Institute (EFI), Stockholm

This Version is available at:

<https://hdl.handle.net/10419/56219>

**Standard-Nutzungsbedingungen:**

Die Dokumente auf EconStor dürfen zu eigenen wissenschaftlichen Zwecken und zum Privatgebrauch gespeichert und kopiert werden.

Sie dürfen die Dokumente nicht für öffentliche oder kommerzielle Zwecke vervielfältigen, öffentlich ausstellen, öffentlich zugänglich machen, vertreiben oder anderweitig nutzen.

Sofern die Verfasser die Dokumente unter Open-Content-Lizenzen (insbesondere CC-Lizenzen) zur Verfügung gestellt haben sollten, gelten abweichend von diesen Nutzungsbedingungen die in der dort genannten Lizenz gewährten Nutzungsrechte.

**Terms of use:**

*Documents in EconStor may be saved and copied for your personal and scholarly purposes.*

*You are not to copy documents for public or commercial purposes, to exhibit the documents publicly, to make them publicly available on the internet, or to distribute or otherwise use the documents in public.*

*If the documents have been made available under an Open Content Licence (especially Creative Commons Licences), you may exercise further usage rights as specified in the indicated licence.*

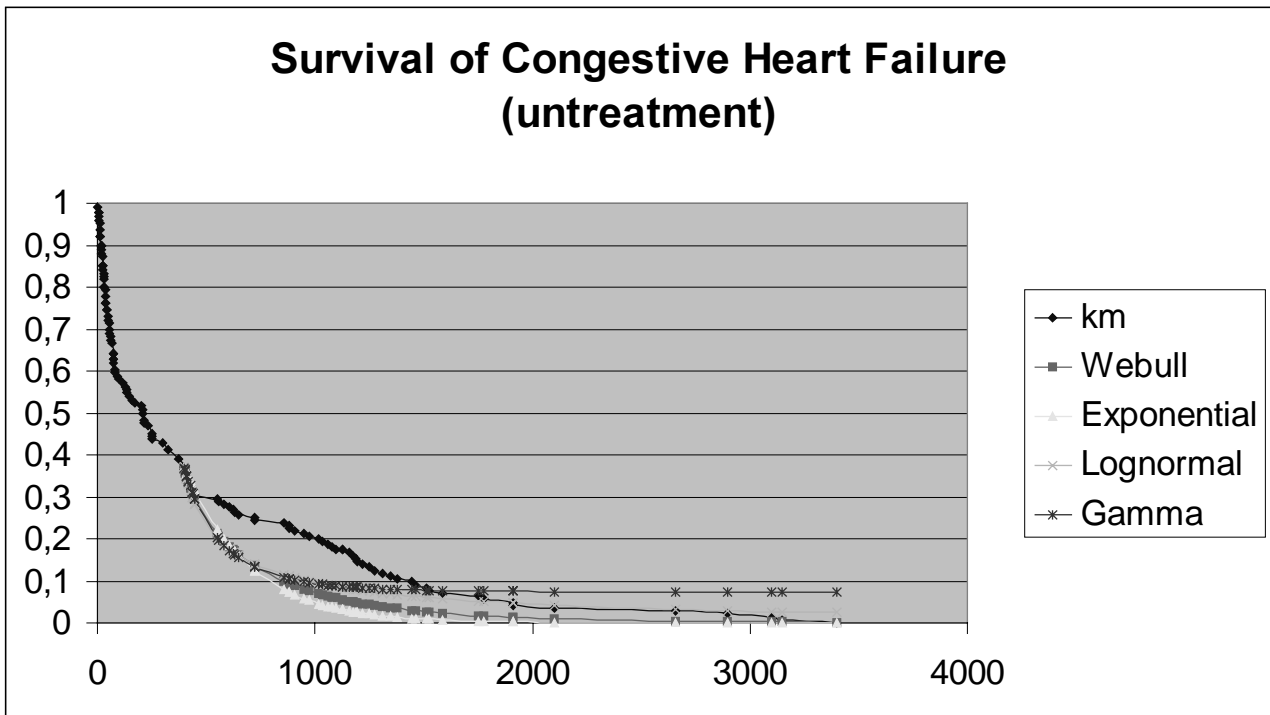
**Table 1.** Mean survival time (days) and costs within the clinical trial and total actual and modelled mean survival respectively.

	Undiscounted				Discounted			
	Standard	Enalapril	Diff.	ICER	Standard	Enalapril	Diff.	ICER
<b>Costs (SEK)</b>	21 361	34 711	13 350		21 361	34 711	13 350	
<b>Health effects</b>								
<i>True survival:</i>								
Within trial	159.37	215.32	55.95		159.37	215.323	55.950	
Total follow up	515.53	785.95	270.42	18 019	502.26	767.280	265.01	18 387
<i>Modelled</i>								
<i>Survival:</i>								
Gamma	927.84	1227.50	299.65	16 261	865.87	1145.88	280.01	17 402
Lognormal	902.74	1194.44	291.69	16 705	844.03	1117.11	273.07	17 844
Weibull	574.23	761.75	187.51	25 985	555.63	737.25	181.61	26 830
Exponential	410.64	546.27	135.63	35 925	405.11	539.00	133.88	36 395

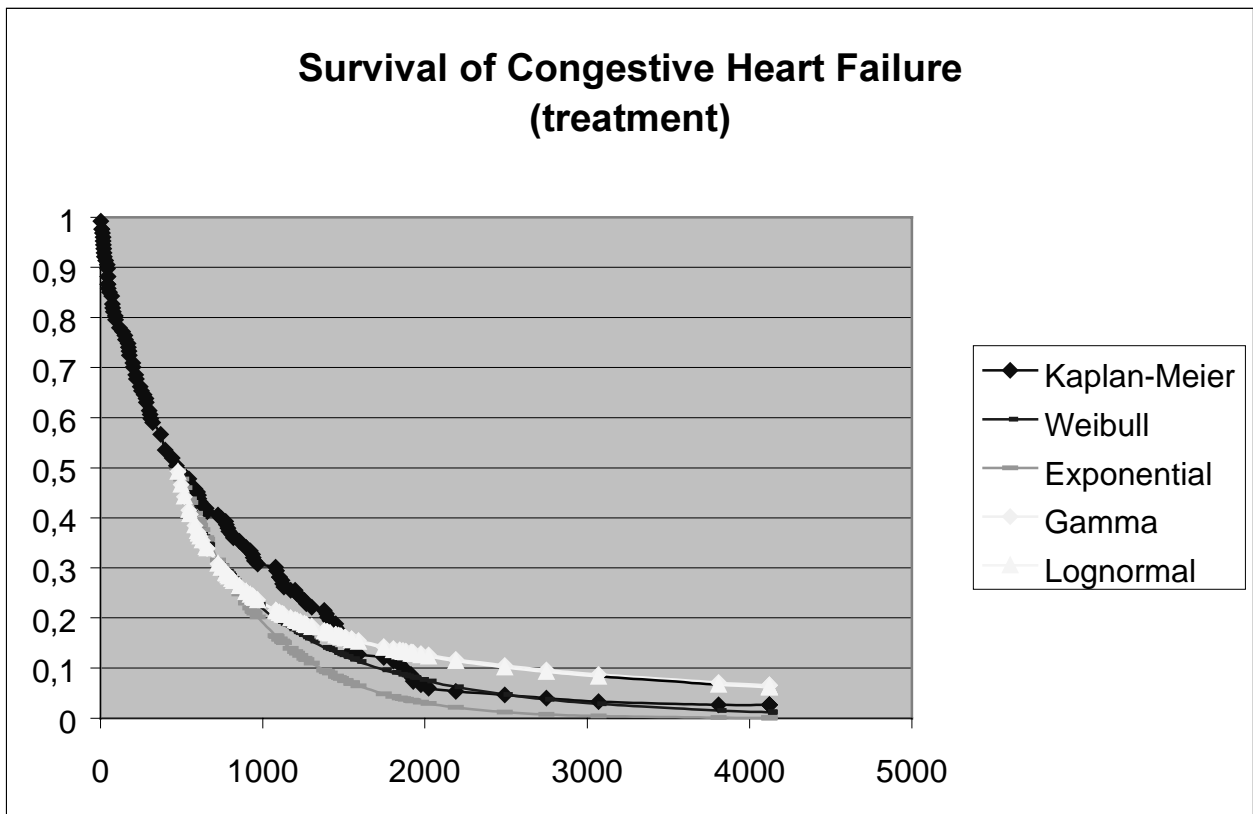
**Table 2.** Upper 95% confidence limit for the ICER based on non-parametric bootstrapping and the Fieller's method (within parenthesis).

	Upper 95% confidence limit	Mean value of the ICER
True	64 881 (61 413)	18 019
Modelled (true)	47 081 (47 561)	18 019
Gamma	54 555 (59 263)	16 261
Lognormal	58 461 (60 643)	16 705
Weibull	90 720 (87 965)	25 985
Exponential	118 284 (115 255)	35 925

**Figure 1a.** Actual survival (kaplan meier) compared with modelled survival for the placebo group.



**Figure 1b.** Actual survival (kaplan meier) compared with modelled survival for the treatment group.



**Figure 2.** Cost-effectiveness acceptability curves for the actual data, and the different modelling alternatives.

