

Tol, Richard S. J.

Working Paper

Shapley values for assessing research production and impact of schools and scholars

ESRI Working Paper, No. 370

Provided in Cooperation with:

The Economic and Social Research Institute (ESRI), Dublin

Suggested Citation: Tol, Richard S. J. (2011) : Shapley values for assessing research production and impact of schools and scholars, ESRI Working Paper, No. 370, The Economic and Social Research Institute (ESRI), Dublin

This Version is available at:

<https://hdl.handle.net/10419/50059>

Standard-Nutzungsbedingungen:

Die Dokumente auf EconStor dürfen zu eigenen wissenschaftlichen Zwecken und zum Privatgebrauch gespeichert und kopiert werden.

Sie dürfen die Dokumente nicht für öffentliche oder kommerzielle Zwecke vervielfältigen, öffentlich ausstellen, öffentlich zugänglich machen, vertreiben oder anderweitig nutzen.

Sofern die Verfasser die Dokumente unter Open-Content-Lizenzen (insbesondere CC-Lizenzen) zur Verfügung gestellt haben sollten, gelten abweichend von diesen Nutzungsbedingungen die in der dort genannten Lizenz gewährten Nutzungsrechte.

Terms of use:

Documents in EconStor may be saved and copied for your personal and scholarly purposes.

You are not to copy documents for public or commercial purposes, to exhibit the documents publicly, to make them publicly available on the internet, or to distribute or otherwise use the documents in public.

If the documents have been made available under an Open Content Licence (especially Creative Commons Licences), you may exercise further usage rights as specified in the indicated licence.

Shapley Values for Assessing Research Production and Impact of Schools and Scholars

Richard S.J. Tol^{a,b,c,d}

Abstract: Performance measures of individual scholars tend to ignore the context. I introduce contextualised metrics: cardinal and ordinal pseudo-Shapley values that measure a scholar's contribution to (perhaps power over) her own school and her market value to other schools should she change job. I illustrate the proposed measures with business scholars and business schools in Ireland. Although conceptually superior, the power indicators imply a ranking of scholars within a school that is identical to the corresponding conventional performance measures. The market value indicators imply an identical ranking within schools and a very similar ranking between schools. The ordinal indices further contextualise performance measures and thus deviate further from the corresponding conventional indicators. As the ordinal measures are discontinuous by construction, a natural classification of scholars emerges. Averaged over schools, the market values offer little extra information over the corresponding production and impact measures. The ordinal power measure indicates the robustness or fragility of an institution's place in the rank order. It is only weakly correlated with the concentration of publications and citations.

Key words: Rankings, individuals, departments

Corresponding Author: Richard.Tol@esri.ie

Acknowledgements: I am grateful to all who helped improve the database by checking their entries. I had useful discussions on this subject with Frances Ruane.

^a Economic and Social Research Institute, Dublin, Ireland

^b Institute for Environmental Studies, Vrije Universiteit, Amsterdam, The Netherlands

^c Department of Spatial Economics, Vrije Universiteit, Amsterdam, The Netherlands

^d Department of Economics, Trinity College, Dublin, Ireland

ESRI working papers represent un-refereed work-in-progress by researchers who are solely responsible for the content and any views expressed therein. Any comments on these papers will be welcome and should be sent to the author(s) by email. Papers may be downloaded for personal use only.

Shapley Values for Assessing Research Production and Impact of Schools and Scholars

1. Introduction

Measuring the academic quality of schools and scholars is now routine practice. Scholars are ranked according to their output or citations to their work, typically with some correction for quality. The ranking apart, scholars are evaluated without context, with in reality scholars are affiliated to schools and part of communities. Schools are ranked according to some aggregation of the scores of their members (Kalaitzidakis et al. 2003;Nederhof 2008;Nederhof and Noyons 1992;Zhu et al. 1991).¹ However, some institutions are carried by a single, exceptional individual, while other institutions have a large number of good researchers (Crewe 1988). This has implications for the power relations within an institution and for the robustness of its ranking to job mobility. The contextualised performance indicators for individual scholars proposed in this paper, when aggregated to schools, measure fragility and robustness of the performance of schools. The proposed indices thus complement standard measures of academic quality. The proposed measures are variations of standard ones in economics. The starting point is the Shapley value (Shapley 1953), which measures the average contribution of an agent to any coalition. Instead of any coalition, I use the existing schools. Value is measured cardinally (i.e., the score of the school) and ordinally (i.e., the rank of the school). As far as I know, I am the first to propose this.²

I use the normalised Herfindahl-Hirschman Index (HHI) to measure concentration (Herfindahl 1951;Hirschman 1964).³ While not new (Cox and Chung 1991;Rubin and Chang 2003), this is not common in the scientometric literature.⁴

¹ Of course, university departments have wider responsibilities than research (Coronini and Mangematin 1999).

² A search on Shapley in abstracts of papers published in *Scientometrics* returns nothing.

³ See (Lee 2010) for a discussion of alternative concentration measures.

While the new indicators constitute the main contribution of this paper, the application is interesting too. I illustrate the new measures using data on business schools and business scholars in Ireland. Business research is rarely evaluated (Harzing 2005; Hodder and Hodder 2010; Hogan 1990; Kao and Pao 2009; Vieira and Teixeira 2010).

The paper continues as follows. Section 2 specifies the indicators and presents the data. Section 3 applies this to business schools and business scholars in Ireland and discusses the results. Section 4 concludes.

2. Methods and Data

2.1. Methods

Let us consider the number of publications P as an indicator for the production of a scholar, and the number of citations C as an indicator for the quality or impact of the research. These are standard indicators, but they are devoid of any context: The performance of a scholar depends only on her own publications and citations.⁵ When individual researchers are ranked according to these indicators, a context emerges – but individuals are treated as independent of one another. In reality, however, scholars group together in schools.

(Shapley 1953) introduced a measure for the contribution of an agent (scholar) to a coalition (school). The Shapley value of an agent equals the average contribution of that agent to any coalition. I here define the value of a coalition as the average number of publications or citations. The contribution of a researcher is then the change in the coalition's value should this researcher leave or join the coalition. I only consider existing institutions, rather than any coalition, and therefore refer to this indicator as a *pseudo-Shapley* value. Following the convention in the analysis of cartels (d'Aspremont et al. 1983), I further assume that scholars make decisions independently of other scholars about whether to change affiliation or retire.

⁴ A search on HHI in abstracts of papers published in *Scientometrics* returned one paper on research performance (Yang et al. 2010).

⁵ (de Witte and Rogge 2010) introduce a metric for publication efficiency which combines individual and environmental characteristics.

The pseudo-Shapley value S for the number of publications of a researcher r in institution 1 is defined as:

$$(1) \quad S_r := \frac{1}{I} \underbrace{\left[\bar{p}_1 - \left(\frac{n_1}{n_1 - 1} \bar{p}_1 - \frac{p_r}{n_1} \right) \right]}_{\text{contribution to own school}} + \frac{1}{I} \sum_{i=2}^I \underbrace{\left[\left(\frac{n_i}{n_i + 1} \bar{p}_i + \frac{p_r}{n_i + 1} \right) - \bar{p}_i \right]}_{\text{contribution to other schools}}$$

where n_i is the number of members of institution i , I is the number of institutions, and \bar{p}_i is the average number of publications per researcher at institution i . Institutions can be ordered at will so that (1) defines S_r for researcher in any school.

Equation (1) splits the pseudo-Shapley value into two components. The first component is the actual indicator value for the school minus the indicator value in case scholar r departs.⁶ The second component is the indicator value in case scholar r joins another school minus the actual indicator value, averaged for the other schools.

The two components are more insightful than the pseudo-Shapley value itself. The first component is a measure of the power of an individual scholar over her school. The second component is a measure of the contribution a scholar would make to the competition, that is, a measure of the market value.

Let us therefore define two new indicators, power P and market value M , as follows:

$$(2) \quad P_r = \frac{1}{I} \left(\frac{p_r}{n_1} - \frac{1}{n_1 - 1} \bar{p}_1 \right)$$

$$(3) \quad M_r = \frac{1}{I} \sum_{i=2}^I \frac{p_r - \bar{p}_i}{n_i + 1}$$

Note that $P_r + M_r = S_r$. Equation (2) equals the first component of Equation (1), and Equation (3) its second component; in both cases, the equations were simplified. Equations (1-3) are defined for publication numbers, but the same definitions hold for citation numbers, or quality-weighted publication numbers, or indeed any individual performance indicator that would be averaged to assess the school performance.

⁶ Note that in the definition of the Shapley value actors are not evaluated relative to an existing coalition structure. This is another reason why the proposed measure is a *pseudo*-Shapley value.

In Equations (1-3), the contribution of a scholar is defined as her contribution to an indicator *score* of a school. One may also consider the contribution of a researcher to the *rank* of any existing institution.⁷ This could be referred to as an *ordinal* pseudo-Shapley value⁸ and it is split into an ordinal power indicator and an ordinal market indicator.

In fact, the ordinal power and market indicators contain more information than the ordinal Shapley values. The ordinal Shapley value measures the change in rankings should a scholar leave a school to join another. This would push one school up in the rankings, and another one down. Indeed, the net change in rankings of all schools is zero. In the application below, for individual scholars, I report the number of publications, the number of citations, the cardinal power and market indicators (based on both publications and citations), and the ordinal power and market indicators (based on both publications and citations).

For schools, I report the average number of publication and citations, and the average cardinal and ordinal power and market indicators.⁹ A high value of the average power measure indicates that a few scholars contribute most of the publications or citations of a school – because individual scholars would have low power over their school if all their colleagues perform equally well.

I compare the school’s power indicator to the Herfindahl-Hirschman Index (*HHI*), which is a standard measure for the concentration of market share. The *HHI* is defined as the sum of the squared shares:

$$(4) \quad HHI = \sum_{i=1}^n \left(\frac{p_i}{P} \right)^2 ; P = \sum_{i=1}^n p_i$$

where p_i is the number of publications (say) and n is the number of scholars (including the ones that did not publish). The *HHI* lies between $1/n$ and one. The *HHI* would be one if a single scholar authored all publications of a school (monopoly). The *HHI* would be $1/n$ if all scholars in a school published the same number of papers. Because institutions differ in size, I use the normalized *HHI*:

⁷ This is intuitively clear, but notationally messy. I therefore skip the formalization.

⁸ I therefore refer to the indicators *S*, *P*, and *M* as *cardinal* pseudo-Shapley values.

⁹ Note that the average cardinal power indicators are included for completeness only. The cardinal power index is an individual’s contribution to the average. Its average is zero.

$$(5) \quad HHI^* = \frac{HHI - HHI_{\min}}{1 - HHI_{\min}}; HHI_{\min} = \sum_{i=1}^n \left(\frac{1}{n}\right)^2 = \frac{1}{n}$$

HHI^* lies between zero and one, regardless of n .

There is no reason to assume that the HHI and the power indicator will yield similar results. The HHI is quadratic in a scholar's number of publications and inversely proportional to the square of the school's publications. The power indicator also increases with a scholar's publications and decreases with her school's number, but the relationships are linear.

2.2. Data

I illustrate the above indicators with business scholars and business schools on the island of Ireland. Business schools are hard to define. Some universities have an entity called "school of business", but other institutions mix business studies with other disciplines, or spread business studies over a number of schools. Table 1 shows, for each of the 11 institutions,¹⁰ the schools (colleges, faculties) and their departments (schools, groups). There are two contentious issues. First, it is difficult to draw a line between business studies and economics. The topics are closely connected and often taught together. This study includes those economists who teach in business schools, but excludes other economists. The other issue is tourism. In two institutions, tourist studies are part of the business school, while elsewhere tourist studies are placed in other departments or indeed in a separate department. Here, tourism scholars are included if they teach in a business school.

For this study, business scholars are scholars who are employed in the business schools as defined in Table 1. People were identified as listed on the websites in early September 2010. There is no reason to believe that these lists are accurate. Indeed, several errors were uncovered (and corrected) during the data vetting process (see below). However, it is the only source of information available.

¹⁰ There are also a number of business schools that only teach. These are excluded from the current study.

There are a total of 748 business scholars in Ireland. In addition, business schools employ administrative staff, teaching and research assistants, and PhD students – all of whom were excluded (if so identified). Business schools also have a large number of adjunct faculty – typically, senior business people who teach a few classes a year – while some business schools also host research staff from companies. These people were excluded too.

748 is a substantial number of scholars, each of which has to be assessed individually.¹¹ For that reason, a simple method is used. Data were collected from *Scopus*¹² only. *Scopus* has a much broader coverage than the *Web of Science*¹³ for recent years (but a limited coverage before 1996). As Irish business scholars tend to be relatively young and tend to publish outside the core journals, *Scopus* is a more appropriate source of data. See also (Vieira and Gomes 2009). Nonetheless, some journals are not covered in *Scopus*, including a number of particular importance to business scholars in Ireland (e.g., *Administration*, *Irish Journal of Management*, *Irish Marketing Journal*, *Irish Marketing Review*). *Google Scholar*¹⁴ (and thus *Publish and Perish* (Harzing 2010)¹⁵ and *Scholarometer*¹⁶) has a wider coverage than *Scopus* and would thus be more appropriate for business scholars (Mingers and Lipitakis 2010). However, *Google Scholar* suffers from a lack of quality control on publications and citations.¹⁷

Four statistics were gathered from *Scopus*: year of first publication, number of publications, number of citations, and h-index (Hirsch 2005). People's name, affiliation, specialization, degree, rank, and sex were also recorded. Here, I only use publications, citations, and affiliations.

The data are available at:

<https://docs.google.com/leaf?id=0Bz17rNCpfuDNNTA2MGZmNTQtZmYxNS00YTU3LWI0ODItZmVjMDllYWFiY2Qw&hl=en>

¹¹ Note that the database contains another 124 individuals who were erroneously included.

¹² <http://www.scopus.com/home.url>

¹³ <http://www.isiwebofknowledge.com/>

¹⁴ <http://scholar.google.com/>

¹⁵ <http://www.harzing.com/pop.htm>

¹⁶ <http://scholarometer.indiana.edu/>

¹⁷ For instance, *Publish and Perish* returns over 500 papers for the current author, whose CV counts less than 200 publications.

The data have been cross-checked with CVs when online. Three preliminary versions of the data were published at *IrishEconomy*¹⁸, with an explicit invitation to correct data where needed. Heads of departments were all notified of the exercise and invited to comment. This vetting process led to substantial changes in the data – people and indeed departments were added; administrative, adjunct and trainee staff were removed; and publication and citation records were corrected.

The actual performance of business schools and scholars is discussed in detail in a companion paper (Tol 2010). I here focus on the information contained in the new indicators.

3. Results

3.1. Scholars

Equation (2) has that the power indicator is linear in the number of publications or citations, with the slope equal to the inverse of the number of schools times the number of scholars in a school. The intercept equals the average number of publications or citations in the school, divided by the number of schools. That is, both the intercept and the slope are different between schools but identical within schools. Because of this, the power ranking within schools is the same as the publication/citation ranking within schools.

Figure 1 shows the cardinal power indicators for the 748 business scholars in Ireland, plotted against the number of publications and citations. Power over the own school increases with production and influence, but the rate differs between schools. TCD is the smallest school and has therefore the steepest incline. UU and DIT are the largest schools, and the slope is thus the shallowest. Very productive or influential TCD scholars therefore have a greater power than equally productive or influential UU scholars.

Figure 2 shows the ordinal power indices. The pattern is very different from that in Figure 1. Rank changes are integer, so average rank changes are discontinuous. Like the

¹⁸ <http://www.irisheconomy.ie/index.php/2010/10/18/assessing-business-schools-and-business-scholars/>
<http://www.irisheconomy.ie/index.php/2010/10/18/assessing-business-schools-and-business-scholars/>
<http://www.irisheconomy.ie/index.php/2010/11/01/business-schools-and-scholars-3/>

cardinal power indicators, the ordinal power indicators increase in the number of publications and citations. However, the context is much more important. While some TCD scholars have a great impact on the score of their small school, TCD is so far ahead of the other business schools that only one scholar could, by departing affect its ranking on publications – and none could affect TCD’s ranking on citations. DCU’s performance, on the other hand, is similar to some of its competitors and a number of DCU scholars could affect its ranking by departure.

Equation (3) has that market value is linear in the number of publications or citations. The intercept depends on the average number of publications or citations in all schools but one’s own and on the number of scholars in those schools. The slope depends on the number of scholars in other schools. One would therefore expect that all scholars are on roughly the same line. Figure 3 confirms this: Market value rise linearly with the number of either publications or citations, and there is little difference between schools. The slope varies between 0.0165 for TCD (the smallest school) and 0.0202 for DIT (the largest school). This is intuitive: Scholars from larger schools have fewer outside opportunities and thus a greater impact. Differences are small, however.

Figure 4 shows the ordinal market value indicators. The indicator is discontinuous. Market value increases with the number of publications and citations. However, scholars from some schools need to publish more / be cited more to command the same market value as do scholars of other schools. If a scholar moves from one school to another, the impact on the ranking depends on her productivity / influence, the initial score and size of either schools, and their position relative to other schools. With so many variables, the pattern is highly non-linear and hard to interpret and predict.

Consider, for instance, the four scholars (one at NUIG, two at QUB, and one at UU) with an ordinal market value based on publications of 0.64. Their publication numbers range from 31 to 49. The discretisation of the ranking groups them together for a single market value. There is another QUB scholar with an ordinal market value of 0.73 and 46 publications. He scores better than his QUB fellows with 35 and 37 papers. He also scores better than the UU scholar with 49 publications. The reason is that ranks change if the QUB scholar moves to UU; but not if the UU scholar moves to QUB. The market

value indicator captures part of the context in a way that simple publication or citation numbers cannot.

3.2. *Schools*

Table 2 shows the performance indicators for the 11 business schools in Ireland. The smallest school employs only 20 scholars, the largest 147. Average publication numbers range from 0.2 to 10.9 published papers per scholar, and average citations from 0.7 to 63.3 citations per scholar.

The average cardinal power indicator is zero. The average ordinal power indicator ranges from -2.28 to +2.22 for publications and from -4.81 to 0.07 for citations. A negative value indicates that the school's rank would improve if the average scholar departs. A positive value indicates that the departure of the average scholar would lead to a lower rank – the average scholar could use this threat to exert power. There are also schools with an average power index of zero – that is, the departure of the average scholar would not affect the ranking. Zero values are more prevalent near the top and bottom of the publication and citation ranks, because ranks can change in one direction only.

Table 2 also shows the Herfindahl-Hirschman Indices which range from 0.03 to 0.24 for publications and from 0.05 to 0.90 for citations. Citations are more concentrated than publications, except for UCD.

Figure 5 plots the concentration indices against the power indices. Although there is a suggestion of some relationship – greater concentration and greater power seem to go together – the two indicators clearly measure different things. NCI, for instance, has an extremely high concentration of citations. However, as NCI is ranked last on citations, highly-cited researchers at NCI cannot exert any influence over NCI's rank. Publications are less concentrated at NCI, but as NCI is ranked 10th, the (threatened) departure of a highly productive scholar would (potentially) affect NCI's publication rank.

Table 2 further shows the average market value indicators, both cardinal and ordinal. Figure 6 plots the market value indices against the number of publications and citations. Cardinal market value is linear in the number. This is true for the individual scores (cf. Figure 3), and therefore also for the average scores. Ordinal market value tends to increase with the number, but a richer pattern emerges because ordinal values take

context into account. Figure 4 shows that there is a different association between publications / citations and market value for scholars at different schools. Figure 6 confirms this.

4. Discussion and conclusion

Current performance measures of individual scholars ignore the context of scholarship. I introduce pseudo-Shapley values that measure a scholar's contribution to (or power over) her own school and her value to other schools should they hire her. I illustrate the proposed measures with business scholars and business schools in Ireland. Although conceptually superior, the power indicators lead to an identical ranking of scholars within a school as conventional performance measures would, while the market value indicators lead to an identical ranking within schools and a very similar ranking between schools. I introduce both cardinal and ordinal indicators. The ordinal indices further contextualise performance measures and thus deviate more from conventional indicators. Furthermore, as the ordinal measures are discontinuous by construction, a natural classification of scholars emerges. Averaged over schools, the ordinal and particularly the cardinal market values offer little extra information over the average publication and citation numbers. The ordinal power measure gives, for the first time, an indication of the robustness or fragility of an institution's place in the rank order. It is only weakly correlated with the Herfindal-Hirschman concentration index of publications and citations.

The proposed measures open up new avenues for research. Do scholars prefer to work in schools in which they are powerful, or would they rather work in a place where their average colleague outperforms them (so that they maximise learning)? This cannot be answered with a cross-section (as used in this paper); panel data are required to separate cause and effect. Is the ranking of fragile schools (according to the measures proposed here) indeed more volatile? This would again require data for multiple years.

The measures themselves can be further refined too. Particularly, I used publications and citations numbers for scholars, and their averages for schools. The mathematics is therefore rather straightforward. The power and market value indicators could be defined from more complex performance measures too, such as the h-index (Hirsch 2005).

Furthermore, I assume that scholars are individuals, and negotiate as such with their schools. It is not uncommon, however, for a team of scholars to move from one school to another. Pseudo-Shapley values naturally generalise to this case – indeed, the actual Shapley value is defined for any coalition – but this was not considered here. All this is deferred to future research.

Table 1. Business schools assessed in this study.

<i>Acronym</i>	<i>Institution</i>	<i>School and department</i>
DCU	Dublin City University	Business School <ul style="list-style-type: none"> • accounting • economics, finance and entrepreneurship • human resources management • management • marketing
DIT	Dublin Institute of Technology	College of Business <ul style="list-style-type: none"> • accounting and finance • management • marketing • retail and services management
NCI	National College of Ireland	School of Business
NUIG	National University of Ireland at Galway	School of Business and Economics <ul style="list-style-type: none"> • economics • accountancy, finance and information systems • management • marketing
NUIM	National University of Ireland at Maynooth	School of Business <ul style="list-style-type: none"> • management School of Economics, Finance and Accounting
QUB	Queen's University Belfast	Management School
TCD	Trinity College Dublin	School of Business
UCC	University College Cork	Faculty of Commerce <ul style="list-style-type: none"> • accounting and finance • business information systems • food business and development • management and marketing
UCD	University College Dublin	School of Business <ul style="list-style-type: none"> • accountancy • management information systems • industrial relations and human resources • marketing • management • banking and finance • corporate governance
UL	University of Limerick	Business School <ul style="list-style-type: none"> • accounting and finance • economics • management and marketing • personnel and employment relations
UU	University of Ulster	Business School <ul style="list-style-type: none"> • accounting • business, retail and financial services • hospitality and tourism management • international business • management • marketing, entrepreneurship and strategy

Table 2. Indicators for production (publications) and impact (citations) for eleven research-oriented business schools in Ireland.

School	Staff	Publications						Citations					
		Ave	Market		HHI	Power		Ave	Market		HHI	Power	
			Card	Ord		Card ^a	Ord		Card	Ord		Card ^a	Ord
TCD	20	10.9	0.126	0.173	0.1068	0	0.000	63.25	0.733	0.123	0.1206	0	0.000
QUB	62	7.3	0.052	0.107	0.0289	0	0.000	35.94	0.165	0.063	0.0556	0	0.072
UCD	79	5.7	0.018	0.086	0.0502	0	0.015	33.39	0.112	0.045	0.0472	0	0.070
NUIG	56	4.9	-0.013	0.021	0.0276	0	0.054	25.55	0.051	-0.008	0.0706	0	-0.266
NUIM	31	3.7	-0.148	0.035	0.0676	0	0.003	32.45	-0.798	0.129	0.1993	0	0.106
UL	72	4.0	0.002	0.061	0.0284	0	0.001	16.26	-0.039	0.023	0.0752	0	0.001
DCU	63	3.3	-0.018	0.058	0.0286	0	0.009	19.46	-0.279	0.017	0.1037	0	0.001
UU	130	3.1	-0.015	0.038	0.0590	0	0.106	18.84	-0.086	0.016	0.1092	0	0.045
UCC	67	3.2	-0.032	0.008	0.0356	0	-0.284	9.04	-0.394	0.001	0.0521	0	0.000
DIT	147	0.3	-0.014	-0.011	0.0612	0	0.000	0.70	-0.075	0.001	0.1197	0	0.006
NCI	21	0.2	-0.654	-0.502	0.2440	0	0.052	2.86	-3.971	0.000	0.9003	0	0.000

Staff = number of teaching and research staff, excluding PhD students and adjunct faculty; Ave = Average number of publications / citations; Market = average market value of staff, be it cardinal market value (card) or ordinal market value (ord); Power = average power value of staff; HHI = Herfindahl-Hirschman Index
^a Zero by definition.

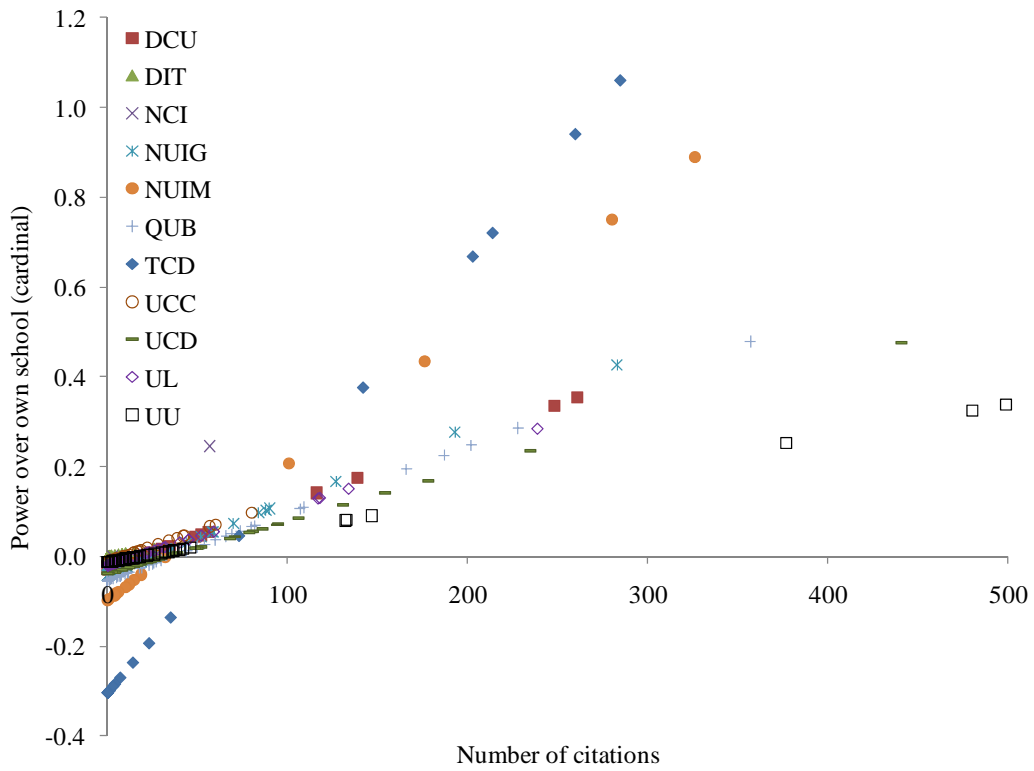
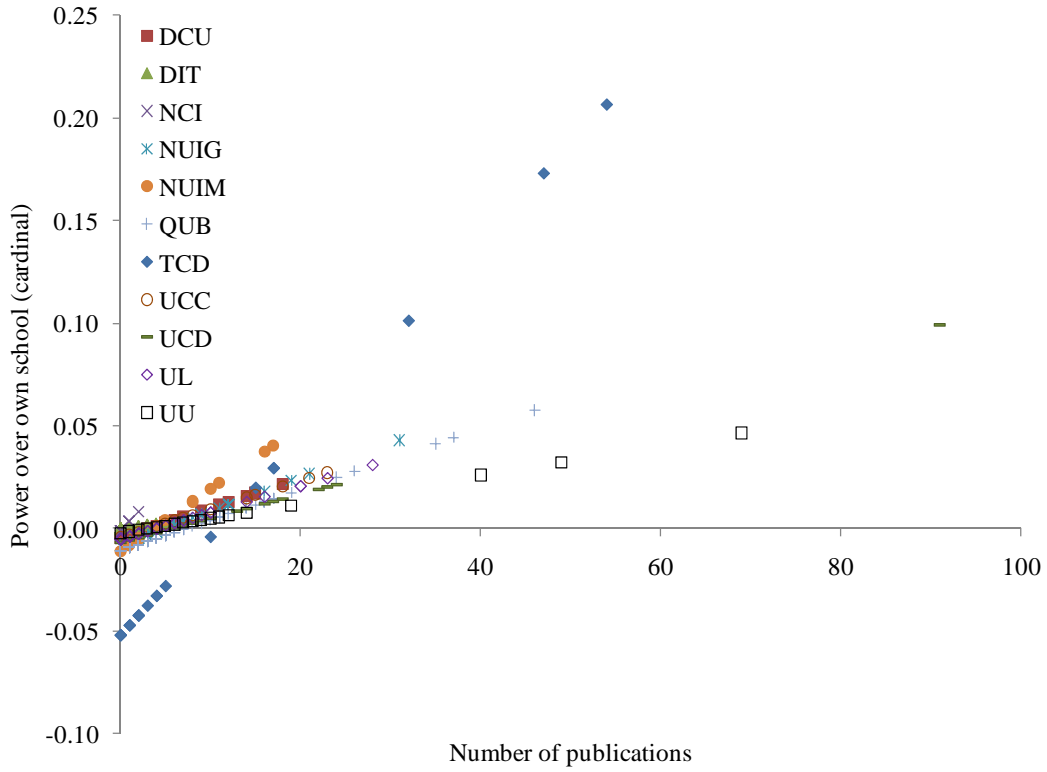


Figure 1. Cardinal power indicators for publications (top panel) and citations (bottom panel) as a function of the number of publications and citations, respectively.

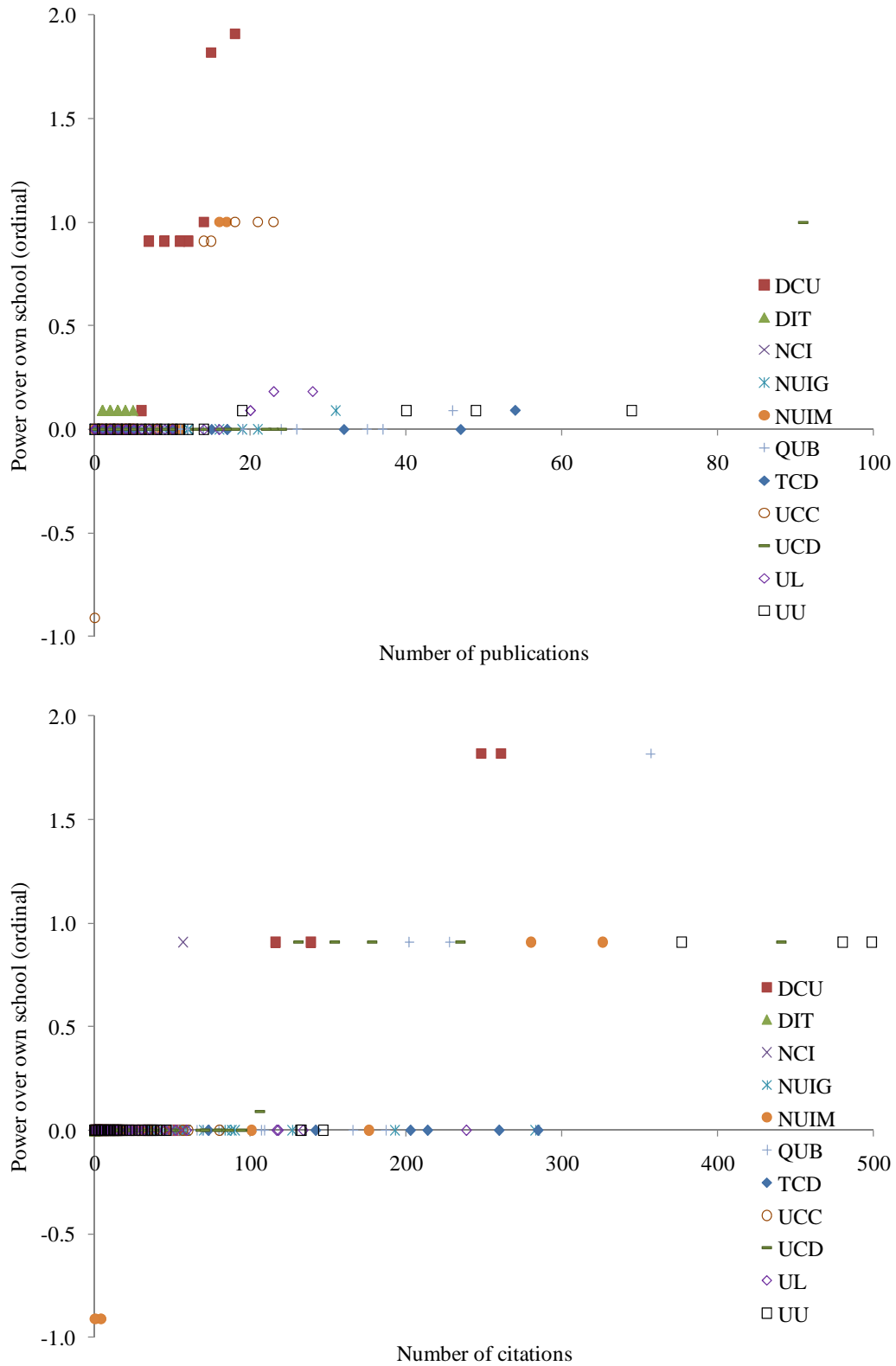


Figure 2. Ordinal power indicators for publications (top panel) and citations (bottom panel) as a function of the number of publications and citations, respectively.

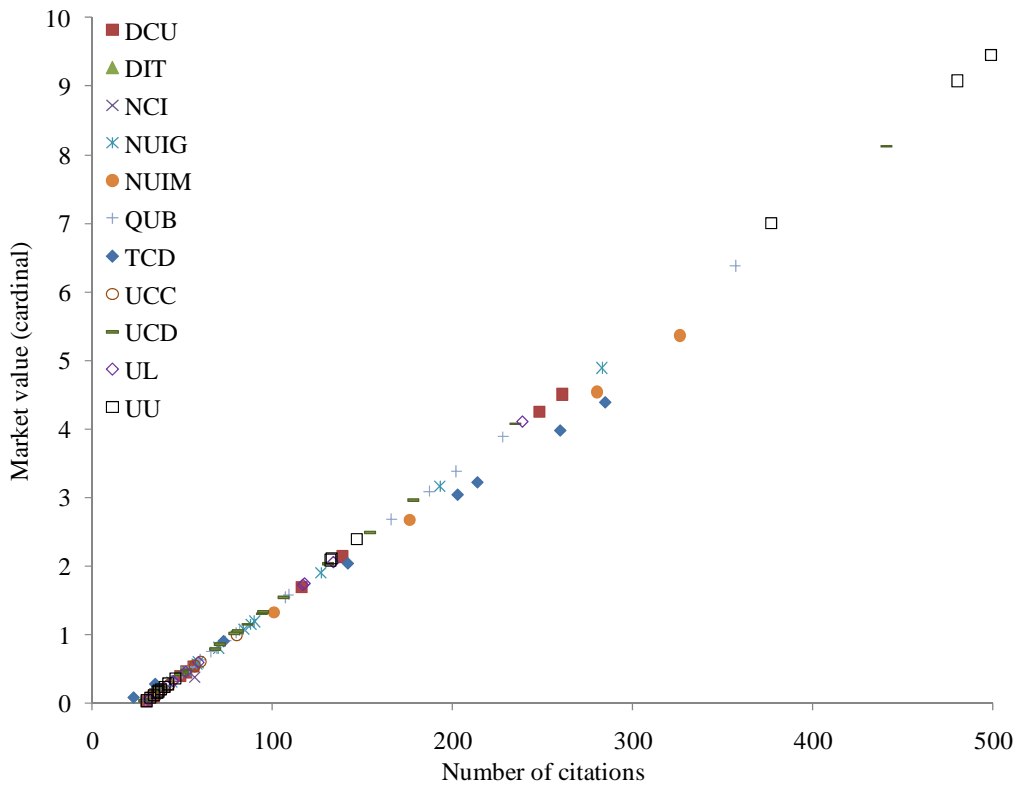
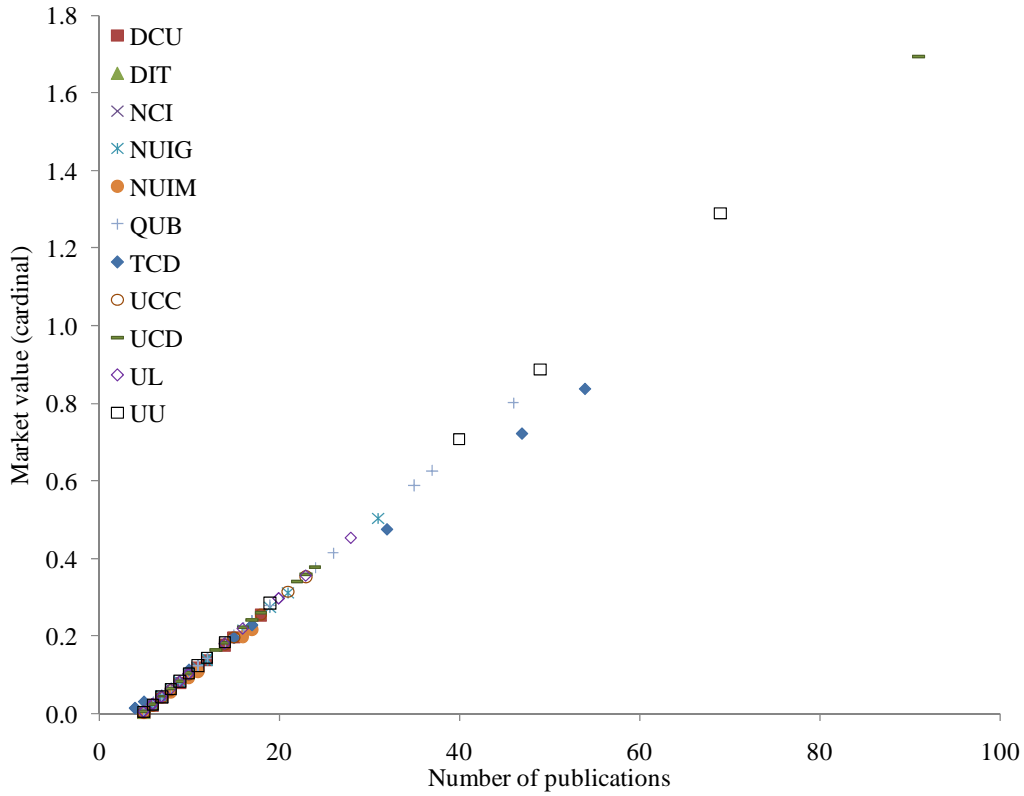


Figure 3. Cardinal market value indicators for publications (top panel) and citations (bottom panel) as a function of the number of publications and citations, respectively.

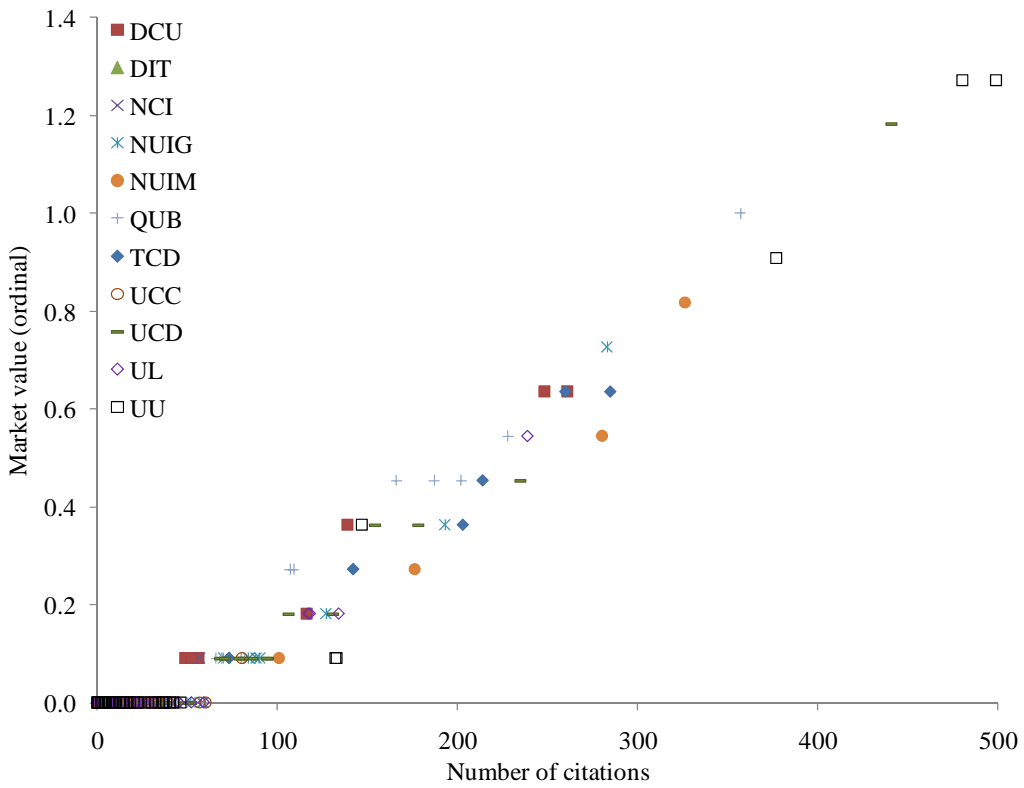
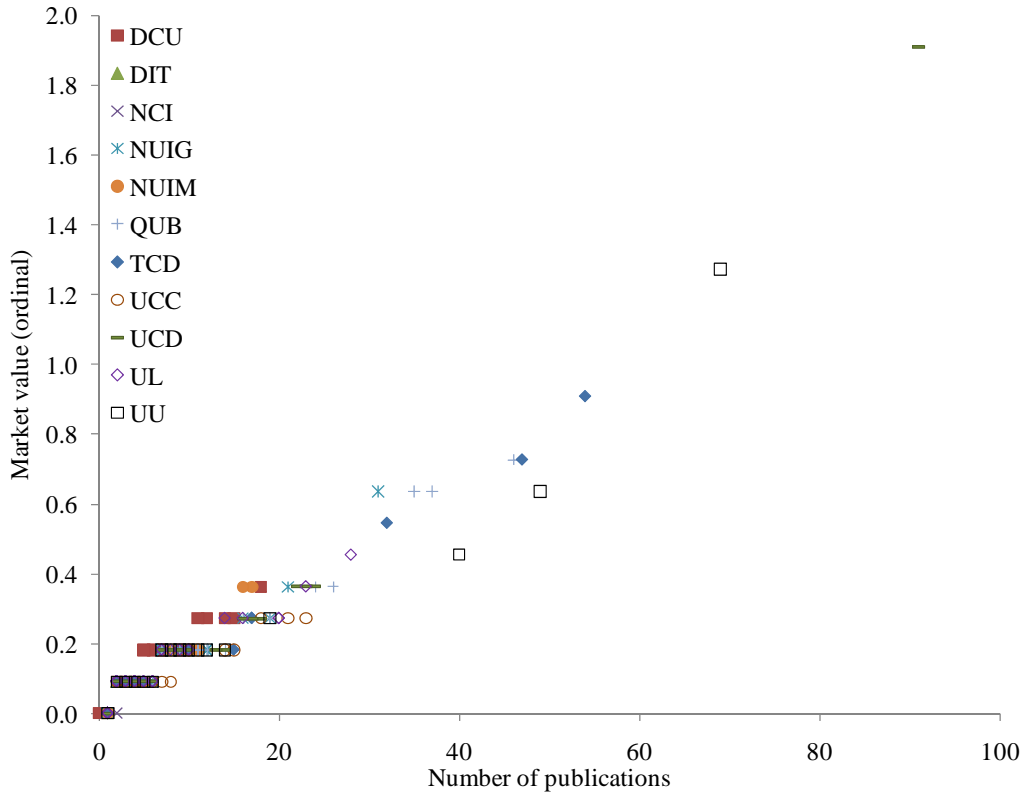


Figure 4. Ordinal market value indicators for publications (top panel) and citations (bottom panel) as a function of the number of publications and citations, respectively.

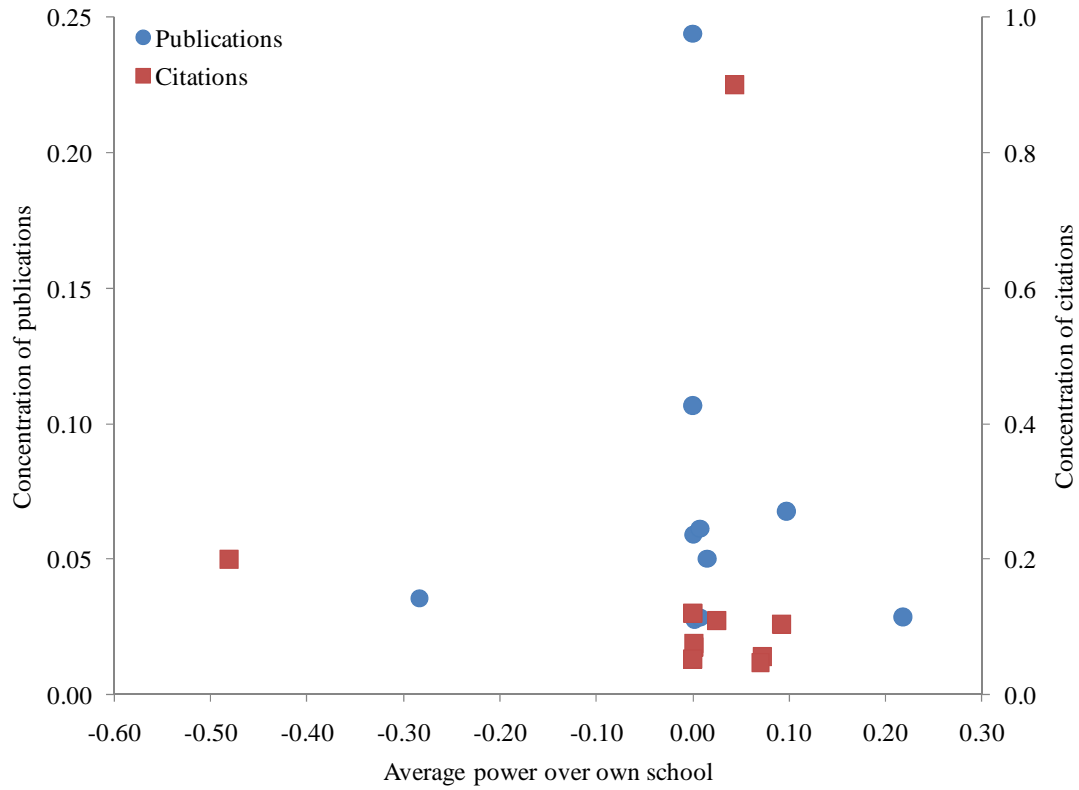


Figure 5. The Herfindahl-Hirschman Index of concentration of publications (left axis) and citations (right axis) as a function of the average power indicator.

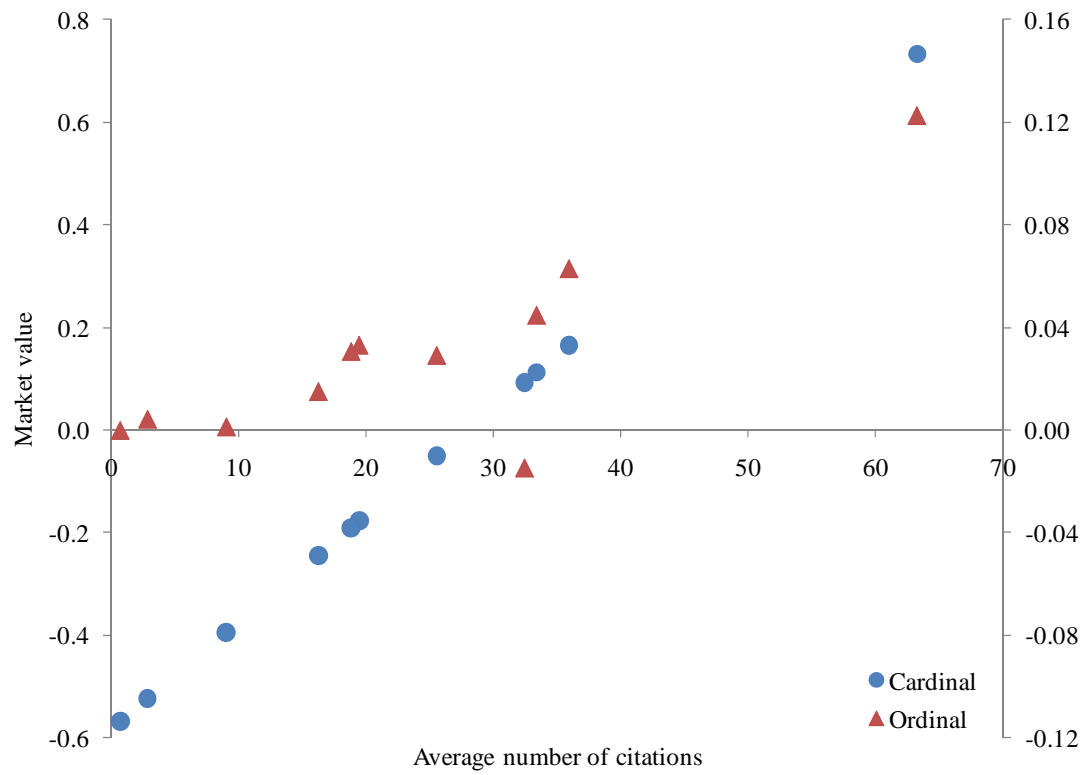
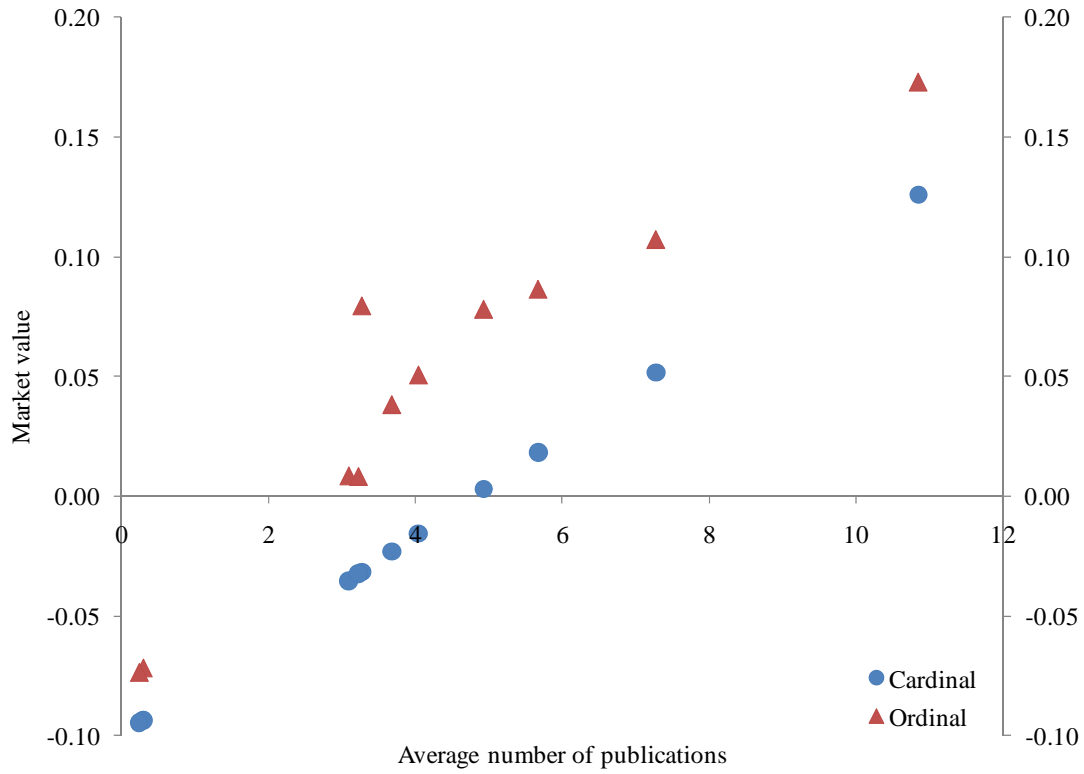


Figure 6. The average market value (cardinal – left axis; ordinal – right axis) as a function of the number of publications (top panel) and citations (bottom panel).

References

- Coronini, R. and V.Mangematin (1999), 'From individual scientific visibility to collective competencies: The example of an academic department in the social sciences', *Scientometrics*, **45**, (1), pp. 55-80.
- Cox, R.A.K. and K.H.Chung (1991), 'Patterns of research output and author concentration in the economics literature', *Review of Economics and Statistics*, **73**, (4), pp. 740-747.
- Crewe, I. (1988), 'Reputation, research and reality: The publication records of UK departments of politics, 1978-1984', *Scientometrics*, **14**, (3-4), pp. 235-250.
- d'Aspremont, C., A.Jacquemin, J.J.Gabszewicz, and J.A.Weymark (1983), 'On the Stability of Collusive Price Leadership', *Canadian Journal of Economics*, **16**, (1), 17-25.
- de Witte, K. and N.Rogge (2010), 'To publish or not to publish? On the aggregation and drivers of research performance', *Scientometrics*, **85**, (3), pp. 657-680.
- Harzing, A.-W. (2005), 'Australian Research Output in Economics and Business: High Output, Low Impact?', *Australian Journal of Management*, **30**, (2), 183-200.
- Harzing, A.-W. (2010), *The Publish or Perish Book -- Tour Guide to Effective and Responsible Citation Analysis* Tarma Software Research, Melbourne.
- Herfindahl, O. C. (1951), *Concentration in the Steel Industry*, PhD Thesis, Department of Economics, Columbia University.
- Hirsch, J.E. (2005), 'An Index to Quantify an Individual's Scientific Research Output', *Proceedings of the National Academy of Science*, **102**, 16569-16572.
- Hirschman, A.O. (1964), 'The paternity of an index', *American Economic Review*, **54**, (5), p. 761.
- Hodder, A.P.W. and C.Hodder (2010), 'Research culture and New Zealand's performance-based research fund: Some insights from bibliographic compilations of research outputs', *Scientometrics*, **84**, (3), pp. 887-901.
- Hogan, T.J. (1990), 'A measure of accounting faculties and doctoral programs', *Scientometrics*, **19**, (3-4), pp. 207-221.
- Kalaitzidakis, P., T.P.Mamuneas, and T.Stengos (2003), 'Rankings of Academic Journals and Institutions in Economics', *Journal of the European Economic Association*, **1**, (6), 1346-1366.
- Kao, C. and H.L.Pao (2009), 'An evaluation of research performance in management of 168 Taiwan universities', *Scientometrics*, **78**, (2), pp. 261-277.
- Lee, G.J. (2010), 'Assessing publication performance of research units: Extensions through operational research and economic techniques', *Scientometrics*, **84**, (3), pp. 717-734.

- Mingers, J. and E.A.E.C.Lipitakis (2010), 'Counting the citations: A comparison of Web of Science and Google Scholar in the field of business and management', *Scientometrics*, **85**, (2), pp. 613-625.
- Nederhof, A.J. (2008), 'Policy impact of bibliometric rankings of research performance of departments and individuals in economics', *Scientometrics*, **74**, (1), pp. 163-174.
- Nederhof, A.J. and E.C.M.Noyons (1992), 'Assessment of the international standing of university departments' research: A comparison of bibliometric methods', *Scientometrics*, **24**, (3), pp. 393-404.
- Rubin, R.M. and C.F.Chang (2003), 'A bibliometric analysis of health economics articles in the economics literature: 1991-2000', *Health Economics*, **12**, (5), pp. 403-414.
- Shapley, L.S. (1953), 'A value for n -person games', in *Contributions to the Theory of Games, Volume II*, vol. 28 H.W. Kuhn and A.W. Tucker (eds.), Princeton University Press, Princeton, pp. 307-317.
- Tol, R.S.J. (2010), *The research output of business schools and business scholars in Ireland*, Working Paper **364**, Economic and Social Research Institute, Dublin.
- Vieira, E.S. and J.A.N.F.Gomes (2009), 'A comparison of Scopus and Web of science for a typical university', *Scientometrics*, **81**, (2), pp. 587-600.
- Vieira, P.C. and A.A.C.Teixeira (2010), 'Are finance, management, and marketing autonomous fields of scientific research? An analysis based on journal citations', *Scientometrics*, **85**, (3), pp. 627-646.
- Yang, S., F.Ma, Y.Song, and J.Qiu (2010), 'A longitudinal analysis of citation distribution breadth for Chinese scholars', *Scientometrics*, **85**, (3), pp. 755-765.
- Zhu, J., A.J.Meadows, and G.Mason (1991), 'Citations and departmental research ratings', *Scientometrics*, **21**, (2), pp. 171-179.

Year	Number	Title/Author(s) ESRI Authors/Co-authors <i>Italicised</i>
2011		
	369	Determinants of Vegetarianism and Partial Vegetarianism in Ireland <i>Eimear Leahy, Seán Lyons, Richard S.J. Tol</i>
	368	Modified Ramsey Discounting for Climate Change <i>Richard S.J. Tol</i>
	367	A Cost-Benefit Analysis of the EU 20/20/2020 Package <i>Richard S.J. Tol</i>
	366	The Distributional Effects of Value Added Tax in Ireland <i>Eimear Leahy, Seán Lyons, Richard S.J. Tol</i>
2010		
	365	Explaining International Differences in Rates of Overeducation in Europe <i>Maria A. Davia, Seamus McGuinness and Philip, J. O'Connell</i>
	364	The Research Output of Business Schools and Business Scholars in Ireland <i>Richard S.J. Tol</i>
	363	The Effects of the Internationalisation of Firms on Innovation and Productivity <i>Iulia Siedschlag, Xiaoheng Zhang and Brian Cahill</i>
	362	Too much of a good thing? Gender, 'Concerted cultivation' and unequal achievement in primary education <i>Selina McCoy, Delma Byrne, Joanne Banks</i>
	361	Timing and Determinants of Local Residential Broadband Adoption: Evidence from Ireland <i>Seán Lyons</i>
	360	Determinants of Vegetarianism and Partial Vegetarianism in the United Kingdom <i>Eimear Leahy, Seán Lyons and Richard S.J. Tol</i>

- 359 From Data to Policy Analysis: Tax-Benefit Modelling using SILC 2008
Tim Callan, Claire Keane, John R. Walsh and Marguerita Lane
- 358 Towards a Better and Sustainable Health Care System – Resource Allocation and Financing Issues for Ireland
Frances Ruane
- 357 An Estimate of the Value of Lost Load for Ireland
Eimear Leahy and Richard S.J. Tol
- 356 Public Policy Towards the Sale of State Assets in Troubled Times: Lessons from the Irish Experience
Paul K Gorecki, Sean Lyons and Richard S. J. Tol
- 355 The Impact of Ireland's Recession on the Labour Market Outcomes of its Immigrants
Alan Barrett and Elish Kelly
- 354 Research and Policy Making
Frances Ruane
- 353 Market Regulation and Competition; Law in Conflict: A View from Ireland, Implications of the Panda Judgment
Philip Andrews and *Paul K Gorecki*
- 352 Designing a property tax without property values: Analysis in the case of Ireland
Karen Mayor, Seán Lyons and Richard S.J. Tol
- 351 Civil War, Climate Change and Development: A Scenario Study for Sub-Saharan Africa
Conor Devitt and Richard S.J. Tol
- 350 Regulating Knowledge Monopolies: The Case of the IPCC
Richard S.J. Tol
- 349 The Impact of Tax Reform on New Car Purchases in Ireland
Hugh Hennessy and Richard S.J. Tol
- 348 Climate Policy under Fat-Tailed Risk: An Application of FUND
David Anthoff and Richard S.J. Tol
- 347 Corporate Expenditure on Environmental Protection
Stefanie A. Haller and Liam Murphy

- 346 Female Labour Supply and Divorce: New Evidence from Ireland
Olivier Bargain, Libertad González, *Claire Keane* and Berkay Özcan
- 345 A Statistical Profiling Model of Long-Term Unemployment Risk in Ireland
Philip J. O'Connell, Seamus McGuinness, Elish Kelly
- 344 The Economic Crisis, Public Sector Pay, and the Income Distribution
Tim Callan, Brian Nolan (UCD) and John Walsh
- 343 Estimating the Impact of Access Conditions on Service Quality in Post
Gregory Swinand, Conor O'Toole and Seán Lyons
- 342 The Impact of Climate Policy on Private Car Ownership in Ireland
Hugh Hennessy and Richard S.J. Tol
- 341 National Determinants of Vegetarianism
Eimear Leahy, Seán Lyons and Richard S.J. Tol
- 340 An Estimate of the Number of Vegetarians in the World
Eimear Leahy, Seán Lyons and Richard S.J. Tol
- 339 International Migration in Ireland, 2009
Philip J O'Connell and Corona Joyce
- 338 The Euro Through the Looking-Glass: Perceived Inflation Following the 2002 Currency Changeover
Pete Lunn and David Duffy
- 337 Returning to the Question of a Wage Premium for Returning Migrants
Alan Barrett and Jean Goggin
- 2009** 336 What Determines the Location Choice of Multinational Firms in the ICT Sector?
Iulia Siedschlag, Xiaoheng Zhang, Donal Smith
- 335 Cost-benefit analysis of the introduction of weight-based charges for domestic waste – West Cork's experience
Sue Scott and Dorothy Watson
- 334 The Likely Economic Impact of Increasing Investment in

- Wind on the Island of Ireland
*Conor Devitt, Seán Diffney, John Fitz Gerald, Seán Lyons
and Laura Malaguzzi Valeri*
- 333 Estimating Historical Landfill Quantities to Predict Methane
Emissions
Seán Lyons, Liam Murphy and Richard S.J. Tol
- 332 International Climate Policy and Regional Welfare Weights
Daiju Narita, *Richard S. J. Tol*, and *David Anthoff*
- 331 A Hedonic Analysis of the Value of Parks and
Green Spaces in the Dublin Area
Karen Mayor, Seán Lyons, David Duffy and Richard S.J. Tol
- 330 Measuring International Technology Spillovers and
Progress Towards the European Research Area
Iulia Siedschlag
- 329 Climate Policy and Corporate Behaviour
*Nicola Commins, Seán Lyons, Marc Schiffbauer, and
Richard S.J. Tol*
- 328 The Association Between Income Inequality and Mental
Health: Social Cohesion or Social Infrastructure
Richard Layte and Bertrand Maitre
- 327 A Computational Theory of Exchange:
Willingness to pay, willingness to accept and the
endowment effect
Pete Lunn and Mary Lunn
- 326 Fiscal Policy for Recovery
John Fitz Gerald
- 325 The EU 20/20/2020 Targets: An Overview of the EMF22
Assessment
Christoph Böhringer, Thomas F. Rutherford, and *Richard
S.J. Tol*
- 324 Counting Only the Hits? The Risk of Underestimating the
Costs of Stringent Climate Policy
Massimo Tavoni, *Richard S.J. Tol*
- 323 International Cooperation on Climate Change Adaptation
from an Economic Perspective
Kelly C. de Bruin, Rob B. Dellink and *Richard S.J. Tol*

- 322 What Role for Property Taxes in Ireland?
T. Callan, C. Keane and J.R. Walsh
- 321 The Public-Private Sector Pay Gap in Ireland: What Lies
Beneath?
Elish Kelly, Seamus McGuinness, Philip O'Connell
- 320 A Code of Practice for Grocery Goods Undertakings and An
Ombudsman: How to Do a Lot of Harm by Trying to Do a
Little Good
Paul K Gorecki
- 319 Negative Equity in the Irish Housing Market
David Duffy
- 318 Estimating the Impact of Immigration on Wages in Ireland
Alan Barrett, Adele Bergin and Elish Kelly
- 317 Assessing the Impact of Wage Bargaining and Worker
Preferences on the Gender Pay Gap in Ireland Using the
National Employment Survey 2003
*Seamus McGuinness, Elish Kelly, Philip O'Connell, Tim
Callan*
- 316 Mismatch in the Graduate Labour Market Among
Immigrants and Second-Generation Ethnic Minority Groups
Delma Byrne and Seamus McGuinness
- 315 Managing Housing Bubbles in Regional Economies under
EMU: Ireland and Spain
Thomas Conefrey and John Fitz Gerald
- 314 Job Mismatches and Labour Market Outcomes
*Kostas Mavromaras, Seamus McGuinness, Nigel O'Leary,
Peter Sloane and Yin King Fok*
- 313 Immigrants and Employer-provided Training
*Alan Barrett, Séamus McGuinness, Martin O'Brien
and Philip O'Connell*
- 312 Did the Celtic Tiger Decrease Socio-Economic Differentials
in Perinatal Mortality in Ireland?
Richard Layte and Barbara Clyne
- 311 Exploring International Differences in Rates of Return to
Education: Evidence from EU SILC
*Maria A. Davia, Seamus McGuinness and Philip, J.
O'Connell*

- 310 Car Ownership and Mode of Transport to Work in Ireland
Nicola Commins and Anne Nolan
- 309 Recent Trends in the Caesarean Section Rate in Ireland
1999-2006
Aoife Brick and Richard Layte
- 308 Price Inflation and Income Distribution
Anne Jennings, Seán Lyons and Richard S.J. Tol
- 307 Overskilling Dynamics and Education Pathways
Kostas Mavromaras, *Seamus McGuinness*, Yin King Fok
- 306 What Determines the Attractiveness of the European Union
to the Location of R&D Multinational Firms?
*Iulia Siedschlag, Donal Smith, Camelia Turcu, Xiaoheng
Zhang*
- 305 Do Foreign Mergers and Acquisitions Boost Firm
Productivity?
Marc Schiffbauer, Iulia Siedschlag, Frances Ruane
- 304 Inclusion or Diversion in Higher Education in the Republic
of Ireland?
Delma Byrne
- 303 Welfare Regime and Social Class Variation in Poverty and
Economic Vulnerability in Europe: An Analysis of EU-SILC
Christopher T. Whelan and *Bertrand Maître*
- 302 Understanding the Socio-Economic Distribution and
Consequences of Patterns of Multiple Deprivation:
An Application of Self-Organising Maps
Christopher T. Whelan, Mario Lucchini, Maurizio Pisati and
Bertrand Maître
- 301 Estimating the Impact of Metro North
Edgar Morgenroth
- 300 Explaining Structural Change in Cardiovascular Mortality in
Ireland 1995-2005: A Time Series Analysis
Richard Layte, Sinead O'Hara and Kathleen Bennett
- 299 EU Climate Change Policy 2013-2020: Using the Clean
Development Mechanism More Effectively
Paul K Gorecki, Seán Lyons and Richard S.J. Tol
- 298 Irish Public Capital Spending in a Recession

Edgar Morgenroth

- 297 Exporting and Ownership Contributions to Irish Manufacturing Productivity Growth
Anne Marie Gleeson, Frances Ruane
- 296 Eligibility for Free Primary Care and Avoidable Hospitalisations in Ireland
Anne Nolan
- 295 Managing Household Waste in Ireland: Behavioural Parameters and Policy Options
John Curtis, Seán Lyons and Abigail O'Callaghan-Platt
- 294 Labour Market Mismatch Among UK Graduates; An Analysis Using REFLEX Data
Seamus McGuinness and Peter J. Sloane
- 293 Towards Regional Environmental Accounts for Ireland
Richard S.J. Tol, Nicola Commins, Niamh Crilly, Sean Lyons and Edgar Morgenroth
- 292 EU Climate Change Policy 2013-2020: Thoughts on Property Rights and Market Choices
Paul K. Gorecki, Sean Lyons and Richard S.J. Tol
- 291 Measuring House Price Change
David Duffy
- 290 Intra-and Extra-Union Flexibility in Meeting the European Union's Emission Reduction Targets
Richard S.J. Tol
- 289 The Determinants and Effects of Training at Work: Bringing the Workplace Back In
Philip J. O'Connell and Delma Byrne
- 288 Climate Feedbacks on the Terrestrial Biosphere and the Economics of Climate Policy: An Application of *FUND*
Richard S.J. Tol
- 287 The Behaviour of the Irish Economy: Insights from the HERMES macro-economic model
Adele Bergin, Thomas Conefrey, John FitzGerald and Ide Kearney
- 286 Mapping Patterns of Multiple Deprivation Using Self-Organising Maps: An Application to EU-SILC Data for

- Ireland
Maurizio Pisati, *Christopher T. Whelan*, Mario Lucchini and
Bertrand Maitre
- 285 The Feasibility of Low Concentration Targets:
An Application of FUND
Richard S.J. Tol
- 284 Policy Options to Reduce Ireland's GHG Emissions
Instrument choice: the pros and cons of alternative policy
instruments
Thomas Legge and *Sue Scott*
- 283 Accounting for Taste: An Examination of Socioeconomic
Gradients in Attendance at Arts Events
Pete Lunn and *Elish Kelly*
- 282 The Economic Impact of Ocean Acidification on Coral Reefs
Luke M. Brander, Katrin Rehdanz, *Richard S.J. Tol*, and
Pieter J.H. van Beukering
- 281 Assessing the impact of biodiversity on tourism flows: A
model for tourist behaviour and its policy implications
Giulia Macagno, Maria Loureiro, Paulo A.L.D. Nunes and
Richard S.J. Tol
- 280 Advertising to boost energy efficiency: the Power of One
campaign and natural gas consumption
Seán Diffney, *Seán Lyons* and *Laura Malaguzzi Valeri*
- 279 International Transmission of Business Cycles Between
Ireland and its Trading Partners
Jean Goggin and *Iulia Siedschlag*
- 278 Optimal Global Dynamic Carbon Taxation
David Anthoff
- 277 Energy Use and Appliance Ownership in Ireland
Eimear Leahy and *Seán Lyons*
- 276 Discounting for Climate Change
David Anthoff, *Richard S.J. Tol* and Gary W. Yohe
- 275 Projecting the Future Numbers of Migrant Workers in the
Health and Social Care Sectors in Ireland
Alan Barrett and Anna Rust
- 274 Economic Costs of Extratropical Storms under Climate

- Change: An application of FUND
 Daiju Narita, *Richard S.J. Tol*, *David Anthoff*
- 273 The Macro-Economic Impact of Changing the Rate of
 Corporation Tax
Thomas Conefrey and *John D. Fitz Gerald*
- 272 The Games We Used to Play
 An Application of Survival Analysis to the Sporting Life-
 course
Pete Lunn
- 2008**
- 271 Exploring the Economic Geography of Ireland
Edgar Morgenroth
- 270 Benchmarking, Social Partnership and Higher
 Remuneration: Wage Settling Institutions and the Public-
 Private Sector Wage Gap in Ireland
Elish Kelly, *Seamus McGuinness*, *Philip O'Connell*
- 269 A Dynamic Analysis of Household Car Ownership in Ireland
Anne Nolan
- 268 The Determinants of Mode of Transport to Work in the
 Greater Dublin Area
Nicola Commins and *Anne Nolan*
- 267 Resonances from *Economic Development* for Current
 Economic Policymaking
Frances Ruane
- 266 The Impact of Wage Bargaining Regime on Firm-Level
 Competitiveness and Wage Inequality: The Case of Ireland
Seamus McGuinness, *Elish Kelly* and *Philip O'Connell*
- 265 Poverty in Ireland in Comparative European Perspective
Christopher T. Whelan and *Bertrand Maitre*
- 264 A Hedonic Analysis of the Value of Rail Transport in the
 Greater Dublin Area
Karen Mayor, *Seán Lyons*, *David Duffy* and *Richard S.J. Tol*
- 263 Comparing Poverty Indicators in an Enlarged EU
Christopher T. Whelan and *Bertrand Maitre*
- 262 Fuel Poverty in Ireland: Extent,
 Affected Groups and Policy Issues

Sue Scott, Seán Lyons, Claire Keane, Donal McCarthy and Richard S.J. Tol

- 261 The Misperception of Inflation by Irish Consumers
David Duffy and Pete Lunn
- 260 The Direct Impact of Climate Change on Regional Labour Productivity
Tord Kjellstrom, R Sari Kovats, Simon J. Lloyd, Tom Holt,
Richard S.J. Tol
- 259 Damage Costs of Climate Change through Intensification of Tropical Cyclone Activities: An Application of FUND
Daiju Narita, *Richard S. J. Tol* and *David Anthoff*
- 258 Are Over-educated People Insiders or Outsiders? A Case of Job Search Methods and Over-education in UK
Aleksander Kucel, *Delma Byrne*
- 257 Metrics for Aggregating the Climate Effect of Different Emissions: A Unifying Framework
Richard S.J. Tol, Terje K. Berntsen, Brian C. O'Neill, Jan S. Fuglestvedt, Keith P. Shine, Yves Balkanski and Laszlo Makra
- 256 Intra-Union Flexibility of Non-ETS Emission Reduction Obligations in the European Union
Richard S.J. Tol
- 255 The Economic Impact of Climate Change
Richard S.J. Tol
- 254 Measuring International Inequity Aversion
Richard S.J. Tol
- 253 Using a Census to Assess the Reliability of a National Household Survey for Migration Research: The Case of Ireland
Alan Barrett and Elish Kelly
- 252 Risk Aversion, Time Preference, and the Social Cost of Carbon
David Anthoff, Richard S.J. Tol and Gary W. Yohe
- 251 The Impact of a Carbon Tax on Economic Growth and Carbon Dioxide Emissions in Ireland
Thomas Conefrey, John D. Fitz Gerald, Laura Malaguzzi

- Valeri and Richard S.J. Tol*
- 250 The Distributional Implications of a Carbon Tax in Ireland
Tim Callan, Sean Lyons, Susan Scott, Richard S.J. Tol and Stefano Verde
- 249 Measuring Material Deprivation in the Enlarged EU
Christopher T. Whelan, Brian Nolan and Bertrand Maitre
- 248 Marginal Abatement Costs on Carbon-Dioxide Emissions: A Meta-Analysis
Onno Kuik, Luke Brander and *Richard S.J. Tol*
- 247 Incorporating GHG Emission Costs in the Economic Appraisal of Projects Supported by State Development Agencies
Richard S.J. Tol and Seán Lyons
- 246 A Carbon Tax for Ireland
Richard S.J. Tol, Tim Callan, Thomas Conefrey, John D. Fitzgerald, Seán Lyons, Laura Malaguzzi Valeri and Susan Scott
- 245 Non-cash Benefits and the Distribution of Economic Welfare
Tim Callan and Claire Keane
- 244 Scenarios of Carbon Dioxide Emissions from Aviation
Karen Mayor and Richard S.J. Tol
- 243 The Effect of the Euro on Export Patterns: Empirical Evidence from Industry Data
Gavin Murphy and Iulia Siedschlag
- 242 The Economic Returns to Field of Study and Competencies Among Higher Education Graduates in Ireland
Elish Kelly, Philip O'Connell and Emer Smyth
- 241 European Climate Policy and Aviation Emissions
Karen Mayor and Richard S.J. Tol
- 240 Aviation and the Environment in the Context of the EU-US Open Skies Agreement
Karen Mayor and Richard S.J. Tol
- 239 Yuppie Kvetch? Work-life Conflict and Social Class in Western Europe
Frances McGinnity and Emma Calvert

- 238 Immigrants and Welfare Programmes: Exploring the Interactions between Immigrant Characteristics, Immigrant Welfare Dependence and Welfare Policy
Alan Barrett and Yvonne McCarthy
- 237 How Local is Hospital Treatment? An Exploratory Analysis of Public/Private Variation in Location of Treatment in Irish Acute Public Hospitals
Jacqueline O'Reilly and Miriam M. Wiley
- 236 The Immigrant Earnings Disadvantage Across the Earnings and Skills Distributions: The Case of Immigrants from the EU's New Member States in Ireland
Alan Barrett, Seamus McGuinness and Martin O'Brien
- 235 Europeanisation of Inequality and European Reference Groups
Christopher T. Whelan and Bertrand Maitre
- 234 Managing Capital Flows: Experiences from Central and Eastern Europe
Jürgen von Hagen and Iulia Siedschlag
- 233 ICT Diffusion, Innovation Systems, Globalisation and Regional Economic Dynamics: Theory and Empirical Evidence
Charlie Karlsson, Gunther Maier, Michaela Trippel, Iulia Siedschlag, Robert Owen and Gavin Murphy
- 232 Welfare and Competition Effects of Electricity Interconnection between Great Britain and Ireland
Laura Malaguzzi Valeri
- 231 Is FDI into China Crowding Out the FDI into the European Union?
Laura Resmini and Iulia Siedschlag
- 230 Estimating the Economic Cost of Disability in Ireland
John Cullinan, Brenda Gannon and Seán Lyons
- 229 Controlling the Cost of Controlling the Climate: The Irish Government's Climate Change Strategy
Colm McCarthy, Sue Scott
- 228 The Impact of Climate Change on the Balanced-Growth-Equivalent: An Application of *FUND*
David Anthoff, Richard S.J. Tol

- 227 Changing Returns to Education During a Boom? The Case of Ireland
Seamus McGuinness, Frances McGinnity, Philip O'Connell
- 226 'New' and 'Old' Social Risks: Life Cycle and Social Class Perspectives on Social Exclusion in Ireland
Christopher T. Whelan and Bertrand Maitre
- 225 The Climate Preferences of Irish Tourists by Purpose of Travel
Seán Lyons, Karen Mayor and Richard S.J. Tol
- 224 A Hirsch Measure for the Quality of Research Supervision, and an Illustration with Trade Economists
Frances P. Ruane and Richard S.J. Tol
- 223 Environmental Accounts for the Republic of Ireland: 1990-2005
Seán Lyons, Karen Mayor and Richard S.J. Tol
- 2007** 222 Assessing Vulnerability of Selected Sectors under Environmental Tax Reform: The issue of pricing power
J. Fitz Gerald, M. Keeney and S. Scott
- 221 Climate Policy Versus Development Aid
Richard S.J. Tol
- 220 Exports and Productivity – Comparable Evidence for 14 Countries
The International Study Group on Exports and Productivity
- 219 Energy-Using Appliances and Energy-Saving Features: Determinants of Ownership in Ireland
Joe O'Doherty, Seán Lyons and Richard S.J. Tol
- 218 The Public/Private Mix in Irish Acute Public Hospitals: Trends and Implications
Jacqueline O'Reilly and Miriam M. Wiley
- 217 Regret About the Timing of First Sexual Intercourse: The Role of Age and Context
Richard Layte, Hannah McGee
- 216 Determinants of Water Connection Type and Ownership of Water-Using Appliances in Ireland
Joe O'Doherty, Seán Lyons and Richard S.J. Tol

- 215 Unemployment – Stage or Stigma?
Being Unemployed During an Economic Boom
Emer Smyth
- 214 The Value of Lost Load
Richard S.J. Tol
- 213 Adolescents' Educational Attainment and School
Experiences in Contemporary Ireland
Merike Darmody, Selina McCoy, Emer Smyth
- 212 Acting Up or Opting Out? Truancy in Irish Secondary
Schools
Merike Darmody, Emer Smyth and Selina McCoy
- 211 Where do MNEs Expand Production: Location Choices of
the Pharmaceutical Industry in Europe after 1992
Frances P. Ruane, Xiaoheng Zhang
- 210 Holiday Destinations: Understanding the Travel Choices of
Irish Tourists
Seán Lyons, Karen Mayor and Richard S.J. Tol
- 209 The Effectiveness of Competition Policy and the Price-Cost
Margin: Evidence from Panel Data
Patrick McCloughan, *Seán Lyons* and William Batt
- 208 Tax Structure and Female Labour Market Participation:
Evidence from Ireland
Tim Callan, A. Van Soest, J.R. Walsh