

Madden, David

**Working Paper**

## An analysis of mental stress in Ireland, 1994 - 2000

UCD Centre for Economic Research Working Paper Series, No. WP07/10

**Provided in Cooperation with:**

UCD School of Economics, University College Dublin (UCD)

*Suggested Citation:* Madden, David (2007) : An analysis of mental stress in Ireland, 1994 - 2000, UCD Centre for Economic Research Working Paper Series, No. WP07/10, University College Dublin, UCD School of Economics, Dublin

This Version is available at:

<https://hdl.handle.net/10419/43356>

**Standard-Nutzungsbedingungen:**

Die Dokumente auf EconStor dürfen zu eigenen wissenschaftlichen Zwecken und zum Privatgebrauch gespeichert und kopiert werden.

Sie dürfen die Dokumente nicht für öffentliche oder kommerzielle Zwecke vervielfältigen, öffentlich ausstellen, öffentlich zugänglich machen, vertreiben oder anderweitig nutzen.

Sofern die Verfasser die Dokumente unter Open-Content-Lizenzen (insbesondere CC-Lizenzen) zur Verfügung gestellt haben sollten, gelten abweichend von diesen Nutzungsbedingungen die in der dort genannten Lizenz gewährten Nutzungsrechte.

**Terms of use:**

*Documents in EconStor may be saved and copied for your personal and scholarly purposes.*

*You are not to copy documents for public or commercial purposes, to exhibit the documents publicly, to make them publicly available on the internet, or to distribute or otherwise use the documents in public.*

*If the documents have been made available under an Open Content Licence (especially Creative Commons Licences), you may exercise further usage rights as specified in the indicated licence.*

*UCD CENTRE FOR ECONOMIC RESEARCH*

*WORKING PAPER SERIES*

*2007*

**An Analysis of Mental Stress in Ireland, 1994-2000**

David Madden, University College Dublin

WP07/10

August 2007

**UCD SCHOOL OF ECONOMICS  
UNIVERSITY COLLEGE DUBLIN  
BELFIELD DUBLIN 4**

# **An Analysis of Mental Stress in Ireland, 1994-2000**

**David Madden**

**(University College Dublin)**

**July 2007**

**Abstract:** The General Health Questionnaire (GHQ) is frequently used as a measure of mental well-being with those people with values below a certain threshold regarded as suffering from mental stress. Comparison of mental stress levels across populations may then be sensitive to the chosen threshold. This paper uses stochastic dominance techniques to show that mental stress fell in Ireland over the 1994 to 2000 period regardless of the threshold chosen. Decomposition techniques suggest that changes in the proportion unemployed and in the protective effect of income, education and marital status upon mental health were the principal factors underlying this fall.

**Keywords:** GHQ, mental stress, dominance, decomposition.

**JEL Codes:** I12, I31, I32.

**Corresponding Author:** David Madden,  
School of Economics,  
University College Dublin,  
Belfield,  
Dublin 4,  
Ireland.

Phone: 353-1-7168396

Fax: 353-1-2830068

E-Mail: [david.madden@ucd.ie](mailto:david.madden@ucd.ie)

I am grateful to the Irish Social Science Data Archive for providing the data and to Paul Devereux for helpful discussion. I remain responsible for any errors.

# An Analysis of Mental Stress in Ireland, 1994-2000

## 1. Introduction

The General Health Questionnaire (GHQ) first introduced by Goldberg (1972) is one of the most commonly employed measures of mental health. The original development of the measure involved a 60 item version (GHQ-60) with the “best” 30, 20 and 12 of these items being identified for use when the respondent’s time was at a premium (giving rise to the GHQ-30, GHQ-20 and GHQ-12 measures respectively). Items in the GHQ consist of questions asking whether the respondent has recently experienced a particular symptom or item of behaviour rated on a four-point scale. For example a respondent might be asked the question: have you recently been feeling reasonably happy, all things considered? The respondent then answers from one of the following four categories: more so than usual, same as usual, less than usual, or much less than usual.

The GHQ score can be used as a predictor of an individual being a psychiatric case. The score is highly correlated with standardised clinical interviews and in a review of six validity studies of the GHQ-12, Goldberg and Williams (1988) reported sensitivity rates (proportion of cases correctly identified) of between 71% and 91%, as well as specificity rates (proportions of normals correctly identified) of between 71% and 91%. The variance weighted mean of sensitivity and specificity rates were 89% and 80% respectively.

Two main scoring systems are then used to summarise the GHQ score. The first, the GHQ method, assigns a score of 0 if the individual answers in either of the first two categories or 1 if answering either of the latter two categories. The alternative scoring method is the Likert method where responses are given scores of 0,1,2, and 3. In this case, the “best” GHQ score in terms of mental well-being is a score of 0, while the worst is a score of 36. In some cases, the Likert ordering may be reversed, so that weights of 3, 2, 1, and 0 are given, in which case the best score is 36 and the worst is 0. For reasons that will become clear later on, this is the scoring system employed in the analysis here.

In terms of the choice between GHQ and Likert scoring systems, Banks et al (1980) suggest that the Likert method is to be preferred to the GHQ method in studies using parametric multivariate techniques, since its distribution more closely approximates the normal.

Given the general acceptance of the GHQ as a measure of mental health, it is worth asking whether there is any key threshold value, above (or below) which an individual may be considered to be experiencing mental stress. In the case of the GHQ scoring method, Goldberg et al (1998) show how the threshold may vary from place to place and suggest the mean score as a rough guide to the best threshold. In the case of the Likert scoring method, the choice of threshold is not as clearcut, partly because, as indicated above, the greater range of potential scores for each item implies that the distribution more closely approximates the normal. The choice of the mean score as a threshold in that case would imply that close to 50% of the population would be measured as experiencing mental stress, which does not seem plausible.

Thus when using the Likert scoring method, there is scope for varying threshold levels. For example, Piccinelli et al (1993) suggest a cut-off of 22/23 for the GHQ-12 scale while Goldberg et al suggest a cut-off of 24/25.<sup>1</sup> Clearly, there is room for some disagreement on the appropriate cut-off point to identify mental stress. This implies that comparison of mental stress levels across populations at a single point in time or for the same population across time can be sensitive to the cut-off point chosen.

This is an issue which is also encountered in the literature on poverty, where poverty comparisons can be sensitive to the particular poverty line chosen. To overcome this problem Atkinson (1987) suggested the use of *poverty dominance*. Poverty dominance is a situation where one distribution of, say income, can be identified as having a higher rate of poverty than another distribution, for a wide range of poverty lines and for a wide range of poverty indices. If poverty dominance is found then it is possible to make reasonably strong statements regarding poverty levels in two different distributions. If poverty dominance is not found, then it may

---

<sup>1</sup> In the original papers the suggested cut-offs were actually 13/14 and 11/12 as the authors were regarding 0 as the best Likert score. We have rescaled them for the case where 36 is the best score.

be necessary to restrict the range of poverty lines and/or the class of poverty indices over which we search for dominance.

The approach of poverty dominance has clear potential to be applied to any situation where measurement of a phenomenon is sensitive to the choice of a critical threshold. In this paper we apply the concept of poverty dominance to compare the degree of mental stress in Ireland over the period 1994-2000, where mental health is measured by the Likert scoring method applied to the GHQ-12. As we are applying the insights of the poverty literature where more income is considered to be “better” than less income, it seems natural that we use the version of the Likert scale where higher scores are “better” than lower scores.

The results below will show quite a considerable change in the GHQ-12 among those at risk of mental stress over the period in question. This begs the question of whether any factor or set of factors can be identified as lying behind this change. We carry out standard regression analysis to attempt to identify the characteristics lying behind the probability of falling below the GHQ-12 threshold. We then apply decomposition techniques to identify changes in characteristics and in the “returns” to characteristics (returns in the sense of their marginal effect upon the probability of being below the GHQ-12 threshold) which may lie behind the change in GHQ-12.

The remainder of the paper is as follows: in the next section we provide more formal definitions of dominance and in section 3 we describe our data and present results concerning dominance. In section 4 we carry out the regression and decomposition analysis to explore the factors lying behind the change in GHQ-12 over time. Section 5 offers concluding comments.

## **2. Dominance: a more formal definition**

In this section we provide a more formal definition of dominance. Dominance analysis as presented here is an application of stochastic dominance to distributions of the GHQ-12. Until recently probably the main application of stochastic dominance in economics was in relation to assets with monetary payoffs where it is used to rank the payoff distributions of assets in terms of their level of return and the dispersion of the

return i.e. the level of risk attached to the asset. It has also been used in poverty and income distribution analysis and it can be extremely useful when making non-parametric comparisons between distributions.

Suppose we have two distributions with cumulative density functions (CDF)  $F(x)$  and  $G(x)$  respectively. Then CDF  $F(x)$  first-order stochastically dominates  $G(x)$  if and only if, for all monotone non-decreasing functions  $\alpha(x)$ :

$$\int \alpha(x)dF(x) \geq \int \alpha(x)dG(x)$$

where the integral is taken over the whole range of  $x$ . Thus the average value of  $\alpha$  is at least as large in distribution  $F$  as it is in distribution  $G$ , as long as the valuation function is such that more is better i.e. it is monotone non-decreasing.<sup>2</sup> In this sense distribution  $F$  stochastically dominates distribution  $G$ . An equivalent way of expressing this is to say that for all  $x$ ,

$$G(x) \geq F(x)$$

so that the CDF of distribution  $G$  is always at least as large as that of distribution  $F$  i.e. distribution  $G$  always has more mass in the lower part of the distribution.

In terms of a diagram, in figure 1, the cumulative distribution points  $H(y)$ , on the vertical axis, are proportional to the area under the curves and to the left of  $x$ . As we can see from figure 1, distribution  $G(x)$  is everywhere above distribution  $F(x)$  and so the probability of getting at least  $x$  is higher under  $F(x)$  than  $G(x)$ , thus  $F(x)$  first-order stochastically dominates  $G(x)$

So how is this related to analysis of mental stress? Suppose we decide upon a threshold level of the GHQ indicating mental stress and denote it as  $z$ . If there are  $n$  individuals in total and if  $q$  individuals have a GHQ score at or below  $z$ , then what we term the headcount ratio is  $G_0 = q/n$ . In this case we may regard the CDFs as Stress Incidence Curves and each point on the graph gives the proportion of the population with GHQ score less than or equal to the GHQ score on the horizontal axis. The cumulative distribution points correspond to head-count ratios in the sense that they represent the proportion of the population at and below a particular GHQ level.

---

<sup>2</sup> In the case of mental health we can regard the  $\alpha$  function as being similar to a utility function which is increasing in the index of mental health,  $x$ .

Suppose there is some disagreement over the precise value of the GHQ threshold, but there is reasonable agreement that it is not greater than  $z^{max}$ . In this case, mental stress will fall between two dates if the stress incidence curve for the latter date lies nowhere above that for the former date, up to  $z^{max}$ . This is called the First Order Dominance Condition (FOD). In other words if, for GHQ thresholds up to  $z^{max}$

$$G(x) \geq F(x)$$

then the incidence of mental stress will always be higher for distribution G than for distribution F. Thus the stress ranking of two distributions according to the headcount ratio is robust to all choices of the threshold up to  $z^{max}$  if, and only if, one distribution stochastically dominates the other.

In terms of our diagrams in Figure 2 the distribution  $G(x)$  is everywhere above that of distribution  $F(x)$  and so mental stress is greater for  $G(x)$  than  $F(x)$ , no matter where the threshold is drawn. This reflects the fact that the proportion of people with GHQ score less than the minimum threshold of  $z^{max}$  is always greater with distribution  $G(x)$  than with distribution  $F(x)$ .

If the curves intersect, as in Figure 3 below, then the ranking is ambiguous. For example, if the threshold was set at  $z_b$ , as in Figure 3, then distribution  $G(x)$  will lie above distribution  $F(x)$ . If the threshold however, is set at  $z_a$  then distribution  $F(x)$  will lie above distribution  $G(x)$ . Thus mental stress at  $z_b$  is higher with distribution  $G(x)$ , but at  $z_a$  mental stress is higher with distribution  $F(x)$ . We cannot therefore unambiguously state that one distribution exhibits dominance over the other as their ranking in terms of mental stress changes depends on where the threshold is drawn.

In this case there are essentially two courses we can pursue if we wish to establish dominance. First, we could restrict the range of the threshold over which we search for dominance i.e. look for dominance in an interval  $z_{min} \leq z \leq z_{max}$ . Alternatively we could impose greater structure on the way in which we summarise GHQ scores for any given distribution, which in turn may enable us to make comparisons across distributions in cases where dominance cannot be found. Effectively, this involves



putting greater structure on the function  $\alpha(x)$ . In particular, as well as requiring  $\alpha(x)$  to be increasing in  $x$ , we may also require it to be concave. Clearly, the greater degree of structure or restrictions imposed upon the  $\alpha$  function, the greater the scope for disagreement between analysts as to the reasonableness of such restrictions. The imposition of greater structure (in the form of concavity etc) is clearly more plausible in poverty analysis when the underlying variable is cardinal than when it is ordinal, as with the GHQ measure. In the next section we search for dominance using Irish data on GHQ scores.

### 3. Data and Results

In this section we apply the approach outlined above to Irish data. The data comes from two waves of the Living in Ireland Survey (LII), 1994 and 2000.<sup>3</sup> The LII survey is a nationally representative survey which was collected annually between 1994 and 2001 and which formed the Irish part of the European Community Household Panel Survey. It has been used extensively in a variety of studies on (amongst other issues) poverty, deprivation and education.

One issue which inevitably arises with the use of panel data is attrition. Attrition is the process whereby households who were interviewed in the first year of the study are unavailable (for a variety of reasons) for interview in subsequent waves. Since attrition can occur on a year-by-year basis it is possible that a substantial proportion of the original sample may have been lost after a period of say, five or six years. There are two principal problems associated with attrition. The first is that if attrition happens on a non-random basis then the sample may gradually become unrepresentative. Secondly, as the sample shrinks in size it may lose precision.

There is a detailed discussion of attrition in the LII survey in Nolan et al (2002). They conclude that there is some evidence that as well as giving rise to a loss of precision, attrition in the LII survey may have been non-random. In particular, there

---

<sup>3</sup> For an overview of the Living in Ireland Survey, see Watson (2004).

may have been relatively higher attrition amongst households which changed address and which consisted primarily of young single adults. In response to this a booster sample, with just over 1500 new households, was introduced in 2000 with a view to alleviating the problems arising from attrition (see Watson, 2004). On this basis, it seems best to use as our two years of comparison 1994 and 2000, as these are the years least prone to any problems with attrition.

Figure 4 presents first order dominance curves for 1994 and 2000. The results are presented for values of the Likert scale from 6 to 25. The upper bound of 25 is chosen as a reasonable upper value for the stress threshold and 6 is chosen as the lower threshold as there are simply very few observations with Likert values below 6.

For Likert values below around 12, the curves are quite close together and it can be difficult to establish dominance merely via visual inspection. Accordingly, in figures 5, we “magnify” the CDF curves to look at the narrower interval of values between 6 and 12.

Bear in mind that because the Likert scale is a discrete, rather than a continuous variable, there is likely to be a range of values of the CDF for each value of the Likert scale. Hence there may be overlap between the values of the CDF for the two distributions for each value of the Likert scale. This can lead to curves where visual comparison is difficult. Hence the dominance curves we present show the highest values of the range of CDF values for each value of the Likert scale.

Figures 4 and 5 present a very consistent picture. In all cases the CDF for the Likert score is higher for 1994 than for 2000, suggesting that no matter where the threshold is drawn, 2000 shows dominance over 1994 i.e. mental stress was lower in 2000 than in 1994.

Of course, while it is one thing to observe that the CDF values for one distribution lie above that for another, it still has to be established that such dominance is statistically significant. To test for statistical significance we adopt the procedure of Kakwani (1990) in calculating statistical significance for poverty measures. Since the (higher) values of the CDF for each GHQ score can essentially be regarded as

equivalent to poverty headcount ratios (i.e. the proportion of the population with GHQ scores on or below a given threshold) we calculate the standard errors of these headcount ratios for each year for each GHQ score. We can then test the null hypothesis that the difference between these headcount ratios is statistically significant.

More formally if we denote the values of the CDF for the GHQ scores for years 1 and 2 as  $\hat{G}_1$  and  $\hat{G}_2$  respectively, then the standard error of  $(\hat{G}_1 - \hat{G}_2)$  will be

$$SE(\hat{G}_1 - \hat{G}_2) = \sqrt{\frac{\hat{\sigma}_1^2}{n_1} + \frac{\hat{\sigma}_2^2}{n_2}}$$

where  $\hat{\sigma}_i^2 = \hat{G}_i(1 - \hat{G}_i)$  and  $n_i$  refers to the sample size for year  $i$ . Then the statistic

$$\eta = \frac{\hat{G}_1 - \hat{G}_2}{SE(\hat{G}_1 - \hat{G}_2)}$$

has an asymptotic normal distribution with zero mean and unit

variance.

Table 1 summarises the result of the test of the null hypothesis of no difference between the CDF values. We see that we can reject the null hypothesis for comparisons between 1994 and 2000.

This section has provided evidence that mental stress as measured by the proportion of the population with GHQ-12 scores below a key threshold has diminished over the period 1994 to 2000. The strength of this conclusion is reinforced by the fact that this result holds regardless of where the threshold is drawn. We now turn to the question of whether we can identify any factor or set of factors as lying behind this reduction in mental stress.

#### **4. Decomposition of Change in Mental Stress**

This section attempts to identify the factors lying behind the change in mental stress in Ireland over the period 1994-2000. To do this requires some “model” of mental stress. We will not provide any structural model of mental stress. Instead we

estimate a reduced form model which attempts to identify those factors lying behind mental stress without specifying the pathway. Thus the estimating equations (and consequent decompositions which we carry out) are very much in the spirit of Clark and Oswald (1994, 2002).

Before presenting a reduced form model of mental stress we first of all have to return to the definition of mental stress. The discussion in section 1 outlined how there was some disagreement over the choice of appropriate threshold and indeed the purpose of the analysis so far has been to arrive at conclusions which are not sensitive to choice of threshold. For the analysis in this section however it is necessary that some choice be made, so we will adopt the Goldberg threshold of 24/25 and check the sensitivity of our results to the choice of an alternative threshold.

We therefore adopt a binary threshold of mental stress whereby all individuals with GHQ-12 scores below 25 are deemed to be suffering from mental stress and those with GHQ-12 scores of 25 or above are not. We then estimate a probit model to identify the factors associated with being mentally stressed i.e. GHQ-12 below 25. Before presenting our regression results we first present a simple table of our summary statistics by year and gender. Table 2 simply reproduces in table form what can be observed in figure 4. The proportion of the population suffering from mental stress fell from over 30% to just below 27% for males and from about 37% to 32.4% for females.<sup>4</sup>

Thus the reduced form model for mental stress is given by the probit model

$$\Pr(S_{it} = 1 | X_{it}) = \Phi(X_{it}\beta)$$

where  $X_{it}$  is a vector of characteristics describing individual  $i$  in period  $t$ ,  $S_{it} = 1$  indicates the individual is stressed i.e. their GHQ-12 lies below the threshold,  $\beta$  is a vector of parameters and  $\Phi$  is the standard normal cumulative density function.

---

<sup>4</sup> Women consistently appear to register higher levels of mental stress when measured by GHQ scores (see Emslie et al., 2002). This is an issue which we intend returning to in future research.

Estimates of  $\beta$  are obtained for the two time periods, 1994 and 2000 and then an unbiased predictor of the fraction of the population suffering mental stress in time period  $t$  is given by

$$\hat{P}_t = \left( \frac{1}{n_t} \right) \sum_{i=1}^{n_t} \Phi(X_{it} \hat{\beta}_t)$$

where  $n_t$  is the sample size in period  $t$ . Then the change in mental stress between 1994 and 2000 is decomposed into two parts, explained and unexplained. The explained part refers to the change in mental stress that can be accounted for by changes in the characteristics vector  $X_i$ , such as employment status, health status etc. The unexplained part arises from changes in the vector of parameters,  $\beta$ . The vector  $\beta$  can be regarded as describing the “returns” to the characteristics in  $X_i$ , in the sense that it denotes the impact of a marginal change in one of the characteristics on the probability of being below the mental threshold.

The breakdown of the change in mental stress between 1994 and 2000 is given by

$$\hat{P}_{00} - \hat{P}_{94} = EXP + UNEXP .$$

The explained part of the change is the change in the proportion suffering from mental stress which would occur if the returns to characteristics were to remain unchanged but the characteristics of the population changed from those of 1994 to those of 2000. Essentially we are adapting the well-known Blinder-Oaxaca decomposition, originally developed for linear regression, to a probit. As always with Blinder-Oaxaca decompositions the issue of path dependence arises i.e. the decomposition could also be carried out by using the  $\beta$  values from 2000 as the norm (for a recent discussion of path dependence in Blinder-Oaxaca decompositions see Fournier, 2005).

The explained part is thus given by:

$$EXP = \left[ \left( \frac{1}{n_{00}} \right) \sum_{i=1}^{n_{00}} \Phi(X_{i,00} \hat{\beta}_{94}) \right] - \left[ \left( \frac{1}{n_{94}} \right) \sum_{i=1}^{n_{94}} \Phi(X_{i,94} \hat{\beta}_{94}) \right]$$

while the unexplained portion is that which is unexplained by characteristics, but is due to differences in returns i.e.  $\hat{\beta}_{94}$  changes to  $\hat{\beta}_{00}$ :

$$UNEXP = \left[ \left( \frac{1}{n_{00}} \right) \sum_{i=1}^{n_{00}} \Phi(X_{i,00} \hat{\beta}_{00}) \right] - \left[ \left( \frac{1}{n_{00}} \right) \sum_{i=1}^{n_{04}} \Phi(X_{i,00} \hat{\beta}_{94}) \right]$$

In turn, following Even and Macpherson (1990) the contribution of the explained gap due to the  $j$ th explanatory variable is defined as:

$$EXP_j = EXP \left[ \frac{(\bar{X}_{00,j} - \bar{X}_{94,j}) \hat{\beta}_{94,j}}{(\bar{X}_{00} - \bar{X}_{94}) \hat{\beta}_{94}} \right].$$

While the contribution of the return of the  $j$ th explanatory variable to the unexplained gap is given by:

$$UNEXP_j = UNEXP \left[ \frac{(\hat{\beta}_{00,j} - \hat{\beta}_{94,j}) \bar{X}_{00,j}}{(\hat{\beta}_{00} - \hat{\beta}_{94}) \bar{X}_{00}} \right].$$

We model the probability of suffering from mental stress as depending upon the following variables: age, gender, income, marital status, education, health, labour force status, and two social capital variables, membership of a club or society and religious attendance. Table 3 gives the characteristics of the population in terms of the explanatory variables used in the regression. Compared to 1994, the sample in 2000 was older, had higher income, higher educational qualifications, a higher proportion at work (and hence fewer unemployed or on home duties), fewer with health problems and lower religious observance.

Ferrer-i-Carbonell and Frijters (2004) discuss methodological issues in estimating the determinants of the returns to happiness. While we are not estimating happiness as such their recommendations have clear relevance to this exercise. They suggest that the inclusion of individual fixed effects may be of greater importance than the question of the cardinality of the dependent variable (virtually all studies in this area employ an ordinal dependent variable). Unfortunately since we are examining the role of changes in both characteristics and their estimated effects between two periods we have to estimate two separate regressions. Since we have only two waves of a

panel which we believe are not adversely affected by attrition, we are unable to incorporate individual fixed effects into our analysis.

Table 4 gives the estimated marginal effects for 1994 and 2000. Bearing in mind that we are trying to model the probability of stress a positive coefficient is associated with an increased likelihood of stress. It is interesting to observe not just the signs of the coefficients but also how they changed over the period. Amongst the more notable changes is that the protective effect of income and education have increased, substantially so in the case of income.<sup>5</sup> In terms of labour force/economic status, compared to working, the impact on mental stress of being unemployed has decreased, while that of being in full-time education has increased. The impact of health problems and marital status (compared to the default category of single) have also decreased. For some covariates the direction of causality should be borne in mind. Thus being a member of a club or society may act to reduce the probability of mental stress, but it is arguably just as likely that causality is in the other direction i.e. suffering from mental stress decreases the probability that one would join a club.

The observed proportion of the population of those suffering from stress falls between 1994 and 2000 by about 4%. Of that fall, about one quarter is “explained” in the sense that it can be accounted for by changes in population characteristics, while the remaining three quarters is unexplained and accounted for by changes in the “returns” to characteristics. Table 5 gives the proportional contribution of each variable to the explained and unexplained part of the change. In terms of interpreting the coefficients a positive coefficient indicates that a change in this variable (or the returns to this variable) contributed to the fall in mental stress. The major contribution to the explained part of the fall is in the area of labour market status. In particular the fall in unemployment on its own can account for over 100% of the explained fall with the fall in the proportion on “home duties” also contributing. Since it is possible that some of those reporting themselves as being on home duties may have been disguised unemployed and thus given that being in employment is the omitted category here what we are essentially seeing is the positive effects in terms of mental health of having a higher fraction of the population at work. The reduction in

the fraction of the population suffering from health problems also comprises a significant part of the explained fall. On the other hand the rise in the proportion of the population separated, divorced or widowed and the fall in those with regular religious attendance tends to work against the fall in mental stress.

The unexplained part of the fall is perhaps a little more difficult to interpret. The change in the constant in the regression is included in this part and we label this part “other unexplained”. Perhaps this is best regarded as that part of the change which can be regarded as arising from unobservables (both in terms of characteristics and returns to characteristics) and this change contributed significantly to the fall in mental stress. Changes in returns to education and marital status (the negative effect of marriage is reversed and the negative effect of widowhood and separation/divorce falls) contribute to the fall. However the greatest contribution to the fall is the increased protective effect of income. The size of the coefficient in the regression increases by a factor of ten and accounts for over 200% of the unexplained fall. On the other side changes in the returns to age, religious attendance and being in full-time education all worked against the reduction in mental stress.<sup>6</sup>

We repeated the exercise for a lower GHQ threshold (where mental stress is defined as a value of GHQ-12 of 22 or lower) and the results (which are available on request) were qualitatively very similar. The proportion of the change in mental stress accounted for by explained factors was around 27% with about 73% accounted for by unexplained factors. Once again labour market status (falls in the proportion unemployed and on home duties) and changes in the proportion suffering from health problems and a higher age profile accounted for the bulk of the fall arising from explained factors, with the decline in the proportions regularly attending religious services working in the opposite direction. For unexplained factors changes in the protective effect of income and in the returns to age and to being married continued to exercise a strong influence on the fall in mental stress, as did labour market status. Changes in the return to gender and religious observance were the principal forces working in the opposite direction.

---

<sup>5</sup> We use the log of non-equivalised income, in line with the suggestions by Ferrer-i-Carbonell and Fritjers (2004).



## 5. Conclusions

This paper has investigated the change in mental stress in Ireland over the period 1994 to 2000. We have applied stochastic dominance techniques, previously used in poverty analysis, to show that, regardless of where the threshold for mental stress (in terms of the GHQ-12 measure) is set, levels of mental stress in Ireland were lower in 2000 compared to 1994. We also applied a version of the well-known Blinder-Oaxaca decomposition technique to analyse the factors lying behind the change. We find that in terms of changes in observable characteristics of the population the greatest contribution to the fall in mental stress came from higher employment levels. We also find that a substantial part of the change is unexplained in the sense that it arises from changes in the returns to characteristics (in the sense of their impact upon mental stress). In this regard the most important changes were with respect to income, education and marital status.

---

<sup>6</sup> The result that the probability of mental stress essentially follows an inverse U shape with respect to age is consistent with recent results by Blanchflower and Oswald (2007).

## References

- Atkinson, A., (1987):** “On the Measurement of Poverty”, *Econometrica*, Vol. 55, pp. 749-764.
- Banks, M., C. Clegg, P. Jackson, N. Kemp, E. Stafford and T. Wall (1980):** “The use of the General Health Questionnaire as an indicator of mental health in occupational studies”, *Journal of Occupational Psychology*, Vol. 53, pp. 187-194.
- Blanchflower D., and A. Oswald (2007):** “Is Well-Being U Shaped Over the Lifecycle?”, NBER Working Paper WP12935.
- Clark, A., and A. Oswald (1994):** “Unhappiness and Unemployment”, *Economic Journal*, Vol. 104, pp. 648-659.
- and ----- (2002): “A Simple Statistical Model for Measuring How Life Events Affect Happiness”, *International Journal of Epidemiology*, Vol. 31, pp. 1139-1144.
- Emslie, C., R. Fuhrer, K. Hunt, S. Macintyre, M. Shipley and S. Stansfield (2002):** “Gender Differences in Mental Health: Evidence from Three Organisations”, *Social Science and Medicine*, Vol. 54, pp. 621-624.
- Even, W., and D. Macpherson, (1990):** Plant Size and the Decline of Unionism, *Economics Letters*. 32. 393-398.
- Ferrer-i-Carbonell, A., and P. Frijters (2004):** “How Important is Methodology for the Estimates of the Determinants of Happiness”, *Economic Journal*, Vol. 114, pp. 641-659.
- Fournier, M., (2005):** “Exploiting Information from Path Dependency in Oaxaca-Blinder Decomposition Procedures”, *Applied Economics Letters*, Vol. 12, pp. 669-672.
- Goldberg, D., (1972):** *The Detection of Psychiatric Illness by Questionnaire*. London: Oxford University Press.
- , **R. Gater, N. Sartorius, T.B. Ustun, M. Piccinelli, O. Gureje and C. Rutter (1997):** “The validity of two versions of the GHQ in the WHO study of mental illness in general health care”, *Psychological Medicine*, Vol. 27, pp. 191-197.
- , **T. Oldehinkel and J Ormel (1998):** “Why GHQ threshold varies from one place to another”, *Psychological Medicine*, Vol. 28, pp. 915-921.
- , **and P. Williams (1988):** *A Users Guide to the General Health Questionnaire*. Windsor. NFER-NELSON.
- Kakwani, N., (1990):** “Testing for Significance of Poverty Differences”, *World Bank LSMS Working Paper No. 62*.

**Lambert, P., (1992):** *The Distribution and Redistribution of Income*. Manchester University Press.

**Nolan, B., B. Gannon, R. Layte, D. Watson, C. Whelan and J. Williams (2002):** *Monitoring Poverty Trends in Ireland: Results from the 2000 Living in Ireland Survey*. Dublin. Economic and Social Research Institute.

**Piccinelli, M., G. Bisoffi, M. Giovanna Bon, L. Cunico and M. Tansella (1993):** “Validity and Test-Retest Reliability of the Italian Version of the 12 Item General Health Questionnaire in General Practice: a Comparison Between Three Scoring Methods”, *Comparative Psychiatry*, Vol. 34, pp. 198-205.

**Watson, D., (2004):** *Living in Ireland Survey – Technical Overview*. Dublin. Economic and Social Research Institute.

**Table 1: Significance Tests for GHQ Thresholds**

<b>GHQ Threshold</b>	<b>Test Statistic 2000/1994 Total</b>	<b>Test Statistic 2000/1994 Males</b>	<b>Test Statistic 2000/1994 Females</b>
<b>6</b>	2.59	1.72	1.99
<b>7</b>	2.76	1.78	2.18
<b>8</b>	3	2.05	2.28
<b>9</b>	4.15	3.47	2.68
<b>10</b>	3.72	2.89	2.56
<b>11</b>	3.62	3.19	2.22
<b>12</b>	3.69	2.84	2.53
<b>13</b>	4.83	3.34	3.59
<b>14</b>	5.52	4.29	3.75
<b>15</b>	5.77	4.41	3.98
<b>16</b>	5.79	4.36	4.05
<b>17</b>	5.91	3.9	4.57
<b>18</b>	7.45	4.93	5.74
<b>19</b>	8.11	5.23	6.38
<b>20</b>	8.38	5.92	6.17
<b>21</b>	8.51	6.07	6.26
<b>22</b>	8.85	6.09	6.7
<b>23</b>	9.26	6.16	7.16
<b>24</b>	5.24	3.2	4.37
<b>25</b>	15.39	3.53	4.6

**Table 2: % Populations with Mental Stress by Year and Gender**  
(threshold=24/25)

	<b>1994</b>	<b>2000</b>
<b>Male</b>	0.3798	0.3437
<b>Female</b>	0.4492	0.4029

**Table 3: Characteristics of Population, 1994 and 2000**

<b>Characteristic</b>	<b>1994</b>	<b>2000</b>
<b>Age</b>	43.01042	45.51558
<b>Gender (% female)</b>	0.5211316	0.5375076
<b>Income (log)</b>	5.92019	6.200911
<b>Married</b>	0.590654	0.5839383
<b>Sep/Divorced</b>	0.0185546	0.0282819
<b>Widowed</b>	0.0590998	0.0671506
<b>Inter Cert</b>	0.2284962	0.2291289
<b>Leaving Cert</b>	0.287825	0.295977
<b>3<sup>rd</sup> level</b>	0.1283931	0.1710526
<b>Bad health problem</b>	0.0328714	0.0290381
<b>Mild health problem</b>	0.1337762	0.111464
<b>In full-time education</b>	0.0737602	0.0677556
<b>Unemployed</b>	0.0728439	0.0317604
<b>Retired</b>	0.088306	0.110859
<b>On home duties</b>	0.2715611	0.2292801
<b>Other</b>	0.0176383	0.023291
<b>Club member</b>	0.4262971	0.4342105
<b>Religious</b>	0.8174321	0.7549909

**Table 4: Probit Estimates for Mental Stress (marginal effects), Threshold 25**

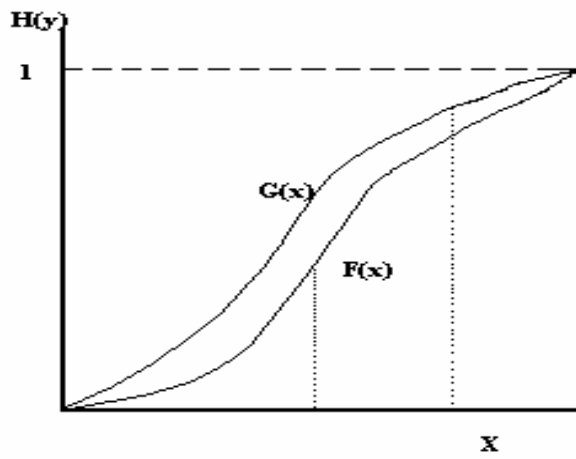
<b>Variable</b>	<b>1994 (N=8731)</b>	<b>2000 (N=8051)</b>
Age	0.010 (0.002)**	0.008 (0.003)**
Age squared	-0.000 (0.000)**	-0.000 (0.000)*
Gender	0.042 (0.014)**	0.029 (0.015)
Income (log)	-0.001 (0.006)	-0.013 (0.007)*
Married	0.044 (0.017)**	-0.006 (0.020)
Sep/div	0.179 (0.044)**	0.097 (0.043)*
Widow	0.192 (0.030)**	0.059 (0.033)
Inter Cert	-0.033 (0.016)*	-0.039 (0.018)*
Leaving Cert	-0.032 (0.016)	-0.072 (0.018)**
3 <sup>rd</sup> level	-0.013 (0.020)	-0.059 (0.020)**
Bad health problem	0.367 (0.028)**	0.436 (0.034)**
Mild health problem	0.216 (0.017)**	0.194 (0.021)**
In full-time education	0.042 (0.026)	0.103 (0.031)**
Unemployed	0.240 (0.021)**	0.162 (0.037)**
Retired	0.024 (0.026)	0.016 (0.027)
On home duties	0.063 (0.018)**	0.077 (0.020)**
Other	0.215 (0.047)**	0.230 (0.049)**
Club member	-0.066 (0.012)**	-0.058 (0.013)**
Religious	-0.070 (0.015)**	-0.040 (0.015)*

Default category is male, single, with no formal educational qualifications, no health problem and working.

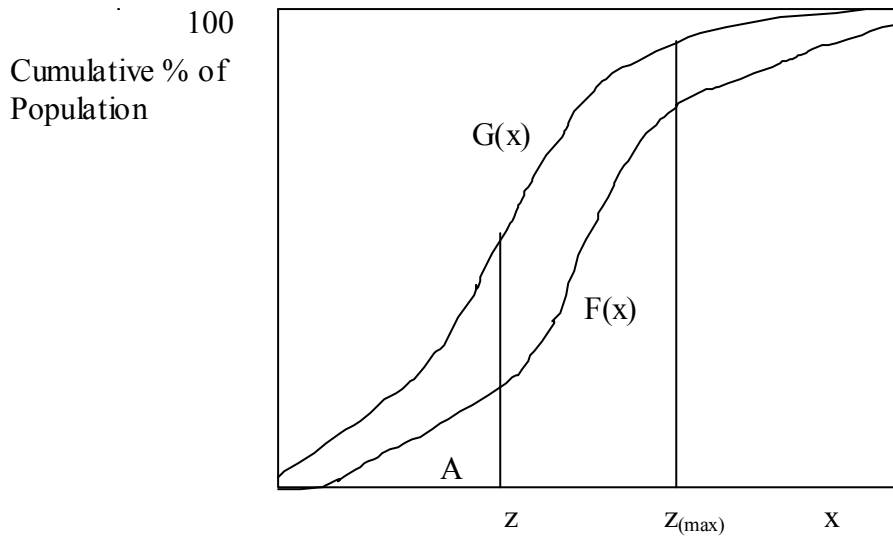
**Table 5: Proportional Contribution of Characteristics to Explained and Unexplained Change in Mental Stress, 1994-2000**

<b>Characteristic</b>	<b>Explained</b>	<b>Unexplained</b>
<b>Age</b>	-0.122	-0.160
<b>Gender (% female)</b>	-0.070	0.194
<b>Income</b>	0.030	2.453
<b>Married</b>	0.031	0.917
<b>Sep/Divorced</b>	-0.176	0.069
<b>Widowed</b>	-0.157	0.267
<b>Inter Cert</b>	0.002	0.050
<b>Leaving Cert</b>	0.027	0.393
<b>3<sup>rd</sup> level</b>	0.059	0.255
<b>Bad health problem</b>	0.151	-0.071
<b>Mild health problem</b>	0.491	0.070
<b>In full-time education</b>	0.026	-0.129
<b>Unemployed</b>	1.009	0.076
<b>Retired</b>	-0.055	0.024
<b>On home duties</b>	0.270	-0.114
<b>Other</b>	-0.123	-0.011
<b>Club member</b>	0.054	-0.078
<b>Religious</b>	-0.446	-0.668
<b>Other unexplained</b>	-	-2.535
<b>% of total change</b>	0.249	0.751

**Figure 1: First-Order Stochastic Dominance**

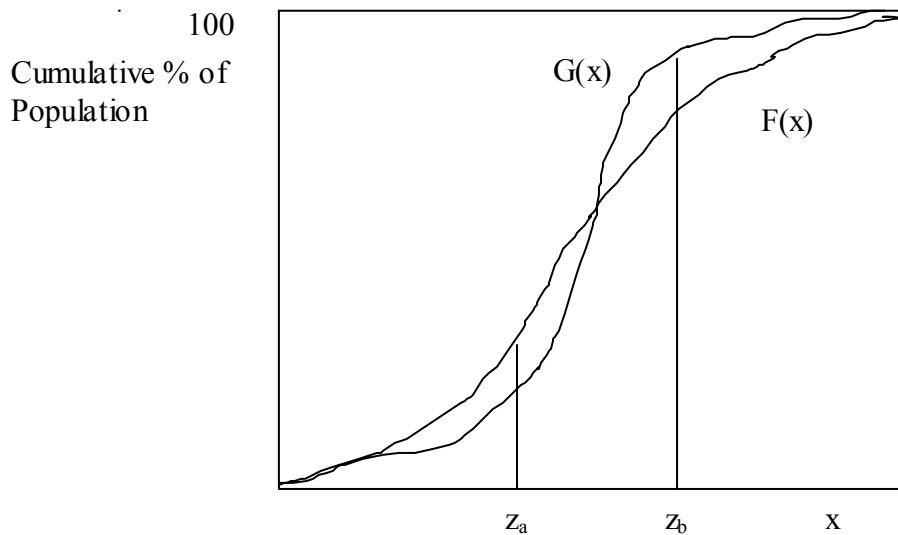


**Figure 2: First Order Stress Dominance**





**Figure 3: Crossing of Stress Incidence Curves**



**Figure 4: GHQ 1994 & 2000, Likert Scores, 6 to 25**

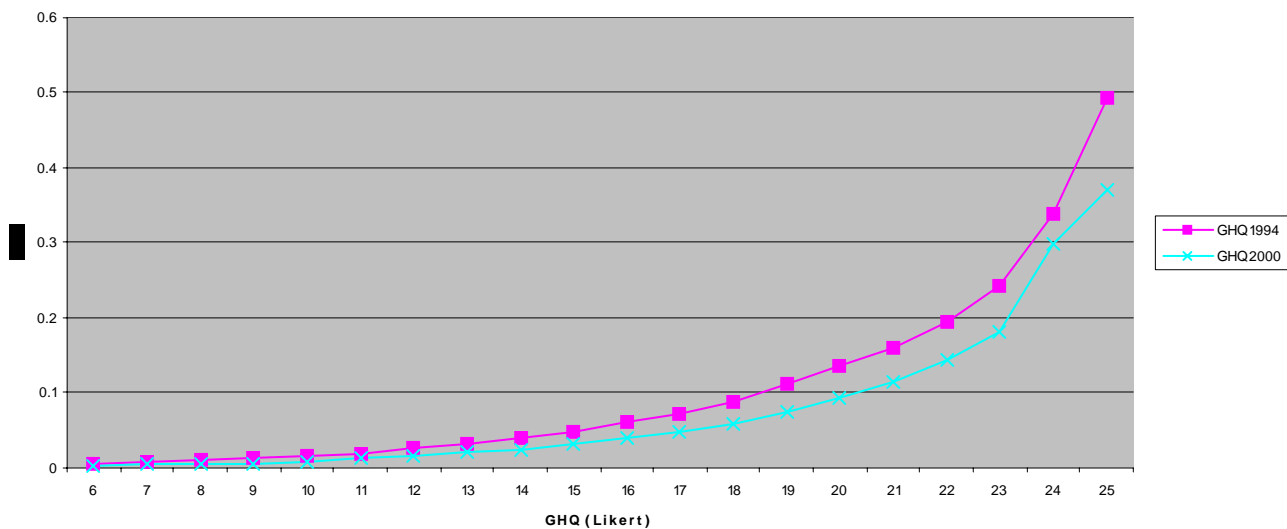


Fig 5: GHQ 1994 and 2000, CDF for Likert values between 6 and 12

