

Fedele, Alessandro; Panteghini, Paolo M.; Vergalli, Sergio

Working Paper

Optimal Investment and Financial Strategies under Tax Rate Uncertainty

CESifo Working Paper, No. 3017

Provided in Cooperation with:

Ifo Institute – Leibniz Institute for Economic Research at the University of Munich

Suggested Citation: Fedele, Alessandro; Panteghini, Paolo M.; Vergalli, Sergio (2010) : Optimal Investment and Financial Strategies under Tax Rate Uncertainty, CESifo Working Paper, No. 3017, Center for Economic Studies and ifo Institute (CESifo), Munich

This Version is available at:

<https://hdl.handle.net/10419/38888>

Standard-Nutzungsbedingungen:

Die Dokumente auf EconStor dürfen zu eigenen wissenschaftlichen Zwecken und zum Privatgebrauch gespeichert und kopiert werden.

Sie dürfen die Dokumente nicht für öffentliche oder kommerzielle Zwecke vervielfältigen, öffentlich ausstellen, öffentlich zugänglich machen, vertreiben oder anderweitig nutzen.

Sofern die Verfasser die Dokumente unter Open-Content-Lizenzen (insbesondere CC-Lizenzen) zur Verfügung gestellt haben sollten, gelten abweichend von diesen Nutzungsbedingungen die in der dort genannten Lizenz gewährten Nutzungsrechte.

Terms of use:

Documents in EconStor may be saved and copied for your personal and scholarly purposes.

You are not to copy documents for public or commercial purposes, to exhibit the documents publicly, to make them publicly available on the internet, or to distribute or otherwise use the documents in public.

If the documents have been made available under an Open Content Licence (especially Creative Commons Licences), you may exercise further usage rights as specified in the indicated licence.

Optimal Investment and Financial Strategies under Tax Rate Uncertainty

Alessandro Fedele
Paolo M. Panteghini
Sergio Vergalli

CESIFO WORKING PAPER NO. 3017
CATEGORY 1: PUBLIC FINANCE
APRIL 2010

An electronic version of the paper may be downloaded

- *from the SSRN website:* www.SSRN.com
- *from the RePEc website:* www.RePEc.org
- *from the CESifo website:* www.CESifo-group.org/wp

Optimal Investment and Financial Strategies under Tax Rate Uncertainty

Abstract

In this paper we apply a real-option model to study the effects of tax rate uncertainty on a firm's decisions. In doing so, we depart from the relevant literature, which focuses on fully equity-financed investment project. By letting a representative firm borrow optimally, we show that debt finance not only encourages investment activities but can also substantially mitigate the effect of tax rate uncertainty on investment timing.

JEL-Code: H25.

Keywords: capital levy, corporate taxation, default risk, real options.

Alessandro Fedele
University of Brescia, Italy
fedele@eco.unibs.it

Paolo M. Panteghini
University of Brescia, Italy
panteghi@eco.unibs.it

Sergio Vergalli
University of Brescia, Italy
vergalli@eco.unibs.it

We would like to thank Hamed Ghodduzi and the seminar audience at the 10th Venice Summer Institute Workshop on "OPERATING UNCERTAINTY USING REAL OPTIONS", Venice International University, San Servolo, 8 - 9 July 2009 for their useful comments. The usual disclaimer applies.

1 Introduction

Over the last decades, increase in capital mobility has lead to a sharp rise in FDIs and multinational activity, thereby creating the conditions for international tax competition.¹ As shown in Figure 1, among the 106 countries surveyed by KPMG (2009), the average of corporate statutory tax rates (All) has fallen from 31.4 to 25.9% over the 1999-2008 period. While tax cuts were less pronounced in Latin American (LAT) and Asian Pacific (ASPAC) countries, much more dramatic tax cuts occurred in industrialized countries: in the EU, for example, the decrease was sharper (i.e., from 34.2 to 23.2%). We can therefore say that, due to tax competition, firms have been operating in a tax-rate-cut scenario where further reductions might occur in the future.²

Despite this generalized tax-cut policies, the recent world crisis has lead politicians to discuss a possible tax rate increase aimed at financing the policies implemented to offset the dramatic effects of the 2008-2009 recession.³ As pointed out by Mintz (1995, p. 61): "When capital is sunk, governments may have the irresistible urge to tax such a capital at a high rate in the future. This endogeneity of government decisions results in a problem of *time consistency* in tax policy, whereby governments may wish to take actions in the future that would be different from what would be originally planned". In this case, the commitment failure leads to the well-known "capital levy problem", which is related to a firm's fear that a government can decide to raise taxes on capital already invested.⁴ Firms are aware that the government can take a different action from that initially planned and try to anticipate its tax choices.

¹See, e.g., Devereux et al. (2008) and Ghinamo et al. (2009).

²KPMG experts add that "we have found no country anywhere that has raised its rate since last year" (KPMG 2009, p. 6).

³The sharp increase in public deficits throughout the world will probably be tackled not only by cutting public spending but also by increasing tax rates. Some US States (such as Oregon and Illinois) have already planned or are planning to raise statutory tax rates. Similarly, public budget concerns in the Eurozone make tax rate increases more likely in some countries.

⁴For further details on the capital-levy problem, see Eichengreen (1990).

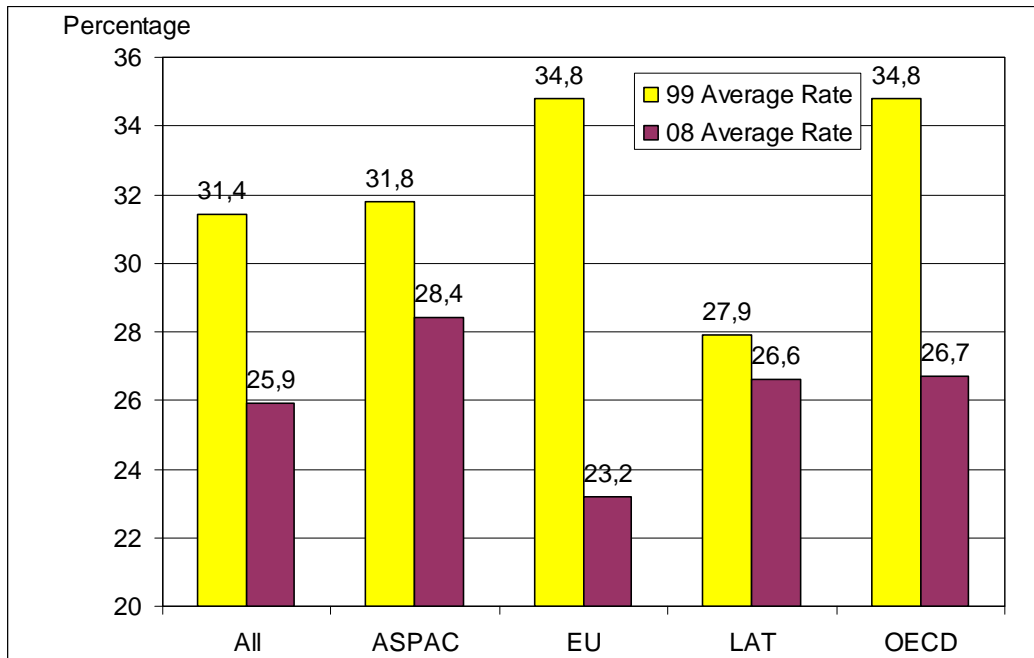


FIGURE 1: A TAX RATE COMPARISON BY GLOBAL REGION, 1999-2008.
KPMG (2009).

Whatever the sign of the tax rate change is, the empirical evidence shows that tax rate changes are not only frequent but also are difficult to foresee by taxpayers. This means that tax changes are a source of uncertainty.

Tax uncertainty is a fairly important problem and must be analyzed with appropriate techniques. Over the last decade, scholars have used the real-option approach to deal with tax uncertainty.⁵ Hassett and Metcalf (1999) used a model with an output price following a geometric Brownian motion and an uncertain investment tax credit to explain the effects of tax policy uncertainty on aggregate investment. They concluded that tax policy uncertainty tends to delay investment under a continuous-time random walk, but increases the capital stock under a Poisson jump process.

Böhm and Funke (2000) showed that investment is not very sensitive to the degree of tax policy uncertainty, when capital is gradually accumulated. Agliardi (2001) analyzed investment effects of uncertain investment tax credits following a jump-diffusion process. She found that tax policy uncertainty delays investment. Böckem (2001) studied whether the threat of imposing a sales tax can lead to a systematic delay of investment. In a dynamic investment model with demand and tax uncertainty, she showed that no systematic delay of investment is expected

⁵ As argued by Pindyck (2007): "sunk costs *do matter* in decision-making when those costs *have yet to be sunk*". This implies that the effects of tax uncertainty must be analyzed from an ex-ante perspective, i.e., when firms are still free to choose not only whether but also when to invest.

to occur.

Panteghini (2001a, 2001b) used a Poisson process for the tax rate and proved that investment may be unaffected by tax policy uncertainty, if an ACE-type system is applied. Niemann (2004) defined two neutrality conditions: first-order neutrality, which requires the complete ineffectiveness of taxation on investment decisions; second-order neutrality, which means that the stochastic nature of taxation does not alter investment decisions. In a subsequent article (Niemann, 2006), he analyzed combined tax rate and tax base uncertainty by assuming a stochastic tax payment. He showed that the uncertainty of tax payments has an ambiguous impact on investment timing.⁶ Recently, Chen and Funke (2008) have found that political uncertainty (including discontinuous changes in taxation) discourages FDI decisions.

It is worth noting that all these articles deal with tax uncertainty by assuming fully equity-financed investment decisions. However, the evidence shows that investment and financial decisions are related and, hence, should be jointly analyzed. To provide a more realistic analysis, therefore, we depart from the relevant literature and let a firm borrow optimally. Given the importance that the statutory tax rate has on financial choices (see, e.g., Leland, 1994), we will focus on tax rate uncertainty. Moreover, since the evidence shows that tax rate changes are discrete, we will describe them with a Poisson process. In doing so, we will be able to study two possible scenarios: a standard capital-levy one, where the tax rate is expected to rise, and a tax-competition one, where there is a downward trend in tax rates.

Given this model, we will prove that debt finance not only encourages investment activities but also can substantially mitigate the effect of tax rate uncertainty on investment timing. In particular, using a numerical simulation, based on realistic parameter values, we will show that a highly volatile tax system may have a negligible impact on investment choices, if firms can choose their capital structure. If however, they are credit-constrained the impact of tax-rate uncertainty is much more significant. Our results have implications in terms of both empirical analysis and policy decision-making. Firstly, we can say that econometric investigation should control for the existence (absence) of financial flexibility. Otherwise, estimates would be misleading. Secondly, the effects of a hot policy debate on future (and uncertain) tax-rate changes crucially depend on the efficiency of financial market and, in particular, on the existence/absence of credit constraints.

The structure of the paper is as follows. Section 2 describes the model. Section 3 shows our main findings and discusses how tax rate uncertainty affects a firm's choices. Section 4 summarizes our main findings and discusses its implications.

⁶On this point see also Sureth (2002).

2 The model

In this section we introduce an EBIT-based model in the spirit of Goldstein et al. (2001). By focusing on cash flows rather than stocks, we can better describe the investment and financial strategies of an infinitely-lived risk-neutral firm.⁷

Let us denote Π_t as the firm's Earning Before Interest and Taxes (EBIT) at time t and assume that it evolves as follows:

$$\frac{d\Pi_t}{\Pi_t} = \alpha dt + \sigma dz_t, \text{ with } \Pi_0 \geq 0, \quad (1)$$

where α is the expected rate of growth, σ is the instantaneous standard deviation of $\frac{d\Pi_t}{\Pi_t}$ and dz_t is the increment of a Brownian motion. Moreover, let us introduce the following hypotheses.

Assumption 1 *The firm must pay a sunk start-up cost, denoted by I , to undertake a risky project.*

Assumption 2 *The firm can borrow from a perfectly competitive risk-neutral credit sector, characterized by a given risk-free interest rate r .*

Assumption 3 *The firm can decide how much to borrow by choosing a non-renegotiable coupon C .*

Assumption 4 *Default takes place when Π_t goes to C .*

Assumption 5 *The cost of default is equal to vC with $v > 0$.*

According to Assumption 1, the firm must pay a sunk cost. This means that investment projects are irreversible. Assumption 2 entails a simple framework where lenders are price-takers and become shareholders in the event of default. In line with Leland (1994), the firm chooses an optimal coupon (Assumption 3).⁸ For simplicity, the capital structure is assumed to be static, i.e., financial policy cannot be reviewed later.⁹ Moreover, according to Assumption 4, default occurs

⁷For a study on risk-averse firms' investment choices, see Niemann and Sureth (2004, 2005).

⁸Given C and the risk-free interest rate r , the market value of debt can be calculated. It is worth noting that, in the absence of arbitrage, setting the coupon first, and then calculating the market value of debt is equivalent to first choosing the value of debt and then calculating the effective interest rate. The ratio between C and the market value of debt is equal to the effective interest rate (which is given by the sum between r and the default risk premium).

⁹Ruling out the option to renegotiate debt does not affect the qualitative properties of the model. For a detailed analysis of *dynamic* trade-off strategies, with costly debt renegotiation, see, e.g., Goldstein et al. (2001), and Hennessy and Whited (2005).

when the firm's profit, net of its debt obligations, is nil.¹⁰ When default takes place, a sunk default cost, equal to vC , is faced (Assumption 5).¹¹

Let us next introduce taxation. We define τ as the tax rate and assume that interest payments are fully deductible. As to the treatment of the lender's receipts, the evidence shows that effective tax rates on capital income are fairly low. With no loss of generality, therefore, we assume that the lender's pre-default tax burden is nil, so that her after-tax profit function at any instant t is simply C . When, however, default takes place, the lender becomes shareholder and is then subject to corporate taxation.

Given these assumptions a firm's after-tax profit function, at time t , is equal to

$$\Pi^N = (1 - \tau_t)(\Pi_t - C). \quad (2)$$

Given Assumption 4 therefore, default takes place when $\Pi^N = 0$. This means that the default threshold point is C .

Let us finally model tax rate uncertainty. We assume that the tax rate follows a Poisson process. Given an initial tax rate τ_0 , at any short time interval dt there is a probability λdt that the tax rate changes to τ_1 ($\leq \tau_0$). Hence we can write:

$$d\tau = \begin{cases} 0 & \text{w.p. } 1 - \lambda dt, \\ \Delta\tau & \text{w.p. } \lambda dt, \end{cases} \quad (3)$$

where $\Delta\tau = \tau_1 - \tau_0$. Given (3), we can therefore focus on:

1. a capital-levy scenario, where the tax rate is expected to rise (i.e., $\Delta\tau > 0$);
2. a tax-competition scenario, where the tax rate is expected to decrease (i.e., $\Delta\tau < 0$).

For simplicity, hereafter we will omit the time variable t .

2.1 The value function

Let us next calculate the firm's value function. Using a backward approach, we will first focus on the value function after the tax rate change: in this case the relevant rate is τ_1 and the value function will be denoted by $V_1(\Pi; C)$. Subsequently, we will focus on the before-tax-change scenario, where the current statutory rate is τ_0 .

¹⁰ Assumption 4 implies that debt is protected. As pointed out by Leland (1994) minimum net-worth requirements, implied by protected debt, are common in short-term debt financing. For further details on default conditions see Brennan and Schwartz (1978), and Smith and Warner (1979). For a comparison between protected and unprotected debt financing, see also Panteghini (2007a).

¹¹ The quality of results does not change if, like Leland (1994), we assume that default costs are proportional to a firm's value.

2.1.1 After the tax-rate change

The value function $V_1(\Pi; C)$ is given by the sum between the equity value $E_1(\Pi; C)$ and the debt value $D_1(\Pi; C)$, net of the investment cost I . As shown in Appendix A.1, it amounts to:

$$V_1(\Pi; C) = \begin{cases} \frac{(1-\tau_1)\Pi}{\delta} - I, & \text{after default,} \\ \frac{(1-\tau_1)\Pi}{\delta} + \frac{\tau_1 C}{r} - (\frac{\tau_1}{r} + v) C \left(\frac{\Pi}{C}\right)^{\beta_2} - I, & \text{before default,} \end{cases} \quad (4)$$

where $\delta \equiv r - \alpha > 0$ is the so-called "dividend yield". The term $\frac{(1-\tau_1)\Pi}{\delta}$ measures the gross value of an unlevered firm;¹² $\frac{\tau_1 C}{r}$ is the tax benefit due to deductibility of the interest expenses. The third term, $\left[-(\frac{\tau_1}{r} + v) C \left(\frac{\Pi}{C}\right)^{\beta_2}\right]$, measures the contingent cost of default. In other words, in the event of default, a firm not only faces a sunk cost vC but also loses the tax benefit of interest deductibility $(\frac{\tau_1 C}{r})$. The present value of the default cost is multiplied by $\left(\frac{\Pi}{C}\right)^{\beta_2}$, with $\beta_2 < 0$ (see Appendix A), which measures the contingent value of 1€ in the event of default.

2.1.2 Before the tax-rate change

Let us now calculate the value function before the tax rate change, $V_0(\Pi; C)$. As shown in Appendix A.2, $V_0(\Pi; C)$ is given by the sum of the equity value $E_0(\Pi; C)$ and the debt value $D_0(\Pi; C)$ before the tax rate change, net of the investment cost I , i.e.,

$$V_0(\Pi; C) = E_0(\Pi; C) + D_0(\Pi; C) - I = V_1(\Pi; C) + X(\Pi; C) + Y(\Pi; C) - I, \quad (5)$$

where

$$\begin{aligned} X(\Pi; C) &\equiv E_0(\Pi; C) - E_1(\Pi; C) \\ &= (\tau_1 - \tau_0) \left[\left(\frac{\Pi}{\delta + \lambda} - \frac{C}{r + \lambda} \right) - \left(\frac{C}{\delta + \lambda} - \frac{C}{r + \lambda} \right) \left(\frac{\Pi}{C} \right)^{\beta_2(\lambda)} \right] \end{aligned}$$

and

$$Y(\Pi; C) \equiv D_0(\Pi; C) - D_1(\Pi; C) = (\tau_1 - \tau_0) \frac{C}{\delta + \lambda} \left(\frac{\Pi}{C} \right)^{\beta_2(\lambda)}$$

are the expected changes in the equity and debt value, respectively. The term $\left(\frac{\Pi}{C}\right)^{\beta_2(\lambda)}$, with $\beta_2(\lambda) < 0$ (see again Appendix A), is the contingent value of 1€, under tax rate uncertainty. As can be seen, the relevant discount rates are $\delta + \lambda$ and $r + \lambda$ (instead of δ and r), respectively. This is due to the fact that, before the tax-rate jump, present value calculations must account for the probability λ of this tax change.

¹²The relevant discount rate of the first term is $\delta \leq r$. This means that the present value of future cash flow accounts for the expected growth rate $\alpha \geq 0$ of Π .

It is worth noting that $\beta_2(\lambda)$ depends on the probability of the tax-rate change. This implies that the contingent value of default is affected by tax uncertainty. To understand this important effect, let us compare the tax uncertainty case with the tax certainty one. Since $\beta_2(\lambda) < \beta_2 < 0$, the inequality $\left(\frac{\Pi}{C}\right)^{\beta_2} > \left(\frac{\Pi}{C}\right)^{\beta_2(\lambda)}$ holds. This means that the contingent value of 1€ under tax rate uncertainty is less than that under tax rate certainty.

Both the expected changes in the equity and debt value account for the tax rate change and are proportional to the differential $(\tau_1 - \tau_0)$. In particular, $X(\Pi; C)$ is given by the product between the tax rate differential $(\tau_1 - \tau_0)$ and the term in square brackets, which measures the contingent value of equity: this term is given by the difference between a firm's equity value, with zero default risk, i.e., $\left(\frac{\Pi}{\delta+\lambda} - \frac{C}{r+\lambda}\right)$, and the contingent value of equity in the event of default, i.e., $\left(\frac{C}{\delta+\lambda} - \frac{C}{r+\lambda}\right) \left(\frac{\Pi}{C}\right)^{\beta_2(\lambda)}$. Function $Y(\Pi; C)$ measures the impact of the tax-rate change on the benefit of interest deductibility. It is thus equal to the product between the tax rate differential $(\tau_1 - \tau_0)$ and the contingent value of C Euros (i.e., $C \left(\frac{\Pi}{C}\right)^{\beta_2(\lambda)}$), divided by the relevant discount rate $(\delta + \lambda)$.

2.2 The option value

Let us next deal with the option to invest. Accordingly, we denote the option value $O_1(\Pi; C)$ and $O_0(\Pi; C)$, under tax rate certainty and uncertainty, respectively. Again, we will follow a backward approach.

2.2.1 After the tax-rate change

Let us start with the after-change scenario. Since the tax-rate change has already occurred, policy uncertainty has vanished. As shown in Appendix B.1, the option value is therefore equal to:

$$O_1(\Pi; C; \bar{\Pi}) = \left(\frac{\Pi}{\bar{\Pi}}\right)^{\beta_1} \left[\frac{(1 - \tau_1)\bar{\Pi}}{\delta} + \frac{\tau_1 C}{r} - (\tau_1 + rv) \frac{C}{r} \left(\frac{\bar{\Pi}}{C}\right)^{\beta_2} - I \right], \quad (6)$$

where $\bar{\Pi}$ is the threshold EBIT level, above which investment is undertaken. As can be seen, the option value is given by the product between $\left(\frac{\Pi}{\bar{\Pi}}\right)^{\beta_1}$, i.e., the present value of 1€ contingent on the entry decision, and

$$\left[\frac{(1 - \tau_1)\bar{\Pi}}{\delta} + \frac{\tau_1 C}{r} - (\tau_1 + rv) \frac{C}{r} \left(\frac{\bar{\Pi}}{C}\right)^{\beta_2} - I \right],$$

that is, the Net Present Value (NPV) at point $\Pi = \bar{\Pi}$ (i.e., when the investment project is optimally undertaken).

2.2.2 Before the tax-rate change

The option value under tax-rate uncertainty can be written as follows (see Appendix B.2):

$$O_0(\Pi; C; \hat{\Pi}; \bar{\Pi}) = O_1(\Pi; C; \bar{\Pi}) + Z(\Pi; C; \bar{\Pi}; \hat{\Pi}), \quad (7)$$

where $\hat{\Pi}$ is the threshold point, above which investment is profitable in a tax-uncertainty context. Function

$$Z(\Pi; C; \bar{\Pi}; \hat{\Pi}) = \left[V_0(\hat{\Pi}; C) - V_1(\bar{\Pi}; C) \left(\frac{\hat{\Pi}}{\bar{\Pi}} \right)^{\beta_1} \right] \left(\frac{\Pi}{\bar{\Pi}} \right)^{\beta_1(\lambda)} \quad (8)$$

measures the contingent effect of tax-rate uncertainty on the option value (see Appendix B). Terms $V_0(\hat{\Pi}; C)$ and $V_1(\bar{\Pi}; C)$ are the value functions at the relevant threshold levels $\hat{\Pi}$ and $\bar{\Pi}$, respectively, and $\left(\frac{\Pi}{\bar{\Pi}} \right)^{\beta_1(\lambda)}$ is the contingent value of 1€ invested when Π reaches $\hat{\Pi}$. Finally, $\left(\frac{\hat{\Pi}}{\bar{\Pi}} \right)^{\beta_1}$ measures the impact of tax rate uncertainty on the contingent evaluation of assets.¹³

2.3 The firm's problem

Given the NPV and the option value, let us next analyze a firm's decision on both the coupon C and the investment timing. Again, we will start with the after-tax reform, and then focus on the before-tax rate change case.

2.3.1 After the tax-rate change

If the tax rate change has already occurred, a firm's problem is:

$$\max_{\bar{\Pi} > 0, C > 0} \left(\frac{\Pi}{\bar{\Pi}} \right)^{\beta_1} \left[\frac{(1 - \tau_1) \bar{\Pi}}{\delta} + \frac{\tau_1 C}{r} - (\tau_1 + rv) \frac{C}{r} \left(\frac{\bar{\Pi}}{C} \right)^{\beta_2} - I \right], \quad (9)$$

Solving problem (9) gives (Appendix C.1):

$$\begin{aligned} \bar{\Pi}_1^* &= \frac{1}{1+m_1} \frac{\beta_1}{\beta_1-1} \frac{rI}{1-\tau_1}, \\ \text{with } m_1 &\equiv \frac{\tau_1}{1-\tau_1} \frac{\beta_2}{\beta_2-1} \left(\frac{1}{1-\beta_2} \frac{\tau_1}{\tau_1+rv} \right)^{-\frac{1}{\beta_2}} > 0, \\ \bar{C}_1 &= \left(\frac{1}{1-\beta_2} \frac{\tau_1}{\tau_1+rv} \right)^{-\frac{1}{\beta_2}} \bar{\Pi}_1^*. \end{aligned} \quad (10)$$

¹³If tax-rate uncertainty vanishes, the equality $\hat{\Pi} = \bar{\Pi}$ holds and $\left(\frac{\hat{\Pi}}{\bar{\Pi}} \right)^{\beta_1}$ goes to unity.

The threshold point $\bar{\Pi}_1^*$ is given by the product between the term $\frac{1}{1+m_1}$, which measures the effect of debt financing on the firm's trigger point, and $\frac{\beta_1}{\beta_1-1} \frac{rI}{1-\tau_1}$, which is the value of the threshold point under full equity finance (see, Panteghini, 2007a and 2007b). Since $\frac{1}{1+m_1} < 1$, debt financing encourages investment (namely, induces a firm to invest earlier). The reasoning behind this result is straightforward: if a firm can borrow, it will invest earlier in order to benefit from interest deductibility (see Panteghini 2007b).

The optimal coupon \bar{C}_1 is proportional to the threshold point $\bar{\Pi}_1^*$ and is negatively affected by the default cost parameter v . As shown in Appendix C.2, both $\bar{\Pi}_1^*$ and \bar{C}_1 are increasing in τ_1 . The positive effect of τ_1 on the threshold point $\bar{\Pi}_1^*$ is due to the fact that the higher the tax rate, the greater the option value is (i.e., the higher the opportunity cost of immediate investment is), and the lower the after-tax value of the project is. Both effects cause a delay in investment. The positive sign of $\frac{\partial \bar{C}_1}{\partial \tau_1}$ means that the higher the rate τ_1 , the greater the benefit of interest deductibility, the higher the optimal coupon is. Moreover, we can show (see again Appendix C.2) that the ratio $\left(\frac{\bar{C}_1}{\bar{\Pi}_1^*}\right)$ is increasing in τ_1 . This means that a higher tax rate stimulates borrowing for any given level of EBIT.

2.3.2 Before the tax-rate change

Under tax-rate uncertainty, a firm's problem is as follows:

$$\max_{\hat{\Pi} > 0, C > 0} O_0(\Pi; C; \hat{\Pi}; \bar{\Pi}), \quad (11)$$

where $O_0(\Pi; C; \hat{\Pi}; \bar{\Pi})$ is defined by (6), (7) and (8). Solving (11) gives the following first order conditions:

$$\begin{aligned} \frac{\partial O_0(\Pi; C; \hat{\Pi}; \bar{\Pi})}{\partial \hat{\Pi}} &= V_1(\bar{\Pi}; C) \left(\frac{\Pi}{\bar{\Pi}}\right)^{\beta_1} \frac{\beta_1(\lambda) - \beta_1}{\hat{\Pi}} \left(\frac{\Pi}{\hat{\Pi}}\right)^{\beta_1(\lambda) - \beta_1} + \\ &+ \left[\frac{\partial V_0(\hat{\Pi}; C)}{\partial \hat{\Pi}} \left(\frac{\Pi}{\hat{\Pi}}\right)^{\beta_1(\lambda)} - \frac{\beta_1(\lambda)}{\hat{\Pi}} V_0(\hat{\Pi}; C) \left(\frac{\Pi}{\hat{\Pi}}\right)^{\beta_1(\lambda)} \right] = 0. \end{aligned} \quad (12)$$

and

$$\begin{aligned} \frac{\partial O_0(\Pi; C; \hat{\Pi}; \bar{\Pi})}{\partial C} &= \frac{\partial V_1(\bar{\Pi}; C)}{\partial C} \left(\frac{\Pi}{\bar{\Pi}}\right)^{\beta_1} \left[1 - \left(\frac{\Pi}{\hat{\Pi}}\right)^{\beta_1(\lambda) - \beta_1} \right] \\ &+ \left[\frac{\partial V_0(\hat{\Pi}; C)}{\partial C} \left(\frac{\Pi}{\hat{\Pi}}\right)^{\beta_1(\lambda)} \right] = 0. \end{aligned} \quad (13)$$

$\widehat{\Pi}^*$ and C^* are the solutions of system (12)-(13). Although this it has no closed-form solution, the analysis of equations (12)-(13) gives us some hint about the effects of tax rate uncertainty. To do so, let us start with the tax-certainty scenario. Setting $\lambda = 0$ gives $\beta_1(\lambda)|_{\lambda=0} = \beta_1$, and therefore, the terms

$$V_1(\bar{\Pi}; C) \left(\frac{\Pi}{\bar{\Pi}} \right)^{\beta_1} \frac{\beta_1(\lambda) - \beta_1}{\widehat{\Pi}} \left(\frac{\Pi}{\widehat{\Pi}} \right)^{\beta_1(\lambda) - \beta_1} \quad (14)$$

and

$$\frac{\partial V_1(\bar{\Pi}; C)}{\partial C} \left(\frac{\Pi}{\bar{\Pi}} \right)^{\beta_1} \left[1 - \left(\frac{\Pi}{\widehat{\Pi}} \right)^{\beta_1(\lambda) - \beta_1} \right] \quad (15)$$

go to zero. In this case the two-equation system (12)-(13) collapses to the tax-rate certainty system (48)-(49) (in Appendix C.1), with the relevant tax rate τ_0 .

This first step allows us to show that terms (14) and (15) measure the distortions caused by tax-rate uncertainty. In particular, term (14) measures the marginal distortion on the threshold EBIT level. As can be seen, (14) is proportional to the firm's value after the tax-rate change $V_1(\bar{\Pi}; C)$. Moreover, it depends on both $\left(\frac{\Pi}{\bar{\Pi}} \right)^{\beta_1}$ and $\left(\frac{\Pi}{\widehat{\Pi}} \right)^{\beta_1(\lambda) - \beta_1}$: while former measures the contingent value of 1€ invested when Π reaches $\bar{\Pi}$, i.e., when it is optimal to invest in the absence of tax-rate uncertainty, the latter measures the wedge on contingent evaluation due to tax-rate uncertainty. As we can see, the wedge $\left(\frac{\Pi}{\widehat{\Pi}} \right)^{\beta_1(\lambda) - \beta_1}$ depends on the tax-rate-uncertainty trigger point $\widehat{\Pi}$ and on the difference $[\beta_1(\lambda) - \beta_1]$. This means that the higher the parameter λ , the larger the tax-rate uncertainty wedge is, or equivalently, the greater the distortion caused by tax-rate uncertainty.

A similar reasoning holds for term (15), which enters Eq. (13). As can be seen, the marginal condition on the coupon depends on the marginal benefit of debt financing, after the tax-rate change (i.e., $\frac{\partial V_1(\bar{\Pi}; C)}{\partial C}$). Moreover, it is proportional to the contingent value of 1€ invested when Π reaches $\bar{\Pi}$ (i.e., $\left(\frac{\Pi}{\bar{\Pi}} \right)^{\beta_1}$). Finally, it depends on the tax-rate uncertainty wedge $\left(\frac{\Pi}{\widehat{\Pi}} \right)^{\beta_1(\lambda) - \beta_1}$.

Notice that $\left(\frac{\Pi}{\widehat{\Pi}} \right)^{\beta_1(\lambda) - \beta_1}$ has two opposing effects on Equations (12)-(13): while it raises the LHS of (12), it reduces the LHS of (13). As will be shown in the next section, this opposing effect will lead to an increase in the marginal cost of immediate investment and, at the same time, a drop in the marginal cost of debt finance.

3 A numerical analysis

In order to analyze how a firm's ability to borrow affects investment decisions, let us compare the tax-uncertainty scenario with the tax-certainty one. In both

cases, we assume that the starting tax rate is τ_0 . While in the tax-certainty case it will be unchanged, under tax-rate uncertainty this rate is expected to jump (either up or down).

Under tax-rate certainty, the firm's problem is equivalent to (9), with the assumption that here, the relevant tax rate is τ_0 (instead of τ_1). Hence, its solutions will have the same form as solution (10):

$$\begin{aligned}\bar{\Pi}_0^* &= \frac{1}{1+m_0} \frac{\beta_1}{\beta_1-1} \frac{rI}{1-\tau_0}, \\ \bar{C}_0 &= \left(\frac{1}{1-\beta_2} \frac{\tau_0}{\tau_0+rv} \right)^{-\frac{1}{\beta_2}} \bar{\Pi}_0^*, \\ m_0 &\equiv \frac{\tau_0}{1-\tau_0} \frac{\beta_2}{\beta_2-1} \left(\frac{1}{1-\beta_2} \frac{\tau_0}{\tau_0+rv} \right)^{-\frac{1}{\beta_2}} > 0.\end{aligned}\tag{16}$$

Since solutions (16) have the same form as solutions (10), the comparative statics results of Appendix C.2 (on solutions solutions (10)) still hold. In other terms, the threshold point and the optimal coupon of (16), as well as the ratio $\left(\frac{\bar{C}_0}{\bar{\Pi}_0^*}\right)$ are increasing in the tax rate (τ_0).

As pointed out, the tax-rate uncertainty problem (11) has no closed-form solution. For this reason, we need a numerical analysis to compare the tax-certainty with the tax-uncertainty case. In doing so, we will use the benchmark parameter values of Table 1. In line with Dixit and Pindyck (p. 157 and p. 193, 1994; 1999) we set $r = \delta = 0.05$ and $\sigma = 0.4$.¹⁴ Furthermore, we assume that $v = 3$. This means that, given $r = 0.05$, the default cost is about 10% of the debt value.¹⁵

As we have seen in Figure 1, over the last decade, the average statutory tax rate has been about 30%. Accordingly, we set τ_0 equal to 0.3. Given the high heterogeneity of the tax-rate jumps occurred over the past decade, we will assume that τ_1 ranges from 0.1 to 0.55.¹⁶ We will therefore be able to study both the capital-levy and the tax-competition case.

Let us first look at the effects of the tax rate differential $\Delta\tau$ on both the threshold point and the optimal coupon. Figure 2 shows that both $\hat{\Pi}^*$ and C^* are positively affected by the tax rate differential $\Delta\tau$. The reasoning behind this result is as follows. An increase in $\Delta\tau$ means that, given τ_0 and λ , a higher average tax rate (which must account for both the current rate τ_0 and the expected future one τ_1) will be levied. The heavier the expected tax burden, the higher the investment trigger point is (i.e., the later the investment will be undertaken). Therefore, if $\Delta\tau > 0$, an increase in $\Delta\tau$ raises the expected tax burden, and therefore, causes a delay in investment timing. The opposite is true if $\Delta\tau < 0$.

¹⁴The quality of results does not change if we use different values of σ . For further details see, e.g., Leland (1994).

¹⁵This percentage is in line with Branch's (2002) estimates.

¹⁶Of course, the quality of results does not change if a different value of τ_0 is assumed.

Table 1: The parameter values.

Parameter	Value
σ	.4
I	100
τ_0	.3
τ_1	[.1, .55]
r	.05
δ	.05
v	3
λ	[.1, 1]

Similarly, an increase in $\Delta\tau$ raises the optimal coupon C^* . This is due to the fact that a higher average tax rate leads to a higher tax benefit of interest deductibility, thereby encouraging borrowing.

Notice that point $\Delta\tau = 0$ describes the tax-rate certainty case. Therefore, Figure 2 allows us to compare the tax-rate certainty case with the tax-rate uncertainty one. If a firm foresees a tax cut ($\Delta\tau < 0$), both the threshold point and the optimal coupon are less than under tax-rate certainty. The opposite is true if $\Delta\tau > 0$.

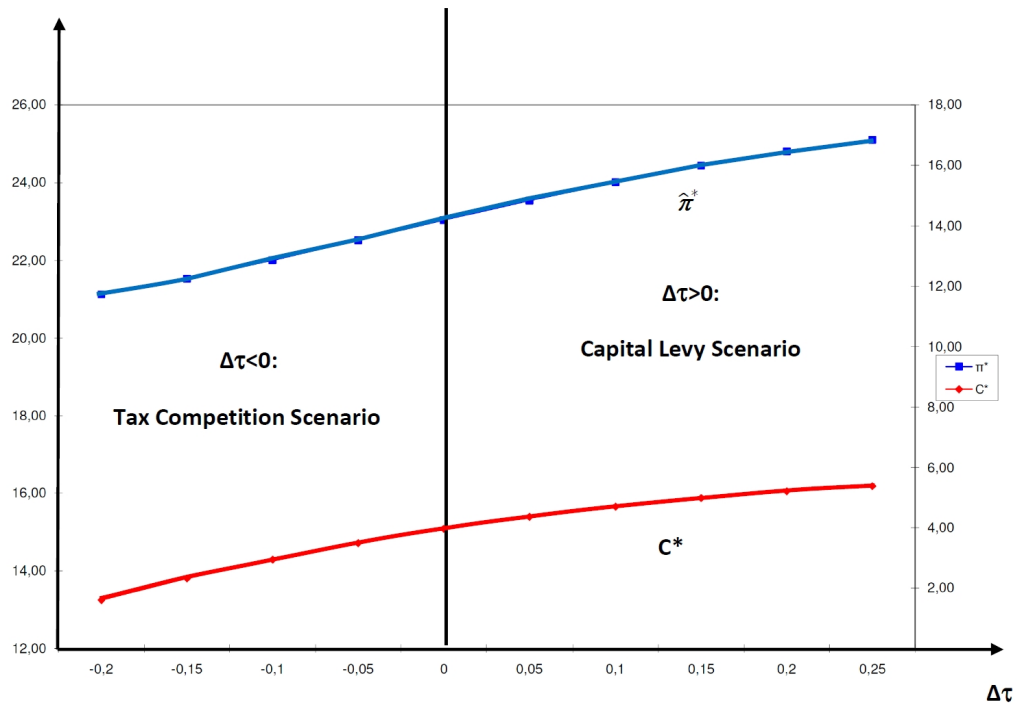


FIGURE 2: THE OPTIMAL VALUES C^* AND $\hat{\Pi}^*$ AS FUNCTION OF $\Delta\tau$.

So far we have focused on the absolute values of Π and C . Let us next

focus on the coupon/EBIT ratio. We will then compare the tax-rate-certainty ratio, $\left(\frac{\bar{C}_0}{\bar{\Pi}_0^*}\right)$, with the tax-rate uncertainty one, $\left(\frac{C^*}{\hat{\Pi}^*}\right)$. As shown in Figure 3, ratio $\left(\frac{C^*}{\hat{\Pi}^*}\right)$ is increasing in $\Delta\tau$ (blue line); in other words, a firm's propensity to borrow increases with $\Delta\tau$. Of course, the ratio $\left(\frac{\bar{C}_0}{\bar{\Pi}_0^*}\right)$, depicted by the purple line, is constant. It is worth noting that the blue line (tax-uncertainty case) is below (above) the purple line (tax-certainty case) if $\Delta\tau < 0$ ($\Delta\tau > 0$). This means that when a tax rate is expected to decrease, the expected tax benefit of interest deductibility will be lower and therefore, debt will be less profitable than under tax-rate certainty. The converse is true if $\Delta\tau > 0$: in this case, a firm operating in a uncertain tax environment is stimulated to raise leverage.

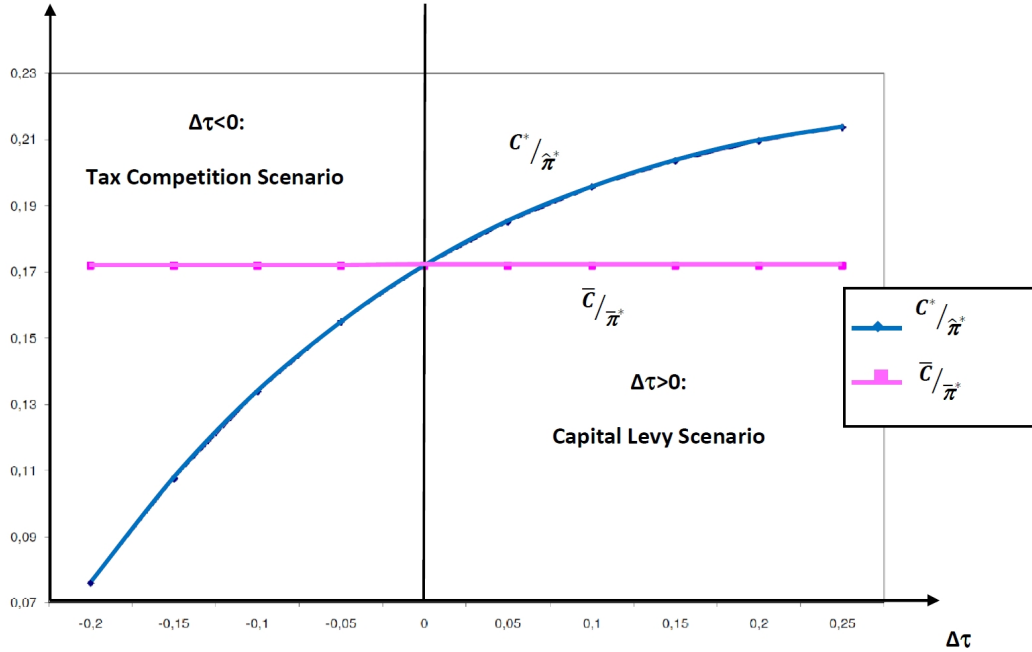


FIGURE 3: THE OPTIMAL RATIOS $C^*/\hat{\Pi}^*$ AND $\bar{C}_0/\bar{\Pi}_0^*$ AS FUNCTION OF $\Delta\tau$.

In Tables 2, 3 and 4 we provide a sensitivity analysis for different values of $\Delta\tau$, λ , σ and v . In order to analyze how a firm's ability to borrow affects its investment decisions, we will compare the well-known full-equity finance case ($C = 0$), with the optimal-leverage case (i.e., $C = C^*$). Accordingly, we will calculate the threshold values under both full-equity financing (i.e., $\hat{\Pi}^*(C = 0)$) and optimal-leverage financing (i.e., $\hat{\Pi}^*(C = C^*)$). Moreover, we will calculate the differential $\Delta\hat{\Pi}^* \equiv \hat{\Pi}^*(C = 0) - \hat{\Pi}^*(C = C^*)$.

λ	0.10			0.25			0.50			0.75			1.00		
	$\#(C=0)$	$\#(C=C^*)$	$\Delta\#$	$\#(C=0)$	$\#(C=C^*)$	$\Delta\#$	$\#(C=0)$	$\#(C=C^*)$	$\Delta\#$	$\#(C=0)$	$\#(C=C^*)$	$\Delta\#$	$\#(C=0)$	$\#(C=C^*)$	$\Delta\#$
0.25	21.86	20.82	1.04	20.87	19.47	1.40	20.12	18.24	1.88	19.72	17.54	2.18	19.46	17.07	2.39
-0.20	22.12	21.12	1.00	21.28	20.10	1.18	20.64	19.18	1.46	20.30	18.64	1.67	20.08	18.26	1.82
-0.15	22.41	21.53	0.88	21.74	20.79	0.95	21.24	20.17	1.07	20.97	19.79	1.18	20.79	19.52	1.28
-0.10	22.75	22.00	0.74	22.27	21.54	0.73	21.91	21.17	0.74	21.72	20.95	0.77	21.60	20.79	0.81
-0.05	23.12	22.51	0.61	22.87	22.30	0.57	22.68	22.14	0.53	22.57	22.05	0.52	22.51	21.99	0.52
0.00	23.54	23.03	0.51	23.54	23.03	0.51	23.54	23.03	0.50	23.53	23.03	0.50	23.53	23.03	0.50
0.05	24.02	23.54	0.48	24.30	23.71	0.59	24.51	23.80	0.70	24.62	23.85	0.77	24.69	23.87	0.82
0.10	24.55	24.01	0.54	25.15	24.30	0.85	25.61	24.43	1.18	25.86	24.47	1.39	26.02	24.48	1.54
0.15	25.14	24.44	0.70	26.11	24.80	1.31	26.87	24.91	1.96	27.27	24.90	2.37	27.54	24.86	2.68
0.20	25.80	24.80	0.99	27.21	25.18	2.02	28.31	25.22	3.08	28.91	25.14	3.77	29.30	25.03	4.26
0.25	26.54	25.09	1.44	28.46	25.44	3.01	29.98	25.37	4.61	30.81	25.19	5.62	31.35	25.02	6.33

TABLE 2: THE OPTIMAL VALUES $\hat{\Pi}^*$ WITH $C=0$ AND $C=C^*$ AS FUNCTION OF ΔT AND λ .

Let us first focus on the effects of tax rate uncertainty (λ) on a firm's choices. As shown in Table 2, we can see that:

1. for any given λ , the inequality $\widehat{\Pi}^*(C = C^*) < \widehat{\Pi}^*(C = 0)$ holds. As expected, financial flexibility allows firms to invest earlier, in order to enjoy the tax benefit of interest deductibility.
2. A similar reasoning holds when $\Delta\tau = 0$. However, in the certainty-case, the differential $\Delta\widehat{\Pi}^*$ is quite small. This means that a firm's ability to borrow allows a firm to invest earlier, although this effect is almost negligible.
3. When $\Delta\tau \neq 0$, the distortive effect of tax-rate uncertainty is always larger in the standard full-equity financing case. Indeed, the ability to borrow can substantially smooth the effects of tax rate uncertainty.
4. Under the capital-levy scenario (i.e., with $\Delta\tau > 0$), the threshold points $\widehat{\Pi}^*(C = 0)$ and $\widehat{\Pi}^*(C = C^*)$ are positively affected by λ . The reasoning behind this result is simple: the higher the probability of a given tax rate increase, the higher the expected tax burden and the higher a firm's trigger point is (and hence, the later an investment is made). The opposite is true in a tax-competition environment (i.e., with $\Delta\tau < 0$): an increase in λ reduces $\widehat{\Pi}^*$.

To sum up, we can say that, when debt finance is allowed, tax-rate uncertainty (in terms of both a higher differential $\Delta\tau$ and a higher probability) has a smaller impact on investment timing. For instance, our numerical analysis shows that if a dramatic tax rate increase (τ_1 from 0.3 to 0.55) was expected, its effect would be almost negligible for an optimally-leveraged firm. When, instead, a borrowing constraint is binding and a firm can finance its investment only through equity issues, the effect of tax-rate uncertainty is much more significant.

σ	0.10			0.20			0.30			0.40			0.50			0.60		
	$\#(C=0)$	$\#(C=C^*)$	$\Delta\#$	$\#(C=0)$	$\#(C=C^*)$	$\Delta\#$	$\#(C=0)$	$\#(C=C^*)$	$\Delta\#$	$\#(C=0)$	$\#(C=C^*)$	$\Delta\#$	$\#(C=0)$	$\#(C=C^*)$	$\Delta\#$	$\#(C=0)$	$\#(C=C^*)$	$\Delta\#$
-0.25	10.50	7.31	3.19	12.29	10.74	1.56	16.47	15.22	1.25	21.86	20.82	1.04	28.51	27.62	0.88	36.47	35.68	0.79
-0.20	9.53	7.60	1.94	12.39	11.01	1.37	16.67	15.49	1.18	22.12	21.12	1.00	28.82	27.99	0.83	36.82	36.14	0.69
-0.15	9.20	7.87	1.33	12.54	11.36	1.18	16.90	15.87	1.03	22.41	21.53	0.88	29.16	28.43	0.73	37.22	36.63	0.59
-0.10	9.21	8.10	1.12	12.74	11.71	1.03	17.17	16.29	0.88	22.75	22.00	0.74	29.55	28.95	0.60	37.66	37.19	0.47
-0.05	9.32	8.28	1.04	12.98	12.02	0.95	17.49	16.71	0.77	23.12	22.51	0.61	29.99	29.52	0.46	38.14	37.81	0.34
0.00	9.47	8.39	1.08	13.26	12.28	0.97	17.85	17.11	0.73	23.54	23.03	0.51	30.47	30.13	0.34	38.68	38.47	0.21
0.05	9.66	8.44	1.23	13.58	12.49	1.10	18.25	17.47	0.78	24.02	23.54	0.48	31.00	30.75	0.25	39.27	39.18	0.09
0.10	9.89	8.38	1.51	13.95	12.62	1.33	18.71	17.78	0.93	24.55	24.01	0.54	31.60	31.37	0.22	39.93	39.91	0.02
0.15	10.15	8.22	1.93	14.37	12.67	1.70	19.22	18.02	1.20	25.14	24.44	0.70	32.26	31.97	0.29	40.65	40.64	0.01
0.20	10.45	7.97	2.48	14.84	12.63	2.22	19.79	18.18	1.61	25.80	24.80	0.99	32.99	32.53	0.46	41.45	41.36	0.09
0.25	10.77	7.61	3.16	15.38	12.48	2.89	20.45	18.25	2.19	26.54	25.09	1.44	33.81	33.04	0.78	42.34	42.06	0.29

TABLE 3: $\Delta\hat{\Pi}^* = \hat{\Pi}^*(C=0) - \hat{\Pi}^*(C=C^*)$ WITH $C=0$ AND $C=C^*$ AS FUNCTION OF ΔT AND σ .

Let us next look at the effects of both EBIT volatility (σ) and default cost (v) on a firm's decisions. Results can be summarized as follows.

1. For any given couple $(\sigma, \Delta\tau)$ and $(v, \Delta\tau)$, the differential $\Delta\hat{\Pi}^*$ is positive. Again, we can see that financial flexibility allows firms to invest earlier in order to enjoy the tax benefit of interest deductibility.
2. For any given value of σ and v , the value $\Delta\hat{\Pi}^*$ is U-shaped. This means that: (i) the differential $\Delta\hat{\Pi}^*$ is large when $|\Delta\tau|$ is large, i.e., a firm's ability to borrow allows to invest much earlier when a large variation of the tax rate is expected; (ii) the differential $\Delta\hat{\Pi}^*$ is minimum for $\Delta\tau \rightarrow 0$. In this case, the effect of a firm's ability to borrow on investment timing is still positive, though it is relatively small.
3. Table 3 shows that the positive effect of σ on both thresholds points $\hat{\Pi}^*$ ($C = 0$) and $\hat{\Pi}^*$ ($C = C^*$) is substantial. This is due to the fact that volatility raises a firm's option value, with the effect that the investment is delayed. On the contrary, Table 4 shows that the effect of parameter v , representing the unitary cost of default, on $\hat{\Pi}^*$ ($C = C^*$) is almost negligible.

To sum up, we can say that the results of Tables 3 and 4 show that our results are robust: when debt finance is allowed, tax rate uncertainty has a smaller effect on investment timing decision for a wide range of parameter values.

v	1,000			3,000			6,000			9,000			12,000			15,000		
	$\bar{\pi}(C=0)$	$\bar{\pi}(C=C^*)$	$\Delta \bar{\pi}$	$\bar{\pi}(C=0)$	$\bar{\pi}(C=C^*)$	$\Delta \bar{\pi}$	$\bar{\pi}(C=0)$	$\bar{\pi}(C=C^*)$	$\Delta \bar{\pi}$	$\bar{\pi}(C=0)$	$\bar{\pi}(C=C^*)$	$\Delta \bar{\pi}$	$\bar{\pi}(C=0)$	$\bar{\pi}(C=C^*)$	$\Delta \bar{\pi}$	$\bar{\pi}(C=0)$	$\bar{\pi}(C=C^*)$	$\Delta \bar{\pi}$
-0.25	21.86	20.05	1.81	21.86	20.82	1.04	21.86	21.08	0.78	21.86	21.14	0.72	21.86	21.16	0.70	21.86	21.17	0.69
-0.20	22.12	20.48	1.64	22.12	21.12	1.00	21.12	21.46	-0.34	22.11	21.57	0.54	22.12	21.61	0.51	22.12	21.63	0.49
-0.15	22.41	21.02	1.39	22.41	21.53	0.88	22.41	21.87	0.54	22.41	22.00	0.41	22.41	22.06	0.35	22.41	22.09	0.32
-0.10	22.74	21.39	1.15	22.75	22.00	0.74	22.75	22.32	0.43	22.75	22.45	0.30	22.75	22.51	0.23	22.75	22.55	0.20
-0.05	23.12	22.13	0.99	23.12	22.51	0.61	23.12	22.79	0.33	23.12	22.91	0.21	23.12	22.97	0.15	23.12	23.01	0.11
0.00	23.54	22.65	0.89	23.54	23.03	0.51	23.54	23.28	0.27	23.55	23.39	0.16	23.55	23.44	0.11	23.55	23.47	0.07
0.05	24.00	23.12	0.88	24.02	23.54	0.48	24.02	23.77	0.24	24.02	23.86	0.15	24.02	23.91	0.11	24.02	23.93	0.09
0.10	24.33	23.53	1.00	24.55	24.01	0.54	24.55	24.26	0.29	24.55	24.34	0.21	24.55	24.37	0.18	24.55	24.39	0.16
0.15	25.12	23.89	1.23	25.14	24.44	0.70	25.14	24.71	0.43	25.15	24.80	0.35	25.15	24.83	0.32	25.15	24.84	0.31
0.20	25.77	24.18	1.59	25.80	24.80	0.99	25.80	25.13	0.67	25.81	25.23	0.58	25.82	25.26	0.55	25.82	25.27	0.54
0.25	26.31	24.39	2.12	26.34	25.09	1.44	26.36	25.30	1.06	26.35	25.63	0.93	26.37	25.67	0.90	26.37	25.68	0.89

TABLE 4: $\Delta \bar{\pi}^* = \bar{\pi}^*(C=0) - \bar{\pi}^*(C=C^*)$ WITH $C=0$ AND $C=C^*$ AS FUNCTION OF Δt AND v .

4 Conclusion

In this article, we have applied a real-option model to study the effects of tax rate uncertainty on both investment timing and the optimal capital structure of a representative firm.

By departing from the relevant literature, which has extensively analyzed fully equity-financed investment decisions, we have shown that the ability to borrow allows firms to invest earlier in order to enjoy the tax benefit of interest deductibility. More importantly, we have shown that a highly volatile tax system may have a negligible impact on investment choices, when firms can choose their capital structure. This leads us to conclude that debt finance allows a firm to substantially smooth the distortive effects of tax-rate uncertainty.

Our results have interesting implications in terms of both empirical analysis and policy decisions. Given our findings, we can say that when investment activities are studied, empirical investigation should control for the existence (absence) of financial flexibility. Indeed, disregarding the characteristics of financial markets would be misleading.

Similarly, the effect of a hot policy debate on future (and uncertain) tax-rate changes may have a significantly negative impact on investment, if firms are credit-constrained. If however, financial markets are efficient and hence provide a sufficient amount of resources, the same debate may lead to a negligible impact on investment, since firms can smooth the effects of tax-rate uncertainty by optimally adjusting their capital structure. It is worth noting that we assumed the absence of any renegotiation of debt. Of course we expect that, whenever renegotiation is allowed, a firm enjoys a higher degree of flexibility and therefore, the effect of tax-rate uncertainty is further mitigated.

In this article we have used other simplifying assumptions, such as the symmetric treatment of profits and losses, as well as the absence of personal taxation, agency costs and any bargaining process between stakeholders (including renegotiation and partial conversion of debt into equity). We believe that the elimination of any of these simplifying assumptions is an interesting topic that we leave for future research. Finally, the evidence shows that tax uncertainty is caused by both tax-rate and tax-base changes (e.g., via changes in investment tax credits and fiscal depreciation allowances). We therefore believe that a promising extension of our model would entail the joint analysis of tax-rate and tax-base uncertainty.

A The value functions

In order to calculate a firm's value function with tax rate uncertainty we must first focus on the value function after the tax-rate change, i.e., when tax rate is

τ_1 . Subsequently, we will deal with the value function under tax rate uncertainty, i.e., when the current tax rate is τ_0 .

A.1 The value function (4)

Using dynamic programming, let us calculate the equity value $E_1(\Pi; C)$ as a summation between the net cash flow $(1 - \tau_1)(\Pi - C)$, in the short interval dt , and its future value after the instant dt has passed:

$$E_1(\Pi; C) = (1 - \tau_1)(\Pi - C) dt + e^{-rdt} \xi [E_1(\Pi + d\Pi; C)], \quad (17)$$

where $\xi [E(\Pi + d\Pi; C)]$ is the expected value of equity at time $t + dt$. Expanding the RHS of (17), applying Itô's Lemma and rearranging gives the following non-arbitrage condition:

$$rE_1(\Pi; C) = (1 - \tau_1)(\Pi - C) + (r - \delta)\Pi E_{1\Pi}(\Pi; C) + \frac{\sigma^2}{2}\Pi^2 E_{1\Pi\Pi}(\Pi; C), \quad (18)$$

where $\delta \equiv r - \alpha$, $E_{1\Pi} \equiv \frac{\partial E}{\partial \Pi}$ and $E_{1\Pi\Pi} \equiv \frac{\partial^2 E}{\partial \Pi^2}$. The general-form solution of (18) is

$$E_1(\Pi; C) = \begin{cases} 0 & \text{after default,} \\ (1 - \tau_1) \left(\frac{\Pi}{\delta} - \frac{C}{r} \right) + \sum_{i=1}^2 A_i \Pi^{\beta_i} & \text{before default,} \end{cases} \quad (19)$$

where $\beta_1 = \frac{1}{2} - \frac{r-\delta}{\sigma^2} + \sqrt{\left(\frac{r-\delta}{\sigma^2} - \frac{1}{2}\right)^2 + \frac{2r}{\sigma^2}} > 1$ and $\beta_2 = \frac{1}{2} - \frac{r-\delta}{\sigma^2} - \sqrt{\left(\frac{r-\delta}{\sigma^2} - \frac{1}{2}\right)^2 + \frac{2r}{\sigma^2}} < 0$ are the roots of the characteristic equation $\Psi(\beta) = \frac{1}{2}\sigma^2\beta(\beta-1) + (r-\delta)\beta - r = 0$.

Let us next calculate A_1 and A_2 . In the absence of any financial bubbles, A_1 is nil. To calculate A_2 , we must consider that default occurs when Π drops to C , namely the condition

$$E_1(C; C) = (1 - \tau_1) \left(\frac{C}{\delta} - \frac{C}{r} \right) + A_2 C^{\beta_2} = 0$$

holds. Rearranging this equation gives:

$$A_2 = - \left[(1 - \tau_1) \left(\frac{C}{\delta} - \frac{C}{r} \right) \right] C^{-\beta_2}.$$

Using these results we can therefore rewrite (19) as

$$E_1(\Pi; C) = \begin{cases} 0 & \text{after default,} \\ (1 - \tau_1) \left[\left(\frac{\Pi}{\delta} - \frac{C}{r} \right) - \left(\frac{C}{\delta} - \frac{C}{r} \right) \left(\frac{\Pi}{C} \right)^{\beta_2} \right] & \text{before default.} \end{cases} \quad (20)$$

Following the same procedure we can write $D_1(\Pi; C)$ as:

$$D_1(\Pi; C) = C + e^{-rdt} \xi [D_1(\Pi + d\Pi; C)].$$

Expanding its RHS, applying Itô's Lemma and rearranging gives the following non-arbitrage condition:

$$rD_1(\Pi; C) = \begin{cases} (1 - \tau_1)\Pi + (r - \delta)\Pi D_{1\Pi}(\Pi; C) + \frac{\sigma^2}{2}\Pi^2 D_{1\Pi\Pi}(\Pi; C) & \text{after default,} \\ C + (r - \delta)\Pi D_{1\Pi}(\Pi; C) + \frac{\sigma^2}{2}\Pi^2 D_{1\Pi\Pi}(\Pi; C) & \text{before default.} \end{cases} \quad (21)$$

The closed-form solution of (21) is:

$$D_1(\Pi; C) = \begin{cases} \frac{(1-\tau_1)\Pi}{\delta} + \sum_{i=1}^2 B_i \Pi^{\beta_i} & \text{after default,} \\ \frac{C}{r} + \sum_{i=1}^2 D_i \Pi^{\beta_i} & \text{before default.} \end{cases} \quad (22)$$

To calculate B_2 we use the boundary condition $D(0; C) = 0$, which means that when Π falls to zero the lender's post-default claim is nil. This implies that $B_2 = 0$. In the absence of any financial bubble, we have $B_1 = D_1 = 0$. Finally, to calculate D_2 we let the pre-default branch of (22) equate its after-default one, net of the default cost vC , at point $\Pi = C$. We thus obtain:

$$\frac{C}{r} + D_2 C^{\beta_2} = \frac{(1 - \tau)C}{\delta} - vC. \quad (23)$$

Solving (23) for D_2 gives $D_2 = \left[\frac{(1-\tau_1)C}{\delta} - \frac{C}{r} - vC \right] C^{-\beta_2}$, and hence, (22) reduces to:

$$D_1(\Pi; C) = \begin{cases} \frac{(1-\tau_1)\Pi}{\delta} & \text{after default,} \\ \left[\frac{1}{r} + \left(\frac{1-\tau_1}{\delta} - \frac{1}{r} - v \right) \left(\frac{\Pi}{C} \right)^{\beta_2} \right] C & \text{before default.} \end{cases} \quad (24)$$

The summation of (20) and (24), net of the investment cost I , gives:

$$\begin{aligned} V_1(\Pi; C) &= E_1(\Pi; C) + D_1(\Pi; C) - I \\ &= \frac{(1-\tau_1)\Pi}{\delta} + \frac{\tau_1 C}{r} - \left(\frac{\tau_1}{r} + v \right) C \left(\frac{\Pi}{C} \right)^{\beta_2} - I. \end{aligned} \quad (25)$$

A.2 The value function (5)

Following the same procedure we can calculate the value function before the tax rate change. Again, we write the value of equity as:

$$E_0(\Pi; C) = (1 - \tau_0)(\Pi - C) + (1 - \lambda dt) e^{-rdt} \xi [E_0(\Pi + d\Pi; C)] + \lambda dt \xi [E_1(\Pi + d\Pi; C)].$$

Expanding its RHS, applying Itô's Lemma and rearranging gives:

$$(r + \lambda) E_0(\Pi; C) = (1 - \tau_0)(\Pi - C) + (r - \delta)\Pi E_{0\Pi}(\Pi; C) + \frac{\sigma^2}{2}\Pi^2 E_{0\Pi\Pi}(\Pi; C) + \lambda E_1(\Pi; C). \quad (26)$$

Let us next subtract (18) from (26) so that:

$$(r + \lambda) X(\Pi; C) = (\tau_1 - \tau_0)(\Pi - C) + (r - \delta)\Pi X_\Pi(\Pi; C) + \frac{\sigma^2}{2}\Pi^2 X_\Pi(\Pi; C), \quad (27)$$

where

$$X(\Pi; C) \equiv E_0(\Pi; C) - E_1(\Pi; C). \quad (28)$$

Solving (27) gives

$$X(\Pi; C) = (\tau_1 - \tau_0) \left(\frac{\Pi}{\delta + \lambda} - \frac{C}{r + \lambda} \right) + \sum_{i=1}^2 F_i \Pi^{\beta_i(\lambda)}, \quad (29)$$

where

$$\beta_1(\lambda) = \frac{1}{2} - \frac{r - \delta}{\sigma^2} + \sqrt{\left(\frac{r - \delta}{\sigma^2} - \frac{1}{2} \right)^2 + \frac{2(r + \lambda)}{\sigma^2}} > 1,$$

$$\beta_2(\lambda) = \frac{1}{2} - \frac{r - \delta}{\sigma^2} - \sqrt{\left(\frac{r - \delta}{\sigma^2} - \frac{1}{2} \right)^2 + \frac{2(r + \lambda)}{\sigma^2}} < 0,$$

are the roots of the characteristic equation

$$\Psi(\beta) = \frac{1}{2}\sigma^2\beta(\beta - 1) + (r - \delta)\beta - (r + \lambda) = 0.$$

Notice that, in the absence of bubbles, we have $F_1 = 0$. Using (28) and (29), and rearranging, we obtain:

$$\begin{aligned} E_0(\Pi; C) &= E_1(\Pi; C) + X(\Pi; C) \\ &= (1 - \tau_1) \left[\left(\frac{\Pi}{\delta} - \frac{C}{r} \right) - \left(\frac{C}{\delta} - \frac{C}{r} \right) \left(\frac{\Pi}{C} \right)^{\beta_2} \right] \\ &\quad + (\tau_1 - \tau_0) \left(\frac{\Pi}{\delta + \lambda} - \frac{C}{r + \lambda} \right) + F_2 \Pi^{\beta_2(\lambda)}. \end{aligned}$$

Using condition $E_0(C; C) = 0$ and solving for F_2 we can find

$$F_2 = -(\tau_1 - \tau_0) \left(\frac{C}{\delta + \lambda} - \frac{C}{r + \lambda} \right) C^{-\beta_2(\lambda)}.$$

Hence, the value of equity is equal to:

$$\begin{aligned} E_0(\Pi; C) &= E_1(\Pi; C) + X(\Pi; C) \quad (30) \\ &= (1 - \tau_1) \left[\left(\frac{\Pi}{\delta} - \frac{C}{r} \right) - \left(\frac{C}{\delta} - \frac{C}{r} \right) \left(\frac{\Pi}{C} \right)^{\beta_2} \right] \\ &\quad + (\tau_1 - \tau_0) \left[\left(\frac{\Pi}{\delta + \lambda} - \frac{C}{r + \lambda} \right) - \left(\frac{C}{\delta + \lambda} - \frac{C}{r + \lambda} \right) \left(\frac{\Pi}{C} \right)^{\beta_2(\lambda)} \right]. \end{aligned}$$

Let us now calculate the value of debt before the tax rate change. As usual, we can write it as:

$$D_0(\Pi; C) = C + (1 - \lambda dt) e^{-rdt} \xi [D_0(\Pi + d\Pi; C)] + \lambda dt \xi [D_1(\Pi + d\Pi; C)].$$

Expanding its RHS, applying Itô's Lemma and rearranging gives the following non-arbitrage condition:

$$(r + \lambda) D_0(\Pi; C) = C + (r - \delta) \Pi D_{0\Pi}(\Pi; C) + \frac{\sigma^2}{2} \Pi^2 D_{0\Pi\Pi}(\Pi; C) + \lambda D_1(\Pi; C). \quad (31)$$

Subtracting (21) from (31) gives:

$$(r + \lambda) Y(\Pi; C) = (r - \delta) \Pi Y_{\Pi}(\Pi; C) + \frac{\sigma^2}{2} \Pi^2 Y_{\Pi\Pi}(\Pi; C), \quad (32)$$

with

$$Y(\Pi; C) \equiv D_0(\Pi; C) - D_1(\Pi; C). \quad (33)$$

The solution of (32) has the following form:

$$Y(\Pi; C) = \begin{cases} \frac{(\tau_1 - \tau_0)\Pi}{\delta + \lambda} + \sum_{i=1}^2 L_i \Pi^{\beta_i(\lambda)} & \text{after default,} \\ \sum_{i=1}^2 G_i \Pi^{\beta_i(\lambda)} & \text{before default.} \end{cases}$$

Notice that, after default (but before the tax-rate change), the boundary condition $Y(0; C) = 0$ holds. This implies that $L_2 = 0$. Moreover, in the absence of bubbles, we have $L_1 = G_1 = 0$.

Remember that, after default, the lender becomes shareholders. Therefore, using (32) and rearranging, we can write the firm's value after default:

$$D_0(\Pi; C) = \left[\frac{(1 - \tau_1)}{\delta} + \frac{(\tau_1 - \tau_0)}{\delta + \lambda} \right] \Pi.$$

Following the same procedure we can write the before-default value of debt:

$$D_0(\Pi; C) = \left\{ \frac{1}{r} + \left[\frac{(1 - \tau_1)}{\delta} - \frac{1}{r} - v \right] \left(\frac{\Pi}{C} \right)^{\beta_2} \right\} C + G_2 \Pi^{\beta_2(\lambda)}. \quad (34)$$

To find G_2 , we let the two branches of the debt function meet at point $\Pi = C$, and account for the default cost. This means that the equality

$$\frac{1 - \tau_1}{\delta} C + G_2 C^{\beta_2(\lambda)} = \left(\frac{1 - \tau_1}{\delta} + \frac{\tau_1 - \tau_0}{\delta + \lambda} \right) C - vC \quad (35)$$

holds. Solving (35) for G_2 and substituting the result into (34) gives:

$$D_0(\Pi; C) = \left[\frac{1}{r} + \left(\frac{1 - \tau_1}{\delta} - \frac{1}{r} - v \right) \left(\frac{\Pi}{C} \right)^{\beta_2} \right] C + \frac{\tau_1 - \tau_0}{\delta + \lambda} C \left(\frac{\Pi}{C} \right)^{\beta_2(\lambda)}. \quad (36)$$

Using (30) and (36) we can finally calculate the firm's NPV:

$$\begin{aligned} V_0(\Pi; C) = & (1 - \tau_1) \left[\left(\frac{\Pi}{\delta} - \frac{C}{r} \right) - \left(\frac{C}{\delta} - \frac{C}{r} \right) \left(\frac{\Pi}{C} \right)^{\beta_2} \right] + \\ & + (\tau_1 - \tau_0) \left[\left(\frac{\Pi}{\delta + \lambda} - \frac{C}{r + \lambda} \right) - \left(\frac{C}{\delta + \lambda} - \frac{C}{r + \lambda} \right) \left(\frac{\Pi}{C} \right)^{\beta_2(\lambda)} \right] \\ & + \left[\frac{1}{r} + \left(\frac{1 - \tau_1}{\delta} - \frac{1}{r} - v \right) \left(\frac{\Pi}{C} \right)^{\beta_2} \right] C + \frac{\tau_1 - \tau_0}{\delta + \lambda} C \left(\frac{\Pi}{C} \right)^{\beta_2(\lambda)} - I. \end{aligned} \quad (37)$$

B The option functions

B.1 The option function (6)

Using dynamic programming we can write a firm's option to invest under tax rate certainty as:

$$O_1(\Pi; C) = e^{-rdt} \xi [O_1(\Pi + d\Pi; C)].$$

Expanding its RHS, applying Itô's Lemma and rearranging gives the following non-arbitrage condition:

$$rO_1(\Pi; C) = (r - \delta)\Pi O_{1\Pi}(\Pi; C) + \frac{\sigma^2}{2}\Pi^2 O_{1\Pi\Pi}(\Pi; C). \quad (38)$$

As shown in Dixit and Pindyck (1994), the general-form solution of (38) is:

$$O_1(\Pi; C) = H_1 \Pi^{\beta_1}, \quad (39)$$

where H_1 is an unknown. To calculate H_1 , we apply the VMC at the entry threshold level ($\Pi = \bar{\Pi}$), i.e.,

$$V_1(\Pi; C)|_{\Pi=\bar{\Pi}} = O_1(\Pi; C)|_{\Pi=\bar{\Pi}}, \quad (40)$$

and therefore, obtain

$$\begin{aligned} H_1 = & V_1(\bar{\Pi}; C) \bar{\Pi}^{-\beta_1} = \\ & = \left[\frac{(1 - \tau_1) \bar{\Pi}}{\delta} + \frac{\tau_1 C}{r} - (\tau_1 + rv) \frac{C}{r} \left(\frac{\bar{\Pi}}{C} \right)^{\beta_2} - I \right] \bar{\Pi}^{-\beta_1} \end{aligned} \quad (41)$$

Substituting (41) into (39), using (40) and rearranging gives the option function (6).

B.2 The option function (7)

Following the same procedure, let write a firm's option to invest as:

$$O_0(\Pi; C) = (1 - \lambda dt) e^{-rdt} \xi [O_0(\Pi + d\Pi; C)] + \lambda dt \xi [O_1(\Pi + d\Pi; C)].$$

Expanding its RHS, applying Itô's Lemma and rearranging gives the following non-arbitrage condition:

$$(r + \lambda) O_0(\Pi; C) = (r - \delta) \Pi O_{0_{\text{III}}}(\Pi; C) + \frac{\sigma^2}{2} \Pi^2 O_{0_{\text{III}}}(\Pi; C) + \lambda O_1(\Pi; C). \quad (42)$$

Subtracting (38) from (42) gives

$$(r + \lambda) Z(\Pi; C) = (r - \delta) \Pi Z_{\text{II}}(\Pi; C) + \frac{\sigma^2}{2} \Pi^2 Z_{\text{III}}(\Pi; C), \quad (43)$$

where $Z(\Pi; C) \equiv O_0(\Pi; C) - O_1(\Pi; C)$. Solving (43) we have:

$$Z(\Pi; C) = \sum_{i=1}^2 Z_i \Pi^{\beta_i(\lambda)}.$$

Since $Z(0; C) = 0$, we obtain

$$Z(\Pi; C) = Z_1 \Pi^{\beta_1(\lambda)},$$

and therefore, the option value can be rewritten as follows:

$$\begin{aligned} O_0(\Pi; C) &= O_1(\Pi; C) + Z(\Pi; C) \\ &= H_1 \Pi^{\beta_1} + Z_1 \Pi^{\beta_1(\lambda)}. \end{aligned} \quad (44)$$

To calculate Z_1 we apply the VMC at the threshold point $\Pi = \hat{\Pi}$:

$$V_0(\Pi; C)|_{\Pi=\hat{\Pi}} = O_0(\Pi; C)|_{\Pi=\hat{\Pi}}. \quad (45)$$

Using (44) and (45) we obtain:

$$H_1 \hat{\Pi}^{\beta_1} + Z_1 \hat{\Pi}^{\beta_1(\lambda)} = V_0(\hat{\Pi}; C), \quad (46)$$

which gives

$$Z_1 = \left[V_0(\hat{\Pi}; C) - H_1 \hat{\Pi}^{\beta_1} \right] \hat{\Pi}^{-\beta_1(\lambda)}.$$

Substituting (41) into $Z(\Pi; C)$ gives

$$Z_1 \Pi^{\beta_1(\lambda)} = \left[V_0(\hat{\Pi}; C) - H_1 \hat{\Pi}^{\beta_1} \right] \left(\frac{\Pi}{\hat{\Pi}} \right)^{\beta_1(\lambda)}. \quad (47)$$

Substituting (47) into (46), using (45) and rearranging gives (7).

C The firm's choice under tax-rate certainty

Under tax-rate certainty, the firm's problem is (9).

C.1 The solutions

The first order conditions of (9) w.r.t. C and $\bar{\Pi}$ are

$$\left(\frac{\bar{\Pi}}{\bar{\Pi}}\right)^{\beta_1} \frac{1}{r} \left[\tau_1 - (1 - \beta_2)(\tau_1 + vr) \left(\frac{\bar{\Pi}}{C}\right)^{\beta_2} \right] = 0, \quad (48)$$

$$\left(\frac{\bar{\Pi}}{\bar{\Pi}}\right)^{\beta_1} \frac{1}{\bar{\Pi}} \left\{ \frac{(1-\tau_1)\bar{\Pi}}{r} - \beta_2 \frac{C}{r} (\tau_1 + vr) \left(\frac{\bar{\Pi}}{C}\right)^{\beta_2} + \right. \\ \left. - \beta_1 \left[\frac{(1-\tau_1)\bar{\Pi}}{r} + \frac{C}{r} \left(\tau_1 - (\tau_1 + vr) \left(\frac{\bar{\Pi}}{C}\right)^{\beta_2} \right) - I \right] \right\} = 0, \quad (49)$$

respectively. Rearranging (48) gives

$$C = \left(\frac{1}{1 - \beta_2} \frac{\tau_1}{\tau_1 + vr} \right)^{-\frac{1}{\beta_2}} \bar{\Pi}. \quad (50)$$

Moreover, from (48) we obtain

$$\frac{\tau_1}{1 - \beta_2} = (\tau_1 + vr) \left(\frac{\bar{\Pi}}{C}\right)^{\beta_2},$$

and hence, we can rewrite (49) as

$$\left[\frac{(1 - \tau_1)\bar{\Pi}}{r} - \beta_2 \frac{C}{r} \frac{\tau_1}{1 - \beta_2} \right] - \beta_1 \left[\frac{(1 - \tau_1)\bar{\Pi}}{r} + \frac{C}{r} \left(\tau_1 - \frac{\tau_1}{1 - \beta_2} \right) - I \right] = 0. \quad (51)$$

Rearranging and dividing (51) by $\frac{(1-\beta_1)(1-\tau_1)}{r}$ one obtains:

$$\bar{\Pi} + \frac{\tau_1}{1 - \tau_1} \frac{\beta_2}{\beta_2 - 1} C - \frac{\beta_1}{\beta_1 - 1} \frac{r}{1 - \tau_1} I = 0. \quad (52)$$

Substituting (50) into (52) gives

$$\bar{\Pi}_1^* = \frac{1}{1 + m_1} \frac{\beta_1}{\beta_1 - 1} \frac{r}{1 - \tau_1} I,$$

where $m_1 \equiv \frac{\tau_1}{1 - \tau_1} \frac{\beta_2}{\beta_2 - 1} \left(\frac{1}{1 - \beta_2} \frac{\tau_1}{\tau_1 + vr} \right)^{-\frac{1}{\beta_2}} > 0$. Solution (10) is thus obtained.

C.2 Comparative statics

Let us next provide some comparative statics for $\bar{\Pi}_1^*$, \bar{C}_1 and m_1 . Their derivatives w.r.t. τ_1 are

$$\begin{aligned}\frac{\partial \bar{\Pi}_1^*}{\partial \tau_1} &= \frac{\beta_1}{\beta_1 - 1} \frac{rI}{(1 - \tau_1)^2} \frac{1 + m_1 - \frac{\partial m_1}{\partial \tau_1} (1 - \tau_1)}{(1 + m_1)^2}, \\ \frac{\partial \bar{C}_1}{\partial \tau_1} &= \left(\frac{(1 - \beta_2)(\tau_1 + vr)}{\tau_1} \right)^{\frac{1}{\beta_2}} \left(\frac{\partial \bar{\Pi}_1^*}{\partial \tau_1} - \frac{1}{\beta_2 \tau_1} \frac{rv}{\tau_1 + vr} \bar{\Pi}_1^* \right), \\ \frac{\partial m_1}{\partial \tau_1} &= \frac{\beta_2}{\beta_2 - 1} \left(\frac{1}{1 - \beta_2} \right)^{-\frac{1}{\beta_2}} \left(1 + \frac{vr}{\tau_1} \right)^{\frac{1}{\beta_2}} \frac{(\tau_1 + vr)\beta_2 - vr(1 - \tau_1)}{(1 - \tau_1)^2 \beta_2 (\tau_1 + vr)} > 0.\end{aligned}\tag{53}$$

It is easy to show that

$$\frac{\partial \bar{\Pi}_1^*}{\partial \tau_1} > 0 \text{ if } \frac{\partial m_1}{\partial \tau_1} < \frac{1 + m_1}{1 - \tau_1},$$

where

$$\frac{\partial m_1}{\partial \tau_1} < \frac{1 + m_1}{1 - \tau_1} \iff \frac{\beta_2(\tau_1 + vr) - vr}{(\beta_2 - 1)(\tau_1 + vr)} \left(\frac{1}{1 - \beta_2} \frac{\tau_1}{\tau_1 + vr} \right)^{-\frac{1}{\beta_2}} < 1.$$

Since $\frac{\beta_2(\tau_1 + vr) - vr}{(\beta_2 - 1)(\tau_1 + vr)} < 1$ and $\left(\frac{\tau_1}{(1 - \beta_2)(\tau_1 + vr)} \right)^{-\frac{1}{\beta_2}} < 1$, inequalities $0 < \frac{\partial m_1}{\partial \tau_1} < \frac{1 + m_1}{1 - \tau_1}$ hold. This implies that $\frac{\partial \bar{\Pi}_1^*}{\partial \tau_1} > 0$.

Let us next study the derivative $\frac{\partial \bar{C}_1}{\partial \tau_1}$. It is worth noting that, given $\frac{\partial \bar{\Pi}_1^*}{\partial \tau_1} > 0$, it is always positive.

Given these results one can easily obtain:

$$\frac{\partial \left(\frac{\bar{C}_1}{\bar{\Pi}_1^*} \right)}{\partial \tau_1} = - \left(\frac{1}{1 - \beta_2} \right)^{-\frac{1}{\beta_2}} \frac{1}{\beta_2} \left(\frac{\tau_1}{\tau_1 + vr} \right)^{-\frac{1 - \beta_2}{\beta_2}} \frac{rv}{(\tau_1 + vr)^2} > 0.$$

References

- [1] Agliardi E. (2001), Taxation and Investment Decisions – A Real Option Approach, *Australian Economic Papers*, 40, pp. 44-55.
- [2] Böckem S. (2001), Investment and Politics – Does Tax Fear Delay Investment?, *FinanzArchiv*, 58, pp. 60-77.
- [3] Böhm H. and M. Funke (2000), Optimal Investment Strategies under Demand and Tax Policy Uncertainty, CESifo Working Paper No. 311.
- [4] Branch B. (2002), The Costs of Bankruptcy: A Review, *International Review of Financial Analysis*, 11, pp. 39-57.
- [5] Brennan M.J. and E.S. Schwartz (1977), Convertible Bonds: Valuation and Optimal Strategies for Call and Conversion, *Journal of Finance*, 32, pp. 1699-1715.
- [6] Chen Y.-F. and M. Funke (2008), Political Risk, Economic Integration, and the Foreign Direct Investment Decision, Dundee Discussion Papers in Economics No. 208.
- [7] Devereux, M.P., B. Lockwood, and M. Redoano (2008), Do Countries Compete over Corporate Tax Rates? *Journal of Public Economics*, 92, pp. 1210-1235.
- [8] Dixit A.K. and R.S. Pindyck (1994), *Investment under Uncertainty*, Princeton University Press.
- [9] Dixit A.K. and R.S. Pindyck (1999), Expandability, Reversibility, and Optimal Capacity Choice, in *Project Flexibility, Agency, and Competition*, M.J. Brennan and L. Trigeorgis (Eds.), Oxford University Press.
- [10] Eichengreen B. (1990), The Capital Levy in Theory and Practice, in R. Dornbusch and M. Draghi (eds.), *Public Debt Management: Theory and History*, Cambridge University Press, Cambridge, New York and Melbourne.
- [11] Ghinamo M., P.M. Panteghini and F. Revelli (2009), FDI Determination and Corporate Tax Competition in a Volatile World, *International Tax and Public Finance*, forthcoming.
- [12] Goldstein R., N. Ju and H. Leland (2001), An EBIT-Based Model of Dynamic Capital Structure, *Journal of Business*, 74, pp. 483-512.
- [13] Hennessy C. and T.M. Whited (2005), Debt Dynamics, *Journal of Finance*, 60, pp. 1129-1165.

- [14] KPMG (2009), *Corporate and Indirect Tax Rate Survey 2008*.
- [15] Leland H.E. (1994), Corporate Debt Value, Bond Covenants, and Optimal Capital Structure, *Journal of Finance*, September, 49, pp. 1213-1252.
- [16] Mintz J.M. (1995), The Corporation Tax: A Survey, *Fiscal Studies*, 16, pp. 23-68.
- [17] Niemann R. (1999), Neutral Taxation under Uncertainty – a Real Options Approach, *FinanzArchiv*, 56, 51-66.
- [18] Niemann R. (2004), Tax Rate Uncertainty, Investment Decisions, and Tax Neutrality, *International Tax and Public Finance*, 11, 265-281.
- [19] Niemann R. (2006), The Impact of Tax Uncertainty on Irreversible Investment, arqus Diskussionsbeitrag Nr. 21.
- [20] Niemann R. and C. Sureth (2004), Tax Neutrality under Irreversibility and Risk Aversion, *Economics Letters*, 84, 43-47.
- [21] Niemann R. and C. Sureth (2005), Capital Budgeting with Taxes under Uncertainty and Irreversibility, *Jahrbücher für Nationalökonomie und Statistik*, 225, 77-95.
- [22] Panteghini P.M. (2001a), On Corporate Tax Asymmetries and Neutrality, in: *German Economic Review*, 2, 269-286.
- [23] Panteghini P.M. (2001b), Corporate Tax Asymmetries under Investment Irreversibility, *FinanzArchiv*, 58, 207-226.
- [24] Panteghini P.M. (2007a), *Corporate Taxation in a Dynamic World*, Springer.
- [25] Panteghini P.M. (2007b), Interest Deductibility under Default Risk and the Unfavorable Tax Treatment of Investment Costs: A Simple Explanation, *Economics Letters*, 96, pp.1-7.
- [26] Pindyck R.S. (2007), Mandatory Unbundling and Irreversible Investment in Telecom Networks, *Review of Network Economics*, 6, pp. 274-298.
- [27] Smith C.W. Jr. and J.B. Warner (1979), On Financial Contracting: An Analysis of Bond Covenants, *Journal of Financial Economics*, 7, pp. 117-161.
- [28] Sureth C. (2002), Partially Irreversible Investment Decisions and Taxation under Uncertainty: A Real Option Approach, *German Economic Review*, 3, 185-221.

CESifo Working Paper Series

for full list see www.cesifo-group.org/wp

(address: Poschingerstr. 5, 81679 Munich, Germany, office@cesifo.de)

- 2953 Roland Strausz, The Political Economy of Regulatory Risk, February 2010
- 2954 Sanjay Jain, Sumon Majumdar and Sharun W. Mukand, Workers without Borders? Culture, Migration and the Political Limits to Globalization, February 2010
- 2955 Andreas Irmen, Steady-State Growth and the Elasticity of Substitution, February 2010
- 2956 Bengt-Arne Wickström, The Optimal Babel – An Economic Framework for the Analysis of Dynamic Language Rights, February 2010
- 2957 Stefan Bauernschuster and Helmut Rainer, From Politics to the Family: How Sex-Role Attitudes Keep on Diverging in Reunified Germany, February 2010
- 2958 Patricia Funk and Christina Gathmann, How do Electoral Systems Affect Fiscal Policy? Evidence from State and Local Governments, 1890 to 2005, February 2010
- 2959 Betsey Stevenson, Beyond the Classroom: Using Title IX to Measure the Return to High School Sports, February 2010
- 2960 R. Quentin Grafton, Tom Kompas and Ngo Van Long, Biofuels Subsidies and the Green Paradox, February 2010
- 2961 Oliver Falck, Stephan Heblich, Alfred Lameli and Jens Suedekum, Dialects, Cultural Identity, and Economic Exchange, February 2010
- 2962 Bård Harstad, The Dynamics of Climate Agreements, February 2010
- 2963 Frederick van der Ploeg and Cees Withagen, Is There Really a Green Paradox?, February 2010
- 2964 Ingo Vogelsang, Incentive Regulation, Investments and Technological Change, February 2010
- 2965 Jan C. van Ours and Lenny Stoeldraijer, Age, Wage and Productivity, February 2010
- 2966 Michael Hoel, Climate Change and Carbon Tax Expectations, February 2010
- 2967 Tommaso Nannicini and Roberto Ricciuti, Autocratic Transitions and Growth, February 2010
- 2968 Sebastian Brauer and Frank Westermann, A Note on the Time Series Measure of Conservatism, February 2010
- 2969 Wolfram F. Richter, Efficient Education Policy – A Second-Order Elasticity Rule, February 2010

- 2970 Tomer Blumkin, Yoram Margalioth and Efraim Sadka, Taxing Children: The Redistributive Role of Child Benefits – Revisited, February 2010
- 2971 Chang Woon Nam and Georg Wamser, Application of Regionally Varying Additionality Degrees in the Practice of EU Cohesion Policy, February 2010
- 2972 Ali Bayar, Frédéric Dramais, Cristina Mohora, Masudi Opese and Bram Smeets, Modeling Russia for Climate Change Issues, February 2010
- 2973 Magnus Söderberg, Informal Benchmarks as a Source of Regulatory Threat in Unregulated Utility Sectors, March 2010
- 2974 Piotr Wdowiński and Marta Malecka, Asymmetry in Volatility: A Comparison of Developed and Transition Stock Markets, March 2010
- 2975 Frans van Winden, Michal Krawczyk and Astrid Hopfensitz, Investment, Resolution of Risk, and the Role of Affect, March 2010
- 2976 Hyun-Ju Koh and Nadine Riedel, Do Governments Tax Agglomeration Rents?, March 2010
- 2977 Johann K. Brunner and Susanne Pech, Optimum Taxation of Bequests in a Model with Initial Wealth, March 2010
- 2978 Guglielmo Maria Caporale and Nicola Spagnolo, Stock Market Integration between three CEECs, Russia and the UK, March 2010
- 2979 Florian Englmaier, Ales Filipi and Ravi Singh, Incentives, Reputation and the Allocation of Authority, March 2010
- 2980 Konstantinos Angelopoulos, George Economides and Apostolis Philippopoulos, What is the Best Environmental Policy? Taxes, Permits and Rules under Economic and Environmental Uncertainty, March 2010
- 2981 Frederick van der Ploeg, Rapacious Resource Depletion, Excessive Investment and Insecure Property Rights, March 2010
- 2982 Wolfram F. Richter and Christoph Braun, Efficient Subsidization of Human Capital Accumulation with Overlapping Generations and Endogenous Growth, March 2010
- 2983 Francesco Cinnirella, Marc Piopiunik and Joachim Winter, Why Does Height Matter for Educational Attainment? Evidence from German Pre-Teen Children, March 2010
- 2984 Bernard Van Praag, Well-being Inequality and Reference Groups – An Agenda for New Research, March 2010
- 2985 Francesca Barion, Raffaele Miniaci, Paolo M. Panteghini and Maria Laura Parisi, Profit Shifting by Debt Financing in Europe, March 2010

- 2986 Alexander Haupt and Magdalena Stadejek, The Choice of Environmental Policy Instruments: Energy Efficiency and Redistribution, March 2010
- 2987 John Komlos and Marek Brabec, The Trend of BMI Values among US Adults, March 2010
- 2988 Emanuele Massetti and Lea Nicita, The Optimal Climate Policy Portfolio when Knowledge Spills across Sectors, March 2010
- 2989 Helmut Rainer and Thomas Siedler, Family Location and Caregiving Patterns from an International Perspective, March 2010
- 2990 Toru Kikuchi and Ngo Van Long, A Simple Model of Service Offshoring with Time Zone Differences, March 2010
- 2991 Assaf Razin, Efraim Sadka and Benjarong Suwankiri, Migration and the Welfare State: Dynamic Political-Economy Theory, March 2010
- 2992 Bård Harstad, Buy Coal! Deposit Markets Prevent Carbon Leakage, March 2010
- 2993 Axel Dreher, Stephan Klasen, James Raymond Vreeland and Eric Werker, The Costs of Favoritism: Is Politically-driven Aid less Effective?, March 2010
- 2994 Sven Neelsen and Thomas Stratmann, Effects of Prenatal and Early Life Malnutrition: Evidence from the Greek Famine, March 2010
- 2995 Claude Hillinger and Bernd Süßmuth, The Quantity Theory of Money: An Assessment of its Real Linchpin Prediction, March 2010
- 2996 Matthew M. Chingos and Martin R. West, Do More Effective Teachers Earn More Outside of the Classroom?, March 2010
- 2997 Laurence Jacquet and Dirk Van de gaer, A Comparison of Optimal Tax Policies when Compensation or Responsibility Matter, March 2010
- 2998 Valentina Bosetti, Carlo Carraro, Romain Duval and Massimo Tavoni, What Should we Expect from Innovation? A Model-Based Assessment of the Environmental and Mitigation Cost Implications of Climate-Related R&D, March 2010
- 2999 Scott Alan Carson, Nineteenth Century Stature and Family Size: Binding Constraint or Productive Labor Force?, March 2010
- 3000 Jukka Pirttilä and Ilpo Suoniemi, Public Provision, Commodity Demand and Hours of Work: An Empirical Analysis, March 2010
- 3001 Bertrand Candelon and Franz C. Palm, Banking and Debt Crises in Europe: The Dangerous Liaisons?, March 2010
- 3002 Joan Costa-i-Font and Marin Gemmill-Toyama, Does Cost Sharing really Reduce Inappropriate Prescriptions?, March 2010

- 3003 Scott Barrett, Climate Treaties and Backstop Technologies, March 2010
- 3004 Hans Jarle Kind, Tore Nilssen and Lars Sørgard, Price Coordination in Two-Sided Markets: Competition in the TV Industry, March 2010
- 3005 Jay Pil Choi and Heiko Gerlach, Global Cartels, Leniency Programs and International Antitrust Cooperation, March 2010
- 3006 Aneta Hryckiewicz and Oskar Kowalewski, Why do Foreign Banks Withdraw from other Countries? A Panel Data Analysis, March 2010
- 3007 Eric A. Hanushek and Ludger Woessmann, Sample Selectivity and the Validity of International Student Achievement Tests in Economic Research, March 2010
- 3008 Dennis Novy, International Trade and Monopolistic Competition without CES: Estimating Translog Gravity, April 2010
- 3009 Yin-Wong Cheung, Guonan Ma and Robert N. McCauley, Renminbising China's Foreign Assets, April 2010
- 3010 Michel Beine and Sara Salomone, Migration and Networks: Does Education Matter more than Gender?, April 2010
- 3011 Friedrich Schneider, Tilman Brück and Daniel Meierrieks, The Economics of Terrorism and Counter-Terrorism: A Survey (Part I), April 2010
- 3012 Friedrich Schneider, Tilman Brück and Daniel Meierrieks, The Economics of Terrorism and Counter-Terrorism: A Survey (Part II), April 2010
- 3013 Frederick van der Ploeg and Steven Poelhekke, The Pungent Smell of "Red Herrings": Subsoil Assets, Rents, Volatility and the Resource Curse, April 2010
- 3014 Vjollca Sadiraj, Jan Tuinstra and Frans van Winden, Identification of Voters with Interest Groups Improves the Electoral Chances of the Challenger, April 2010
- 3015 Guglielmo Maria Caporale, Davide Ciferri and Alessandro Girardi, Time-Varying Spot and Futures Oil Price Dynamics, April 2010
- 3016 Scott Alan Carson, Racial Differences in Body-Mass Indices for Men Imprisoned in 19th Century US Prisons: A Multinomial Approach, April 2010
- 3017 Alessandro Fedele, Paolo M. Panteghini and Sergio Vergalli, Optimal Investment and Financial Strategies under Tax Rate Uncertainty, April 2010