

Hofer, Helmut; Schmidt, Torsten; Weyerstrass, Klaus

**Working Paper**

## Practice and Prospects of Medium-term Economic Forecasting

Ruhr Economic Papers, No. 177

**Provided in Cooperation with:**

RWI – Leibniz-Institut für Wirtschaftsforschung, Essen

*Suggested Citation:* Hofer, Helmut; Schmidt, Torsten; Weyerstrass, Klaus (2010) : Practice and Prospects of Medium-term Economic Forecasting, Ruhr Economic Papers, No. 177, ISBN 978-3-86788-198-2, Rheinisch-Westfälisches Institut für Wirtschaftsforschung (RWI), Essen

This Version is available at:

<https://hdl.handle.net/10419/37001>

**Standard-Nutzungsbedingungen:**

Die Dokumente auf EconStor dürfen zu eigenen wissenschaftlichen Zwecken und zum Privatgebrauch gespeichert und kopiert werden.

Sie dürfen die Dokumente nicht für öffentliche oder kommerzielle Zwecke vervielfältigen, öffentlich ausstellen, öffentlich zugänglich machen, vertreiben oder anderweitig nutzen.

Sofern die Verfasser die Dokumente unter Open-Content-Lizenzen (insbesondere CC-Lizenzen) zur Verfügung gestellt haben sollten, gelten abweichend von diesen Nutzungsbedingungen die in der dort genannten Lizenz gewährten Nutzungsrechte.

**Terms of use:**

*Documents in EconStor may be saved and copied for your personal and scholarly purposes.*

*You are not to copy documents for public or commercial purposes, to exhibit the documents publicly, to make them publicly available on the internet, or to distribute or otherwise use the documents in public.*

*If the documents have been made available under an Open Content Licence (especially Creative Commons Licences), you may exercise further usage rights as specified in the indicated licence.*



# RUHR

ECONOMIC PAPERS

Helmut Hofer  
Torsten Schmidt  
Klaus Weyerstrass

## Practice and Prospects of Medium-term Economic Forecasting



#177

# Imprint

## Ruhr Economic Papers

Published by

Ruhr-Universität Bochum (RUB), Department of Economics  
Universitätsstr. 150, 44801 Bochum, Germany

Technische Universität Dortmund, Department of Economic and Social Sciences  
Vogelpothsweg 87, 44227 Dortmund, Germany

Universität Duisburg-Essen, Department of Economics  
Universitätsstr. 12, 45117 Essen, Germany

Rheinisch-Westfälisches Institut für Wirtschaftsforschung (RWI)  
Hohenzollernstr. 1-3, 45128 Essen, Germany

## Editors

Prof. Dr. Thomas K. Bauer  
RUB, Department of Economics, Empirical Economics  
Phone: +49 (0) 234/3 22 83 41, e-mail: [thomas.bauer@rub.de](mailto:thomas.bauer@rub.de)

Prof. Dr. Wolfgang Leininger  
Technische Universität Dortmund, Department of Economic and Social Sciences  
Economics – Microeconomics  
Phone: +49 (0) 231/7 55-3297, email: [W.Leininger@wiso.uni-dortmund.de](mailto:W.Leininger@wiso.uni-dortmund.de)

Prof. Dr. Volker Clausen  
University of Duisburg-Essen, Department of Economics  
International Economics  
Phone: +49 (0) 201/1 83-3655, e-mail: [vclausen@vwl.uni-due.de](mailto:vclausen@vwl.uni-due.de)

Prof. Dr. Christoph M. Schmidt  
RWI, Phone: +49 (0) 201/81 49-227, e-mail: [christoph.schmidt@rwi-essen.de](mailto:christoph.schmidt@rwi-essen.de)

## Editorial Office

Joachim Schmidt  
RWI, Phone: +49 (0) 201/81 49-292, e-mail: [joachim.schmidt@rwi-essen.de](mailto:joachim.schmidt@rwi-essen.de)

## Ruhr Economic Papers #177

Responsible Editor: Christoph M. Schmidt

All rights reserved. Bochum, Dortmund, Duisburg, Essen, Germany, 2010

ISSN 1864-4872 (online) – ISBN 978-3-86788-198-2

The working papers published in the Series constitute work in progress circulated to stimulate discussion and critical comments. Views expressed represent exclusively the authors' own opinions and do not necessarily reflect those of the editors.

---

Ruhr Economic Papers #177

Helmut Hofer, Torsten Schmidt, and Klaus Weyerstrass

**Practice and Prospects  
of Medium-term  
Economic Forecasting**



## **Bibliografische Informationen der Deutschen Nationalbibliothek**

---

Die Deutsche Bibliothek verzeichnet diese Publikation in der deutschen Nationalbibliografie; detaillierte bibliografische Daten sind im Internet über: <http://dnb.ddb.de> abrufbar.

ISSN 1864-4872 (online)  
ISBN 978-3-86788-198-2

---

Helmut Hofer, Torsten Schmidt, and Klaus Weyerstrass<sup>1</sup>

## Practice and Prospects of Medium-term Economic Forecasting

### Abstract

*Government agencies and other national and international institutions are asked to perform forecasts over the medium term. In particular, the EU Stability and Growth Pact contains the obligation to formulate stability programmes over four years, covering a general economic outlook as well as the projected development of public finances. However, the current practice of performing medium-term economic projections is unsatisfactory from a methodological point of view as the applied methodology has been developed for short-run forecasting and it is questionable whether these methods are useful for the medium term. In particular, currently medium-term projections are mostly based on the neoclassical Solow growth model with an aggregate production function with labour, capital, and exogenous technological progress. It might be argued, however, that for medium-run projections endogenous growth models might be better suited. In this paper we give an overview of currently used methods for medium-term macroeconomic projections. Then we analyse the performance of medium-term forecasts for Austria to illustrate the strengths and weaknesses of the typical approach. In particular, the five-year projections of real GDP growth, inflation and the unemployment rate are investigated. Finally, we describe some approaches to improve medium-run projections.*

*JEL Classification: C53, E32, E37, E66*

*Keywords: Econometric models; macroeconomic forecasts; aggregate production function; Austria*

*March 2010*

---

<sup>1</sup> Helmut Hofer, IHS Wien; Torsten Schmidt, RWI; Klaus Weyerstrass, IHS Wien. – The authors would like to thank Robert Kunst and Karl Pichelmann for valuable comments. – All correspondence to Torsten Schmidt, Rheinisch-Westfälisches Institut für Wirtschaftsforschung (RWI), Hohenzollernstr. 1-3, 45128 Essen, Germany, e-mail: torsten.schmidt@rwi-essen.

## 1. Introduction

Government agencies and other national and international institutions are asked to perform forecasts over a time horizon of more than three years. In particular, the Stability and Growth Pact contains the obligation for the EU Member States to formulate stability programmes over four years, covering a general economic outlook as well as the projected development of public finances (Strauch et al. 2004). Another example is the Congressional Budget Office which performs budget projections over a time horizon of ten years. This time horizon from three to ten years is often called the medium term. A time horizon of more than two years is also important for monetary policy because prices can be affected by policy measures only with a substantial time lag. A medium-term orientation also allows monetary policy to avoid excessive volatility in short-term interest rates. In a stylised model estimated for the Euro Area it can be shown that the medium run should be viewed as a time horizon of four years (Smets 2003).

However, the current practice of performing medium-term economic projections is unsatisfactory from a methodological point of view as the applied methodology has been developed for short-run forecasting and it is questionable whether these methods are useful for the medium term. It is often stressed that medium-run forecasts are not meant as the most likely path of the economy. In contrast, it is argued that these projections are scenario simulations because they are conditioned on various assumptions. Nevertheless, government agencies calculate projections which are the basis for medium-term budget plans. It is not foreseen to calculate alternative budget projections for example in the Stability and Growth Pact.

In this paper we illustrate the state of the art of medium-term forecasting and discuss some approaches to improve medium-term forecasts. In an overview of current approaches it is shown that medium-term projections are mostly based on the neoclassical Solow growth model with an aggregate Cobb-Douglas production function with labour, capital, and exogenous technological progress. While the production function is used to calculate potential output, the transition of actual output back to potential in most approaches is determined by demand factors. In this sense most of these models treat the medium run as a prolongation of the short run. We illustrate the performance of this approach by evaluating the medium-term forecasts of the IHS for Austria which are based on this type of model. The results suggest that these forecasts tend to interpret short-run cyclical movements as structural developments.

Based on this finding it is likely that model based medium-term projections can be improved by incorporating aspects of economic growth in these models. This is in line with recent empirical studies on the performance of medium-term forecasts (Batista and Zalduendo 2004; Lindh 2004). It is therefore argued in this paper that the success of endogenous growth models in recent years recommends the consideration for example of R&D developments over the medium term.

The outline of the paper is as follows: In section two we give an overview of approaches for medium-run forecasting. Afterwards, in section three we analyse the performance of

medium-run forecasts based on a typical model. Section four discusses some approaches to improve medium-run forecasts, and section five concludes.

## **2. Practice of medium-term forecasting**

Forecasting is an important topic in economics which has led to a huge variety of forecasting methods. However, most of these methods are developed for the short run and it is not clear a priori that these methods are also useful for a time horizon from three to ten years. To classify these approaches it is useful to rank them with regard to their empirical and theoretical coherence. Empirical coherence means the ability of a forecasting method to replicate the history of one or more time series. Theoretical coherence means that the forecast can be explained in line with an economic model. As pointed out by Pagan (2003) there is a trade-off between both concepts for many reasons and therefore the selection of a forecasting method includes a weighting for both aspects. In figure 1 we rank some important forecasting methods with regard to empirical and theoretical coherence.

If the only goal is to predict the outcome of a time series like GDP in the future a time series approach is one opportunity. However, there is some evidence that most economic time series contain only limited information that is useful for medium-run forecasting. There are some attempts to formally test the information content of time series. For example, Galbraith (2003) finds that there is no valuable information in US GDP after two quarters. Öller (1985) finds that using an ARIMA model for a three year ahead forecast for Finnish GDP contains valuable information. Using a different approach, Diebold and Kilian (1997) find that the information content of US GDP time series is close to zero after 15 quarters. All of these tests suggest that pure time series approaches and VAR models are not useful for the medium-term horizon.

For this and other reasons it is a common approach to use econometric models to perform medium-term projections. Another advantage of using an econometric model is the possibility to interpret the outcome of important macroeconomic variables with regard to the evolution of exogenous variables and the underlying economic structure of the model. This dependence on assumptions about exogenous variables and the underlying structure is the reason why these projections are not forecasts in the technical sense. Some authors call medium-run projections “scenarios” to stress the uncertainty of such medium-run projections. However, by performing alternative projections and stochastic simulations both aspects can be assessed in macroeconomic models.

The models currently in use can be roughly grouped into two classes. A first category of models that are relatively sharply focused on empirical coherence includes those operated by the New Zealand and Australian Treasuries (Powell and Murphy 1997). Both of these models also have a very strong theoretical foundation and derive the short-term relationships from Keynesian theory; the nature of the long-run relationships is neo-classical. Concessions are made in these models, however, to facilitate their use for forecasting in the Treasuries. This is illustrated by the example of the NAIRU. In New Zealand's NZTM the NAIRU is predetermined exogenously because it is plausible to assume, for short and medium-term forecasts, that it remains relatively constant. For policy simulation purposes, on the other



hand, it is important that the NAIRU is determined endogenously in view of its significance to a series of effect relationships (Szeto 2002).

In the models with an explicit long-term equilibrium, the two components are specified independently and brought together only later. This modelling approach is adopted by the Australian and New Zealand models. To arrive at the equations for the long-term equilibrium, the supply block is estimated at the same time with a maximum likelihood approach in the New Zealand model. The demand-side equations are estimated with OLS because the relations are interpreted as co-integrating relations. The model's dynamic structure, which is currently being calibrated, is especially significant, however, for the short and medium-term forecasts. Work is in hand to estimate the dynamic structure in the future as well.

Most of the models used for the medium term belong to the second class of single-equation error correction (or structural error correction) models. For this reason, this class contains the largest variety of models. Although their theoretical foundations differ considerably, they all based on the neo-classical principle of synthesis. The models' neo-classically oriented supply side plays an especially prominent role in those that are used to compute scenarios or produce forecasts over a period of up to 15 years; that is to say the medium to long term. Models covering a period of no more than five years generally dispose of a comprehensively modelled demand side and thus place a greater emphasis on Keynesian elements. These models facilitate testing of the effect relationships derived from theory at least on the level of the single equations.

Within this second framework a two step procedure is used to perform a medium-term forecast. In a first step, the level of potential GDP over the next five years is determined. The second step is to derive the transition path of actual GDP from its current level towards the level of potential GDP. To calculate potential output again filter techniques as well as economic concepts can be used (Barabas et al., 2008). However, from a practical point of view using a production function is the dominant approach (Kappler 2007). For example the CBO which has a long tradition in medium-run forecasting uses a production function approach to calculate potential output (CBO 2001) for five economic sectors. In the following we sketch the approach chosen by the EU Commission because of its relevance for EU member countries. This approach is closely related to the CBO approach (Denis et al. 2006).

The approach proposed by the European Commission is based on a Cobb-Douglas production function. In a first step the data for GDP, labour input and capital is used to calculate a series for total factor productivity (TFP) as the Solow residual, i.e. that part of the change in GDP that is not accounted for by changes in the input factors. In a second step, in order to calculate potential GDP it is assumed that TFP and labour input fluctuate around a certain trend over the business cycle. In this case it is necessary to calculate the trends of TFP and labour input. In contrast no adjustments are necessary for the capital stock because potential output is related to the full utilisation of the capital stock. In the simplest case TFP is assumed to follow a linear trend. This was formerly done by the EU Commission. The current approach is to use the HP-filter to calculate the trend TFP (Denis et al. 2006). The approach to get the trend for labour input is more complicated. The trend labour force is obtained by multiplying the (HP-)trend of the participation rate with the population of working age. In addition the trend NAWRU is calculated, where the NAWRU (non-accelerating wage rate of

unemployment) is defined as the rate of unemployment consistent with constant wage inflation. The trend employment is then adjusted with the trend NAWRU. The resulting term is multiplied with the trend of average hours worked.

Substituting these values into the production function gives the historical values of potential output. To predict potential output over the medium term it is necessary to predict the evolution of these input factors. The EU Commission also suggests methods for these calculations. Total factor productivity and average hours worked are forecasted using an ARIMA model. A forecast of the population of working age is taken from Eurostat, while participation rate changes are forecasted using an AR model. The NAWRU is forecasted allowing for 50 % of the most recent change to extend into the future. To calculate the capital stock over the forecasting horizon it is assumed that the ratio of investment to potential GDP is constant.

To get a forecast of real GDP over the medium-term it is necessary to link real GDP to potential output. A common approach is to perform a short term forecast over two years and assume that the gap between real and potential GDP is closed at the end of the five year horizon. However, currently it is more appropriate to deviate from this assumption. The drop in production observed in 2009 together with the consequences of the financial crisis and of the increase in unemployment on economic activity also in the mid-term was so dramatic that presently it seems unrealistic to assume that the economy will return to its production possibility frontier within five years, even when taking into account that probably also potential GDP has been negatively affected.

Actual GDP together with other important macroeconomic aggregates like (un)employment or inflation are typically obtained with a macroeconomic model. One typical structural multi-equation model is the LIMA model for Austria. A description of an earlier version of the model can be found in Hofer and Kunst (2005).<sup>1</sup> LIMA is essentially demand-driven, i.e. actual GDP is determined from the expenditure side. Hence, the model contains behavioural equations for private consumption, housing and equipment investment, exports and imports. In addition, consumer prices as well as the deflators of the GDP expenditure components, labour demand by companies, labour supply by private households and the wage formation process are covered by behavioural equations. Unemployment is defined as the difference between labour demand by companies and labour supply by private households. Furthermore, the public sector is modelled in some detail. Government consumption is exogenous, but many revenue and expenditure items which fluctuate with economic activity are endogenously determined. The supply-side comes into play via potential GDP which in the current model version is determined by applying a Hodrick-Precott filter to actual GDP. For the projections, this trend GDP is then extended via an autoregressive model. The application of a production function to determine potential GDP was prohibited by data constraints. After the transition to the current version of the National Accounts (ESA95), there occurred some delay in calculating consistent capital stock time

---

<sup>1</sup> Since the most recent mid-term projection which is analysed in this paper was generated in 2004 (see below), the model version documented in Hofer and Kunst (2005) represents the state of the model that was used for the most recent projections evaluated below.

series for Austria. However, as now capital stock series for Austria are available, in the next model update potential GDP will be determined with a production function instead of the HP trend. In any case, the capacity utilisation rate, i.e. actual as percentage of potential GDP enters different price equations of the model. In case of a negative output gap, i.e. an under-utilisation of capacities, inflation will be lower, thus moderating wage pressure. Hence, companies increase employment which generates income and ultimately private consumption. In addition, in the case of low inflation consumption is also supported by raising real disposable income. Both effects lead to a closing of the output gap. In case of a high capacity utilisation, inflation will be higher with a detrimental effect on real activity.

### **3. An illustrative example: mid-term projections at IHS**

In this section, the mid-term projections published by the Institute for Advanced Studies (IHS) are evaluated. A forecast evaluation is complicated by the possibility that forecasts may influence the behaviour of economic agents. As a result, the “reality” to which the projection is compared is different from the “reality” which would have occurred without the forecast. The prediction of a downturn may affect expectations in such a way that the economy actually slows down, e.g. because private households become more cautious in their spending decisions or because companies invest less than they would have done otherwise. Up to a certain degree, forecasts may therefore become self-fulfilling. The opposite, i.e. a self-destructive forecast is likewise conceivable. Faced with an unfavourable forecast, policymakers might take measures to stimulate growth, or at least let the automatic stabilisers operate. Furthermore, model-based economic projections are always conditional on assumptions about exogenous variables like world trade or international raw material prices. A forecast error is therefore not necessarily indicative of a “wrong” forecast, as a forecast error might result from wrong assumptions about exogenous variables. If, on the other hand, the projection coincides with the true realisation although the underlying assumptions were wrong, then the projection has to be considered as wrong (see Baumgartner 2002).

With these caveats in mind, in the following the accuracy of the mid-term projections published by IHS is analysed.<sup>2</sup> The Institute for Advanced Studies has a long tradition of producing economic forecasts. In addition to the quarterly short-term forecasts, which cover a period of two years, once a year a mid-term projection for a five-year horizon is published (see, e.g. Felderer et al. 2009). The projections are produced with the aid of the annual macroeconomic model LIMA. In the following, these mid-term projections, which are available since 1987, are evaluated.

As the projections cover a five-year horizon, and given the fact that at the time of writing this paper the GDP figures for 2009 have not yet been published, the last mid-term projection that could be included and confronted with the actual development was the projection published in 2004. This time span generates 18 mid-term projections that could be included in the evaluation exercise. The evaluation covers three central macroeconomic indicators: real GDP growth, the unemployment rate and the inflation rate. The IHS projections are compared

---

<sup>2</sup> For an evaluation of short-term forecasts for Austria, see Baumgartner (2002) and Ragacs and Schneider (2007).

with forecasts generated with two alternative models: first, a VAR model including the three variables of interest and second, three autoregressive (AR) models, one for each of the three variables under consideration. For each model, the lag length was set to two. The choice of two lags was based both on selection criteria like the Akaike information criterion and on the consideration that at least two lags are necessary to generate some cyclical fluctuations in the variables. With only one lag, the models would converge too quickly to their long-run equilibria.

In mid-term projections, the focus of interest lies on the average development over the forecast period. Hence, when generating a mid-term projection, one is in general not so much interested in forecasting exactly the actual outcome in any single year of the forecasting horizon, as it is the case for short-term, i.e. two-year forecasts. Therefore, in the following particular attention is given to the question which of the forecasts (IHS, VAR, AR) is best regarding the projection of the five-year average of real GDP growth, inflation and unemployment. GDP is subject to substantial revisions over time. Not only are GDP figures revised when new statistical information becomes available. In addition, from time to time the entire system of National Accounts is substantially revised. This was e.g. the case when switching from ESA68 to ESA95. Furthermore, recently the calculation of real GDP has been changed from constant prices of a base year to previous year's prices. Hence, it is not entirely clear with which "reality" the GDP projections should be compared. In order to take this feature into account, in the present paper both the first publication of the GDP growth rate and the figure according to the most recent vintage of National Accounts have been taken. As an example for the magnitude of these revisions, in 1988 real GDP growth amounted to 4.2% according to the first publication and to 2.9% according to the most recent National Accounts vintage. The unemployment rate and the inflation rate are generally not revised in later years; therefore such a distinction was not necessary for those two variables.

The projections are evaluated by means of the following criteria:

1. The accuracy of the IHS projections are compared to forecasts generated with alternative models.
2. It is analysed which of the models how often comes closest to the actual outcome.
3. It is investigated whether the IHS projections are on average unbiased, or if there are systematic forecast errors.

Turning to the first criterion, i.e. the comparison of the IHS projections to projections generated with alternative models (i.e. the VAR and the AR models), the projections are analysed on the basis of the following statistical tests:

- a. Mean error (ME). The mean error is defined as the difference between the forecast and the actual value:

$$\frac{1}{N} \sum_{t=1}^N \hat{x}_t - x_t$$

$\hat{x}$  and  $x$  denote the projection and the actual value, respectively,  $t$  is the time period, and  $N$  is defined as the projection horizon.

- b. Mean squared error (MSE). While in the mean error positive and negative deviations of the projection from the actual value cancel out, this is not the case with the MSE where the deviations are squared:

$$\frac{1}{N} \sum_{t=1}^N (\hat{x}_t - x_t)^2$$

- c. Mean absolute deviation (MAD). The MAD measures the absolute differences between the projection and the actual outcome:

$$\frac{1}{N} \sum_{t=1}^N |\hat{x}_t - x_t|$$

The mean absolute deviation can be interpreted as the mean deviation of the projection from the actual outcome in percentage points.

- d. Theil's inequality coefficient U2. Theil's inequality coefficient U2 compares the forecast with a naïve no-change forecast. In the case of five-year averages this means that the average of the past five years is taken as the benchmark forecast for the outcome in the following five-year period. The U2 statistic will take the value 1 under the naïve forecasting method. Values less than 1 indicate greater forecasting accuracy than the naïve forecasts, values greater than 1 indicate the opposite. Theil's U2 statistic is defined by the following formula:

$$\sqrt{\frac{\sum_{t=1}^{N-1} \left( \frac{\hat{x}_{t+1} - x_{t+1}}{x_t} \right)^2}{\sum_{t=1}^{N-1} \left( \frac{x_{t+1} - x_{t+1}}{x_t} \right)^2}}$$

Tables 1 to 3 show the results of this evaluation exercise. Table 1 compares the projection of the average real GDP growth rate over the 5-year forecast period with the first publication (upper panel) as well as the most recent vintage of the National Accounts (lower panel). The unemployment projections are evaluated in table 2, while table 3 is devoted to the inflation rate. In order to check whether the projections could be improved over time, the second half of the evaluation period (1996-2004) is shown in addition to the results for the entire sample (1987-2004). The forecasts of the 5-year averages of the three variables under consideration are visualised in figures 2 to 4.

As table 1 reveals, the VAR model, including all three variables of interest (real GDP growth, the inflation rate and the unemployment rate) traces the actual development of the 5-year average GDP growth rate remarkably well. The IHS projections, which are essentially based on a fully fledged structural macroeconomic model, enhanced by expert judgement, are in general not able to beat the VAR model. In contrast, the single-equation autoregressive (AR) models which explain the three variables under consideration exclusively on the basis of the past development of the respective variable are clearly worse. It is evident that the IHS projections could be improved over time, which is not the case for the forecasts generated

with the time series models. That the forecasting performance of the VAR and AR models cannot be improved over time is to be expected as these models do not include any learning rule. It is striking that the projections with respect to the most recent National Accounts release are better than the forecasts of the first publication of the GDP figures.

Regarding the unemployment rate, the VAR model again generates the best projections (see table 2). However, for this variable even the simple time series models beat the IHS forecasts. An inspection of figure 2 reveals that the relatively unfavourable IHS result is to a considerable extent driven by too optimistic five-year projections published in 1989/1990 and in the low-growth period 2001-2003.

Turning to the inflation projections, the IHS has been able to beat the time series models. All statistical error measures are better for the IHS projections as compared to the VAR and AR models. However, the differences are relatively small. Furthermore, an improvement of the projections over time can be shown, as the forecast errors are smaller in the second half of the sample than in the entire period.

These results are in line with previous forecast evaluations for Austria (Baumgartner (2002) and Ragacs and Schneider (2007), which also find that inflation forecasts are more accurate than GDP forecasts. There it is argued that usually inflation fluctuates less than GDP growth, and that past realisations of inflation, i.e. the values on which the projections are based, undergo less data revisions than National Accounts figures.

It is striking that for all models and for each of the three macroeconomic indicators Theil's inequality coefficient  $U_2$  exceeds one. This result indicates that the naive no-change forecasts (i.e. to take the average of the past five years as the projection of the average of the following five years) would have been better. Interestingly, this outcome can be found regarding the five-year averages, but in general not for each single year.<sup>3</sup> This means that for the projection of the second, third, fourth and fifth year, Theil's  $U_2$  is below one in the cases of GDP growth and inflation. Only for the unemployment rate, Theil's  $U_2$  exceeds one also for the projections of the outcome in single years.

In addition to looking at the absolute or relative deviations of the projections from the true values of the target variables, another way of comparing different projections is to analyse how often which forecast comes closest to the actual outcome. Such an analysis is the basis of table 4 which shows the average rank of the projections made by the IHS and with the time series models. The table depicts the average rank over the period 1987 to 2004 regarding the projection of the 5-year average of the respective variable. As an example, the model that comes closest to the actual five-year average of GDP growth in 1987 (i.e., the 5 years starting in 1987) gets rank 1 in that particular year, and the second best and third best models the ranks 2 and 3, respectively. As can be seen, for GDP growth the VAR model gets clearly more often the rank 1 than the AR model and the IHS forecasts, and the IHS forecasts are on average closer to the actual development than the simple time series models. Regarding the unemployment projections, the VAR model is again the winner, this time followed by the AR

---

<sup>3</sup> For reasons of conciseness, the results for single years are not included in this paper, but can be obtained from the authors upon request.

models. Finally, IHS and the time series models generate more or less equally often the best, middle and worst five-year projection of the inflation rate.

As a third criterion of forecast accuracy it is tested whether systematic errors can be detected in the IHS projections. In the absence of systematic errors, the mean of the projection should be equal to the mean of the actual outcome. As suggested by Mincer and Zarnowitz (1969), this can be tested by estimating the following equation:

$$\hat{x}_t = a + b \cdot x_t + \varepsilon_t,$$

where, as before,  $\hat{x}$  and  $x$  denote the projection and the actual value, respectively,  $t$  is the time period, and  $\varepsilon$  is the error term.

It is formally tested whether the constant  $a$  is zero and  $b$  takes the value 1. If the constant is significantly different from zero, the projections systematically under- or over-estimate the variable in question, as a constant value biases the projection. If the coefficient  $b$  is significantly different from 1, the projection deviates more or less proportionally from the actual outcome. The Hypotheses ( $a = 0$ ,  $b = 1$ ) are jointly tested by estimating the above equation and then performing a Wald test on coefficient restrictions. The Wald statistic measures how close the unrestricted estimates come to satisfying the restrictions under the null hypothesis. If the restrictions are in fact true, then the unrestricted estimates should come close to satisfying the restrictions. The power of the Wald tests have to be qualified insofar as the underlying time series are relatively short as just 18 five-year projections could be included in the evaluation exercise.

The variables under consideration are again the five-year averages of real GDP growth, the unemployment rate and the inflation rate. The results of the tests are reported in table 5, where the Wald test statistic is displayed. A significant value of the test statistic leads to the rejection of the null hypothesis of unbiased projections. In the final column it is stated whether the null hypothesis of unbiased projections can be rejected for the variables under consideration. As can be seen, the projections of GDP growth are biased. On the other hand, both for the unemployment rate and the inflation rate the null hypothesis of unbiased projections cannot be rejected.

Summing the forecasting evaluation up, it seems that the professional forecasters, assisted by a structural macroeconomic model, as well as the simple time series models tend to attach too much weight to the most recent economic developments. This applies in particular to real GDP growth and the unemployment rate. The five-year averages of these two macroeconomic indicators fluctuate in general less than expected by forecasters. Hence, in general macroeconomic shocks cause business cycle fluctuations, but they tend to affect the long-term growth less than it may seem to be the case at the time the shock occurs. As a conclusion, in mid-term projections it is important to distinguish between business cycle fluctuations and more structural, mid to long-term developments.

#### 4. Approaches to improve medium-term forecasts

It is common practice to use macroeconomic models for medium-term forecasting. Most of these models are traditional demand driven business cycle models, extended by a production function to determine potential output. Despite this slight modification, most of the models used for medium-run forecasting treat the medium term as an extension of the short run. However, some authors argue that this approach neglects some important aspects because the medium run can be seen as the transition from business cycles to growth. They explicitly argue in favour of a special treatment of the medium run. They highlight some aspects of what they think are neither a phenomenon of the short nor of the long run. Solow (2000) mentions the transition from fixed to flexible prices. Other authors point to the rise of the capital share in continental Europe (Blanchard 1997; McAdam and Willman 2008). To account for this fact it is necessary to represent the supply side of the economy by a CES production function instead of a Cobb-Douglas function. Besides this more technical aspect it is not clear what the ingredients for a theory of the medium run should be and whether we need an explicit theory at all. However, the discussion about medium-run phenomena may highlight some aspects that might be helpful to improve medium-run forecasts.

The traditional mechanism to converge from the short to the long run is the adjustment of prices and wages. This transition is explicitly modelled in new Keynesian DSGE models. These models became increasingly popular in recent years also for forecasting. In an influential paper Smets and Wouters (2007) show that forecasts with these models are able to outperform those of Bayesian VARs at a time horizon of three years. However, empirical findings suggest that firms adjust their prices every five to eight months (Dennis 2008). For wages the evidence is that firms at least in the Euro Area make adjustments once a year (ECB 2009). This implies that price and wage adjustments are too fast to play an important role over the medium run.

Another approach to improve forecasts over the medium run is to use determinants of economic growth. From this point of view the medium term is part of the long run. Batista and Zalduendo (2004) estimate growth equations for a panel of countries. Among other variables the authors include income, human capital openness and fertility rates to forecast five-year GDP growth rates. The authors compare their results with the official five-year projections of the IMF. On average the forecasts based on these growth equations outperform the official IMF forecasts despite the fact that the IMF include country-specific information that is not included in the growth equations. The idea that long run economic growth determinants are also useful to forecast GDP growth in the medium term was tested by Lindh (2004). He finds that age structure data for Sweden improve predictions of potential GDP growth over the medium term.

The empirical finding that determinants of economic growth are also useful for the medium term is one motivation for combining business cycle and growth models. However, up to now the main approach is to include aspects of endogenous technological change in business cycle models (Stadler 1990). A justification for this is the finding that firstly private R&D expenses as an indicator for the development of new technologies is highly correlated with output at high frequencies (Comin 2009). Secondly, at medium-run frequencies the cyclical component of R&D expenditures has a correlation of 0.4 with output at a lead of five



years. This finding suggests that information about R&D activity in the private sector probably contains valuable information for forecasting over the medium term.

Comin and Gertler (2006) construct a model with endogenous technological change that is able to generate long-run growth and business cycle fluctuations. The authors incorporate endogenous productivity in a real business cycle model. This model consists of three sectors for a consumption and an investment good, respectively, because it is argued that the medium run is important for the transmission of innovations to marketable products. It is therefore necessary to model this process in more detail. The R&D sector produces blueprints for new intermediate goods. In the second sector, adopters buy the blueprint and convert it into a marketable product. This adoption process of new products is endogenous as it depends on the level of economic activity. Therefore the time lag of the diffusion of new ideas is also endogenous. The adopter sells the new intermediate good to the final good producer. The entry and exit of firms in the final goods sector generates a countercyclical variation of price mark-ups.

To test whether this model is able to reproduce medium-term cycles in the data the moments of selected time series generated by the model are compared with the unconditional moments of the actual data for the business cycle as well as the medium-term cycle frequency. For most of the time series the moments of the artificial time series are quite close to those of the actual data. However, Comin and Gertler define the medium run as frequencies from 2 to 200 quarters which is a quite long time span. It is therefore an open question whether the diffusion of new technologies contains useful information over a time horizon from 3 to 5 years.

## **5. Conclusions**

In view of the importance of medium-term forecasts for economic policy making it seems to be necessary to refine the methods in use. The current practice to perform a medium-run projection is to calculate the path of potential output over the forecasting horizon and then using a macroeconometric model to project the transition path of actual output back to its potential level. To use models for medium-term forecasting is reasonable because the information content of macroeconomic time series is too small to use time series methods. However, the typical structure of these models is unsatisfactory from an empirical as well as from a theoretical point of view. A first shortcoming is that the determinants of potential output – with the capital stock as the only exception – are exogenous to business cycle dynamics. This is in conflict with the empirical finding that business cycle and medium-run dynamics are related. Medium-term models should therefore incorporate a link between business cycle fluctuations and potential output.

Another weakness of most medium-run models is that they solely incorporate the feedback from potential output to economic demand via the output gap. Other potentially important factors of economic supply, for example the entry and exit of new firms and cyclical R&D activity, are neglected. This is the reason why the transition path of actual output back to its potential level is mainly demand driven. As shown in this paper this approach tends to attach too much weight on the short-run dynamics of economic activity. This finding is in line with

other empirical studies which find that considering the information of growth determinants for medium-run forecasts helps to improve the forecasting performance of these models.

Up to now proposals to improve medium-term forecasts are scarce. Nevertheless, existing approaches to combine business cycle and growth models are promising. In particular, the huge literature on endogenous growth offers many starting points for further improvements of medium-run models. Which aspects of long-run growth are also relevant over the medium term is an open question. However, incorporating aspects of endogenous growth in business cycle models, e.g. information on R&D activity are with good prospects.

## Tables and Figures

**Table 1: Projections of real GDP growth**

	Recent vintage					
	Total sample (1987 - 2004)			second half (1996 - 2004)		
	IHS	VAR	AR	IHS	VAR	AR
ME	0.26	0.18	-0.30	0.30	0.42	-0.21
MSE	0.97	0.31	1.34	0.43	0.32	1.02
MAD	0.79	0.44	1.04	0.56	0.45	0.92
Theil	2.33	1.40	2.71	2.07	1.89	2.99

	1 <sup>st</sup> publication					
	Total sample (1987 - 2004)			second half (1996 - 2004)		
	IHS	VAR	AR	IHS	VAR	AR
ME	-0.02	-0.10	-0.57	-0.05	0.07	-0.56
MSE	0.69	0.17	1.45	0.38	0.18	1.35
MAD	0.71	0.35	1.08	0.53	0.36	1.08
Theil	2.09	1.02	3.16	1.43	1.06	2.93

Notes: ME: Mean Error, MSE: Mean Squared Error, MAD: Mean Absolute Deviation; Theil: Theil's inequality coefficient U2.

Source: own calculations.

**Table 2: Projections of the unemployment rate**

	Total sample (1987 - 2004)			second half (1996 - 2004)		
	IHS	VAR	AR	IHS	VAR	AR
ME	-0.25	-0.11	0.26	-0.43	-0.06	0.57
MSE	0.82	0.13	0.33	0.80	0.16	0.53
MAD	0.79	0.29	0.48	0.74	0.35	0.63
Theil	4.84	1.89	2.98	6.13	2.59	4.65

Notes: ME: Mean Error, MSE: Mean Squared Error, MAD: Mean Absolute Deviation; Theil: Theil's inequality coefficient U2.

Source: own calculations.

**Table 3: Projections of the inflation rate**

	Total sample (1987 - 2004)			second half (1996 - 2004)		
	IHS	VAR	AR	IHS	VAR	AR
ME	0.26	-0.18	0.00	-0.18	-0.24	0.14
MSE	0.43	0.69	0.59	0.14	0.30	0.24
MAD	0.50	0.68	0.62	0.33	0.44	0.38
Theil	2.40	2.67	2.68	1.71	2.55	1.95

Notes: ME: Mean Error, MSE: Mean Squared Error, MAD: Mean Absolute Deviation; Theil: Theil's inequality coefficient U2.

Source: own calculations.

**Table 4: Average rank of the different models (basis: projections of 5-year averages)**

	IHS	VAR	AR
GDP	2.2	1.3	2.5
Unemployment rate	2.5	1.4	2.1
Inflation rate	2.0	2.1	1.9

Source: own calculations.

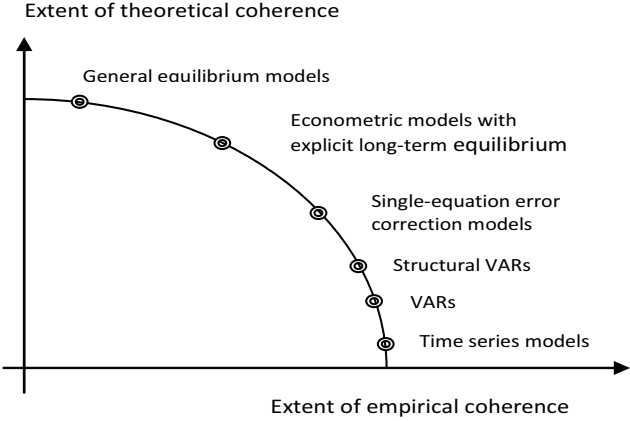
**Table 5: Test whether IHS projections are biased**

Variable	Wald test	Biased
GDP growth 1 <sup>st</sup> release	29.654***	yes
GDP growth current	36.265***	yes
Unemployment rate	0.248	no
Inflation rate	1.944	no

Notes: Test equation: projection = a + b · true value. "\*\*\*" denotes significance on the 1 percent level.

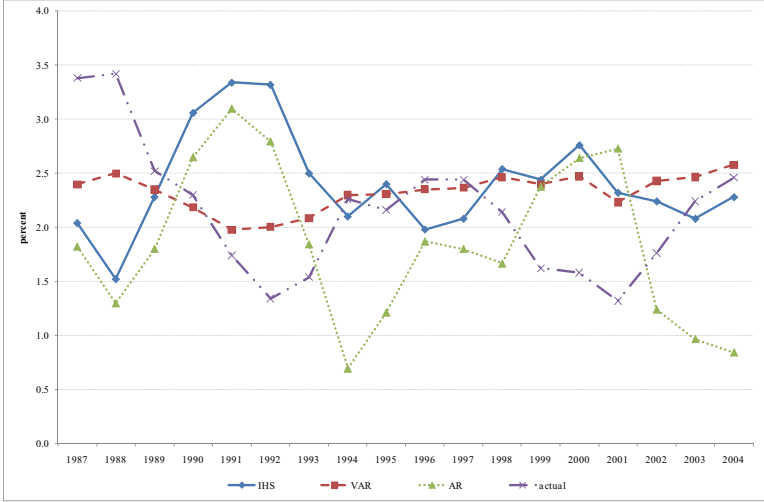
Source: own calculations

**Figure 1: Trade-off between theoretical and empirical coherence of macroeconomic models**



Source: After Pagan (2003).

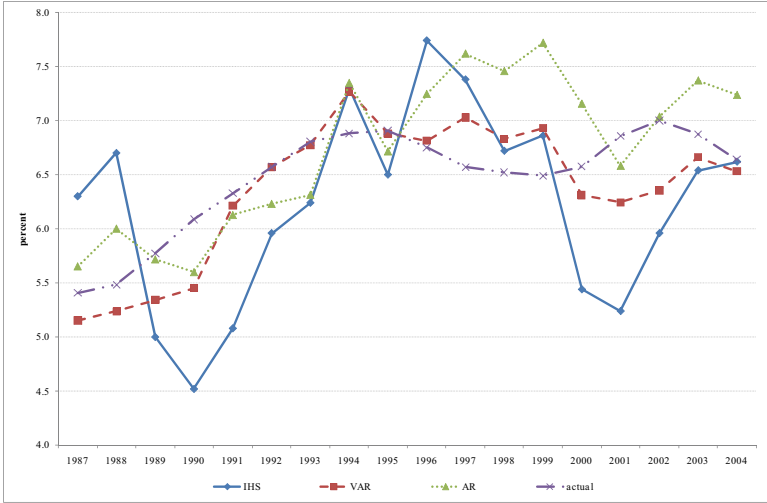
**Figure 2: Real GDP (5-year averages) - comparison of projections**



Note: Shown are 5-year averages, starting in the respective year.

Source: own calculations.

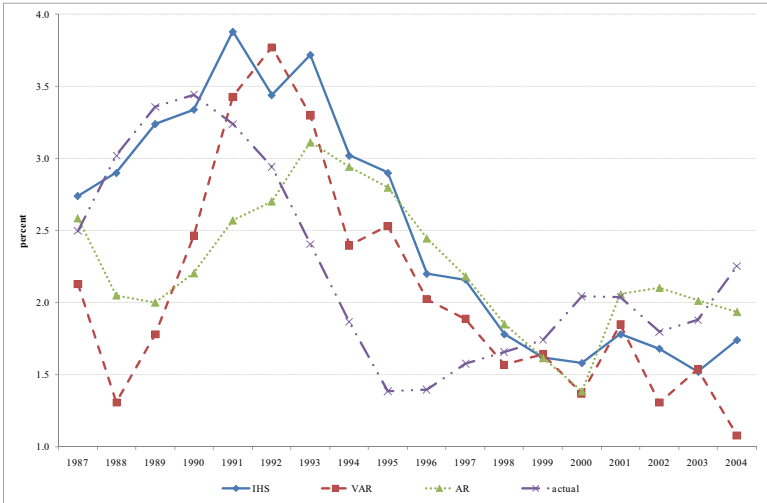
**Figure 3: Unemployment rate (5-year averages) - comparison of projections**



Note: Shown are 5-year averages, starting in the respective year.

Source: own calculations.

**Figure 4: Inflation rate (5-year averages) - comparison of projections**



Note: Shown are 5-year averages, starting in the respective year

Source: own calculations.

## References

- Barabas, G., H. Gebhardt, H. J. Münch, C. M. Schmidt and T. Schmidt (2008), Studie des RWI Essen. In: K. J. Gern, T. Schmidt and M. Schröder (Eds.), *Mittelfristige gesamtwirtschaftliche Prognosen*. Wiley, Weinheim.
- Batista, C. and J. Zalduendo (2004), *Can the IMF's Medium-Term Growth Projections be Improved?*. IMF Working Paper 04/203.
- Baumgartner, J. (2002), *Die Wirtschaftsprognosen von WIFO und IHS. Eine Analyse für die achtziger und neunziger Jahre*. In: *WIFO-Monatsberichte* 11/2002. 701-716.
- Blanchard, O. J. (1997), *The Medium Run*. *Brookings Papers on Economic Activity* 2: 89-158.
- Comin, D. (2009), *On the integration of growth and business cycles*. *Empirica* 36(2): 165-176.
- Comin, D. and M. Gertler (2006), *Medium-Term Business Cycles*. *American Economic Review* 96(3): 523-551.
- Congressional Budget Office (2001), *CBO's Method for Estimating Potential Output – An Update*. CBO Paper August 2001.
- Denis, C., D. Grenouilleau, K. Mc Morrow and W. Röger (2006), *Calculating potential growth rates and output gaps – a revised production function approach*. *EC Economic Papers* No. 247.
- Dennis, R. (2008), *The Frequency of Price Adjustments and New Keynesian Business Cycle Dynamics*. CAMA Working Paper 19.
- Diebold, F. X. and L. Kilian (1997), *Measuring Predictability: Theory and Macroeconomic Applications*. Technical Working Paper 213. NBER, Cambridge.
- European Central Bank (2009), *New Survey Evidence on Wage Setting in Europe*. ECB Monthly Bulletin February.
- Felderer, B., I. Fortin, D. Grozea-Helmenstein, H. Hofer, W. Schwarzbauer, U. Schuh, E. Skriner, L. Strohner and K. Weyerstrass, (2009), *Mittelfristige Prognose der österreichischen Wirtschaft 2009-2013: Weltwirtschaftskrise dämpft mittelfristiges Wachstum in Österreich*. *Economic Forecast*, 58/2009, Institute for Advanced Studies, Vienna.
- Galbraith, J. W. (2003), *Content Horizons for Univariate Time-Series forecasts*, *International Journal of Forecasting* 19: 43-55.
- Hofer, H. and R. M. Kunst (2005), *The Macroeconometric Model LIMA*, in: Fenz, G. and M. Schneider (eds.): *“Macromodels and Forecasts for Austria. Proceedings of OeNB Workshops. No. 5”*, 87-116.
- Kappler, M. (2007), *Projecting the Medium-Term: Outcomes and Errors for GDP Growth*. ZEW Discussion Paper 07-068.

Lindh, Th. (2004), Medium-term forecasting of potential GDP and inflation using age structure information. *Journal of Forecasting* 23: 19-49.

McAdam, P. and A. Willman (2008), Medium Run Redux – Technical change, factor shares and frictions in the Euro Area. ECB Working Paper 919.

Mincer, J., V. Zarnowitz, (1969), The Evaluation of Economic Forecasts, in Mincer, J. (ed.), „Economic Forecasts and Expectations: Analyses of Forecasting Behavior“. NBER Studies in Business Cycles, 1969 (19).

Öller, L.-E. (1985), How far an Changes in General Business Activity be Forecasted?. *International Journal of Forecasting* 1: 135-141.

Pagan, A. (2003), Report on Modelling and Forecasting at the Bank of England. <http://www.bankofengland.co.uk/publications/news/2003/paganreport.pdf>

Powell, A. A. and C. W. Murphy (1997), Inside a Modern Macroeconometric Model. Springer, Berlin.

Ragacs, Ch. and Schneider, M. (2007), Comparing the Predictive Accuracy of Macroeconomic Forecasts for Austria from 1998 to 2006, *Monetary Policy and the Economy*, 2/07, 29-49.

Smets, F. (2003), Maintaining Price Stability: How Long is the Medium Term?. *Journal of Monetary Economics* 50: 1293-1309.

Smets, F. and R. Wouters (2007), Shocks and Frictions in US Business Cycles: A Bayesian DSGE Approach. *American Economic Review* 97(3): 586-606.

Solow, R. M. (2000), Toward a Macroeconomics of the Medium Run. *Journal of Economic Perspectives* 14(1): 151-158.

Stadler, G. W. (1990), Business Cycle Models with Endogenous Technology. *American Economic Review* 80(4): 763-778.

Strauch, R., M. Hallerberg and J. von Hagen (2004), Budgetary Forecasts in Europe – The Track Record of Stability and Convergence Programmes. ECB Working Paper 307.

Szeto, K. L. (2002), A Dynamic Computable General Equilibrium (CGE) Model of the New Zealand Economy. New Zealand Treasury Working Paper 02/07, Wellington.