

Brunello, Giorgio; Fabbri, Daniele; Fort, Margherita

Working Paper

Years of schooling, human capital and the body mass index of European females

IZA Discussion Papers, No. 4667

Provided in Cooperation with:

IZA – Institute of Labor Economics

Suggested Citation: Brunello, Giorgio; Fabbri, Daniele; Fort, Margherita (2009) : Years of schooling, human capital and the body mass index of European females, IZA Discussion Papers, No. 4667, Institute for the Study of Labor (IZA), Bonn

This Version is available at:

<https://hdl.handle.net/10419/35941>

Standard-Nutzungsbedingungen:

Die Dokumente auf EconStor dürfen zu eigenen wissenschaftlichen Zwecken und zum Privatgebrauch gespeichert und kopiert werden.

Sie dürfen die Dokumente nicht für öffentliche oder kommerzielle Zwecke vervielfältigen, öffentlich ausstellen, öffentlich zugänglich machen, vertreiben oder anderweitig nutzen.

Sofern die Verfasser die Dokumente unter Open-Content-Lizenzen (insbesondere CC-Lizenzen) zur Verfügung gestellt haben sollten, gelten abweichend von diesen Nutzungsbedingungen die in der dort genannten Lizenz gewährten Nutzungsrechte.

Terms of use:

Documents in EconStor may be saved and copied for your personal and scholarly purposes.

You are not to copy documents for public or commercial purposes, to exhibit the documents publicly, to make them publicly available on the internet, or to distribute or otherwise use the documents in public.

If the documents have been made available under an Open Content Licence (especially Creative Commons Licences), you may exercise further usage rights as specified in the indicated licence.

IZA DP No. 4667

Years of Schooling, Human Capital and the Body Mass Index of European Females

Giorgio Brunello
Daniele Fabbri
Margherita Fort

December 2009

Years of Schooling, Human Capital and the Body Mass Index of European Females

Giorgio Brunello

*University of Padova,
CESifo and IZA*

Daniele Fabbri

*University of Bologna,
CHILD and HEDG*

Margherita Fort

*University of Bologna
and CHILD*

Discussion Paper No. 4667
December 2009

IZA

P.O. Box 7240
53072 Bonn
Germany

Phone: +49-228-3894-0
Fax: +49-228-3894-180
E-mail: iza@iza.org

Any opinions expressed here are those of the author(s) and not those of IZA. Research published in this series may include views on policy, but the institute itself takes no institutional policy positions.

The Institute for the Study of Labor (IZA) in Bonn is a local and virtual international research center and a place of communication between science, politics and business. IZA is an independent nonprofit organization supported by Deutsche Post Foundation. The center is associated with the University of Bonn and offers a stimulating research environment through its international network, workshops and conferences, data service, project support, research visits and doctoral program. IZA engages in (i) original and internationally competitive research in all fields of labor economics, (ii) development of policy concepts, and (iii) dissemination of research results and concepts to the interested public.

IZA Discussion Papers often represent preliminary work and are circulated to encourage discussion. Citation of such a paper should account for its provisional character. A revised version may be available directly from the author.

ABSTRACT

Years of Schooling, Human Capital and the Body Mass Index of European Females*

We use the compulsory school reforms implemented in European countries after the II World War to investigate the causal effect of education on the Body Mass Index (BMI) and the incidence of overweight and obesity among European females. Our IV estimates suggest that years of schooling have a protective effect on BMI. The size of the estimated effect is not negligible but smaller than the one found in comparable recent work for the US. We depart from the current empirical literature in three main directions. First, we use a multi-country approach. Second, we complement the standard analysis of the causal impact of years of schooling on BMI with one relying on a broader measure of education, i.e. individual standardized cognitive tests, and show that the current focus in the literature on years of schooling as the measure of education is not misplaced. Last, we evaluate whether the current focus on conditional mean effects should be integrated with an approach which allows for heterogeneous responses to changes in compulsory education. Although our evidence based on quantile regressions is mixed, there is some indication that the protective effect of schooling does not increase monotonically from the lower to the upper quantile of the distribution of BMI. Rather, the marginal effect is stronger among overweight (but not obese) females than among females with BMI above 30.

JEL Classification: I12, I21

Keywords: obesity, human capital, Europe

Corresponding author:

Giorgio Brunello
Department of Economics
University of Padua
Via del Santo, 33
35121 Padova
Italy
E-mail: giorgio.brunello@unipd.it

* We are grateful to Erich Battistin, Maria Bigoni, Giacomo Calzolari, Matteo Cervellati, Juan Dolado, Andrea Ichino, Carlos Lamarche, Chiara Monfardini, Sonia Oreffice, Davide Dragone, Arsen Palestini, Climent Quintana Domeque, Davide Raggi, Riccardo Rovelli, Sergio Pastorello, Mario Padula, Lorenzo Rocco, Alfonso Rosolia, Paolo Vanin, Rudolf Winter Ebmer, and the audiences in Alicante, Bologna, Florence, Linz, Madrid (Carlos III), Oxford and Rome (Bank of Italy) for comments. The ECHP data used in this paper are available at the Department of Economics, University of Padua, contract n.14/99. We also thank Caroline Lions and Bruno Ventelou for providing the French data used in the paper and DIW Berlin for access to the German Socio-Economic Panel. Access to the BHPS data was granted by the UK Data Archive, University of Essex. The results of the quantile regression analysis are generated using Ox Console version 5.00 (see Doornik, 2007) and the codes developed in OX by Christian Hansen for instrumental variable quantile regression (IVQR) and posted on his web-page (<http://faculty.chicagobooth.edu/christian.hansen/research/>). Financial support from Fondazione Cariparo is gratefully acknowledged. The usual disclaimer applies.

Introduction

The health consequences and the economic costs of rising obesity¹ have generated social and political concern both in the United States (US) and in Europe. The principal public interventions proposed and implemented so far to tackle the problem are information measures, including information campaigns, advertising regulations, labelling rules and regulations on nutritional claims. The use of regulatory tools such as standards and incentives is still in its infancy. According to the recent assessment by Mazzocchi, Traill and Shogren (2009), information measures "can change knowledge and attitudes but the evidence that they change behaviour is weak". (p. 150).

A similar claim is made by Philipson and Posner (2008), who notice that "...deficiencies in education and information cannot be the key to explaining the growth of obesity, since people have become much better informed about characteristics of food, including calories, as a result of food labels, diet advertising and publicity about obesity. Incentives created by technological change have more than offset the increased understanding of caloric intake and expenditure" (p.979). According to these authors "...the problem is not that disadvantaged persons cannot read labels and are unaware that obesity is bad for their health but that uneducated persons have less incentive to invest in their health because their longevity and their utility from living are below average" (p.979). Therefore, general education policies that increase the years of schooling attained by vulnerable individuals are more promising than information policies in combating rising obesity.

Does education reduce obesity and overweight, and, if yes, is the effect sizeable? Empirical evidence on the positive association between education and health, the so-called health-education gradient², is abundant. Feinstein, Sabates, Anderson, Sorhaindo and Hammond, 2006, after comprehensively reviewing the relevant literature, conclude that the causal effects of education are "...particularly robust and substantive for the outcomes of adult depression, adult mortality, child mortality, child anthropometric measures at birth, self-assessed health, physical health, smoking (prevalence and cessation), hospitalizations and use of social health care." (p. 217). Yet there are still relatively few studies that investigate the causal impact of education on adiposity and obesity, and with rather inconclusive results.

¹ In the US, the percentage of obese individuals in the population has almost doubled between 1990 and 2004 and is now above 30 percent. Europe is also on a rising trend, albeit at a slower pace than the US (Brunello, Michaud and Sanz-de-Galdeano, 2009). This increase has happened much too quickly to be explicable exclusively by genetic factors (Philipson and Posner, 2008).

² Cutler and Lleras-Muney, 2006, estimate that the health returns to education increase the total returns to education by at least 15 percent.

In this paper, we use a sample of European females to study the effects of education on the Body Mass Index (BMI) and the propensity to be overweight or obese. As in previous contributions, causal effects are identified by the exogenous variation induced by compulsory school reforms. We depart from the existing literature in three directions. First, we adopt a multi-country framework rather than the single country setup typical of previous contributions, in an effort to avoid the problems associated with instrument weakness, a potential source of the inconclusive results obtained so far (see Kenkel, Lillard and Mathios, 2006; Arendt, 2005). For this purpose, we assemble a dataset which contains data on individual education and BMI and covers more than 10 European countries which joined the European Union before the end of the Warsaw Pact.

Second, we investigate the relationship between BMI and a broader measure of education, i.e. individual standardized test scores.³ While years of schooling are an input in the production of human capital, test scores are an output measure of the education process, which reflect both the quantity and the quality of full-time formal education, as well as the impact of subsequent lifelong learning⁴. Failure to control for the dimensions of learning not captured by years of schooling may invalidate the identification strategy used to study the relationship between years of schooling and BMI if the selected instruments affect school quality and lifelong learning directly, and not exclusively via their effect on years of schooling. Under the maintained hypothesis that the selected instruments are valid when we measure education with test scores, we develop a method to test whether restricting the measure of education to years of schooling – as done in the empirical literature so far – can deliver consistent IV (instrumental variables) estimates of the causal effect of education on BMI.

Third, we investigate the impact of education on the conditional distribution of BMI, with particular attention to the upper quantiles, where policy interest concentrates. Virtually all the empirical research in this area has been concerned with whether education induces a location shift in BMI. In the presence of heterogeneity, however, the estimated marginal effect of education on the conditional mean of BMI could be rather different from the effect at the lower and higher (conditional) quantiles of the distribution of BMI.

We find evidence that our selected instrument – the number of years of compulsory education - is not weak. In line with the empirical literature, we confirm that instrumental variables (IV) estimates

³ In their review of the literature, Feinstein, Sabates, Anderson, Sorhaindo and Hammond, 2006, argue that a weakness of the existing evidence is that "... much of the assessment of the effects of education has measured education in terms of years of schooling" (p.175). This approach, probably motivated by lack of data, ignores important dimensions of education, such as school quality, and restricts learning to post-adolescent emerging adulthood, thereby excluding lifelong learning.

⁴ Hanushek and Wossmann, 2009, use standardized test scores in their study of the relationship between education and growth.

of the effect of education on BMI are larger than the estimates based on ordinary least squares (OLS). Depending on the sample used, we find that a 10 percent increase in the years of schooling – which corresponds in our sample to slightly more than one additional year at school - reduces the average BMI of females by 1.65 to 2.27%, and the incidence of overweight and obese females by 10% to 16% and by nearly 11% to 16% respectively. These quantitative effects based on IV estimates are not negligible but smaller than those recently found by Grabner, 2008, for the US⁵. In order to gain some perspective on their size, we notice that, in the European countries for which we have data, the incidence of overweight females has increased between the early 1990s and 2005 by 8 to 22 percent, and the incidence of obesity among females has risen by 42 to 76 percent⁶. Our results suggest that the effect of adding one year of compulsory schooling is almost equivalent to rolling back the percentage of overweight females to its value in the early 1990s, but is moderate when compared to the substantial increase in the incidence of obesity in Europe during the past 15 years.

These results are not affected in a qualitative way when we use test scores rather than years of schooling as the empirical measure of endogenous education, and we instrument the latter with the years of compulsory schooling. On the one hand, the estimated elasticities of BMI to alternative measures of education – test scores or years of schooling – are generally not statistically different. On the other hand, we fail to reject in most of the considered cases the null hypothesis that the number of years of compulsory education is orthogonal to factors other than years of schooling that affect the production of human capital.

Finally, there is some evidence that the marginal effect of education on BMI is heterogeneous and varies with the quantiles of the distribution of BMI, but this finding is sensitive to the estimation method. When education is treated as exogenous, the marginal effect of an additional year of schooling is about 4 times as big in absolute value in the 90th percentile than in the 10th percentile. When we treat education as endogenous, the IV quantile treatment effects (IVQTE) are generally higher (in absolute value) than the effects obtained by treating schooling as exogenous, but the evidence of heterogeneous effects is weaker, and we cannot reject both the hypothesis of constant effects and the hypothesis of exogeneity. Although our evidence based on quantile regressions is mixed, there is some indication that the protective effect of schooling does not increase monotonically from the lower to the upper quantile

⁵ Grabner finds that a one year increase in years of schooling, which is equivalent to an 8% increase in our data – reduces BMI by 4 percent and the incidence of overweight and obesity by 6.5 and 4.4 percentage points. According to our estimates, an 8% increase in schooling reduces the incidence of overweight by 3.3 to 5.1 percentage points and the incidence of obesity by 1.3 to 1.9 percentage points.

⁶ The OECD health data cover Austria, Finland, France, the UK, Spain and The Netherlands. In these countries, average years of education during the same period have risen on average by close to one year.

of the distribution of BMI. Rather, the marginal effect of education is stronger among overweight (but not obese) females than among females with BMI above 30.

The paper is organized as follows: Section 1 briefly reviews the literature and Section 2 presents our empirical strategy. The data are introduced in Section 3 and the empirical findings when education is measured with years of schooling are reported in Section 4. In Section 5 we compare these estimates with those obtained when education is measured with (imputed) test scores and implement a test of the validity of our identification strategy. The final Section 6 is devoted to the presentation of IV quantile treatment effects. Conclusions follow.

1. Education, Overweight and Obesity: a Review of the Literature

There are a number of reasons why the education gradient is positive. On the one hand, educated individuals have a better understanding of what a healthy life is and are better endowed in making improved choices that affect health (Kenkel, 1991). On the other hand, more education provides access to better job opportunities in terms of higher monetary and non-monetary rewards. Higher monetary payoffs increase income and improve individual health because of the higher command over resources, including access to healthcare.

Since better health reduces dropout rates and improves educational attainment and cognitive skills⁷, a positive association between education and health can be due to the former causing the latter, to reverse causality, or it may be driven by unobserved third variables which affect both health and education, such as the rate of time preference, the attitude toward risk, mental ability and parental background⁸. The estimate of the causal impact of education on health requires the identification of exogenous sources of variation (instruments) which are correlated with observed education but orthogonal to the selected measure of health.

In spite of a large literature investigating the relationship between education and health, there are only a few contributions which examine the causal impact of education on obesity. Spasojevic, 2003, uses the 1950 Swedish comprehensive school reform to instrument education in a regression of BMI on education and additional controls. Because of the reform, the cohorts of individuals born between 1945 and 1955 went through two different systems, with the latter requiring at least one more year of schooling than the former. Her results show that an additional year of schooling improves the

⁷ See for instance Ding, Lehrer, Rosenquist and Audrain-McGovern (2006) and Grossman (2004).

likelihood of having BMI in the healthy range – between 18.5 and 25 – by 12 percentage points, from 60% to nearly 72%.

Arendt, 2005, estimates the effects of education on BMI using a sample of Danish workers aged 18 to 59. The endogeneity of education is addressed by using as instruments the Danish school reforms of 1958 and 1975, which affected kids who turned 14 in 1959 and 1976. Because of the high standard errors associated to the IV estimates, his results are inconclusive. Clark and Royer, 2008, study the effects of the compulsory school reform of 1947 in the UK and find that the effects of education on BMI and obesity are statistically insignificant. On a more positive note is the study by Grabner, 2008, who uses the variation caused by state-specific compulsory schooling laws between 1914 and 1978 in the US as an instrument for education and finds that one extra year of schooling lowers individual BMI by 1 to 4% and the probability of being obese by 2 to 4 percentage points. His estimated effects are larger for females than for males.

Webbink, Martin and Visscher, 2008, use a sample of 5967 Australian twins older than 18, who have been interviewed twice, in 1980 and 1988. They adopt a within-twins estimator to eliminate the influence of unobservable common genetic and environment effects and find evidence that – in the subsample of males – one additional year of schooling reduces both the likelihood to be overweight and individual BMI. No significant effect is found for females. Lundborg, 2008, also adopts a within-twins estimator, using data on 694 US twins aged 25 to 74 drawn from the National Survey of Midlife Development in the United States (MIDUS). He finds no evidence of a statistically significant relationship between education and BMI.

Kenkel, Lillard and Mathios, 2006, use data from the 1979 wave of the US National Longitudinal Survey of Youth to estimate the impact of high school completion on obesity and overweight. They cope with the endogeneity of education by using as instruments education policies that vary with the state of residence at the time of school attendance and the cohort. These policies include high school graduation requirements, the ease of General Educational Development (GED) certification and per capita expenditure in education. Since their empirical specification includes state fixed effects, they rely on the within-state variation in their instruments. Their results show that "having completed high school" does not have a statistically significant effect on the likelihood of being overweight. Jürges, Reinhold and Salm, 2008, use a similar approach on German data drawn from three waves of the German Microcensus. They investigate whether having attained the highest level of secondary education in Germany (the so called *Abitur*) affects the likelihood to be overweight, using as

⁸ See Cutler and Lleras Muney, 2007.

instrument for endogenous education the proportion of individuals obtaining an *Abitur* in the relevant cohort and state (*Länder*) of residence. They find evidence that additional education reduces the likelihood to be overweight more for males than for females. Finally, McInnis, 2008, uses a change in the Vietnam drafting procedures for U.S. males during the 1960s and finds that college completion reduces the probability of being obese by 70%.

In summary, there are still relatively few empirical studies investigating the causal effect of education on measures of adiposity and obesity. These studies adopt different identification strategies to take into account the endogeneity of education. Results are rather inconclusive, with several studies finding no statistically significant effect.

2. Our Empirical Strategy

Our empirical model is described by the following pair of equations:

$$BMI_{ics} = \beta_c f_c + \beta_s f_{cs} + \beta_X X_{ics} + \delta W_{cs} + \theta S_{ics} + \varepsilon_{ics} \quad [1]$$

$$S_{ics} = \alpha_c g_c + \alpha_s g_{cs} + \alpha_X X_{ics} + \gamma W_{cs} + \phi YCOMP_{cs} + \nu_{ics} \quad [2]$$

where S is years of schooling, f_c and g_c are country dummies, f_{cs} and g_{cs} are country specific time trends⁹, W a vector of variables which vary by country and cohort, $YCOMP$ (years of compulsory education) is the instrument, and the subscript i is for the individual, c for the country and s for the cohort¹⁰. Finally, ε and ν are the error terms, which are likely to be correlated either because they include common factors, such as genetic and environment effects, or because omitted BMI at the age of schooling is correlated both with current BMI and with education. The coefficient of interest in equation (1), θ , includes both the direct effects of S on BMI, and the indirect effects, for instance those affecting health via income and lifelong learning.

The linear specification in equation (1) summarizes the behaviour of BMI at fixed levels of the covariates using a measure of central tendency (the conditional mean) and assumes that the marginal

⁹ We use linear and quadratic trends. For each country in the sample, the trend is the distance between birth cohort and the first birth cohort affected by the reforms.

¹⁰ We have experimented with two alternative specifications: first, we have added to (1) and (2) year of birth dummies, but we cannot reject the hypothesis that these dummies are jointly equal to zero. Second, we have used both year of birth dummies and country specific linear trends in the age of birth, as in Pischke and von Watcher, 2008, with results that are very similar to the ones discussed in the text.

effect of schooling on BMI is constant. Provided that the impact of education is constant at different levels of BMI, focusing on the conditional mean does not produce any loss of relevant information and the average causal effect is the only parameter of interest. We identify this effect by relying on the theoretical results by Angrist and Imbens, 1994¹¹, and by using the variation in the number of years of compulsory schooling induced by educational reforms.

The social and political attention drawn by overweight and obesity suggests that we augment model (1) and (2) with the additional equation

$$D = 1[BMI_{ics} \geq \omega] \quad [3]$$

where D is a dummy equal to 1 if individual BMI is above the threshold ω and to zero otherwise.¹² It is useful to write equation (1) more compactly as $BMI_{ics} = Y_{ics}\pi + \theta S_{ics} + \varepsilon_{ics}$, where the vector Y includes the variables in vectors X , W , the country specific trends and the country dummies, and to assume: a) $\varepsilon_{ics} = \rho v_{ics} - e_{ics}$, where e_{ics} is independent of $YCOMP$ and normally distributed with zero mean and variance σ^2 ; b) the error term ε_{ics} has unit variance. Under these assumptions, the probability of being overweight or obese is $\Phi\left(\frac{Y_{ics}\pi + \theta S_{ics} + \rho v_{ics} - \omega}{\sigma}\right)$, where Φ is the standard normal distribution.¹³

The Setup

For each country where we have data, we construct a pre-treatment and a post-treatment sample as follows: first, we select a school reform affecting compulsory schooling and identify a pivotal birth

¹¹ The assumptions that guarantee identification in our application are the following: (1) compulsory school reforms have had a non negligible impact on schooling S , and affect individual BMI only through their effect on S ; (2) individuals who went to school under the new legislation attained at least as much schooling as they would have attained under the old schooling system; (3) individuals who went to school under the old system attained at most as much schooling as they would have attained under the new legislation; (4) there are no spill-over effects (Stable Unit Treatment Value Assumption). In this set up, the average causal effect can be identified only for the subpopulation of *compliers*, i.e. for those individuals who have changed their educational attainment because of the mandatory schooling reforms.

¹² We will consider two threshold values, namely $\omega=25$ and $\omega=30$, and study the conditional incidence of overweight and obese individuals in the population, respectively.

¹³ The parameters of the model can be estimated using two different approaches: (a) a maximum likelihood estimator (MLE); (b) a two-step estimator (TW). Both estimators rely on the joint normality assumption and allow to test the exogeneity hypothesis in a straightforward way. On the one hand, the exogeneity test based on the two-step estimator is valid even if the normality assumption is violated whereas the exogeneity test based on the MLE is not. On the other hand, if the assumptions hold and there is evidence of endogeneity, the MLE estimator is more efficient. Note that MLE and TW estimates parameters that differ for a scale factor, since the normalization adopted is different.

cohort \bar{c}_k , defined as the first cohort potentially affected by the change in mandatory schooling leaving age. Second, we define $T \equiv (C - \bar{c}_k)$ as the distance between cohort C and the pivotal cohort, and include in the pre and post-treatment samples the individuals born within a range defined by the window $T \in \{-7, +7\}$. By construction, the number of years of compulsory education, YCOMP, “jumps” in correspondence of the pivotal cohort and is typically higher in the post-treatment sample. The timing and intensity of these jumps vary across countries, and we use this exogenous variation to identify the causal effects of schooling on BMI. The breadth of the window is designed to exclude the occurrence of other compulsory school reforms, which would blur the difference between pre- and post-treatment in our data. Our choice also trades off the increase in sample size with the need to reduce the risk that unaccounted confounders affect our results. We also experiment with a much shorter window, defined by 3 years before and 3 years after the critical year, which allows us to add two countries to our sample.¹⁴

Table 1 shows for each country in our sample the selected reform, the year of birth of the first cohort potentially affected by the reform, the change in the minimum school leaving age and in the years of compulsory education induced by the reform, the minimum expected school attainment, expressed in terms of the ISCED classification, and the school entry age.¹⁵ The selected reforms increased the minimum school leaving age by one year in Austria, Germany, Ireland, Britain and Sweden; by two years in Denmark, France, Portugal and Spain; by three years in Finland, Greece, Italy and by four years in Belgium. In some of these countries, namely Germany, Finland and Sweden, the introduction of the reform varied by region. Since we do not have access to data at the municipality level, for Finland and Sweden we define the year of the reform in each area as the year when the largest share of municipalities in that area changed the schooling legislation. Notice that Northern and Southern European countries are quite evenly distributed among early and late reforms.

3. The Data

We pool together data drawn from the 1998 wave of the European Community Household Panel (ECHP), the second release of the first wave of the Survey on Household Health, Ageing and Retirement in Europe (SHARE) for the year 2004, the 2002 wave of the German Socio Economic Panel (SOEP), the 2003

¹⁴ Brunello, Fort and Weber, 2009, use a similar strategy in their study of the impact of education on the distribution of earnings.

¹⁵ See Brunello, Fort and Weber, 2009, for details on the sources of these data.

wave of the British Household Panel Survey and the 2003 wave of the French *Enquete sur la Sante*¹⁶. The countries included in this dataset are: Austria, Belgium, Denmark, Finland, France, Germany, Greece, Ireland, Italy, Portugal, Spain, Sweden and the United Kingdom. In the case of a few countries, we use data from two different surveys.

Since Portugal experienced a second school reform in 1968, four years after the 1964 reform, the window of observation for this country is only the shortest one (three years before and after the critical cohort). Swedish data are from SHARE, and have a small number of observations at the upper tail of the longer window. Because of this, we include this country only in the shortest window. Finally, we exclude from the sample individuals younger than 25, who are likely to be still in education, and those older than 65. This implies that Belgium, where the compulsory school reform took place in the early 1980s, is included only with the shortest window.

Our dependent variable is the body-mass index (BMI), defined as weight in kilograms divided by the square of height in meters (kg/m^2). The BMI, albeit somewhat crude, has been found to be highly correlated with more precise (and more costly to collect) measures of adiposity.¹⁷ In all our data sources individual height and weight are self-reported. As such our measure of BMI may be affected by measurement error, with heavier persons more likely to underreport their weight (see Burkhauser and Cawley, 2008). Notice however that Sanz-de-Galdeano (2007) finds that the rank correlation between country level self-reported and objective measures of weight is very high. Following Hamermesh, 2008, we only consider females with BMI in the range 15 to 55.

In Sections 4 and 6, we measure educational attainment with the number of years of schooling. For all countries in the sample except France, this number is based on responses to questions asking the age when full time education was stopped and the highest level of education was attained. In the case of France, we attributed to each individual in our sample the average years of education spent by her cohort to complete the attained degree, as measured in the *Enquete sur l'Emploi*. Table 2 reports average BMI, years of schooling, years of compulsory education, age and the number of observations in the sample by country. Average BMI is equal to 24.67, close to the 60th percentile. Since median BMI is 23.87, the unconditional distribution is not symmetric. Average age is highest in Austria, Germany, Italy and France, because the relevant reforms occurred in the 1950s and 1960s. Years of

¹⁶ The ECHP is a panel of European households. We choose the 1998 wave so as to maximize the number of observations in the sample. These data do not contain information on BMI for key countries such as France, Germany and the UK. For these countries we select national surveys, using waves that include information on BMI.

¹⁷ Other anthropometric methods for measuring individuals body fat include the waist-hip ratio, sagittal abdominal diameter, skin folds thickness. More accurate measures are based on bioelectrical impedance analysis, infrared interactance, dual energy X-ray absorptiometry. All these methods imply some instrumental measurement that is usually far from being viable in social surveys.

schooling depends on birth cohort and is highest in the UK and Belgium and lowest in Italy and Portugal.

To identify the causal relationship between education and BMI we need to control as accurately as possible for additional factors affecting the dependent variable¹⁸. We include in the empirical specification both country and survey dummies. Furthermore, trend-like changes in both education and BMI relative to the time of the school reform are controlled with a second order polynomial in $K=T+7$ – where T is the distance between each cohort and the first cohort potentially affected by the reform – and its interactions with country dummies¹⁹.

Recent empirical research has documented that adult BMI is correlated to weight at birth, and that the latter is correlated to the season of birth and the climatic conditions prevailing at the time of birth (see for instance Phillips and Young, 2000; Murray et al, 2000; van Hamswijck et al, 2002). We use individual information on the month and year of birth to construct two variables: 1) a dummy equal to 1 if the individual is born in autumn or winter, and 0 otherwise; 2) the average temperature registered in the country during a window spanning three months before and after birth. Data on historical temperature for each country come from the Global Historical Climatology Network monthly data base, made available by the National Climatic Data Center at the US Department of Commerce.

Changes in educational attainment after a compulsory school reform could be due to the reform itself or to confounding factors, which may alter the incentives to invest in education at the time of the reform but independently of it. To illustrate, take a reform that increases the minimum school leaving age from a to $a+1$ in a certain year. If individuals at age a - or their parents - find it more attractive to invest in education because of a reduction in the opportunity costs generated by a contemporaneous increase in the unemployment rate, they might invest more independently of the reform. To control for this, we include in the vector W of equation [1] the female unemployment rate (by country) and the country specific real GDP per head at time $b+a$, where b is year at birth. Both GDP per capita and the unemployment rate near school reforms are likely to affect BMI also because they influence health conditions and school quality at the time when critical schooling decisions are taken.

¹⁸ "To estimate consistently the LATE of compulsory schooling, the timing of the law changes must not be correlated with any other policy changes or regional characteristics that also relate to the outcome variable." (Oreopoulos, 2008, p. 154).

¹⁹The relatively low order of the polynomial follows the suggestions by Lee and Card (2008). Compared to higher order polynomials, the second order specification is the most parsimonious and provides adequate fit of the data. The country specific trends may help capture the effects of unmeasured school quality on BMI. Following Lee and Barro, 1997, one way to improve our ability to control for school quality is to compute measures of the pupil – teacher ratio in secondary schools in the neighbourhood of the time when school reforms took place. Unfortunately, the available data do not cover in a satisfactory way the full set of countries available in our dataset.

Figure 1 presents the cumulative distribution function of years of education both for the cohorts affected (broken line) and for the cohorts not affected by the reforms (continuous line). It is clear that the empirical distribution shifts to the right after the reforms, suggesting that the proportion of individuals attaining relatively low education declines among the younger cohorts. To check whether this shift is partially induced by compulsory school reforms, we purge years of schooling from the influence of exogenous controls and cohort effects and plot the residuals in Figure 2 for the cohorts born before and after the first cohort potentially affected by the reforms. The upward jump at the time of the reforms is clearly visible and corresponds to about 0.4 years for each additional year of mandatory schooling prescribed by law.²⁰

4. The Effects of Schooling on Bmi

Table 3 reports the first stage estimates of years of schooling on the vector of exogenous variables plus the instrument *YCOMP* for two time windows, our baseline window [+7,-7] (column 1 in the table) and the shorter window [+3,-3] (column 2). We find that our instrument is significantly correlated with the endogenous variable. As anticipated by Figure 2, one additional year of compulsory education increases the years of schooling attained in our sample by close to 0.4 years. We test for the presence of weak instruments by comparing the F-statistic for the exclusion of *YCOMP* from the first stage regressions with the rule of thumb indicated by Staiger and Stock, 1997, which suggests that the F-test should be at least 10 for weak identification not to be considered a problem. In all specifications, we can reject the hypothesis that our instrument is weak, albeit only marginally in the shorter window²¹.

Table 4 presents the ordinary least squares (OLS) and instrumental variables (IV) estimates in the two selected windows. With OLS, the estimated association between BMI and years of schooling is negative. The size of the effect is similar to that estimated by Cutler and Lleras-Muney, 2007 for US whites aged over 25 (-0.190) but smaller than the estimate for US females (-0.302) reported by Grabner, 2008. The IV estimates of the impact of years of schooling on BMI are always larger in size than the OLS estimate – a standard result in this literature, see Grabner, 2008, for a discussion - and

²⁰ Figure 1 is based on the sample of individuals born 7 years before and 7 years after the critical cohort and excludes data from Belgium, Sweden and Portugal. This jump is slightly larger than the one found by Brunello, Fort and Weber, 2009, who consider however only employed individuals. Here we include in our sample all females independently of their labour market status.

statistically significant at the 5 percent level of confidence. Our results imply that a 10 percent increase in years of schooling reduces the BMI of females by 1.65 in the broader window and by 2.27 percent in the narrower window, a moderate effect when compared to the 4 percent decline estimated by Grabner for the US, using compulsory school reforms to instrument years of schooling, as we do²².

Turning to the other regressors in Table 4, we find no evidence that the average temperature at birth influences individual BMI after controlling for the semester of birth. There is instead weak evidence that individual BMI is lower among individuals born in autumn and winter, and that a higher GDP per capita at the age first affected by the reforms reduces individual BMI. Our interpretation of these findings builds on two observations. First, our dependent variable is adult BMI – measured as the ratio between weight and height squared. Second, evidence in the literature suggests that when the economy strengthens there is a transient increase in BMI (see Ruhm, 2000 and 2003) but a permanent increase in height (see Van den Berg, et al. 2009). Therefore, *ceteris paribus*, individuals exposed to early good economic environments tend to be taller but not necessarily heavier when adult. The estimates reported in Table 4 also suggest that, other things being equal, the higher the female unemployment rate at the age the individual was first affected by the reforms the lower her BMI when adult. In other words, cohorts of women whose mothers were more probably not working at the time of the reform tend to be leaner at adult age.

4.1 The Effects of Schooling on the Probability of Being Overweight and Obese

We estimate probit models by treating schooling either as exogenous (columns 1 and 3 of Table 5) or as endogenous (columns 2 and 4 of Table 5)²³. In the latter case, we use years of compulsory schooling as instrument. In the case of overweight, and depending on the selected window, the evidence suggests that a 10 percent increase in years of schooling (slightly more than 1 year from the sample mean) reduces the probability of being overweight by 6.71 to 6.82 percent when schooling is treated as exogenous and by 10.87 to 16.60 percent when it is treated as endogenous. Concerning obesity, IV estimates are imprecise and close to standard probit estimates. In this case, a 10 percent

²¹ Even though just – identified 2SLS estimates are approximately unbiased, a weak instrument may lead to imprecise estimates in the second stage (Angrist and Pischke, 2009).

²² When interpreting the IV estimates in Table 4, it is important to notice that the Hausman test never rejects the null of exogeneity of years of schooling.

²³ Since the two-step estimates obtained with the standard control variate approach (Wooldridge, 202) give results similar to the maximum likelihood estimates (obtained with the STATA code IVPROBIT), we do not report them here.

increase in years of schooling reduces obesity by 11.57 to 16.70 percent when years of schooling are treated as endogenous, depending on the window.²⁴

The comparison of the conditional mean effects in Table 4 with the estimates in Table 5 is informative of the presence of heterogeneous effects of schooling on BMI at different points of the distribution. To illustrate why, consider the overweight and the broader window of observation. If the effects of one additional year of schooling were the same across the distribution of BMI (i.e. -0.35), only the individuals who had before the increase a BMI between 25 and 25.35 would cease to be overweight because of the policy. Since this group is 2.43 percent of the relevant population, the percentage of overweight individuals would decline by the same amount, but below the estimated decline (-4.41 percentage points, the marginal effect reported in column 2, Table 5 panel a). It follows that the findings in Tables 4 and 5 (for the overweight) are consistent only if the marginal effect of higher schooling on BMI is larger among those currently overweight.

We can apply a similar argument to the obese and the sample with the broader window. In the case of a homogeneous effect of one additional year of schooling, only those with BMI between 30 and 30.35 would cease to be obese after the policy, which corresponds to 1.04 percentage points. This percentage is very close to the one we estimate (-1.2 percentage points, see column 2, Table 5 panel b), which suggests that the effect (in absolute value) of additional schooling on BMI is quantitatively lower for the obese than for the overweight. These considerations suggest that the extent of the marginal response of BMI to schooling does not increase monotonically as we move from the mean to the upper quantiles of the distribution of BMI: presumably, the response is larger in absolute value for the individuals located in the 70th and 80th percentiles, and smaller for those in the 90th percentile – where most of the obese are located.

5. Checking the Validity of the Exclusion Restriction: the Effects of a Broader Measure of Education on Bmi

In the empirical literature on the causal effects of education on health, it is customary to measure the former with years of schooling, thereby ignoring important dimensions of education, such as school quality and learning from labour market experience, which includes training. In this section, we take a broader view of education by considering the effects on BMI of cognitive skills, as proxied by cognitive test scores (TS). As argued by Hanushek and Wossmann, 2009, in their empirical study of

²⁴ The Wald test on the exogeneity of schooling never rejects the null.

growth, one of the advantages of using cognitive skills as a measure of human capital is that it allows for "...differences in performance among students with differing quality of schooling (but possibly the same quantity of schooling)...[and opens]...the investigation of the importance of different policies designed to affect the quality aspect of schools." (Hanushek and Wossmann, 2009, p. 6).

There is another important reason why we consider cognitive skills in this paper: in our set up the (internal) validity of the identification strategy requires that the instrument *YCOMP* does not affect BMI directly but only through education (exclusion restriction). This requirement is more likely to be met when we use a broader measure of education than simply years of schooling. We show that, under some mild additional assumptions, the availability of such measure – test scores - provides a way of testing the validity of the exclusion restriction when education is measured with years of schooling, as usually done in the empirical literature.

5.1 The Test

To illustrate the implications of using test scores rather than years of schooling as a measure of education, assume that TS is generated by equation [4], where Q is a "catch all" variable which is orthogonal to S and includes the effect of factors other than S on TS (school quality, parental background and learning from experience)²⁵

$$TS = F(Q, S) \tag{4}$$

Let the "true" relationship between BMI and education be given by

$$BMI = \beta TS + v \tag{5}$$

where the effects of the variables in vector *Y* have been partialled out, and let β_{IV} be the IV estimate when compulsory school reforms are used as instruments for test scores. This estimate is consistent if $Cov(YCOMP, v) = 0$, which we treat as our maintained hypothesis. Assuming that equation [4] is linear in S and Q²⁶

$$TS = \lambda_0 + \lambda_1 S + \lambda_2 Q \tag{6}$$

²⁵ Since school quality and lifelong learning may be correlated with years of schooling, it is useful to think of Q as a residual "catch all" variable after S has been partialled out.

²⁶ A first-order Taylor approximation of [4] yields $F(S, Q) \cong F(s, q) + \lambda_1(s, q)S + \lambda_2(s, q)Q$, where $\lambda_1(s, q)$ and $\lambda_2(s, q)$ are the partial derivatives of TS with respect to S and Q, evaluated at a fixed point.

we can use [6] into [5] and obtain the relationship estimated in the empirical literature

$$BMI = \alpha S + \mu \quad [7]$$

where $\alpha = \beta\lambda_1$ and $\mu = \beta\lambda_0 + \beta\lambda_2 Q + v$.

Under the maintained hypothesis, β_{IV} is consistent but the IV estimate of α , α_{IV} , fails to be consistent if the selected instrument is correlated with omitted Q . When this is the case, it is inappropriate to estimate the relationship between education and BMI using years of schooling as measure of education – as in [7] – and a broader measure – such as test scores – should be adopted, as in equation [5]. In order to test whether restricting education to years of schooling – as done in the empirical literature so far – can deliver consistent IV estimates of the causal effect of education on BMI, consider the null hypothesis: a) the instrument $YCOMP$ does not affect Q ; b) $\frac{Cov(Q, v)}{V(Q)} = \lambda_2 \frac{Cov(TS, v)}{V(TS)}$. Under this (joint) hypothesis, we show in the Appendix that

$$\frac{\frac{E[\alpha_{OLS}]}{E[\beta_{OLS}]}}{\frac{E[\alpha_{IV}]}{E[\beta_{IV}]}} = 1 \quad [8]$$

This result holds because: (a) under the null hypothesis the OLS estimators in the two models have the same bias, and both the IV estimators are asymptotically unbiased; (b) the rescaling factor λ_1 is the same when we contrast OLS or IV estimates. Importantly, condition [8] is sufficient but not necessary. Hence, we may reject it even if the orthogonality condition $Cov(Q, YCOMP)$ does not fail, but the auxiliary assumption that the ratio of the covariances of Q and TS with the error term v be proportional to the ratio of the variances, with factor of proportionality equal to λ_2 , fails to hold. Therefore, the test is conservative²⁷.

It follows that, when there are two measures of human capital (TS and S) and one instrumental variable that can be used in turn for either endogenous variable, we can test the hypothesis that the identification strategy is valid in both cases by comparing the ratio of the OLS and the ratio of the IV estimates in the two specifications. If the null hypothesis [8] is not rejected, we interpret this as

²⁷ In the Appendix we use simulations to show that the proposed test has power to reject the null hypothesis.

evidence that the exclusion restriction is met. In this case, using years of schooling as the measure of education and years of compulsory schooling as the instrument for endogenous education produces consistent IV estimates of the causal relationship between education and BMI.

5.2 The Data on Test Scores

Our measure of cognitive skills is drawn from the International Adult Literacy Survey (IALS), which tests individual cognitive skills in the population aged 15 to 65 and in different countries according to a common, standardized format²⁸. The approach followed by IALS is to measure cognitive skills in three domains – quantitative literacy, prose literacy, and document literacy. The former is defined as the ability to apply “arithmetic operations, either alone or sequentially, to numbers embedded in printed materials”. Prose literacy is defined as the ability to understand and to use “information in texts”. Document literacy is defined as the ability to “locate and use information in various formats” (see Cascio, Clark and Gordon, 2008). Cognitive skills as measured by IALS test scores reflect both the formal education process – its quantity and quality - and the learning activities taking place after education is completed. Therefore, they are a good proxy of the stock of cognitive human capital accumulated by each individual until the time of the interview. The data document both the positive association between education and test scores and the substantial variation in test scores for a given number of years of schooling (see Figure 3), which can be driven by differences in parental background, school quality and learning from labour market experience.

5.3 The Imputation Procedure

The implementation of the test requires information on the following variables: individual BMI, education - both quantity and quality - country and year of birth.²⁹ Our main dataset (the “FULL sample” hereafter) has all the required information, with the exception of test scores. On the other hand, the IALS dataset includes all relevant variables but BMI. Since IALS and the FULL dataset are drawn from different samples, we develop an imputation procedure which allows us to augment our

²⁸ This is the source of international test scores best suited to our purposes, both because it covers the adult population and because it was carried out in the second part of the 1990s, when most of our data on BMI are collected. Other international surveys of cognitive skills typically focus on the population at schooling age. For instance, the Trends in International Mathematics and Science Study (TIMSS) covers mainly 13 year old students, and the OECD Programme for International Student Assessment (PISA) focuses on 15 year old pupils. An alternative option would have been to use the test scores included in the SHARE dataset. However this option is not viable in the current setup because of the limited number of observations available for each relevant cohort and country.

²⁹ The last two variables are crucial for the definition of our instrumental variable.

original dataset with information on test scores, limitedly to the countries that are included in both samples.

Within each country and in both datasets, the available data are a representative random sample of the same population. Starting from this observation, we combine information from both sources and construct a new sample which includes two distinct measures of the quantity of education, the one recorded in IALS (we call it S_{IALS}) and the one recorded in the FULL dataset (call it S_{FULL}), the test score and the BMI. This is done in three steps.

First, we restrict the FULL sample to the sub-sample of countries also surveyed by IALS. This sub-sample includes Denmark, Ireland, Italy and United Kingdom when we consider individuals born within the range of 7 years before and after the pivot cohort in each country. Second, we define strata in the FULL sample as consisting of individuals from the same country, born in the same year and with identical levels of education (as measured by S_{FULL}). Finally, we attach to each individual in the FULL sample the information on the education profile (quantity of education S_{IALS} and test score) of a randomly chosen individual from the IALS sample who is born in the same year, the same country and reports *roughly* the same level of education, as recorded by S_{FULL} .³⁰ In other words, for any given stratum in FULL the corresponding set of "donors" (observations used to donate a missing variable) in IALS is made of individuals of exactly the same age and country and with years of education that fall within a given tolerance interval around S_{FULL} .

We consider three different tolerance levels as constant percentage variations around a given value of S_{FULL} : high (30%), medium (25%) and low (20%) tolerance. To illustrate, consider Italian females in the FULL sample who have 8 years of schooling and are born in 1955. The relevant sample of IALS donors in this case is made of Italian females born in the same year and with S_{IALS} between 5.6 and 10.4 years (high tolerance), 6 and 10 years (medium tolerance), and 6.4 to 9.6 years (low tolerance). In the definition of tolerance levels, we face the following trade-off: on the one hand, the lower is the tolerance level, the higher is the correlation between years of schooling in different samples. On the other hand, the lower is the tolerance level, the smaller is the number of observations in each stratum and the larger is the number of empty strata.³¹

³⁰ By so doing we attach the joint distribution of S_{IALS} and the test score.

³¹ We have considered tolerance levels, spaced 0.05, in the interval [0.05,0.30]. The fraction of matched records corresponding to each tolerance level is 89%, 93%, 97%, 98%, 99% and 99% respectively. We restrict our attention to the three cases where the fraction of matched records is above or equal to 98%.

Table A1 reports the pair-wise correlation coefficients between S_{IALS} , S_{FULL} and test scores in the generated sample for the three levels of tolerance. As expected, the lower is the tolerance level, the higher is the observed correlation between different measures of schooling. Table A2 reports sample sizes by country and survey: the ratio of individuals in IALS with respect to FULL is 94/100 in the UK, 63-66/100 for Denmark and Ireland and 20/100 for Italy. Figure A1 includes the scatter plots of actual and imputed years of schooling for the three different levels of tolerance. As documented in Figure 3, our imputation method is able to reproduce rather well in the FULL sample the variation in test scores for each year of schooling that is observed in the IALS sample.

5.4 The Estimates

Table 6 shows for alternative tolerance levels the OLS and IV estimates when the explanatory variable is either years of schooling or test scores, and the sample consists of four countries (Denmark, Ireland, Italy and the UK) in the broader window [+7,-7]. It turns out that the IV point estimates of the effects of years of schooling on BMI are rather close to the estimates in the main sample (see Table 4), within the range [-0.446, -0.421] using S_{FULL} and within the range [-0.544,-0.526] using S_{IALS} . On the other hand, the estimated marginal effect of test scores is in the range [-0.030, -0.027].

When we compare estimated elasticities rather than marginal effects, we find that the elasticities of BMI to years of education and test scores are rather similar, and range between -28% and -19% in the former case and between -27% and -31% in the latter case. We use the estimates in Table 6 to compute the two statistics $t_1 = \frac{E(\alpha_{OLS})}{E(\beta_{OLS})} / \frac{E(\alpha_{IV})}{E(\beta_{IV})}$ and $t_2 \equiv \frac{\partial \ln BMI}{\partial \ln TS} - \frac{\partial \ln BMI}{\partial \ln S}$ and to test whether these statistics are different from one and zero respectively. In this exercise, we consider the OLS and IV estimates of α when years of schooling are equal to either S_{IALS} or S_{FULL} .³² The results are reported in Table 7 (S_{IALS}) and Table 8 (S_{FULL}). In the former case, the hypotheses $t_1 = 1$ and $t_2 = 0$ are never rejected at the 5% or 10% level of confidence. In the latter case, we reject $t_1 = 1$ only when we use data with relatively high tolerance (30%) and we reject $t_2 = 0$ at 5% for medium and high level of tolerance.

Overall, these results suggest that using years of schooling as the measure of education when investigating the relationship between education and BMI does not produce inconsistent IV estimates. This is particularly important in the light of the fact that datasets which include both measures of health lifestyles such as BMI and alternative measures of education – such as years of schooling and test

³² The standard errors and confidence intervals for t_1 and t_2 are obtained by bootstrapping (500 replications).

scores – are rather uncommon. Our findings also point out that, once we have controlled for the direct and indirect effects of years of schooling and we have instrumented years of schooling using the years of compulsory schooling, the contribution of the residual “catch all” variable Q to individual test scores TS and BMI is negligible and not significantly different from zero³³.

6. Quantile Treatment Effects

In this final section, we investigate the effects of education on the shape of the conditional distribution by modelling each conditional quantile $Q_{BMI|Y,S}(\tau | Y, S)$ as:

$$Q_{BMI|Y,S}(\tau | Y, S) = \pi(\tau)Y_{ics} + \theta(\tau)S_{ics} \quad [9]$$

where τ is the τ^{th} -quantile, $\theta(\tau)$ is the parameter of interest and years of schooling S are treated as endogenous. An appealing feature of equation [8] is that it nests the location shift model of equation [1] (see Koenker, 2005), and allows at the same time to study how education affects the different quantiles of the distribution of BMI , including those where overweight and obese individuals are concentrated.

We estimate IVQTE (instrumental variable quantile treatment effects) by adopting the approach proposed by Chernozhukov and Hansen, 2005,³⁴ which applies to the whole (treated) population, and is based on imposing some structure to the evolution of ranks across treatment states. Their approach is applicable when the outcome variable is continuous, while both the endogenous variable and the instrumental variable can be either continuous or discrete. Let $U \approx U(0,1)$ be the latent factor (or rank variable) responsible for the heterogeneity of outcomes for individuals with the same Y and S . It is convenient to call this factor “nature and nurture”. The critical assumption in this approach is that, conditional on the instrument Z , the distribution of the rank variable does not vary with the treatment S (rank similarity).

³³Notice that in our setting the statistic t_2 has the following expression:

$$t_2 = \hat{\beta}^{IV} \frac{TS}{BMI} - \hat{\alpha}^{IV} \frac{S}{BMI} = \frac{\hat{\beta}^{IV}}{BMI} [TS - \lambda_1 S] = \frac{\hat{\beta}^{IV}}{BMI} [\lambda_0 + \lambda_2 Q].$$

Provided that cognitive abilities, as proxied by TS , are “produced” according to equation [6], the contribution of $\lambda_0 + \lambda_2 Q$ is negligible.

³⁴ Abadie, Angrist and Imbens et al, 2002, generalize the approach by Angrist, Imbens, 1994, to the estimation of the effect of a binary (potentially endogenous) treatment on the quantiles of the distribution of a scalar continuously distributed outcome. Since this approach has not yet been extended to the case where the endogenous variable is either discrete or continuously distributed, it is not well-suited to the application at hand, where education is measured in years of schooling, a discrete variable. Chesher, 2003, uses a recursive model with a triangular structure both in the observable and in the latent variables. The latter assumption is problematic in our context, because the error terms in equations [1] and [2] are likely to contain common factors, such as genetic and non-genetic environment effects.

In our setup, this is equivalent to saying that the treatment does not alter the ordering induced by genetics and early life conditions ("nature and nurture")³⁵.

In practice, the estimation requires two steps (see Chernozukhov and Hansen, 2004): first, we use tentative estimates of $Q_{BMI|Y,S}(\tau|Y,S)$ to estimate quantile regressions of $BMI - Q_{BMI|Y,S}(\tau|Y,S)$ on Y and the instrument $YCOMP$; second, we choose as the estimate of the coefficient $\theta(\tau)$ the one which minimizes the absolute value of the coefficient of $YCOMP$ in the first step. This procedure requires an initial estimate of $Q_{BMI|Y,S}(\tau|Y,S)$ in the first step. Chernozukhov and Hansen consider linear quantile regression models and suggest to use a grid search for $\theta(\tau)$, centered around the two stage quantile regression estimates – i.e. quantile regressions of BMI on S^* and Y , where S^* is the expectation of S conditional on Y and the instrument $YCOMP$
36

In this empirical implementation, we consider only the FULL sample with the broader window (-7,+7), and a range of equally spaced quantiles over the interval [0.1, 0.9]. We report the estimates for nine deciles only for brevity: while Table 9 shows the results under the null of exogenous education, Table 10 presents the findings when we use the Chernozukhov and Hansen IVQTE model. Figure 4 shows how the estimated coefficients of years of education (top panel) and the intercept (bottom panel) vary as we move from the lowest to the highest quantiles on the conditional distribution of female BMI. Each dot in the graphs represents an estimated coefficient and the shaded area shows the 95% confidence interval around the estimate. In the estimates reported in this figure, education is treated as exogenous. The intercept measures the conditional quantiles of BMI for the baseline country, the United Kingdom, when all the continuous regressors are set at their sample mean and years of education are set to zero. The estimated level of BMI is around 20 at the bottom (0.10) quantile, raises to 25 at the third decile, is around 28 at the median and reaches 37 at the highest quantile (0.90). We contrast these estimates with those obtained when treating education as endogenous – see Figure 5. In the upper part of the figure, we show the IV estimates only for nine deciles; in the bottom part, we present instead the estimates when all the quantiles are used.

When schooling is treated as exogenous (Table 9), there is evidence that its negative correlation with BMI increases in absolute value as we move from the bottom to the top quantiles: the marginal effect of an additional year of formal education is around -0.08 at the first decile, -0.18 at the median and -0.26 at the eighth decile (the corresponding effect at the conditional mean is -0.20, see column 1 in

³⁵ The rank similarity assumption is the (un-testable) identifying assumption in the model proposed by Chernozukhov and Hansen, 2005. This assumption is not required under the approach proposed by Abadie, Angrist and Imbens, 2002.

³⁶ We implement the method proposed by Chernozukhov and Hansen and estimate quantile treatment effects when education is treated as endogenous by adapting to our application the OX algorithm provided by Hansen in his web-page.

Table 4). A test of the hypothesis that the estimated correlations are not statistically different across the nine selected quantiles of BMI clearly rejects it at the one percent level of significance.³⁷ The observed pattern supports the view that raising education could be particularly beneficial to overweight and obese individuals.

When education is treated as endogenous (Table 10) and we use IVQTE with years of compulsory education *YCOMP* as the instrument, we find that the causal effects of schooling on BMI are larger in absolute value than the associations shown in Table 9, but often imprecisely estimated. Moreover, there is no clear monotonic pattern in the estimated marginal effects, which are larger for the quantiles in the range 0.5-0.8 and lower elsewhere, including at the 9th quantile. These results are in line with those discussed at the end of sub-section 4.1, which are based on the estimates of the probability of being overweight and obese³⁸: there are signs that the effects of schooling are heterogeneous along the distribution of BMI, but their absolute value does not increase monotonically as we move from the bottom to the top quantiles. Rather, the marginal effect of additional (compulsory) education on BMI is larger for overweight than for obese females, who are arguably the primary target of public intervention.

Conclusions

In this paper, we have departed from the empirical literature which investigates the effects of education on the body mass index in three main directions. First, we have adopted a multi-country framework rather than the single country setup typical of previous contributions, in an effort to avoid the problems associated with instrument weakness. Second, we have investigated the relationship between BMI and a broader measure of education, i.e. individual standardized test scores, which capture the output of the production of individual human capital rather than a single input. Third, we

³⁷ The Wald test statistic is equal to 22.53, with a p-value of 0.000. We tested the hypothesis that education affects only the location of the conditional distribution of BMI, i.e. that the effect is homogeneous, by considering also a variant of the Kolmogorov-Smirnov test based on the quantile regression process (see Koenker, 2005 for details). We run the test using a routine available in the software R. The observed test value is 2.102. We contrast this with the asymptotic critical values provided by Koenker (2005, Table B.1 p.318), i.e. 2.640 (1%) 2.102 (5%) 1.833 (10%). Since the test rejects for values higher than the critical value, we do not reject the null at 10% and the test is inconclusive at 5%.

³⁸ By relying on estimates of the quantile regression process at equally spaced quantiles, we test formally the following hypotheses: (1) the effect of education is not statistically different from zero at all conditional quantiles; (2) the effect of education on BMI has the same negative sign over the whole distribution (education is protective); (3) the exogeneity of years of schooling. While we reject at the 5% level of confidence the hypothesis that the effect of education on the conditional distribution is zero, we cannot reject the hypothesis that education has a protective effect on health. Furthermore, we cannot reject the hypothesis of exogeneity at the conventional levels of confidence.

have studied the impact of education on the conditional distribution of BMI, with particular attention to the upper quantiles, where policy interest concentrates.

Our empirical findings point to three main conclusions: first, education has a protective effect on BMI and the probability of being obese or overweight. The size of the estimated effect is not negligible but smaller than the one found in recent comparable estimates for the US³⁹. Second, and reassuringly, we cannot reject the hypothesis that the standard usage of years of schooling as the measure of endogenous education –instrumented with compulsory years of schooling - produces consistent estimates. There is also evidence that percentage changes in alternative measures of education – years of schooling or cognitive test scores – induce broadly similar proportional reductions in individual BMI. Therefore, the emphasis placed by the empirical literature on years of schooling – motivated mainly by data constraints – is not ill placed. Third, we have found that focusing on conditional mean effects – as most of the current literature does - may overlook the fact that treatment effects are heterogeneous across the quantiles of the distribution of BMI. This heterogeneity does not imply, however, that estimated marginal effects are highest among females in the top quantile of the distribution of BMI: it is the incidence of overweight, not of the obese, that responds the most to marginal changes in years of schooling. Since the incidence of overweight is larger than the incidence of obesity, different marginal effects translate in fairly similar elasticities. These findings suggest that targeting education policies at the individuals who are located in the upper quantiles of the distribution of BMI is not more effective than targeting other groups.

Our results suggest that general education campaigns that affect individuals with low education – who are particularly at risk of having un-healthy lifestyles – can play a role in reducing obesity. However, the recent surge in the phenomenon, both in the US and to a lesser extent in Europe, indicates that these campaigns alone are unlikely to turn the tide. Other policies, such as the establishment of standards and the introduction of appropriate taxes and subsidies, seem required if we intend to drastically reduce the incidence of severe obesity.

While these findings require a number of qualifications, we conclude with only one. We have compared younger individuals who are affected by school reforms with older individuals who are not

³⁹ The moderate effect of additional (compulsory) education on individual BMI may be understood in the light of the technological change theory of obesity (see Philipson and Posner, 2003). According to this theory, the long run growth of obesity is explained by changes in the price of consuming and expending calories. Since more educated individuals tend to be more frequently employed in less strenuous working activities, they tend to expend fewer calories at work, other things being equal. The reallocation of physical exercise from working time to leisure time can only partly offset this change. In this case, the protective effect of education, working for instance through better information processing skills and on a taste

affected. Since mortality increases with age and decreases with education, our control group consists mostly of survivors, and cannot be considered as fully representative of the entire population of individuals not affected by school reforms. These survivors are typically in better health and have lower BMI and higher education than those who could not survive. An implication of this unavoidable feature of our data is that our empirical estimates should be considered as a lower bound of the true effects of education on adiposity and obesity.

for being in good health, can be partly or even completely offset by the decline in physical exercise due to automation in college related jobs.

REFERENCES

- Abadie, A. and Angrist, J. and Imbens, G. (2002) Instrumental Variables Estimates of the Effect of Subsidized Training on the Quantiles of Trainee Earnings, *Econometrica*, Vol. 70(1): 91-117.
- Angrist, J. and Imbens, G. and Rubin, D. (1996) Identification of Causal Effects Using Instrumental Variables. *Journal of the American Statistical Association*, 91(434): 444-455, June.
- Angrist, J. and Pischke J., (2009), *Mostly Harmless Econometrics*, Princeton University Press, Princeton.
- Arendt, J.N. (2005) Does education cause better health? A panel data analysis using school reforms for identification, *Economics of Education Review*, 24: 149–160.
- Arias, O. and Hallock K. F. and Sosa-Escudero, W. (2001) Individual Heterogeneity in the Returns to Schooling: Instrumental Variables Quantile Regression Using Twins Data. *Empirical Economics*, 26: 7-40.
- Ariga K., Brunello G., Iwahashi R. and Rocco L. (2008) On the Efficiency Costs of De-Tracking Secondary Schools, mimeo, University of Padova.
- Becker, G. and Mulligan, C. B. (1997) The Endogenous Determination of Time Preference. *The Quarterly Journal of Economics*, 112 (3): 729-758.
- Brunello, G. and Michaud, P.C. and Sanz-de-Galdeano, A. (2009) The Rise of Obesity in Europe: an Economic Perspective, *Economic Policy*, 57.
- Brunello, G., Fort, M. and Weber, G. (2009) Changes in Compulsory Schooling, Education and the Distribution of Wages in Europe, *The Economic Journal*, March.
- Burkhauser, R.V. and Cawley, J. (2008) Beyond BMI: The Value of More Accurate Measures of Fatness and Obesity in Social Science Research, *Journal of Health Economics*, 27(2): 519-29.
- Carneiro P. and Heckman J. (2002) The Evidence on Credit Constraints in Post-Secondary Education. NBER WP 9055.
- Cawley, J. and Spiess, C.K. (2008) Obesity and Skill Attainment in Early Childhood. NBER Working Paper No. 13997.
- Cascio E., Clark D., Gordon N. (2008) [Education and the Age Profile of Literacy into Adulthood](#), [NBER Working Papers](#) 14073.
- Chernozhukov, V. and Hansen, C. (2005) An IV Model of Quantile Treatment Effects, *Econometrica*, 73(1): 245-261, January.
- Chernozhukov, V. and Hansen, C. (2006) Instrumental quantile regression inference for structural and treatment effect models. *Journal of Econometrics* 132: 491-525.
- Chernozhukov, V. and Hansen, C. (2008) Instrumental quantile regression: a robust inference approach. *Journal of Econometrics*, 142: 379-398.

- Chesher, A. (2001) Exogenous Impact and Conditional Quantile Functions. Working Paper CWP 01/01, Center for microdata methods and practice, October (revision).
- Chesher, A. (2002) Instrumental Values. Working Paper CWP17/02, Center for microdata methods and practice, March.
- Chesher, A. (2003) Identification in Nonseparable Models. *Econometrica*, 71: 1405-1441.
- Chesher, A. (2005) Nonparametric Identification Under Discrete Variation, *Econometrica*, 73(5): 1525-1550, September.
- Clark, D., Royer, H. (2008) The effect of education on adult mortality and health. Evidence from the United Kingdom, mimeo, University of Florida.
- Cutler, D.M. and Lleras-Muney, A. (2006) Education and Health: Evaluating Theories and Evidence, NBER Working Paper 12352.
- Cutler, D.M. and Lleras-Muney, A. (2007) Understanding Differences in Health Behavior by Education, mimeo, Harvard University.
- Ding, W. and Lehrer, S.F. and Rosenquist, J.N. and Audrain-McGovern, J. (2006) The Impact of Poor Health on Education: New Evidence Using Genetic Markers, National Bureau of Economic Research (NBER) Working Paper No. 12304.
- Doornik, J.A. (2007), Object-Oriented Matrix Programming Using Ox, 3rd ed., London: Timberlake Consultants Press and Oxford: www.doornik.com.
- Feinstein, L. and Sabates, R. and Anderson, T.M. and Sorhaindo, A. and Hammond, C. (2006) What Are the Effects of Education on Health?, in *Proceedings of the Copenhagen Symposium "Measuring the Effects of Education on Health and Civic Engagement"*, Organization for Economic Co-operation and Development (OECD), Paris.
- Grabner M, (2008), The Causal Effect of Education on Obesity: Evidence from Compulsory Schooling Laws, mimeo, University of California at Davis.
- Grossman, M. (2004) The Demand for Health, 30 Years Later: A Very Personal Retrospective And Prospective Reflection, *Journal of Health Economics*, 23: 629–636.
- Grossman, M. (2006) Education and Nonmarket Outcomes, in Hanushek, E. and Welch, F., *Handbook of The Economics of Education*, vol. 1, Elsevier.
- Hamermesh, D., (2009), [Grazing, Goods and Girth: Determinants and Effects](#), [NBER Working Papers](#) 15277.
- Hanushek, E. and Woessmann, L. (2006). “Does Education Tracking Affect Performance and Inequality? Differences in Differences Evidence Across Countries”, *The Economic Journal*, 116: C63-C76.
- Hanushek E. and Wossmann, L. (2009), Do Better Schools Lead to More Growth? Cognitive Skills, Economic Outcomes, and Causation, NBER Working Paper 14633.
- Kenkel, D. and Lillard, D. and Mathios, A. (2006) The Roles of High School Completion and GED Receipt in Smoking and Obesity, *Journal of Labor Economics*, 2006, 24(3): 635-660.

- Kenkel, D.S. (1991) Health behavior, health knowledge, and schooling, *Journal of Political Economy* 99: 287-305.
- Jürges, H, Reinhold, S and Salm, M. (2008) Does Schooling Improve Your Health? Evidence from the Educational Expansion in Western Germany. mimeo, Mannheim Research Institute for the Economics of Aging University of Mannheim.
- Lee, S. and Card, D. (2008) Regression Discontinuity Inference with Specification Error, *Journal of Econometrics*, Vol. 142(2): 655-674.
- Lleras-Muney, A. (2005) The Relationship Between Education and Adult Mortality in the U.S., *Review of Economics Studies*, Vol. 72(1), January 2005.
- Lundborg, P. (2008) The Health Returns to Education. What Can We Learn From Twins? Institute for the Study of Labor (IZA) DP No. 3399.
- Ma, L. and Koenker, R. (2006) Quantile Regression Methods for Recursive Structural Equation Models. *Journal of Econometrics*, 134:471-506, October.
- MacInnis, B. (2008) Does college education impact health? Evidence from the pre-lottery Vietnam draft, mimeo.
- Mazzocchi, M., Traill, W.B. and Shogren, J.F. (2009) Fat Economics. Nutrition, Health, and Economic Policy. Oxford University Press, New York.
- Murray, L.J. and O'Reilly, J. and Betts, N. and Patterson, C.C. and Smith, G.D. and Evans, A.E. (2000) Season and outdoor ambient temperature: Effects on birth weight. *Obstetrics and Gynecology*, 96(5), pp. 689-695
- Oreopoulos, P., 2006b. Estimating average and local average treatment effects of education when compulsory schooling laws really matter. *American Economic Review* 96, 152-175.
- Philipson, T.J. and Posner R.A. (2003) The long-run growth in obesity as a function of technological change *Perspectives in Biology and Medicine*, Volume: 46 Issue: 3 Pages: S87-S107.
- Philipson, T. and Posner, R. (2008) Is the Obesity Epidemic a Public Health Problem? *Journal of Economic Literature*, Volume: 46 Issue: 4 Pages: 974-982.
- Phillips, D.I.W. and Young, J.B. (2000) Birth weight, climate at birth and the risk of obesity in adult life. *International Journal of Obesity*, 24: 281-287.
- Pischke, J., von Wachter, T., 2005. Zero returns to compulsory schooling in Germany. Evidence and interpretation. NBER Working Paper 11414.
- Quintana Domeque, C. and Villar, G. (2008) Income and Body Mass Index in Europe. Department of Economics and Business, Universitat Pompeu Fabra series Economics Working Papers N. 1001.
- Ruhm, C. (2000) Are recessions good for your life? *Quarterly Journal of Economics*, 115(2), 617-650.
- Ruhm, C. (2003) Good times make you sick. *Journal of Health Economics* 22 (2003) 637-658.
- Sanz-de-Galdeano, A. (2007) An Economic Analysis of Obesity in Europe: Health, Medical Care and Absenteeism Costs. Fundacion de Estudios de Economia Aplicada (FEDEA) Working Paper 2007-38.

- Silles, M.A. (2009) The Causal Effect of Education on Health: Evidence from the United Kingdom, *Economics of Education Review* 28:122–128.
- Spasojevic, J. (2003) Effects of education on adult health in Sweden: Results from a Natural Experiment. Ph.D. Thesis. Graduate School for Public Affairs and Administration, Metropolitan College of New York.
- Staiger, D. and Stock, J.H. (1997) Instrumental variables regression with weak instruments. *Econometrica*, Vol. 65 (3): 557-586.
- van den Berg, G., Lundborg, P., Nystedt, P., and Rooth, D.-O. (2009) [Critical Periods During Childhood and Adolescence: A Study of Adult Height Among Immigrant Siblings](#). Institute for the Study of Labor (IZA) DP No. 4140.
- Van Hanswijk De Jonge, L. and, Kumaryka, S. and Støa Birketvedt G Waller1 (2002) Environmental temperature during gestation and body mass index in adolescence: new etiologic clues? *International Journal of Obesity*, Vol. 26: 765-769.
- Webbink, D. and Martin, N.G. and Visscher, P. M. (2008) Does teenage childbearing increase smoking, drinking and the body size? *Journal of Health Economics*, 27: 888-903.
- World Health Organization (2002). The World Health Report: 2002: Reducing risks, promoting healthy life. Geneva.
- Wooldridge, J. M. (2002) *Econometric Analysis of Cross Sections and Panel Data*, Massachusetts Institute of Technology (MIT).

Table 1. School reforms in Europe

Country	Year of Reform	First affected cohort	Change in minimum school-leaving age	Change in years of compulsory schooling	Min. expected qualification	School entry age
Austria	1962	1947	14 => 15	8 => 9	ISCED2	6
Belgium	1983	1969	14 => 18	8 => 12	ISCED3	6
Denmark	1971	1957	14 => 16	7 => 9	ISCED3	7
Finland (Uusima)	1977	1966	13 => 16	6 => 9	ISCED3	7
Finland (Etela-Suomi)	1976	1965	13 => 16	6 => 9	ISCED3	7
Finland (Ita-Suomi)	1974	1963	13 => 16	6 => 9	ISCED3	7
Finland (Vali-Suomi)	1973	1962	13 => 16	6 => 9	ISCED3	7
Finland (Pohjois-Suomi)	1972	1961	13 => 16	6 => 9	ISCED3	7
France	1959	1953	14 => 16	8 => 10	ISCED3	6
Germany (Sch. Hols.)	1956	1941	14 => 15	8 => 9	ISCED3	6
Germany (Hamburg)	1949	1934	14 => 15	8 => 9	ISCED3	6
Germany (Nieders.)	1962	1947	14 => 15	8 => 9	ISCED3	6
Germany (Bremen)	1958	1943	14 => 15	8 => 9	ISCED3	6
Germany (Nord.Wes.)	1967	1953	14 => 15	8 => 9	ISCED3	6
Germany (Hessen)	1967	1953	14 => 15	8 => 9	ISCED3	6
Germany (Rhein.Pf.)	1967	1953	14 => 15	8 => 9	ISCED3	6
Germany (Baden-W.)	1967	1953	14 => 15	8 => 9	ISCED3	6
Germany (Bayern)	1969	1955	14 => 15	8 => 9	ISCED3	6
Germany (Saarland)	1964	1949	14 => 15	8 => 9	ISCED3	6
Greece	1975	1963	12 => 15	6 => 9	ISCED2	6
Ireland	1972	1958	14 => 15	8 => 9	ISCED3	6
Italy	1963	1949	11 => 14	5 => 8	ISCED2	6
UK (Scotland)	1976	1961	15 => 16	10 => 11	ISCED3	5
UK (England, Wales, Northern Ireland)	1973	1958	15 => 16	10 => 11	ISCED3	5
Spain	1970	1957	12 => 14	6 => 8	ISCED2	6
Sweden	1962	1950	14/15 => 15/16	8 => 9	ISCED3	6/7
Portugal	1964	1956	12 => 14	4 => 6	ISCED2	8

Table 2. Summary statistics

Country	Bmi	Years of education	Years of compulsory education	Age	N° observations
Austria	26.1	11.1	8.5	53.8	1,202
Belgium	22.9	15.4	10.0	29.3	275
Denmark	24.1	14.0	7.9	43.3	767
Finland	23.9	15.3	7.4	34.8	843
France	24.2	12.3	9.0	49.6	3,593
Germany	25.1	12.2	8.6	50.3	2,722
Greece	24.2	11.7	7.3	36.6	1,272
Ireland	24.4	11.0	8.5	39.9	765
Italy	24.8	9.6	6.4	50.9	2,216
Portugal	25.4	6.8	4.9	42.3	475
Spain	24.2	9.6	7.0	42.2	1,630
Sweden	25.2	11.8	8.5	54.3	357
UK	25.8	13.2	10.6	43.4	1,471

Note: data for Belgium, Portugal and Sweden refer to the cohorts born between 3 years before and 3 years after the year of birth of the first affected cohort (see Table 1). Data for all other countries refer to the cohorts born between 7 years before and 7 years after the year of birth of the first affected cohort. See the text for more details. In the table we exclude records with missing values for the variables used in the estimates.

Table 3: First stage effects. Dependent variable: years of schooling S

	Window +7,-7	Window +3,-3
Years of compulsory education YCOMP	0.367*** [0.059]	0.378*** [0.081]
Log GDP per-capita at pivotal age	1.385** [0.604]	1.627*** [0.615]
Unemployment rate at pivotal age	-0.065* [0.039]	-0.082 [0.075]
Born in autumn or winter	0.016 [0.063]	-0.111 [0.086]
Avg. temperature at month of birth	-0.008 [0.010]	-0.007 [0.013]
Observations	16335	8843
F test	38.35	21.87

Note: Robust standard errors within brackets. All regressions include year and country dummies and a country specific second order polynomial in $K=T+7$ for the broader window and $K=T+3$ for the smaller window. The benchmark country is the UK. Pivotal age is the age first affected by the school reform. The estimates in the shorter window include Belgium, Portugal and Sweden. These countries are excluded in the broader window. One, two and three stars for coefficients statistically significant at the 10, 5 and 1 percent level of confidence.

Table 4. Ordinary least squares and instrumental variable estimates. Dependent variable: BMI

	Window +7,-7		Window +3,-3	
	OLS	IV	OLS	IV
Years of schooling (S)	-0.204*** [0.009]	-0.347** [0.171]	-0.199*** [0.013]	-0.479** [0.236]
Log GDP per-capita at pivotal age	-2.620 [0.755]	-2.457*** [0.779]	-0.563 [0.882]	-0.138 [0.951]
Unemployment rate at pivotal age	-0.137*** [0.047]	-0.148*** [0.050]	-0.268*** [0.089]	-0.297*** [0.096]
Born in autumn or winter	-0.191** [0.077]	-0.188* [0.077]	0.050 [0.102]	0.018 [0.108]
Avg. temperature at month of birth	-0.011 [0.011]	-0.012 [0.012]	0.011 [0.015]	0.008 [0.016]
Elasticity of BMI to years of schooling				
at sample mean	-0.097*** [0.004]	-0.165** [0.081]	-0.094*** [0.006]	-0.227** [0.112]
at UK first affected cohort	-0.107*** [0.005]	-0.181** [0.089]	-0.103*** [0.007]	-0.249** [0.123]
Hausman test for endogeneity (p-value)		0.414		0.283
Observations	16335	16335	8843	8843

Notes: robust standard errors within brackets. All regressions include year and country dummies and a country specific second order polynomial in $K=T+7$ for the broader window and $K=T+3$ for the smaller window. The benchmark country is the UK. The estimates in the shorter window include Belgium, Portugal and Sweden. These countries are excluded in the broader window. One, two and three stars for coefficients statistically significant at the 10, 5 and 1 percent level of confidence.

Table 5. Probit models. Panel a: probability of being overweight (BMI>=25)

VARIABLES	Window +7,-7		Window +3,-3	
	probit	ivprobit	probit	ivprobit
Years of schooling	-0.058*** [0.003]	-0.114** [0.050]	-0.057*** [0.004]	-0.163*** [0.057]
Log GDP per-capita at pivotal age	-0.374* [0.224]	-0.302 [0.234]	0.079 [0.268]	0.239 [0.268]
Unemployment rate at pivotal age	-0.027* [0.015]	-0.031** [0.015]	-0.057** [0.028]	-0.064** [0.028]
Born in 2nd semester	-0.017 [0.024]	-0.015 [0.024]	0.025 [0.032]	0.01 [0.032]
Avg. temperature at birth	0.001 [0.004]	0 [0.004]	0.007 [0.005]	0.006 [0.005]
Hausman test for endogeneity (p-value)		0.286		0.113
Marginal Effects to years of schooling				
at sample mean	-0.022*** [0.001]	-0.044** [0.021]	-0.022*** [0.002]	-0.067** [0.030]
at UK first affected cohort	-0.023*** [0.001]	-0.046** [0.022]	-0.023*** [0.002]	-0.070** [0.031]
Elasticity to years of schooling				
at sample mean	-0.682*** [0.039]	-1.087** [0.450]	-0.671*** [0.052]	-1.660*** [0.517]
at UK first affected cohort	-0.682*** [0.047]	-1.341** [0.591]	-0.630*** [0.061]	-1.784*** [0.636]
% overweight at the mean		38.74		38.77
% overweight at UK first affected cohort		41.94		41.94
Observations		16335		8843

Table 5. Probit models (continued). Panel b: probability of being obese (BMI>=30)

VARIABLES	Window +7,-7		Window +3,-3	
	probit	ivprobit	probit	ivprobit
Years of schooling	-0.065*** [0.005]	-0.066 [0.074]	-0.063*** [0.006]	-0.093 [0.096]
Log GDP per-capita at pivotal age	-0.637** [0.279]	-0.636** [0.294]	-0.193 [0.323]	-0.146 [0.358]
Unemployment rate at pivotal age	-0.033* [0.020]	-0.033* [0.020]	-0.029 [0.037]	-0.031 [0.038]
Born in 2nd semester	-0.087*** [0.031]	-0.087*** [0.031]	0.044 [0.041]	0.041 [0.043]
Avg. temperature at birth	-0.003 [0.005]	-0.003 [0.005]	0.009 [0.006]	0.009 [0.006]
Marginal Effects to years of schooling				
at sample mean	-0.012*** [0.001]	-0.012 [0.013]	-0.012*** [0.001]	-0.017 [0.018]
at UK first affected cohort	-0.016*** [0.001]	-0.016 [0.018]	-0.016*** [0.002]	-0.023 [0.025]
Elasticity to years of schooling				
at sample mean	-1.341*** [0.104]	-1.157 [1.276]	-1.283*** [0.132]	-1.670 [1.646]
at UK first affected cohort	-1.311*** [0.111]	-1.319 [1.491]	-1.273*** [0.144]	-1.852 [1.896]
%obese at the mean		11.42		11.64
%obese at UK first affected cohort		17.2		17.2
Observations		16335		8843

Notes: robust standard errors within brackets. All regressions include year and country dummies and a country specific second order polynomial in $K=T+7$ for the broader window and $K=T+3$ for the smaller window. The benchmark country is the UK. The estimates in the shorter window include Belgium, Portugal and Sweden. These countries are excluded in the broader window. One, two and three stars for coefficients statistically significant at the 10, 5 and 1 percent level of confidence.

Table 6. Ordinary least squares and instrumental variable estimates in the generated sample which includes both years of schooling S and the test score TS . Dependent variable: BMI. Window +7,-7

Tolerance	Obs.	Treatment variable	Hausman Test	First stage (YCOMP on treatment)	Marginal effect		Elasticity at mean		Elasticity at reference	
					OLS	IV	OLS	IV	OLS	IV
h=0.20	5107	S_{FULL}	0.161	0.558*** [0.100]	-0.176*** [0.016]	-0.446*** [0.183]	-0.080*** [0.007]	-0.203*** [0.083]	-0.092*** [0.009]	-0.233*** [0.096]
		S_{IALS}	0.155	0.461*** [0.093]	-0.197*** [0.018]	-0.540** [0.210]	-0.088*** [0.008]	-0.241** [0.100]	-0.100*** [0.009]	-0.275** [0.114]
		Score (TS)	0.098	9.203*** [1.484]	-0.008*** [0.001]	-0.027** [0.011]	-0.078*** [0.012]	-0.279** [0.116]	-0.081*** [0.012]	-0.290** [0.120]
h=0.25	5176	S_{FULL}	0.116	0.644*** [0.102]	-0.165*** [0.016]	-0.421*** [0.155]	-0.076*** [0.007]	-0.192*** [0.071]	-0.086*** [0.008]	-0.220*** [0.081]
		S_{IALS}	0.081	0.515*** [0.090]	-0.167*** [0.018]	-0.526*** [0.188]	-0.074*** [0.008]	-0.233*** [0.087]	-0.085*** [0.009]	-0.268*** [0.101]
		Score (TS)	0.066	9.991*** [1.487]	-0.008*** [0.001]	-0.027*** [0.010]	-0.082*** [0.011]	-0.278*** [0.104]	-0.085*** [0.012]	-0.289*** [0.108]
h=0.30	5187	S_{FULL}	0.100	0.643*** [0.102]	-0.163*** [0.015]	-0.422*** [0.156]	-0.075*** [0.007]	-0.193*** [0.071]	-0.085*** [0.008]	-0.220*** [0.081]
		S_{IALS}	0.090	0.499*** [0.089]	-0.177* [0.018]	-0.544** [0.196]	-0.078* [0.008]	-0.239** [0.090]	-0.089*** [0.009]	-0.273*** [0.103]
		Score (TS)	0.060	8.977*** [1.506]	-0.008*** [0.001]	-0.030** [0.011]	-0.078*** [0.011]	-0.309*** [0.117]	-0.079*** [0.012]	-0.313*** [0.118]

Notes: robust standard errors within brackets. The standard errors for elasticities are computed using the delta method (implemented by a built-in function in STATA). The reference point is the pivotal cohort for UK. The treatment variables are the quantity of education, measured as years of education both in the full sample and in IALS, and the average test score. S_{FULL} denotes the quantity of education recorded in the FULL sample and S_{IALS} denotes the quantity of education recorded in the IALS sample and imputed here. All regressions include year and country dummies, a country specific second order polynomial in $K=T+7$, the log of GDP per capita and the unemployment rate at the pivotal age, the average temperature at month of birth and a dummy for the period of birth. One, two and three stars for coefficients statistically significant at the 10, 5 and 1 percent level of confidence.

Table 7. Test of the validity of the exclusion restriction. Measure of the quantity of education S_{IALS}

		(1)	(2)	(3)	(4)	(5)	(6)	(7)	(8)	(9)
Tolerance	Test statistic	Point estimate	Mean	Se	LB95 (normality)	UB95 (normality)	Quant. 0.025	Quant. 0.975	Quant. 0.05	Quant. 0.95
h=0.2	Double ratio t_1	1.231	1.347	0.311	0.0738	1.956	0.823	2.048	0.9	1.919
	Elasticity difference t_2 (IV estimates, mean)	-0.037	-0.035	0.057	-0.147	0.076	-0.156	0.079	-0.128	0.058
	Elasticity difference t_2 (IV estimates, reference)	-0.014	-0.012	0.062	-0.132	0.11	-0.125	0.127	-0.107	0.093
h=0.25	Double ratio t_1	1.072	1.108	0.224	0.0668	1.548	0.751	1.637	0.79	1.527
	Elasticity difference t_2 (IV estimates, mean)	-0.045	-0.047	0.053	-0.151	0.057	-0.157	0.033	-0.131	0.023
	Elasticity difference t_2 (IV estimates, reference)	-0.021	-0.022	0.053	-0.126	0.081	-0.134	0.077	-0.105	0.052
h=0.3	Double ratio t_1	1.220	1.329	0.297	0.746	1.911	0.882	1.923	0.927	1.824
	Elasticity difference t_2 (IV estimates, mean)	-0.070	-0.074	0.059	-0.188	0.042	-0.208	0.014	-0.173	0.001
	Elasticity difference t_2 (IV estimates, reference)	-0.040	-0.042	0.058	-0.155	0.072	-0.17	0.058	-0.131	0.04

Legend: Double ratio is the statistic $t_1 = \frac{E(\alpha_{OLS})}{E(\beta_{OLS})} / \frac{E(\alpha_{IV})}{E(\beta_{IV})}$; Elasticity difference is the statistic $t_2 \equiv \frac{\partial \ln BMI}{\partial \ln TS} - \frac{\partial \ln BMI}{\partial \ln S}$. The elasticities are evaluated at the sample

mean and for the reference country (UK). Columns (2) and (3) report the mean and the standard error of the estimate of t_1 and t_2 obtained over 500 bootstrap replications. Column (4) and (5) report the extremes of the 95% confidence interval using the normal approximation; columns (6), (7), (8) and (9) report the extremes of the 95% and 90% confidence intervals based on the empirical distribution of the estimators.

Table 8. Test of the validity of the exclusion restriction. Measure of the quantity of education S_{FULL}

		(1)	(2)	(3)	(4)	(5)	(6)	(7)	(8)	(9)
Tolerance	Test statistic	Point estimate	Mean	Se	LB95 (normality)	UB95 (normality)	Quant. 0.025	Quant. 0.975	Quant. 0.05	Quant. 0.95
h=0.2	Double ratio t_1	1.332	1.472	0.341	0.804	2.14	0.0927	2.298	0.98	2.081
	Elasticity difference t_2 (IV estimates, mean)	-0.076*	-0.076	0.056	-0.187	0.034	-0.21	0.0196	-0.178	-0.001
	Elasticity difference t_2 (IV estimates, reference)	-0.056	-0.057	0.057	-0.168	0.055	-0.184	0.043	-0.16	0.021
h=0.25	Double ratio t_1	1.323	1.373	0.291	0.082	1.943	0.911	1.994	0.955	1.914
	Elasticity difference t_2 (IV estimates, mean)	-0.086**	-0.09	0.06	-0.207	0.027	-0.222	-0.005	-0.191	-0.014
	Elasticity difference t_2 (IV estimates, reference)	-0.069	-0.074	0.058	-0.187	0.04	-0.21	0.011	-0.175	0
h=0.3	Double ratio t_1	1.448**	1.6	0.396	0.824	2.376	1.022	2.433	1.089	2.243
	Elasticity difference t_2 (IV estimates, mean)	-0.116**	-0.121	0.067	-0.251	0.009	-0.275	-0.022	-0.239	-0.033
	Elasticity difference t_2 (IV estimates, reference)	-0.093**	-0.097	0.064	-0.223	0.028	-0.237	-0.002	-0.197	-0.014

Legend: see Table 8.

Table 9. Quantile estimates of the effect of years of schooling on BMI. Window (-7,+7). Exogenous schooling.

Quantile	Constant	Years of schooling	Log GDP per capita	Unemployment rate at pivotal age	Average temperature at birth	Born in 2nd semester
0.1	22.056*** [0.491]	-0.080*** [0.010]	-2.478*** [0.741]	-0.096*** [0.047]	-0.012 [0.011]	-0.105 [0.077]
0.2	24.015*** [0.450]	-0.109*** [0.009]	-2.777*** [0.720]	-0.076** [0.044]	-0.007 [0.011]	-0.106 [0.071]
0.3	25.047*** [0.532]	-0.133*** [0.009]	-2.679*** [0.660]	-0.122*** [0.043]	-0.009 [0.011]	-0.147*** [0.072]
0.4	26.741*** [0.603]	-0.156*** [0.009]	-2.072*** [0.693]	-0.123*** [0.045]	-0.019** [0.011]	-0.200*** [0.075]
0.5	28.002*** [0.551]	-0.177*** [0.009]	-1.897** [0.811]	-0.123** [0.051]	-0.013 [0.012]	-0.099 [0.082]
0.6	29.585*** [0.590]	-0.208*** [0.010]	-2.105*** [0.945]	-0.139** [0.059]	-0.008 [0.014]	-0.108 [0.093]
0.7	31.248*** [0.712]	-0.228*** [0.011]	-1.962* [1.087]	-0.097 [0.071]	0 [0.016]	-0.102 [0.109]
0.8	34.026*** [0.938]	-0.261*** [0.014]	-3.621*** [1.614]	-0.073 [0.084]	-0.016 [0.019]	-0.353*** [0.128]
0.9	37.057*** [1.206]	-0.322*** [0.018]	-4.369** [1.837]	-0.217* [0.118]	0.006 [0.027]	-0.356** [0.181]

Notes: All quantile regressions include country dummies and a country specific second order polynomial in $K=T-7$. The benchmark country is the UK. Pivotal age is the age first affected by the school reform. Belgium, Portugal and Sweden are not included. Heteroskedasticity robust standard errors within brackets. One, two and three stars for coefficients statistically significant at the 10, 5 and 1 percent level of confidence. The estimates are obtained using the software Ox and the algorithm provided by Hansen in his research web-page.

Table 10. Quantile estimates of the effect of years of schooling on BMI. Window (-7,+7). Endogenous schooling.

Quantile	Constant	Years of schooling	Log GDP per capita	Unemployment rate at pivotal age	Average temperature at birth	Born in 2nd semester
0.1	24.04*** [3.840]	-0.310 [0.324]	-1.765 [1.314]	-0.095 [0.079]	-0.016 [0.018]	-0.098 [0.110]
0.2	26.78*** [1.655]	-0.346** [0.145]	-3.176*** [0.760]	-0.104** [0.046]	-0.011 [0.011]	-0.155** [0.075]
0.3	27.846*** [1.735]	-0.351*** [0.140]	-2.598*** [0.730]	-0.149*** [0.047]	-0.005 [0.012]	-0.153* [0.078]
0.4	28.032*** [2.935]	-0.295 [0.226]	-1.948** [0.773]	-0.131*** [0.048]	-0.024** [0.012]	-0.199** [0.079]
0.5	31.842*** [3.882]	-0.475 [0.306]	-1.369 [0.944]	-0.132** [0.062]	-0.017 [0.013]	-0.131 [0.091]
0.6	31.244*** [3.953]	-0.354 [0.299]	-1.876** [0.877]	-0.161** [0.058]	-0.008 [0.015]	-0.086 [0.091]
0.7	34.055*** [2.502]	-0.393** [0.172]	-1.693 [1.157]	-0.158 [0.100]	-0.003 [0.019]	-0.126 [0.124]
0.8	36.853*** [5.262]	-0.408 [0.371]	-3.120* [1.730]	-0.157 [0.136]	-0.02 [0.026]	-0.367* [0.222]
0.9	35.847*** [2.967]	-0.247 [0.216]	-4.810*** [1.732]	-0.243** [0.112]	-0.007 [0.026]	-0.398** [0.187]

Notes: All quantile regressions include country dummies and a country specific second order polynomial in $K=T+7$. The benchmark country is the UK. Pivotal age is the age first affected by the school reform. Belgium, Portugal and Sweden are not included. Heteroskedasticity robust standard errors within brackets. One, two and three stars for coefficients statistically significant at the 10, 5 and 1 percent level of confidence. The estimates are obtained using the software Ox and the algorithm provided by Hansen in his research web-page.

Table A1. Sample sizes and correlations between key variables.

tolerance (h)	FULL+IALS size	correlation S_{FULL} S_{IALS}	correlation S_{IALS} score	correlation S_{FULL} score	Fraction of matched records
0.20	5107	0.936	0.591	0.546	0.98
0.25	5176	0.905	0.600	0.530	0.99
0.30	5187	0.869	0.618	0.527	0.99

Table A2. Sample sizes by sample and their ratio.

Country	IALS sample size	FULL sample size	IALS size/ FULL size
Denmark	503	767	0.66
Ireland	479	765	0.63
Italy	449	2216	0.20
UK	1383	1471	0.94
Total	2814	5219	0.54

Figures

Figure 1: Empirical cumulative distributions of years of education by reform status.

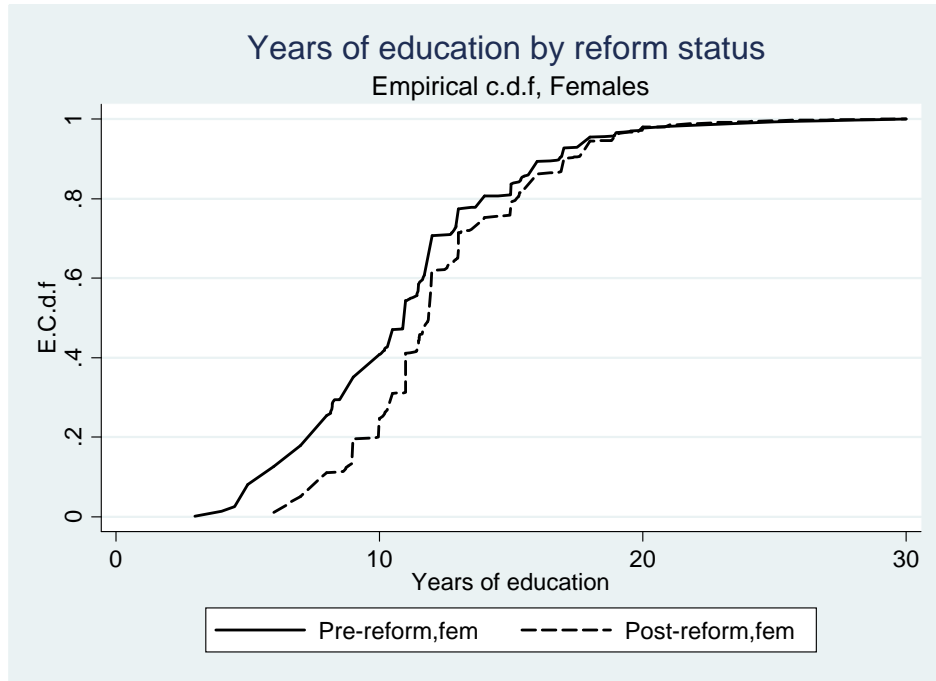


Figure 2: Effect of the years of compulsory education (YCOMP) on average years of schooling, net of exogenous controls.

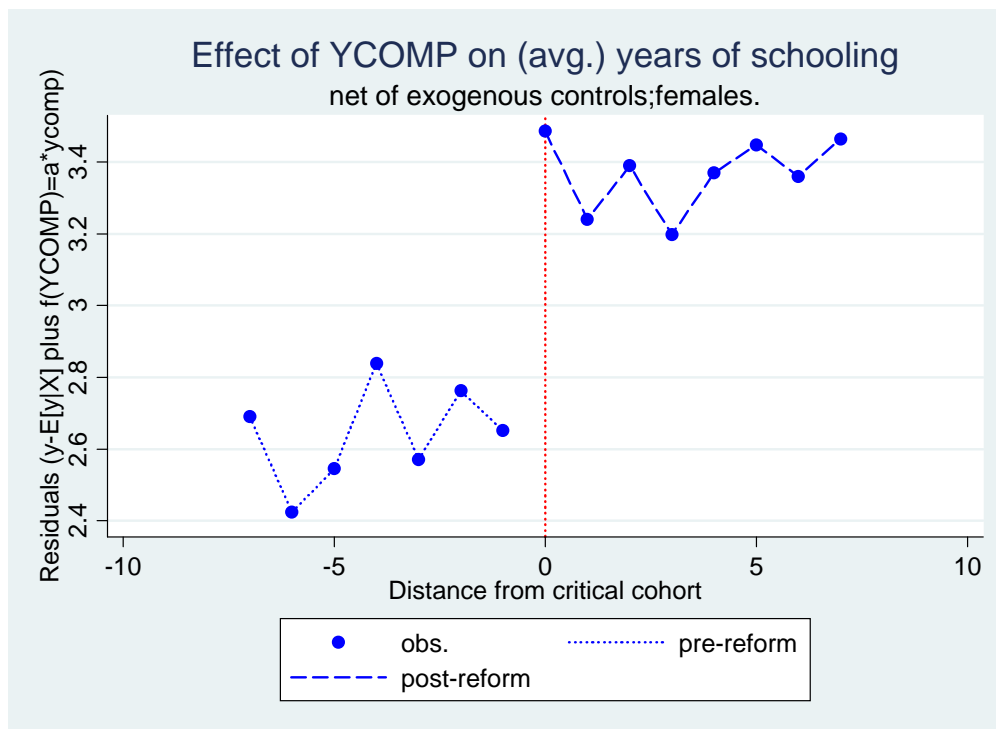
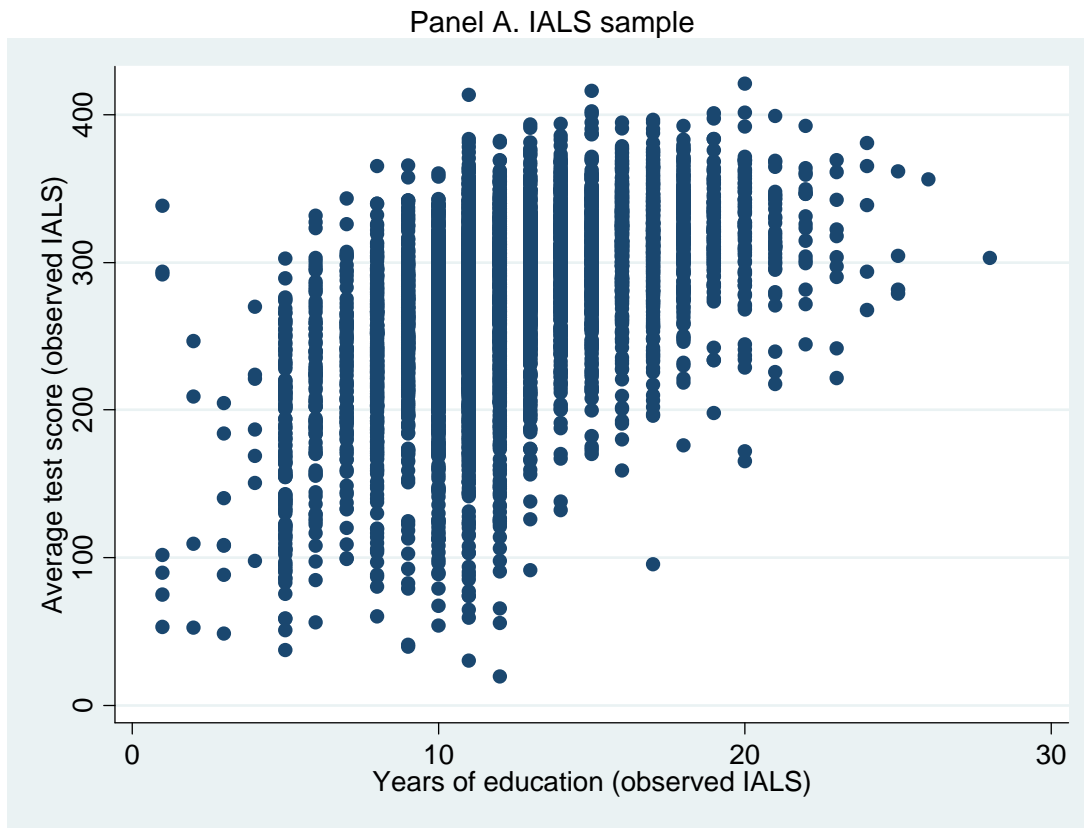


Figure 3: Conditional distribution of test scores by levels of years of schooling. International Adult Literacy Survey (IALS) and the augmented data set (see details in Section 5 in the text).



Panel B. Augmented sample (after imputation; tolerance: 0.20)

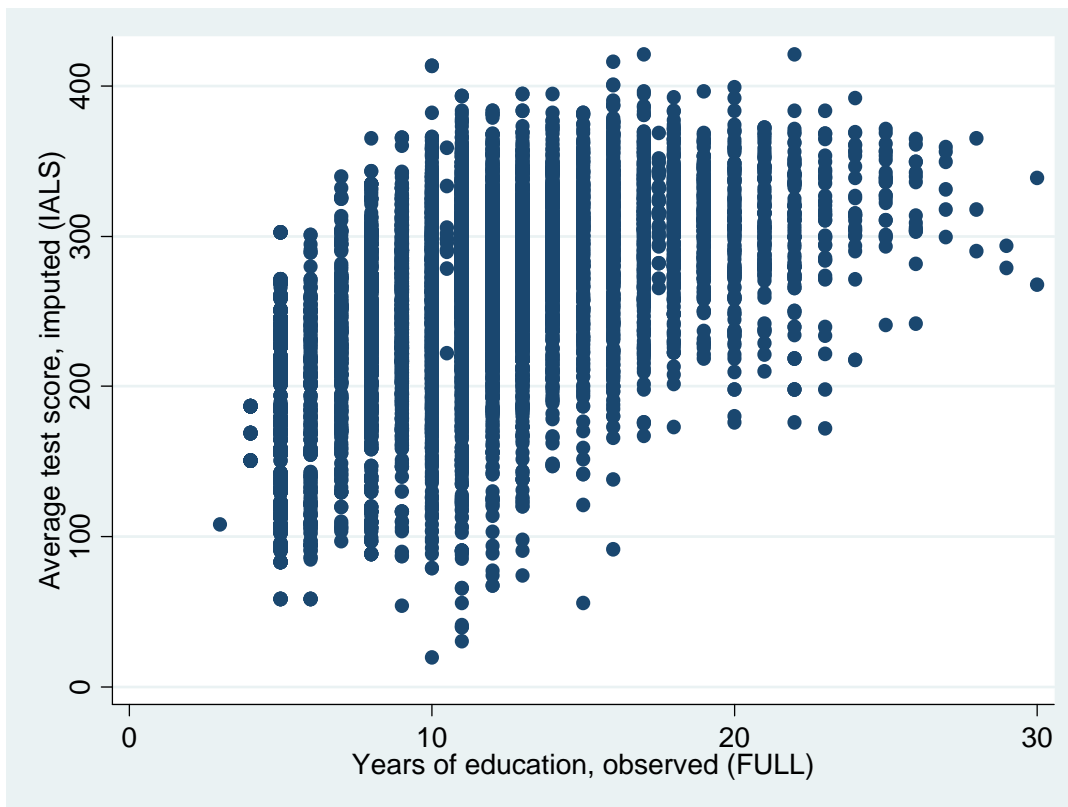


Figure 4. Treatment effect when the treatment (additional schooling) is assumed to be exogenous. Females only.

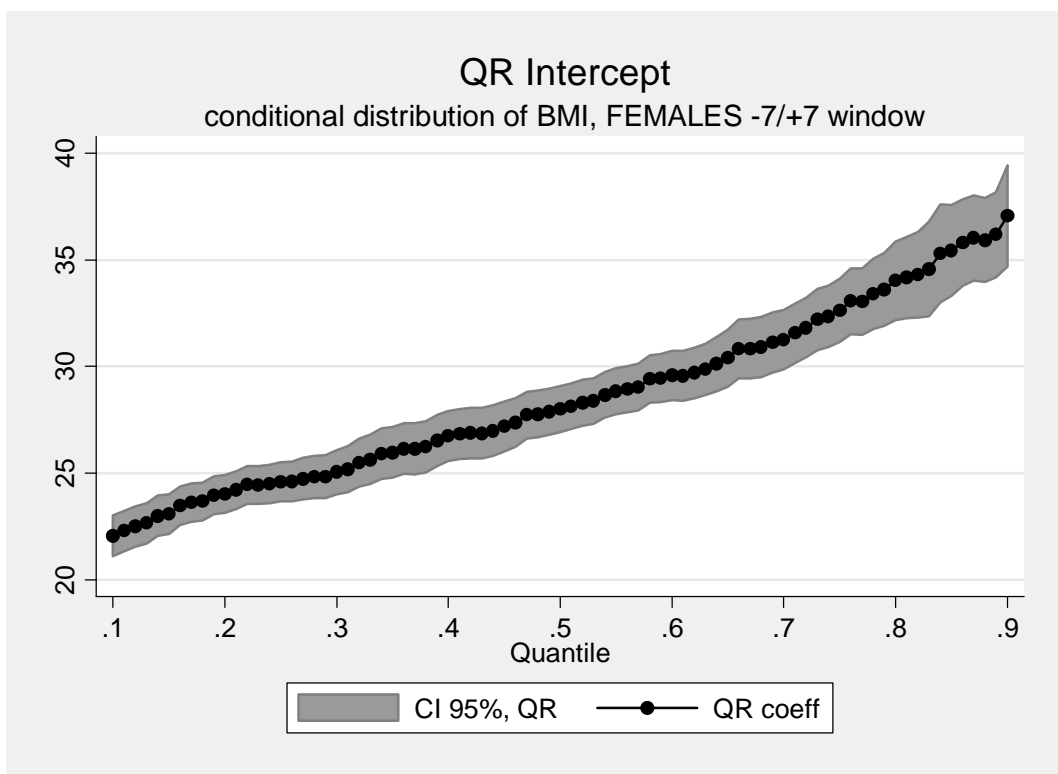
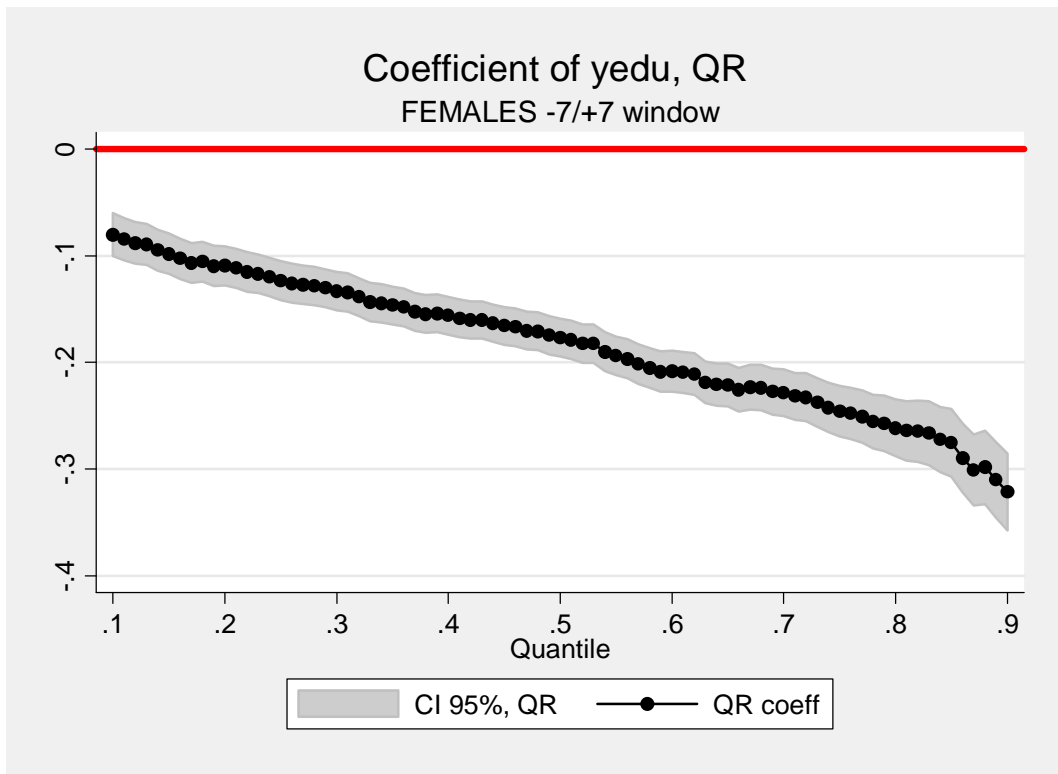


Figure 5. Treatment effect when the treatment (years of schooling) is assumed to be exogenous and when is treated as endogenous and instrumented with years of compulsory education (ycomp). Females only.

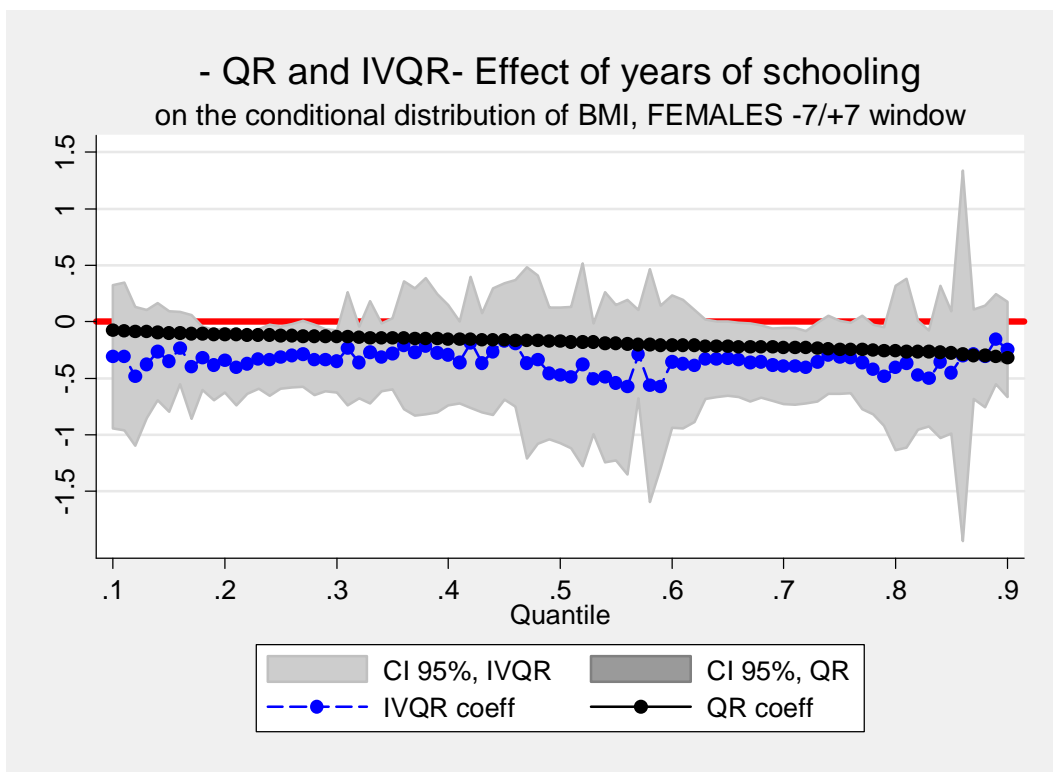
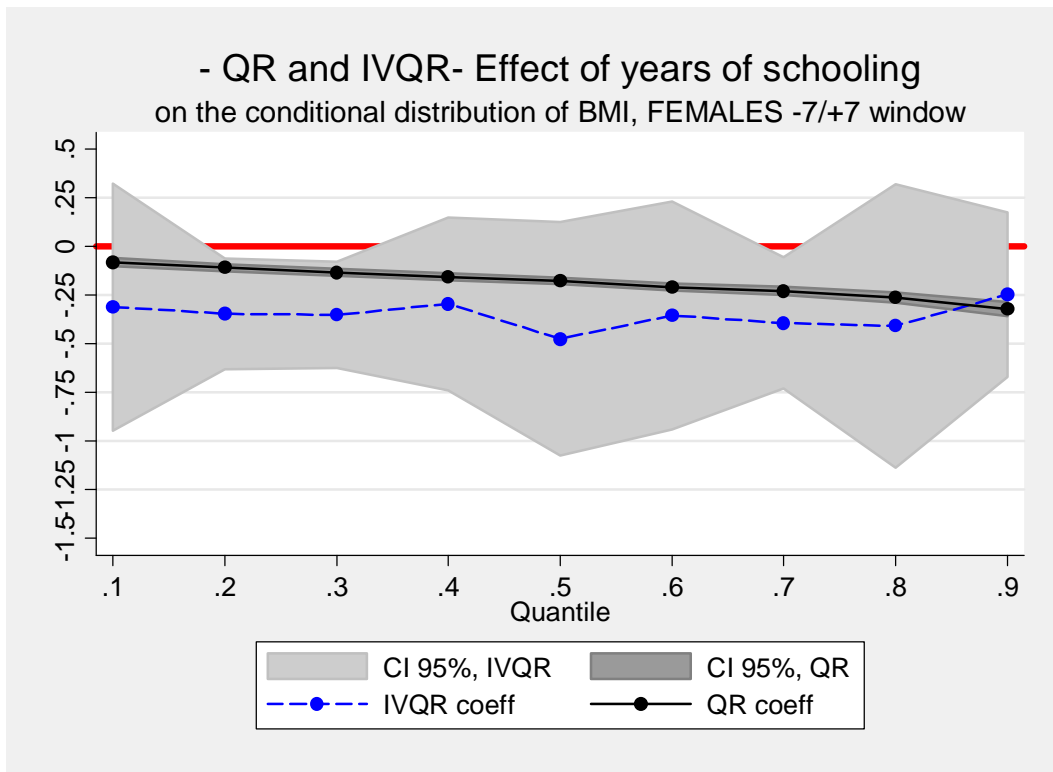
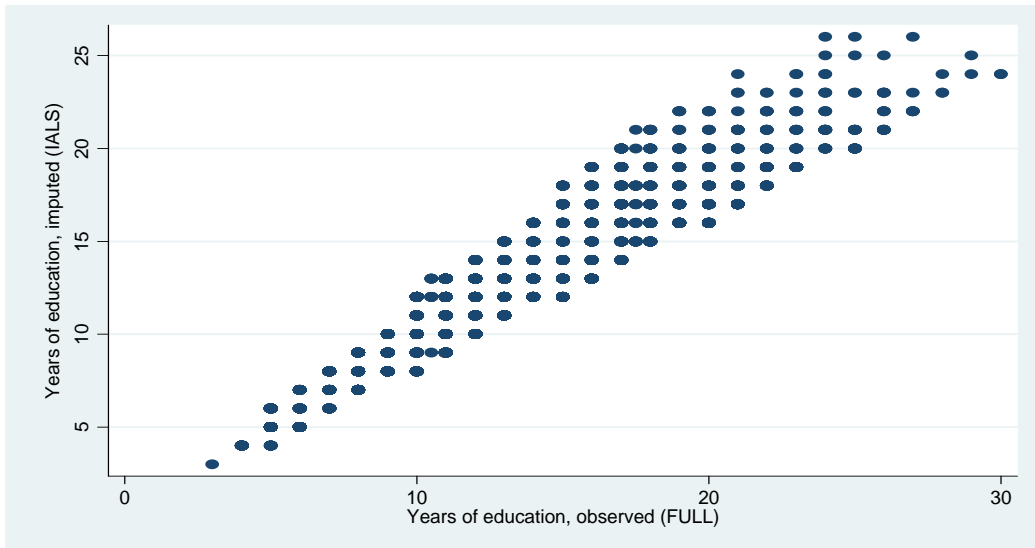
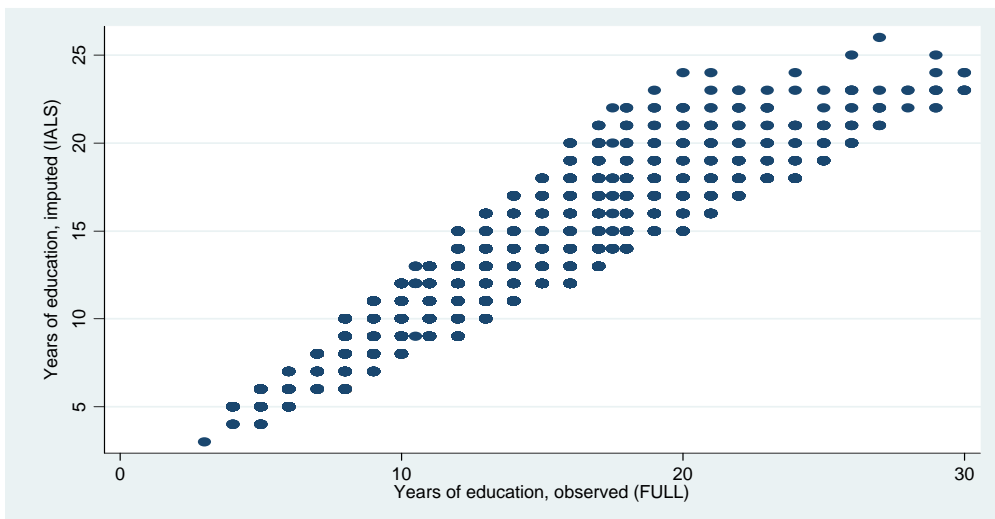


Figure A1. Scatter plot of the observed and imputed measure of education

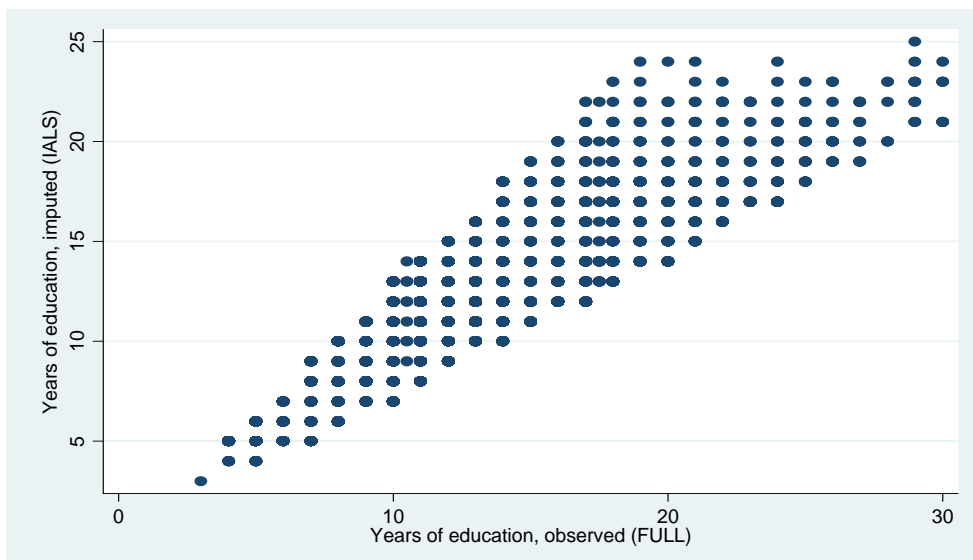
Panel 1. Tolerance 0.20



Panel 2. Tolerance 0.25



Panel 3. Tolerance 0.3



Technical Appendix

A.1 THE EDUCATIONAL REFORMS USED IN THIS STUDY

See Brunello, Fort and Weber, 2009 and Fort, 2006 for details on the reforms in all the countries included in this paper, with the exception of the United Kingdom (UK). See Silles, 2009, for details on the UK.

A.2 DERIVATION OF THE TEST

Consider the two equations [A1] and [A2], where the effects of the exogenous covariates have been partialled out. Equation [A2] represents the first stage equation:

$$BMI = \beta TS + v \quad [A1]$$

$$TS = \gamma YCOMP + \varepsilon \quad [A2]$$

The OLS and IV estimator for the parameter β are

$$\hat{\beta}_{OLS} = \beta + \frac{Cov(v, TS)}{V(TS)} \quad [A3]$$

$$\hat{\beta}_{IV} = \frac{Cov(BMI, YCOMP)}{Cov(TS, YCOMP)} = \frac{\beta\gamma + \frac{Cov(\beta\varepsilon + v, YCOMP)}{V(YCOMP)}}{\gamma + \frac{Cov(\varepsilon, YCOMP)}{V(YCOMP)}} \quad [A4]$$

Further assume that

$$TS = \lambda_0 + \lambda_1 S + \lambda_2 Q \quad [A5]$$

Using equation [A5] in [A1] and [A2] we get

$$BMI = \alpha S + \mu \quad [A6]$$

$$S = \delta YCOMP + \xi \quad [A7]$$

where $\alpha \equiv \beta\lambda_1$, $\mu \equiv \beta\lambda_0 + \beta\lambda_2 Q + v$, $\delta \equiv \frac{\gamma}{\lambda_1}$ and $\xi = \frac{1}{\lambda_1}[-\lambda_0 - \lambda_2 Q - \varepsilon]$.

The OLS and IV estimator for the parameter α are

$$\hat{\alpha}_{OLS} = \alpha + \frac{Cov(\mu, S)}{V(S)} \quad [A8]$$

$$\hat{\alpha}_{IV} = \frac{Cov(BMI, YCOMP)}{Cov(S, YCOMP)} = \frac{\alpha\delta + \frac{Cov(\delta\xi + \mu, YCOMP)}{V(YCOMP)}}{\delta + \frac{Cov(\xi, YCOMP)}{V(YCOMP)}} \quad [A9]$$

Using equation [A5], the assumption that S and Q are orthogonal and the additional assumption that

$$\frac{Cov(v, Q)}{V(Q)} = \lambda_2 \frac{Cov(v, TS)}{V(TS)} \quad [A10]$$

equation [A8] can be written as

$$\hat{\alpha}_{OLS} = \lambda_1\beta + \frac{\lambda_1 \frac{Cov(v, TS)}{V(TS)} - \lambda_1\lambda_2 \frac{Cov(v, Q)}{V(TS)}}{1 - \lambda_2^2 \frac{V(Q)}{V(TS)}} = \lambda_1\beta + \lambda_1 \frac{Cov(v, TS)}{V(TS)} = \lambda_1\hat{\beta}_{OLS} \quad [A11]$$

Under the assumption that $Cov(Q, YCOMP)$ is zero, we can write

$$Cov(S, YCOMP) = Cov\left(\frac{1}{\lambda_1}TS - \frac{\lambda_2}{\lambda_1}Q, YCOMP\right) = \frac{1}{\lambda_1}Cov(TS, YCOMP)$$

Substituting this expression in [A9], we obtain

$$\frac{\hat{\alpha}_{IV}}{\hat{\beta}_{IV}} = \frac{\frac{Cov(BMI, YCOMP)}{Cov(S, YCOMP)}}{\frac{Cov(BMI, YCOMP)}{Cov(TS, YCOMP)}} = \frac{Cov(TS, YCOMP)}{Cov(S, YCOMP)} = \frac{Cov(TS, YCOMP)}{\frac{1}{\lambda_1}Cov(TS, YCOMP)} = \lambda_1 \quad [A12]$$

and

$$\frac{\hat{\alpha}_{IV}}{\hat{\beta}_{IV}} = \frac{\hat{\alpha}_{OLS}}{\hat{\beta}_{OLS}} \quad [A13]$$

When the null hypothesis [A13] is rejected, the identification strategy used in the literature and in the paper to estimate [A6] fails. Notice that [A13] is a sufficient but not necessary condition. We may reject it even if the orthogonality condition $Cov(Q, YCOMP)$ does not fail, but the auxiliary assumption [A10] that the ratio of the covariances of Q and TS with the error term v be proportional to the ratio of the variances, with factor of proportionality equal to λ_2 , fails to hold. Therefore, the test is conservative.

We explore the power of the test to detect deviations from the null in our empirical application using simulations. We set the model parameters to replicate the descriptive statistics of the observed variables in our application, and keep the same sample size as we have. Since Q is not observed, we experiment with different values of $V(Q)$ and λ_2 . While the choice of $V(Q)$ does not affect the results, the choice of λ_2 does affect the precision of

the test. In the simulations, we pick a value of λ_2 that delivers higher standard errors. The data generating process is described by the equations below

$$S = \delta_1 YCOMP + \varepsilon$$

$$TS = \lambda_0 + \lambda_1 S + \lambda_2 Q$$

$$BMI = \alpha S + \tilde{v}$$

$$BMI = \beta TS + v$$

where $Cov(YCOMP, \varepsilon) = 0$, $Cov(YCOMP, v) = 0$, and $(Q, YCOMP, \varepsilon, v)$ are jointly normal with vector of means $[7, 8, 7, 33]$ and elements of the variance covariance matrix that may vary under the null and alternative hypothesis. The following set of parameters is held constant across the simulations: $V(Q) = 20$, $V(Z) = 4$, $V(\varepsilon) = 12$, $V(v) = 16$, $Cov(\varepsilon, Q) = 0$, $Cov(v, Q) = 0.5$, $\lambda_0 = 40$, $\lambda_1 = 10$, $\lambda_2 = 15$, $\delta_1 = 0.5$, $\beta = -0.03$. Given these parameters, $Cov(YCOMP, Q) = 0$ and $Cov(v, \varepsilon) = 0.217$ under the null.

The first deviation from the null we experiment with (H_1^A) assumes that $Cov(YCOMP, Q) = 2$ and $Cov(v, \varepsilon) = 4$.

The second deviation (H_1^B) assumes that only the second condition is violated, so that $Cov(YCOMP, Q) = 0$ and $Cov(v, \varepsilon) = 4$. The third deviation (H_1^C) assumes that only the first condition is violated, so that $Cov(YCOMP, Q) = 2$ and $Cov(v, \varepsilon) = 0.217$. Table A3 summarizes the results of the simulations. The empirical distribution of the test under each alternative hypothesis is reported in Figure A2. The test turns out to be able to discriminate the null from each alternative hypothesis.

Table A3. Test of the validity of the exclusion restriction. Simulations.

		(1)	(2)	(3)	(4)
Hypothesis	Test statistic	Mean	Se	Quant. 0.025	Quant. 0.975
H_0	Double ratio t_1	0.908	0.095	0.748	1.121
	Elasticity difference t_2 (IV estimates, mean)	-0.142**	0.008	-0.206	-0.081
H_1^A	Double ratio t_1	0.027**	0.029	-0.036	0.084
	Elasticity difference t_2 (IV estimates, mean)	0.037**	0.017	0.008	0.074
H_1^B	Double ratio t_1	-0.079**	0.082	-0.252	0.079
	Elasticity difference t_2 (IV estimates, mean)	-0.167**	0.034	-0.244	-0.105
H_1^C	Double ratio t_1	0.427**	0.031	0.368	0.492
	Elasticity difference t_2 (IV estimates, reference)	0.008	0.016	-0.023	0.040

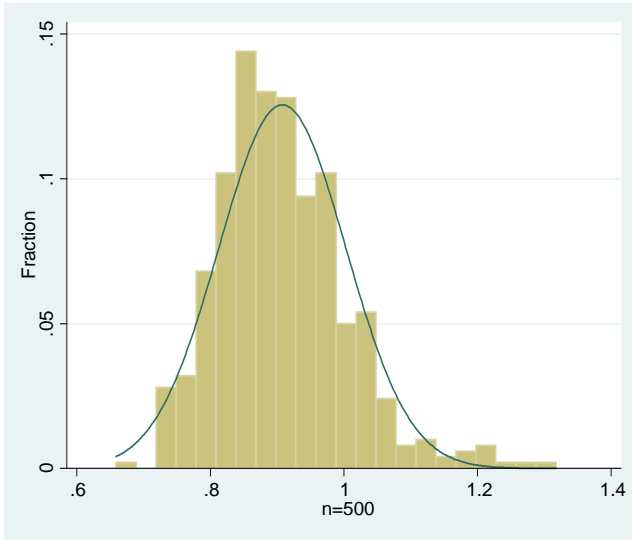
Legend: Double ratio is the statistic $t_1 = \frac{E(\alpha_{OLS})}{E(\beta_{OLS})} / \frac{E(\alpha_{IV})}{E(\beta_{IV})}$; elasticity difference is the statistic

$t_2 \equiv \frac{\partial \ln BMI}{\partial \ln TS} - \frac{\partial \ln BMI}{\partial \ln S}$. The elasticity varies according to the point where it is computed. Here we consider the

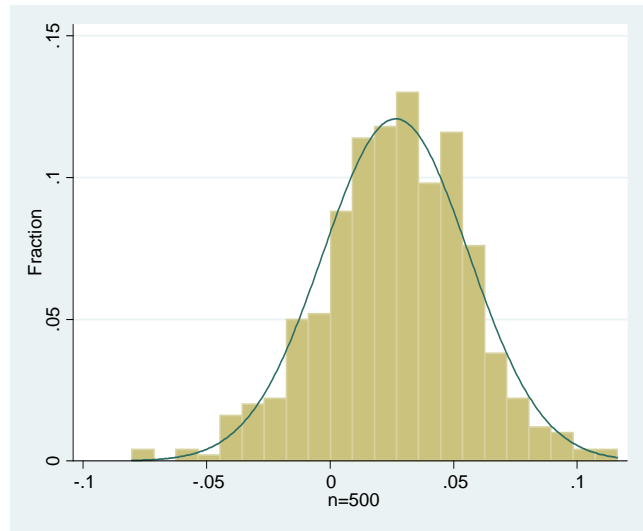
mean. Columns (1) and (2) report the mean and the standard errors of the estimator of t_1 and t_2 obtained over 500 bootstrap replications. Column (3) and (4) report the extremes of the 95% confidence interval based on the empirical distribution of the estimators. Two stars indicate that the null hypothesis of the double ratio being one or the elasticity being 0 is rejected at 5% level.

Figure A2. Empirical distribution of the test under alternative hypotheses. Simulated data.

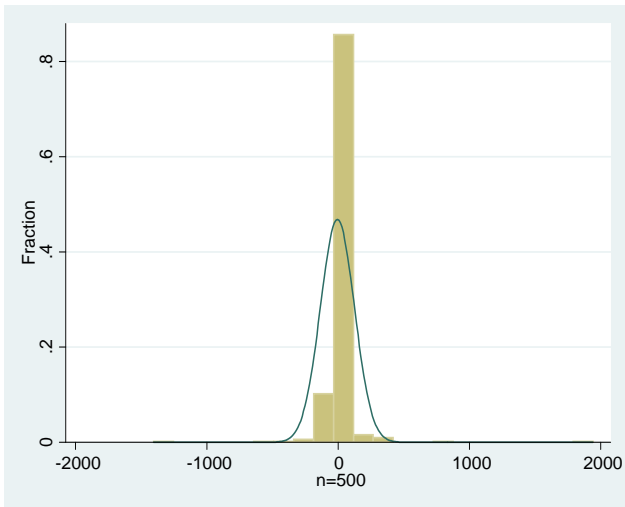
$H_0: Cov(YCOMP, Q) = 0$ and $Cov(v, \varepsilon) = 0.217$



$H_1^A: Cov(YCOMP, Q) = 2$ and $Cov(v, \varepsilon) = 4$



$H_1^B: Cov(YCOMP, Q) = 0$ and $Cov(v, \varepsilon) = 4$



$H_1^C: Cov(YCOMP, Q) = 2$ and $Cov(v, \varepsilon) = 0.217$

