

Artis, Michael J.; Dreger, Christian; Kholodilin, Konstantin Arkadievich

**Working Paper**

## Common and spatial drivers in regional business cycles

DIW Discussion Papers, No. 859

**Provided in Cooperation with:**

German Institute for Economic Research (DIW Berlin)

*Suggested Citation:* Artis, Michael J.; Dreger, Christian; Kholodilin, Konstantin Arkadievich (2009) : Common and spatial drivers in regional business cycles, DIW Discussion Papers, No. 859, Deutsches Institut für Wirtschaftsforschung (DIW), Berlin

This Version is available at:

<https://hdl.handle.net/10419/27382>

**Standard-Nutzungsbedingungen:**

Die Dokumente auf EconStor dürfen zu eigenen wissenschaftlichen Zwecken und zum Privatgebrauch gespeichert und kopiert werden.

Sie dürfen die Dokumente nicht für öffentliche oder kommerzielle Zwecke vervielfältigen, öffentlich ausstellen, öffentlich zugänglich machen, vertreiben oder anderweitig nutzen.

Sofern die Verfasser die Dokumente unter Open-Content-Lizenzen (insbesondere CC-Lizenzen) zur Verfügung gestellt haben sollten, gelten abweichend von diesen Nutzungsbedingungen die in der dort genannten Lizenz gewährten Nutzungsrechte.

**Terms of use:**

*Documents in EconStor may be saved and copied for your personal and scholarly purposes.*

*You are not to copy documents for public or commercial purposes, to exhibit the documents publicly, to make them publicly available on the internet, or to distribute or otherwise use the documents in public.*

*If the documents have been made available under an Open Content Licence (especially Creative Commons Licences), you may exercise further usage rights as specified in the indicated licence.*

# Discussion Papers

# 859

Michael Artis • Christian Dreger • Konstantin Kholodilin

**Common and Spatial Drivers  
in Regional Business Cycles**

Berlin, February 2009

Opinions expressed in this paper are those of the author and do not necessarily reflect views of the institute.

## IMPRESSUM

© DIW Berlin, 2009

DIW Berlin  
German Institute for Economic Research  
Mohrenstr. 58  
10117 Berlin  
Tel. +49 (30) 897 89-0  
Fax +49 (30) 897 89-200  
<http://www.diw.de>

ISSN print edition 1433-0210  
ISSN electronic edition 1619-4535

Available for free downloading from the DIW Berlin website.

Discussion Papers of DIW Berlin are indexed in RePEc and SSRN.  
Papers can be downloaded free of charge from the following websites:

[http://www.diw.de/english/products/publications/discussion\\_papers/27539.html](http://www.diw.de/english/products/publications/discussion_papers/27539.html)

<http://ideas.repec.org/s/diw/diwwpp.html>

[http://papers.ssrn.com/sol3/JELJOUR\\_Results.cfm?form\\_name=journalbrowse&journal\\_id=1079991](http://papers.ssrn.com/sol3/JELJOUR_Results.cfm?form_name=journalbrowse&journal_id=1079991)

# Common and spatial drivers in regional business cycles

Michael Artis, Christian Dreger, Konstantin Kholodilin<sup>1</sup>

**Abstract:** We examine real business cycle convergence for 41 euro area regions and 48 US states. Results obtained by a panel model with spatial correlation indicate that the relevance of common business cycle factors is rather stable over the past two decades in the euro area and the US. Ongoing business cycle convergence often detected in a country data is not confirmed at the regional level. The degree of synchronization across the euro area is similar to that to be found for the US states. Thus, the lack of convergence does not seem to be an impediment to a common monetary policy.

JEL: E32, C51, E37

Keywords: Business cycle convergence, spatial correlation, spatial panel model

---

<sup>1</sup> Artis, Economics Department, University of Swansea. Singleton Park, Swansea SA2 8PP email: Michael.Artis@manchester.ac.uk. Dreger (corresponding author): German Institute for Economic Research (DIW Berlin), Germany. Phone: +49-30-89789529, email: cdreger@diw.de. Kholodilin: German Institute for Economic Research (DIW Berlin), Germany. Phone: +49-30-89789361, email: kholodilin@diw.de.

## 1 Introduction

The degree of comovement of economic activity across states or regions is an issue of considerable importance to policy-makers. Asymmetric business cycles are often seen as inimical to the formation of a common currency area, although it has been argued that a common monetary policy in itself may reduce the cyclical asymmetry (Frankel and Rose 1998).

Economic theory does not provide a conclusive answer regarding the impact of economic integration on the synchronization of output fluctuations: see Backus, Kehoe and Kydland (1995) and Baxter and Kouparitsas (2005) and the issue remains an empirical one. Many authors have investigated the issue, as for example Artis and Zhang (1997), Kose, Otrok and Whiteman (2003), Artis, Krolzig and Toro (2004), Stock and Watson (2005) and Canova, Ciccarelli and Ortega (2006). Most of them have detected a tendency for national business cycles to converge during the integrative period of the second globalization from the 1960s. Artis and Okubo (2008) provide a long-run historical perspective which, by revisiting the era of the first globalization before the First World War, demonstrates a tendency for globalization to produce a high degree of synchronization in national business cycles.

While these findings are based on country data, little work has been done at the regional level. There is some indication that European monetary integration has boosted convergence, although the impact of national borders is quite strong (see Montoya and De Haan, 2007). While deeper trade integration exerts a positive effect on synchronisation, specialisation and exchange rate volatility appear to be the main sources of dispersion (Tondl and Traistaru-Siedschlag, 2006). Business cycles differ also across US states, see Owyang, Piger, and Wall (2005) as does the response to monetary policy (Carlino and De Fina, 1998 and 1999, Fratantoni and Schuh, 2003, Hanson, Hurst and Park, 2006). There is some evidence that synchronization has decreased since the late 1980s, implying that the US matches the optimum currency area criteria less well than earlier. The contradiction between what is commonly seen as being a highly successful monetary policy at the national level and this evidence of increasing asymmetry between regional cycles might be traced to a trade-off between national cycle volatility and regional synchronization (Partridge and Rickman, 2005).

Despite the attendant complications, exploiting a larger information set offers the possibility that exploring the regional dimension will provide new insights. Regions tend to be more open to trade than countries and the degree of specialisation is higher than at the national level. If diverging trends cancel out in the aggregate, policy conclusions based on national evidence can be misleading. In addition, regional comovements may be caused not only by common business cycles, but also by non-economic factors represented in the geographical map pattern; whilst this is linked to industrial structures and migration, it can also reflect habits, heritage and culture. Spatial spillovers have been largely neglected in previous studies, thereby creating omitted variable bias. A panel model allowing for spatial correlation is a convenient way to capture these effects.

## 2 Panel models with spatial dependencies

Dependencies along the regional dimension can be approximated by a spatial ARMA model

$$(1) \quad y = \alpha W y + \beta X + \varepsilon + \theta W \varepsilon$$

where  $y$  is the endogeneous variable with observations from  $n$  regions,  $X$  a matrix of  $k$  explanatory variables and  $\varepsilon$  the error term (see Anselin, 2001). Spatial spillovers are captured by the introduction of spatial lags of the endogeneous variable or by spatial correlation in the error term.  $W$  denotes a  $n \times n$  matrix of spatial weights, with elements equal to 0 or 1, depending on whether two regions share a common border (1) or not (0). Higher spatial lags can be embedded by defining  $W$  in a cumulative form (Anselin, 2001). A row-standardized form of the matrix is often used to extract the mean of observations from contiguous regions. The Moran statistic

$$(2) \quad m = \frac{y' W y}{y' y}$$

is an overall measure of the strength of regional dependencies. The linkages may be driven by different forces, including business cycle comovements.

The model (1) refers to a pure cross sectional framework. To explore the impact of common drivers on regional business cycles, the time series dimension has to be added. This is done by estimating a panel model allowing for spatial effects: in this we follow the instructive leads given by Elhorst (2003) and Baltagi and Li (2006).

### **3 Data and results**

Data for 41 EU regions and 48 US states are exploited: see table 1 for the list of regions. Annual data on regional economic activity are available for the 1982-2007 period. Some regions are excluded for data reasons. Euro area series refer to GVA at 2000 prices reported by Cambridge Econometrics. Real GDP data for US states chained in 2000 dollars are from the BEA. State level data prior to 1991 are reconstructed using BEA quantity indexes. The analysis refers to the cyclical component of regional GDP. This is defined as a deviation from trend, where the latter is obtained by a HP filter. Following Ravn and Uhlig (2002), the smoothing parameter is set equal to 6.25. The results do not depend critically on this choice of filter: very similar estimates are obtained when GVA/GDP growth rates are used instead.

*-Table 1 and Figure 1 about here-*

Figure 1 shows the rolling Moran coefficient, i.e. (2) calculated as an average over a moving window of eight years. The dependencies between EU regions were rather weak in the 1980s. Perhaps fostered by the European integration process, the correlation rose until the mid-1990s. After a decline during the new economy boom, regional spillovers regained importance in recent years. The initial correlation was quite high in US regions; after that the dependencies decreased until the middle of the sample period. Subsequently, over more recent years the strength of spillovers again increased gradually.

The Moran coefficient is an overall measure of regional dependencies. To explore the role of supraregional factors in this process, area wide business cycles are extracted as the first two principal components of regional cycles, as suggested by the information criteria (Bai and Ng, 2002). On average, the factors represent two thirds of cyclical output fluctuations, a share which declines towards the end of the sample. Regression results for different specifications are shown in table 2. The top panel of that table reports results for the whole sample period, the lower two for two successive sub-samples.

*-Table 2 about here-*

Business cycle comovements are important to explain regional output fluctuations. The parameters are robust across subperiods. The inclusion of spatial effects improves the model fit. Nevertheless, common business cycles do not account for a larger share of the regional economic evolution in more recent years. Therefore, a tendency towards a higher cyclical synchronization often found in country panels cannot be confirmed at the regional level.



## References

- Anselin, L. (2001): Spatial econometrics, in Baltagi, B.H. (ed.): A companion to theoretical econometrics, Malden, Blackwell, 310-330.
- Artis, M., Krolzig, H.-M., Toro, J. (2004): The European business cycle, *Oxford Economic Papers* 56, 1-44.
- Artis, M. and Okubo, T. (2008): Globalization and business cycle transmission, *CEPR Discussion Papers* 7041.
- Artis, M., Zhang, W. (1997): International business cycles and the ERM. Is there a European business cycle?, *International Journal of Finance and Economics* 2, 1-16.
- Backus, D.K., Kehoe, P.J., Kydland, F.E. (1995): International business cycles. Theory and evidence, in Cooley, T. (ed.): *Frontiers of business cycle research*, Princeton University Press, Princeton, 331-356.
- Baltagi, B.H., Li, D. (2006): Prediction in the panel data model with spatial correlation: the case of liquor, *Spatial Economic Analysis* 1, 175-185.
- Baxter, M., Kouparitsas, M.A. (2005): Determinants of business cycle comovement: A robust analysis, *Journal of Monetary Economics* 52, 113-157.
- Canova, F., Ciccarelli, M., Ortega, E. (2006): Similarities and convergence in G-7 cycles, *Journal of Monetary Economics* 54, 850-878.
- Carlino, G., De Fina, R. (1998): The differential regional effects of monetary policy, *Review of Economics and Statistics* 80, 572-587.
- Carlino, G., De Fina, R. (1999): The differential regional effects of monetary policy: Evidence from US states, *Journal of Regional Science* 39, 339-358.
- Elhorst, J.P. (2003): Specification and estimation of spatial panel data models, *International Regional Science Review* 26, 244-268.
- Elhorst, J.P. (2009): Spatial panel data models, in: Fischer, M., Getis, A. (eds): *Handbook of Applied Spatial Analysis*, Chapter 2.
- Frankel, J.A., Rose A.K. (1998): The endogeneity of the optimum currency area criteria, *Economic Journal* 108, 1009-1025.

- Frantantoni, M., Schuh, S. (2003): Monetary policy, housing, and heterogeneous regional markets, *Journal of Money, Credit and Banking* 35, 557–589.
- Hanson, M.S., Hurst, E., Park, K.Y. (2006): Does monetary policy help least those who need it most?, *Wesleyan University Economic Working Papers* 2006-006.
- Kose, M.A., Otrok, C., Whiteman, C.H. (2003): International business cycles. World, region and country-specific factors, *American Economic Review* 93, 1216-1239.
- Montoya, L.A., De Haan, J. (2007): Regional business cycle synchronization in Europe?, *Bruges European Economic Research Paper* 11, *International Economics and Economic Policy*, forthcoming.
- Owyang, M.T., Piger, J., Wall, H.J. (2005): Business cycle phases in US states, *Review of Economics and Statistics* 87, 604-616.
- Partridge, M.D., Rickman, D.S. (2005): Regional cyclical asymmetries in an optimal currency area: An analysis using US state data, *Oxford Economic Papers* 57, 373-397.
- Ravn M, Uhlig H. (2002): On adjusting the HP-filter for the frequency of observations, *Review of Economics and Statistics* 84, 371-375.
- Stock, J.H., Watson, M.W. (2005): Understanding changes in international business cycle dynamics, *Journal of the European Economic Association* 3, 968-1006.
- Tondl, G., Traistaru-Siedschlag, I. (2006): Regional growth cycle synchronisation within the euro area, *Economic and Social Research Institute, Dublin, Working Paper* 173.

Table 1: Euro area and US regions

A Euro area regions

*Belgium*: Brussels, Vlaams Gewest, Wallonne. *Germany*: Baden-Wuerttemberg, Bayern, Bremen, Hamburg, Hessen, Niedersachsen, Nordrhein-Westfalen, Rheinland-Pfalz, Saarland, Schleswig-Holstein. *Spain*: Noroeste, Comunidad de Madrid, Centro, Este, Sur. *France*: Île de France, Bassin Parisien, Nord-Pas-de-Calais, Est, Ouest, Sud-Ouest, Centre-Est, Méditerranée. *Italy*: Nord Ovest, Nord Est, Centro, Sud, Isole. *Luxembourg*: Luxembourg. *Netherlands*: Nord-, Oost-, West-, Zuid-Nederland. *Austria*: Ost-, Sued-, Westoesterreich. *Portugal*: Continente.

B US regions

All states excluding Alaska and Hawaii

Table 2: Components of regional output growth

1982-2007

	Euro area		US	
Factor 1	0.131 (14.37)	0.177 (20.15)	0.118 (12.72)	0.188 (17.24)
Factor 2	0.035 (2.67)	0.047 (2.70)	0.010 (0.76)	0.016 (0.769)
Spatial lag	0.262 (7.32)		0.371 (11.30)	
Spatial error		0.258 (7.71)		0.362 (11.30)
R-squared	0.429	0.430	0.415	0.417
Log likelihood	3400.27	3400.26	3802.34	3802.93

1982-1994

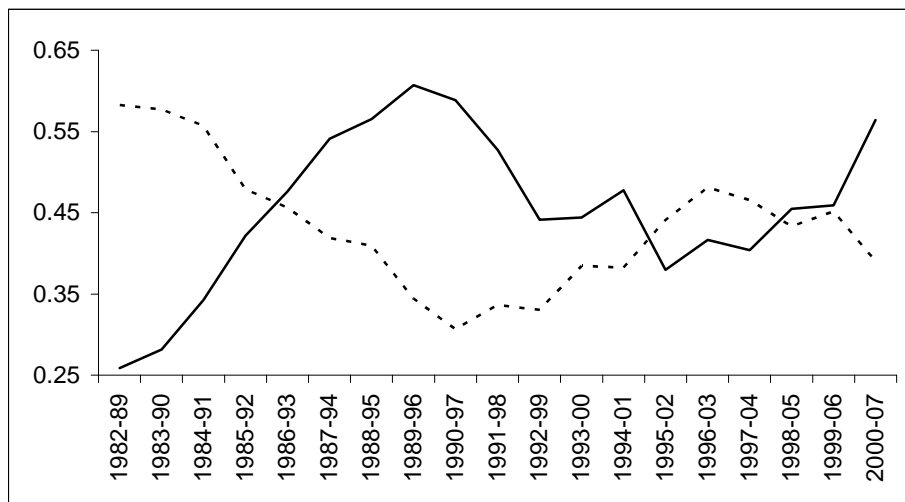
	Euro area		US	
Factor 1	0.128 (9.73)	0.174 (12.98)	0.107 (8.62)	0.194 (12.00)
Factor 2	0.033 (1.94)	0.044 (1.94)	0.020 (1.20)	0.036 (1.26)
Spatial lag	0.264 (5.22)		0.447 (10.34)	
Spatial error		0.269 (5.72)		0.428 (10.02)
R-squared	0.399	0.397	0.486	0.483
Log likelihood	1578.46	1577.35	1907.90	1905.50

1995-2007

	Euro area		US	
Factor 1	0.143 (11.64)	0.186 (18.34)	0.137 (9.03)	0.189 (11.50)
Factor 2	0.061 (1.81)	0.080 (1.80)	-0.021 (0.79)	-0.028 (0.791)
Spatial lag	0.231 (4.48)		0.279 (5.61)	
Spatial error		0.235 (4.90)		0.285 (5.936)
R-squared	0.529	0.527	0.342	0.340
Log likelihood	1939.95	1935.61	1902.72	1900.52

Note: 41 EU regions, 48 US states. Regional GVA and GDP growth rate explained by first two principal components (factor 1, factor 2), spatial lags and spatial errors of first order. Panel regression with fixed regional effects, *t*-values in parantheses. R-squared adjusted.

Figure 1: Rolling Moran coefficient



Note: Average Moran coefficient for first order spatial autocorrelation between EU and US (dashed line) regions.