

Cheung, Yin-Wong; Friedman, Daniel

Working Paper

Speculative attacks: a laboratory study in continuous time

CESifo Working Paper, No. 2420

Provided in Cooperation with:

Ifo Institute – Leibniz Institute for Economic Research at the University of Munich

Suggested Citation: Cheung, Yin-Wong; Friedman, Daniel (2008) : Speculative attacks: a laboratory study in continuous time, CESifo Working Paper, No. 2420, Center for Economic Studies and ifo Institute (CESifo), Munich

This Version is available at:

<https://hdl.handle.net/10419/26465>

Standard-Nutzungsbedingungen:

Die Dokumente auf EconStor dürfen zu eigenen wissenschaftlichen Zwecken und zum Privatgebrauch gespeichert und kopiert werden.

Sie dürfen die Dokumente nicht für öffentliche oder kommerzielle Zwecke vervielfältigen, öffentlich ausstellen, öffentlich zugänglich machen, vertreiben oder anderweitig nutzen.

Sofern die Verfasser die Dokumente unter Open-Content-Lizenzen (insbesondere CC-Lizenzen) zur Verfügung gestellt haben sollten, gelten abweichend von diesen Nutzungsbedingungen die in der dort genannten Lizenz gewährten Nutzungsrechte.

Terms of use:

Documents in EconStor may be saved and copied for your personal and scholarly purposes.

You are not to copy documents for public or commercial purposes, to exhibit the documents publicly, to make them publicly available on the internet, or to distribute or otherwise use the documents in public.

If the documents have been made available under an Open Content Licence (especially Creative Commons Licences), you may exercise further usage rights as specified in the indicated licence.

Speculative Attacks: A Laboratory Study in Continuous Time

YIN-WONG CHEUNG
DANIEL FRIEDMAN

CESIFO WORKING PAPER NO. 2420
CATEGORY 6: MONETARY POLICY AND INTERNATIONAL FINANCE
OCTOBER 2008

An electronic version of the paper may be downloaded

- *from the SSRN website:* www.SSRN.com
- *from the RePEc website:* www.RePEc.org
- *from the CESifo website:* www.CESifo-group.org/wp

Speculative Attacks: A Laboratory Study in Continuous Time

Abstract

We examine speculative attacks in a controlled laboratory environment featuring continuous time, size asymmetries, and varying amounts of public information. Attacks succeeded in 233 of 344 possible cases. When speculators have symmetric size and access to information: (a) weaker fundamentals increase the likelihood of successful speculative attacks and hasten their onset, and (b) contrary to some theory, success is enhanced by public access to information about either the net speculative position or the fundamentals. The presence of a larger speculator further enhances success, and experience with large speculators increases small speculators' response to the public information. However, giving the large speculator increased size or better information does not significantly strengthen his impact.

JEL Code: F30, C73, C92.

Keywords: currency crisis, speculative attack, laboratory experiment, coordination game, pre-emption, large player.

Yin-Wong Cheung
Department of Economics, E2
University of California
Santa Cruz, CA 95064
USA
cheung@ucsc.edu

Daniel Friedman
Department of Economics, E2
University of California
Santa Cruz, CA 95064
USA
dan@ucsc.edu

June 2008

The work was funded under NSF grant IIS-9986651. The authors are also grateful to programmers Nitai Farmer and Adam Freidin and to research assistants Lidan Wang, Paul Viotti, Gurnain Pastricha and especially Kai Pommerenke and Andy Sun. We are greatly indebted to Joshua Aizenman and Federico Ravenna, who made substantial contributions to early versions of the paper. We also benefited from helpful comments offered by Jim Costain, Joseph Fung, Frank Heinemann, Hans Genberg, Antonio Guarino, Ali Hortascu, Steffen Huck, Ken Kletzer, Brian Kluger, Steve Morris, Peter Norman Sørensen, Jean-Robert Tyran, Eric Wincoop, Donald Wittman, Matthew Yiu, and seminar participants at University College London, University of Copenhagen, The Hong Kong Institute for Monetary Research, and the 2006 CESifo Conference on Macro, Money & International Finance. Two anonymous referees of this journal helped us significantly improve the final version.

1. Introduction

For more than 30 years, recurrent currency crises have confounded policy makers, and have challenged economic theorists to find explanations. The “First Generation” models, (e.g., Krugman, 1979, and Flood and Garber, 1984) gave insight into the Latin American and other crises of the 1970s and early 1980s, but had difficulty accounting for later events such as the 1992 British Pound crisis. Theorists responded with “Second Generation” models of self-fulfilling crises (e.g., Obstfeld, 1995, 1996), leading to quite different policy implications. The 1997-8 crisis in East Asia and other recent events inspired “Third Generation” models that focus on financial market imperfections. Most Second and Third Generation models feature strategic interactions among speculators and government agencies, and many have multiple equilibria.

International finance economists now have an embarrassment of riches. With so many models to choose from, it is hard to trust the policy implications of any one of them; indeed, the next currency crisis might inspire Fourth Generation models with still different implications. Empirical work is essential to understand the range of applicability of current models. Traditional econometric methods help, but are limited by a mismatch between data and theory. Key variables, such as speculators’ information and expectations, are not observable in the field so inferences are limited. The historical data, of course, can exhibit at most one equilibrium at a time, so the existence of multiple equilibria remains a matter of conjecture.

The laboratory offers an underexploited source of data for examining the robustness of theoretical predictions. In the lab, one can observe and even control key variables including the information available to players, can replicate a given scenario many times, and can make rigorous causal inferences. Of course, laboratory markets are much smaller scale than in the field, and one must investigate external validity. Due to their very different strengths, laboratory and field data are complements, not substitutes.

The present paper describes one of the first laboratory investigations of speculative attacks. The laboratory game is not closely tailored to any particular theoretical model. It is intended to provide evidence not otherwise obtainable that can help sharpen the issues, inform econometric analysis of field data, and refine existing models.

Unlike most current models and experiments, time is continuous in our laboratory game. During each trial, the strength of fundamentals can deteriorate moment by moment, and the speculators can switch back and forth between passive mode and attack mode. Such

asynchronous decisions by human subjects illuminate aspects of the coordination problem that are invisible in static models, but that may be crucial in the decentralized 24 hour global foreign exchange market.

The experiment focuses on a question central to many of the Second and Third Generation models: when can speculators coordinate on their preferred equilibrium, an attack that forces devaluation? The question is particularly acute when the speculators are uncertain about the strength of fundamentals, or are uncertain about what the other speculators are doing. We examine whether public information about the fundamentals and about other players' choices affects coordination and, hence, the probability of a successful attack.

In some trials we include one speculator able to take a larger position and sometimes with better information on the fundamentals. It is widely believed that a single large player, George Soros, was essential in coordinating the successful 1992 attack on British pound, and a branch of the theoretical literature justifies that belief. The experiment also examines some predictions from that theoretical literature.

Section 2 surveys some relevant theoretical models, some field evidence, and the handful of relevant laboratory studies. Section 3 offers some simple theoretical perspectives and some theoretical predictions that are testable in the laboratory. Section 4 describes our laboratory environment and treatments.

Section 5 presents the results. When feasible, attacks succeed more often than not. With speculators of symmetric size and access to information, speculative attacks are more often successful and occur sooner when fundamentals are weaker. Contrary to some theory, public access to information about either the net speculative position or the fundamentals also enhances success. The presence of a larger speculator further enhances success, and experience with large speculators increases small speculators' response to the public information. However, giving the large speculator increased size or better information does not significantly strengthen his impact. Section 6 puts the findings into broader perspective.

2. Some Related Literature

As just noted, there are already several generations of models designed to explain foreign currency crises. Henderson and Salant (1978) is an important precursor, dealing with the interaction between the speculators and government policies. The First Generation models,

formulated by Krugman (1979) and Flood and Garber (1984), focused on economies where the fundamentals are inconsistent with preserving a fixed exchange rate. This is the case when a sizable fiscal deficit is monetized and the money supply increases faster than money demand under a fixed exchange rate, inducing a crisis. In the absence of uncertainty, the crisis hits and the currency devalues when the shadow exchange rate (i.e., the exchange rate that would prevail if the exchange rate were allowed to float) is equal to the official exchange rate.

The First Generation models provide a useful interpretation of crises triggered by fiscal weaknesses, as in Latin America in the 1970s-80s. However, the financial instability in Europe in the early 1990s, including the 1992 attack on the British Pound, shifted attention to the fragility of equilibrium under a fixed exchange rate. The role of financier George Soros in the 1992 attack also raised questions regarding speculators' behavior when some of them have market power. "Second Generation" models, formulated by Obstfeld (1995, 1996), feature self-fulfilling crises and multiple equilibria. Obstfeld (1995), for instance, extends the Barro-Gordon framework and models a policy maker who faces a trade-off between credibility and flexibility when devaluation entails a fixed cost. The potential for self-fulfilling crises stems from circularity: the behavior of the policy maker depends on prior private sector expectations of inflation and depreciation. These expectations, however, depend on market perceptions of the policy maker's behavior. In such circumstances, an increase in the cost of abandoning the peg may increase the likelihood of a crisis [Flood and Marion (1999)], and toughness can be counterproductive [Drazen and Masson (1994)].

Later events, especially the 1997-8 crisis in East Asia, led to "Third Generation" models. Their focus is the role of balance sheet factors and financial sector weaknesses, as well as the possibility of bailouts by international financial institutions, central banks, and governments. Leading examples include Krugman (1999), Corsetti *et al.* (1999), Chang and Velasco (1999) and Dooley (1997).

The growing dynasty of models attests to the rich interplay between economic theory and economic events. The downside is that models seem to "chase" the last crisis in an attempt to provide ex-post explanations. Of course, the research has also identified some ex-ante vulnerabilities and suggested ways to prevent or mitigate crises; see e.g. Obstfeld (1998).

A common thread of the Second and Third Generation models is the role of public information and the existence of multiple equilibria. Morris and Shin (1998) resolve multiplicity

by introducing private information via the global games approach of Carlsson and Van Damme (1993). When privately informed speculators make simultaneous choices, one obtains a unique equilibrium for almost every value of the fundamentals. Much of the subsequent theoretical literature investigates when private information does or does not eliminate multiple equilibria (e.g., Angeletos and Werning, 2006).

Several later authors, surveyed in Allegret and Cornand (2005), extend the static Morris and Shin model to examine policy issues. There has been a widespread consensus in the policy community, bolstered by theoretical models such as Heinemann and Illing (2002) and by some evidence such as Bannier (2004), that greater transparency (i.e., better information on fundamentals and perhaps on speculative behavior) will discourage speculative attacks. Using a slightly different model, Bannier and Heinemann (2005) confirm the consensus except in some circumstances when prior beliefs about fundamentals are optimistic, in which case a lesser degree of transparency will minimize the probability of speculative attacks. The survey finds other exceptions and concludes that central bank transparency has an ambiguous effect theoretically (and empirically).

Noting that “the coordination problem among investors is at the heart of most second- and third-generation models of currency crises,” Corsetti *et al.* (2004) work out the theoretical implications of introducing a single large player into the global games approach. Their model predicts that the mere presence of a large player makes other (small) players more willing to join a speculative attack. The effect is enhanced when the small players can observe the large player’s position, but is not necessarily enhanced by increasing the size of the large player. In a more strategically symmetric model, Bannier (2005) concludes that attacks are more likely with a larger and less well informed large player when beliefs about fundamentals are pessimistic, but the reverse is true when beliefs are optimistic.

Costain (2004) obtains bimodal outcomes (both successful and unsuccessful attacks) over a wide range of fundamentals when speculators choose sequentially and observe some earlier choices. Angeletos *et al.* (2007) reach a similar conclusion in a discrete time dynamic extension of global games where players can learn from earlier periods. For our purposes, their most interesting conclusion is that “equilibrium dynamics can alternate between phases of distress and phases of tranquility, even without changes in the fundamentals.” An earlier paper, Chamley

(2003), also highlights the dynamic tension between delaying to learn more and moving quickly to ensure a share of the gains if an attack is successful.

Guimaraes (2006) extends the Flood-Garber model to a continuous time setting in which the shadow foreign exchange rate (corresponding to fundamentals) follows Brownian motion and a continuum of speculators chooses at Poisson times. He obtains a unique equilibrium in which, other things equal, the number of attacking speculators increases in the Poisson parameter (proxying for smaller frictions) and in the trend deterioration in fundamentals; and decreases in the opportunity cost of speculating (e.g., the interest rate differential), and the uncertainty with which fundamentals are observed. Thus some recent work owes as much to the First Generation as to the later generations.

Another theoretical approach begins with Abreu and Brunnermeier (2003). They build a rather complex model of bubbles and crashes in which a continuum of speculators gradually become aware of a negative shock to fundamentals, but don't know how many others are already aware. Rochon (2006) incorporates this information process into a currency crisis model. In that model, the informed speculators delay attacking longer when fundamentals are stronger and deteriorate more slowly, and when speculators face higher opportunity costs and become informed more slowly.

Evidence on the role of large players in contemporary foreign exchange markets includes the Federal Reserve Bank of New York (1998) report that the top five trading firms account for 31% of market share. Recent surveys of dealers (Cheung and Wong, 2000; Cheung and Chinn, 2001; Cheung *et al.*, 2004) indicate that trading in some currencies is dominated by a few big players. Respondents attribute deviation of FX rates from fundamental values mainly to "excess speculation" and "institutional customer or hedge fund manipulation." Many observers agree that George Soros' hedge fund, followed by other investors, precipitated devaluation of the British pound and Italian lira in the 1992 EMS crisis. Some argue that the hedge funds led the way in the rapid devaluation of the Japanese yen in late 1998. It would seem that their high degree of leverage allows hedge funds to influence the price of thinly traded currencies (*Economist*, October 10, 1998; Sesit and Pacelle, 1998). On the other hand, Eichengreen *et al.* (1998) and others argue that hedge funds did not exacerbate the 1997-8 Asian currency crises.

We are aware of only a few relevant laboratory experiments. The first, reported in Heinemann, Nagel and Ockenfels (2004, henceforth HNO) examines the static symmetric model

of Morris and Shin (1998). Subjects play the role of speculators in a series of simultaneous move coordination games, with public or private information about the strength of fundamentals. Contrary to the key global games prediction that private information resolves multiplicity, the speculators coordinate more successfully and achieve higher payoffs with public information. Consistent with the basic comparative static predictions, speculative attacks succeed more often when fundamentals are weaker and when speculation costs are lower.

A second study by Costain, Heinemann and Ockenfels (2005, henceforth CHO) reports bimodal outcomes when traders move sequentially, as predicted in the Costain (2004) model. Cornand (2006) extends the static HNO setup and finds that speculative attacks succeed more often with two public signals than with one public and one private signal. Arikawa *et al.* (2006) also extend HNO and find, consistent with Corsetti *et al.* (2004), that small players are more likely to attack when a large player is present.

Do similar results hold in continuous time? Huberman and Glance (1993) argue that continuous time can make coordination more difficult because choices are asynchronous—it's not only what you do but when you do it. In the only other continuous coordination laboratory game we know, Brunnermeier and Morgan (2004, henceforth BM)¹ examine “clock games” that end when the third of six players exits, and those three players receive a payoff that increases continuously in the exit time. The authors report that, consistent with the unique symmetric pure strategy Nash equilibrium, players exit sooner when they have better information about other players' choices and clock settings.

3. Theoretical Considerations

This section spotlights the main issues by describing speculators' activities and writing down a simple stylized model. It then poses a set of researchable questions.

When speculators think that monetary authorities may not be able to maintain a fixed exchange rate for some specific currency (against, say, the US Dollar), they can “attack” by selling the currency short, hoping to profit from the difference between the exchange rate before and after devaluation. Devaluation occurs when in aggregate speculators' net short position exceeds some critical level that represents the monetary authorities' willingness and ability to

¹ We believe that all the laboratory studies mentioned here were independently initiated at about the same time as (or after) our own except for HNO, which came first.

defend the currency (the so-called “fundamentals”). While waiting for devaluation, the speculators incur ongoing costs. The main explicit cost is the interest rate differential: authorities often defend a currency by raising the interest rate hundreds or even thousands of basis points above the US dollar rate. The main implicit cost is the risk that the authorities might impose capital controls, or might otherwise penalize speculators taking large short positions.

3.1 *A Simple Model*

Many of the strategic issues are captured in the following continuous time coordination game. At each moment t in $[0, 1]$, each player i with mass (or position size) m_i can switch between passive mode, denoted $a_i(t) = 0$, and attack mode $a_i(t) = 1$.² Let $B(t) = \sum_i a_i(t) m_i$ be the total mass of players in attack mode at time t , and let $T(t)$ represent the threshold mass, i.e., the exogenous strength of fundamentals. Normalize payoff flows so that players earn 100 per unit time in passive mode (an opportunity cost that represents the speculators’ ongoing costs noted above) and, when $B(t) < T(t)$, earn 0 in attack mode. Let $t^* = \min\{1, \inf\{t: B(t) \geq T(t)\}\}$ represent the moment that the speculative attack succeeds, or the end of the period if the attack never succeeds. The attackers receive a lump-sum payoff of $L > 0$ when the attack succeeds. After that point, all players earn the opportunity cost. Set the discount factor to 1 for simplicity.

Thus, using the Heaviside function $\theta(x) = 1$ if $x > 0$ and $\theta(x) = 0$ otherwise, the payoff for player i can be written as $100(1 - \int_0^{t^*} a_i(t) dt) + \theta(1 - t^*) a_i(t^*) L$. In the simplest variant of the game, players at time t observe the history $T(s)$ and $B(s)$ for all $s < t$, and all have equal mass normalized to unity, $m_i = 1$. More complicated variants allow for noisy observations of $T(s)$ and $B(s)$ and for size asymmetries.

Some caveats are in order before discussing the equilibria of these games and the testable implications. The threshold $T(t)$ is exogenous, i.e., the monetary authority is not a strategic participant, in order to keep a sharp focus on coordination and information issues. The games suppress two margins that sometimes play a minor role in the literature: the size of the devaluation is fixed at L , and each player either attacks fully or not at all.

At any fixed time t , the (static) equilibrium correspondence depends on the strength of the fundamentals $T(t)$ relative to the mass $m = \max_i m_i$ of the largest individual player, and to the

² A careful formal model would impose the assumption that the a_i functions are right-continuous, or at least

total mass $M = \sum_i m_i$ of all players. When $T(t) \leq m$, there are only devaluation equilibria in which a sufficiently large player unilaterally forces devaluation. When $T(t) > M$, there is only the trivial equilibrium with everyone passive. Our focus is the intermediate case. When $m < T(t) \leq M$, there are devaluation equilibria as well as the trivial equilibrium. The question then is, when will the players be able to coordinate an attack to achieve the higher payoffs in a devaluation equilibrium?

Continuous time introduces some interesting complications. Player i would find it in her immediate interest to join a speculative attack whenever she is pivotal, i.e., at any time t such that $B(t) < T(t) \leq B^{+i}(t) \equiv m_i + \sum_{j \neq i} a_j(t) m_j$. Typically several passive players would find themselves as pivotal at the same time, so they play a preemption game: as with patrons of a burning nightclub or depositors in a bank run, the reward goes to those who move first. The incentives are in the opposite direction when a player is not pivotal. It is in her interest to wait for the other players to attack (and let them forego the opportunity cost of 100 per unit time) until she becomes pivotal. Thus the direct incentive switches abruptly from free riding (waiting) to preemption (rushing) when a player becomes pivotal.³

The efficient equilibrium in the continuous time game (from the players' perspective, not the Central Bank's perspective!) is for all players to switch simultaneously into attack mode at the first time t^* that $T(t^*) \leq M$. Of course, there are many other equilibria, e.g., "sunspot" equilibria in which a sufficient mass of players attacks at an arbitrary t^* such that $T(t^*) \leq M$.

3.2 Researchable Questions

In practice, one wonders how the players might learn to coordinate on any equilibrium. Some of our evidence suggests a home-grown signaling process. When $B(s)$ is publicly observable, a player switching into attack mode signals to the other players currently in passive mode that they are now closer to being pivotal, which may encourage them also to switch. This signal is low cost if the switch is brief. Such signaling episodes would be observed as pulses in

measurable.

³ Similar timing issues arise in several other contexts besides speculative attacks. These range from trying to be fashionably late to a dinner party, to introducing a new high technology product or harvesting a seasonal crop, to selling off a bubble asset. Park and Smith (2008) consider such games with no information on other players' choices and no option to switch back to non-speculative mode. They derive symmetric mixed Nash equilibria characterized by a trickle of attackers until a crucial moment (determined by the known future path $T(t+s)$) when all remaining players attack.

which B increases rapidly and either reaches the threshold T so the attack succeeds, or else tops out below T and then rapidly declines. Angeletos *et al.* (2007) obtain such pulses in dynamic equilibrium.

The interesting questions now may be posed as follows.

1. *Fundamentals.* Is the probability of a successful attack a decreasing function of $T(t)$? The static Nash equilibrium correspondence allows for that possibility but does not require it. Recall that the global games approach predicts a sharp transition from probability 0 to probability 1. To expand slightly on the comments at the end of the previous section, HNO obtain a more gradual transition using different fixed levels of T in different trials, while CHO confirm an almost linear transition with simultaneous choice but persistent bimodality with sequential choice. By contrast, our laboratory design will allow us to evaluate the effects of continuously changing fundamentals.

2. *Information.* Does the probability of a successful attack increase or decrease when players have better public information about B and T ? The discussion above (regarding signaling and being pivotal) suggests an increase, as do the lab results (albeit in a very different context) of BM. The policy consensus, together with some theory and field evidence, predicts a decrease. Bannier and Heinemann (2005) predict that it can go either way depending on market sentiment and other factors. In a somewhat different lab context, HNO find that public information makes no significant difference.

3. *Asymmetries.* Does the presence of a player with larger mass or better information increase the probability of a successful attack? Corsetti *et al.* (2004) predict affirmative answers that are consistent with the laboratory results of Arikawa *et al.* (2006). Bannier (2005) has more nuanced predictions. Our experiment provides evidence in a continuous time setting.

4. *Coordination.* In terms of individual choice, do players respond differently when they are nearly pivotal than when they are far from pivotal? More precisely, is a player in passive (or active) mode more (or less) likely to switch when the shortfall $T(t) - B^{+i}(t)$ is smaller? More generally, is the switch probability increasing in B and/or decreasing in T ?

4. The Experiment

To answer such questions, we conducted an experiment at UCSC's LEEPS lab using a custom-built software platform called EvTech that supports asynchronous (i.e., continuous time) binary

choice games. A typical session lasted 90 minutes and involved fewer than a dozen inexperienced human subjects recruited by email from a campus-wide pool of undergraduate volunteers. Subjects silently read the instructions, reproduced in Appendix A, and then listened to an oral summary by the conductor. After a quiz and a couple of practice rounds, they played usually played 45 periods, of which most were the Speculative Attack game described in more detail below. Each subject received \$2 (or \$3 in some sessions) in cash per 1000 points earned over all periods, plus a \$5 showup fee. On average the cash payment was \$20.90, and the vast majority of subjects earned between \$15 and \$30.

During each period, each subject privately viewed a player screen display similar to the one shown in Figure 1. Except for one condition (explained in the Symmetry item below), each subject knew that other subjects saw the same information on their screens.

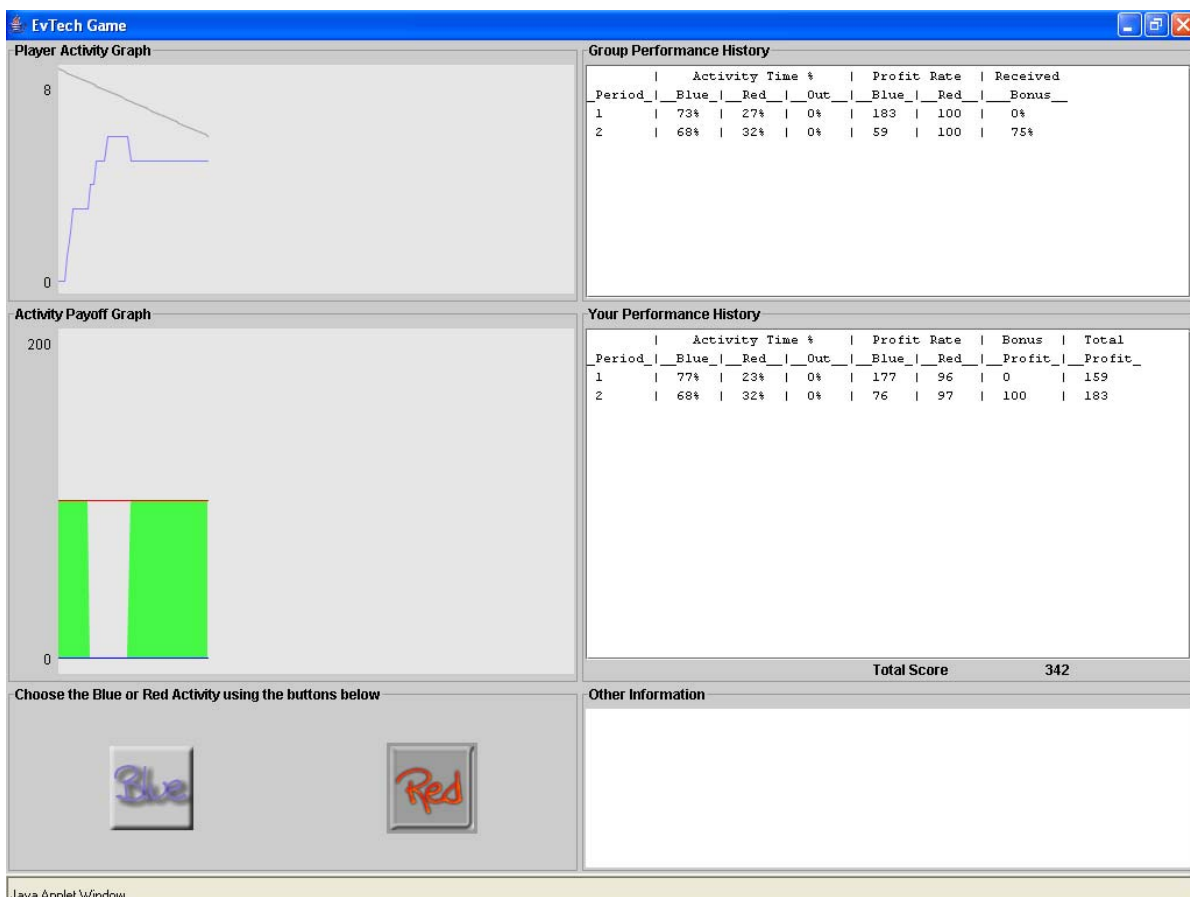


Figure 1. Example of speculator's screen at mid-period.

Each subject had two buttons, labeled Red (corresponding to the passive mode) and Blue (the attack mode), and switched mode by clicking the button not grayed out. In Speculative Attack periods, the payoff rates were exactly as in the theoretical discussion above: 0 for Blue prior to success, and 100 per period for Red (the opportunity cost) and for either mode after a successful attack. It was announced publicly (and written on the whiteboard) that players in Blue mode at the time that an attack succeeded received a bonus of $L=100$ points. The “Activity Payoff Graph” portion of the screen showed in real time the payoff rates as blue and red lines, and also showed (as a green area) the player’s profits earned so far. At the end of each period, the subject could see her current period and previous period payoffs, and the average payoffs to both activities, as in the right side panels in Figure 1.

Continuously updated panels as in the upper left in Figure 1 allowed players in the baseline treatment to observe the mass $B(s)$ of players in attack mode and the threshold $T(s)$ for success, for all times s from the beginning of the period up to the current time t . More precisely, the program refreshed the screen displays every “tick”, set at half a second (500 msec), and each period lasted 90 seconds.

4.1 Treatments

Table 1 lists the 12 experimental sessions featuring Speculative Attack periods. Each session had several blocks, each with four consecutive periods of the Speculative Attack game separated from the adjoining blocks by single periods of some other game using the same computer interface. Each block held constant all treatments except the time path of fundamentals; the other treatments varied across blocks and across sessions. The table includes 90 such blocks, but excludes 16 periods with too-strong fundamentals (as described below); hence the table and subsequent analysis reports $4 \cdot 90 - 16 = 344$ periods.

Key treatments include the following.

1. *Number of players and experience.* The number of human subjects varied across sessions from 4 to 11, and was known to everyone. The last two sessions used only subjects with experience in a prior session of the experiment; the other sessions used only inexperienced subjects.
2. *Fundamentals.* The threshold $T(t)$ always started out at 110% of total player mass M at $t=0$, fell linearly to a predetermined final value at a predetermined time, and remained at that final

Table 1: Experimental Design

Session number	Session date	Number of periods with max player weight ^a			Number of players	Number of periods with displayed lines ^b			Number of periods with asymmetric information ^c			Number of periods with steep ^d fundamental		Players experienced?
		=1	=3	=5		T	B	TB	A	D	N	yes	no	
85	7/21/04	15	0	0	6	10	11	8	0	0	0	2	13	No
86	8/16/04	36	0	0	4	24	24	16	0	0	0	8	28	No
87	8/18/04	23	0	0	6	19	16	12	0	0	0	5	18	No
88	9/28/04	36	0	0	7	24	24	16	0	0	0	8	28	No
89	10/6/04	18	0	0	5	10	10	6	0	0	0	4	14	No
91	10/13/04	18	0	0	8	10	10	6	0	0	0	4	14	No
94	11/19/04	0	31	0	6	18	31	18	6	18	7	4	27	No
100	1/25/05	11	10	12	7	13	33	13	8	6	8	0	33	No
101	1/31/05	8	9	11	11	13	28	13	7	7	6	0	28	No
102	2/1/05	9	12	14	8	15	19	9	9	9	8	5	30	No
103	2/7/05	7	12	8	7	11	18	8	7	7	6	3	24	Yes
104	2/8/05	12	14	18	9	17	25	10	11	10	11	5	39	Yes
Sum		193	88	63		184	249	135	48	57	46	48	296	

Note: The table and subsequent analysis excludes practice periods, the first 5 periods in each session, periods not related to speculative attacks, and 16 periods in which the attack was not feasible. The sessions after 10/13/04 include only the extreme information treatments (sharp lines or none) regarding fundamentals and speculative activity, while the prior sessions also include the intermediate (thick line) treatments.

^a Symmetric periods are indicated by max player weight =1, regular Soros periods by =3 and BigSoros periods by =5.

^b T indicates that the threshold line is displayed; B indicates that the blue (attack) line is displayed; and TB indicates that both lines are displayed.

^c A indicates that only Soros sees the threshold line; D indicates that all players see the threshold line; and N indicates that no players see the threshold line in sessions with asymmetric (“Soros”) periods.

^d The fundamental path is classified as steep if $T(t)$ fell to $0.5M$ within 50 sec., or to $0.6M$ within 30 seconds.

value for the rest of the period.⁴ Final values and times ranged from 50% of M at 15 seconds to 105% at 60 seconds. Of course, attacks cannot succeed when $T(t)$ always remains above 100%, and the 16 such periods are excluded from the analysis.⁵ The vast majority of fundamentals paths lie between a decrease to 90% of M within 45 seconds, and a decrease to 60% within 30 seconds. The path changed each period (to discourage uninteresting focal point equilibria), and varied across blocks orthogonally to the other treatment variables (to sharpen statistical inferences).

3. Information. The threshold line $T(t)$ and blue activity line $B(t)$ were displayed sharply in baseline periods, as in Figure 1. In some other periods, participants saw a thick line or band encompassing (not centered on) the actual value; its width allowed observational errors of up to two players. In some periods we completely suppressed either the T line or the B line. Thus each source of information had three possible levels, yielding $3*3=9$ different information treatments. Preliminary analysis showed that performance in the thick line treatments was not significantly different from the sharp line treatments, so the main data analysis involves only $2*2 = 4$ distinct information treatments.

4. Symmetry. In more than half of the reported periods, all players had the same screen displays and the same weight. In three periods of most blocks of some sessions, one player (called Soros below) had weight 3 or 5 times the weight of the other players. Soros observed the same B line as everyone else (either perfect or none), but in some blocks when other players did not observe T , Soros observed it perfectly, and this possibility was known to all players. The Soros role rotated among the players across blocks. Each player knew when Soros was present, could infer Soros' size in periods when the B line appeared, and knew when she had the Soros role.

The laboratory environment is constructed to address the questions posed at the end of the previous section, regarding the impact of fundamentals, information, player asymmetries and pivotality. It does not address some other questions covered in the HNO experiment, such as the comparative statics of devaluation size and opportunity cost, or the general impact of private information (we examine only Soros' private information). The sequential environment of CHO and the continuous time environment of BM allow players only to switch once from passive to

⁴ This treatment of fundamentals is perhaps reminiscent of First Generation models, except that (due to our focus on the "intermediate case") we always stabilize T above the level m where the no-attack equilibrium disappears.

⁵ Of course, we excluded the block separation periods from the present paper, as well as periods from early pilot sessions (in which we often varied the number of active players within a session and introduced some automated agents). We also excluded the first block of each session because occasionally a few subjects seemed confused in the first few periods. No other periods or sessions are excluded.

attack mode; ours allows them to switch freely back and forth. Thus our asynchronous environment provides a new and stringent test of coordination.

5. Results

5.1 Overview

Before testing hypotheses, we gain perspective by examining how players behaved in a single trading period, say the 19th period in the last session. In that block (periods 16-20), all players observed neither the blue line $B(t)$, the weight of players in attack mode, nor the gray line $T(t)$, the threshold weight or strength of fundamentals. In period 19, player #4 had the Soros role, with weight 5.

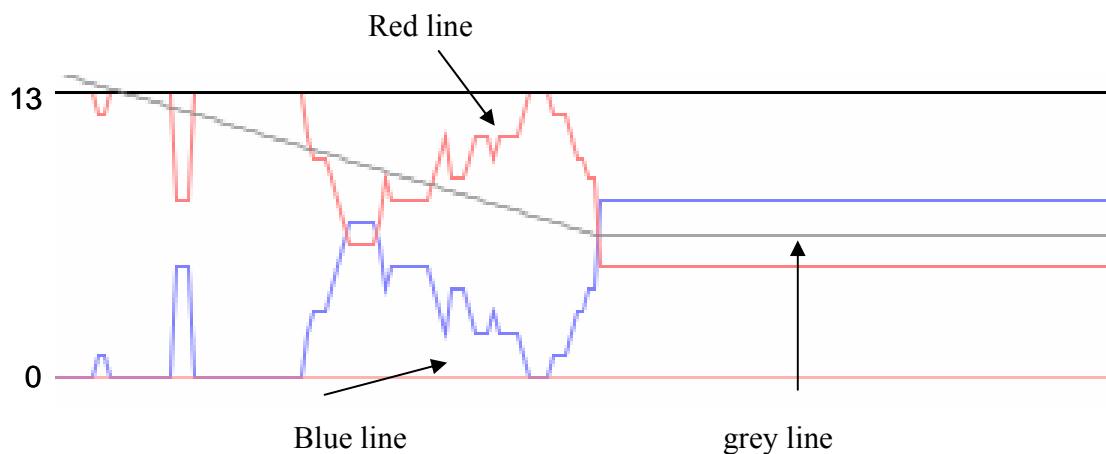


Figure 2. Player activity graph from period 19 on Feb. 8, 2005. The threshold (grey line) falls to 0.5 (6.5) after 45 seconds. There were 9 human players, but player 4 had a weight of 5 in this period. No player saw any of the lines in this period.

As shown in Figure 2, the threshold dropped from 110% of total mass $M (= 5+8*1 = 13)$ to 50% of M at $t=45$ seconds. In the first 20 seconds or so players remained in passive mode except for brief solo attacks by player #5 and player #4 (Soros). Then several small players successively switched into attack mode and remained there for several seconds, but the attack reached a plateau and began to subside by $t=27$ sec. At $t=41$, with much weaker fundamentals, the attack was renewed and it succeeded at $t^*=45.5$ when Soros finally switched to attack mode. Soros and the other attackers at t^* earned about 190 points each in period 19, while passive players earned 100 points. Player #9 abandoned the attack just before it succeeded and earned

only 89 points.

The other 343 periods differed in many respects. Some sessions saw many periods with several unsuccessful attack pulses, while other sessions (including the last) usually saw attacks succeed on the first pulse. Some sessions had relatively few successful attacks, but in one session attacks usually succeeded almost as soon as they became feasible. Summaries for all periods in Figure 2 format cannot be included here but are available on request.

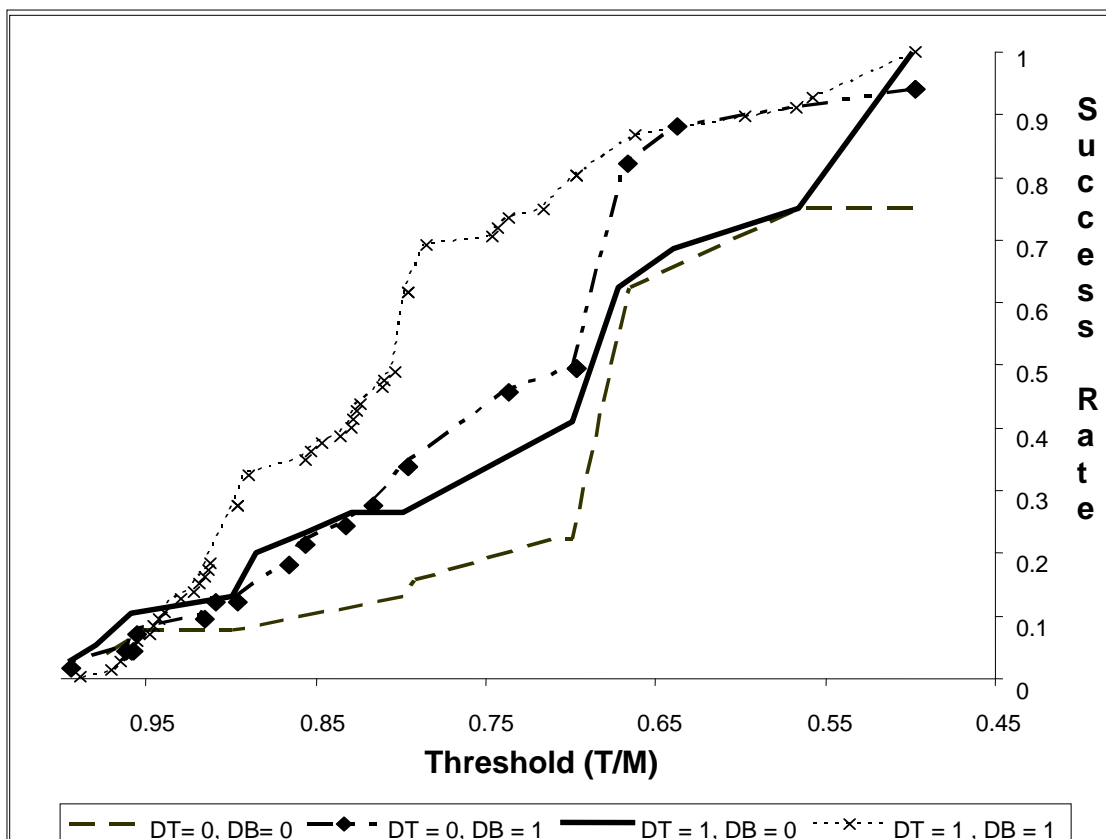


Figure 3: Success Rates for Speculative Attacks by the Strength of Fundamentals in Symmetric Periods. The success rate at threshold x is defined as $S(x)/[S(x)+U(x)]$, where $S(x)$ = number of periods where an attack succeeded at a threshold at or above x , and $U(x)$ = number of periods where the threshold declined to x without a successful attack. The horizontal axis is the threshold T as a fraction of the mass M of players. The treatment dummies DB and $DT=1$ (resp. $=0$) indicate that players observe (resp. do not observe) the number of attackers and the threshold.

Figure 3 provides an overview of speculative success for the 296 symmetric periods, by information condition. The success rate for speculative attacks is, of course, zero when the fundamentals are too strong ($T > M$). A simultaneous attack by all speculators is required when

$T = 0.95M$, and the figure shows that the success rate in this case is under 10% in all information treatments. When speculators can see both $B(t)$ and $T(t)$, the success rate climbs steeply as fundamentals weaken, e.g., it is over 70% when $T = 0.75M$, that is, when $\frac{3}{4}$ of the speculators are required. By contrast, the success rate at the same threshold is only about 20% when speculators see neither $B(t)$ nor $T(t)$. Players achieve intermediate success rates when they can see one but not both of the lines.

The figure suggests affirmative answers to the first two research questions: the probability of a successful attack does seem to be a decreasing function of the threshold, and seems enhanced by more public information. But the figure doesn't indicate whether the differences are significant, it conflates rapidly moving with slowly moving fundamentals, and it omits the asymmetric periods.⁶ More quantitative tests are in order.

5.2 Performance Variables, Explanatory Variables, and Estimation Techniques

The first two parts of our quantitative data analysis treat each period as a single observation, and examine four measures of performance.

1. *Success*: this dummy variable =1 iff there is a successful attack that period.

2. *Time to success*, $\tau = t^* - t_o$: seconds elapsed from the time t_o when the attack first became feasible (so $T(t_o) = M$) until the time t^* when the attack succeeded. Since time-dependent variables are recorded by tick (half-seconds), we can also measure time as the integer number of ticks instead of the decimal number τ of seconds. The τ and tick variables are right-censored by the end of the period when $t^*=90$, i.e., when no attack succeeds that period.

3. *Minimum gap*, $\text{Mingap} = \min\{T(t) - B(t) : 0 \leq t \leq 90\}/M$, the minimum shortfall of the mass attackers from the threshold within the period, expressed as a fraction of player mass M . *Mingap* measures continuously how close attacks come to success. It equals zero and is left-censored when *Success* = 1.

⁶ After making conventions on how to classify periods in which Soros sees T but other players do not, etc., one can create versions of Figure 3 that includes the asymmetric periods. The results are roughly similar to Figure 3 except that the $DB=1, DT=0$ line is closer to the full information line $DT=DB=1$, suggesting that information on speculative activity is more useful when Soros is present.

4. *Bluearea* = $\int_0^{t^*} B(t)dt$: the area under the blue activity line $B(t)$ before the attack succeeds. It measures speculators' foregone earnings due to attacks before achieving success. It is right-censored when Success = 0.

The explanatory variables (as previously noted in Table 1 and Figure 3) include:

1. *Threshold information dummy*: DT=1 if a threshold line is displayed (exact or with noise) and =0 if it is not displayed. (We found no qualitative difference between an exact DT dummy and a noisy DT dummy in the symmetric sessions, so we combine them.)
2. *Blue information dummy*: DB=1 if the blue line is displayed (exact or with noise) and =0 if it is not displayed. (Again, for simplicity we combined the exact and noisy DB dummies after finding no qualitative difference between them.)
3. *Steep dummy*: Steep=1 if $T(t)$ fell to 0.5 within 50 seconds, or to 0.6 within 30 seconds. A value of 1 indicates rapid deterioration of the fundamentals.

To explain the first performance measure, success, we estimate the Logit model

$$P(y_i = 1) = F(x_i' \beta), i = 1, \dots, N,$$

where y_i is the period i success dummy taking the value of 1 or 0, while x_i is a vector of explanatory variables, and β is the corresponding vector of coefficients. $F(w) = e^w / (1 + e^w)$ is the logistic distribution function, and $N=193$ is the number of periods included in the regression analysis.

Due to their censoring structure, the performance variables τ , Mingap, and Bluearea are estimated using the Tobit specification

$$y_i^* = x_i' \beta + \varepsilon_i, i = 1, \dots, N$$

where the observed variable y_i is equal to its latent counterpart y_i^* if there is no censoring and is equal to 1 (0) if y_i^* is right- (left-) censored. (For τ , the censor-value of 1 period length corresponds to 90 sec or 180 ticks.) The coefficients are estimated under the standard Type I extreme-value distribution assumption.⁷

To check robustness and to offer a different perspective on the data, we re-examine the time to success τ using the Cox proportional hazard model (PHM)

$$h_i(t) = h(t, x_i) = h_0(t) \exp(x_i' \beta), i = 1, \dots, N.$$

⁷ The Type I extreme-value distribution function, also known as the log Weibull distribution function, is given by $F(w) = \exp[-\exp(-w)]$.

The variable $h_i(t)$ is the hazard rate (or, in the present context, the success rate), the probability density that a speculative attack is successful at time t conditional on the explanatory variables in the vector x_i (and conditional on no earlier success, so we can use t and τ interchangeably). The baseline hazard rate $h_0(t)$ is $h_i(t)$ when $x_i = 0$. One advantage of PHM is that it is semiparametric and imposes no functional form on the baseline function $h_0(t)$.

5.3 Tests of Fundamentals and Information.

Is the probability of a successful attack a decreasing function of $T(t)$? We now sharpen this first question as: do the variables $T(t)$ or Steep have a significant impact on the performance variables in the appropriate direction? Likewise, the second researchable question—Does the probability of a successful attack increase or decrease when players have better public information about B and T ?—can be sharpened as: do the variables DB and DT significantly impact the performance variables in either direction?

Table 2 collects the evidence from the 193 periods with symmetric players. The second column reports the logit estimates for the performance variable Success. The probability of a successful attack does significantly increase when the threshold and attack mass variables are observable and when the fundamentals deteriorate rapidly. Indeed, a steep decline in the fundamentals increases the log odds of success by almost three. We also considered the effect of the interaction terms DT*Steep and DT*DB, but omit reporting them because neither is highly significant in any specification or even marginally significant in most specifications.

The Tobit estimation results for the other three performance variables are shown in the next three columns, and they all reinforce the implications of the Logit estimates. For instance, the time to success (τ) is significantly less when players see the T and the B lines and when T drops steeply. Each dummy variable reduces the time to success by about 15% (e.g., $0.88 / 5.87 \approx 0.15$ for DB). Again, the estimates indicate that the 'Steep' dummy has an even larger impact.

So far the regression results indicate that information about the fundamentals and speculative activity hastens the occurrence of a successful attack. What happens when no successful attack is observed? The Mingap Tobit regression again indicates that all three explanatory variables foster speculation and help narrow the gap to success. The Bluearea Tobit regression likewise shows that the same variables reduce the time spent in fruitless speculation.

In the sixth column, the PHM coefficient signs are reversed relative to the Tobit model

Table 2: Coefficient Estimates for Symmetric Periods

Dependent Var.	Success	τ in sec	Mingap	Bluearea	τ in sec	Ticks	Ticks	Ticks	Ticks
Model	Logit	Tobit	Tobit	Tobit	PHM	PHM	PHM	PHM	PHM
Intercept	-2.29 **	5.87 **	-.31 **	6.88 **					
DT	1.61 **	-.81 **	-.32 **	-.69 **	1.08 **	1.03 **		1.04 **	1.04 **
DB	1.59 **	-.88 **	-.32 **	-.87 **	1.29 **	.91 **	.62	.93 **	.92 **
Steep	2.96 **	-1.33 **	-.71 **	-1.62 **	1.85 **				
T(t)						-7.04 **	-8.89 **	-7.52 **	-7.14 **
AT(t)							-6.21	-3.92	
Tprime(t)									-5.00
No. of obs.	193	193	193	193	193	193	66	193	193
Censor if success		=0	=1	=0	=0	=0	=0	=0	=0
Type of censoring		right	left	right	right	right	right	right	right
No. censored obs.		87	106	87	87	87	44	87	87

Note: ** denotes p-values $\leq .001$, * denotes p-values $\leq .01$, + denotes p-values $\leq .1$. Data are all symmetric periods reported in Table 1.

(because the PHM estimates the success rate instead of the time to success) but the fitted models again reinforce each other. Other things equal, displaying the strength of fundamentals (DT=1) increases the probability of a successful attack per unit time by an estimated factor of $e^{1.08} \approx 2.94$, or 194%. Likewise, displaying the overall speculative position (DB=1) more than triples the probability of success ($e^{1.29} \approx 3.65$) and steeply declining fundamentals (Steep=1) increases it sixfold ($e^{1.85} \approx 6.36$).

The PMH also allows us to examine directly the effect of the time-varying fundamental $T(t)$, as reported in the remaining columns Table 2. Of course, the Steep dummy is now redundant and is omitted and, due to the way the data are recorded, the time variable is expressed in ticks rather than in seconds. In column 7, both information dummies DT and DB maintain their significance and approximate magnitudes in the presence of $T(t)$, although their relative size changes. The coefficient estimate -7.04 implies that deterioration of fundamentals causes a dramatic increase in the probability of a successful attack. For example, the success probability doubles when T decreases by just 10% of speculators' total capacity M (since $e^{(-0.10)*(-7.04)} \approx 2.02$).

What happens when players can't observe the threshold, that is, when $DT = 0$? Define $AT(t)$ as the average over all draws of $T(t)$ used in the experiment. Up to sampling error, this variable captures an individual player's previous experience in observing the fundamentals. Columns 8 and 9 report results based on, respectively, only sessions with $DT = 0$ and all the sessions. The results suggest that subjects respond appropriately to such experience, especially in the 66 periods with $DT = 0$, but (perhaps due to sampling error) the $AT(t)$ coefficient estimates aren't quite significant; their p-values are 0.37 in the $DT = 0$ subset and 0.27 overall.

Some of the theoretical work suggests that the speed at which fundamentals deteriorate is as important as the level (Flood and Garber, 1984; Guimares, 2006; Rochon, 2006). To investigate, we form the variable $T_{\text{prime}} = dT/dt$, expressed as a fraction of M per minute. For instance, if T falls linearly from $1.1M$ to $0.8M$ at $t=45$ sec and then stops, then $T_{\text{prime}} = -0.3/(45/60) = -0.4$ for $t < 45$ sec and $= 0$ for $t > 45$ sec. The results in the last column of Table 2 show that the deterioration rate of fundamentals has the predicted effect but it is not statistically significant. We note that if T is excluded from the regression, then T_{prime} has the expected sign and is significant. Thus, our data do not support the extreme view that the deterioration rate of fundamentals is all that matters.

We also conducted several robustness checks, omitted from Table 2 to conserve space. Players in a given session might be especially good or bad at coordinating, and this could affect the results, so we re-ran all regressions using session fixed effects. None of the estimated effects changes sign or loses significance, and some estimated effects become stronger. A few of the session fixed effects are large

(e.g., session exp101 has a very large fixed effect for Success, suggesting excellent coordination) but, except for some of the Bluearea and Mingap tobits, very few are highly significant. We also ran several alternative PHM specifications. Including a time trend in some cases slightly increased the estimated magnitude and significance of the T, AT, or Tprime variables, but never enough to change the qualitative conclusions, and the time trend itself was never significant in the presence of these variables.

5.4 Tests of Asymmetry

Does the presence of a player with larger mass or better information increase the probability of a successful attack? To address this third researchable question, we define the following dummy explanatory variables:

1. *Soros*: equals one if there was a player with $\text{weight} > 1$
2. *BigSoros*: equals one if his $\text{weight} = 5$; =0 otherwise
3. *PT*: equals one if the threshold line $\{T(s): s < t\}$ is displayed for the Public
4. *OST*: equals one if only Soros sees the threshold line, but not the Public

Table 3 reports regressions for the asymmetric sessions, which include 47 symmetric periods as well as 151 periods with Soros. The specifications are similar to those in Table 2, augmented by the ‘Soros’ variable and the more significant interactions. The variable ‘BigSoros’ is insignificant in all specifications and so is dropped from the reported results. One possible interpretation, consistent with the theoretical results of Corsetti *et al.* (2004), is that what matters is Soros’ mere presence, not his exact trading capacity. The ‘OST’ variable is also insignificant in all specifications and omitted from the table.

The results in Table 3 confirm that Soros has a real impact. The “Soros” dummy variable is significant at least at the 10% level in each regression, and always indicates that speculative attacks are more likely to succeed and come sooner when Soros is present. For example, the third column of Panel A indicates that Soros speeds the time to success by almost 30% (from $1.94/6.76 \approx 0.287$). Even when the attack is not successful, the Mingap and pressure estimates in columns 4 and 5 indicate that the presence of Soros significantly narrows the gap from success and adds to speculative pressure.

The impact of fundamentals $T(t)$ is less in Table 3 than in Table 2 but is still quite strong. For example, the devaluation probability increase for a 10% deterioration in fundamentals is 65% (based on the -5.01 coefficient estimate in the last column of Table 3), about two-thirds as strong as in Table 2. Steeply declining fundamentals seldom appear in the asymmetric data, so the steep dummy has more erratic coefficients and usually lower significance than in Table 2.

Table 3: Coefficient Estimates for Asymmetric Sessions

Dependent Var.	Success	τ in sec	Mingap	Bluearea	τ in sec	Ticks	Attack ^a
Model	Logit	Tobit	Tobit	Tobit	PHM	PHM	PHM
Intercept	-5.12 [*]	6.76 ^{**}	.25 ^{**}	9.31 ^{**}			
PT	3.68 [*]	-1.24 ^{**}	-.24 ^{**}	-1.66 ^{**}	1.87 ^{**}	1.16 ⁺	2.48 ^{**}
DB	5.18 [*]	-2.42 [*]	-.28 ^{**}	-3.74 ^{**}	3.56 [*]	2.92 [*]	.31 ^{**}
PT*DB	-1.96	.82 [*]	-.02	1.26 [*]	-1.23 ⁺	-.45	
Steep	14.52	-.82 ^{**}	-3.54	1.62 ^{**}	1.27 ^{**}		
T(t)						-5.01 ^{**}	-2.47 ^{**}
Soros	3.80 ⁺	-1.94 ⁺	-.22 ^{**}	-2.39 ⁺	2.93 [*]	2.42 ⁺	.31 ^{**}
DB*Soros	-2.19	1.55 ⁺	-.003	2.28 ⁺	-2.33 ⁺	-1.73	
No. of obs.	198	198	198	198	198	198	2448
Censor if success		=0	=1	=0	=0	=0	
Type of censoring		right	left	right	right	right	right
No. censored obs.		44	154	44	44	44	282

Note: ** denotes p-values $\leq .001$, * denotes p-values $\leq .01$, + denotes p-values $\leq .1$. Data in all columns except the last are from all periods of sessions conducted after 11/1/04 as reported in Table 1. ^aThe columns for Attack are based on all data from all sessions reported in Table 1.

Table 3, like Table 2, reports that both informational dummy variables significantly increase the probability of an attack, hasten its onset, increase speculative pressure, and reduce the shortfall of unsuccessful attacks. However, in Table 3 most of the direct effects are stronger and they often interfere with each other. The Tobit time to success estimates, for example, indicate separate reductions of about 18% and 36% respectively for PT (the counterpart of DT from Table 2) and DB, but an offset of 12% in the combination. Thus when speculators observe both speculative activity and fundamentals, the average time to success declines by about $[1.24 + 2.42 - 0.82]/6.76 \approx 18\% + 36\% - 12\% = 42\%$.

The interaction term DB*Soros is insignificant in many of the regressions, but comes up marginally significant in two of the three timing regressions, with a sign again indicating an offset of the level effects. Looking once more at the Tobit time to success estimates, we note that the separate effects are 36% and 29% reductions respectively for observing speculative activity and for Soros' presence, but the coefficient estimate for DB*Soros implies an offset of $1.55/6.76 \approx 23\%$ and thus a combined effect of about $36\% + 29\% - 23\% = 42\%$. In comparing these estimates to those from Table 2, the main puzzle is the large impact for DB (estimated at 36%) when Soros is absent. Perhaps players somehow become more attuned to signaling in sessions where Soros is usually present.

Again to check robustness, we reran the Table 3 estimates allowing for session fixed effects. This

generally strengthens the results slightly, without changing the qualitative results. We also tried the AT and Tprime variables on the asymmetric data, obtaining results a bit noisier but otherwise similar to those reported in the previous subsection. These additional results are not reported for brevity but are available from the authors.

5.5 Tests of Coordination

The last column of Table 3 investigates a preliminary question: how do individual speculators decide when to attack? We fit the proportional hazard model to the 2448 ticks at which a speculator first switched from passive mode into attack mode. The estimates indicate that such switches are much more likely when speculators can see the strength of fundamentals and somewhat more likely when they can see the amount of speculation. Stronger fundamentals (when observable) deter attacks and the presence of Soros encourages attacks.

Table 4: Timing of Speculative Attacks

	No. of obs.	Mean SP	t Test	MW Test
Soros Knows Same			6.05**	4.44**
Regular Players	2033	5.25		
Soros Players	178	3.70		
Soros Knows More			5.78**	4.32**
Regular Players	664	5.36		
Soros Players	93	3.32		

Note: MW refers to the nonparametric Mann-Whitney (or Wilcoxon rank-sum) test, and t refers to the unequal variance version of Student’s t test for equality of means. The variable Shortfall from Pivotality (SP) is defined in the text. Data are all periods from sessions conducted after 10/13/04 reported in Table 1.

** denotes p-values $\leq .001$.

Table 4 investigates a question related both to coordination and to asymmetry. The model of Corsetti *et al.* (2004) emphasizes Soros’ ability to exploit his signaling strength by attacking earlier than other speculators. On the other hand, in our experiment, Soros could exploit his greater opportunity to be pivotal by attacking later. By the same token, ordinary speculators might attack earlier to avoid preemption by Soros.

The most direct evidence comes from defining the variable Shortfall from Pivotality, $SP(i,t) = T(t) - B(t) + (a_i(t)-1)m_i$, for each player i at each time t . Thus SP is the number of additional regular (mass=1)

players it would take for the attack to succeed. Table 4 reports mean values of SP of 5.25 for regular players and 3.70 for Soros players when Soros has no informational advantage, and reports similar averages (if anything, a bit further apart) when Soros knows the strength of fundamentals but small speculators do not. Thus in our experiment Soros attacks later than ordinary speculators.

Table 5: Switching Behavior

Dependent Var.	Switch to Attack	Switch to Attack	Switch to Attack	Switch to Attack	Stay in Attack	Stay in Attack	Stay in Attack	Stay in Attack
Model	Logit	Logit + Subject fixed effects	Logit	Logit + Subject fixed effects	Logit	Logit + Subject fixed effects	Logit	Logit + Subject fixed effects
Intercept	-3.04 **	-2.80	-3.47 **	-5.01 **	2.37 **	2.77	1.33 **	1.65
DT	0.15 **	-0.20	0.09 +	0.06	0.41 **	0.64 **	0.37 **	0.93 *
DB	0.24 **	-0.18	0.23 **	-0.43 +	0.21 **	0.92 **	0.20 **	0.40
DT*DB		1.18 **		0.76 +		-0.14		-0.97 +
SP	-0.22 **	-0.34 **			-0.09 **	-0.14 **		
SP*DT		0.09 +				0.05		
SP*DB		0.13 **				-0.07 +		
SP*DT*DB		-0.29 **				-0.08		
Threshold			-0.13 **	0.02			0.03 +	-0.01
numAttack			0.33 **	0.50 **			0.23 **	0.16 +
Thresh*DT				0.01				0.01
Thresh*DB				0.12 *				0.01
numAtt*DT				-0.16 *				-0.07
numAtt*DB				-0.11 +				0.12 +
Th*DT*DB				-0.15 *				0.02
Att*DT*DB				0.31 **				0.17 +
No. of obs.	109051	109051	109051	109051	27061	27061	27061	27061

Note: ** denotes p-values $\leq .001$, * denotes p-values $\leq .01$, + denotes p-values $\leq .10$. Data include all ticks prior to a successful attack in all symmetric periods and for all subjects reported in Table 1.

Table 5 addresses the crucial question on coordination: do players respond differently when they are nearly pivotal than when they are far from pivotal? The table looks at each player's choices every half-second tick prior to a successful attack in all symmetric periods. For players in passive mode (about

109 thousand observations), it uses a logit model to fit the cases (about 3 thousand) where the player switched to attack mode on the next tick. For players already in attack mode (about 27 thousand observations) it fits the choice of staying in attack mode (about 25 thousand cases) or switching back to passive mode.

The second column reports direct effect estimates. The presence of either line increases the switching probability significantly, and a greater shortfall from pivotality decreases it. The third column allows for individual subject fixed effects and interactions. When both lines are visible, those estimates give slope $-.34+.09+.13-.29 = -0.41$ and intercept $-2.80-.20-.18+1.18 = -2.00$. Given the logit specification, the corresponding switch probability is $\exp(-2.00 - 0.41SP) / (1 + \exp(-2.00 - 0.41SP))$, about 12% when the player is pivotal ($SP=0$, essentially a measure of reaction time) and about 8% when only one more speculator is required for a successful attack ($SP=1$). The estimated probability falls below 1% when at least 7 more speculators are needed.

These coefficient estimates indicate that seeing both lines together has a much stronger effect than seeing either of them by itself: for the intercept, the direct effects $(-.20, -.18)$ are at best marginally significant while the interaction $(+1.18)$ is very significant, and for the slope estimates the interaction term (-0.29) again is the most significant and strongest term.

The fourth column breaks apart the SP variable and looks at the separate effects of the threshold $T(t)$ and the number of players $B(t)$ currently in attack mode, as fractions of the total player mass M . Consistent with many of the theoretical models, the $T(t)$ coefficient estimate indicates that individual players are significantly more likely to switch to attack mode when fundamentals are weaker. Switching to attack mode responds even more strongly to a larger number of players already in attack mode. The significant three way interactions in the fifth column once more show that seeing both lines together has an especially strong effect.

The other columns of Table 5 obtain parallel results for players already in attack mode. The direct effect estimates for SP again indicate that players are more likely to remain in attack mode when they have more information and when the attack is closer to success. The more refined specification in the next column obtains stronger direct effect estimates but relatively weak interaction estimates. The last column also shows a significantly stronger positive information effect for threshold but a marginally significant level effect of the wrong sign.⁸

Subsets of the data provide evidence on the robustness of two conditional predictions regarding

⁸ That sign reverts to its expected one but becomes insignificant in more refined estimates including higher order interactions and subject fixed effects. These estimates, excluded here to save space, are available from the authors.

transparency. Recall that Bannier and Heinemann (2005) conclude that greater transparency may encourage speculation in some circumstances when speculators believe that fundamentals are strong. Their model, an extension of global games, doesn't translate precisely into our laboratory setup, but if their conclusion is very robust it would suggest that the positive DB and DT coefficient estimates in the second column of Table 5 are due to observations when $T(t)$ is high. Figure 3 points to $T(t)=0.8M$ as a natural breakpoint, since the success rate of speculative attacks in the full information condition first exceeds 50% and climbs sharply at this threshold. Restricting to $T(t) \geq 0.8M$ data, we obtain coefficient estimates -0.06 and 0.23**, smaller than the unrestricted estimates of 0.15** and 0.24** reported in the table. Thus the first conditional prediction is not supported in our data.

Recall that Bannier (2005) concludes that attacks are more likely with a larger and less well informed large player when beliefs about fundamentals are pessimistic, but the reverse holds when beliefs are optimistic. A rough translation into our data predicts higher attack rates by ordinary players in condition 5N-p (Soros has weight 5 and neither Soros nor regular players see the threshold line, and fundamentals are "pessimistic," $T(t) < 0.8M$) than in 3A-p (Soros has weight 3 and is the only one who sees the threshold line, and $T(t) < 0.8M$), and higher attack rates in 3A-o than in 5N-o (defined as before except with "optimistic" fundamentals $T(t) \geq 0.8M$). The raw attack rates in our data are 3.2% in 5N-p versus 7.0% in 3A-p (contrary to the first part of the prediction) and are 2.9% in 3A-o versus 2.7% in 5N-o (consistent with the prediction but negligible). To control for information conditions and SP , one compares intercept coefficients the basic Switch to Attack Logit. The first comparison becomes negligible (log-odds of -1.70 in 5N-p versus -1.76 in 3A-p) while the second becomes more favorable (-1.95 in 3A-o versus -2.57 in 5N-o). Thus the evidence on the second conditional prediction is mixed.

6. Discussion

Second and third generation models raise as many questions as they answer. What governs the timing of speculative attacks? What factors make attacks more or less frequent, and more or less likely to succeed? The models, and the available field evidence, are either silent or inconsistent on these important matters. The few existing laboratory studies use a simplified one-time, simultaneous-move setting that doesn't capture the dynamic nature of currency speculation.

Our laboratory experiment allows speculators to switch in and out of attack mode and lets the strength of fundamentals change in real time. It controls explanatory variables and so their impact on performance has a causal interpretation. Thus the experiment provides direct evidence on the models' predictive power in a simple dynamic setting, and offers a fresh perspective on field evidence.

The main results of the experiment can be summarized as follows.

1. *Fundamentals*. The probability of a successful attack indeed is a decreasing function of the strength of the fundamentals. The function appears to be continuous, not a jump from 0 to 1 as in some models. For example, a deterioration of the fundamentals from 90 to 80 (percent of potential speculation required to force a devaluation) doubles the probability of a successful attack in our data.
2. *Information*. Successful attacks are more likely and come sooner when speculators have information about the strength of fundamentals and about the activities of other speculators. In our symmetric data, for example, providing precise public information about net speculative positions shortens the average time to devaluation by about 15%, and providing precise public information about the fundamentals has a very similar effect. The effects persist even with weaker fundamentals and with less precise information.
3. *Asymmetries*. The mere presence of a speculator with larger mass (“Soros”) increases the probability of a successful attack and hastens its onset; e.g., the time to success decreases by almost 30%. Consistent with some theory, giving the large speculator increased size does not significantly strengthen his impact in our data. Contrary to some theory, giving him better information seems to have little impact, and in our experiment the large speculators tend to attack later than ordinary speculators.
4. *Coordination*. Speculators are more likely to switch into (and less likely to switch out of) attack mode when they are nearer to being pivotal, e.g., when fundamentals are weaker or more speculators are already in attack mode. The effect is enhanced by information about fundamentals and speculative activity.

Of course, the laboratory results should not be translated directly into policy recommendations, but they should sharpen subsequent theoretical and empirical research and thus improve policy indirectly. For example, part of result 3 seems inconsistent with surveys of foreign exchange dealers, who say that the two most important advantages possessed by large traders are a “large customer base” and “better information” about the market (Cheung and Wong, 2000; Cheung and Chinn, 2001; and Cheung, Chinn and Marsh, 2004).⁹ Future empirical work, both laboratory and field, should resolve the inconsistency and point to appropriate policy.

Another example is the second result that better information about fundamentals encourages speculative attacks and makes success more likely. As noted, this conclusion seems to contradict conventional wisdom, some theoretical models, and one piece of field data. In our experiment, the strength of fundamentals is, by design, independent of what information is available. The two variables might be correlated in field data. Indeed, the central bank might strategically increase or decrease the

⁹ Wei and Kim (1997) find a very weak association between big players’ position and the subsequent currency movement, and infer that large players do not generally have better information.

availability of information, and from a decrease speculators might infer that fundamentals are weak. If this strategic effect is sufficiently strong, it could account for the conventional result and its very different policy implications. One way to pursue the question is to conduct laboratory experiments with information controlled by a player in the role of a central bank. The baseline results of our completed experiment would allow clear inferences about the strategic effect.

To conclude, experimental methods have made useful contributions to many theoretical and applied fields of economics in the last ten or twenty years, but have hardly touched international finance. We believe that the work reported here offers evidence that is complementary to both field studies and theoretical models, and we hope that it encourages greater cross fertilization.

Bibliography

- Abreu, Dilip Abreu and Markus K. Brunnermeier, 2003, "Bubbles and Crashes," *Econometrica* 71, 173-204.
- Arikawa, Yasuhiro, Kumi Suzuki-Loffelhotz and Kenshi Taketa, 2006, "Experimental Analysis on the Role of a large Speculator in Currency Crises," Bank of Japan, Institute for Monetary and Economic Studies Discussion Paper No. 2006-E-4.
- Angeletos, George-Marios, Christian Hellwig and Alessandro Pavan, 2007, "Dynamic Global Games of Regime Change: Learning, Multiplicity, and the Timing of Attacks," *Econometrica* 75(3), 711-756.
- Angeletos, George-Marios and Iván Werning, 2006, "Crises and Prices: Information Aggregation, Multiplicity and Volatility," *American Economic Review* 96(5), 1720-1736.
- Allegret, Jean-Pierre and Camille Cornand, 2005, "The Pros and Cons of Higher Transparency: The Case of Speculative Attacks," GATE WP 05-02.
- Bannier, Christina E., 2004, "The Role of Information Disparity in the 1994/95 Mexican Peso Crisis: Empirical Evidence," manuscript, Finance Department, Goethe University Frankfurt.
- Bannier, Christina E., 2005, "Big Elephants in Small Ponds: Do Large Traders Make Financial Markets More Aggressive?" *Journal of Monetary Economics* 52, 1517–1531
- Bannier, Christina E. and Frank Heinemann, 2005, "Optimal Transparency and Risk - Taking to Avoid Currency Crises," *Journal of Institutional and Theoretical Economics* 161, 374 – 391.
- Brunnermeier, M. K. and John Morgan, 2004, "Clock Games: Theory and Experiments," manuscript, Haas School, UC Berkeley.
- Carlsson, H. and E. Van Damme, 1993, "Global Games and Equilibrium Selection," *Econometrica* 61, 989–1018.
- Chamley, Christophe, (2003), "Dynamic Speculative Attacks," *American Economic Review* 93, 603-621
- Chang, Roberto and Andres Velasco (1999), "Financial Fragility and the Exchange Rate Regime," NBER Working Paper 7272.
- Cheung, Yin-Wong and Clement Yuk-Pang Wong, 2000, "A Survey of Market Practitioners' Views on Exchange Rate Dynamics," *Journal of International Economics* 51, 401-419.
- Cheung, Yin-Wong and Menzie Chinn, 2001, "Currency Traders and Exchange Rate Dynamics: A Survey of the U.S. Market," *Journal of International Money and Finance* 20, 439-471.
- Cheung, Yin-Wong, Menzie Chinn and Ian Marsh, 2004, "How Do UK Foreign Exchange Dealers Think their Market Operates," *International Journal of Finance and Economics* 9, 289-306.
- Cornand, Camille, 2006, "Speculative Attacks and Informational Structure: An Experimental Study,"

Review Of International Economics 14, 797-817.

- Corsetti, Giancarlo, Amil Dasgupta, Stephen Morris and Hyun Song Shin, 2004, "Does One Soros Make a Difference? A Theory of Currency Crisis with Large and Small Traders," *Review of Economic Studies* 71, 87-113.
- Corsetti, Giancarlo, Paolo Pesenti and Nouriel Roubini, 1999, "Paper Tigers? A Model of the Asian Crisis," *European Economic Review* 43, 1211-1236.
- Costain, James, 2006, "A Herding Perspective on Global Games and Multiplicity," U. Carlos III Economics Working Paper 03-29 (08), May 2003; revised July 2006.
- Costain, James, Frank Heinemann and Peter Ockenfels, 2005, "Multiple Outcomes of Speculative Behavior in Theory and in the Laboratory," Department of Economics manuscript, Universidad Carlos III Madrid. (April).
- Dooley Michael P., 1997, "A Model of Crises in Emerging Markets," NBER Working Paper #6300.
- Drazen Allan and Paul R. Masson, 1994, "Credibility of Policies versus Credibility of Policymakers," *Quarterly Journal of Economics* 104, 735-54.
- Economist, 1998, "Finance and economics: Freefall," *Economist* 349, 78-79.
- Eichengreen, Barry, Donald Mathieson, Sunil Sharma, Bankim Chadha, Laura Kodres and Anne Jansen, 1998, "Hedge Funds and Financial Market Dynamics," Occasional Paper 166, International Monetary Fund, Washington, D.C.
- Federal Reserve Bank of New York, 1998, *Foreign Exchange and Interest Rate Derivatives Markets Survey Turnover in the United States* (New York: Federal Reserve Bank of New York, September 29th).
- Flood, Robert P. and Peter M. Garber, 1984, "Collapsing Exchange Rate Regimes: Some Linear Examples," *Journal of International Economics* 17, 1-13.
- Flood, Robert P. and Nancy P. Marion, 1999, "Perspectives on the Recent Currency Crisis Literature," *International Journal of Finance and Economics* 4, 1-26.
- Guimaraes, Bernardo, 2006, "Dynamics of Currency Crises with Asset Market Frictions," *Journal of International Economics* 68, 141-158.
- Heinemann, Frank and Gerhard Illing, 2002, "Speculative Attacks: Unique Equilibrium and Transparency," *Journal of International Economics* 58, 429-450.
- Heinemann, Frank, Rosemarie Nagel and Peter Ockenfels, 2004, "The Theory of Global Games on Test: Experimental Analysis of Coordination Games with Public and Private Information," *Econometrica* 72, 1583-1599.

- Henderson, Dale and Steven Salant, 1978, "Market Anticipations of Government Policies and the Price of Gold," *Journal of Political Economy* 86, 627-48
- Huberman, Bernardo and Natalie Glance, 1993, "Evolutionary Games and Computer Simulations," *Proceedings of the National Academy of Science* 90, 7716-7718.
- Krugman, Paul, 1979, "A Model of Balance of Payment Crises," *Journal of Money, Credit and Banking* 11, 311-25.
- Krugman, Paul, 1999, "Balance Sheets, the Transfer Problem, and Financial Crises," in *International Finance and International Crises*, eds. Peter Isard, Assaf Razin and Andrew K. Rose, International Monetary Fund, Washington DC.
- Morris, Stephen and Hyun Song Shin, 1998, "Unique Equilibrium in a Model of Self-Fulfilling Currency Attacks," *American Economic Review* 88, 587-597.
- Obstfeld, Maurice, 1995, "The Logic of Currency Crises," in *Monetary and Fiscal Policy in an Integrated Europe*, eds. Barry Eichengreen, Jeffrey Frieden, and Jurgen von Hagen, Springer Verlag, London.
- Obstfeld, Maurice, 1996, "Models Of Currency Crisis with Self-Fulfilling Features," *European Economic Review* 40, 1037-1047.
- Obstfeld, Maurice, 1998, "EMU: Ready or Not?" Princeton Essays in International Finance, no. 209.
- Park, Andreas and Lones Smith, 2008, "Caller Number Five and Related Timing Games," *Theoretical Economics* 3, 231-256.
- Rochon, Céline, 2006, "Devaluation without common knowledge," *Journal of International Economics* 70, 470-489.
- Sesit, M.R., Pacelle, M., 1998. Selling blitz hits dollar 7.4% on Tokyo's move: hedge funds scramble in bid to cut losses, Wall Street Journal, October 8, C1.
- Wei, Shang-Jin and Jungshik Kim, 1997, "The Big Players in the Foreign Exchange Market: Do They Trade on Information or Noise?" NBER Working Paper #6256.

CESifo Working Paper Series

for full list see www.cesifo-group.org/wp

(address: Poschingerstr. 5, 81679 Munich, Germany, office@cesifo.de)

- 2357 Wolfgang Buchholz and Jan Schumacher, Discounting the Long-Distant Future: A Simple Explanation for the Weitzman-Gollier-Puzzle, July 2008
- 2358 Luca Anderlini, Leonardo Felli and Alessandro Riboni, Statute Law or Case Law?, July 2008
- 2359 Guglielmo Maria Caporale, Davide Ciferri and Alessandro Girardi, Are the Baltic Countries Ready to Adopt the Euro? A Generalised Purchasing Power Parity Approach, July 2008
- 2360 Erkki Koskela and Ronnie Schöb, Outsourcing of Unionized Firms and the Impacts of Labour Market Policy Reforms, July 2008
- 2361 Francisco Alvarez-Cuadrado and Ngo Van Long, A Permanent Income Version of the Relative Income Hypothesis, July 2008
- 2362 Gabrielle Demange, Robert Fenge and Silke Uebelmesser, Financing Higher Education and Labor Mobility, July 2008
- 2363 Alessandra Casarico and Alessandro Sommacal, Labor Income Taxation, Human Capital and Growth: The Role of Child Care, August 2008
- 2364 Antonis Adam, Manthos D. Delis and Pantelis Kammass, Fiscal Decentralization and Public Sector Efficiency: Evidence from OECD Countries, August 2008
- 2365 Stefan Voigt, The (Economic) Effects of Lay Participation in Courts – A Cross-Country Analysis, August 2008
- 2366 Tobias König and Andreas Wagener, (Post-)Materialist Attitudes and the Mix of Capital and Labour Taxation, August 2008
- 2367 Ximing Wu, Andreas Savvides and Thanasis Stengos, The Global Joint Distribution of Income and Health, August 2008
- 2368 Alejandro Donado and Klaus Wälde, Trade Unions Go Global!, August 2008
- 2369 Hans Gersbach and Hans Haller, Exit and Power in General Equilibrium, August 2008
- 2370 Jan P.A.M. Jacobs and Jan-Egbert Sturm, The Information Content of KOF Indicators on Swiss Current Account Data Revisions, August 2008
- 2371 Oliver Hülsewig, Johannes Mayr and Timo Wollmershäuser, Forecasting Euro Area Real GDP: Optimal Pooling of Information, August 2008

- 2372 Tigran Poghosyan and Jakob de Haan, Determinants of Cross-Border Bank Acquisitions in Transition Economies: A Latent Class Analysis, August 2008
- 2373 David Anthoff and Richard S.J. Tol, On International Equity Weights and National Decision Making on Climate Change, August 2008
- 2374 Florian Englmaier and Arno Schmöller, Reserve Price Formation in Online Auctions, August 2008
- 2375 Karl Farmer, Birgit Friedl and Andreas Rainer, Effects of Unilateral Climate Policy on Terms of Trade, Capital Accumulation, and Welfare in a World Economy, August 2008
- 2376 Monika Büttler, Stefan Staubli and Maria Grazia Zito, The Role of the Annuity's Value on the Decision (Not) to Annuitize: Evidence from a Large Policy Change, August 2008
- 2377 Inmaculada Martínez-Zarzoso, The Impact of Urbanization on CO₂ Emissions: Evidence from Developing Countries, August 2008
- 2378 Brian Roberson and Dmitriy Kvasov, The Non-Constant-Sum Colonel Blotto Game, August 2008
- 2379 Ian Dew-Becker, How Much Sunlight Does it Take to Disinfect a Boardroom? A Short History of Executive Compensation Regulation, August 2008
- 2380 Cécile Aubert, Oliver Falck and Stephan Heblich, Subsidizing National Champions: An Evolutionary Perspective, August 2008
- 2381 Sebastian Buhai, Miguel Portela, Coen Teulings and Aico van Vuuren, Returns to Tenure or Seniority?, August 2008
- 2382 Erkki Koskela and Jan König, Flexible Outsourcing, Profit Sharing and Equilibrium Unemployment, August 2008
- 2383 Torberg Falch and Justina AV Fischer, Does a Generous Welfare State Crowd out Student Achievement? Panel Data Evidence from International Student Tests, September 2008
- 2384 Pedro Gomes and François Pouget, Corporate Tax Competition and the Decline of Public Investment, September 2008
- 2385 Marko Koethenbueger, How Do Local Governments Decide on Public Policy in Fiscal Federalism? Tax vs. Expenditure Optimization, September 2008
- 2386 Ronald McKinnon and Gunther Schnabl, China's Exchange Rate Impasse and the Weak U.S. Dollar, September 2008
- 2387 Yan-Leung Cheung, Yin-Wong Cheung and Alan T.K. Wan, A High-Low Model of Daily Stock Price Ranges, September 2008

- 2388 Louis Eeckhoudt and Harris Schlesinger, Changes in Risk and the Demand for Saving, September 2008
- 2389 Carsten Hefeker and Blandine Zimmer, Uncertainty and Fiscal Policy in an Asymmetric Monetary Union, September 2008
- 2390 Jay Pil Choi and Byung-Cheol Kim, Net Neutrality and Investment Incentives, September 2008
- 2391 Marcel Gérard, Financing Bologna, the Internationally Mobile Students in European Higher Education, September 2008
- 2392 Annette Alstadsæter and Knut Reidar Wangen, Corporations' Choice of Tax Regime when Transition Costs are Small and Income Shifting Potential is Large, September 2008
- 2393 António Afonso and Christophe Rault, 3-Step Analysis of Public Finances Sustainability: the Case of the European Union, September 2008
- 2394 Betsey Stevenson and Justin Wolfers, Economic Growth and Subjective Well-Being: Reassessing the Easterlin Paradox, September 2008
- 2395 Bernhard Eckwert and Itzhak Zilcha, Private Investment in Higher Education: Comparing Alternative Funding Schemes, September 2008
- 2396 Øystein Foros, Hans Jarle Kind and Jan Yngve Sand, Slotting Allowances and Manufacturers' Retail Sales Effort, September 2008
- 2397 Mohammad Reza Farzanegan, Illegal Trade in the Iranian Economy: Evidence from a Structural Model, September 2008
- 2398 Olivier Bos, Charity Auctions for the Happy Few, September 2008
- 2399 Robert S. Chirinko and Debdulal Mallick, The Marginal Product of Capital: A Persistent International Puzzle, September 2008
- 2400 Ben D'Exelle and Arno Riedl, Elite Capture, Political Voice and Exclusion from Aid: An Experimental Study, September 2008
- 2401 Torben M. Andersen and Joydeep Bhattacharya, On Myopia as Rationale for Social Security, September 2008
- 2402 Fabienne Llense, French CEO Compensations: What is the Cost of a Mandatory Upper Limit?, September 2008
- 2403 Valentina Bosetti, Carlo Carraro, Alessandra Sgobbi and Massimo Tavoni, Delayed Action and Uncertain Targets. How Much Will Climate Policy Cost?, September 2008
- 2404 Robert G. Chambers, Rolf Färe, Shawna Grosskopf and Michael Vardanyan, Generalized Quadratic Revenue Functions, September 2008

- 2405 Leonidas Enrique de la Rosa, Overconfidence in a Career-Concerns Setting, September 2008
- 2406 Marcus Drometer and Johannes Rincke, The Design of Political Institutions: Electoral Competition and the Choice of Ballot Access Restrictions in the United States, September 2008
- 2407 Markku Lanne and Helmut Lütkepohl, Stock Prices and Economic Fluctuations: A Markov Switching Structural Vector Autoregressive Analysis, September 2008
- 2408 Thomas L. Brewer, International Energy Technology Transfers for Climate Change Mitigations, September 2008
- 2409 Alexander Kemnitz, Native Welfare Losses from High Skilled Immigration, September 2008
- 2410 Xavier Vives, Strategic Supply Function Competition with Private Information, September 2008
- 2411 Fabio Padovano and Roberto Ricciuti, The Political Competition-Economic Performance Puzzle: Evidence from the OECD Countries and the Italian Regions, September 2008
- 2412 Joan Costa-Font and Mireia Jofre-Bonet, Body Image and Food Disorders: Evidence from a Sample of European Women, September 2008
- 2413 Thorsten Upmann, Labour Unions – To Unite or to Separate?, October 2008
- 2414 Sascha O. Becker and Ludger Woessmann, Luther and the Girls: Religious Denomination and the Female Education Gap in 19th Century Prussia, October 2008
- 2415 Florian Englmaier and Stephen Leider, Contractual and Organizational Structure with Reciprocal Agents, October 2008
- 2416 Vittorio Daniele and Ugo Marani, Organized Crime and Foreign Direct Investment: The Italian Case, October 2008
- 2417 Valentina Bosetti, Carlo Carraro, Alessandra Sgobbi and Massimo Tavoni, Modelling Economic Impacts of Alternative International Climate Policy Architectures. A Quantitative and Comparative Assessment of Architectures for Agreement, October 2008
- 2418 Paul De Grauwe, Animal Spirits and Monetary Policy, October 2008
- 2419 Guglielmo Maria Caporale, Christophe Rault, Robert Sova and Anamaria Sova, On the Bilateral Trade Effects of Free Trade Agreements between the EU-15 and the CEEC-4 Countries, October 2008
- 2420 Yin-Wong Cheung and Daniel Friedman, Speculative Attacks: A Laboratory Study in Continuous Time, October 2008