

Birk, Angela

Working Paper

Long-term unemployment, technical progress and capital mobility in an open growth-matching model

HWWA Discussion Paper, No. 171

Provided in Cooperation with:

Hamburgisches Welt-Wirtschafts-Archiv (HWWA)

Suggested Citation: Birk, Angela (2002) : Long-term unemployment, technical progress and capital mobility in an open growth-matching model, HWWA Discussion Paper, No. 171, Hamburg Institute of International Economics (HWWA), Hamburg

This Version is available at:

<https://hdl.handle.net/10419/19333>

Standard-Nutzungsbedingungen:

Die Dokumente auf EconStor dürfen zu eigenen wissenschaftlichen Zwecken und zum Privatgebrauch gespeichert und kopiert werden.

Sie dürfen die Dokumente nicht für öffentliche oder kommerzielle Zwecke vervielfältigen, öffentlich ausstellen, öffentlich zugänglich machen, vertreiben oder anderweitig nutzen.

Sofern die Verfasser die Dokumente unter Open-Content-Lizenzen (insbesondere CC-Lizenzen) zur Verfügung gestellt haben sollten, gelten abweichend von diesen Nutzungsbedingungen die in der dort genannten Lizenz gewährten Nutzungsrechte.

Terms of use:

Documents in EconStor may be saved and copied for your personal and scholarly purposes.

You are not to copy documents for public or commercial purposes, to exhibit the documents publicly, to make them publicly available on the internet, or to distribute or otherwise use the documents in public.

If the documents have been made available under an Open Content Licence (especially Creative Commons Licences), you may exercise further usage rights as specified in the indicated licence.

Long-Term Unemployment, Technical Progress and Capital Mobility in an Open Growth-Matching Model

Angela Birk

HWWA DISCUSSION PAPER

171

Hamburgisches Welt-Wirtschafts-Archiv (HWWA)
Hamburg Institute of International Economics

2002

ISSN 1616-4814

The HWWA is a member of:

- Wissenschaftsgemeinschaft Gottfried Wilhelm Leibniz (WGL)
- Arbeitsgemeinschaft deutscher wirtschaftswissenschaftlicher Forschungsinstitute (ARGE)
- Association d'Instituts Européens de Conjoncture Economique (AIECE)

Long-Term Unemployment, Technical Progress and Capital Mobility in an Open Growth-Matching Model

Angela Birk

I am grateful to Bart Taub, Christian Groth as well as seminar participants from Copenhagen and Greifswald for helpful comments and to Thomas Gries for earlier remarks. Previous versions of this paper were presented at the 2001 EEA Meeting and the 2001 German Economic Meeting. The subject of this paper is assigned to the HWWA's research program "Internationalization of Firms and Labor Markets".

HWWA DISCUSSION PAPER

**Edited by the Department
EUROPEAN INTEGRATION**

Head: Dr. Konrad Lammers

Hamburgisches Welt-Wirtschafts-Archiv (HWWA)
Hamburg Institute of International Economics
Öffentlichkeitsarbeit
Neuer Jungfernstieg 21 - 20347 Hamburg
Telefon: 040/428 34 355
Telefax: 040/428 34 451
E-mail: hwwa@hwwa.de
Internet: <http://www.hwwa.de/>

Angela Birk
Hamburg Institute of International Economics
Neuer Jungfernstieg 21 - 20347 Hamburg
Telefon: 040/428 34-478
Telefax: 040/428 34-451
E-Mail: angela.birk@hwwa.de

Contents

	Page
Abstract/Zusammenfassung	VI
1 Introduction	1
1.1 Capitalization and Creative Destruction Effects	2
1.2 Stigmatization and Human Capital Depreciation Effects	3
1.3 Small Open Economy	5
2 The Economy	7
2.1 The Labor Market	7
2.2 The Wealth Market	9
3 Steady-State Solution	14
3.1 Overall Steady-State of the Economy	16
3.2 Stability of the Steady-State	19
4 Economics of the Steady-State	22
4.1 The Parametric Growth Condition	23
4.2 Violating the Growth Condition	27
5 Conclusion	29
6 Appendix	30
References	37

Figures:

Figure 1: Steady-State of a Net Creditor Economy	17
Figure 2: Transitional Dynamics for Net Wealth in Efficiency Units	19
Figure 3: Transitional Dynamics of Labor Market Tightness	20
Figure 4: Stability of the open Growth-Matching-Model	21
Figure 5: Steady-State Implications for a Net Creditor by Increasing Technical Progress and Fulfilling the Growth Condition	26
Figure 6: Steady-State Implications for a Net Debtor by Increasing Technical Progress and Violating the Growth Condition	28
Figure 7: Development of Long-Term Unemployment on Total Unemployment for Groups of Countries	37

Abstract

How does technical progress affect long-term unemployment in a small open economy? This relationship is evaluated in an open neoclassical growth model that is extended by a Pissarides-style labor market matching approach. In the general equilibrium model, the labor market of the three factor growth model is characterized by immobile heterogeneous jobless workers. International capital mobility represents the efficient intertemporal allocation of world resources. Depending on a parametric growth condition, an increase in technical progress implies a favorable capitalization effect respectively an unfavorable Schumpeterian creative destruction effect. Secondary effects in form of a stigmatization and a human capital depreciation effect are generated and influence the unemployment duration and the fraction of long-term unemployment negatively. Additionally, the model shows that even in the steady state a constant current account deficit for a net debtor is sustained that rises even more as productivity growth increases.

Zusammenfassung

Wie beeinflusst der technische Fortschritt die Langzeitarbeitslosigkeit in einer kleinen geöffneten Ökonomie? Diese Beziehung wird in einem geöffneten neoklassischen Wachstumsmodell evaluiert, das um einen Arbeitsmarkt nach der Formulierung des Matching-Ansatz von Pissarides erweitert wird. In dem allgemeinen Gleichgewichtsmodell ist der Arbeitsmarkt des Drei-Faktor-Wachstumsmodell durch immobile, heterogene Arbeitslose charakterisiert. Internationale Kapitalmobilität repräsentiert die effiziente intertemporale Allokation von weltweiten Ressourcen. Abhängig von einer spezifischen Wachstumsbedingung impliziert eine Erhöhung des technischen Fortschritts einen positiven Kapitalisierungseffekt bzw. einen negativen Schumpeterschen kreativen Zerstörungseffekt. Sekundäre Effekte in Form eines Stigmatisierungs- und eines Humankapital-Abwertungs-Effekt werden generiert und beeinflussen sowohl die Dauer der Arbeitslosigkeit als auch die Langzeitarbeitslosigkeit negativ. In dem Modell wird zusätzlich gezeigt, dass erstaunlicher Weise im Steady State ein konstantes Leistungsbilanzdefizit für ein Netto-Schuldner Land aufrecht erhalten wird, das bei steigendem technischen Fortschritt größer wird.

JEL Classification: E24; F41; O41

Keywords: long-term unemployment, technical progress, capital mobility, growth, matching

1 Introduction

The stylized fact on long-term unemployment¹ shows a huge increase in the level and the growth rates of long-term unemployment in industrialized countries.² Taking into account the openness of countries and the rapid increase in new technologies in the last decades, a natural question becomes, how does technical progress affect long-term unemployment in a small open economy.

Recently expanding literature focuses, on the one hand, mainly on unemployment and technical progress – usually in matching models that neglect the influence of capital accumulation as well as goods and capital market integration on unemployment – and, on the other hand, the huge increase in long-term unemployment is discussed in closed economy approaches explaining the implications of skill-biased shocks. However, the literature does not take into consideration the effects of technical progress on long-term unemployment in small open economies with integrated capital and goods markets, when the usual social benefit argument – that is increasing unemployment compensation leads to higher unemployment and higher long-term unemployment – is not regarded.³

The model that can fill this gap is developed in this paper. The relationship between long-term unemployment and the rate of growth attributable to technical progress is evaluated in an open neoclassical growth model that is extended by a Pissarides-style labor market matching approach and by introducing international capital and goods mobility. Since this paper does not make an attempt of explicitly explaining growth,⁴ the neoclassical growth model with exogenous technical progress, influencing the skills of employed, unemployed and long-term unemployed workers as well, i.e. affecting the labor market, seems more appropriate than endogenous growth models. Furthermore, to analyze considerable structural labor market changes, the Pissarides-style matching approach is chosen, because this approach is able to describe long-run structural changes; whereas alternative short-run

¹Long-term unemployment is defined as percentage on total unemployment.

²See Figure 7 in the appendix.

³For a discussion of the implications of unemployment benefits on long-term unemployment, see for example MARIMON, ZILIBOTTI (1999), LJUNGQVIST, SARGENT (1998), GORA, SCHMIDT (1998), BOERI, WÖRGÖTTER (1998), LAYARD (1997), LAYARD, NICKELL, JACKMAN (1991) and LAYARD, BEAN (1989) .

⁴To explain growth endogenously see for example ROMER (1986, 1990), LUCAS (1988), AGHION, HOWITT (1992).

labor market theories explain wage differentials between the equilibrium wage and the actual wage rate.⁵ The labor market of the three factor growth model that consists of real capital, labor in efficiency units and an imported intermediate good is characterized by immobile heterogeneous jobless workers to distinguish between short-term and long-term unemployed. International capital mobility represents an intertemporal efficient allocation of world-wide resources. To account for goods and capital market integration, the model includes the capital account as well as the current account.

1.1 Capitalization and Creative Destruction Effects

It will be shown in this model that, depending on a parametric growth condition, an increase in technical progress implies a favorable capitalization effect as well as an unfavorable creative destruction effect.⁶ In the literature, the favorable effect is called *capitalization effect*, since “...an increase in the growth rate increases the present discounted value of the profits from creating a job slot...” (BEAN, PISSARIDES, 1993, p. 838). The unfavorable effect is related to Schumpeter’s *creative destruction effect*. “At this point SCHUMPETER (1950, p.83) also introduces his famous concept of ‘creative destruction’, by which he means that capitalism contains forces ‘that incessantly revolutionize the economic structure *from within*, incessantly destroying the old one, incessantly creating a new one’.” (SWEDBERG, 1991, p. 157). Here the key point is that, satisfying the growth condition, an increase in technical progress leads to the capitalization effect via the net creation of jobs. This in turn implies rising employment and shrinking average unemployment. However, violating the parametric growth condition, the negative Schumpeterian creative destruction effect is caused by the net destruction of existing jobs. As a result, employment will decrease and average unemployment will increase.

Both effects are sufficiently discussed in the literature in order to explore the relationship respectively the direction of causation between technical progress and unemployment. In general, this discussion does not determine any clear-cut relationship. PISSARIDES (1990) shows that an increase in the rate of technical progress

⁵These more short-run orientated approaches, like insider-outsider-models or efficiency-wage-models, usually explain unemployment because of wage rigidities. For these approaches see for example SALOP (1973a,b), STIGLITZ (1974), CALVO (1979), WEISS (1980, 1991), AKERLOF (1982, 1984), SHAPIRO, STIGLITZ (1984), AKERLOF, YELLEN (1985, 1990), NICKELL (1991).

⁶For both effects see also AGHION, HOWITT (1994, p. 477) and POSTEL-VINAY (1998, p. 1101).

results in higher revenues indicating a positive link between employment and productivity growth. According to AGHION, HOWITT (1994) technical progress is not equally distributed among firms and jobs implying that technical progress generates and destroys jobs at the same time. In their closed economy vintage-model, an increase in productivity growth causes the creative destruction effect describing that increasing productivity growth causes higher unemployment and also, the capitalization effect. Due to the latter effect, employment increases. Therefore, if productivity growth rises at low rates, a reduction in employment is implied; whereas at high rates of technological progress employment goes up. This results in a hump-shaped relationship between productivity growth and unemployment. While in both approaches productivity growth generates unemployment, BEAN, PISSARIDES (1993) point, in a closed economy overlapping-generations-model, to the other direction of causation requiring that unemployment determines technological progress. They derive a positive respectively negative interdependence between growth and unemployment depending on whether the point of view is Classical or Keynesian. POSTEL-VINAY (1998) and MORTENSEN, PISSARIDES (1998) confirm the ambiguous link between growth and unemployment in an endogenous growth model respectively an endogenous matching-model. In the latter stochastic matching-model with heterogenous productivities, increasing productivity growth leads via the creation of new jobs to rising employment when renovation costs are low, and to rising unemployment when renovation costs are high.

Within the model that is developed in section 2 the capitalization effect as well as the creative destruction effect occur. However, the implications of an increase in technological progress on unemployment do not depend on the level of the growth rate, as in AGHION, HOWITT (1994), but on whether the growth condition holds or is violated. Furthermore, both effects show up in a simple open neoclassical growth model that is extended by a Pissarides-style labor market approach and by introducing heterogenous unemployed workers to distinguish between short-term and long-term unemployed workers.

1.2 Stigmatization and Human Capital Depreciation Effects

Beside these primary implications, i.e. the capitalization and creative destruction effect acting directly but in opposite directions on unemployment, secondary effects in form of a stigmatization effect and a human capital depreciation effect also occur

in the model. Both effects influence the duration of average unemployment and the fraction of long-term unemployment negatively.

The *stigmatization effect* shows the relationship between technical progress and the unemployment duration. It is supposed that increasing technological progress impacts negatively on the duration of unemployment. As technical progress increases, the matching probability decreases and less unemployed leave the unemployment pool. Therefore, with higher productivity growth the average duration of unemployment increases, and the average unemployed worker is stigmatized by a higher unemployment duration.

Furthermore, since the unemployment pool consists of short-term and long-term unemployed, increasing technical progress causes *human capital depreciation* especially for long-term unemployed workers. Being out of work for a long time implies that long-term unemployed workers do not possess the know-how and the abilities to handle the latest production technologies. For their vacancies that are endowed with the latest technology, firms demand only short-term unemployed and, due to human capital depreciation, the fraction of long-term unemployed workers will increase as technical progress rises.

This latter relation, i.e. the relationship between the skills of the unemployed and technological progress, is discussed in some recent studies showing implications of *skill-biased* technological shocks on (long-term) unemployment.⁷ COLES, MASTERS (2000) examine in a search-matching model the effect of skill depreciation on the equilibrium level of unemployment when long-term unemployment emerges as endogenous phenomenon. Their model implies that today's recession, which leads to longer unemployment spells, impacts on the distribution of market skill levels in the future. They conclude that subsidizing retraining to reduce long-term unemployment is inappropriate; a better way is to subsidize vacancy creation. The argument of LJUNGQVIST, SARGENT (1998) points in the same direction and identifies generous welfare schemes as obstacles for reducing long-term unemployment.⁸ Their point is that generous welfare schemes tend to be more prone to generate high levels of unemployment when economies undergo rapid structural change. If

⁷For different models explaining long-term unemployment respectively the duration of unemployment for various reasons see also ACEMOGLU (1995), BLANCHARD, DIAMOND (1994), PISARIDES (1992) and LOCKWOOD (1991). For analyzing the implications of reduced outflows rate on long-term unemployment from a more empirically related perspective see ROSEN (1997), BURGESS (1994) and JONES, MANNING (1992).

⁸See also LJUNGQVIST, SARGENT (1995).

redundancy is associated with the loss of skills, abundant welfare payments make unemployed more reluctant to take up poorly paid jobs. Thus, an increase in long-term unemployment is implied, and increasing structural change interpreted as the rate of skill decay will always raise unemployment. This point of view is confirmed by MARIMON, ZILIBOTTI (1999). They show in a search-matching model with heterogeneity in productivities that differences in unemployment insurance result in differences in unemployment and productivity growth, when countries experience a skill-biased technological shock. Due to the complementarity between capital and capital-specific-skills, the mismatch in the economy is enlarged. MORTENSEN, PISSARIDES (1999) also examine the effects of skill-biased shocks that increase the spread of productivities across different skills.⁹ These skill-biased shocks are modelled as changes in the complementarity between new capital and labor, favoring the more skilled and eroding the productivity of the less skilled. Therefore, pure skill-biased shocks lead to higher mean unemployment and to longer unemployment durations.

In this approach, skill-biased technological shocks are represented by a negative influence of rising technological progress on the fraction of long-term unemployed workers. That assumption seems plausible, since an increase in technological progress has a greater negative impact on long-term unemployed than on short-term unemployed workers. The human capital of the long-term unemployed gets even more obsolete than that of short-term searchers, and it depreciates even faster, when new production technologies are implemented very rapidly.

1.3 Small Open Economy

The focus of the above discussed literature is to explain the increase and persistence in unemployment within matching models that are usually set up for closed economies.¹⁰ However, long-run relationships between capital accumulation, technical progress and the labor market are often missing in these models as well as the integration of capital and goods markets. This paper focuses on a small open economy to analyze the implications of technical change on unemployment within an open neoclassical growth model that is extended by the labor market matching-approach.

⁹For related models see also MERZ (1995, 1999).

¹⁰However, FEVE/LANGOT (1996) integrate the search labor market approach into a small open real business cycle model and estimate the implications for the French economy.

It is well-known that in small open economies populated by indefinitely-lived representative households with time additive utility, a long-run steady-state equilibrium does not exist, if the subjective discount factor is different to the fixed interest rate.¹¹ However, assuming a constant saving rate – as usual in neoclassical growth models – the existence of a steady-state is implied. Even if the small country is a net debtor, its capital stock will not be consumed and, therefore, the country does not vanish; as it would be the case in a small debtor economy characterized by indefinitely-lived households with constant time-preference rates that are higher than the interest rates.

In this model, the country’s net wealth position depends on a condition which is determined by labor market as well as fundamental parameters. It will be shown that even in the steady-state, a constant current account surplus for a net creditor will be sustained, and it rises even more as productivity growth increases (and vice versa for a net debtor). Therefore, the model does not support the notion of long-run well balanced trade. Additionally, it is discussed whether, in the long-run steady state, a constant current account deficit will be financed by a trade account deficit or surplus and/or by the international interest income of that country.

Analyzing the implications of capital market integration on the domestic labor market, the model shows that rising technical progress can lead to higher demand for investment, higher capital accumulation and a higher level of offered vacancies. As a result, a higher net wealth position for a net creditor country and less steady-state unemployment are implied.

To summarize, the paper focuses on the influence of technical progress on long-term unemployment as well as on the current account and the net wealth position of a small open economy, and it explains the increase in long-term unemployment within an open growth-matching model. The model is developed in the next section. Section 3 analyses the steady-state solution and the stability of the model. Thereafter, economic implications are discussed in section 4 and Section 5 concludes.

¹¹See also OBSTFELD (1990, p. 46): “In a deterministic setting with infinitely-lived households, constant time-preference rates fail to produce a steady-state in which all households have positive net worth and consumption. Translated to a world of small open economies, the result implies either that the long-run global distribution of wealth is indeterminate or the economy with the lowest time-preference rate eventually comes to own all the world’s outside wealth.”

2 The Economy

2.1 The Labor Market

Aggregate labor endowment of households is constant and denoted by $L = \bar{L}$. At any time labor is either employed or unemployed; the employed workers are denoted as E and the unemployed as U . Thus, the labor force is represented by

$$\bar{L} = E + U. \quad (1)$$

The labor market is characterized by search frictions with firms looking for jobless workers filling vacancies and unemployed searching for a job. Both sides of the market have incomplete information about the opposite market side. The level of search activities is represented by the number of vacancies V , the number of unemployed U and the number of matches M formed at any point in time. If no frictions were present, laid-off workers would find immediately new jobs and equilibrium unemployment would not exist.

Matching and Technical Progress

Since newly created vacancies are endowed with the most recent technology, the number of matches is also determined by the rate of technological progress $\hat{\lambda}$ that represents the diffusion of technological know-how. If an economy has a high rate of technological progress, only few unemployed workers can fill the vacancies and the number of matches is relatively low. In order to describe this, it is assumed that technological knowledge of the unemployed does not grow with the same rate as technological progress. The underlying matching technology is defined as

$$M = m(V, U; \hat{\lambda}) = V^{1-\beta} U^\beta \hat{\lambda}^{-1}, \quad 0 < \beta < 1 \quad (2)$$

with β as the search intensity of the unemployed workers. The matching function is assumed to be homogeneous of degree one. This implies that the indicator for labor market tightness is denoted by the ratio of vacancies to unemployed $\theta := V/U$ and

$$p(\theta; \hat{\lambda}) := M/U = m(V/U, 1; \hat{\lambda}), \quad p_{\hat{\lambda}} < 0 < p_\theta \quad (3)$$

is the matching-probability for the searchers and

$$q(\theta; \hat{\lambda}) := M/V = m(1, U/V; \hat{\lambda}), \quad q_\theta, q_{\hat{\lambda}} < 0, \quad (4)$$

is the probability of filling the firm's vacancies. Both probabilities depend on labor market tightness and reflect the externalities each trading partner faces. If the number of jobless workers increases, the matching-probability for the average unemployed will decrease and simultaneously the probability of filling vacancies will increase. Introducing the growth rate of technological progress into the matching function implies that it will become more difficult for an average searcher to leave via a job-match the unemployment pool. On the other hand, since the vacancies are endowed with the latest technology, the probability of filling a firm's vacancy will decrease as technical progress increases.

Human Capital Depreciation and Long-Term Unemployed

Due to constant returns of scale, the average duration in unemployment is defined as

$$\rho(\theta; \hat{\lambda}) := U/M = m(V/U, 1; \hat{\lambda})^{-1}, \quad \rho_\theta < 0 < \rho_{\hat{\lambda}} \quad (5)$$

and it goes up when the labor market becomes tighter which is characterized by increasing unemployment for given vacancies. Additionally, as technical progress raises, less unemployed are matched to jobs, and unemployment duration increases as well.

Furthermore, two types of jobless workers are distinguished: short-term and long-term unemployed, U^S respectively U^L , and the heterogeneous unemployment pool is defined as

$$\begin{aligned} U &= U^S + U^L \\ U &= [1 - \phi(\rho; \hat{\lambda})]U + \phi(\rho; \hat{\lambda})U, \quad 0 < \phi < 1, \quad \phi_\rho, \phi_{\hat{\lambda}} > 0, \end{aligned} \quad (6)$$

with $\phi(\rho; \hat{\lambda})U$ as the long-term unemployed. The long-term jobless workers show significant different search behavior than short-term unemployed. They are looking for new jobs with less search intensity and, due to the long unemployment duration, they are demoralized and discouraged.¹² During their jobless time their human capital is exposed to large depreciation losses and, since they are not trained and do not accumulate any additional knowledge, i.e. without allocating any resources to the long-term unemployed, they are not able to handle the latest production technologies. Therefore, the number of long-term jobless workers depends positively on the unemployment duration ρ and positively on the rate of technical progress $\hat{\lambda}$.

¹²See also LAYARD, NICKELL, JACKMAN (1991).

Wage Determination

Due to matching-frictions, trading partners have monopoly power and successful matching yields additional profits which are shared between firms and workers. The division of profits can be modelled by a Nash bargaining approach or simply by sharing the marginal product of labor, whereby the sharing proportions are determined by the bargaining power of searchers and firms.¹³ This sharing rule determines the profit proportion newly hired workers get and, because all job-worker pairs are equally productive, the wage rate results as a constant fraction of the marginal product of labor¹⁴

$$w = \omega F_E(k), \quad 0 < \omega < 1. \quad (7)$$

ω denotes the sharing proportion and represents the bargaining power of searching workers.

2.2 The Wealth Market

Each firm uses three inputs capital K , labor L , imports Z and the current state of technological progress $\lambda := \lambda_0 e^{\hat{\lambda}t}$ to produce a homogenous good X . Imports are intermediate goods needed to produce the output which is described by a Cobb-Douglas-function:

$$X = F(K, Z, \lambda E) := K^\alpha Z^\gamma [\lambda E]^\varepsilon \quad (8)$$

with α as the production elasticity of capital [$0 < \alpha < 1$], ε as the production elasticity of labor in efficiency units [$0 < \varepsilon < 1$] and γ as the elasticity of imports [$0 < \gamma < 1$]. The production function has constant returns to scale and, using $\varepsilon := 1 - \alpha - \gamma$, it can be rewritten in efficiency units as

$$x = z^\gamma k^\alpha, \quad (9)$$

with z as imports in efficiency units, $z := Z/\lambda E$,

$$k := \frac{K}{\lambda E} \quad (10)$$

¹³See also NICKELL (1999) and ZANCHI (2000) for a recent discussion of the wage determination in search models.

¹⁴See also GRIES, JUNGBLUT, MEYER (1997 a, b) and SAINT-PAUL (1996, p. 138) who assumes that “the output of any worker is equally split between the firm and the worker.”

$$0 < \alpha + \gamma < 1.$$

Demand decisions for the representative firm concern changes in real capital as well as in employment. The change in employment is determined by inflows in and outflows out of unemployment. The inflows into unemployment are characterized by the separation of existing job-matches at any point in time and are described by the exogenously given separation rate ν times the workers E . Thus, inflows characterize the number of unproductive jobs which generate layoffs.¹⁵ On the other hand, outflows are represented by the flow of newly formed job-matches and, therefore, by the matching-function $m(U, V; \hat{\lambda})$. Firms create and offer new productive jobs and they have to fill these vacancies by searching for suitable workers. At the aggregate level, the filling of vacancies depends on the number of unemployed, the number of offered vacancies, the search intensities of firms and unemployed and the rate of technical progress; all determinants are expressed in the matching-function. Taking outflows and inflows together, the dynamics of employment result as the difference between both and can be expressed as

$$\dot{E} = m(U, V; \hat{\lambda}) - \nu E. \quad (11)$$

Each vacancy induces search costs of c_v with $c_v := c_{v0}e^{\lambda t}$. Since the newest jobs contain the latest technology, it is costly for the firm to find unemployed workers being able to handle most recent technologies. Therefore, search costs grow with the rate of technical progress.

Taking these aspects into consideration, the representative firm faces the following intertemporal optimization problem with the current flow of profits as output minus factor payments minus search expenditures. The factor payments consists of cost for rented capital rK , labor cost wE and import cost $p_z Z$. Denoting r as the discount factor, the firm's maximization can be written as

$$\begin{aligned} \max_{I, V, Z} \int_0^{\infty} \{F(K, \lambda E, Z) - rK - wE - p_z Z - c_v V\} e^{-rt} dt \\ \text{s.t.} \quad \dot{E} = m(U, V; \hat{\lambda}) - \nu E \\ \dot{K} = I \\ K(0), E(0) \quad \text{given.} \end{aligned} \quad (12)$$

¹⁵For an exogenous separation rate see also PISSARIDES (1990) as well as POSTEL-VINAY (1998) and for an endogenous rate see MORTENSEN/PISSARIDES (1994, 1998).

In order to solve the optimization problem, a present-value Hamiltonian function $\mathcal{H}(K, E, V, I, \mu_1, \mu_2)$ with two state variables, E respectively K , the control variables I and V as well as costate variables μ_i [$i = 1, 2$] is set up. Denoting F_j as the partial derivative of $F(\cdot)$ with respect to $j = K, E, Z$, the Hamiltonian conditions are

$$\frac{\partial \mathcal{H}}{\partial V} = 0 \iff -e^{-rt}c_v + \mu_1 m_V = 0 \quad (13)$$

$$-\dot{\mu}_1 = \frac{\partial \mathcal{H}}{\partial E} \iff -\dot{\mu}_1 = e^{-rt}[F_E - w] - \mu_1 \nu \quad (14)$$

$$\dot{E} = \frac{\partial \mathcal{H}}{\partial \mu_1} \iff \dot{E} = m(U, V) - \nu E \quad (15)$$

$$\frac{\partial \mathcal{H}}{\partial I} = 0 \iff \mu_2 = 0 \quad (16)$$

$$-\dot{\mu}_2 = \frac{\partial \mathcal{H}}{\partial K} \iff -\dot{\mu}_2 = e^{-rt}[F_K - r] \quad (17)$$

$$\dot{K} = \frac{\partial \mathcal{H}}{\partial \mu_2} \iff \dot{K} = I \quad (18)$$

$$\frac{\partial \mathcal{H}}{\partial Z} = 0 \iff -e^{-rt}[F_Z - p_z] = 0 \quad (19)$$

with the transversality conditions

$$\lim_{t \rightarrow \infty} \frac{\partial \mathcal{H}}{\partial E} E = \lim_{t \rightarrow \infty} \frac{\partial \mathcal{H}}{\partial K} K = 0.$$

The first order conditions for capital, labor and imports are given by

$$F_K(k) = r \quad (20)$$

$$F_E(k) = w + \frac{\hat{\lambda}}{1 - \beta} c_v \left[r - \hat{\lambda} + \beta (\hat{U} - \hat{V}) + \nu \right] \theta^\beta \quad (21)$$

$$F_Z(k) = p_z \quad (22)$$

with $F_j(k)$ [$j = K, E, Z$] as the marginal products of their respective factors and the right hand sides are marginal costs. Note that the representative firm takes the wage as given so that the firm cannot influence the wage rate in this stage. Since there are many firms, they compete with each other and, therefore, cannot determine the wage. This is done later in the wage bargaining process.¹⁶ Furthermore, the import price as well as the interest rate are fixed due to the small country assumption.

Notice that the workers get only a fraction of the marginal product of labor which is $w = \omega F_E(k)$ and the firm receives $(1 - \omega)F_E(k)$. The latter one uses it to finance its search costs and, therefore, the restriction $(1 - \omega)F_E(k) = c_v V$ holds.

¹⁶For the wage determination see equation (7).

International Capital Mobility

After describing the intertemporal optimization problem of the representative firm, international financial assets have to be introduced to generate an intertemporal allocation of goods. TAUB (1999, p. 492) characterizes international trade in goods and capital as follows: “...countries should trade intertemporally; the exchange will take the visible form of assets exchanged for goods, and subsequent repayment of goods. By this logic countries should be borrowing and lending in the international market.” If capital can freely move between countries, it has to be differentiated whether the domestic capital stock arises from domestic and/or foreign capital accumulation. Domestic capital K and net assets B are assumed to be the only forms of national wealth, A

$$A - K = B. \tag{23}$$

B is positive, that is the domestic stock of net assets is positive, if the domestic country is net creditor. As long as the domestic country is net debtor ($B < 0$), the rest of the world is net creditor. Because of international purchases or sales of net assets, net interest payments have to be regarded. National income, Y , consists of domestic income, Y^d , and net interest income, rB :

$$Y := rK + wE + rB, \tag{24}$$

where rK and wE is the domestic income, Y^d , with w as wage rate and r as world interest rate. National income would decrease with an increasing stock of net foreign debts (i.e. $B < 0$), because of rising interest payments. Therefore, national income can increase or decrease, depending on the country's net creditor or debtor position.

As a next step the balance of payments, consisting of current account and capital account, has to be regarded. Without international capital mobility, the trade account would restrict the country's current consumption possibilities. However, due to capital mobility, this restriction does not hold any longer. The temporal restriction becomes more flexible, since additional intertemporal exchanges are now possible. The release of international tradable assets allows a country to use more than the own temporary production possibilities; that is, with international capital mobility a country can make use of foreign resources. As a reward for the current use of foreign resources, an intertemporal promise regarding interest payments and debt repayment is given and ensures the later back-delivery of own future resources into the foreign country. This possibility of using excessively the temporary product in

favor of future under-utilization allows an efficient intertemporal allocation of world wide resources.

Therefore, with international capital mobility, the trade account restriction does not longer hold; due to international interest income, it has to be extended to the current account. Beside exports and imports, the current account includes in its simplest form net interest income. Denoting the current account balance by CA , it consists of exports, Ex , with the price of exports normalized to one, of the import volume, $p_z Z$, and of net interest income, rB :

$$CA = Ex - p_z Z + rB. \quad (25)$$

Also, the current account restriction does not hold any longer. If the domestic country is a net capital importer, its current account balance can be negative and net flows of goods from the foreign into the domestic country occur. The reward for the good imports is represented by the release of additional domestic net assets and is denoted by \dot{B} (< 0), i.e. the rest of the world is buying domestic net assets. Therefore, as long as a country has a negative current account balance, foreigners buy additional net assets on the domestic capital stock. However, with a current account surplus, the domestic country is accumulating net assets ($\dot{B} > 0$).

With intertemporal exchange possibilities, the exchange restriction that has to hold is given by the balance of payments

$$Ex - p_z Z + rB - \dot{B} = 0, \quad (26)$$

and the balance of the capital account, \dot{B} , has to be equal to the balance of the current account, CA . The balance of payments represents, on the one hand, the net flows of goods and, on the other hand, the kind of compensation for the net good flows. In the case of a country's net indebtedness, the latter is represented by additional net debt, i.e. by net capital imports. However, if the country is a net creditor, it exports goods and accumulates additional net assets.

Equilibrium of the Wealth Market

In the small open economy with capital mobility, the savings-investment relation, being valid in a closed economy, does not hold any longer. In an economy with integrated capital markets, savings can be higher or lower than investments and the difference is characterized by the current account balance. Therefore, the equilibrium of the goods market in a small open economy is given by:

$$S = I + Ex - p_z Z + rB. \quad (27)$$

This equation substitutes the equilibrium condition for a closed economy. If equation (26) and (27) are substituted into another, the equilibrium condition for the wealth market can be rewritten as:

$$S = I + \dot{B}. \quad (28)$$

Note that the change in net wealth is identical to domestic savings $\dot{A} \equiv S$ where domestic savings are a constant fraction of income

$$S = sY. \quad (29)$$

In the case that the country runs a current account deficit investments are build up by the abandonment of domestic as well as foreign consumption possibilities.

The domestic budget restriction consists of national income, Y , import cost, $p_z Z$, search cost, $c_v V$, and interest income or payment, rB :

$$X = Y + p_z Z - rB + c_v V, \quad (30)$$

where X is the output. In the budget restriction the interest income have to be subtracted, since it is already included in national income.

3 Steady-State Solution

Analyzing the overall steady-state solution for the economy, the long-run equilibrium for the labor market and the steady-state for the wealth market are derived separately in a first step. They are characterized by two functions: the *efficient factor allocation function* and the *balanced accumulation function*. The first function will be the $\dot{\theta} = 0$ -curve describing the stationary labor market and the second function will be the $\dot{a} = 0$ -curve that represents the stationary wealth market. In a second step, after determining the stationary equilibrium in both markets separately, the stationary overall steady-state in the small open economy will be derived.

Steady-State of the Labor Market

The steady-state of the labor market is deduced by using the flow condition of the labor market. This condition requires that the inflows are equal to the outflows and, therefore, the change in employment is zero:

$$\dot{E} = 0 \Leftrightarrow V^{1-\beta} U^\beta \hat{\lambda}^{-1} = \nu E. \quad (31)$$

Furthermore, due to neglecting on-the-job-search, the flow of newly created vacancies is identical to the employment flow, i.e. $\dot{V} = \dot{E} = 0$, and because of a constant labor force, the employment and unemployment levels are constant in the long-run equilibrium, i.e. $\dot{E} = -\dot{U} = 0$. These conditions imply that steady-state labor market tightness is also constant, i.e. $\dot{\theta} = 0$, and that the steady-state growth rates of unemployment and vacancies are zero, i.e. $\hat{V} = \hat{U} = 0$.

Using these conditions, the *efficient factor allocation function* for the stationary labor market can be derived:¹⁷

$$\Psi(a) := \frac{(1 - \alpha - \gamma)(1 - \beta)(1 - \omega)\lambda_o}{\hat{\lambda}c_{v0} [r + \nu - \hat{\lambda}]} \left(\frac{r}{\alpha}\right)^{\frac{\alpha}{\alpha+\gamma-1}} \left(\frac{\gamma}{p_z}\right)^{\frac{\gamma}{1-\alpha-\gamma}} = \theta^\beta \quad (32)$$

It shows all combinations of wealth in efficiency units and labor market tightness that reflect the long-run equilibrium of the labor market in a small open economy, i.e. this function is the $\dot{\theta} = 0$ -curve. The steady-state of the labor-market is influenced by several exogenous variables and it will change when the exogenous environment changes. In the (θ^β, a) plane it is linear in a with $\Psi'(a) = 0, \forall a$.¹⁸

Furthermore, in the long-run labor market equilibrium the steady-state employment rate is given by¹⁹

$$e(\theta) := \frac{E}{\bar{L}} = \frac{p(\theta)}{\nu + p(\theta)}, \quad e_\theta > 0. \quad (33)$$

Therefore, the employment probability depends positively on labor market tightness θ and on the matching-probability $p(\theta)$ and negatively on the separation rate ν . The higher the separation rate, the lower the steady-state employment rate. Furthermore, the steady-state unemployment rate is determined as well as

$$1 = e(\theta) + u(\theta),$$

where the steady-state unemployment rate $u(\theta)$ is defined as $u(\theta) := U/\bar{L}$. The higher the separation rate, the lower the steady-state employment rate and the higher the steady-state unemployment rate. Thus, the steady-state for the labor market is described by an efficient factor allocation function that defines all equilibrium combinations of labor market tightness and wealth in efficiency units.

¹⁷For the derivation of the efficient factor allocation function see appendix, proposition 6.

¹⁸See appendix, proposition 7.

¹⁹See appendix, proposition 8.

Steady-State of the Wealth Market

The long-run steady-state of the wealth market is characterized by constant wealth in efficiency units, $a := \frac{A}{\lambda E} = \frac{K+B}{\lambda E}$, i.e.

$$\dot{a} = \frac{\dot{K} + \dot{B}}{\lambda E} - (\hat{\lambda} + \hat{E}) \frac{A}{\lambda E} = 0. \quad (34)$$

In the steady state, the wealth accumulation process in labor efficiency units is constant; that is, domestic accumulation wishes $(\hat{\lambda} + \hat{E})a$ are build up by the same accumulation structure of both assets in efficiency units $(\dot{k} + \dot{b})$. Hence, the domestic demand for investments is equal to the constant accumulation structure. The steady-state of the wealth market can be described by a *balanced accumulation function*:²⁰

$$\Phi(a) := \frac{\lambda_0}{c_{v0} \hat{\lambda} \nu} \left\{ (1 - \alpha - \gamma) \left(\frac{\gamma}{p_z} \right)^{1-\alpha-\gamma} \left(\frac{r}{\alpha} \right)^{\frac{\alpha}{\alpha+\gamma-1}} + (sr - \hat{\lambda}) a \right\} = \theta^\beta \quad (35)$$

This function shows all combinations of labor market tightness and wealth in efficiency units characterizing the steady-state in the wealth market. That is, this function represents the $\dot{a} = 0$ -curve. Satisfying $sr - \hat{\lambda} < 0$, the balanced accumulation function is linear in a with $\Phi'(a) < 0$, $\forall a$ in the (θ^β, a) plane.²¹

3.1 Overall Steady-State of the Economy

After deriving the equilibrium conditions for the labor market respectively for the goods market separately, both together determine the overall steady-state, i.e. the efficient factor allocation function and the balanced accumulation function simultaneously define the steady-state values $(\tilde{\theta}^\beta, \tilde{a})$. The steady-state exists and is unique.²²

Proposition 1 *If the net wealth condition*

$$\frac{(1 - \alpha - \gamma)(1 - \beta)(1 - \omega)\nu}{[\nu - \hat{\lambda} + r]} + \alpha + \gamma \geq 1 \quad (36)$$

is satisfied in the stationary equilibrium, the domestic country will be a net creditor with positive net wealth in efficiency units, i.e. $\tilde{a} \geq 0$.

²⁰For a detailed derivation of the balanced accumulation function see appendix, proposition 9.

²¹See appendix, proposition 10.

²²See appendix, proposition 11.

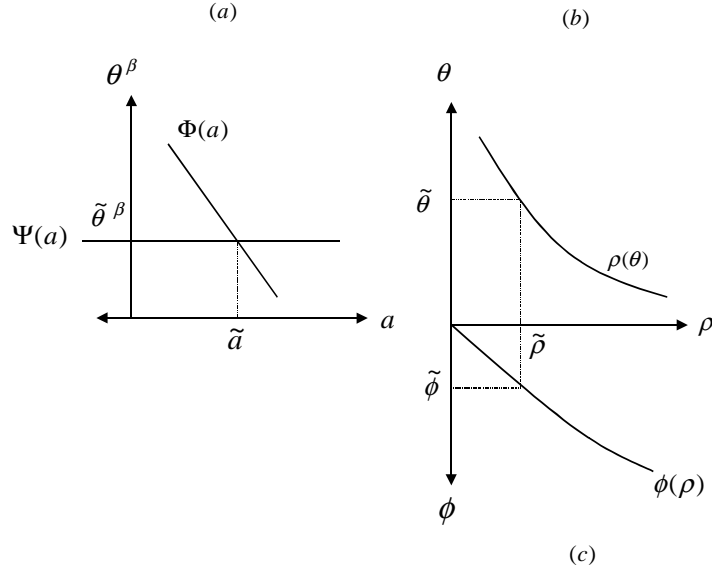


Figure 1: *Steady-State of a Net Creditor Economy*

Proof. See appendix, proposition 12. ■

If the net wealth condition holds, the domestic country will be a net creditor and is accumulating in the long-run steady-state constantly net wealth in efficiency units with $\tilde{a} \geq 0$ (see Figure 1a). Therefore, the domestic country owns a stationary net wealth proportion on the whole net wealth of the rest of the world. Violating this condition, i.e., if

$$\frac{(1 - \alpha - \gamma)(1 - \beta)(1 - \omega)\nu}{[\nu - \hat{\lambda} + r]} + \alpha + \gamma < 1 \quad (37)$$

is valid, the rest of the world is a net creditor, the domestic country is net debtor and net wealth in efficiency units will be negative ($\tilde{a} < 0$). Therefore, the balanced accumulation function as well as the overall steady-state equilibrium $(\tilde{\theta}^\beta, \tilde{a})$ will be in left quadrant in Figure 1a.

Once the steady-state search equilibrium $(\tilde{\theta}^\beta, \tilde{a})$ is determined, the steady-state values for the matching probability \tilde{p} , the steady-state employment respectively unemployment rate \tilde{e} respectively \tilde{u} can be derived. The steady-state employment and unemployment levels are fixed as well: $\tilde{E} = e(\tilde{\theta})\bar{L}$ and $\tilde{U} = u(\tilde{\theta})\bar{L}$. Furthermore, steady-state labor market tightness determines the equilibrium unemployment duration $\tilde{\rho}$ and the steady-state fraction of the long-term unemployed $\tilde{\phi}$ (see Figure 1b,c).

Behavior of the Trade Account and Current Account in the Steady-State

After deriving the overall steady-state of the economy, the long run equilibrium positions of the current account and the trade account can also be ascertained. Looking at the idea of long run well-balanced trade, this model does not support off-setting steady-state trade, i.e. even in the long run, countries do not have to have well-balanced trade. This unbalanced long run trade can be characterized by permanent current account deficits (surplus') sustained in the steady state. To derive this, the steady-state current account deficit (surplus) in efficiency units is defined as $\tilde{c}a$ and is determined by the growth rate of technical progress and the steady state value of net wealth²³

$$\tilde{c}a = \hat{\lambda}\tilde{a}. \quad (38)$$

This equation shows that even in steady-state the current account is not well-balanced, i.e. $\tilde{c}a \neq 0$.²⁴ Depending on the net creditors' or net debtors' position, a permanent current account surplus or deficit is sustained in the steady-state. For example satisfying (37), the country is a net debtor with a constant current account deficit in the long run, i.e. $\tilde{c}a = \hat{\lambda}\tilde{a} < 0$. In absolute terms, however, the steady state current account deficit increases. Furthermore, as steady-state accumulation wishes of the domestic country increase, i.e. $\hat{\lambda}\tilde{a}$ rises, the steady-state current account deficit in efficiency units will increase as well.

Interesting is also the question, whether, for example, net capital exports to accumulate wealth are financed by a trade account deficit or surplus or by international interest income.²⁵ The steady-state trade balance in efficiency units, $\tilde{t}b$, is defined as the steady-state current account balance in efficiency units, $\tilde{c}a$, minus international interest income in efficiency units, $r\tilde{a}$, i.e.

$$\tilde{t}b = \tilde{c}a - r\tilde{a} = (\hat{\lambda} - r)\tilde{a}.$$

As long as the trade balance is counterbalanced ($\tilde{t}b = 0$), net wealth accumulation is exclusively financed by steady-state interest income. Furthermore, as the current account shows a surplus, the steady-state trade account does not necessarily have to be positive, since it can be well-balanced by interest income, i.e. $\tilde{t}b = \underbrace{\tilde{c}a}_{>0} -$

²³See appendix, proposition 13.

²⁴For a constant current account deficit see also GRIES (1995).

²⁵See equation (26).

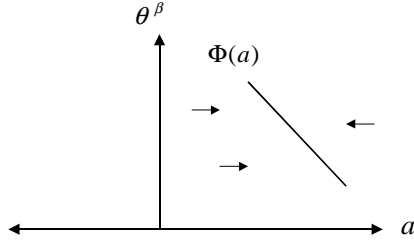


Figure 2: *Transitional Dynamics for Net Wealth in Efficiency Units*

$r \underbrace{\tilde{a}}_{>0} \gtrless 0$. However, for a net creditor country, a trade deficit can exist as long as the domestic growth rate of technical progress is less than the world interest rate. Putting it differently: If the net creditors' accumulation wishes are smaller than international interest income, the steady-state trade account has a long run deficit and imports are higher than exports. Therefore, in the steady-state, the domestic country receives international interest income to finance its net good imports. Hence, with the introduction of capital mobility, a net creditor country can use permanently resources from abroad and obtains simultaneously continuous international interest income (and vice versa for a net debtor position).

3.2 Stability of the Steady-State

Global Stability

The transitional behavior of net wealth in efficiency units is characterized by the dynamic wealth accumulation function²⁶

$$\begin{aligned} \dot{a} &= f(a, \theta) \\ &= s \left\{ (1 - \alpha - \gamma) \left(\frac{\gamma}{p_z} \right)^{\frac{\gamma}{1-\alpha-\gamma}} \left(\frac{r}{\alpha} \right)^{\frac{\alpha}{\alpha+\gamma-1}} - \frac{c_{v0} \hat{\lambda} (\hat{E} + \nu) \theta^\beta}{\lambda_0} \right\} + (sr - \hat{\lambda}) a, \end{aligned} \quad (39)$$

and the global properties can be analyzed using the following expressions

$$\dot{a} < 0 \Leftrightarrow \theta^\beta > \frac{\lambda_0}{c_{v0}(\hat{E} + \nu)\nu} \left\{ (1 - \alpha - \gamma) \left(\frac{\gamma}{p_z} \right)^{\frac{\gamma}{1-\alpha-\gamma}} \left(\frac{r}{\alpha} \right)^{\frac{\alpha}{\alpha+\gamma-1}} + (sr - \hat{\lambda}) a \right\}$$

and vice versa. If a realized value for the labor market tightness for given net wealth in efficiency units is higher than the steady-state value for labor market tightness, the

²⁶See appendix, proposition 15.

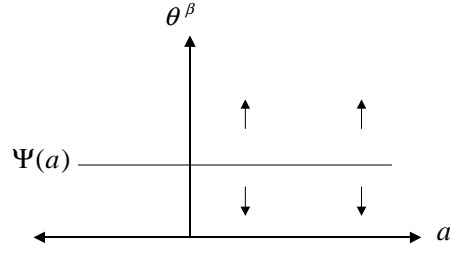


Figure 3: *Transitional Dynamics of Labor Market Tightness*

firm is offering too many vacancies for a given level of unemployment. The supply of vacancies has to be reduced to be consistent with the long-run growth equilibrium. Cutting back vacancies implies that capital accumulation and, therefore, the net wealth position is shrinking. Hence, above the $\dot{a} = 0$ -curve, too many vacancies are supplied and capital accumulation as well as net wealth accumulation in efficiency units has to be reduced to reach the long-run steady-state (see Figure 2). That is, if a value of labor market tightness is realized which is higher than the equilibrium value of labor market tightness, net wealth in efficiency units should decrease to reach the steady-state, i.e. $\dot{a} < 0$.

Furthermore, the transitional dynamics of the labor market tightness are given by the dynamic factor allocation function²⁷

$$\begin{aligned} \dot{\theta} &= h(a, \theta) \\ &= \frac{[r + \nu - \hat{\lambda}] \theta}{\beta} - \frac{(1 - \alpha - \gamma)(1 - \omega)(1 - \beta)\lambda_0}{c_{v0}\hat{\lambda}\beta\theta^{\beta-1}} \left(\frac{\gamma}{p_z}\right)^{\frac{\gamma}{1-\alpha-\gamma}} \left(\frac{r}{\alpha}\right)^{\frac{\alpha}{\alpha+\gamma-1}}. \end{aligned} \quad (40)$$

Analyzing the global dynamic properties of the dynamic factor allocation function, labor market tightness for given net wealth in efficiency units increases, if values of the labor market tightness are realized being above the $\dot{\theta} = 0$ -curve:

$$\theta^\beta > \frac{(1 - \alpha - \gamma)(1 - \omega)(1 - \beta)\lambda_0}{c_{v0}\hat{\lambda}[r + \nu - \hat{\lambda}]} \left(\frac{\gamma}{p_z}\right)^{\frac{\gamma}{1-\alpha-\gamma}} \left(\frac{r}{\alpha}\right)^{\frac{\alpha}{\alpha+\gamma-1}},$$

which implies $\dot{\theta} > 0$ and vice versa (see Figure 3). If a value for the labor market tightness is realized being higher than the equilibrium value for given β and given net wealth in efficiency units, labor market tightness will increase and will never reach the stable long-run equilibrium. Only if values for labor market tightness are

²⁷See appendix, proposition 14.

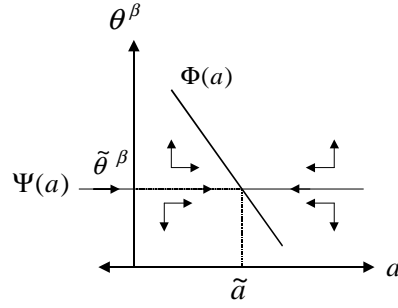


Figure 4: *Stability of the open Growth-Matching-Model*

realized that are on the factor allocation function, labor market tightness will not drift away and approaches the steady-state. That is, labor market tightness is not a predetermined variable; instead it is the jump variable of the model.

Putting the global properties of labor market tightness and net wealth in efficiency units together, the global dynamics in Figure 4 are implied.

Local Stability

After characterizing global stability, the local properties can be examined by linearizing the dynamic system in the area of the steady state, i.e.

$$\begin{bmatrix} \dot{\theta} \\ \dot{a} \end{bmatrix} = \underbrace{\begin{bmatrix} h_a & h_\theta \\ f_a & f_\theta \end{bmatrix}}_{:=H} \begin{bmatrix} \theta - \tilde{\theta} \\ a - \tilde{a} \end{bmatrix}$$

with

$$\begin{aligned} h_a &= 0 \\ h_\theta &= \frac{r + \nu - \hat{\lambda}}{\beta} - \frac{(1 - \beta)^2(1 - \alpha - \gamma)(1 - \omega)\lambda_0}{c_{v0}\hat{\lambda}\beta q(\theta)} \left(\frac{\gamma}{p_z}\right)^{\frac{\gamma}{1-\alpha-\gamma}} \left(\frac{r}{\alpha}\right)^{\frac{\alpha}{\alpha+\gamma-1}} \\ &= ? \\ f_a &= sr - \hat{\lambda} - \hat{E} < 0 \\ f_\theta &= -\frac{c_{v0}\hat{\lambda}s(\hat{E} + \nu)\beta\theta^{\beta-1}}{\lambda_0} < 0, \end{aligned}$$

where $\tilde{\theta}$ and \tilde{a} represent the steady-state values of the model.

Proposition 2 *Suppose*

$$\begin{aligned} h_\theta &= \frac{r + \nu - \hat{\lambda}}{\beta} - \frac{(1 - \beta)^2(1 - \alpha - \gamma)(1 - \omega)\lambda_0}{c_{v0}\hat{\lambda}\beta q(\theta)} \left(\frac{\gamma}{p_z}\right)^{\frac{\gamma}{1-\alpha-\gamma}} \left(\frac{r}{\alpha}\right)^{\frac{\alpha}{\alpha+\gamma-1}} \\ &< 0, \end{aligned}$$

the unique steady-state is a saddle point.

Proof. See appendix, proposition 16.²⁸ ■

The saddle point equilibrium is characterized by the saddle path leading in the locally stable steady state. In Figure 4 the saddle path is represented by the efficient factor allocation function, $\Psi(a)$. If an economy is on this function, labor market tightness is constant and labor market structures are not changing anymore. The steady state can only be reached by being on the stable saddle path and the economy has to jump on it. If the economy is on the stable saddle path, the structures of the labor market are constant, however, the domestic wealth situation as a net creditor respectively net debtor can change further. Due to additional capital imports, the domestic country can move from a net creditor to a net debtor. The changes in the accumulation process of domestic net debt titles induces also changes in the current account. As long as the asset structures of net debt titles are changing, i.e. as long as the economy has not reached the long-run steady-state growth equilibrium, the economy will experience current account changes. With increasing net asset accumulation of the rest of the world, the domestic country has to carry higher interest payments and, therefore, it is confronted with a higher current account deficit.

4 Economics of the Steady-State

After deriving the long-run steady-state as well as the stability of the model, economic implications especially the effects of rising technical progress on the labor market are analyzed in this section. In the first situation of fulfilling a parametric growth condition which requires that the growth rate of technical progress is larger than the average of interest rate and separation rate, the implications of rising productivity growth on the equilibrium levels of employment, unemployment and the duration of unemployment as well as on the steady-state fraction of long-term unemployment are analyzed. After that, in the second case, the effects of a rise of technical progress on these variables will be described when violating the growth condition.

²⁸See also LEONARD/VAN LONG (1992, p. 100-1) and PISSARDIES (1990, p. 45).

4.1 The Parametric Growth Condition

For analyzing the effect of an increase in the growth rate of technical progress $\hat{\lambda}$ on steady-state employment, unemployment, the equilibrium duration of unemployment and the steady-state fraction of long-term unemployment, its influence on the efficient factor allocation function, on the balanced accumulation function as well as on the overall steady-state will be derived.

Proposition 3 *If the growth rate is larger than the average of world interest rate and separation rate, that is, if the growth condition $\hat{\lambda} > \frac{r+\nu}{2}$ is valid, increasing technical progress induces a positive capitalization effect such that steady state employment increases. However, because of negative acting stigmatization and human capital depreciation effects, a trade-off between technical progress and the steady-state duration of unemployment as well as the steady-state fraction of long-term unemployment arises. Therefore, it is not clear whether equilibrium long-term unemployment will raise or shrink.*

This can be shown by analyzing the implication of an increase in the growth rate of technical progress for the efficient factor allocation function and the balanced accumulation function. As long as the growth condition $\hat{\lambda} > \frac{r+\nu}{2}$ holds, an increase in the rate of technical progress causes an increase in labor market tightness. That is, the labor market becomes less tight and for given net wealth labor market tightness increases

$$\frac{\partial \Psi(a)}{\partial \hat{\lambda}} = - \frac{(1 - \alpha - \gamma)(1 - \beta)(1 - \omega)\lambda_0 \left(\frac{\gamma}{p_z}\right)^{\frac{\gamma}{1-\alpha-\gamma}} \left(\frac{r}{\alpha}\right)^{\frac{\alpha}{\alpha+\gamma-1}}}{c_{v0}\hat{\lambda}^2 \left[\nu - \hat{\lambda} + r\right]^2} \underbrace{\left[\nu - 2\hat{\lambda} + r\right]}_{<0}$$

$$> 0.$$

The factor allocation function shifts upwards. Furthermore, analyzing the effect of increasing productivity growth on the balanced accumulation function, a negative relationship is derived:

$$\frac{\partial \Phi(a)}{\partial \hat{\lambda}} = - \frac{\lambda_0}{c_{v0}\nu\hat{\lambda}^2} \left[(1 - \alpha - \gamma) \left(\frac{\gamma}{p_z}\right)^{\frac{\gamma}{1-\alpha-\gamma}} \left(\frac{r}{\alpha}\right)^{\frac{\alpha}{\alpha+\gamma-1}} + sra \right] < 0$$

The increase in the growth rate of technical progress affects the balanced accumulation negatively and for given net wealth the labor market becomes tighter, i.e. labor

market tightness decreases. This is reflected by the downward shift of the balanced accumulation function.

To examine the total effect of rising technical progress on the equilibrium positions of the economy, the above implications—both derived separately—have to be analyzed together. Overall, rising productivity growth will induce a higher level of offered vacancies for given unemployment, and jobless workers will face a higher matching rate. Therefore, steady-state unemployment will decrease which leads for given vacancies to an increase in steady-state labor market tightness defined as the ratio of vacancies to unemployment. However, the effects on the steady-state duration of unemployment as well as the steady-state fraction of long-term unemployment are ambiguous.

These overall effects can be shown clearly by regarding three different effects. First, the increase in steady-state labor market tightness can be explained by the so-called *capitalization effect* to indicate that higher technical progress is favorable for employment, due to the net creation of jobs. According to AGHION, HOWITT (1994) technical progress is not equally distributed among jobs and firms, implying that technical progress generates and destroys jobs simultaneously. They require that, at low growth rates, increasing technical progress causes via the net destruction of jobs a creative destruction effect that leads to increasing unemployment; while, at high growth rates, increasing technical progress generates a capitalization effect that dominates the negative creative destruction effect to result in rising employment through the net creation of jobs.

In this model independent of the level of the growth rate, the capitalization effect occurs as well, but it depends – opposite to AGHION, HOWITT (1994) – on the above growth condition. In the steady-state, boosting technical progress leads to the net creation of new jobs to induce a higher equilibrium level of vacancies and, therefore, a higher level of labor market tightness (see Figure 5a). That is, for given vacancies the increase in steady-state labor market tightness is equivalent to reduced steady-state unemployment and equilibrium employment will raise.

Furthermore, regarding the net creditor or net debtor position of the country, higher productivity growth implies in the case of fulfilling the growth condition a lower steady-state net wealth position due to the negative shape of the balanced accumulation function (from \tilde{a}_0 to \tilde{a}_1 , see Figure 5a).

To analyze the implications of increasing technical progress on the steady-state duration of unemployment and on the steady-state fraction of long-term unemploy-

ment, negative acting secondary effects – the stigmatization effect and the human capital depreciation effect – are induced. The increase in the steady-state unemployment duration resulting from an increase in the productivity rate can be explained by the so-called *stigmatization effect*. Because the unemployment pool consists of short-term and long-term unemployed and because long-term unemployed are stigmatized by long jobless durations that indicate their long time being out of work and less working experience, they are not seen as potential candidates for unfilled jobs and are not demanded by firms.²⁹ Firms want to hire only short-term jobless workers with short unemployment durations. Therefore, as productivity growth goes up, the duration of unemployment increases for all duration levels implying a higher steady-state unemployment duration (see Figure 5b).

Third, the *human capital depreciation effect* will be explained. In growing economies human capital depreciation is a decisive factor for the existence and the increase of long-term unemployment and can be described as follows. The higher the growth rate of technological progress, the more qualification-intensive and specific the job-requirements of firms are.³⁰ If the qualification level of the long-term unemployed does not grow with the same rate as technical progress, their human capital depreciates as technical progress increases and it depreciates faster, the longer the unemployment duration takes. The long-term unemployed cannot handle the latest technologies, are not attractive for firms and are not demanded. Therefore, an increase in technical progress leads to higher levels of long-term unemployment for all unemployment durations and, hence, to a higher steady-state long-term unemployment fraction (see Figure 5c).

To summarize these three different effects, an increase in technical progress induces a capitalization effect such that labor market tightness goes up (from $\tilde{\theta}_0^\beta$ to $\tilde{\theta}_1^\beta$, see Figure 5a). The positive capitalization effect leads to an increase in steady-state employment respectively to a decrease in steady-state unemployment (i.e. for given vacancies to an increase in labor market tightness from $\tilde{\theta}_0$ to $\tilde{\theta}_1$, see Figure 5b) and to reductions in the unemployment duration (from $\tilde{\rho}_0$ to $\tilde{\rho}_1$) as well as in the fraction of long-term unemployed (from $\tilde{\phi}_0$ to $\tilde{\phi}_1$). Despite this positive capitalization effect that induces a reduction in unemployment, long-term unemployment as well

²⁹See also LAYARD (1986, p. 53), who argues “...that long-term unemployment is a complete waste.”

³⁰For mismatch due to qualifical reasons, see also JUHN, MURPHY, TOPEL (1991) and BLANCHARD, KATZ (1997).

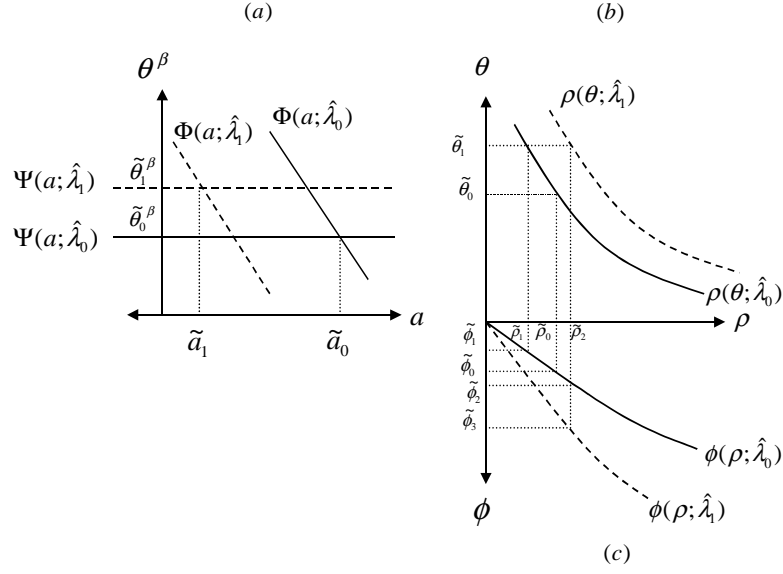


Figure 5: *Steady-State Implications for a Net Creditor by Increasing Technical Progress and Fulfilling the Growth Condition.*

as in the duration of unemployment, two negative acting effects – the stigmatization and the human capital depreciation effect – are generated additionally. The stigmatization effect implies a higher unemployment duration (from $\tilde{\rho}_1$ to $\tilde{\rho}_2$, see Figure 5b) and this induces an increase in the fraction of long-term unemployed (from $\tilde{\phi}_1$ to $\tilde{\phi}_2$, see Figure 5c). Furthermore, as technical progress increases, the fraction of long-term unemployed rises additionally (from $\tilde{\phi}_2$ to $\tilde{\phi}_3$) because of the human capital depreciation effect. Therefore, it is not clear how the duration of unemployment and the fraction of long-term unemployment are affected by the increase in productivity growth; ambiguous effects for the duration of unemployment and the fraction of long-term unemployment can result. If the capitalization effect outweighs the stigmatization and human capital depreciation effect, the duration of unemployment as well as the fraction of long-term unemployment will decrease. However, if both latter effects outweigh the positive capitalization effect, the duration of unemployment and the fraction of long-term unemployment will increase, although steady-state unemployment decreases.

4.2 Violating the Growth Condition

Proposition 4 *If, on the other hand, the average of the interest rate and separation rate are larger than the growth rate, i.e. if the condition $\hat{\lambda} < \frac{r+\nu}{2}$ holds, an increase in the rate of technical progress induces a negative creative destruction effect such that steady-state unemployment will increase which is reinforced by the stigmatization effect as well as the qualification-mismatch effect. Therefore, equilibrium unemployment and the steady-state fraction of long-term unemployment will unambiguously raise.*

The increase in technical progress can be shown by analyzing, first, its effect on the factor allocation function and on the balanced accumulation function and, second, its overall effect on the steady-state positions. If the growth condition does not hold any longer, i.e. the growth rate is smaller than the average of fixed interest rate and separation rate, the labor market becomes tighter and labor market tightness decreases

$$\frac{\partial \Psi(a)}{\partial \hat{\lambda}} = - \frac{(1 - \alpha - \gamma)(1 - \beta)(1 - \omega)\lambda_0 \left(\frac{\gamma}{p_z}\right)^{\frac{\gamma}{1-\alpha-\gamma}} \left(\frac{r}{\alpha}\right)^{\frac{\alpha}{\alpha+\gamma-1}}}{c_{v0}\hat{\lambda}^2 \left[\nu - \hat{\lambda} + r\right]^2} \underbrace{\left[\nu - 2\hat{\lambda} + r\right]}_{>0} < 0.$$

With rising technical progress, labor market tightness decreases such that firms are offering less vacancies and, as a result, the steady-state level of vacancies will shrink for a given level of unemployment. The factor allocation function shifts downward. For an average unemployed worker it becomes more difficult to leave unemployment. The effect on the balanced accumulation function, however, does not change and the negative relationship between increasing technical progress and steady-state labor market tightness is still valid

$$\frac{\partial \Phi(a)}{\partial \hat{\lambda}} = - \frac{\lambda_0}{c_{v0}\nu\hat{\lambda}^2} \left[(1 - \alpha - \gamma) \left(\frac{\gamma}{p_z}\right)^{\frac{\gamma}{1-\alpha-\gamma}} \left(\frac{r}{\alpha}\right)^{\frac{\alpha}{\alpha+\gamma-1}} + sra \right] < 0,$$

i.e., labor market tightness will decrease for all levels of net wealth with rising technical progress.

To examine raising technical progress when violating the growth condition, the overall effects on the equilibrium positions have to be analyzed. When violating the growth condition, the same stigmatization and human capital depreciation effects

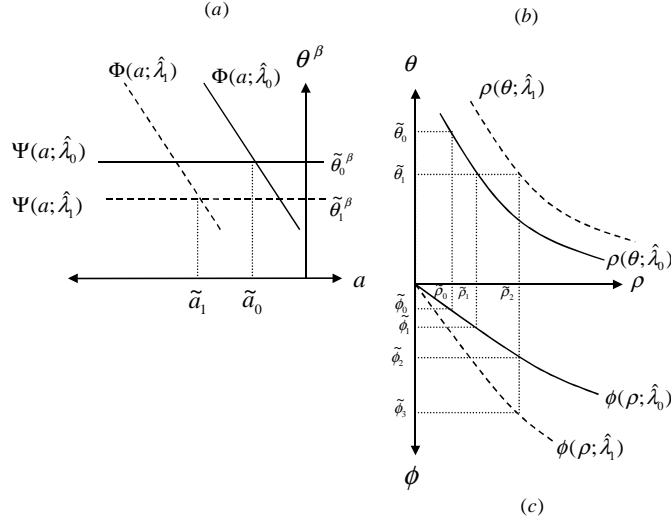


Figure 6: *Steady-State Implications for a Net Debtor by Increasing Technical Progress and Violating the Growth Condition.*

are implied as before. However, the positive capitalization effect leading to raising employment is reversed into a negative Schumpeterian *creative destruction effect*. As in AGHION/HOWITT (1994), the creative destruction effect indicates that more jobs are destroyed than new jobs are created when technological progress rises. This causes the net destruction of jobs and, in equilibrium, unemployment increases which implies a reduction in labor market tightness defined as the ratio of vacancies to unemployment. Therefore, higher productivity growth implies the net destruction of jobs as well as higher steady-state unemployment such that labor market tightness reduces (from $\tilde{\theta}_0^\beta$ to $\tilde{\theta}_1^\beta$, see Figure 6a).

Regarding the net creditor or net debtor position of the country, higher productivity growth could imply a higher steady-state net wealth position, but also a lower steady-state net wealth position. Hence, net wealth can rise or shrink with increasing technical progress.

Analyzing the implications for the steady-state duration of unemployment and for the steady-state fraction of long-term unemployment, the stigmatization as well as the human capital depreciation effects are induced. Due to the negative creative destruction effect, unemployment increases, i.e. for given vacancies labor market tightness decreases (from $\tilde{\theta}_0$ to $\tilde{\theta}_1$, see Figure 6b), which implies that it becomes more difficult for an average unemployed to leave unemployment and steady-state duration of unemployment rises (from $\tilde{\rho}_0$ to $\tilde{\rho}_1$). The long-term unemployed are

stigmatized by long jobless durations and, as technical progress increase, they are even less able to use the latest technologies. Therefore, due to the stigmatization effect, the duration increases additionally (from $\tilde{\rho}_1$ to $\tilde{\rho}_2$) leading to a higher fraction of long-term unemployment (from $\tilde{\phi}_1$ to $\tilde{\phi}_2$, see Figure 6c). Furthermore, since the long-term unemployed are not additionally trained and qualified as technical progress rises, their human capital depreciates even more. They are not demanded by the firms at all and, because of the human capital depreciation effect, the steady-state fraction of long-term unemployment will increase further (from $\tilde{\phi}_2$ to $\tilde{\phi}_3$).

To summarize, if the growth condition is violated, increasing technical progress causes rising unemployment and a net destruction of jobs such that the creative destruction effect is reinforced by the stigmatization and the human capital depreciation effect inducing higher steady-state unemployment duration as well as higher equilibrium long-term unemployment.

5 Conclusion

The relationship between long-term unemployment and the growth rate attributable to technical progress is evaluated in an open Solow growth model extended by the long run labor market matching approach and by the capital and current account. Capital mobility is represented by trading international property titles. The labor market of the three factor growth model is characterized by immobile heterogeneous jobless workers to distinguish between short-term and long-term unemployed.

Depending on a parametric growth condition, an increase in technical progress implies, on the one hand, a favorable capitalization effect inducing the net creation of jobs and shrinking average unemployment and, on the other hand, an unfavorable creative destruction effect causing the net destruction of existing jobs and increasing average unemployment. Beside these primary implications which act directly, but in opposite directions on aggregate employment respectively unemployment, secondary effects in form of a stigmatization and human capital depreciation effects are generated. Both influence the duration of average unemployment and the fraction of long-term unemployment negative. Higher productivity growth can lead to reduced average unemployment, but, due to the stigmatization and human capital depreciation effects, also to a higher average unemployment duration and an increasing fraction of long-term unemployed workers, depending on whether the capitalization effect outweighs the stigmatization and human capital depreciation effects or vice

versa.

However, if the growth condition is violated, the negative Schumpeterian creative destruction effect induces higher average unemployment as well as a tighter labor market and reinforces the increase in the duration of unemployment and in the fraction of long-term unemployment generated by the stigmatization and human capital depreciation effect. Additionally, it is shown that even in the steady-state a constant current account surplus (deficit) for a net creditor (debtor) can be sustained that rises even more as productivity growth increases.

6 Appendix

Lemma 5 *Using the matching function (2), the Hamiltonian conditions (13), (14), $c_v = c_{v0}e^{\hat{\lambda}t}$ and $\lambda = \lambda_0e^{\hat{\lambda}t}$, the optimal condition for labor (21) is implied.*

Proof. Differentiate (2) w.r.t. V and (13) w.r.t. time, use $c_v := c_{v0}e^{\hat{\lambda}t}$ and $\lambda := \lambda_0e^{\hat{\lambda}t}$, then

$$\begin{aligned} e^{-rt}c_v(r - \hat{\lambda}) + \frac{1 - \beta}{\hat{\lambda}} \left[\dot{\mu}_1 + \mu_1\beta(\hat{U} - \hat{V}) \right] \theta^{-\beta} &= 0 \\ \Leftrightarrow -\dot{\mu}_1 &= \frac{\hat{\lambda}}{1 - \beta} e^{-rt}c_v(r - \hat{\lambda})\theta^\beta + \mu_1\beta(\hat{U} - \hat{V}). \end{aligned}$$

Substitute (14) for $-\dot{\mu}_1$, then

$$\frac{\hat{\lambda}}{1 - \beta} e^{-rt}c_v(r - \hat{\lambda})\theta^\beta + \mu_1\beta(\hat{U} - \hat{V}) = e^{-rt}[F_E(k) - w] - \mu_1\nu$$

and substitute (13) for μ_1 , then

$$\begin{aligned} c_v \frac{\hat{\lambda}}{1 - \beta} \theta^\beta \left[\beta(\hat{U} - \hat{V}) + \nu \right] &= F_E(k) - w - c_v \frac{\hat{\lambda}}{1 - \beta} \theta^\beta (r - \hat{\lambda}) \\ \Leftrightarrow F_E(k) &= w + c_v \frac{\hat{\lambda}}{1 - \beta} \left[r - \hat{\lambda} + \beta(\hat{U} - \hat{V}) + \nu \right] \theta^\beta. \end{aligned}$$

Therefore, the optimal condition for labor (21) is implied. ■

Proposition 6 *Using labor restriction (1), wage hypothesis (7), production functions (8) and (9), optimal conditions for capital (20), for labor (21) as well as for imports (22) and the flow condition for employment (31), the efficient factor allocation function (32) follows.*

Proof. Differentiate (8) w.r.t. Z and use $\varepsilon := 1 - \alpha - \gamma$, then

$$F_Z(k) = \gamma z^{\gamma-1} k^\alpha. \quad (8')$$

Substitute this into (22), then

$$\gamma z^{\gamma-1} k^\alpha = p_z, \quad (22')$$

and (9) in (22'), then

$$\frac{\gamma}{p_z} x = z. \quad (22'')$$

Furthermore, substitute this back into (9), then

$$x = \left(\frac{\gamma}{p_z} \right)^{\frac{\gamma}{1-\gamma}} k^{\frac{\alpha}{1-\gamma}}. \quad (9')$$

Differentiate (8) w.r.t. K and E and use (8'), then

$$F_K(k) = \alpha k^{-1} \left(\frac{\gamma}{p_z} \right)^{\frac{\gamma}{1-\gamma}} k^{\frac{\alpha}{1-\gamma}} \quad (8'')$$

$$F_E(k) = (1 - \alpha - \gamma) \lambda \left(\frac{\gamma}{p_z} \right)^{\frac{\gamma}{1-\gamma}} k^{\frac{\alpha}{1-\gamma}}. \quad (8''')$$

Substitute (7) in (21), then

$$F_E(k) = \frac{\widehat{\lambda} c_v \left[r - \widehat{\lambda} + \nu + \beta(\widehat{U} - \widehat{V}) \right] \theta^\beta}{(1 - \beta)(1 - \omega)} \quad (21')$$

Equate (21') with (8''') and use $c_v = c_{v0} e^{\widehat{\lambda} t}$, $\lambda = \lambda_0 e^{\widehat{\lambda} t}$, then

$$\begin{aligned} \frac{\widehat{\lambda} c_v \left[r - \widehat{\lambda} + \nu + \beta(\widehat{U} - \widehat{V}) \right] \theta^\beta}{(1 - \beta)(1 - \omega)} &= (1 - \alpha - \gamma) \lambda \left(\frac{\gamma}{p_z} \right)^{\frac{\gamma}{1-\gamma}} k^{\frac{\alpha}{1-\gamma}} \\ \Leftrightarrow \theta^\beta &= \frac{(1 - \alpha - \gamma)(1 - \beta)(1 - \omega) \lambda_0}{\widehat{\lambda} c_{v0} \left[r - \widehat{\lambda} + \nu + \beta(\widehat{U} - \widehat{V}) \right]} \left(\frac{\gamma}{p_z} \right)^{\frac{\gamma}{1-\gamma}} k^{\frac{\alpha}{1-\gamma}} \end{aligned} \quad (21'')$$

Substitute (8'') in (20), then

$$\begin{aligned} r &= \alpha \left(\frac{\gamma}{p_z} \right)^{\frac{\gamma}{1-\gamma}} k^{\frac{\alpha}{1-\gamma} - 1} \\ \Leftrightarrow k &= \left(\frac{r}{\alpha} \right)^{\frac{1-\gamma}{\alpha + \gamma - 1}} \left(\frac{\gamma}{p_z} \right)^{\frac{\gamma}{1-\alpha-\gamma}} \end{aligned} \quad (20')$$

Differentiate (1) w.r.t. time, then $\dot{E} = -\dot{U}$, use $\theta := V/U$, then $\dot{\theta} = \dot{V}/U - V\dot{U}/U^2$; use (1) and (31), then $\dot{E} = 0 = -\dot{U}$, $\dot{\theta} = 0$ and $\dot{V} = 0$ are implied and, therefore, $\hat{U} = \hat{V} = 0$. Substitute this and (20') in (21''), rearrange it, then

$$\theta^\beta = \frac{(1 - \alpha - \gamma)(1 - \beta)(1 - \omega)\lambda_o}{\hat{\lambda}c_{v0} [\nu - \hat{\lambda} + r]} \left(\frac{r}{\alpha}\right)^{\frac{\alpha}{\alpha+\gamma-1}} \left(\frac{\gamma}{p_z}\right)^{\frac{\gamma}{1-\alpha-\gamma}} =: \Psi(a)$$

follows. ■

Proposition 7 *Suppose $\nu - \hat{\lambda} > 0$, then $\Psi(a) > 0$ and $\Psi(a)$ is a linear function with $\Psi'(a) = 0$.*

Proof. If $\nu - \hat{\lambda} > 0$, then

$$\Psi(a) := \frac{(1 - \alpha - \gamma)(1 - \beta)(1 - \omega)\lambda_o}{\hat{\lambda}c_{v0} [\nu - \hat{\lambda} + r]} \left(\frac{r}{\alpha}\right)^{\frac{\alpha}{\alpha+\gamma-1}} \left(\frac{\gamma}{p_z}\right)^{\frac{\gamma}{1-\alpha-\gamma}} > 0 \quad \forall a.$$

Furthermore, $\Psi'(a) = 0$. ■

Proposition 8 *Using labor restriction (1), matching function (2), matching probability (3) and the flow condition for employment (31), the steady-state employment rate $e(\theta) = \frac{p(\theta)}{\nu+p(\theta)}$ is implied.*

Proof. Using (2), (31) can be written as

$$\dot{E} = 0 \Leftrightarrow M = \nu E$$

and using (1) as well as (3), then

$$\begin{aligned} \frac{M}{U}U &= \nu E \\ \Leftrightarrow \frac{M}{U}\bar{L} - \frac{M}{U}E &= \nu E \\ \Leftrightarrow p(\theta)\bar{L} &= (\nu + p(\theta))E. \end{aligned}$$

Therefore, $e(\theta) := \frac{E}{L} = \frac{p(\theta)}{\nu+p(\theta)}$ follows. ■

Proposition 9 *Using matching function (2), production function (9'), the change in employment (11), capital in efficiency units (20'), the optimal condition for imports (22''), net wealth definition (23), the wealth market equilibrium (28), the saving hypothesis (29), budget constraint (30) and the steady-state condition for the wealth market (34), the balanced accumulation function (35) is implied.*

Proof. Rewrite (30) as

$$\begin{aligned} Y &= X - p_z Z - c_v V + rB \\ \Leftrightarrow sY &= s[X - p_z Z - c_v V + rB]. \end{aligned}$$

Use (28) and (29) in efficiency units and substitute it in the above equation, we get

$$\dot{k} + \dot{b} = s[x - p_z z - c_v v + rb]. \quad (30')$$

Define vacancies in efficiency units as $v := V/\lambda E$ and use (2) and (11), then

$$v = \frac{(\hat{E} + \nu) \hat{\lambda}}{\lambda} \theta^\beta. \quad (41)$$

Substitute this as well as (9'), (22'') in (30') to get

$$\dot{k} + \dot{b} = s \left[(1 - \gamma) \left(\frac{\gamma}{p_z} \right)^{\frac{\gamma}{1-\alpha-\gamma}} \left(\frac{r}{\alpha} \right)^{\frac{\alpha}{\alpha+\gamma-1}} - \frac{c_{v0} \hat{\lambda} (\hat{E} + \nu) \theta^\beta}{\lambda_0} + rb \right] \quad (30'')$$

Now, substitute (30'') in the steady-state condition (34) and get

$$\begin{aligned} \dot{a} &= \dot{k} + \dot{b} - (\hat{\lambda} + \hat{E})a = 0 \\ \dot{a} &= s \left[(1 - \gamma) \left(\frac{\gamma}{p_z} \right)^{\frac{\gamma}{1-\alpha-\gamma}} \left(\frac{r}{\alpha} \right)^{\frac{\alpha}{\alpha+\gamma-1}} - \frac{c_{v0} \hat{\lambda} (\hat{E} + \nu) \theta^\beta}{\lambda_0} + rb \right] - (\hat{\lambda} + \hat{E})a = 0. \end{aligned}$$

Use for b equation (23) in efficiency units, for k equation (20') and $\dot{k} = 0$ ³¹, then

$$\dot{a} = s \left[(1 - \alpha - \gamma) \left(\frac{\gamma}{p_z} \right)^{\frac{\gamma}{1-\alpha-\gamma}} \left(\frac{r}{\alpha} \right)^{\frac{\alpha}{\alpha+\gamma-1}} - \frac{c_{v0} \hat{\lambda} (\hat{E} + \nu) \theta^\beta}{\lambda_0} \right] + (sr - \hat{\lambda} - \hat{E})a = 0 \quad (30''')$$

follows. Now use $\dot{a} = 0$ and $\hat{E} = 0$, the balanced wealth accumulation function

$$\theta^\beta = \frac{\lambda_0}{c_{v0} \hat{\lambda} \nu} \left\{ (1 - \alpha - \gamma) \left(\frac{\gamma}{p_z} \right)^{\frac{\gamma}{1-\alpha-\gamma}} \left(\frac{r}{\alpha} \right)^{\frac{\alpha}{\alpha+\gamma-1}} + (sr - \hat{\lambda})a \right\} := \Phi(a)$$

is implied. ■

Proposition 10 *Let $sr - \hat{\lambda} < 0$, the balanced asset accumulation function is a linear function with $\Phi(0) > 0$, $\Phi(\infty) = \infty$, $\Phi'(a) < 0$ and $\Phi''(a) = 0$.*

³¹ $\dot{k} = 0$ is valid, since the capital stock in efficiency units is for a given world interest rate constant.

Proof. $\Phi(0) := \frac{\lambda_0}{c_{v0}\hat{\lambda}s\nu}(1 - \alpha - \gamma) \left(\frac{\gamma}{p_z}\right)^{\frac{\gamma}{1-\alpha-\gamma}} \left(\frac{r}{\alpha}\right)^{\frac{\alpha}{\alpha+\gamma-1}} > 0$, $\Phi(\infty) = \infty$. Let $sr - \hat{\lambda} < 0$, then

$$\Phi'(a) = \frac{\lambda_0}{c_{v0}\hat{\lambda}\nu}(sr - \hat{\lambda}) < 0$$

and $\Phi''(a) = 0$. ■

Proposition 11 *A steady state exists and is unique with*

$$\tilde{a} \begin{cases} \geq 0 \\ < 0 \end{cases} \text{ for } \begin{cases} \frac{(1-\alpha-\gamma)(1-\beta)(1-\omega)\nu}{[\nu-\hat{\lambda}+r]} + \alpha + \gamma - 1 \geq 0 \\ \frac{(1-\alpha-\gamma)(1-\beta)(1-\omega)\nu}{[\nu-\hat{\lambda}+r]} + \alpha + \gamma - 1 < 0 \end{cases}.$$

Proof. Define $\frac{(1-\alpha-\gamma)(1-\beta)(1-\omega)\lambda_0}{\hat{\lambda}c_{v0}[\nu-\hat{\lambda}+r]} \left(\frac{r}{\alpha}\right)^{\frac{\alpha}{\alpha+\gamma-1}} \left(\frac{\gamma}{p_z}\right)^{\frac{\gamma}{1-\alpha-\gamma}} := T$, $\frac{\lambda_0}{c_{v0}\hat{\lambda}\nu} := D$ and $\left(\frac{\gamma}{p_z}\right)^{\frac{\gamma}{1-\alpha-\gamma}} \left(\frac{r}{\alpha}\right)^{\frac{1-\gamma}{\alpha+\gamma-1}} := M$, $\frac{r}{\alpha}(1 - \alpha - \gamma) := G$ and use

$$\begin{aligned} \Psi(a) &= T \\ \Phi(a) &= D \left\{ MG + (sr - \hat{\lambda})a \right\}, \end{aligned}$$

then

$$T = D \left[MG + (sr - \hat{\lambda})a \right],$$

respectively

$$\begin{aligned} \tilde{a} &= \frac{1}{sr - \hat{\lambda}} \left(\frac{T}{D} - MG \right) \\ &= \frac{1}{sr - \hat{\lambda}} \underbrace{\left(\frac{\gamma}{p_z} \right)^{\frac{\gamma}{1-\alpha-\gamma}} \left(\frac{r}{\alpha} \right)^{\frac{\alpha}{\alpha+\gamma-1}}}_{> 0} \\ &\quad \underbrace{\left\{ \frac{(1-\alpha-\gamma)(1-\beta)(1-\omega)\nu}{[\nu-\hat{\lambda}+r]} + \alpha + \gamma - 1 \right\}}_{\geq 0} \\ &\geq 0. \end{aligned}$$

Analyzing the last term yields

$$\underbrace{\frac{(1-\alpha-\gamma)(1-\beta)(1-\omega)\nu}{[\nu-\hat{\lambda}+r]}}_{> 0} + \underbrace{\alpha + \gamma - 1}_{> 0} \geq 0,$$

therefore,

$$\tilde{a} \begin{cases} \geq 0 \\ < 0 \end{cases} \quad \text{for} \quad \begin{cases} \frac{(1-\alpha-\gamma)(1-\beta)(1-\omega)\nu}{[\nu-\hat{\lambda}+r]} + \alpha + \gamma - 1 \geq 0 \\ \frac{(1-\alpha-\gamma)(1-\beta)(1-\omega)\nu}{[\nu-\hat{\lambda}+r]} + \alpha + \gamma - 1 < 0 \end{cases} \quad \blacksquare$$

Proposition 12 *The domestic country is net creditor, i.e. $\tilde{a} \geq 0$, if $\frac{(1-\alpha-\gamma)(1-\beta)(1-\omega)\nu}{[\nu-\hat{\lambda}+r]} + \alpha + \gamma - 1 \geq 0$.*

Proof. See above. \blacksquare

Proposition 13 *If the domestic country is a net debtor (creditor), its current account shows a constant deficit (surplus) in the overall steady state, i.e. $\tilde{c}a = \hat{\lambda}\tilde{a} < 0$.*

Proof. Define the current account (25) and the balance of payments (26) in efficiency units, i.e.

$$\begin{aligned} ca &= ex - p_z z - ra \\ 0 &= ex - p_z z - ra - \dot{b} \end{aligned}$$

and, therefore,

$$ca = \dot{b}. \quad (26')$$

Substituting (26') in the steady-state condition for the wealth market (34) and $\dot{k} = 0$,

$$\tilde{c}a = \hat{\lambda}\tilde{a}$$

is implied. Therefore, if $\tilde{a} < 0$, then $\tilde{c}a < 0$ (and vice versa). \blacksquare

Proposition 14 *The dynamic factor allocation function is given by $\dot{\theta} = \frac{\theta}{\beta} \left\{ r + \nu - \hat{\lambda} - \frac{(1-\alpha-\gamma)(1-\omega)(1-\beta)\lambda_0}{c_{v0}\hat{\lambda}\theta^\beta} \left(\frac{\gamma}{p_z} \right)^{\frac{\gamma}{1-\alpha-\gamma}} \left(\frac{r}{\alpha} \right)^{\frac{\alpha}{\alpha+\gamma-1}} \right\}$.*

Proof. Substitute (20') in (21''), then

$$\theta^\beta = \frac{(1-\alpha-\gamma)(1-\beta)(1-\omega)\lambda_0}{\hat{\lambda}c_{v0} \left[r + \nu - \hat{\lambda} + \beta(\hat{U} - \hat{V}) \right]} \left(\frac{r}{\alpha} \right)^{\frac{\alpha}{\alpha+\gamma-1}} \left(\frac{\gamma}{p_z} \right)^{\frac{\gamma}{1-\alpha-\gamma}}.$$

Use $\hat{U} - \hat{V} = -\hat{\theta}$, i.e. differentiate $\theta := V/U$ with respect to time, then the dynamic factor allocation function

$$\dot{\theta} = \frac{\theta}{\beta} \left\{ r + \nu - \hat{\lambda} - \frac{(1-\alpha-\gamma)(1-\omega)(1-\beta)\lambda_0}{c_{v0}\hat{\lambda}\theta^\beta} \left(\frac{\gamma}{p_z} \right)^{\frac{\gamma}{1-\alpha-\gamma}} \left(\frac{r}{\alpha} \right)^{\frac{\alpha}{\alpha+\gamma-1}} \right\}$$

is implied. \blacksquare

Proposition 15 *The dynamic asset accumulation function can be written as*

$$\begin{aligned} \dot{a} = & s \left[(1 - \alpha - \gamma) \left(\frac{\gamma}{p_z} \right)^{\frac{\gamma}{1-\alpha-\gamma}} \left(\frac{r}{\alpha} \right)^{\frac{\alpha}{\alpha+\gamma-1}} - \frac{c_{v0} \hat{\lambda} (\hat{E} + \nu) \theta^\beta}{\lambda_0} \right] \\ & + (sr - \hat{\lambda} - \hat{E}) a. \end{aligned}$$

Proof. See derivation of equation (30’’). ■

Proposition 16 *Suppose $h_\theta = \frac{r+\nu-\hat{\lambda}}{\beta} - \frac{(1-\beta)^2(1-\alpha-\gamma)(1-\omega)\lambda_0}{c_{v0}\hat{\lambda}\beta q(\theta)} \left(\frac{\gamma}{p_z} \right)^{\frac{\gamma}{1-\alpha-\gamma}} \left(\frac{r}{\alpha} \right)^{\frac{\alpha}{\alpha+\gamma-1}} > 0$, $|H|$ is negative, i.e. the unique steady-state is a saddle point.*

Proof. Using $h_\theta = \frac{r+\nu-\hat{\lambda}}{\beta} - \frac{(1-\beta)^2(1-\alpha-\gamma)(1-\omega)\lambda_0}{c_{v0}\hat{\lambda}\beta q(\theta)} \left(\frac{\gamma}{p_z} \right)^{\frac{\gamma}{1-\alpha-\gamma}} \left(\frac{r}{\alpha} \right)^{\frac{\alpha}{\alpha+\gamma-1}} > 0$, the signs of the coefficient matrix of H can be characterized by

$$H = \begin{bmatrix} 0 & + \\ + & + \end{bmatrix}$$

and, therefore,

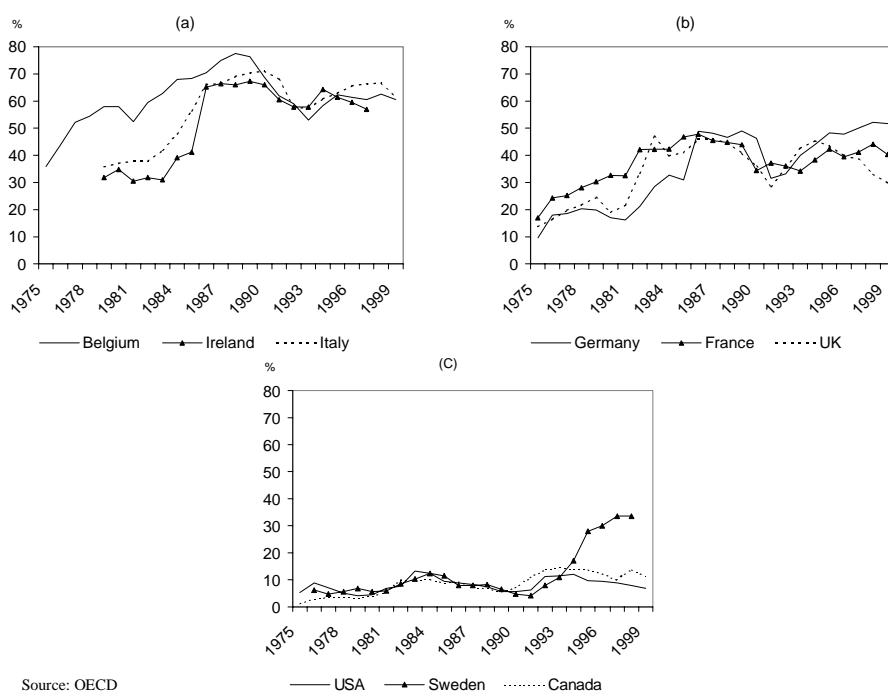
$$\begin{aligned} |H| = & 0 - [\hat{\lambda} + \hat{E} + sr] \left\{ \frac{r + \nu - \hat{\lambda}}{\beta} \right. \\ & \left. - \frac{(1 - \beta)^2(1 - \alpha - \gamma)(1 - \omega)\lambda_0}{c_{v0}\hat{\lambda}\beta q(\theta)} \left(\frac{\gamma}{p_z} \right)^{\frac{\gamma}{1-\alpha-\gamma}} \left(\frac{r}{\alpha} \right)^{\frac{\alpha}{\alpha+\gamma-1}} \right\} \\ < & 0 \end{aligned}$$

is implied. That is one characteristic root is positive and the other is negative, implying that the unique steady-state is a saddle point. ■

Development of Long-Term Unemployment in Industrialized Countries

Figure 7 shows the increase in long-term unemployment for selected groups of countries. Figure 7a shows a group of countries characterized by high shares of long-term unemployment. In 1975 Belgium displays 36 per cent long-term unemployment of total unemployment; this share increases until 1999 up to over 60 per cent. Italy and Ireland have nearly 67 respectively 57 per cent long-term unemployment in the end of the 90s. In this group the average growth rate of long-term unemployment is at about 2 per cent.

The countries shown in Figure 7b are characterized by medium levels and higher average growth rates of long-term unemployment. The share of long-term unemployment increases in Germany from 10 per cent in 1975 up to 50 per cent in 1999.



Source: OECD

Figure 7: *Development of Long-Term Unemployment on Total Unemployment for Groups of Countries*

France and the U.K. show nearly the same structure: their proportions rise from 17 per cent in 1975 up to 40 per cent at the end of the last decade.

A third country group with relatively low levels but relatively high growth rates of long-term unemployment can be identified in Figure 7c. Canada starts with 1 per cent long-term unemployment and this increases up to nearly 11 per cent in 1999; Sweden starts with 6 per cent and ends up with 33 per cent. In the US the proportion of long-term unemployed workers is over the whole period almost constant at about 6 per cent and the average growth rate is constant as well. However, Sweden and Canada display annual average growth rates of 7 respectively 9 per cent.

References

- ACEMOGLU, D.; 1995, Public Policy in a Model of Long-Term Unemployment, *Economica*, 62, 161-78.
- AGHION, P., HOWITT, P.; 1994, Growth and Unemployment, *Review of Economic Studies*, 61, 477-94.

- AGHION, P., HOWITT, P.; 1992, A Model of Growth through Creative Destruction, *Econometrica*, 60, 323-51.
- AKERLOF, G.; 1982, Labor Contracts as Partial Gift Exchange, *Quarterly Journal of Economics*, 97, 543-69.
- AKERLOF, G.; 1984, Gift Exchange and Efficiency Wage Theory: Four Views, *American Economic Review*, 74, 79-83.
- AKERLOF, G., YELLEN, J.; 1985, A Near-Rational Model of Business Cycle, with Wage and Price Inertia, *Quarterly Journal of Economics*, 100, 823-38.
- AKERLOF, G., YELLEN, J.; 1990, The Fair Wage-Effort Hypothesis and Unemployment, *Quarterly Journal of Economics*, 105(2), 255-83.
- BEAN, C., PISSARIDES, C.; 1993, Unemployment, Consumption and Growth, *European Economic Review*, 37, 837-59.
- BLANCHARD, O., DIAMOND, P.; 1994, Ranking, Unemployment Duration and Wages, *Review of Economic Studies*, 61, 417-34.
- BLANCHARD, O., KATZ, L.; 1997, What We Know and Do Not Know About the Natural Rate of Unemployment, *Journal of Economic Perspectives*, 11, 51-72.
- BOERI, T., WÖRGÖTTER, A.; 1998, Long-Term Unemployment and Social Assistance: Introduction, *Empirical Economics*, 23, 1-3.
- BURGESS, S.; 1994, Matching Models and Labour Market Flows, *European Economic Review*, 38, 809-16.
- CALVO, G.; 1979, Quasi-Walrasian Theories of Unemployment, *American Economic Review, Papers and Proceedings*, 69, 102-7.
- CHAPMAN, B.; 1993, Long-Term Unemployment: The Dimensions of the Problem, *Australian Economic Review*, 2nd quarter, 22-25.
- COLES M., MASTERS A.; 2000, Retraining and Long-Term Unemployment in a Model of Unlearning by Not Doing, *European Economic Review*, 44, 1801-22.
- FAHRER, J., PEASE, A.; 1993, The Unemployment/Vacancy Relationship in Australia; *Australian Economic Review*, 4th quarter, 43-47.

- FEVE P., LANGOT F.; 1996, Unemployment and the Business Cycle in a Small Open Economy: G.M.M. Estimation and Testing with French Data, *Journal of Economic Dynamics and Control*, 20, 1609-39.
- GORA, M., SCHMIDT, C.; 1998, Long-Term Unemployment, Unemployment Benefits and Social Assistance: The Polish Experience, *Empirical Economics*, 23, 55-85.
- GRIES, T., 1995, *Wachstum, Humankapital und die Dynamik der Komparativen Vorteile*, Mohr-Verlag, Tübingen.
- GRIES, T., JUNGBLUT, S., MEYER, H.; 1997a, The Dynamics of Growth and Employment in a Two-Sector Model of Job-Matchings, in: KISCHKA, P., LORENZ, H., DERIGS, U., DOMSCHKE, W., KLEINSCHMIDT, P., MOHRING, R. (eds.), *Operations Research Proceedings 1997*, Springer, Heidelberg, 241-6.
- GRIES, T., JUNGBLUT, S., MEYER, H.; 1997b, Job Matching, Structural Unemployment and Growth, *Working Paper No. 9703, International Economics*, University of Paderborn.
- JUHN, C., MURPHY, K., TOPEL, R.; 1991, Why Has the Natural Rate of Unemployment Increased Over Time?, *Brookings Papers on Economic Activity*, 2, 75-142.
- JONES, D., MANNING, D.; 1992, Long Term Unemployment, Hysteresis and the Unemployment-Vacancy Relationship: A Regional Analysis, *Regional Studies*, 26, 17-29.
- LAYARD, R.; 1986, *How to Beat Unemployment?*, Oxford University Press, Oxford.
- LAYARD, R., 1997, Preventing Long-Term Unemployment: An Economic Analysis, in SNOWER, D., DE LA DEHASA, G. (ed.), *Unemployment Policy: Government Options for the Labour Market*, Cambridge University Press, Cambridge.
- LAYARD, R., BEAN, C.; 1989, Why Does Unemployment Persist?, *Scandinavian Journal of Economics*, 91, 371-96.
- LÉONARD, D., VAN LONG, N.; 1992, *Optimal Control Theory and Static Optimization in Economics*, Cambridge University Press, Cambridge.

- LJUNGQVIST, L., SARGENT, TH.; 1995, The Swedish Unemployment Experience, *European Economic Review*, 39, 1043-1070.
- LJUNGQVIST, L., SARGENT, TH.; 1998, The European Unemployment Dilemma, *Journal of Political Economy*, 106, 31, 514-550.
- LOCKWOOD, B.; 1991, Information Externalities in the Labour Market and the Duration of Unemployment, *Review of Economic Studies*, 58, 733-753.
- LUCAS, R.E.; 1988, On the Mechanics of Economic Development, *Journal of Monetary Economics*, 22, 3-42.
- MARIMON, R., ZILIBOTTI, F.; 1999, Unemployment versus Mismatch of Talents: Reconsidering Unemployment Benefits, *Economic Journal*, 109, 266-91.
- MERZ, M.; 1995, Search in the Labor Market and the Real Business Cycle, *Journal of Monetary Economics*, 36, 266-300.
- MERZ, M.; 1999, Heterogeneous Job-Matches and the Cyclical Behavior of Labor Turnover, *Journal of Monetary Economics*, 43, 91-124.
- MORTENSEN, D., PISSARIDES, C.; 1994, Job Creation and Job Destruction in the Theory of Unemployment, *Review of Economic Studies*, 61, 397-415.
- MORTENSEN, D., PISSARIDES, C.; 1998, Technological Progress, Job Creation, and Job Destruction, *Review of Economic Dynamics*, 1, 733-53.
- MORTENSEN, D., PISSARIDES, C.; 1999, Unemployment Responses to 'Skilled-Biased' Technology Shocks: The Role of Labor Market Policy, *Economic Journal*, 109, 242-65.
- NICKELL, S.; 1991, Unemployment: A Survey, *Economic Journal*, 100, 391-439.
- NICKELL, S.; 1999, Product Markets and Labour Markets, *Labour Economics*, 6, 1-20.
- OBSTFELD, M.; 1990, Intertemporal Dependence, Impatience, and Dynamics, *Journal of Monetary Economics*, 26, 45-75.
- OECD; 1983-2000, *Employment Outlook*, various years, Paris.

- PISSARIDES, C.; 1990, *Equilibrium Unemployment Theory*, Basil Blackwell, Oxford.
- PISSARIDES, C.; 1992, Loss of Skill During Unemployment and the Persistence of Unemployment Shocks, *Quarterly Journal of Economics*, 107, 1371-91.
- POSTEL-VINAY, F.; 1998, Transitional Dynamics of the Search Model with Endogenous Growth, *Journal of Economic Dynamics and Control*, 22, 1091-1115.
- ROMER, P.M.; 1986, Increasing Returns and Long Run Growth, *Journal of Political Economy*, 94, 5, 1002-1037.
- ROMER, P.M.; 1990, Endogenous Technological Change, *Journal of Political Economy*, 98, 5, 71-102.
- SAINT-PAUL, G.; 1996, *Dual Labor Markets: A Macroeconomic Perspective*, MIT Press, Cambridge.
- SALOP, S.; 1973a, Systematic Job Search and Unemployment, *Review of Economic Studies*, 40, 191-201.
- SALOP, S.; 1973b, Wage Differentials in a Dynamic Theory of the Firm, *Journal of Economic Theory*, 6, 321-44.
- SHAPIRO, C., STIGLITZ, J.; 1984, Equilibrium Unemployment as a Worker Discipline Device, *American Economic Review*, 74, 433-44.
- STIGLITZ, J., 1974, Alternative Theories of Wage Determination and Unemployment in LDC's: The Labor Turnover Model, *Quarterly Journal of Economics*, 88, 194-227.
- SWEDBERG, R.; 1991, *Joseph A. Schumpeter - His Life and Work*, Polity Press, Cambridge.
- TAUB, B.; 1999, International Financial Equilibrium with Risk Sharing and Private Information, in A. Alkan, C. Aliprantis, N. Yannelis (eds), *Current Trends in Economics: Theory and Applications*, Springer-Verlag, Berlin.
- WEISS, A.; 1980, Job Queues and Layoffs in Labor Markets with Flexible Wages, *Journal of Political Economy*, 88, 526-38.

WEISS, A.; 1991, *Efficiency Wages: Models of Unemployment, Layoffs, and Wage Dispersion*, Clarendon-Press, Oxford.

ZANCHI, L.; 2000, Recent Contributions to the Search Theory on the Labour Market: Introduction, *Bulletin of Economic Research*, 52, 4, 257-260.