

Kugler, Maurice; Rapoport, Hillel

**Working Paper**

## Skilled emigration, business networks and foreign direct investment

CESifo Working Paper, No. 1455

**Provided in Cooperation with:**

Ifo Institute – Leibniz Institute for Economic Research at the University of Munich

*Suggested Citation:* Kugler, Maurice; Rapoport, Hillel (2005) : Skilled emigration, business networks and foreign direct investment, CESifo Working Paper, No. 1455, Center for Economic Studies and ifo Institute (CESifo), Munich

This Version is available at:

<https://hdl.handle.net/10419/18819>

**Standard-Nutzungsbedingungen:**

Die Dokumente auf EconStor dürfen zu eigenen wissenschaftlichen Zwecken und zum Privatgebrauch gespeichert und kopiert werden.

Sie dürfen die Dokumente nicht für öffentliche oder kommerzielle Zwecke vervielfältigen, öffentlich ausstellen, öffentlich zugänglich machen, vertreiben oder anderweitig nutzen.

Sofern die Verfasser die Dokumente unter Open-Content-Lizenzen (insbesondere CC-Lizenzen) zur Verfügung gestellt haben sollten, gelten abweichend von diesen Nutzungsbedingungen die in der dort genannten Lizenz gewährten Nutzungsrechte.

**Terms of use:**

*Documents in EconStor may be saved and copied for your personal and scholarly purposes.*

*You are not to copy documents for public or commercial purposes, to exhibit the documents publicly, to make them publicly available on the internet, or to distribute or otherwise use the documents in public.*

*If the documents have been made available under an Open Content Licence (especially Creative Commons Licences), you may exercise further usage rights as specified in the indicated licence.*

# SKILLED EMIGRATION, BUSINESS NETWORKS AND FOREIGN DIRECT INVESTMENT

MAURICE KUGLER  
HILLEL RAPOPORT

CESIFO WORKING PAPER NO. 1455  
CATEGORY 7: TRADE POLICY  
APRIL 2005

PRESENTED AT CESIFO AREA CONFERENCE ON GLOBAL ECONOMY,  
DECEMBER 2004

*An electronic version of the paper may be downloaded*

- *from the SSRN website:* [www.SSRN.com](http://www.SSRN.com)
- *from the CESifo website:* [www.CESifo.de](http://www.CESifo.de)

# SKILLED EMIGRATION, BUSINESS NETWORKS AND FOREIGN DIRECT INVESTMENT

## Abstract

In a global context foreign direct investment (FDI) and migration substitute one another in the matching process between workers and firms. However, as labor flows can lead to the formation of business networks, migration can actually facilitate FDI in the long-run. We first present a stylized model for a small open economy illustrating these offsetting effects. We then use U.S. data on bilateral labor inflows and capital outflows to measure the extent of contemporaneous substitutability and dynamic complementarity between migration and FDI. We find that brain drain and FDI inflows are negatively correlated contemporaneously but that skilled migration is associated with future increases in FDI inflows. We also find suggestive evidence of substitutability between current migration and FDI for migrants with secondary education, and of complementarity between past migration and FDI for unskilled migrants.

JEL Code: F22, F43, O41.

Keywords: brain drain, foreign direct investment inflows, migrant ties and business networks.

*Maurice Kugler*  
*Department of Economics*  
*University of Southampton*  
*Southampton SO17 1BJ*  
*United Kingdom*  
*mdk1@soton.ac.uk*

*Hillel Rapoport*  
*Department of Economics*  
*Bar-Ilan University*  
*52900 Ramat Gan*  
*Israel*  
*hillel@biu.ac.il*

We thank Frederic Docquier, Edward Taylor and John Whalley for comments and suggestions and the hospitality of the Stanford Center for International Development, where both authors were visitors when this research was initiated.

# 1 Introduction

The last few decades have seen a tremendous increase in the international movements of factors and goods, with international trade and factor flows growing much more rapidly than output. Grossly, the growth rate of international trade has been twice that of world output between 1990 and 2000; even more remarkable is the growth of global FDI flows, which has been triple the growth rate of international trade flows over the period. While such growth has been faster in some regions than others, it has not been localized in just one or two regions, as shown in Figure 1. Global figures for international migration are less easy to obtain because of poor data quality and lack of international harmonization in the definition of a migrant (Zlotny, 1998). International migration is clearly on the rise, however, as reflected for example by the fact that the total number of foreign-born individuals residing in OECD countries (i.e., the OECD immigration stock) has increased by 50% over the same period. The latter figure is amazing because in contrast to the liberalization trend that has characterized trade and FDI, restrictive immigration policies have instead been introduced by most receiving countries with the double objective of decreasing the quantity and increasing the quality of immigration (Faini, 2004). Only the second of these objectives has been achieved; indeed, the number of highly-skilled immigrants (foreign-born individuals with tertiary education) living in an OECD member country has increased by 70% between 1990 and 2000, but the number of low-skill migrants has risen too, although at a lower pace (28%) (Docquier and Marfouk, 2004), as displayed in Figure 2.

This paper investigates whether migration and foreign direct investments (FDI) are substitutes, as standard trade models would predict (either jobs flow to workers or workers to jobs) or complements, as recent socio-economic literature on the role of diasporas in favoring capital inflows and technology diffusion to the migrants' origin countries would seem to suggest. In a standard trade-theoretic framework, the relationship between migration and trade as well as between migration and FDI is a relationship of substitutability. Indeed, trade contributes to factor price equalization and therefore lowers incentives for factor mobility; at the same time, factor movements (beyond the Rybszinski cone) reduce price differentials and, hence, the scope for trade. Similarly, capital is expected to flow to where the type of labor used intensively in production is abundant and, other things equal, workers will supply their labor services where the highest salary can be obtained. Through such

mechanisms, migration and FDI are substitute ways to match workers and employers located in different countries. On the other hand, there is a growing literature emphasizing that migrant networks facilitate bilateral economic transactions through their removing of informational and cultural barriers between host and origin countries. Such a diaspora externality has long been recognized in the sociological literature and, more recently, by economists in the field of international trade. In many instances indeed, and, as explained, in contrast to the predictions of standard trade models, trade and migration appear as complements (e.g., Gould, 1994). Interestingly, such a complementarity has been shown to prevail mostly for trade in heterogeneous goods, where ethnic networks help overcoming information problems linked to the very nature of the goods exchanged (Rauch and Casella, 2003, Rauch and Trindade, 2002).

In a similar spirit, migration may also facilitate the formation of the types of business links which lead to FDI project deployment in a particular location. Hence, while emigration of workers into a country may mitigate to some extent the incentives for FDI from the host to the origin country of migrants, their sheer presence in the host country can be a catalyst to establish the required links to achieve efficient distribution, procurement, transportation and satisfaction of regulations. An important barrier to a multinational corporation's viability to set up a subsidiary in a developing country can be uncertainty. To the extent that migrants integrate to the business community, a network can emerge whereby migrants liaise between potential investors and partners (both private and public) in various aspects of setting up a production facility in the country of origin of the migrant. Such mechanisms through which migration and FDI seem to complement each thanks to migrants taking part in business networks are described in various sectoral case-studies, notably in the case of the software industry (Saxeenian, 2001, Arora and Gambardella, 2004, Commander et al., 2004b). While the channel just described would seem to apply mainly to skilled migrants, there are other channels through which unskilled migrants may also contribute to relax information constraints on FDI. Indeed, their integration into the host country labor market acts as a revelator of the characteristics of the workforce in their home country and may therefore reduce uncertainty and possibly remove any concern potential investors could have in this respect. Hence, migration of both skilled and unskilled workers can facilitate in

the long run the outflow of FDI from the destination to the origin country.<sup>1</sup>

How is the relationship of substitutability or complementarity between migration and FDI affected by the skill composition of migration and by the pattern (i.e., sectoral composition) of FDI? Surprisingly, these issues have so far been neglected in the literature. Focusing on the impact of trade liberalization on migration in a cross-section of countries, Lopez and Schiff (1998) concluded to a relationship of complementarity between trade and unskilled migration and to a relationship of substitutability between trade and skilled migration, but did not analyze the pattern of migration in relation to FDI. More recently, Aroca and Maloney (2002) analyzed the impact of FDI on US-Mexico migration and concluded to a relationship of contemporaneous substitutability between the two; however, they did not consider possible dynamic relationships between the two, nor did they consider the possible impact of migration on FDI. Finally, recent studies suggest that there are FDI spillovers on upstream industries in developing countries (e.g., Kugler, 2000, 2005, Smarzynska, 2004). To the extent that such spillovers induce adoption of more skill-intensive technologies, they may magnify the substitution effect between skilled migration and FDI.

On the whole, our working assumption is that the relationship between migration and FDI is characterized by the offsetting effects of contemporaneous substitutability and dynamic complementarity. In Section 2 we first present a stylized model that captures the main mechanisms through which international labor and capital movements can be linked; the aim of this simple theoretical framework is to derive a number of predictions to be tested empirically. Section 3 presents the data used for the empirical analysis; the main data sources we use are US Census data on immigration stocks in 1990 and 2000, and data from the US Bureau on Economic Analysis on FDI outflows. Section 4 discusses our empirical strategy and presents the results. These are broadly consistent with the predictions of the theoretical framework in that skilled migration (brain drain) and FDI inflows are negatively correlated contemporaneously but past skilled migration is associated with an increase in current FDI inflows. We also find suggestive evidence of substitutability between current migration and FDI for migrants with secondary

---

<sup>1</sup>If verified, this is another channel – alongside remittances, return migration, and the effect of migration prospects on education investment – through which skilled migration affects growth and welfare in the sending countries. See Rapoport and Docquier (2005) on the growth effects of remittances, and Domingues Dos Santos and Postel-Vinay (2003) on return migration as a source of growth.

education, and of complementarity between past migration and FDI for unskilled migrants. Section 5 concludes.

## 2 Theoretical framework

Consider a small open developing economy where, at each period, a composite good is produced according to a Cobb-Douglas technology with constant returns to scale:

$$Y_t = A(H_t)K_t^{1-\alpha}L_t^\alpha$$

with  $L_t = N_t H_t$ , the stock of labor measured in efficiency units and  $H_t$  the average number of such units (or average level of human capital) per worker. In this setting, skilled and unskilled workers are perfect substitutes and total factor productivity depends on human capital externalities, as captured by the expression of the scale factor  $A$ . Assuming competitive markets and denoting by  $k$  the capital to labor ratio, factor returns are given by:

$$\begin{aligned} r_t &= (1 - \alpha)A(H_t)k_t^{-\alpha} \\ w_t &= \alpha A(H_t)k_t^{1-\alpha} \end{aligned}$$

The economy is "open" in that capital is perfectly mobile internationally and "developing" in that, due to persistent technological gaps, the wage rate (or wage per efficient unit of labor) is higher in a more advanced economy which represents a potential destination for migrants.<sup>2</sup> By contrast, labor is imperfectly mobile internationally due to the presence of migration costs (possibility coupled to liquidity constraints that prevent profitable migration investments) and to the fact that destination countries restrict immigration both quantitatively and qualitatively (i.e., selective immigration policy). Wage-differentials, migration costs and immigration policy determine the pattern of migration (i.e., whether there is self-selection or out-selection and whether migrants have more or less than average skills).

International capital flows are such that the domestic interest rate is equal to the international interest rate augmented by a country-risk premium  $\pi$  associated to internal factors such as risk, political instability, corruption, individual freedom, degree of trade liberalization, quality of governance, etc.

---

<sup>2</sup>The destination country is assumed to be large. That is, its domestic prices and wages are assumed to be unaffected by international factor flows to/from one single country.

With  $r_t = r^* + \pi_t$ , we have, therefore:

$$\begin{aligned} k_t &= \frac{(1 - \alpha)A(H_t)^{\frac{1}{\alpha}}}{r^* + \pi_t} \equiv k(\pi_t, H_t) \\ w_t &= \alpha \frac{1 - \alpha}{r^* + \pi_t}^{\frac{1-\alpha}{\alpha}} [A(H_t)]^{\frac{1}{\alpha}} \equiv w(\pi_t, H_t) \end{aligned}$$

with the derivatives  $k_1' < 0$ ,  $k_2' > 0$  and  $w_1' < 0$ ,  $w_2' > 0$ .

The equilibrium stock of capital in the economy is thus given by:

$$K_t = k_t L_t = \frac{(1 - \alpha)A(H_t)N_t^\alpha H_t^{\frac{1}{\alpha}}}{r^* + \pi_t}$$

The latter expression allows us to envision the causal relationships between migration and FDI that are the focus of our empirical analysis and to design our empirical strategy accordingly.

The first, immediate effect of migration is to reduce the number of workers (denoting by  $m$  the migration rate, it becomes  $N_t(1 - m)$ ); any migration outflow would decrease the domestic return to capital and therefore generate a compensating outflow of capital; clearly, FDI and migration are here substitutes as more migration leads to less FDI and conversely.

Second, the skill composition of migration is also of importance. As is well known and documented, a skilled labor force is a key determinant of FDI inflows as it contributes to the capacity of the home economy to adopt new technologies, an effect often referred to as the technological externality arising from human capital formation.<sup>3</sup> All else equal, a more skilled emigration lowers the proportion of skilled in the home population and, therefore, through a decrease in  $H$ , should deter FDI. In terms of our notations, if the post-migration level of human capital,  $H_t^m$ , is lower than the pre-migration average level of human capital,  $H_t$ , this affects capital inflows negatively in two ways, through the stronger depletion of the stock of labor  $L_t$  and through the human capital externality captured by  $A(H_t)$ .

Third, as explained in the introduction, skilled migrants tend to take part in business networks while unskilled migrants convey information on the characteristics of the home country labor force. Hence, both types of

---

<sup>3</sup>See for example Klenow and Rodriguez-Clare (2004) for both a theoretical framework and survey of the empirical literature on this issue.



migration help overcoming informational barriers to FDI and therefore contribute to increasing the attractiveness of the country to foreign investors. We interpret this impact of emigration as a negative shock on the origin country risk premium ( $\pi_t \rightarrow \pi_t^m$ ).

Finally, one must also bear in mind that education decisions are impacted by the prospect of migration. Back in the 1970s, the first generation of brain drain models (e.g., Bhagwati and Hamada, 1974, McCulloch and Yellen, 1977) did recognize this but considered that destination (Western) countries reaped all the benefits from the induced increase in the international supply of brains. It is only recently that, starting with Mountford (1997), Stark et al. (1997, 1998), Vidal (1998) and Beine et al. (2001, 2003), a growing literature has demonstrated that migration prospects can not only boost domestic enrollment in higher education but also increase net human capital formation at home.<sup>4</sup> This suggests that the effect of a more skilled emigration on  $H$  and, therefore, on FDI inflows, could be ambiguous; indeed, one would expect a detrimental brain drain to weaken the dynamic complementarity between skilled migration and FDI emphasized above, and to strengthen it instead in case of a beneficial brain drain.

Notwithstanding this last, indirect effect, the central predictions from our stylized model are that all else equal, a larger and more skilled migration network (given the additional impact of skilled migrants through their being part of business networks) should encourage future FDI while contemporaneous international factor movements should reflect a negative correlation between labor outflows and capital inflows.

### 3 Data description

The main data sources we use are US Census data on immigration stocks by country of origin and education level for 1990 and 2000, and data from the US Bureau of Economic Analysis on FDI outflows by destination country and sector (manufacturing vs. services). The stocks of migrants are classified by the highest level of schooling attained grouped as primary, secondary or tertiary education.

The estimates of US direct investment position abroad are valued at historical cost and include international transactions between US. parent com-

---

<sup>4</sup>See Commander et al. (2004a) and Docquier and Rapoport (2004) for analytical surveys of this literature.

panies and their foreign affiliates for calendar years 1982-2001. International transactions consist of capital outflows and its components (equity capital outflows, reinvested earnings, and intercompany debt outflows); income; royalties and license fees; and charges for other services. The data for 1982, 1989, and 1994 are universe values from benchmark surveys, adjusted from the fiscal year basis on which the data were reported to a calendar year basis—the basis required for the international transactions accounts. The data for 1983-88, 1990-93 and 1995-2001 are universe estimates that are the sum of sample data reported in BEA’s quarterly surveys of US. direct investment abroad plus an estimate of data for affiliates not reported in the quarterly surveys. The estimates for unreported affiliates for 1983-88 are derived both by extrapolating forward data reported for these affiliates in the 1982 benchmark survey based on the movement of the sample data in the subsequent years, and by interpolating backwards between the 1989 and 1982 benchmark surveys. The estimates for unreported affiliates for 1990-93 are derived by extrapolating forward data reported for these affiliates in the 1989 benchmark survey based on the movement of the sample data in the subsequent years. Likewise, the estimates for unreported affiliates for 1995-2001 are derived by extrapolating forward data reported for these affiliates in the 1994 benchmark survey based on the movement of the sample data in the subsequent years.

Beginning with 1994, the positions and transactions associated with intercompany debt between parents and foreign financial affiliates that are not depository institutions but are primarily engaged in financial intermediation are reclassified from the direct investment accounts to the accounts for US. nonbanking concerns’ transactions with unaffiliated foreigners. Similarly, interest receipts and payments associated with these debt transactions are reclassified from the direct investment income account to the otherprivate income account. Other types of capital transactions—equity capital and reinvested earnings—with these financial intermediaries and the associated earnings receipts continue to be classified as direct investment.

On the basis of these flows, the BEA builds for each country and sector receiving FDI from the US the historical capital stock. Taking account of depreciation, this allows to compute the change in each country’s sectoral capital stock that may be attributed to accumulated FDI of US origin. It is this variable over the 1990s that we use as dependent variable. Among the more than 100 countries for which immigration data is available, there were only 55 countries for which we were able to calculate the change of FDI

financed capital formation between 1990 and 2000. We use GDP, GDP per capita, and regional dummies for Europe and Latin America as controls, and add interaction terms between regional dummies and migration variables to make allowance for regional determinants of migration and FDI patterns. Table 1 presents the list of countries.

Table 2 presents the descriptive statistics for the variables used in the empirical analysis. Number of observations per variable is 55 corresponding to the number of countries for which we can construct our historical stock variables of emigration by schooling level and sectoral capital formation financed with FDI, where the host country of the US multinational corporation subsidiaries is the country of origin of the US immigrant stocks. Let  $\Delta K^s$  be the change between 1990 and 2000 in the log of  $s$  capital stock (where henceforth  $s = TOT, MAN, SER$  stands for total, manufacturing and services respectively) financed with FDI from US,  $K_{1990}^s$  is the log of the historical  $s$  stock in 1990 of capital financed with FDI from the US,  $\Delta M^e$  is the change in the 1990's of the log of the stock of migrants in the US with  $e$  educational attainment (where henceforth  $e = PRI, SEC, TER$  for primary, secondary and tertiary respectively), and  $M_{1990}^e$  is the log of the stock of migrants in the US in 1990 with  $e$  educational attainment. Over the decade aggregate capital formation financed by FDI in our sample of countries rose on average by 117%. The corresponding figures for manufacturing and services were 133% and 351%. Even with this wide gap in growth between sectors by 2000 the average of capital stock, across the 55 countries in the sample, financed with FDI in services was half of that in manufacturing. The average stock of US immigrants by country with only primary education declined by 19% and with secondary education by 4%. In contrast, the number of migrants with university education rose by 44% between 1990 and 2000. The initial stocks by the three categories of highest educational attainment were roughly similar in 1990. These observed trends are not particular to our sample. For example, Figure 1 shows aggregate FDI, not just originated in the US, inflows to various regions and there is a clear expansionary tendency across the board. While the growth of FDI is more pronounced in some regions, it is clearly not a localized phenomenon. At the same time, Figure 2 shows changes in the skill composition, measured by schooling attainment, of migrant stocks to different destinations in OECD countries. The increase in the share of university educated among immigrants observed in the US in 1990's also happened in the Australia, Canada and the EU, and overall in the OECD. Hence, while our constructions of capital and migrant stocks re-

stricts our sample of countries, the temporal variation of the main variables in the resulting sample accords with what is observed globally.

## 4 Empirical analysis

We specify a regression in differences to mitigate concerns about endogeneity and simultaneity. In contrast to most empirical specifications on the determinants of FDI inflows, our dependent variable is the rate of change of the historical capital stock financed via FDI inflows rather than the levels of FDI. In standard analyses on FDI determinants with the explanatory variable expressed in levels, Tobit estimation is generally used to correct for censoring of the dependent variable.<sup>5</sup> In our set up, truncated distributions are not an issue as growth of the capital stock is not restricted to be positive. At the same time, there is a sample selection issue as we have to exclude countries for which historical sectoral capital stocks financed are missing. To the extent that missing values may be caused by lack of FDI inflows induced by fundamentals in the potential recipient country, there may be a bias towards substitutability as weak fundamentals simultaneously increase migration and lower FDI.

As pointed out by Razin et al. (2004), lack of inflows may be induced by lumpy sunk costs associated with investing in the potential host country. If the costs do not change over time, they can be modelled as a fixed effect. We account for such unobserved heterogeneity by taking first differences. At the same time, we incorporate variation in the educational attainment of migrants, to proxy for heterogeneity in the skill composition of migration, and hence our framework has a differences-in-differences structure. We estimate the following regressions using OLS:

$$\Delta K_{i,t} = X'_{i,t-1}\alpha_0 + M'_{i,t-1}\beta_0 + \Delta M'_{i,t}\beta_1 + \epsilon_i$$

where  $\Delta K_{i,t}$  is the change in the capital stock of country  $i$  that is financed with FDI from the US between 1990 and 2000,  $X_{i,t-1}$  is a vector of control variables including the lagged dependent variable,  $M_{i,t-1}$  contains country  $i$ 's

---

<sup>5</sup>A recent and notable exception is Razin, Rubinstein and Sadka (2004), where flaws with the use of Tobit estimation techniques are highlighted. Coefficients from Tobit regressions are biased due to their failure to account for the fact that occurrence of zeros in reported FDI may reflect economic fundamentals, beyond boundary problems.

stock of migrants in the US by educational attainment in 1990, the elements of  $\Delta M_{i,t}$  are the rates of change in the components by educational grade completed US immigrant between 1990 and 2000, and the term  $\epsilon_i$  captures measurement error.

Using this specification we obtain the following results. Table 3 shows the impact of emigration patterns on FDI inflows. For total FDI, we obtain that unskilled migration is associated with rising future FDI. There is also some indication, although less significant, that brain drain is positively correlated with ensuing capital inflows. On the one hand, the positive association between unskilled emigration and total FDI inflows to the workers' origin country may relate to the revelation of information about high labor force quality from observations of their work by multinational investors. On the other hand, positive correlation of current total FDI inflows and past emigration of those holding university degrees is consistent with brain drain acting as a catalyst for the creation of international business networks.

For manufacturing FDI, we find that inflows have a significant positive association with past emigration of university graduates from the multinational corporation subsidiary's host country to the home country. Also, current FDI inflows from the US are negatively correlated with current emigration by workers with secondary education to the US. At the same time, for Latin American countries the evidence indicates a contemporaneous positive link between emigration to the US by those with primary and tertiary schooling attainments and FDI inflows from the US. A 10% rise in the stock of university educated migrants in the US was associated with a rise of a quarter of a percentage point in the growth of capital in manufacturing financed with FDI to the migrants' country of origin. On the other hand, a 10% increase in emigration of workers with secondary education to the US over the 1990's is associated with a 7% lower capital formation in manufacturing financed with FDI from the US to the migrants' origin country.

Finally, with respect to FDI inflows directed to the service sector we find evidence consistent with contemporaneous substitutability and dynamic complementarity between skilled emigration to the US and FDI inflows from the US to the service sector, while no significant effect was found for the relationship between unskilled migration and FDI. A 10% rise in the stock of university educated migrants in the US was associated with a rise of a half of a percentage point in the growth of capital in manufacturing financed with FDI to the migrants' country of origin. By contrast, a 1% increase in emigration of workers with secondary education to the US over the 1990's is

associated with a 3.5% lower capital formation in services financed with FDI from the US to the migrants' origin country.

## 5 Concluding remarks

Since international factor flows are jointly determined by technology deployment and endowment differentials, it is natural to study at the same time capital and labor movements between countries. Yet, one potential determinant of FDI which has rarely been studied is migration. The most obvious link is that to match workers and vacancies which are in different countries, either employees have to relocate to where jobs are or investments need to be undertaken to create jobs where potential employees are. In particular, FDI will flow to where the type of labor used intensively in production is abundant. At the same time, other things equal, workers will supply their labor services where the highest salary can be obtained. Through this mechanism FDI and migration are substitute ways to match workers and employers located in different countries.

Another effect that runs in the opposite direction is that migration might facilitate the formation of the types of business links which lead to FDI project deployment in a particular location. Hence, while emigration of workers into a country may mitigate to some extent the incentive for FDI outflow from the destination country of migrants to the origin country, the presence of migrants can be a catalyst to establish the required links to achieve efficient distribution, procurement, transportation and satisfaction of regulations. An important barrier to a multinational corporation's viability to set up a subsidiary in a developing country can be uncertainty and transaction costs. To the extent that migrants integrate to the business community, a network can emerge whereby migrants liaise between potential investors and partners (both private and public) in various aspects of setting up a production facility in the country of origin of the migrant.

Hence, migration can facilitate in the long run the outflow of FDI from the destination to the origin country. Through this mechanism FDI and migration complement each other. Whether brain drain is associated with a net increase in FDI inflows or not is an empirical matter. We use bilateral data of migration and FDI flows, as well as other control variables. Our benchmark is a differences-in-differences specification for FDI with country size measures (e.g. GDP and GDP per capita) and regional indicators as control

variables and the skill composition and change over time of emigration as explanatory variables. We identify evidence consistent with contemporaneous substitutability among FDI and migration as well as dynamic complementarity, especially among migrants with more schooling.

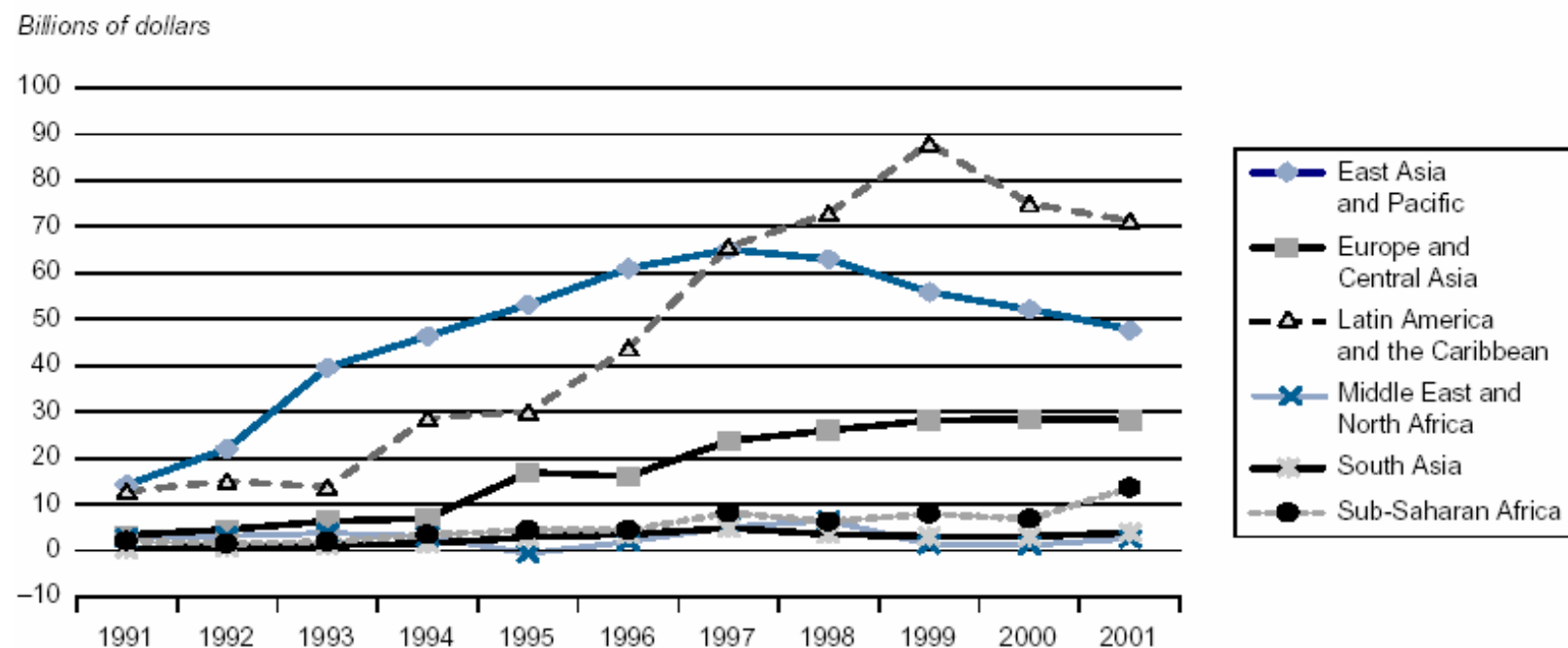
## References

- Arora, A. and A. Gambardella (2004): The Globalization of the Software Industry: Perspectives and Opportunities for Developed and Developing Countries; in A.B. Jaffe, J. Lerner and S. Stern, eds.: *Innovation Policy and the Economy*, Vol. 5, Cambridge, Ma.: The MIT Press, forthcoming.
- Beine, Michel, Frédéric Docquier and Hillel Rapoport (2001): Brain Drain and Economic Growth: Theory and Evidence, *Journal of Development Economics*, 64, 1: 275-89.
- Beine, Michel, Frédéric Docquier and Hillel Rapoport (2003): Brain Drain and LDCs' Growth: Winners and Losers, IZA Discussion Paper No 819, July.
- Bhagwati, J. N. and K. Hamada (1974): The brain drain, international integration of markets for professionals and unemployment, *Journal of Development Economics*, 1, 1: 19-42.
- Commander, Simon, Maria Kangasniemi and Alan L. Winters (2004a): The brain drain: curse or boon? A survey of the literature, in R. Badlwin and L.A. Winters, eds.: *Challenges to Globalization*, The University of Chicago Press, Chapter 7.
- Commander, S., R. Chanda, M. Kangasmieni and A.L. Winters (2004b): Who gains from skilled migration? Evidence from the software industry, Manuscript, Center for Economic Performance, London School of Economics.
- Docquier, Frédéric and Abdeslam Marfouk (2004): Measuring the international mobility of skilled workers, 1990-2000, Policy Research Working Paper No 3381, The World Bank, August.
- Docquier, Frédéric and Hillel Rapoport (2004): Skilled migration: the perspective of developing countries, Policy Research Working Paper No 3382, The World Bank, August.
- Domingues Dos Santos, Manon and Fabien Postel-Vinay (2003): Migration as a source of growth: the perspective of a developing country, *Journal of Population Economics*, 16, 1: 161-75.
- Faini, Riccardo (2004): Trade liberalization in a globalizing world, IZA Discussion Paper No 1406, November.
- Javorcik, Beata Smarzyska (2004): Does Foreign Direct Investment Increase the Productivity of Domestic Firms? In Search of Spillovers through Backward Linkages, *American Economic Association*, vol. 94(3), pages 605-627.
- Klenow, Peter J. and Andres Rodriguez-Clare (2004): Externalities and growth, NBER Working Paper No 11009, December.



- Kugler, Maurice (2000): The diffusion of externalities from Foreign Direct Investment: Theory ahead of measurement, Ph.D Dissertation, UC Berkeley.
- Kugler, Maurice (2004): Spillovers from Foreign Direct Investments: within or between industries?, *Journal of Development Economics*, forthcoming.
- Lopez, Ramon and Maurice Schiff (1998): Migration and the skill composition of the labour force: the impact of trade liberalization in LDCs, *Canadian Journal of Economics*, 31, 2: 318-36.
- McCulloch, R. and J.T. Yellen (1977): Factor mobility, regional development and the distribution of income, *Journal of Political Economy*, 85, 1: 79-96.
- Mountford, Andrew (1997): Can a brain drain be good for growth in the source economy?, *Journal of Development Economics*, 53, 2: 287-303.
- Rapoport, Hillel and Frédéric Docquier (2005): The economics of migrants' remittances, in L.-A. Gerard-Varet, S.C. Kolm and J. Mercier-Ythier, eds.: *Handbook of the economics of giving, reciprocity and altruism*, Amsterdam: North-Holland, forthcoming.
- Rauch, James E. and Victor Trindade (2002): Ethnic chinese networks in international trade, *Review of Economics and Statistics*, 84, 1: 116-30.
- Rauch, James E., Casella, Alessandra (2003) Overcoming informational barriers to international resource allocation: Prices and Ties, *Economic Journal*, 113, 484: 21-42.
- Razin, Assaf, Yona Rubinstein and Efraim Sadka (2004): Which countries export FDI, and how much? Mimeo, Tel-Aviv University, March.
- Saxenian, A. (2001) Bangalore, the Silicon Valley of India?, CREDPR Working Paper No 91, Stanford University.
- Stark, Oded, Christian Helmenstein and Alexia Prskawetz (1997): A brain gain with a brain drain, *Economics Letters*, 55: 227-34.
- Stark, Oded, Christian Helmenstein and Alexia Prskawetz (1998): Human capital depletion, human capital formation, and migration: a blessing or a 'curse'?, *Economics Letters*, 60, 3: 363-7.
- Vidal, Jean-Pierre (1998): The effect of emigration on human capital formation, *Journal of Population Economics*, 11, 4: 589-600.
- Zlotnik, H. (1998): International migration 1965-96: An overview, *Population and Development Review*, 24, 3: 429-68.

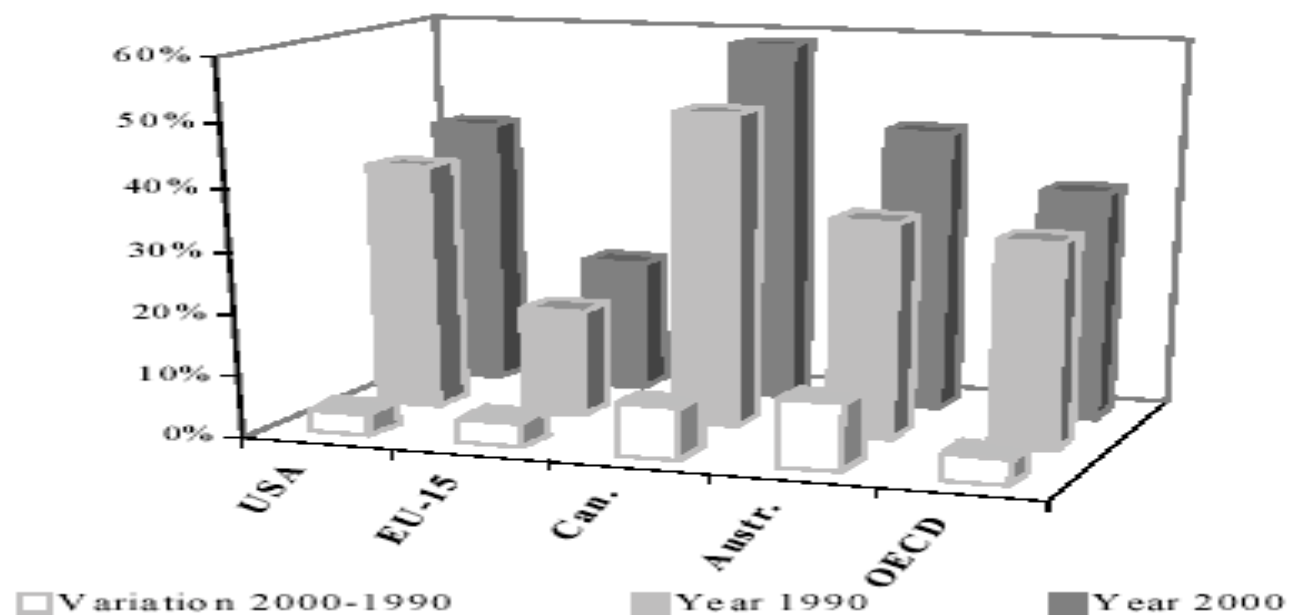
**Figure 1 – Regional Trends of FDI Inflows in 1990's**



Source: World Bank, *Global Development Finance: Country Tables* and sources cited therein, various years; World Bank staff estimates for 2001.

**Figure 2 – Changes in migrant composition in 1990's**

*Skilled immigrants in percent of the immigration stock*



Source: Docquier and Marfouk (2004)

**Table 1 – Sample Description**

<b>COUNTRY</b>	<b>US MIGRANTS 90</b>	<b>US MIGRANTS 00</b>	<b>FDI FINANCED CAPITAL 90</b>	<b>FDI FINANCED CAPITAL 00</b>
Canada	738955	809096	69508	128814
Costa Rica	33962	52641	252	1655
Guatemala	137248	323011	130	907
Honduras	68978	176530	262	257
Mexico	2655997	6176253	10313	37332
Panama	85871	113209	9289	29316
Bahamas	12269	18908	4004	2317
Barbados	34320	45789	252	1170
Dominican Republic	240489	530197	529	813
Jamaica	246067	413887	625	2354
UK	109576	192558	5929	28514
Argentina	76980	109345	2531	15646
Brazil	63204	158859	14384	39033
Chile	47710	63862	1896	9451
Colombia	221260	396371	1677	4606
Ecuador	105098	214765	280	763
Peru	107990	211137	599	3485
Venezuela	32467	76021	1087	9530
Denmark	34447	30292	1726	5363
Finland	20461	18825	544	1110
Ireland	160778	158979	5894	33816
Norway	39979	30728	4909	5833
Sweden	49442	44626	1787	22676
United Kingdom	534328	694618	72707	241663
Austria	88999	59581	1113	2686
Belgium	31495	35753	9464	19527
France	133623	163848	19164	38752
Germany	836475	925822	27609	50963
Luxembourg	2277	2987	1697	25571
Netherlands	89854	93938	19120	117557
Switzerland	36278	40060	25099	55854
Greece	164968	166200	282	637
Portugal	179840	206218	897	1888
Italy	587275	500449	14063	22392
Spain	71503	83440	7868	19846
Egypt	59216	92273	1231	2344
Nigeria	46442	111871	401	1237
South Africa	25718	48236	775	3245
Israel	79396	90856	746	3386
Saudi Arabia	7013	9823	1899	4225
Turkey	49398	66627	522	1356
United Arab Emirates	304.001	1322.002	409	737
India	346194	811189	372	1431
Indonesia	35876	52032	3207	8514
Malaysia	17725	38298	1466	7400
Philippines	745388	1198020	1355	2735
Singapore	8204	16931	3975	25634
Thailand	61433	97383	1790	6635
China	462957	830139	354	9861
Hong Kong	98090	166616	6055	26621
Japan	288190	375947	22599	59441
Korea, South	405468	4941	2695	8914
Taiwan	179245	258486	2226	7821
Australia	37475	51958	15110	35364
New Zealand	13462	18177	3156	3854

**Notes:** Migration stocks reported in thousands of people and capital stocks reported in millions of 1990 US dollars with “90” variable suffix corresponding to year 1990 levels and “00” suffix to year 2000 levels.

**Table 2 – Summary Statistics**  
**Sectoral Capital Financed by FDI and Migrant Composition by Education:**  
**Stocks and flows**

<b>VARIABLE</b>	<b>MEAN</b>	<b>STANDARD DEVIATION</b>	<b>MINIMUM</b>	<b>MAXIMUM</b>
$\Delta K$ TOT	1.171053	.6742091	-.54702	3.327045
$K$ TOT <sub>1990</sub>	7.722503	1.562444	1.562444	11.19419
$\Delta K$ MAN	1.330517	2.230985	-1.425655	12.62149
$K$ MAN <sub>1990</sub>	5.768116	3.591764	-6.907755	10.41253
$\Delta K$ SER	3.519508	4.707519	-8.006368	15.99219
$K$ SER <sub>1990</sub>	.9125442	5.332361	-6.907755	7.990915
$\Delta M$ PRI	-.1950974	.9222775	-4.04217	1.53527
$M$ PRI <sub>1990</sub>	8.825225	2.796136	-6.907755	14.25432
$\Delta M$ SEC	-.0451762	1.831756	-11.2772	1.260745
$M$ SEC <sub>1990</sub>	10.09821	1.602961	4.369448	13.53907
$\Delta M$ TER	.4465127	.6800715	-4.009286	1.770801
$M$ TER <sub>1990</sub>	10.50365	1.408626	5.416101	13.13872

**Number of observations** per variable is 55 corresponding to the number of countries for which we can construct our historical stock variables of emigration by schooling level and sectoral capital formation financed with FDI, where the host country of the subsidiary is the country of origin of the migrant.

**Definitions:**  $\Delta K$   $s$  is change in the 1990's in the log of  $s$  capital stock financed with FDI from US (where henceforth  $s$  = TOT, MAN and SER stands for total, manufacturing and services respectively),  $K$   $s$ <sub>1990</sub> is the log of the historical  $s$  stock in 1990 of capital financed with FDI from the US,  $\Delta M$   $e$  is the change in the 1990's of the log of the stock of migrants in the US with  $e$  educational attainment (where henceforth  $e$  = PRI, SEC and TER for primary, secondary and tertiary respectively), and  $M$   $e$ <sub>1990</sub> is the log of the stock of migrants in the US in 1990 with  $e$  educational attainment.

**Table 3 – Emigration and FDI inflows**

<b><i>Dep. Var.:</i></b> growth in capital financed with FDI from the US in 1990's	<b>(1)</b>	<b>(2)</b>	<b>(3)</b>
	<b>Total</b>	<b>Manufacturing</b>	<b>Services</b>
Constant	1.499236 (.9434182)	1.619913 (1.961791)	18.32049 (5.938741)
GDP per capita of host in 1990 (log)	.105372 (.038974)	.319913 (.061791)	.091347 (.051791)
GDP of host in 1990 (log)	.199136 (.079463)	.569131 (.232561)	.013814 (.006192)
KTOT <sub>1990</sub> (log)	-.070537 (.0758481)	--	--
KMAN <sub>1990</sub> (log)	--	-.3713256 (.074652)	--
KSER <sub>1990</sub> (log)	--	--	0.001 (0.69)
MPRI <sub>1990</sub> (log)	.2162047 (.0695231)	.2096735 (.3048121)	-.3224105 (1.02825)
MSEC <sub>1990</sub> (log)	-.5635226 (.3495073)	-.3314846 (.683885)	3.461478 (2.331489)
MTER <sub>1990</sub> (log)	.4390899 (.2437978)	1.602782 (.5472631)	4.381484 (1.805951)
$\Delta$ M PRI (log diffs)	.1512915 (.2182103)	.8442118 (.4731091)	2081284 (1.197774)
$\Delta$ M SEC (log diffs)	-.0603085 (.1366381)	-.7071812 (.2622901)	.5721065 (.9354538)
$\Delta$ M TER (log diffs)	-.0831427 (.2677519)	2308714 (.55928993)	-3.33648 (1.637666)
Regional fixed effects	YES	YES	YES
Regional interaction effects	YES	YES	YES
R-squared	0.3582	0.5491	0.4976
No. of observations	55	55	55

Notes: Robust standard errors in parentheses. Variable definitions are as in Table 2.

# CESifo Working Paper Series

(for full list see [www.cesifo.de](http://www.cesifo.de))

---

- 1390 James J. Heckman and Dimitriy V. Masterov, Skill Policies for Scotland, January 2005
- 1391 Emma Galli & Fabio Padovano, Sustainability and Determinants of Italian Public Deficits before and after Maastricht, January 2005
- 1392 Angel de la Fuente and Juan Francisco Jimeno, The Private and Fiscal Returns to Schooling and the Effect of Public Policies on Private Incentives to Invest in Education: A General Framework and Some Results for the EU, January 2005
- 1393 Juan C. Conesa and Carlos Garriga, Optimal Response to a Demographic Shock, January 2005
- 1394 Christian Gollier, Optimal Portfolio Management for Individual Pension Plans, February 2005
- 1395 Ruslan Lukach, Joseph Plasmans and Peter M. Kort, Innovation Strategies in a Competitive Dynamic Setting, February 2005
- 1396 Gebhard Kirchgässner, (Why) Are Economists Different?, February 2005
- 1397 Marko Köthenbürger, Panu Poutvaara and Paola Profeta, Why are More Redistributive Social Security Systems Smaller? A Median Voter Approach, February 2005
- 1398 Gabrielle Demange, Free Choice of Unfunded Systems: A First Assessment, February 2005
- 1399 Carlos Fonseca Marinheiro, Sustainability of Portuguese Fiscal Policy in Historical Perspective, February 2005
- 1400 Roel M. W. J. Beetsma and Koen Vermeylen, The Effect of Monetary Unification on Public Debt and its Real Return, February 2005
- 1401 Frank Asche, Petter Osmundsen and Maria Sandsmark, Is It All Oil?, February 2005
- 1402 Giacomo Corneo, Media Capture in a Democracy: The Role of Wealth Concentration, February 2005
- 1403 A. Lans Bovenberg and Thijs Knaap, Ageing, Funded Pensions and the Dutch Economy, February 2005
- 1404 Thiess Büttner, The Incentive Effect of Fiscal Equalization Transfers on Tax Policy, February 2005
- 1405 Luisa Fuster, Ayşe İmrohoroglu and Selahattin İmrohoroglu, Personal Security Accounts and Mandatory Annuitization in a Dynastic Framework, February 2005

- 1406 Peter Claeys, Policy Mix and Debt Sustainability: Evidence from Fiscal Policy Rules, February 2005
- 1407 James M. Malcomson, Supplier Discretion over Provision: Theory and an Application to Medical Care, February 2005
- 1408 Thorvaldur Gylfason, Interview with Assar Lindbeck, February 2005
- 1409 Christian Gollier, Some Aspects of the Economics of Catastrophe Risk Insurance, February 2005
- 1410 Gebhard Kirchgässner, The Weak Rationality Principle in Economics, February 2005
- 1411 Carlos José Fonseca Marinheiro, Has the Stability and Growth Pact Stabilised? Evidence from a Panel of 12 European Countries and Some Implications for the Reform of the Pact, February 2005
- 1412 Petter Osmundsen, Frank Asche, Bård Misund and Klaus Mohn, Valuation of International Oil Companies –The RoACE Era, February 2005
- 1413 Gil S. Epstein and Shmuel Nitzan, Lobbying and Compromise, February 2005
- 1414 Marcel F. M. Canoy, Jan C. van Ours and Frederick van der Ploeg, The Economics of Books, February 2005
- 1415 Eric A. Hanushek and Ludger Wößmann, Does Educational Tracking Affect Performance and Inequality? Differences-in-Differences Evidence across Countries, February 2005
- 1416 George Kapetanios and M. Hashem Pesaran, Alternative Approaches to Estimation and Inference in Large Multifactor Panels: Small Sample Results with an Application to Modelling of Asset Returns, February 2005
- 1417 Samuel Mühlemann, Jürg Schweri, Rainer Winkelmann and Stefan C. Wolter, A Structural Model of Demand for Apprentices. February 2005
- 1418 Giorgio Brunello and Lorenzo Rocco, Educational Standards in Private and Public Schools, February 2005
- 1419 Alex Bryson, Lorenzo Cappellari and Claudio Lucifora, Why so Unhappy? The Effects of Unionisation on Job Satisfaction, March 2005
- 1420 Annalisa Luporini, Relative Performance Evaluation in a Multi-Plant Firm, March 2005
- 1421 Giorgio Bellettini and Carlotta Berti Ceroni, When the Union Hurts the Workers: A Positive Analysis of Immigration Policy, March 2005
- 1422 Pieter Gautier, Michael Svarer and Coen Teulings, Marriage and the City, March 2005



- 1423 Ingrid Ott and Stephen J. Turnovsky, Excludable and Non-Excludable Public Inputs: Consequences for Economic Growth, March 2005
- 1424 Frederick van der Ploeg, Back to Keynes?, March 2005
- 1425 Stephane Dees, Filippo di Mauro, M. Hashem Pesaran and L. Vanessa Smith, Exploring the International Linkages of the Euro Area: a Global VAR Analysis, March 2005
- 1426 Hans Pitlik, Friedrich Schneider and Harald Strotmann, Legislative Malapportionment and the Politicization of Germany's Intergovernmental Transfer System, March 2005
- 1427 Konstantinos Angelopoulos and Apostolis Philippopoulos, The Role of Government in Anti-Social Redistributive Activities, March 2005
- 1428 Ansgar Belke and Daniel Gros, Asymmetries in the Trans-Atlantic Monetary Policy Relationship: Does the ECB follow the Fed?, March 2005
- 1429 Sören Blomquist and Luca Micheletto, Optimal Redistributive Taxation when Government's and Agents' Preferences Differ, March 2005
- 1430 Olof Åslund and Peter Fredriksson, Ethnic Enclaves and Welfare Cultures – Quasi-Experimental Evidence, March 2005
- 1431 Paul De Grauwe, Roberto Dieci and Marianna Grimaldi, Fundamental and Non-Fundamental Equilibria in the Foreign Exchange Market. A Behavioural Finance Framework, March 2005
- 1432 Peter Egger, Stefan Gruber, Mario Larch and Michael Pfaffermayr, Knowledge-Capital Meets New Economic Geography, March 2005
- 1433 George Economides and Apostolis Philippopoulos, Should Green Governments Give Priority to Environmental Policies over Growth-Enhancing Policies?, March 2005
- 1434 George W. Evans and Seppo Honkapohja, An Interview with Thomas J. Sargent, March 2005
- 1435 Helge Berger and Volker Nitsch, Zooming Out: The Trade Effect of the Euro in Historical Perspective, March 2005
- 1436 Marc-Andreas Muendler, Rational Information Choice in Financial Market Equilibrium, March 2005
- 1437 Martin Kolmar and Volker Meier, Intra-Generational Externalities and Inter-Generational Transfers, March 2005
- 1438 M. Hashem Pesaran and Takashi Yamagata, Testing Slope Homogeneity in Large Panels, March 2005
- 1439 Gjermund Nese and Odd Rune Straume, Industry Concentration and Strategic Trade Policy in Successive Oligopoly, April 2005

- 1440 Tomer Blumkin and Efraim Sadka, A Case for Taxing Education, April 2005
- 1441 John Whalley, Globalization and Values, April 2005
- 1442 Denise L. Mauzerall, Babar Sultan, Namsoug Kim and David F. Bradford, Charging NO<sub>x</sub> Emitters for Health Damages: An Exploratory Analysis, April 2005
- 1443 Britta Hamburg, Mathias Hoffmann and Joachim Keller, Consumption, Wealth and Business Cycles in Germany, April 2005
- 1444 Kohei Daido and Hideshi Itoh, The Pygmalion Effect: An Agency Model with Reference Dependent Preferences, April 2005
- 1445 John Whalley, Rationality, Irrationality and Economic Cognition, April 2005
- 1446 Henning Bohn, The Sustainability of Fiscal Policy in the United States, April 2005
- 1447 Torben M. Andersen, Is there a Role for an Active Fiscal Stabilization Policy? April 2005
- 1448 Hans Gersbach and Hans Haller, Bargaining Power and Equilibrium Consumption, April 2005
- 1449 Jerome L. Stein, The Transition Economies: A NATREX Evaluation of Research, April 2005
- 1450 Raymond Riezman, John Whalley and Shunming Zhang, Metrics Capturing the Degree to which Individual Economies are Globalized, April 2005
- 1451 Romain Ranciere, Aaron Tornell and Frank Westermann, Systemic Crises and Growth, April 2005
- 1452 Plutarchos Sakellaris and Focco W. Vijselaar, Capital Quality Improvement and the Sources of Growth in the Euro Area, April 2005
- 1453 Kevin Milligan and Michael Smart, Regional Grants as Pork Barrel Politics, April 2005
- 1454 Panu Poutvaara and Andreas Wagener, To Draft or not to Draft? Efficiency, Generational Incidence, and Political Economy of Military Conscription, April 2005
- 1455 Maurice Kugler and Hillel Rapoport, Skilled Emigration, Business Networks and Foreign Direct Investment, April 2005