

Fishman, Arthur; Gneezy, Uri

Working Paper

A field study of social learning

Working Paper, No. 2011-21

Provided in Cooperation with:

Department of Economics, Bar-Ilan University

Suggested Citation: Fishman, Arthur; Gneezy, Uri (2011) : A field study of social learning, Working Paper, No. 2011-21, Bar-Ilan University, Department of Economics, Ramat-Gan

This Version is available at:

<https://hdl.handle.net/10419/95988>

Standard-Nutzungsbedingungen:

Die Dokumente auf EconStor dürfen zu eigenen wissenschaftlichen Zwecken und zum Privatgebrauch gespeichert und kopiert werden.

Sie dürfen die Dokumente nicht für öffentliche oder kommerzielle Zwecke vervielfältigen, öffentlich ausstellen, öffentlich zugänglich machen, vertreiben oder anderweitig nutzen.

Sofern die Verfasser die Dokumente unter Open-Content-Lizenzen (insbesondere CC-Lizenzen) zur Verfügung gestellt haben sollten, gelten abweichend von diesen Nutzungsbedingungen die in der dort genannten Lizenz gewährten Nutzungsrechte.

Terms of use:

Documents in EconStor may be saved and copied for your personal and scholarly purposes.

You are not to copy documents for public or commercial purposes, to exhibit the documents publicly, to make them publicly available on the internet, or to distribute or otherwise use the documents in public.

If the documents have been made available under an Open Content Licence (especially Creative Commons Licences), you may exercise further usage rights as specified in the indicated licence.

A Field Study of Social Learning

Arthur Fishman* and Uri Gneezy**

April 29, 2011

Abstract: We present a field study of social learning. The setting is a pair of adjacent fast food restaurants serving very similar cuisine whose main clientele are the students at a nearby major university. We observed whether an uninformed customer's choice of restaurant depends on the relative queue lengths at the two restaurants. Observations were made at two separate observation periods, the start of the academic year, when a significant proportion of customers had little or no experience with either restaurant, and the middle of the year, when most customers already had previous experience with the restaurants. It is found, consistent with the social learning hypothesis, that relative queue length has a significant effect at the first period but not at the second.

*Dept of Economics, Bar Ilan University, Ramat Gan, Israel

**Rady School of Management, UC San Diego, La Jolla CA, USA

1. Introduction

Understanding the extent to which rational agents infer and act upon information from the behavior of others is essential for the analysis of many important economic phenomena. In particular, the literature on social learning by rational agents, beginning with the seminal papers of Welch (1992), Bikhchandani, Hirshleifer and Welch (1992, 1998), and Bennerjee (1992), shows that such learning can lead to herding or information cascades.

In the classical cascade paradigm, a sequence of decision makers, with common preferences, faces a choice between one of two options, A and B, and each agent receives an independent private binary signal about which choice provides the higher payoff and observes all her predecessors' choices. In this example, once one of the options is observed to have been chosen at least twice more than the other, it is optimal for all subsequent agents to choose it even if this choice contradicts their own signal. Thus all available information is not aggregated and, consequently, all agents may wind up making the wrong choice.

For example, if the first two agents choose action A, this reveals two signals in favor of A (assuming that the second person will follow her own signal). Then, each subsequent agent thinks that A is better even if her own signal favors B and thus also chooses A. More generally, when action and signal spaces are finite and each signal is imperfect, rational agents eventually herd, ignoring their own information and imitating others. Various studies have shown that these results may be modified or reversed if action or signal spaces are sufficiently "rich" or if agents are incompletely informed about predecessors' choices or the order in which they were taken. For example, Eyster

and Rabin (2009) have shown that when agents have limited rationality and believe that predecessors act only on the basis of their own signal (or put “excessive” weight on their own signal), social learning can lead to worse outcomes than if agents only act on their own information.

These theoretical predictions have received support in the laboratory. A pioneering study supporting the information cascade models is Anderson and Holt (1997); see also Anderson and Holt (1996), Hung and Plott (2001); Çelen and Kariv (2004, 2005) and Alevy, Haigh and List (2007). Yet, the basic prediction of social learning has received little support in the field, which is what we do in the current paper.

The setting is a pair of adjacent fast food restaurants in Israel serving the same type of food whose main clientele are the students of a nearby major university. The restaurants are privately owned and are not part of a chain. In this setting we observed whether an uninformed customer's choice of restaurant reflects the choices of previous customers, as social learning theory would suggest. Specifically, consumer behavior was observed during two separate observation periods. At the first observation period, at the beginning of the academic year, as we argue below, a significant proportion of customers had little or no experience with either restaurant and thus had reason to look to other (presumably more experienced) customers' choices to learn about the relative qualities of the two stores. By contrast, at the second observation period, the overwhelming majority of customers already had considerable experience with the restaurants and were therefore less likely to be influenced by others' choices. Thus this setting allows us to distinguish between genuine social *learning* and merely imitative “copycat” behavior (or the desire to dine in the company of others as Becker (1991) has suggested). Specifically, the social

learning hypothesis is supported if imitative behavior is more pronounced during the first period (when consumers have a greater need for information) than in the second period (when they do not).

What are consumers Learning?

In the theoretical and experimental studies cited above, it is generally assumed that consumers have identical preferences and differ only with respect to their information. This does not seem to be the case in our setting. In particular, at the second observation period, when presumably most or all consumers' preferences are already well formed, they divide between the two restaurants (instead of herding at only one of them), suggesting that experienced consumers have different preferences between them. Instead, we conceive of inexperienced consumers at the first observation period as learning about their own tastes. The following is a schematic way to think of this. Suppose any individual has an ex ante preference for restaurant A with the probability p , where p is an unknown parameter with a prior of 0.5 common to all consumers (i.e., an inexperienced consumer with no additional information considers it equally likely that she will prefer either restaurant). If such an individual has no additional information, she will choose one restaurant at random. Suppose she knows that a fraction α of consumers is informed (i.e., has already learned which store they prefer), and that this information is correlated with her preferences. Then if an uninformed consumer is Bayesian and observes that more consumers choose restaurant A than restaurant B, she should update her posterior of p to be >0.5 .

Thus, in our empirical setting, a new freshman with no previous experience with

these restaurants has a prior of 0.5 that she will prefer restaurant A. She also knows that about 2/3 of students are already informed about their own preference (this is a three-year college). So if she observes more students choosing A than B, then (assuming she does not perfectly distinguish between freshmen and older students), her posterior probability about p should be updated to $p > 0.5$. It follows that at the first observation period, an inexperienced (Bayesian) freshman who observes a longer queue at restaurant A than B will infer that her own preference is more likely to be for store A and join the queue for store A. By contrast, an experienced student's choice will not depend on relative queue lengths. Therefore, if such a student has learned that she prefers restaurant B she will choose it even if the queue for store A is longer. This implies that, at the beginning of the year, when restaurant A has a longer queue than B, a randomly selected consumer is more likely to go to restaurant A than if restaurant B has a longer one (and similarly for restaurant B when it has a longer queue).

This can lead to herding behavior on the part of inexperienced students. Suppose an inexperienced student observes a customer at restaurant A and no customers at restaurant B. The customer at restaurant A may be an inexperienced consumer who chose store A by chance, or an experienced consumer who actually has some private information regarding the relative quality of the restaurants. So it is rational for the new student to choose A as well. By contrast, at the second observation period, almost all students are probably already experienced. Therefore the queue length should have much less influence on a consumer's choice.

To support the intuition, consider music purchase. Say that you decide to familiarize yourself with Cuban music, about which you have very little knowledge. A

good first step might be to go online and see what the most popular artists/albums are-- and start there. With time, you will probably develop your own taste and learn more about your own preferences, and will have less need for others' recommendation (Salganik, Dodds and Watts, 2006).

2. Detailed Description of the Field study

The two fast food restaurants are situated literally back to back (see photos) in an outdoor food court located right outside the main entrance to the Bar Ilan University Campus near Tel Aviv – a large University in Israel with a student body of almost 20,000. The location of the food court, Nve Ilan is a quiet residential area, not very centrally located. Each of the restaurants serves both falafel and shwarma sandwiches in pita bread, and are popular with the University students. The restaurants are also frequented by local residents, but the majority of patrons are students (and some faculty and administrative staff). As can be seen from the photos, the restaurants are outwardly very similar, have almost identical décor and signs and the food and service are very similar. As is typical of such restaurants, the store-front of each restaurant has a shelf containing bowls of condiments which patrons can add to their pita sandwiches.

Importantly, there is a common seating area in front of the restaurants which is used by patrons of both restaurants. This rules out the possibility that choice of restaurant is dictated by the desire to dine in larger company. Directly adjacent to these restaurants is an upscale café (of the Aroma chain) and a Thai fast food restaurant.

Data collection

The data collection procedure was very simple. Research assistants were seated in the seating area in front of the restaurants during the key hours, 11 AM to 3 PM, which are the busiest hours. Whenever a new customer approached one of the restaurants to be served, the number of customers standing in front of each restaurant (just prior to her arrival) was recorded. These included customers waiting to be served as well as customers who had already been served and were standing at the storefront eating their sandwiches or adding condiments to them. Then the restaurant chosen by the new customer was recorded. If several customers arrived in a group and chose the same restaurant, they were recorded as a single observation, unless they went to different restaurants, in which case they were recorded as separate observations.

It is important to note that the waiting time is very short in both restaurants; In 77% of the cases we measured, a customer was served within less than a minute (even if there were four or five customers in line), and in only 6% of the cases were customers made to wait more than 2 minutes for service. This suggests that shortening waiting time is probably not a significant consideration in consumer choice.

We observed customer behavior during two different time periods. The first period was during the first two weeks of the academic year, in October 2009. This is the time when about a third of the students – the freshmen - are new to the campus and presumably most of them have never eaten at the restaurants before.

The second observation period was in the middle of the academic year (specifically mid April), when all potential student have already had plenty of recent experience with the restaurants and probably formed fairly strong beliefs and preferences.

In other words, on average customers come to the field with more informative private signals at the second observation period than at the first one. Theory would therefore predict less 'information cascading' during the second than the first time period.

3. Results

An observation is the choice of the restaurant by a newly arrived customer, presented as a function of the number of people in queue A and in queue B at the time of her arrival. The number of observations in each queue situation is presented in Tables 1a for the beginning of the year and 1b for the middle of the year. The total number of observations is 1,324 for the beginning of the year and 1,153 for the middle of the year.

The percentage of observations in which restaurant A was chosen as a function of the number of people in restaurant A and B is presented in Table 2a for the first observation period and in Table 2b for the second period.

Recall that our purpose is to determine whether the difference between the number of customers in each queue affects consumer choice. Figure 1 presents this data. At the beginning of the year, 366 (63%) out of 580 of arriving customers went to A when there were more customers in restaurant A,. When there were more customers in B, only 189 (40%) out of 478 went to A. A binomial test of proportions reveals that the difference is statistically significant ($z=7.64$, $p<.001$). At the end of the year, the numbers are 192 (49%) out of 389 who go to A when there are more people in A, and 202 (47%) out of 431 who do so when there are more people in B. The difference at the end of the year is not statistically significant ($z=.71$, $p=.48$). Thus the data supports the social learning hypothesis.

Figure 2 presents the fraction of new customers which chose restaurant A, as a function of difference between the number of customers in each queue, for the two observation periods. The figure shows that effect of the difference in queue length is more pronounced at the first observation period.

To more formally test whether the trend shown in Figure 2 is statistically significant, we ran a logit regression where the dependent variable gets the value 1 if restaurant A is chosen and zero if store B is chosen. The independent variables are *Additional*, *period* and an interaction variable, *Additional*period*. The variable *Additional* measures the effect of an additional customer at the queue for restaurant A on customer choice. *Period* is a dummy variable which equals 0 for observations at the first period and 1 for observations at the second period. *Additional*period* is the interaction effect of these variables (their product). The marginal effects associated with the variables in the regression are listed in Table 3a for different base values of A-B, where A-B is the difference between the number of customers at restaurant A and the number at B. Thus *Additional* measures the marginal effect of an additional customer at A on the probability of choosing store A at the first observation period while the sum of *Additional* and the interaction variable *Additional*period*, measures the effect of an additional customer at the second period. The marginal effects of *Additional* and the interaction variable are both highly significant (*p* values of less than .01). The table shows that for all listed values of A-B, an additional customer increases the probability of choosing restaurant B by between about 3.4 percent to about 4.8 percent at the first period. In sharp contrast, the sum of *Additional* and the interaction variable is only about -0.001 in all cases. Thus an additional customer has virtually no effect at the second period.

Table 3b gives the results of the same regression when the dependent variable is the probability of choosing store B as a function of the difference B-A. The results are very similar to those in Table 3a. Thus we conclude that the difference in the number of customers has a highly significant effect at the first period but a negligible effect at the second period. As argued above, we view these results as evidence in support of social learning.

4. Conclusion

In this paper we present evidence in support of the economic theory of social learning. In our empirical setting, uninformed consumers' preferences are hypothesized to be correlated with those of other, more informed consumers. As predicted by theory, we find that social learning is important at the initial stage, when new consumers are poorly informed about their preferences between different products. At this stage, such a consumer uses the observed choices of other consumers as a source of information about her preferences. Once she has gained sufficient personal experience, she ignores these outside signals. Hence the simple social interactions in our setting seem to be consistent with the theoretical model.

As the development of social networks accelerates the flow of information in society, understanding social learning becomes increasingly important. Nevertheless, there is little research testing the social learning hypothesis outside of the laboratory. It is thus encouraging that our results offer strong support for the theory in a real world setting.

	# in queue-B									
	0	1	2	3	4	5	6	7		
# in queue A	0	106	79	62	38	20	13	1	1	
	1	101	69	68	30	17	2	6		
	2	84	60	47	33		24	10	1	
	3	39	31	36	25	33	3	3		
	4	26	17	28	24	18	25	4	5	
	5	13	2	28	11	20	1			
	6	5	3	3	9	2	2			
	7	1		8	5			3		
	8	5		6	5					
	9	3								

	# in queue-B											
	0	1	2	3	4	5	6	7	8	9	10	
# in queue A	0	143	71	49	45	22	6	4	7	3	4	
	1	75	88	46	39	10	6	4	7	4		
	2	31	52	61	7	10	8	5	4	2		
	3	15	28	28	19	17	9	3	4	2	1	1
	4	17	18	14	13	16	9		2	2	3	1
	5	1	4	9	3	2	2	7		1		
	6	7	5	4	6	2	4	3	5			
	7	5	8	8	2	2	4	3		1		
	8	2			6	1		1		1		
	9				1	1	2					
	10							1	1	2	1	

Table 1a (top figure, beginning of year) and 1b (bottom figure, end of year): Number of observations as a function of the number of people in each queue. For example, in Table 1a we have 60 observations in which when the new person approached the restaurants there were 2 people in queue A and 1 in queue B.

	# in queue-B									
	0	1	2	3	4	5	6	7		
# in queue A	0	58	46	39	21	60	31	0	0	
	1	59	58	56	27	35	100	83		
	2	57	53	68	30		33	70	0	
	3	59	61	61	52	33	67	67		
	4	88	53	0	75	83	8	100	0	
	5	69	100	82	36	65	0			
	6	100	100	1000	33	100	100			
	7	0		63	60			100		
	8	100		100	60					
	9	33								

	# in queue-B											
	0	1	2	3	4	5	6	7	8	9	10	
# in queue A	0	53	48	53	40	55	50	75	57	100	75	
	1	52	57	43	49	50	50	25		0		
	2	42	52	61	57		88	60	50	50		
	3	33	43	54	63	29	33	33		50	0	0
	4	47	50	57	62	44	44		50	50	67	0
	5	100	50	33	67	0	0			0		
	6	43	60	100	67	100	75					
	7	40		50	0			67		100		
	8	0			17					100		
	9				100	100	50					
	10							100	0	50	0	

Table 2a (top figure, beginning of year) and 2b (bottom figure, end of year): Percentage of observations that ended up with the person choosing restaurant A as a function of the number of people in each queue.

A-B	(1) <i>Additional</i>	(2) <i>period</i>	(3) <i>Additional period</i>
-5	0.041*** (0.003)	0.025 (0.017)	-0.042* (0.006)
-4	0.044*** (0.005)	0.027 (0.018)	-0.045*** (0.007)
-3	0.046*** (0.005)	.0286 (.019)	-0.048*** (0.008)
-2	0.048*** (0.006)	0.030 (.019)	-0.049*** (0.009)
-1	0.0488*** (0.007)	0.030 (0.020)	-0.050*** (0.009)
0	0.0486*** (0.007)	0.030 (0.020)	-0.050*** (0.009)
1	0.047*** (0.006)	0.030 (0.020)	-0.049*** (0.009)
2	0.045*** (0.006)	0.029 (0.019)	-0.047*** (0.008)
3	0.043*** (0.00485)	0.027 (0.018)	-0.044*** (0.007)
4	0.034*** (0.004)	.026 (0.017)	-0.041*** (0.006)
5	0.036*** (0.003)	0.023 (0.016)	-0.037*** (0.005)

Table 3a: The marginal effects associated with the variables in the logit regression for different base values of A-B, where A-B is the difference between the number of customers at restaurant A and the number at B. *Additional* measures the marginal effect of an additional customer at B on the probability of choosing store B at the first observation period while the sum of *Additional* and the interaction variable *Additional period*, given in column 4, measures the effect of an additional customer at the second period. Standard errors are in parentheses. Three asterisks indicate a *p* value of less than one percent.

B-A	(1) Additional	(2) period	(3) Additional period
-5	0.036 (0.003)	0.023 (0.016)	0.037 (0.005)
-4	0.040*** (0.004)	0.026 (0.017)	-0.041*** (0.006)
0.-3	0.0430*** (0.005)	0.027 (0.018)	-.0443*** (0.007)
-2	0.0456*** (0.006)	0.029 (0.019)	-0.047*** (0.008)
-1	0.0475*** (0.006)	0.030 (0.020)	-0.049*** (0.009)
0	(0.049)*** (0.007)	0.030 (0.020)	-0.050*** (0.009)
1	0.0488*** (0.007)	0.030 (0.020)	-0.050*** (0.009)
2	0.048*** (0.006)	0.030 (0.020)	-0.049*** (0.009)
3	0.046*** (0.006)	0.029 (0.019)	-.0478*** (0.008)
4	0.044*** (0.005)	0.027 (0.018)	-0.045*** (0.007)
5	0.041*** (0.004)	0.025 (0.017)	-0.043*** (0.006)

Table 3b: The marginal effects associated with the variables in the logit regression for different base values of B-A. *Additional* measures the marginal effect of an additional customer at B on the probability of choosing store B at the first observation period while the sum of *Additional* and the interaction variable *Additional*•*period*, given in column 4, measures the effect of an additional customer at the second period. Standard errors are in parentheses. Three asterisks indicate a *p* value of less than one percent.

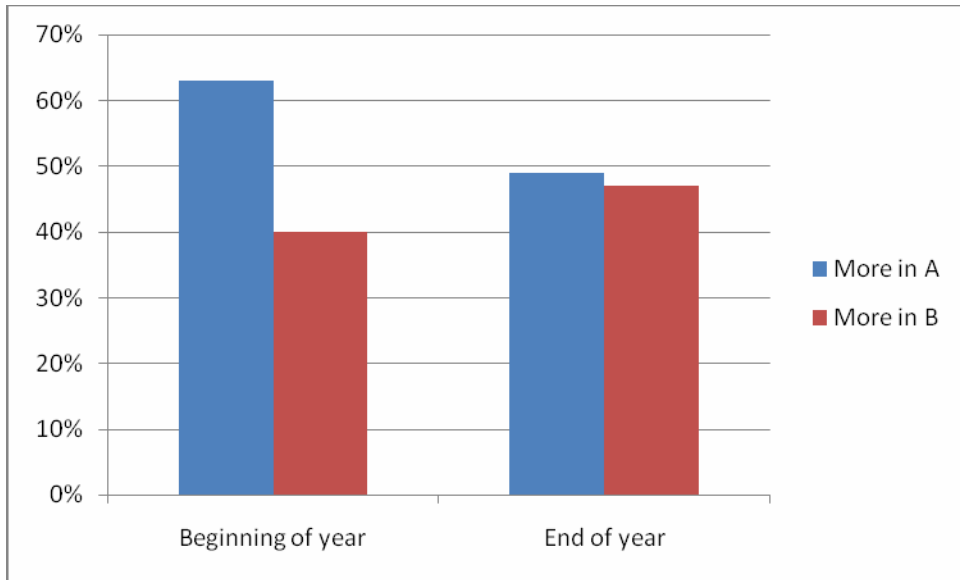
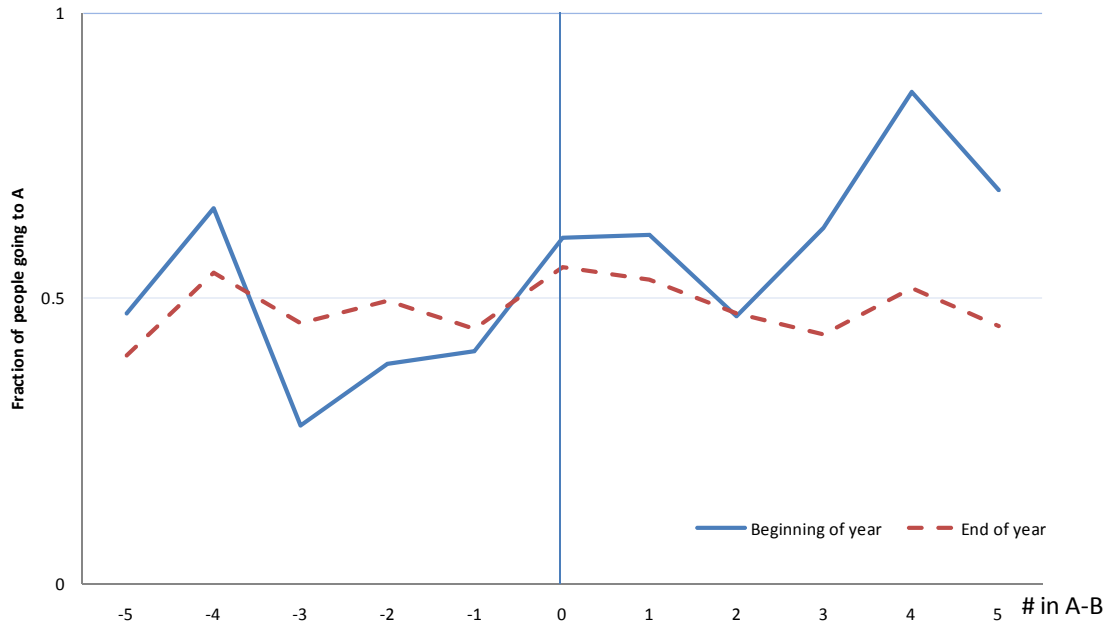


Figure 1: The percentage of customers going to restaurant A depending on whether there were more or less customers in it, and during the beginning and the end of the year.

Where the next person goes as a function of Number in (A - B)





Views of the Two Adjoining Fast Food Restaurants

References

- Alevy, J.E., Haigh, M.S., J. List, (2007) "Information Cascades: Evidence from a Field Experiment with Financial Market Professionals", *The Journal of Finance*, 62(1), 151–180
- Anderson LR and Holt C.A., (1997) "Information Cascades in the Laboratory". *American Economic Review* **87**: 847-862.
- Bannerjee A.V., (1992) "A Simple Model of Herd Behavior". *Quarterly Journal of Economics* **107**: 797-817.
- Becker, G.S., (1991) "A Note on Restaurant Pricing and Other Examples of Social Influences on Price", *Journal of Political Economy*, 91,5, pp 1109-1116.
- Bikhchandani S, Hirshleifer D. and I. Welch, (1992) "A Theory of Fads, Fashion, Custom, and Cultural Change as Informational Cascades" *Journal of Political Economy* 100: 992-1026.
- Çelen, B and S. Kariv (2005) "An Experimental Test of Observational Learning under Imperfect Information", *Economic Theory* 26: 677-699.
- Çelen, B and S. Kariv (2004) "Distinguishing Informational Cascades from Herd Behavior in the Laboratory," *American Economic Review*.
- Eyster, E. and M. Rabin (2010), "Naive Herding in Rich Information Settings", *American Economic Journal: Microeconomics*, 2(4): 221–43.
- Holt C.A. and L.R. Anderson, (1996) "Classroom Games: Understanding Bayes' Rule", *Journal of Economic Perspectives* **10**: 179-187.
- Hung AA and C.R. Plott (2001) "Information Cascades: Replication and an Extension to Majority Rule and Conformity Rewarding Institutions", *American Economic Review*. 91 (5), 1508-1520.
- Salganik, M.J., P.S. Dodds and D.J. Watts (2006) "Experimental Study of Inequality and Unpredictability in an Artificial Cultural market", *Science*, 3, 11, 854-856.

Bar-Ilan University
Department of Economics
WORKING PAPERS

- 1-01 **The Optimal Size for a Minority**
Hillel Rapoport and Avi Weiss, January 2001.
- 2-01 **An Application of a Switching Regimes Regression to the Study of Urban Structure**
Gershon Alperovich and Joseph Deutsch, January 2001.
- 3-01 **The Kuznets Curve and the Impact of Various Income Sources on the Link Between Inequality and Development**
Joseph Deutsch and Jacques Silber, February 2001.
- 4-01 **International Asset Allocation: A New Perspective**
Abraham Lioui and Patrice Poncet, February 2001.
- 5-01 **מודל המועדון והקהילה החרדית**
יעקב רוזנברג, פברואר 2001.
- 6-01 **Multi-Generation Model of Immigrant Earnings: Theory and Application**
Gil S. Epstein and Tikva Lecker, February 2001.
- 7-01 **Shattered Rails, Ruined Credit: Financial Fragility and Railroad Operations in the Great Depression**
Daniel A. Schiffman, February 2001.
- 8-01 **Cooperation and Competition in a Duopoly R&D Market**
Damiano Bruno Silipo and Avi Weiss, March 2001.
- 9-01 **A Theory of Immigration Amnesties**
Gil S. Epstein and Avi Weiss, April 2001.
- 10-01 **Dynamic Asset Pricing With Non-Redundant Forwards**
Abraham Lioui and Patrice Poncet, May 2001.
- 11-01 **Macroeconomic and Labor Market Impact of Russian Immigration in Israel**
Sarit Cohen and Chang-Tai Hsieh, May 2001.

Electronic versions of the papers are available at
http://www.biu.ac.il/soc/ec/wp/working_papers.html

- 12-01 **Network Topology and the Efficiency of Equilibrium**
Igal Milchtaich, June 2001.
- 13-01 **General Equilibrium Pricing of Trading Strategy Risk**
Abraham Lioui and Patrice Poncet, July 2001.
- 14-01 **Social Conformity and Child Labor**
Shirit Katav-Herz, July 2001.
- 15-01 **Determinants of Railroad Capital Structure, 1830–1885**
Daniel A. Schiffman, July 2001.
- 16-01 **Political-Legal Institutions and the Railroad Financing Mix, 1885–1929**
Daniel A. Schiffman, September 2001.
- 17-01 **Macroeconomic Instability, Migration, and the Option Value of Education**
Eliakim Katz and Hillel Rapoport, October 2001.
- 18-01 **Property Rights, Theft, and Efficiency: The Biblical Waiver of Fines in the Case of Confessed Theft**
Eliakim Katz and Jacob Rosenberg, November 2001.
- 19-01 **Ethnic Discrimination and the Migration of Skilled Labor**
Frédéric Docquier and Hillel Rapoport, December 2001.
- 1-02 **Can Vocational Education Improve the Wages of Minorities and Disadvantaged Groups? The Case of Israel**
Shoshana Neuman and Adrian Ziderman, February 2002.
- 2-02 **What Can the Price Gap between Branded and Private Label Products Tell Us about Markups?**
Robert Barsky, Mark Bergen, Shantanu Dutta, and Daniel Levy, March 2002.
- 3-02 **Holiday Price Rigidity and Cost of Price Adjustment**
Daniel Levy, Georg Müller, Shantanu Dutta, and Mark Bergen, March 2002.
- 4-02 **Computation of Completely Mixed Equilibrium Payoffs**
Igal Milchtaich, March 2002.
- 5-02 **Coordination and Critical Mass in a Network Market – An Experimental Evaluation**
Amir Etziony and Avi Weiss, March 2002.

- 6-02 **Inviting Competition to Achieve Critical Mass**
Amir Etziony and Avi Weiss, April 2002.
- 7-02 **Credibility, Pre-Production and Inviting Competition in a Network Market**
Amir Etziony and Avi Weiss, April 2002.
- 8-02 **Brain Drain and LDCs' Growth: Winners and Losers**
Michel Beine, Frédéric Docquier, and Hillel Rapoport, April 2002.
- 9-02 **Heterogeneity in Price Rigidity: Evidence from a Case Study Using Micro-Level Data**
Daniel Levy, Shantanu Dutta, and Mark Bergen, April 2002.
- 10-02 **Price Flexibility in Channels of Distribution: Evidence from Scanner Data**
Shantanu Dutta, Mark Bergen, and Daniel Levy, April 2002.
- 11-02 **Acquired Cooperation in Finite-Horizon Dynamic Games**
Igal Milchtaich and Avi Weiss, April 2002.
- 12-02 **Cointegration in Frequency Domain**
Daniel Levy, May 2002.
- 13-02 **Which Voting Rules Elicit Informative Voting?**
Ruth Ben-Yashar and Igal Milchtaich, May 2002.
- 14-02 **Fertility, Non-Altruism and Economic Growth: Industrialization in the Nineteenth Century**
Elise S. Brezis, October 2002.
- 15-02 **Changes in the Recruitment and Education of the Power Elites in Twentieth Century Western Democracies**
Elise S. Brezis and François Crouzet, November 2002.
- 16-02 **On the Typical Spectral Shape of an Economic Variable**
Daniel Levy and Hashem Dezhbakhsh, December 2002.
- 17-02 **International Evidence on Output Fluctuation and Shock Persistence**
Daniel Levy and Hashem Dezhbakhsh, December 2002.
- 1-03 **Topological Conditions for Uniqueness of Equilibrium in Networks**
Igal Milchtaich, March 2003.
- 2-03 **Is the Feldstein-Horioka Puzzle Really a Puzzle?**
Daniel Levy, June 2003.

- 3-03 **Growth and Convergence across the US: Evidence from County-Level Data**
Matthew Higgins, Daniel Levy, and Andrew Young, June 2003.
- 4-03 **Economic Growth and Endogenous Intergenerational Altruism**
Hillel Rapoport and Jean-Pierre Vidal, June 2003.
- 5-03 **Remittances and Inequality: A Dynamic Migration Model**
Frédéric Docquier and Hillel Rapoport, June 2003.
- 6-03 **Sigma Convergence Versus Beta Convergence: Evidence from U.S. County-Level Data**
Andrew T. Young, Matthew J. Higgins, and Daniel Levy, September 2003.
- 7-03 **Managerial and Customer Costs of Price Adjustment: Direct Evidence from Industrial Markets**
Mark J. Zbaracki, Mark Ritson, Daniel Levy, Shantanu Dutta, and Mark Bergen, September 2003.
- 8-03 **First and Second Best Voting Rules in Committees**
Ruth Ben-Yashar and Igal Milchtaich, October 2003.
- 9-03 **Shattering the Myth of Costless Price Changes: Emerging Perspectives on Dynamic Pricing**
Mark Bergen, Shantanu Dutta, Daniel Levy, Mark Ritson, and Mark J. Zbaracki, November 2003.
- 1-04 **Heterogeneity in Convergence Rates and Income Determination across U.S. States: Evidence from County-Level Data**
Andrew T. Young, Matthew J. Higgins, and Daniel Levy, January 2004.
- 2-04 **"The Real Thing:" Nominal Price Rigidity of the Nickel Coke, 1886-1959**
Daniel Levy and Andrew T. Young, February 2004.
- 3-04 **Network Effects and the Dynamics of Migration and Inequality: Theory and Evidence from Mexico**
David McKenzie and Hillel Rapoport, March 2004.
- 4-04 **Migration Selectivity and the Evolution of Spatial Inequality**
Ravi Kanbur and Hillel Rapoport, March 2004.
- 5-04 **Many Types of Human Capital and Many Roles in U.S. Growth: Evidence from County-Level Educational Attainment Data**
Andrew T. Young, Daniel Levy and Matthew J. Higgins, March 2004.

- 6-04 **When Little Things Mean a Lot: On the Inefficiency of Item Pricing Laws**
Mark Bergen, Daniel Levy, Sourav Ray, Paul H. Rubin and Benjamin Zeliger,
May 2004.
- 7-04 **Comparative Statics of Altruism and Spite**
Igal Milchtaich, June 2004.
- 8-04 **Asymmetric Price Adjustment in the Small: An Implication of Rational Inattention**
Daniel Levy, Haipeng (Allan) Chen, Sourav Ray and Mark Bergen, July 2004.
- 1-05 **Private Label Price Rigidity during Holiday Periods**
Georg Müller, Mark Bergen, Shantanu Dutta and Daniel Levy, March 2005.
- 2-05 **Asymmetric Wholesale Pricing: Theory and Evidence**
Sourav Ray, Haipeng (Allan) Chen, Mark Bergen and Daniel Levy,
March 2005.
- 3-05 **Beyond the Cost of Price Adjustment: Investments in Pricing Capital**
Mark Zbaracki, Mark Bergen, Shantanu Dutta, Daniel Levy and Mark Ritson,
May 2005.
- 4-05 **Explicit Evidence on an Implicit Contract**
Andrew T. Young and Daniel Levy, June 2005.
- 5-05 **Popular Perceptions and Political Economy in the Contrived World of Harry Potter**
Avichai Snir and Daniel Levy, September 2005.
- 6-05 **Growth and Convergence across the US: Evidence from County-Level Data (revised version)**
Matthew J. Higgins, Daniel Levy, and Andrew T. Young , September 2005.
- 1-06 **Sigma Convergence Versus Beta Convergence: Evidence from U.S. County-Level Data (revised version)**
Andrew T. Young, Matthew J. Higgins, and Daniel Levy, June 2006.
- 2-06 **Price Rigidity and Flexibility: Recent Theoretical Developments**
Daniel Levy, September 2006.
- 3-06 **The Anatomy of a Price Cut: Discovering Organizational Sources of the Costs of Price Adjustment**
Mark J. Zbaracki, Mark Bergen, and Daniel Levy, September 2006.

- 4-06 **Holiday Non-Price Rigidity and Cost of Adjustment**
Georg Müller, Mark Bergen, Shantanu Dutta, and Daniel Levy.
September 2006.
- 2008-01 **Weighted Congestion Games With Separable Preferences**
Igal Milchtaich, October 2008.
- 2008-02 **Federal, State, and Local Governments: Evaluating their Separate Roles in US Growth**
Andrew T. Young, Daniel Levy, and Matthew J. Higgins, December 2008.
- 2008-03 **Political Profit and the Invention of Modern Currency**
Dror Goldberg, December 2008.
- 2008-04 **Static Stability in Games**
Igal Milchtaich, December 2008.
- 2008-05 **Comparative Statics of Altruism and Spite**
Igal Milchtaich, December 2008.
- 2008-06 **Abortion and Human Capital Accumulation: A Contribution to the Understanding of the Gender Gap in Education**
Leonid V. Azarnert, December 2008.
- 2008-07 **Involuntary Integration in Public Education, Fertility and Human Capital**
Leonid V. Azarnert, December 2008.
- 2009-01 **Inter-Ethnic Redistribution and Human Capital Investments**
Leonid V. Azarnert, January 2009.
- 2009-02 **Group Specific Public Goods, Orchestration of Interest Groups and Free Riding**
Gil S. Epstein and Yosef Mealem, January 2009.
- 2009-03 **Holiday Price Rigidity and Cost of Price Adjustment**
Daniel Levy, Haipeng Chen, Georg Müller, Shantanu Dutta, and Mark Bergen,
February 2009.
- 2009-04 **Legal Tender**
Dror Goldberg, April 2009.
- 2009-05 **The Tax-Foundation Theory of Fiat Money**
Dror Goldberg, April 2009.

- 2009-06 **The Inventions and Diffusion of Hyperinflatable Currency**
Dror Goldberg, April 2009.
- 2009-07 **The Rise and Fall of America's First Bank**
Dror Goldberg, April 2009.
- 2009-08 **Judicial Independence and the Validity of Controverted Elections**
Raphaël Franck, April 2009.
- 2009-09 **A General Index of Inherent Risk**
Adi Schnytzer and Sara Westreich, April 2009.
- 2009-10 **Measuring the Extent of Inside Trading in Horse Betting Markets**
Adi Schnytzer, Martien Lamers and Vasiliki Makropoulou, April 2009.
- 2009-11 **The Impact of Insider Trading on Forecasting in a Bookmakers' Horse Betting Market**
Adi Schnytzer, Martien Lamers and Vasiliki Makropoulou, April 2009.
- 2009-12 **Foreign Aid, Fertility and Population Growth: Evidence from Africa**
Leonid V. Azarnert, April 2009.
- 2009-13 **A Reevaluation of the Role of Family in Immigrants' Labor Market Activity: Evidence from a Comparison of Single and Married Immigrants**
Sarit Cohen-Goldner, Chemi Gotlibovski and Nava Kahana, May 2009.
- 2009-14 **The Efficient and Fair Approval of "Multiple-Cost–Single-Benefit" Projects Under Unilateral Information**
Nava Kahanaa, Yosef Mealem and Shmuel Nitzan, May 2009.
- 2009-15 **Après nous le Déluge: Fertility and the Intensity of Struggle against Immigration**
Leonid V. Azarnert, June 2009.
- 2009-16 **Is Specialization Desirable in Committee Decision Making?**
Ruth Ben-Yashar, Winston T.H. Koh and Shmuel Nitzan, June 2009.
- 2009-17 **Framing-Based Choice: A Model of Decision-Making Under Risk**
Kobi Kriesler and Shmuel Nitzan, June 2009.
- 2009-18 **Demystifying the 'Metric Approach to Social Compromise with the Unanimity Criterion'**
Shmuel Nitzan, June 2009.

- 2009-19 **On the Robustness of Brain Gain Estimates**
Michel Beine, Frédéric Docquier and Hillel Rapoport, July 2009.
- 2009-20 **Wage Mobility in Israel: The Effect of Sectoral Concentration**
Ana Rute Cardoso, Shoshana Neuman and Adrian Ziderman, July 2009.
- 2009-21 **Intermittent Employment: Work Histories of Israeli Men and Women, 1983–1995**
Shoshana Neuman and Adrian Ziderman, July 2009.
- 2009-22 **National Aggregates and Individual Disaffiliation: An International Study**
Pablo Brañas-Garza, Teresa García-Muñoz and Shoshana Neuman, July 2009.
- 2009-23 **The Big Carrot: High-Stakes Incentives Revisited**
Pablo Brañas-Garza, Teresa García-Muñoz and Shoshana Neuman, July 2009.
- 2009-24 **The Why, When and How of Immigration Amnesties**
Gil S. Epstein and Avi Weiss, September 2009.
- 2009-25 **Documenting the Brain Drain of «la Crème de la Crème»: Three Case-Studies on International Migration at the Upper Tail of the Education Distribution**
Frédéric Docquier and Hillel Rapoport, October 2009.
- 2009-26 **Remittances and the Brain Drain Revisited: The Microdata Show That More Educated Migrants Remit More**
Albert Bollard, David McKenzie, Melanie Morten and Hillel Rapoport, October 2009.
- 2009-27 **Implementability of Correlated and Communication Equilibrium Outcomes in Incomplete Information Games**
Igal Milchtaich, November 2009.
- 2010-01 **The Ultimatum Game and Expected Utility Maximization – In View of Attachment Theory**
Shaul Almakias and Avi Weiss, January 2010.
- 2010-02 **A Model of Fault Allocation in Contract Law – Moving From Dividing Liability to Dividing Costs**
Osnat Jacobi and Avi Weiss, January 2010.

- 2010-03 **Coordination and Critical Mass in a Network Market: An Experimental Investigation**
Bradley J. Ruffle, Avi Weiss and Amir Etziony, February 2010.
- 2010-04 **Immigration, fertility and human capital: A model of economic decline of the West**
Leonid V. Azarnert, April 2010.
- 2010-05 **Is Skilled Immigration Always Good for Growth in the Receiving Economy?**
Leonid V. Azarnert, April 2010.
- 2010-06 The Effect of Limited Search Ability on the Quality of Competitive Rent-Seeking Clubs**
Shmuel Nitzan and Kobi Kriesler, April 2010.
- 2010-07 **Condorcet vs. Borda in Light of a Dual Majoritarian Approach**
Eyal Baharad and Shmuel Nitzan, April 2010.
- 2010-08 **Prize Sharing in Collective Contests**
Shmuel Nitzan and Kaoru Ueda, April 2010.
- 2010-09 **Network Topology and Equilibrium Existence in Weighted Network Congestion Games**
Igal Milchtaich, May 2010.
- 2010-10 **The Evolution of Secularization: Cultural Transmission, Religion and Fertility Theory, Simulations and Evidence**
Ronen Bar-El, Teresa García-Muñoz, Shoshana Neuman and Yossef Tobol, June 2010.
- 2010-11 **The Economics of Collective Brands**
Arthur Fishman, Israel Finkelstein, Avi Simhon and Nira Yacouel, July 2010.
- 2010-12 **Interactions Between Local and Migrant Workers at the Workplace**
Gil S. Epstein and Yosef Mealem, August 2010.
- 2010-13 **A Political Economy of the Immigrant Assimilation: Internal Dynamics**
Gil S. Epstein and Ira N. Gang, August 2010.
- 2010-14 **Attitudes to Risk and Roulette**
Adi Schnytzer and Sara Westreich, August 2010.

- 2010-15 **Life Satisfaction and Income Inequality**
Paolo Verme, August 2010.
- 2010-16 **The Poverty Reduction Capacity of Private and Public Transfers in Transition**
Paolo Verme, August 2010.
- 2010-17 **Migration and Culture**
Gil S. Epstein and Ira N. Gang, August 2010.
- 2010-18 **Political Culture and Discrimination in Contests**
Gil S. Epstein, Yosef Mealem and Shmuel Nitzan, October 2010.
- 2010-19 **Governing Interest Groups and Rent Dissipation**
Gil S. Epstein and Yosef Mealem, November 2010.
- 2010-20 **Beyond Condorcet: Optimal Aggregation Rules Using Voting Records**
Eyal Baharad, Jacob Goldberger, Moshe Koppel and Shmuel Nitzan, December 2010.
- 2010-21 **Price Points and Price Rigidity**
Daniel Levy, Dongwon Lee, Haipeng (Allan) Chen, Robert J. Kauffman and Mark Bergen, December 2010.
- 2010-22 **Price Setting and Price Adjustment in Some European Union Countries: Introduction to the Special Issue**
Daniel Levy and Frank Smets, December 2010.
- 2011-01 **Business as Usual: A Consumer Search Theory of Sticky Prices and Asymmetric Price Adjustment**
Luís Cabral and Arthur Fishman, January 2011.
- 2011-02 **Emigration and democracy**
Frédéric Docquier, Elisabetta Lodigiani, Hillel Rapoport and Maurice Schiff, January 2011.
- 2011-03 **Shrinking Goods and Sticky Prices: Theory and Evidence**
Avichai Snir and Daniel Levy, March 2011.
- 2011-04 **Search Costs and Risky Investment in Quality**
Arthur Fishman and Nadav Levy, March 2011.

- 2011-05 **To What Extent do Investors in a Financial Market Anchor Their Judgments? Evidence from the Hong Kong Horserace Betting Market**
Johnnie E.V. Johnson, Shuang Liu and Adi Schnytzer, March 2011.
- 2011-06 **Attitudes to Risk and Roulette**
Adi Schnytzer and Sara Westreich, March 2011.
- 2011-07 **False Consciousness in Financial Markets: Or is it in Ivory Towers?**
Adi Schnytzer and Sara Westreich, March 2011.
- 2011-08 **Herding in Imperfect Betting Markets with Inside Traders**
Adi Schnytzer and Avichai Snir, March 2011.
- 2011-09 **Painful Regret and Elation at the Track**
Adi Schnytzer and Barbara Luppi, March 2011.
- 2011-10 **The Regression Tournament: A Novel Approach to Prediction Model Assessment**
Adi Schnytzer and Janez Šušteršič, March 2011.
- 2011-11 **Shorting the Bear: A Test of Anecdotal Evidence of Insider Trading in Early Stages of the Sub-Prime Market Crisis**
Les Coleman and Adi Schnytzer, March 2011.
- 2011-12 **SP Betting as a Self-Enforcing Implicit Cartel**
Adi Schnytzer and Avichai Snir, March 2011.
- 2011-13 **Testing for Home Team and Favorite Biases in the Australian Rules Football Fixed Odds and Point Spread Betting Markets**
Adi Schnytzer and Guy Weinberg, March 2011.
- 2011-14 **The Impact of Insider Trading on Forecasting in a Bookmakers' Horse Betting Market**
Adi Schnytzer, Martien Lamers and Vasiliki Makropoulou, March 2011.
- 2011-15 **The Prediction Market for the Australian Football League**
Adi Schnytzer, March 2011.
- 2011-16 **Information and Attitudes to Risk at the Track**
Adi Schnytzer and Sara Westreich, March 2011.
- 2011-17 **Explicit Evidence on an Implicit Contract**
Andrew T. Young and Daniel Levy, March 2011.

- 2011-18 **Globalization, Brain Drain and Development**
Frédéric Docquier and Hillel Rapoport, March 2011.
- 2011-19 **The Impact of Worker Effort on Public Sentiment Towards
Temporary Migrants**
Gil S. Epstein and Alessandra Venturini, April 2011.
- 2011-20 **Animal Modeling of Earthquakes and Prediction Markets**
Adi Schnytzer and Yisrael Schnytzer, May 2011.
- 2011-21 **A Field Study of Social Learning**
Arthur Fishman and Uri Gneezy, May 2011.