

Cantillon, Bea; Marx, Ive; Van den Bosch, Karel

Working Paper

The puzzle of egalitarianism: About the relationships between employment, wage inequality, social expenditures and poverty

LIS Working Paper Series, No. 337

Provided in Cooperation with:

Luxembourg Income Study (LIS)

Suggested Citation: Cantillon, Bea; Marx, Ive; Van den Bosch, Karel (2002) : The puzzle of egalitarianism: About the relationships between employment, wage inequality, social expenditures and poverty, LIS Working Paper Series, No. 337, Luxembourg Income Study (LIS), Luxembourg

This Version is available at:

<https://hdl.handle.net/10419/95374>

Standard-Nutzungsbedingungen:

Die Dokumente auf EconStor dürfen zu eigenen wissenschaftlichen Zwecken und zum Privatgebrauch gespeichert und kopiert werden.

Sie dürfen die Dokumente nicht für öffentliche oder kommerzielle Zwecke vervielfältigen, öffentlich ausstellen, öffentlich zugänglich machen, vertreiben oder anderweitig nutzen.

Sofern die Verfasser die Dokumente unter Open-Content-Lizenzen (insbesondere CC-Lizenzen) zur Verfügung gestellt haben sollten, gelten abweichend von diesen Nutzungsbedingungen die in der dort genannten Lizenz gewährten Nutzungsrechte.

Terms of use:

Documents in EconStor may be saved and copied for your personal and scholarly purposes.

You are not to copy documents for public or commercial purposes, to exhibit the documents publicly, to make them publicly available on the internet, or to distribute or otherwise use the documents in public.

If the documents have been made available under an Open Content Licence (especially Creative Commons Licences), you may exercise further usage rights as specified in the indicated licence.

Luxembourg Income Study Working Paper Series

Working Paper No. 337

**The Puzzle of Egalitarianism:
About the Relationships between Employment, Wage
Inequality, Social Expenditures and Poverty**

Bea Cantillon, Ive Marx and Karel Van den Bosch

December 2002



Luxembourg Income Study (LIS), asbl



**The puzzle of egalitarianism*.
About the relationships
between employment,
wage inequality, social
expenditures and poverty**

Bea Cantillon
Ive Marx
Karel Van den Bosch

December 2002

* The title of this contribution was suggested to us by a sentence in a paper by Pablo Alvarez (2001: 3). The excellent research support and input provided by Veerle de Maesschalck and Bart Van Hoorebeeck is kindly acknowledged.

B E R I C H T E N

CENTRUM VOOR SOCIAAL BELEID
UFSIA - UNIVERSITEIT ANTWERPEN

<http://www.ufsia.ac.be/csb>

D/2002/6104/04

Contents

Abstract	1
1. Introduction	2
2. Cross-country correlations	3
2.1. The link between employment and poverty	3
2.2. The link between low wages and poverty	7
2.3. The link between social expenditures and poverty.	10
3. Conclusion.....	14
Bibliography.....	16

Abstract

In the social policy debate, fundamentally different ideas prevail about the interlinkages between such key variables as employment, low pay, social transfers and poverty. This paper presents basic empirical evidence on the validity of these ideas and the policy prescriptions that follow from them, mainly drawing on cross-country comparative analysis. We show that clear and striking cross-country correlations prevail, but not, as is often so readily suggested, between low pay (wage compression) and employment performance, or between employment performance and poverty. Instead we find a strong and positive cross-country correlation between the incidence of low pay and the incidence of relative poverty, and we also find a strong but negative cross-country correlation between the level of social spending and the incidence of poverty. In addition, the incidence of low wage employment and social expenditure are also strongly and (negatively) related. We examine these correlations in more depth, particularly the link between the level of social spending and poverty. Since there is such a clear and strong negative link between the level of social expenditure and the level of poverty, it is tempting to think that more social spending offers an easy route to less poverty. However, a simple simulation exercise using Luxemburg Income Study data from the mid 90's suggests that putting more money in social transfer systems as they currently exist in the EU would not have positive outcomes on poverty rates in all countries. The final section of the papers sets out an agenda for further research.

Acknowledgement: Material from the Luxemburg Income Study UK data is Crown Copyright; has been made available by the Office for National Statistics through the ESRC Data Archive; and has been used by permission. Neither the Office for National Statistics nor the ESRC Data Archive bear any responsibility for the analysis or the interpretation of the data reported here.

1. Introduction

The fight against income poverty is now firmly on the European agenda. Though most European governments have so far remained reluctant to commit themselves to any clearly defined objective, (relative) income poverty appears to on its way of becoming a key indicator of social policy performance within the framework of the open method of coordination.

Clearly, if the objective of achieving continuous and substantial progress in the reduction of income poverty is about to be taken seriously, a renewed effort in the social policy domain will be required. For welfare states in Europe and elsewhere in the OECD area appear to be deadlocked. Despite generally falling unemployment figures, and stable social expenditures, poverty and income inequality have not come down during the nineties, but rather seem to have increased in a number of OECD countries (Förster; 2000, Atkinson 1999). Only the figures for the United Kingdom and the United States indicate something of a reversal during the mid to late 1990s. The overwhelming impression, however, is of progress in the field of poverty reduction having stalled.

Views on how to get out of this apparent deadlock remain as wide-ranging as ever. Observing the debate, it is striking that widely different assumptions are entertained about the interlinkages between such key variables as employment, low pay, social transfers and poverty. Take, for example, the link between work and poverty. An important section of opinion basically assumes that more people in work equals less people in poverty and, by implication, that a high level of social spending is not a prerequisite for a low level of poverty. (This view was epitomized by Dutch social policy during the 1990s, which the Dutch government itself summed up as: ‘work, work and work’.) Others, by contrast, assume that there effectively exists a trade-off between employment (that is, *non-subsidized* employment) and poverty. The idea is that high levels of non-subsidized employment can only be achieved at the cost of a large low-paid (service) sector and increased, though perhaps temporary, ‘poverty in work’.

It is the purpose of this paper to present basic empirical evidence on the validity of such assumptions. Particularly, we look at some cross-country correlations between key variables, such as employment, low-wage incidence, social expenditures and poverty. We show that clear and striking cross-country correlations prevail, but not, as is often so readily assumed, between low pay (wage compression) and employment performance, or between employment performance and poverty. Instead we find a strong and positive cross-country correlation between the incidence of low pay and the incidence of relative poverty, and we find an equally strong but negative cross-country correlation between the level of social spending and the incidence of poverty. There also appears to be a strong positive cross-country correlation between low pay and social spending. The causal mechanisms behind these remarkably consistent relationships remain, however, rather obscure. For example, the strong cross-country correlation between low pay and poverty is, contrary to what is generally thought, not due to a strong link between low pay and poverty at the individual level. The explanation,

therefore, must be more complex and probably runs through the correlation between the incidence of low pay and the level of social spending (which directly affects the level of protection offered to the non-employed).

This paper continues with a more detailed look at the link between social spending and poverty. Since there is such a clear and strong negative link between the level of social expenditure and the level of poverty, it is tempting to think that more social spending offers a route out of the impasse of persistent poverty. However, a simple simulation exercise using Luxemburg Income Study data from the mid 90's suggests that expanding welfare state expenditures within existing social transfer systems would not always generate notable effects on poverty rates.

A note on terminology. The principal variable in this paper is poverty. Throughout this paper we use a relative poverty threshold and we do so because we are interested in how well countries succeed in protecting those who are, relative to the average standard of living, least well-off in income terms. Perhaps it would be more accurate to use the term "low income" instead of poverty, but in line with common practice in the literature and in order to avoid awkward formulations, we will continue to use the word 'poverty'. The definitions of other concepts will be clarified throughout the text.

2. Cross-country correlations

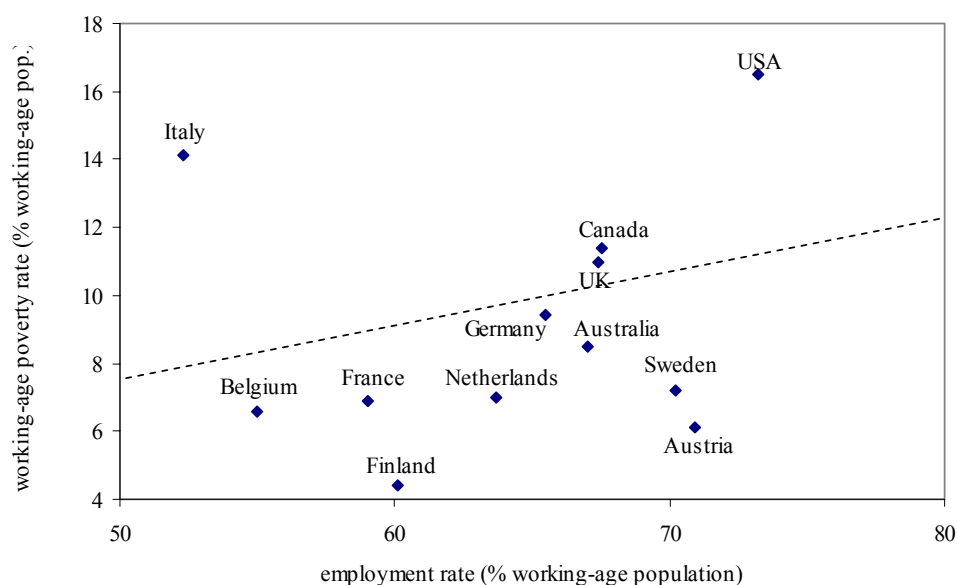
2.1. The link between employment and poverty

Within any country, poverty among those with paid work is far lower than among those without such work - certainly if one looks only at the non-elderly. However, across countries such a clear link between employment and poverty is lacking, as shown in Figure 1 (following page), which plots poverty rates for the working-age population¹ against employment rates for the late 1990s. (Actually, the relationship is weakly positive, implying that more employment is linked with more, not less poverty.) It is striking that the relative poverty rate for the working age population in the United States is almost twice as high as in Germany or France, and almost four times as high as in Belgium, although a far higher proportion of the working age population is employed in the United States.

Within the sample of countries presented in Figure 1, only Austria and Sweden combine a high employment rate (over 70%) with a low poverty level. Sweden (as well as other Scandinavian countries) has in the past pursued very active employment policies, and has a large subsidised employment sector, unlike the United States and Canada. At the other extreme we find Italy, where employment is low and poverty is high. However, many continental European states, including France and Belgium, have relatively low poverty rates despite a relatively elevated level of non-employment.

¹ The working age population comprises all individuals between 16 and 64.

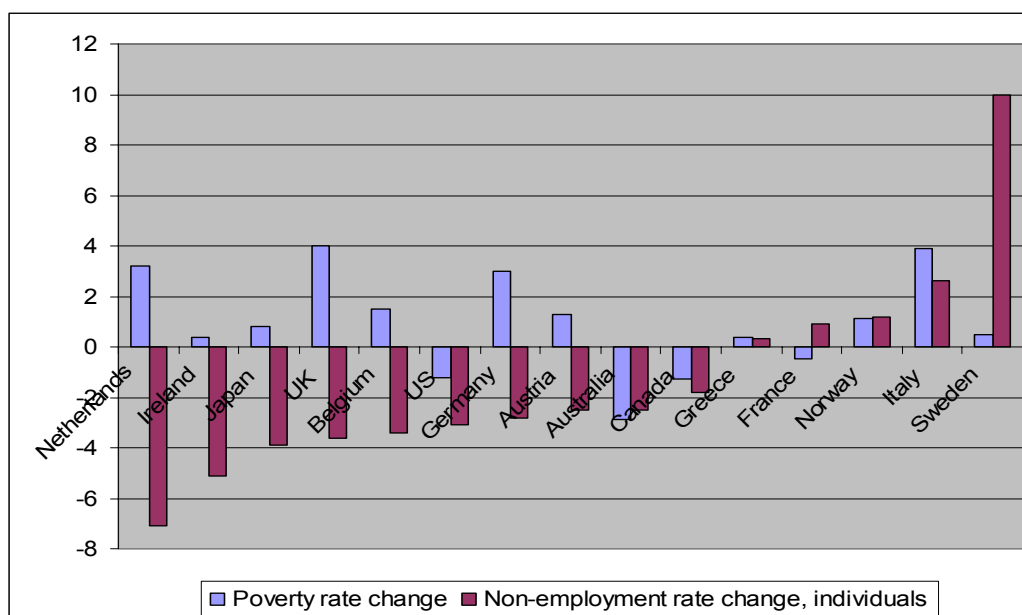
Figure 1. Employment performance and poverty.



Sources: Employment rates: OECD (1998) Employment Outlook; poverty rates: Förster (2000); data for mid 1990s.

Similarly, across time countries that have done well in terms of employment growth have not necessarily done well in terms of poverty. Figure 2 shows that the top 5 performers in terms of employment growth during the mid 1980s to mid 1990s period have seen rises in their relative poverty rates. Most striking is the example of the Netherlands where a dramatic rise in employment has gone accompanied with a substantial rise in relative poverty.

Figure 2. Changes in employment and poverty rates, mid 1980s-mid 1990s (percentage points difference).

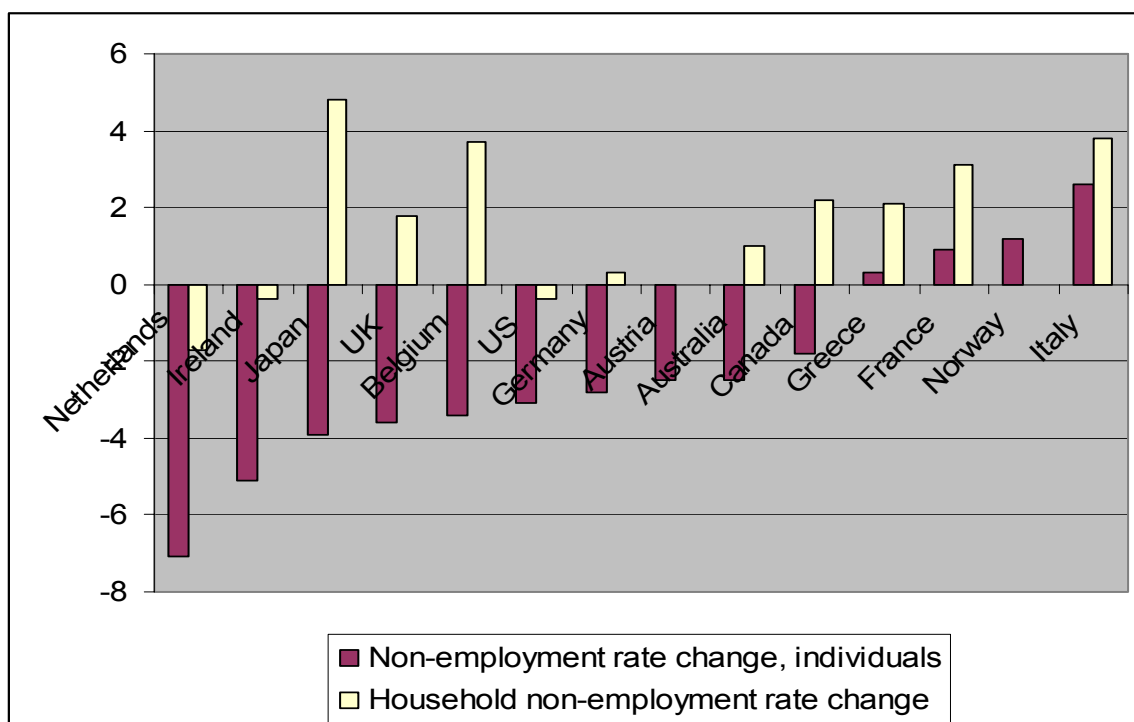


Notes: Poverty are relative poverty rates for working-age individuals.

Source: Poverty rates: Förster (2000), Employment rates: OECD Employment Outlook (1998).

What are the reasons behind the lack of a relationship between employment and poverty, across countries and across time? A first reason is that jobgrowth does not always benefit jobless households. In a number of countries, employment growth over the past decades has not been to the benefit of workless households. This is illustrated in Figure 3. Most remarkably, in the ‘job miracle’ countries, the Netherlands and Ireland, massive employment growth at the individual level has not lead to comparable employment growth at the household level. Even more striking perhaps is the example of the United Kingdom. As first pointed out by Paul Gregg and Jonathan Wadsworth (1996), the much touted rise in the UK employment rate during the 1980s and 1990s masked a polarization between what they called work-rich and workless households. The proportion of working-age individuals in work had risen in the UK, but so had the proportion of households with not a single person in work. Job growth had mainly benefited households with already one person in work. De Beer (2001) has documented a similar dynamic in more detail for the Netherlands. He shows that job growth there has mainly benefited new labour market entrants and previously single earner households.

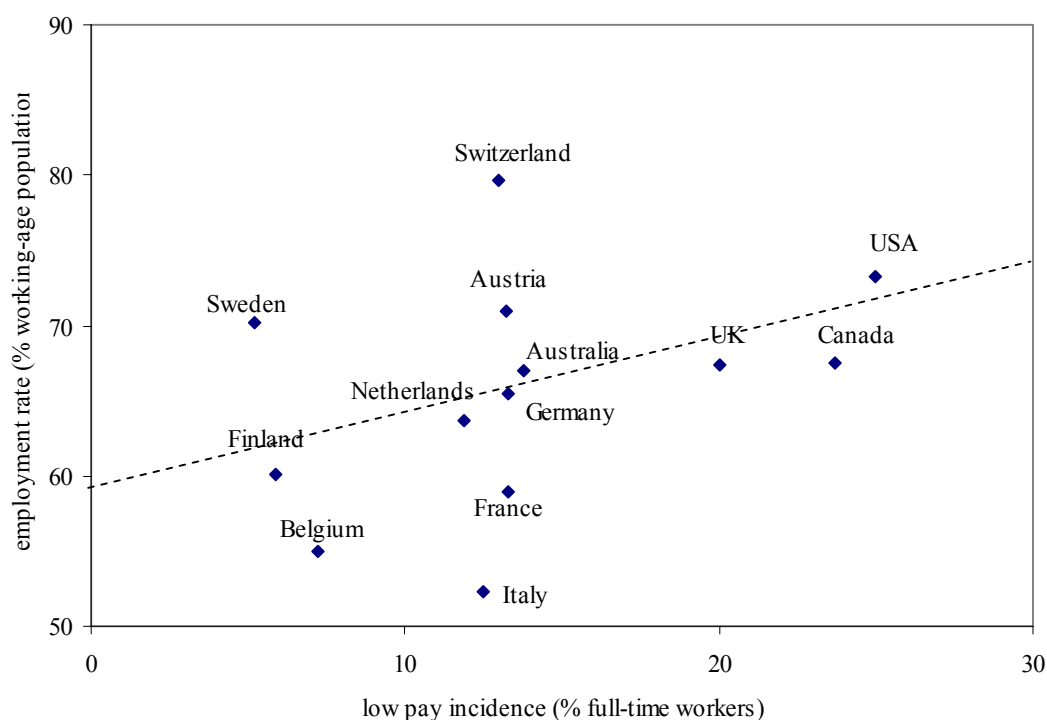
Figure 3. Changes in non-employment rates at the individual and the household level, mid 1980s-mid 1990s (percentage points difference).



Source: OECD (1998), Employment Outlook.

A second possible reason why employment and poverty are not closely related is that additional jobs are bought at the price of more wage inequality. Indeed, a familiar argument is that countries like the United States achieve a high employment rate at the cost of large-scale poverty in work. Similarly, there exists a perception that some countries, like the UK or even the Netherlands, have achieved their progress to a large extent through an expansion of “bad” jobs: insecure, low-paid service sector jobs. And indeed, Figure 4 shows that in the UK, Canada and the USA, a large proportion (20% or more) of all employees earn relatively low wages (less than 60 percent of the median). Yet, the overall link between employment and low pay incidence is weak or non-existent, as other countries (notably Sweden) manage to have high employment with very few persons on low pay.

Figure 4. Low pay incidence and employment performance.



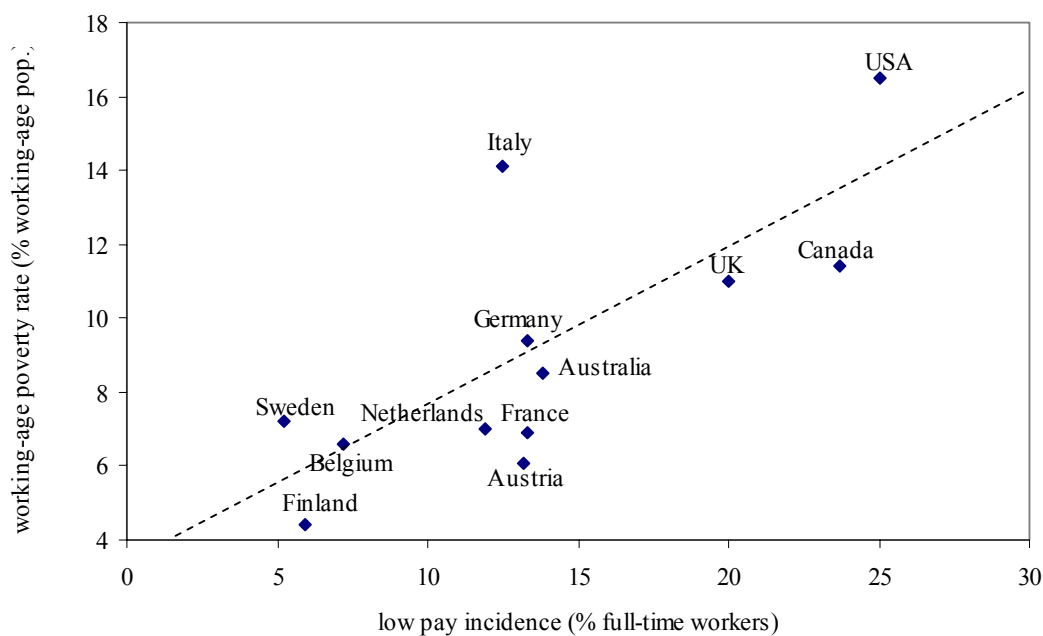
Sources: Employment rates: OECD (1998) Employment Outlook; low pay: OECD (1996) Employment Outlook; data for mid 1990s.

2.2. The link between low wages and poverty

Figure 5 shows that there is a clear and fairly strong relationship across countries between the incidence of low pay and poverty among the working-aged. The seemingly obvious interpretation of this relationship would be that the persons earning a low wage are also those who tend to be in poverty. However, this is only part of the explanation. While it is true that poverty rates tend to be higher in countries with a comparatively high incidence of low pay, the actual incidence of poverty *among* low-paid workers themselves tends to be lower than generally thought, even in countries where low-paid work is widespread. As Figure 6 shows, in most European countries less than 10 per cent of low-paid workers (by a relative definition set at 66 per cent of gross median earnings) live in relative poverty (Marx and Verbist, 1998). The United States is somewhat of an exception – poverty in work is quite a substantial problem there. The principal explanation for the generally weak overlap between low pay and poverty is that most low-paid workers live in multi-earner households. This is certainly the case for low-paid women and youngsters, who make up the majority of low-paid workers. (It is possible, however, that low-paid workers are “forced” to live in a multi-earner household, especially those most prone to end up in poverty, and that consequently latent poverty among the low-paid is much higher than observed poverty. On the other hand, the income from a low-paid job sometimes provides the much needed second household income that otherwise single earner

households require to attain a reasonable standard of living. If a better paid job is not a feasible alternative, low-paid work actually reduces poverty.)

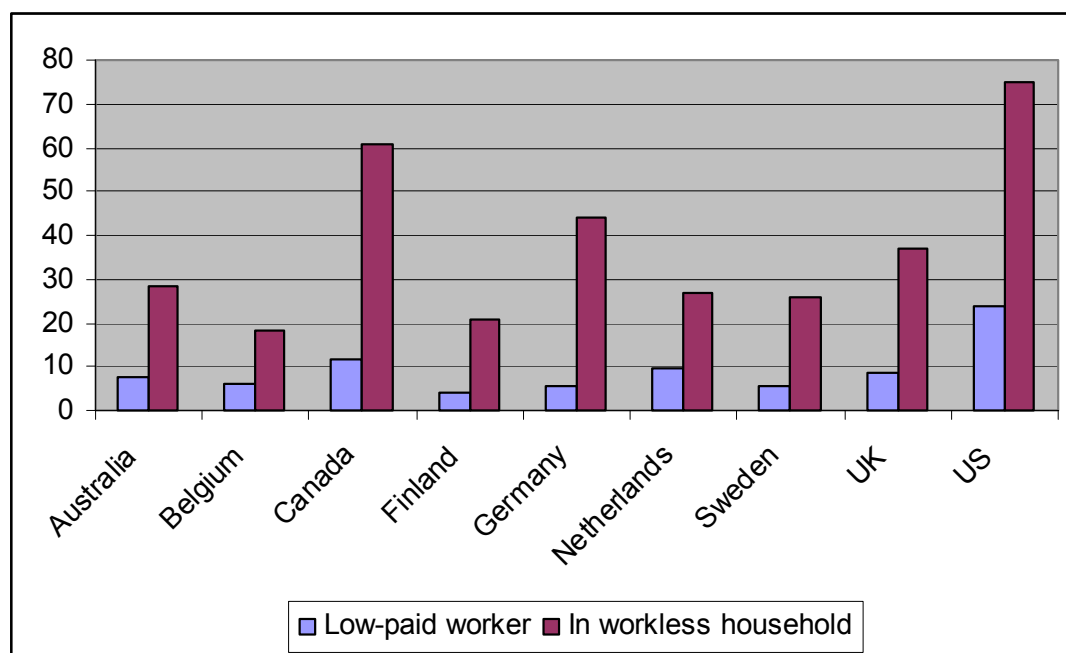
Figure 5. Incidence of low pay and poverty.



Source: Low pay: OECD (1996) Employment Outlook; poverty: Förster (2000); data for mid 1990s.

By far the most vulnerable group in every country are and remain the non-employed at working-age, particularly those living in households without a person in work. Poverty rates for workless households are extremely high in most countries (cf. figure 5). The average poverty rate for workless households with a working-age head in the 16 OECD countries included in Förster (2000) is 36 per cent, versus 13 per cent for households with one worker and 3 per cent for households with two workers. However, there are important variations across countries in the incidence of poverty among workless households. In North America the poverty rates (as measured around the mid 1990s) for these households are extraordinarily high: 75 per cent in the US or 61 in Canada. Although European countries also perform badly when it comes to providing adequate minimum income protection to workless households, the proportions in poverty are much lower: in Germany almost 45 per cent of workless households live in poverty, in the Netherlands, France and Sweden around 25 per cent.

Figure 6. Poverty incidence among the low-paid and individuals in workless households, data for early to mid 1990s.



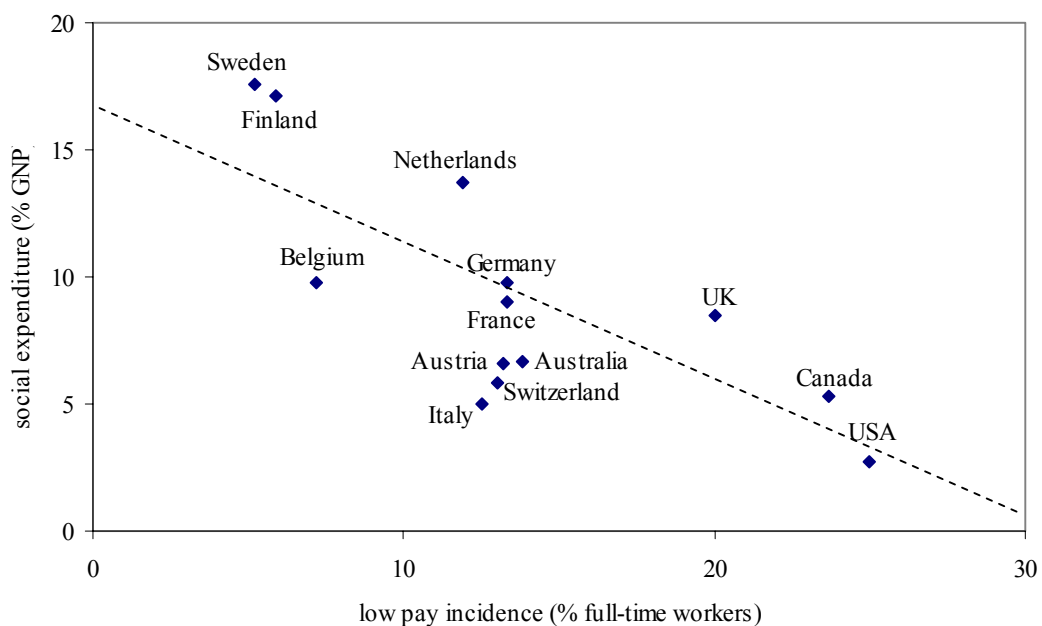
Source: Poverty rates for low-paid workers (full-year, full-time workers earning less than 66% of the median gross wage) drawn from LIS: Marx and Verbist (1998); Poverty rates for workless households: Förster (2000).

These relationships suggest that the high poverty level in some countries with high (non-subsidized) employment is connected with an inadequate minimum protection for those who are out of work despite the high employment rate (e.g. unemployment benefits and social assistance). Figure 7 shows that indeed across OECD countries social expenditure and the incidence of low pay are strongly negatively related, which may come as something of a surprise. Alvarez (2001) calls the finding (which he documents extensively) that wage-egalitarian societies present the highest levels of welfare effort and redistribution "the puzzle of egalitarianism".

Generally speaking, there might be three kinds of reasons behind this puzzle. First, the direction of causality may go from an extensive welfare state to a condensed waged distribution. This is the line followed by Alvarez (2001), who argues that second-order effects of social expenditure are a large part of the explanation of the puzzle: the higher taxes and transfers of large welfare states influence labor-supply in such a way that a more condensed wage distribution results. (High wage earners substitute leisure for money income in response to taxes, while generous benefits reduce labour supply among those commanding low wages through high reservation wages). Secondly, low wage inequality may somehow give rise to a well-developed welfare state. This kind of mechanism may seem less plausible, as one might expect that high wage inequality and a large number of low wage earners would create a demand for income redistribution (Alvarez, 2001: 3). On the other hand, a highly unequal distribution of market wages may make it politically and technically difficult to redistribute

income. Robin Hood's task becomes harder when market incomes are more unequally distributed whereas minimum wages form the floor of minimum protection in social insurances and social assistance (cf. Cantillon, 2002). Thirdly, an extensive welfare state as well as a limited degree of wage inequality may both be the results of a third variable. As Atkinson (1999: 67-68) suggests, countries may be characterized by notions of equity that are widely shared within any society, but that differ across societies. A society in which the value of solidarity is widely shared may at once support pay norms, collective agreements and adequate minimum wages, as well as quasi-universal and generous benefits.

Figure 7. Incidence of low pay and social expenditure.



Notes: Social expenditure is non-education expenditure for the working-age population only.

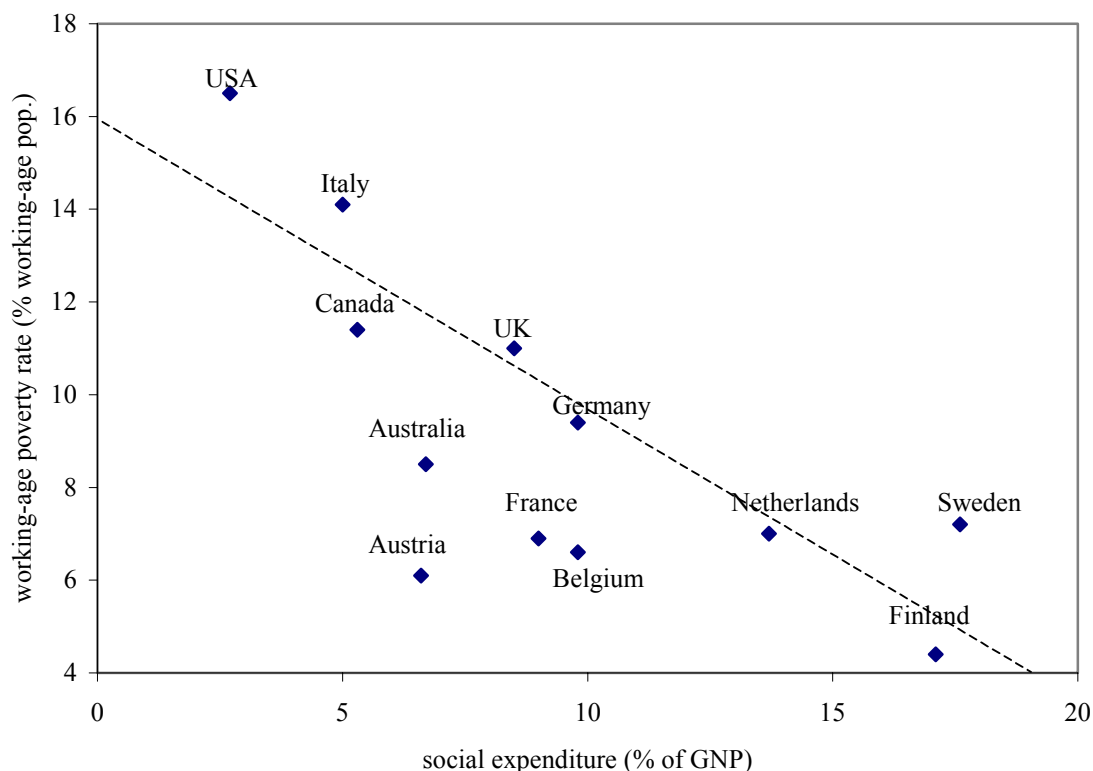
Sources: Low pay: OECD (1996) Employment Outlook; Social expenditure: Bradbury and Jäntti (1999).

2.3. The link between social expenditures and poverty.

This leads us to the link between social expenditures and poverty, which is shown in Figure 8. The strong and negative relationship between social expenditure and income poverty (as well as income inequality) has now been well established in empirical studies (cfr. Cantillon et al., 1997; Bradbury and Jäntti, 2001; Atkinson, 2000; Beblo and Knaus, 2001; Oxley et al., 2001). As Oxley et al. (2001: 392-396) show, some countries achieve better 'efficiency' in terms of child poverty reduction (i.e. poverty is reduced more for each Euro or Franc spent) through targeting more on low-income groups. However, 'effort' and 'targeting' are negatively related,

and thus "countries with higher 'efficiency' due to targeting have traded a good part of this away by reducing 'effort'."

Figure 8. Social expenditure and poverty.



Note: Social expenditure is non-education expenditure for the working-age population only.

Sources: Social expenditure: Bradbury and Jäntti (1999); poverty: Förster (2000).

However, welfare states differ in more respects than the size of total expenditures and the degree of targeting. If those were the only important characteristics, the policy recommendation would be simple: increase expenditure (and/or improve targeting for those countries which already spend a lot). However, things are not this straightforward. A simple simulation exercise using Luxemburg Income Study data suggests that expanding welfare state expenditures within the existing social transfer systems would not always have a strong effect on poverty rates.

This simulation was done in the following way. In each country, the social transfers received by working-age households were increased by the same proportion, such that they constituted 22 percent of aggregate income of all working-age households². At the same time, all income other than transfers was also adjusted proportionally, but in the opposite direction, such that

² This is slightly more than the actual percentage of the best-performing EU Member State in the analysis, viz. Finland. Sweden was excluded from the simulation as their 29% transfer score would be too far off for the other countries.

average and aggregate total household income remained constant. Next, poverty rates were recalculated from the micro-data³. This simulation is equivalent to an across-the-board and proportional increase in all social transfers, paid for by a proportional tax or contribution (bonus) on all other income sources. Table 1 shows the result of this admittedly rather rudimentary simulation.

Table 1. Comparison poverty headcount with simulated poverty outcome when the share of transfers in aggregate income is 22%, for active households only.

	Share of social transfers	Poverty rate		Gain in poverty rate / increase in share of social transfers
		Actual	Simulated	
Denmark	18,3%	13,0%	10,0%	-0,81
Netherlands	17,7%	11,1%	8,6%	-0,58
Belgium	16,0%	11,3%	7,5%	-0,64
France	13,6%	13,4%	8,1%	-0,64
Italy	8,3%	21,8%	25,1%	0,24
Spain	7,4%	15,3%	16,1%	0,05
Norway	14,4%	8,7%	6,3%	-0,31
Finland	21,5%	8,5%	8,2%	-0,62
UK	12,4%	16,9%	7,1%	-1,03

Note: UK LIS data: Crown Copyright 2002 . Source: Office for National Statistics.

Source: Luxemburg Income Study data for mid 90's, except for Spain (1990).

The most startling result is that the simulated convergence in social transfers expenditure does *not* produce an overall convergence in poverty outcomes. In the only southern European countries included in this simulation exercise, Italy and Spain, poverty rates are not affected in the right direction at all. In both countries, the simulated increase of social expenditure to the level of 22 per cent of GDP actually has a serious adverse effect on poverty. As a result, the difference between the European country with the highest poverty rate and the one with the lowest increases to 18,8 per cent, up 5 percentage points from the present situation.

Still, this simple simulation exercise does confirm the general intuition that more social spending generates less poverty. Our simulation suggests that if social spending reached 22 per cent of GDP, the United Kingdom would rank among the countries with lowest poverty rates in Europe. Other countries like France, Belgium and Denmark also see a considerable decrease of poverty in the simulated outcomes, but the effect is less dramatic than in the United Kingdom. Finland is hardly effected as its transfers share was already close to the 22% used in the simulation.

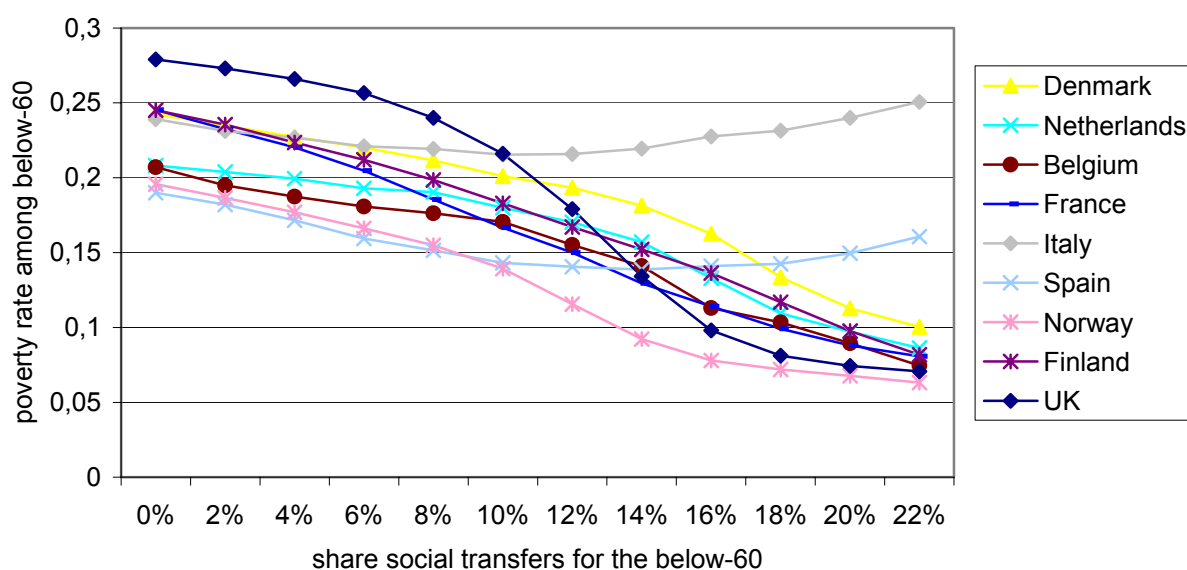
The main reason, though, for the smaller than expected response of poverty statistics is that in most countries poverty outcomes are far less sensitive to increases in social transfers than the

³ Using a poverty line defined as 60 percent of median equivalent household income in each country, with the modified OECD equivalence scale, which has weights of 1.0, 0.5 and 0.3 for the first adult, other adults and children below 18, respectively.

cross-country graphs would suggest. For the data presented here (viz. in columns two and three of Table 1), we find a regression coefficient of -0.70 ($r^2=0.58$) for the cross-country relationship between the share of social transfers and the poverty rate. The fifth column of Table 1 shows the gain in the poverty rate divided by the simulated change in the share of social transfers, both expressed in terms of percentage-points. These coefficients can be regarded as sensitivity estimates, and are for many countries comparable to the regression slope coefficient of -0.70. Only for the UK and Denmark do the sensitivity coefficients exceed the cross-country slope estimate. In Italy and Spain the estimates are even positive, indicating that an increase in the share of social transfers implies that, in the balance, income is redistributed away from the poor and towards the non-poor.

In order to gain a broader perspective on the results, this exercise was repeated in each country for a number of percentages, ranging from 0% to 22%, in steps of 2 percentage-points. For each percentage, poverty rates were recalculated from the micro-data (though the poverty thresholds were not adjusted) and graphed in Figure 9.

Figure 9. Simulated poverty rates for persons below 60, at a range of share of social transfers in household income among this group.



Note: UK LIS data: Crown Copyright 2002 . Source: Office for National Statistics.

Source: Luxemburg Income Study data for mid 90's, except for Spain (1990).

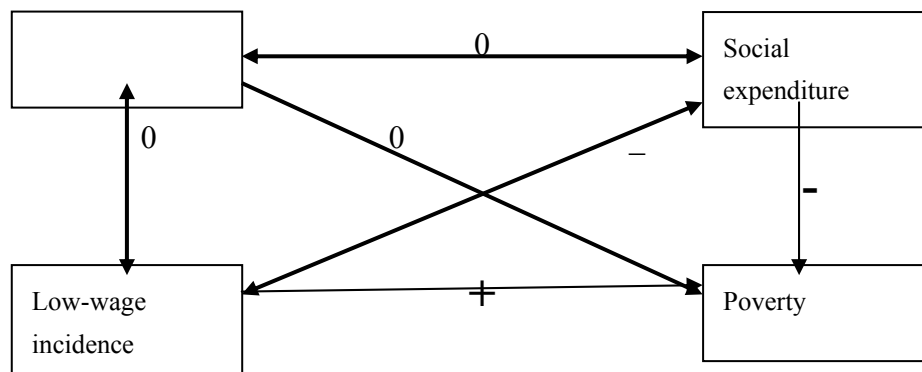
The curves indicate that in the Southern European countries, poverty among working-age individuals and children is remarkably insensitive to social transfer spending. More detailed analyses in Van den Bosch (2002) suggest that this is due to two mechanisms which cancel each other out: as expenditure is increased, most social transfer beneficiaries escape poverty,

but at the same time a relatively large proportion of households for whom earnings is the most important source of income are pulled into poverty by the increase in taxes / contributions. In most other countries, however, additional social spending reduces poverty. But the marginal effect of more spending differs quite substantially from country to country and is not always linear. For the UK, the effect of additional spending from the current level would initially have a big impact on poverty. But the marginal effect declines substantially after the 18 per cent mark. The curve for Norway seems to indicate that the country's current transfer share of 14.4% is rather efficient.

3. Conclusion

In the social policy debate, fundamentally different ideas prevail about the interlinkages between such key variables as employment, the number of low-wage earners, social transfers and poverty. These diverging ideas and assumptions give rise to very different policy recommendations. The purpose of this paper was to present basic empirical evidence regarding these assumptions, primarily using cross-country correlations. The correlations and non-correlations reported in this paper are summarized in Figure 10.

Figure 10. Cross-country correlations between employment, social expenditure, low-wage incidence and poverty.



Note: 0: no relationship; +: positive relationship; -: negative relationship.

Looking at cross-country correlations, we do not find the expected relationship between employment and poverty, nor between low wages and employment. We do find fairly strong relationships between low wages and poverty, between social expenditure and poverty, and also (perhaps surprisingly) between low wages and social expenditure. On closer inspection, none of these relationships turns out to be as simple as one might think, and the causal mechanisms remain rather obscure. Even in countries with a high number of low wage earners, poverty among this group remains limited, and is concentrated among workless households. The strong cross-country association between high welfare state effort and low poverty would suggest that increasing spending in currently low-effort countries would lead to a downward convergence in poverty outcomes. However, simulating an increase in social

expenditures for some EU Member States within existing systems shows that not all countries seem to fit this pattern.

This paper represents very much work-in-progress. Therefore it is too early to draw conclusions. What we can do is to suggest a research agenda, or rather the general direction in which research into the relationship between welfare state effort (input) and poverty and income distribution outcomes should go.

The finding that wage egalitarian societies present the highest levels of welfare effort and redistribution and the lowest level of income poverty points to the idea that we should avoid the kinds of analyses where the welfare state is seen as an institution that corrects market outcomes, after the market has finished its workings. The commonly made comparisons between pre- and post-transfer incomes are an important example of such analyses. The study of market outcomes should be an intrinsic part of welfare state research. Wage inequalities are probably to a large extent not exogenously given, but influenced importantly by various welfare state arrangements. On the other hand, a highly unequal distribution of market wages may make it politically and technically more difficult to redistribute incomes. Alternatively, both a high level of social expenditure and a compressed wage distribution perhaps emanate from widely shared value systems emphasizing solidarity and equality. Such values might at once support pay norms and collective agreements (Atkinson, 1999, p. 68), as well as universal and generous benefits.

Bibliography

- Adema, W, e.a (1996), *Net Public Social Expenditure*. Labour Market and Social Policy Occasional Papers no.19, Paris, OECD.
- Alvarez, P. (2001), The Politics of Income Inequality in the OECD: *The Role of Second Order Effects*, Luxembourg Income Study Working Paper No. 284, Syracuse: Syracuse University.
- Atkinson, A. (1999), 'The Distribution of Income in the UK and OECD Countries in the Twentieth Century', *Oxford Review of Economic Policy*, vol. 15, no. 4, pp. 56-75.
- Atkinson, A., (2000), *A European Social Agenda: Poverty Benchmarking and Social Transfers*, Euromod Working Paper No. EM3/00.
- Atkinson, T., Cantillon, B., Marlier, E. and Nolan, B. (2001), *Indicators for Social Inclusion in the European Union*. Oxford: Oxford University Press.
- Beblo, M., Knaus, T. (2001), 'Measuring Income Inequality in Euroland', *The Review of Income and Wealth*, p. 301-320.
- Berger, F., M. Borsenberger, H. Immervoll, J. Lumen, B. Scholtus and K. De Vos (2001), *The Impact of Tax-Benefit Systems on Low-Income Households in Benelux Countries. A Simulation Approach Using Synthetic Datasets*. Euromod Working Paper.
- Bradbury, B., Jäntti, M. (2001), 'Child poverty across twenty-five countries', in: Bradbury, B., Jenkins, S., Micklewright, J. (eds.), *The dynamics of Child Poverty in Industrialised Countries*. Cambridge University Press, pp. 62-91.
- Bradshaw, J., Ditch, J., Holmes, H., Whiteford, P. (1993), *Support for children A comparison of arrangements in fifteen countries*. UK Department of Social Security, Research Report 21, London.
- Cantillon, B. (2002), *The failures of Bismarck and Beveridge: The case of old-age pensions for the self-employed in Belgium*, paper for the 9th FISS seminar on "Pension reform", June 2002, Sigtuna, Sweden.
- Cantillon, B., Marx, I., Van den Bosch, K. (1997), 'The Challenge of Poverty and Social Exclusion', in: OECD (ed.), *Towards 2000: The New Social Policy Agenda*, Paris: OECD.
- Cantillon, B., Ghysels, J., Mussche, N., Van Dam, R. (2001), 'Female employment differences, poverty and care provisions', *European Societies*, jrg. 3, 4, p. 447-469.
- De Beer, P. (2001) *Over werken in de postindustriële samenleving*, Den Haag: Sociaal en Cultureel Planbureau.
- Esping-Andersen, G. (1990), *The Three Worlds of Welfare Capitalism*. Cambridge: Polity Press.
- Förster, M. (2000), Trends and driving factors in income distribution in the OECD area, *Labour Market and Social Policy Occasional Papers n.42*, Paris:OECD.
- Gregg, P. and Wadsworth, J. (1996), More Work in Fewer Households ?, in Hills, J. (ed), *New Inequalities: The Changing Distribution of Income and Wealth in the UK*, Cambridge University Press, Cambridge.
- Heady, C., Th. Mitrakos and P. Tsakloglou (2001), *The Distributional Impact of Social Transfers in the European Union: Evidence from the ECHP*, IZA Discussion Paper No 356.
- Immervoll, H. and C. O'Donoghue (2002), *Welfare Benefits and Work Incentives An Analysis of the Distribution of Net Replacement Rates in Europe Using EUROMOD, A Multi-Country Microsimulation Model*, Euromod Working Paper No. EM4/01.
- Iversen, T. and A. Wren (1998), "Equality, Employment and Budgetary Restraint. The Trilemma of the Service Economy", *World Politics*, vol. 50, pp. 507-546.

- Jäntti, M. and S. Danziger (2000), "Income Poverty in Advanced Countries", in: Atkinson, A. and F. Bourguignon (eds), *Handbook of income distribution*, Amsterdam: Elsevier. (Handbooks in economics; 16)
- Korpi, W., Palme, J. (1998), 'The Paradox of Redistribution and Strategies of Equality: Welfare State Institutions, Inequality, and Poverty in the Western Countries', *American Sociological Review*, p.661-687.
- Marlier, E. and Cohen-Solal, M. (2000), "Social benefits and their redistributive effect in the EU", *Statistics in Focus. Population and Social Conditions*, Theme 3 - 09/2000, Eurostat, Luxembourg.
- Marx, I., Verbist, G. (1998), 'Low-paid work and poverty: a cross-country perspective', in: Bazen, S., Gregory, M., Salverda, W. (eds.), *Low-wage employment in Europe*, Edward Elgar.
- Mitchell, D. (1991), *Income Transfers in Ten Welfare States*. Aldershot: Avebury.
- OECD (1996), *Employment Outlook*, Paris: OECD
- OECD (1998), *Employment Outlook*, Paris: OECD
- OECD (1999), *Benefit systems and work incentives*. Paris: OECD, 59 p.
- Oxley, H., Dang, Th.-Th., Förster, M., and Pellizari, M. (2001), 'Income inequalities and poverty among children and households with children in selected OECD countries', in: Vlemminckx, K. and Smeeding, T. (eds), *Child Well-being, Child Poverty and Child Policy in Modern Nations: What do we know*, Bristol: Policy Press, pp. 371-405.
- Sutherland, H., (2001), *Reducing Child Poverty in Europe: what can static microsimulation tell us?*, Euromod Working Paper No. EM5/01.
- Van den Bosch, K. (2001), *Identifying the Poor. Using subjective and consensual methods*. Aldershot: Ashgate.
- Van den Bosch, K. (2002), *Convergence in Poverty Outcomes and Social Income Transfers in Member States of the EU*, Paper for the XV World Congress of Sociology in Brisbane, July 2002.
- Vandenbroucke, F. (2002), "The EU and social protection: what should the European Convention propose?", Paper presented at the Max Planck Institute for the Study of Societies, Cologne, 17 june 2002. (Paper obtainable from the website www.vandenbroucke.com).