

Brady, David

**Working Paper**

## Structural theory and relative poverty in rich Western democracies, 1969-2000

LIS Working Paper Series, No. 407

**Provided in Cooperation with:**

Luxembourg Income Study (LIS)

*Suggested Citation:* Brady, David (2005) : Structural theory and relative poverty in rich Western democracies, 1969-2000, LIS Working Paper Series, No. 407, Luxembourg Income Study (LIS), Luxembourg

This Version is available at:

<https://hdl.handle.net/10419/95371>

**Standard-Nutzungsbedingungen:**

Die Dokumente auf EconStor dürfen zu eigenen wissenschaftlichen Zwecken und zum Privatgebrauch gespeichert und kopiert werden.

Sie dürfen die Dokumente nicht für öffentliche oder kommerzielle Zwecke vervielfältigen, öffentlich ausstellen, öffentlich zugänglich machen, vertreiben oder anderweitig nutzen.

Sofern die Verfasser die Dokumente unter Open-Content-Lizenzen (insbesondere CC-Lizenzen) zur Verfügung gestellt haben sollten, gelten abweichend von diesen Nutzungsbedingungen die in der dort genannten Lizenz gewährten Nutzungsrechte.

**Terms of use:**

*Documents in EconStor may be saved and copied for your personal and scholarly purposes.*

*You are not to copy documents for public or commercial purposes, to exhibit the documents publicly, to make them publicly available on the internet, or to distribute or otherwise use the documents in public.*

*If the documents have been made available under an Open Content Licence (especially Creative Commons Licences), you may exercise further usage rights as specified in the indicated licence.*

# **Luxembourg Income Study Working Paper Series**

**Working Paper No. 407**

**Structural Theory and Relative Poverty in  
Rich Western Democracies, 1969-2000**

**David Brady**

**March 2005**



---

**Luxembourg Income Study (LIS), asbl**

---

---

**STRUCTURAL THEORY AND RELATIVE POVERTY IN RICH WESTERN  
DEMOCRACIES, 1969-2000**

David Brady

***Duke University***

March 17, 2005

Forthcoming in *Research in Social Stratification and Mobility*

Word count: 15,151 (including footnotes, excluding tables and figures)

\* Please direct correspondence to David Brady, Department of Sociology, Duke University, Box 90088, Durham, NC, 27708; email: brady@soc.duke.edu. This paper benefited from comments by Kevin Leicht and *RSSM* reviewers, Art Alderson, Jason Beckfield, Clem Brooks, M.E. Hughes, Lane Kenworthy, Phil Morgan, Emilio Parrado, David Reingold, Rob Robinson, and Mike Wallace. I appreciate data shared by Jason Beckfield, Evelyne Huber, Charles Ragin, and John Stephens.

---

# **STRUCTURAL THEORY AND RELATIVE POVERTY IN RICH WESTERN DEMOCRACIES, 1969-2000\***

## **ABSTRACT**

This study assesses if structural theory explains the variation in poverty across rich Western democracies. With unbalanced panel analysis of 18 countries, two poverty measures and controlling for the welfare state and economic performance, I examine five structural factors: manufacturing employment, agricultural employment, female labor force participation, the elderly population, and children in single mother families. Manufacturing employment, female labor force participation, elderly population, and children in single mother families significantly influence the headcount measure of poverty, while agricultural employment is insignificant. By contrast, all five structural variables are insignificant for the interval measure of poverty. For the headcount, the structural variables have a more powerful influence than economic growth (the only significant indicator of economic performance) but a smaller influence than the welfare state. For the interval measure, the welfare state has a much larger influence than economic growth, and the insignificant structural and other economic variables. Counterfactual simulations are used to illustrate consequences of these effects for the U.S., Germany, and Sweden. Sensitivity analyses demonstrate the main conclusions hold regardless of the U.S. cases. Though structural variables influence one of the two poverty measures, the welfare state is most important to explaining poverty in rich Western democracies.

## **STRUCTURAL THEORY AND RELATIVE POVERTY IN RICH WESTERN DEMOCRACIES, 1969-2000\***

Cross-national and historical variation in poverty is profound. In the postindustrial era, substantial, even dramatic, differences exist across rich Western democracies and over recent decades. The U.S. persistently maintains nearly twice as much poverty as Canada and the U.K. Even more strikingly, the U.S. has poverty levels more than three times higher than many West European nations (Smeeding et al. 2001). Despite the very high levels of U.S. poverty, this is not simply a story of American exceptionalism. Substantial cross-national and historical variation among other rich Western democracies emerges as well. With one index, France's poverty declined from 7.3 in 1989 to 5.3 in 1994; Austria's poverty jumped from 3.5 in 1987 to 7 in 1995; poverty climbed from 5.7 to 8.2 between 1986 and 1991 in the U.K.; and between 1989 and 1994, Australian poverty rose from 8.1 to 10.2 (Brady 2003a). To understand poverty in affluent societies, social scientists must explain these crucial cross-national and historical differences. What explains the comparative historical variation in poverty across rich Western democracies?

Confronting poverty, one explanation tends to receive the most support among sociologists. In general, sociologists have been persuaded by a structural theory of poverty. Structural theories have a long history in the social sciences, and have been tremendously influential in sociology at least since Wilson's (1987) *The Truly Disadvantaged*. To my knowledge, however, no study has examined if structural theory accounts for variation in poverty across rich Western democracies. This study addresses this absence. Specifically, I evaluate five structural factors: manufacturing employment, agricultural employment, female labor-force participation, the elderly population, and children in single-mother families. Moreover, this study explicitly compares the impact of structural factors with two alternative causal sources: the welfare state and economic performance. Hence, this study provides a systematic evaluation of the structural theory of poverty.

## STRUCTURAL THEORIES OF POVERTY

Structural explanations contend that macro-level labor market and demographic conditions put people at risk of poverty, and cross-sectional and over time differences in these structural factors account for variation in poverty. Groups, cities and countries disproportionately impacted by structural factors tend to have more poverty.<sup>1</sup> Thus, structural theory is a compositional explanation: the more people in vulnerable demographic or labor market circumstances, the more poverty exists. In this sense, structure refers to the set of labor market opportunities and/or demographic propensities that characterize the population's likelihood of being poor.

Structural theories have received interest partly because of Wilson's (1987, 1996) influential work. Like most structural theories, Wilson showed how labor market and demographic factors disadvantage the urban poor. Of course, Wilson's model was not designed to explain comparative historical variation and more precisely focused on concentrated inner-city African-American poverty in the U.S. However, Wilson's work demonstrates the value of structural theory and provides a foundation to examining how structural factors affect poverty.

O'Connor (2001) shows that structural theories have actually been prominent for decades and originated at least in the 1960s (Clark 1965; Myrdal 1962; Ornati 1966; Rainwater 1969). For example, Galbraith (1998) challenged the "conventional wisdom" that the poor would benefit from economic growth, since the poor were marginalized in labor markets. Harrington (1981) contended that the poor lived in an invisible "Other America" that was "immune" to, and even displaced, by economic progress. Labor market segmentation theorists contend that the poor were stuck in secondary labor markets, and uniquely disadvantaged by the massive transitions like agriculture to

---

<sup>1</sup> Of course, there might not be any *one* structural theory of poverty. Structural theories have always been a diverse set of claims with a shared orientation to demographics and labor markets (O'Connor 2001). I conceive of structural theory as a set of macro-level, population-wide, labor market and demographic factors that put people at risk of poverty. Also, I distinguish between these structural factors, the welfare state and economic performance. To be clear, I am referring to structural theory in poverty research (O'Connor 2001), and I do not mean to represent the entire variety of "structural" explanations in sociology

industry to service, rural to urban to suburban, and Fordism to Post-Fordism (Gordon 1972; Gordon, Edwards and Reich 1982). Contemporary structural accounts maintain these concerns. Historians document how structural factors shaped urban poverty in the 20<sup>th</sup> century U.S. (e.g. Sugrue 1996). While explaining the local experiences of the poor, ethnographers often contextualize poverty within structural conditions (e.g. Anderson 1990; Newman 1999). In a related prolific literature, analysts demonstrate that structural factors shape income and earnings inequality (Harrison and Bluestone 1988; McCall 2001; Nielsen and Alderson 1997).

Structural explanations are appealing, in part, because they unite demographics and labor markets in one sociological model. Such models oriented the sociological debate over poverty in the 1990s (Jencks and Peterson 1991; Small and Newman 2001; O'Connor et al. 2001; Wilson 1993). Tomaskovic-Devey (1991) finds support for a structural model of poverty in a panel of U.S. counties (also Eggers and Massey 1991, 1992). McFate et al.'s (1995) collection illustrates how structural factors are affecting poverty across advanced democracies. Even the welfare state theorist Esping-Andersen (1999) claims that postindustrial structural changes produce novel social risks that welfare states were not built to manage. Such research directs attention to five structural factors: manufacturing employment, agricultural employment, female labor-force participation, the elderly population and children in single-mother families.<sup>2</sup> This study follows research on macro-level variation in inequality (Alderson and Nielsen 2002). Given that, and since readers often consider relative poverty and inequality similar phenomena, this study builds on the literatures on structural factors and both poverty and income inequality.

---

<sup>2</sup> Obviously, I am excluding one important structural factor: immigration. Unfortunately, valid and reliable data on immigration are not consistently available. The OECD provides data on variables like the percent of the population foreign born, but this data are not available before the 1980s and are spotty for many nations. Alderson and Nielsen (2002) and Moller et al. (2003) analyze “net migration” – the difference of population, birth and death estimates in the current and past year. However, it may be problematic that the population, birth and death estimates are actually based themselves on estimates of migration. As well, Moller et al. (2003) find net migration does not significantly affect poverty before taxes and transfers.

## *Manufacturing Employment\**

Bluestone and Harrison (1982) defined deindustrialization as the widespread, systematic, disinvestment in a nation's core manufacturing industries. While many debate its causes (Alderson 1999; Grant and Wallace 1994), Bluestone and Harrison were equally concerned with deindustrialization's consequences. Scholars have shown that deindustrialization contributed to a restructuring of labor relations and increased inequality – “The Great U-Turn” (Bluestone and Harrison 2000; Harrison and Bluestone 1988; Alderson and Nielsen 2002; Gottschalk and Joyce 1995; Gustafson and Johansson 1999; Lorence and Nelson 1993; Nielsen and Alderson 1997). Chevan and Stokes (2000) find that deindustrialization was the largest cause of increased inequality in the U.S. Still, others conclude that the relationship between deindustrialization and inequality remains unclear (McCall 2001; Morris and Western 1999: 637).

The focus on inequality partly overshadows the connection between manufacturing and poverty – one Bluestone and Harrison (1982: 76) recognized. Because manufacturing provides secure, well-paid jobs, the less-skilled poor are especially vulnerable to deindustrialization. Wilson's (1987, 1993, 1996) research on inner-city poverty highlighted the role manufacturing jobs played for African-American men, and how the disappearance of that work disadvantaged poor neighborhoods. Subsequent scholarship suggests that deindustrialization in the U.S. increased poverty in cities, for less-skilled workers and families (Brady and Wallace 2001; Eggers and Massey 1991, 1992; Kasarda 1993; Nelson et al. 1998; Quillian 2003; Tomaskovic-Devey 1991). Nevertheless, some doubt manufacturing's impact (Williams 1993). For example, Jargowsky (1997) argues that deindustrialization did not influence the concentration of poverty in U.S. cities.<sup>3</sup>

---

<sup>3</sup> In his award-winning book, Jargowsky (1997: 122) writes, “All things considered, the early emphasis of researchers on manufacturing may have been misplaced. There is, at best, only modest evidence to support the notion that the shift from manufacturing to services is important to the overall poverty rate of blacks, and almost no direct evidence that it contributes to the growth of poor neighborhoods. . . On the other hand, there is some evidence that sectoral shifts may have had a disproportionate impact on the less-well educated, so the possible impact of deindustrialization on the growth of ghettos and barrios cannot be entirely dismissed.”



## ***Agricultural Employment***

Kuznets (1953) theorized that inequality would decline with development as labor shifted from the more equal agricultural sector to the relatively more unequal modern, urban and industrial sectors. Across developing and developed societies, agricultural employment reduces inequality (Nielsen 1994; Nielsen and Alderson 1995). Recently, however, research has produced differing results (Nielsen and Alderson 1997; Robinson 1984). Alderson and Nielsen (2002) argue that in the postindustrial era, inequality is actually higher in the agricultural sector. Reflecting its traditional social structure, agricultural employment increases inequality. In fact, Alderson and Nielsen (2002) find agricultural employment is the strongest determinant of income inequality.<sup>4</sup>

In his pioneering work, Harrington described the plight of migrant and seasonal farm workers writing, “Perhaps the harshest and most bitter poverty in the United States is to be found in the fields” (1981: 41). Some research examines the connection between agricultural employment and poverty and inequality in the rural U.S. (Billings and Blee 2000; Lassley et al. 1995; Lobao and Meyer 2001; Lobao and Schulman 1991; Tickamyer and Duncan 1990). For example, Duncan (1999) contends that rural U.S. poverty has declined for several decades because of the decay of an exploitative farm labor system. Given this work on inequality, agricultural employment may significantly increase poverty as well.

## ***Female Labor Force Participation***

Some studies conclude that female labor force participation increases inequality (Alderson and Nielsen 2002; Gustafsson and Johansson 1999). These authors suggest that female labor force participation inflates the bottom of the earnings distribution, amplifies the relative advantage of

---

<sup>4</sup> Based on an unbalanced panel analysis of 16 OECD nations, they find that agricultural employment’s standardized coefficient (.88) is twice as large as the next most important variable union density (-.44), more than four times as large as decommodification (-.20), and nearly fourteen times as large as female labor force participation (.064). Manufacturing employment, by contrast, is not even statistically significant in the final models.

high-income households, and indirectly links to rising single motherhood.<sup>5</sup> These conclusions, however, contrast with research on rising inequality in the U.S. Nielsen and Alderson (1997) find that female labor force participation reduced income inequality across U.S. counties in 1980 and 1990 (Cancian et al. 1993). In contrast, others remain skeptical that female labor force participation has more than modest effects (Morris and Western 1999: 630).

Poverty researchers broadly conclude that female labor force participation reduces poverty (Bianchi 1999; Blank 1997; Christopher et al. 2002). Studies variously show that female employment helped women exit welfare and escape poverty (Harris 1996); decreased poverty and inequality for U.S. Latinos (Santiago and Wilder 1991); and reduced child poverty (Eggebeen and Lichter 1991). Therefore, it is plausible that female labor force participation influences comparative historical variation in poverty (Gornick et al. 1998). Given the somewhat conflicted literature, however, the nature of the effect remains unclear.

### ***The Elderly Population***

Several analysts posit the increasing elderly population as a demographic source of inequality (Hedstrom and Ringen 1990; Nielsen and Alderson 1997). O’Rand and Henretta (1999) document the increasingly high inequality within the elderly, and high inequality between the working-age and elderly populations. By contrast, Gustafsson and Johansson (1999) find that the size of the elderly population does not affect comparative historical variation in inequality.

Structuralists have long been concerned with elderly poverty in the U.S. (Harrington 1981; Newman 2003). However, recent debates have been dominated by the perception that the elderly have become much less likely to be officially poor or experience economic hardship – especially in comparison to children (Bianchi 1999; Blank 1997; Mirowsky and Ross 1999; Preston 1984).

---

<sup>5</sup> At the time of Alderson and Nielsen’s (2002) analysis, data were not available on single mother households: “[T]his finding is open to alternative interpretations. For instance, data limitations preclude us from controlling for changes in household structure. Perhaps the effect of female labor force participation has been confounded by its association with the growth of female-headed households” (1281-1282).

Others challenge these claims by critiquing the measurement of official poverty and elderly economic hardship (Brady 2004a; Burtless and Smeeding 2001; Citro and Michael 1995; Hardy and Hazelrigg 1999; Jencks and Torrey 1988). Some scholars highlight the feminization of poverty in late life (O’Rand and Henretta 1999). Many studies show that the elderly, like children, are actually disproportionately vulnerable to poverty (Brady 2004a; Smeeding et al. 2001). Finally, it remains unclear if large elderly populations contribute to poverty once one considers how much the welfare state diminishes poverty over the life course (Esping-Andersen 1999; O’Rand and Henretta 1999).

### ***Children in Single-Mother Families***

Probably the most studied structural cause is single motherhood. Studies show single motherhood contributed to the rise in inequality in the U.S. (Lichter and Eggebeen 1993; Nielsen and Alderson 1997). Most agree that U.S. single mother families are more likely to be poor, and this contributes to trends in poverty (Bianchi 1999; Blank 1997; Cancian and Reed 2001; Eggebeen and Lichter 1993; Lichter et al. 2003; Thomas and Sawhill 2002; Wu and Wolfe 2001). Indeed, single motherhood has always featured prominently in structural accounts (Anderson 1990; Eggers and Massey 1991, 1992; Newman 1998; Small and Newman 2001; Wilson 1987, 1993, 1996). For example, female-headed households increase poverty in U.S. cities and counties (Eggers and Massey 1991, 1992; Tomaskovic-Devey 1991).

Several cross-national studies suggest that single-motherhood contributes to poverty, especially for women and children (Casper et al. 1994; Kamerman 1995; McFate et al. 1995; Rose 1995). Christopher and her colleagues (2002: 219) conclude, “Single mother families have higher poverty rates than other families in all [8] nations except Sweden.” At the same time, however, cross-national variation in single motherhood does not clearly correspond to variation in poverty (Kiernan 2001; Lichter 1997; Moller et al. 2003; Sorensen 1994, 1999). Possibly, single motherhood might not explain poverty, but rather, what explains poverty is how much welfare

states ensure the economic security of single mother families (Christopher et al. 2002; Esping-Andersen 1999; Gustafsson 1995; Kamerman 1995; Lefaucheur 1995; McLanahan and Garfinkel 1995). Further, other structural factors may offset the effect of single motherhood, and studies should control for these to guard against a potentially spurious association.

### **CONCERNS IN EVALUATING STRUCTURAL THEORY**

This study builds on past research in this area. Moreover, this study addresses three limitations of past research. First, I expand the cross-national and historical scope of inquiry. Second, I consider two alternative explanations to structural theory. Third, I scrutinize poverty measurement, and utilize more valid and reliable measures of poverty.

#### ***Cross-National and Historical Scope***

Most research in this area focuses on the U.S. Brady (2003a) finds that only 7.6 percent of quantitative sociological poverty studies examine countries besides the U.S. This starkly contrasts with the extensive cross-national research on inequality, and neglects the substantial cross-national variation in poverty. Research exclusively based on the U.S. is not representative of and might not generalize to other affluent democracies. Smeeding and his colleagues (2001: 162) argue that U.S. poverty research “rests on an inherently parochial foundation, for it is based on the experiences of only one nation.” In order to understand why poverty varies across countries and over time, it is essential to analyze a distribution of countries and time periods. Compared to other nations, the U.S. has had almost no variation in poverty. For several decades, the U.S. has by far the most poverty (Brady 2003a; Smeeding et al. 2001). Further, the U.S. is anomalous since it is the richest country in the world and maintains the least generous welfare state of any industrialized democracy.

Unfortunately, extant research has not systematically examined if structural theory can explain the comparative historical variation in poverty across rich Western democracies.<sup>6</sup>

### *Alternative Causal Explanations*

Within U.S. poverty research and policy, the dominant explanation of poverty remains liberal economics (Brady 2003b; Gordon 1972; O'Connor 2001). Liberal economics contends that poverty mainly depends on economic performance: economic growth, productivity, and unemployment (Ellwood and Summers 1986; Freeman 2001). To reduce poverty, nations should increase economic growth, raise productivity through human capital, and diminish unemployment. Blank (2000: 6, 10) asserts, "A strong macroeconomy matters more than anything else," and "the first and most important lesson for anti-poverty warriors from the 1990s is that sustained economic growth is a wonderful thing."<sup>7</sup> With economic growth, the best anti-poverty strategy is to reduce unemployment and foster job opportunities for the poor (O'Connor 2001: 143; Tobin 1994). Haveman and Schwabish (1999: 18) conclude, "Strong economic growth and high employment may again be the nation's most effective antipoverty policy instrument." Moreover, unemployment is routinely identified as the most important poverty issue in Western Europe (Gallie and Paugam 2000; Hauser et al. 2000). In contrast, structural factors are expected to play only a cursory role in explaining poverty (Williams 1993). Economic growth, productivity, and unemployment are the main determinants of poverty, and structural factors are considered much less significant.

---

<sup>6</sup> Of course, others analyze poverty across nations. However, most macro-level comparisons involve a cross-section of nations at only one point in time (Korpi and Palme 1998; Kenworthy 1999), while micro-level analyses often examine individuals across nations at one or a few time points (Christopher et al. 2002). By contrast, relatively few studies analyze many nations with several time points. Recently, Moller et al. (2003) analyzed poverty among 25-59 year olds in 61 cases across 14 nations (1970-1997). The present study includes 92 observations across 18 nations (1969-2000).

<sup>7</sup> As a highly visible poverty scholar, the 2000 piece is a noteworthy change from Blank's recent arguments. Three years prior, she recognized the impact of structural changes and argued, "Economic growth is not likely to be effective in the near future in reducing poverty" (1997: 221); "Poverty is harder to address through broad-based economic growth policies now than thirty years ago" (p.222); "Changes in the jobs available to less-skilled workers have made those jobs less effective in helping people escape poverty" (p.222); and, "The rising share of single parents among the poor means that employment alone will not be as effective in reducing poverty" (p.222).

Recently, scholars have provided evidence for a political-institutional explanation, where comparative differences in welfare states and Leftist political institutions explain poverty (Brady 2003c, 2005). Variation in poverty is a product of how much states redistribute income, and transfer economic resources to the poor (Jantti and Danziger 2000). Many studies show that when U.S. social policies expanded, official poverty declined (Blank 1997; Burtless and Smeeding 2001; DeFina and Thanawala 2001; Page and Simmons 2000). In a cross-section of rich democracies, welfare state generosity is associated with less poverty (Korpi and Palme 1998; Smeeding et al. 2001; Kenworthy 1999). Extending this work, the welfare state is the main influence on both comparative and historical variation in poverty (Brady 2005; Hanratty and Blank 1992; Moller et al. 2003). This explanation emphasizes that variation in poverty is ultimately due to variation in welfare state generosity and its origins in leftist politics (Brady 2003c). Ultimately, democratic states decide to what extent welfare programs will offset structural factors. It is a political question if egalitarianism is institutionalized regardless of the extent to which people are vulnerable because of demographic or labor market changes.

### ***The Measurement of Poverty***

Past structural accounts mainly focused on official U.S. poverty (Eggers and Massey 1991, 1992; Tomaskovic-Devey 1991). The official measure has well-documented reliability and validity weaknesses that raise questions about this research (Brady 2003a; Citro and Michael 1995; DeFina and Thanawala 2001; O'Connor 2001). Therefore, conclusions based on research with this measure warrant scrutiny. Building on recent advances, Brady (2003a) synthesized five criteria for more valid and reliable measures of poverty: a) measure comparative historical variation effectively; b) be relative rather than absolute; c) conceptualize poverty as social exclusion; d) integrate the depth of poverty and the inequality among the poor; and, e) assess the impact of taxes, transfers and state

benefits. This study adheres to these criteria and I now review the justification for three of the more controversial criteria.

First, international poverty researchers prefer relative measures for industrialized democracies, and are highly skeptical of absolute measures (Brady 2003a; Rainwater and Smeeding 2004; Smeeding et al. 2001). Of course, absolute measures can assess basic well-being, but such measures unrealistically set the line so low that only a tiny population would be defined as poor (Harrington 1981) and neglect that poverty and well-being are distinct phenomena. As Sen (1992: 110) explains, “Poverty is not a matter of low well-being, but the inability to pursue well-being precisely because of the lack of economic means.” Relative measures conceptualize poverty as capability deprivation and social exclusion (Sen 1999; Silver 1994). This is consistent with most structural theorists’ conceptualizations of poverty: Wilson’s (1991) concept of social dislocation; Harrington’s (1981: 11) concern that “the poor are losing their links with the greater world;” and Galbraith’s (1998: 235) notion of falling behind community-standards of decency and acceptability.<sup>8</sup> If poverty is conceptualized consistent with structural theory as capability deprivation and social exclusion, relative measures are more valid and reliable (Atkinson 1987; Brady 2003a; Sen 1999).

Second, the depth of poverty should be incorporated. Much poverty research utilizes simple headcount measures, for example, 50% of the median income (Smeeding et al. 2001; Moller et al. 2003). These justifiably operationalize poverty relatively, usually define household income comprehensively, and effectively describe the percent of the population that is poor. Certainly, it remains valuable to analyze headcounts. However, headcount measures problematically treat all

---

<sup>8</sup> Galbraith (1998: 235) writes, “People are poverty-stricken when their income, even if adequate for survival, falls radically behind that of the community. Then they cannot have what the larger community regards as the minimum necessary for decency; and they cannot wholly escape, therefore, the judgment of the larger community that they are indecent. They are degraded for, in the literal sense, they live outside the grades or categories which the community regards as acceptable.”

poor people as equal regardless of their distance from the threshold (Atkinson 1987; Blank 1997: 139; Myles and Picot 2000; Sen 1976). This may neglect the intensity of poverty and homogenize the poor (Osberg and Xu 2000). Hence, it would be valuable to supplement analyses of headcounts with measures that incorporate the depth of poverty of the average poor household.

Third, this study concentrates on poverty after taxes and transfers (state mediated, SM). Many scholars examine (market generated, MG) poverty before taxes and transfers (Moller et al. 2003); compare MG and SM poverty (Brady 2003b, 2003c; Christopher et al. 2002); and, compute poverty reduction from MG and SM poverty (Moller et al. 2003; Brady 2005; Hicks and Kenworthy 2003). Despite the utility of these measures, there are limitations to MG poverty (see Brady 2005). While MG poverty is useful when examining individual adults, it makes less sense when including the elderly in your sample – since the elderly often have little income before taxes and transfers in many countries. Moreover, if structural factors truly are consequential, they should have an impact even after considering taxes and transfers. After all, no household really exists in a pretax and pretransfer world and taxes and transfers fundamentally shape the income distribution.<sup>9</sup> Some readers might be concerned that structural factors indirectly affect SM poverty through MG poverty. For example, if increasing elderly populations raise MG poverty, and MG poverty increases SM poverty, this would be a nontrivial indirect effect. Others might claim poverty reduction measures are most useful. Crucially, however, MG and SM poverty are simply not empirically associated in any way that suggests potential indirect effects through MG poverty (Brady 2005).<sup>10</sup> Coupled with

---

<sup>9</sup> This study's concentration on SM poverty is partly motivated by its neglect in past studies. Recently, Moller et al. (2003) evaluated how agricultural employment, industrial employment, female labor force participation, and children in single mother families affect poverty among 25-59 year olds. Despite their contributions, they examined poverty before taxes and transfers (market generated, MG) and poverty reduction, and did not analyze SM poverty. Moreover, they include agricultural employment, industrial employment, and female labor force participation as predictors of MG poverty, but those variables are not included in the poverty reduction models. The only structural factor included for poverty reduction was single mother families, and it was not significant.

<sup>10</sup> The bivariate correlation is insignificant, and surprisingly, negative (-.17). Thus, a structural equation model could not produce the example indirect effects. If the elderly population increased MG poverty, this would produce a negative



its greater validity and reliability, the essential cross-national and historical variation occurs in SM poverty. In turn, this study concentrates on SM poverty.

## MODELS, DATA AND MEASURES

To evaluate structural theory, I follow recent research on inequality (Alderson and Nielsen 2002) and poverty (Brady 2003b, 2003c, 2004, 2005). I utilize an unbalanced panel design where the unit of analysis is a country-year. Because of the availability of the dependent variable, cases are unevenly distributed across 18 countries (N's) and 29 years (T's). Due to unobserved time-invariant cross-national heterogeneity, ordinary least squares (OLS) regression is inappropriate (Hsiao 2003). Using STATA, I analyzed models with several techniques. For theoretical and methodological reasons, I present random effects (RE) models. First, the RE model better facilitates estimating the effects of the independent variables on the dependent variables when both cross-national and historical variation are essential (Beck 2001; Beck and Katz 1996; Greene 1990: 495).<sup>11</sup> It is valuable to understand why some nations have more or less poverty, and why poverty increases or decreases over time. In fact, the standard deviations between nations are much larger than within nations for most variables. Further, the number of countries (18 N's) far exceeds the average number of time points (4.33 T's). As a result, the cross-national (between) variation is arguably more important than the historical (within) variation. Second, statistical tests accept RE

---

indirect effect. In a random effects model, MG poverty is only weakly associated with SM poverty. So, variables are unlikely to have an indirect effect through MG poverty, since MG poverty does not really affect SM poverty.

<sup>11</sup> Fixed effects (FE) models allow the independent variables to explain the historical variation within nations while removing the variation between nations. FE models perform OLS after including nation-specific constant terms and subtracting all variables from their nation-specific means (Alderson and Nielsen 1999; Hsiao 2003). Between-effects (BE) models allow the independent variables to explain the between nation variation while removing the variation within nations. BE models pool the values for each variable by country to calculate nation-specific means, and then estimate the variation across those nation-specific means. The RE model is the matrix weighted average of the within- (FE) and between-nations (BE) estimators (Greene 1990: 488; Hsiao 2003). RE models include a country-specific error term in addition to the general error term and, subtract a smaller portion of the nation-specific means. Last, cross-national differences in poverty and the independent variables are not constant over time, but relative stability exists in the cross-national ranking of nations for many of these variables – hence, FE models effectively mask this crucial variation (see Beck and Katz 2001: 492). As Beck and Katz (2001: 487) explain, “Fixed effects are problematic in the presence of [the] temporally stable regressors.” Further, understanding historical trends in poverty is essential as well, and unfortunately, BE models would mask this essential within-nation variation.

models. Recently, methodologists have demonstrated that the Bayesian Information Criterion (BIC') can be used to select between these techniques (Beck and Katz 2001: 492; Teachman et al. 2001). BIC' very strongly prefers RE over FE models. Hausman's (1978) Chi-Square test accepts RE and does not require FE models. Third, according to the econometric literature, in small and unbalanced samples with more N's than T's, RE models perform better than alternatives (Bhargava and Sargan 1983; Greene 1990: 493, 495; Hsiao 2003; Beck 2001). By contrast, the alternatives are often problematic in small and unbalanced samples, especially when the N far exceeds the T's.<sup>12</sup> Finally, I have estimated all models with four alternative techniques: between effects, fixed effects, OLS with panel-corrected standard errors, and OLS with robust clustered errors. These alternatives yield the same conclusions as RE models and are available on request.<sup>13</sup>

With statistical significance and basic fit statistics, the Bayesian Information Criterion Prime (BIC') assists model selection. BIC' selects the more parsimonious model unless model fit is significantly enhanced (Raftery 1995). Specifically, the greater negative value of BIC' is preferred. A BIC' difference of 0-2 offers weak evidence for model selection, 2-6 offers positive evidence, 6-10 offers strong evidence, and greater than 10 offers very strong evidence.

Table provides descriptive statistics and sources for the variables. In the sensitivity analyses, I remove the U.S. In turn, I provide descriptive statistics for 18 nations and the sub-

---

<sup>12</sup> FE models consume a degree of freedom for every N. In this analysis, with 92 cases and 18 N's (average of 5.1 T's), FE models are inefficient (Beck and Katz 2001; Hsiao 2003: 42; Greene 1990). Nickell (1981) also shows that FE models may produce biased estimates when N far exceeds T. Population average (PA) models are problematic in small samples since they are a maximum likelihood estimator, which are designed for much larger samples. Another alternative is to use techniques with heteroscedasticity consistent standard errors, for example OLS with robust clustered errors (Moller et al. 2003). However, Long and Ervin (2000) show that this popular Huber-White Sandwich estimator (HC0) produces incorrect inferences in samples with less than 250 cases. The alternative HC3, which works well even in samples as small as 25, does not allow for the clustering of errors within countries – the principal reason for using HC0 with this kind of data. Finally, Beck (2001) emphasizes that OLS with panel corrected standard errors should not be used when there are less than 10 or 15 T's. Importantly, Beck (2001) draws a sharp distinction between time-series-cross-section data with more T's than N's, and panel data with more N's than T's. Beck (p. 274) explains, "Panel methods [e.g. RE] are designed for and work well with very small T's (three, or perhaps even two)."

<sup>13</sup> Initially, I included these analyses in appendices. Reviewers suggested that I remove the appendices and only make the analyses available upon request.

sample of 17 nations. Data for several variables are proximately from Huber et al. (2004). For this study, Spain and Luxembourg were added. Appendix I displays a correlation matrix.

[ TABLE 1 ABOUT HERE ]

### ***Dependent Variables***

The Luxembourg Income Study (LIS) provides the data on poverty. The LIS provides cross-nationally and historically comparable individual-level, nationally representative data sets. Cumulatively, LIS provides almost standardized data on household income with similar variables, similar samples and equal weights, which allow for population estimates. I utilize two measures of poverty. Both are relative SM measures based on all income and near-income after taxes and transfers (the LIS variable DPI). Using the datasets on 18 rich Western democracies generates an unbalanced sample of 92 cases.<sup>14</sup>

The first of my two measures is the official LIS headcount (H) of the percent of the population that resides in households with less than 50% of the median income. The second measure is an updated version of Brady's (2003a) estimates of Interval (HI) poverty.<sup>15</sup> Interval poverty (also called poverty intensity) is the product of H and I, where I is the average depth of poverty (the difference between the median in the sample and the mean of the poor sub-sample, standardized by the median in the sample). Hence, HI is not a rate, but synthesizes the rate and depth of poverty into one index.

---

<sup>14</sup> This dataset include observations for Australia (4), Austria (4), Belgium (4), Canada (8), Denmark (2), Finland (4), France (5), Germany (8), Ireland (4), Italy (8), Luxembourg (5), Netherlands (5), Norway (5), Spain (2), Sweden (6), Switzerland (2), U.K. (8), U.S. (7). These represent the LIS datasets on these countries in September 2004. A list of the years of the datasets is available at [www.lisproject.org](http://www.lisproject.org).

<sup>15</sup> Brady's equivalence scale standardizes income by household size by weighting the household head as one, additional adults as .5, and children as .3. The LIS equivalence scale standardizes income by the square root of household size.

## ***Structural Variables***

This study evaluates five structural variables measured in the current year.<sup>16</sup> The operationalizations of these variables follow past research (Alderson and Nielsen 2002; Moller et al. 2003). First, I measure Manufacturing Employment as industrial employees as a percentage of the labor force. Second, I include Agricultural Employment as a percentage of the labor force.<sup>17</sup> Third, Female Labor Force Participation is measured as the female labor force as a percent of the female population between 15 and 64 years old. Fourth, the Elderly Population is measured as the percentage of the population that is 65 years old and over.

Fifth, I include Children in Single Mother Families as a percent of the population. The LIS estimates the percent of children in single mother families. I multiplied these estimates by the percentage of the population children.<sup>18</sup> Because this standardization harmonizes this variable's denominator with denominators of the dependent variable and the other structural variables, this measurement has several advantages.<sup>19</sup> To verify that this decision was not producing inaccurate results, I estimated all models while using the LIS estimates instead. The conclusions would be consistent, and my measure has larger and more significant coefficients than the LIS measure in all

---

<sup>16</sup> Some stratification researchers are more interested in changes rather than levels of structural variables. This study follows recent research on inequality that analyzes levels (Alderson and Nielsen 2002). In analyses available upon request, I measured the structural variables as lagged values, moving averages, rates of change, and long-term changes. These alternatives produce consistent conclusions, but with smaller and less significant coefficients. The strongest effects were with the current values.

<sup>17</sup> Alderson and Nielsen (2002) log agricultural employment. In analyses available upon request, I reestimated all models below with this variable logged. Logging this variable does not make a difference in any of the models. The logged variable would never be close to significant in any model.

<sup>18</sup> I calculated the percentage of the population children from OECD data on the number of children and the total population. The OECD data are actually the number of children under 15. This is somewhat problematic since the LIS rates of children in single mother families are based on children under 18. Unfortunately, however, high quality data on the population under 18 are not available. Most likely, the generated measurement error is not very damaging since this variable only excludes 15, 16, and 17 year olds.

<sup>19</sup> First, as I show in Table 2, my measure is very highly associated with the original LIS estimates. Second, as I also show in Table 2, my measure is more strongly correlated with the two poverty dependent variables than the LIS estimates. Third, using the LIS estimates may create greater collinearity problems in the models, since the LIS estimates are more correlated with female labor force participation than my measure ( $r=.7$  vs.  $r=.6$ ).

models. Thus, I chose to proceed with my measure since it may improve upon the LIS estimates and allow the single motherhood variable the best opportunity to explain variation in poverty.

### ***Welfare State Variables***

Following recent research (Brady 2003c, 2005; Huber and Stephens 2001; Moller et al. 2003), the analyses contain two measures of the welfare state measured currently. First, Social Security Transfers as a percent of GDP includes state transfers for sickness, old age pensions, family allowances, unemployment and workers' compensation and other assistance. Second, Public Health Spending as a percent of Total Health Spending summarizes all public spending on healthcare, medicine, and public health including transfers, in-kind benefits and services. These two collectively measure state transfers and services designed to reduce poverty and redistribute income. Brady (2005) shows that these two variables reasonably gauge variation in welfare state generosity and are the most influential welfare state indicators on poverty; and explains the causal mechanisms that account for their effects on poverty.

### ***Economic Performance Variables***

Following Brady (2003b), the analysis includes three measures of economic performance. First, I measure economic growth as the five-year average (t, t-1, t-2, t-3, t-4) of the annual rate of change in gross domestic product (GDP) of purchasing power parity (PPP) dollars. The GDP PPP data offer highly comparable assessments of economic output. In Appendix II, I present alternative economic growth results with different temporal operationalizations and with national currency units (NCU) instead of PPP. These results unequivocally prefer PPP to NCU, and suggest the five-year moving average is a reasonable choice (see also Brady 2003b). Second, I measure productivity as GDP in PPP per civilian employee utilizing comparable data on labor force participation. This

measure, which is lagged one year, proxies the level of economic development and human capital.<sup>20</sup>

Third, I measure unemployment in the current year with standardized unemployment rates that permit cross-national and historical comparison of the percent of the labor force unemployed.

Brady (2003b) has shown that the results of these economic variables are robust if each indicator is included individually or with any combination of the other two, or if the economic variables are included with no other independent variables.

## RESULTS

### *Descriptive Patterns*

Before proceeding to the analyses, I describe the patterns in the dependent variable and structural variables. For the 18 nations in the most recent LIS data, Table 2 displays the two dependent variables, the percent of children in single mother families, and children in single mother families as a percent of the population. The fourth column provides one of the structural variables. The two dependent variables are highly correlated with each other ( $r=.90$ ). My children in single mother families variable is very highly correlated with the percent of children in single mother families ( $r=.96$ ) and is even more strongly correlated with the two poverty measures. Also, the coefficients of variation are comparable across both single motherhood measures (not shown). Hence, my operationalization appears to be justifiable.

[ TABLE 2 ABOUT HERE ]

---

<sup>20</sup> I acknowledge productivity is not a perfect proxy for human capital. Unfortunately, valid and reliable data on educational attainment are simply not available. The OECD's *Education at a Glance* provides measures like the percentage of adults with secondary degrees. Unfortunately, however, these data are not nearly sufficiently available. Second, others use secondary school enrollment instead of attainment, but this might not be a valid and reliable proxy – and it is an insignificant predictor of adult poverty (Moller et al. 2003; also Alderson and Nielsen 2002). Third, the main reason education would reduce poverty is indirectly it would be expected to raise productivity by increasing human capital. So, productivity may proxy the effect of attainment. Finally, extant LIS research provides little evidence that educational attainment explains inequality – if it has any effect, it might increase earnings inequality (Sullivan and Smeeding 1997). The level of economic development can also be measured with GDP per capita. GDP per employee is highly correlated and GDP per capita, and productivity is slightly more correlated with poverty. In analyses available upon request, I substituted GDP per capita for productivity and the conclusions are identical (with or without economic growth in the model).

The U.S. and Australia have the most poverty, while Finland and Luxembourg have the least. Interesting variation in single motherhood exists. In a surprising new development, the U.K. has the highest levels for both measures (21.7 and 4.19). In the mid-1990s, the U.S. still had the most single motherhood, and this was the case in every previous cross-section of LIS data. For the first time, in this most recent LIS data, the U.K. has overtaken the U.S. with the most single motherhood across the affluent democracies. By contrast, Spain (1990) and Italy have the lowest levels of single motherhood by a sizable margin.

On the surface, the correlations between the single motherhood and poverty measures suggest a strong association. Also, since the U.S. has consistently had the most poverty and had one of the highest (until now the highest) levels of single motherhood, this structural variable has commonly been considered a source of variation in poverty. However, the relationship is simply not that clear. The U.K. has more single parenthood, and the Scandinavian countries (Denmark, Finland, Norway and Sweden) all maintain noticeably high rates. But, these countries have considerably less poverty than the U.S. While many countries have very low rates of single motherhood, several of them (e.g. Italy, Spain, Netherlands) have higher poverty than countries with high rates of single motherhood. Though the single motherhood variables are positively correlated with the poverty measures, the relationship is quite ambiguous. Moreover, the bivariate correlation might be a spurious relationship. One must control for other factors in order to assess if single parenthood causes comparative historical variation in poverty.

Figure 1 displays a comparison of historical trends in manufacturing employment. In this and the three figures that follow, I confine the presentation to Germany, Sweden and the U.S. from 1969 to 2000.<sup>21</sup> Figure 1 documents the widespread decline of manufacturing employment.

---

<sup>21</sup> These three provide a reasonable sample of the diversity across the 18 nations. These three include conservative/Christian-Democratic/ corporatist Germany, socialist/Social Democratic Sweden, and the liberal U.S. Also, these three include the largest (U.S.), second largest (Germany), and one of the smaller populations (Sweden). These three provide

Germany declined from nearly 50 percent of its labor force employed in manufacturing to less than 30 percent. Sweden fell from about 40 percent to 23 percent employed in manufacturing. Finally, the U.S. declined from about 33 percent to just over 22 percent employed in manufacturing. Sweden and the U.S. had less manufacturing employment throughout the period, but the more industrialized Germany actually underwent a much more rapid decline. All nations experienced substantial deindustrialization by 2000.

[ FIGURE 1 ABOUT HERE ]

Figure 2 displays the massive decline in agricultural employment in all three nations, which has led to a convergence at very low levels. Germany and Sweden declined at a much more dramatic pace. Germany began with more agricultural employment than Sweden in 1969 (9.0 vs. 8.2), and both have fallen to 2.4 and 2.2 percent. The U.S. had already lost much of its agricultural employment by 1969 when it was only 4.4 of the labor force, but it continued to decline to 2.5 percent in 2000. Agricultural employment is a very small percent of the labor forces of these countries, but its substantial decline suggests a potentially important trend.<sup>22</sup>

[ FIGURE 2 ABOUT HERE ]

Figure 3 documents the substantial rise in female labor force participation in Germany, Sweden and the U.S. Sweden rose from 57.8 percent in 1969 to just above 81 percent in 1990, but has actually fallen to 72.7 percent in 2000. Germany increased consistently from 48 percent to 61.4 percent in 2000. While the U.S. was indistinguishable from Germany (the lowest of the three) at 48.2 percent in 1969, it rose to about 70 percent in 1990, where it has stayed through 2000 (now very close to Sweden). This widespread upsurge was not linear. Sweden's rate declined with the

---

a high number of LIS cases: Germany (8), Sweden (6), and the U.S. (7). In my opinion, including all countries or the central tendency and dispersion would be less illustrative than these figures.

<sup>22</sup> Alderson and Nielsen (2002: 1258) note that agriculture was very recently a large part of many nations' economies: "As late as 1967, the employment share of agriculture was over 10% in Austria, Denmark, France, Germany, Norway, and Sweden and over 20% in Finland, Ireland, Italy and Japan."



broad decline in employment for both sexes in the 1990. Also, Germany and the U.S. seemed to reach a plateau around 1990. There is now much less variation in female labor force participation than there was in the mid-1980s. Still, all nations experienced a fundamental transition.

[ FIGURE 3 ABOUT HERE ]

Finally, Figure 4 shows the substantial growth of the elderly population for all three nations. Sweden increased from 13.5 percent in 1969 to 17.7 in 1987 and actually declined slightly to 17.3 in 2000. The U.S. increased from 9.7 percent to a peak of 12.7 percent in 1995 and has since remained stable. Germany's elderly population grew from 13 percent in 1969 to 16.45 percent in 2000. Notably, the elderly remain a minority of each nation's populations and their size has remained relatively stable since about 1990. But, the aging of these populations does present a challenge for their welfare states.

### ***Models of Poverty***

In Table 3, the first two columns display LIS Headcount (H) poverty and the second two display Interval (HI) poverty. For both dependent variables, I primarily present a full model of the five structural variables, the two welfare state variables, and the three economic variables. Secondly, I only include the structural variables. The second model tests if the effects of the structural variables are robust to the other variables in the model. Brady (2003b) has shown that the results for the economic variables are robust with no other variables in the models. Since this paper focuses on evaluating structural theory, I concentrate on testing the robustness of the structural variables. In results available upon request, I analyzed each structural variable individually (with and without the other variables) and the conclusions are consistent.<sup>23</sup>

[ TABLE 3 ABOUT HERE ]

---

<sup>23</sup> Individually with the welfare state and economic variables, the structural variables would have the following t-scores for H and HI: manufacturing employment (-2.48, -1.11), agricultural employment (-.46, -1.03), female labor force participation (.83, .28), elderly population (1.46, .57), and children in single mother families (2.91, 1.80).

In the first model for H poverty, four structural variables have significant effects: manufacturing employment, female labor force participation, elderly population, and children in single mother families. Agricultural employment is not significant. For a standard deviation decline in manufacturing employment, H poverty is expected to increase by .29 standard deviations, holding all other variables constant at their means. For a standard deviation increase in female labor force participation, H poverty should decline by .33 standard deviations. For a standard deviation increase in the elderly population, H poverty is expected to increase by .28 standard deviations. For a standard deviation increase in children in single mother families, H poverty should increase by .26 standard deviations. Given historical trends, the decline of manufacturing, the rise of the elderly population and the growth of children in single mother families have been partially offset by the rise of female labor force participation. But, since the collective poverty increasing effects of the first three is larger than the effect of female labor force participation, the net effect of historical changes in these structural variables has been to increase H poverty.

The structural variables have smaller effects than the welfare state variables, but much larger effects than the economic variables. Both welfare state variables are significant. Only economic growth has a significant effect, while productivity and unemployment are insignificant.<sup>24</sup> The two welfare state variables have the largest effects. With a standard deviation increase in social security transfers, H poverty is expected to decline by .38 standard deviations. For a standard deviation in public health spending, H poverty is expected to decline by .44 standard deviations. By contrast, economic growth has the smallest effect of any of the significant variables. A standard deviation increase in economic growth should decrease H poverty by .13 standard deviations.

---

<sup>24</sup> The three economic variables are not jointly significant in a Wald Chi-Square test ( $p=.14$ ). Also, productivity and unemployment are not jointly significant ( $p=.65$ ). Productivity and unemployment would not be significant if the other or economic growth was dropped from the first model. In fact, productivity and unemployment are not significant in a model with no other independent variables (Brady 2003b).

In the second models, only two of the structural variables remain statistically significant. Manufacturing employment is significant at the .10 level, and the size of the coefficient declines by more than a third. Children in single mother families has a more significant and larger effect. Since agricultural employment does not affect H poverty in either model, it simply has not effect on H poverty.<sup>25</sup> The second models show that the welfare state and economic controls do not obscure the effect of the structural variables. In fact, only children in single mother families has a larger effect, while female labor force participation and elderly population become insignificant. Since it is most reasonable to control for the welfare state and economic variables, it is reasonable to conclude that the first models accurately represent the effects of the structural variables.

In the first model for HI poverty, none of the structural variables is significant (column 3). Three variables have t-scores larger than one, and female labor force participation is near significant ( $t=-1.6$ ). But, the structural variables do not have significant effects.<sup>26</sup> Since agricultural employment – unlike the other structural variables – failed to affect H poverty, this study provides no evidence that it influences poverty. Also, none of the structural variables is significant in the next model without the welfare state and economic variables. Children in single mother families rises to near significance, while the other structural variables attenuate. As mentioned above (see fn. 28), children in single mother families would have a significant effect ( $t=1.8$ ) in a model with the welfare state and economic variables but no other structural variables. But, this effect is not robustly significant if one adds manufacturing or agricultural employment to the model.<sup>27</sup> Overall, thus, the structural variables simply do not significantly affect HI poverty.<sup>28</sup>

---

<sup>25</sup> In a model with no other independent variables, agricultural employment does not significantly affect LIS H poverty ( $t=-1.21$ , overall R-squared=.0005).

<sup>26</sup> The structural variables are not jointly significant in a Wald chi-square ( $p=.38$ ). If year is added to the model, all of the structural variables remain significant.

<sup>27</sup> In general, the inclusion of manufacturing employment attenuates the effect of children in single mother families. This finding suggests that manufacturing's typically well-paid and stable male employment may influence marriage and single motherhood (Hughes 2003; Wilson 1987). The two are negatively correlated ( $r=-.40$ ). In a RE model predicting children in single mother families including all of the independent variables, manufacturing employment and public

The welfare state variables both significantly reduce HI poverty, while economic growth remains the only significant economic variable.<sup>29</sup> As with H poverty, the two welfare state variables have the largest effects. For a standard deviation increase in social security transfers, HI poverty is expected to decline by .22 standard deviations. With a standard deviation increase in public health spending, HI poverty should decline by .59 standard deviations. While social security transfers had only a slightly smaller effect than public health spending for H, public health spending has a much larger effect for HI (Brady 2005). Economic growth has a larger effect than the insignificant structural variables would have if significant, but a smaller effect than the welfare state variables. For a standard deviation increase in economic growth, SM HI poverty is expected to decline by .18 standard deviations.

Looking across both dependent variables, it is noteworthy that four of the structural variables affect H poverty but none affect HI poverty. There are three plausible interpretations for this inconsistency. First, structural variables may be more important to dichotomously differentiating who is poor from non-poor as H measures simply what percent is below the threshold. By contrast, structural variables may be less important when a poverty measure incorporates the depth of poverty. While changes in these structural variables may lift households above the threshold, they might not reduce the depth of poverty among those that remain poor. Possibly, structural variables lift people out of poverty who are barely below the poverty threshold, but do little for those more deeply in poverty. Second, H poverty might be measured with less error than HI poverty. There are certainly concerns with the quality of household income data at the low

---

health spending are the only significant effects, and both are negative. These findings are consistent if a time trend is added to the model as well.

<sup>28</sup> In models of HI poverty with no other independent variables, manufacturing employment ( $t=1.47$ ), agricultural employment ( $t=-.64$ ), female labor force participation ( $t=.50$ ), and elderly population ( $t=.20$ ) would not have significant effects. Only children in single mother families ( $t=2.1$ ) would be significant.

<sup>29</sup> The three economic variables are jointly significant in a Wald Chi-Square test ( $p=.04$ ), but this is solely due to economic growth. Productivity and unemployment are not jointly significant ( $p=.34$ ). Consistent with LIS H (fn. 29), productivity and unemployment are not significant if the other or economic growth was dropped. Also, productivity and unemployment are not significant in a model with no other independent variables (Brady 2003b).

end of the distribution. It may be possible that by trying to estimate the depth of poverty of low-income households, one is introducing measurement error than does not exist in H poverty. Third, a reasonable conclusion is that the evidence fails to show that the effects of structural variables are robust to an alternative dependent variable. While the welfare state variables and economic growth clearly have robust effects on both dependent variables, the evidence is not as strong for the structural variables.

### ***Counterfactual Simulations***

In Table 4, I illustrate the possible influence of structural factors, the welfare state and economic performance on U.S. poverty in 2000. This simulation provides a substantive comparison of the influence of the three sets of causes of poverty. I display the actual levels of poverty (with LIS H and HI) in the U.S. in 2000. Then, I estimate what the level of poverty would be if each of the significant variables was changed one standard deviation in the direction of poverty reduction. After doing so, I sum the changes for the groups of causes to compare their relative influence.

[TABLE 4 ABOUT HERE]

In 2000, the U.S. had the greatest H poverty among the affluent democracies (17.0). If manufacturing employment increased one standard deviation to 27.8, H poverty would be 90.2 percent of its actual level. This increased industrialization would place the U.S. among the most industrialized in the panel presently, similar to the U.S. in 1976, and near the mean for the entire sample. If female labor force participation increased one standard deviation to 79.7 percent, the U.S. would have one of the highest rates ever. In turn, H poverty would be 79.7 percent of its actual level. If the elderly population was one standard deviation smaller, it would be 10.3 percent of the population, a level close to the U.S. in the early 1970s. In this case, H poverty would still be 96.5 percent of its actual level. If children in single mother families declined one standard deviation, they would be 3.15 percent of the population – still above the sample mean, near Sweden in 2000,

and lower than at any point in the U.S. for which data exists (1974-2000). If single parenthood declined this greatly, H poverty would still be about 98.5 percent of its actual level. Among the structural variables, the biggest changes to U.S. poverty could occur with increased manufacturing employment and female labor force participation. By contrast, poverty would be very similar if the elderly population and/or single motherhood changed. Collectively, if all four significant structural variables moved in a poverty reducing direction, poverty would be 64.8 percent of its actual level – similar to Canada in 2000. Of course, all structural variables simultaneously changing towards poverty reduction is unlikely since the most powerful of these, female labor force participation, probably has increased in tandem with deindustrialization and the rise of single motherhood.<sup>30</sup>

Table 4 also presents simulations for the welfare state and economic growth. If social security transfers increased one standard deviation to 16.3, the U.S. would be slightly above the sample mean. With this change, H poverty would be 90.5 percent of its actual level. If public health spending increased one standard deviation to 56.5, it would still be nearly two standard deviations below the sample mean and similar to Switzerland, the country with the second lowest levels of public health spending. Even with these relatively low levels, H poverty would decline to 68 percent of its actual level. If the five-year average of economic growth increased one standard deviation, it would have been an extremely high 6 percent. This would be more than a standard deviation above the sample mean, and higher than at any time for the U.S. since 1966. With this extremely high growth, H poverty would still be 97.9 percent of its actual level.

Comparing the collective influence of the four significant structural variables, the welfare state and economic performance provides a greater understanding of these sources of poverty.

Together, the structural variables could have a more powerful influence than economic growth, but

---

<sup>30</sup> Appendix I shows that female labor force participation is moderately negatively correlated with manufacturing employment and strongly positively correlated with children in single mother families. In a RE model, manufacturing employment significantly reduces ( $t=-7.0$ ) female labor force participation, but children in single mother families does not have a significant effect ( $n=92$ ; with or without the other independent variables in the model).

a lesser influence than the welfare state. Hence, the U.S. would receive the greatest reduction in poverty by emphasizing first, an expanded welfare state; second, poverty reducing structural change; and third, increased economic growth. If all four structural variables changed in a poverty reducing direction (a scenario I acknowledge above as possibly self-contradictory), H poverty would decline 35.2 percent. If both welfare state variables were boosted one standard deviation, H poverty would decline 41.5 percent. The larger effect of the welfare state is even more noteworthy considering that we are comparing two welfare state variables with four structural variables. If economic growth increased one standard deviation, H poverty would decline 2.2 percent. Put another way, if all structural variables changed to reduce poverty, the U.S. would have H poverty levels below four countries and near Canada in 2000. If both welfare state variables increased, the U.S. would have H poverty levels below five countries and between Spain and Switzerland. With greater economic growth, the U.S. would still have the most H poverty, more than 2 percent higher than Australia, the next highest country.

Table 4 also displays this counterfactual simulation for HI poverty. This comparison is less relevant to evaluating structural theory since none of the structural variables significantly affects HI poverty. Thus, this simulation only compares the welfare state variables with economic growth. As with H poverty, the welfare state variables are far more powerful than economic growth. If both welfare state variables increased one standard deviation, HI poverty would be 52 percent of its actual level. If economic growth increased one standard deviation, HI poverty would be 97.2 percent of its actual level. Thus, increasing the welfare state would almost cut U.S. HI poverty in half, while increasing economic growth would produce a small reduction. Ultimately, both simulations in Table 4 strongly suggest that the best means to reduce poverty in the U.S. would be to expand the welfare state. Countries accomplished low levels of poverty principally by having a

generous welfare state, and secondly, because of structural factors. By contrast, economic growth plays a very small role in explaining poverty.

Table 5 provides simulations for Germany and Sweden in 2000. Because these two have lower levels of poverty, I contrast them with the U.S. by simulating the consequences if structural, welfare state and economic variables all changed in a poverty *increasing* direction. If manufacturing employment declined one standard deviation, Germany's H would increase 13% and Sweden's H would increase 17%. If female labor force participation declined one standard deviation, H would increase 15% in Germany and 19% in Sweden. If the elderly population increased similarly, H would increase 12% in Germany and 16% in Sweden. If children in single mother families increased similarly, H would increase 11% in Germany and 15% in Sweden.

[TABLE 5 ABOUT HERE]

Collectively, if all these structural variables changed in a poverty increasing direction, Germany's H would 12.6 (52% higher) and Sweden's H would be 10.78 (66% higher). Thus, even with these changes, Germany and Sweden's H poverty would still be far below the U.S. value of 17.0. If the two welfare state variables declined one standard deviation, Germany's H would be 11.3 (36% higher) and Sweden's H would be 9.5 (47% higher). If economic growth declined one standard deviation, H poverty would only increase 6 or 7% and HI poverty would only increase 8%. Therefore, structural variables would exert a greater influence on H poverty in these countries than in the U.S., and actually would have a larger impact than the welfare state variables. As with the U.S., economic growth would be least consequential. As mentioned above, it is unlikely that all four structural variables would change in a poverty-increasing direction, and one should be cautious about comparing two welfare state variables with four structural variables. Moreover, reducing the welfare state variables one standard deviation would result a 33% or 37% increase in HI poverty. By contrast, the structural variables do not significantly influence HI poverty.



## *Sensitivity Analyses*

Finally, in Table 6, I evaluate the dynamics created with the inclusion of the U.S. in the sample. Even though the RE models control for cross-national differences, it is possible that the results rested on the anomalous U.S. cases. The U.S. clearly has the most poverty, the most single motherhood, the least generous welfare state, and recently has experienced strong economic performance. Building on the primary models in Table 3, I first include a dummy control variable for the U.S. cases and second replicate the analyses after dropping the U.S. cases.

[ TABLE 6 ABOUT HERE ]

Table 6 is broadly consistent with Table 3, though there are some departures. While including a dummy for U.S. cases, three structural variables significantly increase H poverty. After controlling for the idiosyncrasies of the U.S., children in single mother families is not significant. The coefficient is slightly more than a fourth smaller than in Table 3, and the t-score is only near significant. To a certain extent, children in single mother families does not appear to affect H poverty after controlling for the unique characteristics of the U.S. cases.<sup>31</sup> The two welfare state variables and economic growth continue to be significant, while agricultural employment, productivity and unemployment remain insignificant. Still, however, BIC' very strongly prefers the primary H poverty model in Table 3 over this model with the U.S. dummy variable.

In the second model of Table 6, I drop the U.S. cases. As with the results in Table 3, four structural variables, the two welfare state variables, and economic growth significantly affect H poverty. Unlike in the first model, children in single mother families has a significant effect. Thus, after dropping the U.S. cases, children in single mother families does help explain variation in H

---

<sup>31</sup> Similarly, children in single mother families does not have a significant effect on H poverty in fixed effect (FE) models (available upon request). Controlling for time invariant cross-national characteristics with FE models, the structural variables would have the following t-scores: manufacturing employment (-3.1), agricultural employment (.35), female labor force participation (-2.6), elderly population (2.1), and children in single mother families (.19). Since the FE models contain a set of national dummy variables and difference all variables from their national means, FE models isolate the within-nation (over time) effect of structural variables.

poverty among the remaining countries. More importantly, however, this model shows that the results of Table 3 hold regardless of whether the U.S. cases are in the sample.

In the next two columns in Table 6, I examine HI poverty. As with Table 3, four of the structural variables, productivity and unemployment are insignificant, while the two welfare state variables and economic growth significantly reduce HI poverty. The one departure when including a dummy for the U.S. cases or dropping the U.S. cases is that female labor force participation is significantly negative at the .10 level. This result suggests that after controlling for the unique characteristics of the U.S. and in the non-U.S. countries, increased female labor force participation has contributed to reduced HI poverty. Nevertheless, BIC' very strongly prefers the primary model in Table 3 over either of these models of HI poverty in Table 6.

## **DISCUSSION**

Structural theory has been one of the most influential explanations of poverty in the social sciences, and probably the most popular explanation within sociology. This study evaluates structural theory by examining how five structural factors affect poverty in 18 rich Western democracies. To this author's knowledge, this is the only study to assess the impact of these five structural factors on poverty after taxes and transfers in a panel of affluent democracies. This study is also unique because it substantially expands the comparative and historical scope of inquiry, compares structural theory with two alternative theoretical explanations, and considers a second measure of poverty that incorporates the depth of poverty. In this section, I review the evidence for each structural variable, compare structural theory with liberal economic and political-institutional explanations, and suggest future research.

First, manufacturing employment significantly reduces H poverty but is insignificant for HI poverty. The deindustrialization of affluent democracies has contributed to comparative historical variation in poverty. The lower levels of manufacturing employment in the U.S. partly account for

the particularly high levels of H poverty in the U.S. Bluestone and Harrison's (1982) concern with the distributional consequences of deindustrialization, one recognized by Wilson (1987, 1996), warrants the continuing attention of poverty researchers. At the same time, however, since manufacturing employment is insignificant for HI poverty, the evidence for its impact is less robust.

Second, agricultural employment does not significantly affect either dependent variable. There is no evidence that poverty is shaped by levels of agricultural employment in affluent democracies. This non-finding shows how relative poverty is not simply the same phenomena as income inequality. While Alderson and Nielsen (2002) found that agricultural employment was the most important determinant of inequality in a similar sample, it simply has no effect on poverty. Agricultural employment is a very small part of the labor force in all countries by the end of the period. Plausibly, it is too marginal a sector to really influence variation in poverty.

Third, female labor force participation significantly reduces H poverty but is insignificant for HI poverty in Table 3. However, if one controls for the U.S. cases, female labor force participation significantly affects HI poverty. When controlling for the welfare state and economic variables, this variable has the largest impact of the structural variables. The rise in female labor force participation has partially offset the poverty augmenting consequences of other structural changes. Indeed, the U.S. would have much greater levels of poverty without its moderately high levels of female labor force participation. Again, given its insignificance for HI poverty in Table 3, the evidence for its effect on poverty is not entirely robust.

Fourth, the elderly population significantly increases H poverty, but is insignificant for HI poverty. The elderly are more vulnerable to being poor than working-age adults in affluent Western democracies (Brady 2004a). As the elderly grow as a proportion of the population, H poverty rises. Countries with larger elderly populations, holding all other variables constant, tend to have more H

poverty. Still, the U.S. would have only slightly less poverty if the elderly population was one standard deviation less. Like the other structural factors, this variable is not robust to HI poverty.

Fifth, children in single mother families significantly increases H poverty, but is only near significant for HI poverty.<sup>32</sup> Single mother families are more likely to be poor in most countries (Christopher et al. 2002), and countries with more children in single mother families tend to have more poverty. Of the significant structural factors, the effect of children in single mother families is the smallest for H poverty. The U.S. would experience very little change in its H poverty if children in single mother families were a standard deviation less. As well, children in single mother families probably does not account for historical variation in H poverty since it is insignificant with a dummy to control for the U.S. or in FE models (see fn. 36). The less robust, smaller effects of children in single mother families are surprising since it has probably received the most attention among the structural variables. The conclusion that single motherhood is less relevant than other structural factors parallels Chevan and Stokes's (2000) finding that deindustrialization was more important than changes in family structure to the rise in income inequality in the U.S.

Despite the importance of structural factors, the welfare state has a larger impact on poverty.<sup>33</sup> Also, more robust evidence exists of the welfare state's impact since it significantly influences both H and HI poverty. The two welfare state variables consistently have the largest effects in the models. If the U.S. increased the two welfare state variables by a standard deviation, H poverty would decline by a larger margin than if structural variables underwent a similar change. In fact, HI poverty would be nearly cut in half. In Germany and Sweden, a standard deviation

---

<sup>32</sup> In Moller et al.'s (2003) analysis of poverty reduction (which is correlated with SM poverty), the LIS measure of the percent of children in single mother families was the only structural factor included. They found it was insignificant. Their finding could be due to the different operationalization of children in single mother families or because their dependent variable was H poverty among 25-59 year olds. Also, the larger sample in this study, and the resulting greater degrees of freedom, may be responsible.

<sup>33</sup> The findings on the welfare state further illustrate how the causes of relative poverty are different from the causes of income inequality. Past studies conclude that the social security transfers has an insignificant (Gustafsson and Johansson 1999) decommodification has a small effect on inequality (Alderson and Nielsen 2002).

change in the structural variables would result in greater H poverty than a standard deviation decline in the welfare state variables. But, since the structural variables are insignificant for HI poverty, a welfare state decline would be far more consequential for HI poverty. Ultimately, the standardized coefficients in Table 3 show that the welfare state is the primary causal influence on comparative historical variation in poverty.

Hence, this study ultimately illustrates the limitations of structural theory. Since the welfare state has the most powerful effects, structural theory should be more of a supplementary explanation. The contrast between structural and political-institutional explanations boils down to a question of causal primacy. Earlier, I explained structural theory emphasizes that as the population is composed of more people in vulnerable demographic or labor market circumstances, the more poverty results. Sociologists tend to concentrate on these labor market and demographic factors as the main pressures on a nation's poverty levels. This study and most political-institutional accounts suggest that concentration is misplaced. How much welfare states institutionalize egalitarianism and protect citizens against economic insecurity – including insecurity resulting from vulnerable demographic and labor market circumstances – is more important than simply how many people are vulnerable. It is true that structural factors (e.g. deindustrialization) are often causes of variation in welfare states. Nevertheless, the welfare state is fundamentally a political outcome. As a result, poverty is a political outcome as well.

Consistent with past research (Brady 2003b), economic performance has only a minor effect on poverty. Economic growth significantly reduces poverty, while unemployment and productivity are insignificant. For H poverty, economic growth has a smaller influence than the significant structural variables. For HI poverty, economic growth's effects are larger since none of the structural variables significantly affects HI poverty. Ultimately, however, the welfare state has much larger effects than economic growth.

Given its contributions and limitations, future research should evaluate this study's conclusions with analyses of poverty across demographic groups. It would be valuable to examine if this study's prioritization of causes is consistent across children, the elderly, women and men (see e.g. Brady 2004a). In the event that data allow for valid and reliable cross-national comparisons, research should examine these sources of poverty for racial/ethnic minorities and immigrants. Historically, structural explanations have been animated by a concern with the plight of inner-city African-Americans, immigrants and other ethnic minorities (O'Connor et al. 2001). A complete evaluation of structural theory would require a serious consideration of ethnic stratification.

These results illustrate some limitations of contemporary U.S. poverty research and policy. Unfortunately, this area overwhelmingly concentrates on the U.S. case. Probably partly as a result, U.S. poverty debates have focused on economic growth and single motherhood above any other sources of poverty (O'Connor 2001). This study suggests that U.S. poverty research and policy would gain much more by focusing on other structural factors, particularly manufacturing employment, female labor force participation, and the elderly population. More importantly, the welfare state is far more crucial than economic growth and even these structural factors. Without a change in the focus of U.S. poverty policy and research, the U.S. will most likely continue to have the most poverty of any of the rich Western democracies.

## REFERENCES

- Alderson, Arthur S. 1999. "Explaining Deindustrialization: Globalization, Failure, or Success?" *American Sociological Review* 64: 701-721.
- Alderson, Arthur S. and Francois Nielsen. 2002. "Globalization and the Great U-Turn." *American Journal of Sociology* 107: 1244-1299.
- \_\_\_\_\_. 1999. "Income Inequality, Development and Dualism: A Reconsideration." *American Sociological Review* 64: 606-631.
- Anderson, Elijah. 1990. *Streetwise* Chicago: University of Chicago Press.
- Atkinson, Anthony B. 1987. "On the Measurement of Poverty." *Econometrica* 55: 749-764.
- Beck, Nathaniel. 2001. "Time Series-Cross Section Data: What Have We Learned in the Past Few Years." *Annual Review of Political Science* 4: 271-293.
- Beck, Nathaniel and Jonathan N. Katz. 2001. "Throwing Out the Baby with the Bath Water." *International Organization* 55: 487-495.
- \_\_\_\_\_. 1996. "Nuisance Over Substance." *Political Analysis* 6: 1-36.
- Bhargava, Alok and J.D. Sargan. 1983. "Estimating Dynamic Random Effects Models from Panel Data Covering Short Time Periods." *Econometrica* 51: 1635-1660.
- Bianchi, Suzanne M. 1999. "Feminization and Juvenilization of Poverty: Trends, Relative Risks, Causes, and Consequences." *Annual Review of Sociology* 25: 307-333.
- Billings, Dwight B. and Kathleen Blee. 2000. *The Road to Poverty* New York: Cambridge University Press.
- Blank, Rebecca M. 2000. "Fighting Poverty: Lessons From Recent U.S. History." *Journal of Economic Perspectives* 14: 3-19.
- \_\_\_\_\_. 1997. *It Takes a Nation* Princeton, NJ: Princeton University Press.
- Bluestone, Barry and Bennett Harrison. 2000. *Growing Prosperity: The Battle for Growth With Equity in the 21<sup>st</sup> Century* New York: Houghton Mifflin.
- \_\_\_\_\_. 1982. *The Deindustrialization of America* New York, NY: Basic Books.
- Brady, David. 2004a. "Reconsidering the Divergence Between Elderly, Child and Overall Poverty." *Research on Aging* 26(5): 487-510.
- \_\_\_\_\_. 2005. "The Welfare State and Relative Poverty in Rich Western Democracies, 1967-1997." Forthcoming in *Social Forces*
- \_\_\_\_\_. 2003a. "Rethinking the Sociological Measurement of Poverty." *Social Forces* 81: 715-752.
- \_\_\_\_\_. 2003b. "The Poverty of Liberal Economics." *Socio-Economic Review* 1: 369-409.
- \_\_\_\_\_. 2003c. "The Politics of Poverty: Left Political Institutions, the Welfare State and Poverty." *Social Forces* 82: 557-588.
- Brady, David and Michael Wallace. 2001. "Deindustrialization and Poverty: Manufacturing Decline and AFDC Reciprocity in Lake County, Indiana, 1964-1993." *Sociological Forum* 21 (2): 321-358.
- Burtless, Gary and Timothy M. Smeeding. 2001. "The Level, Trend, and Composition of Poverty." Pp. 27-68 in *Understanding Poverty*, edited by S. Danziger and R. Haveman. New York and Cambridge, MA.: Russell Sage Foundation and Harvard University Press.
- Cancian, Maria, Sheldon Danziger, and Peter Gottschalk. 1993. "Working Wives and Family Income Inequality Among Married Couples." Pp. 195-221 in *Uneven Tides*, edited by S. Danziger and P. Gottschalk. New York: Russell Sage Foundation.
- Cancian, Maria and Deborah Reed. 2001. "Changes in Family Structure." Pp. 69-96 in *Understanding Poverty*, edited by S. Danziger and R. Haveman. New York and Cambridge, MA.: Russell Sage Foundation and Harvard University Press.

- Casper, Lynne M., Sara S. McLanahan and Irwin Garfinkel. 1994. "The Gender-Poverty Gap: What We Can Learn From Other Countries." *American Sociological Review* 59:594-605.
- Chevan, Albert and Randall Stokes. 2000. "Growth in Family Income Inequality, 1970-1990: Industrial Restructuring and Demographic Change." *Demography* 37: 365-380.
- Christopher, Karen, Paula England, Timothy M. Smeeding, and Katherine Ross. 2002. "The Gender Gap in Poverty in Modern Nations: Single Motherhood, the Market, and the State." *Sociological Perspectives* 45: 219-242.
- Citro, Constance, and Robert T. Michael. 1995. *Measuring Poverty: A New Approach* Washington, DC: National Academy Press.
- Clark, Kenneth B. 1965. *Dark Ghetto: Dilemmas of Social Power* New York: Harper and Row.
- DeFina, Robert H. and Kishor Thanawala. 2001. "The Impact of Taxes and Transfers on Alternative Poverty Indexes." *Review of Social Economy* 59: 395-416.
- Duncan, Cynthia M. 1999. *Worlds Apart: Why Poverty Persists in Rural America* New Haven: Yale University Press.
- Eggebeen, David J., and Daniel T. Lichter. 1991. "Race, Family Structure, and Changing Poverty Among American Children." *American Sociological Review* 56: 801-817.
- Eggers, Mitchell L., and Douglas S. Massey. 1992. "A Longitudinal Analysis of Urban Poverty: Blacks in U.S. Metropolitan Areas Between 1970 and 1980." *Social Science Research* 21: 175-203.
- \_\_\_\_\_. 1991. "The Structural Determinants of Urban Poverty: A Comparison of Whites, Blacks, and Hispanics." *Social Science Research* 20: 217-255.
- Ellwood, David T., and Lawrence Summers. 1986. "Poverty in America: Is Welfare the Answer or the Problem." Pp. 78-105 in *Fighting Poverty: What Works and What Doesn't*, edited by Sheldon Danziger and Daniel Weinberg. Cambridge, MA.: Harvard University Press.
- Esping-Andersen, Gosta. 1999. *Social Foundations of Postindustrial Economies* New York: Oxford University Press.
- Freeman, Richard B. 2001. "The Rising Tide Lifts..." Pp. 97-126 in *Understanding Poverty*, edited by S. Danziger and R. Haveman. New York and Cambridge, MA.: Russell Sage Foundation and Harvard University Press.
- Galbraith, John Kenneth. 1998 [1958]. *The Affluent Society* New York: Mariner Books.
- Gallie, Duncan and Serge Paugam. 2000. *Welfare Regimes and the Experience of Unemployment in Europe* New York: Oxford University Press.
- Gordon, David M. 1972. *Theories of Poverty and Underemployment: Orthodox, Radical, and Dual Labor Market Perspectives* Lexington, MA: Lexington Books.
- Gordon, David M., Richard Edwards, and Michael Reich. 1982. *Segmented Work, Divided Workers: The Historical Transformation of Labor in the United States*. New York, NY: Cambridge University Press.
- Gornick, Janet C., Marcia K. Meyers, and Katherin E. Ross. 1998. "Public Policies and the Employment of Mothers: A Cross-National Study." *Social Science Quarterly* 79: 35-54.
- Gottschalk, Peter and Mary Joyce. 1995. "The Impact of Technological Change, Deindustrialization, and Internationalization of Trade on Earnings Inequality: An International Perspective." Pp. 197-228 in *Poverty, Inequality, and the Future of Social Policy*, edited by K. McFate, R. Lawson, and W.J. Wilson. New York: Russell Sage Foundation.
- Grant, Don Sherman II, and Michael Wallace. 1994. "The Political Economy of Manufacturing Growth and Decline Across the American States, 1970-1985." *Social Forces* 73(1):33-63.
- Greene, William H. 1990. *Econometric Analysis* New York: Macmillan.



- Gustafsson, Siv. 1995. "Single Mothers in Sweden." Pp. 291-326 in *Poverty, Inequality and the Future of Social Policy*, edited by K. McFate, R. Lawson, and W.J. Wilson. New York: Russell Sage Foundation.
- Gustafsson, Bjorn and Mats Johansson. 1999. "In Search of Smoking Guns: What Makes Income Inequality Vary Over Time in Different Countries?" *American Sociological Review* 64: 585-605.
- Hanratty, Maria J. and Rebecca M. Blank. 1992. "Down and Out in North America: Recent Trends in Poverty Rates in the United States and Canada." *The Quarterly Journal of Economics* 107: 233-254.
- Hardy, Melissa A., and Lawrence E. Hazelrig. 1999. "Fueling the Politics of Age: On Economic Hardship Across the Life Course." *American Sociological Review* 64: 570-576.
- Harrington, Michael. 1981 [1962]. *The Other America* NY: Penguin.
- Harris, Kathleen Mullan. 1996. "Life After Welfare: Women, Work and Repeat Dependency." *American Sociological Review* 61: 407-426.
- Harrison, Bennett, and Barry Bluestone. 1988. *The Great U-Turn: Corporate Restructuring and the Polarizing of America* New York, NY: Basic Books.
- Hauser, Richard and Brian Nolan with Konstanze Morsdorf and Wolfgang Strengmann-Kuhn. 2000. "Unemployment and Poverty: Change Over Time." Pp. 25-46 in *Welfare Regimes and The Experience of Unemployment in Europe*, edited by D. Gallie and S. Paugam. New York: Oxford University Press.
- Hausman, J.A. 1978. "Specification Tests in Econometrics." *Econometrica* 46: 1251-1271.
- Haveman, Robert and Jonathan Schwabish. 1999. "Economic Growth and Poverty: A Return to Normalcy?" *Focus* 20: 1-7.
- Hedstrom, Peter and Stein Ringen. 1990. "Age and Income in Contemporary Society." Pp. 77-104 in T.M. Smeeding, M. O'Higgins, and L. Rainwater (eds.), *Poverty, Inequality and Income Distribution in Comparative Perspective* Washington, D.C.: The Urban Institute Press.
- Hicks, Alexander and Lane Kenworthy. 2003. "Varieties of Welfare Capitalism." *Socio-Economic Review* 1: 27-61.
- Hsiao, Cheng. 2003. *Analysis of Panel Data, 2<sup>nd</sup> Ed.* New York: Cambridge University Press.
- Huber, Evelyn, John D. Stephens, Charles Ragin, David Brady, and Jason Beckfield. 2004. *Comparative Welfare States Data Set*, University of North Carolina, Northwestern University, Duke University and Indiana University.
- Huber, Evelyn and John D. Stephens. 2001. *Development and Crisis of the Welfare State* Chicago: The University of Chicago Press.
- Hughes, Mary E. 2003. "Home Economics: Metropolitan Labor and Housing Markets and Domestic Arrangements in Young Adulthood." *Social Forces* 81: 1399-1429.
- Jantti, Marcus and Sheldon Danziger. 2000. "Income Poverty in Advanced Countries." Pp. 309-378 in *Handbook of Income Distribution*, edited by A.B. Atkinson and F. Bourguignon. New York: Elsvier.
- Jargowsky, Paul A. 1997. *Poverty and Place: Ghettos, Barrios, and the American City* NY: Russell Sage Foundation.
- Jencks, Christopher and Paul E. Peterson. 1991. *The Urban Underclass*. Washington, DC: The Brookings Institution.
- Jencks, Christopher and Barbara Boyle Torrey. 1988. "Beyond Income and Poverty: Trends in Social Welfare Among Children and the Elderly Since 1960." Pp. 229-273 in *The Vulnerable*, edited by J.L. Palmer, T. Smeeding, and B.B. Torrey. Washington, D.C. Urban Institute Press.

- Kamerman, Sheila B. 1995. "Gender Role and Family Structure Changes in the Advanced Industrialized West: Implications for Social Policy." Pp. 231-256 in *Poverty, Inequality and the Future of Social Policy*, edited by K. McFate, R. Lawson, and W.J. Wilson. New York: Russell Sage Foundation.
- Kasarda, John D. 1993. "Urban Industrial Transition and the Underclass." Pp. 43-64 in *The Ghetto Underclass*, edited by W. J. Wilson. Newbury Park, CA.: Sage.
- Kenworthy, Lane. 1999. "Do Social Welfare Policies Reduce Poverty? A Cross-National Assessment." *Social Forces* 77: 1119-1140.
- Kiernan, Kathleen. 2001. "European Perspectives on Nonmarital Childbearing." Pp. 77-108, in *Out of Wedlock*, edited by L. Wu and B.L. Wolfe. New York: Russell Sage Foundation.
- Korpi, Walter, and Joakim Palme. 1998. "The Paradox of Redistribution and Strategies of Equality: Welfare State Institutions, Inequality, and Poverty in the Western Countries." *American Sociological Review* 63: 661-687.
- Kuznets, Simon. 1953. "Economic Growth and Income Inequality." *American Economic Review* 45: 1-28.
- Lassley, Paul, F. Larry Leistritz, Linda M. Lobao, and Katherine Meyer. 1995. *Beyond Amber Waves of Grain* Boulder, CO.: Westview Press.
- Lefaucheur, Nadine. 1995. "French Policies Toward Lone Parents." Pp. 257-290 in *Poverty, Inequality and the Future of Social Policy*, edited by K. McFate, R. Lawson, and W.J. Wilson. New York: Russell Sage Foundation.
- Lichter, Daniel T. 1997. "Poverty and Inequality Among Children." *Annual Review of Sociology* 23:121-145.
- Lichter, Daniel T., and David J. Eggebeen. 1993. "Rich Kids, Poor Kids: Changing Income Inequality Among American Children." *Social Forces* 71: 761-780.
- Lichter, Daniel T., Deborah Roempke Graefe and J. Brian Brown. 2003. "Is Marriage a Panacea? Union Formation Among Economically Disadvantaged Unwed Mothers." *Social Problems* 50: 60-86.
- Lobao, Linda and Katherine Meyer. 2001. "The Great Agricultural Transition: Crisis, Change and Social Consequences of Twentieth Century U.S. Farming." *Annual Review of Sociology* 27: 103-124.
- Lobao, Linda M. and Michael D. Schulman. 1991. "Farming Patterns, Rural Restructuring, and Poverty: A Comparative Regional Analysis." *Rural Sociology* 56: 565-602.
- Long, J. Scott and Laurie H. Ervin. 2000. "Using Heteroscedastic Consistent Standard Errors in the Linear Regression Model." *The American Statistician* 54: 217-224.
- Lorence, Jon, and Joel Nelson. 1993. "Industrial Restructuring and Metropolitan Earnings Inequality, 1970-1980." *Research in Social Stratification and Mobility* 12:145-184.
- McCall, Leslie. 2001. *Complex Inequality* New York: Routledge.
- McFate, Katherine, Roger Lawson, and William Julius Wilson. 1995. *Poverty, Inequality and the Future of Social Policy* New York: Russell Sage Foundation.
- McLanahan, Sara, and Irwin Garfinkel. 1995. "Single Mother Families and Social Policy." Pp. 367-383 in *Poverty, Inequality and the Future of Social Policy*, edited by K. McFate, R. Lawson, and W.J. Wilson. New York: Russell Sage Foundation.
- Mirowsky, John and Catherine E. Ross. 1999. "Economic Hardship Across the Lifecourse." *American Sociological Review* 64: 548-569.
- Moller, Stephanie, David Bradley, Evelyn Huber, Francois Nielsen, and John D. Stephens. 2003. "Determinants of Relative Poverty in Advanced Capitalist Democracies." *American Sociological Review* 68: 22-51.

- Morris, Martina and Bruce Western. 1999. "Inequality in Earnings at the Close of the 20<sup>th</sup> Century." *Annual Review of Sociology* 25: 623-657.
- Myles, John, and Garnett Picot. 2000. "Poverty Indices and Policy Analysis." *Review of Income and Wealth* 46: 161-179.
- Myrdal, Gunnar. 1965. *Challenge to Affluence* New York: Vintage Books.
- Newman, Katherine S. 2003. *A Different Shade of Gray* New York: The New Press.
- \_\_\_\_\_. 1999. *No Shame in My Game: The Working Poor in the Inner City* New York: Russell Sage Foundation and Knopf.
- Nelson, Amy L., Kent P. Schwirian, and Patricia M. Schwirian. 1998. "Social and Economic Distress in Large Cities, 1970-1990: A Test of the Urban Crisis Thesis." *Social Science Research* 27: 410-431.
- Nickell, Stephen. 1981. "Biases in Dynamic Models with Fixed Effects." *Econometrica* 49: 1417-1426.
- Nielsen, Francois. 1994. "Income Inequality and Industrial Development: Dualism Revisited." *American Sociological Review* 59: 654-677.
- Nielsen, Francois, and Arthur S. Alderson. 1997. "The Kuznets Curve and the Great U-Turn: Income Inequality in U.S. Counties." *American Sociological Review* 62:12-33.
- \_\_\_\_\_. 1995. "Income Inequality, Development, and Dualism: Results From an Unbalanced Cross-National Panel." *American Sociological Review* 60: 674-701.
- O'Connor, Alice. 2001. *Poverty Knowledge: Social Science, Social Policy, and the Poor in Twentieth Century U.S. History* Princeton, N.J.: Princeton University Press.
- O'Connor, Alice, Chris Tilly, and Lawrence D. Bobo. 2001. *Urban Inequality* New York: Russell Sage Foundation.
- O'Rand, Angela and Henretta, John C. 1999. *Age and Inequality* Boulder, CO.: Westview Press.
- Ornati, Oscar. 1966. *Poverty Amid Affluence* New York: Twentieth Century Fund.
- Osberg, Lars and Kuan Xu. 2000. "International Comparisons of Poverty Intensity: Index Decomposition and Bootstrap Inference." *The Journal of Human Resources* 35: 51-81.
- Page, Benjamin I. and James R. Simmons. 2000. *What Government Can Do: Dealing with Poverty and Inequality* Chicago: The University of Chicago Press.
- Preston, Samuel H. 1984. "Children and the Elderly: Divergent Paths for America's Dependents." *Demography* 21: 435-457.
- Quillian, Lincoln. 2003. "The Decline of Male Employment in Low-Income Black Neighborhoods, 1950-1990." *Social Science Research* 32: 220-250.
- Raftery, Adrian. 1995. "Bayesian Model Selection in Social Research." *Sociological Methodology* 25: 111-163.
- Rainwater, Lee. 1969. *Behind Ghetto Walls* Chicago: Aldine.
- Rainwater, Lee and Timothy M. Smeeding. 2004. *Poor Kids in a Rich Country: America's Children in Comparative Perspective* New York: Russell Sage Foundation.
- Robinson, Robert V. 1984. "Structural Change and Class Mobility in Capitalist Societies." *Social Forces* 63: 51-71.
- Rose, Ruth. 1995. "Lone Parents: The Canadian Experience." Pp. 327-366 in *Poverty, Inequality and the Future of Social Policy*, edited by K. McFate, R. Lawson, and W.J. Wilson. New York: Russell Sage Foundation.
- Santiago, Anne M. and Margaret G. Wilder. 1991. "Residential Segregation and Links to Minority Poverty." *Social Problems* 38: 492-515.
- Sen, Amartya. 1999. *Development as Freedom* New York: Anchor Books.
- \_\_\_\_\_. 1992. *Inequality Reexamined* Cambridge, MA.: Harvard University Press.
- \_\_\_\_\_. 1976. "Poverty: An Ordinal Approach to Measurement." *Econometrica* 44: 219-231.

- Silver, Hilary. 1994. "Social Exclusion and Social Solidarity: Three Paradigms." *International Labour Review* 133: 531-578.
- Small, Mario Luis and Katherine Newman. 2001. "Urban Poverty After The Truly Disadvantaged: The Rediscovery of the Family, the Neighborhood, and Culture." *Annual Review of Sociology* 27: 23-45.
- Smeeding, Timothy M., Lee Rainwater, and Gary Burtless. 2001. "U.S. Poverty in Cross-National Context." Pp. 162-189 in *Understanding Poverty*, edited by S. Danziger and R. Haveman. New York and Cambridge, MA.: Russell Sage Foundation and Harvard University Press.
- Smeeding, Timothy M., Peter Saunders, John Coder, Stephen Jenkins, Johan Fritzell, Aldi J.M. Hagenaars, Richard Hauser, and Michael Wolfson. 1993. "Poverty, Inequality, and Family Living Standards Impacts Across Seven Nations." *Review of Income and Wealth* 39: 229-256.
- Sorensen, Annemette. 1999. "Family Decline, Poverty, and Social Exclusion: The Mediating Effects of Family Policy." *Comparative Social Research* 18: 57-78.
- \_\_\_\_\_. 1994. "Women's Economic Risk and the Economic Position of Single Mothers." *European Sociological Review* 10: 173-188.
- Sugrue, Thomas J. 1996. *The Origins of the Urban Crisis: Race and Inequality in Postwar Detroit* Princeton, NJ: Princeton University Press.
- Sullivan Dennis H. and Timothy M. Smeeding. 1997. "Educational Attainment and Earnings Inequality in Eight Nations." *International Journal of Education Research* 27: 513-526.
- Teachman, Jay, Greg J. Duncan, W. Jean Yeung, and Dan Levy. 2001. "Covariance Structure Models for Fixed and Random Effects." *Sociological Methods and Research* 30: 271-288.
- Tickmayer, Ann R. and Cynthia M. Duncan. 1990. "Poverty and Opportunity Structure in Rural America." *Annual Review of Sociology* 16: 67-86.
- Thomas, Adam and Isabel Sawhill. 2002. "For Richer or For Poorer: Marriage as an Anti-Poverty Strategy." *Journal of Policy Analysis and Management* 21: 587-599.
- Tobin, James. 1994. "Poverty in Relation to Macroeconomic Trends, Cycles, and Policies." In S.H. Danziger, G.D. Sandefur, and D.H. Weinberg (eds.), *Confronting Poverty: Prescriptions for Change*: 147-167. Cambridge, MA: Harvard University Press.
- Tomaskovic-Devey, Donald. 1991. "A Structural Model of Poverty Creation and Change: Political Economy, Local Opportunity, and U.S. Poverty, 1959-1979." *Research in Social Stratification and Mobility* 10:289-322.
- Williams, Donald R. 1991 "Structural Change and the Aggregate Poverty Rate." *Demography* 28: 323-332.
- Wilson, William Julius. 1996. *When Work Disappears* New York: Norton.
- \_\_\_\_\_. 1993. *The Ghetto Underclass: Social Science Perspectives* Newbury Park, CA: Sage Press.
- \_\_\_\_\_. 1991. "Studying Inner-City Social Dislocations: The Challenge of Public Agenda Research." *American Sociological Review* 56: 1-14.
- \_\_\_\_\_. 1987. *The Truly Disadvantaged* Chicago: University of Chicago Press.
- Wu, Lawrence L. and Barbara Wolfe. 2001. *Out of Wedlock: Causes and Consequences of Nonmarital Fertility* New York: Russell Sage Foundation.

**Table 1.** Descriptive Statistics and Sources for Variables: Means and Standard Deviations in Parentheses.

	<i>18 Nations (N=92)</i>	<i>17 Nations (N=85)</i>	<i>Sources</i>
<b><i>Dependent Variable</i></b>			
LIS Headcount Poverty	9.434 (3.692)	8.814 (3.100)	Luxembourg Income Study, <a href="http://www.lisproject.org">www.lisproject.org</a> , “Key Figures”
Interval Poverty	6.540 (2.406)	6.085 (1.874)	Luxembourg Income Study, <a href="http://www.lisproject.org">www.lisproject.org</a> ; Brady (2003)
<b><i>Structural Change</i></b>			
Manufacturing Employment	27.692 (5.692)	27.924 (5.797)	OECD <i>Labor Force Statistics</i> , various years
Agricultural Employment	5.060 (2.656)	5.237 (2.685)	OECD <i>Labor Force Statistics</i> , various years
Female Labor Force Participation	58.622 (10.450)	58.092 (10.543)	OECD <i>Labor Force Statistics</i> , various years
Elderly Population	13.413 (2.137)	14.032 (2.118)	OECD <i>Labor Force Statistics</i> , various years
Children in Single Mother Families	2.139 (1.018)	1.937 (.791)	Luxembourg Income Study; OECD <i>Labor Force Statistics</i>
<b><i>Welfare State</i></b>			
Social Security Transfers	15.208 (4.293)	15.521 (4.306)	OECD <i>Labor Force Statistics</i> , various years
Public Health Spending	75.454 (12.299)	78.179 (8.049)	OECD-Eco Sante <i>Health CD-Rom</i> , 2003
<b><i>Economic Performance</i></b>			
Economic Growth	2.558 (2.725)	2.525 (2.815)	OECD-Eco Sante <i>Health CD-Rom</i> , 2003
Productivity	48005.250 (8490.386)	47222.680 (8326.744)	OECD <i>Labor Force Statistics</i> , various years
Unemployment	7.056 (3.495)	7.166 (3.605)	OECD <i>Main Economic Indicators</i> , various years
U.S. Dummy	.076 (.267)		

**Table 2.** Descriptive Patterns Across 18 Rich Democracies in Most Recent Luxembourg Income Study Data.

	<i>Year</i>	<i>LIS Headcount Poverty</i>	<i>Interval Poverty</i>	<i>% of Children in Single Mother Families</i>	<i>Children in Single Mother Families as % of Population</i>
Australia	1994	14.3	10.210	10.6	2.292
Austria	1997	8.0	4.927	12.7	2.192
Belgium	1997	8.0	5.020	8.9	1.581
Canada	2000	11.4	7.490	13.1	2.502
Denmark	1992	7.2	5.738	14.4	2.448
Finland	2000	5.4	3.325	12.8	2.325
France	1994	8.0	5.299	9.3	1.832
Germany	2000	8.3	5.970	12.5	1.952
Ireland	1996	12.3	6.235	10.3	2.428
Italy	2000	12.7	8.391	4.9	.705
Luxembourg	2000	6.0	3.080	6.7	1.270
Netherlands	1999	7.3	6.051	8.1	1.501
Norway	2000	6.4	4.891	14.5	2.903
Spain	1990	10.1	6.017	4.9	.973
Sweden	2000	6.5	5.215	17.8	3.280
Switzerland	1992	9.3	8.110	8.9	1.543
United Kingdom	1999	12.5	7.480	21.7	4.188
United States	2000	17.0	12.1735	19.5	4.166
Correlation with Interval Poverty (N=92)		.902		.400	.506
Correlation with % of Children in Single Mother Families (N=92)					.964

**Table 3.** Random Effects Models of Poverty on Structural, Welfare State, and Liberal Economic Variables in Rich Western Democracies, 1969-2000 (N=92).

	LIS Headcount Poverty		Interval Poverty	
<b>Structural</b>				
Manufacturing	-.190**	-.118*	-.064	-.028
Employment	<b>-.293</b> (-2.41)	<b>-.183</b> (-1.77)	<b>-.150</b> (-1.13)	<b>-.067</b> (-.58)
Agricultural Employment	.109 <b>.078</b> (.74)	.129 <b>.093</b> (.81)	-.061 <b>-.067</b> (-.60)	-.005 <b>-.006</b> (-.05)
Female Labor Force Participation	-.117** <b>-.331</b> (-2.52)	-.037 <b>-.104</b> (-.86)	-.053 <b>-.232</b> (-1.62)	-.015 <b>-.065</b> (-.49)
Elderly Population	.488** <b>.280</b> (2.34)	.019 <b>.011</b> (.09)	.127 <b>.112</b> (.86)	-.064 <b>-.056</b> (-.40)
Children in Single Mother Families	.921** <b>.256</b> (2.33)	1.026** <b>.285</b> (2.30)	.395 <b>.168</b> (1.40)	.510 <b>.217</b> (1.60)
<b>Welfare State</b>				
Social Security Transfers	-.325*** <b>-.378</b> (-3.95)		-.124** <b>-.221</b> (-2.11)	
Public Health Spending	-.133*** <b>-.442</b> (-2.10)		-.115*** <b>-.586</b> (-4.78)	
<b>Economic Performance</b>				
Economic Growth	-.177** <b>-.133</b> (-2.10)		-.153** <b>-.176</b> (-2.49)	
Productivity	-.00003 <b>-.063</b> (-.91)		-.00003 <b>-.101</b> (-1.31)	
Unemployment	-.032 <b>-.030</b> (-.31)		-.066 <b>-.096</b> (-.89)	
Constant	28.887*** (4.59)	11.449** (2.43)	21.740*** (4.91)	7.888** (2.31)
BIC'	-75.309	-14.139	-69.559	-16.276
R <sup>2</sup> Within	.272	.120	.122	.018
R <sup>2</sup> Between	.777	.376	.793	.358
R <sup>2</sup> Overall	.730	.329	.713	.345

\*\*\* p<.01

\*\* p<.05

\* p<.10

Note: For each independent variable, the unstandardized coefficient, *standardized coefficient in bold and italics*, and t-score in parentheses are displayed.

**Table 4.** Counterfactual Simulations of U.S. Poverty in 2000 Based on Analysis in Table 3.

	<i>LIS Headcount Poverty</i>	<i>Interval Poverty</i>
<b>ACTUAL LEVELS</b>	<b>17.0</b>	<b>12.173</b>
<i>Structural, Standard Deviation Change Towards Poverty Reduction</i>	<i>11.014</i> <i>64.79% of Actual Value</i>	<i>12.173</i> <i>100% of Actual Value</i>
Manufacturing Employment, Standard Deviation Increase from 22.14 to 27.83	15.332 90.19% of Actual Value	Not Significant
Agricultural Employment, Standard Deviation Decline from 2.486 to 0	Not Significant	Not Significant
Female Labor Force Participation, Standard Deviation Increase from 69.22 to 79.67	13.541 79.65% of Actual Value	Not Significant
Elderly Population, Standard Deviation Decline from 12.43 to 10.29	16.402 96.48% of Actual Value	Not Significant
Children in Single Mother Families, Standard Deviation Decline from 4.17 to 3.15	16.739 98.47% of Actual Value	Not Significant
<i>Welfare State, Standard Deviation Change Towards Poverty Reduction</i>	<i>9.941</i> <i>58.48% of Actual Value</i>	<i>8.844</i> <i>52.02% of Actual Value</i>
Social Security Transfers, Standard Deviation Increase from 12.00 to 16.29	15.377 90.45% of Actual Value	16.051 94.42% of Actual Value
Public Health Spending, Standard Deviation Increase from 44.20 to 56.500	11.564 68.02% of Actual Value	9.793 57.61% of Actual Value
<i>Economic Performance, Standard Deviation Change Towards Poverty Reduction</i>	<i>16.638</i> <i>97.87% of Actual Value</i>	<i>16.520</i> <i>97.18% of Actual Value</i>
Economic Growth, Standard Deviation Increase from 3.29 to 6.01	16.638 97.87% of Actual Value	16.520 97.18% of Actual Value
Productivity, Standard Deviation Increase from 63,143.59 to 71,633.97	Not Significant	Not Significant
Unemployment, Standard Deviation Decline from 4.00 to 7.50	Not Significant	Not Significant



**Table 5.** Counterfactual Simulations of Poverty in Sweden and Germany in 2000 Based on Analysis in Table 3.

	Germany		Sweden	
	<i>LIS H</i>	<i>HI</i>	<i>LIS H</i>	<i>HI</i>
<b>ACTUAL LEVELS</b>	<b>8.3</b>	<b>5.970</b>	<b>6.5</b>	<b>5.215</b>
<i>Structural, Standard</i>	<i>12.583</i>	<i>5.970</i>	<i>10.783</i>	<i>5.215</i>
<i>Deviation Change</i>	<i>152%</i>	<i>100%</i>	<i>166%</i>	<i>100%</i>
<i>Towards Poverty Increase</i>				
Manufacturing	9.382	Not Significant	7.582	Not Significant
Employment Decline One	113%		117%	
Standard Deviation				
Female Labor Force	9.522	Not Significant	7.722	Not Significant
Participation Decline One	115%		119%	
Standard Deviation				
Elderly Population	9.334	Not Significant	7.534	Not Significant
Increase One Standard	112%		116%	
Deviation				
Children in Single Mother	9.245	Not Significant	7.445	Not Significant
Families Increase One	111%		115%	
Standard Deviation				
<i>Welfare State, Standard</i>	<i>11.327</i>	<i>7.912</i>	<i>9.527</i>	<i>7.157</i>
<i>Deviation Change</i>	<i>136%</i>	<i>133%</i>	<i>147%</i>	<i>137%</i>
<i>Towards Poverty Increase</i>				
Social Security Transfers	9.696	6.502	7.896	5.747
Decline One Standard	117%	109%	121%	110%
Deviation				
Public Health Spending	9.932	7.380	8.132	6.625
Decline One Standard	120%	124%	125%	127%
Deviation				
<i>Economic Performance,</i>	<i>8.791</i>	<i>6.393</i>	<i>6.991</i>	<i>5.638</i>
<i>Standard Deviation</i>	<i>106%</i>	<i>107%</i>	<i>108%</i>	<i>108%</i>
<i>Change Towards Poverty</i>				
<i>Increase</i>				
Economic Growth Decline	8.791	6.393	6.991	5.638
One Standard Deviation	106%	107%	108%	108%

**Table 6.** Sensitivity Analyses of Random Effects Models With and Without the U.S. of Poverty on Structural, Welfare State, and Liberal Economic Variables in Rich Western Democracies, 1969-2000.

	<i>LIS Headcount Poverty</i>		<i>Interval Poverty</i>	
	<i>With U.S. Dummy</i>	<i>Dropping U.S.</i>	<i>With U.S. Dummy</i>	<i>Dropping U.S.</i>
<b><i>Structural</i></b>				
Manufacturing Employment	-.222*** (-2.72)	-.191** (-2.26)	-.086 (-1.46)	-.067 (-1.10)
Agricultural Employment	.143 (.95)	.104 (.69)	-.041 (-.38)	-.062 (-.57)
Female Labor Force Participation	-.123*** (-2.64)	-.136*** (-2.84)	-.058* (-1.73)	-.064* (-1.86)
Elderly Population	.562*** (2.61)	.546** (2.52)	.173 (1.12)	.165 (1.05)
Children in Single Mother Families	.677 (1.59)	.893* (1.96)	.218 (.70)	.339 (1.02)
<b><i>Welfare State</i></b>				
Social Security Transfers	-.330*** (-3.99)	-.350*** (-4.15)	-.127** (-2.12)	-.139** (-2.27)
Public Health Spending	-.103** (-2.52)	-.112*** (-2.69)	-.094*** (-3.20)	-.100*** (-3.34)
<b><i>Economic Performance</i></b>				
Economic Growth	-.154* (-1.80)	-.168* (-1.92)	-.132** (-2.12)	-.142** (-2.22)
Productivity	-.00003 (-1.14)	-.00004 (-1.18)	-.00003 (-1.55)	-.00004 (-1.57)
Unemployment	-.033 (-.32)	-.014 (-.13)	-.067 (-.89)	-.054 (-.69)
U.S. Dummy	3.664 (1.38)		2.365 (1.27)	
Constant	27.366*** (4.23)	28.251*** (4.28)	20.812*** (4.50)	21.292*** (4.50)
BIC'	-60.903	-35.241	-57.447	-13.477
R <sup>2</sup> Within	.287	.295	.135	.146
R <sup>2</sup> Between	.755	.670	.769	.615
R <sup>2</sup> Overall	.700	.608	.688	.494
N	92	85	92	85

\*\*\* p<.01      \*\* p<.05      \* p<.10

Notes: For each independent variable, the unstandardized coefficient, and t-score in parentheses are displayed.

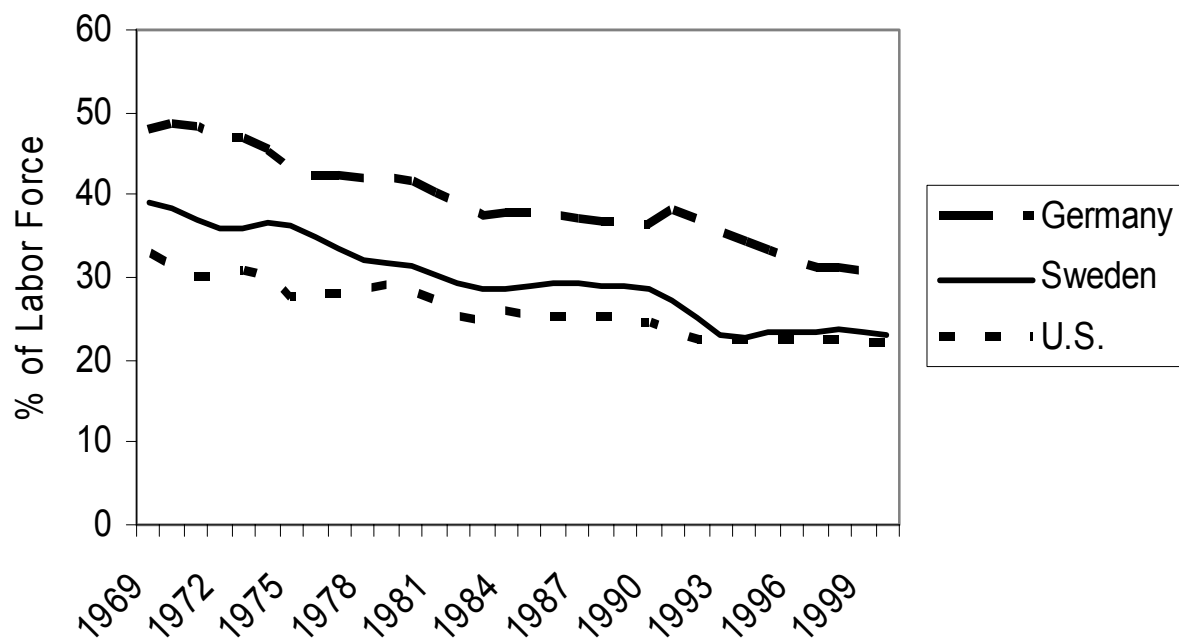
**Appendix I.** Correlation Matrix for Variables (N=92).

	1	2	3	4	5	6	7	8	9	10	11	12
1) LIS Headcount Poverty												
2) Interval Poverty	.90											
3) Manufacturing Employment	-.25	-.21										
4) Agricultural Employment	.02	-.07	.16									
5) Female Labor Force Participation	-.05	-.05	-.33	-.44								
6) Elderly Pop.	-.39	-.38	.18	-.26	.30							
7) Children in Single Mother Families	.49	.51	-.40	-.38	.60	-.15						
8) Social Security Transfers	-.54	-.43	-.04	-.02	-.03	.50	-.27					
9) Public Health Spending	-.67	-.76	.21	.05	.00	.44	-.46	.27				
10) Economic Growth	-.16	-.16	-.02	-.25	.01	-.14	.04	-.06	-.12			
11) Productivity	.31	.21	-.28	-.18	-.11	-.04	.10	-.26	-.19	.01		
12) Unemployment	.28	.12	-.40	.29	-.32	-.14	-.09	.12	-.10	-.25	.00	
13) U.S. Dummy	.59	.66	-.14	-.23	.18	-.26	.66	-.26	-.78	.04	.32	-.11

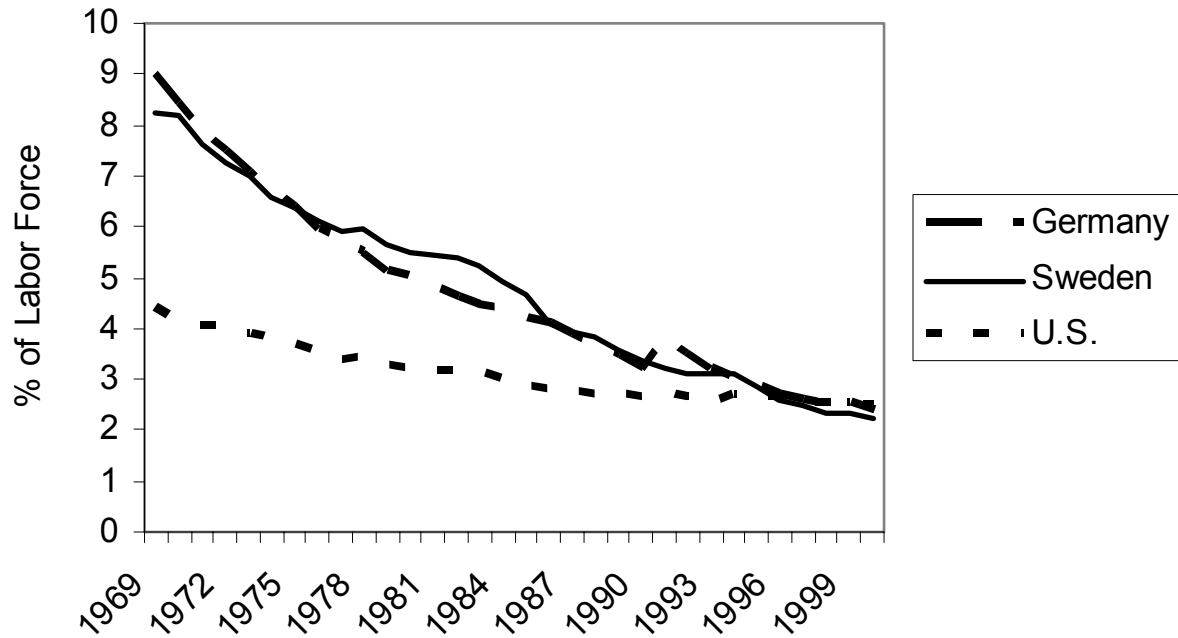
**Appendix II. Comparisons of Results with Different Measures of Economic Growth (N=92)**

Measure of Growth	Correlation with Interval Poverty	Standardized Coef. And T-score with <u>No Other</u> I.V.'s	R <sup>2</sup> with <u>No Other</u> I.V.'s	Standardized Coef. and T-score with <u>All Other</u> I.V.'s	R <sup>2</sup> with <u>All Other</u> I.V.'s	Correlation with LIS Headcount Poverty
NCU T	-.228	-.022 (-.38)	.052	-.061 (-1.07)	.656	-.103
PPP T	-.265	-.038 (-.66)	.070	-.116** (-2.01)	.690	-.244
NCU T-1	-.039	-.049 (-.88)	.002	-.059 (-1.00)	.632	.108
PPP T-1	-.076	-.065 (-1.22)	.010	-.108* (-1.88)	.676	-.027
NCU T-2	.027	-.017 (-.33)	.001	-.040 (-.69)	.624	.084
PPP T-2	-.010	-.101* (-1.76)	.010	-.152*** (-2.64)	.697	-.090
NCU Avg. of T, T-1, T-2	-.138	-.045 (-.75)	.019	-.094 (-1.46)	.658	.019
PPP Avg. of T, T-1, T-2	-.204	-.099* (-1.65)	.042	-.199*** (-3.27)	.733	-.171
NCU T-3	-.065	.009 (.18)	.004	.017 (.32)	.622	-.013
PPP T-3	-.032	.020 (.36)	.001	-.039 (-.63)	.638	-.032
NCU T-4	-.038	.045 (.89)	.001	.081 (1.53)	.612	.007
PPP T-4	-.108	.015 (.25)	.012	-.015 (-.25)	.641	-.108
NCU Avg. of T, T-1, T-2, T-3, T-4	-.131	-.007 (-.12)	.017	-.022 (-.34)	.635	.011
PPP Avg. of T, T-1, T-2, T-3, T-4	-.164	-.054 (-.83)	.027	-.176** (-2.49)	.713	-.164
*** p<.01      ** p<.05      * p<.10						

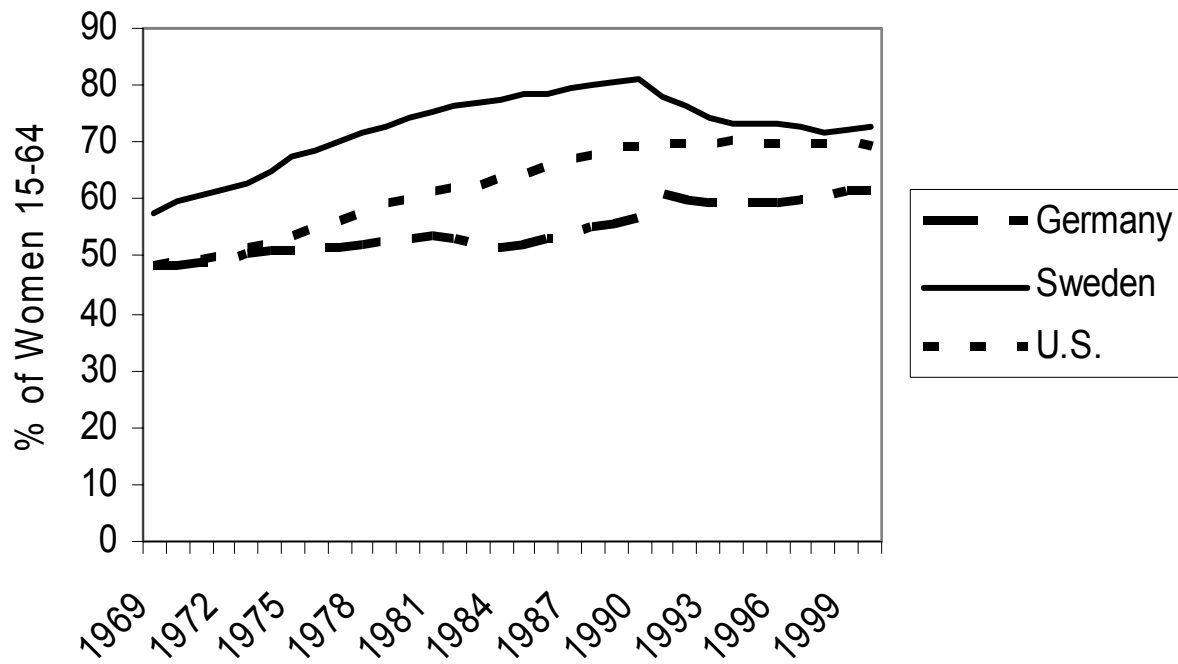
**Figure 1.** Trends in Manufacturing Employment: Germany, Sweden, and the U.S., 1969-2000



**Figure 2.** Trends in Agricultural Employment: Germany, Sweden, and the U.S., 1969-2000



**Figure 3.** Trends in Female Labor Force Participation:  
Germany, Sweden, and the U.S., 1969-2000



**Figure 4.** Trends in Elderly Population: Germany, Sweden, and the U.S., 1969-2000

