

Erlingsson, Einar Jon et al.

Article

Housing market bubbles and business cycles in an agent-based credit economy

Economics: The Open-Access, Open-Assessment E-Journal

Provided in Cooperation with:

Kiel Institute for the World Economy – Leibniz Center for Research on Global Economic Challenges

Suggested Citation: Erlingsson, Einar Jon et al. (2014) : Housing market bubbles and business cycles in an agent-based credit economy, Economics: The Open-Access, Open-Assessment E-Journal, ISSN 1864-6042, Kiel Institute for the World Economy (IfW), Kiel, Vol. 8, Iss. 2014-8, pp. 1-42, <https://doi.org/10.5018/economics-ejournal.ja.2014-8>

This Version is available at:

<https://hdl.handle.net/10419/93133>

Standard-Nutzungsbedingungen:

Die Dokumente auf EconStor dürfen zu eigenen wissenschaftlichen Zwecken und zum Privatgebrauch gespeichert und kopiert werden.

Sie dürfen die Dokumente nicht für öffentliche oder kommerzielle Zwecke vervielfältigen, öffentlich ausstellen, öffentlich zugänglich machen, vertreiben oder anderweitig nutzen.

Sofern die Verfasser die Dokumente unter Open-Content-Lizenzen (insbesondere CC-Lizenzen) zur Verfügung gestellt haben sollten, gelten abweichend von diesen Nutzungsbedingungen die in der dort genannten Lizenz gewährten Nutzungsrechte.

Terms of use:

Documents in EconStor may be saved and copied for your personal and scholarly purposes.

You are not to copy documents for public or commercial purposes, to exhibit the documents publicly, to make them publicly available on the internet, or to distribute or otherwise use the documents in public.

If the documents have been made available under an Open Content Licence (especially Creative Commons Licences), you may exercise further usage rights as specified in the indicated licence.



<http://creativecommons.org/licenses/by/3.0/>

Housing Market Bubbles and Business Cycles in an Agent-Based Credit Economy

Einar Jon Erlingsson, Andrea Teglio, Silvano Cincotti, Hlynur Stefansson, Jon Thor Sturlusson, and Marco Raberto

Abstract

This paper investigates the housing and mortgage markets by means of an agent-based macroeconomic model of a credit network economy. A set of computational experiments have been carried out in order to explore the effects of different households' creditworthiness conditions required by banks in order to grant a mortgage. Results show that easier access to credit inflates housing prices, triggering a short run output expansion. However, the artificial economy becomes more unstable and prone to recessions. With stricter conditions the economy is more stable and does not fall into serious recessions, although a too severe regulation can slow down economic growth.

JEL G21 E20 E25 R31 R38

Keywords Credit cycles; housing market; agent-based model; subprime lending

Authors

Einar Jon Erlingsson, ✉ Reykjavik University, Iceland, einare09@ru.is

Andrea Teglio, University Jaume I, Castellon, Spain

Silvano Cincotti, DIME-CINEF, University of Genoa, Genova, Italy

Hlynur Stefansson, Reykjavik University, Iceland

Jon Thor Sturlusson, Reykjavik University, Iceland

Marco Raberto, DIME-CINEF, University of Genoa, Genova, Italy

Citation Einar Jon Erlingsson, Andrea Teglio, Silvano Cincotti, Hlynur Stefansson, Jon Thor Sturlusson, and Marco Raberto (2014). Housing Market Bubbles and Business Cycles in an Agent-Based Credit Economy. *Economics: The Open-Access, Open-Assessment E-Journal*, Vol. 8, 2014-8. <http://dx.doi.org/10.5018/economics-ejournal.ja.2014-8>

1 Introduction

Empirical models have been used for analysis and policy making in most countries and econometric models have become an established part of the policy framework (Meen and Meen, 2003). This paper aims to study the macroeconomic effects of different mortgage policies by banks and related changes in housing prices. The idea is that stricter or looser evaluation criteria for granting mortgages can affect the real economy through the leverage of the household sector and the housing price channel. According to a well-established literature, positive shocks to asset prices improve firm's borrowing and investments, leading to positive outcomes in the economy (Holmstrom and Tirole, 1997; Kiyotaki and Moore, 1997). Furthermore, the wealth effect of raising housing prices increases aggregate demand and leads to higher production and employment. However, as pointed out in Chakraborty et al. (2013), these arguments are leaving out the potentially negative effect of asset-price (in our case housing-price) increases. The main arguments are related to the crowding out of lending to commercial firms due to the predominance of mortgage loans, or, more in general, a misallocation of resources across sectors which reduces welfare. However, the recent crisis has shown how an asset bubble can increase the financial fragility of the whole economic system with potentially destructive effects when the bubble bursts. In order to address this issue, we consider the problem of housing bubbles as an endogenous mechanism that depends on the characteristics of the economic system and on policy decisions. Our aim is to analyze the transmission channels of the housing bubble and to study how the negative macroeconomic impact could be mitigated or prevented.

The shortcomings of the general equilibrium framework and its variations have been known for a long time (Kirman, 1989) and recently have been subject to severe scrutiny due to lack of consideration of financial factors and their inability to foresee the great recession.¹ Recently, it has been also emphasized that agent-based models can be used as an alternative tool for economic modeling and policy making,² see e.g. Farmer and Foley (2009). Agent-based models have shown promise of being able to take into account the complex interactions of different

¹ "The state of economics. The other-worldly philosophers". The Economist. July 16th 2009, print edition.

² "Economics after the crisis. New model army". The Economist, January 19th 2013, print edition.

economic agents (see e.g. Tesfatsion and Judd (2006) for a review), the interplay between credit supply and the real economy (Delli Gatti et al., 2010; Raberto et al., 2012; Teglioni et al., 2012) and reproducing multiple stylized facts of the economy (Dosi et al., 2010, 2013). Unlike DSGE models, agent-based models rule out the representative-agent paradigm, shown by Kirman (1992) to be flawed in many respects. Furthermore, agent-based models do not assume that the economy will end up in an equilibrium state subject to exogenous shocks, but allow shocks to be endogenously generated due to interactions between economic agents or sectors, i.e., firms and banks, borrowers and lenders, that interact in decentralized markets with limited information and foresight.

We present here an agent-based model of the economy, henceforth Iceace model, where different economic agents interact using simple behavioral rules through various markets, i.e., the consumption goods market, the labor market, the credit market and the housing market. The modeling approach followed in developing the Iceace model is largely based on the EURACE model and simulator (Cincotti et al., 2012; Raberto et al., 2012) in particular for what concerns the stock-flow consistency modeling approach and the careful balance-sheet accounting both at the single agent and at the aggregate level. However, the two models are quite different. First, Iceace is generally simpler than Eurace as it does not include at the moment investments in capital goods, it does not include stocks and government bonds markets, and it is characterized by a simpler labor market with no heterogeneity of technical skills among workers. Second, Iceace has a new important added feature that is absent in Eurace, i.e., the residential housing market and the related mortgage loans provided by banks. This new feature allows to better model and study a credit-driven (real estate) asset bubble and its impact on the business cycle. This feature is considered crucial in order to explain the recent financial and economic crisis both in Iceland and worldwide. A simulator has been developed from the Iceace³ model in order to be able to perform computational experiments and test the effects of different policy settings on the workings of the artificial economy.

³ The name Iceace should be read as “Ice” and the acronym ‘ACE’ and means agent-based computational economics for Iceland, as the model is under development within a project funded by the Icelandic Center for Research (Rannis), see <http://iceace.github.io/home/>.

The work presented in this paper centers around the issue of how changes in asset prices, housing prices in our case, affects household consumption and thus the real economy. It is well documented in the literature that changes in the wealth of households affect their consumption (Case et al., 2005; Carroll et al., 2011). This transmission channel, between the wealth of households and their consumption, is one reason why we have introduced a housing market into the Iceace model. Another is because of the way the housing market can play a role in business cycles of the real economy through mortgage defaults. As in reality, the households of our model generally require mortgages to buy housing. If, for some reason, the debt burden of households becomes unsustainable, banks assets will inevitably be impaired. If the shock to the asset side of the banking system is large enough, the credit market can freeze with catastrophic effects for the real economy (Meh and Moran, 2010).

The housing market part of our model will not focus on the geographical aspect of the market, like e.g. Diappi and Bolchi (2008) and Gilbert et al. (2009). Our modeling perspective is more in line with Geanakoplos et al. (2012), looking to the financial aspects of the market, such as housing prices, mortgage payments, household debt, the fragility of the banking sector, and the effect of the housing market dynamics on the real economy.

The rest of the paper is organized as follows. In Section 2 we present a broad overview of our model and the timing of events. We then and describe the most important features of the model in detail in Sections 2.1-2.6. Finally we present our results in Section 3 and then give some concluding remarks in Section 4.

2 The model

The economy is populated by households, firms, construction firms, banks, an equity fund, the government, and a central bank. Households provide a homogeneous labor force to firms and constructions firms. They buy homogeneous consumption goods (CGOODS in Table 1) from firms according to their consumption budget. They also invest in new housing units built by construction firms; moreover, they can buy or sell housing units in the housing market.

	Hous	Firm	TFirm	Bank	Fund	Gov	CB
Hous	HOUSING	CGOODS	HOUSING	deposits	equity <i>dividends</i>	<i>transfers</i>	
Firm	LABOR			deposits			
TFirm	LABOR			deposits			
Bank	mortgage <i>interests</i> <i>principal</i>	loans <i>interests</i>	loans <i>interests</i>				deposits
Fund		equity <i>dividends</i>	equity <i>dividends</i>	equity <i>dividends</i>			deposits
Gov	<i>taxes</i>						deposits <i>seigniorage</i>
CB				loans <i>interests</i>			

Table 1: Interactions matrix. The matrix should be read as follows: row agents are the ones demanding or receiving real assets (in small caps), financial claims (in bold face) with related future monetary flows (in italics); column agents are the ones supplying the corresponding real assets, financial claims and monetary flows.

Firms employ labor, using the labor market to hire and fire workers as needed, and capital goods to produce the homogeneous consumption good according to their production plan; construction firms employ labor as well, through the labor market, and capital goods to produce new housing units. Banks supply loans to firms and construction firms, and provide mortgages to households; banks also collect private sector deposits (i.e., from households, firms and constructions firms) and may borrow from the central bank if in shortage of liquidity. The government collects taxes on both labor and capital income and it pays unemployment benefits and transfers to households. The central bank sets the policy rate, providing a standing facility to banks and loans to the government if needed. The equity fund owns all the equity shares of firms, constructions firms and banks. It collects their dividends, redistributing it to households. The shares of the equity fund are equally distributed among households, giving households an equal share in the dividend payment of the equity fund. The equity fund may retain part of the dividends received to provide financing to firms and construction firms, if, firstly, they are in need of financing and, secondly, have been rationed in the credit market.

Agent	Assets	Liabilities
Household <i>abbrev.</i> : Hous <i>index</i> : $h = 1, \dots, N_{Hous}$	housing X^h liquidity, M^h equity fund shares, V_d^h	mortgages, U^h equity, E^h
Firm <i>index</i> : $f = 1, \dots, N_{Firm}$	capital goods, K^f inventories, I^f liquidity, M^f	debt (loans from banks), D^f equity, E^f
Construction firm <i>abbrev.</i> : TFirm <i>index</i> : $s = 1, \dots, N_{TFirm}$	capital goods, K^s inventories, I^s liquidity, M^s	debt (loans from banks), D^s equity, E^s
Bank <i>index</i> : $b = 1, \dots, N_{Bank}$	loans, $\mathcal{L}^b = \sum_{f,s} D_b^{f,s}$ mortgages, $U^b = \sum_h U_h^b$ liquidity, M^b	private sector ⁴ deposits, $\mathcal{D}^b = \sum_{h,f,s} M_b^{h,f,s}$ debt with the central bank, D^b equity, E^b
Equity Fund <i>abbrev.</i> : Fund <i>index</i> : e	liquidity, M^e firms' shares, V_f^e construction firms' shares, V_s^e banks' shares, V_b^e	equity, E^e
Government <i>abbrev.</i> : Gov <i>index</i> : g	liquidity M^g	debt to the central bank, D^g equity, E^g
Central Bank <i>abbrev.</i> : CB <i>index</i> : c	liquidity, M^c loans to banks, $\mathcal{L}_b^c = \sum_b D_b^b$ loans to the government, $\mathcal{L}_g^c = D^g$	outstanding fiat money banks liquidity, $\sum_b M^b$ government liquidity, M^g fund liquidity, M^e equity, E^c

Table 2: Balance sheets of agents populating the Iceace economy. Balance sheet entries in the table are generally named with capital letters and a superscript character that is the index of the agent the variable refers to. In some cases, we can find also subscript characters that refers to other agents' balance sheets where we have the counterparts. For instance, U^h refers to the total mortgages of household h , i.e. a liability, and U^b refers to the total mortgages of bank b , i.e. an asset, while U_b^h (U_h^b) refers to the mortgage that household h (bank b) has with bank b (household h). Of course, we have the identities $U^h = \sum_b U_b^h$ and $U^b = \sum_h U_h^b$.

Table 2 presents the balance sheets of the agents while Table 1 shows the exchange of real assets, financial assets and their related monetary flows among agents, occurring respectively in the consumption goods market, the labor market and the credit market. Monetary transactions related to the exchange of real goods are not reported in Table 1. Table 3 shows the cash flow of agents. The cash flow of each agent is grouped by whether it occurs weekly, monthly or quarterly.

The elementary time step of the model is conventionally set equal to a day; however, most of events occur on a weekly, monthly or quarterly base, as can be seen by the timing of cash flows in Table 3, and are synchronous. In particular, at the first day of every month, firms and construction firms make their pricing and production plans, the labor market opens and closes, households decide whether to enter or not the housing market. At the first day of any quarter, after the monthly time step, the income statements of the economic agents in the model are calculated and balancing of agents' accounts takes place.

In what follows, Sections 2.1-2.6, we discuss in detail the agents that populate the economy and the markets where they interact.

2.1 Production and pricing

Firms

Firms are characterized by a Leontief production technology with two inputs: labor units L and capital goods K , i.e.,

$$q^f = \min(\gamma_L L^f, \gamma_K K^f), \quad (1)$$

where γ_L and γ_K are the productivity of labor and capital, respectively; f is the index of the firm. Neither depreciation nor investments are considered in this model setting, therefore capital shall be considered as a constant. Furthermore, in the simulation presented here, we conventionally set $\gamma_K = +\infty$ for any firms; therefore, the amount of physical capital is not binding for production as it would be due to the Leontief technology. It is worth noting, however, that the endowment of physical capital is initialized to a specific amount and its value, given by the fixed capital price P_K , impacts the assets side of the balance sheet and therefore the financial position of the firm.

Agent	Timing	Cash flow
Household <i>abbrev.</i> : Hous <i>index</i> : $h = 1, \dots, N_{Hous}$	weekly monthly quarterly	- consumption, \hat{C}_B^h + labor income, Z_ℓ^h - taxes on labor income, $Z_\ell^h t_\ell$ +/- net housing investment, $\Delta X^h P_H$ +/- net change in mortgages, ΔU^h + general transfer benefits, $\xi_g W$ + unemployment benefits, $\xi_u W$ + dividends from Fund, Z_e^h - taxes on capital, $Z_e^h t_e$ - mortgage payments, R^h
Firm <i>index</i> : $f = 1, \dots, N_{Firm}$	weekly monthly quarterly	+ sales, $q^f P_C$ - labor cost, $L^f W^f$ + new loans, ΔD^f - interest payments on loans, $r_L D^f$ + investment from Fund, \mathcal{E}^f - dividends, div^f
Construction firm <i>abbrev.</i> : TFirm <i>index</i> : $s = 1, \dots, N_{TFirm}$	monthly quarterly	+ sales, $q^s P_H$ - labor cost, $L^s W^s$ + new loans, ΔD^s - interest payments on loans, $r_L D^s$ + investment from Fund, \mathcal{E}^s - dividends to Fund, div^s
Bank <i>index</i> : $b = 1, \dots, N_{Bank}$	monthly quarterly	+/- net change in mortgages, ΔU^b + interests on loans, $\sum_{f,s} D^{(f,s)} r_L$ - new loans, $\Delta \mathcal{L}^b$ + mortgage payments, $\sum_h R^h$ - dividends to Fund, div^b +/- net change in loans with CB, $\Delta \mathcal{L}_b^c$
Equity Fund <i>abbrev.</i> : Fund <i>index</i> : e	quarterly	+ dividends from Firm, TFirm, Bank, $\sum div^{(f,s,b)}$ - dividends to Hous, $\sum Z_e^h$ - investments in Firm, TFirm, $\sum \mathcal{E}^{(f,s)}$
Government <i>abbrev.</i> : Gov <i>index</i> : g	monthly quarterly	+ taxes on labor income, $\sum Z_\ell^h t_\ell$ - unemployment benefits, $\sum Z_u^h$ - general benefits, $\sum Z_g^h$ + taxes on capital, $\sum Z_e^h t_e$
Central Bank <i>abbrev.</i> : CB <i>index</i> : c	quarterly	+/- net change in loans to Banks, $\Delta \mathcal{L}_b^c$

Table 3: Timing of cash flow of agents populating the Iceace economy.

Production takes place the last day of any month and is available for sale since the first day of the following month; the production amount depends on the number of employees L^f available to firm f and on labor productivity γ_L which is taken constant over time and equal across firms.

Firms are price makers and set prices equal to the average unit production costs plus a fixed mark-up, μ , which is fixed over time and across firms. Total production costs related to the last month period are composed by two parts: a variable part related to labor costs $w^f L^f$, where w^f is the monthly nominal wage paid by firm f to its employees, and a second part which does not depend on the amount of production and is given by the cost for the service of debt, i.e., $r_L D^f$, where r_L is the nominal loan rate⁵ paid by firms to the banking system, and D^f is the amount of debt owed by the firm to banks. Unit production costs c^f related to the last month period are therefore given by:

$$c^f = \frac{w^f L^f + r_L D^f}{q^f}; \quad (2)$$

c^f is then averaged with the average production costs \bar{c}_I^f of firm' inventories I^f in order to compute the new average production costs \bar{c}^f as follows:

$$\bar{c}^f = \frac{\bar{c}_I^f I^f + c^f q^f}{I^f + q^f}. \quad (3)$$

The new monthly price p^f applied by firm f to goods for sale (both inventories and newly produced goods) is then given by:

$$p^f = (1 + \mu) \bar{c}^f. \quad (4)$$

At the beginning of the month, firms make also their production plans \tilde{q}^f for the present month. Based on their production plans, firms will form their labor demand. Production, as previously stated, will take place at the end of the month and will be available for sale in the following month. Firms first form an expectation on their expected sales both during the present and the next month.

⁵ The nominal loan rate, r_L , is calculated as a 1% spread on the Central Bank rate, r_{CB} , and is invariant between firms. For more information on how the Central Bank rate is formed see Section 2.6.

We stipulate that sales expectations, denoted as \hat{q}^f , are identical in the two months and depend on previous month sales. In particular, expected sales are generally set equal to previous month sales unless in the previous month all the inventories were sold out. In this latter case, expected sales are set equal to an amount 10% higher than sales in the previous month. Accordingly, the best production plan is given by $\hat{q}^f - \max(I^f - \hat{q}^f, 0)$, where the rationale is to produce the expected sale foreseen next month, as production will be only available after one month, minus the possible remaining inventories unsold in the present month. Finally, the production plan by firm f in the present month is indeed set to:

$$\tilde{q}^f = \eta q^f + (1 - \eta)(\hat{q}^f - \max(I^f - \hat{q}^f, 0)). \quad (5)$$

Therefore the actual plan takes into account a weighted average between previous production q^f and the supposed optimal plan, $\eta \in (0, 1)$, to avoid possible unrealistic and too wide oscillations of output.

Given \tilde{q}^f , based on Eq. 5, firms compute the labor demand L_d^f needed to fulfill their plans as:

$$L_d^f = \frac{\tilde{q}^f}{\gamma_L}. \quad (6)$$

The difference between L_d^f and the present labor endowment L^f determines new hiring (if positive) or layoffs (if negative) for the firms.

Construction firms

In the artificial economy, construction firms, indexed by s , produce housing units, according to a Leontief production technology, and sell them on the housing market (see Section 2.3). Two inputs are needed to produce housing, labor units L and capital goods K , described by Eq. 7. Construction firms start with an initial endowment of physical capital, $K^s(0)$. Their production capacity is limited by this physical capital and they cannot invest in new physical capital. In that way we have a constant upper limit to the growth of the housing stock in the model.

$$q^s = \min(\psi_L L^s, \psi_K K^s), \quad (7)$$

The production of each housing unit takes twelve months. Each housing unit can only be advanced by one month at a time. The construction firm can be forced to halt a particular housing construction project. This can happen for two reasons. Firstly, if the construction firm is rationed in the labor market or, secondly, if the construction firm is rationed in the credit market and is unable to get funding from the Equity Fund.⁶ When a particular housing unit has been worked on for twelve months the housing unit is complete and is then counted as inventory of the construction firm.

Looking at empirical data⁷ of the Icelandic housing market and construction industry, we find that the amount of houses constructed by construction firms in Iceland seems to be led by the price of housing. Therefore construction firms in the model look to the price of housing when deciding the amount of houses to construct. This modelling choice is also strengthened by the fact that when housing price started to drop in Iceland, after the recent housing bubble, the number of bankruptcies of construction firms increased significantly. This seems to suggest that construction firms in Iceland are more driven by short term profit rather than long term sustainability.

The planned production of construction firms, \tilde{q}^s , in the following month is therefore decided by looking into the evolution of housing prices. Here we define ΔP_H as the change in housing price, as well as the current number of projects under construction, α^s . If the price of housing is increasing, $\Delta P_H > 0$, the construction firms will randomly choose an integer amount to produce, uniformly distributed in the interval $[\alpha^s, \psi_K K^s]$, where $\psi_K K^s$ is the maximum production capacity of construction firm s . When the price of housing is decreasing, the construction firms want to decrease their production and randomly choose an integer amount to produce, again uniformly distributed, in the interval $[1, \alpha^s]$.

As a consequence, that when housing price is increasing, on average, the construction firms tries to produce more housing units, while if the housing price is decreasing, production tends to be lower. Based on the production plan, the construction firm will form its demand for labor, L_d^s , according to equation 8 and

⁶ See Section 2.4 for further details.

⁷ Data obtained from Registers Iceland (<http://www.skra.is>) and Statistics Iceland (<http://www.statice.is>).

try to fill vacant positions in the labor market (see Section 2.2), or fire workers if the construction firm is currently employing more workers than needed to fill the production plan.

$$L_d^s = \frac{\tilde{q}^s}{\psi_L}. \quad (8)$$

Construction firms will post their finished housing units, inventory, for sale on the housing market, where they compete with used housing units offered for sale by the households themselves. Section 2.3 explains how construction firms set prices in the housing market.

2.2 Labor market

The labor market is decentralized and is active the first day of any month after the production planning. Production plans by firms and construction firms set their need for employees according to eqs. 6 and 8. The difference between the need for employees and their present labor endowment set the labor demand of any producer and its behavior in the labor market.

The labor market is then characterized by four phases: wage adjustment, firing, turnover and new hirings. First, producers with a positive labor demand raise their wage offer $w^{(f,s)}$ by a fixed percentage γ_w to keep their present workers as well as to attract new ones, and post open job positions. Conversely, producers with a negative labor demand fire workers that are in excess of their need. The selection of fired workers is deterministic and households with the lowest skills⁸ are selected for firing. In the turnover phase, a set of employee is randomly selected, with a selection probability ζ for anyone, to look for new and better paid positions at different employers. These employees are queued in descending order according to their skills and in turn decide to fill a new position if it is paid better than the present one. Finally, it is the turn of unemployed households, again queued in the market in descending order according to their skills, to look for the remaining, if any, open positions and to fill them.

⁸ In the model, households are heterogeneous in term of their ability or skill to maintain the job and to get a new job if unemployed. As productivity of work is equal and constant across both firms and workers, skills should not be considered as technical abilities here, but more like social skills.

2.3 Housing market

The housing market is decentralized and is active the first day of any month. The housing market is mostly based on the model described in Erlingsson et al. (2013). With respect to this previous model, the supply side of the market is enriched by new housing units produced by constructions firms. We stipulate that households can buy or sell only one housing unit at any market round (month). Housing units are homogeneous. The bulk of demand and supply of housing is made by households who are selected with a probability ρ_H to enter the market as buyers or sellers with equal likelihood. This modeling choice aims to address the trading activities driven not by speculative reasons but by different reasons, like family needs, migration,⁹ etc... However, we stipulated that, if households are in financial distress, they are forced to enter the market to liquidate one housing unit, repay mortgages and thus to reduce their debt (mortgage) burden. We call this behavior fire sale of housing. Households are considered to be in financial distress if their past quarterly mortgage costs (interest + principal payments) R^h are higher than a given fraction θ of their total past quarterly net income, given by both labor income Z_ℓ^h and capital income Z_e^h , considering both the labor income tax, t_l and capital income tax, t_e . The fire sale condition is then given by:

$$R^h > \theta \left(Z_\ell^h(1 - t_l) + Z_e^h(1 - t_e) \right), \quad (9)$$

where θ is a parameter defined in the interval $(0, 1)$. The market is a posted-price market where sellers post prices and buyers search for the cheapest housing units. Posted prices are based on the last market round (last month) average transaction price P_H . In particular, households selected to be random sellers and construction firms post selling prices p_H^i given by:

$$p_H^i = P_H (1 + \varepsilon^i) \quad i \in \{\text{random sellers (Hous) and construction firms}\} \quad (10)$$

where ε^i is a random draw by seller i from a uniform distribution defined in the interval between 0 and λ_H^{md} . The rationale of Eq. 10 is that if sellers are not subject to particular financial needs, as the households selected at random to sell or construction firms, then they are willing to sell their housing units only if they

⁹ It is worth noting however that no geographical features are considered in this model

make a gain with respect to the reference price, P_H . Conversely, in the fire sale case, we stipulate that sellers can accept a selling price lower than the latest market price to facilitate the liquidation of the housing unit and then the easing of their financial distress. If the fire sale condition holds, households post selling prices p_H^h given by

$$p_H^j = P_H (1 - \hat{\varepsilon}^j) \quad j \in \{\text{households in financial distress}\} \quad (11)$$

where $\hat{\varepsilon}^h$ is a random draw by household h from a uniform distribution defined in the interval between 0 and $\lambda_H^{\text{firesale}}$.

Buyers, i.e. households selected to buy, are randomly queued so that each one, when getting its turn, will select the cheapest available housing unit to buy and a transaction occurs provided that the household has the necessary financial resources or is able to get a mortgage. The market closes when all buyers have had their turn on the market or the supply of housing is depleted. A new housing price P_H is then calculated as the average of realized transaction prices.

2.4 Credit market

Banks provide loans to producers, both consumption goods producers and construction firms, to finance their operations, and mortgages to households to finance their purchase of housing units. In both cases, lending activity by banks is constrained by a minimum capital requirement which states that the equity base E^b of bank b must be equal or higher than a fraction χ of the sum of its risky assets, i.e., the sum of loans to firms and mortgages to households.

A second constraint holds concerning the equity of the borrower, i.e., producers must have a positive equity to receive a loan, while households must fulfill a minimum equity ratio requirement, i.e. their net wealth E^h must be equal or higher than a fraction ϕ of their total wealth $P_H X^h + M^h + P_F V^h$, given by the sum of housing wealth $P_H X^h$, liquid wealth M^h , and equity fund shares wealth $P_F V^h$. See Table 1 for details about the used symbols.

Loans

The market for loans to firms and construction firms opens each quarter and is active the first day of the period. Demand for loans $\mathcal{L}_d^{(f,s)}$ by firms and constructions

firms, collectively called producers, is set by their liquidity needs to pay dividends to the Equity Fund and interests to banks, i.e.,

$$\mathcal{L}_d^{(f,s)} = \max(r_L D^{(f,s)} + \text{div}^{(f,s)} - M^{(f,s)}, 0) \quad (12)$$

Producers apply for credit first to their preferred bank randomly set at the beginning of the simulation, then if rationed make a second application to another randomly selected bank. For the sake of simplicity, we stipulate that loans are infinitely lived and are never paid back.

If the producers are rationed by both their preferred bank and by a second bank, they will be forced to cut their dividend payment. If this still is not enough to cover the interest payment on loans, $r_L D^{(f,s)}$, the producers will look to the Equity Fund for additional equity to continue their operations. In order to be accepted by the Equity Fund the producers must have a minimum equity ratio of 5%.

If producers are rejected by the Equity Fund, having an equity ratio of less than 5% and not being able to pay the interest on their loans, they will be considered bankrupt and will go through what is defined as an illiquidity bankruptcy. The illiquidity bankruptcy entails that the debt of the producer is restructured, with a corresponding loss for the banking system, so that the payment of interest is equal to the earnings before interest and taxes (EBIT). In the case of negative EBIT the debt of the producer will be set to zero. After receiving this debt relief the producer will continue normal operations.

A more severe bankruptcy will occur if the producer has negative equity. In this case the producer exits the economy. The producers debt is written off, causing a loss for the banking system, and its employees are laid off. A new producer is started with one employee and with new initial equity, physical capital and inventories. The new firm will set its price to the mean price of the market while keeping its wage level. The initial physical capital endowment of the newly founded producer, (f, s) , is inherited from the failed firm, (j, i) , so that $K^{(f,s)} = K^{(j,i)}$. Inventories of the new firm are set to a level representing one workers output over one month, $I^f = \gamma_{L^f}$ for consumption goods producers or $I^s = 0$ for construction firms, and liquidity of the producer is set to the same level as in the start of the simulation, $U^{(f,s)} = 0$. When the asset side has been initialized the producer is given a loan from the banking system consistent with the leverage given to producers at the start of the simulation, $D^f = (P_K K^f + P_C I^f + U^f) / (1 + v^f)$ for consumption

goods producers and $D^s = (P_K K^s + P_H I^s + U^s)/(1 + v^s)$ for construction firms. The residual is then the equity of the producer, $E^f = P_K K^f + P_H I^f + U^f - D^f$ for consumption goods producers and $E^s = P_K K^s + P_H I^s + U^s - D^s$ for construction firms.

Note that this mechanism for both illiquidity and insolvency bankruptcy of producers within the artificial economy entails that the number of producers is constant over time.

Mortgages

Mortgages are the financial instruments that households use to borrow from banks for buying housing units. We consider a well-known type of mortgage, the adjustable-rate mortgage (ARM)¹⁰ with a life span of 40 years. The ARM takes into account the change of the financing conditions within the economy through the change of the annual mortgage rate r_M . The mortgage rate changes on a quarterly base following the monetary policy decision by the central bank and is calculated at the beginning of each quarter as the central bank interest rate, r_{CB} , plus a fixed 2% spread. No cap on the interest rate or payment variation between quarters is considered. Given the annual mortgage rate r_M , the annuity factor, A^m , can be computed for each mortgage m considering its remaining life as follows:

$$A^m = \frac{1}{\frac{1}{4}r_M} - \frac{1}{\frac{1}{4}r_M (1 + \frac{1}{4}r_M)^n}, \quad (13)$$

where n is the number of quarters remaining in the mortgages's life. The annuity factor allows to easily compute the quarterly mortgage costs R^m related to mortgage m repayment, which should include both interests, R_r^m , and a fraction of the principal, R_U^m . Let us denote as U^m the principal amount remaining to repay for mortgage m , the related mortgage repayment costs (principal and interests) are then given by the annuity factor as follows:

$$R^m = \frac{U^m}{A^m}. \quad (14)$$

¹⁰ In Iceland a special type of inflation-indexed mortgage is also widely used. This special type of mortgage alongside the fixed rate mortgage will be considered in future enhancements of the Iceace model.

The quarterly interest payment R_r^m is straightforward to calculate as $R_r^m = U^m \frac{1}{4} r_M$. Finally, the part of the principal which is repaid, R_U^m , is simply given by the difference between the total payment R^m and the interest payment R_r^m , i.e., $R_U^m = R^m - R_r^m$.

Households ask for a mortgage for the purchase of new housing units if they are not endowed with enough liquidity. Beside the equity ratio, households must satisfy an additional requirement to get a mortgage, i.e., households need to show to be able to pay the costs (interests and principal repayment) of all their mortgages, including the new one, given their present income and the present mortgage rate. In particular, for any household asking for a new mortgage m^* , the total quarterly costs of present mortgages $\sum_m R^m$ plus the additional quarterly costs related to the new requested mortgage, i.e., R^{m^*} , must not be higher than a fraction β of the total quarterly net income, including both labor Z_ℓ and capital income Z_e . The condition that needs to be fulfilled by a household to get a mortgage is then:

$$\sum_m R^m + R^{m^*} \leq \beta (Z_\ell(1 - t_l) + Z_e(1 - t_e)). \quad (15)$$

Like for producers, any household has its preferred bank to whom asking for a mortgage. Unlike producers, it does not turn to a different bank if rationed by its preferred one.

When a household sells a unit of housing it uses the amount received to pay back the entire mortgage. If the amount received is more than the mortgage owed the difference will be kept as liquidity.

If it happens that a household is spending a very large part of its disposable income on mortgage payments, such that $R^h > \theta_{\text{high}}(Z_\ell^h(1 - t_l) + Z_e^h(1 - t_e))$, the household will get a debt write-off, since reasonably it is unable to service the debt. The write-off will lower the debt service to a sustainable level, $R^h = \theta_{\text{low}}(Z_\ell^h(1 - t_l) + Z_e^h(1 - t_e))$, and the total mortgage of the household will be: $U^h = R^h / r_M$. This will, of course, be reflected by the asset side of banks' balance sheets, creating a loss equal to the total debt write-off.

2.5 Households' consumption and the wealth effect

At the beginning of each month, households set their consumption budget, i.e., the amount of money to spend on the consumption market during the month. The

consumption budget C_B^h of any household h depends on the labor Z_l^h and capital Z_e^h income realized in the last quarter¹¹ and on its quarterly mortgage expenses, $R^h = \sum_m R^{m,h}$. The labor income consists of wages, W^h , unemployment benefits, $\xi_u W^h$, and general benefits, $\xi_g W^h$, so we have $Z_l^h = W^h + \xi_u W^h + \xi_g W^h$. Any household then determines its monthly disposable income, Υ^h , taking into account the labor tax, t_l , and capital tax, t_e , as:

$$\Upsilon^h = \frac{1}{3} (Z_l^h(1 - t_l) + Z_e^h(1 - t_e) - R^h), \quad (16)$$

which is the amount that could be reasonably spent for consumption. Consumption decisions then is mainly modeled according the theory of buffer-stock saving behavior (Carroll, 2001; Deaton, 1992), which states that households consumption depends on a precautionary saving motive, determined by a target level of liquid wealth M^h to income ratio. Let's denote ρ_C as the target ratio between the stock of liquid wealth, M^h , and the monthly disposable income, Υ^h ; according to the buffer-stock theory of saving, the monthly consumption budget would be then given by $\Upsilon^h + \alpha_C(M^h - \rho_C \Upsilon^h)$. According to this rule, consumption is set at a value lower (higher) than the disposable income if the actual ratio M^h/Υ^h is lower (higher) than the target ρ_C . The rationale is then to adjust the consumption budget every month so to adaptively meet the pre-determined liquid wealth to disposable income target ratio by consuming less (more) than the disposable income if $M^h < \rho_C \Upsilon^h$ ($M^h > \rho_C \Upsilon^h$), so to increase (decrease) M^h . The parameter α_C sets the speed of adjustment. Furthermore, we take also into account the wealth effect on consumption given directly by the quarterly variation of households' equity or net wealth E^h , which is mainly given by the rising or falling housing prices. Indeed, according to Carroll et al. (2011) the wealth effect of an increase in housing prices is much higher than the wealth effect observed from rising stock prices. According to Calomiris et al. (2012), the wealth effect ranges from 5% to 8%. Mixing together the buffer-stock theory of saving and the wealth effect, the monthly consumption budget C_B is then given by:

$$C_B^h = \Upsilon^h + \alpha_C(M^h - \rho_C \Upsilon^h) + \omega E^h, \quad (17)$$

¹¹ It is worth remembering here that the labor income changes on a monthly basis, while capital income and mortgage payments are computed and accounted quarterly. The labor income in then the sum of three months, or one quarter, worth of labor income.

where the parameter ω sets the size of the wealth effect on consumption. It is worth noting that the wealth effect is a shock transmission mechanism from the housing market to the real economy, since an increase (decrease) in housing wealth, due to an increase (decrease) in the price of housing, will result in increased (decreased) households' net wealth and then consumption. This will result in more (less) production by firms and therefore in an increase (decrease) of the employment level.

The consumption market opens at the beginning day of every week and all households are randomly queued and willing to spend a fraction¹² of their part of the monthly consumption budget not yet spent in the previous weeks. The household selects a firm to buy consumption goods from at random, though giving more weight to the probability of selecting firms that offer the lower prices. In particular, the probability is inversely proportional to prices, e.g. a firm offering double the minimum price has half the probability of being selected by a household as a firm offering the minimum price.

The consumption goods market closes either when there are no goods for sale or when all households have spent their entire weekly consumption budget.

2.6 Policy makers: Central Bank and the Government

The Central Bank has two main functions in the model. Firstly, the Central Bank is responsible for the monetary policy and sets the interest rate, r_{CB} , on a monthly basis according to a Taylor rule. The Taylor rule takes into account both the unemployment rate, \mathcal{U} , and the rate of inflation, \mathcal{I} , and sets the interest rate according to Eq. 18.

$$r_{CB} = \mathcal{I} + \frac{1}{2}(\mathcal{I} - \mathcal{I}_{CB}) - \frac{1}{2}\mathcal{U}, \quad (18)$$

where \mathcal{I}_{CB} is the inflation target of the Central Bank. The minimum interest rate is set to 0.5%. Secondly, the Central Bank acts as a liquidity provider for the banking sector. If the banks of the artificial economy require liquidity they can draw upon the Central Bank credit line at any time and without limit.

¹² The value of the fraction depends on the number of weeks remaining in the month, i.e. it can range from 1/4 for the first week of the month to 1 for the last week.

The government, being responsible for the fiscal policy in the economy, has two main functions. Firstly, it collects taxes on revenues, both labor tax, t_ℓ , and capital income tax, t_e . The second function is to distribute this income among households, both as general transfer benefits, $\xi_g W$, distributed equally among all households and unemployment benefits, $\xi_u W$, given to unemployed households. The government will always aim at having zero deficit, thus raising (lowering) taxes and lowering (raising) benefits if the balance is negative (positive). The parameter, Γ defined in the interval $(0, 1)$, decides the ratio between using taxes and benefits to balance the budget of the government. A higher Γ means that taxes are used more than benefits to balance the budget when there is a deficit, but benefits are raised more when there is a surplus. In a way a higher Γ can be interpreted as a more social type of government, where both taxes and benefits are higher than when Γ is low. Taxes, both on labor and capital income, cannot be raised above 50% and the maximum transfer benefits¹³ are 40% of average wages. The minimum tax is 10% while benefits can go to 0% of average wages. The unemployment benefits are fixed at 50% of the average wage.

3 Results

A set of computational experiments, based on numerical simulations of the agent-based model, has been carried out and is presented in this section. The main objective of computational experiments is to study the effect on the economy of banks' different standpoints, represented in the model by parameter β , towards the creditworthiness of the borrowers defining households financial robustness (see Section 2.4 for details). Parameter β sets banks' attitude when evaluating the eligibility of an household for a mortgage loan (see Eq. 15). A higher β means looser creditworthiness conditions required by the bank to grant a mortgage.

The setting for the simulations is the following: 8000 households, 125 firms, 25 construction firms, 2 banks, 1 government and 1 central bank.

¹³ The purpose to include general transfer benefits is to model welfare transfers and costs for the government, like e.g. hospitals, schools, public offices, that, contrary to unemployment benefits, are a substantial component of public spending that is independent from the business cycle.

For each configuration of the parameters, several random seeds that generate different stochastic processes have been used in order to improve the reliability of the outcomes.

For the sake of a clear presentation of results, this section is divided into three parts. In the first part, there is a short discussion regarding the initialization of the model and how some parameters are derived from empirical data. In the second part, a single simulation (that can be considered as a specific realization of the agent-based economic model) is presented, and a qualitative analysis of economic interactions is performed. Finally, the third part, where the results of all simulations, corresponding to fifty different seeds, are statistically aggregated and analyzed as a whole. In this way, we can first describe in detail the economic mechanisms of interaction and propagation emerging from a representative simulation, and then show that these mechanisms hold for every simulation, irrespective of the random seed used.

3.1 Initialization of the simulation settings

We initialize the balance sheet of economic agents both by looking into empirical evidence from the Icelandic economy¹⁴ and by setting the initial values of the variables from a limited set of assumptions. However, our aim is not to calibrate the model in order to take into account the different stylized facts of the Icelandic economy, but just to restrict the degrees of freedom of the model and to set initial conditions and parameters to values consistent with a realistic economy in terms of relative size and dimension.

We set the number of firms in the model, $N_{Firm} + N_{TFirm}$, to 150. According to Statistics Iceland data about one in every six firms in Iceland are in the construction industry. Therefore the number of construction firms in our model is: $N_{TFirm} = 25$, which leaves us with $N_{Firm} = 125$ consumption goods producers. Also, the labor force share of construction firms (δ^s) according to Statistics Iceland is about 7.5% of the total labor force. From the data we also find the maximum yearly growth of the housing stock, $\rho^s = 0.015$.

¹⁴ Empirical data retrieved from Statistics Iceland (statice.is).

We also limit the degrees of freedom by deriving the initial state of many variables from just a few assumptions. We start with setting the gross money wage, $W(0) = 5$, for producers and the initial unemployment level, $\mathcal{U}(0) = 10\%$, which gives us the initial number of employees for each producer, $L^{f,s}$. The total number of employees working in the construction firms is set according to δ^s , so that $\sum_s L^s = \delta^s (1 - \mathcal{U}) N_{Hous}$. Consequently, $\sum_f L^f = (1 - \delta^s) (1 - \mathcal{U}) N_{Hous}$. Now we can set the initial debt of producers so that the service of the debt is 20% of the labor cost: $D^{f,s} = 0.2 \left(\frac{W(0)L^{f,s}}{r_L} \right)$, where r_L is the initial loan rate, given by $r_{CB} + 1\%$, where the initial central bank policy rate is set to 2%. Then the Equity of firms is set using the initial leverage of firms and construction firms, $E^{f,s} = \frac{D^{f,s}}{v^{f,s}}$. Given the liabilities side of the balance sheet of producers, we set their liquidity, $M^{f,s}$, to 0 and their inventories to a month's worth of production, given a single employee, $I^f = \gamma_L L^f$ for consumption goods producers, and $I^s = 0$ for construction firms. Physical capital is then used to balance the assets and liabilities of producers. Using a similar approach we construct the initial balance sheet of households by assuming that each household starts with 5 housing units, $X^h(0) = 5$, each worth, $P_H(0) = 20W(0)$, and a liquidity equal to three months' wages, $M^h(0) = 3W(0)$. Consequently we can decide the initial mortgages of households, U^h , and equity, E^h , using the starting leverage, v^h . After initializing the balance sheet of producers and households we can start constructing the balance sheet of banks. Firstly we assume that deposits of banks are given by the sum of producers' and households' liquidity: $\mathcal{D} = \sum_{h,f,s} M^{h,f,s}$. Banks assets are composed by producers' debt, \mathcal{L}^b , households mortgages, U^b , and finally the banks own liquidity, M^b , which is initially set to a ratio of total assets. Then equity can be set using the initial capital adequacy ratio, $\chi(0)$. Banks' debt to the central bank is set to balance assets and liabilities of the bank.

Some parameters, like the mortgage duration T_M , and the capital adequacy ratio of banks χ , are derived from common knowledge while other parameter values, like the size of the wealth effect of housing, ω , come from the literature (see e.g. Carroll et al. (2011) and Case et al. (2005)). Finally some parameter values are based on best-guess estimates and conventions when working with agent-based models. Tables 7-9 in the appendices summarize the values given to relevant parameters and initial values of the main endogenous variables of the model.

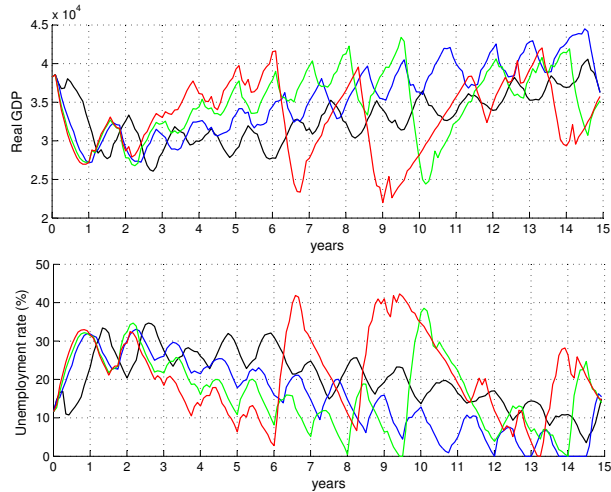


Figure 1: Simulation paths for GDP and unemployment rate. Four values of β are considered, i.e., $\beta = 0.2$ (black line), $\beta = 0.25$ (blue line), $\beta = 0.3$ (green line) and $\beta = 0.4$ (red line).

3.2 Analysis of economic interactions

Figures 1 to 7 show the time series from a single simulation run. The main features of this particular simulation are shared by the whole set of simulations composing our computational experiment, as shown in Section 3.3.

The monthly GDP levels associated with different β s are plotted in Figure 1. It is obtained from the total value of both housing and consumption goods production (nominal GDP), corrected by the consumer price index, which includes only consumption goods. The black line corresponds to the most restrictive attitude towards borrowers ($\beta = 0.20$), meaning that a high income to housing expenditure ratio is requested to get a loan, whereas the red line corresponds to the most permissive case ($\beta = 0.40$), that we could homologate to subprime lending. The blue ($\beta = 0.25$), and green ($\beta = 0.30$) lines represent two intermediate cases.

In Figure 2 the direct impact of such different lending strategies on the total mortgages amount is clearly visible. When financial requirements are low, a higher

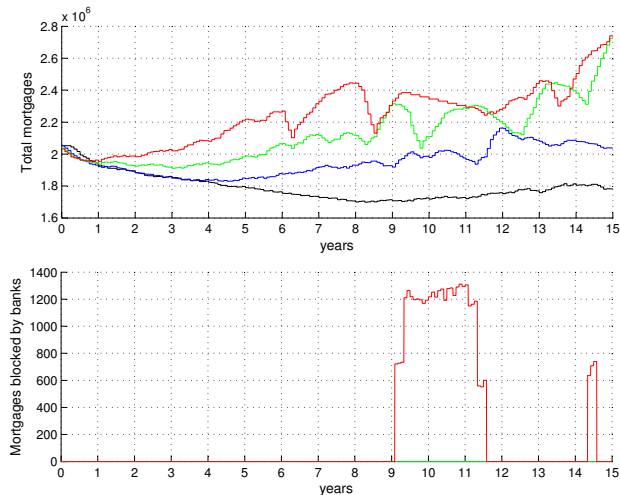


Figure 2: Simulation paths for mortgages. Four values of β are considered, i.e., $\beta = 0.2$ (black line), $\beta = 0.25$ (blue line), $\beta = 0.3$ (green line) and $\beta = 0.4$ (red line).

amount of mortgages is granted and the housing market is more active, with a much higher level of transactions, at least in the first 6 years of simulation.

Going back to Figure 1, we can appreciate the economic implications of the different borrowing requirements. If only the first 6 years were considered, the result would be very clear: the more you lend, the more you grow. In other words, more permissive household's financial requirements entail higher GDP growth rates. However, the second part of the simulation tells another story. The red GDP trajectory shows two deep recessions, the first starting at year 6, the second starting after year 8. The green line also shows a deep recession after year 9. What is visible to the naked eye, looking at these plots, and confirmed by the statistical aggregation of all the simulations in Table 4, is that the volatility of GDP increases when a higher amount of credit money is allowed to enter the economic system. At a first glance, the blue line, corresponding to the intermediate value of ($\beta = 0.25$), seems to be the best compromise between the slow growth of the black line ($\beta = 0.20$) and the instable behavior of the two other cases with higher β 's.

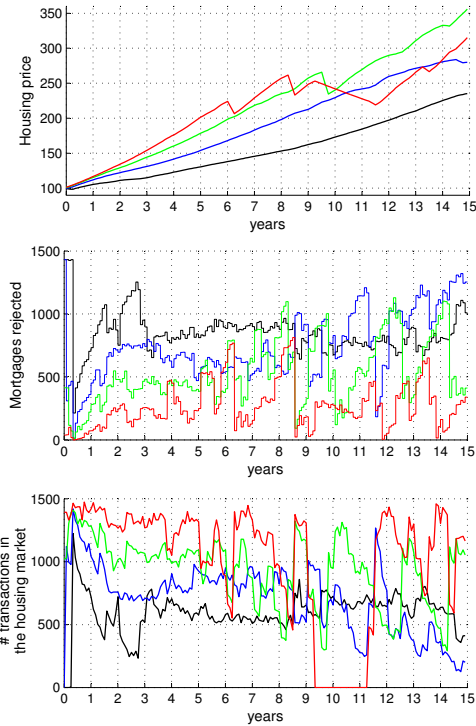


Figure 3: Simulation paths for housing market variables. Four values of β are considered, i.e., $\beta = 0.2$ (black line), $\beta = 0.25$ (blue line), $\beta = 0.3$ (green line) and $\beta = 0.4$ (red line).

It can be relevant to analyze how the economic system runs into a crisis when the value of β is high enough, examining the crucial events that involve different economic agents, and observing the main economic interactions.

From the households (borrowers) perspective, as it has been shown, a more permissive policy leads to an increase in mortgages, and, consequently, in the aggregate liquid wealth of the household, i.e. $\sum_h M^h$, (see Figure 5). The new available mortgage loans obviously push the housing price up (Figure 3), raising the nominal wealth of households. In turn, the greater liquidity, combined

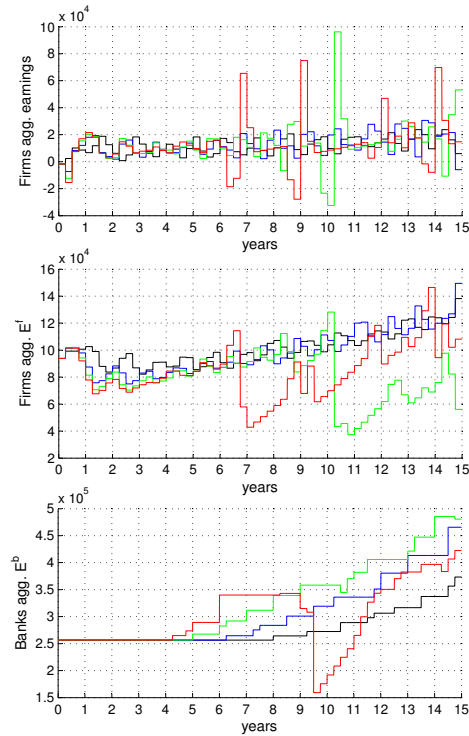


Figure 4: Simulation paths for equity capital and earnings. Four values of β are considered, i.e., $\beta = 0.2$ (black line), $\beta = 0.25$ (blue line), $\beta = 0.3$ (green line) and $\beta = 0.4$ (red line).

with the wealth effect, entails an increasing goods' demand that leads to higher consumption, and thus production. On the other hand, a more permissive loans policy increases households' housing expenditures, due to the raise of the mortgage interest payments with respect to their income, as reported in Figure 5. We can notice that in both the red and the green cases, the housing expenditure starts to raise quite early (around year 4). At year 6, the year of the first crisis for $\beta = 0.40$, the average housing expenditure is slightly less than 30%, which is a very high value compared to the cases of lower β 's. Furthermore, this 30% percentage is

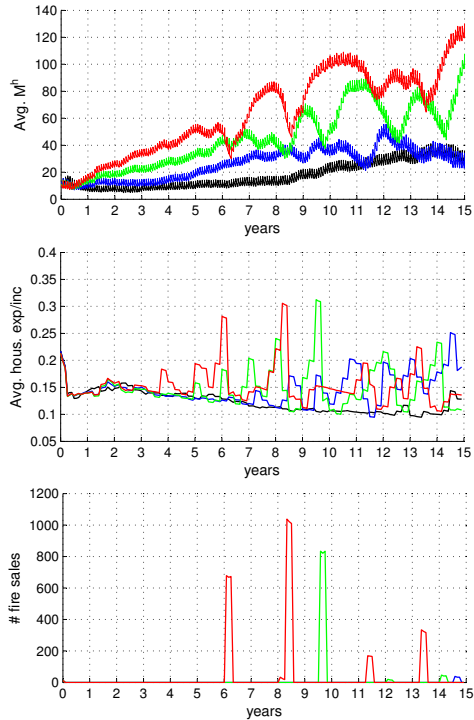


Figure 5: Simulation paths of financial fragility indicators of households. Four values of β are considered, i.e., $\beta = 0.2$ (black line), $\beta = 0.25$ (blue line), $\beta = 0.3$ (green line) and $\beta = 0.4$ (red line).

an average value, meaning that, in some cases, the interest payment associated to households debt load is simply not bearable. As a consequence, some households are forced to sell their house in order to get sufficient liquidity to pay back the mortgage. These fire sales, also shown in Figure 5, start immediately after the peak of the housing expenditure versus income ratio, causing a decrease in the housing price (Figure 7). We argue that these price dynamics can be described as a bubble determined by an excess of credit money.

When the housing price has decreased enough, around the second quarter of year 6, the housing markets starts up again and the number of transactions

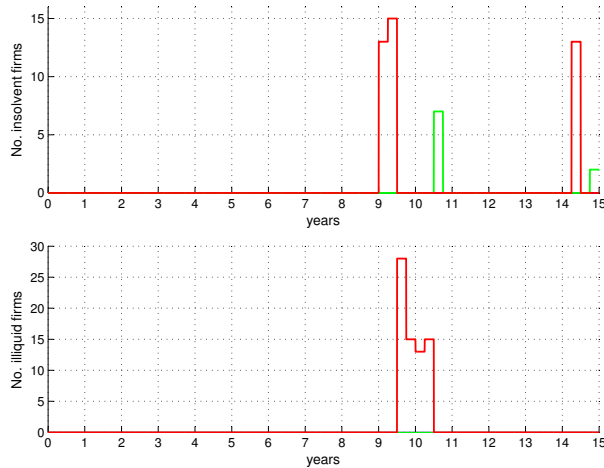


Figure 6: Simulation paths for firms bankruptcies. Four values of β are considered, i.e., $\beta = 0.2$ (black line), $\beta = 0.25$ (blue line), $\beta = 0.3$ (green line) and $\beta = 0.4$ (red line).

rises sharply, as Figure 2 shows. It is worth noting that this “market efficient” reactivation of the housing transactions is a main distinguishing factor between the first crisis of year 6 and the second crisis starting in the second quarter of year 8, as we will explain later.

Before going on and describing the second crisis, it is useful to analyze what happens from firms and banks side. Figure 4 shows several time series related to firms. It is important to underline that the first crisis does not trigger any firms’ bankruptcy in the model. It is basically a demand crisis due to the excessive burden of interest payments for the households, with a consequent reduction of consumption. The fall of the housing prices exacerbates this reduction through the wealth effect. In turn, firms have to reduce production with obvious effects on firms aggregate revenues and equity.

After almost one year of crisis, as we have seen, households’ demand starts to raise again and the economy slowly recovers. At year 8, the GDP red line ($\beta = 0.40$) reaches again a comparable level with respect to the other β values.

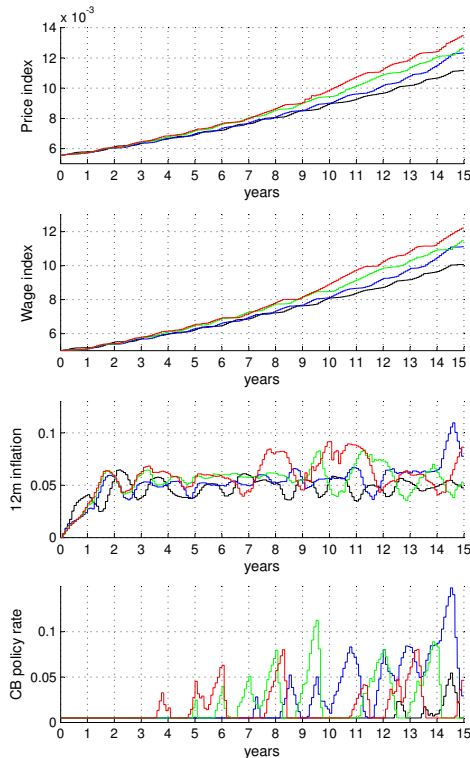


Figure 7: Simulation paths for price and wage indices, inflation and the central bank policy rate. Four values of β are considered, i.e., $\beta = 0.2$ (black line), $\beta = 0.25$ (blue line), $\beta = 0.3$ (green line) and $\beta = 0.4$ (red line).

However, Figure 4 shows that firm's equity still remains at a significantly lower level, meaning that the first crisis left firms in a more fragile financial condition, undermining the solidity of the whole economics system. In fact leading after half a year to a serious bankruptcy chain that triggers a second crisis, which can be described as a sort of double dip recession (Figure 1). During this second crisis, the bankruptcy of many firms results in a further reduction in banks' equity that, in turn, are unable to meet the Basel II adequacy ratio, setting a minimum equity capital requirement with respect to the weighted total assets owned by the bank.

As a consequence, banks are no more able to lend money, as far as they have not cured their balance sheets, and the housing market freezes, as shown in Figure 2.

It could be interesting to resume here the mechanism of interaction between housing market and firms' activity emerging from the model in the case of a permissive financial requirements policy for households' mortgages ($\beta = 0.40$). In a first crisis, triggered by the housing price bubble and by the consequent incapability for households of paying back their mortgages, firms' profit and equity capital is seriously reduced. Later, after a 2 year slow recovery of the economy, a second crisis is triggered again by an excessive amount of households' debt burden. This time many firms are financially fragile, due to the previous crisis, and go into bankruptcy, triggering loan write-offs that reduce banks' equity capital, preventing banks from granting new mortgages due to the Basel II regulation, completely freezing the housing market.

On the other hand, looking at the time series of the various economic variables represented in Figures 1 to 7, for lower values of β , it clearly emerges a much more stable context. There are, of course, fluctuations in the GDP, but they do not seem to be rising in amplitude and there is no trace of the violent crisis that characterize higher β cases. As a last comment, it is worth noting that the economic performance with the lowest $\beta = 0.2$ value is significantly lower than the performance with $\beta = 0.25$.

The conclusion of this qualitative analysis is therefore quite evident. High values of β (corresponding to a loose regulation) cause a higher economic instability with a higher chance for deep and violent recessions. On the other hand, too strict regulations (as for $\beta = 0.2$) can be an obstacle to growth and limit the economic activity. There seems to exist a trade-off between growth and stability, and policy makers should be careful in setting a balanced regulation according to their goals and to the economic conditions.

3.3 Analysis of aggregated outcomes

The average values (and standard errors) of several economic variables have been computed considering 50 different random simulation seeds, and are collected in Tables 4 to 6. The idea is to show that the economic reasoning presented in Section 3.2 is not just related to a specific simulation outcome but characterizes

	period (years)	$\beta = 0.2$	$\beta = 0.25$	$\beta = 0.3$	$\beta = 0.4$
Real GDP	1-15	33,127 (1712)	35,033 (2358)	35,530 (2307)	33,460 (1694)
	1-6	31,596 (409)	31,228 (624)	32,578 (862)	33,693 (956)
	7-15	34,147 (1330)	37,570 (1644)	37,498 (1464)	33,304 (979)
Yearly real GDP growth (%)	1-15	0.07 (0.77)	1.36 (0.58)	1.32 (0.57)	0.92 (0.67)
	1-6	-3.30 (1.21)	0.08 (0.98)	2.32 (0.95)	2.88 (0.92)
	7-15	1.77 (0.14)	1.73 (0.15)	0.52 (0.22)	0.60 (0.36)
GDP volatility	1-15	29,936 (393)	45,110 (777)	45,030 (856)	51,945 (3639)
	1-6	33,688 (189)	23,213 (453)	30,202 (415)	35,017 (604)
	7-15	20,549 (602)	24,347 (763)	34,448 (1793)	58,408 (5059)
Unemployment (%)	1-15	20.5 (0.8)	16.5 (1.2)	15.7 (1.0)	21.2 (0.7)
	1-6	24.4 (0.79)	25.2 (0.75)	22.2 (0.95)	20.0 (1.01)
	7-15	17.9 (0.52)	10.7 (0.50)	11.3 (0.18)	22.0 (0.47)
Housing stock	1-15	43,315 (292)	43,372 (289)	43,370 (283)	43,089 (237)
	1-6	41,173 (114)	41,250 (115)	41,291 (115)	41,295 (115)
	7-15	44,744 (177)	44,787 (172)	44,756 (167)	44,285 (115)

Table 4: Real values of the Iceace economy for three different periods of the simulations and four different values of β . Standard error shown in parenthesis.

the whole set of runs in the computational experiment. In order to better explain how different regulation rules affect the macro economy in the short and in the long run, the economic variables are presented for three different time spans. The first one represents the whole period considered. The second one includes the first 6 years, that we could consider as a short-medium run, while the last time span considers the long run, from year 7 to year 15. In general, the specific analysis presented in Section 3.2 is confirmed by the data presented in Tables 4 to 6. The main macroeconomic effect of decreasing the limitation on households mortgage borrowing (increasing β), raises dramatically the volatility of real GDP growth,

	period (years)	$\beta = 0.2$	$\beta = 0.25$	$\beta = 0.3$	$\beta = 0.4$
Price level	1-15	0.0079 (0.0002)	0.0082 (0.0003)	0.0084 (0.0003)	0.0086 (0.0003)
	1-6	0.0063 (0.0001)	0.0064 (0.0001)	0.0064 (0.0001)	0.0065 (0.0001)
	7-15	0.0090 (0.0002)	0.0095 (0.0002)	0.0098 (0.0002)	0.0100 (0.0002)
Wage level	1-15	7.12 (0.20)	7.40 (0.24)	7.60 (0.27)	7.73 (0.27)
	1-6	5.67 (0.06)	5.70 (0.07)	5.75 (0.08)	5.79 (0.80)
	7-15	8.10 (0.15)	8.54 (0.17)	8.83 (0.19)	9.01 (0.19)
Housing price	1-15	153.7 (5.4)	195.5 (8.8)	220.6 (10.2)	222.2 (8.6)
	1-6	116.7 (1.5)	132.0 (2.7)	145.0 (3.9)	156.2 (5.0)
	7-15	178.4 (4.0)	237.8 (5.8)	271.0 (6.0)	266.2 (2.9)
Central bank interest rate (%)	1-15	0.65 (0.05)	1.91 (0.24)	2.37 (0.23)	1.62 (0.11)
	1-6	0.50 (0.00)	0.50 (0.00)	0.59 (0.03)	1.03 (0.11)
	7-15	0.75 (0.06)	2.86 (0.22)	3.56 (0.12)	2.01 (0.06)
No. Firm Bankruptcies	1-15	0.0 (0.0)	0.0 (0.0)	0.2 (0.1)	8.7 (1.5)
	1-6	0.0 (0.0)	0.0 (0.0)	0.0 (0.0)	0.0 (0.0)
	7-15	0.0 (0.0)	0.0 (0.0)	0.3 (0.1)	14.4 (1.4)

Table 5: Nominal values of the Iceace economy for three different periods of the simulations and four different values of β . Standard error shown in parenthesis.

as already commented in the previous section and corroborated by Table 4. We used the standard deviation of the GDP growth as a straightforward measure of the economic volatility.

Looking at Table 4, one can appreciate the short and long term effects of the computational experiment. In the case of a very permissive requirements policy, i.e., $\beta = 0.40$, the mean real GDP level and the mean yearly GDP growth are the highest in the first six years, and the lowest in the last nine years, with respect to all β values. The opposite obviously happens to the unemployment rate, which is the lowest in the first six years and the highest in the last nine. This facts show that,

	period (years)	$\beta = 0.2$	$\beta = 0.25$	$\beta = 0.3$	$\beta = 0.4$
Household total debt	1-15	1,794,667 (11676)	1,977,154 (16899)	2,147,666 (27978)	2,272,147 (26677)
	1-6	1,873,190 (10468)	1,883,715 (7682)	1,955,635 (4953)	2,063,031 (12781)
	7-15	1,742,318 (4128)	2,039,447 (15580)	2,275,686 (21590)	2,411,557 (10065)
Household leverage	1-15	0.43 (0.03)	0.37 (0.03)	0.34 (0.03)	0.35 (0.02)
	1-6	0.66 (0.02)	0.56 (0.03)	0.52 (0.03)	0.51 (0.03)
	7-15	0.29 (0.01)	0.24 (0.01)	0.23 (0.01)	0.25 (0.00)
Household exp/income	1-15	1.016 (0.006)	1.026 (0.006)	1.044 (0.007)	1.075 (0.010)
	1-6	0.998 (0.009)	1.029 (0.008)	1.065 (0.007)	1.093 (0.011)
	7-15	1.028 (0.002)	1.022 (0.004)	1.029 (0.006)	1.062 (0.010)
Firm total debt	1-15	247,814 (336)	259,345 (890)	271,813 (2026)	258,296 (2700)
	1-6	245,537 (206)	254,046 (459)	259,054 (590)	262,019 (703)
	7-15	249,333 (209)	262,877 (746)	280,319 (1723)	255,814 (3413)
Firm leverage	1-15	2.44 (0.03)	2.73 (0.04)	3.25 (0.04)	3.17 (0.10)
	1-6	2.63 (0.02)	2.99 (0.04)	3.18 (0.05)	3.25 (0.06)
	7-15	2.32 (0.03)	2.56 (0.02)	3.29 (0.04)	3.11 (0.12)

Table 6: Financial values of the Iceace economy for three different periods of the simulations and four different values of β . Standard error shown in parenthesis. Leverage is defined as *debt/equity*.

apart from a huge rise in volatility, also the overall performance of the economic system is seriously compromised in the long run. The narrative of Section 3.2 is again confirmed by looking at Table 5. In the case of subprime lending ($\beta = 0.40$) the rate of banks' mortgage rejections in the first period is very low, allowing households' total debt to grow much faster. Households ratio between expenditure and income is higher, due to a higher interest bill generated by mortgage loans, making their financial condition more fragile. However, the main indicator of financial fragility, the debt-equity ratio, is lower for high β s; at a first glance this could seem inconsistent with our narrative, but it actually reveals a subtler

aspect. The growth of households' debt (increasing β) is in fact compensated by a growth of households' assets value, resulting from higher asset prices, since the housing stock is barely variable among different β 's. Therefore, what enlarges equity in households balance sheet is the boost of the housing price. The point that is not fully captured in the tables, which only presents ensemble averages over a given time period, is that the apparent financial stability of households, due to the equity increased by the housing price bubble, collapses when the house price index falls, deflating households balance sheet. Looking at Figures 4 and 3, one can observe this phenomenon, particularly highlighted by fire sales which entail that households, despite their apparent financial robustness, are forced to sell their houses in order to avoid bankruptcy. A little lesson we can learn from this, is that we should focus on various stability indicators, looking both at stocks (e.g. leverage) and flows (e.g. expenditure income ratio) in order to have a more complete picture.

The ratio between total expenditure and total income, reported in Table 6 is an interesting indicator. It is below 1 in the first six years only in the case of $\beta = 0.20$, and it is rapidly increasing with β . This is more evidence that, for high β s, households are on average financing the excess spending with new credit.

Looking at firms' data, the scenario emerged in Section 3.2 is again confirmed. Raising β fosters an accumulation of firms' debt and an erosion of firms' equity in the first six years, jeopardizing firms' financial stability, as also pointed out by the value of firms' leverage, i.e., debt-equity ratio, that is much higher in the case of high β s. The consequences of all this are visible in the average number of bankruptcies affecting the economic system, dramatically raising for $\beta = 0.40$.

4 Concluding remarks

The paper investigates the macroeconomic implications of an easy access to mortgage loans. The adopted methodology belongs to the agent-based modeling approach. We built a model of a credit network economy, including a consumption market and a housing market, following a rigorous balance sheets approach in order to ensure the stock-flow consistency of the model. We designed a computational experiment varying the conditions that needs to be fulfilled by a household to get

a mortgage. For each set of parameters 50 simulation runs with different random seeds have been performed in order to improve the statistical relevance of the experiment.

Results tell us that an easy access to mortgage loans causes a higher economic instability with a higher chance for deep and violent recessions. On the other hand, too strict regulations can be an obstacle to growth and limit the economic activity. The main propagation mechanism emerged from the study passes through the growth of a price bubble in the housing market and through the consequent loans write-off, affecting banks' equity capital, when the bubble bursts. The richness of the model permits to follow the economic dynamics with a high level of detail, following the evolution of every economic agent in the system.

We claim that this approach is able to present an useful picture of our complex economic system, pointing out dynamics and interactions that are not usually taken into account in aggregated models. The message for policy makers emerging from our study is the existence of a trade-off between growth and stability. Therefore, a strong and balanced regulation of the credit market, according to the economic conditions, is required to prevent economic crises.

Acknowledgements

The authors would like to acknowledge the financial support of the Icelandic Center for Research (RANNIS), grant no. 110653021. EJE also acknowledges the financial support of COST Action IS0902, for a short visit to the University of Genoa, Italy, where part of the work was accomplished. AT also acknowledges projects GV/2012/045 of the Generalitat Valenciana, project Bancaja P11A2010-17, and the Spanish national project ECO2011-23634.

References

- Calomiris, C., Longhofer, S., and Miles, W. (2012). The housing wealth effect: The crucial roles of demographics, wealth distribution and wealth shares. Working paper 17740, National Bureau of Economic Research. URL <http://ideas.repec.org/p/nbr/nberwo/17740.html>.
- Carroll, C., Otsuka, M., and Slacalek, J. (2011). How large are housing and financial wealth effects? A new approach. *Journal of Money, Credit and Banking*, 43(1): 55–79. URL <http://ideas.repec.org/a/mcb/jmoncb/v43y2011i1p55-79.html>.
- Carroll, C. D. (2001). A theory of the consumption function, with and without liquidity constraints. *Journal of Economic Perspectives*, 15(3): 23–45. URL <http://ideas.repec.org/a/aea/jecper/v15y2001i3p23-45.html>.
- Case, K., Quigley, J., and Shiller, R. (2005). Comparing wealth effects: The stock market versus the housing market. *The BE Journal of Macroeconomics*, 5(1): 1. URL <http://ideas.repec.org/a/bpj/bejmac/vadvances.5y2005i1n1.html>.
- Chakraborty, I., Goldstein, I., and MacKinlay, A. (2013). Do asset price bubbles have negative real effects? Available at SSRN 2246214. URL http://papers.ssrn.com/sol3/papers.cfm?abstract_id=2246214.
- Cincotti, S., Raberto, M., and Teglio, A. (2012). The Eurace macroeconomic model and simulator. In *Agent-based Dynamics, Norms, and Corporate Governance*.

- The proceedings of the 16-th World Congress of the International Economic Association, Palgrave*, volume 2. URL <http://www.iea-world.com/docs/1042.pdf>.
- Deaton, A. (1992). Household saving in LDCs: Credit markets, insurance and welfare. *The Scandinavian Journal of Economics*, 94(2): 253–273. URL <http://ideas.repec.org/a/bla/scandj/v94y1992i2p253-73.html>.
- Delli Gatti, D., Gallegati, M., Greenwald, B., Russo, A., and Stiglitz, J. E. (2010). The financial accelerator in an evolving credit network. *Journal of Economic Dynamics and Control*, 34(9): 1627–1650. URL <http://ideas.repec.org/a/eee/dyncon/v34y2010i9p1627-1650.html>.
- Diappi, L., and Bolchi, P. (2008). Smith’s rent gap theory and local real estate dynamics: A multi-agent model. *Computers, Environment and Urban Systems*, 32(1): 6–18. URL <http://www.sciencedirect.com/science/article/pii/S0198971506001037>.
- Dosi, G., Fagiolo, G., Napoletano, M., and Roventini, A. (2013). Income distribution, credit and fiscal policies in an agent-based Keynesian model. *Journal of Economic Dynamics and Control*, 37(8): 1598–1625. URL <http://dx.doi.org/10.1016/j.jedc.2012.11.008>.
- Dosi, G., Fagiolo, G., and Roventini, A. (2010). Schumpeter meeting Keynes: A policy-friendly model of endogenous growth and business cycles. *Journal of Economic Dynamics and Control*, 34(9): 1748–1767. URL <http://ideas.repec.org/a/eee/dyncon/v34y2010i9p1748-1767.html>.
- Erlingsson, E., Raberto, M., Stefićensson, H., and Sturluson, J. (2013). Integrating the housing market into an agent-based economic model. In A. Teglio, S. Alfarano, E. Camacho-Cuena, and M. Ginićes-Vilar (Eds.), *Managing Market Complexity*, volume 662 of *Lecture Notes in Economics and Mathematical Systems*, pages 65–76. Springer Berlin Heidelberg.
- Farmer, J., and Foley, D. (2009). The economy needs agent-based modelling. *Nature*, 460(7256): 685–686. URL <http://www.nature.com/nature/journal/v460/n7256/full/460685a.html>.

- Geanakoplos, J., Axtell, R., Farmer, J., Howitt, P., Conlee, B., Goldstein, J., Hendrey, M., Palmer, N., and Yang, C.-Y. (2012). Getting at systemic risk via an agent-based model of the housing market. *American Economic Review*, 102(3): 53–58. URL <http://www.aeaweb.org/articles.php?doi=10.1257/aer.102.3.53>.
- Gilbert, N., Hawksworth, J., and Swinney, P. (2009). An agent-Based model of the English housing market. In *AAAI Spring Symposium on Technosocial Predictive Analytics*. Stanford, California: AAAI. URL <http://www.aaai.org/Papers/Symposia/Spring/2009/SS-09-09/SS09-09-007.pdf>.
- Holmstrom, B., and Tirole, J. (1997). Financial intermediation, loanable funds, and the real sector. *the Quarterly Journal of economics*, 112(3): 663–691.
- Kirman, A. (1989). The intrinsic limits of modern economic theory: The emperor has no clothes. *The Economic Journal*, 99(395): 126–139. URL <http://ideas.repec.org/a/ecj/econjl/v99y1989i395p126-39.html>.
- Kirman, A. (1992). Whom or what does the representative individual represent? *The Journal of Economic Perspectives*, 6(2): 117–136. URL <http://ideas.repec.org/a/aea/jecper/v6y1992i2p117-36.html>.
- Kiyotaki, N., and Moore, J. (1997). Credit cycles. *Journal of Political Economy*, 105(2): 211–248. URL <http://ideas.repec.org/a/ucp/jpolec/v105y1997i2p211-48.html>.
- Meen, D., and Meen, G. (2003). Social behaviour as a basis for modelling the urban housing market: a review. *Urban Studies*, 40(5-6): 917–935. URL <http://usj.sagepub.com/content/40/5-6/917.full.pdf>.
- Meh, C., and Moran, K. (2010). The role of bank capital in the propagation of shocks. *Journal of Economic Dynamics and Control*, 34(3): 555–576. URL <http://dx.doi.org/10.1016/j.jedc.2009.10.009>.
- Raberto, M., Teglio, A., and Cincotti, S. (2012). Debt, deleveraging and business cycles: An agent-based perspective. *Economics: The Open-Access, Open-Assessment E-Journal*, 6(27): 1–49. URL <http://dx.doi.org/10.5018/economics-ejournal.ja.2012-27>.

Teglio, A., Raberto, M., and Cincotti, S. (2012). The impact of banks' capital adequacy regulation on the economic system: An agent-based approach. *Advances in Complex Systems*, 15(supp02): 1250040. URL <http://ideas.repec.org/a/wsi/acsxxx/v15y2012isup1250040-1-1250040-27.html>.

Tesfatsion, L., and Judd, K. (2006). *Agent-based computational economics*, volume 2 of *Handbook of Computational Economics*. North Holland. URL <http://ideas.repec.org/p/isu/genres/10368.html>.

Appendix 1

Parameter	Description	Value
Time constants		
T_D	Loan duration	$+\infty$
T_M	Mortgage duration in years	40
T_H	Housing construction time in months	12
Housing market		
ϕ	Minimum equity ratio of mortgage borrowers	$-\infty$
λ_H^{rnd}	Seller price interval for housing	0.025
$\lambda_H^{firesale}$	Fire sale price reduction interval	0.05
Households		
ω	Households wealth effect	0.07
ζ	Households labor turnover probability	0.1
v^h	Households starting leverage	1
ζ_{min}	Minimum amount of housing units	1
θ	Households budget threshold for fire sale	0.6
θ_{high}	Households budget threshold for mortgage write-off	0.7
θ_{low}	Households budget ratio for mortgage write-off	0.5
α_C	Speed of adj. of Household savings	0.1
ρ_C	Households target ratio of liquid wealth over disp. income	1

Table 7: Table of general parameters for time constants, the housing market and households in the Iceace economy.

Appendix 2

Parameter	Description	Value
Firms and construction firms		
v^f	Firms starting leverage	4
μ	Firms markup on consumption goods	1.1
γ_L	Firms labor productivity	1000
γ_K	Physical capital utilization of firms	$+\infty$
v^s	Construction firms starting leverage	1
ψ_L	Construction firms labor productivity	0.8
ψ_K	Physical capital utilization of construction firms	0.7
δ^s	Labor force share of constr. firms	0.075
ρ^s	Maximum yearly growth rate of housing stock	0.015
Banks		
χ_{\min}	Minimum capital adequacy ratio of banks	0.085
Government and Central bank		
Γ	Tax and benefit ratio policy parameter	0.9
\mathcal{I}_{CB}	Central bank inflation target	0.02

Table 8: Table of general parameters of firms, construction firms, banks and policy agents in the Iceace economy.

Appendix 3

Variable	Description	Value
Price and interest rates		
$P_H(0)$	Initial price of a housing unit	$20W(0)$
$P_C(0)$	Initial price of consumption goods	0.0056
$P_K(0)$	Initial price of capital goods	$100 * P_C$
$r_{CB}(0)$	Initial Central Bank interest rate	0.02
$r_L(0)$	Initial bank loans interest rate	$r_{CB} + 0.01$
$r_M(0)$	Initial bank Mortgage interest rate	$r_{CB} + 0.02$
Firms and Construction firms		
$W^{f,s}(0)$	Initial wage of firms and construction firms	5
Households		
$X^h(0)$	Households initial amount of housing units	5
$M^h(0)$	Households initial liquidity	$3W(0)$
Banks		
$\chi(0)$	Initial capital adequacy ratio of banks	0.1
$M_{init\ ratio}^b$	Initial liquidity ratio of banks	0.091
Government and Central bank		
$t_\ell(0)$	Initial income tax	0.2
$t_e(0)$	Initial capital income tax	0.2
$\xi_U(0)$	Initial unemployment benefit ratio	0.5
$\xi_T(0)$	Initial general transfer benefit ratio	0.3
$\mathcal{U}(0)$	Initial unemployment level	0.1

Table 9: Table of initial values for some of the variables of the artificial economy.

Please note:

You are most sincerely encouraged to participate in the open assessment of this article. You can do so by either recommending the article or by posting your comments.

Please go to:

<http://dx.doi.org/10.5018/economics-ejournal.ja.2014-8>

The Editor