

Leicester, Andrew; Levell, Peter

**Working Paper**

## Anti-smoking policies and smoker well-being: Evidence from Britain

IFS Working Papers, No. W13/13

**Provided in Cooperation with:**

The Institute for Fiscal Studies (IFS), London

*Suggested Citation:* Leicester, Andrew; Levell, Peter (2013) : Anti-smoking policies and smoker well-being: Evidence from Britain, IFS Working Papers, No. W13/13, Institute for Fiscal Studies (IFS), London,  
<https://doi.org/10.1920/wp.ifs.2013.1313>

This Version is available at:

<https://hdl.handle.net/10419/91543>

**Standard-Nutzungsbedingungen:**

Die Dokumente auf EconStor dürfen zu eigenen wissenschaftlichen Zwecken und zum Privatgebrauch gespeichert und kopiert werden.

Sie dürfen die Dokumente nicht für öffentliche oder kommerzielle Zwecke vervielfältigen, öffentlich ausstellen, öffentlich zugänglich machen, vertreiben oder anderweitig nutzen.

Sofern die Verfasser die Dokumente unter Open-Content-Lizenzen (insbesondere CC-Lizenzen) zur Verfügung gestellt haben sollten, gelten abweichend von diesen Nutzungsbedingungen die in der dort genannten Lizenz gewährten Nutzungsrechte.

**Terms of use:**

*Documents in EconStor may be saved and copied for your personal and scholarly purposes.*

*You are not to copy documents for public or commercial purposes, to exhibit the documents publicly, to make them publicly available on the internet, or to distribute or otherwise use the documents in public.*

*If the documents have been made available under an Open Content Licence (especially Creative Commons Licences), you may exercise further usage rights as specified in the indicated licence.*

# Anti-smoking policies and smoker well-being: evidence from Britain

IFS Working Paper W13/13

Andrew Leicester  
Peter Levell

# Anti-smoking Policies and Smoker Well-Being: Evidence From Britain\*

Andrew Leicester<sup>†</sup> and Peter Levell<sup>‡</sup>

June 14, 2013

## Abstract

Anti-smoking policies can in theory make smokers better off, by helping smokers with time-inconsistent preferences commit to giving up or reducing the amount they smoke. We use almost 20 years of British individual-level panel data to explore the impact on self-reported psychological well-being of two policy interventions: large real-terms increases in tobacco excise taxes and bans on smoking in public places. We use a difference-in-differences approach to compare the effects on well-being for smokers and non-smokers. Smoking behaviour is likely to be influenced by policy interventions, leading to a selection problem if outcomes are compared across current smokers and non-smokers. We consider different ways of grouping individuals into ‘treatment’ and ‘control’ groups based on demographic characteristics and observed smoking histories. We find fairly robust evidence that increases in tobacco taxes raise the relative well-being of likely smokers. Exploiting regional variation in the timing of the smoking ban across British regions, we also find some evidence that it raised smoker well-being, though the effect is not robust to the measure of well-being. The economic significance of the effects also appears to be quite modest. Our findings therefore give cautious support to the view that such interventions are at least partly justifiable because of the benefits they have for smokers themselves.

JEL: D03, D12, H23, H31

Keywords: Smoking, taxation, happiness, well-being, time inconsistency, commitment

---

\*Address for correspondence: a.leicester@ifs.org.uk. This research was funded by the Nuffield Foundation (reference OPD/39073), and the ESRC Centre for Microeconomic Analysis of Public Policy (CPP, reference RES-544-28-5001) at IFS. Data from the British Household Panel Survey are produced by University of Essex Institute for Economic and Social Research. The data are Crown Copyright and reproduced with the permission of the Controller of HMSO and the Queen’s Printer for Scotland. The authors would like to thank Ian Crawford of IFS and Oxford, Tom Crossley of IFS and Essex, Deborah Arnott and Martin Dockrell of Action on Smoking and Health, Howard Reed of Landman Economics and Robert West of UCL for comments on earlier drafts and useful discussions. They would also like to thank seminar participants at the Institute for Fiscal Studies and the Royal Economics Society annual conference for helpful advice. Views expressed are those of the authors and not the Institute for Fiscal Studies. Any errors are our own.

<sup>†</sup>Institute for Fiscal Studies

<sup>‡</sup>Institute for Fiscal Studies and University College London

# 1 Introduction

It has long been recognised that policies to reduce smoking behaviour can be justified by the negative externalities associated with smoking.<sup>1</sup> Costs including passive smoking and the net cost to public healthcare are borne by wider society but not the smoker, leading to excessively high levels of smoking from a socially optimal perspective. Policies such as tobacco excise taxes which raise the cost of smoking can therefore improve overall social welfare, though are usually assumed to make smokers individually worse off. However, recent insights from behavioural economics suggest that smokers themselves may benefit from anti-smoking interventions. In particular, when smokers are time inconsistent, they may not be acting in their *own* best interests in making their smoking decisions. They make plans to give up smoking in the future but are unable to act on them when the future comes and they are faced with the immediate decision to smoke again.<sup>2</sup> In such cases, anti-smoking policies could help smokers commit to giving up, meaning the policies could be further rationalised by the commitment benefits they confer on smokers.

It is hard to determine straightforwardly whether or not there is such a rationale for intervention. Empirical predictions about how smoking behaviour responds to price increases (now or expected in the future), for example, are the same whether or not smokers are assumed to be time inconsistent. A small emerging literature, beginning with Gruber and Mullainathan (2005), has started to look at how the self-reported well-being of smokers responds to policy reforms. Assuming that self-reported well-being is informative about individual welfare, evidence that smokers are made relatively better-off when anti-smoking reforms are enacted would be suggestive of time inconsistency. The key methodological challenge of this literature is to overcome the fact that smoking behaviour is in itself partly determined by policy reforms.

This paper contributes to this emerging literature in a number of ways. Most significantly, we make use of a long individual-level panel dataset which includes information on smoking behaviour alongside self-reported well-being. Previous studies looking into the same question have made use of cross-sectional data, relying on a modelled propensity to smoke (assumed exogenous to policy changes) to identify the impact on well-being. Using panel data allows us to make use of individuals' *own* smoking histories to construct treatment groups of people likely to benefit from the commitment value of anti-smoking policies, but where treatment status is not itself determined by policy changes. We also explore the differential impact of the policies across education groups. If low education (a proxy for low lifetime income) people are more prone to time-inconsistency, they may see greater welfare benefits from anti-smoking policies. This has implications for the distributional effects of such policies.

We look at the effect both of tobacco excise taxes and bans on smoking in public places. Bans have

---

<sup>1</sup>A summary of the evidence on the magnitude of smoking-related externalities is in Crawford et al. (2010).

<sup>2</sup>Around two thirds of adult smokers in England say they would like to give up (NHS Information Centre, 2012).

been implemented in a number of OECD countries in recent years, as anti-smoking policies move beyond price-based incentives toward more direct regulation of smoker behaviour. We exploit time-specific variation in cigarette taxation and regional variation in when smoking bans were implemented to identify the impact of these measures on smoker well-being. Our study provides the first evidence on this issue for Britain, which has been active both in implementing bans on smoking and in raising tobacco taxes. As at July 2011, British excise taxes on cigarettes were the second-highest (behind Ireland) in the EU.

To preview briefly our key results: we find evidence that higher real tobacco taxes increase the relative well-being of likely smokers, suggestive of time inconsistency in smoker behaviour. This result is broadly robust to different definitions of treatment groups and measures of well-being. We find similar evidence that bans on smoking in public places raise smoker well-being, though this result is more sensitive to the measure of well-being. We do not find any differential effects across education groups.

The rest of the paper proceeds as follows. Section 2 recaps the recent evolution of UK tobacco taxes and bans on smoking in public places, our main policies of interest. Section 3 then describes the main economic and conceptual ideas around smoker behaviour and the implications of anti-smoking policies for smoker welfare. Section 4 develops the empirical strategy and describes the data used for the analysis. Section 5 describes the main results, and Section 6 concludes.

## 2 Policy background

### 2.1 Smoking taxation

Excise taxes have long formed an important part of government policy to limit tobacco consumption. Cigarette taxation in the UK includes both a specific component (£3.35 per pack of 20 cigarettes in 2012) and an ad-valorem component (16.5% of the tax-inclusive price).<sup>3</sup> Tobacco taxes are forecast to raise around £9.8 billion in financial year 2012/13, 1.7% of total receipts.

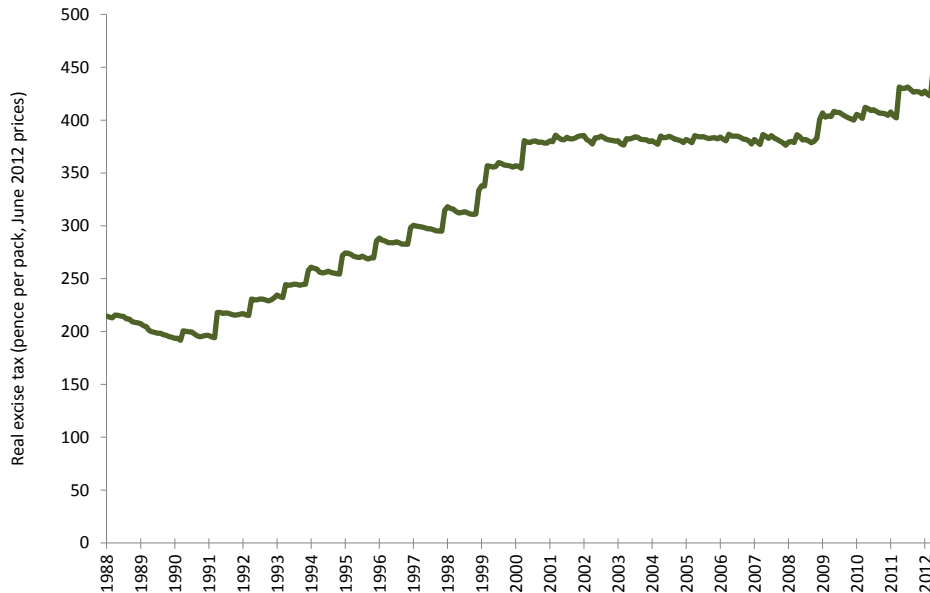
Figure 1 shows real-terms excise taxes on cigarettes in the UK between 1988 and 2012, based on data from HM Revenue and Customs (HMRC, 2012). We convert the specific and ad valorem components into a single rate per pack of 20 cigarettes using information on cigarette prices from the Office for National Statistics to place a cash value on the ad-valorem component.<sup>4</sup> This is then converted to real June 2012 values using the all-items Retail Prices Index (RPI).

---

<sup>3</sup>Other tobacco products generally face specific taxes by weight. Rates can be found at <http://www.hmrc.gov.uk/rates/tobacco-duty.htm>.

<sup>4</sup>Series CZMP at <http://www.ons.gov.uk/ons/datasets-and-tables/data-selector.html?table-id=3.1&dataset=mm23>.

Figure 1: Real-terms cigarette excise tax per pack of 20, 1988–2012



**Source:** ONS data on prices (series CZMP, Consumer Price Indices). UKtradeinfo data on taxes (www.uktradeinfo.com). Converted to June 2012 prices using the all-items Retail Prices Index.

Real tax rates more than doubled over the period. Between 1993 and 2000, there was an explicit ‘escalator’ policy to increase the specific tax in real terms, by 3% above inflation at first and then, from July 1997, by 5%. Over this period, real tobacco taxes increased by around 64% from £2.32 to £3.81 per pack. Beginning with the 2001 Budget, tobacco taxes were then frozen in real terms. In December 2008, tax rates increased to ‘offset’ a temporary reduction in the rate of Value Added Tax (VAT) from 17.5% to 15% enacted as a fiscal stimulus (though note this was not reversed when VAT rates rose again in January 2010). Real taxes then rose by 1% in 2010, 2% in 2011 and 5% in 2012.

A large empirical literature suggests that prices are an effective instrument to reduce smoking rates. A meta-study by Gallet and List (2003) found an average price elasticity of demand for cigarettes of around -0.4 to -0.5. Chaloupka and Warner (2000) find that price increases reduce demand both along the extensive and intensive margins (i.e. the propensity to smoke at all and how much is smoked conditional on smoking anything), and that increases in tobacco taxes tend to be passed through more than one-for-one into final retail prices. A number of papers have highlighted other behavioural responses to price rises, such as substitution to higher tar and nicotine cigarettes and smoking more intensively (Evans and Farrelly, 1998; Farrelly et al.,

2004; Adda and Cornaglia, 2006) which could partially or wholly offset the impact of reduced smoking on the intensive margin. Smokers could also substitute by trading down to cheaper brands or forms of tobacco, such as hand-rolling tobacco (HRT) rather than pre-rolled cigarettes. There is evidence of a switch towards HRT in the England. Data from the NHS Information Centre (2012) suggest that in 1990, around 91% of adult smokers smoked mostly pre-rolled cigarettes whilst 10% smoked hand-rolled. By 2010, the proportions were 69% and 31%. Note, though, that the taxation of HRT and cigarettes have moved in very similar ways over time (HMRC, 2011a). Further, given the overall decline in smoking rates, the prevalence of HRT smokers amongst all adults rose only from 3% to 6% whilst the proportion of cigarette smokers fell from 26% to 14%.

Smokers may also respond by purchasing illicit tobacco (e.g. from low-tax jurisdictions by people living near borders, or through increased organised smuggling). Stehr (2005) uses US data and finds cigarette purchases repond more than cigarette consumption to tax changes, ascribing much of the difference to evasion. Price is not the only determinant of evasion, which will also depend on resources devoted to enforcement. Estimates for the UK (HMRC, 2011b) suggest that the illicit market share for cigarettes fell from 21% in 2000/01 to 10% in 2009/10 (from 61% to 46% for HRT over the same period) following a policy strategy to reduce smuggling including greater enforcement at borders and punishments for those caught (HMCE and HMT, 2000). We discuss the possible implications for our analysis in Section 5.

## 2.2 Bans on smoking in public places

Over the last decade or so a number of countries have implemented bans on smoking in public places. In the UK, a ban was first introduced in Scotland from 26 March 2006, followed by Wales (2 April 2007), Northern Ireland (30 April 2007) and finally England (1 July 2007). de Bartolome and Irvine (2010) develop a model in which bans raise the cost of smoking by limiting the ability of smokers to take in a smooth stream of nicotine throughout the day. Bans can also raise the hassle costs of smoking. A review by Hopkins et al. (2010) finds a small but consistent effect of ‘smokefree’ policies including bans to reduce smoking at the extensive and intensive margin. By contrast, a number of recent studies (Adda and Cornaglia, 2010; Carpenter et al., 2011; Anger et al., 2011; Jones et al., 2011) have used quasi-experimental approaches exploiting regional variation in the timing of bans and found no significant effect on overall smoking prevalence or intensity, though some evidence of heterogeneous responses amongst particular groups (e.g. those most likely to frequent bars and restaurants or heavy smokers). Shetty et al. (2009) find no impact of smoking bans in workplaces on hospitalisation rates or mortality from heart attacks, comparing areas where bans were introduced to control areas where they were not. These results suggest bans tend to displace where people smoke. Adda and Cornaglia (2010) draw on time use data to suggest that following bans, smokers spent more time at home.

They argue that bans may have increased children’s exposure to second-hand smoke as a result, though the findings have been disputed by Carpenter et al. (2011) drawing on self-reported records of exposure by non-smokers.

### 3 Economic models of smoker behaviour and welfare implications of policy interventions

The workhorse economic model of smoking has been the ‘rational addiction’ framework (Becker and Murphy, 1988). Consumption of an addictive good like tobacco builds up a ‘stock’ of addiction. Utility in each period depends not only on current consumption of tobacco and other goods, but also the accumulated addiction stock (reflecting for example the health costs of smoking). This introduces a non-separability in preferences across periods, such that current smoking will be influenced by expectations of future tobacco prices. Addiction is characterised by ‘adjacent complementarity’: the higher the addiction stock, the higher the marginal utility from smoking. Consumers pick a path for current and future consumption of tobacco and the non-addictive good, taking into account how current decisions affect future utility. In the absence of any unexpected shocks, they will follow through that plan. A key implication of the rational addiction framework is that increases of the cost of smoking (such as higher tobacco taxes or public smoking bans) will reduce smokers’ well-being.

The rational addiction model has been extended in a number of ways to account for smokers expressing regret about their smoking behaviour or failing to give up when they express a preference to do so, whilst maintaining the basic assumption that smoking decisions are the result of utility maximising behaviour. For example, if consumers make boundedly rational decisions with informational uncertainty about their tendency to become addicted (Orphanides and Zervos, 1995), then taking up smoking might look optimal given some perceived risk of addiction which later turns out to be wrong, but continued smoking is then optimal given the addiction stock which has been built up. There is some empirical evidence that young people in particular make smoking choices without full information on the risk of addiction (Gruber and Zinman, 2001; Loewenstein et al., 2003; Schoenbaum, 2005).<sup>5</sup> Suranovic et al. (1999) build in an adjustment cost of reducing smoking (perhaps reflecting the pain of withdrawal) which may not be fully anticipated by people making smoking decisions. Jehiel and Lilico (2010) argue that consumption decisions may be taken with limited foresight: consumers may make smoking choices only considering some proportion of the future rather than the whole lifetime. In this framework it is possible that the lifetime optimal choice would be not to smoke but the limited foresight optimal choice is to smoke. They show that if the foresight horizon

---

<sup>5</sup>It is also possible that people may misperceive the health risks of smoking which would cause them to come to regret their decisions as and when their information changed. Sloan and Platt (2011), though, suggest that if anything young people tend to *overestimate* the risk of health harms from smoking.



increases with age (perhaps reflecting increased learning or maturity), older people will give up or, in some cases, cycle between smoking and not smoking.

Whilst these ideas suggest why people come to regret past decisions or change their behaviour in the light of new information or experience, they do not clearly explain why people say they plan to give up but fail to do so.<sup>6</sup> Another development of the theory has considered that people suffer from a *time inconsistency* problem. The rational addiction framework assumes that there is a constant discount rate: from today's perspective, utility in two periods is discounted twice as much as utility next period. If, instead, people discount the immediate future more heavily relative to the far-distant future, then it is possible that a plan to quit looks optimal from today's perspective but is no longer optimal when the time comes to follow that plan through. As a result, the passage of time alone is enough to change behaviour, hence the expression 'time inconsistency'. A key implication of time inconsistency is that consumers place positive value on mechanisms which allow them to commit to a particular plan of action. Bryan et al. (2010) provide evidence on the demand for commitment devices in a number of contexts. Frederick et al. (2002) and DellaVigna (2009) survey evidence for time-inconsistency in lab and field experiments respectively.

The hyperbolic discounting model of Laibson (1997) builds this change in discount factors into standard models of people making inter-temporal choices. O'Donoghue and Rabin (1999) look at this in the context of procrastination over whether or not to carry out a discrete action such as giving up smoking. Gruber and Kőszegi (2000, 2001, 2004) build hyperbolic discounting into the rational addiction framework to think about continuous choices over cigarette consumption. Their model forms the basis for our empirical approach - we outline the main points below but full details of the derivation and proofs can be found in their papers.

Consumers allocate income across two goods in each period  $t$ , addictive tobacco  $a_t$  and a non-addictive consumption good  $c_t$ . Utility is assumed to be additively separable in the two goods. Consuming the addictive good builds up an addiction stock  $S_t$  which depreciates at a constant rate  $0 < d < 1$  in each period. Utility from consuming the addictive good depends on the accumulated stock as well as the current consumption. Thus the utility function takes the form:

$$\begin{aligned} U_t &= v(a_t, S_t) + u(c_t) \\ S_{t+1} &= (1 - d)(S_t + a_t) \end{aligned}$$

Addiction in this model arises when  $v_{aS} > 0$ , that is, the marginal utility of current tobacco consumption increases in the addiction stock. The harmful health consequences of tobacco can be modelled by assuming

---

<sup>6</sup>Assuming of course that a stated preference to give up is genuine and does not reflect a bias of survey respondents to give 'socially acceptable' answers.

$v_S < 0$ .

Under quadratic utility, the subutility functions can be written as:

$$\begin{aligned} v(a_t, S_t) &= \alpha_a a_t + \alpha_S S_t + \alpha_{aS} a_t S_t + \frac{\alpha_{aa}}{2} a_t^2 + \frac{\alpha_{SS}}{2} S_t^2 \\ u(c_t) &= \alpha_c c_t \end{aligned}$$

with  $\alpha_a, \alpha_c, \alpha_{aS} > 0$  and  $\alpha_{aa}, \alpha_{SS}, \alpha_S < 0$ . Tobacco is sold at a price  $p$  in each period, and the non-addictive good is sold at a normalised price of 1. Consumption of the non addictive good is therefore given as residual income,  $c_t = I_t - p a_t$ .

Consumers maximise discounted current and future utility. Utility over  $T$  periods is given as:

$$U = U_t + \beta \sum_{i=1}^{T-t} \delta^i U_{t+i}$$

with  $\beta, \delta \in (0, 1)$ . Hyperbolic discounting in this model arises because from the period  $t$  perspective, utility in the next period  $t + 1$  is discounted by  $\beta\delta$  whereas utility between periods  $t + 1$  and  $t + 2$  (or any two future consecutive periods) is discounted only by  $\delta$ . In other words, the immediate future is more heavily discounted than the distant future. In the next period, the discount rate between  $t + 1$  and  $t + 2$  will then change to  $\beta\delta$ .

Consumers are assumed to be aware that their discount rates are time-varying in this way. It is also assumed that from a welfare perspective, what matters for consumers are their long-run preferences (i.e. ignoring the additional immediate discount factor  $\beta$ ).<sup>7</sup> The question is then how an increase in the price of tobacco affects consumer welfare. Since (conditional on income) utility will depend on the price of tobacco and the addiction stock in this model, from today's perspective, the expression of interest is:

$$\frac{d}{dp} U_1(S_1, p) = \frac{d}{dp} [v(a_1, S_1) + \alpha_c (I_1 - p a_1) + \delta U_2(S_2, p)]$$

Gruber and Kőszegi (2004) show using an iterative procedure that the derivative of discounted utility with respect to the price of tobacco is given by:

$$-\alpha_c \left( \sum_{j=1}^T \delta^{j-1} a_j \right) - (1 - \beta) \sum_{j=1}^T \delta^{j-1} \frac{\partial a_j}{\partial p} \frac{v_a(a_j, S_j) - p \alpha_c}{\beta}$$

---

<sup>7</sup>This is of course something of a controversial assumption: it may be thought that at least some weight should be given to the short-term preference as well. For a discussion see Bernheim and Rangel (2005).

The first term is the standard result where there is no time inconsistency: higher tobacco prices reduce utility by increasing the cost of smoking. The second term is the commitment benefit of higher prices. In each period, consumers smoke by more than they would ‘like’ on the basis of their long-term preferences because the immediate future is more heavily discounted. Higher prices induce a consumption response  $\frac{\partial a_j}{\partial p} < 0$  which helps time-inconsistent consumers to act more in line with their long-run preferences. The whole second expression is positive: that is, the utility cost of higher prices is mitigated by the self control benefit.

To reiterate: the important implication of building time inconsistency into the addiction framework is that increases in the cost of addictive goods (such as tobacco) need not reduce individual welfare. With time inconsistency, higher costs provide a ‘commitment’ benefit to smokers, reducing future consumption towards levels that would be optimal in a time consistent model.<sup>8</sup> Gruber and Kőszegi (2004) carry out a calibration exercise to show that higher prices are particularly likely to be welfare-improving when the hyperbolic discount factor is low (that is, when people are very impatient over the immediate future). This suggests that increases in tobacco tax rates can make smokers better off, giving a rationale for smoking taxes even without negative externalities. A similar argument can be made for other policies which raise the cost of smoking, such as bans on smoking in public places.

If we can interpret measures of self-reported well-being in surveys as a measure of individual welfare (or at least assume that they are positively correlated with welfare), then this model implies that when smokers are very time-inconsistent their reported well-being will rise when smoking costs increase, whereas non-smokers will be unaffected.<sup>9</sup> This forms the basis of our empirical strategy outlined in the next section.

---

<sup>8</sup>As noted in Gruber and Mullainathan (2005), other ‘behavioural’ models besides time inconsistency can generate a demand for commitment. Bernheim and Rangel (2004) discuss ‘cue-based’ consumption models, where consumption decisions depend on particular environmental signals (such as intending not to smoke but being influenced to do so when in the company of other smokers). Smokers who are aware of this would demand mechanisms that help them avoid those cues. The model of Gul and Pesendorfer (2001, 2007) considers the ‘self-control’ costs that people face to avoid ‘temptation’ - think of the willpower effort needed not to smoke when cigarettes are easily available - and so demand mechanisms that reduce self-control costs. In both cases, simple versions of these models imply that higher prices make smokers worse-off because consumption in the presence of a cue or the temptation value placed on smoking is essentially unresponsive to price. However, allowing cue-based demand or temptation utility to vary with price can restore the interpretation that smoker welfare improves when the costs of smoking rise.

<sup>9</sup>Larsen and Fredrickson (1999) and Stutzer and Frey (2010) summarise evidence on the relationship between survey-based measures of happiness and other indicators of well-being (including observer-reports of happiness and economic indicators). There are of course reasons why non-smokers may be impacted by higher tobacco taxes as well. Reduced smoking rates may have positive benefits for non-smokers in the presence of negative externalities, for example. The use of increased tobacco tax revenues to fund public spending or reduce other taxes may also benefit non-smokers. However it might be expected that these gains are second-order in magnitude relative to the direct gains for time-inconsistent smokers.

## 4 Empirical methods

### 4.1 Empirical strategy

We carry out a reduced-form analysis of the impact of anti-smoking policy interventions (increases in cigarette excise taxes and bans on smoking in public places) on self-reported individual measures of well-being. In particular, we compare whether these policies have a differential impact on the well-being of the people most likely to benefit from the commitment value they generate: smokers or groups of people who, on the basis of their observable characteristics or past smoking behaviour, are likely smokers. We exploit time-varying real excise taxes and time- and location-varying bans on smoking alongside detailed long-term panel data reporting happiness and smoking measures for a large sample of British adults to conduct our analysis. The data are described in more detail in Section 4.2.

We draw on a number of recent studies, most notably the pioneering work of Gruber and Mullainathan (2005). Using US and Canadian data, they find evidence that higher real cigarette excise taxes significantly reduce the tendency of likely smokers to report being unhappy relative to those unlikely to smoke. Their results for the US imply that an excise tax of \$1.60 has the same effect on the happiness of likely smokers as moving from the poorest income quartile to the next poorest quartile. More recently, mixed evidence has emerged on the effect of smoking bans on the relative well-being of smokers. Odermatt and Stutzer (2012) find a negative effect, exploiting variation in the timing of bans across European countries and regions. However, Brodeur (2013) uses county-level data from the US and finds a positive effect.

Other studies have provided empirical support that smokers support anti-smoking policies. Hersch (2005) uses US data to look at support for restrictions on smoking in six different types of public place among current smokers, distinguishing those who say they want to quit (who may therefore reveal themselves to be suffering from time inconsistency) from those who do not. The results show stronger support for the bans amongst those who want to give up. Interestingly, the support is even stronger for those who have tried and failed to quit than those who are planning to try for the first time. They suggest this is evidence that those who have failed before have higher quit costs (such as the pain of withdrawal or difficulty in obtaining support for giving up elsewhere) and so would place even greater value on the policies. Kan (2007) finds evidence in Taiwanese data that smokers who want to quit express more support for higher tobacco taxes and smoking bans in public places or at work. Badillo Amador and López Nicolás (2011) find similar results in Spanish data.

### 4.1.1 Cigarette excise taxes

In looking at the impact of tobacco excise taxes, we compare how they affect the self-reported well-being of likely smokers relative to non-smokers. The basic estimating equation takes the form:

$$H_{it} = \alpha + \beta_t + \gamma T_t + \delta S_{it} + \xi (T_t \times S_{it}) + \theta \mathbf{X}_{it} + \varepsilon_{it}$$

where  $H_{it}$  is a measure of well-being ( $i$  indexing individuals and  $t$  indexing the time (year and month) in which the individual is observed),  $T_t$  is the inflation-adjusted tobacco tax rate,  $S_{it}$  is a variable indicating smoker status and  $\mathbf{X}_{it}$  is a vector of individual-specific observable characteristics that could affect well-being. We detail the set of covariates in Section 4.2. Because we use panel data, we cluster the standard errors at the individual level to account for any correlation in the error structure within individuals over time. The parameter of interest is  $\xi$  which measures the differential impact of real excise taxes on the well-being of smokers relative to non-smokers. A positive coefficient would be suggestive of the commitment benefits from higher taxation seen in time inconsistency models of smoker behaviour.

Simply using current smoker status as the measure of  $S_{it}$  in the model may lead to problems since smoking behaviour today will be endogenous to current tax rates. This leads to a selection effect: if those who continue to smoke following a tax rise have lower happiness than those who quit, this will bias downward the coefficient  $\xi$ .

We consider a number of approaches to deal with this. The first closely follows that of Gruber and Mullainathan (2005). In place of current smoking status, they use a modelled estimate of an individual's *propensity* to smoke based on observable characteristics, where smoking propensity is not a function of current smoking tax rates. Using the first wave of data (from 1991) we estimate a probit model of the propensity to smoke where the dependent variable is a dummy variable for current smoker status and the independent variables are the same covariates used in the happiness equation.<sup>10</sup> We use the parameter estimates to predict the likelihood that individuals observed in each year would have been smokers had they been observed with those covariates in the 1991 sample. This propensity  $P_{it}^{91}$  is then used in place of  $S_{it}$  in the well-being equation.<sup>11</sup> There are two small differences between the Gruber and Mullainathan (2005) approach and our

---

<sup>10</sup>The model results from this probit are detailed in the Appendix. Controlling for other observables, women are less likely to smoke than men. People in poorer households and with lower educational attainment are more likely to smoke, as are those who are unemployed. Divorced, widowed or co-habiting people are more likely to smoke than married people. Private and social renters are more likely to smoke than other tenure types. Those with breathing problems are more likely to be smokers.

<sup>11</sup>Note that as discussed in Gruber and Mullainathan (2005), we do not use  $P_{it}^{91}$  as an *instrument* for  $S_{it}$ ; rather, it directly replaces it as the object of interest in the estimating equation. Further, as we use the same covariates in the happiness equation and the first stage probit equation, identification of the  $\theta$  parameter in the happiness equation is rather tenuous, driven largely by the fact that the propensity score is modelled non-linearly whereas the parameters enter linearly into the happiness equation. However, these covariates in the happiness equation are not really of direct interest and serve merely as controls: the key parameter of interest is  $\xi$  which is identified by the interaction of smoking propensity with real tax rates.

first method. First, we model the propensity only using the first year of data rather than estimating separate propensity models for each year of data. The idea is that modelled propensity to have been a smoker in 1991 is exogenous to tax rates in later years. Second, we account for the fact that we use a two-step method and use bootstrapping techniques to calculate standard errors in the happiness equation. Not doing this gives misleadingly small standard errors which could give rise to spurious significance of the key terms of interest.

The fact we are using a long panel dataset of individual smoking and happiness data allows us to consider two further approaches. Rather than modelling the likelihood that individuals are smokers, we are able to draw on each individual's *own smoking history* to assign them to a 'treatment' group who would benefit from the commitment value of higher taxation under time inconsistency and 'control' group who would not. First, we define those who are smokers in the initial 1991 wave of data as treated and track how their well-being responds to changes in cigarette excise taxes relative to those who were not smokers in 1991. Second, we define those who are ever observed to smoke over the entire data period (1991 to 2008) as treated and those who never smoke as controls. Clearly, those who smoked in 1991 are a subset of those who are ever observed to smoke over the whole period. It may be that some of those who were not smoking in 1991 but later took it up were also at risk of starting in earlier years and so would also have valued the commitment benefit of taxation. Rather than estimating a propensity weight, these approaches essentially boil down to a straightforward difference-in-differences model where treatment status is exogenous to policy reforms.<sup>12</sup>

One particular implication of the economic model is that likely smokers who exhibit a greater degree of time inconsistency will see the largest welfare gains from increased taxes, since they will value the commitment mechanism more highly. There is relatively little evidence on whether time inconsistency varies directly with observable individual characteristics. Paserman (2008) finds unemployed workers previously on low incomes exhibit more time inconsistency than those previously on high incomes. Choi et al. (2011) find evidence that better-off consumers make decisions consistent with economic rationality, but do not test time-consistency directly. We investigate the issue by exploring whether there is any differential in the relative impact of taxes on self-reported happiness for smokers in different education groups, where education is assumed to reflect differences in permanent income across households. This involves further interacting the policy and smoker status interaction with an educational attainment dummy for those who achieved post-compulsory qualifications. Finding larger effects for low education individuals could be suggestive evidence that time

---

<sup>12</sup>We considered other approaches to determining treatment status. For example, in 1999 individuals were asked about their smoking histories over their whole life and we could have classified anyone who had ever smoked as treated. However, around two-thirds of people had smoked at some point, and we found little difference between modelled smoking propensity across treatment and control individuals using this definition. It was also unclear that experimental youth smoking would be a good determinant of whether or not people suffered from time inconsistency problems as a later adult non-smoker. We also could have used any past smoking behaviour as a current treatment indicator, such as smoker status in the previous year, rather than smoker status in the first wave. However, the assumption that smoking status a year ago is exogenous to current policy changes is perhaps less credible than assuming exogeneity of initial smoker status to current policy, particularly where people may have had reasonable expectations about how policy would change in the near future either during the tobacco tax escalator or around the time that smoking bans were being introduced in different regions.

inconsistency problems are larger for poorer people.

#### 4.1.2 Bans on smoking in public places

We adopt a similar approach to assessing the well-being effect of the ban on smoking in public places. We exploit regional variation in the timing of the smoking ban. We restrict our sample to those who are defined as likely smokers, and compare changes in smoker well-being for those living in Scotland to those living in England and Wales in the period following the ban being implemented in Scotland. Again this is a straightforward difference-in-differences estimation where the sample is restricted to individuals likely to benefit from the commitment value of the ban, and ‘treatment’ is now defined across regions rather than people.

We define groups of likely smokers using individual observed smoking histories in a similar way as described above.<sup>13</sup> First we take smoking status in the first year in which individuals are observed. In the analysis of the smoking ban, we begin in 1999 (rather than in 1991 as for the tax analysis) in order to make use of regional booster samples in the data which significantly increase the Scottish sample size. Second we take smoking status over the whole data period beginning from 1999 and define likely smokers as those who smoked at any time. As above, treatment status should be exogenous to the policy reforms.

The estimating equation is of the form:

$$H_{it} = \alpha + \beta SCOT_{it} + \gamma POST_{it} + \xi(SCOT_{it} \times POST_{it}) + \theta \mathbf{X}_{it} + \varepsilon_{it}$$

where  $SCOT_{it}$  is a dummy variable for individuals living in Scotland, and  $POST_{it}$  is a dummy for someone observed in March 2006 or later, following the ban being introduced in Scotland. The coefficient on the interaction term  $\xi$  then represents the relative impact on well-being for a ‘smoker’ living in Scotland following the ban there compared to one living in England or Wales before the ban was extended to the rest of Britain.

## 4.2 Data

Our data come from the first eighteen waves of the British Household Panel Survey (BHPS), which covers the period September 1991 to April 2009. The BHPS is annual survey that initially sampled around 5,500 households (10,000 individuals) in 1991. The survey attempts to follow the same individuals and their natural descendants through successive waves, even if they move home. All adult members (age 16+) of the sample households are interviewed each year, including adults that move into the household after the start of the

---

<sup>13</sup>Note that we do not use a propensity score approach in this part of the analysis. We could model smoking likelihood and take some arbitrary cut off value to define those ‘likely’ smokers over whom to make regional comparisons in well-being, but it is not clear what the appropriate cut-off to take would be.

survey and children that reach adulthood. Most interviews (around 97%) take place between September and November each year, though a small number take place between December and May. The survey initially only covered England, Scotland and Wales. Booster samples of around 1,500 households each from Scotland and Wales were added in 1999 to allow regional-level analysis.<sup>14</sup> Information on individual and household socio-economic characteristics is collected each year, along with physical and mental health status and current smoking behaviour.

The survey asks several questions on individuals' subjective well-being. However, the only questions that have been asked consistently across waves are the General Health Questionnaire (GHQ) questions of Goldberg (1972).<sup>15</sup> These are a suite of 12 questions originally used to screen patients to detect signs of psychiatric disorders. They ask about recent feelings of stress, self-worth, confidence and happiness. Respondents answer each question on a four point scale, reflecting their recent feelings relative to 'usual'. These responses are converted to a 0–3 numeric value, where 3 represents the highest distress and 0 the lowest distress. Values for each question are then simply added up to give a total score between 0 and 36, with higher values representing greater distress. Answers to these questions are recorded by the respondents on a self-completion questionnaire and are not interviewer-delivered.

We draw on the GHQ measure in two ways to define the dependent variable in the well-being equation. First, we use the total GHQ score and estimate the well-being model using simple OLS. Second, we select one of the twelve questions which make up the GHQ: "have you recently been feeling reasonably happy, all things considered?" Respondents can answer "more so than usual", "the same as usual", "less so than usual" or "much less than usual". We generate three dummy variables for "happier than usual", "the same as usual" and "less happy than usual" (the latter includes those reporting "much less" which is relatively rarely observed), and then estimate three separate linear probability models for each outcome.<sup>16</sup>

Note that the GHQ specifically asks respondents to consider their feelings relative to 'usual'. There may be some concern about this. If time-inconsistent smokers felt their 'usual' happiness rise following anti-smoking policy interventions, we may not pick this up with the questions as phrased. However, what would be particularly hard to account for outside of a time inconsistency framework is a *short-term* increase in happiness following an anti-smoking intervention, which is precisely what this sort of question would capture.

---

<sup>14</sup>A sample of around 2,000 households from Northern Ireland was included from the 11th wave (2001) to allow UK-wide analysis; because the region is not covered across all waves we exclude Northern Ireland observations from all our results. Further details of the BHPS can be found at <https://www.iser.essex.ac.uk/bhps>. Note that from 2009 onwards, the BHPS sample has been subsumed into the wider survey Understanding Society which has much larger sample sizes. The first wave of Understanding Society to incorporate the BHPS sample was in 2010. However, information on smoking is not routinely collected in Understanding Society; rather smoking history information will be gathered every three years. This means it has not been possible to extend the analysis beyond 2008.

<sup>15</sup>A seven point measure of life general life satisfaction is only available from 1996 to 2000 and 2002 to 2008, and so misses a large period during which real-terms cigarette excise taxes were rising rapidly (see Figure 1).

<sup>16</sup>This follows Ai and Norton (2003) who warn of the difficulty of interpreting interaction terms in non-linear models. However, results using probit methods are qualitatively similar and are available on request. Fewer than 1% of observations in all cases had predicted probabilities outside the 0-1 range.



Within the standard rational addiction model, for example, smokers could be happier (have higher utility) if they did not smoke than if they did, but given their accumulated addiction stock and the short-term costs of quitting the optimal decision is to continue to smoke. Higher taxes may help smokers to give up, and eventually attain a higher baseline happiness level, but we would expect the short-term effect on happiness to be negative whilst the costs of quitting are endured. If we find evidence that anti-smoking measures make likely smokers happier *than usual* this could be even more persuasive evidence for time inconsistency if we interpret it as a short-term gain to happiness. Note too that we are not the first to use the GHQ as a straightforward happiness measure (see for example Oswald, 1997; Clark and Oswald, 2002), or as a measure of happiness relating to smoking behaviour in the BHPS: Moore (2009) finds that increases in smoking behaviour are correlated with reduced happiness using the same GHQ happiness question.

We include a number of covariates in the model which we might expect to influence well-being. This includes real net equivalised annual household income, based on the income derivations for the BHPS provided by Bardasi et al. (2012). Rather than using absolute income, we construct within-wave income deciles to allow for the possibility that well-being is affected by relative income position rather than absolute income, and to allow for non-linear relationships between income and well-being.<sup>17</sup> Individual-level covariates include age (and age squared), gender, the presence and number of children of different age groups in the household, highest educational attainment, employment status, marital status, housing tenure type, and a number of physical and mental health problems as recorded by the individual in the self-completion questionnaire. Clark and Etilé (2002) note that deterioration in health is correlated with quitting smoking. Health outcomes are therefore likely to be related both to smoking status and self-reported well-being, suggesting that excluding them could bias our results.

The BHPS data are supplemented with real-terms smoking excise duties as described in Section 2 above. These are merged into the BHPS data at a monthly level, expressed in June 2012 prices based on the all-items RPI measure of the price level.

#### 4.2.1 Sample selection

As described in Section 4.1.1, we consider three main approaches to explore the relationship between anti-smoking policies and the relative well-being of likely smokers. Here we outline the samples selected from the data for the different approaches.

---

<sup>17</sup>Clark and Oswald (2002) discuss absolute versus positional measures of income as determinants of well-being.

## **Cigarette excise taxes**

All of our analysis of excise taxes is restricted to the ‘original’ BHPS sample (individuals who were interviewed in the initial 1991 wave). We start with a naive analysis using current smoker status; here our only restriction on the sample is to include individuals who are observed in 1991 and have non-missing smoker information in a given year.

For the model using smoking propensity in place of smoker status, we also restrict the sample to individuals observed in 1991. This is largely because we bootstrap the estimates to account for the two-stage nature of the estimation. Since we have panel data, each iteration of the bootstrap samples individuals rather than observations (combinations of individual and survey wave). To ensure that the number of observations in the first stage probit model does not change in each iteration, we have to condition on individuals who are observed in that year.

For the model using 1991 smoking status as a treatment indicator, it is obvious that we need to restrict the sample to those individuals observed in that year with non-missing smoking status. Conditional on that we do not make any other sample selection. This means that we can include observations in later years where smoking status is missing (unlike the naive model) since the treatment indicator has been defined for that observation.

For the model using observed smoking status over the period 1991 to 2008 as a treatment indicator, we condition on the individual reporting their smoking status in at least 15 waves (including 1991).<sup>18</sup> If they ever report a positive response to current smoking behaviour we classify them as treated individuals in all years, otherwise they are classed as controls. Essentially we are willing to assume that someone who reports being a non-smoker in at least 15 separate years is unlikely to be a smoker in the years in which their smoking status is not observed. Since this is the only specification that conditions on smoking status being observed a given number of times the sample sizes for this specification are substantially lower than the others (see Table 1).<sup>19</sup>

Across all specifications, we further condition on individuals having a full set of right-hand side control variables without missing values. We also exclude proxy respondents.

## **Bans on smoking in public places**

Our analysis of smoking bans relies explicitly on regional variation in when bans are introduced. Since the original BHPS sample contains relatively small numbers of Scottish observations, relying on this sample alone

---

<sup>18</sup>Conditioning on observing individuals in 1991 excludes new entrants to the survey whose smoking status may be depend on tax rates in the years they join.

<sup>19</sup>This selection does not appear to materially affect things: our empirical findings are not sensitive to using this more restricted sample with the other approaches.

Table 1: Observations in each specification

	Tax			Ban	
	1991 propensity	Smoked 1991-2008	Smoked 1991	Smoked 1999	Smoked 1999-2008
# Observations	109,552	85,525	111,446	23,312	24,061
# Individuals	9,525	5,012	9,744	3,875	3,243

makes it much less likely that we would pick up any differential effect on well-being across regions. Thus for this analysis make use of the regional booster samples. Since these were introduced in 1999, we start our analysis in that year. All of our analysis for the smoking ban ends before the ban is extended to England and Wales in 2007. Since our smoking ban models use region as a treatment indicator and are restricted to ‘smokers’ from a subset of the whole data period, the sample sizes are much smaller than the tax-based models, even though we make use of the regional boosters.

As noted, we do not use a propensity model for the smoking ban analysis, since our interest is in regional variation in the well-being of likely smokers and it is not clear what the appropriate cut-off point to classify individuals as likely smokers based on a modelled propensity would be. Thus we define smokers based on observed behaviour: those who were smokers in 1999, and those who ever smoked in the period 1999 to 2008 with no more than two missing observations over that period.

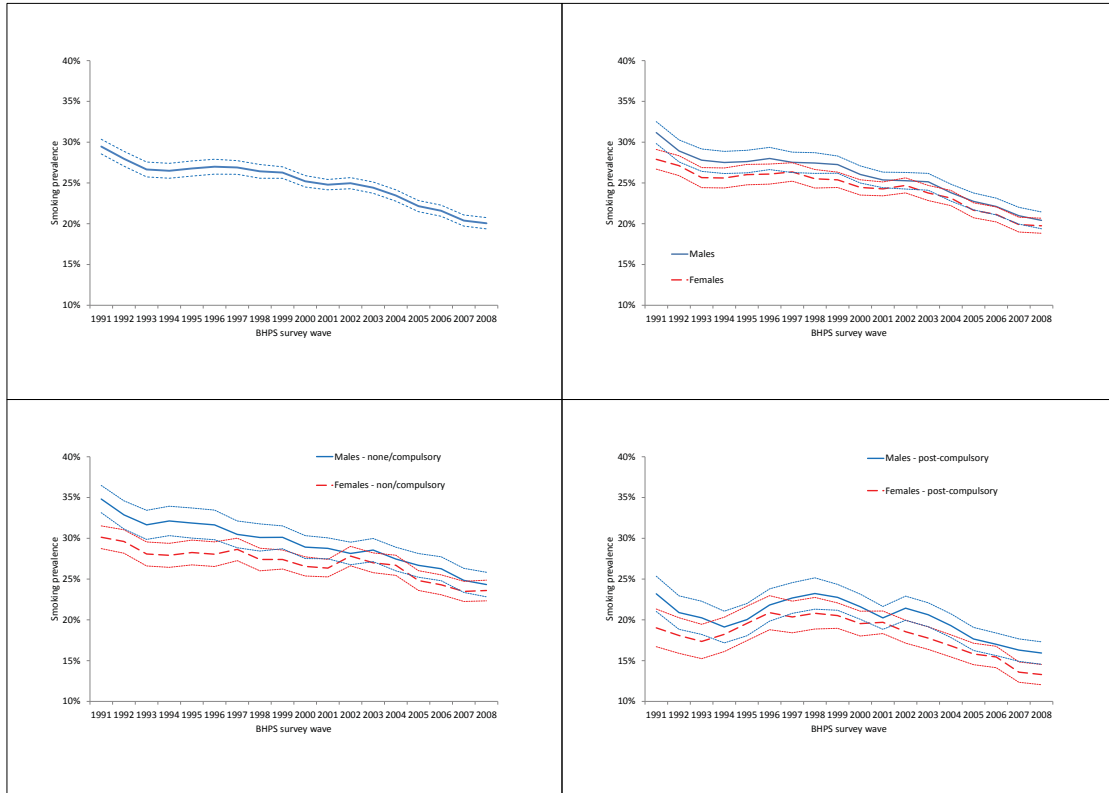
Table 1 shows the number of individuals and number of observations for each specification following these various selection criteria.

#### 4.2.2 Descriptive statistics: smoking and happiness

Smoking rates in the BHPS sample have fallen over time. Figure 2 compares trends in overall smoking prevalence (top-left panel), by gender (top-right), and then further splitting by educational attainment distinguishing those with no more than compulsory schooling (bottom-left) and post-compulsory schooling (bottom-right).<sup>20</sup> Overall smoking prevalence fell from 29% in the 1991 survey to 20% in the 2008 survey. Males have remained slightly more likely to smoke than females, though both have seen similar declines in participation over time. These figures and trends are very close to those reported in official smoking statistics based on data from the General Lifestyle Survey (Dunstan, 2012). Males are also more likely to smoke than females conditional on educational attainment. Whilst those with post-compulsory education are considerably less likely to smoke than those without, there has been a strikingly different trend over time in smoking rates by education. For those with low education, smoking rates have declined fairly consistently over the whole period. By contrast, for those with higher education, prevalence actually rose in the mid 1990s before falling back in the 2000s.

<sup>20</sup>These figures are based on the full samples in each year rather than the selected samples for our empirical specification. This includes regional booster samples where available. All figures are weighted to national totals.

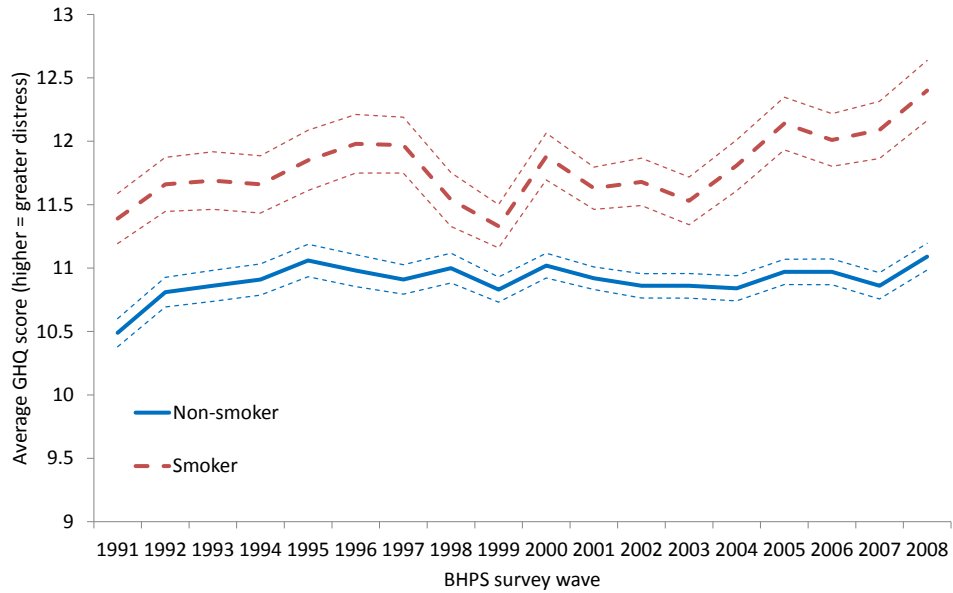
Figure 2: BHPS smoking prevalence by gender and educational attainment, 1991–2008



Source: Authors' estimates from British Household Panel Survey data. Dotted lines are 95% confidence intervals.

There appears to be a negative correlation between smoking and self-reported well-being. Figure 3 shows the average GHQ score (between 0 and 36) by current smoker status and survey year where higher values reflect lower well-being. Across all waves, smokers report on average a GHQ score of 11.8 and non-smokers a score of 10.9. For both groups there has been a slight upward trend over time in the average score, though the recent trend is stronger for smokers such that the gap has widened in the most recent years having narrowed in the later 1990s. Of course, as is clear from Figure 2, compositional changes over time in those who are smokers mean we cannot draw clear conclusions from these trends alone about how anti-smoking policies have affected the relative well-being of smokers. Hence we turn to our empirical results.

Figure 3: GHQ score by current smoker status, 1991–2008



Source: Authors' estimates from British Household Panel Survey data. Dotted lines are 95% confidence intervals.

## 5 Results

### 5.1 Cigarette excise taxes

Table 2 shows the proportion of individuals classified as current smokers and as treatment and control groups under the two specifications which use smoking histories to define those who may benefit from higher excise taxes as a commitment device. It also shows the average smoking propensity score from the probit model of smoking status using the 1991 sample for the treatment and control groups and for current smokers.

Table 2: Likely smoker variables

	Current smoker			Everyone	#Observations	#Individuals
	Yes	No	No Answer			
Average pscore	0.35	0.24	0.32	0.27	113,821	9,816
Ever smoked 1991-2008	100%	16%	37%	35%	86,938	5,012
Smoked 1991	89%	9%	27%	29%	113,821	9,816

The table shows that the average propensity score is higher for individuals observed smoking in any given year than those observed not smoking, though the difference is not huge (0.35 compared to 0.24). 35%

of the sample were seen smoking at one point in our sample and are included in our ever smoked group. Interestingly, only 16% of those observed not smoking in any given year are seen smoking on some other occasion, suggesting that most non-smokers are essentially never smokers. 29% of the sample were seen smoking in the first year of data in 1991.

All of the well-being equations include year dummies,<sup>21</sup> the smoker status variable (the treatment/control indicator or the propensity score) and its interaction with the real excise tax rate (measured in pounds per pack of 20 cigarettes), and the same set of covariates as the smoking propensity model. As discussed earlier, these covariates serve merely as controls in the model. For reasons of space we do not therefore present the full model results, and instead present the key results of interest. Full results are available on request.

Table 3 shows results from an OLS specification where the overall GHQ score (on the 0-36 scale) is the dependent variable. Recall that higher GHQ scores reflect lower well-being; as a result, if higher excise taxes were associated with an increase in the relative well-being of the smoker groups we would expect a negative coefficient on the interaction term. Each column shows a different specification of the definition of the ‘smoker’ variable as outlined above. Column (1) shows a naive specification using current smoker status, likely to be endogenous to the current tax rate. Column (2) replaces current status with the propensity score based on the 1991 smoker probit. Column (3) replaces current smoker status with a treatment indicator set to 1 for those who were smokers at any time between 1991 and 2008. Column (4) sets the treatment indicator to 1 for those who smoked in 1991.

Table 3: Cigarette taxes and smoker well-being: overall GHQ score

	(1) Current smoker	(2) 1991 propensity	(3) Smoked 1991-2008	(4) Smoked 1991
‘Smoker’ effect	0.657*** (0.229)	4.376*** (1.168)	0.796*** (0.235)	0.880*** (0.212)
Cigarette tax	1.224** (0.613)	1.273** (0.620)	0.905 (0.751)	1.264** (0.613)
Interaction	-0.126* (0.075)	-0.243 (0.246)	-0.199*** (0.070)	-0.230*** (0.068)
Observations	111,399	109,552	85,525	111,446
Individuals	9,744	9,525	5,012	9,744
$R^2$	0.176		0.173	0.176

Clustered (on the individual) standard errors in parentheses. Standard errors in Column (2) are based on 1,000 bootstrap replications.

\*  $p < 0.10$  , \*\*  $p < 0.05$  , \*\*\*  $p < 0.01$

Being a smoker, or a likely smoker based on individual characteristics or observed behaviour, is consistently related to lower overall well-being. Smokers in the two treatment/control specifications (columns 3 and 4) have average GHQ scores around 0.8 to 0.9 points higher than non-smokers. It is hard to compare that to the

<sup>21</sup>We do not control specifically for month - whilst we may expect seasonal variation in reported well-being, recall that almost all the interviews in the BHPS take place between September and November in a given year.

propensity score specification (column 2) since here the ‘smoker’ variable is just the propensity score in the range 0 to 1. Taking the average observed propensity score for current smokers in the sample (0.36) compared to the average propensity score for non-smokers (0.25) and multiplying the difference by the coefficient gives that an average smoker in this specification has a GHQ score around 0.5 points higher than an average non-smoker.

Increases in real cigarette taxes also tend to raise GHQ scores (reduce well-being): a £1 tax rise is associated with an average increase of around 1 to 1.2 points in the GHQ score, though this is not statistically significant in all specifications.

The interaction terms are consistently negative, though the statistical significance varies across specifications, being strongly significant for the treatment/control models but not significant in the propensity score model. These results lend some support to the view that a treatment group of smokers sees their well-being rise relative to a control group of non-smokers as taxes increase (though note that the overall effect of higher taxes on ‘smoker’ well-being given by the sum of the tax and interaction terms is still negative). Taking the treatment/control specifications, for example, a £1 rise in taxes would be associated with a relative fall in the GHQ score of smokers of around 0.2 points. This compares to an average GHQ score for the sample of 11.1 and a standard deviation of 5.3.

As discussed in Section 4.1, an open empirical question is whether poorer consumers exhibit a greater degree of time inconsistency. If so, one implication is that low education smokers (where low education is a proxy for low lifetime income) would see the largest benefits from the commitment value of higher taxation. Table 4 repeats the analysis, further interacting the smoker status and tax interaction with three educational attainment groups (post-compulsory, compulsory only and no formal qualifications). The interaction terms are all negative, though vary across specifications in terms of statistical significance. The results point in the direction that those with compulsory education see larger benefits from higher taxes than those with post-compulsory education, but also larger benefits than those with no formal qualifications. However it is possible that the ‘no qualification’ group also tend to be older, possibly conflating age and education effects. Further, the degree of statistical significance of the differences across education groups is limited: F-tests fail to reject the null hypothesis that all the interaction coefficients are the same except in the specification defining treatment status based on observed smoking behaviour between 1991 and 2008 (column 3). Thus there is relatively little compelling evidence for greater time inconsistency among the lifetime poor from these results.

Table 4: Cigarette taxes and smoker well-being with education interactions: overall GHQ score

	(1)	(2)	(3)	(4)
	Smoker	Psmoke1991	Smoked 1991-2008	Smoked 1991
Smoker main effect	0.644*** (0.229)	3.361*** (1.138)	0.811*** (0.235)	0.888*** (0.212)
Cigarette tax	1.212** (0.613)	1.292** (0.621)	0.884 (0.751)	1.260** (0.613)
Interaction: no qualifications	-0.089 (0.084)	-0.238 (0.267)	-0.151* (0.080)	-0.215*** (0.077)
Interaction: compulsory	-0.165** (0.082)	-0.373 (0.254)	-0.290*** (0.078)	-0.285*** (0.075)
Interaction: > compulsory	-0.120 (0.081)	-0.325 (0.293)	-0.171** (0.076)	-0.201*** (0.075)
<i>N</i>	111,399	109,552	85,525	111,446
Individuals	9,744	9,525	5,012	9,744
<i>R</i> <sup>2</sup>	0.176		0.173	0.176

Clustered (on the individual) standard errors in parentheses. Standard errors in Column (2) are based on 1,000 bootstrap replications.  
 \*  $p < 0.10$  , \*\*  $p < 0.05$  , \*\*\*  $p < 0.01$

The results so far have focused on the broad GHQ measure derived from twelve separate questions relating to current well-being. As we discussed previously, the single sub-question which forms part of the overall GHQ asking about current happiness relative to usual may provide a more concrete test of the rational addiction model. We run separate linear probability models for those responding being “more happy than usual” (Table 5), “the same as usual” (Table 6) or “less happy or much less happy than usual” (Table 6).<sup>22</sup> We would expect the interaction term to be positive in Table 5 and negative in Table 7; it is not clear whether we would expect any obvious interaction effect in Table 6: likely smokers may move into or out of this group if they are less likely to be unhappy but more likely to be happy.

The results broadly follow this pattern, though there are interesting differences across specifications when compared to the results based on the overall GHQ measure. Most notably, we find fairly consistent evidence that likely smokers are relatively less likely to report being unhappier than usual when real taxes rise. However, this result is more strongly significant in the propensity specification, and only weakly significant in the specification based on 1991 smoking status. This is the opposite pattern of significance to the GHQ results. A similar picture emerges looking at the probability of being more happy than usual: the interaction coefficients are significantly positive for the propensity specification, but only weakly positive for the specifications based on smoking histories. We find no evidence at all for any effect on the relative likelihood of reporting being as happy as usual.

<sup>22</sup>Note that the most consistent significant findings reported by Gruber and Mullainathan (2005) were a reduced probability that likely smokers reported being unhappy.



Table 5: Relationship between cigarette taxes and being more happy than usual

	(1)	(2)	(3)	(4)
	Current smoker	1991 propensity	Smoked 1991-2008	Smoked 1991
'Smoker' effect	-0.012 (0.012)	-0.163*** (0.053)	-0.030** (0.014)	-0.026** (0.012)
Cigarette tax	0.023 (0.041)	0.015 (0.041)	0.022 (0.051)	0.020 (0.041)
Interaction	0.000 (0.004)	0.031** (0.013)	0.008* (0.004)	0.006* (0.004)
Observations	113,770	113,821	86,938	113,821
Individuals	9,816	9,816	5,012	9,816
$R^2$	0.025		0.025	0.025

Clustered (on the individual) standard errors in parentheses. Standard errors in Column (2) are based on 1,000 bootstrap replications.  
\*  $p < 0.10$  , \*\*  $p < 0.05$  , \*\*\*  $p < 0.01$

Table 6: Relationship between cigarette taxes and being the same happiness as usual

	(1)	(2)	(3)	(4)
	Current smoker	1991 propensity	Smoked 1991-2008	Smoked 1991
'Smoker' effect	-0.005 (0.017)	-0.046 (0.078)	-0.002 (0.019)	0.002 (0.016)
Cigarette tax	-0.106* (0.055)	-0.105* (0.054)	-0.077 (0.066)	-0.106* (0.054)
Interaction	0.002 (0.005)	-0.002 (0.017)	-0.000 (0.006)	-0.001 (0.005)
Observations	113,770	113,821	86,938	113,821
Individuals	9,816	9,816	5,012	9,816
$R^2$	0.060		0.062	0.060

Clustered (on the individual) standard errors in parentheses. Standard errors in Column (2) are based on 1,000 bootstrap replications.  
\*  $p < 0.10$  , \*\*  $p < 0.05$  , \*\*\*  $p < 0.01$

Table 7: Relationship between cigarette taxes and being less happy than usual

	(1)	(2)	(3)	(4)
	Current smoker	1991 propensity	Smoked 1991-2008	Smoked 1991
'Smoker' effect	0.023* (0.013)	0.217*** (0.059)	0.039*** (0.015)	0.029** (0.013)
Cigarette tax	0.063 (0.041)	0.068 (0.042)	0.063 (0.050)	0.064 (0.041)
Interaction	-0.004 (0.004)	-0.027** (0.014)	-0.010** (0.004)	-0.007* (0.004)
Observations	113,770	113,821	86,938	113,821
Individuals	9,816	9,816	5,012	9,816
$R^2$	0.083		0.085	0.083

Clustered (on the individual) standard errors in parentheses. Standard errors in Column (2) are based on 1,000 bootstrap replications.  
\*  $p < 0.10$  , \*\*  $p < 0.05$  , \*\*\*  $p < 0.01$

In summary, the results based on the single happiness question point in the same direction as the results based on the overall GHQ measure: likely smokers appear to be made relatively *better off* from higher real excise taxes. Taxes had a negative and significant effect on the relative distress of likely smokers for

two out of three of the treatment groups at the 5% level; in the third case the sign of the effect was also negative. For all specifications, treatment groups were more likely to report being happier than usual and less likely to report being unhappier than usual with at least 10% significance. Although the magnitude of the interaction term is quite low relative to the mean or standard deviation of happiness measures, the fact that they all point consistently in the same direction is noteworthy, and goes against the prediction of the rational addiction model. We find only very weak evidence that the effect is greater for low education individuals in the treatment group.

## 5.2 Ban on smoking in public places

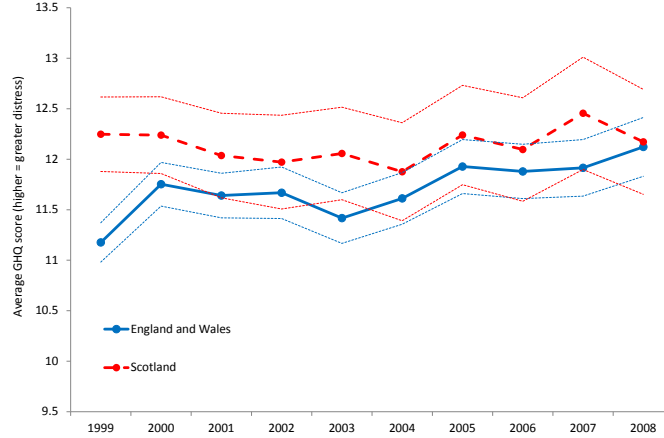
For the analysis of regional variation in the timing of the smoking ban, the sample is restricted to those classified as likely smokers, comparing the well-being of smokers in Scotland to England and Wales in the period following the ban being implemented north of the border. We restrict our sample to stop in March 2007, before the ban is extended to other regions. We show results for the specification classifying likely smokers based on their 1999 smoking behaviour. Results from the alternative strategy outlined above drawing on observed smoking status over the whole period 1999 to 2008 are quantitatively very similar and are available on request.

As always with difference-in-difference studies, we make the common trend assumption. This means that changes in likely smoker well-being in England and Wales would be a good predictor of changes in Scotland absent the smoking ban having been implemented there. Figure 4 shows trends in the average GHQ score by region (Scotland versus England and Wales) and year among those who smoked in 1999. The trends are broadly similar: flat or declining GHQ scores in both regions up to around 2003 with some evidence of increasing scores (reduced well-being) since then. The striking difference is 1999 to 2000 when there was a large increase in the GHQ score in England and Wales not seen in Scotland.

Table 8 shows the main results, again focused on the coefficients of key interest: the coefficient on the Scotland dummy, a dummy for the period between March 2006 and March 2007 (when the ban is in place in Scotland but not elsewhere) and the interaction term between the two which is the difference-in-difference estimate. Columns here represent different dependent variables: linear probability models for the three categorical responses to the single happiness equation and an OLS model for the overall GHQ index.

While we find no significant effects of the ban on the relative probability of a smoker being more, less, or no more happy than usual, we do find significant effects of the ban on the overall GHQ score of those who were seen smoking in 1999. According to the results in column 4, the smoking ban appears to have improved well-being for likely smokers in Scotland by around 0.5 points relative to likely smokers in England

Figure 4: Average well-being for those observed to smoke in 1999, by year and region



**Source:** Authors' calculations from BHPS

and Wales, but was associated with a weakly significant reduction in overall well-being of around 0.9 points for likely smokers as a whole. This is similar to the findings for taxation when looking at the GHQ score outcome: higher real taxes were associated with an overall reduction in well-being but the reduction was smaller for likely smokers. Here, the ban reduced the overall well-being of smokers but had a smaller impact in Scotland (where it was effective) than in England and Wales (where it was not).

Table 8: Impact of smoking ban on well-being of likely smokers

	(1)	(2)	(3)	(4)
	LPM: 'more happy'	LPM: 'same as usual'	LPM: 'less happy'	OLS: 0 to 36 GHQ
Scotland	-0.022 (0.014)	0.037** (0.019)	-0.028* (0.015)	-0.162 (0.268)
Scottish ban	0.014 (0.051)	0.011 (0.071)	0.032 (0.044)	0.895* (0.507)
Scotland × ban	0.009 (0.015)	-0.004 (0.022)	-0.013 (0.017)	-0.540** (0.244)
<i>N</i>	23,312	23,312	23,312	22,790
<i>R</i> <sup>2</sup>	0.034	0.079	0.125	0.244

Clustered (on the individual) standard errors in parentheses. Note the sample is restricted to those who smoked in 1999.

\*  $p < 0.10$  , \*\*  $p < 0.05$  , \*\*\*  $p < 0.01$

### 5.3 Discussion

Our results lend some support to the view that anti-smoking policies raise the relative well-being of likely smokers, as suggested by models of time inconsistency in which smokers value the commitment benefits of such policies. Using different methods to classify individuals as likely smokers, we find consistent evidence

that higher real-terms cigarette excise taxes raise the relative self-reported well-being of smokers. This holds for two different measures of well-being: an index of distress and a specific question on current happiness relative to usual. That the results hold across different specifications and different outcome variables, and correspond to those from the US and Canada of Gruber and Mullainathan (2005) using data from another country, is suggestive that this effect is quite empirically robust. However, it is notable that the statistical significance of the effect is somewhat sensitive to the particular method chosen to define likely smokers, and that the pattern of significance across methodologies also varies for different measures of well-being. The size of the relative increase in well-being for likely smokers is also quite small compared to the mean or standard deviation of observed responses.

We find some positive effect of the ban on smoking in public places on the well-being of Scottish smokers relative to those in England and Wales during the short period in which it was only in operation in Scotland, though the effect is not robust to the outcome measure of well-being chosen.

We relate well-being measures to contemporaneous smoking policies. It is possible that forward-looking smokers will react to taxes or bans on smoking when they are *announced* rather than when they are implemented.<sup>23</sup> In the UK, the smoking tax escalator announced an intention to raise real excise taxes by 3% per year in November 1993. Assuming that smokers believed the plans would be carried through, in principle most of the real tax rises in the 1990s should have been completely anticipated by smokers. The escalator was raised to 5% in July 1997 which might suggest a further ‘shock’ for likely smokers who had anticipated a 3% rise. This could be investigated by looking for year-specific variation in the relative well-being effects. Similarly, whilst the ban on smoking was only in place in Scotland in 2007, smokers in England and Wales could have anticipated bans based on legislation passing through national parliaments at the time. Forward-looking time-inconsistent smokers might therefore have already adjusted to an expected future ban even before its implementation. However even if at least some future policy reforms were anticipated, this does not undermine our central finding that they appear to have had a small but positive effect on the relative well-being of groups of likely smokers.

A related point thinking about wider influences on smoker well-being is to consider whether there were other changes in anti-smoking policies at the same time as tax changes or the smoking ban. If so, without explicitly measuring and controlling for other policy changes, we might attribute some of their impact on relative smoker well-being to our policies of interest. It is common to see policies packaged together as part of a wider anti-smoking strategy.<sup>24</sup> However, there is no clear evidence that other significant anti-smoking

---

<sup>23</sup>As noted in Gruber and Kőszegi (2000, 2001, 2004), time inconsistency is still compatible with consumers being forward-looking.

<sup>24</sup>For example, the 1998 White Paper *Smoking Kills* looked at measures including advertising restrictions and clamping down on smuggling.

reforms were introduced at the same time as the main increase in real excise taxes in the 1990s under the duty escalator. Cigarette advertising had been banned on UK television since 1965, and advertising in other media was progressively banned between 2003 and 2005 as part of the Tobacco Advertising and Promotions Act 2002, following the end of the escalator period. Health warnings on cigarette packets were introduced compulsorily in July 1991, before the excise escalator, and increased in prominence and visibility from 2002, after the escalator had ended. The legal purchase age for cigarettes was also raised after the escalator period, in October 2007.

An alternative explanation for our results is that taxes affect the well-being of smokers through their effects on the illicit (untaxed) market for tobacco. As noted above, illicit tobacco appeared to command a relatively high share of the market in the 1990s when tax rates were increasing rapidly. If tax increases lead to a rise in the availability of illicit tobacco, this could actually reduce the cost of smoking and make smokers better off even under a time consistent framework. This would undermine the power of our test to discriminate between time inconsistency and rational addiction. Note, though, that for this to hold would require the cost of obtaining tobacco to *fall* when the tax rate went up, where the cost of illicit tobacco includes not only the purchase price but also the costs of obtaining it (which may include the hassle of dealing with illicit sellers and any moral costs). In general, we might expect that people turning to illicit tobacco might be paying more than they had paid for tobacco before the tax increase, just less than the cost of obtaining licit (duty-paid) tobacco following the tax rise. However, it is possible that the cost of smoking fell as a result of tax increases if, for instance, the growth in the size of the illicit market allowed tobacco smugglers to benefit from economies of scale, or if more widespread use of illicit tobacco reduced any social stigma or moral costs from consuming it. It is of course hard to determine whether these sorts of effects exist or how important they are without data on who smokes illicit tobacco and how the price of licit and illicit products changed over this period.

A final potential concern is attrition from our panel. Attrition may be influenced by both happiness and smoking behaviour, and if there is any interaction between these effects it could bias our results (for example, if relatively unhappy smokers are more likely to die or attrit from the sample for other reasons, then we may see an upward trend in the relative happiness of smokers which correlates with the trend in real excise taxes). To check the robustness of our results to problems of attrition, we repeat our analysis from Table 3 for our “Smoked 1991-2008” and “Smoked 1991” measures on a sample which conditions on individuals who are observed in all years of data. This reduces our sample sizes substantially: for example, using 1991 smoking status to classify treated individuals, the number of observations falls by around 45% and the number of individuals by around 64%. Using the GHQ index measure of well-being, we still find negative interaction effects between smoker status and the real excise tax for both specifications (-0.17 and -0.09 respectively),

with the former significant at the 5% level but the latter no longer statistically significant. Thus we continue to find the negative interaction term, but we have much less precise estimates. It is possible that an attrition bias explains some part of our finding, but at least for some specifications the result appears robust to a sample where attrition is ruled out - even when that also entails a substantial reduction in sample size.

## 6 Conclusions

When people suffer from time inconsistency problems that lead them to over-consume harmful products, policies that restrict their behaviour can in principle make them individually better off. We find quite strong evidence of such an effect of tobacco taxes using British panel data recording smoking status and self-reported measures of well-being over a long period. There is also weaker evidence of a similar effect for a ban on smoking in public places introduced in Scotland. We find little compelling evidence that the relative effect is larger for poorer households as measured by educational attainment. The size of the effect appears to be fairly modest, but is robust to different treatment indicators and measures of well-being, and points in the opposite direction to the predictions of standard theory.

From a policy perspective, our findings suggest a possible ‘internality’ rationale for tobacco taxation as well as the more usual externality rationale. This could suggest that optimal tobacco excise taxes exceed those which would be justified by estimates of the marginal external cost imposed on others, though we are unable to quantify the size of the internality on the basis of our results. Drawing on a theoretical framework, Gruber and Kőszegi (2001) estimated the internality-correcting tax could be around \$1 per pack of cigarettes compared to an excise tax at the time of around 65 cents. They also argued that if poorer individuals were more likely to suffer from time inconsistency, increases in taxes could be progressive in terms of the welfare impact. However we find no significant evidence that this is the case: tax do not appear to have a larger relative effect on the well-being of poorer (low education) smokers than richer (high education) smokers.

## References

- [1] Adda, J. and F. Cornaglia (2006), “Taxes, cigarette consumption and smoking intensity”, *American Economic Review*, 96 (4), 1013–28
- [2] Adda, J. and F. Cornaglia (2010), “The effect of bans and taxes on passive smoking”, *American Economic Journal: Applied Economics*, 2 (1), 1–32
- [3] Ai, C. and E. Norton (2003), “Interaction terms in logit and probit models”, *Economics Letters*, 80 (1), 123–9

- [4] Anger, S., M. Kvasnicka and T. Siedler (2011), “One last puff? Public smoking bans and smoking behaviour”, *Journal of Health Economics*, 30, 591–601
- [5] Badillo Amador, L. and López Nicolás, Á (2011), “Self-control and support for anti-smoking policies among smokers, ex smokers and never smokers”, *European Journal of Health Economics*, October
- [6] Bardasi, E., S. Jenkins, H. Sutherland, H. Levy and F. Zantomio (2012), *British Household Panel Survey Derived Current and Annual Net Household Income Variables, Waves 1-18, 1991-2009 (9th Edition)*, University of Essex Institute for Social and Economic Research (original data producers), Colchester, Essex; UK Data Archive (distributor), SN 3909 (<http://dx.doi.org/10.5255/UKDA-SN-3909-2>)
- [7] de Bartolome, C. and I. Irvine (2010), *The Economics of Smoking Bans*, University College Dublin Geary Institute Discussion Paper (<http://www.ucd.ie/geary/static/publications/workingpapers/gearywp201027.pdf>)
- [8] Becker, G. and K. Murphy (1988), “A theory of rational addiction”, *Journal of Political Economy*, 96 (4), 675–700
- [9] Bernheim, B. and A. Rangel (2004), “Addiction and cue-triggered decision processes”, *American Economic Review*, 94 (5), 1558–90
- [10] Bernheim, B. and A. Rangel (2005), *Behavioral Public Economics: Welfare and Policy Analysis with Non-Standard Decision-Makers*, NBER Working Paper 11518 (<http://www.nber.org/papers/w11518>)
- [11] Brodeur, A. (2013), *Smoking, Income and Subjective Well-Being: Evidence from Smoking Bans*, mimeo, Paris School of Economics (<http://cep.lse.ac.uk/pubs/download/dp1202.pdf>)
- [12] Bryan, G., D. Karlan and S. Nelson (2010), “Commitment devices”, *Annual Review of Economics*, 2, 671–98
- [13] Carpenter, C., S. Postolek and C. Warman (2011), “Public-place smoking laws and exposure to environmental tobacco smoke (ETS)”, *American Economic Journal: Economic Policy*, 3, 35–61
- [14] Chaloupka, F. and K. Warner (2000), “The economics of smoking”, in Culyer, A. and J. Newhouse (eds.), *Handbook of Health Economics, Volume 1*
- [15] Choi, S., S. Kariv, W. Müller and D. Silverman (2011), *Who is (More) Rational?*, Working Paper ([http://www.homepages.ucl.ac.uk/~uctpsc0/Research/CKMS\\_I.pdf](http://www.homepages.ucl.ac.uk/~uctpsc0/Research/CKMS_I.pdf))
- [16] Clark, A. and F. Etilé (2002), “Do health changes affect smoking? Evidence from British panel data”, *Journal of Health Economics*, 21 (4), 533–62

- [17] Clark, E. and A. Oswald (2002), “A simple statistical method for measuring how life events affect happiness”, *International Journal of Epidemiology*, 31 (6), 1139–44
- [18] Crawford, I., M. Keen and S. Smith (2010), “Value Added Tax and excises”, in Mirrlees, J., S. Adam, T. Besley, R. Blundell, S. Bond, R. Chote, M. Gammie, P. Johnson, G. Myles and J. Poterba (eds.), *Dimensions of Tax Design: the Mirrlees Review*, Oxford: Oxford University Press (<http://www.ifs.org.uk/mirrleesreview/dimensions/ch4.pdf>)
- [19] DellaVigna, S. (2009), “Psychology and economics: evidence from the field”, *Journal of Economic Literature*, 47 (2), 315–72
- [20] Dunstan, S. (ed.) (2012), *General Lifestyle Survey Overview: a Report on the 2010 General Lifestyle Survey*, London: Office for National Statistics (<http://www.ons.gov.uk/ons/rel/ghs/general-lifestyle-survey/2010/index.html>)
- [21] Evans, W. and M. Farrelly (1998), “The compensating behavior of smokers: taxes, tar and nicotine”, *RAND Journal of Economics*, 29 (3), 578–95
- [22] Farrelly, M., C. Nimsch, A. Hyland and M. Cummings (2004), “The effects of higher cigarette prices on tar and nicotine consumption in a cohort of adult smokers”, *Health Economics*, 13, 49–58
- [23] Frederick, S., G. Loewenstein and T. O’Donoghue (2002), “Time discounting and time preference: a critical review”, *Journal of Economic Literature*, 40 (2), 351–401
- [24] Gallet, C. and J. List (2003), “Cigarette demand: a meta-analysis of elasticities”, *Health Economics*, 12, 821–35
- [25] Goldberg, D. (1972), *The Detection of Psychiatric Illness by Questionnaire*, London: Oxford University Press
- [26] Gruber, J. and B. Kőszegi (2000), *Is addiction ‘rational’? Theory and evidence*, NBER Working Paper 7507 (<http://www.nber.org/papers/w7507.pdf>)
- [27] Gruber, J. and B. Kőszegi (2001), “Is addiction ‘rational’? Theory and evidence”, *Quarterly Journal of Economics*, 116 (4), 1261–1303
- [28] Gruber, J. and B. Kőszegi (2004), “Tax incidence when individuals are time-inconsistent: the case of cigarette excise taxes”, *Journal of Public Economics*, 88 (9–10), 1959–87
- [29] Gruber, J. and S. Mullainathan (2005), “Do cigarette taxes make smokers happier”, *Advances in Economic Analysis & Policy*, 5 (1), Article 4



- [30] Gruber, J. and J. Zinman (2001), “Youth smoking in the United States: evidence and implications”, in J. Gruber (ed.), *Risky Behavior among Youths: An Economic Analysis*, Chicago: University of Chicago Press (<http://www.nber.org/chapters/c10687.pdf>)
- [31] Gul, F. and W. Pesendorfer (2001), “Temptation and self-control”, *Econometrica*, 69 (6), 1403–36
- [32] Gul, F. and W. Pesendorfer (2007), “Harmful addiction”, *Review of Economic Studies*, 74 (1), 147–72
- [33] Hersch, J. (2005), “Smoking restrictions as a self-control mechanism”, *Journal of Risk and Uncertainty*, 31 (1), 5–21
- [34] HMCE and HMT (2000), *Tackling Tobacco Smuggling*, London: The Stationery Office Limited (<http://www.hm-treasury.gov.uk/d/433.pdf>)
- [35] HMRC (2011a), *Tobacco Duties Factsheet November 2011*, London: HMRC (<https://www.uktradeinfo.com/Statistics/Statistical%20Factsheets/TobaccoFactsheet2011.xls>)
- [36] HMRC (2011b), *Measuring Tax Gaps 2011*, London: HMRC (<http://www.hmrc.gov.uk/stats/mtg-2011.pdf>)
- [37] HMRC (2012), *Tobacco duty bulletin July 2012*, London: HMRC (<https://www.uktradeinfo.com/Statistics/Tax%20and%20Duty%20Bulletins/Tob0712.xls>)
- [38] Hopkins, D., S. Razi, K. Leeks, G. Kalra, S. Chattopadhyay and R. Soler (2010), “Smokefree policies to reduce tobacco use”, *American Journal of Preventive Medicine*, 38 (2S), S275–89
- [39] Jehiel, P. and A. Lilico (2010), “Smoking today and stopping tomorrow: a limited foresight perspective”, *CEifo Economic Studies*, 56 (2), 141–64
- [40] Jones, A., A. Laporte, N. Rice and E. Zucchelli (2011), *A Model of the Impact of Smoking Bans on Smoking With Evidence from Bans in England and Scotland*, University of York Health, Econometrics and Data Group Working Paper W05/11 ([http://www.york.ac.uk/res/herc/documents/wp/11\\_05.pdf](http://www.york.ac.uk/res/herc/documents/wp/11_05.pdf))
- [41] Kan, K. (2007), “Cigarette smoking and self-control”, *Journal of Health Economics*, 26 (1), 61–81
- [42] Laibson, D. (1997), “Golden eggs and hyperbolic discounting”, *Quarterly Journal of Economics*, 112 (2), 443–77
- [43] Larsen, R. and B. Fredrickson (1999), “Measurement issues in emotion research”, in Kahneman, D., E. Diener and N. Schwarz (eds.), *Well-Being: Foundations of Hedonic Psychology*, New York: Russell Sage ([http://www.unc.edu/peplab/publications/Larsen%20&%20Fredrickson\\_1999.pdf](http://www.unc.edu/peplab/publications/Larsen%20&%20Fredrickson_1999.pdf))

- [44] Loewenstein, G., T. O'Donoghue and M. Rabin (2003), "Projection bias in predicting future utility", *Quarterly Journal of Economics*, 118 (4), 1209–48
- [45] Moore, S. (2009), "The nonpecuniary effects of smoking cessation: happier smokers smoke less", *Applied Economics Letters*, 16 (4), 395–8
- [46] NHS Information Centre (2012), *Statistics on Smoking - England, 2012, Data Tables* (available from <http://www.ic.nhs.uk/statistics-and-data-collections/health-and-lifestyles/smoking/statistics-on-smoking-england-2012>)
- [47] O'Donoghue, T. and M. Rabin (1999), "Doing it now or later", *American Economic Review*, 89 (1), 103–24
- [48] Odermatt, R. and Stutzer, A. (2012), *Smoking Bans and Life Satisfaction in Europe*, mimeo ([http://www.iza.org/conference\\_files/ReDisWeBe2010/odermatt\\_r6632.pdf](http://www.iza.org/conference_files/ReDisWeBe2010/odermatt_r6632.pdf))
- [49] Orphanides, A. and D. Zervos (1995), "Rational addiction with learning and regret", *Journal of Political Economy*, 103 (4), 739–58
- [50] Oswald, A. (1997), "Happiness and economic performance", *Economic Journal*, 107 (445), 1815–31
- [51] Paserman, M. (2008), "Job search and hyperbolic discounting: structural estimation and policy evaluation", *Economic Journal*, 118 (531), 1418–52
- [52] Schoenbaum, M. (2005), "The accuracy of teens' expectations of future smoking", *American Journal of Preventive Medicine*, 28 (3), 274–80
- [53] Shetty, K., T. DeLeire, C. White and J. Bhattacharya (2009), *Changes in U.S. Hospitalization and Mortality Rates Following Smoking Bans*, NBER Working Paper 14790
- [54] Sloan, F. and A. Platt (2011), "Information, risk perceptions, and smoking choices of youth", *Journal of Risk and Uncertainty*, 42, 161–93
- [55] Stehr, M. (2005), "Cigarette tax avoidance and evasion", *Journal of Health Economics*, 24, 277–97
- [56] Stutzer, A. and B. Frey (2010), *Recent Advances in the Economics of Individual Subjective Well-Being*, IZA Discussion Paper 4850 (<http://ftp.iza.org/dp4850.pdf>)
- [57] Suranovic, S., R. Goldfarb and T. Leonard (1999), "An economic theory of cigarette addiction", *Journal of Health Economics*, 18 (1), 1–29

## Appendix: Propensity to smoke results

Table 9: Smoker Probit, 1991

	(1)
	Dep var: Smoker
Age	0.0461*** (7.96)
Age <sup>2</sup>	-0.000638*** (-10.14)
Female	-0.128*** (-4.16)
Child 0-4	0.0469 (0.90)
More than one child 0-4	0.0279 (0.33)
Child 5-11	0.114* (2.39)
More than one child 5-11	-0.0714 (-1.19)
Child 12-18	-0.0878 (-1.89)
More than one child 12-18	-0.351*** (-5.11)
2nd income decile	-0.0631 (-0.86)
3rd income decile	-0.175* (-2.38)
4th income decile	-0.150* (-2.09)
5th income decile	-0.254*** (-3.57)

6th income decile	-0.192** (-2.70)
7th income decile	-0.329*** (-4.54)
8th income decile	-0.221** (-3.02)
9th income decile	-0.170* (-2.27)
10th income decile	-0.389*** (-4.94)
Income decile	-0.126 (-1.77)
No formal qualification	0.731*** (4.84)
O-level/CSE	0.553*** (3.66)
A-level	0.332* (2.17)
Undergraduate	0.146 (0.94)
Self-employed	0.0301 (0.55)
Retired	0.109 (1.68)
Unemployed	0.250*** (3.98)
Other employment	-0.116** (-2.58)
Student	0.170 (1.90)
Co-habiting	0.298*** (5.01)

Single	0.0973 (1.95)
Divorced/Separated	0.241*** (4.13)
Widowed	0.178** (2.73)
Mortgage	0.0923* (2.14)
LA/HA renter	0.557*** (12.05)
Private renter	0.375*** (6.35)
Health problems: limbs	0.0426 (1.19)
Health problems: sight	0.0287 (0.51)
Health problems: hearing	-0.0398 (-0.69)
Health problems: skin	0.0317 (0.69)
Health problems: breath	0.169*** (3.68)
Health problems: high blood pressure	-0.119* (-2.48)
Health problems: digestion	-0.0132 (-0.21)
Health problems: diabetes	-0.233* (-2.01)
Health problems: mental	0.152* (2.41)
Health problems: migraine	0.0581 (1.13)

Health problems: other (incl. drugs and epilepsy)	0.0841 (1.41)
Constant	-1.748*** (-6.92)
<hr/>	
<i>N</i>	9899
pseudo <i>R</i> <sup>2</sup>	0.095
<hr/>	

Note: Omitted coefficients are first income decile, higher degree, owned outright, employed, married, male.  
Significance indicators are \* =  $p < 0.1$ , \*\* =  $p < 0.05$ , \*\*\* =  $p < 0.01$ .