

Hoyos, Alejandro; Nopo, Hugo; Pena, Ximena

Working Paper

The Persistent Gender Earnings Gap in Colombia, 1994-2006

IDB Working Paper Series, No. IDB-WP-174

Provided in Cooperation with:

Inter-American Development Bank (IDB), Washington, DC

Suggested Citation: Hoyos, Alejandro; Nopo, Hugo; Pena, Ximena (2010) : The Persistent Gender Earnings Gap in Colombia, 1994-2006, IDB Working Paper Series, No. IDB-WP-174, Inter-American Development Bank (IDB), Washington, DC

This Version is available at:

<https://hdl.handle.net/10419/89112>

Standard-Nutzungsbedingungen:

Die Dokumente auf EconStor dürfen zu eigenen wissenschaftlichen Zwecken und zum Privatgebrauch gespeichert und kopiert werden.

Sie dürfen die Dokumente nicht für öffentliche oder kommerzielle Zwecke vervielfältigen, öffentlich ausstellen, öffentlich zugänglich machen, vertreiben oder anderweitig nutzen.

Sofern die Verfasser die Dokumente unter Open-Content-Lizenzen (insbesondere CC-Lizenzen) zur Verfügung gestellt haben sollten, gelten abweichend von diesen Nutzungsbedingungen die in der dort genannten Lizenz gewährten Nutzungsrechte.

Terms of use:

Documents in EconStor may be saved and copied for your personal and scholarly purposes.

You are not to copy documents for public or commercial purposes, to exhibit the documents publicly, to make them publicly available on the internet, or to distribute or otherwise use the documents in public.

If the documents have been made available under an Open Content Licence (especially Creative Commons Licences), you may exercise further usage rights as specified in the indicated licence.

The Persistent Gender Earnings Gap in Colombia, 1994-2006

Alejandro Hoyos
Hugo Ñopo
Ximena Peña

May 2010

The Persistent Gender Earnings Gap in Colombia, 1994-2006

Alejandro Hoyos*
Hugo Ñopo*
Ximena Peña**

* Inter-American Development Bank

** Universidad de los Andes



Inter-American Development Bank

2010

Cataloging-in-Publication data provided by the
Inter-American Development Bank
Felipe Herrera Library

Hoyos, Alejandro.

The persistent gender earnings gap in Colombia, 1994-2006 / Alejandro Hoyos, Hugo Ñopo, Ximena Peña.

p. cm. (IDB working paper series ; 174)

Includes bibliographical references.

1. Wages—Women—Colombia. 2. Pay equity—Colombia. I. Ñopo, Hugo. II. Peña, Ximena. III. Inter-American Development Bank. Research Dept. IV. Title. V. Series.

HD4920.C6 H69 2010

© Inter-American Development Bank, 2010
www.iadb.org

Documents published in the IDB working paper series are of the highest academic and editorial quality. All have been peer reviewed by recognized experts in their field and professionally edited. The information and opinions presented in these publications are entirely those of the author(s), and no endorsement by the Inter-American Development Bank, its Board of Executive Directors, or the countries they represent is expressed or implied.

This paper may be freely reproduced provided credit is given to the Inter-American Development Bank.

Abstract*

This paper surveys gender wage gaps in Colombia from 1994 to 2006, using matching comparisons to examine the extent to which individuals with similar human capital characteristics earn different wages. Three sub-periods are considered: 1994-1998; 2000-2001; and 2002- 2006. The gaps dropped from the first to the second period but remained almost unchanged between the second and the third. The gender wage gap remains largely unexplained after controlling for different combinations of socio-demographics and job-related characteristics, reaching between 13 and 23 percent of average female wages. That gap is lower at the middle of the wage distributions than the extremes, possibly due to a gender-equalizing effect of the minimum wage. Moreover, the gap is more pronounced for low-productivity workers and those who need flexibility to participate in labor markets. This suggests that policy interventions in the form of labor market regulations may have little impact on reducing gender wage gaps.

JEL classifications: C14, D31, J16, O54

Keywords: Gender, Ethnicity, Wage gaps, Latin America, Colombia, Matching

* We are grateful to Luz Karime Abadía, Diego Ángel-Urdinola and Rocío Ribero for useful comments. Any mistake within the paper is our own and the findings herein do not necessarily represent the views of the Inter-American Development Bank or its Board of Directors.

1. Introduction

From a gender perspective, Colombia has experienced important changes in the labor market during the last three decades. The increase in the labor market participation rate of Colombian women has been the highest in a region where the female participation rate has increased substantially. Elías and Ñopo (2010) report that while in 1980 the participation rate of Colombian females was the second lowest in the region, only above that of Costa Rica, by 2004 it was the highest in the region, equaled only by Uruguay. Restricting attention to the period between 1994 and 2006, the increase in female labor force participation in Colombia is the third highest in the region, only after Venezuela and Peru. Interestingly enough, the female unemployment rate over the past two decades has steadily been about 5 percentage points higher than that for men (Sabogal, 2009).

While there still remain some gender differences in labor market outcomes, such as participation, unemployment rates and, as this paper will explore, wages, there are also interesting gender differences in individual characteristics. Females have more years of education, while men tend to have the potential to accumulate more experience. In addition, there are important differences in the occupational choices of men and women. For example, most people who report being a household servant are female, while most construction workers are male.

The fact that there are still sizeable gender gaps in labor market outcomes is surprising since Colombia is domestically perceived as an “egalitarian” country regarding gender issues. Legally, there are tools to promote gender equality such as Articles 13 and 43 of the Constitution, or Article 143 of the Labor Code, which explicitly states that employers should pay equal wages for equal jobs. In addition, laws have been passed to give more protection to women—which may have provided disincentives to hire them. For example, Law 50 in 1990 specifies that all female workers in a state of pregnancy have the right to a 12-week paid leave and that a female worker cannot be fired due to pregnancy. Despite the strong improvement in the labor market characteristics of women, and the legal framework to promote equality, the gender wage gap in Colombia has changed little during the last 20 years.

One relevant question on that regard is how much of the gender wage gap can be explained by existing differences in observable characteristics. Traditionally, this question has been answered using the Blinder-Oaxaca (BO) decomposition, which uses the estimated

differences in Mincerian equations to answer questions such as: “What would the earnings of the *average* woman have been if her labor market characteristics were those of the *average* man?” In this paper we adopt a non-parametric alternative to the BO decomposition that (i) addresses the traditional BO question not only for averages but also, and more interestingly, for the distribution of wages; and (ii) emphasizes the role of the gender differences in the *supports* of the distribution of observable human capital characteristics.

The methodology generates synthetic samples of individuals by matching males and females with the same observable characteristics. By matching individuals in several dimensions, we compare comparable individuals. The method allows us calculate the earnings *distribution* of the sample of females had their observable characteristics resembled those of the sample of males. Just like alternative decomposition methods, this approach, developed by Ñopo (2008) allows us to decompose the observed gap into a component due to differences in characteristics and an unexplained portion. However, in addition, we can also determine how much of the calculated gap is accounted for by the outcomes of men and women out of the common support. This issue is often neglected in the gender wage gaps literature and allows for a richer exploration of gender wage differentials in Colombia.

2. The Literature on Gender in the Colombian Labor Markets

Several studies have measured the average gender wage gap in Colombia using Mincerian equations and decomposing the gap following BO methodology (Tenjo, 1993; and Tenjo, Ribero and Bernat, 2006). In general their findings coincide in pointing out a substantial gender wage gap which is mostly explained by differences in the rewards to labor market characteristics, rather than by differences in the characteristics between men and women.

Abadía (2005) tries to determine whether the average gender wage gap in Colombia can be explained by statistical discrimination.¹ The intuition is that if firms do not apply statistical discrimination, the gender wage gap will not change with experience, whereas if they do, the gap will depend less on easily observable characteristics (such as gender and education). The author

¹ Statistical discrimination is a theory of why minorities are paid lower wages. It arises when rational agents use aggregate group characteristics to evaluate individual characteristics, and this implies that agents belonging to different groups may be treated differently. For example, if firms believe that child-bearing age women are more likely to have babies, and therefore have breaks during their careers, than older women, they would pay child-bearing age women lower wages to account for the higher probability of losing the worker.

finds evidence of statistical discrimination against women for private wage earners, but not for public employees.

Ángel-Urdinola and Wodon (2006) document the existence of a long-term trend towards an increase in the gender wage gap in the years following the issuing of a new labor regulation giving more protection to women and thereby raising the cost of female employment for firms. In particular, the authors study the effect of Law 50 of 1990, which, as stated above, ensures that pregnant female workers cannot be fired and that they have the right to a 12-week paid leave, on the gender wage gap between 1982 and 2000. Sabogal (2009) finds that the Colombian gender wage gap is pro-cyclical among the population aged 25 to 55 years old. She finds evidence suggesting that three mechanisms contribute to the pro-cyclicality of the gap: i) the additional worker effect, ii) changes in compositions of the formal and informal worker forces and iii) changes in sectoral composition.

But the literature in Colombia has already been beyond the analysis confined to averages and has studied gender wage gaps along the distributions of wages, or along its conditional distribution. Bernat (2007) explores the distribution of the gender gap using discrimination curves for 2000, 2003 and 2006. The methodology of this paper calculates incidence, intensity and inequality of discrimination. The author finds that despite the observed reduction in the average gender gap starting 2000, there have been no major advances in terms of discrimination: there is evidence of a glass ceiling (barriers for women to reach the top of the earnings distribution) for professional women and the percentage of women discriminated against actually grew throughout the period.

Fernández (2006) using the urban subsamples of the 1997 and 2003 Living Standards Measurement Survey reports gender differences in wages that are not statistically significant. However, when measuring the gap along the distribution, there are interesting variations. At the bottom 3 percent of the distribution, there is a gap favoring men, while between percentiles 4 and 85, the wage gap favors women. At the top of the distribution, she finds evidence of the existence of a glass ceiling, since there is a gap favoring men that reaches 25 percent of hourly wages. Using quantile regression analysis she also reports that the gap is mostly due to differences in rewards rather than observable characteristics.

Badel and Peña (2009) use the Colombian Household Surveys to measure the gender wage gap for individuals between 25 and 55 years of age in the seven main cities in 1986, 1996

and 2006. The gender wage gap for their sample is always positive, significant, and displays a U-shape with respect to earnings: women's wages fall further below men's at the extremes of the distribution, whereas they are closer around the middle of the distribution. The authors also employ quantile regression techniques to examine the degree to which differences in the distribution of observable characteristics explain the Colombian gender gap. In line with most of the literature, they find that the gap is largely explained by differences in the rewards to human capital characteristics. Innovatively, they also account for selection as female participation in Colombia is far from universal, and thus self-selection of women into work is important. Their results suggest that selection accounts for roughly 50 percent of the observed gender wage gap. That is, if all women worked, the observed gender wage gap would be 50 percent higher than what it is today. The selection effect in Colombia is positive and therefore more able women self-select into work.

This paper contributes to the previous literature in at least two dimensions. First, we provide estimations of the gender wage gap between 1992 and 2006, a period that includes booms and recessions. Second, we also decompose the gaps using an alternative methodology to BO, with the two methodological advantages outlined above: precision (as it compares comparable individuals regarding human capital characteristics, providing more precise measures of the unexplained components of the wage gaps) and information (as it allows us to explore unexplained gender wage gaps along the distributions of several variables).

3. Matching and Gender Wage Gap Decompositions

In order to disentangle the extent to which gender wage gaps in Colombia can be attributed to observable differences in characteristics we follow the approach introduced by Nopo (2008). This method, as a non-parametric alternative to the traditional Blinder-Oaxaca (BO) decompositions, is based on a matching-on-characteristics approach. The algorithm for such matching, in its basic form, can be summarized as follows:

- Step 1: Select one female (without replacement) from the sample.
- Step 2: Select all males who have the same characteristics as the female previously selected.

- Step 3: With all the individuals selected in Step 2, construct a synthetic individual whose wage is equal to the average of all of them and “match” him to the original female.
- Step 4: Put the observations of both individuals (the synthetic male and the female) in their respective new samples of matched individuals.
- Repeat steps 1 through 4 until it exhausts the original female sample.

The application of this matching algorithm delivers three sets of individuals: (i) those females with observable characteristics for which there are no males to do the matching, (ii) those males who were never selected because there is no female with the same observable characteristics and (iii) those females and males who were matched. By construction, the set of matched females and males shows no differences in the distribution of characteristics, so any differences in wages that could remain in this set cannot be attributed to gender differences in observable characteristics. They are instead due to unobservable characteristics (discrimination probably being one of them).

This method emphasizes gender differences in the supports of the distributions of observable characteristics to develop wage gap decompositions in the spirit of that proposed by Blinder and Oaxaca. It divides the gender wage gap into four additive elements:

$$\Delta = (\Delta_x + \Delta_f + \Delta_m) + \Delta_0$$

where:

- Δ_x is the part explained by males and females having individual characteristics distributed differently over their common support.
- Δ_f is the component of the wage gap that exists because for some combinations of female characteristics there are no comparable males.
- Δ_m is the component of the wage gap that exists because some combinations of characteristics that men have are not reached by women.
- Δ_0 is the part that cannot be explained by differences in observable characteristics.

The first three components can be attributed to the existence of gender differences in individuals characteristics that the labor market rewards, while the last is due to the existence of a combination of both unobservable (by the econometrician) differences in characteristics that the labor market rewards and discrimination. The last component is comparable to the one that is due to the differences in rewards to observables characteristics in the traditional BO approach, but restricted to the common support of those characteristics.

The BO decomposition based on linear regressions suffers from a potential problem of misspecification due to differences in the supports of the empirical distributions of individual characteristics for females and males (gender differences in the supports). This is due to the fact that there are combinations of individual characteristics for which it is possible to find males in the labor force, but not females (for example, males who are in their early thirties, married, and holding at least a college degree). There are also combinations of characteristics for which it is possible to find females, but not males (for example, single females who are migrants, in their late forties, and have less than an elementary school education). With such combinations of characteristics, one cannot compare outcomes across genders.

By not considering this restriction, the BO decomposition is implicitly based on an “out-of-support assumption”: it becomes necessary to assume that the linear estimators are also valid out of the supports of individual characteristics for which they were estimated.

Along with the misspecification problem associated with gender differences in the supports, the traditional BO approach is only informative about the *average* unexplained difference in wages. It is therefore not capable of addressing the distribution of these unexplained differences. The matching technique enables us to highlight the problem of gender differences in the supports and also to provide information about the distribution of the unexplained pay differences, as will be shown in the following sections.

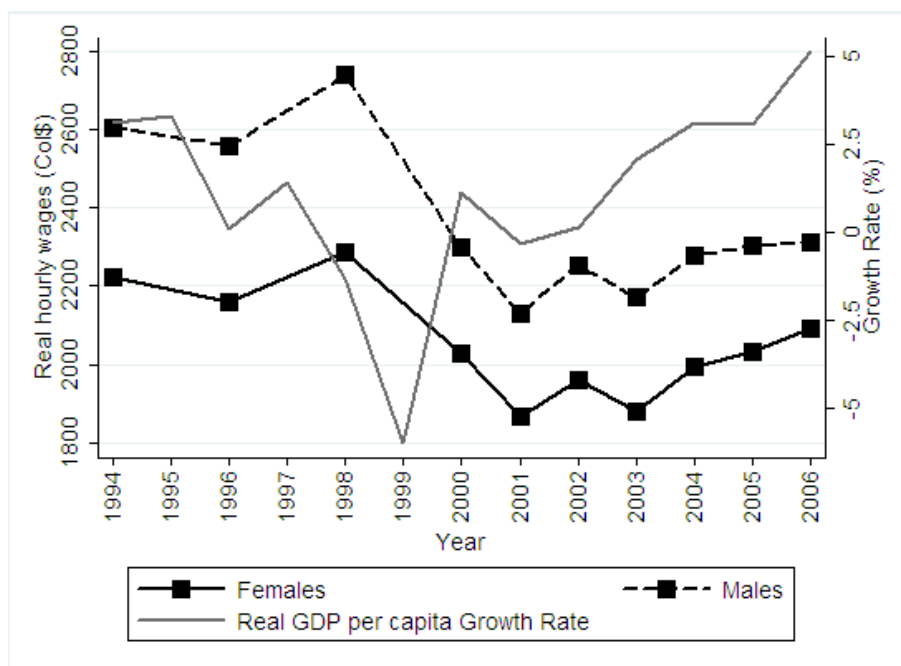
4. The Data

Data for this paper are drawn from household surveys quarterly collected by the Colombian National Statistical agency (DANE). Up to the year 2000 the survey included an extensive labor markets module in its second quarter release every other year, including information on labor earnings, social security coverage and firm size, among other areas. Since then the extensive labor module has been included yearly. In this paper we use available data from 1994 to 2006,

that is, for the earlier period we count with biannual and for the later with annual data.² As a result we use 10 shifts of the survey for the period under analysis.

Figure 1 below illustrates the evolution of real hourly wages for females and males during that period along with the evolution of the growth rate of the real GDP per capita. As shown in the figure, three qualitatively different periods can be identified. The first, from 1994 to 1998, displays real wage growth but with marked fluctuations. A second period, from 2000 to 2001, is characterized by substantial reductions in real wages (the annualized reduction in real wages was above 10 percent), and a third period from 2002 to 2006 characterized by sustained growth in real wages. Furthermore, the periods distinguished from the evolution of real wages coincide with the periods that one would distinguish when analyzing the evolution of GDP growth in the country. The first period, 1994-1998, is characterized by a slowdown of overall economic activity, reaching a limit by the end of the period. A steep economic decline can be seen in 2000 and up to 2001, followed by a sustained growth since 2002.

Figure 1. Evolution of Real Hourly Wages 1994 – 2006



Source: Household Surveys 1994-2006.

² Even though there is earlier information, we decided to begin our analysis in 1994 because of two main reasons. First, during the 1980s the right tail of the income distribution was truncated, and second, there was a major reform to the health system in 1993 (Law 100), with profound impacts on labor markets, particularly in regard to formality and wages (Camacho, Conover and Hoyos, 2009; Santa María, 2009 and Santa María, García and Mujica, 2008).

It is for these reasons that our analysis of the evolution of wage gaps will be organized around these three periods. In each of these periods we pool the data sets for the years available during each period, using the corresponding expansion factors of each survey to maintain its representativeness. We restrict the analysis to the 10 largest metropolitan areas,³ and in these cities we focus on working individuals between 18 and 65 years old reporting positive earnings (that is, we drop unpaid workers from the analysis and those who do not report a wage), working between 10 and 84 hours per week and with no missing information regarding their observable characteristics. Also, for each year and gender we drop the top 1 percent of the earnings distributions as these are likely measurement-error outliers for the variable of interest. Table 1 below reports relative wages by different sets of observable individual characteristics, normalizing them such that average females' wages are set equal to 100 at each period. The gender wage gap was higher during the earlier period (reaching almost 18 percent of average females' wages) and similar between the intermediate and the later period (at almost 14 percent).

³ Barranquilla, Bucaramanga, Bogotá, Manizales, Medellín, Cali, Pasto, Villavicencio, Pereira and Cúcuta.

Table 1. Relative Hourly Wages by Characteristics

	(1994 - 1998)		(2000 - 2001)		(2002 - 2006)	
	(Base: Average female wage = 100)		(Base: Average female wage = 100)		(Base: Average female wage = 100)	
	Female	Male	Female	Male	Female	Male
All	100.0	118.3	100.0	113.8	100.0	113.5
Age						
18 to 24	76.2	† 79.4	74.1	† 76.3	72.4	72.9
25 to 34 †	102.2	114.0	102.3	109.6	101.3	109.2
35 to 44 †	113.1	134.1	108.8	127.1	107.0	126.4
45 to 54 †	106.3	143.6	112.7	135.7	114.7	131.8
55 to 65 †	89.9	130.7	91.5	124.6	95.0	129.6
Education						
None or Primary Incomplete †	50.4	68.4	48.6	61.8	45.5	56.9
Primary Complete or Secondary Incomplete †	66.4	85.7	62.6	78.7	58.4	71.4
Secondary Complete or Tertiary Incomplete †	109.6	124.2	103.1	116.3	92.8	107.0
Tertiary Complete †	223.5	291.8	244.1	286.3	229.4	277.3
Presence of children (<6) in the household						
No †	100.9	120.4	102.6	115.6	101.4	115.5
Yes †	97.0	113.3	90.5	108.7	94.3	107.2
Marital Status						
Cohabiting †	81.2	94.7	79.2	90.9	81.5	88.7
Married †	124.6	144.6	126.4	142.2	129.7	147.9
Widowed, Divorced or Separated †	88.4	113.3	90.8	106.7	91.1	107.9
Never Married †	95.0	101.4	97.6	101.9	95.0	98.6
Presence of other household member with labor income						
No †	94.7	113.1	101.0	113.8	103.5	113.2
Yes †	101.4	121.2	99.6	113.7	98.8	113.7
Type of Employment						
Employer	157.6	† 192.1	185.6	186.3	177.4	† 202.6
Self - Employed †	82.3	105.6	71.8	88.2	74.9	89.8
Private Employee †	98.8	106.4	105.4	109.0	107.5	105.9
Public Employee	178.8	‡ 183.9	218.0	216.4	233.2	230.4
Domestic Servants †	40.2	54.3	46.9	67.2	45.0	64.6
Time worked						
Part time †	129.5	165.8	112.7	155.9	104.6	147.7
Full time †	105.0	126.4	113.3	130.0	115.8	131.4
Over time †	67.1	96.3	67.8	87.1	70.2	89.1
Formality						
No †	73.4	94.6	67.3	81.3	63.3	77.0
Yes †	119.2	139.2	129.3	145.6	130.1	142.6
Small firm						
No †	121.2	† 131.3	134.1	† 139.9	135.7	* 136.9
Yes †	75.4	102.9	69.1	90.0	67.3	88.8
Economic Sector						
Primary	113.5	† 140.8	93.2	† 115.1	123.5	128.2
Secondary †	88.3	103.5	91.2	101.4	90.4	98.6
Tertiary †	103.5	125.8	102.4	119.3	102.3	120.5
Occupation						
White Collar †	128.4	162.4	134.6	156.8	137.5	159.7
Blue Collar †	66.3	89.2	65.4	84.6	62.7	80.5

Note: † in the name of the category indicates that the wages differences between males and females are statistically different at the 99% level in the three periods.

† Means are statistically different at the 99% level

‡ Means are statistically different at the 95% level

* Means are statistically different at the 90% level

Source: Household Surveys 1994-2006

Many interesting features arise. Regarding individuals' life cycle, some gender differences are worth noting. On the one hand, males reach their earnings peak when they are between 45 and 54 years old, and this has been the case for the three periods under analysis. On the other hand, females' earnings profile over the life cycle has slightly changed during the last 15 years. For the earlier period their earnings peak was achieved when they were 35 to 44 years

old. For the latter two periods, however, the peaks are achieved at later ages (between 45 and 54 years old). This may reflect a secular trend in females' staying longer in the labor markets, maintaining their productive cycles and avoiding early retirement.

Regarding education, the patterns of skill premium are not surprising, neither for males nor for females. Males earn more than females in all education categories for all three periods. The presence of other income earner in the household does not seem to play an important role in wage differentials. Individuals living in households with children (younger than 6 years of age) tend to show lower wages than those living in households with no children, and that difference has remained constant over the period of analysis.

In regard to marital status, married people earn more than others. Never-married individuals earn almost the same as those cohabiting, but individuals cohabiting outside of a formal marriage persistently receive the lowest wages. It is interesting to note, however, that gender wage gaps are more pronounced among those cohabiting than among those never married. The highest wage gaps are found among widowed, divorced or separated individuals.

As expected, employers earn much more than private employees, who in turn earn more than the self-employed, who in turn earn more than domestic servants. The surprising result, however, is that public employees are at the top of average earnings by type of employment. Part-time workers (those who work less than 35 hours per week) earn much more per hour than those working full time who in turn earn more than those working over-time (more than 48 hours). Informal workers earn less than their formal counterparts,⁴ and those working in small firms (five workers or less) earn less than those working in larger firms. Services (business and social) and construction are among the highest paid economic sectors, especially for women. On the other extreme, household and personal services is the lowest paid sector during the whole period of analysis and for both genders. White-collar workers earn more than blue-collar workers.

The results reported in Table 1, however, are merely descriptive statistics; they do not take into account the *simultaneous* role of other observable characteristics in the determination of wages. Table 2 describes the differences in observable characteristics between men and women for the three periods under study.

⁴ In this paper, a worker is considered as formal if she/he contributes to health insurance through employment.

Table 2. Observable Characteristics: Descriptive Statistics

	(1994 - 1998)		(2000 - 2001)		(2002 - 2006)	
	Female	Male	Female	Male	Female	Male
Real Wage	2,225	2,632	1,948	2,217	1,998	2,269
Age (%)						
18 to 24	19.8	18.6	18.4	17.5	17.2	16.6
25 to 34	36.0	33.8	32.2	32.2	30.5	30.6
35 to 44	27.4	25.5	29.3	27.2	29.0	26.7
45 to 54	12.4	14.6	14.8	15.7	17.7	18.0
55 to 65	4.4	7.5	5.2	7.4	5.7	8.2
Education (%)						
None or Primary Incomplete	11.6	12.2	10.4	11.4	8.8	9.5
Primary Complete or Secondary Incomplete	38.5	45.9	37.9	41.0	32.6	35.8
Secondary Complete or Tertiary Incomplete	37.7	30.9	38.9	36.3	42.0	40.6
Tertiary Complete	12.2	11.1	12.7	11.2	16.5	14.1
Presence of children in the household (%)	22.7	29.6	21.3	26.6	19.2	23.5
Marital Status (%)						
Cohabiting	15.2	24.5	18.9	29.3	19.8	29.8
Married	28.5	41.6	25.9	36.7	24.6	34.9
Widowed, Divorced or Separated	20.6	4.6	23.4	6.7	22.3	7.0
Never Married	35.6	29.3	31.8	27.4	33.3	28.3
Presence of other member with labor income (%)	79.5	64.5	73.3	62.1	73.5	63.8
Type of Employment (%)						
Employer	3.3	7.1	2.6	5.6	2.8	5.9
Self - Employed	22.0	26.4	27.3	32.6	26.9	30.9
Private Employee	54.8	58.4	49.7	54.6	50.8	57.0
Public Employee	10.5	7.9	8.0	6.8	6.1	5.7
Domestic Servants	9.4	0.2	12.4	0.4	13.4	0.5
Time worked (%)						
Part time	16.5	6.9	21.6	10.5	20.6	8.9
Full time	59.6	57.2	49.5	45.2	49.9	45.4
Over time	23.9	35.9	29.0	44.2	29.6	45.7
Small firm (%)	46.3	45.8	52.5	52.3	52.2	48.7
Formality (%)	58.1	53.1	52.8	50.4	54.9	55.7
Economic Sector (%)						
Primary	0.8	1.8	0.9	2.0	0.8	2.1
Secondary	23.5	35.0	20.9	30.5	20.4	32.5
Tertiary	75.7	63.2	78.3	67.5	78.8	65.4
Occupation (%)						
White Collar	54.2	39.8	50.0	40.4	49.8	41.7
Blue Collar	45.8	60.2	50.0	59.6	50.2	58.3
Observations (Unweighted)	33,411	47,595	22,450	27,417	58,181	68,598
Observations (Weighted)	5,863,482	7,992,771	4,183,348	4,840,639	11,817,986	12,837,329

Note: Using a Pearson's chi-squared statistic to test the distribution between males and females among categories of each of the variables, we conclude that all are statistically different at the 99% level in each of the three periods.

Source: Household Surveys 1994-2006.

Working men are slightly older than working women. However, both females and males are staying longer in labor markets. This is reflected in an older labor force, especially for females, as shown in the statistics. While women in Colombia are more educated than men, the overall labor force's education also shows an increasing trend as the percentage of workers with tertiary and secondary education has increased over the three sub-periods.

Even though children are more often present in the households of working men, the prevalence of children has decreased over the period of study, and gender differences have narrowed. In line with previously reported findings by Amador and Bernal (2009), there have been important changes in patterns of family formation and dissolution in Colombia, similar to what has happened in the rest of the region. The percentages of cohabiting individuals have increased, both for males and females (but cohabitation is higher among males). Combining formal marriage and cohabitation, there are also important gender differences in marital status. Approximately two out of three males are married (either formally or informally), while less than half of females in Colombia are in a similar situation.

There are more often other members of the household with labor income for women than for men. The presence of other income earners at home has not changed for males but has slightly changed for females. The percentage of females who share the breadwinning responsibilities in their household has dropped almost 5 percentage points during the period of analysis, reflecting the increase in female household headship that Colombia and the Region has experienced. Very few workers are employers (and there are around twice as many male employers as female employers) and the share of self-employment has increased at the expense of the share of employees. For males, overtime schedules have increased in Colombia such that at the latter period almost one half of males reported working more than 48 hours per week. For females, the data show both an increase in overtime and also an increase in part-time schedules (at the expense of full-time schedules), reflecting the great deal of heterogeneity present in the labor markets for females.

Around half of workers (both males and females) are formal employees in small firms. Transportation is a sector that has gained employment among males, and the prevalence of white-collar workers has slightly decreased among females and increased among males.

We next turn to the central question of this paper: To what extent can observed gender differences in wages be explained by gender differences in observable characteristics?

5. Results

Table 3 shows different wage gap decomposition exercises for the three sub-periods. Each panel on the table corresponds to a sub-period. Then, in each panel the decomposition exercises are shown in columns such that each column adds a variable to the matching set available in the previous one. The first column results from matching females and males in the same survey year, living in the same metropolitan area and within the same age group. The second column considers the previous matching characteristics and individuals' education level. The third adds upon the second by considering presence of children in the household on top of the previous four characteristics, and so on. The matching variables considered in Table 3 are those considered as individuals' socio-demographics, without considering other job-related characteristics for the time being.

The first panel on Table 3 shows that during 1994-1998 males earned 18.3 percent higher hourly labor earnings than females (measured as a percentage of average females' wages). When controlling for year, city and age group most of the wage gaps remains unexplained, as only a wage gap of 0.1 percentage points of average females' wages can be accounted for by these characteristics. When adding education to the previous set of matching characteristics, the unexplained wage gap is even slightly higher, reflecting the higher education of the female population. Not only that, but also the component that exists because males achieve certain combinations of characteristics that females do not (Δ_m) reaches a level close to 2 percent (which remains after the addition of other socio-demographics). The addition of the other socio-demographic characteristics slightly reduces the unexplained component of the wage gap (Δ_0) and (Δ_m) but at increases (Δ_f), the component that exists due to unmatchable females.

As mentioned above, the overall gender wage gap is higher during the first sub-period than in the other two. After controlling for observable individuals' socio-demographic characteristics the pattern remains. In fact, most of the gap remains unexplained after matching the whole set of socio-demographics. The second most important element, but an order of magnitude smaller, is the one that exist because females fail to achieve certain combinations of characteristics that males do; these are well-paid segments of the labor markets.

Table 3. Gender Wage Gap Decomposition

1994 - 1998					
	Year, Metropolitan Area & Age	+ Education	+ Presence of children in the HH	+ Marital Status	+ Presence of other wage earner member in the HH
Δ	18.3%	18.3%	18.3%	18.3%	18.3%
ΔO	18.2%	19.9%	19.4%	17.5%	18.5%
ΔM	0.0%	1.8%	2.5%	1.6%	0.7%
ΔF	0.0%	-0.1%	-0.4%	0.8%	1.7%
ΔX	0.1%	-3.3%	-3.3%	-1.6%	-2.6%
% CS Males	99.8%	97.4%	93.0%	76.5%	57.6%
% CS Females	100.0%	99.3%	97.5%	78.4%	68.3%

Source: Household Surveys 1994-1998.

2000 - 2001					
	Year, Metropolitan Area & Age	+ Education	+ Presence of children in the HH	+ Marital Status	+ Presence of other wage earner member in the HH
Δ	13.8%	13.8%	13.8%	13.8%	13.8%
ΔO	13.0%	15.4%	15.8%	13.8%	14.5%
ΔM	0.0%	2.4%	3.8%	5.1%	4.9%
ΔF	0.0%	-0.7%	-1.2%	-2.3%	-2.0%
ΔX	0.7%	-3.4%	-4.7%	-2.7%	-3.6%
% CS Males	99.9%	96.9%	92.3%	73.6%	55.9%
% CS Females	100.0%	98.7%	96.1%	74.1%	61.2%

Source: Household Surveys 2000-2001.

2002 - 2006					
	Year, Metropolitan Area & Age	+ Education	+ Presence of children in the HH	+ Marital Status	+ Presence of other wage earner member in the HH
Δ	13.5%	13.5%	13.5%	13.5%	13.5%
ΔO	13.9%	17.5%	17.4%	16.1%	15.1%
ΔM	0.0%	1.1%	1.5%	1.3%	1.4%
ΔF	0.0%	-0.3%	-0.7%	-1.3%	-1.9%
ΔX	-0.5%	-4.7%	-4.7%	-2.6%	-1.0%
% CS Males	99.9%	97.6%	93.6%	75.9%	57.9%
% CS Females	100.0%	98.7%	96.3%	74.5%	61.6%

Source: Household Surveys 2002-2006.

Investigating the effect of job-related individuals' characteristics on top of the socio-demographics reported in Table 3 is not a simple task. The curse of dimensionality suffered by non-parametric approaches, including the present matching approach, presents a challenging task. As the number of matching variables increases, the likelihood of finding matches diminishes and hence the size of the common supports, as reported in the last two rows of the tables. For that reason, in order to leave space for the inclusion of job-related characteristics some socio-demographic ones will not be considered. The table uses the set of socio-demographic matching variables that includes year, city age and education and adds the job-related characteristics one-by-one (as opposed to cumulatively as previously done in Table 3).

The second column of the three panels of Table 4 shows the decomposition that arises from the use of the socio-demographic characteristics; the third column in the three panels of Table 3 is copied here to facilitate the comparison. The third columns in Table 4 then add a dummy variable controlling for whether individuals work in small firms or not (as stated above, a firms is considered small if it has five workers or less). The fourth column replaces the small firm dummy for a variable indicating the economic sector in which the individual works (primary, secondary or tertiary). The fifth column replaces occupation by type of employment, the sixth instead uses formality and the seventh replaces it by time commitment (part-, full- or overtime). The eight and last column includes all six job-related characteristics on top of the basic set of socio-demographics.

Table 4. Gender Wage Gap Decomposition: Job-Related Variables

1994 - 1998								
	Year, Metropolitan Area, age & education	& Small Firm	& Sector	& Occupation	& Type of Empl.	& Formality	& Time Worked	Year, Metropolitan Area, age, education & Job-related
Δ	18.3%	18.3%	18.3%	18.3%	18.3%	18.3%	18.3%	18.3%
ΔO	19.9%	20.3%	19.3%	23.4%	16.0%	20.3%	24.0%	19.9%
ΔM	1.8%	3.0%	2.9%	1.8%	7.4%	3.1%	4.0%	1.0%
ΔF	-0.1%	-0.7%	-0.3%	-0.1%	2.3%	-0.5%	-2.6%	2.3%
ΔX	-3.3%	-4.3%	-3.6%	-6.9%	-7.4%	-4.6%	-7.1%	-4.9%
% CS Males	97.4%	92.4%	90.3%	93.2%	83.7%	93.0%	88.9%	29.6%
% CS Females	99.3%	97.3%	96.9%	97.3%	84.6%	97.1%	91.1%	38.6%

Source: Household Surveys 1994-1998.

2000 - 2001								
	Year, Metropolitan Area, age & education	& Small Firm	& Sector	& Occupation	& Type of Empl.	& Formality	& Time Worked	Year, Metropolitan Area, age, education & Job-related
Δ	13.8%	13.8%	13.8%	13.8%	13.8%	13.8%	13.8%	13.8%
ΔO	15.4%	15.4%	14.6%	17.7%	12.7%	16.6%	20.4%	20.1%
ΔM	2.4%	4.1%	3.5%	2.8%	8.8%	3.7%	5.8%	-5.9%
ΔF	-0.7%	-1.9%	-1.5%	-0.7%	0.2%	-1.4%	-3.5%	5.3%
ΔX	-3.4%	-3.8%	-2.8%	-6.0%	-8.0%	-5.1%	-8.9%	-5.7%
% CS Males	96.9%	91.8%	88.9%	91.9%	83.0%	92.1%	86.8%	23.9%
% CS Females	98.7%	96.1%	95.1%	95.8%	80.0%	96.0%	88.1%	28.7%

Source: Household Surveys 2000-2001.

2002 - 2006								
	Year, Metropolitan Area, age & education	& Small Firm	& Sector	& Occupation	& Type of Empl.	& Formality	& Time Worked	Year, Metropolitan Area, age, education & Job-related
Δ	13.5%	13.5%	13.5%	13.5%	13.5%	13.5%	13.5%	13.5%
ΔO	17.5%	18.0%	16.7%	19.9%	14.5%	17.3%	21.2%	17.9%
ΔM	1.1%	1.6%	1.6%	0.6%	6.8%	1.3%	2.8%	-7.2%
ΔF	-0.3%	-1.2%	-0.7%	-0.4%	1.8%	-0.5%	-1.9%	10.5%
ΔX	-4.7%	-4.8%	-4.0%	-6.6%	-9.6%	-4.5%	-8.5%	-7.7%
% CS Males	97.6%	92.5%	89.4%	92.6%	83.6%	93.3%	88.5%	25.8%
% CS Females	98.7%	95.8%	95.0%	95.8%	78.9%	95.2%	86.4%	28.7%

Source: Household Surveys 2002-2006.

The patterns are similar to those depicted in Table 3. Most of the gender wage gaps are left unexplained by these observable characteristics. Furthermore, the unexplained gender gap after controlling for observable characteristics is frequently *greater* than the observed one. The one-by-one inclusion of job-related characteristics increases the magnitude of the component of the wage gap attributable to the existence of males with characteristics that are not achieved by females (Δ_M). In the most dramatic case (the one obtained after the addition of type of employment to the socio-demographic characteristics or columns 6) more than one-third of the wage gap is explained by this lack of common support in favor of males, in all sub-periods under analysis. Even more, for the two later periods the role of type of employment accounts for around one-half of the observed gender wage gaps. This is partly due to the overrepresentation of women as domestic servants.

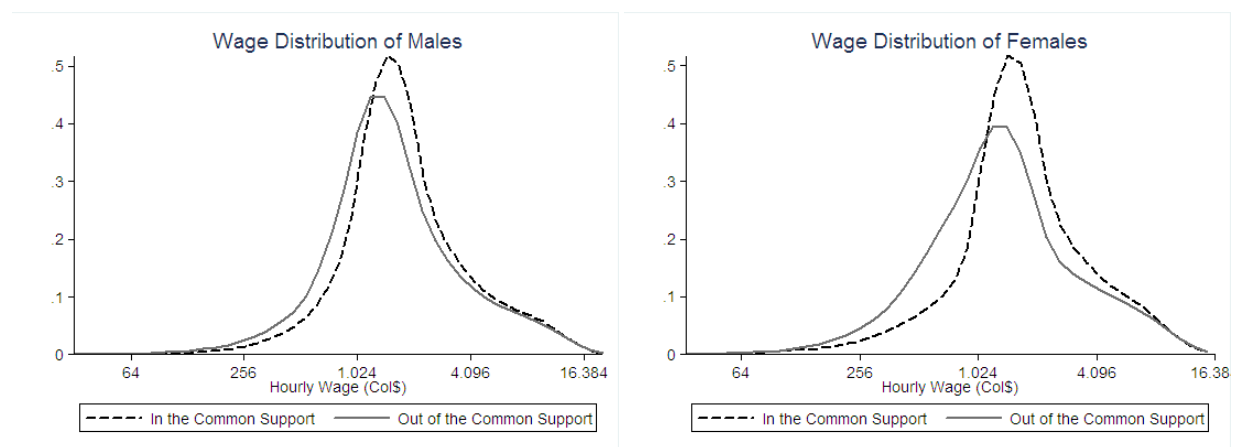
The component attributable to the existence of males with characteristics that are not achieved by females (Δ_M) plays a prominent role in explaining the gender gap when controlling for socio-demographic characteristics alone. However, the component due to the existence of females with characteristics that are not achieved for males (Δ_F) is just as important when additionally controlling for job-related characteristics. This implies greater gender segmentation in job-related characteristics, particularly regarding job type and hours worked.

It is interesting to note, however, that the joint addition of all job-related characteristics to the basic set of socio-demographics delivers a negative Δ_M component, paired with a positive Δ_F . This implies that the existence of females' access barriers to certain job profiles works in *opposite* directions at both extremes of the earnings distribution. Those combinations of human capital characteristic that females fail to achieve (that is, those of the males out of the common support) are not linked to higher wages than those of matched males, as evidenced in the left panel of Figure 2.⁵ On the other hand, those combinations of human capital characteristics that females show but for which there are no comparable males are linked to lower wages than those of the other females. This is shown in the right panel of Figure 2. Note there that the distribution of wages of females out of the common support is at the left of the distribution of wages of females in the common support.⁶

⁵ Figure 2 is shown here only for the third sub-period. The other two sub-periods, with qualitatively similar results, are available from the authors upon request.

⁶ Kolmogorov-Smirnov tests for the two differences in distributions shown in Figure 2 deliver rejections of the null hypothesis of equality in both cases.

**Figure 2. Hourly Wage Distributions (2002 – 2006):
After Matching on Full Set of Observable Characteristics**



Source: Household Surveys 2002-2006.

Who are the females and males in and out of the common support of observable characteristics? The results in Table 5 indicate that males out of the common support differ from those in the common support in that the former are older, less educated, married, either working as self-employed or employer, tend to work more overtime in small firms, with less formality, more in the secondary sector and as blue-collar workers.⁷ That is, there is no clear pattern indicating that out-of-support males have better rewarded human capital characteristics than those in the support. For females, on the other hand, the pattern is similar. Women out of the common support are older, less educated, more separated, more domestic servants and self-employed than those in the common support. Additionally, women out of the common support tend to work at both extremes (either part-time or overtime), they work in smaller firms, with less formality and more as blue-collar workers and in the tertiary sector. Therefore, unmatched females seem to have combinations of human capital characteristics less rewarded than those of the females in the common support.

⁷ As in the case of Figure 2, Table 5 is shown only for the third sub-period. The other two sub-periods, with qualitatively similar results, are available from the authors upon request.

Table 5. Descriptive Statistics of the Individual in and out of the Common Support after Matching on Year, MSA, Age, Education and Job-Related Characteristics

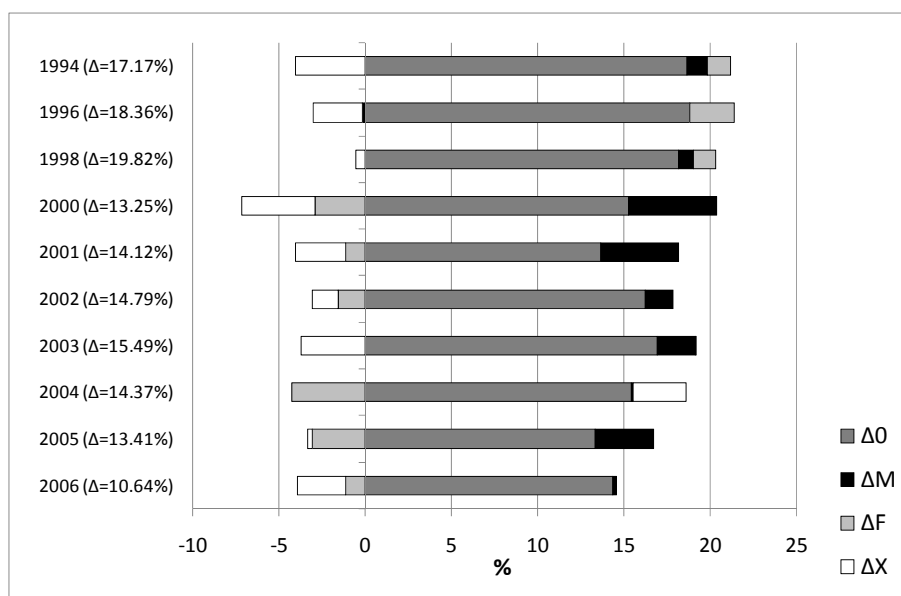
	2002 - 2006			
	Females		Males	
	Out of the common support	In the common support	Out of the common support	In the common support
Real Wage	1,913	2,209	2,219	2,412
Age (%)				
18 to 24	16.1	19.8	15.5	19.7
25 to 34	27.7	37.4	28.4	37.0
35 to 44	29.4	27.9	26.4	27.5
45 to 54	19.6	12.9	19.4	13.7
55 to 65	7.3	2.0	10.3	2.1
Education (%)				
None or Primary Incomplete	11.4	2.3	11.9	2.6
Primary Complete or Secondary Incomplete	35.4	25.7	38.0	29.7
Secondary Complete or Tertiary Incomplete	37.6	53.1	36.5	52.2
Tertiary Complete	15.6	18.9	13.6	15.5
Presence of children in the household (%)	19.2	19.1	23.3	24.3
Marital Status (%)				
Cohabiting	20.2	18.9	30.7	27.0
Married	24.3	25.4	35.8	32.4
Widowed, Divorced or Separated	23.7	18.9	7.4	6.0
Never Married	31.8	36.9	26.1	34.6
Presence of other member with labor income (%)	73.1	74.3	63.3	65.2
Type of Employment (%)				
Employer	3.8	0.4	7.8	0.5
Self - Employed	30.0	19.4	33.9	22.1
Private Employee	41.6	73.6	52.1	71.2
Public Employee	6.1	6.1	5.7	5.7
Domestic Servants	18.6	0.6	0.5	0.5
Time worked (%)				
Part time	26.2	6.6	9.9	6.0
Full time	42.5	68.2	38.9	64.2
Over time	31.3	25.1	51.2	29.8
Small firm (%)	62.9	25.5	55.6	28.7
Formality (%)	47.0	74.6	50.4	70.9
Economic Sector (%)				
Primary	1.1	0.1	2.7	0.1
Secondary	18.7	24.6	33.5	29.5
Tertiary	80.3	75.3	63.7	70.4
Occupation (%)				
White Collar	44.9	62.1	37.7	53.2
Blue Collar	55.1	37.9	62.3	46.8

Note: Using a Pearson's chi-squared statistic to test the distribution between those out and in of the common support among categories of each of the variables, we conclude that all are statistically different at the 99% level.

Source: Household Surveys 2002-2006.

Having analyzed the role of job-related characteristics in the wage gap decompositions, we turn back to the basic setup of matching on the full set of socio-demographic characteristics (year, city, age, education, presence of children in the household, marital status and presence of other income-earner in the household) and analyze deeper the wage differentials there. Figure 3 shows the gender wage gap decomposition after matching on such set of socio-demographic variables, year-by-year, illustrating a pattern of diminishing unexplained gender wage gaps for Colombia during the period of analysis. The component that captures the fact that some males have combinations of characteristics that are not achieved by females (Δ_M) is the second most important component of the wage gap, but it doesn't show a decreasing pattern. Consistent with the results reported in Table 3, this component is higher during the middle sub-period under analysis.

**Figure 3. Gender Wage Gap Decomposition by Year
After Matching on the Demographic Set**

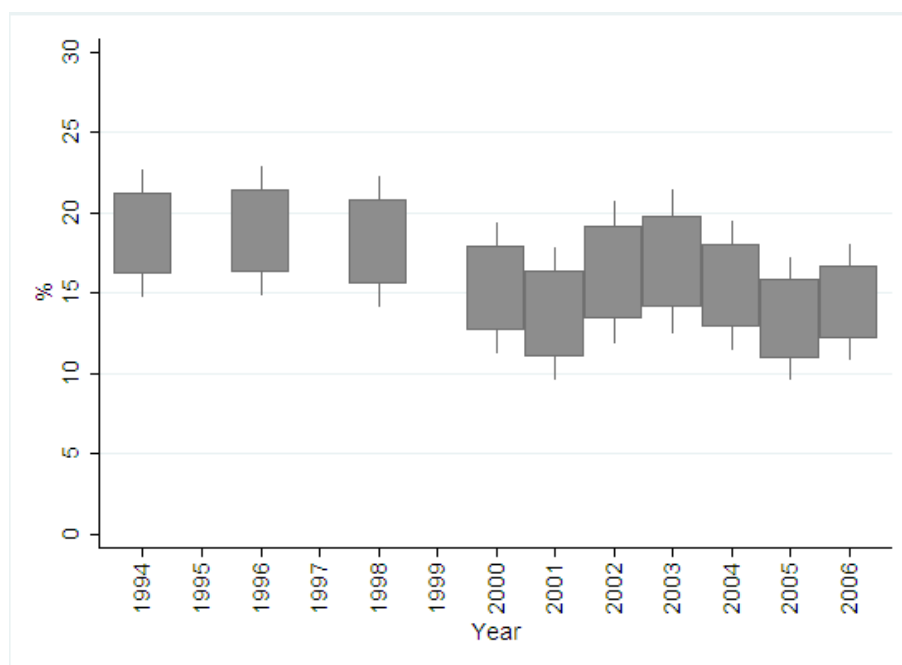


Source: Household Surveys 1994-2006.

The reduction in the unexplained component of the wage gap has not been statistically significant, however, as illustrated in Figure 4. The extremes of the boxes correspond to a 90 percent confidence interval for the unexplained gaps, and the extremes of the whiskers to a 95 percent confidence interval. As reported in the figure, the confidence intervals overlap over time. Consequently, although there is some evidence that the unexplained gender wage gaps have been

decreasing during the last decade in Colombia, that decrease has not yet been statistically significant.

Figure 4. Unexplained Wage Gap by Year, Demographic Set



Source: Household Surveys 1994-2006.

The literature on gender wage gaps for Colombia has already suggested that it is important to look beyond averages. Badel and Peña (2009) find that the gender wage gap has a U shape along the earnings distribution. As outlined above, one of the most salient features of the matching approach to decompose wage gaps is that it not only allows for a computation of the average decomposition but also for an exploration of its distribution. Our results for the three sub-periods, shown in Figure 5, are qualitatively similar among them. The unexplained gender wage gaps are smaller for the middle-income individuals, it is higher at both extremes of the wage distribution, but slightly more pronounced at the bottom.

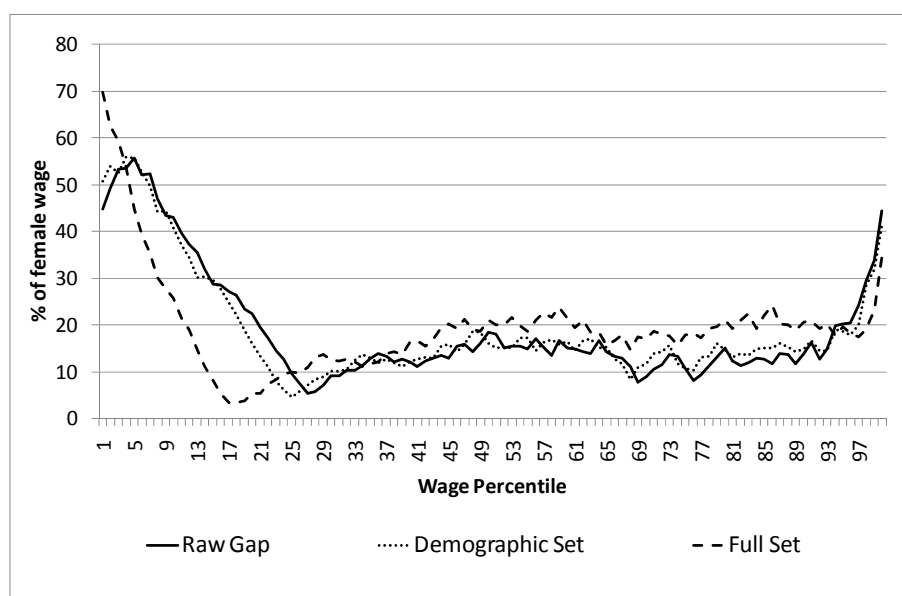
What generates the observed U-shape in both the observed and unexplained gender wage gaps? The minimum wage may be behind the lowers levels of the unexplained gender wage gap in the middle of the distribution. Because people at the middle of the distribution earn close to

the minimum wage,⁸ it may exert a gender-equalizing effect on intermediate-paying jobs. The “bite” of the minimum wage varies along the income distribution. It barely affects the wages of people earning less than the minimum, usually informal workers, is very binding at and around the level of the minimum wage, and loses importance as one moves along the income distribution towards high earners (Cunningham, 2007).

When controlling for the demographic set of observable characteristics, the unexplained gap is slightly higher than when matching on a more basic set, especially at the higher portion of the wage distribution. When controlling for the full set of socio-demographic and job-related characteristics the situation is similar: the unexplained gaps above the median of the wage distributions are higher than before. The novelty arises below the median of the wage distributions; there the unexplained gaps are substantially smaller than those obtained with the other sets of matching characteristics. Thus, observable characteristics do a better job of explaining gender wage differential at the lower portion of the wage distribution.

Figure 5. Unexplained Gender Wage Gap by Percentiles of the Wage Distribution of Males and Females (1994-2006)

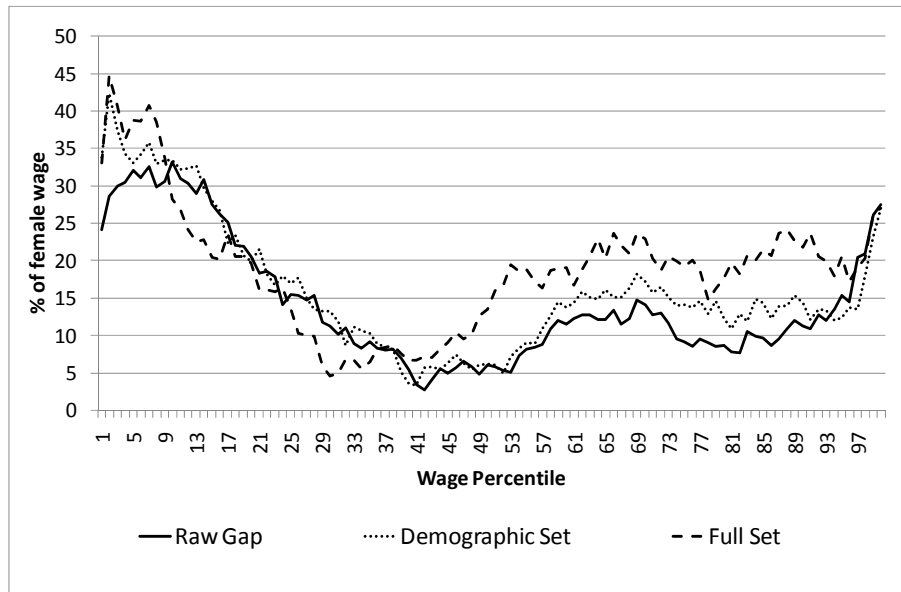
a. 1994-1998



Source: Household Surveys 1994-1998.

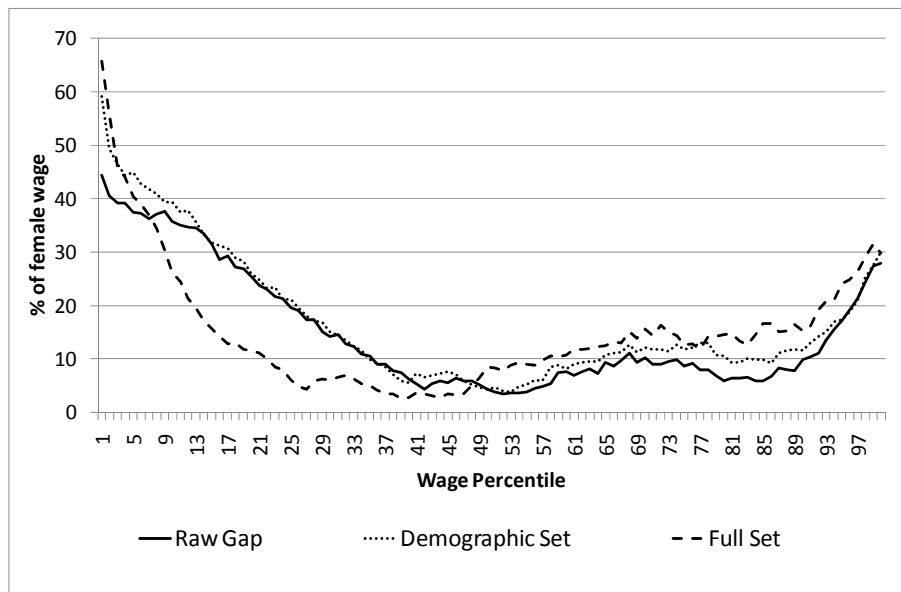
⁸ In our sample, approximately 52 percent of males and 58 percent of females earn wages less than or equal to the minimum wage.

b. 2000-2001



Source: Household Surveys 2000-2001.

c. 2002-2006

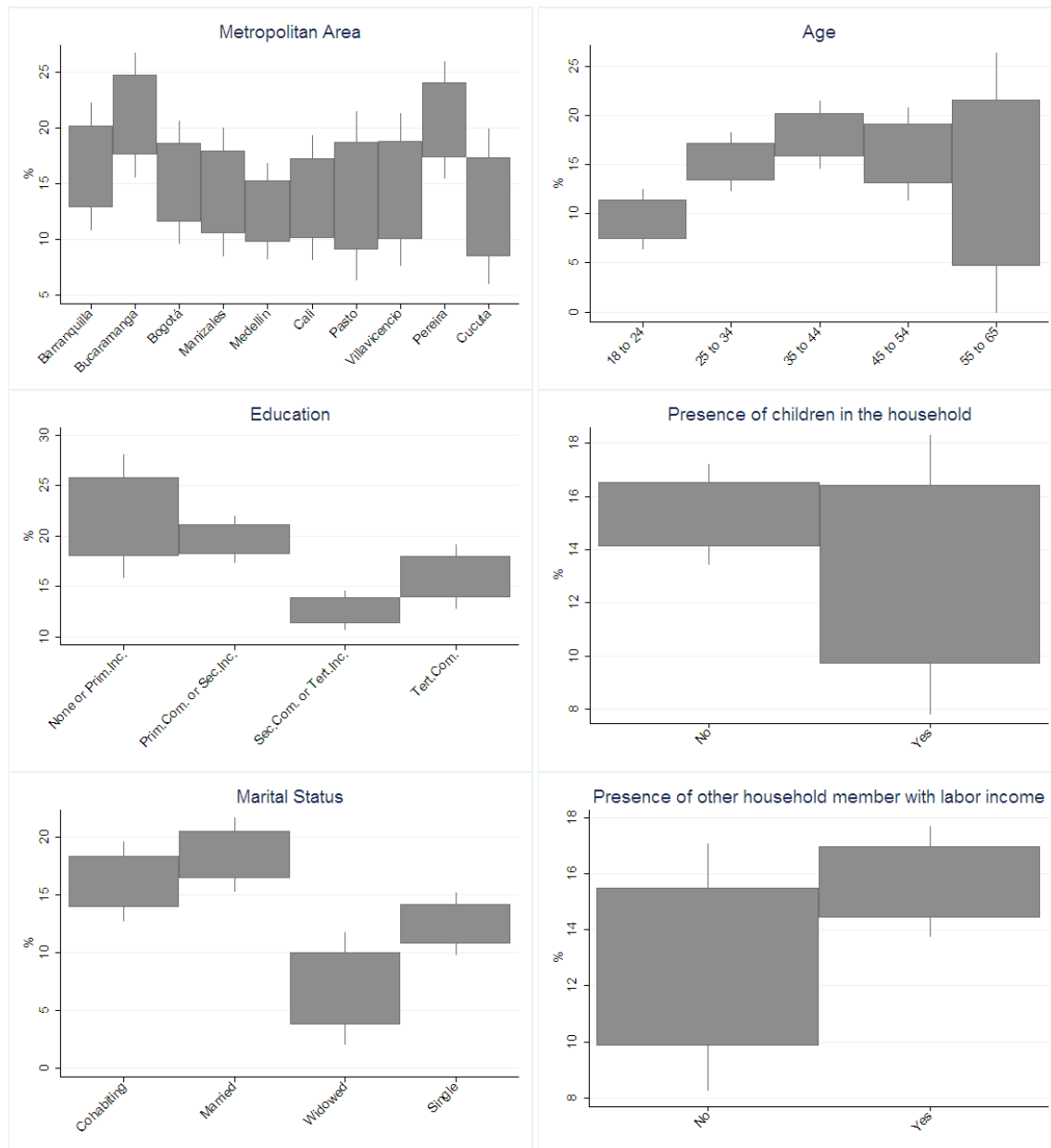


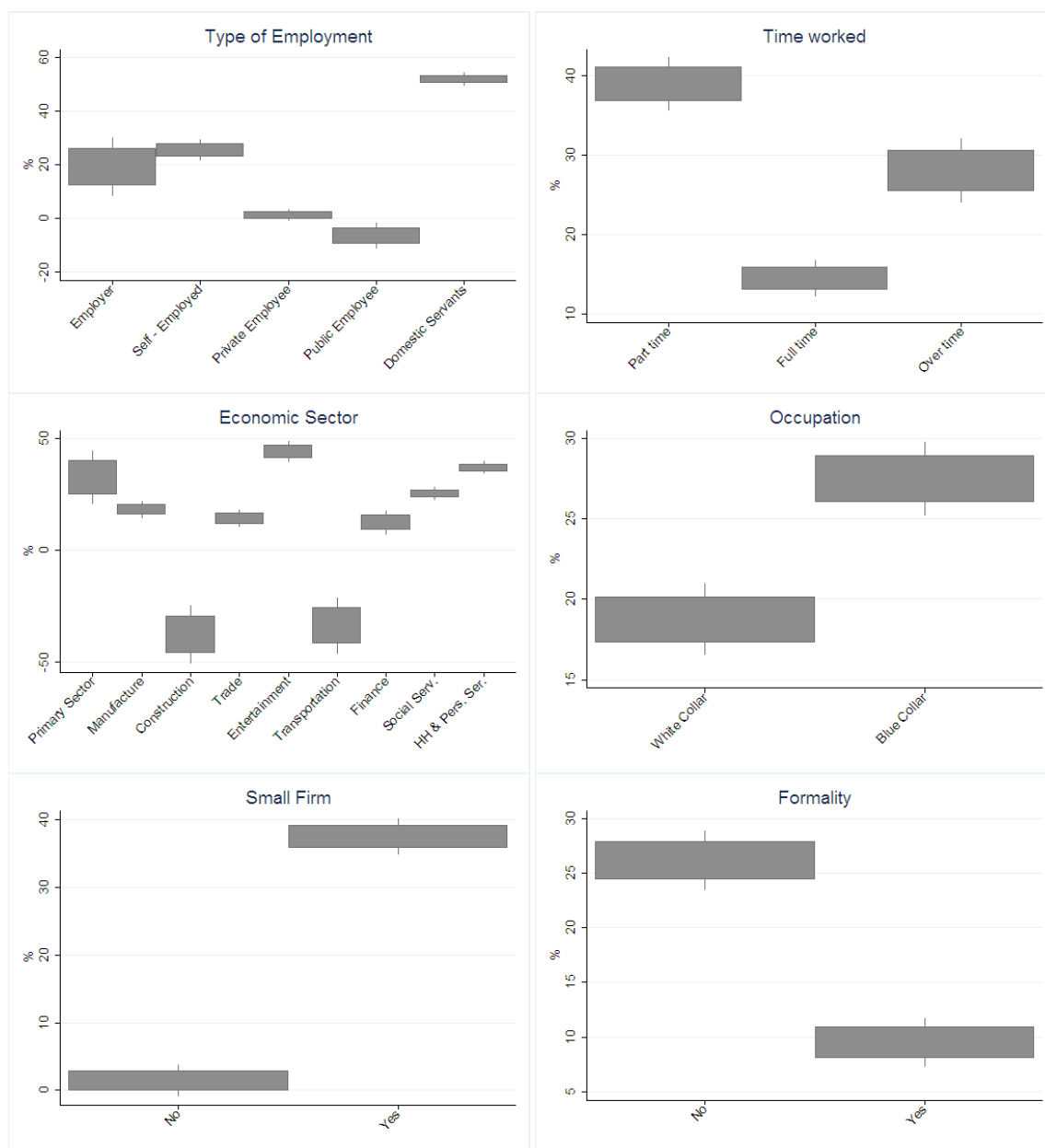
Source: Household Surveys 2002-2006.

The matching approach allows an exploration of wage differentials not only along the wage distributions but also along the set of observable characteristics. Figure 6 reports confidence intervals for the unexplained gender wage gaps after matching in the demographic set along different segments of the labor markets. Most of the cities show similar unexplained

gender wage gaps. The only statistically significant differences in unexplained gaps are found between Medellin on the one hand, and Bucaramanga and Pereira on the other, being lower in the former. There is also a pattern for age, as younger people show smaller wage gaps than those in middle age. The unexplained gaps are highly dispersed among older people (55 to 65 years old). The unexplained gap along education categories is very similar to that of the whole distribution; it is higher among those in the low (secondary incomplete) and high education (complete tertiary) groups, and smaller for those with intermediate education (secondary complete or tertiary incomplete). The unexplained gaps are also smaller among the widowed, public employees, full-time workers, those in construction and transportation, white-collar workers, those in larger firms and formal workers.

Figure 6. Gender Wage Gap by Characteristics (2002-2006)
Unexplained Gaps after Matching on the Demographic Set





Source: Household Surveys 2002-2006.

6. Concluding Remarks

Despite strong improvement in women's labor market characteristics of women and the existence of a legal framework to promote equality, the gender wage gap in Colombia has changed little during the last 20 years. Our results suggest that the gender gap is mostly unexplained by the existing differences in observable characteristics, both socio-economic and job-related. Some females seem to be confined to combinations of human capital characteristics that are less rewarded than those of most of the labor force. The gender wage gap that remains

unexplained after accounting for individuals' and job characteristics displays a U shape with respect to earnings: it is smaller for middle-income individuals and higher at both extremes of the wage distribution. This may be due to the gender-equalizing effect of the minimum wage.

Our findings show that the largest unexplained wage gaps are found among less educated individuals, those who work part-time, in the primary sector/entertainment or household services, domestic servants, blue-collar workers, informal workers and workers in small firms. These characteristics, at which the wage gaps are most pronounced, depict two clearly recognizable profiles within Colombia's labor markets. One consists of low-productivity individuals, and the other is comprised of females who, in need of flexibility to participate in the labor markets, have to work under arrangements of precarious attachment to the markets.

Interesting policy implications in terms of the potential effectiveness—or rather ineffectiveness—of different measures to decrease the gender wage gaps can be derived from our results. First, the gender wage gap may be due to discrimination. Some argue that discrimination will decrease over time on its own as society becomes accustomed to women in the working force. However, the high participation rates of women in the country, and the fact that the gender wage gap has changed little in the last decade, suggest that this channel of reduction of discriminatory practices may not be very effective.

Second, as the highest wage gaps are found among low-productivity, vulnerable workers, who frequently work outside government regulations, it seems that public policy interventions in Colombia such as standard labor market regulations seem to have little scope to reduce the gender wage gap. Given the gender imbalance across occupations, particularly the high proportion of women who work as domestic servants, special regulations geared toward this group may promise to have some effect on the gender gap (as has been the case with “nanny laws” in the United States, for example). However, based on the limited success of previous attempts to enforce the minimum wage and increasing access to health insurance and pension contributions among domestic servants in Colombia, that promise seems unlikely to be fulfilled.

Third, the gender wage gap may have to do with Colombian women's dual role as workers and homemakers, which reduces their labor market attachment and bargaining power at work. Therefore, family-friendly policies, which explicitly take into account the special needs of female workers, may have the potential to reduce the gender wage gap. However, with the information at hand, it is hard to determine to what extent addressing the gender wage gap

depends on the reconciliation of family and work life. This seems to be a promising field for future research.

References

- Abadía, L.K. 2005. "Discriminación Salarial por Sexo en Colombia: Un Análisis Desde la Discriminación Estadística." Documentos de Economía 17. Bogotá, Colombia: Pontificia Universidad Javeriana.
- Albrecht, J., A. Bjorklund and S. Vroman. 2003. "Is There a Glass Ceiling in Sweden?" *Journal of Labor Economics* 21: 145-177.
- Amador, D. and R. Bernal. 2010 " Marriage vs. Cohabitation: The Effects on Children's Well-being" Mimeo, Universidad de Los Andes, available at http://economia.uniandes.edu.co/profesores/planta/Bernal_Raquel/documentos_de_trabajo, recovered may 11, 2010.
- Amador, D., R. Bernal and X. Peña. In progress. "Trends in Female Labor Participation in Colombia: Marriage, Children or Education?" Bogota, Colombia: Universidad de los Andes.
- Angel-Urdinola, D., and Q. Wodon. 2006. "The Gender Wage Gap and Poverty in Colombia." *Labour* 20(4): 721-739.
- Badel, A., and X. Peña. 2009 "Decomposing the Gender Gap with Sample Selection Adjustment: Evidence from Colombia." Mimeo, Universidad de Los Andes, available at: <http://ximena.pena.googlepages.com/gender.pdf>, recovered May 11, 2010.
- Bernat, L. F. (2007) "¿Quiénes son las mujeres discriminadas?: enfoque distributivo de las diferencias salariales por género" Borradores de Economía y Finanzas No 13, ICESI, diciembre.
- Camacho, A., E. Conover and A. Hoyos. 2009 "Effects of Colombia's Social Protection System on Workers' Choice between Formal and Informal Employment." Documento CEDE 18. Bogota, Colombia: Universidad de los Andes, Centro de Estudios sobre Desarrollo Económico.
- Cunningham, W. 2007. *Minimum Wages and Social Policy: Lessons from Developing Countries*. Washington, DC, United States: World Bank Publications.
- De la Rica, S., J. Dolado and V. Llorens. 2005. "Glass Ceiling or Floors? Gender Wage Gaps by Education in Spain." IZA Discussion Paper 1483. Bonn, Germany: Institute for the Study of Labor/IZA. January.

- Elias, J., and H. Ñopo. 2010. "The Increase in Female Labor Force Participation in Latin America 1990-2004: Decomposing the Changes." Washington, DC, United States: Inter-American Development Bank. Mimeographed document.
- Fernández, P. 2006. "Determinantes del Diferencial Salarial por Género en Colombia, 1997-2003." *Desarrollo y Sociedad* 58(2): 165-208.
- Ñopo, H. 2006. "The Gender Wage Gap in Chile 1992-2003 from a Matching Comparisons Perspective." Research Department Working Paper 562. Washington, DC, United States: Inter-American Development Bank.
- . 2008. "Matching as a Tool to Decompose Wage Gaps." *Review of Economics and Statistics* 90(2): 290-299.
- Sabogal, A. 2009. "Brecha Salarial por Género y Ciclo Económico en Colombia." Bogota, Colombia: Universidad de los Andes. Mimeographed document.
- Santa María, M. 2009. "Los Costos No Salariales y el Mercado Laboral: Impacto de la Reforma a la Salud en Colombia." Documento de Trabajo 43. Bogota, Colombia: Fedesarrollo.
- Santa María, M., F. García and A.V. Mujica. 2008. "El Mercado Laboral y la Reforma a la Salud en Colombia: Incentivos, Preferencias y Algunas Paradojas." Bogota, Colombia: Fedesarrollo. Mimeographed document.
- Tenjo, J. 1993. "1976-1989: Cambios en los Diferenciales Salariales entre Hombres y Mujeres." *Planeación y Desarrollo* 24: 103-116.
- Tenjo, J., R. Ribero and L. Bernat. 2006 "Evolución de las Diferencias Salariales de Género en Seis Países de América Latina." In: C. Piras, editor. *Mujeres y Trabajo en América Latina*. Washington, DC, United States: Inter-American Development Bank.