

Koopman, Siem Jan; Jungbacker, Borus; Hol, Eugenie

Working Paper

Forecasting Daily Variability of the S&P 100 Stock Index using Historical, Realised and Implied Volatility Measurements

Tinbergen Institute Discussion Paper, No. 04-016/4

Provided in Cooperation with:

Tinbergen Institute, Amsterdam and Rotterdam

Suggested Citation: Koopman, Siem Jan; Jungbacker, Borus; Hol, Eugenie (2004) : Forecasting Daily Variability of the S&P 100 Stock Index using Historical, Realised and Implied Volatility Measurements, Tinbergen Institute Discussion Paper, No. 04-016/4, Tinbergen Institute, Amsterdam and Rotterdam

This Version is available at:

<https://hdl.handle.net/10419/86208>

Standard-Nutzungsbedingungen:

Die Dokumente auf EconStor dürfen zu eigenen wissenschaftlichen Zwecken und zum Privatgebrauch gespeichert und kopiert werden.

Sie dürfen die Dokumente nicht für öffentliche oder kommerzielle Zwecke vervielfältigen, öffentlich ausstellen, öffentlich zugänglich machen, vertreiben oder anderweitig nutzen.

Sofern die Verfasser die Dokumente unter Open-Content-Lizenzen (insbesondere CC-Lizenzen) zur Verfügung gestellt haben sollten, gelten abweichend von diesen Nutzungsbedingungen die in der dort genannten Lizenz gewährten Nutzungsrechte.

Terms of use:

Documents in EconStor may be saved and copied for your personal and scholarly purposes.

You are not to copy documents for public or commercial purposes, to exhibit the documents publicly, to make them publicly available on the internet, or to distribute or otherwise use the documents in public.

If the documents have been made available under an Open Content Licence (especially Creative Commons Licences), you may exercise further usage rights as specified in the indicated licence.



TI 2004-016/4

Tinbergen Institute Discussion Paper

Forecasting Daily Variability of the S&P 100 Stock Index using Historical, Realised and Implied Volatility Measurements

Siem Jan Koopman^{a,b}

Borus Jungbacker^a

Eugenie Hol^c

^a *Department of Econometrics, Vrije Universiteit Amsterdam,*

^b *Tinbergen Institute,*

^c *ING Group Credit Risk Management, The Netherlands.*

Tinbergen Institute

The Tinbergen Institute is the institute for economic research of the Erasmus Universiteit Rotterdam, Universiteit van Amsterdam, and Vrije Universiteit Amsterdam.

Tinbergen Institute Amsterdam

Roetersstraat 31

1018 WB Amsterdam

The Netherlands

Tel.: +31(0)20 551 3500

Fax: +31(0)20 551 3555

Tinbergen Institute Rotterdam

Burg. Oudlaan 50

3062 PA Rotterdam

The Netherlands

Tel.: +31(0)10 408 8900

Fax: +31(0)10 408 9031

Please send questions and/or remarks of non-scientific nature to driessen@tinbergen.nl.

Most TI discussion papers can be downloaded at <http://www.tinbergen.nl>.

Forecasting daily variability of the S&P 100 stock index using historical, realised and implied volatility measurements

Siem Jan Koopman^{(a,b)*} Borus Jungbacker^(a) Eugenie Hol^(c)

^(a) Department of Econometrics, Free University Amsterdam

^(b) Tinbergen Institute Amsterdam

^(c) ING Group Credit Risk Management, The Netherlands

January 29, 2004

Abstract

The increasing availability of financial market data at intraday frequencies has not only led to the development of improved volatility measurements but has also inspired research into their potential value as an information source for volatility forecasting. In this paper we explore the forecasting value of historical volatility (extracted from daily return series), of implied volatility (extracted from option pricing data) and of realised volatility (computed as the sum of squared high frequency returns within a day). First we consider unobserved components and long memory models for realised volatility which is regarded as an accurate estimator of volatility. The predictive abilities of realised volatility models are compared with those of stochastic volatility models and generalised autoregressive conditional heteroskedasticity models for daily return series. These historical volatility models are extended to include realised and implied volatility measures as explanatory variables for volatility. The main focus is on forecasting the daily variability of the Standard & Poor's 100 stock index series for which trading data (tick by tick) of almost seven years is analysed. The forecast assessment is based on the hypothesis of whether a forecast model is outperformed by alternative models. In particular, we will use superior predictive ability tests to investigate the relative forecast performances of some models. Since volatilities are not observed, realised volatility is taken as a proxy for actual volatility and is used for computing the forecast error. A stationary bootstrap procedure is required for computing the test statistic and its p -value. The empirical results show convincingly that realised volatility models produce far more accurate volatility forecasts compared to models based on daily returns. Long memory models seem to provide the most accurate forecasts.

JEL classification: C22, C53, G15.

Keywords: Generalised autoregressive conditional heteroskedasticity model, Long memory model, Realised volatility, Stochastic volatility model, Superior predictive ability, Unobserved components.

*Corresponding author: Siem Jan Koopman, Department of Econometrics and OR, Free University Amsterdam, De Boelelaan 1105, NL-1081 HV Amsterdam, The Netherlands. <http://staff.feweb.vu.nl/koopman/>

We would like to thank Marius Ooms and two referees for their comments which have led to a much improved paper. An earlier version of this paper was circulated with title "Stock Index Volatility Forecasting with High Frequency Data". All errors in the paper are ours.

1 Introduction

Modelling and forecasting volatility in financial markets has gained much interest in the financial and economic literature. The seminal paper of Engle (1982) has started the development of a large number of so-called historical volatility models in which a time-varying volatility process is extracted from financial returns data. Most volatility models can be regarded as variants of the generalised autoregressive conditional heteroskedasticity (GARCH) models of Bollerslev (1986), see Bollerslev, Engle, and Nelson (1994) for a review. A rival class of volatility models is associated with the stochastic volatility (SV) model, see Taylor (1986) and Harvey, Ruiz, and Shephard (1994). The overviews presented in Shephard (1996) and Ghysels, Harvey, and Renault (1996) provide an excellent introduction to historical volatility models. A more recent review of volatility models together with an assessment of their forecasting performances is given by Poon and Granger (2003).

Both GARCH and SV models are regularly used for the analysis of daily, weekly and monthly returns. From a theoretical perspective these models can also be applied to returns data measured at higher frequencies (intraday). However, it is learned from empirical studies that these models can not accomodate all information in high frequency returns. The initial work of Andersen and Bollerslev (1998) and Barndorff-Nielsen and Shephard (2001) show that realised volatility (a daily volatility measure) as computed by the cumulative sum of squared intraday returns is less subject to measurement error and therefore less noisy. This empirical fact is supported by the theory that the measurement noise contained in daily squared returns prevents the observation of the volatility process while it is reduced as the sampling frequency of the return series from which volatility is calculated is increased, see Andersen, Bollerslev, Diebold, and Labys (2001) and Barndorff-Nielsen and Shephard (2001, 2002). These results also justify the earlier work of French, Schwert, and Stambaugh (1987), amongst others. Andersen and Bollerslev (1998) show that daily forecasts of exchange rates based on GARCH models, when evaluated against realised volatility, are far more accurate than had been previously assumed. These findings were subsequently confirmed with regards to stock index data by Blair, Poon, and Taylor (2001) and Hansen and Lunde (2003b) who examined the predictive accuracy of volatility forecasts based on GARCH models.

Volatility can be extracted from returns data but it can also be derived from option pricing data in combination with an option pricing model. Early empirical studies by Latané and Rendleman (1976), Chiras and Manaster (1978) and Beckers (1981) have indicated that implied volatility, when compared with historical standard deviations, can be regarded as a good predictor of future volatility. Implied volatility is often referred to as the market's volatility forecast and is said to be forward looking as opposed to historical based methods which are by definition backward looking. More recent studies by Christensen and Prabhala (1998), Fleming (1998), Blair, Poon, and Taylor (2001) and Giot (2003) show that accurate volatility forecasts for returns on stock indices are often based on implied volatility. Moreover, their research strongly suggests that daily returns contain little or no incremental information about future volatility.

In this paper we investigate the potential gains of different measures of volatility and different ways of modelling these data for the purpose of volatility forecasting. For example, Blair, Poon, and Taylor (2001) and Martens (2001) suggest to incorporate realised volatility as an explanatory variable in the variance equation of a daily GARCH model. They found a considerable improvement in the forecasting performance in this way. Another possible explanatory variable for volatility is implied

volatility. We will explore this option further by incorporating such explanatory variables in both GARCH and SV models.

Realised volatility can also be modelled directly which is reminiscent of the methods adopted for monthly volatility in a number of earlier studies such as those by French, Schwert, and Stambaugh (1987) and Poon and Taylor (1992). The forecasting performance of realised volatility models has been studied, amongst others, by Andersen, Bollerslev, Diebold, and Ebens (2001) and Barndorff-Nielsen and Shephard (2004a). In the first paper, it is stressed that long memory features are present in the logarithms of realised volatility and that the autoregressive fractionally integrated moving average (ARFIMA-RV) model is effective in empirical modelling. The second paper builds on Barndorff-Nielsen and Shephard (2002) where volatility is represented as a continuous time series process, the sum of independent Lévy driven Ornstein-Uhlenbeck (OU) processes. This approach forms the basis of an unobserved components (UC-RV) model for realised volatility that consists of independent ARMA components with restricted parameters.

The empirical investigation is for the Standard & Poor's 100 (S&P 100) stock index series over the period 6 January 1997 to 14 November 2003 with 1725 trading days. Opening and closure prices for all trading days in the sample are available in this period together with all price quotes within the days (tick by tick). Further we have obtained the S&P 100 implied volatility index from the Chicago Board Options Exchange Market volatility index (VIX) which is known to be a highly liquid options market. The forecasting performance of various volatility models for the last 525 days of the data set is the focus of the empirical study. We compare the forecasts of ARFIMA-RV, UC-RV, SV and GARCH volatility models; the latter two models are considered with and without explanatory variables. The forecasts are generated by a rolling-window of 1200 observations through the last 525 daily observations. Forecast comparison is based on four different loss functions including the mean squared error and the mean absolute error statistics. The fact that a particular loss criterion is smallest for a particular model does not provide any information about its forecast superiority in other samples of the data set and in future samples of the data. The results in White (2000) and the important refinements in Hansen (2001) constitute a framework that constructs a formal test for superior prediction ability (SPA) of a benchmark or base model relative to a set of rival models. Since volatility can never be observed, realised volatility is taken as a proxy for actual volatility and used for determining the forecast error. This may introduce inconsistencies in the ranking of forecast models but it is argued that the occurrence of such inconsistencies are unlikely in our study. The method of computing the SPA test statistic and its p -value requires bootstrap samples obtained by, for example, the stationary bootstrap procedure of Politis and Romano (1994). The construction of the test and some details of implementation are discussed.

The findings of this extensive empirical study are presented by reporting a selection of the most interesting results. The maximum likelihood estimates for the coefficients of the considered models are reported for the full sample. Although these estimates are not used for forecasting since all models are re-estimated for each rolling window sample (starting from 17 October 2001), the reported estimation results provide insights about the S&P 100 data set and the effectiveness of models to capture volatility information from the data. A selection of the forecasting results is also presented but most attention is paid to the SPA results. It has become clear that the realised volatility models are overwhelmingly superior and therefore making comparisons between, say, GARCH and ARFIMA-RV is not useful. We therefore concentrate on the comparison of models within the two classes of realised volatility models

and historical volatility models. It will be concluded that both the ARFIMA-RV and the SV model with realised volatility as the explanatory variable are superior within their classes for the forecasting of S&P 100 volatility.

The remainder of this paper is organised as follows. In the next section we discuss the available data sets and discuss how returns are constructed and how volatility measures are derived from these returns. In section 3 we provide some details about the realised volatility models, the UC-RV and ARFIMA-RV models. In section 4 the historical volatility models are shortly described. The forecasting methodology is discussed in section 5 and in section 6 the estimation and forecasting results are presented. Section 7 concludes.

2 Stock Return Data and Volatility

2.1 Daily and intraday returns

The data for our empirical study consists of Standard & Poor's 100 (S&P 100) stock index transaction prices during the period from 6 January 1997 to 14 November 2003 which constitutes a total of $N = 1,725$ trading days. The daily return R_n is defined as the first difference between the 4.00 pm closing prices on consecutive trading days, expressed in percentage terms, that is

$$R_n = 100(\ln P_n - \ln P_{n-1}), \quad n = 1, \dots, N, \quad (1)$$

where P_n is the closing asset price at trading day n .

In the S&P 100 dataset, the price quotes are available for all trading days. We can therefore extract intraday returns for any interval that is usually measured in minutes. Such high-frequency returns are subject to market micro structures (bid-ask bounces, discrete price observations, etcetera) which distort the return properties of interest. The 5-minute frequency is regarded as the highest frequency at which the effects of market microstructure are not too distorting. Andersen and Bollerslev (1998) also construct their intraday returns using the 5-minute frequency. A more complete discussion on the choice of frequency is given by Andersen, Bollerslev, Diebold, and Labys (2001). To construct the 5-minute return, the last transaction price is recorded before the relevant time mark and the difference is taken between successive log prices, that is

$$R_{n,d} = 100(\ln P_{n,d} - \ln P_{n,d-1}), \quad n = 1, \dots, N, \quad d = 1, \dots, D, \quad (2)$$

where $P_{n,d}$ is the asset price at trading day n , at the 5-minute mark d . Note that $P_{n,0}$ is the opening price of day n .

The New York Stock Exchange opens at 9.30 am and closes at 4 pm EST. A full trading day therefore consists of $D = 78$ intraday returns and one overnight return. Not all trading days will have 78 5-minute quotes because the New York Stock Exchange closes early on certain days (for example, Christmas Eve). Another important reason for a different number of 5-minute returns is the lapses in trading and in data reporting on some trading days. Various methods are used to deal with such problems. For example, Andersen, Bollerslev, Diebold, and Ebens (2001) consider linear interpolation through bid-ask quotes in order to obtain a full set of 5-minute interval returns. A flexible spline interpolation method is used by Hansen and Lunde (2003b).

Following this recent literature we have used a spline method for the construction of 5-minute returns as follows. All price quotes within one trading day are ordered over the trade sequence. The duration between price quotes is measured in minutes and is strictly non-negative. In the majority of cases multiple price quotes occur in one minute. The durations of price quotes after the first quote in a minute are set to zero. The resulting time series of price quotes is effectively a non-equally spaced sequence. A nonparametric spline function is estimated through these high-frequency intraday prices. The spline function through a non-equally spaced time series can be represented as a time-varying state state space model, see Durbin and Koopman (2001, section 3.11). To attain an optimal level of smoothing, the “smoothing parameter” of the spline function is estimated via the maximisation of the (quasi) Gaussian loglikelihood function. The spline function itself is computed by the Kalman filter and an associating smoothing algorithm¹. The five minute nodes of the spline are taken as the “observed” prices $P_{n,d}$ for $d = 0, \dots, D$. The price $P_{n,0}$ is defined as the observed opening price which is the first price observed after 9.29 am (even if it takes place at, say, 11.30 am). The closing price $P_{n,D}$ is then the last price observed before 4.00 p.m. The overnight returns are defined as

$$R_{n,0} = 100(\ln P_{n,0} - \ln P_{n-1,D}), \quad n = 1, \dots, N. \quad (3)$$

In this way we have constructed 79 intra-daily returns for the 1,725 trading days in our dataset.

2.2 Realised volatility

It is generally acknowledged that squared daily returns provide a poor approximation of actual daily volatility. It was first pointed out by Andersen and Bollerslev (1998) that more accurate estimates could be obtained by summing squared intraday returns. They defined realised volatility in the foreign exchange market as the sum of 288 5-minute squared returns. If we were to apply this method directly to the stock market, realised volatility would be defined as the sum of the squared overnight and the cumulative squared 5-minute intraday returns, so

$$\tilde{\sigma}_n^2 = R_{n,0}^2 + \sum_{d=1}^D R_{n,d}^2, \quad n = 1, \dots, N, \quad (4)$$

with $R_{n,d}$ and $R_{n,0}$ as defined in equations (2) and (3), respectively, and with $D = 78$. However, this ignores the fact that the overnight return is a special case. Stock markets, unlike foreign exchange markets, are not open 24 hours a day and the changes in the stock index price during the hours that the stock market is closed are relatively large compared to the 5-minute returns observed during trading hours. In order to account for the fact that overnight returns are presumably more volatile than intraday 5-minute returns and that a large value for $R_{n,0}$ will have a pronounced and distorting effect on the realised volatility estimate $\tilde{\sigma}_n^2$, an alternative realised volatility measures need to be considered by excluding the “noisy” overnight return $R_{n,0}$. This will measure the volatility during trading hours as opposed to daily volatility². It is suggested by Martens (2002) to scale the sum of intraday returns

¹These computations are carried out using `0x 3.3` (see Doornik (2001)) with use of the `SsfPack 3.0` functions `SsfGetSpline`, `SsfLikEx` and `SsfMomentEstEx` (see Koopman, Shephard, and Doornik (1999)).

²Andersen and Bollerslev (1997) and Andersen, Bollerslev, Diebold, and Ebens (2001) use this definition of realised volatility in their stock market studies.

by

$$\hat{\sigma}_n^2 = \frac{\hat{\sigma}_{oc}^2 + \hat{\sigma}_{co}^2}{\hat{\sigma}_{oc}^2} \sum_{d=1}^D R_{n,d}^2, \quad (5)$$

with the “open-to-close” sample variance $\hat{\sigma}_{oc}^2$ and the “close-to-open” sample variance $\hat{\sigma}_{co}^2$ computed as

$$\hat{\sigma}_{oc}^2 = \frac{10,000}{N} \sum_{n=1}^N (\log P_{n,D} - \log P_{n,0})^2, \quad \hat{\sigma}_{co}^2 = \frac{10,000}{N} \sum_{n=1}^N (\log P_{n,0} - \log P_{n-1,D})^2.$$

An alternative sample estimate of the “open-to-close” variance is the average of the realised volatilities of (4), but without $R_{n,0}^2$, from 1 to N as considered by Hansen and Lunde (2002). However, the current proposed estimates $\hat{\sigma}_{oc}^2$ and $\hat{\sigma}_{co}^2$ are consistent with each other since they are both based on sums of N squared returns. An alternative scaling is considered by Areal and Taylor (2002) who assign different weights to the intraday squared returns with weights depending on variance proportions. Hansen and Lunde (2003b) provide a more detailed discussion on the choice of scaling.

Other recent methods for the construction of realised volatility include the Fourier method of Malliavin and Mancino (2002), and applied by Barucci and Reno (2002) and Hansen and Lunde (2003a), and the filtering method of Corsi, Zumbach, Müller, and Dacorogna (2001).

2.3 Implied volatility

The implied volatility index is obtained from the Chicago Board Options Exchange Market Volatility Index³ (VIX) which is based on a highly liquid options market for the period 6 January 1997 to 14 November 2003. The VIX index is calculated from the midpoint of bid-ask option prices using a binomial method as described in Harvey and Whaley (1992) which takes account of the level and timing of dividend payments on the underlying S&P 100 stock index. The Black-Scholes model assumption of constant volatility however introduces bias into the implied volatility measure. Hull and White (1987) found that the magnitude of the bias in the Black-Scholes model was smallest for near-the-money and close-to-maturity options; also see Feinstein (1995). Therefore the index is based on implied volatilities of eight nearby-expiry call and put options⁴. The VIX index is then constructed as a weighted average of these implied volatilities in such a way that it represents the implied volatility of a hypothetical at-the-money OEX option with twenty-two trading days to expiration. Although the VIX represents a biased implied volatility measure, it is still a useful proxy of future volatility for the practical application of volatility forecasting. It mitigates many of the measurement errors which typically contribute to biased implied volatility measures. The VIX is constructed on a daily basis and is denoted by s_n^2 for $n = 1, \dots, N$.

³The VIX data was extracted from the CBOE on-line database.

⁴The shortest time to maturity is at least eight days in order to eliminate the increase in implied volatility observed during the option’s last week of trading. The calendar-day implied volatilities of each of the eight options are adjusted to a trading base as in Fleming, Ostdiek, and Whaley (1995). The wildcard option implicit in the options is ignored as in Fleming and Whaley (1994).

2.4 Descriptive statistics

In Figure 1 we present graphs of the time series that are used in this empirical study together with their histograms and correlograms of the time series. The summary statistics of the series are given in Table 1.

For the daily return series R_n we observe several volatile periods which occurred towards the end of 1997, during the third quarter of 1998, at the beginning and end of 2000 and during the summer of 2002. The three largest shocks to the return process took place in one of these periods and were negative. This largely contributed to the reported negative skewness coefficient for the return series and the large positive skewness coefficient of the squared returns. It is also seen that R_n and R_n^2 exhibit excess kurtosis.

Table 1: Summary Statistics of return and volatility time series for the period from 6 January 1997 to 14 November 2003 (number of days is 1,725).

| | daily return | | realised volatility | | implied volatility | |
|------------|--------------|---------|----------------------|---------------------------|--------------------|--------------|
| | R_n | R_n^2 | $\tilde{\sigma}_n^2$ | $\log \tilde{\sigma}_n^2$ | s_n^2 | $\log s_n^2$ |
| Mean | 0.020 | 1.889 | 0.920 | -0.612 | 26.46 | 3.253 |
| Stand.Dev. | 1.374 | 4.058 | 1.359 | 0.981 | 5.998 | 0.208 |
| Skewness | -0.122 | 7.918 | 5.109 | 0.245 | 1.266 | 0.744 |
| Exc.Kurt. | 5.621 | 110.8 | 39.80 | 0.524 | 1.482 | 0.135 |
| Minimum | -8.994 | 0 | 0.004 | -5.484 | 16.84 | 2.834 |
| Maximum | 5.702 | 80.89 | 15.38 | 2.733 | 50.48 | 3.922 |

The realised volatility series $\tilde{\sigma}_n^2$ is presented in Figure 1 in levels (row 3) and logs (row 4). The distribution of the logged realised volatility appears approximately Gaussian but with a fat tail to the left due to one “inlier” in the summer of 1998. The descriptive statistics in Table 1 for realised volatility mirror earlier findings for stock market data as reported by Andersen, Bollerslev, Diebold, and Ebens (2001), Areal and Taylor (2002) and Giot and Laurent (2004).

The daily implied volatility (VIX) series s_n^2 in levels (row 5) and logs (row 6) are also included in Figure 1 and their summary statistics are reported in Table 1. The effects of some large outliers in the sample are illustrated by high values for skewness and excess kurtosis. Various changes in implied volatility can be observed and they correspond more or less with changes in realised volatilities. However, high volatility periods appear more pronounced in the implied volatility series than in the realised volatility series.

The time series properties are revealed by the sample autocorrelation functions or correlograms which are presented in the third column of the graphs in Figure 1. Positive serial correlation is present in the squared daily return series but is not strong as the volatility dynamics are subject to measurement error. This is reduced considerably for realised volatility and more correlation structure in the series appears as a result, both for levels and logs. Most notably, long memory features are apparent in logged realised volatility. The most persistent correlation structure appears in the implied volatility series.

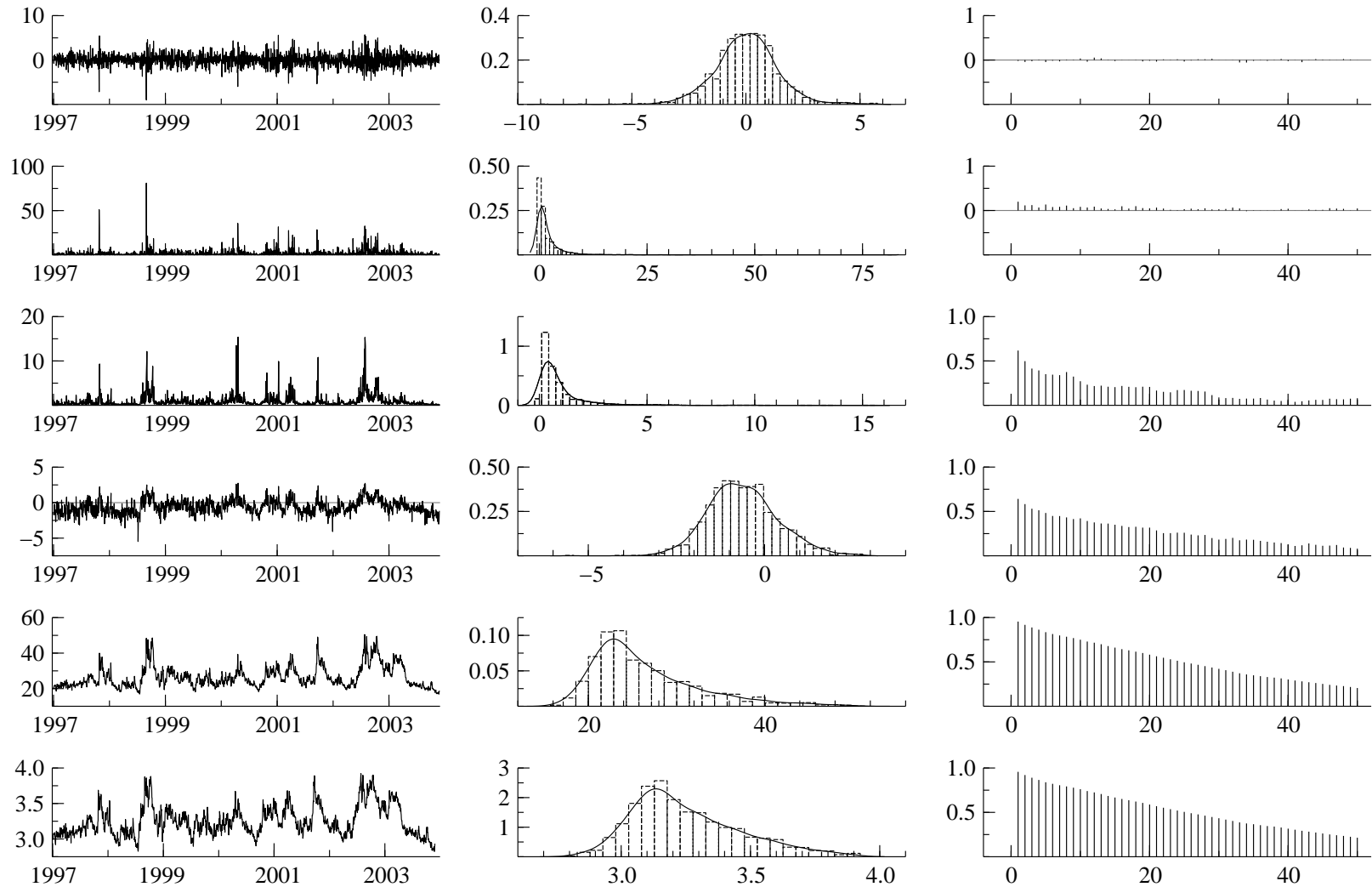


Figure 1: Six daily time series with observations (first column), histogram (second column) and correlogram (third column): (i) daily returns R_n ; (ii) squared daily returns; (iii) realised volatility $\tilde{\sigma}_n^2$; (iv) realised volatility in logs; (v) implied volatility s_n^2 ; (vi) implied volatility in logs. The time series are related to the Standard & Poor's 100 stock index for the period from 6 January 1997 to 14 November 2003 (1,725 days).

3 Realised Volatility Models

The spot price of an asset is denoted by $P(t)$ and its return is defined as

$$R(t) = \log P(t) - \log P(0), \quad t > 0. \quad (6)$$

Motivated by financial economic theory the dynamic stochastic process of returns can be represented by the continuous time process

$$dR(t) = \mu(t)dt + \sigma(t)dW(t), \quad t > 0, \quad (7)$$

where $\mu(t)$ is a drift process, $\sigma(t)$ is the spot volatility and $W(t)$ is a standard Brownian motion process. The drift term $\mu(t)$ is included for completeness but will be of no importance below. For the introduction of various volatility models below we further assume that the mean and variance of spot volatility are given by

$$E(\sigma^2(t)) = \xi, \quad \text{var}(\sigma^2(t)) = \omega^2.$$

The actual volatility for the n -th day interval of length h is then defined as

$$\sigma_n^2 = \sigma^*(hn) - \sigma^*((n-1)h), \quad \text{where } \sigma^*(t) = \int_0^t \sigma^2(s)ds.$$

3.1 Unobserved components model for realised volatility

It has been argued that realised volatility $\tilde{\sigma}_n^2$ is an accurate estimator of actual volatility σ_n^2 ; see, for example, Andersen and Bollerslev (1998). Barndorff-Nielsen and Shephard (2002) provide an excellent discussion of the statistical properties of this estimator and its error $\sigma_n^2 - \tilde{\sigma}_n^2$. They also show with a Monte-Carlo study that using a model for the spot volatility $\sigma^2(t)$ can significantly improve estimates of actual volatility. A candidate model for $\sigma^2(t)$ is based on the superposition of Ornstein-Uhlenbeck (OU) processes $\tau^j(t)$, that is

$$\sigma^2(t) = \sum_{j=1}^J \tau^j(t), \quad d\tau^j(t) = -\lambda_j \tau^j(t)dt + dz_j(\lambda_j t), \quad (8)$$

where $z_j(t)$ is an independent Lévy process with non-negative increments (also known as a subordinator) and λ_j is an unknown fixed parameter for $j = 1, \dots, J$ with J as the number of factors. In this case the stochastic differential equation defining $\tau^j(t)$ permits its autocorrelation function to be expressed as

$$\text{corr}(\tau^j(t), \tau^j(t+s)) = e^{-\lambda_j |s|}.$$

By assuming $E(\tau^j(t)) = w_j \xi$ and $\text{var}(\tau^j(t)) = w_j \omega^2$, where $w_j > 0$ and $\sum w_j = 1$, a convenient and intuitively appealing form for the autocorrelation function for $\sigma^2(t)$ can be derived and is given by

$$\text{corr}(\sigma^2(t), \sigma^2(t+s)) = \sum_{j=1}^J w_j e^{-\lambda_j |s|}.$$

where we refer to Barndorff-Nielsen and Shephard (2001, 2002) for more details on this approach to modelling volatility. Using the expression of the autocorrelation $\text{corr}(\tau^j(t), \tau^j(t+s))$ and after some

calculus, it can be shown that the autocorrelation function of the j -th component of actual volatility $\tau_n^j \equiv \int_{(n-1)h}^{nh} \tau^j(t)dt$ is given by

$$\text{corr}(\tau_n^j, \tau_{n+m}^j) = \frac{(1 - e^{-\lambda_j h})^2}{2(e^{-\lambda_j h} - 1 + \lambda_j h)} e^{-\lambda_j h(m-1)}, \quad m = 1, 2, \dots,$$

where h is the length of the day interval. This convenient result implies that τ_n^j permits the ARMA(1,1) representation

$$\tau_{n+1}^j = w_j \xi + \phi_j (\tau_n^j - w_j \xi) + \theta_j \eta_{n-1}^j + \eta_n^j, \quad \eta_n^j \sim WN(0, \sigma_{\eta_j}^2), \quad (9)$$

where $WN(0, \sigma^2)$ refers to a white noise process with zero mean and variance σ^2 . It follows that the autoregressive parameter ϕ_j equals $e^{-\lambda_j h}$ while Meddahi (2003) shows that

$$\theta_j = \frac{1 - \sqrt{1 - 4\vartheta_j^2}}{2\vartheta_j}, \quad \text{with } \vartheta_j = \frac{\text{corr}(\tau_n^j, \tau_{n+1}^j) - \phi_j}{(1 + \phi_j^2) - 2\phi_j \text{corr}(\tau_n^j, \tau_{n+1}^j)}, \quad (10)$$

where θ_j has the typical value of 0.26; see also Barndorff-Nielsen and Shephard (2004b). The key to modelling realised volatility is the set of results in Barndorff-Nielsen and Shephard (2001, section 2.3) in which they define the estimation error as $u_n = \sigma_n^2 - \tilde{\sigma}_n^2$ and, assuming that the return process (7) is valid, they establish it to be a (weak) white noise sequence with mean zero and variance

$$\sigma_{u,n}^2 = 2D_n \left((\xi h/D_n)^2 + \sum_{j=1}^J \frac{2w_j \omega_j^2}{\lambda_j^2} (e^{-\lambda_j h/D_n} - 1 + \lambda_j h/D_n) \right), \quad (11)$$

where D_n is the number of intra-daily intervals used to calculate $\tilde{\sigma}_n^2$. By assuming that the model for spot volatility is correctly specified, the model for realised volatility is then finally obtained as

$$\tilde{\sigma}_n^2 = \sum_{j=1}^J \tau_n^j + u_n, \quad \tau_n^j \sim \text{ARMA}(1,1), \quad u_n \sim WN(0, \sigma_{u,n}^2), \quad (12)$$

which in effect is an unobserved ARMA components (UC) model.

An unobserved ARMA components model can be represented in the state space formulation and methods based on the Kalman filter can be used for the quasi-maximum likelihood estimation of fixed parameters such as λ_j and for the signal extraction of spot volatility conditional on realised volatility $\tilde{\sigma}_n^2$ which takes account of the implied dynamic structure of spot volatility. More importantly, the model framework allows model-based forecasting of tomorrow's spot volatility based on the unobserved ARMA components model. It should be noted that the analysis is based on quasi-maximum likelihood estimation because distributional properties for u_n and η_n^j are not established.

3.2 Long memory ARFIMA model

In empirical work on realised volatility it is pointed out that the realised volatility series $\tilde{\sigma}_n^2$ can be modelled by a Gaussian dynamic process after it is transformed into logs. The dynamic properties of log realised volatility exhibit features known as long memory, that is, the correlogram decays less

than exponentially as the lag length increases. The correlograms of the realised volatility series in levels and logs are presented in Figure 1 to illustrate that this empirical fact also applies to our S&P 100 dataset. To model the long memory properties, the autoregressive fractionally integrated moving average (ARFIMA) model is adopted following Andersen, Bollerslev, Diebold, and Ebens (2001) and Andersen, Bollerslev, Diebold, and Labys (2003).

The ARFIMA(1, d , 1) model with mean μ for realised volatility can be given by

$$(1 - \phi L)(1 - L)^d(\tilde{\sigma}_n^2 - \mu) = (1 + \theta L)\varepsilon_n, \quad (13)$$

where L is the lag operator ($L\tilde{\sigma}_n^2 = \tilde{\sigma}_{n-1}^2$), coefficients d , ϕ and θ are fixed and unknown and ε_n is Gaussian white noise with mean zero and variance σ^2 . The following restrictions on the parameters apply,

$$0 < d < 0.5, \quad |\phi| < 1, \quad |\theta| < 1, \quad \sigma^2 > 0.$$

In the context of volatility modelling, the ARFIMA model for the logs of realised volatility is empirically investigated, for example, by Andersen, Bollerslev, Diebold, and Labys (2003).

The parameters of the ARFIMA model, including mean μ , can be estimated by the method of maximum likelihood; for details, see, for example, Sowell (1992) and Doornik and Ooms (2003). However, the estimation is not without hurdles. It is, for example, pointed out by Brodsky and Hurvich (1999) and Bos, Franses, and Ooms (2002) that standard ARMA(1,1) models can also capture long memory features and that, depending on the sample spectrum of the data, not all parameters of an ARFIMA(1,d,1) can be empirically identified from the data. This typically applies to the case of realised volatility. For example, Andersen, Bollerslev, Diebold, and Labys (2003) estimate the d parameter using a log-periodogram estimator and fix d as estimated in their long memory vector autoregressive model of order 1. However, we estimate the d parameter simultaneously with other coefficients of the model. Since different ARFIMA model specifications produce rather similar results, we consider the ARFIMA(1, d , 0) model in the empirical study⁵.

Forecasting can be carried out by extrapolating the series in which the correlation structure implied by the estimated ARFIMA model is taken into account. Details of how these computations can be implemented elegantly for ARFIMA models are given by Doornik and Ooms (2003).

4 Daily Time-Varying Volatility Models

In this section we discuss daily time-varying volatility models where volatility is explicitly modelled as the second moment of daily returns. This class of so-called historical volatility models is well-established and includes stochastic volatility (SV) and generalised autoregressive conditional heteroskedasticity (GARCH) classes of models. In addition to standard formulations we also consider extensions to both models with realised and implied volatility measures incorporated in the variance equation.

⁵The required computations are implemented using the ARFIMA package of Doornik and Ooms (2001) within the programming environment of `0x`; see Doornik (2001).

4.1 Stochastic volatility model

The stochastic volatility model is deduced from the continuous time process for the returns (6). By discretising the continuous process (7) at daily intervals and by assuming an autoregressive process for log-volatility, we obtain the stochastic volatility model for daily returns as given by

$$\begin{aligned} R_n &= \mu + \sigma_n \varepsilon_n, & \varepsilon_n &\sim \text{NID}(0, 1), & n &= 1, \dots, N, \\ \sigma_n^2 &= \sigma^{*2} \exp(h_n), \\ h_{n+1} &= \phi h_n + \sigma_\eta \eta_n, & \eta_n &\sim \text{NID}(0, 1), & h_1 &\sim \text{NID}(0, \sigma_\eta^2 / \{1 - \phi^2\}), \end{aligned} \quad (14)$$

where R_n is computed as in equation (1) and constant μ is treated as fixed and zero in our empirical study. The choice of a first-order autoregressive process for the daily log-volatility h_n is common. Note that some weak serial correlation in R_n^2 exists as confirmed by the first correlogram of Figure 1. The actual volatility σ_n^2 is modelled by the product of a scaling factor $\sigma^{*2} > 0$ and the exponential of the stochastic process h_n . The persistence parameter ϕ of the autoregressive process is restricted to be positive and smaller than one to ensure stationarity. We further assume that ε_n and η_n are mutually uncorrelated, contemporaneously and at all lags, and with h_1 . More theoretical details about the SV model are discussed by Shephard (1996).

The nonlinear relation between the unobserved log-volatility h_n and the observed dependent variable R_n does not allow the computation of the likelihood by linear methods such as the Kalman filter. However, the likelihood function of the SV model can be constructed using simulation methods such as the ones developed by Shephard and Pitt (1997) and Durbin and Koopman (1997). These developments allow the exact maximum likelihood estimation of parameters of the SV model using Monte Carlo importance sampling techniques, see also Sandmann and Koopman (1998).

For the SV model we can express the likelihood function as

$$L(\psi) = p(y|\psi) = \int p(y, \theta|\psi) d\theta = \int p(y|\theta, \psi) p(\theta|\psi) d\theta, \quad (15)$$

where $y = (y_1, \dots, y_N)'$ and

$$\psi = (\phi, \sigma_\eta, \sigma^*)', \quad \theta = (h_1, \dots, h_N)'.$$

An efficient way of evaluating such expressions is by using importance sampling; see Ripley (1987, Chapter 5). A simulation device is required to sample from an importance density $\tilde{p}(\theta|y, \psi)$ which we prefer to be as close as possible to the true density $p(\theta|y, \psi)$. It is common to take a conditional Gaussian density $g(\theta|y, \psi)$ as the importance density since it is relatively straightforward to sample from it using simulation smoothers such as the ones developed by de Jong and Shephard (1995) and Durbin and Koopman (2002). Guidelines for the construction of Gaussian importance sampling devices for the SV model are discussed in Lee and Koopman (2003). It can be shown that the Monte Carlo estimate of the likelihood function can be computed as

$$\hat{L}(\psi) = L_G(\psi) D^{-1} \sum_{j=1}^D d_j, \quad d_j = \frac{p(y|\theta^j, \psi)}{g(y|\theta^j, \psi)},$$

where θ^j is a draw (realisation) of $g(\theta|y, \psi)$ as obtained from the simulation smoother for $j = 1, \dots, D$. The likelihood function can be computed for a given value of parameter vector ψ and can be numerically

maximised with respect to ψ by using the same source of random deviates for computing $\hat{L}(\psi)$ for the different values of ψ . In this way maximum likelihood estimates of ψ are obtained⁶.

The one-step ahead daily volatility forecast for the SV model is computed as

$$\hat{\sigma}_{N+1}^2 = \hat{\sigma}^{*2} \exp(\hat{h}_{N+1|N} + 0.5p_{N+1|N}), \quad (16)$$

where $\hat{\sigma}^{*2}$ is the maximum likelihood estimate of σ^{*2} , $\hat{h}_{N+1|N}$ is the estimator of h_{N+1} given all N observed daily returns and $p_{N+1|N}$ is its mean squared error. The latter two values are computed by

$$\hat{h}_{N+1|N} = \frac{\sum_j d_j h_{N+1|N}(\theta^j)}{\sum_j d_j}, \quad p_{N+1|N} = \frac{\sum_j d_j p_{N+1|N}(\theta^j)}{\sum_j d_j},$$

where $h_{N+1|N}(\theta^j)$ and $p_{N+1|N}(\theta^j)$ are obtained from the Kalman filter applied to the approximating model that is used as part of the Gaussian importance sampling device and is based on the draw θ^j from $g(\theta|y, \psi)$. Further details of this approach are discussed in Durbin and Koopman (2000).

The SV model can be extended by the inclusion of an explanatory variable in the log-variance equation for h_n in (14), that is

$$h_n = \phi h_{n-1} + \gamma(1 - \phi L)x_{n-1} + \sigma_\eta \eta_n, \quad n = 1, \dots, N, \quad (17)$$

where $x_n = \ln \tilde{\sigma}_n^2$ for realised volatility or $x_n = \ln s_n^2$ for implied volatility. An equivalent specification for model (17) is given by

$$h_n = \gamma x_{n-1} + \eta_n^*, \quad \eta_n^* = \phi \eta_{n-1}^* + \sigma_\eta \eta_n,$$

which is a regression model with autoregressive disturbances. Although ϕ is restricted to be positive for model (14), for model (17) the standard stationary condition $-1 < \phi < 1$ applies. For other volatility models, similar extensions have been considered, see Martens (2001) and Blair, Poon, and Taylor (2001), amongst others. Replacing the equation (17) for h_n in (14) does not affect the non-linear relationship between daily return R_n and unobserved volatility h_n . Therefore the estimation and forecasting methods for the SV model as described earlier can be applied straightforwardly. The regression coefficient γ in (17) is estimated by numerically maximising the simulated likelihood function with respect to γ and jointly with respect to the other coefficients. One-step ahead forecasts for the extended model are obtained using the same methods as for the SV model although it requires the value of x_N .

4.2 Generalised autoregressive conditional heteroskedasticity model

An alternative to the SV model and more common in its use of modelling time-varying volatility is the generalised autoregressive conditional heteroskedasticity (GARCH) model which in its most simplest form is given by

$$\begin{aligned} R_n &= \sigma_n \varepsilon_n, & \varepsilon_n &\sim \text{NID}(0, 1), & n &= 1, \dots, N, \\ \sigma_n^2 &= \omega + \alpha R_{n-1}^2 + \beta \sigma_{n-1}^2, \end{aligned} \quad (18)$$

⁶The SV model is estimated using a program written in the `0x` language of Doornik (2001) using `SsfPack` by Koopman, Shephard, and Doornik (1999). The `0x` programs can be obtained from <http://staff.feweb.vu.nl/koopman/sv/>.

with parameter restrictions $\omega > 0$, $\alpha \geq 0$, $\beta \geq 0$ and $\alpha + \beta < 1$. The parameter vector ψ consists of ω , α and β in this case. The persistence of daily volatility is measured by $\alpha + \beta$ in GARCH models. More lags of R_n^2 and σ_n^2 can be added to the volatility equation of the GARCH model but in empirical studies the model (18) has proven to work effectively in forecasting volatility, see, for example, Andersen and Bollerslev (1998) and Hansen and Lunde (2003b). The time-varying variance is formulated conditional on the lagged observed return R_{n-1} and therefore the variance σ_n^2 is known conditional on past observed returns and parameter vector ψ . The predictive observation density is given by

$$R_{n+1}|R_1, \dots, R_n, \psi \sim \text{NID}(0, \omega + \alpha R_n^2 + \beta \sigma_n^2).$$

The prediction error decomposition allows the construction of the likelihood function in a straightforward way, see Bollerslev (1986). When the assumption of normality for ε_n is dropped, estimation can be referred to as quasi-maximum likelihood. Estimation procedures for the GARCH model are implemented in many standard econometric software packages⁷. Interesting surveys on GARCH models are written by Bollerslev, Chou, and Kroner (1992), Bera and Higgins (1993) and Bollerslev, Engle, and Nelson (1994). Finally it follows directly that the one-day ahead volatility forecast at time N can be computed as

$$\hat{\sigma}_{N+1}^2 = \hat{\omega} + \hat{\alpha} R_N^2 + \hat{\beta} \hat{\sigma}_N^2, \quad (19)$$

where $\hat{\omega}$, $\hat{\alpha}$ and $\hat{\beta}$ denote maximum likelihood estimates of ω , α and β , respectively.

The daily GARCH model can also be extended to include an explanatory variable by incorporating it in the variance equation, so the volatility process σ_n^2 in equation (18) can be rewritten as

$$\sigma_n^2 = \omega + \alpha R_{n-1}^2 + \beta \sigma_{n-1}^2 + \gamma s_{n-1}^2, \quad (20)$$

where s_n^2 represents implied volatility but can be exchanged with realised volatility $\tilde{\sigma}_n^2$. We note that the inclusion of s_n^2 in the volatility equation (20) is different from its inclusion in (17) and therefore the regression coefficients have different implications for forecasting. Most econometric packages have options to specify explanatory variables for the volatility equation (20) because estimation of these coefficients is relatively straightforward. As for the standard GARCH model, all information for the calculation of the one-day ahead volatility forecast $\hat{\sigma}_{N+1}^2$ is available at time N and is given by

$$\hat{\sigma}_{N+1}^2 = \hat{\omega} + \hat{\alpha} R_N^2 + \hat{\beta} \hat{\sigma}_N^2 + \hat{\gamma} s_N^2, \quad (21)$$

where $\hat{\gamma}$ is the maximum likelihood estimate of γ .

5 Forecasting methodology

In the next section the results are presented of an out-of-sample forecasting study in which we compare the forecasting performances of the various volatility models described in sections 3 and 4. This forecasting study is carried out as follows. The volatility models are estimated 525 times based on 525 samples of 1,200 observations. The first sample starts 6 January 1997 and ends 16 October 2001. A forecast of volatility is generated for 17 October 2001 based on the estimated model for the

⁷In this paper a program for estimating the parameters of the GARCH model is written in `0x`, the programming environment of Doornik (2001), using functions of the `GARCH` package of Laurent and Peters (2002).

first sample. The second sample, starting 7 January 1997 and ending 17 October 2001, is used to forecast the volatility of 18 October 2001 based on the estimated model for the second sample. These estimation and forecasting steps can be repeated 525 times for the available sample from 6 January 1997 to 14 November 2003. More specifically, we produce the 525 one-day ahead forecasts $\hat{\sigma}_m^2$ where

$$\hat{\sigma}_m^2 \text{ is forecast of } \sigma_m^2 \text{ based on information } R_{m-1200}, \dots, R_{m-1}, \hat{\psi}, \quad (22)$$

for $m = N + 1, \dots, N + M$ and $\hat{\psi}$ refers to the maximum likelihood estimate of the parameter vector ψ . In the case of realised volatility models the conditioning also refers to the intraday returns associated with trading days $m = N + 1, \dots, N + M$. The range of the day index m reflects the period from 17 October 2001 to 14 November 2003. The forecasts are based on a “rolling window” procedure: in each case the sample is rolled forward by one trading day while the size of the sample is kept constant at 1,200.

The volatility is not observable and as a result the forecast error is also not observable. It is argued earlier that realised volatility (5), denoted by $\tilde{\sigma}_m^2$, is an accurate estimator and therefore $\tilde{\sigma}_m^2$ is the variable to forecast for $m = N + 1, \dots, N + M$. The volatility forecast obtained from model \mathcal{M}_k is denoted by $\hat{\sigma}_{k,m}^2$ and is defined as in (22). It is difficult to determine whether, say, model \mathcal{M}_1 outperforms model \mathcal{M}_2 . This is a subjective matter that depends on the choice of a criterion. Various forecasting criteria can be considered to assess the predictive accuracy of a volatility model. In this paper we use the following accuracy statistics or loss functions for a particular model \mathcal{M}_k :

| | |
|--|---|
| The squared error | $L_{1,k,m} = (\tilde{\sigma}_m^2 - \hat{\sigma}_{k,m}^2)^2,$ |
| The absolute error | $L_{2,k,m} = \tilde{\sigma}_m^2 - \hat{\sigma}_{k,m}^2 ,$ |
| The squared error adjusted for heteroskedasticity | $L_{3,k,m} = (1 - \tilde{\sigma}_{k,m}^{-2} \hat{\sigma}_m^2)^2,$ |
| The absolute error adjusted for heteroskedasticity | $L_{4,k,m} = 1 - \tilde{\sigma}_{k,m}^{-2} \hat{\sigma}_m^2 .$ |

Some of these loss functions are also considered by Andersen, Bollerslev, and Lange (1999), Martens (2002) and Hansen and Lunde (2003b).

When a particular loss function is smaller for model \mathcal{M}_1 than for model \mathcal{M}_2 , say, we can clearly not conclude that the forecasting performance of model \mathcal{M}_1 is superior to that of model \mathcal{M}_2 . Such a conclusion can not be made on the basis of just one criterion and just one sample. Recent work has focused on a testing framework for determining whether a particular model is outperformed by another model, see, for example, Diebold and Mariano (1995), West (1996) and White (2000). A further development of the White framework is known as the Superior Predictive Ability (SPA) test and is proposed by Hansen (2001) where it is also shown that SPA has good power properties and is robust. We adopt the SPA test to investigate the relative performance of various volatility models. A similar study is carried out by Hansen and Lunde (2003b) for a range of daily volatility models, mainly variants of GARCH models. In this study we focus on the comparison of the forecast abilities of models based on high-frequency measures of volatility and models based on daily returns.

We consider $K + 1$ different models \mathcal{M}_k for $k = 0, 1, \dots, K$ and which are discussed in sections 3 and 4. For each model \mathcal{M}_k we generate M volatility forecasts $\hat{\sigma}_{m,k}^2$ for $m = N + 1, \dots, N + M$. For every forecast we calculate the loss function $L_{i,m,k}$ as given above with $i = 1, \dots, 4$. A particular

model \mathcal{M}_0 is taken as the benchmark model. The loss function relative to the benchmark model is defined as

$$X_{k,m} \equiv L_{i,0,m} - L_{i,k,m}, \quad (23)$$

for some choice of loss function i . The unobserved actual volatility σ_m^2 is the object of forecasting while realised volatility $\tilde{\sigma}_m^2$ is taken as its proxy for assessing the relative forecast accuracy of models. Hansen and Lunde (2003a) argue that the use of a proxy may lead to inconsistencies in the comparison of models with respect to forecast accuracy. Consistency requires moment conditions and dependence structures for relative forecast losses $X_{k,m}$. These conditions are weak and likely to be fulfilled for at least $L_{1,k,m}$ and $L_{2,k,m}$. Further, the results in Hansen and Lunde (2003a) imply that the inconsistencies are proportionate with the precision of the proxy. The results in Barndorff-Nielsen and Shephard (2002) support the fact that realised volatility is a precise estimator of actual volatility. Assuming that models can be ranked consistently, $\lambda_k \equiv E(X_{k,m})$ is well defined. When the benchmark or base model \mathcal{M}_0 outperforms all other models, we have $\lambda_k < 0$ for all models $k = 1, \dots, K$. Therefore the base model is not outperformed when it rejects the null hypothesis

$$\max_{k=1, \dots, K} \lambda_k \leq 0. \quad (24)$$

The associated test statistic proposed by Hansen (2001) is given by

$$T = \max_{k=1, \dots, K} \frac{\sqrt{M} \bar{X}_k}{\hat{\omega}_{kk}}, \quad (25)$$

with $\hat{\omega}_{kk}^2$ as a consistent estimate of ω_{kk}^2 and where

$$\bar{X}_k = \frac{1}{M} \sum_{m=N+1}^{N+M} X_{k,m}, \quad \omega_{kk}^2 = \lim_{M \rightarrow \infty} \text{var}(\sqrt{M} \bar{X}_k). \quad (26)$$

A consistent estimator of ω_{kk} and the p -value of test statistic T can be obtained via a bootstrap procedure that is outlined below.

We apply the stationary bootstrap of Politis and Romano (1994) to compute the test statistic T and to assess its distributional properties. This procedure consists of building new samples for $X_{k,m}$ of length M which are constructed by randomly choosing subsamples of different lengths and putting these together. The lengths of the subsamples are independent and are drawn from a geometric distribution with mean q . The random lengths are ideally small but sufficiently large to reflect the serial dependence in the $X_{k,m}$ series. After the inspection of correlograms of $X_{k,m}$ for different models \mathcal{M}_k we have taken $q = 0.5$. The resulting bootstrap samples for $X_{k,m}$ are denoted by $X_{k,m}^i$ and we consider B bootstraps, $i = 1, \dots, B$. The empirical distribution implied by the bootstrap samples is taken as the distribution that has generated $X_{k,m}$. For each bootstrap the sample mean is computed as

$$\bar{X}_k^i = \frac{1}{M} \sum_{m=1}^M X_{k,m}^i, \quad i = 1, \dots, B. \quad (27)$$

The variation within these bootstrapped means is taken as the estimator of ω_{kk} , that is

$$\hat{\omega}_{kk} = \frac{1}{B} \sum_{i=1}^B (\bar{X}_k^i - \bar{\bar{X}}_k)^2, \quad \bar{\bar{X}}_k = \frac{1}{B} \sum_{i=1}^B \bar{X}_k^i. \quad (28)$$

The bootstrap estimate of ω_{kk} allows the computation of the test statistic T in (25). Finally, the distribution of T under the null hypothesis can be empirically identified as follows. Define \bar{Z}_k^i as

$$\bar{Z}_k^i = \left(\bar{X}_k^i - \bar{\bar{X}}_k \right) \times \mathbf{1}_{\{\bar{X}_k > -A_k\}}, \quad (29)$$

where $A_k = \frac{1}{4}M^{-4}\hat{\omega}_{kk}$ and $\mathbf{1}_{\{\cdot\}}$ is an indicator function. The empirical distribution of

$$T^i = \max_{k=1,\dots,K} \frac{\sqrt{M}\bar{Z}_k^i}{\hat{\omega}_{kk}}, \quad (30)$$

converges to the distribution of T under the null hypothesis; see Hansen (2001) for more details. It follows directly that the p -value of T can be empirically identified as

$$\frac{1}{B} \sum_{i=1}^B \mathbf{1}_{\{T^i > T\}}. \quad (31)$$

More details of this procedure are detailed in Hansen (2001) and Hansen and Lunde (2003b).

6 Empirical Results

6.1 Parameter estimation

The estimation results obtained from realised and historical volatility models as described in sections 3 and 4, respectively, are presented in Table 2. The results are based on observations from the full sample period 6 January 1997 to 14 November 2003. All models indicate high persistency in volatility dynamics as it is expected from stock index prices. Unobserved ARMA component models (UC-RV) are estimated with one (UC-RV1) and two (UC-RV2) factors. The coefficients μ , ϕ_1 , ϕ_2 , $\sigma_{\eta_1}^2$ and $\sigma_{\eta_2}^2$ are estimated and standard errors are provided while the coefficients σ_u^2 , θ_1 and θ_2 are functions of the estimated coefficients as is apparent from equations (10) and (11). The ARMA factor in UC-RV1 with autoregressive coefficient 0.45 and moving average coefficient 0.26 does not imply the persistent dynamic structure as indicated by the sample correlogram of realised volatility $\tilde{\sigma}_n^2$ given in Figure 1. However, a higher level of volatility persistency is obtained when two ARMA factors are considered. The second factor in UC-RV2 has a higher persistency with autoregressive coefficient 0.98. The loglikelihood function is larger for the two factor UC-RV2 model than for the one factor UC-RV1 model which is confirmed by a lower Akaike criterion (AIC) value for UC-RV2. More ARMA factors have also been considered but two factors have proved to be sufficient for this dataset. Both UC-RV models are successful in capturing the dynamics in the series given the relatively small values of the Box-Ljung Q statistics.

The fractional integration parameter of the ARFIMA model is estimated as 0.408 for realised volatility in levels and as 0.478 for logged realised volatility. In the latter case, the d estimate exceeds the estimate found by Andersen, Bollerslev, Diebold, and Labys (2003) who report the value 0.441. It should be noted that this and related studies employ different ARFIMA model specifications, different estimation methods and different datasets⁸. Further, in the case of logged realised volatility,

⁸Andersen, Bollerslev, Diebold, and Labys (2003) do not estimate the fractional parameter but obtain the d value from a prior analysis and fix it for the estimation of the other parameters in their vector autoregressive fractional model for three exchange rates.

the process may not be covariance-stationary as the estimate of d is close to the boundary value of 0.5. Some evidence of nonstationarity is also found in the high persistency implied by the second ARMA component in the UC-RV2 model. From these in-sample results we may conclude that a parsimonious and effective description of the dynamics in the S&P 100 realised volatility is provided by the ARFIMA(1, d , 0) model. The dynamics of realised volatility seem to be best captured by the ARFIMA model since it has the lowest Box-Ljung test statistic. The ARFIMA log-likelihood value and AIC for logged realised volatility can not be compared with the other realised volatility models since it refers to different values of the dependent variable. The Box-Ljung statistic is the highest for the log ARFIMA model but this is probably due to the fact that logged series have usually less atypical observations (outliers). Aberrant observations in a time series have a destructive effect on the serial correlation structure.

Volatility persistency for the historical SV and GARCH models are estimated as statistically significant and close to unity with $\hat{\phi} = 0.967$ and $\hat{\alpha} + \hat{\beta}$ equal to 0.963 which confirms earlier findings in the literature with regard to daily stock index return series. The estimated SV model with a higher log-likelihood value is preferred since it indicates a better fit compared to the GARCH model. However, one should be careful in comparing likelihood values since the involved computations for SV and GARCH models are very different and models are non-nested⁹.

The inclusion of the realised volatility series in the volatility equation of the SV model has a significant effect on the fit of the model as is shown by a decrease of 27.8 in the AIC value and by the significance of the estimated regression coefficient γ . The estimate of the persistence parameter ϕ has not changed significantly. The change in the estimated values for σ^{*2} and σ_{η}^2 can be explained by the necessary rescaling due to the inclusion of the regression variable $\log \tilde{\sigma}_n^2$. Similar conclusions can be made for the inclusion of implied volatility in logs, that is $\log s_n^2$, in the log-volatility equation of the SV model. However the effect is even stronger since the AIC decreases by 37.8 in relation to the standard SV model. Also the regression coefficient is more significant compared to the significance of γ in the realised volatility case. Therefore the SV model with implied volatility in the volatility equation may be preferred based on these in-sample results.

The estimation results for the GARCH model are typical for stock index series and can be found elsewhere in the literature. It is noticeable that within the GARCH framework, the inclusion of realised or implied volatility as explanatory variables for volatility has a large impact, larger than in the SV case. The AIC value decreases by 61.6 and 64.6 for the two volatilities. Also in both cases the regression coefficients are significant. However, the inclusion of these regressors diminishes the persistency of the volatility dynamics. The estimated coefficient β remains significant in both cases. In the case where implied volatility is included, the estimated α coefficient is not significant. This case implies that the daily (squared) returns do not play a role in the estimation of σ_n^2 which in fact only depends on past values of implied volatilities, that is

$$\hat{\sigma}_n^2 = \hat{\gamma} \sum_{j=1}^{\infty} \hat{\beta}^{j-1} s_{n-j}^2.$$

⁹The estimation results for the GARCH model confirm the empirical results of Blair, Poon, and Taylor (2001) who examine Standard & Poor's 100 stock index returns over the earlier 1987 to 1992 period and find values for γ similar to ours. In contrast, Martens (2002) reports on much smaller and statistically insignificant γ estimates for returns on Standard & Poor's 500 futures, see also Taylor and Xu (1997).

Table 2: Estimation results of realised and historical volatility models using the Standard & Poor 100 stock index data set for the period 6 January 1997 to 15 November 2003

| model | UC ARMA model | | ARFIMA model | | | Stochastic volatility model | | | | GARCH model | | |
|---------------------|----------------|----------------|----------------|----------------|-------------------|-----------------------------|----------------|----------------|----------|----------------|----------------|-----------------|
| | UC-RV1 | UC-RV2 | level | log | | with RV | with IV | with RV | | with IV | | |
| μ | 0.955 0.058 | 0.953 0.224 | 0.813 0.779 | -.797 1.434 | σ^{*2} | 1.473 0.180 | 1.775 0.166 | 0.040 0.024 | α | 0.102 0.010 | -.047 0.019 | 0.016 0.017 |
| ϕ_1 | 0.451 0.025 | 0.422 0.130 | 0.051 0.040 | -.109 0.031 | ϕ | 0.967 0.011 | 0.964 0.018 | 0.934 0.029 | β | 0.861 0.016 | 0.448 0.070 | 0.252 0.103 |
| ϕ_2 | | 0.976 0.009 | | | γ | | 0.279 0.053 | 1.127 0.181 | γ | | 0.908 0.113 | 0.126 0.018 |
| d | | | 0.408 0.031 | 0.477 0.020 | | | | | | | | |
| $\sigma_{\eta_1}^2$ | 1.103 0.040 | 0.030 0.012 | | | σ_{η}^2 | 0.026 0.008 | 0.014 0.007 | 0.028 0.012 | ω | 0.075 0.017 | 0.312 0.065 | -2.000 0.284 |
| $\sigma_{\eta_2}^2$ | | 0.439 0.079 | | | | | | | | | | |
| σ_u^2 | 1.002 | 1.003 | 1.069 | 0.489 | | | | | | | | |
| θ_1 | 0.259 | 0.257 | | | | | | | | | | |
| θ_2 | | 0.268 | | | | | | | | | | |
| $\ln L$ | -2616.3 | -2506.4 | -2506.1 | -1834.86 | | -2876.3 | -2861.2 | -2856.2 | | -2895.1 | -2833.5 | -2830.5 |
| AIC | 5238.6 | 5022.7 | 5018.3 | 3675.72 | | 5758.2 | 5730.4 | 5720.4 | | 5796.3 | 5675.0 | 5669.0 |
| $Q(12)$ | 14.14 | 14.02 | 12.28 | 20.01 | | 22.05 | 22.19 | 20.61 | | 17.36 | 20.11 | 18.14 |

Parameter estimates are reported together with asymptotic 95% standard errors which are obtained using the delta method since some coefficients are transformed for estimation. The Akaike information criterion AIC is calculated as $-2(\ln L) + 2p$ where p is the number of coefficients that is estimated. The Box-Ljung portmanteau statistic $Q(\ell)$ is for the observation errors and is asymptotically χ^2 distributed with ℓ degrees of freedom.

Here β is estimated as $\hat{\beta} = 0.25$ implying that effectively only s_{n-1}^2 and, to a smaller extent, s_{n-2}^2 determine $\hat{\sigma}_n^2$.

6.2 Some forecasting results

Volatility forecasts are constructed for realised and historical volatility models as described in section 5. The evaluation period ranges from 17 October 2001 to 14 November 2003. In this period, for each trading day n a volatility forecast is generated for each considered model which is estimated using information from the last 1,200 days ($n - 1, \dots, n - 1200$). The one-step ahead forecasts for the evaluation period are presented in Figure 2 together with realised volatility (displayed as dots). Some interesting aspects of the forecast results can be observed since in this sample a small group of days displays high volatility while most other days have low volatility. The GARCH and SV forecasts are clearly biased when volatility is low. The GARCH forecasts are also too high for days when volatility is relatively high. The positive and persistent forecast bias may be explained from the fact that the GARCH and SV forecasts are extracted from daily returns that are subject to measurement noise. The volatility estimates are not corrected for this measurement variance and therefore the forecast bias is positive. In contrast, the realised volatility models appear to produce forecasts without positive forecast bias. The log ARFIMA-RV forecasts are clearly the least sensitive to jumps in volatility.

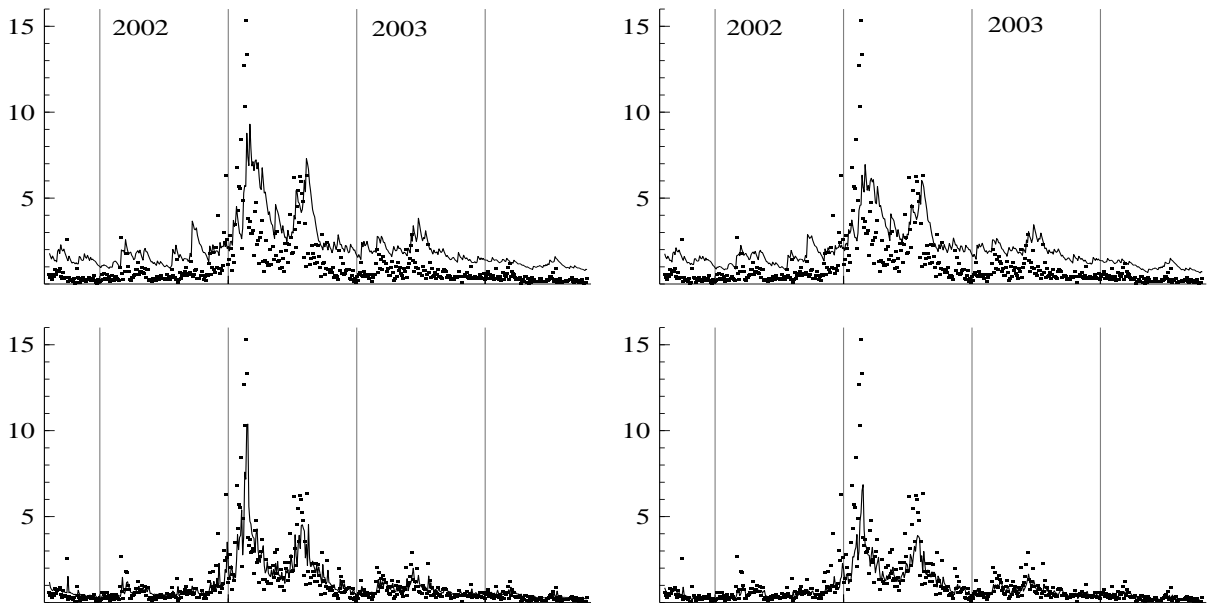


Figure 2: One-day ahead volatility forecasts from (i) GARCH, (ii) SV, (iii) UC-RV2 and (iv) log ARFIMA-RV models for the period between 17 October 2001 and 14 November 2003 (525 days).

Table 3 presents the forecast accuracy statistics that consist of the means of four loss functions: $L_{1,k,m}$, mean squared error (MSE); $L_{2,k,m}$, mean absolute error (MAE); $L_{3,k,m}$, heteroskedastic adjusted MSE (HMSE); $L_{4,k,m}$, heteroskedastic adjusted MAE (HMAE)¹⁰. In terms of MSE, the UC-RV2

¹⁰For example, we define the MSE for model \mathcal{M}_k by $M^{-1} \sum_{m=N+1}^{N+M} L_{1,k,m}$.

and ARFIMA-RV models produce the smallest values for this sample. In terms of the other criteria, the log ARFIMA-RV and UC-RV2 models produce the smallest values. The heteroskedastic corrected versions of MSE and MAE give relatively less weight to forecast errors associated with high values of realised volatility while the MSE give relatively more weight to these errors. Therefore both of these statistics are of interest on their own merits. In case of value-at-risk applications, one may be more interested in the accurate forecasting of high volatility rather than low volatility. This implies that the MSE criterion is the relevant loss function for applications in risk management.

Realised volatility models provide more accurate forecasts compared to the historical SV and GARCH models that are based on daily returns. Within the group of historical models, the SV model with either realised or implied volatility as an explanatory variable for volatility is providing the most accurate forecasts. This holds when considering the different loss functions. The accuracy of GARCH forecasts vary but overall their forecasts are less accurate. Within the group of realised volatility models, there is a clear distinction in accuracy. For the MSE loss function, the ARFIMA-RV and UC-RV2 models produce the smallest values while for the other loss functions, the log ARFIMA-RV model clearly outperforms the other models in forecasting accuracy.

For completeness we also report the goodness-of-fit measure R^2 for regressing $\tilde{\sigma}_m$ on a constant and the volatility forecast $\hat{\sigma}_m$ for $m = N + 1, \dots, N + M$. This so-called Mincer-Zarnowitz regression is used in many volatility forecast studies. The goodness-of-fit statistics confirm the earlier conclusions although the GARCH and SV models produce relatively high R^2 values, especially the GARCH model with realised volatility. This can be explained from the fact that the R^2 measure corrects for the bias in forecast errors since it compares the total fit of the Mincer-Zarnowitz regression with the sum of squared mean deviations of forecast errors. Therefore it shows that the pattern of one-step ahead forecasts obtained from the GARCH model with realised volatility is close to the pattern of volatility itself. The realised volatility models however produce overall the highest R^2 values. These results confirm similar findings reported in Andersen, Bollerslev, Diebold, and Labys (2003) for exchange rate data.

Finally, to get some insight in how forecasts evolve over time in our study, in Figure 3 we have zoomed in on the one-step ahead forecasts between 9 September 2002 and 18 November 2002 (51 trading days). The forecasts of GARCH and SV respond slowly to the changes from high to low and from low to high volatility. The forecasts of these models are obtained from weighted averages of past squared returns with relatively long exponentially declining weight patterns. This may explain the slow response of the forecasts to changes in volatility and, together with the volatility measurement error in daily squared returns, it may provide an explanation for the relatively poor performance of historical models in volatility forecasting. The inclusion of realised volatility shows an improvement in both the GARCH and SV model. Especially in the latter case it can be observed from Figure 3 that the forecasts are more responsive to changes in volatility. The positive forecast bias is reduced when volatility is low and it produces more accurate forecasts when volatility is high.

In the case of realised volatility models it is shown that the more successful models in forecasting are the ones that produce a smoother series of forecasts (UC-RV2 and log ARFIMA-RV). It is surprising to notice that relative smooth forecast patterns are a virtue in forecasting volatility.

Table 3: *Out-of-sample forecasting criteria (evaluated against $\tilde{\sigma}_m^2$) for the Standard & Poor's 100 evaluation period 17 October 2001 to 14 November 2003*

| Model \mathcal{M}_k | Forecast loss functions | | | | |
|-----------------------|-------------------------|-------|-------|-------|-------|
| | MSE | MAE | HMSE | HMAE | R^2 |
| UC-RV1 | 1.248 | 0.613 | 2.495 | 1.240 | 0.522 |
| UC-RV2 | 0.996 | 0.505 | 1.546 | 0.792 | 0.593 |
| ARFIMA-RV | 0.991 | 0.508 | 1.610 | 0.813 | 0.598 |
| ARFIMA-RV (log) | 1.149 | 0.472 | 1.030 | 0.555 | 0.597 |
| SV | 2.433 | 1.240 | 5.080 | 2.948 | 0.386 |
| SV RV | 2.256 | 1.037 | 3.368 | 2.063 | 0.437 |
| SV IV | 3.132 | 1.082 | 3.422 | 2.048 | 0.343 |
| GARCH | 2.837 | 1.348 | 5.339 | 3.174 | 0.405 |
| GARCH RV | 3.134 | 1.228 | 4.603 | 2.738 | 0.605 |
| GARCH IV | 2.872 | 1.297 | 5.079 | 2.720 | 0.419 |

The MSE for model \mathcal{M}_k is defined as $M^{-1} \sum_{m=N+1}^{N+M} L_{1,k,m}$. In a similar way, MAE (based on $L_{2,k,m}$), HMSE (based on $L_{3,k,m}$) and HMAE (based on $L_{4,k,m}$) are defined. The goodness-of-fit R^2 statistic is based on the OLS regression applied to $\tilde{\sigma}_m = a + b\hat{\sigma}_m + u_m$ where a and b are regression coefficients and with realised volatility $\tilde{\sigma}_m$, forecast $\hat{\sigma}_m$ as defined in (22) and error u_m for $m = N + 1, \dots, N + M$ and $M = 525$. In a similar forecasting context, these so-called Mincer-Zarnowitz regressions are also carried out by Andersen, Bollerslev, Diebold, and Labys (2003).

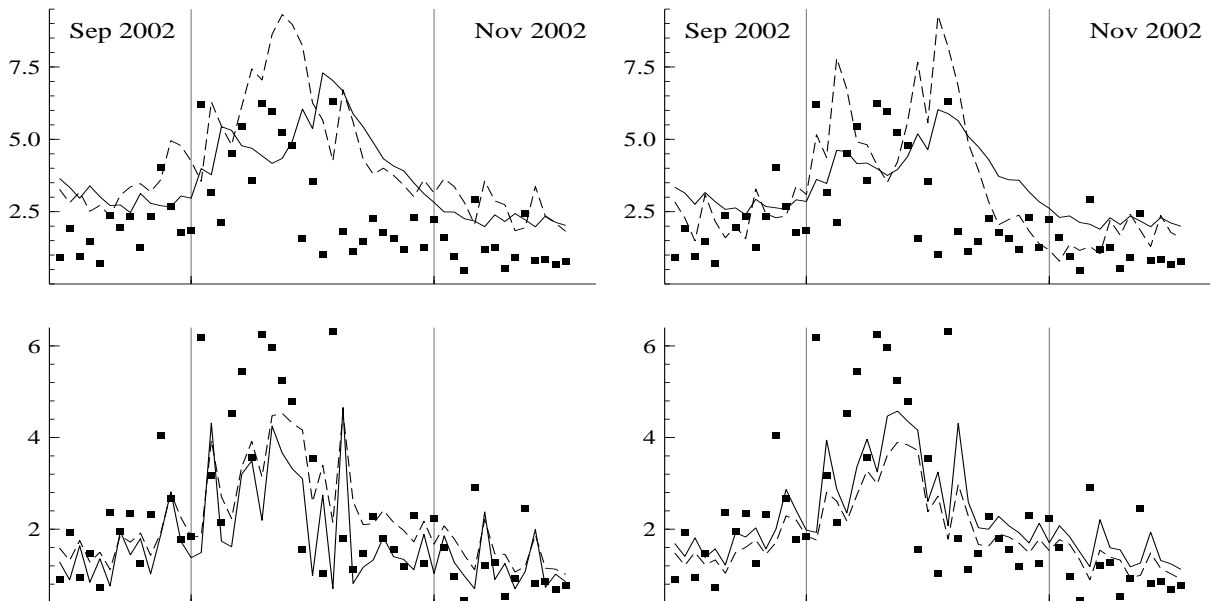


Figure 3: Realised volatility (as dots) and one-day ahead volatility forecasts from (i) GARCH (solid) and GARCH with RV (dashed), (ii) SV (solid) and SV with RV (dashed), (iii) UC-RV1 (solid) and UC-RV2 (dashed) and (iv) ARFIMA-RV (solid) and log ARFIMA-RV (dashed) models for the period between 9 September 2002 and 18 November 2002 (day 225 to 275).

6.3 Superiority prediction tests

Although the forecasting results have clearly shown that the ARFIMA model for logged realised volatility is the best model for prediction and that the SV model with realised volatility as an explanatory variable in the volatility equation produces the best forecasts within the class of historical volatility models. However, these results only apply to one selected sample. To assess whether the same outcomes are obtained for similar samples, we need to apply the methodology of White (2000) and Hansen (2001) as discussed in section 5. The computation of superior predictive ability (SPA) test (25) requires the stationary bootstrap of loss series $L_{i,k,m}$ over the sample $m = N + 1, \dots, N + M$ for a specific loss function i and for a range of models \mathcal{M}_k with $k = 0, \dots, K$. Computing \bar{X}_k in equation (26) is based on the actual forecasts while computing $\hat{\omega}_{kk}$ in equation (28) requires the bootstraps. The computation of the p -values as in (31) also requires the bootstraps.

Tables 4 and 5 present the SPA results for the two classes of volatility models. The individual \bar{X}_k is reported for each model that is considered as a base model \mathcal{M}_0 while the remaining models are treated as rival models \mathcal{M}_k . All considered models in this study are consecutively taken as base models. Further, the various statistics are reported for the four different loss functions. As a result, and in the way the \bar{X}_k statistics are presented, the tables (apart from the last column) consist of four blocks of skewed symmetric matrices. The last columns of Tables 4 and 5 report the p -values of the SPA tests for each considered base model. A high p -value rejects the null hypothesis (24) of "no superiority" of the base model. The earlier forecast results have seen a large difference in forecast accuracy of historical and realised volatility models. Therefore the SPA results are presented separately for these two classes of models.

In Table 4 the SPA results for the realised volatility models are presented. The average of daily squared forecast error differences between UC-RV1 and UC-RV2 models is 2.21, which means that the squared forecast error of UC-RV1 was on average higher than of UC-RV2. The average values for UC-RV1 in relation to the rival ARFIMA and log ARFIMA models are 2.39 and 1.15, respectively. This result is not good for UC-RV1 as is also reflected by its p -value of zero for the SPA test. Overall Table 4 shows that for all loss functions, the UC-RV2 and ARFIMA models are very close in their good forecasting performance. However, the log ARFIMA model is clearly the preferred model when we rely on the loss functions L_2 , L_3 and L_4 . This is particularly noticeable when we consider the p -value of the SPA test. For the last three loss functions its p -value is unity implying it is superior to all other models that are considered. The first loss function (squared forecast error) however shows that ARFIMA and UC-RV2 forecasts are to be preferred which confirms the earlier findings from Table 3.

Finally, in Table 5 the results are even more dramatic in its clarity. For all loss functions it can be concluded that forecasts from the SV class of models are to be preferred. Overall the SV model with logged realised volatility as an explanatory variable for log-volatility is the outstanding model within its class.

These forecasting results show the importance of realised volatility as a predictor of future volatility. We confirm the findings of Christensen and Prabhala (1998), Fleming (1998), Blair, Poon, and Taylor (2001) and Giot (2003) that forecasts of volatility extracted from models for daily returns are less accurate than forecasts based on implied volatility. However, in this study we have found that models based on realised volatility outperform models with implied volatility when forecasting the volatility in the S&P 100 index series. The importance of realised volatility for forecasting is also found by

Table 4: Superior predictive ability (SPA) test λ_k for realised volatility models and the Standard & Poor's 100 evaluation period 17 October 2001 to 14 November 2003

| Loss | Base model | Alternative models | | | | p -value T^* |
|------|------------|--------------------|--------|--------|---------|------------------|
| | | UC-RV1 | UC-RV2 | ARFIMA | ARF.log | |
| MSE | UC-RV1 | – | 2.21 | 2.39 | 1.15 | 0.028 |
| | UC-RV2 | –2.21 | – | 0.38 | –0.99 | 0.564 |
| | ARFIMA | –2.39 | –0.38 | – | –1.07 | 1 [†] |
| | ARFIMA log | –1.15 | 0.99 | 1.07 | – | 0.197 |
| MAE | UC-RV1 | – | 7.05 | 7.28 | 9.08 | 0.000 |
| | UC-RV2 | –7.05 | – | –0.79 | 1.58 | 0.053 |
| | ARFIMA | –7.28 | 0.79 | – | 2.20 | 0.019 |
| | ARFIMA log | –9.08 | –1.85 | –2.20 | – | 1 [†] |
| HMSE | UC-RV1 | – | 2.80 | 2.97 | 2.89 | 0.011 |
| | UC-RV2 | –2.80 | – | –1.21 | 3.05 | 0.007 |
| | ARFIMA | –2.97 | 1.21 | – | 2.63 | 0.023 |
| | ARFIMA log | –2.89 | –3.05 | –2.63 | – | 1 [†] |
| HMAE | UC-RV1 | – | 7.96 | 7.82 | 8.78 | 0.000 |
| | UC-RV2 | –7.96 | – | –2.64 | 8.84 | 0.000 |
| | ARFIMA | –7.82 | 2.64 | – | 8.64 | 0.000 |
| | ARFIMA log | –8.78 | –8.84 | –8.64 | – | 1 [†] |

A positive value in column of an alternative model \mathcal{M}_k indicates it is superior to the base model according to a specific loss function. Final column has p -value of T^* test and can be interpreted as the intensity of the base model producing superior forecasts. [†] A unity value indicates here that the test is not computed since the model outperformed all others.

Table 5: Superior predictive ability (SPA) test λ_k for daily SV models and the Standard & Poor's 100 evaluation period 17 October 2001 to 14 November 2003

| Loss | Base model | Alternative models | | | | | | p -value T^* |
|------|------------|--------------------|-------|-------|-------|-------|-------|------------------|
| | | SV | SV RV | SV IV | GARCH | GA.RV | GA.IV | |
| MSE | SV | – | 0.73 | –1.26 | –2.42 | –1.02 | –1.91 | 0.604 |
| | SV RV | –0.73 | – | –1.68 | –3.72 | –1.34 | –2.06 | 1 [†] |
| | SV IV | 1.26 | 1.68 | – | 0.60 | –0.00 | 0.44 | 0.089 |
| | GARCH | 2.42 | 3.72 | –0.60 | – | –0.45 | –0.13 | 0.002 |
| | GARCH RV | 1.02 | 1.34 | 0.00 | 0.45 | – | 0.37 | 0.164 |
| | GARCH IV | 1.91 | 2.06 | –0.44 | 0.13 | –0.37 | – | 0.027 |
| MAE | SV | – | 5.86 | 2.42 | –5.32 | 0.21 | –1.02 | 0.000 |
| | SV RV | –5.86 | – | –0.76 | –10.5 | –3.41 | –4.05 | 1 [†] |
| | SV IV | –2.42 | 0.76 | – | –4.50 | –1.79 | –2.69 | 0.400 |
| | GARCH | 5.32 | 10.5 | 4.50 | – | 2.05 | 0.80 | 0.000 |
| | GARCH RV | –0.21 | 3.41 | 1.79 | –2.05 | – | –0.89 | 0.004 |
| | GARCH IV | 1.02 | 4.05 | 2.69 | –0.80 | 0.89 | – | 0.000 |
| HMSE | SV | – | 2.01 | 1.94 | –6.00 | 0.94 | 0.04 | 0.070 |
| | SV RV | –2.01 | – | –0.55 | –2.32 | –3.07 | –1.90 | 1 [†] |
| | SV IV | –1.94 | 0.55 | – | –2.26 | –3.06 | –1.83 | 0.575 |
| | GARCH | 6.00 | 2.32 | 2.26 | – | 1.45 | 1.15 | 0.000 |
| | GARCH RV | –0.94 | 3.07 | 3.06 | –1.46 | – | –0.80 | 0.009 |
| | GARCH IV | –0.04 | 1.90 | 1.83 | –1.15 | 0.80 | – | 0.089 |
| HMAE | SV | – | 7.76 | 7.99 | –10.1 | 2.26 | 1.77 | 0.000 |
| | SV RV | –7.76 | – | 0.25 | –9.11 | –5.46 | –4.39 | 0.405 |
| | SV IV | –7.99 | –0.25 | – | –9.66 | –6.69 | –4.48 | 1 [†] |
| | GARCH | 10.1 | 9.11 | 9.66 | – | 4.77 | 3.17 | 0.000 |
| | GARCH RV | –2.26 | 5.46 | 6.69 | –4.77 | – | 0.11 | 0.000 |
| | GARCH IV | –1.77 | 4.39 | 4.48 | –3.17 | –0.11 | – | 0.000 |

A positive value in column of an alternative model \mathcal{M}_k means it is superior to the base model according to a specific loss function. Final column has p -value of T^* test and can be interpreted as the intensity of the base model producing superior forecasts. [†] A unity value indicates here that model outperformed all others.

Andersen, Bollerslev, Diebold, and Labys (2003) although the empirical part of their study is based on various GARCH and (trivariate) ARFIMA models for exchange rates while this study considers univariate ARFIMA models together with unobserved component models (based on Lévy driven OU processes) for a stock index time series.

7 Summary and Conclusions

In this paper we examine the predictive abilities of four classes of volatility models by comparing the forecasts with realised volatility measures that are defined as scaled sums of squared intraday returns. Time series of realised volatility can be modelled by unobserved components (UC-RV) and by autoregressive fractionally integrated moving average (ARFIMA-RV) models. Forecasts can be generated from these models after they are estimated using relatively straightforward methods. Daily returns can be modelled by stochastic volatility (SV) and generalised autoregressive conditional heteroskedasticity (GARCH) models from which volatility estimates and forecasts can be obtained. In the case of GARCH models, estimation and forecasting belong to the standard toolbox of many applied workers. More involved statistical procedures are required for estimating and forecasting volatility on the basis of SV models. We empirically investigate the one-step ahead forecasting performance of the various models for the Standard & Poor's 100 stock index over the period 17 October 2001 to 14 November 2003. The most accurate forecasts are obtained with the log ARFIMA-RV model and closely followed by the UC-RV model. Within the classes of historical volatility models, the SV model with realised volatility incorporated as an explanatory variable in the volatility equation is best. These conclusions are not only based on a standard forecasting accuracy assessment using mean squared forecast error and mean absolute forecast error statistics, formal prediction superiority tests are also carried out. The implementation closely follows the developments reported in White (2000) and Hansen (2001). This extensive study may have shed some light on the discussion which model is mostly suited for the forecasting of volatility. In this respect we would like to stress the importance of realised volatility in empirical work. Recent work by Andersen, Bollerslev, Diebold and Ebens (2001), Barndorff-Nielsen and Shephard (2001, 2002), Andersen, Bollerslev, Diebold and Labys (2003) and work in progress on realised volatility is therefore highly relevant for the forecasting of volatility.

References

- Andersen, T.G. and T. Bollerslev (1997), Intraday seasonality and volatility persistence in foreign exchange and equity markets, *Journal of Empirical Finance* **4**, 115–158.
- Andersen, T.G. and T. Bollerslev (1998), Answering the skeptics: Yes, standard volatility models do provide accurate forecasts, *International Economic Review* **39**, 885–905.
- Andersen, T.G., T. Bollerslev, F.X. Diebold, and H. Ebens (2001), The distribution of realized stock return volatility, *Journal of Financial Economics* **61**, 43–76.
- Andersen, T.G., T. Bollerslev, F.X. Diebold, and P. Labys (2001), The distribution of exchange rate volatility, *Journal of the American Statistical Association* **96**, 42–55.
- Andersen, T.G., T. Bollerslev, F.X. Diebold, and P. Labys (2003), Modeling and forecasting realized volatility, *Econometrica* **71**, 579–625.

- Andersen, T.G., T. Bollerslev, and S. Lange (1999), Forecasting financial market volatility: sample frequency vis-à-vis forecast horizon, *Journal of Empirical Finance* **6**, 457–477.
- Areal, N.M.P.C. and S.J. Taylor (2002), The realized volatility of FTSE-100 futures prices, *Journal of Futures Markets* **22**, 627–648.
- Barndorff-Nielsen, O.E. and N. Shephard (2001), Non-Gaussian OU based models and some of their uses in financial economics (with discussion), *Journal of the Royal Statistical Society, Series B* **63**, 167–241.
- Barndorff-Nielsen, O.E. and N. Shephard (2002), Econometric analysis of realised volatility and its use in estimating Stochastic Volatility models, *Journal of the Royal Statistical Society, Series B* **64**, 253–280.
- Barndorff-Nielsen, O.E. and N. Shephard (2004a), Measuring and forecasting financial variability using realised variance, In A.C. Harvey, S.J. Koopman, and N. Shephard (Eds.), *State space and unobserved components models: theory and applications*, Cambridge University Press, Cambridge.
- Barndorff-Nielsen, O.E. and N. Shephard (2004b), Power and bipower variation with stochastic volatility and jumps (with discussion), *Journal of Financial Econometrics* **3**, Forthcoming.
- Barucci, E. and R. Reno (2002), On measuring volatility of diffusion processes with high frequency data, *Economic Letters* **74**, 371–378.
- Beckers, S. (1981), Standard deviations implied in options prices as predictors of future stock price variability, *Journal of Banking and Finance* **5**, 363–381.
- Bera, A.K. and M.L. Higgins (1993), ARCH models: properties, estimation and testing, *Journal of Economic Surveys* **7**, 305–366.
- Blair, B.J., S.H. Poon, and S.J. Taylor (2001), Forecasting S&P 100 volatility: the incremental information content of implied volatilities and high frequency returns, *Journal of Econometrics* **105**, 5–26.
- Bollerslev, T. (1986), Generalized autoregressive conditional heteroskedasticity, *Journal of Econometrics* **31**, 307–327.
- Bollerslev, T., R.Y. Chou, and K.F. Kroner (1992), ARCH modeling in Finance: a review of the theory and empirical evidence, *Journal of Econometrics* **52**, 5–59.
- Bollerslev, T., R.F. Engle, and D.B. Nelson (1994), ARCH models, In R.F. Engle and D.L. McFadden (Eds.), *Handbook of Econometrics*, Volume 4, pp. 2959–3038, Elsevier Science, Amsterdam.
- Bos, C.S., P.H. Franses, and M. Ooms (2002), Inflation, forecast intervals and long memory regression models, *International Journal of Forecasting* **18**, 243–264.
- Brodsky, J. and C.M. Hurvich (1999), Multi-step forecasting for long-memory processes, *Journal of Forecasting* **18**, 59–75.
- Chiras, D.P. and S. Manaster (1978), The information content of options prices and a test of market efficiency, *Journal of Financial Economics* **6**, 213–234.
- Christensen, B.J. and N.R. Prabhala (1998), The relation between implied and realized volatility, *Journal of Financial Economics* **50**, 125–150.

- Corsi, F., G. Zumbach, U. Müller, and M. Dacorogna (2001), Consistent high-precision volatility from high-frequency data, *Economic Notes* **30**, 183–204.
- de Jong, P. and N. Shephard (1995), The simulation smoother for time series models, *Biometrika* **82**, 339–350.
- Diebold, F.X. and R.S. Mariano (1995), Comparing predictive accuracy, *Journal of Business and Economic Statistics* **13**, 253–263.
- Doornik, J.A. (2001), *Ox: Object Oriented Matrix Programming, 3.0*, London: Timberlake Consultants Press.
- Doornik, J.A. and M. Ooms (2001), A package for estimating, forecasting and simulating Arfima models: Arfima package 1.01 for Ox, Working Paper, Nuffield College, Oxford.
- Doornik, J.A. and M. Ooms (2003), Computational aspects of maximum likelihood estimation of autoregressive fractionally integrated moving average models, *Computational Statistics and Data Analysis* **42**, 333–348.
- Durbin, J. and S.J. Koopman (1997), Monte Carlo maximum likelihood estimation for non-Gaussian state space models, *Biometrika* **84**, 669–684.
- Durbin, J. and S.J. Koopman (2000), Time series analysis of non-Gaussian observations based on state space models from both classical and Bayesian perspectives (with discussion), *Journal of the Royal Statistical Society, Series B* **62**, 3–56.
- Durbin, J. and S.J. Koopman (2001), *Time series analysis by state space methods*, Oxford University Press, Oxford.
- Durbin, J. and S.J. Koopman (2002), A simple and efficient simulation smoother for state space time series analysis, *Biometrika* **89**, 603–616.
- Engle, Robert F (1982), Autoregressive conditional heteroskedasticity with estimates of the variance of the United Kingdom Inflation, *Econometrica* **50**, 987–1007.
- Feinstein, S.P. (1995), The Black-Scholes formula is nearly linear in σ for at-the-money options; therefore implied volatilities from at-the-money options are virtually unbiased, Working Paper, Boston University.
- Fleming, J. (1998), The quality of market volatility forecast implied by S&P 100 index option prices, *Journal of Empirical Finance* **5**, 317–345.
- Fleming, J., B. Ostdiek, and R.E. Whaley (1995), Predicting stock market volatility: a new measure, *Journal of Futures Markets* **15**, 265–302.
- Fleming, J. and R.E. Whaley (1994), The value of wildcard options, *Journal of Finance* **49**, 215–236.
- French, K.R., G.W. Schwert, and R.F. Stambaugh (1987), Expected stock returns and volatility, *Journal of Financial Economics* **19**, 3–29.
- Ghysels, E., A.C. Harvey, and E. Renault (1996), Stochastic Volatility, In G.S. Maddala and C.R. Rao (Eds.), *Handbook of Statistics, Volume 14, Statistical Methods in Finance*, pp. 119–191, North-Holland, Amsterdam.
- Giot, P. (2003), The information content of implied volatility in agricultural commodity markets, *Journal of Futures Markets* **23**, 441–454.

- Giot, P. and S. Laurent (2004), Modelling daily Value-at-Risk using realized volatility and ARCH type models, *Journal of Empirical Finance* **11**, forthcoming.
- Hansen, P.R. (2001), A test for superior predictive ability, Discussion Paper, Brown University Working Paper 2001-06.
- Hansen, P.R. and A. Lunde (2002), Volatility estimation using high frequency data with partial availability, Discussion Paper, Brown University Working Paper.
- Hansen, P.R. and A. Lunde (2003a), Consistent reordering with an estimated criterion function, with an application to the evaluation and comparison of volatility models, Discussion Paper, Brown University Working Paper 2003-01.
- Hansen, P.R. and A. Lunde (2003b), A forecast comparison of volatility models: does anything beat a GARCH(1,1)?, Discussion Paper, Brown University Working Paper.
- Harvey, A.C., E. Ruiz, and N. Shephard (1994), Multivariate Stochastic Variance models, *Review of Economic Studies* **61**, 247–264.
- Harvey, C.R. and R.E. Whaley (1992), Dividends and S&P 100 index option valuation, *Journal of Futures Markets* **12**(2), 123–137.
- Hull, J. and A. White (1987), The pricing of options on assets with stochastic volatilities, *Journal of Finance* **42**, 281–300.
- Koopman, S.J., N. Shephard, and J. Doornik (1999), Statistical algorithms for models in state space using SsfPack 2.2, *Econometrics Journal* **2**, 113–166.
- Latané, H.A. and R.J. Rendleman (1976), Standard deviations of stock price ratios implied in option prices, *Journal of Finance* **31**, 369–381.
- Laurent, S. and J.P. Peters (2002), G@RCH 2.2: an Ox package for estimating and forecasting various ARCH models, *Journal of Economic Surveys* **16**, 447–484.
- Lee, K.M. and S.J. Koopman (2003), Estimating Stochastic Volatility models: a comparison of two importance samplers, Discussion Paper, Free University Amsterdam.
- Malliavin, P. and M.E. Mancino (2002), Fourier series method for measurement of multivariate volatilities, *Finance and Stochastics* **6**, 49–61.
- Martens, M. (2001), Forecasting daily exchange rate volatility using intraday returns, *Journal of International Money and Finance* **20**, 1–23.
- Martens, M. (2002), Measuring and forecasting S&P 500 index-futures volatility using high-frequency data, *Journal of Futures Markets* **22**, 497–518.
- Meddahi, N. (2003), ARMA representation of integrated and realized variances, *Econometrics Journal* **6**, 335–356.
- Politis, D.N. and J.P. Romano (1994), The stationary bootstrap, *Journal of the American Statistical Association* **89**, 1303–1313.
- Poon, S.H. and C. Granger (2003), Forecasting volatility in financial markets: a review, *Journal of Economic Literature* **41**, 478–539.

- Poon, S.H. and S.J. Taylor (1992), Stock returns and volatility: an empirical study of the UK stock market, *Journal of Banking and Finance* **16**, 37–59.
- Ripley, B.D. (1987), *Stochastic simulation*, Wiley, New York.
- Sandmann, G. and S.J. Koopman (1998), Estimation of Stochastic Volatility models via Monte Carlo maximum likelihood, *Journal of Econometrics* **87**, 271–301.
- Shephard, N. (1996), Statistical aspects of ARCH and Stochastic Volatility, In D.R. Cox, D.V. Hinkley, and O.E. Barndorff-Nielsen (Eds.), *Time Series Models in Econometrics, Finance and Other Fields*, Number 65 in Monographs on Statistics and Applied Probability, pp. 1–67, Chapman and Hall, London.
- Shephard, N. and M.K. Pitt (1997), Likelihood analysis of non-Gaussian measurement time series, *Biometrika* **84**, 653–667.
- Sowell, F. (1992), Maximum likelihood estimation of stationary univariate fractionally integrated time series models, *Journal of Econometrics* **53**, 165–188.
- Taylor, S.J. (1986), *Modelling financial time series*, John Wiley and Sons, Chichester.
- Taylor, S.J. and X. Xu (1997), The incremental volatility information in one million foreign exchange quotations, *Journal of Empirical Finance* **4**, 317–340.
- West, K.D. (1996), Asymptotic inference about predictive ability, *Econometrica* **64**, 1067–1084.
- White, H. (2000), A reality check for data snooping, *Econometrica* **68**, 1097–1126.