

Baruník, Jozef; Vácha, Lukáš; Vošvrda, Miloslav

Working Paper

Tail behavior of the Central European Stock markets during the financial crisis

IES Working Paper, No. 4/2010

Provided in Cooperation with:

Charles University, Institute of Economic Studies (IES)

Suggested Citation: Baruník, Jozef; Vácha, Lukáš; Vošvrda, Miloslav (2010) : Tail behavior of the Central European Stock markets during the financial crisis, IES Working Paper, No. 4/2010, Charles University in Prague, Institute of Economic Studies (IES), Prague

This Version is available at:

<https://hdl.handle.net/10419/83368>

Standard-Nutzungsbedingungen:

Die Dokumente auf EconStor dürfen zu eigenen wissenschaftlichen Zwecken und zum Privatgebrauch gespeichert und kopiert werden.

Sie dürfen die Dokumente nicht für öffentliche oder kommerzielle Zwecke vervielfältigen, öffentlich ausstellen, öffentlich zugänglich machen, vertreiben oder anderweitig nutzen.

Sofern die Verfasser die Dokumente unter Open-Content-Lizenzen (insbesondere CC-Lizenzen) zur Verfügung gestellt haben sollten, gelten abweichend von diesen Nutzungsbedingungen die in der dort genannten Lizenz gewährten Nutzungsrechte.

Terms of use:

Documents in EconStor may be saved and copied for your personal and scholarly purposes.

You are not to copy documents for public or commercial purposes, to exhibit the documents publicly, to make them publicly available on the internet, or to distribute or otherwise use the documents in public.

If the documents have been made available under an Open Content Licence (especially Creative Commons Licences), you may exercise further usage rights as specified in the indicated licence.

Institute of Economic Studies, Faculty of Social Sciences
Charles University in Prague

Tail Behavior of the Central European Stock Markets during the Financial Crisis

Jozef Barunik
Lukas Vacha
Miloslav Vosvrda

IES Working Paper: 4/2010



Institute of Economic Studies,
Faculty of Social Sciences,
Charles University in Prague

[UK FSV – IES]

Opletalova 26
CZ-110 00, Prague
E-mail : ies@fsv.cuni.cz
<http://ies.fsv.cuni.cz>

Institut ekonomických studií
Fakulta sociálních věd
Univerzita Karlova v Praze

Opletalova 26
110 00 Praha 1

E-mail : ies@fsv.cuni.cz
<http://ies.fsv.cuni.cz>

Disclaimer: The IES Working Papers is an online paper series for works by the faculty and students of the Institute of Economic Studies, Faculty of Social Sciences, Charles University in Prague, Czech Republic. The papers are peer reviewed, but they are *not* edited or formatted by the editors. The views expressed in documents served by this site do not reflect the views of the IES or any other Charles University Department. They are the sole property of the respective authors. Additional info at: ies@fsv.cuni.cz

Copyright Notice: Although all documents published by the IES are provided without charge, they are licensed for personal, academic or educational use. All rights are reserved by the authors.

Citations: All references to documents served by this site must be appropriately cited.

Bibliographic information:

Barunik, J., Vacha, L., Vosvrda, M. (2010). “ Tail Behavior of the Central European Stock Markets during the Financial Crisis ” IES Working Paper 4/2010. IES FSV. Charles University.

This paper can be downloaded at: <http://ies.fsv.cuni.cz>

Tail Behavior of the Central European Stock Markets during the Financial Crisis

Jozef Barunik*

Lukas Vacha#

Miloslav Vosvrda^o

* IES, Charles University Prague
and

Institute of Information Theory and Automation,
Academy of Sciences of the Czech Republic, Prague
E-mail: barunik@utia.cas.cz

^oIES, Charles University Prague
and

Institute of Information Theory and Automation,
Academy of Sciences of the Czech Republic, Prague

March 2010

Abstract:

In the paper we research statistical properties of the Central European stock markets. We focus mainly on the tail behavior of the Czech, Polish, and Hungarian stock markets and compare them to the benchmark U.S. and German stock markets. We fit the data of the 4-year period from March 2005 to March 2009 with the stable probability distribution model and discuss its tail behavior. As the estimation of the tail exponent is very sensitive to the size of the data set, the estimates can be misleading for short daily samples. Thus, we employ high-frequency 1-minute data, which proves to be a good choice as it reveals interesting findings about the distributional properties. Furthermore, we study the difference in stock market behavior before and during the financial crisis.

Keywords: financial crisis, tail behavior, stock markets, stable probability distribution

JEL: G14, C13, C16

Acknowledgements:

Support from the Czech Science Foundation under Grants 402/09/0965, 402/09/H045, and 402/08/P207 and from Ministry of Education MSMT 0021620841 is gratefully acknowledged.

1. INTRODUCTION

Statistical analysis of financial data has been of vigorous interest in recent years, mainly among the physics community (Mantegna and Stanley, 2000; Bouchaud and Potters, 2001; Buchanan, 2002; Mantegna et al., 1999; Plerou et al., 2000; Stanley et al., 2000; Stanley, 2003). One of the main reasons driving the research is the use of established statistical characteristics to better describe and understand the real-world financial data.

Financial returns are believed to be the cumulative outcome of an enormous number of pieces of information and decisions arriving almost continuously in time (McCulloch, 1996; Rachev and Mittnik, 2000). Since the pioneering work of Louis Bachelier in 1900, they have been modeled by the Gaussian distribution. The strongest argument supporting this assumption is based on the Central Limit Theorem, which states that the sum of a large number of independent, identically distributed variables from a finite-variance distribution will tend to be normally distributed. However, financial returns have heavier tails, which may be a source of infinite variance.

In response to the empirical evidence, Mandelbrot (1963) and Fama (1965) proposed stable distributions as an alternative to the Gaussian distribution model. Stable distributions were introduced by Levy (1925). Lévy investigated the behavior of sums of independent random variables. In the literature stable distributions are also called Lévy stable, Lévy laws, α -stable, Paretian stable or stable laws. Although we know other heavy-tailed alternative distributions (such as student's t , hyperbolic or inverse normal Gaussian), stable distributions are attractive for researchers as they are supported by the generalized Central Limit Theorem. The theorem states that stable laws are the only possible limit distributions for properly normalized and centered sums of independent, identically distributed random variables. A sum of two independent random variables having a Lévy stable distribution with parameter α is again a Lévy stable distribution with the same parameter α . However, this invariance property does not hold for different values of α . Observed stock market prices are argued to be the sum of many small terms, hence a stable model should be used to describe them. When $\alpha < 2$, the variance of the stable distribution is infinite and the tails are asymptotically equivalent to a Pareto law, i.e., they exhibit power-law behavior. Stable distributions have been proposed as a model for many types of physical and economic systems as they can accommodate fat tails and asymmetry and fit the data well. Examples in finance and economics are given in Mandelbrot (1963), Fama (1965), Embrechts et al. (1997) and Rachev and Mittnik (2000).

There have, however, been many applications of Lévy stable distributions to empirical data sets which could raise doubts about the correctness of the tail estimate

(Lux, 1996; Voit, 2005). There is a significant difference between the value of the estimated α (based on the whole data set) and the estimated tail exponent, introduced in extreme-value theory. The tail exponent is estimated only on an arbitrarily chosen part of the data (Hill, 1975; Weron, 2001). Since extreme observations of prices on financial markets are of great importance, this problem deserves further research. If α is underestimated, the occurrence of extreme events is overestimated. Weron (2001) shows that the estimated tail exponent is very sensitive to changes in parameters and to the size of the data set, hence the estimates can be highly misleading. Simulations show that a large data set (10^6) is needed for identification of the true tail behavior. The logical step is to use high-resolution data analysis. Lux (1996) was one of the first to use high-frequency data, doing so for analysis of the German stock market index. Several studies concerning estimation of stable distributions followed (Mantegna and Stanley, 2000; Dacorogna et al., 2001; Voit, 2005).

In our paper, we append an analysis of Central European stock markets to the discussions. In the first part, we briefly discuss the basics of stable distributions and their tail behavior. In the second part, we focus on empirical analysis of the daily returns of the Czech PX, Polish WIG, Hungarian BUX, German DAX, and U.S. SP500 stock market indices. We fit the stable distribution to the empirical distributions of all the indices during the period of March 2005 to March 2009. Moreover, we divide this period into two equal halves so we can compare the behavior before and during the crisis. After a discussion of the appropriateness of the stable model for our data and a description of the tail behavior, we employ high-frequency data in the analysis. We estimate the stable parameters for each day and use the intraday γ for standardization of the daily data. Finally, the high-frequency data allow us to study the standardized daily returns adjusted for volatility.

2. STABLE DISTRIBUTIONS

Stable distributions are a class of probability laws with appealing theoretical properties. Their application to financial modeling comes from the fact that they generalize the Gaussian distribution, which does not describe well-known stylized facts about stock market data. Stable distributions allow for heavy tails and skewness. In this paper, we provide a basic idea about stable distributions. Interested readers can find the theorems and proofs in Nolan (2003), Zolotarev (1986), and Samorodnitsky and Taqqu (1994).

The reason for the term stable is that stable distributions retain their shape up to scale and shift under addition: if X, X_1, X_2, \dots, X_n are independent, identically distributed stable random variables, then for every n

$$(1) \quad X_1 + X_2 + \dots + X_n \stackrel{d}{=} c_n X + d_n$$

for constants $c_n > 0$ and d_n . Equality ($\stackrel{d}{=}$) here means that the right-hand and left-hand sides have the same distribution. Normal distributions satisfy this property: the sum of normals is normal. In general, the class of all laws satisfying (1) can be described by four parameters, $(\alpha, \beta, \gamma, \delta)$. Parameter α is called the *index* of the law or the *index of stability* or *characteristic exponent* and must be in the range $\alpha \in (0, 2]$. The coefficients c_n are equal to $n^{1/\alpha}$. Parameter β is called the *skewness* of the law and must be in the range $-1 \leq \beta \leq 1$. If $\beta = 0$, the distribution is symmetric, if $\beta > 0$ it is skewed to the right, and if $\beta < 0$ it is skewed to the left. While parameters α and β determine the shape of the distribution, γ and δ are scale and location parameters, respectively.

Due to a lack of closed form formulas for probability density functions (except for three stable distributions: Gaussian, Cauchy, and Levy) the α -stable distribution can be described by a characteristic function which is the inverse Fourier transform of the probability density function, i.e., $\phi(u) = E \exp(iuX)$.

A confusing issue with stable parameters is that there are multiple parametrizations used in the literature. Nolan (2003) provides a good guide to all the definitions. In this paper, we will use Nolan's parametrization, which is jointly continuous in all four parameters. A random variable X is distributed by $S(\alpha, \beta, \gamma, \delta)$ if it has the following characteristic function:

$$(2) \quad \phi(u) = \begin{cases} \exp(-\gamma^\alpha |u|^\alpha [1 + i\beta(\tan \frac{\pi\alpha}{2})(\text{sign}u)(|\gamma u|^{1-\alpha} - 1)] + i\delta u) & \alpha \neq 1 \\ \exp(-\gamma |u| [1 + i\beta \frac{2}{\pi}(\text{sign}u) \ln(\gamma |u|)] + i\delta u) & \alpha = 1 \end{cases}$$

There are only three cases where a closed-form expression for density exists and we can verify directly if the distribution is stable – the Gaussian, Cauchy, and Lévy distributions. Gaussian laws are stable with $\alpha = 2$ and $\beta = 0$. More precisely, $N(0, \sigma^2) = S(2, 0, \sigma/\sqrt{2}, 0)$. Cauchy laws are stable with $\alpha = 1$ and $\beta = 0$, Cauchy(γ, δ) = $S(1, 0, \gamma, \delta)$; and finally, Lévy laws are stable with $\alpha = 1/2$ and $\beta = 1$; Lévy(γ, δ) = $S(1/2, 1, \gamma, \gamma + \delta)$. Nolan (2003) shows these examples in detail.

For all values of parameter $\alpha < 2$ and $-1 < \beta < 1$, stable distributions have two tails that are asymptotically power laws. The asymptotic tail behavior of non-Gaussian stable laws for $X \sim S(\alpha, \beta, \gamma, \delta)$ with $\alpha < 2$ and $-1 < \beta < 1$ is defined as follows:

$$(3) \quad \lim_{x \rightarrow \infty} x^\alpha P(X > x) = c_\alpha (1 + \beta) \gamma^\alpha$$

$$(4) \quad \lim_{x \rightarrow \infty} x^\alpha P(X < -x) = c_\alpha (1 - \beta) \gamma^\alpha,$$

where

$$(5) \quad c_\alpha = \sin\left(\frac{\pi\alpha}{2}\right) \Gamma(\alpha) / \pi.$$

If the data is stable, the empirical distribution function should be approximately a straight line with slope $-\alpha$ in a log-log plot.

A negative aspect of non-Gaussian stable distributions ($\alpha < 2$) is that not all moments exist.¹ The first moment EX is not finite when $\alpha \leq 1$. On the other hand, when $1 < \alpha \leq 2$ the first moment is defined as

$$(6) \quad EX = \mu = \delta - \beta\gamma \tan \frac{\pi\alpha}{2}.$$

Non-Gaussian stable distributions do not have finite second moment. It is also important to emphasize that the skewness parameter β is different from the classical skewness parameter used for the Gaussian distribution. It cannot be defined because the second and third moments do not exist for non-Gaussian stable distributions. The kurtosis is also undefined, because the fourth moment does not exist either.

The index of stability α gives important information about financial market behavior. When $\alpha < 2$, extreme events are more probable than for the Gaussian distribution. From an economic point of view some values of parameter α do not make sense. For example, in the interval $0 < \alpha < 1$ the random variable X does not have a finite mean. In this case, an asset with returns which follow a stable law with $0 < \alpha < 1$ would have an infinite expected return. Thus, we are looking for $1 < \alpha < 2$ to be able to predict extreme values more precisely than by the Gaussian distribution.

There are several methods for estimating the parameters of stable distributions. For a detailed discussion, see Nolan (2003), McCulloch (1996). In our paper, we use maximum likelihood estimation of the parameters.

¹It is possible to define a fractional absolute moment of order p , where p is any real number. For $0 < p < \alpha$, $E|X|^p$ is finite, but for $p \geq \alpha$, $E|X|^p = \infty$ (Nolan, 2003).

3. DAILY DATA

In this section, we will use different real-world data sets consisting of Central European and U.S. stock market indices in order to study their distributions. More precisely, we use 1,000 daily prices from March 2005 until March 2009 of value-weighted PX, BUX, WIG, DAX, and SP500 indices, representing an approximation of the Czech, Hungarian, Polish, German, and U.S. stock market indices, respectively.

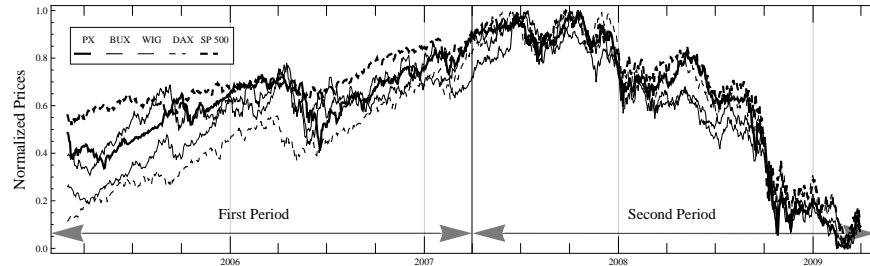


FIGURE 1. Prices of the indices examined, normalized to the $[0, 1]$ interval. The plot also shows the division into two periods, the first one before the crisis and the second during the crisis

Figure 1 shows the plots of all the indices. In our analysis, we examine the differences in the distributions of two groups: the Central European stock markets as represented by PX, BUX, and WIG (plotted by solid lines in Figure 1) and DAX and SP500 as benchmarks (plotted by dotted lines in Figure 1). We also divide the data set into two subsets, the first one before the first quarter of 2007 and the other one during the crisis. We will refer to these two groups as the *first period* and the *second period* in the text. The division is logical as it allows us to study the differences in behavior of all the stock market indices before the crisis during the steady state growth period, and during the crisis. We can also compare the differences across the two groups of stock markets studied.

4. EMPIRICAL PROBABILITY DENSITIES

The logarithmic daily changes of all the indices are fitted with stable probability densities. For the estimation, we use John P. Nolan's STABLE² program, which can compute stable densities, cumulative distribution functions, and quantiles. We use

²The STABLE program is available at <http://academic2.american.edu/~jpnolan/stable/stable.html>

the maximum likelihood method, which yields reliable results for our sample size (Nolan and Surami, 1999). The fitted stable parameters of $S(\alpha, \beta, \gamma, \delta)$ (Equation 2) are listed in Table 1. The fits are divided according to the periods examined. The fit for the whole period is given first, followed by the fits for the *first period* and *second period* subsamples.

	α	β	γ	δ
Whole Period (2005–2009)				
PX	1.4790 (0.0974)	-0.2540 (0.1739)	0.0079 (0.0005)	0.0010 (0.0008)
BUX	1.6986 (0.0941)	-0.1393 (0.2610)	0.0103 (0.0006)	0.0001 (0.0011)
WIG	1.7424 (0.0900)	-0.3001 (0.2885)	0.0108 (0.0006)	0.0009 (0.0011)
DAX	1.5309 (0.0973)	-0.3093 (0.1857)	0.0071 (0.0005)	0.0013 (0.0008)
SP 500	1.2873 (0.0933)	-0.2021 (0.1387)	0.0056 (0.0004)	0.0008 (0.0006)
First Period (2005–2007)				
PX	1.6055 (0.1363)	-0.3848 (0.2913)	0.0063 (0.0006)	0.0019 (0.0009)
BUX	1.9098 (0.0912)	-0.5716 (0.7837)	0.0098 (0.0007)	0.0011 (0.0014)
WIG	1.8543 (0.1048)	-0.5964 (0.5619)	0.0090 (0.0007)	0.0022 (0.0014)
DAX	1.8712 (0.0891)	-0.9447 (0.2367)	0.0059 (0.0004)	0.0020 (0.0009)
SP 500	1.8515 (0.1100)	-0.1233 (0.6411)	0.0042 (0.0003)	0.0005 (0.0006)
Second Period (2007–2009)				
PX	1.4974 (0.1387)	-0.1607 (0.2575)	0.0103 (0.0009)	-0.0004 (0.0016)
BUX	1.5597 (0.1390)	-0.0403 (0.2922)	0.0109 (0.0009)	-0.0011 (0.0016)
WIG	1.7945 (0.1218)	-0.2262 (0.4746)	0.0130 (0.0010)	-0.0008 (0.0019)
DAX	1.5189 (0.1382)	-0.2339 (0.2622)	0.0092 (0.0008)	0.0001 (0.0014)
SP 500	1.3855 (0.1360)	-0.2007 (0.2202)	0.0095 (0.0009)	0.0002 (0.0014)

TABLE 1. Stable parameter estimates for the two groups of indices: PX, BUX, and WIG, and DAX and SP 500. The number in parenthesis is the 95% confidence interval half-width estimate.

Looking at whole period, we can observe that for all markets parameter α is less than 2, indicating that the fitted stable density might be non-Gaussian. All distributions show asymmetry to some extent. The scale parameter γ is small for all fits and the location parameter δ is close to zero for all markets.

Figure 2 completes the information about the fits, as it provides the stable density fits with histograms for all the stock market indices and periods tested.

For the whole tested period of 2005 to 2009, WIG and BUX have the highest estimated α . PX does not seem to belong in this group, as it shows a lower α which is

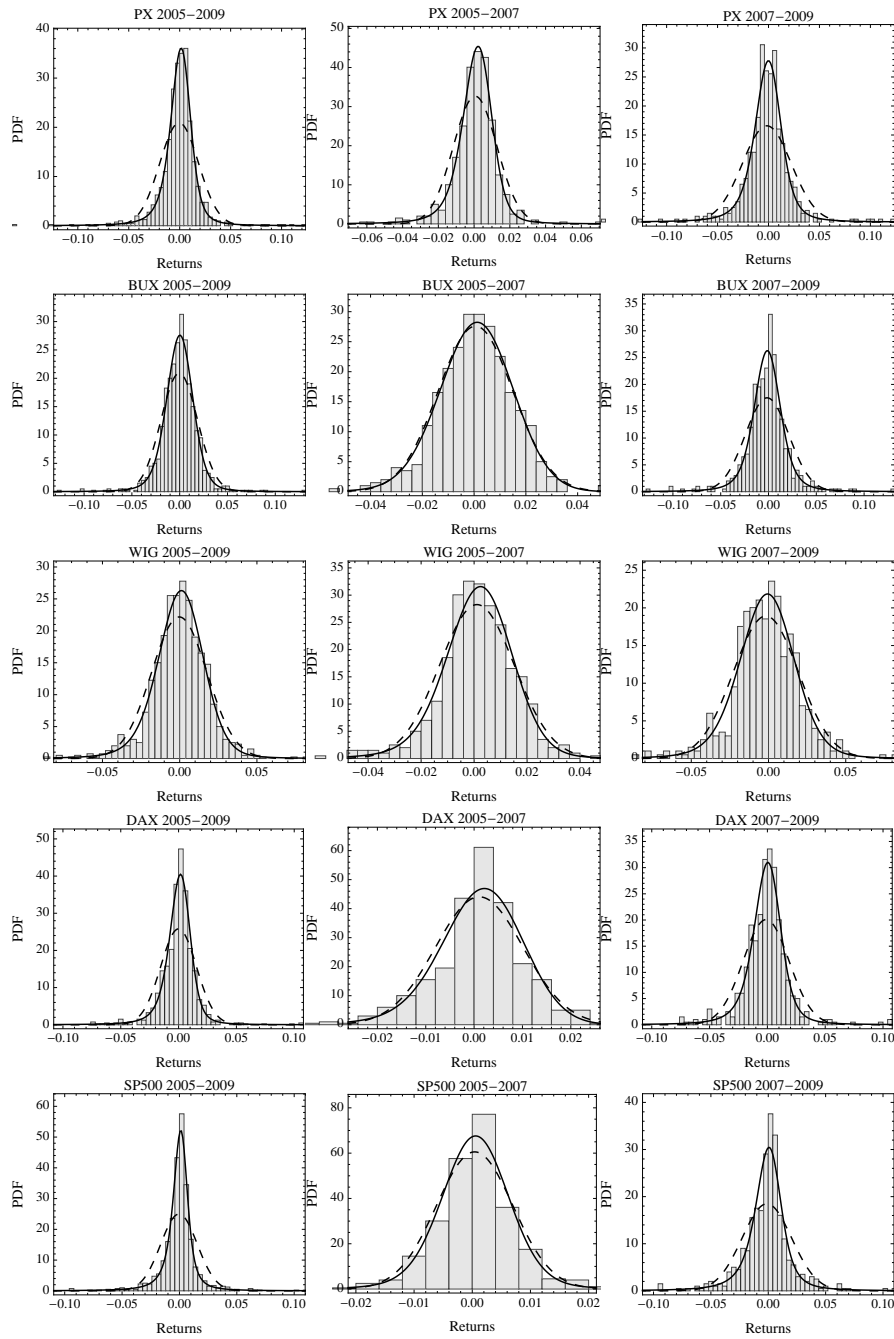


FIGURE 2. Estimated stable probability density functions of PX, BUX, WIG, DAX, and SP500 in solid lines, compared to the normal distribution function in dashed lines and histograms. Note the vertical division according to the periods tested. The whole period for all indices is given in the first column. The second and third columns show the fits of the *first* and *second* sub-periods, respectively.

not significantly different from the benchmark DAX index. On the other hand, the other benchmark index, SP500, has a significantly lower α than all the other indices. This is also valid when we divide the period into two sub-periods. Thus, we can see that the most developed and the most liquid U.S. stock market, as represented by SP500 index, departs from normality ($\alpha = 2$) and also from the group of Central European stock markets. Interestingly, DAX shows very similar estimates of stable parameters compared to the Central European indices.

The division of the data sets into the *first period* and the *second period* shows us more interesting results. All the α estimates of the *second period* are lower when compared to the *first period*, while the α of BUX, DAX, and SP500 are significantly lower. This indicates that from the Central European group, only the BUX index has significantly different tail behavior during the crisis than before the crisis³. On the other hand, the more developed stock markets in Germany and the USA show significantly heavier tails during the *second period*. This observation is confirmed by Figure 2. From Figure 2, we can also observe that the distributions from the *first period* are much closer to the normal distribution, while the distributions from the *second period* of the financial crisis clearly depart from the normal distribution.

The Jarque-Bera statistics also strongly reject normality of all the stock market indices for the whole period. When we divide the period into two sub-samples, for the first period the Jarque-Bera statistics show departure from the normal distribution at the 99% significance level for all indices except BUX. For BUX, they reject the null of normality at 95%. For the *second period*, the Jarque-Bera statistics again strongly reject normality for all the stock market indices examined.

5. TAIL BEHAVIOR

While the fit of the stable parameters to the data set seems reasonable, it is not surprising that one can fit a data set with a 4-parameter stable model better than with a 2-parameter normal model. Thus, a relevant question is whether or not the stable fit describes the data better. For this purpose, goodness-of-fit diagnostics are used. The first one is a simple density plot and the second one is a variance-stabilized PP plot. Figure 2 shows us the density plots with histograms. We can observe that the stable fit describes the distributions more reasonably than the normal distribution for the *second period*. We cannot really conclude this for the *first period* (these results

³This result is most likely influenced by the severe economic problems that started before the current financial crisis.

are confirmed by the more rigorous analysis in the previous section). The PP plot of all fits is on the diagonal⁴, which also confirms the good fit of the model used.

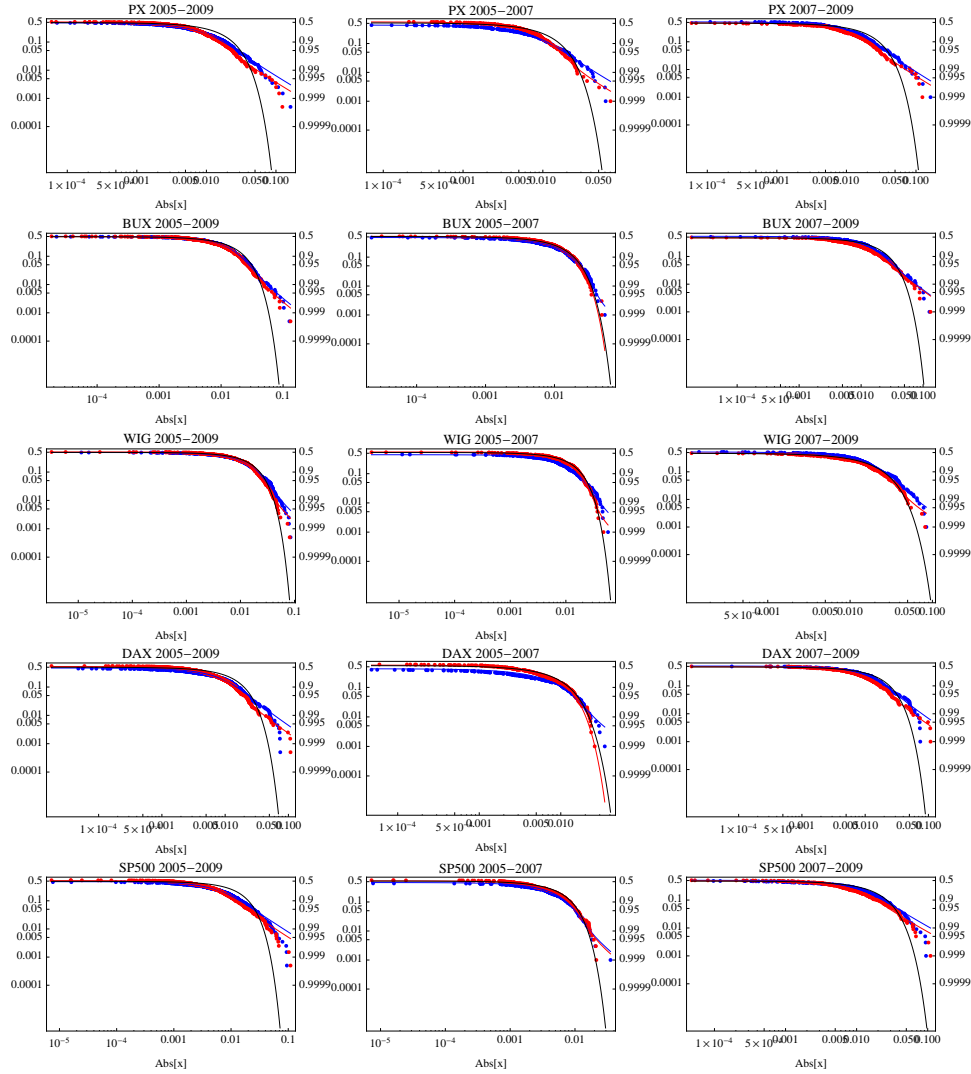


FIGURE 3. Log-log plots of stable distribution fits for all indices for different periods. The absolute value of the left tail is in blue and the absolute value of the right tail is in red. For comparison, the tail of the normal distribution is in black and is not linear.

⁴We do not provide all the PP plots here for reasons of space. They can be provided by the authors on request

The previous analysis did not show us a lot of details about the tails. The estimated α exponents may provide a clue to the tail behavior, but more rigorous analysis is needed to draw any conclusions. The tails are the most important part of the distribution we are interested in when studying financial data, so the motivation to take a closer look is really strong. First of all, we will use log-log fits to the cumulative distribution function. Stable distributions with $\alpha < 2$ should show linear parallel tails with a slope of minus α . Moreover, if β is zero, the tails are superimposed. When $\beta = \pm 1$, the lighter tail is not linear. Figure 3 shows the log-log plot⁵ for our tested grid of stock market indices and periods. We also provide the tail of the normal distribution calculated from the sample, which is not linear.

From Figure 3 one can observe that the tails of the actual data are slightly lighter than the tail exponents from the stable fits. There are points visible on the right side of the graphs that lie below the two straight lines that characterize the stable fit. These points represent the most extreme observations on both the left and right tails of the distribution. An imaginary line drawn through these few points on the tails has a steeper slope than the line representing the stable fit (a higher absolute value of α). To provide a deeper and more rigorous insight into the tail behavior, we need more sophisticated methods of tail exponent estimation.

There are basically two tail index estimation methods. The first is based on log-log linear regression of the cumulative distribution function and the second is the Hill estimator (Hill, 1975). The Hill estimator tends to overestimate the tail exponent of a stable distribution if α is close to two and the sample size is not very large. In general, both methods are very sensitive to the choice of parameters. For a more detailed discussion see Weron (2001) and Embrechts et al. (1997). In our analysis we use the first method, calculating the tail exponent estimates from the upper and the lower 2% data tails. The results are provided in Table 2. All the values of the tail exponent estimates are higher than the stable parameter estimates α from the previous section listed in Table 1.

Generally, we can see that the tail exponents from the *second period* are lower than the tail exponents from the *first period*, which confirms our previous result that the stock market distribution from the pre-crisis period behaves more normally and the *second period* can be better described by stable distributions, which catch the heavy tails. But none of the estimates of the tail exponent α is less than 2. According to the generalized central limit theorem, sums of random variables from distributions with

⁵The log-log plot is a two-dimensional graph that uses logarithmic scales on both the horizontal and vertical axes. The plot shows a log-log fit to the cumulative distribution function. The absolute value of the left tail is shown in blue and the absolute value of the right tail is shown as 1- probability in red.

linear tail exponents $\alpha < 2$ will converge to a stable distribution. Those with higher tail exponents will converge to a normal distribution on summation. Thus, none of our data comes from a stable distribution. Moreover, if we take a simulation derived from the fit of our data (Table 1) and reconstruct a price series, we find extreme changes more frequently than are ever found in a real financial time series. Thus, stable fit overestimates the frequency of extreme events for financial data.

	Whole Period		First Period		Second Period	
	Left	Right	Left	Right	Left	Right
PX	2.0484	2.8222	2.4851	3.7801	2.2089	2.7226
BUX	2.8735	2.5276	4.5662	6.0168	2.9692	3.6715
WIG	4.3111	4.2127	7.3268	6.3841	4.0577	5.7020
DAX	2.0199	4.7485	14.048	4.9252	2.4838	5.5519
SP500	2.9095	3.4848	8.2624	3.3343	3.1789	3.7717

TABLE 2. The tail exponents α for all the stock indices and periods tested. Table shows the exponents for both the right and left tails

While the value of the tail exponent α has its asymptotic limit 2, it turns out to provide quite restrictive support for conclusions about the tail behavior (Weron, 2001). Using simulations, Weron shows that reported values of the tail exponent α of around 3 may very well indicate a Lévy-stable distribution with $\alpha \approx 1.8$. Log-log linear regression is also very sensitive to the sample size and the choice of the number of observations used in the regression. Moreover, a slope of around -3 (tail exponent α equal to 3) may indicate non-Lévy-stable power-law decay in the tails or, on the contrary, a Lévy-stable distribution with $\alpha \approx 1.8$.

Weron (2001) also shows that for a typically sized data set of 10^4 or less, the plot may be quite misleading. The true tail behavior of stable laws is visible only for extremely large data sets, which leads us to the use of high-frequency asset returns. Moreover, we have to keep in mind that the choice of observations used in the regression is subjective and can yield large estimation errors.

6. HIGH FREQUENCY DATA

The previous analysis suggests that the stable model is more appropriate for the tested data than the normal one, but we are not able to prove it as we are not able to draw conclusions about the tail behavior. We follow our experiment with the assumption that there is a structure that can be observed in the volatility of

the financial time series. Stable distributions have the mathematical property that the absolute mean deviation of a sample from the stable distribution $S(\alpha, \beta, \gamma, \delta)$ is proportional to the scale factor, γ .

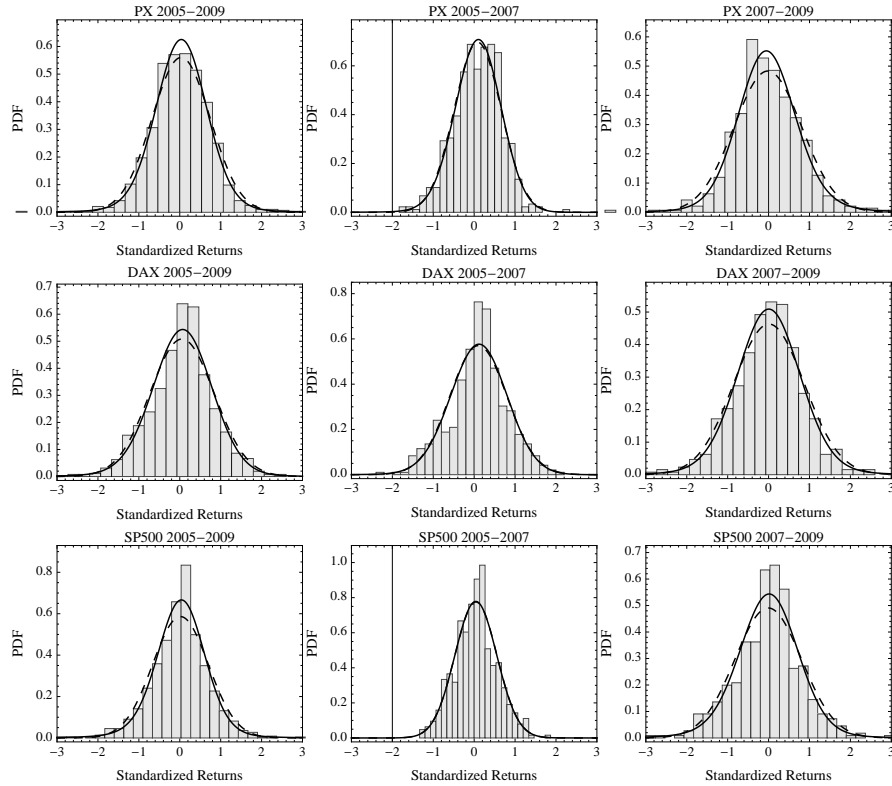


FIGURE 4. Estimated stable probability density functions of standardized PX, DAX, and SP500 in solid lines, compared to the normal distribution function in dashed lines and histograms. Note the vertical division according to the periods tested. The whole period for all indices is given in the first column. The second and third columns show the fits of the *first* and *second* sub-periods, respectively.

To explore the data-generating process in further detail, we employ higher resolution data.⁶ More precisely, we use 1-minute prices. We only have access to PX, DAX, and SP500 1-minute prices for the period of March 2005 until March 2009, so we

⁶There are several studies concerning the estimation of stable distributions on high frequency data. For example, tail exponents of the German stock market are examined in Lux (1996). Detailed treatments of the topic can be found in Mantegna and Stanley (2000), Dacorogna et al. (2001), and Voit (2005)

	α	β	γ	δ
Whole Period (2005 - 2009)				
PX	1.8610 (0.0740)	-0.0678 (0.4617)	0.4518 (0.0233)	0.0369 (0.0369)
DAX	1.8813 (0.0738)	-0.3046 (0.5138)	0.515810 (0.0275)	0.0724 (0.0553)
SP 500	1.8232 (0.0843)	-0.2049 (0.4002)	0.4276 (0.0241)	0.0343 (0.0471)
First Period (2005 - 2007)				
PX	1.9207 (0.0818)	-0.6774 (0.7652)	0.3908 (0.0265)	0.1085 (0.0548)
DAX	2.0000 (0.0000)	-0.4288 (0.2367)	0.494007 (0.0313)	0.1020 (0.0626)
SP 500	1.8515 (0.1100)	-0.1233 (0.6411)	-0.0878 (0.0231)	0.432 (0.0463)
Second Period (2007 - 2009)				
PX	1.8486 (0.1063)	0.2580(0.6005)	0.5169 (0.0379)	-0.451 (-0.0751)
DAX	2.0000 (0.0000)	-0.0878 (0.7064)	0.5535 (0.0424)	0.0061 (0.0843)
SP 500	1.8558 (0.1114)	-0.2250 (0.6622)	0.5233 (0.0406)	0.0603 (0.0806)

TABLE 3. Stable parameter estimates for standardized indices by estimates of γ for PX, DAX, and SP 500. The number in parenthesis is the 95% confidence interval half-width estimate.

decided it would be sufficient to continue the analysis leaving out the BUX and WIG indices. The trading days are concatenated so that there is no gap between a closing price and the next open.

For each day we compute the parameters of the stable distribution so we obtain 1,000 daily estimates of all the parameters. The variation of the intraday scale factor γ can be viewed as an estimate of the daily volatility of the series. Thus, we scale the daily returns by the square root of the γ estimate. Figure 4 shows the histograms of these standardized data as well as the stable and normal fits. Table 3 shows the parameter estimates of the stable fits to these scaled daily series.

We can observe immediately that all the α estimates are larger than the α estimates of the unstandardized data (Table 1). Again, we are interested in the details of the tails. Figure 5 shows the left and right tails of all the estimates of the standardized data. All of them are closer to the stable fit when compared with the fits of the raw data in Figure 3. Jarque-Berra statistics strongly reject⁷ normality of all the data for the whole sample. The statistics are much lower than the Jarque-Berra values for the unstandardized daily data. Interestingly, the test does not reject normality of the data at the 95% level for the PX series and at 90% for the DAX and SP500 series during the *first period*. For DAX and SP500, the statistics are very close to 1.

⁷at the 99% significance level

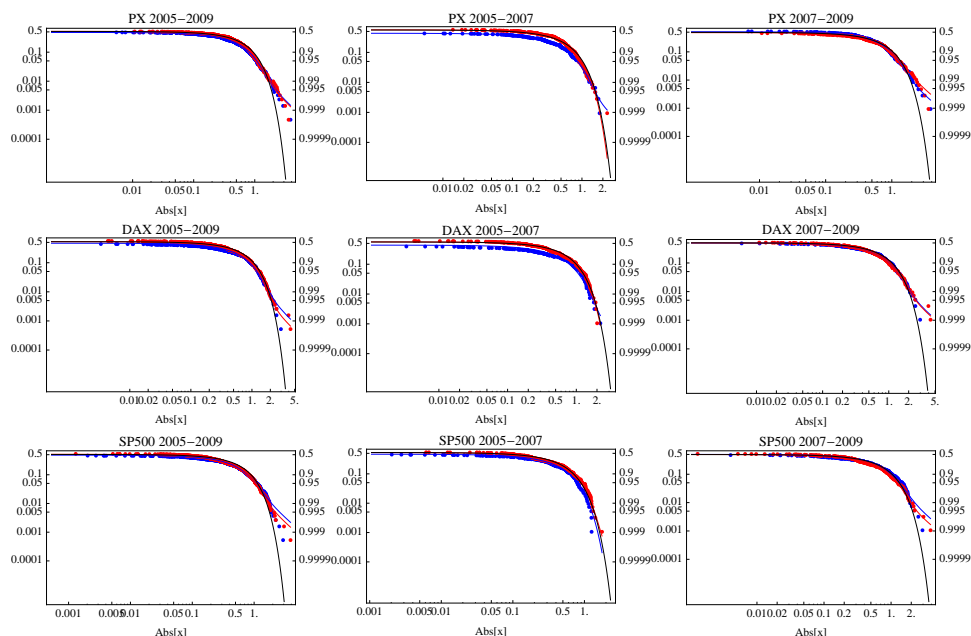


FIGURE 5. Log-log plots of stable distribution fits for all standardized indices for different periods. The absolute value of the left tail is in blue and the absolute value of the right tail is in red. For comparison, the tail of the normal distribution is in black and is not linear.

For the *second period*, the Jarque-Berra statistics again strongly reject⁸ the null of normality of all the tested data.

7. CONCLUSION

In this paper, we investigated the statistical behavior of two groups of data; a Central European group, represented by the Czech PX, Polish WIG, and Hungarian BUX indices, and the benchmark German DAX and U.S. SP500. Moreover, we divided the tested period of March 2005 to March 2009 into two sub-periods. The first half of the data represents the pre-crisis period and the second half comprises data of the current world financial crisis. We fit the stable distribution to all the data sets and sub-periods.

The first period does not show any significant departure from the normal distribution, while the second period does. When we explore the tail behavior in detail, we find that the stable distribution fits embody fatter tails than can be observed in the

⁸at the 99% significance level

data. We thus arrive at the same result as other studies, namely, that the real data show fatter-than-normal but lighter-than-stable tails. In other words, the stable fit overestimates extreme events in the stock markets. We came across another tail estimation problem during the analysis: a large estimation error when using small data sets. This problem can be addressed using high frequency data. As we cannot say that the analyzed daily returns come from stable random data, we continue the analysis.

For the further analysis, we employ 1-minute index returns. We use γ estimates for each day to standardize the daily index returns. This step encounters the observation of dependence in volatility. The stable fits and tails of these standardized returns are much closer to a stable random distribution and show that stock market returns may be generated from a mixture distribution of stable random variables and a volatility process, which is the only part which carries information and can be predicted. When the volatility is adjusted out, what remains is a stable random model.

Of course, this observation is far from being proof of financial time series behavior. Nevertheless, it seems reasonable to say that the price formation process emerges from sums of returns and these are driven by a fat-tailed distribution in market order books. This process becomes extremely complicated and does not have the convenient features of simple mathematical laws that might be attributed to independent and identically distributed random variables.

REFERENCES

- Bouchaud, J. P. and M. Potters (2001). *Theory of Financial Risks: From Statistical Physics to Risk Management*. Cambridge: Cambridge University Press.
- Buchanan, M. (2002). The physics on the trading floor. *Nature* 10-12(415).
- Dacorogna, M., R. Gençay, U. Mueller, and O. Pictet (2001). *An Introduction to High-Frequency finance*. Academic press.
- Embrechts, P., C. Kluppelberg, and T. Mikosch (1997). *Modelling Extremal Events for Insurance and Finance*. Heidelberg: Springer Verlag.
- Fama, E. (1965). The behavior of stock prices. *Journal of Business* (38), 34–105.
- Hill, B. M. (1975). A simple general approach to inference about the tail of a distribution. *The Annals of Statistics* 3(5), 1163–1174.
- Levy, P. (1925). *Calcul des Probabilites*. Gauthier Villars.

- Lux, T. (1996). The stable paretian hypothesis and the frequency of large returns. *Applied Financial Economics* 6, 463–475.
- Mandelbrot, B. (1963). The variation of certain speculative prices. *Journal of Business* (26), 394–419.
- Mantegna, R., Z. Palagyi, and H. Stanley (1999). Applications of statistical mechanics to finance. *Physica A* 274(1-2), 216–221.
- Mantegna, R. and H. Stanley (2000). *An Introduction to Econophysics*. Cambridge: Cambridge University Press.
- McCulloch, J. H. (1996). *Financial applications of stable distributions* (Handbook of Statistics ed.), Volume 14. Elsevier.
- Nolan, J. P. (2003). *Stable Distributions: Models for Heavy Tailed Data*. Boston, MA: Birkhauser.
- Nolan, J. P. and A. Surami (Eds.) (1999). *Heavy Tails*, Washington. ASA-IMS Conference.
- Plerou, V., P. Gopikrishnan, B. Rosenow, L. A. N. Amaral, and H. E. Stanley (2000). A random matrix theory approach to financial cross-correlations. *Physica A* 287(3-4), 374–382.
- Rachev, S. T. and S. Mittnik (2000). *Stable Paretian Models in Finance*. New York: Wiley.
- Samorodnitsky, G. and M. S. Taqqu (1994). *Stable Non-Gaussian Random Processes*. New York: Chapman and Hall.
- Stanley, H. (2003). Statistical physics and economic fluctuations: do outliers exist? *Physica A* 318(1-2), 279–292.
- Stanley, H., L. Amaral, P. Gopikrishnan, and V. Plerou (2000). Scale invariance and universality of economic fluctuations. *Physica A* 283(1-2), 31–41.
- Voit, J. (2005). *The Statistical Mechanics of Financial Markets*. Heidelberg: Springer-Verlag Berlin.
- Weron, R. (2001). Lévy-stable distributions revisited: Tail index > 2 does not exclude the levy-stable regime. *International Journal of Modern Physics C* 12, 209–223.
- Zolotarev, V. M. (1986). *One-Dimensional Stable Distributions*, Volume 65 of *Amer. Math. Soc. Transl. of Math. Monographs*. Providence, RI: Amer. Math. Soc.

IES Working Paper Series

2009

1. František Turnovec : *Fairness and Squareness: Fair Decision Making Rules in the EU Council?*
2. Radovan Chalupka : *Improving Risk Adjustment in the Czech Republic*
3. Jan Průša : *The Most Efficient Czech SME Sectors: An Application of Robust Data Envelopment Analysis*
4. Kamila Fialová, Martina Mysíková : *Labor Market Participation: The Impact of Social Benefits in the Czech Republic*
5. Kateřina Pavloková : *Time to death and health expenditure of the Czech health care system*
6. Kamila Fialová, Martina Mysíková : *Minimum Wage: Labour Market Consequences in the Czech Republic*
7. Tomáš Havránek : *Subsidy Competition for FDI: Fierce or Weak?*
8. Ondřej Schneider : *Reforming Pensions in Europe: Economic Fundamentals and Political Factors*
9. Jiří Witzany : *Loss, Default, and Loss Given Default Modeling*
10. Michal Bauer, Julie Chytilová : *Do children make women more patient? Experimental evidence from Indian villages*
11. Roman Horváth : *Interest Margins Determinants of Czech Banks*
12. Lenka Štátná : *Spatial Interdependence of Local Public Expenditures: Selected Evidence from the Czech Republic*
13. František Turnovec : *Efficiency of Fairness in Voting Systems*
14. Martin Gregor, Dalibor Roháč : *The Optimal State Aid Control: No Control*
15. Ondřej Glazar, Wadim Strielkowski : *Turkey and the European Union: possible incidence of the EU accession on migration flows*
16. Michaela Vlasáková Baruníková : *Option Pricing: The empirical tests of the Black-Scholes pricing formula and the feed-forward networks*
17. Eva Ryšavá, Elisa Galeotti : *Determinants of FDI in Czech Manufacturing Industries between 2000-2006*
18. Martin Gregor, Lenka Štátná : *Mobile criminals, immobile crime: the efficiency of decentralized crime deterrence*
19. František Turnovec : *How much of Federalism in the European Union*
20. Tomáš Havránek : *Rose Effect and the Euro: The Magic is Gone*
21. Jiří Witzany : *Estimating LGD Correlation*
22. Linnéa Lundberg, Jiri Novak, Maria Vikman : *Ethical vs. Non-Ethical – Is There a Difference? Analyzing Performance of Ethical and Non-Ethical Investment Funds*
23. Jozef Barunik, Lukas Vacha : *Wavelet Analysis of Central European Stock Market Behaviour During the Crisis*
24. Michaela Krčilková, Jan Zápal : *OCA cubed: Mundell in 3D*
25. Jan Průša : *A General Framework to Evaluate Economic Efficiency with an Application to British SME*
26. Ladislav Kristoufek : *Classical and modified rescaled range analysis: Sampling properties under heavy tails*
27. Natálie Švarcová, Petr Švarc : *Diffusion Processes on Complex Networks*

28. Goran Serdarević, Petr Teplý : Efficiency of EU Merger Control in the 1990-2008 Period
29. Jiri Novak, Dalibor Petr : *Empirical Risk Factors in Realized Stock Returns*
30. Karel Janda, Eva Michalíková, Věra Potácelová : *Vyplácí se podporovat exportní úvěry?*
31. Karel Janda, Jakub Mikolášek, Martin Netuka : *The Estimation of Complete Almost Ideal Demand System from Czech Household Budget Survey Data*
32. Karel Janda, Barbora Svárovská : *Investing into Microfinance Investment Funds*

2010

1. Petra Benešová, Petr Teplý : *Main Flaws of The Collateralized Debt Obligation's Valuation Before And During The 2008/2009 Global Turmoil*
2. Jiří Witzany, Michal Rychnovský, Pavel Charamza : *Survival Analysis in LGD Modeling*
3. Ladislav Kristoufek : *Long-range dependence in returns and volatility of Central European Stock Indices*
4. Jozef Barunik, Lukas Vacha, Miloslav Vosvrda : *Tail Behavior of the Central European Stock Markets during the Financial Crisis*

All papers can be downloaded at: <http://ies.fsv.cuni.cz>

