

Österholm, Pär

Working Paper

Incorporating Judgement in Fan Charts

Working Paper, No. 2006:30

Provided in Cooperation with:

Department of Economics, Uppsala University

Suggested Citation: Österholm, Pär (2006) : Incorporating Judgement in Fan Charts, Working Paper, No. 2006:30, Uppsala University, Department of Economics, Uppsala, <https://nbn-resolving.de/urn:nbn:se:uu:diva-19541>

This Version is available at:

<https://hdl.handle.net/10419/82702>

Standard-Nutzungsbedingungen:

Die Dokumente auf EconStor dürfen zu eigenen wissenschaftlichen Zwecken und zum Privatgebrauch gespeichert und kopiert werden.

Sie dürfen die Dokumente nicht für öffentliche oder kommerzielle Zwecke vervielfältigen, öffentlich ausstellen, öffentlich zugänglich machen, vertreiben oder anderweitig nutzen.

Sofern die Verfasser die Dokumente unter Open-Content-Lizenzen (insbesondere CC-Lizenzen) zur Verfügung gestellt haben sollten, gelten abweichend von diesen Nutzungsbedingungen die in der dort genannten Lizenz gewährten Nutzungsrechte.

Terms of use:

Documents in EconStor may be saved and copied for your personal and scholarly purposes.

You are not to copy documents for public or commercial purposes, to exhibit the documents publicly, to make them publicly available on the internet, or to distribute or otherwise use the documents in public.

If the documents have been made available under an Open Content Licence (especially Creative Commons Licences), you may exercise further usage rights as specified in the indicated licence.



UPPSALA
UNIVERSITET

Working Paper 2006:30

Department of Economics

Incorporating Judgement in Fan Charts

Pär Österholm

Department of Economics
Uppsala University
P.O. Box 513
SE-751 20 Uppsala
Sweden
Fax: +46 18 471 14 78

Working paper 2006:30
November 2006
ISSN 1653-6975

INCORPORATING JUDGEMENT IN FAN CHARTS

PÄR ÖSTERHOLM

Papers in the Working Paper Series are published
on internet in PDF formats.
Download from <http://www.nek.uu.se>
or from S-WoPEC <http://swopec.hhs.se/uunewp/>

Incorporating Judgement in Fan Charts[#]

Pär Österholm*

Sveriges Riksbank and Department of Economics, Uppsala University

November 20, 2006

Abstract

Within a decision-making group, such as the monetary-policy committee of a central bank, group members often hold differing views about the future of key economic variables. Such differences of opinion can be thought of as reflecting differing sets of judgement. This paper suggests modelling each agent's judgement as one scenario in a macroeconomic model. Each judgement set has a specific dynamic impact on the system, and accordingly, a particular predictive density – or *fan chart* – associated with it. A weighted linear combination of the predictive densities yields a final predictive density that correctly reflects the uncertainty perceived by the agents generating the forecast. In a model-based environment, this framework allows judgement to be incorporated into fan charts in a formalised manner.

JEL Classification: C15, C53, E17, E50

Keywords: Forecasts, Predictive density, Linear opinion pool

[#] I am grateful to Meredith Beechey, Per Jansson, Stefan Laséen, Eric Leeper, Athanasios Orphanides, Lars Svensson, Tom Tallarini, Mattias Villani, Jonathan Wright, Fredrik Wulfsberg and seminar participants at the Board of Governors of the Federal Reserve System, Georgetown University, the International Monetary Fund, the National Institute of Economic Research, Norges Bank and Sveriges Riksbank for valuable comments on this paper and to Mattias Villani for providing Matlab code. Financial support from Jan Wallander's and Tom Hedelius' foundation is gratefully acknowledged. The views expressed in this paper are solely the responsibility of the author and should not be interpreted as reflecting the views of the executive board of Sveriges Riksbank.

* Department of Economics, Uppsala University, Box 513, 751 20 Uppsala, Sweden
e-mail: par.osterholm@nek.uu.se Phone: +1 202 378 4135

1. Introduction

Most economists agree that there is no such thing as a perfect model. In the absence of such, it is widely accepted that incorporating judgement into forecasting and policy analysis is both desirable and necessary.¹ The aim of this paper is to present a framework in which judgement can be incorporated in a formal and model-consistent manner into a model-based forecasting process. Specifically, we show how predictive densities associated with differing sets of judgement can be combined to achieve the overall goal of one final predictive density for each macroeconomic variable of interest.

Predictive densities are most familiarly represented as *fan charts*, which are used in a range of applications, the best known probably being the inflation fan charts published by the Bank of England. The nature of monetary policy and its lags demand that central banks devote much time and energy to forecasting, and addressing how to incorporate judgement into their forecasts is paramount. Consider the following situation: The monetary policy committee at a central bank is about to make a decision regarding the policy interest rate. A main scenario – generated, perhaps, by the staff responsible for macroeconomic forecasting – is presented. One member of the committee is concerned that upcoming wage negotiations will lead to faster wage growth the coming year, while another member believes that foreign demand will be stronger than predicted in the main scenario. How can these views be accommodated in the forecasting process?

The methodology put forward in this paper takes its starting point from the suggestion that judgement could be modelled as a scenario in a general-equilibrium type macroeconomic model. A scenario is defined by laying down the probability density function for a number of future observations for one or more variables in the system. Thus the way in which judgement is modelled in this paper resembles the way in which Sims (1982) and Leeper and Zha (2003) model policy interventions. The main methodological distinction between the current paper and previous studies is that we allow specification of distributions for future values of any variable instead of just those under the control of the policy maker.

¹ See for example Lawrence *et al.* (1985), McNees (1990), Reifschneider *et al.* (1997), Sanders and Ritzman (1999), Svensson (2005) and Svensson and Tetlow (2005). However, the opposing viewpoint has some currency. Authors arguing against the general usage of judgement when statistical methods are available include Armstrong (1985) and Makridakis (1988).

This modelling choice allows us to observe the dynamic effect of judgement upon the system. The dynamic impact is encapsulated in a predictive density corresponding to each judgement set. We suggest that the predictive densities associated with the different scenarios be combined into one final fan chart via a weighted linear combination, a method also referred to as the *linear opinion pool*. This allows judgement to be incorporated in the final fan chart in a model-consistent manner that correctly reflects the uncertainty perceived by the agents generating the forecasts.

In the previous literature, the typical way to address judgement has been to adjust the level of a chosen variable with “intercept corrections” or “add factors”; for examples of this, see Reifschneider *et al.* (1997), Clements and Hendry (1998) and Svensson (2005). Such adjustments may be based on systematic historical forecast errors, rules of thumb, alternative models or other, more or less *ad hoc*, methods. The methodology suggested in this paper is similar in spirit to the previous literature that has taken a more formal approach to the incorporation of judgement.² The motivation for turning away from *ad hoc* methods is that whilst judgement may improve forecasting performance, it can also introduce inconsistencies and shortcomings in the process, such as forecast bias and damaged forecast accuracy (Armstrong, 1985; Hogarth, 1987). An example of such shortcomings can be found in the Riksbank’s fan charts. Because of the way in which judgement is incorporated, the fan charts have the undesirable property that inflation and its determinants can *always* be more uncertain than usual.³ While the methodology proposed in this paper is not immune to all potential problems that judgement can introduce to the forecasting process, it alleviates several through the use of general-equilibrium type models – such as DSGE or VAR models – that ensure the equilibrium properties of the system are taken into account.

Another advantage of the method proposed in this paper is its ability to address several conflicting scenarios, a practical issue noted by Svensson and Tetlow (2005).⁴ From an empirical point of view, this is an appealing feature given the complexity of many forecasting processes and it is made feasible by the use of model-averaging techniques.

² Formalised use of judgement is advocated by for example Lawrence *et al.* (1986) and Sanders and Ritzman (1999).

³ For a description of how the Riksbank’s fan charts are generated, see Blix and Sellin (1998). See Leeper (2003) for a more detailed discussion of the shortcomings of this method.

⁴ Conflicting judgement regarding coefficients and models has been addressed by Svensson and Williams (2005).

Model averaging has frequently been employed in the forecasting literature – see, for example, Diebold and Pauly (1990) and Garratt *et al.* (2003) – but not in the way presently suggested. We argue that model-averaging techniques, such as the linear opinion pool, are a valuable tool to address judgement and forecast uncertainty.⁵

The remainder of this paper is organised as follows: Section 2 presents the background and terminology regarding judgement and lays down some notation. Section 3 discusses the combination of forecast densities, with extra attention paid to the issue of how to determine the weights for the linear opinion pool. In Section 4, the method is employed in an empirical application using a Bayesian VAR model. Finally, Section 5 concludes.

2. Modelling judgement

As stated in the introduction, the aim of this paper is to suggest a framework through which judgement can be incorporated in a forecasting process. In order to present the statistical methodology upon which the analysis relies, it will be useful to first describe what we mean by *judgement* and how this will be modelled. One potential definition is that by Svensson (2005, p. 2), who describes judgement as “*information, knowledge, and views outside the scope of a particular model*”. This is an appealingly broad description and roughly in line with economists’ conception of judgement in forecasting.

As a typical example of what could be seen as judgement in this framework, consider the task of forecasting future CPI inflation using a VAR model four periods ahead standing at time T . Assume next that a substantial cut in the value-added tax is decided upon by the parliament and announced to take place at $T+1$. Since the VAR model is purely backward looking, it will never be able to take the effects of this tax cut into account by itself (unless it is a recurring event). Given that we have this information, it is desirable to incorporate it into the forecast though.

Based on Svensson’s qualitative definition of judgement, it will be useful to look more closely at four cases of interest:

⁵ Whilst relying on tools from the multi-model inference literature, it should be noted though that this paper does not address the issue of model uncertainty; see for example Brock *et al.* (2003). Rather, the model will be taken as given in the analysis and it is the different sets of judgement that we wish to account for.

- i) There are known future values for one or more variables in the system and these are different from those suggested by the model.⁶
- ii) There are known future values for one or more variables not in the system, but which will affect the system, and these are different to those implicitly used by the model.
- iii) An agent's perceived probability density function (PDF) for predictions for one or more variables in the system differs from that suggested by the model.
- iv) An agent's perceived PDF for predictions for one or more variables not in the system, but which will affect the system, differs from that implicitly used by the model.

The first case is usually reasonably straightforward to deal with since we often simply can condition on the known values in the model. It is not completely trivial though as the forecaster typically has to decide how to generate the conditioning. Put differently, it must be decided upon which combination of shocks that caused the outcome. The question of which combination of shocks to use in order to generate a particular outcome or distribution is an equally important issue in all four cases above though and we will therefore discuss this issue in more detail below. From now on the discussion will, however, focus on the last three cases which are more interesting and they will be treated in the same way methodologically.

Turning to the way in which judgement will be modelled in this paper, we will initially denote by \mathbf{z}_t the $n \times 1$ vector of variables being modelled. We assume that there is a main scenario in the forecasting process, given, for example, by a macroeconomic model's endogenous forecast. Judgement – as described in cases *ii*), *iii*) and *iv*) above – is then represented as $M-1$ *alternative scenarios*, where a particular alternative scenario is defined as the PDF for the predictions of the $n_i^s \times 1$ vector $\mathbf{z}_{i,t}^s$ over the horizon $T + h_i^l$ to $T + h_i^u$,

⁶ By “different” we mean that the value used for point forecasting and evaluation – which typically is given by the mean, median or mode – is different from the known future value.

where $\mathbf{z}_{i,t}^s$ is a subset of the variables in \mathbf{z}_i with $1 \leq n_i^s \leq n$ and $h_i^l \leq h_i^u$ for $i = 1, \dots, M - 1$.

Stacking our predictions in the $n_i^s(h_i^u - h_i^l + 1) \times 1$ vector $\mathbf{k}_i = \left(\mathbf{z}_{i,T+h_i^l}^s{}' \quad \dots \quad \mathbf{z}_{i,T+h_i^u}^s{}' \right)'$, each scenario accordingly describes the PDF for the vector \mathbf{k}_i , denoted $\phi_i(\mathbf{k}_i)$. In empirical applications, we would typically expect h_i^l to equal one – or at least be small – since it is at short horizons that we think that judgement may be superior to models.⁷ It also appears reasonable to expect \mathbf{k}_i to be of fairly low dimension as it seems non-trivial to specify a distribution for a large number of variables over a long forecasting horizon.

Having specified $\phi_i(\mathbf{k}_i)$, the practical issue of how to generate the predictive density associated with that scenario remains. A number of methods for such conditional forecasting have been used in the literature – see for example Sims (1982), Doan *et al.* (1984), Waggoner and Zha (1999), Leeper and Zha (2003), Adolfson, Laséen, Lindé and Villani (2005), Cogley *et al.* (2005) and Robertson *et al.* (2005) – where stochastic simulation typically is an important feature. As the purpose of this paper is to evaluate judgement using the dynamic impact on the system, we will follow the line of research relying on repeated simulation of the model. In this framework, forecasts are generated by feeding shocks into the system and after making sure that the restrictions defined by $\phi_i(\mathbf{k}_i)$ are met we can observe the dynamic effects that a particular scenario has.⁸

We will not dwell on the technical details regarding the different ways of generating predictive densities from different scenarios here – instead the reader is referred to the above mentioned articles for details. One method will also be more closely described in the empirical application in Section 4. However, it is worth pointing out that when a scenario is generated we should – depending on application and, in particular, the information available – carefully consider if any shock(s) should be given a more pronounced position. For example, a scenario that describes a higher wage growth than suggested by the model could be generated in a number of ways depending on what the underlying causes are judged to be: Higher productivity or stronger labour unions might be the answer, but it

⁷ See for example Lawrence *et al.* (1986) and McNees (1990).

⁸ For empirical applications relying on the same principle, see for example Waggoner and Zha (1999) and Adolfson, Laséen, Lindé and Villani (2005).

could also be a weaker real exchange rate, a higher inflation rate or strong foreign demand. If we are fairly sure that the driving force in a particular scenario is a certain shock (or combination of shocks), this information should clearly be used when generating the scenario. Intuitively, it seems preferable to use as detailed information as possible as this should generate the highest accuracy. Empirical work along this line of reasoning can be found in Leeper and Zha (2003) and Adolfson, Laséen, Lindé and Villani (2005); in both articles was a constant future interest rate path generated by a monetary policy shock. Needless to say, we could on the other hand also be in the situation where we are almost completely agnostic regarding the underlying causes in a particular scenario. In such a case, it might be more reasonable to “plead ignorant” and a method such as that of Sims’ (1982) – in which the sum of squares of the shocks is minimised – could be one reasonable alternative.

3. Combining predictive densities

The way in which judgement is modelled is a key element in the methodological framework presented in this paper. An equally important issue though is how to generate a single predictive density which takes the $M-1$ sets of potentially conflicting judgement into account in a sensible way. In this paper we suggest that the linear opinion pool should be used for this purpose. This is a method to combine probability distributions with a strong support in the literature; see for example McKonway (1981) and Wallis (2005).⁹

Our goal is to generate the PDF for the stacked $n^y H \times 1$ vector of predictions

$\mathbf{y} = \left(\mathbf{z}_{T+1}^y \quad \dots \quad \mathbf{z}_{T+H}^y \right)'$, where the $n^y \times 1$ vector \mathbf{z}_t^y is a subset of the variables in \mathbf{z}_t with

$1 \leq n^y \leq n$. Employing the linear opinion pool, this is accomplished by taking a weighted average of the predictive densities under the main and alternative scenarios according to

$$p(\mathbf{y}) = \omega_1 f(\mathbf{y}) + \sum_{j=2}^M \omega_j g_j(\mathbf{y}), \quad (1)$$

⁹ An excellent review on previous literature regarding judgement and forecast combination can be found in Clemen and Winkler (1999).

where $f(\mathbf{y})$ and $g_j(\mathbf{y})$ are the predictive densities under the main and alternative scenarios respectively and ω_j are the weights each scenario receive which fulfil $\omega_j \geq 0$ and

$$\sum_{j=1}^M \omega_j = 1.$$

The linear opinion pool has a number of appealing features; the weighted density automatically integrates to one and, as pointed out by Clemen and Winkler (1999, p. 189), the method also “*satisfies a number of seemingly reasonable axioms*” such as the unanimity property and marginalisation property. Most importantly though, it allows us to in a straightforward way combine the predictive densities from all scenarios under consideration and this can be done regardless of whether they are compatible or at odds with each other.

The weighted density is not necessarily easy to describe though, as $p(\mathbf{y})$ typically is not of the same form as the distributions that were weighted together. For example, weighting together M normal distributions, $p(\mathbf{y})$ is in general not a normal distribution even though this assumption is not uncommon in the literature.¹⁰ But whilst this could be a potential problem when aiming for analytical expressions, it need not impose much of a problem in empirical applications.¹¹ The potentially complicated form of $p(\mathbf{y})$ should, however, not only be considered a problem. Clearly, it is also an advantage of the linear opinion pool that it – despite its simplicity – is able to generate for example bimodal distributions or distributions with fat tails.

What we have seen so far is that the suggested method to weight together the M different predictive densities as such obviously is very straightforward and easy to implement. However, one key question still remains, namely that of how to determine the weights ω_j .

3.1 Arbitrary weights

One solution to the problem of which weights to use in equation (1) is to simply employ an arbitrary set of weights which reflect the forecasters’ or decision makers’ probabilities over

¹⁰ See for example Hendry and Clements (2004)

¹¹ One appealing solution is to rely on numerical methods; we discuss the practical implementation of this issue in Section 4 and Appendix B in this paper.

the different scenarios. This solution has a certain appeal and has the advantage that it generates a weighted predictive density that correctly reflects the risk picture as perceived by the forecasters or decision makers. In some cases it should also be unproblematic to determine such arbitrary weights: Several sets of judgement could for example reflect several models used by the same agent – an agent that alone has all the power in the decision making process. In such a case the agent obviously just has to decide herself which weights to employ in equation (1).

However, different sets of judgement will often reflect the views of different agents; recall that the framework presented is intended as a potential tool for groups such as the monetary policy committee of a central bank. Needless to say, different agents need not necessarily agree upon which weights to assign to the different scenarios and formalised procedures to establish the weights are therefore of interest. Methods that describe decision making in a group in a formalised way include DeGroot (1974) and Öller (1978), where the former article describes a method to reach consensus and the latter suggests a voting procedure. In Öller's voting procedure, the votes could be evenly distributed over the agents involved in the process or also take additional information – such as each agent's previous forecast performance – into account. Relying on such procedures to establish the weights in equation (1) could clearly be of interest both to the equivalent of a monetary policy committee or a group responsible for generating forecasts at a lower level.

Usage of arbitrary weights obviously has some advantages, but the literature on model averaging and forecasting has typically relied on more formal methods to address the issue of forecast combination. Equal weights over models – that is, $\omega_j = 1/M$ for all j – is one method that has been commonly employed; see, for example, Diebold and Pauly (1990) and Hendry and Clements (2004). Optimal weights, derived by minimising the mean square error of the point forecast, was used by Granger and Ramanathan (1984) and Diebold and Pauly (1990). Akaike and Schwarz weights were used by Garratt *et al.* (2003) and Pesaran and Zaffaroni (2004) and Hall and Mitchell (2004) suggested that a data driven approach – aiming to minimise a test statistic – should be employed. In line with these more data-based methods to determine weights, we will next suggest an alternative to arbitrary weights.

3.2 Distance-based weights

Despite the relatively good supply of methods to determine weights for forecast combination, an additional approach will nevertheless be suggested here.¹² The suggested method takes its starting point in the idea that the main scenario in the forecasting process should be a forecast that there is quite some confidence in; this could for example be the endogenous forecast from a DSGE or VAR model with well-established forecasting properties. We next note that imposition of a certain PDF on \mathbf{k}_i typically has effects on the rest of the variables in the system at horizons beyond $T + h_i^l$. These effects can be large or small and the predictive density from an alternative scenario can accordingly have been shifted substantially or negligibly relative to the predictive density of the main scenario. A substantial shift implies a forceful intervention and we therefore argue that a substantial shift typically should render a scenario to be judged less likely.¹³ A small shift in the predictive density on the other hand implies that the added judgement was largely consistent with the benchmark density.

In line with the above arguments, we suggest that the weights in equation (1) could be set in such a way that deviations from the forecast density of the main scenario are penalised; the larger the distance between an alternative scenario's predictive density and the predictive density of the main scenario, the lower is the weight assigned to that scenario. In order to implement this principle for determining the weights, we need a measure of the distance between two densities though. The *Kullback-Leibler information criterion* (Kullback and Leibler, 1951) is a highly useful tool for this task; it measures the distance between two (potentially time-varying) distributions – one “reference distribution” (f) and one “alternative distribution” (g) – and is defined as

$$\delta(f, g) = \int f(\mathbf{v}) \ln \left(\frac{f(\mathbf{v})}{g(\mathbf{v})} \right) d\mathbf{v} = E_f \ln[f(\mathbf{v})] - E_f \ln[g(\mathbf{v})]. \quad (2)$$

¹² The interested reader is referred to Clemen (1989) for an extensive survey on methods and earlier literature.

¹³ A substantial shift maybe should not be judged unlikely if it is accompanied by a very good explanation. However, in some cases we should perhaps be concerned even if the explanation is good. For example, if the intervention is so large that it changes the way expectations are formed in the economy, the Lucas critique applies.

Clearly, $\delta(f, g) \geq 0$ and the smaller the value of $\delta(f, g)$, the closer the alternative distribution is to the reference distribution; $\delta(f, g) = 0$ only when $f = g$. In this paper we let f be the main scenario's predictive density and we will measure the distance between this distribution and the predictive densities from all scenarios.

The empirical usefulness of the Kullback-Leibler information criterion (KLIC) has been thoroughly established and it has been employed as an evaluation measure in recent work by for example Cogley *et al.* (2005) and Robertson *et al.* (2005). The work of Cogley *et al.* is similar in spirit to this paper; employing a Bayesian VAR to generate fan charts for U.K. inflation, they then investigated – using the KLIC as one of several measures – how much the model needed to be “twisted” in order to match the Bank of England's fan charts. They concluded that large values of the KLIC, implying large deviations from the benchmark VAR, would require convincing arguments by the monetary policy committee.

Armed with a method to measure the distance between different predictive densities, we can next turn to the issue of exactly how deviations from the main scenario's predictive density should be penalised and, accordingly, the weights for the different scenarios determined. We propose that the weights for the different scenarios, ω_j , could be given by

$$\omega_j = \frac{q_j \exp(-\Delta_j)}{\sum_{i=1}^M q_i \exp(-\Delta_i)}, \quad j = 1, \dots, M, \quad (3)$$

where q_j are prior weights assigned to each scenario, $\Delta_j = KLIC_j - \min(KLIC)$ and $\min(KLIC)$ is the smallest value of the M different values of $KLIC_j$.¹⁴ Since the KLIC and the weights will be calculated for all scenarios by using the predictive density under the main scenario as the reference distribution, this implies that the main scenario will yield $\min(KLIC) = 0$. It follows that Δ_j for the main scenario also will be zero.

¹⁴ Determining weights by employing the KLIC is in itself not a new suggestion but has also been advocated by Mitchell and Hall (2005).

Equation (3) penalises deviations from the main scenario’s predictive density in a non-linear fashion; other things equal, scenarios will receive a higher weight the smaller the deviations of their predictive densities are relative to the benchmark density. As such, the suggested method is based on the same principle as when Akaike or Schwarz weights are used, except that the true distribution is treated as known in this case.¹⁵ The relationship between KLIC and Akaike weights can be seen by noting that the Akaike information criterion is a function of an estimator of the expected Kullback-Leibler information criterion; see Burnham and Anderson (2004).

Regarding the specification of equation (3), we would like to point out that reasonably often when Schwarz weights are calculated – and almost always when Akaike weights are calculated – a uniform prior over models is used. This means that the weights are strictly data determined. However, instead of letting the weights be completely data determined, we argue that it is reasonable to assume that forecasters or decision makers *a priori* will have an opinion regarding how likely a particular scenario is. We accordingly want to incorporate this opinion into the analysis and therefore allow for non-uniform priors over scenarios in equation (3).¹⁶

Relying on the distance-based weighting scheme presented above introduces both benefits and shortcomings through the way in which deviations from the predictive density under the main scenario are being penalised. On the one hand, it means that an “extreme” scenario – which at a certain point in time may actually have a large probability of occurring – will receive a disproportionately low weight since it typically will be judged highly unlikely by the data. Using the distance-based weighting scheme in such cases would lead to an incorrectly assessed uncertainty and a misleading final fan chart. On the other hand, equation (3) implies an additional safeguard against bad judgement as the procedure can be seen as a way of “shrinking” the weighted predictive density towards that of the main

¹⁵ Note though that instead of the traditional evaluation of a number of *models* against each other, we instead evaluate a number of *scenarios*.

¹⁶ Overall, the suggested framework is related to traditional Bayesian model averaging – see for example Garratt *et al.* (2003) – even though it should not be given a formal Bayesian interpretation. The similarities can be seen by considering the Bayesian model averaging formula $\Pr(\mathbf{y} | \mathbf{Z}_T) = \sum_{i=1}^M \Pr(S_i | \mathbf{Z}_T) \Pr(\mathbf{y} | \mathbf{Z}_T, S_i)$, where $\mathbf{Z}_T = (\mathbf{z}_1 \dots \mathbf{z}_T)$ are data, $\Pr(\mathbf{y} | \mathbf{Z}_T)$ is the predictive density conditional on data, $\Pr(S_i | \mathbf{Z}_T)$ is the posterior probability of model S_i and $\Pr(\mathbf{y} | \mathbf{Z}_T, S_i)$ is the posterior predictive density of model S_i .

scenario. Since the main scenario here by assumption is free from judgement, the suggested method thereby mildly favours the views of Armstrong (1985) and Makridakis (1988). However, instead of following Armstrong and Makridakis – and actually exclude judgement whenever statistical models are available – judgement is only penalised in the present framework.

The distance-based weights also imply that we in practice are evaluating the judgement provided and conclude that scenarios associated with a large KLIC are less likely than those with a small KLIC. Whilst the application in this paper is new, the suggested methodology is, however, clearly related to the policy evaluation conducted in Sims (1982), Doan *et al.* (1984), Leeper and Zha (2003) and Hamilton and Herrera (2004). In Sims, Doan *et al.* and Hamilton and Herrera, policy is evaluated by calculating how likely the sequence of structural shocks needed to generate a particular scenario is. Leeper and Zha on the other hand – whose methodology also was employed by Hamilton and Herrera – proposed that policy could be evaluated by constructing linear projections of macro variables conditional on hypothetical paths of monetary policy. These projections were judged reliable if the impact of an intervention was within plus/minus two standard deviations of the historical fluctuations. If not, the intervention was judged to be inconsistent with the prevailing policy regime, leading potentially to changes in private agents' decision rules. As such, Leeper and Zha's work could be seen as a way of empirically testing the relevance of the Lucas critique. The fact that the suggested methodology in this paper emphasises the dynamic impact on the system – rather than the size and sign of the intervention itself – makes it more closely related to the work of Leeper and Zha (2003) than that of Sims (1982) though.

Summing up before we turn to the empirical application, we now have the following procedure to generate a final fan chart which takes judgement into account:

- a) A main scenario for the coming H quarters is generated in a macroeconomic model. This main scenario has a predictive density for the n variables that are being forecasted.
- b) Judgement is presented in terms of $M-1$ alternative scenarios which are defined as PDFs for future values for one or more variables in the system.

Each alternative scenario has a predictive density for the n variables that are being forecasted associated with it.

- c) M weights are determined for the linear opinion pool. These weights could be generated in a number of ways; we have in this paper suggested *i)* arbitrary weights and *ii)* a data-based method which takes the KLIC into account in a formalised fashion.
- d) The final predictive density (fan chart) is achieved by weighting together the predictive densities of the different scenarios.

4. Empirical application

In order to illustrate the method presented above, we next turn to an empirical application using Swedish macroeconomic data. Two completely hypothetical alternative scenarios will be presented and a final fan chart then generated by weighting together the predictive densities from the alternative scenarios to that from the model's endogenous forecast. The empirical analysis will be carried out with a standard reduced form Bayesian VAR model. Such a model obviously has limitations as it is more or less impossible to associate behavioural explanations to the scenarios. In many practical applications this shortcoming is serious enough to warrant usage of structural VAR or DSGE models instead as such models can incorporate judgement in a more precise way. However, the purpose of the present exercise is merely to illustrate the principle behind the suggested methodology. For this purpose the reduced form VAR is quite sufficient and the simplicity of the model is appealing as it should maximise transparency.

Turning to the model, it is given by

$$\mathbf{G}(L)\mathbf{x}_t = \boldsymbol{\mu} + \boldsymbol{\Phi}\mathbf{D}_t + \boldsymbol{\eta}_t, \quad (4)$$

where $\mathbf{G}(L) = \mathbf{I} - \mathbf{G}_1L - \dots - \mathbf{G}_pL^p$, \mathbf{x}_t is an $n \times 1$ vector of macroeconomic variables, \mathbf{D}_t is a $k \times 1$ vector of dummy variables and $\boldsymbol{\eta}_t$ is an $n \times 1$ vector of *iid* error terms fulfilling $E(\boldsymbol{\eta}_t) = \mathbf{0}$

and $E(\boldsymbol{\eta}_t, \boldsymbol{\eta}_t') = \boldsymbol{\Sigma}$. The model is estimated using Bayesian methods and priors on dynamics in the model follow the standard modelling approach, as they take their starting point in a Minnesota prior; see for example Litterman (1986).¹⁷ Priors on the constant term and the dummy variable are also mainstream with diffuse normal priors, as is the prior on the covariance matrix which is given by $p(\boldsymbol{\Sigma}) \propto |\boldsymbol{\Sigma}|^{-(n+1)/2}$.

The numerical evaluation of the posterior distributions is conducted using the Gibbs sampler – see for example Tierny (1994) – with the number of draws set to 10 000. The chain is serially dependent but there has been no thinning of it. Whilst this could be done in order to increase efficiency, it is largely a matter of taste since at convergence the draws are identically distributed according to the posterior distribution; see for example Gelman *et al.* (2003).

We apply the model to Swedish data from 1980Q2 to 2004Q4 and define

$$\mathbf{x}_t = \left(c\Delta y_t^f \quad \pi_t^{cpi,f} \quad i_t^f \quad u_t \quad c\Delta y_t \quad c\Delta w_t \quad \pi_t^{cpi} \quad i_t \quad cq_t \right)' \quad (5)$$

where $c = 100$, y_t^f is the logarithm of GDP in fixed prices for the foreign economy, $\pi_t^{cpi,f}$ is twelve month ended CPI inflation for the foreign economy and i_t^f is the three month treasury bill rate for the foreign economy.¹⁸ The remaining variables in the system are all Swedish; u_t is the open unemployment rate, y_t is the logarithm of GDP in fixed prices, w_t is the logarithm of wages, π_t^{cpi} is twelve month ended CPI inflation and i_t is the three month treasury bill rate. Finally, q_t is the logarithm of the trade weighted real exchange rate, given as SEK per foreign currency. All variables except interest rates and the real exchange rate have been

¹⁷ A minor modification is, however, introduced regarding the dynamics: Sweden is a small open economy, but block exogeneity of the foreign economy not is enforced in the model with probability one. Instead, the exogeneity restriction is controlled using an additional hyperparameter; see Villani and Warne (2003) for details.

¹⁸ Foreign GDP and CPI have been trade weighted according to the TCW index. The foreign interest rate has been weighted using a subset of the countries included in the TCW index due to missing data for some countries.

seasonally adjusted. We set lag length to $p = 4$ and let \mathbf{D}_t be a single dummy variable taking on the value one between 1980Q2 and 1992Q4 and zero otherwise.¹⁹

The judgement that is to be included is defined as one scenario for the real exchange rate and one for the unemployment rate. In both cases we lay down paths from 2005Q1 to 2005Q4 and we accordingly let $h_t^l = 1$ and $h_t^u = 4$ in both scenarios. The real exchange rate path is given by [465 460 457 452], which can be compared to the endogenous median forecast from the model of [473 474 474 474]. We can note that the last observation for the real exchange rate in (non-transformed) TCW terms was 112.85. The conditioning path implies an appreciation to 91.84 – or 18.6 percent – in 2005Q4. For the unemployment rate, the conditioning path is [4.5 4.0 3.7 3.5], which is a substantially stronger development for the labour market than the endogenous median forecast of [5.2 5.1 4.9 4.7].

By laying down particular paths for the real exchange rate and the unemployment rate, we are imposing distributions $\phi_t(\mathbf{k}_t)$ which have all mass in one point each, just like in Sims (1982), Leeper and Zha (2003) and Adolfson, Laséen, Lindé and Villani (2005). Such exact imposition of particular paths is called *hard conditions* using the terminology of Waggoner and Zha (1999). This choice of how to model the scenarios is a simplification in some aspects. For example, it is typically easier to generate the desired distribution; since the variance is zero, we in practice only have to match the first moment.²⁰

We use the model to generate forecasts twelve quarters ahead from 2004Q4. This is slightly longer than the Riksbank's traditional horizon of two years but in line with recent statements by the former governor Lars Heikensten (Sveriges Riksbank, 2005). The forecasts, and thereby the scenarios, are generated the following way: for every draw from the posterior distribution, a sequence of independent standard normal shocks, $(\boldsymbol{\varepsilon}_{T+1}, \dots, \boldsymbol{\varepsilon}_{T+H})$, are drawn. These shocks are then used together with the definition

¹⁹ Since several of the countries that have large weights in the TCW index also experienced policy changes around the same period – for example Germany, Norway and the U.K. – we also let the dummy variable affect the foreign economy. Changing this assumption, thereby letting the dummy affect the Swedish economy alone, has negligible effects on the results.

²⁰ Hard conditions do, however, also introduce some restrictions when calculating the KLIC. We return to these restrictions below.

$\boldsymbol{\varepsilon}_t = \left[\varepsilon_t^{y^f} \quad \varepsilon_t^{\pi^f} \quad \varepsilon_t^{i^f} \quad \varepsilon_t^u \quad \varepsilon_t^{y^w} \quad \varepsilon_t^w \quad \varepsilon_t^\pi \quad \varepsilon_t^i \quad \varepsilon_t^q \right]' = \mathbf{P}^{-1} \boldsymbol{\eta}_t$ – where \mathbf{P} is obtained from the standard Cholesky decomposition of $\boldsymbol{\Sigma}$ as $\boldsymbol{\Sigma} = \mathbf{P}\mathbf{P}'$ – to generate the reduced form shocks and thereby the future data. When a variable has been conditioned upon – that is, it has to take on a particular value at a certain horizon – the forecasts are obviously still generated sequentially one horizon at a time. However, one shock in each scenario – ε_t^q in the real exchange rate scenario and ε_t^u in the unemployment scenario – is used to generate the conditioning. This means that this shock is generated last for each horizon and its value is set such that given the elements in $\boldsymbol{\varepsilon}_{t+h}$, the forecast of the variable in question is exactly that specified in the scenario.²¹ This choice of generating the conditionings is obviously arbitrary, but it can probably also be described as one of the most intuitive alternatives. As our goal is to illustrate a principle, we argue that it therefore is well-suited for the purpose.

Based on the above described routine, we get as many paths for each variable as we have iterations in the Gibbs sampling algorithm except for the variable we have conditioned upon which takes on the same value every iteration. The predictive densities from the respective scenarios are given in Figures A1 to A3 in Appendix A; the black line is the median forecast and the coloured bands are 50 and 90 percent confidence bands.²²

Turning to the issue of how to combine the predictive densities under consideration, we will initially use a set of arbitrary weights and simply employ these to weight the predictive densities according to equation (1). Second, we will also make use of equation (3) – in which deviations from the benchmark predictive density are penalised – in the weighting procedure, thereby allowing both data and a set of arbitrary prior weights to influence the weights in equation (1).

²¹ The method used to generate the conditionings in this paper is the same as that used by Adolfson, Laséen, Lindé and Villani (2005) which in turn is a generalisation of Leeper and Zha's (2003) method.

²² It can be noted that the model attributes non-negligible probabilities to the event of the interest rate taking on negative values in the future; the same thing would be true for the unemployment rate in some cases if the forecast horizon was increased. Such violations of theoretical and practical restrictions are obviously a shortcoming of any model but nevertheless extremely common in empirical work. The issue could be dealt with in several ways: One solution is to transform the variables so that they always meet the theoretical restrictions – that is, bounded between zero and one for the unemployment rate and strictly positive for the interest rate. Another solution is to discard all data from iterations in the Gibbs sampling algorithm in which restrictions are not met. However, this shortcoming does nothing to interfere with the exposition of the methodology and we therefore do not address it in the present application.

4.1 Combination of predictive densities using arbitrary weights

Figures 1 and 2 show predictive densities for Swedish GDP growth, CPI inflation and the three month treasury bill rate.²³ The plots give the median forecast and 50 and 90 percent confidence bands for different sets of weights.²⁴ The solid lines in both figures represent the predictive densities from the model's endogenous forecast, that is, weights have been set to $\omega = [\omega_1 \ \omega_2 \ \omega_3]' = [1 \ 0 \ 0]'$ where ω_1 is the weight given to the model's endogenous forecast, ω_2 the weight on the real exchange rate scenario and ω_3 the weight on the unemployment scenario. The predictive densities given by the dashed lines have been generated by weighting the three different predictive densities using the arbitrary weights $\omega = [1/3 \ 1/3 \ 1/3]'$ in Figure 1 and $\omega = [0 \ 0.5 \ 0.5]'$ in Figure 2.²⁵

Looking at Figures 1 and 2 it is obvious that by taking the two alternative scenarios into account the shape of the predictive densities has been changed substantially. In practice, this means that the risk picture – as perceived by the agents producing the forecast – can be significantly altered when judgement is included. Considering the way in which the shape of the predictive densities has been changed, we note that there appears to have been a downward shift at the longer horizons for all variables regardless of whether the weight vector is $\omega = [1/3 \ 1/3 \ 1/3]'$ or $\omega = [0 \ 0.5 \ 0.5]'$. The predictive densities using $\omega = [0 \ 0.5 \ 0.5]'$ do clearly deviate more from the benchmark, but this is only to be expected since $[1/3 \ 1/3 \ 1/3]'$ is a linear combination of $[1 \ 0 \ 0]'$ and $[0 \ 0.5 \ 0.5]'$.

The shifts in the predictive densities are consistent with a stronger real exchange rate generating lower GDP growth and inflation and thereby a lower interest rate. At the shorter horizons though, the confidence bands for GDP growth are approximately the same for the weighted predictive densities as those for the endogenous forecast; it can also be noted that the predictive density for inflation has been shifted up slightly. This reflects the increase in GDP growth and inflation that initially follows a negative shock to the unemployment rate

²³ Note that we have chosen to present marginalised distributions for each variable instead of joint distributions since the latter do not visualise very well.

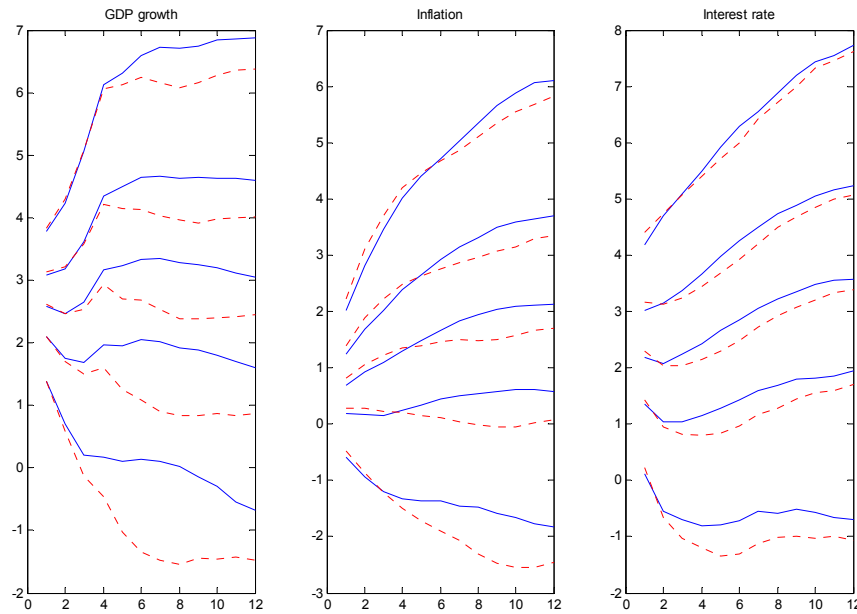
²⁴ That is, the 5th, 25th, 50th, 75th and 95th percentiles of the predictive densities are plotted.

²⁵ For a description of how the weighted predictive densities were generated, see Appendix B.

and this effect counteracts the decrease that the negative real exchange rate shock has. Another feature worth mentioning is that for all variables – but maybe most obviously so for GDP growth – the weighted predictive density is skewed relative to that from the endogenous forecast. Put differently, by taking a linear combination of the predictive densities from the three scenarios we have generated predictive densities that have not just been shifted in a symmetric way. This serves as an empirical illustration of the claim in Section 3 that the weighted densities potentially can have complicated forms.

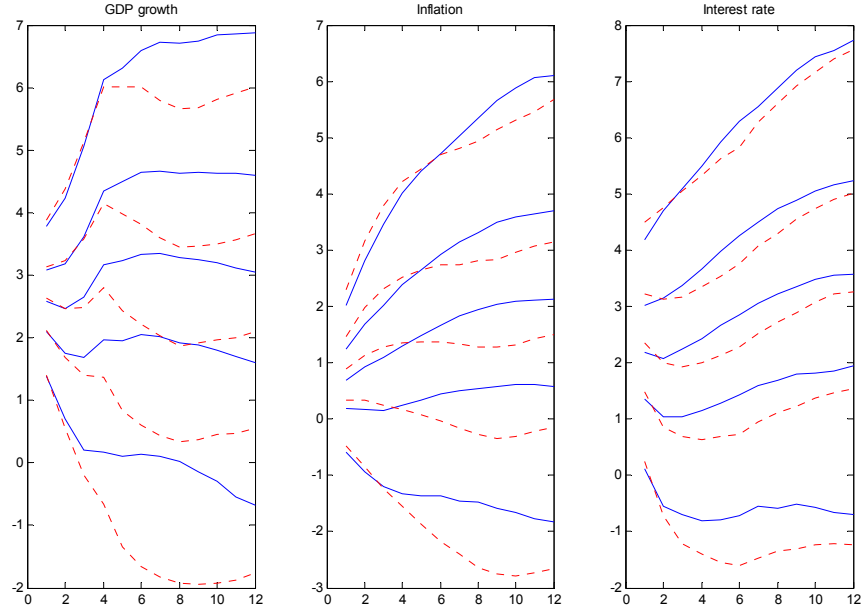
We have now seen the predictive densities that were the outcome of an arbitrary choice of weights. Keep in mind though that these weights for example could have been the outcome of a consensus decision or voting procedure in a group and therefore potentially highly legitimate. Next we will investigate the effect of letting data influence the weights and accordingly turn to predictive density combination using the weights from equation (3).

Figure 1. Fan charts from model's endogenous forecast compared to weighted fan charts generated with weight vector $[1/3 \ 1/3 \ 1/3]$.



Solid lines are fan charts from model's endogenous forecast; dashed lines are weighted fan charts.

Figure 2. Fan charts from model's endogenous forecast compared to weighted fan charts generated with weight vector $[0.0 \ 0.5 \ 0.5]$.



Solid lines are fan charts from model's endogenous forecast; dashed lines are weighted fan charts.

4.2 Combination of predictive densities using distance-based weights

The weights generated by equation (3) are functions of the KLIC for the different scenarios and we must therefore first calculate the KLIC for each scenario. As pointed out above, the two hypothetical alternative scenarios impose paths for the real exchange rate and unemployment rate respectively which are reasonably far from the model's endogenous median forecasts. However, our method is based on an evaluation of the dynamic impact on the system from this conditioning and we therefore turn to the KLIC to find out how large this is. The KLIC for each scenario is calculated relative to the predictive density from the endogenous forecast from the model; using the definition in equation (2), we see that this implies that the KLIC for the endogenous forecast is zero.

The practical calculation of the KLIC is described in Appendix C. Before the KLIC can be calculated though, \mathbf{z}_t^v – that is, the subset of the variables in \mathbf{z}_t employed in the calculation of the KLIC – must be established. This issue will matter for the weights and attention should therefore be paid to it in practical applications. In principle, as many

variables as possible should be included in \mathbf{z}_t^v if one wants to take into account the dynamic effects in all dimensions. However, it is also possible to picture a situation in which only a few variables are included in \mathbf{z}_t^v ; this might be the case for example if deviations in some dimensions are judged unimportant by the decision makers. In order to illustrate the importance of this question, the KLIC has here been calculated using three different sets of variables. Letting numbers denote the variables' position in \mathbf{x}_t in equation (5), the three alternatives are given by $\mathbf{z}_t^v = [1 \ 2 \ 3 \ 5 \ 6 \ 7 \ 8]'$, $\mathbf{z}_t^v = [5 \ 6 \ 7 \ 8]'$ and $\mathbf{z}_t^v = [7]$.²⁶ Note that the first vector is the largest possible given that we have used hard conditions. As pointed out in Appendix C, the calculations would not be fruitful if the real exchange rate and/or the unemployment rate were included. Values for the various combinations are given in Table 1.

Table 1. Results from Bayesian VAR model on Swedish data. Predictive density from endogenous forecast is reference distribution.

Variables used for evaluation	Prior weight (q)	Endogenous forecast		Real exchange rate scenario		Unemployment scenario	
		KLIC	ω_1	KLIC	ω_2	KLIC	ω_3
[1 2 3 5 6 7 8]	[1/3 1/3 1/3]	0.0000	0.7300	2.5871	0.0549	1.2213	0.2150
[5 6 7 8]	[1/3 1/3 1/3]	0.0000	0.6127	1.5174	0.1343	0.8845	0.2530
[7]	[1/3 1/3 1/3]	0.0000	0.3788	0.2613	0.2917	0.1397	0.3294
[1 2 3 5 6 7 8]	[0.0 0.5 0.5]	0.0000	0.0000	2.5871	0.2035	1.2213	0.7965
[5 6 7 8]	[0.0 0.5 0.5]	0.0000	0.0000	1.5174	0.3468	0.8845	0.6532
[7]	[0.0 0.5 0.5]	0.0000	0.0000	0.2613	0.4696	0.1397	0.5304

The order in which scenarios are referred to in prior weight vector is [endogenous forecast, real exchange rate scenario, unemployment scenario].

The KLIC values obviously tell us something about how likely the different scenarios are in light of the model and the data. In this particular application, we can for example tell that the unemployment scenario is judged more likely than the real exchange rate scenario; regardless of which variables are included in the calculation of the KLIC, the value for the unemployment scenario is approximately half of that for the real exchange rate scenario. However, the KLIC values are difficult to interpret – it is not obvious what constitutes a “small” or “large” deviation from the reference distribution. By next turning to the

²⁶ This means that all variables but unemployment and the real exchange rate are included in the biggest set. The second set consists of GDP, wages, inflation and interest rates and the smallest set is inflation alone.

distance-based weights, we instead face non-negative numbers that sum to one. These weights accordingly tell us in a straightforward way how deviations from the reference distribution are penalised.

The weights have been calculated by assuming that the prior weights over scenarios are given either by $\mathbf{q} = [q_1 \quad q_2 \quad q_3]' = [1/3 \quad 1/3 \quad 1/3]'$ or $\mathbf{q} = [0 \quad 0.5 \quad 0.5]'$, where q_1 is the prior weight given to the model's endogenous forecast, q_2 the prior weight on the real exchange rate scenario and q_3 the prior weight on the unemployment scenario. This choice of weights was made so that the fan charts are directly comparable to those in Figures 1 and 2; through this setup any difference between the weighted predictive densities is due to the KLIC. Note that the KLIC is calculated using three different subset of variables: $\mathbf{z}^v = [1 \quad 2 \quad 3 \quad 5 \quad 6 \quad 7 \quad 8]'$, $\mathbf{z}^v = [5 \quad 6 \quad 7 \quad 8]'$ and $\mathbf{z}^v = [7]$. Weights for the scenarios – calculated with the two sets of prior weights and three sets of variables for evaluation – are given in Table 1.

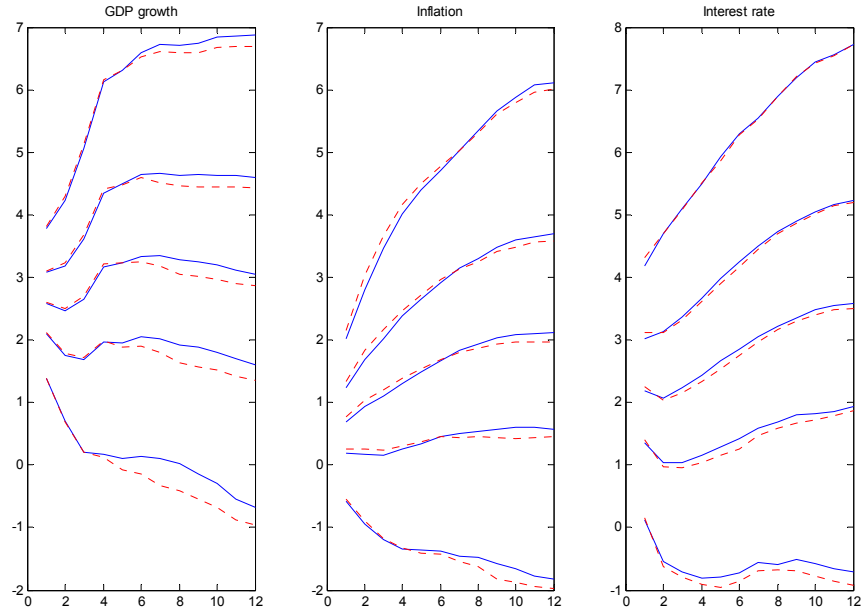
Figures 3 to 5 show the predictive densities from the endogenous forecast and those generated by weighting predictive densities according to the weights from equation (3), where $\mathbf{q} = [1/3 \quad 1/3 \quad 1/3]'$ were used as prior weights; just like above, solid lines represent the former and dashed lines the latter. As can be seen, the weights generated by equation (3) are always highest for the endogenous forecast but as the number of variables used for calculation of the KLIC is reduced, more weight is put on the alternative scenarios. This is clearly illustrated in Figures 3 to 5 where there are only minor differences between the predictive density of the endogenous forecast and the weighted predictive density when all variables except unemployment and the real exchange rate are used to calculate the KLIC. Using fewer variables in the evaluation though, the weighted predictive densities look more and more different from that of the endogenous forecast. When only inflation is used to calculate the KLIC, the weights given by equation (3) are actually fairly close to 1/3 for all scenarios and Figure 5 accordingly looks a lot like Figure 1. The fact that weights are more evenly distributed over scenarios as fewer variables are used to calculate the KLIC is in line with our expectations. It can intuitively be explained by the fact that as fewer variables are

included in \mathbf{z}^v , there are fewer dimensions in which the densities can deviate from each other.

We next turn to the case where $\mathbf{q} = [0 \quad 0.5 \quad 0.5]'$ in which the benchmark model – whilst we might not be interested in it *per se* – can be seen as a “neutral” way of evaluating two conflicting views regarding the economy before weighting the predictive densities together. It can then be seen in Figures 6 to 8 that the influence of the unemployment scenario – which was judged more likely by the KLIC – is reduced as the KLIC is being calculated using fewer variables. As only inflation is used to calculate the KLIC, the predictive densities in Figure 8 are virtually identical to those in Figure 2. This is of course precisely what we expect since the weights according to equation (3) in that case are very close to 0.5 for both scenarios.

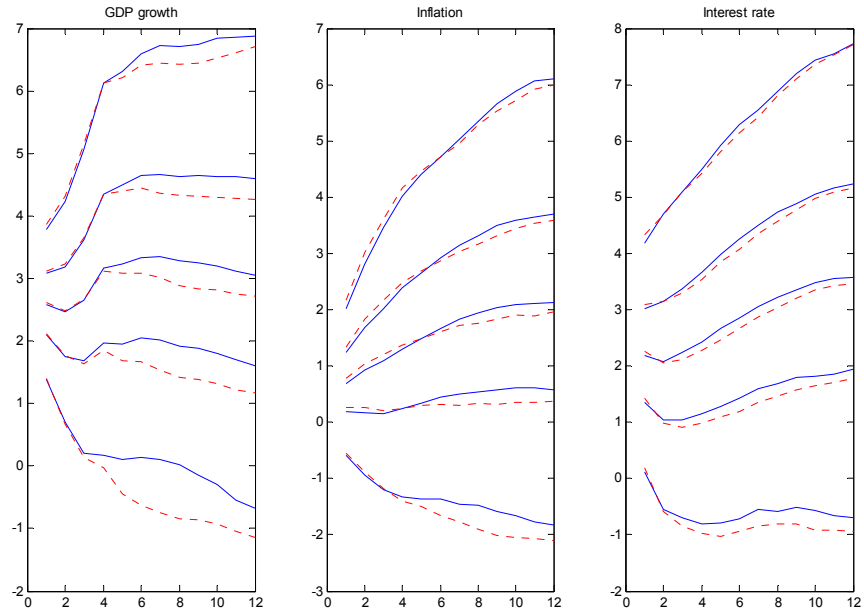
Summing up, we think that the above exercise has shown that judgement can be introduced in the analysis in a formal and reasonably straightforward way. The linear opinion pool allows us to combine the predictive densities from several scenarios and conflicting sets of judgement can thereby be accounted for in the forecasting process. In the empirical analysis we used arbitrary weights and weights based on the KLIC of a scenario’s predictive density relative to a benchmark predictive density. Both of these approaches seem reasonable in practice. A combination of these two methods, in which arbitrary weights are used but where the decision makers can use the KLIC values as input in the decision making process, is also a potential solution. However, the method to determine weights should probably be made application and institution specific in order to generate the best possible result. More work is therefore needed on this particular issue.

Figure 3. Fan charts from model's endogenous forecast compared to weighted fan charts generated with prior vector $[1/3 \ 1/3 \ 1/3]$ and evaluated using all possible variables.



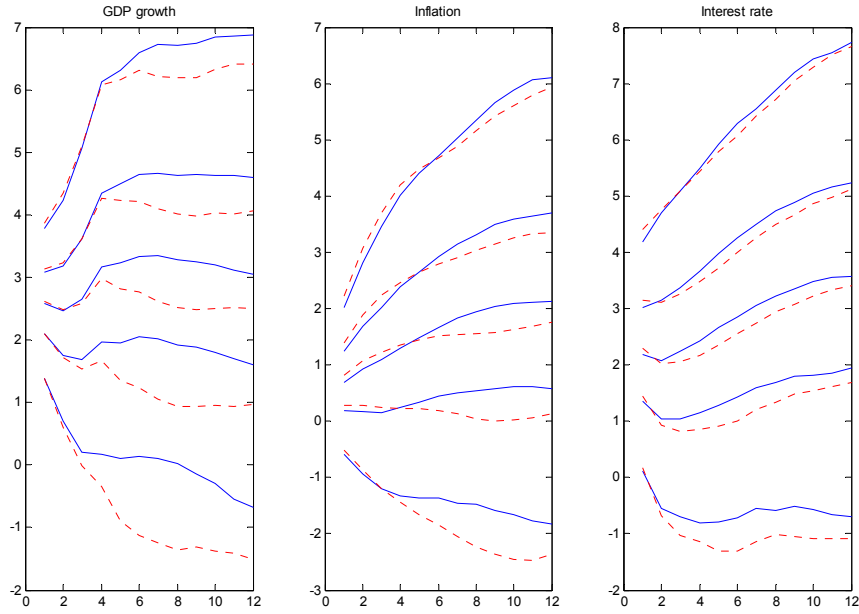
Solid lines are fan charts from model's endogenous forecast; dashed lines are weighted fan charts.

Figure 4. Fan charts from model's endogenous forecast compared to weighted fan charts generated with prior vector $[1/3 \ 1/3 \ 1/3]$ and evaluated using GDP, wage, inflation and interest rate.



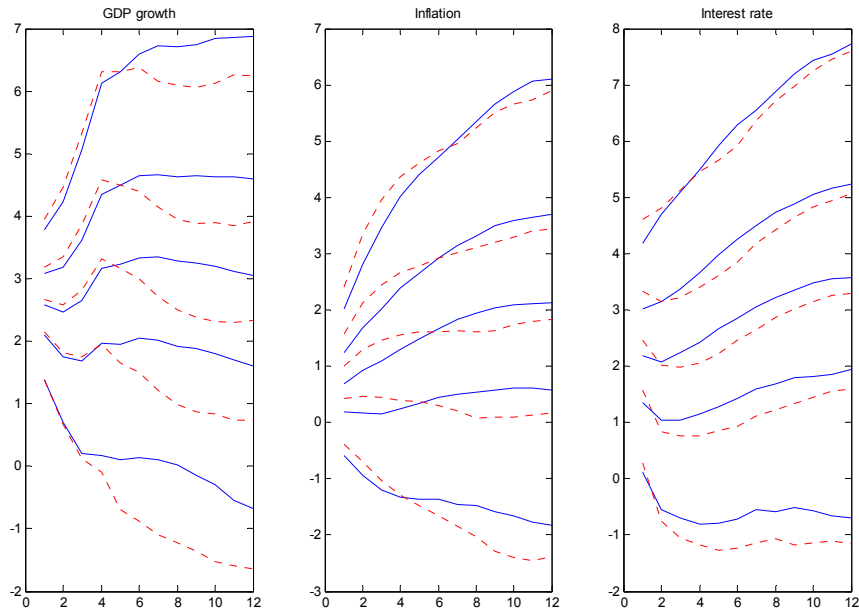
Solid lines are fan charts from model's endogenous forecast; dashed lines are weighted fan charts.

Figure 5. Fan charts from model's endogenous forecast compared to weighted fan charts generated with prior vector $[1/3 \ 1/3 \ 1/3]$ and evaluated using inflation.



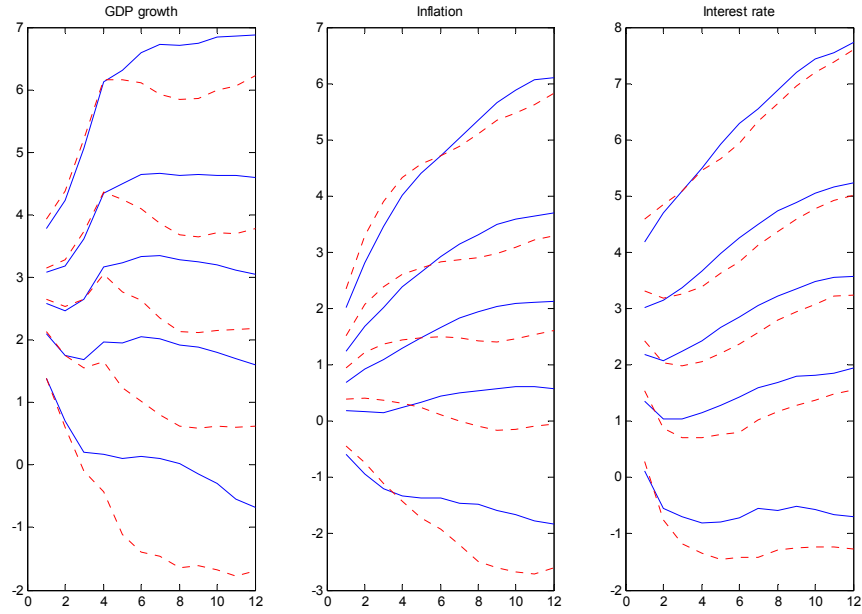
Solid lines are fan charts from model's endogenous forecast; dashed lines are weighted fan charts.

Figure 6. Fan charts from model's endogenous forecast compared to weighted fan charts generated with prior vector $[0.0 \ 0.5 \ 0.5]$ and evaluated using all possible variables.



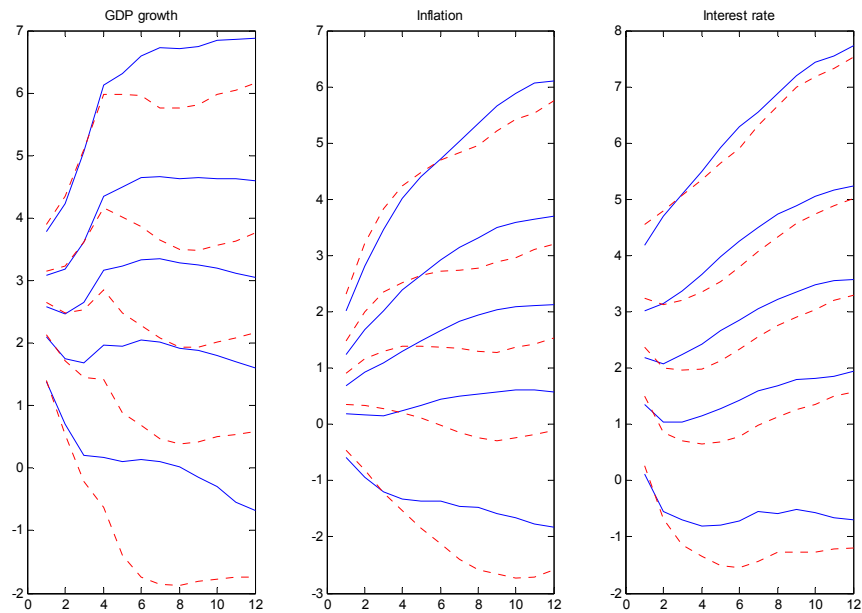
Solid lines are fan charts from model's endogenous forecast; dashed lines are weighted fan charts.

Figure 7. Fan charts from model's endogenous forecast compared to weighted fan charts generated with prior vector $[0 \ 0.5 \ 0.5]$ and evaluated using GDP, wage, inflation and interest rate.



Solid lines are fan charts from model's endogenous forecast; dashed lines are weighted fan charts.

Figure 8. Fan charts from model's endogenous forecast compared to weighted fan charts generated with prior vector $[0 \ 0.5 \ 0.5]$ and evaluated using inflation.



Solid lines are fan charts from model's endogenous forecast; dashed lines are weighted fan charts.

5. Conclusions

This paper has outlined a new method to incorporate judgement into a forecasting process. We have suggested that each judgement set be modelled as an alternative scenario in a macroeconomic model, with its dynamic effect on the system described by a predictive density. Specifically, we suggest combining the predictive densities stemming from the different sets of judgement into one final predictive density. This final density thereby reflects the judgemental views within the context of the macroeconomic model.

Forecasters in general, and central banks in particular, often wish to provide an accurate predictive density for a number of macroeconomic variables. The framework offers a formalised and model-consistent way to incorporate judgement into predictive densities in a model-based environment. The methodology is best suited to a forecasting process that places a great deal of emphasis on one model which, given recent improvements in the forecasting ability of DSGE models, increasingly describes the forecasting practices of several central banks.²⁷ As policy institutions head further along the path of incorporating models into the policy process, a new and straightforward way to address judgement when generating predictive densities is available.

Although the empirical application in this paper focused upon marginal predictive densities for one variable at a time, the method also yields joint predictive densities, facilitating answering joint-probability questions of the type posed by Leeper and Zha (2003). For example, knowing the probability with which inflation may exceed a target *and* output growth may be negative at the same time is clearly of interest to policy makers, as it reveals the policy tradeoff they face in a particular scenario or across all scenarios. This issue can be readily addressed in the proposed framework, increasing its appeal in applied policy work. The framework also explicitly addresses how conflicting sets of judgement can be taken into account in the forecasting process, as it is rarely the case in practice that judgement sets are completely compatible with each other. The paper thus extends related literature on predictive densities and judgement, such as Svensson and Tetlow (2005).

²⁷ See for example Smets and Wouters (2004) and Adolfson, Andersson, Lindé, Villani and Vredin (2005).

Finally, it is important to stress that although the framework put forward in this paper places a model in the prominent position, this does not detract from the value of judgement. Rather, our goal is to step away from *ad hoc* judgemental adjustments and toward a more formal framework, thereby generating more accurate predictive densities. The use of fan charts is a relatively new development and the implementation at different policy institutions suffers from various shortcomings, as pointed out by Leeper (2003), Clements (2004) and Hall and Mitchell (2004). As interest in fan charts and model-based forecasting increases, there is reason for improvement and refinement of the techniques.

References

- Adolfson, M., Andersson, M. K., Lindé, J., Villani, M. and Vredin, A. (2005), "Modern Forecasting Models in Action: Improving Macro Economic Analyses at Central Banks", Working Paper No. 190, Sveriges Riksbank.
- Adolfson, M., Laséen, S., Lindé, J. and Villani, M. (2005), "Are Constant Interest Rate Forecasts Modest Interventions? Evidence from a Dynamic Open Economy Model", *International Finance* 8, 509-535.
- Armstrong, J. S. (1985), *Long-Range Forecasting*. 2nd edition. John Wiley, New York.
- Blix, M. and Sellin, P. (1998), "Uncertainty Bands for Inflation Forecasts", Working Paper No. 65, Sveriges Riksbank.
- Brock, W. A., Durlauf, S. N. and West, K. D. (2003), "Policy Evaluation in Uncertain Economic Environments", *Brookings Papers on Economic Activity* 2003:1, 235-301.
- Burnham, K. P. and Anderson, D. R. (2004), "Multimodel Inference: Understanding AIC and BIC in Model Selection", *Sociological Methods and Research* 33, 261-304.
- Clemen, R. T. (1989), "Combining Forecasts: A Review and Annotated Bibliography", *International Journal of Forecasting* 5, 559-583.
- Clemen, R. T. and Winkler, R. L. (1999), "Combining Probability Distributions from Experts in Risk Analysis", *Risk Analysis* 19, 187-203.
- Clements, M. P. (2004), "Evaluating the Bank of England Density Forecasts of Inflation", *Economic Journal* 114, 844-866.
- Clements, M. P. and Hendry, D. F. (1998), *Forecasting Economic Time Series*. Cambridge University Press, Cambridge.

- Cogley, T., Morozov, S. and Sargent, T. J. (2005), "Bayesian Fan Charts for U.K. Inflation: Forecasting and Sources of Uncertainty in an Evolving Monetary System", *Journal of Economic Dynamics and Control* 29, 1893-1925.
- DeGroot, M. H. (1974), "Reaching a Consensus", *Journal of the American Statistical Association* 69, 118-121.
- Diebold, F. X. and Pauly, P. (1990), "The Use of Prior Information in Forecast Combination", *Journal of Forecasting* 6, 503-508.
- Doan, T., Litterman, R. and Sims, C. (1984), "Forecasting and Conditional Projection Using Realistic Prior Distributions", *Econometric Reviews* 3, 1-100.
- Garratt, A., Lee, K., Pesaran, M. H. and Shin, Y. (2003), "Forecast Uncertainties in Macroeconomic Modeling: An Application to the U.K. Economy", *Journal of the American Statistical Association* 98, 829-838.
- Gelman, A., Carlin, J. B., Stern, H. S. and Rubin, D. B. (2003), *Bayesian Data Analysis*, 2nd edition. Chapman and Hall, New York.
- Granger, C. W. J. and Ramanathan, R. (1984), "Improved Methods of Combining Forecasts", *Journal of Forecasting* 3, 197-204.
- Hall, S. G. and Mitchell, J. (2004), "Optimal Combination of Density Forecasts", Tanaka Business School Discussion Papers TBS/DP04/16.
- Hamilton, J. D. and Herrera, A. M. (2004), "Oil Shocks and Aggregate Macroeconomic Behavior: The Role of Monetary Policy", *Journal of Money, Credit, and Banking* 36, 265-286.
- Hendry, D. F. and Clements, M. P. (2004), "Pooling of Forecasts", *Econometrics Journal* 7, 1-31.
- Hogarth, R. M. (1987), *Judgment and Choice*. John Wiley, New York.
- Kullback, S. and Leibler, R. A. (1951), "On Information and Sufficiency", *Annals of Mathematical Statistics* 22, 79-86.
- Lawrence, M. J., Edmundson, R. H. and O'Connor, M. J. (1985), "An Examination of the Accuracy of Judgemental Extrapolation of Time Series", *International Journal of Forecasting* 1, 14-25.
- Lawrence, M. J., Edmundson, R. H. and O'Connor, M. J. (1986), "The Accuracy of Combining Judgemental and Statistical Forecasts", *Management Science* 32, 1521-1532.
- Leeper, E. M. (2003), "An Inflation Reports Report", *Sveriges Riksbank Economic Review* 2003:3, 94-118.

- Leeper, E. M. and Zha, T. (2003), “Modest Policy Interventions”, *Journal of Monetary Economics* 50, 1673-1700.
- Litterman, R. B. (1986), “Forecasting with Bayesian Vector Autoregressions – Five Years of Experience”, *Journal of Business and Economic Statistics* 5, 25-38.
- Makridakis, S. (1988), “Metaforecasting”, *International Journal of Forecasting* 4, 467-491.
- McKonway, K. J. (1981), “Marginalization and Linear Opinion Pools”, *Journal of the American Statistical Association* 76, 410-414.
- McNees, S. K. (1990), “The Role of Judgment in Macroeconomic Forecasting Accuracy”, *International Journal of Forecasting* 6, 287-299.
- Mitchell, J. and Hall, S. G. (2005), “Evaluating, Comparing and Combining Density Forecasts Using KLIC with an Application to the Bank of England and NIESR “Fan” Charts of Inflation”, *Oxford Bulletin of Economics and Statistics* 67, 995-1033.
- Öller, L.-E. (1978), “A Method for Pooling Forecasts”, *Journal of the Operational Research Society* 29, 55-63.
- Reifschneider, D. L., Stockton, D. J. and Wilcox, D. W. (1997), “Econometric Models and the Monetary Policy Process”, *Carnegie-Rochester Conference Series on Public Policy* 47, 1-37,
- Robertson, J. C., Tallman, E. W. and Whiteman, C. H. (2005), “Forecasting Using Relative Entropy”, *Journal of Money, Credit, and Banking* 37, 383-401.
- Sanders, N. R. and Ritzman, L. P. (1999), “Judgmental Adjustments of Statistical Forecasts”. In: Armstrong, J. S. (ed), *Principles of Forecasting*. Kluwer Academic Publishers, Norwell.
- Schorfheide, F. (2000), “Loss Function-Based Evaluation of DSGE Models”, *Journal of Applied Econometrics* 15, 645-670.
- Schott, J. R. (1997), *Matrix Analysis for Statistics*. Wiley, New York.
- Sims, C. A. (1982), “Policy Analysis with Econometric Models”, *Brookings Papers on Economic Activity* 1982:1, 107-164.
- Smets, F. and Wouters, R. (2004), “Forecasting with a Bayesian DSGE Model – An Application to the Euro Area”, Working Paper No. 389, European Central Bank.
- Svensson, L. E. O. (2005), “Monetary Policy with Judgement: Forecast Targeting”, *International Journal of Central Banking* 1, 1-54.

- Svensson, L. E. O. and Tetlow, R. J. (2005), "Optimal Policy Projections", *International Journal of Central Banking* 1, 177-207.
- Svensson, L. E. O. and Williams, N. (2005), "Monetary Policy with Model Uncertainty: Distribution Forecast Targeting", NBER Working Paper No. 11733.
- Sveriges Riksbank. (2005), *Tankar om hur det penningpolitiska arbetet kan utvecklas*. Speech by Governor Lars Heikensten on February 22 at Nationalekonomiska Föreningen. Retrieved from www.riksbank.se/templates/Page.aspx?id=15783.
- Tierny, L. (1994), "Markov Chains for Exploring Posterior Distributions", *Annals of Statistics* 22, 1701-1762.
- Villani, M. and Warne, A. (2003), "Monetary Policy Analysis in a Small Open Economy Using Bayesian Cointegrated Structural VARs", Working Paper No. 296, European Central Bank.
- Wallis, K. F. (2005), "Combining Density and Interval Forecasts: A Modest Proposal", *Oxford Bulletin of Economics and Statistics* 67, 983-994.
- Waggoner, D. F. and Zha, T. (1999), "Conditional Forecasts in Dynamic Multivariate Models", *Review of Economics and Statistics* 81, 639-651.

Appendix A – Predictive densities

Figure A1. Endogenous forecast from Bayesian VAR model using Swedish data.

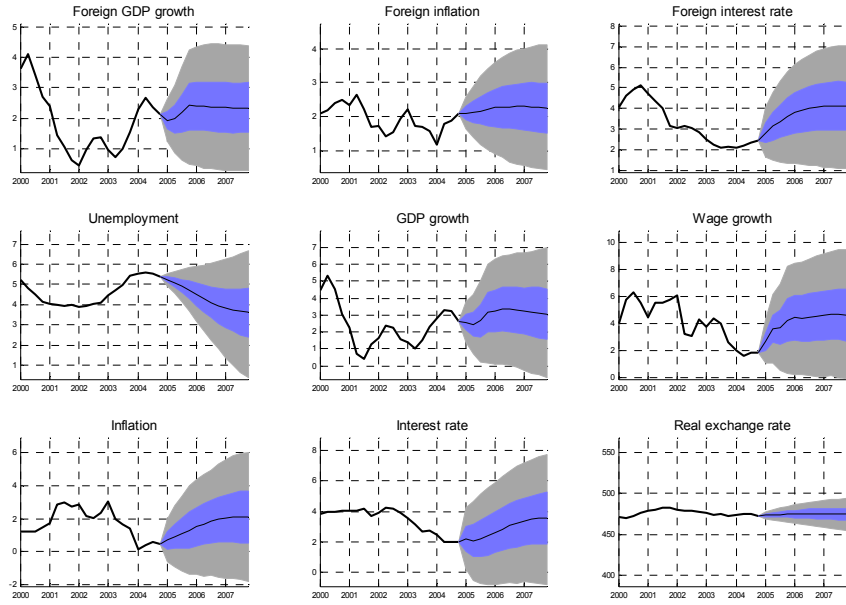


Figure A2. Forecasts from real exchange rate scenario in Bayesian VAR model using Swedish data.

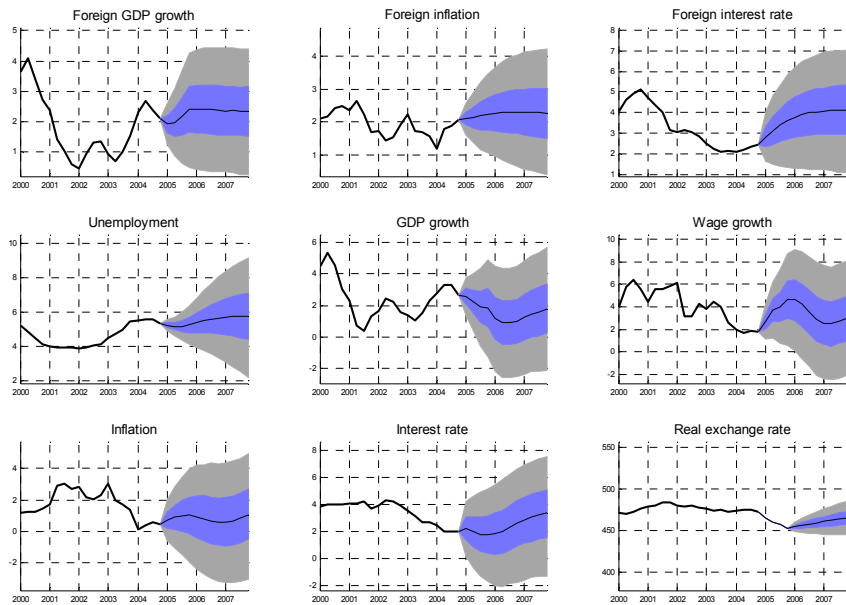
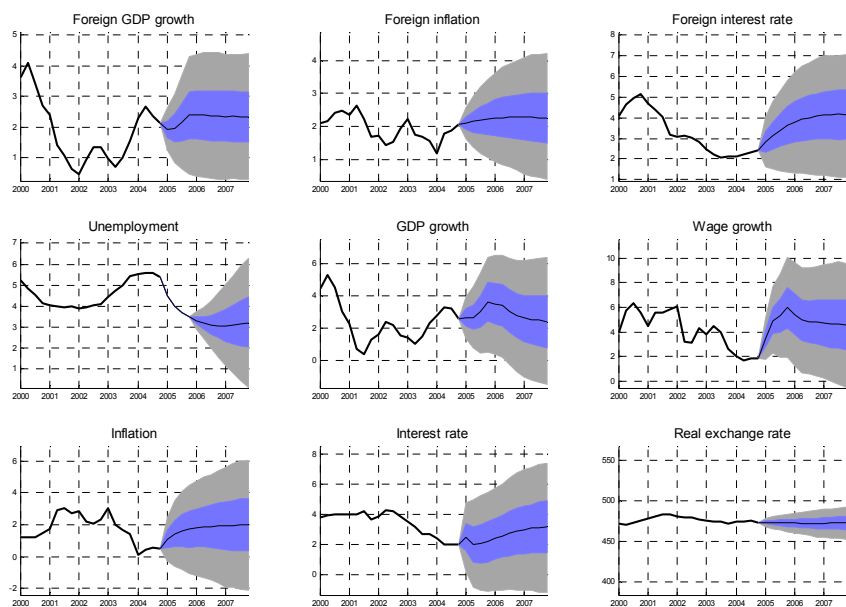


Figure A3. Forecasts from unemployment scenario in Bayesian VAR model using Swedish data.



Appendix B – Generating weighted predictive densities

This appendix shortly describes how the weighted predictive densities are generated in this paper. Clearly, this is only one of many potential ways in which the weighting can be conducted.

The predictive density from each scenario is generated using a Gibbs sampling algorithm as described in Section 4. For each scenario – $i = 1, \dots, M$ – we have a three dimensional matrix \mathbf{C}_i of dimensions $B \times n \times H$ which contains all predictions generated under that scenario. Using the M matrices \mathbf{C}_i , a weighted predictive density – stored in the $L \times n \times H$ matrix \mathbf{A} – can be produced the following way:

1. Decide which of the M matrices to sample a $1 \times n \times H$ plane from. The probability of matrix \mathbf{C}_i being chosen is given by the weight of that scenario, ω_i .
2. Sample, with a probability given by $1/B$ for all planes in the matrix, a $1 \times n \times H$ plane from the chosen \mathbf{C}_i .
3. Store the plane in \mathbf{A} .
4. Return to 1. Repeat the procedure L times.

Appendix C – Calculating the Kullback-Leibler information criterion

From a practical point of view, the integral in equation (2) could be very difficult to solve analytically in many cases. This can of course be circumvented by relying on numerical methods, but a numerical calculation of the integral could potentially come at a high computational cost if the system is of high dimension. A simplification which will be used in this paper is therefore to assume that we have a simple known form for the densities in question which yields a convenient analytical solution. We describe this assumption in this appendix.

Initially, define $\mathbf{v} = \left(\mathbf{z}_{T+1}^v \quad \dots \quad \mathbf{z}_{T+H}^v \right)'$ as the stacked $n^v H \times 1$ vector of forecasts, where the $n^v \times 1$ vector \mathbf{z}_t^v is the subset of the variables in \mathbf{z}_t employed in the calculation of the KLIC, $1 \leq n^v \leq n$ and H is the forecast horizon. We next assume that \mathbf{v} follows a multivariate normal distribution which implies that knowledge of the mean ($\boldsymbol{\mu}$) and covariance ($\boldsymbol{\Sigma}$) of the distribution is sufficient to completely describe it.²⁸ The distributions f and g are hence given by

$$f(\mathbf{v}) = (2\pi)^{-n^v H/2} \ln|\boldsymbol{\Sigma}_f|^{-1/2} \exp\left(-\frac{1}{2}(\mathbf{v} - \boldsymbol{\mu}_f)' \boldsymbol{\Sigma}_f^{-1} (\mathbf{v} - \boldsymbol{\mu}_f)\right) \quad (\text{A1})$$

$$g(\mathbf{v}) = (2\pi)^{-n^v H/2} \ln|\boldsymbol{\Sigma}_g|^{-1/2} \exp\left(-\frac{1}{2}(\mathbf{v} - \boldsymbol{\mu}_g)' \boldsymbol{\Sigma}_g^{-1} (\mathbf{v} - \boldsymbol{\mu}_g)\right) \quad (\text{A2})$$

Relying on the above assumptions, the KLIC can be calculated as

$$\delta(f, g) = -\frac{1}{2} \ln|\boldsymbol{\Sigma}_f \boldsymbol{\Sigma}_g^{-1}| - \frac{n^v H}{2} + \frac{1}{2} \text{tr}(\boldsymbol{\Sigma}_f \boldsymbol{\Sigma}_g^{-1}) + \frac{1}{2} (\boldsymbol{\mu}_f - \boldsymbol{\mu}_g)' \boldsymbol{\Sigma}_g^{-1} (\boldsymbol{\mu}_f - \boldsymbol{\mu}_g) \quad (\text{A3})$$

where we have made use of the following lemma:

²⁸ Note that this assumption also implies that information regarding higher moments of the predictive densities is being ignored in the calculations.

Lemma 1

Let \mathbf{x} be a p -dimensional vector with mean $\boldsymbol{\theta}$ and covariance matrix $\boldsymbol{\Omega}$, then

$$E\left[(\mathbf{x} - \mathbf{b})' \mathbf{B}(\mathbf{x} - \mathbf{b})\right] = \text{tr}(\boldsymbol{\Omega}\mathbf{B}) + (\boldsymbol{\theta} - \mathbf{b})' \mathbf{B}(\boldsymbol{\theta} - \mathbf{b}) \quad (\text{A4})$$

for every p vector \mathbf{b} and symmetric $p \times p$ matrix \mathbf{B} . [Proof: Schott (1997).]

Whilst equation (A3) is a simple expression, we still need means and covariance matrices of the distributions in question to implement it. These moments could be calculated in numerous ways depending upon the chosen framework but one convenient solution in empirical applications is to once again rely on stochastic simulation. Using numerical techniques, B values taken on by \mathbf{v} are generated as the predictive densities for the main and alternative scenarios are simulated. The $n^v H \times 1$ vectors $\boldsymbol{\mu}_f$ and $\boldsymbol{\mu}_g$ and the $n^v H \times n^v H$ covariance matrices $\boldsymbol{\Sigma}_f$ and $\boldsymbol{\Sigma}_g$ can then be estimated using maximum likelihood by employing equations (A5) and (A6) respectively.

$$\hat{\boldsymbol{\mu}}_r = B^{-1} \sum_{j=1}^B \mathbf{v}_{rj} \quad (\text{A5})$$

$$\hat{\boldsymbol{\Sigma}}_r = B^{-1} \sum_{j=1}^B (\mathbf{v}_{rj} - \hat{\boldsymbol{\mu}}_r)(\mathbf{v}_{rj} - \hat{\boldsymbol{\mu}}_r)' \quad (\text{A6})$$

for $r = (f, g)$ and where B is the number of iterations in the numerical algorithm. The KLIC is then computed by simply replacing the true parameters in equation (A3) with their maximum likelihood estimates.

A technical issue that we want to point out here is that relying on the above described method and hard conditions, any variable included in $\mathbf{z}_{i,t}^s$ cannot be included in \mathbf{z}_t^v since $\boldsymbol{\Sigma}_g$ in that case would be singular. Put differently, we cannot include variables that we have imposed hard conditions on in the calculation of the KLIC.

WORKING PAPERS*

Editor: Nils Gottfries

- 2005:23 Peter Hästö and Pär Holmberg, Some inequalities related to the analysis of electricity auctions. 7pp.
- 2006:1 Jie Chen, The Dynamics of Housing Allowance Claims in Sweden: A discrete-time hazard analysis. 37pp.
- 2006:2 Fredrik Johansson and Anders Klevmarcken: Explaining the size and nature of response in a survey on health status and economic standard. 25pp.
- 2006:3 Magnus Gustavsson and Henrik Jordahl, Inequality and Trust: Some Inequalities are More Harmful than Others. 29pp.
- 2006:4 N. Anders Klevmarcken, The Distribution of Wealth in Sweden: Trends and Driving factors. 20pp.
- 2006:5 Erica Lindahl and Andreas Westermark: Soft Budget Constraints as a Risk Sharing Arrangement in an Economic Federation. 22pp.
- 2006:6 Jonas Björnerstedt and Andreas Westermark: Bargaining and Strategic Discrimination. 36pp.
- 2006:7 Mikael Carlsson, Stefan Eriksson and Nils Gottfries: Testing Theories of Job Creation: Does Supply Create Its Own Demand? 23pp.
- 2006:8 Annika Alexius and Erik Post, Cointegration and the stabilizing role of exchange rates. 33pp.
- 2006:9 David Kjellberg, Measuring Expectations. 46pp.
- 2006:10 Nikolay Angelov, Modellig firm mergers as a roommate problem. 21pp.
- 2006:11 Nikolay Angelov, Structural breaks in iron-ore prices: The impact of the 1973 oil crisis. 41pp.
- 2006:12 Per Engström and Bertil Holmlund, Tax Evasion and Self-Employment in a High-Tax Country: Evidence from Sweden. 16pp.
- 2006:13 Matias Eklöf and Daniel Hallberg, Estimating retirement behavior with special early retirement offers. 38pp.
- 2006:14 Daniel Hallberg, Cross-national differences in income poverty among Europe's 50+. 24pp.
- 2006:15 Magnus Gustavsson and Pär Österholm, Does Unemployment Hysteresis Equal Employment Hysteresis? 27pp.

* A list of papers in this series from earlier years will be sent on request by the department.

- 2006:16 Jie Chen, Housing Wealth and Aggregate Consumption in Sweden. 52pp.
- 2006:17 Bertil Holmlund, Quian Liu and Oskar Nordström Skans, Mind the Gap? Estimating the Effects of Postponing Higher Education. 33pp.
- 2006:18 Oskar Nordström Skans, Per-Anders Edin and Bertil Holmlund, Wage Dispersion Between and Within Plants: Sweden 1985-2000. 57pp.
- 2006:19 Tobias Lindhe and Jan Södersten, The Equity Trap, the Cost of Capital and the Firm's Growth Path. 20pp.
- 2006:20 Annika Alexius and Peter Welz, Can a time-varying equilibrium real interest rate explain the excess sensitivity puzzle? 27pp.
- 2006:21 Erik Post, Foreign exchange market interventions as monetary policy. 34pp.
- 2006:22 Karin Edmark and Hanna Ågren, Identifying Strategic Interactions in Swedish Local Income Tax Policies. 36pp.
- 2006:23 Martin Ågren, Does Oil Price Uncertainty Transmit to Stock Markets? 29pp.
- 2006:24 Martin Ågren, Prospect Theory and Higher Moments. 31pp.
- 2006:25 Matz Dahlberg, Eva Mörk, Jørn Rattsø and Hanna Ågren, Using a discontinuous grant rule to identify the effect of grants on local taxes and spending. 26pp.
- 2006:26 Jukka Pirttilä and Håkan Selin, How Successful is the Dual Income Tax? Evidence from the Finnish Tax Reform of 1993. 40pp.
- 2006:27 Henrik Jordahl and Che-Yuan Liang, Merged Municipalities, Higher Debt: On Free-riding and the Common Pool Problem in Politics. 34pp.
- 2006:28 Per Engström, Ann-Sofie Kolm and Che-Yuan Liang, Maternal Addiction to Parental Leave. 18pp.
- 2006:29 Jonas Björnerstedt and Andreas Westermarck, Delay in Bargaining with Externalities. 27pp.
- 2006:30 Pär Österholm, Incorporating Judgement in Fan Charts. 36pp.

See also working papers published by the Office of Labour Market Policy Evaluation
<http://www.ifau.se/>

ISSN 1653-6975