

Andersen, Torben M.; Seneca, Martin

Working Paper

Labour market asymmetries in a monetary union

Danmarks Nationalbank Working Papers, No. 53

Provided in Cooperation with:

Danmarks Nationalbank, Copenhagen

Suggested Citation: Andersen, Torben M.; Seneca, Martin (2008) : Labour market asymmetries in a monetary union, Danmarks Nationalbank Working Papers, No. 53, Danmarks Nationalbank, Copenhagen

This Version is available at:

<https://hdl.handle.net/10419/82307>

Standard-Nutzungsbedingungen:

Die Dokumente auf EconStor dürfen zu eigenen wissenschaftlichen Zwecken und zum Privatgebrauch gespeichert und kopiert werden.

Sie dürfen die Dokumente nicht für öffentliche oder kommerzielle Zwecke vervielfältigen, öffentlich ausstellen, öffentlich zugänglich machen, vertreiben oder anderweitig nutzen.

Sofern die Verfasser die Dokumente unter Open-Content-Lizenzen (insbesondere CC-Lizenzen) zur Verfügung gestellt haben sollten, gelten abweichend von diesen Nutzungsbedingungen die in der dort genannten Lizenz gewährten Nutzungsrechte.

Terms of use:

Documents in EconStor may be saved and copied for your personal and scholarly purposes.

You are not to copy documents for public or commercial purposes, to exhibit the documents publicly, to make them publicly available on the internet, or to distribute or otherwise use the documents in public.

If the documents have been made available under an Open Content Licence (especially Creative Commons Licences), you may exercise further usage rights as specified in the indicated licence.



DANMARKS NATIONALBANK WORKING PAPERS

2008 • 53

Torben M. Andersen

School of Economics and Management, University of Aarhus
CEPR, EPRU and IZA

Martin Seneca

School of Economics and Management, University of Aarhus

Labour market asymmetries in a monetary union

May 2008

The Working Papers of Danmarks Nationalbank describe research and development, often still ongoing, as a contribution to the professional debate.

The viewpoints and conclusions stated are the responsibility of the individual contributors, and do not necessarily reflect the views of Danmarks Nationalbank.

As a general rule, Working Papers are not translated, but are available in the original language used by the contributor.

Danmarks Nationalbank's Working Papers are published in PDF format at www.nationalbanken.dk. A free electronic subscription is also available at this Web site.

The subscriber receives an e-mail notification whenever a new Working Paper is published.

Please direct any enquiries to

Danmarks Nationalbank, Information Desk, Havnegade 5, DK-1093 Copenhagen K Denmark

Tel.: +45 33 63 70 00 (direct) or +45 33 63 63 63

Fax : +45 33 63 71 03

E-mail: info@nationalbanken.dk

Text may be copied from this publication provided that Danmarks Nationalbank is specifically stated as the source. Changes to or misrepresentation of the content are not permitted.

Nationalbankens Working Papers beskriver forsknings- og udviklingsarbejde, ofte af foreløbig karakter, med henblik på at bidrage til en faglig debat.

Synspunkter og konklusioner står for forfatterens regning og er derfor ikke nødvendigvis udtryk for Nationalbankens holdninger.

Working Papers vil som regel ikke blive oversat, men vil kun foreligge på det sprog, forfatterne har brugt.

Danmarks Nationalbanks Working Papers er tilgængelige på Internettet www.nationalbanken.dk i pdf-format. På webstedet er det muligt at oprette et gratis elektronisk abonnement, der leverer en e-mail notifikation ved enhver udgivelse af et Working Paper.

Henvendelser kan rettes til :

Danmarks Nationalbank, Informationssektionen, Havnegade 5, 1093 København K.

Telefon: 33 63 70 00 (direkte) eller 33 63 63 63

E-mail: info@nationalbanken.dk

Det er tilladt at kopiere fra Nationalbankens Working Papers - såvel elektronisk som i papirform - forudsat, at Danmarks Nationalbank udtrykkeligt anføres som kilde. Det er ikke tilladt at ændre eller forvanske indholdet.

ISSN (trykt/print) 1602-1185

ISSN (online) 1602-119

Titel (Danish title)

Arbejdsmarkedsasymmetrier i en møntunion.

Resumé (Danish summary)

Dette papir tager et første skridt i analysen af, hvordan en møntunion fungerer, når arbejdsmarkedsstrukturene er forskellige på tværs af landegrænser. Forskelle i lønfleksibilitet, markedsmagt og landestørrelse tillades i en model med både landespecifikke og fælles stød.

Implikationerne af asymmetrier for både den overordnede makroøkonomiske stabilitet i møntunionen og den landespecifikke situation analyseres. Det vises, at asymmetrier kan have vigtige effekter, og at der er betydelige spill-over-effekter. Blandt andet viser analysen, at den aggregerede outputvariabilitet ikke er strengt stigende i graden af nominal rigiditet, men snarere pukkelformet. En disproportional andel af konsekvenserne af lønrigiditet kan tilfalde små lande, og et ufleksibel land opnår ikke nødvendigvis større stabilitet ved at blive mere fleksibelt. Der kan derfor være en konflikt mellem den grad af fleksibilitet, der opfattes som hensigtsmæssig i et enkelt land og i hele møntunionen.

Labour market asymmetries in a monetary union*

Torben M. Andersen

School of Economics and Management, University of Aarhus
CEPR, EPRU and IZA

Martin Seneca

School of Economics and Management, University of Aarhus

May 2008

Abstract

This paper takes a first step in analysing how a monetary union performs in the presence of labour market asymmetries. Differences in wage flexibility, market power and country sizes are allowed for in a setting with both country-specific and aggregate shocks. The implications of asymmetries for both the overall performance of the monetary union and the country-specific situation are analysed. It is shown that asymmetries are not only critical for country-specific performance but also for the overall performance of the monetary union. A striking finding is that aggregate output volatility is not strictly increasing in nominal rigidities but hump-shaped. Moreover, a disproportionate share of the consequences of wage inflexibility may fall on small countries. In the case of country-specific shocks, a country unambiguously benefits in terms of macroeconomic stability by becoming more flexible, while this is not necessarily the case for aggregate shocks. There may thus be a tension between the degree of flexibility considered optimal at the country level and at the aggregate level within the monetary union.

JEL classification: E30, E52, F41

Key words: wage formation, nominal wage rigidity, staggered contracts, monetary policy, monetary union, business cycles, shocks

*We are grateful for comments to previous versions made by participants at seminars at Danmarks Nationalbank, CREI at Universitat Pompeu Fabra, the Phillips-curve Conference in Kiel, the SAE conference in Granada and the Royal Economic Society Annual Conference in Warwick. Martin Seneca thanks Danmarks Nationalbank for financial support.

1 Introduction

In the run-up to the establishment of the European Monetary Union, much focus was on whether the potential member countries fulfilled the conditions for an optimal currency area. According to the traditional theory on optimal currency areas, participation in a currency union and the implied loss of autonomy in monetary policy require that labour markets are flexible in adjusting to country-specific shocks (see e.g. de Grauwe (2005)). The flexibility can either be in terms of wage adjustment or labour mobility. In a second wave of the literature, it was stressed that the conditions for an optimal currency area are endogenous since participation in a currency union affects market fundamentals (via further integration), incentives in wage formation and possibly the incentive to undertake structural reforms (see e.g. Rose and Frankel (1998) and Calmfors (2001)). Whether the countries constitute an optimal currency union is an ex-post rather than an ex-ante question. In either case, it is presumed that a monetary union eventually will be characterized by symmetries.

However, perceiving a currency union as a homogeneous area is in most cases misleading, and for the European Monetary Union (EMU) in particular this assumption does not seem appropriate. European countries are fairly heterogeneous, reflecting different institutional, political and historical developments. The homogeneity assumption did not hold neither in an ex ante and nor in an ex post sense so far since the incidence and nature of reforms undertaken in recent years do not seem to indicate that these differences are about to be eliminated. Differences in business cycle situations and the tensions these have created in the assessment of the common monetary policy of the ECB reveal that countries are affected by different shocks and/or structures.

This paper takes a first step in analysing the role of asymmetries for business cycle fluctuations within a currency union, focussing on the role of asymmetric sizes, structures and shocks. One reason why such asymmetries may be important and why the homogeneity assumption underlying standard approaches is potentially misleading arises from the observation that the common monetary policy tends to react to common or aggregate shocks within the area. Hence, asymmetries are potentially more important since they cannot easily be countered via the common monetary policy. Asymmetries across countries may arise directly from country-specific shocks, but even aggregate or common shocks may create asymmetric effects when they interact with differences in size and structures across the member countries. This, in turn, implies that aggregate measures of the performance of the union, like inflation and output (gaps) to which the common monetary policy reacts, may critically depend on the asymmetries. To further complicate matters, the "asymmetries" are transmitted across member countries via trade links. It is an implication that the performance of the monetary union is not in general well described by a "representative" country approach.

The framework used in this paper is based on recent intertemporal approaches in both open economy macroeconomics and in the closed-economy

New Keynesian literature on monetary policy.¹ To focus on the interactions within the monetary union, it is considered to be a closed area where the member countries share a common monetary policy and engage in trade with each other. The focus is positive in the sense of exploring the consequences of asymmetries (size, structure and shocks) for the business cycle performance at the country and aggregate level for a given monetary policy setting. The specific structural asymmetries analyzed apply to the labour market, and differences in nominal adjustment and the degree of competition in the labour market are allowed for. These two types of structural dimensions can be seen as examples of structural differences in the real and the nominal dimension. They are further motivated by the fact that it is well-established that there are such differences across European countries (member or potential member countries of EMU), see e.g. the OECD (various issues), European Commission (2006) and Arpaia and Pichelmann (2007).² The specific shocks considered are supply (productivity) shocks. Modern business cycle theory has studied such shocks extensively and therefore constitutes a natural benchmark for the analysis of the implications of asymmetries. However, the main mechanisms are not dependent on whether shocks are originating on the supply or the demand side. Finally, we model monetary policy by a simple Taylor-rule in accordance with much recent research on monetary policy.³

Whether participation in a monetary union strengthens the incentive to undertake reforms can not really be addressed without having analysed how the monetary union works in the presence of given asymmetries. The debate seems to take it for granted that more flexibility is good both from a country and an overall monetary union perspective. Is it necessarily the case that less flexible countries suffer from a disproportionate share of economic problems and therefore have the largest incentives to undertake reforms? Is it only asymmetries across large member countries that matter, or are the structural characteristics of smaller member countries also important? Surprisingly, these questions have not been much researched. We shed some light on these questions by considering the implications of asymmetric structures both for the aggregate performance of a monetary union and country-specific performance. Interestingly, we find that there may be a conflict between what may seem best from a country perspective and from an overall monetary union perspective. Moreover, changes in structural parameters may release spill-over effects between member countries, suggesting that non-cooperative structural policy making does not necessarily imply structures which are optimal seen from both an overall monetary union and a country-specific perspective.

Other forms of asymmetries or heterogeneities in a monetary union have been addressed in the literature. One important issue is the interdependency between

¹Seminal contributions are Obstfeld and Rogoff (1995) and Yun (1996), respectively. For monographic expositions, cf. Obstfeld and Rogoff (1996) and Woodford (2003).

²Recent work has also pointed to the importance of downward nominal wage rigidities and cross-country differences in this form of rigidity, see Holden and Wulfsberg (2008).

³See, for instance, Smets and Wouters (2003) for an estimated Taylor rule for the euro area, and Galí and Gertler (2007) for a recent discussion.

monetary and fiscal policy when the former is centralised and the latter decentralised. This naturally leads to potential asymmetries in fiscal policy, which raises questions concerning interdependencies between national fiscal policies as well as between the aggregate fiscal stance and the monetary policy (see, e.g., Lombardo and Sutherland (2004), Beetsma and Jensen (2005), and Andersen, (2005)). Also, Benigno (2002) analyses, from a normative point of view, how monetary policy should be designed when member countries have different degrees of nominal price rigidities, and it is shown that the central bank should attach more weight to inflation in countries characterised by more nominal inertia. Beetsma and Jensen (2004, 2005) allow for labour market asymmetries in their analysis of the interactions between monetary and fiscal policy in a monetary union. Dellas and Tavlas (2004) present a three-country model allowing for asymmetries in nominal wage flexibility, and find that countries with a high degree of nominal wage rigidity are better off in a monetary union. Andersen (2008) also analyses the implications of labour market asymmetries in a monetary union in an intertemporal model, but in a setting with one-period contracts.

The paper is organised as follows. The model structure is laid out in section 2, and the equilibrium processes for output and inflation are determined in section 3. Section 4 considers the shock transmission in a symmetric baseline example. The implications of various forms of asymmetries are explored in section 5 both from a unionwide and country-specific perspective. Section 6 offers a few concluding comments.

2 A monetary union with heterogeneous labour markets

Consider a monetary union where the central bank has the monetary authority over I separate and otherwise independent countries (or more generally regions) indexed by i . In particular, the central bank sets the nominal interest rate R_t earned on risk-free nominal bonds throughout this monetary union between periods t and $t + 1$. The union is closed to the outside world.⁴ Each country i is populated by a continuum of households $h \in [0, 1]$ and has a continuum of firms $f \in [0, 1]$. Countries may be of different sizes, where the relative size of country i is given by $v_i \in [0, 1]$ such that $\sum_{i=1}^I v_i = 1$. All firms in a given country produce the same internationally traded consumption good, different from those produced in other countries (a specialised production structure). For simplicity, product markets are assumed to be perfectly competitive and prices to be flexible. Labour markets, in contrast, are imperfectly competitive and have nominal rigidities in the form of nominal wage contracts. Labour market structures are allowed to differ across countries in terms of degrees of market power in wage setting, and degrees of nominal rigidity are different across

⁴This means that the model could also be interpreted as a closed-economy model of a single country with I sectors, which are potentially asymmetric in terms of structures and shocks.

countries. There is no mobility of labour across borders.

2.1 Firms

2.1.1 Labour demand

In each period t , each household h in country i supplies a differentiated labour service $N_{it}(h)$. The labour used in production in country i , L_{it} , is assumed to be an aggregate of the continuum of labour services supplied by the households:

$$L_{it} = \left[\int_0^1 N_{it}(h)^{\frac{\xi_i-1}{\xi_i}} dh \right]^{\frac{\xi_i}{\xi_i-1}} \quad (1)$$

where $\xi_i > 1$ is the elasticity of substitution between labour services.

Each household determines its wage rate, $W_{it}(h)$, taking into account how firms' labour demand depends on the wage (a right-to-manage structure). That is, given wages, actual employment is determined by labour demand. The demand for household h 's labour service is determined by the cost minimization problems of the country's firms, which minimise costs, taking households' wage rates, $W_{it}(h)$, as given. The representative firm minimizes

$$\int_0^1 W_{it}(h) N_{it}(h) dh \quad (2)$$

with respect to $N_{it}(h)$ subject to (1). This leads to a demand for household h 's labour service given by

$$N_{it}(h) = \left(\frac{W_{it}(h)}{W_{it}} \right)^{-\xi_i} L_{it} \quad (3)$$

where W_{it} is the wage index defined by

$$W_{it} = \left[\int_0^1 W_{it}(h)^{1-\xi_i} dh \right]^{\frac{1}{1-\xi_i}} \quad (4)$$

This wage index has the property that the minimum cost of acquiring L_{it} units of aggregate labour is given by $W_{it}L_{it}$. It follows that the labour demand elasticity is ξ_i , and hence the market power of wage setters is inversely related to ξ_i . The demand for household h 's labour service is a decreasing function of the household's relative wage.

2.1.2 Profit maximisation

The representative firm in country i produces output Y_{it} according to the production function

$$Y_{it} = \frac{1}{\gamma} L_{it}^\gamma U_{it}^{1-\gamma} \quad (5)$$

where U_{it} is the stochastic period- t productivity of firms in country i , and $0 < \gamma < 1$ is the degree of returns to scale. Real capital is disregarded to simplify, but decreasing returns can be interpreted as arising from a second factor of production in fixed supply.

Product markets are perfectly competitive, and the representative firm in country i maximizes profits, which it distributes to households. There are no nominal price rigidities, and the firm takes the price of its product, P_{it} , as given. The profit maximization problem yields a demand for aggregated labour services given by

$$L_{it} = \left(\frac{W_{it}}{P_{it}} \right)^{-\frac{1}{1-\gamma}} U_{it} \quad (6)$$

Inserting in (5) gives the supply relation

$$Y_{it} = \frac{1}{\gamma} \left(\frac{W_{it}}{P_{it}} \right)^{\frac{\gamma}{\gamma-1}} U_{it} \quad (7)$$

In logs and measuring variables as deviations from steady state⁵, we have

$$y_{it} = \beta (p_{it} - w_{it}) + u_{it} \quad (8)$$

where $\beta \equiv \gamma/(1-\gamma)$. The supply shock is assumed to be generated by the process

$$u_{it} = \rho_{uu} u_{it-1} + \varepsilon_{it} \quad (9)$$

where $-1 < \rho_{uu} < 1$ and $\varepsilon_{it} \sim iid N(0, \sigma_\varepsilon^2)$. The correlation of the innovations $Corr(\varepsilon_i, \varepsilon_j)$ is denoted ρ_ε . Hence, different situations can easily be characterized by varying this correlation coefficient. If $\rho_\varepsilon = 1$, it follows that all innovations are identical across regions, i.e., $\varepsilon_{it} = \varepsilon_t \forall i$, which corresponds to an aggregate shock. If $\rho_\varepsilon = 0$, the shocks are idiosyncratic or country-specific shocks.

2.2 Households

2.2.1 Consumption and bond holdings

Household h in country i has the utility function

$$E_t \sum_{\tau=0}^{\infty} \delta^\tau \left[\frac{\sigma}{\sigma-1} C_{it+\tau}(h)^{\frac{\sigma-1}{\sigma}} - \frac{1}{1+\mu} N_{it+\tau}(h)^{1+\mu} \right] \quad (10)$$

where E_t is an operator representing expectations over all states of the economy conditional on period- t information, $\delta \in (0, 1)$ is the subjective discount factor,

⁵In order to solve the model, it is written in log-deviations from the non-stochastic steady state. Steady-state values are indicated by omission of time subscripts, and lower-case letters denote (log-)deviations from steady-state values of corresponding upper-case variables ($x_t \equiv dX_t/X \approx \ln(X_t/X)$). Throughout, aggregate log-variables are defined as weighted averages of country-specific log-variables, i.e., for any variable x , we have $x_t = \sum_{i=1}^I v_i X_{it}$. In general, a log-linearization around a steady-state of $X_t = \sum_{i=1}^I V_i X_{it}$ gives this average where $v_i = \frac{V_i X_i}{X}$. Symmetry of the steady state implies $v_i = V_i$.

and $C_{it+\tau}(h)$ is a real consumption index for period $t + \tau$, $N_{it+\tau}$ is labour supply in period $t + \tau$. $\sigma > 0$ is the elasticity of intertemporal substitution of consumption and $\mu > 0$.⁶

The consumption index is defined over the differentiated commodities produced in the union's member countries. Specifically,

$$C_{it}(h) = \left[\sum_{j=1}^I v_j C_{ijt}(h)^{\frac{\theta-1}{\theta}} \right]^{\frac{\theta}{\theta-1}} \quad (11)$$

where $\theta > 0$, v_j is the relative size of country j (as noted above), and $C_{ijt}(h)$ represents consumption of country j 's commodity by household h in country i . In every period t , this household chooses $C_{ijt}(h)$ for a given level of real consumption by minimizing

$$\sum_{j=1}^I P_{jt} C_{ijt}(h)$$

subject to (11). This yields a demand for country j 's product by household h in country i given by

$$C_{ijt}(h) = \left(\frac{P_{jt}}{v_j P_t} \right)^{-\theta} C_{it}(h) \quad (12)$$

when P_t is the price index defined by

$$P_t = \left[\sum_{j=1}^I v_j \left(\frac{P_{jt}}{v_j} \right)^{1-\theta} \right]^{\frac{1}{1-\theta}} \quad (13)$$

This price index has the property that the minimum cost of acquiring C_{it} units of real consumption is given by $P_t C_{it}$. From (12) it follows that θ is the price elasticity of demand for C_{ijt} .

Asset markets are assumed to be complete (see discussion below), i.e., available financial assets completely span the possible states of the economy. This assumption leads to the following period- t flow budget constraint for a household in country i :

$$E_t [Q_{t,t+1} B_{it}(h)] + P_t C_{it}(h) = B_{it-1}(h) + W_{it}(h) N_{it}(h) + \Pi_{it}(h) \quad (14)$$

The right-hand side gives available resources as the sum of initial financial wealth, $B_{it-1}(h)$, labour income, $W_{it}(h) N_{it}(h)$, and nominal profit income,

⁶ Real money balances could be included in the utility function in order to analyse money demand. However, the central bank's policy instrument is the interest rate, while it passively supplies the money demanded by households. Thus, as long as money enters additively separably in the utility function, nothing will change in what follows since the inclusion of money will only add a money demand relation recursively determining money demand as a function of the variables of interest. See, e.g., Woodford (2003) for a discussion.

$\Pi_{it}(h)$. The left-hand side represents the allocation of resources to consumption, $P_t C_{it}(h)$, and bond-holdings, $E_t [Q_{t,t+1} B_{it}(h)]$, where $Q_{t,t+1}$ is the asset pricing kernel.⁷

Given existing wage contracts, the household maximises expected utility (10) subject to the sequence of budget constraints (14) and (implicitly) a solvency condition. Defining the net risk-free nominal interest rate R_t by the relation $(1 + R_t)^{-1} = E [Q_{t,t+1}]$, the first-order conditions determining the optimal choice of consumption and bond-holdings can be combined to yield the Euler equation

$$C_{it}(h)^{-\frac{1}{\sigma}} = \delta (1 + R_t) E_t \left(C_{it+1}(h)^{-\frac{1}{\sigma}} \frac{P_t}{P_{t+1}} \right) \quad (15)$$

summarising the household's intertemporal consumption decisions.⁸

2.2.2 Wage setting

To model nominal rigidities, it is assumed that wages are set by households in a staggered fashion with random duration of wage contracts analogous to the mechanism in Calvo (1983). In particular, in every period each household in country i is allowed to reset the wage rate it demands for its labour service with a fixed probability $(1 - \alpha_i)$. Hence, the wage rate set by household h at time t , $W_{it}^*(h)$, is the prevailing wage rate for the household at time $t + \tau$, i.e., $W_{it+\tau}(h) = W_{it}^*(h)$, with probability α_i^τ , and the expected duration of a contract given by $(1 - \alpha_i)^{-1}$. For given wages, employment is determined from the demand side.

When a household resets its wage, it does so to maximise expected utility (10) subject to the demand for its labour (3), its budget constraint (14) and the price setting mechanism just described. For a household changing its wage rate at time t , this is equivalent to maximizing the following function with respect to $W_{it}^*(h)$ subject to (3) and (14):⁹

$$E_t \sum_{\tau=0}^{\infty} (\alpha_i \delta)^\tau \left[\frac{\sigma}{\sigma - 1} C_{it+\tau}(h)^{\frac{\sigma-1}{\sigma}} - \frac{1}{1 + \mu} N_{it+\tau}(h)^{1+\mu} \right] \quad (16)$$

The first-order condition becomes

$$E_t \sum_{\tau=0}^{\infty} (\alpha_i \delta)^\tau \left[\left(\frac{\xi_i}{1 - \xi_i} N_{it+\tau}(h)^\mu + C_{it+\tau}(h)^{-\frac{1}{\sigma}} \frac{W_{it}^*(h)}{P_{t+\tau}} \right) N_{it+\tau}(h) \right] = 0 \quad (17)$$

⁷The asset-pricing kernel is the period- t price of a claim to one unit of currency in state s^{t+1} in period $t + 1$ divided by the probability of that state occurring conditional on period- t information, $\Pr_t(s^{t+1})$. The bond B_{it} is a random variable paying $B_{it}(s^{t+1})$ units of currency in state s^{t+1} in period $t + 1$. At time t , the household chooses the complete specification of this random variable in all states s^{t+1} . It follows that $E_t [Q_{t,t+1} B_{it}]$ is the allocation of resources to a portfolio of bonds.

⁸Note that it is an implication of (15) that monetary policy affects aggregate demand in all countries symmetrically.

⁹This differs from (10) in that implicit terms representing states where the wage to be set is not the prevailing wage are excluded.

It follows that the monopolistically competitive household sets its wage rate so that the marginal utility of income from an extra unit of labour effort is a constant mark-up over the marginal disutility in discounted expected value terms. This captures the standard result in wage bargaining models that the market power of wage setters depends on the elasticity of labour demand (see, e.g., Blanchard and Fisher (1989)).

In the special case with flexible wages where households are allowed to reset the wage each period, the first-order condition collapses to

$$\frac{W(h)_{it}^*}{P_t} = \frac{\xi_i}{\xi_i - 1} \frac{N(h)_{it}^\mu}{C(h)_{it}^{-\frac{1}{\sigma}}} = \frac{\xi_i}{\xi_i - 1} MRS(h)_{it} \quad (18)$$

where MRS_{it} is the marginal rate of substitution between consumption and leisure.

As shown in appendix A, the first-order condition for the representative household's wage-setting problem (17), the household labour demand relation (3) and the law of motion of the wage index (25) can be used to derive the following wage-setting equation for country i (in logs):

$$\omega_{it} = \Lambda_i [mrs_{it} - (w_{it} - p_t)] + \delta E_t \omega_{it+1} \quad (19)$$

where $\omega_{it} = w_{it} - w_{it-1}$ is wage inflation, $mrs_{it} = \mu l_{it} + \sigma^{-1} c_t$ is the marginal rate of substitution, and Λ_i is a decreasing function of the Calvo parameter α_i and of the elasticity of substitution between labour services ξ_i :

$$\Lambda_i = \frac{(1 - \alpha_i)(1 - \alpha_i \delta)}{\alpha_i(1 + \mu \xi_i)} \quad (20)$$

For later reference, note that Λ_i depends on both the parameter characterising wage adjustment, α_i , and the parameter determining the mark-up or market power in wage formation, ξ_i .

2.2.3 Risk-sharing

Staggered wage setting implies that households in a given country are not identical, and there is no representative household. In the general case, individual decisions will depend on initial wealth, which implies that decisions will be path dependent, cf. Obstfeld and Rogoff (1995) and Corsetti and Pesenti (2001). This causes both substantial technical problems and problems with multiplicity of equilibria. This has been overcome in the literature either by imposing assumptions precluding wealth transfers or by assuming that risk-sharing arrangements are in place. We choose the latter approach here. By assuming that all households in the monetary union have entered the world with the same level of wealth, the complete-markets assumption implies that they will choose the same consumption levels, i.e., risk-sharing is complete both within and between the member countries of the monetary union.¹⁰ While overcoming technical

¹⁰This follows from the first-order conditions of the utility-maximisation problems as all households face the same asset-pricing kernel.

problems, this assumption also serves the purpose of focusing on the implications of supply side asymmetries across member countries in a monetary union without mixing them with demand and wealth effects. Risk-sharing implies that $C_{it}(h) = C_{it}$ for all h , and therefore the h index can be dropped in what follows.

Aggregate demand for good j can now be defined as the weighted sum over countries i of (12):

$$D_{jt} = \sum_{i=1}^I v_i C_{ijt} = \left(\frac{P_{jt}}{v_j P_t} \right)^{-\theta} C_t \quad (21)$$

where

$$C_t = \sum_{i=1}^I v_i C_{it} \quad (22)$$

is defined as aggregate unionwide consumption. International risk-sharing implies that $C_{it} = C_{jt}$ for all i, j . Hence, $C_{it} = C_t$ for all i .

In logs, the Euler equation (15) becomes

$$E_t c_{t+1} = c_t + \sigma (r_t - E_t \pi_{t+1}) \quad (23)$$

where $r_t \equiv \log(1 + R_t)$ and $\pi_{t+1} = p_{t+1} - p_t$ is inflation, and aggregate demand for commodity j (21)

$$d_{jt} = -\theta (p_{jt} - p_t) + c_t \quad (24)$$

In addition, the complete-markets assumption implies that the fraction $(1 - \alpha_i)$ of households in country i changing their wage rates at time t choose the same rate W_{it}^* . The remaining fraction α_i of households continue with the wage rate prevailing at time $t - 1$ where the distribution of wage rates is unchanged. Hence, the law of motion of the aggregate wage index in country i is given by

$$W_{it} = \left[\int_0^1 W_{it}(h)^{1-\xi_i} dh \right]^{\frac{1}{1-\xi_i}} = \left[\alpha_i W_{it-1}^{1-\xi_i} + (1 - \alpha_i) (W_{it}^*)^{1-\xi_i} \right]^{\frac{1}{1-\xi_i}} \quad (25)$$

2.3 Monetary policy

The aim of this paper is to consider the implications of labour market asymmetries for a given monetary policy. Therefore, a standard monetary policy reaction function is specified, namely a so-called Taylor rule, cf. Taylor (1993). Specifically, it is assumed that the interest rate is determined by (in logs)¹¹

$$r_t = k_\pi \pi_t + k_y \hat{y}_t \quad (26)$$

where $\hat{y}_t = y_t - \bar{y}_t$ is the output gap. The level of 'potential' output, \bar{y}_t , used in this definition is the level of output under flexible wages. As shown in appendix B, it is given by

$$\bar{y}_t = \Xi u_t \quad (27)$$

¹¹Empirically interest rate smoothing is important, we disregard it here to simplify the exposition and focus on the role of asymmetries.

where

$$\Xi = \frac{1 + \mu}{1 + \mu(1 + \beta) + \beta\sigma^{-1}} \quad (28)$$

Note that the level of output under flexible wages is independent of monetary policy.

3 Equilibrium inflation and output

Market clearing requires that demand for each good equals its supply. That is, for all commodities $i = 1, 2, \dots, I$ the equilibrium conditions read (in logs)

$$d_{it} = y_{it} \quad (29)$$

This implies that there is no aggregate net wealth accumulation or decumulation:

$$c_t = y_t \quad (30)$$

Wages are determined according to (25), and for these wages employment is demand determined from (6). Finally, the interest rate is given by (26).

The steady state is symmetric so that $B_i = 0$, $C_i = C = Y_i = Y$, $R = \delta^{-1} - 1$, $v_i^{-1}P_i = P$ and $W_i = W$. The equilibrium process for the endogenous variables can be explicitly characterized by solving the model by the undetermined coefficients method (see Appendix C).¹²

Output and inflation in country i are given by

$$y_{it} = \sum_{j=1}^I v_j b_0^{ij} u_{jt} + \sum_{j=1}^I v_j b_1^{ij} u_{jt-1} + \sum_{j=1}^I v_j b_2^{ij} y_{jt-1} \quad (31)$$

and

$$\pi_{it} = \sum_{j=1}^J v_j c_0^{ij} u_{jt} + \sum_{j=1}^J v_j c_1^{ij} u_{jt-1} + \sum_{j=1}^J v_j c_2^{ij} y_{jt-1} \quad (32)$$

Note that the system is in $ARMA(1,1)$ form. Aggregate output and inflation follows straightforwardly by aggregation of (31) and (32).

3.1 Numerical illustrations

To illustrate the model's properties, we shall later present numerical simulations. They are made for a two-country version of the model, i.e., the case where $I = 2$ and $i \in \{1, 2\}$. Numerical results are particularly useful since the complexity of the model makes it difficult to extract analytical results. Restricting attention to the two-country case avoids unnecessary complications while illustrating the main properties of the model.

¹²The minimal state representation of the equilibrium is followed, cf. McCallum (1983,1999).

The log-linear version of the model is solved numerically using DYNARE,¹³ and the solution is used to calculate moments of the variables of interest. These moments are taken as measures of the performance of the macroeconomic variables. Simulations are performed for country-specific shocks, imperfectly correlated shocks and unionwide shocks, i.e., for the cases $\rho_\varepsilon = 0$, $\rho_\varepsilon = 0.5$ and $\rho_\varepsilon = 1$.¹⁴

4 Symmetry and shock transmission

To set the scene for the subsequent discussion of heterogeneities, it is useful to consider the symmetric case, i.e., the case where all countries are of equal sizes ($v_i = v$ for all i) and have the same structural parameters ($\alpha_i = \alpha$ and $\xi_i = \xi$ for all i). However, shocks are allowed to differ. This structurally symmetric case serves the purpose of clarifying the basic mechanisms operating in the model.

4.1 Shock transmission

Consider the transmission of a productivity shock specific to country i . On impact, since prices are fully flexible, this shock will tend to both increase the output of commodity i , y_i , and to decrease its price, p_i , cf. (8). Hence, the terms of trade change to the disfavour of country i in the sense that the relative price of its export good decreases. However, this works to shift demand from goods produced in other parts of the monetary union towards country i 's commodity, cf. (24). In turn, this shift in demand causes the price of foreign products (p_j , $j \neq i$) to fall, but not by as much as the price of commodity i .¹⁵ Consequently, the output level in the other country decreases, i.e., a country-specific shock induces a negative correlation in country-specific outputs via the terms of trade effect. The terms of trade effect plays a crucial role in the difference between the volatility of country-specific and aggregate output since from (24) we have

$$Var(y_i) = Var(y) + \theta^2 Var(p_i - p) - 2\theta Cov(p_i - p, y)$$

Note that in the limiting case of perfectly correlated shocks (aggregate shocks), there are no terms of trade changes, and hence $Var(y_i) = Var(y)$ and country-specific outputs are perfectly correlated. Similar reasoning applies to inflation; that is, country-specific prices (inflation) are positively correlated, and more so the larger the correlation in the shocks.

¹³For documentation, see www.cepremap.cnrs.fr/dynare/.

¹⁴The choice of the values for the remaining parameters is inspired by estimated parameters for the euro area in Smets and Wouters (2003). The baseline values are $\alpha_i = 0.75$, $\xi_i = 4$, $\sigma_i^2 = 1$, $\delta = 1$, $\sigma = \frac{2}{3}$, $\mu = 1$, $\theta = 4$, $\gamma = 0.7$, $\rho = 0.95$, $k_\pi = 1.5$, $k_y = 0.5$.

¹⁵Note that the decrease in prices triggers a monetary expansion which, in turn, increases activity in both countries. If the response is sufficiently strong, it is possible that output increases in both countries. In the simulations reported, the parameter values ensure that this does not happen; i.e. the direct effects of the shocks described in the text dominate.

4.2 Output and inflation volatility

As mentioned above, the implications of various structural factors are assessed in terms of the standard deviations and correlations of the two key variables - output and inflation. Figure 1 shows the standard deviation for country-specific as well as aggregate output and inflation as a function of $\alpha = \alpha_1 = \alpha_2$ for various levels of the correlation of shocks.

First, note a basic smoothing effect in the sense that aggregate output is less volatile than country-specific outputs (except in the limiting case of perfectly correlated shocks where they are equal). This is a direct consequence of smoothing by aggregation since

$$\sigma^2(y) = (v_1)^2\sigma^2(y_1) + (v_2)^2\sigma^2(y_2) + 2v_1v_2\rho(y_1, y_2) \quad (33)$$

and hence in the symmetric case ($\sigma^2(y_1) = \sigma^2(y_2) = \sigma^2(y_i)$ and $v_1 = v_2 = 1/2$), we have

$$\sigma^2(y) = \frac{1}{2}\sigma^2(y_i) [1 + \rho(y_1, y_2)] \leq \sigma^2(y_i)$$

This expression also shows that the negative correlation in output for the member countries (for $\rho_\varepsilon < 1$) described above contributes to lower aggregate volatility. Since country-specific inflation rates are positively correlated, the smoothing effect for aggregate inflation is less strong.

Second, considering the effects of changing the degree of nominal rigidity, α , it is found that country-specific output volatility is strictly increasing in the degree of nominal rigidity if shocks are not too highly correlated. However, aggregate output variability is hump-shaped for all three types of shocks. Consequently, there is a critical level of nominal flexibility, α^* , where aggregate output variability is increasing in α for $\alpha < \alpha^*$, and decreasing in α for $\alpha > \alpha^*$. In the numerical illustration, the critical value α^* is close to one half, corresponding to expected contract lengths of two periods.

To understand the mechanism generating this hump, note that since output is generated by an $ARMA(1, 1)$ process, the unconditional variance (in the case of common shocks) is given as

$$VAR(y_t) = \frac{b_0 + b_1^2 + 2b_0b_1b_2}{1 - b_2^2} \frac{1}{1 - \rho_u^2} \sigma_\varepsilon^2 \quad (34)$$

where the coefficients are all functions of the nominal rigidity parameter, α , i.e., $b_0 = b_0(\alpha)$, $b_1 = b_1(\alpha)$ and $b_2 = b_2(\alpha)$. It is seen that the variance depends on the properties of the shock, but also on the endogenous responses captured by the impact effect (b_0) and the persistence-generating mechanisms (b_1, b_2). Note that b_0 is increasing in α , while b_1 and b_2 are decreasing in α . It follows that stronger nominal rigidities (higher α) tend to increase output variability by increasing the impact effects of shocks, and to lower variability by reducing the persistence in the response to shocks. These two counteracting effects create the hump-shaped relation, where output variability is at first increasing and then decreasing in the nominal rigidity (α).

Figure 1: Standard deviations of country-specific and aggregate output and inflation as functions of nominal rigidity (α); symmetric structures ($\alpha_1 = \alpha_2 = \alpha; \xi_1 = \xi_2 = \xi; v_1 = v_2 = 0.5$) and different levels of shock correlations (ρ_ε).

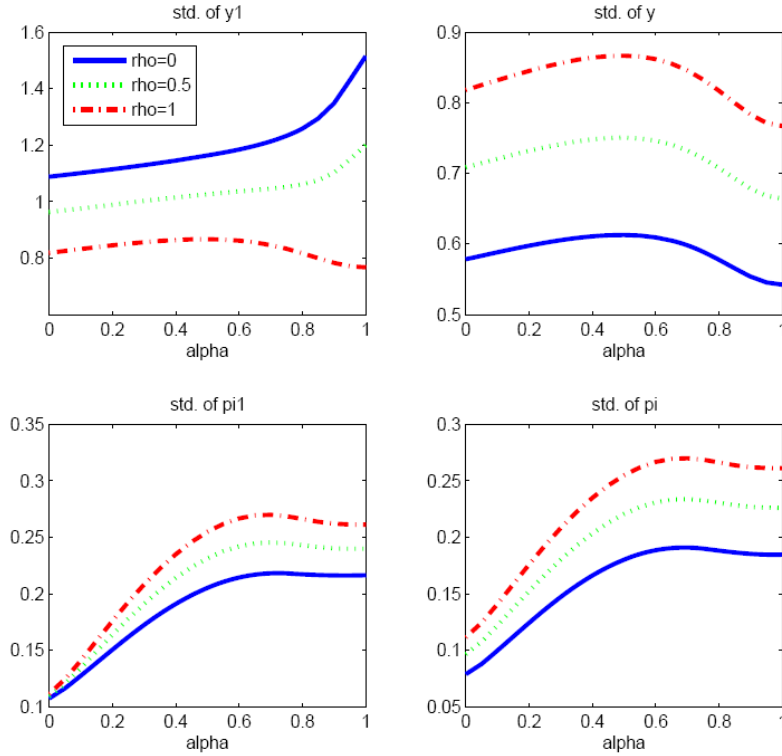


Figure 1 also shows the volatility of country-specific and unionwide inflation. In both cases, the variability of the inflation rate increases when α is low, and at some level it remains almost invariant to changes in α . Hence, while inflation volatility is quite sensitive to changes in the degree of nominal wage rigidity when wages are flexible (low α), it is relatively insensitive to changes in the degree of nominal wage rigidity when the starting point is one with rigid wages (high α).

Finally, considering the importance of imperfect competition (the ξ parameter), we also find (figures not shown) that aggregate output is less volatile than country-specific output (and identical for perfect correlation of shocks). In this case, more competition (higher ξ) implies less volatility of both aggregate output and inflation, but the effect levels off when converging to perfect competition (high ξ). However, country-specific output is more volatile, the higher ξ , unless the shocks are highly correlated. This is due to the implied reduction in the weight, Λ_i , put on the current relation between the marginal rate of substitution and the real wage in wage setting, cf. (20). This reduction in Λ_i

leads to a weaker instantaneous reaction of wages and hence, through its effect on marginal costs, of output. This implies a larger adjustment burden on prices and thus the terms of trade.

5 Asymmetries in size and structure

We now turn to an analysis of the implications of labour market asymmetries between the member countries of the monetary union. To clarify the issues, this proceeds in three steps. First, we consider asymmetries arising from different country sizes ($v_1 \neq v_2$), maintaining symmetric labour market structures across countries. Second, we consider structural asymmetries, while maintaining identical country sizes, with respect to the degree of nominal wage rigidity ($\alpha_1 \neq \alpha_2$) and the degree of competition ($\xi_1 \neq \xi_2$). Finally, we intersect the two dimensions of asymmetry, size and structure.

5.1 Different country sizes

To consider the effects of asymmetric country sizes, note first that it follows from (33) that (using $v_1 + v_2 = 1$)

$$\begin{aligned} \frac{\partial \sigma^2(y)}{\partial v_1} &= 2v_1\sigma^2(y_1) - 2(1-v_1)\sigma^2(y_2) + 2[1-2v_1]\sigma(y_1, y_2) \\ &= \sigma^2(y_i)(1-2v_1)2[\rho(y_1, y_2) - 1] \end{aligned}$$

If all structural parameters for the two countries are the same (implying $\sigma^2(y_1) = \sigma^2(y_2) = \sigma^2(y_i)$), we have

$$\frac{\partial \sigma^2(y)}{\partial v_1} = \sigma^2(y_i)(1-2v_1)2[\rho(y_1, y_2) - 1]$$

and hence

$$\begin{aligned} \frac{\partial \sigma^2(y)}{\partial v_1} &= 0 && \text{for } \rho = 1 \\ \frac{\partial \sigma^2(y)}{\partial v_1} &> 0 && \text{for } v_1 > \frac{1}{2} \text{ and } \rho < 1 \\ \frac{\partial \sigma^2(y)}{\partial v_1} &< 0 && \text{for } v_1 < \frac{1}{2} \text{ and } \rho < 1 \end{aligned}$$

i.e. asymmetric size exacerbates aggregate output volatility unless the correlation of shocks is one. Similar reasoning applies to inflation volatility.

Figure 2: Standard deviations of country 1 and aggregate output and inflation as functions of country size (v_1); symmetric structures ($\alpha_1 = \alpha_2 = \alpha; \xi_1 = \xi_2 = \xi$;) and country-specific shocks ($\rho_\varepsilon = 0$).

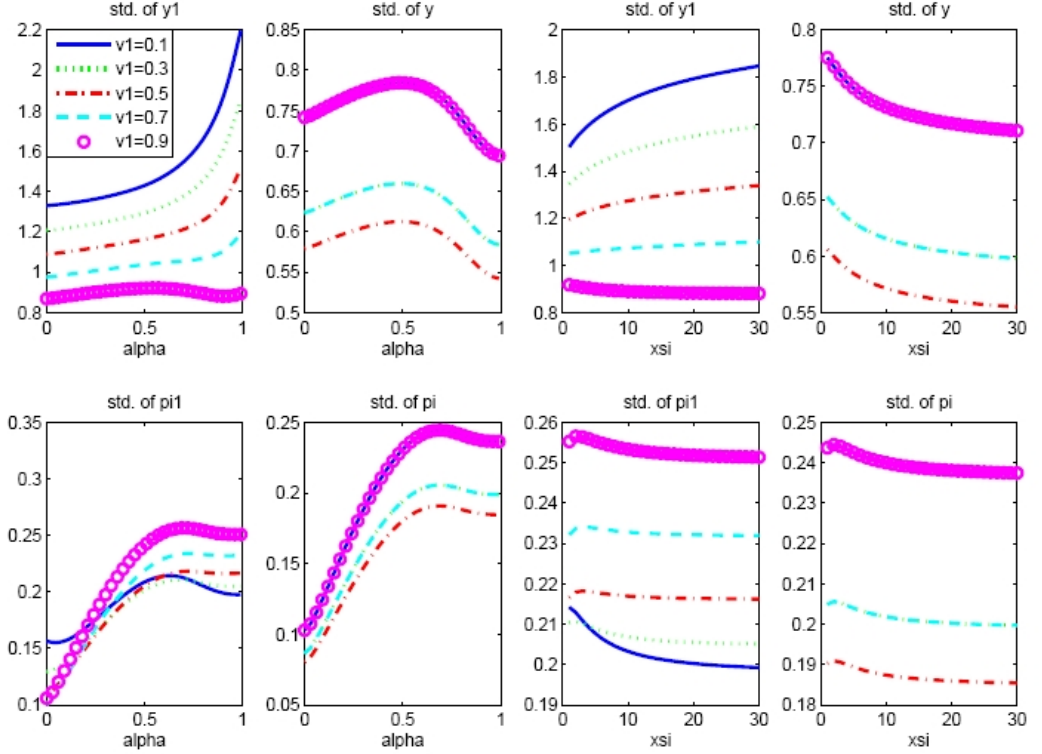


Figure 2 shows the standard deviations of output and inflation as a function of $\alpha = \alpha_1 = \alpha_2$ for different sizes of country 1 (the pattern is symmetric for country 2). This confirms that the level of aggregate output volatility is generally higher when countries are of asymmetric sizes. Moreover, aggregate output volatility is hump-shaped in nominal rigidity (α), as in the case with symmetric country sizes. However, the volatilities of the country-specific output levels differ. Output volatility is generally higher the smaller the country, and an increase in nominal wage rigidity (an increase in α) leads to larger increases in output volatility in the small country than in the large country (unless shocks are highly correlated). This suggests that nominal rigidities may be more problematic for small countries than for large countries.

For inflation, we find also that the level of volatility is generally higher due to asymmetric country sizes. Both aggregate and country-specific inflation tend to be increasing in nominal wage rigidity, but the effect levels off when nominal rigidities reach a certain level. Country size matters less for country-specific inflation than for country-specific output.

Qualitatively, the effects of variations in the degree of imperfect competition

are the same when countries have asymmetric sizes as when they are of equal sizes, but the level of volatility is generally larger with asymmetrically sized countries.

5.2 Asymmetric labour market structures

Next, we turn to the role of asymmetry with respect to structural factors. This issue is complicated by the fact that changing the structural parameters for one country has implications not only for the specific country but also at the aggregate level, and hence there is a risk of mixing up effects arising from asymmetries with effects arising from changing the aggregate properties of the currency union. To overcome this problem and to focus on the role of asymmetries for given aggregate structural characteristics of the monetary union, we keep aggregate variables unchanged in this subsection in the sense that the weighted average of the coefficients across countries is kept constant.¹⁶

Consider first the degree of wage flexibility. Figure 3 shows the behaviour of the standard deviations of output and inflation for different values of α_1 when the average degree of nominal wage rigidity is restricted to be 0.5, i.e.,

$$\bar{\alpha} = v_1\alpha_1 + v_2\alpha_2 = 0.5$$

For equally sized countries, i.e., for $v_1 = v_2 = 0.5$, this implies

$$\alpha_2 = 1 - \alpha_1$$

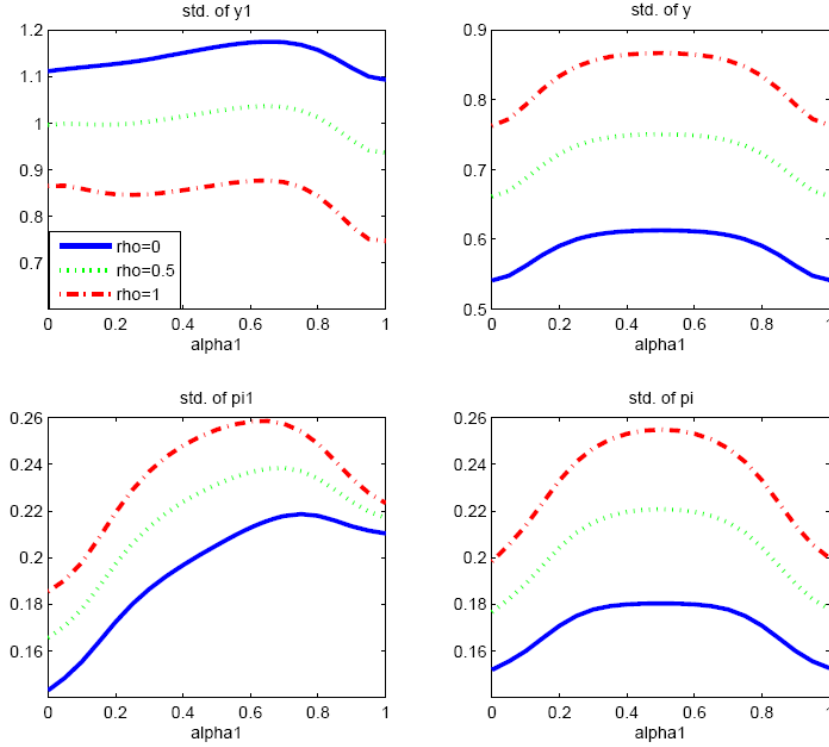
Hence, α_2 goes from 1 to 0 as α_1 goes from 0 to 1. In other words, the labour market in country 1 becomes relatively less flexible and the labour market in country 2 more flexible when moving from left to right on the x-axis.

We find that the volatility in aggregate output is somewhat lower with asymmetries in nominal rigidities than with symmetric labour market structures, i.e., asymmetries in nominal wage flexibility contribute to lowering aggregate output volatility.¹⁷ Similarly, for inflation we find that its volatility is reduced due to asymmetries. Interestingly, the form of the volatility of country-specific output as a function of the degree of nominal rigidity now changes and becomes hump-shaped. This suggests interesting spill-over effects in the structural parameters between the two countries. For country-specific output, we find that small asymmetries may imply a larger volatility in domestic output, while larger asymmetries may cause output volatility to be lower. This suggests that if countries have fairly asymmetric structures, the direction in which there is an incentive to change structural characteristics via reforms may be ambiguous.

¹⁶In the next subsection, we fix the structural parameters of country 2 while allowing those of country 1 to vary in order to analyze the incentives for unilateral reform in country 1.

¹⁷At the unionwide level, the standard deviations are symmetric in the degree of nominal rigidity attaining a maximum at $\alpha_1 = \alpha_2 = 0.5$. This is the point where the two countries are identical. The symmetry, of course, arises because the countries have the same size so that the restriction $\bar{\alpha} = 0.5$ implies that $\alpha_2 = 1 - \alpha_1$.

Figure 3: Standard deviations of country 1 and aggregate output and inflation as functions of country 1 nominal rigidity (α_1); average nominal rigidity $\bar{\alpha} = 0.5$, symmetry wrt. to competition and size ($\xi_1 = \xi_2 = \xi$; $v_1 = v_2 = 0.5$) for different levels of shock correlations (ρ_ε).

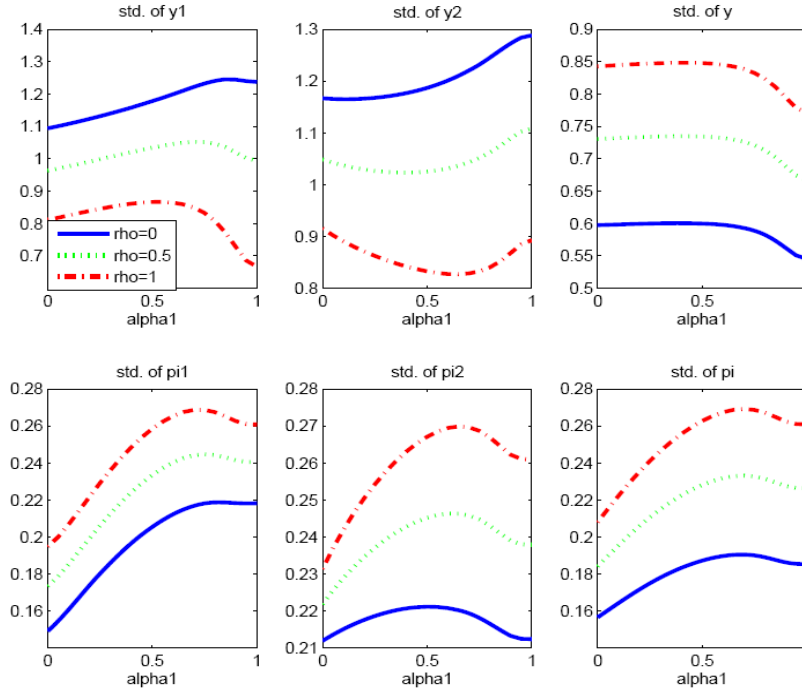


Similarly, we consider the role of asymmetries in the parameters characterising the degree of monopolistic competition in labour markets, ξ_i for $i = 1, 2$. The average elasticity of substitution of labour services is restricted to be 4, i.e., $\bar{\xi} = 4$, and hence

$$\xi_2 = 8 - \xi_1$$

It turns out (figures not shown) that this form of asymmetry has essentially no effect on the volatility of domestic and aggregate output or on inflation.

Figure 4: Standard deviations of country-specific and aggregate output and inflation as functions of a unilateral change in country 1 nominal rigidity (α_1); symmetry wrt. to competition and size ($\xi_1 = \xi_2 = \xi$; $v_1 = v_2 = 0.5$; $\alpha_2 = 0.75$) for different levels of shock correlations (ρ_ε).



5.3 Unilateral changes in structural characteristics

While the above sheds light on the implications of structural asymmetries, it does not directly clarify the incentives for structural reforms. Such reforms are unilateral and thus lead to changes in structural parameters in one country, leaving structural parameters in other countries unchanged. Assuming that the model's labour market parameters (α_i, ξ_i) can be affected through various structural policies, it is therefore of interest to determine the direction in which a country has an incentive to lead its reforms when the country aims at stabilizing its national output and inflation.

In figure 4, we present standard deviations as a function of α_1 when α_2 is fixed at 0.75. If shocks are uncorrelated, a lower value of α_1 decreases both the output and inflation volatility of country 1. Therefore, in this case a country has an incentive to implement reforms that make wages more flexible. Such reforms also tend to stabilize output in country 2, but not necessarily at the aggregate level. In addition, if α_1 is initially very high, the stabilization of country-specific

output may be at the expense of a higher volatility of the country-specific inflation.

The picture is less clear if shocks are correlated. In this case, the volatilities of output and inflation in country 1 are hump-shaped in nominal rigidity in country 1. Hence, it is not necessarily in the interest of country 1 to implement labour market reforms inducing more flexibility. Moreover, an intermediary level of nominal flexibility in country 1 may bring about the highest output volatility for country 1, but the lowest level in country 2.

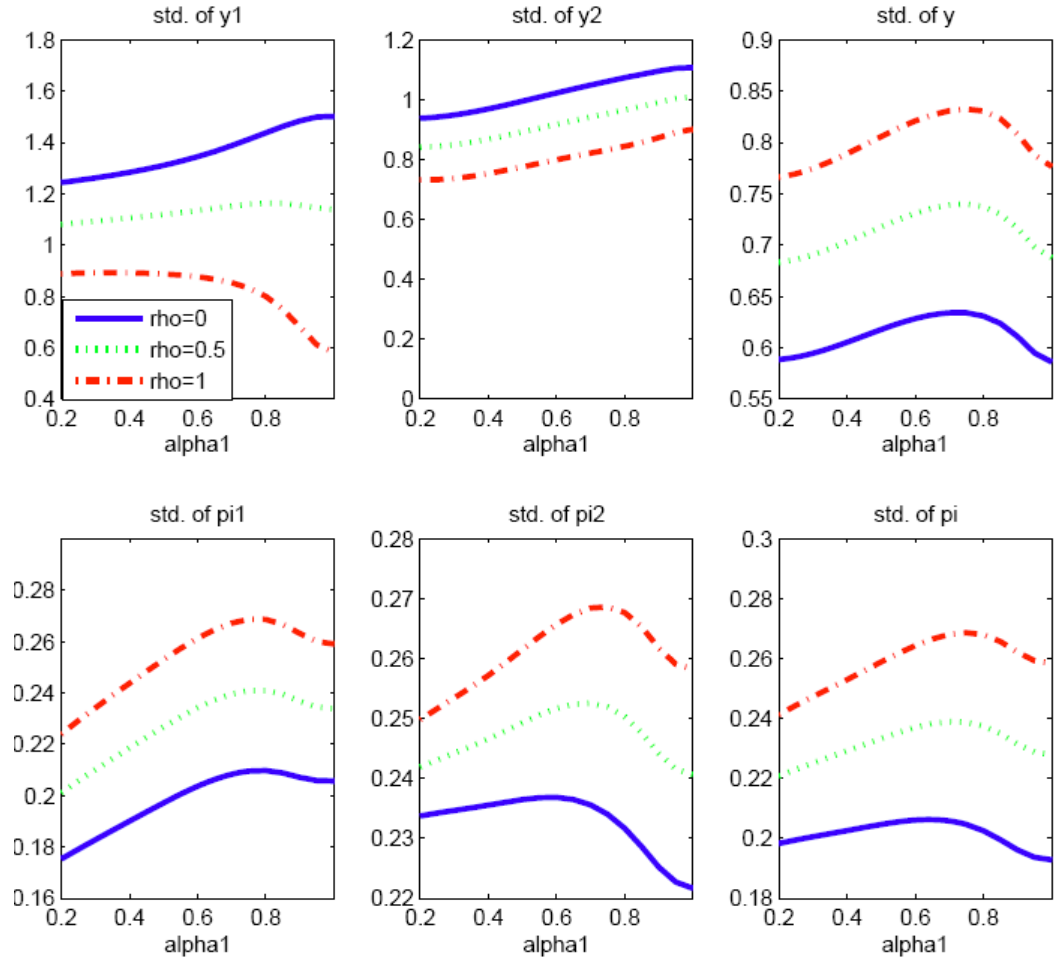
As suggested by the results in the previous subsection, we find that unilateral reforms aimed at changing the degree of monopolistic competition in labour markets have only very limited effect on the volatility of output and inflation. It follows that no incentives to change the degree of competition in labour markets follow from a concern over stabilization of output and inflation.

5.4 Different country-sizes and labour market structures

Finally, we turn to the interaction between the various forms of asymmetries. The preceding analysis has suggested that asymmetries in size and nominal flexibility are the more important both with respect to the aggregate and country-specific performance. In the following, a case is considered in which different country sizes (one country is small, the other large) interact with different degrees of nominal rigidities. The interaction between country sizes and degrees of imperfect competition, and the interaction between degrees of nominal rigidities and degrees of competition have also been considered. However, results are not reported as no new insights are gained by investigating these combinations of asymmetries. The former combination is close to the case with different country sizes only, and the latter to the case with asymmetries in nominal wage rigidity being the only deviation from the symmetric baseline example.

Consider the case where the weight of the small country is $v_1 = 0.3$ and aggregate nominal rigidity is $\bar{\alpha} = 0.75$. Figure 5 shows volatility of output and inflation. We find that more nominal rigidity in the small country – in combination with less nominal rigidity in the large country – has a hump-shaped effect on aggregate output. This is the same type of result as found above. However, while the volatility of country 2 output is strictly increasing in the nominal rigidity in country 1, the volatility of country 1's output is hump-shaped if shocks are sufficiently correlated. This suggests that there may be an important negative externality from the small to the large country in the sense that more nominal rigidity in the small country may increase output volatility in the large country and decrease it in the small country. For inflation – both country-specific and aggregate – the volatility is hump-shaped. Hence, asymmetries lower inflation variability in this case.

Figure 5: Standard deviations of country 1 and 2, and aggregate output and inflation as functions of country 1 nominal rigidity (α_1); average nominal rigidity $\bar{\alpha} = 0.75$, asymmetric sizes ($v_1 = 0.3, v_2 = 0.7$), symmetry wrt. to competition ($\xi_1 = \xi_2 = \xi$) for different levels of shock correlations (ρ_ε).



6 Concluding remarks

In this paper, we have analyzed the consequences of labour market asymmetries in a monetary union with focus on degrees of nominal wage rigidity and of monopolistic competition in wage setting. We have considered both aggregate and country-specific shocks and how they are propagated across member countries that may not be equal in size. Moments of country-specific as well as union-wide output and inflation fluctuations have been calculated. These moments are

taken as measures of the macroeconomic performance in the monetary union.

First, our results indicate that asymmetry in the sizes of member countries may in itself be an impediment to macroeconomic stability in a monetary union. In particular, the level of output and inflation volatility is generally higher when countries are of different sizes than when they are equal in size. In a monetary union consisting of a large core and a small periphery, the output in the periphery is generally more volatile than in the core. In addition, the periphery is more sensitive to changes in the degree of nominal rigidities.

Second, asymmetry in the degrees of nominal rigidity may smooth aggregate output and inflation volatility, while asymmetry in the degree of monopolistic competition has essentially no effect on the volatility of the macroeconomic variables of interest. Thus, the present analysis suggests that structural asymmetries alone are no hindrance to macroeconomic stability at the unionwide level. At the country level, however, the picture is less clear; our results indicate that there are non-trivial spill-over effects from asymmetries in nominal rigidities.

Third, when shocks are country-specific, i.e., when there is no correlation between shocks hitting the countries in the monetary union, a country unambiguously benefits in terms of macroeconomic stability by pursuing unilaterally structural labour market reforms that reduce wage rigidities. For aggregate shocks hitting the whole monetary union with the same force, however, results are ambiguous.

Forth, we find that structural labour market reforms have different effects on macroeconomic stability at the country level than at the aggregate level. Hence, there is risk of a 'reform deficit' from the unionwide perspective. An individual member country may not have an incentive to reform its labour market unilaterally, while such reforms may be beneficial for the monetary union as a whole.

Given that only a few unambiguous results can be established, the incentives to undertake reform from the point of view of individual member countries, and the desirability of such reform from the point of view of the monetary union as a whole, depend crucially on the structural characteristics of national labour markets. An interesting topic for future research, then, is to estimate this model on data for a monetary union such as the EMU to identify and quantify the important asymmetries. As a final remark, we emphasize that, though we implicitly assume that macroeconomic stability is desirable, our statements about the volatility of macroeconomic variables cannot literally be interpreted as statements about welfare. Hence, in future research, we hope to address this issue – along with normative issues concerning monetary policy responses to structural asymmetries – in more explicit terms.

- Andersen, T.M. (2008), 'Heterogeneous wage formation under common monetary policy', *Economic Modeling* (to appear).
- Andersen, T.M. (2005), 'Fiscal Stabilization Policy in a Monetary Union with Inflation Targeting', *Journal of Macroeconomics*, 27, 1-29.
- Arpaia, and K. Pichelmann (2007), Nominal and Real wage flexibility in EMU, European Commission, European Economy, Economic Paper 281.
- Beetsma, R. and H. Jensen (2004), 'Mark-up Fluctuations and Fiscal Stabilization Policy in a Monetary Union', *Journal of Macroeconomics*, 26, 357-76.
- Beetsma, R. and H. Jensen (2005), 'Monetary and Fiscal Policy Interactions in a Micro-founded model of a Monetary Union', *Journal of International Economics*, forthcoming
- Benigno, P. (2004), 'Optimal Monetary Policy in a Currency Area', *Journal of International Economics*, 63, 293-320.
- Blanchard, O.J. and S. Fischer (1989), 'Lectures on Macroeconomics', Cambridge, MA: The MIT Press.
- Calmfors, L. (2001), 'Wages and Wage-Bargaining Institutions in the EMU – A survey of the Issues', *Empirica*, 28, 325-351.
- Calvo, G. A. (1983), 'Staggered Prices in a Utility-Maximizing Framework', *Journal of Monetary Economics*, 12, 383-398.
- Campbell, J.Y. (1994), 'Inspecting the Mechanism: An Analytical Approach to the Stochastic Growth Model', *Journal of Monetary Economics*, 33, 463-506.
- Christiano, L.J. (2002), 'Solving Dynamic Equilibrium Models by a Method of Undetermined Coefficients', *Computational Economics*, 20, 21-55.
- Clarida, R., J. Galí and M. Gertler (2002), 'A Simple Framework for International Monetary Policy Analysis', *Journal of Monetary Economics*, 49, 879-904.
- Corsetti, C. and P. Pesenti (2001), 'Welfare and Macroeconomic Interdependence', *Quarterly Journal of Economics*, 116, 421-445.
- De Grauwe, P. (2003), 'Economics of Monetary Union', 5th edition, Oxford: Oxford University Press.
- Dellas, H., and G. Tavlás (2005), 'Wage Rigidity and Monetary Union', *Economic Journal*, 115, 907-927.
- European Commission (2006), 'Labour market and wage development in 2005, with special focus on labour market adjustment in the Euro Area', Special report no 4/2006

- Ferrero, A. (2005), 'Fiscal and Monetary Rules for a Currency Union', ECB Working Paper, 502.
- Frankel, J. and A. K. Rose (1998), 'The Endogeneity of the Optimum Currency Area Criteria', *Economic Journal*, 108, 1009-25.
- Galí, J. and T. Monacelli (2005), 'Optimal Monetary and Fiscal Policy in a Currency Union', mimeo, Universitat Pompeu Fabra and Università Bocconi.
- Galí, J. and M. Gertler (2007), Macroeconomic Modeling for Monetary Policy Evaluation, *Journal of Economic Perspectives*, 21(4), 25-45.
- Golub, G.H. and C.F. van Loan (1996), 'Matrix Computations' (3rd edition), Baltimore: John Hopkins University Press.
- Holden, S., and F. Wulfsberg (2008), Downward nominal wage rigidity in the OECD, mimeo, Norges Bank.
- Klein, P. (2000), 'Using the generalized Schur form to solve a multivariate linear rational expectations model', *Journal of Economic Dynamics & Control*, 24, 1405-1423.
- Lombardo, G. (2006), 'Inflation Targeting Rules and Welfare in an Asymmetric Currency Area', *Journal of International Economics*, 68, 424-442.
- Lombardo G. and A. Sutherland (2004), 'Monetary and Fiscal Interactions in Open Economies', *Journal of Macroeconomics*, 26, 319-348.
- McCallum, B.T. (1983), 'On Non-Uniqueness in Rational Expectations Models: An Attempt at Perspective', *Journal of Monetary Economics*, 11, 139-168.
- McCallum, B.T. (1999), 'Roles of the Minimal State Variable Criterion on Rational Expectations Models', NBER working paper 7087.
- Obstfeld, M. and K. Rogoff (1995), 'Exchange Rate Dynamics Redux', *Journal of Political Economy*, 103, 624-60.
- Obstfeld, M. and K. Rogoff (1996), 'Foundations of International Macroeconomics', Cambridge, MA: The MIT Press.
- OECD, 'Employment Outlook', various issues.
- Sims, C.A. (1989), 'Solving Nonlinear Stochastic Optimization and Equilibrium Problems Backwards', Federal Reserve Bank of Minneapolis, Discussion Paper, 15.
- Sims, C.A. (2002), 'Solving Linear Rational Expectations Models', *Computational Economics*, 20, 1-20.

- Smets, F. and R. Wouters (2003), 'An Estimated Dynamic Stochastic General Equilibrium Model of the Euro Area' *Journal of the European Economic Association*, 1, 1123-1175.
- Taylor, J. (1993), 'Discretion versus Policy Rules in Practice', *Carnegie-Rochester Conference Series on Public Policy*, 39, 195-214.
- Uhlig, H. (1999), 'A Toolkit for Analyzing Nonlinear Dynamic Stochastic Models Easily', in R. Marimon and A. Scott (eds.), 'Computational Methods for the Study of Dynamic Economics', Oxford: Oxford University Press.
- Woodford, M. (2003), 'Interests and Prices - Foundations of a Theory of Monetary Policy', Princeton: Princeton University Press.
- Yun, T. (1996), 'Nominal Price Rigidity, Money Supply Endogeneity, and Business Cycles', *Journal of Monetary Economics*, 37, 345-370

A Log-linearization

Write the first-order condition (17) as

$$W_{it}^* E_t \sum_{\tau=0}^{\infty} (\alpha_i \delta)^\tau \frac{C_{it+\tau}^{-\frac{1}{\sigma}}}{P_{t+\tau}} N_{it+\tau} = E_t \sum_{\tau=0}^{\infty} (\alpha_i \delta)^\tau \frac{\xi}{(\xi - 1)} N_{it+\tau}^{1+\mu} \quad (35)$$

Taking the differential with respect to W_{it}^* , $C_{it+\tau}$, $P_{t+\tau}$ and $N_{it+\tau}$, evaluating at the steady-state values – W , C , P and N respectively – dividing through by W and rearranging gives the following log-linear approximation around the steady state:

$$\begin{aligned} v_{it}^* &= (1 - \alpha_i \delta) E_t \sum_{\tau=0}^{\infty} (\alpha_i \delta)^\tau (\mu n_{it+\tau} + \sigma^{-1} c_{it+\tau} + p_{t+\tau}) \\ &= (1 - \alpha_i \delta) E_t \sum_{\tau=0}^{\infty} (\alpha_i \delta)^\tau [\mu (l_{it+\tau} - \xi (v_{it}^* - w_{it+\tau})) + \sigma^{-1} c_{it+\tau} + p_{t+\tau}] \end{aligned} \quad (36)$$

where the second equality follows by using a log-linear version of (3) to replace $n_{it+\tau}$. Rearranging gives

$$v_{it}^* = \frac{(1 - \alpha_i \delta)}{1 + \mu \xi} (\mu l_{it} - \mu \xi w_{it} + \sigma^{-1} c_{it} + p_t) + (\alpha_i \delta) E_t v_{t+1}^* \quad (37)$$

Similarly, a log-linear approximation to (25) is given by

$$w_{it} = \alpha_i w_{it-1} + (1 - \alpha_i) v_{it}^* \quad (38)$$

Subtracting w_{it} from both sides of (37) and using (38) to eliminate v_{it}^* gives

$$\omega_{it} = \frac{(1 - \alpha_i)(1 - \alpha_i \delta)}{\alpha_i (1 + \mu \xi)} [\mu l_{it} + \sigma^{-1} c_{it} - (w_{it} - p_t)] + \delta E_t \omega_{it+1} \quad (39)$$

where $\omega_{it} = w_{it} - w_{it-1}$.

B Flexible wage equilibrium

Suppose wages are flexible as well as prices. In this case, the wage equation becomes

$$w_{it} = p_t + \mu l_{it} + \sigma^{-1} c_t \quad (40)$$

Substituting out l_{it} by a linear version of the production function (5) gives

$$w_{it} = p_t + \mu \left(\frac{1}{\gamma} y_{it} - \frac{1 - \gamma}{\gamma} u_{it} \right) + \sigma^{-1} c_t \quad (41)$$

implying

$$w_t = p_t + \mu \left(\frac{1}{\gamma} y_t - \frac{1 - \gamma}{\gamma} u_t \right) + \sigma^{-1} y_t \quad (42)$$

Inserting this in aggregated supply

$$y_t = \beta(p_t - w_t) + u_t \quad (43)$$

gives

$$\bar{y}_t = \beta \left(-\mu \left(\frac{1}{\gamma} \bar{y}_t - \frac{1-\gamma}{\gamma} u_t \right) - \sigma_t^{-1} \bar{y} \right) + u_t \quad (44)$$

or

$$\bar{y}_t = \frac{1 + \mu}{1 + \mu(1 + \beta) + \beta\sigma^{-1}} u_t \quad (45)$$

C Sticky wage equilibrium

Imposing the equilibrium condition means $c_{it} = c_t = y_t$. Using this, the wage equation (19) and the aggregate supply relation (8) can be combined to give the 'AS' relation

$$\begin{aligned} & \pi_{it} + \beta^{-1} [(u_{it} - u_{it-1}) - (y_{it} - y_{it-1})] \\ &= \Lambda_i [(\mu + (1 + \mu)\beta^{-1} + \theta^{-1}) y_{it} + (\sigma - \theta^{-1}) y_t - (1 + \mu)\beta^{-1} u_{it}] \\ & \quad + \delta (E_t \pi_{it+1} + \beta^{-1} [(\rho_u - 1) u_{it} - (E_t y_{it+1} - y_{it})]) \end{aligned} \quad (46)$$

where a log-linear version of (5) has been used to substitute out l_{it} . Similarly, combining the Euler equation (23), the Taylor rule (26) and the intratemporal demand function (24) gives the 'IS' relation

$$\begin{aligned} & y_{it} - y_{it-1} \\ &= -\theta (\pi_{it} - \pi_t) + E_t y_{t+1} \\ & \quad - \sigma (k_\pi \pi_t + k_y (y_t - \Xi u_t) - E_t \pi_{t+1}) - y_{t-1} \end{aligned} \quad (47)$$

Hence, two equations summarise the dynamics of output and inflation for each country. Disturbances to the system follow from the stochastic process

$$u_{it} = \rho_u u_{it-1} + \varepsilon_{it} \quad (48)$$

We guess that output and inflation in country i take the forms:

$$y_{it} = \sum_j v_j b_0^{ij} u_{jt} + \sum_j v_j b_1^{ij} u_{jt-1} + \sum_j v_j b_2^{ij} y_{jt-1} \quad (49)$$

and

$$\pi_{it} = \sum_j v_j c_0^{ij} u_{jt} + \sum_j v_j c_1^{ij} u_{jt-1} + \sum_j v_j c_2^{ij} y_{jt-1} \quad (50)$$

These conjectures imply the following expressions for aggregate output and inflation:

$$y_t = \sum_i \sum_j v_i v_j b_0^{ij} u_{jt} + \sum_i \sum_j v_i v_j b_1^{ij} u_{jt-1} + \sum_i \sum_j v_i v_j b_2^{ij} y_{jt-1} \quad (51)$$

$$\pi_t = \sum_i \sum_j v_i v_j c_0^{ij} u_{jt} + \sum_i \sum_j v_i v_j c_1^{ij} u_{jt-1} + \sum_i \sum_j v_i v_j c_2^{ij} y_{jt-1} \quad (52)$$

In addition, expectations become

$$E_t y_{it+1} = \sum_j v_j \left(b_0^{ij} \rho_u + b_1^{ij} \right) u_{jt} + \sum_j v_j b_2^{ij} y_{jt} \quad (53)$$

$$E_t \pi_{it+1} = \sum_j v_j \left(c_0^{ij} \rho_u + c_1^{ij} \right) u_{jt} + \sum_j v_j c_2^{ij} y_{jt} \quad (54)$$

$$E_t y_{t+1} = \sum_i \sum_j v_i v_j \left(b_0^{ij} \rho_u + b_1^{ij} \right) u_{jt} + \sum_i \sum_j v_i v_j b_2^{ij} y_{jt} \quad (55)$$

$$E_t \pi_{t+1} = \sum_i \sum_j v_i v_j \left(c_0^{ij} \rho_u + c_1^{ij} \right) u_{jt} + \sum_i \sum_j v_i v_j c_2^{ij} y_{jt} \quad (56)$$

To verify our conjectures, we find values of the coefficients $(b_0^{ij}, b_1^{ij}, b_2^{ij}, c_0^{ij}, c_1^{ij}, c_2^{ij})$ that satisfy the restrictions imposed by the log-linear model. Inserting the conjectures in (46) gives

$$\begin{aligned} & \sum_j v_j c_0^{ij} u_{jt} + \sum_j v_j c_1^{ij} u_{jt-1} + \sum_j v_j c_2^{ij} y_{jt-1} \\ & + \beta^{-1} (u_{it} - u_{it-1}) - \beta^{-1} \left(\sum_j v_j b_0^{ij} u_{jt} + \sum_j v_j b_1^{ij} u_{jt-1} + \sum_j v_j b_2^{ij} y_{jt-1} - y_{it-1} \right) \\ = & \Lambda_i (\mu + (1 + \mu) \beta^{-1} + \theta^{-1}) \left(\sum_j v_j b_0^{ij} u_{jt} + \sum_j v_j b_1^{ij} u_{jt-1} + \sum_j v_j b_2^{ij} y_{jt-1} \right) \\ & + \Lambda_i (\sigma - \theta^{-1}) \left(\sum_n \sum_j v_n v_j b_0^{nj} u_{jt} + \sum_n \sum_j v_n v_j b_1^{nj} u_{jt-1} + \sum_n \sum_j v_n v_j b_2^{nj} y_{jt-1} \right) \\ & - (1 + \mu) \beta^{-1} \Lambda_i u_{it} + \delta \sum_j v_j \left(c_0^{ij} \rho_u + c_1^{ij} \right) u_{jt} \\ & + \delta \sum_n v_n c_2^{in} \left(\sum_j v_j b_0^{nj} u_{jt} + \sum_j v_j b_1^{nj} u_{jt-1} + \sum_j v_j b_2^{nj} y_{jt-1} \right) \\ & + \delta \beta^{-1} (\rho_u - 1) u_{it} - \delta \beta^{-1} \sum_j v_j \left(b_0^{ij} \rho_u + b_1^{ij} \right) u_{jt} \\ & - \delta \beta^{-1} \sum_j v_j b_2^{ij} \left(\sum_n v_n b_0^{jn} u_{nt} + \sum_n v_n b_1^{jn} u_{nt-1} + \sum_n v_n b_2^{jn} y_{nt-1} \right) \\ & + \delta \beta^{-1} \left(\sum_j v_j b_0^{ij} u_{jt} + \sum_j v_j b_1^{ij} u_{jt-1} + \sum_j v_j b_2^{ij} y_{jt-1} \right) \end{aligned} \quad (57)$$

Equating coefficients on u_{it} gives the restriction

$$\begin{aligned}
& v_i c_0^{ii} + \beta^{-1} - \beta^{-1} v_i b_0^{ii} \\
= & \Lambda_i (\mu + (1 + \mu) \beta^{-1} + \theta^{-1}) v_i b_0^{ii} + \Lambda_i (\sigma - \theta^{-1}) \sum_j v_j v_i b_0^{ji} \\
& - (1 + \mu) \beta^{-1} \Lambda_i + \delta v_i (c_0^{ii} \rho_u + c_1^{ii}) + \delta \sum_j v_j v_i c_2^{ij} b_0^{ji} \\
& + \delta \beta^{-1} (\rho_u - 1) - \delta \beta^{-1} v_i (b_0^{ii} \rho_u + b_1^{ii}) \\
& - \delta \beta^{-1} \sum_j v_j v_i b_2^{ij} b_0^{ji} + \delta \beta^{-1} v_i b_0^{ii} \tag{58}
\end{aligned}$$

Equating coefficients on u_{jt} where $j \neq i$ gives

$$\begin{aligned}
& c_0^{ij} - \beta^{-1} b_0^{ij} \\
= & \Lambda_i (\mu + (1 + \mu) \beta^{-1} + \theta^{-1}) b_0^{ij} + \Lambda_i (\sigma - \theta^{-1}) \sum_n v_n b_0^{nj} \\
& + \delta (c_0^{ij} \rho_u + c_1^{ij}) + \delta \sum_n v_n c_2^{in} b_0^{nj} \\
& - \delta \beta^{-1} (b_0^{ij} \rho_u + b_1^{ij}) - \delta \beta^{-1} \sum_n v_n b_2^{in} b_0^{nj} + \delta \beta^{-1} b_0^{ij} \tag{59}
\end{aligned}$$

Equating coefficients on u_{it-1} :

$$\begin{aligned}
& v_i c_1^{ii} - \beta^{-1} - \beta^{-1} v_i b_1^{ii} \\
= & \Lambda_i (\mu + (1 + \mu) \beta^{-1} + \theta^{-1}) v_i b_1^{ii} \\
& + \Lambda_i (\sigma - \theta^{-1}) \sum_n v_n v_i b_1^{ni} + \delta \sum_n v_n v_i c_2^{in} b_1^{ni} \\
& - \delta \beta^{-1} \sum_n v_n v_i b_2^{in} b_1^{ni} + \delta \beta^{-1} v_i b_1^{ii} \tag{60}
\end{aligned}$$

Equating coefficients on u_{jt-1} where $j \neq i$:

$$\begin{aligned}
& c_1^{ij} - \beta^{-1} b_1^{ij} \\
= & \Lambda_i (\mu + (1 + \mu) \beta^{-1} + \theta^{-1}) b_1^{ij} \\
& + \Lambda_i (\sigma - \theta^{-1}) \sum_n v_n b_1^{nj} + \delta \sum_n v_n c_2^{in} b_1^{nj} \\
& - \delta \beta^{-1} \sum_n v_n b_2^{in} b_1^{nj} + \delta \beta^{-1} b_1^{ij} \tag{61}
\end{aligned}$$

Equating coefficients on y_{it-1} gives

$$\begin{aligned}
& v_i c_2^{ii} - \beta^{-1} (v_i b_2^{ii} - 1) \\
= & \Lambda_i (\mu + (1 + \mu) \beta^{-1} + \theta^{-1}) v_i b_2^{ii} + \Lambda_i (\sigma - \theta^{-1}) \sum_n v_n v_i b_2^{ni} \\
& + \delta \sum_n v_n v_i c_2^{in} b_2^{ni} - \delta \beta^{-1} \sum_n v_n v_i b_2^{in} b_2^{ni} + \delta \beta^{-1} v_i b_2^{ii} \tag{62}
\end{aligned}$$

and on y_{jt-1} where $j \neq i$:

$$\begin{aligned}
& v_j c_2^{ij} - \beta^{-1} v_j b_2^{ij} \\
= & \Lambda_i (\mu + (1 + \mu) \beta^{-1} + \theta^{-1}) v_j b_2^{ij} + \Lambda_i (\sigma - \theta^{-1}) \sum_n v_n v_j b_2^{nj} \\
& + \delta \sum_n v_n v_j c_2^{in} b_2^{nj} - \delta \beta^{-1} \sum_n v_n v_j b_2^{in} b_2^{nj} + \delta \beta^{-1} v_j b_2^{ij} \quad (63)
\end{aligned}$$

Inserting conjectures in (47) gives

$$\begin{aligned}
& \sum_j v_j b_0^{jj} u_{jt} + \sum_j v_j b_1^{jj} u_{jt-1} + \sum_j v_j b_2^{jj} y_{jt-1} - y_{it-1} \\
= & -\theta \left(\sum_j v_j c_0^{ij} u_{jt} + \sum_j v_j c_1^{ij} u_{jt-1} + \sum_j v_j c_2^{ij} y_{jt-1} \right) \\
& + (\theta - \sigma k_\pi) \left(\sum_n \sum_j v_n v_j c_0^{nj} u_{jt} + \sum_n \sum_j v_n v_j c_1^{nj} u_{jt-1} + \sum_n \sum_j v_n v_j c_2^{nj} y_{jt-1} \right) \\
& + \sum_n \sum_j v_n v_j (b_0^{nj} \rho_u + b_1^{nj}) u_{jt} \\
& + \sum_m \sum_n v_m v_n b_2^{mn} \left(\sum_j v_j b_0^{nj} u_{jt} + \sum_j v_j b_1^{nj} u_{jt-1} + \sum_j v_j b_2^{nj} y_{jt-1} \right) \\
& - \sigma k_y \left(\sum_n \sum_j v_n v_j b_0^{nj} u_{jt} + \sum_n \sum_j v_n v_j b_1^{nj} u_{jt-1} + \sum_n \sum_j v_n v_j b_2^{nj} y_{jt-1} \right) + \sigma k_y \Xi \sum_j v_j u_{jt} \\
& + \sigma \sum_n \sum_j v_n v_j (c_0^{nj} \rho_u + c_1^{nj}) u_{jt} \\
& + \sigma \sum_m \sum_n v_m v_n c_2^{mn} \left(\sum_j v_j b_0^{nj} u_{jt} + \sum_j v_j b_1^{nj} u_{jt-1} + \sum_j v_j b_2^{nj} y_{jt-1} \right) - \sum_j v_j y_{jt-1} \quad (64)
\end{aligned}$$

Equating coefficients on u_{jt} gives

$$\begin{aligned}
& b_0^{ij} \\
= & -\theta c_0^{ij} + (\theta - \sigma k_\pi) \sum_n v_n c_0^{nj} + \sum_n v_n (b_0^{nj} \rho_u + b_1^{nj}) \\
& + \sum_m \sum_n v_m v_n b_2^{mn} b_0^{nj} - \sigma k_y \sum_n v_n b_0^{nj} + \sigma k_y \Xi v_j + \sigma \sum_n v_n (c_0^{nj} \rho_u + c_1^{nj}) \\
& + \sigma \sum_m \sum_n v_m v_n c_2^{mn} b_0^{nj} \quad (65)
\end{aligned}$$

On u_{jt-1} :

$$\begin{aligned}
& b_1^{ij} \\
= & -\theta c_1^{ij} + (\theta - \sigma k_\pi) \sum_n v_n c_1^{nj} + \sum_m \sum_n v_m v_n b_2^{mn} b_1^{nj} \\
& -\sigma k_y \sum_n v_n b_1^{nj} + \sigma \sum_m \sum_n v_m v_n c_2^{mn} b_1^{nj}
\end{aligned} \tag{66}$$

y_{it-1} :

$$\begin{aligned}
& v_i b_2^{ii} - 1 \\
= & -\theta v_i c_2^{ii} + (\theta - \sigma k_\pi) \sum_n v_n v_i c_2^{ni} + \sum_m \sum_n v_m v_n b_2^{mn} v_i b_2^{ni} \\
& -\sigma k_y \sum_n v_n v_i b_2^{ni} + \sigma \sum_m \sum_n v_m v_n c_2^{mn} v_i b_2^{ni} - v_i
\end{aligned} \tag{67}$$

and finally, y_{jt-1} where $j \neq i$:

$$\begin{aligned}
& b_2^{ij} \\
= & -\theta c_2^{ij} + (\theta - \sigma k_\pi) \sum_n v_n c_2^{nj} + \sum_m \sum_n v_m v_n b_2^{mn} b_2^{nj} \\
& -\sigma k_y \sum_n v_n b_2^{nj} + \sigma \sum_m \sum_n v_m v_n c_2^{mn} b_2^{nj} - 1
\end{aligned} \tag{68}$$

The restrictions (58)-(63) and (65)-(68) constitute a system of $6I^2$ equations determining the $6I^2$ coefficients in the conjectures. Indeed, this system is recursive. The $2I^2$ restrictions from equating coefficients on y_{it-1} may be combined to solve for $\{b_2^{ij}, c_2^{ij}\}_{ij}$, which may then be used in the $2I^2$ restrictions from u_{it-1} to solve for $\{b_1^{ij}, c_1^{ij}\}_{ij}$. Finally, these coefficients may be used in the restrictions from equation coefficients on u_{it} to find the remaining $2I^2$ coefficients $\{b_0^{ij}, c_0^{ij}\}_{ij}$.