

Arndt, Channing; Tarp, Finn; Thurlow, James

Working Paper

The economic costs of climate change: A multi-sector impact assessment for Vietnam

WIDER Working Paper, No. 2012/82

Provided in Cooperation with:

United Nations University (UNU), World Institute for Development Economics Research (WIDER)

Suggested Citation: Arndt, Channing; Tarp, Finn; Thurlow, James (2012) : The economic costs of climate change: A multi-sector impact assessment for Vietnam, WIDER Working Paper, No. 2012/82, ISBN 978-92-9230-546-8, The United Nations University World Institute for Development Economics Research (UNU-WIDER), Helsinki

This Version is available at:

<https://hdl.handle.net/10419/81035>

Standard-Nutzungsbedingungen:

Die Dokumente auf EconStor dürfen zu eigenen wissenschaftlichen Zwecken und zum Privatgebrauch gespeichert und kopiert werden.

Sie dürfen die Dokumente nicht für öffentliche oder kommerzielle Zwecke vervielfältigen, öffentlich ausstellen, öffentlich zugänglich machen, vertreiben oder anderweitig nutzen.

Sofern die Verfasser die Dokumente unter Open-Content-Lizenzen (insbesondere CC-Lizenzen) zur Verfügung gestellt haben sollten, gelten abweichend von diesen Nutzungsbedingungen die in der dort genannten Lizenz gewährten Nutzungsrechte.

Terms of use:

Documents in EconStor may be saved and copied for your personal and scholarly purposes.

You are not to copy documents for public or commercial purposes, to exhibit the documents publicly, to make them publicly available on the internet, or to distribute or otherwise use the documents in public.

If the documents have been made available under an Open Content Licence (especially Creative Commons Licences), you may exercise further usage rights as specified in the indicated licence.



UNITED NATIONS
UNIVERSITY

UNU-WIDER

World Institute for Development
Economics Research

Working Paper No. 2012/82

The Economic Costs of Climate Change: A Multi-Sector Impact Assessment for Vietnam

Channing Arndt¹, Finn Tarp², and James Thurlow²

September 2012

Abstract

Unlike existing studies, we adopt a multi-sectoral approach and consider the full range of climate projections. Biophysical damages are translated into economic costs using a dynamic economywide model. Our results for Vietnam indicate that the negative impacts on agriculture and roads are modest, at least until 2050. Larger costs are caused by rising sea levels and cyclone strikes. Overall, climate change is likely to reduce Vietnam's national income by between one and two percent by 2050 (relative to a historical baseline). Damages double under more extreme projections. Our findings suggest that there are benefits from pre-emptive action, but also opportunity costs from precautionary adaptation investments.

Keywords: climate change, uncertainty, multi-sector, CGE model, Vietnam

JEL classification: O13, O21, Q51, Q54

Copyright © UNU-WIDER 2012

¹University of Copenhagen, Department of Economics, ²UNU-WIDER, corresponding author email: thurlow@wider.unu.edu

This study has been prepared within the UNU-WIDER project on Development under Climate Change, directed by Channing Arndt, James Thurlow, and Finn Tarp.

UNU-WIDER gratefully acknowledges the financial contributions to the research programme from the governments of Denmark, Finland, Sweden, and the United Kingdom.

ISSN 1798-7237

ISBN 978-92-9230-546-8

Tables and figures appear at the end of the paper.

The World Institute for Development Economics Research (WIDER) was established by the United Nations University (UNU) as its first research and training centre and started work in Helsinki, Finland in 1985. The Institute undertakes applied research and policy analysis on structural changes affecting the developing and transitional economies, provides a forum for the advocacy of policies leading to robust, equitable and environmentally sustainable growth, and promotes capacity strengthening and training in the field of economic and social policy making. Work is carried out by staff researchers and visiting scholars in Helsinki and through networks of collaborating scholars and institutions around the world.

www.wider.unu.edu

publications@wider.unu.edu

UNU World Institute for Development Economics Research (UNU-WIDER)
Katajanokanlaituri 6 B, 00160 Helsinki, Finland

Typescript prepared by Lisa Winkler at UNU-WIDER

The views expressed in this publication are those of the author(s). Publication does not imply endorsement by the Institute or the United Nations University, nor by the programme/project sponsors, of any of the views expressed.

1 Introduction

Vietnam is often said to be particularly vulnerable to anthropogenic climate change (see, for example, Mendelsohn et al. 2006). This is due to at least three of the country's characteristics. First, despite rapid economic growth and transformation, much of Vietnam's population still depends on agriculture, and so a changing climate could jeopardize farm revenues and rural livelihoods (Adger 1999; Booth et al. 1999). Second, Vietnam's position at the end of trans-boundary river basins, including the Red and Mekong Rivers, exposes the country to inland flooding that could displace large populations (Warner 2010) and damage transport and energy infrastructure (Jacobs 1996). Third, Vietnam's long, low-lying coastline is vulnerable to rising sea levels, which, when coupled with storm surge, could lead to further infrastructure damages (Koetse and Rietveld 2009; Nicholls et al. 1999; Ziedler 1997). Together, these characteristics mean that crucial economic sectors, i.e., agriculture, energy and infrastructure, are exposed to climate risks that could influence Vietnam's long-term development prospects.

Climate change studies in Vietnam have tended to focus on specific impact channels (i.e., agriculture or sea level) or certain regions (i.e., river deltas). Most of the studies cited above conclude that climate change will have detrimental effects on Vietnam. However, it is difficult to integrate sector level findings in order to identify the main transmission channels, or to evaluate how sector level impacts might compound or offset each other (i.e., via economywide linkages or adaptation mechanisms, see Adger et al. 2005). This information is needed for prioritizing policy responses and adaptation investments, especially over the long run. Moreover, most quantitative studies consider only a few global climate change projections, even though knowledge of the full range of risks and outcomes is needed for designing robust development strategies.

This paper is one of four papers that document the findings from a UNU-WIDER research project: 'Development under Climate Change'. As one of the project's country level case studies, these four papers estimate climate change's biophysical and economic impacts on Vietnam using an integrated or multi-sector modeling framework. Sector level impact channels include water, agriculture and hydropower (Gebretsadik et al. 2012), road infrastructure (Chinowsky et al. 2012) and cyclones and storm surge (Neumann et al. 2012). This paper combines these sectoral impact channels to provide an economywide assessment of climate change for Vietnam. The paper is structured as follows. Section 2 describes the climate change projections for Vietnam and summarizes those results from the sector level studies that feed directly into the economic analysis. Section 3 describes the economywide modeling framework and the baseline and climate change scenarios. Section 4 discusses the simulation results, and the concluding section summarizes our findings and discusses their implications for adaptation policy.

2 Climate change in Vietnam

2.1 Climate change projections

There is much uncertainty surrounding climate change projections. General circulation models (GCM) produce a wide range of possible future climates, especially at the

country level. This is partly due to differences in modeling earth-atmosphere relationships. It is also unclear how the global economy will evolve over the next century. This means that different emission scenarios are identified and modeled based on projected populations, economic growth and technological progress. In order to capture the distribution of possible climate realizations, we employ the results from 22 GCMs and 3 special report emissions scenarios (SRES) (see Arnell et al. 2010). This gives 56 future scenarios since not every GCM simulates every SRES.

Assuming each GCM/SRES scenario is ‘equally unlikely’, the projections suggest that Vietnam’s temperature will rise by 1.5 °C above a historical baseline by the 2040s, with most projections clustered around this median value. Precipitation projections are more uncertain. Precipitation declines slightly, as reflected by the median projection, but dryer conditions are only somewhat less likely than wetter conditions at the national level. This uncertainty extends to all regions, where both rising and falling precipitation levels are projected.

Figure 1 shows projected changes in Vietnam’s climate moisture index (CMI), which is a composite indicator of temperature and precipitation outcomes (see Willmott and Feddema 1992). The CMI is calculated using annual precipitation and potential evapotranspiration. A climate is classified as becoming more arid (humid) when potential evapotranspiration increases (decreases) relative to precipitation (i.e., a CMI of -1 is very arid whereas +1 is very humid).

Vietnam’s already high levels of humidity limit changes in potential evapotranspiration (PET). Nevertheless, PET tends to rise by more than precipitation in most regions. The CMI suggests that Vietnam’s climate conditions will tend to become more arid as a result of climate change, though the median change is not dramatic. There is, again, considerable uncertainty, especially at the regional level.

2.2 Biophysical impacts

Climate projections are translated into biophysical impacts via a series of specialized sector models. Figure 2 shows the flow of information through the river basin and water resource models down to the sector models that are used to estimate impacts on agriculture, energy and infrastructure. River basin models determine streamflow for water resource models, which then estimate water availability for hydropower models. The river basin model also predicts flood frequency and severity, which, together with precipitation and temperature, determines road damages in the infrastructure model. Climate projections directly affect production in the crop models. We also capture land inundation from SLR and storm surges from cyclone activity. Finally, the biophysical results are passed down to a multi-sector economic model that estimates the economywide impacts of climate change.

Strzepek et al. (2012) estimate how climate change affects irrigation demand and yields for a variety of crops in each of Vietnam’s eight regions. The authors’ main results are summarized in Figure 3. Irrigation demand is found to generally rise throughout Vietnam in response to climate change, leading to lower irrigation coverage rates. However, deviations from baseline irrigation coverage are fairly small and so the impact of climate change on the production of irrigated rice – Vietnam’s primary staple crop – is modest. Yield impacts on other crops are generally larger. For example, average

yields for annual crops fall by more than 10 percent by the late-2040s under the median climate change projection.

Strzepek et al. (2012) also consider how changes in streamflow due to climate change affect hydropower generation. Their analysis of Vietnam's 22 river basins shows that national generating capacity in the 2040s remains virtually unchanged from the baseline under the median climate change projection. There is, however, wide variation around the median, with projected national capacity rising or falling by more than 5 percent relative to the baseline in certain extreme climate change projections.

We simulate road infrastructure impacts using the 'CLIROAD' model, which includes various stressor-response functions, such as heat and precipitation damage and road losses from severe flooding (see Chinowsky and Arndt 2012). The model also tracks maintenance costs and new road investments. The results shown in Figure 3 indicate that, in some scenarios, road network length actually increases as a result of climate change. Drier scenarios often favor road network length due to reduced washouts from precipitation and flooding. Nevertheless, most climate projections reduce road network length due to three factors. First, all climate projections indicate higher temperatures. Higher maximum temperatures accelerate the degradation of paved roads unless steps are taken to render roads more robust. These adjustments are not considered 'autonomous' adaptation in the road infrastructure model and so rising temperatures lead to higher maintenance costs, which in turn displaces new road investment. Second, even though precipitation at the national level declines slightly, the intensity of precipitation tends to increase, leading to a higher rate of washouts, particularly for unpaved roads. Third, the increase in precipitation intensity leads to, in most scenarios, a small rise in the frequency and intensity of flooding events. In a few climate projections, large scale flooding becomes much more frequent, leading to more substantial declines in the total road stock.

Chinowsky et al. (2012) estimate the additional impacts of SLR on coastal road infrastructure. SLR of one meter, which is an extreme scenario, damages almost the entire road-stock in the low-lying Mekong River Delta. Road infrastructure in the Red River Delta and parts of the South East are also vulnerable to SLR, with damages to a fifth of certain districts' road-stocks. Overall, the authors estimate that one meter SLR causes US\$2 billion in road damages.

Finally, Neumann et al (2012) consider the coupled effect of SLR and storm surges. Cyclones are already a regular occurrence in Vietnam, but SLR will increase the extent to which storm surges are able to reach inland and damage infrastructure. The authors examine a range of SLR from 0.16 to 0.38 meters. In the worst scenario, the authors find that the effective frequency of a 100-year event (i.e., a five meter storm surge) almost doubles so that it becomes a 60-year event by 2050. Around 10 percent of Hanoi's GDP is exposed to 0.38 meter SLR, and this rises to more than 40 percent during a 100-year event.

The sector level studies indicate potential losses from climate change, although there is considerable variation across climate projections, with Vietnam benefiting from climate change in some cases. This emphasizes the need to evaluate the full distribution of climate change projections. In the next section we describe the economywide model used to translate biophysical into economic impacts.

3 Economywide modeling framework

The sector level results summarized above are passed down to a dynamic computable general equilibrium (CGE) model of Vietnam, which estimates the economywide impact of the baseline and climate change scenarios, including spillovers from the individual sectors to each other and to the rest of the economy (i.e., indirect or economywide linkages). Our dynamic CGE model belongs to the structural neoclassical class of models (see Dervis et al. 1982) and is well-suited to analyzing climate change. First, it simulates the functioning of a market economy, including markets for labor, capital and commodities, and therefore can evaluate how changing economic conditions are mediated via prices and markets. Second, the model ensures that all economywide constraints are respected, such as foreign exchange and factor resource supply constraints. These are crucial for long-run climate change projections. Finally, the model contains a detailed sector breakdown and provides a ‘simulation laboratory’ for quantitatively examining how the individual impact channels of climate change influence the performance and structure of the whole economy.

Economic decision-making in the CGE model is the outcome of decentralized optimization by producers and consumers within a coherent economywide framework.¹ A variety of substitution mechanisms occur in response to variations in relative prices, including substitution between factors, between imports and domestic goods, and between exports and domestic sales. The Vietnam model contains 30 representative producers or sectors, including electricity generation, transport services and ten agricultural sub-sectors (see Arndt et al. 2010). Eleven factors of production are identified: six types of labor (primary, secondary and tertiary educated in rural and urban areas), agricultural land, three types of farm capital (crop, livestock and fisheries), and non-farm capital. Agricultural activities and their land and capital are distributed across eight sub-national regions (Red River, North East, North West, North Central, South Central, Central Highlands, South East and Mekong River). This sectoral and regional detail captures Vietnam’s economic structure and influences model results.

Climate change affects economic growth and welfare in the CGE model via three principal mechanisms. First, the changes in crop yields and irrigation demand estimated by the water and crop models are imposed on the subsector production functions in the CGE model, which then determines how much of the available resources should be devoted to each crop given their profitability relative to other farm and non-farm activities (i.e., ‘autonomous adaptation’). Profitability is here defined as the rental rate on fixed sector-specific capital.

Second, the CGE model directly incorporates fluctuations in hydropower production. River flows only affect crop production if the irrigated area available for planting exceeds the maximum potential area that could be irrigated given water availability constraints. Changes in the supply of hydropower will affect all industries and households depending on their energy-intensity of production and consumption.

Third, the length of regional road networks is used in the CGE model to determine the productivity of transport services. As mentioned above, the road infrastructure model

¹ See Diao and Thurlow (2012) for a detailed specification of the core model, and Arndt et al. (2011) for a recent application to climate change.

explicitly holds constant factors such as road width and the shares of investment allocated to different classes of roads (e.g., paved or unpaved). This implicitly assumes that planners are equally effective at determining where new road construction should take place across climate scenarios. Given that these and other determinants of transport productivity are held constant, a shorter road network is assumed to lower transport productivity and increase the cost of moving goods between producers and consumers.

Finally, the CGE model also incorporates the effects of SLR on road infrastructure and on the changing availability of cultivable land due to land inundation. Capital stocks, reflecting non-road infrastructure and productive assets, are also damaged during randomly determined cyclones and storm surges (discussed in the next section).

Dynamic processes are important given the long time frame over which climate change will unfold. Our CGE model's recursive dynamics allows it to capture annual changes in the rate of physical and human capital accumulation and technical change. So, for example, if climate change reduces agricultural or hydropower production in a given year, it also reduces income and hence savings. This reduction in savings displaces investment and lowers production potential. Similarly, higher road maintenance costs imply less infrastructure investment and shorter road networks both now and in the future. Extreme events, such as flooding, also destroy infrastructure with lasting effects. Generally, even small differences in accumulation can cause large differences in economic outcomes over long time periods. Our CGE model is well-suited to capture these path-dependent effects.

4 Simulation results

4.1 Baseline scenario

In order to estimate the economic impact of climate change for Vietnam it is necessary to first specify a baseline scenario that reflects future development trends, policies and priorities in the absence of climate change. The baseline provides a reasonable trajectory for growth and structural change of the economy for the period 2007–50 upon which we can overlay the impacts of climate change.

Economic growth in the CGE model is determined by rates of factor accumulation and technical change. For labor supply, we assume that the stock of labor grows at 2.5, 2.0 and 1.5 percent for tertiary, secondary and primary labor categories, respectively. We assume that cultivated crop land is scarce such that growth agricultural production increasingly depends on adopting improved technologies rather than expanding land use. Improvements in the education levels of the workforce are assumed to enhance productivity growth, with productivity rising for tertiary and secondary workers (i.e., at 2.0 and 1.0 percent per year, respectively) compared to no factor specific technical advance for primary educated workers. Baseline annual growth in hydropower generation and regional road networks are determined by the sector models using historical climate data. Under the above assumptions, Vietnam's economy grows at 5.4 percent per annum, with agriculture's contribution to GDP falling from 15.7 to 7.5 percent during 2007–50. This strong growth in per capita GDP leads to significant improvements in average household welfare.

4.2 Climate change scenarios

Figure 4 reports the deviation in average real GDP across the climate projections for the period 2046–50 (relative to the baseline). The average is reported in order to limit the implications of shocks during a particular year. Note that the impacts of each transmission channel are cumulative from left to right in the figure. In other words, the *Roads* scenario includes the effects of the *Agriculture* scenario; the *Hydropower* scenario includes the effects of both the *Roads* and *Agriculture* scenarios; and so on until the *Cyclone* scenario, which includes all transmission channels. The sector level climate change shocks imposed on the CGE model are summarized in Table 1.

Beginning with the *Agriculture* scenario, we find the implication of climate change to be fairly small when the land losses caused by SLR are excluded. In other words, only the implications of the yield shocks and unmet irrigation demands are imposed (see Figure 3). The implications of these shocks for the national economy and for growth are modest for two reasons. First, the shocks themselves are not particularly large in most instances. Second and importantly, agriculture's share of GDP falls in the baseline and remains strictly between 7 and 8 percent of GDP across all climate change projections. Since agriculture's contribution to the economy in the baseline declines regardless of climate change (a strong empirical regularity), variations or reductions in agricultural GDP have an increasingly muted effect on the national economy and overall economic growth rates.

In the *Roads* scenario depicted in Figure 4, the implications of climate change become more pronounced. Although climate change sometimes produces positive outcomes, they are more likely to be negative at a national scale. These implications are driven by results from the road infrastructure model (again, excluding infrastructure lost due to SLR). Figure 3 summarized the distribution of changes in road network length relative to the baseline scenario. As indicated earlier, the road infrastructure model is fully integrated within the CGE model, with road network length directly influencing the rate of total factor productivity (TFP) growth for the transport sector. In addition, investment in new roads is assumed to move proportionately with growth in government spending. As a result of these interactions, road network length differs across scenarios.

Degradation or destruction of road infrastructure is different from agricultural yield impacts because the effects on infrastructure endure. Once a road is washed away, the negative effect remains until the road is rebuilt. However, with constant resources allocated to roads, reconstruction of a section of road that is washed away due to heavy rainfall or flooding implies fewer resources available for construction of new roads or regular rehabilitation of existing roads. Hence, climate change influences the rate of accumulation of the road stock, which in turn influences the rate of productivity growth in the transport sector. Because rates of accumulation are influenced, the effects compound over time and can become relatively large. In contrast, for agriculture, climate change (as modeled) influences production in a given year, but not necessarily rates of growth in productive capacity through time. If growing conditions are poor, production declines; however, if growing conditions are favorable, production increases. For these reasons, the incremental impact of climate change is larger for the *Roads* scenario.

The *Hydropower* scenario includes changes in electricity generation due changes in streamflow. As discussed in Section 2, impacts on hydropower production are

essentially centered about zero in the 2040s. However, in the 2020s and 2030s, when hydropower represents a larger share of total electricity supply, the impacts tend to be negative. The effect is to slightly reduce growth over the period, resulting in a slight reduction in GDP for the median climate projection during the period 2046–50. It is interesting to note that maximum GDP across all climate scenarios is reduced in hydropower relative to roads. Recall that dry scenarios are typically favorable to roads, but would not be favorable to hydropower production.

The impacts of SLR are negative across all scenarios and shift the distribution of GDP outcomes downward. We assume that SLR is uncorrelated with particular GCM/SRES pairings (i.e., the same SLR shocks are applied to all climate projections). The two principal drivers of losses from SLR are loss of agricultural land and loss of road infrastructure. As mentioned earlier, one meter SLR is an extreme scenario for climate projections until 2050 (but perhaps a less extreme one for 2100). Following Neumann et al. (2012), we assume that climate change is expected to deliver at most 0.38 meters of SLR by 2050. However, elevation data for Vietnam was available at one meter steps. It is therefore impossible to analyze the exact impacts of SLR to 2050 without additional assumptions. We assume that, with 0.38 meters of SLR, 38 percent of the area that would be submerged by one meter of SLR is assumed to be submerged. We also assume that this area constitutes principally agricultural land and road infrastructure. Other forms of coastal capital, including machines and permanent structures, are assumed to be less affected because they can either be relocated or placed on higher ground. Based on these assumptions, the scenario *SLR-High* is proportionally worse than *SLR-Low*.

The *Cyclone* scenario considers the marginal impact of cyclones relative to the baseline. We assume that there is no change in the frequency or intensity of cyclone strikes from what was observed in the historical record. Much of the damage from cyclone strikes is a function of wind velocity; however, this is held constant between the baseline and the climate change scenarios. As a result, the marginal impact of cyclones due to climate change is restricted to the interactions between storm surge and SLR. SLR of 0.38 meters causes the storm surge to extend further inland and increases the depth of submersion in affected areas.

Since larger storms result in more powerful surges and a greater area inundated, we assume that marginal damages increase non-linearly with the power of the storm. This is illustrated in Figure 5, which shows the marginal loss of capital stock in economic sectors associated with cyclone strikes of different historical return periods (RP). The higher a cyclone's RP, the less frequent but more severe it is. The figure shows how a two meter storm surge is an RP90 event, i.e., a cyclone of this severity or greater is expected only once every 90 years. Moreover, the figure shows how 0.38 meters of SLR significantly increases the effective return period of historical storms by 2050. Cyclone events are drawn randomly each year across the 56 GCM/SRES pairings. As a result, we expect to see some strong cyclone activity in at least one GCM/SRES pairing in each year. While mean effects remain small even out to 2050 (about 0.1 percent or 1/1000 of the stock of capital lost), losses from relatively larger cyclone events are much more significant – at 1.2 percent of capital stock lost during a single 1-in-90 year storm surge.

The capital damages from cyclones shifts downward the distribution of GDP outcomes. Nevertheless, cyclones' total effects on economic growth are not large relative to the full projected GDP of Vietnam. The *SLR-Low* scenario represents the least strong

distribution of impacts, considering all impact channels as well as low SLR. As shown in Figure 4, average GDP during 2046–50 is reduced by between 0.3 and 3.0 percentage points, with the majority of outcomes between 1.0 and 2.0 percent. With high SLR and cyclones (i.e., *Cyclone* scenario), the level of GDP in the period 2046–50 is between 1.0 and 3.5 percent lower. These results are broadly consistent with World Bank (2010).

Since growth is a cumulative process, the reported reductions in GDP levels translate into small reductions in average annual GDP growth rates over the simulation period. In the *Cyclone* scenario, the average annual GDP growth rate is reduced by between 0.02 percentage points and 0.10 percentage points. In other words, if the expected average baseline growth rate without climate change is 5.4 percent per annum, then the growth rate would be expected to be between 5.30 and 5.38 percentage points. In sum, climate change represents an additional challenge for future economic development in Vietnam. However, the challenge is not insurmountable, since other factors will be more influential in determining economic growth rates out to about 2050.

Vietnam's GDP is expected to exceed US\$500 billion by 2050, which means that the losses caused by climate change are large in absolute terms. Figure 6 illustrates the net present value of losses over the period 2007–50, measured in terms of the difference in GDP at factor cost between the climate change scenarios and the baseline. The net present value is obtained using a 5 percent discount rate. Taking the range between the most favorable outcome of the *SLR-Low* scenario and the least favorable outcome of the *Cyclone* scenario, the net present value of losses ranges from about zero to around US\$40 billion (measured in real 2007 prices). The majority of GDP losses are grouped within the range of US\$6–15 billion. These losses provide clear incentives for adaptation policies designed to reduce climate change damages. Moreover, our findings suggest that there is a window of opportunity for Vietnam to benefit from preemptive action.

Finally, Figure 7 reports the net present value of GDP losses for the *Cyclone* scenario by decade and global emissions scenario. Even though these values are discounted to 2007 (i.e., the base year for our analysis), the later decades are found to contribute much more to the net present value of total losses than earlier decades. Moreover, climate change impacts are expected to be more severe after 2050 and so our results emphasize the need to prepare early for gradually more severe climate impacts.

5 Conclusions

Climate change is a multi-sectoral and uncertain phenomenon. This makes it difficult to evaluate economic impacts and design robust and appropriately prioritized adaptation strategies. In this paper we applied an economywide model that enabled us to estimate (and decompose) the effects of climate change via a range of sector level transmission channels, including agriculture, energy, infrastructure, sea levels and storm surges. We used this integrated modeling framework to examine the full distribution of climate projections. Our analysis advances previous studies for Vietnam by better capturing uncertainty and multi-sectoral impacts. Further research is needed to capture other important sector impacts, particularly health (Few and Tran 2010).

Anthropogenic climate change is expected to increase Vietnam's surface temperature by 2050. Effects on precipitation are much more uncertain but are centered on relatively

mild impacts with a slight tendency for drying. This combination of slightly lower rainfall and higher evapotranspiration leads to a mild ‘drying out’ of Vietnam’s currently humid climate. These changes are not sufficient to generate large declines in agricultural production, nor are they projected to generate (in most instances) large increases in the frequency and severity of events, such as flooding, that would threaten infrastructure. In addition, while hydropower generation tends to be negatively affected, this outcome is not large enough to be a major hindrance to economic development during 2007–50. That being said, some climate change projections lead to substantial damages for Vietnam. This emphasizes the importance of analyzing the full range of climate projections. It also highlights the need to carefully balance precautionary adaptation investments against their opportunity costs, i.e., forgone investments in economic development.

Rising sea levels generate some of the largest economic effects in our analysis, especially when SLR is high and is combined with cyclone strikes and storm surges. Together these forces lead to significant damages to agricultural land, roads and other infrastructure. For this reason, climate change is expected to worsen Vietnam’s economic growth prospects out to 2050. Despite this, climate change’s macroeconomic impact out to about 2050 is not particularly large. Non-climate factors are likely to be more important determinants of growth rates over at least the next few decades.

Nevertheless, the net present value of losses indicates that climate change’s macroeconomic effects are appreciable and adaptation policies are merited. Our analysis suggests that an adaptation agenda for Vietnam should include (i) investment in information systems to monitor climate change impacts, including improved information on river flow and land elevation in low-lying regions; (ii) development of heat resistant crop varieties; (iii) improved water use efficiency; and (iv) changes in design standards for infrastructure, such as roads, to endure a warmer and more variable climate.

Serious choices revolve around the implications of SLR combined with cyclone strike. There are essentially two pro-active options: (i) the government channels economic activity towards higher ground in an evolutionary fashion; and (ii) the government invests in protective infrastructure. These are not mutually exclusive options and decisions in response to climate change do not need to be made immediately. Nevertheless, while more study is required, we expect that a gradual channeling of activity to higher ground may prove to be more economically efficient. It is certainly less risky than inaction. A major detractor to protective coastal infrastructure investments is that they reduce risks but increase exposure. Both the costs of protective coastal infrastructure and the capital that will inevitably be placed in the shadow of that protection are vulnerable to cyclone strike of sufficient magnitude. Hence, with a protective strategy, there is always the possibility that one will lose a great deal more than just the certain costs of building the protective infrastructure. The gradual channeling of economic activity to safer, higher elevation zones, on the other hand, recognizes that the vast majority of the capital stock of 2050 has yet to be created and installed. The location and vulnerability of that stock is, as a consequence, essentially a matter of choice. Nevertheless, for the gradual evolution strategy to be efficient, the channeling of economic activity to higher ground should begin as soon as possible, especially if, as time proceeds, the upper ends of SLR projections appear to coincide with observed SLR.

Finally, while our study offers a more comprehensive climate change impact assessment than existing studies, there are at least two areas where the analysis could be strengthened. First, we have drawn directly from historical climate data, and so our future baseline replicated the sequence of past weather events. However, a stochastic baseline scenario would be less dependent on the historical sequence of (extreme) weather events, but would require greater interaction between biophysical and economic models (see Thurlow et al. 2012). Second, the results from the CGE model incorporate some autonomous adaptation based on the behavior of representative agents (i.e., producers and consumers). However, these agents do not anticipate climate changes and so do not adjust their behavior based on forward-looking expectations. The extent to which such complex behavior is applicable in the context of climate changes in developing countries is an important area for future work.

References

- Adger, W.N. (1999). 'Social Vulnerability to Climate Change and Extremes in Coastal Vietnam'. *World Development* 27(2): 249–69.
- Adger, W.N., Arnell, N.W. and Tompkins, E.L. (2005). 'Successful Adaptation to Climate Change across Scales'. *Global Environmental Change* 15: 77–86.
- Arndt, C., A. Garcia, H.H. Pham and J. Thurlow (2010). *A 2007 Social Accounting Matrix for Vietnam*. Unpublished manuscript, Department of Economics, University of Copenhagen and Central Institute of Economic Management, Hanoi.
- Arndt, C., K. Strzepek, F. Tarp, J. Thurlow, C. Fant and L. Wright (2011). 'Adapting to Climate Change: An Integrated Biophysical and Economic Assessment for Mozambique'. *Sustainability Science* 6: 7–20.
- Arnell, N.W., M.J.L. Livermore, S. Kovats, P.E. Levy, R. Nicholls, M.L. Parry, and S.R. Gaffin (2010). 'Climate and Socio-Economic Scenarios for Global-Scale Climate Change Impacts Assessments: Characterising the SRES Storylines'. *Global Environmental Change* 20: 577–85.
- Booth, T.H., Nghia, N.H., Kirschbaum, M.U., Hackett, C. and Jovanovic, T. (1999). 'Assessing Possible Impacts of Climate Change in Species Important for Forestry in Vietnam'. *Climatic Change* 41: 109–26.
- Chinowsky, P. and Arndt, C. (2012). 'Climate Change and Roads: A Dynamic Stressor–Response Model'. *Review of Development Economics* 16(3): 448–62.
- Chinowsky, P.S., Schweikert, A.E., Strzepek, N.L., and Strzepek, K. (2012). 'Road Infrastructure and Climate Change in Vietnam'. Working Paper 2012/80. Helsinki: UNU-WIDER.
- Dervis K., J. de Melo, S. Robinson (1982). *General Equilibrium Models for Developing Countries*. Cambridge: Cambridge University Press.
- Diao, X. and J. Thurlow (2012). 'A Recursive Dynamic Computable General Equilibrium Model'. In Diao, X., J. Thurlow, S. Benin and S. Fan (ed.). *Strategies and Priorities for African Agriculture: Economywide Perspectives from Country Studies*. Washington DC: International Food Policy Research Institute.

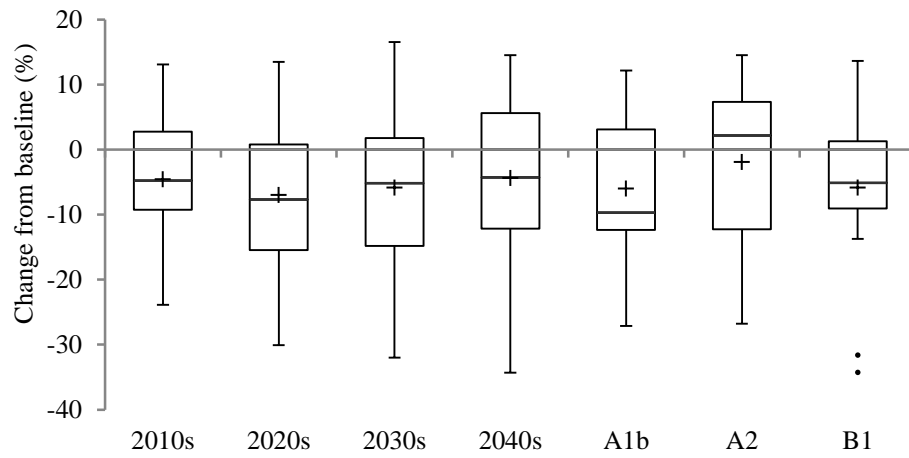
- Few, R. and Tran, P.G. (2010). 'Climatic Hazards, Health Risk and Response in Vietnam: Case Studies on Social Dimensions of Vulnerability'. *Global Environmental Change* 20(3): 529–38.
- Gebretsadik, Y., Fant, C., and Strzepek. K. (2012). Impact of Climate Change on Irrigation, Crops and Hydropower in Vietnam'. Working Paper 2012/79. Helsinki: UNU-WIDER.
- Jacobs, J.W. (1996). 'Adjusting to Climate Change in lower Mekong'. *Global Environmental Change* 6(1): 7–22.
- Koetse, M.J. and Rietveld, P. (2009). 'The Impact of Climate Change and Weather on Transport: An Overview of Empirical Findings'. *Transportation Research Part D* 14: 205–221.
- Mendelsohn, R., Dinar, A. and Williams, L. (2006). 'The Distributional Impact of Climate Change on Rich and Poor Countries'. *Environment and Development Economics* 11: 159–78.
- Neumann, J.E., Emanuel, K.A., Ravela, S, Ludwig, L.C., and Verly, C. (2012). 'Risks of Coastal Storm Surge and the Effect of Sea Level Rise in the Red River Delta, Vietnam'. Working Paper 2012/81. Helsinki: UNU-WIDER.
- Nicholls, R.J., Hoozemans, F.M.J., and Marchand, M. (1999). 'Increasing Flood Risk and Wetland Losses due to Global Sea-level Rise: Regional and Global Analyses'. *Global Environmental Change* 9: S69–S87.
- Thurlow, J., Dorosh, P. and Yu, W. (2012). 'A Stochastic Simulation Approach to Estimating the Economic Impacts of Climate Change in Bangladesh'. *Review of Development Economics* 16(3): 412–28.
- Warner, K. (2010). 'Global Environmental Change and Migration: Governance Challenges'. *Global Environmental Change* 20: 402–13.
- Willmott, C.J. and J.J. Feddema (1992). 'A More Rational Climatic Moisture Index'. *The Professional Geographer* 44(1): 84–88.
- World Bank (2010). *Economics of Adaptation to Climate Change: Vietnam*. Washington, DC: World Bank.
- Ziedler, R.B. (1997). 'Continental Shorelines: Climate Change and Integrated Coastal Management'. *Ocean and Coastal Management* 37(1): 41–62.

Table 1: Climate change scenarios

Scenario	Description of impacts
1 Agriculture	Projected temperature and precipitation changes on crop yields (from CLICROP) combined with changes in irrigated land area based on unmet irrigation demands (from CLIRUN).
2 Roads	Changes in temperature and precipitation and flood frequency and severity on road network length (from CLIROAD).
3 Hydropower	Streamflow changes on the generation capacity of hydropower installations (from IMPEND)
4 SLR-Low	Incremental crop land losses and infrastructure damages from a linear sea level rise reaching 16 centimeters by 2050.
5 SLR-High	As above but with sea levels rising by 38 centimeters by 2050.
6 Cyclones	Probabilistic cyclone strikes on coastal regions with only the incremental impacts caused by higher sea levels imposed as a climate change shock.

Source: Authors' summary.

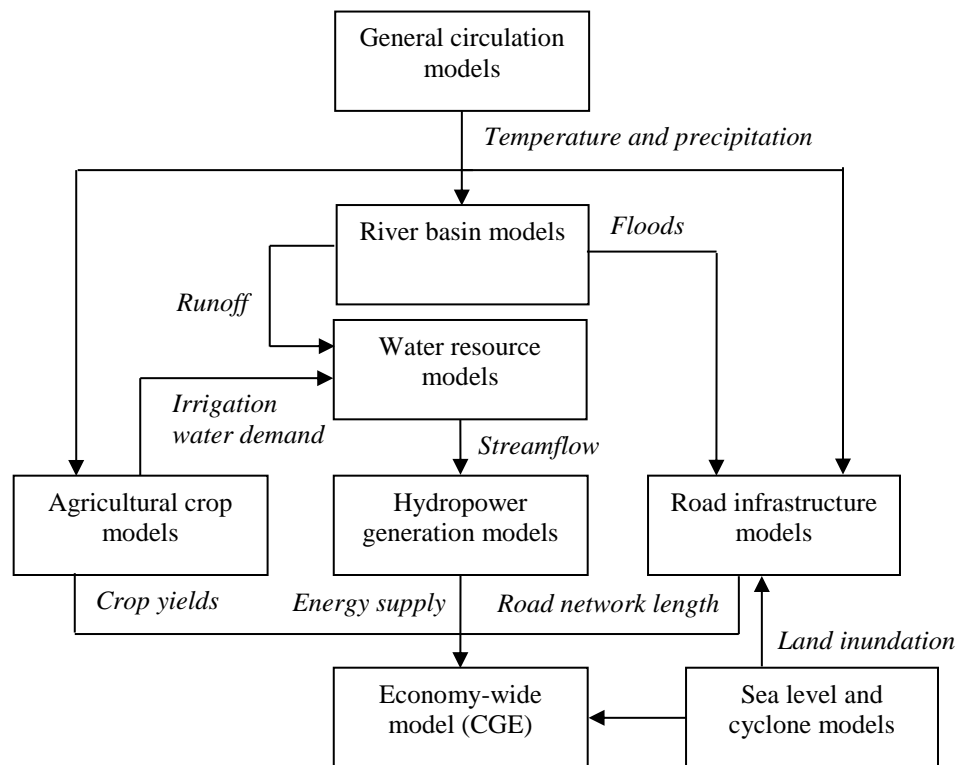
Figure 1: Deviations in average national climate moisture index from baseline due to climate change.



Source: Authors' calculations using results from Gebretsadik et al. (2012).

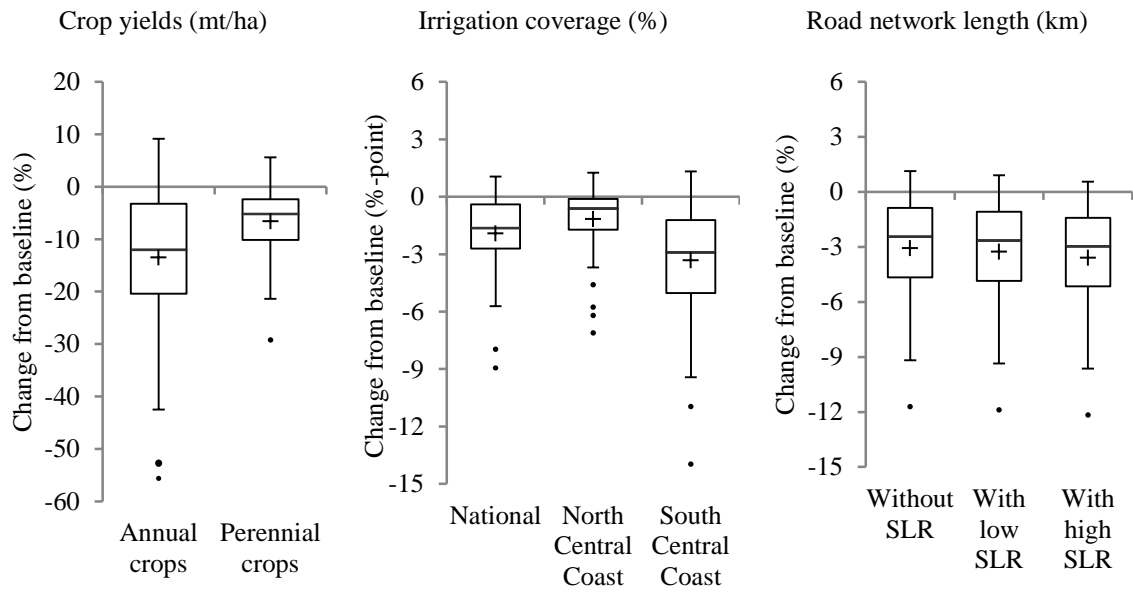
Notes: A1b, A2 and B1 are emission scenarios. Dots show outliers.

Figure 2: Integrated modeling framework



Source: Authors' framework.

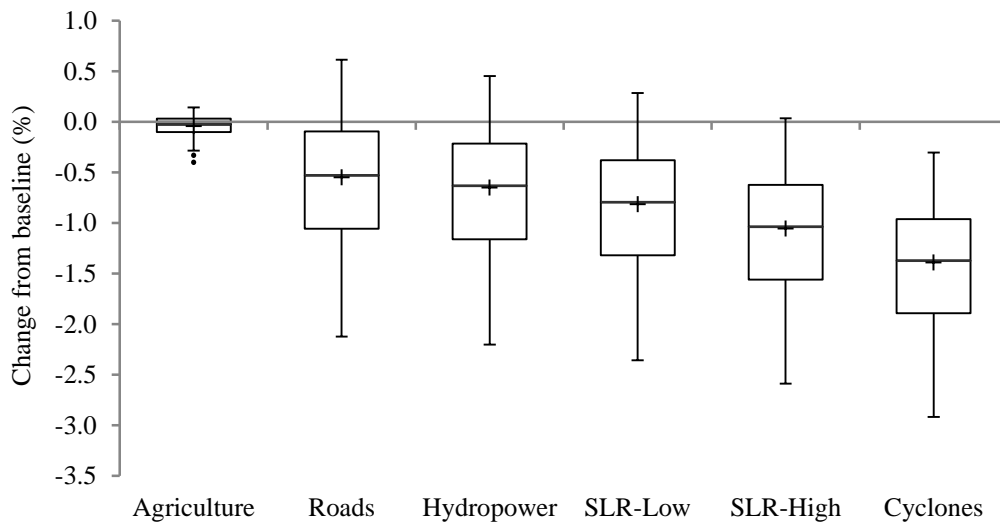
Figure 3: Deviation in composite crop yields, irrigation water demand coverage, and road network length from baseline during 2046–50 due to climate change



Source: Authors' calculations using results from Gebretsadik et al. (2012).

Note: Dots show outliers.

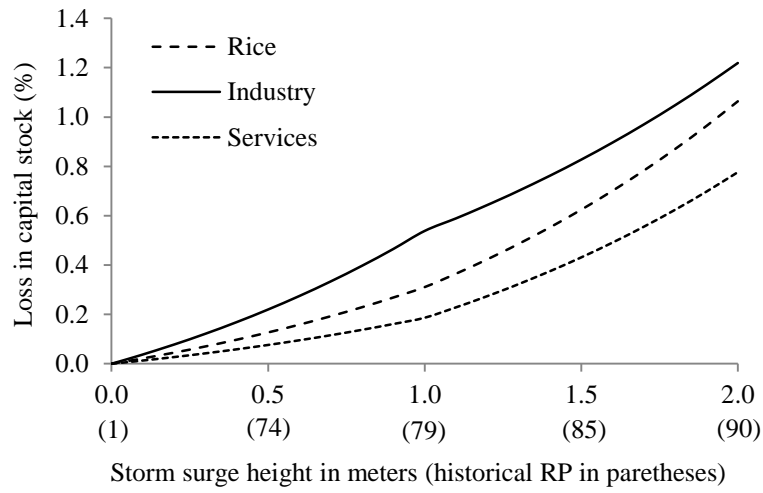
Figure 4: Deviation in average real GDP from baseline during 2046–50 due to climate change. Scenarios are cumulative from left to right



Source: CGE model results.

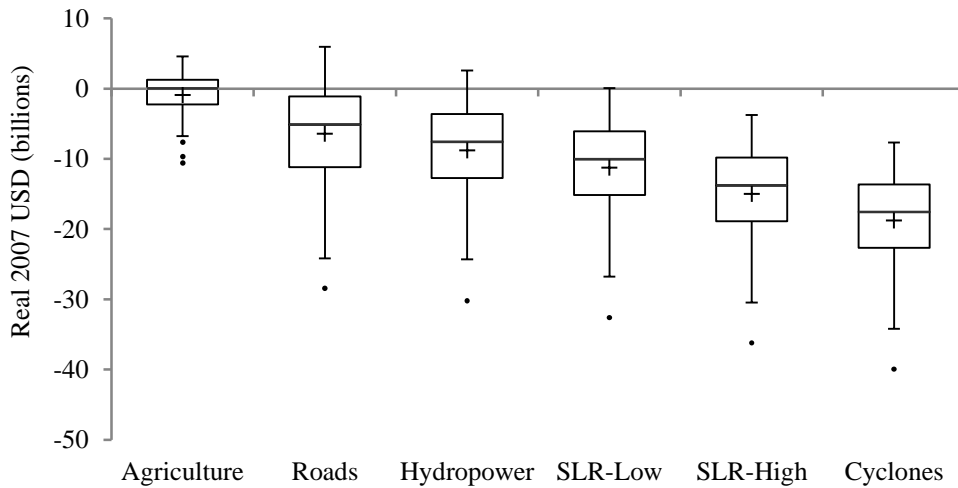
Note: Dots show outliers.

Figure 5: Marginal damages to capital stock due to storm surge and cyclones



Source: Authors' calculations using results from Neumann et al. (2012).

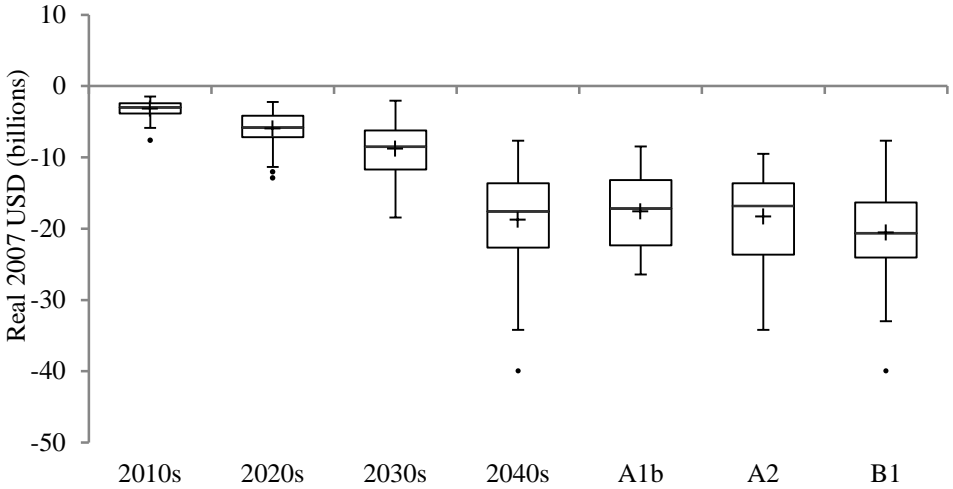
Figure 6: Net present value of total GDP losses during 2040s (shown as negative values) due to climate change



Source: CGE model results.

Notes: Five % discount rate is applied. Scenarios are cumulative from left to right. Dots show outliers.

Figure 7: Net present value of total GDP losses in the Cyclone Scenario (shown as negative values)



Source: CGE model results.

Notes: Five % discount rate is applied. Dots show outliers.