

Danzer, Alexander M.; Dietz, Barbara; Gatskova, Kseniia

Working Paper

Migration and remittances in Tajikistan: Survey technical report

IOS Working Papers, No. 327

Provided in Cooperation with:

Leibniz Institute for East and Southeast European Studies (IOS), Regensburg

Suggested Citation: Danzer, Alexander M.; Dietz, Barbara; Gatskova, Kseniia (2013) : Migration and remittances in Tajikistan: Survey technical report, IOS Working Papers, No. 327, Institut für Ost- und Südosteuropaforschung (IOS), Regensburg, <https://nbn-resolving.de/urn:nbn:de:101:1-201303128505>

This Version is available at:

<https://hdl.handle.net/10419/79232>

Standard-Nutzungsbedingungen:

Die Dokumente auf EconStor dürfen zu eigenen wissenschaftlichen Zwecken und zum Privatgebrauch gespeichert und kopiert werden.

Sie dürfen die Dokumente nicht für öffentliche oder kommerzielle Zwecke vervielfältigen, öffentlich ausstellen, öffentlich zugänglich machen, vertreiben oder anderweitig nutzen.

Sofern die Verfasser die Dokumente unter Open-Content-Lizenzen (insbesondere CC-Lizenzen) zur Verfügung gestellt haben sollten, gelten abweichend von diesen Nutzungsbedingungen die in der dort genannten Lizenz gewährten Nutzungsrechte.

Terms of use:

Documents in EconStor may be saved and copied for your personal and scholarly purposes.

You are not to copy documents for public or commercial purposes, to exhibit the documents publicly, to make them publicly available on the internet, or to distribute or otherwise use the documents in public.

If the documents have been made available under an Open Content Licence (especially Creative Commons Licences), you may exercise further usage rights as specified in the indicated licence.

Arbeitsbereich Ökonomie

IOS Working Papers

No. 327 February 2013

Migration and Remittances in Tajikistan: Survey Technical Report

Alexander M. Danzer^{*}, Barbara Dietz^{**}, and Kseniia Gatskova^{***}

^{*} Ludwig-Maximilians-Universität München, Institut für Ost- und Südosteuropaforschung Regensburg and IZA Bonn; ^{**} Institute for East and Southeast European Studies and IZA Bonn; ^{***} Institute for East and Southeast European Studies and University of Konstanz

Correspondence to: Institute for East and Southeast European Studies, Landshuter Strasse 4, D-93047 Regensburg, Germany; e-mail: dietz@ios-regensburg.de



Landshuter Straße 4
D-93047 Regensburg

Telefon: (0941) 943 54-10

Telefax: (0941) 943 54-27

E-Mail: info@ios-regensburg.de

Internet: www.ios-regensburg.de

Contents

Abstract	v
1 Introduction	1
2 The Tajikistan Household Panel Survey 2011	3
2.1 Background and goals	3
2.2 Household selection	4
3 The questionnaire	7
4 Pretest and fieldwork	10
5 Training of interviewers and supervisors	12
6 Quality control.....	14
7 First results	15
7.1 Demographic characteristics of respondents and households	15
7.2 International migration experience of households	18
8 Concluding remarks.....	22
References	23
Annex 1 Regional Data on migration in Tajikistan.....	24

List of Tables

Table 1 Sample allocation of households in the 2007 TLSS	5
Table 2 Final cluster allocation in the 2007 TLSS	5
Table 3 Sample allocation of households in the 2011 THPS.....	6
Table 4 Final cluster allocation in the 2011 THPS.....	6
Table 5 Interview language in the 2011 THPS	8
Table 6 Regional distribution and gender of interviewers	10
Table 7 Migration activities of households	20
Table 8 Migration activities of households (including currently away and older than 16 when left home)	20
Table 9 Demographic characteristics, destination choice and remittance behavior of migrants	21

List of Figures

Figure 1	Regions of Tajikistan	4
Figure 2	Number of households	15
Figure 3	Gender of respondents.....	15
Figure 4	Gender of all household members	15
Figure 5	Age structure of respondents	16
Figure 6	Age distribution of all household members.....	16
Figure 7	Household size	16
Figure 8	Education of respondents.....	17
Figure 9	Ethnicity of respondents	17
Figure 10	Education of all household members aged 6 years and above	17
Figure 11	Ethnicity of all household members	17
Figure 12	“How many children have you given birth to?” Answers of all women aged between 15 and 49 years	18
Figure 13	International labor migration experience of respondents (N=1,503) and all household members (N=9,608) during 1991–2011	19
Figure 14	International labor migration experience of households in 1991–2011	19
Figure 15	Number of international migrants per household in 2011.....	21

Abstract

This paper presents the research design and data description of a household survey conducted in Tajikistan in 2011, the Tajikistan Household Panel Survey (THPS). Based on a sample of the 2007 and 2009 Tajikistan Living Standards Measurement Survey (TLSS) administered by the World Bank and UNICEF, 1,503 households were re-interviewed. The main part of the paper explains the technique of the household survey including sampling strategy, questionnaire design, pretest and fieldwork, training of interviewers and supervisors and survey quality control procedures. A short overview over the characteristics of households and respondents follows.

JEL-Classification: C83

Keywords: Tajikistan, panel data, survey design, migration

This paper was prepared as part of the research project “Migration and Remittances in Central Asia: The case of Kazakhstan and Tajikistan”. We are indebted to the Volkswagen Foundation for financial support and to the Research Center SHARQ, Dushanbe, Tajikistan for carrying out the fieldworks. We thank Dzhamilya Tovbaeva for excellent research assistance.

1 Introduction

After the collapse of the Soviet Union, both internal and external migration incidence in Tajikistan increased sharply. While the former was mainly caused by a severe civil war between 1992 and 1997, the latter was driven by ethnic motivations in the first years of independence but has become labor dominated soon after. Meanwhile, external labor migration and remittances play a dominant role for the economic and social development of Tajikistan which is the poorest country among the successor states of the Soviet Union. According to the World Bank, nearly half (46.7 percent) of Tajikistan's population lived below the poverty line in 2009. While Russia achieved a GDP per capita of 13,089 US\$ in 2011, GDP per capita in Tajikistan amounted to only 935 US\$ in that year (World Bank 2012).

Labor migration from Tajikistan is widespread, although it is characterized by circular and return movements. According to the 2009 Tajikistan Living Standards Measurement Survey (TLSS), 9 percent of the population of Tajikistan worked abroad in 2009, which implies that 28 percent of all households included at least one migrant (Danzer and Ivaschenko 2010). Further results of the TLSS 2009 showed that rural and poorer (pre-remittances) locations were likely to have a bigger share of households with migrants. More than 90 percent of migrants chose Russia as destination, and out of those more than half went to Moscow. A very high percentage of Tajik migrants are males (87 percent), working predominantly in the construction sector and in other low-skill jobs, such as trade and services. The median migration spell of return migrants in 2009 was about 7 months.

Since more than a decade Tajikistan is heavily dependent on remittances. According to official data, the inflow of remittances to Tajikistan amounted to 2.25 billion US\$ in 2010, or about 31 percent of the country's GDP. This high share makes Tajikistan occupy the top spot among all countries in the world. Moreover, the volume of remittances has increased sharply since 2003, when it was around 0.3 billion US\$. A recent study by Danzer and Ivaschenko (2010) found that remittances have a significant bearing on household consumption. On average, urban households can buy 10 percent, while rural household can afford 15 percent of their yearly consumption through remittances. When

conditioning on remittance receipt, the substantial depth of external dependence becomes even more obvious. The share of yearly consumption which actually becomes affordable through remittances exceeds 35 percent in all welfare quintiles. The poorest rural and urban households finance through remittances on average almost 80 percent and 50 percent of their yearly consumption respectively. During the global financial crisis remittances remained a major source of finance for many households who have to bear most of the risk of Tajikistan's external dependence.

In summary, the main issues arising from the analysis of migration and remittances in Tajikistan are: (i) the very high dependence of households, and especially of the poor ones, on external migration and remittances; (ii) the comparatively low-skilled nature of migration directed at the same destination and the same sector of employment, which make migration flows vulnerable in times of economic crisis.

This report describes the research design and first results of a new household survey on migration and remittances conducted in 2011 in Tajikistan. The remainder of the present paper is organized as follows: The second section introduces the sampling strategy of the Tajikistan Household Panel Survey (THPS). It was based on the TLSS 2007 and 2009 administered by the World Bank and UNICEF. In the third section the questionnaire design is introduced while the fourth section describes the pretest and the fieldwork. Section five focuses on the training of interviewers and supervisors. The issue of data quality control is discussed in section six, followed by a short description of the characteristics and migration patterns of respondents and households in section seven. The last section summarizes and concludes.

2 The Tajikistan Household Panel Survey 2011: Sampling strategy

2.1 Background and goals

The THPS 2011 is a study particularly focusing on migration and remittances in Tajikistan. It has been designed by the Institute for East- and Southeast European Studies Regensburg, Germany¹ and implemented in cooperation with the Research Center SHARQ in Dushanbe, Tajikistan². The aim was to re-interview households surveyed by the TLSS 2009 and the 2007 to generate a unique panel data base on migration and remittances in a developing country. Furthermore, the medium run consequences of the global financial crisis were meant to be analyzed. The data collection in Tajikistan took place in fall 2011 in order to keep equidistance between the waves of the World Bank panel and to respect the seasonality patterns in agriculture and migration flows.

The previous studies (2007 and 2009 TLSS) were implemented to conduct a representative analysis of poverty and living conditions of individuals and households in Tajikistan.³ The questions partly came from the questionnaire used in the Living Standards Measurement Study (LSMS), which was first conducted in Tajikistan in 1999 and then replicated in 2003. The data collection proceeded in two steps. During the first round, which took place between September and October 2007, 4,860 households were interviewed using three types of questionnaires: household questionnaire, women's questionnaire and community questionnaire. In the second round (October–November 2007) it was not possible to reach all of the households from the first round. Nevertheless, 4,490 households were revisited and additional information on different topics including migration, food security, and respondents' beliefs was collected.

In October and November 2009 a random subsample of 1,503 households was drawn from the sample of the TLSS 2007. The selected households were re-interviewed within the TLSS 2009 study.

¹ Formerly Osteuropa-Institut Regensburg, Germany.

² SHARQ was founded in 1996 and specializes in sociological, media and marketing research in Tajikistan.

³ For a detailed description of the 2007 TLSS sampling strategy see: <http://microdata.worldbank.org/index.php/catalog/72>

2.2 Household selection

In the TLSS 2007, the household selection was based on a representative probability sample with respect to the national level, the urban/rural structure and the 5 oblasts which form the main administrative regions (Figure 1). These include Dushanbe city, Region of Republican Subordination (RRP), Sughd, Khatlon, and Gorno-Badakhshan Autonomous Oblast (GBAO).

Figure 1 Regions of Tajikistan



The sample size was set at 4,860 households, allocated to 270 clusters with 18 household interviews each. Because the population size varies widely between regions in Tajikistan a modified optimal compromise sample allocation technique (as suggested by Kish 1988) was used to allocate households within regions. This allowed increasing the sample size of less densely populated regions to achieve precise survey estimates. The allocation of households within regions in the 2007 TLSS sample is presented in Table 1.

Table 1 Sample allocation of households in the 2007 TLSS

	Number of Households by Census (2000)	Share of Households	Sample Allocation
Dushanbe	139,239	0.13	900
RRP	204,390	0.20	972
Sughd	365,136	0.35	1,008
Khatlon	307,322	0.29	1,278
GBAO	30,933	0.03	702
Tajikistan	1,047,020	1.00	4,860

Source: TLSS 2007, Basic Information Document

In Table 2 the cluster allocation to regions and to urban and rural areas within regions are described. The distribution of clusters to regions followed the household allocation (18 per cluster), while the allocation of clusters to urban and rural areas within regions were designed according to the real proportion of urban and rural settlements in Tajikistan.

Table 2 Final cluster allocation in the 2007 TLSS

	Urban	Rural	Total
Dushanbe	50	n. a.	50
RRP	9	45	54
Sughd	18	38	56
Khatlon	12	59	71
GBAO	6	33	39
Tajikistan	95	175	270

Source: TLSS 2007, Basic Information Document

The final sample selection in the 2007 TLSS used a stratified two-stage cluster design. In the first stage 270 clusters were assigned to urban/rural areas and regions as defined by the allocation technique described above. The selection of clusters in each domain was achieved with probability proportional to size. In the second stage, individual households (18 per cluster) were randomly chosen. In 2009, the TLSS was repeated with 1,503 randomly drawn households from the 2007 TLSS sample.

Based on the household list of the 2009 TLSS (main list) and the 2007 TLSS (additional list) the 2011 THPS re-interviewed 1,503 households. The regional and urban/rural allocation of households in THPS 2011 is shown in Table 3.

Table 3 Sample allocation of households in the 2011 THPS

	Urban	Rural	Total
Dushanbe	270	n. a.	270
RRP	45	270	315
Sughd	135	261	396
Khatlon	54	324	378
GBAO	18	126	144
Tajikistan	522	891	1503

Source: THPS 2011 data base

The households were grouped into 167 primary sampling units (PSU). In each PSU 9 households were interviewed. The distribution of clusters according to the regional and the rural/urban distribution is presented in Table 4.

Table 4 Final cluster allocation in the 2011 THPS

	Urban	Rural	Total
Dushanbe	30	n. a.	30
RRP	5	30	35
Sughd	15	29	44
Khatlon	6	36	42
GBAO	2	14	16
Tajikistan	58	109	167

Source: THPS 2011 data base

In some cases households from the main list (TLSS 2009) and the additional list (TLSS 2007) could not be located in 2011. Therefore 45 households were included in the THPS 2011 sample that had not participated in the previous surveys. These were selected randomly in primary sampling units where the original households were found missing.

3 The questionnaire

The questionnaire was designed to obtain detailed information on the determinants, patterns and consequences of migration and on the prevalence and use of remittances in Tajikistan.⁴ These topics were embedded in a number of questionnaire modules that related to demographic characteristics, health status, labor market experience and living conditions of respondents and all household members. Furthermore subjective perceptions of family's well-being, role of religion in person's life and coping strategies of households were inquired. For women a small separate block of questions was added to collect information on child bearing and the health status of children. Within the selected households all household members were interviewed. Questions that concerned the household as a whole were asked of the household head, assisted by other household members if necessary. The interviews were conducted face to face.

The development of the THPS 2011 questionnaire was based on the TLSS questionnaires used in 2007 and 2009, although a number of questions were changed and others added. Generally, one of the main objectives was to keep the most important questions as closely comparable as possible to the TLSS 2007 and 2009. The addition of new/improved questions was related to the special interest of this survey in analyzing migration and remittances in Tajikistan.

The main questionnaire is divided in eleven modules; the women's questionnaire contains two modules. In the first module basic information on the demographic characteristics of all household members is collected (household roster) including the educational attainment of the respondents' parents. Modules 2 to 5 relate to individual level information: Unless otherwise indicated, complete information was collected on every household member starting from age 16. The second module concentrates on various types of migration. If appropriate, the respondents were asked in detail about their most recent move, including questions on their motivation for migration and on the impact of the move on their earnings, job advancement and living conditions. While part A of module 2 is concerned with internal and international movements, part B looks at household members who had left and were still abroad ("household members currently away"). This in-

⁴ The questionnaire was designed by Alexander M. Danzer and Barbara Dietz.

cludes questions on these household members' motivation for moving, their destination and on the living and working conditions abroad. The third module deals with the educational attainment of respondents and the costs related to education. A subsection of Module 3 relates to the schooling of children. In the fourth module questions on the health status, hospitalization and the access to health care were asked for all household members. Module 5 addresses the labor market experience of household members, including details on labor force participation, job description and wages for first and second jobs.

The remaining five modules relate to information regarding the entire household: Information on expenditures for various types of utilities (electricity, central heating, gas, firewood etc.) is gathered in module 6. The topic of module 7 is transfers and social assistance which allows identifying remittances. In this module transfers from other persons and institutions as well as transfers to other persons and institutions are documented. Module 8 inquires subjective perceptions and coping strategies. In module 9 the household head was asked to report the expenditure on the entire household's food consumption during the last seven days. Module 10 collects information on non-food purchases, while module 11 covers the household's income from various sources.

Table 5 Interview language in the 2011 THPS

	Tajik		Russian		All
		in percent		in percent	
Dushanbe	246	91.1	24	8.9	270
RRP	366	92.4	30	7.6	396
Sughd	371	98.1	7	1.9	378
Khatlon	314	99.7	1	0.3	315
GBAO	144	100.0	0	0.0	144
Tajikistan	1,441	95.9	62	4.1	1,503

Source: THPS 2011 data base

The questionnaire and all other survey tools (show cards, coding lists) were produced in English first. In a second step the questionnaire and the survey tools were translated into Russian and Tajik. The interviews were conducted either in Russian or Tajik, depending on the respondent's choice. More than 95 percent of the respondents chose Ta-

jik, although the interview languages differed somewhat across regions (table 5). As it can be expected in the capital city Dushanbe the percentage of Russian language interviews was the highest.

The length of the interviews depended on the size and the migration experience of households. While the shortest interview took 30 minutes, the longest lasted for 4 hours. On average, the interview time was 2 hours.

4 Pretest and fieldwork

In order to test the questionnaire and to assure that interviewers were well prepared for the fieldwork a pilot study was carried out on October 18, 2011. Each of the interviewers and supervisors conducted one interview with a randomly chosen household. As a result 63 households were interviewed. After completion of the pretest the interviewers' recommendations and critical comments concerning the lists of response options, and the understanding and sensitivity of some questions were collected and discussed. The suggestions of interviewers concerning the workload and timeline were taken into account while adjusting the interviewers' tasks. The phrasings of some questions were subsequently revised and improved. In general, interviewers and supervisors refined their professional skills during the pretest.

The survey fieldwork began on November 1, 2011 and terminated on December 31, 2011. The total number of households that participated in the survey was 1,503, including 1,458 households from the TLSS 2009 and 2007 and 45 additional households. Households from previous surveys were identifiable through their household identification numbers. The survey was conducted by 63 interviewers, 52 percent of whom were female. Summary information on the gender and regional distribution of interviewers is presented in Table 6.

The typical *face-to-face* method was used to collect the data. The interviews took place exclusively at the respondents' place of residence, that is, in apartments or houses. During the final thorough control of the questionnaires interviewers and supervisors checked for missing information and revisited households in case some relevant questions were not answered.

Table 6 Regional distribution and gender of interviewers

	Interviewers		
	Male	Female	Total
Dushanbe and RRP	7	17	24
Sughd	12	5	17
Khatlon	6	9	15
GBAO	5	2	7
Total	30	33	63

After the fieldwork was completed SHARQ submitted a technical report which contained a list of difficulties and problems that had arisen during the fieldwork (e.g. household accessibility, refusals of respondents to answer some questions, changed family composition compared to 2007 and 2009). The collection of the data between October and December enabled interviewing a large number of seasonal migrants who came to stay at home during the winter months.

5 Training of interviewers and supervisors

The research center SHARQ was responsible for the selection, training and supervision of the interviewers and supervisors engaged in the survey. Due to the complexity of the survey special attention was paid to previous professional experience, language skills and personal reliability of the team members. The vast majority of the interviewers had higher education. All interviewers and supervisors had previous fieldwork experience and possessed necessary knowledge of Tajik, Russian, and Uzbek languages.⁵ Knowledge of Tajik and Russian was a precondition for selection of the interviewers, since these were the two languages of the questionnaire.

The tasks of the interviewers included contacting the households, soliciting participation, conducting the interview and rewarding the households for their participation.⁶

The interviewer training was organized in the office of SHARQ in Dushanbe from October 15 to October 19, 2011. The five-day workshop program was developed and implemented by Professor Muzaffar A. Olimov and Dr. Sasun Tsirunyan. During the first meeting interviewers and supervisors received comprehensive general information on the survey and its purposes. This stage also included the first introduction into the questionnaire and support materials.

The first day of the training workshop was dedicated to the supervisor's activities during the fieldworks. Each of the seven supervisors received the written supervisor instructions and a list of interviewers they had to control. The focus of discussions and exercises was on practical issues of organizing the interviewers' work. The team of SHARQ managers and supervisors elaborated the fieldwork schedule including time-lines for each of the interviewers.

On the second day of the workshop the interviewers received instructions with a detailed explanation of their duties, responsibilities and the rules for conducting the survey. Each of the questionnaire modules was discussed in detail. Special attention was

⁵ According to the 2000 census in Tajikistan 79.9 percent of the population is Tajik, 15.3 percent is Uzbek, while 4.8 percent belong to other national groups.

⁶ Depending on the size of the household a small sum of money was paid for the interview. On average the household received 11.7 Tajik Somoni (2.4 US\$).

paid to the quality requirements of the interviews. The interviewers were reminded of the general rules of conducting face-to-face interviews, including the neutral behavior of interviewer, methods of soliciting participation, and precise reading of the question phrasings. Each interviewer received a work schedule and instructions concerning the reward of the participating households. It was also explained how to write and submit an interviewer report after completion of the fieldwork. The third day of the training dealt with role-playing exercises. For training purposes the interviewers interviewed each other. Afterwards they discussed the difficulties that arose during the test-interviews.

During the interviewer training each of the interviewers received the following package of documents:

1. Questionnaires in Russian and Tajik, support materials
2. List of the households' addresses
3. A form for accounting of the respondents' rewards
4. Interviewer instructions
5. Work schedule and timeline
6. Contact information of the supervisor and SHARQ
7. Official letter to households inviting them to participate in the survey and providing information on SHARQ and Institute for East and Southeast European Studies.

Before starting the fieldwork, the confidentiality rules were explained to the interviewers and supervisors.

6 Quality control

The central office of SHARQ was continuously controlling and supervising the work of interviewers and supervisors during the fieldwork. The key element of the controlling was a systematic monitoring of the interviewers' duties. Supervisors had to inform regularly the manager of the fieldwork or her assistant about the progress of interviewers' work including a report on the number of completed interviews and notification about emerging difficulties and accepted decisions.

Each of the supervisors managed a team of minimum 6 and maximum 24 interviewers. The controlling responsibilities of the supervisors included inspection of the submitted questionnaires, telephone control and follow-up visits of the respondents. Every supervisor visited at least 2 respondents of each interviewer to ensure that the interviews were conducted according to the quality standards. The respondents to be visited or called for the purpose of quality control were randomly selected by the supervisors.

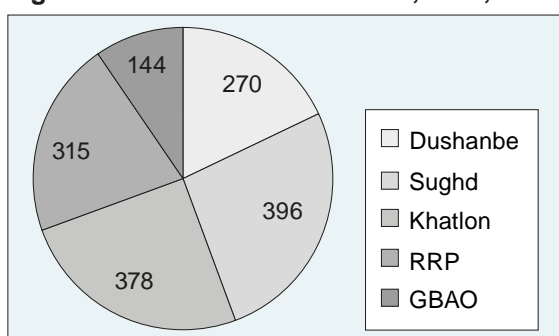
Overall 20 percent of the interviews were checked either by telephone or follow-up visits. After supervisors performed the quality control activities they had to prepare a summary report on controlling. This report consisted of control protocols that were written during controlling visits and telephone calls and contained the information on respondent's answers to selected questions from the questionnaire as well as their reactions and general comments concerning the interview.

7 First results

7.1 Demographic characteristics of respondents and households

This section provides a brief description of the 2011 THPS panel survey data. In total, 1,503 households (including 9,608 household members) were interviewed in the five main administrative regions (oblasts) of the country: Dushanbe, Region of Republican Subordination (RRP), Sughd, Khatlon, and Gorno-Badakhshan Autonomous Oblast (GBAO). The distribution of interviewed households across regions is presented in Figure 2.

Figure 2 Number of households, N = 1,503



In general, the most knowledgeable household member (*respondent*) answered the questions of the questionnaire and provided information concerning all household members (supported by other household members where applicable). As a rule the respondent was the household head, who possessed comprehensive information on the household's activities and the socio-demographic characteristics of all household members. Respondents had to be 16 years or older; over half of them were male (Figure 3).

Figure 3 Gender of respondents, N = 1,503, in percent

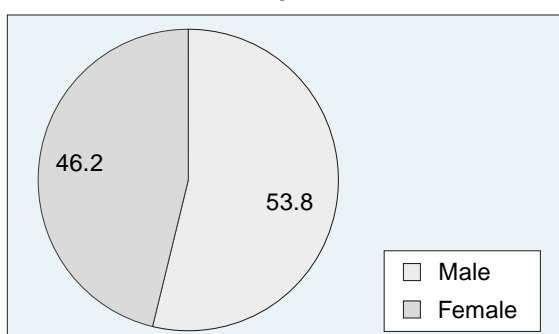
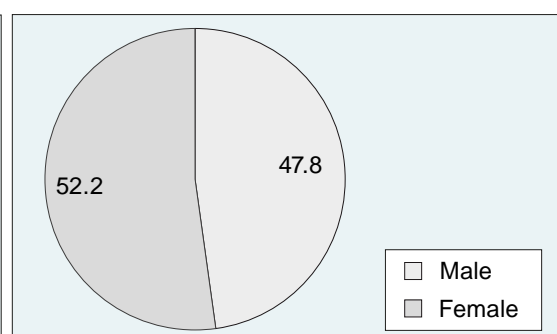


Figure 4 Gender of all household members, N = 9,608, in percent



The gender distribution of all household members (Figure 4) shows that women slightly outnumber men.

Figure 5 presents the age structure of respondents, whose minimum age was set at 16 years. It shows that 71 percent of them were between 31 and 60 years old, while approximately one fifth was 61 and above.

Figure 5 Age structure of respondents, N = 1,503, in percent

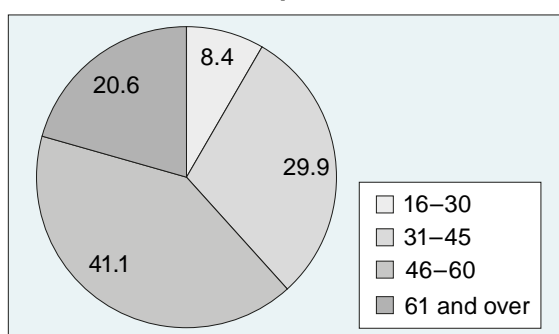
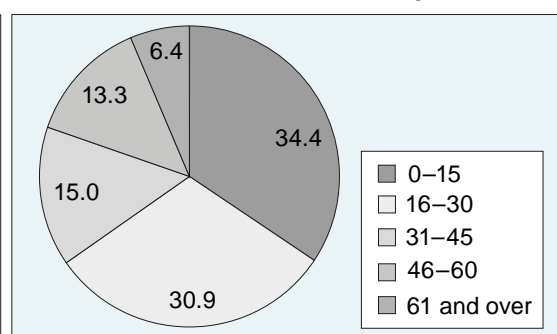


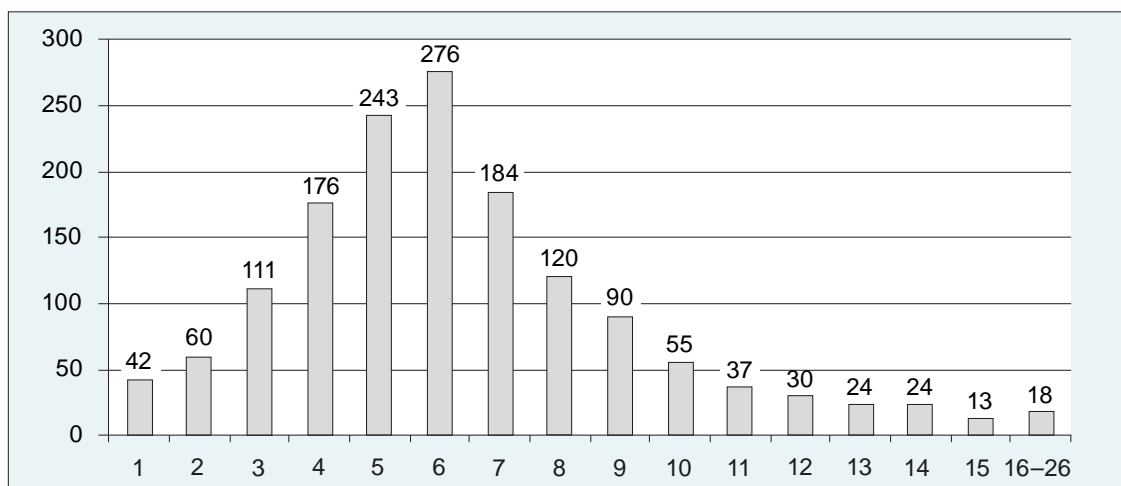
Figure 6 Age distribution of all household members, N=9,608, in percent



* Because the age of respondents was 16 years and above, the group of persons aged 0 to 15 years is not presented in the age structure of respondents.

In the age distribution of all household members (Figure 6) the proportion of the oldest group (older than 61 years) is very small (6.4 percent). By contrast the group of children under 16 is relatively large and makes up 34.4 percent. These figures are close to the age distribution in Tajikistan where the share of persons above 60 is 5.1 percent and the youngest population group (0–17 years) accounts for 41.9 percent (TransMonEE 2012 Database).

Figure 7 Household size, N = 1,503



The family size varies strongly across the sample from one to 26 persons (Figure 7) with the mean household size amounting to 6.39 members.

Figures 8 to 11 show the distribution of respondents by their educational attainment and ethnicity. Most respondents have completed secondary or vocational education. 16 percent of respondents have attained higher education and only 2 percent have no education at all. Higher education is much more frequent among males compared to female respondents (7.8 percent of women have higher education, whereas among men 22.7 percent are higher educated). Ethnically, most respondents are of Tajik origin (77 percent); the second biggest ethnic group is Uzbek (21 percent). These proportions are practically the same for all household members (figure 11). This reflects the ethnic distribution in Tajikistan where 80 percent of the population are Tajiks and 15.3 percent Uzbeks.

Figure 8 Education of respondents, N=1,503, in percent

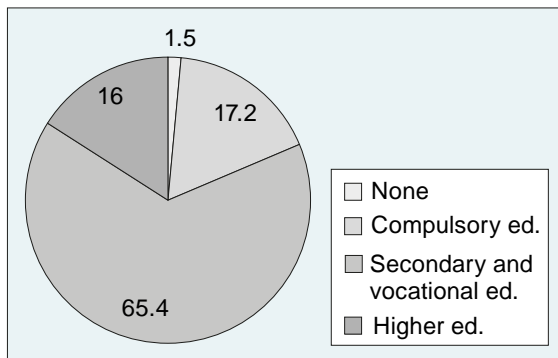


Figure 9 Ethnicity of respondents, N=1,503, in percent

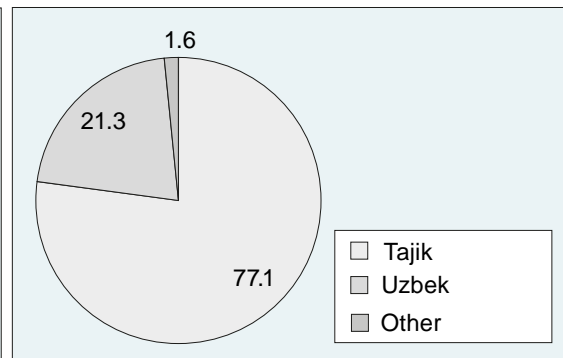


Figure 10 Education of all household members aged 6 years and above, N=8,087, in percent

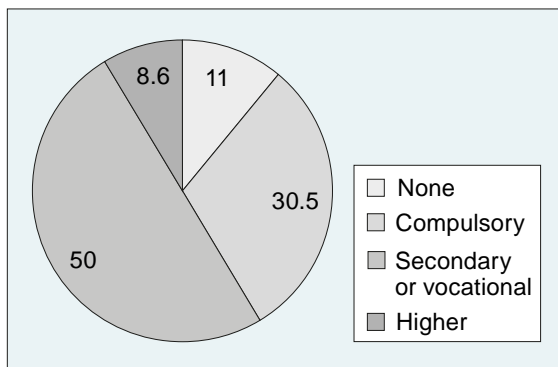
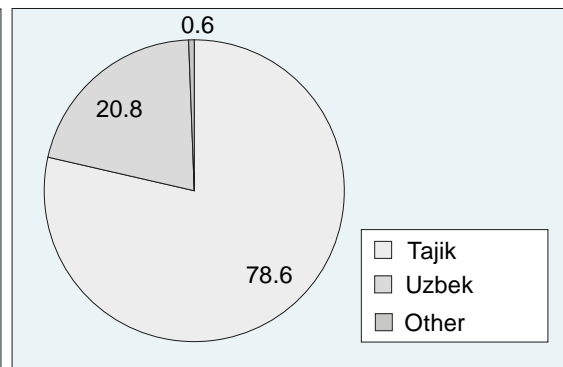


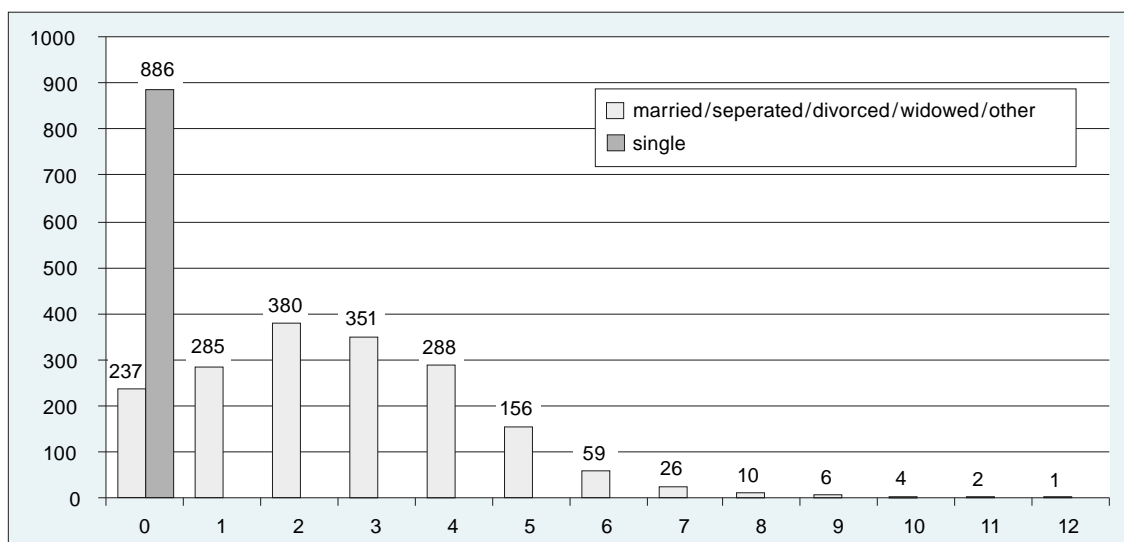
Figure 11 Ethnicity of all household members, N=9,608, in percent



In the survey all women aged between 15 and 49 years (N = 2,691) were asked additional questions concerning women's health, childbearing and marriage. According to the data, about 67 percent of women in this age group had been married at least once. The minimum marriage age in our sample is 12 years, which is an extreme case (this woman got married in 1987). According to the amendment of the Family Code of Tajikistan in 2010 the legal age to marry for women was raised from 17 to 18 years (Family Code of Republic of Tajikistan 1998). However, official marriage often follows the traditional Islamic wedding ceremony (Roche and Hohmann 2011).

The average and median marriage age among all interviewed women is 20.2 and 20 years respectively (mode is 18). About 58 percent of all women between 15 and 49 years of age gave birth to at least one child. The number of children per women ranges between 1 and 12 (Figure 12).

Figure 12 “How many children have you given birth to?” Answers of all women aged between 15 and 49 years, N=2,691

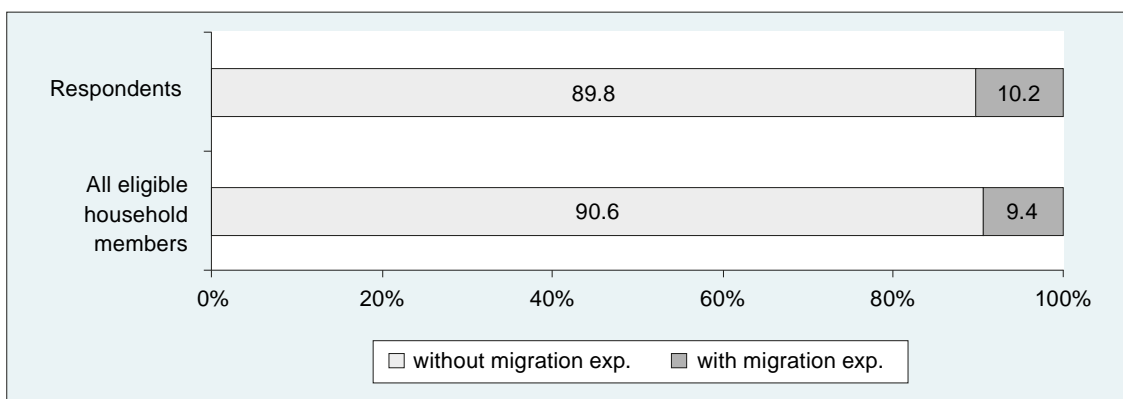


7.2 International migration experience of households

Since independence, Tajikistan is a net emigration country (TransMonEE 2012 Database, Annex I). According to official data, the country lost 2.6 percent of its population between 1998 and 2010 due to emigration. However, these data only include registered emigrants, while they do not contain short-term labor migrants who return after working

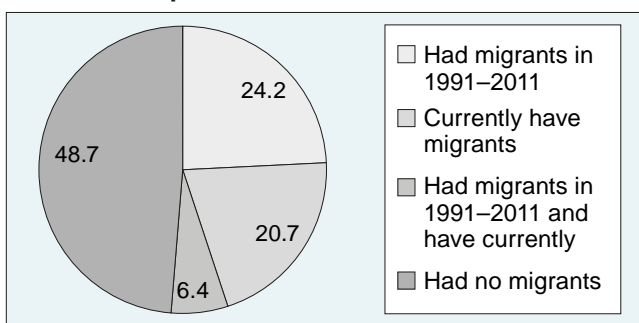
abroad. The 2011 THPS allows tracing the international labor migration history of people during the years after collapse of the Soviet Union. Among all surveyed persons aged 16 and above currently living in Tajikistan 9.4 percent had moved abroad for work reasons in the period between 1991 and 2011 (Figure 13). The percentage of migrants among respondents in that period was only slightly higher (10.2 percent).

Figure 13 International labor migration experience of respondents (N=1,503) and all household members (N=9,608) during 1991–2011, in percent



At the household level, 30 percent of all households had at least one member currently living in the family, who had moved abroad for work reasons between 1991 and 2011. A fifth of households (20 percent) reported at the time of the survey that at least one of their household members was currently abroad. Taken together, every second household in Tajikistan (51.3 percent) is or has been involved in labor migration activities since Tajikistan became independent (Figure 14).

Figure 14 International labor migration experience of households in 1991–2011, N=1,503, in percent



A comparison of international migration activities in 2007, 2009 and 2011 indicate increasing labor migration flows from Tajikistan. Tables 7 and 8 show the migration activities of household members across years. Table 7 includes only those migrants who were present at the time of the interview but had emigrated in the migration season of the respective year, while table 8 considers also those household members, who were away at the time of survey fieldworks. Both tables indicate that in most families only one person migrates abroad to work. However, general tendency towards growing number of households that have more than one migrant among their members may be discerned. This means that not only more households are getting involved into labor migration activities, but also more members of the same household.

Table 7 Migration activities of households, in percent

	2007	2009	2011
No migrant	89.75	87.69	84.76
1	8.38	10.11	11.44
2	1.53	1.80	3.19
3+	0.33	0.40	0.60

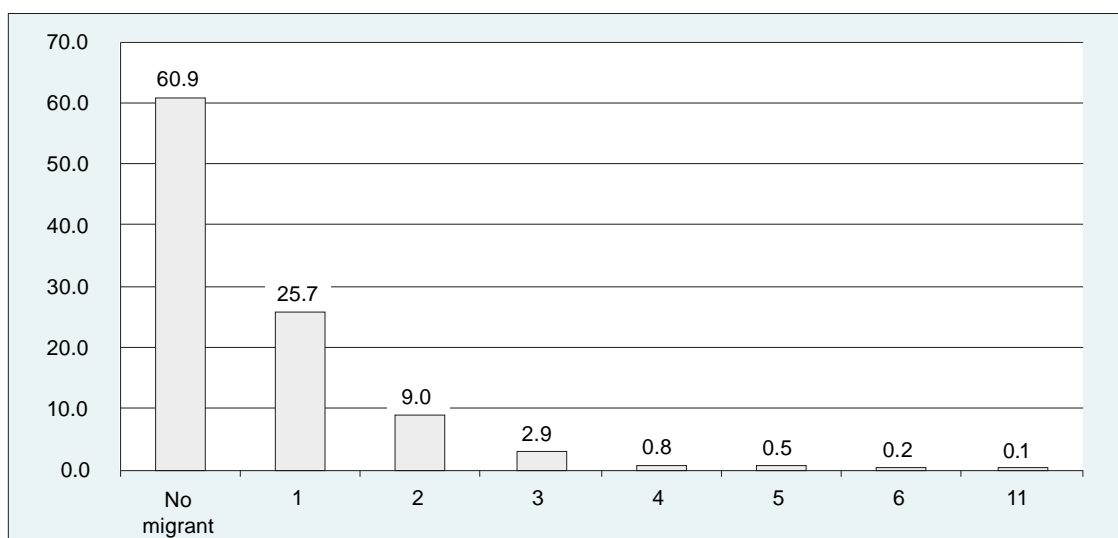
Source: THPS 2011

Table 8 Migration activities of households (including currently away and older than 16 when left home), in percent

	2007	2009	2011
No migrant	85.23	79.77	60.88
1	11.51	14.9	25.68
2	2.33	3.53	8.98
3+	0.94	1.81	4.46

Source: THPS 2011

The sample contains 606 persons who lived abroad at the time when the survey took place. Figure 16 shows the number of migrants (both returned or working abroad) per household for all 1,503 households in 2011. The number of family members with migration experience in 2011 ranges from one to eleven persons.

Figure 15 Number of international migrants per household in 2011, N=1,503, in percent

The demographic characteristics, the destination choice, and the remittance behavior of migrants in 2011 are presented in Table 9. The average age of migrants who returned back home was 31.6 years and of those, who were still living abroad at the time of the survey was 28.9 years. Most of migrants were men. The survey shows that nearly all migrants went to Russia, almost two thirds chose the capital city Moscow. The crucial role of remittances for Tajik labor migrants is confirmed by the survey: 99 percent of migrants who had returned back home in 2011 sent money home, while 78 percent of those, who were still living abroad at the time of the survey remitted money.

Table 9 Demographic characteristics, destination choice and remittance behavior of migrants, in percent

	2011, N=296	2011 (including currently away), N=606
Average age	31.6	28.9
Proportion of women	5.07	13.37
Destination choice:		
Russia (Moscow)	58.45	64.85
Russia (Other cities)	40.89	34.24
Other country	0.68	1.01
Money remitted	99.32	78.38

Source: TPHS 2011

8 Concluding remarks

This research note presents the research design of and first evidence from a household survey conducted in Tajikistan in 2011, the Tajikistan Household Panel Survey (THPS). It describes the sampling strategy of the survey, the questionnaire design, the procedures of training and controlling interviewers and controllers, and technical details concerning the implementation of fieldwork activities. Furthermore, a short description of the survey results is provided.

The THPS successfully re-interviewed 1,503 households which had been previously interviewed in the 2007 and 2009 Tajikistan Living Standards Measurement Survey (TLSS) administered by the World Bank and UNICEF. The original household selection was based on a representative probability sample with respect to the national level, the urban/rural structure and the five main administrative regions in Tajikistan. The development of the questionnaire referred to the THPS questionnaires used in 2007 and 2009, although a number of questions were changed and added. This was related to the special interest of this survey in analyzing migration and remittances in Tajikistan. Between October and December 2011 the Research Center SHARQ organized and carried out the fieldwork. In accordance with the preference of the respondents the interviews were conducted either in Tajik or in Russian. After the completion of the fieldwork activities and subsequent controlling procedures the empirical data was entered and prepared for the data analysis.

The survey contains information on 1,503 households in Tajikistan, including 9,608 household members. The family size varies strongly across the sample from one to 26 persons with the mean household size amounting to 6.4 members. Among all surveyed persons aged 16 and above currently living in Tajikistan 9.4 percent had moved abroad for work reasons in the period between 1991 and 2011. A comparison of international migration activities in 2007, 2009 and 2011 indicate increasing labor migration flows from Tajikistan. According to the survey results not only more households are getting involved into labor migration activities, but also more members of the same household.

References

Danzer, A. and O. Ivaschenko (2010): Migration Patterns in a Remittances Dependent Economy: Evidence from Tajikistan during the Global Financial Crisis, *Migration Letters*, Vol. 7, No. 2, pp. 190–202.

Family Code of Republic of Tajikistan (1998). http://mmk.tj/ru/library/semeinii_kodeks_rt.doc.

Kish, L. (1988): Multi-purpose Sample Designs, *Survey Methodology*, Vol. 14, No. 1, pp. 19–32.

Roche, S. and S. Hohmann (2011): Wedding rituals and the struggle over national identities, *Central Asian Survey*, Vol. 30, No. 1, pp. 113–128.

TransMonEE (2012): TransMonEE 2012 DATABASE, released in April 2012. <http://www.transmonee.org>.

World Bank (2012): TLSS 2007, Basic Information Document. <http://microdata.worldbank.org/index.php/catalog/72>.

Annex 1 Regional data on migration in Tajikistan*Immigration (people)*

	1998	1999	2000	2001	2002	2003	2004	2005	2006	2007	2008	2009	2010
Tajikistan	16890	14730	14482	16729	17735	16923	15244	17962	19646	24283	24419	25563	29637
GBAO	446	433	334	513	451	308	193	336	464	427	454	267	531
Sughd oblast	5788	5459	4505	5728	5423	5953	5128	5236	5772	6966	7959	8767	9794
Khatlon oblast	3317	1491	1953	2282	2494	2020	2393	2714	3715	4403	4883	6713	6860
Dushanbe city	5248	5664	5772	5486	6475	5897	4869	6276	5481	6475	4724	3849	3396
RRP	2091	1683	1918	2720	2892	2745	2661	3400	4214	6012	6399	5967	9056

Emigration (people)

	1998	1999	2000	2001	2002	2003	2004	2005	2006	2007	2008	2009	2010
Tajikistan	32283	28823	28188	29144	30219	27936	24663	27311	30554	38761	37651	37231	36134
GBAO	830	1278	964	862	1212	919	1205	2058	1833	2518	1978	1475	1751
Sughd oblast	10629	10939	10481	11434	10563	9995	8083	8068	9648	12340	13061	12459	12431
Khatlon oblast	8662	6899	7342	7969	8364	8049	8311	9217	9876	11872	10789	12777	11359
Dushanbe city	7262	4715	4826	4582	4750	3975	2974	3106	3895	4129	4007	3678	2925
RRP	4900	4992	4575	4297	5330	4998	4090	4862	5302	7902	7816	6842	7668

Net migration (people)

	1998	1999	2000	2001	2002	2003	2004	2005	2006	2007	2008	2009	2010
Tajikistan	-15760	-14093	-13706	-12415	-12484	-11013	-9419	-9349	-10908	-14478	-13232	-11674	-6497
GBAO	-384	-845	-630	-349	-761	-611	-1012	-1722	-1369	-2091	-1524	-1208	-1220
Sughd oblast	-4841	-5480	-5976	-5706	-5140	-4042	-2955	-2832	-3876	-5374	-5102	-3692	-2637
Khatlon oblast	-5345	-5408	-5389	-5687	-5870	-6029	-5918	-6503	-6161	-7469	-5906	-6064	-4499
Dushanbe city	-2014	949	946	904	1725	1922	1895	3170	1586	2346	717	171	471
RRP	-2809	-3309	-2657	-1577	-2438	-2253	-1429	-1462	-1088	-1890	-1417	-881	1388

Source: Statistical Agency of Tajikistan