

Necula, Diana

Conference Paper

The evolution of the agroturistic pensions in Buzau County, period 2004 - 2011

Provided in Cooperation with:

The Research Institute for Agriculture Economy and Rural Development (ICEADR), Bucharest

Suggested Citation: Necula, Diana (2012) : The evolution of the agroturistic pensions in Buzau County, period 2004 - 2011, In: Agrarian Economy and Rural Development - Realities and Perspectives for Romania. 3rd Edition of the International Symposium, October 2012, Bucharest, The Research Institute for Agricultural Economy and Rural Development (ICEADR), Bucharest, pp. 244-247

This Version is available at:

<https://hdl.handle.net/10419/76847>

Standard-Nutzungsbedingungen:

Die Dokumente auf EconStor dürfen zu eigenen wissenschaftlichen Zwecken und zum Privatgebrauch gespeichert und kopiert werden.

Sie dürfen die Dokumente nicht für öffentliche oder kommerzielle Zwecke vervielfältigen, öffentlich ausstellen, öffentlich zugänglich machen, vertreiben oder anderweitig nutzen.

Sofern die Verfasser die Dokumente unter Open-Content-Lizenzen (insbesondere CC-Lizenzen) zur Verfügung gestellt haben sollten, gelten abweichend von diesen Nutzungsbedingungen die in der dort genannten Lizenz gewährten Nutzungsrechte.

Terms of use:

Documents in EconStor may be saved and copied for your personal and scholarly purposes.

You are not to copy documents for public or commercial purposes, to exhibit the documents publicly, to make them publicly available on the internet, or to distribute or otherwise use the documents in public.

If the documents have been made available under an Open Content Licence (especially Creative Commons Licences), you may exercise further usage rights as specified in the indicated licence.

THE EVOLUTION OF THE AGROTURISTIC PENSIONS IN BUZĂU COUNTY, PERIOD 2004-2011

NECULA DIANA¹

Abstract

Unlike other counties, whose relief consists only of plains (Teleorman, Ialomița), mountains or hills (Brașov, Sibiu, etc.), Buzău county has plain, hill and mountain, what makes it distinctive from other counties. Buzău county region is one of the important areas in terms of tourist potential in its natural, historic, and effective architecture monuments, folk art, people living here, householders, good preservers of old traditions. In the County there is a fairly developed agroturistic network, supported mainly by ANTREC, most hostels are in the area Sarata Monteoru, and then in the Buzău Valley (Berca, Nehoiu, Gura Teghii, Siriu). Most tourists and agroturistic pensions of Buzău County are small, indicating that they only bring complementary tourist income for their owners. There are few agroturistic pensions deriving income from this activity only.

Keywords: agritourism, accommodation, overnights, average rate

INTRODUCTION

County is located in the South-Eastern part of the country, it is bordered by the counties of Covasna and Brașov in North-West, in North -Vrancea, East - Brăila, Prahova in West and Ialomița to the South. The County area is 6103 km² (2.6% of Romania's surface), being on 17 place among the other counties.

Agritourism is a form of rural tourism practiced in rural areas which uses (as a touristic structure) households with all amenities. As such, this form of tourism uses for the accommodation and dining only tourist and agroturistic pensions farm, benefiting from an unpolluted environment and natural attractions, cultural-historical values, traditions and customs of the countryside. It represents the most effective way of exploiting local resources existing in rural areas [1].

Agroturistic pension is defined as a touristic structure, accommodation with a capacity of up to 10 rooms, totalizing not more than 30 available seats in rural areas and up to 20 rooms in urban areas. This works in the house of the citizens or in stand-alone buildings, providing accommodation in specially arranged places for tourists and preparation and serving of meals.

Agroturistic pensions (the equivalent of agroturistic farms) can ensure (beside the accommodation) the meals of the tourists with the nourishment of its own production, without any obligation to for serving it.

MATERIAL AND METHODS

Indices are numerical expressions resulting from comparing or reporting two indicators expressing the same phenomenon, but are either at different times or in different drives or refers to planned levels of the phenomena. With their help, we can determine the dynamics to a fixed base or chain base, constructing rhythms, feedback on performance, the evolution of the system ability to evaluate in a given context.

Analysis to the achievements of previous years

Fixed-base index – establish the dynamics of a phenomenon or process taking a fixed reference base.

Basic chain indices help determining the evolution of phenomena through reporting achievements in a given year to the achievements of the previous year [3]

¹ PhD.Student, Faculty of Management, Economic Engineering in Agriculture and Rural Development, University of Agricultural Sciences Veterinary Medicine Bucharest, Bucharest, Romania, E-mail: anaiddianec@yahoo.es

RESULTS AND DISCUSSION

Due to the demand of accommodation higher than supply, the provision of accommodation is to be located in the vicinity of tourist resorts. In these areas there are many factors that contribute to the development of rural tourism : modern roadways; more natural and anthropogenic objectives.

In table 1 we have a situation at the level of the existing agrotouristic pensions in Buzau County and accommodation capacity in the period 2004-2011, where we can observe an increase in the number of pensions and accommodation capacity.

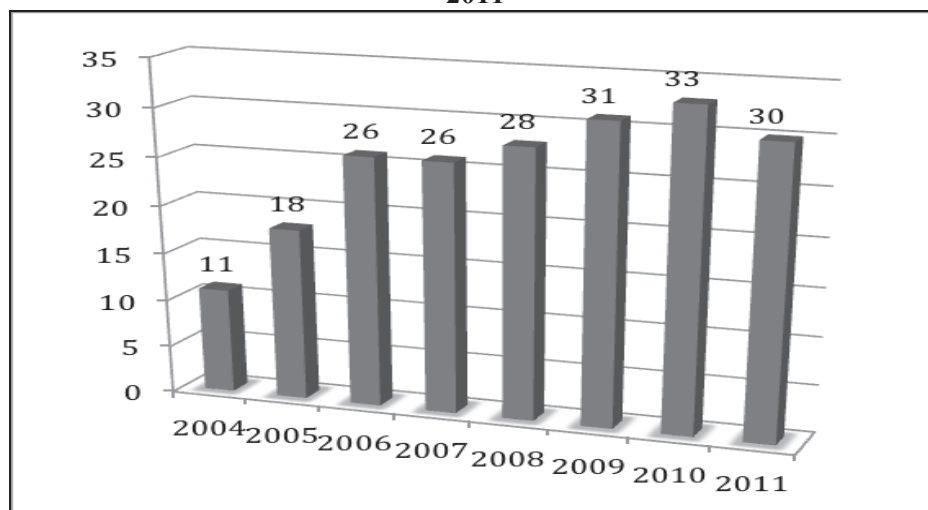
Table 1. The number of agrotouristic pensions and accommodation capacity in Buzau County in the period 2004-2011

| Specification | UM | 2004 | 2005 | 2006 | 2007 | 2008 | 2009 | 2010 | 2011 | Average rate % | Annual rate % |
|---|--------------|--------|--------|--------|--------|--------|--------|--------|--------|----------------|---------------|
| Agrotouristic pensions | Nr | 11 | 18 | 26 | 26 | 28 | 31 | 33 | 30 | x | x |
| | % | 100.00 | 163.64 | 236.36 | 236.36 | 254.55 | 281.82 | 300.00 | 272.73 | 230.68 | x |
| | % | | 1.64 | 1.44 | 1.00 | 1.08 | 1.11 | 1.06 | 0.91 | x | 15.41 |
| The existing capacity of the accommodation of tourist | Place | 160 | 262 | 364 | 365 | 427 | 483 | 499 | 496 | x | x |
| | % | 100.00 | 163.75 | 227.50 | 228.13 | 266.88 | 301.88 | 311.88 | 310.00 | 238.75 | x |
| | % | | 1.64 | 1.39 | 1.00 | 1.17 | 1.13 | 1.03 | 0.99 | x | 17.54 |
| Tourist accommodation capacity in operation | No place/day | 55187 | 77629 | 131546 | 132863 | 148047 | 172695 | 181799 | 181812 | x | x |
| | % | 100.00 | 140.67 | 238.36 | 240.75 | 268.26 | 312.93 | 329.42 | 329.45 | 244.98 | x |
| | % | | 1.41 | 1.69 | 1.01 | 1.11 | 1.17 | 1.05 | 1.00 | x | 18.57 |

Source: Statistical Yearbook of 2004-2011 County Buzau, Buzau DSJ[5]

The number of agrotouristic pensions grow during the period analyzed with 172% in 2011 compared to 2004, with an 15,41% annual rate of growth and a annual average rhythm of 230,68%; You can see an increase of 63% in 2005 from 2004 un till 2010 when it achieves 200%, in 2011 has a decrease compared to the previous year with 27,27%.

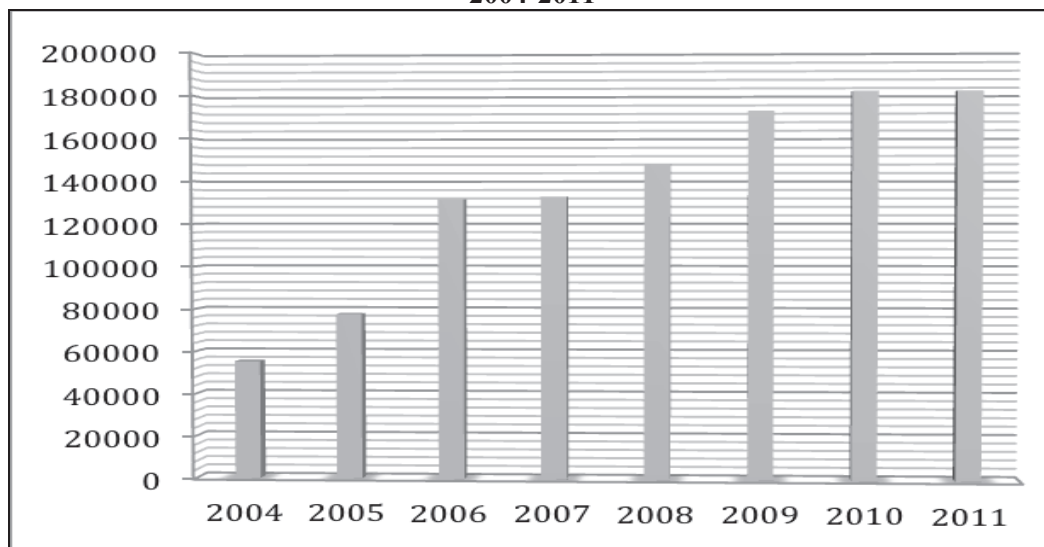
Figure 1: The evolution of the number of agrotouristic pensions in Buzau County in the period 2004-2011



Source: Statistical Yearbook of 2004-2011 County Buzau, Buzau DSJ[5]

In terms of tourist accommodation capacity in operation, as we can see from the data analyzed in table 1 and shown in Figure 2, it has also a continue growth, at with 40,67% 2005 compared to 2004, 140,75% in 2007, to reach an increase of 229,45% in 2010 and 2011 compared with the year of reference; through this period is established an annual growth rate of 18,57% and an average rate of 244,98%.

Figure 2: The evolution of the agroturistic capacity accommodation in Buzau County in the period 2004-2011



Source: Statistical Yearbook of 2004-2011 County Buzau, Buzau DSJ

The arrival of a tourist in a touristic accommodation shall be registered when a person is entered in the register of the structure in question, to be hosted by one or more nights.

In each structure of the tourist accommodation shall be regarded as a single tourist registration, regardless of the number of nights of its uninterrupted stay [2].

From the analysis of table no. 2 stands out the ascending evolution of the number of tourists in the agro touristic pensions in the period considered, especially romanian tourists, this is due to the fact that the district is not known internationally.

So, if in the 2004 Romanian tourists represent 98,35% of total arrivals and the foreign tourists arrivals represent 1.65% of those, in 2011 the number of romanian tourists arrivals represents 95.97% of the total and the number of foreigners has risen to 4, 03%.

Table 2 Arrivals and overnights stays by the types of tourists in agroturistic pensions , Buzau County in the period 2004-2011

| Specification | Tourists | UM | 2004 | 2005 | 2006 | 2007 | 2008 | 2009 | 2010 | 2011 | Average rate % | Annual rate % |
|--|------------|----|--------|--------|--------|--------|--------|--------|--------|--------|----------------|---------------|
| Arrivals of tourists with accommodation services | Total | no | 5465 | 5462 | 6900 | 9458 | 11754 | 9903 | 9241 | 9809 | x | x |
| | | % | 100.0 | 99.95 | 126.26 | 173.06 | 215.08 | 181.21 | 169.09 | 179.49 | 155.52 | x |
| | | % | | 0.999 | 1.26 | 1.37 | 1.24 | 0.84 | 0.93 | 1.06 | x | 8.72 |
| | Romans | no | 5375 | 5369 | 6799 | 9172 | 11395 | 9502 | 8895 | 9414 | x | x |
| | | % | 100.00 | 99.89 | 126.49 | 170.64 | 212.00 | 176.78 | 165.49 | 175.14 | 153.30 | x |
| | | % | | 0.999 | 1.27 | 1.35 | 1.24 | 0.83 | 0.94 | 1.06 | x | 8.34 |
| | Foreigners | no | 90 | 93 | 101 | 286 | 359 | 401 | 346 | 395 | x | x |
| | | % | 100.00 | 103.33 | 112.22 | 317.78 | 398.89 | 445.56 | 384.44 | 438.89 | 287.64 | x |
| | | % | | 1.033 | 1.09 | 3.20 | 1.26 | 1.12 | 0.86 | 1.14 | x | 23.53 |
| Overnights on types of tourists | Total | no | 7068 | 8464 | 10294 | 16259 | 20091 | 18713 | 16386 | 17419 | x | x |
| | | % | 100.00 | 119.75 | 145.64 | 230.04 | 284.25 | 264.76 | 231.83 | 246.45 | 202.84 | x |
| | | % | | 1.198 | 1.22 | 1.58 | 1.24 | 0.93 | 0.88 | 1.06 | x | 13.75 |
| | Romans | no | 6925 | 8334 | 10090 | 15678 | 19241 | 17643 | 15625 | 16,539 | x | x |
| | | % | 100.00 | 120.35 | 145.70 | 226.40 | 277.85 | 254.77 | 225.63 | 238.83 | 198.69 | x |
| | | % | | 1.203 | 1.21 | 1.55 | 1.23 | 0.92 | 0.89 | 1.06 | x | 13.24 |
| | Foreigners | no | 143 | 130 | 204 | 581 | 850 | 1070 | 761 | 880 | x | x |
| | | % | 100.00 | 90.91 | 142.66 | 406.29 | 594.41 | 748.25 | 532.17 | 615.38 | 403.76 | x |
| | | % | | 0.909 | 1.57 | 2.85 | 1.46 | 1.26 | 0.71 | 1.16 | x | 29.64 |

Source: Statistical Yearbook of 2004-2011 County Buzau, Buzau DSJ

Romanian tourists arrivals have increased during the period considered by 75,14% in 2011 compared to 2004, while foreign tourists with 338,89% in the same period.

Overnight stay is an indicator that represents the interval of 24 hours, starting with the hotel hour, for which a person is recorded in the track structure of tourist accommodation and benefit from the tariff corresponding to the hosting space occupied, even if the duration of stay is less than the effective range. There are envisaged and related the supplementary beds installed (paid by tourists) [2].

When analyzing the data in the table above, regarding the types of tourists, we discover also a significant growth in this period. The overnights stays of Romanian tourists increased by 138,83% in 2011 compared to 2004, and for foreigners with 515,38%. Though, the share of overnights of Romanian tourists of the total is much higher than the share of the overnights of foreigners in agro touristic pensions, but in an ascending line, so in 2004 the Romanian tourists overnights accounted 97,98% of the total and in 2011 at 94,95%, while of foreign tourists to be of 2.02% in 2004, and in 2011 at 5,05%.

CONCLUSIONS

In Buzau County there is a very valuable tourism potential, with a natural richness in all its components, but also by significant anthropogenic and varied tourist attractions, plus the maintenance of old occupations and crafts, folk customs and beautiful habits.

Touristic anthropic fond impose increasingly more in the tourist circuit through his qualities of diversity, originality and uniqueness.

The number of tourists arriving (tourists stay) in agro touristic pensions, has an ascending evolution, this is due to the increase from year to year of the number of tourists. Other reasons that could cause this increase in the number of arrivals are: quality of services offered to tourists, the tourism potential of the region, the tariffs in accommodation, sightseeing, etc.

In County Buzau arrive more Romanian tourists than foreign tourists, this is because the County promotion is not organized at the international level, organizations are looking for ways so the tourism to release his agro touristic potential.

Regarding the evolution of the number of overnight stays recorded in the agro touristic pensions, it has an increasing trend to both Romanian and foreign tourists.

The practice of rural tourism involves a development of the infrastructure and a sustainable urban-rural balance, the use of unconventional forms of energy, less polluting techniques, depending on the types of landscape and environment.

Local authorities have a responsibility to draw up a strategy to support the culture, tradition and agro tourism, which can valorize the local attributes, in line with the principles of the sustainable development.

BIBLIOGRAPHY

- [1] Alecu, I. N., ș.a., 2006- Agroturism și Marketing agroturistic, Ed. Ceres, București.
- [2] Bădălău Elena Raluca, 2008, Lucrare de Disertație, "Strategia de Dezvoltare Durabilă a Județului Gorj", Universitatea Creștină "Dimitrie Cantemir" Facultatea "Management Turistic Și Comercial" "Managementul Afacerilor În Turism", București
- [3] Cristiana Tindeche, "Analiza Economică a Unităților de Alimentație Publică Și Agroturism"
- [4] Strategia de Dezvoltare și Promovare a Turismului și a Agroturismului în județul Buzău 2010 – 2015" available at <http://www.ejbuzau.ro>
- [5] Statistical Yearbook of 2004-2011 County Buzau, Buzau DSJ