

Tornell, Aaron; Westermann, Frank

**Working Paper**

## Credit Market Imperfections in Middle Income Countries

CESifo Working Paper, No. 960

**Provided in Cooperation with:**

Ifo Institute – Leibniz Institute for Economic Research at the University of Munich

*Suggested Citation:* Tornell, Aaron; Westermann, Frank (2003) : Credit Market Imperfections in Middle Income Countries, CESifo Working Paper, No. 960, Center for Economic Studies and Ifo Institute (CESifo), Munich

This Version is available at:

<https://hdl.handle.net/10419/76416>

**Standard-Nutzungsbedingungen:**

Die Dokumente auf EconStor dürfen zu eigenen wissenschaftlichen Zwecken und zum Privatgebrauch gespeichert und kopiert werden.

Sie dürfen die Dokumente nicht für öffentliche oder kommerzielle Zwecke vervielfältigen, öffentlich ausstellen, öffentlich zugänglich machen, vertreiben oder anderweitig nutzen.

Sofern die Verfasser die Dokumente unter Open-Content-Lizenzen (insbesondere CC-Lizenzen) zur Verfügung gestellt haben sollten, gelten abweichend von diesen Nutzungsbedingungen die in der dort genannten Lizenz gewährten Nutzungsrechte.

**Terms of use:**

*Documents in EconStor may be saved and copied for your personal and scholarly purposes.*

*You are not to copy documents for public or commercial purposes, to exhibit the documents publicly, to make them publicly available on the internet, or to distribute or otherwise use the documents in public.*

*If the documents have been made available under an Open Content Licence (especially Creative Commons Licences), you may exercise further usage rights as specified in the indicated licence.*

# CREDIT MARKET IMPERFECTIONS IN MIDDLE INCOME COUNTRIES

AARON TORNELL  
FRANK WESTERMANN

CESIFO WORKING PAPER NO. 960  
CATEGORY 6: MONETARY POLICY AND INTERNATIONAL FINANCE  
JUNE 2003

*An electronic version of the paper may be downloaded*

- *from the SSRN website:* [www.SSRN.com](http://www.SSRN.com)
- *from the CESifo website:* [www.CESifo.de](http://www.CESifo.de)

# CREDIT MARKET IMPERFECTIONS IN MIDDLE INCOME COUNTRIES

## Abstract

In this paper we document three credit market imperfections prevalent in middle income countries that can help to explain boom-bust cycles, as well as other macroeconomic patterns observed at higher frequencies across these countries. These imperfections are: the existence of financing constraints that affect mainly the nontradables sector, currency mismatch and guarantees that cover lenders against systemic crises. In MICs T-sector firms have access to international capital markets, while most N-firms are bank-dependent and are financially constrained. Systemic guarantees generate incentives for borrowers to take on insolvency risk by denominating debt in foreign currency. This currency mismatch makes movements in the real exchange rate—the relative price between N and T goods—the driving element in the amplification of shocks.

JEL Code: E32, F32, G15, O16.

*Aaron Tornell*  
*Department of Economics*  
*University of California, Los Angeles*  
*8283 Bunche Hall*  
*405 Hilgard Avenue*  
*Los Angeles, CA 90024*  
*U.S.A*  
*tornell@econ.ucla.edu.*

*Frank Westermann*  
*CESifo (University of Munich & Ifo Institute)*  
*Poschingerstrasse 5*  
*81679 Munich*  
*Germany*  
*westermann@cesifo.de*

This paper was prepared for the conference “Financial Market Development in Latin America,” at the Center for Research on Economic Development and Policy Reform at Stanford University.

# 1. Introduction

In recent decades many middle income countries (MICs) have liberalized their financial markets. Financial liberalization has typically been followed by lending booms during which credit grows unusually fast. Some of these booms have been punctuated by twin currency and banking crises that are followed by a protracted credit crunch.

In this paper we document three credit market imperfections prevalent in MICs that can explain these *boom-bust cycles* as well as other macroeconomic patterns observed at higher frequencies across MICs. These imperfections are the existence of borrowing constraints (the effects of which differ across sectors), currency mismatch and systemic bailout guarantees.

Prior to twin crises the typical MIC experiences a real exchange rate appreciation and a lending boom during which the ratio of credit-to-GDP grows unusually fast. In the aftermath of twin crises there is typically a short-lived recession and a protracted credit crunch that persists long after aggregate growth has resumed. The credit crunch hits mainly small and nontradables (N) firms. In fact, nontradables production declines relative to the output of the tradables (T) sector for several years after the crisis, and the credit-to-GDP ratio falls. This asymmetric sectorial pattern is also observed before a crisis as the N-sector grows faster than the T-sector.

In contrast to the crises of earlier decades, large fiscal deficits have not taken center stage in the new boom-bust cycles. Furthermore, investment is the component of GDP that experiences by far the largest swings over the cycle, and, at the other extreme, consumption varies the least.

These comovements between credit, the N-to-T output ratio and the real exchange rate also arise at higher frequencies, even if we do not condition on the occurrence of crises. Panel regressions reveal that credit growth is positively correlated with the ratio of N-to-T output, with changes in the real exchange rate, and with investment growth. However, credit growth is not significantly correlated with either aggregate GDP growth or consumption.

These comovements and the boom-bust cycle are not observed in countries with developed financial markets. They appear to be the same across MICs, in spite of different exchange rate regimes. These facts indicate that the mechanisms at work are not dependent on particular features of the exchange rate regime, but rather on other institutional characteristics of MICs. It has been argued in the literature that they are generated by the interaction of three characteristics of financing typical of MICs. First, there is a pronounced *asymmetry in size and financing opportunities* across tradables (T) and non-tradables (N) sectors. While T-sector firms tend to be large and have access to world capital markets, N-sector firms are smaller on average, are bank-dependent and face borrowing constraints.<sup>1</sup>

Second, in MICs a substantial amount of N-sector debt is dollar denominated, while the income streams that service those debts are in domestic currency. Since domestic banks are heavily exposed to the N-sector, the degree of *currency mismatch* is significant. Even when the banks' balance sheets are equilibrated, banks face a de facto currency mismatch because they lend primarily to the N-sector. Thus, they face insolvency risk.

Third, creditors are covered, either explicitly or implicitly, by *systemic bailout guaran-*

---

<sup>1</sup>In MICs T-sector firms have easy access to external finance because they can either pledge export receivables as collateral, or can get guarantees from closely linked firms.

*tees*. It is expected that if a critical mass of debtors risks insolvency, the government will implement policies to ensure that creditors get repaid (at least in part) and thus avoid an economic meltdown. These policies may come in the form of an easing of monetary policy, the maintenance of an exchange rate peg, or the handing out of checks.

This paper is structured as follows. In Section 2 we document the credit market imperfections. In Section 3 we characterize the boom-bust cycle and the comovements alluded to above. In Section 4 we describe the mechanism that links the credit market imperfections to the stylized facts. Finally in Section 5 we present the conclusions.

## **2. Credit Market Imperfections**

Here we present evidence on the three key credit market imperfections that prevail in MICs: asymmetric financing opportunities, currency mismatch and systemic guarantees.

We classify as MICs all countries that satisfy the following four conditions: they have a per-capita income between \$1,000 and \$18,000; in addition to banks, the stock market is a viable source of finance; they have a population greater than 1 million people; the country has not engaged in war or civil war during the sample period. Thirty seven countries satisfy these conditions. We also consider Sweden and Finland, whose per capita incomes are greater than \$18,000 but have experienced often studied twin crises. Thus, our sample consists of 39 countries.<sup>2</sup> We consider the period between 1980 and 1999.

---

<sup>2</sup>Argentina, Brazil, Chile, Colombia, Croatia, Czech Republic, Ecuador, Egypt, Estonia, Finland, Greece, Hungary, Indonesia, Ireland, Israel, Jordan, Korea, Latvia, Lithuania, Malaysia, Mexico, Morocco, New Zealand, Peru, Philippines, Poland, Portugal, Russia, Saudi Arabia, Slovak Republic, Slovenia, South Africa, Spain, Sweden, Thailand, Tunisia, Turkey, Uruguay, Venezuela.

Table 2.1: Sectorial and Size Distributions of Firms

	N-Sector	T-Sector
Small	68 %	32 %
Large	33 %	67 %

Source: *World Business Environment Survey* (WBES), 2001.

Note: “small” corresponds to firms with up to 200 employees.

## 2.1. Asymmetric Financing Opportunities

In order to investigate whether there is a significant difference between firms in the T-sector and those in the N-sector, we use firm level data from a panel of 3877 firms of the World Business Economic Survey of the World Bank (WBES, 2001). This survey covers 27 out of our sample of 39 MICs, and it classifies firms according to their size and, among other things, whether or not they export.<sup>3</sup> Since the share of T-output in the group of export firms is greater than that of non-export firms, we identify exporters with T-sector firms and non-exporters with N-sector firms.

The first question we ask is whether firms in the T-sector tend to be larger than those in the N-sector. The answer is positive. Table 2.1 shows that, across the 27 countries in the WBES survey, a majority (68 percent) of small and medium firms belongs to the N-sector, while a majority (67 percent) of large firms belongs to the T-sector. This fact holds true when looking at the matrices of individual countries. Table 2.2 shows that the distribution

---

<sup>3</sup>Argentina, Brazil, Chile, Czech Republic, Ecuador, Egypt, Estonia, Hungary, Indonesia, Lithuania, Mexico, Malaysia, Peru, Philippines, Poland, Portugal, Russia, Slovakia, Slovenia, South Africa, Spain, Sweden, Thailand, Turkey, Tunisia, Uruguay and Venezuela. Schiffer and Weder (2001) describe in detail this data base. It is available from the World Bank at: <http://www.worldbank.org/beext/resources/assess-wbessurvey-alt.htm>

Table 2.2: Sectorial and Size Distributions for Individual Countries

<b>Argentina:</b>		
	N-Sector	T-Sector
Small	74%	26%
Large	67%	33%

<b>Brazil:</b>		
	N-Sector	T-Sector
Small	73%	27%
Large	60%	40%

<b>Chile:</b>		
	N-Sector	T-Sector
Small	63%	37%
Large	48%	52%

<b>Indonesia:</b>		
	N-Sector	T-Sector
Small	82%	18%
Large	54%	46%

<b>Mexico:</b>		
	N-Sector	T-Sector
Small	68%	32%
Large	38%	62%

<b>Malaysia:</b>		
	N-Sector	T-Sector
Small	65%	35%
Large	40%	60%

<b>Philippines:</b>		
	N-Sector	T-Sector
Small	73%	27%
Large	48%	52%

<b>Thailand:</b>		
	N-Sector	T-Sector
Small	61%	39%
Large	24%	76%

Source: *World Business Environment Survey* (WBES), 2001.

Note: "small" denotes small and medium firms up to 200 employees. "Large" firms have more than 200 employees.



Table 2.3: Asymmetric Financing Opportunities

Dependent variable: Answer to the question  
“is financing a major obstacle to running your business?”

	(1)	(2)	(3)
N-sector firms	0.175*** (0.039)		
Share of exports		-0.003*** (0.001)	
NL			0.265*** (0.051)
NS			0.094* (0.053)
Age			-0.000 (0.001)
Government share			-0.004*** (0.001)

Note: This table reports regression results of ordered probit regressions, specified with a constant and with country dummies. The answer to the question “is financing a major obstacle to running your business?” is evaluated on a scale from 1 to 4. The independent variable in regressions 1 and 3 is a dummy that is equal to one for N sector firms and zero otherwise. In regression 2, it is the share of exports among T-sector firms. In regression 3, NL = Non tradable and large, NS = Non tradable and small, the age of the firm, and the share of government participation. Standard errors are reported in parentheses; \* indicates significance at the 10 percent level, \*\* indicates significance at the 5 percent level and \*\*\* indicates significance at the 1 percent level.

of table 2.1 is also exhibited by most MICs individually.<sup>4</sup>

The survey also asked firms to rank, on a scale from 1 to 4, how much of an obstacle financing was to running their business. We use the answers from this survey to estimate an ordered probit model to assess whether there exists an asymmetry in financing opportunities across the N and T-sectors.<sup>5</sup>

We create a dummy variable for the yes-or-no answer “do you export?” A significant positive parameter on the dummy indicates that N-sector firms evaluate the access to finance

<sup>4</sup>There are some large firms in the N-sector, such as utilities. However, in most countries they represent a small share of the N-sector firms in the survey.

<sup>5</sup>We use the same approach as Schiffer and Weder (2001), who compare small and large firms with respect to financing constraints as well as other indicators of governance. They find that small firms are more constrained.

as a significantly larger obstacle to running their business than do T-sector firms. We estimate ordered probit regressions of the following form.

$$y_i^* = \beta_0 + \beta_1 EXPORT + \beta_2 AGE + \beta_3 GOV + \gamma_1 d_{1i} + \dots + \gamma_n d_{ni} + \varepsilon_i,$$

$$\text{where } y_i = \left\{ \begin{array}{l} 1 \text{ if } y_i^* < \alpha_1 \\ 2 \text{ if } \alpha_1 < y_i^* < \alpha_2 \\ 3 \text{ if } \alpha_2 < y_i^* < \alpha_3 \\ 4 \text{ if } \alpha_4 < y_i^* \end{array} \right\},$$

$n = 27$ , and *EXPORT* is either a dummy that takes the value of 1 if the firm does not export, or it is the share of exports in output among exporting firms. *GOV* controls for government participation in the firm, *AGE* denotes the year a firm was established and  $d_1 \dots d_n$  are country dummies. The dependent variable,  $y$ , captures the ranking of the severity of an obstacle for running a business, as perceived by the firms. The obstacles considered are financing, collateral and the exchange rate. The true  $y$  is not directly observed, and the  $\alpha$  parameters are estimated together with  $\beta_0 \dots \beta_3$  and  $\gamma_1 \dots \gamma_n$ .

Table 2.3 reports the regression results: regression 1 is the basic regression where we regress the perceived credit constraints on the N-sector dummy. Regression 2 replaces the N-Sector by a variable that measures the percentage of output that is exported by exporters. Regression 3 reports the results of a regression that differentiates between small and large N-firms, and includes the age of the firm and the share of government participation as control variables.

Table 2.4: The Use of Collateral in Securing Loans

Indonesia	50-60%
Korea	90%
Malaysia	40%
Philippines	50-60%
Thailand	50-60%

Source: Dwor-Frecaut, D, M. Hallward-Driemeier, F.X. Colaço, Asian Corporates' Credit need and Governance, Presented at the 1999 World Bank Conference in Bangkok.

In all regressions we find that there is a significant difference between exporters and non-exporters in their evaluation of financing as an obstacle to running their businesses. The latter consider the obstacle to be more severe. Furthermore, we find that among exporters, the larger the share of exports in output, the less significant is financing deemed to be as an obstacle for running a business. We also find that older firms have easier access to financing than younger firms. The same is true for firms with high government participation. None of the control variables, however, obviates the role of the exporters/non-exporters indicator.

Next, we ask whether bank credit depends on collateral and whether there is a statistically significant difference between the N- and T-sectors in this respect. Tables 2.4 and 2.5 shed light on this question. Table 2.4 shows that in most MICs, the majority of bank loans are indeed secured by collateral. The percentage ranges from 40% in Malaysia to 90% in Korea. In Table 2.5 we make use again of the WBES data set, where firms were also asked to evaluate how much of an obstacle the access to collateral is to running their business. Table 2.5 shows that even after controlling for other factors, such as government share and the age of the firm, the importance of collateral is viewed as significantly more severe by the firms

Table 2.5: The Role of Collateral as an Obstacle to Obtain Financing

Dependent variable: the answer to the question:  
“Is collateral a major obstacle to obtain financing?”

	(1)	(2)	(3)
N-sector firms	0.127*** (0.039)		
Share of exports		-0.0005* (0.008)	
NL			0.118* (0.052)
NS			0.034* (0.055)
Age			-0.004 (0.001)
Government share			-0.001 (0.001)

Note: Table 4 reports regression results of ordered probit regressions, specified with a constant and with country dummies. The answer to the question, “Is collateral a major obstacle to obtain financing?” is evaluated on a scale from 1 to 4. The independent variable in Regression 1 is a dummy that is equal to one for N sector firms and zero otherwise. In Regression 2, it is the share of exports among T-sector firms. In Regression 3, NL = Non tradable and large, NS = Non tradable and small, the age of the firm, and the share of government participation. Standard errors are reported in parentheses. \* indicates significance at the 10 percent level, \*\* indicates significance at the 5 percent level and \*\*\* indicates significance at the 1 percent level.

Table 2.6: Structure of Cooperate Financing in Korea

	1997	1998	1999
<i>Borrowing from Domestic Money Banks</i>			
large	25.1	29.6	28.1
SME	74.8	70.3	71.8
<i>Gross issuance of cooperate bonds</i>			
large	90.8	99.1	94.3
SME	9.2	0.9	5.7

Source: IMF country Report 00/10

in the N-sector than those in the T-sector.

Aside from easier access to bank credit, firms in the T-sector are typically large firms that have the possibility to issue bonds and stocks as substitutes for bank credit. Figure 2.6 illustrates this for the case of Korea. While small and medium enterprises account for about 75% of domestic bank credit, more than 90 percent of domestic bonds were issued by large firms.

## 2.2. Currency Mismatch and Banks Exposure to the N-sector

Currency mismatch exists when liabilities are denominated in foreign currency, while the income streams that must service these debts are denominated in domestic currency. Currency mismatch has become an important issue in MICs because sudden real depreciations increase significantly the debt burden of a large group of agents, generating a meltdown of the banking system.

Unfortunately, there are no readily available indices of currency mismatch, so the question arises as to how best to measure this concept. First of all, currency mismatch need not be a problem that affects the aggregate economy. It is a sectorial problem that mainly affects the

Table 2.7: Bank Lending by Sector

	Assets	
	Loans to Non-tradables <sup>1</sup>	Loans to Tradables <sup>2</sup>
Argentina (95)	67.1 <sup>3</sup>	32.9
Chile (85)	60.1	39.9
Korea (97)	74.8 <sup>5</sup>	25.1
Mexico (95)	66.0	33.9
Peru (96)	59.2	40.8
Thailand (97)	66.5	34.5
Turkey (93)	34.0 <sup>4</sup>	66.0 <sup>4</sup>

Sources: See Appendix.

Notes: 1) N-Sectors: Construction, Real Estate Business, Infrastructure, Services, Personal Consumption, Commerce, Wholesale and Retail, Housing, Electricity-Gas-Water, Restaurants, Hotels, Transportation, Small. 2) T- Sectors: Mining, Quarrying, Industry, Agriculture, Forestry; Industrial Sector, Foreign Entities, Primary Production, Imports, Trade, Large, Other. 3) not including consumption or Housing credit. 4) only consumption credit is N. 5) N is proxied by small, T is proxied by large firms.

N-sector. It may well be the case that there is enough foreign currency available to service the debt. However, if N-sector debtors and the banks that lend to them have currency mismatch, then a real depreciation might generate a meltdown, unless the government can implement a redistribution from the T to the N-sector on short notice. Clearly, these fiscal transfers are not feasible.

Since in MICs banks are heavily exposed to the N-sector, we can get a more precise indicator of currency mismatch by looking at the balance sheet of the banking system. Table 2.7 shows that, on average, only about a third of bank lending goes to firms that can potentially be classified as belonging to the tradeable sector. This indicates that the banking system is strongly exposed to the N-sector.<sup>6</sup>

<sup>6</sup>In order to bias the results against the hypothesis that banks are heavily exposed to the N-sector,

Table 2.8: Share of foreign currency liabilities covered by income from exports

	Liabilities	Assets	Foreign currency coverage of assets		Currency Mismatch
	(a) % of foreign currency liabilities	(b) Loans to Tradables	(c) Export/output	(d) (b)*(c)	(e) (a)/(d), (lower bound <sup>3</sup> )
Argentina (95)	35.0	32.9	0.30	9.8	3.57
Chile (83)	46.7	39.9 <sup>1</sup>	0.28	11.2	4.17
Korea (97)	17.9 <sup>2</sup>	25.1	0.34	8.53	2.97
Mexico (95)	33.4	33.9	0.23	7.7	4.34
Peru (96)	73.0	59.2	0.34	20.1	3.62
Thailand (97)	22.3	34.5	0.17	5.8	3.85
Turkey (93)	47.0	66.0	0.24	15.84	2.97

Source: See Appendix.

Note. 1) Data on loans in Chile are 1985. 2) Foreign liabilities data in Korea is from 1993 – thus the mismatch in 97 must have been much larger. 3) The results are biased against finding our hypothesis of currency mismatch in several important ways: 1) Off balance sheet items are not included, which are primarily in foreign currency. 2) Due to legislation banks tend to underreport their foreign currency holdings as a share of liabilities (see Kamin et. al 2001). 3) We assume that all revenues from exports can be used to service the debt. All firms in potentially tradable sectors are assumed to indeed be tradeable.

Since banks are strongly exposed to the N-sector we cannot determine the degree of currency mismatch by simply comparing the liabilities and the assets of the banking system. A bank can have 20% of its liabilities in dollars and 20% of its assets denominated in dollars. However, if all the loans are granted to the N-sector, there is a de facto currency mismatch because there is insolvency risk. It may be even more misleading just to compare the denomination of deposits and loans, as these are only a subset, and a small subset at that, of the total balance sheet.<sup>7</sup>

---

we assume that all firms in sectors that are commonly considered tradable are indeed tradable. Thus, we group manufacturing, mining, agriculture, forestry, and primary production as tradables, while construction, services, electricity-gas-water are considered nontradables. Note that the fraction of bank lending that goes to consumption or housing credit is not covered by foreign currency income and thus also counts as nontradable. In most countries, the figures would be even higher if these items were included (consumption and housing credit are only available for Hungary, Mexico and Thailand).

<sup>7</sup>For instance, foreign currency deposits in Thailand account for less than 10% of the total foreign external liabilities of the banking system.

Table 2.9: Aggregate indicators of currency mismatch

	Foreign debt Service/ Exports	Foreign debt/ Exports
Argentina	0.37	4.73
Chile	0.26	2.13
Korea	0.09	0.76
Mexico	0.36	2.30
Peru	0.25	5.77
Thailand	0.18	1.47
Turkey	0.56	3.60

Source: World Bank Development indicators (year: 1994)

Our index of currency mismatch compares the share of foreign currency liabilities of the banking system to the share of loans that are covered by export income. We compute the latter ratio by multiplying the share of bank lending that goes to the T-sector by the share of T-sector output that is actually exported. Column (c) in Table 2.8 shows that exporting firms sell the majority of their output in the domestic market. Thus, they too must earmark a large share of domestic currency revenue for servicing foreign currency debt.

Our index of currency mismatch is reported in column (e) of Table 2.8. The estimates range from 2.97 for Korea in 1997 to 4.34 for Mexico in 1995.<sup>8</sup> To see that currency mismatch is mostly a sectorial, not an aggregate, problem compare Table 2.8 with Table 2.9. Notice that the foreign debt service-to-exports ratio is low in countries with a high currency mismatch index. A banking system where only 15-30% of dollar loans are covered by exports are certainly subject to substantial real exchange rate risk. This is true even though the aggregate measures of Table 2.9 do not indicate currency mismatch.<sup>9</sup>

<sup>8</sup>Our estimates of CM are conservative. More realistic/accurate estimates would take into account that the amount of foreign currency revenue that is available to service debt is less than total foreign currency income. Some of the foreign currency income is required to pay off the factors of production.

<sup>9</sup>A high foreign debt service-to-exports ratio signals a CM problem. However, just because this aggregate



### 2.3. Systemic Guarantees

Despite the fact that bailout guarantees have played an important role in several explanations of boom-bust cycles, the evidence supporting the existence of this distortion is mainly anecdotal. Although many countries have systemic guarantees in place, it is very difficult to document their existence directly. The difficulty in pinning guarantees down is that in most cases they are implicit. To begin with, they are not limited to promises to hand out a bailout payment to lenders in case of default. They are often implicit in the exchange rate regime and monetary policy rules. Since in most instances one of the objectives of policymakers is to avoid sharp drops in output, they will implement policies that are, de facto, implicit guarantees against systemic crises.<sup>10</sup>

We investigate whether there are implicit guarantees by looking at the behavior of interest rate spreads. The idea is that if guarantees are present, the spread will, *ceteris paribus*, be insensitive to a deterioration in the average quality of loans, assuming, of course, that no crisis has yet occurred. When a crisis occurs, the quality of loans collapses and the spread skyrockets.

An ideal way to measure the evolution of the loans' quality is with the 'true' share of non-performing loans (NPLs). Unfortunately, such data in time series form does not exist for most MICs. A good proxy for an increase in NPLs is the occurrence of a lending boom in the recent past. When there is a sharp acceleration in credit, the monitoring capacity

---

measure may be low, one cannot infer that there is no CM.

<sup>10</sup>Systemic guarantees are not the same as deposit insurance schemes, which cover individual agents against idiosyncratic risk.

of both banks and regulators is diminished, so that there is an increase in the likelihood of granting credit to bad projects. The increase in the share of NPLs may take some time to materialize because it takes time for a given loan to become non-performing and because during the boom a lot of new loans are being granted. Nonetheless, after some time NPLs must become a problem for the banking system. This is true regardless of whether NPLs are officially recorded.

To capture this idea we run the following panel regression

$$(\rho - r)_{j,t} = \alpha_j + \alpha_1 LB_{j,t-1} + \alpha_2 D_{j,t} \cdot LB_{j,t-1} + \varepsilon_{j,t}, \quad (2.1)$$

where  $(\rho - r)_{j,t}$  is the interest rate spread as defined earlier, in country  $j$  at time  $t$ .  $LB_{j,t-1}$  is a dummy that indicates the existence of a lending boom. It is equal to one if during the past 2 years real credit has grown by more than 10% on average.  $D_{j,t}$  is a dummy that indicates that twin banking and currency crises have occurred at  $t$  or  $t - 1$ .

The coefficient  $\alpha_1$  measures the effect of an increase in NPLs on the spread in country-years in which a crisis has not occurred in either the current or the previous year. Meanwhile, the sum  $\alpha_1 + \alpha_2$  measures the effect of an increase in NPLs on the spread during crisis times (at  $t$  or  $t - 1$ ). As we discussed above, in order to isolate the effect of guarantees we need to distinguish between periods in which a crisis has not occurred recently, and periods where a crisis has occurred recently. This is because systemic crises are typically preceded by lending booms and during crises the spread shoots up.

The null hypothesis that there are systemic guarantees is  $H_0 : \alpha_1 = 0$ . Table 2.10 exhibits

Table 2.10: Implicit Bailout Guarantees

Dependent variable: Interest rate spread

	(a) MIC 8		(b) Group of 39	
	(1)	(2)	(3)	(4)
$LB_{j,t-1}$	2.559*** (0.930)	1.330 (0.875)	0.723** (0.348)	-0.188 (0.485)
$D_{j,t} * LB_{j,t-1}$		3.849*** (1.131)		2.833*** (1.007)
Adj. $R^2$	0.531	0.636	0.631	0.634
N	74	74	244	244

Note: The table shows the estimates of the panel regression in (5.1). The lending boom dummy,  $LB$ , is equal to one, if the growth rate of real credit has been larger than 10 percent on average for the past two years. The crisis dummy,  $D$ , indicates that a twin crisis occurred in  $t$  or  $t+1$ . The regressions are estimated with fixed effects, using a GLS estimator. Standard errors are reported in parentheses; \* indicates significance at the 10 percent level, \*\* indicates significance at the 5 percent level and \*\*\* indicates significance at the 1 percent level.

the estimates of regression (2.1). Panel (a) considers a set of 8 MICs frequently discussed in the literature, while panel (b) considers the full set of 39 MICs. In both cases we cannot reject the null at the 10% significance level. That is, we cannot reject the presence of systemic guarantees. Interestingly, if the crisis dummy is disregarded and the spread is regressed only on the lending boom dummy, the estimated coefficient is statistically significant at the 10% level.

If we were to define systemic guarantees literally as promises to hand out a bailout payment to lenders in case of default, we could investigate the proportion of crises that have triggered this type of bailouts, and then impose rational expectations to infer the ex-ante implicit guarantee. Bordo and Schwarz (2001) and Jeanne and Zettelmeyer (2000) find evidence of ex-post bailouts during the last two decades and the early banking crises of the 20th century.

### 3. Macroeconomic Patterns

The credit market imperfections we have documented give rise to macroeconomic patterns that are common across MICs, but are not typically observed in high income countries. In this section we illustrate these patterns both by examining the comovements of the relevant variables conditioning on the occurrence of twin crises, and by characterizing the unconditional comovements of these variables. In the next section we describe the mechanism that links the credit market imperfections to the macroeconomic patterns.

We characterize the boom-bust cycle by means of event windows over the period 1980-1999 on the set of 39 MICs where, in addition to banks, the stock market is a viable source of finance. Figure 3.1 shows that prior to a crisis there is a real appreciation and a lending boom during which credit grows unusually fast. In the aftermath of a crisis there is typically a short-lived recession and a protracted credit crunch that affects mainly the N-sector. In fact, N-production declines relative to the output of the T-sector and the credit-to-GDP ratio continues to fall for several years after the crisis. Investment is the component of GDP that exhibits by far the largest (and statistically significant) deviations from tranquil times, while consumption deviations are very mild and insignificant.<sup>11</sup>

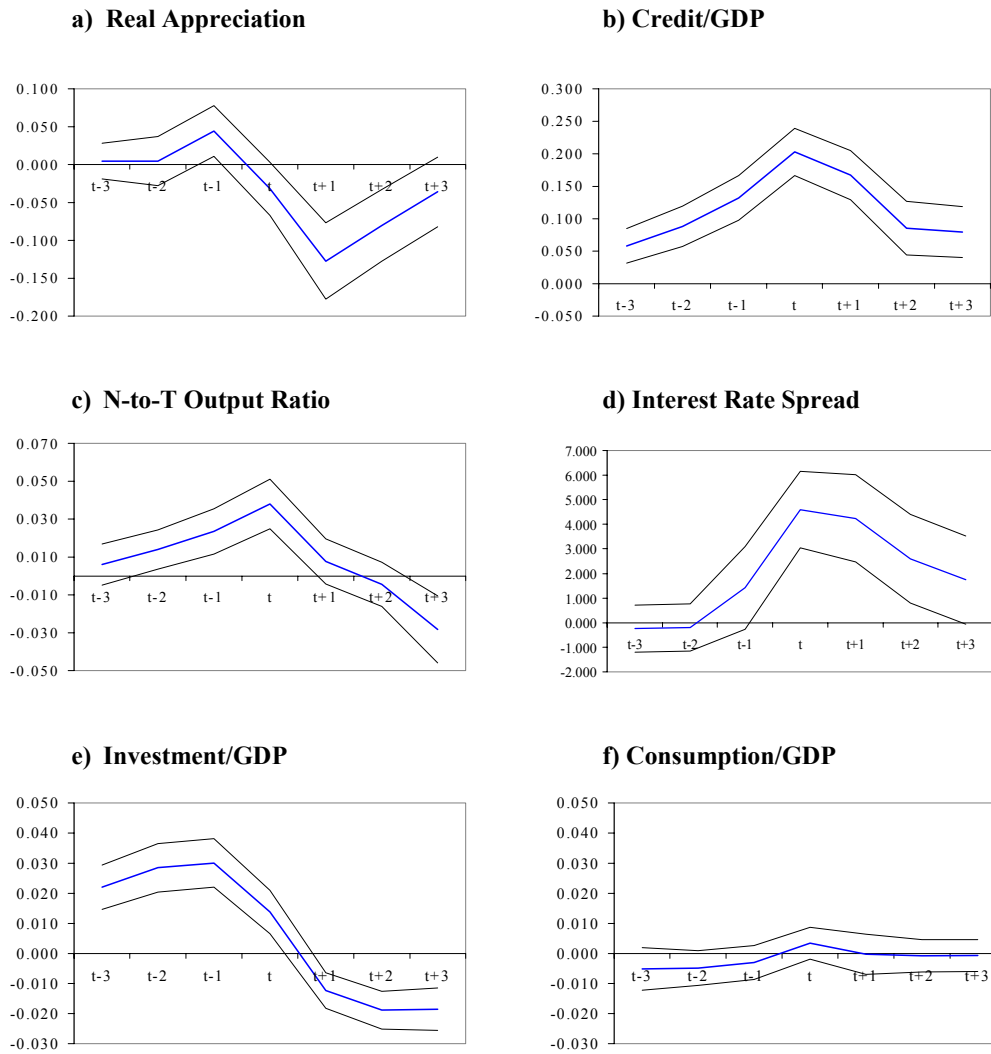
We characterize the unconditional comovements by means of panel regressions over the same period and set of countries. In the panel regressions, we allow for random and fixed effects.<sup>12</sup> The partial correlations cannot, of course, be interpreted as causal relations. How-

---

<sup>11</sup>Figure 3.1 is taken from Tornell and Westerman (2002a). See that paper for details.

<sup>12</sup>All variables are in first differences in order to avoid the issues associated with non-stationarity. These patterns have been characterized by Tornell and Westermann (2002b).

Figure 3.1: The Boom-Bust Cycle



Note: The figures show the average behavior of the respective variable, across 39 countries around twin currency and banking crises during the period 1980-1999. Index  $t$  in the figures refers to the year during which a twin crisis takes place. The figures are the visual representations of the point estimates and standard errors from regressions in which the respective variable in the graph is the dependent variable, regressed on time dummies preceding and following a crisis. The panel data estimations include fixed effects and use a GLS estimator. The heavy line represents the average deviation relative to tranquil times. The thin lines represent the 95% confidence interval.

Table 3.1: Random Effects Model

Dependent Variable: Real Credit Growth

	(1)	(2)	(3)	(4)
1/Real exchange rate	0.370*** (0.074)	0.356*** (0.089)	0.212* (0.112)	0.216** (0.106)
N/T output ratio	0.294*** (0.109)	0.387*** (0.127)	0.241* (0.139)	0.290** (0.137)
Interest rate spread		-0.002** (0.001)	-0.071*** (0.021)	-0.063*** (0.020)
Investment			0.306*** (0.107)	0.219*** (0.078)
Consumption			-0.228 (0.263)	
Deficit			0.614** (0.249)	0.591** (0.259)
Net exports			0.000 (0.001)	
Adj. R <sup>2</sup>	0.211	0.180	0.363	0.376
# countries	30	26	25	25

Note: The table reports the regression results from a model with random effects. Standard errors are reported in parentheses; \* indicates significance at the 10 percent level, \*\* indicates significance at the 5 percent level and \*\*\* indicates significance at the 1 percent level.

ever, they indicate the variables that theoretical models should emphasize.

The first regression in Table 3.1 shows that an increase in credit is associated with (i) a decline in the interest rate spread, (ii) an increase in the ratio of N-to-T output, and (iii) a real appreciation. It is remarkable that these partial correlations are significant at the 1% level. Correlation (i) suggests the existence of a credit channel. Correlation (ii) is consistent with the fact that the N-sector is more credit-constrained than the T-sector. Correlation (iii) is consistent with the existence of a balance sheet effect.<sup>13</sup>

Among components of GDP, what is surprising is the dog that didn't bark: consumption and net exports do not move with credit growth. In contrast, investment and the fiscal deficit

<sup>13</sup>The MICs we examine have experienced crises from time to time during the sample period. We are not limiting ourselves to analyzing the events surrounding crises, and the comovements of Tables 3.1 and 3.2 are not conditional on the occurrence of crises.

Table 3.2: Fixed Effects Model

Dependent Variable: Real Credit Growth

	(1)	(2)	(3)	(4)
1/Real exchange rate	0.398*** (0.081)	0.374*** (0.053)	0.258** (0.119)	0.234** (0.113)
N/T output ratio	0.273*** (0.081)	0.295*** (0.040)	0.198 (0.151)	0.283* (0.146)
Interest rate spread		-0.002 (0.001)	-0.073*** (0.022)	-0.064*** (0.021)
Investment			0.324*** (0.112)	0.203** (0.083)
Consumption			-0.390 (0.282)	
Deficit			0.617** (0.295)	0.583** (0.294)
Net exports			0.000 (0.001)	
Adj. R <sup>2</sup>	0.155	0.143	0.317	0.376
# countries	30	26	25	25

Note: GLS regression results from a model with fixed effects. Standard errors are reported in parentheses; \* indicates significance at the 10 percent level, \*\* indicates significance at the 5 percent level and \*\*\* indicates significance at the 1 percent level.

vary strongly with credit. Regressions 2 and 3 show that all parameters, except those on consumption and net exports, are significant at the 5% level. We find similar results using fixed effects estimation (Table 3.2). After dropping insignificant variables, all remaining variables are significant at the 5% level and have the same sign as in the random effects model.

As we can see in Figure 3.1, macroeconomic variables display similar comovements as those shown in Tables 3.1 and 3.2. These stylized facts suggest that investment, rather than consumption, should play a key role in the amplification mechanism. Furthermore, they indicate that any model of macroeconomic comovements or of crises in MICs should generate an equilibrium path along which credit varies negatively with the real exchange rate, and positively with the N-to-T output ratio.

## 4. The Mechanism

To explain some of the stylized facts that we have described, the literature has looked to financial market imperfections as key ‘fundamentals’. Existing models are typically based on *one of two* distortions: either “bad policy”, in the form of bailout guarantees, or “bad markets”, in the form asymmetric information, or the imperfect enforceability of contracts in financial markets.<sup>14</sup>

On the one hand, policies that ensure agents against systemic crises (i.e., systemic bailout guarantees), lead agents to take on more risk than they otherwise would. This can explain risky debt denomination. On the other hand, credit market imperfections such as imperfect enforceability of contracts or asymmetric information lead lenders to be very conservative and give rise to credit constraints. The question arises as to whether one can construct an internally consistent framework where guarantees do not neutralize the credit market imperfections. Furthermore, can the interaction between these two distortions generate the dynamic patterns that characterize the boom-bust cycle and the comovements alluded to above?

Schneider and Tornell (2000) consider an economy where these two distortions do not neutralize each other and show how their *interaction* generates several features of the boom cycle. Tornell and Westermann (2002a and 2002b) show how this framework can explain the comovements alluded to above and the strong credit channel that exists in MICs.

---

<sup>14</sup>See for instance, Aghion, Bacchetta and Banerjee (2000), Burnside, Eichenbaum and Rebelo (2000), Caballero and Krishnamurthy (1999), Calvo (1998), Corsetti, Pesenti and Roubini (1999), Krugman (1999) and Mckinnon and Pill (1998).



In what follows we discuss how some elements of these papers help explain the macroeconomic patterns we described in the previous section. Consider an economy with two sectors: a tradables sector (T) and a nontradables sector (N). T-sector agents have access to perfect capital markets, while N-sector agents face enforceability problems and systemic guarantees.

The first key result is that the *interaction* of systemic guarantees and enforceability problems generates a self-reinforcing mechanism. On the one hand, if there is sufficient real exchange rate risk: (a) binding credit constraints arise and (b) it is individually optimal for an N-sector agent to issue debt denominated in T-goods (i.e., borrow in foreign currency on a short-term). On the other hand, when *many* N-sector agents gamble by denominating their debt in T goods, exchange rate risk may be endogenously created, as the economy becomes vulnerable to *self-fulfilling meltdowns* of the banking system. If the amount of T denominated debt is high, a real depreciation can severely squeeze cash flow, or even bankrupt banks altogether. Since they face binding borrowing constraints, they then have to curtail lending to the N-sector. Weak investment demand from the N-sector for its own products in turn validates the real depreciation. The systemic credit risk created by the banking system thus induces endogenous exchange rate risk.

The second key result is that the *interaction* of binding borrowing constraints and T denominated debt generates a dynamic path that resembles a boom-bust cycle and the comovements we have characterized earlier. During the boom, the real appreciation reduces the debt burden and relaxes credit constraints, permitting unusually fast growth in the bank-dependent N-sector. This leads to further real appreciation, further relaxation of credit

constraints and so on. Since the T-sector is not credit constrained, both the credit-to GDP and the N-to-T output ratios follow increasing paths. However, the existence of risky debt denomination makes the economy vulnerable to self-fulfilling twin crises, during which a real depreciation coincides with both a meltdown of the banking system and a collapse of the N-sector's internal funds. In the aftermath of crisis the N-sector is outperformed by the T-sector. Since banks are strongly exposed to the N-sector, a long-lasting credit crunch outlives a brief recession.

To understand the amplification mechanism in more detail consider an increase in the domestic lending rate. This shock leads to higher debt service obligations and thus implies that firms can now borrow less at each level of net worth. Lower borrowing results in lower investment. This direct effect is amplified because there is currency mismatch and part of N-sector's demand comes from the N-sector itself. In this case, the fall in demand for N-goods, leads to a real depreciation. Since N-sector agents have dollar debt on the books, while their revenues are denominated in the local currency, there is a fall in N-sector's profits and net worth. A vicious circle ensues as lower net worth leads to even lower investment, which leads to a lower demand for N-goods and a steeper real depreciation, which leads to lower net worth and so on. This process might lead to twin crises in which a critical mass of N-sector agents goes bust.

T-sector agents have access to international capital markets and can more easily substitute away from domestic borrowing. Thus, their decisions are mostly affected by the world interest rate, not by the domestic lending rate. Therefore, a fall in credit is associated with a

real depreciation and a decline in the N-to-T output ratio. Furthermore, the sectorial asymmetry implies that the decline in GDP growth is milder than that of credit. This explains the persistent swings in the credit-to-GDP ratio observed in the data.

## 5. Conclusions

In this paper we have documented the existence of three credit markets imperfection prevalent in middle income countries (MICs). We have also discussed how they can account for macroeconomic patterns observed across MICs in recent decades.

In MICs borrowing constraints affect many firms. However, their incidence is heavily biased towards the non-tradables (N) sector. While tradables (T) sector firms tend to be large and have access to world capital markets, N-sector firms are smaller on average and are bank-dependent.

A second imperfection is the substantial amount of N-sector debt that is denominated in foreign currency, while the income streams that service those debts are in domestic currency. Since domestic banks are heavily exposed to the N-sector, the degree of *currency mismatch* is significant.

This sharp asymmetry in financial opportunities and the severe currency mismatch are key to understanding why there are sharp fluctuations in the real exchange rate (the relative price of N and T goods), and why they play a key role in the amplification and propagation of shocks in MICs.

The prevalence of currency mismatch does not appear out of the blue, but rather is the

optimal response of borrowers and creditors to the existence of *systemic guarantees*, the third imperfection we have documented.

There is much work to be done in understanding economic fluctuations in MICs. This paper contributes to the literature by highlighting common macroeconomic regularities and by documenting the existence of three credit market imperfections that are prevalent in otherwise very different MICs. In so doing, we have restricted the classes of plausible explanations for economic fluctuations that are common across MICs.

References:

Aghion, P., P. Bachetta, and A. Banerjee (2000), "Capital Markets and the Instability of Open Economies," mimeo, Study Center Gerzensee.

Bordo, M. and A. Schwartz (2001) "Measuring Real Economic Effects of Bailouts" *NBER working paper* 7701.

Burnside, C., M. Eichenbaum and S. Rebelo (2001), "Prospective Deficits and the Asian Currency Crisis," *Journal of Political Economy*, 109(6), 1155-97.

Caballero, R. and A. Krishnamurthy (2001), "International and Domestic Collateral Constraints in a Model of Emerging Market Crises," *Journal of Monetary Economics*, 48 (3), 513-48.

Calvo, Guillermo (1998), "Capital Flows and Capital Market Crises: The Simple Economics of Sudden Stops," *Journal of Applied Economics*, pp 35-54.

Corsetti, G., P. Pesenti and N. Roubini (1999), "Paper Tigers: A Model of the Asian Crisis" *European Economic Review* 43(7), 1211-36.

Jeanne, O. and J. Zettelmeyer (2001), "International Bailouts, Moral Hazard and Conditionality," *Economic Policy*, October.

Krugman, Paul (1999), "Balance Sheets, The Transfer Problem, and Financial Crises," mimeo, MIT.

McKinnon, R. and H. Pill (1997), "Credible Economic Liberalizations and Overborrowing," *American Economic Review* 87(2), 189-93.

Schiffer, M. and B. Weder (2001), "Firm Size and the Business Environment: Worldwide

Survey Results,” *IFC discussion paper* 43.

Schneider, M. and A. Tornell (2000), “Balance Sheet Effects, Bailout Guarantees and Financial Crises,” *NBER working paper* 8060.

Tornell, A. and F. Westermann (2002a), “Boom-Bust Cycles: Facts and Explanation”, *IMF Staff Papers* (41), 111-165.

Tornell, A. and F. Westermann (2002b), “The Credit Channel in Middle Income Countries”, *NBER working paper* 9355.

## Appendix: Data Sources and Definitions

1. *Panel regression.* Source: World Bank Development Indicators (WBDI), IFS (IMF) and OECD Statistical Compendium.

*Criteria for country selection:* We consider countries: a) that have a stock market and the value of the stocks traded as a share of GDP is larger than 1%, b) that have a population of more than 1 million people, c) that have a per capita income of more than \$1000 but less than \$18 000 and d) that are not engaged in war or civil war (Iran, Iraq, Yugoslavia and Lebanon). In addition, we consider Finland and Sweden. In total we have 39 countries. The sample covers 20 years, from 1980 to 1999. The panel is unbalanced, as not all series cover the full sample or are available for all countries.

*Variables included in the regression:* Real credit growth: IMF, International financial Statistics, CD-ROM. Claims on private sector by deposit money banks (Lines 22d..ZF), divided by CPI (Lines 64..ZF); N/T: Services: World Bank Development indicators (Code: NV.SRV.TETC.KN), Manufacturing: World Bank Development indicators (Code: NV.IND.MANF.KN), Construction: OECD Statistical Compendium, Main indicators of industrial activity and individual central banks. See Tornell and Westermann (2002a) for selection criteria for N and T- Sectors; Interest rate spread: World Bank Development indicators (Code: FR.INR.LNDP); Real interest rate: World Bank Development indicators (Code: FR.INR.RINR); Gross domestic fixed investment: World Bank Development indicators (Code: NE.GDI.FTOT.KN); Private Consumption: World Bank Development indicators (Code: NE.CON.PRVT.KN)

2. *Probit regressions.* Source: World Business Economic Survey (WBES).

*Variables included in the regressions:* label var gcf “General constraint—financing” 1=no obstacle 4=major obstacle; label var exp\_yn “Exports” 1=yes, 2=no; label var exp\_pct “% of output exported”; label var yr\_estb “year established”; label var gvt\_pct “Percent government ownership.”

3. *Currency Mismatch:* Sources: Bank of Argentina, Bank of Brazil, Bank of Korea, Bank of Peru, Bank of Turkey, BANXICO, Dirección General de Investigación Económica. Indicadores Económicos, May 1996 and 2001. Dziobek, Claudia, J. Kim Hobbs and David Marston, 2000, “Toward a Framework for Systemic Liquidity Policy,” IMF Working Paper 00/34 (Washington: International Monetary Fund). Takatoshi Ito and Luiz A. Pereira da Silva: "The Credit Crunch in Thailand during the 1997-98 Crisis: Theoretical and operational issues with the JEXIM survey". Steven Kamin, Philip Turner and Jozef Van't Dak\*, "The transmission mechanism of monetary policy in emerging market economies: an overview", mimeo, BIS conference, OECD Bank Profitability statistics.



# CESifo Working Paper Series

(for full list see [www.cesifo.de](http://www.cesifo.de))

---

- 896 Dennis C. Mueller, Rights and Citizenship in the European Union, March 2003
- 897 Jeremy Edwards, Gains from Trade in Tax Revenue and the Efficiency Case for Trade Taxes, March 2003
- 898 Rainer Fehn and Thomas Fuchs, Capital Market Institutions and Venture Capital: Do They Affect Unemployment and Labour Demand?, March 2003
- 899 Ronald MacDonald and Cezary Wójcik, Catching Up: The Role of Demand, Supply and Regulated Price Effects on the Real Exchange Rates of Four Accession Countries, March 2003
- 900 R. Selten, M. Schreckenberg, T. Pitz, T. Chmura, and S. Kube, Experiments and Simulations on Day-to-Day Route Choice-Behaviour, April 2003
- 901 Stergios Skaperdas, Restraining the Genuine *Homo Economicus*: Why the Economy Cannot be Divorced from its Governance, April 2003
- 902 Yin-Wong Cheung, Menzie D. Chinn, and Antonio Garcia Pascual, What Do We Know about Recent Exchange Rate Models? In-Sample Fit and Out-of-Sample Performance Evaluated, April 2003
- 903 Mika Widgrén, Enlargements and the Principles of Designing EU – Decision-Making Procedures, April 2003
- 904 Phornchanok Cumperayot, Dusting off the Perception of Risk and Returns in FOREX Markets, April 2003
- 905 Kai A Konrad, Inverse Campaigning, April 2003
- 906 Lars P. Feld and Stefan Voigt, Economic Growth and Judicial Independence: Cross Country Evidence Using a New Set of Indicators, April 2003
- 907 Giuseppe Bertola and Pietro Garibaldi, The Structure and History of Italian Unemployment, April 2003
- 908 Robert A.J. Dur and Otto H. Swank, Producing and Manipulating Information, April 2003
- 909 Christian Gollier, Collective Risk-Taking Decisions with Heterogeneous Beliefs, April 2003

- 910 Alexander F Wagner, Mathias Dufour, and Friedrich Schneider, Satisfaction not Guaranteed – Institutions and Satisfaction with Democracy in Western Europe, April 2003
- 911 Ngo Van Long, Raymond Riezman, and Antoine Soubeyran, Trade, Wage Gaps, and Specific Human Capital Accumulation, April 2003
- 912 Andrea Goldstein, Privatization in Italy 1993-2002: Goals, Institutions, Outcomes, and Outstanding Issues, April 2003
- 913 Rajshri Jayaraman and Mandar Oak, The Signaling Role of Municipal Currencies in Local Development, April 2003
- 914 Volker Grossmann, Managerial Job Assignment and Imperfect Competition in Asymmetric Equilibrium, April 2003
- 915 Christian Gollier and Richard Zeckhauser, Collective Investment Decision Making with Heterogeneous Time Preferences, April 2003
- 916 Thomas Moutos and William Scarth, Some Macroeconomic Consequences of Basic Income and Employment Subsidies, April 2003
- 917 Jan C. van Ours, Has the Dutch Miracle Come to an End?, April 2003
- 918 Bertil Holmlund, The Rise and Fall of Swedish Unemployment, April 2003
- 919 Bernd Huber and Marco Runkel, Optimal Design of Intergovernmental Grants under Asymmetric Information, April 2003
- 920 Klaus Wälde, Endogenous Business Cycles and Growth, April 2003
- 921 Ramon Castillo and Stergios Skaperdas, All in the Family or Public? Law and Appropriative Costs as Determinants of Ownership Structure, April 2003
- 922 Peter Fredriksson and Bertil Holmlund, Improving Incentives in Unemployment Insurance: A Review of Recent Research, April 2003
- 923 Bernard M.S. van Praag and Adam S. Booij, Risk Aversion and the Subjective Time Discount Rate: A Joint Approach, April 2003
- 924 Yin-Wong Cheung, Kon S. Lai, and Michael Bergman, Dissecting the PPP Puzzle: The Unconventional Roles of Nominal Exchange Rate and Price Adjustment, April 2003
- 925 Ugo Trivellato and Anna Giraldo, Assessing the ‘Choosiness’ of Job Seekers. An Exploratory Approach and Evidence for Italy, April 2003
- 926 Rudi Dornbusch and Stanley Fischer, International Financial Crises, April 2003
- 927 David-Jan Jansen and Jakob de Haan, Statements of ECB Officials and their Effect on the Level and Volatility of the Euro-Dollar Exchange Rate, April 2003

- 928 Mario Jametti and Thomas von Ungern-Sternberg, Assessing the Efficiency of an Insurance Provider – A Measurement Error Approach, April 2003
- 929 Paolo M. Panteghini and Guttorm Schjelderup, Competing for Foreign Direct Investments: A Real Options Approach, April 2003
- 930 Ansgar Belke, Rainer Fehn, and Neil Foster, Does Venture Capital Investment Spur Employment Growth?, April 2003
- 931 Assar Lindbeck, Sten Nyberg, and Jörgen W. Weibull, Social Norms and Welfare State Dynamics, April 2003
- 932 Myrna Wooders and Ben Zissimos, Hotelling Tax Competition, April 2003
- 933 Torben M. Andersen, From Excess to Shortage – Recent Developments in the Danish Labour Market, April 2003
- 934 Paolo M. Panteghini and Carlo Scarpa, Irreversible Investments and Regulatory Risk, April 2003
- 935 Henrik Jacobsen Kleven and Claus Thustrup Kreiner, The Marginal Cost of Public Funds in OECD Countries. Hours of Work Versus Labor Force Participation, April 2003
- 936 Klaus Adam, George W. Evans, and Seppo Honkapohja, Are Stationary Hyperinflation Paths Learnable?, April 2003
- 937 Ulrich Hange, Education Policy and Mobility: Some Basic Results, May 2003
- 938 Sören Blomquist and Vidar Christiansen, Is there a Case for Public Provision of Private Goods if Preferences are Heterogeneous? An Example with Day Care, May 2003
- 939 Hendrik Jürges, Kerstin Schneider, and Felix Büchel, The Effect of Central Exit Examinations on Student Achievement: Quasi-experimental Evidence from TIMSS Germany, May 2003
- 940 Samuel Bentolila and Juan F. Jimeno, Spanish Unemployment: The End of the Wild Ride?, May 2003
- 941 Thorsten Bayindir-Upmann and Anke Gerber, The Kalai-Smorodinsky Solution in Labor-Market Negotiations, May 2003
- 942 Ronnie Schöb, Workfare and Trade Unions: Labor Market Repercussions of Welfare Reform, May 2003
- 943 Marko Köthenbürger, Tax Competition in a Fiscal Union with Decentralized Leadership, May 2003
- 944 Albert Banal-Estañol, Inés Macho-Stadler, and Jo Seldeslachts, Mergers, Investment Decisions and Internal Organisation, May 2003

- 945 Kaniska Dam and David Pérez-Castrillo, The Principal-Agent Matching Market, May 2003
- 946 Ronnie Schöb, The Double Dividend Hypothesis of Environmental Taxes: A Survey, May 2003
- 947 Erkki Koskela and Mikko Puhakka, Stabilizing Competitive Cycles with Distortionary Taxation, May 2003
- 948 Steffen Huck and Kai A. Konrad, Strategic Trade Policy and Merger Profitability, May 2003
- 949 Frederick van der Ploeg, Beyond the Dogma of the Fixed Book Price Agreement, May 2003
- 950 Thomas Eichner and Rüdiger Pethig, A Microfoundation of Predator-Prey Dynamics, May 2003
- 951 Burkhard Heer and Bernd Süßmuth, Cold Progression and its Effects on Income Distribution, May 2003
- 952 Yu-Fu Chen and Michael Funke, Labour Demand in Germany: An Assessment of Non-Wage Labour Costs, May 2003
- 953 Hans Gersbach and Hans Haller, Competitive Markets, Collective Decisions and Group Formation, May 2003
- 954 Armin Falk, Urs Fischbacher, and Simon Gächter, Living in Two Neighborhoods – Social Interactions in the LAB, May 2003
- 955 Margarita Katsimi, Training, Job Security and Incentive Wages, May 2003
- 956 Clemens Fuest, Bernd Huber, and Jack Mintz, Capital Mobility and Tax Competition: A Survey, May 2003
- 957 Edward Castronova, The Price of ‘Man’ and ‘Woman’: A Hedonic Pricing Model of Avatar Attributes in a Synthetic World, June 2003
- 958 Laura Bottazzi and Marco Da Rin, Financing Entrepreneurial Firms in Europe: Facts, Issues, and Research Agenda, June 2003
- 959 Bruno S. Frey and Matthias Benz, Being Independent is a Great Thing: Subjective Evaluations of Self-Employment and Hierarchy, June 2003
- 960 Aaron Tornell and Frank Westermann, Credit Market Imperfections in Middle Income Countries, June 2003