

Clark, W. Steven

**Working Paper**

## Using Micro-Data to Assess Average Tax Rates

CESifo Working Paper, No. 966

**Provided in Cooperation with:**

Ifo Institute – Leibniz Institute for Economic Research at the University of Munich

*Suggested Citation:* Clark, W. Steven (2003) : Using Micro-Data to Assess Average Tax Rates, CESifo Working Paper, No. 966, Center for Economic Studies and ifo Institute (CESifo), Munich

This Version is available at:

<https://hdl.handle.net/10419/76326>

**Standard-Nutzungsbedingungen:**

Die Dokumente auf EconStor dürfen zu eigenen wissenschaftlichen Zwecken und zum Privatgebrauch gespeichert und kopiert werden.

Sie dürfen die Dokumente nicht für öffentliche oder kommerzielle Zwecke vervielfältigen, öffentlich ausstellen, öffentlich zugänglich machen, vertreiben oder anderweitig nutzen.

Sofern die Verfasser die Dokumente unter Open-Content-Lizenzen (insbesondere CC-Lizenzen) zur Verfügung gestellt haben sollten, gelten abweichend von diesen Nutzungsbedingungen die in der dort genannten Lizenz gewährten Nutzungsrechte.

**Terms of use:**

*Documents in EconStor may be saved and copied for your personal and scholarly purposes.*

*You are not to copy documents for public or commercial purposes, to exhibit the documents publicly, to make them publicly available on the internet, or to distribute or otherwise use the documents in public.*

*If the documents have been made available under an Open Content Licence (especially Creative Commons Licences), you may exercise further usage rights as specified in the indicated licence.*

# USING MICRO-DATA TO ASSESS AVERAGE TAX RATES

W. STEVEN CLARK

CESIFO WORKING PAPER NO. 966

CATEGORY 1: PUBLIC FINANCE

JUNE 2003

PRESENTED AT CESIFO CONFERENCE ON MEASURING THE TAX BURDEN ON LABOUR AND  
CAPITAL, VENICE, JULY 2002

*An electronic version of the paper may be downloaded*

- *from the SSRN website:* [www.SSRN.com](http://www.SSRN.com)
- *from the CESifo website:* [www.CESifo.de](http://www.CESifo.de)

# USING MICRO-DATA TO ASSESS AVERAGE TAX RATES

## Abstract

Measuring effective tax rates using tax revenue data is attractive, given that revenues collected capture the net effect of tax provisions and taxpayer behaviour that are difficult to model. Yet reliance on aggregate tax and income data requires restrictive assumptions and significantly limits the scope of analysis. This paper considers advantages of relying on micro-data gathered from tax returns to assess average tax rates on labour, capital and transfer income and presents some illustrative results. The analysis emphasises the importance of matching taxpayerlevel information to income flows, and notes difficulties in interpreting tax rates that average over all taxpayers. It also illustrates the importance of loss adjustments in measuring effective tax rates on capital income, and reports evidence of significant variation in corporate average tax rates by sector and firm size.

JEL Code: H2, H3.

*W. Steven Clark*  
*Centre for Tax Policy and Administration*  
*OECD*  
*2, rue André Pascal*  
*75775 Paris Cedex 16*  
*France*  
*steven.clark@oecd.org*

The author is grateful to Gaëtan Nicodeme and other participants of the CESifo Venice Summer Institute Workshop on “Measuring the Tax Burden on Capital and Labour”, 15-16 July 2002, for their comments on an earlier draft. The views expressed here are the author’s own and do not necessarily reflect the views of the OECD or its Member countries.

## A) INTRODUCTION

This paper reports work by Delegates of Working Party No.2 of the OECD Committee on Fiscal Affairs (CFA) examining the use of taxpayer-level “micro-data” to assess average tax rates on various income types. The work may be seen as follow-up to that published in *Tax Burdens—Alternative Measures*, OECD Tax Policy Studies No.2, which examines various “backward-looking” and “forward-looking” tax burden measures.<sup>1</sup> The purpose of the exercise is to examine in greater detail backward-looking measures, and in particular, to draw out relative strengths of tax revenue-based approaches relying on micro-data collected from personal and corporate income tax returns, as an alternative to measures based on aggregate tax revenue data as reported in OECD *Revenue Statistics*.

Interest in the calculation of average tax rates on various categories of income, for example labour or capital income, measured using tax revenue data, can be traced to at least three considerations. First, other often-cited tax rates, including statutory tax rates, and marginal and average effective tax rates based on models of taxpayer behaviour, may provide limited information on tax burdens on labour and capital income. Depending on the modelling approach, forward-looking measures tend to give less than full consideration of certain factors that influence the amount of tax collected, and therefore may provide imprecise indicators of tax burdens on employment, savings and investment activities.

*Statutory tax rates*, while relevant to tax-planning incentives, work effort and investment decisions, ignore special tax allowances, tax credits and other provisions important to effective tax rate calculations. *Marginal effective tax rates* (METRs), while taking into account a number of factors thought relevant to work and investment behaviour, ignore factors pertaining to infra-marginal activities and tax-planning, which may be important in assessing tax burdens and incentive effects of tax systems. Similarly, forward-looking *average effective tax rates* derived for capital income, while capturing the taxation of infra-marginal rents and provisions relevant to the after-tax cost of acquiring capital, take less than full account of tax-minimising strategies, the influence of business loss carryover provisions, and other factors determining actual tax burdens on income from capital.

Backward-looking *average tax rates*, on the other hand, measured using actual revenue figures, take into account the effects of statutory income tax rates, tax deductions and tax credits in determining the tax take. They also take into account the effects of tax planning, tax relief provided by law or discretionary administrative practice, as well as non-compliance. Thus revenue-based average tax rates in principle offer certain advantages in measuring actual tax burdens. However, as backward-looking measures, they may give misleading information on effective taxation of returns on prospective investment. On the other hand, given that they account for tax planning, they may be useful in assessing the likely tax burden on past investment. They could be used, for example, as a check against model-based average effective tax rate (AETR) measures that are properly forward-looking, but ignore factors that may be of critical importance in particular cases.

In addition to these possible advantages encouraging the use of actual tax return data, there is a view, perhaps mistaken, that average tax rate analysis based on revenue data is intrinsically a simpler exercise than model-based approaches, for example AETR analysis. In particular, there is no need to delve into the detailed rules that go into the determination of capital cost allowances, investment tax credits, the cost of financial capital, and so on, that must be encoded into a METR or AETR formula. The net effect of these and other rules on tax burdens is captured in the (numerator) measure of tax revenues collected.

Third, it is recognised that, whatever the relative strengths of average tax rates based on aggregate revenue data, such numbers will be generated, quoted, interpreted and used to influence tax policy debate. Given this, an interest emerges in developing a better understanding of what goes into the making of average tax rates based on aggregate data, and what can and cannot be made of them.

With this background, Delegates of Working Party No.2 agreed to a project that would consider and implement frameworks relying on *micro-level data* to assess average tax rates on various categories of income. This work would build on earlier work undertaken by the group in this area.<sup>2</sup> The results from the project would be of interest in their own right, while at the same time could shed light on the extent to which average tax rates derived from aggregate (e.g. *Revenue Statistics* and *National Accounts*) data could be used to inform policy debate. A number

of Delegates volunteered (or were asked to volunteer!) to assist in this project, relying on confidential data drawn from tax returns. This paper provides a summary of work undertaken by Delegates from Austria, Belgium, Canada, Denmark and Norway, reporting on the use of taxpayer-level data to assess average tax rates on labour, capital, and transfer income.

Section B) of the paper reviews work by Norway and Denmark focusing on advantages that micro-data offer in isolating tax revenues raised from various types of income. This precision enables a check on results derived from aggregate data, and possibly more accurate estimates of economy-wide average tax rates on labour, capital and transfer income. This section also reviews work by Austria that serves to illustrate the strengths of micro-data in permitting the computation of average tax rates on labour income at various wage levels, and across different household types.

Section C) reports work by Belgium and Canada analysing how micro-data can be used to calculate average tax rates at the corporate level on income from capital. This work is important, given widespread policy interest in assessing average corporate tax rates, and given the general inability of aggregate data to generate a meaningful annual corporate average tax rate series. The considerations also have implications for implicit capital tax rates derived from aggregate data. A number of examples are provided to illustrate the impact of cyclical effects on corporate tax burden measures, the importance of correcting for business losses in average tax rate calculations, and possible adjustments using micro-data. This section also reports variations in tax rates at the industry level and by firm size. Section D) briefly concludes.

## **B) ASSESSING AVERAGE TAX RATES ON PERSONAL INCOME**

A key attribute of micro-data is the flexibility it provides, enabling the modeller to derive average tax rates at various levels of aggregation ranging from the individual taxpayer to the overall economy level. While a disaggregate view is required to address many policy-related questions, figures reporting levels and trends in the *economy-wide* average tax rate on different categories of income may also be of interest – for example, to address the sharing of tax burdens between labour and capital, and so the overall ‘fairness’ of the tax system. Macro-modellers may also be interested in single, economy-wide tax rate series for labour and capital income. This

section considers advantages of relying on micro-data to assess economy-wide average tax rates on labour income, with reference to the Norwegian tax system. It also reports on economy-wide average tax rates on transfer income based on micro-data, with illustrations by Denmark. These strengths are assessed relative to the implicit tax rate approach that relies on aggregate *Revenue Statistics* and *National Accounts* data.<sup>3</sup>

A main concern with implicit tax rate analysis is the relatively crude manner in which revenues from a given comprehensive or schedular personal income tax are allocated across (attributed to) different categories of income included in the tax base. The implicit tax rate method in effect assumes that a single economy-wide average tax rate on personal income may be taken as the effective tax rate on all income included in the personal tax base for all taxpayers.<sup>4</sup> This assumption is generally unrealistic, and calls for more detailed work as considered in this paper. As reviewed below, micro-data permit a more targeted assessment of the amount of personal income tax revenue raised from labour income and other types of income. This in turn may enable improved estimates of average tax rates by income type, or more generally, provide results that confirm or lead one to reconsider certain results based on aggregate data.

Obtaining good estimates of the (notional) allocation of personal tax revenues across income types, to calculate economy-wide average tax rates on labour, capital and other income, is important, given the importance of this tax. In OECD Europe, taxes on personal income accounted for roughly one-quarter of total tax revenues in 2000. In OECD America, almost 40 per cent of revenues were raised from personal income tax, while in OECD Pacific the figure was about 30 per cent.

In addition to offering possible refinements to economy-wide average tax rate measures, micro-data enable *disaggregate analysis* to guide policy-making. For example, in assessing distribution effects of the tax system, and the impact of taxation on labour markets, attention may be given to effective tax rates on wage income measured separately for various taxpayer groups that differ by income level and household structure. The ability to measure average tax rates for different taxpayer groups is important to the extent that effective tax rates vary across taxpayer groups (i.e. the tax wedge depends on the income level and the household structure). It is also

important to the extent that the behavioural response to a given tax wedge differs depending on the taxpayer situation.<sup>5</sup>

To illustrate this point, work by Austria is reviewed which finds significant variability in average tax rates on wage income across wage levels. This raises questions over the use of implicit labour tax rates to assess the tax burden on labour income taxed on a progressive basis, as reliance on aggregate data means that only a single summary labour tax burden measure may be assessed for a given country in a given year. Attempts to use average tax rates to assess fairness in the tax system are therefore severely limited without information on the distribution of the tax burden. The paper argues that assessments of the possible impact of the tax system on labour market participation are strengthened where one is able to measure average tax rates on labour income at various income levels and for different taxpayer groups.

Analysis by Austria shows that an average tax rate measure, even if derived for a tax that applies to one type of income alone, for example a wage tax on labour income, may not be particularly informative for policy purposes where the rate is derived from aggregated data. Problems of interpretation are shown to arise where the average tax rate measure is sensitive to the distribution of labour income, as for example under a progressive tax rate structure. These problems may become pressing where employment concerns are concentrated on blue-collar workers, for example, earning an average production wage.

### **1) Isolating Revenues from Different Income Categories**

Examples by Norway and Denmark illustrate how micro-data may permit more direct measurement of the amount of tax revenue raised from different categories or types of income. There may be policy interest, for example, in measuring average tax rates on capital income, or on labour income, or more narrowly on wage and salary income, or transfer income.<sup>6</sup> In such cases, two advantages may be identified when relying on micro-data – one in relation to the treatment of taxes that include a single category or type of income in the tax base, and another in relation to taxes with two or more types of income in the tax base and where a notional revenue split is required.

#### ***a) Identification of taxes levied on a single income category***



Where there is policy interest in measuring the effective tax rate on a specific category of income, and a given tax is levied on that income category alone (as can occur under a schedular tax system), in general the revenues from that tax should be accounted for in their entirety when measuring an average tax rate for that income. However, when relying on aggregate personal income tax revenue data, the revenues from such a tax are typically factored in only partially. Under the implicit tax rate approach, aggregate personal tax revenues are scaled to approximate a notional labour tax component. In contrast, the use of micro-data can permit the identification and separate measurement of the relevant tax revenue amount. This precision holds out certain advantages, as the implications of partial inclusion are generally unknown, leading to uncertainty over the accuracy of implicit tax rate results.

The Norwegian dual income tax example illustrates this advantage. Under this schedular system, tax is imposed at a flat (proportional) rate on ordinary income, which includes labour and capital income.<sup>7</sup> Separately, an income surtax is imposed under a two-step progressive rate schedule on gross labour income alone (alternatively called the tax on personal income). Micro-data can isolate the amount of tax collected on labour income by this income surtax, which is not possible when working with aggregate individual income tax data – for example, when relying on *Revenue Statistics* data that combines tax on ordinary income, tax on personal (labour) income, and tax on capital income, and reports a single aggregate personal income tax revenue amount in a given year.<sup>8</sup>

To illustrate, consider the following equation set relying on micro-data to measure the total amount of tax imposed in Norway in a given year on labour income:

$$IT(\text{labour}) = \sum_j (w_j^L \cdot OT_j) + S + SSC \quad (1a)$$

$$S = \sum_j S_j \quad (1b)$$

$$SSC = \sum_j SSC_j^{ee} + \sum_j SSC_j^{se} + \sum_j SSC_j^{er} \quad (1c)$$

where the summation term  $\sum_j$  is over all individual taxpayers (or alternatively a representative weighted sample of  $n$  taxpayers, with  $j=1, \dots, n$ ).

The first term in equation (1a) estimates the total amount of tax on ordinary income (OT) derived from the labour income component of the ordinary income tax base, using taxpayer-specific weights  $w_j^L$  measuring the fraction of net ordinary income that is labour income.<sup>9</sup> The third term measures aggregate social security contributions collected on labour income, with the components shown in equation (1c). The first two, social security contributions of employees ( $\sum_j \text{SSC}^{\text{ee}}_j$ ) and the self-employed ( $\sum_j \text{SSC}^{\text{se}}_j$ ), are levied on labour income.<sup>10</sup> The third, employer social security contributions ( $\sum_j \text{SSC}^{\text{er}}_j$ ), is levied on wage and salaries alone. All three contributions relate to labour income, and may be included in full in estimating the total amount of tax imposed on labour income.

This sub-section focuses on the second term S in (1a), measuring income surtax revenues.<sup>11</sup> As with social security contributions, the surtax is imposed on labour income alone, and should be included in full when estimating total tax revenues raised on labour income. Working with micro-data, this precision is possible, as reflected in equation (1a).

In contrast, the implicit tax rate approach factors in some fraction  $f^L$  of total personal income tax revenues – comprised of ordinary income tax plus income surtax revenues – in measuring the total amount of tax imposed on labour income, as follows:<sup>12</sup>

$$\text{IT}^{(\text{agg})}(\text{labour}) = f^L(\text{OT} + \text{S}) + \text{SSC} \quad (2)$$

where OT denotes total tax revenues on ordinary income, S denotes total income surtax revenues, and SSC denotes total social security contributions.

When comparing equations (1a) and (2), two differences are evident. First, the micro-data approach allows one to rely on taxpayer-specific weights ( $w_j^L$ ), rather than an overall average weight ( $f^L$ ), when estimating the labour component of the tax on ordinary income. The advantages of relying on taxpayer-specific weights are taken up in section 1)b).

Second, whereas the income surtax (tax on personal (labour) income) is accounted for in full in equation (1a), only some fraction ( $f^L$ ) of S is included in the implicit tax rate model, with the weight ( $f^L$ ) assessed as the percentage of total individual income that is labour income. As noted, given that the base of S is labour income alone, the surtax amount should be included in full in

measuring total tax imposed on labour income, to feed into the corresponding calculation of the average tax rate on labour.

When working with aggregate data, the implications are generally unclear of partially rather than fully including the income surtax. The potential for under-estimating labour tax revenues (and thus the average tax rate on labour income) increases the larger is the contribution of the surtax to total tax revenues collected on labour income. However, the percentage contribution of the income surtax is uncertain where one only has access to aggregate personal income tax revenue statistics, as reported in *Revenue Statistics*.

#### *Analysis by Norway of average tax rates on labour income*

Work by Norway investigates the importance of this particular advantage of micro-data in assessing the average tax rate on labour income, using a variant of equation set (1), as follows:<sup>13</sup>

$$\tau^{L(\text{Norway})} = (w^L \cdot OT + S + SSC) / (W + SSC^{er}) \quad (3a)$$

$$w^L = W / OY \quad (3b)$$

where the first term ( $w^L \cdot OT$ ) gives an estimate of the labour portion of total tax revenues raised on ordinary income,  $S$  is total income surtax,  $SSC$  is total social security contributions,  $SSC^{er}$  is total employer social security contributions, and  $W$  denotes labour income. The scaling factor used to weight total tax on ordinary income is given by (3b), where  $W$  includes total wages and salaries of employees plus the total labour portion of remuneration of the self-employed, and  $OY$  measures total ordinary income.<sup>14</sup> The average tax rate on labour income (including pension income) is estimated to be 33.1 per cent on average over the period 1997-1999 when relying on tax return data.

Under the implicit tax rate approach, the income surtax  $S$  is factored into the numerator only in part, as follows:

$$\tau^{L(\text{implicit})} = (w^L \cdot (OT + S) + SSC) / (W + SSC^{er}) \quad (4)$$

When relying on aggregate data, the average effective tax rate on labour is estimated to be 33.0 per cent in the same period. Thus, the micro-data are useful in this instance in lending

support to the results derived from aggregate data. In particular, including the income surtax in part rather than in full is shown to not materially affect estimates of the average tax rate on labour income in Norway over the years considered. This finding reflects the relatively low percentage contribution of the surtax to the total tax on labour income. Conversely, in systems where a tax levied on a single income category accounts for a more significant portion of total tax on that income (with that amount ‘buried’ in aggregate tax data), the use of micro-data could provide for more precise average tax rate measures.

### ***b) Treatment of taxes levied on multiple income types***

Micro-data may also enable more precise measurement of the amount of tax imposed on a given category or type of income by a tax that includes more than one type of income in its tax base. Depending on what average tax rate is being measured, interest arises in accurately measuring tax collected, for example, on labour income, or wage income, or transfer income. In such cases, micro data allows one to link features of a tax system that treat different types of income differently to the distribution of these income flows across taxpayers subject to varying average tax rates.

To take an example, when tasked with measuring an average tax rate on labour income, and given the need to incorporate an estimate of the (notional) amount of tax revenue raised from a broad-based tax that can be attributed to labour income, the use of taxpayer-level data can more closely assess the influence of special features targeted at labour income.<sup>15</sup> This section draws on sub-section 1)a) focusing on the Norwegian tax system, and examines how micro-data can be used to measure the amount of total tax on ordinary income that can be tied to labour income, or more narrowly, wage income.<sup>16</sup>

Consider first a simple framework that illustrates how micro-data may be used to estimate the (notional) amount of tax revenues raised by a given tax on a specific type of income (e.g. personal income tax on wage income) where that income is included with other types of income in the tax base. The general results obtained can be compared with those under the implicit tax rate methodology. While the analysis focuses on measuring an average tax rate on labour income, the issues raised generally carry over when assessing the tax burden on other types of income included in a broadly defined (pooled) tax base. We then turn to an application of the general

approach by Denmark, which considers a broad-based personal income tax and focuses on assessing personal tax revenues derived from pension and benefit income.

The illustrative framework assumes an economy with two taxpayers (1 and 2) and a single tax (e.g. personal income tax) levied on taxable income that includes labour income  $W_j$  and ‘other’ income  $Y_j$ , where  $j$  is an index over taxpayers ( $j=1,2$ ).

### *Taxpayer 1*

We can model taxpayer 1’s personal income tax liability in a general fashion as follows:

$$PIT_1 = t(W_1 + Y_1 - \lambda E_1 - A) - C_1 \quad (5a)$$

where  $t$  denotes the personal income tax rate,<sup>17</sup>  $W_1$  measures labour income,  $Y_1$  measures ‘other’ taxable income,  $\lambda E_1$  measures deductible expenses in earning ‘other’ income with the deductible portion  $\lambda$  given by the tax code,  $A$  measures a basic tax allowance, and  $C_1$  denotes a general or targeted tax credit.<sup>18</sup>

The portion of taxpayer 1’s personal income tax liability linked to labour income can be estimated as the portion that labour income is to the taxpayer’s total economic (or accounting) income:

$$PIT(lab)_1 = PIT_1 \cdot (W_1 / (W_1 + Y_1 - E_1)) = f^L_1 \cdot PIT_1. \quad (5b)$$

The amount raised from ‘other’ income is given by:

$$PIT(oth)_1 = PIT_1 \cdot ((Y_1 - E_1) / (W_1 + Y_1 - E_1)) = f^O_1 \cdot PIT_1. \quad (5c)$$

Consider the income weights for labour (wage) and ‘other’ income for taxpayer 1:

$$f^L_1 = W_1 / (W_1 + Y_1 - E_1) \quad (5d)$$

$$f^O_1 = (Y_1 - E_1) / (W_1 + Y_1 - E_1) \quad (5e)$$

These weights  $f_1^L$  and  $f_1^O$ , applied to personal income tax, are taxpayer-specific and are determined *without* reference to the deduction scaling factor  $\lambda$ , the standard allowance or the tax credit. The measurement of the weights requires an assignment of the expense  $E_1$  to the relevant income type (in the example,  $Y_1$ ). Where an expense (negative income) item relates to more than one type of income, it is necessary to allocate the expense across the relevant income amounts.

The denominator of the weights ( $W_1+Y_1-E_1$ ) is comprised of flows that establish taxpayer 1's economic income, as opposed to the individual's net income for tax purposes. For practical purposes, the modeller may resort to an accounting measure of net income. The counterpart to this accounting basis at the economy wide level is household income on a *National Accounts* basis. Tax provisions relevant to measuring the tax base are not taken into account in the measurement of the denominator of the weights. The effect of tax provisions is captured through their impact on reported tax revenues (PIT).

Personal tax raised on a taxpayer's labour income can be expressed as a fraction ( $f_1^L$ ) of personal income tax (see equation (5b)), or alternatively as a percentage  $\tau_1$  of that taxpayer's labour income  $W_1$  where  $\tau_1$  is *taxpayer 1's average tax rate* on personal income:

$$\tau_1 = \text{PIT}_1 / (W_1 + Y_1 - E_1) \quad (5f)$$

### *Taxpayer 2*

Modelling taxpayer 2's income tax liability in an analogous fashion we have:

$$\text{PIT}_2 = t(W_2 + Y_2 - \lambda E_2 - A) - C_2 \quad (6a)$$

$$\text{PIT}(\text{lab})_2 = f_2^L \cdot \text{PIT}_2 = \tau_2 \cdot W_2 \quad (6b)$$

$$\text{PIT}(\text{oth})_2 = f_2^O \cdot \text{PIT}_2 = \tau_2 \cdot (Y_2 - E_2) \quad (6c)$$

$$f_2^L = W_2 / (W_2 + Y_2 - E_2) \quad (6d)$$

$$f_2^O = (Y_2 - E_2) / (W_2 + Y_2 - E_2) \quad (6e)$$

$$\tau_2 = \text{PIT}_2 / (W_2 + Y_2 - E_2) \quad (6f)$$

For each taxpayer, the tax rate  $\tau_j$  is an average rate over the taxpayer's labour and 'other' income – in other words, income-specific tax rates for each taxpayer are *not* derived in this framework.<sup>19</sup> However, the rates are taxpayer specific, with  $\tau_j$  reflecting taxpayer  $j$ 's taxable position. In particular, this rate depends on the *level* of taxpayer  $j$ 's total taxable income where the tax rate schedule denoted by  $t$  is progressive and/or where standard (fixed) allowances are provided. Individual tax rates may also differ across taxpayers depending on the *composition* of income to the extent that personal income tax deductions and/or credits are targeted at (or earned in respect of) different income types, and income composition varies across taxpayers.

In the context of the model, when comparing results for taxpayer 1 and taxpayer 2 (i.e. comparing equations (5a) and (6a), and (5f) and (6f)), the average income tax rate for taxpayer 1 ( $\tau_1$ ) can differ from that for taxpayer 2 ( $\tau_2$ ) to the extent that:

- taxpayer 1 and taxpayer 2 have *different levels of (pre-tax) income*, and the personal tax rate structure ( $t$ ) is progressive and/or standard allowances ( $A$ ) are provided; and/or
- taxpayer 1 and taxpayer 2 have the same (pre-tax) income level, but *different income composition*, and different tax payable due to income- or expenditure-specific tax deductions and/or tax credit claims (as denoted by  $\lambda E_i$  and  $C_i$ ).

While the approach measures a single average income tax rate for a given taxpayer in a given year, the micro-data allow one to assess different average tax rates for different taxpayers, and thereby enable notional tax revenue and overall average tax rate estimates for different categories of income that take into account different taxpayer situations.

#### *Measuring average tax rates on labour income*

Using these ***micro data*** results, an average tax rate on labour income, and an average tax rate on 'other' income can be derived taking into account potentially important taxpayer-level information. For illustrative purposes, consider the measurement of the average tax rate on labour income, which we can denote by  $\tau^{L(\text{micro})}$ . This rate is determined by adding the taxpayer-level (notional) amounts of personal tax on labour income and dividing by aggregate labour income, as follows:

$$\tau^{L(\text{micro})} = (\tau_1 \cdot W_1 + \tau_2 \cdot W_2) / (W_1 + W_2) \quad (7a)$$

where the taxpayer-level personal tax rates are given by:

$$\tau_i = \text{PIT}_i / (W_i + Y_i - E_i) \quad (i=1,2) \quad (7b)$$

The point to emphasise is that the estimate of total tax revenues derived from labour income, appearing in the numerator of the average tax rate calculation (7a), is determined using taxpayer-specific (rather than overall) average personal income tax rates. In particular, labour income at the taxpayer-level is weighted using taxpayer-specific tax rates ( $\tau_i$ ).

In contrast, when working with *aggregate data*, as under the implicit tax rate approach, the estimate of total tax revenues derived from labour income is derived by applying a single (overall) taxpayer average personal income tax rate  $\tau^{\text{agg}}$ , as follows:

$$\tau^{L(\text{impl})} = \tau^{\text{agg}} \cdot (W_1 + W_2) / (W_1 + W_2) \quad (8a)$$

where

$$\tau^{\text{agg}} = \cdot \sum \text{PIT}_i / \sum (W_i + Y_i - E_i) \quad (8b)$$

Compare the two approaches. The micro-data approach links features of the tax system determining average income tax rates of individual wage earners with the distribution of wage income across taxpayers (similarly for ‘other’ income). In estimating the notional amount of revenue raised from labour income, the micro-data framework weights labour income at the taxpayer level with taxpayer-specific tax rates. Depending on the distribution of wage income in the economy, and the variation in average tax rates at the taxpayer level, the resulting estimate of the notional amount of tax revenue raised on labour income could differ markedly from that obtained when relying on an overall economy-wide average tax rate, as under the implicit tax rate approach.

To elaborate this point, consider the situation where labour income is concentrated in the hands of taxpayer 1 (with ‘other’ income in the hands of taxpayer 2), and taxpayer 1’s average tax rate  $\tau_1$  is lower than that of taxpayer 2 (and thus lower than the overall rate  $\tau^{\text{agg}}$ ). Then weighting



labour income by  $\tau_1$  would provide a closer approximation of tax revenues raised from labour income than relying on  $\tau^{\text{agg}}$ . In practice, wage income is dispersed among taxpayers and the importance of using taxpayer-specific rather than overall economy-wide average tax rates is an empirical question. Yet the use of taxpayer-level data holds out the advantage where such differences are important.

*Analysis by Denmark of average effective tax rates on transfer income*

Work by Denmark analyses how taxpayer-level data can be used to disaggregate personal income tax revenues into notional component parts, and derive corresponding average effective tax rates, using an approach along the lines set out in the simple framework discussed above. The results reported in Table 1 show significant variation in average tax rates across different types of transfer income, indicating that the distribution of transfer income across taxpayers differs depending on the specific type of transfer income. The results also show the relative importance of tax allowances for different taxpayers earning different types of transfer income. For example, tax allowances are shown to have little effect on average effective tax rates on social pensions and low income transfers, while lowering rates on unemployment benefits and sickness benefits by 4 to 5 percentage points.

**TABLE 1**  
**Average Effective Tax Rates on**  
**Various Types of Social Transfers, Denmark**

Type of transfer income	Average effective tax rate	
	<i>Without tax allowances</i>	<i>With tax allowances</i>
Social pensions	29.25	29.20
Supplementary pension	31.46	31.38
Civil servants pension	38.72	38.47
Early retirement pension	31.60	30.81
Sickness benefits	32.29	28.25
Parental leave	28.50	22.26
Educational allowance	20.96	20.07
Support, start enterprise	28.91	25.15
Unemployment benefit	31.98	26.49
Early retirement unemployment	31.46	28.31
Low income	29.12	28.57

Source: Ministry of Finance, Denmark.

## **2) Addressing Progressivity and Income Distribution Effects**

Average tax rate measures for labour income may be of policy interest where there are concerns that the tax system is not sufficiently progressive, or more generally does not adequately address income distribution concerns. Such measures may also be of interest where concerns exist that the tax system is creating a large wedge between gross (pre-tax) labour costs and the after-tax take-home pay of workers, discouraging labour market participation. However, measuring a representative average tax rate is difficult when relying on aggregate data, as the net impact of progressive tax rate structures, tax allowances and tax credits can differ, sometimes significantly, depending on the gross wage level and household structure.

For example, the effect of a fixed allowance in offsetting tax is relatively more pronounced at low earnings. Tax allowances and credits may be subject to thresholds and have tapering (phasing-in and phasing-out) provisions, where again the relative importance of such measures depends on gross earnings. Where the average tax rate on labour income varies with gross income, the relevance of an average tax rate derived using aggregate data is less than clear. An analysis of Austrian data shows that average tax rates on labour income derived on the basis of aggregated tax revenue data are representative for only a narrow band of wage earners. In contrast, reliance on micro-data can provide a range of effective tax rate calculations of policy interest.

Austrian micro-data gather separate series for taxes assessed on labour income, including wage taxes, (final) income taxes, and social security contributions. While final income tax assessments determine the final income tax burden on labour income, the wage tax statistics (reflecting a prepayment of income tax) offer timely insights into average tax rates on labour income at various wage levels. The figures closely approximate the ‘true’ tax burden figures where final assessments result in minimal adjustments, and offer the advantage of being available a year before the final income tax data. Furthermore, wage tax statistics are compiled separately for employees (Table 2) and pensioners (Table 3). This feature is attractive where one is interested in examining the impact of the tax system on employment incentives for a particular taxpayer group (employees), with reference to effective tax rates on current wages (as opposed to pension income taxed as ordinary income). The data show that removing pensioners from the

sample sharpens the focus of the exercise, with total wage tax paid by pensioners amounting to over 48 billion ATS in 1999, or roughly 23 per cent of total wage tax collected in that year. Moreover, effective tax rates are shown to differ between pensioner and employee groups at various income levels.

The average tax rate (ATR) analysis for employees in Table 2 derives two average tax rate series, one for wage taxes ( $\tau^L_I$ ) and a second for employee social security contributions ( $\tau^L_{II}$ ):

$$\tau^L_I = WT/W \quad (9)$$

$$\tau^L_{II} = SSC^{ee}/W \quad (10)$$

where WT measures wages taxes withheld on wage income,  $SSC^{ee}$  measures employee social security contributions, and W measures gross wages and salaries of employees (wages and salaries recorded net of  $SSC^{ee}$ , plus  $SSC^{ee}$ ). Employer social security contributions and payroll taxes are not included (although these could be factored in). Instead, the analysis focuses on wage tax and employee social security contribution components of average effective tax rates on labour, and draws out a number of useful observations.<sup>20</sup>

First, the results reveal that a single average tax rate derived using aggregate taxpayer data provides limited tax burden information in the Austrian example, even where the relevant tax revenues on labour income can be isolated (as they can, in this example in the case of the wage tax). In particular, Table 2 shows that the average tax rate on wage income, derived at an aggregate level for all employees as a group, at 17.3 per cent, corresponds to the average tax rate on wages of taxpayers with gross income of roughly 550 thousand ATS. This rate is nearly double that applicable to those with average wage earnings of 300 thousand ATS, and triple the rate applicable to those with gross earnings in the range of 50-200 thousand ATS. Given this variability, it is unclear how one should interpret in a policy context the overall figure of 17.3 per cent. Taking this as an estimate of the tax burden on ‘labour’ to be compared with that on ‘capital’ would be difficult to explain, given the variability in observed results across income levels.

TABLE 2

## ATR Results for Employees based on Micro-data (Austria, Wage tax Statistics, 1999)

Gross income 000's ATS	Gross Wages and Salaries			Wage Tax			Social Security Contributions					
	Persons	mill.ATS	Per head	Persons	Mill.ATS	Per head	ATR	DTR	Persons	mill.ATS	per head	ATR
0-50	459915	9727	21.1	224916	241	1.1	5.1%		341154	1174	3.4	16.3%
50-100	287951	21579	74.9	151315	601	4.0	5.3%	5.4%	269805	3228	12.0	16.0%
100-150	275379	34394	124.9	172310	1050	6.1	4.9%	4.2%	273443	5714	20.9	16.7%
150-200	281671	49416	175.4	262406	2276	8.7	4.9%	5.1%	280842	8524	30.4	17.3%
200-250	317780	71736	225.7	315526	5217	16.5	7.3%	15.6%	317212	12482	39.3	17.4%
250-300	372715	102622	275.3	371921	9558	25.7	9.3%	18.5%	372249	17834	47.9	17.4%
300-350	357645	116069	324.5	357447	12772	35.7	11.0%	20.4%	357260	20076	56.2	17.3%
350-400	292265	109239	373.8	292161	13556	46.4	12.4%	21.7%	291954	18728	64.1	17.2%
400-450	215355	91257	423.8	215226	12555	58.3	13.8%	23.9%	215057	15437	71.8	16.9%
450-500	157145	74440	473.7	157046	11335	72.2	15.2%	27.7%	156924	12354	78.7	16.6%
500-600	205798	112314	545.7	205558	19535	95.0	17.4%	31.7%	205346	18133	88.3	16.2%
600-700	119999	77413	645.1	119721	15367	128.4	19.9%	33.5%	119533	11718	98.0	15.2%
700-800	71179	53115	746.2	70866	11537	162.8	21.8%	34.1%	70906	7300	103.0	13.8%
800-900	45304	38358	846.7	45101	8852	196.3	23.2%	33.3%	45078	4797	106.4	12.6%
900-1000	29720	28146	947.0	29580	6788	229.5	24.2%	33.1%	29526	3214	108.9	11.5%
100-1400	52229	60320	1154.9	51865	15705	302.8	26.2%	35.3%	51768	5815	112.3	9.7%
1400-2100	19944	32982	1653.7	19825	9354	471.8	28.5%	33.9%	19686	2244	114.0	6.9%
2100-2800	4725	11263	2383.7	4699	3292	700.6	29.4%	31.3%	4604	533	115.8	4.9%
2800-3500	1778	5506	3096.7	1774	1683	948.7	30.6%	34.8%	1718	200	116.4	3.8%
3500 & over	2207	12764	5783.4	2204	4018	1823.0	31.5%	32.5%	2132	263	123.4	2.1%
	3570704	1112660	311.6	3071467	165292	53.8	17.3%		3426197	169768	49.5	15.9%

Average (APW)  
income

Median income

ATR(agg)

Source: Ministry of Finance, Austria.  
Note: ATR= average tax rate; DTR= 'discrete change' tax rate

TABLE 3

## ATR Results for Pensioners based on Micro-data (Austria, Wage tax Statistics, 1999)

Gross income 000's ATS	Gross Wages and Salaries			Wage Tax			
	Persons	mill.ATS	per head	Persons	Mill.ATS	per head	DTR
0-50	290359	6005	20.7	13001	30	2.3	11.2%
50-100	257654	19656	76.3	18411	85	4.6	6.1%
100-150	422728	51443	121.7	83697	259	3.1	2.5%
150-200	264056	45890	173.8	240294	2575	10.7	6.2%
200-250	213786	47955	224.3	211489	4868	23.0	3%
250-300	170819	46733	273.6	170228	6102	35.8	13.1%
300-350	123017	39846	323.9	122829	6080	49.5	15.3%
350-400	84085	31271	371.9	83980	5257	62.6	16.8%
400-450	43562	18403	422.5	43508	3334	76.6	18.1%
450-500	29032	13761	474.0	29001	2673	92.2	19.4%
500-600	32572	17755	545.1	32545	3733	114.7	21.0%
600-700	19453	12551	645.2	19438	2861	147.2	22.8%
700-800	12235	9116	745.1	12216	2196	179.8	24.1%
800-900	7192	6088	846.5	7183	1526	212.4	25.1%
900-1000	5134	4865	947.6	5123	1288	251.4	26.5%
1000-1400	8270	9492	1147.8	8247	2643	320.5	27.9%
1400-2100	2567	4254	1657.2	2563	1207	470.9	28.4%
2100-2800	817	1858	2274.2	816	548	671.6	29.5%
2800-3500	382	1184	3099.5	380	315	828.9	29.5%
3500 & over	530	2970	5603.8	529	780	1474.5	26.7%
	<b>1988250</b>	<b>391096</b>	<b>196.7</b>	<b>1105478</b>	<b>48360</b>	<b>43.7</b>	<b>22.2%</b>

Average income

Median income

ATR(agg)

Source: Ministry of Finance, Austria.

Note: ATR= average tax rate; DTR= 'discrete change' tax rate

Rather than generating a single ‘representative’ value, the micro-data approach solves for average tax rates at various income levels. This range of values allows one to assess how the various Austrian personal tax provisions combine to shape the degree of progressivity in the system. Furthermore, average tax rate figures derived from actual tax return data may be helpful in assessing how the tax system has impacted on employment activity – for example, on labour market participation decisions.<sup>21</sup>

However, interpreting a stationary or variable single rate over time, derived from aggregate data is difficult, given the variability in average tax rates across income levels, and the sensitivity of the overall rate to the pre-tax income distribution. By enabling tax rate calculations at various income levels, micro-data allows one to more readily associate average tax rates with a corresponding income level. This may be helpful where employment problems tend to be acute for employees at certain earnings levels (e.g., low-paid labour). Also, the micro-data results allow one to more readily identify differences in effective tax rates over time (and across countries) at various income levels resulting from differences in tax policy (affecting tax base and statutory rates), as opposed to differences in pre-tax earnings distribution.

The micro-data also permit the calculation of “discrete change” tax rates (DTR) which examine how the tax burden changes with discrete increases in gross wage income. These rates are not true marginal rates, as they are measured for discrete rather than unit increases in gross wage income, and do not reflect tax changes arising solely from changes in gross wage income (based on actual tax revenues, the DTR measure does not hold other factors constant).<sup>22</sup> The DTR results for wage income may be potentially useful when addressing the impact of the tax system on work incentives for those already in work, who consider the net benefits of additional work effort. In particular, the results may be usefully compared with marginal tax rate results derived from a micro-simulation model focusing on tax effects resulting from a unit increase in gross wages, holding other factors constant (as in OECD *Taxing Wages*). With access to only aggregate income tax or wage tax revenues, assessing effective tax rates ‘at the margin’ in this way using actual tax revenue figures is not possible.

In addition, the micro-data set reveals differences in the tax burden imposed by alternative taxes on wage income at various earnings levels, which may be useful if policy makers wish to

target tax relief to a particular group of workers. To take an example, for employees earning roughly 300 thousand ATS in gross wages, employee social security contributions impose a tax burden roughly twice that imposed by the wage tax. In contrast, for those earning in excess of 600 thousand ATS, the wage tax burden is higher, and increases as wages climb above this mark. Thus reductions in social security contribution rates would tend to favour low- to median-wage earners. While such impacts can be inferred from the statutory provisions relevant to each tax, the availability of micro-based effective tax rates provides the analyst with a useful source of information to assess distributional effects, estimate the fiscal cost, and steer policy decisions.

### **C) ASSESSING AVERAGE TAX RATES ON CORPORATE INCOME**

This section focuses on the use of micro-data to assess corporate average tax rates, and identifies problems and limitations encountered when relying on aggregate data, based on contributions by Belgium and Canada. The discussion does not address difficulties in relying on aggregate data to measure average tax rates on income from capital more generally (covering corporate and shareholder-level taxes), although the findings presented on the corporate side have implications that carry over.

The attention given to average tax rates at the corporate level is motivated in part by the high degree of policy interest in corporate-level tax burdens. For example, in an open economy context, there is interest in examining separately the effective tax rate on corporate profits to address the possible negative impact that taxation may have on (direct) investment incentives. Also, there are often concerns captured in the press that corporations are not paying their “fair” share of tax. The review focuses first on the need to make adjustments in respect of business losses to obtain meaningful average tax rate measures, which requires access to micro-data. Such adjustments are shown in the country work to be very important. Indeed, the inability to properly account and adjust for losses when relying solely on aggregate *Revenue Statistics* and *National Accounts* data largely explains why implicit tax rate modellers avoid reporting implicit corporate tax rates.<sup>23</sup> The work by Belgium and Canada also highlights the broad set of calculations made possible by micro-data, including estimates of average corporate tax rates by sector, asset size, and income strata.



## 1) Accounting for Business Losses

Properly accounting for business losses and their tax treatment in the measurement of average tax rates on corporate income is complicated in theory and practice. One might argue that losses and their tax treatment should be ignored, restricting attention to the treatment of firms profitable in all years. However, important information relevant to determining the corporate tax burden is lost when the tax treatment of losses is ignored.<sup>24</sup> Important issues include the treatment of unclaimed losses under loss carry-forward rules, and whether or not related firms are taxed on a separate basis, or instead on a group basis allowing for the losses of one firm to offset taxable income of related companies in the group. Such provisions can impact significantly on corporate tax burdens.

When relying on aggregate data, a central problem is the fact that aggregate corporate income tax revenues appearing in the numerator of an average tax rate are reduced by losses incurred in prior years, while the denominator is reduced by losses incurred in the current year. The numerator effect results from loss carry-forward provisions. The denominator effect results from the inclusion of current year losses of current year loss-making firms, offsetting profits of profitable firms in the same year upon aggregation. Thus losses are factored into the numerator and denominator, but the losses are mismatched in the sense that they are in respect of different periods (i.e. prior year versus current year).

This timing problem could be addressed by aggregating numerator amounts (e.g., corporate income tax) over a number of years, and dividing this by an aggregate of denominator amounts (operating surplus of incorporated companies) summed over the same period. The longer the aggregation period, generally the smaller is the problem (in relative terms) of any remaining inconsistency in loss treatment. However, policy interest in a multi-year average tax rate declines the longer the aggregation period.<sup>25</sup> This is particularly the case when tax policy changes have occurred over this period, and one is interested in examining the impact of these changes by examining the time profile of the effective tax rate on corporations from one year to the next.

Before turning to the work by Belgium and Canada illustrating the flexibility of micro-data in accounting for business losses, it is useful to reflect on some of the relevant considerations. Tables 4 and 5 illustrate problems of interpretation when relying on aggregate data alone, and how

micro-data can be used adjust (denominator) profit figures or alternatively (numerator) tax figures in an average tax rate (ATR) measure in order to adjust for the effects of losses. The illustrative examples assume that firms are able to carry losses forward (loss refunds are not provided). Table 4 examines two firms over a four-year period, with each firm subject to an effective corporate income tax rate of 20 per cent.<sup>26</sup> Firm 1 is profitable over this period, earning 20 units of profit in each year. Firm 2 begins operations in year 2 and incurs losses in that year, but becomes profitable in year three and is able to carry forward its initial losses to claim against tax in year 3.

Corporate tax burden analysis based on *aggregated* data (shown under the Macro-data heading) finds an average corporate tax rate ATR(agg) of 26.67% and 16% in years 2 and 3. In year 2, with current period losses included in year 2 aggregate (net) profits, but the tax treatment of those losses not factored into the numerator, the effective tax rate is overstated in year 2. In year 3, the effective tax rate at 16% is understated due to the year claim for year 2 losses impacting on the numerator, but without those losses factoring into the denominator.

Two types of adjustments relying on micro-data to address the mismatch in loss treatment are considered in Table 4. The first approach, with results shown as ATR 1, excludes current year unclaimed losses from the denominator profit measure, and instead reduces the denominator in respect of prior year losses, and in particular, loss carry-forward claims impacting the numerator.<sup>27</sup> In other words, where a firm incurs losses, the losses are accounted for in measuring aggregate corporate profits in the year in which claims are made in respect of those losses. Rather than recognising the loss of (5) by firm 2 in measuring year 2 aggregate profits, this loss is set off against corporate profits in year 3 when the claim is made for that loss. This yields an ATR value of 20% in each year in the illustration in Table 4.

An alternative approach is to include current-year profits and current-year losses in the denominator (net) profit measure, and to adjust corporate tax revenues in the numerator in respect of future claims on current-year losses. In particular, where losses are realised in a given year, corporate tax revenues for that year are reduced in respect of the present value of future claims on those losses. In the example, the second set of results in Table 4 (ATR 2A and ATR 2B) adjusts aggregate tax revenues in year 2 to take into account the loss carry-forward claim in year 3 by firm 2 in respect of its losses realised in year 2. In particular, the loss claim in year 3 of 5 units of

losses reduces tax in that year by 1 unit (assuming a 20 per cent corporate tax rate). Thus, under the adjustment without discounting, aggregate corporate tax receipts (4 units) in year 2 are reduced from 4 to 3 units, yielding an average tax rate of 20%.

**TABLE 4**  
**Corporate ATR Implications of Relying on**  
**Macro- versus Micro Data**

**-- Example 1 --**

	Year 1	Year 2	Year 3	Year 4
<b>Firm 1</b>				
profit/loss	20	20	20	20
Taxable profit	20	20	20	20
Tax (@20)	4	4	4	4
<b>Firm 2</b>				
profit/loss	0	-5	5	10
Cumulative unclaimed losses	0	-5	-5	0
loss carryforward claim	0	0	-5	0
taxable profit	0	0	0	10
tax (@20)	0	0	0	2
<b>Macro-data results</b>				
Total tax	4	4	4	6
Total profit	20	15	25	30
ATR(agg)	20%	26.67%	16%	20%
<b>Micro-data results</b>				
Total tax	4	4	4	6
Total adjusted profit	20	20	20	30
ATR 1	20%	20%	20%	20%
Total adjusted tax	4	3	5	6
(no discounting)				
Total profit	20	15	25	30
ATR 2A	20%	20%	20%	20%
Total adjusted tax	4	3.09	5	6
( $r=10\%$ )				
Total profit	20	15	25	30
ATR 2B	20%	20.61%	20%	20%
discount rate $r$	10%			

**TABLE 5**  
**Corporate ATR Implications of Relying on**  
**Macro- versus Micro Data**

**-- Example 2 --**

	Year 1	Year 2	Year 3	Year 4
<b>Firm 1</b>				
profit/loss	20	20	20	20
taxable profit	20	20	20	20
tax (@20)	4	4	4	4
<b>Firm 2</b>				
profit/loss	0	-5	5	10
Cumulative unclaimed losses	0	-5	-5	0
loss carryforward claim	0	0	-5	0
taxable profit	0	0	0	10
tax (@20)	0	0	0	2
<b>Firm 3</b>				
profit/loss	0	-5	-5	-5
Cumulative unclaimed losses	0	-5	-10	-15
loss carryforward claim	0	0	0	0
taxable profit	0	0	0	0
tax (@20)	0	0	0	0
<b>Macro-data results</b>				
Total tax	4	4	4	6
Total profit	20	10	20	25
ATR(agg)	20%	40%	20%	24%
<b>Micro-data results</b>				
Total tax	4	4	4	6
Total adjusted profit	20	20	20	30
ATR 1A	20%	20%	20%	20%
Total adjusted profit *	20	20	15	25
ATR 1B	20%	20%	27%	24%
Total adjusted tax ( $r=10\%$ )	4	3.09	5	6
Total profit	20	10	20	25
ATR 2	20%	30.91%	25.00%	24.0%
discount rate $r$	10%			

The second set of results (ATR 2B) takes into account the time value of money, assuming a 10% discount rate, and deducts from aggregate corporate tax receipts the present value in year 2 of the loss claim of 5 in year 3. The ATR of 20.61% in year 2 reflects the assumption that the tax system does not allow losses to be carried forward with interest (as implicitly assumed in the first set of micro-data results, ATR 2A).

Table 5 broadens the analysis by adding a third firm assumed to be in a loss position in each year over the 4-year period. As in Table 4, the first set of results ATR(agg) illustrate the problems of interpretation created when (unadjusted) aggregated data are used. The next two sets of results are derived using adjusted profits. The ATR 1A results ignore the losses of firm 3, which in the example are never offset in full or in part by the tax system, in measuring corporate profits. The approach can be interpreted as reflecting a benchmark system that denies a loss offset to perpetually loss-making firms. In contrast, the ATR 1B results assume an alternative benchmark, reducing profits in respect of prior year unrelieved losses, regardless of whether loss-making firms eventually become profitable or not.

The ATR 2 results are derived under the alternative loss-adjustment approach of adjusting aggregate corporate tax revenues (rather than aggregate profits) in respect of future claims on current year losses, and assuming a benchmark profit measure that recognises the losses of all firms. The inability of the loss firm (Firm 3) to claim relief in respect of its losses means that aggregate corporate tax receipts would not be adjusted downward in respect of these losses (i.e. the present value of zero relief is zero). The losses do however lower aggregate profit, putting upward pressure on the corporate ATR.

The cases examined in Tables 4 and 5 serve to illustrate possible approaches relying on micro-data to adjust for business losses. In principle, one may wish to reduce aggregate corporate tax revenues in respect of the present value of future claims (if any) on same period losses, rather than following the alternative of adjusting aggregate corporate profits in respect of same period claims on prior year losses. A concern that arises under the latter approach is that the results tend to blur the timing of the corporate average tax rate series – that is, the impact of losses on aggregate corporate profits and tax is not recognised until the year(s) in which tax claims are

taken. Also, realised losses that never get claimed for tax purposes are ignored. However, in practice the profit-adjustment approach may be preferred, as the alternative is difficult to implement, even where statutory corporate tax rates remain fixed. Few corporate tax micro-models are dynamically structured to provide an account, by firm, of when unutilised losses are eventually claimed (or lost). A manual checking of tax returns and ad hoc adjustments would normally be required, tending to limit the focus on only large firms in the corporate sample.

### ***Illustrations based on Micro-data***

This section examines approaches by Belgium and Canada in using micro-data compiled from tax returns to measure corporate average tax rates, in particular, domestic corporate income tax rates on domestic source income.<sup>28</sup> Results are compared and contrasted with findings based on aggregate data. Before analysing the results, it is useful to address a number of measurement issues.

First, measuring a corporate average tax rate involves, in general, dividing (adjusted) corporate tax revenues by an adjusted measure of corporate profits, with a focus in each year on (taxable and non-taxable) firms that are profitable in the year (see the discussion above concerning alternative methods to factor in losses). In principle, the denominator profit measure should reflect economic income at the corporate level. Arguably such a measure is appropriate when assessing fairness and distribution concerns, and also where the measure is used to assess effective tax rates on past investment (as a possible check against forward-looking tax burden measures which ignore tax planning). This benchmark would provide true economic depreciation, corrections for inflation in measuring depreciation and the cost of goods sold (inventory valuation adjustment), and factor in income from the decline in the real value of debt of the non-financial sector during periods of inflation. As elaborated below, the profit measures used by Belgium and Canada do not make all of these adjustments. The results nevertheless draw out a number of important considerations, most importantly loss effects and variability of corporate ATRs by sectors and firm size.

The implicit tax rate approach to measuring a corporate average tax rate, relying on aggregate data, measures domestic tax on domestic and foreign-source income as a percentage of the domestic operating surplus of the (domestic) incorporated sector. Corporate operating surplus

is a measure of the return to capital employed in the economy, net of depreciation, including returns to debt and equity.<sup>29</sup> As noted above, operating surplus includes current year losses.

The Canadian AETR figures use an adjusted book income figure in the denominator, derived at the micro-level for a weighted-sample of corporations.<sup>30</sup> Measuring adjusted book income begins with net income as reported in financial statements. This amount is adjusted to arrive at a measure of domestic corporate profit that removes double counting of domestic income, excludes foreign income, factors out corporate tax payments, and adjusts for losses by netting out loss carry forward claims for tax purposes in the current year.<sup>31</sup> Foreign income is excluded in the interest of focusing on domestic tax on domestic source income.<sup>32</sup> No adjustments are made in respect of depreciation. Therefore depreciation claims used for accounting purposes are incorporated in the benchmark profit measure.

Rather than beginning with financial income, the Belgian example begins with net taxable income, and ‘works backwards’ to arrive at an adjusted benchmark measure of corporate profit. Beginning with net taxable income, corporate profits are measured net of loss carry forward claims without further adjustment.<sup>33</sup> Also, with net taxable income measured net of domestic dividend income, no adjustment is required in respect of these amounts to avoid double counting of domestic profit (with the underlying profit accounted for in the net taxable income of the distributing company). However, in order to ensure that profits exempted under special tax regimes are accounted for, the exempt profits of qualifying firms are added back.<sup>34</sup> Disallowed expenses (that is, expenses that reduce economic income but do not qualify for a tax deduction) are subtracted, while tax expenditures are added back.<sup>35</sup> As net taxable income excludes (most) foreign profits, no adjustment is made in respect of these amounts.<sup>36</sup>

Turning now to the results, Figure 1 shows the Belgian corporate average tax rate based on micro-data, along with other corporate tax rate measures, over the period 1984-1998. The results clearly reveal the need to factor in corporate tax base considerations, and not just the statutory corporate rate, in assessing the corporate income tax burden. The progressive narrowing of the discrepancy between the statutory and the average tax rates illustrates a convergence of the actual tax base to the benchmark profit measure in the denominator of the ATR, with the micro-data

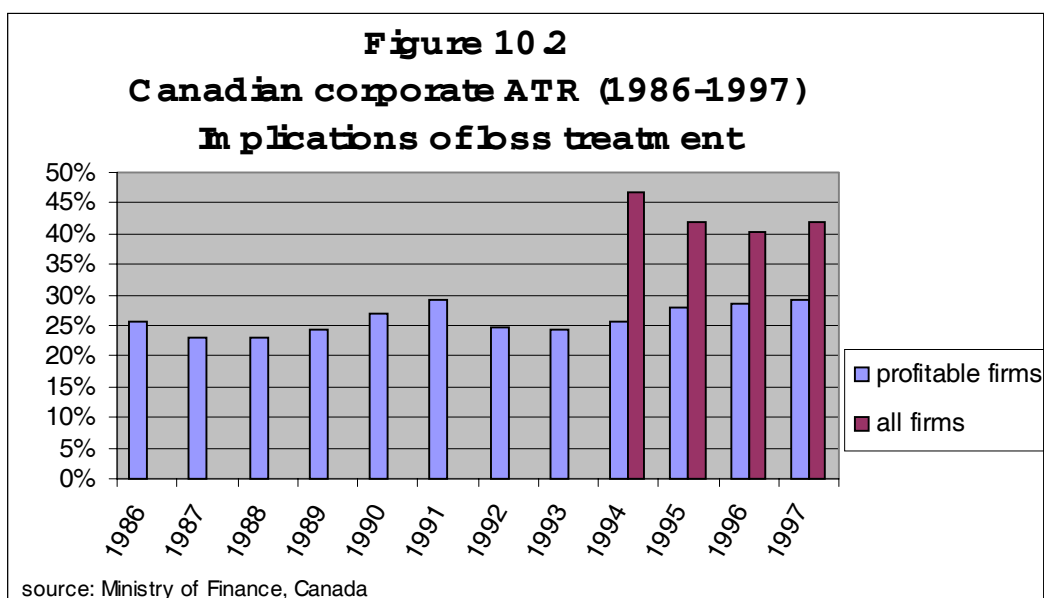
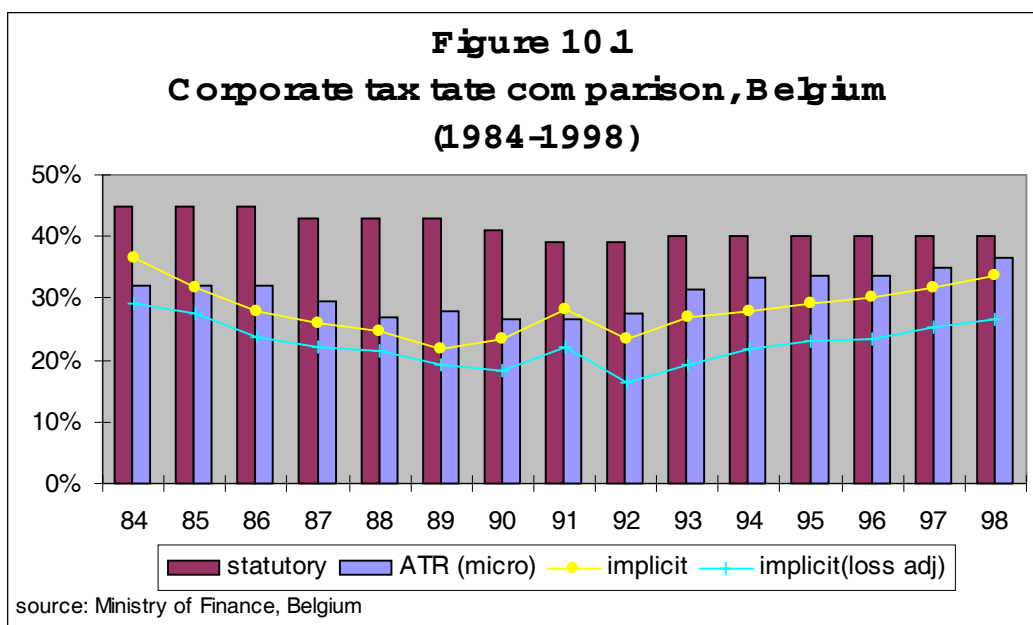
indicating that this results mainly from a series of tax reform measures that reduced tax expenditures.<sup>37</sup>

Figure 1 also shows an implicit corporate tax rate time series derived using aggregate data, as well as an adjusted implicit tax rate series with a loss adjustment that nets out from the denominator (corporate operating surplus) the deduction for losses factored into corporate income tax liabilities in the numerator.<sup>38</sup> In years where significant corporate losses were incurred, the implicit tax rate exceeds the ATR based on micro-data (1984 and 1991).

However, in other years the implicit tax rate is below the micro-data ATR. Drawing from the analysis of Table 4, this suggests that the effect of loss carry forward claims in the numerator (in years immediately following 1984, and 1991) were more pronounced than the effect of current year losses factoring into the denominator. Another possible explanation is that the *National Accounts* operating surplus measure is significantly broader than corporate operating surplus, due for example to the inclusion in the *National Accounts* of non-taxable corporations including government enterprises (as indicated by Norway in its work on average effective tax rates on capital). It may also be that corporate profits are not properly consolidated in the *National Accounts*, tending to overstate the true value, as noted by Belgium.

It can also be observed from Figure 1 that trends in the corporate tax burden may be misrepresented by implicit tax rate figures, particularly when considering short time intervals. For example, the micro data show that the average tax rate in the corporate sector was essentially unchanged over the three-year period 1984-1986, while the implicit tax rate results show a reduction exceeding 8 percentage points. Similarly, the aggregate data suggest that the corporate average tax rate increased by 8 percentage between 1989 and 1991, while the micro-data find a reduction in the corporate tax burden over that period.





A similar finding emerges from Figure 2 showing Canadian corporate average tax rates, which factor in not only corporate income tax, but also federal capital taxes (net wealth taxes) on corporations.<sup>39</sup> Results shown for the last four years included in the figure 1994-1997 compare corporate average tax rates when loss making firms are included in the analysis, as they are under the implicit tax rate approach, with corporate ATRs with loss firms excluded.<sup>40</sup> When loss-making firms are included, the figures show a declining average corporate tax burden over the

three-year period 1994 to 1996, while the results relying on adjusted profits of profitable firms show an upward trend in the tax burden over this period.

## **2) Measuring Corporate ATRs by Sector and Firm Size**

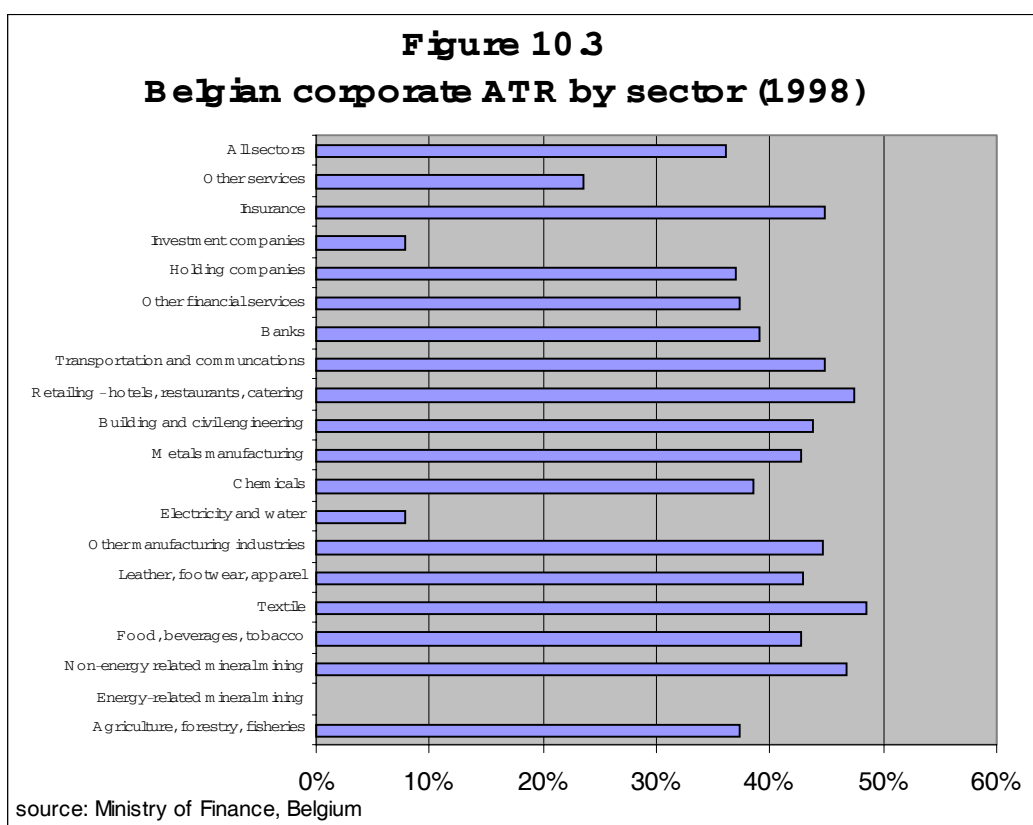
In addition to enabling an adjustment for business losses, micro-data also permit disaggregate analyses of corporate tax burdens. A disaggregate approach is useful, for example, where the tax system targets preferential tax treatment to firms engaged in certain business activities, or to firms on the basis of their size. Policy interest naturally arises in such cases in assessing the impact of the special tax provisions on targeted groups – investment companies in Belgium, and manufacturing and processing companies in Canada, as examples. Additionally, the tax systems in both Belgium and Canada provide special tax relief to ‘small’ firms, and so policy interest arises in comparing the tax burden across companies of different size measured by assets or income.<sup>41</sup>

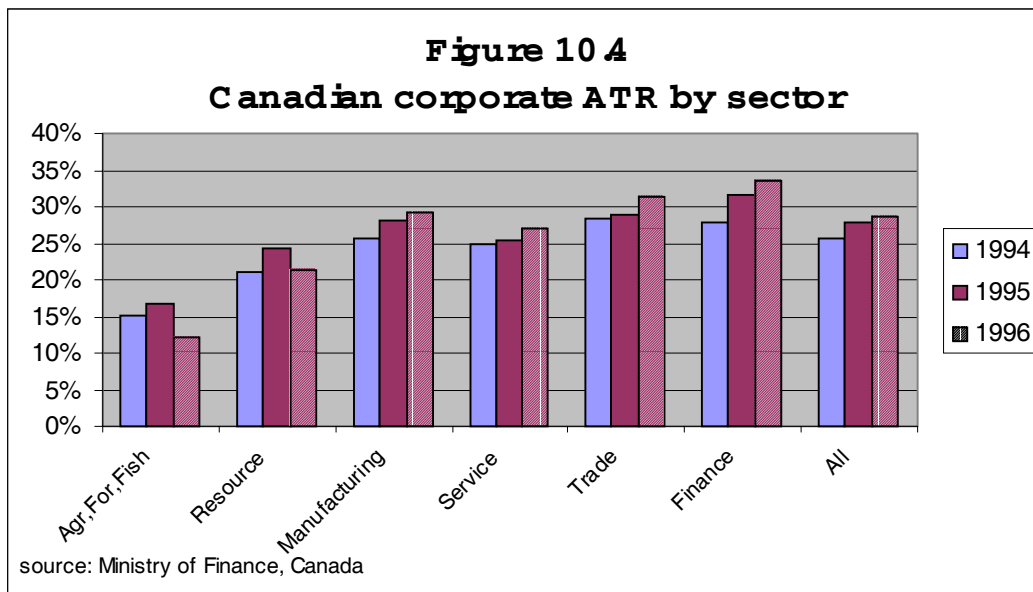
Even in the absence of targeted measures, there may be interest in assessing the impact of general features of the corporate tax system that affect different industries differently. For example, tax depreciation rules tend to be more important to firms in industries that are relatively capital intensive, while loss treatment tends to matter more to firms in industries exhibiting strong cyclical effects. As the net effect of these and other features of the tax system get captured in disaggregated average tax rates, an incentive exists to construct such rates for firms grouped by industry (and possibly by other criteria, for example size or location). The remainder of the paper reviews findings by Belgium and Canada based on micro-data that illustrate a diverse of corporate average tax rates, a diversity that tends to get masked when relying on aggregate data alone. Certain implications for policy analysis are addressed.

### ***a) ATR results by sector***

Micro-data results by Belgium and Canada reveal significant variation in corporate average tax rates across industries, as illustrated in Figures 3 and 4. As emphasised in the analysis provided by Belgium, interpretation of the Belgian results by sector requires careful examination of the underlying micro-data and an accounting for the impact of special features of corporate tax system.

To take an example, one striking finding is that in most of the industrial sectors (with the exclusion of the chemical industry, and electricity and water industry) the corporate ATR is found to *exceed* the statutory tax rate. This finding, particularly pronounced for small firms, is traced to disallowed expenses (netted from taxable profits in measuring benchmark profit) that exceed tax expenditures (removed from benchmark profits).





The Belgian analysis gives an insightful interpretation to average tax rates calculated for the industry and retail trade sectors, and other ‘other services’ sector. In particular, the analysis cautions that the true tax burden on the industry and retail trade sectors is actually lower than that suggested by the corporate ATRs computed for these sectors. The reason is that part of the ‘true’ profit of these sectors is paid out in the form of interest and other deductible charges to related companies where the amounts are received tax-free under the Belgian co-ordination centre regime rules. These payments are deductible in measuring tax (numerator) and pre-tax profits (denominator) in the calculation of the corporate ATR of the industry and retail trade sectors. Therefore, the impact of the co-ordination centre rules does not tend to be reflected in the corporate ATRs for these sectors. With co-ordination centres included in the ‘other services’ sector, the corporate ATR for this sector is lowered on account of the tax exemption for income from transactions with related companies in the industry and/or retail trade sectors under the co-ordination regime (in other words, the ‘other services’ sector corporate ATR would be higher if co-ordination companies were excluded).

The corporate ATR analysis by Canada reveals the need to distinguish firms by industry when considering trends in the corporate tax burden over time. In particular, when considering all profitable firms, the results show an increase in the corporate ATR in 1995 (+2.3 percentage

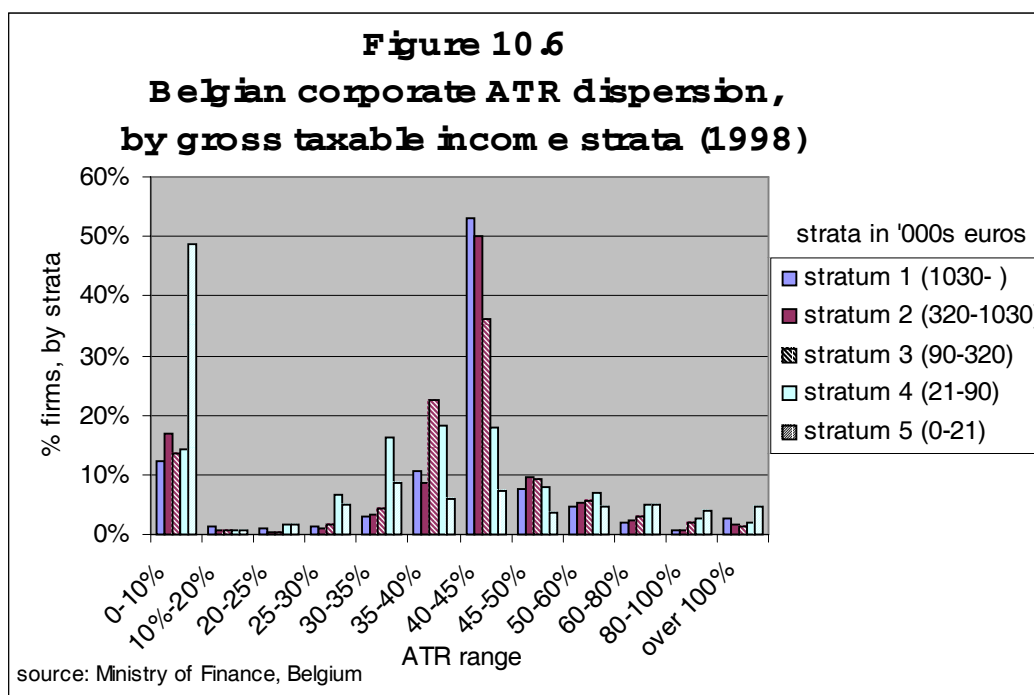
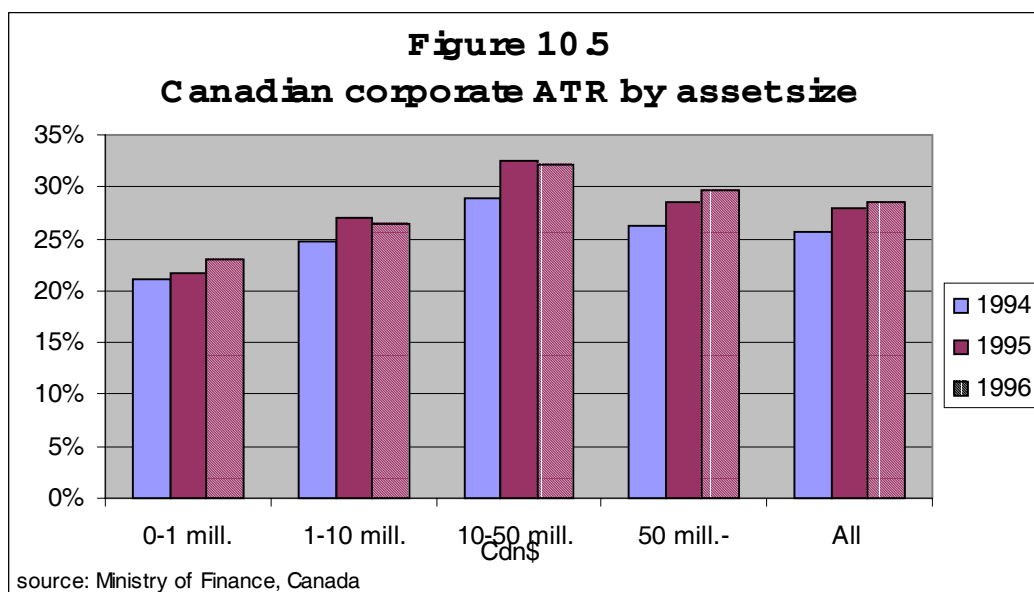
points from 1994), and again in 1996 (+0.5 percentage points). However, the same percentage increases are not found in the manufacturing, service, trade and finance industries, while the tax burden is shown to decrease in 1996 in the resource sector, and in the agricultural, forestry and fishing sector.

#### ***b) ATR results by firm size***

In assessing the tax burden on firms according to their size as measured by assets, Canadian results show variability in corporate ATRs across firms, and over time, not reflected in the aggregate results. For example, profitable firms in the \$CDN 10-50 million asset range are found to have the highest ATR, in the order of roughly 29 to 32%, depending on the year, as illustrated in Figure 5. Small firms with assets less than \$CDN 1 million are found to have considerably lower ATRs, in the range of 21 to 23%, owing mostly a special small business deduction.

Also, year-to-year fluctuations in ATRs at the disaggregate level are not always reflected in the aggregate results. For example, while the corporate ATR for all profitable firms shows the corporate ATR increasing by 2.5 percentage points from 1994 to 1995, a 3.6 percentage point increase is found for the most heavily taxed group (in the \$CDN 10-50 million range). For the same group, the corporate ATR falls in 1996, while the results for all profitable firms show an increase in the corporate ATR in 1996 by over half a percentage point. Similarly, the ATR for firms in the \$CDN 1-10 million asset range is shown to decline by 0.5 percentage points in 1996, while the aggregate data show the ATR increasing by 0.7 percentage points.

The Belgian example takes an alternative approach of grouping firms by gross taxable income strata, and measuring for each income strata, the percentage distribution of firms across different ATR ranges. From this analysis, a general profile is evident, as illustrated in Figure 6. For all of the income strata, there is a concentration of firms with ATRs close to zero, and a concentration of firms with ATRs close to the statutory rate. Almost half of the smallest firms (in the fifth stratum with taxable income in the range of 0-21000 euros) are found to have ATRs close to zero. A closer look at the micro-data reveal that this finding can be explained largely by loss carry over claims. For larger firms, tax expenditures and the exemption system are found to be more important in explaining ATRs below the statutory rate.



## D) SUMMARY AND CONCLUSIONS

Relying on tax revenue information to measure average tax rates on labour, capital, and other types of income offers the advantage of incorporating the net effect of a complex set of factors that determine tax liabilities and are difficult to model.<sup>42</sup> Micro (taxpayer-level) data

drawn from tax returns provide values for various entries determining final tax calculations, which can assist in refining measurement techniques. And micro-data figures can be (partially) aggregated to cover particular taxpayer groups. The ability to generate results for different taxpayer groups offers insights into possibly divergent tax burdens, which in turn helps one interpret tax burden trends at the aggregate level, and more generally provide an empirical basis for tax policy analysis.

While in general a micro-level view (by taxpayer-group, or by sector) is necessary to address many if not most tax policy-related questions, interest also exists in economy-wide average tax rates derived, for example, for labour or capital income. This paper reviews work by Norway and Denmark examining how micro-data can permit a more targeted assessment of personal tax revenues imposed on different income types to feed into such measures. In particular, by isolating taxes that apply to a single income type, and by using taxpayer-specific (rather than economy-wide) average tax rates to decompose revenues raised by taxes levied on multiple income types, one can measure average tax rates for different categories of income with greater precision.

Work by Belgium and Canada highlights the critical importance of adjusting for business losses in measuring an economy-wide corporate average tax rate, with implications for the proper measurement of an economy-wide average tax rate on income from capital (including both corporate and shareholder-level taxation).<sup>43</sup> The insights are important given widespread interest in corporate tax burdens and their effects, and the general inability of aggregate data to generate a reliable annual corporate average tax rate series. The paper reviews a number of possible adjustment techniques relying on micro-data, and certain issues encountered with each. While not addressed in the work reviewed in this paper, the findings also have implications for the measurement of average tax rates on business or total income of the self-employed.

Perhaps most importantly, the paper underscores the difficulties in drawing policy conclusions from results based on aggregate data. An ability to measure average tax rates for different taxpayer groups is important, as effective tax rates tend to vary, sometimes significantly, by taxpayer group. Work by Austria finds significant variation in average tax rates on wage income across wage levels, raising questions over the use of a single (implicit) tax rate for a given

year based on aggregate data to assess the tax burden on labour income taxed on a progressive basis. The paper argues that assessments of the possible impact of the tax system on labour market participation are strengthened where one is able to measure average tax rates on labour income at various income levels and for different taxpayer groups.

The paper also reports significant variation on average corporate tax rates across firms grouped by industry and firm size. The analysis by Belgium and Canada reveals that economy-wide results may be misleading indicators of levels and trends in corporate average tax rates for certain groups of firms, calling for a disaggregate view to steer policy analysis and decisions.

The paper provides very limited discussion of the use of various micro-based average tax rates to address specific policy questions. Such an analysis is beyond the purpose or scope of the current exercise, which in the main has been to question the extent to which average tax rate results derived from aggregate data can be taken to be representative where significant diversity in tax burdens exists at the disaggregate level across taxpayer groups, and where year-to-year percentage changes in tax burdens are not uniform.

This raises a central issue of the confidentiality of taxpayer information, and the general inability of those outside government to undertake revenue-based average tax rate analysis at the micro-level. This is unfortunate (yet understandable), as broader access to micro-level data would accelerate progress in this field. One potentially fruitful area to explore would be to consider what levels of aggregation of taxpayer-level data would be possible that would maintain confidentiality, while supporting revenue-based average tax rate analysis on a disaggregate basis.



## REFERENCES

- Blundell, R. (1996), “Labour Supply and Taxation”, in M. Devereux (ed), *The Economics of Tax Policy*, Oxford University Press.
- Carey, D. and H. Tchilinguirian, *Average Effective Tax Rates on Capital, labour and Consumption*, OECD Economics Department Working Paper No.258 (2000).
- Mendoza, E., A. Razin and L. Tesar, *Effective Tax rates in Macroeconomics: Cross country Estimates of Tax Rates on Factor Incomes and Consumption*, NBER Working Paper, No. 4864, September (1994).
- OECD (2000), *Tax Burdens – Alternative Measures*, Tax Policy Studies, No.2.
- OECD (2000), *Average Effective Tax Rates - Notes by Canada, Denmark and Norway*, a collection of papers prepared for the 14-15 November 2000 meeting of Working Party No.2 of the OECD Committee on Fiscal Affairs.
- OECD (2001), *National Accounts*, 1984-2001.
- OECD (2001), *Revenue Statistics*, 1965-2001.
- OECD (2001), *Tax Ratios – A Critical Survey*, Tax Policy Studies, No.5.
- OECD (2001), *Taxing Wages*.
- Rainer, Anton (2001), *Austrian Micro Tax Data and Tax Indicators*, (mimeo), a paper prepared for the 12-14 June 2001 meeting of Working Party No.2 of the OECD Committee on Fiscal Affairs.
- Valenduc, C. (2001), *Effective Tax Rates: The Use of Micro-Data*, (mimeo), a paper prepared for the 12-14 June 2001 meeting of Working Party No.2 of the OECD Committee on Fiscal Affairs.

## ENDNOTES :

---

<sup>1</sup> See Chapter 6 of *Tax Burdens–Alternative Measures* for a discussion of the relevance of backward-looking (tax revenue-based) measures to address primarily fairness considerations, and in particular the sharing of tax burdens, and forward-looking (model-based) measures for taxes on capital income relevant to assessing investment incentives.

<sup>2</sup> As reported in *Tax Burdens – Alternative Measures*, OECD Tax Policy Studies, No.2 (2000), and in *Tax Ratios – A Critical Survey*, prepared by Jakob de Haan and Bjorn Volkerink, released as OECD Tax Policy Studies, No.5 (2001).

<sup>3</sup> For a review of the basic implicit tax rate approach, see *Tax Burdens-Alternative Measures*. See also Carey and Tchilinguirian (2001).

<sup>4</sup> Under the implicit tax rate approach, total personal income tax on labour (capital) income is estimated as the proportion of aggregate personal income tax that aggregate labour (capital) income is to aggregate personal income.

<sup>5</sup> Average tax rates on wage income, which may affect labour market participation decisions, can differ significantly depending on the wage level and household structure (married vs. single, principal vs. secondary-earner, with or without children) (see OECD Taxing Wages). There is evidence that elasticities of labour demand and supply may differ depending on the taxpayer group (e.g., primary earners vs. secondary earners) (see R. Blundell (1996)).

<sup>6</sup> Income may be separated into labour income or capital income. Implicit tax rate analysis generally restricts itself to these two broad income categories (while measuring average tax rates on other ‘taxable events’, e.g., consumption). Access to micro-data enables measurement of average tax rates on various types (sub-categories) of income – for example, on alternative items or groupings of labour income amounts. A broad definition of labour income would include wages and salaries, the labour component of returns to the self-employed, and pension income including social security benefits. Policy analysis may call for effective tax rate measures for more narrow definitions of labour income (e.g., excluding pension income).

<sup>7</sup> Ordinary income includes wage and salary income (including fringe benefits), pension/benefits income, imputed labour income of the self-employed, and also capital income (dividends, capital gains, interest, rents, imputed capital income of self-employed business owners, and other forms of capital income), less deductions. A flat 28 per cent rate applies to ordinary income in excess of a threshold which varies depending on the household structure (Class 1 and Class 2). The separate income surtax on gross labour income is imposed at progressive rates with taxable income thresholds and allowances that also depend on the household structure (Class 1 or Class 2), with no deductions.

<sup>8</sup> The revenues from these taxes are aggregated and reported under category 1110 in OECD *Revenue Statistics* (‘taxes on income and profits of individuals’).

<sup>9</sup> As elaborated in section 1)b), micro-data enable precision in estimating tax imposed on a given category/type of income by a broad-based tax.

---

<sup>10</sup> Employee social security contributions are imposed on wage and salary income and pension income, while social security contributions of the self-employed are imposed on pension income and imputed labour income of the self-employed.

<sup>11</sup> The income surtax is imposed on wage and salary income, imputed labour income of the self-employed, and pension income.

<sup>12</sup> Note that total personal income tax (OT+S) in (2) corresponds to category 1100 in the *Revenue Statistics*.

<sup>13</sup> In estimating the labour portion of tax on ordinary income, the approach taken in (3a) – unlike that shown in equation (1a) – does *not* use taxpayer-level data. As with the implicit tax rate approach, it instead relies on an overall weight ( $w^L$ ) rather than taxpayer-specific weight. Thus the exercise concentrates on the benefits of isolating the surtax for the purpose of the average tax rate calculation.

<sup>14</sup> In measuring (3a), the labour component of income from self-employment is measured at the taxpayer level (and then aggregated) by relying on the split of operating surplus of the self-employed into labour and capital components as required for tax purposes. Total labour income in the numerator of equation 3b) is measured net of deductions allocated to labour. Ordinary income OY appearing in the denominator of 3b) is measured from tax returns (gross of the class allowance).

<sup>15</sup> Such features could include special tax deductions or credits tied to employment income (e.g., deductions for travel expenses, earned income tax credits). Similarly, differences in tax burdens on labour income compared with capital income tied to a progressive tax rate structure would be taken into account, unlike in the implicit tax rate approach. If capital income tends to be earned primarily by taxpayers with relatively high average tax rates, tending to increase the average tax rate on capital income relative to labour income, results derived using micro-data would account for this, whereas a reliance on aggregated data would not. To take another example, taxpayer-level data can more directly assess features of the tax system that affect the tax burden on income from capital, for example provisions allowing a partial deduction for interest expense on amounts borrowed to generate taxable interest income.

<sup>16</sup> An estimate of the average tax rate on wage income may be a better indicator of the tax burden on employment, compared with an average tax rate on labour income broadly defined.

<sup>17</sup> The tax rate  $t$  can be interpreted as either a flat tax rate, or representing a progressive rate structure applied to the tax base shown in round brackets.

<sup>18</sup> The illustrative framework ignores, for ease of exposition, expenses incurred in earning wage income – such expenses however can be readily factored in, in a manner analogous to that shown for expenses in earning ‘other’ income.

<sup>19</sup> As pointed out at the CESifo conference, an assessment of income-specific rates would be important where one is assessing a marginal (as opposed to an average) tax rate.

---

<sup>20</sup> The ATR series ( $\tau^L_I$  and  $\tau^L_{II}$ ) can be combined to give  $\tau^L_{I+II}=[WT+SSC^{ec}]/W$  which more closely aligns with the normal implicit tax rate approach (the Austrian results ignore employer social security contributions and payroll taxes). While measuring this combined tax rate  $\tau^L_{I+II}$  using micro-data can usefully assess the combined tax burden at various wage levels, information provided by each series individually is lost in this aggregation.

<sup>21</sup> This may be particularly true where benefit levels for those out of work are not high. Where they are, consideration of the labour market participation decision should factor in benefit and tax impacts of taking up work.

<sup>22</sup> The discrete change tax rate on wage income (DTR) series is derived by measuring the change in wage tax per head resulting from a (discrete) increase in gross wages/salaries per head (from one gross income band to the next).

<sup>23</sup> The distorting effects (linked to losses) in implicit tax rate analysis (relying on aggregate data) are generally more pronounced when attempting to measure an average *corporate* tax rate. These effects, however, also factor in when measuring an average tax rate on income from *capital* (incorporating both personal and corporate taxation), given the inclusion of corporate income tax in the numerator (reduced by loss carry forwards) and operating surplus in the denominator (reduced by current period losses).

<sup>24</sup> Working with micro-data, one could consider measuring an average corporate tax rate for profitable companies alone by including in the numerator an estimate of corporate tax revenues in the absence of loss carryover claims and, in the denominator, current period profits of profitable firms alone (note that such an adjustment would not be possible when relying on aggregate *National Accounts* data, as operating surplus in a given year includes the losses of current loss-making firms). However, as noted in the main text, ignoring the treatment of losses would omit important information relevant to assessing the tax burden imposed on the corporate sector.

<sup>25</sup> There are also a number of difficult modelling choices, including the use of a fixed or moving-average aggregation period, and the length and timing of the aggregation period. Arguably, the length should reflect the business cycle. However, business cycles can vary over time and across countries, making a uniform aggregation procedure difficult. Also, one could argue that the aggregation period should take into account the number of years in which losses can be carried over for tax purposes if loss claims are discretionary. This recognises that where taxpayers delay a loss claim in a given year, in favour of another claim (e.g. tax credit) under liberal carryforward rules, too short an aggregation period could overstate the effective tax burden.

<sup>26</sup> The effective corporate tax rate of 20 per cent can be interpreted as resulting from a statutory corporate tax rate in excess of 20 per cent, with tax expenditures (e.g., accelerated depreciation or special tax credits) that lower the effective rate to 20 per cent. Alternatively, one can interpret the rate as the statutory corporate income tax rate where such tax expenditures are not provided.

<sup>27</sup> This is the approach followed by Belgium and Canada in their work.

<sup>28</sup> An alternative measure would assess net domestic corporate tax on domestic plus foreign-source income of resident firms as a percentage of worldwide income. However, interpreting

---

such a measure would be difficult, tending to limit its use. Where the home country operates an exemption system, the measure would exclude entirely foreign tax on foreign source income, relevant to fairness, as well as investment and efficiency considerations. Similar problems of interpretation arise where the home country operates a residence-based system, given difficulties in establishing the amount of foreign tax levied on foreign income.

<sup>29</sup> Operating surplus can be measured either gross or net of depreciation of real capital. While deriving corporate tax as a percentage of net operating surplus conforms with measures of tax on income, comparing results across countries is difficult on account of non-uniform measurement of depreciation in the *National Accounts* across countries.

<sup>30</sup> In each year, a weighted-sample of profitable corporations is chosen (individual firms included in the sample may vary from one year to the next). Losses are factored into the analysis through the treatment of prior-year losses of currently profitable firms (with current year loss claims used to reduce current year aggregate profits).

<sup>31</sup> The adjusted book income figure nets out (taxable and non-taxable) dividend receipts both domestic and foreign, foreign branch and other (non-business) foreign income, and net equity of affiliates included in financial income. As net financial income is measured net of current income and capital taxes, these amounts are added back to arrive at a pre-tax amount. Other adjustments include netting current-period loss claims from book income (including non-capital (business) losses, net capital losses, and farm losses), and adding back charitable donations.

<sup>32</sup> Canadian corporate tax is not imposed on foreign dividends received from treaty countries. However, the numerator of the Canadian corporate ATR includes some Canadian income tax to the extent that it exceeds foreign tax credits earned on other foreign source income. While in principle this tax should be excluded for consistency with the denominator profit measure, the inclusion of this tax does not have a significant impact on the results.

<sup>33</sup> As the calculation of pre-tax profit begins with net taxable income (already measured net of loss carry-forward claims), no adjustment is necessary in respect of loss amounts. Also, by focusing on taxable firms, the sample includes firms that are profitable in the given year. As in the Canadian example, losses are factored in by netting loss carry-forward claims from current year profits.

<sup>34</sup> The special regimes include co-ordination centre, distribution centre and service centre regimes.

<sup>35</sup> The tax expenditures include special deductions for investment, exempted gifts, tax relief for additional staff. As noted in the text, profits exempted under special regimes are also added back. These tax expenditures reduce tax liability (and thus factor into the numerator), but do not relate to pre-tax economic income.

<sup>36</sup> Profits earned in countries with which Belgium has a double tax treaty are tax-exempt. Thus these profits are excluded from the denominator (net taxable income) and numerator. Profits earned in countries with which Belgium does not have a double taxation treaty are taxed at one-quarter of the nominal rate. These amounts are included in the denominator and tax thereon is included in the numerator. While in principle these amounts should be excluded in a pure domestic corporate ATR measure, their inclusion does not have a significant impact on the results.

---

<sup>37</sup> This includes the elimination over the period of deductible notional withholding taxes (précomptes fictifs) on loans and capital contributions to Belgian co-ordination centres and other amounts.

<sup>38</sup> In order to avoid double counting of losses, it is necessary to exclude current period losses from current period operating surplus. Without this adjustment, losses of a firm in year t would be taken into account in year t (through the inclusion in operating surplus of losses of firms in year t), and also in subsequent years where previously loss-making firms become taxable and claim a loss carry forward.

<sup>39</sup> The inclusion of a tax determined as a percentage of capital stock (or a similar base, as opposed to profit) is appropriate in a measure of corporate tax paid out of corporate profit. One can argue that this inclusion is suitable only where the resulting rate is used for distribution analysis. When considering tax consequences of additional investment, one would like to capture additional capital tax paid as a result of an expanded capital stock. Including capital tax in the numerator of a measure used to assess tax burden on investment may be justified where aggregate corporate profits is proportional to aggregate capital stock. Note that the Canadian figures are used in the paper to address distribution issues.

<sup>40</sup> Unlike the profit measure in the denominator of the AETRs computed for the profitable group, the profit measure for the 'all firm' series does not net out loss carry forward claims (consistent with the inclusion of loss making firms).

<sup>41</sup> Belgium offers tax relief for supplementary personnel employed in small and medium sized enterprises, while Canada targets small firms through its small business deduction.

<sup>42</sup> It has been pointed out that tax burden measures that factor in tax liabilities, but exclude taxpayer compliance costs, understate true tax burden. Also, measures that rely on financial statements to measure corporate profit may be biased to the extent that profits are manipulated (e.g., overstated).

<sup>43</sup> Loss adjustments are also obviously important for analysis at the disaggregate level.

# CESifo Working Paper Series

(for full list see [www.cesifo.de](http://www.cesifo.de))

---

- 903 Mika Widgrén, Enlargements and the Principles of Designing EU – Decision-Making Procedures, April 2003
- 904 Phornchanok Cumperayot, Dusting off the Perception of Risk and Returns in FOREX Markets, April 2003
- 905 Kai A Konrad, Inverse Campaigning, April 2003
- 906 Lars P. Feld and Stefan Voigt, Economic Growth and Judicial Independence: Cross Country Evidence Using a New Set of Indicators, April 2003
- 907 Giuseppe Bertola and Pietro Garibaldi, The Structure and History of Italian Unemployment, April 2003
- 908 Robert A.J. Dur and Otto H. Swank, Producing and Manipulating Information, April 2003
- 909 Christian Gollier, Collective Risk-Taking Decisions with Heterogeneous Beliefs, April 2003
- 910 Alexander F Wagner, Mathias Dufour, and Friedrich Schneider, Satisfaction not Guaranteed – Institutions and Satisfaction with Democracy in Western Europe, April 2003
- 911 Ngo Van Long, Raymond Riezman, and Antoine Soubeyran, Trade, Wage Gaps, and Specific Human Capital Accumulation, April 2003
- 912 Andrea Goldstein, Privatization in Italy 1993-2002: Goals, Institutions, Outcomes, and Outstanding Issues, April 2003
- 913 Rajshri Jayaraman and Mandar Oak, The Signaling Role of Municipal Currencies in Local Development, April 2003
- 914 Volker Grossmann, Managerial Job Assignment and Imperfect Competition in Asymmetric Equilibrium, April 2003
- 915 Christian Gollier and Richard Zeckhauser, Collective Investment Decision Making with Heterogeneous Time Preferences, April 2003
- 916 Thomas Moutos and William Scarth, Some Macroeconomic Consequences of Basic Income and Employment Subsidies, April 2003
- 917 Jan C. van Ours, Has the Dutch Miracle Come to an End?, April 2003

- 918 Bertil Holmlund, The Rise and Fall of Swedish Unemployment, April 2003
- 919 Bernd Huber and Marco Runkel, Optimal Design of Intergovernmental Grants under Asymmetric Information, April 2003
- 920 Klaus Wälde, Endogenous Business Cycles and Growth, April 2003
- 921 Ramon Castillo and Stergios Skaperdas, All in the Family or Public? Law and Appropriative Costs as Determinants of Ownership Structure, April 2003
- 922 Peter Fredriksson and Bertil Holmlund, Improving Incentives in Unemployment Insurance: A Review of Recent Research, April 2003
- 923 Bernard M.S. van Praag and Adam S. Booij, Risk Aversion and the Subjective Time Discount Rate: A Joint Approach, April 2003
- 924 Yin-Wong Cheung, Kon S. Lai, and Michael Bergman, Dissecting the PPP Puzzle: The Unconventional Roles of Nominal Exchange Rate and Price Adjustment, April 2003
- 925 Ugo Trivellato and Anna Giraldo, Assessing the ‘Choosiness’ of Job Seekers. An Exploratory Approach and Evidence for Italy, April 2003
- 926 Rudi Dornbusch and Stanley Fischer, International Financial Crises, April 2003
- 927 David-Jan Jansen and Jakob de Haan, Statements of ECB Officials and their Effect on the Level and Volatility of the Euro-Dollar Exchange Rate, April 2003
- 928 Mario Jametti and Thomas von Ungern-Sternberg, Assessing the Efficiency of an Insurance Provider – A Measurement Error Approach, April 2003
- 929 Paolo M. Panteghini and Guttorm Schjelderup, Competing for Foreign Direct Investments: A Real Options Approach, April 2003
- 930 Ansgar Belke, Rainer Fehn, and Neil Foster, Does Venture Capital Investment Spur Employment Growth?, April 2003
- 931 Assar Lindbeck, Sten Nyberg, and Jörgen W. Weibull, Social Norms and Welfare State Dynamics, April 2003
- 932 Myrna Wooders and Ben Zissimos, Hotelling Tax Competition, April 2003
- 933 Torben M. Andersen, From Excess to Shortage – Recent Developments in the Danish Labour Market, April 2003
- 934 Paolo M. Panteghini and Carlo Scarpa, Irreversible Investments and Regulatory Risk, April 2003
- 935 Henrik Jacobsen Kleven and Claus Thustrup Kreiner, The Marginal Cost of Public Funds in OECD Countries. Hours of Work Versus Labor Force Participation, April 2003



- 936 Klaus Adam, George W. Evans, and Seppo Honkapohja, Are Stationary Hyperinflation Paths Learnable?, April 2003
- 937 Ulrich Hange, Education Policy and Mobility: Some Basic Results, May 2003
- 938 Sören Blomquist and Vidar Christiansen, Is there a Case for Public Provision of Private Goods if Preferences are Heterogeneous? An Example with Day Care, May 2003
- 939 Hendrik Jürges, Kerstin Schneider, and Felix Büchel, The Effect of Central Exit Examinations on Student Achievement: Quasi-experimental Evidence from TIMSS Germany, May 2003
- 940 Samuel Bentolila and Juan F. Jimeno, Spanish Unemployment: The End of the Wild Ride?, May 2003
- 941 Thorsten Bayindir-Upmann and Anke Gerber, The Kalai-Smorodinsky Solution in Labor-Market Negotiations, May 2003
- 942 Ronnie Schöb, Workfare and Trade Unions: Labor Market Repercussions of Welfare Reform, May 2003
- 943 Marko Köthenbürger, Tax Competition in a Fiscal Union with Decentralized Leadership, May 2003
- 944 Albert Banal-Estañol, Inés Macho-Stadler, and Jo Seldeslachts, Mergers, Investment Decisions and Internal Organisation, May 2003
- 945 Kaniska Dam and David Pérez-Castrillo, The Principal-Agent Matching Market, May 2003
- 946 Ronnie Schöb, The Double Dividend Hypothesis of Environmental Taxes: A Survey, May 2003
- 947 Erkki Koskela and Mikko Puhakka, Stabilizing Competitive Cycles with Distortionary Taxation, May 2003
- 948 Steffen Huck and Kai A. Konrad, Strategic Trade Policy and Merger Profitability, May 2003
- 949 Frederick van der Ploeg, Beyond the Dogma of the Fixed Book Price Agreement, May 2003
- 950 Thomas Eichner and Rüdiger Pethig, A Microfoundation of Predator-Prey Dynamics, May 2003
- 951 Burkhard Heer and Bernd Süßmuth, Cold Progression and its Effects on Income Distribution, May 2003
- 952 Yu-Fu Chen and Michael Funke, Labour Demand in Germany: An Assessment of Non-Wage Labour Costs, May 2003

- 953 Hans Gersbach and Hans Haller, Competitive Markets, Collective Decisions and Group Formation, May 2003
- 954 Armin Falk, Urs Fischbacher, and Simon Gächter, Living in Two Neighborhoods – Social Interactions in the LAB, May 2003
- 955 Margarita Katsimi, Training, Job Security and Incentive Wages, May 2003
- 956 Clemens Fuest, Bernd Huber, and Jack Mintz, Capital Mobility and Tax Competition: A Survey, May 2003
- 957 Edward Castronova, The Price of ‘Man’ and ‘Woman’: A Hedonic Pricing Model of Avatar Attributes in a Synthetic World, June 2003
- 958 Laura Bottazzi and Marco Da Rin, Financing Entrepreneurial Firms in Europe: Facts, Issues, and Research Agenda, June 2003
- 959 Bruno S. Frey and Matthias Benz, Being Independent is a Great Thing: Subjective Evaluations of Self-Employment and Hierarchy, June 2003
- 960 Aaron Tornell and Frank Westermann, Credit Market Imperfections in Middle Income Countries, June 2003
- 961 Hans-Werner Sinn and Wolfgang Ochel, Social Union, Convergence and Migration, June 2003
- 962 Michael P. Devereux, Measuring Taxes on Income from Capital, June 2003
- 963 Jakob de Haan, Jan-Egbert Sturm and Bjørn Volkerink, How to Measure the Tax Burden on Labour at the Macro-Level?, June 2003
- 964 Harry Grubert, The Tax Burden on Cross-Border Investment: Company Strategies and Country Responses, June 2003
- 965 Kirk A. Collins and James B. Davies, Measuring Effective Tax Rates on Human Capital: Methodology and an Application to Canada, June 2003
- 966 W. Steven Clark, Using Micro-Data to Assess Average Tax Rates, June 2003