

Repkine, Alexander; Walsh, Patrick Paul

Working Paper

European trade and foreign direct investment U-Shaping industrial output in Central and Eastern Europe: Theory and evidence

LICOS Discussion Paper, No. 73

Provided in Cooperation with:

LICOS Centre for Institutions and Economic Performance, KU Leuven

Suggested Citation: Repkine, Alexander; Walsh, Patrick Paul (1998) : European trade and foreign direct investment U-Shaping industrial output in Central and Eastern Europe: Theory and evidence, LICOS Discussion Paper, No. 73, Katholieke Universiteit Leuven, LICOS Centre for Transition Economics, Leuven

This Version is available at:

<https://hdl.handle.net/10419/75443>

Standard-Nutzungsbedingungen:

Die Dokumente auf EconStor dürfen zu eigenen wissenschaftlichen Zwecken und zum Privatgebrauch gespeichert und kopiert werden.

Sie dürfen die Dokumente nicht für öffentliche oder kommerzielle Zwecke vervielfältigen, öffentlich ausstellen, öffentlich zugänglich machen, vertreiben oder anderweitig nutzen.

Sofern die Verfasser die Dokumente unter Open-Content-Lizenzen (insbesondere CC-Lizenzen) zur Verfügung gestellt haben sollten, gelten abweichend von diesen Nutzungsbedingungen die in der dort genannten Lizenz gewährten Nutzungsrechte.

Terms of use:

Documents in EconStor may be saved and copied for your personal and scholarly purposes.

You are not to copy documents for public or commercial purposes, to exhibit the documents publicly, to make them publicly available on the internet, or to distribute or otherwise use the documents in public.

If the documents have been made available under an Open Content Licence (especially Creative Commons Licences), you may exercise further usage rights as specified in the indicated licence.

LICOS

Centre for Transition Economics

LICOS Discussion Paper

Discussion Paper 73/1998

European Trade and Foreign Direct Investment U-Shaping Industrial Output in Central and Eastern Europe: Theory and Evidence

Alexander Repkine
Patrick Paul Walsh



Katholieke Universiteit Leuven

LICOS Centre for Transition Economics
Huis de Dorlodot
Deberiotstraat 34
B-3000 Leuven
BELGIUM
TEL: +32-(0)16 32 65 98
FAX: +32-(0)16 32 65 99
<http://www.econ.kuleuven.ac.be/licos>

European Trade and Foreign Direct Investment
U-Shaping Industrial Output in Central and Eastern Europe:
Theory and Evidence

Alexander Repkine* and Patrick P. Walsh**

LICOS Centre for Transition Economics
Faculty of Economics and Applied Economics
Katholieke Universiteit Leuven

*LICOS, Centre for Transition Economics, Katholieke Universiteit Leuven, Debériotstraat 34, 3000 Leuven (Belgium),
Tel : 0032-(0)16-326587 - Fax : 0032-(0)16-356599
E-mail : Alexander.Repkine@econ.kuleuven.ac.be

** LICOS, Centre for Transition Economics, Katholieke Universiteit Leuven, Debériotstraat 34, 3000 Leuven
(Belgium), Tel : 0032-(0)16-326591 - Fax : 0032-(0)16-356599
E-mail : Paul.Walsh@econ.kuleuven.ac.be
and
Trinity College, Department of Economics, Dublin 2, Ireland - E-mail : ppwalsh@tcd.ie

The Research was undertaken as part of a Marie Curie Research Training Grant, ERB4001GT965163, “Employment Restructuring and Unemployment in Western and Transition Economies” given to Patrick Paul Walsh. The support of TACIS-ACE PhD grant No T95-5129-S given to Alexandre Repkine is gratefully acknowledged. We thank Sergio Alessandrini for access to the Bocconi FDI data set and Marvin Jackson for his work on the LICOS Industrial Data Base. This paper was inspired during P.P. Walsh’s time as a visiting scholar in the Research Department of the International Monetary Fund. We are grateful to Marvin Jackson, Jozef Konings and Ciara Whelan for their support. The paper was presented to the 12th Irish Economic Association, April 1998. We thank all participants for their helpful suggestions.

Abstract (JEL Classifications: F43,O33 & P23)

We examine the evolution of industrial output in Bulgaria, Hungary, Poland and Romania over the period 1989-1995 in terms of product trade orientation prior to the transition process, some products traded in a market economy while others traded in the artificial market of the Soviet Bloc. We theoretically and empirically model the growth dynamics of EU oriented output within sectors of industry, ex-post trade and market liberalisation, as Foreign Direct Investment (FDI) induced Schumpeterian (vertical) waves of product innovation. We estimate the growth dynamics of non-EU oriented output within sectors as unobservable deterministic sector and country specific heterogeneity. The results indicate that the evolution of industrial production within sectors that were EU oriented prior to transition grew with increasing convexity over time. This growth was unconstrained by the transition process due to increased access to the European market, foreign capital and foreign expertise. Pre-transition non-EU industrial production is estimated to follow the same pattern as that observed in CIS countries. Hence the faster recovery, or the U-Shape industrial output, observed in CEE as compared with CIS countries is mainly explained by the inherited presence of EU oriented production and its unconstrained growth over the transition period.

Keywords: Foreign Direct Investment, Industrial Output Growth, Transition Economies, Cross-Country and Branches of Industry Regressions.

Introduction

We examine the evolution of industrial output in Bulgaria, Hungary, Poland and Romania over the period 1989-1995 in terms of product trade orientation prior to the transition process. Before transition some products traded with the West while other products were sold only into the Soviet Bloc. The former products were viable in a market economy while the latter were privileged producers in an artificial market. The thesis of this paper is that pre-transition EU oriented products made an easy transition to private ownership and efficient structures with the aid of foreign investment and expertise. Given time, research into product innovations allowed them to fully exploit the increased access to the European Market and expand. The collapse of the artificial market and the loss of State privileges made the transition period very difficult for pre-transition non-EU oriented products. The evolution of industrial output and changing sector composition is determined by the offsetting experiences of products, as dictated by pre-transition trade orientation, during the transition process.

Hoekman and Djankov (1997) document the movements and compositional changes in exports to the EU and to the previous CMEA in these countries during the transition process. At the start of transition these open economies already exported more to Europe than to the centrally planned market. With the introduction of the market system and trade agreements and the corresponding reduction of trade restrictions, outlined in Rodrik (1994), we observe an expansion in export growth to the EU over the period 1990-96 which was particularly evident from 1993 onwards. Rodrik (1994) noted that the re-orientation of products, previously directed to CMEA, to the EU market was not a feature of the transition period. The export share of previously CMEA oriented trade declined rapidly in the first few years of transition with a slight recovery over the period 1993-96. This analysis on the evolution and changing composition of exports suggests that one should document the fortunes of EU and non-EU oriented production during the first six years of transition. We do this in a matrix of big and small countries, slow and fast reformers.

We model the growth of EU oriented output within sectors of industry, both theoretically and empirically, ex-post trade and market liberalisation as endogenous Schumpeterian waves of vertical product innovation. These waves were induced by the increased access to the EU market and EU investors. Borenszstein et al. (1998) estimated the effect of Foreign Direct Investment (FDI) on the economic growth of developing countries using the endogenous growth model of Romer (1990), Grossman and Helpman (1991) and Barro and Sala-i-Martin (1995) as their theoretical framework.

In the same spirit we undertake the empirical counterpart of the endogenous growth model of Aghion and Howitt (1992) as our theoretical framework. We prefer to model innovations, or technical process, as vertical innovations within products rather than horizontal diffusions from outside the product.

We merge three important data sets that allow us undertake an empirical investigation of the dynamic processes put forward in the theoretical section of this paper. *The LICOS Industrial Data Base* contains industrial output data by branch/sector of Industry in 2-digit NACE classification by country. *The EUROSTAT Trade Statistics* is a high quality database containing annual data on trade flows, to and from CEE countries, by 7-digit NACE classification. Finally the *Bocconi FDI Data Base* contains information on 2385 investment operations across twelve host countries including, Bulgaria, Hungary, Poland and Romania, by 2-digit NACE classification. Using panel data techniques we estimate the growth dynamics of EU oriented output ex-post trade and market liberalisation as EU induced Schumpeterian waves of vertical product innovations, and non-EU oriented output within sectors as unobservable deterministic sector and country specific heterogeneity. Our results suggest that transition issues such as reallocation, restructuring and disorganisation were not of first order importance when considering the EU oriented component of industrial output. This might be expected given that these products already exported to the EU before 1989, thereby minimising the need to restructure product attributes. The use of foreign capital and expertise of European companies allowed them to privatise and restructure with ease and take full advantage of increased market access to the EU.

The evolution of non-EU industrial output is estimated to follow the same pattern as that observed CIS countries. Hence the faster recovery, or the U-Shape industrial output, observed in CEE as compared with CIS countries is mainly explained by the inherited presence of EU oriented production and its unconstrained growth over the transition period.

In section I we write down the theoretical framework and the reduced form to be estimated in our empirical section. In section II we describe and undertake an analysis of the data used in our empirical work. We undertake our econometric analysis and tabulate our results in section III. Finally, we make our conclusions and review their compatibility with the current literature on the U-shaped industrial output curve.

SECTION I: ENDOGENOUS PRODUCT GROWTH AND TRADE LIBERALISATION: THE SCHUMPETERIAN APPROACH

Our framework for modelling growth is based on the Aghion and Howitt (1992) endogenous growth model. In our model growth is induced by endogenous shifts in the demand function rather than shifts in the production function. We also allow the steady state level of investment in our model to be determined endogenously in a two-stage framework. Trade and market liberalisation ensured that product specific investments became an endogenous outcome driven by international market forces. Investment under the planning system was determined by the State. We proxy the effects of liberalisation as exogenous shifts in consumer willingness to pay (or international market size), S , and exogenous shifts in the internationally determined outside option, A , for product specific investment resources. In our model we derive the impact of these factors on the expected evolution of product specific investment, output and price dynamics in steady state equilibrium.

In the model, product specific investment resources, which may be foreign, are allocated between current production and research. The research is aimed at increasing the expected arrival of vertical innovations that in turn will alter the consumer willingness to pay for the product. As in Aghion and Howitt (1992), the maintained assumption is that innovations (endogenous shifts in the demand curve) within the product category are undertaken in a least cost manner via the entry and exit of firms, changes in ownership, rather than restructuring of practices within firms. Growth in the model is determined by Schumpeterian waves of firm *creative destruction* within products, with the intervals between each wave being determined by the level of investment and the share that is being allocated to research for product innovation. We model product growth in a two-stage framework. In Stage I the investment decision is made conditional on having perfect foresight on the uncertain outcomes of Stage II. Hence we model stage two first.

Stage II: We assume a given and continuous amount of product specific investment resources, I , which can be used either in current production (x) or in research (n). Research seeks to develop an improved vertical attribute for the product type. The research is aimed at creating an “innovation” that will make the current product obsolete when the new product arrives on the market. Innovations are assumed to arrive randomly with a Poisson arrival rate of λ for each unit of investment put into research. Growth in this model is generated from a succession of uncertain arrivals of product innovations with new ownership. The expected arrival rate of such innovations is determined by λn .

The following equation acts as a *accounting equation*.

$$I = x + n \quad (1)$$

The investment allocation between current production and research will equalise the expected discounted rate of return from the allocation. The following *arbitrage equation* is also binding,

$$r_t = \lambda V_{t+1} \quad (2)$$

r_t is rate of return accrued by an investment resource dedicated to current production while λV_{t+1} is the discounted expected rate of return that results from allocating a unit of investment to the search for a new innovation. One should note that t denotes the current level of innovation and not time. The value of V_{t+1} is determined by the following asset equation,

$$RV_{t+1} = \pi_{t+1} - \lambda n_{t+1} V_{t+1} \quad (3)$$

The left-hand-side is the discounted expected income from the licence to produce a product with the $(t+1)$ innovation level over the expected duration of its life. The right-hand side is the rent flow minus the expected loss when a new innovation arrives. The net present value of an asset yields a certain π_{t+1} until it disappears, which it does at the expected rate of λn_{t+1} , the expected duration of monopoly rents. The model becomes operational by solving for x from the following optimisation problem,

$$\underset{x}{Max} \pi_t = (P_t - r_t)x_t \quad (4)$$

We model our inverse demand curve and production function as an exact form. The results of the model are robust to general specifications. Thus,

$$P_t = \frac{S \gamma^t}{Y_t} = \frac{S \gamma^t}{x_t^\alpha} \quad (5)$$

where the Cobb Douglas production function exhibits decreasing returns to scale $0 < \alpha < 1$. The size of the market, S , or willingness to pay, shifts by a factor γ each time a new product arrives with an innovation in its vertical attribute. Each incumbent producer faces an exogenous market size defined in terms of S and the vertical attribute. Market size has two components. The endogenous component depends on the historical number innovations undertaken for the product including that undertaken by the current manufacturer before entering the market. The exogenous component, S , is predetermined by exogenous factors such as the degree of market regulation and trade liberalisation.

The optimal manufacturing level within a product niche is determined by a monopoly. The solution function for the above optimisation problem and the sign of the partial derivatives are as follows,

$$x_t = \left(S^+ \gamma^+ r_t^- \right) = \left(\frac{S(1-\alpha)\gamma^t}{r_t} \right)^{1/\alpha} \quad (6)$$

Using (1) and (6) we can express r_t as a function of the n_t conditioned on (6) holding. We express this relationship and its partial derivatives in the steady state as follows,

$$r = g \left(S^+ \gamma^+ I^- n^+ \right) = \frac{S(1-\alpha)\gamma^t}{(I-n)^\alpha} \quad (7)$$

In the steady state we drop the subscript t except in the case of the endogenous vertical attribute whose given value to the incumbent depends on the number of innovations undertaken in history. Using the arbitrage equation (2), and equation (6) we can also express r_t as a function of the n_{t+1} . This relationship and the partial derivatives in the steady state are given as,

$$r = f \left(S^+ \gamma^{t+1} n^- \lambda^+ R^- \right) = \left(\frac{\lambda\alpha}{(R+\lambda n)(1-\alpha)} \right)^\alpha (S(1-\alpha)\gamma^{t+1}) \quad (8)$$

We undertake comparative static exercises on our accounting and arbitrage equations, (7) and (8), assuming a steady-state equilibrium and that (5) is binding. We express the partial derivatives of the solution functions in terms of the partial derivatives of the above equations.

$$\begin{aligned} r^0 \left(S^+ \gamma^+ I^- \lambda^+ R^- \right): \quad r_s^0 = g_s > 0 \quad \text{and} \quad r_I^0 = \left(\frac{g_I f_n}{f_n - g_n} \right) < 0 \\ n^0 \left(S^0 \gamma^+ I^+ \lambda^+ R^- \right): \quad n_s^0 = 0 \quad \text{and} \quad n_I^0 = \left(\frac{g_I}{f_n - g_n} \right) > 0 \end{aligned} \quad (9)$$

The explicit solution functions for (9) can be found in appendix I. In the steady state equilibrium we are concerned with the impact of I and S on the allocation of resources between production and research, and on the equilibrium rate of return to investment projects. The greater the amount of investment resources available, the bigger the allocation to research. This in turn increases the expected arrival rate of innovations in equilibrium. The rate of return to current and future projects falls as the expected life cycle of each innovation is shortened. A change in the exogenously determined market size has no effect on the allocation of investment between current production and research, but it does increase the current and discounted expected rate of return on a unit of investment. This will be important for the determination of steady state investment in stage I.

Stage I: In stage I the level of steady state investment is determined in full anticipation of the expected outcomes in stage II. Investment maximises the steady state rate of return net of an exogenous outside option, A . We express the steady state optimisation problem as the following,

$$\text{Max}_I \Omega = (r^0 - A)^\varepsilon \quad (10)$$

The first order condition takes account of the changes in the steady state rate of return as investment changes. This is expressed as follows,

$$\Omega_I = \varepsilon \left(r^0 \left(\overset{-}{I}, \overset{+}{S} \right) - A \right)^{\varepsilon-1} \frac{\partial r^0 \left(\overset{-}{I}, \overset{+}{S} \right)}{\partial I} = 0 \quad (11)$$

Taking (11) as our equilibrium equation, we can perform comparative static exercises, using (9) and the first and second derivatives of (7) and (8), with respect to all the exogenous variables in our model on steady state investment. The explicit functional form for the steady state level of investment can be found in appendix I. We report our results as follows,

$$I^0 \left(\overset{-}{A} \overset{+}{S} \overset{+}{\gamma} \overset{+}{\lambda} \overset{-}{R} \right) \quad (12)$$

The exogenous level of market size and the endogenous shift in the market size after each innovation have a positive impact on the overall level of steady state investment. Factors such as a rising outside option or discount rate in evaluating expected future returns from innovations reduce steady state investment levels. Equation (11) has the property that investors in steady state equilibrium only earn an expected return equal to the outside option. We turn to the analysis of steady state output and price dynamics in the event of endogenous movements in investment resources made available to products in the aftermath of trade liberalisation.

Steady State Output Dynamics: Using the expression for (6) in steady state, we can express the corresponding output as follows,

$$Y_{t+1}^o = x_{t+1}^{o\alpha} = \gamma Y_t^o \quad (13)$$

The expected growth rate is a random step function, the interval between each step being exponentially distributed by steady state level of λn . This is determined, amongst other things, by the steady state level of investment and the other factors in (9). Investment in turn depends on the exogenous size of the market and the outside option for investors in addition amongst other factors. Expected growth in our steady state equilibrium can be expressed as follows,

$$\dot{y} = \lambda n^o \left(I^o \left(S^+, A^- \right) \right) \ln \gamma \quad (14)$$

The expected growth in steady state output during real times, τ , depends on the amount of innovations that take place over the defined real time interval,

$$\ln y_{\tau+1} = \ln y_{\tau} + \psi(\ln \gamma) \quad (15)$$

where the expected growth rate of output over a defined real time interval depends on the expected number of innovations ψ over the interval as dictated by equation (14). Output for defined real time intervals is expected to grow at an increasing rate. Innovations or endogenous increases in the market size ensure that the innovation rate itself is expected to increase over time. Trade and market liberalisation, through its effect on market size and on the outside option for investors, is also an important determinant of the level of investment and hence the steady state level of current production and its expected growth overtime. An increase in the endogenous level of investment increases both x and n but lowers the ratio of x/n . The expected growth path of output is higher on two accounts. Innovations are expected to arrive at a greater rate over defined real time intervals due to an increase in overall investment, but also because a greater share is allocated to research. The core implication of our model is that a product facing a positive investment shock due to trade liberalisation (the free movement of goods and capital between countries) will increase steady state output, but will also concentrate more of the increased investment resources into research. Thus, the expected rate of output growth increases with increasing convexity overtime. The expected benefits of the positive shock are spread overtime.

Steady State Price Dynamics: By substituting (6) into (5) and setting $r = A$ to satisfy the condition in (11), we can express the steady state prices as follows,

$$P = \frac{A}{(1 - \alpha)} \quad (16)$$

The price for the product after trade and market liberalisation is a mark-up on the outside option for investment resources. The mark-up tends to zero as the degree of competition in the market increases ($\alpha \rightarrow 0$). The prediction of the model is that price movements in steady state over-time become independent of output movements. We would expect the export price of goods to reflect their trading partners in the event that they compete for the same pool of investment resources.

Implications for Sector Output Dynamics: Assuming products form independent sub-markets and investment is product specific, we aggregate over products to predict their contribution to the evolution of sector output. Our theory predicts that as product specific investment grows with trade liberalisation, a higher share will be allocated to research for product innovation. This in turn is predicted to induce an initial expansion in sector production and a large expansion in sector growth overtime induced by increasing rates of *creative destruction* within products experiencing positive investment shocks. The above model shows how the role of discrete changes in investment patterns not only dictate contemporaneous output levels, but also their evolution over time. The reduced form in (14) and (15) will form the basis of our empirical agenda. We first describe and undertake a brief analysis of the data used in our empirical work.

SECTION II: SECTOR ANALYSIS OF INDUSTRIAL OUTPUT, EU EXPORT ORIENTED PRODUCTS AND EU FOREIGN DIRECT INVESTMENT.

We wish to examine the forces behind industrial sectors output growth in Bulgaria, Hungary, Poland and Romania over the period 1989-1995. Three important data sets are merged which allow us undertake an empirical investigation of the dynamic processes put forward in the theoretical section of this paper. We describe each data set and undertake an analysis of the variables we intend to use in the empirical section of the paper.

The LICOS Industrial Data Base: This data base contains industrial output data by branch/sector of Industry in the NACE classification outlined in table 1 over the period 1989-1995. An INCO-COPERNICUS project (CIPA-C-93-0003) on the region converted data from official sources, using a common methodology, to a common NACE classification system. We have constant output data for all our four countries by sector of industry in the form of a cumulative output index. The value of this index is always equal to 1 in base year 1989 for all branches. Using this data we can analysis the degree of sector heterogeneity in the evolution of Industrial output in Bulgaria, Hungary, Poland and Romania over the period 1989 and 1995. We undertake the analysis with a number of simply indices. We calculate a discrete measure of growth over the period t-1 to t in sector i and country j as the following,

$$g_{ijt} = \left(\frac{y_{ijt} - y_{ijt-1}}{(y_{ijt} + y_{ijt-1}) / 2} \right) \quad (17)$$

We wish to examine the contribution of rising and declining sectors to the overall evolution of output. To do this we sum the growth rates of each rising sector (POS), weighted by the sector size S_{ijt} , and sum of the absolute growth rates of each declining sector (NEG) weighted by their size S_{ijt} ,

$$\begin{aligned} POS_{jt} &= \sum_{i=1}^n S_{ijt} g_{ijt} && \text{if } g_{ijt} > 0 \\ NEG_{jt} &= \sum_{i=1}^n S_{ijt} |g_{ijt}| && \text{if } g_{ijt} < 0 \end{aligned} \quad (18)$$

The net change in industrial output and the excess reallocation of output between sectors within countries over and above that necessary to generate the net outcome are calculated as follows,

$$\begin{aligned} NET_{jt} &= POS_{jt} - NEG_{jt} \\ EXCESS_{jt} &= POS_{jt} + NEG_{jt} - |NET_{jt}| \end{aligned} \quad (19)$$

In table 2 we outline the year to year growth rates in industrial output, the contribution of rising and declining sectors to the overall net changes in industrial output, and the excess reallocation of output between sectors within Bulgaria, Hungary, Poland and Romania.

The U-Shaped Industrial Output Curve can be seen to be present in all four countries. Bulgaria and Romania had negative growth rates till the end of 1993 and since then we observe a recovery. Romania grew strongly one year later than Bulgaria. It is only since 1992 that we observe simultaneous expansions and contractions of sectors inducing reallocations of output across sectors to be significant in Bulgaria and Romania. Structural change in Poland started earlier. We observe a large collapse in output in the period 1989-1990 followed by large reallocations of output between sectors in the following years up to the end of 1992 and stable and homogeneous growth in all sectors since. The collapse in Hungarian output was spread over the years up to 1992 and output was reallocated across sectors in the period 1992-1993.

As shown in fig.1 the initial size distributions of sectors within each country were similar coming out of the planning system in 1989. Even though the timing of change in sector composition of output was very different in each of the four countries the final size distributions of sectors converged again by 1995. As indicated in table 3 the variation in the absolute change in sector size across countries was less than the variation between different sectors within countries over the period 1989-1995. This indicates that structural change tended to be induced by common sector specific shocks rather than country specific shocks.

In fig.2 we examine the shift in the size distributions of sectors within countries and note the shift to the right in the distribution. This indicates that by 1995 sectors that were initially small in 1989 increased their share of output relative to the traditional large sectors. Heterogeneity in sector experience is present throughout this period and its determinants seem to be common across all four countries. We show that intra-sector compositional changes are the driving force behind the observed differences in sector experience. To allow us estimate the role of intra-sector compositional changes over this period in terms of EU versus non-EU oriented production, we turn to an analysis of the trade data by sector of industry.

EUROSTAT Trade Statistics: This high quality database contains annual data on trade flows by 7-digit product categories between the 12 Member States and some 200 non-Community countries. We obtained imports from Bulgaria, Hungary, Poland and Romania for the period 1988-1995 for the EU12. In order to link the foreign trade data with the data on industrial output we used the NACE CLIO (1970) product classification system (see "Système européen de comptes économiques intègrès" EUROSTAT, Luxembourg, 1979). The IMF financial statistics yearbooks provide the value of trade flows in 1989 prices. The trade data is in 1000 ECUs. The deflator used in this case was the CPI in the twelve Western European countries reported in the country tables in the IMF Financial Yearbook. We used the weighted sum of the CPI for EU12 with weights equal to the countries' respective shares of their GDP in a common currency.

Hoekman and Djankov (1997) provide us with a good analysis of the export structure in Central and Eastern Europe. Table 4 is constructed from their analysis. There are a number of important observations to be made. First, the export share of the EU at the start of the transition process was greater than CMEA trade. Secondly, we observe the export share both to former centrally planned economies and to the EU changing in a dramatic fashion. A large initial decline in exports to the former CMEA is observed up to 1993 with a recovery only evident in the later period of 1993-1996. The positive impact of EU trade was apparent in early periods, but the real expansion can only be observed in the later period.

In table 6, we report, among other things, the distribution of export share by sector of industry in 1988 and the initial size of sectors in industry, averaged over the four countries. We note that all sectors of industry contained products that were exported to the EU before 1989 and the larger sectors in industry under the planning system had the greater share of industrial exports to the EU.

We wish to examine the experience of products at the 7 digit level of Industry within these 2 digit sectors over the period 1989-1995. We do this by constructing the following products for EU Export Creative Destruction Index (CDI) for each 2 digit sector of Industry in country j over a defined period $t-1$ to t . We express the index as in the following,

$$CDI_{ijt} = \sum_{k=1}^k \left[\frac{x_{kijt}}{X_{ijt}} \left(\frac{|x_{kijt} - x_{kijt-1}|}{|x_{kijt} + x_{kijt-1}|/2} \right) \right] \quad (20)$$

We construct the CDI in sector i of country j in period t from the export level of products, k , at the 7 digit level of industry. For each product we calculate the absolute change in the level of exports over the period $t-1$ to t and divide it by the average size of the product exports over the defined time interval. This term is bounded between 0 and 2. To get the size weighted average of product turbulence classified within 2 digit sectors of industry we aggregate over products up to the sector level. Each products contribution is weighted by the share of its exports in ijt to the overall sectors exports, X , in ijt . Expansions and contractions, entry and exit of product categories for EU export, generate turbulence and move the index closer to two. This is likely to reflect firm turnover and the introduction of products with better vertical attributes as outlined in our theoretical section.

In table 5 we examine the year to year evolution of our CDI index by Country, weighting by the size of sectors within industry. To allow us see whether the smaller sectors experience was different we also report the index where each sector is given an equal weight. In Hungary the average product exported to the EU generated turbulence in the order of 22 per cent of its export size over the period 1989-90. This turbulence increased over time, particularly after 1993, to the order of 82 per cent of product export size over the period 1994-95. Giving an equal weighting to the size weighted product experience of each sector we observe that the products in the smaller sectors generated more turbulence. These patterns are also transparent in the other three countries.

In table 6, the presence of products for EU Export Creative Destruction, averaged over the four countries, is evident in all sectors. With the exception of Basic Metal and Fuel Production, the index is greater in sectors that were traditionally small in output and in their share of EU exports under the planning system. In all sectors the size-weighted turbulence of products is greater in the later period, 1992 to 1995. By 1995 sectors such as Leather products, Wood products, Electrical and Optical Equipment, and Transport Equipment, that were traditionally small sectors had, on average, product turbulence greater than a 100 per cent of the export size in the previous year.

In the last column of table 6 we document a concentration index of product sizes within sectors, averaged across the four countries. We report an augmented Herfindahl index which is normalised for the number of products in the sector by subtracting the value of the Herfindahl index assuming each product has an equal share of exports from the value of the standard index. The closer the index is to one, the further away the sector of industry is from having a distribution of equal export share across products. In general we find that bigger sectors do not have a higher concentration of products in export structure as compared with smaller sectors, with the exception of Fuels Production. In addition concentration levels do not rise over time. In fact product share of sector exports is in many cases becoming slightly more fragmented.

Our analysis suggests that the factors behind the evolution of the CDI coefficient seem to be sector specific and common across countries. Aturupane, Djankov and Hoekman (1997) and McDowell and Thom (1998) document a large increase in Intra-Industry Trade between the EU and Central East European countries over this period, 90 per cent of which is vertical in nature. They also find that 85 per cent of the variation in Vertical Intra-Industry Trade is not country specific but industry specific, which is consistent with our analysis. They report that higher levels of Intra-Industry Trade are observed in those sectors engaged in vertical product differentiation and foreign direct investment. We now turn to the analysis of the initial EU Foreign Direct Investment flows in 1990 by sector of industry and by country. Investment is the key determinant of the reduction in real time Creative Destruction intervals in our theoretical model. We intend to model observed patterns in our CDI index using initial EU Foreign Direct Investment flows by sector of Industry. With the instrumented values of our CDI index, we estimate the portion of sector growth in each country that can be explained by vertical innovations in product categories exporting to the EU over the period 1989-95 and use panel data techniques to model non-EU output as deterministic unobservable η_{ij} heterogeneity.

Bocconi Foreign Direct Investment Data Base: These data were collected as part of a research project commissioned by DG III of the European Commission (Ref: SUB/96/83328/U.B.), from two general sources. First, published lists of foreign investors collected by national investment promotion agencies and international organisations. These agencies were interviewed in March and April 1997. Secondly, from Journals, Specialised Magazines and Newspapers. The data bank contains information on 2385 investment operations across twelve host countries including, Bulgaria, Hungary, Poland and Romania, by NACE code. The amount of initial investment, in Millions of ECUs, were aggregated to the higher level of 13 NACE manufacturing branches (DA, DB, ..., DM) by summing up over FDI operations. To be counted as FDI, the investment should ensure a lasting interest and control in the management of an enterprise.

The investment can be Greenfield Investment but the majority was an Acquisition or a Joint Venture. The reliability of the data, cumulated initial values of investments, compares favourably with official FDI flows measured by EUROSTAT, European Union Direct Investment Yearbook 1996, on a home country basis for the period 1992-1994.

In table 7 we summarise the data on the amount of initial FDI investments in 1990 (Millions of ECUs) aggregated up to the level of our 13 NACE manufacturing branches of Industry. Hungary and Poland attracted the larger share of the Investment flows. Macro-Stability was a key factor in attracting the flows (see EBRD, *Transition Report*, various years). Investments were also sector specific, with some traditionally small sectors attracting large investments. The distribution across the sectors was similar in each country but the magnitude was higher in each sector in the Visegrad countries. Many of the FDI investments were joint ventures, and hence the values of FDI could suggest that much larger investment activities were present. In the next section we undertake an econometric analysis.

SECTION III: THE ECONOMETRIC ANALYSIS

In this section we estimate the impact of the product for EU export Creative Destruction Index on sector output changes, as stated in the reduced forms of (14) and (15), with panel data modelling techniques. The CDI variable is instrumented using initial EU Foreign Direct Investment flows, initial sector size, sector, country and year dummies, and interactions terms. We use the predicted values to model growth in sector i , country j during the interval $t-1$ to period t . We wish to decompose sector growth into that determined by the observable EU trade developments (induced by innovations in products using foreign capital), unobservable but deterministic sector developments (market developments in non-EU products) and a random element. The growth model may be written as follows,

$$Growth_{ijt} = \alpha + \beta_1 \hat{CDI}_{ijt} + \beta_2 (\hat{CDI}_{ijt} \times ISIZE_{ij}) + \beta_3 YEAR_t + v_{ij} + \epsilon_{ijt} \quad (21)$$

To evaluate whether the instrumented values of CDI had a heterogeneous impact by size of sector, it is interacted with initial sector size, $ISIZE$. Unobserved heterogeneity in sector ij is controlled for by the inclusion of a unit specific residual, v_{ij} , that is comprised of a collection of factors not in the regression that are ij specific and constant over time. In addition to controlling for the collection of factors not related to the EU trade that are ij specific and constant, we control for ij time varying effects with $YEAR$. For example, we have no data on the product turbulence within sectors generated from the negative impact of the decline and recovery of the former CMEA market. We also do not have data to control directly for disorganisation and other supply side problems that may constrain such products performance.

The intercept and trend in the regression allow us to estimate the baseline intercept shift and evolution overtime of the unobservable deterministic factors for the region. The recovered sector ij fixed and time varying effects will be subtracted from the overall intercept shift and time trend to estimate the unobserved deterministic sector ij effect.

The results of our instrumented regression on sector output growth are presented in table 8. The instrumented CDI has a significant positive impact on growth, but its estimated impact depends on sector size. Although smaller sectors exhibit more turbulence in product categories, the estimated impact on growth per unit of change is less compared with large sectors.

In table 9 the growth rate in (21) by sector ij is decomposed into the portion of growth estimated to have been induced by innovations in products for EU export, and deterministic unobservable factors related to the collapse of the CMEA market. We sum over sectors, weighting by sector size, in each year to get the contribution of EU and Non-EU products performance to the aggregate growth rate of manufacturing output. The net change predicted shows us the estimated impact of these compositional changes within sectors on aggregate industrial growth. Excess reallocation is the sum of the absolute, size weighted, growth rates of EU and non-EU products by sector over and above that necessary to generate the observed net growth rate predicted for manufacturing output. The greater the simultaneous expansion of EU and contraction of non-EU products within sectors the bigger the index.

We also report the predicted net change in the manufacturing year to year growth rate and the reallocation of output within sectors to producing EU rather than previously CMEA oriented products, given equal weights to all sectors. This illustrates whether the smaller sectors are predicted to have had a different experience.

Comparing the within sector analysis in table 9 to the between sector analysis in table 2 we see that most of the observed changes in the aggregate output curve are induced by changes within sectors rather than between sectors. The U-Shape in industrial output results from the net impact of offsetting developments within sectors. Products for EU export induced sector growth in each year, but the effect is particularly strong from 1993 onwards. Products previously sold into the CMEA market collapsed in the first few years of transition and only recovered in Hungary and Poland after 1994. In table 9 we see that that the experience was heterogeneous across sectors. In particular, by giving equal weights to the smaller sectors we observe two points. First, the U shape in the net change predicted for manufacturing output due to the within sector experience is flatter.

In the early periods the CMEA shock did not dominate the benefits of the EU trade shock as much as in the larger sectors. In the latter periods the dominance of the EU trade shocks were not as great as in the larger sectors. Secondly, the reallocation of output within sectors to EU oriented products away from previously CMEA directed products was not as great in smaller sectors. Although the smaller sectors did not perform as well on the basis of EU exports, they still increased their share of industrial output over-time. This was because they suffered much less from the power of the CMEA shock and its slow recovery.

In table 10 we report the sector analysis averaged over the four countries. The countries had a similar sector specific experience. The estimated EU trade shock and the collapse of the CMEA shock on each sector are reported as well as the actual output growth experience of the sector in question. We see clearly the points inferred from table 9 when considering the experience of small versus large sectors.

Our econometric work allows us to estimate the evolution of non-EU industrial production. In fig. 3 we compare the evolution of non-EU oriented industrial output in CIS to our four CEE countries. We observe a relatively steep decline in non-EU industrial output in the first few years of transition in CEECs. One can argue that the CEECs started initial restructuring (reductions in over-manning) earlier since we observe a convergence between cumulative output indices of the two groups of countries in the later years of transition. The graph illustrates that the U-shape in CEE industrial output resulted mainly from the existence of EU oriented production before 1989 and its rapid expansion since then fuelled by the increased access to the EU market and EU investment.

Conclusions

We have shown that the experience of EU oriented output within sectors has been fundamentally different to that estimated for non-EU oriented products. The dynamics of EU oriented output, ex-post trade and market liberalisation, is modelled theoretically and empirically as EU induced Schumpeterian waves of vertical product innovations. Our results suggest that transition issues such as reallocation, restructuring and disorganisation were not of first order importance when considering this component of industrial output. This might be expected given that these products already exported to the EU before 1989, thereby minimising the need to restructure product attributes. The use of foreign capital and expertise of European companies allowed them to privatise and restructure with ease and take full advantage of increased market access to the EU.

The evolution of non-EU industrial output is estimated to follow the same pattern as that observed CIS countries. Our main conclusion is that the faster recovery, or the U-Shape industrial output, observed in CEE as compared with CIS countries is mainly explained by the inherited presence of EU oriented production and its unconstrained growth over the transition period.

The shape of the non-EU component of industrial output varies from sector to sector. In some case we observe a U-Shape while in others an inverse J-Curve. It is unlikely, as in the case of EU oriented output, that this component of industrial output is an efficient outcome induced solely by trade and market liberalisation. Most of the theoretical literature thus far explains the collapse of industrial output as an inefficient outcome driven by supply side rigidities that constrain the transition process.

As outlined in Blanchard (1997), there are two key elements of the transition process, reallocation and restructuring. Reallocation refers to the movement of production away from state to private ownership. Restructuring refers to changing the level and technical composition of labour and capital in search of cost and productive efficiency in production. A distinction can be made between initial restructuring and deep or strategic restructuring. Initial restructuring refers to reducing over-manning levels in response to the hardening of budget constraints. Deep or strategic restructuring requires that fundamental actions be taken aimed at improving the long run performance of the firm. This type of restructuring can include various actions such as an increase in investment into new technology, vertical innovations in products, and replacement of obsolete capital. In the absence of distortions, the level of output that results from the transition process should be a first best outcome that reflects efficient eradication of distortions that existed in the microeconomic environment of the planning system. This was the experience of EU oriented output but not of non-EU oriented output.

To date the theoretical explanations put forward for the initial collapse in non-EU industrial output are based on the presence of supply side rigidities that constrain the transition process. Atkeson and Kohoe (1995) blame the presence of labour market frictions that result from the sector shifts within output and a lack of investment into the reorganisation of human capital. Wei Li (1994) explain the decline by noting that while central planners behaved like a single vertically integrated monopoly liberalisation lead to multiple monopolies charging monopoly prices to downstream monopolies constraining the transition process. Blanchard (1997) explains the decline as a second best outcome driven by the presence of downward real wage rigidities during transition. Finally, Blanchard and Kremer (1997) and Roland and Verdier (1997) provide us with the microeconomic foundations for understanding why *disorganisation* in the links of production, led to a short-term output contraction after market liberalisation and a recovery thereafter. Blanchard and Kremer (1997) model “disorganisation” as disruption in the production links that had been established during central planning. Under central planning bilateral relationships existed between suppliers and buyers. Liberalisation of the market gave suppliers an outside option. An assumed presence of information asymmetries on the outside option of suppliers created disruption in their model. Firms cannot find out the price that alternative buyers are willing to pay to the supplier. As a result they may not pay a price that prevents suppliers switching to new buyers, thus creating disruption in the production links and a fall in output during transition.

Roland and Verdier (1997) also model “disorganisation” in production during the transition process. They focus on the role of search frictions created from the desire to find new partners in the chain of production. The outside option is endogenous in a model of two sided search and matching. In the long-term more efficient opportunities are available to all. Suppliers and buyers will maintain existing links until one finds a better match. Search by many bad buyers creates congestion and reduces the quality of matches in the short-run. The fall in output is not generated by the breakdown of supplier and buyer relationships that existed in the planning system but due the assumption that investments will not be undertaken in production until a long-term partner is found. No investments take place during search. Aggregate output in the years after liberalisation contracts due to a fall in investment demand and the failure to replace obsolete capital.

Do the above supply side theories tell the whole story? The firms producing products traditionally exporting to the CMEA had three choices: exit, re-orient their production to Western markets, or improve the technical efficiency of production to make products of the quality required to compete on previously CMEA markets.

The latter was driven by the decline in market demand and the availability of foreign imports. Rodrik (1994) rules the second choice out. For traditional firms that did not exit, problems of reallocation, restructuring and disorganisation may have become first order in importance. Yet, this may have been induced by changes in taste patterns and competitive pressure from imports in the previously named CMEA market. The interaction of the demand shock with supply side rigidities may well be the determinant of the collapse and slow recovery that is estimated by us in our empirical work in CEE countries. These issues can only be disentangled using firm level data on a sample of firms that existed under central planning *and* traded within the CMEA before the event of transition. Given the results of this paper, we would not expect the issues and results to be different in samples of such firms from CEE or CIS countries.

Figure 1: Distribution of Sector Size Across Countries

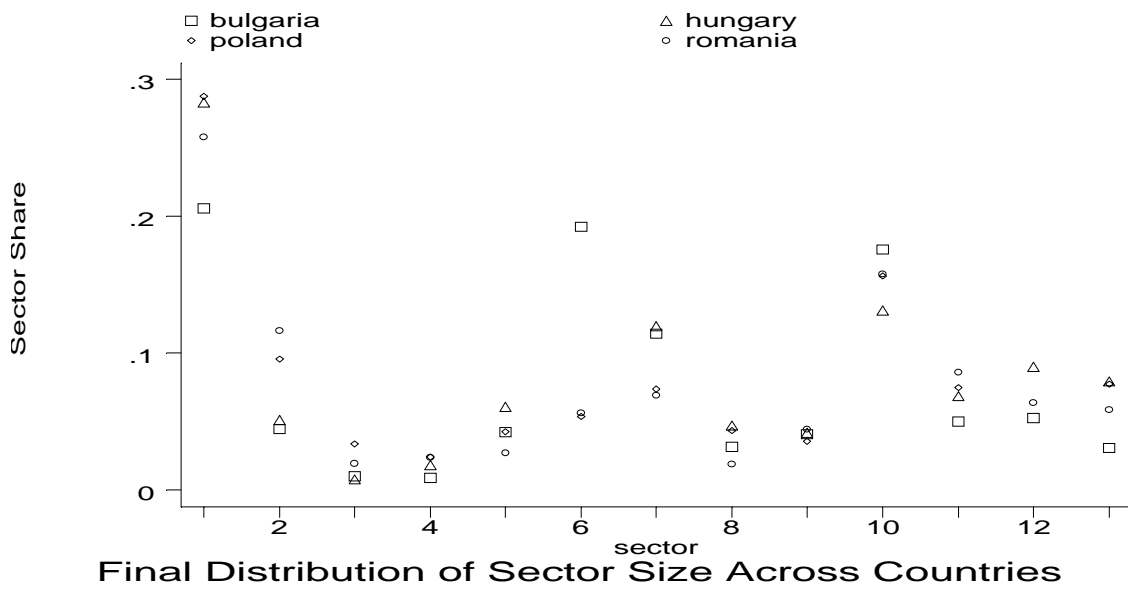
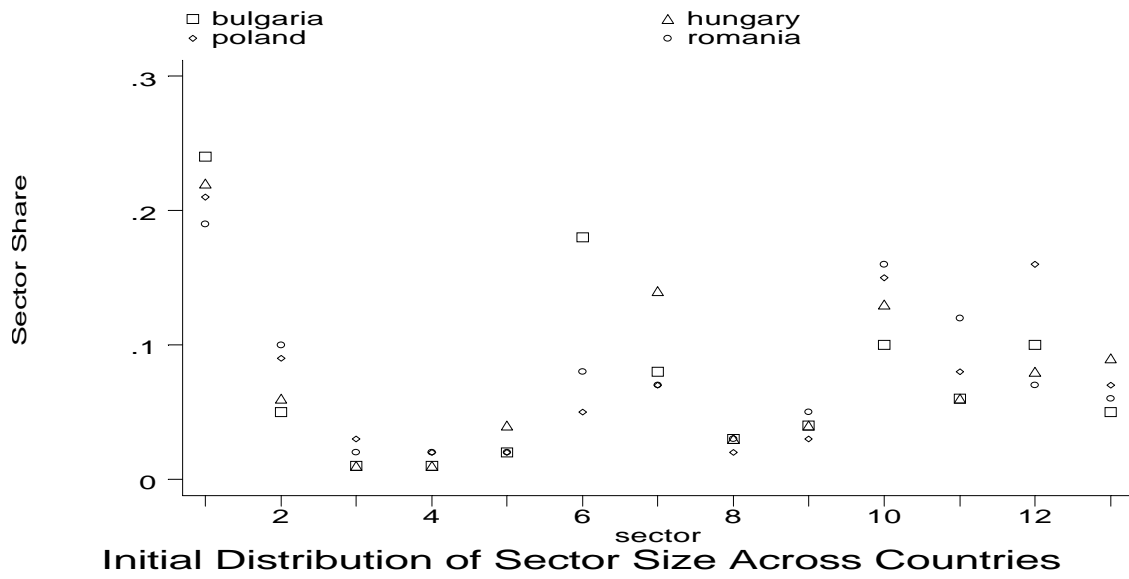
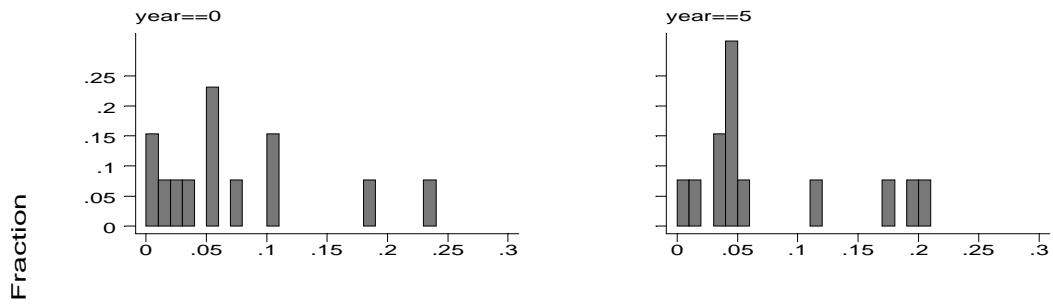
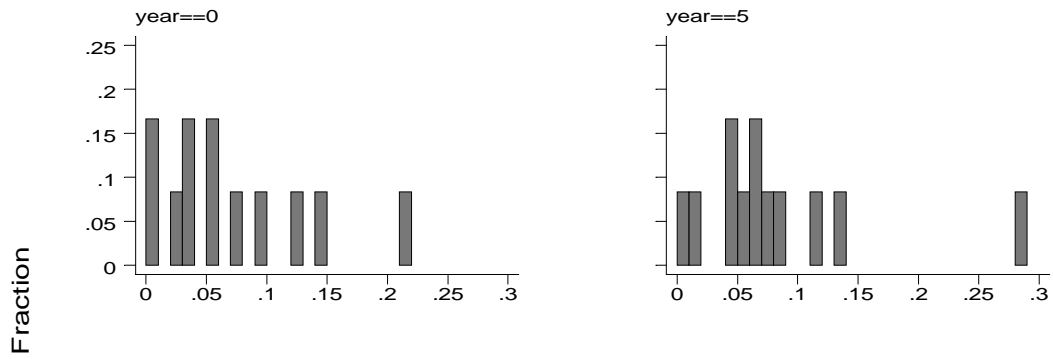


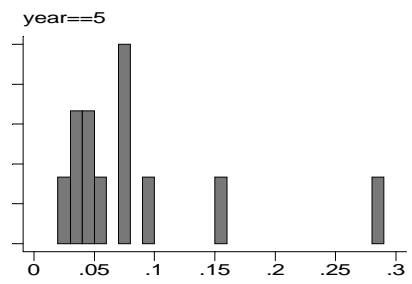
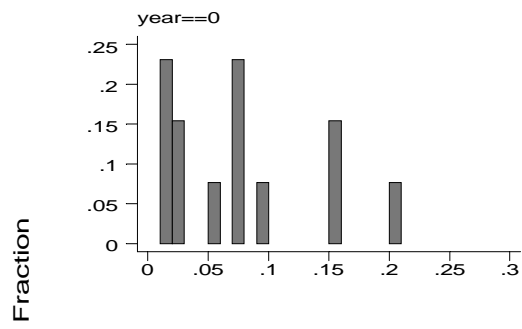
Figure 2 : Distribution of Sector Size Within Countries



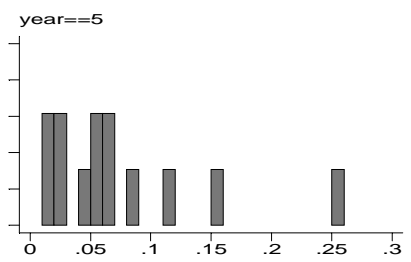
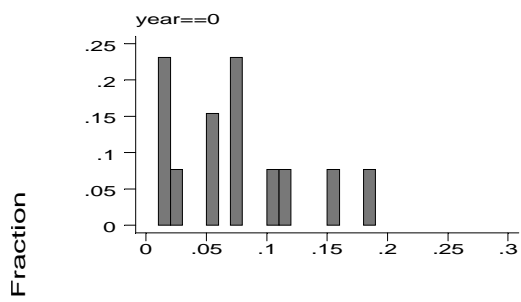
Distributions of Sector Size, Bulgaria



Distributions of Sector Size, Hungary



size
Distributions of Sector Size, Poland



size
Distributions of Sector Size, Romania

Figure 3: Trends in Industrial Output

The Evolution of output net of EU trade in the CEECs and the actual decline in industry in the four CIS countries

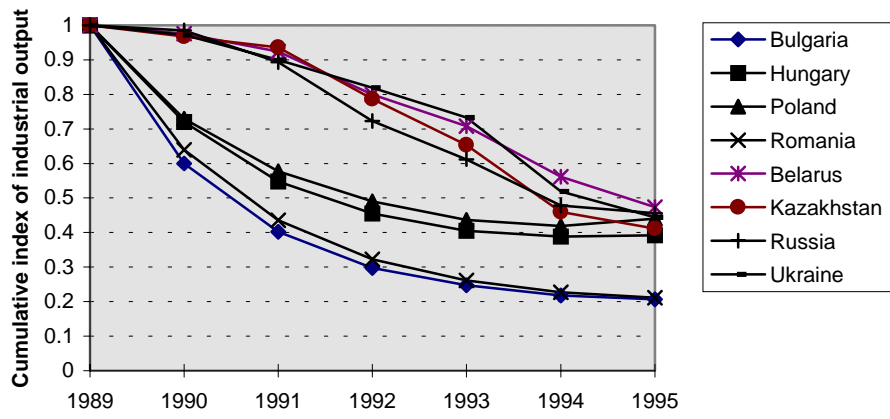


Table 1: Total Manufacturing D (NACE)

Sector #	Sector Name	D	NACE
1	Food, Beverage and Tobacco	DA	(15,15.1-8,15.9,16)
2	Textiles and Textile Products	DB	(17,18)
3	Leather and Leather Products	DC	(19.1-2,19.3)
4	Wood Products	DD	(20)
5	Paper, Printing and Publishing	DE	(21,22)
6	Fuels Production	DF	(23)
7	Chemicals Products, Fibers	DG	(24, 24.1/2/7, 24.3-6)
8	Rubber and Plastic Products	DH	(25,25.1,25.2)
9	Mineral Materials and Products	DI	(26,26.1-4)
10	Basic Metals and Fab. products	DJ	(27,28)
11	Machinery, excluding electrical	DK	(29)
12	Electrical and Optical Equipment	DL	(30,31,32,33)
13	Transport Equipment	DM	(34,35)
14	Other Manufactured Products	DN	(36)

Table 2: Aggregate Growth Rate of Manufacturing and Sector Heterogeneity

(i) Bulgaria						
Year	89-90	90-91	91-92	92-93	93-94	94-95
Rising Sectors	.001	.003	0	.012	.159	.076
Declining Sectors	.204	.272	.176	.144	.015	.006
Net Change	-.20	-.27	-.18	-.13	.14	.07
Excess Reallocation	.002	.01	0	.024	.03	.013
(ii) Hungary						
Rising Sectors	.0003	.0001	0	.056	.104	.080
Declining Sectors	.117	.211	.202	.015	0	.004
Net Change	-.12	-.211	-.202	.041	.104	.08
Excess Reallocation	.0005	.0003	0	.031	0	.009
(iii) Poland						
Rising Sectors	.0005	.107	.091	.117	.119	.094
Declining Sectors	.346	.107	.075	0	0	.002
Net Change	-.346	.0004	.016	.117	.117	.092
Excess Reallocation	.001	.214	.150	0	0	.004
(iv) Romania						
Rising Sectors	0	0	.002	.010	.068	.112
Declining Sectors	.254	.178	.138	.054	.026	0
Net Change	-.254	-.178	-.136	-.044	.042	.112
Excess Reallocation	0	0	.004	.019	.052	0

Table 3: The Dispersion of the Absolute Change in Sector Size 1990-95

(i) Across Countries		(ii) Within Countries	
Sector	Dispersion (1990-95)	Country	Dispersion (1990-95)
1	.31	Bulgaria	1.59
2	.56	Hungary	2.34
3	1.01	Poland	2.72
4	.70	Romania	2.45
5	.41		
6	.76		
7	1.06		
8	.71		
9	.71		
10	1.69		
11	.91		
12	1.07		
13	.75		

Table 4: Structure of Exports to Former CMEA Markets and The EU 1990-96

Country	Export	Growth*	Share of Exports**					
			EU			CMEA		
	1990-93	1993-96	(90)	(93)	(96)	(90)	(93)	(96)
Bulgaria	13.4	22.3	40	46	51	30	16	19
Hungary	7.1	14.3	50	56	71	34	14	21
Poland	5.9	16.2	51	70	69	33	11	21
Romania	6.2	16.7	36	40	54	35	11	10

Source: Heckman and Djankov (1997)

*Annual Average Percentage Growth

**Percent

Table 5: Year to Year Growth in (Sector Size Weighted and Equal Weights (E)) EU Export Creative Destruction Overtime by Country

Country	1989-1990	1990-1991	1991-1992	1992-1993	1993-1994	1994-1995
Bulgaria	.22	.50	.67	.61	.77	0.93
(E)	.31	.64	.83	.76	.92	1.00
Hungary	.22	.41	.51	.58	.63	.82
(E)	.26	.47	.63	.67	.75	.96
Poland	.35	.48	.53	.53	.63	.85
(E)	.34	.54	.62	.67	.77	.99
Romania	.62	.65	.65	.77	.73	.84
(E)	.56	.70	.75	.84	.78	.81

Table 6: Products for EU Export *Creative Destruction* by Sector (Averaged Over Countries).

(a) *Creative Destruction Index, Average over 1989-92*

(b) *Creative Destruction Index, Average over 1992-95*

(c) *Initial Share of EU Exports in 1988*

(d) *Initial Size of Sector in 1989*

(e) *Concentration of Product Contribution by Sector 1995 (1989)*

Sector	(a)	(b)	©	(d)	(e)
1	.40	.47	.16	.22	.36 (.40)
2	.45	.64	.08	.08	.36 (.31)
3	.67	1.3	.02	.02	.59 (.50)
4	.61	.88	.04	.02	.27 (.28)
5	.59	.80	.05	.03	.62 (.71)
6	.58	.87	.19	.10	.59 (.78)
7	.51	.56	.14	.09	.41 (.37)
8	.43	.63	.02	.03	.54 (.50)
9	.57	.83	.03	.04	.27 (.32)
10	.46	.81	.18	.14	.29 (.32)
11	.43	.69	.06	.08	.23 (.29)
12	.45	.85	.03	.10	.30 (.39)
13	1.0	1.4	.03	.07	.43 (.31)

Table 7: EU FDI in 1990

(i) By Sector, Across Countries			
Sector	Mean Value (Mill. ECUs)	Coefficient of Variation	Sector Size 1989
1	407.0	.87	.22
2	46.0	.96	.08
3	1.5	1.77	.02
4	3.8	.62	.02
5	47.3	.97	.03
6	3.5	1.77	.10
7	127.3	.73	.09
8	42.8	1.31	.03
9	160.3	1.65	.04
10	89.8	1.01	.14
11	61.5	.67	.08
12	545.0	1.30	.10
13	124.8	1.00	0.7
(ii) Within Country, Across Sectors			
Country	Mean Value (Mill. ECU's)	Coefficient of Variation	
Bulgaria	8.2	2.4	
Hungary	250.9	1.8	
Poland	227.0	1.1	

Romania	24.9	1.1	
----------------	------	-----	--

Table 8: Regression Results

	Fixed Effects Model
R ² (Overall)	0.24
Growth*	
Constant	-.35 (7.8)*
CDI	-.06 (0.5)
CDI x ISIZE	2.3 (2.1)*
Year	.06 (4.7)*
Observations	306
Heterosced.	$\chi^2(52) = 15.3$
AR1	$\chi^2(1) = 7.62$
AR4	$\chi^2(4) = 1.41$

*a. T-statistics in parenthesis

b. Significant at the 5% level.

c. Use predicted Values of CDI instrumented with initial values of FDI, initial sector size, country, sector and year dummies, and their interactions. Interactions of Year x Country x Sector are included in the Fixed Effect Model. Only Fuels Production in Bulgaria and Romania turn out to have a different time varying ij effect compared to that estimated in the overall pooled sample.

Table 9: Aggregate Growth Rate of Manufacturing and Within Sector Heterogeneity

(i) Bulgaria						
Year	89-90	90-91	91-92	92-93	93-94	94-95
EU Products	.08	.11	.14	.15	.20	.24
Non-EU Products	-.40	-.33	-.26	-.17	-.12	-.05
Net-Change Pred.	-.32	-.22	-.12	-.02	.08	.19
Excess Reallocation	.16	.22	.28	.30	.24	.10
Net-Change Pred. (Equal Weights)	-.28	-.19	-.11	-.01	.06	.14
Excess Reallocation (Equal Weights)	.12	.15	.19	.24	.17	.08
Hungary						
EU Products	.07	.09	.11	.13	.16	.18
Non-EU Products	-.28	-.24	-.17	-.11	-.04	.01
Net-Change Pred.	-.21	-.15	-.06	.02	.12	.19
Excess Reallocation	.14	.18	.22	.22	.08	0
Net-Change Pred. (Equal Weights)	-.20	-.12	-.05	.02	.01	.17
Excess Reallocation (Equal Weights)	.10	.14	.17	.18	.01	.04
(iii) Poland						
EU Products	.09	.11	.13	.15	.17	.17
Non-EU Products	-.27	-.21	-.15	-.11	-.04	.05
Net-Change Pred.	-.18	-.10	-.02	.04	.13	.22
Excess Reallocation	.18	.22	.26	.22	.08	0
Net-Change Pred. (Equal Weights)	-.15	-.07	.01	.08	.16	.24
Excess Reallocation (Equal Weights)	.12	.16	.21	.12	.05	.01
(iv) Romania						
EU Products	.16	.17	.19	.20	.21	.22
Non-EU Products	-.36	-.32	-.26	-.19	-.13	-.07
Net-Change Pred.	-.20	-.15	-.06	.02	.12	.19
Excess Reallocation	.32	.34	.39	.37	.22	.10
Net-Change Pred. (Equal Weights)	-.23	-.16	-.08	.01	.06	.13
Excess Reallocation (Equal Weights)	.22	.23	.25	.26	.17	.08

Table 10: Contributions to annual growth by Sector (Averaged Over Countries) made by EU Products for Export (a) and Non-EU Products for Export (b); Actual annual growth by Sector (Averaged Over Countries) (c); and Initial Size of Sector

Sector		89-90	90-91	91-92	92-93	93-94	94-95	Sector Size (1989)
1	a	.16	.18	.20	.22	.24	.26	.22
	b	-.37	-.31	-.25	-.19	-.13	-.07	
	c	-.12	-.11	-.05	-.06	.06	.05	
2	a	.05	.06	.08	.10	.11	.13	.08
	b	-.27	-.21	-.15	-.10	-.03	.03	
	c	-.12	-.19	-.13	-.02	.08	-.01	
3	a	.03	.03	.03	.04	.04	.05	.02
	b	-.22	-.16	-.10	-.04	.02	.08	
	c	-.24	-.10	-.15	-.06	.01	-.01	
4	a	.02	.02	.02	.03	.03	.04	.02
	b	-.16	-.10	-.04	.02	.08	.14	
	c	-.11	-.13	-.02	-.04	.15	-.01	
5	a	.02	.03	.03	.04	.05	.05	.03
	b	-.13	-.07	-.01	.05	.11	.17	
	c	-.18	-.14	.09	.13	.14	.09	
6	a	.15	.18	.17	.21	.23	.25	.10
	b	-.50	-.40	-.29	-.18	-.07	.03	
	c	-.38	-.44	-.09	.08	.20	.12	
7	a	.05	.07	.10	.12	.14	.16	.09
	b	-.30	-.24	-.18	-.12	-.06	.00	
	c	-.24	-.15	-.15	-.04	.07	.05	
8	a	.02	.02	.03	.04	.04	.05	.03
	b	-.20	-.14	-.08	-.02	.04	.10	
	c	-.25	-.16	-.04	.03	.07	.08	
9	a	.04	.05	.06	.07	.08	.09	.04
	b	-.23	-.17	-.11	-.05	.01	.07	
	c	-.16	-.24	-.13	.03	.05	.07	
10	a	.13	.16	.18	.21	.23	.26	.14
	b	-.37	-.31	-.25	-.19	-.13	-.07	
	c	-.31	-.26	-.11	.03	.16	.09	
11	a	.06	.08	.09	.11	.13	.14	.08
	b	-.32	-.26	-.20	-.14	-.08	-.02	
	c	-.25	-.24	-.19	-.10	-.001	.19	
12	a	.08	.11	.13	.16	.19	.21	.10
	b	-.36	-.30	-.24	-.18	-.12	-.06	
	c	-.37	-.16	-.38	.05	.12	.10	
13	a	.15	.17	.18	.20	.22	.23	.07
	b	-.37	-.31	-.25	-.17	-.13	-.07	
	c	-.31	-.30	-.23	.06	.02	.19	

APPENDIX I

Stage II: The accounting equation (1), arbitrage equation (2) and the asset equation (3) constitute the core of the model. At any period t an innovator who has a monopoly on producing good x_t chooses its value by maximising the following profit function taking (5) as given:

$$\pi_t = \max_x [P_t(x_t)x_t - r_t x_t] \quad (\text{A1})$$

This profit maximisation yields the following value for x :

$$x_t = \left(\frac{S(1-\alpha)\gamma^t}{r^t} \right)^{1/\alpha} = x_t \left(\begin{matrix} + & - & - \\ S, \gamma^t, r_t \end{matrix} \right) \quad (\text{A2})$$

Using accounting equation and (A2) gives (taken I_t as given):

$$r = \frac{S(1-\alpha)\gamma^t}{(I-n)^\alpha} = g \left(\begin{matrix} + & + & - & + \\ S, \gamma^t, I, n \end{matrix} \right) \quad (\text{A3})$$

Applying the envelope theorem (using FOC from profit maximisation for x) and using the arbitrage equation, (2) gives a second equation in r :

$$r = \left(\frac{\lambda\alpha}{(1-\alpha)(R+\lambda n)} \right)^\alpha S(1-\alpha)\gamma^{t+1} = f \left(\begin{matrix} + & + & - & + & - \\ S, \gamma^t, n, \lambda, R \end{matrix} \right) \quad (\text{A4})$$

Solving (A3) and (A4) gives the following optimal levels of n , r and p :

$$n^o = \frac{\gamma^{1/\alpha} \lambda \alpha I - R + R\alpha}{(1-\alpha + \alpha\gamma^{1/\alpha})\lambda} \quad (\text{A5})$$

$$r^o = S(1-\alpha)\gamma^{t+1} \left(\frac{\lambda\alpha}{1-\alpha} \right)^\alpha [R + \lambda n^o]^{-\alpha} \quad (\text{A6})$$

$$P^o_t = \frac{S\gamma^t r_t}{S\gamma^t(1-\alpha)} = \frac{r_t}{(1-\alpha)} \quad (\text{A7})$$

Stage II: The level of investment is endogenous and it is assumed that the optimal level of r resulting from any level of current investment I is perfectly known. The level of investment is determined from the maximisation problem in (10): The value of optimal investment in this case is given by

$$I_t^o = -\frac{R}{\lambda} + (1-\alpha + \gamma^{1/\alpha}) \left(\frac{S}{A} \right)^\alpha (1-\alpha)^{\frac{1}{\alpha}-1} \gamma^{\frac{t}{\alpha}} \quad (\text{A8})$$

References

- Aghion, P. and Howitt, P. (1998). *Endogenous Growth Theory*, The MIT Press, Cambridge, Massachusetts
- Aghion, P., Howitt, P. (1992) "A Model of Growth through Creative Destruction", *Econometrica* 60: pp323-51.
- Atheson, A. and P. Kehoe (1995) "Optimal Social Insurance, Incentives and Transition", mimeograph, Federal Reserve Bank of Minneapolis.
- Aturupane, C., Djankov, S. and Hoekman, B. (1997) "Determinants of Intra-Industry Trade between East and West Europe. CEPR Discussion Paper No. 1721
- Barro, R. and Sala-I-Martin, X. (1995) *Economic Growth*, McGraw-Hill, Cambridge, M.A.
- Blanchard, O. (1997). *The Economics of Post-Communist Transition*. Clarendon Press Oxford.
- Blanchard, O. and Kremer (1997). "Disorganization", *Quarterly Journal of Economics*, Vol. 111, pp. 1091-1126.
- Borensztein, E., De Gregorio, J. and Lee, J-W (1998). "How does foreign direct investment affect economic growth?" *Journal of International Economics*, 45, pp.115-135
- Grossman, G. and Helpman, E. (1991) "Innovation and Growth in the Global Economy, MIT Press, Cambridge, M.A.
- Hoekman B., Djankov, S. (1997) "Determinants of the Export Structure of Countries in Central and Eastern Europe", *The World Bank Economic Review*, Vol. 11, No. 3, pp. 471-87
- Kornai, J. (1993). "Transformational Recession. A general Phenomenon Examined Through the Example of Hungary's Development", *Economie Appliquée* Vol. 46, No.2, pp. 181-227.
- Li, Wei (1994) "A Tale of Two Reforms", mimeograph Fuqua School of Business, Duke University.
- McDowell, M. and Thom, R. (1998) "Intra-Industry Trade and Adjustment Costs: Evidence from Economies in Transition", Mimeograph, Department of Economics, University College Dublin.
- Rodrik, D. (1994). "Foreign trade in Eastern Europe's Transition: Early Results", pp.319-56 in Blanchard O., Froot K. and Sachs, J. (eds.) *The Transition in Eastern Europe*, vol.2 (Chicago, IL: NBER and University of Chicago Press.
- Roland, G. And Verdier, T. (1997). "Transition and the Output Fall", *CEPR Discussion Paper* 1636, May.
- Romer. P. (1990). "Endogenous Technological Change", *Journal of Political Economy*, 98, S-71-S102