

Klose, Jens; Weigert, Benjamin

**Working Paper**

## Determinants of sovereign yield spreads during the Euro-crisis: Fundamental factors versus systemic risk

Arbeitspapier, No. 07/2012

**Provided in Cooperation with:**

German Council of Economic Experts

*Suggested Citation:* Klose, Jens; Weigert, Benjamin (2012) : Determinants of sovereign yield spreads during the Euro-crisis: Fundamental factors versus systemic risk, Arbeitspapier, No. 07/2012, Sachverständigenrat zur Begutachtung der Gesamtwirtschaftlichen Entwicklung, Wiesbaden

This Version is available at:

<https://hdl.handle.net/10419/74739>

**Standard-Nutzungsbedingungen:**

Die Dokumente auf EconStor dürfen zu eigenen wissenschaftlichen Zwecken und zum Privatgebrauch gespeichert und kopiert werden.

Sie dürfen die Dokumente nicht für öffentliche oder kommerzielle Zwecke vervielfältigen, öffentlich ausstellen, öffentlich zugänglich machen, vertreiben oder anderweitig nutzen.

Sofern die Verfasser die Dokumente unter Open-Content-Lizenzen (insbesondere CC-Lizenzen) zur Verfügung gestellt haben sollten, gelten abweichend von diesen Nutzungsbedingungen die in der dort genannten Lizenz gewährten Nutzungsrechte.

**Terms of use:**

*Documents in EconStor may be saved and copied for your personal and scholarly purposes.*

*You are not to copy documents for public or commercial purposes, to exhibit the documents publicly, to make them publicly available on the internet, or to distribute or otherwise use the documents in public.*

*If the documents have been made available under an Open Content Licence (especially Creative Commons Licences), you may exercise further usage rights as specified in the indicated licence.*

---

## Determinants of sovereign yield spreads during the Euro-crisis – Fundamental factors versus systemic risk

---

Jens Klose

Benjamin Weigert  
(both Staff of German Council of Economic Experts)

Working Paper 07/2012\*)  
November 2012

\*) Working papers reflect the personal views of the authors and not necessarily those of the German Council of Economic Experts. The current working paper is not an official publication of the German Council of Economic Experts and does not necessarily reflect the views of all members.

## Determinants of sovereign yield spreads during the Euro-crisis –

### Fundamental factors versus systemic risk

**Abstract:** *The intensity of the Euro-crisis was reflected by significant increases of sovereign bond yields in the troubled countries. This has launched a hot debate whether this increase can solely be attributed to fundamental factors like e.g. rescue programmes, rising budget deficits, deteriorating economic prospects or changes in the rating-status of the country, or whether a part of these growing yields is likely to represent a systemic risk, i.e. that one or more countries will drop out of the European Monetary Union and reintroduce their own national currencies. This empirical analysis explores whether such systemic risk is present in the yield spreads of nine Euro area countries by using a novel market based indicator from the virtual prediction market Intrade. Our empirical results suggest that beside fundamental factors a systemic risk component played a role in determination of sovereign yields. Our empirical measure of the systemic component in sovereign yields can be related to the expected change of the newly introduced national currency. Accordingly to that, Portugal, Ireland, Spain and Italy are expected to depreciate their currency while the others would appreciate after a withdrawal from the Euro area.*

*“Risk premia that are related to fears of the reversibility of the Euro are unacceptable, and they need to be addressed in a fundamental manner.”(ECB-President Mario Draghi, August 2012)*

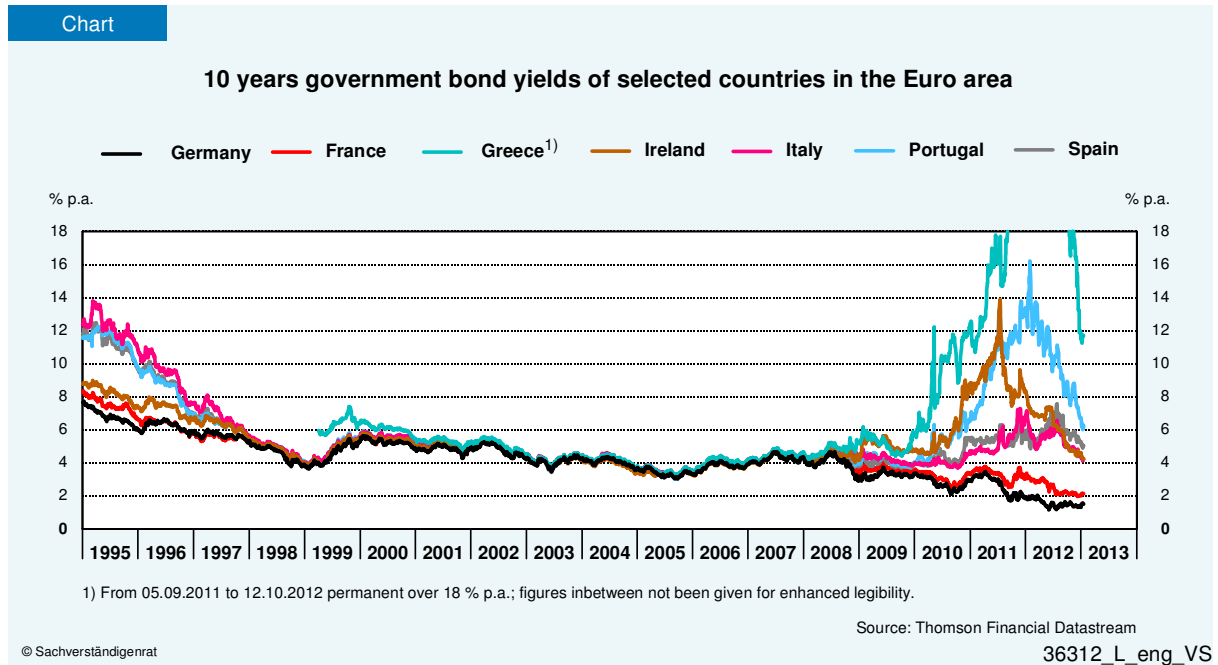
*“Es gibt fundamentale Zweifel der Märkte an der Sicherheit der Währungsunion.”  
(Bundesbankpräsident Jens Weidmann, July 2012)*

### 1. Introduction

The European debt crisis that unfolded in 2010 has culminated in a deep crisis of confidence, raising fundamental doubts over the integrity of the Euro area with countries withdrawing from the currency union eventually leading to its complete break-up. While the European treaties do not provide any explicit option to exit the European Monetary Union (EMU), evidence has been mounting that market participants nevertheless seem to expect that one or more members of the Euro area might exit. At the end of 2012, *ECB-President Mario Draghi* and other officials of the ECB labelled these risks perceived by financial markets the redenomination risk, the risk that a country that leaves the Euro and reintroduces a national currency will unilaterally redenominate its public and private liabilities. Opinions regarding the existence of such redenomination risks are divided among economists, though. Therefore, we analyse empirically in this paper whether such risks contribute to the rising yield spreads across Euro area countries.

It was the unanimous spirit of the founding fathers of the EMU that becoming a member of the currency union meant to establish a life-long relationship. Certainly for members of the Euro area there are costs and benefits. In retrospect, benefits *inter alia* arose before the financial crisis hit the world economy that unfolded the turmoil in the Euro area and laid bare the underlying causes of unsustainable developments in many countries. With its introduction,

interest rates for virtually all member countries converged and more or less resembled that of Germany (Chart 36312). Consequently, all economic agents could borrow at very low interest rates because sovereign yields represent a benchmark even for private credit rates: In countries like Ireland and Spain borrowing was mostly done in the private sector, in Italy in the public sector and in the case of Greece in both the private and public sector.



But especially with the burst of real estate bubbles in Ireland and Spain and the need to realign wages that had been increased well beyond productivity growth thereby eroding price competitiveness, the potential costs of being a member of EMU were revealed. By contrast to previous episodes, troubled member countries cannot rely on monetary policy tools, i.e. on external devaluation to support the necessary real adjustments and mitigate the readjustment process. Instead, to regain price competitiveness, these countries have to initiate a long lasting and painful process of internal devaluation implying wage cuts and sustained fiscal austerity if the fiscal position is not well balanced. Similarly, also by contrast to past experience, they cannot diminish the real value of nominal private and public debt by simply following a monetary policy that eventually leads to higher inflation. In effect, membership in the monetary union implies that the countries are indebted in a currency which they cannot generate themselves.

Given that external devaluation is out of their reach and a painful period of internal devaluation is the disconcerting prospect of the road ahead, in some troubled countries policy makers might consider an exit from EMU. This basic rationale is that an exit from EMU may result in a process of external devaluation due to the imminent depreciation of any newly introduced national currency. But also creditor countries might consider to exit from EMU, since political support for membership in the monetary union in these countries is likely to dwindle with each additional rescue package. This might eventually result in “rescue fatigue” putting pressure on domestic policy makers to leave the EMU. And, an exit of a creditor

country would most likely result in an appreciation of their newly introduced national currency stipulated by huge capital inflows into those countries right after the exit from EMU.

All these – yet hypothetical – considerations change the state of play in the currency union: If there was a fundamental change in expectations about the reversibility of the Euro, this would at least to some degree have an influence on the sovereign bond yields of Euro area member countries. While the increasing spreads after the start of the financial crisis have been subject to many studies so far (e.g. von Hagen, Schuknecht, and Wolswijk 2011; Dötz and Fischer 2010; Favero and Missale 2012) the question whether there are signals for an increasing risk of a break-up of the Euro area has scarcely been asked. Several studies find that the exploding sovereign bond yields to the German Bunds cannot be explained by fiscal or other fundamental factors (De Grauwe and Ji 2012; International Monetary Fund 2012). But as recently as 2012, Favero and Missale (2012), analysing data up to June 2011, conclude that the “non-default components [of spreads] are unlikely to reflect expectations of depreciation”.

However, yields of troubled countries skyrocketed in the second half of 2011 and again in spring 2012. This casts at least some doubts on whether these events are purely driven by fundamentals that do exclude any expectations about a fundamental change in the institutional set-up of the monetary union. One of the first contributions that dealt implicitly with the perceived risk of one country withdrawing from the EMU is Eichler (2011). Using data from American depositary receipt (ADR) of underlying stocks from Spain, Italy, Greece, Ireland and Portugal for the period of January 2007 until March 2009, this study finds some evidence that even during that time which was long before the intense phase of the crisis, investors price-in the risk of a withdrawal but concludes that the perceived risk over the given time period is rather small. To the best of our knowledge, so far only Di Cesare et al. (2012) using data up to spring 2012 have explicitly dealt with the issue of a systemic crisis, finding that this component plays a significant role in determining yield spreads. Unfortunately, this study takes only differences of German and Italian bond yields into account. They find that the risk of a Euro area break-up, approximated by the corresponding Google indicator for this phrase, indeed leads to an implied appreciation of the (hypothetically) newly introduced German and a depreciation of the Italian currency vis-à-vis the Euro.

Our explorative study contributes to the recent literature by analysing a larger set of Euro area countries consisting of nine member states. Moreover, we proxy the probability of a disintegration of the Euro area by using a novel indicator. This indicator is derived from the virtual trading platform INTRADE and is based on market expectations of the event that at least one country will leave the Euro area by the end of 2013. Using this indicator in a modelling framework for estimating daily interest rate spreads shows that interest rates seem to correlate with expectations about countries leaving the EMU. When extending our regression analysis to allow for time-varying coefficients it can be shown that this correlation is not constant over time. Interest rates apparently correlate most with “fundamentals” of debt sustainability that are proxied by CDS spreads. Nevertheless, for most countries, the correlation between yield spreads and our proxy for the expectations about a break-up of the

EMU is highest in times of market tension up to November 2011 and just before summer 2012.

We proceed as follows: In section 2 we present theoretical considerations, followed by section 3 which provides an exposition of our econometric framework and the data used, while section 4 and 5 present the results emerging from the fixed- and variable-coefficient approaches. Section 6 delivers a range of robustness checks, before section 7 finally concludes.

## 2. Theoretical considerations

To motivate our analysis of sovereign bond spreads in the recent crisis and to develop our argument, we basically follow the theoretical exposition of Bernoth, von Hagen and Schuknecht (2012). They derive in a stylized portfolio model a reduced form equation for yield spreads in a currency union between a risky ( $r_j$ ) and a risk free bond issuer ( $r^*$ ):

$$(1) \ r_j - r^* = p_{D,j}(F_j)HC_j + l + \Phi$$

with  $p_{D,j}(F_j)HC_j$  representing the expected loss that may materialize in case of default with  $p_{D,j}$  denoting the probability of default of sovereign  $j$  given fundamental factors  $F_j$  and  $HC_j$  denoting the expected haircut on the principle value. Investors will therefore demand higher yields if expected losses increase. Additionally, investors will demand a liquidity premium  $l$  compared to a risk free and fully liquid asset and a premium  $\Phi$  reflecting the investors' degree of risk aversion.

Interest rate differentials should, thus, reflect fundamentals of the sovereign and the national economy that directly influence the expected loss of investors like, e.g., a sovereign's debt level, its budget balance and expected growth. Therefore, yield spreads are supposed to be higher for higher perceived risks of default of the bond issuer. The expected loss, entailing the risk of default and the potential haircut on the principle and interest payments, can readily be measured by the corresponding market price of a credit default swap (CDS) on the underlying asset because a CDS insures its holder against any financial losses resulting in an event of default of the issuer of the underlying asset. Consequently, CDS spreads should include all information available concerning an altered risk of default for each country, i.e. new information about rescue programmes, rising governmental deficits, reductions in GDP or changes in the rating-status of the country issuing the bond and so on (Aizenman, Hutchison, and Jinjark 2011). In general, rising governmental deficits or lower growth rates as well as a downgraded governmental rating should lead to higher CDS premium and thus increase the yield spread. A whole strand of the literature analyses these fundamental factors that may ultimately have a direct impact and confirms the importance of those factors for yields spreads (e.g., Bernoth, Von Hagen, and Schuknecht 2012; Aizenman, Hutchison, and Jinjark 2011; Dötz and Fischer 2010; Haugh, Ollivaud, and Turner 2009).

In contrast to this unequivocal reaction of CDS spreads to fundamentals, the reaction to an announcement of new rescue programmes depends crucially on whether those are granted a

seniority status, i.e. whether rescue loans will be serviced at par even in the case of default. If this is the case, the default risk for the remaining (junior) bonds of the country should rise, thus increasing its CDS premium. It should most likely decrease, though, if the seniority of the outstanding bonds is not altered. Therefore, the influence of the ECB's securities markets programme (SMP) changed dramatically when the ECB was granted a seniority status in the Greek haircut of March 12, 2011. After this decision, the depressing effect of bond purchases by the ECB on these yields should have been lower than before. Thus, it does not come as such a surprise that no additional bonds were purchased via the SMP after the haircut and that the following ECB programme the outright monetary transactions (OMT) is not granted any seniority status.

Liquidity of the various government bonds will most likely also influence the yield spread, with lower (higher) liquidity, leading to higher (lower) yield spreads. Liquidity is frequently measured by the bid-ask-spread of the underlying asset (Beber, Brandt, and Kavajecz 2009; Gerlach, Schulz, and Wolff 2010; Bernoth and Erdogan 2012), so a lower (higher) bid-ask-spread indicates a higher (lower) liquidity.

An increasing global risk aversion may result in larger flows of capital to countries viewed as more solid, even though in such a "safe haven" the yields would probably be lower. Since Euro area countries are identified - especially in the recent crisis - to be differently creditworthy, the global capital flows have recently concentrated on a few countries in the Euro area (e.g. Germany), while others suffered from a relatively low demand for their government bonds. But one could also observe a net outflow of liquidity from the Euro area during the debt crisis which signals global capital flows to be redirected to other parts of the world presumed to provide a safe haven.

Those three previously discussed factors influence yield spreads in a given institutional setting, i.e. in the context of the Euro area a credible commitment to the common currency union. However, the basic rationale of investors changes if there are fears - well founded or not - that a country may leave the currency union, eventually reintroducing a national currency and redenominating sovereign debt. In this case the probability of regime switch is considered and the expected rate of devaluation  $p_{Exit,j} \left( \frac{\Delta E}{E} \right)$  vis-à-vis the common currency adds to the above-mentioned factors:

$$(2) \ r_j - r^* = p_{D,j}(F_j)HC_j + l + \Phi + p_{Exit,j} \frac{\Delta E}{E}$$

In a currency union that is fully credible the probability to exit the union is zero and investors do not care about redenomination risk. Once the probability is non-zero, we are entering a regime with a fixed exchange rate regime that entails the risk of exchange rate readjustments: Investors that invest in a foreign currency will consider potential changes of their asset value (including interest payments) that may result from exchange rate fluctuations. Most importantly, from the perspective of a single member country investor's expectations about the integrity of the currency union are crucial. If market expectations turn against a member country its yield spread may increase significantly and turn self-fulfilling because a member



country itself cannot convince markets credibly to not exit the currency union. This is what many commentators of the Euro crisis coined the systemic risk or systemic element of the crisis (German Council of Economic Experts 2012). Among others, De Grauwe (2011) discusses these self-fulfilling speculations in the context of a currency union with sovereigns facing roll-over risk of existing debt.

Additionally, while one country leaving the Euro area and reintroducing its national currency directly affects its own exchange rate vis-à-vis the Euro, such an event will most likely result in contagion effects throughout the remaining member countries potentially forcing more member countries to drop out of the monetary union which may eventually even lead to a complete break-up of the Euro area.

Due to the unknown consequences of entering into a new (fixed-rate) regime where an exit from the union is possible, the influence of the exit probability on a country's bond yield can move either way depending on whether the newly introduced national currency would be expected to appreciate or depreciate after the break-up. In terms of implementation the re-introduction of the national currencies would have to proceed in the same way as the previous establishment of the Euro. In a first step, fixed exchange rates to the Euro would be implemented and in a second step, the new currencies would be allowed to float, thereby leading to either appreciation or devaluation. The expectation of an appreciation will lead to a lower yield spread today because the expected value of the bond increases with the probability of the exit after maturity. The reverse is true for an expected depreciation of any new national currency.

### 3. Econometric framework

Our econometric approach resembles the reduced equation that was derived from the stylized theoretical model. Ultimately, for country  $j$ , the sovereign yield spread vis-a-vis the Euro will be determined by the four factors – fiscal and economic fundamentals, liquidity, expectations about a withdrawal from the Euro area and global as well as country specific risk aversion – simultaneously, as in equation (3) and (3a):

$$(3) \quad r_{j,t} - r_t^{ECB} = \alpha_{1j}(BID - ASK)_{j,t-1} + \alpha_{2j}CDS_{j,t-1} + \alpha_{3j}Exit_{t-1} + \alpha_{4j}USBonds_{t-1} + \alpha_{5j}GARCH_{j,t} + \varepsilon_{j,t}$$

together with

$$(3a) \quad GARCH_{j,t} = \beta_{0j} + \beta_{1j}\varepsilon_{j,t-1}^2 + \beta_{2j}(\varepsilon_{j,t-1}^2 | \varepsilon_{j,t-1} < 0) + \beta_{3j}GARCH_{j,t-1}$$

The yield spread as the dependent variable is defined as the difference between the government bond yield of the respective Euro area country with a maturity of up to two years, and the risk-free rate which is the rate of the ECB deposit facility ( $r_{j,t} - r_t^{ECB}$ ). This rate can be considered as risk-free, because banks can deposit their excess funds at this rate overnight at the ECB. Additionally, there is virtually no liquidity risk for central bank assets allowing us



to directly measure the liquidity premium for each country separately. This conditioning of the residual maturity to two years is done because of the exit probability which is bound to end with the year 2013. Although the maturity decreases in the sample this is the best approximation for most of the period under investigation. The liquidity premium and the default risk are modelled by the bid-ask-spread for government bonds  $((BID - ASK)_{j,t-1})$  and by the corresponding CDS premium for government bonds  $(CDS_{j,t-1})$  respectively, both referring to a residual maturity of two years as well.

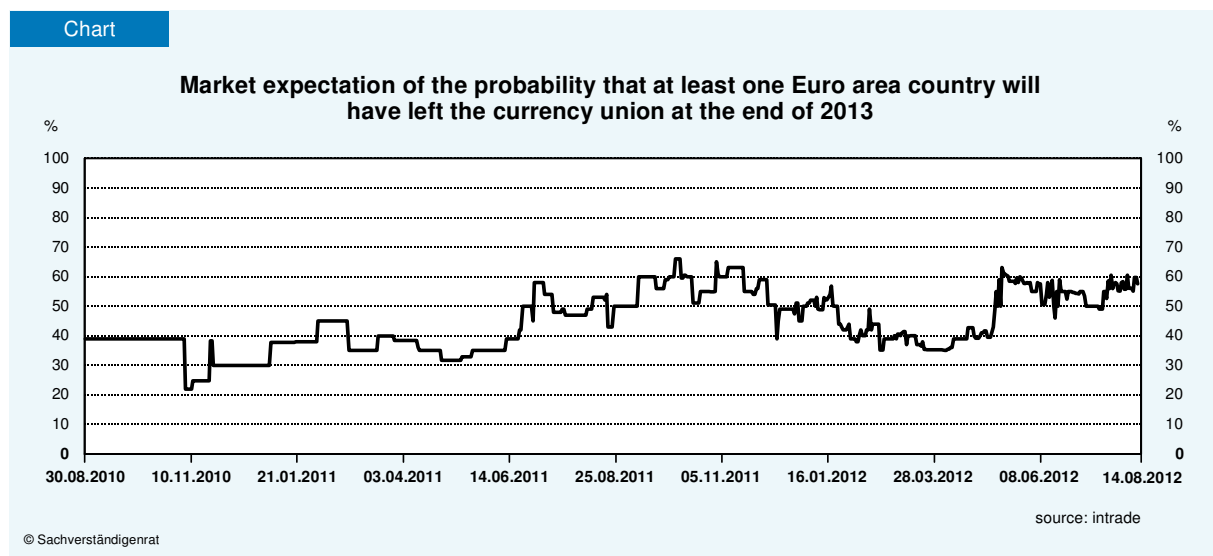
Our main focus is on the third term which captures the risk premium stemming from the perceived risk of a country's withdrawal of the currency union ( $Exit_{t-1}$ ). Unfortunately, no market based measure of exit probabilities for the Euro area member countries is available. However, we use the probability that at least one member country will declare its exit from the monetary union by the end of 2013 (see Chart 19612) which is derived from the internet platform INTRADE – a virtual prediction market that allows to predict real-world events by trading virtual securities whose predefined pay-off is conditioned on the particular real-world event to occur until maturity of the security. The procedure for trading these securities is as follows: If one or more member countries declare their exit before the end of 2013, the holders receive 10 US-Dollars, while the stock is worthless, if this is not the case. Therefore, the price of the stock (after re-scaling) can be interpreted as the subjective probability perceived by INTRADE participants of this underlying event. While this probability most likely reflects the probability of an exit of Greece, our estimated coefficients for any other Euro area country have to be interpreted as the product of the conditional probability that this country will drop out of the monetary union because of the regime-shift introduced by the Greek exit and the expected rate of appreciation or devaluation of the newly introduced national currency. The estimated coefficients of the Exit variable can thus be interpreted as a proxy of the market's expectation of the probability weighted intensity of the appreciation (negative sign) or depreciation (positive sign) of a newly introduced national currency in comparison to the Euro today, when assuming that a Greek exit will lead to a complete break-up of the Euro-area. By assuming a conditional probability that country  $j$  will exit the currency union,  $p_{exit,j|Greek-exit}$ , after a Greek exit the exchange rate adjustment can be calculated as  $\frac{\alpha_3}{p_{exit,j|Greek-exit}}$ .

The fourth term is global risk aversion ( $USBonds$ ) and is approximated by the US corporate BBB / government bond spreads as is frequently done in studies on bond yield estimations (Gerlach, Schulz, and Wolff 2010; von Hagen, Schuknecht, and Wolswijk 2011). Again the relevant assets have a maturity of up to two years.

Finally, since equation (3) is estimated on a daily basis, a measure of the country specific volatility in yields spreads is introduced as well by adding the response to a GARCH-in-mean term ( $GARCH$ ). This allows us to capture the impact of investors' country specific risk aversion on yields that results from changes in volatility of yields. In general, an increased volatility of the yield spread should increase the level of yield spreads because the predictability of the bond value at a specific future point in time is lower resulting in a higher risk premium. The specific structure of the country specific volatility term (3a) follows the

approach of Hallwood, MacDonald and Marsh (2000) and includes a constant, an ARCH-term, i.e. the lagged residual variance of the mean-equation given by (3), a threshold ARCH term, i.e. the lagged residual variance of the mean-equation given that the residuals are negative. This accounts for the fact that the reaction to positive and negative residuals may be asymmetric, i.e. that the volatility of rising spreads is larger than to falling spreads (Glosten, Jagannathan, and Runkle 1993). Finally the lagged GARCH term itself is introduced to the volatility equation to account for persistence in volatility.

For each country equation (3) and (3a) of our regression are estimated simultaneously. The member countries included in our analysis are: Austria, Belgium, Germany, France, Ireland, Italy, the Netherlands, Portugal and Spain. The estimations were also carried out for Greece but they remained inconclusive, mainly due to the relatively large bond yields and CDS premia but also because of the debt haircut in March 2012. The data are measured in daily frequency. To prevent reverse causality from biasing the results the right hand side variables are included with a one period lag. The time series is available starting August 2010. However, it is obvious from Chart 19612 that the market was illiquid at the beginning which might bias the results. Therefore, the analysis is conducted from September 2011 onwards, as after this date the traded volumes in the market point to more liquidity. The end of the sample period is chosen to the 14<sup>th</sup> August 2012 due to data availability.



#### 4. Estimation results

Equations (3) and (3a) are estimated simultaneously via Maximum-Likelihood. The results are presented in Table 28212. In line with our expectations, the bid-ask-spread as our proxy for market liquidity is found to have a significantly positive impact on the yield spreads for six of the nine Euro area countries. Only with respect to Germany and Ireland the reverse seems to be true. Also for the global risk aversion, captured by the US Corporate/Government bond spread, seven out of nine countries show the expected positive influence on government yield spreads. That is, global safe haven flows tend to go out of the most Euro area and are thus not intra monetary union flows. In contrast, only Portuguese yields seem to react significantly negative. With the exception of Austria, also the volatility premium (GARCH)

exhibits the expected positive influence on the bond yield spread. Quantitatively, the influence of the country specific volatility is most important in the case of Italy and Spain, the two countries with the most pronounced swings in sovereign yields during the respective time period.

Concerning the influence of default risks within the EMU as they are reflected by the corresponding CDS premium, the results show a heterogeneous picture among Euro area countries. While the effects are the largest for Portugal and Spain, pointing to a high influence of any news on yield spreads, they are found to be lower for France and Italy. So the response of the government yield spreads on CDS premia is even stronger for those countries with the highest risk of default. In contrast, for Germany and the Netherlands which are the two countries in the sample with the lowest yield spreads, rising CDS premia even lead to lower yield spreads. This puzzling result might be explained by the safe haven status of both countries. While the periods of rising default risk for these two countries correspond to an overall increase of the CDS premium for all Euro area countries, Germany and the Netherlands receive safe haven flows as the less default risky countries thereby lower their bond yields. Therefore, safe haven flows might be seen either in the global risk aversion but also in the Euro area wide risk aversion which becomes evident in the CDS spreads.

Table

Estimates of yield spreads for Euro area countries<sup>1)</sup>

	AT	BE	DE	FR	IE	IT	NL	PT	ES
Liquidity premium .....	1,63 *** (0,08)	1,03 ** (0,51)	- 2,54 *** (0,06)	3,35 *** (0,01)	- 0,21 *** (0,01)	6,77 *** (2,61)	2,25 *** (0,28)	1,62 *** (0,39)	0,12 (0,15)
Credit (default) risk .....	1,08 *** (0,05)	1,30 *** (0,08)	- 0,35 *** (0,06)	0,17 *** (0,00)	1,13 *** (0,00)	0,67 *** (0,09)	- 0,43 *** (0,09)	2,03 *** (0,04)	1,41 *** (0,07)
Euro-break up ..	- 0,96 *** (0,10)	- 0,67 (0,46)	- 1,27 *** (0,13)	- 1,87 *** (0,01)	3,44 *** (0,05)	1,21 (0,75)	- 1,49 *** (0,08)	19,36 *** (1,84)	2,19 *** (0,61)
Global risk premium .....	- 0,09 (0,06)	1,17 *** (0,13)	0,55 *** (0,04)	0,74 *** (0,00)	1,37 *** (0,01)	2,83 *** (0,16)	0,57 *** (0,03)	- 5,89 *** (0,63)	1,47 *** (0,15)
Volatility .....	- 0,08 *** (0,01)	0,64 *** (0,06)	0,12 *** (0,02)	0,13 *** (0,00)	0,55 *** (0,00)	1,31 *** (0,10)	0,01 * (0,01)	- 0,11 (0,12)	1,09 *** (0,08)
Volatility Eq.									
C .....	0,00 *** (0,00)	0,01 *** (0,00)	0,00 (0,00)	0,00 *** (0,00)	0,02 *** (0,00)	0,01 *** (0,00)	0,00 *** (0,00)	3,16 *** (0,72)	0,00 *** (0,00)
ARCH .....	0,32 *** (0,07)	0,31 *** (0,07)	0,54 *** (0,11)	1,58 *** (0,08)	1,23 *** (0,01)	0,30 *** (0,05)	1,00 *** (0,30)	1,00 *** (0,33)	0,22 *** (0,04)
TARCH .....	0,80 *** (0,26)	- 0,33 *** (0,07)	- 0,43 *** (0,10)	- 0,66 *** (0,06)	- 1,14 *** (0,01)	- 0,41 *** (0,05)	- 0,20 (0,35)	0,29 (0,55)	- 0,30 *** (0,04)
GARCH .....	0,45 *** (0,07)	0,79 *** (0,03)	0,77 *** (0,03)	0,26 *** (0,01)	0,47 *** (0,00)	0,87 *** (0,02)	0,13 * (0,08)	- 0,15 ** (0,07)	0,92 *** (0,02)

1) Dependent variable: Sovereign yields minus ECB deposit rate. Estimation period 1/9/2011 to 14/08/2012; \*\*\*/\*\*/\* signal significance at the 99 % / 95 % / 90% level. Standard errors in parantheses.

Source: Own calculations

RW28212\_CH

The market based expectations with respect to an exchange rate adjustment in case of a Euro area break-up, measured by our Exit variable, clearly divide the Euro area into two groups.

The first group comprises Portugal, Ireland, Spain and Italy which are all expected to depreciate their currency after a break-up. This depreciation would consequently lead to a lower repayment, once their debt matures, if it is redenominated into their new national currency. However, the size of the depreciation is rather limited with 1.21% for Italy, 2.19% for Spain and 3.44% for Ireland assuming that a Greek exit will lead to a Euro area break-up. But for Portugal the estimates imply that a break-up of the Euro area would lead to a depreciation of 19.36%, so bondholders would face an indirect haircut of about 20%. The second group, France, the Netherlands, Germany, Austria and Belgium are expected to appreciate their currency after a Euro area break-up. This appreciation would be in the range of 1.87% to 0.67%, thus leading to higher repayments at maturity. Di Cesare et al. (2012) come up with similar results of their Euro area break-up variable based on the Google indicator when comparing Germany and Italy.

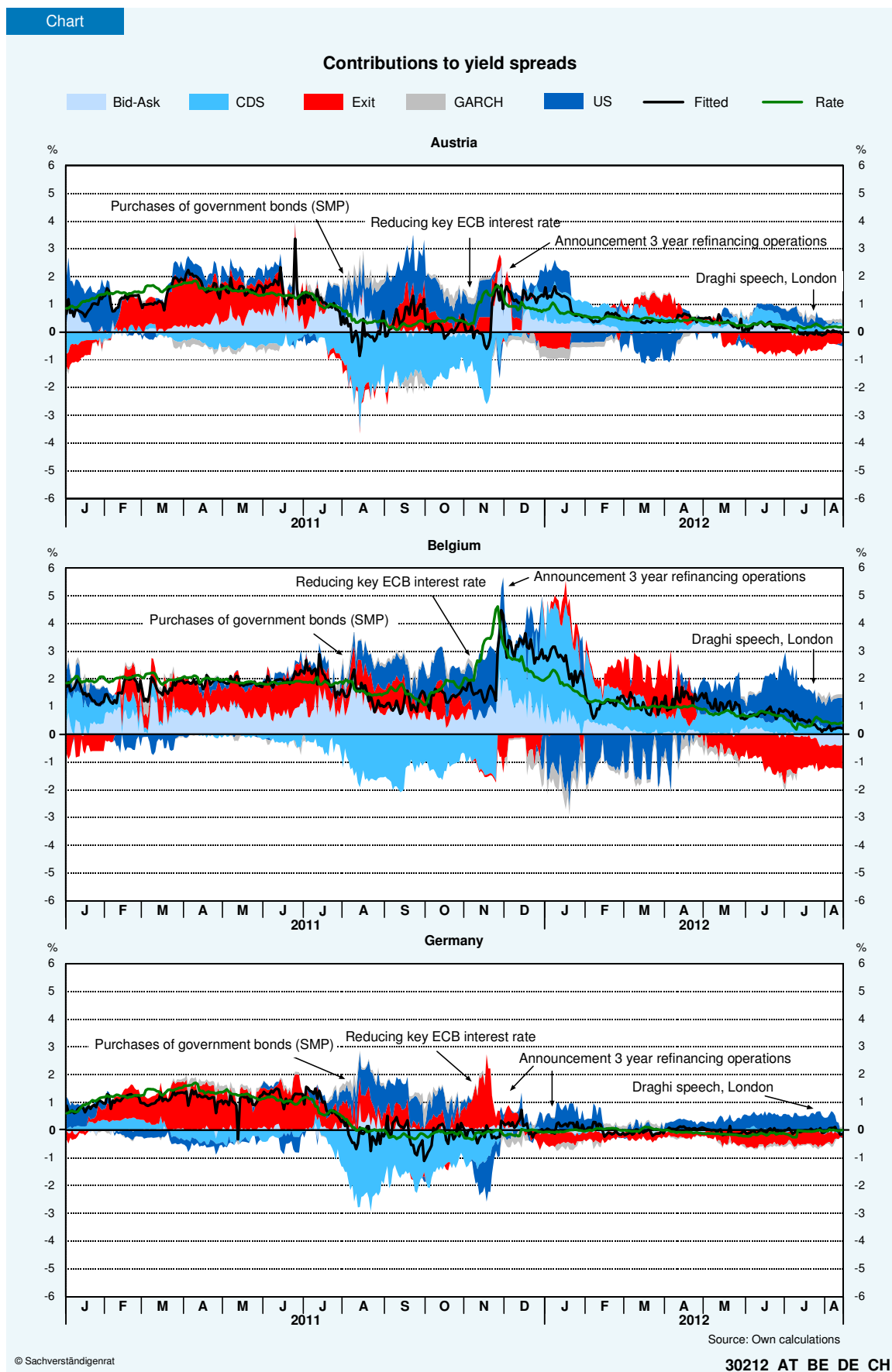
Our results for Ireland and Portugal have to be interpreted cautiously because during this time period both countries were already under an adjustment programme as they lost access to financial markets and relied mostly on EFSF/IMF funding. In both cases it is very likely that markets for sovereign bonds and CDS were highly dysfunctional with market prices reflecting not only fundamental factors but also the state of the markets.

### 5. Time-varying estimation results

The influence of the four factors and the GARCH-term can be assumed to be rather time-dependent, so additionally their contribution to the yield spreads is estimated using rolling regressions for equations (3) and (3a). Recent contributions to the literature of the determinants of yield spreads during the crisis revealed potentially time-varying coefficients in estimations of yield spreads in Euro area (Aßmann and Boysen-Hogrefe 2011; Bernoth und Erdogan 2012). The window size is held constant with 100 observations each, so it is assumed that the current influence of the independent variables can be proxied by the average coefficients over this period. In addition the variables are smoothed as symmetric five day averages in order to avoid reversed daily swings in the bond yields and independent variables (Charts 30212). The first estimation is thus made with a rolling window ending in January 1<sup>st</sup> 2011, due to data availability of the Exit variable, although the liquidity of this market is rather low until September 2011. Consequently up to this point the results for this variable should be interpreted cautiously. The results reveal similarities but also significant differences in the determinants of bond spreads across countries: In general the fit of the rolling regressions seems to be rather good as given by the comparison between the true bond spread and its fitted values. This holds independently of the size of the bond-spread for all member states, so for either the countries currently under pressure due to high bond yields and those who are not.

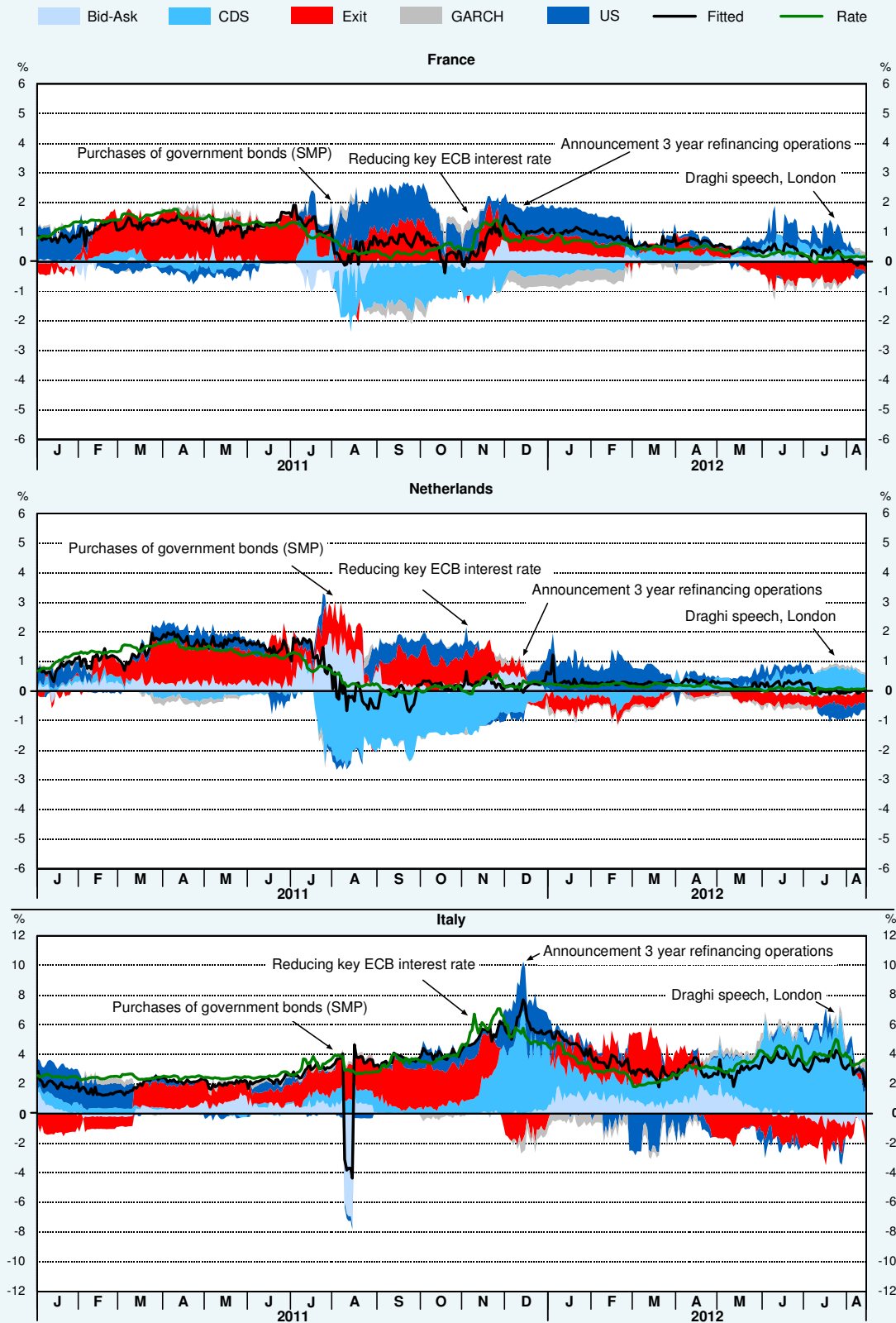
The influence of the volatility premium modelled with a GARCH-specification is rather low for all Euro-area countries, although the fixed-period estimates point to significant contribution in almost all cases. The same holds to a lesser extent for the bid-ask spread which shows the influence of the liquidity component. Here especially for Belgium this variable is

driving up yield spreads, but there is also a larger contribution of the bid-ask spread for Austria, the Netherlands, Italy and Spain all of them pointing to an increased effect.



## Chart

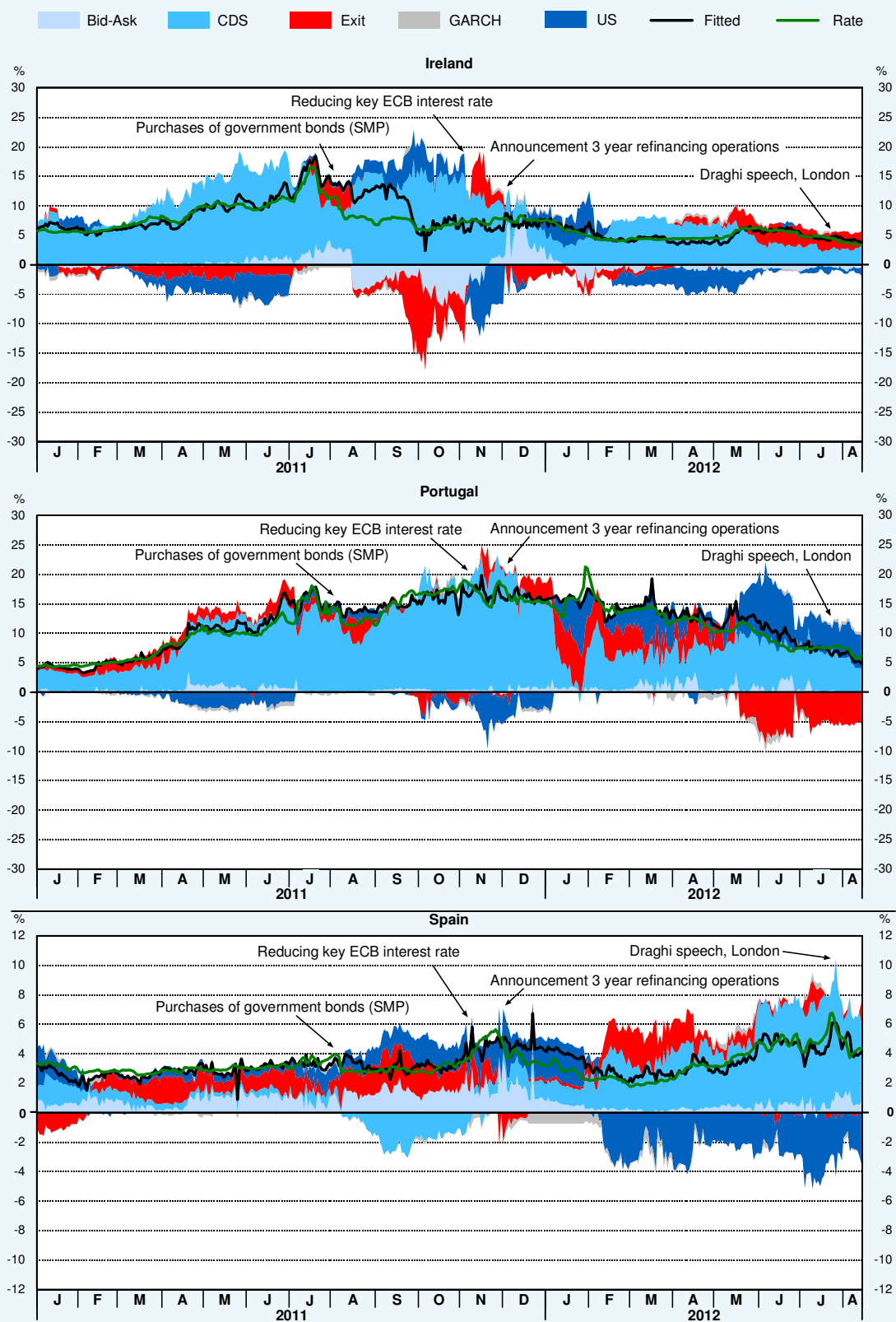
## Contributions to yield spreads



Source: Own calculations

## Chart

## Contributions to yield spreads



Source: Own calculations



The influence of global risk aversion as measured by the US corporate/government bond spreads is the most important factor for the two largest countries of the Euro area, Germany and France. While for these two the influence is mainly positive as expected there are several periods where there is also a negative contribution for several other countries. This is found especially for Spain from February 2012 onwards and may be explained by the rising importance of domestic and Euro area wide developments and less by the global component.

The importance of CDS spreads differs considerably across member countries. But also within several countries the influence of this variable is highly time-dependent. The first group consisting of Austria, Germany, France and the Netherlands exhibit a negative contribution of CDS to bond-spreads signalling their status as intra Eurosystem safe haven countries. These flows seem to be especially large in the period from April 2011 to November 2011 so exactly in the period of rising tensions in the Euro area, signalled by heightened yield spreads in crisis countries, which were temporarily relaxed by the ECB announcement to conduct two longer term refinancing operations with a maturity of three years executed in December 2011 and February 2012.

In contrast CDS spreads in Spain and Italy as the second group tended to have a rather low explanatory power for the yield spreads. However, in the course of 2012, this influence increased considerably being nowadays the most important factor in determining bond spreads in both countries. This result is in line with the rising doubt in the capital markets whether Italy or Spain would use the help of the Euro rescue funds EFSF or ESM, which may include a private sector involvement.

The third group of countries consists of Ireland and Portugal which used to have the largest average bond spreads over the sample period. For both of them the CDS premium is the main driving force leading to high yields in all periods. This is not a surprising result given that both countries are as Greece in an EFSF program. However, with the declining bond rates after the introduction of the program also the default risk is lowered.

While it is certainly true that CDS premia explain most of the variation in the yield spread for the crisis countries Italy, Ireland, Portugal and Spain, thus the default risk while staying in the Euro area is the driving factor, also the contribution of the potential break-up of the Euro area plays a significant role. Especially before the ECB intervened with its two long term refinancing operations in all countries a significant part of the yield spreads could be accounted for by the exit variable. In this period, in almost all countries, the potential break-up would have led to a devaluation of the national currency. In contrast, after the two tenders with three year maturity conducted by the ECB this effect switches for Germany and the Netherlands leading to an appreciation of the currency, while the response of the other countries is rather mixed. The only two countries that are at the end of the sample expected to depreciate their national currency to the Euro are Ireland and Spain.

## 6. Robustness Check

There are several contractual issues with CDS contracts in the event of a country's withdrawal from EMU. Currency redenomination will not in any case trigger a credit or restructuring event that eventually leads to a payment from the issuer of the contract to the holder, i.e. there are cases where CDS do not insure the holder against losses from redenomination of the principal and interest payment. According to the credit derivative definition of the International Swaps and Derivatives Association (ISDA) a permitted currency to which the currency of an underlying asset can be changed without triggering such a restructuring event is any legal tender of a G-7 country or of an OECD country with an S&P credit rating of AAA or more. The implied appreciation or depreciation of the newly introduced national currency after a potential break-up of the Euro area does only for countries fulfilling at least one of these requirements not lead to a credit default and thus only in these cases the exit variable can be interpreted as the change in the exchange rate times the probability of a Greek exit leading to an exit of the respective country. However, in the Euro area this holds only for the three G7-countries France, Germany and Italy and the Netherlands due to its AAA rating.<sup>1</sup> For the remaining five countries investigated in this study the introduction of a national currency would most likely trigger a credit default event, so CDS would become due independent of whether the country defaults within the Euro area or after a potential break-up which results in the introduction of a national currency. It is highly unlikely that one of the five countries would introduce another currency which is not their own by using a G7-currency to avoid the credit default event. Therefore, for the remaining five countries a robustness check is conducted (equation (4)) which accounts for the two different scenarios causing a credit default. In line with the previous estimation, a default while the country remains in the EMU is modelled by the CDS spread while the default occurring after a break-up of the Euro area is estimated as the product of the exit variable and the CDS spread.

$$(4) \quad r_{j,t} - r_t^{ECB} = \alpha_{1j}(BID - ASK)_{j,t-1} + \alpha_{2j}CDS_{j,t-1} + \gamma_j Exit_{t-1} CDS_{j,t-1} + \alpha_{4j}USBonds_{t-1} + \alpha_{5j}GARCH_{j,t} + \varepsilon_{j,t}$$

So the implied change in the exchange rate can be computed as  $\gamma_j/\alpha_{2j}$  because the CDS becomes due independent of whether the default occurs remaining in or by dropping out of the monetary union. That is why in both cases the reaction of the CDS to the interest rate spread should be equal. This robustness check leads overall to the same results as the previous estimation did (Table 30012). Coefficients on the liquidity premium (BID-ASK), the global risk aversion (USBonds), volatility premium (GARCH) and default risk (CDS) are generally found to exhibit the same tendency on the yield spreads. Even for the implied change in the exchange rate after a potential break-up of the Euro area, the same ordering of the countries appreciation and depreciation is found: While Portugal (1.44), Ireland (0.55) and Spain (0.03) depreciate if the Euro collapses, Belgium (-0.63) and Austria (-0.86) would appreciate. However, the result for Spain is now found to be insignificant. Moreover, this robustness check tends to lower the changes in the exchange rate for all countries.

---

<sup>1</sup> Austria lost its AAA-rating in January 2012 so also for this country an exit from the monetary union would most likely constitute a credit event.

Table

**Estimates of yield spreads for Euro area countries – Accounting for default of an Euro area break-up**

	AT	BE	IE	PT	ES
Bid_Ask .....	1,48 *** (0,07)	1,13 *** (0,40)	– 0,30 *** (0,04)	0,56 * (0,33)	0,13 (0,17)
CDS .....	1,85 *** (0,10)	2,16 *** (0,14)	0,90 *** (0,04)	1,36 *** (0,08)	1,54 *** (0,16)
CDS * Exit .....	– 1,27 *** (0,14)	– 1,36 *** (0,24)	0,49 *** (0,06)	1,97 *** (0,12)	0,05 (0,23)
US-Bonds .....	– 0,34 *** (0,04)	0,86 *** (0,10)	2,19 *** (0,05)	– 1,81 *** (0,53)	1,71 *** (0,14)
GARCH .....	– 0,08 *** (0,01)	0,60 *** (0,06)	0,49 *** (0,04)	– 0,90 *** (0,17)	1,10 *** (0,08)
Exit implied .....	– 0,86	– 0,63	0,55	1,44	0,03
Variance Eq.					
C .....	0,00 ** (0,00)	0,01 *** (0,00)	0,01 *** (0,00)	1,14 *** (0,44)	0,01 *** (0,00)
ARCH .....	0,33 *** (0,07)	0,34 *** (0,08)	1,07 *** (0,17)	0,55 *** (0,15)	0,24 *** (0,04)
TARCH .....	0,73 *** (0,24)	– 0,40 *** (0,08)	– 0,94 *** (0,18)	1,00 ** (0,40)	– 0,32 *** (0,04)
GARCH .....	0,44 *** (0,07)	0,73 *** (0,04)	0,47 *** (0,01)	0,12 (0,08)	0,90 *** (0,02)

1) Dependent variable: Sovereign yields minus ECB deposit rate. Estimation period 1/9/2011 to 14/08/2012; \*\* significance at the 99 % / 95 % / 90% level. Standard errors in parantheses.

Source: Own calculations  
RW30012\_CH

## 7. Conclusions

The European debt crisis has led to doubts about the irreversibility of the Euro as the common currency in all member countries. This risk is to a different degree reflected as a systemic component in the yield spreads of each country. The systemic component is approximated in this study by a market based index on whether any Euro area country will declare its exit from the monetary union before the end of 2013. While this indicator does not necessarily reflect a complete break-up of the EMU, it signals at least the market expectations of a regime shift in European monetary policy when it becomes possible to leave the monetary union. Therefore, the Euro area would change into a fixed-rate regime were it is possible for every member country to switch to flexible rates by introducing a national currency and thus leaving the Euro. For this reason, the response of the interest rate spread to the market expectations can be interpreted as the national currency exchange rate change when the respective country goes back to its national currency. However, today the consequences for the Euro area countries are quite heterogeneous. While especially the countries nowadays in the centre of debt crisis (Portugal, Ireland, Spain and Italy) are expected to depreciate their currency once leaving the Euro area, France, the Netherlands, Germany, Austria and Belgium are expected to appreciate. Moreover, we were able to show that the influence of this reintroduction of

national currencies is not time constant but varies considerably in its size depending on the level of stress in the markets, i.e. whether the ECB has announced new measures to ease those.

Since it is obvious from the analysis that risks to a break-up of the Euro area are present the question has to be raised whether this is in itself a problem for monetary policy. According to the ECB (European Central Bank 2012) the heterogeneities in bond yields which are not only due to country specific fundamental factors but also to the systemic risk of an Euro area break-up are influencing the monetary transmission process negatively. Therefore, the newly introduced OMT, which shall lower the bond yields of countries in an EFSF/ESM programme by central bank purchases on the secondary market, is a way to achieve this goal, thereby making the Euro area more homogeneous. However, it is highly questionable which component of the high yield spreads the ECB is tackling with this policy. While they should only lower or even delete the systemic component (which a credible action of the ECB is likely to do) there is also an influence on the remaining components of yield spreads, thereby the ECB runs the risk of lowering the yields by too much thus giving the countries room to delay their reform agenda. So the systemic component is indeed adding to the heterogeneous situation among Euro area countries but the OMT is not the tool to solve this problem since it is unable to account directly for the systemic part of the crisis.

Even more as long as the ECB is taking the leadership, the crisis is likely to be not fundamentally solved. This is the task of the fiscal authorities which need to find (even painful) solutions by implementing structural reforms and lowering deficits. Only this will lower the yield spreads of the crisis countries in a sustained manner and with it reduce the systemic component. But whether it is possible to get back to a regime where there is no doubt about the future of the Euro area in its current composition is questionable.

## References

- Aizenman, Joshua, Michael M. Hutchison, and Yothin Jinjark. 2011. *What is the Risk of European Sovereign Debt Defaults? Fiscal Space, CDS Spreads and Market Pricing of Risk*. Working Paper. National Bureau of Economic Research.
- Aßmann, Christian, and Jens Boysen-Hogrefe. 2011. Determinants of government bond spreads in the euro area: in good times as in bad. *Empirica* 39 (3) (June): 341–356.
- Beber, Alessandro, Michael W. Brandt, and Kenneth A. Kavajecz. 2009. Flight-to-Quality or Flight-to-Liquidity? Evidence from the Euro-Area Bond Market. *Review of Financial Studies* 22 (3): 925–957.
- Bernoth, Kerstin, and Burcu Erdogan. 2012. Sovereign bond yield spreads: A time-varying coefficient approach. *Journal of International Money and Finance* 31 (3): 639–656.
- Bernoth, Kerstin, Jürgen von Hagen, and Ludger Schuknecht. 2012. Sovereign risk premiums in the European government bond market. *Journal of International Money and Finance* 31 (5): 975–995.
- Di Cesare, Antonio, Giuseppe Grande, Michele Manna, and Marco Taboga. 2012. *Recent estimates of sovereign risk premia for euro-area countries*. Questioni di Economia e Finanza (Occasional Papers). Bank of Italy, Economic Research and International Relations Area.

- Dötz, Niko, and Christoph Fischer. 2010. *What can EMU countries' sovereign bond spreads tell us about market perceptions of default probabilities during the recent financial crisis?* Discussion Paper Series 1: Economic Studies. Deutsche Bundesbank.
- Eichler, Stefan. 2011. What Can Currency Crisis Models Tell Us About the Risk of Withdrawal from the EMU? Evidence from ADR Data. *JCMS: Journal of Common Market Studies* 49 (4): 719–739.
- European Central Bank. 2012. Monthly Bulletin, September.
- Favero, Carlo, and Alessandro Missale. 2012. Sovereign Spreads in the Eurozone: Which Prospects for a Eurobond? *Economic Policy* 27 (70): 231–273.
- Gerlach, Stefan, Alexander Schulz, and Guntram B. Wolff. 2010. *Banking and sovereign risk in the euro area*. Discussion Paper Series 1: Economic Studies. Deutsche Bundesbank.
- German Council of Economic Experts. 2012. After the Euro Area Summit: Time to Implement Long-term Solutions. Wiesbaden.
- Glosten, Lawrence R., Ravi Jagannathan, and David E. Runkle. 1993. On the Relation between the Expected Value and the Volatility of the Nominal Excess Return on Stocks. *Journal of Finance* 48 (5): 1779–1801.
- De Grauwe, Paul. 2011. Governance of a Fragile Eurozone. CEPS Working Documents.
- De Grauwe, Paul, and Yuemei Ji. 2012. Self-Fulfilling Crises in the Eurozone: An Empirical Test. CEPS Working Documents.
- Von Hagen, Jürgen, Ludger Schuknecht, and Guido Wolswijk. 2011. Government bond risk premiums in the EU revisited: The impact of the financial crisis. *European Journal of Political Economy* 27 (1): 36–43.
- Hallwood, C. Paul, Ronald MacDonald, and Ian W. Marsh. 2000. Realignment expectations and the US dollar, 1890-1897: Was there a ‚Peso problem‘? *Journal of Monetary Economics* 46 (3): 605–620.
- Haug, David, Patrice Ollivaud, and David Turner. 2009. *What Drives Sovereign Risk Premiums?: An Analysis of Recent Evidence from the Euro Area*. OECD Economics Department Working Paper.
- International Monetary Fund. 2012. Fiscal Monitor Update.