

Tomberlin, David; Holloway, Garth

**Working Paper**

## Trip-Level Analysis of Efficiency Changes in Oregon's Deepwater Trawl Fishery

Nota di Lavoro, No. 86.2007

**Provided in Cooperation with:**

Fondazione Eni Enrico Mattei (FEEM)

*Suggested Citation:* Tomberlin, David; Holloway, Garth (2007) : Trip-Level Analysis of Efficiency Changes in Oregon's Deepwater Trawl Fishery, Nota di Lavoro, No. 86.2007, Fondazione Eni Enrico Mattei (FEEM), Milano

This Version is available at:

<https://hdl.handle.net/10419/74308>

**Standard-Nutzungsbedingungen:**

Die Dokumente auf EconStor dürfen zu eigenen wissenschaftlichen Zwecken und zum Privatgebrauch gespeichert und kopiert werden.

Sie dürfen die Dokumente nicht für öffentliche oder kommerzielle Zwecke vervielfältigen, öffentlich ausstellen, öffentlich zugänglich machen, vertreiben oder anderweitig nutzen.

Sofern die Verfasser die Dokumente unter Open-Content-Lizenzen (insbesondere CC-Lizenzen) zur Verfügung gestellt haben sollten, gelten abweichend von diesen Nutzungsbedingungen die in der dort genannten Lizenz gewährten Nutzungsrechte.

**Terms of use:**

*Documents in EconStor may be saved and copied for your personal and scholarly purposes.*

*You are not to copy documents for public or commercial purposes, to exhibit the documents publicly, to make them publicly available on the internet, or to distribute or otherwise use the documents in public.*

*If the documents have been made available under an Open Content Licence (especially Creative Commons Licences), you may exercise further usage rights as specified in the indicated licence.*

# **Trip-Level Analysis of Efficiency Changes in Oregon's Deepwater Trawl Fishery**

David Tomberlin and Garth Holloway

NOTA DI LAVORO 86.2007

**SEPTEMBER 2007**

NRM – Natural Resources Management

David Tomberlin, *National Marine Fisheries Service*  
Garth Holloway, *Department of Agricultural and Food Economics,*  
*School of Agriculture, University of Reading*

This paper can be downloaded without charge at:

The Fondazione Eni Enrico Mattei Note di Lavoro Series Index:  
<http://www.feem.it/Feem/Pub/Publications/WPapers/default.htm>

Social Science Research Network Electronic Paper Collection:  
<http://ssrn.com/abstract=1012033>

# **Trip-Level Analysis of Efficiency Changes in Oregon's Deepwater Trawl Fishery**

## **Summary**

In 2003, an industry-financed, government-administered buyback of trawl fishing permits and vessels took place on the US West Coast, resulting in the retirement of about one-third of the limited-entry trawl fleet. The lack of cost data in this fishery precludes an analysis of how the buyback has affected profitability, but changes in technical efficiency can provide some insight into the program's effects. This paper, the first of a planned series of analyses of the buyback's effect on technical efficiency in the trawl fleet, applies stochastic frontier analysis to assess whether technical efficiency changed perceptibly after 2003. We adopt a hierarchical modeling approach estimated with Markov Chain Monte Carlo methods, and present results from both Cobb-Douglas and translog specifications. The analysis is limited to 13 boats active in Oregon's deepwater 'DTS' fishery, which targets dover sole, thornyheads, and sablefish. The results suggest that the buyback has had little impact on trip-level technical efficiency in the study fishery. However, departures from the frontier are markedly bi-modal, indicating that a mixed-density approach to estimation may be more appropriate.

**Keywords:** Fishery Buyback, Technical Efficiency, Stochastic Production Frontier, Bayesian Inference, Markov Chain Monte Carlo

**JEL Classification:** Q2, L5, C1

*We thank Kelvin Balcombe for conversations about the econometrics; Xavier Irz for conversations about the econometrics; Xavier Irz for conversations about the theory; Merrick Burden, Steve Freese, Jan Mason, Don Pearson, and Steve Ralston for helpful information on the fishery; and William Daspit and Brad Stenberg for help with data acquisition.*

*Address for correspondence:*

David Tomberlin  
National Marine Fisheries Service  
110 Shaffer Rd.  
Santa Cruz CA 95060  
USA  
E-mail: david.tomberlin@noaa.gov

## **Introduction**

The groundfish fishery of the US West Coast has been in crisis for several years. Due to the mingling of very depressed fish stocks with apparently healthy stocks, fishing regulations have become much more stringent over time. In 2003, an industry-financed buyback of fishing boats and limited-entry permits was carried out with the aims of reducing fishing pressure and increasing the profitability of boats that remained in the fishery. Assessing the effectiveness of the buyback in achieving these goals is important in its own right and also may shed some light on the relative benefits of further transition to a transferable quota system. However, an assessment of the buyback's economic benefits is difficult for several reasons: the large number of species landed by trawlers, the lack of cost data for the fleet, technological and regulatory change, and the effects of fluctuations in fish stocks and ocean conditions. In this paper, we examine the effect of the buyback on technical efficiency, which, while far from telling managers all they would want to know to assess the buyback's impact, is a useful metric for considering the effects of the program.

The US West Coast groundfish fishery is a biologically and institutionally complex multi-species fishery. More than 80 species are included in the regional groundfish management plan. Several different gear types and fishing strategies are routinely employed. Harvesting rights are divided among limited-entry, open access, tribal, and recreational sectors. Harvest management is accomplished with a mix of trip limits, cumulative monthly and bi-monthly limits, gear restrictions, and seasonal and area closures. These regulations have become progressively more complex over the past three decades. Groundfish landings by domestic fishing vessels increased dramatically following the expansion of the exclusive economic zone in 1976, but by the early 1980s

concerns were being voiced about excessive fishing pressure on some fish stocks. Despite increasingly strict regulation of fishing, by 2000 the federal government had declared the fishery a disaster. The 2003 buyback retired 91 of 263 limited-entry trawl permits, with the aims of reducing fishing capacity, reducing fishing pressure, and restoring profitability.

This paper presents a preliminary attempt to gauge the economic effects of the buyback by examining its impact on technical efficiency at the trip level. Given the difficulty of assessing effects across the entire limited-entry groundfish fleet, our emphasis here is on developing a method and applying it to a small component of the fishery. Specifically, we propose a stochastic frontier analysis of boats that derive a large part of their income from the ‘DTS’ complex (Dover sole, thornyhead, and sablefish), a deepwater assemblage generally targeted by larger trawl vessels on the continental slope at depths in excess of 450 meters. We limit attention to the DTS complex because fishing at this depth takes place with a more uniform technology than does fishing nearer to shore, and also because the number of species caught is fairly small relative to shallower local waters. And while a multi-output distance function approach may seem more natural due to the diversity of species in the fishery, we opt, in this preliminary investigation, for the simpler and more conventional approach of aggregating catch across species. Presently, the problem of imposing curvature restrictions on the parameters underlying multi-output distance functions remains a significant challenge (see, for examples, Griffiths, O’Donnell and Tan Cruz, 2000; Dorfman and MacIntosh, 2001; and O’Donnell and Coelli, 2005). Based on two production function specifications, we estimate a composed-error stochastic production frontier to derive estimates of production function parameters and also the technical

inefficiencies of boats in our sample. Comparing these inefficiencies provides a measure of the effect of the buyback on technical efficiency.

In the remainder of the paper, we first present our econometric approach to estimating the stochastic production frontier. We then describe the study data and the prior information used in the empirical investigation. We then outline the main results. The final section offers a summary and conclusions, as well as notes on further work required to strengthen the preliminary analysis presented here.

### **Hierarchical Estimation of the Stochastic Production Frontier**

The basis of our analysis is the composed-error model, first formalized by Aigner, Lovell and Schmidt (1977)<sup>1</sup>. This approach allows us to investigate catch as a function of inputs to production, random error, and inefficiency. Given data on output (here, catch per trip) and inputs to production, a stochastic production frontier may be specified as

$$(1) \quad y_i = \mathbf{x}_i' \boldsymbol{\beta} - z_i + u_i$$

where  $y_i$  is the catch by unit  $i$ ;  $\mathbf{x}_i$  is a vector of inputs to production;  $\boldsymbol{\beta}$  is a vector of parameters that, together with  $\mathbf{x}_i$ , defines the frontier;  $u_i$  is a normally distributed sampling error term; and  $z_i$  a term denoting the distance of  $y_i$  from the frontier, i.e.,  $z_i$  is a measure of the inefficiency of unit  $i$ , which we will assume follows a truncated normal distribution. These are standard assumptions in the literature (see Kumbhakar and Lovell (2000) for a book-length treatment).

Because our unit of observation is the individual trip, we elaborate equation (1) to account for three dimensions of the sampling environment, namely the vessel, year, and

trip for which catch is reported. We denote catch (in pounds) by vessel  $i$  in year  $j$  during trip  $k$  as  $y_{ijk}$  and exploit the availability of panel data by introducing a hierarchical structure in the parameters governing inefficiency. The idea of the hierarchical modelling structure is that observations within a sample may be probabilistically related at the unit or sub-unit level and that these relationships may be captured by representing model parameters themselves as draws from a distribution. Thus, we suppose that trips by boat  $i$  in year  $j$  have a particular efficiency level  $z_{ij}$  (assumed to be constant over trips for boat  $i$  in year  $j$ ), but that there are both boat-specific and year-specific influences on the  $z_{ij}$ , which are embedded in the hierarchical structure and estimated simultaneously. A previous exercise in model selection (Tomberlin, Irz, and Holloway 2005) gives strongest support to a two-layer hierarchy based on the hypothesis that inter-boat differences are more important determinants of efficiency than are inter-annual differences. This hypothesis is embodied in a two-layer hierarchy of inefficiency parameters: the boat-year inefficiencies,  $z_{ij}$ , are drawn from a distribution  $f^{\text{TN}}(z_{ij}|v_i, \eta_i^2)$  with a mean  $v_i$  specific to each boat, and these  $v_i$  are in turn drawn from a distribution  $f^{\text{TN}}(v_i|\lambda, \omega^2)$ . The regression equation has the general form

$$(2) \quad y_{ijk} = f(\mathbf{x}_{ijk}; \boldsymbol{\beta}) - z_{ij} + u_{ijk},$$

where  $y_{ijk}$  denotes catch aboard boat  $i$  in year  $j$  on trip  $k$ ;  $f(\mathbf{x}_{ijk}; \boldsymbol{\beta})$  specifies the functional form of the model in question;  $z_{ij}$  denotes the boat-year-specific inefficiency level; and  $u_{ijk}$  denotes a random error, which we assume is identically and independently normally distributed across trips, boats, and years. We consider results under two separate assumptions about functional form for  $f(\mathbf{x}_{ijk}; \boldsymbol{\beta})$ . In the first analysis we assume that  $f(\mathbf{x}_{ijk}; \boldsymbol{\beta})$  has the Cobb-Douglas form and in the second we assume that it has the

---

<sup>1</sup> A review of recent developments in composed-error modeling is found in Murillo-Zamorano (2004).

transcendental logarithmic form; in both cases, of course, it follows that  $y_{ijk}$  represents the natural logarithm of catch. In the Cobb-Douglas setting there are a total of four covariates, including the constant term; and in the translog setting there are a total of ten covariates. Our sample consists of 819 trips made by 13 boats over 5 years, although not all boats operated in each of the respective years (there are a total of 74 boat-years, to which the  $z_{ij}$  correspond). As indicated in the hierarchical setup, each  $z_{ij}$  is assumed to be drawn from one of the thirteen boat-level means,  $v_i$ , with corresponding variance  $\eta_i$ ; and the thirteen  $v_i$ 's, in turn, are drawn from the upper-level distribution with mean  $\mu$  and variance  $\omega^2$ . Figure 1 depicts the hierarchy. Here, we treat as latent or so-called 'missing data' the terms  $\mathbf{z} \equiv (\mathbf{z}_1', \mathbf{z}_2', \dots, \mathbf{z}_N')$ ,  $\mathbf{z}_1 \equiv (z_{11}, z_{12}, \dots, z_{1T1})'$ ,  $\mathbf{z}_2 \equiv (z_{21}, z_{22}, \dots, z_{2T2})'$ , ...,  $\mathbf{z}_N \equiv (z_{N1}, z_{N2}, \dots, z_{NTN})'$ , and  $\mathbf{v} \equiv (v_1, v_2, \dots, v_N)'$ ; and primary interest centres on the locations and scales of the components of  $\boldsymbol{\theta} \equiv (\boldsymbol{\beta}', \boldsymbol{\eta}', \mu, \omega)$ , where  $\boldsymbol{\beta} \equiv (\beta_1, \beta_2, \dots, \beta_K)'$  denotes the response of catch to the K covariates in each model and  $\boldsymbol{\eta} \equiv (\eta_1, \eta_2, \dots, \eta_N)'$  denotes the variance in the lower level of the hierarchy. Once a satisfactory prior is put in place we derive fully conditional posterior distributions for the components of  $\boldsymbol{\theta}$  and the components of the missing data vectors  $\mathbf{v}$  and  $\mathbf{z}$ . Details are presented in Holloway *et al.* (2005).

### **Empirical Model and Results**

To assess the impacts of the buyback on technical efficiency in our study sample, we wish to establish, primarily, whether the year-specific technical inefficiency distributions have moved by a significant amount over time. Regressors  $\mathbf{x}_{ijk}$  in the model are crew size, horsepower, and total duration of tows per trip. We include observations on boats that made at least fifty DTS trips during 2000-2005, where a DTS



trip is defined as a trip on which the DTS complex accounted for at least 90% of total catch volume for the trip. The analysis is thus limited to 819 trips by 13 boats during 2000-2005. Summary statistics are presented in Table 1, and a breakdown of trips by year is presented in Table 2.

While we have little information about the likely magnitudes of the components of  $\theta$ , a proper prior is required for model comparison. We use the proper prior  $\pi(\theta) \equiv \pi(\beta) \times \pi(\mu) \times \pi(\sigma) \times \pi(\omega) \times \prod_i \pi(\eta_i)$ , and assume  $\pi(\beta)$  is the K-dimensional Normal pdf with mean and variance  $\mathbf{0}_N$  and  $\mathbf{I}_N \times 10$ , respectively;  $\pi(\mu)$  is normal with zero mean and variance ten; and  $\pi(\sigma)$ ,  $\pi(\omega)$  and each component of the product  $\prod_i \pi(\eta_i)$  is inverse-Gamma as in Zellner (1979), equation (A.37b), with degrees of freedom parameter  $v = 1$  and scale parameter  $s = 1$ . These hyper-parameter values reflect weak prior information. Naturally, we wish to assess the extent to which the prior affects parameter estimates and the likelihood calculations. For this reason, we calculate three quantities that give some indication of the influence of the prior in these calculations, namely the maximum value of the likelihood function in the range of draws obtained from the Gibbs sample; the estimated value of the likelihood function in the Gibbs draws; and the estimated values and the numerical standard errors of the marginal likelihood values obtained by an extension (due to Chib, 1995) of the Gibbs sample used to estimate the posterior pdf's of the parameters.

Estimation results, reported in Tables 3 and 4, are based on 10,000 'burn-in' Gibbs samples followed by a collection sample of the same size. The entire procedure takes about ten minutes to run on a standard computing platform. Table 3 presents estimation results from the Cobb-Douglas specification and Table 4 presents those from the translog specification. The main conclusions to be drawn from the tables are that few of

the covariates are significant (i.e., have highest posterior density (HPD) intervals that do not include zero) and that there are some significant departures from the production frontier, *i.e.*, evidence of inefficiency in the sample. The results also serve to highlight the sensitivity of the DTS trawl data to changes in specification, a subject we are continuing to investigate. For example, readers should note the sizable differences in the estimates of the constants across models; differences in the magnitude of the tow-time coefficients across specifications; and differences across the boat inefficiency scores between specifications. We are continuing to investigate why inclusion of the cross-product terms has such an influence on some parameter estimates.

Figures 2 and 3 present plots of the distributions of the Gibbs sample for the boat-year inefficiency terms, grouped by year, for each of the two specifications. Within each figure, the modes of the six distributions are very similar, indicating that *within each specification*, the inefficiency levels in the fleet have changed little, if any, over time. While there is a slight suggestion that the curve for 2005 shows improved efficiency in that year relative to earlier years, we conclude that there is little evidence that the buyback has had a discernible impact on the overall level of trip-level technical efficiency in the fishery. The bimodal appearance of the figures does however strongly suggest that a mixture model may be a more appropriate framework for analysis for these data. Thus, our preliminary finding that there has been little if any change in the technical efficiency of the DTS fleet over time requires further testing, which we intend to pursue through the application of a mixture model of the multi-output distance function, estimated subject to the full set of monotonicity and curvature conditions (Fare and Primont 1995).

## **Conclusions**

This paper has presented a stochastic production frontier for assessing the effect of a permit buyback on technical efficiency in a fishery, and described estimation of this frontier by Bayesian hierarchical methods. We applied this framework to a small sample of boats that participate in the deepwater DTS fishery off the coast of Oregon. Our results suggest that there has been little, if any, change in trip-level technical efficiency in the wake of the 2003 buyback.

These results are necessarily tentative. Our decision to limit the study to only 13 boats means that there may be significant information that our preliminary analysis ignores. Similarly, only two years of post-buyback data are available, and it is possible that some effects of the buyback involve significant lags. Including more boats and trips will pose significant conceptual and computational challenges because the number of species caught and activities undertaken by a broader segment of the groundfish trawl fleet will be much higher. Even for the DTS fishery, a multi-output model, properly constrained, would be preferable. Another important point is that this fishery is restricted by cumulative trip limits defined over one- or two-month periods. Further analysis may well reveal that the buyback has had significant efficiency effects at this longer time scale, i.e., while individual trips may not have become more efficient, the ability to make more trips during a two-month period may result in greater efficiency overall.

Beyond expanding the data and exploring the appropriate unit of observation for the analysis, further work on the effects of the buyback would benefit from several conceptual extensions to the approach presented here. We have not yet incorporated exogenous factors such as ocean conditions and fish stocks, though these are clearly

important. We also intend to elaborate the model to account for productivity changes, since changes in the location and shape of the production frontier itself are almost certainly part of the buyback story. We will also consider possible mixing over two or more types of vessels within the data set, as suggested by the bimodality of the inefficiency measures. And we will implement fully the curvature and monotonicity restrictions implied by economic theory and assess the sensitivity of any conclusions made to these restrictions using formal model-comparison methodology that has only recently become available (Chib 1995; Chib and Jeliazkov 2001).

## References

- Aigner D, Lovell, K. and Schmidt, P. (1977). "Formulation and Estimation of Stochastic Frontier Models." Journal of Econometrics 6: 21-37.
- Chib, S. (1995). "Marginal Likelihood From the Gibbs Output." Journal of the American Statistical Association 90: 1313-21.
- \_\_\_\_\_ and I. Jeliazkov. (2001). "Marginal Likelihood From the Metropolis-Hastings Output." Journal of the American Statistical Association 96: 270-81.
- Dorfman, J. H. and C. S. McIntosh (2001) "Imposing Regularity Conditions: Efficiency Gains from Economic Theory." Economics Letters 71(2):205-209.
- Färe, R. and D. Primont (1995). Multi-Output Production and Duality: Theory and Applications. Boston: Kluwer Academic Publishers.
- Griffiths, W. E., C. J. O'Donnell and A. Tan Cruz (2000). "Imposing Regularity Conditions on a System of Factor and Share Equations." Australian Journal of Agricultural and Resource Economics 44(1):107-127.
- Holloway, G. J., D. Tomberlin and X. Irz. Hierarchical Analysis of Production Efficiency in a Coastal Trawl Fishery. In R. Scarpa and A. Alberini (eds.) Simulation Methods in Environmental and Natural Resource Economics. (2005)
- Jeffreys, H. Theory of Probability. Oxford Classic Texts in the Physical Sciences. Oxford: Oxford University Press, 1939.
- Kumbhakar, S. C. and C. A. K Lovell. (2000). Stochastic Frontier Analysis, Cambridge University Press, Cambridge.
- Murillo-Zamorano, L.R. 2004. Economic efficiency and frontier techniques. Journal of Economic Surveys 18, 33-78.

O'Donnell, C. and T. J. Coelli (2005). "A Bayesian Approach to Imposing Curvature on Distance Functions." Journal of Econometrics 126:493-523.

Tomberlin, D., X. Irz, and G. Holloway. 2006. Bayesian Estimation of Technical Efficiency in the Pacific Hake Fishery. Fisheries Centre Working Paper #2006-22, The University of British Columbia, Vancouver, B.C., Canada.

Zellner A. (1979). An Introduction to Bayesian Inference in Econometrics. Wiley Classics Library. New York: John Wiley and Sons.

**Table 1: Summary Statistics on 819 Trips by 13 Boats, 2000-2005**

	Mean	Std. Dev.	Minimum	Maximum
Number of Crew	3	0.50	2	5
Horsepower	405	108	190	638
Total Tow Time (hrs)	25	19	0.5	96
DTS Catch (lbs)	7933	6395	77	34,467
DTS Share of Trip Catch	0.97	0.03	0.90	1.00

**Table 2: Trips per Year in Data Set**

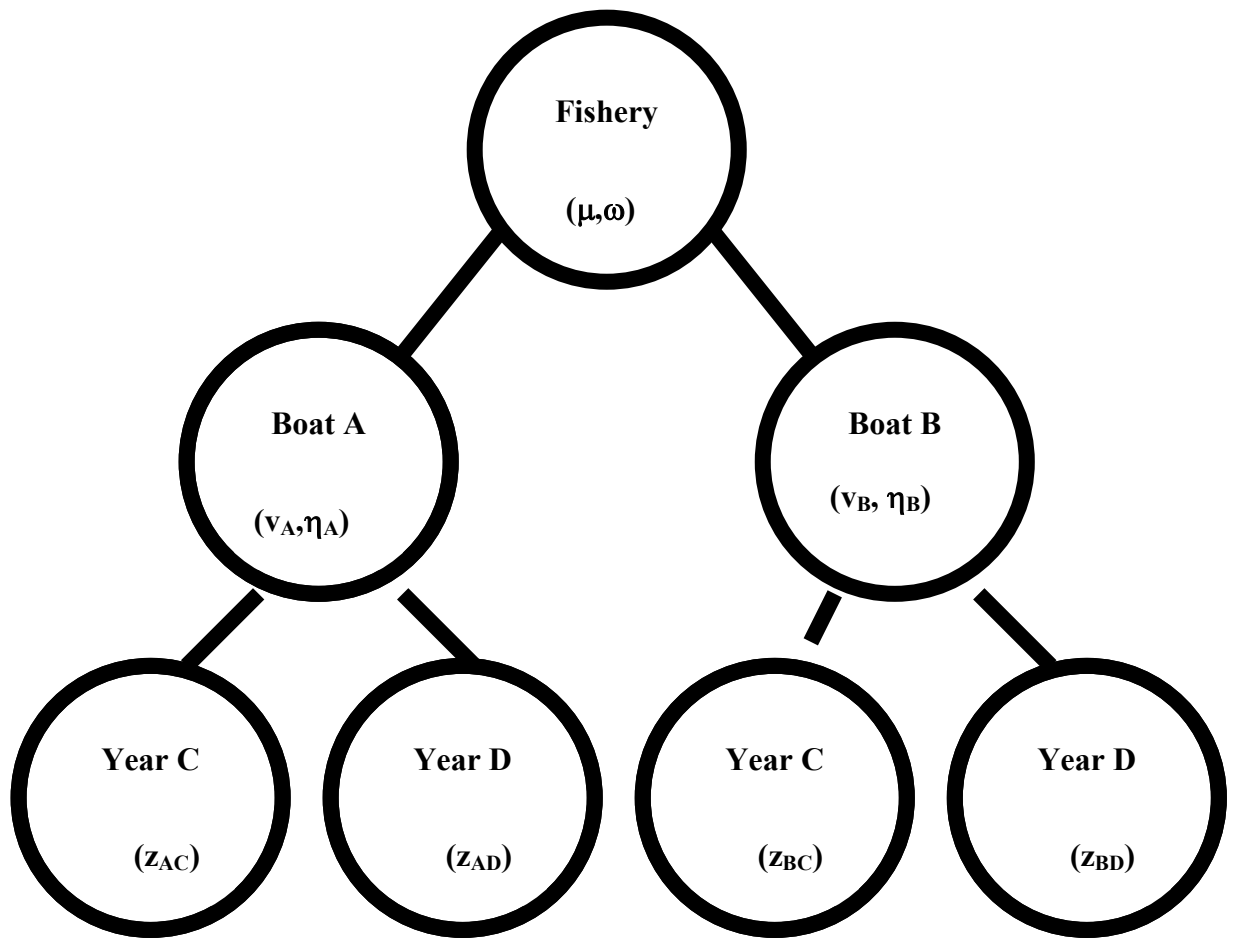
Year	Trips Used in Estimation
2000	184
2001	156
2002	119
2003	119
2004	117
2005	124
<b>Total trips</b>	<b>819</b>

**Table 3: Estimation Results**

	Cobb-Douglas			Translog		
	95% lower HPD	Mean	95% upper HPD	95% lower HPD	Mean	95% upper HPD
$\beta_{crew}$	-0.16	0.31	0.77	-4.77	2.68	10.26
$\beta_{horsepower}$	-1.05	-0.12	0.82	-4.21	2.20	8.69
$\beta_{tow-time}$	0.67	0.73	0.79	-1.26	0.18	1.62
$\beta_{crew}^2$				-4.39	-0.63	3.22
$\beta_{horsepower}^2$				-1.63	-0.40	0.81
$\beta_{tow-time}^2$				-0.16	-0.05	0.06
$\beta_{crew*horsepower}$				-1.92	-0.36	1.16
$\beta_{crew*tow-time}$				-0.24	0.13	0.51
$\beta_{horsepower*tow-time}$				-0.18	0.09	0.36
$\beta_{constant}$	5.67	11.81	17.67	-15.77	2.63	20.61
$\sigma$	0.68	0.72	0.75	0.68	0.72	0.75
$\eta_1$	0.39	0.72	1.36	0.39	0.71	1.34
$\eta_2$	0.33	0.62	1.21	0.34	0.63	1.24
$\eta_3$	0.30	0.55	1.04	0.30	0.55	1.04
$\eta_4$	0.28	0.50	0.95	0.28	0.51	0.96
$\eta_5$	0.34	0.69	1.51	0.34	0.69	1.47

$\eta_6$	0.29	0.53	0.99	0.29	0.53	1.01
$\eta_7$	0.31	0.57	1.07	0.31	0.57	1.09
$\eta_8$	0.32	0.64	1.40	0.31	0.64	1.40
$\eta_9$	0.31	0.56	1.09	0.31	0.56	1.09
$\eta_{10}$	0.30	0.55	1.05	0.30	0.55	1.04
$\eta_{11}$	0.31	0.56	1.08	0.31	0.57	1.07
$\eta_{12}$	0.32	0.58	1.09	0.32	0.58	1.10
$\eta_{13}$	0.32	0.60	1.15	0.32	0.60	1.14
$V_1$	2.88	4.90	6.87	0.78	2.43	4.39
$V_2$	3.17	5.19	7.15	1.15	2.79	4.66
$V_3$	2.67	4.67	6.59	0.56	2.19	4.14
$V_4$	2.93	4.90	6.82	0.89	2.47	4.33
$V_5$	2.89	4.92	6.89	0.79	2.47	4.39
$V_6$	2.87	4.87	6.80	0.72	2.37	4.33
$V_7$	2.88	4.87	6.79	0.80	2.41	4.32
$V_8$	2.99	5.02	6.99	0.92	2.59	4.50
$V_9$	2.52	4.64	6.66	0.57	2.19	4.10
$V_{10}$	2.95	4.94	6.88	0.92	2.52	4.38
$V_{11}$	3.04	5.09	7.07	0.80	2.51	4.58
$V_{12}$	2.74	4.73	6.66	0.67	2.29	4.16
$V_{13}$	2.92	4.93	6.86	0.89	2.50	4.37
$\omega$	0.28	0.46	0.79	0.28	0.47	0.80
$\mu$	2.85	4.90	6.86	0.78	2.44	4.38
<i>Mean <math>z_{ij}</math> in 2000</i>	2.77	4.84	6.81	0.65	2.38	4.34
<i>Mean <math>z_{ij}</math> in 2001</i>	2.91	5.02	7.05	0.78	2.56	4.59
<i>Mean <math>z_{ij}</math> in 2002</i>	2.82	4.94	6.98	0.71	2.47	4.49
<i>Mean <math>z_{ij}</math> in 2003</i>	2.77	4.91	7.04	0.66	2.45	4.52
<i>Mean <math>z_{ij}</math> in 2004</i>	2.79	4.94	7.05	0.68	2.48	4.54
<i>Mean <math>z_{ij}</math> in 2005</i>	2.55	4.74	6.89	0.45	2.28	4.43
Maximized Log-Likelihood		-869.67			-867.62	
Estimated Log-Likelihood		-886.08			-884.62	
Marginalized Log-Likelihood		-927.79			-941.10	
Numerical Standard Error		0.02			0.02	





**Figure 1. A Two-Layer Hierarchy of Boat Efficiency**

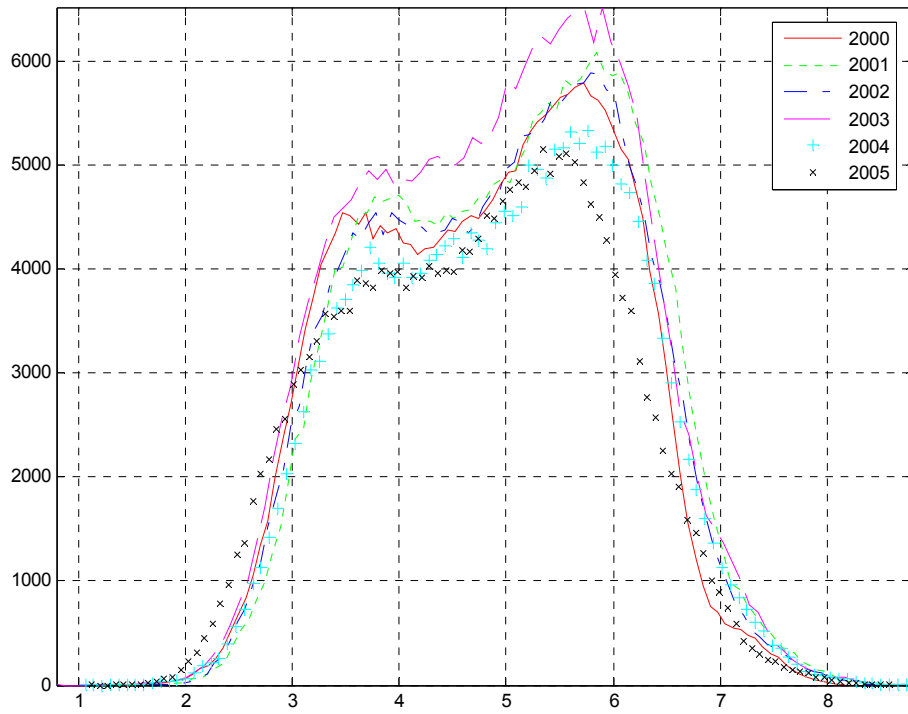


Figure 2: Distribution of Gibbs samples for inefficiency terms  $z_{ij}$  by year, assuming a Cobb-Douglas production function.

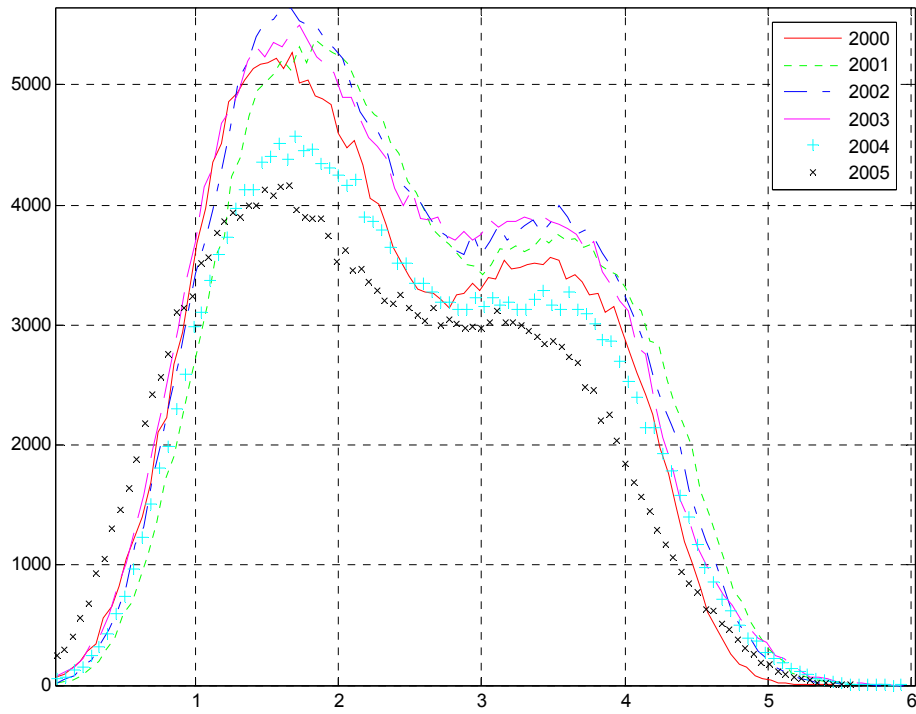


Figure 3: Distribution of Gibbs samples for inefficiency terms  $z_{ij}$  by year, assuming a translog production function.

## NOTE DI LAVORO DELLA FONDAZIONE ENI ENRICO MATTEI

### Fondazione Eni Enrico Mattei Working Paper Series

Our Note di Lavoro are available on the Internet at the following addresses:

<http://www.feem.it/Feem/Pub/Publications/WPapers/default.htm>

<http://www.ssrn.com/link/feem.html>

<http://www.repec.org>

<http://agecon.lib.umn.edu>

<http://www.bepress.com/feem/>

### NOTE DI LAVORO PUBLISHED IN 2007

NRM	1.2007	<i>Rinaldo Brau, Alessandro Lanza, and Francesco Pigliaru: <u>How Fast are Small Tourism Countries Growing? The 1980-2003 Evidence</u></i>
PRCG	2.2007	<i>C.V. Fiorio, M. Florio, S. Salini and P. Ferrari: <u>Consumers' Attitudes on Services of General Interest in the EU: Accessibility, Price and Quality 2000-2004</u></i>
PRCG	3.2007	<i>Cesare Dosi and Michele Moretto: <u>Concession Bidding Rules and Investment Time Flexibility</u></i>
IEM	4.2007	<i>Chiara Longo, Matteo Manera, Anil Markandya and Elisa Scarpa: <u>Evaluating the Empirical Performance of Alternative Econometric Models for Oil Price Forecasting</u></i>
PRCG	5.2007	<i>Bernardo Bortolotti, William Megginson and Scott B. Smart: <u>The Rise of Accelerated Seasoned Equity Underwritings</u></i>
CCMP	6.2007	<i>Valentina Bosetti and Massimo Tavoni: <u>Uncertain R&amp;D, Backstop Technology and GHGs Stabilization</u></i>
CCMP	7.2007	<i>Robert Küster, Ingo Ellersdorfer, Ulrich Fahl (lxxx): <u>A CGE-Analysis of Energy Policies Considering Labor Market Imperfections and Technology Specifications</u></i>
CCMP	8.2007	<i>Mònica Serrano (lxxx): <u>The Production and Consumption Accounting Principles as a Guideline for Designing Environmental Tax Policy</u></i>
CCMP	9.2007	<i>Erwin L. Corong (lxxx): <u>Economic and Poverty Impacts of a Voluntary Carbon Reduction for a Small Liberalized Developing Economy: The Case of the Philippines</u></i>
CCMP	10.2007	<i>Valentina Bosetti, Emanuele Massetti, and Massimo Tavoni: <u>The WITCH Model. Structure, Baseline, Solutions</u></i>
SIEV	11.2007	<i>Margherita Turvani, Aline Chiabai, Anna Alberini and Stefania Tonin: <u>Public Policies for Contaminated Site Cleanup: The Opinions of the Italian Public</u></i>
CCMP	12.2007	<i>M. Berritella, A. Certa, M. Enea and P. Zito: <u>An Analytic Hierarchy Process for The Evaluation of Transport Policies to Reduce Climate Change Impacts</u></i>
NRM	13.2007	<i>Francesco Bosello, Barbara Buchner, Jacopo Crimi, Carlo Giupponi and Andrea Povellato: <u>The Kyoto Protocol and the Effect of Existing and Planned Measures in the Agricultural and Forestry Sector in the EU25</u></i>
NRM	14.2007	<i>Francesco Bosello, Carlo Giupponi and Andrea Povellato: <u>A Review of Recent Studies on Cost Effectiveness of GHG Mitigation Measures in the European Agro-Forestry Sector</u></i>
CCMP	15.2007	<i>Massimo Tavoni, Brent Sohngen, and Valentina Bosetti: <u>Forestry and the Carbon Market Response to Stabilize Climate</u></i>
ETA	16.2007	<i>Erik Ansink and Arjan Ruijs: <u>Climate Change and the Stability of Water Allocation Agreements</u></i>
ETA	17.2007	<i>François Gusdorf and Stéphane Hallegatte: <u>Compact or Spread-Out Cities: Urban Planning, Taxation, and the Vulnerability to Transportation Shocks</u></i>
NRM	18.2007	<i>Giovanni Bella: <u>A Bug's Life: Competition Among Species Towards the Environment</u></i>
IEM	19.2007	<i>Valeria Termini and Laura Cavallo: <u>"Spot, Bilateral and Futures Trading in Electricity Markets. Implications for Stability"</u></i>
ETA	20.2007	<i>Stéphane Hallegatte and Michael Ghil: <u>Endogenous Business Cycles and the Economic Response to Exogenous Shocks</u></i>
CTN	21.2007	<i>Thierry Bréchet, François Gerard and Henry Tulkens: <u>Climate Coalitions: A Theoretical and Computational Appraisal</u></i>
CCMP	22.2007	<i>Claudia Kettner, Angela Köppl, Stefan P. Schleicher and Gregor Thenius: <u>Stringency and Distribution in the EU Emissions Trading Scheme –The 2005 Evidence</u></i>
NRM	23.2007	<i>Hongyu Ding, Arjan Ruijs and Ekko C. van Ierland: <u>Designing a Decision Support System for Marine Reserves Management: An Economic Analysis for the Dutch North Sea</u></i>
CCMP	24.2007	<i>Massimiliano Mazzanti, Anna Montini and Roberto Zoboli: <u>Economic Dynamics, Emission Trends and the EKC Hypothesis New Evidence Using NAMEA and Provincial Panel Data for Italy</u></i>
ETA	25.2007	<i>Joan Canton: <u>Re dealing the Cards: How the Presence of an Eco-Industry Modifies the Political Economy of Environmental Policies</u></i>
ETA	26.2007	<i>Joan Canton: <u>Environmental Taxation and International Eco-Industries</u></i>
CCMP	27.2007	<i>Oscar Cacho and Leslie Lipper (lxxxii): <u>Abatement and Transaction Costs of Carbon-Sink Projects Involving Smallholders</u></i>
CCMP	28.2007	<i>A. Caparrós, E. Cerdá, P. Ovando and P. Campos (lxxxii): <u>Carbon Sequestration with Reforestations and Biodiversity-Scenic Values</u></i>
CCMP	29.2007	<i>Georg E. Kindermann, Michael Obersteiner, Ewald Rametsteiner and Ian McCallum (lxxxii): <u>Predicting the Deforestation-Trend Under Different Carbon-Prices</u></i>

CCMP	30.2007	<i>Raul Ponce-Hernandez (lxxxii): <u>A Modelling Framework for Addressing the Synergies between Global Conventions through Land Use Changes: Carbon Sequestration, Biodiversity Conservation, Prevention of Land Degradation and Food Security in Agricultural and Forested Lands in Developing Countries</u></i>
ETA	31.2007	<i>Michele Moretto and Gianpaolo Rossini: <u>Are Workers' Enterprises Entry Policies Conventional</u></i>
KTHC	32.2007	<i>Giacomo Degli Antoni: <u>Do Social Relations Affect Economic Welfare? A Microeconomic Empirical Analysis</u></i>
CCMP	33.2007	<i>Reyer Gerlagh and Onno Kuik: <u>Carbon Leakage with International Technology Spillovers</u></i>
CCMP	34.2007	<i>Richard S.J. Tol: <u>The Impact of a Carbon Tax on International Tourism</u></i>
CCMP	35.2007	<i>Reyer Gerlagh, Snorre Kverndokk and Knut Einar Rosendahl: <u>Optimal Timing of Environmental Policy: Interaction Between Environmental Taxes and Innovation Externalities</u></i>
SIEV	36.2007	<i>Anna Alberini and Alberto Longo: <u>Valuing the Cultural Monuments of Armenia: Bayesian Updating of Prior Beliefs in Contingent Valuation</u></i>
CCMP	37.2007	<i>Roeland Bracke, Tom Verbeke and Veerle Dejonckheere: <u>What Distinguishes EMAS Participants? An Exploration of Company Characteristics</u></i>
CCMP	38.2007	<i>E. Tzouvelekas, D. Vouvaki and A. Xepapadeas: <u>Total Factor Productivity Growth and the Environment: A Case for Green Growth Accounting</u></i>
CCMP	39.2007	<i>Klaus Keller, Louise I. Miltich, Alexander Robinson and Richard S.J. Tol: <u>How Overconfident are Current Projections of Anthropogenic Carbon Dioxide Emissions?</u></i>
CCMP	40.2007	<i>Massimiliano Mazzanti and Roberto Zoboli: <u>Environmental Efficiency, Emission Trends and Labour Productivity: Trade-Off or Joint Dynamics? Empirical Evidence Using NAMEA Panel Data</u></i>
PRCG	41.2007	<i>Veronica Ronchi: <u>Populism and Neopopulism in Latin America: Clientelism, Trade Union Organisation and Electoral Support in Mexico and Argentina in the '90s</u></i>
PRCG	42.2007	<i>Veronica Ronchi: <u>The Neoliberal Myth in Latin America: The Cases of Mexico and Argentina in the '90s</u></i>
CCMP	43.2007	<i>David Anthoff, Cameron Hepburn and Richard S.J. Tol: <u>Equity Weighting and the Marginal Damage Costs of Climate Change</u></i>
ETA	44.2007	<i>Bouwse R. Dijkstra and Dirk T.G. Rübhelke: <u>Group Rewards and Individual Sanctions in Environmental Policy</u></i>
KTHC	45.2007	<i>Benno Torgler: <u>Trust in International Organizations: An Empirical Investigation Focusing on the United Nations</u></i>
CCMP	46.2007	<i>Enrica De Cian, Elisa Lanzi and Roberto Roson: <u>The Impact of Temperature Change on Energy Demand: A Dynamic Panel Analysis</u></i>
CCMP	47.2007	<i>Edwin van der Werf: <u>Production Functions for Climate Policy Modeling: An Empirical Analysis</u></i>
KTHC	48.2007	<i>Francesco Lancia and Giovanni Prarolo: <u>A Politico-Economic Model of Aging, Technology Adoption and Growth</u></i>
NRM	49.2007	<i>Giulia Minoia: <u>Gender Issue and Water Management in the Mediterranean Basin, Middle East and North Africa</u></i>
KTHC	50.2007	<i>Susanna Mancinelli and Massimiliano Mazzanti: <u>SME Performance, Innovation and Networking Evidence on Complementarities for a Local Economic System</u></i>
CCMP	51.2007	<i>Kelly C. de Bruin, Rob B. Dellink and Richard S.J. Tol: <u>AD-DICE: An Implementation of Adaptation in the DICE Model</u></i>
NRM	52.2007	<i>Frank van Kouwen, Carel Dieperink, Paul P. Schot and Martin J. Wassen: <u>Interactive Problem Structuring with ICZM Stakeholders</u></i>
CCMP	53.2007	<i>Valeria Costantini and Francesco Crespi: <u>Environmental Regulation and the Export Dynamics of Energy Technologies</u></i>
CCMP	54.2007	<i>Barbara Buchner, Michela Catenacci and Alessandra Sgobbi: <u>Governance and Environmental Policy Integration in Europe: What Can We learn from the EU Emission Trading Scheme?</u></i>
CCMP	55.2007	<i>David Anthoff and Richard S.J. Tol: <u>On International Equity Weights and National Decision Making on Climate Change</u></i>
CCMP	56.2007	<i>Edwin van der Werf and Sonja Peterson: <u>Modeling Linkages Between Climate Policy and Land Use: An Overview</u></i>
CCMP	57.2007	<i>Fabien Priour: <u>The Environmental Kuznets Curve in a World of Irreversibility</u></i>
KTHC	58.2007	<i>Roberto Antonietti and Giulio Cainelli: <u>Production Outsourcing, Organizational Governance and Firm's Technological Performance: Evidence from Italy</u></i>
SIEV	59.2007	<i>Marco Percolo: <u>Urban Transport Policies and the Environment: Evidence from Italy</u></i>
ETA	60.2007	<i>Henk Folmer and Pierre von Mouche: <u>Linking of Repeated Games. When Does It Lead to More Cooperation and Pareto Improvements?</u></i>
CCMP	61.2007	<i>Arthur Riedacker (lxxx): <u>A Global Land Use and Biomass Approach to Reduce Greenhouse Gas Emissions, Fossil Fuel Use and to Preserve Biodiversity</u></i>
CCMP	62.2007	<i>Jordi Roca and Mònica Serrano: <u>Atmospheric Pollution and Consumption Patterns in Spain: An Input-Output Approach</u></i>
CCMP	63.2007	<i>Derek W. Bunn and Carlo Fezzi (lxxx): <u>Interaction of European Carbon Trading and Energy Prices</u></i>
CTN	64.2007	<i>Benjamin Golub and Matthew O. Jackson (lxxxiii): <u>Naïve Learning in Social Networks: Convergence, Influence and Wisdom of Crowds</u></i>
CTN	65.2007	<i>Jacob K. Goeree, Arno Riedl and Aljaž Ule (lxxxiii): <u>In Search of Stars: Network Formation among Heterogeneous Agents</u></i>
CTN	66.2007	<i>Gönül Doğan, M.A.L.M. van Assen, Arnout van de Rijt, and Vincent Buskens (lxxxiii): <u>The Stability of Exchange Networks</u></i>
CTN	67.2007	<i>Ben Zissimos (lxxxiii): <u>Why are Trade Agreements Regional?</u></i>
CTN	68.2007	<i>Jacques Drèze, Michel Le Breton, Alexei Savvateev and Shlomo Weber (lxxxiii): <u>«Almost» Subsidy-free Spatial Pricing in a Multi-dimensional Setting</u></i>
CTN	69.2007	<i>Ana Babus (lxxxiii): <u>The Formation of Financial Networks</u></i>

CTN	70.2007	<i>Andrea Galeotti and Sanjeev Goyal</i> (lxxxiii): <u><a href="#">A Theory of Strategic Diffusion</a></u>
IEM	71.2007	<i>Francesco Bosello, Enrica De Cian and Roberto Roson</i> : <u><a href="#">Climate Change, Energy Demand and Market Power in a General Equilibrium Model of the World Economy</a></u>
ETA	72.2007	<i>Gastón Giordana and Marc Willinger</i> : <u><a href="#">Fixed Instruments to Cope with Stock Externalities An Experimental Evaluation</a></u>
KTHC	73.2007	<i>Oguzhan Dincer and Eric Uslaner</i> : <u><a href="#">Trust and Growth</a></u>
CCMP	74.2007	<i>Fei Teng and Alun Gu</i> : <u><a href="#">Climate Change: National and Local Policy Opportunities in China</a></u>
KTHC	75.2007	<i>Massimiano Bucchi and Valeria Papponetti</i> : <u><a href="#">Research Evaluation as a Policy Design Tool: Mapping Approaches across a Set of Case Studies</a></u>
SIEV	76.2007	<i>Paolo Figini, Massimiliano Castellani and Laura Vici</i> : <u><a href="#">Estimating Tourist Externalities on Residents: A Choice Modeling Approach to the Case of Rimini</a></u>
IEM	77.2007	<i>Irene Valsecchi</i> : <u><a href="#">Experts and Non-experts</a></u>
CCMP	78.2007	<i>Giuseppe Di Vita</i> : <u><a href="#">Legal Families and Environmental Protection: is there a Causal Relationship?</a></u>
KTHC	79.2007	<i>Roberto Antonietti and Giulio Cainelli</i> : <u><a href="#">Spatial Agglomeration, Technology and Outsourcing of Knowledge Intensive Business Services Empirical Insights from Italy</a></u>
KTHC	80.2007	<i>Iacopo Grassi</i> : <u><a href="#">The Music Market in the Age of Download</a></u>
ETA	81.2007	<i>Carlo Carraro and Alessandra Sgobbi</i> : <u><a href="#">Modelling Negotiated Decision Making: a Multilateral, Multiple Issues, Non-Cooperative Bargaining Model with Uncertainty</a></u>
CCMP	82.2007	<i>Valentina Bosetti, Carlo Carraro, Emanuele Massetti and Massimo Tavoni</i> : <u><a href="#">International Energy R&amp;D Spillovers and the Economics of Greenhouse Gas Atmospheric Stabilization</a></u>
CCMP	83.2007	<i>Sjak Smulders and Edwin van der Werf</i> : <u><a href="#">Climate Policy and the Optimal Extraction of High- and Low-Carbon Fossil Fuels</a></u>
SIEV	84.2007	<i>Benno Torgler, Bruno S. Frey and Clevo Wilson</i> : <u><a href="#">Environmental and Pro-Social Norms: Evidence from 30 Countries</a></u>
KTHC	85.2007	<i>Elena Bellini, Ugo Gasparino, Barbara Del Corpo and William Malizia</i> : <u><a href="#">Impact of Cultural Tourism upon Urban Economies: An Econometric Exercise</a></u>
NRM	86.2007	<i>David Tomberlin and Garth Holloway</i> : <u><a href="#">Trip-Level Analysis of Efficiency Changes in Oregon's Deepwater Trawl Fishery</a></u>

(lxxxii) This paper was presented at the EAERE-FEEM-VIU Summer School on "Computable General Equilibrium Modeling in Environmental and Resource Economics", held in Venice from June 25th to July 1st, 2006 and supported by the Marie Curie Series of Conferences "European Summer School in Resource and Environmental Economics".

(lxxxii) This paper was presented at the Workshop on "Climate Mitigation Measures in the Agro-Forestry Sector and Biodiversity Futures", Trieste, 16-17 October 2006 and jointly organised by The Ecological and Environmental Economics - EEE Programme, The Abdus Salam International Centre for Theoretical Physics - ICTP, UNESCO Man and the Biosphere Programme - MAB, and The International Institute for Applied Systems Analysis - IIASA.

(lxxxiii) This paper was presented at the 12th Coalition Theory Network Workshop organised by the Center for Operation Research and Econometrics (CORE) of the Université Catholique de Louvain, held in Louvain-la-Neuve, Belgium on 18-20 January 2007.

<b>2007 SERIES</b>	
<b>CCMP</b>	<i>Climate Change Modelling and Policy</i> (Editor: Marzio Galeotti )
<b>SIEV</b>	<i>Sustainability Indicators and Environmental Valuation</i> (Editor: Anil Markandya)
<b>NRM</b>	<i>Natural Resources Management</i> (Editor: Carlo Giupponi)
<b>KTHC</b>	<i>Knowledge, Technology, Human Capital</i> (Editor: Gianmarco Ottaviano)
<b>IEM</b>	<i>International Energy Markets</i> (Editor: Matteo Manera)
<b>CSR</b>	<i>Corporate Social Responsibility and Sustainable Management</i> (Editor: Giulio Sapelli)
<b>PRCG</b>	<i>Privatisation Regulation Corporate Governance</i> (Editor: Bernardo Bortolotti)
<b>ETA</b>	<i>Economic Theory and Applications</i> (Editor: Carlo Carraro)
<b>CTN</b>	<i>Coalition Theory Network</i>