

Valente, Simone

**Working Paper**

## Growth, Conventional Production and Tourism Specialisation: Technological Catching-up Versus Terms-of- Trade Effects

Nota di Lavoro, No. 140.2005

**Provided in Cooperation with:**

Fondazione Eni Enrico Mattei (FEEM)

*Suggested Citation:* Valente, Simone (2005) : Growth, Conventional Production and Tourism Specialisation: Technological Catching-up Versus Terms-of-Trade Effects, Nota di Lavoro, No. 140.2005, Fondazione Eni Enrico Mattei (FEEM), Milano

This Version is available at:

<https://hdl.handle.net/10419/74278>

**Standard-Nutzungsbedingungen:**

Die Dokumente auf EconStor dürfen zu eigenen wissenschaftlichen Zwecken und zum Privatgebrauch gespeichert und kopiert werden.

Sie dürfen die Dokumente nicht für öffentliche oder kommerzielle Zwecke vervielfältigen, öffentlich ausstellen, öffentlich zugänglich machen, vertreiben oder anderweitig nutzen.

Sofern die Verfasser die Dokumente unter Open-Content-Lizenzen (insbesondere CC-Lizenzen) zur Verfügung gestellt haben sollten, gelten abweichend von diesen Nutzungsbedingungen die in der dort genannten Lizenz gewährten Nutzungsrechte.

**Terms of use:**

*Documents in EconStor may be saved and copied for your personal and scholarly purposes.*

*You are not to copy documents for public or commercial purposes, to exhibit the documents publicly, to make them publicly available on the internet, or to distribute or otherwise use the documents in public.*

*If the documents have been made available under an Open Content Licence (especially Creative Commons Licences), you may exercise further usage rights as specified in the indicated licence.*

**Growth, Conventional Production  
and Tourism Specialisation:  
Technological Catching-up Versus  
Terms-of-Trade Effects**

Simone Valente

NOTA DI LAVORO 140.2005

**NOVEMBER 2005**

NRM – Natural Resources Management

Simone Valente, *Institute of Economic Research, ETH Zurich*

This paper can be downloaded without charge at:

The Fondazione Eni Enrico Mattei Note di Lavoro Series Index:  
<http://www.feem.it/Feem/Pub/Publications/WPapers/default.htm>

Social Science Research Network Electronic Paper Collection:  
<http://ssrn.com/abstract=855984>

# **Growth, Conventional Production and Tourism Specialisation: Technological Catching-up Versus Terms-of-Trade Effects**

## **Summary**

This paper extends the 'expanding-varieties' growth model in a two-countries-two-goods setup, and describes the dynamics of growth rates and terms of trade when the industry-based economy is the innovation leader, while the tourism-based economy is the follower (i.e. increases the number of intermediate inputs by readapting innovations developed abroad). Two types of transitional dynamics may exist: technological catching-up and technological falling-behind. Contrary to the standard result, technological catching-up by the follower is associated with lower growth rates with respect to the leader, whereas terms-of-trade effects guarantee positive growth differentials for the tourism-based economy when the technological gap with the leader increases over time. The underlying principle of 'increased relative demand' might explain the good economic performance observed in tourism-dependent economies.

**Keywords:** Endogenous growth, Two-country models, Technology diffusion, Trade specialization

**JEL Classification:** F12, F43, O33

*This paper was presented at the Second International Conference on "Tourism and Sustainable Economic Development - Macro and Micro Economic Issues" jointly organised by CRENoS (Università di Cagliari and Sassari, Italy) and Fondazione Eni Enrico Mattei, Italy, and supported by the World Bank, Chia, Italy, 16-17 September 2005.*

*Address for correspondence:*

Simone Valente  
Institute of Economic Research  
WIF-ETH Zurich  
Zurichbergstrasse 18 - ZUE F15  
CH-8032 Zurich  
Switzerland  
Phone: +41 44 6324724  
E-mail: svalente@ethz.ch

# Growth, Conventional Production and Tourism Specialisation: Technological Catching-Up versus Terms-of-Trade Effects

Simone Valente\*

*Institute of Economic Research, ETH Zurich*

**Abstract.** This paper extends the 'expanding-varieties' growth model in a two-countries-two-goods setup, and describes the dynamics of growth rates and terms of trade when the industry-based economy is the innovation leader, while the tourism-based economy is the follower (i.e. increases the number of intermediate inputs by readapting innovations developed abroad). Two types of transitional dynamics may exist: technological catching-up and technological falling-behind. Contrary to the standard result, technological catching-up by the follower is associated with lower growth rates with respect to the leader, whereas terms-of-trade effects guarantee positive growth differentials for the tourism-based economy when the technological gap with the leader increases over time. The underlying principle of 'increased relative demand' might explain the good economic performance observed in tourism-dependent economies.

## 1. Introduction

The fast economic growth of countries specialised in tourism poses a number of questions for economic analysis at both the theoretical and the empirical level. International data show that tourism-dependent economies exhibit higher growth rates with respect to most industrialised countries over the last two decades, suggesting a systematic link between tourism development, product specialisation and international trade with manufacturing-based economies. A possible explanation of the economic performance of countries specialised in tourism is that of a favourable trend in terms of trade with conventional consumption goods produced by industrialised countries. However, as tourism-based economies *keep* growing faster even beyond the very short run, this explanation calls for a more detailed analysis of the conditions under which the favourable trend in terms of trade is structurally linked to technological differences between trading countries. This paper tackles the issue in the context of endogenous growth theory and shows that: (i) in a two-countries-two-goods setup with full specialisation, terms-of-trade effects always dominate the effects of growth in physical output; (ii) tourism specialisation is growth improving when convergence towards the long run equilibrium implies a dynamic increase in the foreign relative demand for tourism services, which drives terms of trade in the favourable direction.

The view that tourism specialisation is growth improving due to terms-of-trade effects is consistent with many stylised facts: typical features of tourism-based economies are small relative size, extensive use of environmental resources, lower labour skills with respect to most industrialised countries. Our

---

\* Address: WIF-ETH Zurich, Zurichbergstrasse 18 - ZUE F15, CH-8032 Zurich (Switzerland). E-mail: svalente@ethz.ch.

formal analysis hinges on the assumption that tourism-based economies exhibit lower ability to generate high-tech innovations: the existence of a technological gap between industrialised and tourism-dependent countries is the source of growth differentials along the transition to the long run equilibrium. Following a standard approach in international economics (Frenkel and Razin, 1985; Gardner and Kimbrough, 1990; Turnovsky, 1997, Chap. 7), we assume a world consisting of two countries, each of which is fully specialised in producing one final good - either tourism services or conventional manufactured goods - that is exchanged at the international level. Trade allows all consumers to enjoy both goods, so that terms-of-trade dynamics are determined by the demand functions for the two goods. In the literature on tourism and growth, Lanza and Pigliaru (1998) implement this approach in a learning-by-doing model *à la* Lucas (1988), and show that the sign of growth differentials is determined by the elasticity of substitution between the two goods in consumers preferences. The preference elasticity still plays a role in our model, although the present analysis studies transitional dynamics of terms of trade and emphasises technological sources of growth differentials.

The supply side of the economies is modelled following the 'expanding-varieties' approach (Spence, 1976; Dixit and Stiglitz, 1977; Romer, 1987), extending a recent version developed by Barro and Sala-i-Martin (1997) to include full specialisation in non-homogeneous traded goods. Final output is produced by means of labour and a number of intermediate input goods supplied by quasi-monopolists. The source of growth is represented by increases in the number of intermediates, which can be obtained in two ways: (a) developing a new type of intermediate goods through innovations and paying the associated R&D cost, or (b) readapting intermediates developed abroad and paying the associated 'readaptation cost'. The industrialised country exhibits a higher ability to produce innovations, so that the tourism-based economy faces a *technological gap*. In this environment, the industrialised economy is the 'innovation leader', whereas the tourism-based country acts as a 'follower'. In the long run, both economies converge to a balanced-growth path, so that no differentials arise in equilibrium. However, two different types of convergence may exist during the transition. In the first case, which we label 'convergence from below', the tourism-based economy reduces the technological gap over time and experiences higher growth rates in *physical* output with respect to the innovation leader; however, terms-of-trade effects induced by the increase in the relative demand for manufactured goods are stronger, and the growth rate differential is in favour of the industrialised country. Conversely, when the tourism-based economy 'converges from above', the technological gap increases over time, and growth rates in physical output are below those experienced by the innovation leader; also in this case, terms-of-trade effects induced by the increase in the foreign relative demand for tourism dominate, and the overall growth rate differential is positive for the tourism-based country. Hence, *technological catching-up* is associated with lower growth, whereas *technological falling-behind* corresponds to higher growth rates for the tourism-based economy. In contrast to the standard result

that technological falling-behind is bad for growth (Barro and Sala-i-Martin, 1997), our analysis emphasises the role of terms of trade in determining the development path of tourism-based countries, suggesting that the observed performance might be explained by dynamic increases in the relative foreign demand for tourism services.

## 2. The model

The world consist of two countries indexed by  $i = M, T$ : country  $M$  is specialised in manufactured goods, country  $T$  is specialised in tourism. International trade allows all consumers to enjoy both goods, population is constant and equal to total labour force  $H_i$ . In particular, we assume that labour is more abundant in country  $M$  with respect to the tourism-based economy:

$$H_M > H_T. \quad (1)$$

Since international lending is ruled out, trade is balanced in every instant.

*Demand side.* Individual wealth is represented by assets of firms operating in the home country. Each individual supplies one unit of labour, earning the real wage rate  $w^h$ . Denoting by  $a_i$  per-capita wealth, expressed in terms of the home-produced good, the individual wealth constraint in country  $i$  reads

$$\dot{a}_i = \mu_i a_i + w_i^h H_i - c_i, \quad (2)$$

where  $\mu_i$  is the interest rate. Consumers preferences are identical between the two countries, and instantaneous utility is represented by

$$u(c_i^m, c_i^t) = \frac{\sigma}{\sigma - 1} \log \left[ \beta (c_i^m)^{\frac{\sigma-1}{\sigma}} + (1 - \beta) (c_i^t)^{\frac{\sigma-1}{\sigma}} \right], \quad (3)$$

where  $c_i^m$  and  $c_i^t$  are individually consumed quantities of manufactured and tourism goods, respectively,  $\beta \in (0, 1)$  is a weighting parameter and  $\sigma > 0$  is the elasticity of substitution between the two types of goods. Denoting by  $p_i$  the relative price of  $Y_i$ , individual spending for consumption goods in country  $i$  can be expressed in terms of the home-produced good as

$$c_i = \frac{1}{p_i} (p_M \cdot c_i^m + p_T \cdot c_i^t). \quad (4)$$

The consumer problem is solved in two steps. In the first step, each agent maximises  $u(c_i^M, c_i^T)$  choosing how to allocate consumption between  $c_i^M$  and  $c_i^T$ , taking total expenditure  $c_i$  as given. Defining the terms-of-trade index as  $p = p_T/p_M$ , first-step optimality conditions imply

$$\frac{c_M^m}{c_M^t} = \frac{c_T^m}{c_T^t} = \left( p \frac{\beta}{1 - \beta} \right)^\sigma, \quad (5)$$

which can be substituted back in (3) to obtain the indirect utility functions

$$U(c_M, p) = \log c_M + \frac{\sigma}{\sigma - 1} \log(\Phi_M(p)), \quad (6)$$

$$U(c_T, p) = \log c_T + \frac{\sigma}{\sigma - 1} \log(\Phi_T(p)), \quad (7)$$

where  $\Phi_M$  and  $\Phi_T$  are functions of  $p$ . In the second step, each agent maximises the objective function

$$\int_0^\infty U(c_i(\tau), p(\tau)) e^{-\delta\tau} d\tau \quad (8)$$

where  $\tau$  is the time-index, and  $\delta > 0$  is the time-preference rate. Maximising (8) subject to (2) yields the standard Keynes-Ramsey rule

$$\frac{\dot{c}_i}{c_i} = \mu_i - \delta. \quad (9)$$

*Supply side.* The supply side of the two economies is modelled as in Barro and Sala-i-Martin (1997), with the difference that each country is fully specialised, so that final goods are not homogeneous. Final output  $Y$  is obtained by means of labour  $H$  and a number of intermediate inputs  $x_k$  (where the type of intermediate good is indexed by  $k = 1, \dots, N$ ) according to the homogeneous production function

$$Y_i = H_i^{1-\alpha} \sum_{k=1}^{N_i} x_{ki}^\alpha, \quad i = M, T, \quad (10)$$

where  $\alpha \in (0, 1)$ .<sup>1</sup> Constant returns to scale allow to model the whole final sector as a single competitive firm. Denoting the real wage rate by  $w^h$  and the marginal cost of the  $k$ -th variety of intermediate good by  $w_k^x$ , profit maximisation in the final sector implies

$$w_i^h H_i = (1 - \alpha) Y_i, \quad (11)$$

$$w_{ki}^x x_{ki} = \alpha Y_i, \quad k = 1, \dots, N_i. \quad (12)$$

The intermediate good is produced by technology monopolists that face a constant marginal cost, normalised to unity. Instantaneous profits for the  $k$ -th type of intermediate thus equal  $\pi_{ki} = x_{ki} (w_{ki}^x - 1)$ . Maximisation of  $\pi_{ki}$  subject to the demand schedule (12) gives the standard solution of *constant mark-up* over marginal costs, i.e.

$$w_{ki}^x = w_i^x = 1/\alpha > 1 \quad \forall k. \quad (13)$$

---

<sup>1</sup> Assuming that factor shares  $\alpha$  and  $(1 - \alpha)$  are equal between the two countries simplifies the algebra without affecting the main results: setting  $\alpha_T \neq \alpha_M$  would not alter qualitative dynamics, and hence our characterization of growth differentials (see section 4).

From (13), the optimal quantity of each type of intermediate is

$$x_{ki} = \bar{x}_i = H_i \alpha^{\frac{2}{1-\alpha}}, \quad (14)$$

and instantaneous profits are accordingly equalised across varieties:

$$\pi_{ki} = \bar{\pi}_i = \left( \frac{1-\alpha}{\alpha} \right) \alpha^{\frac{2}{1-\alpha}} H_i. \quad (15)$$

Equation (14) implies that

$$\sum_{k=1}^{N_i} x_{ki}^\alpha = N_i \bar{x}_i^\alpha = N_i H_i^\alpha \alpha^{\frac{2\alpha}{1-\alpha}}, \quad (16)$$

which can be substituted in (10) to obtain

$$Y_i = H_i N_i \alpha^{\frac{2\alpha}{1-\alpha}}. \quad (17)$$

From (17), output per worker is proportional to the number of intermediates,  $N_i$ . In line with the basic idea of the 'expanding-varieties' model pioneered by Spence (1976) and Dixit and Stiglitz (1977), the source of endogenous growth is represented by increases in  $N_i$  obtained through innovations. In the present context, an 'innovation' is the development of a new variety of intermediates, and the innovator becomes its sole supplier by virtue of a patent which is perfectly enforced within the country.

However, as in Barro and Sala-i-Martin (1997), we assume that countries are able to expand  $N_i$  not only by 'original' innovation, but also 'by imitation': new types of intermediates developed *e.g.* in country  $M$  can be re-adapted as intermediates for producing tourism goods in country  $T$ , thereby raising  $N_T$ .<sup>2</sup> Hence, countries may in principle obtain new varieties by means of two alternative strategies. On the one hand, country  $i$  may act as the *innovation leader* by inventing new intermediates: the associated marginal cost (which will be called 'R&D cost') is assumed constant and denoted  $\lambda_i > 0$ . On the other hand, if innovators in country  $i' \neq i$  are actually developing new blueprints on their own, country  $i$  may choose to be a *follower*: technology monopolists readapt intermediates invented abroad, and readapt it for the specialised good produced in country  $i$ . This second strategy implies a marginal 'readaptation cost' denoted by  $f_i > 0$ .

Obviously, innovators would find profitable to invest resources in discovering new types 'by themselves' as long as  $\lambda_i < f_i$ , and if this inequality holds in

---

<sup>2</sup> For the readaptation process to be possible in the present context, it is not strictly necessary to assume that laws for copyright protection are ineffective at the international level: countries are producing different goods, and the readaptation process may generate intermediates  $x_{\bar{k}T}$  featuring specific differences (and hence not violating international laws) with respect to their 'original versions'  $x_{\bar{k}M}$  developed in country  $M$ . The lack of effective copyright protection at the international level is instead an implicit assumption in Barro and Sala-i-Martin (1997), as they assume that countries produce exactly the same final good.



both countries none of the two will act as a follower. In the present context, it is plausible to assume that country  $M$  exhibits a higher ability to generate innovations with respect to country  $T$ : a positive *technological gap* in favour of industrialised countries with respect to tourism-based economies is indeed typically observed, especially in terms of the number of high-tech innovations. Formally, we make three assumptions in this regard: (i) at time  $\tau = 0$  the set of intermediates existing in the tourism-based economy is a subset of that employed in country  $M$ , with  $N_M(0) > N_T(0)$ ; (ii) inventing new intermediates is relatively more expensive in the tourism-based economy,  $\lambda_M < \lambda_T$ ; (iii) readaptation costs are specified according to the 'cost of imitation' function in Barro and Sala-i-Martin (1997),

$$f_T = \lambda_T \left( \frac{N_T}{N_M} \right)^\nu. \quad (18)$$

The cost function (18) exhibits two important properties. First,  $N_M > N_T$  implies  $f_T < \lambda_T$ , which means that if there is a 'technological gap' in favour of country  $M$  readapting is more convenient than innovating for the tourism-based economy: this property implies that it is profitable for country  $T$  to act as a follower at time zero, because  $N_T(0) < N_M(0)$  yields  $f_T(0) < \lambda_T$ . Second, since  $\partial f_T / \partial \left( \frac{N_T}{N_M} \right) > 0$ , the wider is the technological gap (i.e. the lower is  $N_T/N_M$ ) the lower is the cost of readaptation: followers imitate foreign intermediates beginning with the variety which is the easiest to readapt, so that marginal costs rise with the number of varieties already readapted.<sup>3</sup>

Given the above assumptions, free-entry conditions for firms in R&D sectors can be derived as follows: the present value of profits from inventing a new type of intermediates at instant  $\tau$  equals

$$V_i(\tau) = \int_\tau^\infty \pi_{ki}(s) e^{-\int_\tau^s \mu_i(b) db} ds. \quad (19)$$

If there is free-entry in innovation in country  $M$ , and free-entry in 'readaptation' in country  $T$  as well, we have

$$V_M = \lambda_M, \quad V_T = f_T, \quad (20)$$

because an equilibrium with positive amounts of resources devoted to obtain new intermediates requires R&D costs be equal to the market value of R&D firms, represented by  $V_M$  and  $V_T$ . Notice that (20) implies that  $V_M$  is constant over time, whereas  $V_T$  is generally time-varying since readaptation costs depend, through (18), on the technological gap between the two countries. This has important consequences for economic dynamics and growth differentials between the two countries, as shown below.

<sup>3</sup> An alternative interpretation is that readaptation proceeds chronologically: countries bearing a relatively wide technological gap first readapt intermediates that are relatively 'old' with respect to those being pioneered by the leader in that moment; if the technological gap is reduced thereafter, imitating becomes more expensive because intermediates available for readaptation are 'technologically closer' to the frontier currently determined by the leader.

### 3. Equilibrium and dynamic analysis

Since international lending is not allowed, trade is balanced in each instant and the aggregate resource constraints of the two economies can be expressed as

$$Y_i = C_i + D_i, \quad i = M, T, \quad (21)$$

where  $C_i = H_i c_i$ , and  $D_i$  equals total spending - in terms of the home-produced good - devoted to expand the set of intermediates. Setting  $A_i = a_i H_i$ , the aggregate wealth constraint is derived by (2) as  $\dot{A}_i - \mu_i A_i = w_i^h H_i - C_i$ . As shown in the Appendix, world intertemporal equilibrium is characterised by

$$\frac{\dot{N}_i}{N_i} = \mu_i + (1 - \alpha) \frac{Y_i}{V_i N_i} - \frac{C_i}{V_i N_i} - \frac{\dot{V}_i}{V_i}, \quad (22)$$

$$\frac{\dot{C}_i}{C_i} = \mu_i - \delta, \quad (23)$$

$$\frac{\dot{p}}{p} = \frac{1}{\sigma} \left( \frac{\dot{C}_M}{C_M} - \frac{\dot{C}_T}{C_T} \right), \quad (24)$$

and equilibrium interest rates in the two economies equal

$$\mu_M = \frac{\bar{\pi}_M}{\lambda_M}, \quad (25)$$

$$\mu_T = \frac{\bar{\pi}_T}{f_T} + \frac{\dot{f}_T}{f_T}. \quad (26)$$

Equation (22) represents the growth rate of the number of intermediate varieties in country  $i$ ; equation (23) is the Keynes-Ramsey rule in terms of aggregate consumption; equation (24) describes the dynamic behaviour of terms of trade: the growth rate of the relative price index  $p = p_T/p_M$  equals the algebraic difference between growth rates of consumption indices, times the inverse of the preference-elasticity of substitution between the two goods ( $\sigma$ ).

Equations (25)-(26) result from equilibrium between the value of total households assets and the market value of R&D firms. In this regard, two points should be emphasised. First, equilibrium interest rates  $\mu_M$  and  $\mu_T$  are endogenously determined within the respective countries, and variations in terms of trade occur as a consequence of interest rate differentials: from (23) and (24),

$$\dot{p}/p = \sigma^{-1} (\mu_M - \mu_T). \quad (27)$$

Second, the equilibrium interest rate in the leader country is constant over time along the entire path, whereas  $\mu_T$  is generally time-varying: in (25), marginal costs of innovation  $\lambda_M$  and instantaneous profits  $\bar{\pi}_M$  are constant, whereas readaptation costs imply non trivial dynamics in (26), because  $f_T$  depends on the technological gap observed in each point in time. That is, assumption (18) implies that the tourism-based economy will experience non-constant growth

rates in  $C_T$  whenever  $\dot{N}_T/N_T \neq \dot{N}_M/N_M$ . The asymmetric behaviour of output growth and interest rates between the two economies generates the following result.

**PROPOSITION 1.** *Country  $M$  immediately achieves balanced growth at time zero and exhibits a constant growth rate  $\dot{C}_M/C_M = \dot{Y}_M/Y_M = g_M$  in each instant  $t \in [0, \infty)$ . Country  $T$  displays transitional dynamics, and real growth rates converge to  $g_M$  in the long run.*

A rigorous proof of Proposition 1 is obtained in exactly the same way as in Barro and Sala-i-Martin (1997), and a brief explanation will be given here. With respect to the dynamics of country  $M$ , from (23) and (25), a constant interest rate in country  $M$  implies a constant growth rate of  $C_M$  in each point in time. By (17), output and the number of intermediates grow at each point in time at the same rate  $g_M = \dot{Y}_M/Y_M = \dot{N}_M/N_M$ , which is constant (see Barro and Sala-i-Martin, 1997). Since any equilibrium where  $C$  and  $Y$  grow at constant but different rates would violate either the aggregate resource constraint (21) or the constraint  $C \geq 0$  in finite time, the only possible equilibrium path is the one along which

$$\dot{C}_M/C_M = \dot{Y}_M/Y_M = \dot{N}_M/N_M = g_M \text{ for each } t \in [0, \infty). \quad (28)$$

In the tourism-based country, a non-constant interest rate implies  $\dot{C}_T/C_T$  be time-varying. Defining control-like and state-like variables  $\chi_T = C_T/N_T$  and  $N_\star = N_T/N_M$ , the following dynamic equations can be derived (see Appendix):

$$\frac{\dot{N}_\star}{N_\star} = \frac{1}{\lambda_T N_\star^\nu} \left[ \left( \frac{1+\alpha}{\alpha} \right) \bar{\pi}_T - \chi_T \right] - g_M, \quad (29)$$

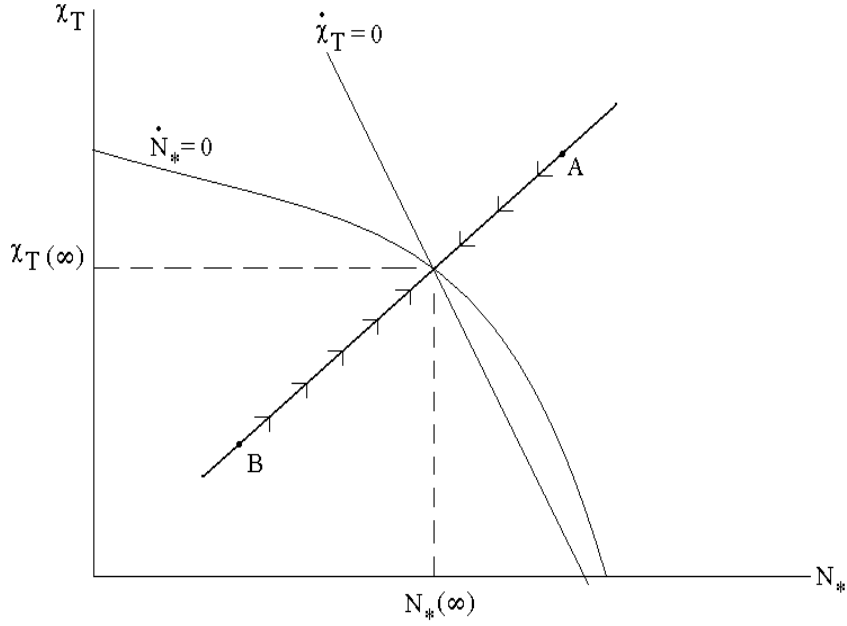
$$\frac{\dot{\chi}_T}{\chi_T} = \frac{1}{\lambda_T N_\star^\nu} \left[ (1-\nu) \chi_T - \bar{\pi}_T \frac{(1-\nu)(1+\alpha) - \alpha}{\alpha} \right] - \nu g_M - \delta. \quad (30)$$

Equations (29)-(30) describe economic dynamics in country  $T$  for each  $t \in [0, \infty)$  provided the tourism-based economy is always acting as a follower.<sup>4</sup> Little algebra shows that equation (29) is dynamically stable regardless of different combinations of parameters:  $N_\star$  approaches a steady state value as time goes to infinity, and the numbers of intermediate varieties in the two countries,  $N_T$  and  $N_M$ , will consequently grow at the same rate in the long run. Since  $Y_i$  is proportional to  $N_i$  from (17), it follows that

$$\lim_{t \rightarrow \infty} \frac{\dot{N}_T}{N_T} = \lim_{t \rightarrow \infty} \frac{\dot{Y}_T}{Y_T} = \lim_{t \rightarrow \infty} \frac{\dot{C}_T}{C_T} = g_M. \quad (31)$$

Convergence of the growth rate  $\dot{C}_T/C_T$  towards  $g_M$  is ensured by saddle-point stability, as shown in the phase diagram depicted in Figure 1.

<sup>4</sup> For the moment, we take for granted that parameters are such that this strategy is convenient for each  $t \in [0, \infty)$  in country  $T$ : this allows us to ascertain whether the economy converges to a steady growth path in this case; we will subsequently show (Lemma 2-3) that our assumptions guarantee that country  $T$  is in fact a follower from time zero onward.



**Figure 1.** Phase diagram of system (29)-(30). If country  $T$  starts from point  $A$  the technological gap with the leader increases over time. Conversely, starting from point  $B$ , the tourism-based economy reduces the technological gap with the leader.

As usual in standard growth models, only one stable arm exists, and all diverging paths would violate either optimality conditions or the aggregate resource constraint in the long run.<sup>5</sup> The economy jumps at time zero along the stable arm of the saddle, which brings  $\chi_T$  and  $N_*$  towards equilibrium values  $\chi_T(\infty)$  and  $N_*(\infty)$ . Since  $\dot{\chi}_T = 0$  in the long run,  $C_T$  and  $N_T$  (and hence, also  $Y_T$ ) grow asymptotically at the same rate, implying balanced growth in country  $T$ . From (31), convergence in growth rates of  $C_T$  and  $C_M$  requires interest rates be equalised in the long run, by virtue of the Keynes-Ramsey rule (23). This in turn implies that terms of trade are asymptotically time-invariant: from (24),

$$\lim_{t \rightarrow \infty} \mu_T = \mu_M \Rightarrow \lim_{t \rightarrow \infty} \dot{p} = 0. \quad (32)$$

<sup>5</sup> Note that the conclusion that also the growth rate  $\dot{C}_T/C_T$  converges to  $g_M$  can be reached heuristically by applying (as  $t \rightarrow \infty$  in country  $T$ ) the same reasoning used to rule out non-balanced growth paths in country  $M$  (at each  $t$ ).

### 3.1. GROWTH RATES DIFFERENTIALS

Asymptotic balanced growth in the two countries implies that no type of specialisation - tourism or manufacturing - may be labelled as growth improving in the long run. More precisely, define the *growth rates differential*  $\Delta$  between country  $T$  and country  $M$  as

$$\Delta = \Delta^y + \frac{\dot{p}}{p} = \Delta^y - \frac{\Delta^c}{\sigma}, \quad (33)$$

where

$$\Delta^y = \left( \dot{Y}_T / Y_T \right) - \left( \dot{Y}_M / Y_M \right) \quad \text{and} \quad \Delta^c = \left( \dot{C}_T / C_T \right) - \left( \dot{C}_M / C_M \right).$$

The term  $\Delta^y$  represents the *output effect*, whereas  $-\Delta^c/\sigma$ , which equals by (24) the growth rate of the price index, is the *terms-of-trade effect*. The economic meaning of (33) is as follows. The sign of the growth rates differential between countries  $T$  and  $M$  is determined by the relative strength of two forces: on the one hand,  $\Delta$  is *higher* the higher is the gap between the growth rates of physical output in country  $T$  and in country  $M$ . On the other hand,  $\Delta$  is *lower* the higher is the gap between the growth rates of  $C_T$  and  $C_M$ , because a positive gap means a decrease in the relative foreign demand for the tourism good, which causes the terms-of-trade index  $p_T/p_M$  to fall ( $\dot{p} < 0$ ).

In our model,  $\Delta$  approaches zero in the long run because, by (31), convergence implies  $\Delta^y(\infty) = \Delta^c(\infty) = 0$ . However, output and terms-of-trade effects need not compensate along the *transitional path*, since growth rates of  $Y_T$  and  $C_T$  clearly differ before the balanced-growth equilibrium is achieved. This key feature of the model yields the main insights on growth differentials between tourism-based and manufacturing-based economies, as the time needed for substantial convergence is long, being of the order of generations if compared to the human life cycle.

## 4. Transitional dynamics

The characterization of economic dynamics in the two countries developed above, and Proposition 1 in particular, postulates that readaptation costs always remain below innovation costs in country  $T$ . That is, we have been supposing that acting as a follower is profitable in each instant  $t \in [0, \infty)$  for the tourism-based country. This is actually true due to the assumptions made about readaptation costs and initial conditions, as shown in Lemma 2 and Lemma 3 below.

**LEMMA 2.** *The relative scarcity of labour in country  $T$  ensures that readapting is cheaper than innovating for the tourism-based economy when  $\dot{\chi}_T = \dot{N}_* = 0$ .*

To prove Lemma 2 recall that the cost function (18) is such that  $f_T < \lambda_T$  as long as  $N_\star < 1$ . In the long run equilibrium we have

$$f_T(\infty) = \lambda_M \left( \frac{\bar{\pi}_T}{\bar{\pi}_M} \right) \equiv \lambda_M \left( \frac{H_T}{H_M} \right), \quad (34)$$

where the first equality derives from setting  $\mu_T = \mu_M$  in equations (25)-(26), and the last term is obtained by substituting (15) for each country. Having assumed  $H_T < H_M$ , i.e. that labour is relatively scarce in country  $T$ , and that innovation costs are lower in the industrialised country ( $\lambda_M < \lambda_T$ ), it follows from (34) that  $f_T < \lambda_T$  in the steady state equilibrium of system (29)-(30). The steady state equilibrium is therefore associated with  $N_\star(\infty) < 1$  in Figure 1.

Combining this result with assumption  $N_T(0) < N_M(0)$ , i.e. that the technological gap is in favour of country  $M$  at time zero, we obtain that the tourism-based country is always a follower:

**LEMMA 3.** *If initial conditions are such that  $N_\star(0) < 1$ , readapting is cheaper than innovating in every instant  $t \in [0, \infty)$  for the tourism-based economy.*

Lemma 3 is immediately proved by means of Figure 1. Since  $N_\star(\infty) < 1$ , there are two possible cases, which we label as *convergence from below* and *convergence from above*. This classification reflects the positive slope of the stable arm in the phase plane.<sup>6</sup>

If  $N_\star(0) < N_\star(\infty) < 1$ , the economy converges from below, starting *e.g.* in point B of Figure 1. If  $N_\star(\infty) < N_\star(0) < 1$ , the economy converges from above, starting *e.g.* in point A. In both cases,  $N_\star$  converges monotonically to  $N_\star(\infty)$  so as to remain, during the whole transition, on the left of the vertical line  $N_\star = 1$ . Since  $N_\star < 1$  guarantees  $f_T < \lambda_T$ , we have  $f_T < \lambda_T$  along the entire transitional path: for country  $T$ , readapting intermediates developed abroad is always more profitable than developing new varieties.

Hence, if  $N_\star(0) < 1$ , the tourism-based economy is always a follower, regardless of whether the economy approaches the long run equilibrium from above or from below. However, the direction of convergence is of fundamental importance for our analysis, as it ultimately determines the sign of  $\Delta$ , the growth rate differential, during the transition. The following propositions characterise the two cases:

**PROPOSITION 4.** *Convergence from below:  $N_\star(0) < N_\star(\infty)$ . If the economy converges from below, the technological gap is reduced over time*

$$\frac{d(N_T/N_M)}{d\tau} > 0, \quad (35)$$

<sup>6</sup> Our use of the terms 'above' and 'below' relates to the phase diagram in Figure 1, and does *not* refer to initial output levels as often done in the growth literature. The analysis will clarify that 'above' and 'below' are then associated with the growth rate differential between the follower and the leader, but this is peculiar to the present model since the opposite result holds in the original Barro and Sala-i-Martin (1997) model (see below).

and

$$\frac{\dot{C}_T}{C_T} > \frac{\dot{Y}_T}{Y_T} > \frac{\dot{Y}_M}{Y_M} = \frac{\dot{C}_M}{C_M} \quad (36)$$

along the transitional path.

PROPOSITION 5. *Convergence from above:  $N_*(0) > N_*(\infty)$ . If the economy converges from above, the technological gap increases over time,*

$$\frac{d(N_T/N_M)}{d\tau} < 0, \quad (37)$$

and

$$\frac{\dot{C}_T}{C_T} < \frac{\dot{Y}_T}{Y_T} < \frac{\dot{Y}_M}{Y_M} = \frac{\dot{C}_M}{C_M} \quad (38)$$

along the transitional path.

Both propositions hinge on the fact that the stable path towards the steady state equilibrium is upward sloping in the phase plane  $(\chi_T, N_*)$ , as shown in Figure 1. Firstly consider Proposition 4, which corresponds to a situation where the economy starts from point  $B$ . As the economy converges from below we have  $\dot{\chi}_T > 0$  during the transition, implying  $\dot{C}_T/C_T > \dot{N}_T/N_T = \dot{Y}_T/Y_T$  which proves the first inequality in (36). On the other hand, starting from point  $B$  implies  $\dot{N}_* > 0$  during the transition, so that  $\dot{N}_T/N_T > \dot{N}_M/N_M$ . Since  $\dot{N}_i/N_i = \dot{Y}_i/Y_i$ , also the second inequality in (36) is proved.

Next consider Proposition 5, which corresponds to a situation where the economy starts from point  $A$  in Figure 1. As the economy converges from above we have  $\dot{\chi}_T < 0$  during the transition, so that  $\dot{C}_T/C_T < \dot{N}_T/N_T = \dot{Y}_T/Y_T$ , which proves the first inequality in (38); starting from point  $A$  also implies  $\dot{N}_* < 0$  during the transition: since  $\dot{N}_T/N_T < \dot{N}_M/N_M$  corresponds to  $\dot{Y}_T/Y_T < \dot{Y}_M/Y_M$ , also the second inequality in (38) is proved. The last equality  $\dot{Y}_M/Y_M = \dot{C}_M/C_M$  in both (36) and (38) just follow from balanced growth in country  $M$ , which completes the proof.

Propositions 4 and 5 provide all the information needed to determine the sign of growth differentials along the transitional path. For the sake of clarity, we begin by discussing the case in which tourism and manufactured goods are neither substitutes nor complements ( $\sigma = 1$ ).

#### 4.1. GROWTH DIFFERENTIALS WITH $\sigma = 1$

When the elasticity of substitution between the two types of goods is  $\sigma = 1$ , the growth rate differential (33) reduces to

$$\Delta' = \Delta^y - \Delta^c, \quad (39)$$

that is, the *terms of trade effect* coincides with (-) the difference between growth rates of  $C_T$  and  $C_M$ . In this case, it follows from (36) and (38) that

PROPOSITION 6. *If country  $T$  converges from below, tourism specialisation implies lower growth rates during the transition. If country  $T$  converges from above, tourism specialisation implies higher growth rates during the transition.*

The statement is proved as follows: when country  $T$  converges from below, the growth rate differential is negative because expression (36) implies

$$\Delta^c > \Delta^y > 0 \quad \Rightarrow \quad \Delta' < 0. \quad (40)$$

The economic reason for this result is that when country  $T$  converges from below, the technological gap is being reduced, implying that physical output and the internal consumption index ( $Y_T$  and  $C_T$ ) are both growing at higher rates than in country  $M$ . However, the consumption index gap between the two countries,  $\Delta^c$ , exceeds the physical output gap  $\Delta^y$ , so that the terms-of-trade effect dominates and the resulting growth rate differential is negative.

Conversely, when country  $T$  converges from above, the growth rate differential is negative because expression (38) implies

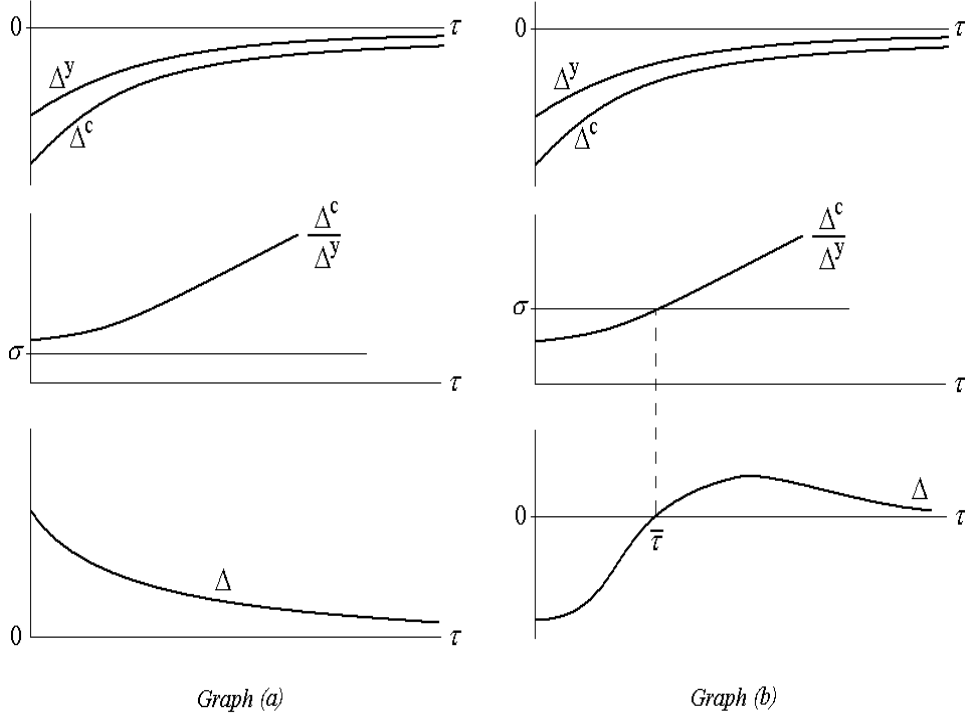
$$\Delta^c < \Delta^y < 0 \quad \Rightarrow \quad \Delta' > 0. \quad (41)$$

In economic terms, when country  $T$  converges from above, the technological gap increases during the transition, implying physical output and the internal consumption index be both growing at lower rates than in country  $M$ . But the consumption index gap dominates in absolute value the physical output gap, and the terms-of-trade effect is favourable to tourism specialisation in this case, yielding a positive overall differential  $\Delta' > 0$ .

The conclusion is that, since terms-of-trade effects always dominate output effects, tourism specialisation guarantees higher growth when tourism-based countries *fall behind* the innovation leader: as the technological gap increases over time (the economy starts in point A), the relative price of tourism rises due to the increase in the relative foreign demand, and country  $T$  obtains higher growth rates by virtue of the terms-of-trade effect. Conversely, *technological catching-up* is bad for growth: if the tourism-based economy reduces the technological gap with the industrialised country (starting from point B), the resulting growth differential is negative because the relative demand for manufactured goods by consumers in country  $T$  is increased, implying a transitional reduction in the relative price of the tourism good.

It should however be stressed that the above results do hold provided  $\sigma = 1$ , i.e. tourism and manufactured goods are neither complements nor substitutes: in this case, the individual demand for one good is not affected by variations in the price of the second, all other things being equal. Conclusions are slightly modified when the elasticity of substitution differs from unity, as shown below.





**Figure 2.** Growth differentials and preference-elasticity. Graph (a) shows that when  $\sigma < \Delta^c/\Delta^y$  at time zero, tourism specialisation ensures higher growth rates during the entire transitional path. Graph (b) shows that when  $\sigma > \Delta^c/\Delta^y$  at time zero and the adjustment speed of  $\Delta^c$  is strictly below that of  $\Delta^y$ , tourism specialisation is growth reducing in the short run, and growth improving in the medium run, before balanced-growth is achieved.

#### 4.2. GROWTH DIFFERENTIALS WITH $\sigma \neq 1$

When tourism and manufactured goods are either complements ( $\sigma < 1$ ) or substitutes ( $\sigma > 1$ ), the relative strength of the terms-of-trade effect changes: as intuitive, whether these *substitution effects* are sufficient to overturn previous conclusions is a matter of parameters. The issue is interesting, as the peculiar role of  $\sigma$  was already discussed in previous literature. Elaborating on Lucas (1988), Lanza and Pigliaru (1998) analysed growth paths of a small economy specialised in tourism, using a standard learning-by-doing model of endogenous growth. Assuming that labour productivity in tourism-based countries grows at lower rates, Lanza and Pigliaru (1998) show that specialisation in tourism guarantees higher growth rates if the preference-elasticity of substitution is strictly less than unity. We will refer to this result as to the *LP-condition*, and ascertain whether it is modified in the present model.

The LP-condition builds on the assumption that real productivity in the tourism-based economy grows at a lower rate with respect to the manufacturing-based economy. In our model, this situation corresponds to the case 'convergence from above', where the growth rate of physical output is lower in country  $T$  during the transition. From (33), the growth rate differential is now redefined as  $\Delta = \Delta^y - \sigma^{-1}\Delta^c$ . Following the same steps as in Proposition 5, it can be easily shown that

**PROPOSITION 7.** *If country  $T$  converges from above, tourism specialisation implies higher growth rates along the transition as long as*

$$\sigma < \frac{\Delta^c}{\Delta^y}, \quad (42)$$

where  $\Delta^c/\Delta^y > 1$  along the transition.

Proposition 7 implies that a modified LP-condition holds in the present model, though inequality (42) must be re-interpreted in a dynamic context. More precisely, the growth rate differential exhibits different dynamics depending on whether (42) is satisfied at time zero. In particular,  $\Delta$  is time-varying during transition, and its sign is crucially determined by adjustment speeds of  $\Delta^c$  and  $\Delta^y$ . Since  $\Delta^c/\Delta^y > 1$  along the entire transitional path, the speed at which  $\Delta^c$  approaches zero will not exceed the adjustment speed of  $\Delta^y$  around the steady state, implying that  $\Delta^c/\Delta^y$  is non-declining over time and bounded below by unity. As a consequence, if inequality (42) holds at time zero, it will also be satisfied along the entire transitional path: as shown in Figure 2.a, when  $\sigma < \Delta^c/\Delta^y$  at  $\tau = 0$  the tourism-based economy (converging from above) exhibits higher growth during the whole transition to the long run equilibrium.

When  $\sigma > \Delta^c/\Delta^y > 1$  at  $\tau = 0$ , instead, the growth rate differential  $\Delta$  may approach zero following a non-monotonic transitional path: in Figure 2.b, the adjustment speed of  $\Delta^c$  is strictly less than that of  $\Delta^y$ , which implies that although (42) is initially violated, the ratio  $\Delta^c/\Delta^y$  will grow over time so as to achieve  $\Delta^c/\Delta^y = \sigma$  at some instant  $\tau = \bar{\tau}$ , with inequality (42) be satisfied from that time onward. The associated path of  $\Delta$  is therefore non-monotonic, with negative values over the interval  $\tau \in [0, \bar{\tau}]$ , positive values for  $\bar{\tau} < \tau < \infty$ , and approaching zero in the long run. That is, tourism specialisation in this case is growth reducing in the short run, and growth improving in the medium run: at the beginning, the increase in the relative demand for tourism is more than offset by the negative impact of increasing the technological gap with leader; subsequently, terms-of-trade effects dominate implying higher growth in the tourism-based economy, before achieving balanced growth. Clearly, the non-monotonic case in Figure 2.b does not occur when the preference-elasticity is below unity:  $\sigma < 1$  implies  $\sigma < \Delta^c/\Delta^y$  at any point in time. This is indeed the link between Proposition 7 and the LP-condition: in the present model,  $\sigma < 1$  is not strictly necessary to have positive growth differentials between tourism-based and manufacturing-based economies; but  $\sigma < 1$  is sufficient to ensure

that tourism specialisation is growth improving along the *entire* transitional path.

Due to an exactly symmetric reasoning, when country  $T$  converges from below tourism specialisation is growth *reducing* as long as  $\sigma < \Delta^c/\Delta^y$ : when  $\sigma < \Delta^c/\Delta^y$  at time zero, country  $T$  exhibits lower growth rates along the entire transitional path; if  $\sigma$  initially exceeds  $\Delta^c/\Delta^y > 1$  and adjustment speeds differ between  $\Delta^c$  and  $\Delta^y$ , also the non-monotonic case is reversed, and tourism specialisation is growth improving in the short run but growth reducing in the medium run.

#### 4.3. COMMENT

In the model presented, tourism-based economies exhibit higher growth when the technological gap with industrialised countries increases over time. It should however be stressed that technological falling-behind need not be thought of as *the* requirement for obtaining higher growth, as the above results may be interpreted more generally as follows. In a two country-two good setup, the growth effects of increasing physical output are more than offset by price movements. Consequently, tourism specialisation is growth improving when the increase in the foreign relative demand is sufficient to drive terms of trade in the favourable direction. With standard specifications for preferences and technology, this process occurs when growth rates of physical output are lower than those experienced by trading partners: in general, any specialisation is growth improving as long as the *relative scarcity* of the home-produced good is increased over time.

From this broad perspective, it is clear that other sources of 'relative scarcity' may play the same role as the technological gap in our model. Considering tourism-dependent economies, a standard index of 'physical output' is likely to be subject to finite upper bounds, by virtue e.g. of land availability, accommodation capacity, depletable environmental resources, *et cetera*; in this case, good economic performance is necessarily driven by either quality improvements or increasing relative prices for tourism. Similarly, product-differentiation strategies pursued by tourism-dependent economies may be interpreted as way of implementing an equivalent 'scarcity principle' when facing industrialised countries, where the levels of conventional production steadily increase. Whether and to what extent relative scarcity and differentiation strategies actually explain the observed economic performance of tourism-based economies, is an empirical question. On the other hand, further theoretical work is needed to provide a full characterization of the problem at hand, with particular respect to the long run consequences of trading tourism versus conventional goods at the international level. The model presented focuses on technological sources of growth differentials, and extending the analysis to include country-specific features - such as differences in the relative size, the nature of factors employed in production, the use of exhaustible natural resources - appears an interesting topic for future research.

Finally, it is worth noting the sharp contrast with the original expanding-varieties model. In this regard, we have extended the one-good version developed by Barro and Sala-i-Martin (1997) to include full specialisation in non-homogeneous final goods, and terms-of-trade effects. This apparently slight modification brought about a major difference: when both countries produce the same final good, relative prices disappear and the growth rate of physical output is all that matters. As a consequence, conclusions about growth differentials are radically overturned: in a one-good setup, technological catching up (i.e. converging from point B) guarantees higher growth rates along the transition for the follower; conversely, converging from point A, the technological gap increases over time and transitional growth rates are lower with respect to the innovation leader.

## 5. Conclusions

This paper analysed the dynamics of growth differentials between countries specialised in manufactured goods and tourism-based economies. Elaborating on Barro and Sala-i-Martin (1997), we have extended the 'expanding-varieties' growth model to include heterogeneous final goods in a two-countries setup. The analysis focused on the time paths of growth rates and terms of trade when the industrialised country is the 'innovation leader' and the tourism-based country is the 'follower'. In the long run, both countries converge to balanced growth, and no differentials arise in the steady state equilibrium. However, two different types of transitional dynamics may arise: in the case of 'convergence from below', the tourism-based economy reduces the technological gap over time and experiences higher growth rates in *physical* output with respect to the innovation leader, but terms-of-trade effects imply the growth rate differential be in favour of the industrialised country. In the case of 'convergence from above', the technological gap increases over time and terms-of-trade effects induced by the increase in the foreign relative demand imply that the overall growth rate differential is positive for the tourism-based country. This contradicts some results of the standard one-good model, where technological falling-behind is bad for growth: in the two-goods version, terms-of-trade effects always dominate growth in physical output. The analysis suggests that the process of 'increased relative foreign demand' plays an important role in the development of specialised countries, and might explain the good economic performance of tourism-based economies.

## References

- Barro, R. and Sala-i-Martin, X. (1997). 'Technological diffusion, convergence, and growth'. *Journal of Economic Growth*, 2: 1-26.

- Dixit, A. and Stiglitz, J. (1977). 'Monopolistic competition and optimum product diversity'. *American Economic Review*, 67: 297-308.
- Frenkel, J. and Razin, A. (1985). 'Government spending, debt, and international economic interdependence'. *Economic Journal*, 95: 619-636.
- Gardner, G. and Kimbrough, K. (1990). 'The effects of trade-balance-triggered tariffs'. *International Economic Review*, 31: 117-129.
- Lanza, A. and Pigliaru, F. (1998). 'On the fast economic growth of small countries specialised in tourism'. *Fondazione ENI Enrico Mattei, Note di Lavoro*, n.73.98.
- Lucas, R. (1988). 'On the mechanics of economic development'. *Journal of Monetary Economics*, 22: 3-42.
- Romer (1987). 'Growth based on increasing returns due to specialization'. *American Economic Review*, 77: 56-62.
- Spence, M. (1976). 'Product selection, fixed costs, and monopolistic competition'. *Review of Economic Studies*, 43: 217-235.
- Turnovsky, S. (1997). 'International Macroeconomic Dynamics'. MIT Press: Cambridge MA.

## Appendix

**Derivation of (22)-(23)-(24).** Since  $A_i = N_i V_i$ , the aggregate wealth constraint can be rewritten as

$$\dot{N}_i V_i + N_i \dot{V}_i = \mu_i N_i V_i + w_i^h H_i - C_i. \quad (43)$$

and, substituting final-sector f.o.c.  $w_i^h H_i = (1 - \alpha) Y_i$  together with (17) yields

$$\dot{N}_i V_i + N_i \dot{V}_i = \mu_i N_i V_i + (1 - \alpha) H_i N_i \alpha^{\frac{2\alpha}{1-\alpha}} - C_i. \quad (44)$$

Dividing by  $V_i N_i$  yields equation (22) in the text. Equation (23) is simply the Keynes-Ramsey rule expressed (9) in terms of aggregate consumption. Equation (24) is derived as follows: optimality conditions for the individual consumer's problem imply

$$c_M = \left[ \frac{p + p^\sigma \left( \frac{\beta}{1-\beta} \right)^\sigma}{p^\sigma \left( \frac{\beta}{1-\beta} \right)^\sigma} \right] c_M^m, \quad c_T = \left[ 1 + p^{\sigma-1} \left( \frac{\beta}{1-\beta} \right)^\sigma \right] c_T^t. \quad (45)$$

Taking the ratio and time-differentiating yields

$$\frac{\dot{c}_M}{c_M} - \frac{\dot{c}_T}{c_T} = \frac{\dot{c}_M^m}{c_M^m} - \frac{\dot{c}_T^t}{c_T^t} + (1 - \sigma) \frac{\dot{p}}{p}. \quad (46)$$

From (5) we can substitute  $\frac{\dot{c}_M^m}{c_M^m} = \frac{\dot{c}_M^t}{c_M^t} + \sigma \frac{\dot{p}}{p}$  and  $\frac{\dot{c}_T^t}{c_T^t} = \frac{\dot{c}_T^m}{c_T^m} - \sigma \frac{\dot{p}}{p}$  to obtain

$$\frac{\dot{c}_M}{c_M} - \frac{\dot{c}_T}{c_T} = \frac{\dot{c}_M^t}{c_M^t} - \frac{\dot{c}_T^m}{c_T^m} + (1 + \sigma) \frac{\dot{p}}{p}. \quad (47)$$

Trade balance requires  $c_T^m = pc_M^t$ : differentiating and substituting the resulting expression in (47) gives the terms-of-trade equation (24).

**Derivation of equations (25)-(26).** Differentiating  $V_i(\tau)$  with respect to time yields the traditional dynamic programming equation

$$\dot{V}_i = \mu_i V_i - \bar{\pi}_i, \quad (48)$$

where we have used (15), i.e. the fact that monopoly profits are equalised across varieties. Substituting equilibrium free-entry conditions (20) in (48), we obtain (25)-(26).

**Derivation of equations (29)-(30).** Equation (29) is derived as follows. Equations (14) and (17) imply  $Y_T = \alpha^{-2} \bar{x}_T N_T$ , which can be substituted in (15) to obtain

$$(1 - \alpha) \frac{Y_T}{N_T} = \frac{\bar{\pi}_T}{\alpha}. \quad (49)$$

Now rewrite (22) as

$$\frac{\dot{N}_T}{N_T} = \mu_T + \frac{1}{V_T} \left[ (1 - \alpha) \frac{Y_T}{N_T} - \chi_T - \dot{V}_T \right], \quad (50)$$

where  $\chi_T = C_T/N_T$  as defined in the text. Substituting (20), (26) and (49) in (50) gives

$$\frac{\dot{N}_T}{N_T} = \frac{1}{f_T} \left[ \left( \frac{1 + \alpha}{\alpha} \right) \bar{\pi}_T - \chi_T \right]. \quad (51)$$

Setting  $N_\star = N_T/N_M$  we obtain, from (28) and (51),

$$\frac{\dot{N}_\star}{N_\star} = \frac{1}{f_T} \left[ \left( \frac{1 + \alpha}{\alpha} \right) \bar{\pi}_T - \chi_T \right] - g_M.$$

Substituting as  $f_T = \lambda_T N_\star^\nu$  from (18) in the above expression yields equation (29) in the text.

Equation (30) is derived as follows. Substituting (26) in (23) gives

$$\frac{\dot{C}_T}{C_T} = \nu \frac{\dot{N}_\star}{N_\star} + \frac{1}{\lambda_T N_\star^\nu} (\bar{\pi}_T - \delta), \quad (52)$$

where we have used  $f_T = \lambda_T N_*^\nu$  and  $\dot{f}_T/f_T = \nu \dot{N}_*/N_*$ . Using (51) and (52), the growth rate of  $\chi_T$  is obtained as

$$\frac{\dot{\chi}_T}{\chi_T} = \nu \frac{\dot{N}_*}{N_*} + \frac{1}{\lambda_T N_*^\nu} (\bar{\pi}_T - \delta) - \frac{1}{\lambda_T N_*^\nu} \left[ \left( \frac{1 + \alpha}{\alpha} \right) \bar{\pi}_T - \chi_T \right]. \quad (53)$$

Substituting (25) for  $\dot{N}_*/N_*$  and rearranging terms gives equation (30) in the text.

## NOTE DI LAVORO DELLA FONDAZIONE ENI ENRICO MATTEI

### Fondazione Eni Enrico Mattei Working Paper Series

Our Note di Lavoro are available on the Internet at the following addresses:

<http://www.feem.it/Feem/Pub/Publications/WPapers/default.html>

<http://www.ssrn.com/link/feem.html>

<http://www.repec.org>

### NOTE DI LAVORO PUBLISHED IN 2004

IEM	1.2004	<i>Anil MARKANDYA, Suzette PEDROSO and Alexander GOLUB: <u>Empirical Analysis of National Income and So2 Emissions in Selected European Countries</u></i>
ETA	2.2004	<i>Masahisa FUJITA and Shlomo WEBER: <u>Strategic Immigration Policies and Welfare in Heterogeneous Countries</u></i>
PRA	3.2004	<i>Adolfo DI CARLUCCIO, Giovanni FERRI, Cecilia FRALE and Ottavio RICCHI: <u>Do Privatizations Boost Household Shareholding? Evidence from Italy</u></i>
ETA	4.2004	<i>Victor GINSBURGH and Shlomo WEBER: <u>Languages Disenfranchisement in the European Union</u></i>
ETA	5.2004	<i>Romano PIRAS: <u>Growth, Congestion of Public Goods, and Second-Best Optimal Policy</u></i>
CCMP	6.2004	<i>Herman R.J. VOLLEBERGH: <u>Lessons from the Polder: Is Dutch CO2-Taxation Optimal</u></i>
PRA	7.2004	<i>Sandro BRUSCO, Giuseppe LOPOMO and S. VISWANATHAN (lxv): <u>Merger Mechanisms</u></i>
PRA	8.2004	<i>Wolfgang AUSENNEGG, Pegaret PICHLER and Alex STOMPER (lxv): <u>IPO Pricing with Bookbuilding, and a When-Issued Market</u></i>
PRA	9.2004	<i>Pegaret PICHLER and Alex STOMPER (lxv): <u>Primary Market Design: Direct Mechanisms and Markets</u></i>
PRA	10.2004	<i>Florian ENGLMAIER, Pablo GUILLEN, Loreto LLORENTE, Sander ONDERSTAL and Rupert SAUSGRUBER (lxv): <u>The Chopstick Auction: A Study of the Exposure Problem in Multi-Unit Auctions</u></i>
PRA	11.2004	<i>Bjarne BRENDSTRUP and Harry J. PAARSCH (lxv): <u>Nonparametric Identification and Estimation of Multi-Unit, Sequential, Oral, Ascending-Price Auctions With Asymmetric Bidders</u></i>
PRA	12.2004	<i>Ohad KADAN (lxv): <u>Equilibrium in the Two Player, k-Double Auction with Affiliated Private Values</u></i>
PRA	13.2004	<i>Maarten C.W. JANSSEN (lxv): <u>Auctions as Coordination Devices</u></i>
PRA	14.2004	<i>Gadi FIBICH, Arieh GAVIOUS and Aner SELA (lxv): <u>All-Pay Auctions with Weakly Risk-Averse Buyers</u></i>
PRA	15.2004	<i>Orly SADE, Charles SCHNITZLEIN and Jaime F. ZENDER (lxv): <u>Competition and Cooperation in Divisible Good Auctions: An Experimental Examination</u></i>
PRA	16.2004	<i>Marta STRYSZOWSKA (lxv): <u>Late and Multiple Bidding in Competing Second Price Internet Auctions</u></i>
CCMP	17.2004	<i>Slim Ben YOUSSEF: <u>R&amp;D in Cleaner Technology and International Trade</u></i>
NRM	18.2004	<i>Angelo ANTOCI, Simone BORGHESI and Paolo RUSSU (lxvi): <u>Biodiversity and Economic Growth: Stabilization Versus Preservation of the Ecological Dynamics</u></i>
SIEV	19.2004	<i>Anna ALBERINI, Paolo ROSATO, Alberto LONGO and Valentina ZANATTA: <u>Information and Willingness to Pay in a Contingent Valuation Study: The Value of S. Erasmo in the Lagoon of Venice</u></i>
NRM	20.2004	<i>Guido CANDELA and Roberto CELLINI (lxvii): <u>Investment in Tourism Market: A Dynamic Model of Differentiated Oligopoly</u></i>
NRM	21.2004	<i>Jacqueline M. HAMILTON (lxvii): <u>Climate and the Destination Choice of German Tourists</u></i>
NRM	22.2004	<i>Javier Rey-MAQUIEIRA PALMER, Javier LOZANO IBÁÑEZ and Carlos Mario GÓMEZ GÓMEZ (lxvii): <u>Land, Environmental Externalities and Tourism Development</u></i>
NRM	23.2004	<i>Pius ODUNGA and Henk FOLMER (lxvii): <u>Profiling Tourists for Balanced Utilization of Tourism-Based Resources in Kenya</u></i>
NRM	24.2004	<i>Jean-Jacques NOWAK, Mondher SAHLI and Pasquale M. SGRO (lxvii): <u>Tourism, Trade and Domestic Welfare</u></i>
NRM	25.2004	<i>Riaz SHAREEF (lxvii): <u>Country Risk Ratings of Small Island Tourism Economies</u></i>
NRM	26.2004	<i>Juan Luis EUGENIO-MARTÍN, Noelia MARTÍN MORALES and Riccardo SCARPA (lxvii): <u>Tourism and Economic Growth in Latin American Countries: A Panel Data Approach</u></i>
NRM	27.2004	<i>Raúl Hernández MARTÍN (lxvii): <u>Impact of Tourism Consumption on GDP. The Role of Imports</u></i>
CSRM	28.2004	<i>Nicoletta FERRO: <u>Cross-Country Ethical Dilemmas in Business: A Descriptive Framework</u></i>
NRM	29.2004	<i>Marian WEBER (lxvi): <u>Assessing the Effectiveness of Tradable Landuse Rights for Biodiversity Conservation: an Application to Canada's Boreal Mixedwood Forest</u></i>
NRM	30.2004	<i>Trond BJORN DAL, Phoebe KOUNDOURI and Sean PASCOE (lxvi): <u>Output Substitution in Multi-Species Trawl Fisheries: Implications for Quota Setting</u></i>
CCMP	31.2004	<i>Marzio GALEOTTI, Alessandra GORIA, Paolo MOMBRINI and Evi SPANTIDAKI: <u>Weather Impacts on Natural, Social and Economic Systems (WISE) Part I: Sectoral Analysis of Climate Impacts in Italy</u></i>
CCMP	32.2004	<i>Marzio GALEOTTI, Alessandra GORIA, Paolo MOMBRINI and Evi SPANTIDAKI: <u>Weather Impacts on Natural, Social and Economic Systems (WISE) Part II: Individual Perception of Climate Extremes in Italy</u></i>
CTN	33.2004	<i>Wilson PEREZ: <u>Divide and Conquer: Noisy Communication in Networks, Power, and Wealth Distribution</u></i>
KTHC	34.2004	<i>Gianmarco I.P. OTTAVIANO and Giovanni PERI (lxviii): <u>The Economic Value of Cultural Diversity: Evidence from US Cities</u></i>
KTHC	35.2004	<i>Linda CHAIB (lxviii): <u>Immigration and Local Urban Participatory Democracy: A Boston-Paris Comparison</u></i>



KTHC	36.2004	<i>Franca ECKERT COEN and Claudio ROSSI</i> (I xviii): <u>Foreigners, Immigrants, Host Cities: The Policies of Multi-Ethnicity in Rome. Reading Governance in a Local Context</u>
KTHC	37.2004	<i>Kristine CRANE</i> (I xviii): <u>Governing Migration: Immigrant Groups' Strategies in Three Italian Cities – Rome, Naples and Bari</u>
KTHC	38.2004	<i>Kiflemariam HAMDE</i> (I xviii): <u>Mind in Africa, Body in Europe: The Struggle for Maintaining and Transforming Cultural Identity - A Note from the Experience of Eritrean Immigrants in Stockholm</u>
ETA	39.2004	<i>Alberto CAVALIERE</i> : <u>Price Competition with Information Disparities in a Vertically Differentiated Duopoly</u>
PRA	40.2004	<i>Andrea BIGANO and Stef PROOST</i> : <u>The Opening of the European Electricity Market and Environmental Policy: Does the Degree of Competition Matter?</u>
CCMP	41.2004	<i>Micheal FINUS</i> (I xix): <u>International Cooperation to Resolve International Pollution Problems</u>
KTHC	42.2004	<i>Francesco CRESPI</i> : <u>Notes on the Determinants of Innovation: A Multi-Perspective Analysis</u>
CTN	43.2004	<i>Sergio CURRARINI and Marco MARINI</i> : <u>Coalition Formation in Games without Synergies</u>
CTN	44.2004	<i>Marc ESCRHUELA-VILLAR</i> : <u>Cartel Sustainability and Cartel Stability</u>
NRM	45.2004	<i>Sebastian BERVOETS and Nicolas GRAVEL</i> (I xvi): <u>Appraising Diversity with an Ordinal Notion of Similarity: An Axiomatic Approach</u>
NRM	46.2004	<i>Signe ANTHON and Bo JELLES MARK THORSEN</i> (I xvi): <u>Optimal Afforestation Contracts with Asymmetric Information on Private Environmental Benefits</u>
NRM	47.2004	<i>John MBURU</i> (I xvi): <u>Wildlife Conservation and Management in Kenya: Towards a Co-management Approach</u>
NRM	48.2004	<i>Ekin BIROL, Ágnes GYOVAI and Melinda SMALE</i> (I xvi): <u>Using a Choice Experiment to Value Agricultural Biodiversity on Hungarian Small Farms: Agri-Environmental Policies in a Transition al Economy</u>
CCMP	49.2004	<i>Gernot KLEPPER and Sonja PETERSON</i> : <u>The EU Emissions Trading Scheme. Allowance Prices, Trade Flows, Competitiveness Effects</u>
GG	50.2004	<i>Scott BARRETT and Michael HOEL</i> : <u>Optimal Disease Eradication</u>
CTN	51.2004	<i>Dinko DIMITROV, Peter BORM, Ruud HENDRICKX and Shao CHIN SUNG</i> : <u>Simple Priorities and Core Stability in Hedonic Games</u>
SIEV	52.2004	<i>Francesco RICCI</i> : <u>Channels of Transmission of Environmental Policy to Economic Growth: A Survey of the Theory</u>
SIEV	53.2004	<i>Anna ALBERINI, Maureen CROPPER, Alan KRUPNICK and Nathalie B. SIMON</i> : <u>Willingness to Pay for Mortality Risk Reductions: Does Latency Matter?</u>
NRM	54.2004	<i>Ingo BRÄUER and Rainer MARGGRAF</i> (I xvi): <u>Valuation of Ecosystem Services Provided by Biodiversity Conservation: An Integrated Hydrological and Economic Model to Value the Enhanced Nitrogen Retention in Renaturated Streams</u>
NRM	55.2004	<i>Timo GOESCHL and Tun LIN</i> (I xvi): <u>Biodiversity Conservation on Private Lands: Information Problems and Regulatory Choices</u>
NRM	56.2004	<i>Tom DEDEURWAERDERE</i> (I xvi): <u>Bioprospection: From the Economics of Contracts to Reflexive Governance</u>
CCMP	57.2004	<i>Katrin REHDANZ and David MADDISON</i> : <u>The Amenity Value of Climate to German Households</u>
CCMP	58.2004	<i>Koen SMEKENS and Bob VAN DER ZWAAN</i> : <u>Environmental Externalities of Geological Carbon Sequestration Effects on Energy Scenarios</u>
NRM	59.2004	<i>Valentina BOSETTI, Mariaester CASSINELLI and Alessandro LANZA</i> (I xvii): <u>Using Data Envelopment Analysis to Evaluate Environmentally Conscious Tourism Management</u>
NRM	60.2004	<i>Timo GOESCHL and Danilo CAMARGO IGLIORI</i> (I xvi): <u>Property Rights Conservation and Development: An Analysis of Extractive Reserves in the Brazilian Amazon</u>
CCMP	61.2004	<i>Barbara BUCHNER and Carlo CARRARO</i> : <u>Economic and Environmental Effectiveness of a Technology-based Climate Protocol</u>
NRM	62.2004	<i>Elissaios POPYRAKIS and Reyer GERLAGH</i> : <u>Resource-Abundance and Economic Growth in the U.S.</u>
NRM	63.2004	<i>Györgyi BELA, György PATAKI, Melinda SMALE and Mariann HAJDÚ</i> (I xvi): <u>Conserving Crop Genetic Resources on Smallholder Farms in Hungary: Institutional Analysis</u>
NRM	64.2004	<i>E.C.M. RUIJGROK and E.E.M. NILLESEN</i> (I xvi): <u>The Socio-Economic Value of Natural Riverbanks in the Netherlands</u>
NRM	65.2004	<i>E.C.M. RUIJGROK</i> (I xvi): <u>Reducing Acidification: The Benefits of Increased Nature Quality. Investigating the Possibilities of the Contingent Valuation Method</u>
ETA	66.2004	<i>Giannis VARDAS and Anastasios XEPAPADEAS</i> : <u>Uncertainty Aversion, Robust Control and Asset Holdings</u>
GG	67.2004	<i>Anastasios XEPAPADEAS and Constadina PASSA</i> : <u>Participation in and Compliance with Public Voluntary Environmental Programs: An Evolutionary Approach</u>
GG	68.2004	<i>Michael FINUS</i> : <u>Modesty Pays: Sometimes!</u>
NRM	69.2004	<i>Trond BJØRNDAL and Ana BRASÃO</i> : <u>The Northern Atlantic Bluefin Tuna Fisheries: Management and Policy Implications</u>
CTN	70.2004	<i>Alejandro CAPARRÓS, Abdelhakim HAMMOUDI and Tarik TAZDAÏT</i> : <u>On Coalition Formation with Heterogeneous Agents</u>
IEM	71.2004	<i>Massimo GIOVANNINI, Margherita GRASSO, Alessandro LANZA and Matteo MANERA</i> : <u>Conditional Correlations in the Returns on Oil Companies Stock Prices and Their Determinants</u>
IEM	72.2004	<i>Alessandro LANZA, Matteo MANERA and Michael MCALEER</i> : <u>Modelling Dynamic Conditional Correlations in WTI Oil Forward and Futures Returns</u>
SIEV	73.2004	<i>Margarita GENIUS and Elisabetta STRAZZERA</i> : <u>The Copula Approach to Sample Selection Modelling: An Application to the Recreational Value of Forests</u>

CCMP	74.2004	<i>Rob DELLINK and Ekko van IERLAND</i> : <u>Pollution Abatement in the Netherlands: A Dynamic Applied General Equilibrium Assessment</u>
ETA	75.2004	<i>Rosella LEVAGGI and Michele MORETTO</i> : <u>Investment in Hospital Care Technology under Different Purchasing Rules: A Real Option Approach</u>
CTN	76.2004	<i>Salvador BARBERÀ and Matthew O. JACKSON</i> (lxx): <u>On the Weights of Nations: Assigning Voting Weights in a Heterogeneous Union</u>
CTN	77.2004	<i>Àlex ARENAS, Antonio CABRALES, Albert DÍAZ-GUILERA, Roger GUIMERA and Fernando VEGA-REDONDO</i> (lxx): <u>Optimal Information Transmission in Organizations: Search and Congestion</u>
CTN	78.2004	<i>Francis BLOCH and Armando GOMES</i> (lxx): <u>Contracting with Externalities and Outside Options</u>
CTN	79.2004	<i>Rabah AMIR, Effrosyni DIAMANTOUDI and Licun XUE</i> (lxx): <u>Merger Performance under Uncertain Efficiency Gains</u>
CTN	80.2004	<i>Francis BLOCH and Matthew O. JACKSON</i> (lxx): <u>The Formation of Networks with Transfers among Players</u>
CTN	81.2004	<i>Daniel DIERMEIER, Hülya ERASLAN and Antonio MERLO</i> (lxx): <u>Bicameralism and Government Formation</u>
CTN	82.2004	<i>Rod GARRATT, James E. PARCO, Cheng-ZHONG QIN and Amnon RAPOPORT</i> (lxx): <u>Potential Maximization and Coalition Government Formation</u>
CTN	83.2004	<i>Kfir ELIAZ, Debraj RAY and Ronny RAZIN</i> (lxx): <u>Group Decision-Making in the Shadow of Disagreement</u>
CTN	84.2004	<i>Sanjeev GOYAL, Marco van der LEIJ and José Luis MORAGA-GONZÁLEZ</i> (lxx): <u>Economics: An Emerging Small World?</u>
CTN	85.2004	<i>Edward CARTWRIGHT</i> (lxx): <u>Learning to Play Approximate Nash Equilibria in Games with Many Players</u>
IEM	86.2004	<i>Finn R. FØRSUND and Michael HOEL</i> : <u>Properties of a Non-Competitive Electricity Market Dominated by Hydroelectric Power</u>
KTHC	87.2004	<i>Elissaios PAPHAKIS and Reyer GERLAGH</i> : <u>Natural Resources, Investment and Long-Term Income</u>
CCMP	88.2004	<i>Marzio GALEOTTI and Claudia KEMFERT</i> : <u>Interactions between Climate and Trade Policies: A Survey</u>
IEM	89.2004	<i>A. MARKANDYA, S. PEDROSO and D. STREIMIKIENE</i> : <u>Energy Efficiency in Transition Economies: Is There Convergence Towards the EU Average?</u>
GG	90.2004	<i>Rolf GOLOMBEK and Michael HOEL</i> : <u>Climate Agreements and Technology Policy</u>
PRA	91.2004	<i>Sergei IZMALKOV</i> (lxv): <u>Multi-Unit Open Ascending Price Efficient Auction</u>
KTHC	92.2004	<i>Gianmarco I.P. OTTAVIANO and Giovanni PERI</i> : <u>Cities and Cultures</u>
KTHC	93.2004	<i>Massimo DEL GATTO</i> : <u>Agglomeration, Integration, and Territorial Authority Scale in a System of Trading Cities. Centralisation versus devolution</u>
CCMP	94.2004	<i>Pierre-André JOUVET, Philippe MICHEL and Gilles ROTILLON</i> : <u>Equilibrium with a Market of Permits</u>
CCMP	95.2004	<i>Bob van der ZWAAN and Reyer GERLAGH</i> : <u>Climate Uncertainty and the Necessity to Transform Global Energy Supply</u>
CCMP	96.2004	<i>Francesco BOSELLO, Marco LAZZARIN, Roberto ROSON and Richard S.J. TOL</i> : <u>Economy-Wide Estimates of the Implications of Climate Change: Sea Level Rise</u>
CTN	97.2004	<i>Gustavo BERGANTIÑOS and Juan J. VIDAL-PUGA</i> : <u>Defining Rules in Cost Spanning Tree Problems Through the Canonical Form</u>
CTN	98.2004	<i>Siddhartha BANDYOPADHYAY and Mandar OAK</i> : <u>Party Formation and Coalitional Bargaining in a Model of Proportional Representation</u>
GG	99.2004	<i>Hans-Peter WEIKARD, Michael FINUS and Juan-Carlos ALTAMIRANO-CABRERA</i> : <u>The Impact of Surplus Sharing on the Stability of International Climate Agreements</u>
SIEV	100.2004	<i>Chiara M. TRAVISI and Peter NIJKAMP</i> : <u>Willingness to Pay for Agricultural Environmental Safety: Evidence from a Survey of Milan, Italy, Residents</u>
SIEV	101.2004	<i>Chiara M. TRAVISI, Raymond J. G. M. FLORAX and Peter NIJKAMP</i> : <u>A Meta-Analysis of the Willingness to Pay for Reductions in Pesticide Risk Exposure</u>
NRM	102.2004	<i>Valentina BOSETTI and David TOMBERLIN</i> : <u>Real Options Analysis of Fishing Fleet Dynamics: A Test</u>
CCMP	103.2004	<i>Alessandra GORIA e Gretel GAMBARELLI</i> : <u>Economic Evaluation of Climate Change Impacts and Adaptability in Italy</u>
PRA	104.2004	<i>Massimo FLORIO and Mara GRASSENI</i> : <u>The Missing Shock: The Macroeconomic Impact of British Privatisation</u>
PRA	105.2004	<i>John BENNETT, Saul ESTRIN, James MAW and Giovanni URGA</i> : <u>Privatisation Methods and Economic Growth in Transition Economies</u>
PRA	106.2004	<i>Kira BÖRNER</i> : <u>The Political Economy of Privatization: Why Do Governments Want Reforms?</u>
PRA	107.2004	<i>Pehr-Johan NORBÄCK and Lars PERSSON</i> : <u>Privatization and Restructuring in Concentrated Markets</u>
SIEV	108.2004	<i>Angela GRANZOTTO, Fabio PRANOVI, Simone LIBRALATO, Patrizia TORRICELLI and Danilo MAINARDI</i> : <u>Comparison between Artisanal Fishery and Manila Clam Harvesting in the Venice Lagoon by Using Ecosystem Indicators: An Ecological Economics Perspective</u>
CTN	109.2004	<i>Somdeb LAHIRI</i> : <u>The Cooperative Theory of Two Sided Matching Problems: A Re-examination of Some Results</u>
NRM	110.2004	<i>Giuseppe DI VITA</i> : <u>Natural Resources Dynamics: Another Look</u>
SIEV	111.2004	<i>Anna ALBERINI, Alistair HUNT and Anil MARKANDYA</i> : <u>Willingness to Pay to Reduce Mortality Risks: Evidence from a Three-Country Contingent Valuation Study</u>
KTHC	112.2004	<i>Valeria PAPPONETTI and Dino PINELLI</i> : <u>Scientific Advice to Public Policy-Making</u>
SIEV	113.2004	<i>Paulo A.L.D. NUNES and Laura ONOFRI</i> : <u>The Economics of Warm Glow: A Note on Consumer's Behavior and Public Policy Implications</u>
IEM	114.2004	<i>Patrick CAYRADE</i> : <u>Investments in Gas Pipelines and Liquefied Natural Gas Infrastructure What is the Impact on the Security of Supply?</u>
IEM	115.2004	<i>Valeria COSTANTINI and Francesco GRACCEVA</i> : <u>Oil Security. Short- and Long-Term Policies</u>

IEM	116.2004	<i>Valeria COSTANTINI and Francesco GRACCEVA: <u>Social Costs of Energy Disruptions</u></i>
IEM	117.2004	<i>Christian EGENHOFER, Kyriakos GIALOGLOU, Giacomo LUCIANI, Maroeska BOOTS, Martin SCHEEPERS, Valeria COSTANTINI, Francesco GRACCEVA, Anil MARKANDYA and Giorgio VICINI: <u>Market-Based Options for Security of Energy Supply</u></i>
IEM	118.2004	<i>David FISK: <u>Transport Energy Security. The Unseen Risk?</u></i>
IEM	119.2004	<i>Giacomo LUCIANI: <u>Security of Supply for Natural Gas Markets. What is it and What is it not?</u></i>
IEM	120.2004	<i>L.J. de VRIES and R.A. HAKVOORT: <u>The Question of Generation Adequacy in Liberalised Electricity Markets</u></i>
KTHC	121.2004	<i>Alberto PETRUCCI: <u>Asset Accumulation, Fertility Choice and Nondegenerate Dynamics in a Small Open Economy</u></i>
NRM	122.2004	<i>Carlo GIUPPONI, Jaroslaw MYSLAK and Anita FASSIO: <u>An Integrated Assessment Framework for Water Resources Management: A DSS Tool and a Pilot Study Application</u></i>
NRM	123.2004	<i>Margaretha BREIL, Anita FASSIO, Carlo GIUPPONI and Paolo ROSATO: <u>Evaluation of Urban Improvement on the Islands of the Venice Lagoon: A Spatially-Distributed Hedonic-Hierarchical Approach</u></i>
ETA	124.2004	<i>Paul MENSINK: <u>Instant Efficient Pollution Abatement Under Non-Linear Taxation and Asymmetric Information: The Differential Tax Revisited</u></i>
NRM	125.2004	<i>Mauro FABIANO, Gabriella CAMARSA, Rosanna DURSI, Roberta IVALDI, Valentina MARIN and Francesca PALMISANI: <u>Integrated Environmental Study for Beach Management: A Methodological Approach</u></i>
PRA	126.2004	<i>Irena GROSFELD and Iraj HASHI: <u>The Emergence of Large Shareholders in Mass Privatized Firms: Evidence from Poland and the Czech Republic</u></i>
CCMP	127.2004	<i>Maria BERRITTELLA, Andrea BIGANO, Roberto ROSON and Richard S.J. TOL: <u>A General Equilibrium Analysis of Climate Change Impacts on Tourism</u></i>
CCMP	128.2004	<i>Reyer GERLAGH: <u>A Climate-Change Policy Induced Shift from Innovations in Energy Production to Energy Savings</u></i>
NRM	129.2004	<i>Elissaios POPYRAKIS and Reyer GERLAGH: <u>Natural Resources, Innovation, and Growth</u></i>
PRA	130.2004	<i>Bernardo BORTOLOTTI and Mara FACCIO: <u>Reluctant Privatization</u></i>
SIEV	131.2004	<i>Riccardo SCARPA and Mara THIENE: <u>Destination Choice Models for Rock Climbing in the Northeast Alps: A Latent-Class Approach Based on Intensity of Participation</u></i>
SIEV	132.2004	<i>Riccardo SCARPA Kenneth G. WILLIS and Melinda ACUTT: <u>Comparing Individual-Specific Benefit Estimates for Public Goods: Finite Versus Continuous Mixing in Logit Models</u></i>
IEM	133.2004	<i>Santiago J. RUBIO: <u>On Capturing Oil Rents with a National Excise Tax Revisited</u></i>
ETA	134.2004	<i>Ascensión ANDINA DÍAZ: <u>Political Competition when Media Create Candidates' Charisma</u></i>
SIEV	135.2004	<i>Anna ALBERINI: <u>Robustness of VSL Values from Contingent Valuation Surveys</u></i>
CCMP	136.2004	<i>Gernot KLEPPER and Sonja PETERSON: <u>Marginal Abatement Cost Curves in General Equilibrium: The Influence of World Energy Prices</u></i>
ETA	137.2004	<i>Herbert DAWID, Christophe DEISSENBERG and Pavel ŠEVČIK: <u>Cheap Talk, Gullibility, and Welfare in an Environmental Taxation Game</u></i>
CCMP	138.2004	<i>ZhongXiang ZHANG: <u>The World Bank's Prototype Carbon Fund and China</u></i>
CCMP	139.2004	<i>Reyer GERLAGH and Marjan W. HOFKES: <u>Time Profile of Climate Change Stabilization Policy</u></i>
NRM	140.2004	<i>Chiara D'ALPAOS and Michele MORETTO: <u>The Value of Flexibility in the Italian Water Service Sector: A Real Option Analysis</u></i>
PRA	141.2004	<i>Patrick BAJARI, Stephanie HOUGHTON and Steven TADELIS (lxxi): <u>Bidding for Incomplete Contracts</u></i>
PRA	142.2004	<i>Susan ATHEY, Jonathan LEVIN and Enrique SEIRA (lxxi): <u>Comparing Open and Sealed Bid Auctions: Theory and Evidence from Timber Auctions</u></i>
PRA	143.2004	<i>David GOLDREICH (lxxi): <u>Behavioral Biases of Dealers in U.S. Treasury Auctions</u></i>
PRA	144.2004	<i>Roberto BURGNET (lxxi): <u>Optimal Procurement Auction for a Buyer with Downward Sloping Demand: More Simple Economics</u></i>
PRA	145.2004	<i>Ali HORTACSU and Samita SAREEN (lxxi): <u>Order Flow and the Formation of Dealer Bids: An Analysis of Information and Strategic Behavior in the Government of Canada Securities Auctions</u></i>
PRA	146.2004	<i>Victor GINSBURGH, Patrick LEGROS and Nicolas SAHUGUET (lxxi): <u>How to Win Twice at an Auction. On the Incidence of Commissions in Auction Markets</u></i>
PRA	147.2004	<i>Claudio MEZZETTI, Aleksandar PEKEČ and Ilia TSETLIN (lxxi): <u>Sequential vs. Single-Round Uniform-Price Auctions</u></i>
PRA	148.2004	<i>John ASKER and Estelle CANTILLON (lxxi): <u>Equilibrium of Scoring Auctions</u></i>
PRA	149.2004	<i>Philip A. HAILE, Han HONG and Matthew SHUM (lxxi): <u>Nonparametric Tests for Common Values in First-Price Sealed-Bid Auctions</u></i>
PRA	150.2004	<i>François DEGEORGE, François DERRIEN and Kent L. WOMACK (lxxi): <u>Quid Pro Quo in IPOs: Why Bookbuilding is Dominating Auctions</u></i>
CCMP	151.2004	<i>Barbara BUCHNER and Silvia DALL'OLIO: <u>Russia: The Long Road to Ratification. Internal Institution and Pressure Groups in the Kyoto Protocol's Adoption Process</u></i>
CCMP	152.2004	<i>Carlo CARRARO and Marzio GALEOTTI: <u>Does Endogenous Technical Change Make a Difference in Climate Policy Analysis? A Robustness Exercise with the FEEM-RICE Model</u></i>
PRA	153.2004	<i>Alejandro M. MANELLI and Daniel R. VINCENT (lxxi): <u>Multidimensional Mechanism Design: Revenue Maximization and the Multiple-Good Monopoly</u></i>
ETA	154.2004	<i>Nicola ACOCELLA, Giovanni Di BARTOLOMEO and Wilfried PAUWELS: <u>Is there any Scope for Corporatism in Stabilization Policies?</u></i>
CTN	155.2004	<i>Johan EYCKMANS and Michael FINUS: <u>An Almost Ideal Sharing Scheme for Coalition Games with Externalities</u></i>
CCMP	156.2004	<i>Cesare DOSI and Michele MORETTO: <u>Environmental Innovation, War of Attrition and Investment Grants</u></i>

CCMP	157.2004	<i>Valentina BOSETTI, Marzio GALEOTTI and Alessandro LANZA: <u>How Consistent are Alternative Short-Term Climate Policies with Long-Term Goals?</u></i>
ETA	158.2004	<i>Y. Hossein FARZIN and Ken-Ichi AKAO: <u>Non-pecuniary Value of Employment and Individual Labor Supply</u></i>
ETA	159.2004	<i>William BROCK and Anastasios XEPAPADEAS: <u>Spatial Analysis: Development of Descriptive and Normative Methods with Applications to Economic-Ecological Modelling</u></i>
KTHC	160.2004	<i>Alberto PETRUCCI: <u>On the Incidence of a Tax on PureRent with Infinite Horizons</u></i>
IEM	161.2004	<i>Xavier LABANDEIRA, José M. LABEAGA and Miguel RODRÍGUEZ: <u>Microsimulating the Effects of Household Energy Price Changes in Spain</u></i>

#### NOTE DI LAVORO PUBLISHED IN 2005

CCMP	1.2005	<i>Stéphane HALLEGATTE: <u>Accounting for Extreme Events in the Economic Assessment of Climate Change</u></i>
CCMP	2.2005	<i>Qiang WU and Paulo Augusto NUNES: <u>Application of Technological Control Measures on Vehicle Pollution: A Cost-Benefit Analysis in China</u></i>
CCMP	3.2005	<i>Andrea BIGANO, Jacqueline M. HAMILTON, Maren LAU, Richard S.J. TOL and Yuan ZHOU: <u>A Global Database of Domestic and International Tourist Numbers at National and Subnational Level</u></i>
CCMP	4.2005	<i>Andrea BIGANO, Jacqueline M. HAMILTON and Richard S.J. TOL: <u>The Impact of Climate on Holiday Destination Choice</u></i>
ETA	5.2005	<i>Hubert KEMPF: <u>Is Inequality Harmful for the Environment in a Growing Economy?</u></i>
CCMP	6.2005	<i>Valentina BOSETTI, Carlo CARRARO and Marzio GALEOTTI: <u>The Dynamics of Carbon and Energy Intensity in a Model of Endogenous Technical Change</u></i>
IEM	7.2005	<i>David CALEF and Robert GOBLE: <u>The Allure of Technology: How France and California Promoted Electric Vehicles to Reduce Urban Air Pollution</u></i>
ETA	8.2005	<i>Lorenzo PELLEGRINI and Reyer GERLAGH: <u>An Empirical Contribution to the Debate on Corruption Democracy and Environmental Policy</u></i>
CCMP	9.2005	<i>Angelo ANTOCI: <u>Environmental Resources Depletion and Interplay Between Negative and Positive Externalities in a Growth Model</u></i>
CTN	10.2005	<i>Frédéric DEROLAN: <u>Cost-Reducing Alliances and Local Spillovers</u></i>
NRM	11.2005	<i>Francesco SINDICO: <u>The GMO Dispute before the WTO: Legal Implications for the Trade and Environment Debate</u></i>
KTHC	12.2005	<i>Carla MASSIDDA: <u>Estimating the New Keynesian Phillips Curve for Italian Manufacturing Sectors</u></i>
KTHC	13.2005	<i>Michele MORETTO and Gianpaolo ROSSINI: <u>Start-up Entry Strategies: Employer vs. Nonemployer firms</u></i>
PRCG	14.2005	<i>Clara GRAZIANO and Annalisa LUPORINI: <u>Ownership Concentration, Monitoring and Optimal Board Structure</u></i>
CSRM	15.2005	<i>Parashar KULKARNI: <u>Use of Ecolabels in Promoting Exports from Developing Countries to Developed Countries: Lessons from the Indian LeatherFootwear Industry</u></i>
KTHC	16.2005	<i>Adriana DI LIBERTO, Roberto MURA and Francesco PIGLIARU: <u>How to Measure the Unobservable: A Panel Technique for the Analysis of TFP Convergence</u></i>
KTHC	17.2005	<i>Alireza NAGHAVI: <u>Asymmetric Labor Markets, Southern Wages, and the Location of Firms</u></i>
KTHC	18.2005	<i>Alireza NAGHAVI: <u>Strategic Intellectual Property Rights Policy and North-South Technology Transfer</u></i>
KTHC	19.2005	<i>Mombert HOPPE: <u>Technology Transfer Through Trade</u></i>
PRCG	20.2005	<i>Roberto ROSON: <u>Platform Competition with Endogenous Multihoming</u></i>
CCMP	21.2005	<i>Barbara BUCHNER and Carlo CARRARO: <u>Regional and Sub-Global Climate Blocs. A Game Theoretic Perspective on Bottom-up Climate Regimes</u></i>
IEM	22.2005	<i>Fausto CAVALLARO: <u>An Integrated Multi-Criteria System to Assess Sustainable Energy Options: An Application of the Promethee Method</u></i>
CTN	23.2005	<i>Michael FINUS, Pierre v. MOUCHE and Bianca RUNDSHAGEN: <u>Uniqueness of Coalitional Equilibria</u></i>
IEM	24.2005	<i>Wietze LISE: <u>Decomposition of CO2 Emissions over 1980–2003 in Turkey</u></i>
CTN	25.2005	<i>Somdeb LAHIRI: <u>The Core of Directed Network Problems with Quotas</u></i>
SIEV	26.2005	<i>Susanne MENZEL and Riccardo SCARPA: <u>Protection Motivation Theory and Contingent Valuation: Perceived Realism, Threat and WTP Estimates for Biodiversity Protection</u></i>
NRM	27.2005	<i>Massimiliano MAZZANTI and Anna MONTINI: <u>The Determinants of Residential Water Demand Empirical Evidence for a Panel of Italian Municipalities</u></i>
CCMP	28.2005	<i>Laurent GILOTTE and Michel de LARA: <u>Precautionary Effect and Variations of the Value of Information</u></i>
NRM	29.2005	<i>Paul SARFO-MENSAH: <u>Exportation of Timber in Ghana: The Menace of Illegal Logging Operations</u></i>
CCMP	30.2005	<i>Andrea BIGANO, Alessandra GORIA, Jacqueline HAMILTON and Richard S.J. TOL: <u>The Effect of Climate Change and Extreme Weather Events on Tourism</u></i>
NRM	31.2005	<i>Maria Angeles GARCIA-VALIÑAS: <u>Decentralization and Environment: An Application to Water Policies</u></i>
NRM	32.2005	<i>Chiara D'ALPAOS, Cesare DOSI and Michele MORETTO: <u>Concession Length and Investment Timing Flexibility</u></i>
CCMP	33.2005	<i>Joseph HUBER: <u>Key Environmental Innovations</u></i>
CTN	34.2005	<i>Antoni CALVÓ-ARMENGOL and Rahmi İLKILIÇ (Ixxii): <u>Pairwise-Stability and Nash Equilibria in Network Formation</u></i>
CTN	35.2005	<i>Francesco FERI (Ixxii): <u>Network Formation with Endogenous Decay</u></i>
CTN	36.2005	<i>Frank H. PAGE, Jr. and Myrna H. WOODERS (Ixxii): <u>Strategic Basins of Attraction, the Farsighted Core, and Network Formation Games</u></i>

CTN	37.2005	<i>Alessandra CASELLA and Nobuyuki HANAOKI</i> (lxxii): <u>Information Channels in Labor Markets. On the Resilience of Referral Hiring</u>
CTN	38.2005	<i>Matthew O. JACKSON and Alison WATTS</i> (lxxii): <u>Social Games: Matching and the Play of Finitely Repeated Games</u>
CTN	39.2005	<i>Anna BOGOMOLNAIA, Michel LE BRETON, Alexei SAVVATEEV and Shlomo WEBER</i> (lxxii): <u>The Egalitarian Sharing Rule in Provision of Public Projects</u>
CTN	40.2005	<i>Francesco FERI</i> : <u>Stochastic Stability in Network with Decay</u>
CTN	41.2005	<i>Aart de ZEEUW</i> (lxxii): <u>Dynamic Effects on the Stability of International Environmental Agreements</u>
NRM	42.2005	<i>C. Martijn van der HEIDE, Jeroen C.J.M. van den BERGH, Ekko C. van IERLAND and Paulo A.L.D. NUNES</i> : <u>Measuring the Economic Value of Two Habitat Defragmentation Policy Scenarios for the Veluwe, The Netherlands</u>
PRCG	43.2005	<i>Carla VIEIRA and Ana Paula SERRA</i> : <u>Abnormal Returns in Privatization Public Offerings: The Case of Portuguese Firms</u>
SIEV	44.2005	<i>Anna ALBERINI, Valentina ZANATTA and Paolo ROSATO</i> : <u>Combining Actual and Contingent Behavior to Estimate the Value of Sports Fishing in the Lagoon of Venice</u>
CTN	45.2005	<i>Michael FINUS and Bianca RUNDSHAGEN</i> : <u>Participation in International Environmental Agreements: The Role of Timing and Regulation</u>
CCMP	46.2005	<i>Lorenzo PELLEGRINI and Reyer GERLAGH</i> : <u>Are EU Environmental Policies Too Demanding for New Members States?</u>
IEM	47.2005	<i>Matteo MANERA</i> : <u>Modeling Factor Demands with SEM and VAR: An Empirical Comparison</u>
CTN	48.2005	<i>Olivier TERCIEUX and Vincent VANNETELBOSCH</i> (lxx): <u>A Characterization of Stochastically Stable Networks</u>
CTN	49.2005	<i>Ana MAULEON, José SEMPERE-MONERRIS and Vincent J. VANNETELBOSCH</i> (lxxii): <u>R&amp;D Networks Among Unionized Firms</u>
CTN	50.2005	<i>Carlo CARRARO, Johan EYCKMANS and Michael FINUS</i> : <u>Optimal Transfers and Participation Decisions in International Environmental Agreements</u>
KTHC	51.2005	<i>Valeria GATTAI</i> : <u>From the Theory of the Firm to FDI and Internalisation: A Survey</u>
CCMP	52.2005	<i>Alireza NAGHAVI</i> : <u>Multilateral Environmental Agreements and Trade Obligations: A Theoretical Analysis of the Doha Proposal</u>
SIEV	53.2005	<i>Margaretha BREIL, Gretel GAMBARELLI and Paulo A.L.D. NUNES</i> : <u>Economic Valuation of On Site Material Damages of High Water on Economic Activities based in the City of Venice: Results from a Dose-Response-Expert-Based Valuation Approach</u>
ETA	54.2005	<i>Alessandra del BOCA, Marzio GALEOTTI, Charles P. HIMMELBERG and Paola ROTA</i> : <u>Investment and Time to Plan: A Comparison of Structures vs. Equipment in a Panel of Italian Firms</u>
CCMP	55.2005	<i>Gernot KLEPPER and Sonja PETERSON</i> : <u>Emissions Trading, CDM, JI, and More – The Climate Strategy of the EU</u>
ETA	56.2005	<i>Maia DAVID and Bernard SINCLAIR-DESGAGNÉ</i> : <u>Environmental Regulation and the Eco-Industry</u>
ETA	57.2005	<i>Alain-Désiré NIMUBONA and Bernard SINCLAIR-DESGAGNÉ</i> : <u>The Pigouvian Tax Rule in the Presence of an Eco-Industry</u>
NRM	58.2005	<i>Helmut KARL, Antje MÖLLER, Ximena MATUS, Edgar GRANDE and Robert KAISER</i> : <u>Environmental Innovations: Institutional Impacts on Co-operations for Sustainable Development</u>
SIEV	59.2005	<i>Dimitra VOUVAKI and Anastasios XEPAPADEAS</i> (lxxiii): <u>Criteria for Assessing Sustainable Development: Theoretical Issues and Empirical Evidence for the Case of Greece</u>
CCMP	60.2005	<i>Andreas LÖSCHEL and Dirk T.G. RÜBBELKE</i> : <u>Impure Public Goods and Technological Interdependencies</u>
PRCG	61.2005	<i>Christoph A. SCHALTEGGER and Benno TORGLER</i> : <u>Trust and Fiscal Performance: A Panel Analysis with Swiss Data</u>
ETA	62.2005	<i>Irene VALSECCHI</i> : <u>A Role for Instructions</u>
NRM	63.2005	<i>Valentina BOSETTI and Gianni LOCATELLI</i> : <u>A Data Envelopment Analysis Approach to the Assessment of Natural Parks' Economic Efficiency and Sustainability. The Case of Italian National Parks</u>
SIEV	64.2005	<i>Arianne T. de BLAEIJ, Paulo A.L.D. NUNES and Jeroen C.J.M. van den BERGH</i> : <u>Modeling 'No-choice' Responses in Attribute Based Valuation Surveys</u>
CTN	65.2005	<i>Carlo CARRARO, Carmen MARCHIORI and Alessandra SGOBBI</i> : <u>Applications of Negotiation Theory to Water Issues</u>
CTN	66.2005	<i>Carlo CARRARO, Carmen MARCHIORI and Alessandra SGOBBI</i> : <u>Advances in Negotiation Theory: Bargaining, Coalitions and Fairness</u>
KTHC	67.2005	<i>Sandra WALLMAN</i> (lxxiv): <u>Network Capital and Social Trust: Pre-Conditions for 'Good' Diversity?</u>
KTHC	68.2005	<i>Asimina CHRISTOFOROU</i> (lxxiv): <u>On the Determinants of Social Capital in Greece Compared to Countries of the European Union</u>
KTHC	69.2005	<i>Eric M. USLANER</i> (lxxiv): <u>Varieties of Trust</u>
KTHC	70.2005	<i>Thomas P. LYON</i> (lxxiv): <u>Making Capitalism Work: Social Capital and Economic Growth in Italy, 1970-1995</u>
KTHC	71.2005	<i>Graziella BERTOCCHI and Chiara STROZZI</i> (lxxv): <u>Citizenship Laws and International Migration in Historical Perspective</u>
KTHC	72.2005	<i>Elsbeth van HYLCKAMA Vlieg</i> (lxxv): <u>Accommodating Differences</u>
KTHC	73.2005	<i>Renato SANSA and Ercole SORI</i> (lxxv): <u>Governance of Diversity Between Social Dynamics and Conflicts in Multicultural Cities. A Selected Survey on Historical Bibliography</u>
IEM	74.2005	<i>Alberto LONGO and Anil MARKANDYA</i> : <u>Identification of Options and Policy Instruments for the Internalisation of External Costs of Electricity Generation. Dissemination of External Costs of Electricity Supply Making Electricity External Costs Known to Policy-Makers</u> <u>MAXIMA</u>

IEM	75.2005	<i>Margherita GRASSO and Matteo MANERA: <u>Asymmetric Error Correction Models for the Oil-Gasoline Price Relationship</u></i>
ETA	76.2005	<i>Umberto CHERUBINI and Matteo MANERA: <u>Hunting the Living Dead A “Peso Problem” in Corporate Liabilities Data</u></i>
CTN	77.2005	<i>Hans-Peter WEIKARD: <u>Cartel Stability under an Optimal Sharing Rule</u></i>
ETA	78.2005	<i>Joëlle NOAILLY, Jeroen C.J.M. van den BERGH and Cees A. WITHAGEN (lxxvi): <u>Local and Global Interactions in an Evolutionary Resource Game</u></i>
ETA	79.2005	<i>Joëlle NOAILLY, Cees A. WITHAGEN and Jeroen C.J.M. van den BERGH (lxxvi): <u>Spatial Evolution of Social Norms in a Common-Pool Resource Game</u></i>
CCMP	80.2005	<i>Massimiliano MAZZANTI and Roberto ZOBOLI: <u>Economic Instruments and Induced Innovation: The Case of End-of-Life Vehicles European Policies</u></i>
NRM	81.2005	<i>Anna LASUT: <u>Creative Thinking and Modelling for the Decision Support in Water Management</u></i>
CCMP	82.2005	<i>Valentina BOSETTI and Barbara BUCHNER: <u>Using Data Envelopment Analysis to Assess the Relative Efficiency of Different Climate Policy Portfolios</u></i>
ETA	83.2005	<i>Ignazio MUSU: <u>Intellectual Property Rights and Biotechnology: How to Improve the Present Patent System</u></i>
KTHC	84.2005	<i>Giulio CAINELLI, Susanna MANCINELLI and Massimiliano MAZZANTI: <u>Social Capital, R&amp;D and Industrial Districts</u></i>
ETA	85.2005	<i>Rosella LEVAGGI, Michele MORETTO and Vincenzo REBBA: <u>Quality and Investment Decisions in Hospital Care when Physicians are Devoted Workers</u></i>
CCMP	86.2005	<i>Valentina BOSETTI and Laurent GILOTTE: <u>Carbon Capture and Sequestration: How Much Does this Uncertain Option Affect Near-Term Policy Choices?</u></i>
CSRM	87.2005	<i>Nicoletta FERRO: <u>Value Through Diversity: Microfinance and Islamic Finance and Global Banking</u></i>
ETA	88.2005	<i>A. MARKANDYA and S. PEDROSO: <u>How Substitutable is Natural Capital?</u></i>
IEM	89.2005	<i>Anil MARKANDYA, Valeria COSTANTINI, Francesco GRACCEVA and Giorgio VICINI: <u>Security of Energy Supply: Comparing Scenarios From a European Perspective</u></i>
CCMP	90.2005	<i>Vincent M. OTTO, Andreas LÖSCHEL and Rob DELLINK: <u>Energy Biased Technical Change: A CGE Analysis</u></i>
PRCG	91.2005	<i>Carlo CAPUANO: <u>Abuse of Competitive Fringe</u></i>
PRCG	92.2005	<i>Ulrich BINDSEIL, Kjell G. NYBORG and Ilya A. STREBULAEV (lxv): <u>Bidding and Performance in Repo Auctions: Evidence from ECB Open Market Operations</u></i>
CCMP	93.2005	<i>Sabrina AUCI and Leonardo BECCHETTI: <u>The Stability of the Adjusted and Unadjusted Environmental Kuznets Curve</u></i>
CCMP	94.2005	<i>Francesco BOSELLO and Jian ZHANG: <u>Assessing Climate Change Impacts: Agriculture</u></i>
CTN	95.2005	<i>Alejandro CAPARRÓS, Jean-Christophe PEREAU and Tarik TAZDAÏT: <u>Bargaining with Non-Monolithic Players</u></i>
ETA	96.2005	<i>William BROCK and Anastasios XEPAPADEAS (lxxvi): <u>Optimal Control and Spatial Heterogeneity: Pattern Formation in Economic-Ecological Models</u></i>
CCMP	97.2005	<i>Francesco BOSELLO, Roberto ROSON and Richard S.J. TOL (lxxvii): <u>Economy-Wide Estimates of the Implications of Climate Change: Human Health</u></i>
CCMP	98.2005	<i>Rob DELLINK, Michael FINUS and Niels OLIEMAN: <u>Coalition Formation under Uncertainty: The Stability Likelihood of an International Climate Agreement</u></i>
CTN	99.2005	<i>Valeria COSTANTINI, Riccardo CRESCENZI, Fabrizio De FILIPPIS, and Luca SALVATICI: <u>Bargaining Coalitions in the Agricultural Negotiations of the Doha Round: Similarity of Interests or Strategic Choices? An Empirical Assessment</u></i>
IEM	100.2005	<i>Giliola FREY and Matteo MANERA: <u>Econometric Models of Asymmetric Price Transmission</u></i>
IEM	101.2005	<i>Alessandro COLOGNI and Matteo MANERA: <u>Oil Prices, Inflation and Interest Rates in a Structural Cointegrated VAR Model for the G-7 Countries</u></i>
KTHC	102.2005	<i>Chiara M. TRAVISI and Roberto CAMAGNI: <u>Sustainability of Urban Sprawl: Environmental-Economic Indicators for the Analysis of Mobility Impact in Italy</u></i>
ETA	103.2005	<i>Livingstone S. LUBOOBI and Joseph Y.T. MUGISHA: <u>HIV/AIDS Pandemic in Africa: Trends and Challenges</u></i>
SIEV	104.2005	<i>Anna ALBERINI, Erik LICHTENBERG, Dominic MANCINI, and Gregmar I. GALINATO: <u>Was It Something I Ate? Implementation of the FDA Seafood HACCP Program</u></i>
SIEV	105.2005	<i>Anna ALBERINI and Aline CHIABAI: <u>Urban Environmental Health and Sensitive Populations: How Much are the Italians Willing to Pay to Reduce Their Risks?</u></i>
SIEV	106.2005	<i>Anna ALBERINI, Aline CHIABAI and Lucija MUEHLENBACHS: <u>Using Expert Judgment to Assess Adaptive Capacity to Climate Change: Evidence from a Conjoint Choice Survey</u></i>
CTN	107.2005	<i>Michele BERNASCONI and Matteo GALIZZI: <u>Coordination in Networks Formation: Experimental Evidence on Learning and Saliency</u></i>
KTHC	108.2005	<i>Michele MORETTO and Sergio VERGALLI: <u>Migration Dynamics</u></i>
NRM	109.2005	<i>Antonio MUSOLESI and Mario NOSVELLI: <u>Water Consumption and Long-Run Urban Development: The Case of Milan</u></i>
SIEV	110.2005	<i>Benno TORGLER and Maria A. GARCIA-VALIÑAS: <u>The Determinants of Individuals’ Attitudes Towards Preventing Environmental Damage</u></i>
SIEV	111.2005	<i>Alberto LONGO and Anna ALBERINI: <u>What are the Effects of Contamination Risks on Commercial and Industrial Properties? Evidence from Baltimore, Maryland</u></i>
SIEV	112.2005	<i>Anna ALBERINI and Alberto LONGO: <u>The Value of Cultural Heritage Sites in Armenia: Evidence from a Travel Cost Method Study</u></i>
CCMP	113.2005	<i>Mikel GONZÁLEZ and Rob DELLINK: <u>Impact of Climate Policy on the Basque Economy</u></i>
NRM	114.2005	<i>Gilles LAFFORGUE and Walid OUESLATI: <u>Optimal Soil Management and Environmental Policy</u></i>

NRM	115.2005	<i>Martin D. SMITH and Larry B. CROWDER (lxxvi): <u>Valuing Ecosystem Services with Fishery Rents: A Lumped-Parameter Approach to Hypoxia in the Neuse River Estuary</u></i>
NRM	116.2005	<i>Dan HOLLAND and Kurt SCHNIER (lxxvi): <u>Protecting Marine Biodiversity: A Comparison of Individual Habitat Quotas (IHQs) and Marine Protected Areas</u></i>
PRCG	117.2005	<i>John NELLIS: <u>The Evolution of Enterprise Reform in Africa: From State-owned Enterprises to Private Participation in Infrastructure — and Back?</u></i>
PRCG	118.2005	<i>Bernardo BORTOLOTTI: <u>Italy's Privatization Process and Its Implications for China</u></i>
SIEV	119.2005	<i>Anna ALBERINI, Marcella VERONESI and Joseph C. COOPER: <u>Detecting Starting Point Bias in Dichotomous-Choice Contingent Valuation Surveys</u></i>
CTN	120.2005	<i>Federico ECHENIQUE and Mehmet B. YENMEZ: <u>A Solution to Matching with Preferences over Colleagues</u></i>
KTHC	121.2005	<i>Valeria GATTAI and Corrado MOLteni: <u>Dissipation of Knowledge and the Boundaries of the Multinational Enterprise</u></i>
KTHC	122.2005	<i>Valeria GATTAI: <u>Firm's Intangible Assets and Multinational Activity: Joint-Venture Versus FDI</u></i>
CCMP	123.2005	<i>Socrates KYPREOS: <u>A MERGE Model with Endogenous Technological Change and the Cost of Carbon Stabilization</u></i>
CCMP	124.2005	<i>Fuminori SANO, Keigo AKIMOTO, Takashi HOMMA and Toshimasa TOMODA: <u>Analysis of Technological Portfolios for CO2 stabilizations and Effects of Technological Changes</u></i>
CCMP	125.2005	<i>Fredrik HEDENUS, Christian AZAR and Kristian LINDGREN: <u>Induced Technological Change in a Limited Foresight Optimization Model</u></i>
CCMP	126.2005	<i>Reyer GERLAGH: <u>The Value of ITC under Climate Stabilization</u></i>
PRCG	127.2005	<i>John NELLIS: <u>Privatization in Africa: What has happened? What is to be done?</u></i>
PRCG	128.2005	<i>Raphaël SOUBEYRAN: <u>Contest with Attack and Defence: Does Negative Campaigning Increase or Decrease Voters' Turnout?</u></i>
PRCG	129.2005	<i>Pascal GAUTIER and Raphael SOUBEYRAN: <u>Political Cycles : The Opposition Advantage</u></i>
ETA	130.2005	<i>Giovanni DI BARTOLOMEO, Nicola ACOCELLA and Andrew HUGHES HALLETT: <u>Dynamic Controllability with Overlapping targets: A Generalization of the Tinbergen-Nash Theory of Economic Policy</u></i>
SIEV	131.2005	<i>Elissaios POPYRAKIS and Reyer GERLAGH: <u>Institutional Explanations of Economic Development: the Role of Precious Metals</u></i>
ETA	132.2005	<i>Giovanni DI BARTOLOMEO and Nicola ACOCELLA: <u>Tinbergen and Theil Meet Nash: Controllability in Policy Games</u></i>
IEM	133.2005	<i>Adriana M. IGNACIUK and Rob B. DELLINK: <u>Multi-Product Crops for Agricultural and Energy Production – an AGE Analysis for Poland</u></i>
IEM	134.2005	<i>Raffaele MINIACI, Carlo SCARPA and Paola VALBONESI: <u>Restructuring Italian Utility Markets: Household Distributional Effects</u></i>
SIEV	135.2005	<i>Valentina ZANATTA, Paolo ROSATO, Anna ALBERINI and Dimitrios REPPAS: <u>The Impact of Speed Limits on Recreational Boating in the Lagoon of Venice</u></i>
NRM	136.2005	<i>Chi-CHUR CHAO, Bharat R. HAZARI, Jean-Pierre LAFFARGUE, Pasquale M. SGRO, and Eden S. H. YU (lxxviii): <u>Tourism, Jobs, Capital Accumulation and the Economy: A Dynamic Analysis</u></i>
NRM	137.2005	<i>Michael MCALEER, Riaz SHAREEF and Bernardo da VEIGA (lxxviii): <u>Risk Management of Daily Tourist Tax Revenues for the Maldives</u></i>
NRM	138.2005	<i>Guido CANDELA, Paolo FIGINI and Antonello E. SCORCI (lxxviii): <u>The Economics of Local Tourist Systems</u></i>
NRM	139.2005	<i>Paola De AGOSTINI, Stefania LOVO, Francesco PECCI, Federico PERALI and Michele BAGGIO (lxxviii): <u>Simulating the Impact on the Local Economy of Alternative Management Scenarios for Natural Areas</u></i>
NRM	140.2005	<i>Simone VALENTE (lxxviii): <u>Growth, Conventional Production and Tourism Specialisation: Technological Catching-up Versus Terms-of-Trade Effects</u></i>

- (lxv) This paper was presented at the EuroConference on “Auctions and Market Design: Theory, Evidence and Applications” organised by Fondazione Eni Enrico Mattei and sponsored by the EU, Milan, September 25-27, 2003
- (lxvi) This paper has been presented at the 4<sup>th</sup> BioEcon Workshop on “Economic Analysis of Policies for Biodiversity Conservation” organised on behalf of the BIOECON Network by Fondazione Eni Enrico Mattei, Venice International University (VIU) and University College London (UCL), Venice, August 28-29, 2003
- (lxvii) This paper has been presented at the international conference on “Tourism and Sustainable Economic Development – Macro and Micro Economic Issues” jointly organised by CRENoS (Università di Cagliari e Sassari, Italy) and Fondazione Eni Enrico Mattei, and supported by the World Bank, Sardinia, September 19-20, 2003
- (lxviii) This paper was presented at the ENGIME Workshop on “Governance and Policies in Multicultural Cities”, Rome, June 5-6, 2003
- (lxix) This paper was presented at the Fourth EEP Plenary Workshop and EEP Conference “The Future of Climate Policy”, Cagliari, Italy, 27-28 March 2003
- (lxx) This paper was presented at the 9<sup>th</sup> Coalition Theory Workshop on "Collective Decisions and Institutional Design" organised by the Universitat Autònoma de Barcelona and held in Barcelona, Spain, January 30-31, 2004
- (lxxi) This paper was presented at the EuroConference on “Auctions and Market Design: Theory, Evidence and Applications”, organised by Fondazione Eni Enrico Mattei and Consip and sponsored by the EU, Rome, September 23-25, 2004
- (lxxii) This paper was presented at the 10<sup>th</sup> Coalition Theory Network Workshop held in Paris, France on 28-29 January 2005 and organised by EUREQua.
- (lxxiii) This paper was presented at the 2nd Workshop on "Inclusive Wealth and Accounting Prices" held in Trieste, Italy on 13-15 April 2005 and organised by the Ecological and Environmental Economics - EEE Programme, a joint three-year programme of ICTP - The Abdus Salam International Centre for Theoretical Physics, FEEM - Fondazione Eni Enrico Mattei, and The Beijer International Institute of Ecological Economics
- (lxxiv) This paper was presented at the ENGIME Workshop on “Trust and social capital in multicultural cities” Athens, January 19-20, 2004
- (lxxv) This paper was presented at the ENGIME Workshop on “Diversity as a source of growth” Rome November 18-19, 2004
- (lxxvi) This paper was presented at the 3rd Workshop on Spatial-Dynamic Models of Economics and Ecosystems held in Trieste on 11-13 April 2005 and organised by the Ecological and Environmental Economics - EEE Programme, a joint three-year programme of ICTP - The Abdus Salam International Centre for Theoretical Physics, FEEM - Fondazione Eni Enrico Mattei, and The Beijer International Institute of Ecological Economics
- (lxxvii) This paper was presented at the Workshop on Infectious Diseases: Ecological and Economic Approaches held in Trieste on 13-15 April 2005 and organised by the Ecological and Environmental Economics - EEE Programme, a joint three-year programme of ICTP - The Abdus Salam International Centre for Theoretical Physics, FEEM - Fondazione Eni Enrico Mattei, and The Beijer International Institute of Ecological Economics.
- (lxxviii) This paper was presented at the Second International Conference on "Tourism and Sustainable Economic Development - Macro and Micro Economic Issues" jointly organised by CRENoS (Università di Cagliari and Sassari, Italy) and Fondazione Eni Enrico Mattei, Italy, and supported by the World Bank, Chia, Italy, 16-17 September 2005.



#### 2004 SERIES

<b>CCMP</b>	<i>Climate Change Modelling and Policy</i> (Editor: Marzio Galeotti )
<b>GG</b>	<i>Global Governance</i> (Editor: Carlo Carraro)
<b>SIEV</b>	<i>Sustainability Indicators and Environmental Valuation</i> (Editor: Anna Alberini)
<b>NRM</b>	<i>Natural Resources Management</i> (Editor: Carlo Giupponi)
<b>KTHC</b>	<i>Knowledge, Technology, Human Capital</i> (Editor: Gianmarco Ottaviano)
<b>IEM</b>	<i>International Energy Markets</i> (Editor: Anil Markandya)
<b>CSRM</b>	<i>Corporate Social Responsibility and Sustainable Management</i> (Editor: Sabina Ratti)
<b>PRA</b>	<i>Privatisation, Regulation, Antitrust</i> (Editor: Bernardo Bortolotti)
<b>ETA</b>	<i>Economic Theory and Applications</i> (Editor: Carlo Carraro)
<b>CTN</b>	<i>Coalition Theory Network</i>

#### 2005 SERIES

<b>CCMP</b>	<i>Climate Change Modelling and Policy</i> (Editor: Marzio Galeotti )
<b>SIEV</b>	<i>Sustainability Indicators and Environmental Valuation</i> (Editor: Anna Alberini)
<b>NRM</b>	<i>Natural Resources Management</i> (Editor: Carlo Giupponi)
<b>KTHC</b>	<i>Knowledge, Technology, Human Capital</i> (Editor: Gianmarco Ottaviano)
<b>IEM</b>	<i>International Energy Markets</i> (Editor: Anil Markandya)
<b>CSRM</b>	<i>Corporate Social Responsibility and Sustainable Management</i> (Editor: Sabina Ratti)
<b>PRCG</b>	<i>Privatisation Regulation Corporate Governance</i> (Editor: Bernardo Bortolotti)
<b>ETA</b>	<i>Economic Theory and Applications</i> (Editor: Carlo Carraro)
<b>CTN</b>	<i>Coalition Theory Network</i>