

Bigano, Andrea; Cassinelli, Mariaester; Markandya, Anil; Sferra, Fabio

Working Paper

The Role of Risk Aversion and Lay Risk in the Probabilistic Externality Assessment for Oil Tanker Routes to Europe

Nota di Lavoro, No. 149.2006

Provided in Cooperation with:

Fondazione Eni Enrico Mattei (FEEM)

Suggested Citation: Bigano, Andrea; Cassinelli, Mariaester; Markandya, Anil; Sferra, Fabio (2006) : The Role of Risk Aversion and Lay Risk in the Probabilistic Externality Assessment for Oil Tanker Routes to Europe, Nota di Lavoro, No. 149.2006, Fondazione Eni Enrico Mattei (FEEM), Milano

This Version is available at:

<https://hdl.handle.net/10419/74193>

Standard-Nutzungsbedingungen:

Die Dokumente auf EconStor dürfen zu eigenen wissenschaftlichen Zwecken und zum Privatgebrauch gespeichert und kopiert werden.

Sie dürfen die Dokumente nicht für öffentliche oder kommerzielle Zwecke vervielfältigen, öffentlich ausstellen, öffentlich zugänglich machen, vertreiben oder anderweitig nutzen.

Sofern die Verfasser die Dokumente unter Open-Content-Lizenzen (insbesondere CC-Lizenzen) zur Verfügung gestellt haben sollten, gelten abweichend von diesen Nutzungsbedingungen die in der dort genannten Lizenz gewährten Nutzungsrechte.

Terms of use:

Documents in EconStor may be saved and copied for your personal and scholarly purposes.

You are not to copy documents for public or commercial purposes, to exhibit the documents publicly, to make them publicly available on the internet, or to distribute or otherwise use the documents in public.

If the documents have been made available under an Open Content Licence (especially Creative Commons Licences), you may exercise further usage rights as specified in the indicated licence.

**The Role of Risk Aversion and Lay
Risk in the Probabilistic Externality
Assessment for Oil Tanker Routes
to Europe**

Andrea Bigano, Mariaester Cassinelli,
Anil Markandya and Fabio Sferra

NOTA DI LAVORO 149.2006

DECEMBER 2006

IEM - International Energy Markets

Andrea Bigano, *Fondazione Eni Enrico Mattei and REF, Ricerche
per l'Economia e la Finanza, Milan, Italy*

Mariaester Cassinelli and Fabio Sferra, *Fondazione Eni Enrico Mattei, Milan, Italy*
Anil Markandya, *Fondazione Eni Enrico Mattei, Department of Economics and International
Development, University of Bath, United Kingdom*

This paper can be downloaded without charge at:

The Fondazione Eni Enrico Mattei Note di Lavoro Series Index:
<http://www.feem.it/Feem/Pub/Publications/WPapers/default.htm>

Social Science Research Network Electronic Paper Collection:
<http://ssrn.com/abstract=951458>

The opinions expressed in this paper do not necessarily reflect the position of
Fondazione Eni Enrico Mattei
Corso Magenta, 63, 20123 Milano (I), web site: www.feem.it, e-mail: working.papers@feem.it

The Role of Risk Aversion and Lay Risk in the Probabilistic Externality Assessment for Oil Tanker Routes to Europe

Summary

Oil spills are a major cause of environmental concern, in particular for Europe. However, the traditional approach to the evaluation of the expected external costs of these accidents fails to take into full account the implications of their probabilistic nature. By adapting a methodology originally developed for nuclear accidents to the case of oil spills, we extend the traditional approach to the assessment of the welfare losses borne by potentially affected individuals for being exposed to the risk of an oil spill. The proposed methodology differs from the traditional approach in three respects: it allows for risk aversion; it adopts an ex-ante rather than an ex-post perspective; it allows for subjective oil spill probabilities (held by the lay public) higher than those assessed by the experts in the field. In order to illustrate quantitatively this methodology, we apply it to the hypothetical (yet realistic) case of an oil spill in the Aegean Sea. We assess the risk premiums that potentially affected individuals would be willing to pay in order to avoid losses to economic activities such as tourism and fisheries, and non-use damages resulting from environmental impacts on the Aegean coasts. In the scenarios analysed, the risk premiums on expected losses for tourism and fisheries turn out to be substantial when measured as a percentage of expected losses; by contrast, they are quite small for the case of damages to the natural environment.

Keywords: Oil Spills, Probabilistic Externalities, Risk Aversion, Lay Risk Assessment, Mediterranean

JEL Classification: Q51, Q53, L91

The methodology and the results presented in this report have been derived in the framework of the FP6 Integrated Project on New Energy Externalities for Development Sustainability (NEEDS; www.needs-project.org), funded by the European Commission's DG Research. FEEM is involved in NEEDS' Research Stream 1c, and leads the Working Package dealing with the assessment of externalities concerning the extraction and transport of oil. This paper has greatly benefited from the interaction with NEEDS' Research Stream 1c partners (Manfred Hafner, Shobet Karbuz, Evasio Lavagno, Ståle Navrud, François Parthiot, Ari Rabl). The authors are also very grateful for their comments and suggestions to Alessandro Lanza, and to Salvatore De Gaetano, Pietro Rossi and Andrea Carpignano for their technical input. All errors and opinions are ours.

Address for correspondence:

Andrea Bigano
Fondazione Eni Enrico Mattei
Corso Magenta 63
20123 Milan
Italy
E-mail: andrea.bigano@feem.it

1. Introduction

The most recent large scale accidents in oil sea transport (Erika, Prestige, etc.) have highlighted the concern of oil spills to the environment, health, economy, and socio-economic activity. As externalities associated to oil spills have been very poorly analysed in previous work and as their impact can potentially be very high, there is a need to deepen the knowledge of these kind of externalities.

In order to arrive at a comprehensive evaluation of the external costs associated with importing oil into Europe, one needs to take into account the likely future oil demand-supply scenarios, the relative relevance of import routes and pipelines, the local specificities in terms of critical passages, the differences in terms of burdens and environmental and socio-economic impacts along the different routes and pipelines, and the development of oil spills prevention and remediation technologies and regulations. Last but not least, the intrinsic stochastic nature of the phenomenon should be carefully analysed. The perception of European citizens of the risks involved in carrying oil to Europe and the associated *risk aversion* are particularly important in this context. In order to incorporate all these features into a consistent evaluation framework, one needs to develop a methodology suitable to deal with *probabilistic externalities*. In this perspective, we develop a methodology for analyzing the risks related to oil tanker accidents. We can divide ideally this methodology design effort into a series of tasks.

The **first task** is to identify the possible causes of an oil spill. Ship-related oil pollution is attributed mostly to operational discharges, which have consistently overshadowed accidental discharges. Apparently the majority of these discharges happen either close to the mainland or within port areas and terminal stations, usually resulting in small spills that are dealt with by the local authorities and seldom reported. Less frequently, the cause of an oil spill from a tanker is an accidental event, which will be discussed in detail in the next section.

The **second task** is to evaluate the probabilities related to these types of accidents, or more precisely, for each of these causes of accident, the probability that an accident of such kind happens, and oil is actually spilt. The probabilities of a grounding, collision or a structural failure and foundering incident occurring and causing oil to be spilled are calculated through a Fault Tree Analysis (FTA).

The first and second tasks are dealt with in Section 3. In order to anchor our probability assessment methodology to a real world example, and to test the developments of such methodology, a sample route from Novorossiysk on the Black Sea coast in Russia to Augusta in Sicily, Italy, is used as a benchmark. The basic scenario considers a Suezmax type tanker carrying approximately 145'000¹ tonnes of oil cargo. The selected route has a number of special features which make it of singular importance and interest, not least the fact that it passes through the Bosphorus Straits, a highly congested and navigationally difficult sea passage passing through the heart of Istanbul in Turkey. Four locations along the route were chosen due to a combination of the high likelihood of an accident happening in that particular site and the high environmental and socio-economic consequences that such an accident would entail. The parts of the route not considered, through the Black Sea and from the Aegean to Sicily, have a lower chance of a spill occurring due to a relative lack of obstacles. Furthermore, should a spill occur the consequences would be, again relative to the other sites, less severe due to the absence of a nearby coastline and the fact that the oil would be naturally dispersed more quickly in the open sea. As a consequence their expected risk values are orders of magnitude lower than those of the selected sites.

¹ Tankers of this class are the most likely to be used along this route. The Bosphorus cannot be navigated by tankers larger than 150'000 tonnes; moreover, small tankers are unlikely to be used along this route due to recent European regulations which have banned tankers cruising under the flag of countries notorious for having lax regulatory criteria for registering ships – medium-sized and large tankers are unlikely to be operated under these flags.

The **third task** has precisely to do with people's attitude towards risk and consists in devising a set of *criteria* to decide how each category of cost arising from an oil spill should be coupled with probabilities in order to monetize probabilistic externalities, and a *methodology* to include risk aversion and the perception of a risky situation by the public when relevant.

For external costs which directly or indirectly affect the public at large, considering risk aversion is necessary because, for the vast majority of people, the exposure to a risky situation is a source of discomfort. In a sense, risk aversion is a measure of the reluctance to be subject to uncertain negative effects. For some category of costs arising from an oil spill, such as the loss of cargo or cleanup costs, considering risk aversion is not necessary: these costs are directly borne by the oil companies or, partially, by coastal protection agencies, and do not have a direct impact on individuals. Therefore we assume that such costs enter the welfare function of a risk neutral collective agent.

On the other hand, damages to the local economies and to the local environment directly affect the utility function of individuals, and, for these categories of probabilistic externalities, we assume that, in general, risk aversion is relevant. Section 4 deals with the methodological implications of including these consideration into the analysis.

In order to illustrate our risk aversion evaluation methodology, in Section 5 we have applied it to three areas in the Greek Aegean Islands: the Northern Aegean Region, the Southern Aegean Region and Crete Region, focusing on three different types of impact of an oil spill: impacts on local economies (fishery and tourism) and impacts on local natural environment.

The analysis provides the following conclusions:

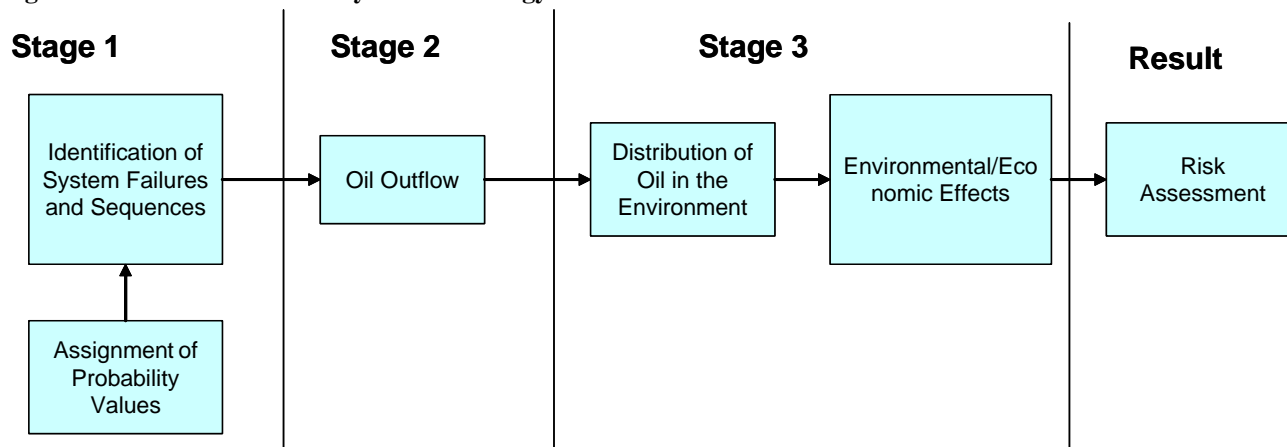
- The costs of oil spills (in terms of losses for the tourism sector, fisheries and damages to the natural environment) in the Aegean are estimated at around €405 million in the case of a 'worst case' oil spill and around €264 million in the case of a 'typical' spill.
- The 'expected value' of these losses – i.e. the costs referred to above times the associated probabilities is €22'662 for a typical spill and €1935 for a worst case oil spill.
- These values are based on the expert probabilities. If we take indicative lay estimates of the probabilities of the accidents, which could be as much as 100 times higher, the expected costs will also increase by a factor of 100.
- The risk premiums on these expected costs are not negligible when measured as a percentage of expected costs for tourism and fisheries (on average about 90%, 40% and 23% in Northern Aegean, Southern Aegean and Crete respectively, , but up to 350% for particularly affected groups); by contrast, they are quite small for the case of damages to the natural environment (around 0.8% in all regions). Assuming higher accident probabilities does not change much the overall regional ratios of risk premiums to their correspondent expected costs for a given accident; it does however increase these ratios, for the most vulnerable groups, when risk premiums are broken down for different impact groups. Also, the absolute values of risk premiums increase considerably assuming lay probabilities.
- Future work is needed to assess the lay probabilities more carefully and to examine more sites/routes to increase our understanding of accident costs of oil transportation by sea.

2. Probability assessment methodology

The intrinsically probabilistic nature of the externalities related to oil transportation, and in particular to oil spills from oil tankers, calls for an extension and adaptation of the externality assessment methodology in at least two respects.

First, one needs to determine the probabilities attached to the events liable to cause external damages. Second, one needs to assess to what extent the mere fact of being confronted with an uncertain event with likely negative consequences affects the welfare of the concerned individuals. These two tasks are crucial elements of the more comprehensive task of assessing the externalities related to oil transportation, which proceeds via the following framework pathway (Figure 2-1).

Figure 2-1. Outline of risk analysis methodology



The focus of this Section is on Stages 1 and 2 for the determination of the probabilities of the initiating events.

2.1. Causes of oil spills

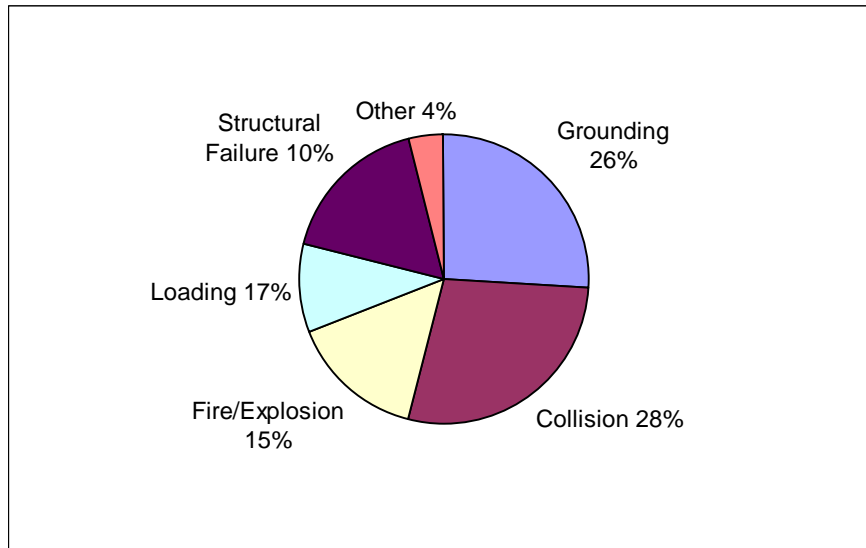
The first task is to identify the possible causes of an oil spill. Ship-related oil pollution is attributed mostly to operational discharges which have consistently overshadowed accidental discharges. Apparently the majority of these discharges happen either close to the mainland or within port areas and terminal stations resulting usually in small spills which are dealt with by the local authorities and are seldom reported.

Less frequently, the cause of an oil spill from a tanker is an accidental event. Figure 2-2 reports the distribution of oil spill causes in recorded oil tanker accidents. The most likely causes of accidental oil spills are grounding and ship to ship collision. Fire and explosion used to be significant causes of accident. Their importance is now negligible, due to recent changes in unloading regulations that prevent the formation of explosive gas mixtures in the hull. Structural failures, foundering and loading-unloading errors can also cause sizeable spills; in these cases the human element, which can play a role also in case of grounding and collision, is particularly important. For a residual fraction of the accidents so far recorded the cause could not be identified with certainty.

The rest of this work focuses on *groundings*, *collisions* and *structural failure & foundering* as these are the most likely sources of accidental oil spills. In particular, in the Aegean case study we disregard accidents due to fire explosion in view of the safety improvements described above, and accidents due to loading and unloading because crude oil tankers do not engage in such activities at

any port in the Aegean Islands. Therefore, assuming that oil spills in the Aegean can be originated only by one of the three surviving causes we normalise their shares as follows: *grounding*: 41%, *collision*: 43% and *structural failure & foundering*: 16%.

Figure 2-2. Major causes of recorded accidental oil spills²



2.2. Determination of probabilities of oil spills

The second sub-task is to evaluate the probabilities related to these types of accidents.

The probabilities of a grounding, a collision or a structural failure incident occurring and causing oil to be spilled are calculated via Fault Tree Analysis (FTA).

The Fault Trees used for this study were constructed to show the possible accident trajectory of opportunity which could lead to an oil spill, and standard probabilities were attributed to the initiator events. These were then combined using Boolean algebra techniques. If, for an event to occur, two or more causal events need to happen (or not happen as the case may be), then the probabilities of these two events are multiplied together. This new value gives the probability of each events occurring, commonly known in Boolean algebra as the intersection of events. This is represented by an AND gate in the Fault Tree. For example, for drift grounding to occur, four events must happen simultaneously:

1. There is a loss of steering or propulsion.
2. There is an anchor failure.
3. There is a failure in the ability of assistance to prevent the grounding.
4. There is an unsafe wind or current which propels the vessel into a place where it grounds.

Only if all of these factors occur at the same time will grounding occur.

If, on the other hand, for an event to occur only one of any number of casual events is required for an event to occur, these probabilities are added together. In Boolean algebra this is the union of events³ and is represented by an OR gate.

For there to be a failure of assistance to prevent grounding, any one of these events is sufficient.

1. Assistance is not requested.

² [15]

³ To be precise, the union is the sum of the probabilities minus the probability that the events occur simultaneously (intersect). As the probabilities used in this analysis were quite small, the intersect was negligible and therefore not considered.

2. Assistance does not arrive.
3. Assistance is unable to prevent grounding.

For the sake of simplicity, where there is a pathway that is far more important (difference is more than two orders of magnitude) than the others where only one is necessary (OR gate), only that pathway is considered. These probabilities are per tanker passage.

For *groundings and collisions*, the probabilities were calculated using data from Brown⁴ using human error performance values under various situations and previous oil spill statistics.

For *structural failure and foundering*, FTA was conducted on the basis of expert probability assessment; however, the resulting probabilities were double checked against actual spill data and a found to be consistent with observed accident frequency for reasonable parameter values.

Two calculations were made for each site: (a) the probability of a spill occurring and being of an average size and (b) the probability of a “Worst Case Scenario”.

A Worst Case Scenario is defined as loss of 90% of cargo (spill size =130'000 tonne) where the cargo is 100% crude oil.

The probable spill size and the likelihood that an incident comes under the Worst Case Scenario category were taken from statistics of previous tanker accidents.

Once the probabilities of each initiator event have been established, they are multiplied by a weighting factor for each site, usually based on the physical characteristics, preventive measures taken and level of spill preparedness of the location. This allows us to determine:

1. the probability that oil is spilt, given that grounding or a collision or a structural failure has occurred, and
2. the probabilities of different amounts of oil being spilt given that oil is lost.

From 1993, all new tankers above 5'000 dwt (dead-weight tons) were required to have double hulls or equivalent. 39% of all tankers had double hulls in 2001.⁵ A report commissioned in the US after the Exxon Valdez disaster in Alaska showed that double-hull design reduced the number of spills (over the single-hulls) by 54 percent for the 150'000-dwt tankers. However in collisions, the double-hull vessels had a larger average spill size (given a spill) than the single-hulls, but the single-hulls had a larger maximum spill. For the grounding scenarios, in comparing average spill size given a spill, the single-hull vessel had a larger average spill than the double-hull in the 150'000-dwt size. The double-hull designs had a larger maximum spill than the single-hulls.⁶

Using the procedure sketched above, expert probabilities for an oil spill, given that an accident has occurred, have been computed for the case of Grounding, Collision and Structural Failure and foundering. The table below summarises the main findings for the Aegean Islands' case. Note that these probabilities are site-specific, as they take into account site-specific factors that influence the final probability. The details of the probability assessment exercise for the route under scrutiny are not reported here for economy of space, and can be obtained from the authors upon request.

Table 2-1. Oil spill probabilities for the Aegean case study.

Accident type	Share in total accidents	Average	Worst case
Grounding	41%	1.37E-04	2.73E-06
Collision	44%	6.59E-05	6.59E-07
Structural Failure and Foundering	16%	7.40E-05	2.52E-05

⁴ [25]

⁵ [19]

⁶ [19]

3. Risk aversion and lay risk evaluation methodology

Once the probabilities of the events causing the externalities and the monetary value of the possible damages in the absence of any risk have been assessed, the following factors should be taken into consideration when evaluating the implications of an oil spill for the welfare of the affected individuals:

- the fact that the externalities under scrutiny are probabilistic rather than certain,
- the fact that individuals, when confronted with the perspective of being potentially affected by the consequences of an oil spill, naturally adopt an **ex-ante** perspective, rather than the **ex-post** perspective usually implicit in standard externality evaluation, and
- the fact that the public perception of the relevant probabilities is based upon information sets that typically differ from those of the experts in the field, and hence subjective probabilities held by the public are in general different themselves from probabilities assessed by the experts.

The first factor is in general referred to as *risk aversion* and the third factor as *lay risk evaluation*. Both factors combine in an *ex-ante* damage assessment framework to add additional “virtual” external costs to those caused by an environmental accident: that is, the cost of the discomfort of being exposed to an uncertain situation with possible negative consequences, whose chances are not well understood either.

In principle, taking into account these three additional factors allows a more correct representation of the losses in welfare actually incurred by the population affected by the consequences of a spill. It is thus important to include these refinements in our externality assessment, irrespective of the size of their actual contribution to the total value of the external damages caused by the oil spill.

The methodology we propose for assessing these issues was originally developed by Markandya and Taylor [35] in the context of probabilistic externalities of nuclear accidents in France. The rest of this section will draw heavily upon the methodological sections of that report. From a theoretical economic point of view, the problems, once framed in terms of expected utility from the outcomes of a lottery, are identical, and thus their methodology can be directly applied to our task. However practical differences exist, particularly in the determination of the relevant probabilities (for which we refer to those reported in Section 2), and in the determination of the burdens and impacts to which a monetary value has to be attached. Since the order of magnitude of the variation in utility is way lower than the one usually expected from a nuclear accident, the size of the contribution of these considerations to the overall external cost of oil transportation is obviously much lower than that assessed in [35] in the case of nuclear accidents.

3.1. Methods of estimating the costs of an uncertain accident

In most analyses of accidents related to the supply of energy, damages and benefits are estimated by simply monetising expected consequences, relying on expert judgements about both the probability of consequences and their magnitude. This approach, termed Expert Expected Damage (EED), relies upon the fundamental implicit assumptions that individuals are indifferent to risk and that they share the same information about the accident under scrutiny as the experts in the field. It basically consists of multiplying the monetised expected consequences by the probability assessed

by the experts⁷. The implication of this approach is that if the per capita share of the value thus computed was offered to each of the individuals affected by the accident for accepting the related risk, they would be fully compensated for the cost component of that risk actually taken into account in the assessment. Markandya and Taylor [35] note that there are some obvious and not so obvious problems with this reasoning, the most obvious one being that there may be many more effects of an accident than the analyst can track and quantify. To the extent that some of these effects are missing, the money value derived will be too low. A partial response to this problem is to take higher probabilities; in general, however, the probability used refer to design requirements and is usually very small, especially for potentially very dangerous installations such as nuclear power plants, and this in turn results in very low external costs⁸.

Other partial approaches to solve the problem of incompleteness of standard practice risk evaluation are mostly ad hoc remedies which do not attempt to tackle the core of the issue in a systematic way. For instance in [38], again in the context of nuclear accidents, the suggestion is to use the square of the damages, on the grounds that an event with many deaths is valued much more highly than the same number of deaths occurring one at a time. In practical terms, under this approach one event causing 10 deaths is valued the same as 100 events with one death each. That would raise the external costs significantly but there is no empirical justification for this argument.

In the case of an oil spill, human lives are rarely in danger, but the integrity of whole ecosystems and the viability of a number of economic and social activities can be compromised for a non-negligible period. The uncertainty about what will exactly happen after a tanker has spilt several thousands of tons of oil in front of a coast, may well result in probabilities of such an accident held by the public that differ substantially from those held by the experts.

Thus the problem is analogous to the one posed by nuclear accidents, albeit at a lower level of concern.

In [35], the strategy proposed as the most likely one for resolving this issue, is to *allow more systematically for risk aversion and to use perceived probabilities in the evaluation*.

The problems addressed here may be described as a failure of the EED approach to account for individual preferences and for the context in which these preferences are expressed. In modern economics, the basis for the valuation of any commodity, including complex and non-market ones like health risks, is individual preferences as expressed in or inferred through market behaviour, or as inferred through observing other types of behaviour.

There are three issues, from an economics perspective, that arise in the expert expected damage (EED) approach:

- (i) Ignoring risk aversion. The EED approach assumes that money and satisfaction, are proportionally related. The evidence in study after study, however is that people need more money to compensate them for taking risks than the actuarial value of these risks. The reason is simply that people are adverse to taking risks, particularly of the type we are considering here.
- (ii) Ignoring the ex ante perspective in individual decision making. A distinction is made here between an ex ante approach and an ex post approach to making decisions when outcomes are uncertain. The ex post approach, which is part of the EED approach, assumes that individuals maximise the expected value of their welfare realised in alternative states. However, economists have found more empirical support for individuals' maximising expected utilities, which we term the ex ante approach, following [39]. The term "expected utility" is used because individuals are assumed to maximise the expected value of their utility over a state with, and a state without, the accident while accounting for the

⁷ See [35] where [36] is mentioned as an application of this approach to the case of the evacuation costs for a nuclear accident.

⁸ An exception is [37], where probabilities 300 times higher than the design one for nuclear power plants are used.

probability of each state occurring. This may be distinguished from the EED approach where one estimates the loss in satisfaction from the consequences of an accident if it occurred with certainty and then multiplies this amount by the probability that the accident will occur.

- (iii) Ignoring lay risk assessments. The EED model as described above is based on expert assessment of the probabilities of uncertain events. Studies have shown that, at least for the nuclear case, the lay public believes these estimates are far too low. Further, the public has been shown to hold a complex, multi-attribute definition of nuclear risks, encompassing much more than probabilities and consequences--incorporating trust, controllability, dread and other concerns that are outside of the purview of an expert risk assessment. The distinction between expert and lay assessments of risk does not mean that either is incorrect. However, it suggests that, since damages are estimated based on individuals' willingness to pay (WTP) to avoid risks, it is more appropriate to estimate damages based on lay perceptions of risk since their willingness to pay is based on their perceptions. This idea is equally applicable to all of the fuel cycles, though assessments of the nuclear fuel cycle are unusually sensitive to this distinction.

In theory, unless these issues are addressed, the sum of money estimated as the damage will not match the amount needed to make whole those potentially harmed. Accordingly, an alternative paradigm is suggested here, termed expected utility (EU) approach, that incorporates risk aversion, the ex ante perspective (i.e., expected utility maximisation), and lay perceptions of risks. The EU model is then used to simulate the consequences for damage estimates of substituting the EU model for the EED model using the "state-dependent utility function approach" alluded to above.

As is the case for nuclear accidents, it easily can be argued that the public may view risks connected to oil spills holistically, not distinguishing in their assessments of risks between the various impacts. If this is true, one cannot, even conceptually, apply the EU (or EED) model to each impact of oil spills and sum the resulting damage estimates. Rather, the EU model must be defined over all impacts simultaneously to derive a holistic damage estimate.

In [35] it was necessary to assume that the public's preferences are additive and separable across stages of the nuclear cycle. We have to take a similar assumption, namely the public's preferences are additive and separable across the various impacts on an oil spill.

Such an assumption permits us to focus on each impact of oil spill in turn and then sum up the damage estimates and to compare it to estimates of damage derived from the EED approach, which necessarily views expected consequences of each impact as additive and separable.

3.2. The Expected Utility Model

We replicate here the description of the theoretical model as proposed in [35]. As noted above the theoretical framework is identical for the two problems. The only difference in our approach is that we used a more general functional form for the power utility function, which allows a more extensive sensitivity analysis.

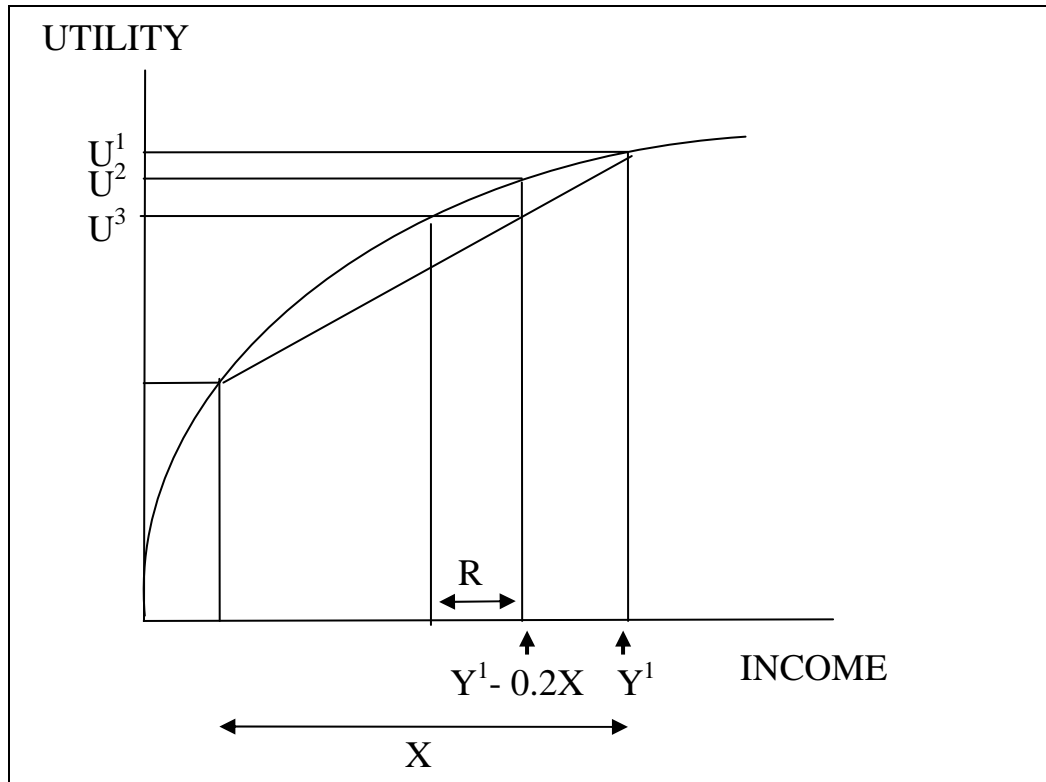
The expected utility model can be best explained with the use of an example. Suppose that an increase in emissions of a pollutant result in a risk of a non-fatal cancer, which cannot be treated in a preventative way but only once it has been diagnosed. Then it can be eliminated with no pain and suffering but at a cost of X € to the individual. If the risk of getting that cancer is two parts in ten, then $0.2X$ is the 'expected value' of the damage.⁹ However, the willingness to pay to avoid the risk is

⁹ The numerical values are not intended to be realistic (0.2 is a very large risk), but are chosen to make the figure easier to interpret.

greater than that as can be seen in Figure 3-1 below. Each level of the individual's income is assumed to have associated with it an utility U and the shape of the utility curve is as shown, with additional utility declining as income increases. The present level of the individual's utility is U^1 and his income is Y^1 . With the increased risk of a health impact, the expected income falls to $Y^1 - 0.2X$, and the utility associated with that uncertain event is U^3 . However, the individual is willing to pay more than $0.2X$ to eliminate this uncertainty, because he can obtain the same level of utility (U^3) as the expected one associated with his expected income with a level of income equal to $Y^1 - 0.2X - R$. 'R' is said to be the risk premium associated with the uncertain event or the amount over and above the expected costs of the event that the individual will pay.

Estimating the risk premium is very important, especially when it comes to environmental damages related to health and to accidents. It is also important to note that the premium will depend not only on the shape of the utility function (which indicates attitudes to risk aversion), but also on the perceived probabilities of the damages. There is some evidence to indicate that, for events with small probabilities of occurrence, the subjective probabilities are often much higher than the objective ones.

Figure 3-1: Risk Premium in Valuing Damages



3.3 Choice of the utility function

As noted above the degree of risk aversion depends on the concavity of the utility function. There are two main measures of this concavity: the coefficient of absolute risk aversion and the coefficient of relative risk aversion. Given a utility function of the form

$$U = U(W) \quad (8)$$

Where W is the wealth of the individual and U its utility, absolute risk aversion is given by A_r and relative risk aversion is given by R_r where

$$A_r = -U''(W)/U'(W) \quad (9)$$

$$R_r = -W U''(W)/U'(W) \quad (10)$$

U' is the first derivative of U with respect to W and U'' is the second derivative of U with respect to W .

The terms “absolute risk aversion” and “relative risk aversion” are tied to the nature of the lottery. Absolute risk aversion applies to additive lotteries that are expressed in monetary units while relative risk aversion applies to multiplicative lotteries in rates or fraction. In our case, the monetary consequences of accidents will be expressed in terms of percentage of loss wealth. We will thus use the relative risk aversion coefficient (R_r).

From the theoretical point of view, various functional forms of utility functions have been studied which reflect different attitudes towards risk. Many experimental studies have also been developed to estimate the risk aversion coefficient of individual decision-makers by presenting them lotteries (i.e. a set of probabilities associated with different loss of wealth) and by letting them rank these lotteries¹⁰. These studies usually show that the absolute risk aversion decreases with wealth. As far as relative risk aversion is concerned, they seem to support the idea of a rather constant coefficient of relative risk aversion. As a consequence, the most general way to express suitable potential functional forms of the utility function is a power function [31] defined by:

$$U(W) = \frac{1}{\gamma} \left[1 - \exp \left(-\gamma \left(\frac{W^{1-\sigma} - 1}{1-\sigma} \right) \right) \right], \sigma \geq 0, \gamma \geq 0. \quad (11)$$

When $\gamma = 0$ this function boils down to

$$U(W) = \frac{W^{1-\sigma} - 1}{1-\sigma} \quad (12)$$

and exhibits positive and decreasing absolute risk aversion, while the coefficient of relative risk aversion (R_r) is constant and amounts to σ . The logarithmic specification $U(W) = \ln W$ (implying that the coefficient of relative risk aversion is equal to unity) can also be derived as a special case of the power function (11) by choosing $\sigma = 1, \gamma = 0$.

If the individual is risk neutral, the relative risk aversion coefficient is zero, and the corresponding utility function is: $U(W) = W$.

3.4. Risk premium computation

The Willingness to Pay of a risk averse individual for avoiding a risky situation can be computed by comparing what would be the welfare change of a risk neutral individual and the correspondent of a risk averse one. We label these welfare losses respectively, **cost of accident without risk** and **cost of accident with risk**.

To fix ideas, suppose that a risk averse individual living in a coastal area faces the lottery. During a given year, with probability p_1 the shore of its place of residence will be affected by a moderate oil spill. With probability p_2 ($p_1 > p_2$), the shore of its place of residence will be affected by a much larger oil spill. If a moderate oil spill takes place, the per capita damage for the inhabitants of the affected area is X_1 . If a more substantial oil spill takes place, the per capita damage for the inhabitants of the affected area is X_2 (with $X_1 < X_2$). With probability $p_0 = 1 - p_1 - p_2$, no oil spill

¹⁰ See [40], [41], [42], [43], [44].

will affect his place of residence and hence no damage would occur. If W_0 is the wealth of the individual under scrutiny, her situation in the three possible state of the world is summarized in the following Table:

Table 3-1. States of the world for a simple oil spill lottery

State of the world	Probability	Wealth
No Spill	$p_0 = 1 - p_1 - p_2$	W_0
Moderate Spill	P_1	$W_0 - X_1$
Very Large Spill	P_2	$W_0 - X_2$

Now, for a risk neutral individual, the **cost of accident without risk** is simply

$$CA_{RN} = W_0 - E(W) = W_0 - [(1 - p_1 - p_2)W_0 + p_1(W_0 - X_1) + p_2(W_0 - X_2)] \quad (13)$$

where $E(W)$ is the expected value of the individual's wealth.

On the other hand, for a risk averse individual, the **cost of accident with risk** is

$$CA_{RA} = W_0 - U^{-1}[E(U^*)] \quad (14)$$

where $U^{-1}[E(U^*)]$ is the so- called “*certainty equivalent*”, that is that value of wealth that yields the same level of “satisfaction” to the (risk averse) individual as being exposed to the lottery.

In terms of the power function (11), the certainty equivalent is

$$U^{-1}[E(U^*)] = [1 + (1 - \sigma) * E(U^*)]^{\frac{1}{1-\sigma}} \quad (15)$$

where

$$E(U^*) = [(1 - p_1 - p_2)U(W)_0 + p_1U[(W_0 - X_1)] + p_2U[(W_0 - X_2)]] \quad (16)$$

This is the step where concavity plays a crucial role. Note in fact that, for a risk neutral agent, the certainty equivalent is $E(W)$, since its utility function is simply $U(W) = W$.

The risk premium is then computed by looking at the difference between the two welfare changes, or

$$RP = CA_{RA} - CA_{RN} \quad (17)$$

4. Application of risk aversion and lay risk evaluation methodology: a case study on the Aegean islands

From the theoretical discussion of Section 3 it is clear that four main ingredients are needed in order to integrate both Risk Aversion and Lay Risk consideration into the assessment of a probabilistic externality:

1. a set of “objective” (or at least, realistic) probabilities of occurrence of the accident causing the externality;
2. the monetised value of the damages that could be caused by the accident; this involves individuating the sectors affected and the degree by which they are impacted by an oil spill;

3. a concave utility function for the individuals affected by the externality, parameterised in such a way to yield a realistic representation of risk aversion;
4. for the lay risk assessment, a reasonable hypothesis about the degree by which probabilities held by general public differ by those deemed realistic by experts in the field.

As to the first ingredient, we rely upon the probabilities of occurrence of an oil spill in an average and worst case scenario for the Aegean leg of the Novorossiysk - Augusta tanker route, as specified in Table 2-1;

As to the second ingredient, we focus on the case of Aegean Sea Islands, one of the “hot spots” of the Novorossiysk-Augusta tanker route.

As to the third ingredient, we consider a range of power utility functions (12), which include the logarithmic utility function as a special case, and rely on sensitivity analysis to check the impact of choosing different specifications.

As for the fourth ingredient, we will present a simple example of lay risk assessment under the somewhat arbitrary, alternative assumptions that Aegean residents hold subjective probabilities of an oil spill affecting the Aegean Islands either 20 or 100 times higher than probabilities computed in Section 2. In the nuclear field, observed lay risk probabilities were about 20 time higher than expert ones. However, since 20 was the factor observed for very specific kind of accident (nuclear accidents in France), we compare the results obtained using this factor to those that can be obtained by prudentially setting lay risk probabilities to much higher values, that is, by multiplying expert probabilities by a factor of 100.

4.1. The Aegean Sea Islands¹¹

This case study considers three Regions of the Aegean Sea: Northern Aegean Region, Southern Aegean Region and Crete Region.

The Aegean Sea is located between the coasts of Greece and Turkey and the islands of Crete and Rhodes. It covers an area of 210 square kilometres and contains over two thousand islands of varying sizes, most of which belong to Greece. The Aegean is also filled with submerged rocks and island populations that depend on fishing and tourism for their livelihood. It has been named as a key area of the Mediterranean in need of protection by the World Wildlife Fund.

This area of the Mediterranean has a massive amount of tanker traffic, as it is here that tankers travelling from the Black Sea and the Suez canal converge, increasing the likelihood of a collision.

The Northern Aegean region lies northeast of the Greek mainland. The region of the Northern Aegean has a population of 206'000, representing 1.9% of the country's population and contributing 1.7 % to the GDP (2004). About 59'000 residents are employed in public and/or private enterprises, 21% in agriculture, 22% in foods and drinks industry, non-metal products manufacture and furniture manufacture and 57% in tourism. The region's tourism sector counts 398 firms and 5'478 workers, and represents the 3.1% of the GDP (2004). The fishery sector counts 2'239 workers and contributes 2.58% to the GDP (2004).

The Southern Aegean region, more commonly known as the Dodecanese and the Cyclades region, consists of two groups of islands in the Southern Aegean Sea. The region has a population of 302'000, representing 2.8% of the country's population and contributing 3.1% to the GDP (2004). About 95'000 residents are employed in public and/or private enterprises, 9% in agriculture, 22% in foods and drinks industry, non-metal manufacture and clothing manufacture and 69% in tourism. The region's tourism sector counts 1'858 firms and 17'839 workers, and represents the 18.7% of the GDP (2004). The fishery sector counts 3'586 workers and contributes 3.8% the GDP (2004).

¹¹ [32]

Crete is Greece's largest and southernmost island. It has a population of 601'000, representing 5.5% of the country's population and contributing 5.3% to Greece's GDP (2004). About 230'000 residents are employed in public and/or private enterprises, 31.4% in agriculture, 13.6% in foods and drinks industry, textile manufacturing and production of plastic products and 55% in tourism (2004). The region's tourism sector counts 1'337 firms and 26'792 workers, and represents the 13.1% of the GDP (2004). The fishery sector counts 1'161 workers and contributes 0.4% to the GDP (2004).

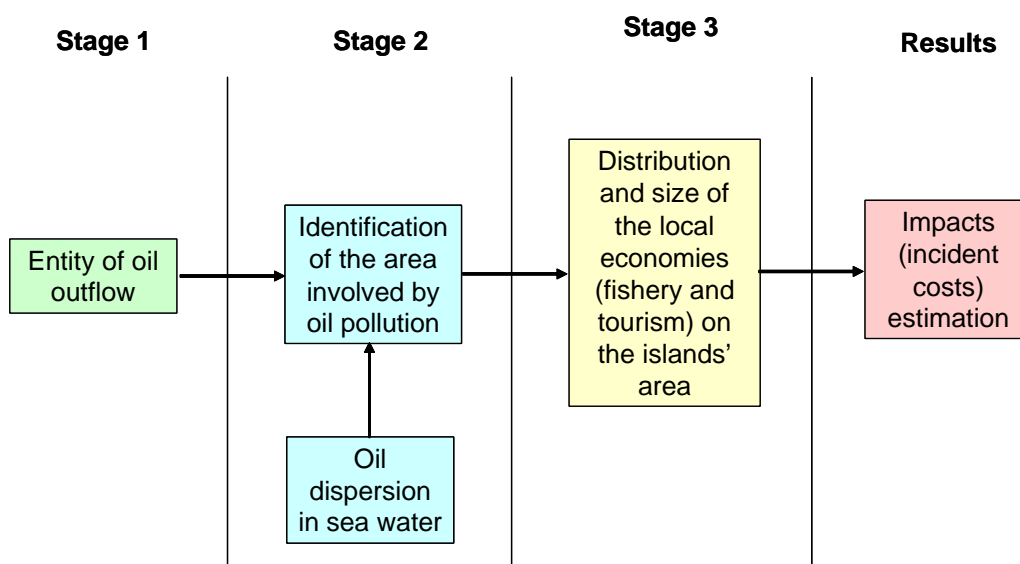
4.2. Externalities considered in the case study

The most important impacts of an oil spill in the case of islands like Aegean Island are those on *environment* and on local specific economic sectors, namely *tourism* and *fishery*. We do not consider as externalities *cleanup costs*, because we assume they are not borne by local communities and, for the sake of simplicity, we assume that individuals are risk neutral regarding these costs.

4.3. Estimation of the impacts on local economies

To estimate impacts on tourism and fishery sector, first of all, it is necessary to identify the area involved by oil pollution, which is a consequence of the amount of oil that is released and of the way it is dispersed in sea water. Then, we have to look to local economies, and in particular to consider their distribution and size on the island's area. Knowing the area affected by oil pollution and the size of the economies present in this area, one can estimate the impact of the oil spill, and, as a final consequence, the cost of the oil spill relative to these economies. The sequence is as shown in Figure 4-2.

Figure 4-2. Methodology of oil spill's impact on local economies estimation



4.3.1. Stage 1: Size of oil outflow.

For a Suezmax type tanker carrying approximately 145'000 tonnes of oil cargo, the sizes of oil outflow for the Average and the Worst Case scenarios (90% of oil cargo flown out) in the cases of grounding, collision and structural failure & foundering, are summarized in the table below¹²:

¹² The details of the estimation of oil outflow under the two alternative scenarios can be obtained by the authors upon request.

Table 4-1. Spill sizes by accident cause for 145'000 tanker

Type of Accident	Average oil spill (tonnes)	Worst case scenario (tonnes)
Collision	8'175	130'000
Grounding	6'790	130'000
Structural failure and foundering	92'000	130'000

4.3.2. Stage 2: Estimation of the area involved by the oil-spill

To estimate the area affected by the oil outflow, we consider as reference a real world case, characterised by an amount of oil spilled not too different from the average case scenario of Table 4-1 (at least as far as collision and grounding are concerned) and which affected an archipelago: the Braer Spill Grounding, happened in the Shetland Island (UK) on the 5th January 1993¹³.

During the 20 days following the accident, 84'700 tons of Norwegian Gullfaks crude oil were spilled out. Of that amount, 40-50% was dispersed at sea, 10-20% evaporated, 35% remained in sediments, and 1% was recovered on shoreline. Because of severe and persistent gale winds, quantities of oil were deposited on the land surface up to 3 km from the coast and almost 60 km² of land were reckoned to have been coated with a fine brown smear of oil at the height of the pollution event. In this case only the 1% of oil reached the shoreline, but this can be considered to be a fortunate case; in fact usually the percentage of oil that reaches the shoreline is greater.

Table 4-2 summarizes the data of the Braer accident:

Table 4-2. Baer spill scenario.

Average Grounding oil spill size (t)	84700
Shoreline	1%
Oil arrived on land (t): 1% of 84700	847
Land contaminated (km2)	60
Average Grounding oil spill size (t)	84'700
Shoreline	1%
Oil arrived on land (t): 1% of 84700	847
Land contaminated (km2)	60

For the Aegean case study scenario we assume a percentage of oil at the shoreline 10 times higher. The Aegean scenario appears then quite different from the Braer one:

Table 4-3. Aegean Sea Spill Average Case scenario.

Average Grounding oil spill size (t)	84'700
Shoreline	10%
Oil arrived on land (t): 10% of 84700	8'470
Land contaminated (km2)	600 ¹⁴

By extending linearly these quantities to the worst case grounding scenario for the Aegean Sea case study¹⁵ the figures are:

¹³ Detailed information concerning this accident has been provided by CEDRE, partner of the NEEDS project.

¹⁴ We assume that the onshore area affected by the oil spill is directly proportional to the amount of oil that reaches the shoreline. If the oil that reaches the shoreline is 1% of the total amount of oil spilled, (thus 847 t), and contaminates a land surface of 60 km², then the 10% of the oil spilled (8'470 t), contaminates a land surface of x km², where x is calculated from this proportion: $847t:60 \text{ km}^2=8470t:x$.

Table 4-4. Aegean Sea Spill Worst Case scenario.

Average Grounding oil spill size (t)	130'000
Shoreline	10 %
Oil arrived on land (t): 10% of 130000	13'000
Land contaminated (km ²)	920,9 ¹⁶

4.3.3. Stages 3 and 4: Distribution and size of the local economies (tourism and fishery) on the islands' area and impacts (incident costs) estimation.

For a sake of simplicity, in order to estimate tourism and fishery sectors' sizes, we assume as a first approximation, that workers in tourism and fishery sectors are distributed homogenously over the islands. We measure the sectors' economic size in terms of sector's GDP per worker (Table 4-5).

One then needs to evaluate the number of workers in the area involved by the oil spill. To do this, the number of workers in the sector considered for each km² of Regional area (see Table 4-6) has been calculated.

Assuming that it will take a full year to restore normal production levels after the accident and that the whole production of that year will be lost for the sectors affected by the accident, the impact size of the oil spill on the economic sectors considered (Table 4-7) can be estimated as the product of the affected area (see Tables 4-3 and 4-4), the number of workers pertaining to the sectors considered per km² of regional area (Table 4-6), and the economic size of the sectors (Table 4-5):

$$I_s = A_i * \frac{W_s}{A_r} * GDP_PC_s, \quad (18)$$

where:

I_s = impact on local economic sector (€)

A_i = area involved by the oil spill (km²)

W_s = number of sector's workers

A_r = regional area (km²)

GDP_PC_s = sector's GDP per worker (€)

Table 4-5. Characteristics of local economies.

	Northern Aegean	Southern Aegean	Crete
Number of workers in Tourism sector(2003)	5'478	17'839	26'792
Number of workers in Fishery sector (2003)	2'239	3'586	1'161
Tourism Sector GDP per worker (M€)	0.03	0.05	0.03
Fishery Sector GDP per worker (M€)	0.02	0.05	0.04

¹⁵ The hypothesis of linearly increasing impacts on the shoreline is somewhat arbitrary, because it is not granted that a larger quantity of oil will spread evenly to a longer length of shoreline; it might affect a proportionally smaller length of shoreline but deposit in thicker layers on the shore. Since modelling the dispersion of an oil spill on shore is a tremendous task, for the illustrative purposes of this paper we will content ourselves with the linear case.

¹⁶ If the oil that reaches the shoreline is 10% of the total quantity, (thus 13000 t), the land surface contaminated is x km², where x is calculated from this proportion: 8470t:600 km²=13000t: x .

Table 4-6. Workers in the involved area

	Northern Aegean	Southern Aegean	Crete
Regional Area (km ²)	3'836	5'286	8'336
Tourism workers' density (workers/km ²)	1.43	3.37	3.21
Fishery workers' density (workers/km ²)	0.58	0.68	0.14

Table 4-7. Losses (M€) for the tourism and fishery sectors in the case of Grounding

	Northern Aegean	Southern Aegean	Crete
Tourism			
Grounding average case	14.3	103.3	83
Grounding worst case	21.9	158.6	127.6
Fishery			
Grounding average case	12	21	2.6
Grounding worst case	18.4	32.2	4

This is of course only a first, rather crude approximation of the economic damages to fisheries and tourist activities after an oil spill has occurred in the Aegean.

A first way to refine these estimates would be to compute more precisely the amount of time during which the affected sectors must remain inactive. We leave this for further research¹⁷.

In this case study we prefer to focus on another refinement: more precisely, we consider a differentiated distribution of the impact at different distances from the oil outflow. In fact, it is realistic to think that areas closer to the accident are also those most subject to the damages provoked by the oil spill. In order to incorporate this refinement into the analysis (see Figure 4-3 and Table 4-8), the area around the oil spill has been divided into three sub-areas: the first, the smallest, but nearest to the spillage point, sustains the greatest per capita damage (in proportion, greater number of workers involved and greater impact), the third, the largest, but the farthest away from the spillage point, sustains the smallest per capita damage (in proportion, smaller number of workers involved and smaller impact). The shares of the damage and the relative size of the three groups are of course chosen rather arbitrarily, for illustrative purpose only.

Table 4-8 Diversification of oil spill impacts

Land area	Workers in Tourism or Fishery sector	% involved	% of oil spill impact
Area 1	Group 1	0.2%	10%
Area 2	Group 2	9.1%	45%
Area 3	Group 3	90.7%	45%
	Total	100%	100%

The number of workers in the tourism and fishery sectors affected by the oil spill (Tables 4-9 and 4-10) and its impacts on these sectors are thus differentiated, as reported in Table 4-18, which collects average losses for the regions and sectors considered.

¹⁷ Another topic is the amount by which these damages are internalised, by means of compensation payments from the ship owners and/or insurance. The legal intricacies of this subject suggest to leave aside the topic, along with the consideration that, *in any case*, the externality must be somehow assessed before being compensated.

Figure 4-3: Diversification of oil spill impact

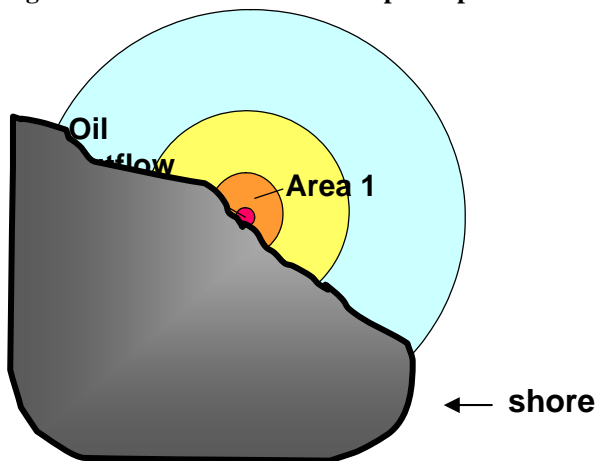


Table 4-9. Number of tourism workers involved at different distances from the oil spill

	Northern Aegean	Southern Aegean	Crete
Group 1	11	36	54
Group 2	498	1'623	2'438
Group 3	4'969	16'180	24'300
Total	5'478	17'839	26'792

Table 4-10. Number of fishery workers involved at different distances from the oil spill

	Northern Aegean	Southern Aegean	Crete
Group 1	4	7	2
Group 2	204	326	106
Group 3	2'031	3'253	1'053
Total	2'239	3'586	1'161

The expected value of the losses based on the probability assessments of Section 3 are given at the bottom of Table 4-18. However, in order to give a complete summary of these losses, we need first to bring the damages to the natural environment into the picture. This is dealt with in the following sub section.

4.4. Evaluation of the damages to the natural environment

The estimation of the damages caused to a natural environment by an accident generated by human activities is not a straightforward task. A fundamental difficulty is that environmental goods have both use and non-use values for the public and therefore an important share of their attributes do not have a market¹⁸, and hence a directly observable price. One of the most developed methods to

¹⁸ A somewhat related difficulty is the inherent arbitrariness in selecting the group of agents for whom the damages to a particular environment is relevant. In the case of the non-use value of an environmental good, potentially a fraction of the whole world population, irrespective of the place of residence, can be negatively affected by the fact that a valuable environment has been damaged. In any CVM study however, for practical feasibility reason it is necessary to limit the evaluation to a sample extracted from a meaningful group of individuals.

attach an economic value to a natural environment, and thus to the damages sustained by the environment itself, is the Contingent Valuation Method.

To the best of the authors' knowledge, a CVM study for evaluating the consequences of an oil spill on the environment of the area under scrutiny has not yet been carried out. Performing a full CVM evaluation for evaluating the consequences of an oil spill on the natural environment of the Greek Aegean Islands was beyond the scope (and the resources) of our project.

What can be attempted however is to evaluate to which extent the results of other CVM studies on oil spill damages can be transferred to the Aegean case, through a well established technique by the name of *Benefit Transfer Methodology*.

For this case study, we use as a reference the results of Van Bieryliet et al. [33], the only Contingent Valuation study available which evaluates the damages of an oil spill on an European Coast.

This paper offers an economic assessment of the loss on non-use values resulting from different oil spill scenarios along the Belgian Coast. The study is based on the information gathered through a telephone interview survey carried out in 2001 over a sample of 571 Belgian households.

The interested Reader is referred to [33] for the details of this study. In short, respondents were confronted with the certain perspective of being subjected to the obligation of paying an amount of money in order to set up a prevention system that would neutralize the effects of an oil spill on the Belgian coast. The precise disaster and prevention scenarios submitted to the evaluation of each respondent were randomly chosen between three alternative scenarios, corresponding to increasing levels of severity of the accident.

In order to apply the results of [33] to our case study, we perform a very rough Benefit Transfer exercise, leaving more refined applications of these techniques to further research. Our aim here is simply to derive a value for the environmental damages caused by an oil spill as the one considered in this case study which can be reasonably applied to the population of the Greek Aegean Islands. To this aim we assume that the two most relevant sources of difference between the Belgian oil spill scenario(s) and the Greek ones boil down to two key characteristics of the Belgian and the Greek populations: their number and their income. For the rest, we very crudely assume, as a first approximation, that one meter of Belgian shore is environmentally speaking perfectly substitutable with one meter of Greek Aegean shore, at least in the eye of the inhabitants of their respective countries (in other words, we assume that Belgian and Greek tastes and preferences are extremely similar when it comes to marine environment). Therefore we use as pivot variables for the transfer the Belgian and Greek GDPs and populations: assuming that Belgian and Greek populations only differ for these two characteristics, we can rescale Belgian Willingness To Pay (WTP) to preserve the coast from the consequences of an oil spill, in such a way to obtain a crude "Greek" WTP for the preservation of the Greek equivalent of such coast.

In [33] two alternative ranges of WTP were computed depending on whether protest answers were included in the computation, where protest answers are those expressed by survey's respondents who were not prepared to pay any amount in any scenario proposed (their WTP was always equal to 0, see Table 4-11). For the aims of this case study, it has been decided to consider the WTP computed in [33] by excluding protest-answers. The higher WTP range was thus selected.

Table 4-11. Belgian study's results for 2001 (million €).

	Total WTP (min)	Total WTP (max)
Protest answers excluded	492	606
Protest answers included	375	476

Albeit very simple, our benefit transfer exercise requires a few steps in order to be performed. First, the WTP in [33] for 2001 must be transformed into per capita values for 2004. To calculate Belgian

WTP per capita for 2004 (see Table 4-13), Belgian GDP growth and Belgian Population have been used (see Table 4-12)¹⁹.

Table 4-12. Belgian GDP and Population.

	2001	2002	2003	2004
GDP (Bln €)	254.1	261.1	268.5	283.5
GDP per capita (Mln. €)	0.025	0.025		0.027
GDP growth %	0.7	0.9	1.3	2.7
Population (Mln.)	10.26	10.31		10.4

Table 4-13. Belgian WTP (€) for 2004 (case of protest answer excluded).

	WTP min per capita	WTP max per capita
Protest answers excluded	52.1	64.2
Protest answers included	39.7	50.4

Next, Belgian per capita WTP had to be translated into per capita WTP for each of the three Greek regions considered. In order to calculate WTP per capita for Greece in 2004 (see Table 4-15), Belgian per capita WTP was rescaled using the ratio of Belgian per capita GDP to its equivalent in each of the Greek regions. The relevant data are reported in Table 4-14 below.

Table 4-14. Greek Regions' GDP and Population.

	Northern Aegean	Southern Aegean	Crete
GDP (2004) M€	2'873	4'701	8'489
GDP per capita (€)	14'463	16'142	14'647
Population (2004)	206'000	302'000	601'000

Table 4-15. Greek Regions WTP per-capita for 2004 (case of protest answer excluded).

	Northern Aegean			Southern Aegean			Crete		
	WTP min (euro)	WTP max (euro)	WTP average value (euro)	WTP min (euro)	WTP max (euro)	WTP average value (euro)	WTP min (euro)	WTP max (euro)	WTP average value (euro)
Protest-answers excluded	28	34		31	38		28	34	
Protest-answers included	21	27	24	24	30	27	21	27	24

¹⁹ [35]

Table 4-16. Greek Regions WTP for 2004 (case of protest answer excluded).

	Northern Aegean			Southern Aegean			Crete		
	WTP min (M€)	WTP max (M€)	WTP average value (M€)	WTP min (M€)	WTP max (M€)	WTP average value (M€)	WTP min (M€)	WTP max (M€)	WTP average value (M€)
Protest-answers excluded	5.69	7.01		9.32	11.48		16.83	20.73	
Protest-answers included	4.34	5.51	4.93	7.10	9.02	8.06	12.83	16.28	14.55

Greek Total WTP for 2004 can be estimated multiplying Greek WTP per-capita by Greek Regions' populations (see Table 4-18).

To estimate the damages caused by our oil spill scenario on Greek Aegean Islands' natural environment (see Table 4-17), it has been considered, as *average case damage*, the Greek total WTP average value. As *worst case damage*, instead, the value proportional to the expected cost to the land contaminated in the worst case has been calculated as follows:

$$D_{WC} = D_{AC} \frac{A_{WC}}{A_{AC}} \quad (19)$$

Where: D_{AC} = average case damage
 A_{AC} = average case contaminated area (600 km²)
 W_{AC} = worst case damage
 A_{WC} = worst case contaminated area (920,9 km²).²⁰

This completes the benefit transfer exercise. The computed total WTPs for the three Aegean regions are reported in Table 4-17 below.

Table 4-17. Greek Regions WTP for 2004 (case of protest answer excluded).

	Northern Aegean	Southern Aegean	Crete
ENVIRONMENT			
Grounding average case	4.9	8.1	14.6
Grounding worst case	7.6	12.4	22.3

Also in the case of estimation of natural environment impacts, the more refined approach of differentiating the impacts, and hence the damages, according to the distance from the oil outflow, can be applied. The last three columns of Table 4-18 split the WTPs of Table 4-17 among three different groups according to the procedure described in paragraph 4.3.1. The expected costs, based on the probabilities of the events, are given in the last row of the table.

Since for the first and second group the chances that the damages are higher than the reference income levels are significant, and since the utility function is not defined for negative values of the argument and tends to minus infinity for values of the argument close to zero, we assumed a lower bound for the impacts of the oil spill on individual budgets. More precisely we assumed that, even if the oil spill would deprive the affected individuals of their main source of income for a whole year,

²⁰ The area affected by the outflow is again the one estimated using as reference the Braer spill (sub-section 4.3.3).

they could always count on the equivalent of one month's earnings (alternative income, formal or informal aid etc.) to withstand this severe change in their economic situation.

4.5. Risk aversion and lay risk estimation results.

Risk Aversion and Lay Risk methodologies have been applied for each region and each sector considered (Tourism, Fishery and Natural Environment). Using the probabilities of accident causes reported in Table 2-1, the monetary values of the damages to the environment just computed, and the power function²¹ with $\gamma = 0$, $\sigma = 1.2$, one can compute the risk premiums following the procedure described in Section 4. To recall briefly, the risk premium, expressing the willingness to pay of the individuals in order to avoid being subjected to the risk of the accident under scrutiny, can be computed as the difference between the *cost of the accident with risk* (the loss of utility expected from the accident for a risk averse individual) and the *cost of the accident without risk* (the expected value of the damage, or the loss of utility expected from the accident for a risk neutral individual).

Table 4-18. Damages for Tourism, Fisheries and the Natural Environment, diversified by impact group, (M€, weighted average across incident types).

		Tourism			Fisheries			Natural Environment		
		N. Aegean	S. Aegean	Crete	N. Aegean	S. Aegean	Crete	N. Aegean	S. Aegean	Crete
Group 1	average case	1.4	10.3	8.3	1.2	2.1	0.3	0.5	0.8	1.5
	worst case	2.2	15.9	12.8	1.8	3.2	0.4	0.8	1.2	2.2
Group 2	average case	6.4	46.5	37.4	5.4	9.4	1.2	2.2	3.6	6.5
	worst case	9.9	71.4	57.4	8.3	14.5	1.8	3.4	5.6	10.1
Group 3	average case	6.4	46.5	37.4	5.4	9.4	1.2	2.2	3.6	6.5
	worst case	9.9	71.4	57.4	8.3	14.5	1.8	3.4	5.6	10.1
Total	average case	14.3	103.3	83.1	12.0	21.0	2.6	4.9	8.1	14.6
	worst case	21.9	158.6	127.6	18.4	32.2	4.0	7.6	12.4	22.3
	<i>Expected costs (€)</i>	1485.6	10756.0	8653.9	1249.2	2180.6	271.9	512.6	838.7	1514.6

Table 4-19 reports the results of the risk aversion assessment for the three sectors considered and under the assumption of differentiated impacts. Note that the values reported in Tables 4-19- 4-21 are weighted averages of the risk premiums computed for each cause of accident, where the weights are the shares reported in Table 2-1. Although, in this case study, the damages faced by the

²¹ For economy of space, we do not report here the results obtained with the power function with $\gamma = 0.5$; they are very similar to those reported in this section. The results obtained under the assumption of logarithmic utility function appear in the sensitivity analysis with $\sigma = 1$.

individuals if an oil spill takes place are the same whatever the cause of an oil spill, probabilities of occurrence are not, and hence expected damages, expected utility losses and risk premiums differ across the three causes of accident considered. We report only the weighted averages in order to give an overall idea of the magnitudes of the results; detailed figures for grounding, collision and structural failure and foundering can be obtained from the authors upon request.

Table 4-19. Risk premiums (€) of Tourism Sector (differentiated impact).

	Northern Aegean		Southern Aegean		Crete	
	risk premium	fraction of expected costs	risk premium	fraction of expected costs	risk premium	fraction of expected costs
Tourism						
Total Group 1	59.5	351.1%	424.3	251.1%	538.3	251.1%
Total Group 2	1'286.2	191.1%	3'347.7	68.4%	1'221.7	31.2%
Total Group 3	34.5	5.1%	178.3	3.7%	89.4	2.3%
Total	1'380.2	100.3%	3'950.2	39.7%	1'849.4	23%
Fishery						
Total Group 1	48.2	351.1%	82.9	251.1%	22.8	351.1%
Total Group 2	800	145%	743.2	74.8%	40.5	32.9%
Total Group 3	30.2	5.4%	37.5	3.8%	2.9	2.4%
Total	878.4	77.8%	863.7	42.8%	66.2	26.3%
Environment						
Total Group 1	2.8	5.5%	4.6	5.5%	8.4	5.5%
Total Group 2	1.2	0.5%	1.9	0.5%	3.5	0.5%
Total Group 3	0.1	0.1%	0.2	0.1%	0.3	0.1%
Total	4.1	0.8%	6.8	0.8%	12.2	0.8%

In Tables 4-20 and Table 4-21 we redo the same evaluation applying Lay Risk probabilities 20 times (respectively, 100 times) higher than expert probabilities using the same function as above and the same scenario.

Table 4-20. Lay Risk assessment of Risk premiums (€)-differentiated impact, expert probabilities x 20.

	Northern Aegean		Southern Aegean		Crete	
	risk premium	fraction of expected costs	risk premium	fraction of expected costs	risk premium	fraction of expected costs
Tourism						
Total Group 1	845.6	249.8%	8'436.3	249.8%	10'704	249.8%
Total Group 2	25'594.8	190.2%	66'747.9	68.2%	24'370.2	31.1%
Total Group 3	689.3	5.1%	3'558.1	3.7%	1'785.1	2.3%
Total	27'129.7	138.3%	78'742.4	44.9%	36'859.2	24%
Fishery						
Total Group 1	685.7	249.8%	1'649.3	249.8%	454.2	349.8%
Total Group 2	15'932.5	144.4%	14'816.4	74.5%	807.1	32.8%
Total Group 3	602.5	5.3%	749.3	3.8%	58.2	2.4%
Total	17'220.7	79.5%	17'215.1	49.3%	1'319.6	27.3%
Environment						
Total Group 1	56.5	5.50%	92.5	5.50%	167	5.5%
Total Group 2	23.7	0.51%	38.7	0.51%	6.3	0.05%
Total Group 3	2.4	0.05%	3.9	0.05%	7	0.05%
Total	82.6	0.84%	135.1	0.84%	180.4	0.62%

Table 4-21. Lay Risk assessment of Risk premiums (€-differentiated impact, expert probabilities x 100.

	Northern Aegean		Southern Aegean		Crete	
	risk premium	fraction of expected costs	risk premium	fraction of expected costs	risk premium	fraction of expected costs
Tourism						
Total Group 1	4'126.9	244.4%	41'174.7	244.4%	52'242.2	244.4%
Total Group 2	125'299.2	186.5%	329'432.1	67.4%	120'530.5	30.8%
Total Group 3	3'414.7	5.1%	17'628.6	3.6%	8'845.1	2.3%
Total	132'840.8	135.3%	388'235.4	44.4%	18'617.7	23.7%
Fishery						
Total Group 1	3'346.5	244.4%	8'049.7	244.4%	2'232.4	344.4%
Total Group 2	78'240.4	142.1%	73'102.2	73.6%	3'991.6	32.5%
Total Group 3	2'984.9	5.3%	3'712.5	3.8%	288.5	2.4%
Total	84'571.8	78.3%	84'864.3	48.7%	6'512.5	27%
Environment						
Total Group 1	280.1	5.45%	458.3	5.45%	827.5	5.45%
Total Group 2	117.4	0.51%	192	0.51%	31.4	0.05%
Total Group 3	11.7	0.05%	19.2	0.05%	34.6	0.05%
Total	409.1	0.84%	669.4	0.84%	893.5	0.62%

Tables 20-21 highlight a few interesting facts. First, allowing for lay risk probabilities increases noticeably the willingness to pay of individuals to reduce their exposition to risk in absolute terms for the tourism and fishery sectors. This increase is almost directly proportional to the increase of the probabilities attached to the accident. Secondly, assuming higher accident probabilities does not change much the overall ratio of risk premiums to the expected cost of an accident; it does however increase this ratio for the most vulnerable groups. Both these features derive from the properties of the utility function used to evaluate risk aversion. Thirdly, both in absolute and in relative terms, risk premiums are modest for the case of direct damages to the environment²². This is mainly due to the magnitude of the damages assumed for this category of impacts. However, for the damages to economic activities, risk premiums are much more substantial. Allowing for differentiated impacts clearly highlights how the discomfort of even a small number of potentially severely affected individuals can account for a substantial welfare loss, especially if lay risk evaluation is taken into consideration. For example, in the case of tourism in Southern Aegean, the risk premiums for groups 1 and 2, who represent only 10% of the workforce, can be as much as €0.56 million in the case of Structural Failure and Foundering (when averaged out with the corresponding values for the other two causes of accident, this figure decreases to €0.37 million²³). In any case this is more than twenty times the risk premium of the remaining 90% of the workforce.

4.5.1. Sensitivity Analysis

Sensitivity analysis has been performed in order to check the robustness of the methodologies applied. Estimations have been made considering different power functions with $\gamma=0$ and σ variable. Table 4-22 reports the results of such analysis for the Northern Aegean region²⁴. The last column in particular gives the total risk premium for the whole population of the region. These

²² Recall that the figures given in Tables 4-19 - 4-21 are total values for all individuals in each group.

²³ This figure is the sum of the risk premiums of Groups 1 and 2 for Southern Aegean tourism in Table 4-21.

²⁴ For the case of $\gamma=0$ and $\sigma=1.2$ the values reported in Table 4-22 coincide with those reported in Table 4-21, for the Northern Aegean.

values take into account lay risk probabilities, differentiated impacts among three population groups, and sum up the damages to fisheries, tourism and the environment²⁵.

Table 4-22. Sensitivity Analysis, lay risk assessment (expert probabilities X 100) of Northern Aegean Tourism sector.

σ	Risk Premium (€) Group 1	Risk Premium (€) Group 2	Risk Premium (€) Group 3	Total Northern Aegean	
				Risk Premium (€)	fraction of expected costs
1*	2834	78'968	2829	84'632	62%
1,2**	4127	125'299	3415	132'841	97%
1,5	7049	293'144	4305	304'498	218%
2	16'415	1'492'953	5823	1'515'191	1066%
4	108'547	7'977'905	12345	8'098'797	6743%

* the function with $\sigma = 1$ is the logarithmic utility function

** this is the value of σ used in the computations.

Note that in Table 4-22, realistic degrees of risk aversion can be related to values of σ not greater than 2. Thus the last row of the table is for comparison purposes only. The message of this table is thus the following: taking extremely concave utility functions, risk premiums may explode, while, for realistic values, there is a moderate to large increase in risk premiums. It is thus important to calibrate correctly the utility function used for the evaluations.

These results point to a relative robustness of the methodology in terms of the choice of the utility function, *for events with a probabilistic structure such as the one analyzed here*. In other words, for oil spills, the degree of risk aversion embedded in the utility function used to evaluate the probabilistic externalities is important for the final results and it is thus important to stick to realistic values of this parameter.

5. Conclusion

This paper has developed a methodology to assess probabilistic externalities caused by oil transportation by tanker. The Aegean Islands case study has provided an example of how the evaluation of the probabilistic externalities caused by an oil spill can be performed using a more refined and realistic methodological framework than the usual risk neutral Expert Expect Damage assessment approach.

The value of this exercise is, in the opinion of the authors, more in showing the feasibility of a more refined approach than in the actual numerical results. It is however interesting to discuss briefly the outcome of the analysis performed.

In the Aegean Islands' case, it is apparent that the computed risk aversion premiums for oil spill accidents are negligible in the case of damages to the natural environment, but they cannot be overlooked when damages to economic activities are analysed and lay risk evaluation is taken into account. In the case of the damages to the environment, this result arises because of the low magnitude of the damages involved (both use and non-use) and by the low probabilities associated to the negative outcomes of the lottery modelled. In other words, the maximum damage that each inhabitant of Aegean Island (that is, per capita damages) may actually suffer from seeing their

²⁵ The results for the other two regions are qualitatively similar and are not reported here for economy of space.

coastal environment damaged by an oil spill of the kind considered (which is, by the way, a reasonably serious accident) is much lower than what they would suffer by, say, bumping their car while waiting for the green light at a crossroad. The story is very different for economic activities, where small groups can be very severely affected in their ability to generate income. This generates a strong dislike for the risk they are exposed to and consequently they may be prepared to pay substantial amounts to avoid it²⁶. The following conclusions could be drawn from the case study:

- The costs of oil spills (in terms of losses for the tourism sector, fisheries and damages to the natural environment) in the Aegean are estimated at around €405 million, in the case of a worst case oil spill, and around €264 million, in the case of a 'typical' spill.
- The 'expected value' of these losses – i.e. the costs referred to above times the associated probabilities is €22'662 for a typical spill and €1935 for a worst case oil spill.
- This value is based on the expert probabilities. If we take indicative lay estimates of the probabilities of the accidents, which could be as much as 100 times higher, the expected costs will also increase by a factor of 100.
- The risk premiums on these expected costs are not negligible when measured as a percentage of expected costs for tourism and fisheries (on average about 90%, 40% and 23% in Northern Aegean, Southern Aegean and Crete respectively, , but up to 350% for particularly affected groups); by contrast, they are quite small for the case of damages to the natural environment (on average around 0.8% in all regions). Assuming higher accident probabilities does not change much the overall regional ratios of risk premiums to their correspondent expected costs for a given accident; it does however increase these ratios for the most vulnerable groups, when risk premiums are broken down for different impact groups. Also, the absolute values of risk premiums increase considerably assuming lay probabilities.

The assessment of the probabilities of an oil spill requires the knowledge of both general causal factors and of factors that are specific of the site where the accident takes place and of the ship involved in the accident. Although it is possible to portrait the general shape of the causal links that may lead to an oil spill, case by case evaluation is necessary in order to compute specific probability values.

On the other hand, once these probabilities have been computed and the relevant impacts and burdens have been assessed, introducing risk aversion and lay risk evaluation is a relatively straightforward task, although careful calibration of the utility function must be performed in order to arrive at realistic values. The impact of these refinements on the final monetary evaluation of the damage depends however again on the characteristics of the site where the oil spill takes place, due to the spatial variability of probabilities, impacts and burdens. Future work is needed to assess the lay probabilities more carefully and to examine more sites/routes to increase our understanding of accident costs of oil transportation by sea.

²⁶ Direct comparability between risk premiums for losses to economic activities and risk premiums for damages to the natural environment is not fully possible, due to the fact that their evaluation is based on different initial levels of income. This is one of the issues currently tackled by our ongoing research.

REFERENCES

- [1] ALEXOPOULOS, A. B., DOUNIAS, G., *An Assessment of Vessel Source Oil Pollution Incidents in the Mediterranean Sea Using Inductive Machine Learning Methodologies*, *Aegean Working Papers*, Issue 1, December 2003.
- [2] EUROPEAN COMMISSION, *World Energy, Technology and Climate Policy Outlook – WETO – 2030*, EUR 20366, 2003.
- [3] HILDREW, J.C., *Case Study for Workshop on Environmental Valuation Oil Spills Preparedness*, Caspian Environment Program: GEF/PIPP Training Component, 2001.
- [4] HEISSELBERG, L. P. (Editor), *GAC News*, No. 1, January/February 2002.
- [5] ENI, *Progetto di By-Pass del Bosforo: Stima del costo di trasporto via mare*, Rome, March 2005.
- [6] NITZOV, B., *The Bosphorus: Oil Through the Eye of a Needle* [On-line], (page visited 29/06/2005), [www.treemedia.com/cfrlibrary/ library/bosphorus/nitzov.html](http://www.treemedia.com/cfrlibrary/library/bosphorus/nitzov.html)
- [7] SOLIGO, R., *The Economics of Transport Routes for Caspian Oil* [On-line] (page visited 07/07/05) http://denizhukuku.bilgi.edu.tr/doc/Caspian_conference_bilgi_soligo.doc.
- [8] BRITO, D. L., *Congestion of the Turkish Straits: A Market Alternative* February, 1999 [on-line] (page visited 08/07/05) www.ruf.rice.edu/~econ/papers/1999papers/08Brito.pdf .
- [9] WORLD WILDLIFE FUND, *Mediterranean Marine Gap Analysis* [On-line] 2004 (page visited 13/07/05) <http://panda.bluegecko.net:8080/downloads/europe/background.doc>.
- [10] TRADE AND ENVIRONMENT DATABASE, *Bosphorus Straits Regulation and Central Asian Oil*, [On-line], (page visited 08/07/05) <http://www.american.edu/TED/bosporus.htm>
- [11] BILARDO, U., MUREDDU, G., *Traffico Petroliero e Sostenibilità Ambientale*, Unione Petrolifera, 2004. 350 p.
- [12] EUROPEAN MARITIME SAFETY ORGANISATION, *Action Plan For Oil Pollution Preparedness and Response*, [On-line] 2004 (page viewed 25/06/05)
- [13] ALEXOPOULOS, A. B., DOUNIAS, G., *An Assessment of Vessel Source Oil Pollution Incidents in the Mediterranean Sea Using Inductive Machine Learning Methodologies*, *Aegean Working Papers*, Issue 1, December 2003.
- [14] M.E.H.R.A., *Factors Influencing Vessel Risks in UK Waters, Appendix 2*[On-line] 1999 (page visited 05/08/05) www.defra.gov.uk/environment/consult/mehra/pdf/appx2.pdf
- [15] FRIIS–HANSEN, P., DITLEVSEN, O., *Nature preservation acceptance model applied to tanker oil spill simulations*, *Structural Safety*, Vol. 25, No.1 pages 1 – 34, 2002.

- [16] BROWN, A.J., AMROZOWICZ, M., *Tanker Environmental Risk - Putting the Pieces Together*", Joint SNAME/SNAJ Conference on Designs and Methodologies for Collision and Grounding Protection of Ships, San Francisco, 1996.
- [17] BROWN, A.J., AMROZOWICZ, M, GOLAY, M, *A Probabilistic Analysis of Tanker Groundings*, 7th International Offshore and Polar Engineering Conference, Honolulu, Hawaii, May, 1997.
- [18] BROWN, A.J. (2001b), *Collision Scenarios and Probabilistic Collision Damage*, 2nd International Conference on Collision and Grounding, Copenhagen, Denmark, pp. 259-272.
- [19] COMMITTEE FOR EVALUATING DOUBLE HULL TANKER DESIGN ALTERNATIVES, *Special Report 259 – Environmental Performance of Tanker Designs in Collision and Grounding – Method for Comparison*. National Academy Press, Washington D.C., 2001 [On-line] (page visited 08/08/05) <http://trb.org/publications/sr/sr259.pdf>.
- [20] M.E.H.R.A., *Factors Influencing Vessel Risks in UK Waters, Appendix 6* [On-line] 1999 (page visited 24/08/05) www.defra.gov.uk/environment/consult/mehra/pdf/appx6.pdf.
- [21] ETKIN, D. S., *Cleanup Costs for Oil Spills in Ports*, Port Technology International [On-line] (page visited 04/08/05) www.porttechnology.org/journals/ed8/download/08.237.pdf.
- [22] MARTINI, N., PATRUNO, R., *Oil pollution Risk Assessment and Preparedness in the East Mediterranean*, 2005 International Oil Spill Conference [On-line] (page viewed 03/09/05) www.itopf.com/iosc2005martini.pdf.
- [23] ETKIN, D. S., *Comparative Methodologies for Estimating On-Water Response Costs for Oil Spills* 2001 International Oil Spill Conference p.1281.
- [24] SIRKAR, J., AMEER, P., BROWN, A., GOSS, P., MICHEL, K., NICASTRO, F., WILLIS, W., *A Framework For Assessing the Environmental Performance of Tankers in Accidental Groundings and Collisions*, Transactions, SNAME.
- [25] BROWN, A.J., HAUGENE, B, *Assessing the Impact of Management and Organizational Factors on the Risk of Tanker Grounding*, 8th International Offshore and Polar Engineering Conference, ISOPE-98-HKP-03, May 1998.
- [26] MALLIN BAKER, *Companies in Crisis – What not to do when it all goes wrong –* [On-line] (page viewed 10/09/05) www.mallenbaker.net/csr/CSRfiles/crisis03.html.
- [27] NAVRUD, S. *Impact Pathway Approach (IPA) How to apply it and combine it with Risk Assessment*, NEEDS Research Stream 1c Meeting March 2005.
- [28] ITOF, *Black Sea Regional Profile*, [On line] (page viewed 15/09/05) www.itopf.com/country_profiles/profiles/Blacksea.pdf.
- [29] ITOF, *Mediterranean Regional Profile*, [On line] (page viewed 15/09/05) www.itopf.com/country_profiles/profiles/Mediterranean.pdf.

- [30] ETKIN, Dagmar Schmidt, *Modeling Oil Spill Response and Damage Costs*, [On-line] (Page viewed 14/09/05) www.epa.gov/oilspill/etkin2_04.pdf.
- [31] XIE, D., *Power Risk Aversion Utility Functions*, Annals of Economics and Finance, 1, pp.265-282 (2000).
- [32] HELLENIC REPUBLIC, MINISTRY OF FOREIGN AFFAIRS. Official Website www.agora.mfa.gr.
- [33] VAN BIERLYET, K., LE ROY, D., NUNES, P.A.L.D. *An Accidental Oil Spill Along the Belgian Coast: Results from a CV*, FEEM Working Paper N. 41.2006.
- [34] FPS Economy, National Bank of Belgium, World Bank.
- [35] MARKANDYA, A., TAYLOR, T., *The External Costs of Nuclear Accidents*, IAEA (1999).
- [36] LEE, R., et al., *Damages and Benefits of the Nuclear Fuel Cycle: Estimation Impacts and Values*, Oakridge National Laboratory, Oakridge USA (1993).
- [37] PACE, *Environmental Costs of Electricity*, PACE University Centre for Environmental Legal Studies. Prepared for the New York State Energy Research and Development Authority and the US Department of Energy (1992).
- [38] FERGUSON, R., *Environmental Costs of Energy Technologies, Accidental Radiological Impacts of Nuclear Power*, CEETES, University of Newcastle (1992).
- [39] HAMMOND, P., *Ex Ante and Ex Post Welfare Optimality Under Uncertainty*, Economica, 48 (191), 235-250 (1981).
- [40] ExternE, *Externalities of Energy - Vol. 2: Methodology*, European Commission DGXII, Luxembourg (1995).
- [41] FRIEND, I., BLUME, M., *The Demand for Risky Assets*, American Economic Review, vol. 65, pp. 900-922 (1975).
- [42] HANSEN, L.P., SINGLETON, K.J., *Generalized Instrumental Variables Estimation of Nonlinear Expectations Models*, Econometrica 50, pp. 1269-1286 (1982).
- [43] SZPIRO, G.G., *Measuring Risk Aversion: an Alternative Approach*, The Review of Economics and Statistics, vol. LXVIII n°1, (1986).
- [44] MEHRA, R., PRESCOTT, E.C., *The Equity Premium - a puzzle*, Journal of Monetary Economics, Vol. 15, 1985, pp. 145-161 (1995).

NOTE DI LAVORO DELLA FONDAZIONE ENI ENRICO MATTEI

Fondazione Eni Enrico Mattei Working Paper Series

Our Note di Lavoro are available on the Internet at the following addresses:

<http://www.feem.it/Feem/Pub/Publications/WPapers/default.html>

<http://www.ssrn.com/link/feem.html>

<http://www.repec.org>

<http://agecon.lib.umn.edu>

NOTE DI LAVORO PUBLISHED IN 2006

SIEV	1.2006	<i>Anna ALBERINI</i> : <u>Determinants and Effects on Property Values of Participation in Voluntary Cleanup Programs: The Case of Colorado</u>
CCMP	2.2006	<i>Valentina BOSETTI, Carlo CARRARO and Marzio GALEOTTI</i> : <u>Stabilisation Targets, Technical Change and the Macroeconomic Costs of Climate Change Control</u>
CCMP	3.2006	<i>Roberto ROSON</i> : <u>Introducing Imperfect Competition in CGE Models: Technical Aspects and Implications</u>
KTHC	4.2006	<i>Sergio VERGALLI</i> : <u>The Role of Community in Migration Dynamics</u>
SIEV	5.2006	<i>Fabio GRAZI, Jeroen C.J.M. van den BERGH and Piet RIETVELD</i> : <u>Modeling Spatial Sustainability: Spatial Welfare Economics versus Ecological Footprint</u>
CCMP	6.2006	<i>Olivier DESCHENES and Michael GREENSTONE</i> : <u>The Economic Impacts of Climate Change: Evidence from Agricultural Profits and Random Fluctuations in Weather</u>
PRCG	7.2006	<i>Michele MORETTO and Paola VALBONESE</i> : <u>Firm Regulation and Profit-Sharing: A Real Option Approach</u>
SIEV	8.2006	<i>Anna ALBERINI and Aline CHIABAI</i> : <u>Discount Rates in Risk v. Money and Money v. Money Tradeoffs</u>
CTN	9.2006	<i>Jon X. EGUIA</i> : <u>United We Vote</u>
CTN	10.2006	<i>Shao CHIN SUNG and Dinko DIMITRO</i> : <u>A Taxonomy of Myopic Stability Concepts for Hedonic Games</u>
NRM	11.2006	<i>Fabio CERINA</i> (lxxviii): <u>Tourism Specialization and Sustainability: A Long-Run Policy Analysis</u>
NRM	12.2006	<i>Valentina BOSETTI, Mariaester CASSINELLI and Alessandro LANZA</i> (lxxviii): <u>Benchmarking in Tourism Destination, Keeping in Mind the Sustainable Paradigm</u>
CCMP	13.2006	<i>Jens HORBACH</i> : <u>Determinants of Environmental Innovation – New Evidence from German Panel Data Sources</u>
KTHC	14.2006	<i>Fabio SABATINI</i> : <u>Social Capital, Public Spending and the Quality of Economic Development: The Case of Italy</u>
KTHC	15.2006	<i>Fabio SABATINI</i> : <u>The Empirics of Social Capital and Economic Development: A Critical Perspective</u>
CSRM	16.2006	<i>Giuseppe DI VITA</i> : <u>Corruption, Exogenous Changes in Incentives and Deterrence</u>
CCMP	17.2006	<i>Rob B. DELLINK and Marjan W. HOFKES</i> : <u>The Timing of National Greenhouse Gas Emission Reductions in the Presence of Other Environmental Policies</u>
IEM	18.2006	<i>Philippe QUIRION</i> : <u>Distributional Impacts of Energy-Efficiency Certificates Vs. Taxes and Standards</u>
CTN	19.2006	<i>Somdeb LAHIRI</i> : <u>A Weak Bargaining Set for Contract Choice Problems</u>
CCMP	20.2006	<i>Massimiliano MAZZANTI and Roberto ZOBOLI</i> : <u>Examining the Factors Influencing Environmental Innovations</u>
SIEV	21.2006	<i>Y. Hossein FARZIN and Ken-ICHI AKAO</i> : <u>Non-pecuniary Work Incentive and Labor Supply</u>
CCMP	22.2006	<i>Marzio GALEOTTI, Matteo MANERA and Alessandro LANZA</i> : <u>On the Robustness of Robustness Checks of the Environmental Kuznets Curve</u>
NRM	23.2006	<i>Y. Hossein FARZIN and Ken-ICHI AKAO</i> : <u>When is it Optimal to Exhaust a Resource in a Finite Time?</u>
NRM	24.2006	<i>Y. Hossein FARZIN and Ken-ICHI AKAO</i> : <u>Non-pecuniary Value of Employment and Natural Resource Extinction</u>
SIEV	25.2006	<i>Lucia VERGANO and Paulo A.L.D. NUNES</i> : <u>Analysis and Evaluation of Ecosystem Resilience: An Economic Perspective</u>
SIEV	26.2006	<i>Danny CAMPBELL, W. George HUTCHINSON and Riccardo SCARPA</i> : <u>Using Discrete Choice Experiments to Derive Individual-Specific WTP Estimates for Landscape Improvements under Agri-Environmental Schemes: Evidence from the Rural Environment Protection Scheme in Ireland</u>
KTHC	27.2006	<i>Vincent M. OTTO, Timo KUOSMANEN and Ekko C. van IERLAND</i> : <u>Estimating Feedback Effect in Technical Change: A Frontier Approach</u>
CCMP	28.2006	<i>Giovanni BELLA</i> : <u>Uniqueness and Indeterminacy of Equilibria in a Model with Polluting Emissions</u>
IEM	29.2006	<i>Alessandro COLOGNI and Matteo MANERA</i> : <u>The Asymmetric Effects of Oil Shocks on Output Growth: A Markov-Switching Analysis for the G-7 Countries</u>
KTHC	30.2006	<i>Fabio SABATINI</i> : <u>Social Capital and Labour Productivity in Italy</u>
ETA	31.2006	<i>Andrea GALLICE</i> (lxxix): <u>Predicting one Shot Play in 2x2 Games Using Beliefs Based on Minimax Regret</u>
IEM	32.2006	<i>Andrea BIGANO and Paul SHEEHAN</i> : <u>Assessing the Risk of Oil Spills in the Mediterranean: the Case of the Route from the Black Sea to Italy</u>
NRM	33.2006	<i>Rinaldo BRAU and Davide CAO</i> (lxxviii): <u>Uncovering the Macrostructure of Tourists' Preferences. A Choice Experiment Analysis of Tourism Demand to Sardinia</u>
CTN	34.2006	<i>Parkash CHANDER and Henry TULKENS</i> : <u>Cooperation, Stability and Self-Enforcement in International Environmental Agreements: A Conceptual Discussion</u>
IEM	35.2006	<i>Valeria COSTANTINI and Salvatore MONNI</i> : <u>Environment, Human Development and Economic Growth</u>
ETA	36.2006	<i>Ariel RUBINSTEIN</i> (lxxix): <u>Instinctive and Cognitive Reasoning: A Study of Response Times</u>

ETA	37.2006	<i>Maria SALGADEO</i> (lxxx): <u>Choosing to Have Less Choice</u>
ETA	38.2006	<i>Justina A.V. FISCHER and Benno TORGLER</i> : <u>Does Envy Destroy Social Fundamentals? The Impact of Relative Income Position on Social Capital</u>
ETA	39.2006	<i>Benno TORGLER, Sascha L. SCHMIDT and Bruno S. FREY</i> : <u>Relative Income Position and Performance: An Empirical Panel Analysis</u>
CCMP	40.2006	<i>Alberto GAGO, Xavier LABANDEIRA, Fidel PICOS And Miguel RODRÍGUEZ</i> : <u>Taxing Tourism In Spain: Results and Recommendations</u>
IEM	41.2006	<i>Karl van BIERVLIET, Dirk Le ROY and Paulo A.L.D. NUNES</i> : <u>An Accidental Oil Spill Along the Belgian Coast: Results from a CV Study</u>
CCMP	42.2006	<i>Rolf GOLOMBEK and Michael HOEL</i> : <u>Endogenous Technology and Tradable Emission Quotas</u>
KTHC	43.2006	<i>Giulio CAINELLI and Donato IACOBUCCI</i> : <u>The Role of Agglomeration and Technology in Shaping Firm Strategy and Organization</u>
CCMP	44.2006	<i>Alvaro CALZADILLA, Francesco PAULI and Roberto ROSON</i> : <u>Climate Change and Extreme Events: An Assessment of Economic Implications</u>
SIEV	45.2006	<i>M.E. KRAGT, P.C. ROEBELING and A. RUIJS</i> : <u>Effects of Great Barrier Reef Degradation on Recreational Demand: A Contingent Behaviour Approach</u>
NRM	46.2006	<i>C. GIUPPONI, R. CAMERA, A. FASSIO, A. LASUT, J. MYSLIAK and A. SGOBBI</i> : <u>Network Analysis, Creative System Modelling and DecisionSupport: The NetSyMoD Approach</u>
KTHC	47.2006	<i>Walter F. LALICH</i> (lxxx): <u>Measurement and Spatial Effects of the Immigrant Created Cultural Diversity in Sydney</u>
KTHC	48.2006	<i>Elena PASPALANOVA</i> (lxxx): <u>Cultural Diversity Determining the Memory of a Controversial Social Event</u>
KTHC	49.2006	<i>Ugo GASPARINO, Barbara DEL CORPO and Dino PINELLI</i> (lxxx): <u>Perceived Diversity of Complex Environmental Systems: Multidimensional Measurement and Synthetic Indicators</u>
KTHC	50.2006	<i>Aleksandra HAUKE</i> (lxxx): <u>Impact of Cultural Differences on Knowledge Transfer in British, Hungarian and Polish Enterprises</u>
KTHC	51.2006	<i>Katherine MARQUAND FORSYTH and Vanja M. K. STENIUS</i> (lxxx): <u>The Challenges of Data Comparison and Varied European Concepts of Diversity</u>
KTHC	52.2006	<i>Gianmarco I.P. OTTAVIANO and Giovanni PERI</i> (lxxx): <u>Rethinking the Gains from Immigration: Theory and Evidence from the U.S.</u>
KTHC	53.2006	<i>Monica BARNI</i> (lxxx): <u>From Statistical to Geolinguistic Data: Mapping and Measuring Linguistic Diversity</u>
KTHC	54.2006	<i>Lucia TAJOLI and Luca DE BENEDICTIS</i> (lxxx): <u>Economic Integration and Similarity in Trade Structures</u>
KTHC	55.2006	<i>Suzanna CHAN</i> (lxxx): <u>"God's Little Acre" and "Belfast Chinatown": Diversity and Ethnic Place Identity in Belfast</u>
KTHC	56.2006	<i>Diana PETKOVA</i> (lxxx): <u>Cultural Diversity in People's Attitudes and Perceptions</u>
KTHC	57.2006	<i>John J. BETANCUR</i> (lxxx): <u>From Outsiders to On-Paper Equals to Cultural Curiosities? The Trajectory of Diversity in the USA</u>
KTHC	58.2006	<i>Kiflemariam HAMDE</i> (lxxx): <u>Cultural Diversity A Glimpse Over the Current Debate in Sweden</u>
KTHC	59.2006	<i>Emilio GREGORI</i> (lxxx): <u>Indicators of Migrants' Socio-Professional Integration</u>
KTHC	60.2006	<i>Christa-Maria LERM HAYES</i> (lxxx): <u>Unity in Diversity Through Art? Joseph Beuys' Models of Cultural Dialogue</u>
KTHC	61.2006	<i>Sara VERTOMMEN and Albert MARTENS</i> (lxxx): <u>Ethnic Minorities Rewarded: Ethnostratification on the Wage Market in Belgium</u>
KTHC	62.2006	<i>Nicola GENOVESE and Maria Grazia LA SPADA</i> (lxxx): <u>Diversity and Pluralism: An Economist's View</u>
KTHC	63.2006	<i>Carla BAGNA</i> (lxxx): <u>Italian Schools and New Linguistic Minorities: Nationality Vs. Plurilingualism. Which Ways and Methodologies for Mapping these Contexts?</u>
KTHC	64.2006	<i>Vedran OMANOVIĆ</i> (lxxx): <u>Understanding "Diversity in Organizations" Paradigmatically and Methodologically</u>
KTHC	65.2006	<i>Mila PASPALANOVA</i> (lxxx): <u>Identifying and Assessing the Development of Populations of Undocumented Migrants: The Case of Undocumented Poles and Bulgarians in Brussels</u>
KTHC	66.2006	<i>Roberto ALZETTA</i> (lxxx): <u>Diversities in Diversity: Exploring Moroccan Migrants' Livelihood in Genoa</u>
KTHC	67.2006	<i>Monika SEDENKOVA and Jiri HORAK</i> (lxxx): <u>Multivariate and Multicriteria Evaluation of Labour Market Situation</u>
KTHC	68.2006	<i>Dirk JACOBS and Andrea REA</i> (lxxx): <u>Construction and Import of Ethnic Categorisations: "Allochthones" in The Netherlands and Belgium</u>
KTHC	69.2006	<i>Eric M. USLANER</i> (lxxx): <u>Does Diversity Drive Down Trust?</u>
KTHC	70.2006	<i>Paula MOTA SANTOS and João BORGES DE SOUSA</i> (lxxx): <u>Visibility & Invisibility of Communities in Urban Systems</u>
ETA	71.2006	<i>Rinaldo BRAU and Matteo LIPPI BRUNI</i> : <u>Eliciting the Demand for Long Term Care Coverage: A Discrete Choice Modelling Analysis</u>
CTN	72.2006	<i>Dinko DIMITROV and Claus-JOCHEN HAAKE</i> : <u>Coalition Formation in Simple Games: The Semistrict Core</u>
CTN	73.2006	<i>Ottorino CHILLEM, Benedetto GUI and Lorenzo ROCCO</i> : <u>On The Economic Value of Repeated Interactions Under Adverse Selection</u>
CTN	74.2006	<i>Sylvain BEAL and Nicolas QUÉROU</i> : <u>Bounded Rationality and Repeated Network Formation</u>
CTN	75.2006	<i>Sophie BADE, Guillaume HAERINGER and Ludovic RENO</i> : <u>Bilateral Commitment</u>
CTN	76.2006	<i>Andranik TANGIAN</i> : <u>Evaluation of Parties and Coalitions After Parliamentary Elections</u>
CTN	77.2006	<i>Rudolf BERGHAMMER, Agnieszka RUSINOWSKA and Harrie de SWART</i> : <u>Applications of Relations and Graphs to Coalition Formation</u>
CTN	78.2006	<i>Paolo PIN</i> : <u>Eight Degrees of Separation</u>
CTN	79.2006	<i>Roland AMANN and Thomas GALL</i> : <u>How (not) to Choose Peers in Studying Groups</u>

CTN	80.2006	<i>Maria MONTERO: <u>Inequity Aversion May Increase Inequity</u></i>
CCMP	81.2006	<i>Vincent M. OTTO, Andreas LÖSCHEL and John REILLY: <u>Directed Technical Change and Climate Policy</u></i>
CSRM	82.2006	<i>Nicoletta FERRO: <u>Riding the Waves of Reforms in Corporate Law, an Overview of Recent Improvements in Italian Corporate Codes of Conduct</u></i>
CTN	83.2006	<i>Siddhartha BANDYOPADHYAY and Mandar OAK: <u>Coalition Governments in a Model of Parliamentary Democracy</u></i>
PRCG	84.2006	<i>Raphaël SOUBEYRAN: <u>Valence Advantages and Public Goods Consumption: Does a Disadvantaged Candidate Choose an Extremist Position?</u></i>
CCMP	85.2006	<i>Eduardo L. GIMÉNEZ and Miguel RODRÍGUEZ: <u>Pigou's Dividend versus Ramsey's Dividend in the Double Dividend Literature</u></i>
CCMP	86.2006	<i>Andrea BIGANO, Jacqueline M. HAMILTON and Richard S.J. TOL: <u>The Impact of Climate Change on Domestic and International Tourism: A Simulation Study</u></i>
KTHC	87.2006	<i>Fabio SABATINI: <u>Educational Qualification, Work Status and Entrepreneurship in Italy an Exploratory Analysis</u></i>
CCMP	88.2006	<i>Richard S.J. TOL: <u>The Polluter Pays Principle and Cost-Benefit Analysis of Climate Change: An Application of Fund</u></i>
CCMP	89.2006	<i>Philippe TULKENS and Henry TULKENS: <u>The White House and The Kyoto Protocol: Double Standards on Uncertainties and Their Consequences</u></i>
SIEV	90.2006	<i>Andrea M. LEITER and Gerald J. PRUCKNER: <u>Proportionality of Willingness to Pay to Small Risk Changes – The Impact of Attitudinal Factors in Scope Tests</u></i>
PRCG	91.2006	<i>Raphaël SOUBEYRAN: <u>When Inertia Generates Political Cycles</u></i>
CCMP	92.2006	<i>Alireza NAGHAVI: <u>Can R&D-Inducing Green Tariffs Replace International Environmental Regulations?</u></i>
CCMP	93.2006	<i>Xavier PAUTREL: <u>Reconsidering The Impact of Environment on Long-Run Growth When Pollution Influences Health and Agents Have Finite-Lifetime</u></i>
CCMP	94.2006	<i>Corrado Di MARIA and Edwin van der WERF: <u>Carbon Leakage Revisited: Unilateral Climate Policy with Directed Technical Change</u></i>
CCMP	95.2006	<i>Paulo A.L.D. NUNES and Chiara M. TRAVISI: <u>Comparing Tax and Tax Reallocations Payments in Financing Rail Noise Abatement Programs: Results from a CE valuation study in Italy</u></i>
CCMP	96.2006	<i>Timo KUOSMANEN and Mika KORTELAJINEN: <u>Valuing Environmental Factors in Cost-Benefit Analysis Using Data Envelopment Analysis</u></i>
KTHC	97.2006	<i>Dermot LEAHY and Alireza NAGHAVI: <u>Intellectual Property Rights and Entry into a Foreign Market: FDI vs. Joint Ventures</u></i>
CCMP	98.2006	<i>Inmaculada MARTÍNEZ-ZARZOSO, Aurelia BENGOCHEA-MORANCHO and Rafael MORALES LAGE: <u>The Impact of Population on CO2 Emissions: Evidence from European Countries</u></i>
PRCG	99.2006	<i>Alberto CAVALIERE and Simona SCABROSETTI: <u>Privatization and Efficiency: From Principals and Agents to Political Economy</u></i>
NRM	100.2006	<i>Khaled ABU-ZEID and Sameh AFIFI: <u>Multi-Sectoral Uses of Water & Approaches to DSS in Water Management in the NOSTRUM Partner Countries of the Mediterranean</u></i>
NRM	101.2006	<i>Carlo GIUPPONI, Jaroslav MYSLAK and Jacopo CRIMI: <u>Participatory Approach in Decision Making Processes for Water Resources Management in the Mediterranean Basin</u></i>
CCMP	102.2006	<i>Kerstin RONNEBERGER, Maria BERRITTELLA, Francesco BOSELLO and Richard S.J. TOL: <u>Klum@Gtap: Introducing Biophysical Aspects of Land-Use Decisions Into a General Equilibrium Model A Coupling Experiment</u></i>
KTHC	103.2006	<i>Avner BEN-NER, Brian P. McCALL, Massoud STEPHANE, and Hua WANG: <u>Identity and Self-Other Differentiation in Work and Giving Behaviors: Experimental Evidence</u></i>
SIEV	104.2006	<i>Aline CHIABAI and Paulo A.L.D. NUNES: <u>Economic Valuation of Oceanographic Forecasting Services: A Cost-Benefit Exercise</u></i>
NRM	105.2006	<i>Paola MINOIA and Anna BRUSAROSCO: <u>Water Infrastructures Facing Sustainable Development Challenges: Integrated Evaluation of Impacts of Dams on Regional Development in Morocco</u></i>
PRCG	106.2006	<i>Carmine GUERRIERO: <u>Endogenous Price Mechanisms, Capture and Accountability Rules: Theory and Evidence</u></i>
CCMP	107.2006	<i>Richard S.J. TOL, Stephen W. PACALA and Robert SOCOLOW: <u>Understanding Long-Term Energy Use and Carbon Dioxide Emissions in the Usa</u></i>
NRM	108.2006	<i>Carles MANERA and Jaume GARAU TABERNER: <u>The Recent Evolution and Impact of Tourism in the Mediterranean: The Case of Island Regions, 1990-2002</u></i>
PRCG	109.2006	<i>Carmine GUERRIERO: <u>Dependent Controllers and Regulation Policies: Theory and Evidence</u></i>
KTHC	110.2006	<i>John FOOT (lxxx): <u>Mapping Diversity in Milan. Historical Approaches to Urban Immigration</u></i>
KTHC	111.2006	<i>Donatella CALABI: <u>Foreigners and the City: An Historiographical Exploration for the Early Modern Period</u></i>
IEM	112.2006	<i>Andrea BIGANO, Francesco BOSELLO and Giuseppe MARANO: <u>Energy Demand and Temperature: A Dynamic Panel Analysis</u></i>
SIEV	113.2006	<i>Anna ALBERINI, Stefania TONIN, Margherita TURVANI and Aline CHIABAI: <u>Paying for Permanence: Public Preferences for Contaminated Site Cleanup</u></i>
CCMP	114.2006	<i>Vivekananda MUKHERJEE and Dirk T.G. RÜBBELKE: <u>Global Climate Change, Technology Transfer and Trade with Complete Specialization</u></i>
NRM	115.2006	<i>Clive LIPCHIN: <u>A Future for the Dead Sea Basin: Water Culture among Israelis, Palestinians and Jordanians</u></i>
CCMP	116.2006	<i>Barbara BUCHNER, Carlo CARRARO and A. Denny ELLERMAN: <u>The Allocation of European Union Allowances: Lessons, Unifying Themes and General Principles</u></i>
CCMP	117.2006	<i>Richard S.J. TOL: <u>Carbon Dioxide Emission Scenarios for the Usa</u></i>

NRM	118.2006	<i>Isabel CORTÉS-JIMÉNEZ and Manuela PULINA: <u>A further step into the ELGH and TLGH for Spain and Italy</u></i>
SIEV	119.2006	<i>Beat HINTERMANN, Anna ALBERINI and Anil MARKANDYA: <u>Estimating the Value of Safety with Labor Market Data: Are the Results Trustworthy?</u></i>
SIEV	120.2006	<i>Elena STRUKOVA, Alexander GOLUB and Anil MARKANDYA: <u>Air Pollution Costs in Ukraine</u></i>
CCMP	121.2006	<i>Massimiliano MAZZANTI, Antonio MUSOLESI and Roberto ZOBOLI: <u>A Bayesian Approach to the Estimation of Environmental Kuznets Curves for CO₂ Emissions</u></i>
ETA	122.2006	<i>Jean-Marie GRETHER, Nicole A. MATHYS, and Jaime DE MELO: <u>Unraveling the World-Wide Pollution Haven Effect</u></i>
KTHC	123.2006	<i>Sergio VERGALLI: <u>Entry and Exit Strategies in Migration Dynamics</u></i>
PRCG	124.2006	<i>Bernardo BORTOLOTTI and Valentina MILELLA: <u>Privatization in Western Europe Stylized Facts, Outcomes and Open Issues</u></i>
SIEV	125.2006	<i>Pietro CARATTI, Ludovico FERRAGUTO and Chiara RIBOLDI: <u>Sustainable Development Data Availability on the Internet</u></i>
SIEV	126.2006	<i>S. SILVESTRI, M PELLIZZATO and V. BOATTO: <u>Fishing Across the Centuries: What Prospects for the Venice Lagoon?</u></i>
CTN	127.2006	<i>Alison WATTS: <u>Formation of Segregated and Integrated Groups</u></i>
SIEV	128.2006	<i>Danny CAMPBELL, W. George HUTCHINSON and Riccardo SCARPA: <u>Lexicographic Preferences in Discrete Choice Experiments: Consequences on Individual-Specific Willingness to Pay Estimates</u></i>
CCMP	129.2006	<i>Giovanni BELLA: <u>Transitional Dynamics Towards Sustainability: Reconsidering the EKC Hypothesis</u></i>
IEM	130.2006	<i>Elisa SCARPA and Matteo MANERA: <u>Pricing and Hedging Illiquid Energy Derivatives: an Application to the JCC Index</u></i>
PRCG	131.2006	<i>Andrea BELTRATTI and Bernardo BORTOLOTTI: <u>The Nontradable Share Reform in the Chinese Stock Market</u></i>
IEM	132.2006	<i>Alberto LONGO, Anil MARKANDYA and Marta PETRUCCI: <u>The Internalization of Externalities in The Production of Electricity: Willingness to Pay for the Attributes of a Policy for Renewable Energy</u></i>
ETA	133.2006	<i>Brighita BERCEA and Sonia OREFFICE: <u>Quality of Available Mates, Education and Intra-Household Bargaining Power</u></i>
KTHC	134.2006	<i>Antonia R. GURRIERI and Luca PETRUZZELLIS: <u>Local Networks to Compete in the Global Era. The Italian SMEs Experience</u></i>
CCMP	135.2006	<i>Andrea BIGANO, Francesco BOSELLO, Roberto ROSON and Richard S.J. TOL: <u>Economy-Wide Estimates of the Implications of Climate Change: A Joint Analysis for Sea Level Rise and Tourism</u></i>
CCMP	136.2006	<i>Richard S.J. TOL: <u>Why Worry About Climate Change? A Research Agenda</u></i>
SIEV	137.2006	<i>Anna ALBERINI, Alberto LONGO and Patrizia RIGANTI: <u>Using Surveys to Compare the Public's and Decisionmakers' Preferences for Urban Regeneration: The Venice Arsenale</u></i>
ETA	138.2006	<i>Y. Hossein FARZIN and Ken-Ichi AKAO: <u>Environmental Quality in a Differentiated Duopoly</u></i>
CCMP	139.2006	<i>Denny ELLERMAN and Barbara BUCHNER: <u>Over-Allocation or Abatement? A Preliminary Analysis of the Ets Based on the 2005 Emissions Data</u></i>
CCMP	140.2006	<i>Horățiu A. RUS (lxxx): <u>Renewable Resources, Pollution and Trade in a Small Open Economy</u></i>
CCMP	141.2006	<i>Enrica DE CIAN (lxxx): <u>International Technology Spillovers in Climate-Economy Models: Two Possible Approaches</u></i>
CCMP	142.2006	<i>Tao WANG (lxxx): <u>Cost Effectiveness in River Management: Evaluation of Integrated River Policy System in Tidal Ouse</u></i>
CCMP	143.2006	<i>Gregory F. NEMET (lxxx): <u>How well does Learning-by-doing Explain Cost Reductions in a Carbon-free Energy Technology?</u></i>
CCMP	144.2006	<i>Anne BRIAND (lxxx): <u>Marginal Cost Versus Average Cost Pricing with Climatic Shocks in Senegal: A Dynamic Computable General Equilibrium Model Applied to Water</u></i>
CCMP	145.2006	<i>Thomas ARONSSON, Kenneth BACKLUND and Linda SAHLÉN (lxxx): <u>Technology Transfers and the Clean Development Mechanism in a North-South General Equilibrium Model</u></i>
IEM	146.2006	<i>Theocharis N. GRIGORIADIS and Benno TORGLER: <u>Energy Regulation, Roll Call Votes and Regional Resources: Evidence from Russia</u></i>
CCMP	147.2006	<i>Manish GUPTA: <u>Costs of Reducing Greenhouse Gas Emissions: A Case Study of India's Power Generation Sector</u></i>
CCMP	148.2006	<i>Valeria COSTANTINI: <u>A Modified Environmental Kuznets Curve for Sustainable Development Assessment Using Panel Data</u></i>
IEM	149.2006	<i>Andrea BIGANO, Mariaester CASSINELLI, Anil MARKANDYA and Fabio SFERRA: <u>The Role of Risk Aversion and Lay Risk in the Probabilistic Externality Assessment for Oil Tanker Routes to Europe</u></i>

(lxxviii) This paper was presented at the Second International Conference on "Tourism and Sustainable Economic Development - Macro and Micro Economic Issues" jointly organised by CRENoS (Università di Cagliari and Sassari, Italy) and Fondazione Eni Enrico Mattei, Italy, and supported by the World Bank, Chia, Italy, 16-17 September 2005.

(lxxix) This paper was presented at the International Workshop on "Economic Theory and Experimental Economics" jointly organised by SET (Center for advanced Studies in Economic Theory, University of Milano-Bicocca) and Fondazione Eni Enrico Mattei, Italy, Milan, 20-23 November 2005. The Workshop was co-sponsored by CISEPS (Center for Interdisciplinary Studies in Economics and Social Sciences, University of Milan-Bicocca).

(lxxx) This paper was presented at the First EURODIV Conference "Understanding diversity: Mapping and measuring", held in Milan on 26-27 January 2006 and supported by the Marie Curie Series of Conferences "Cultural Diversity in Europe: a Series of Conferences.

(lxxxi) This paper was presented at the EAERE-FEEM-VIU Summer School on "Computable General Equilibrium Modeling in Environmental and Resource Economics", held in Venice from June 25th to July 1st, 2006 and supported by the Marie Curie Series of Conferences "European Summer School in Resource and Environmental Economics".

2006 SERIES

CCMP	<i>Climate Change Modelling and Policy</i> (Editor: Marzio Galeotti)
SIEV	<i>Sustainability Indicators and Environmental Valuation</i> (Editor: Anil Markandya)
NRM	<i>Natural Resources Management</i> (Editor: Carlo Giupponi)
KTHC	<i>Knowledge, Technology, Human Capital</i> (Editor: Gianmarco Ottaviano)
IEM	<i>International Energy Markets</i> (Editor: Matteo Manera)
CSRM	<i>Corporate Social Responsibility and Sustainable Management</i> (Editor: Giulio Sapelli)
PRCG	<i>Privatisation Regulation Corporate Governance</i> (Editor: Bernardo Bortolotti)
ETA	<i>Economic Theory and Applications</i> (Editor: Carlo Carraro)
CTN	<i>Coalition Theory Network</i>