

Tangian, Andranik

**Working Paper**

## Evaluation of Parties and Coalitions After Parliamentary Elections

Nota di Lavoro, No. 76.2006

**Provided in Cooperation with:**

Fondazione Eni Enrico Mattei (FEEM)

*Suggested Citation:* Tangian, Andranik (2006) : Evaluation of Parties and Coalitions After Parliamentary Elections, Nota di Lavoro, No. 76.2006, Fondazione Eni Enrico Mattei (FEEM), Milano

This Version is available at:

<https://hdl.handle.net/10419/74121>

**Standard-Nutzungsbedingungen:**

Die Dokumente auf EconStor dürfen zu eigenen wissenschaftlichen Zwecken und zum Privatgebrauch gespeichert und kopiert werden.

Sie dürfen die Dokumente nicht für öffentliche oder kommerzielle Zwecke vervielfältigen, öffentlich ausstellen, öffentlich zugänglich machen, vertreiben oder anderweitig nutzen.

Sofern die Verfasser die Dokumente unter Open-Content-Lizenzen (insbesondere CC-Lizenzen) zur Verfügung gestellt haben sollten, gelten abweichend von diesen Nutzungsbedingungen die in der dort genannten Lizenz gewährten Nutzungsrechte.

**Terms of use:**

*Documents in EconStor may be saved and copied for your personal and scholarly purposes.*

*You are not to copy documents for public or commercial purposes, to exhibit the documents publicly, to make them publicly available on the internet, or to distribute or otherwise use the documents in public.*

*If the documents have been made available under an Open Content Licence (especially Creative Commons Licences), you may exercise further usage rights as specified in the indicated licence.*

## **Evaluation of Parties and Coalitions After Parliamentary Elections**

Andranik Tangian

NOTA DI LAVORO 76.2006

**MAY 2006**

CTN – Coalition Theory Network

Andranik Tangian, *Hans Boeckler Foundation*

This paper can be downloaded without charge at:

The Fondazione Eni Enrico Mattei Note di Lavoro Series Index:  
<http://www.feem.it/Feem/Pub/Publications/WPapers/default.htm>

Social Science Research Network Electronic Paper Collection:  
<http://ssrn.com/abstract=904192>

# Evaluation of Parties and Coalitions After Parliamentary Elections

## Summary

Five leading German political parties and their coalitions are evaluated with regard to party manifestos and results of the 2005 parliamentary elections. For this purpose, the party manifestos are converted into Yes/No answers to 95 topical questions (Relax the protection against dismissals? Close nuclear power plants? etc.). On each question, every party represents its adherents as well as those of the parties with the same position. Therefore, a party usually represents a larger group than its voters. The popularity of a party is understood to be the percentage of the electorate represented, averaged on all the 95 questions. The universality of a party is the frequency of representing a majority of electors. The questions are considered either unweighted, or weighted by an expert, or weighted by the number of GOOGLE-results for given keywords (the more important the question, the more documents in the Internet). The weighting however plays a negligible role because the party answers are backed up by the party "ideology" which determines a high intra-question correlation. The SPD (Social-Democratic Party) did not receive the highest percentage of votes, remains nevertheless the most popular and the most universal German party. A comparison of the election results with the position of German Trade Union Federation (DGB) reveals its high representativeness as well. Finally, all coalitions with two and three parties are also evaluated. The coalition CDU/SPD (which is currently in power) is the most popular, and the coalition SPD/Green/Left-Party (which failed due to personal conflicts) is the most universal.

**Keywords:** Parliamentary Election, Fractions, Coalitions, Theory of Voting, Mathematical Theory of Democracy, Indices of Popularity and Universality, German Trade Union Federation (DGB)

**JEL Classification:** D71

*"This paper was presented at the 11th Coalition Theory Network Workshop organised by the University of Warwick, UK on behalf of the CTN, with the financial support of the Department of Economics of the University of Warwick, UNINET, the British Academy, and the Association for Public Economic Theory, Warwick, 19-21 January 2006."*

*Address for correspondence:*

Andranik Tangian  
WSI  
Hans Boeckler Foundation  
Hans-Boeckler-Str. 39  
40476 Duesseldorf  
Germany  
Phone: +49 211 7778 259  
Fax: +49 211 7778 190  
E-mail: andranik-tangian@boeckler.de

# 1 Introduction

The result of German parliamentary elections 2005 (BUNDESTAG 2005, BUNDESWAHLLEITER 2005, SUEDEDEUTSCHE 2005; see the “second votes” devoted to parties)

	SPD	CDU/CSU	Green	FDP	Left-Party	19 minor parties
Percentage of votes	34.2	35.2	8.1	9.8	8.7	4.0

is difficult to judge, because no party got an absolute majority of votes<sup>1</sup>. It is known that the bottle-necks of simple majority voting systems are so drastic that the legitimacy of election results can be put in question (HELD 1996, SAMONS 2004).

Already in 1770, the member of the Royal Academy of Sciences in Paris J.-Ch. de Borda (1733–1799) warned against “wrong results” of simple majority vote for more than two parties (BLACK 1958). Borda has illustrated it with an example of three candidates  $A, B, C$  and 21 voters, see Figure 1. The winner is the candidate  $A$  who receives 8 votes. On the other hand,  $A$  is the most undesired for an absolute majority of 13 of 21 voters.

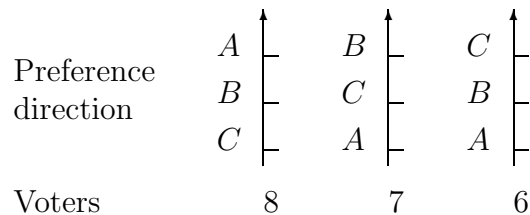


Figure 1: Example of Borda (1770, see BLACK 1958, p. 157)

In similar cases, more information than just the first choices should be considered: candidate rankings (preferences of electors with second and third priorities), preference grades, quantitative estimations, etc. Such problems are studied in the theory of voting and social choice since the 18 century, however, with no unambiguous solution (MUELLER 1989). Therefore, to attain a social consensus, each particular situation should be analyzed from several sides.

The given paper evaluates the five leading political parties in the German parliamentary elections on September 18 and in Dresden on October 2, 2005. The data required for

---

<sup>1</sup>SPD is the Social Democratic Party, CDU is the Christian Democratic Union together with Bavaria’s Christian Social Union (conservators), FDP is the Free Democratic Party (neoliberals), and Left-Party is a fusion of the PDS (Party of Democratic Socialism—former East German communists) with the WASG (Voting Alternative for Employment and Social Justice—the separated left wing of the SPD).

the application are similar to that used by the Internet program WAHL-O-MAT (2005): a tabular representation of party positions and individual opinions in the form of Yes/No answers to topical questions (Relax the protection against dismissals? Yes/No; Close nuclear power plants? Yes/No, etc.). The task of our model is different, however. The program WAHL-O-MAT helps the *individual user* to find the party to vote for (the program was originally aimed at involving young people into political participation). Our mathematical model estimates how good the parties represent the *whole of electorate*. In other words, the WAHL-O-MAT tests the goodness of fit of single voters to parties, and our model tests the goodness of fit of parties to the electorate.

The parties are evaluated with indicators of *popularity* and *universality*. The indicators can be regarded as two global *social utility functions* which reflect the ability of parties and their coalitions to represent the electorate. The indicators are derived from the size of groups resulting from *crosscutting cleavages* (Pitkin 1967, Miller 1964, Wright 1978, Miller 1983, and Brams et al. 1998). In a sense, both indicators suggest a kind of correlation measure for estimating the proximity between party positions and voters' opinions introduced into political science by Achen (1977, 1978).

The crosscutting cleavages are determined by 95 dichotomous questions<sup>2</sup> (with Yes/No answers), each dividing the society into two groups, one with positive, and one with negative opinion on the question. The parties, answering these questions, represent some Yes-groups and some No-groups. The popularity of a party is measured by the size of the group represented, averaged on the 95 questions selected. The universality of a party is the frequency of representing a majority. Therefore, the popularity reflects the spatial aspect of representativeness, and the universality reflects its temporal aspect.

The questions are considered either unweighted, or weighted by an expert, or weighted by the number of GOOGLE-results for given keywords (the more important the question, the more documents in the Internet). It turns out that the weighting plays a negligible role. The party answers backed up by the party "ideology" are highly correlated, making the overall evaluation little sensitive to question weights.

---

<sup>2</sup>The same number as of the *Theses* by Martin LUTHER (1517).

The quantitative analysis shows that the SPD is the most popular and the most universal German party, although it did not receive the highest percentage of votes. A comparison of the election results with the position of German Trade Union Federation (DGB) reveals its high representativeness as well. Finally, all coalitions with two and three parties are also evaluated. The coalition CDU/SPD (which is actually in power) is the most popular, and the coalition SPD/Green/Left-Party (which failed due to personal conflicts) is the most universal.

In Section 2, “Model”, initial data, basic assumptions, and indicators of popularity and universality of parties are introduced. In particular, all the 95 source questions with party answers and weightings are listed.

In Section 3, “Evaluation of parties”, the indices of popularity and universality of parties and of DGB are discussed, both for the whole of Germany and for federal states (Länder). The main conclusion is that the SPD has better indicators, although the CDU got the highest percentage of votes.

In Section 4, “Evaluation of coalitions”, a kind of coalition formation analysis is performed; for recent references see van Deemen (1997) and de Vries (1999). For this purpose, the indices of popularity and universality are extended to coalitions with two and three parties. The main conclusion is that the coalition of three left parties could be a better alternative to the centrist coalition currently in power.

In Section 5, “Summary”, the main statements of the paper are recapitulated.

In Section 6, “Annex: Computational issues”, the mathematical model is rigorously described. The computation formulas are derived and linked to tables and figures of the paper.

## 2 Model

Journalists Anne Graef (*Einblick*, DGB, Berlin) and Michael Schultheiss (Hannover) have analyzed comparative tables of party manifestos downloadable from the Internet like (GEWERKSCHAFT DER POLIZEI BREMEN 2005, WERNER ET AL. 2005) and published in popular journals. The distinctions in the form of Yes/No answers to 95 questions are collected in Table 1. The position of the German Federation of Trade Unions (DGB) has

been specified by Anne Graef and Michael Schultheiss.

The unequal importance of the questions can be reflected by weight coefficients. Such a weighting (with grades 1–5) performed by Anne Graef as a DGB-expert is shown in the next to last column of Table 1. The last column of Table 1 contains the number of GOOGLE-results for given (German) keywords on September 25, 2005. The idea of using GOOGLE as a weighting instrument is as follows: the more important the question, the more frequently it is discussed, and the more documents in the Internet contain the related keywords.

It is assumed that the opinions of voters on all the 95 questions are represented by their favorite parties. It would be certainly better to use individual answers to each question but such data are not available.

Each party, as well as the DGB has its own Yes/No answer to each question. By voting for a Yes-party or for a No-Party (for a given question), the voters build two groups: Yes-group and No-Group. The *representativeness* of a Yes-Party for a given question is the size of the whole Yes-Group. Respectively, the *representativeness* of a No-Party for a given question is the size of the whole No-Group; see Figure 2.

For example, consider the first question “Relax the protection against dismissals?”. The SPD, Green, and Left-Party are against this measure, having the representativeness  $34.2 + 8.1 + 8.7 = 51\%$ , that is, representing 51% of voters. This No-group is shown in Figure 2 by red, green, and dark-red rectangles<sup>3</sup> (with the lengths being the percentage of votes received by each party). These rectangles lie in the No-Domain to the left from the vertical axis 0%. CDU and FDP will relax the protection against dismissals and represent thereby  $35.2 + 9.8 = 45.0\%$  of the electorate. This Yes-group is shown by black and yellow rectangles. It lies in the Yes-Domain to the right from the vertical axis. The sum of both groups is always 96%. The more the No-Group overbalances, the more the total 96%-rectangle is shifted to the left. The more the Yes-Group overbalances, the more it is shifted to the right.

On each question, every party represents its adherents as well as those of the parties with the same position. For example, the SPD’s *representativeness* is 51% on the first

---

<sup>3</sup>Throughout the paper, the official colors of the five parties are used. The DGB’s unofficial color is red, but we use blue to distinct the DGB from the “red” parties.

Table 1: Structuralized representation of party manifestos

	Opinions of parties and unions						Weighting	
	SPD	CDU	Green	FDP	Left-Party	Unions	Expert	Google results
	34.2%	35.2%	8.1%	9.8%	8.7%		18.09.05	25.09.05
<b>Labour market</b>								
Relax the protection against dismissals	No	Yes	No	Yes	No	No	5	25300
Sector-dependent minimal wages	Yes	No	Yes	No	No	Yes	4	367
Statutory minimal wage	Yes	No	Yes	No	Yes	Yes	3	32500
Prolong Unemployment Benefits I (ALG I) for old employees	Yes	No	Yes	No	Yes	Yes	5	32700
Equalize Unemployment Benefits II (ALG II) in East and West	Yes	No	Yes	No	Yes	Yes	5	65900
Increase Unemployment Benefits II	No	No	Yes	No	Yes	Yes	5	23500
Unemployment Benefits II: higher allowance for old-age provisions	No	No	Yes	No	Yes	Yes	5	14900
Cancel 2005 reform (Hartz IV)	No	No	No	No	Yes	No	4	25700
Increase the limit for mini-jobs up to 600 EUR	No	No	No	Yes	No	No	5	41
Adopt combined wages	No	Yes	No	No	No	No	3	54000
Statutory subsidies to low-paid	No	No	Yes	No	No	Yes	3	604
Abolish the Federal Employment Office	No	No	No	Yes	No	No	5	32000
Further subsidize self-employment (Ich-AGs)	Yes	No	No	No	No	No	4	24600
Narrow rights of employees	No	Yes	No	Yes	No	No	5	20100
Broaden laws for foreign workers	Yes	No	Yes	No	Yes	Yes	5	407
Efficient protection against dismissals also in small enterprises	Yes	No	Yes	No	Yes	Yes	5	30000
Unemployment Benefits II: reconsideration of partner's income	No	No	Yes	No	Yes	Yes	5	548
Simplifying temporary employment	No	Yes	No	Yes	No	No	5	9180
More actively subsidize the labour market	Yes	No	Yes	No	Yes	Yes	5	40900
<b>Co-determination</b>								
Restrict the establishment of works councils	No	No	No	Yes	No	No	5	35900
Cancel the parity co-determination	No	No	No	Yes	No	No	5	27300
Pacts for employment and competitiveness	No	Yes	No	Yes	No	No	5	120000
Reduce the autonomy of collective bargaining	No	Yes	No	Yes	No	No	5	12400
Reduce the influence of trade unions	No	Yes	No	Yes	No	No	5	34100
Abolish generally binding collective agreements	No	Yes	No	Yes	No	No	5	980
Retain area collective agreements	Yes	No	Yes	No	Yes	Yes	5	34600
Trade union representatives in supervisory boards	Yes	Yes	Yes	No	Yes	Yes	5	712
<b>Economy</b>								
Reduce the corporation tax	Yes	Yes	No	Yes	No	No	3	359000
Deregulate employment, health, and environment protection	No	Yes	No	Yes	No	No	5	770000
More favorable credits for medium-sized business	Yes	Yes	No	Yes	No	No	3	472000
More generous financing of research	Yes	Yes	Yes	Yes	No	Yes	3	289000
Better control of hedge funds	Yes	Yes	Yes	No	Yes	Yes	4	57400
Disclose the income of firms' directors	Yes	Yes	Yes	No	Yes	Yes	4	156000
Increase public investments	Yes	No	No	No	Yes	Yes	5	454000
No further reduction of statutory social responsibility	Yes	No	No	Yes	No	Yes	5	60100
Privatization of state investments	No	No	No	Yes	No	No	4	56300



Table 1: (Continued) Structuralized representation of party manifestos

	Opinions of parties and unions						Weighting	
	SPD	CDU	Green	FDP	Left-Party	Unions	Expert	Google results
	34.2%	35.2%	8.1%	9.8%	8.7%		18.09.05	25.09.05
<b>Taxes</b>								
Increase the value added tax (VAT)	No	Yes	No	No	No	No	5	37400
Abolish trade income tax	No	No	No	Yes	No	No	5	29800
Reduce the highest tax rate	No	Yes	No	Yes	No	No	4	57800
Increase the highest tax rate	No	No	Yes	No	Yes	Yes	4	44300
Tax-free surcharges for work on weekends and at night	No	Yes	No	Yes	No	No	5	10200
Cut flat-rate benefits for commuter travels	No	Yes	Yes	Yes	No	No	5	32400
Tax on assets	No	No	Yes	No	Yes	Yes	5	220000
Increase the inheritance tax for large heritages	No	No	Yes	No	Yes	Yes	4	610
"Richness-tax" for high income	Yes	No	Yes	No	Yes	Yes	5	54000
Tax on realization of shares in joint-stock companies	No	Yes	No	Yes	Yes	Yes	4	561
<b>Health and pensions</b>								
Account the income from capital	Yes	No	Yes	No	Yes	Yes	5	519
Compulsory health insurance for all employed	Yes	No	Yes	No	Yes	Yes	5	743000
Equal contribution for all insured	No	Yes	No	No	No	No	5	226000
Abolish the compulsory health insurance	No	No	No	Yes	No	No	5	968000
Obligatory basic insurance at private health insurance	No	No	No	Yes	No	No	5	203
Strengthen private old-age provisions	Yes	Yes	Yes	Yes	No	No	4	94600
Prolong the duration of working life	Yes	Yes	Yes	Yes	No	Yes	3	37500
Obligatory insurance for pensions	No	No	Yes	No	Yes	Yes	4	1
Basic income	No	No	No	Yes	No	No	5	652
<b>Gender</b>								
Anti-discrimination law	Yes	No	Yes	No	No	Yes	5	316000
Equal-opportunity law for private firms	No	No	Yes	No	Yes	Yes	5	13300
Reform the splitting of income between spouses	No	No	Yes	No	Yes	Yes	3	646
<b>Family</b>								
More general right to part-time work	Yes	No	Yes	No	Yes	Yes	5	526
One-year parental benefits as wage substitute	Yes	No	Yes	No	Yes	Yes	5	152
Right to the parental leave for children under three years	Yes	No	Yes	No	Yes	Yes	4	12800
Child-bonus 50 EUR to the pension insurance	No	Yes	No	No	No	No	3	12600
<b>Education</b>								
Tuition fees for the first course of study	No	Yes	No	Yes	No	No	4	102000
Abolish the school system with three school types	No	No	Yes	No	Yes	No	2	608
Statutory apportionment of trainee positions	No	No	Yes	No	Yes	Yes	5	1740
Strengthen / subsidize professional training	Yes	No	Yes	Yes	Yes	Yes	4	198000
Establishing the all-day school	Yes	No	Yes	No	Yes	Yes	5	91500

Table 1: (Continued) Structuralized representation of party manifestos

	Opinions of parties and unions						Weighting	
	SPD	CDU	Green	FDP	Left-Party	Unions	Expert	Google results
	34.2%	35.2%	8.1%	9.8%	8.7%		18.09.05	25.09.05
<b>East Germany</b>								
Some exceptions from federal laws	No	Yes	No	Yes	No	No	5	21000
Subsidize households	Yes	Yes	No	Yes	Yes	No	3	313
<b>Energy and environment</b>								
Longer terms for nuclear power plants	No	Yes	No	Yes	No	No	4	9910
Subsidize renewable energy	Yes	No	Yes	No	Yes	Yes	3	212000
Subsidize black coal industry	Yes	No	No	No	Yes	Yes	4	46800
Continue the agriculture reform	Yes	No	Yes	No	Yes	Yes	3	568
Restrict genetic technologies	Yes	No	Yes	No	Yes	Yes	3	133000
Introduce the environmental code	Yes	No	Yes	No	No	Yes	3	18700
Abolish the can pledge	No	No	No	Yes	No	No	1	12300
Speed limit on motor ways	No	No	Yes	No	Yes	No	1	50500
<b>Domestic policy</b>								
Use army forces in domestic problems	No	Yes	No	Yes	No	No	3	46800
Abolish large bugging operations	No	No	Yes	Yes	Yes	Yes	2	606
Abolish the access of public authorities to bank accounts	No	No	No	Yes	No	No	3	215
Sharpen the immigration restrictions	No	Yes	No	No	No	No	4	62
Allow double nationality	No	No	Yes	No	Yes	Yes	4	107000
People's participation at the national level	No	No	Yes	Yes	Yes	Yes	3	17000
Improve labelling of foodstuffs	Yes	Yes	Yes	No	Yes	Yes	1	39000
Culture as the national objective in the Basic Law	Yes	No	Yes	Yes	No	Yes	1	19700
<b>Foreign affairs</b>								
Abolish the compulsory military service	No	No	Yes	Yes	Yes	No	2	38100
NATO is the most important security pact	No	Yes	No	Yes	No	No	3	37
Withdraw nuclear weapons from Germany	No	No	No	No	Yes	No	3	29200
Increase the development aid for other countries	Yes	No	Yes	No	Yes	Yes	3	104000
<b>European politics</b>								
Accept Turkey as the EU member state	Yes	No	Yes	Yes	Yes	Yes	4	51400
Strictly respect the stability pact	No	Yes	No	Yes	No	No	5	853
Reconsider the EU-constitution	No	No	No	Yes	Yes	No	5	548
Develop the European joint defense policy	Yes	Yes	Yes	Yes	No	Yes	3	28200
Liberalize the Single European Market for services	No	Yes	No	Yes	No	No	5	35000
Strengthen the social dimension of the EU	Yes	No	Yes	No	Yes	Yes	5	144000

question, 44.2% on the second question, etc., although it obtained only 34.2% votes. This means that a party usually represents a larger group than its direct adherents.

The average percentage of the voters represented is understood to be the *popularity* of the party. For example, the computed popularity of the SPD is 67.5%, almost twice the percentage of its direct adherents.

The frequency of representing a majority ( $\geq 50\%$ ) is called the *universality* of the party. For instance, the SPD represents a majority on 86 of 95 questions. This provides  $\frac{86}{95} \cdot 100\% = 90.5\%$  universality.

The indices of popularity and universality can be computed directly (unweighted), or with weight coefficients of the questions. Then the popularity is defined to be the weighted average representativeness, and the universality is defined to be the weighted frequency of representing a majority; for details see Section 6.

### 3 Evaluation of parties

The popularity and universality of parties and of DGB are displayed in Figure 3. Each indicators is given in three versions: for *Unweighted* (u) questions, for by Anne Graef as *Expert* (e) weighted questions as well as by *GOOGLE*-results (g) weighted questions. Which conclusions do follow from Figure 3?

#### **In spite of shortage of votes, the SPD remains to be the most popular and most universal German party**

The 67.5% unweighted popularity of the SPD means that on the average it represents the opinion of 67.5% voters. The unweighted 90.5% universality means that it represents a majority on 86 of 95 questions.

Note that both indices of the SPD are higher than that of the election winner CDU. This means that, despite the unfavorable vote ratio, the SPD represents the electorate better. The shortage of votes is rather due to a disappointment of citizens by the economic recession and governmental policy than due to the electoral program.

#### **High representativeness of the German Trade Union Federation (DGB)**

Figure 2: What do the voters give their votes for?



Figure 2: (Continued) What do the voters give their votes for?

Percentage of voters, who with YES/NO to the questions of party manifestos answer: by voting for the SPD (red), CDU (black), Green (green), FDP (yellow), Left-Party (dark red). Position of unions (DGB) (blue).

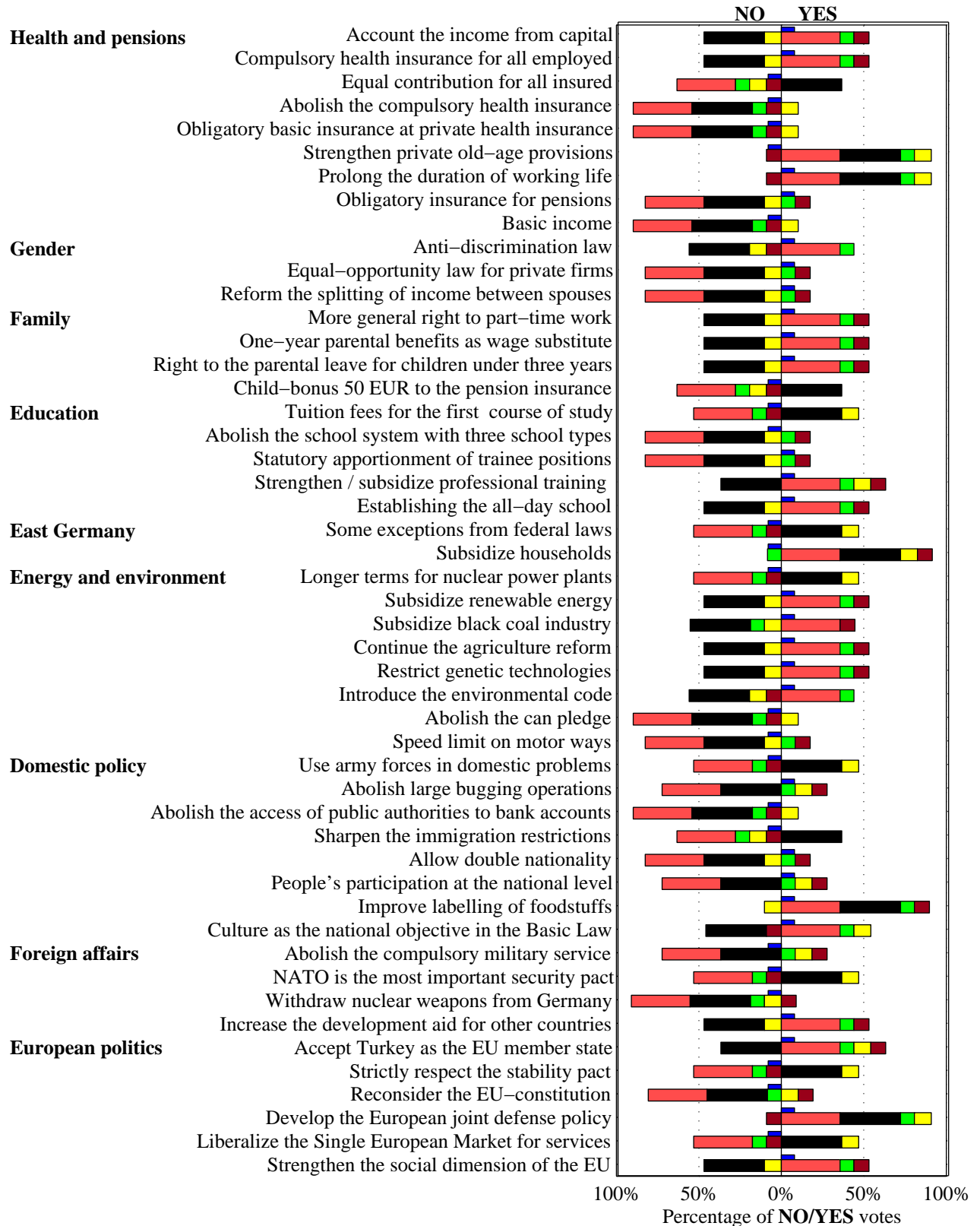
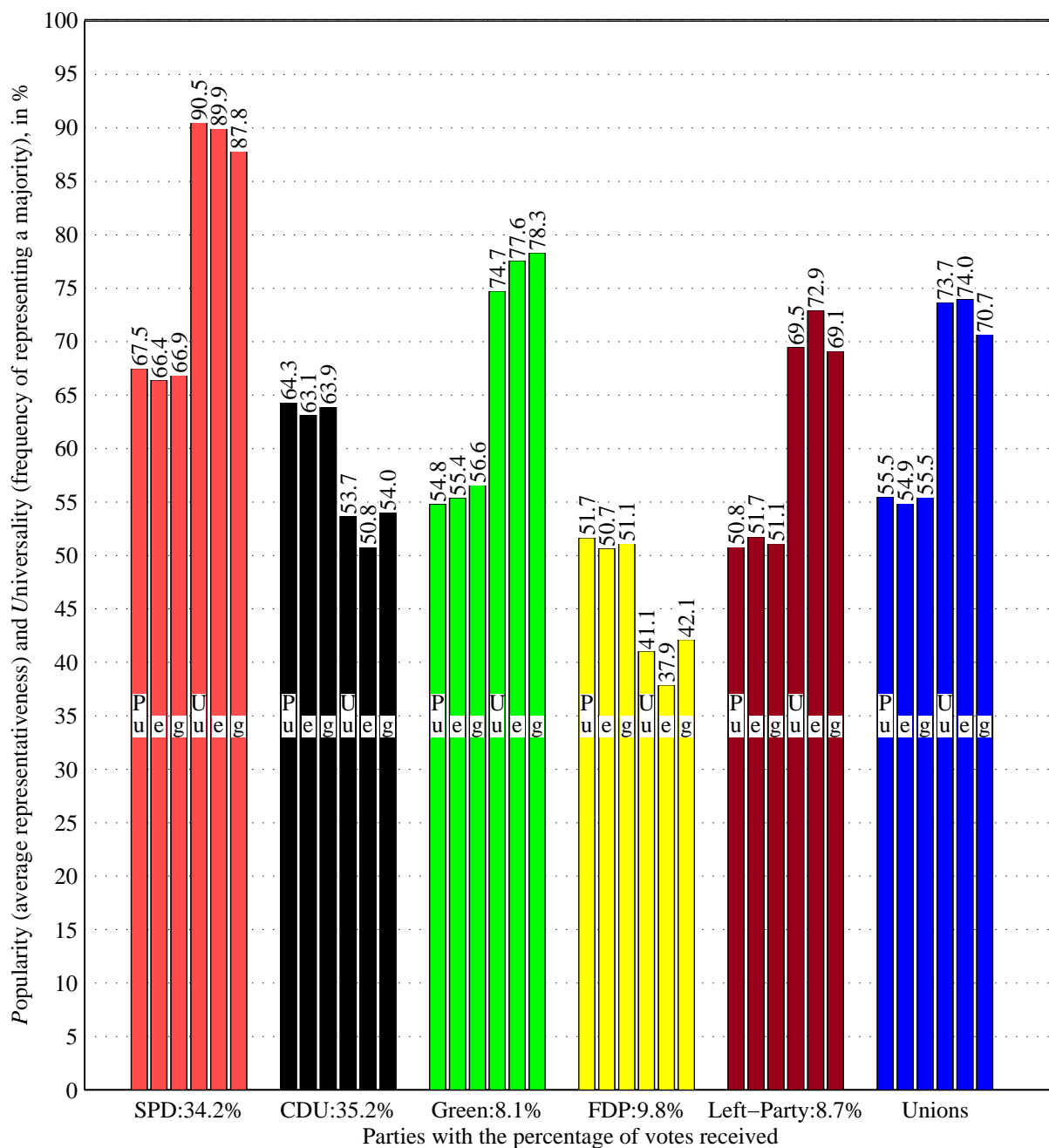


Figure 3: Indicators of popularity and universality of parties and of DGB for unweighted (u) questions, for by an expert (e) weighted questions and for by GOOGLE-results (g) weighted questions



The high indices of the DGB mean that it well represents the public opinion and finds a significant support in the society. Note that this conclusion is obtained with no interrogation of public opinion but indirectly, by comparing the position of the DGB with the election results.

### **Weighting plays a negligible role in the evaluation**

As one can see in Figure 3, the three weighting types of the questions (unweighted, expert-weighting, and GOOGLE-weighting) has a little influence on the indicators' values. Indeed, the party answers are backed up by the party "ideology" which determines a high intra-question correlations. Therefore, under-weighting and even omitting some questions plays a negligible role, because other questions carry superfluous information on the parties (over-weighting some questions is equivalent to under-weighting other questions).

Henceforth, only unweighted indicators will be considered.

Table 2 displays the percentage of votes and unweighted indices of popularity and universality of the parties and of the DGB for all the 16 German federal states and for the whole of Germany. Besides, each column of the table is provided with a ranking  $R$  of the federal states with respect to the corresponding indicator.

For example, the SPD is the most popular party in Bremen (74.5%, rank 1), where its universality 98.9% is also maximal (the SPD represents a majority in 94 of 95 questions). However, its highest percentage of votes is attained in Niedersachsen with somewhat lower indices (5th and 3rd rank, respectively).

Both unweighted indicators are depicted in Figures 4 and 5. The CDU surpasses the SPD in Bavaria, Baden-Württemberg and Rheinland-Pfalz. At the party landscape, the CDU is seen behind the SPD in these three openings only.

The DGB attains its highest popularity in Brandenburg (65.8%) and the highest universality in Bremen (80%), whereas the CDU has a quite low standing in these federal states. The DGB is least popular and universal in the conservative Bavaria, where the CSU (the Bavarian partner of CDU) has the largest percentage of votes with rank 1 and represents a majority in all the 95 of 95 questions.

Table 2: Unweighted popularity and universality of parties and of DGB with ranks  $R$  of the German federal states (Länder)

	SPD			CDU			Green			FDP			Left-Party			Unions	
	Votes	Popu- larity	Univer- sality	Votes	Popu- larity	Univer- sality	Votes	Popu- larity	Univer- sality	Votes	Popu- larity	Univer- sality	Votes	Popu- larity	Univer- sality	Popu- larity	Univer- sality
	%/R	%/R	%/R	%/R	%/R	%/R	%/R	%/R	%/R	%/R	%/R	%/R	%/R	%/R	%/R	%/R	%/R
Baden-Württemberg	30.1/13	64.6/15	52.6/9	39.2/2	67.8/2	91.6/2	10.7/4	52.0/15	36.8/8	11.9/1	55.1/2	78.9/1	3.8/14	46.7/15	31.6/8	52.1/15	35.8/7
Bayern	25.5/15	61.3/16	44.2/10	49.3/1	73.6/1	100.0/1	7.9/7	47.7/16	28.4/9	9.5/6	57.8/1	70.5/2	3.4/15	42.9/16	25.3/9	47.7/16	27.4/8
Berlin	34.4/9	71.7/3	97.9/2	22.0/15	53.9/15	46.3/9	13.7/3	64.0/1	75.8/3	8.2/9	43.8/15	33.7/8	16.4/6	60.8/4	68.4/4	64.4/2	78.9/2
Brandenburg	35.8/6	72.2/2	93.7/5	20.6/16	52.1/16	50.5/6	5.1/12	63.9/2	71.6/6	6.9/13	41.7/16	37.9/5	26.6/1	64.3/1	72.6/2	65.4/1	76.8/3
Bremen	43.0/2	74.5/1	98.9/1	22.8/14	55.6/12	45.3/10	14.3/2	63.3/3	74.7/4	8.1/10	45.0/12	34.7/7	8.3/7	57.9/6	67.4/5	64.0/3	80.0/1
Hamburg	38.7/4	71.2/4	94.7/4	28.9/11	59.5/9	49.5/7	14.9/1	60.1/6	78.9/1	9.0/7	48.0/9	36.8/6	6.3/8	54.4/9	65.3/6	60.4/7	75.8/4
Hessen	35.7/7	67.9/12	90.5/8	33.7/6	64.2/6	53.7/3	10.1/5	54.8/12	74.7/4	11.7/2	52.6/5	41.1/4	5.3/10	49.7/12	69.5/3	55.4/12	73.7/6
Mecklenburg-Vorpommern	31.7/12	68.8/9	92.6/6	29.6/10	57.9/11	51.6/5	4.0/15	59.4/7	70.5/7	6.3/14	45.4/11	36.8/6	23.7/3	59.5/5	73.7/1	60.6/6	75.8/4
Niedersachsen	43.2/1	71.2/5	95.8/3	33.6/7	63.8/7	48.4/8	7.4/9	55.7/10	77.9/2	8.9/8	50.9/7	37.9/5	4.3/13	50.5/10	64.2/7	56.9/10	76.8/3
Nordrhein-Westfalen	40.0/3	69.6/7	91.6/7	34.4/5	64.4/5	52.6/4	7.6/8	54.9/11	73.7/5	10.0/5	51.9/6	42.1/3	5.2/11	50.0/11	68.4/4	55.9/11	74.7/5
Rheinland-Pfalz	34.6/8	66.5/13	52.6/9	36.9/3	66.5/3	91.6/2	7.3/10	52.5/14	36.8/8	11.7/2	54.2/3	78.9/1	5.6/9	47.9/14	31.6/8	53.2/14	35.8/7
Saarland	33.3/10	69.0/8	92.6/6	30.2/8	59.3/10	51.6/5	5.9/11	58.6/8	70.5/7	7.4/12	46.9/10	36.8/6	18.5/5	57.1/7	73.7/1	59.6/8	75.8/4
Sachsen	24.5/16	64.8/14	92.6/6	30.0/9	59.8/8	51.6/5	4.8/13	56.7/9	70.5/7	10.2/3	48.7/8	36.8/6	22.8/4	56.9/8	73.7/1	57.4/9	75.8/4
Sachsen-Anhalt	32.7/11	69.7/6	92.6/6	24.7/13	54.8/14	51.6/5	4.1/14	61.2/4	70.5/7	8.1/10	44.2/14	36.8/6	26.6/1	61.8/2	73.7/1	62.5/4	75.8/4
Schleswig-Holstein	38.2/5	68.5/11	90.5/8	36.4/4	65.5/4	53.7/3	8.4/6	54.1/13	74.7/4	10.1/4	52.6/4	41.1/4	4.6/12	49.1/13	69.5/3	54.9/13	73.7/6
Thüringen	29.8/14	68.6/10	92.6/6	25.7/12	55.6/13	51.6/5	4.8/13	60.7/5	70.5/7	7.9/11	44.6/13	36.8/6	26.1/2	61.3/3	73.7/1	61.8/5	75.8/4
<b>Whole of Germany</b>	34.2	67.5	90.5	35.2	64.3	53.7	8.1	54.8	74.7	9.8	51.7	41.1	8.7	50.8	69.5	55.5	73.7



Figure 4: Unweighted popularity of parties and of DGB in German federal states (Länder)

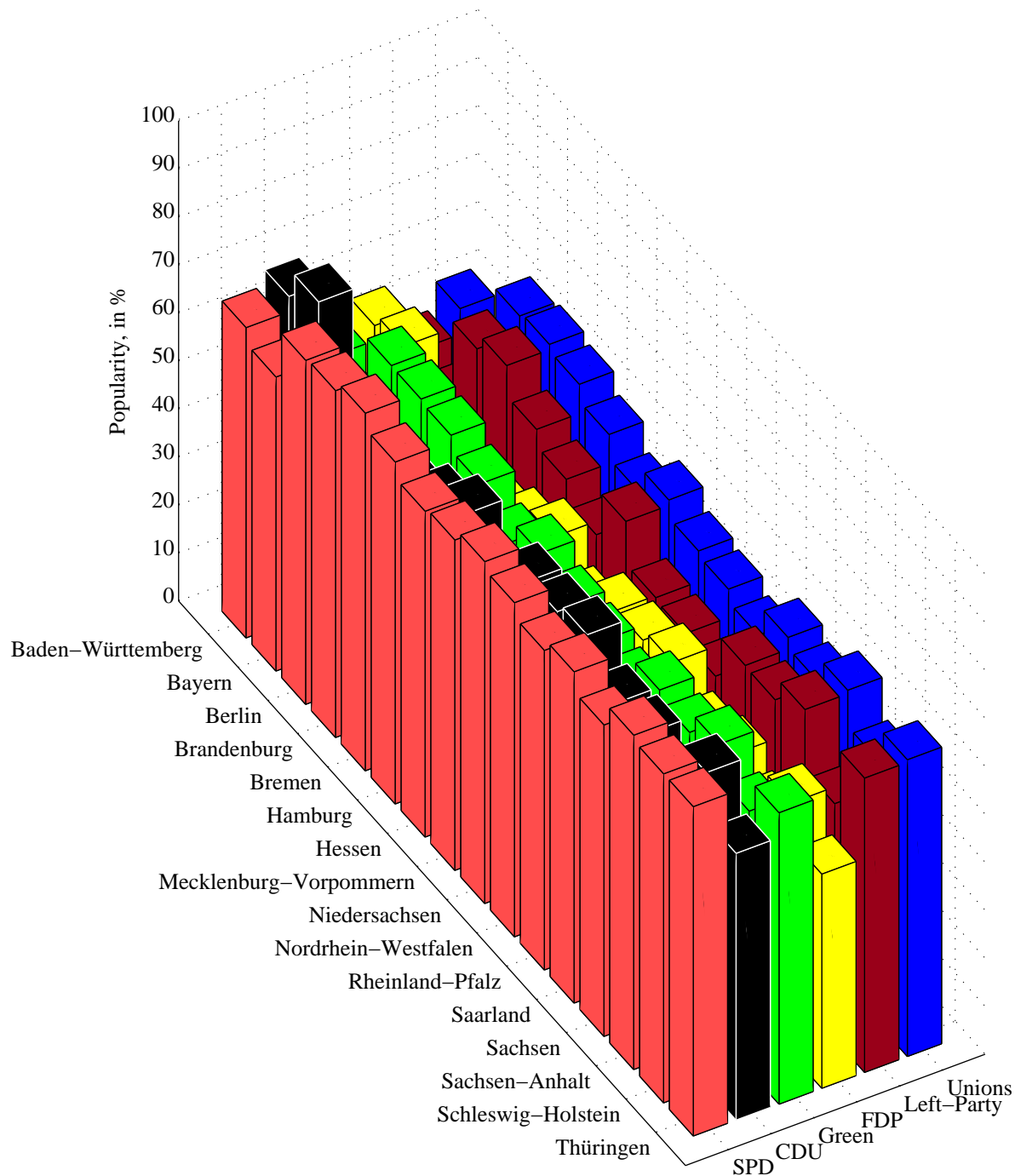
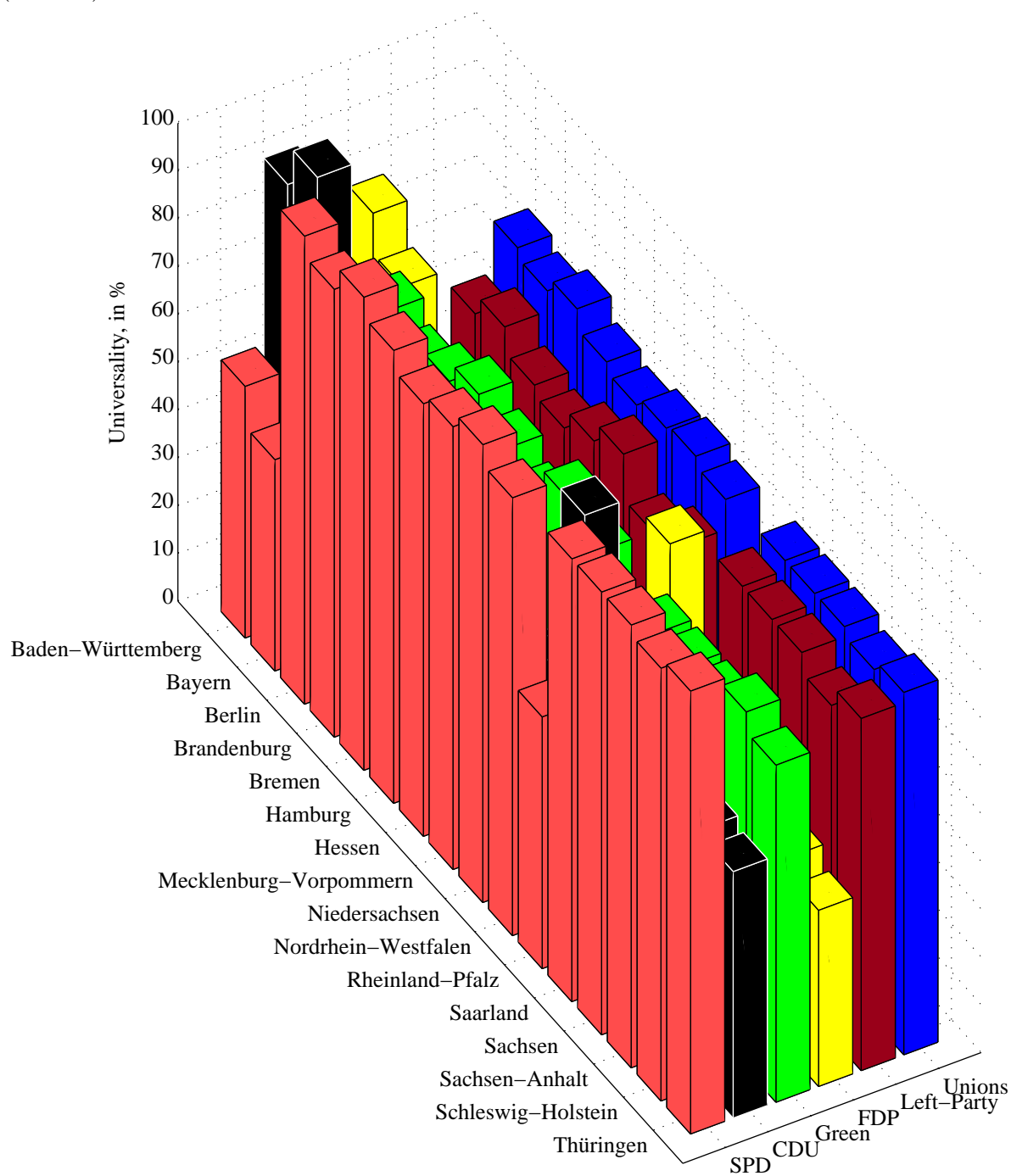


Figure 5: Unweighted universality of parties and of DGB in German federal states (Länder)



## 4 Evaluation of coalitions

Table 3 displays all possible coalitions with two and three parties with their indices of popularity and universality for unweighted questions. The first column contains the names of parties which constitute the coalition. The second column shows the coalition size in the total percentage of votes (= the percentage of parliament seats) with its ranking. For example, the first two-party coalition SPD/CDU has the percentage of votes  $34.2 + 35.2 = 69.4\%$ .

The third column shows the degree of unanimity of the coalition, expressed in % of questions on which all the member parties agree, also with a ranking. The following coalitions have the highest unanimity: Green/Left-Party (rank 1,  $81.1\% = 78/95$  questions), SPD/Green (rank 2,  $73.7\% = 70/95$  questions), CDU/FDP (rank 3,  $70.5\% = 67/95$  questions), and SPD/Left-Party (rank 4,  $66.3\% = 63/95$  questions). Then go the triplet-coalition SPD/Green/Left-Party with rank 5 and unanimity  $61.1\% = 58/95$  questions. The much discussed “Jamaica-coalition” CDU/Green/FDP (called so by its black-green-yellow colors) agrees in  $10.5\% = 10/95$  questions only and has rank 17.

On every question, the coalition members can either agree or disagree. In the first case the coalition is unanimous and unambiguously represents the voters with the same opinion (either Yes-Group, or No-Group). In the second case the coalition is not unanimous and can come to any of alternative opinions. Usually, the impact of coalition members on final coalition opinions is proportional to their weights (number of votes received). However, such a proportionality holds only approximately.

In our model, the *proportionality of impact to weights* is described by a special parameter  $p$ . For example, let the weight ratio of parties within a coalition be  $3 : 1$ . The maximal respect to weight  $p = 1$  means that the larger party determines the coalition opinions with the proportional probability  $\frac{3}{4}$ , and the smaller party with probability  $\frac{1}{4}$ . No respect to weight  $p = 0$  means equal impact, so that each of alternative opinions can be accepted by the coalition with probability  $\frac{1}{2}$ , regardless of member weights. The intermediate case  $p = \frac{1}{2}$  corresponds to the impact probabilities  $\frac{3}{4} \cdot \frac{1}{2} + \frac{1}{2} \cdot \frac{1}{2} = \frac{5}{8}$  and  $\frac{1}{4} \cdot \frac{1}{2} + \frac{1}{2} \cdot \frac{1}{2} = \frac{3}{8}$ . In the paper  $p = \frac{1}{2}$  is accepted and applied to all coalitions considered.

Under the assumption, both indices of popularity and universality turn out to be random variables. The coalition's popularity is understood as the expected size of the voter group represented. It is shown in the fourth column of Table 3, *Expectation*. The prediction accuracy is specified in the fifth column of Table 3, *Standard deviation* (= square root of the variance) of the size of the group represented. The highest popularity 65.9% and the highest prediction accuracy (= lowest standard deviation)  $\pm 0.5\%$  are inherent in the coalition SPD/CDU, which is currently in power.

The next to last column of Table 3 contains the coalition universality understood as the expected frequency of representing a majority. The last column shows the standard deviation of the underlying random variable, characterizing the prediction accuracy. The most universal coalition is SPD/Green with rank 1 with the expected universality 85.1% and the second best prediction accuracy  $\pm 2.5\%$  (rank 2).

The location of coalitions in the space Popularity–Universality–Unanimity is depicted in Figure 6. As one can see, the coalitions differ in universality much more than in popularity. The results of principle component analysis are shown in Table 4. Recall that this type of analysis allows to approximate a cloud of observations with an ellipsoid, which first diameter is the direction of the maximal variance, the second diameter is the second maximal variance, etc. (JACKSON 1988, KRZANOWSKI 1988, and SEBER 1984). The contribution of universality absolutely predominates in the first two components. Consequently, the universality can be regarded as a more decisive indicator than popularity.

Some more details can be found in Figures 7–8 which show the coalitions in planes Unanimity–Popularity and Unanimity–Universality. The prediction accuracy (standard deviation) of the indicators is depicted by vertical grey segments. Note the location of coalitions along the ascending diagonal, meaning that the higher the degree of unanimity, the higher the indices of popularity and universality.

The coalition SPD/CDU (now in power) has a high popularity but a low degree of unanimity and a mediocre universality. The coalition SPD/Green/Left-Party (much discussed but not realized) has a higher degree of unanimity, somewhat lower popularity but a much higher universality. The coalition CDU/FDP (which held before the elections) has a higher degree of unanimity but relatively low indices of popularity and universality.

Table 3: Evaluation of coalitions for unweighted questions; the proportionality of impact to weights  $p = \frac{1}{2}$

Nr.	Coalition size	Unanimity	Popularity		Universality	
			Expectation	Standard deviation	Expectation	Standard deviation
	%/R	%/R	%/R	%/R	%/R	%/R
1 SPD, CDU	69.4/4	44.2/6	65.9/1	$\pm 0.5/1$	72.0/6	$\pm 3.8/6$
2 SPD, Green	42.3/16	73.7/2	63.1/2	$\pm 1.5/3$	85.1/1	$\pm 2.5/2$
3 SPD, FDP	44.0/12	33.7/7	61.8/4	$\pm 1.7/7$	72.6/4	$\pm 4.0/7$
4 SPD, Left-Party	42.9/15	66.3/4	61.6/5	$\pm 1.7/10$	83.1/2	$\pm 2.8/4$
5 CDU, Green	43.3/14	28.4/8	61.0/7	$\pm 1.5/5$	60.9/12	$\pm 4.1/8$
6 CDU, FDP	45.0/11	70.5/3	59.8/10	$\pm 1.7/8$	49.2/20	$\pm 2.7/3$
7 CDU, Left-Party	43.9/13	25.3/9	59.6/11	$\pm 1.7/11$	59.2/14	$\pm 4.2/9$
8 Green, FDP	17.9/19	22.1/12	53.2/17	$\pm 2.2/16$	57.1/15	$\pm 4.5/13$
9 Green, Left-Party	16.8/20	82.1/1	52.8/18	$\pm 1.3/2$	72.1/5	$\pm 2.2/1$
10 FDP, Left-Party	18.5/18	18.9/13	51.2/20	$\pm 2.4/19$	54.8/18	$\pm 4.6/17$
11 SPD, CDU, Green	77.5/3	23.2/11	62.0/3	$\pm 1.5/4$	66.9/8	$\pm 4.4/11$
12 SPD, CDU, FDP	79.2/1	24.2/10	61.4/6	$\pm 1.6/6$	65.1/11	$\pm 4.4/10$
13 SPD, CDU, Left-Party	78.1/2	17.9/14	60.7/8	$\pm 1.7/9$	65.3/10	$\pm 4.5/14$
14 SPD, Green, FDP	52.1/8	14.7/15	58.1/13	$\pm 2.1/14$	68.1/7	$\pm 4.5/12$
15 SPD, Green, Left-Party	51.0/10	61.1/5	60.5/9	$\pm 1.8/12$	82.5/3	$\pm 3.1/5$
16 SPD, FDP, Left-Party	52.7/7	9.5/18	56.8/14	$\pm 2.3/17$	66.3/9	$\pm 4.6/18$
17 CDU, Green, FDP	53.1/6	10.5/17	56.7/15	$\pm 2.2/15$	54.9/17	$\pm 4.6/16$
18 CDU, Green, Left-Party	52.0/9	17.9/14	58.5/12	$\pm 1.9/13$	59.3/13	$\pm 4.5/15$
19 CDU, FDP, Left-Party	53.7/5	7.4/19	55.5/16	$\pm 2.3/18$	53.8/19	$\pm 4.7/19$
20 Green, FDP, Left-Party	26.6/17	11.6/16	51.4/19	$\pm 2.4/20$	56.6/16	$\pm 4.8/20$

Table 4: Principal component analysis of the “cloud of observations” of the 20 coalitions in the space Popularity–Universality–Unanimity

	Principle components		
	1st component	2nd component	3rd component (residual)
Popularity	0.0568	-0.2327	-0.9709
Universality	0.2677	-0.9333	0.2394
Unanimity	0.9618	0.2735	-0.0093
Standard deviation w.r.t. new axes	24.9417	8.3166	3.3827

All of these show that the best would be likely the coalition SPD/Green/Left-Party which failed due to personal conflicts between party leaders.

## 5 Summary

**(Initial data)** The indices of popularity and universality of parties and their coalitions are derived from the results of the German parliament elections 2005 and party manifestos.

**(Indicators)** These allow us to evaluate the representativeness of parties and of the German Trade Union Federation (DGB), the degree of unanimity of coalitions as well as to predict their performance.

**(Most representative party)** According to the quantitative analysis, the SPD was the most representative German party at the time of the elections, although it was not the election winner.

**(Most representative coalition)** The actual coalition in power, CDU/SPD, might have a better alternative SPD/Green/Left-Party if the politicians could surmount their prejudgements.

**(Computational formulas)** The vector-matrix computing formulas derived in the next sections are easy to implement and provide a clear geometric interpretation of interactions between the model elements.

Figure 6: Location of coalitions in the space Popularity–Universality–Unanimity for un-weighted questions; the proportionality of impact to weights  $p = \frac{1}{2}$

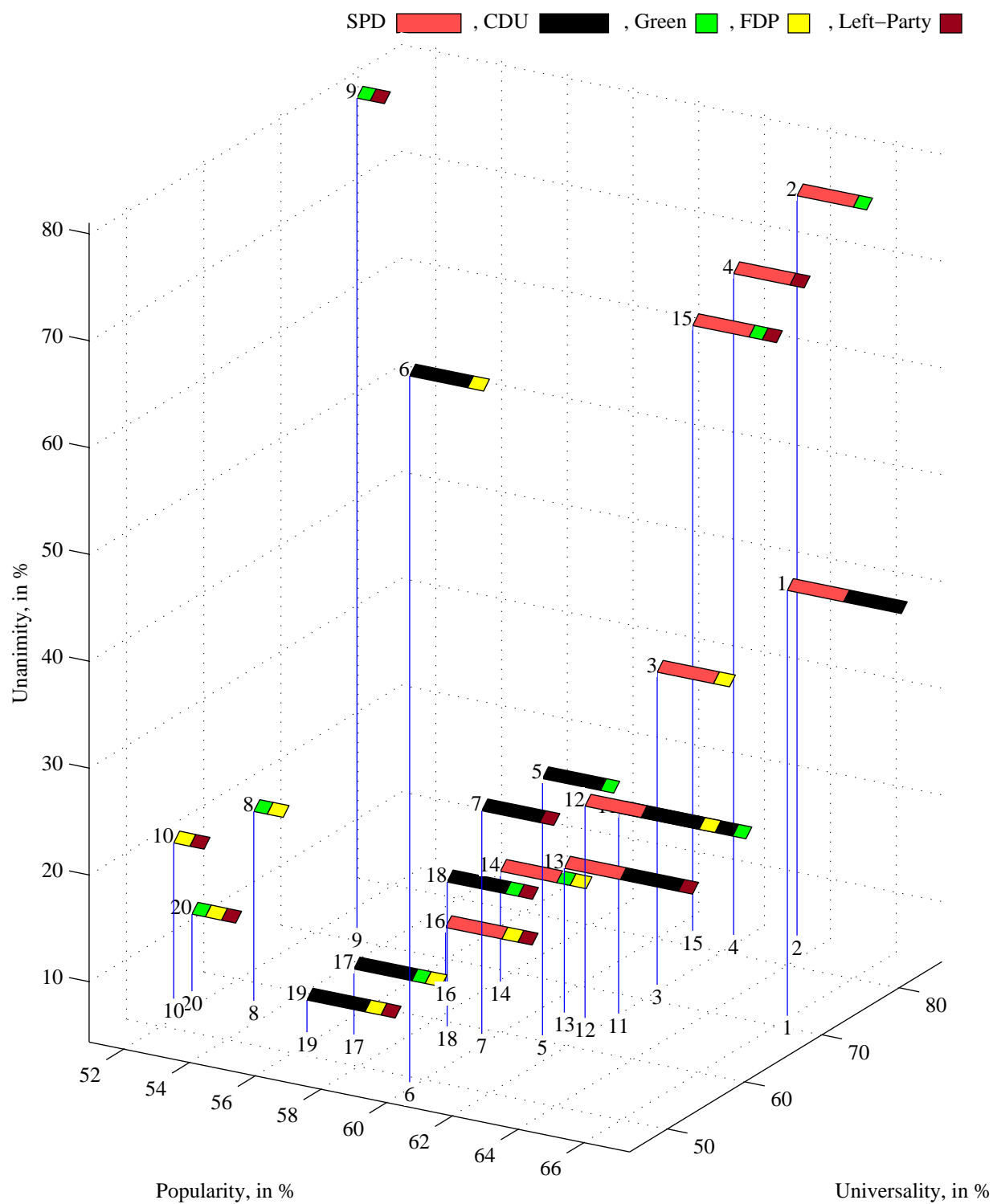


Figure 7: Degree of unanimity versus popularity of coalitions for unweighted questions; the proportionality of impact to weights  $p = \frac{1}{2}$

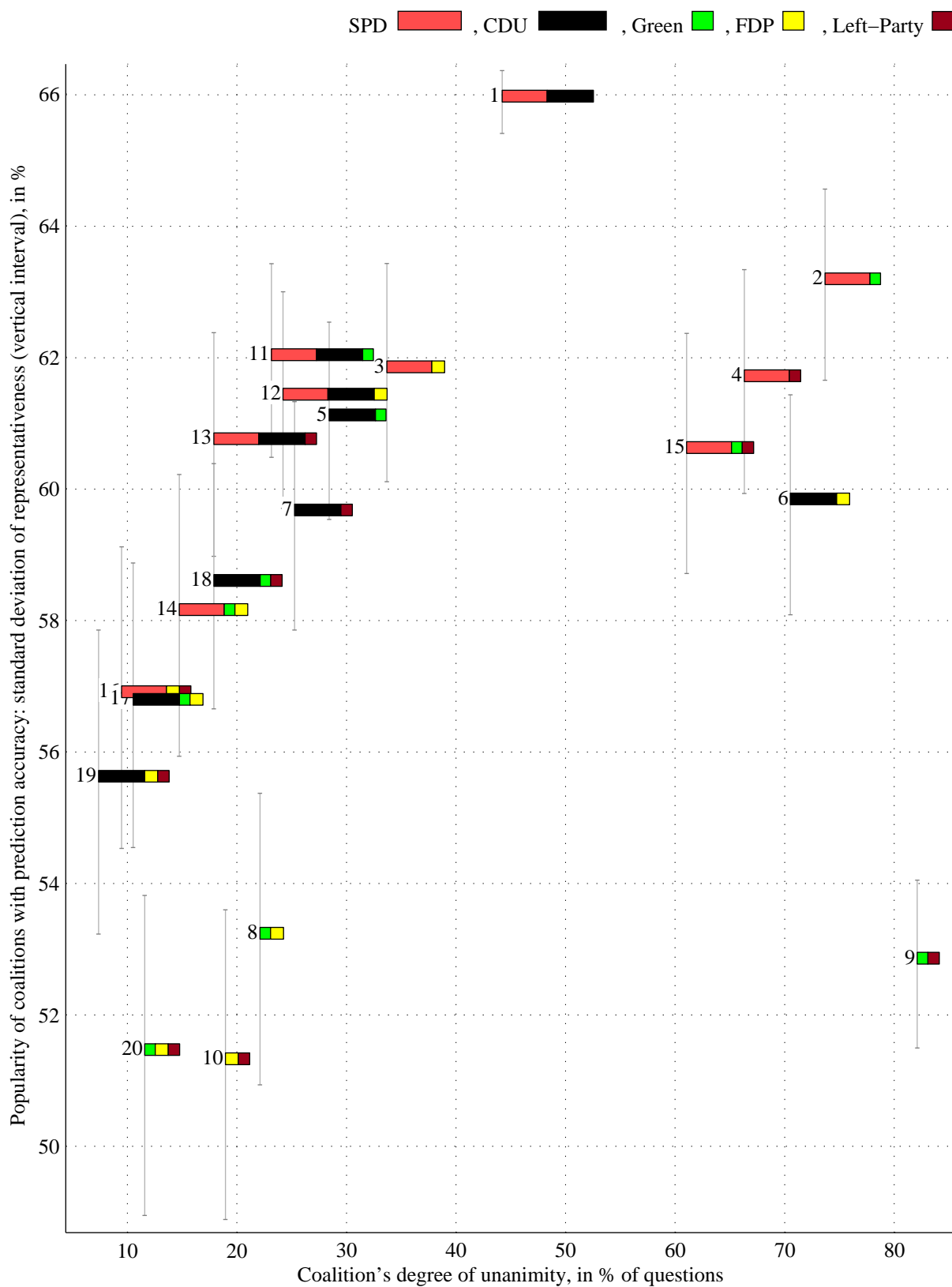
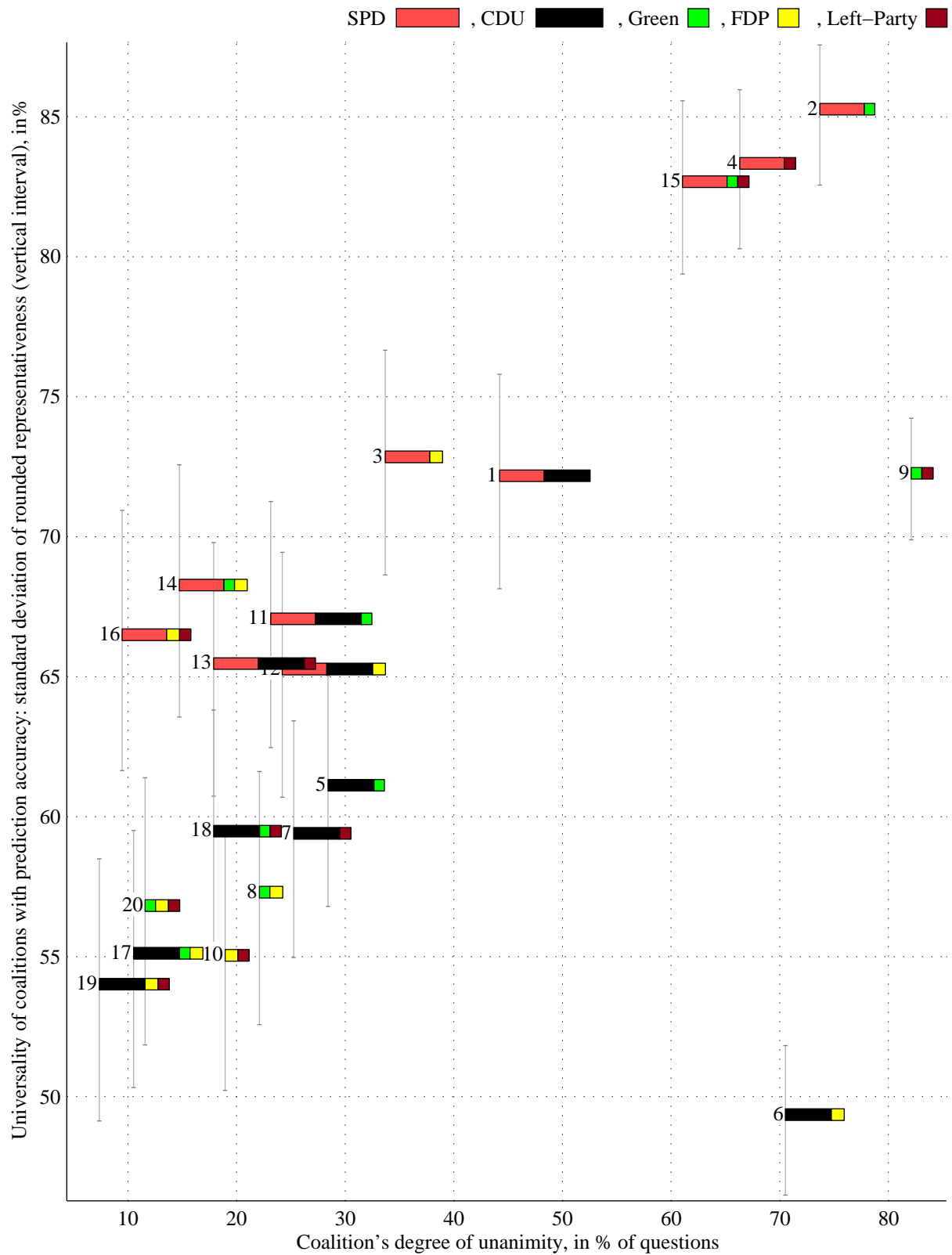




Figure 8: Degree of unanimity versus universality of coalitions for unweighted questions; the proportionality of impact to weights  $p = \frac{1}{2}$



## 6 Annex: Computational issues

This section introduces notation and formulas for evaluating parties and their coalitions. Similar tasks of coalition analysis have been considered with the use of relational algebras (Schmidt and Ströchlein 1993, Brink et al. 1997, de Swart et al. 2003, Berghammer et al. 2005, and Rusinowska et al. 2005). The vector-matrix formulas adduced below are much simpler and have a clear geometric interpretation.

**Questions/Agenda** By  $Q$  denote the agenda with dichotomous questions  $q$ , that is, which evoke either positive or negative *opinions* (Yes/No answers) coded by  $\pm 1$ . In our applications, the list of  $m = 95$  questions is given in the first column of Table 1.

The importance of questions is reflected by weights  $\mu_q$  which constitute a *probability measure*  $\mu$  on  $Q$  (the reference to “probability” can be misleading; in fact, we just need a normalized additive measure). It assumes

*non-negativity*

$$\mu_q \geq 0 \quad \text{for every } q \in Q ,$$

*additivity*

$$\mu_X = \sum_{q \in X} \mu_q \quad \text{for every subset } X \subset Q ,$$

and *normality*

$$\sum_q \mu_q = 1 \quad (\text{the totality is } 100\%) . \tag{1}$$

The question weights are collected into the column  $m$ -vector

$$\boldsymbol{\mu} = \{\mu_q\} .$$

In our application, “unweighted” means equal weights  $\mu_q = 1/95$ . The non-normalized expert weights and GOOGLE-weights are given in the last two columns of Table 1. To fulfill the normalizing condition (1), divide each weight by the total of the 95 weights in the given column.

**Candidates** Consider  $N$  candidates  $c$  for election; in our application the candidates are  $N = 5$  parties. Their positive or negative opinions  $b_{qc} = \pm 1$  on questions  $q$  are collected into the  $(m \times N)$ -matrix of candidate opinions derived from columns 2–6 of Table 1

$$\mathbf{B} = \{b_{qc}\}, \quad b_{qc} = \pm 1 .$$

**Balance of opinions in the society** Consider the *society* of 45,430,368 voters for the five leading parties, that is, 96% of all the 47,287,988 voters with the valid second vote (for parties); see BUNDESWAHLLEITER (2005). The 4% voters for other 19 minor parties are not considered.

On each question  $q$ , the society falls into *protagonists* who answer the question positively, and *antagonists* who answer the question negatively. These groups, redefined for each question, are shown in Figure 2, assuming that voters' opinions are represented by the parties.

On every question  $q$ , the *balance of opinions*  $a_q$  is the predominance of protagonists over antagonists, expressed in fraction (%) of the society. In Figure 2, it corresponds to the difference between the length of the right-hand and left-hand rectangles. For example, for question  $q = 1$  (Relax the protection against dismissals?) we obtain

$$a_1 = \frac{\overbrace{35.2}^{\text{Votes for CDU}} + \overbrace{9.8}^{\text{Votes for FDP}} - \overbrace{34.3}^{\text{Votes for SPD}} - \overbrace{8.1}^{\text{Votes for Green}} - \overbrace{8.7}^{\text{Votes for Left-Party}}}{\underbrace{35.2 + 9.8 + 34.3 + 8.1 + 8.7}_{\text{Total votes for the five leading parties}}} = -0.0635 = -6.35\% .$$

To facilitate computing, define the normalized *vector of candidate weights*, the coordinates of which are proportional to percentages of votes for the five parties<sup>4</sup>

$$\boldsymbol{\xi} = \{\xi_c\} = \frac{(34.2, 35.2, 8.1, 9.8, 8.7)'}{35.2 + 9.8 + 34.3 + 8.1 + 8.7} . \quad (2)$$

The column 95-vector *balance of opinions* in the society is the matrix-vector product<sup>5</sup>

$$\mathbf{a} = \{a_q\} = \mathbf{B}\boldsymbol{\xi} . \quad (3)$$

<sup>4</sup>The figures in (2) are for the whole of Germany. For federal states use the voting results from Table 2.

<sup>5</sup>The balance of opinions in the society should be derived from individual opinions. Here, the balance of opinions in the society is indirectly derived from the votes for candidates and their opinions, because direct data on individual opinions are not available.

**Popularity and universality of the candidates (parties)** The *representativeness*  $r_{qc}$  of candidate  $c$  on question  $q$  is the size of the social group represented, measured in fraction (percentage) of the society

$$r_{qc} = \begin{cases} \text{total weight of protagonists in the society} & \text{if } b_{qc} = 1 \\ \text{total weight of antagonists in the society} & \text{if } b_{qc} = -1 \end{cases} .$$

The *popularity* of candidate  $c$  is the weighted average of his representativeness (= expected representativeness)

$$P_c = \sum_q \mu_q r_{qc} \quad (4)$$

The *universality* of candidate  $c$  is the weighted frequency with which he represents a non-strict majority (= expected rounded representativeness):

$$U_c = \sum_{q:r_{qc} \geq \frac{1}{2}} \mu_q = \sum_q \mu_q \text{round}[r_{qc}] \quad (5)$$

In a sense, the popularity reflects the spatial aspect of representativeness, and the universality reflects its temporal aspect.

**Computing the indicators and their geometrical interpretation** Introduce the following notation (all vectors are column vectors!):

' the operation of vector/matrix transpose

. the operation of element-by-element product of vectors and matrices of the same size, for example,  $(1, 2) \cdot (3, 4) = (3, 8)$

.<sup>2</sup> the operation of element-by-element square of vectors and matrices, for example,  $(2, 3) \cdot^2 = (4, 9)$

+ the addition of scalars to matrices or vectors by applying it to all matrix elements, for example,  $0.5 + (1, 2) = (1.5, 2.5)$

diag $\mathbf{a}$  the diagonal  $(m \times m)$ -matrix with elements of vector  $\mathbf{a}$  on its main diagonal

sign $\mathbf{a}$  the  $m$ -vector of *majority opinions* derived from the vector  $\mathbf{a}$  by applying the sign function to its coordinates

$$\text{sign}a_q = \begin{cases} +1 & \text{if } a_q > 0, & \text{i.e. the majority opinion on question } q \text{ is positive} \\ 0 & \text{if } a_q = 0, & \text{i.e. tie opinion on question } q \\ -1 & \text{if } a_q < 0, & \text{i.e. the majority opinion on question } q \text{ is negative} \end{cases}$$

$\delta_{\mathbf{a}} = 1 - \text{abs}(\text{sign}\mathbf{a})$  the  $m$ -vector of *indicators of tie opinion*, with the  $q$ th coordinate being 1 if the opinion on question  $q$  is tied, and 0 otherwise; we use this vector to express the total weight of questions with a tie opinion

$$\boldsymbol{\mu}'\delta_{\mathbf{a}} = \sum_{q:a_q=0} \mu_q \quad (6)$$

**Theorem 1 (Computing the indicators and their geometric interpretation)**

$$\underbrace{\mathbf{R}}_{\substack{(m \times N)\text{-matrix of} \\ \text{representativeness} \\ \text{of candidates } c \\ \text{on questions } q}} = \frac{1}{2} + \frac{1}{2} \underbrace{\text{diag}\mathbf{a}}_{\substack{\text{diagonal} \\ (m \times m)\text{-matrix of} \\ \text{balance of opinions} \\ \text{in the society}}} \underbrace{\mathbf{B}}_{\substack{(m \times N)\text{-matrix} \\ \text{of opinions} \\ \text{of candidates } c \\ \text{on questions } q}} \quad (7)$$

$$\underbrace{\{\mathbf{P}_c\}}_{\substack{\text{row } N\text{-vector of} \\ \text{popularity of} \\ \text{all candidates } c}} = \boldsymbol{\mu}'\mathbf{R} \quad (8)$$

$$= \frac{1}{2} + \frac{1}{2} \underbrace{(\boldsymbol{\mu} \cdot \mathbf{a})'}_{\substack{\boldsymbol{\mu}\text{-weighted} \\ m\text{-vector} \\ \text{of balance} \\ \text{of opinions}}} \underbrace{\mathbf{B}}_{\substack{(m \times N)\text{-matrix} \\ \text{of opinions} \\ \text{of candidates } c \\ \text{on questions } q}} \quad (9)$$

$$\underbrace{\{\mathbf{U}_c\}}_{\substack{\text{row } N\text{-vector of} \\ \text{universality of} \\ \text{all candidates } c}} = \boldsymbol{\mu}'\text{round}[\mathbf{R}] \quad (10)$$

$$= \frac{1}{2} + \frac{1}{2} \underbrace{\boldsymbol{\mu}'\delta_{\mathbf{a}}}_{\substack{\text{total weight of} \\ \text{questions with} \\ \text{tie opinions} \\ \text{(constant scalar} \\ \text{independent of } c)}} + \frac{1}{2} \underbrace{(\boldsymbol{\mu} \cdot \text{sign}\mathbf{a})'}_{\substack{\boldsymbol{\mu}\text{-weighted} \\ m\text{-vector} \\ \text{of majority} \\ \text{opinion}}} \underbrace{\mathbf{B}}_{\substack{(m \times N)\text{-matrix} \\ \text{of opinions} \\ \text{of candidates } c \\ \text{on questions } q}}, \quad (11)$$

where the vector  $\mathbf{a}$  is computed from (3).

Thus, the most popular (universal) candidate  $c$  has the largest projection of his opinion vector  $\mathbf{b}_c$  (= the  $c$ th column of matrix  $\mathbf{B}$ ) on the  $\boldsymbol{\mu}$ -weighted social vector of balance of opinions  $\boldsymbol{\mu} \cdot \mathbf{a}$  (respectively, on the  $\boldsymbol{\mu}$ -weighted vector of majority opinion  $\boldsymbol{\mu} \cdot \text{sign}\mathbf{a}$ )<sup>6</sup>.

The formulas of the theorem are used to compute the indicators in Table 2 and for Figures 3, 4, and 5.

---

<sup>6</sup>The popularity of candidate  $c$  is a bilinear form of social opinions  $\mathbf{a}$  and candidate opinions  $\mathbf{b}_c$  ( $c$ th column of matrix  $\mathbf{B}$ ). In our application, vectors  $\mathbf{a}$  and matrix  $\mathbf{B}$  are derived from candidate opinions, reducing the bilinear form to quadratic.

**Remark 1 (Analogy with force vectors in physics)**

Recall that in mechanics a work is produced by displacements. Accordingly, the only productive constituent of a force vector is its projection on the direction of motion. In Theorem 1, the “work for the society” of a candidate is measured by the projection of his opinion vector on the “main stream”, the social vector of balance of opinions, or social vector of majority opinion. Thus the variety of representatives and representative bodies with numerous opinions on the agenda is projected onto a single line axis, exactly like in the case of physical forces.

**Evaluation of coalitions** By definition, a *coalition*  $C$  is a subset of the set of candidates. The *coalition size* is the total percentage of voters for all the candidates of the coalition. For instance, the size of coalition  $C = \text{SPD}/\text{CDU}$  is  $34.2 + 35.2 = 69.4\%$ .

The (relative) weights of members of coalition  $C$  are collected in the normalized vector

$$\overset{C}{\boldsymbol{\xi}} = \left\{ \overset{C}{\xi}_c = \frac{\xi_c}{\sum_{c \in C} \xi_c}, \quad c \in C \right\} .$$

The matrix of opinions of coalition members is the restriction of  $\mathbf{B}$  to columns  $c \in C$ :

$$\overset{C}{\mathbf{B}} = \{b_{qc}, \quad c \in C\} . \tag{12}$$

The *balance of opinions within coalition*  $C$  is the vector

$$\overset{C}{\mathbf{b}} = \left\{ \overset{C}{b}_q \right\} = \overset{C}{\mathbf{B}} \overset{C}{\boldsymbol{\xi}} . \tag{13}$$

The (degree of) *unanimity* of coalition  $C$  is the total weight of the questions on which the coalition members have equal positions. For instance, SPD and CDU agree in 42 of 95 questions, so that its unanimity is 44.2%.

If a coalition  $C$  is unanimous on question  $q$  its representativeness  $r_{qC}$  is equal to that of its every member. If the coalition is not unanimous, it can come to either positive, or negative opinion on question  $q$ . We assume that on question  $q$  a coalition  $C$  represents protagonists in the society with a probability ranging from the relative weight  $\overset{C}{\xi}_q^+$  of coalition protagonists to the absolute uncertainty  $\frac{1}{2}$ :

$$\overset{C}{\xi}_q^+ p + \frac{1}{2}(1 - p), \quad 0 \leq p \leq 1 ,$$

where  $p$  denotes the *proportionality of impact to weights* of coalition members. If  $p = 1$  the impact of coalition members is proportional to their weights. If  $p = 0$  the coalition comes to  $\pm 1$  opinions with equal chances, so that both protagonists and antagonists in the society are represented with equal probabilities  $\frac{1}{2}$ .

Under these provisions, the representativeness and the indicators of popularity and universality of a coalition are random variables which behavior for non-unanimous questions depends on the parameter  $p$ . The *popularity*  $P_C$  and *universality*  $U_C$  of coalition  $C$  are understood as its expected representativeness and expected rounded representativeness. Besides, we compute the variance of representativeness and of rounded representativeness as a measure of accuracy of the coalition indicators.

**Theorem 2 (Evaluation of coalitions)**

$$\text{Unanimity of } C = 1 - \boldsymbol{\mu}' \overset{C}{\mathbf{s}} \quad (14)$$

$$P_C = E r_C = \underbrace{\overline{P_C}}_{\substack{= \sum_{c \in C} \xi_c^C P_c \\ \text{weighted} \\ \text{average} \\ \text{popularity} \\ \text{of coalition} \\ \text{members}}} - \frac{1}{2} \underbrace{(1-p)}_{\text{impact of uncertainty}} \underbrace{(\boldsymbol{\mu} \cdot \mathbf{a})'}_{\substack{\boldsymbol{\mu}\text{-weighted} \\ m\text{-vector} \\ \text{of balance} \\ \text{of opinions}}} \underbrace{\begin{pmatrix} C & C \\ \mathbf{s} & \mathbf{b} \end{pmatrix}}_{\substack{m\text{-vector} \\ \text{of balance} \\ \text{of opinions} \\ \text{within the} \\ \text{coalition for} \\ \text{non-unanimous} \\ \text{questions}}} \quad (15)$$

$$U_C = E \text{round}[r_C] = \underbrace{\overline{U_C}}_{\substack{= \sum_{c \in C} \xi_c^C U_c \\ \text{weighted} \\ \text{average} \\ \text{universality} \\ \text{of coalition} \\ \text{members}}} - \frac{1}{2} \underbrace{(1-p)}_{\text{impact of uncertainty}} \underbrace{(\boldsymbol{\mu} \cdot \text{sign} \mathbf{a})'}_{\substack{\boldsymbol{\mu}\text{-weighted} \\ m\text{-vector} \\ \text{of majority} \\ \text{opinion}}} \underbrace{\begin{pmatrix} C & C \\ \mathbf{s} & \mathbf{b} \end{pmatrix}}_{\substack{m\text{-vector} \\ \text{of balance} \\ \text{of opinions} \\ \text{within the} \\ \text{coalition for} \\ \text{non-unanimous} \\ \text{questions}}}, \quad (16)$$

where

$$\overset{C}{\mathbf{s}} = \left\{ s_q^C = \text{sign} \left( n - \left| \sum_{c \in C} b_{cq} \right| \right) \right\}, \quad \text{are indicators of the coalition non-unanimity on questions } q, \text{ with } n \text{ being the number of coalition members,}$$

$$\overline{P_C} = \sum_{c \in C} \xi_c^C P_c \quad \text{is the weighted average popularity of coalition members, and}$$

$$\overline{U_C} = \sum_{c \in C} \xi_c^C U_c \quad \text{is the weighted average universality of coalition members.}$$

Besides, if the coalition opinions on non-unanimous questions are independent (= independent negotiations on every question) then

$$\mathbf{V}r_C = \frac{1}{4} [(\boldsymbol{\mu} \cdot \mathbf{a}) \cdot^2]' \left[ \overset{C}{\mathbf{s}} \cdot \left( 1 - p^2 \overset{C}{\mathbf{b}} \cdot^2 \right) \right] \quad (17)$$

$$\mathbf{V}\text{round}[r_C] = \frac{1}{4} [(\boldsymbol{\mu} \cdot \text{sign}\mathbf{a}) \cdot^2]' \left[ \overset{C}{\mathbf{s}} \cdot \left( 1 - p^2 \overset{C}{\mathbf{b}} \cdot^2 \right) \right] . \quad (18)$$

The formulas of the theorem with  $p = \frac{1}{2}$  are used to compute indicators in Table 3 and for Figures 6, 7, and 8.

### Remark 2 (Coalition indicators in the simplest case)

If  $p = 1$  (the impact of coalition members is proportional to their weights) then by (15) and (16) the popularity and universality of a coalition are equal to the weighted average of corresponding indicators of its members:  $P_C = \overline{P_C}$  and  $U_C = \overline{U_C}$ .

### Proof of Theorem 1

On every question  $q$ , obviously

$$\text{The weight of non-strict majority/minority} = \underbrace{\frac{1}{2}}_{\substack{\text{half} \\ \text{the} \\ \text{society}}} \pm \frac{1}{2} \underbrace{|a_q|}_{\substack{\text{predominance} \\ \text{of protagonists} \\ \text{over antagonists}}} .$$

Consequently, the representativeness of candidate  $c$  on question  $q$  is determined by the the sign of his opinion and by the sign of  $a_q$

$$r_{qc} = \underbrace{\frac{1}{2}}_{\substack{\text{half} \\ \text{the} \\ \text{society}}} + \frac{1}{2} \underbrace{a_q}_{\substack{\text{predominance} \\ \text{of protagonists} \\ \text{over antagonists} \\ \text{in the society}}} \underbrace{b_{qc}}_{\substack{= \pm 1 \\ \text{opinion of} \\ \text{candidate } c}} , \quad (19)$$

which matrix form is

$$\mathbf{R} = \frac{1}{2} + \frac{1}{2} \text{diag} \mathbf{a} \mathbf{B} , \quad (20)$$

as required in (7). Multiplying  $\boldsymbol{\mu}'$  by (20), as required in the definition (4), obtain (8) and (9):

$$\{P_c\} = \boldsymbol{\mu}' \mathbf{R}$$



$$\begin{aligned}
&= \boldsymbol{\mu}' \left[ \frac{1}{2} \begin{pmatrix} 1 \\ \vdots \\ 1 \end{pmatrix} + \frac{1}{2} \text{diag} \mathbf{a} \mathbf{B} \right] \\
&= \frac{1}{2} \cdot \underbrace{\sum_q \mu_q}_{=1} + \frac{1}{2} \boldsymbol{\mu}' \text{diag} \mathbf{a} \mathbf{B} \\
&= \frac{1}{2} + \frac{1}{2} (\boldsymbol{\mu} \cdot \mathbf{a})' \mathbf{B} .
\end{aligned} \tag{21}$$

To obtain (10), multiply  $\boldsymbol{\mu}'$  by  $\text{round}[\mathbf{R}]$ , as required by definition (5). To obtain (11), express the rounded representativeness of candidate  $c$  on question  $q$  by analogy with (19):

$$\begin{aligned}
\text{round}[r_{qc}] &= \frac{1}{2} + \frac{1}{2} \text{sign} a_q b_{qc} + \frac{1}{2} \underbrace{\delta_{a_q}}_{\substack{= 1 & \text{if } a_q = 0 \\ = 0 & \text{if } a_q \neq 0}} \\
&= \begin{cases} 1 & \text{if } a_q = 0 \\ 0 & \text{if } a_q \neq 0 \end{cases}
\end{aligned} \tag{22}$$

and proceed similarly to (21). ■

## Proof of Theorem 2

The unanimity of coalition members  $c \in C$  on question  $q$  means that either all  $b_{qc} = 1$ , or all  $b_{qc} = -1$ , implying  $|\sum_{c \in C} b_{cq}| = n$ , where  $n$  is the number of coalition members. Consequently,

$$s_q^C = \text{sign} \left( n - \left| \sum_{c \in C} b_{cq} \right| \right) = \begin{cases} 0 & \text{if } c \in C \text{ are unanimous on question } q \\ 1 & \text{otherwise} \end{cases} \tag{23}$$

$$1 - s_q^C = 1 - \text{sign} \left( n - \left| \sum_{c \in C} b_{cq} \right| \right) = \begin{cases} 1 & \text{if } c \in C \text{ are unanimous on question } q \\ 0 & \text{otherwise} \end{cases} \tag{24}$$

Hence, the total weight of the questions on which the coalition is unanimous

$$\begin{aligned}
\text{Unanimity of } C &= \sum_q \mu_q \left[ 1 - \text{sign} \left( n - \left| \sum_{c \in C} b_{cq} \right| \right) \right] \\
&= \sum_q \underbrace{\mu_q}_{=1} - \boldsymbol{\mu}' \mathbf{s}^C ,
\end{aligned}$$

as required in (14).

Compute the expectation and variance of representativeness  $r_{qC}$  of a coalition  $C$  for a given question  $q$ . Consider two cases.

- **Coalition members are unanimous on question  $q$ .** Express the coalition's representativeness by analogy with (19) and note that  $r_{qC}$  is constant, implying

$$\mathbb{E} r_{qC} = \frac{1}{2} + \frac{1}{2} a_q \underbrace{b_q^C}_{=\pm 1 \text{ in case of unanimity}} \quad (25)$$

$$\mathbb{V} r_{qC} = 0 . \quad (26)$$

- **Coalition members are not unanimous on question  $q$ .** The representativeness  $r_{qC}$  is a Bernoulli random variable, taking two values  $\frac{1}{2} \pm \frac{1}{2} a_q$  with range  $|a_q|$ . The coalition can accept the opinion of majority in the coalition, or of its minority, representing respectively the social groups with the size:

$$\frac{1}{2} + \frac{1}{2} a_q \text{sign } b_q^C \quad \text{with probability} \quad \underbrace{\left( \frac{1}{2} + \frac{1}{2} \left| b_q^C \right| \right)}_{\text{majority in the coalition}} p + \frac{1}{2} (1 - p) \quad (27)$$

$$= \frac{1}{2} + \frac{1}{2} \left| b_q^C \right| p ,$$

$$\frac{1}{2} - \frac{1}{2} a_q \text{sign } b_q^C \quad \text{with probability} \quad \frac{1}{2} - \frac{1}{2} \left| b_q^C \right| p . \quad (28)$$

By definition of expectation

$$\begin{aligned} \mathbb{E} r_{qC} &= \frac{1}{4} \left[ \left( 1 + a_q \text{sign } b_q^C \right) \left( 1 + \left| b_q^C \right| p \right) + \left( 1 - a_q \text{sign } b_q^C \right) \left( 1 - \left| b_q^C \right| p \right) \right] \\ &= \frac{1}{2} + \frac{1}{2} a_q \text{sign } b_q^C \left| b_q^C \right| p \\ &= \frac{1}{2} + \frac{1}{2} a_q b_q^C p . \end{aligned} \quad (29)$$

By the known formula for the variance of Bernoulli random variables (Korn and Korn 1968, Table 18.8.3, case  $n = 1$ , Abramowitz and Stegun 1972, 26.1.20, case  $n = 1$ ) obtain

$$\begin{aligned} \mathbb{V} r_{qC} &= a_q^2 \left( \frac{1}{2} + \frac{1}{2} \left| b_q^C \right| p \right) \left( \frac{1}{2} - \frac{1}{2} \left| b_q^C \right| p \right) \\ &= \frac{1}{4} a_q^2 \left[ 1 - \left( b_q^C \right)^2 p^2 \right] . \end{aligned} \quad (30)$$

Compute the popularity  $\mathbb{P}_C$  of a coalition  $C$ . Using (25) and (29) and applying (23)–(24) as indicators of (non-) unanimity, obtain

$$\mathbb{P}_C = \mathbb{E} r_C = \sum_{q \text{ unanimous}} \mu_q \left( \frac{1}{2} + \frac{1}{2} a_q b_q^C \right) + \sum_{q \text{ non-unanimous}} \mu_q \left( \frac{1}{2} + \frac{1}{2} a_q b_q^C p \right)$$

$$\begin{aligned}
&= \sum_q \mu_q \left(1 - \overset{C}{s}_q\right) \left(\frac{1}{2} + \frac{1}{2} a_q \overset{C}{b}_q\right) + \sum_q \mu_q \overset{C}{s}_q \left(\frac{1}{2} + \frac{1}{2} a_q \overset{C}{b}_q p\right) \xrightarrow{\text{Identity}} \\
&= \sum_q \mu_q \left(\frac{1}{2} + \frac{1}{2} a_q \overset{C}{b}_q\right) - \frac{1}{2}(1-p) \sum_q \mu_q a_q \overset{C}{s}_q \overset{C}{b}_q \xrightarrow{\text{by (12)}} \tag{31} \\
&= \underbrace{\sum_q \mu_q \left(\frac{1}{2} \sum_{c \in C} \overset{C}{\xi}_c + \frac{1}{2} a_q \sum_{c \in C} \overset{C}{\xi}_c \overset{C}{b}_{qc}\right)}_{=1} - \frac{1}{2}(1-p) \sum_q \mu_q a_q \overset{C}{s}_q \overset{C}{b}_q \\
&\quad \sum_{c \in C} \overset{C}{\xi}_c \sum_q \mu_q \left(\frac{1}{2} + \frac{1}{2} a_q \overset{C}{b}_{qc}\right) \stackrel{\text{by (4) and (19)}}{=} \sum_{c \in C} \overset{C}{\xi}_c \mathbf{P}_c \\
&= \underbrace{\sum_{c \in C} \overset{C}{\xi}_c \mathbf{P}_c}_{\overline{\mathbf{P}}_C} - \frac{1}{2}(1-p) (\boldsymbol{\mu} \cdot \mathbf{a})' \left(\overset{C}{\mathbf{s}} \cdot \overset{C}{\mathbf{b}}\right),
\end{aligned}$$

as required in (15).

Compute the universality  $\mathbf{U}_C$  of a coalition  $C$ . If  $a_q = 0$  (tie opinion on question  $q$  in the society) the rounded representativeness  $\text{round}[r_C] = \text{round}[\frac{1}{2}] = 1$ . If  $a_q \neq 0$ , by analogy with (27)–(28), the rounded representativeness of coalition  $C$  takes values

$$\begin{aligned}
\frac{1}{2} + \frac{1}{2} \text{sign} a_q \text{sign} \overset{C}{b}_q &\quad \text{with probability} \quad \frac{1}{2} + \frac{1}{2} \left| \overset{C}{b}_q \right| p, \\
\frac{1}{2} - \frac{1}{2} \text{sign} a_q \text{sign} \overset{C}{b}_q &\quad \text{with probability} \quad \frac{1}{2} - \frac{1}{2} \left| \overset{C}{b}_q \right| p.
\end{aligned}$$

Applying the indicator of tie opinion (6) and proceeding like in (29) and (31) obtain

$$\begin{aligned}
\mathbf{U}_C &= \mathbf{E} \text{round}[r_C] \\
&= \underbrace{\sum_{q: a_q=0} \mu_q \cdot 1 + \sum_{q: a_q \neq 0} \mu_q \left(\frac{1}{2} + \frac{1}{2} \text{sign} a_q \overset{C}{b}_q\right)}_{\sum_{c \in C} \overset{C}{\xi}_c \mathbf{U}_c} - \frac{1}{2}(1-p) \underbrace{\sum_{q: a_q \neq 0} \mu_q \text{sign} a_q \overset{C}{s}_q \overset{C}{b}_q}_{\sum_q \mu_q \text{sign} a_q \overset{C}{s}_q \overset{C}{b}_q} \\
&= \overline{\mathbf{U}}_C - \frac{1}{2}(1-p) (\boldsymbol{\mu} \cdot \text{sign} \mathbf{a})' \left(\overset{C}{\mathbf{s}} \cdot \overset{C}{\mathbf{b}}\right),
\end{aligned}$$

as required in (16).

Compute the variance of representativeness  $r_{qC}$  of coalition  $C$ . Using (26) and (30), applying (23)–(24) as indicators of (non-)unanimity, and taking into account that the variance of a sum of independent random variables is the sum of their variances, obtain

$$\begin{aligned}
\mathbf{V} r_C &= \sum_q \mu_q^2 \left(1 - \overset{C}{s}_q\right) \cdot 0 + \sum_q \mu_q^2 \overset{C}{s}_q \frac{1}{4} a_q^2 \left[1 - p^2 \left(\overset{C}{b}_q\right)^2\right] \xrightarrow{\text{Identity}} \tag{32} \\
&= \frac{1}{4} [(\boldsymbol{\mu} \cdot \mathbf{a}) \cdot \mathbf{a}]' \left[\overset{C}{\mathbf{s}} \cdot \left(1 - p^2 \overset{C}{\mathbf{b}} \cdot \mathbf{b}\right)\right],
\end{aligned}$$

as required in (17).

The derivation of the variance for the rounded representativeness  $\text{round}[r_{qC}]$  of coalition  $C$  is similar to (32), but there are two changes to be made:

- The range of the Bernoulli random variable  $\text{round}[r_{qC}]$  is 1 instead of  $|a_q|$ , consequently,  $a_q^2$  in (32) should be replaced by 1.
- If  $a_q = 0$  in (32), that is, tie opinion in the society on question  $q$ , then  $r_{qC} = \frac{1}{2}$ , implying  $\text{round}[r_{qC}] = \text{round}[\frac{1}{2}] = 1$ . Hence,  $\text{V round}[r_{qC}] = 0$ . The variances for such questions  $q$  should be nullified by the multiplier  $(\text{sign}a_q)^2$  which retains all other terms intact.

Thus,

$$\text{V round}[r_C] = \frac{1}{4} \left[ \boldsymbol{\mu} \cdot (\text{sign} \mathbf{a}) \right]' \left[ \mathbf{s} \cdot \left( 1 - p^2 \mathbf{b} \right) \right],$$

as required in (18). ■

## 7 References

- ABRAMOWITZ, M., AND STEGUN, I. (1972) *Handbook of Mathematical Functions*, New York: Dover.
- ACHEN, CH. (1977) Measuring representation: Perils of the correlation coefficient. *American Journal of Political Science*, 21, 805–815.
- ACHEN, CH. (1978) Measuring representation. *American Journal of Political Science*, 22, 475–510.
- BERGHAMMER, R., RUSINOWSKA, A., AND DE SWART, H. (2005) *Applying Relational Algebra and RELVIEW to Coalition Formation*. Public Choice Society.  
<http://www.pubchoicesoc.org/papers2005/BerghammerRusinowskadeSwart.pdf>
- BLACK, D. (1958) *The Theory of Committees and Elections*. Cambridge, At the University Press.

- BRAMS, S.J., KILGOUR, D.M., ZWICKER, W.S. (1998) The paradox of multiple elections. *Social Choice and Welfare*, 15, 211–236.
- BRINK, C., KAHL, W., AND SCHMIDT, G. (EDS.) (1997) *Relational Methods in Computer Science*. Berlin, Springer.
- BUNDESTAG (2005) *Informationen zur Bundestagswahl 2005, Stand 19.09.2005*. Berlin.  
<http://www.bundestag.de/>
- BUNDESWAHLLEITER (2005) *Endgültiges Ergebnis der Bundestagswahl 2005*  
[http://www.bundeswahlleiter.de/bundestagswahl2005/ergebnisse/bundesergebnisse/b\\_tabelle\\_99.html](http://www.bundeswahlleiter.de/bundestagswahl2005/ergebnisse/bundesergebnisse/b_tabelle_99.html)
- DEEMEN, A. VAN (1997) *Coalition Formation and Social Choice*. Kluwer.
- GEWERKSCHAFT DER POLIZEI (2005) *Wahlprogramme der Parteien in der bersicht, Stand 13.07.2005*. Bremen.  
[http://www.gdp.de/gdp/gdphbcms.nsf/id/Bun200\\_DE](http://www.gdp.de/gdp/gdphbcms.nsf/id/Bun200_DE)
- HELD, D. (1996): *Models of Democracy*, 2nd Ed. Cambridge, Polity Press.
- JACKSON, J.E. (1988) *A User's Guide to Principal Components*. New York, Wiley.
- KORN, G.A., AND KORN, TH.,M. (1968): *Mathematical Handbook for Scientists and Engineers*. New York, McGraw-Hill.
- KRZANOWSKI, W.J. (1988) *Principles of Multivariate Analysis*. Oxford, Oxford University Press.
- LUTHER, M. (1517): *Theses*. <http://www.luther.de/en/95thesen.html>
- MILLER, N.R. (1983) Pluralism and social choice. *American Political Science Review*, 77, 734–747.
- MILLER, W.E. (1964) Majority rule and the representative system of government. In: E. ALLARDT AND Y. LITTUNEN (EDS.) *Cleavages, Ideologies, and Party Systems*. Transactors of the Westermarck Society, 343–376.

- MUELLER, D.C. (1989) *Public Choice II*, Cambridge, Cambridge University Press.
- PITKIN, H. (1967) *The Concept of Representation*. Berkeley, University of California Press.
- RUSINOWSKA, A., DE SWART, H., AND VAN DER RIJT, J.W. (2005) A new model of coalition formation. *Social Choice and Welfare*, 24, 129–154.
- SAMONS, L.J. II (2004) *What's Wrong with Democracy?* Berkeley, University of California Press.
- SCHMIDT, G., AND STRÖHLEIN, T. (1993) *Relations and Graphs, Discrete Mathematics for Computer Scientists*. Berlin, Springer.
- SEBER, G.A.F. (1984) *Multivariate Observations*. New York, Wiley.
- SÜDDEUTSCHE ZEITUNG (2005, NR. 217, 20.09) Die Wahl 2005.
- SWART, H. DE, ORLOWSKA, E., SCHMIDT, G., AND ROUBENS, M. (EDS.) (2003) *Theory and Applications of Relational Structures as Knowledge Instruments*. Berlin, Springer.
- VRIES, M. DE (1999) *Governing with Your Closest Neighbour: An Assessment of Spatial Coalition Formation Theories*. University of Nijmegen, Print Partners Ipskamp.  
<http://hdl.handle.net/2066/18833>
- WAHL-O-MAT (2005) *Bundestagswahl 2005*. <http://www.wahlomat.de>
- WERNER, H., ERKENS, R., UND TAMM, S. (2005) *Die Wahlprogramme der Parteien zur Bundestagswahl 2005 - eine vergleichende Gegenberstellung nach Schwerpunkten*. Potsdam, Friedrich Naumann Stiftung.  
[http://www.fnst.de/webcom/show\\_article.php/\\_c-686/\\_lkm-1010/i.html](http://www.fnst.de/webcom/show_article.php/_c-686/_lkm-1010/i.html)
- WRIGHT, G.C.JR. (1978) Candidates' policy positions and voting in U.S. congressional elections. *Legislative Studies Quarterly*, 3, 445–464.

## NOTE DI LAVORO DELLA FONDAZIONE ENI ENRICO MATTEI

### Fondazione Eni Enrico Mattei Working Paper Series

Our Note di Lavoro are available on the Internet at the following addresses:

<http://www.feem.it/Feem/Pub/Publications/WPapers/default.html>

<http://www.ssrn.com/link/feem.html>

<http://www.repec.org>

<http://agecon.lib.umn.edu>

### NOTE DI LAVORO PUBLISHED IN 2006

SIEV	1.2006	<i>Anna ALBERINI</i> : <u>Determinants and Effects on Property Values of Participation in Voluntary Cleanup Programs: The Case of Colorado</u>
CCMP	2.2006	<i>Valentina BOSETTI, Carlo CARRARO and Marzio GALEOTTI</i> : <u>Stabilisation Targets, Technical Change and the Macroeconomic Costs of Climate Change Control</u>
CCMP	3.2006	<i>Roberto ROSON</i> : <u>Introducing Imperfect Competition in CGE Models: Technical Aspects and Implications</u>
KTHC	4.2006	<i>Sergio VERGALLI</i> : <u>The Role of Community in Migration Dynamics</u>
SIEV	5.2006	<i>Fabio GRAZI, Jeroen C.J.M. van den BERGH and Piet RIETVELD</i> : <u>Modeling Spatial Sustainability: Spatial Welfare Economics versus Ecological Footprint</u>
CCMP	6.2006	<i>Olivier DESCHENES and Michael GREENSTONE</i> : <u>The Economic Impacts of Climate Change: Evidence from Agricultural Profits and Random Fluctuations in Weather</u>
PRCG	7.2006	<i>Michele MORETTO and Paola VALBONESE</i> : <u>Firm Regulation and Profit-Sharing: A Real Option Approach</u>
SIEV	8.2006	<i>Anna ALBERINI and Aline CHIABAI</i> : <u>Discount Rates in Risk v. Money and Money v. Money Tradeoffs</u>
CTN	9.2006	<i>Jon X. EGUIA</i> : <u>United We Vote</u>
CTN	10.2006	<i>Shao CHIN SUNG and Dinko DIMITRO</i> : <u>A Taxonomy of Myopic Stability Concepts for Hedonic Games</u>
NRM	11.2006	<i>Fabio CERINA</i> (lxxviii): <u>Tourism Specialization and Sustainability: A Long-Run Policy Analysis</u>
NRM	12.2006	<i>Valentina BOSETTI, Mariaester CASSINELLI and Alessandro LANZA</i> (lxxviii): <u>Benchmarking in Tourism Destination, Keeping in Mind the Sustainable Paradigm</u>
CCMP	13.2006	<i>Jens HORBACH</i> : <u>Determinants of Environmental Innovation – New Evidence from German Panel Data Sources</u>
KTHC	14.2006	<i>Fabio SABATINI</i> : <u>Social Capital, Public Spending and the Quality of Economic Development: The Case of Italy</u>
KTHC	15.2006	<i>Fabio SABATINI</i> : <u>The Empirics of Social Capital and Economic Development: A Critical Perspective</u>
CSRM	16.2006	<i>Giuseppe DI VITA</i> : <u>Corruption, Exogenous Changes in Incentives and Deterrence</u>
CCMP	17.2006	<i>Rob B. DELLINK and Marjan W. HOFKES</i> : <u>The Timing of National Greenhouse Gas Emission Reductions in the Presence of Other Environmental Policies</u>
IEM	18.2006	<i>Philippe QUIRION</i> : <u>Distributional Impacts of Energy-Efficiency Certificates Vs. Taxes and Standards</u>
CTN	19.2006	<i>Somdeb LAHIRI</i> : <u>A Weak Bargaining Set for Contract Choice Problems</u>
CCMP	20.2006	<i>Massimiliano MAZZANTI and Roberto ZOBOLI</i> : <u>Examining the Factors Influencing Environmental Innovations</u>
SIEV	21.2006	<i>Y. Hossein FARZIN and Ken-ICHI AKAO</i> : <u>Non-pecuniary Work Incentive and Labor Supply</u>
CCMP	22.2006	<i>Marzio GALEOTTI, Matteo MANERA and Alessandro LANZA</i> : <u>On the Robustness of Robustness Checks of the Environmental Kuznets Curve</u>
NRM	23.2006	<i>Y. Hossein FARZIN and Ken-ICHI AKAO</i> : <u>When is it Optimal to Exhaust a Resource in a Finite Time?</u>
NRM	24.2006	<i>Y. Hossein FARZIN and Ken-ICHI AKAO</i> : <u>Non-pecuniary Value of Employment and Natural Resource Extinction</u>
SIEV	25.2006	<i>Lucia VERGANO and Paulo A.L.D. NUNES</i> : <u>Analysis and Evaluation of Ecosystem Resilience: An Economic Perspective</u>
SIEV	26.2006	<i>Danny CAMPBELL, W. George HUTCHINSON and Riccardo SCARPA</i> : <u>Using Discrete Choice Experiments to Derive Individual-Specific WTP Estimates for Landscape Improvements under Agri-Environmental Schemes: Evidence from the Rural Environment Protection Scheme in Ireland</u>
KTHC	27.2006	<i>Vincent M. OTTO, Timo KUOSMANEN and Ekko C. van IERLAND</i> : <u>Estimating Feedback Effect in Technical Change: A Frontier Approach</u>
CCMP	28.2006	<i>Giovanni BELLA</i> : <u>Uniqueness and Indeterminacy of Equilibria in a Model with Polluting Emissions</u>
IEM	29.2006	<i>Alessandro COLOGNI and Matteo MANERA</i> : <u>The Asymmetric Effects of Oil Shocks on Output Growth: A Markov-Switching Analysis for the G-7 Countries</u>
KTHC	30.2006	<i>Fabio SABATINI</i> : <u>Social Capital and Labour Productivity in Italy</u>
ETA	31.2006	<i>Andrea GALLICE</i> (lxxix): <u>Predicting one Shot Play in 2x2 Games Using Beliefs Based on Minimax Regret</u>
IEM	32.2006	<i>Andrea BIGANO and Paul SHEEHAN</i> : <u>Assessing the Risk of Oil Spills in the Mediterranean: the Case of the Route from the Black Sea to Italy</u>
NRM	33.2006	<i>Rinaldo BRAU and Davide CAO</i> (lxxviii): <u>Uncovering the Macrostructure of Tourists' Preferences. A Choice Experiment Analysis of Tourism Demand to Sardinia</u>
CTN	34.2006	<i>Parkash CHANDER and Henry TULKENS</i> : <u>Cooperation, Stability and Self-Enforcement in International Environmental Agreements: A Conceptual Discussion</u>
IEM	35.2006	<i>Valeria COSTANTINI and Salvatore MONNI</i> : <u>Environment, Human Development and Economic Growth</u>
ETA	36.2006	<i>Ariel RUBINSTEIN</i> (lxxix): <u>Instinctive and Cognitive Reasoning: A Study of Response Times</u>

ETA	37.2006	<i>Maria SALGADO</i> (lxxix): <u>Choosing to Have Less Choice</u>
ETA	38.2006	<i>Justina A.V. FISCHER and Benno TORGLER</i> : <u>Does Envy Destroy Social Fundamentals? The Impact of Relative Income Position on Social Capital</u>
ETA	39.2006	<i>Benno TORGLER, Sascha L. SCHMIDT and Bruno S. FREY</i> : <u>Relative Income Position and Performance: An Empirical Panel Analysis</u>
CCMP	40.2006	<i>Alberto GAGO, Xavier LABANDEIRA, Fidel PICOS And Miguel RODRÍGUEZ</i> : <u>Taxing Tourism In Spain: Results and Recommendations</u>
IEM	41.2006	<i>Karl van BIERVLIET, Dirk Le ROY and Paulo A.L.D. NUNES</i> : <u>An Accidental Oil Spill Along the Belgian Coast: Results from a CV Study</u>
CCMP	42.2006	<i>Rolf GOLOMBEK and Michael HOEL</i> : <u>Endogenous Technology and Tradable Emission Quotas</u>
KTHC	43.2006	<i>Giulio CAINELLI and Donato IACOBUCCI</i> : <u>The Role of Agglomeration and Technology in Shaping Firm Strategy and Organization</u>
CCMP	44.2006	<i>Alvaro CALZADILLA, Francesco PAULI and Roberto ROSON</i> : <u>Climate Change and Extreme Events: An Assessment of Economic Implications</u>
SIEV	45.2006	<i>M.E. KRAGT, P.C. ROEBELING and A. RUIJS</i> : <u>Effects of Great Barrier Reef Degradation on Recreational Demand: A Contingent Behaviour Approach</u>
NRM	46.2006	<i>C. GIUPPONI, R. CAMERA, A. FASSIO, A. LASUT, J. MYSLIAK and A. SGOBBI</i> : <u>Network Analysis, Creative System Modelling and DecisionSupport: The NetSyMoD Approach</u>
KTHC	47.2006	<i>Walter F. LALICH</i> (lxxx): <u>Measurement and Spatial Effects of the Immigrant Created Cultural Diversity in Sydney</u>
KTHC	48.2006	<i>Elena PASPALANOVA</i> (lxxx): <u>Cultural Diversity Determining the Memory of a Controversial Social Event</u>
KTHC	49.2006	<i>Ugo GASPARINO, Barbara DEL CORPO and Dino PINELLI</i> (lxxx): <u>Perceived Diversity of Complex Environmental Systems: Multidimensional Measurement and Synthetic Indicators</u>
KTHC	50.2006	<i>Aleksandra HAUKE</i> (lxxx): <u>Impact of Cultural Differences on Knowledge Transfer in British, Hungarian and Polish Enterprises</u>
KTHC	51.2006	<i>Katherine MARQUAND FORSYTH and Vanja M. K. STENIUS</i> (lxxx): <u>The Challenges of Data Comparison and Varied European Concepts of Diversity</u>
KTHC	52.2006	<i>Gianmarco I.P. OTTAVIANO and Giovanni PERI</i> (lxxx): <u>Rethinking the Gains from Immigration: Theory and Evidence from the U.S.</u>
KTHC	53.2006	<i>Monica BARNI</i> (lxxx): <u>From Statistical to Geolinguistic Data: Mapping and Measuring Linguistic Diversity</u>
KTHC	54.2006	<i>Lucia TAJOLI and Lucia DE BENEDICTIS</i> (lxxx): <u>Economic Integration and Similarity in Trade Structures</u>
KTHC	55.2006	<i>Suzanna CHAN</i> (lxxx): <u>“God’s Little Acre” and “Belfast Chinatown”: Diversity and Ethnic Place Identity in Belfast</u>
KTHC	56.2006	<i>Diana PETKOVA</i> (lxxx): <u>Cultural Diversity in People’s Attitudes and Perceptions</u>
KTHC	57.2006	<i>John J. BETANCUR</i> (lxxx): <u>From Outsiders to On-Paper Equals to Cultural Curiosities? The Trajectory of Diversity in the USA</u>
KTHC	58.2006	<i>Kiflemariam HAMDE</i> (lxxx): <u>Cultural Diversity A Glimpse Over the Current Debate in Sweden</u>
KTHC	59.2006	<i>Emilio GREGORI</i> (lxxx): <u>Indicators of Migrants’ Socio-Professional Integration</u>
KTHC	60.2006	<i>Christa-Maria LERM HAYES</i> (lxxx): <u>Unity in Diversity Through Art? Joseph Beuys’ Models of Cultural Dialogue</u>
KTHC	61.2006	<i>Sara VERTOMMEN and Albert MARTENS</i> (lxxx): <u>Ethnic Minorities Rewarded: Ethnostratification on the Wage Market in Belgium</u>
KTHC	62.2006	<i>Nicola GENOVESE and Maria Grazia LA SPADA</i> (lxxx): <u>Diversity and Pluralism: An Economist's View</u>
KTHC	63.2006	<i>Carla BAGNA</i> (lxxx): <u>Italian Schools and New Linguistic Minorities: Nationality Vs. Plurilingualism. Which Ways and Methodologies for Mapping these Contexts?</u>
KTHC	64.2006	<i>Vedran OMANOVIĆ</i> (lxxx): <u>Understanding “Diversity in Organizations” Paradigmatically and Methodologically</u>
KTHC	65.2006	<i>Mila PASPALANOVA</i> (lxxx): <u>Identifying and Assessing the Development of Populations of Undocumented Migrants: The Case of Undocumented Poles and Bulgarians in Brussels</u>
KTHC	66.2006	<i>Roberto ALZETTA</i> (lxxx): <u>Diversities in Diversity: Exploring Moroccan Migrants’ Livelihood in Genoa</u>
KTHC	67.2006	<i>Monika SEDENKOVA and Jiri HORAK</i> (lxxx): <u>Multivariate and Multicriteria Evaluation of Labour Market Situation</u>
KTHC	68.2006	<i>Dirk JACOBS and Andrea REA</i> (lxxx): <u>Construction and Import of Ethnic Categorisations: “Allochthones” in The Netherlands and Belgium</u>
KTHC	69.2006	<i>Eric M. USLANER</i> (lxxx): <u>Does Diversity Drive Down Trust?</u>
KTHC	70.2006	<i>Paula MOTA SANTOS and João BORGES DE SOUSA</i> (lxxx): <u>Visibility &amp; Invisibility of Communities in Urban Systems</u>
ETA	71.2006	<i>Rinaldo BRAU and Matteo LIPPI BRUNI</i> : <u>Eliciting the Demand for Long Term Care Coverage: A Discrete Choice Modelling Analysis</u>
CTN	72.2006	<i>Dinko DIMITROV and Claus-JOCHEN HAAKE</i> : <u>Coalition Formation in Simple Games: The Semistrict Core</u>
CTN	73.2006	<i>Ottorino CHILLEM, Benedetto GUI and Lorenzo ROCCO</i> : <u>On The Economic Value of Repeated Interactions Under Adverse Selection</u>
CTN	74.2006	<i>Sylvain BEAL and Nicolas QUÉROU</i> : <u>Bounded Rationality and Repeated Network Formation</u>
CTN	75.2006	<i>Sophie BADE, Guillaume HAERINGER and Ludovic RENO</i> : <u>Bilateral Commitment</u>
CTN	76.2006	<i>Andranik TANGIAN</i> : <u>Evaluation of Parties and Coalitions After Parliamentary Elections</u>



(lxxviii) This paper was presented at the Second International Conference on "Tourism and Sustainable Economic Development - Macro and Micro Economic Issues" jointly organised by CRENoS (Università di Cagliari and Sassari, Italy) and Fondazione Eni Enrico Mattei, Italy, and supported by the World Bank, Chia, Italy, 16-17 September 2005.

(lxxix) This paper was presented at the International Workshop on "Economic Theory and Experimental Economics" jointly organised by SET (Center for advanced Studies in Economic Theory, University of Milano-Bicocca) and Fondazione Eni Enrico Mattei, Italy, Milan, 20-23 November 2005. The Workshop was co-sponsored by CISEPS (Center for Interdisciplinary Studies in Economics and Social Sciences, University of Milan-Bicocca).

(lxxx) This paper was presented at the First EURODIV Conference "Understanding diversity: Mapping and measuring", held in Milan on 26-27 January 2006 and supported by the Marie Curie Series of Conferences "Cultural Diversity in Europe: a Series of Conferences.

#### **2006 SERIES**

<b>CCMP</b>	<i>Climate Change Modelling and Policy</i> (Editor: Marzio Galeotti )
<b>SIEV</b>	<i>Sustainability Indicators and Environmental Valuation</i> (Editor: Anna Alberini)
<b>NRM</b>	<i>Natural Resources Management</i> (Editor: Carlo Giupponi)
<b>KTHC</b>	<i>Knowledge, Technology, Human Capital</i> (Editor: Gianmarco Ottaviano)
<b>IEM</b>	<i>International Energy Markets</i> (Editor: Anil Markandya)
<b>CSRМ</b>	<i>Corporate Social Responsibility and Sustainable Management</i> (Editor: Sabina Ratti)
<b>PRCG</b>	<i>Privatisation Regulation Corporate Governance</i> (Editor: Bernardo Bortolotti)
<b>ETA</b>	<i>Economic Theory and Applications</i> (Editor: Carlo Carraro)
<b>CTN</b>	<i>Coalition Theory Network</i>