

Tol, Richard S.J.

Working Paper

Carbon Dioxide Emission Scenarios for the Usa

Nota di Lavoro, No. 117.2006

Provided in Cooperation with:

Fondazione Eni Enrico Mattei (FEEM)

Suggested Citation: Tol, Richard S.J. (2006) : Carbon Dioxide Emission Scenarios for the Usa, Nota di Lavoro, No. 117.2006, Fondazione Eni Enrico Mattei (FEEM), Milano

This Version is available at:

<https://hdl.handle.net/10419/74102>

Standard-Nutzungsbedingungen:

Die Dokumente auf EconStor dürfen zu eigenen wissenschaftlichen Zwecken und zum Privatgebrauch gespeichert und kopiert werden.

Sie dürfen die Dokumente nicht für öffentliche oder kommerzielle Zwecke vervielfältigen, öffentlich ausstellen, öffentlich zugänglich machen, vertreiben oder anderweitig nutzen.

Sofern die Verfasser die Dokumente unter Open-Content-Lizenzen (insbesondere CC-Lizenzen) zur Verfügung gestellt haben sollten, gelten abweichend von diesen Nutzungsbedingungen die in der dort genannten Lizenz gewährten Nutzungsrechte.

Terms of use:

Documents in EconStor may be saved and copied for your personal and scholarly purposes.

You are not to copy documents for public or commercial purposes, to exhibit the documents publicly, to make them publicly available on the internet, or to distribute or otherwise use the documents in public.

If the documents have been made available under an Open Content Licence (especially Creative Commons Licences), you may exercise further usage rights as specified in the indicated licence.

Carbon Dioxide Emission Scenarios for the Usa

Richard S.J. Tol

NOTA DI LAVORO 117.2006

SEPTEMBER 2006

CCMP – Climate Change Modelling and Policy
--

Richard S.J. Tol, *Economic and Social Research Institute, Dublin, Ireland, Research unit Sustainability and Global Change, Hamburg University and Centre for Marine and Atmospheric Science, Hamburg, Germany, Institute for Environmental Studies, Vrije Universiteit, Amsterdam, The Netherlands and Engineering and Public Policy, Carnegie Mellon University, Pittsburgh, PA, USA*

This paper can be downloaded without charge at:

The Fondazione Eni Enrico Mattei Note di Lavoro Series Index:
<http://www.feem.it/Feem/Pub/Publications/WPapers/default.htm>

Social Science Research Network Electronic Paper Collection:
<http://ssrn.com/abstract=932508>

The opinions expressed in this paper do not necessarily reflect the position of
Fondazione Eni Enrico Mattei
Corso Magenta, 63, 20123 Milano (I), web site: www.feem.it, e-mail: working.papers@feem.it

Carbon Dioxide Emission Scenarios for the Usa

Summary

A model of carbon dioxide emissions of the USA is presented. The model consists of population, income per capita, economic structure, final and primary energy intensity per sector, primary fuel mix, and emission coefficients. The model is simple enough to be calibrated to observations since 1850. The model is used to project emissions until 2100. Best guess carbon dioxide emissions are in the middle of the IPCC SRES scenarios, but incomes and energy intensities are on the high side, while carbon intensities are on the low side. The confidence interval suggests that the SRES scenarios do not span the range of not-implausible futures. Although the model can be calibrated to reflect structural changes in the economy, it cannot anticipate such changes. The data poorly constrain crucial scenario elements, particularly energy prices. This suggests that the range of future emissions is wider still.

Keywords: Climate Change, Emissions Scenarios, USA

JEL Classification: Q540

Comments by Klaus Keller, Steve Pacala, Rob Socolow and an anonymous referee helped improve the paper. Financial support by the European Commission DG Research (ENSEMBLES), the Hamburg University Innovation Fund, and the Princeton Environmental Institute is gratefully acknowledged.

Address for correspondence:

Richard S.J. Tol
Hamburg University
FNU/ZMK/UniHH
Bundesstrasse 55
Pavillion Room 008
20146 Hamburg
Germany
Phone: +49 40 42838 7007
Fax: +49 40 42838 7009
E-mail: richard.tol@zmaw.de

1. Introduction

The emissions scenarios of the Intergovernmental Panel on Climate Change (IPCC) are commonly used for research into climate change, estimates of the impacts of climate change, and analysis of greenhouse gas emission reduction policies. The SRES scenarios (Nakicenovic and Swart, 2000), the latest set of IPCC scenarios, were also used as the basis of the scenarios of the Millennium Ecosystem Assessment (2005) and national scenarios, e.g., in Britain (UKCIP, 2001). The SRES scenarios have been severely criticised (Castles and Henderson, 2003a,b; Castles, 2004; Henderson, 2005), while the improper handling of justified critique (IPCC, 2003; Nakicenovic et al., 2003; Grübler et al., 2004) has cast doubt on the credibility of the entire IPCC (Economist, 2003a,b, 2004; Michaels, 2003; House of Lords, 2005).

The initial critique of the SRES scenarios focussed on economic accounting (Nordhaus, forthcoming). However, the use of market exchange rates rather than the more appropriate purchasing power exchange rates becomes particularly critical if income convergence is assumed (Dixon and Rimmer, 2006), a contestable assumption (Tol, 2006). The bias thus introduced is partially offset by the assumption of convergence of energy intensities (Manne *et al.*, 2005), an assumption with some empirical support (Miketa and Mulder, 2005; Markandya *et al.*, 2006).

The rapid convergence of per capita income is a known characteristic of the modern growth theory developed by Solow (1956, 1987) and Koopmans (1967). Although new growth theory superseded modern growth theory since the work of Romer (1986, 1987, 1990), integrated assessment models have not been updated. New growth theory is distinct from modern growth theory in that technological change is *endogenous*, rather than *exogenous*.¹ As a corollary, convergence of per capita income does not follow, and is indeed not observed (Barro and Sala-i-Martin, 1995).

The fact that a crucial component of the SRES emission scenarios is at odds with the observations is probably because the models used to generate these scenarios have never been validated (see Edward *et al.*, 2005, and O'Neill and Van Vuuren, forthcoming, for a first attempt). Indeed, the models were calibrated to a recent year and run forward for a century or more. Interestingly, the SRES scenarios typically show a trend break where the data end and the scenario begins.

Criticising the SRES scenarios is easy. This paper is an attempt to offer an alternative, that is better in at least some respects. The model presented here is in line with recent insights into growth and development, and the model is tested against observations for the last 150 years. The work of economic historians, led by Angus Maddison (2001), enables this. The paper is primarily concerned with methodology, and attention is restricted to the USA. Therefore, I do not address my main criticism of the SRES scenarios, namely income convergence. However, the economic model used is a new growth model. An extension to other regions would not imply convergence of incomes.

Besides an improved methodology and a new scenario, this paper offers some estimate of the likelihood of scenarios. Calibration of the model to past observations allows for this. Decision analysis, as it is found in textbooks (Pratt *et al.*, 1995), calls for a complete quantification of the uncertainties. In practical applications, a test of the robustness of insights to alternative assumptions is often sufficient. However, robustness is only meaningful against the full range

¹ Note that although technological progress is endogenous in the model below, economic growth is not.

of non-implausible alternatives. Therefore, also in this case, one needs some idea of the likelihood of the baseline scenario and its alternatives. The confidence intervals presented here are more suited for robustness analysis than for uncertainty analysis, as the dimensionality and non-linearity of the model do not permit a formal estimation of the uncertainties. Yet, the current paper improves on SRES also in this respect, as SRES does not contain any estimate of confidence intervals or relative likelihoods of its alternative scenarios.

The paper is structured as follows. Section 2 describes the model. Except for population, all model parts were developed specifically for the purpose of this paper. Section 3 presents the base scenario. Section 4 shows validation and sensitivity analyses, primarily for developing insights into the behaviour of the model and the scenario. Section 5 concludes.

2. The model

2.1. Data

The list of data and their sources is given in Table 1. The data set is the same as in Tol *et al.* (2006), who analyze the data in some detail. The main advantage of this database is that it includes final energy consumption per sector for the period 1850-2000; IEA (2005) has this data from 1960 onwards only. For primary energy use by source, the database combines the historical data of Schurr *et al.* (1960) with EIA (2005).

2.2. Population

The population model used is CHIMP 1.0, described in Fisher *et al.* (forthcoming). Like most demographic models, CHIMP has population cohorts. Every period, the larger part of a cohort is promoted to the next cohort, while the remainder dies. The size of the youngest cohort is proportional to the size of the cohorts of women of child-bearing age. Furthermore, people can migrate between the 16 regions of the model. The USA is a separate region. Unlike most demographic models, fertility, mortality, and migration are partly driven by per capita income. This is particularly pronounced for the poorer regions. For the USA, exogenous trends in mortality and fertility are more important. Migration, however, is driven by the income gap between the USA and other regions.

2.3. Economic growth

The economic model is David Romer's (1996) macro-version of Paul Romer's (1990) micro-based model of economic growth, except for the savings' rate. Production is driven by labour, capital and knowledge:

$$(1) \quad Y(t) = H(t) \left((1 - \gamma_K) K(t) \right)^\lambda \left((1 - \gamma_L) L(t) \right)^{1-\lambda}$$

where Y is production, H is technology, K is capital and L is labour (not population); t denotes times; and γ and λ are parameters. Note that (1) has constant returns to scale in capital and labour so that, in the short term, perfect competition can be assumed on the capital and labour markets.

Capital accumulates as

$$(2) \quad K(t+1) = (1 - \delta_K) K(t) + s(t) Y(t)$$

where s is the savings' rate and δ is depreciation.

Knowledge accumulates as

$$(3) \quad H(t+1) = (1 - \delta_A)H(t) + \beta (\gamma_K K(t))^\kappa (\gamma_L L(t))^\kappa H(t)^\kappa$$

where κ , β , and δ are parameters. Note that if $\kappa > 1/3$, there is no steady state; instead, growth ever accelerates. We could have chosen different κ s for capital, labour, and knowledge, but assuming them to be equal leads to a reasonable fit (see below) and reduces the number of parameters.

The savings' rate follows

$$(4) \quad s(t) = \vartheta + \psi \frac{L(t)}{P(t)}$$

where P denotes the population and φ and ψ are parameters. Earlier versions of the model had a constant savings' rate, but then the technology parameter β in equation (3) has to vary. Calibration did not reveal a regular, interpretable pattern for β .

Equations (1)-(4) have 9 parameters in total, whose values and sources are given in Table 2. Most parameters are set to values that are typical in the literature; the standard deviation is my guess. The parameters of Equation (4) are based on a linear regression. The initial value of the capital stock K is set to its steady state value. The initial value of the knowledge stock H is set such that the predicted GDP matches the observed one for 1850. The capital share of knowledge production κ is set by calibration; the distance between the observed and modelled GDP in 2002 is minimised.

2.4. Structure of the economy

Energy intensity is higher in manufacturing than in agriculture and services. Structural changes in the economy therefore influence energy use. Over a century, structural changes are substantial. Kongsamut *et al.* (2001) present a simple model of secular changes in economic structure. We extended their model to allow for different production functions in the different sectors, and for differential technological progress (see the Appendix). The growth rates of agriculture, manufacturing and services are

$$(5) \quad \frac{\dot{A}}{A} = \frac{A - \bar{A}}{A} ((1 - \alpha)(g_M - g_A) + g + g_M)$$

$$(6) \quad \frac{\dot{M}}{M} = g + g_M$$

$$(7) \quad \frac{\dot{S}}{S} = \frac{S + \underline{S}}{S} ((1 - \sigma)(g_M - g_S) + g + g_M)$$

where A is production in agriculture, M is production in manufacturing, and S is production in services; \bar{A} and \underline{S} are parameters, denoting subsistence agriculture and household production of services, respectively; α and σ are parameters, denoting the capital share of production in agriculture and services, respectively; g_A and g_S are parameters, denoting technological progress in agriculture and services, respectively.

In (6), g and g_M are parameters, but in the complete model, they equal the growth rate of the population (Section 2.2) and technological progress in the overall economy (Section 2.3), respectively. This implies that manufacturing is the “normal” sector, whose growth rate equals the growth rate of the economy. Without biased technological change ($g_M = g_A$), agriculture is subnormal; it grows slower than the economy as the demand for agriculture

products saturates. The service sector is supernormal; it grows faster than the economy as it produces luxury goods. Note that this construction essentially allows us to “decouple” economic growth and economic structure² – that is, (5)-(7) is calibrated conditional on (1)-(4), not simultaneous with. Note also that (5)-(7) do not necessarily add up to the total economy;³ rescaling is needed.

There are six parameters in (5)-(7); see Table 2. However, α and σ are indeterminate, and therefore omitted. The other parameters are set by minimum least squares; standard deviations are guessed; \bar{A} and \underline{S} are held constant, g_A and g_S are constrained to vary by less than 1% a year.

2.5. Final energy use

Energy is not a factor of production – see Equation (1). Instead, final energy use follows from the multiplication of economic activity with its energy intensity. Future energy intensities are based on exogenous projections.

Final energy use is split into five categories: agriculture, manufacturing, services, transport and residential. Tol *et al.* (2006) extrapolate the IEA (2005) data for 1960-2002 back to 1850, constraining the extrapolation with activities levels, primary energy use, and restrictions on the annual change in energy intensities. The energy intensity of transport is here defined as energy use over GDP; residential energy use is per capita. We extrapolate energy intensities to the future as follows. The average intensity is computed for every five-year period between 1852 and 2002. Average annual growth rates are computed for every interval ending in 1997-2002. The mean and standard deviation of these 30 growth rates is used to extrapolate future energy intensity.

2.6. Primary energy use

The ratio of primary energy to final energy grew on average at 0.33% per year between 1850 and 2000. This growth rate is assumed for the future as well.

We distinguish between six sources of energy: coal, oil, gas, nuclear power, hydropower, and “other” (largely renewables⁴). Note that the definitions of oil and gas include non-conventional oil (shale oil, oil sands, etc.) and non-conventional gas (clathrates), respectively. Each energy source with its own capital stock. Capital is depreciated, and new investments are made so that total supply meets primary energy demand. In each period, investment costs are minimised. Note that, since energy is not a factor of production (Section 2.5), energy costs are not part of GDP. Investment costs are assumed to be quadratic. The problem is therefore

$$(8) \quad \min_{I_i} \sum_i \pi_i I_i^2 \text{ s.t. } \sum_i I_i > I$$

where I is investment and π is cost (capital plus operation and maintenance plus fuel), which solves as

$$(9) \quad I_i = \frac{I}{\sum_i \frac{1}{2\pi_i}}$$

² Note that this reinterprets the model of Kongsamut *et al.* (2001); they do not decouple growth and structure.

³ Note that this is a result of the reinterpretation; in the original Kongsamut *et al.* (2001) model, sectors do add up.

⁴ See Palmer and Burtraw (2005) for an analysis of the prospects of renewable electricity in the USA,

The life-time of capital is set equal to 40 years, except for hydropower which is 100 year. As energy use varies from year to year, we used the 15-year moving average of primary energy use as the indicator for capacity. For the past, the model was calibrated by inversion. Figure 1 shows the observations and model reconstruction; Figure 2 the prices.

For extrapolation to the future, we followed the same procedure as for energy intensity. Five-year averages of investment costs were computed, and cost trends based on that were extrapolated. Note that because non-conventional oil and gas are included, resource constraints are not binding.

2.7. Carbon dioxide emissions

Carbon dioxide emissions follow from multiplying the primary energy use by fuel with the appropriate emission factor.

2.8. Variances and confidence intervals

Model predictions and observations overlap. Via the sum of squared residuals, this gives a one-step prediction error. Combined with the standard deviations of the parameters specified in Table 2, multiple-step prediction errors follow. The variances are approximated with their first-order Taylor approximations.

The exception is the population scenario. Here, we set the coefficient of variation of the growth rate of the population such that all SRES scenarios just fall in the 67% confidence interval.

3. Emission scenarios

Figure 3 shows the number of people for 1850-2100, as observed and as projected. With 478 million people in 2100, the CHIMP scenario is slightly higher than the A1 and B1 scenarios, lower than A2 and higher than B2. All SRES scenarios fall within the 67% confidence interval, by construction (see above). Section 4 shows sensitivity analyses.

Figure 4 shows per capita income. The Romer-Romer model reproduces the observations for 1850-2000 reasonably well, bar the upheaval of the Great Depression and World War II. For the future, our model project an average income of \$100,000 per person per year, which is in between A1 and B1/B2, but much higher than A2. The A2 falls outside the 67% confidence interval, while the other scenarios approach the edges. Section 4 shows sensitivity analyses.

Figure 5 shows the sectoral composition. The KRX model reasonably reproduces the observations. In the projections, the services sector dominates, while agriculture all but disappears. Note that, although the share of manufacturing falls, absolute production in manufacturing continues to increase.

Figure 6 shows observed and projected energy intensities, which are declining everywhere. As the changes in past energy intensity were so regular, the confidence intervals of the projections are rather narrow. See also Table 2.

Figure 7 shows primary energy use. Our model reproduces the observations reasonably well. Our projections are somewhere in between A2, and B2 and A1, but much higher than B1. (Note that GDP is the same for all scenarios in Figure 7, and that the confidence interval is about the energy sector only.) As in Figure 6, our confidence interval is rather narrow, and excludes all SRES scenarios. Section 4 shows sensitivity analyses.

Figure 8 shows primary energy by source for the period 1850-2100. The projection is driven by the relative prices of the energy sources. For coal, nuclear power, and hydropower, we set the annual price change equal to the observed price changes in the past. See Table 2. For oil and gas, we used the mean price change in the past plus the standard deviation. For “other” (wind, solar, biofuels), we used the mean price change minus its standard deviation. Under these assumptions, the share of hydropower, coal and oil are largely stable. This assumes that new sources of exploitable oil will be found, perhaps on the poles or under the ocean, perhaps in tar sands. New sources of hydropower will need to be tapped, as the primary energy use increases (see Figure 7). The share of natural gas declines. Nuclear and to a lesser extent renewables will make up. The absolute numbers (Figure 9) show that the model reasonably reproduces the observations, except for coal which is more volatile than our model allows. Section 4 shows sensitivity analyses.

Figure 10 shows carbon dioxide emissions as observed and as projected. The model reasonably reproduces the past. Our projections are much lower than the SRES ones. (Note that primary energy use is the same for all scenarios in Figure 10, and that the confidence interval is about primary energy use only.) The main reasons are that, under our assumption, oil is not replaced by coal; and gas is replaced by nuclear and renewables.

Figure 11 also shows carbon dioxide emissions as observed and as projected. The difference with Figure 10 is that Figure 11 uses the SRES scenarios proper, and not just the carbon intensity of primary energy use. Similarly, the confidence interval includes all uncertainties, starting with the population. Our projections lie somewhere between A2 and B2, which fall in the 67% confidence interval, and are thus substantially lower than A1 and higher than B1. Note that our projections of energy intensity and carbon intensity deviate from SRES, being on the high side and the low side, respectively. These cancel, so that our emissions projection is well within the SRES range. Section 4 shows sensitivity analyses.

According to the estimated uncertainty about our projection, we can estimate the relative likelihood of the scenarios. We only consider the carbon dioxide emissions in 2100. Including only the SRES scenarios, the probability of A1 is 12%, of A2 is 28%, B1 23%, and B2 37%. Including all five scenarios, our projection has a probability of 33%, A1 8%, A2 19%, B1 15%, and B2 25%.

4. Validation and sensitivity analysis

The confidence intervals reported above already give an idea of the range of scenario results. This range is extended, in a qualitative way, by the validation exercise. In the sensitivity analyses, we rather focus on the workings of the underlying model.

4.1. Validation

A standard way of model validation is out of sample forecasting. With 150 years of observations, there is enough data to re-calibrate the model for a shorter period, and compare long-term projections with observations. We here focus on economic growth and the fuel structure of primary energy supply.

Figure 12 shows the past reconstruction of per capita income for the period from 1850 to 2000, and the projections for the remaining period till 2100. The calibration procedure was identical. The models calibrated to 1950, 1960 and 1970 behave very similar; indeed, the results are graphically indistinguishable for 1960 and 1970. Similarly, when calibrated to 1980, 1990 or 2000, the model behaves basically the same. However, if calibrated to 1970 and before, projections are much higher. This suggests that there was a structural break in the

1970s, probably associated with the oil crises. This implies that our projection of per capita income is sound – provided that there are no structural breaks. The model can be recalibrated after a structural break, and performs fine after that. However, the model cannot anticipate structural breaks. This is a humbling conclusion for a 100 year forecast.

Figure 13 shows the past reconstruction and future projection of primary energy sources if the model is calibrated to 1950 and 1975, rather than to 2000. Interestingly, the results are not very different for the year 2000. In the calibration to 1950, coal does not recover from its decline (as it did in the 1970s), and nuclear does not appear; oil takes up this share. In the calibration to 1975, there is too much nuclear and too little coal. Although these differences are relatively small in 2000, they are much larger in the projections. This shows that, in a system with a slow capital turnover, short-term prediction is relatively easy – but that skill at the short term does not imply skill at the long term. The nuclear example shows that history-based projections are not robust to radically new technologies.⁵

4.2. *Sensitivity analysis*

In Table 3, we report two sensitivity analyses. In the first one, we increased the growth rate of the population by a factor 1.001, so that the 2100 population is roughly 10% larger. We kept the age distribution the same, so that the workforce increases by roughly the same percentage. Income per capita goes up by 5%, as more people of working age implies faster technological progress. The income also has to be shared with a larger number of people however. The population elasticity of per capita income is 0.4. Primary energy use and carbon dioxide emissions go up by about 15%, roughly equal to the sum of the population increase and the per capita income increase.

In the second sensitivity analysis, we increased the workforce by roughly 10% in 2100, but kept the population at its original value. Per capita income goes up by 12% as technological progress accelerates. In the current parameterisation of the model, the workforce elasticity of per capita income is greater than unity. Primary energy use and carbon dioxide emissions go up by about 10%. This implies an income elasticity of less than one, which comes about because more rapid economic growth also implies more rapid advancements in energy efficiency. The numbers in Table 3 also reveal that the primary energy elasticity of carbon dioxide emissions is smaller than unity. This is because a greater energy demand would be met with a more diverse portfolio of energy sources; that is, the share of coal and oil falls relative to the baseline.

The changes and elasticities of the two sensitivity analyses are consistent with each other. The “larger workforce” scenario also represents a sensitivity analysis for different economic growth rates.

Figures 8 and 14 show sensitivity analyses around the assumed costs of the six alternative energy sources; Figure 8 shows the structure of the fuel demand, Figure 14 carbon dioxide emissions. In the base case, we set the price development of coal, nuclear and hydro equal to past trends, while we let the price of oil and gas evolve according to the upper end of the 67% confidence interval, and the price of renewables followed the lower end. In the first sensitivity analysis, all prices evolve according to past trends. Unsurprisingly, oil and gas expand, at the expense of coal, nuclear and renewables. The latter two dominate the response of carbon dioxide emissions, which are higher than in the base case. In the next six sensitivity analyses, we increase the rate of price change by one standard deviation for coal and oil; and decrease the price change by one standard deviation for the other fuels; in this way, CO₂ emissions

⁵ See Toth and Rogner (2006) for a further analysis of the prospects for nuclear power.

always go down. If coal or oil are more expensive than in the base case, they substitute for one another; at the same time, nuclear power expands. Therefore, carbon dioxide emissions fall, relatively to the baseline, and more so if coal is more expensive. If gas is less expensive, it expands at the expense of oil and nuclear. Therefore, CO₂ emissions hardly change. If nuclear, hydro, or renewables are less expensive, they expand at the expense of oil and coal. Carbon dioxide emissions fall relative to the baseline, and in fact start to decline in absolute terms as well.

These sensitivity analyses are based on a single parameter, deviating a single standard deviation from their value in the base scenario. Nonetheless, in three cases (hydro, nuclear, renewables), the alternative projections fall outside the confidence interval for CO₂ emissions derived above. This is partly because, in a full uncertainty analysis, the effects of individual parameter deviations cancel. However, this analysis also suggests that the interval of Figure 11 is overconfident.

5. Discussion and conclusion

In this paper, we present a model of US carbon dioxide emissions. The model contains all the main components: population, income, economic structure, energy intensity, primary energy use, and energy sources. The model reproduces the last 150 years of observations. This is achieved by calibration. Nonetheless, it suggests that the model and its parameters have some relation to reality.

We use the model to extrapolate carbon dioxide emissions for the 21st century. The base scenario is right in the middle of the SRES scenarios. However, the composition of the scenario is different, with a higher energy intensity, and a lower carbon intensity. As the model is calibrated, we do have some idea of the uncertainty of the projection. The SRES A2 and B2 scenarios fall within the 67% confidence interval of our projection for most of the century, while all SRES scenarios are within our 95% confidence range.

However, model validation and sensitivity analyses show that our estimate of the uncertainty is a clear underestimate. Therefore, the confidence range of our scenario, and by implication the range of IPCC scenarios, is too narrow; and we are overconfident in our ability to predict the future. This is not uncommon (Morgan and Henrion, 1990). It is sobering, however, that this effect is so pronounced for the easy case of the USA. Projections for data-scarce and dynamic areas such as sub-Saharan Africa and East Asia are much less constrained by our current understanding. Extending the model to other parts of the world is first on my list of priorities.

The overall conclusion is therefore one of humility. Clearly, the only way forward in improving the models used to generate emissions scenarios, is to systematically test the models in their ability to “predict” changes in the past. The results here show that this ability is limited, particularly with regard to structural breaks; and that alternative models that reconstruct the past equally well may have radically different forecasts. This calls for further research on the one hand, and a wider range of scenarios at the other.

Acknowledgements

Comments by Klaus Keller, Steve Pacala, Rob Socolow and an anonymous referee helped improve the paper. Financial support by the European Commission DG Research (ENSEMBLES), the Hamburg University Innovation Fund, and the Princeton Environmental Institute is gratefully acknowledged.

References

- Barro, R. J. and Sala-i-Martin, X. (1995), *Economic Growth*, MIT Press, Cambridge.
- Castles, I. (2004), 'Climate Work Based on Unsound Economics', *Australian Financial Review* (Feb 7th).
- Castles, I. and D. Henderson (2003a), 'The IPCC Emission Scenarios: An Economic-Statistical Critique', *Energy and Environment*, 14 (2-3), 159-185.
- Castles, I. and D. Henderson (2003a), 'Economics, Emission Scenarios and the Work of the IPCC', *Energy and Environment*, 14 (4), 415-435.
- Dixon, P. and M. Rimmer (2006), "Analysing Convergence With A Multi-Country Computable General Equilibrium Model: PPP versus MER", *Energy and Environment*, **16** (6).
- Economist (2003a), *Hot Potato. The Intergovernmental Panel on Climate Change had better check its calculations* (Feb 13th).
- Economist (2003b), *Hot Potato Revisited. A Lack-of-Progress Report on the Intergovernmental Panel on Climate Change* (Nov 6th).
- Economist (2004), *Measuring Economies: Garbage In, Garbage Out* (May 27th).
- Edwards, N., H. Grepping, A. Haurie, L. Viguier (2005), 'Linking Climate and Economic Dynamics', in A. Haurie and L. Viguier (eds.), *The Coupling of Climate and Economic Dynamics*, Springer, Berlin.
- EIA (2005), *Historical Data Overview*, Energy Information Agency, US Department of Energy http://www.eia.doe.gov/overview_hd.html
- Fisher, B.S., G. Jakeman, H.M. Pant, M. Schwoon and R.S.J. Tol (forthcoming), 'CHIMP: A Simple Population Model for Use in Integrated Assessment of Global Environmental Change', *Integrated Assessment Journal*.
- Grübler, A., N. Nakicenovic, J. Alcamo, G. Davis, J. Fenhann, B. Hare, S. Mori, B. Pepper, H. Pitcher, K. Riahi, H.-H. Rogner, E. Lebre La Rovere, A. Sankovski, M. Schlesinger, R.P. Shukla, R. Swart, N. Victor and Tae Young Jung (2004), "Emissions Scenarios: A Final Response," *Energy and Environment*, **15** (1), 11-24.
- Henderson, D. (2005), 'The Treatment of Economic Issues by the Intergovernmental Panel on Climate Change', *Energy and Environment*, **16** (2), 321-326.
- House of Lords (2005), *The Economics of Climate Change*, HL Paper 12-I, Select Committee on Economic Affairs 2nd Report of Session 2005-06, London.
- IEA (2005), *World Energy Statistics and Balances*, International Energy Agency http://hermia.sourceoecd.com/vl=6413579/cl=13/nw=1/rpsv/statistic/s35_about.htm?jnlissn=16834240
- IPCC (2003), *IPCC Press Information on AR4 and Emissions Scenarios* (<http://www.ipcc.ch/press/pr08122003.htm>).
- Kongsamut, P., S. Rebelo and D.Y. Xie (1997), 'Beyond Balanced Growth', *NBER Working Paper*, **6159**, National Bureau of Economic Research, Cambridge.
- Kongsamut, P., S. Rebelo and D.Y. Xie (2001), 'Beyond Balanced Growth', *Review of Economic Studies*, **68**, 869-882.

- Koopmans, T. C. (1967), 'Objectives, Constraints, and Outcomes in Optimal Growth Models', *Econometrica*, **35**, 1-15.
- Liesner, T. (1989), *One Hundred Years of Economic Statistics – A New Edition of Economic Statistics 1900-1983 Revised and Expanded to 1987*, Facts on File, New York.
- Maddison, A. (2001), *The World Economy – A Millennial Perspective*, OECD, Paris.
- Maddison, A. (2003), *The World Economy: Historical Statistics*, OECD, Paris.
- Manne, A.S., Richels, R.G. and Edmonds, J.A. (2005), 'Market Exchange Rates or Purchasing Power Parity: Does the Choice Make a Difference to the Climate Debate?', *Climatic Change*, **71** (1-2), 1-8.
- Markandya, A., S. Pedroso-Galinato and D. Streimikiene (2006), 'Energy Intensity in Transition Economies: Is there Convergence towards the EU Average?', *Energy Economics*, **28** (1), 121-145.
- Marland, G., T.A. Boden and R.J. Andres (2005), 'Global, Regional and National CO2 Emissions' in *Trends: A Compendium of Data on Global Change*, Oak Ridge National Laboratory, Oak Ridge. http://cdiac.esd.ornl.gov/trends/emis/em_cont.htm
- Michaels, P. (ed.) (2003), 'Bad Math', *World Climate Report*, 13 (10). <http://www.co2andclimate.org>
- Miketa, A. and P. Mulder (2005), 'Energy Productivity across Developed and Developing Countries in 10 Manufacturing Sectors: Patterns of Growth and Convergence', *Energy Economics*, **27** (3), 429-453.
- Millennium Ecosystem Assessment (2005), *Ecosystems and Human Well-Being: Scenarios*, Island Press, Washington, D.C.
- Mitchell, B.R. (1998), *International Historical Statistics: The Americas 1750-1993*, 4th Edition, Stockton Press, New York.
- Morgan, M. G. and M. Henrion (1990), *Uncertainty - A Guide to Dealing with Uncertainty in Quantative Risk and Policy Analysis*, Cambridge University Press, Cambridge.
- Nakicenovic N. and Swart, R.J. (2000) *Emissions Scenarios 2000 – Special Report of the Intergovernmental Panel on Climate Change*, Cambridge University Press, Cambridge.
- Nakicenovic, N., Grübler, A., Gaffin, S., Jung, T.T., Kram, T., Morita, T., Pitcher, H., Riahi, K., Schlesinger, M., Shukla, P.R., Van Vuuren, D., Davis, G., Michaelis, L., Swart, R. and Victor, N. (2003), 'IPCC SRES Revisited: A Response', *Energy and Environment*, **14** (2-3), 187-214.
- Nordhaus, W.D. (forthcoming), 'Alternative Measures of Output in Global Economic-Environmental Models: Purchasing Power Parity or Market Exchange Rates?', *Energy Economics*.
- Palmer, K. and D. Burtraw (2005), 'Cost-effectiveness of Renewable Electricity Policies', *Energy Economics*, **27** (6), 873-894.
- Pratt, J.W., H. Raiffa and R. Schlaifer (1995), *Introduction to Statistical Decision Theory*, The MIT Press, Cambridge.
- Romer, D. (1996), *Advanced Macroeconomics*, McGraw-Hill, New York.
- Romer, P.M. (1986), 'Increasing Returns and Long-Run Growth', *Journal of Political Economy*, **94** (5), 1002-1037.

- Romer, P.M. (1987), 'Growth Based on Increasing Returns Due to Specialization', *American Economic Review*, **77** (2), 56-62.
- Romer, P.M. (1990), 'Endogenous Technological Change', *Journal of Political Economy* **98** (5), S71-S102.
- Schurr, S.H., B.C. Netschert, V.F. Eliasberg, J. Lerner and H.H. Landsberg (1960), *Energy in the American Economy 1850-1975 – An Economic Study of its History and Prospects*, Resources for the Future / Johns Hopkins Press, Baltimore.
- Solow, R.M. (1956), 'A Contribution to the Theory of Economic Growth', *Quarterly Journal of Economics*, **70** (1), 65-94.
- Solow, R.M. (1987), *Growth Theory - An Exposition (The Radcliffe Lectures Delivered in the University of Warwick 1969, Nobel Prize Lecture 1987)*, Oxford University Press, New York.
- Tol, R.S.J. (2006), 'Exchange Rates and Climate Change: An Application of *FUND*', *Climatic Change*, **75**, 59-80.
- Tol, R.S.J., S.W. Pacala and R.H. Socolow (2006), *Understanding Long-Term Energy Use and Carbon Dioxide Emissions in the USA*, Research unit Sustainability and Global Change **FNU-100**, Hamburg University and Centre for Marine and Atmospheric Science, Hamburg.
- Toth, F.L. and H.-H. Rogner (2006), 'Oil and Nuclear Power: Past, Present and Future', *Energy Economics*, **28** (1), 1-25.
- UKCIP (2001), *Socio-economic Scenarios for Climate Change Impact Assessments – A Guide to their Use in the UK Climate Impacts Programme*, UKCIP, Oxford.
- Van Vuuren, D.P., and B.C. O'Neill (2006), 'The Consistency of IPCC's Scenarios to 1990-2000 Trends and Recent Projections', *Climatic Change*, **75** (1-2), 9-46.
- WRI (2005), *EarthTrends – The Environmental Information Portal*, World Resource Institute <http://earthtrends.wri.org/>

Table 1. Data: Coverage and sources.

Variable	Coverage	Period	Source
<i>Energy</i>			
Primary energy consumption	Coal, oil, gas, hydro, wood	1850-1955	Schurr <i>et al.</i> (1960)
Primary energy consumption	Coal, oil, gas	1900-1987	Liesner (1989)
Primary energy consumption	Coal, oil, gas, nuclear, hydro, other; Industrial, commercial, transport, residential	1949-2004	EIA (2005)
Primary energy consumption	Coal, oil, gas, nuclear, hydro, other	1960-2002	IEA (2005)
Final energy consumption	Coal, oil, gas, electricity, other; Agriculture, manufacturing, services, transport, residential	1960-2002	IEA (2005)
<i>Population</i>			
Size	-	1850-2003	Maddison (2003)
<i>Economy</i>			
GDP		1850-2002	Maddison (2003)
Structure of GDP	Agriculture, manufacturing, construction, transport and communication, commerce	1869-1993	Mitchell (1998)
Structure of GDP	Agriculture, manufacturing, services	1971-2001	WRI (2005)
<i>Emissions</i>			
Carbon dioxide	Coal, oil, gas, flaring, cement	1800-2002	Marland <i>et al.</i> (2005)

Table 2. Parameters of the model.

Symbol	Description	Value		Source
<i>Growth</i>				
γ_K	Share of capital in production	.0263	(.0026)	WRI
γ_L	Share of labour in production	.0074	(.0007)	WRI
λ	Capital share in production	.20	(.002)	This paper
κ	Capital share in knowledge production	.29	(.003)	Calibration
φ	Constant savings' rate	31.2	(6.1)	Regression
ψ	Shift factor in savings' rate	-28.4	(5.6)	Regression
δ_K	Depreciation of capital	.100	(.010)	This paper
δ_H	Depreciation of knowledge	.020	(.002)	This paper
<i>Structure</i>				
\bar{A}	Subsistence agriculture	485	(49)	Least squares
\underline{S}	Household services	1003	(100)	Least squares
$(1-\alpha)(g_M-g_A)$	Technological bias agriculture	Fig A1		Least squares
$(1-\sigma)(g_M-g_S)$	Technological bias services	Fig A1		Least squares
<i>Energy</i>				
	Annual energy intensity decline, agriculture, percent	0.79	(0.41)	This paper
	Annual energy intensity decline, manufacturing, percent	0.84	(0.63)	This paper
	Annual energy intensity decline, services, percent	1.10	(0.52)	This paper
	Annual energy intensity decline, transport, percent	0.79	(0.31)	This paper
	Annual energy intensity decline, residential, percent	0.54	(0.20)	This paper
	Conversion efficiency decline, percent	0.33	(0.17 10^{-4})	Regression
	Annual relative price change, coal, percent	-0.45	(1.15)	This paper
	Annual relative price change, oil, percent	-2.01	(1.69)	This paper
	Annual relative price change, gas, percent	-1.36	(2.70)	This paper
	Annual relative price change, nuclear, percent	-1.38	(4.96)	This paper
	Annual relative price change, hydro, percent	-1.79	(4.80)	This paper
	Annual relative price change, other, percent	0.22	(2.35)	This paper

Table 3. Values of selected characteristics in 2100 in the base case and two sensitivity analyses.

		Base	Population			Workforce		
		value	value	change	elasticity	value	change	elasticity
Population	People (10^6)	478	528	10.5%		478		
Workforce	People (10^6)	193	212	9.8%		212	9.8%	
Per capita income	Dollar (10^3)	106	111	4.7%	0.45	118	11.6%	
Primary energy use	BTU (10^{15})	246	283	15.0%	1.43	272	10.5%	0.91
CO ₂ emissions	g CO ₂ (10^{12})	11.5	13.1	14.6%	1.39	12.6	10.2%	0.88

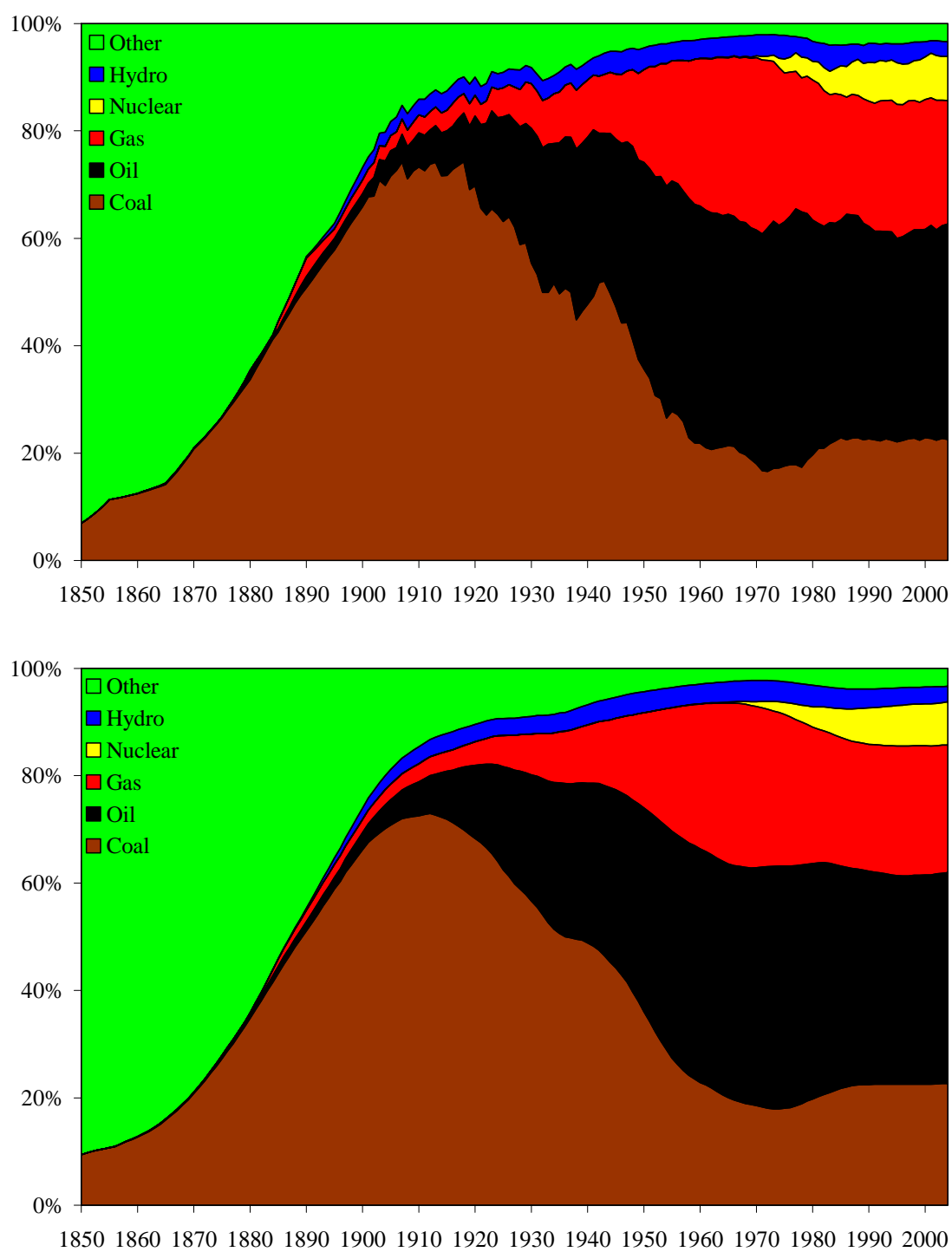


Figure 1. Primary energy use by source as observed (top panel) and as modelled (bottom panel).

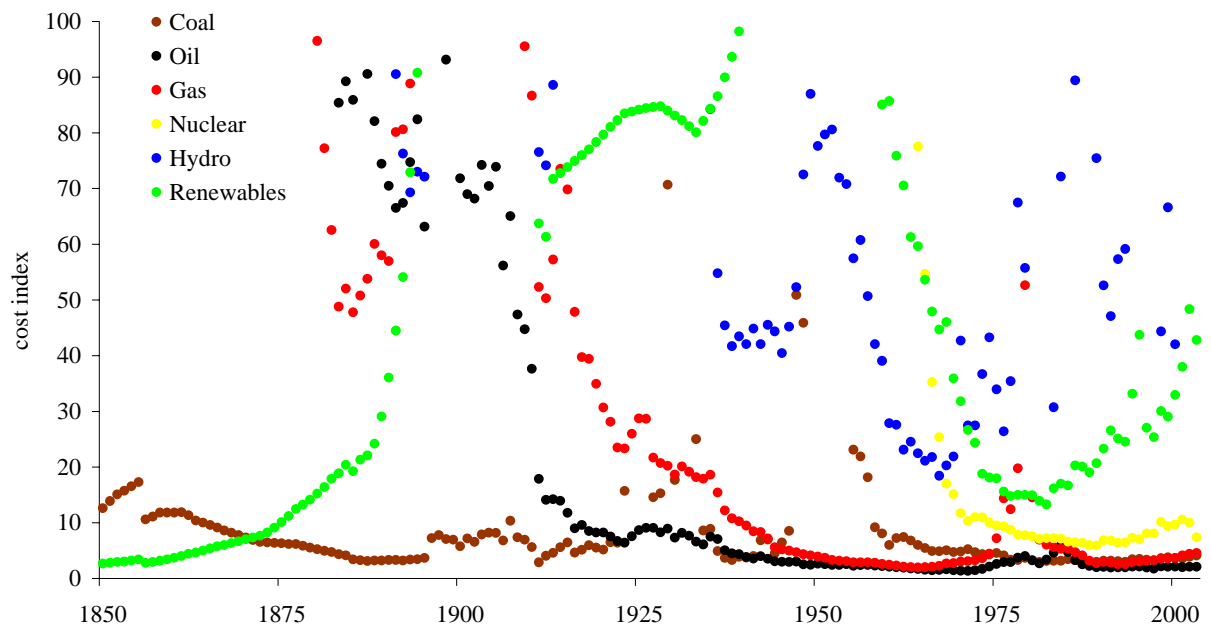


Figure 2. The assumed costs of energy investment, by source.

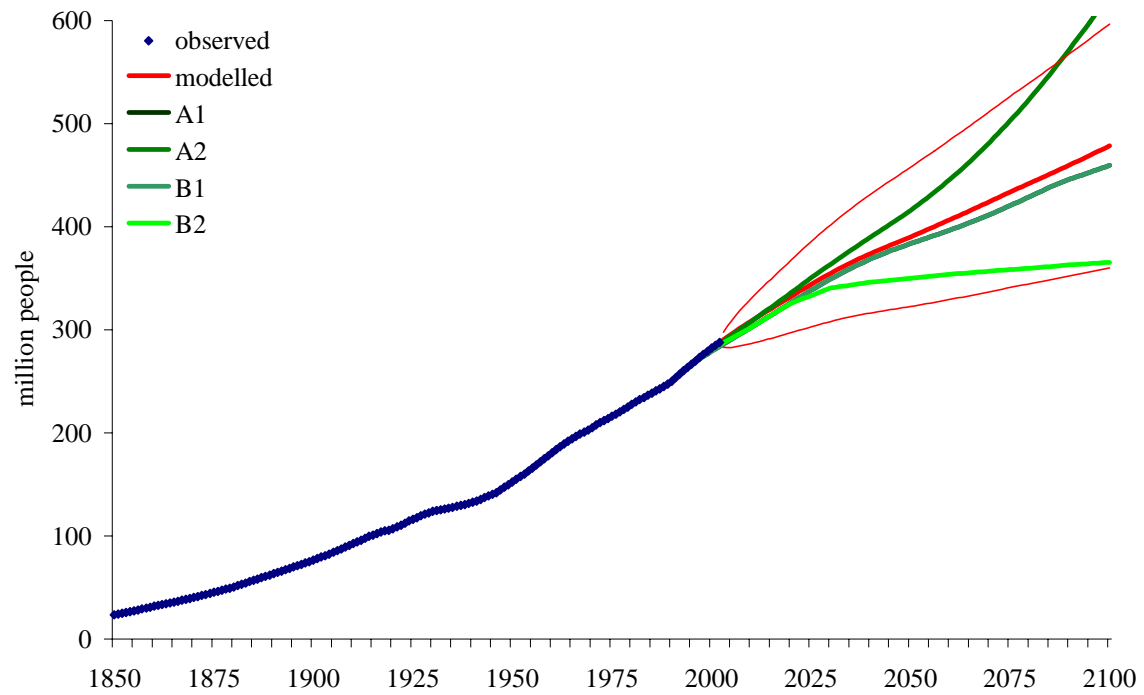


Figure 3. Number of people in the USA as observed and as projected; note that the A1 and B1 scenarios coincide.

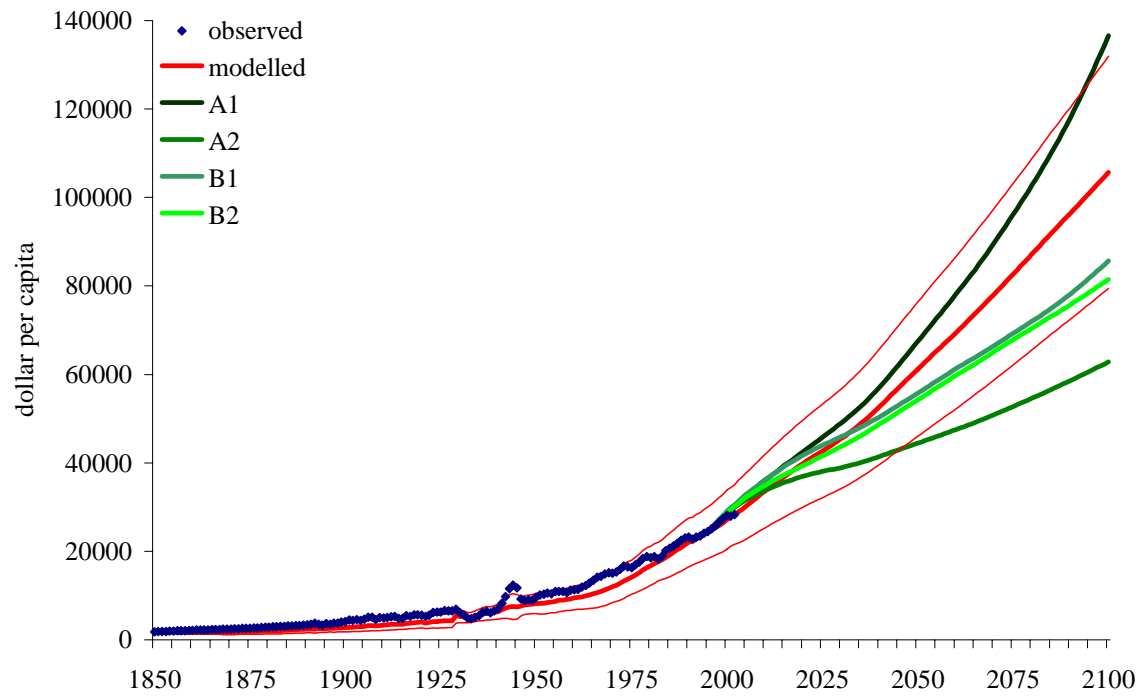


Figure 4. Per capita income as observed and as projected.

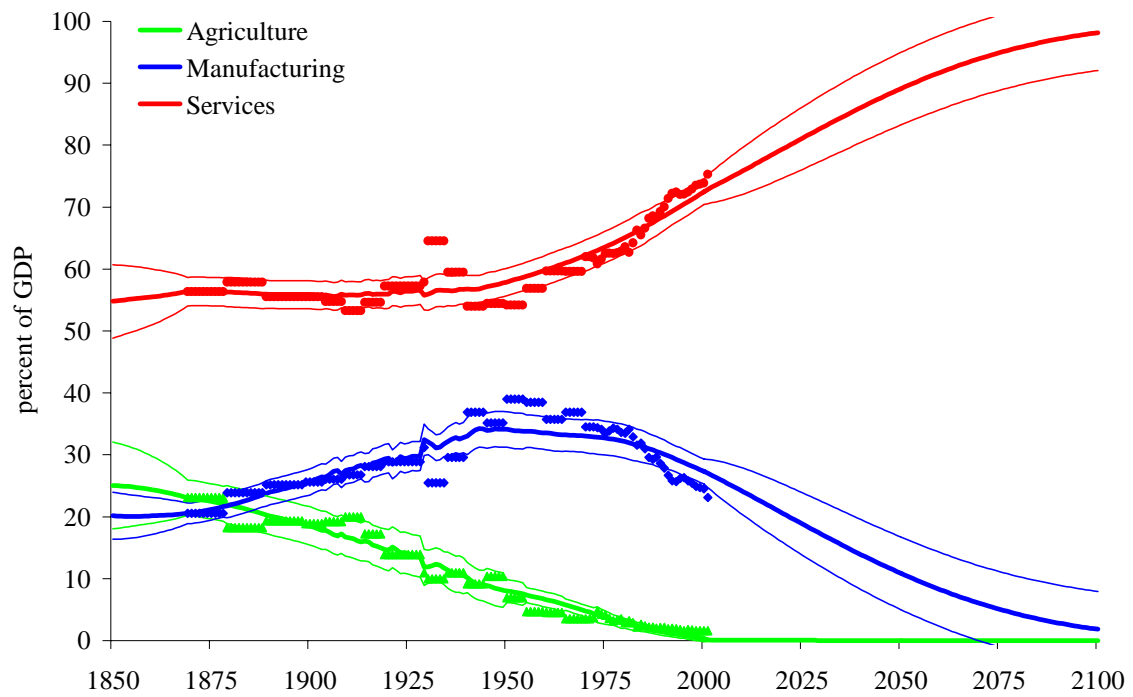


Figure 5. The composition of economic production, as observed and as predicted.

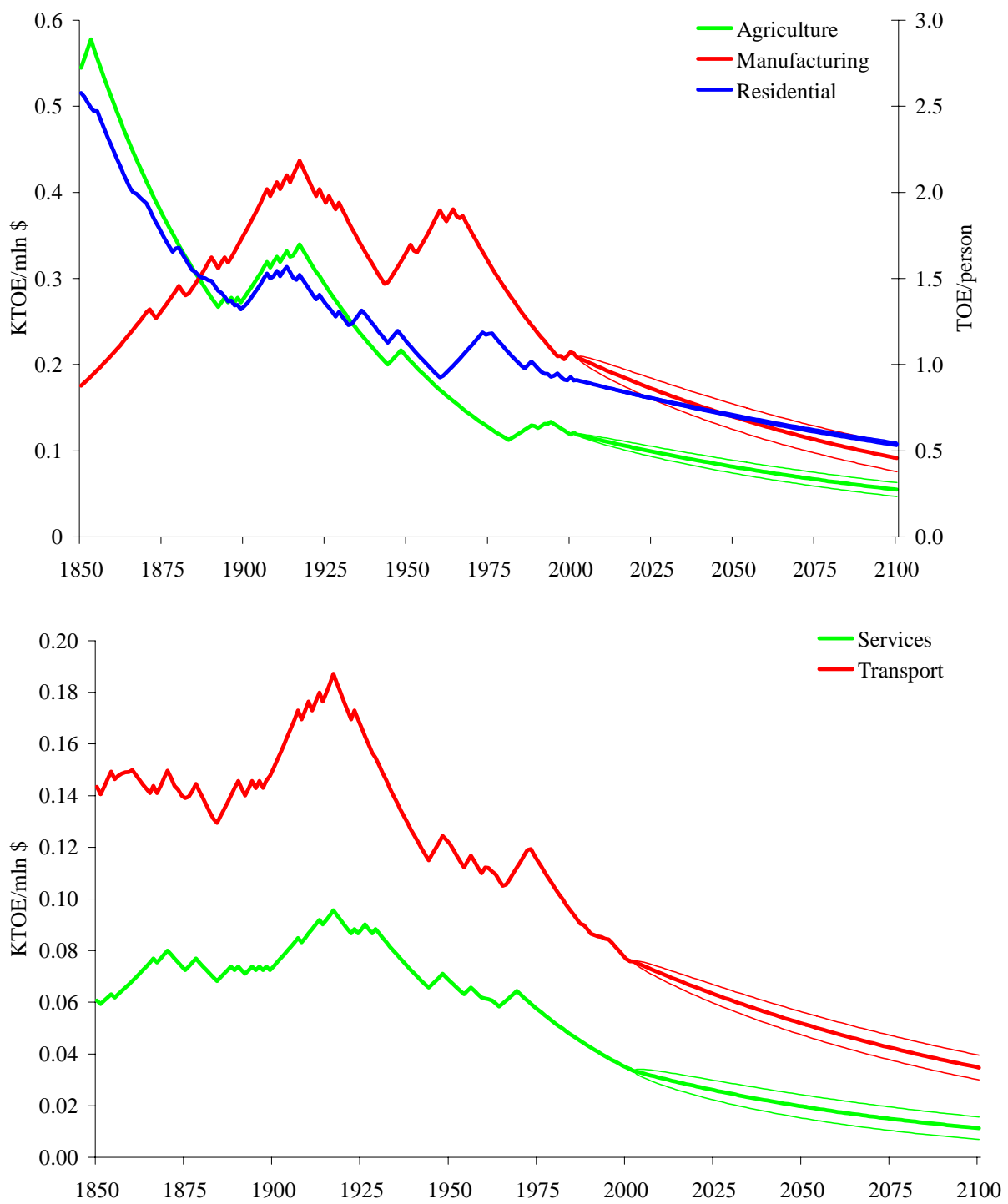


Figure 6. Energy intensities as observed and as projected for agriculture, manufacturing and residential (top panel) and for services and transport (bottom panel).

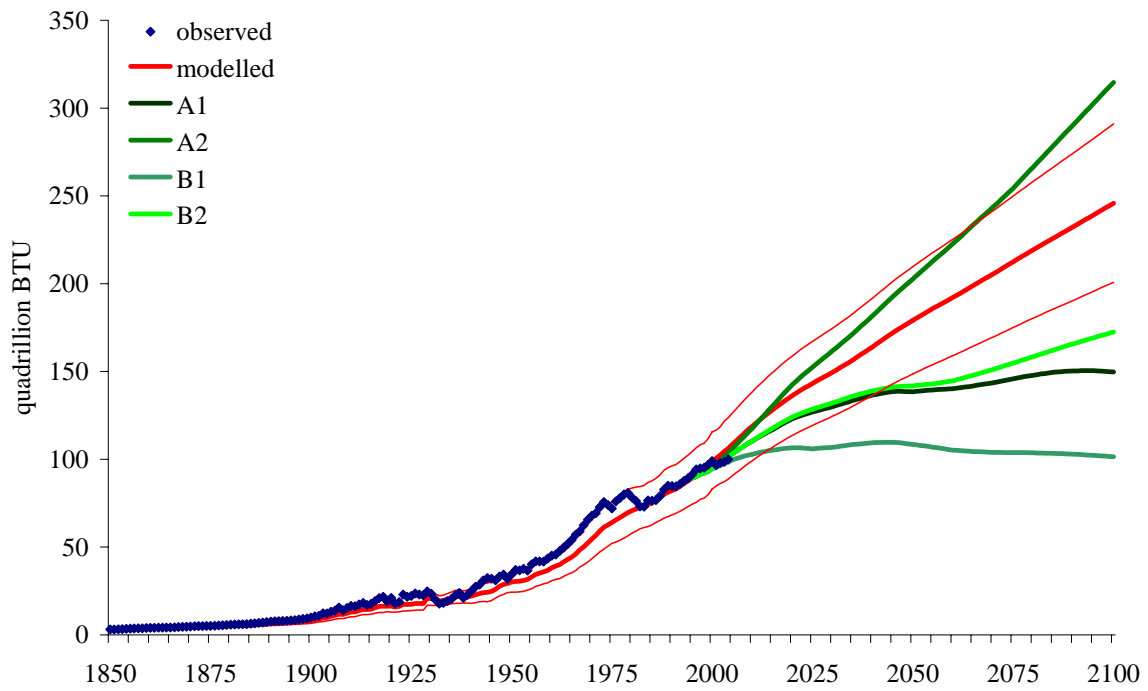


Figure 7. Primary energy use, as observed and as projected.

Base case

100%
80%
60%
40%
20%
0%

Other
Hydro
Nuclear
Gas
Oil
Coal

1850 1875 1900 1925 1950 1975 2000 2025 2050 2075 2100

Expensive oil

The chart illustrates the historical and projected energy mix. The y-axis represents the percentage of total energy consumption, ranging from 0% to 100%. The x-axis represents time in years, from 1850 to 2100. The legend identifies the following energy sources: Other (green), Hydro (blue), Nuclear (yellow), Gas (red), Oil (black), and Coal (brown). The chart shows a significant increase in energy consumption starting around 1900, with coal being the dominant source until the 1950s. Oil then becomes the primary source, peaking around 1975. Gas usage increases steadily from the 1950s onwards. Nuclear power emerges in the 1960s and grows through the 1980s. Hydro power remains a consistent but smaller portion of the mix. The 'Other' category, which includes wind and solar, is shown as a small but growing portion of the total energy consumption in the later years of the chart.

Year	Coal (%)	Oil (%)	Gas (%)	Nuclear (%)	Hydro (%)	Other (%)
1850	100	0	0	0	0	0
1900	70	10	0	0	0	20
1950	40	40	10	0	0	10
1975	20	40	20	0	1	19
2000	20	35	30	10	1	3
2025	25	30	35	15	1	2
2050	30	25	35	20	1	1
2100	30	20	30	25	1	1

Expensive coal

The chart illustrates the historical and projected energy mix. Coal (red) and oil (black) dominated the early 20th century. Oil's share peaked around 1970 and has since declined. Coal's share peaked around 1950 and has also declined. Gas (blue) and nuclear power (green) emerged in the mid-20th century and have grown significantly. Projections from 2000 onwards show a continued decline in coal and oil, with gas and nuclear power remaining significant, and a small but growing share for hydro and other sources.

Year	Coal	Oil	Gas	Nuclear	Hydro	Other
1850	100%	0%	0%	0%	0%	0%
1875	80%	0%	0%	0%	0%	20%
1900	50%	10%	0%	0%	0%	40%
1925	30%	40%	0%	0%	0%	30%
1950	10%	60%	0%	0%	0%	30%
1975	5%	40%	30%	0%	0%	25%
2000	5%	30%	30%	10%	0%	25%
2025	5%	25%	30%	20%	0%	20%
2050	5%	20%	30%	25%	0%	20%
2075	5%	15%	30%	25%	0%	25%
2100	5%	10%	30%	25%	0%	30%

Cheap renewables

The chart illustrates the historical and projected energy mix. The x-axis represents years from 1850 to 2100, and the y-axis represents the percentage share of total energy supply from 0% to 100%.

Legend:

- Other (Green)
- Hydro (Blue)
- Nuclear (Yellow)
- Gas (Red)
- Oil (Black)
- Coal (Brown)

Key trends:

- Coal (Brown):** Dominant from 1850 to ~1925, peaking at ~75%.
- Oil (Black):** Rises sharply after 1925, peaking at ~40% around 1975.
- Gas (Red):** Rises after 1950, peaking at ~25% around 2000.
- Nuclear (Yellow):** Emerges after 1975, growing to ~15% by 2100.
- Hydro (Blue):** Steady growth from 1850, reaching ~5% by 2100.
- Other (Green):** Represents a significant and growing share, reaching ~35% by 2100.

Cheap nuclear power

The chart illustrates the historical and projected share of electricity generation by source. The y-axis represents the percentage of total electricity, ranging from 0% to 100%. The x-axis represents the year, from 1850 to 2100. The legend identifies the following sources: Other (light blue), Hydro (dark blue), Nuclear (yellow), Gas (red), Oil (black), and Coal (brown). Coal is the dominant source until the 1920s, followed by oil and gas. Nuclear power begins to rise significantly in the 1950s and is projected to become the primary source by the 2050s, eventually accounting for nearly 100% of electricity generation by 2100. Hydro and other sources remain relatively stable throughout the period.

Year	Coal (%)	Oil (%)	Gas (%)	Nuclear (%)	Hydro (%)	Other (%)
1850	100	0	0	0	0	0
1900	70	20	10	0	0	0
1950	30	40	20	10	0	0
2000	20	40	20	20	0	0
2050	10	30	20	40	0	0
2100	5	15	10	70	0	0

Cheap natural gas

The chart illustrates the historical and projected energy mix from 1850 to 2100. The y-axis represents the percentage of energy, ranging from 0% to 100%. The x-axis represents the year, from 1850 to 2100. The legend identifies the following energy sources:

- Other (Green)
- Hydro (Blue)
- Nuclear (Yellow)
- Gas (Red)
- Oil (Black)
- Coal (Brown)

Key observations from the chart include:

- 1850-1900:** Coal (brown) is the primary energy source, increasing from approximately 10% to 70%.
- 1900-1950:** Oil (black) rises sharply, peaking at about 40% around 1950. Coal remains significant, while gas (red) begins to emerge.
- 1950-2000:** Oil continues to dominate, peaking at nearly 50% around 1975. Gas (red) increases significantly, reaching about 20% by 2000. Coal (brown) declines to around 20%.
- 2000-2100:** Projections show a decline in oil and coal, and a significant increase in natural gas (red), which is projected to reach about 40% by 2100. Coal (brown) is projected to rise again to about 20% by 2100. Other (green) remains a large portion of the energy mix, and Hydro (blue) and Nuclear (yellow) show minor increases.

Cheap hydropower

The chart illustrates the historical and projected mix of electricity generation sources. Coal and oil were the primary sources in the late 19th and early 20th centuries. Hydropower's share grew steadily from the late 19th century. Gas and nuclear power emerged as major sources in the mid-20th century. Projections for the future show a continued decline in coal and oil, with gas and nuclear maintaining significant shares, and a slight increase in hydropower and other sources.

Year	Coal	Oil	Gas	Nuclear	Hydro	Other
1850	10%	0%	0%	0%	0%	90%
1900	40%	0%	0%	0%	10%	50%
1950	45%	20%	0%	0%	15%	20%
2000	20%	20%	20%	10%	15%	15%
2050	20%	20%	20%	20%	15%	5%
2100	15%	10%	20%	20%	15%	20%

Figure 8. Primary energy use, by source, as modelled; share in total.

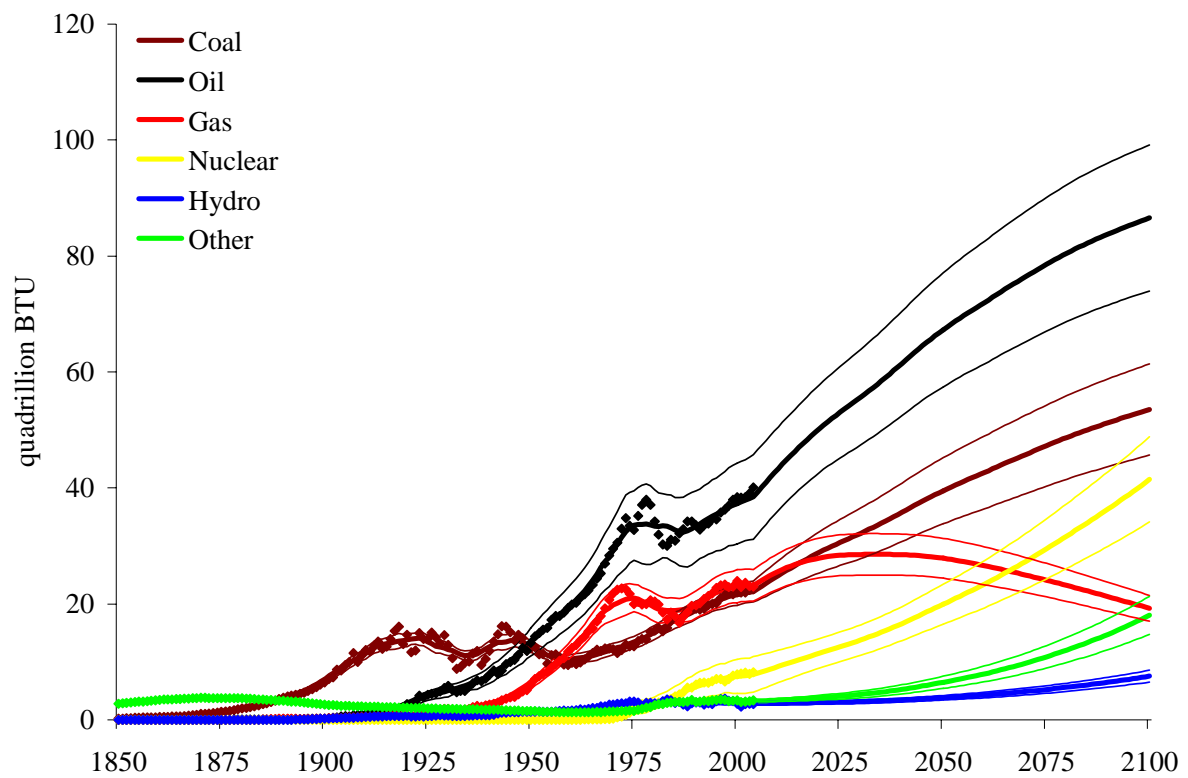


Figure 9. Primary energy use, by source, as modelled; absolute amounts.

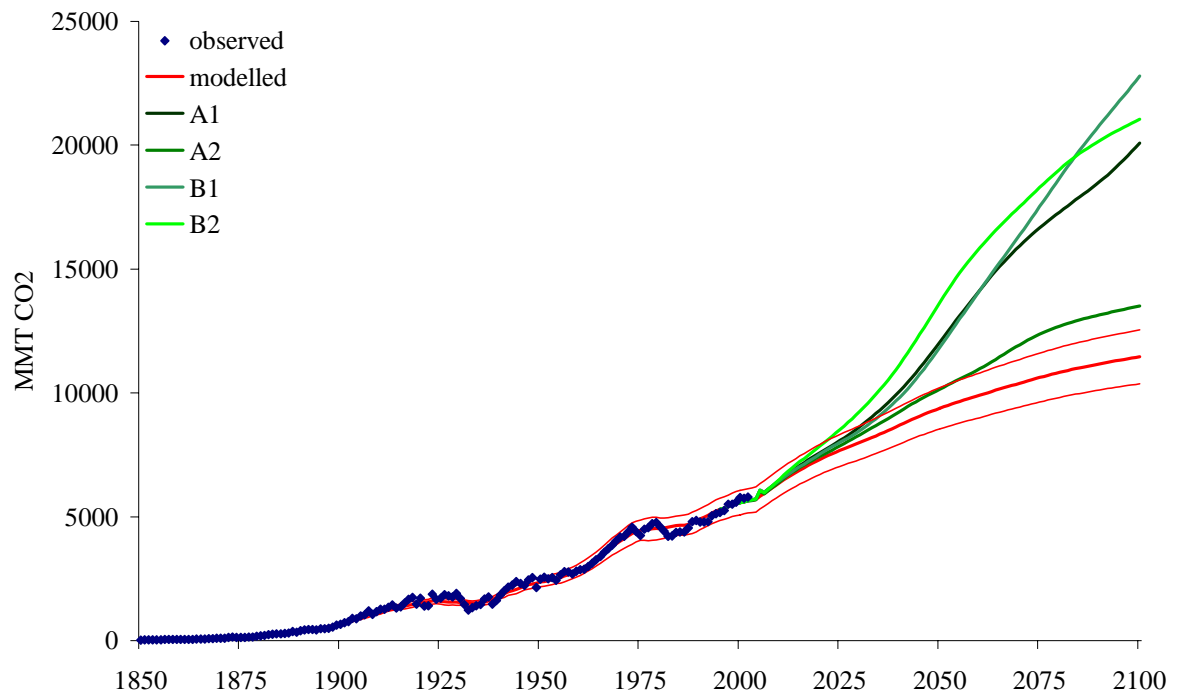


Figure 10. Carbon dioxide emissions as observed and as projected; note that all scenarios are based on the same primary energy use.

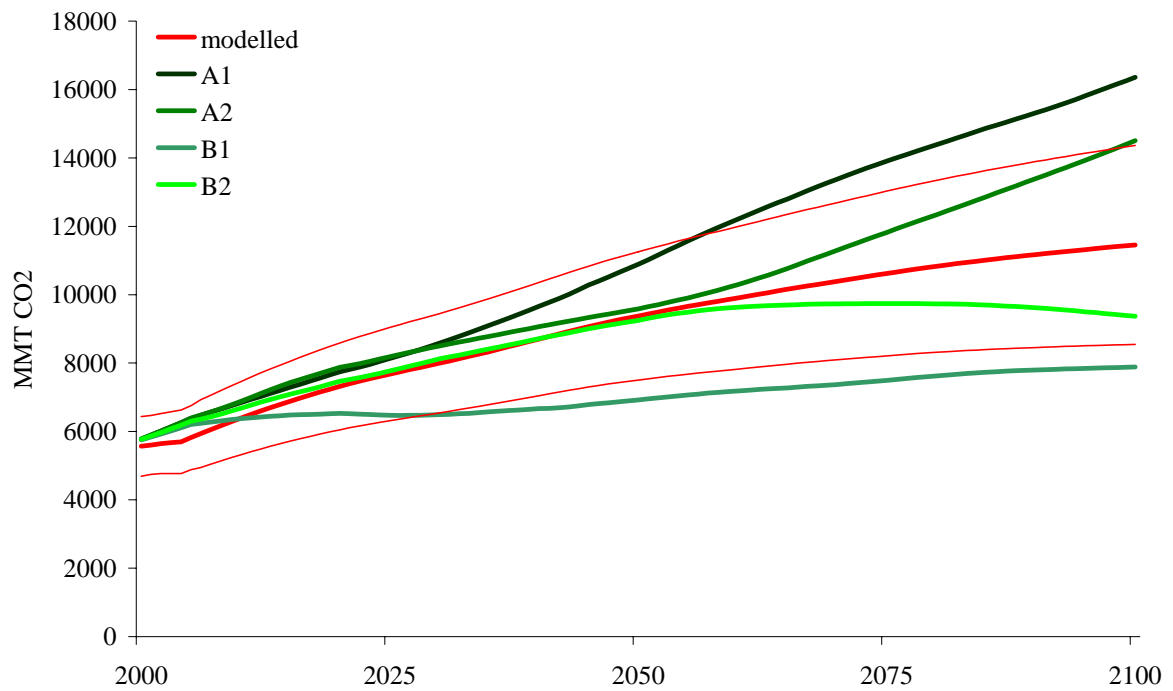


Figure 11. Carbon dioxide emissions, as projected, according to our baseline scenario and four IPCC scenarios.

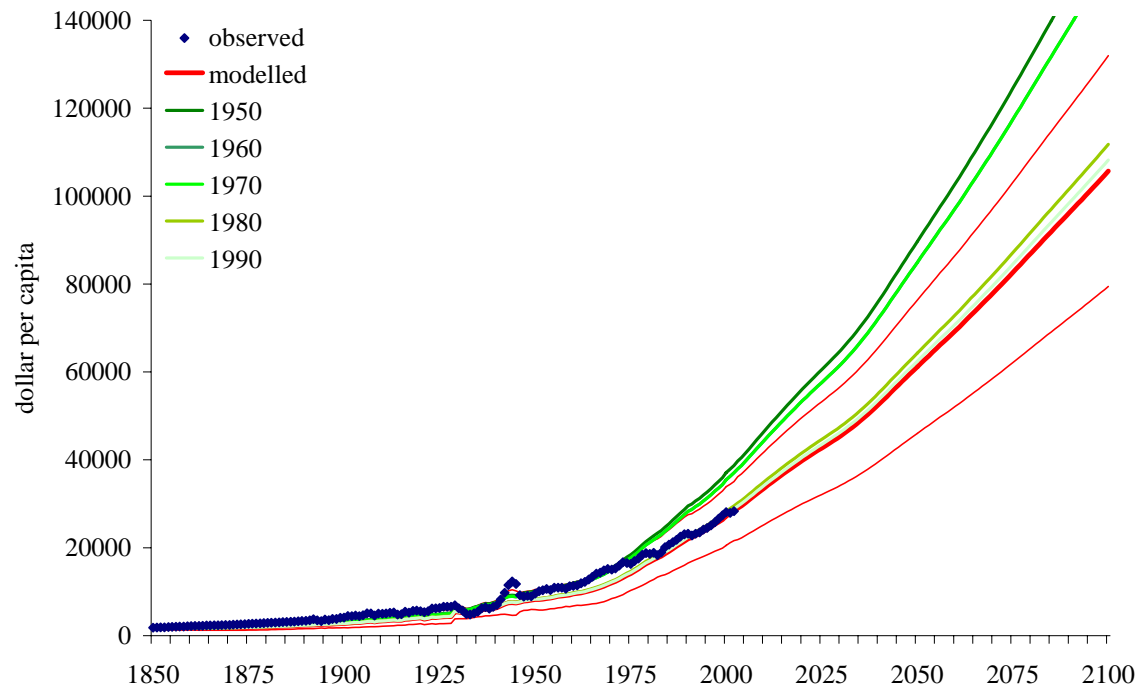
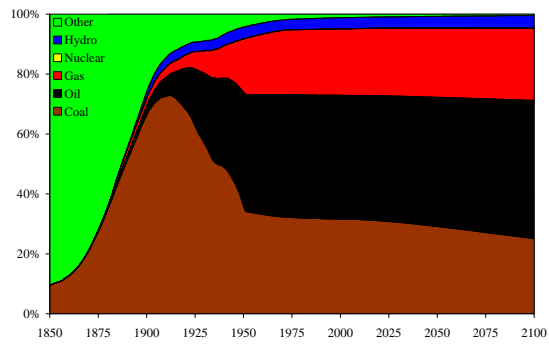


Figure 12. Sensitivity analysis, economic growth; the model was calibrated for the period from 1850 to the year in the legend. For “modelled”, the calibration period extended up to 2000; this projection include the 67% confidence interval.

1950



1975

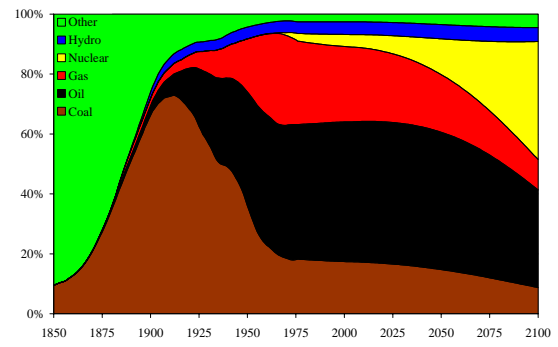


Figure 13. Primary energy use, by source.

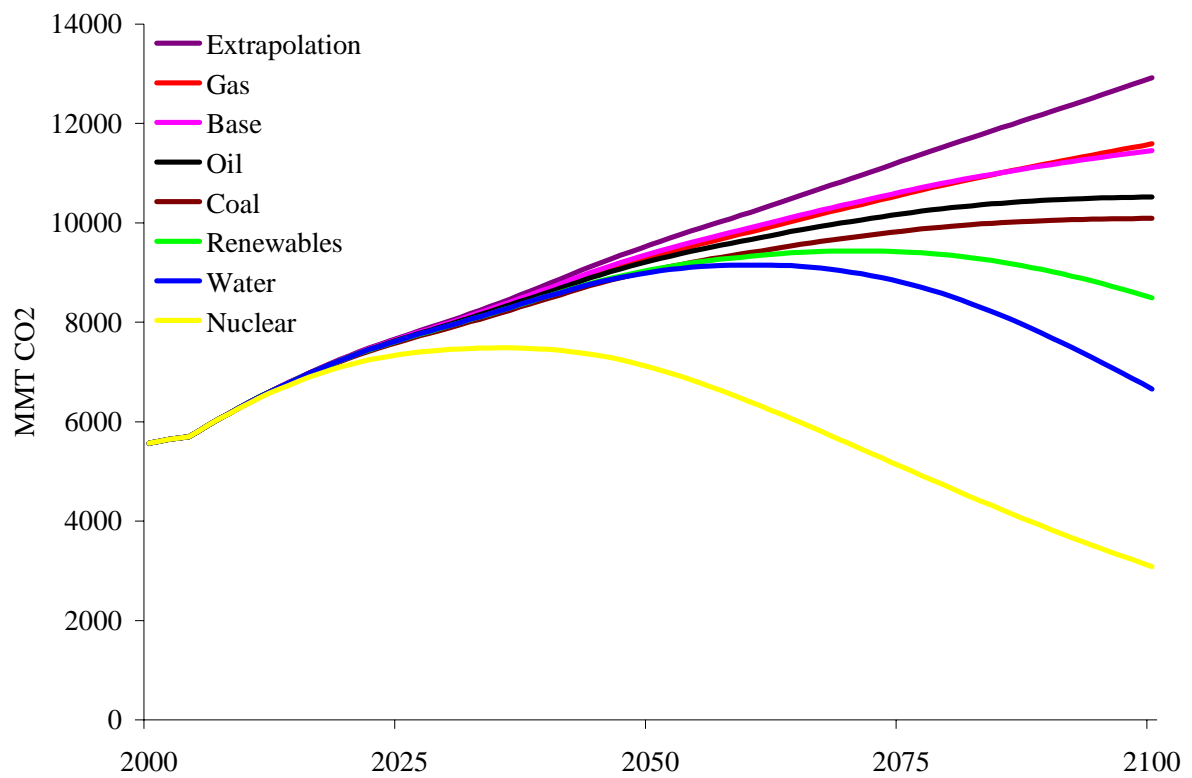


Figure 14. Carbon dioxide emissions, as projected, according to our baseline scenario and seven sensitivity analyses.

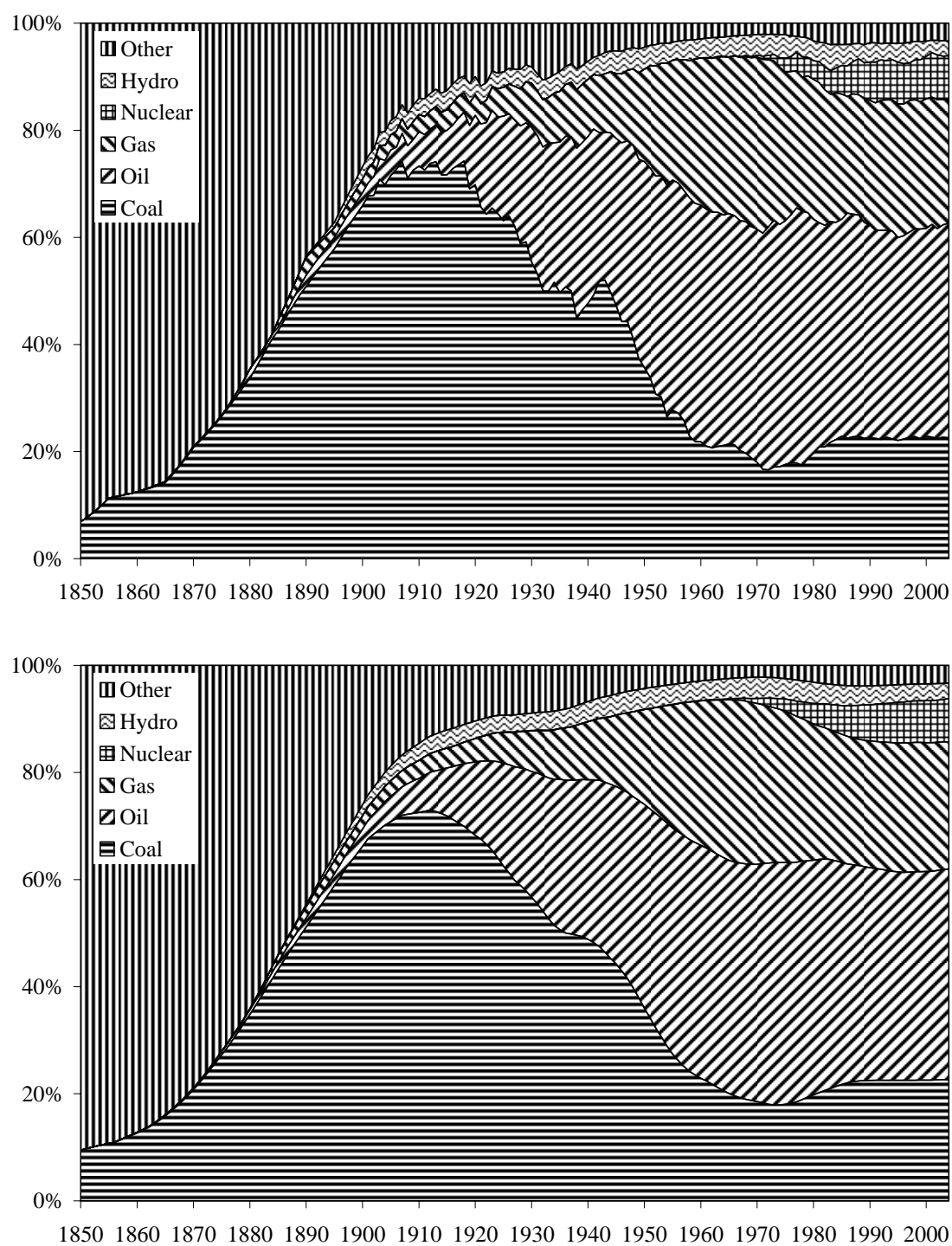


Figure 1. Primary energy use by source as observed (top panel) and as modelled (bottom panel).

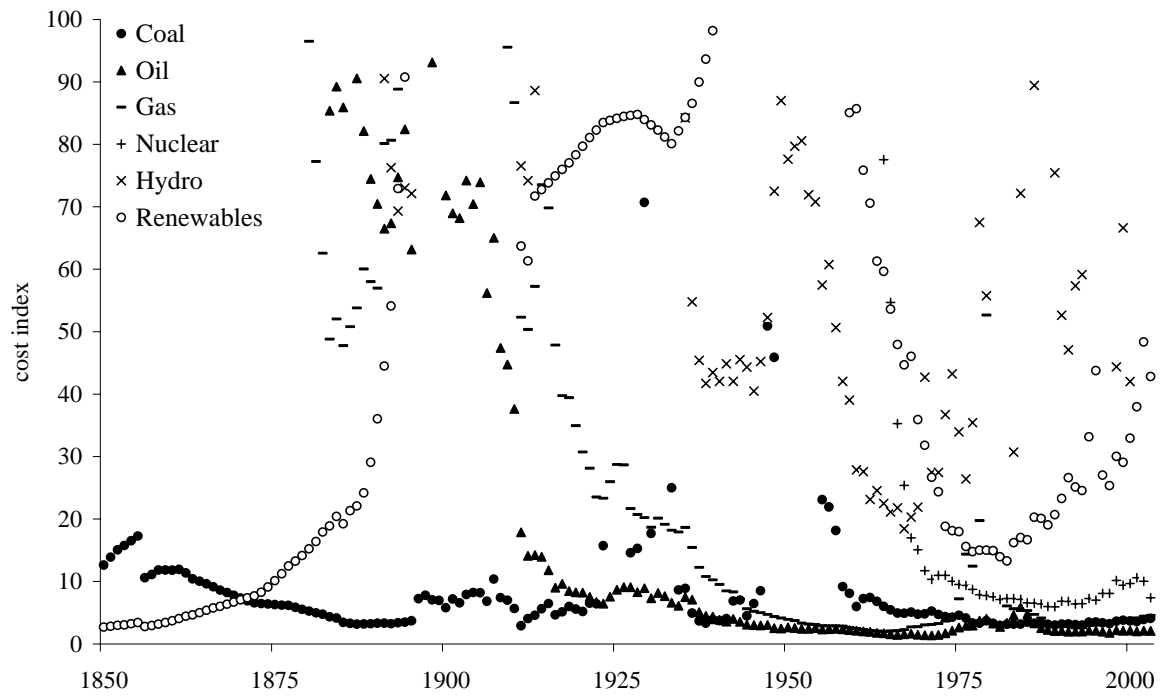


Figure 2. The assumed costs of energy investment, by source.

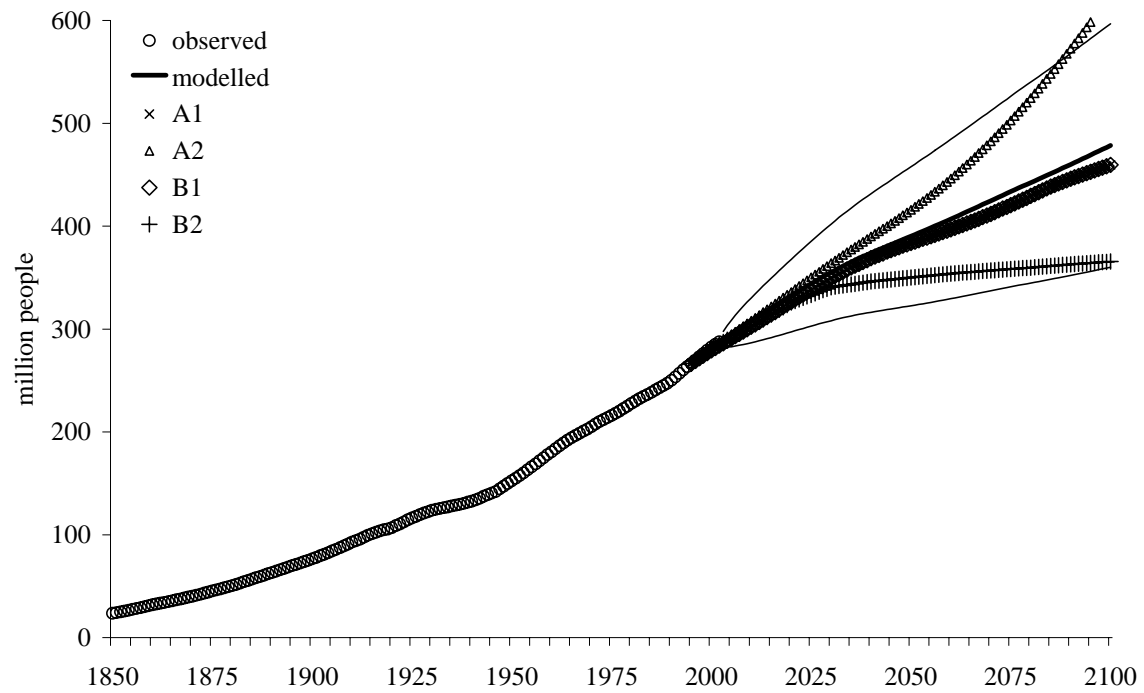


Figure 3. Number of people in the USA as observed and as projected; note that the A1 and B1 scenarios coincide.

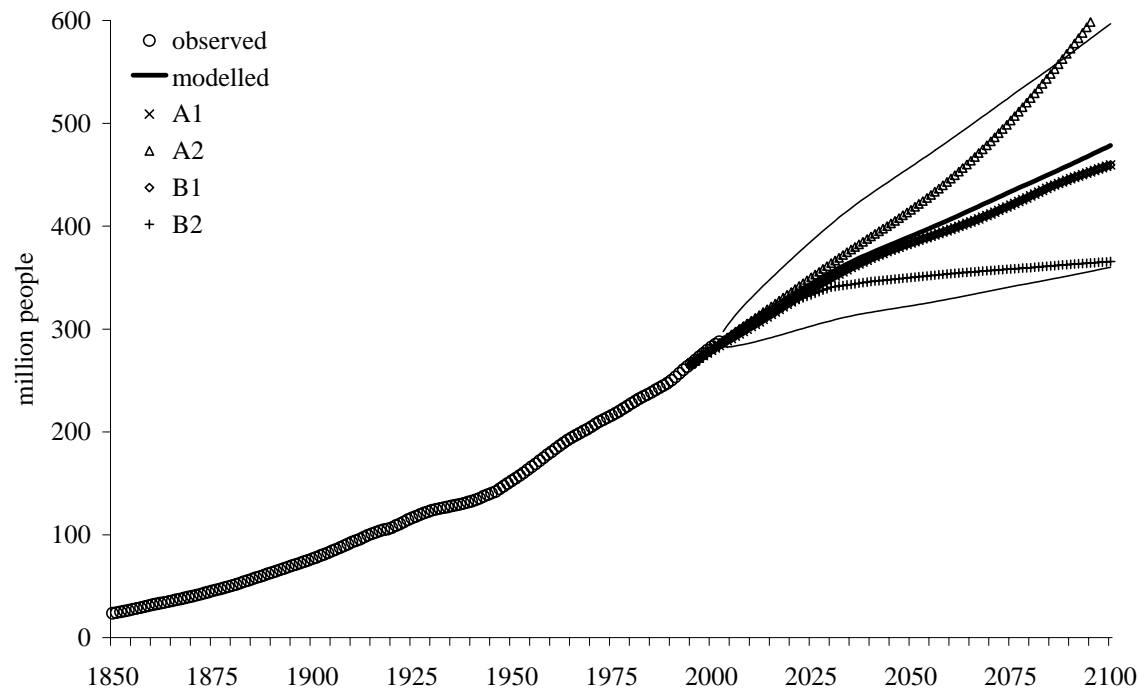


Figure 4. Per capita income as observed and as projected.

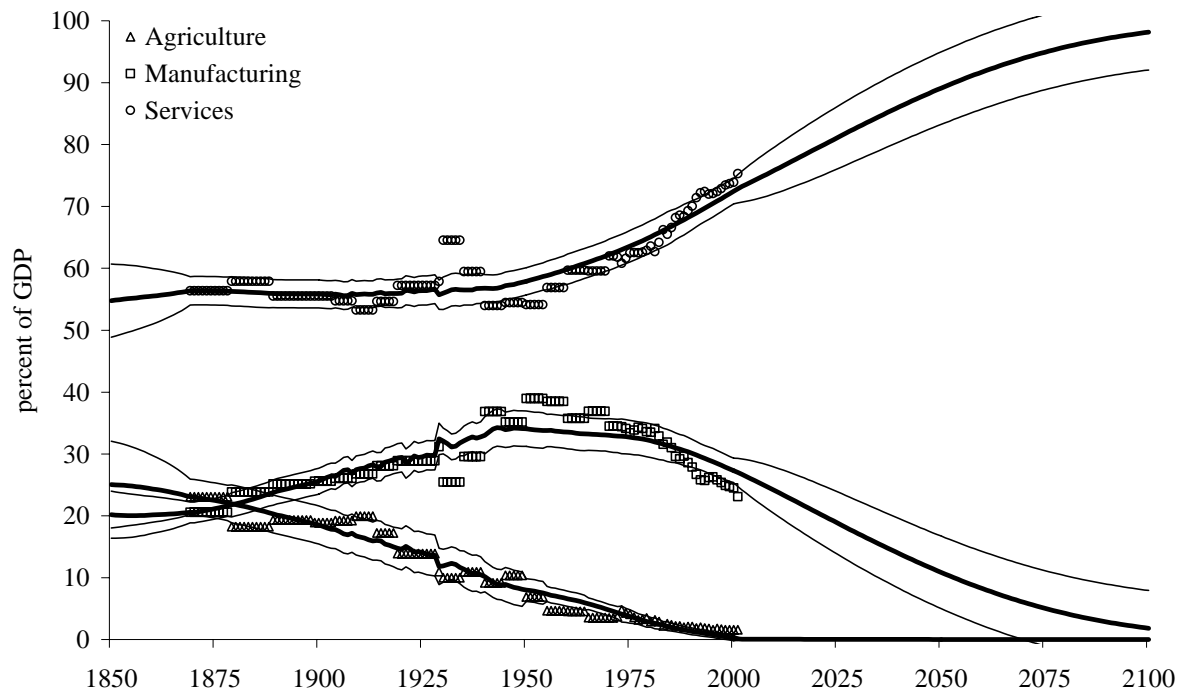


Figure 5. The composition of economic production, as observed and as predicted.

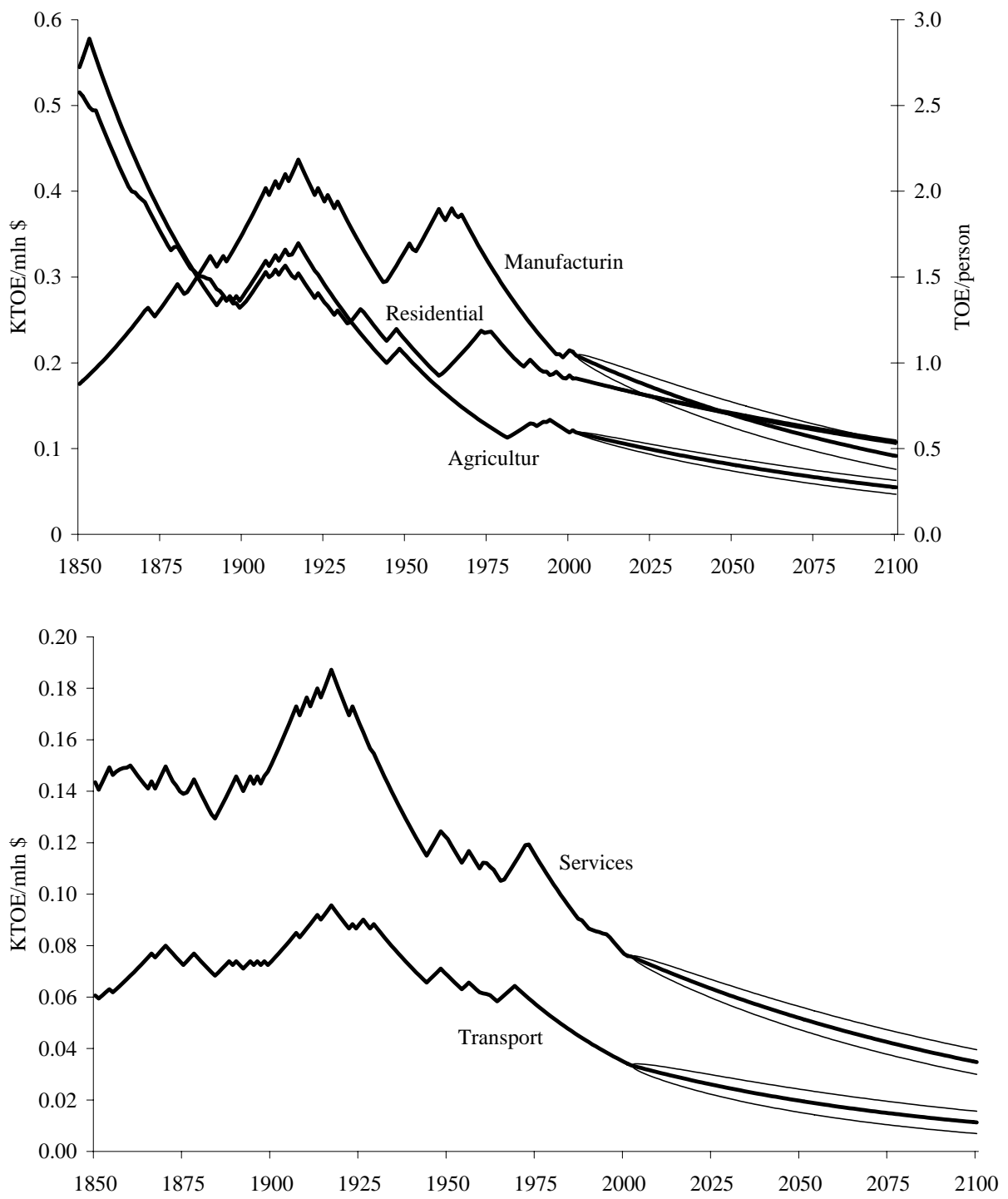


Figure 6. Energy intensities as observed and as projected for agriculture, manufacturing and residential (top panel) and for services and transport (bottom panel).

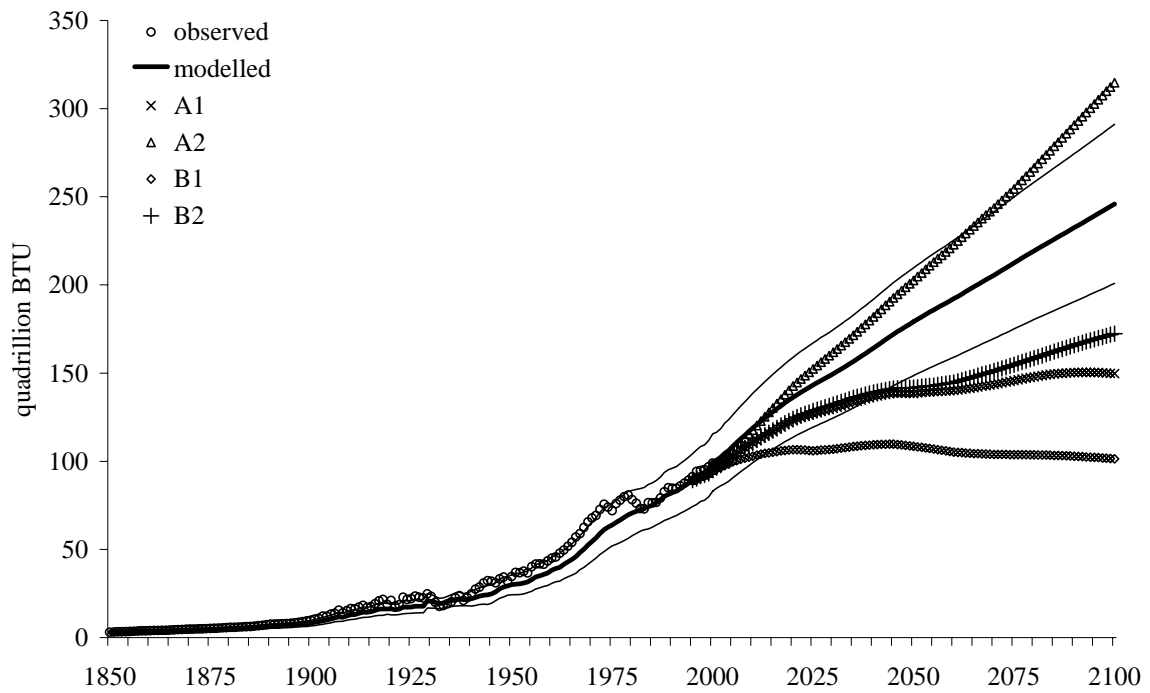


Figure 7. Primary energy use, as observed and as projected.

Figure 1 is a 100% stacked area chart illustrating the projected share of total energy consumption by source from 1850 to 2100. The Y-axis represents the percentage share from 0% to 100%, and the X-axis represents the year. The legend identifies six energy sources: Coal (horizontal lines), Oil (diagonal lines), Gas (cross-hatch), Nuclear (vertical lines), Hydro (wavy lines), and Other (solid black). The chart shows a historical shift from coal to oil and gas, with a projected increase in gas and hydro, and a significant projected increase in nuclear energy starting around 2000.

Year	Coal (%)	Oil (%)	Gas (%)	Nuclear (%)	Hydro (%)	Other (%)
1850	100	0	0	0	0	0
1875	80	20	0	0	0	0
1900	50	40	10	0	0	0
1925	30	50	20	0	0	0
1950	15	45	35	0	5	0
1975	10	35	45	0	10	0
2000	10	30	45	15	10	0
2025	10	25	45	20	10	0
2050	10	20	45	25	10	0
2075	10	15	45	30	10	0
2100	10	10	45	35	10	0

The chart displays the historical and projected energy mix. Coal was the dominant source until the 1920s, followed by oil and gas. Projections show a significant decline in coal and oil's share after 2000, while gas's share is expected to remain high until around 2050. Nuclear power is projected to grow steadily from the 1970s onwards, and hydro power is expected to continue its gradual increase. The 'Other' category, which includes wind, solar, and geothermal, is projected to become a more significant portion of the energy mix in the latter half of the 21st century.

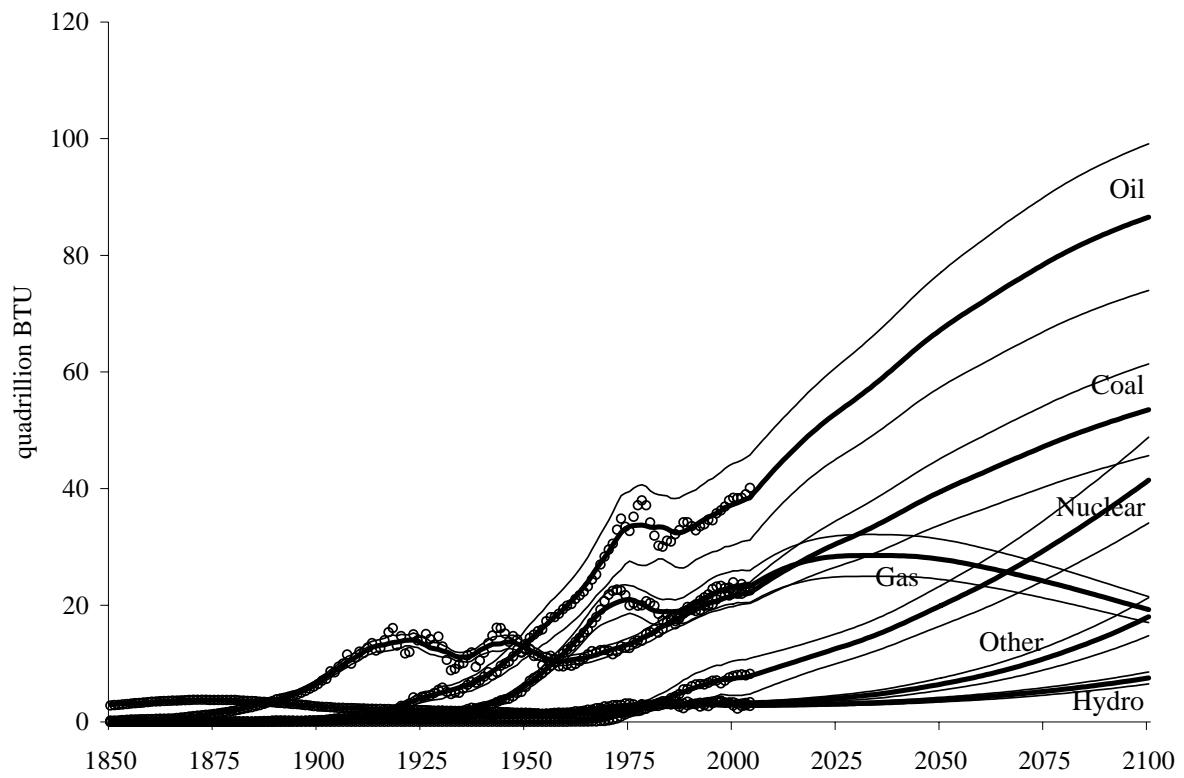


Figure 9. Primary energy use, by source, as modelled; absolute amounts.

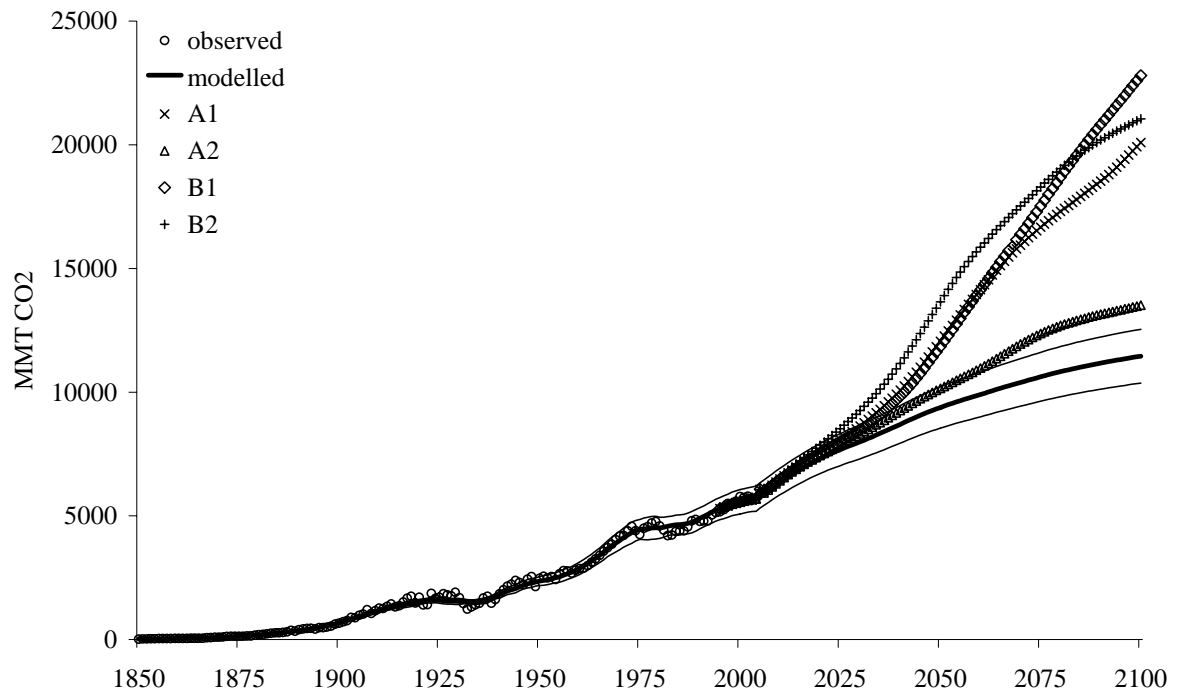


Figure 10. Carbon dioxide emissions as observed and as projected; note that all scenarios are based on the same primary energy use.

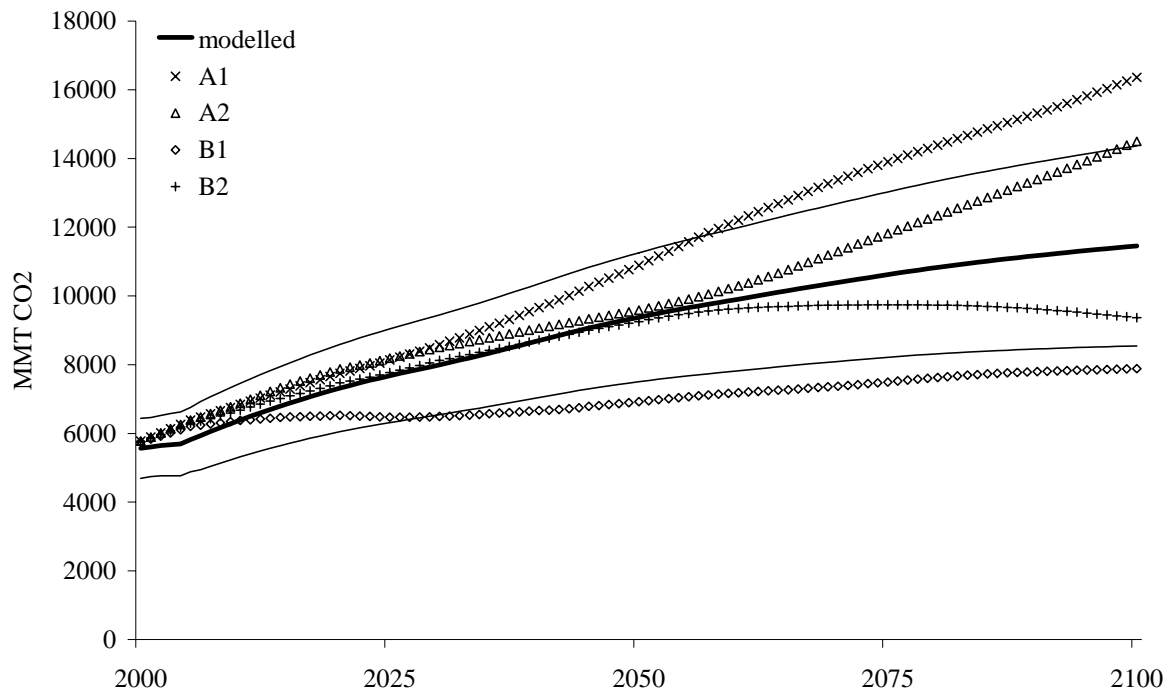


Figure 11. Carbon dioxide emissions, as projected, according to our baseline scenario and four IPCC scenarios.

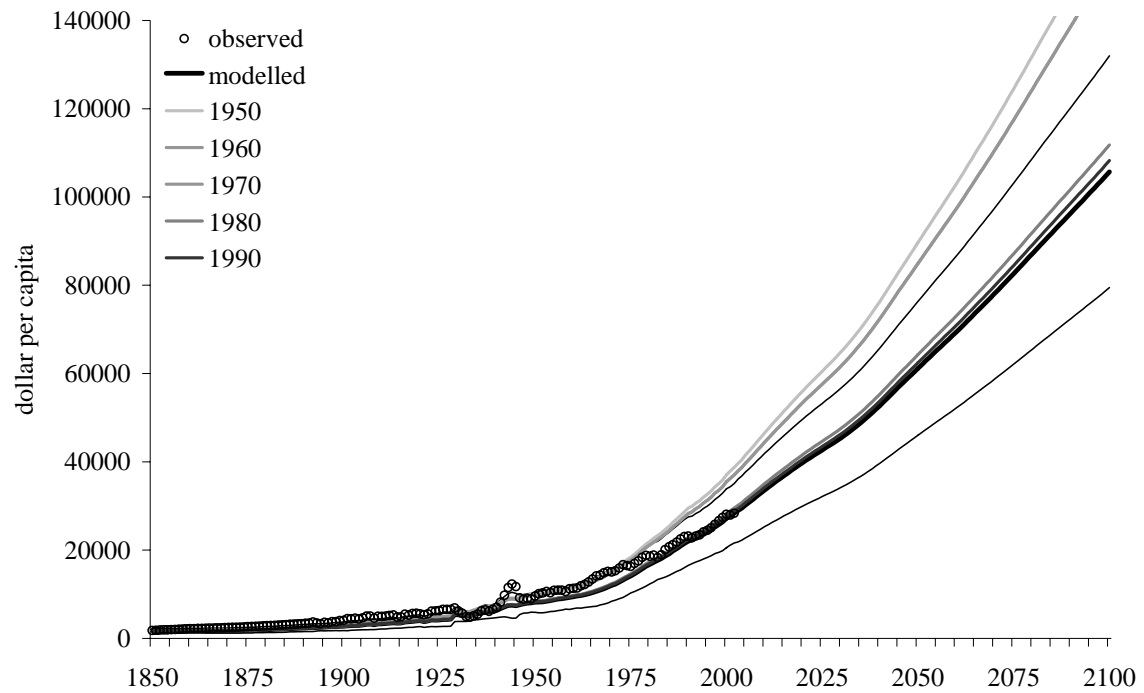
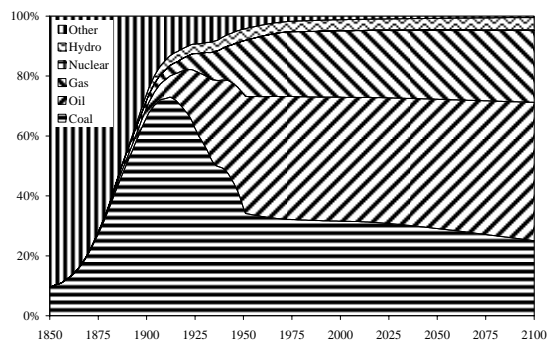


Figure 12. Sensitivity analysis, economic growth; the model was calibrated for the period from 1850 to the year in the legend. For “modelled”, the calibration period extended up to 2000; this projection include the 67% confidence interval.

1950



1975

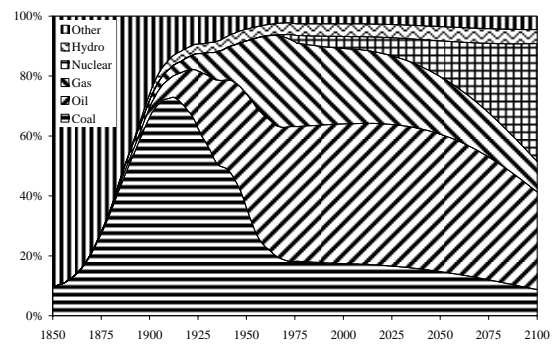


Figure 13. Primary energy use, by source.

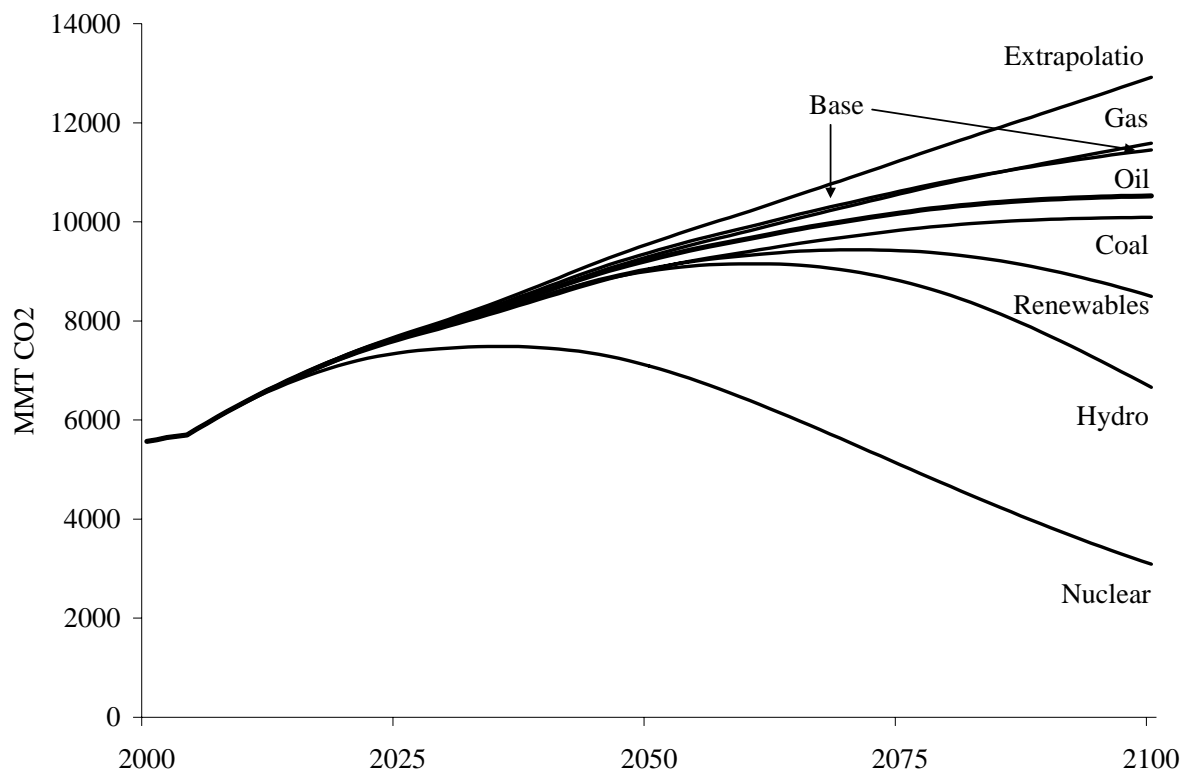


Figure 14. Carbon dioxide emissions, as projected, according to our baseline scenario and seven sensitivity analyses.

Appendix: The Kongsamut, Rebelo and Xie (KRX) model

Below, we show three versions of the same model. The first version is identical to the one in Kongsamut *et al.* (2001), but with an error corrected (in relative employment). The second version is more general, but more specific than the second model in Kongsamut *et al.* (1997), the working paper version of the 2001 article. The third version is more general still, and coincides with the third model in Kongsamut *et al.* (1997). However, the solution proposed here is much more straightforward than in Kongsamut *et al.* (1997), which is unnecessarily complicated.

Mathematically, the model consists of a set of conservation equations and differential equations. From first principles, all conservation equations are known, but only some of the differential equations. The model is solved by finding the missing differential equations. This is relatively straightforward in the simple version of the model. That solution inspires a proposal for a solution of the intermediate version, which in turn suggests a solution for the general model. In the paper, we use the general model; see Equations (5)-(7).

The basic model

Labour and capital are the only two factors of production. The economy has three sectors: agriculture, manufacturing and services. Production is given by

$$(A1) \quad A(t) = B_A F(\varphi_A(t)K(t), \mathcal{G}_A(t)L(t))$$

$$(A2) \quad M(t) = B_M F(\varphi_M(t)K(t), \mathcal{G}_M(t)L(t)) - I(t) - \delta K(t)$$

$$(A3) \quad S(t) = B_S F(\varphi_S(t)K(t), \mathcal{G}_S(t)L(t))$$

with

$$(A4) \quad \varphi_A(t) + \varphi_M(t) + \varphi_S(t) = 1$$

$$(A5) \quad \mathcal{G}_A(t) + \mathcal{G}_M(t) + \mathcal{G}_S(t) = 1$$

$$(A6) \quad \dot{L}(t) = gL(t)$$

$$(A7) \quad \dot{K}(t) = \delta K(t) + I(t)$$

If we assume perfect capital and labour mobility and constant returns to scale, then production efficiency implies

$$(A8) \quad \frac{\varphi_A}{\mathcal{G}_A} = \frac{\varphi_M}{\mathcal{G}_M} = \frac{\varphi_S}{\mathcal{G}_S} = 1$$

If we normalise the price of manufactured goods to unity, product-mix efficiency implies that the price of agricultural produce and services equals

$$(A9) \quad P_A = \frac{B_M}{B_A}; P_S = \frac{B_M}{B_S}; \frac{P_A}{P_S} = \frac{B_S}{B_A}$$

Consumers maximise

$$(A10) \quad U = \int_0^{\infty} \frac{\left[\left(A(t) - \bar{A} \right)^{\kappa} M(t)^{\lambda} \left(S(t) + \underline{S} \right)^{1-\kappa-\lambda} \right]^{1-\varepsilon} - 1}{1-\varepsilon} e^{-\rho t} dt$$

\bar{A} is the subsistence level of agriculture, while \underline{S} is the amount of services produced in the household.

Equation (A10) is maximised under the budget constraint

$$(A11) \quad P_A A(t) + M(t) + P_S S(t) + I(t) + \delta K(t) = P_A B_A F(\varphi_A K(t), \vartheta_A L(t)) + B_M F(\varphi_M K(t), \vartheta_M L(t)) + P_S B_S F(\varphi_S K(t), \vartheta_S L(t)) = B_M F(L(t), K(t)) = B_M F(1, k(t)) L(t); k(t) := \frac{K(t)}{L(t)}$$

The final steps follow from (A9) and the assumed constant returns to scale.

The static first-order conditions of (A10) and (A11) yield

$$(A12) \quad \frac{P_A (A(t) - \bar{A})}{\kappa} = \frac{M(t)}{\lambda}; \frac{P_S (S(t) - \underline{S})}{1 - \kappa - \lambda} = \frac{M(t)}{\lambda}$$

which determine the movement of the consumption of agriculture and services relative to manufacturing, as relative prices are constant by (A9).

The interest rate r follows from

$$(A13) \quad r(t) = B_M \frac{\partial F(k(t), 1)}{\partial k(t)} - \delta$$

Manufacturing follows Euler's equation

$$(A14) \quad \frac{\dot{M}(t)}{M(t)} = \frac{r(t) - \rho}{\lambda}$$

Along the generalised balanced growth path, the interest rate is constant: $r(t) = r$. This in turn implies that $k(t)$ is constant – see (A13) – that is, capital and labour grow at the same rate g . Constant returns to scale and Equation (A2) imply that $M + \partial K + I$ grow at the same rate as well; in fact $\partial K + I$ is net investment, which grows at g , so that M grows at g as well. So, the right-hand-side of budget constraint (A11) grows at rate g and some elements of the left-hand-side grow at g as well. This implies that $P_A A + P_S S$ has to grow at rate g too. Equations (A9) and (A12) imply that $A - \bar{A}$ and $S + \underline{S}$ grow at rate g . These two conditions can only be simultaneously met if $\bar{A} B_S = \underline{S} B_A$; combined with (A9):

$$(A15) \quad \bar{A} B_S = \underline{S} B_A \Leftrightarrow P_A \bar{A} = P_S \underline{S} \Rightarrow P_A A + P_S S = P_A A + P_S S - P_A \bar{A} + P_S \underline{S} = P_A (A - \bar{A}) + P_S (S + \underline{S})$$

The right-hand-side of (15) grows at rate g , and so does the left-hand-side. With this parameter restriction, budget constraint (A11) holds.

If $A - \bar{A}$ and $S + \underline{S}$ grow at rate g , then

$$(A16) \quad \frac{\dot{A}(t)}{A(t)} = g \frac{A(t) - \bar{A}(t)}{A(t)}; \frac{\dot{S}(t)}{S(t)} = g \frac{S(t) + \underline{S}(t)}{S(t)}$$

Equations (A1-A3) imply

$$\begin{aligned}
\frac{\dot{\varphi}_A(t)}{\varphi_A(t)} + \frac{\dot{K}(t)}{K(t)} &= \frac{\dot{\varphi}_A(t)}{\varphi_A(t)} + g = \frac{\dot{\mathcal{G}}_A(t)}{\mathcal{G}_A(t)} + \frac{\dot{L}(t)}{L(t)} = \frac{\dot{A}(t)}{A(t)} = g \frac{A(t)}{A(t)} - g \frac{\bar{A}(t)}{A(t)} \Rightarrow \\
\frac{\dot{\varphi}_A(t)}{\varphi_A(t)} &= \frac{\dot{\mathcal{G}}_A(t)}{\mathcal{G}_A(t)} = -g \frac{\bar{A}}{A} \\
\frac{\dot{\varphi}_M(t)}{\varphi_M(t)} &= \frac{\dot{\mathcal{G}}_M(t)}{\mathcal{G}_M(t)} = 0 \\
\frac{\dot{\varphi}_S(t)}{\varphi_S(t)} &= \frac{\dot{\mathcal{G}}_S(t)}{\mathcal{G}_S(t)} = g \frac{S}{S}
\end{aligned}
\tag{A17}$$

Note that (A17) deviates from the result by Kongsamut *et al.* (2001).

Different production functions

Equation (A17) is rather restrictive; it implies that the relative movement of labour, capital and production in the three sectors is not only of the same sign, but also of the same magnitude. That is, if 10% of workers shifts from agriculture to services, then 10% of invested capital, production and consumption shifts too. This result follows from Equation (A8), and goes back to the fact that the production functions in (A1)-(A3) are proportional. In reality, one would expect that manufacturing is more capital-intensive, and services more labour-intensive, so that economic modernisation is characterised by a shift of workers to services, and a shift of capital to manufacturing.

Let us assume that the production functions (A1-A3) are Cobb-Douglas with different parameters for the three sectors:

$$(A1') \quad A(t) = B_A [\varphi_A(t)K(t)]^\alpha [\mathcal{G}_A(t)L(t)]^{1-\alpha}$$

$$(A2') \quad M(t) = B_M [\varphi_M(t)K(t)]^\mu [\mathcal{G}_M(t)L(t)]^{1-\mu} - I(t) - \delta K(t)$$

$$(A3') \quad S(t) = B_S [\varphi_S(t)K(t)]^\sigma [\mathcal{G}_S(t)L(t)]^{1-\sigma}$$

Then, (A8) is replaced by

$$(A8') \quad \frac{1-\alpha}{\alpha} \frac{\varphi_A}{\mathcal{G}_A} = \frac{1-\mu}{\mu} \frac{\varphi_M}{\mathcal{G}_M} = \frac{1-\sigma}{\sigma} \frac{\varphi_S}{\mathcal{G}_S}$$

Whereas (A8) implies that the distribution of labour is the same as the distribution of capital, (A8') allows the two to deviate.

Instead of (A9), we have

$$(A9') \quad P_A = \frac{B_M}{B_A} \frac{\mu(\varphi_M K)^{\mu-1} (\mathcal{G}_M L)^{1-\mu}}{\alpha(\varphi_A K)^{\alpha-1} (\mathcal{G}_A L)^{1-\alpha}}; P_S = \frac{B_M}{B_S} \frac{\mu(\varphi_M K)^{\mu-1} (\mathcal{G}_M L)^{1-\mu}}{\sigma(\varphi_S K)^{\sigma-1} (\mathcal{G}_S L)^{1-\sigma}}$$

which reduces to (A9) if $\alpha=\mu=\sigma$; note that (A8) holds then as well.

The budget constraint (A11) does not change, although it cannot be simplified to manufacturing production only. Therefore, Equation (A12) still holds, although in this case both relative prices and relative production may shift.

Equations (A13) and (A14) are unchanged, so a constant real interest rate r implies that k has to be constant, and both K and L grow at rate g . In fact, M and $\partial K+I$ grow at g too. This implies that

$$(A18) \quad \dot{P}_A = \frac{\partial}{\partial t} \frac{B_M \mu \varphi_M^{\mu-1} \mathcal{G}_M^{1-\mu}}{B_A \alpha \varphi_A^{\alpha-1} \mathcal{G}_A^{1-\alpha}} K^{\mu-\alpha} L^{\alpha-\mu} =$$

$$C \left[(\mu - \alpha) L^{\alpha-\mu} K^{\mu-\alpha-1} g K + (\alpha - \mu) K^{\mu-\alpha} L^{\alpha-\mu-1} g L \right] = 0$$

The same holds for the change in the price of services. Therefore, the parameter condition for the generalised balanced growth path changes from $\bar{A}B_S = \underline{S}B_A$ to

$$(A19) \quad \bar{A}B_S \sigma (\varphi_S K)^{\sigma-1} (\mathcal{G}_S L)^{1-\sigma} = \underline{S}B_A \alpha (\varphi_A K)^{\alpha-1} (\mathcal{G}_A L)^{1-\alpha}$$

Although (A19) has time-dependent variables, their joint growth rate is zero.

Therefore, (A16) still holds, and so does (A17). The model has become more complicated, but its dynamic behaviour has not changed.

Biased technological change

Let us further complicate the model and explicitly introduce labour-augmenting technological change. The production functions are:

$$(A1'') \quad A(t) = B_A [\varphi_A(t) K(t)]^\alpha [\mathcal{G}_A(t) H_A(t) L(t)]^{1-\alpha}$$

$$(A2'') \quad M(t) = B_M [\varphi_M(t) K(t)]^\mu [\mathcal{G}_M(t) H_M(t) L(t)]^{1-\mu} - I(t) - \delta K(t)$$

$$(A3'') \quad S(t) = B_S [\varphi_S(t) K(t)]^\sigma [\mathcal{G}_S(t) H_S(t) L(t)]^{1-\sigma}$$

with

$$(A4) \quad \varphi_A(t) + \varphi_M(t) + \varphi_S(t) = 1$$

$$(A5) \quad \mathcal{G}_A(t) + \mathcal{G}_M(t) + \mathcal{G}_S(t) = 1$$

$$(A6) \quad \dot{L}(t) = gL(t)$$

$$(A7) \quad \dot{K}(t) = \delta K(t) + I(t)$$

$$(A20) \quad \dot{H}_A(t) = g_A H_A(t); \dot{H}_M(t) = g_M H_M(t); \dot{H}_S(t) = g_S H_S(t)$$

Note that if $g_A = g_M = g_S$, we might as well have added it to g , and set $H(t) = 1$.

Statically, nothing has changed. Equations (A8'), (A9'), (A11), and (A12) still hold.

Dynamically, things do change; $k(t)$ is redefined as $k(t) := K(t)/L(t)/H(t)$. Then, Equations (A13) and (A14) hold. However, if the interest rate is constant, capital in manufacturing now grows as the rate of *effective* labour, that is $g + g_M$. Then,

$$\begin{aligned}
\dot{P}_A &= \frac{\partial}{\partial t} \frac{B_M \mu \varphi_M^{\mu-1} \mathcal{G}_M^{1-\mu}}{B_A \alpha \varphi_A^{\alpha-1} \mathcal{G}_A^{1-\alpha}} K^{\mu-\alpha} L^{\alpha-\mu} H_M^{1-\mu} H_A^{\alpha-1} = \\
(A18') \quad C &\left[(\mu-\alpha) L^{\alpha-\mu} H_M^{1-\mu} H_A^{\alpha-1} K^{\mu-\alpha-1} (g+g_M) K + (\alpha-\mu) K^{\mu-\alpha} H_M^{1-\mu} H_A^{\alpha-1} L^{\alpha-\mu-1} g L + \right. \\
&\quad \left. (1-\mu) K^{\mu-\alpha} L^{\alpha-\mu} H_A^{\alpha-1} H_M^{-\mu} g_M H_M + (\alpha-1) K^{\mu-\alpha} L^{\alpha-\mu} H_M^{1-\mu} H_A^{\alpha} g_A H_A \right] \Leftrightarrow \\
\dot{P}_A &= P_A (1-\alpha) (g_M - g_A) \\
\dot{P}_S &= P_S (1-\sigma) (g_M - g_S)
\end{aligned}$$

Note that for agricultural prices to fall, we need that technological progress is *faster* in agriculture than it is in manufacturing. Kongsamut *et al.* (1997) show empirical support for this.

If the savings and depreciation rates are constant, both effective labour and capital grow at $g+g_M$, and the relative shares of labour and capital in manufacturing is constant, then

$$(A21) \quad \frac{\dot{\varphi}_M}{\varphi_M} = \frac{\dot{\mathcal{G}}_M}{\mathcal{G}_M} = 0$$

Equation (A12) still holds, so

$$(A22) \quad \frac{\dot{P}_A A + P_A \dot{A} - \dot{P}_A \bar{A}}{P_A (A - \bar{A})} = \frac{\dot{P}_S S + P_S \dot{S} + \dot{P}_S \underline{S}}{P_S (S + \underline{S})} = g + g_M$$

which implies

$$\begin{aligned}
(A23) \quad \frac{\dot{A}}{A} &= \frac{A - \bar{A}}{A} \left(\frac{\dot{P}_A}{P_A} + g + g_M \right) = \frac{A - \bar{A}}{A} ((1-\alpha)(g_M - g_A) + g + g_M) \\
\frac{\dot{S}}{S} &= \frac{S + \underline{S}}{S} ((1-\sigma)(g_M - g_S) + g + g_M)
\end{aligned}$$

Note that (A23) and (A16) differ by a constant only. If all elements on the left hand side of budget constraint (A11) expand at the same rate $g+g_M$, we again have the restriction

$$\begin{aligned}
P_A \bar{A} &= P_S \underline{S} \Leftrightarrow (1-\alpha)(g_M - g_A) = (1-\sigma)(g_M - g_S) \Leftrightarrow \\
(A23) \quad g_S &= g_M \frac{\alpha - \sigma}{1 - \sigma} + g_A \frac{\alpha - 1}{1 - \sigma}
\end{aligned}$$

In addition, (19) holds.

$$\begin{aligned}
(A24) \quad \frac{\dot{\varphi}_A}{\varphi_A} &= \frac{\dot{\mathcal{G}}_A}{\mathcal{G}_A} = \frac{A - \bar{A}}{A} (1-\alpha)(g_M - g_A) - (g + g_M) \frac{\bar{A}}{A} \\
\frac{\dot{\varphi}_S}{\varphi_S} &= \frac{\dot{\mathcal{G}}_S}{\mathcal{G}_S} = \frac{S + \underline{S}}{S} (1-\sigma)(g_M - g_S) - (g + g_M) \frac{\underline{S}}{S}
\end{aligned}$$

which reduces to (A17) if $g_A = g_M = g_S$. Equation (A24) is qualitatively different from (A17). However, capital and labour still move in tandem.

Equation (A23) corresponds to Equations (5) and (7). The model is initialised by setting the starting values equal to the first observations.

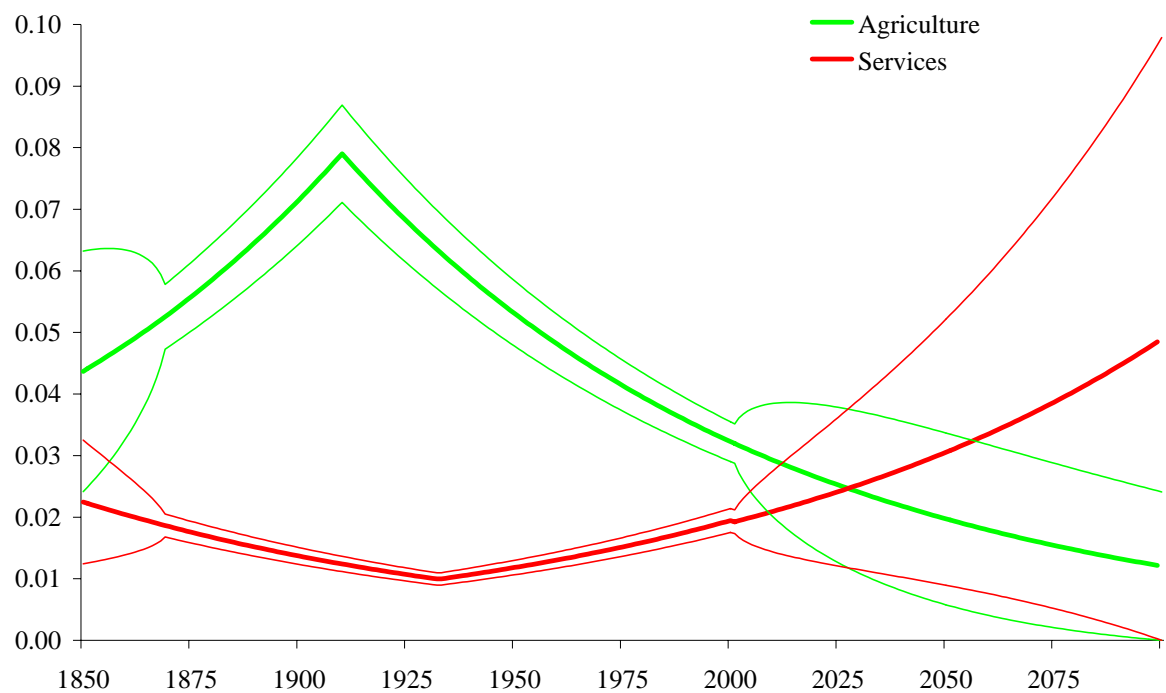


Figure A1. Adjustment factors for agriculture and services; see Equations (5), (7) and (A24).

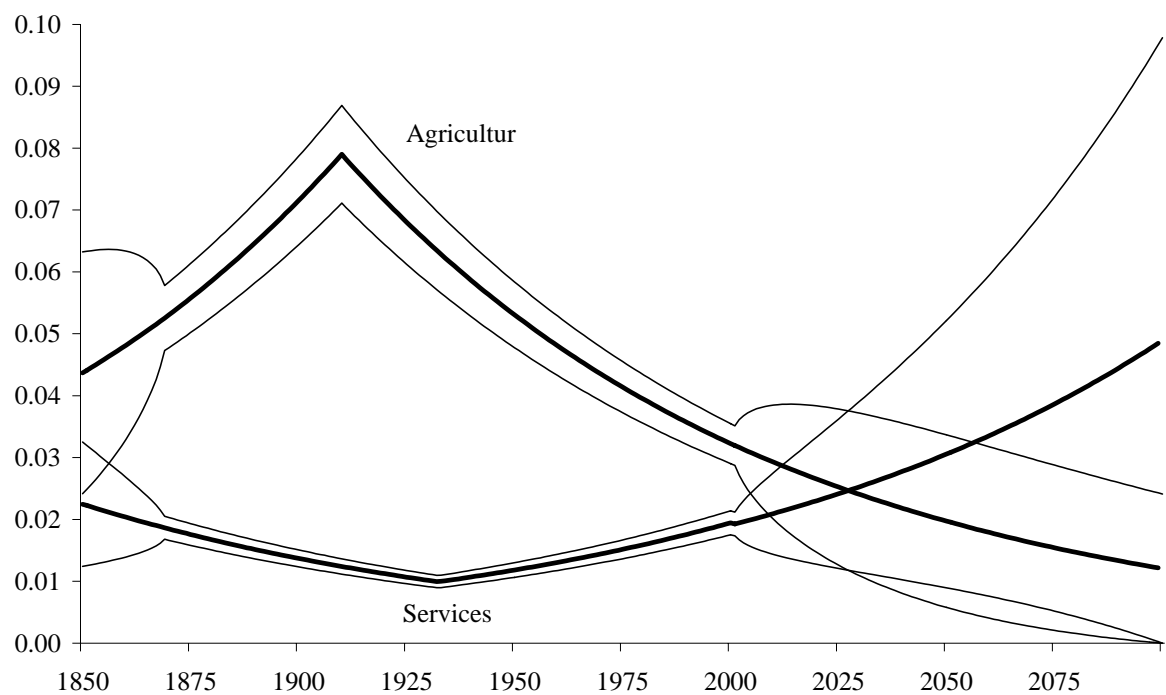


Figure A1. Adjustment factors for agriculture and services; see Equations (5), (7) and (A24).

NOTE DI LAVORO DELLA FONDAZIONE ENI ENRICO MATTEI

Fondazione Eni Enrico Mattei Working Paper Series

Our Note di Lavoro are available on the Internet at the following addresses:

<http://www.feem.it/Feem/Pub/Publications/WPapers/default.html>

<http://www.ssrn.com/link/feem.html>

<http://www.repec.org>

<http://agecon.lib.umn.edu>

NOTE DI LAVORO PUBLISHED IN 2006

SIEV	1.2006	<i>Anna ALBERINI</i> : <u>Determinants and Effects on Property Values of Participation in Voluntary Cleanup Programs: The Case of Colorado</u>
CCMP	2.2006	<i>Valentina BOSETTI, Carlo CARRARO and Marzio GALEOTTI</i> : <u>Stabilisation Targets, Technical Change and the Macroeconomic Costs of Climate Change Control</u>
CCMP	3.2006	<i>Roberto ROSON</i> : <u>Introducing Imperfect Competition in CGE Models: Technical Aspects and Implications</u>
KTHC	4.2006	<i>Sergio VERGALLI</i> : <u>The Role of Community in Migration Dynamics</u>
SIEV	5.2006	<i>Fabio GRAZI, Jeroen C.J.M. van den BERGH and Piet RIETVELD</i> : <u>Modeling Spatial Sustainability: Spatial Welfare Economics versus Ecological Footprint</u>
CCMP	6.2006	<i>Olivier DESCHENES and Michael GREENSTONE</i> : <u>The Economic Impacts of Climate Change: Evidence from Agricultural Profits and Random Fluctuations in Weather</u>
PRCG	7.2006	<i>Michele MORETTO and Paola VALBONESE</i> : <u>Firm Regulation and Profit-Sharing: A Real Option Approach</u>
SIEV	8.2006	<i>Anna ALBERINI and Aline CHIABAI</i> : <u>Discount Rates in Risk v. Money and Money v. Money Tradeoffs</u>
CTN	9.2006	<i>Jon X. EGUIA</i> : <u>United We Vote</u>
CTN	10.2006	<i>Shao CHIN SUNG and Dinko DIMITRO</i> : <u>A Taxonomy of Myopic Stability Concepts for Hedonic Games</u>
NRM	11.2006	<i>Fabio CERINA</i> (lxxviii): <u>Tourism Specialization and Sustainability: A Long-Run Policy Analysis</u>
NRM	12.2006	<i>Valentina BOSETTI, Mariaester CASSINELLI and Alessandro LANZA</i> (lxxviii): <u>Benchmarking in Tourism Destination, Keeping in Mind the Sustainable Paradigm</u>
CCMP	13.2006	<i>Jens HORBACH</i> : <u>Determinants of Environmental Innovation – New Evidence from German Panel Data Sources</u>
KTHC	14.2006	<i>Fabio SABATINI</i> : <u>Social Capital, Public Spending and the Quality of Economic Development: The Case of Italy</u>
KTHC	15.2006	<i>Fabio SABATINI</i> : <u>The Empirics of Social Capital and Economic Development: A Critical Perspective</u>
CSRM	16.2006	<i>Giuseppe DI VITA</i> : <u>Corruption, Exogenous Changes in Incentives and Deterrence</u>
CCMP	17.2006	<i>Rob B. DELLINK and Marjan W. HOFKES</i> : <u>The Timing of National Greenhouse Gas Emission Reductions in the Presence of Other Environmental Policies</u>
IEM	18.2006	<i>Philippe QUIRION</i> : <u>Distributional Impacts of Energy-Efficiency Certificates Vs. Taxes and Standards</u>
CTN	19.2006	<i>Somdeb LAHIRI</i> : <u>A Weak Bargaining Set for Contract Choice Problems</u>
CCMP	20.2006	<i>Massimiliano MAZZANTI and Roberto ZOBOLI</i> : <u>Examining the Factors Influencing Environmental Innovations</u>
SIEV	21.2006	<i>Y. Hossein FARZIN and Ken-ICHI AKAO</i> : <u>Non-pecuniary Work Incentive and Labor Supply</u>
CCMP	22.2006	<i>Marzio GALEOTTI, Matteo MANERA and Alessandro LANZA</i> : <u>On the Robustness of Robustness Checks of the Environmental Kuznets Curve</u>
NRM	23.2006	<i>Y. Hossein FARZIN and Ken-ICHI AKAO</i> : <u>When is it Optimal to Exhaust a Resource in a Finite Time?</u>
NRM	24.2006	<i>Y. Hossein FARZIN and Ken-ICHI AKAO</i> : <u>Non-pecuniary Value of Employment and Natural Resource Extinction</u>
SIEV	25.2006	<i>Lucia VERGANO and Paulo A.L.D. NUNES</i> : <u>Analysis and Evaluation of Ecosystem Resilience: An Economic Perspective</u>
SIEV	26.2006	<i>Danny CAMPBELL, W. George HUTCHINSON and Riccardo SCARPA</i> : <u>Using Discrete Choice Experiments to Derive Individual-Specific WTP Estimates for Landscape Improvements under Agri-Environmental Schemes: Evidence from the Rural Environment Protection Scheme in Ireland</u>
KTHC	27.2006	<i>Vincent M. OTTO, Timo KUOSMANEN and Ekko C. van IERLAND</i> : <u>Estimating Feedback Effect in Technical Change: A Frontier Approach</u>
CCMP	28.2006	<i>Giovanni BELLA</i> : <u>Uniqueness and Indeterminacy of Equilibria in a Model with Polluting Emissions</u>
IEM	29.2006	<i>Alessandro COLOGNI and Matteo MANERA</i> : <u>The Asymmetric Effects of Oil Shocks on Output Growth: A Markov-Switching Analysis for the G-7 Countries</u>
KTHC	30.2006	<i>Fabio SABATINI</i> : <u>Social Capital and Labour Productivity in Italy</u>
ETA	31.2006	<i>Andrea GALLICE</i> (lxxix): <u>Predicting one Shot Play in 2x2 Games Using Beliefs Based on Minimax Regret</u>
IEM	32.2006	<i>Andrea BIGANO and Paul SHEEHAN</i> : <u>Assessing the Risk of Oil Spills in the Mediterranean: the Case of the Route from the Black Sea to Italy</u>
NRM	33.2006	<i>Rinaldo BRAU and Davide CAO</i> (lxxviii): <u>Uncovering the Macrostructure of Tourists' Preferences. A Choice Experiment Analysis of Tourism Demand to Sardinia</u>
CTN	34.2006	<i>Parkash CHANDER and Henry TULKENS</i> : <u>Cooperation, Stability and Self-Enforcement in International Environmental Agreements: A Conceptual Discussion</u>
IEM	35.2006	<i>Valeria COSTANTINI and Salvatore MONNI</i> : <u>Environment, Human Development and Economic Growth</u>
ETA	36.2006	<i>Ariel RUBINSTEIN</i> (lxxix): <u>Instinctive and Cognitive Reasoning: A Study of Response Times</u>

ETA	37.2006	<i>Maria SALGADO</i> (lxxix): <u>Choosing to Have Less Choice</u>
ETA	38.2006	<i>Justina A.V. FISCHER and Benno TORGLER</i> : <u>Does Envy Destroy Social Fundamentals? The Impact of Relative Income Position on Social Capital</u>
ETA	39.2006	<i>Benno TORGLER, Sascha L. SCHMIDT and Bruno S. FREY</i> : <u>Relative Income Position and Performance: An Empirical Panel Analysis</u>
CCMP	40.2006	<i>Alberto GAGO, Xavier LABANDEIRA, Fidel PICOS And Miguel RODRÍGUEZ</i> : <u>Taxing Tourism In Spain: Results and Recommendations</u>
IEM	41.2006	<i>Karl van BIERVLIET, Dirk Le ROY and Paulo A.L.D. NUNES</i> : <u>An Accidental Oil Spill Along the Belgian Coast: Results from a CV Study</u>
CCMP	42.2006	<i>Rolf GOLOMBEK and Michael HOEL</i> : <u>Endogenous Technology and Tradable Emission Quotas</u>
KTHC	43.2006	<i>Giulio CAINELLI and Donato IACOBUCCI</i> : <u>The Role of Agglomeration and Technology in Shaping Firm Strategy and Organization</u>
CCMP	44.2006	<i>Alvaro CALZADILLA, Francesco PAULI and Roberto ROSON</i> : <u>Climate Change and Extreme Events: An Assessment of Economic Implications</u>
SIEV	45.2006	<i>M.E. KRAGT, P.C. ROEBELING and A. RUIJS</i> : <u>Effects of Great Barrier Reef Degradation on Recreational Demand: A Contingent Behaviour Approach</u>
NRM	46.2006	<i>C. GIUPPONI, R. CAMERA, A. FASSIO, A. LASUT, J. MYSLIAK and A. SGOBBI</i> : <u>Network Analysis, Creative System Modelling and DecisionSupport: The NetSyMoD Approach</u>
KTHC	47.2006	<i>Walter F. LALICH</i> (lxxx): <u>Measurement and Spatial Effects of the Immigrant Created Cultural Diversity in Sydney</u>
KTHC	48.2006	<i>Elena PASPALANOVA</i> (lxxx): <u>Cultural Diversity Determining the Memory of a Controversial Social Event</u>
KTHC	49.2006	<i>Ugo GASPARINO, Barbara DEL CORPO and Dino PINELLI</i> (lxxx): <u>Perceived Diversity of Complex Environmental Systems: Multidimensional Measurement and Synthetic Indicators</u>
KTHC	50.2006	<i>Aleksandra HAUKE</i> (lxxx): <u>Impact of Cultural Differences on Knowledge Transfer in British, Hungarian and Polish Enterprises</u>
KTHC	51.2006	<i>Katherine MARQUAND FORSYTH and Vanja M. K. STENIUS</i> (lxxx): <u>The Challenges of Data Comparison and Varied European Concepts of Diversity</u>
KTHC	52.2006	<i>Gianmarco I.P. OTTAVIANO and Giovanni PERI</i> (lxxx): <u>Rethinking the Gains from Immigration: Theory and Evidence from the U.S.</u>
KTHC	53.2006	<i>Monica BARNI</i> (lxxx): <u>From Statistical to Geolinguistic Data: Mapping and Measuring Linguistic Diversity</u>
KTHC	54.2006	<i>Lucia TAJOLI and Lucia DE BENEDICTIS</i> (lxxx): <u>Economic Integration and Similarity in Trade Structures</u>
KTHC	55.2006	<i>Suzanna CHAN</i> (lxxx): <u>"God's Little Acre" and "Belfast Chinatown": Diversity and Ethnic Place Identity in Belfast</u>
KTHC	56.2006	<i>Diana PETKOVA</i> (lxxx): <u>Cultural Diversity in People's Attitudes and Perceptions</u>
KTHC	57.2006	<i>John J. BETANCUR</i> (lxxx): <u>From Outsiders to On-Paper Equals to Cultural Curiosities? The Trajectory of Diversity in the USA</u>
KTHC	58.2006	<i>Kiflemariam HAMDE</i> (lxxx): <u>Cultural Diversity A Glimpse Over the Current Debate in Sweden</u>
KTHC	59.2006	<i>Emilio GREGORI</i> (lxxx): <u>Indicators of Migrants' Socio-Professional Integration</u>
KTHC	60.2006	<i>Christa-Maria LERM HAYES</i> (lxxx): <u>Unity in Diversity Through Art? Joseph Beuys' Models of Cultural Dialogue</u>
KTHC	61.2006	<i>Sara VERTOMMEN and Albert MARTENS</i> (lxxx): <u>Ethnic Minorities Rewarded: Ethnostratification on the Wage Market in Belgium</u>
KTHC	62.2006	<i>Nicola GENOVESE and Maria Grazia LA SPADA</i> (lxxx): <u>Diversity and Pluralism: An Economist's View</u>
KTHC	63.2006	<i>Carla BAGNA</i> (lxxx): <u>Italian Schools and New Linguistic Minorities: Nationality Vs. Plurilingualism. Which Ways and Methodologies for Mapping these Contexts?</u>
KTHC	64.2006	<i>Vedran OMANOVIĆ</i> (lxxx): <u>Understanding "Diversity in Organizations" Paradigmatically and Methodologically</u>
KTHC	65.2006	<i>Mila PASPALANOVA</i> (lxxx): <u>Identifying and Assessing the Development of Populations of Undocumented Migrants: The Case of Undocumented Poles and Bulgarians in Brussels</u>
KTHC	66.2006	<i>Roberto ALZETTA</i> (lxxx): <u>Diversities in Diversity: Exploring Moroccan Migrants' Livelihood in Genoa</u>
KTHC	67.2006	<i>Monika SEDENKOVA and Jiri HORAK</i> (lxxx): <u>Multivariate and Multicriteria Evaluation of Labour Market Situation</u>
KTHC	68.2006	<i>Dirk JACOBS and Andrea REA</i> (lxxx): <u>Construction and Import of Ethnic Categorisations: "Allochthones" in The Netherlands and Belgium</u>
KTHC	69.2006	<i>Eric M. USLANER</i> (lxxx): <u>Does Diversity Drive Down Trust?</u>
KTHC	70.2006	<i>Paula MOTA SANTOS and João BORGES DE SOUSA</i> (lxxx): <u>Visibility & Invisibility of Communities in Urban Systems</u>
ETA	71.2006	<i>Rinaldo BRAU and Matteo LIPPI BRUNI</i> : <u>Eliciting the Demand for Long Term Care Coverage: A Discrete Choice Modelling Analysis</u>
CTN	72.2006	<i>Dinko DIMITROV and Claus-JOCHEN HAAKE</i> : <u>Coalition Formation in Simple Games: The Semistrict Core</u>
CTN	73.2006	<i>Ottorino CHILLEM, Benedetto GUI and Lorenzo ROCCO</i> : <u>On The Economic Value of Repeated Interactions Under Adverse Selection</u>
CTN	74.2006	<i>Sylvain BEAL and Nicolas QUÉROU</i> : <u>Bounded Rationality and Repeated Network Formation</u>
CTN	75.2006	<i>Sophie BADE, Guillaume HAERINGER and Ludovic RENOU</i> : <u>Bilateral Commitment</u>
CTN	76.2006	<i>Andranik TANGIAN</i> : <u>Evaluation of Parties and Coalitions After Parliamentary Elections</u>
CTN	77.2006	<i>Rudolf BERGHAMMER, Agnieszka RUSINOWSKA and Harrie de SWART</i> : <u>Applications of Relations and Graphs to Coalition Formation</u>
CTN	78.2006	<i>Paolo PIN</i> : <u>Eight Degrees of Separation</u>
CTN	79.2006	<i>Roland AMANN and Thomas GALL</i> : <u>How (not) to Choose Peers in Studying Groups</u>

CTN	80.2006	<i>Maria MONTERO: <u>Inequity Aversion May Increase Inequity</u></i>
CCMP	81.2006	<i>Vincent M. OTTO, Andreas LÖSCHEL and John REILLY: <u>Directed Technical Change and Climate Policy</u></i>
CSRM	82.2006	<i>Nicoletta FERRO: <u>Riding the Waves of Reforms in Corporate Law, an Overview of Recent Improvements in Italian Corporate Codes of Conduct</u></i>
CTN	83.2006	<i>Siddhartha BANDYOPADHYAY and Mandar OAK: <u>Coalition Governments in a Model of Parliamentary Democracy</u></i>
PRCG	84.2006	<i>Raphaël SOUBEYRAN: <u>Valence Advantages and Public Goods Consumption: Does a Disadvantaged Candidate Choose an Extremist Position?</u></i>
CCMP	85.2006	<i>Eduardo L. GIMÉNEZ and Miguel RODRÍGUEZ: <u>Pigou's Dividend versus Ramsey's Dividend in the Double Dividend Literature</u></i>
CCMP	86.2006	<i>Andrea BIGANO, Jacqueline M. HAMILTON and Richard S.J. TOL: <u>The Impact of Climate Change on Domestic and International Tourism: A Simulation Study</u></i>
KTHC	87.2006	<i>Fabio SABATINI: <u>Educational Qualification, Work Status and Entrepreneurship in Italy an Exploratory Analysis</u></i>
CCMP	88.2006	<i>Richard S.J. TOL: <u>The Polluter Pays Principle and Cost-Benefit Analysis of Climate Change: An Application of Fund</u></i>
CCMP	89.2006	<i>Philippe TULKENS and Henry TULKENS: <u>The White House and The Kyoto Protocol: Double Standards on Uncertainties and Their Consequences</u></i>
SIEV	90.2006	<i>Andrea M. LEITER and Gerald J. PRUCKNER: <u>Proportionality of Willingness to Pay to Small Risk Changes – The Impact of Attitudinal Factors in Scope Tests</u></i>
PRCG	91.2006	<i>Raphaël SOUBEYRAN: <u>When Inertia Generates Political Cycles</u></i>
CCMP	92.2006	<i>Alireza NAGHAVI: <u>Can R&D-Inducing Green Tariffs Replace International Environmental Regulations?</u></i>
CCMP	93.2006	<i>Xavier PAUTREL: <u>Reconsidering The Impact of Environment on Long-Run Growth When Pollution Influences Health and Agents Have Finite-Lifetime</u></i>
CCMP	94.2006	<i>Corrado Di MARIA and Edwin van der WERF: <u>Carbon Leakage Revisited: Unilateral Climate Policy with Directed Technical Change</u></i>
CCMP	95.2006	<i>Paulo A.L.D. NUNES and Chiara M. TRAVISI: <u>Comparing Tax and Tax Reallocations Payments in Financing Rail Noise Abatement Programs: Results from a CE valuation study in Italy</u></i>
CCMP	96.2006	<i>Timo KUOSMANEN and Mika KORTELAJINEN: <u>Valuing Environmental Factors in Cost-Benefit Analysis Using Data Envelopment Analysis</u></i>
KTHC	97.2006	<i>Dermot LEAHY and Alireza NAGHAVI: <u>Intellectual Property Rights and Entry into a Foreign Market: FDI vs. Joint Ventures</u></i>
CCMP	98.2006	<i>Inmaculada MARTÍNEZ-ZARZOSO, Aurelia BENGOCHEA-MORANCHO and Rafael MORALES LAGE: <u>The Impact of Population on CO2 Emissions: Evidence from European Countries</u></i>
PRCG	99.2006	<i>Alberto CAVALIERE and Simona SCABROSETTI: <u>Privatization and Efficiency: From Principals and Agents to Political Economy</u></i>
NRM	100.2006	<i>Khaled ABU-ZEID and Sameh AFIFI: <u>Multi-Sectoral Uses of Water & Approaches to DSS in Water Management in the NOSTRUM Partner Countries of the Mediterranean</u></i>
NRM	101.2006	<i>Carlo GIUPPONI, Jaroslav MYSLIAK and Jacopo CRIMI: <u>Participatory Approach in Decision Making Processes for Water Resources Management in the Mediterranean Basin</u></i>
CCMP	102.2006	<i>Kerstin RONNEBERGER, Maria BERRITTELLA, Francesco BOSELLO and Richard S.J. TOL: <u>Klum@Gtap: Introducing Biophysical Aspects of Land-Use Decisions Into a General Equilibrium Model A Coupling Experiment</u></i>
KTHC	103.2006	<i>Avner BEN-NER, Brian P. McCALL, Massoud STEPHANE, and Hua WANG: <u>Identity and Self-Other Differentiation in Work and Giving Behaviors: Experimental Evidence</u></i>
SIEV	104.2006	<i>Aline CHIABAI and Paulo A.L.D. NUNES: <u>Economic Valuation of Oceanographic Forecasting Services: A Cost-Benefit Exercise</u></i>
NRM	105.2006	<i>Paola MINOIA and Anna BRUSAROSCO: <u>Water Infrastructures Facing Sustainable Development Challenges: Integrated Evaluation of Impacts of Dams on Regional Development in Morocco</u></i>
PRCG	106.2006	<i>Carmine GUERRIERO: <u>Endogenous Price Mechanisms, Capture and Accountability Rules: Theory and Evidence</u></i>
CCMP	107.2006	<i>Richard S.J. TOL, Stephen W. PACALA and Robert SOCOLOW: <u>Understanding Long-Term Energy Use and Carbon Dioxide Emissions in the Usa</u></i>
NRM	108.2006	<i>Carles MANERA and Jaume GARAU TABERNER: <u>The Recent Evolution and Impact of Tourism in the Mediterranean: The Case of Island Regions, 1990-2002</u></i>
PRCG	109.2006	<i>Carmine GUERRIERO: <u>Dependent Controllers and Regulation Policies: Theory and Evidence</u></i>
KTHC	110.2006	<i>John FOOT (lxxx): <u>Mapping Diversity in Milan. Historical Approaches to Urban Immigration</u></i>
KTHC	111.2006	<i>Donatella CALABI: <u>Foreigners and the City: An Historiographical Exploration for the Early Modern Period</u></i>
IEM	112.2006	<i>Andrea BIGANO, Francesco BOSELLO and Giuseppe MARANO: <u>Energy Demand and Temperature: A Dynamic Panel Analysis</u></i>
SIEV	113.2006	<i>Anna ALBERINI, Stefania TONIN, Margherita TURVANI and Aline CHIABAI: <u>Paying for Permanence: Public Preferences for Contaminated Site Cleanup</u></i>
CCMP	114.2006	<i>Vivekananda MUKHERJEE and Dirk T.G. RÜBBELKE: <u>Global Climate Change, Technology Transfer and Trade with Complete Specialization</u></i>
NRM	115.2006	<i>Clive LIPCHIN: <u>A Future for the Dead Sea Basin: Water Culture among Israelis, Palestinians and Jordanians</u></i>
CCMP	116.2006	<i>Barbara BUCHNER, Carlo CARRARO and A. Denny ELLERMAN: <u>The Allocation of European Union Allowances: Lessons, Unifying Themes and General Principles</u></i>
CCMP	117.2006	<i>Richard S.J. TOL: <u>Carbon Dioxide Emission Scenarios for the Usa</u></i>

(lxxviii) This paper was presented at the Second International Conference on "Tourism and Sustainable Economic Development - Macro and Micro Economic Issues" jointly organised by CRENoS (Università di Cagliari and Sassari, Italy) and Fondazione Eni Enrico Mattei, Italy, and supported by the World Bank, Chia, Italy, 16-17 September 2005.

(lxxix) This paper was presented at the International Workshop on "Economic Theory and Experimental Economics" jointly organised by SET (Center for advanced Studies in Economic Theory, University of Milano-Bicocca) and Fondazione Eni Enrico Mattei, Italy, Milan, 20-23 November 2005. The Workshop was co-sponsored by CISEPS (Center for Interdisciplinary Studies in Economics and Social Sciences, University of Milan-Bicocca).

(lxxx) This paper was presented at the First EURODIV Conference "Understanding diversity: Mapping and measuring", held in Milan on 26-27 January 2006 and supported by the Marie Curie Series of Conferences "Cultural Diversity in Europe: a Series of Conferences.

2006 SERIES

CCMP	<i>Climate Change Modelling and Policy</i> (Editor: Marzio Galeotti)
SIEV	<i>Sustainability Indicators and Environmental Valuation</i> (Editor: Anna Alberini)
NRM	<i>Natural Resources Management</i> (Editor: Carlo Giupponi)
KTHC	<i>Knowledge, Technology, Human Capital</i> (Editor: Gianmarco Ottaviano)
IEM	<i>International Energy Markets</i> (Editor: Matteo Manera)
CSRM	<i>Corporate Social Responsibility and Sustainable Management</i> (Editor: Giulio Sapelli)
PRCG	<i>Privatisation Regulation Corporate Governance</i> (Editor: Bernardo Bortolotti)
ETA	<i>Economic Theory and Applications</i> (Editor: Carlo Carraro)
CTN	<i>Coalition Theory Network</i>