

Miele, Raffaele; Mola, Francesco

Working Paper

An Open Source Based Data Warehouse Architecture to Support Decision Making in the Tourism Sector

Nota di Lavoro, No. 142.2005

Provided in Cooperation with:

Fondazione Eni Enrico Mattei (FEEM)

Suggested Citation: Miele, Raffaele; Mola, Francesco (2005) : An Open Source Based Data Warehouse Architecture to Support Decision Making in the Tourism Sector, Nota di Lavoro, No. 142.2005, Fondazione Eni Enrico Mattei (FEEM), Milano

This Version is available at:

<https://hdl.handle.net/10419/74096>

Standard-Nutzungsbedingungen:

Die Dokumente auf EconStor dürfen zu eigenen wissenschaftlichen Zwecken und zum Privatgebrauch gespeichert und kopiert werden.

Sie dürfen die Dokumente nicht für öffentliche oder kommerzielle Zwecke vervielfältigen, öffentlich ausstellen, öffentlich zugänglich machen, vertreiben oder anderweitig nutzen.

Sofern die Verfasser die Dokumente unter Open-Content-Lizenzen (insbesondere CC-Lizenzen) zur Verfügung gestellt haben sollten, gelten abweichend von diesen Nutzungsbedingungen die in der dort genannten Lizenz gewährten Nutzungsrechte.

Terms of use:

Documents in EconStor may be saved and copied for your personal and scholarly purposes.

You are not to copy documents for public or commercial purposes, to exhibit the documents publicly, to make them publicly available on the internet, or to distribute or otherwise use the documents in public.

If the documents have been made available under an Open Content Licence (especially Creative Commons Licences), you may exercise further usage rights as specified in the indicated licence.

**An Open Source Based Data
Warehouse Architecture to
Support Decision Making
in the Tourism Sector**

Francesco Mola and Raffaele Miele

NOTA DI LAVORO 142.2005

NOVEMBER 2005

NRM – Natural Resources Management

Francesco Mola, *Università degli Studi di Cagliari*
Raffaele Miele, *Università degli Studi di Napoli Federico II*

This paper can be downloaded without charge at:

The Fondazione Eni Enrico Mattei Note di Lavoro Series Index:
<http://www.feem.it/Feem/Pub/Publications/WPapers/default.htm>

Social Science Research Network Electronic Paper Collection:
<http://ssrn.com/abstract=856005>

The opinions expressed in this paper do not necessarily reflect the position of
Fondazione Eni Enrico Mattei
Corso Magenta, 63, 20123 Milano (I), web site: www.feem.it, e-mail: working.papers@feem.it

An Open Source Based Data Warehouse Architecture to Support Decision Making in the Tourism Sector

Summary

In this paper an alternative Tourism oriented Data Warehousing architecture is proposed which makes use of the most recent free and open source technologies like Java, Postgresql and XML. Such architecture's aim will be to support the decision making process and giving an integrated view of the whole Tourism reality in an established context (local, regional, national, etc.) without requesting big investments for getting the necessary software.

Keywords: Tourism, Data warehousing architecture

JEL Classification: L83, C81

This paper was presented at the Second International Conference on "Tourism and Sustainable Economic Development - Macro and Micro Economic Issues" jointly organised by CRENoS (Università di Cagliari and Sassari, Italy) and Fondazione Eni Enrico Mattei, Italy, and supported by the World Bank, Chia, Italy, 16-17 September 2005.

Address for correspondence:

Raffaele Miele
Università degli Studi di Napoli Federico II
C.so Umberto I
Napoli
Italy
Phone: +39 0812531111
E-mail: rafmiele@unina.it

Introduction: the actual Scenario

In the era of the Information Technology the impressive masses of data generated by the automatized systems (which contribute to make everyday life easier), the internal (administrative , productive , etc.) enterprise processes and, more generally, by the always more widespread informative network which links all the modern world's sectors (economical, social, cultural) represents today, for the anybody that has to take decisions, a crucial challenge in order to get a leadership position on the market or to efficiently manage resources. Because of such reasons, having an efficient Information System is of vital importance for being fast on perceiving new opportunities, discovering consumers preferences and behaviors, rationalizing the productive process through reducing wastes and optimizing productive and distributive cycles. In other words we can say that the decision making process can (or we should say must) be supported by a statistical system. Such instruments must be able to collect, select, organize and analyze the (usually, but not always) huge amount of data scattered over different operational data sources where, for operational data is intended all atomic and transactional data generated by the enterprises (hotels, campings, etc.) during the ordinary production process. The main purpose of such instruments is to extract information from raw data (which is useless, alone) and to convert it in knowledge that can be helpful for decision making. Those practices, techniques and instruments form a so-called Business Intelligence System. Such systems need to make use of a different platform for storing data because the traditional relational database architecture is not optimized for this kind of tasks. The reason to this relies in the fact that the strategical information needed by the decision maker is obtained by executing very complex queries (a query is a search interrogation on a database) joining different (usually) big tables. Relational databases, which are very good in transaction processing, are not that good for complex and join-intensive queries. During the past years the technology industry had poor results trying to do this type of analytical queries and reporting from their business system often degrading the performances of the system such that it would have stopped or be done after hours.

The Data Warehouse solution

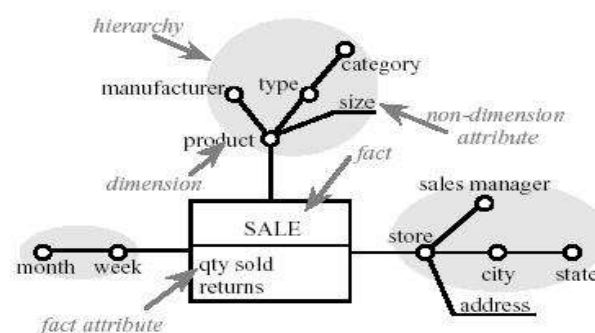
The platform that best fits the needs described before is a Data Warehouse which is a "subject-oriented, integrated, time-variant and non-volatile collection of data in support of management's decision making process" (B. Inmon, 1990) intended in the following way:

- Subject oriented: the data stored in a DW gives information about a particular subject instead of about a company's ongoing operations.
- Integrated: data is gathered into the DW from different heterogeneous sources and is merged into a coherent whole.
- Time-variant: All data in the warehouse is identified with a particular time period. This is a big

difference with the operational systems which store only necessary data for real-time use for the best operational performance and efficiency.

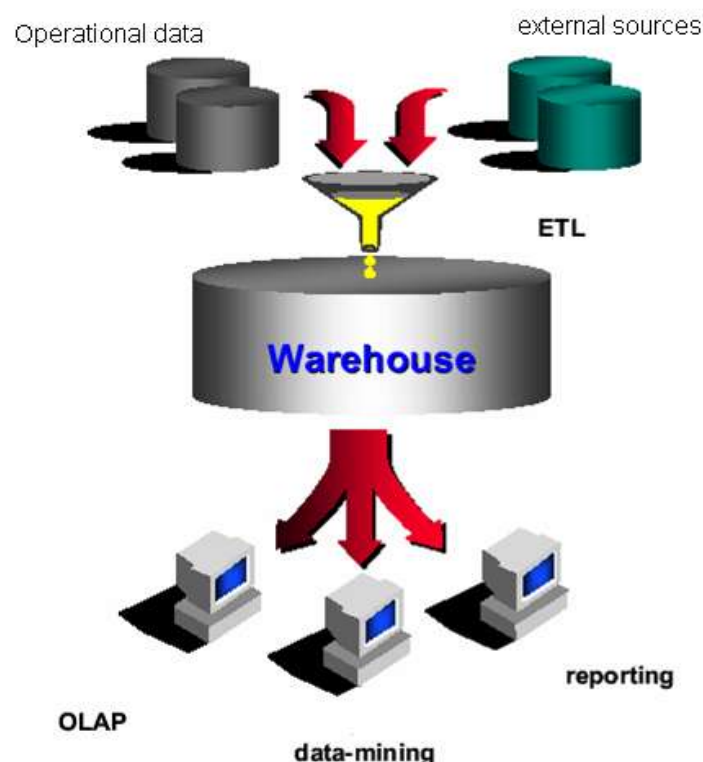
- Non-volatile: data is stable in a warehouse. More data is added but data is never removed. This enables management to gain a consistent picture of the whole business reality.

This definition remained reasonably accurate for almost ten years even if some changes have been made. A Data Warehouse, for instance, can be volatile due to the large amount of storage required (sometimes a DW can reach the size of some terabytes) only a certain amount of history is kept in the repository while the oldest is periodically discharged as soon as new data is loaded. In a Data Warehouse the data coming from the operational sources is processed by the ETL (Extraction, Transformation and Loading) instruments which collect, clean and load them into the repository. Such data is stored in fact and dimension tables where a fact represents a business measure and the dimension tables contain the textual descriptors of the business. It is possible to aggregate and separate data according to a predefined attribute hierarchy for each dimension. An useful instrument for conceptual visualization is the DFM (Dimensional Fact Model) which is shown in next figure.



The DW can serve such data for analysis to traditional reporting tools (tables, charts, etc.) and more specific ones like Data Mining applications. The following figure shows the data flow from operational sources to the DW and from the DW to specific applications.

Data Flow in a DW

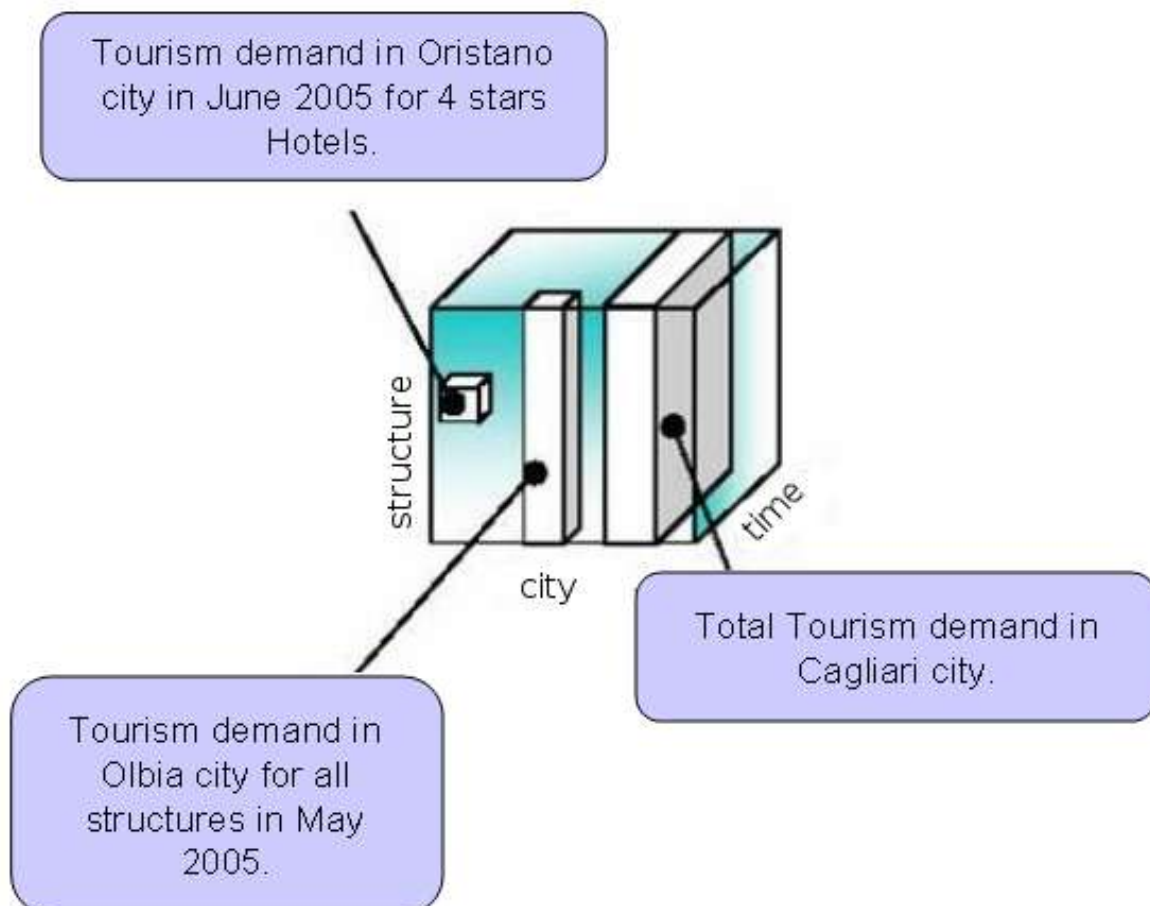


Information and knowledge extraction via OLAP tools

A well-known approach to DW data analysis is called OLAP (On Line Analytic Processing) which consists in obtaining a multidimensional view of the data by preparing a set of queries on the DW in which data can be aggregated and desegregated according to some predefined business categories. A better definition (<http://www.olapreport.com>) of OLAP applications is: Fast Analysis of Shared Multidimensional Information. The meaning is explained as follows:

- Fast: the system is targeted to deliver most responses to users in real-time (within about five seconds), with the simplest analyzes taking no more than one second and very few taking more than 20 seconds.
- Analysis: the system can cope with any business logic and statistical analysis that is relevant for the application and the user, and keep it easy enough for the target user.
- Shared: the system implements all the security requirements for confidentiality (possibly down to cell level) and, if multiple write access is needed, concurrent update locking at an appropriate level.
- Multidimensional: the system must provide a multidimensional conceptual view of the data, including full support for hierarchies and multiple hierarchies, as this is certainly the most logical way to analyze businesses and organizations.
- Information is all of the data and derived information needed, wherever it is and however much is relevant for the application. The capacity of various products is measured in in terms of how much input data they can handle, not how many Gigabytes they take to store it.

An OLAP application allows the decision maker to navigate through the multidimensional data structure by aggregating and desegregating data in real time on the base of the hierarchical structures of the dimensions. A simple example (just three dimensions for graphical representation) of what kind of queries can be performed with a Tourism oriented OLAP cube is shown in next figure.



Data Mining

Data Mining techniques are also used (by processing the data stored in a Data Warehouse platform) to extract knowledge patterns.

The main Data Mining techniques can be summarized as follows:

- Classification: it is defined a function or a model to assign a unit into one of pre-defined classes;
- Regression: it is defined a regression function or model to describe the dependence relation of a response variable on the basis of various predictors as well as to forecast future behavior and trends of the response;
- Clustering: it is identify an automatic procedure to find a partition of data units into classes on the basis of various characteristics observed on the data.
- Association: it is interesting to identify typological characteristics in the data yielding to find consensus rules or association rules relating various aspects of the phenomenon under analysis.
- Modeling: it is identified a general model to describe the significant relations of the variables by means of graphical tools (such as networks, trees, etc.) or parametric forms that permit the specific use of numerical scale for comparisons and interpretation.
- Analysis of Deviations: it is satisfied the purpose to get the most significant variations in the data with respect to the normative rules as well as past behavior.

Decision Support Systems

A DSS can be defined as an interactive, computer-based system intended to provide support to the decision-makers engaged in solving various semi- or full-structured problems involving multiple attributes, objectives and goals. Typical components of a (model-based) DSS are the transactional database, the user interface and the model management module. However, the methodological and technological developments of DSS are far from being considered mature, since complex, integrated decision-making is still done partially or completely manually. Some technological innovations and recently developed statistical learning tools have enabled far more powerful DSS functionality.

Three main phases are considered in the implementation of a DSS in order to simplify and contribute to decision-making processes:

- Intelligence, by collecting internal and external information to provide a correct and feasible definition of the decision problem.
- Design, by identifying suitable quantitative methodologies aimed to generate various problem-solving alternatives,
- Choice, by evaluating alternatives and selecting the best action on the basis of forecasting and scenario analysis.

The DSS is designed to get four typologies of fundamental operations:

- Reporting, aiming to provide, regularly, several queries to databases, yielding to statistical reports for a graphical analysis of business trends;
- Data mining, that consists in applying specific advanced statistical methodologies yielding to identify trends, pattern recognition, typological characteristics, data segmentation for classification purpose;
- What if analysis, aiming to build up specific scenarios that are useful for satisfying purposes related to planning and forecasting the future market trends;
- OLAP (On Line Analytical Process), leading to get "intelligent" queries (by means of specific operators such as Drill-Down, Roll-Up, Pivot) in real time but also in intuitive matter without taking care of the effective and logical structure of the data.

A case: Australian Tourism Data Warehouse

Data warehouses are not exclusively used for analyzing data but also for offering services. In the tourism field an example is given by the Australian Tourism Data Warehouse(ATDW), which is a joint initiative of the Government tourism organizations from all Australian States and Territories

and the Australian Tourist Commission. With the increased demand for tourism information, the States and Territories identified the need for a comprehensive database of Australian tourism product and destination information from a single “trusted” source. The ATDW has been developed to meet this requirement. Each State and Territory has agreed to integrate their tourism databases into the ATDW, which provides consistent, accurate, and extensive information on Australian tourism products and destinations to the global Internet user (see www.nttc.com.au/nt/nttc/services/atdw.html for details). Such big infrastructure is able to offer, as explained before, a unique and trusted access point to the whole Australian continent for anything which is related to Tourism. It is obvious that such system can also monitor the Tourism phenomenon as a whole and give any kind of statistical information is needed by a decision maker or prepare the right data for any Data Mining analysis. The numbers of that system's dimension are impressive but it is due, of course, to the fact that it stores data referring to a whole continent. Such big dimensionality fully justifies the use of extremely powerful (and expensive) instruments.

The proposed solution

The costs of data warehousing projects are usually very high and one of the reasons lies in the price of the licenses for all the software packages which are necessary to build up the Warehouse. A DW of a big Enterprise would quickly reach huge dimensions so a powerful database engine is needed to manage such big amount of data. Once the database server is on, the manager needs a powerful OLAP tool to analyze the data coming from the DB and the same thing happens when it comes to apply Data Mining techniques by using commercial software, which is usually very expensive. The cost of such software (Oracle, Microsoft Sql Server, IBM DB2, Salford CART, etc.) is usually extremely high so purchasing those tools is affordable (and justified) only for very big enterprises. But also small context (like small and medium enterprises, local Authorities, etc.) need statistical support for decision making because both enterprises are forced to compete (in a dimension whose main keyword is “globalization”) with multinational companies and local Authorities are always more often called to constantly monitor the whole behavior of the context of interest (i.e. Tourism) in order to take decisions rapidly in order to correct any situation which is somehow “out of control”.

In such a scenario, this paper proposes an open-source based statistical decision support system architecture for the Tourism Decision Maker that has the need of analyzing data and formulating strategies. In other words we propose a Business Intelligence System architecture which can be used by Tourism-related local Authorities. Such Authorities requirements are very different from the ones of big enterprises. First of all, small costs are a must for local Authorities, because they don't have the economical availability that a big private enterprise do but, on the other hand, their operational systems tend not to produce the same huge amount of data. Small realities (like regional ones, for instance) won't produce the same mass of data that an international Company would do.

This means that such systems will have the advantage of not being very resources consuming because of the size of the operational systems that would feed such Data Warehouse.

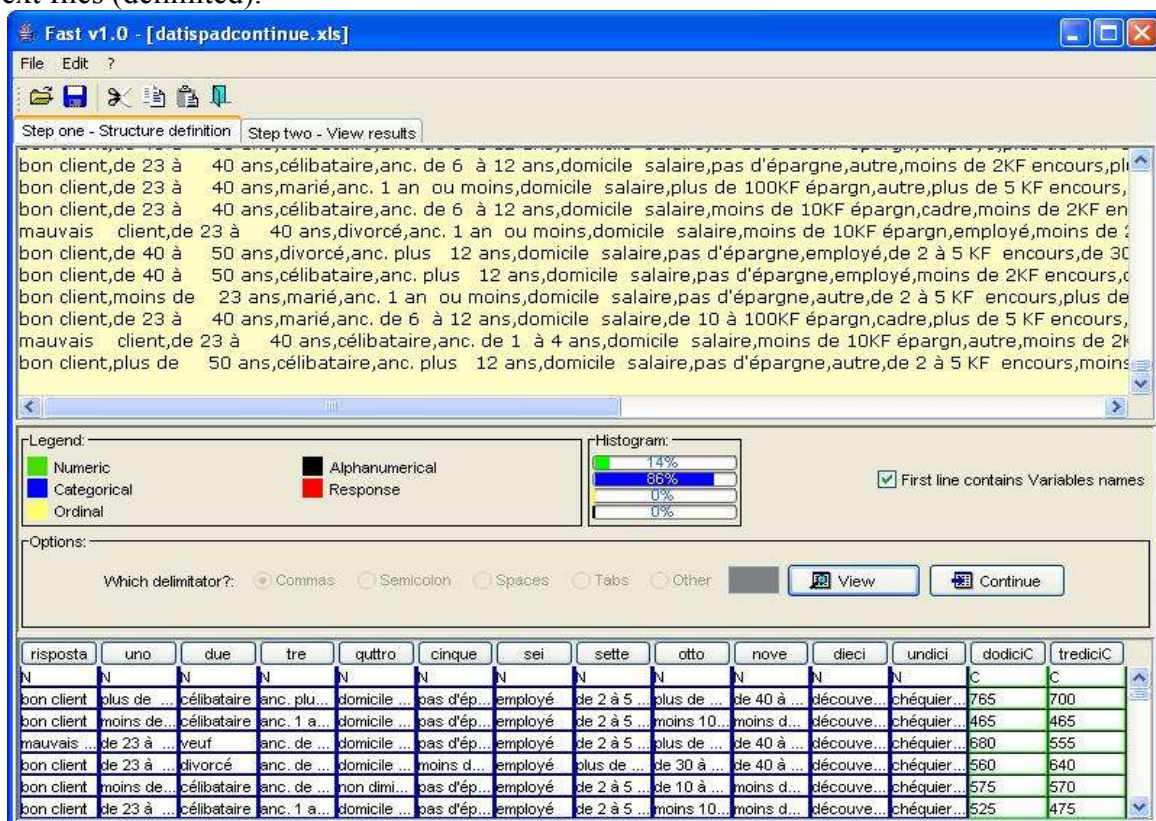
Such system will be designed ad-hoc for the smaller and constrained local Authority reality. The choice of the software architecture will go on open-source instruments which have proved to be valid alternatives (and, some times, competitors) to the very expensive traditional tools for Business Intelligence. By open source software we mean a particular license that states that such software must be given together with its own source code (there are also other specifications, for details see http://www.opensource.org/docs/definition_plain.php). Many open source software are also free to use in the sense that there is no license cost to pay. In particular the MySQL and PostgreSQL database platforms will be used as DB engines and some ad-hoc Java programs and Php scripts will be written to implement the most important features that the open-source Databases are missing. In order to make all the system usable via the web the well-known Apache web server will be used. It has to be noticed that Java programming language, Php scripting languages and PostgreSQL are totally free, even for commercial use, while MySQL DB has a very low commercial license fee, so a very big cut in licensing cost has will be done. The open source world has even more to offer: the

Apache http Server, for instance, which is totally free, will allow users to query the DW from a web-based front-end. The high quality level of those open source software is also proved by the fact that Oracle includes, for instance, Apache http Server with his Database Server and uses Java Technology for JDeveloper and Business Intelligence Beans software. In order to allow the decision maker to analyze the data coming out of the DW a rudimentary OLAP interface and some reporting instruments will be written in Java and the queries will be made available through the web using the Apache Http Server.

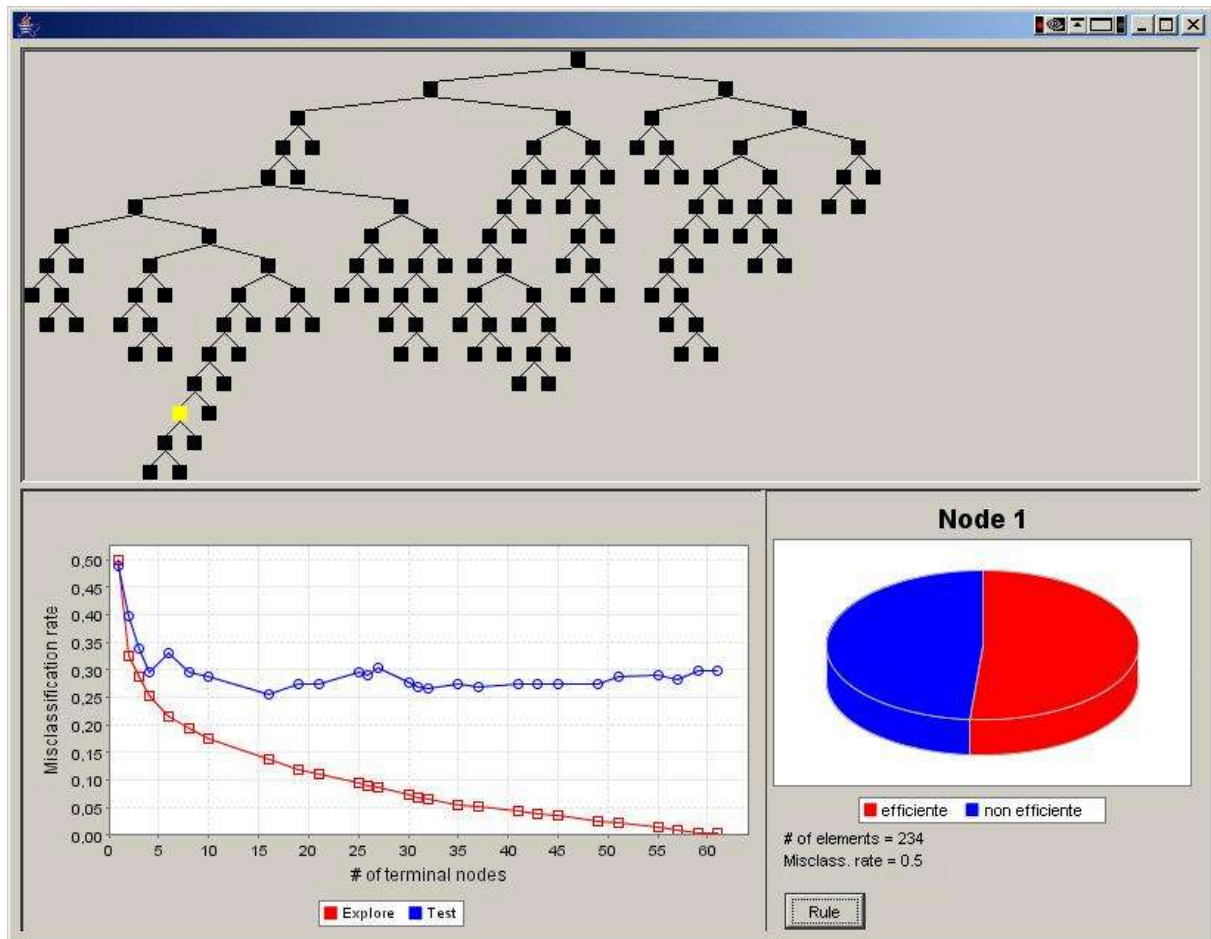
Data Mining with free tools

The strong interoperability between the various chosen platform (PostGreSql and MySql provide native JDBC driver that allow direct connection between the DB and a Java program) and the use of the XML language will grant communication between all the layers of the whole architecture and make it possible to easily plug other free Data Mining software like J-FAST (Miele, Mola and Siciliano, 2005), a Java-based program for building Classification and Regression Trees. J-FAST can easily connect (via the JDBC drivers) to all of the aforementioned databases engines (also to many others and the commercial ones). The next figure shows the interactive Data Import GUI of the J-FAST software. The plugin for letting J-FAST connect to the following sources are already available:

- Oracle DB.
- Mysql DB.
- PostGreSql DB.
- Excel files.
- Text files (delimited).



All the necessary ETL (Extraction, Transformation and Loading) can thus be written by making use of the Java and PHP languages. The J-FAST program builds Classification and Regression Trees, which are powerful Data Mining tools used for complex exploratory and predictive analysis (See Breiman et al., 1984, for further details). The next figure shows the J-FAST interactive GUI for browsing the results of an analysis.



Further developments: Heuristic Algorithms

Once a Data Warehousing system is active it will quickly collect very big amounts of data, and this makes another problem rise. Such problem lies in the fact that actual Data Mining procedures have problems to analyze very big datasets, so that just very some statistical techniques could be applied (univariate and bivariate statistics, time series modeling, etc). This would lead to have very big repository that “hide” information and knowledge which is not possible to perceive completely.

New modern procedures, which are based on the use of particular optimization techniques called Heuristic Algorithms, are being developed for treating datasets which are not analyzable by making use of classical Data Mining procedures (see Mola and Miele, 2005). The use of such techniques could be the answer to an actually crucial question about Data Mining about data dimensionality and computational performance.

References

- R. Kimball and M. Ross (2002). The Data Warehouse Toolkit, the complete guide to dimensional modeling, second edition. John Wiley & Sons, Inc.
- M. Golfarelli and S. Rizzi (1974). Data Warehouse: teoria e pratica della progettazione. McGraw-Hill.
- D. Pyle 1999. Data Preparation for Data Mining, M.Kaufmann Publisher, Inc.
- Jarke, M. Lenzerini 2000, Y. Vassiliou, P. Vassiliadis. Fundamentals of Data Warehouses, Springer.
- M. Golfarelli and S. Rizzi 1999. Designing the Data Warehouse: key steps and Crucial Issues. Journal of computer science and Information Management, vol. 2, n. 3
- J. Han and M. Kamber 2001. Data Mining: concept and techniques. Morgan Kaufmann Publisher.

- M. Golfarelli and S. Rizzi 1998. A methodological framework for Data Warehouse design. Proc. First International Workshop on Data Warehousing and OLAP (DOLAP), Bethesda, MD.
- M. Golfarelli, D. Maio and S. Rizzi 1998. Conceptual Design of Data Warehouses from E/R Schemes. Proc. Hawaii Int. Conf. on System Sciences, vol. VII, Kona, Hawaii, 334-343
- M. Golfarelli, D. Maio and S. Rizzi (1998). The Dimensional Fact Model: a Conceptual Model for Data Warehouses. International Journal of Cooperative Information Systems, vol. 7, n. 2-3.
- Breiman L., Friedman J., Olshen R. and Stone C. (1984) Classification and regression trees, Belmont C.A. Wadsworth.
- R. Miele, F. Mola and R. Siciliano 2005. J-FAST: an interactive software for Classification and Regression Trees. Fifth biennial meeting of the Classification and Data Analysis Group (CLADAG) of the Italian Statistical Society. Parma, Italy, 437-440.
- F. Mola and R. Miele 2005. Evolutionary algorithms for Classification and Regression Trees. Fifth biennial meeting of the Classification and Data Analysis Group (CLADAG) of the Italian Statistical Society. Parma, Italy, 129-132

NOTE DI LAVORO DELLA FONDAZIONE ENI ENRICO MATTEI

Fondazione Eni Enrico Mattei Working Paper Series

Our Note di Lavoro are available on the Internet at the following addresses:

<http://www.feem.it/Feem/Pub/Publications/WPapers/default.html>

<http://www.ssrn.com/link/feem.html>

<http://www.repec.org>

NOTE DI LAVORO PUBLISHED IN 2004

IEM	1.2004	Anil MARKANDYA, Suzette PEDROSO and Alexander GOLUB: <u>Empirical Analysis of National Income and So2 Emissions in Selected European Countries</u>
ETA	2.2004	Masahisa FUJITA and Shlomo WEBER: <u>Strategic Immigration Policies and Welfare in Heterogeneous Countries</u>
PRA	3.2004	Adolfo DI CARLUCCIO, Giovanni FERRI, Cecilia FRALE and Ottavio RICCHI: <u>Do Privatizations Boost Household Shareholding? Evidence from Italy</u>
ETA	4.2004	Victor GINSBURGH and Shlomo WEBER: <u>Languages Disenfranchisement in the European Union</u>
ETA	5.2004	Romano PIRAS: <u>Growth, Congestion of Public Goods, and Second-Best Optimal Policy</u>
CCMP	6.2004	Herman R.J. VOLLEBERGH: <u>Lessons from the Polder: Is Dutch CO2-Taxation Optimal</u>
PRA	7.2004	Sandro BRUSCO, Giuseppe LOPOMO and S. VISWANATHAN (lxv): <u>Merger Mechanisms</u>
PRA	8.2004	Wolfgang AUSENNEGG, Pegaret PICHLER and Alex STOMPER (lxv): <u>IPO Pricing with Bookbuilding, and a When-Issued Market</u>
PRA	9.2004	Pegaret PICHLER and Alex STOMPER (lxv): <u>Primary Market Design: Direct Mechanisms and Markets</u>
PRA	10.2004	Florian ENGLMAIER, Pablo GUILLEN, Loreto LLORENTE, Sander ONDERSTAL and Rupert SAUSGRUBER (lxv): <u>The Chopstick Auction: A Study of the Exposure Problem in Multi-Unit Auctions</u>
PRA	11.2004	Bjarne BRENDSTRUP and Harry J. PAARSCH (lxv): <u>Nonparametric Identification and Estimation of Multi-Unit, Sequential, Oral, Ascending-Price Auctions With Asymmetric Bidders</u>
PRA	12.2004	Ohad KADAN (lxv): <u>Equilibrium in the Two Player, k-Double Auction with Affiliated Private Values</u>
PRA	13.2004	Maarten C.W. JANSSEN (lxv): <u>Auctions as Coordination Devices</u>
PRA	14.2004	Gadi FIBICH, Arie GAVIOUS and Aner SELA (lxv): <u>All-Pay Auctions with Weakly Risk-Averse Buyers</u>
PRA	15.2004	Orly SADE, Charles SCHNITZLEIN and Jaime F. ZENDER (lxv): <u>Competition and Cooperation in Divisible Good Auctions: An Experimental Examination</u>
PRA	16.2004	Marta STRYSZOWSKA (lxv): <u>Late and Multiple Bidding in Competing Second Price Internet Auctions</u>
CCMP	17.2004	Slim Ben YOUSSEF: <u>R&D in Cleaner Technology and International Trade</u>
NRM	18.2004	Angelo ANTOCI, Simone BORGHESI and Paolo RUSSU (lxvi): <u>Biodiversity and Economic Growth: Stabilization Versus Preservation of the Ecological Dynamics</u>
SIEV	19.2004	Anna ALBERINI, Paolo ROSATO, Alberto LONGO and Valentina ZANATTA: <u>Information and Willingness to Pay in a Contingent Valuation Study: The Value of S. Erasmo in the Lagoon of Venice</u>
NRM	20.2004	Guido CANDELA and Roberto CELLINI (lxvii): <u>Investment in Tourism Market: A Dynamic Model of Differentiated Oligopoly</u>
NRM	21.2004	Jacqueline M. HAMILTON (lxvii): <u>Climate and the Destination Choice of German Tourists</u>
NRM	22.2004	Javier Rey-MAQUIEIRA PALMER, Javier LOZANO IBÁÑEZ and Carlos Mario GÓMEZ GÓMEZ (lxvii): <u>Land, Environmental Externalities and Tourism Development</u>
NRM	23.2004	Pius ODUNGA and Henk FOLMER (lxvii): <u>Profiling Tourists for Balanced Utilization of Tourism-Based Resources in Kenya</u>
NRM	24.2004	Jean-Jacques NOWAK, Mondher SAHLI and Pasquale M. SGRO (lxvii): <u>Tourism, Trade and Domestic Welfare</u>
NRM	25.2004	Riaz SHAREEF (lxvii): <u>Country Risk Ratings of Small Island Tourism Economies</u>
NRM	26.2004	Juan Luis EUGENIO-MARTÍN, Noelia MARTÍN MORALES and Riccardo SCARPA (lxvii): <u>Tourism and Economic Growth in Latin American Countries: A Panel Data Approach</u>
NRM	27.2004	Raúl Hernández MARTÍN (lxvii): <u>Impact of Tourism Consumption on GDP. The Role of Imports</u>
CSRM	28.2004	Nicoletta FERRO: <u>Cross-Country Ethical Dilemmas in Business: A Descriptive Framework</u>
NRM	29.2004	Marian WEBER (lxvi): <u>Assessing the Effectiveness of Tradable Landuse Rights for Biodiversity Conservation: an Application to Canada's Boreal Mixedwood Forest</u>
NRM	30.2004	Trond BJØRNDAL, Phoebe KOUNDOURI and Sean PASCOE (lxvi): <u>Output Substitution in Multi-Species Trawl Fisheries: Implications for Quota Setting</u>
CCMP	31.2004	Marzio GALEOTTI, Alessandra GORIA, Paolo MOMBRINI and Evi SPANTIDAKI: <u>Weather Impacts on Natural, Social and Economic Systems (WISE) Part I: Sectoral Analysis of Climate Impacts in Italy</u>
CCMP	32.2004	Marzio GALEOTTI, Alessandra GORIA, Paolo MOMBRINI and Evi SPANTIDAKI: <u>Weather Impacts on Natural, Social and Economic Systems (WISE) Part II: Individual Perception of Climate Extremes in Italy</u>
CTN	33.2004	Wilson PEREZ: <u>Divide and Conquer: Noisy Communication in Networks, Power, and Wealth Distribution</u>
KTHC	34.2004	Gianmarco I.P. OTTAVIANO and Giovanni PERI (lxviii): <u>The Economic Value of Cultural Diversity: Evidence from US Cities</u>
KTHC	35.2004	Linda CHAIB (lxviii): <u>Immigration and Local Urban Participatory Democracy: A Boston-Paris Comparison</u>

KTHC	36.2004	<i>Franca ECKERT COEN and Claudio ROSSI</i> (lxviii): <u>Foreigners, Immigrants, Host Cities: The Policies of Multi-Ethnicity in Rome. Reading Governance in a Local Context</u>
KTHC	37.2004	<i>Kristine CRANE</i> (lxviii): <u>Governing Migration: Immigrant Groups' Strategies in Three Italian Cities – Rome, Naples and Bari</u>
KTHC	38.2004	<i>Kiflemariam HAMDE</i> (lxviii): <u>Mind in Africa, Body in Europe: The Struggle for Maintaining and Transforming Cultural Identity - A Note from the Experience of Eritrean Immigrants in Stockholm</u>
ETA	39.2004	<i>Alberto CAVALIERE</i> : <u>Price Competition with Information Disparities in a Vertically Differentiated Duopoly</u>
PRA	40.2004	<i>Andrea BIGANO and Stef PROOST</i> : <u>The Opening of the European Electricity Market and Environmental Policy: Does the Degree of Competition Matter?</u>
CCMP	41.2004	<i>Micheal FINUS</i> (lxix): <u>International Cooperation to Resolve International Pollution Problems</u>
KTHC	42.2004	<i>Francesco CRESPI</i> : <u>Notes on the Determinants of Innovation: A Multi-Perspective Analysis</u>
CTN	43.2004	<i>Sergio CURRARINI and Marco MARINI</i> : <u>Coalition Formation in Games without Synergies</u>
CTN	44.2004	<i>Marc ESCRIHUELA-VILLAR</i> : <u>Cartel Sustainability and Cartel Stability</u>
NRM	45.2004	<i>Sebastian BERVOETS and Nicolas GRAVEL</i> (lxvi): <u>Appraising Diversity with an Ordinal Notion of Similarity: An Axiomatic Approach</u>
NRM	46.2004	<i>Signe ANTHON and Bo JELLES MARK THORSEN</i> (lxvi): <u>Optimal Afforestation Contracts with Asymmetric Information on Private Environmental Benefits</u>
NRM	47.2004	<i>John MBURU</i> (lxvi): <u>Wildlife Conservation and Management in Kenya: Towards a Co-management Approach</u>
NRM	48.2004	<i>Ekin BIROL, Ágnes GYÓVAI and Melinda SMALE</i> (lxvi): <u>Using a Choice Experiment to Value Agricultural Biodiversity on Hungarian Small Farms: Agri-Environmental Policies in a Transition al Economy</u>
CCMP	49.2004	<i>Gernot KLEPPER and Sonja PETERSON</i> : <u>The EU Emissions Trading Scheme. Allowance Prices, Trade Flows, Competitiveness Effects</u>
GG	50.2004	<i>Scott BARRETT and Michael HOEL</i> : <u>Optimal Disease Eradication</u>
CTN	51.2004	<i>Dinko DIMITROV, Peter BORM, Ruud HENDRICKX and Shao CHIN SUNG</i> : <u>Simple Priorities and Core Stability in Hedonic Games</u>
SIEV	52.2004	<i>Francesco RICCI</i> : <u>Channels of Transmission of Environmental Policy to Economic Growth: A Survey of the Theory</u>
SIEV	53.2004	<i>Anna ALBERINI, Maureen CROPPER, Alan KRUPNICK and Nathalie B. SIMON</i> : <u>Willingness to Pay for Mortality Risk Reductions: Does Latency Matter?</u>
NRM	54.2004	<i>Ingo BRÄUER and Rainer MARGGRAF</i> (lxvi): <u>Valuation of Ecosystem Services Provided by Biodiversity Conservation: An Integrated Hydrological and Economic Model to Value the Enhanced Nitrogen Retention in Renaturated Streams</u>
NRM	55.2004	<i>Timo GOESCHL and Tun LIN</i> (lxvi): <u>Biodiversity Conservation on Private Lands: Information Problems and Regulatory Choices</u>
NRM	56.2004	<i>Tom DEDEURWAERDERE</i> (lxvi): <u>Bioprospection: From the Economics of Contracts to Reflexive Governance</u>
CCMP	57.2004	<i>Katrin REHDANZ and David MADDISON</i> : <u>The Amenity Value of Climate to German Households</u>
CCMP	58.2004	<i>Koen SMEKENS and Bob VAN DER ZWAAN</i> : <u>Environmental Externalities of Geological Carbon Sequestration Effects on Energy Scenarios</u>
NRM	59.2004	<i>Valentina BOSETTI, Mariaester CASSINELLI and Alessandro LANZA</i> (lxvii): <u>Using Data Envelopment Analysis to Evaluate Environmentally Conscious Tourism Management</u>
NRM	60.2004	<i>Timo GOESCHL and Danilo CAMARGO IGLIORI</i> (lxvi): <u>Property Rights Conservation and Development: An Analysis of Extractive Reserves in the Brazilian Amazon</u>
CCMP	61.2004	<i>Barbara BUCHNER and Carlo CARRARO</i> : <u>Economic and Environmental Effectiveness of a Technology-based Climate Protocol</u>
NRM	62.2004	<i>Elissaios PAPYRAKIS and Reyer GERLAGH</i> : <u>Resource-Abundance and Economic Growth in the U.S.</u>
NRM	63.2004	<i>Györgyi BELA, György PATAKI, Melinda SMALE and Mariann HAJDÚ</i> (lxvi): <u>Conserving Crop Genetic Resources on Smallholder Farms in Hungary: Institutional Analysis</u>
NRM	64.2004	<i>E.C.M. RUIJGROK and E.E.M. NILLESEN</i> (lxvi): <u>The Socio-Economic Value of Natural Riverbanks in the Netherlands</u>
NRM	65.2004	<i>E.C.M. RUIJGROK</i> (lxvi): <u>Reducing Acidification: The Benefits of Increased Nature Quality. Investigating the Possibilities of the Contingent Valuation Method</u>
ETA	66.2004	<i>Giannis VARDAS and Anastasios XEPAPADEAS</i> : <u>Uncertainty Aversion, Robust Control and Asset Holdings</u>
GG	67.2004	<i>Anastasios XEPAPADEAS and Constadina PASSA</i> : <u>Participation in and Compliance with Public Voluntary Environmental Programs: An Evolutionary Approach</u>
GG	68.2004	<i>Michael FINUS</i> : <u>Modesty Pays: Sometimes!</u>
NRM	69.2004	<i>Trond BJØRNDAL and Ana BRASÃO</i> : <u>The Northern Atlantic Bluefin Tuna Fisheries: Management and Policy Implications</u>
CTN	70.2004	<i>Alejandro CAPARRÓS, Abdelhakim HAMMOUDI and Tarik TAZDAÏT</i> : <u>On Coalition Formation with Heterogeneous Agents</u>
IEM	71.2004	<i>Massimo GIOVANNINI, Margherita GRASSO, Alessandro LANZA and Matteo MANERA</i> : <u>Conditional Correlations in the Returns on Oil Companies Stock Prices and Their Determinants</u>
IEM	72.2004	<i>Alessandro LANZA, Matteo MANERA and Michael MCALEER</i> : <u>Modelling Dynamic Conditional Correlations in WTI Oil Forward and Futures Returns</u>
SIEV	73.2004	<i>Margarita GENIUS and Elisabetta STRAZZERA</i> : <u>The Copula Approach to Sample Selection Modelling: An Application to the Recreational Value of Forests</u>

CCMP	74.2004	<i>Rob DELLINK and Ekko van IERLAND</i> : <u>Pollution Abatement in the Netherlands: A Dynamic Applied General Equilibrium Assessment</u>
ETA	75.2004	<i>Rosella LEVAGGI and Michele MORETTO</i> : <u>Investment in Hospital Care Technology under Different Purchasing Rules: A Real Option Approach</u>
CTN	76.2004	<i>Salvador BARBERÀ and Matthew O. JACKSON</i> (lxx): <u>On the Weights of Nations: Assigning Voting Weights in a Heterogeneous Union</u>
CTN	77.2004	<i>Àlex ARENAS, Antonio CABRALES, Albert DÍAZ-GUILERA, Roger GUIMERÀ and Fernando VEGA-REDONDO</i> (lxx): <u>Optimal Information Transmission in Organizations: Search and Congestion</u>
CTN	78.2004	<i>Francis BLOCH and Armando GOMES</i> (lxx): <u>Contracting with Externalities and Outside Options</u>
CTN	79.2004	<i>Rabah AMIR, Effrosyni DIAMANTOUDI and Licun XUE</i> (lxx): <u>Merger Performance under Uncertain Efficiency Gains</u>
CTN	80.2004	<i>Francis BLOCH and Matthew O. JACKSON</i> (lxx): <u>The Formation of Networks with Transfers among Players</u>
CTN	81.2004	<i>Daniel DIERMEIER, Hülya ERASLAN and Antonio MERLO</i> (lxx): <u>Bicameralism and Government Formation</u>
CTN	82.2004	<i>Rod GARRATT, James E. PARCO, Cheng-ZHONG QIN and Amnon RAPOPORT</i> (lxx): <u>Potential Maximization and Coalition Government Formation</u>
CTN	83.2004	<i>Kfir ELIAZ, Debraj RAY and Ronny RAZIN</i> (lxx): <u>Group Decision-Making in the Shadow of Disagreement</u>
CTN	84.2004	<i>Sanjeev GOYAL, Marco van der LEIJ and José Luis MORAGA-GONZÁLEZ</i> (lxx): <u>Economics: An Emerging Small World?</u>
CTN	85.2004	<i>Edward CARTWRIGHT</i> (lxx): <u>Learning to Play Approximate Nash Equilibria in Games with Many Players</u>
IEM	86.2004	<i>Finn R. FØRSUND and Michael HOEL</i> : <u>Properties of a Non-Competitive Electricity Market Dominated by Hydroelectric Power</u>
KTHC	87.2004	<i>Elissaios PAPYRAKIS and Reyer GERLAGH</i> : <u>Natural Resources, Investment and Long-Term Income</u>
CCMP	88.2004	<i>Marzio GALEOTTI and Claudia KEMFERT</i> : <u>Interactions between Climate and Trade Policies: A Survey</u>
IEM	89.2004	<i>A. MARKANDYA, S. PEDROSO and D. STREIMIKIENE</i> : <u>Energy Efficiency in Transition Economies: Is There Convergence Towards the EU Average?</u>
GG	90.2004	<i>Rolf GOLOMBEK and Michael HOEL</i> : <u>Climate Agreements and Technology Policy</u>
PRA	91.2004	<i>Sergei IZMALKOV</i> (lxv): <u>Multi-Unit Open Ascending Price Efficient Auction</u>
KTHC	92.2004	<i>Gianmarco I.P. OTTAVIANO and Giovanni PERI</i> : <u>Cities and Cultures</u>
KTHC	93.2004	<i>Massimo DEL GATTO</i> : <u>Agglomeration, Integration, and Territorial Authority Scale in a System of Trading Cities. Centralisation versus devolution</u>
CCMP	94.2004	<i>Pierre-André JOUVET, Philippe MICHEL and Gilles ROTILLON</i> : <u>Equilibrium with a Market of Permits</u>
CCMP	95.2004	<i>Bob van der ZWAAN and Reyer GERLAGH</i> : <u>Climate Uncertainty and the Necessity to Transform Global Energy Supply</u>
CCMP	96.2004	<i>Francesco BOSELLO, Marco LAZZARIN, Roberto ROSON and Richard S.J. TOL</i> : <u>Economy-Wide Estimates of the Implications of Climate Change: Sea Level Rise</u>
CTN	97.2004	<i>Gustavo BERGANTIÑOS and Juan J. VIDAL-PUGA</i> : <u>Defining Rules in Cost Spanning Tree Problems Through the Canonical Form</u>
CTN	98.2004	<i>Siddhartha BANDYOPADHYAY and Mandar OAK</i> : <u>Party Formation and Coalitional Bargaining in a Model of Proportional Representation</u>
GG	99.2004	<i>Hans-Peter WEIKARD, Michael FINUS and Juan-Carlos ALTAMIRANO-CABRERA</i> : <u>The Impact of Surplus Sharing on the Stability of International Climate Agreements</u>
SIEV	100.2004	<i>Chiara M. TRAVISI and Peter NIJKAMP</i> : <u>Willingness to Pay for Agricultural Environmental Safety: Evidence from a Survey of Milan, Italy, Residents</u>
SIEV	101.2004	<i>Chiara M. TRAVISI, Raymond J. G. M. FLORAX and Peter NIJKAMP</i> : <u>A Meta-Analysis of the Willingness to Pay for Reductions in Pesticide Risk Exposure</u>
NRM	102.2004	<i>Valentina BOSETTI and David TOMBERLIN</i> : <u>Real Options Analysis of Fishing Fleet Dynamics: A Test</u>
CCMP	103.2004	<i>Alessandra GORIA e Gretel GAMBARELLI</i> : <u>Economic Evaluation of Climate Change Impacts and Adaptability in Italy</u>
PRA	104.2004	<i>Massimo FLORIO and Mara GRASSEN</i> : <u>The Missing Shock: The Macroeconomic Impact of British Privatisation</u>
PRA	105.2004	<i>John BENNETT, Saul ESTRIN, James MAW and Giovanni URG</i> : <u>Privatisation Methods and Economic Growth in Transition Economies</u>
PRA	106.2004	<i>Kira BÖRNER</i> : <u>The Political Economy of Privatization: Why Do Governments Want Reforms?</u>
PRA	107.2004	<i>Pehr-Johan NORBÄCK and Lars PERSSON</i> : <u>Privatization and Restructuring in Concentrated Markets</u>
SIEV	108.2004	<i>Angela GRANZOTTO, Fabio PRANOVI, Simone LIBRALATO, Patrizia TORRICELLI and Danilo MAINARDI</i> : <u>Comparison between Artisanal Fishery and Manila Clam Harvesting in the Venice Lagoon by Using Ecosystem Indicators: An Ecological Economics Perspective</u>
CTN	109.2004	<i>Somdeb LAHIRI</i> : <u>The Cooperative Theory of Two Sided Matching Problems: A Re-examination of Some Results</u>
NRM	110.2004	<i>Giuseppe DI VITA</i> : <u>Natural Resources Dynamics: Another Look</u>
SIEV	111.2004	<i>Anna ALBERINI, Alistair HUNT and Anil MARKANDYA</i> : <u>Willingness to Pay to Reduce Mortality Risks: Evidence from a Three-Country Contingent Valuation Study</u>
KTHC	112.2004	<i>Valeria PAPPONETTI and Dino PINELLI</i> : <u>Scientific Advice to Public Policy-Making</u>
SIEV	113.2004	<i>Paulo A.L.D. NUNES and Laura ONOFRI</i> : <u>The Economics of Warm Glow: A Note on Consumer's Behavior and Public Policy Implications</u>
IEM	114.2004	<i>Patrick CAYRADE</i> : <u>Investments in Gas Pipelines and Liquefied Natural Gas Infrastructure What is the Impact on the Security of Supply?</u>
IEM	115.2004	<i>Valeria COSTANTINI and Francesco GRACCEVA</i> : <u>Oil Security. Short- and Long-Term Policies</u>

ITEM	116.2004	<i>Valeria COSTANTINI and Francesco GRACCEVA: <u>Social Costs of Energy Disruptions</u></i>
ITEM	117.2004	<i>Christian EGENHOFER, Kyriakos GIALOGLOU, Giacomo LUCIANI, Maroeska BOOTS, Martin SCHEEPERS, Valeria COSTANTINI, Francesco GRACCEVA, Anil MARKANDYA and Giorgio VICINI: <u>Market-Based Options for Security of Energy Supply</u></i>
ITEM	118.2004	<i>David FISK: <u>Transport Energy Security. The Unseen Risk?</u></i>
ITEM	119.2004	<i>Giacomo LUCIANI: <u>Security of Supply for Natural Gas Markets. What is it and What is it not?</u></i>
ITEM	120.2004	<i>L.J. de VRIES and R.A. HAKVOORT: <u>The Question of Generation Adequacy in Liberalised Electricity Markets</u></i>
KTHC	121.2004	<i>Alberto PETRUCCI: <u>Asset Accumulation, Fertility Choice and Nondegenerate Dynamics in a Small Open Economy</u></i>
NRM	122.2004	<i>Carlo GIUPPONI, Jaroslaw MYSLAK and Anita FASSIO: <u>An Integrated Assessment Framework for Water Resources Management: A DSS Tool and a Pilot Study Application</u></i>
NRM	123.2004	<i>Margaretha BREIL, Anita FASSIO, Carlo GIUPPONI and Paolo ROSATO: <u>Evaluation of Urban Improvement on the Islands of the Venice Lagoon: A Spatially-Distributed Hedonic-Hierarchical Approach</u></i>
ETA	124.2004	<i>Paul MENSINK: <u>Instant Efficient Pollution Abatement Under Non-Linear Taxation and Asymmetric Information: The Differential Tax Revisited</u></i>
NRM	125.2004	<i>Mauro FABIANO, Gabriella CAMARSA, Rosanna DURSI, Roberta IVALDI, Valentina MARIN and Francesca PALMISANI: <u>Integrated Environmental Study for Beach Management: A Methodological Approach</u></i>
PRA	126.2004	<i>Irena GROSFELD and Iraj HASHI: <u>The Emergence of Large Shareholders in Mass Privatized Firms: Evidence from Poland and the Czech Republic</u></i>
CCMP	127.2004	<i>Maria BERRITTELLA, Andrea BIGANO, Roberto ROSON and Richard S.J. TOL: <u>A General Equilibrium Analysis of Climate Change Impacts on Tourism</u></i>
CCMP	128.2004	<i>Reyer GERLAGH: <u>A Climate-Change Policy Induced Shift from Innovations in Energy Production to Energy Savings</u></i>
NRM	129.2004	<i>Elissaios PAPYRAKIS and Reyer GERLAGH: <u>Natural Resources, Innovation, and Growth</u></i>
PRA	130.2004	<i>Bernardo BORTOLOTTI and Mara FACCIO: <u>Reluctant Privatization</u></i>
SIEV	131.2004	<i>Riccardo SCARPA and Mara THIENE: <u>Destination Choice Models for Rock Climbing in the Northeast Alps: A Latent-Class Approach Based on Intensity of Participation</u></i>
SIEV	132.2004	<i>Riccardo SCARPA Kenneth G. WILLIS and Melinda ACUTT: <u>Comparing Individual-Specific Benefit Estimates for Public Goods: Finite Versus Continuous Mixing in Logit Models</u></i>
ITEM	133.2004	<i>Santiago J. RUBIO: <u>On Capturing Oil Rents with a National Excise Tax Revisited</u></i>
ETA	134.2004	<i>Ascensión ANDINA DÍAZ: <u>Political Competition when Media Create Candidates' Charisma</u></i>
SIEV	135.2004	<i>Anna ALBERINI: <u>Robustness of VSL Values from Contingent Valuation Surveys</u></i>
CCMP	136.2004	<i>Gernot KLEPPER and Sonja PETERSON: <u>Marginal Abatement Cost Curves in General Equilibrium: The Influence of World Energy Prices</u></i>
ETA	137.2004	<i>Herbert DAWID, Christophe DEISSENBERG and Pavel ŠEVČIK: <u>Cheap Talk, Gullibility, and Welfare in an Environmental Taxation Game</u></i>
CCMP	138.2004	<i>ZhongXiang ZHANG: <u>The World Bank's Prototype Carbon Fund and China</u></i>
CCMP	139.2004	<i>Reyer GERLAGH and Marjan W. HOFKES: <u>Time Profile of Climate Change Stabilization Policy</u></i>
NRM	140.2004	<i>Chiara D'ALPAOS and Michele MORETTO: <u>The Value of Flexibility in the Italian Water Service Sector: A Real Option Analysis</u></i>
PRA	141.2004	<i>Patrick BAJARI, Stephanie HOUGHTON and Steven TADELIS (lxxi): <u>Bidding for Incomplete Contracts</u></i>
PRA	142.2004	<i>Susan ATHEY, Jonathan LEVIN and Enrique SEIRA (lxxi): <u>Comparing Open and Sealed Bid Auctions: Theory and Evidence from Timber Auctions</u></i>
PRA	143.2004	<i>David GOLDREICH (lxxi): <u>Behavioral Biases of Dealers in U.S. Treasury Auctions</u></i>
PRA	144.2004	<i>Roberto BURGUET (lxxi): <u>Optimal Procurement Auction for a Buyer with Downward Sloping Demand: More Simple Economics</u></i>
PRA	145.2004	<i>Ali HORTACSU and Samita SAREEN (lxxi): <u>Order Flow and the Formation of Dealer Bids: An Analysis of Information and Strategic Behavior in the Government of Canada Securities Auctions</u></i>
PRA	146.2004	<i>Victor GINSBURGH, Patrick LEGROS and Nicolas SAHUGUET (lxxi): <u>How to Win Twice at an Auction. On the Incidence of Commissions in Auction Markets</u></i>
PRA	147.2004	<i>Claudio MEZZETTI, Aleksandar PEKEČ and Ilia TSETLIN (lxxi): <u>Sequential vs. Single-Round Uniform-Price Auctions</u></i>
PRA	148.2004	<i>John ASKER and Estelle CANTILLON (lxxi): <u>Equilibrium of Scoring Auctions</u></i>
PRA	149.2004	<i>Philip A. HAILE, Han HONG and Matthew SHUM (lxxi): <u>Nonparametric Tests for Common Values in First-Price Sealed-Bid Auctions</u></i>
PRA	150.2004	<i>François DEGEORGE, François DERRIEN and Kent L. WOMACK (lxxi): <u>Quid Pro Quo in IPOs: Why Bookbuilding is Dominating Auctions</u></i>
CCMP	151.2004	<i>Barbara BUCHNER and Silvia DALL'OLIO: <u>Russia: The Long Road to Ratification. Internal Institution and Pressure Groups in the Kyoto Protocol's Adoption Process</u></i>
CCMP	152.2004	<i>Carlo CARRARO and Marzio GALEOTTI: <u>Does Endogenous Technical Change Make a Difference in Climate Policy Analysis? A Robustness Exercise with the FEEM-RICE Model</u></i>
PRA	153.2004	<i>Alejandro M. MANELLI and Daniel R. VINCENT (lxxi): <u>Multidimensional Mechanism Design: Revenue Maximization and the Multiple-Good Monopoly</u></i>
ETA	154.2004	<i>Nicola ACOCELLA, Giovanni Di BARTOLOMEO and Wilfried PAUWELS: <u>Is there any Scope for Corporatism in Stabilization Policies?</u></i>
CTN	155.2004	<i>Johan EYCKMANS and Michael FINUS: <u>An Almost Ideal Sharing Scheme for Coalition Games with Externalities</u></i>
CCMP	156.2004	<i>Cesare DOSI and Michele MORETTO: <u>Environmental Innovation, War of Attrition and Investment Grants</u></i>

CCMP	157.2004	<i>Valentina BOSETTI, Marzio GALEOTTI and Alessandro LANZA: <u>How Consistent are Alternative Short-Term Climate Policies with Long-Term Goals?</u></i>
ETA	158.2004	<i>Y. Hossein FARZIN and Ken-Ichi AKAO: <u>Non-pecuniary Value of Employment and Individual Labor Supply</u></i>
ETA	159.2004	<i>William BROCK and Anastasios XEPAPADEAS: <u>Spatial Analysis: Development of Descriptive and Normative Methods with Applications to Economic-Ecological Modelling</u></i>
KTHC	160.2004	<i>Alberto PETRUCCI: <u>On the Incidence of a Tax on PureRent with Infinite Horizons</u></i>
IEM	161.2004	<i>Xavier LABANDEIRA, José M. LABEAGA and Miguel RODRÍGUEZ: <u>Microsimulating the Effects of Household Energy Price Changes in Spain</u></i>

NOTE DI LAVORO PUBLISHED IN 2005

CCMP	1.2005	<i>Stéphane HALLEGATTE: <u>Accounting for Extreme Events in the Economic Assessment of Climate Change</u></i>
CCMP	2.2005	<i>Qiang WU and Paulo Augusto NUNES: <u>Application of Technological Control Measures on Vehicle Pollution: A Cost-Benefit Analysis in China</u></i>
CCMP	3.2005	<i>Andrea BIGANO, Jacqueline M. HAMILTON, Maren LAU, Richard S.J. TOL and Yuan ZHOU: <u>A Global Database of Domestic and International Tourist Numbers at National and Subnational Level</u></i>
CCMP	4.2005	<i>Andrea BIGANO, Jacqueline M. HAMILTON and Richard S.J. TOL: <u>The Impact of Climate on Holiday Destination Choice</u></i>
ETA	5.2005	<i>Hubert KEMPF: <u>Is Inequality Harmful for the Environment in a Growing Economy?</u></i>
CCMP	6.2005	<i>Valentina BOSETTI, Carlo CARRARO and Marzio GALEOTTI: <u>The Dynamics of Carbon and Energy Intensity in a Model of Endogenous Technical Change</u></i>
IEM	7.2005	<i>David CALEF and Robert GOBLE: <u>The Allure of Technology: How France and California Promoted Electric Vehicles to Reduce Urban Air Pollution</u></i>
ETA	8.2005	<i>Lorenzo PELLEGRINI and Reyer GERLAGH: <u>An Empirical Contribution to the Debate on Corruption Democracy and Environmental Policy</u></i>
CCMP	9.2005	<i>Angelo ANTOCI: <u>Environmental Resources Depletion and Interplay Between Negative and Positive Externalities in a Growth Model</u></i>
CTN	10.2005	<i>Frédéric DEROLAN: <u>Cost-Reducing Alliances and Local Spillovers</u></i>
NRM	11.2005	<i>Francesco SINDICO: <u>The GMO Dispute before the WTO: Legal Implications for the Trade and Environment Debate</u></i>
KTHC	12.2005	<i>Carla MASSIDDA: <u>Estimating the New Keynesian Phillips Curve for Italian Manufacturing Sectors</u></i>
KTHC	13.2005	<i>Michele MORETTO and Gianpaolo ROSSINI: <u>Start-up Entry Strategies: Employer vs. Nonemployer firms</u></i>
PRCG	14.2005	<i>Clara GRAZIANO and Annalisa LUPORINI: <u>Ownership Concentration, Monitoring and Optimal Board Structure</u></i>
CSRM	15.2005	<i>Parashar KULKARNI: <u>Use of Ecolabels in Promoting Exports from Developing Countries to Developed Countries: Lessons from the Indian LeatherFootwear Industry</u></i>
KTHC	16.2005	<i>Adriana DI LIBERTO, Roberto MURA and Francesco PIGLIARU: <u>How to Measure the Unobservable: A Panel Technique for the Analysis of TFP Convergence</u></i>
KTHC	17.2005	<i>Alireza NAGHAVI: <u>Asymmetric Labor Markets, Southern Wages, and the Location of Firms</u></i>
KTHC	18.2005	<i>Alireza NAGHAVI: <u>Strategic Intellectual Property Rights Policy and North-South Technology Transfer</u></i>
KTHC	19.2005	<i>Mombert HOPPE: <u>Technology Transfer Through Trade</u></i>
PRCG	20.2005	<i>Roberto ROSON: <u>Platform Competition with Endogenous Multihoming</u></i>
CCMP	21.2005	<i>Barbara BUCHNER and Carlo CARRARO: <u>Regional and Sub-Global Climate Blocs. A Game Theoretic Perspective on Bottom-up Climate Regimes</u></i>
IEM	22.2005	<i>Fausto CAVALLARO: <u>An Integrated Multi-Criteria System to Assess Sustainable Energy Options: An Application of the Promethee Method</u></i>
CTN	23.2005	<i>Michael FINUS, Pierre v. MOUCHE and Bianca RUNDSHAGEN: <u>Uniqueness of Coalitional Equilibria</u></i>
IEM	24.2005	<i>Wietze LISE: <u>Decomposition of CO2 Emissions over 1980–2003 in Turkey</u></i>
CTN	25.2005	<i>Somdeb LAHIRI: <u>The Core of Directed Network Problems with Quotas</u></i>
SIEV	26.2005	<i>Susanne MENZEL and Riccardo SCARPA: <u>Protection Motivation Theory and Contingent Valuation: Perceived Realism, Threat and WTP Estimates for Biodiversity Protection</u></i>
NRM	27.2005	<i>Massimiliano MAZZANTI and Anna MONTINI: <u>The Determinants of Residential Water Demand Empirical Evidence for a Panel of Italian Municipalities</u></i>
CCMP	28.2005	<i>Laurent GILOTTE and Michel de LARA: <u>Precautionary Effect and Variations of the Value of Information</u></i>
NRM	29.2005	<i>Paul SARFO-MENSAH: <u>Exportation of Timber in Ghana: The Menace of Illegal Logging Operations</u></i>
CCMP	30.2005	<i>Andrea BIGANO, Alessandra GORIA, Jacqueline HAMILTON and Richard S.J. TOL: <u>The Effect of Climate Change and Extreme Weather Events on Tourism</u></i>
NRM	31.2005	<i>Maria Angeles GARCIA-VALIÑAS: <u>Decentralization and Environment: An Application to Water Policies</u></i>
NRM	32.2005	<i>Chiara D'ALPAOS, Cesare DOSI and Michele MORETTO: <u>Concession Length and Investment Timing Flexibility</u></i>
CCMP	33.2005	<i>Joseph HUBER: <u>Key Environmental Innovations</u></i>
CTN	34.2005	<i>Antoni CALVÓ-ARMENGOL and Rahmi İLKILIÇ (Ixxii): <u>Pairwise-Stability and Nash Equilibria in Network Formation</u></i>
CTN	35.2005	<i>Francesco FERI (Ixxii): <u>Network Formation with Endogenous Decay</u></i>
CTN	36.2005	<i>Frank H. PAGE, Jr. and Myrna H. WOODERS (Ixxii): <u>Strategic Basins of Attraction, the Farsighted Core, and Network Formation Games</u></i>

CTN	37.2005	<i>Alessandra CASELLA and Nobuyuki HANAKI</i> (lxxii): <u>Information Channels in Labor Markets. On the Resilience of Referral Hiring</u>
CTN	38.2005	<i>Matthew O. JACKSON and Alison WATTS</i> (lxxii): <u>Social Games: Matching and the Play of Finitely Repeated Games</u>
CTN	39.2005	<i>Anna BOGOMOLNAIA, Michel LE BRETON, Alexei SAVVATEEV and Shlomo WEBER</i> (lxxii): <u>The Egalitarian Sharing Rule in Provision of Public Projects</u>
CTN	40.2005	<i>Francesco FERI</i> : <u>Stochastic Stability in Network with Decay</u>
CTN	41.2005	<i>Aart de ZEEUW</i> (lxxii): <u>Dynamic Effects on the Stability of International Environmental Agreements</u>
NRM	42.2005	<i>C. Martijn van der HEIDE, Jeroen C.J.M. van den BERGH, Ekko C. van IERLAND and Paulo A.L.D. NUNES</i> : <u>Measuring the Economic Value of Two Habitat Defragmentation Policy Scenarios for the Veluwe, The Netherlands</u>
PRCG	43.2005	<i>Carla VIEIRA and Ana Paula SERRA</i> : <u>Abnormal Returns in Privatization Public Offerings: The Case of Portuguese Firms</u>
SIEV	44.2005	<i>Anna ALBERINI, Valentina ZANATTA and Paolo ROSATO</i> : <u>Combining Actual and Contingent Behavior to Estimate the Value of Sports Fishing in the Lagoon of Venice</u>
CTN	45.2005	<i>Michael FINUS and Bianca RUNDSHAGEN</i> : <u>Participation in International Environmental Agreements: The Role of Timing and Regulation</u>
CCMP	46.2005	<i>Lorenzo PELLEGRINI and Reyer GERLAGH</i> : <u>Are EU Environmental Policies Too Demanding for New Members States?</u>
IEM	47.2005	<i>Matteo MANERA</i> : <u>Modeling Factor Demands with SEM and VAR: An Empirical Comparison</u>
CTN	48.2005	<i>Olivier TERCIEUX and Vincent VANNETELBOSCH</i> (lxx): <u>A Characterization of Stochastically Stable Networks</u>
CTN	49.2005	<i>Ana MAULEON, José SEMPERE-MONERRIS and Vincent J. VANNETELBOSCH</i> (lxxii): <u>R&D Networks Among Unionized Firms</u>
CTN	50.2005	<i>Carlo CARRARO, Johan EYCKMANS and Michael FINUS</i> : <u>Optimal Transfers and Participation Decisions in International Environmental Agreements</u>
KTHC	51.2005	<i>Valeria GATTAI</i> : <u>From the Theory of the Firm to FDI and Internalisation: A Survey</u>
CCMP	52.2005	<i>Alireza NAGHAVI</i> : <u>Multilateral Environmental Agreements and Trade Obligations: A Theoretical Analysis of the Doha Proposal</u>
SIEV	53.2005	<i>Margaretha BREIL, Gretel GAMBARELLI and Paulo A.L.D. NUNES</i> : <u>Economic Valuation of On Site Material Damages of High Water on Economic Activities based in the City of Venice: Results from a Dose-Response-Expert-Based Valuation Approach</u>
ETA	54.2005	<i>Alessandra del BOCA, Marzio GALEOTTI, Charles P. HIMMELBERG and Paola ROTA</i> : <u>Investment and Time to Plan: A Comparison of Structures vs. Equipment in a Panel of Italian Firms</u>
CCMP	55.2005	<i>Gernot KLEPPER and Sonja PETERSON</i> : <u>Emissions Trading, CDM, JI, and More – The Climate Strategy of the EU</u>
ETA	56.2005	<i>Maia DAVID and Bernard SINCLAIR-DESGAGNÉ</i> : <u>Environmental Regulation and the Eco-Industry</u>
ETA	57.2005	<i>Alain-Désiré NIMUBONA and Bernard SINCLAIR-DESGAGNÉ</i> : <u>The Pigouvian Tax Rule in the Presence of an Eco-Industry</u>
NRM	58.2005	<i>Helmut KARL, Antje MÖLLER, Ximena MATUS, Edgar GRANDE and Robert KAISER</i> : <u>Environmental Innovations: Institutional Impacts on Co-operations for Sustainable Development</u>
SIEV	59.2005	<i>Dimitra VOUVAKI and Anastasios XEPAPADEAS</i> (lxxiii): <u>Criteria for Assessing Sustainable Development: Theoretical Issues and Empirical Evidence for the Case of Greece</u>
CCMP	60.2005	<i>Andreas LÖSCHEL and Dirk T.G. RÜBBELKE</i> : <u>Impure Public Goods and Technological Interdependencies</u>
PRCG	61.2005	<i>Christoph A. SCHALTEGGER and Benno TORGLER</i> : <u>Trust and Fiscal Performance: A Panel Analysis with Swiss Data</u>
ETA	62.2005	<i>Irene VALSECCHI</i> : <u>A Role for Instructions</u>
NRM	63.2005	<i>Valentina BOSETTI and Gianni LOCATELLI</i> : <u>A Data Envelopment Analysis Approach to the Assessment of Natural Parks' Economic Efficiency and Sustainability. The Case of Italian National Parks</u>
SIEV	64.2005	<i>Arianne T. de BLAEIJ, Paulo A.L.D. NUNES and Jeroen C.J.M. van den BERGH</i> : <u>Modeling 'No-choice' Responses in Attribute Based Valuation Surveys</u>
CTN	65.2005	<i>Carlo CARRARO, Carmen MARCHIORI and Alessandra SGOBBI</i> : <u>Applications of Negotiation Theory to Water Issues</u>
CTN	66.2005	<i>Carlo CARRARO, Carmen MARCHIORI and Alessandra SGOBBI</i> : <u>Advances in Negotiation Theory: Bargaining, Coalitions and Fairness</u>
KTHC	67.2005	<i>Sandra WALLMAN</i> (lxxiv): <u>Network Capital and Social Trust: Pre-Conditions for 'Good' Diversity?</u>
KTHC	68.2005	<i>Asimina CHRISTOFOROU</i> (lxxiv): <u>On the Determinants of Social Capital in Greece Compared to Countries of the European Union</u>
KTHC	69.2005	<i>Eric M. USLANER</i> (lxxiv): <u>Varieties of Trust</u>
KTHC	70.2005	<i>Thomas P. LYON</i> (lxxiv): <u>Making Capitalism Work: Social Capital and Economic Growth in Italy, 1970-1995</u>
KTHC	71.2005	<i>Graziella BERTOCCHI and Chiara STROZZI</i> (lxxv): <u>Citizenship Laws and International Migration in Historical Perspective</u>
KTHC	72.2005	<i>Elsbeth van HYLCKAMA Vlieg</i> (lxxv): <u>Accommodating Differences</u>
KTHC	73.2005	<i>Renato SANSA and Ercole SORI</i> (lxxv): <u>Governance of Diversity Between Social Dynamics and Conflicts in Multicultural Cities. A Selected Survey on Historical Bibliography</u>
IEM	74.2005	<i>Alberto LONGO and Anil MARKANDYA</i> : <u>Identification of Options and Policy Instruments for the Internalisation of External Costs of Electricity Generation. Dissemination of External Costs of Electricity Supply Making Electricity External Costs Known to Policy-Makers</u> <u>MAXIMA</u>

IEM	75.2005	<i>Margherita GRASSO and Matteo MANERA: <u>Asymmetric Error Correction Models for the Oil-Gasoline Price Relationship</u></i>
ETA	76.2005	<i>Umberto CHERUBINI and Matteo MANERA: <u>Hunting the Living Dead A “Peso Problem” in Corporate Liabilities Data</u></i>
CTN	77.2005	<i>Hans-Peter WEIKARD: <u>Cartel Stability under an Optimal Sharing Rule</u></i>
ETA	78.2005	<i>Joëlle NOAILLY, Jeroen C.J.M. van den BERGH and Cees A. WITHAGEN (lxxvi): <u>Local and Global Interactions in an Evolutionary Resource Game</u></i>
ETA	79.2005	<i>Joëlle NOAILLY, Cees A. WITHAGEN and Jeroen C.J.M. van den BERGH (lxxvi): <u>Spatial Evolution of Social Norms in a Common-Pool Resource Game</u></i>
CCMP	80.2005	<i>Massimiliano MAZZANTI and Roberto ZOBOLI: <u>Economic Instruments and Induced Innovation: The Case of End-of-Life Vehicles European Policies</u></i>
NRM	81.2005	<i>Anna LASUT: <u>Creative Thinking and Modelling for the Decision Support in Water Management</u></i>
CCMP	82.2005	<i>Valentina BOSETTI and Barbara BUCHNER: <u>Using Data Envelopment Analysis to Assess the Relative Efficiency of Different Climate Policy Portfolios</u></i>
ETA	83.2005	<i>Ignazio MUSU: <u>Intellectual Property Rights and Biotechnology: How to Improve the Present Patent System</u></i>
KTHC	84.2005	<i>Giulio CAINELLI, Susanna MANCINELLI and Massimiliano MAZZANTI: <u>Social Capital, R&D and Industrial Districts</u></i>
ETA	85.2005	<i>Rosella LEVAGGI, Michele MORETTO and Vincenzo REBBA: <u>Quality and Investment Decisions in Hospital Care when Physicians are Devoted Workers</u></i>
CCMP	86.2005	<i>Valentina BOSETTI and Laurent GILOTTE: <u>Carbon Capture and Sequestration: How Much Does this Uncertain Option Affect Near-Term Policy Choices?</u></i>
CSRM	87.2005	<i>Nicoletta FERRO: <u>Value Through Diversity: Microfinance and Islamic Finance and Global Banking</u></i>
ETA	88.2005	<i>A. MARKANDYA and S. PEDROSO: <u>How Substitutable is Natural Capital?</u></i>
IEM	89.2005	<i>Anil MARKANDYA, Valeria COSTANTINI, Francesco GRACCEVA and Giorgio VICINI: <u>Security of Energy Supply: Comparing Scenarios From a European Perspective</u></i>
CCMP	90.2005	<i>Vincent M. OTTO, Andreas LÖSCHEL and Rob DELLINK: <u>Energy Biased Technical Change: A CGE Analysis</u></i>
PRCG	91.2005	<i>Carlo CAPUANO: <u>Abuse of Competitive Fringe</u></i>
PRCG	92.2005	<i>Ulrich BINDSEIL, Kjell G. NYBORG and Ilya A. STREBULAIEV (lxv): <u>Bidding and Performance in Repo Auctions: Evidence from ECB Open Market Operations</u></i>
CCMP	93.2005	<i>Sabrina AUCI and Leonardo BECCHETTI: <u>The Stability of the Adjusted and Unadjusted Environmental Kuznets Curve</u></i>
CCMP	94.2005	<i>Francesco BOSELLO and Jian ZHANG: <u>Assessing Climate Change Impacts: Agriculture</u></i>
CTN	95.2005	<i>Alejandro CAPARRÓS, Jean-Christophe PEREAU and Tarik TAZDAÏT: <u>Bargaining with Non-Monolithic Players</u></i>
ETA	96.2005	<i>William BROCK and Anastasios XEPAPADEAS (lxxvi): <u>Optimal Control and Spatial Heterogeneity: Pattern Formation in Economic-Ecological Models</u></i>
CCMP	97.2005	<i>Francesco BOSELLO, Roberto ROSON and Richard S.J. TOL (lxxvii): <u>Economy-Wide Estimates of the Implications of Climate Change: Human Health</u></i>
CCMP	98.2005	<i>Rob DELLINK, Michael FINUS and Niels OLIEMAN: <u>Coalition Formation under Uncertainty: The Stability Likelihood of an International Climate Agreement</u></i>
CTN	99.2005	<i>Valeria COSTANTINI, Riccardo CRESCENZI, Fabrizio De FILIPPIS, and Luca SALVATICI: <u>Bargaining Coalitions in the Agricultural Negotiations of the Doha Round: Similarity of Interests or Strategic Choices? An Empirical Assessment</u></i>
IEM	100.2005	<i>Giliola FREY and Matteo MANERA: <u>Econometric Models of Asymmetric Price Transmission</u></i>
IEM	101.2005	<i>Alessandro COLOGNI and Matteo MANERA: <u>Oil Prices, Inflation and Interest Rates in a Structural Cointegrated VAR Model for the G-7 Countries</u></i>
KTHC	102.2005	<i>Chiara M. TRAVISI and Roberto CAMAGNI: <u>Sustainability of Urban Sprawl: Environmental-Economic Indicators for the Analysis of Mobility Impact in Italy</u></i>
ETA	103.2005	<i>Livingstone S. LUBOOBI and Joseph Y.T. MUGISHA: <u>HIV/AIDS Pandemic in Africa: Trends and Challenges</u></i>
SIEV	104.2005	<i>Anna ALBERINI, Erik LICHTENBERG, Dominic MANCINI, and Gregmar I. GALINATO: <u>Was It Something I Ate? Implementation of the FDA Seafood HACCP Program</u></i>
SIEV	105.2005	<i>Anna ALBERINI and Aline CHIABAI: <u>Urban Environmental Health and Sensitive Populations: How Much are the Italians Willing to Pay to Reduce Their Risks?</u></i>
SIEV	106.2005	<i>Anna ALBERINI, Aline CHIABAI and Lucija MUEHLENBACHS: <u>Using Expert Judgment to Assess Adaptive Capacity to Climate Change: Evidence from a Conjoint Choice Survey</u></i>
CTN	107.2005	<i>Michele BERNASCONI and Matteo GALIZZI: <u>Coordination in Networks Formation: Experimental Evidence on Learning and Salience</u></i>
KTHC	108.2005	<i>Michele MORETTO and Sergio VERGALLI: <u>Migration Dynamics</u></i>
NRM	109.2005	<i>Antonio MUSOLESI and Mario NOSVELLI: <u>Water Consumption and Long-Run Urban Development: The Case of Milan</u></i>
SIEV	110.2005	<i>Benno TORGLER and Maria A. GARCIA-VALIÑAS: <u>The Determinants of Individuals’ Attitudes Towards Preventing Environmental Damage</u></i>
SIEV	111.2005	<i>Alberto LONGO and Anna ALBERINI: <u>What are the Effects of Contamination Risks on Commercial and Industrial Properties? Evidence from Baltimore, Maryland</u></i>
SIEV	112.2005	<i>Anna ALBERINI and Alberto LONGO: <u>The Value of Cultural Heritage Sites in Armenia: Evidence from a Travel Cost Method Study</u></i>
CCMP	113.2005	<i>Mikel GONZÁLEZ and Rob DELLINK: <u>Impact of Climate Policy on the Basque Economy</u></i>
NRM	114.2005	<i>Gilles LAFFORGUE and Walid OUESLATI: <u>Optimal Soil Management and Environmental Policy</u></i>

NRM	115.2005	<i>Martin D. SMITH and Larry B. CROWDER (lxxvi): <u>Valuing Ecosystem Services with Fishery Rents: A Lumped-Parameter Approach to Hypoxia in the Neuse River Estuary</u></i>
NRM	116.2005	<i>Dan HOLLAND and Kurt SCHNIER (lxxvi): <u>Protecting Marine Biodiversity: A Comparison of Individual Habitat Quotas (IHQs) and Marine Protected Areas</u></i>
PRCG	117.2005	<i>John NELLIS: <u>The Evolution of Enterprise Reform in Africa: From State-owned Enterprises to Private Participation in Infrastructure — and Back?</u></i>
PRCG	118.2005	<i>Bernardo BORTOLOTTI: <u>Italy's Privatization Process and Its Implications for China</u></i>
SIEV	119.2005	<i>Anna ALBERINI, Marcella VERONESI and Joseph C. COOPER: <u>Detecting Starting Point Bias in Dichotomous-Choice Contingent Valuation Surveys</u></i>
CTN	120.2005	<i>Federico ECHENIQUE and Mehmet B. YENMEZ: <u>A Solution to Matching with Preferences over Colleagues</u></i>
KTHC	121.2005	<i>Valeria GATTAI and Corrado MOLteni: <u>Dissipation of Knowledge and the Boundaries of the Multinational Enterprise</u></i>
KTHC	122.2005	<i>Valeria GATTAI: <u>Firm's Intangible Assets and Multinational Activity: Joint-Venture Versus FDI</u></i>
CCMP	123.2005	<i>Socrates KYPREOS: <u>A MERGE Model with Endogenous Technological Change and the Cost of Carbon Stabilization</u></i>
CCMP	124.2005	<i>Fuminori SANO, Keigo AKIMOTO, Takashi HOMMA and Toshimasa TOMODA: <u>Analysis of Technological Portfolios for CO2 stabilizations and Effects of Technological Changes</u></i>
CCMP	125.2005	<i>Fredrik HEDENUS, Christian AZAR and Kristian LINDGREN: <u>Induced Technological Change in a Limited Foresight Optimization Model</u></i>
CCMP	126.2005	<i>Reyer GERLAGH: <u>The Value of ITC under Climate Stabilization</u></i>
PRCG	127.2005	<i>John NELLIS: <u>Privatization in Africa: What has happened? What is to be done?</u></i>
PRCG	128.2005	<i>Raphaël SOUBEYRAN: <u>Contest with Attack and Defence: Does Negative Campaigning Increase or Decrease Voters' Turnout?</u></i>
PRCG	129.2005	<i>Pascal GAUTIER and Raphael SOUBEYRAN: <u>Political Cycles : The Opposition Advantage</u></i>
ETA	130.2005	<i>Giovanni DI BARTOLOMEO, Nicola ACOCCELLA and Andrew HUGHES HALLETT: <u>Dynamic Controllability with Overlapping targets: A Generalization of the Tinbergen-Nash Theory of Economic Policy</u></i>
SIEV	131.2005	<i>Elissaios PAPYRAKIS and Reyner GERLAGH: <u>Institutional Explanations of Economic Development: the Role of Precious Metals</u></i>
ETA	132.2005	<i>Giovanni DI BARTOLOMEO and Nicola ACOCCELLA: <u>Tinbergen and Theil Meet Nash: Controllability in Policy Games</u></i>
IEM	133.2005	<i>Adriana M. IGNACIUK and Rob B. DELLINK: <u>Multi-Product Crops for Agricultural and Energy Production – an AGE Analysis for Poland</u></i>
IEM	134.2005	<i>Raffaele MINIACI, Carlo SCARPA and Paola VALBONESI: <u>Restructuring Italian Utility Markets: Household Distributional Effects</u></i>
SIEV	135.2005	<i>Valentina ZANATTA, Paolo ROSATO, Anna ALBERINI and Dimitrios REPPAS: <u>The Impact of Speed Limits on Recreational Boating in the Lagoon of Venice</u></i>
NRM	136.2005	<i>Chi-CHUR CHAO, Bharat R. HAZARI, Jean-Pierre LAFFARGUE, Pasquale M. SGRO, and Eden S. H. YU (lxxviii): <u>Tourism, Jobs, Capital Accumulation and the Economy: A Dynamic Analysis</u></i>
NRM	137.2005	<i>Michael MCALEER, Riaz SHAREEF and Bernardo da VEIGA (lxxviii): <u>Risk Management of Daily Tourist Tax Revenues for the Maldives</u></i>
NRM	138.2005	<i>Guido CANDELA, Paolo FIGINI and Antonello E. SCORCI (lxxviii): <u>The Economics of Local Tourist Systems</u></i>
NRM	139.2005	<i>Paola De AGOSTINI, Stefania LOVO, Francesco PECCI, Federico PERALI and Michele BAGGIO (lxxviii): <u>Simulating the Impact on the Local Economy of Alternative Management Scenarios for Natural Areas</u></i>
NRM	140.2005	<i>Simone VALENTE (lxxviii): <u>Growth, Conventional Production and Tourism Specialisation: Technological Catching-up Versus Terms-of-Trade Effects</u></i>
NRM	141.2005	<i>Tiago NEVES SEQUEIRA and Carla CAMPOS (lxxviii): <u>International Tourism and Economic Growth: a Panel Data Approach</u></i>
NRM	142.2005	<i>Francesco MOLA and Raffaele MIELE (lxxviii): <u>An Open Source Based Data Warehouse Architecture to Support Decision Making in the Tourism Sector</u></i>

- (lxv) This paper was presented at the EuroConference on “Auctions and Market Design: Theory, Evidence and Applications” organised by Fondazione Eni Enrico Mattei and sponsored by the EU, Milan, September 25-27, 2003
- (lxvi) This paper has been presented at the 4th BioEcon Workshop on “Economic Analysis of Policies for Biodiversity Conservation” organised on behalf of the BIOECON Network by Fondazione Eni Enrico Mattei, Venice International University (VIU) and University College London (UCL) , Venice, August 28-29, 2003
- (lxvii) This paper has been presented at the international conference on “Tourism and Sustainable Economic Development – Macro and Micro Economic Issues” jointly organised by CRENoS (Università di Cagliari e Sassari, Italy) and Fondazione Eni Enrico Mattei, and supported by the World Bank, Sardinia, September 19-20, 2003
- (lxviii) This paper was presented at the ENGIME Workshop on “Governance and Policies in Multicultural Cities”, Rome, June 5-6, 2003
- (lxix) This paper was presented at the Fourth EEP Plenary Workshop and EEP Conference “The Future of Climate Policy”, Cagliari, Italy, 27-28 March 2003
- (lxx) This paper was presented at the 9th Coalition Theory Workshop on "Collective Decisions and Institutional Design" organised by the Universitat Autònoma de Barcelona and held in Barcelona, Spain, January 30-31, 2004
- (lxxi) This paper was presented at the EuroConference on “Auctions and Market Design: Theory, Evidence and Applications”, organised by Fondazione Eni Enrico Mattei and Consip and sponsored by the EU, Rome, September 23-25, 2004
- (lxxii) This paper was presented at the 10th Coalition Theory Network Workshop held in Paris, France on 28-29 January 2005 and organised by EUREQua.
- (lxxiii) This paper was presented at the 2nd Workshop on "Inclusive Wealth and Accounting Prices" held in Trieste, Italy on 13-15 April 2005 and organised by the Ecological and Environmental Economics - EEE Programme, a joint three-year programme of ICTP - The Abdus Salam International Centre for Theoretical Physics, FEEM - Fondazione Eni Enrico Mattei, and The Beijer International Institute of Ecological Economics
- (lxxiv) This paper was presented at the ENGIME Workshop on “Trust and social capital in multicultural cities” Athens, January 19-20, 2004
- (lxxv) This paper was presented at the ENGIME Workshop on “Diversity as a source of growth” Rome November 18-19, 2004
- (lxxvi) This paper was presented at the 3rd Workshop on Spatial-Dynamic Models of Economics and Ecosystems held in Trieste on 11-13 April 2005 and organised by the Ecological and Environmental Economics - EEE Programme, a joint three-year programme of ICTP - The Abdus Salam International Centre for Theoretical Physics, FEEM - Fondazione Eni Enrico Mattei, and The Beijer International Institute of Ecological Economics
- (lxxvii) This paper was presented at the Workshop on Infectious Diseases: Ecological and Economic Approaches held in Trieste on 13-15 April 2005 and organised by the Ecological and Environmental Economics - EEE Programme, a joint three-year programme of ICTP - The Abdus Salam International Centre for Theoretical Physics, FEEM - Fondazione Eni Enrico Mattei, and The Beijer International Institute of Ecological Economics.
- (lxxviii) This paper was presented at the Second International Conference on "Tourism and Sustainable Economic Development - Macro and Micro Economic Issues" jointly organised by CRENoS (Università di Cagliari and Sassari, Italy) and Fondazione Eni Enrico Mattei, Italy, and supported by the World Bank, Chia, Italy, 16-17 September 2005.

2004 SERIES

CCMP	<i>Climate Change Modelling and Policy</i> (Editor: Marzio Galeotti)
GG	<i>Global Governance</i> (Editor: Carlo Carraro)
SIEV	<i>Sustainability Indicators and Environmental Valuation</i> (Editor: Anna Alberini)
NRM	<i>Natural Resources Management</i> (Editor: Carlo Giupponi)
KTHC	<i>Knowledge, Technology, Human Capital</i> (Editor: Gianmarco Ottaviano)
IEM	<i>International Energy Markets</i> (Editor: Anil Markandya)
CSRM	<i>Corporate Social Responsibility and Sustainable Management</i> (Editor: Sabina Ratti)
PRA	<i>Privatisation, Regulation, Antitrust</i> (Editor: Bernardo Bortolotti)
ETA	<i>Economic Theory and Applications</i> (Editor: Carlo Carraro)
CTN	<i>Coalition Theory Network</i>

2005 SERIES

CCMP	<i>Climate Change Modelling and Policy</i> (Editor: Marzio Galeotti)
SIEV	<i>Sustainability Indicators and Environmental Valuation</i> (Editor: Anna Alberini)
NRM	<i>Natural Resources Management</i> (Editor: Carlo Giupponi)
KTHC	<i>Knowledge, Technology, Human Capital</i> (Editor: Gianmarco Ottaviano)
IEM	<i>International Energy Markets</i> (Editor: Anil Markandya)
CSRM	<i>Corporate Social Responsibility and Sustainable Management</i> (Editor: Sabina Ratti)
PRCG	<i>Privatisation Regulation Corporate Governance</i> (Editor: Bernardo Bortolotti)
ETA	<i>Economic Theory and Applications</i> (Editor: Carlo Carraro)
CTN	<i>Coalition Theory Network</i>