

Farzin, Y. Hossein

**Working Paper**

## Sustainability and Optimality in Economic Development: Theoretical Insights and Policy Prospects

Nota di Lavoro, No. 89.2007

**Provided in Cooperation with:**

Fondazione Eni Enrico Mattei (FEEM)

*Suggested Citation:* Farzin, Y. Hossein (2007) : Sustainability and Optimality in Economic Development: Theoretical Insights and Policy Prospects, Nota di Lavoro, No. 89.2007, Fondazione Eni Enrico Mattei (FEEM), Milano

This Version is available at:

<https://hdl.handle.net/10419/74057>

**Standard-Nutzungsbedingungen:**

Die Dokumente auf EconStor dürfen zu eigenen wissenschaftlichen Zwecken und zum Privatgebrauch gespeichert und kopiert werden.

Sie dürfen die Dokumente nicht für öffentliche oder kommerzielle Zwecke vervielfältigen, öffentlich ausstellen, öffentlich zugänglich machen, vertreiben oder anderweitig nutzen.

Sofern die Verfasser die Dokumente unter Open-Content-Lizenzen (insbesondere CC-Lizenzen) zur Verfügung gestellt haben sollten, gelten abweichend von diesen Nutzungsbedingungen die in der dort genannten Lizenz gewährten Nutzungsrechte.

**Terms of use:**

*Documents in EconStor may be saved and copied for your personal and scholarly purposes.*

*You are not to copy documents for public or commercial purposes, to exhibit the documents publicly, to make them publicly available on the internet, or to distribute or otherwise use the documents in public.*

*If the documents have been made available under an Open Content Licence (especially Creative Commons Licences), you may exercise further usage rights as specified in the indicated licence.*

**Sustainability and Optimality in  
Economic Development:  
Theoretical Insights and  
Policy Prospects**

Y. Hossein Farzin

NOTA DI LAVORO 89.2007

**SEPTEMBER 2007**

ETA – Economic Theory and Applications
--

Y. Hossein Farzin, *Department of Agricultural and Resource Economics,  
University of California*

This paper can be downloaded without charge at:

The Fondazione Eni Enrico Mattei Note di Lavoro Series Index:  
<http://www.feem.it/Feem/Pub/Publications/WPapers/default.htm>

Social Science Research Network Electronic Paper Collection:  
<http://ssrn.com/abstract=1015063>

The opinions expressed in this paper do not necessarily reflect the position of  
Fondazione Eni Enrico Mattei  
Corso Magenta, 63, 20123 Milano (I), web site: [www.feem.it](http://www.feem.it), e-mail: [working.papers@feem.it](mailto:working.papers@feem.it)

# **Sustainability and Optimality in Economic Development: Theoretical Insights and Policy Prospects**

## **Summary**

This paper takes sustainability to be a matter of intergenerational welfare equality and examines whether an optimal development path can also be sustainable. It argues that the general “zero-net-aggregate-investment” condition for an optimal development path to be sustainable in the sense of the maximin criterion of intergenerational justice is too demanding to be practical, especially in the context of developing countries. The maximin criterion of sustainability may be more appealing to the rich advanced industrial countries, but is too costly and ethically unreasonable for developing nations as it would act as an intergenerational “poverty equalizer”. The paper suggests that a compromise development policy that follows the optimal growth approach but adopts certain measures to mitigate the intergenerational and *intragenerational* welfare inequalities may better serve these countries. Some of the principal elements of such a policy are highlighted.

**Keywords:** Sustainability, Intergenerational Equity, Optimality, Discounting, Development Policy

**JEL Classification:** Q01, Q56, O21, O13, D62, D63

*For helpful comments and discussions, I thank T. Takebe, Richard Green, Phil Martin, Kazuo Nishimura, Kazuhiro Ueta, and the participants at the International Symposium on Integrating Global Environmental Studies Towards Human Security, 22-23 June 2007, Kyoto University, Japan, and seminars at the Institute of Economic Research and the Graduate School of Environmental Studies, Kyoto University. I alone, however, am responsible for any error of commission or omission.*

*Address for correspondence:*

Y. Hossein Farzin  
Department of Agricultural and Resource Economics  
University of California  
Davis CA 95616  
USA  
E-mail: Farzin@primal.ucdavis.edu

# **Sustainability and Optimality in Economic Development: Theoretical Insights and Policy Prospects**

## **1. Introduction**

“Sustainability” has come into vogue, but remains a vague concept, making it hard to test sustainability in practice. Many economists define sustainability as was done in the report of the World Commission on Environment and Development (WCED, 1987), the Bruntland Report.<sup>1</sup> It defines sustainable economic development as: “*development that meets the needs of present generations without compromising the ability of future generations to meet their own needs*”. Implicit in this definition are two basic concepts: Intergenerational fairness and optimality. Sustainability is a question of intergenerational equity, asking about the fair or just distribution of productive capacity and welfare between the present and future generations. Optimality, on the other hand, is concerned with attaining the highest feasible level of social welfare over the long run. We consider sustainability as a question of intergenerational equality in economic welfare, and focus on a basic question: Is there a conflict between sustainability and optimality? Or, phrased differently: Can an optimal economic development path also be sustainable?

We begin in section 2.1 by reviewing the main insights from the theory of optimal economic growth (Ramsey (1928)) and its extension to cases where a natural exhaustible resource is essential to production (Dasgupta and Heal (1974)(1979)). In section 2.2, we consider the extreme case of intergenerational justice as defined by Rawls’ maximin criterion and discuss its implications for economic sustainability in a simple model with a single consumption good, a reproducible man-made capital, and a natural exhaustible resource (Solow (1974) and Hartwick (1977)) and expand this in section 2.3 to a very general model which includes many consumption goods and services, many man-made capitals and environmental stocks, and the direct effect of time (Farzin(2006)). Section 3 highlights the limitations and practical difficulties with the implementation of sustainability rule as implied by the maximin criterion of intergenerational justice, emphasizing the important roles of scale, externalities, information, markets and other institutions in the

---

<sup>1</sup> For a review of various definitions of sustainability see Pezzey (1989) and World Bank (1997). See also Farzin (2004) who uses two alternative definitions of sustainability to show that even a purely exhaustible resource economy can under certain conditions be sustainable by one of the sustainability definitions.

design of a sustainability policy. In section 4, we argue that while the maximin rule of sustainability may offer a sensible approach for rich industrial economies, it turns into a “poverty equalizer” policy for poor developing nations. We suggest that a policy that adopts the optimal growth approach but modifies it to account for intergeneration inequality may offer a more practicable and promising alternative for developing countries. We outline some of the main elements of such a policy to promote the growth of future welfare and sustainability. Section 5 concludes.

## 2. Theoretical Insights

### 2.1 Ramsey’s Utilitarian Approach

The search for an economic development path that is both optimal and sustainable occupied economists as far back as Ramsey (1928). Ramsey sought an optimal path for the capital stock to converge to some positive level and remain permanently at that level (*i.e.*, a steady-state level) *regardless* of the initial size of the capital stock. However, characterizing sustainability by the steady-state of the economy, as in Ramsey’s optimal growth model, has the problem that sustainability, if achievable at all, is attained *only after* the economy has reached its steady state. As such, it has *no regard for intergenerational distribution of savings burden and consumption (welfare) in the transition period to the steady state*, which may be a very long period, indeed.

To make the point clear and to form a basis for my subsequent arguments, let us briefly revisit Ramsey’s optimal growth model.

Ramsey model is a *utilitarian* one in that the social planner adopts a utilitarian social welfare function and aims to solve the following problem:

$$\begin{aligned}
 & \underset{c(t)}{\text{Maximize}} && \int_0^{\infty} U(c(t)) e^{-\rho t} dt \\
 & \text{S.t.} && \dot{k}(t) = f(k(t)) - c(t) - (n + \delta)k(t) \\
 & && k(0) = k_0 > 0, \text{ given} \\
 & && 0 \leq c(t) \leq f(k(t))
 \end{aligned} \tag{P1}$$

where

$k(t)$  : capital stock per head  
 $f(k(t))$  : production technology  
 $c(t)$  : consumption perhead  
 $\rho$  : social time discount rate (constant)  
 $n$  : population growth rate (constant)  
 $\delta$  : capital stock depreciation rate (constant)

The evolution of Ramsey's economy along an optimal path is characterized by the pair of differential equations:

$$\dot{k}(t) = f(k(t)) - c(t) - (n + \delta)k(t) \quad (1.1)$$

$$\dot{c}(t) = c(t)[f'(k(t)) - (\rho + n + \delta)] / \eta \quad (1.2)$$

$$\text{where } \eta \equiv -\frac{cu''(c)}{u'(c)} \quad (1.3)$$

### 2.1.1 Some Important Sustainability Insights from Ramsey Model

#### (a) No Discounting of Future Welfare

Ramsey objected to the discounting of future utilities as “ethically indefensible”, and believed that it “arises merely from the weakness of imagination”. If we follow this moral principle, so that  $\rho = 0$ , and for simplicity's sake assume constant population and no capital stock depreciation, so that  $n = \delta = 0$ , then from (1.1) and (1.2) we have that

$$\dot{k}(t) = f(k(t)) - c(t) > 0 \text{ and } \dot{c}(t) = c(t)f'(k(t)) / \eta > 0 \quad (2)$$

That is, there exists *no steady state*: along the optimal development path capital stock and consumption per head, and hence welfare, rise over time right from the beginning without bound. So, each successive generation will be better off than its previous generation, with the present generation being the *least well off* of all generations (see Figure 1).

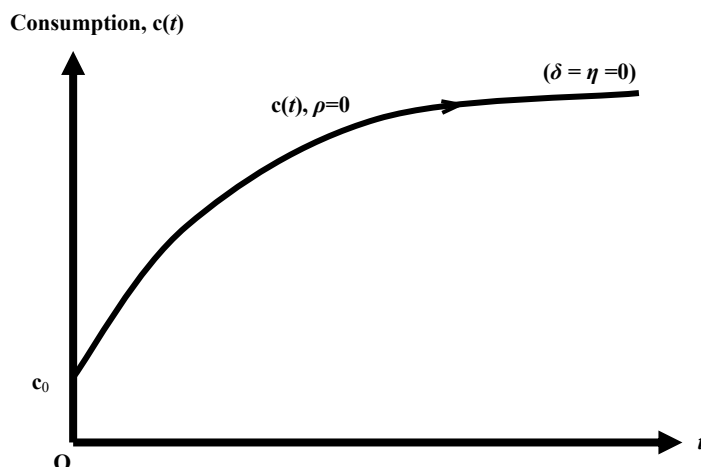


Figure 1: Optimal consumption path in Ramsey model  
no discounting,  $\rho=0$

Thus, we have the rather ironic result that:

*In a utilitarian society, following the moral principle of **treating the welfare of all generations equally** (i.e., applying no discount rate) could result in an optimal outcome which is **intergenerationally highly inequitable!***

*(b) Discounting of Future Welfare*

Koopmans (1967)(1970) was the first economist who questioned the reasonableness of the moral principle that requires the welfare of all generations to be equally treated in the social welfare function. He showed that such a principle would result in unacceptably large sacrifices to be made by the present generation in that it would impose an unacceptably high savings burden, leaving the present generation almost destitute. Arrow (1996) confirms this argument by way of a thought-experiment, showing that if the present generation is presented with a one-time only investment opportunity which provides a small constant income forever, then with no discounting, the optimal decision requires that the present generation to invest its entire income, i.e., it should have a savings rate equal to 1. Interestingly, Arrow shows that the Koopmans' basic argument does neither depend on uncertainty about the investment (although that uncertainty reinforces the argument) nor essentially on the assumption of an infinite time horizon by demonstrating that even if the time horizon of the investment is reduced from infinity to say 3000 years and the return to

investment is assumed to be as low as 0.01% (one-hundredth of a percentage), without discounting of future returns, the optimality still dictates that the present generation should save and invest almost 90% of its income- too high a rate by any ethical standard (more on this point later on).

So, how would the discounting of future generations' welfare alter the above conclusion about the intergenerational inequality associated with the utilitarian approach?

It is easy to verify from (1.1) and (1.2) that regardless of whether the population is constant or grows at a constant rate  $n > 0$ , and regardless of whether capital stock depreciates at a constant rate  $\delta > 0$  or not at all, *there exists a steady-state* for the economy. It is characterized by  $\dot{k}(t) = \dot{c}(t) = 0$ , where the constant consumption per head and capital per head are obtained as solutions to the pair of equations

$$\begin{aligned} f(\bar{k}) - \bar{c} - (n + \delta)\bar{k} &= 0 \\ f'(\bar{k}) - (\rho + n + \delta) &= 0 \end{aligned} \quad (3)$$

Assuming  $k_0 < \bar{k}$ , the optimal policy will involve a transition period during which the consumption and capital per head rises over time until the economy reaches the steady state. Thereafter, for ever the consumption per head and hence welfare remains constant for all subsequent generations (see Figure 2).

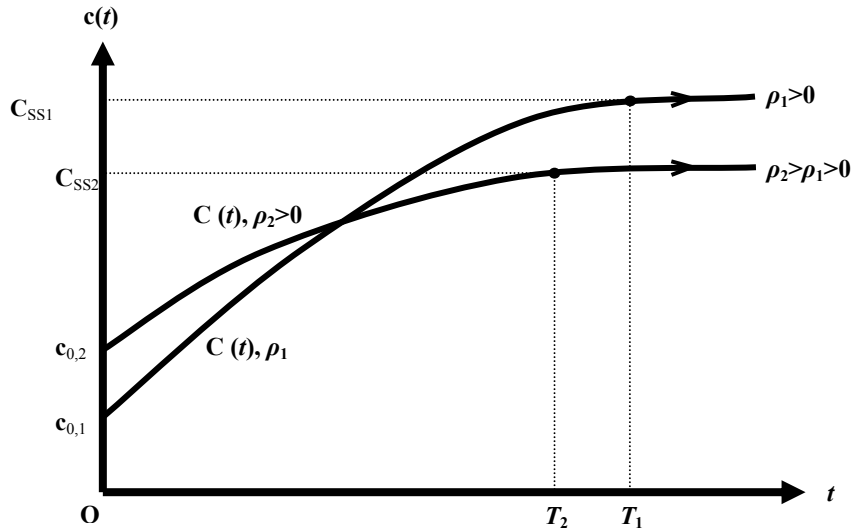


Figure 2: Optimal consumption path in Ramsey model  
with discounting,  $\rho > 0$



Thus, *in the utilitarian model, although discounting of future welfare defies the moral principle of treating the welfare of all generations equally, again rather ironically, it leads to an optimal outcome in which after certain initial period all future generations will enjoy an equal welfare level.* However, the utilitarian economy still involves a transitional period during which *intergenerational equity fails to prevail*. This is because, as in the previous case, the earlier generations during this transitional period will be worse off than later generations who in turn will be less well off than those living in the steady state, with the present generation being the least well off of all.

The concept of capital stock in Ramey model was limited to a manufactured capital. As such, it ignored other types of capital stocks such as human capital, knowledge capital, social capital and in particular the important question of degradation and depletion of environmental and natural resource assets. This task was later taken by Dasgupta and Heal (1974) (1979) and Stiglitz (1974) who generalized the Ramey model to include an exhaustible natural resource stock.

Dasgupta and Heal showed that with *no discounting* of the future generations' welfare ( $\rho = 0$ ), and maintaining the assumptions of constant population, constant technology, and no capital depreciation, the inclusion of the exhaustible resource *makes no difference* to the conclusion reached in the Ramsey model: Along the optimal path (when it exists)<sup>2</sup>, consumption, and hence utility, per head rises over time *without bound* and the exhaustible resource is used at rates that declines to zero as time approaches infinity. Thus, as in the Ramsey model without the natural resource stock, the optimal development path is at odds with intergenerational equality in consumption and welfare. Interestingly, however, the optimal path does imply a constant savings ratio, so it is intergenerationally equitable in the sense of equal *savings burden*.

Noteworthy in the utilitarian model is the role of the ethically based parameter  $\eta$ , which indicates the degree to which social preferences are egalitarian, or stating it differently, the degree of society's aversion to intergenerational welfare inequality. Not

---

<sup>2</sup> With a Cobb-Douglas production technology,  $Q = F(K, R) = K^\alpha R^\beta$  where  $K$  is the reproducible capital stock and  $R$  is the input of an exhaustible resource, together with a constant-elasticity utility function,  $u(c) = \frac{c^{1-\eta}}{1-\eta}$ ,  $\eta > 0$ , the optimal policy exists if  $\eta > (1-\beta)/(\alpha-\beta)$  (see Slow (1974)).

surprisingly, the larger is  $\eta$  the flatter becomes the optimal path of consumption per head, implying a reduction in the degree of intergenerational inequality relative to a constant consumption path. In fact, in the extreme case when  $\eta \rightarrow \infty$  the optimal path of consumption per head becomes a constant path, implying intergenerational equality in consumption (see Figure 3).

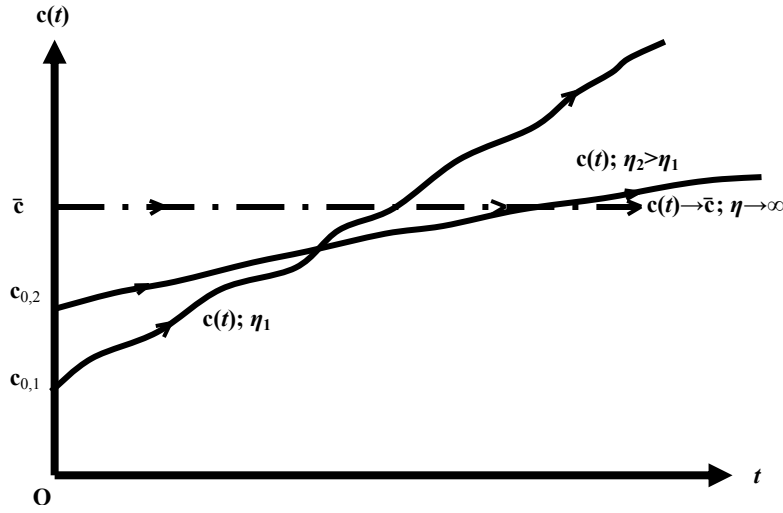


Figure 3: The Role of  $\eta$  in the utilitarian (Ramsey) model  
with no discounting ( $\rho=0$ )

In contrast with the case of no discounting, when future welfare is discounted ( $\rho > 0$ ), then along the utilitarian optimal path, consumption eventually declines to zero (*i.e.*, the economy collapses in the very long-run). However, depending on the magnitude of the discount rate the path to eventual collapse differs. For very low discount rates, consumption per head first rises over time and reaches a peak and then monotonically falls over time and eventually becomes zero. On the other hand, for large discount rates, consumption will monotonically fall to zero. The role of discount rate is just the opposite of that of  $\eta$ , so that a *smaller* discount rate reduces the intergenerational inequality relative to the perfectly equal distribution (see Figure 4).

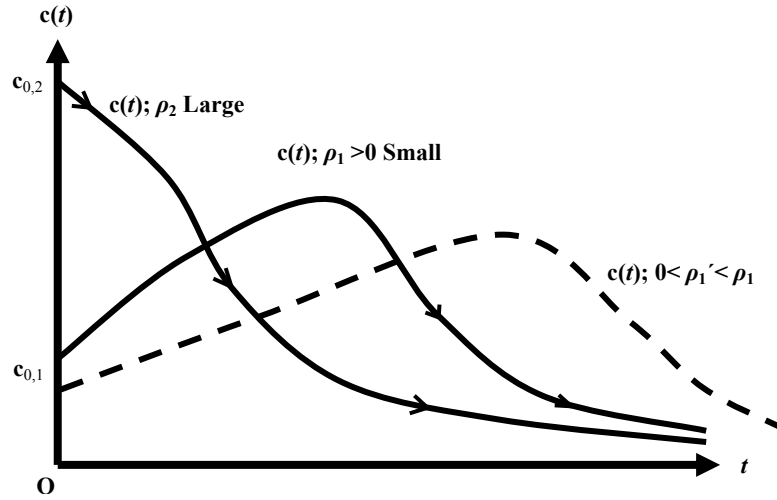


Figure 4: The utilitarian consumption path with exhaustible resource and discounting ( $\rho > 0$ )

In summary, if the concept of sustainability is taken to mean a development policy that is intergenerationally just in the sense that it provides the same consumption (welfare) per head to the present and all future generations, then in general the *utilitarian economy falls short of being sustainable, whether or not future welfare is discounted*.

## 2.2 Maximin Rule of Intergenerational Justice

The concern about intergenerational justice on the one hand and depletion of natural and environmental assets, on the other, confronts us with a basic question: If instead of adopting the utilitarian approach one were to adopt sustainability (or intergenerational equality) as the social objective, would an economy that is endowed with both manufactured capital and an essential exhaustible resource stock be able to achieve the sustainability objective in an optimal fashion?

Fortunately, this is exactly the question that was first tackled and elegantly answered by Solow (1974) and Hartwick (1997), leading to what's known as Solow-Hartwick's rule of sustainability. In its extreme form, intergenerational justice according to the Rawls' (1971) moral philosophy of choosing from the "initial position" and "behind the veil of ignorance" implies the "maximin" social welfare function. That is, the society's objective should be to maximize the well-being of the poorest generation among the present and all future generations. By implication, sustainability then requires that

consumption per head to remain permanently constant over time. The optimality of the sustainable development then entails selecting the *largest* permanently constant consumption per capita path that is feasible, given the initial endowments of the resource stock and the manufactured capital stock. Under the assumptions of *no technological change*, *no population growth* ( $n=0$ ), and *no depreciation of capital* ( $\delta=0$ ), Solow (1974) and later on Hartwick (1997) strikingly showed that, *provided that there is enough substitutability between the manufactured capital and the natural resource*, it is quite possible to achieve the highest feasible level of consumption per head that remains permanently constant over time. To do so, it is sufficient that at every point in time the scarcity rent from the depletion of the exhaustible resource stock be invested in accumulation of the manufactured capital (Solow-Hartwick Sustainability Rule). This is indeed a striking and elegant theoretical result, and with some important implications for sustainability policy, as we shall see shortly. It is a striking result because it informs us that:

- As long as the elasticity of substitution between the natural resource and manufactured capital is at least one, even with the constraint of an exhaustible resource that is essential to production, it is possible to achieve a constant consumption (utility) per head for ever. As such, one should *not* worry about diminishing stock of the resource, of course, as long as it is depleted optimally and is made up for by accumulating the man-made capital optimally.

- Along the optimal path, the use of exhaustible resource *declines* over time, implying more use of it by successive early generations than by later generations. This in turn shows that sustainability (or intergenerational equality) in consumption (well-being) not only does *not* require intergenerational equality in allocation of the resource stock itself. In fact, it may well require what ecologically may be judged an inequitable distribution of the resource stock. The same is true for the stock of manufactured capital, but, of course, in the opposite direction.

- The Solow-Hartwick rule of sustainability is an elegant theoretical result because it seems so simple: to sustain consumption per head at its highest feasible level all that is needed is to invest the rents from natural resource extraction in the reproducible capital. In other words, all that is needed for sustainability is to keep the net aggregate investment

equal to zero all the time. Note that although in physical terms different generations use the natural resource (and accumulate the reproducible capital) at different rates, in harmony with equality in consumption per head, there is a sense of justice in the rule of zero-net-aggregate investment: *each generation's obligation to invest in the reproducible capital is equal to the value of the natural resource stock it has drawn down*. The more it has drawn on the natural resource stock the more it has to invest in the man-made capital.

It was noted above that the Rawls' maximin criterion of intergenerational justice is an extreme one. This is best appreciated by noting that the maximum sustainable level of consumption per head implied by the maximin criterion depends directly and more crucially on the *initial endowment of the manufactured capital stock* than on that of the natural resource stock. But, this means that achieving the goal of intergenerational justice according to the maximin criterion *can be very costly*, particularly for the poor developing nations where the initial capital stock is relatively small, for it would imply perpetuating the poverty of the present generation for all future generations. In a sense, when the initial capital stock is too small this sustainability rule implies a policy of "equal sharing of poverty by all generations". The undesirable consequence of pursuing a puritanical moral principle such as the maximin criterion naturally raises one's interest to contrast this outcome with the alternative possibility where tolerating some reasonable degree of intergenerational inequality- in the form of a little reduction in consumption (increased saving) by the present generation- allows to raise the welfare levels of *all* future generations. We shall return to this point later on.

What is the relationship of the utilitarian optimal policy with the maximin sustainable policy? As noted earlier, in the case of utilitarian optimal policy, as the degree of egalitarianism of social preferences  $\eta$  increases, the optimal utilitarian path of consumption per head becomes flatter. Unsurprisingly, as  $\eta$  approaches infinity the utilitarian optimal path coincides with the maximin path (see Figure 3 above)<sup>3</sup>.

---

<sup>3</sup> Also, see Farzin (2004) for a hypothetical comparison of the optimal sustainable policies for a rich industrial and a poor developing country using some estimates of the discount rate and  $\eta$ .

### 2.3 Generalization of the (Maximin) Sustainability Condition

Before discussing the limitations and difficulties with policy application of the Solow-Hartwick sustainability rule, it would be helpful if we consider the rule in its most general form. In a recent paper, Farzin (2006) derives a necessary and sufficient condition for the sustainability of a constant consumption/utility path for a dynamically optimizing economy that is most generally characterized as follows:

- The instantaneous utility (well-being) function takes the most general form of  $u(\mathbf{c}(t), \mathbf{s}(t), t)$ , where  $\mathbf{c}(t)$  is a vector of  $n$  final consumption goods/services:  $c_i(t), i = 1, 2, \dots, n$ , and  $\mathbf{s}(t)$  is a vector of  $m$  state variables,  $s_j(t), j = 1, 2, \dots, m$ , representing the stocks of various types of renewable and non-renewable natural and environmental assets as well as human-made reproducible capital stocks (including human, knowledge capital, etc.). Possible changes in social preferences over time is captured by the direct dependence of the utility function on time,  $t$ .
- The dynamics of the stocks are governed by the differential equations:  $\dot{s}_j = g_j(\mathbf{c}(t), \mathbf{s}(t), t), j = 1, 2, \dots, m$ . These indicate how various types of capital stocks  $s_j(t)$  change over time, and can include the growth functions of renewable resources (human population, fisheries, forests, ground water, soil fertility, environmental degradation, etc.), accumulation of reproducible capitals, depletion of exhaustible resource stocks, and possible interactions and interdependencies between dynamics of various types of stocks.

Obviously, a dynamic economy characterized as above is general enough to present almost any case that one may in practice be interested to study. For example, it includes cases where the utility derives not only from consumptions of final goods and services to which natural and environmental resources provide inputs, but also from capital stocks themselves. Examples of the latter are the direct amenity and ecological values of environmental and natural resource stocks such as forests which are valued not only for providing timber but also for their recreational, carbon sequestering, flood controlling, water purifying, soil preservation, biodiversity preserving and other services. The system of  $m$  differential equations  $\dot{s}_j = g_j(\mathbf{c}(t), \mathbf{s}(t), t), j = 1, 2, \dots, m$  is also general enough to allow for interdependencies of various stocks on one another; for example, those of fossil fuels and carbon stocks, or of forest and biodiversity stocks, or of human population and the

stocks of natural and man-made capitals. The explicit dependence on time,  $t$ , includes cases where in the context of a single economy or region there is an *exogenous* flow of population growth, technological change, or positive or negative externalities over time such as knowledge spillover or transboundry or global pollutions, and so on.

▪ Following Farzin (2006), one can seek the condition for an optimal sustainable utility path (when it exists) in two stages: first, by adopting the usual utilitarian approach to optimize a general utilitarian social welfare function  $V = \int_0^\infty e^{-\rho t} u(\mathbf{c}(t), \mathbf{s}(t), t) dt$ , and, second, obtain the condition under which this optimal path is constant over time.<sup>4</sup> Thus, in the first stage, one can imagine that the social planner solves the following optimal control problem

$$\begin{aligned} & \underset{\{\mathbf{c}(t)\}_0^\infty}{\text{Maximize}} & V &= \int_0^\infty e^{-\rho t} u(\mathbf{c}(t), \mathbf{s}(t), t) dt \\ & \text{s.t.} & \dot{s}_j &= g_j(\mathbf{c}(t), \mathbf{s}(t), t), & j = 1, 2, \dots, m, \\ & & s_j(0) &= s_{j0} \text{ (given)} & j = 1, 2, \dots, m. \end{aligned} \quad (\text{P2})$$

Let  $\mathbf{c}^*(t), \mathbf{s}^*(t), \boldsymbol{\lambda}^*(t)$  be the solution to this problem, where  $\boldsymbol{\lambda}^*(t)$  is the vector of co-state variables (shadow prices/costs associated with capital stocks). Then the current-value Hamiltonian  $H(\mathbf{c}, \mathbf{s}, \boldsymbol{\lambda}, t) = u(\mathbf{c}, \mathbf{s}, t) + \sum_{j=1}^m \lambda_j(t) g_j(\mathbf{c}, \mathbf{s}, t)$  is maximized along the optimal paths.

In the second stage, one can resort to Weitzman's (1976) seminal result that the *maximized* current-value Hamiltonian,  $H(t)$ , is the “*stationary equivalent*” of the utilitarian optimal welfare path, *i.e.*

$$\int_t^\infty e^{-\rho(\tau-t)} H(\tau) d\tau = \int_t^\infty e^{-\rho(\tau-t)} u(\mathbf{c}^*(\tau)) d\tau \quad \text{for all } t \geq 0 \quad (4)$$

In other words, it is the highest hypothetical constant utility path  $[H(\tau)]_t^\infty = H(t)$  that has the same present discounted value as the actual utilitarian (and most likely non-constant) optimal path  $u(\mathbf{c}^*(\tau))_t^\infty$ .

Using this result, Farzin (2006) has shown that:

---

<sup>4</sup> Note that this straightforward and general optimal control method is in sharp contrast to the unusual and rather cumbersome optimization method adopted by Slow (1974).

A necessary and sufficient condition for permanently sustaining the highest constant utility/consumption path(i.e., the maximin path) is that the maximized current-value Hamiltonian **remains constant over time**, i.e. that  $\frac{d}{dt}H(t)=0$ , for all  $t \geq 0$ .

In our problem this translates to the general condition that

$$\frac{dH}{dt} = \frac{\partial H}{\partial t} + \rho \sum_{j=1}^m \lambda_j \dot{s}_j = 0 \quad \text{for all } t \geq 0 \quad (5)$$

Notice that  $\frac{\partial H}{\partial t} = \frac{\partial u}{\partial t} + \sum_{j=1}^m \lambda_j(t) \frac{\partial g_j}{\partial t}$  measures the *net* change in the optimal current-value

Hamiltonian at time  $t$  due purely to passage of time alone. We may term this as net “*pure time effect*”, which may be positive (for example in the case of exogenous technological progress alone, or improvements in terms of trade, or an exogenous flow of foreign aid, and so on) or negative (for example when there is exogenous population growth or the rate of decay of carbon stock in the atmosphere, or exogenous transboundry pollution flow).

Now if for simplicity we heuristically assume away any direct and exogenous effects of time on the economy, so that the net “pure time effect” is  $\frac{\partial H}{\partial t} = \frac{\partial u}{\partial t} + \sum_{j=1}^m \lambda_j(t) \frac{\partial g_j}{\partial t} = 0$  for all  $t \geq 0$ , then the general maximin sustainability condition simplifies to

$$\frac{dH}{dt} = \sum_{j=1}^m \lambda_j(t) \dot{s}_j(t) = 0 \quad \text{for all } t \geq 0 \quad (6)$$

But, interestingly, this is none but the generalized version of the Solow-Hartwick’s sustainability rule when the Rawlsian criterion of intergenerational justice, i.e., the maximin criterion is adopted. It shows that the zero-net-aggregate-investment condition holds more generally when (1) there are many types of both natural and man-made capital stocks, (2) the well-being depends not only on a vector of final consumption goods and service but also on capital stocks, and (3) holds in the case of a time autonomous economy (where  $\frac{\partial H}{\partial t} = 0$  for all  $t \geq 0$ ) regardless of whether future welfare is discounted or not. The

condition requires that at every point in time the net aggregate investment be zero. To fix the idea, let us for the sake of illustration take our capital stocks to be those of a natural resource,  $S_R(t)$ , a manufactured capital,  $S_K(t)$ , a human capital,  $S_H(t)$ , a knowledge



capital,  $S_N(t)$ , and a stock of pollution (say CO<sub>2</sub>),  $S_p(t)$ . If we denote the shadow price (cost) of these stocks at time  $t$ , respectively by  $\lambda_R(t)$ ,  $\lambda_K(t)$ ,  $\lambda_H(t)$ ,  $\lambda_N(t)$ , and  $\lambda_p(t)$ , then the sustainability condition that

$$\lambda_R(t)\dot{S}_R(t) + \lambda_K(t)\dot{S}_K(t) + \lambda_H(t)\dot{S}_H(t) + \lambda_N(t)\dot{S}_N(t) - \lambda_p(t)\dot{S}_p(t) = 0, \quad \text{all } t \geq 0 \quad (7)$$

is akin to a rule of optimal portfolio management: the value of changes (whether positive or negative) in any one or more stocks needs to be made up for by changes in one or more other stocks such that the net value of the changes (the net aggregate investment) is always zero. This then guarantees the maximum constant consumption for all the present and future generations, where the level of this maximum consumption depends on the initial endowments of all of the capital stocks, positively in the case of the first four stocks and negatively for the pollution stock. This is a rich theoretical insight, for it informs us that:

- The decline in one stock, for example, depletion of a natural resource, should not necessarily alarm us that the economy is on an unsustainable path, as long as it is *properly* compensated by building up some other (either natural or man-made) stocks, for example by investing in human capital or in knowledge capital or in pollution abatement, or a combination of these. In particular, we note that keeping the stocks of resources intact at their current levels ( $\dot{S}_R(t) = 0$ ,  $S_R(t) = S_R(0) = S_{R0}$ ), or “leaving the nature as it is” (as is sometimes advocated by some environmental activists in advanced industrial countries) is neither necessary nor sufficient for sustainability. In fact, although keeping all capital stocks at their current levels (so that  $\dot{S}_R(t) = \dot{S}_K(t) = \dot{S}_H(t) = \dot{S}_N(t) = \dot{S}_p(t) = 0$ , all  $t \geq 0$ ), or “leaving the world as it is”, does trivially satisfy the sustainability condition, such a policy can lead to an inefficiently low consumption level for all generations, especially if the economy is currently poorly endowed with assets such as manufactured capital or human and knowledge capitals.
- That there are some kinds of stocks (for example, environmental and natural resource assets) the depletion of which *can not* be made up for by accumulation of other types of stock is, of course, an undeniable fact. But, this concern should worry us in as much as *markets do not exist for their use or services or, if they exist, do not perform sufficiently*

*well to reflect the lack of substitutability by commanding sufficiently high prices (in one form or the other reflecting their use value, amenity value, intrinsic value, or precautionary value, etc.) to ensure that either the resource is adequately conserved or that a substitute for it is developed and introduced. In the extreme case where a minimum critical (threshold) level of a resource stock ought to be preserved in order to sustain its regenerative capacity and flow of services (or in the opposite direction, if there is a ceiling on accumulation of a pollution stock beyond which damages inflicted are irreversible) and if there is no substitute for the resource, either in consumption or production, then in principle provided that the market for the resource exists and performs well its price would rise unboundedly as the critical threshold level of the stock is approached, thereby ensuring that the stock will never be depleted (or accumulated, in the case of pollution) to such a critical level.<sup>5</sup> Clearly, when in reality such markets do not exist or for variety of well known reasons fail to function as expected, the ecologists' prescription of preserving natural and environmental assets above their critical levels (also sometimes known as the "strong" sustainability criterion) need to be heeded.*

### **3. Sustainability Rule: The Practical Limitations and Challenges**

The rule of "zero-net-aggregate investment" provides some important and useful insights into sustainability of an intergenerationally equitable maximum consumption or utility level. However, in practice, the application of the condition faces several limitations, which in turn confront social scientists (including economists, political scientists and sociologists), natural scientists, engineers, and policymakers with serious challenges in their pursuit of sustainability. Some of the most serious of these limitations and challenges are briefly discussed below:

- (i) As we noted earlier, the rule requires that "capital stock" be treated in the broadest possible sense of the term. In other words,  $m$  in  $j = 1, 2, \dots, m$ , must be as

---

<sup>5</sup> Note that the optimality transversality condition for a resource stock ( $j$ ) with a minimum threshold level  $\underline{S}_j$  takes the form of  $\lim_{t \rightarrow \infty} e^{-\rho t} \lambda_j(t) [S_j(t) - \underline{S}_j] = 0$ , and for a pollution stock with a ceiling constraint the sign of the terms in the bracket will be reversed.

comprehensive as possible. However, in practice, it is extremely difficult to *identify all the existing natural as well as man-made capital assets* to include knowledge capital, human capital, social capital, and other types of capitals such as institutional capital, cultural heritages, and the like. More challenging are the tasks of *measuring* their current stocks ( $S_j(o)$ ) and *recording changes* in the stocks in every period ( $\dot{S}_j(t)$ ). Although some good progress has been made in this area by developing capital accounts for some of the main renewable and non-renewable assets, the tasks of measuring human capital (including skills, education, and health), knowledge capital (inventions and innovations), and social capital are in their infancy stage or barely undertaken in developing nations.

- (ii) Even more challenging is the task of *developing a reliable knowledge* of the *evolution* of natural and environmental capitals, their *dynamic interdependences*, and the *production* processes by which they render positive or negative flows of inputs and services essential to sustain our well being. These are probably mainly the tasks of natural scientists who should inform economists and other social scientists of the very *ecological capacities and constraints* that need to be taken into account as important subsets of *natural and technological constraints* ( $\dot{s}_j = g_j(\mathbf{c}(t), \mathbf{s}(t), t)$ ,  $j = 1, 2, \dots, m$ ) in development planning.
- (iii) Another difficulty in applying the sustainability rule is the task of *economic evaluation* of the identified stocks. As the rule requires, all of the stocks should be evaluated at their *shadow prices* (rents in the case of exhaustible resources). However, for many of the capital stocks, particularly natural resources and environmental assets, either there are *no markets*, or if they exist, they are highly distorted by *imperfect competition, imperfect information, or public policy interventions* (especially subsidies on energy, water, and land). Many of natural and environmental resource and services currently lack markets, particularly in developing nations, either because of *lack of recognized property rights, or deficiencies in monitoring and enforcing the rights* (whether or not these rights are public, private, or communal (see Ostrom and Nagendra (2007) among many others). Even when markets exist, they are not sufficiently competitive, due to lack of free entry (as in the cases of energy, water, and land) or

because of imperfect information (resulting in asymmetric information and moral hazard problems), thus *entangling* prices with the rents arising from both imperfections of competition and of information.

- (iv) Furthermore, by definition, the shadow prices to be used for valuation of changes in capital stocks include the *social costs* (benefits) of utilizing the stocks. As such, they diverge from market prices which fail to reflect social costs (benefits) of flow and stock *externalities*.
- (v) *Externalities and Sustainability*: The problem of externalities and how they relate to sustainability is an important one and goes beyond using *right* prices for economic valuation of changes in capital stocks. The problem of externalities gives rise to two additional and intertwined issues for application of a sustainability rule. One issue is the common misunderstanding that the use of technologies or adopting practices that mitigate negative externalities (such as environmental pollutions) is equivalent to practice of sustainability: thus, for example agriculturalists frequently refer to *organic* methods of production (as against conventional methods) as “sustainable agriculture”. Similarly, corporations sometimes refer to the so called “green technologies”- that is, the production technologies that mitigate some form of pollution- as “sustainable industry”. However, by mitigating pollution emissions, such alternative agricultural practices or manufacturing technologies *reduce inefficiencies* of resource allocation, and hence increase the aggregate output. This is certainly desirable from efficiency point of view, but need not *necessarily* promote sustainability in the sense of intergenerational equality in welfare. As Bond and Farzin (2007a, 2007b) show in a simple two-sector dynamic model of an agricultural production and a consumer sector that is adversely affected by the agricultural run-offs, agricultural sustainability, although may involve less use of fertilizers and hence agricultural run-offs, it can well lead to *more welfare inequalities* both within and between generations.
- (vi) *Scale and Sustainability*: This brings us to another related question: What is the appropriate scale at which the sustainability rule should be implemented? Nowadays, it is fashionable to talk about “agricultural sustainability”, “corporate sustainability”, “ecological sustainability”, and sustainability at many other *sectoral* and *sub-sectoral* levels. From the perspective of a *single closed economy*, the sustainability rule of zero-

net-aggregate investment applies at the economy wide (macro economic) level, and this is the right scale for policy purposes. The reason is that not only the economic sustainability rule has nothing to prescribe about sustainability at sectoral level, as its objective is the sustainability of consumption or well-being at the societal level, sustainability in one sector or the other, regardless of what sustainability definition is employed, is neither necessary nor sufficient for sustainability at the economy-wide level. In fact, insisting on sectoral sustainability, as defined for instance by sustaining profits or the rate of return on investment, or market shares or share of GDP, or well-being of people employed in one specific sector, be it agriculture, industry, or service sector, can *inflict great efficiency losses on the economy as a whole*. This is so because such sectoral constraints impede the efficient allocation of resources across the economy (see Bond and Farzin (2007a)(2007b)). In other words, given the interlinkages between various sectors, imposing a sustainability constraint on one sector can have adverse implications for sustainability of others. Now, this argument equally applies to the *geographical scale* at which a sustainability policy is to be implemented. In general, since there are ecological, biological, or economic, social, or political interdependencies between various ecological units (a lake, a watershed, a forest, and the like) or economic units (a village, a town, a region), limiting the implementation of a sustainability policy to a specific micro geographical or ecological or economic scale may well itself be unsustainable. This argument suggests that a sustainability policy should take as *broad a view of the scale of sustainability* as is relevant and feasible. At the same time, it reveals the critical role of *coordination* in achieving sustainability. It therefore follows that when there are strong international transboundary interdependencies (as in the cases of some fisheries, lakes, rivers, forests, and the like) or global interdependencies (such as the case of global warming, endemics, and the like), limiting the scale of sustainability to one's own national boundaries may not prove effective, at least not in the long run. By implication, this argument draws attention to the need for developing *international and global sustainability institutions* with the principal objectives of coordinating and facilitating the sustainability policies among various nations involved.

- (vii) Turning to the case of a non-autonomous economy, the condition for the optimal policy to be sustainable is even more stringent than for an autonomous economy. This is because one would require that not only the net aggregate investment to remain at zero but also that the net “pure time effect” to remain constant over time, an almost impossibility. In fact, even in the simple non-autonomous case where the only direct dependence of the economy on time comes through a time-dependent social discount rate, the prospect for the sustainability of an optimal development path remains bleak. This is because even if the discount rate function satisfies the required condition of declining sufficiently slowly (see Farzin (2006))- as is, for example, the case with the well-known hyperbolic discount rate function, a declining discount rate renders the optimal policy *time inconsistent* (Strotz (1956)), thus calling either for a credible commitment to the optimal policy or, if such a commitment device does not exist, for additional policies to substitute for commitment.

#### **4. Developing Countries: Maximin Rule of Sustainability vs. Optimal Growth**

As was noted above, the application of the policy of zero-net- aggregate investment implied by the maximin rule of intergenerational justice confronts serious difficulties. These problems are *even more serious* in the case of developing countries than for the rich, advanced industrial economies, thus casting doubt about suitability of a development policy based on the maximin rule of sustainability. This is because:

First, developing countries are more plagued with the problems of *missing or malfunctioning markets, absent or ill-defined and ill-enforced property rights, imperfect information, and market distorting public interventions*, to name a few. Also, the “pure time effects” of the factors affecting the economy exogenously and directly with time, whether positive (as in the case of disembodied technological change or knowledge spillover) or negative (as in the case of worsening of the terms of trade, or negative externalities associated with climate change), are likely to be more prevalent and pronounced in developing countries than in advanced industrial ones.

Second, more importantly, following the maximin rule of sustainability will be a particularly costly policy for developing countries. This is because, as noted above, the maximum consumption per head or per capita welfare level which is to be kept constant by

all generations depends crucially on the currently available stocks of manufactured capital, human capital, knowledge capital, and social capital (legal and political institutions and social networks, etc.). Yet, developing countries are currently very poor in such assets, being more *dependent on environmental and natural capital* for their well being. Accordingly, for a poor developing country the maximin rule of sustainability would amount to all of its generations sharing and perpetuating its present poverty; that is, it will be a “poverty equalizer”. This is perhaps too high a price to pay for the sake of intergenerational justice, and therefore is itself ethically questionable.

Finally, as Slow (1993) has aptly pointed out, there is something of an ethical paradox with sustainability as a matter of intergenerational equity in general and with its extreme form of the maximin rule in particular. That is, if one is concerned about inequality of welfare between the present and future generations, shouldn't then one be also, at least equally, concerned about the inequality of welfare between today rich and poor, that is, about the *intra-generational equity*? To be logically consistent in our moral values, we should. But then, this would call for increasing the consumption and welfare level of the currently poor by redistribution policies both within a nation and between the nations, which may in turn conflict with *raising the current investment rate* as required for the intergenerational welfare equality. The fact, however, is that today we tolerate a lot of poverty both at the national and international levels, which contradicts the very moral principle of seeking equality of welfare between generations; that is, the very principle of sustainability.

As is often the case, the truth lies somewhere between the two extremes: the ideal of maximin rule of intergenerational equality on the one hand and the heavily discounted utilitarian social welfare function, which is heavily biased towards current generation's welfare, on the other. A desirable and more practical policy seems to be the one that uses the insights from both of the two extreme approaches analyzed above. For the developing countries particularly, this translates into a compromising policy which tolerates some reasonable degree of inequality, both intragenerationally as well as intergenerationally, for the sake of providing all future generations the welfare levels that can be well above that implied by the maximin rule.

Drawing on the theoretical insights obtained from both approaches discussed above, we outline the main and broad elements of a policy which aims to promote the growth of future welfare while at the same time mitigates the intergenerational and intragenerational welfare inequalities, thereby promoting sustainability too. These elements are:

(1) In principle, the objectives of intertemporal optimality (or dynamic efficiency) and intergenerational equality (or sustainability) need not be inconsistent as long as the efficiency gains can be redistributed across the present and future generations to make all generations better off than they would be if the efficiency gains were to be sacrificed in return for attaining intergenerational equality (as would be the case, for example, with the maximin rule or if one were to allocate capital stocks *equally* (and hence sub-optimally) across generations. The problem, however, is a *lack of credible commitment devices* whereby the optimality gains can *actually* be transferred to future generations. It is partly this lack of commitment devices that, as noted earlier, has prompted some ecologists and ecological economists to advocate what has come to be known as “strong sustainability” criterion: requiring the stocks of natural capital to be kept intact or, at least, not exploited beyond certain threshold levels. This may have some merit when, due to absence, or failure, of markets and other institutions, stocks of natural capitals are likely to be over-depleted. However, resorting to such a crude means as a substitute for a more efficient commitment device may come at the cost of inflicting significant welfare losses on all generations. The problem of lack of a commitment device for intergenerational transfer of optimality gains is likely to be particularly acute in developing countries where political and social institutions are *too weak* and governments are sometimes *too corrupt* to be trusted to act as the trustees and agents of such transfers. This point underscores the fundamental role of fighting governmental corruption and institutionalizing grass-root stakeholders’ organizations. Unfortunately in many developing countries natural resource rents are the monopoly of corrupt and undemocratic governments. In such cases, the welfare of both present and future generations may be better served by *transferring the rights over natural assets from the government to people* by distributing these assets equally to all citizens.

(2) Even though it is virtually impossible to adopt the policy of “zero-net-aggregate-investment” at every point in time, it would still be a prudent policy to *invest the rents from*



*natural resource assets* in other productive capital stocks. That is, the depreciation of natural capital stocks should be made up for by investing adequately both in natural and man-made capital stocks, and particularly in irreversible physical infrastructure, knowledge and human capital, and social capital. Unfortunately, as shown in Farzin (1999), for many of natural resource-based developing countries, the actual savings and investment rates have been far below the rates needed to ensure that the living standards of these countries would not decline over time.

(3) The policy of investing the resource rents in turns requires that all of the natural capital stocks which are used in production processes be accounted for and evaluated at correct (shadow) prices at any time point. In other words, *greening of the income accounts at every level of economic activity* is a fundamental step towards welfare growth and sustainability. For natural capital stocks particularly, this points to the vital roles of *instituting and strengthening the property rights* (whether private, communal, or public) over natural and environmental assets and *enforcing these rights*.

(4) A major step towards both optimality and sustainability is to *internalize the externalities* associated with utilization of natural and environmental resource stocks. One effective way of doing this is to *price the use of these resources at their “full” marginal social costs (benefits)* by levying charges and/or removing direct or indirect subsidies to avoid overexploitation of under-priced natural and environmental resources. Besides correcting for the negative externalities associated with use of natural and environmental resources, there is another important reason for making sure that natural and environmental resources are not under priced. This has to do with two factors, both of which deriving from concerns about sustainability. The first factor is the fact that resource and environmental assets in themselves have *stock values* in addition to their *use value* from harvesting or extracting them for use as inputs to production processes. Resource and environmental stock values could take the forms of amenities value, existence or intrinsic value, precautionary value, and the like. The second factor relates to the weight that a society places on the welfare of the distant future generations. In other words, it reflects the degree to which social preferences emphasize the welfare of *distant future* generations versus that of present generation, and ranges from the extreme of the conventional discounted utilitarian social welfare function, which completely ignores the far distant

future generation, to the other extreme of the so called “green golden rule”, which neglects the present by seeking the maximum ultimately sustainable utility level. In between these extremes lies the so called Chichilnisky’s sustainability criterion which maximizes a social welfare function which is a weighted average of the discounted utilitarian welfare function and the green golden rule (see, Chichilnisky (1996) and Chichilnisky, Heal and Beltratti (1995)). As Heal (2000) shows, the appropriate shadow price of natural capital will be higher the more we recognize the environmental stock as a source of value and the more weight we give to the long-run future relative to the present. On both grounds, *concerns about sustainability translate into raising the shadow price of environmental resources.*

(5) As discussed above, today in many developing countries the living standards are very low, so that expecting the current generations to save and invest at high rates for the sake of raising future generations’ welfare would be morally questionable. On the other hand, using a high *constant* discount rate would compromise the principle of intergenerational fairness, as it ignores the welfare of distant future generations. However, one way out of this dilemma would be to use a *non-constant* discount rate: specifically, *a discount rate profile that starts at a relatively high rate and then declines over time as the living standards of future generations increase.* Such a policy would more equitably allocate the savings burden across all generations while at the same time allows welfare to grow over time. A policy of declining discount rate is also supported by a non-ethical argument; namely, today, as an economy plans, the outcomes of future technological changes become increasingly more uncertain as the planning horizon extends to more distant future, implying a declining certainty-equivalent rate of return on future investments (see, Weitzman (1999)).

(6) Finally, rather than sacrificing future generations’ welfare in pursuit of a puritanical moral principle of intergenerational justice, developing counties can more pragmatically pursue an optimal growth approach to increase future welfare levels but mitigate welfare inequalities *directly by redistribution of wealth and income both intragenerationally and intergenerationally.* Importantly, since sustainability considerations are meaningful when considered at macro scales, such redistribution of income and wealth should take place not only at the national level but *regionally and globally* as well.

## **5. Conclusion**

If we consider sustainability a matter of intergenerational fairness, and draw from theoretical insights received from the literature on sustainability and optimal economic growth, we can answer a fundamental question: Can an optimal path of development be also sustainable? We have argued that while the maximin rule of intergenerational equality may be an appropriate socio-economic goal for the rich industrial countries, for the developing countries with poor endowments of some of the critical capital assets, such as human capital, knowledge capital, and institutional capital, it is ethically questionable and practically daunting. It is ethically questionable because it subjects all future generations to the poverty of the present generation, and is impracticable because of its demand for information about existing capital stocks, their evolution over time, and the role of ecological assets in production and well-being. Finally, the requirement to have well-developed markets and non-market institutions seem unrealistic.

On the other hand, the utilitarian optimal growth approach, in its undiscounted-utility version, is capable of generating higher living standards for future generations but can result in considerable intergenerational inequality because it imposes an unacceptably high savings burden on the present generation (in its discounted-utility version, it eventually leads to an economic doomsday). For these reasons, it appears that the question should not be viewed as one of optimality versus intergenerational justice (sustainability); rather, as one of optimizing economic development while taking into account intragenerational and intergenerational fairness. Thus, we have argued that a compromise policy that combines the best features of both paradigms offers a more suitable approach to promote the rising welfare and avoid unreasonable intergenerational inequality in developing countries. We have highlighted some of the main elements of such a policy. These include: (i) developing and empowering democratic political and social institutions so that the governments become accountable for reinvesting natural resources rents in reproductive capital assets (specially in human and knowledge capitals) and act as honest trustees for intergenerational transfers; (ii) instituting and strengthening the property rights over natural and environmental assets and enforcing the rights effectively; (iii) greening of the income accounts at micro and macroeconomic levels; (iv) pricing the use of natural and environmental resources at their full social opportunity costs, including the social values of

their diverse services as environmental assets; (v) using discount rates that decline over time as future generations become more prosperous; (vi) mitigating welfare inequalities directly through income and wealth redistribution policies both at the national and international levels; and (vii), adopting an economy-wide, as opposed to sectoral, view of the scale of sustainability.

Defined as material well-being or consumption per capita, the welfare concept underlying this analysis is narrow. A more general analysis of sustainability should also recognize the importance of non-material components of well-being, including social and psychological factors, and allow for the trade-offs between various components of social happiness.

## **References:**

- Arrow, K. J. (1996) "What Does the Present Owe the Future?", The Grace Adams Tanner Lecture in Human Values, University of Oxford, U.K., April 11, 1996 (unpublished).
- Bond, C. A. and Y. H. Farzin (2007a), "Alternative Sustainability Criteria, Externalities, and Welfare in a Simple Agroecosystem Model: A Numerical Analysis", *Environmental and Resource Economics*, forthcoming.
- Bond, C. A. and Y. H. Farzin (2007b), "Agroecosystem Modeling and Optimal Economic Decisions: Implications for Sustainable Agriculture", *Optimal Control Applications and Methods*, forthcoming.
- Chichilnisky, G., (1996), "An Axiomatic Approach to Sustainable Development", *Social Choice and Welfare*, 13 (2), 219-248
- Chichilnisky, G., G. M. Heal, and A. Beltratti (1995), "The Green Golden Rule", *Economic Letters*, 49: 175-179.
- Dasgupta, P. and G. M. Heal, (1979), *Economic Theory and Exhaustible Resources*, Cambridge.
- Farzin, Y. H. (2006), "Conditions for Sustainable Optimal Economic Development", *Review of Development Economics*, Vol. 10, No.3: 518-534.
- Farzin Y. H. (2004), "Is an Exhaustible Resource Economy Sustainable?" *Review of Development Economics*, Vol. 8, No.1: 33-46.
- Farzin, Y. H. (1999), "Optimal Saving Policy for Exhaustible Resource Economies", *Journal of Development Economics*, Vol. 58, No. 2:149-184.
- Hartwick, J., (1977), "Intergenerational Equity and the Investing of Rents from Exhaustible Resources, *American Economic Review*, 66, 792-794
- Heal, G. M. (2000), "Valuing Our Future: Cost-Benefit Analysis and Sustainability", Chapter 13 in *Incentives, Organization, and Public Economics: papers in Honour of Sir James Mirrlees*, edited by P. J. Hammond and G.D. Myles, Oxford University Press.
- Koopmans, T. C., "Objectives, Constraints, and Outcomes in Optimal Growth Models", *Econometrica*, 35, 1-15.
- Koopmans, T. C., "Intertemporal Distribution and 'Optimal' Aggregate Economic Growth", in *Scientific Papers of T.C. Koopmans*, Springer Verlag, New York, 563-594.

- Ostrom, E. and H. Nagendra (2007), “ Tenure Alone Is Not Sufficient: Monitoring is Essential”, *Environmental Economics and Policy Studies*, forthcoming.
- Pezzey, J. (1989), *Economic Analysis of Sustainable Growth and Sustainable Development*, Environment Department working paper 15, Washington DC: World Bank.
- Ramsey, F.P., “A Mathematical Theory of Saving”, *Economic Journal*, 38 (1928): 543-559.
- Solow, R. M., (1974),”Intergenerational Equity and Exhaustible Resources”, *Review of Economic Studies*, (Symposium), 29-4
- Solow, R.M. (1993) “An Almost Practical Step Toward Sustainability”, *Resources Policy* 19 (3):162-172, Sept. 1993.
- Stiglitz, J.E., (1974), “Growth with Exhaustible Natural Resources: Efficient and Optimal Growth Paths”, *Review of Economic Studies*, (Symposium),
- Strotz, R. H., (1956), “Myopia and Inconsistency in Dynamic Utility Maximization”, *Review of Economic Studies*, Volume 23, Issue 3, 165-180
- Weitzman, M.L. (1976), “On the Welfare Significance of National Product in a Dynamic Economy”, *Quarterly Journal of Economics*, 90: 156-162
- Weitzman, M.L. (1999), “Just Keep Discounting, But..”, Ch.3 in Portney, P.R. and J. P. Weyant (eds.), *Discounting and Intergenerational Equity*, published by Resources for the Future, 1999.
- World Bank (1997), *Expanding the Measures of Wealth: Indicators of Environmentally Sustainable Development*, Washington, DC.
- World Commission on Environment and Development (1987), *Our Common Future* (The Brundtland Report), Oxford: Oxford University Press.

## NOTE DI LAVORO DELLA FONDAZIONE ENI ENRICO MATTEI

### Fondazione Eni Enrico Mattei Working Paper Series

Our Note di Lavoro are available on the Internet at the following addresses:

<http://www.feem.it/Feem/Pub/Publications/WPapers/default.htm>

<http://www.ssrn.com/link/feem.html>

<http://www.repec.org>

<http://agecon.lib.umn.edu>

<http://www.bepress.com/feem/>

### NOTE DI LAVORO PUBLISHED IN 2007

NRM	1.2007	<i>Rinaldo Brau, Alessandro Lanza, and Francesco Pigliaru: <u>How Fast are Small Tourism Countries Growing? The 1980-2003 Evidence</u></i>
PRCG	2.2007	<i>C.V. Fiorio, M. Florio, S. Salini and P. Ferrari: <u>Consumers' Attitudes on Services of General Interest in the EU: Accessibility, Price and Quality 2000-2004</u></i>
PRCG	3.2007	<i>Cesare Dosi and Michele Moretto: <u>Concession Bidding Rules and Investment Time Flexibility</u></i>
IEM	4.2007	<i>Chiara Longo, Matteo Manera, Anil Markandya and Elisa Scarpa: <u>Evaluating the Empirical Performance of Alternative Econometric Models for Oil Price Forecasting</u></i>
PRCG	5.2007	<i>Bernardo Bortolotti, William Megginson and Scott B. Smart: <u>The Rise of Accelerated Seasoned Equity Underwritings</u></i>
CCMP	6.2007	<i>Valentina Bosetti and Massimo Tavoni: <u>Uncertain R&amp;D, Backstop Technology and GHGs Stabilization</u></i>
CCMP	7.2007	<i>Robert Küster, Ingo Ellersdorfer, Ulrich Fahl (lxxx): <u>A CGE-Analysis of Energy Policies Considering Labor Market Imperfections and Technology Specifications</u></i>
CCMP	8.2007	<i>Mònica Serrano (lxxx): <u>The Production and Consumption Accounting Principles as a Guideline for Designing Environmental Tax Policy</u></i>
CCMP	9.2007	<i>Erwin L. Corong (lxxx): <u>Economic and Poverty Impacts of a Voluntary Carbon Reduction for a Small Liberalized Developing Economy: The Case of the Philippines</u></i>
CCMP	10.2007	<i>Valentina Bosetti, Emanuele Massetti, and Massimo Tavoni: <u>The WITCH Model. Structure, Baseline, Solutions</u></i>
SIEV	11.2007	<i>Margherita Turvani, Aline Chiabai, Anna Alberini and Stefania Tonin: <u>Public Policies for Contaminated Site Cleanup: The Opinions of the Italian Public</u></i>
CCMP	12.2007	<i>M. Berrittella, A. Certa, M. Enea and P. Zito: <u>An Analytic Hierarchy Process for The Evaluation of Transport Policies to Reduce Climate Change Impacts</u></i>
NRM	13.2007	<i>Francesco Bosello, Barbara Buchner, Jacopo Crimi, Carlo Giupponi and Andrea Povellato: <u>The Kyoto Protocol and the Effect of Existing and Planned Measures in the Agricultural and Forestry Sector in the EU25</u></i>
NRM	14.2007	<i>Francesco Bosello, Carlo Giupponi and Andrea Povellato: <u>A Review of Recent Studies on Cost Effectiveness of GHG Mitigation Measures in the European Agro-Forestry Sector</u></i>
CCMP	15.2007	<i>Massimo Tavoni, Brent Sohngen, and Valentina Bosetti: <u>Forestry and the Carbon Market Response to Stabilize Climate</u></i>
ETA	16.2007	<i>Erik Ansink and Arjan Ruijs: <u>Climate Change and the Stability of Water Allocation Agreements</u></i>
ETA	17.2007	<i>François Gusdorf and Stéphane Hallegatte: <u>Compact or Spread-Out Cities: Urban Planning, Taxation, and the Vulnerability to Transportation Shocks</u></i>
NRM	18.2007	<i>Giovanni Bella: <u>A Bug's Life: Competition Among Species Towards the Environment</u></i>
IEM	19.2007	<i>Valeria Termini and Laura Cavallo: <u>"Spot, Bilateral and Futures Trading in Electricity Markets. Implications for Stability"</u></i>
ETA	20.2007	<i>Stéphane Hallegatte and Michael Ghil: <u>Endogenous Business Cycles and the Economic Response to Exogenous Shocks</u></i>
CTN	21.2007	<i>Thierry Bréchet, François Gerard and Henry Tulkens: <u>Climate Coalitions: A Theoretical and Computational Appraisal</u></i>
CCMP	22.2007	<i>Claudia Kettner, Angela Köppl, Stefan P. Schleicher and Gregor Thenius: <u>Stringency and Distribution in the EU Emissions Trading Scheme –The 2005 Evidence</u></i>
NRM	23.2007	<i>Hongyu Ding, Arjan Ruijs and Ekko C. van Ierland: <u>Designing a Decision Support System for Marine Reserves Management: An Economic Analysis for the Dutch North Sea</u></i>
CCMP	24.2007	<i>Massimiliano Mazzanti, Anna Montini and Roberto Zoboli: <u>Economic Dynamics, Emission Trends and the EKC Hypothesis New Evidence Using NAMEA and Provincial Panel Data for Italy</u></i>
ETA	25.2007	<i>Joan Canton: <u>Re dealing the Cards: How the Presence of an Eco-Industry Modifies the Political Economy of Environmental Policies</u></i>
ETA	26.2007	<i>Joan Canton: <u>Environmental Taxation and International Eco-Industries</u></i>
CCMP	27.2007	<i>Oscar Cacho and Leslie Lipper (lxxxii): <u>Abatement and Transaction Costs of Carbon-Sink Projects Involving Smallholders</u></i>
CCMP	28.2007	<i>A. Caparrós, E. Cerdá, P. Ovando and P. Campos (lxxxii): <u>Carbon Sequestration with Reforestations and Biodiversity-Scenic Values</u></i>
CCMP	29.2007	<i>Georg E. Kindermann, Michael Obersteiner, Ewald Rametsteiner and Ian McCallum (lxxxii): <u>Predicting the Deforestation-Trend Under Different Carbon-Prices</u></i>

CCMP	30.2007	<i>Raul Ponce-Hernandez (lxxxii): <u>A Modelling Framework for Addressing the Synergies between Global Conventions through Land Use Changes: Carbon Sequestration, Biodiversity Conservation, Prevention of Land Degradation and Food Security in Agricultural and Forested Lands in Developing Countries</u></i>
ETA	31.2007	<i>Michele Moretto and Gianpaolo Rossini: <u>Are Workers' Enterprises Entry Policies Conventional</u></i>
KTHC	32.2007	<i>Giacomo Degli Antoni: <u>Do Social Relations Affect Economic Welfare? A Microeconomic Empirical Analysis</u></i>
CCMP	33.2007	<i>Reyer Gerlagh and Onno Kuik: <u>Carbon Leakage with International Technology Spillovers</u></i>
CCMP	34.2007	<i>Richard S.J. Tol: <u>The Impact of a Carbon Tax on International Tourism</u></i>
CCMP	35.2007	<i>Reyer Gerlagh, Snorre Kverndokk and Knut Einar Rosendahl: <u>Optimal Timing of Environmental Policy: Interaction Between Environmental Taxes and Innovation Externalities</u></i>
SIEV	36.2007	<i>Anna Alberini and Alberto Longo: <u>Valuing the Cultural Monuments of Armenia: Bayesian Updating of Prior Beliefs in Contingent Valuation</u></i>
CCMP	37.2007	<i>Roeland Bracke, Tom Verbeke and Veerle Dejonckheere: <u>What Distinguishes EMAS Participants? An Exploration of Company Characteristics</u></i>
CCMP	38.2007	<i>E. Tzouvelekas, D. Vouvaki and A. Xepapadeas: <u>Total Factor Productivity Growth and the Environment: A Case for Green Growth Accounting</u></i>
CCMP	39.2007	<i>Klaus Keller, Louise I. Miltich, Alexander Robinson and Richard S.J. Tol: <u>How Overconfident are Current Projections of Anthropogenic Carbon Dioxide Emissions?</u></i>
CCMP	40.2007	<i>Massimiliano Mazzanti and Roberto Zoboli: <u>Environmental Efficiency, Emission Trends and Labour Productivity: Trade-Off or Joint Dynamics? Empirical Evidence Using NAMEA Panel Data</u></i>
PRCG	41.2007	<i>Veronica Ronchi: <u>Populism and Neopopulism in Latin America: Clientelism, Trade Union Organisation and Electoral Support in Mexico and Argentina in the '90s</u></i>
PRCG	42.2007	<i>Veronica Ronchi: <u>The Neoliberal Myth in Latin America: The Cases of Mexico and Argentina in the '90s</u></i>
CCMP	43.2007	<i>David Anthoff, Cameron Hepburn and Richard S.J. Tol: <u>Equity Weighting and the Marginal Damage Costs of Climate Change</u></i>
ETA	44.2007	<i>Bouwse R. Dijkstra and Dirk T.G. Rübelke: <u>Group Rewards and Individual Sanctions in Environmental Policy</u></i>
KTHC	45.2007	<i>Benno Torgler: <u>Trust in International Organizations: An Empirical Investigation Focusing on the United Nations</u></i>
CCMP	46.2007	<i>Enrica De Cian, Elisa Lanzi and Roberto Roson: <u>The Impact of Temperature Change on Energy Demand: A Dynamic Panel Analysis</u></i>
CCMP	47.2007	<i>Edwin van der Werf: <u>Production Functions for Climate Policy Modeling: An Empirical Analysis</u></i>
KTHC	48.2007	<i>Francesco Lancia and Giovanni Prarolo: <u>A Politico-Economic Model of Aging, Technology Adoption and Growth</u></i>
NRM	49.2007	<i>Giulia Minoia: <u>Gender Issue and Water Management in the Mediterranean Basin, Middle East and North Africa</u></i>
KTHC	50.2007	<i>Susanna Mancinelli and Massimiliano Mazzanti: <u>SME Performance, Innovation and Networking Evidence on Complementarities for a Local Economic System</u></i>
CCMP	51.2007	<i>Kelly C. de Bruin, Rob B. Dellink and Richard S.J. Tol: <u>AD-DICE: An Implementation of Adaptation in the DICE Model</u></i>
NRM	52.2007	<i>Frank van Kouwen, Carel Dieperink, Paul P. Schot and Martin J. Wassen: <u>Interactive Problem Structuring with ICZM Stakeholders</u></i>
CCMP	53.2007	<i>Valeria Costantini and Francesco Crespi: <u>Environmental Regulation and the Export Dynamics of Energy Technologies</u></i>
CCMP	54.2007	<i>Barbara Buchner, Michela Catenacci and Alessandra Sgobbi: <u>Governance and Environmental Policy Integration in Europe: What Can We learn from the EU Emission Trading Scheme?</u></i>
CCMP	55.2007	<i>David Anthoff and Richard S.J. Tol: <u>On International Equity Weights and National Decision Making on Climate Change</u></i>
CCMP	56.2007	<i>Edwin van der Werf and Sonja Peterson: <u>Modeling Linkages Between Climate Policy and Land Use: An Overview</u></i>
CCMP	57.2007	<i>Fabien Prieur: <u>The Environmental Kuznets Curve in a World of Irreversibility</u></i>
KTHC	58.2007	<i>Roberto Antonietti and Giulio Cainelli: <u>Production Outsourcing, Organizational Governance and Firm's Technological Performance: Evidence from Italy</u></i>
SIEV	59.2007	<i>Marco Percolo: <u>Urban Transport Policies and the Environment: Evidence from Italy</u></i>
ETA	60.2007	<i>Henk Folmer and Pierre von Mouche: <u>Linking of Repeated Games. When Does It Lead to More Cooperation and Pareto Improvements?</u></i>
CCMP	61.2007	<i>Arthur Riedacker (lxxx): <u>A Global Land Use and Biomass Approach to Reduce Greenhouse Gas Emissions, Fossil Fuel Use and to Preserve Biodiversity</u></i>
CCMP	62.2007	<i>Jordi Roca and Mònica Serrano: <u>Atmospheric Pollution and Consumption Patterns in Spain: An Input-Output Approach</u></i>
CCMP	63.2007	<i>Derek W. Bunn and Carlo Fezzi (lxxxi): <u>Interaction of European Carbon Trading and Energy Prices</u></i>
CTN	64.2007	<i>Benjamin Golub and Matthew O. Jackson (lxxxiii): <u>Naïve Learning in Social Networks: Convergence, Influence and Wisdom of Crowds</u></i>
CTN	65.2007	<i>Jacob K. Goeree, Arno Riedl and Aljaž Ule (lxxxiii): <u>In Search of Stars: Network Formation among Heterogeneous Agents</u></i>
CTN	66.2007	<i>Gönül Doğan, M.A.L.M. van Assen, Arnout van de Rijt, and Vincent Buskens (lxxxiii): <u>The Stability of Exchange Networks</u></i>
CTN	67.2007	<i>Ben Zissimos (lxxxiii): <u>Why are Trade Agreements Regional?</u></i>
CTN	68.2007	<i>Jacques Drèze, Michel Le Breton, Alexei Savvateev and Shlomo Weber (lxxxiii): <u>«Almost» Subsidy-free Spatial Pricing in a Multi-dimensional Setting</u></i>
CTN	69.2007	<i>Ana Babus (lxxxiii): <u>The Formation of Financial Networks</u></i>



CTN	70.2007	<i>Andrea Galeotti and Sanjeev Goyal (lxxxiii): <u>A Theory of Strategic Diffusion</u></i>
IEM	71.2007	<i>Francesco Bosello, Enrica De Cian and Roberto Roson: <u>Climate Change, Energy Demand and Market Power in a General Equilibrium Model of the World Economy</u></i>
ETA	72.2007	<i>Gastón Jordana and Marc Willinger: <u>Fixed Instruments to Cope with Stock Externalities An Experimental Evaluation</u></i>
KTHC	73.2007	<i>Oguzhan Dincer and Eric Uslaner: <u>Trust and Growth</u></i>
CCMP	74.2007	<i>Fei Teng and Alun Gu: <u>Climate Change: National and Local Policy Opportunities in China</u></i>
KTHC	75.2007	<i>Massimiano Bucchi and Valeria Papponetti: <u>Research Evaluation as a Policy Design Tool: Mapping Approaches across a Set of Case Studies</u></i>
SIEV	76.2007	<i>Paolo Figini, Massimiliano Castellani and Laura Vici: <u>Estimating Tourist Externalities on Residents: A Choice Modeling Approach to the Case of Rimini</u></i>
IEM	77.2007	<i>Irene Valsecchi: <u>Experts and Non-experts</u></i>
CCMP	78.2007	<i>Giuseppe Di Vita: <u>Legal Families and Environmental Protection: is there a Causal Relationship?</u></i>
KTHC	79.2007	<i>Roberto Antonietti and Giulio Cainelli: <u>Spatial Agglomeration, Technology and Outsourcing of Knowledge Intensive Business Services Empirical Insights from Italy</u></i>
KTHC	80.2007	<i>Iacopo Grassi: <u>The Music Market in the Age of Download</u></i>
ETA	81.2007	<i>Carlo Carraro and Alessandra Sgobbi: <u>Modelling Negotiated Decision Making: a Multilateral, Multiple Issues, Non-Cooperative Bargaining Model with Uncertainty</u></i>
CCMP	82.2007	<i>Valentina Bosetti, Carlo Carraro, Emanuele Massetti and Massimo Tavoni: <u>International Energy R&amp;D Spillovers and the Economics of Greenhouse Gas Atmospheric Stabilization</u></i>
CCMP	83.2007	<i>Sjak Smulders and Edwin van der Werf: <u>Climate Policy and the Optimal Extraction of High- and Low-Carbon Fossil Fuels</u></i>
SIEV	84.2007	<i>Benno Torgler, Bruno S. Frey and Clevo Wilson: <u>Environmental and Pro-Social Norms: Evidence from 30 Countries</u></i>
KTHC	85.2007	<i>Elena Bellini, Ugo Gasparino, Barbara Del Corpo and William Malizia: <u>Impact of Cultural Tourism upon Urban Economies: An Econometric Exercise</u></i>
NRM	86.2007	<i>David Tomberlin and Garth Holloway: <u>Trip-Level Analysis of Efficiency Changes in Oregon's Deepwater Trawl Fishery</u></i>
CTN	87.2007	<i>Pablo Revilla: <u>Many-to-One Matching when Colleagues Matter</u></i>
IEM	88.2007	<i>Hipòlit Torró: <u>Forecasting Weekly Electricity Prices at Nord Pool</u></i>
ETA	89.2007	<i>Y. Hossein Farzin: <u>Sustainability and Optimality in Economic Development: Theoretical Insights and Policy Prospects</u></i>

(lxxxix) This paper was presented at the EAERE-FEEM-VIU Summer School on "Computable General Equilibrium Modeling in Environmental and Resource Economics", held in Venice from June 25th to July 1st, 2006 and supported by the Marie Curie Series of Conferences "European Summer School in Resource and Environmental Economics".

(lxxxix) This paper was presented at the Workshop on "Climate Mitigation Measures in the Agro-Forestry Sector and Biodiversity Futures", Trieste, 16-17 October 2006 and jointly organised by The Ecological and Environmental Economics - EEE Programme, The Abdus Salam International Centre for Theoretical Physics - ICTP, UNESCO Man and the Biosphere Programme - MAB, and The International Institute for Applied Systems Analysis - IIASA.

(lxxxix) This paper was presented at the 12th Coalition Theory Network Workshop organised by the Center for Operation Research and Econometrics (CORE) of the Université Catholique de Louvain, held in Louvain-la-Neuve, Belgium on 18-20 January 2007.

2007 SERIES	
<b>CCMP</b>	<i>Climate Change Modelling and Policy</i> (Editor: Marzio Galeotti)
<b>SIEV</b>	<i>Sustainability Indicators and Environmental Valuation</i> (Editor: Anil Markandya)
<b>NRM</b>	<i>Natural Resources Management</i> (Editor: Carlo Giupponi)
<b>KTHC</b>	<i>Knowledge, Technology, Human Capital</i> (Editor: Gianmarco Ottaviano)
<b>IEM</b>	<i>International Energy Markets</i> (Editor: Matteo Manera)
<b>CSR</b>	<i>Corporate Social Responsibility and Sustainable Management</i> (Editor: Giulio Sapelli)
<b>PRCG</b>	<i>Privatisation Regulation Corporate Governance</i> (Editor: Bernardo Bortolotti)
<b>ETA</b>	<i>Economic Theory and Applications</i> (Editor: Carlo Carraro)
<b>CTN</b>	<i>Coalition Theory Network</i>