

Pech, Susanne

Working Paper

Adverse Selection with individual- and joint-life annuities

Working Paper, No. 0412

Provided in Cooperation with:

Johannes Kepler University of Linz, Department of Economics

Suggested Citation: Pech, Susanne (2004) : Adverse Selection with individual- and joint-life annuities, Working Paper, No. 0412, Johannes Kepler University of Linz, Department of Economics, Linz

This Version is available at:

<https://hdl.handle.net/10419/73321>

Standard-Nutzungsbedingungen:

Die Dokumente auf EconStor dürfen zu eigenen wissenschaftlichen Zwecken und zum Privatgebrauch gespeichert und kopiert werden.

Sie dürfen die Dokumente nicht für öffentliche oder kommerzielle Zwecke vervielfältigen, öffentlich ausstellen, öffentlich zugänglich machen, vertreiben oder anderweitig nutzen.

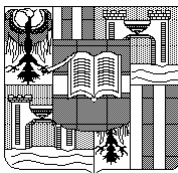
Sofern die Verfasser die Dokumente unter Open-Content-Lizenzen (insbesondere CC-Lizenzen) zur Verfügung gestellt haben sollten, gelten abweichend von diesen Nutzungsbedingungen die in der dort genannten Lizenz gewährten Nutzungsrechte.

Terms of use:

Documents in EconStor may be saved and copied for your personal and scholarly purposes.

You are not to copy documents for public or commercial purposes, to exhibit the documents publicly, to make them publicly available on the internet, or to distribute or otherwise use the documents in public.

If the documents have been made available under an Open Content Licence (especially Creative Commons Licences), you may exercise further usage rights as specified in the indicated licence.



Adverse Selection with individual- and joint-life annuities

by

Susanne Pech^{*)}

Working Paper No. 0412
November 2004

**Johannes Kepler University of Linz
Department of Economics
Altenberger Strasse 69
A-4040 Linz - Auhof, Austria
www.econ.jku.at**

susanne.pech@jku.at
phone +43 (0)70 2468 -8593, -9821 (fax)

Adverse Selection with individual- and joint-life annuities

Susanne Pech

November 2004

Department of Economics
University of Linz
Altenberger Straße 69
A-4040 Linz
Tel. ++43/732/2468-8593
Fax ++43/732/2468-9821
susanne.pech@jku.at

Abstract

This paper includes couples on the demand side and analyses their implications on the problem of adverse selection in the annuity market. First, we examine the pooling equilibrium for individual-life annuities and show that in the presence of couples the rate of return on individual-life annuities is lower in case that couples do not have the advantage of joint consumption of "family public goods" as well as in case of a logarithmic utility function. Second, we examine the market for joint-life annuities. Due to their higher chance that only one partner survives to the retirement, couples with short-lived partners put more weight on the survivor benefit than couples with at least one longer-lived partner. This fact is used by annuity companies to separate couples according to their partners' life-expectancies. Hence, we find that only a separating equilibrium may exist. These results are obtained in a framework where couples are mandated to buy joint-life annuities and only single persons buy individual-life annuities. When relaxing this assumption by allowing couples to choose between individual- and joint-life annuities, we find that in equilibrium couples with long-lived partners buy individual-life annuities, while couples with short-lived partners buy joint-life annuities. However, couples with one long-lived and one short-lived partner may decide for either type of annuities, depending on the exogenous parameters. Accordingly, we identify two different types of equilibria.

Keywords: annuity market, uncertain lifetime, adverse selection, equilibrium.
JEL codes: D13, D82, D91, G22.

1. Introduction

Governments of many developed countries are now looking to reform their social security system in order to cope with the expected financial problems arising due the demographic changes. In the policy debate on the reform options, much attention has been concentrated on the functioning of the private life annuity markets in order to clarify the question whether the cut back of public pensions and more reliance on the private annuity market can be regarded as an appropriate measure to maintain the long-run solvency of the social security system. In this context, the treatment of families in the social security system is one point at issue, raising the question whether it makes sense to continue to mandate protection for family members, especially for surviving spouses, or to leave it up in the responsibility of the families (see e.g. Diamond 2004).

However, although 75 % of men and 44 % of women of age 65 and older are married (see Ameriks and Yakoboski 2003) and, hence, their decision over lifetime consumption may have an impact on a large portion of the annuity market, research on the determination of old-age provision within a family is still in an early stage of development. Theoretical analysis has not progressed much beyond the identification of the fact that the allocation of resources within a family does not conform to that of a single-person household.

The present contribution fits in the rare literature that focuses on consumption behaviour of a family over the uncertain lifetime of its members and their provision for retirement. In particular, two previous studies, namely those by Kotlikoff and Spivak (1981) and by Brown and Poterba (2000), explore the demand of a couple for life annuities.¹ Kotlikoff and Spivak (1981) find that the benefits of buying actuarially fair individual annuities are lower for a married person than for a single person. This is due to the fact that couples are able to self-insure against the uncertain date of death by consumption- and bequest-sharing arrangements, which is obvious from the following consideration: If one member of a couple lives to be very old, there is a high probability that his or her spouse has already died leaving him or her a bequest. This provides some insurance against the risk of a long life, even without a formal annuity contract. Hence, marriage can serve as a substitute for life annuities. While Kotlikoff and Spivak consider individual-life annuities (or single-life annuities), Brown and Poterba (2000) investigate joint-life annuities. They describe the structure of joint-life annuity products that are available to married couples, and calculate the potential utility gain that couples derive from the purchase of joint-life annuities. In particular, they estimate the amount of wealth that a couple would require in the

¹ Another contribution that deals with couples as the decision-making units is that of Hurd (1999). It investigates a life-cycle model of consumption by couples to determine their optimal consumption path over the uncertain life-span of both partners. However, this analysis excludes the possibility of the purchase of life annuities in the private annuity market, but considers public pensions, which are assumed to be given exogenously.

absence of actuarially fair joint-life annuities in order to achieve the same utility level that they receive when actuarially fair joint-life annuities are available. Equivalently to Kotlikoff and Spivak, Brown and Poterba find that for a married person the utility gain from joint-life annuities is smaller than the utility gain from an individual-life annuity for a single person. Hence both papers draw the conclusion that, as most potential annuity buyers are married, their findings may help to explain the limited size of the private annuity market.

Although these papers have recognised the importance of couples for the private annuity market, none of them determined the effect of their consumption behaviour on the equilibrium outcome. On the other hand, various contributions, including Abel (1986), Brunner and Pech (2002, 2005), Eckstein et. al. (1985), Pech (2004), Townley and Boadway (1988) and Walliser (2000), have investigated the functioning of the market for individual-life annuities, in view of the problem of adverse selection. However all of these studies have assumed individuals rather than couples as the decision-making units. The present contribution attempts to close the gap which was left by previous research, mentioned above, by providing a theoretical analysis of the problem of adverse selection in the private annuity market, when couples are included on the demand side. This allows an assessment of the implications on the equilibrium outcome, when turning away from the assumption that the consumption path of a married person over his/her uncertain life time conforms to that of a single person.

Adverse selection arises due to asymmetric information between the market participants: The fact that the annuity companies cannot distinguish individuals according to their life expectancy induces a higher annuity demand of individuals with reason to expect long lives than of those expecting short lives. This leads to the well-known result that lower payouts than the actuarially fair ones, based on the average life expectancy of the population, are necessary to reflect the over-representation of annuities bought by the long-living individuals.²

This paper examines individual- as well as on joint-life annuities. First, we investigate the market for individual-life annuities and compare the equilibrium outcome of an economy consisting of single persons only with an economy in which single persons and couples coexist. For this, we consider the standard model with one working and one retirement period and assume price competition among the annuity companies, which means that they fix the price (i.e. the payoff per unit of annuity) and consumers can buy as many annuities as they want. In this framework only a pooling equilibrium can exist, where all persons (irrespective whether single or married) receive the same rate of return, which – as mentioned above – is below the fair one. Obviously,

² Empirical studies for the well developed US annuity market give evidence that prices are about 7 – 15 % above the fair price due to adverse selection (Walliser, 2000; Mitchell et al., 1999; Friedman and Warshawsky, 1988, 1990). Finkelstein and Poterba (2002) find that adverse selection exists to some similar extent in the voluntary annuity market of the United Kingdom.

the consequences of couples as market participants on the equilibrium rate of return depend on how their demand affects the composition of aggregate annuity demand regarding to the high-risk and the low-risk types. Whenever the demand share of high-risk types is increased (at the expense of that of the low-risk types), the equilibrium rate of return will fall. We obtain this result of a lower rate of return in case that couples do not have the advantage of joint consumption of "family public goods" as well as in case of a logarithmic utility function. Otherwise the effect on the equilibrium rate of return on individual-life annuities is ambiguous.

Secondly, we focus on joint-life annuities, which guarantee a certain payout provided that both partners are alive, as well as a certain ratio of this payout after the death of one partner. Hence, in contrast to individual-life annuities, contracts for joint-life annuities are characterised by two payoffs, which are fixed by the annuity companies. In the U.S. annuity market it is common practice that the ratio of the survivor benefit (to the payoff that a couple receives in case that both partners survive) varies from 50%, two-thirds, 75% up to 100%. The present contribution offers an explanation for the fact that annuity companies offer different survivor benefit options. Separation according to the survival probabilities of both couple-members takes place: Due to their higher chance that only one partner survives to the retirement, couples with both partners having a low survival probability put more weight on the survivor benefit than a couple with partners having a higher life expectancy. This fact can be used by annuity companies to separate couples according to their life expectancy. Hence, we find that no pooling Nash-Cournot equilibrium for joint-life exists; if a Nash-Cournot equilibrium exists, it is a separating one.³ These results are obtained in a model where couples are mandated to provide for old age through joint-life annuities and only single persons buy a pooling contract for individual-life annuities.

However, in real world mandating couples to buy joint-life annuities is not common practice, instead couples can choose between individual- and joint-life annuities. Hence, in a final step, we combine the previous analysis of equilibria for each type of annuities and consider a framework, in which single persons and couples are included on the demand side and the latter are free to choose between individual- and joint-life annuities. Note that there is empirical evidence that some couples indeed buy the latter type of annuities. For instance, a recent survey, conducted by the American Council of Life Insurers, reports that among married owners

³ The Nash-Cournot equilibrium in insurance markets was studied first by Rothschild and Stiglitz (1976) and Wilson (1977). In their framework firms offer a number of different contracts which specify both a price and a quantity. Individuals who prefer a higher quantity are willing to pay a higher price for it. A prerequisite for the existence of price and quantity competition is that individuals can buy at most one contract, which may be a reasonable assumption for some insurance markets, e.g. insurance against accidents, but seems difficult to apply to the annuity market. Consequently, in our model individuals are free to buy as many annuities as they want. Separation becomes possible because firms can fix two prices instead of a price and a quantity.

of life annuities, only 63 % indeed choose joint-life annuities, the remaining 37 % choose individual-life annuities (see Ameriks and Yakoboski 2003). The present contribution offers an explanation for this empirical observation: We find that couples with both partners having a high life expectancy will decide for individual-life annuities. This is due to the fact that this type of annuities can offer higher expected returns to them than their separate contract for joint-life annuities, because in the former case they are pooled with single persons with a low life expectancy. Whether equivalent considerations apply for couples with one long-lived and one short-lived partner depends on the constellations of the exogenous parameters. These findings explain why we identify two different types of equilibria: For sufficiently large shares of high-risk types, an equilibrium may exist where couples with both partners having a high life expectancy, together with the single persons, buy a pooling contract for individual-life annuities and couples with at least one short-lived partner buy a separate contract for joint-life annuities. On the other hand, for lower shares of high-risk types, an equilibrium may exist where also mixed-risk couples buy the pooling contract for individual-life annuities and only couples with both partners having a low survival probability buy their separate contract for joint-life annuities.

The rest of the present paper proceeds as follows: In Section 2 we focus on individual-life annuities. First, the basic model of consumption behaviour of single persons as well as of couples is introduced. Then, the implications of couples as participants in the market for individual-life annuities on the equilibrium outcome are investigated. In Section 3 we concentrate on joint-life annuities. First, the demand of couples for this type of life annuities is analysed. Then, we turn to the investigation of equilibria. First, we derive all results concerning the existence and characterisation of equilibria in the market for joint-life annuities under the assumption that couples are mandated to provide for old-age via joint-life annuities. This serves as a benchmark, which is then compared to the more relevant situation, where couples are free to choose between individual-life annuities and joint-life annuities. Section 4 summarises and concludes the paper.

2. Individual-life annuities

Most previous research has focused on individual-life annuities with single persons as the decision-making units. An individual-life annuity (or single-life annuity) guarantees the annuitant regular payouts conditional on the annuitant's survival. In Section 2.1 we describe the model used to analyse the demand for this prevalent type of annuity, where we pay special attention to couples as the decision-making unit. We refer to two individuals as a couple, if they have agreed to pool their income and wealth, which is then used to support lifetime consumption of both partners. This will be commonly the case for married couples as well as for most long-term relationships. Otherwise we talk about single persons. The results obtained are then used in

Section 2.2 to examine the problem of adverse selection in the market of individual-life annuities, when beside single persons also couples are included on the demand side. This allows an assessment of the implications on the equilibrium outcome, when turning away from the assumption that the decision problem of a couple conforms to that of a single person.

2.1 Demand of a single person and of a couple for individual-life annuities

Consider an economy with N individuals with a share β of single persons; the remaining individuals live with their partner. Hence, the economy consists of $(1 - \beta)N/2$ couple-households and βN single-person households. Each individual (regardless of whether married or not) lives for sure in the working period; however survival to the retirement period 1 is uncertain and occurs with probability π , $0 < \pi < 1$. During the working period, a single person earns a fixed labour income ω , a couple earns 2ω . We assume that no public pension system exists. Thus, at the end of the working period, when the individuals retire, they will provide for the period of retirement by the purchase of individual-life annuities. For each unit of life annuity, bought by an individual in the working period, he/she receives q units of payouts in the retirement period, if he/she survives.

Preferences for consumption over the uncertain lifetime can be represented by expected utility, where the assumption is made that neither a single person nor a couple derives utility from leaving bequests to other persons. This means that there would be unintended bequests, if either the single person or both spouses do not survive to the retirement period. Note that, under the assumption of competitive firms, the rate of return on life annuities is necessarily greater than that on bonds.⁴ Therefore a single person, who has no bequest motive, always decides for annuities against bonds.

Taking this result into account, we formulate *the decision problem of a single person*: A single person i (with survival probability π_i) chooses his/her consumption plan over the uncertain lifetime by maximising his/her expected utility

$$U_i = u(c_{0i}) + \pi_i \alpha u(c_{1i}), \quad (1)$$

subject to the budget equations

⁴ The general intuition for this result, which goes back to Yaari (1965), is the following: In case that an individual provides for old-age consumption through bonds, he/she leaves unintended bequests if dying prematurely. In this case, the deceased's wealth is distributed to the heirs. If, in contrast, the individual puts her wealth into life annuities and dies prematurely, this unconsumed wealth is distributed as annuity payouts to the surviving annuitants. These considerations apply equivalently for couples, when both partners die prematurely. The result of higher returns on annuities holds as long as an annuity company does not have the market power to collect all of the consumer surplus generated in the annuity market.

$$c_{0i} = \omega - B_i, \quad (2)$$

$$c_{1i} = qB_i. \quad (3)$$

in the working period $t = 0$ and the retirement period $t = 1$. In equation (1), $u(c_{ti})$ is the per-period utility depending on consumption c_{ti} , with $u' > 0$, $u'' < 0$ and $\lim_{c \rightarrow 0} u'(c) = \infty$, and α denotes the discount factor of utility due to time preference, $0 < \alpha \leq 1$. Substituting (2) and (3) into (1) and differentiating with respect to B_i , we obtain the first-order condition of this maximization problem as

$$-u'(\omega - B_i) + q\pi_i\alpha u'(qB_i) = 0, \quad (4)$$

which determines annuity demand $B_i(q)$ for single person i .

A couple, on the other hand, share their combined income 2ω to choose consumption over the uncertain lifetime of both partners. In doing so, a couple has to distinguish between four distinct risk-states: Either both partners are alive in the retirement period, only one partner has survived or both are deceased. This is in contrast to the case of a single person, who has to be concerned solely, whether he/she is alive or not. We follow Brown and Poterba (2000) as well as Kotlikoff and Spivak (1981) and assume that the per-period utility function of a couple is the unweighted sum of the two partners' utilities. Thus, expected utility U_{ij} of a couple with partner i (with survival probability π_i) and partner j (with survival probability π_j) is given by

$$U_{ij} = u(c_{0ij}^s) + u(c_{0ij}^w) + \alpha \left(\pi_i\pi_j(u(c_{1ij}^s) + u(c_{1ij}^w)) + \pi_i(1 - \pi_j)u(c_{1ij}^w) + \pi_j(1 - \pi_i)u(c_{1ij}^s) \right),^5 \quad (5)$$

where c_{1ij}^w indicates consumption of partner i in the retirement period 1, in case that he/she is a widow/widower, represented by the superscript w . c_{tij}^s , $t = 0,1$, indicates consumption of partner i , when the other partner j is alive, thus partner i is (and has) a spouse, represented by the superscript s . Equivalently, c_{1ij}^w and c_{1ij}^s denote consumption of partner j , when partner i is deceased or has survived, respectively. Obviously, the consumption level and annuity demand of a couple-member will depend on his/her survival probability as well as on that of his/her partner; to indicate this dependency we make use of the subscript ij .

By the same argument as above, namely a higher rate of return on annuities than on bonds, both members of a couple will always decide to buy positive amounts of individual-life annuities to provide for old-age. However note that bonds, although offering a lower return than individual-life annuities, have one advantage over the latter: The purchase of bonds by a couple member, who does not survive to the retirement period, provides bequests for his/her surviving

⁵ Note that we assume that the survival probabilities π_i and π_j are constant over the different risk-states. By this we exclude the so-called "broken-heart" effect, which means that the survival probability would be lower in case of the partner's death than in case of his/her survival to retirement.

partner, while an individual-life annuity pays nothing in this case. This is the reason why it may be attractive for a couple to supplement annuities by some bonds, which is the case for sufficiently low returns on annuities only. Otherwise, couples will invest solely in individual-life annuities. For sake of simplicity of the analysis, we neglect a situation, where bonds may serve as supplement for annuities by excluding the purchase of bonds as a possible strategy for couples.⁶

We take up the idea of Brown and Poterba (2000) and consider the possibility of goods which can be consumed jointly by both members of the couple. For instance, books and furniture can be regarded as such "public goods" for the couple. By this, the couple's budget equations in the working period 0 and in the retirement period 1, when both partners i and j are alive, are given by

$$c_{0ij}^{is} + c_{0ij}^{js} = \sigma(2\omega - B_{ij}^i - B_{ij}^j), \quad (6)$$

$$c_{1ij}^{is} + c_{1ij}^{js} = \sigma q(B_{ij}^i + B_{ij}^j), \quad (7)$$

where σ indicates the degree of joint consumption with $1 \leq \sigma \leq 2$. For $\sigma = 1$ there is no joint consumption, for $\sigma = 2$ all consumption outlays of the couple are for public goods. In case that only one partner i or j survives to the retirement period, the budget equations read

$$c_{1ij}^{iw} = qB_{ij}^i, \quad (8)$$

$$c_{1ij}^{jw} = qB_{ij}^j. \quad (9)$$

The *couple's decision problem* is to maximise its expected utility (5) subject to the budget constraints (6) – (9). Eliminating c_{0ij}^{is} , c_{1ij}^{is} , c_{1ij}^{iw} and c_{1ij}^{jw} in (5) by use of (6) – (9) and differentiating with respect to c_{0ij}^{js} , c_{1ij}^{js} , B_{ij}^i and B_{ij}^j , respectively, we obtain the first-order conditions of this maximization problem,

$$-u'(c_{0ij}^{is}) + u'(c_{0ij}^{js}) = 0, \quad (10)$$

$$\pi_i \pi_j \alpha (-u'(c_{1ij}^{is}) + u'(c_{1ij}^{js})) = 0, \quad (11)$$

$$-\sigma u'(c_{0ij}^{js}) + q\sigma \pi_i \pi_j \alpha u'(c_{1ij}^{js}) + q\pi_i (1 - \pi_j) \alpha u'(c_{1ij}^{iw}) = 0, \quad (12)$$

$$-\sigma u'(c_{0ij}^{is}) + q\sigma \pi_i \pi_j \alpha u'(c_{1ij}^{is}) + q\pi_j (1 - \pi_i) \alpha u'(c_{1ij}^{jw}) = 0. \quad (13)$$

From (10) and (11) it follows immediately that $c_{tij}^{is} = c_{tij}^{js}$ for $t = 0, 1$. Thus, whenever both partners are alive, they decide to consume the same amounts, thus – use (6) and (7) –

⁶ Alternatively, one could introduce a condition which ensures that it is attractive for couples to buy solely annuities.

$c_{0ij}^{i^s} = \frac{\sigma}{2}(2\omega - B_{ij}^i - B_{ij}^j)$ and $c_{1ij}^{i^s} = \frac{\sigma q}{2}(B_{ij}^i + B_{ij}^j)$. Substituting these terms together with (8) and (9) into (12) and (13) we get

$$-\sigma u'(\frac{\sigma}{2}(2\omega - B_{ij}^i - B_{ij}^j)) + q\sigma\pi_i\pi_j\alpha u'(\frac{\sigma q}{2}(B_{ij}^i + B_{ij}^j)) + q\pi_i(1 - \pi_j)\alpha u'(qB_{ij}^i) = 0, \quad (12')$$

$$-\sigma u'(\frac{\sigma}{2}(2\omega - B_{ij}^i - B_{ij}^j)) + q\sigma\pi_i\pi_j\alpha u'(\frac{\sigma q}{2}(B_{ij}^i + B_{ij}^j)) + q\pi_j(1 - \pi_i)\alpha u'(qB_{ij}^j) = 0. \quad (13')$$

which determine demand $B_{ij}^i(q)$ and $B_{ij}^j(q)$ of each partner i and j for individual-life annuities for any given rate of return q .

Lemma 1: For any rate of return q , it is optimal for a couple whose members differ in their survival probability that the partner with the higher survival probability demands a larger amount of individual-life annuities; in case of identical survival probabilities both partners demand the same amount, i.e. $B_{ij}^i(q) \geq B_{ij}^j(q)$, if $\pi_i \geq \pi_j$. In the latter case, where $\pi_i = \pi_j$, the demand of a married person coincides with that of a single person with the same survival probability π_i , i.e., $B_{ij}^i(q) = B_i(q)$, if there is no joint consumption of goods within the couple ($\sigma = 1$) or in case of logarithmic per-period utility

$$u(c_{tij}^i) = \ln[c_{tij}^i]. \quad (14)$$

Proof: Combining (12') and (13') yields

$$\pi_i(1 - \pi_j)u'(qB_{ij}^i) = \pi_j(1 - \pi_i)u'(qB_{ij}^j). \quad (15)$$

Thus, if $\pi_i \geq \pi_j$, $u'(qB_{ij}^i) \leq u'(qB_{ij}^j)$ and, as $u'' < 0$, $B_{ij}^i(q) \geq B_{ij}^j(q)$.

For $\pi_i = \pi_j$, and hence $B_{ij}^i(q) = B_{ij}^j(q)$, (12') equals

$$-\sigma u'(\sigma(\omega - B_{ij}^i)) + q\pi_i\alpha(\sigma\pi_i u'(\sigma qB_{ij}^i) + (1 - \pi_i)u'(qB_{ij}^i)) = 0, \quad (16)$$

which coincides with (4) for $\sigma = 1$; thus $B_{ij}^i(q) = B_i(q)$. The same holds for the case of a logarithmic per-period utility function (14) for any $1 \leq \sigma \leq 2$. This follows from the fact that for log-utility the first-order condition (16), which reads

$$-1/(\omega - B_{ij}^i) + q\pi_i\alpha(\pi_i/qB_{ij}^i + (1 - \pi_i)/qB_{ij}^i) = 0,$$

is independent of σ .

Q.E.D.

The result, that within a couple the longer-lived partner expresses a larger demand for individual-life annuities, corresponds with intuition and can be explained as follows: Any shift of individual-life annuities from the shorter-lived partner to the longer-lived partner leaves the

aggregate amount $B_{ij}^i + B_{ij}^j$ and, hence, aggregate consumption levels $c_{0ij}^i + c_{0ij}^j$, $c_{1ij}^i + c_{1ij}^j$, when both are alive, unchanged. However such a shift provides a higher consumption level c_{1ij}^i of the longer-lived partner at the expense of that of the shorter-lived partner, when only one partner survives to retirement. As the former has a higher weight in the couple's utility (due to his/her higher chance to be the only survivor), the couple benefits from such a shift. Obviously, in case of identical life expectancy, the couple puts equal weights on consumption of both partners, thus $B_{ij}^i = B_{ij}^j$. Furthermore, in case that a couple with identical survival probabilities does not have the advantage of joint consumption compared to a single person, the demand of each of them coincides with that of a single person with the same survival probability (due to identical per-period utility function of married and single persons and equal weights in couple's utility for both partners). Note, however, that this result also holds for logarithmic per-period utility (14), irrespective of the value of σ .⁷

From now on we assume that all N individuals, irrespective of whether they live together with a partner or live as a single person, are characterized either by a low or a high survival probability. Thus, there are two types of a single person $i = L, H$, while we distinguish between three types of couple $ij = LL, LH, HH$, where LL, HH , resp. denotes a couple with both partners having a low or high, resp., survival probability and LH denotes a couple consisting of a type- L and a type- H partner. Next, we investigate annuity demand of these different types.

Lemma 2: For any rate of return q ,

- (i) a single person of type H demands a higher amount of individual-life annuities than a single person of type L , i.e. $B_H(q) > B_L(q)$.
- (ii) each member of a type- HH couple demands more individual-life annuities than each member of a type- LL couple, i.e. $B_{HH}^H(q) > B_{LL}^L(q)$.
- (iii) a couple member of type $i = L, H$ demands less individual-life annuities, in case that partner j is of type H compared to the case where partner j is of type L , i.e. $B_{LH}^L < B_{LL}^L$ and $B_{HH}^H < B_{LH}^H$, if the following necessary and sufficient condition holds:

$$-\frac{\sigma^2}{2} \left(u'' \left(\frac{\sigma}{2} (2\omega - B_{ij}^i - B_{ij}^j) \right) + q^2 \pi_i \pi_j \alpha u'' \left(\frac{\sigma q}{2} (B_{ij}^i + B_{ij}^j) \right) \right) \left((1 - \pi_i) u'(qB_{ij}^i) + \pi_i u'(qB_{ij}^j) \right) > q^2 \pi_i \pi_j \alpha (1 - \pi_i) u''(qB_{ij}^i) \left(u'(qB_{ij}^i) - \sigma u' \left(\frac{\sigma q}{2} (B_{ij}^i + B_{ij}^j) \right) \right) \quad (17)$$

Hence, in this case $B_{LH}^L(q) < B_{LL}^L(q) < B_{HH}^H(q) < B_{LH}^H(q)$.

Proof: See the Appendix.

⁷ It can be shown (by implicit differentiation of (12') and (13')) that $\partial B_{ij}^i(q) / \partial \sigma \geq 0$, if $R \geq 1$, where $R \equiv -c_{ij}^i u''(c_{ij}^i) / u'(c_{ij}^i)$ denotes the coefficient of relative risk aversion. As logarithmic utility exhibits a constant $R = 1$, σ has no influence on annuity demand.

The result (i) of a higher annuity demand of individuals with high life-expectancy was shown in many contributions, which examined the problem of adverse selection in the market of individual-life annuities; see e.g. Abel (1986), Walliser (2000), Pech (2004). Result (ii) offers its counterpart for couples: A couple with both partners having a high survival probability demands a larger amount of individual-life annuities than a couple with both partners having a low survival probability. The intuition for the result (iii) is related to Lemma 1: A type-L spouse has a higher relative chance to be the only surviving member within a type-LL couple than within a type-LH couple (obviously the opposite applies to his/her respective partner). Due to this, a type-LL couple will shift a higher amount of annuities from the considered type-L spouse to his/her partner than a type-LH couple. Such a behaviour is found, whenever condition (17) holds, for which we observe that the sign of LHS is positive, while the sign of the RHS depends on the difference $u'(qB_{ij}^i) - \sigma u'(\frac{\sigma q}{2}(B_{ij}^i + B_{ij}^j))$. Hence, condition (17) is fulfilled whenever this difference is non-negative (as multiplied by $u'' < 0$), otherwise the difference must be sufficiently small. Whether this is indeed the case, actually depends on the specifics of the per-period function u and on the values of the exogenous parameters. However, it is straightforward to see that for $\sigma = 1$ the difference is non-negative, if $B_{ij}^i(q) \leq B_{ij}^j(q)$, which is fulfilled if $\pi_i \leq \pi_j$ (compare Lemma 1). Further, it can be shown that (17) is fulfilled for the logarithmic per-period utility (14).

2.2 Pooling equilibrium for individual annuities

In this section we examine the equilibrium outcome, when there is asymmetric information in the market for individual-life annuities, which leads to the problem of adverse selection: Because annuity companies cannot distinguish individuals according to their survival probabilities, the first-best outcome, in which each risk type buys annuities at his/her individually fair rate of return according to his/her survival probability, cannot be realized. In the following, we pay special attention to couples as decision-making units and analyse how their annuity demand affects the equilibrium rate of return.

In the model usually employed to study adverse selection in the market for individual-life annuities, it is typically assumed that competition takes place via the price (i.e. via the rate of return), which is fixed by the annuity companies. Individuals can buy as many annuities as they want. In this framework only a pooling equilibrium is possible, where all individuals receive the same rate of return.⁸ However, for any given rate of return, individuals with high life expectancy demand a larger amount of annuities (compare Lemma 2). This over-representation of annuities, bought by high-risk individuals, accounts for the well-known result that annuity

⁸ Price competition appears to be a more plausible assumption for annuity markets than price and quantity competition, which requires that individuals can buy only one insurance contract (as firms fix both both a price and a quantity), but generates the possibility of a separating equilibrium (see Rothschild and Stiglitz, 1976; Wilson, 1977).

companies, in order to avoid losses, offer a rate of return which is lower than the actuarially fair rate of return based on the average survival probability of the population. This consequence of adverse selection in the market of individual-life annuities has been shown in various contributions, however, as far as we know, they all made implicitly the assumption that the decision problem of any household conforms to that of a single person, described above, see e.g. Abel (1986), Walliser (2000), Pech (2004).

We expand these previous studies by including couples as decision-making units. To do so, we make the following assumptions: Let γ be the share of type-H individuals in population and β the share of single persons (as before). These shares as well as the survival probabilities π_H and π_L are public information, known by the annuity companies. But it is the private information for each single person to know his/her risk-type and for each couple to know their risk-type, i.e. the probabilities of survival of both partners. By this, we have introduced asymmetric information into the model in the usual way.

We neglect any correlation between the survival probability and the marital status.⁹ Then, the fraction of single persons of type H is given $\beta\gamma$ and that of single persons of type L is $\beta(1 - \gamma)$. Further, we exclude any dependencies between the survival probability of both couple members¹⁰. By this, $(1-\beta)\gamma^2$ is the fraction of type-H partners within a type-HH couple, $(1-\beta)\gamma(1-\gamma)$ is the share of type-H individuals as well as the share of type-L individuals within a type-LH couple and $(1-\beta)(1-\gamma)^2$ are type-L individuals within a type-LL couple. Given these group shares, expected profits are given by

$$P(q) = \beta(\gamma B_H + (1-\gamma)B_L) + (1-\beta)(\gamma^2 B_{HH}^H + \gamma(1-\gamma)(B_{LH}^H + B_{LH}^L) + (1-\gamma)^2 B_{LL}^L) - q(\beta(\gamma\pi_H B_H + (1-\gamma)\pi_L B_L) + (1-\beta)(\gamma^2\pi_H B_{HH}^H + \gamma(1-\gamma)(\pi_H B_{LH}^H + \pi_L B_{LH}^L) + (1-\gamma)^2\pi_L B_{LL}^L)) \quad (18)$$

where, for shortness, we suppress the dependency of annuity demand B_i , B_{ij}^i on q . Note that in (18) a zero interest rate is assumed, which is chosen for sake of simplicity only; a positive interest rate would not affect the qualitative results. Since the annuity companies are assumed to behave perfectly competitive, the equilibrium rate of return \tilde{q} is implicitly defined by the zero-profit condition

$$P(q) = 0. \quad (19)$$

⁹ One could presume that marriage has a positive (negative) influence on the individuals' life expectancy or that individuals who expect a long life have a higher preference for being married.

¹⁰ One could think that an individual prefers a partner of the same risk type.

Of course, \tilde{q} must be a weighted average of $1/\pi_H$ and $1/\pi_L$, the individually fair rate of returns for each risk-type H and L.¹¹ This implies that for low-risk individuals expected returns are lower than required for individual fairness, while for high-risk individuals they are higher.

Next we will compare the equilibrium outcome of an economy consisting of single persons only ($\beta = 1$) with an economy where single and couples coexist ($\beta < 1$). For this, we assume that (18), a continuous function of q , is strictly decreasing, i.e. $P'(q) < 0$.¹²

Proposition 1: Assume that condition (17) holds, which ensures that $B_{LH}^H/B_{HH}^H > 1$ and $B_{LH}^L/B_{LL}^L < 1$. Then the equilibrium rate of return on individual-life annuities is higher in an economy with single persons only ($\beta = 1$) than in a mixed economy with singles and couples ($\beta < 1$), if there is no joint consumption of goods within the couple ($\sigma = 1$) or in case of logarithmic per-period utility.

Proof: Let \tilde{q}_S be the equilibrium rate of return, determined by the zero-profit condition (19) for $\beta = 1$, which is

$$\tilde{q}_S \equiv \frac{\gamma B_H + (1-\gamma)B_L}{\gamma\pi_H B_H + (1-\gamma)\pi_L B_L}. \quad (20)$$

Substituting (20) into expected profits (18) for $\beta < 1$ yields

$$P(\tilde{q}_S) = (1-\beta) \left[\gamma^2 B_{HH}^H + \gamma(1-\gamma)(B_{LH}^H + B_{LH}^L)(1-\gamma)^2 B_{LL}^L - \frac{\gamma B_H + (1-\gamma)B_L}{\gamma\pi_H B_H + (1-\gamma)\pi_L B_L} \left(\gamma^2 \pi_H B_{HH}^H + \gamma(1-\gamma)(\pi_H B_{LH}^H + \pi_L B_{LH}^L)(1-\gamma)^2 \pi_L B_{LL}^L \right) \right]$$

and further, by some steps of transformation,

$$P(\tilde{q}_S) = \frac{(1-\beta)\gamma(1-\gamma)}{\gamma\pi_H B_H + (1-\gamma)\pi_L B_L} (\pi_H - \pi_L) \left[\gamma(B_{LH}^L B_H - B_L B_{HH}^H) + (1-\gamma)(B_{LL}^L B_H - B_L B_{LH}^H) \right]. \quad (21)$$

Note that, as $\pi_H > \pi_L$, the sign of $P(\tilde{q}_S)$ depends on the last term in the squared brackets on the RHS of (21), which can be rearranged to

$$P(\tilde{q}_S) = \frac{(1-\beta)\gamma(1-\gamma)B_L B_H}{\gamma\pi_H B_H + (1-\gamma)\pi_L B_L} (\pi_H - \pi_L) \left(\gamma \left(\frac{B_{LH}^L}{B_{LL}^L} \frac{B_{LL}^L}{B_L} - \frac{B_{HH}^H}{B_H} \right) + (1-\gamma) \left(\frac{B_{LL}^L}{B_L} - \frac{B_{HH}^H}{B_H} \frac{B_{LH}^H}{B_{HH}^H} \right) \right) \quad (21')$$

¹¹ As Abel (1986) has argued, for any rate of return equal or lower than $1/\pi_H$, an annuity company can slightly increase the rate of return and profitably attract both risk-types; for any rate of return equal or greater than $1/\pi_L$ annuity companies would suffer losses on the annuities sold to both risk-types; see also Pech (2004).

¹² Note that this assumption implies that there is a unique equilibrium. In general, however, multiple equilibria cannot be excluded; see e.g. Abel (1986), Pech (2004).

We know from Lemma 1 that for $\sigma = 1$ or for logarithmic per-period utility $B_{LL}^L/B_L = 1$ and $B_{HH}^H/B_H = 1$. By use of these identities and (21') it is immediate that $P(\tilde{q}_S) < 0$, if condition (17) holds. As $P'(q) < 0$, the equilibrium rate of return for $\beta < 1$ must be lower than \tilde{q}_S . Q.E.D.

Obviously, the consequences of the existence of couples as market participants on the equilibrium rate of return depend on how they affect the composition of aggregate annuity demand between the high-risk and the low-risk types. Whenever the share of annuities bought by high-risk types (at the expense of the low-risk types) in overall demand is increased, the equilibrium rate of return will fall. As for $\sigma = 1$ or for logarithmic utility, $B_{LL}^L/B_L = B_{HH}^H/B_H$ (compare Lemma 1), the same-risk couples LL and HH leave the demand shares of the high- and low-risk types unchanged. But as $B_{LH}^H/B_{HH}^H > 1$ and $B_{LH}^L/B_{LL}^L < 1$ (guaranteed by condition (8)) there is a shift in the composition of aggregate annuity demand away from the low-risk "profitable" types towards the high-risk "unprofitable" types. As a consequence, annuity companies would make a loss, if they paid a rate of return \tilde{q}_S , which allows zero-profits in the case of $\beta = 1$. In order to restore zero profits, the rate of return must fall.

Note however that this result of a lower rate of return is not confined to $\sigma = 1$ or logarithmic utility, where we have coincidence of annuity demand of a single person $i = L, H$ with that of a member within a same-risk couple $ij = LL, HH$. A lower rate of return is also obtained for any arbitrary per-period utility function with $\sigma > 1$, whenever $B_{LL}^L/B_L \leq B_{HH}^H/B_H$ (compare (21')), which means that demand expressed by individuals who live together with a partner of the same risk-type do not decrease the overrepresentation of annuities bought by the high-risk types. Finally note that even in case that $B_{LL}^L/B_L > B_{HH}^H/B_H$, we observe a lower equilibrium rate of return in the presence of couples, if this respective decrease in the overrepresentation of annuities bought by the high-risk types due to demand behaviour of the same-risk couples LL and HH does not outweigh the increase in the overrepresentation of annuities bought by the high-risk types due to demand behaviour of the mixed-risk couples LH.

3. Joint-life annuities

A joint-life annuity guarantees some regular payout as long as either of the two annuitants is alive. Basically two different types are available, where both types guarantee a main payout in case that both partners are alive in retirement, but they offer different survivorship options. The first specifies a payout-fraction which is paid to the survivor after the death of one couple member, regardless of which one. The second specifies a payout fraction which is paid in case that the primary annuitant predeceases the second annuitant, however if the second annuitant predeceases the first, there will be no change in the payout. In this section we focus on the first

more popular type¹³ with "the last survivor payout rule", as it was called by Brown and Poterba (2000). First, we analyse the demand of couples for this type of joint-life annuities. Then we introduce the supply side in order to study the existence and the characteristics of equilibria, when the information about the survival probability is asymmetrically held by the market participants. Observe that in contrast to individual-life annuities, where all annuitants receive a single payout, joint-life annuities are characterised by two payoffs, namely the main payoff, when both couple members survive, and the last survivor payoff. This fact can be used by the annuity companies to offer different contracts for joint-life annuities to couples with differing survival probabilities, who in turn will choose them, as they prefer different payoff-ratios. These considerations give a first intuition for the results shown in Section 3.3: In contrast to individual-life annuities, no pooling equilibrium for joint-life annuities exists; a separating equilibrium may but need not exist.

3.1 Demand of a couple for joint-life annuities

We consider the same framework as in section 2.1 to study now the demand of a couple for joint-life annuities. In the working period a couple ij with income 2ω buys an amount A_{ij} of joint-life annuities to provide for the retirement: Per unit of joint-life annuity the couple receives a payout r in case that both partners survive and a payout k in case that only one partner survives. Hence, the budget equations for a couple in the working period as well as in the retirement periods are given by

$$c_{0ij}^s + c_{0ij}^{j^s} = \sigma(2\omega - A_{ij}), \quad (22)$$

$$c_{1ij}^s + c_{1ij}^{j^s} = \sigma r A_{ij}, \quad (23)$$

$$c_{1ij}^w = k A_{ij}, \quad (24)$$

$$c_{1ij}^{j^w} = k A_{ij}. \quad (25)$$

The budget equations (22) – (25) are built on the assumption that a couple does not save and buy riskless bonds, in addition to joint-life annuities. As for individual-life annuities, a couple, who derives no utility from leaving a bequest to other persons, always decides to buy positive amounts of joint-life annuities. This is due to the fact that the returns $r + k$ on joint-life annuities are necessarily greater than those on bonds, given perfect competition among the annuity companies.¹⁴ However note that for sufficiently small or sufficiently large ratios r/k of payouts, a couple would supplement joint-life annuities by bonds in order to smooth consumption appropriately over the risk-states, in which either both partners survive or only one partner

¹³ Among TIAA-CREF annuitants who choose a joint-life annuity about 83 % of women and 93 % of men choose this option (Ameriks, 2002).

¹⁴ The intuition is equivalent to that given in footnote 4 for individual life annuities.

survives to old-age.¹⁵ Note, however, that for adequate payout-ratios r/k in between, the optimal strategy for a couple is to buy joint-life annuities only.

The decision problem of a couple ij is to maximise their expected utility (5) subject to the budget constraints (22) – (25). Again we eliminate c_{0ij}^s , c_{1ij}^s , c_{1ij}^w and c_{1ij}^j in (5) by use of (22) – (25) and differentiate with respect to A_{ij} , c_{0ij}^s and c_{1ij}^s , respectively, to obtain the first-order conditions

$$-\sigma u'(c_{0ij}^s) + r\sigma\pi_i\pi_j\alpha u'(c_{1ij}^s) + k\pi_i(1-\pi_j)\alpha u'(c_{1ij}^w) + k\pi_j(1-\pi_i)\alpha u'(c_{1ij}^j) = 0, \quad (26)$$

(10) and (11), where the latter two imply that $c_{tij}^s = c_{tij}^j$ for $t = 0, 1$. By use of these identities together with (22) - (25), (26) yields

$$-\sigma u'(\frac{\sigma}{2}(2\omega - A_{ij})) + r\sigma\pi_i\pi_j\alpha u'(\frac{\sigma}{2}A_{ij}) + k(\pi_i(1-\pi_j) + \pi_j(1-\pi_i))\alpha u'(kA_{ij}) = 0, \quad (26')$$

which determines demand $A_{ij}(r,k)$ of a couple ij for joint-life annuities for any given payouts (r,k) . Next we investigate a joint-life annuity contract which specifies a payoff-ratio $r/k = 2$, which we call a "half to last survivor" rule.

Lemma 3: If joint-life annuities are specified according to the "half to last survivor" rule ($r/k = 2$) and offer the same return $r = q$ as individual-life annuities, the demand of a same-risk couple $ij = LL, HH$ for joint-life annuities coincides with their aggregate demand for individual-life annuities, i.e. $A_{ij}(r,k)/2 = B_{ij}^i(q)$, if $r = 2k = q$ and $\pi_i = \pi_j$.

Proof: Assume that $\pi_i = \pi_j$, that $r = 2k = q$ and that $A_{ij}(r,k)/2 = B_{ij}^i(q)$. Then (26') coincides with (16). Q.E.D.

This result is driven by the fact that the same-risk couples $ij = LL, HH$ prefer the same consumption level $c_{1ij}^w = c_{1ij}^j$, provided that only either partner i or j survives. Hence, in case of individual-life annuities they adapt annuity demands accordingly, i.e., $qB_{ij}^i = qB_{ij}^j$, while joint-life annuities restrict the couples to equal consumption levels kA_{ij} . Further, it is optimal for couples (regardless of the type of annuities) to share consumption and, hence, the annuity payouts to equal parts, provided that both partners survive (due to equal weights of c_{tij}^s and c_{tij}^j in the couples' utility function). From these considerations it follows that same-risk couples have the same consumption behaviour over the partners' lifetimes, if $r = 2k = q$, by demanding the same amount $A_{ij}(r,k)/2 = B_{ij}^i(q)$.

¹⁵ For a sufficiently low relative payoff r/k , the couple substitutes annuities partly by bonds to increase consumption for the case that both of them survive. For a sufficiently high relative payoff r/k , they will do so to increase consumption for the case that only one partner survives.

Corollary 1: Lemma 3 implies that any same risk-type couple $ij = LL, HH$ is indifferent between individual-life annuities and joint-life annuities with "a half to last survivor" rule, if $q = r$, while they are better off at any $q > r$ and worse off at any $q < r$. This is in contrast to mixed-risk couples LH, who are better off with individual-life annuities than with joint-life annuities with "a half to last survivor" rule, if $q = r$. The intuition, which follows from the comments below Lemma 1, is that individual-life annuities allow for adjustment to the higher weight of $c_{iLH}^{H^w}$ of the longer-lived partner in the couple's expected utility than that of $c_{iLH}^{L^w}$ of the shorter-lived partner L, while joint-life annuities restricts demand to $c_{iLH}^{H^w} = c_{iLH}^{L^w}$, which implies lower expected utility given that $r = q$.

3.2 Separate and pooling contracts for joint-life annuities

Joint-life annuities are characterised by two payoffs (r, k) . First of all, this allows annuity companies to offer contracts which differ in their payoff ratio r/k . Second, observe that a type-HH couple has a higher probability that both partners survive to retirement (relative to the probability that only one partner survives) than a type-LH couple, who has in turn a relatively higher chance that both survive than a type-LL couple, i.e.

$$\pi_H^2 / (2\pi_H(1 - \pi_H)) > \pi_L \pi_H / (\pi_L(1 - \pi_H) + \pi_H(1 - \pi_L)) > \pi_L^2 / (2\pi_L(1 - \pi_L)), \quad (27)$$

which is due to the assumption that $\pi_H > \pi_L$. Hence, for any given r , a type-LL couple will put most weight on the last-survivor payoff k , while a type-HH couple will put least weight on k . Due to these considerations it is obvious that annuity companies may have an incentive to separate couples according to their survival probabilities by varying the relative payoff. Before we turn (in Section 3.3) to investigate the implications of these considerations on the equilibrium outcome, we introduce contracts for joint-life annuities which produce zero-profits, when either bought by one type of couples only ("*separate contract*") or bought by all three types of couples ("*pooling contract*"). These are of special interest, because under the assumption of perfect competition in the market for joint-life annuities, only zero-profit contracts (whether separate or pooling) can persist.

A contract (r_{ij}, k_{ij}) , which is bought solely by couples of one type ij , is called a *separate contract*. It produces zero-profits, if

$$1 - \pi_i \pi_j r_{ij} - (\pi_i(1 - \pi_j) + \pi_j(1 - \pi_i)) k_{ij} = 0 \quad i, j = L, H \quad (28)$$

given the assumption of a zero interest rate. Note that the zero-profit condition (28) implies that the joint-life annuity is fair for a couple ij , as expected payoffs equal its price. However, as many

contracts (r_{ij}, k_{ij}) fulfil (28), the next Lemma investigates which of them is the most preferred one by a couple of type ij .

Lemma 4: Among all separate contracts (r_{ij}, k_{ij}) , which fulfil (28) for a couple of type ij , the most preferred is characterised by

$$\sigma u'(\frac{\sigma r}{2} A_{ij}) = u'(kA_{ij}) \quad (29)$$

which implies a payoff-ratio $r_{ij}/k_{ij} = 2$ for $\sigma = 1$ or for logarithmic utility, with $r_{ij} = 2/(\pi_i + \pi_j)$.

Proof: See the Appendix.

From (29) it is immediate that in case that there is no joint consumption ($\sigma = 1$), the "half to last survivor" rule is optimal for a couple ij , given their respective zero-profit separate contract. By use of $r_{ij}/k_{ij} = 2$ and (28) the optimal contract (r_{ij}, k_{ij}) for couple ij is given by $(2/(\pi_i + \pi_j), 1/(\pi_i + \pi_j))$. For $\sigma > 1$, however, the optimum ratio r_{ij}/k_{ij} depends on the specifics of the per-period function. One checks easily that for any utility function which exhibits a constant relative risk aversion R , the most preferred ratio r_{ij}/k_{ij} determined by (29) and is larger (smaller) than 2, if R is smaller (larger) than 1, specifically for logarithmic utility ($R = 1$), the "half to last survivor" rule is optimal.¹⁶

On the other hand, a contract (r, k) , which is bought by at least two types of couples $ij = LL, LH, HH$, is called a *pooling contract*. In order that a pooling contract produces zero profits, it must fulfil the condition, together with annuity demand $A_{ij} > 0$ for at least two $ij = LL, LH, HH$, (for brevity, we use A_{ij} instead of $A_{ij}(r, k)$)

$$\begin{aligned} & \frac{\gamma^2}{2} A_{HH} (1 - \pi_H^2 r - 2\pi_H(1 - \pi_H)k) + \gamma(1 - \gamma) A_{LH} (1 - \pi_H \pi_L r - (\pi_H(1 - \pi_L) + \pi_L(1 - \pi_H))k) + \\ & + \frac{(1 - \gamma)^2}{2} A_{LL} (1 - \pi_L^2 r - 2\pi_L(1 - \pi_L)k) = 0, \end{aligned} \quad (30)$$

where $\gamma^2/2$, $\gamma(1 - \gamma)$ and $(1 - \gamma)^2/2$ are the respective shares of type-HH couples, type-LH couples and type-LL couples, resp., according to the assumptions made in Section 2.2.

¹⁶ Note, moreover, that relation (29) which characterises the optimum division of consumption between the different risk-states in retirement, also determines the optimal division of consumption between the working and the retirement period, namely $u'(\frac{\sigma}{2}(2\omega - A_{ij})) = \alpha u'(\frac{\sigma r}{2} A_{ij})$, which can be seen by elimination of $u'(kA_{ij})$ in (26') by use of (29) and (28). It follows that a couple of type ij , who does not discount future consumption due to time preference ($\alpha = 1$), consumes the same amounts in the working period and in the retirement period, when both partners survive. Otherwise ($\alpha < 1$), the couple chooses a greater consumption level in the working period, i.e. $c_{0ij}^s > c_{1ij}^s$.

Further note that our assumptions on the survival probabilities implies that a pooling contract (r,k) specified according to the "half to last survivor" rule $(r/k = 2)$ offers the highest expected payoffs to couple HH and the lowest to couples of type LL, as $\pi_H^2 r + \pi_H(1-\pi_H)r > \pi_L \pi_H r + \frac{1}{2}(\pi_H(1-\pi_L) + \pi_L(1-\pi_H))r > \pi_L^2 r + \pi_L(1-\pi_L)r$. Obviously, this relation reveals that given this contract, couples of type LL are the most "profitable" ones (the good risks) and couples of type HH are the least "profitable" ones (the bad risks). This means that on the one hand, a zero-profit pooling contract with $r/k = 2$ would produce positive profits, if it were chosen only by couple LL, or that, on the other hand, a zero-profit separate contract with $r_{HH}/k_{HH} = 2$ for couple HH would produce positive profits, if it were chosen by couple LH and/or couple LL additionally. However, it will be shown in the next Lemma that the above relation of expected payoffs for different couple-types and hence their profitability for the annuity companies does not hold for all payoff-ratios r/k . Note that this is in contrast to many other models with asymmetric information (e.g. like in the market for individual life annuities, see Section 2.2), where lowest-risk types are always the most profitable costumers for firms, while the highest-risk types are always the least profitable ones.

Lemma 5: Consider a pooling contract (r,k) for joint-life annuities and let $p_{ij} \equiv \pi_i \pi_j r + (\pi_i(1-\pi_j) + \pi_j(1-\pi_i))k$ be expected payoffs for a couple $ij = LL, LH, HH$. Then the relation of expected payoffs of (r,k) for each couple ij depends on the payoff-ratio r/k in the following way:

$$(L5a) \quad p_{LL} < p_{LH} \leq p_{HH}, \text{ if } \frac{r}{k} \geq 2 - \frac{1}{\pi_H},$$

$$(L5b) \quad p_{LL} \leq p_{HH} < p_{LH}, \text{ if } 2 - \frac{1}{\pi_H} > \frac{r}{k} \geq 2 - \frac{2}{\pi_H + \pi_L}, \text{ given that } \pi_H > \frac{1}{2},$$

$$(L5c) \quad p_{HH} < p_{LL} < p_{LH}, \text{ if } 2 - \frac{2}{\pi_H + \pi_L} > \frac{r}{k} > 2 - \frac{1}{\pi_L}, \text{ given that } \pi_H + \pi_L > 1,$$

$$(L5d) \quad p_{HH} < p_{LH} \leq p_{LL}, \text{ if } 2 - \frac{1}{\pi_L} \geq \frac{r}{k}, \text{ given that } \pi_L > \frac{1}{2}.$$

Proof: We determine the signs of the differences $p_{LH} - p_{LL}$, $p_{HH} - p_{LL}$ and $p_{HH} - p_{LH}$ and find that

$$p_{LH} \begin{matrix} \geq \\ < \end{matrix} p_{LL} \text{ if } \frac{r}{k} \begin{matrix} \geq \\ < \end{matrix} 2 - \frac{1}{\pi_L}, \quad p_{HH} \begin{matrix} \geq \\ < \end{matrix} p_{LL} \text{ if } \frac{r}{k} \begin{matrix} \geq \\ < \end{matrix} 2 - \frac{2}{\pi_H + \pi_L}, \quad p_{HH} \begin{matrix} \geq \\ < \end{matrix} p_{LH} \text{ if } \frac{r}{k} \begin{matrix} \geq \\ < \end{matrix} 2 - \frac{1}{\pi_H}, \quad (31)$$

where, as $\pi_L < \pi_H$,

$$2 - \frac{1}{\pi_L} < 2 - \frac{2}{\pi_H + \pi_L} < 2 - \frac{1}{\pi_H}. \quad (32)$$

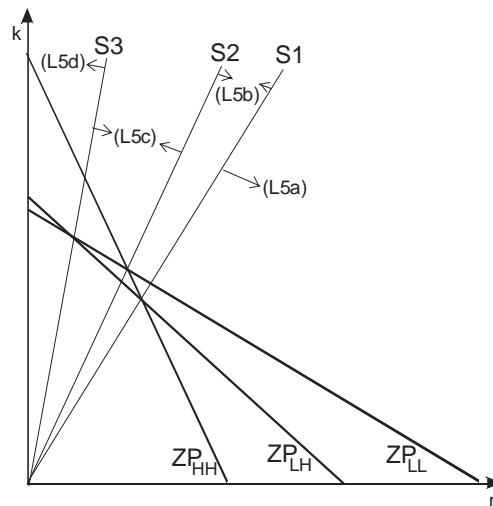
From (31) together with (32) it follows (L5a) – (L5d) of Lemma 5. Q.E.D.

The reasoning for Lemma 5 is the following: Among all three types of couples $ij = LL, LH, HH$, couples LL have the lowest chance that both partners survive, while couples HH have the highest chance that both partners survive (as $\pi_L^2 < \pi_L \pi_H < \pi_H^2$). However, this ordering does

generally not hold for their risk that only one partner survives [as $2\pi_L(1 - \pi_L) \leq \pi_L(1 - \pi_H) + \pi_H(1 - \pi_L) \leq 2\pi_H(1 - \pi_H)$]. This gives us an intuitive argument why only for sufficiently high payoff-ratios r/k , namely those defined by (L5a) of Lemma 5 (among them $r/k = 2$, considered above), couples LL are the best risks and couples HH are the worst risks. For lower payoff-ratios, however, the ordering changes, where it even reverses for sufficiently low payoff-ratios r/k , namely those defined by (L5d). Then, couples LL are the worst risks and couples HH are the best risks.

Corollary 2: Note that the results in Lemma 5 found for pooling contracts has its counterpart for a separate contract: When drawing the zero-profit conditions (28) for a separate contract (r_{ij}, k_{ij}) in the (r, k) -space, denoted by ZP_{ij} , $ij = LL, LH, HH$ in Figure 1, one observes that the zero-profit lines ZP_{ij} intersect at different payoff-ratios indicated by the straight lines S1 – S3. Hence, the position of ZP_{HH} , ZP_{LH} and ZP_{LL} to each other also depends on the payoff-ratio r/k . For an explanation, we note that any contract on ZP_{ij} offers the same expected payoffs, equal to 1, to couple ij . By this, the following correlation becomes obvious: Given a payoff-ratio r/k , at which the expected payoffs of a *pooling* contract is lower, e.g., for couple LL than for couple LH, the *separate* contract for couple LL has to lie above the separate contract for couple LH in order that each of the contracts offers the same expected payoffs (equal to one) to the respective couple. This explains why the payoff-ratios below and on S1 are equal to those defined in (L5a) of Lemma 5, consequently ZP_{LL} lies above ZP_{LH} , which in turn lies above (and on) ZP_{HH} .

Figure 1: Zero-profit conditions for a separate contract (r_{ij}, k_{ij})



Analogously, payoff-ratios between S1 and S2 (as well as on S2) coincide with those defined in (L5b), those between S2 and S3 coincide with those defined in (L5c) and those above and on S3 coincide with those defined in (L5d). In the latter case, ZP_{HH} lies above ZP_{LH} , which in turn lies above ZP_{LL} , which means that a zero-profit separate contract (r_{HH}, k_{HH}) for couples HH offers

higher payoffs than a zero-profit separate contract for couple LH or couple LL. This implies that (r_{HH}, k_{HH}) would produce negative profits, if chosen by couple LH and/or couple HH. As its counterpart, any zero-profit pooling contract would produce positive profits, if it were chosen only by couple HH. Obviously, these results on the profitability of contracts are essential for the incentives for the annuity companies, which contracts they will offer in equilibrium and, hence, for the upcoming analysis of the equilibria.

3.3 Equilibria for joint-life annuities

To investigate the equilibrium outcome in the market for joint-life annuities we make use of the well-known concept of a Nash-Cournot equilibrium, which was studied by Rothschild and Stiglitz (1976) in the context of insurance markets. First we show that no pooling equilibrium for joint-life annuities exists. Then, in subsection 3.3.2 we derive all results concerning the existence and characterisation of a separating equilibrium, when couples are mandated to buy joint-life annuities. This serves as a benchmark, which is then compared to a situation, where couples can choose between individual- and joint-life annuities.

3.3.1 The non-existence of a pooling equilibrium for joint-life annuities

We call a contract (r, k) a pooling equilibrium, if, together with $A_{ij}(r, k) > 0$, $ij = LL, LH, HH$, the zero-profit condition (30) is fulfilled and if no other contract exists, which is preferred to (r, k) by at least one type of couple $ij \in \{LL, LH, HH\}$ and which allows a nonnegative profit. We find that in general no pooling equilibrium exists. As a preparation we show:

Lemma 6: Let (r, k) be a pooling contract that, together with $A_{ij}(r, k) > 0$, $ij = LL, LH, HH$, fulfils the zero-profit condition (30).

- (i) If (r, k) is characterised by $r/k \geq 2 - 2/(\pi_L + \pi_H)$ any contract $(r + \delta r, k + \delta k)$, which is close enough to (r, k) and which is chosen only by couples of type LL, allows a nonnegative profit.
- (ii) If $\pi_L + \pi_H > 1$ and (r, k) is characterised by $r/k < 2 - 2/(\pi_L + \pi_H)$, any contract $(r + \delta r, k + \delta k)$, which is close enough to (r, k) and which chosen only by couples of type HH, allows a nonnegative profit.

Proof: See Appendix.

This result follows from Lemma 5, from which we know that the expected payoffs of any zero-profit pooling contract (r, k) , characterised by $r/k \geq 2 - 2/(\pi_L + \pi_H)$, is lower for couple LL than for couple LH and HH. This in turn implies positive profits, if only type-LL couples buy this zero-

profit pooling contract or one close to it. Equivalent considerations apply for any zero-profit pooling contract, characterised by $r/k < 2 - 2/(\pi_L + \pi_H)$, given that $\pi_L + \pi_H > 1$: Then, (r,k) produces positive profits, if only type-HH couples buy this contract or one close to it, because, due to Lemma 5, it offers smaller expected payoffs to a type-HH couple than to a type-LL couple as well as to a type-LH couple.

We now introduce a further assumption on expected utility U_{ij} , in addition to strict concavity of the per-period utility function u : Indifference curves in the (r,k) -space satisfy the single-crossing condition,

$$-\frac{\partial V_{HH}/\partial r}{\partial V_{HH}/\partial k} < -\frac{\partial V_{LH}/\partial r}{\partial V_{LH}/\partial k} < -\frac{\partial V_{LL}/\partial r}{\partial V_{LL}/\partial k} \quad (33)$$

where $V_{ij}(r,k)$ indicates indirect (expected) utility of couple $ij = LL, LH, HH$ for any contract (r,k) , defined in the usual way as utility attained with $A_{ij}(r,k)$. Condition (33) implies that the indifference curves of couples of different types can cross only once, as the slope of an indifference curve of a type-HH couple is always steeper than that of a type-LH couple, which in turn is steeper than that of a type-LL couple. Using the Envelope Theorem, (33) reduces to

$$\frac{\pi_H^2 \sigma u'(\frac{\sigma r}{2} A_{HH})}{2\pi_H(1-\pi_H)u'(kA_{HH})} > \frac{\pi_L \pi_H \sigma u'(\frac{\sigma r}{2} A_{LH})}{(\pi_L(1-\pi_H) + \pi_H(1-\pi_L))u'(kA_{LH})} > \frac{\pi_L^2 \sigma u'(\frac{\sigma r}{2} A_{LL})}{2\pi_L(1-\pi_L)u'(kA_{LL})}, \quad (33')$$

which, together with (27), implies that the single-crossing condition is certainly fulfilled for any per-period utility function which exhibits a constant coefficient of relative risk aversion, in particular for logarithmic utility (14).

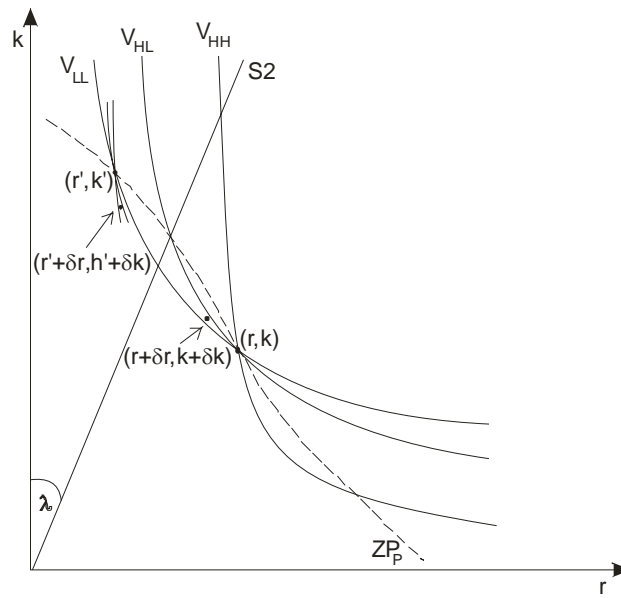
Proposition 2: No pooling equilibrium exists, given the single-crossing condition (33).

We demonstrate the result graphically (see Figure 3) in a diagram where the payoffs r and k are drawn on the axis.¹⁷ The dashed line ZP_P represents the zero-profit condition (30) for a pooling contract, the slope λ of the straight line $S2$ shows the payoff ratio $r/k = 2 - 2/(\pi_L + \pi_H)$. First, consider any contract (r,k) on ZP_P , which lies below or on the straight line $S2$. Due to the single-crossing condition, the indifference curve V_{LL} of a type-LL couple is the flattest. Hence, one can find another contract $(r + \delta r, k + \delta k)$, close to (r,k) , which is preferred only by couple LL. As we know from Lemma 6, such a contract only chosen by couple LL is profitable for the annuity companies. Hence any zero-profit pooling contract (r,k) , which fulfils $r/k \geq 2 - 2/(\pi_L + \pi_H)$, does not represent a pooling equilibrium. The same applies for any contract contract (r',k') on zero-

¹⁷ As the formal arguments to prove Proposition 2 are similar to those given by Brunner and Pech (2005), although in the context of individual-life annuities, which payoffs may vary over two periods of retirement, we refer to Brunner and Pech (2005).

profit line ZP_P and above the straight line $S2$ for analogous reasons: Due to the single-crossing condition, the indifference curve V_{HH} of a type-HH couple is the steepest. Therefore, another contract $(r'+\delta r, k'+\delta k)$ close to (r', k') exists, which is only preferred by couple HH – and is therefore profitable, as Lemma 6 tells us. Altogether, no pooling equilibrium exists.¹⁸

Figure 2: The non-existence of a pooling equilibrium



By means of Figure 2 the significance of the single-crossing condition can be discussed. One observes immediately that the result of Proposition 2 certainly holds whenever the slopes of V_{LL} and V_{HH} differ, independently of which one is steeper, as long as the indifference curve V_{LH} of type LH-couple turns out not to be steeper or flatter than V_{LL} and V_{HH} . Even when the slopes of all three indifference curves are the same, the result holds, given that the slope of the zero-profit line ZP_P is different. In this case one can find another pooling contract close to the original zero-profit pooling contract which is preferred by the couples of all three types and produces a non-negative profit. Only if a point on ZP_P exists in which the slopes of ZP_P , V_{LL} , V_{LH} and V_{HH} are identical this represents a pooling equilibrium. Clearly, this can occur only for very specific parameter constellations. Further, one cannot exclude the possibility that a pooling equilibrium exists, in case that the slope of V_{LH} is either steeper or flatter than the slope of V_{LL} and V_{HH} . In this case, it can occur that any contract, close to the original zero-profit pooling contract, which is preferred either by couple HH or by couple LL, produces a negative profit, as it will be chosen

¹⁸ Obviously, all arguments remain valid, when considering a zero-profit pooling contract which is chosen only by couples of type LL and HH (but not by couple LH). Analogous arguments apply for any zero-profit pooling contract which is chosen by two types of couples only (i.e. either by couples LH and LL or couples LH and HH): For any payoff-ratio one can find another contract close to the original pooling contract, which is preferred by one type of couples only and then produces a nonnegative profit (which follows from Lemma 5 and the single-crossing property (33)). Therefore, as we note already at this stage of analysis, there cannot exist an equilibrium which consists of one pooling contract, chosen by two types of couples, and one separate contract for the remaining type of couple. This will be discussed in detail in Section 3.3.2.

also by couple LH. If this is the case, then the original zero-profit contract constitutes a pooling equilibrium.

3.3.2 Separating equilibrium with mandatory joint-life annuities for couples

In this section we will show the possibility of a separating equilibrium for joint-life annuities in a framework in which couples are mandated to buy joint-life annuities. Under this assumption individual-life annuities are bought by single persons only, who receive a pooling contract \tilde{q}_S defined as in (20). In Section 3.3.3 we relax the assumption of mandatory joint-life annuities for couples and allow couples to choose between individual- and joint-life annuities.

We call a set of three contracts (r_{LL}, k_{LL}) , (r_{LH}, k_{LH}) , (r_{HH}, k_{HH}) a separating Nash-Cournot equilibrium, if each fulfils the respective zero-profit condition (28) and the self-selection constraint for the respective couple $ij = LL, LH, HH$, i.e.

$$V_{HH}(r_{HH}, k_{HH}) \geq V_{HH}(r_{LH}, k_{LH}), \quad (34a)$$

$$V_{HH}(r_{HH}, k_{HH}) \geq V_{HH}(r_{LL}, k_{LL}), \quad (34b)$$

$$V_{LH}(r_{LH}, k_{LH}) \geq V_{LH}(r_{HH}, k_{HH}), \quad (35a)$$

$$V_{LH}(r_{LH}, k_{LH}) \geq V_{LH}(r_{LL}, k_{LL}), \quad (35b)$$

$$V_{LL}(r_{LL}, k_{LL}) \geq V_{LL}(r_{LH}, k_{LH}), \quad (36a)$$

$$V_{LL}(r_{LL}, k_{LL}) \geq V_{LL}(r_{HH}, k_{HH}), \quad (36b)$$

and if no other contract exists, which is preferred by at least one couple $ij \in \{LL, LH, HH\}$ and which allows a nonnegative profit. Note that this definition of a separating equilibrium implies that if a couple of type ij is indifferent between their separate contract and another one (or two), they indeed choose the separate contract which is designed for them. Moreover, it is assumed that each couple of type ij is restricted to buy only one type of contract, i.e. no mix of (r_{LL}, k_{LL}) , (r_{LH}, k_{LH}) and (r_{HH}, k_{HH}) .¹⁹ However, couples may purchase as many contracts of the chosen type as they want. Further, we refer to a logarithmic per-period function (14), which has two convenient properties helping to keep the analytical and graphical analysis simple: First, the single-crossing condition (33) is fulfilled, as mentioned above. Second, the demand for joint-life annuities does not depend on the payoffs (r, k) and on the parameter σ for the degree of joint consumption.

Let the three contracts $(\hat{r}_{HH}, \hat{k}_{HH})$, $(\hat{r}_{LH}, \hat{k}_{LH})$ and $(\hat{r}_{LL}, \hat{k}_{LL})$ be defined as follows:

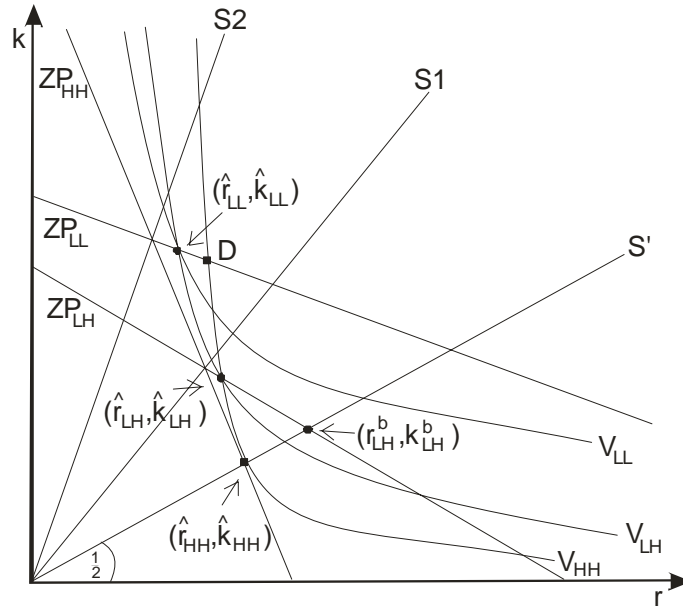
- $(\hat{r}_{HH}, \hat{k}_{HH})$ is the most preferred separate contract for couple HH, which fulfils the zero-profit condition (28) for couple HH; therefore $\hat{r}_{HH} = 2\hat{k}_{HH}$, as shown in Lemma 4.

¹⁹ Note that this assumption is usually made in this type of asymmetric-information models, see e.g. Brunner and Pech (2005), Townley and Boadway (1988). Further, it is related to the analogous assumption needed to model price and quantity competition, as applied by Rothschild and Stiglitz (1976) and Eckstein, Eichenbaum and Peled (1985) in the context of life annuities. There, individuals are restricted to buy only one insurance contract, which specifies a quantity and a price. Thus the assumption of excluding couples from buying a mix of contract types is less demanding; in reality, however, it requires a system of information exchange among annuity companies.

- $(\hat{r}_{LH}, \hat{k}_{LH})$ is implicitly defined by the zero-profit condition (28) for couple LH, by the property that a couple HH is indifferent between $(\hat{r}_{HH}, \hat{k}_{HH})$ and $(\hat{r}_{LH}, \hat{k}_{LH})$ and by $\hat{r}_{LH} < 2\hat{k}_{LH}$.
- $(\hat{r}_{LL}, \hat{k}_{LL})$ is implicitly defined by the zero-profit condition (28) for couple LL, by the property that a couple LH is indifferent between $(\hat{r}_{LH}, \hat{k}_{LH})$ and $(\hat{r}_{LL}, \hat{k}_{LL})$ and by $\hat{r}_{LL} < 2\hat{k}_{LL}$.

In the following we will show that the set of these three contracts may but need not constitute an equilibrium. We begin the analysis by illustrating graphically how the three contracts are defined. In Figure 3, analogously to Figure 1, we have drawn the zero-profit lines ZP_{ij} for a separate contract (r_{ij}, k_{ij}) and their respective points of intersection $S1$ and $S2$. Note that in order to simplify the graphics we now assume a value of $\pi_L < 0.5$, hence in Figure 3 ZP_{LL} and ZP_{LH} do not cross. Given logarithmic utility, the indifference curves V_{ij} are strictly convex, with respective slope $-2\pi_i\pi_j k / ((\pi_i(1-\pi_j) + \pi_j(1-\pi_i))r)$; the respective slope of ZP_{ij} is equal to $-\pi_i\pi_j / ((\pi_i(1-\pi_j) + \pi_j(1-\pi_i)))$. Hence, at $(\hat{r}_{HH}, \hat{k}_{HH})$ the indifference curve V_{HH} is tangent to the zero-profit line ZP_{HH} , while the indifference curves, V_{HH} going through $(\hat{r}_{HH}, \hat{k}_{HH})$ and V_{LH} going through $(\hat{r}_{LH}, \hat{k}_{LH})$, have exactly two points of intersection with the zero-profit line ZP_{LH} , ZP_{LL} resp. $\hat{r}_{LH} < 2\hat{k}_{LH}$ and $\hat{r}_{LL} < 2\hat{k}_{LL}$ uniquely define the respective points of intersection above the straight line S' where $r = 2k$.

Figure 3: The possibility of a separating equilibrium



By definition, $(\hat{r}_{HH}, \hat{k}_{HH})$, $(\hat{r}_{LH}, \hat{k}_{LH})$ and $(\hat{r}_{LL}, \hat{k}_{LL})$ produce zero profits, if each is chosen only by the respective couple $ij = LL, LH, HH$. That this is indeed the case is shown in the next Lemma.

Lemma 7: $(\hat{r}_{HH}, \hat{k}_{HH})$, $(\hat{r}_{LH}, \hat{k}_{LH})$ and $(\hat{r}_{LL}, \hat{k}_{LL})$ fulfil the self-selection constraints (34a) – (36b).

Proof: See the Appendix.

The self-selection constraint (34a) for couple HH is fulfilled by the condition that $V_{HH}(\hat{r}_{HH}, \hat{k}_{HH}) = V_{HH}(\hat{r}_{LH}, \hat{k}_{LH})$. Further it turns out that the self-selection constraint (34b) holds as well, which is due to the single-crossing condition: It is evident from Figure 3 that couples of type HH are better off at $(\hat{r}_{HH}, \hat{k}_{HH})$ than at the separate $(\hat{r}_{LL}, \hat{k}_{LL})$ for couple LL. Altogether, couples of type HH buy their separate contract $(\hat{r}_{HH}, \hat{k}_{HH})$. Equivalent considerations apply to couples of type LH: They choose the contract $(\hat{r}_{LH}, \hat{k}_{LH})$, as, by definition, $V_{LH}(\hat{r}_{LH}, \hat{k}_{LH}) = V_{LH}(\hat{r}_{LL}, \hat{k}_{LL})$, and as, due to the single-crossing condition, $V_{LH}(\hat{r}_{LH}, \hat{k}_{LH}) > V_{LH}(\hat{r}_{HH}, \hat{k}_{HH})$. Finally observe from Figure 3 that (again due to the single-crossing condition) couples of type LL prefer their contract $(\hat{r}_{LL}, \hat{k}_{LL})$ to the other two contracts, designed for couples of type LH and HH; hence the self-selection constraints (36a) and (36b) hold with inequality.

Lemma 7 ensures that no couple of type ij has an incentive to deviate from their respective separate contract, if only $(\hat{r}_{HH}, \hat{k}_{HH})$, $(\hat{r}_{LH}, \hat{k}_{LH})$ and $(\hat{r}_{LL}, \hat{k}_{LL})$ are offered to them, which in turn imply zero profits for the annuity companies. Next, we will show that annuity companies have no incentive to offer any other separate contract than $(\hat{r}_{HH}, \hat{k}_{HH})$, $(\hat{r}_{LH}, \hat{k}_{LH})$ and $(\hat{r}_{LL}, \hat{k}_{LL})$ to the respective couple $ij = LL, LH, HH$. As a preparation we show:

Lemma 8: Any separate contract which fulfils the zero-profit condition (28)

- (i) for couple LH and which is preferred to $(\hat{r}_{LH}, \hat{k}_{LH})$ by couple LH, would be chosen also by couple HH and then produce a loss.
- (ii) for couple LL and which is preferred to $(\hat{r}_{LL}, \hat{k}_{LL})$ by couple LL, would be also chosen by couple LH or by couple LH and HH and then produce a loss.

Proof: See the Appendix.

The arguments behind (i) of Lemma 8 are the following: First observe that $(\hat{r}_{LH}, \hat{k}_{LH})$ as the point of intersection of V_{HH} and ZP_{LH} must lie below the point of intersection of Z_{HH} and ZP_{LH} , which is due to the fact that at $(\hat{r}_{LH}, \hat{k}_{LH})$ the slope of V_{HH} is steeper than ZP_{HH} . Consequently, $(\hat{r}_{LH}, \hat{k}_{LH})$ as well as any contract on ZP_{LH} below $(\hat{r}_{LH}, \hat{k}_{LH})$ are characterised by a payoff-ratio below $S1$ where ZP_{LH} lies above ZP_{HH} (compare Corollary 2). Second, observe that couple LH and HH prefer any contract on ZP_{LH} below $(\hat{r}_{LH}, \hat{k}_{LH})$ to their respective separate contract $(\hat{r}_{LH}, \hat{k}_{LH})$ and $(\hat{r}_{HH}, \hat{k}_{HH})$, while couple LL is better off at $(\hat{r}_{LL}, \hat{k}_{LL})$ (note the single-crossing property of V_{ij}). Hence, any such contract would produce a loss, if it were offered by the annuity companies (as it would be chosen also by couple HH). By analogous consideration we find that $(\hat{r}_{LL}, \hat{k}_{LL})$ is characterised by a payoff-ratio, where ZP_{LL} lies above ZP_{LH} , and that the contract, at which V_{HH}

and ZP_{LH} cross, denoted as D in Figure 3, is characterised by a payoff-ratio below S2, where ZP_{LL} lies above ZP_{HH} . Hence, any contract on ZP_{LL} which is preferred to $(\hat{r}_{LL}, \hat{k}_{LL})$ by couple LL would produce a loss, because it would be chosen also by couple LH or by couple LH and HH.

Proposition 3: If a separating equilibrium exists, it consists of $(\hat{r}_{HH}, \hat{k}_{HH})$, $(\hat{r}_{LH}, \hat{k}_{LH})$ and $(\hat{r}_{LL}, \hat{k}_{LL})$.

Proof: See the Appendix.

As an intuition for this result, note first that $(\hat{r}_{HH}, \hat{k}_{HH})$, which is most preferred by couple HH among all contracts on ZP_{HH} , must be part of the equilibrium: Any other contract is dominated by $(\hat{r}_{HH}, \hat{k}_{HH})$, and firms need not care whether couples of type LH and/or LL might buy this contract too, because this would only increase profits (as $(\hat{r}_{HH}, \hat{k}_{HH})$ lies below S1). However, when offering a specific contract to couple LH, annuity companies have to be concerned that this contract is not chosen by a couple of type HH, because then they would make a loss, as Lemma 8 tells us. This implies that the self-selection constraint (34a) is essential: Among all contracts on ZP_{LH} , only $(\hat{r}_{LH}, \hat{k}_{LH})$, which is the most preferred by couple LH, subject to the self-selection constraint (34a), can be part of a separating equilibrium. Note, in particular that due to this argument the contract (r_{LH}^b, k_{LH}^b) , which is most preferred by couple LH among all contracts on ZP_{LH} cannot be part of the equilibrium. However, annuity companies need not to care whether couples of type LL buy $(\hat{r}_{LH}, \hat{k}_{LH})$, because this would imply positive profits. Analogous considerations apply to the separate contract for couple LL, where only $(\hat{r}_{LL}, \hat{k}_{LL})$, which provides the maximum utility to couple LL subject to the self-selection constraint (35b), can be part of the separating equilibrium. Any other contract on ZP_{LL} , at which couple LL would be better off than at $(\hat{r}_{LL}, \hat{k}_{LL})$, would be chosen by couple LH and/or couple HH and then produce a loss (compare Lemma 8), and hence, will not be offered by the annuity companies.

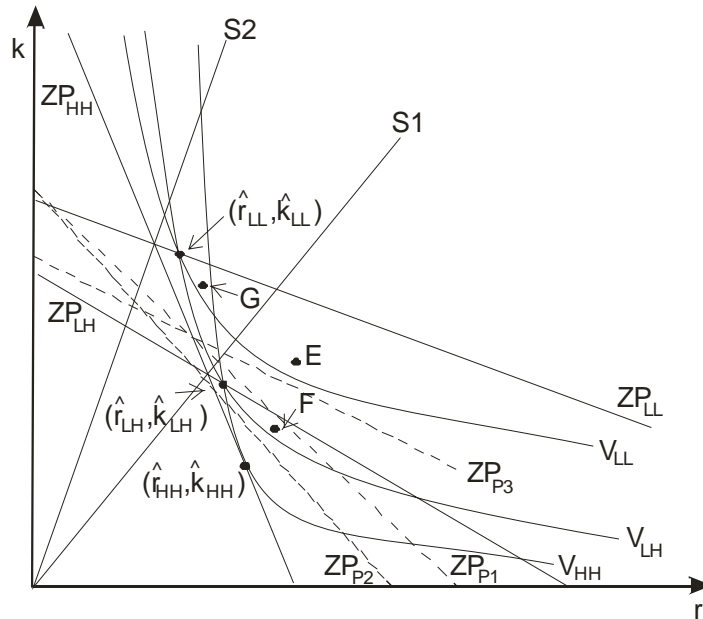
Proposition 3 says that the contract set $(\hat{r}_{HH}, \hat{k}_{HH})$, $(\hat{r}_{LH}, \hat{k}_{LH})$ and $(\hat{r}_{LL}, \hat{k}_{LL})$ is indeed the only candidate for a separating equilibrium: No other separate contract (r_{ij}, k_{ij}) exists which is preferred by the respective couple $ij = LL, LH, HH$ only, and produces a nonnegative profit. However, to prove that this contract set indeed constitutes an equilibrium, one has to show that no other contract exists, which is preferred by at least two couples $ij \in \{LL, LH, HH\}$ and which allows a nonnegative profit.

Proposition 4: For sufficiently high values γ of the share of the high-risk types, a separating equilibrium exists.

Proof: See the Appendix.

We demonstrate the intuition behind this Proposition graphically by means of Figure 4. First, consider a contract, which lies above the indifference curves V_{LL} , V_{LH} and V_{HH} , such as E in Figure 4. If E is offered, couples of all three types will purchase it. If moreover E allows a non-negative profit, when bought by couples of all three types, it will be offered by the annuity companies, and consequently it will upset the potential separating equilibrium $(\hat{r}_{HH}, \hat{k}_{HH})$, $(\hat{r}_{LH}, \hat{k}_{LH})$ and $(\hat{r}_{LL}, \hat{k}_{LL})$. We note that the profitability of E and hence the position of the dashed zero-profit line ZP_{P1} ²⁰, which represents all pooling contracts which fulfil the zero-profit condition with positive annuity demand $A_{ij} > 0$ for $ij = LL, LH, HH$, depends on the composition of aggregate annuity demand. If there are relatively many married persons with a high survival probability, i.e. a high value of γ , then E will lose money. Such a case is drawn in Figure 4, where ZP_{P1} does not cross V_{LL} ; hence no pooling contract exists, which is chosen by couples of all three types and allows a non-negative profit. However, for lower values γ of high-risk types, ZP_{P1} lies closer to ZP_{LL} , if E lies on or below ZP_{P1} , E will make a profit and no separating equilibrium exists.

Figure 4: The existence of a separating equilibrium



Second, consider a contract which lies above the indifference curves V_{LH} and V_{HH} , but below V_{LL} , like contract F in Figure 4. If F is offered, it is purchased by couples of type LH and HH, but not by couples of type LL. As above, the profitability of F and hence the position of the zero-profit line ZP_{P2} for a pooling contract with $A_{HH} > 0$, $A_{LH} > 0$, $A_{LL} = 0$, depends on the level of the share γ of the high-risk types. For sufficiently large values of γ , ZP_{P2} lies below V_{LH} . Such a situation is presented in Figure 4, which implies that any pooling contract, preferred by couple LH and HH, would produce negative profits and thus, will not be offered by the annuity

²⁰ Note that in case of logarithmic per-period utility the zero-profit conditions for a pooling contract is indeed a straight line, as annuity demand A_{ij} does not depend on (r, k) .

companies. However, for sufficiently low values of γ , F makes a non-negative profit, when bought by couples of type LH and HH, (which means that F will lie on or below ZP_{P2}), and consequently the contract set $(\hat{r}_{HH}, \hat{k}_{HH})$, $(\hat{r}_{LH}, \hat{k}_{LH})$ and $(\hat{r}_{LL}, \hat{k}_{LL})$ does not constitute a separating equilibrium. Analogous arguments apply to a contract like G, which lies above V_{LH} and V_{LL} but below V_{HH} , and hence would be chosen by couples of type LH and LL, but not by couple HH. If G lies on or below the zero-profit line ZP_{P3} , which represents all pooling contracts which fulfil the zero-profit condition with $A_{LH} > 0$, $A_{LL} > 0$, $A_{HH} = 0$, no separating equilibrium exists. However, for a sufficiently large γ , as drawn in Figure 4, ZP_{P3} lies below V_{LL} ; hence no dominating pooling contract, which allow non-negative profits, exists. Finally note that there does not exist a contract, which – due to the single-crossing condition – lies above V_{LL} and V_{HH} , but below V_{LH} . Altogether, we can conclude that for sufficiently large shares γ of high-risk types, no pooling contract exists, which is chosen by at least two types of couples, and then produces a non-negative profit. Such a situation is drawn in Figure 4. In this case $(\hat{r}_{HH}, \hat{k}_{HH})$, $(\hat{r}_{LH}, \hat{k}_{LH})$ and $(\hat{r}_{LL}, \hat{k}_{LL})$ indeed constitute a separating equilibrium.

However, for lower shares γ , where at least one pooling contract like E, F or G allows a non-negative profit, no separating equilibrium exists.²¹ In case that E allows non-negative profits, E does not constitute an equilibrium either, as we know from Proposition 2. From this it follows that the market for joint-life annuities will have no equilibrium at all. Due to analogous arguments, there cannot exist an equilibrium which consists of a contract set with one pooling contract for couples of two different types and one separate contract for the couple of the remaining type, like F and $(\hat{r}_{LL}, \hat{k}_{LL})$ or G and $(\hat{r}_{HH}, \hat{k}_{HH})$: For this note first that any contract F which is preferred by couples of type LH and HH to their separate contracts must lie below $S1$, where ZP_{LH} lies above ZP_{HH} (immediate from similar arguments as used to prove Lemma 8). Thus in case that there exists a contract F, which lies on the zero-profit line ZP_{P2} , annuity companies can offer another contract close to F, which is preferred by couples of type LH only, and then produces a positive profit (compare Lemma 5). Thus, a zero-profit pooling contract F cannot be part of an equilibrium, and due to similar considerations, also a zero-profit pooling contract G cannot be part of an equilibrium either.

Finally, it should be mentioned that the basic arguments remain valid in case of a general per-period utility function, not just for a logarithmic one, as long as the single-crossing condition holds. It is straightforward to see that the zero-profit lines ZP_{ij} for separate contracts for couples of each type, are unaffected by the type of the utility function. Hence the characterization of the

²¹ We ran numerical simulations which show that for sufficiently low γ , at which a pooling contract G allows non-negative profits, also the pooling contracts E and F allow non-negative profits. On the other hand, for higher shares γ , only a pooling contract F produces non-negative profits, while the contracts G and E do not.

separating equilibrium remains valid. The main difference is that with a general utility function, the curves ZP_{P_1} , ZP_{P_2} and ZP_{P_3} , defined by the zero-profit condition (30) for pooling contracts, will no longer be a straight line, because annuity demand depends on the payoff rates. The shape of these zero-profit curves in turn has an influence on the existence of the equilibrium.

Altogether, we can conclude that in case that couples are mandated to buy joint-life annuities, only a separating equilibrium can exist, where couples with both partners having a high survival probability can buy their "first-best" contract with a payoff-ratio $r/k = 2$, while couples of the other types (with at least one partner having a low survival probability) can only buy a "distorted" contract with a lower payoff-ratio r/k . This result fits to the empirical observation that annuity companies offer joint-life annuities which differ in their payoff-fraction. For instance, TIAA-CREF offers joint-life annuities with a payoff ratio r/k of 2, 1.5 and 1 (see Amerik, 2002). The results found in this framework suggest that these different options are offered by the annuity companies in order to select couples according to the partners' life-expectancies.

However, among those TIAA-CREF participants, who bought a joint-life annuity, about two-thirds of women and men chose that option with the lowest payoff-ratio of one (Ameriks, 2002). In the framework with mandatory joint-life annuities for all couples, this means that the share γ of high-risk types is relatively low, which in turn would imply that the existence of a separating equilibrium is less likely. However, in reality, couples are free to choose between individual-life annuities and joint-life annuities. Accounting for this fact, a plausible explanation for the high majority of the lowest payoff-ratio $r/k = 1$ among those selecting joint-life annuities can be offered: Mainly couples with partners having a low survival probability indeed choose joint-life annuities, while couples with partners expecting a longer life rather decide for individual-life annuities. The next Section 3.3.3, where free choice between individual- and joint-life annuities is considered, investigates whether this guess turns out to be correct.

3.3.3 Equilibria with free choice between individual or joint-life annuities

In the presence of mandatory joint-life annuities for couples, only single persons of either type $i = L, H$ buy individual-life annuities, which are offered to them at an equilibrium rate of return \tilde{q}_S , as defined by (20) in Section 2.2. In this section we extend the analysis of equilibria by allowing couples to choose between individual- and joint-life annuities within the same framework as above. Specifically, note that maintaining the assumption about restricting individuals to the purchase of one contract-type, now also excludes the purchase of a mix between contracts for individual-life annuities and for joint-life annuities (which will be abbreviated by IA- and JA-contracts from now on). However, as above, individuals (regardless of whether married or single) may purchase any amount of the chosen contract-type as they want. First of all note that

this, together with the above considerations concerning the characterisation and existence of equilibria for both contract-types, implies that IA-contracts, traded in equilibrium, continue to be pooling contracts, which are bought at least by the single persons $i = L, H$. On the other hand, if JA-contracts are traded in equilibrium, then they continue to be separate contracts, designed for the respective couple ij .

The second important observation, relevant for the analysis of equilibria in this extended framework, is that couples of type HH prefer any zero-profit pooling contract for individual-life annuities to any zero-profit separate contract for joint-life annuities. The reason for this result is that with the former contract-type, couples of type HH are in a pool with low-risk individuals (at least with those being unmarried), hence it can offer higher expected payoffs than the latter contract-type, which payoffs are determined according to the high survival probability of both couple members. Specifically, recall that the most preferred zero-profit separate contract $(\hat{r}_{HH}, \hat{k}_{HH})$ for couple HH is given by $(1/\pi_H, 1/(2\pi_H))$, while a zero-profit IA-contract provides a payoff $q > 1/\pi_H$. This together with the fact, explored in Corollary 1, that couples of type HH are better off with individual-life annuities than with joint-life annuities specified according to the "half to last survivor" rule $r/k = 2$, if $q > r$, explains the next Lemma.

Lemma 9: Couple HH prefers any pooling contract q for individual-life annuities, which, together with annuity demand $B_i(q) > 0$ and $B_{ij}^i(q) \geq 0$ for $i, j = L, H$, fulfils the zero-profit condition (19), to their most preferred separate contract $(\hat{r}_{HH}, \hat{k}_{HH})$ which fulfils the zero-profit condition (28) for couple HH.

Proof: Immediate by use of Lemma 3, Corollary 1, Lemma 4 and the fact, explored in Section 2.2, that any zero-profit pooling contract q must lie between $1/\pi_H$ and $1/\pi_L$. Q.E.D.

It follows from Lemma 9 that in equilibrium no separate JA-contract (r_{HH}, k_{HH}) for couple HH will be traded. The third important observation is that it is ambiguous whether couples of type LH are better off with a zero-profit pooling contract q for individual-life annuities or with a zero-profit separate contract (r_{LH}, k_{LH}) for joint-life annuities. For this note that the zero-profit pooling contract q may but need not offer a higher expected payoff than a zero-profit separate contract for couple LH, as the latter depends on π_L and π_H only, while the former depends additionally on the share γ of the high-risk types (and on the share β of single persons). The lower γ , the higher is q , which makes it less likely that couples LH prefer any zero-profit separate contract (r_{LH}, k_{LH}) to the zero-profit pooling contract q .

These observations give us a first intuition for the results shown in the following. We identify two different types of equilibria, denoted by E1 and E2: If γ is sufficiently high for any given β and π_i ,

$i = L, H$, an E1 equilibrium may exist where couples of type HH, together with the single persons, buy a pooling contract for individual-life annuities and couples of type LH and LL buy a separate contract for joint-life annuities. Otherwise, an E2 equilibrium may exist where also couples of type LH (together with the single persons and couples HH) buy the pooling contract for individual-life annuities and only couples of type LL buy their separate contract for joint-life annuities.

Our analysis of possible equilibria proceeds along the same lines as before, where we first investigate the existence and characterisation of the E1 equilibrium, before we turn to the analysis of the E2 equilibrium. We call a set of three contracts $q, (r_{LH}, k_{LH}), (r_{LL}, k_{LL})$ an E1 equilibrium, if the pooling contract q for individual-life annuities together with annuity demand $B_H(q) > 0, B_L(q) > 0, B_{HH}^H(q) > 0$ and $B_{LH}^H(q) = 0, B_{LH}^L(q) = 0, B_{LL}^L(q) = 0$, fulfils the zero-profit condition (19), and each of the separate contracts (r_{LH}, k_{LH}) and (r_{LL}, k_{LL}) fulfils the respective zero-profit condition (28), if each contract fulfils the self-selection constraints for the respective couple $ij = LL, LH, HH$, i.e.

$$V_{HH}(q) \geq V_{HH}(r_{LH}, k_{LH}), \quad (37a) \quad V_{HH}(q) \geq V_{HH}(r_{LL}, k_{LL}), \quad (37b)$$

$$V_{LH}(r_{LH}, k_{LH}) \geq V_{LH}(q), \quad (38a) \quad V_{LH}(r_{LH}, k_{LH}) \geq V_{LH}(r_{LL}, k_{LL}), \quad (38b)$$

$$V_{LL}(r_{LL}, k_{LL}) \geq V_{LL}(r_{LH}, k_{LH}), \quad (39a) \quad V_{LL}(r_{LL}, k_{LL}) \geq V_{LL}(q), \quad (39b)$$

and if no other contract q or (r, k) exists, which is preferred to by at least one couple $ij \in \{LL, LH, HH\}$ and which allows a nonnegative profit.

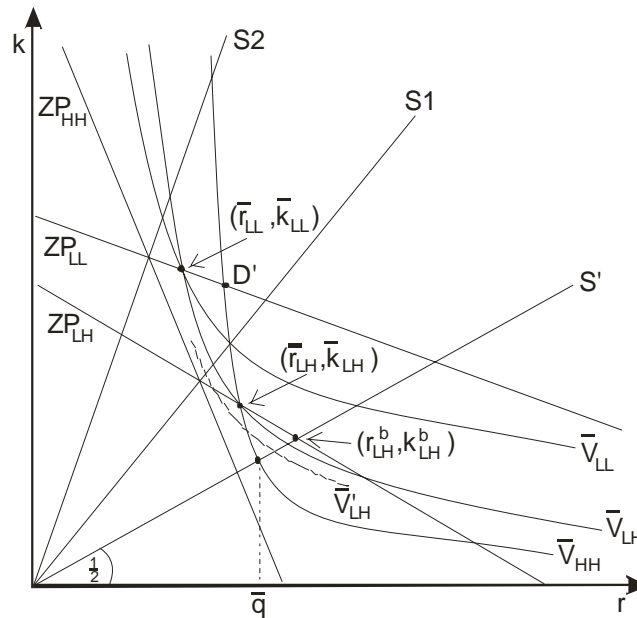
Let \bar{q} denote the zero-profit pooling contract for individual-life annuities, as defined for an E1 equilibrium²², and note that due to Corollary 1 the mixed risk-couple LH is better off at \bar{q} than at any JA-contract (r, k) with $r = 2k$, if $\bar{q} = r$. From this it follows that the self-selection constraint (38a) cannot be fulfilled, if $\bar{q} \geq r_{LH}^b$, where (r_{LH}^b, k_{LH}^b) indicates the zero-profit separate contract, which is most preferred by couple LH, with $r_{LH}^b = 2k_{LH}^b$. Hence, an E1 equilibrium can only exist, if $\bar{q} < r_{LH}^b$. In that case the other two parts of a potential E1 equilibrium, denoted by $(\bar{r}_{LH}, \bar{k}_{LH})$ and $(\bar{r}_{LL}, \bar{k}_{LL})$, have the following properties:

- $(\bar{r}_{LH}, \bar{k}_{LH})$ is implicitly defined by the zero-profit condition (28) for couple LH, by the property that a couple HH is indifferent between \bar{q} and $(\bar{r}_{LH}, \bar{k}_{LH})$ and by $\bar{r}_{LH} < 2\bar{k}_{LH}$.
- $(\bar{r}_{LL}, \bar{k}_{LL})$ is implicitly defined by the zero-profit condition (28) for couple LL, by the property that a couple LH is indifferent between $(\bar{r}_{LH}, \bar{k}_{LH})$ and $(\bar{r}_{LL}, \bar{k}_{LL})$ and by $\bar{r}_{LL} < 2\bar{k}_{LL}$.

²² Note that in case of logarithmic utility (14) the profit function (18) is strictly decreasing in q , which implies that there exists a unique root of the zero-profit condition (19).

Obviously, the definition of $(\bar{r}_{LH}, \bar{k}_{LH})$ and $(\bar{r}_{LL}, \bar{k}_{LL})$ imply that the self-selection constraints (37a) and (38b) are fulfilled with equality, which is illustrated in Figure 5 which replicates Figure 3 for the case where couples are free to choose between IA- and JS-contracts. In Figure 5 the indifference curve \bar{V}_{HH} of couple HH represents all contracts (r, k) at which couple HH is as well off as at the pooling IA-contract \bar{q} . Because couple HH is indifferent between \bar{q} and any JS-contract with $r = 2k = \bar{q}$ (as mentioned above and explored in Corollary 1), the intersection of \bar{V}_{HH} with the straight line S' (where $r = 2k$) shows the level of \bar{q} . As in Figure 3, \bar{V}_{HH} has exactly two points of intersection with the zero-profit line ZP_{LH} ; $\bar{r}_{LH} < 2\bar{k}_{LH}$ uniquely defines the respective point of intersection above S'. In the same way, $(\bar{r}_{LL}, \bar{k}_{LL})$ is found as the point of intersection of ZP_{LL} and \bar{V}_{LH} , going through $(\bar{r}_{LH}, \bar{k}_{LH})$, above S'.

Figure 5: The possibility of an E1 equilibrium $(\bar{q}, (\bar{r}_{LH}, \bar{k}_{LH}), (\bar{r}_{LL}, \bar{k}_{LL}))$



Due to the single-crossing property of the indifference curves the self-selection constraint (37b) for couple HH and the self-selection constraints (39a) and (39b) for couple LL (note that \bar{V}_{LL} going through $(\bar{r}_{LL}, \bar{k}_{LL})$ lies above the contract with $r = \bar{q}$)²³ hold with inequality. However, it depends on the constellations of the parameters π_H , π_L , γ and β whether the self-selection constraint (38a) is fulfilled. Because a JS-contract with $r = 2k$ does not allow to adapt consumption according to the relatively higher chance that only partner H survives than that only partner L survives (as mentioned above and explored in Corollary 1), a couple LH needs a JS-contract with $r = 2k > \bar{q}$ in order to be indifferent to \bar{q} , which means that the dashed indifference curve \bar{V}'_{LH} , which represents all contracts (r, k) at which couple LH is as well off as

²³ Obviously, the indifference curve for the same-risk couple LL (as for the same-risk couple HH) which represents all contracts (r, k) at which they are as well off as at the pooling IA-contract \bar{q} , must go through the point on S' where $r = \bar{q}$.

at \bar{q} , must lie above \bar{q} . Only if \bar{V}'_{LH} lies below the indifference curve \bar{V}_{LH} (or coincide with \bar{V}_{LH}), which goes through $(\bar{r}_{LH}, \bar{k}_{LH})$, the self-selection constraint (38a) holds. Such a case is drawn in Figure 5, which is found for appropriate parameter constellations.

Further, it follows from analogous arguments as in the Proof of Lemma 8, together with the fact that \bar{V}_{HH} lies above ZP_{HH} (and thus above V_{HH} going through $(\hat{r}_{HH}, \hat{k}_{HH})$ in Figure 3), $(\bar{r}_{LH}, \bar{k}_{LH})$ is characterised by a payoff-ratio below S1, at which ZP_{LH} lies above ZP_{HH} , that $(\bar{r}_{LL}, \bar{k}_{LL})$ is characterised by a payoff-ratio, at which ZP_{LL} lies above ZP_{LH} , and D' is characterised by a payoff-ratio below S2, at which ZP_{LL} lies above ZP_{HH} . This implies that, as for the separating equilibrium with mandated joint-life annuities for couples, the self-selection constraints (37a) and (38b) are essential: Annuity companies have to care that $(\bar{r}_{LH}, \bar{k}_{LH})$ is not chosen by couple HH as well as that $(\bar{r}_{LL}, \bar{k}_{LL})$ is not chosen by couple LH and/or by couple HH, because in either case they would make a loss. Thus, any separate contract on ZP_{LH} above \bar{V}_{LH} as well as any separate contract on ZP_{LL} above \bar{V}_{LL} cannot be part of an E1 equilibrium. On the other hand, all other contracts on ZP_{LH} , ZP_{LL} , resp. are dominated by $(\bar{r}_{LH}, \bar{k}_{LH})$, $(\bar{r}_{LL}, \bar{k}_{LL})$, resp., and, hence, cannot be part of the equilibrium either. Moreover, it follows from Lemma 9 that no separate contract for couple HH can be part of the E1 equilibrium, which is obvious also from Figure 5; there \bar{V}_{HH} lies above ZP_{HH} . From these considerations we can conclude that no other separate contract exists which is preferred by a couple $ij = LL, LH, HH$ and then allows a non-negative profit. Therefore, if an E1 equilibrium exists, it consists of \bar{q} , $(\bar{r}_{LH}, \bar{k}_{LH})$ and $(\bar{r}_{LL}, \bar{k}_{LL})$.

However, this contract set does not constitute an equilibrium, if the self-selection constraint (38a) is not fulfilled, i.e. if $V_{LH}(\bar{r}_{LH}, \bar{k}_{LH}) < V_{LH}(\bar{q})$. Moreover, the potential E1 equilibrium may be upset by (i) a pooling IA-contract q , which is preferred also by couple LH and/or by couple LL, and produces a non-negative profit, and/or by (ii) a pooling JS-contract (r, k) , which is preferred by at least two couple $ij \in \{LL, LH, HH\}$ and which produces a non-negative profit. Only if neither of these pooling contracts exists and if condition (38a) holds, then \bar{q} , $(\bar{r}_{LH}, \bar{k}_{LH})$ and $(\bar{r}_{LL}, \bar{k}_{LL})$ indeed constitute an equilibrium.

For (i) note first that the share of individual-life annuities bought by low-risk individuals (in aggregate demand for IA) increases, if couples of type LL would buy individual-life annuities instead of their separate JA-contract $(\bar{r}_{LL}, \bar{k}_{LL})$. Hence, any contract, which is bought additionally by couple LL, must offer a payoff larger than \bar{q} in order to restore zero profits. This means that $\bar{q} < \bar{q}'$ with \bar{q}' denoting the root of the zero-profit condition (19) with positive annuity demand of all types of single and married persons except of those of couples LH. It follows that $V_{LL}(\bar{r}_{LL}, \bar{k}_{LL}) > V_{LL}(\bar{q})$ does not exclude the possibility that $V_{LL}(\bar{r}_{LL}, \bar{k}_{LL}) < V_{LL}(\bar{q}')$. Analogous considerations apply for a pooling contract $\bar{\bar{q}}$, which together with positive annuity

demand of single persons of both types $i = L, H$,²⁴ as well as of couples of type HH and LH, fulfils the zero-profit condition (19) and for a pooling contract \bar{q} , which together with positive annuity demand of all types of single and married persons, fulfils (19). We test for the very existence of an E1 equilibrium by numerical calculations, which are summarised in Table 1.²⁵ These computations for parameter constellations of π_L , π_H , β and γ , where all of the four parameters vary from 0.8, 0.6, 0.4 to 0.2, show the following: For those parameter constellations, at which the self-selection constraint (38a) for couple LH holds, couple LH prefers also $(\bar{r}_{LH}, \bar{k}_{LH})$ to \bar{q} and couple LL prefers $(\bar{r}_{LL}, \bar{k}_{LL})$ to \bar{q}' and \bar{q} . Hence, no other pooling contract q exists, which is chosen by couple LH and/or couple LL, and produces a non-negative profit.

For (ii) the same considerations as in Section 3.3.2 apply where couples are assumed to be mandated to buy joint-life annuities: One has to show whether a contract E, as drawn in Figure 4, which lies above \bar{V}_{HH} , \bar{V}_{LH} and \bar{V}_{LL} , a contract F (above \bar{V}_{HH} and \bar{V}_{LH} , but below \bar{V}_{LL}) and a contract G (above \bar{V}_{LH} and \bar{V}_{LL} , but below \bar{V}_{HH}), allows non-negative profits. If such a contract exists, it upsets the potential equilibrium \bar{q} , $(\bar{r}_{LH}, \bar{k}_{LH})$, $(\bar{r}_{LL}, \bar{k}_{LL})$. However note that \bar{q} , $(\bar{r}_{LH}, \bar{k}_{LH})$, $(\bar{r}_{LL}, \bar{k}_{LL})$ can constitute an equilibrium only, if the self-selection constraint (38a) holds. As argued above, (38a) holds for a sufficiently large share γ of high-risk types only. However, a large share γ makes it less likely that any pooling contract like E, F and/or G produces a non-negative profit (compare Proposition 4). This correlation is also reflected in the numerical simulations: For those parameter constellations, for which the self-selection constraint (38a) holds, no dominating zero-profit pooling contract (r, k) exists, which would upset the potential E1 equilibrium. Altogether, one can conclude that for sufficiently great shares γ of high-risk types the self-selection constraint (38a) holds. Then an E1 equilibrium exists, indicated by "E1" in Table 1.

However, what we did find indeed are parameter constellations, at which $\bar{q} < r_{LH}^b$ and the self-selection constraint (38a) is not fulfilled, i.e. $V_{LH}(\bar{r}_{LH}, \bar{k}_{LH}) < V_{LH}(\bar{q})$ indicated by *) in Table 1.²⁶ For these, as explored above, no E1 equilibrium exists and two cases have to be distinguished: If $V_{LH}(\bar{r}_{LH}, \bar{k}_{LH}) < V_{LH}(\bar{q})$, then, obviously, there exists a pooling contract for individual-life annuities which is preferred also by couple LH and produces zero-profits, which imply that an E2 equilibrium may exist. However, if $V_{LH}(\bar{q}) \leq V_{LH}(\bar{r}_{LH}, \bar{k}_{LH})$, then no such IA-contract exists. It follows that neither an E1 nor an E2 equilibrium exists: Such a situation is found for some parameter constellations and is denoted in Table 1 by NE*).

²⁴ Note however that $\bar{q} \geq \bar{q}$, as in case that couple LH (with one low-risk and one high-risk partner) additionally would buy the pooling IA-contract, the share of individual life annuities bought by low-risk individuals (in aggregate demand for IA) may increase or decrease.

²⁵ Detailed calculations are provided on request.

²⁶ Remember that, if $\bar{q} \geq r_{LH}^b$, (38a) cannot be fulfilled (as it was argued at the beginning of Section 3.3.3).

Table 1: The (non-)existence of an E1- and of an E2-equilibrium
Numerical calculations for logarithmic utility with $\omega = 100$

	$\pi_H = 0.8, \pi_L = 0.6$				$\pi_H = 0.8, \pi_L = 0.4$			
	$\gamma = 0.8$	$\gamma = 0.6$	$\gamma = 0.4$	$\gamma = 0.2$	$\gamma = 0.8$	$\gamma = 0.6$	$\gamma = 0.4$	$\gamma = 0.2$
$\beta = 0.8$	E1	E1	E2	E2	E1	E2 *)	E2 *)	E2
$\beta = 0.6$	E1	E1	E2 *)	E2	E1	E1	E2 *)	E2
$\beta = 0.4$	E1	E1	E2 *)	E2	E1	E1	E2 *)	E2
$\beta = 0.2$	E1	E1	E1	NE**)	E1	E1	NE*)	E2

	$\pi_H = 0.6, \pi_L = 0.4$				$\pi_H = 0.6, \pi_L = 0.2$			
	$\gamma = 0.8$	$\gamma = 0.6$	$\gamma = 0.4$	$\gamma = 0.2$	$\gamma = 0.8$	$\gamma = 0.6$	$\gamma = 0.4$	$\gamma = 0.2$
$\beta = 0.8$	E1	E1	E2	E2	E1	E1	E2 *)	E2
$\beta = 0.6$	E1	E1	E2 *)	E2	E1	E1	E2 *)	E2
$\beta = 0.4$	E1	E1	NE*)	E2	E1	E1	NE*)	E2
$\beta = 0.2$	E1	E1	E1	NE**)	E1	E1	E1	E2 *)

	$\pi_H = 0.4, \pi_L = 0.2$				$\pi_H = 0.8, \pi_L = 0.2$			
	$\gamma = 0.8$	$\gamma = 0.6$	$\gamma = 0.4$	$\gamma = 0.2$	$\gamma = 0.8$	$\gamma = 0.6$	$\gamma = 0.4$	$\gamma = 0.2$
$\beta = 0.8$	E1	E1	E2 *)	E2	E1	E2 *)	E2 *)	E2
$\beta = 0.6$	E1	E1	E2 *)	E2	E1	NE*)	E2 *)	E2
$\beta = 0.4$	E1	E1	NE*)	E2	E1	E1	E2 *)	E2
$\beta = 0.2$	E1	E1	E1	NE**)	E1	E1	NE*)	E2 *)

E1: existence of an E1 equilibrium
E2: existence of an E2 equilibrium

*) $V_{LH}(\bar{r}_{LH}, \bar{k}_{LH}) < V_{LH}(\bar{q})$
NE*) $V_{LH}(\bar{q}) < V_{LH}(\bar{r}_{LH}, \bar{k}_{LH}) < V_{LH}(\bar{q})$
NE**) zero-profit pooling contract (r, k) exists, which is preferred by couples of all three types.

Next, we concentrate our attention on the characterisation and existence of an E2 equilibrium. A contract set consisting of q and (r_{LL}, k_{LL}) constitute an E2 equilibrium, if the pooling contract q for individual-life annuities, together with annuity demand $B_H(q) > 0$, $B_L(q) > 0$, $B_{HH}^H(q) > 0$, $B_{LH}^H(q) > 0$, $B_{LH}^L(q) > 0$, $B_{LL}^L(q) = 0$, fulfils the zero-profit condition (19), and the separate contract (r_{LL}, k_{LL}) fulfils the zero-profit condition (28) for $ij = LL$, if each contract fulfils the self-selection constraint for the respective couple $ij = LL, LH, HH$, i.e.

$$V_{HH}(q) \geq V_{HH}(r_{LL}, k_{LL}), \quad (40)$$

$$V_{LH}(q) \geq V_{LH}(r_{LL}, k_{LL}), \quad (41)$$

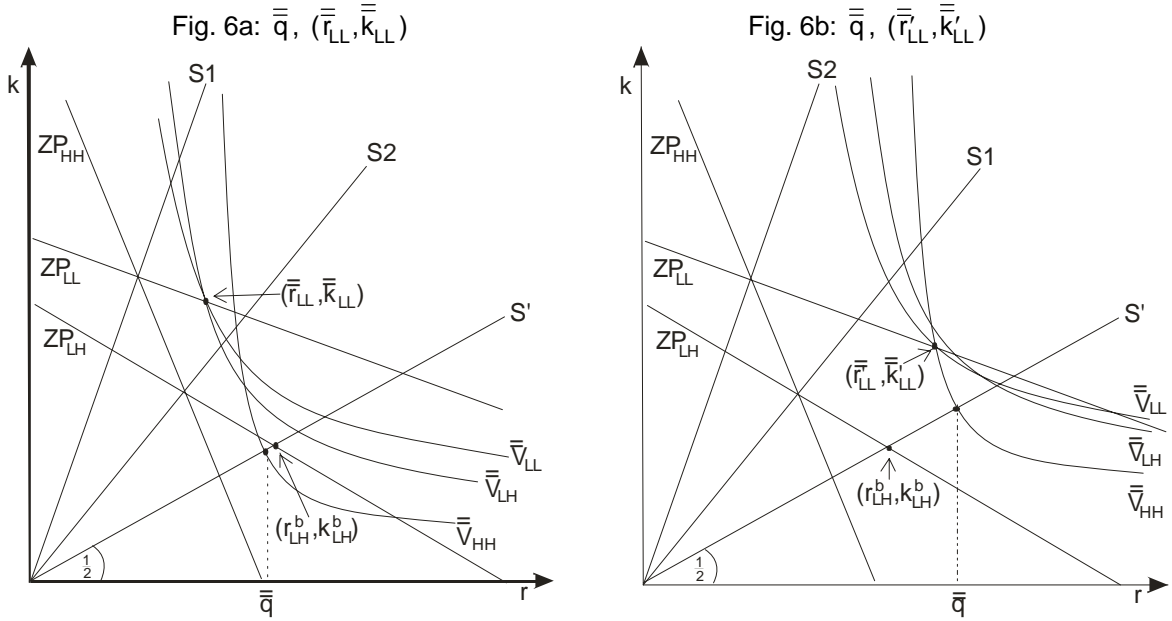
$$V_{LL}(r_{LL}, k_{LL}) \geq V_{LL}(q), \quad (42)$$

and if no other contract q or (r, k) exists, which is preferred to by at least one couple $ij \in \{LL, LH, HH\}$ and which allows a nonnegative profit.

Obviously, \bar{q} must be one part of the potential E2 equilibrium, however we have to distinguish between two cases, depending on the constellations of parameters, how the second part of the

E2 equilibrium, the separate contract (r_{LL}, k_{LL}) for couple LL, is defined. We demonstrate this via geometric arguments: In both Figures 6a and 6b, the indifference curve \bar{V}_{HH} represents all contracts (r,k) at which couple HH is as well off as with the pooling contract \bar{q} . In the same way \bar{V}_{LH} represents all contracts (r,k) at which couple LH is as well off as with \bar{q} (as above, we know that \bar{V}_{HH} goes through the point where $r = 2k = \bar{q}$, while \bar{V}_{LH} has to lie above $r = 2k = \bar{q}$). Observe first that in Figure 6a, \bar{V}_{HH} and \bar{V}_{LH} intersect below ZP_{LL} . Hence, only the contract $(\bar{r}_{LL}, \bar{k}_{LL})$, which is implicitly defined by the zero-profit condition (28) for couple LL, by the property that a couple LH is indifferent between \bar{q} and $(\bar{r}_{LL}, \bar{k}_{LL})$ and by $\bar{r}_{LL} < 2\bar{k}_{LL}$, can constitute, together with \bar{q} , the potential E2 equilibrium. In that case the self-selection constraint (41) holds with equality and (40) holds with inequality. However note that γ may be that small and hence \bar{q} may be that large that \bar{V}_{HH} and \bar{V}_{LH} intersect above ZP_{LL} , as illustrated graphically in Figure 6b. In that case the second part of the potential E2 equilibrium, denoted by $(\bar{r}'_{LL}, \bar{k}'_{LL})$, is found as the point of intersection of \bar{V}_{HH} and ZP_{LL} above the straight line S' .²⁷ There (40) holds with equality and (41) holds with inequality. However irrespective of whether $(\bar{r}_{LL}, \bar{k}_{LL})$ or $(\bar{r}'_{LL}, \bar{k}'_{LL})$ is part of the potential equilibrium, in either case the self-selection constraint (42) is fulfilled due to the single-crossing property of the indifference curves.

Figure 6: The possibility of an E2 equilibrium



Due to equivalent arguments as explored above, given a potential E2 equilibrium no other separate contract (r_{ij}, k_{ij}) exists, which is preferred by the respective couple ij and produces a non-negative profit: First, as in both Figures 6a and 6b, \bar{V}_{HH} lies above ZP_{HH} and \bar{V}_{LH} lies above ZP_{LH} , any separate contract for couple LH and HH, which is preferred by the couple of

²⁷ More formally, $(\bar{r}'_{LL}, \bar{k}'_{LL})$ is implicitly defined by the zero-profit condition (28) for couple LL, by the property that a couple HH is indifferent between \bar{q} and $(\bar{r}'_{LL}, \bar{k}'_{LL})$ and by $\bar{r}'_{LL} < 2\bar{k}'_{LL}$.

the respective type, would produce a loss. Second, any other contract on ZP_{LL} than $(\bar{r}_{LL}, \bar{k}_{LL})$, $(\bar{r}'_{LL}, \bar{k}'_{LL})$, resp., which is preferred by couple LL, would be chosen by couple LH and/or couple HH, and hence produce a loss. From this, we can conclude that, if an E2 equilibrium exists, it consists either of the contract set \bar{q} , $(\bar{r}_{LL}, \bar{k}_{LL})$ or of the contract set \bar{q} , $(\bar{r}'_{LL}, \bar{k}'_{LL})$.

However, as above, no E2 equilibrium exists, if there exists (i) a pooling contract q , which is preferred also by couple LL and produces a non-negative profit, and/or (ii) a pooling contract (r,k) , which if preferred to by at least two couple $ij \in \{LL, LH, HH\}$ and which produces a non-negative profit. In order to assess the prevalence of such dominating zero-profit pooling contracts, we refer to the numerical computations in Table 1, where we proceed along the same lines, as when testing the existence of an E1 equilibrium: (i) As $\bar{q} < \tilde{q}$, we check whether $V_{LL}(\tilde{q}) \leq V_{LL}(\bar{r}_{LL}, \bar{k}_{LL})$ or $V_{LL}(\tilde{q}) \leq V_{LL}(\bar{r}'_{LL}, \bar{k}'_{LL})$, resp. If the respective condition holds, a pooling contract q , which is preferred by couples LL and produces a non-negative profit, does not exist. The numerical calculations show that for those parameter constellations, for which we found a situation as drawn in Figure 6a or 6b, couple LL prefer their respective separate contract to \tilde{q} . (ii) Note that for a potential E2 equilibrium to exist the share γ of high-risk types must be sufficiently low. Consequently, a JA-contract, which is preferred by at least two couples-types and produces a non-negative profit, is more likely to exist. Numerical calculations show that given $\pi_H - \pi_L = 0.2$, $\gamma = 0.2$ and $\beta = 0.2$, a pooling contract (r,k) , like E in Figure 4, exists, which is preferred by couples of all three types and produces a nonnegative profit. Consequently, no E2 equilibrium exists, which is indicated by NE**) in Table 1. However, for all other parameter constellations with sufficiently low shares γ of high-risk types, any pooling contract which is chosen by at least two types of couples, produce negative profits. Therefore, an E2 equilibrium exists, which is indicated by "E2" in Table 1.

Altogether, we can conclude that the equilibria found in this Section can serve as a plausible explanation for the empirical observation (mentioned at the end of Section 3.3.2) that two-thirds of TIAA-CREF participants, who purchased joint-life annuities, chose the contract that specifies the lowest payoff-ratio $r/k = 1$: Mainly couples with partners having a low survival probability choose their separate contract for joint-life annuities, while couples with at least one longer-lived partner rather decide for a pooling contract for individual-life annuities, because such a contract can offer them higher expected payoffs, as they are pooled with the short-lived single persons.

4. Summary and Conclusions

This paper has demonstrated that the consumption behaviour of couples, who have agreed to pool resources, has important implications on the private annuity market. First, we have focused on the market for individual life annuities and have assumed the standard model of asymmetric

information with two periods of life and with price competition. We have shown that the influence of couples as market participants on the pooling equilibrium depends on how their annuity demand affects the overrepresentation of annuities bought by the individuals with a high life-expectancy. We find that the extent of adverse selection is increased, in case that couples do not have the advantage of joint consumption of "family public goods" as well as in case of a logarithmic utility function. Then the equilibrium rate of return on individual-life annuities is smaller in an economy where couples and singles coexist compared to an economy with single persons only, otherwise the effect is ambiguous. As the majority of individuals are married or live in a long-term relationship, this result may contribute to explain the limited size of the private annuity market.

Second, considering couples as the decision-making units allows us to model the market for joint-life annuities. Due to their higher chance that only one partner survives to the retirement, couples with partners having a low survival probability put more weight on the survivor benefit than a couple with partners having a higher life expectancy. We have shown that this provides an incentive for the annuity companies to offer different survivor benefit options in order to separate couples according to the partners' life expectancies. Hence, in a framework where couples are mandated to provide for retirement through joint-life annuities, only a separating equilibrium for joint-life annuities can exist. This result is taken as a benchmark, which is compared to the more relevant situation in which couples are free to choose between individual- and joint-life annuities. In this framework we identify two possible equilibria, which occurrence depends on the exogenous parameters: In the first equilibrium couples with two long-lived partners, together with the single persons, buy a pooling contract for individual-life annuities and couples with at least one short-lived partner buy their separate contracts for joint-life annuities. In the other equilibrium also mixed-risk couples buy the pooling contract for individual-life annuities and only couples with two short-lived partners buy their separate contract for joint-life annuities.

These results can explain the empirical observations, already mentioned in the Introduction, that that couples choose indeed joint-life annuities with differing survivor benefit options and that a certain fraction of married annuitants indeed choose individual-life annuities. Further, in a recent empirical study, Finkelstein and Poterba (2004) tested for selection effects in the U.K. annuity market, and they found systematic relationships between ex-post mortality and certain characteristics of contracts for individual-life annuities. Estimating a hazard model regarding the annuitants' life-spans, they found clear evidence that annuity contracts that provide higher payoffs in later years are selected by the longer-lived individuals; annuity contracts that specify payments to the annuitant's estate in the event of an early death are selected by shorter-lived individuals. These findings makes it plausible to assume that further annuitants' self-selection

may exist, namely those suggested by this paper: Couples with short-lived partners should choose joint-life annuities that offer a higher survivor benefit (relative to the payout in case that both partners survive) than couples with at least one longer-lived partner. Couples with partners having an even higher life-expectancy should choose individual-life annuities. To test for these selection effects appears to be an interesting task for future empirical research.

Appendix

Proof of Lemma 2:

Implicit differentiation of the first-order condition (4) with respect to π_i yields

$$\frac{\partial B_i}{\partial \pi_i} = -\frac{q\alpha u'(qB_i)}{u''(\omega - B_i) + q^2\pi_i\alpha u'(qB_i)} \quad (\text{A1})$$

which is positive. Hence $B_H(q) > B_L(q)$.

We denote the LHS of (12') by V^i and the LHS of (13') by V^j . Implicit differentiation gives

$$\begin{pmatrix} \frac{\partial B_{ij}^i}{\partial \pi_i} & \frac{\partial B_{ij}^i}{\partial \pi_j} \\ \frac{\partial B_{ij}^j}{\partial \pi_i} & \frac{\partial B_{ij}^j}{\partial \pi_j} \end{pmatrix} = -\begin{pmatrix} \frac{\partial V^i}{\partial B_{ij}^i} & \frac{\partial V^i}{\partial B_{ij}^j} \\ \frac{\partial V^j}{\partial B_{ij}^i} & \frac{\partial V^j}{\partial B_{ij}^j} \end{pmatrix}^{-1} \begin{pmatrix} \frac{\partial V^i}{\partial \pi_i} & \frac{\partial V^i}{\partial \pi_j} \\ \frac{\partial V^j}{\partial \pi_i} & \frac{\partial V^j}{\partial \pi_j} \end{pmatrix}, \quad (\text{A2})$$

where

$$\begin{aligned} \frac{\partial V^i}{\partial B_{ij}^i} &= \frac{\sigma^2}{2} \left(u''\left(\frac{\sigma}{2}(2\omega - B_{ij}^i - B_{ij}^j)\right) + q^2\pi_i\pi_j\alpha u''\left(\frac{\sigma q}{2}(B_{ij}^i + B_{ij}^j)\right) \right) < 0, & \frac{\partial V^j}{\partial B_{ij}^i} &= \frac{\partial V^j}{\partial B_{ij}^j}, \\ \frac{\partial V^i}{\partial B_{ij}^j} &= \frac{\partial V^i}{\partial B_{ij}^i} + q^2\pi_i(1-\pi_j)\alpha u''(qB_{ij}^i) < 0, & \frac{\partial V^j}{\partial B_{ij}^j} &= \frac{\partial V^j}{\partial B_{ij}^i} + q^2\pi_j(1-\pi_i)\alpha u''(qB_{ij}^j) < 0, \\ \frac{\partial V^i}{\partial \pi_i} &= q\alpha \left(\sigma\pi_j u'\left(\frac{\sigma q}{2}(B_{ij}^i + B_{ij}^j)\right) + (1-\pi_j)u'(qB_{ij}^i) \right) > 0, & \frac{\partial V^j}{\partial \pi_i} &= q\pi_j\alpha \left(u'\left(\frac{\sigma q}{2}(B_{ij}^i + B_{ij}^j)\right) - u'(qB_{ij}^i) \right), \\ \frac{\partial V^j}{\partial \pi_j} &= q\alpha \left(\sigma\pi_i u'\left(\frac{\sigma q}{2}(B_{ij}^i + B_{ij}^j)\right) + (1-\pi_i)u'(qB_{ij}^j) \right) > 0, & \frac{\partial V^j}{\partial \pi_j} &= q\pi_i\alpha \left(u'\left(\frac{\sigma q}{2}(B_{ij}^i + B_{ij}^j)\right) - u'(qB_{ij}^j) \right). \end{aligned}$$

Let

$$\begin{aligned} x^i &\equiv \frac{\partial V^i}{\partial \pi_i} - \frac{\partial V^j}{\partial \pi_i} = q\alpha \left((1-\pi_j)u'(qB_{ij}^i) + \pi_j u'(qB_{ij}^j) \right) > 0, & z^i &\equiv q^2\pi_i(1-\pi_j)\alpha u''(qB_{ij}^i) < 0, \\ x^j &\equiv \frac{\partial V^j}{\partial \pi_j} - \frac{\partial V^i}{\partial \pi_j} = q\alpha \left((1-\pi_i)u'(qB_{ij}^j) + \pi_i u'(qB_{ij}^i) \right) > 0, & z^j &\equiv q^2\pi_j(1-\pi_i)\alpha u''(qB_{ij}^j) < 0, \end{aligned}$$

$$M \equiv \frac{\partial V^i}{\partial B_{ij}^i} \frac{\partial V^j}{\partial B_{ij}^j} - \frac{\partial V^i}{\partial B_{ij}^j} \frac{\partial V^j}{\partial B_{ij}^i} = (z^i + z^j) \frac{\partial V^i}{\partial B_{ij}^i} + z^i z^j > 0.$$

Inverting the first matrix on the RHS of (A2) and multiplying yields:

$$\frac{\partial B_{ij}^i}{\partial \pi_i} = -\frac{1}{M} \left(\frac{\partial V^j}{\partial B_{ij}^i} \frac{\partial V^i}{\partial \pi_i} - \frac{\partial V^i}{\partial B_{ij}^i} \frac{\partial V^j}{\partial \pi_i} \right) = -\frac{1}{M} \left(\frac{\partial V^i}{\partial B_{ij}^i} x_i + z_j \frac{\partial V^i}{\partial \pi_i} \right), \quad (A3)$$

$$\frac{\partial B_{ij}^j}{\partial \pi_j} = -\frac{1}{M} \left(\frac{\partial V^j}{\partial B_{ij}^j} \frac{\partial V^i}{\partial \pi_j} - \frac{\partial V^i}{\partial B_{ij}^j} \frac{\partial V^j}{\partial \pi_j} \right) = -\frac{1}{M} \left(-\frac{\partial V^j}{\partial B_{ij}^j} x_j + z_i \frac{\partial V^j}{\partial \pi_j} \right), \quad (A4)$$

From the above inequalities and the RHS of (A3), (A4) resp., it follows that $\partial B_{ij}^i / \partial \pi_i > 0$, while the sign of $\partial B_{ij}^j / \partial \pi_j$ is ambiguous: $\partial B_{ij}^j / \partial \pi_j < 0$, if $-x_j \partial V^j / \partial B_{ij}^j > -z_i \partial V^j / \partial \pi_j$ (which is equivalent to condition (17) in the text), where the LHS of this inequality is positive, while the RHS is indeterminate. Due to symmetry the same considerations apply to $\partial B_{ij}^i / \partial \pi_i$ and $\partial B_{ij}^j / \partial \pi_j$. Hence, $B_{LH}^L(q) < B_{LL}^L(q)$ and $B_{HH}^H(q) < B_{LH}^H(q)$, if condition (17) holds.

We use (A3) and (A4) to determine

$$\left. \frac{\partial B_{ij}^i}{\partial \pi_i} + \frac{\partial B_{ij}^j}{\partial \pi_j} \right|_{\pi_i = \pi_j} = -\frac{1}{M} z_j \left(\frac{\partial V^i}{\partial \pi_i} - \frac{\partial V^j}{\partial \pi_i} \right) = -\frac{1}{M} z_j q \alpha u'(q B_{ij}^i) > 0, \quad (A5)$$

where the positive sign follows from the inequalities from above; hence, $B_{HH}^H(q) > B_{LL}^L(q)$. Q.E.D.

Proof of Lemma 4:

We maximise expected utility (5) with respect to r and q subject to (28). By use of (23) – (25), the first-order conditions of this maximisation problem are

$$A_{ij} \alpha \pi_i \pi_j \sigma \left(u'(c_{1ij}^{iS}) + u'(c_{1ij}^{jS}) \right) + \lambda \pi_i \pi_j = 0 \quad (A6)$$

$$A_{ij} \alpha \left(\pi_i (1 - \pi_j) u'(c_{1ij}^{iW}) + \pi_j (1 - \pi_i) u'(c_{1ij}^{jW}) \right) - \lambda (\pi_i (1 - \pi_j) + \pi_j (1 - \pi_i)) = 0, \quad (A7)$$

where λ is the Lagrange multiplier associated with constraint (28). From (A6) and (A7) together with (24), (25) and (11) we find that maximisation requires (29). From (29) one concludes that for any arbitrarily given A_{ij} , $r_{ij}/k_{ij} = 2$ for $\sigma = 1$. The same applies for logarithmic utility (14), as (29) reduces to $r/(2A_{ij}) = k/A_{ij}$ by use of (14). Q.E.D.

Proof of Lemma 6:

Consider any pooling contract (r, k) , which fulfils the zero-profit condition (30) together with $r/k \geq 2 - 2/(\pi_H + \pi_L)$. Due to Lemma 5, we know that for any such contract (r, k) , $p_{LL} < p_{LH}$ and $p_{LL} < p_{HH}$. It follows that p_{LL} is negative and $(p_{LH} + p_{HH})$ is positive, otherwise the LHS of (30)

would be non-zero. This implies that given that only type-LL couples buy the contract (r,k) , it would make positive profits. By continuity, this holds for any contract $(r + \delta r, k + \delta k)$ in the neighbourhood of (r,k) . 9

Equivalently, for any pooling contract, which fulfils (30) together with $r/k < 2 - 2/(\pi_H + \pi_L)$, it follows from Lemma 5 that $p_{HH} < p_{LH}$ and $p_{HH} < p_{LL}$. Therefore, in order that the LHS of (30) is equal to zero, $p_{HH} < 0$ and $(p_{LH} + p_{LL}) > 0$. This implies that annuity companies make a positive profit, given that only couples of type HH buy this pooling contract (r,k) or one close to it. Q.E.D.

Proof of Lemma 7

(34a) and (35b) are fulfilled by definition. That (35a) is fulfilled, follows from $\hat{r}_{LH}/\hat{k}_{LH} < \hat{r}_{HH}/\hat{k}_{HH}$, from the fact that $(\hat{r}_{HH}, \hat{k}_{HH})$ and $(\hat{r}_{LH}, \hat{k}_{LH})$ are on the same indifference curve V_{HH} for couple HH and that the slope of the indifference curve going through $(\hat{r}_{LH}, \hat{k}_{LH})$ is flatter for couple LH than for couple HH. Equivalently, (36a) holds, because $\hat{r}_{LL}/\hat{k}_{LL} < \hat{r}_{LH}/\hat{k}_{LH}$, $(\hat{r}_{LH}, \hat{k}_{LH})$ and $(\hat{r}_{LL}, \hat{k}_{LL})$ are on the same indifference curve V_{LH} for couple LH and that the slope of the indifference curve going through $(\hat{r}_{LL}, \hat{k}_{LL})$ is flatter for couple LL than for couple LH. The conjunction of the arguments, given to show that (35a) hold, with those, given to show that (36a), implies that also (34b) and (36b) hold. Q.E.D.

Proof of Lemma 8

- 1) Consider the indifference curve V_{HH} of couple HH. By definition, at $(\hat{r}_{HH}, \hat{k}_{HH})$ V_{HH} is tangent to zero-profit line ZP_{HH} , while due to strict convexity of V_{HH} , at any payoff-ratio $r/k < 2$, the slope of V_{HH} is steeper than that of ZP_{HH} . From these observations it follows that
 - (a) $(\hat{r}_{LH}, \hat{k}_{LH})$ as the point of intersection of V_{HH} and ZP_{LH} , where $\hat{r}_{LH} < 2\hat{k}_{LH}$, lies below the straight line S1, which goes through the point of intersection of ZP_{HH} and ZP_{LH} . It follows that any contract on ZP_{LH} , which lies above V_{HH} , is characterised by a payoff-ratio, where ZP_{HH} lies below ZP_{LH} . By this, any such contract would be chosen by couple HH and hence produce a loss.
 - (b) the point of intersection of V_{HH} and ZP_{LL} , where $r < 2k$, denoted as D in Figure 3, lies below the straight line S2, which goes through the point of intersection of ZP_{HH} and ZP_{LL} . It follows that any contract on ZP_{LL} , which lies above V_{HH} , is characterised by a payoff-ratio, where ZP_{HH} lies below ZP_{LL} . By this, any such contract would be chosen by couple HH and hence produce a loss.
- 2) Given a value $\pi_L \leq 0.5$, ZP_{LL} lies above ZP_{LH} for any payoff-ratio r/k (compare Corollary 2). Hence, to prove (ii) of Lemma 8, it suffice to show that given a value $\pi_L > 0.5$, as drawn in Figure 1, $(\hat{r}_{LL}, \hat{k}_{LL})$ is characterised by a payoff-ratio below the straight line S3, at which

ZP_{LH} and ZP_{LL} intersect. Consider the indifference V_{LH} of couple LH, which crosses ZP_{LH} at $(\hat{r}_{LH}, \hat{k}_{LH})$ and ZP_{LL} at $(\hat{r}_{LL}, \hat{k}_{LL})$. We know from 1a) of this Proof that $(\hat{r}_{LH}, \hat{k}_{LH})$ lies below S1 and hence also below S3, which is immediate from Corollary 2. From this, together with the fact that V_{LH} is strictly convex, that at $(\hat{r}_{LH}, \hat{k}_{LH})$ the slope of V_{LH} is steeper than that of ZP_{LH} , and that $\hat{r}_{LL}/\hat{k}_{LL} < \hat{r}_{LH}/\hat{k}_{LH}$, it follows that $(\hat{r}_{LL}, \hat{k}_{LL})$ also lies below S3. Altogether, any contract on ZP_{LL} and above V_{LL} is characterised by a payoff-ratio, where ZP_{LL} lies above ZP_{LH} . By this, any such contract would be chosen by couple LH and hence produce a loss.

Finally note that due to the single crossing-property of the indifference curves V_{ij} ,

- any contract on ZP_{LH} , which is preferred to $(\hat{r}_{LH}, \hat{k}_{LH})$ by couple LH, is also chosen by couple HH (but not by couple LL), and then - due to 1a) of this Proof - produces a loss.
- any contract on ZP_{LL} , which is preferred to $(\hat{r}_{LL}, \hat{k}_{LL})$ by couple LL, is chosen also by couple LH or by couple LH and HH, and then - due to 2) and 1b) of this Proof - produces a loss.

Q.E.D.

Proof of Proposition 3

Note first that if $(\hat{r}_{HH}, \hat{k}_{HH})$ is part of the separating equilibrium, then $(\hat{r}_{LH}, \hat{k}_{LH})$ and $(\hat{r}_{LL}, \hat{k}_{LL})$ must be the other parts: $(\hat{r}_{LH}, \hat{k}_{LH})$ provides maximum utility for couple LH, subject to the self-selection constraint (34a) for couple HH and the zero-profit condition (28) for $ij = LH$. With $(\hat{r}_{HH}, \hat{k}_{HH})$ and $(\hat{r}_{LH}, \hat{k}_{LH})$, (34a) is fulfilled with equality. On the one hand, note from Figure 3 that the second point of intersection of V_{HH} and ZP_{LH} , as well as all contracts on ZP_{LH} below this point of intersection and also those above $(\hat{r}_{LH}, \hat{k}_{LH})$ fulfil (34a). However, they all provide lower utility for couple LH, remember the single-crossing property. On the other hand, as explored in the text and shown in Lemma 8, all contracts on ZP_{LH} , which provide a higher utility than $(\hat{r}_{LH}, \hat{k}_{LH})$ for couple LH, would be also chosen by couple HH and then produce a loss. Equivalently, $(\hat{r}_{LL}, \hat{k}_{LL})$ provides maximum utility for couple LL, subject to the self-selection constraint (35b) for couple LH and the zero-profit condition (28) for $ij = LL$. With $(\hat{r}_{LH}, \hat{k}_{LH})$ and $(\hat{r}_{LL}, \hat{k}_{LL})$, (35b) is fulfilled with equality. Again we have: All contracts on ZP_{LL} above $(\hat{r}_{LL}, \hat{k}_{LL})$ and below the second the second point of intersection of V_{LH} with ZP_{LL} as well as this point of intersection fulfil (35b), but provide lower utility for couple LL. All other contracts on ZP_{LL} , which lie above V_{LL} , can be excluded as part of the equilibrium due to Lemma 8.

Further, one observes that, for the same reason, if any other contract (r'_{HH}, k'_{HH}) on ZP_{HH} is part of the separating equilibrium, then the second part (r'_{LH}, k'_{LH}) must be found as the point of intersection of ZP_{LH} with the indifference curve of couple HH through (r'_{HH}, k'_{HH}) , where $r'_{LH} < 2k'_{LH}$, and the third part (r'_{LL}, k'_{LL}) must be found as the point of intersection of ZP_{LL} with the indifference curve of couple LH through (r'_{LH}, k'_{LH}) , where $r'_{LL} < 2k'_{LL}$. Obviously, couples of

type HH prefer $(\hat{r}_{HH}, \hat{k}_{HH})$ to any other (r'_{HH}, k'_{HH}) , couples of type LH prefer $(\hat{r}_{LH}, \hat{k}_{LH})$ to any other (r'_{LH}, k'_{LH}) and couples of type LL prefer $(\hat{r}_{LL}, \hat{k}_{LL})$ to any other (r'_{LL}, k'_{LL}) . Q.E.D.

Proof of Proposition 4

A variation of the share γ of the high-risk types only influences the zero-profit condition (30) for a pooling contract with positive annuity demand $A_{ij} > 0$ for at least two types $ij \in \{LL, LH, HH\}$, while leaving the zero-profit condition (28) for a separate contract (and the indifference curves, of course) unchanged. Comparison of (30) and (28) makes the following obvious: If γ approaches to one, the zero-profit condition (30) for any pooling contract with $A_{HH} > 0$, $A_{LH} > 0$ and $A_{LL} \geq 0$ converges to the zero-profit condition (28) for couple HH and the zero-profit condition (30) for a pooling contract with $A_{HH} = 0$, $A_{LH} > 0$ and $A_{LL} > 0$ converges to the zero-profit condition (28) for couple LH.

Further note from Figure 4 and Lemma 7 the following: Couple LH prefers $(\hat{r}_{LH}, \hat{k}_{LH})$ to any contract on ZP_{HH} where $r/k > \hat{r}_{LH}/\hat{k}_{LH}$ and that couple LL prefers $(\hat{r}_{LL}, \hat{k}_{LL})$ to any contract on ZP_{LH} , where $r/k > \hat{r}_{LL}/\hat{k}_{LL}$. Hence, any contract (r, k) , which is preferred by couple LH to $(\hat{r}_{LH}, \hat{k}_{LH})$, lies above ZP_{HH} , if $r/k > \hat{r}_{LH}/\hat{k}_{LH}$, which is then also preferred by couple HH, and may or may not be preferred by couple LL. Equivalently, any contract (r, k) , which is preferred by couple LL to $(\hat{r}_{LL}, \hat{k}_{LL})$, lies above ZP_{LH} , if $r/k > \hat{r}_{LL}/\hat{k}_{LL}$, which is then also preferred by couple LH, and may or may not be preferred by couple HH.

From the above considerations it follows that for or $\gamma \rightarrow 1$

- (i) any contract which is preferred by couples of type LH and HH to their separate contract $(\hat{r}_{LH}, \hat{k}_{LH})$ and $(\hat{r}_{HH}, \hat{k}_{HH})$, resp., but is not preferred by couples of type LL to $(\hat{r}_{LL}, \hat{k}_{LL})$, must lie above ZP_{HH} and, by continuity, also above the zero-profit condition ZP_{P2} for a pooling contract with $A_{HH} > 0$, $A_{LH} > 0$, $A_{LL} = 0$, as long as γ is sufficiently close to one. Thus any such pooling contract makes negative profits.
- (ii) any contract which is preferred by couples LL and LH to their separate contract $(\hat{r}_{LL}, \hat{k}_{LL})$ and $(\hat{r}_{LH}, \hat{k}_{LH})$, resp., but not by couples HH to $(\hat{r}_{HH}, \hat{k}_{HH})$, must lie above ZP_{LH} and by continuity also above the zero-profit condition ZP_{P3} for a pooling contract with $A_{HH} = 0$, $A_{LH} > 0$, $A_{LL} > 0$, as long as γ is sufficiently close to one. Thus any such pooling contract makes negative profits.
- (iii) any contract which is preferred by couples of all three types $ij = LL, LH, HH$ to their separate contract $(\hat{r}_{LL}, \hat{k}_{LL})$, $(\hat{r}_{LH}, \hat{k}_{LH})$ and $(\hat{r}_{HH}, \hat{k}_{HH})$, resp., must lie above ZP_{LH} and by continuity also above the zero-profit condition ZP_{P1} for a pooling contract with $A_{HH} > 0$, $A_{LH} > 0$, $A_{LL} > 0$, as long as γ is sufficiently close to one. Thus any such pooling contract makes negative profits.

Finally we note that for each case (i) – (iii) there exists an infimum of all γ , for which a pooling contract which is preferred by the respective couples ij , makes a negative profit. We define γ^* as the largest value of all three infima. It follows that for any $\gamma \geq \gamma^*$ a separating equilibrium exists. On the other hand, analogous considerations show that for sufficiently small γ , a profitable pooling contract, which is preferred by couples of at least two types $ij \in \{LL, LH, HH\}$, always exists. Q.E.D.

References

- Abel, A. B. (1986), Capital Accumulation and Uncertain Lifetime with Adverse Selection, *Econometrica* 54, 1079-1097.
- Ameriks, J. (2002), Recent Trends in the Selection of Retirement Income Streams among TIAA-CREF Participants", *Research Dialogue* 74, TIAA-CREF Institute.
- Ameriks, J. and P. Yakoboski (2003), Reducing Retirement Income Risks: The Role of Annuitization, *Benefits Quarterly*, Forth Quarter, 13-24.
- Brown J. R. and J. M. Poterba (2000), Joint-life Annuities and Annuity Demand by Married Couples, *The Journal of Risk and Insurance* 67, 527-554.
- Brunner, J. K. and S. Pech (2002), "Adverse selection in the annuity market with sequential and simultaneously insurance demand", Working paper, 0204, Department of Economics, University of Linz, Austria.
- Brunner, J. K. and S. Pech (2005), Adverse selection in the annuity market when payoffs vary over the time of retirement, forthcoming in *Journal of Institutional and Theoretical Economics*, Vol. 161.
- Diamond, P. (2004), Social Security, *American Economic Review* 94, 1-24.
- Eckstein, Z., M. Eichenbaum and D. Peled (1985), Uncertain Lifetimes and the Welfare Enhancing Properties of Annuity Markets and Social Security, *Journal of Public Economics* 26, 303-326.
- Finkelstein, A. and J. M. Poterba (2004), Adverse Selection in Insurance Markets: Policyholder Evidence from the U.K. Annuity Market, *Journal of Political Economy*, 112, 183-208.
- Friedman, B. M. and M. J. Warshawsky (1988), Annuity Prices and Saving Behaviour in the United States, in: Zvi Bodie, John Shoven and David Wise (ed.), *Pensions in the U.S. Economy*, Chicago: University of Chicago Press, 53-77.
- Friedman, B. M. and M. J. Warshawsky (1990), The Cost of Annuities: Implications for Saving Behaviour and Bequests, *Quarterly Journal of Economics* 105, 135-154.
- Hurd, M. D. (1999), Mortality Risk and Consumption by Couples, NBER Working Paper 7048.
- Mitchell, O. S., J. M. Poterba, M. J. Warshawsky and J. R. Brown (1999), New Evidence on the Money's Worth of Individual Annuities, *American Economic Review* 89, 1299-1318.
- Kotlikoff L. J. and A. Spivak (1981), The Family as an Incomplete Annuities Market, *Journal of Political Economy* 89, 372-391.
- Pech, S. (2004), Tax incentives for private life annuities and the social security reform: effects on consumption and on adverse selection, forthcoming in *FinanzArchiv*, Vol. 60(4).
- Rothschild, M. and J. Stiglitz (1976), Equilibrium in Competitive Insurance Markets: An Essay on the Economics of Imperfect Information, *Quarterly Journal of Economic* 90, 29-649.
- Townley, P. G. C., and R. W. Boadway (1988), Social Security and the Failure of Annuity Markets, *Journal of Public Economics* 35, 75-96.

- Walliser, J.* (2000), Adverse Selection in the Annuities Market and the Impact of Privatizing Social Security, *Scandinavian Journal of Economics* 102, 373-393.
- Wilson, Ch.* (1977), A Model of Insurance Markets with Incomplete Information, *Journal of Economic Theory* 16, 167-207.
- Yaari, M. E.* (1965), Uncertain Lifetime, Life Insurance, and the Theory of the Consumer, *Review of Economic Studies* 32, 137-150.

ARBEITSPAPIERE 1991-2004
des Instituts für Volkswirtschaftslehre, Johannes Kepler Universität Linz

- 9101 WEISS, Christoph: Price inertia and market structure under incomplete information. Jänner 1991. in: *Applied Economics*, 1992.
- 9102 BARTEL, Rainer: Grundlagen der Wirtschaftspolitik und ihre Problematik. Ein einführender Leitfaden zur Theorie der Wirtschaftspolitik. Jänner 1991; Kurzfassung erschienen unter: Wirtschaftspolitik in der Marktwirtschaft, in: *Wirtschaft und Gesellschaft*, 17. 1991,2, S. 229-249
- 9103 FALKINGER, Josef: External effects of information. Jänner 1991
- 9104 SCHNEIDER, Friedrich; Mechanik und Ökonomie: Keplers Traum und die Zukunft. Jänner 1991, in: R. Sandgruber und F. Schneider (Hrsg.), *"Interdisziplinarität Heute"*, Linz, Trauner, 1991
- 9105 ZWEIMÜLLER, Josef, WINTER-EBMER, Rudolf: Manpower training programs and employment stability, in: *Economica*, 63. 1995, S. 128-130
- 9106 ZWEIMÜLLER, Josef: Partial retirement and the earnings test. Februar 1991, in: *Zeitschrift für Nationalökonomie / Journal of Economics*, 57. 1993,3, S. 295-303
- 9107 FALKINGER, Josef: The impacts of policy on quality and price in a vertically integrated sector. März 1991. Revidierte Fassung: On the effects of price or quality regulations in a monopoly market, in: *Jahrbuch für Sozialwissenschaft*.
- 9108 PFAFFERMAYR, Michael, WEISS, Christoph R., ZWEIMÜLLER, Josef: Farm income, market wages, and off-farm labour supply, in: *Empirica*, 18, 2, 1991, S. 221-235
- 9109 BARTEL, Rainer, van RIETSCHOTEN, Kees: A perspective of modern public auditing. Pleading for more science and less pressure-group policy in public sector policies. Juni 1991, dt. Fassung: Eine Vision von moderner öffentlicher Finanzkontrolle, in: *Das öffentliche Haushaltswesen in Österreich*, 32. 1991,3-4, S. 151-187
- 9110 SCHNEIDER, Friedrich und LENZELBAUER, Werner: An inverse relationship between efficiency and profitability according to the size of Upper-Austrian firms? Some further tentative results, in: *Small Business Economics*, 5. 1993,1, S. 1-22
- 9111 SCHNEIDER, Friedrich: Wirtschaftspolitische Maßnahmen zur Steigerung der Effizienz der österreichischen Gemeinwirtschaft: Ein Plädoyer für eine aktivere Industrie- und Wettbewerbspolitik. Juli 1991, in: *Öffentliche Wirtschaft und Gemeinwirtschaft in Österreich*, Wien, Manz, 1992, S. 90-114
- 9112 WINTER-EBMER, Rudolf, ZWEIMÜLLER, Josef: Unequal promotion on job ladders, in: *Journal of Labor Economics*, 15. 1997,1,1, S. 70-71
- 9113 BRUNNER, Johann K.: Bargaining with reasonable aspirations. Oktober 1991, in: *Theory and Decision*, 37, 1994, S. 311-321.
- 9114 ZWEIMÜLLER, Josef, WINTER-EBMER, Rudolf: Gender wage differentials and private and public sector jobs. Oktober 1991, in: *Journal of Population Economics*, 7. 1994, S. 271-285
- 9115 BRUNNER, Johann K., WICKSTRÖM, Bengt-Arne: Politically stable pay-as-you-go pension systems: Why the social-insurance budget is too small in a democracy. November 1991, in: *Zeitschrift für Nationalökonomie = Journal of Economics*, 7. 1993, S. 177-190.
- 9116 WINTER-EBMER, Rudolf, ZWEIMÜLLER, Josef: Occupational segregation and career advancement. Dezember 1991, in: *Economics Letters*, 39. 1992, S. 229-234
- 9201 SCHNEIDER, Friedrich: Ecological objectives in a market economy: Three simple questions, but no simple answers? Jänner 1992, in: Giersch, H. (Hrsg.), *Environmental economics*, Heidelberg, Springer-Verl., 1993
- 9202 SCHNEIDER, Friedrich: The federal and fiscal structures of representative and direct democracies as models for a European federal union: Some preliminary ideas using the public-choice approach, in: *Journal des Economistes et des Etudes Humaines*, 3. 1993,2
- 9203 SCHNEIDER, Friedrich: The development of the shadow economy under changing economic conditions: Some tentative empirical results for Austria. Revised version. März 1992.
- 9204 HACKL, Franz, SCHNEIDER, Friedrich, WITHERS, Glenn: The public sector in Australia: A quantitative analysis. März 1992, in: Gemmell, N. (ed.), *The growth of the public sector*, Aldershot, Elgar, 1993, S. 212-231
- 9205 SCHNEIDER, Friedrich: The federal and fiscal structures of western democracies as models for a federal union in former communist countries? Some thoughts using the public-choice approach. April 1992, in: Wagner, H.-J. (ed.), *On the theory and policy of systematic change*, Heidelberg, Springer-Verl., 1993, S. 135-154
- 9206 WINTER-EBMER, Rudolf: Endogenous growth, human capital, and industry wages. in: *Bulletin of Economic Research*, 4/1994, 289-314.
- 9207 BARTEL, Rainer: Gleichgewicht, Ungleichgewicht und Anpassung in der komparativen Statik. August 1992; 1. Teil erschienen unter: Auf welchen Grundlagen beruhen unsere ökonomischen Aussagen? in: *Wirtschaft und Gesellschaft*, 19, 2, 1993, S. 153-170; 2. Teil erschienen unter: Neoklassische Rationierung, in: *WiSt*, 23, 3, 1993, S. 151-154
- 9208 WEISS, Christoph R.: Market structure and pricing behaviour in Austrian manufacturing. August 1992. in: *Empirica*, 21. 1994, S. 115-131.
- 9209 WINTER-EBMER, Rudolf: Unemployment and individual pay: Wage curve or compensating differentials? erscheint u.d.T.: Wage Curve, Unemployment Duration and Compensating Differentials, in: *Labour Economics*, 3/1996,4, S. 425-434
- 9210 SCHUSTER, Helmut: Chaostheorie und Verkehrswissenschaft? September 1992, in: *Österreichische Zeitschrift für Verkehrswissenschaft*, 1-2, 38. 1992, S. 48-51
- 9211 BARTEL, Rainer, PRUCKNER, Gerald: Strukturelle und konjunkturelle Charakteristika der Budgetpolitik von Bund und Gesamtstaat in Österreich. Oktober 1992, in: *Wirtschaftspolitische Blätter*, 40. 1993,2, S. 134-154
- 9212 PFAFFERMAYR, Michael: Foreign direct investment and exports: A time series approach. Oktober 1992
- 9213 HACKL, Franz, SCHNEIDER, Friedrich: Austrian economic policy since 1945: An exploratory analysis. Oktober 1992, in: Paldam, M. (ed.), *Economic development of small open economies in Europe and South America*, Basingstoke, Macmillan, forthcoming 1994
- 9214 SCHNEIDER, Friedrich: Die Kunst als Wirtschaftsfaktor - vernachlässigbar oder beachtenswert? Oktober 1992, in: *Musicologica Austriaca*, 11. 1993,1, S. 19-29
- 9215 SCHNEIDER, Friedrich: Measuring the size and the development of the shadow economy: Can the causes be found and the obstacles be overcome? November 1992, in: Brandstätter, Hermann and Güth, W. (eds.), *Essays on Economic Psychology*, Heidelberg, Springer-Verl., 1994, S. 208-211
- 9216 SCHNEIDER, Friedrich: Public choice - economic theory of politics: A survey in selected areas. Dezember 1992, in: Brandstätter, Hermann and Güth, W. (eds.), *Essays on*

Economic Psychology, Heidelberg, Springer-Verl., 1994, S. 188-192

- 9301 SCHUSTER, Helmut: Energiepolitik im Spannungsfeld zwischen Wirtschaft und Umwelt. Jänner 1993, in: Friedrich Schneider (Hrsg.), *Energiepolitik in Österreich*, Linz, Trauner, 1993
- 9302 WINTER-EBMER, Rudolf: Motivation to migrate and economic success. März 1993, erscheint u.d.T.: Motivation for Migration and Economic Success, in: *Journal of Economic Psychology*, 15. 1994, S. 282-284
- 9303 LANDESMANN, Michael and GOODWIN, Richard: Productivity growth, structural change and macroeconomic stability. März 1993
- 9304 PFAFFERMAYER, Michael: Foreign outward direct investment and exports in Austrian manufacturing. März 1993
- 9305 BARTEL, Rainer: Zur Ökonomie der öffentlichen Finanzkontrolle. April 1993, erschienen unter: Öffentliche Finanzkontrolle als politische Machtkontrolle. Eine ökonomische Fundierung, in: *Politische Vierteljahresschrift*, 34. 1993,4, S. 613-639
- 9306 HACKL, Franz: Die Internalisierung von überbetrieblichen Leistungen der Landwirtschaft aus allokatorentheoretischer Sicht. April 1993.
- 9307 ZWEIMÜLLER, Josef, WINTER-EBMER, Rudolf, FALKINGER, Josef: Retirement of spouses and social security reform, in: *European Economic Review*, 40/1996, S. 471-472
- 9308 BRUNNER, Johann K.: Abilities, needs, and the size of the cake: an axiomatic bargaining approach to redistributive taxation. Juli 1993.
- 9309 HACKL, Franz, PRUCKNER, Gerald: Touristische Präferenzen für den ländlichen Raum: Die Problematik ihrer empirischen Erfassung und Internalisierung. Juli 1993. Ersch. in: *Gesellschaftliche Forderungen an die Landwirtschaft / Gesellschaft für Wirtschafts- und Sozialwissenschaften des Landbaues (GEWISOLA)*, hrsg. von Konrad Hagedorn ... 1994, Schriften der GEWISOLA, Bd. 30
- 9310 NECK, Reinhard, SCHNEIDER, Friedrich: Steuersystem und Schattenwirtschaft. Juli 1993.
- 9311 POINTNER, Johannes und SCHNEIDER, Friedrich: Österreich im internationalen Wirtschaftssystem, August 1993, in: Ewald Nowotny und Günther Winckler (Hrsg.), *Grundzüge der Wirtschaftspolitik Österreichs*, 1994.
- 9312 SCHNEIDER, Friedrich: The Relationship between efficiency and profitability with respect to the size of firms: an empirical investigation for Austria. September 1993.
- 9313 ÖTSCH, Walter: Die mechanistische Metapher in der Theoriengeschichte der Nationalökonomie. September 1993.
- 9314 BARTEL, Rainer: Wirtschaftspolitische Kontrolle und Beratung: Grundlagen, Probleme, Erfordernisse. September 1993, erschienen als: Kontrolle und Beratung in der Wirtschaftspolitik, in: *Wirtschaftspolitische Blätter*, 41. 1994,4, S. 442-462
- 9315 BARTH, Erling and ZWEIMÜLLER, Josef: Relative wages under decentralized and under corporatist bargaining systems, in: *Scandinavian Journal of Economics*, 97. 1995,3, S. 369-384
- 9316 FALKINGER, Josef and ZWEIMÜLLER, Josef: The impact of income inequality on product diversity and economic growth. Oktober 1993.
- 9317 SCHNEIDER, Friedrich: Anreizorientierte Systeme im Gesundheitswesen unter besonderer Berücksichtigung des stationären Sektors. Oktober 1993.
- 9318 HORSTMANN, Winfried and SCHNEIDER, Friedrich: Deficits, bailout and free riders: Fiscal elements of European constitution. Oktober 1993.
- 9319 BARTEL, Rainer: Egoismus, Altruismus, Ineffizienz und Kontrolle im öffentlichen Bereich: Ein kurzer Blick auf die Argumente und ihre Implikationen. November 1993, in: *Wirtschaft und Gesellschaft*, 20. 1994,2, S. 231-246
- 9320 BURGER, Christina: Theorien der Koalitionsbildung und ihre Anwendbarkeit auf österreichische Regierungen. November 1993.

- 9321 BARTEL, Rainer: Konjunkturelle Selbststabilisierung oder kompensatorische Nachfragepolitik? Ein Leitfaden für Studenten. Dezember 1993, tw. erschienen unter: Konjunkturprobleme - Selbstheilung oder Staatseingriffe?, in: *WiSo*, 17. 1994,4, S. 111-39, erscheint tw. unter: Lohnindexierung - Effiziente Institution zur Stabilisierung der Wirtschaft?, in: *WiSt*, 26. 1997,3, S. 154-156

- 9401 WINTER-EBMER, Rudolf, ZWEIMÜLLER, Josef: Immigration and the Earnings of Young Native Workers. Jänner 1994, in: *Oxford Economic Papers*, 48. 1996, S. 473-491
- 9402 KUNST, Robert, HAUSER, Michael: Fractionally Integrated Models With ARCH Errors. Jänner 1994.
- 9403 ZWEIMÜLLER, Josef, WINTER-EBMER, Rudolf: Internal Markets and Firm-Specific Determination of Earnings in the Presence of Immigrant Labor, in: *Economics Letters*, 48. 1995, S. 185-191
- 9404 SCHUSTER, Helmut: Energie und Umwelt. März 1994.
- 9405 PFAFFERMAYER, Michael: Testing for Ownership Advantages of Direct Investing Firms. März 1994.
- 9406 SCHNEIDER, Friedrich: Determinanten der Steuerhinterziehung und der Schwarzarbeit im internationalen Vergleich. März 1994.
- 9407 FALKINGER, Josef: Social Stability and the Equity-Efficiency Trade-off. April 1994.
- 9408 WINTER-EBMER, Rudolf, ZWEIMÜLLER, Josef: Do Immigrants Displace Native Workers? Mai 1994, erscheint in: *Journal of Population Economics*, 1998.
- 9409 FALKINGER, Josef: How to overcome free-riding: Rewarding deviations from average. Mai 1994. Revidierte Fassung: Efficient Private Provision of Public Goods by Rewarding Deviations from Average, in: *Journal of Public Economics*, 62. 1996,3, S. 413-422
- 9410 ZWEIMÜLLER, Josef: Wealth distribution, innovations, and economic growth. Mai 1994.
- 9411 GANTNER, Manfred, SCHNEIDER, Friedrich: Budgetausgliederungen - eine polit-ökonomische Analyse. Juni 1994.
- 9412 AIGINGER, Karl: The use of game theoretical models for empirical research - A survey of testing non-cooperative game theory with real world data in recent industrial organization literature. Juni 1994.
- 9413 FALKINGER, Josef: The private provision of public goods when the relative size of contribution matters. Juli 1994, in: *Finanzarchiv*, 51, 1994, S. 358 - 371.
- 9414 WINTER-EBMER, Rudolf: Sex discrimination and competition in product and labour markets, in: *Applied Economics*, 27. 1995,9, S. 849-857
- 9415 FALKINGER, Josef, ZWEIMÜLLER, Josef: The cross-country Engel curve for product diversification, August 1994, in: *Structural Change and Economic Dynamics*, 7. 1996,1, S. 79-97
- 9416 FALKINGER, Josef: Tax evasion, consumption of public goods and fairness, August 1994, in: *Journal of Economic Psychology*, 16, 1995, S. 63 - 72.
- 9417 SCHNEIDER, Friedrich: Einige Gedanken zur Harmonisierung indirekter Steuern in der Europäischen Union, September 1994.
- 9418 WINTER-EBMER, Rudolf: Firm size, earnings and displacement risk, Oktober 1994, erscheint in: *Economic Inquiry*, 2000.
- 9419 WEISS, Christoph: Labour market adjustment in U.S. manufacturing: Does market structure matter? Oktober 1994.
- 9420 WEISS, Christoph: State dependence, symmetry and reversibility of off-farm employment, November 1994.
- 9421 SCHNEIDER, Friedrich: Is there a European public choice perspective?, Dezember 1994.

- 9501 BARTEL, Rainer: Reform des öffentlichen Sektors - Grundlagen und Grundsätze. Jänner 1995.
- 9502 RIESE, Martin: The GINI-index as a measure of the goodness of prediction, Jänner 1995, in: *Bulletin of Economic Research*, 49. 1997,2, S. 127-135.

- 9503 AIGINGER, Karl, WINTER-EBMER, Rudolf und ZWEIMÜLLER, Josef: Eastern European Trade and the Austrian Labour Market, in: *Weltwirtschaftliches Archiv*, 132. 1996,3, S. 476-500
- 9504 WEISS, Christoph: Size, Growth, and Survival of Upper Austrian Farms in the 1980s, Februar 1995. in: Sotte, F. and Zanoli, R.: "The Regional Dimension of Agricultural Economics and Politics", forthcoming (1995).
- 9505 BARTEL, Rainer: Umweltpolitik in den Reformländern Europas. Voraussetzungen und Erfordernisse, Februar 1995.
- 9506 PFAFFERMAYR, Michael: Foreign Outward Direct Investment and Exports in Austrian Manufacturing: Substitutes or Complements?, March 1995.
- 9507 BURGER, Christina, SCHNEIDER, Friedrich: How Valuable is the Health of the Elderly- Evaluation of the Treatment of Alzheimer's Disease; April 1995.
- 9508 BRUNNER, Johann, RIESE, Martin: Measuring the Severity of Unemployment, April 1995.
- 9509 SCHNEIDER, Friedrich: Volkswirtschaftliche Aspekte der Mitarbeiterbeteiligung, Mai 1995.
- 9510 ÖTSCH, Walter: Erwartungen und Framing. Keynes und die "Anomalien" der Erwartungsnutzentheorie, Mai 1995.
- 9511 ÖTSCH, Walter: Die Herausforderung des Konstruktivismus für die ökonomische Theorie, Mai 1995, in: Birger P. Priddat und Gerhard Wegner, Hrsg., *Zwischen Evolution und Institution*, Metropolis-Verl., Marburg, 1996, S. 35 - 55
- 9512 ÖTSCH, Walter: Kreativität und Logik im ökonomischen Handlungsmodell, Mai 1995.
- 9513 WEISS, Christoph: Determinants of Farm Survival and Growth, Mai 1995.
- 9514 BARTEL, Rainer: Zum Verhältnis von Ökonomie und Politik des öffentlichen Sektors. Einige kurze Anmerkungen, Juni 1995.
- 9515 KUNST, Robert M.: The Myth of Misspecification. Some Metaphors, Juni 1995.
- 9516 VAN DER BURG, Brigitte, SIEGERS, Jacques, WINTER-EBMER, Rudolf: Gender and Promotion in the Academic Labour Market. Juli 1995.
- 9517 FALKINGER, Josef, FEHR, Ernst, GÄCHTER, Simon, WINTER-EBMER, Rudolf: A simple mechanism for the efficient private provision of public goods - experimental evidence, August 1995, erscheint in: *American Economic Review*, 1999.
- 9518 SCHNEIDER, Friedrich: Some Elements of a European Federal Union: A Public Choice Approach, September 1995.
- 9519 BRUNNER, Johann, FALKINGER, Josef: Nonneutrality of taxes and subsidies for the private provision of public goods, September 1995.
- 9520 WEISS, Christoph: Product Market Power and Dynamic Labour Demand, September 1995.
- 9521 LANDESMANN, Michael, PFAFFERMAYR, Michael: Technological Competition and Trade Performance, October, 1995.
- ***
- 9601 WEISS, Christoph: Exits From a Declining Sector: Econometric Evidence From a Panel of Upper-Austrian Farms 1980-90., Jänner 1996.
- 9602 BÖS, Dieter und SCHNEIDER, Friedrich: Private-public partnership: Gemeinschaftsunternehmen zwischen Privaten und der öffentlichen Hand, Februar 1996.
- 9603 GÄCHTER, Simon, FEHR, Ernst, KMENT, Christiane: Does Social Exchange Increase Voluntary Cooperation?, Februar 1996.
- 9604 ZWEIMÜLLER, Josef, BRUNNER, Johann: Heterogeneous consumers, vertical product differentiation and the rate of innovation, März 1996.
- 9605 SCHNEIDER, Friedrich: The Contributions of Werner W. Pommerehne to Public Choice, März 1996.
- 9606 SEDJAV, Tsagaan-Uvgun: Wissenschaftlich-technologische Entwicklungsfragen der Mongolei, April 1996, Wissenschaftlicher Betreuer: o.Univ.-Prof. Dr. Helmut Schuster, B.Com.
- 9607 KEUSCHNIGG, Christian u. KOHLER Wilhelm: Innovation, Capital Accumulation and Economic Transition, revised version April 1996.
- 9608 AIGINGER, Karl: Beyond Trade Balances: the competitive race between the US, Japan and Europe, Juni 1996.
- 9609 POMMEREHNE, Werner W., HART, Albert und SCHNEIDER, Friedrich: Tragic Choices and Collective Decision-Making: An Empirical Study of Voter Preferences for Alternative Collective Decision-Making Mechanisms, Juli 1996.
- 9610 BARTEL, Rainer, POINTNER, Johannes, SCHNEIDER, Friedrich: Österreich im internationalen Wirtschaftssystem, Juli 1996, erschienen in: E.Nowotny und G. Winckler (Hg.), *Grundzüge der Wirtschaftspolitik Österreichs*, 2. Aufl., Manz-Verlag, Wien 1997, S. 49-98.
- 9611 SCHNEIDER, Friedrich, VOLKERT, Jürgen: Die Realisierung ökologisch-orientierter Wirtschaftspolitik - eine Unmöglichkeit? Überlegungen aus Sicht der Neuen Politischen Ökonomie, Juli 1996.
- 9612 AIGINGER, Karl, WEISS, Christoph R.: Does it Pay to be Flexible? Empirical Evidence on the Relation-ship between Labour Demand Flexibility and Profit Margins, Juli 1996.
- 9613 WEISS, Christoph R.: Beneficial Concentration in a Menu Cost Model: A Note, August 1996.
- 9614 GUSENLEITNER, Markus, WINTER-EBMER, Rudolf, ZWEIMÜLLER, Josef: The Distribution of Earnings in Austria, 1972-1991, *Allgemeines Statistisches Archiv*, 3/98.
- 9615 WINTER-EBMER, Rudolf: Benefit Duration and Unemployment Entry: Quasi-Experimental Evidence for Austria, Oktober 1996.
- 9616 WINTER-EBMER, Rudolf: Potential Unemployment Benefit Duration and Spell Length: Lessons from a Quasi-Experiment in Austria, in: *Oxford Bulletin of Economics and Statistics*, 60. 1998,1, S. 33-45
- 9617 SCHNEIDER, Friedrich, FREY, Bruno S.: Warum wird die Umweltökonomik kaum angewendet?, November 1996.
- 9618 SCHNEIDER, Friedrich: Aktuelle Ergebnisse über die Schattenwirtschaft (Pfüsch) in Österreich, November 1996.
- 9619 KOHLER, Wilhelm: Die langfristige Entwicklung der Transformationsländer Osteuropas: Welche Rolle spielt die Integration der Märkte?, Dezember 1996.
- 9620 BRUNNER, Johann K., PRINZ, Christopher, WIRTH, Friedrich: Die Zukunft der gesetzlichen Pensionsversicherung, Dezember 1996.
- 9621 SCHNEIDER, Friedrich, GAWEL, Erik: Umsetzungsprobleme ökologisch orientierter Steuerpolitik: Eine polit-ökonomische Analyse, Dezember 1996.
- ***
- 9701 SCHNEIDER, Friedrich: Hält der EURO, was er verspricht? Ökonomische Überlegungen zur Stabilität und zur Einführung des EURO, Jänner 1997.
- 9702 SCHNEIDER, Friedrich: Welche Chancen hat Österreich als Wirtschaftsstandort im EU- und Globalisierungskontext derzeit und in Zukunft?, Jänner 1997.
- 9703 BRUNNER, Johann K.: Ökonomische Analyse des umlagefinanzierten Pensionsversicherungssystems, Jänner 1997.
- 9704 PFAFFERMAYR, Michael, WEISS, Christoph R.: On Market Power and Investment Behaviour, January 1997.
- 9705 LANDESMANN, Michael A., STEHRER, Robert: Industrial Specialisation, Catching-up and Labour Market Dynamics, January 1997.
- 9706 BARTEL, Rainer: Taking even introductory textbooks seriously. A note on the importance of a usual neglect, February 1997.
- 9707 KUNST, Robert M.: Decision bounds for data-admissible seasonal models, March 1997.
- 9708 WINTER-EBMER, Rudolf, ZWEIMÜLLER, Josef: Intra-firm Wage Dispersion and Firm Performance, *Kyklos*, 1999.
- 9709 PRITZL, F. J. Rupert und SCHNEIDER, Friedrich: Korruption, März 1997.

- 9710 SCHNEIDER, Friedrich: Empirical Results for the Size of the Shadow Economy of Western European Countries Over Time, März 1997.
- 9711 SCHNEIDER, Friedrich und VOLKERT, Jürgen: No Chance for Incentive-orientated Environmental Policies in Representative Democracies? A Public Choice Approach, März 1997.
- 9712 FALKINGER, Josef: Wachstum, Verteilung und Beschäftigung, März 1997.
- 9713 PRITZL, F. J. Rupert und SCHNEIDER, Friedrich: Zur Politischen Ökonomie autokratischer politischer Systeme - Ein theoretischer und empirischer Ansatz, April 1997.
- 9714 SCHUSTER, Helmut: Das Phänomen der strukturellen Arbeitslosigkeit und Maßnahmen zu seiner Bekämpfung,, Mai 1997.
- 9715 BARTEL, Rainer: Paradigmatik versus Pragmatik in der (Umwelt-)Ökonomie. Eine epistemologische Sicht, Mai 1997.
- 9716 BERGER, Helge und SCHNEIDER, Friedrich: Does the Bundesbank Yield in Conflicts? Frey and Schneider Revisited, Juni 1997.
- 9717 RIESE, Martin und BRUNNER, Johann K.: Interpreting risk with demographic statistics, Juni 1997.
- 9718 KUNST, Robert M.: Asymptotics for Unit-Root Processes with Underspecified Deterministic Structures, Juni 1997.
- 9719 GAWEL, Erik und SCHNEIDER, Friedrich: Implementation Problems of Eco-Taxation: A Political-Economy Analysis, Juli 1997
- 9720 PRITZL, Rupert und SCHNEIDER, Friedrich: Political Economy of Autocratic Political Regimes: A Theoretical and Empirical Approach, Juli 1997
- 9721 WINTER-EBMER, Rudolf: Unknown Wage Offer Distribution and Job Search Duration, *Economics Letters*, 1998.
- 9722 BRUNNER, Johann K.: Optimal Taxation of Income and Bequests, August 1997
- 9723 KEUSCHNIGG, Christian und KOHLER, Wilhelm: Eastern Enlargement of the EU: How Much is it Worth for Austria?, November 1997
- 9724 HOFER, Helmut, KEUSCHNIGG, Christian und Wilhelm KOHLER, A Dynamic Applied General Equilibrium Model for the Austrian Economy With Special Emphasis on the Eastern EU Enlargement, November 1997.
- ***
- 9801 WINTER-EBMER, Rudolf und Klaus F. ZIMMERMANN: East-West Trade and Migration: The Austro-German Case, Jänner 1998, erscheint in: Jaime de Melo, Riccardo Faini und Klaus F. Zimmermann (eds.): *Trade and Factor Mobility*, Cambridge (CUP).
- 9802 ICHINO, Andrea und Rudolf WINTER-EBMER: The Long-Run Educational Cost of World War 2: An Application of Local Average Treatment Effect Estimation, Jänner 1998.
- 9803 SCHNEIDER, Friedrich: Deregulierung und Privatisierung als Allheilmittel gegen ineffiziente Produktion von öffentlichen Unternehmen? Ein Erklärungsversuch mit Hilfe der ökonomischen Theorie der Politik, Jänner 1998.
- 9804 SCHNEIDER, Friedrich: Märkte, Moral und Umwelt: Was sagt die Ökonomie dazu?, Jänner 1998.
- 9805 LENK, Thomas, FUGE, Heidi und SCHNEIDER, Friedrich: Zurück zu mehr Föderalismus: Ein Vorschlag zur Neugestaltung des Finanzausgleichs in der BRD unter besonderer Berücksichtigung der ökonomischen Theorie der Politik, Jänner 1998.
- 9806 SCHNEIDER, Friedrich: Stellt das starke Anwachsen der Schwarzarbeit eine wirtschaftspolitische Herausforderung dar? Einige Gedanken aus volkswirtschaftlicher Sicht, Jänner 1998.
- 9807 SCHNEIDER, Friedrich: Einige grundlegende Elemente einer europäisch-föderalen Verfassung unter Zuhilfenahme der konstitutionellen ökonomischen Theorie, Jänner 1998.
- 9808 LANDESMANN, Michael: Vertical produkt differentiation and international trade: an econometric analysis, März 1998.
- 9808a BARTEL, Rainer: Öffentliche Finanzen, Finanzkontrolle und gesellschaftliche Wohlfahrt. Volkswirtschaftliche Thesen, Antithesen und mögliche Synthesen, März 1998. Erschienen in überarbeiteter Version in: F. Klug (Hrsg.), *Wesen und staatspolitische Funktion der öffentlichen Finanzkontrolle*, Schriftenreihe des Instituts für Kommunalwissenschaften an der Universität Linz, Bd. 107, S. 85-127.
- 9809 AIGINGER, Karl und PFAFFERMAYR, Michael: Product quality, cost asymmetry and the welfare loss of oligopoly, Februar 1998.
- 9810 KOHLER, Wilhelm: Die Ost-Erweiterung der EU: Eine österreichische Perspektive, April 1998.
- 9811 BERGER, Mathias und SCHNEIDER, Friedrich: Schattenwirtschaft und Steuerhinterziehung: Ökonomische und psychologische Aspekte, April 1998.
- 9812 SCHNEIDER, Friedrich und STIEGLER, Harald: Controlling als effizienzsteigerndes Instrument der Universitätsführung – Zauber- oder Leerformel?, April 1998.
- 9813 KUNST, Robert M.: Some aspects of modeling seasonality in economic time series, Juni 1998.
- 9814 KOHLER, Wilhelm: Fifty Years Later: A New Marshall Plan for Eastern Europe?, Juli 1998.
- 9815 RAPHAEL, Steven und WINTER-EBMER, Rudolf: Identifying the Effect of Unemployment on Crime, September 1998.
- 9816 ICHINO, Andrea und WINTER-EBMER, Rudolf: Lower and Upper Bounds of Returns to Schooling: An Exercise in IV Estimation with Different Instruments, September 1998, erscheint in: *European Economic Review*, 1999.
- 9817 PÖLL, Günther und SCHNEIDER, Friedrich: Schattenwirtschaft, Juli 1998.
- 9818 BRUNNER, Johann K.: Kapitaldeckungsverfahren versus Umlageverfahren: Grundsätzliches zur Systemdiskussion, August 1998.
- 9819 SCHNEIDER, Friedrich und ENSTE, Dominik: Increasing Shadow Economies all over the world - Fiction or Reality? A Survey of the Global Evidence of its Size and of its Impact from 1970 to 1995, November 1998.
- 9820 LENK, Thomas und SCHNEIDER, Friedrich: Zurück zu mehr Föderalismus: Ein Vorschlag zur Neugestaltung des Finanzausgleichs in der Bundesrepublik Deutschland unter besonderer Berücksichtigung der neuen Bundesländer, November 1998.
- 9821 KOHLER, Wilhelm: Die Bedeutung der EU-Osterweiterung für verschiedene Sektoren der österreichischen Wirtschaft, November 1998.
- 9822 KOHLER, Wilhelm: Die pan-europäische Integration: Herausforderungen für die Wirtschaftswissenschaft, November 1998.
- 9823 ATKINSON, Anthony B.: The Changing Distribution of Income: Evidence and Explanations (1. K.W. Rothschild Vorlesung), November 1998.
- 9824 PECH, Susanne und PFAFFERMAYR, Michael: Strategic Environmental Taxation in the Presence of Involuntary Unemployment and Endogenous Location Choice, November 1998.
- 9825 BARTEL, Rainer: Reform und Öffnung Osteuropas, November 1998.
- 9826 ÖTSCH, Walter: Zur Geschichte und Zukunft von Grundkategorien des ökonomischen Denkens: Raum, Zeit, Objekt und Ich, November 1998.
- 9827 ÖTSCH, Walter: „Äußere“ und „Innere“ Glücksmodelle in der Theoriegeschichte der Ökonomie, November 1998, erscheint in: Zinn, Bellebaum und Schaaf: *Ökonomie und Glück*, Frühjahr 1999.
- 9828 ÖTSCH, Walter: Konstruktivismus und ökonomische Theorie, November 1999, erscheint in: Lehmann und Pillath: *Handbuch der Evolutorischen Ökonomik*, Springer Verlag, 1999.
- ***
- 9901 WINTER-EBMER, Rudolf and ZWEIMÜLLER, Josef: Firm Size Wage Differentials in Switzerland: Evidence from Job Changers, Jänner 1999, erscheint in: *American Economic Review, Papers & Proceedings*, 1999.

- 9902 BRANDSTÄTTER, Eduard, KÜHBERGER, Anton und SCHNEIDER, Friedrich: "Surprise in Decision making under Uncertainty", Jänner 1999.
- 9903 SCHNEIDER, Friedrich und WAGNER, Alexander: "The Role of International Monetary Institutions after the EMU and after the Asian Crises: Some Preliminary Ideas Using Constitutional Economics", Februar 1999
- 9904 BRUNNER, Johann K.: Transfers zwischen den Generationen, Februar 1999.
- 9905 LACKÓ, Mária: Hidden Economy – An Unknown Quantity? Comparative Analysis of Hidden Economies in Transition Countries in 1989-1995, Februar 1999
- 9906 KOHLER, Wilhelm: Trade and Wages: What Can Factor Contents Tell Us? Februar 1999.
- 9907 LANDESMANN, Michael und STEHRER Robert: The European Unemployment Problem: A Structural Approach, März 1999.
- 9908 SCHNEIDER, Friedrich: Das Verhältnis von Innovation und Beschäftigung aus wirtschaftlicher Sicht – Jobkiller oder Jobwunder?, Mai 1999.
- 9909 SCHNEIDER, Friedrich und LENK, Thomas: Zurück zum Trennsystem als Königsweg zu mehr Föderalismus in Zeiten des „Aufbau Ost“, Juni 1999.
- 9910 SCHNEIDER, Friedrich: Die Entwicklung der Sozialpolitik in repräsentativen und in direkten Demokratien: Königsweg oder Sackgasse? Einige Bemerkungen aus der „Public Choice“-Perspektive, Juni 1999.
- 9911 SCHNEIDER, Friedrich: Ist Schwarzarbeit ein Volkssport geworden? Ein internationaler Vergleich des Ausmaßes der Schwarzarbeit von 1970 bis 1997, Juni 1999.
- 9912 FELBERMAYR, Gabriel, und KOHLER, Wilhelm: Zur ökonomischen Logik spekulativer Attacken, Juli 1999.
- 9913 FERSTERER, Josef und WINTER-EBMER, Rudolf: Returns to Education - Evidence for Austria, August 1999.
- 9914 BARTEL, Rainer: Social economic issues in sexual orientation – Where do we stand?, September 1999.
- 9915 SCHNEIDER, Friedrich und ENSTE, Dominik: Shadow Economies: Sizes, Causes, and Consequences, September 1999.
- 9916 BARTEL, Rainer: Ökonomische Rationalität im System der öffentlichen Finanzkontrolle. Die Funktionalität des neuen Oö. Landesrechnungshofs, September 1999.
- 9917 FERSTERER, Josef und Rudolf WINTER-EBMER: Are Austrian Returns to Education Falling Over Time?, Oktober 1999.
- 9918 SCHNEIDER, Friedrich und WINNER, Hannes: Ein Vorschlag zur Reform der österreichischen Unternehmensbesteuerung, November 1999.
- 9919 SCHNEIDER, Friedrich: Induzieren ökologische Steuerreformen einen Lenkungseffekt oder nur volle Staatskassen? Einige volkswirtschaftliche Überlegungen, November 1999.
- 9920 KOHLER, Wilhelm: Wer gewinnt, wer verliert durch die Osterweiterung der EU?, November 1999.
- 9921 DRÈZE, Jacques: On the Macroeconomics of Uncertainty and Incomplete Markets, November 1999.
- 9922 STIGLBAUER, Alfred M. und WEISS, Christoph R.: Family and Non-Family Succession in the Upper-Austrian Farm Sector, Dezember 1999.
- 9923 HOLZLEITNER, Christian: Linear Profit-Sharing in Regulatory Contracts, Dezember 1999.
- 9924 ÖTSCH, Walter: Objekt, Subjekt und Wert. Zur Kulturgeschichte in Georg Simmels "Philosophie des Geldes", Dezember 1999.
- ***
- 0001 KOHLER, Wilhelm: Die Osterweiterung der EU aus der Sicht bestehender Mitgliedsländer: Was lehrt uns die Theorie der ökonomischen Integration?, Jänner 2000.
- 0002 FERSTERER, Josef und WINTER-EBMER, Rudolf: Smoking, Discount Rates, and Returns to Education, Jänner 2000.
- 0003 BARTEL, Rainer: Quo vadimus. Grundgedanken zum Verhältnis von Wirtschaft, Staat und Gesellschaft, Februar 2000.
- 0004 SCHNEIDER, Friedrich und FREY, Bruno S.: Informal and Underground Economy, Februar 2000.
- 0005 SCHNEIDER, Friedrich und FELD, Lars P.: State and Local Taxation, Februar 2000.
- 0006 ZWEIMÜLLER, Josef und WINTER-EBMER, Rudolf: Firm-specific Training - Consequences for Job Mobility, März 2000.
- 0007 SCHNEIDER, Friedrich: Schattenwirtschaft – Tatbestand, Ursachen, Auswirkungen, April 2000
- 0008 SCHNEIDER, Friedrich: The Increase of the Size of the Shadow Economy of 18 OECD Countries: Some Preliminary Explanations, April 2000.
- 0009 SCHNEIDER, Friedrich und AHLHEIM, Michael: Allowing for Household Preferences in Emission Trading – A Contribution to the Climate Policy Debate, Mai 2000
- 0010 SCHNEIDER, Friedrich: Illegal Activities, but still value added ones (?): Size, Causes, and Measurement of the Shadow Economies all over the World, Mai 2000.
- 0011 WEICHSELBAUMER, Doris: Is it Sex or Personality? The Impact of Sex-Stereotypes on Discrimination in Applicant Selection, Mai 2000.
- 0012 FELBERMAYR, Gabriel, und KOHLER, Wilhelm: Effizienz- und Verteilungswirkungen der Handelsliberalisierung, Juni 2000.
- 0013 EGGER, Peter und PFAFFERMAYR, Michael: Trade, Multinational Sales, and FDI in a Three-Factors Model, Juni 2000.
- 0014 LANDESMANN, Michael und STEHRER, Robert: Potential Switchovers in Comparative Advantage: Patterns of Industrial Convergence, Juni 2000.
- 0015 SCHNEIDER, Friedrich und WAGNER, Alexander: Korporatismus im europäischen Vergleich: Förderung makroökonomischer Rahmenbedingungen?, Juli 2000.
- 0016 SCHNEIDER, Friedrich und LENK, Thomas: Grundzüge der föderalen Finanzverfassung aus ökonomischer Perspektive: Trennsystem vs. Verbundsystem, Juli 2000.
- 0017 HOLZLEITNER, Christian: Efficient Cost Passthrough, August 2000.
- 0018 HOLZLEITNER, Christian: Evolution of Regulatory Contracts in the Real World - A Change for Good?, August 2000.
- 0019 KOHLER, Wilhelm: International Fragmentation: A Policy Perspective, August 2000.
- 0020 KOHLER, Wilhelm: A Specific-Factors View on Outsourcing, August 2000.
- 0021 WEICHSELBAUMER, Doris: Sexual Orientation Discrimination in Hiring, September 2000.
- 0022 KOHLER, Wilhelm: Internationale Migration: Anmerkungen aus der Sicht der Außenwirtschaftstheorie, Oktober 2000.
- 0023 AIGINGER, Karl und DAVIES, S.W.: Industrial Specialisation and geographic Concentration: Two sides of the same coin? Not for the European Union, Oktober 2000.
- 0024 EGGER, Hartmut und EGGER, Peter: Outsourcing and Skill-Specific Employment in a Small Economy: Austria and the Fall of the Iron Curtain, Oktober 2000.
- 0025 KOHLER, Wilhelm: An Incumbent Country View on Eastern Enlargement of the EU - Part I: A General Treatment, November 2000.
- 0026 KOHLER, Wilhelm: An Incumbent Country View on Eastern Enlargement of the EU - Part II: The Austrian Case, November 2000.
- 0027 FREY, Bruno S.: What are the sources of happiness?, November 2000
- 0028 RIESE, Martin: Weakening the SALANT-condition for the Comparison of mean durations, Dezember 2000
- 0029 WINTER-EBMER, Rudolf: Long-term consequences of an innovative redundancy-retraining project: The Austrian Steel Foundation, Dezember 2000.
- 0030 BRUNNER, Johann K. und PECH, Susanne: Adverse Selection in the annuity market when payoffs vary over the time of retirement, Dezember 2000.

- 0101 KOHLER, Wilhelm: Osterweiterung der EU: Die Mitgliedschaft wird teurer – Wird sie auch wertvoller?, Jänner 2001.
- 0102 STEHRER, Robert: Industrial specialisation, trade, and labour market dynamics in a multisectoral model of technological progress, Jänner 2001.
- 0103 SCHNEIDER, Friedrich; SALHOFER, Klaus; SCHMID, Erwin, und STREICHER, Gerhard: Was the Austrian Agricultural Policy Least Cost Efficient?, März 2001.
- 0104 SCHNEIDER, Friedrich; KIRCHLER, Erich und MACIEJOVSKY, Boris: Social Representations on Tax Avoidance, Tax Evasion, and Tax Flight: Do Legal Differences Matter?, März 2001.
- 0105 SCHNEIDER, Friedrich; PITLIK, Hans, und STROTMANN, Harald: On the Politicization of Intergovernmental Fiscal Relations in Germany after Unification, März 2001.
- 0106 SCHNEIDER, Friedrich: Privatisierung und Deregulierung in Österreich in den 90er Jahren: Einige Anmerkungen aus Sicht der Neuen Politischen Ökonomie, März 2001.
- 0107 SCHNEIDER, Friedrich; BRAITHWAITE, Valerie, and REINHART, Monika: Individual Behavior in the Cash / Shadow Economy in Australia: Facts, Empirical Findings and some Mysteries, März 2001.
- 0108 BRUNELLO, Giorgio; LUCIFORA, Claudio, und WINTER-EBMER, Rudolf: The Wage Expectations of European College Students, März 2001.
- 0109 BRUNNER, Johann K. und PECH, Susanne: Die Dritte Säule der Altersvorsorge - Sparen und Versichern?, Juni 2001.
- 0110 STÖGER, Klaus und WINTER-EBMER, Rudolf: Lehrlingsausbildung in Österreich: Welche Betriebe bilden Lehrlinge aus? Juli 2001.
- 0111 HEIJDRRA, Ben J.; KEUSCHNIGG, Christian, und KOHLER, Wilhelm: Eastern Enlargement of the EU: Jobs, Investment and Welfare in Present Member Countries, Oktober 2001
- 0112 BRUNNER, Johann und BUCHEGGER, Reiner: Gesundheitsgüter und Gesundheitsdienstleistungen in Österreich, Dezember 2001.
- 0113 MALINVAUD, Edmond: On methodology in macroeconomics – with application to the demand for unskilled labour, November 2001.

- 0201 KOHLER, Wilhelm: The Distributional Effects of International Fragmentation, April 2002.
- 0202 WINTER-EBMER, Rudolf and WIRZ, Annela: Public Funding and Enrolment into Higher Education in Europe, April 2002.
- 0203 KOHLER, Wilhelm: Issues of US-EU Trade Policy, May 2002.
- 0204 BRUNNER, Johann K. und PECH, Susanne: Adverse selection in the annuity market with sequential and simultaneous insurance demand, May 2002.
- 0205 Stiglitz, Alfred, Stahl, Florian, Winter-Ebmer, Rudolf and Josef Zweimüller: Job Creation and Job Destruction in a Regulated Labor Market: The Case of Austria, July 2002.
- 0206 BÖHEIM, René und TAYLOR, Mark P: Job search methods, intensity and success in Britain in the 1990s, July 2002.
- 0207 BURGSTALLER, Johann: Are stock returns a leading indicator for real macroeconomic developments?, July 2002.
- 0208 KOHLER, Wilhelm: Aspects of International Fragmentation, August 2002.
- 0209 PECH Susanne: Tax incentives for private life annuities and the social security reform: effects on consumption and on adverse selection, August 2002.
- 0210 BRUNELLO, Giorgio and WINTER-EBMER, Rudolf: Why Do Students Expect to Stay Longer in College? Evidence from Europe, August 2002.
- 0211 RIESE, Martin: A New Class of Ageing Distributions, December 2002.
- 0212 BRUNNER, Johann K.: Welfare Effects of Pension Finance Reform, December 2002.

- 0301 SCHNEIDER, Friedrich and BAJADA, Christopher: The Size and Development of the Shadow Economies in the Asia-Pacific, April 2003.
- 0302 SCHNEIDER, Friedrich, CHAUDHURI, Kausik and CHATTERJEE, Sumana: The Size and Development of the Indian Shadow Economy and a Comparison with other 18 Asian Countries: An Empirical Investigation, April 2003.
- 0303 SCHNEIDER, Friedrich, WAGNER, Alexander F. and DUFOUR, Mathias: Satisfaction not guaranteed - Institutions and satisfaction with democracy in Western Europe, April 2003.
- 0304 SCHNEIDER, Friedrich and WAGNER, Alexander, F.: Tradeable permits - Ten key design issues, April 2003.
- 0305 KOHLER, Wilhelm: Factor Price Frontiers with International Fragmentation of Multistage Production, April 2003.
- 0306 BURGSTALLER, Johann: Interest Rate Transmission to Commercial Credit Rates in Austria, May 2003.
- 0307 WEICHSELBAUMER, Doris and WINTER-EBMER, Rudolf: The effects of competition and equal treatment laws on the gender wage differential, July 2003.
- 0308 MAYR, Karin: Immigration and Majority Voting on Income Redistribution - Is there a Case for Opposition from Natives?, July 2003.
- 0309 BRUNNER, Johann K.: Optimum taxation of income from labour and capital in a dynamic two-person economy, September 2003.
- 0310 BRUNNER, Johann K.: Optimale direkte und indirekte Steuern bei unterschiedlicher Anfangsausstattung, September 2003.
- 0311 WEICHSELBAUMER, Doris and WINTER-EBMER, Rudolf: A meta-analysis of the international gender wage gap, September 2003.
- 0312 WEICHSELBAUMER, Doris and WINTER-EBMER, Rudolf: Rhetoric in Economic Research: The Case of Gender Wage Differentials, September 2003.
- 0313 DULLECK, Uwe, FRIJTERS, Paul and WINTER-EBMER, Rudolf: Reducing Start-up costs for New Firms. The Double Dividend on the Labor Market, October 2003.
- 0314 Aiginger, Karl: Insufficient investment into future growth: the forgotten cause of low growth in Germany, November 2003
- 0315 FELBERMAYR, Gabriel J. and LICANDRO, Omar: The underestimated virtues of the two-sector AK model, December 2003.
- 0316 KOHLER, Wilhelm: Eastern Enlargement of the EU: A Comprehensive Welfare Assessment, December 2003.
- 0317 RODRIK, Dani: Growth Strategies, December 2003.

- 0401 FELBERMAYR, Gabriel and KOHLER, Wilhelm: Immigration and Native Welfare, February 2004.
- 0402 FELBERMAYR, Gabriel: Specialization on a Technologically Stagnant Sector Need Not Be Bad for Growth, March 2004.
- 0403 SCHNEIDER, Friedrich and KLINGLMAIR, Robert: Shadow Economies around the World: What do we know?, April 2004.
- 0404 BELKE, Ansgar and SCHNEIDER, Friedrich: Privatization in Austria: Some Theoretical Reasons and Performance Measures, June 2004.
- 0405 SCHNEIDER, Friedrich and BURGER, Christina: Formal and Informal Labour Markets: Challenges and Policy in the Central and Eastern European new EU Members and Candidate Countries, June 2004.
- 0406 SCHOR, Juliet: Sustainable Consumption and Worktime Reduction, June 2004.
- 0407 FELBERMAYR, Gabriel: Does Trade Cause Divergence? Dynamic Panel Data Evidence, Juni 2004.
- 0408 BUCHEGGER, Reiner und WÜGER Michael: Private Expenditures for Children in Austria - Variations in Results applying different Models, July 2004.
- 0409 MAYR, Karin: The Fiscal Impact of Immigrants in Austria – A Generational Accounting Analysis, July 2004.

- 0410 HALLA, Martin: Unterhalt, Obsorge und Scheidungsanwälte: Eine ökonometrische Untersuchung der einvernehmlichen Scheidung in Österreich., August 2004.
- 0411 RAFERZEDER, Thomas and WINTER-EBMER Rudolf: Who is on the Rise in Austria: Wage Mobility and Mobility Risk, September 2004.
- 0412 PECH, Susanne: Adverse Selection with individual- and joint-life annuities, November 2004.