

Cristal, Taboada et al.

**Working Paper**

## Farmers' willingness to adopt irrigation for Quinoa (Chenopodium quinoa Willd) in communities of the central altiplano of Bolivia

Documento de Trabajo, No. 08/11

**Provided in Cooperation with:**

Instituto de Investigaciones Socio-Económicas (IISEC), Universidad Católica Boliviana

*Suggested Citation:* Cristal, Taboada et al. (2011) : Farmers' willingness to adopt irrigation for Quinoa (Chenopodium quinoa Willd) in communities of the central altiplano of Bolivia, Documento de Trabajo, No. 08/11, Universidad Católica Boliviana, Instituto de Investigaciones Socio-Económicas (IISEC), La Paz

This Version is available at:

<https://hdl.handle.net/10419/72761>

**Standard-Nutzungsbedingungen:**

Die Dokumente auf EconStor dürfen zu eigenen wissenschaftlichen Zwecken und zum Privatgebrauch gespeichert und kopiert werden.

Sie dürfen die Dokumente nicht für öffentliche oder kommerzielle Zwecke vervielfältigen, öffentlich ausstellen, öffentlich zugänglich machen, vertreiben oder anderweitig nutzen.

Sofern die Verfasser die Dokumente unter Open-Content-Lizenzen (insbesondere CC-Lizenzen) zur Verfügung gestellt haben sollten, gelten abweichend von diesen Nutzungsbedingungen die in der dort genannten Lizenz gewährten Nutzungsrechte.

**Terms of use:**

*Documents in EconStor may be saved and copied for your personal and scholarly purposes.*

*You are not to copy documents for public or commercial purposes, to exhibit the documents publicly, to make them publicly available on the internet, or to distribute or otherwise use the documents in public.*

*If the documents have been made available under an Open Content Licence (especially Creative Commons Licences), you may exercise further usage rights as specified in the indicated licence.*



*Instituto de Investigaciones Socio Económicas*

Documento de Trabajo No. 08/11  
Junio 2011

**Farmers' Willingness to Adopt Irrigation for  
Quinoa (*Chenopodium quinoa Willd*) in  
Communities of the Central Altiplano of Bolivia**

*por:*  
*Taboada Cristal , et.al*

## **Farmers' willingness to adopt irrigation for quinoa (*Chenopodium quinoa Willd*) in communities of the Central Altiplano of Bolivia**

Taboada Cristal.<sup>a1\*</sup>, Mamani Armando<sup>a2</sup>, Raes Dirk<sup>c3</sup>,  
Mathijs Erik<sup>b</sup>, García Magali<sup>a</sup>, Geerts Sam<sup>c</sup>, Gilles Jere.<sup>d</sup>

### **Resumen**

Actualmente, se considera a la quinua como un cultivo estratégico debido a su capacidad de adaptación a las condiciones abióticas adversas que se presentan en el altiplano boliviano. No obstante, el rendimiento promedio es bajo. Estudios previos, han demostrado que, el rendimiento puede incrementarse haciendo uso de la tecnología de riego deficitario. Sin embargo, el uso de riego en quinua no es una práctica común entre los productores de la región altiplánica. Este estudio, ha examinado los principales factores que determinan la disposición de las unidades productivas para adoptar la tecnología de riego deficitario. Para ello, se ha entrevistado a 137 productores de siete comunidades del altiplano central. Los resultados del análisis estadístico, han demostrado que la disposición para adoptar la tecnología de riego deficitario para el cultivo de quinua, es mayor en zonas donde los productores poseen mayores superficies de tierra y donde ya existe cierta práctica de riego. Palabras clave : quinua, riego deficitario, adopción de tecnología.

### **Abstract**

Quinoa is considered a strategic crop because it is well adapted to the adverse abiotic conditions of the Bolivian Altiplano; however, the average yield is low. Previous studies have demonstrated that quinoa yield would increase with deficit irrigation technology. Nevertheless, to irrigate quinoa is not a normal practice in the farming systems of the Altiplano. This paper examines the main factors that determine the attitude of farmers towards adopting deficit irrigation using a sample of 137 surveys in seven communities of the Central Altiplano. Statistic analysis demonstrates that the most important factors influencing farmers' willingness for irrigation adoption are the acreage planted with quinoa, quantity of surplus production for trading, and having irrigation experience. Also, the age and education level were important to know willingness to adopt a new technology. Therefore, deficit irrigation is more likely to be performed in areas where farmers own larger fields and where there is already certain type of irrigation.

Key words: quinoa, deficit irrigation, willingness for technology adoption

---

<sup>1</sup> <sup>a</sup> Universidad Mayor de San Andrés (UMSA). Facultad de Agronomía. Proyecto QUINAGUA. Calle Héroes del Acre N° 1850, Zona San Pedro. La Paz, Bolivia

<sup>2</sup> K.U. Leuven University, [Division Agricultural and Food Economics](#), Celestijnentaan 200 E, B-3001 Leuven, Belgium

<sup>3</sup> K.U. Leuven University, Division of Soil and Water Management, Celestijnentaan 200 E, B-3001 Leuven, Belgium. University of Missouri, Department of Rural Sociology, 226 Gentry Hall, Missouri, U.S.A.

\* Corresponding author: Tel.: + 591-2-2491485 E- mail address: [cristal\\_taboada@hotmail.com](mailto:cristal_taboada@hotmail.com) (C. Taboada)

## **Farmers' willingness to adopt irrigation for quinoa (*Chenopodium quinoa Willd*) in communities of the Central Altiplano of Bolivia**

### **1. Introduction**

During the last decade, quinoa (*Chenopodium quinoa Willd*) has become more and more a cash export crop, as demonstrated by Bolivian statistics: in 2006, 7,641 tons were exported with a total value of USD 8,903,187 mainly to the USA, Japan and European markets. Moreover, demand for quinoa in developed countries keeps increasing: many consumers direct their consumption towards more healthy food, as quinoa is considered one of the best balanced food; it is an excellent source of protein and slow-releasing carbohydrates (Comai et al., 2007). It can supply all of the body's requirements: carbohydrates, fats, protein, vitamins, minerals and fiber. Quinoa is gluten free and considered an ideal food for those prone to food allergies, making it beneficial for people who cannot tolerate common grains such as wheat, corn, rye, barley and oats. In addition, many small producers organized in producer organizations (most of them in the Southern Altiplano) receive a price premium by selling their quinoa as Fair Trade and Solidarity Market.

In opposition to the opening of the international and national demand for quinoa, production levels in the main exporting countries (Bolivia and Peru) are low and constrained. Farmers constantly face restrictive production conditions, such as climatic risks (droughts, frost) (Garcia et al., 2004; Geerts et al., 2006), the presence of only three wet months (December, January and February) and a very primitive way of farming. Thus, the production level is somewhat larger than the farmer's family consumption.

In this context a lot of quinoa is being sold and transported to foreign markets, as a non-registered product (black market) (FAUTAPO, 2005). However, studies by international agencies (FAO 1998; CAF, 2001), found in quinoa one of the possibilities to improve the overall conditions of poverty in the production countries and particularly in the most depressed areas of the Bolivian Altiplano.

From a technical point of view, previous studies (Garcia, 2003; Geerts et al. 2008), have demonstrated that quinoa yield can be increased by applying only a small amount of irrigation water during the growing period. It was demonstrated that with irrigation applications during the critical stages of growth, the yields can be stabilized around 2,000 kg/ha, which is much larger than the current average (500 kg/ha). In other words, the application of just a little amount of water might substantially raise the yield and thus the income of the farmer.

Although the implementation of irrigation systems for quinoa might help to increase and stabilize quinoa production levels, it requires additional community organization, additional investment, changes in farmer's orientation and technical training which might be difficult to achieve.

The purpose of this paper is to explore whether Bolivian farmers are willing to irrigate quinoa and to investigate which factors determine their willingness or lack of willingness. The remainder of this paper is organised as follows. Section 2 discusses the experiences in Bolivia with quinoa and irrigation. Data and methodology are provided in

section 3. Section 4 provides the results of our analysis, section 5 is devoted to discussion and section 6 concludes the paper.

## **2. Quinoa in Bolivia**

### **2.1. The origin of Quinoa**

Since ancestral times, Andean man has consumed quinoa (*Chenopodium quinoa* W.) and named it the golden grain of the Incas. Quinoa was domesticated 5000 years B.C. This is based on the archeological discoveries made in Ayacucho, Peru. Quinoa production is found throughout the Andean region, i.e. to Bolivia, Peru, Ecuador, Chile, Argentina and Colombia (NEC, 2006).

Today, quinoa is cultivated mainly in Bolivia and Peru. However, during the last decade, Ecuador, Chile, Argentina and Colombia have started many research projects and studies on quinoa, such as: SICA (Agricultural Census and Information System) of the Agricultural Ministry of Ecuador; Quinuacoche CANOE program promoted by the Latin American Foundation in Colombia; Provincial Congress for Quinoa promoted by the Deputies Chamber of Salta, Argentina; Program of Encouragement for Business Design and Innovation promoted by the Euro Chile Foundation.

The quinoa plant represents an enormous biodiversity and its classification is based on ecotypes recognizing five categories (PROINPA, 2004, CEPROBOL, 2007):

1. Valley quinoa grows in the Interandean Valleys between 2000 and 3000 m.a.s.l.
2. Highland quinoa grows in the Central and Northern Altiplano of Bolivia and Peruvian Altiplano.
3. Salt quinoa, from Potosí, Bolivia
4. Sea level quinoa grows in Chile
5. Subtropical quinoa, grows in the Bolivian Interandean Valleys

### **2.2. Quinoa production system in the Central Altiplano**

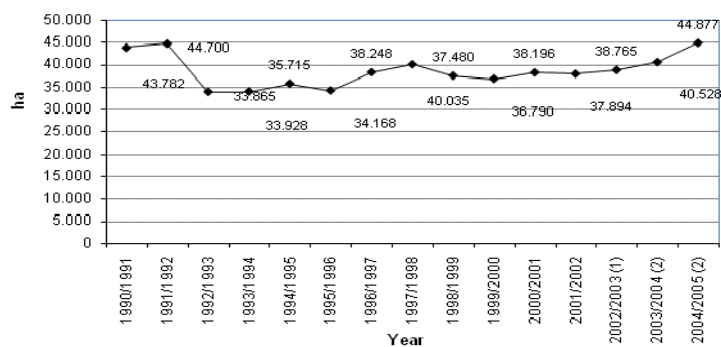
In the Central Altiplano farming systems are traditional and small. Farmers have developed mixed systems (agriculture and livestock) in order to diversify their production as a strategy to reduce production risk (Valdivia and Jete, 1996). This production system has as main crops: potatoes, quinoa, barley, cañahua and vegetables; livestock is composed of dairy production, sheep and lama. Dairy production has become more important than agriculture because the encouragement and incentives given to this activity (Camacho, 2001). Crop rotation is one of the most important activities of crop management. The pattern of rotation is: potatoes, quinoa, bean and barley (Aliaga, 2006; Mamani, 2007).

Most of the farmers in the Central Altiplano cultivate quinoa. Family labour is used throughout the entire production process (from sowing to harvest) (PROINPA, 2004). PROINPA (2004) calculated that mechanization would be possible on land areas from 21 to 80 hectares; thus increasing the potential of commercializing quinoa. Quinoa is generally sown in furrows or scattered at random after potato.

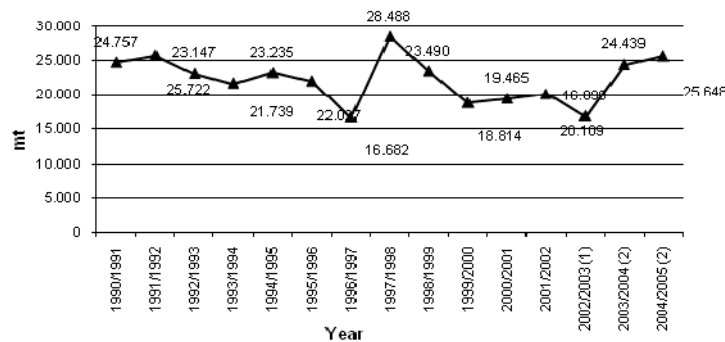
Climate and pests are the most important limiting factors; drought causes the loss of the whole quinoa plant. Frost also causes a significant reduction of production. Under the cited conditions the average yield reported is 500 kilogram per hectare (PROINPA 2004).

### 2.3. Quinoa production and trade

According to official information, the sown area of quinoa in Bolivia in 2000 was 36,847 ha with a total production of 23,875 tons (see figure 1). However, Crespo et al. (2001) and Brenes et al. (2001) (as cited by Ton and Bijman, 2006) provide somewhat lower production figures (21,850 metric tons). According to Ton and Bijman (2006), in 2000 the destination of the marketed surplus of quinoa (estimated at 7,618 metric tons) was as follows: registered exports (1,534 mt or 20%), estimated non-registered exports (black market) (2,800 mt or 37%) and domestic market (3,284 mt or 43%). Thus, Ton and Bijman (2006) emphasize that most Bolivian exports are informal and not registered with destination Peru; the registered formal exports go to the USA and Europe.



(a)



(b)

**Figure 1. Quinoa Area (a) in hectares (ha) and production (b) in metric tonnes (mt) in Bolivia, 1991-2002** (source: INE Bolivia, MACA, SEDAG- Oruro, 2002,) (1), (2), Projected

### 2.4. Quinoa technology development and diffusion

In 1967 Bolivia started, with FAO participation, a programme to study and promote the quinoa crop. Bolivian Agricultural Technology Institute (IBTA) began research in the crop cultivation area. As a result, improved varieties were obtained. Nowadays, farmers are using these varieties. The most important variety in the Central and Northern Altiplano is the Sajama variety (PROINPA, 2004), which is characterized by a low content of saponine. Therefore, this variety is called sweet quinoa.

Since the 1990s different institutions—such as the Self-development Peasant-Oruro Programme (PAC-CORDEOR), the Potosí Quinoa Programme (PROQUIPO) and IBTA—

focused on improving harvest and post-harvest techniques. They promoted the use of sickles and reaping machines, as well as threshers. In 1998 the producer organizations ANAPQUI and CECAOT started up a project to solve the problem of chaff presence in the product. The FAO gave technical support to the project (Soto et al., 2004).

In the frame work of the project “Sustainable Quinoa Production” supported by the McKnight Foundation, the PROINPA Foundation (Research and Promotion of Andean Products) is promoting and diffusing the use of technologies, such as the use of sickles for harvest, the thresher machine and the manual or mechanic scint machine. As result of a participatory work, PROINPA was able to introduce a proposal in harvest and post-harvest activities for quinoa (see Table 1).

**Table 1. Characteristics of the traditional technology and the innovative proposal in harvest and post harvest activities of quinoa crop (Proposal presented by PROINPA FOUNDATION)**

<b>Activities</b>	<b>Traditional Technology</b>	<b>Innovative proposal</b>
<b>Harvest</b>	Manual pulled up (root included)	Use of a cutting tool as sickles, reaping machine, pruning scissor, etc.
<b>Dried</b>	Heaps or arcs formed with the plants, they are in direct contact with the ground (the heads are ordered to the center and covered with straw, till the grains reach the appropriate humidity for thrash)	Use of canvas tarp for covering with different dimensions (for example 30 squared meters), in order to avoid the direct contact with the ground.
<b>Trashed</b>	The grain is extracted by rub of head, by hits of them, with curved sticks named 'huajtanas', or stone rollers or tires of vehicles	Use of thresher machine (the engine could be get from a tractor)
<b>Cleaning and classification</b>	The chaff are winnowed	Cleaning machine use (manual or mechanic)
<b>Storing</b>	The quinoa grains are stored in jute, cotton or polypropylene sacs	Use of metallic silos

Most of the research on quinoa is carried out on breeding, harvest and post-harvest technology improvement and even food technology. However, it is very difficult to find studies on irrigation, because quinoa is growing on marginal conditions of soil, climate and water resources scarcity (Geerts et al, 2008). Nevertheless, there are a few studies on this topic that have demonstrated that a low level of supplemental irrigation of quinoa during flowering might have important effects on final yield, while the vegetative period is almost unaffected by drought (García, 2003; Geerts et al., 2008). García (2003) and Geerts et al. (2008) have demonstrated that by applying deficit irrigation the production can be stabilized between 1,2 to 2 mt/ha. Solíz et al. (2002) conducted a study to evaluate saponine concentration (which makes the bitter taste of unprocessed grains) and composition in two quinoa cultivars ‘Sajama’ and ‘Chucara’, during plant development under three soil water deficit treatments. One of the findings showed that deficit irrigation reduced the saponin content facilitating the grain for further industrialization.

## **2.5. Quinoa production systems**

In Bolivia, quinoa production systems could be grouped into two types of systems according to the growing region and farmer’s production goal. Production systems of Northern and Central Altiplano, where quinoa is dedicated predominantly for self-consumption and

production systems of the Southern Altiplano, where quinoa is dedicated primarily for commercializing. Communities settled in the Northern and Central Altiplano have quinoa as one of the basic components of their food although, potato is the main agricultural crop. In the South Altiplano quinoa is the only crop that has the capacity to adapt to the climatic conditions of the zone.

In the three Altiplano regions, quinoa is cultivated from September to May (austral summer months), nevertheless the production techniques are different according to the zonal conditions (climate, quinoa acreage, socio economic and others conditions) (Geerts, et al, 2008b).

According with the mechanization, the follow cropping systems are found in the Northern, Central and Southern Altiplano: Traditional, when there is no mechanization; semimechanized, when agricultural machinery is used at least in one stage of the production process and mechanized, when agricultural machinery is used twice or more in the production process.

Agricultural production systems in the Central Altiplano is characterized generally by multiple cropping system, production at low scale, small land size and the farmer's family constitutes the main source of labour. According to the characteristics, these zones have an economic system denominated farmer economy or "economías campesinas" (Albarracin, 2001).

## 2.6. Technology adoption

Generally, the adoption of an innovation is a process that is influenced by technological, economic, socio-demographic, and institutional factors (Feder et al., 1985). Previous research related to the adoption of irrigation systems has highlighted the influence of both external factors such as access to water and to infrastructure and the availability of technical and financial support on the one hand and farm-specific factors such as cropping patterns, household income, farmer education, age and experience, and social status on the other (Shrestha and Gopalakrishnan, 1993; Chikozho, 2005; Luquet et al., 2005; Kulecho and Weatherhead, 2006; Blanke et al., 2007; Namara et al., 2007).

## 3. Methodology

We apply binary logistic regression (LR) to evaluate the influence of a set of independent variables on the dependent variable.

Logistic regression does not assume a normal distribution of the independent variables. The relationship between the independent and dependent variables is not a linear function; instead, the model is represented as follow:

$$\text{logit}(p) = \ln \left[ \frac{p_i}{1-p_i} \right] \quad (\text{Bewick 2005}) \quad (1)$$

Where:

$p_i$  = Probability of  $Y = 1$

$1 - p_i$  = Probability of  $Y = 0$

The model with the inclusion of more than one explanatory (independent) variable may be written as follows:

$$\text{Logit}(p) = b_0 + b_1x_1 + b_2x_2 + \dots + b_ix_i \quad (\text{Bewick 2005})(2)$$



Where:

$p$  = Probability of  $Y=1$  (irrigation willing or pay maintenance willing)

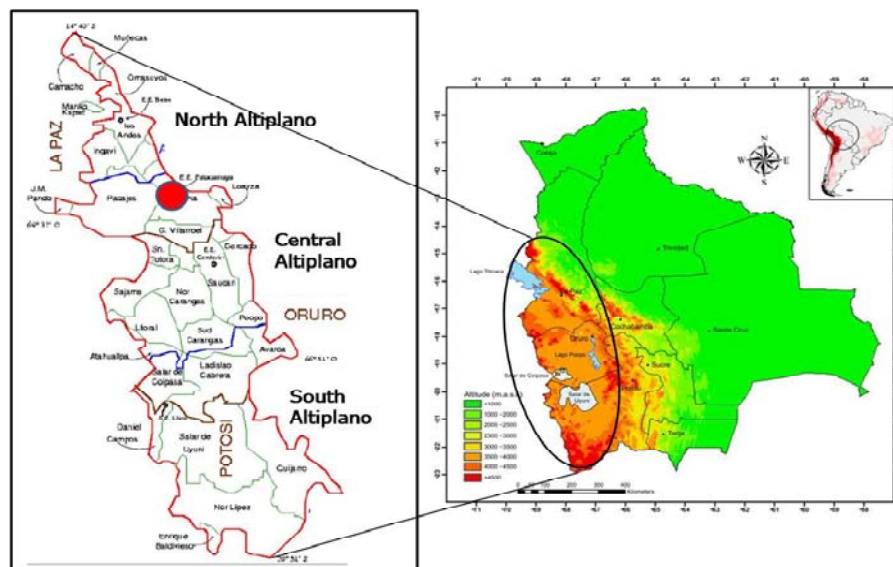
$x_1, x_2, \dots, x_i$  = explanatory variables (socioeconomic variables)

To test the significance of the coefficients of the model, we applied the Hosmer and Lemeshow test of goodness of fit<sup>4</sup> and the iteration history<sup>5</sup>. Also, the omnibus test and the classification rate<sup>6</sup> were computed.

Willingness to pay a system irrigation maintenance fee was used as dependent variable in order to evaluate adoption technology willingness. The independent variables were selected by mean of previous analysis and literature review. We include five farm specific variables: acreage of quinoa, share of quinoa production sold, previous irrigation experience, age and education level of the farmer; and dummy variable for community that captures external factors.

### 3.1. Data

Primary data were collected in five communities of the municipality of Patacamaya: Patarani (17° 15' S, 68° 21' W), Manzanani (17° 51' S and 68° 21' W), San Martin (17° 56' S and 68° 42' W), Mantecani (17° 06' S and 67° 57' W) Toloma (17° 06' S and 68° 47' W) and two communities of the municipality of Umala; Iñacamaya (17° 20' S and 67° 54' W) and San José de Llangas (17° 20' S and 67° 45' W) in the Central Altiplano of Bolivia (figure 2).



**Figure 2.** Location of the Municipalities of Patacamaya and Umala in the Bolivian Altiplano  
Source: FDTA- ALTIPLANO, 2002

<sup>4</sup> The Hosmer and Lemeshow test is used to evaluate the global fit of the model; it is considered more robust than the traditional chi-square test (Garson, 2008; Aguayo, 2007; Alderete, 2006) especially when the model includes continuous covariates and the size sample is small. The test divides the observations into deciles and compares the observed probability with the expected probability for each decil.

<sup>5</sup> The output shows the coefficients and the logarithm of the likelihood ratio into each process of iteration.

<sup>6</sup> For dichotomous dependents variables Classification tables are 2 x 2 tables. The columns present the predicted values of the dependent, while the rows are the observed values. A perfect model, presents all cases on the diagonal and the overall percent correct will be 100%. If the logistic model has homoscedasticity (this is not a logistic regression assumption), the percent correct will be approximately the same for both rows.

The selection criteria to select these communities include:

1. There is at least some quinoa production.
2. There is access to irrigation.
3. At least some irrigation is applied (to any crop)
4. The communities agree with the study (the most important factor)

We collected survey and interview data from families with permanent residence in the community, thus we had 11 families for Manzanani, 20 families for Patarani, 20 families for San Martin, 30 families for Mantecani, 7 families for Toloma, 30 families for Iñacamaya and 20 families for San José de Llangas. In total 137 farmers have been interviewed.

A questionnaire was designed including the following topics:

- Production; to know the importance of quinoa crop for the farmer; including variables as: acreage, production, production destination, reasons for cropping or not.
- Social characteristics; to know the farmers' social environment, including variables as: producer name, family size, age, education level, migration, main family activities, institutional environment, perception of development.
- Production costs; including variables as: labour for the whole production process including harvest and post-harvest.
- Commercialization costs; including variables as: place of sell, distance, transport cost, type of buyer and sell price.
- Transformation and consumption; ways of consumption and transformation.
- Water resource use; including variables as: kind of water source, irrigation use, irrigation system, farmer's willingness to apply irrigation for quinoa, reasons to apply or not irrigation for quinoa, willingness to apply deficit irrigation, willingness to invest for irrigation system.

Small farmers in developing countries are very distrustful with foreign people and they frequently do not give all the information to the institutions (Ramesh, 2000); then it is important to get the farmer's trust. Therefore, participatory evaluation techniques were applied using an experimental field where farmers evaluated the crop growing: at initial, flowering and grain settling (harvest).

With participatory evaluation we were able to explain the research's objectives and the deficit irrigation technology; thus, they were able to compare yields with and without irrigation.

While the dependent variables are dummy variables following a question on the willingness to irrigate or pay a maintenance fee, the independent variables are defined as follows:

- Acreage of quinoa (continuous variable in hectares)
- Share of quinoa production for sale (coded as saleplan continuous variable in %)
- Irrigation experience (coded as irrigation, categorical variable that is the farmer already applies irrigation to quinoa or another crop, it takes the value 0 when farmer does not apply irrigation and 1 when farmer applies irrigation)
- Age (Continuous variable).
- Education level (coded as educlevel, categorical variable grouped into three categories: 1 = Primary school, 2 = Incomplete secondary school, and 3 = Bachelor)

- Zone (coded as pid; categorical variable grouped into three zones according of findings of previous analysis of binary logistic regression: Zone 1 = Patarani, Manzanani and Mantecani; Zone 2 = Toloma, San Martín; Zone 3 = Iñacamaya, San José de Llangas.)

## 4. Results

### 4.1. General information

The study area may be classified into three zones considering the agricultural production system and the main economic activity. Table 3 shows the characteristics of each region.

**Table 3. Characteristics of each zone by main activity and agricultural production system**

Zone	Community	Municipality	Main Activity	Agricultural Production System
1	Iñacamaya San José de Llangas	Umala	Dairy production	Quinoa, Potato, Bean
2	Manzanani San Martín Patarani	Patacamaya	Dairy production Agriculture	Quinoa, Potato, Wheat, Bean
3	Mantecani Toloma	Patacamaya	Agriculture	Quinoa, Potato, Bean, Vegetables

The communities of Iñacamaya and San José de Llangas are located in the Municipality of Umala. Dairy production is the main economic activity and the agricultural production system corresponds to the cropping of quinoa, potato and faba bean. According with the mechanization, less than half of the sampled farmers in these communities use traditional technology. Irrigation generally is not used for agricultural production; thus, 70% of the interviewed farmers use irrigation for forage crops, while only about 20% uses irrigation for potatoes.

The communities of Manzanani, San Martín and Patarani are located in the Municipality of Patacamaya, they have livestock as main economic activity and crop production as secondary activity. Potato and quinoa are the main crops. With regard to mechanization, a large share of the sample (80%) practices traditional technology. Irrigation is not used a lot for agricultural production: only 40 % of the interviewed farmers use irrigation. There are specific crops which are irrigated, such as alfalfa, barley, potato and vegetables (e.g., beans).

The communities of Mantecani and Toloma are also located in the Municipality of Patacamaya. The commercialization of onion, carrot and lettuce is the main economic activity. The agricultural production system is conformed by quinoa, potato, faba bean and vegetables. Into the three regions, the family labour is involved in the whole productive process. Nevertheless, in relation with mechanization use, relatively few farmers (20%) utilize traditional technology. All farmers interviewed use irrigation for agricultural production. The main crops are vegetables such as onions, carrots and lettuce. Irrigation is used for these crops as well as beans and potato.

According to the results of our survey, potato is the most important crop and quinoa represents the second most important crop for all farmers of the communities. All the

families interviewed in the communities of Iñacamaya and San José de Llangas produce quinoa at small scale ranging from 0.25 ha to more than 4 ha. In the communities of Manzanani, San Martín and Patarani less than half of the sample produces quinoa on acreage of 0.25 to 1.6 ha. Over half of the families interviewed in Mantecani and Toloma is cropping quinoa (table 4).

**Table 4. Main agricultural production systems**

	Community						
	Manzanani %	Patarani %	San Martín %	Iñacamaya %	San José %	Mantecani %	Toloma %
Quinoa	100	100	100	43	25	95	57
Potato	100	100	100	100	100	100	100
Bean	100	47	100	50	0	90	57
Onion	0	0	0	0	0	76	86
Carrot	0	0	0	0	0	37	71
Lettuce	0	0	0	0	0	13	0

## 5.2. Willingness to adopt deficit irrigation to quinoa

As the aim of the research was to find the main factors that would influence the adoption of deficit irrigation technology for quinoa; the present study examined the effect of independent variables: Acreage of quinoa, share of quinoa production for selling, irrigation experience, age and education level on dependent variable willingness to apply irrigation

The survey shows that more than 50% of all farmers are willing to irrigate quinoa. Table 5 displays the Wald statistic for each independent variables as well as dummy variables. Variables with Wald statistic significance less than 0.05 denote that the variable is significant in the model.

**Table 5: Definition and summary statistics of independent variables**

			Wald Score	df	Sig.
Step 0	Variables	pid	6.182	2	.045
		pid(1)	4.587	1	.032
		pid(2)	4.352	1	.037
		acreage	3.052	1	.081
		saleplan	12.115	1	.001
		irrigation(1)	3.748	1	.053
		age	24.774	1	.000
		educlevel	50.063	2	.000
		educlevel(1)	49.914	1	.000
		educlevel(2)	16.243	1	.000
Overall Statistics			60.781	8	.000

**Table 6. Logit regression with willingness to pay a maintenance fee for irrigation system as dependent variable**

		<b>B</b>	<b>S.E.</b>	<b>Wald</b>	<b>df</b>	<b>Sig.</b>	<b>Exp(B)</b>
Step 1	Pid			4.587	2	.101	
	pid(1)	1.299	.674	3.719	1	.054	3.667
	pid(2)	.160	.828	.038	1	.846	1.174
	Acreage	.873	.560	2.434	1	.059	2.394
	Saleplan	.037	.016	5.033	1	.025	1.037
	irrigation(1)	-1,5737	0,7262	4,6966	1	0,030	0,207
	Age			11,793	3	0,008	
	Educllevel			26,298	2	.000	
	educlevel(1)	-3.916	.969	16.315	1	.000	.020
	educlevel(2)	-.598	1.081	.306	1	.580	.550
	Constant	4.085	1.277	10.235	1	.001	59.465

a) Variable(s) entered on step 1: pid, acreage, saleplan, irrigation, age, educlevel.

The regression analysis (table 6) shows that acreage of quinoa (acreage), irrigation experience (irrigation), age, education level (educlevel) and share of quinoa production for sale (saleplan) are statistically significant in the model. Despite the variable zone presents a significance value over 0.05, zone 1 composed by the communities San Martín, Patarani and Manzanani displays a significant value which might be related with quinoa acreage. Variables in the equation display the sign we expected.

Results indicate a consistent pattern of adoption technology with other studies (Iqbal 2007, Mgaba-Semgalawe 2000, Namara et al., 2007).

Variables included in the model are: acreage or size farm, it was relevant also for Iqbal (2002) who found that farm size would be a decisive factor to adopt high yielding wheat varieties and Karami (2006) who classified farmer into small, medium and large according whit the farm size for adoption irrigation technology and found the total of farmers classified as large were willing to adopt an appropriate technology.

Irrigation experience is also included in the model and it is supported by research of Lisa Cameron (1999); is important to consider also that farmers who use irrigation have water access. Variables age and education level are consistent with findings of several researchers like Iqbal (2002) who found that younger farmers are more willing to adopt high yielding wheat varieties, Mgaba-Semgalawe (2000) found also that older farmers have negative influence on perception, adoption and investment for the improving of soil conservation.

## 5. Conclusions

The study area was classified into three zones considering the agricultural production system and the main economic activity. The first group composed by Mantecani, Manzanani and Patarani has as main economic activity agriculture and quinoa acreage larger than the second group that is conformed by Toloma and San Martin; these communities show small quinoa

acreage (less than 0.5 hectares) and the third group composed by Iñacamaya and San José de Llangas has as main economic activity livestock.

Nevertheless these specific characteristics, results of binary logistic regression displayed that the factor zone is not a decisive factor for adopting deficit irrigation.

The main findings demonstrate that deficit irrigation technology is more likely to be picked up in areas where farmers own larger fields where they can obtain surplus production for sale and where there is already certain type of irrigation.

On other hand also social factors should be taking into account because young people is more willing to adopt new technology than older people as well as people who reaches a higher education level.

Also is important to remark that farmers decide to plant thinking at first for food for family. This is the most important reason for what the destination of the production is mainly self consumption.

## References

- Alderete, A.M.(2006). *Fundamentos del Análisis de la Regresión Logística en la Investigación Psicológica*. Laboratorio de Evaluación Psicológica y Educativa. Revista Evaluar N° 6. pp. 52- 67.
- Aliaga, S. (2006). *Evaluación Participativa con Enfoque de Género sobre los Usos, Restricciones y Oportunidades de la Quinua en Seis Comunidades del Municipio de Sica Sica*. Facultad de Agronomía, Universidad Mayor de San Andrés. La Paz, Bolivia. 94 pp.
- Aguayo, M. (2007). *Como Hacer una Regresión Logística con SPSS “paso a paso”*. Fundación Andaluza Beturia para la Investigación en Salud (FABIS). DOCUWEB FABIS Dot. Num 0702012. Available at:  
[http://www.fabis.org/html/archivos/docuweb/Regres\\_log\\_1r.pdf](http://www.fabis.org/html/archivos/docuweb/Regres_log_1r.pdf)
- Bewick, V.; Cheek, L.; Ball, J. (2005). *Statistics review 14: Logistic regression*. Pub Med Central. Published online 2005 January 13. doi: 10.1186/cc3045. Available at:  
<http://www.pubmedcentral.nih.gov/articlerender.fcgi?artid=1065119>
- Blanke, A., Rozelle, S., Lohmar, B., Wang, J., Huang, J. (2007). Water saving technology and saving water in China. *Agricultural Water Management* 87: 139-150.
- Brenes, E. R., K. Madrigal and F. Crespo (2001a). *El cluster de la soya en Bolivia: diagnóstico Competitivo y recomendaciones estratégicas*. Documentos de Trabajo. Programa de Competitividad, CLACDS-INCAE.
- Cameron, L. (1999). The Importance of Learning in the Adoption of High-Yielding Variety Seeds. *American Journal of Agricultural Economics*, Vol. 81, No. 1. Pg. 83-94.
- Crespo, F., Brenes E., Madrigal K. (2001). *El cluster de la quinua en Bolivia: Diagnóstico competitivo y recomendaciones estratégicas*. Proyecto Andino de Competitividad-CAF. INCAE, La Paz, Bolivia.
- Camacho, M. (2001). *La gestión del espacio y las prácticas de manejo del suelo en la región altiplánica de Bolivia: El caso de la comunidad de Patarani en la Provincia Aroma*. Tesis de M.Sc. en Ecología y Conservación, Universidad Mayor de San Andrés, La Paz. 88 p.
- CEPROBOL (2007). *Perfiles sectoriales de productos. Quinua y derivados, perfil sectorial*. Ministerio de relaciones exteriores y cultos, Viceministerio de relaciones económicas y comercio exterior. Dirección de investigación e información. 10 pp.
- Chikozho, C. (2005). Policy and institutional dimensions of small-holder farmer innovations in the Thukela River Basin of South Africa and the Pangani River Basin of Tanzania: A comparative perspective. *Physics and Chemistry of the Earth* 30: 913-924.
- Comai, S., Bertazzo, A., Bailoni, L., Zancato, M., Costa, C.V.L., Allegri, G. (2007). The content of protein and nonproteic (free and proteinbound) tryptophan in quinoa and cereal flours, *Food Chem.* 100: 1350-1355.
- Cooperación Andina de Fomento (CAF), Centro para el Desarrollo Internacional-Universidad de Harvard (CID), Centro Latinoamericano para la Competitividad y el Desarrollo Sostenible (CLACDS-INCAE). (2001). *Caracterización y análisis para la competitividad de la quinua en Bolivia. Proyecto andino de competitividad*. Available at:  
<http://www.cid.harvard.edu/archive/andes/documents/presentations/analisisdelaquinuaenbolivia.pdf>
- FAO (Food and Agriculture Organization of the United Nations). (1998). *Under-utilized Andean food crops. Latin America and the Caribbean*, Rome, Italy.
- FAUTAPO. (2005). *Estudio línea base 2001-2004*. Programa Altiplano Quinua Sur. Bolivia. pp. 36-37
- Fundación para el Desarrollo Tecnológico del Altiplano. FDTA-ALTIPLANO. (2002). *Prospección de demandas de La cadena productiva quinua em Bolivia*. Available at:  
<http://www.fdta-altiplano.org/quinua%20presen/IndiceGeneral.htm>

- Feder, G., Just, R., Zilberman, D. (1985). Adoption of agricultural innovations in developing countries: A survey. *Economic Development and Cultural Change*, 33(2): 255-298.
- Garcia, M. (2003). *Agroclimatic study and drought resistance analysis of Quinoa for a deficit irrigation strategy in the Bolivian Altiplano*. Doctoral dissertation, K.U.Leuven University, Dissertaciones de Agricultura, N°556, 184 pages.
- Garcia, M., Raes, D., Allen, R., Herbas, C. (2004). Dynamics of reference evapotranspiration in the Bolivian Highlands (Altiplano). *Agricultural and forest meteorology* 125 (2004) 67-82.
- Garson, D. (1998). *Logistic Regression*. Copyright 1998. Available at: <http://www2.chass.ncsu.edu/garson/PA765/logistic.htm>. Last update 08/04/08.
- Geerts, S., Raes, D., Garcia, M., Del Castillo, C., Buytaert, W. (2006). Agro-climatic suitability mapping for crop production in the Bolivian Altiplano: A case study for quinoa. *Agricultural and forest meteorology* 139 (2006) 399-412.
- Geerts, S., Raes, D., Garcia, M., Vacher, J., Mamani, R., Mendoza, J., Huanca, R., Morales, B., Miranda, R., Cusicanqui, J., Taboada, C. (2008). Introducing deficit irrigation to stabilize yields of quinoa (*Chenopodium quinoa* Willd.). *Europ. J. Agronomy* 28 (2008) 427-436.
- Iqbal, M., Azeem, M., Ahmad, M. (2007). *Adoption of Recommended Varieties: A Farm level Analysis of Wheat Growers in Irrigated Punjab*. Pakistan Institute of Development Economics. Available at: [http://mpr.aub.uni-muenchen.de/2537/01/MPPA\\_paper\\_2537.pdf](http://mpr.aub.uni-muenchen.de/2537/01/MPPA_paper_2537.pdf)
- Instituto Nacional de Estadística (INE), s.d.  
Available at: [http://www.ine.gov.bo/cgi-bin/Panuario\\_00xx.exe/CUADRO](http://www.ine.gov.bo/cgi-bin/Panuario_00xx.exe/CUADRO)
- Karami, E. (2006). Appropriateness of farmers' adoption of irrigation methods: The application of the AHP model. *Agricultural systems* 87 (2006) 101-119
- Kulecho, I.K., Weatherhead, E.K. (2006). Adoption and experience of low-cost drip irrigation in Kenya. *Irrigation and Drainage*, 55(4): 435-444.
- Luquet, D., Vidal, A., Smith, M., Dauzat, J. (2005). More crop per drop: How to make it acceptable for farmers? *Agricultural Water Management* 76: 108-119.
- Mbaga-Semalawe, Z., Folmer, H. (2000). Household Adoption Behaviour of Improved Soil Conservation; The case of the North Pare and West Usambara Mountains of Tanzania. *Land Use Policy* 17. pp. 321-336.
- Mamani, A. (2007). *Evaluación Participativa y Socioeconómica de la Aplicación de Riego en el Cultivo de Quinoa en Tres Comunidades del Municipio de Patacamaya*. Facultad de Agronomía, Universidad Mayor de San Andrés. La Paz, Bolivia. 76 pp.
- Namara, R., Nagar, R. K., Upadhyay, B. (2007). Economics, adoption determinants, and impacts of micro-irrigation technologies: Empirical results from India. *Irrigation Science*, 25:283-297.
- NEC. Núcleo Ejecutor Central. (2006). *Producción y comercialización de quinua en Tantana Acroco, Ayacucho*. Available at: <http://www.nec-tambillo-acocro.com/quinua/Quinoa.htm>
- PROINPA. (2004). *Estudio de los impactos sociales, ambientales y económicos de la promoción de la quinua en Bolivia*. 82 pp.
- Ramesh C. (2000). *Perspectives for Small Farmers in Developing Countries: Do They have a Future?* Centre for Advanced Training in Agricultural & Rural Development, Faculty of Agricultural and Horticultural Sciences, Humboldt University, Berlin, Germany.
- Shrestha, Rb and Gopalakrishnan, C. (1993). Adoption and Diffusion of Drip Irrigation Technology – An Econometric-Analysis. *Economic Development and Cultural Change*, 41 (2): 407-418.
- Solíz-Guerrero, J. Rodríguez, D. Rodríguez-García, R. Angulo-Sánchez, J. Méndez-Padilla G. (2002). *Quinoa Saponins: Concentration and Composition Análisis*. Pg 110-114.
- Soto, JL. Rojas, W, Saravia, R. Marconi, JL. (2004). Experiencias de técnicas de cosecha y postcosecha en el cultivo de quinua en Bolivia. *Leisa revista de agroecología*
- Ton, G. Bijman, J. (2006). *The role of producer organizations in the process of developing and integrated supply chain; experiences for quinoa chain development in Bolivia*. Available at:



<http://www.mst.wur.nl/NR/rdonlyres/0BCD655A-A66C-4BEB-B102->

[21156DDE7539/34823/TheRoleofproducerorganisationsintheprocessofdevelo.pdf](http://www.mst.wur.nl/NR/rdonlyres/0BCD655A-A66C-4BEB-B102-21156DDE7539/34823/TheRoleofproducerorganisationsintheprocessofdevelo.pdf)

Valdivia Score C., Jetté, C. (1996). Peasant households in semi-arid San José: confronting risk through diversification strategies. *Serie de informes técnicos SR-CSRP, IBTA 181/technical report49/SR-CRSP47*.

Van Damme, P. (2002). *Disponibilidad, Uso y Calidad de los Recursos Hídricos en Bolivia. Comisión para la Gestión Integral del Agua en Bolivia*. Cumbre Mundial sobre el Desarrollo Sostenible, Johannesburgo, Available at:

[http://www.zabalketa.org/documentos/tecnicos/recursos\\_hidricos\\_boli.pdf](http://www.zabalketa.org/documentos/tecnicos/recursos_hidricos_boli.pdf)

Viceministerio de Riego (2007). *Boletín Riego en Bolivia N° 14*. La Paz, Bolivia. Available at:

<http://www.riegobolivia.org/boletines/BoletinElectronicoRiegoBolivia4/index.htm>