

Brunauer, Wolfgang; Lang, Stefan; Wechselberger, Peter; Bienert, Sven

**Working Paper**

## Additive hedonic regression models with spatial scaling factors: An application for rents in Vienna

Working Papers in Economics and Statistics, No. 2008-17

**Provided in Cooperation with:**

Institute of Public Finance, University of Innsbruck

*Suggested Citation:* Brunauer, Wolfgang; Lang, Stefan; Wechselberger, Peter; Bienert, Sven (2008) : Additive hedonic regression models with spatial scaling factors: An application for rents in Vienna, Working Papers in Economics and Statistics, No. 2008-17, University of Innsbruck, Department of Public Finance, Innsbruck

This Version is available at:

<https://hdl.handle.net/10419/71939>

**Standard-Nutzungsbedingungen:**

Die Dokumente auf EconStor dürfen zu eigenen wissenschaftlichen Zwecken und zum Privatgebrauch gespeichert und kopiert werden.

Sie dürfen die Dokumente nicht für öffentliche oder kommerzielle Zwecke vervielfältigen, öffentlich ausstellen, öffentlich zugänglich machen, vertreiben oder anderweitig nutzen.

Sofern die Verfasser die Dokumente unter Open-Content-Lizenzen (insbesondere CC-Lizenzen) zur Verfügung gestellt haben sollten, gelten abweichend von diesen Nutzungsbedingungen die in der dort genannten Lizenz gewährten Nutzungsrechte.

**Terms of use:**

*Documents in EconStor may be saved and copied for your personal and scholarly purposes.*

*You are not to copy documents for public or commercial purposes, to exhibit the documents publicly, to make them publicly available on the internet, or to distribute or otherwise use the documents in public.*

*If the documents have been made available under an Open Content Licence (especially Creative Commons Licences), you may exercise further usage rights as specified in the indicated licence.*

University of Innsbruck



**Working Papers  
in  
Economics and Statistics**

**Additive Hedonic Regression Models with Spatial  
Scaling Factors: An Application for Rents in Vienna**

Wolfgang Brunauer, Stefan Lang,  
Peter Wechselberger and Sven Bienert

2008-17

# ADDITIVE HEDONIC REGRESSION MODELS WITH SPATIAL SCALING FACTORS: AN APPLICATION FOR RENTS IN VIENNA

Wolfgang Brunauer<sup>1</sup>, Stefan Lang<sup>2</sup>, Peter Wechselberger<sup>2</sup> and Sven Bienert<sup>3</sup>

We apply additive mixed regression models (AMM) to estimate hedonic price equations. Non-linear effects of continuous covariates as well as a smooth time trend are modeled non-parametrically through P-splines. Unobserved district-specific heterogeneity is modeled in two ways: First, by location specific intercepts with the postal code serving as a location variable. Second, in order to permit spatial variation in the nonlinear price gradients, we introduce multiplicative scaling factors for nonlinear covariates. This allows highly nonlinear implicit price functions to vary within a regularized framework, accounting for district-specific spatial heterogeneity. Using this model extension, we find substantial spatial variation in house price gradients, leading to a considerable improvement of model quality and predictive power.

**Keywords:** Hedonic regression, submarkets, multiplicative spatial scaling factors, semiparametric models, P-splines

## 1. Introduction

This paper is motivated by two common challenges in hedonic price modeling: nonlinear price functions, which require flexible modeling approaches, and the inherent spatial heterogeneity in real estate markets. The purpose of this paper is to address nonlinearity and heterogeneity for rental flats in Vienna simultaneously.

Originally developed for automobiles by Court (1939), hedonic price models have been used extensively in applied economics since the seminal work of Rosen (1974). Often cited classic references are also Lancaster (1966) and Griliches (1971). The theoretical underpinnings are well described e.g. in Follain and Jimenez (1985) and Sheppard (1999). In his 2002 paper, Malpezzi presents a review of the hedonic price literature, and Sirmans et al. (2005) provide a review of specifications and characteristics that have most frequently been used in hedonic pricing studies.

---

<sup>1</sup> Immobilien Rating Gesellschaft (IRG), Austria; E-mail: wolfgang.brunauer@irg.at

<sup>2</sup> Leopold-Franzens-University Innsbruck, Austria

<sup>3</sup> University of Applied Sciences Kufstein, Austria and KPMG Financial Advisory Services, Austria

According to hedonic price theory, differentiated goods like real estate are valued for their utility-bearing characteristics (Rosen, 1974). Since a property is fixed in space, by selecting a specific object, a household implicitly chooses many different goods and services. Therefore, in the concept of implicit markets it is supposed that dwelling characteristics are traded in bundles. The explicit market, with observed prices and transactions, is for the bundles themselves and includes several implicit markets for the property's characteristics (Sheppard, 1999). A hedonic price function describes how the quantity and quality of these characteristics determine its price in a particular market.

Due to the assumption that differentiated goods cannot be easily untied and the resulting impossibility of arbitrage, marginal prices of property characteristics are not constant (Rosen, 1974). Furthermore, the price of one characteristic may depend on the quantity of another. Therefore, we might expect to observe nonlinear relationships between the market price and its measured attributes. A common model specification designed to address this issue takes the log or semi-log form, which furthermore mitigates the problem of heteroscedasticity (Malpezzi, 2002).

Nevertheless, as stated e.g. by Martins-Filho and Bin (2005), a frequent concern in hedonic price literature is the adequacy of parametric specifications. This specification problem arises because economic theory does not provide clear guidance concerning the functional form of the dependence of price on quality (Anglin and Gençay, 1996). As explained e.g. in Wallace (1996), this suggests that functional forms used to estimate hedonic prices should allow for the possibility of nonlinearity in the hedonic price functions. In light of the potentially serious consequences of functional misspecification, there have been some attempts to estimate hedonic price models using semi- or nonparametric methods. The fundamental goal of these approaches is a flexible modeling of the influence of continuous covariates on the dependent variable. Soon after their introduction to hedonic price analysis, they also turned out to be more robust to specification and measurement error (Sheppard, 1999). Semiparametric and nonparametric approaches for real estate can be found e.g. in Pace (1995 and 1998), Anglin and Gençay (1996), Mason and Quigley (1996), Clapp et al. (2002), Clapp (2003, 2004) and Parmeter et al. (2007).

Along with spatial fixation of real estate goes considerable interest in dealing with spatial dependence and variation in hedonic price equations. McMillen (2003) points out that spatial heterogeneity, if modeled inadequately, can lead to spatial dependence. A comprehensive review of various spatial or spatiotemporal econometric models is given in LeSage and Pace

(2004) and Anselin et al. (2004). Very popular in this context is the spatial regression family, which was popularized by Anselin (1988). Spatial autoregressive (SAR) models allow for both spatially lagged dependent variables and spatially lagged disturbance terms. Further reading on related models is provided e.g. by Basu and Thibodeau (1998), LeSage (1999) or Anselin (2003). However, there is a wide range of alternative models, especially semiparametric and nonparametric spatial approaches, which are particularly appropriate to model spatial heterogeneity. Prominent examples are kriging (Diggle and Ribeiro, 2007), 2D tensor product spatial smoothing (e.g. Wood, 2006b; Wood et al., 2008), approaches based on spatial penalization (Besag and Kooperberg, 1995; Fahrmeir et al., 2007) and geographically weighted least squares (Fotheringham et al., 2002).

In this article, non-linear effects of continuous covariates and a time trend are modeled through penalized splines, while discrete spatial effects are implemented as district specific intercepts with spatial regularization in the framework of additive mixed regression models (AMM). An overview concerning additive models and extensions is given e.g. in Fahrmeir et al. (2007) and Wood (2006a). Furthermore, we allow the nonlinear price functions to vary among the districts with spatial scaling factors. Therefore, the basic properties of the nonlinear functions remain constant over all districts (representing submarkets of the Viennese market), while the size of these effects is allowed to vary due to the particular market conditions in a local submarket. Using estimation without spatial scaling factors on the one hand and single districts estimations on the other hand as benchmark models, we find clear advantages of the spatial scaling model. We identify substantial spatial variation in house price gradients, although still in a regularized framework, which leads to a significant improvement of model quality and predictive power.

The remainder of this article is structured as follows: In the next section, the working data set and the particular circumstances in Vienna are described. In section 3, we introduce the models applied in this article, including a discussion of relative (dis-)advantages. We discuss their statistical properties and algorithms for estimation in section 4. In section 5, we present the results, and finally, section 6 concludes.

## **2. Data Description**

The data this article is based on was provided by the ERES NETconsulting-Immobilien.NET GmbH, which operates the largest online real estate platform in Austria. According to a study of the ERES NETconsulting-Immobilien.NET GmbH, more than half of the demand for

housing in Vienna is for rental flats. One remarkable characteristic of the rental market in Austria is the Austrian rental law (MRG), which includes the regulation of house rents. Basically, there are four types of rents: free rents (“Freier Mietzins”), adequate rents (“angemessener Mietzins”), reference rents (“Richtwertmieten”) and rent categories (“Kategoriemietzins”), depending on the year of construction, renovation, condition, size of the flat and several other criteria. This complicated legal framework makes semiparametric estimation techniques for characteristics like the year of construction and the floor size of the flat even more appropriate, as we might expect that legal restrictions lead to price functions that do not behave typically in a sense that they are monotonically increasing/decreasing.

The data set covers 8767 rental flats in Vienna from the 1<sup>st</sup> of January 2004 to the 14<sup>th</sup> of February 2007. It includes offered net rent (in Euro values per month excl. VAT and service charges, which are usually paid by the tenant), continuous variables such as floor size of the flat and indication of the time of letting, integer variables such as the floor the flat is located in, its current condition (captured in 4 categories) and its year of construction (10 categories) as well as discrete variables such as identifying whether the unit has a terrace, a balcony, a garage or a parking lot (Table 1).

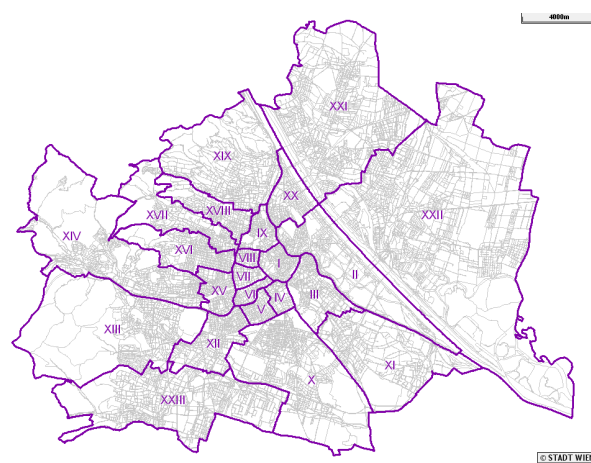
While most studies examine the effects of these characteristics on total rents, we follow Fahrmeir et al. (2004) and choose to examine the effects on rents per sq. m. mainly for the following reasons:

- First, using this specification we try to explain the structure of decreasing marginal returns of additional floor size in detail. More specifically, we find substantial decreasing effects of additional floor size in our data.
- Second, rents per sq. m. are especially interesting in the context of the Austrian rental law, which proposes upper limits for this ratio depending on dwelling characteristics. Therefore, the achievable rent per sq. m. is an important benchmark for policy makers, for market participants on the supply as well as on the demand side.

Variable	Description	Number of Obs.	Mean/frequency	Std.-Dev.	Min	Max
<b>Explained Variables</b>						
rent	rent of apartment [EUR p.m.]	8767	733.1936	471.7273	100	3600
logrent	log of rent of apartment [EUR p.m.]	8767	6.422928	0.5812719	4.60517	8.188689
rent_psqm	rent per sqm of apartment [EUR p.m.]	8767	8.383795	2.515585	2.25	20
logrent_psqm	log of rent per sqm of apartment [EUR p.m.]	8767	2.083598	0.2917687	0.81093	2.99573
<b>Explanatory Variables</b>						
area	floor size of the flat [sqm]	8767	85.0649	38.66965	24	200
terr	existence of a terrace	8767	0.1795369	0.3838231	0	1
	0 = no	7,193	82.05 %			
	1 = yes	1,574	17.95 %			
balk	existence of a balcony	8767	0.1360785	0.3428914	0	1
	0 = no	7,574	86.39 %			
	1 = yes	1,193	13.61 %			
gar	existence of a garage	8767	0.1364207	0.3432543	0	1
	0 = no	7,571	86.36 %			
	1 = yes	1,196	13.64 %			
park	existence of parking lot	8767	0.030227	0.1712211	0	1
	0 = no	8,502	96.98 %			
	1 = yes	265	3.02 %			
elev	existence of an elevator	8767	0.6951066	0.4603885	0	1
	0 = no	2,673	30.49 %			
	1 = yes	6,094	69.51 %			
noelev	no elevator in 3rd floor or higher (interaction variable)	8767	0.0942169	0.292147	0	1
	0 = (floor < 3 or floor >= 3 and existing elevator)	7,941	90.58 %			
	1 = (floor >= 3 and no elevator)	826	9.42 %			
cond	condition of the apartment	8767	2.181248	0.5250943	1	4
cond1	First time use of a new/ renovated apartment	379	4.32 %			
cond2	Very good	6,599	75.27 %			
cond3	Good	1,610	18.36 %			
cond4	Fair/ Needs refurbishment	179	2.04 %			
floor	number of floor the apartment is located in	8767	2.814304	1.721735	0	6
floor1	Ground floor	410	4.68 %			
floor2	1st floor	1,923	21.93 %			
floor3	2nd floor	1,960	22.36 %			
floor4	3rd floor	1,782	20.33 %			
floor5	4th floor	1,029	11.74 %			
floor6	5th - 10th floor	610	6.96 %			
floor7	attic floor	1,053	12.01 %			
yearconst	year of construction	8767	1937.96	46.22035	1815	2006
1815	before 1815 (historic)	77	0.88 %			
1830	1815-1850 (Biedermeier)	73	0.83 %			
1870	1851-1889 (Gründerzeit)	169	1.93 %			
1900	1890-1913 (Jugendstil)	4,116	46.95 %			
1930	1914-1945 (interwar time)	276	3.15 %			
1960	1946-1975	1,327	15.14 %			
1980	1976-1984	361	4.12 %			
1990	1985-1994	525	5.99 %			
1997	1995-2000	1,096	12.50 %			
2006	2001 and younger	747	8.52 %			
distr	number of district	8767	10.15718	6.548259	1	23
distr1	Innere Stadt	765	8.73 %			
distr2	Leopoldstadt	425	4.85 %			
distr3	Landstraße	717	8.18 %			
distr4	Wieden	432	4.93 %			
distr5	Margareten	463	5.28 %			
distr6	Mariahilf	475	5.42 %			
distr7	Neubau	387	4.41 %			
distr8	Josefstadt	343	3.91 %			
distr9	Alsergrund	592	6.75 %			
distr10	Favoriten	331	3.78 %			
distr11	Simmering	86	0.98 %			
distr12	Meidling	331	3.78 %			
distr13	Hietzing	453	5.17 %			
distr14	Penzing	258	2.94 %			
distr15	Rudolfsheim-Fünfhaus	217	2.48 %			
distr16	Ottakring	254	2.90 %			
distr17	Hernals	300	3.42 %			
distr18	Währing	655	7.47 %			
distr19	Döbling	712	8.12 %			
distr20	Brigittenau	191	2.18 %			
distr21	Floridsdorf	141	1.61 %			
distr22	Donaustadt	136	1.55 %			
distr23	Liesing	103	1.17 %			
end	last date the object was in the database	8767	7-Dec-05	315.8881	1-Jan-04	14-Feb-07

Table 1: Description of variables

In our application, the district serves as a location variable. Vienna is composed of 23 districts (“Bezirke”), which are numbered for convenience in a roughly clockwise fashion starting in the city center (Figure 1). With a population of about 1.7 million, Vienna is by far the largest city in Austria as well as its capital, its cultural, economic and political centre. It is located in the east of Austria close to the Czech Republic, Slovakia and Hungary. Viennese districts are very heterogeneous, as concerns history, infrastructure, size and density. Until the mid 19<sup>th</sup> century, the first district used to be the entire city. After several amalgamations, Vienna did not obtain today’s borders until the mid 20<sup>th</sup> century. This historically caused spatial heterogeneity is a strong argument for the existence of submarkets corresponding to districts.



**Figure 1: Districts of Vienna**

### 3. Models

In this section, we compare three different model specifications: The first one is a semiparametric model including district specific intercepts, which is also the first step in our two-step spatial scaling procedure. It is therefore called the “base model”. In an attempt to account for district specific heterogeneity we estimate additive models for every single district, which is what we call the “single districts model”. The last model is the additive mixed model with spatial scaling factors, allowing for district-specific scaling of the nonlinear price functions.

#### 3.1 The Base Model

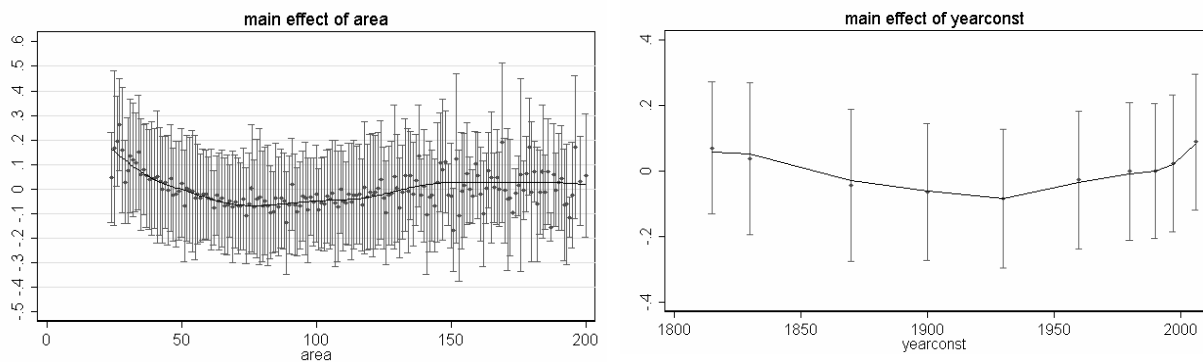
Although in a parametric approach nonlinear effects of continuous covariates are possible (e.g. through variable transformation, polynomial regression), specification and estimation is tedious and not automated. Hence, we estimate the additive mixed model (AMM)



$$\log(\text{rent\_psqm})_i = \alpha_0 + \gamma_{0d_i} + \alpha_1 \text{park}_i + \alpha_2 \text{balc}_i + \alpha_3 \text{gar}_i + \alpha_4 \text{cond1}_i + \alpha_5 \text{cond3}_i + \alpha_6 \text{cond4}_i + \alpha_7 \text{terr}_i + \alpha_8 \text{elev}_i + \alpha_9 \text{noelev}_i + f_1(\text{area}_i) + f_2(\text{floor}_i) + f_3(\text{yearconst}_i) + f_4(\text{end}_i) + \varepsilon_i \quad (1)$$

AMM replace linear effects by possibly nonlinear functions  $f_j(x_{ij})$  of the covariates and may as well include district specific effects. In our specification,  $d_i \in \{1, \dots, 23\}$  is the district-specific index of the  $i$ -th observation and  $\gamma_{0d_i}$  is its district-specific intercept. The  $f_j(x_{ij})$  are possibly nonlinear hedonic price functions of continuous or at least ordinal covariates, and  $\alpha_k$  are parameters for dichotomous covariates. The functions  $f_j$  are assumed to be reasonably smooth, but no specific functional form is assumed a priori. A number of competing approaches are available for specifying the nonlinear functions  $f_j$  and estimating the resulting model. The approach used in our application is based on P(enalized) splines and is described in the next section.

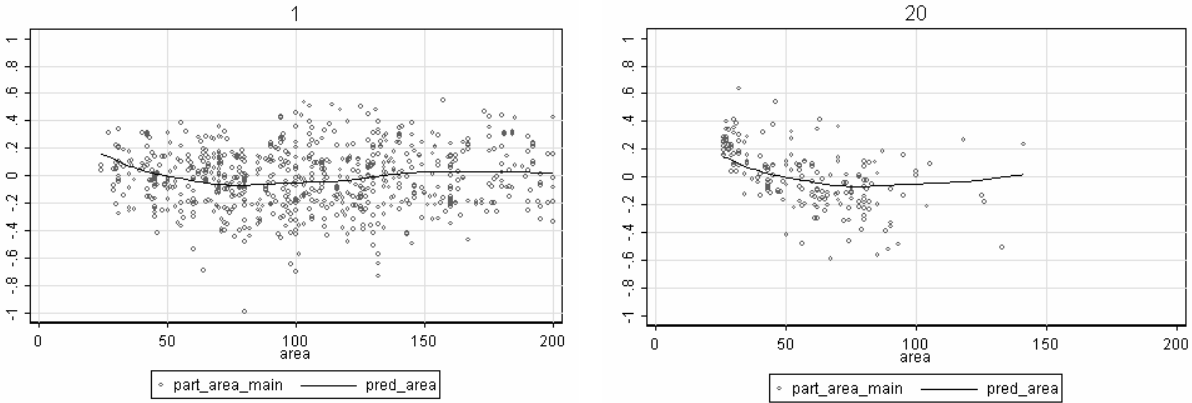
In our application, we find highly nonlinear price functions for some of the covariates, in particular for the year of construction and the floor size of the flat. In a classical linear regression model, these effects could hardly be modeled appropriately. Figure 2 displays the nonparametric functions for the floor size of the flat (*area*, left panel) and the year of construction of the building (*yearconst*, right panel). Shown are estimated price functions as well as the empirical means and standard deviations of the respective partial residuals (note that the price functions are centered about zero for identifiability reasons). This figure illustrates that parametric specifications are likely to lead to wrong specifications and produce autocorrelated residuals.



**Figure 2: Nonlinear effects of the floor area (left panel) and the year of construction of the building (right panel) along with means and standard deviations of partial residuals**

### 3.2 The Single Districts Model

Although the nonlinear specification fits the data much better than a linear model, building location is only treated as a difference in the intercept in our “base model”. A closer inspection of the data shows that in some districts there are still considerable deviations from the estimated price functions. In figure 3, the estimated hedonic price functions for the 1st and the 20th Viennese district are displayed together with partial residuals. In the left panel (1<sup>st</sup> district), the effect is overestimated, while in the right panel the relationship between the floor size of the dwelling and the expected rent per sq. m. is underestimated, especially for smaller flats. An answer to this district specific heterogeneity could be what we call the “single districts model”, where we estimate additive models for each district individually in the same specification as in the “base model” (although without district specific intercept). This approach leads to completely district-specific effects and a maximum of spatial heterogeneity.



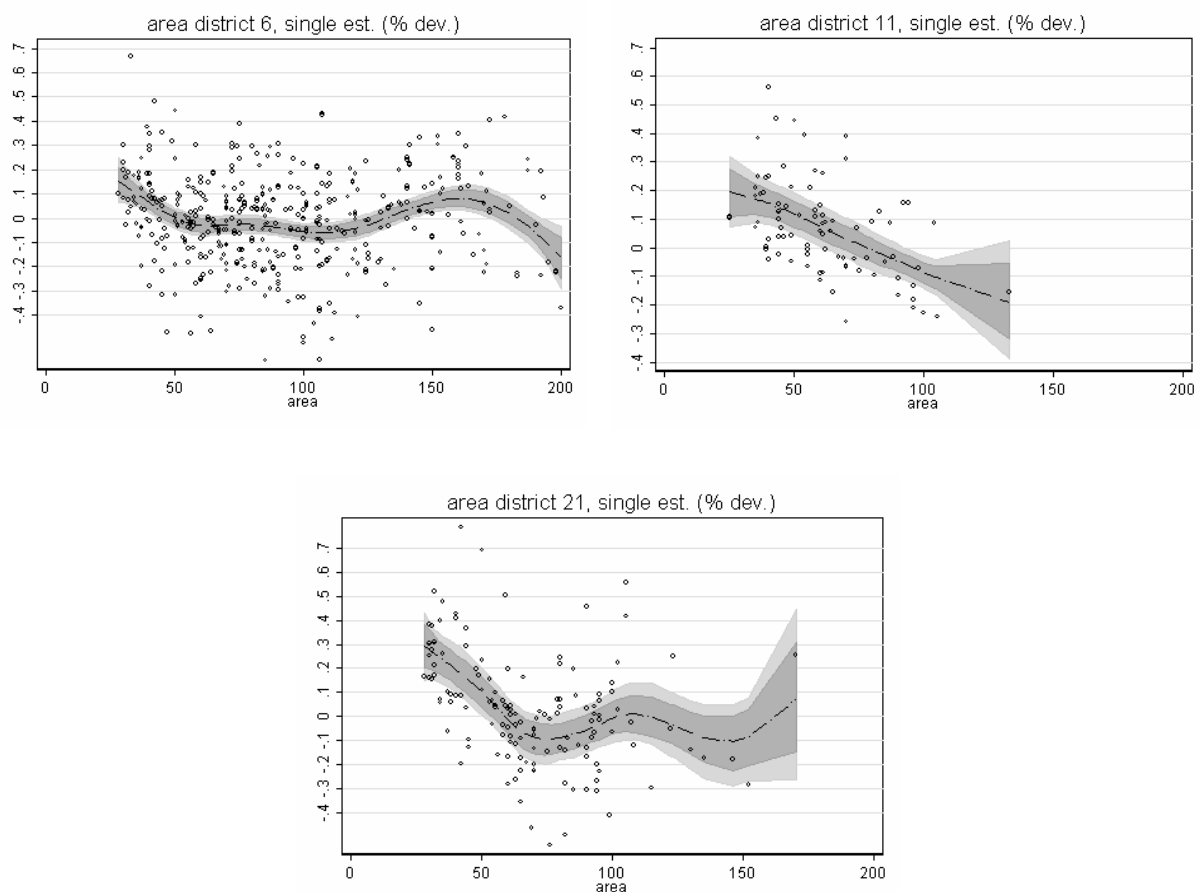
**Figure 3: Effect of the base model, evaluated for district 1 (left) and district 20 (right)**

Although this model is clearly more flexible than the aforementioned, there are a number of shortcomings. We find extremely heterogeneous effects which cannot be justified from a theoretical point of view, as all the districts are submarkets of the same market. This becomes particularly obvious for the 6<sup>th</sup>, the 11<sup>th</sup> and the 21<sup>st</sup> district, as can be seen in figure 4.

- A very obvious disadvantage of single district estimation is the *low precision* of the estimated price functions due to the relatively small sample size per district. For example, it is noteworthy that in the 21<sup>st</sup> district credibility intervals are very wide from approximately 120 sq. m. to the largest flat (170 sq. m.). Nevertheless, the function behaves similarly to the price function estimated in the “base model” in the range from 24 to 120 sq. m.
- Another disadvantage of this treatment is that estimation is prone to producing *statistical artifacts*. For example, the price function for the 6<sup>th</sup> district shows an

unexpected effect in the range from 150 to 200 sq. m., pointing down sharply, and the estimated price function for the 21<sup>st</sup> district goes down and up again in the range from 120 to 170 sq. m. due to a small amount of *influential observations* in this interval.

- In the 11<sup>th</sup> district, we face a situation where there are hardly any observations of flats larger than 100 sq. m. The effect of floor size is estimated nearly linearly, which is consistent with the fact that the main function is monotonically decreasing in the range of 24 to 80 sq. m. However, according to the shape of the price function estimated in the “base model”, the linear estimation is unlikely to hold for flats larger than 100 sq. m. and has therefore no predictive power in this range. In this case, the small range of observations leads to functional *misspecification*.



**Figure 4: Examples of single districts estimations for covariate *area*: empirical means with pointwise 95% and 80% credible intervals and partial residuals (upper panel: 6<sup>th</sup> and 11<sup>st</sup> district; lower panel: 21<sup>st</sup> district)**

To sum up, on the one hand, there seem to be considerable local differences in price functions that are not captured by a model that incorporates district specific heterogeneity only in the intercept. On the other hand, an estimation of models for each district individually produces

very unstable estimates and has a very limited capability of forecasting, especially in ranges with few observations. Therefore, we develop what we call a “spatial scaling model”.

### 3.3 The Spatial Scaling Model

With this model, we try to incorporate the existence of submarkets related to districts. The price functions are allowed to vary within a regularized framework but still reflect the basic structure of the price function in the main market. In a two step procedure, scaling factors are estimated that change the slope of the price functions in every district. This leads to the model

$$\begin{aligned} \log(\text{rent\_psqm})_i = & \alpha_0 + \gamma_{0d_i} + \alpha_1 \text{park}_i + \alpha_2 \text{balc}_i + \alpha_3 \text{gar}_i + \alpha_4 \text{cond1}_i + \alpha_5 \text{cond3}_i + \alpha_6 \text{cond4}_i + \\ & \alpha_7 \text{terr}_i + \alpha_8 \text{elev}_i + \alpha_9 \text{noelev}_i + (1 + \gamma_{1d_i}) f_1(\text{area}_i) + (1 + \gamma_{2d_i}) f_2(\text{floor}_i) + \quad , \quad (2) \\ & (1 + \gamma_{3d_i}) f_3(\text{yearconst}_i) + (1 + \gamma_{4d_i}) f_4(\text{end}_i) + \varepsilon_i \end{aligned}$$

where equation (1) is expanded by multiplicative district specific effects

$$\gamma_{jd} \quad d = 1, \dots, 23; \quad j = 1, 2, 3, 4,$$

resulting in the scaling up of the nonlinear function by making it steeper if  $(1 + \gamma_{jd}) > 1$  and scaling down by making it flatter if  $(1 + \gamma_{jd}) < 1$ .

## 4. Methodology

We now provide a brief sketch of the statistical methodology used for estimating the models described in section 3. More details are given in the references cited in the text.

### 4.1 P-splines

A well established approach for modeling nonlinear effects of unknown shape is the use of P(enalized)-splines as first proposed by Eilers and Marx (1996). In a first step the range of a particular covariate  $z$  is divided into  $m$  equally spaced intervals bounded by the  $m+1$  equidistant knots  $z_{\min} = \kappa_1 < \kappa_2 < \dots < \kappa_{m+1} = z_{\max}$ . Then, a spline  $f(z)$  has the following two properties: in each of the intervals the spline  $f$  is a polynomial of degree  $l$ , and at the *knots* (the interval boundaries) the spline is  $l-1$  times continuously differentiable. The second assumption ensures that the polynomial pieces fit together smoothly (at least for  $l > 0$ ). Typically  $l = 3$  is assumed.

Splines of degree  $l$  can be represented by a linear combination of a set of  $h = m + l$  basis functions  $B_j^l(z_i)$ ,  $j = 1, 2, \dots, d$  at a given observation  $z_i$  (De Boor, 2001)

$$f_i = \beta_1 B_1^l(z_i) + \beta_2 B_2^l(z_i) + \dots + \beta_d B_d^l(z_i).$$

For further analysis it is convenient to write the basis functions into a matrix  $\mathbf{Z}$  containing elements  $\mathbf{Z}[i, j] = B_j^l(z_i)$ , where the value of the  $j$ -th basis function at the  $i$ -th observation is in  $i$ -th row and  $j$ -th column. Analogously, the parameters are stacked into a vector  $\boldsymbol{\beta}$  and the whole effect of covariate  $z$  can be written in matrix notation as  $\mathbf{f} = \mathbf{Z}\boldsymbol{\beta}$ .

The crucial point in modeling nonlinear relationships through splines is the determination of the number (and position) of knots. Too few result in an overly restrictive spline that might not be able to capture the true variability of the data. Contrariwise, a too large number of knots tends to produce statistical artifacts based on an overfit to the data. In order to overcome these difficulties, Eilers and Marx (1996) have proposed a penalization (P-spline) approach. As a start, a moderately large number of equidistant knots (usually between 20 and 40) is chosen to guarantee enough flexibility. In a second step, a roughness penalty is imposed by punishing large (first or second order) squared differences between two adjacent coefficients  $\beta_j$  and  $\beta_{j+1}$ . This can be accomplished in a frequentist setting by penalized least squares (PLS).

The PLS approach incorporates an additional term that penalizes deviations

$$\text{PLS}(\lambda) = \sum_{i=1}^n \left( y_i - \sum_{j=1}^h \beta_j B_j^l(u_i) \right)^2 + \lambda \sum_{j=k+1}^h (\Delta^k \beta_j)^2,$$

where  $\Delta^k$  is the  $k$ -th difference operator and  $\lambda$  governs the trade-off between smoothness and fit to the data. First order differences ( $k = 1$ ) penalize abrupt jumps between successive parameters, second order differences ( $k = 2$ ) penalize deviations from the linear trend. The larger (smaller)  $\lambda$  is the more (less) influence gets the penalization term and the smoother (rougher) is the resulting function. In matrix notation, the penalization term can be rewritten as

$$\lambda \sum_{j=k+1}^h (\Delta^k \beta_j)^2 = \lambda \boldsymbol{\beta}' \mathbf{D}'_k \mathbf{D}_k \boldsymbol{\beta} = \lambda \boldsymbol{\beta}' \mathbf{K}_k \boldsymbol{\beta},$$

where  $\mathbf{D}_k$  is a difference matrix of order  $k$  and  $\mathbf{K}_k$  is referred to as a penalty matrix. Therefore, the penalized least squares equation can be rewritten as

$$\text{PLS}(\lambda) = (\mathbf{y} - \mathbf{Z}\boldsymbol{\beta})'(\mathbf{y} - \mathbf{Z}\boldsymbol{\beta}) + \lambda\boldsymbol{\beta}'\mathbf{K}\boldsymbol{\beta}.$$

Minimizing this expression with respect to  $\boldsymbol{\beta}$  yields the PLS estimator

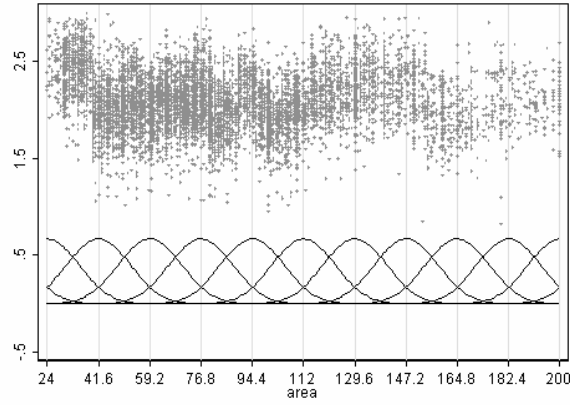
$$\hat{\boldsymbol{\beta}} = (\mathbf{Z}'\mathbf{Z} + \lambda\mathbf{K})^{-1}\mathbf{Z}'\mathbf{y}.$$

The estimated vector of function values  $\hat{\mathbf{f}} = (\hat{f}(u_1), \dots, \hat{f}(u_n))'$  can then be written as

$$\hat{\mathbf{f}} = \mathbf{Z}\hat{\boldsymbol{\beta}} = \mathbf{Z}(\mathbf{Z}'\mathbf{Z} + \lambda\mathbf{K})^{-1}\mathbf{Z}'\mathbf{y}.$$

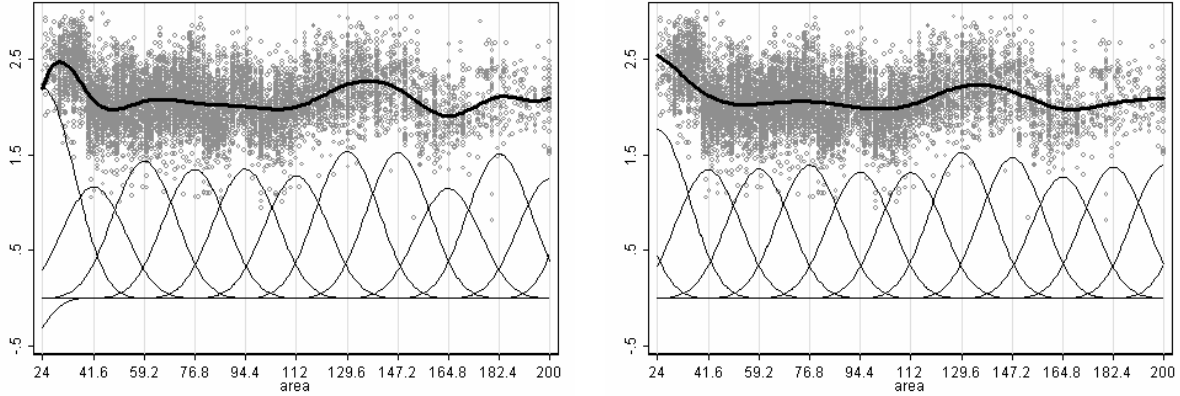
The choice of the smoothing parameter  $\lambda$  is crucial as we may obtain quite different fits by varying the smoothing parameter. In a frequentist setting the smoothing parameters are either chosen by minimizing some goodness of fit criterion (e.g. AIC, GCV etc.), see e.g. Wood (2006a) for details. Alternatively the model may be rewritten as a linear mixed model. Inference for the smoothing parameters is then based on restricted maximum likelihood; see Fahrmeir et al. (2004) or Ruppert et al. (2003) for details. In this paper inference is based on a fully Bayesian version of P-splines as proposed by Lang and Brezger (2004) and Brezger and Lang (2006). The Bayesian version defines priors for the regression coefficients and the smoothing parameters and therefore allows simultaneous estimation of the function  $f$  and the amount of smoothness governed by the smoothing parameter. We used the software package BayesX for estimation, see Brezger et al. (2003a) and Brezger et al. (2003b). The homepage of BayesX (<http://www.stat.uni-muenchen.de/~bayesx/bayesx.html>) contains also a number of tutorials.

In order to illustrate the P-spline approach, we show the construction of a P-spline of degree  $l = 3$  for covariate *area* (note that since we perform univariate smoothing in this example, the estimated function differs in shape from the final results in section 5, where multiple regression models are estimated). In a first step, a full spline basis for a given number  $m$  of intervals (in this case,  $m = 10$ , giving a total of  $h = m + l = 13$  basis functions) is calculated. As can easily be seen in figure 5, each of these functions has non-zero values in  $l + 1$  intervals and overlaps with  $2l$  adjacent basis functions. Vertical lines indicate the position of the inner knots. Note that we have to expand the number of knots to  $m + l + 1$  in order to define the set of basis functions in every interval of the range of *area* (see Fahrmeir et al., 2007).



**Figure 5: Construction of basis functions for covariate *area***

The basis functions are then scaled by the estimated parameters  $\beta_j$ ,  $j=1,2,\dots,h$ , which provide the respective amplitude. Summation of the scaled basis functions leads to the estimated price function (in figure 6, this is represented by a thick line). In a non-penalized approach, this may lead to considerable variability of the function, as can be seen in the left panel of figure 6, especially in the lower range of *area*. In contrast, the P-spline approach leads to a relatively stable fit (right panel of figure 6).



**Figure 6: B-spline (left) and P-spline (right) for covariate *area***

The P-spline approach can be extended to modeling more than one nonlinear covariate. Suppose that  $z_1, \dots, z_q$  are continuous covariates to be modeled nonlinearly by P-splines and  $x_1, \dots, x_p$  are further covariates with linear effects. Define design matrices  $\mathbf{Z}_1, \dots, \mathbf{Z}_q$  corresponding to the  $q$  continuous covariates and a design matrix  $\mathbf{X}$  for the remaining covariates with linear effects. In matrix notation we obtain the model

$$\mathbf{y} = \mathbf{Z}_1\boldsymbol{\beta}_1 + \dots + \mathbf{Z}_q\boldsymbol{\beta}_q + \mathbf{X}\boldsymbol{\alpha} + \boldsymbol{\varepsilon} = \boldsymbol{\eta} + \boldsymbol{\varepsilon} \quad (3)$$

where  $\boldsymbol{\beta}_s$  is the vector of regression coefficients for the  $s$ -th nonlinear term of covariate  $z_s$ , the vector  $\boldsymbol{\alpha}$  contains the regression coefficients of linear effects, and  $\boldsymbol{\eta}$  is the predictor vector. The parameters are estimated by maximizing the extended PLS criterion

$$\text{PLS}(\lambda_1, \dots, \lambda_q) = \sum_{i=1}^n (y_i - \eta_i)^2 + \sum_{s=1}^q \lambda_s \boldsymbol{\beta}_s' \mathbf{K}_s \boldsymbol{\beta}_s, \quad (4)$$

where  $\mathbf{K}_s$  is the penalty matrix of the  $s$ -th nonlinear term. The smoothing parameters involved are again estimated by minimizing a goodness of fit criterion, using the connection to linear mixed models or via a fully Bayesian approach, see the literature cited above.

## 4.2 Spatial Effects

Spatial heterogeneity may be captured in two different ways, by a non-ordered district-specific intercept or by a smooth spatial term that accounts for the spatial ordering of the information.

District specific intercepts  $\gamma_{0d}$  are estimated by adding an additional term  $\mathbf{Z}_{\gamma_0} \boldsymbol{\gamma}_0$  in (3) and by adding the ridge type penalty  $\lambda_{\gamma_0} \boldsymbol{\gamma}_0' \boldsymbol{\gamma}_0$  in the PLS criterion (4), where the matrix  $\mathbf{Z}_{\gamma_0}$  is an incidence matrix with entries 1 in row  $i$  and column  $j$  if observation  $i$  is in district  $j$ . The effect of the penalty is to shrink estimated parameters  $\gamma_{0d}$  towards zero. Hence the penalty prevents from possibly large variation in the estimates for  $\gamma_{0d}$  due to the large number of district specific parameters. For sufficiently large sample sizes within each district the estimated parameters automatically tend to an unconstrained fit.

In our case it is also plausible that objects in neighboring districts (i.e., districts that share a common border) have a higher correlation than two arbitrary objects, which leads us to the notion of spatial dependence. As the spatial ordering of the information is available (i.e., the map including the borders of the districts), we conducted what is called ge additive regression (see Kamman and Wand, 2003). The penalty is given by

$$\lambda \sum_{d=2}^{23} \sum_{r \in N(d), r < d} (\gamma_r - \gamma_d)^2$$



where  $N(d)$  is the set of neighbors of site  $d$ . Hence, squared differences of parameters of neighboring sites are penalized.

In our application it turned out that the results based on the two alternative penalties differ only marginally, which indicates that there is a small amount of spatial dependency. In the following we therefore present only results based on the simple ridge type penalty.

### 4.3 Multiplicative scaling factors

In our application, we allow the nonlinear price functions to vary among districts. For simplicity of presentation consider the model

$$y_i = \gamma_{0d_i} + (1 + \gamma_{1d_i})f(u_i) + \varepsilon_i \quad (5)$$

In matrix notation we obtain

$$\mathbf{y} = \mathbf{Z}_{0\gamma}\boldsymbol{\gamma}_0 + \mathbf{DZ}\boldsymbol{\beta} + \boldsymbol{\varepsilon} = \mathbf{Z}_{0\gamma}\boldsymbol{\gamma}_0 + \tilde{\mathbf{Z}}\boldsymbol{\beta} + \boldsymbol{\varepsilon},$$

where  $\mathbf{Z}_{0\gamma}$  is the design matrix for the district specific intercept,  $\mathbf{D}$  is a diagonal matrix with entries  $1 + \gamma_{1d_i}$ ,  $\mathbf{Z}$  is the design matrix for the nonlinear effect of covariate  $z$  and  $\tilde{\mathbf{Z}} = \mathbf{DZ}$ .

For given scaling factors the regression parameters  $\boldsymbol{\gamma}_0$  and  $\boldsymbol{\beta}$  may be estimated by the estimation techniques outlined in subsections 4.1 and 4.2.

On the other hand, we may rewrite (5) in an alternative way as

$$y_i = \gamma_{0d_i} + f(u_i) + f(u_i)\gamma_{1d_i} + \varepsilon_i.$$

or in matrix notation as

$$\mathbf{y} = \mathbf{Z}_{0\gamma}\boldsymbol{\gamma}_0 + \mathbf{f} + \bar{\mathbf{Z}}\boldsymbol{\gamma}_{1d_i} + \boldsymbol{\varepsilon},$$

where  $\mathbf{f} = [f(u_1), \dots, f(u_n)]$  and  $\bar{\mathbf{Z}} = \text{diag}[f(u_1), \dots, f(u_n)]\mathbf{Z}_{\gamma_1}$ . Hence, for given  $\mathbf{f}$ ,  $\boldsymbol{\gamma}_0$  and  $\boldsymbol{\gamma}_1$  may again be estimated as described in sections 4.2 and 4.3.

This gives rise to the following two step estimation algorithm (which may be iterated):

1. In the first step we assume a homogeneous function  $f$  as in our “base model”, i.e. the district specific intercept  $\gamma_{0d}$  and the scaling factors  $\gamma_{1d}$  are assumed to be identical to zero. Using the PLS estimation we obtain estimates  $\hat{\mathbf{f}}$  of the nonlinear function.
2. In the second step we estimate  $\gamma_0$  and  $\gamma_1$  in an additive mixed model framework by keeping the estimated function  $\hat{\mathbf{f}}$  from the first stage fixed.

A generalization to models with more than one covariate is straightforward.

## 5. Application

In this section we present the estimation results for the models described in section 3. In subsection 5.1, we show the pooled effects of the “base model”. Subsection 5.2 describes the spatial variation of the nonlinear price functions estimated in the “spatial scaling model”.

### 5.1 Estimation results of the Base Model

In table 2, we show the estimation results of the parameters estimated from “base model” as described in equation (1).

Name	Post. Mean	Std.-Dev.	95% Credibility Interval	
const	2.0537	0.0272	2.0034	2.1073
park	-0.0108	0.0131	-0.0373	0.0141
balk	0.0630	0.0067	0.0503	0.0757
gar	0.0502	0.0076	0.0350	0.0653
elev	0.0367	0.0067	0.0235	0.0492
noelev	-0.0389	0.0106	-0.0606	-0.0173
terr	0.1346	0.0073	0.1204	0.1489
cond1	0.0041	0.0120	-0.0197	0.0278
cond3	-0.1165	0.0060	-0.1283	-0.1053
cond4	-0.2876	0.0163	-0.3203	-0.2559

**Table 2: Parametric Effects**

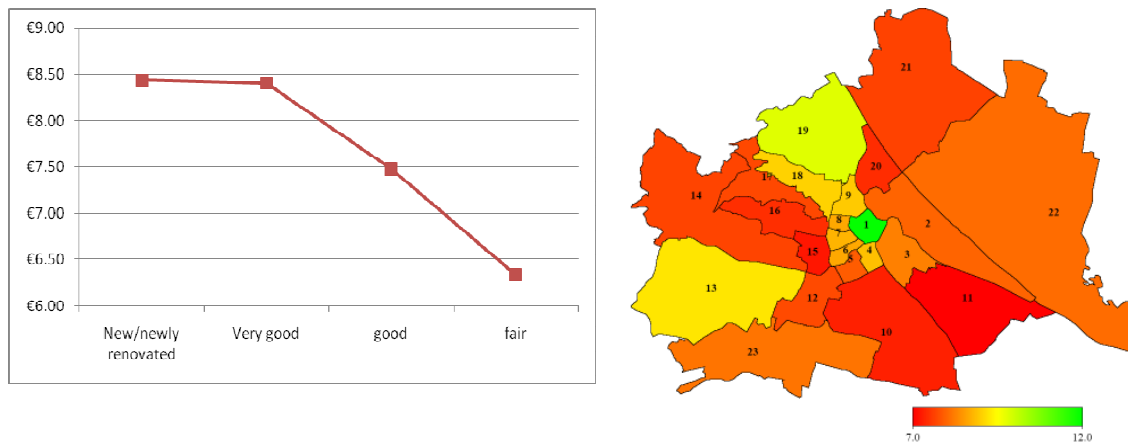
Because the model is specified in a semi-log form, the coefficients can be interpreted as (approximately) the percentage deviation from the reference category (actually, a better approximation of the percentage value is given by  $\exp(\alpha) - 1$ , where  $\alpha$  is the estimated parameter). In order to get an impression of how these effects influence rents in terms of Euro per sq. m., we transform the functions to natural units, where all other covariates are held constant at mean level of attributes in our sample. The results are presented in table 3, where we display the percentage deviation, the difference evaluated at the mean and the resulting rent per sq. m. if the respective attribute is existent.

Attribute	Effect on rents per sq. m.		
	Difference (%)	Difference (€)	Rent per sq. m. (€)

Terrace	13.46%	1.16 €	8.89 €
Balcony	6.30%	0.53 €	8.26 €
Garage	5.02%	0.42 €	8.15 €
Elevator	3.67%	0.30 €	8.03 €
No elevator (floor > 2)	-3.89%	-0.32 €	7.42 €

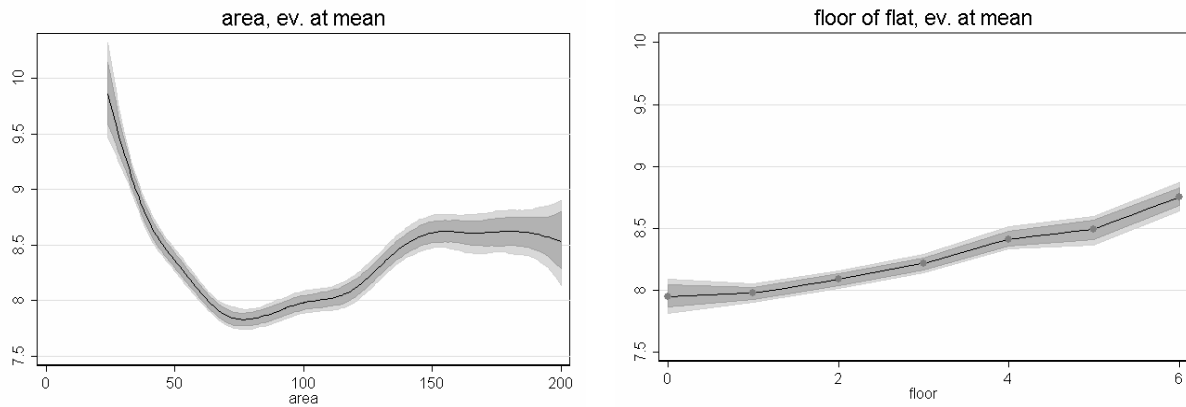
**Table 3: Effect of attributes as percentage difference (left column), difference in Euro values evaluated at sample mean (center column), resulting rent per sq. m. evaluated at sample mean (right column)**

Figure 7 shows the effect of the condition of the flat with category “very good” serving as a reference category in our estimation (left panel) and the district specific intercept (right panel), both evaluated at the sample mean. The condition accounts for a variation of 2.10 Euro per sq. m. evaluated at the sample mean. Also the discrete location effect is very strong, leading to differences in rents per sq. m. of 55% or 5 Euro evaluated at the sample mean, respectively.



**Figure 7: Effect of covariate condition (*cond*, left) and the location of the flat (*distr*, right)**

Figures 8 to 10 depict the nonparametric effects of our “base model”. Shown are the empirical means with pointwise 95% and 80% credible intervals, with the functions evaluated the at the sample mean.

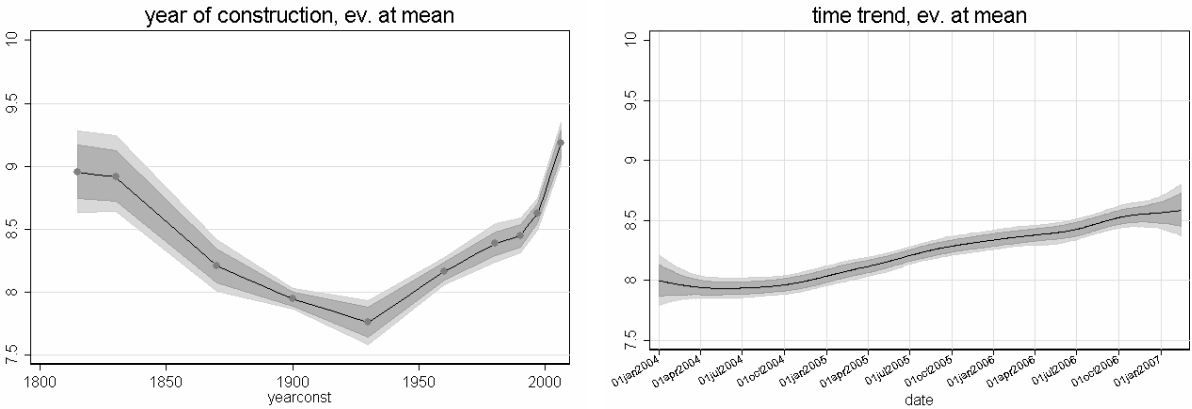


**Figure 8: Empirical mean and pointwise 95% and 80% credible intervals of the floor size of the flat (*area*, left) and the floor the flat is located in (*floor*, right)**

In the left panel of figure 8, the effect of the floor size of the flat (*area*) is displayed. From hedonic price theory, a decreasing price function over the whole range would be expected for this covariate. However, the shape of this function differs from this assumption and leads to some interesting interpretations: In the low range from 24 to approximately 80 sq. m., there is the expected strong effect of decreasing marginal prices which results in a monotonically decreasing function. However, in the range from 80 sq. m. to 150 sq. m. rents start to rise and remain nearly constant from 150 sq. m. onwards. This effect can be interpreted in the context of the Austrian rental law (MRG). The MRG, which regulates rents per sq. m. in Austria, is not relevant for flats of more than 130 sq. m. Actually, from about 130 to 150 sq. m., there is a much stronger increase in rents per sq. m. than in the range from 80 to 130 sq. m. This could be interpreted as a kind of convergence to the level of free rents. Furthermore, large flats are rather scarce in Vienna: flats with more than 150 sq. m. make up less than 8% of the sample. Additionally, very large flats are likely to be correlated with a more exclusive interior, which was not measured in this sample. This explains the constant price level in the highest range of flat sizes.

The effect of the floor the flat is located in (*floor*), displayed in the right panel of figure 8, shows the expected increase in price for higher floor levels. It accounts for approximately 10% in expected rent variation and is therefore much weaker than that of the floor size of the flat. Surprisingly, the ground floor and the first floor are valued nearly equally, although it could be expected that flats in the ground floor realize a much lower price. This is due to the fact that many flats are let with a garden, an attribute that was not collected in the data. Additionally to this effect, we introduced an interaction variable that accounted for the non-

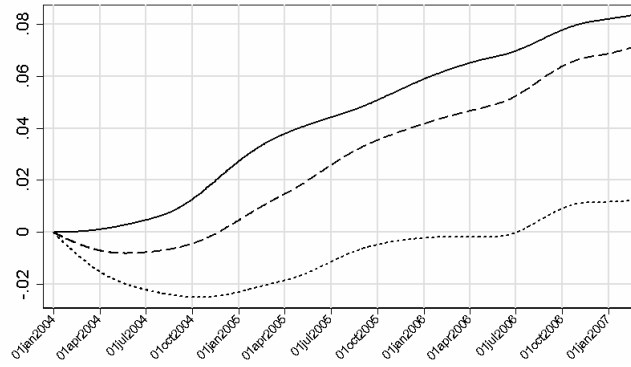
existence of elevators if the flat was located in a third floor or higher (see table 1, for estimation results see table 3).



**Figure 9: Empirical mean and pointwise 95% and 80% credible intervals of the year of construction of the building the flat is located in (*yearconst*, left) and the time trend (*end*, right)**

Concerning the year of construction (*yearconst*) of the building, displayed in the left panel of figure 9, we had two assumptions: We expected a strong increase in rents for buildings constructed after 1945 because for these buildings the MRG is only partly applicable (free rent or appropriate rent instead of reference rent). Furthermore, we thought there might be relatively high rents for new buildings. Actually, our analysis confirmed these two assumptions and showed a strong variation in expected rents due to the year of construction. The lowest expected rent per sq. m. was found for flats in buildings constructed in the interwar time, *ceteris paribus* nearly 20% lower than for flats in buildings constructed after 2001. However, we found that flats in Biedermeier and Gründerzeit buildings had an expected rent per sq. m. that was nearly as high as that of flats in very new buildings. Further research yielded that many of these buildings have been renovated lately and can be found in very desirable locations.

With the variable *end*, which reflects the date of exit from the database, we tried to control for time effects in the sample. As displayed in the right panel of figure 9, it turned out that there is an increase in offered rent of nearly 0.6 Euro per sq. m., evaluated at the sample mean. This is an increase of approximately 8% from the 1<sup>st</sup> of January 2004 to the 14<sup>th</sup> of February 2007.



**Figure 10: Empirical mean of covariate *end* estimated in different models (highest line: non-quality adjusted; middle line: hedonic price index; lower line: hedonic price index in real 2004 rents)**

Yet, the estimated hedonic time index gives some further interesting insights: in figure 10, we compare the quality controlled (hedonic) price index to a nonlinear time trend without quality adjustment. We find that a large amount of the increase in rents is due to higher quality. Furthermore, if the whole model is estimated with 2004 rents (adjusted with a smoothed monthly CPI), we find that there is a decrease in quality adjusted real rents from January to October 2004, an increase to the January 2004 level until January 2006, and real rents start to rise above this level only by July 2006.

### 5.2 Estimation results of the Spatial Scaling Model

As described in section 3 of this paper, the district specific heterogeneity was the motivation for us to introduce spatial scaling factors as in equation (2), allowing nonlinear price functions to vary among districts. Hence, we demand that in a submarket the price function may differ in scale, but not in its basic structure, which lead us to reject the “single districts estimation” (see section 3).

Applying 10-fold cross-validation, we find that the model extension reduces the mean squared error (MSE) by nearly 17% compared to the base model without spatial scaling factors (see table 4).

MSE Base Model	MSE Spatial Scaling Model	Difference (%)
0.0525	0.0438	16.65%

**Table 4: MSE of 10-fold cross-validation**

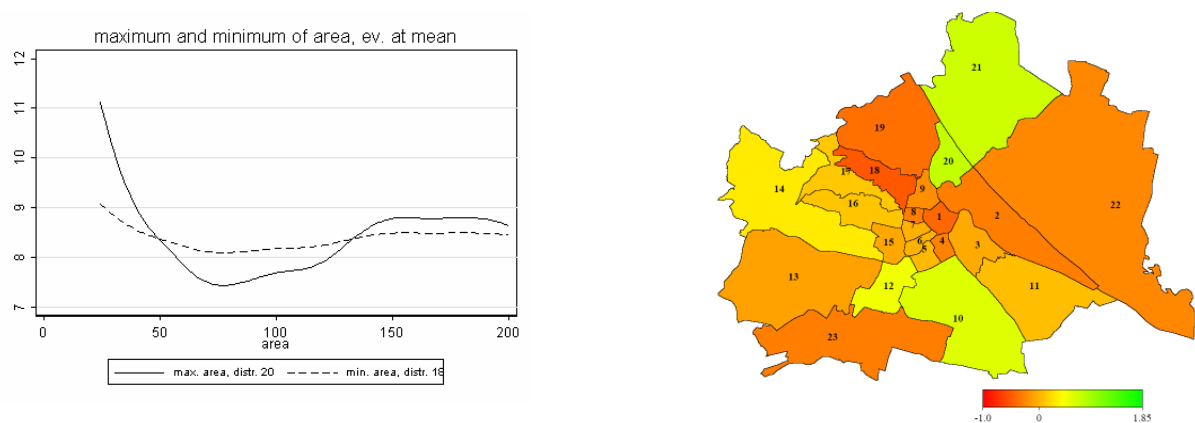
In table 5, the range of the estimated scaling parameters is displayed for each of the price functions under consideration. It shows that the spatial variation in scale ranges from 0.76 for

*end* (the slope of this effect is scaled down by the factor  $(1 + \gamma_{jd}) = 0.75$  compared to the “base model” effect in the 10<sup>th</sup> district and up by the factor  $(1 + \gamma_{jd}) = 1.51$  in the 4<sup>th</sup> district) to 2.81 for *floor* (here, the effect in the 9<sup>th</sup> district is only 0.02, while in the 23<sup>rd</sup> district it is 2.83 times the effect estimated in the “base model”).

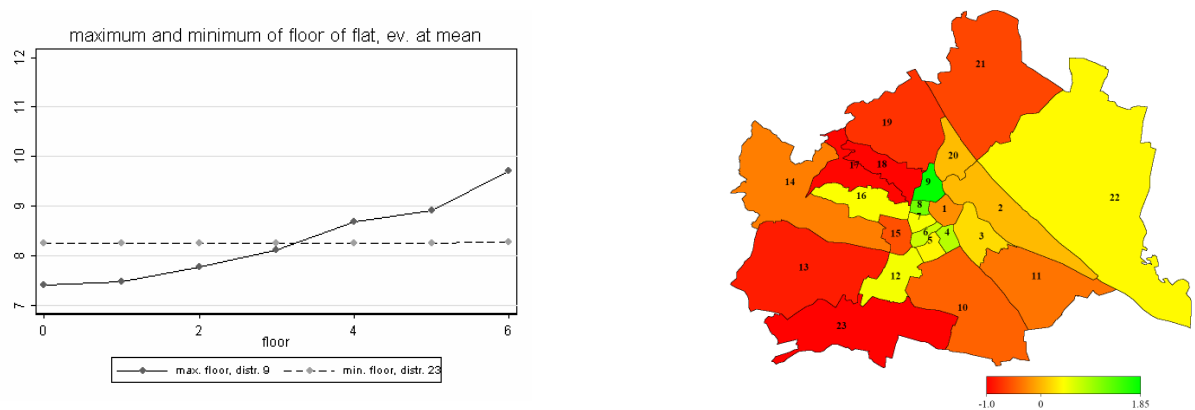
	maximum	minimum	difference
<b>area</b>	0.75	-0.51	1.26
<b>yearconst</b>	0.63	-0.36	0.99
<b>floor</b>	1.83	-0.98	2.81
<b>end</b>	0.51	-0.25	0.76

**Table 5: Maximum (left column), minimum (middle column) and difference of scaling factors**

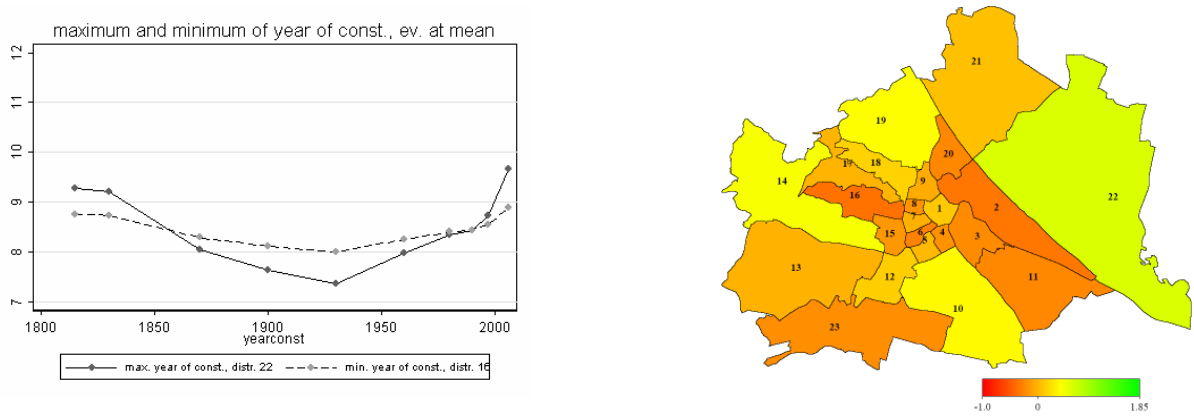
Figures 11 to 14 show this considerable heterogeneity. In the left panel, the maximum and minimum of the set of scaled functions is displayed for every nonlinear price function, again evaluated at the mean level of attributes in our sample. The right panel shows the spatial distribution of the spatial scaling factors in maps of Vienna, respectively.



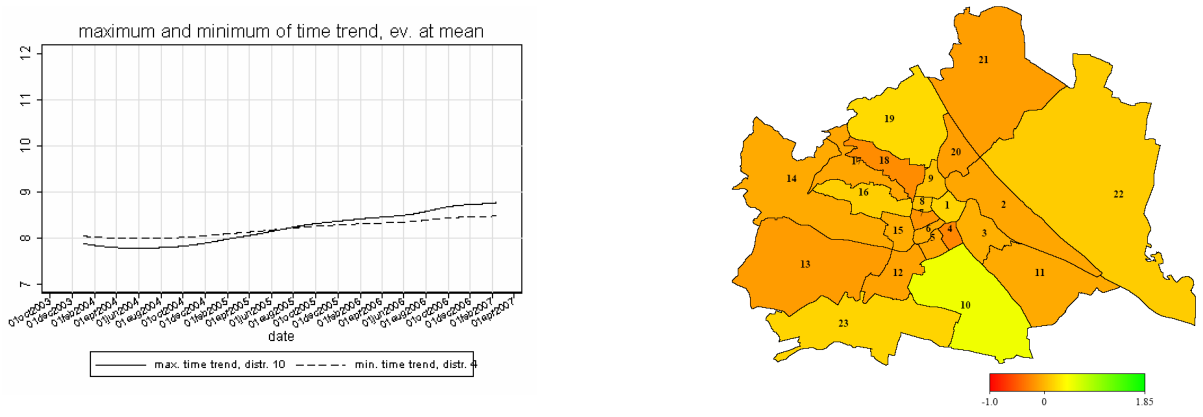
**Figure 11: Maximum and minimum of scaled effects (left) and spatial distribution of spatial scaling factors (right) for covariate *area***



**Figure 12: Maximum and minimum of scaled effects (left) and spatial distribution of spatial scaling factors (right) for covariate *floor***



**Figure 13: Maximum and minimum of scaled effects (left) and spatial distribution of spatial scaling factors (right) for covariate *yearconst***



**Figure 14: Maximum and minimum of scaled effects (left) and spatial distribution of spatial scaling factors (right) for covariate *end***

## 6. Conclusion

In this article, we address two major problems in hedonic price modeling: Nonlinearity of hedonic price functions, for which no specific functional form can be derived from theoretical considerations, and spatial heterogeneity, reflecting the existence of submarkets related to districts. For the first problem, we propose an additive mixed model with district specific intercepts. For the second problem, we introduce spatial scaling factors into the additive mixed model. The spatial scaling model treats nonlinearity and spatial heterogeneity in a unified framework, without leading to unstable estimates due to the decrease in sample size as in the single districts estimation. We find considerable improvement in model quality compared to a model without spatial scaling factors on the one hand and a model that estimates hedonic price functions for each district individually on the other hand.



## Aknowledgements

We would like to thank ERES NETconsulting-Immobilien.NET GmbH for the support and the data this piece of research is based on. Furthermore, we thank the University of Applied Sciences Kufstein and the University of Innsbruck. This research has been financially supported by grants from the Tiroler Wissenschaftsfonds (TWF).

## References

- Anglin, P. and Gençay, R. (1996): Semiparametric Estimation of a Hedonic Price Function. *Journal of Applied Econometrics*, 11(6), 633-648.
- Anselin, L. (1988): *Spatial Econometrics: Methods and Models*. Kluwer, Dordrecht.
- Anselin, L. (2003): Spatial Externalities, Spatial Multipliers and Spatial Econometrics. *International Regional Science Review*, 26, 153-166.
- Anselin, L., Florax, R. and Rey, S. (2004): *Advances in Spatial Econometrics: Methodology, Tools and Applications (Advances in Spatial Sciences)*. Springer, Berlin.
- Basu, S. and Thibodeau, T. (1998): Analysis of Spatial Autocorrelation in House Prices. *Journal of Real Estate Finance and Economics*, 17(1), 61-85.
- Besag, J. and Kooperberg, C. (1995): On Conditional and Intrinsic Autoregressions, *Biometrika* 82, 733–746.
- Brezger, A., Kneib, T., Lang, S. (2005a). Bayesx: Analyzing Bayesian structured additive regression models. *Journal of Statistical Software* 14, 1–22.
- Brezger, A., Kneib, T., Lang, S. (2005b). Bayesx manuals. Technical Report, Department of Statistics, University of Munich.  
Available at: <http://www.stat.uni-muenchen.de/~bayesx>
- Brezger, A. and Lang, S. (2006): Generalized structured additive regression based on Bayesian P-splines. *Computational Statistics and Data Analysis* 50, 967-991.
- Clapp, J. M., Kim, H.-J., Gelfand, A. E. (2002): Predicting Spatial Patterns of House Prices Using LPR and Bayesian Smoothing. *Real Estate Economics* 30 (4), 505–532.
- Clapp, J. M. (2003): A Semiparametric Method for Valuing Residential Locations: Application to Automated Valuation. *Journal of Real Estate Finance and Economics* 27(3), 303–320.
- Clapp, J. M. (2004): A Semiparametric Method for Estimating Local House Price Indices. *Real Estate Economics* 32(1), 127-160.
- Court, A.T. (1939): Hedonic Price Indexes With Automotive Examples. In: *The Dynamics of Automobile Demand*, General Motors, New York.

- De Boor, C. (2001): *A Practical Guide to Splines*, Springer, New York.
- Diggle, P.J. and Ribeiro, P.J. (2007): *Model-based Geostatistics*, Springer, New York.
- Eilers, P. and Marx, B. (1996): Flexible smoothing with B-splines and penalties. *Statistical Science*, 11(2), 89–121.
- Fahrmeir, L., Kneib, T. and Lang, S. (2007): *Regression. Modelle, Methoden und Anwendungen*. Springer, Berlin.
- Fahrmeir, L., Kneib, T. and Lang, S. (2004): Penalized additive regression for space-time data: a Bayesian perspective. *Statistica Sinica*, 14, 731-761.
- Follain, J. and Jimenez, E. (1985): Estimating the Demand for Housing Characteristics: A Survey and Critique. *Regional Science and Urban Economics*, 15(1), 77-107.
- Fotheringham, A.S., Brundson, C. and Charlton, M.E. (2002): *Geographically Weighted Regression: The Analysis of Spatially Varying Relationships*, Wiley, Chichester.
- Griliches, Z. (1971): *Price Indexes and Quality Change: Studies in New Methods of Measurement*, Harvard University Press, Cambridge, MA.
- Kamman, E.E. and Wand, M.P. (2003): Geoadditive Models, *Journal of the Royal Statistical Society C*, 52, 1-18.
- Lancaster, K. (1966): A New Approach to Consumer Theory. *Journal of Political Economy*, 74, 132-157.
- Lang, S. and Brezger, A. (2004): Bayesian P-Splines. *Journal of Computational and Graphical Statistics*, 13, 183-212.
- LeSage, J.P. (1999): *The Theory and Practice of Spatial Econometrics*. Unpublished Manuscript, University of Toledo.
- LeSage, J.P. and Pace, R.K. (eds.) (2004). *Spatial and Spatiotemporal Econometrics (Advances in Econometrics)*. Elsevier, Oxford.
- Malpezzi, S. (2002): Hedonic Pricing Models: A Selective and Applied Review. Prepared for: *Housing Economics: Essays in Honor of Duncan MacLennan*.
- Martins-Filho, C., Bin, O. (2005): Estimation of hedonic price functions via additive nonparametric regression. *Empirical Economics*, 30, 93-114.
- Mason and Quigley (1996): Non-parametric Hedonic Housing Prices. *Housing Studies*, Vol. 11, No. 3, 373-385.
- McMillen, D.P. (2003): Spatial Autocorrelation or Misspecification? *International Regional Science Review*, 26, 591-612.
- MRG (1981): Bundesgesetz vom 12. November 1981 über das Mietrecht – MRG. BGBl. Nr. 520/1981 i.d.F. BGBl. Nr. I/124/2006.

- Pace, R.K. (1995): Hedonic Prices and Public Goods: An Argument for Weighting Locational Attributes in Hedonic Regressions by Lot Size. *Journal of Urban Economics*, 12, 177-201.
- Pace, R.K. (1998): Appraisal Using Generalized Additive Models. *Journal of Real Estate Research*, 15, 77-99.
- Parmeter, C. F., Henderson, D. J. and Kumbhakar, S. C. (2007): Nonparametric estimation of a hedonic price function. *Journal of Applied Econometrics*, 22(3), 695-699.
- Rosen, S. (1974): Hedonic Prices and Implicit Markets: Product Differentiation in Pure Competition. *Journal of Political Economy*, 82(1), 34-55.
- Ruppert, D., Wand, M.P. and Carroll, R.J. (2003): *Semiparametric Regression*. Cambridge University Press.
- Sheppard, S. (1999): Hedonic Analysis of Housing Markets. In: Paul C. Chesire and Edwin S. Mills (eds.), *Handbook of Regional and Urban Economics*, volume 3, 1595-1635.
- Sirmans, G, Macpherson, D. and Zietz, E. (2005): The Composition of Hedonic Pricing Models. *Journal of Real Estate Literature*, 13(1), 3-43.
- Wallace, N. (1996): Hedonic-Based Price Indexes for Housing: Theory, Estimation, and Index Construction. *Federal Reserve Bank of San Francisco Economic Review* 3, 34-48.
- Wood, S. (2006a): *An Introduction to Generalized Additive Models with R*. Taylor & Francis Ltd.
- Wood, S. (2006b): Low-Rank Scale-Invariant Tensor Product Smooths for Generalized Additive Mixed Models, *Biometrics* 62(4), 1025-1036.
- Wood, S. N., Bravington, M.V. and Hedley, S.L. (2008): Soap film Smoothing, *Journal of the Royal Statistical Society B*, in press.

## University of Innsbruck – Working Papers in Economics and Statistics

### Recent papers

- 2008-17 **Wolfgang Brunauer, Stefan Lang, Peter Wechselberger and Sven Bienert:** Additive Hedonic Regression Models with Spatial Scaling Factors: An Application for Rents in Vienna.
- 2008-16 **Harald Oberhofer, Tassilo Philippovich:** Distance Matters! Evidence from Professional Team Sports.
- 2008-15 **Maria Fernanda Rivas and Matthias Sutter:** Wage dispersion and workers' effort.
- 2008-14 **Stefan Borsky and Paul A. Raschky:** Estimating the Option Value of Exercising Risk-taking Behavior with the Hedonic Market Approach.
- 2008-13 **Sergio Currarini and Francesco Feri:** Information Sharing Networks in Oligopoly.
- 2008-12 **Andrea M. Leiter:** Age effects in monetary valuation of mortality risks - The relevance of individual risk exposure.
- 2008-11 **Andrea M. Leiter and Gerald J. Pruckner:** Dying in an Avalanche: Current Risks and their Valuation.
- 2008-10 **Harald Oberhofer and Michael Pfaffermayr:** Firm Growth in Multinational Corporate Groups.
- 2008-09 **Michael Pfaffermayr, Matthias Stöckl and Hannes Winner:** Capital Structure, Corporate Taxation and Firm Age.
- 2008-08 **Jesus Crespo Cuaresma and Andreas Breitenfellner:** Crude Oil Prices and the Euro-Dollar Exchange Rate: A Forecasting Exercise.
- 2008-07 **Matthias Sutter, Stefan Haigner and Martin Kocher:** Choosing the carrot or the stick? – Endogenous institutional choice in social dilemma situations.
- 2008-06 **Paul A. Raschky and Manijeh Schwindt:** Aid, Catastrophes and the Samaritan's Dilemma.
- 2008-05 **Marcela Ibanez, Simon Czermak and Matthias Sutter:** Searching for a better deal – On the influence of group decision making, time pressure and gender in a search experiment.
- 2008-04 **Martin G. Kocher, Ganna Pogrebna and Matthias Sutter:** The Determinants of Managerial Decisions Under Risk.
- 2008-03 **Jesus Crespo Cuaresma and Tomas Slacik:** On the determinants of currency crises: The role of model uncertainty.
- 2008-02 **Francesco Feri:** Information, Social Mobility and the Demand for Redistribution.
- 2008-01 **Gerlinde Fellner and Matthias Sutter:** Causes, consequences, and cures of myopic loss aversion - An experimental investigation. *Revised version forthcoming in Economic Journal.*
- 
- 2007-31 **Andreas Exenberger and Simon Hartmann:** The Dark Side of Globalization. The Vicious Cycle of Exploitation from World Market Integration: Lesson from the Congo.
- 2007-30 **Andrea M. Leiter and Gerald J. Pruckner:** Proportionality of willingness to pay to small changes in risk - The impact of attitudinal factors in scope tests. *Revised version forthcoming in Environmental and Resource Economics.*
- 2007-29 **Paul Raschky and Hannelore Weck-Hannemann:** Who is going to save us now? Bureaucrats, Politicians and Risky Tasks.
- 2007-28 **Harald Oberhofer and Michael Pfaffermayr:** FDI versus Exports. Substitutes or Complements? A Three Nation Model and Empirical Evidence.
- 2007-27 **Peter Wechselberger, Stefan Lang and Winfried J. Steiner:** Additive models with random scaling factors: applications to modeling price response functions.

- 2007-26 **Matthias Sutter:** Deception through telling the truth?! Experimental evidence from individuals and teams. *Revised version accepted for publication in The Economic Journal.*
- 2007-25 **Andrea M. Leiter, Harald Oberhofer and Paul A. Raschky:** Productive disasters? Evidence from European firm level data.
- 2007-24 **Jesus Crespo Cuaresma:** Forecasting euro exchange rates: How much does model averaging help?
- 2007-23 **Matthias Sutter, Martin Kocher and Sabine Strauß:** Individuals and teams in UMTS-license auctions. *Revised version with new title "Individuals and teams in auctions" forthcoming in Oxford Economic Papers.*
- 2007-22 **Jesus Crespo Cuaresma, Adusei Jumah and Sohbet Karbuz:** Modelling and Forecasting Oil Prices: The Role of Asymmetric Cycles.
- 2007-21 **Uwe Dulleck and Rudolf Kerschbamer:** Experts vs. discounters: Consumer free riding and experts withholding advice in markets for credence goods. *Revised version forthcoming in "International Journal of Industrial Organization".*
- 2007-20 **Christiane Schwieren and Matthias Sutter:** Trust in cooperation or ability? An experimental study on gender differences. *Revised version published in Economics Letters 99 (2008): 494-497.*
- 2007-19 **Matthias Sutter and Christina Strassmair:** Communication, cooperation and collusion in team tournaments – An experimental study. *Revised version forthcoming in: Games and Economic Behavior.*
- 2007-18 **Michael Hanke, Jürgen Huber, Michael Kirchler and Matthias Sutter:** The economic consequences of a Tobin-tax – An experimental analysis.
- 2007-17 **Michael Pfaffermayr:** Conditional beta- and sigma-convergence in space: A maximum likelihood approach. *Revised version forthcoming in Regional Science and Urban Economics.*
- 2007-16 **Anita Gantner:** Bargaining, search, and outside options. *Published in: Games and Economic Behavior, Vol. 62 (2008), pp. 417-435.*
- 2007-15 **Sergio Currarini and Francesco Feri:** Bilateral information sharing in oligopoly.
- 2007-14 **Francesco Feri:** Network formation with endogenous decay.
- 2007-13 **James B. Davies, Martin Kocher and Matthias Sutter:** Economics research in Canada: A long-run assessment of journal publications. *Revised version published in: Canadian Journal of Economics, Vol. 41 (2008), 22-45.*
- 2007-12 **Wolfgang Luh, Martin Kocher and Matthias Sutter:** Group polarization in the team dictator game reconsidered. *Revised version forthcoming in: Experimental Economics.*
- 2007-11 **Onno Hoffmeister and Reimund Schwarze:** The winding road to industrial safety. Evidence on the effects of environmental liability on accident prevention in Germany.
- 2007-10 **Jesus Crespo Cuaresma and Tomas Slacik:** An “almost-too-late” warning mechanism for currency crises.
- 2007-09 **Jesus Crespo Cuaresma, Neil Foster and Johann Scharler:** Barriers to technology adoption, international R&D spillovers and growth.
- 2007-08 **Andreas Brezger and Stefan Lang:** Simultaneous probability statements for Bayesian P-splines.
- 2007-07 **Georg Meran and Reimund Schwarze:** Can minimum prices assure the quality of professional services?.
- 2007-06 **Michal Brzoza-Brzezina and Jesus Crespo Cuaresma:** Mr. Wicksell and the global economy: What drives real interest rates?.
- 2007-05 **Paul Raschky:** Estimating the effects of risk transfer mechanisms against floods in Europe and U.S.A.: A dynamic panel approach.
- 2007-04 **Paul Raschky and Hannelore Weck-Hannemann:** Charity hazard - A real hazard to natural disaster insurance. *Revised version forthcoming in: Environmental Hazards.*

- 2007-03 **Paul Raschky:** The overprotective parent - Bureaucratic agencies and natural hazard management.
- 2007-02 **Martin Kocher, Todd Cherry, Stephan Kroll, Robert J. Netzer and Matthias Sutter:** Conditional cooperation on three continents. *Revised version forthcoming in: Economics Letters.*
- 2007-01 **Martin Kocher, Matthias Sutter and Florian Wakolbinger:** The impact of naïve advice and observational learning in beauty-contest games.

**University of Innsbruck**

**Working Papers in Economics and Statistics**

2008-17

Wolfgang Brunauer, Stefan Lang, Peter Wechselberger and Sven Bienert

Additive Hedonic Regression Models with Spatial Scaling Factors: An Application for Rents in Vienna

**Abstract**

We apply additive mixed regression models (AMM) to estimate hedonic price equations. Non-linear effects of continuous covariates as well as a smooth time trend are modeled non-parametrically through P-splines. Unobserved district-specific heterogeneity is modeled in two ways: First, by location specific intercepts with the postal code serving as a location variable. Second, in order to permit spatial variation in the nonlinear price gradients, we introduce multiplicative scaling factors for nonlinear covariates. This allows highly nonlinear implicit price functions to vary within a regularized framework, accounting for district-specific spatial heterogeneity. Using this model extension, we find substantial spatial variation in house price gradients, leading to a considerable improvement of model quality and predictive power.

ISSN 1993-4378 (Print)  
ISSN 1993-6885 (Online)