

Blundell, Richard; Costa Dias, Monica; Meghir, Costas; Van Reenen, John

Working Paper

Evaluating the employment impact of a mandatory job search assistance program

IFS Working Papers, No. 01/20

Provided in Cooperation with:

Institute for Fiscal Studies (IFS), London

Suggested Citation: Blundell, Richard; Costa Dias, Monica; Meghir, Costas; Van Reenen, John (2001) : Evaluating the employment impact of a mandatory job search assistance program, IFS Working Papers, No. 01/20, Institute for Fiscal Studies (IFS), London, <https://doi.org/10.1920/wp.ifs.2001.0120>

This Version is available at:

<https://hdl.handle.net/10419/71430>

Standard-Nutzungsbedingungen:

Die Dokumente auf EconStor dürfen zu eigenen wissenschaftlichen Zwecken und zum Privatgebrauch gespeichert und kopiert werden.

Sie dürfen die Dokumente nicht für öffentliche oder kommerzielle Zwecke vervielfältigen, öffentlich ausstellen, öffentlich zugänglich machen, vertreiben oder anderweitig nutzen.

Sofern die Verfasser die Dokumente unter Open-Content-Lizenzen (insbesondere CC-Lizenzen) zur Verfügung gestellt haben sollten, gelten abweichend von diesen Nutzungsbedingungen die in der dort genannten Lizenz gewährten Nutzungsrechte.

Terms of use:

Documents in EconStor may be saved and copied for your personal and scholarly purposes.

You are not to copy documents for public or commercial purposes, to exhibit the documents publicly, to make them publicly available on the internet, or to distribute or otherwise use the documents in public.

If the documents have been made available under an Open Content Licence (especially Creative Commons Licences), you may exercise further usage rights as specified in the indicated licence.

EVALUATING THE EMPLOYMENT IMPACT OF A MANDATORY JOB SEARCH ASSISTANCE PROGRAM

Richard Blundell
Monica Costa Dias
Costas Meghir
John Van Reenen

EVALUATING THE EMPLOYMENT IMPACT OF A MANDATORY JOB SEARCH PROGRAM¹

Richard Blundell

Monica Costa Dias

Costas Meghir

and

John Van Reenen

December 2002

Abstract

This paper exploits area based piloting and age-related eligibility rules to identify treatment effects of a labor market program – the New Deal for Young People in the UK. A central focus is on substitution/displacement effects and on equilibrium wage effects. The program includes extensive job assistance and wage subsidies to employers. We find that the program significantly raised transitions to employment by about five percentage points (about 20 percent over the pre-program base). The impact is robust to a wide variety of non-experimental estimators. However we present some evidence suggesting that this effect may not be as large in the longer run.

JEL Classification: J18, J23, J38

Keywords: labor market program evaluation, job search, wage subsidy.

¹ **Acknowledgements:** We thank David Card, Richard Freeman, Hide Ichimura, Richard Layard, Rebecca Riley, Garry Young and participants in seminars at Institute for Fiscal Studies, CEMFI, LSE, DfEE and St. Andrews. We are grateful to the Leverhulme foundation for funding this project. This research is also part of the program of research at the ESRC Centre for the Microeconomic Analysis of Fiscal Policy at Institute for Fiscal Studies. The DfEE kindly provided access to NDED and the ESRC Data Archive to the JUVOS data. The second author acknowledges the financial support from Sub-Programa Ciência e Tecnologia do Segundo Quadro Comunitário de Apoio, grant number PRAXIS XXI/BD/11413/97. The usual disclaimer applies.

I. INTRODUCTION

The literature on the evaluation of labor market programs is voluminous, growing and somewhat sobering. The sobering aspect is that we are learning that most programs appear to have very limited effects, especially those that focus on young low-skilled adults. This paper concerns the evaluation of a targeted active labor market program, “New Deal for the Young Unemployed”, designed to move young unemployed individuals in the UK into work and away from welfare. This is a major program that has affected several million young people. It is also viewed as a program that brings together the best of other such initiatives, combining job search assistance in the first instance with subsidized job placement for those whom the initial treatment was not successful. As such, a rigorous evaluation of the program may lead to insights regarding the successful implementation of programs in other countries. In fact, we do find evidence that the program has successfully raised employment, although it is still an open question how long-lived these benefits will be.

The program we evaluate was piloted in certain areas before it was rolled out nation wide. Moreover, the program has age specific eligibility rules. We use these area and age based eligibility criteria that vary across individuals of identical unemployment durations to identify the program effects. We show how they allow us to examine the extent of substitution between eligible and non-eligible groups and also to assess whether there are significant general equilibrium (or “community-wide”) effects of the program. We also exploit a number of additional features of our evaluation data to address fundamental problems that have affected non-experimental program evaluations. First, we use the long history of pre-program data at our disposal to evaluate the plausibility of the assumptions underlying our approach. Having longitudinal data on individuals for up to fifteen years prior to program introduction enables us to place bounds around the maximum and minimum effects of the program based on historical experience. Second, it has been suggested that results from non-experimental evaluations can be fragile – highly dependent on functional form assumptions and on the availability of suitable conditioning variables¹. We use a variety of methods to provide sensitivity analysis on this issue and we find remarkably robust results. Moreover as suggested by Heckman, Ichimura and Todd [1997] we are able to control for recent labour market history, which can be of central importance for the success of a non-experimental evaluation.

The program we study is directed toward individuals aged between eighteen and twenty-four and who have been claiming unemployment insurance (called “Job Seekers Allowance”² in the UK) for six months. The whole program combines initial job search assistance followed by various subsidized options including wage subsidies to employers, temporary government jobs and full time education and training. Prior to this program, young people in the UK could, in principle, claim unemployment benefits indefinitely. Now, after six months of unemployment, young people enter the “Gateway”, which is the first period of job search assistance. The program is mandatory, including the subsidized options part, which introduces an interval in the claiming spell. In this paper we focus only on the job assistance and wage subsidy element of the New Deal as our data does not cover a sufficient period to analyse the other parts of the program (e.g. education and training).³

Our approach to evaluation consists of exploring sources of differential eligibility and different assumptions about the relationship between the outcome and the participation decision to identify the effects of the New Deal. On the “differential eligibility” side, we use two potential sources of identification: age and area. The fact that the program is age-specific implies that using slightly older people of similar unemployment duration is a natural comparison group. This is similar to the identification strategy in Katz [1998] who analyzed the withdrawal of a wage subsidy (the Targeted Job Tax Credit) from economically disadvantaged 23 and 24 year olds in 1989-90. He used a combination of age, economic disadvantage and time to form comparison groups and identified a small but significant effect of the program on employment. Our study uses geographical area as an additional source of identification to Katz [1998] by exploiting the fact that the program was first piloted in selected areas before being implemented nation-wide.

Under a simple difference in differences approach, we show that the choice of the comparison group determines the parameter being estimated as various potential sources of biases are dealt with in different ways. We are especially concerned about substitution and equilibrium wage effects. Substitution occurs if participants take (some of) the jobs that non-participants would have got in the absence of treatment. Equilibrium wage effects may occur when the program is wide enough to affect wages through changes in the supply of labor. While studying the Pilot period, we use a diversity of comparison groups who will be affected differentially by these types of indirect effects to obtain some indication on the importance of such biases.

We apply a number of different econometric techniques, all exploiting the longitudinal nature of the data set being used but making different assumptions about the structure of the disturbances. A general set up is developed, where all estimators can be interpreted in the light of combined difference in differences and matching methodologies. The conditions under which each estimator identifies and estimates the impact of treatment on the treated are derived.

The estimators being used in the present paper, as in many other evaluations, rely on the critical assumption that the evolution of employment in the two groups being compared would have been the same in the absence of the program.⁴ One reason for this to be violated is the fact that individuals eligible for the New Deal program could react to it in *anticipation* of the program, i.e. before eligibility. We can test for this since we observe the complete inflow into unemployment and hence can assess whether the program induces differential behaviour in the six months preceding eligibility. Other factors that could induce differential time trends relate to the slight differences either in location or age of the groups to be compared. We use past history to infer the extent to which this may affect our results.

We focus on the change in transitions from the unemployed claimant count to jobs during the first four months of treatment (the “Gateway” period), although we compare this with a slightly longer perspective. We find that the outflow rate to jobs has risen by about 20 per cent for young men as a result of the New Deal during its National Roll Out (i.e. five percentage points more men find jobs in the first four months of the New Deal above a pre-program level of twenty five percentage points). Similar results show up from the use of different adopted estimators, independently of the amount or type of structure imposed, and they appear to be robust to pre-program selectivity, changes in job quality and different cyclical effects. We obtain similar estimates from using across regional comparison groups (the pilot areas) as we do when using eligible vs. non-eligible age groups. Such an outcome suggests that either equilibrium wage and substitution effects are not very strong or they broadly cancel each other out.

The robustness of our results is reassuring, but we take care to judge how permanent the effects are likely to be. We do find evidence of an important “program introduction effect” in the sense that the impact of the program is much larger in the first quarter it is introduced than in subsequent

quarters. However, there are reasons to suspect that a program such as the New Deal will have more sustainable effects than other labor market programs⁵. First, the program is mandatory: refusal to participate results in sanctions. Mandatory, sanction-enforced schemes have often been found to be more effective than voluntary schemes⁶. Secondly, the "disadvantaged youth" we consider are less disadvantaged than those typically treated in typical US programs often found to be ineffective (e.g. ex-offenders). The only entry requirement is six months unemployment benefit claim, which is not so uncommon for those under twenty five years of age in Britain. Finally, we are evaluating the effects of job search assistance and wage subsidies where the U.S. evidence has been more optimistic than for training programs (see sub-section V.4 for a more detailed comparison of our results with other studies).⁷

The structure of the paper is as follows. We start in section II with a more detailed description of the New Deal. Section III presents the methodology we apply. We discuss how the choice of the comparison group determines the parameter being identified along with the potential sources of bias in each case, and develop a combined difference in differences and matching set up where all the estimators being used can be interpreted. Section IV describes the data and section V details the empirical results. We separate the analysis of the Pilot period of the program, where more detail is possible given the additional instruments we are able to explore to construct the counterfactual. Males and females are also discussed separately and we compare our UK results with experimental evaluations of similar US programs. Finally, section VI offers some concluding comments.

II. THE PROGRAM

II.1. Description of the New Deal for the Young Unemployed

The New Deal for Young People is a recent initiative of the UK government to help the young unemployed gain work. The program is targeted at the eighteen to twenty-four years old longer-term unemployed. Participation is compulsory; every eligible individual who refuses to co-operate faces a loss of their entitlement to benefits. The criteria for eligibility are simple: every individual aged between eighteen and twenty-four by the time of completion of the sixth month on Job Seekers' Allowance (JSA), equivalent to UI, is assigned to the program and starts receiving treatment.⁸ Given

the stated rules, the program can be classified as one of “global implementation”, being administered to everyone in the UK meeting the eligibility criteria.⁹ Indirect effects that spill over to other groups than the treatment group may occur and the nature of these effects will be discussed below.

The path of a participant through the New Deal is composed of three main steps (see Figure 1). On assignment to the program, the individual starts the first stage of the treatment called the “Gateway”. This is the part of the program being evaluated in the present study. It lasts for up to four months and is composed of intensive job-search assistance and small basic skills' courses. Each individual is assigned a “Personal advisor”, a mentor who they meet at least once every two weeks to encourage/enforce job search.

The second stage is composed of four possible options. First, there is the “employer option” - a six-month spell on subsidized employment. For the subsidized employment option, the employer receives a £60 (about \$90) a week wage subsidy during the first six months of employment plus an additional £750 (about \$1125) contribution to finance a required minimum amount of job training equivalent to one day a week¹⁰. Under a second possible option, individuals can enroll in a stipulated full-time education or training course and receive an equivalent amount to the JSA payment for up to twelve months. Third, individuals can work in the voluntary sector for up to six months and are paid a wage or allowance of at least the JSA plus £400 (\$600) spread over the six months. Finally, they may take a job on the “Environmental Task Force” - essentially a government job¹¹.

Once the option period is over, if the individual has not managed to keep/find a job or leave the claimant count for any other reason, the third stage of the program is initiated, the “Follow Through”. This is a process similar to the Gateway, taking up to thirteen weeks, where job-search assistance is the main treatment being provided.

The program was launched in the whole UK in April 1998 (the “national roll out”). There was, however, a pilot from January to March 1998, when the program was implemented in twelve areas, called the *Pathfinder* Pilots¹². Clearly, identification of the treatment effect under these conditions requires stronger assumptions than when an experiment is run within regions using random assignment over a large number of areas. As will be discussed, the problem relates to the fact that the counterfactual must either be drawn from a different labor market or from a group with different

characteristics operating in the same labor market. Below we explore what we can identify under different assumptions.

Given that the program has not been running for a long period, we focus in this paper on an evaluation of the Gateway. In particular, we are concerned with the degree to which enhanced job search assistance has led to an increase in outflows to jobs. The evaluation is based on data provided by the Pathfinder areas before the National Roll Out of the program, as well as on data available following the National Roll Out.

In evaluating the impact of the program we need to consider the precise nature of the comparison group, and hence the definition of what is being measured, and the set of assumptions that underlie the interpretation of the parameter we estimate in each case. There are some important aspects covered within this discussion. One of them concerns the extent to which we can estimate the overall impact of the program on employment as opposed to the impact on the eligible individuals. Potential differences between the overall impact and the effect of treatment on the eligible group could arise because: (1) the impact of the program on eligible individuals may be at the expense of worsened labor market opportunities for similar but ineligible individuals or (2) the wider implementation of the program and the opportunities it offers to participants may affect the equilibrium level of wages and employment, affecting all workers.

II.2. Choice of the outcome variables

We focus on the impact of the program on the proportion leaving unemployment within four months of entering the “Gateway”. The choice is mainly dictated by the desire to focus on the stated government targets and the paucity of data on individuals after they have finished the options.¹³ However an alternative outcome variable would have been the proportion leaving unemployment within, say, eight or ten months of entering the unemployment pool. This outcome variable would avoid the potential composition effects that may be induced by the anticipation of the program among eligible individuals. In particular, if the program is perceived as being able to improve placements, then individuals close to the Gateway and eligible for the program may reduce their search effort and wait for the program. In this case, the average individual among eligibles would be more prone to leave unemployment than its counterpart in the comparison group, leading to

increased exit rates for this group. However, we can test this hypothesis by estimating the proportion of those who left unemployment by the end of the sixth month in the eligible and ineligible group. Such a comparison will provide an idea of how important such compositional effects are likely to be.

We will pay special attention to the *outflows into employment*, but we also examine total outflows from unemployment to all destinations. To assess the importance of the estimated effects, we interpret them in an historical perspective. We provide some lower and upper bounds for the treatment effect by using our methodology during other pre-program time periods. This can be done for total outflow for all years since 1982.

To summarize: treatment is understood as the job-search assistance initiative of the New Deal and the treated are those who enroll in the program after completing a six month unemployment spell. We aim at measuring the impact of improved job-search assistance on the probability of finding a job among the treated. To assess the robustness of our results, we also present estimates of other parameters that are informative about the adequacy of the underlying assumptions. Different definitions of treatment and the treated often characterise such parameters, and this is made clear on the following discussion.

III. IDENTIFICATION AND ESTIMATION METHODS

Our approach to estimate the impact of the New Deal program relies on using information from the pilot period as well as information from the National Roll out. The New Deal can affect employment of both eligible and ineligible individuals in a number of ways. First the eligible individuals receive job search assistance that may enhance their ability to find a job. Second, some of the individuals who pass through the Gateway will receive the wage subsidy option, reducing the cost of employing them for an initial period of six months. This wage subsidy will expand the employment of such workers but may also lead to a substitution of other workers for these cheaper ones. The extent to which this may happen will depend on a number of factors. If the subsidy just covers the deficit in productivity as well as the costs of training, we would not expect any substitution; these workers are no cheaper than anyone else. Second, it will depend on the extent that

these workers are substitutable in production for existing workers and on the extent that it is easy to “churn” worker, that is to replace a worker finishing a six month subsidy with a new subsidized worker. The latter is an important point, since the subsidy only lasts six months. Moreover the agencies implementing the New Deal are supposed to be monitoring the behavior of firms using wage subsidies and employing individuals on the New Deal. Of course if job durations are generally short, firms will be able to use subsidized workers instead of the non-subsidized ones, without any extra effort.

The New Deal may also change the prices in a region or country as a whole as it affects a substantial number of people. For example, the increased search activities of the unemployed could lower the equilibrium wage for less unskilled individuals and therefore increase aggregate employment through a higher job offer arrival rate. This will tend to increase employment for eligible and ineligible individuals and will counteract the effects of substitution on the non-treatment group. Randomized trials cannot account for these general equilibrium or “community wide” effects which have become central pre-occupations of those involved in the program evaluation literature¹⁴.

Assessing the importance of substitution and of General Equilibrium effects through wages or other channels is of central importance. Using the comparison between the pilot and control areas as described below, and assuming these areas are sufficiently separate labor markets from each other, we will be able to assess the extent to which substitution and other General Equilibrium effects combined are likely to be important “side-effects” of the program, at least in the short run. Below we discuss the evaluation methodology, a central part of which is the choice of comparison group. This choice is to a large extent governed by the issues discussed above.

III.1 The Choice of Comparison Group

Define by Y_{it}^1 the outcome for individual i in period t they are exposed to the policy (treatment). The outcome for the same individual if not exposed to the policy is Y_{it}^0 . Consequently the impact for the i -th individual of the policy is $Y_{it}^1 - Y_{it}^0$. The average policy impact for those going through the New Deal is $E(Y_{it}^1 - Y_{it}^0 \mid ND = 1)$. This parameter will be the focus of our attention. $ND=1$ denotes the areas assigned to the New Deal, $t=0$ represents the period before implementation and $t=1$ the

period after. Quite clearly, the evaluation problem relates to the missing data that would allow us to estimate $E(Y_{it}^0 | ND = 1)$ directly. In this section we define a number of alternative comparison groups that will allow us to estimate this counterfactual mean. As we will point out, the definition and interpretation of the estimated parameter will change in certain cases with the comparison group.

Consider first a contrast obtained by comparing employment growth in pilot areas to employment growth in control areas. Assume that

$$(1) \quad E(Y_{it}^0 | ND = 1, t = 1) - E(Y_{it}^0 | ND = 1, t = 0) = \\ E(Y_{it}^0 | ND = 0, t = 1) - E(Y_{it}^0 | ND = 0, t = 0)$$

This assumption means that the growth in employment in the New Deal areas would have been the same as in the non New Deal areas in the absence of the policy. In this case the missing counterfactual value can be replaced by

$$E(Y_{it}^0 | ND = 1, t = 1) = E(Y_{it}^0 | ND = 1, t = 0) + m_t$$

Which is simply the employment level in the New Deal areas before the policy was implemented, adjusted for aggregate employment growth, given by

$$m_t = [E(Y_{it}^0 | ND = 0, t = 1) - E(Y_{it}^0 | ND = 0, t = 0)].$$

This gives rise to a straightforward difference in differences estimator. Under the assumption in (1), such a comparison of growth rates estimates the impact of the New Deal on individuals residing in a pilot area, irrespective of whether they are eligible or not; hence this comparison estimates the net effect of the program including any impact of general equilibrium effects and substitution.

However we can obtain a measure of the importance of substitution effects by comparing the growth of employment in pilot and control areas separately for eligible and ineligible individuals.

Consider applying assumption (1) applied separately to eligible and ineligible individuals and computing the growth in the employment for the eligible individuals in the pilot and control areas

separately. Substitution effects should increase the employment of eligible individuals at the expense of ineligible ones. General equilibrium effects due to the increased wage pressure from the increased supply of workers should tend to increase the employment of both eligible and ineligible individuals. The GE effects can be thought of as part of the program effect. The employment growth of eligible individuals will include the “pure” program effect, the GE effect and the presumably positive substitution effect. The employment growth of ineligible individuals will include a GE effect and a substitution effect of equal and opposite sign to that of the treatment group (assuming that the control group is the only group of workers displaced due to the wage subsidy). Thus a sum weighted by the size of each group should provide us with an estimate of the program effect and the GE effect combined, but net of the substitution. If this is similar to a scaled version of the effect on eligibles alone we can infer that substitution effects are not an important issue.

The definition of the comparison group is of course central to the evaluation. The approach discussed above used as comparison group individuals in non-exposed areas during the pilot period. However, the pilot stage lasted three months only and it is possible that the impacts of the policy in this short first period are not generalizable, if anything because the administration of the program would have been in its infancy. So, we next consider using data from the *National roll out*, the term referring to the national implementation. Suppose we start by assuming that assumption (1) is valid when $ND=1$ refers to eligible individuals following the National implementation and $ND=0$ refers to “similar” but ineligible individuals, i.e. those unemployed over 6 months whose age is just above 24. The choice of this group makes it most likely that their overall characteristics and behavior match that of the treatment group; i.e. that the growth rate of employment for the two groups would be similar in the absence of the program. Such an approach is similar to a regression discontinuity design.¹⁵ By making assumption (1) with respect to these two groups, we are ruling out any substitution effects or equilibrium wage effects that impact on the groups in a differential way. In this case a comparison in the growth rates between eligible and ineligible individuals will provide an estimate of the impact of the program on the eligible ones.

The virtue of the comparison group - that it is very similar to the treatment group in terms of its characteristics and will therefore be expected to respond to shocks in similar ways - may be, in fact, its greatest disadvantage. The substitution effects are likely to be much more severe the closer are the

productivity characteristics of two groups. In the event of substitution, the impact of the program for the eligible group is biased upwards by the fact that the employment of the comparison group is decreasing. If such a decrease is, say, β , the net increase in employment is 2β lower than the estimated increase in employment. However the benefit in terms of employment for the target group would be β lower than our estimate. Within this framework of analysis, the only way we have of gauging the size of β is through the pilots, as discussed above. Alternatively a general equilibrium model would allow us to estimate β , at least in the long run, based on the substitutability of the two groups in production.

There are a number of additional issues that we need to address. First there is the basic issue of whether we can assume that the two groups are subject to the same aggregate labor market trends. To the extent that the human capital of the two groups is similar and to the extent that preferences for work are the same, this assumption will be satisfied. Preferences for work between the eligible group in their early twenties and the ineligible group in their middle/late twenties may, however, not be the same as this is the age that many people get married and start to have children. This may generate differential aggregate trends across groups. We can address this issue by examining the trends in the exit rate from employment of the two groups for a number of years prior to the implementation of the New Deal. Over the preceding years there has been no major policy that explicitly discriminates between the two groups. This approach also suggests a method for bounding the impact of the policy using the historical trends in the two groups. In particular we can identify the pre-program period within our data set that would maximize the estimated impact of the policy and the period that would minimize it. In the empirical section we show the historical trends for the two groups and we provide bounds for our estimates based on these fluctuations between the two groups.

The next important issue is whether the impact of the policy is heterogeneous with respect to observable characteristics. If this is the case, we should interpret the estimate we obtain as an average impact across different effects but must make sure that a suitable comparison group exists. One way to address this problem is to use propensity score matching adapted for the case of difference in differences. In this case, there are two assignments that are non-random. One assignment is to the eligible population and the other assignment is to the relevant time period (before or after the reform). For the evaluation to make sense with heterogeneous treatments, we must guarantee that the

distribution of the relevant observable characteristics is the same in the four cells defined by eligibility and time. One way of achieving this is to extend propensity score matching by defining two propensity scores – one for eligibility and one for time period. We then create a matched sample based on the two propensity scores. This approach ensures that the distribution of observed characteristics is balanced across all cells. In general, the assumption required to justify this approach is that

$$E(Y_{it}^0 | X, ND = 1, t = 0) - E(Y_{it}^0 | X, ND = 1, t = 1) = \\ E(Y_{it}^0 | X, ND = 0, t = 0) - E(Y_{it}^0 | X, ND = 0, t = 1)$$

Where $ND=1$ denotes eligibility and t the time period. This allows the time effects to differ by X . Following Dearden et al. [2001], under this assumption it is possible to construct matched samples by conditioning on the propensity scores for eligibility, $P_{EX} = \Pr(ND = 1 | X)$, and for being observed in time period $t=1$, $P_{tX} = \Pr(t = 1 | X)$

$$(2) \quad E(Y_{it}^0 | P_{EX}, P_{tX}, ND = 1, t = 0) - E(Y_{it}^0 | P_{EX}, P_{tX}, ND = 1, t = 1) = \\ E(Y_{it}^0 | P_{EX}, P_{tX}, ND = 0, t = 0) - E(Y_{it}^0 | P_{EX}, P_{tX}, ND = 0, t = 1)$$

The observables we use include, among other things, labor market history. This approach, which can be implemented non-parametrically, ensures that the composition of the samples in the four cells being compared is kept constant with respect to these key determinants of employment outcomes. In addition we discuss simpler parametric methods that condition linearly on a number of observable characteristics. We discuss further these issues in the estimation section below.

Finally the discrete nature of our outcome variable may imply that the assumptions we make do not hold for the expectations (which are employment probabilities) but for some transformation thereof; in particular for the inverse of the probability function, which must be assumed known. In this case we assume that

$$f^{-1}\left[E\left(Y_{it}^0 \mid X, ND = 1, t = 1\right)\right] - f^{-1}\left[E\left(Y_{it}^0 \mid X, ND = 1, t = 0\right)\right] =$$

$$f^{-1}\left[E\left(Y_{it}^0 \mid X, ND = 0, t = 1\right)\right] - f^{-1}\left[E\left(Y_{it}^0 \mid X, ND = 0, t = 0\right)\right]$$

Where f^{-1} is the inverse of the probability function (e.g. the inverse logistic). This just says that the assumption we make is valid for the index rather than the probability itself. Define by Y_{it} the employment indicator for individual i in period t . In the New Deal areas in period $t=1$, this will represent the outcome under treatment. In all other cases it will represent an outcome under non-treatment. The impact of the policy can then be evaluated as

$$(3) \quad I(X) = E(Y_{it} \mid X, ND = 1, t = 1) - f\left[f^{-1}\left(E(Y_{it} \mid X, ND = 1, t = 1)\right) - \alpha(X)\right]$$

where

$$\alpha(X) =$$

$$(4) \quad \left\{f^{-1}\left[E(Y_{it} \mid X, ND = 1, t = 1)\right] - f^{-1}\left[E(Y_{it} \mid X, ND = 1, t = 0)\right]\right\} -$$

$$\left\{f^{-1}\left[E(Y_{it} \mid X, ND = 0, t = 1)\right] - f^{-1}\left[E(Y_{it} \mid X, ND = 0, t = 0)\right]\right\}$$

$I(X)$ is then averaged using as weights the distribution of X among actually treated individuals. Despite the similarity to the linear case, the non-linear assumption stated above entails two additional restrictions on the nature of the error terms: only group-effects are allowed for and between groups homoscedasticity is required.

III.2 Implementation

Given a particular choice of control group, all methods we apply have the same structure as implied by (3) and (4). They differ only in the way that the expectations in these expressions are computed.

In the linear matching Difference in Differences estimator we run the following simple regression on the sample of control and treatment observations

$$Y_{it} = \theta_{ND} + d_t + \gamma' X_{it} + \alpha ND_{it} + \varepsilon_{it}$$

where Y_{it} is a discrete variable indicating whether the person is in employment or not, θ_{ND} is an eligibility specific intercept (may it be area or age defined or both, depending on the comparison group used), d_t reflects common/aggregate effects and where X is included to correct for differences in observable characteristics between individuals and areas registered at the eligibility point (completion of the 6th month in unemployment). As a simple alternative to this we also estimate the effect using a logit, in which case f in equation (3) is the logistic function.

These procedures can be quite restrictive in a number of ways. First, they do not allow for α to depend on X . And second, they do not impose common support on the distribution of the X s across all four cells. The first assumption can be relaxed under the parametric setting, and this is what we do within the non-linear logit specification. The effect of treatment is allowed to depend on the observable characteristics of the agents by applying the following estimation technique. A different relationship between the outcome and the observables is estimated by group of agents - eligibility status (area or age) * time. Such relationships entail the particular behaviour pattern of each group and the impact of treatment when it existed. By predicting the outcome of treated under the non-treated behavioural equation one obtains an estimate of how the treated would have been without the treatment would they belong to each of the other groups conditional on their observable characteristics. Applying difference in differences to such predictions using equation (3) produces an estimate of the expected impact of treatment on the treated.

To relax both assumptions simultaneously, we supplement the above results by propensity score matching. As mentioned above, this involves matching on two propensity scores, which balances the distribution of the X characteristics in the treatment and control samples, before and after the reform. The matching method we use smoothes the counterfactual outcomes either with a Kernel based method or with splines (see, Heckman, Ichimura and Todd, 97 and Meghir and Palme, 01). We also present results based on the nearest neighbour weighting scheme. These however turn out to be much less precise. We provide details on the estimation method in Appendix 3.¹⁶

III.3. Other estimation issues

III.3.1. The choice of comparison areas

As discussed above, the available options for the choice of the comparison group depend on the type of evaluation being performed. When assessing the program from data on its National roll out, we are constrained to use ineligible individuals within the same area, for which we have chosen the age rule to define (in)eligibility. For the Pilot Study, however, the regional rule provides an additional instrument in the definition of the comparison group. We have used it in two ways, constructing two possible comparison groups: The first takes all eligible individuals living in all non-Pathfinder areas; the second selects all eligible individuals in the set of non-Pathfinder areas that most closely resemble the Pathfinder areas in a way detailed below.

The goal of a careful choice of the comparison area is to satisfy assumption (2), which requires that the time trend evolves in the same way for treatments and controls. To assess how similar any two groups are, we compare men aged 19-24 years old that live in Pathfinder areas to those that live in all non-Pathfinder areas with respect to their recent history of conditional outflows from unemployment. It is clear that the Pathfinder areas have, on average, worse labor market conditions. However, for the purposes of evaluating eligibility rules Figure 2 illustrates the evolution of the outcomes for the impact of the program based on these two groups, what is important is that the difference between the two curves is kept nearly constant over time in order to guarantee that macro trends affect the two groups in similar ways. The older group aged 25-30 is also presented as a potential comparison¹⁷. This group tends to have lower outflows than their younger counterparts. Nevertheless, this data shows that the size of the estimated impact can be sensitive to the choice of period for comparison and in the results section we are careful to test the sensitivity of the results to alternative timing assumptions.

When using all eligible individuals in non-Pathfinder areas as a comparison group (or a matched sub-sample of them), it is being assumed that the two curves represented in Figure 2 are indeed parallel so that similar individuals are similarly affected by macro trends, independently of where they live. One can, however, choose the areas that more closely follow the cycle pattern identified

for the Pathfinder areas. This can be done either within each of the matching procedures described above, or prior to them, selecting the areas where the comparisons are to be drawn from. We have chosen to adopt this latter option, matching the areas in a first step and applying all types of estimators comparing eligibles in different areas to the sub-samples obtained. In this procedure, we have used a completely non-parametric technique, as described below.

The aim of matching the areas is to achieve a match as close as possible with respect to labor market characteristics. The procedure followed to match on labor market characteristics makes use of a quarterly time-series of the outcome variable from 1982 to just before the introduction of the New Deal, in January 1998. A measure of distance was then computed for each possible pair of Pathfinder and non-Pathfinder areas and the two nearest neighbors were chosen. Once the two nearest neighboring areas have been chosen based on similarity of the labor market trends, we carry out the estimation procedure as described earlier.

III.3.2. Sensitivity of the results

The relative size of the estimated impact of the program, when viewed in an historical perspective, can inform on how significant the result is. In order to do so, the series of year-by-year estimates of the impact of a fictitious program has been computed.¹⁸ Given the lack of data on “destination when leaving JSA” before August of 1996, we use information on “exits to all destinations” to perform this analysis.

Suppose, for instance, that the estimated effect of the New Deal Gateway lies within typical values of the historical estimates. This might be an indication that such result is determined by some differential aggregate variation that is not being controlled for and is captured by the program dummy. In such a case, doubts are raised on whether the estimated effect is actually capturing the causal effect of the program alone. We can go further and bound the estimated impact of the Gateway using the distribution of year-by-year estimates to construct an upper and lower bound to the estimated effect. This is done by taking the percentiles on the tail of the distribution - say, percentiles five and ninety-five or ten and ninety - as being the expected value of the estimates in the absence of a program, and using them to re-scale the estimated impact up or down accordingly.

III.3.3. Compositional changes in the treatment group

Such a large-scale program may have compositional effects on the group of eligible individuals. Having learned about the eligibility rules, potential participants may change their behavior in order to secure or avoid enrolment. If such a selection process is taking place, the estimated effects of the program will be affected because the groups being compared are not what they would have been in the absence of the program. We check for this selection bias by examining difference in difference estimates of individuals' probabilities of exiting unemployment in the pre-treatment period (i.e. in the months before reaching six months unemployment when the program begins).

IV. DATA

The data are drawn from the publicly available five per cent longitudinal sample of the whole population claiming Job Seekers Allowance (JSA) in the UK from 1982 to June 1999 (the JUVOS database). This is an administrative database that includes individual information on spells on JSA, the unemployment benefit available in the UK, the main focus being the starting and ending dates of the spells. Individuals can be followed through all their JSA spells since the same group of the population is followed over time. However, although we know the length of time in non-JSA spells, we have no information on any transitions between different jobs during these periods. Since 1996, however, the agencies have collected data on the destination when leaving the claimant count. There are twenty different destination codes, including exit to employment, training/education, other benefits, incarceration, etc. The JUVOS data set also includes a small number of other variables - age, gender, marital status, geographic location, previous occupation and sought occupation. Descriptive statistics on the treatment group and different comparison groups are presented in Appendix1, Table 1A.

We also make use of the New Deal Evaluation Dataset (NDED), an administrative data set that contains information on virtually all individuals that have gone through the New Deal, even if only briefly. For participants, very detailed information is available from the time they join the program, including the types of treatment being administered and the timing of each intervention, letters being

sent and interviews being made, a long list of socio-demographic variables and the destination when leaving the program. Non-participants, however, are not included in the sample, which limits its use for evaluation purposes.

The use of the evaluation dataset NDED is meant to complement the lack of information in benefit (JSA) administrative records about the take-up of New Deal options. Since starting an option implies dropping from the JSA claimant count, there is a potentially large group that is being reclassified as non-unemployed while simply being driven through the program according to its rules. Unfortunately, we are unable to securely identify these types of exits from the JUVOS data set.¹⁹ We use the NDED instead to know the proportion of participants that enroll in each type of option (in any given region-date) by length of the New Deal spell.

In drawing up the treatment groups we have used 19-24 year olds even though the New Deal also affects 18 year olds. This is because 18 year olds can still be in high school and in England high school is only compulsory up to the age of sixteen. Participation of 16 to 18 year olds in full time education grew rapidly over this period so we decided to avoid any time varying composition effects by dropping 18 year olds. In any case, inclusion made no difference to the results.²⁰

The historical period we are examining is partly dictated by the data. The current JUVOS data ends in July 1999. For the National Roll Out we consider all individuals who finished a 6-month JSA spell between April and December 1998 and then follow them up to four months later (so our end date is April 1999). We match this with the individuals who finished a 6-month JSA spell between April and December 1997. For the Pilot Study we compare individuals completing a 6-month JSA spell between the start of January and the end of March 1998 in the Pathfinder areas to the same group in January through March 1997. Ending the sample in April 1999 has the advantage that we avoid contaminating the New Deal effect with the introduction of the national minimum wage enforced from April 1999 onwards.²¹

Some information on the macro-economic climate is given in Figure 3. The New Deal was introduced at a favorable point of the business cycle by historical standards. There was no rapid improvement in the labor market between Spring 1998 and 1999, however, unlike the previous 12 months. The changing business cycle illustrates the reason why we have to select our comparison

groups carefully in implementing our approach to ensure that these macro trends are “differenced out”.

Finally, it should also be pointed out that the effects of the program in this favorable climate may not be easily applied to less favorable periods. First the pool of unemployed is likely to be of worse quality when the aggregate economy is booming. Opposing this is the fact that, in the presence of firing costs (formal or informal) hiring someone in boom may be less risky.

V. RESULTS

This section presents estimates of the impact of the Gateway on the flows into employment. We analyze men and women separately given the different composition of the two groups and characteristics of their behavior. We start by considering the men’s case during the Pilot Period in subsection V.1, and discuss the different possible estimates and respective underlying assumptions available. Subsection V.2 presents the results obtained for men during the National Roll Out, establishing a comparison with what the estimates were for the Pilot Period and assessing the their robustness. Subsection V.3 presents the results for women and subsection V.4 compares the magnitude of our results with those from similar U.S. programs.

V.1. Pilot Study: men’s results

Table 1 presents the main estimates of the impact of the Gateway on eligible men living in Pathfinder areas during the Pilot period. We consider a number of different possible comparison groups, providing some insight on the possible size of indirect effects. Each row in the table corresponds to a different comparison, including different estimates, obtained under different methods, of the effects of the Gateway on *outflows to employment* after four months of treatment.²²

The first row of Table 1 compares men aged 19 to 24 years old living in Pathfinder areas to other 19 to 24 year-old men (with the same unemployment duration) living in all non-Pathfinder areas. After four months of treatment, it is estimated that the Gateway has improved participants'

exits into employment very significantly – all the estimators point to an impact of about ten to eleven percentage points. This effect is even more impressive if compared with the outflow rates reported in Table 2. In the pre-program period only twenty-four per cent of individuals in the treatment group obtained employment over the similar four months period (compared to thirty three per cent afterwards). Thus, the improved job-search assistance provided during the Gateway seems to have raised the probability of getting a job by about 42 per cent ($= 10\%/24\%$) after four months of treatment.

Of course, this result should be contrasted with the information from the NDED (New Deal Evaluation Database) concerning outflows into the employment option (the wage subsidy that may be offered to those who have not found employment through job assistance). It is estimated that the outflows into an employment option after 4 months of treatment sum up to 5.7 per cent of men joining the Gateway (see Table 1). Subtracting this off the overall New Deal effect would give a “pure” Gateway impact (on outflows to unsubsidized employment) of about four to five percentage points. But this is likely to be a lower bound. The calculation assumes that there is essentially no deadweight of the employer subsidy. This happens under the assumption that participants can be split into groups according to their ability to find a job, and that subsidized jobs are being attributed to those in need of a subsidy to leave unemployment. If, on the other extreme, it is believed that the subsidized jobs are being allocated to the most employable participants, then the amount of scaling down required might be small and the “true” effect would be closer to the full ten or eleven percentage points. Thus, four percentage points is a lower bound for the pure Gateway/job assistance effect. The method used to estimate the impact of treatment does not seem to substantially influence the results, reflecting some robustness of the estimates to the functional form assumptions.²³

The rest of the rows in table 1 present estimates for some of the other identifiable parameters discussed in section 3, also providing some clues about the robustness of the results. We start by restricting the comparison group to be composed of eligible men living in matched non-Pathfinder areas in the second row. Depending on the method used, the estimated effect may rise or fall slightly, but not significantly so. This evidence supports the comparability of the two groups used in row 1.

The third row compares eligible and ineligible men aged 25 to 30 years old within the Pathfinder areas. Using an age-based eligibility criterion is our second main source of identification and is all that is available after the pilot period. The point estimates of the four months effect using age-based are very close and insignificantly different from those in row 1 using different areas. The linear matching estimator, for example, suggests a treatment effect of 10.4 percentage points when 25-30 year olds are used as the comparison group (row 3) compared to 11 percentage points when 19-24 year olds in non-Pathfinder areas are used as a comparison group (row 1). It was emphasized in section 3 that this estimate is based on different assumptions from the estimates in rows 1 and 2. In fact, it may suffer from substitution more acutely and it is not immune to local labor market wide wage effects. However, it is informative to know that the obtained results are very similar, independently of the procedure used. We cannot reject the simple null hypothesis of a model without substitution and equilibrium wage effects. Alternatively, their effects may cancel out, the relative sizes of the substitution and wage effects being very similar. We further test for substitution using the older group of 31 to 40s living in Pathfinder areas as control. This group is expected to be less substitutable for 19-24 year olds than the younger 25-30 year old comparison group. Under this assumption, and given that substitution exacerbates the impact of the program, we would expect this estimate to be lower than the one presented in row 3. But the fourth row presents an estimate of the 4 months effect of the New Deal that, if anything is higher than the previously presented results. This is not consistent with large substitution effects. In rows 5 and 6 we compare ineligible individuals living in Pathfinder and non-Pathfinder areas. If there were significant substitution effects or differential trends across regions we may find differences in outflows in the New Deal period. In fact, no significant effects of the New Deal on non-eligibles are found.

Finally, rows 7 and 8 in table 1 contain estimates of the employment effect in the “whole market”. Men aged 19 to 30 and 19 to 50 years old and living in Pathfinder areas are compared with similar individuals living in non-Pathfinder areas. The results only confirm what has been established before: that, during the Pilot period, the program had a very significant positive impact on outflows to employment in the markets it has been implemented. The point estimates are smaller because 19-24 year olds are only a fraction of the larger age range. For example, just over half the 19-30 year old

group is 19-24 year olds. The linear matching estimator in row 7 implies a New Deal effect of 6.6 percentage points – as expected just over half the magnitude of the effect in row 1.

It is interesting to check how sensitive these results are to historical patterns. The lack of information about destinations when leaving the claimant count before 1996 imposes the use of a different variable, *outflows to all destinations*, to perform this analysis. Figure 4 considers different types of comparisons and plots the estimates of non-existent programs over time. The first panel in the chart compares eligible individuals living in Pathfinder areas with eligible individuals living in all other areas. The size of the New Deal effect, represented by the last point in the graph, is well above all other estimates for previous periods. This is just more evidence that the effects of the program on participants during the Pilot period are very positive. Panel 2 compares participants with eligible individuals living in matched non-Pathfinder areas. It shows a similar pattern but with a stronger effect of the New Deal, which may be a consequence of the higher volatility observed. Panel 3 and 4 also confirm the importance of the estimated impact of the New Deal by comparing participants with older groups.

V.2. National Roll Out: men's results

Table 3 contains the main result from the National roll out. The first row shows an implied effect of around 5 per cent on a pre-program base outflow (table 2) of 25.8 per cent, and once more, the method used does not seem to affect the result significantly. Although this is still a substantial impact, it is about half the magnitude estimated for the Pilot period. These differences in size can be accounted for by a “program introduction” effect. In the first few months the program is operating, a very large increase in the flows to employment is observed, which then falls as the program matures. This is illustrated in the other rows of the table. The second and third rows report comparable estimates of the Gateway effect after 4 months of treatment for the first quarter the program operates in the Pathfinder and non-Pathfinder areas, respectively. As noticed before, estimates for the Pilot period (first quarter in Pathfinder areas) are about twice the size of the effect over the whole period. The same is also true if one considers the estimates for the first quarter the New Deal operates in non-Pathfinder areas (see row 3). The fourth row presents estimates obtained using the following

second and third quarters the program is operating and these are comparatively much lower and less significant.

There are, of course, many possible explanations for this. One explanation is that the agencies involved in delivering the program are initially very enthusiastic, but this naturally erodes over time. Another possibility is that the program diminishes welfare fraud. This would have particularly important effects during the first few months after the release of the program since potential participants are unlikely to be aware of the new claiming rules. Similar “cleaning up the register” effects have been noted of previous UK labor market reforms.²⁴

There are many possible criticisms of the results. We shall now discuss some of the main ones - quality of job matches, selectivity and differential trends. How the program affects the women will be discussed on the next section.

First, there is the issue of whether the quality of job matches has improved (or deteriorated) under the New Deal. One of the benefits from the New Deal is said to be that job matches are of higher quality due to greater job assistance and mentoring of the Personal advisor. For those who get onto the employer option there is a guarantee of one day a week training. On the other hand tougher monitoring may push claimants into low quality matches. Quality is difficult to measure without data on earnings and other job characteristics. One indicator of job match quality, however, is simply the longevity of a job. Following the governments preferred measure, we define a “sustained” job as one that lasts at least thirteen weeks. The first row of Table 4 Panel A repeats the analysis but using the outflow to sustained jobs (instead of any job) as the outcome variable. The results are quite consistent with the earlier findings – the estimates point to an increase in the outflows to sustained jobs of 4.5% (in column 1 of Table 4), which compares to estimates of around 5% for the outflows to all employment (in column 1, first row of Table 3).

Secondly, there is the issue of selectivity. It may be that the introduction of the New Deal has an effect on the (unobserved) quality of the inflow of individuals reaching six months of JSA. The most likely route for this is that claimants in the fifth or sixth months of JSA may alter their behavior. If they believe the New Deal regime is “tougher” than the previous regime, they may be more likely to leave the unemployment rolls (this was one of the ways that RESTART, another job assistance

program introduced in 1986 was deemed to have worked). On the other hand, if the New Deal is seen as a desirable thing (e.g. because of subsidies to “good jobs” or training), then claimants may delay exit. If the main effect is increased toughness, then we may underestimate the positive effects of the New Deal as there has been a decline in the unobserved quality of the stock (assuming the most job ready decide to leap into jobs before they are pushed off the unemployment rolls). If the New Deal is perceived as more attractive than the previous regime (as the qualitative evidence suggests) then we may actually be overestimating the effects of the Gateway period as the more job ready actually delay their exits prior to entering the Gateway.

To investigate these selectivity problems we examine outflows to employment during the fourth and fifth month of JSA, using the same methodology as before. The results are presented in rows 2 and 3 of Table 4, Panel B. The introduction of the New Deal had no significant impact on the outflows to employment prior to six months duration. All the estimates are small and insignificant at conventional levels.

Thirdly, we have not controlled for differential trends. Using the same method as before (see section V.1) we calculate upper and lower bounds for the New Deal effect on outflow rates. The average effect is again smaller than the estimates for the Pilot period (see rows 5 and 6 of Table 4, Panel C). Nevertheless, even at the lower bound there is a significant effect of the program on the outflow rates to all destinations.

V.3. The impact of the program on women

Finally, note that we have focused our results on male job outflow rates. Three quarters of all participants in the New Deal are men, but clearly the impact on women is also of great interest. The results for women are not as clear cut as those for men. This is mainly because there is a systematic trend in the labor market behavior of older (25-30) compared to younger (19-24) women. The main problem, therefore, resides on the choice of the appropriate comparison group.

Figure 5 illustrates the difficulties encountered by plotting the conditional exits to all destinations against time for treatments and different possible control groups. It is apparent from the upper panel of Figure 5 that an estimator based on different age groups can be severely contaminated

by differential trends. Compared to the younger age groups, the older age groups seem to have systematically improved their position in the labor market over the 1982-99 period. If this trend extends to the treatment period, it is expected that such comparison under-estimates the impact of treatment on the treated. On the other hand, the lower panel of the graph suggests that the macro shocks seem to affect younger age groups living in different geographic regions much more similarly, making the Pathfinder – non Pathfinder 19-24 year old groups comparable. Matching on regions improves the pattern, the two curves for treatment and comparisons being closer both in levels and slopes. The upshot of this is that using older women as a comparison group is not valid, and we should focus on the Pathfinder data to evaluate the effect of the New Deal for women.

Table 5 presents some estimates of the impact of the program on treated individuals using different comparison groups and estimation techniques. All estimates resulting from the comparison of similar age groups point to a positive effect of the program on the outflows to employment (see rows 1 and 2). These estimates are much less precise, more sensitive to the estimation technique used and generally smaller, but do not seem to reject the conclusions drawn for men. For example, the linear matching estimator in row 1 suggests an impact effect of 6.1 per cent compared to 11.0 per cent for men. The lack of precision is likely to be a consequence of the smaller sample sizes. Notice that the increased job taking-up rate seems to be mainly accounted for by the employment option, which ensured a job to almost 5 per cent of the treated during this period. As expected, comparing different age groups changes the results drastically and in the predicted direction (see row 3): despite remaining statistically insignificant, the estimates are actually negative. Together with the pattern depicted in figure 5, this explains why the women's case is not explored during the National Roll Out of the program. The only group we can draw comparisons from is composed of individuals older than the participants, and these are subject to very differential trends.

V.4 Discussion of the results: A comparison with some of the existing literature

How do our findings compare with the existing results? We overlap with several other program evaluation literatures: Unemployment Insurance (UI) reform, wage subsidies, youth measures over education and training. Perhaps the most directly relevant are the recent program evaluations of

mandatory job search associated with welfare to work reforms. Bloom and Michalopoulos [2001] survey 29 different initiatives that had demonstration projects (random assignments). Eight of these schemes were job-focused (rather than education/training focused) and mandatory for welfare recipients. Table 6 summarizes the results from these studies and shows that although the precise impact effect differed from program to program, a statistically significant effect of the program on employment probabilities was found in all eight cases. The median of the impacts in the final column of Table 6 is 0.23 which is not wildly out of line with our “central” estimate of a program impact of 0.2 (although we should note that 0.2 is probably an ‘upper bound’ measure since, as we have noted, a large part of this employment effect is towards subsidized jobs and also due to a “first quarter” effect).

Unlike the U.S. welfare to work reforms where the affected groups are overwhelmingly females with children, the New Deal’s main participants are men. Experiments over unemployment insurance reforms may, therefore, be more relevant. Meyer [1995] discusses five randomized trials and finds that increased job search assistance and monitoring significantly reduced the duration of unemployment claims (see also Katz and Meyer, 1990, and Meyer, 1990). As with the New Deal it is unclear from these studies whether the “carrot” of job assistance or the “stick” of the tougher monitoring of job search played the most important role. Ashenfelter et al [1999] could find no increased benefit of stricter enforcement over job search in their examination of random trials, but Anderson [2000] and Abbring et al [1997] do find evidence that sanctions and strict monitoring have important effects. Distinguishing between the relative importance of carrot and stick is an important area of ongoing research, but what seems to be less in doubt is that the combination of the two can be effective.

Both the welfare to work and UI studies are across all adults, but a feature of the New Deal is that it is youth-focused. Most evaluations of youth initiatives have been pessimistic, especially for young men (for example, Heckman, LaLonde and Smith [1999]). Our study gives more room for optimism, but it should be remembered that the participant group for most U.S. youth training programs are quite different from the British New Dealers. U.S. schemes are focused on very disadvantaged youth – for example, long-term unemployment is rare in the US, but more common in Europe. It may be easier to help the young in the New Deal because they are far more “job-ready”

than their U.S. counterparts. In addition (unlike JTPA) we are not looking at the impact of the training/education aspects of the New Deal and have focused only on the mandatory job search and wage subsidy element.

Finally, there is an extensive literature on the role of financial incentives for employers and individuals in encouraging employment amongst the less skilled. Employer-based job subsidies of the kind discussed here are rarer than individual-based incentives such as EITC.²⁵ Both types of policy can be successful in raising employment²⁶, but this conclusion depends very much on the exact program. A major problem with employer-based wage subsidies is that they have very low take up by employers, perhaps due to stigma or administrative burden.²⁷

In summary the finding of a positive employment effect of the New Deal is not out of line with the results in the US literature, although gives some cause for guarded optimism since the main target group was young men. Even if the conclusion of some benefit is accepted, however, there remains the question of whether the social costs of the program justify the benefit. In this paper we do not embark on a full cost benefit calculation since the longer-term effects of the program are unknown (especially the human capital raising elements). Nevertheless, Layard [2000] and Van Reenen [2001] make a preliminary attempt to gauge the costs using administrative data and assumptions over the size of earnings gains. They both find that the social benefits outweigh the social costs.

VI. CONCLUSIONS

This paper has examined the labor market impact of the British New Deal for Young People.. The New Deal is a compulsory program affecting all young people claiming unemployment benefit for at least six months. The program offers a combination of treatments, particularly job assistance for four months and a wage subsidy paid to employers. Two sources of identification are used to construct comparison groups in order to make inferences on the impact of the New Deal: a comparison between Pilot areas and non-Pilot areas and an age-related eligibility criteria. Our results suggest similar quantitative effects whichever comparison group is chosen.

Based on the Pilot period of the program we find an economically and statistically significant effect of the program on outflows to employment among men. The program appears to have caused an increase in the probability of young men (who had been unemployed for six months) finding a job in the next four months. On average, this increase is about 5 percentage points (relative to a pre-program baseline of about 26 per cent). Part of this overall effect is the job subsidy element and part is a pure enhanced job search. We estimate that *at least* 1 percentage point of the 5 percentage points is due to the Gateway services, such as job search assistance. We also found that the treatment impact is much larger in the first quarter of introduction compared to the subsequent two quarters. This puts in question whether the effects of this aspect of the program will be sustained in the long run. Our findings are robust to a large number of experiments, including a number of different comparison groups.

Why are our non-experimental program evaluation results more robust than those seen elsewhere in the literature? We suspect that it is due to the combination of having a clear “before and after” design and matching our treatment group closely with a comparison group of similar duration on unemployment insurance. It is worthwhile recalling that both LaLonde [1996] and Fraker and Maynard [1987] found when using comparison groups based on benefit receipt (AFDC in the case of NSW) experimental and non-experimental estimators gave much closer results than the “youth” group as a whole. Our results have a similar flavor.

There are at least three areas of further work. First, the main omission in our work is that we do not consider the longer-term effects of the New Deal. A full evaluation needs to consider whether individuals’ employability has been enhanced by their experience of subsidized work and education and training. The data is only just becoming available to perform such an analysis because the program has only been running nationally for a little over two years. A second problem lies in untangling how robust our estimates are in the face of substitution and equilibrium wage changes. To take these into account involves putting more economic structure on the problem than we have done in this paper (e.g. Blundell, Costa Dias and Meghir, 2003). It is reassuring, however, that the Pathfinder Pilots vs. non-Pilot comparisons yielded results that were quantitatively similar to the within Pathfinder analysis. Finally, we have eschewed a formal cost-benefit analysis given the uncertainty surrounding some of the benefits such as the training and education option. However,

this is clearly an important next step that will be informed by some of the estimates obtained in this paper.

Appendix 1: Data

Table 1A compares the mean values of some of the independent variables used in the analysis before and after matching on the propensity scores.²⁸ It can be observed that similar age groups are much more alike, at least with respect to the considered characteristics (compare columns 1 and 2 with 5 and 6). Moreover, matching on the propensity scores significantly improves the similarity between the groups (compare columns 3-4 with 1-2 or columns 7-8 with 5-6).

A more detailed diagnosis of the quality of the propensity score matching is presented in figures 1A to 4A. These plots represent the distribution of the two propensity scores used in the matching process over the entire population and over specific subgroups. We compare 19 to 24 years old living in pathfinder areas with 19 to 24 years old in all non-pathfinder areas during the pilot period. All groups being included in the analysis are plotted: treatments and controls, before and after the release of the New Deal. As expected, matching significantly improves the similarity between the curves – it can be observed that the curves on the right hand side of figure 1A overlap almost precisely. Moreover, nearly all the initial support is maintained after matching. Figures 2A to 4A give some indications of how identical the distributions of the propensity scores are over sub-groups of the population. It is apparent that matching worked well even over sub-populations, making the distributions quite similar. Very similar results were obtained when using other groups and are available under request.

Appendix 2: Gateway employment effects under different propensity score matching techniques

Table 3A presents estimates for the employment effects of the Gateway among men during the Pilot period using three possible variations of the propensity score matching method under the linear

specification assumption. Columns (1) to (3) present propensity score matching estimates of the parameters presented in table 1 in the main text. Column (1) displays the estimates for the standard nearest neighbor propensity score method, where only one observation from each comparison group is chosen to match each observation in the treatment group - the closest one from the perspective of the two propensity scores at use. Column (2) uses the same method as in column (1) but smoothes the outcome of the comparison group. The same comparisons are chosen but the smoothed outcome is used to estimate the impact of the program. Column (3) uses kernel weights to select the counterfactual for each treatment observation: controls that are relatively near the treatment observation in terms of the propensity scores are given a weight depending on how close they are. These estimates used an Epanechnikov function with a diagonal matrix of bandwidths. The main result from table 3A is that all methods produce similar estimates, and this remains true when comparing with the numbers in table 1 in the main text. However, the precision of the estimates does change from method to method. The estimated standard errors presented in column (1) are much higher than similar estimates produced by other methods. The strong variation resulting from the fact that only one observation is being chosen as a control for each treated individual is in part to blame. The standard errors presented in column (3) are significantly lower but still too high to sustain a definitive conclusion. Estimates in column (2), however, are generally more precise, the result being due to the smoothing of the counterfactual outcomes.

Appendix 3: Estimation methods

The practical implementation of the completely parametric methods is discussed in the main text, and so we omit it here. We use propensity score matching based on two dimensions, time and eligibility, and using either the nearest neighbor method or smoothing the outcomes applying splines or kernel weights. With the same set of observables used in the completely parametric estimates, we compute the two propensity scores, $P_{1X} = P(ND = 1 | X)$ and $P_{tX} = P(t = 1 | X)$.

In the *nearest neighbor* case, each treated individual is paired with one observation from each of the three control groups, the one that minimizes the Euclidean distance with respect to the two propensity scores conditional on two maximum distance restrictions, one for each dimension.

Matching is done with replacement, meaning that each control may be chosen more than once and is weighted accordingly.

Under the *smoothing splines* method, we run a regression of the outcome of interest on a cubic polynomial of the two propensity scores for each of the control groups. Predictions of the outcome under the three non-treatment cases for each of the matched treated observations under the nearest neighbor method are then computed and used to estimate the impact of treatment.

The use of *kernel weights* to select each of the three control groups is based on the Epanechnikov function and a diagonal matrix of (constant) bandwidths, each element of the diagonal being given by $1.06\sigma_x n^{-1/5}$.

Having constructed the three counterfactuals, the simple difference in difference method is applied to estimate the effect of the program under the assumption of separable additivity of the group and time effects. We also transform the outcome applying the logit transformation, as shown in equation (3.4), to estimate the impact of the ND under a non-linear specification.

Appendix 4: UK Unemployment Benefit Rules

The main benefit available for unemployed young people is Jobseeker's Allowance (JSA). It was introduced in October 1996 to replace unemployment benefit. The level of JSA was about £40 a week throughout the New Deal period, though this amount depends on the age of the applicant, and the respective household income and needs. To be eligible for JSA, an unemployed person must: (i) Be “actively seeking work”, which is assessed by a fortnightly short interview taking 5-10 minutes; and (ii) Meet some conditions concerning the past two tax years working history, related to the amount of National Insurance contributions made while employed (“contributory JSA”) or, alternatively, pass a “means test”. Thus, it is possible for someone who never worked before to be entitled for the benefit. In a reform in 1986 (RESTART) more intensive job focused interviews took place at six monthly interviews.

If not before, receipt for JSA becomes “means tested” after six months. Individuals with income from other sources (large assets or a partner bringing in income) have their JSA scaled down or taken away altogether. Prior to October 1996, this period of “non-means tested” unemployment benefit

was one year. The JSA imposes no time limit: as long as the conditions are met, an applicant is entitled to it.

Affiliation:

University College London and Institute for Fiscal Studies, 7 Ridgmount Street, London WC1E 7AE, United Kingdom, r.blundell@ucl.ac.uk

References

Anderson, B., R. Riley and G. Young (1999), *The New Deal for Young People: Early Findings from the Pathfinder areas*. Employment Service Research and Development Employment Service Research, No. 34,

Anderson, P. "Monitoring and Assisting Active Job Search" Dartmouth College mimeo

Abbring, J., van den Berg, G., van Ours, J. (1997) "The effect of unemployment insurance sanctions on the transition rate from unemployment to employment" Tinbergen Institute Working Paper

Ashenfelter, O. (1978), "Estimating the Effect of Training Programs on Earnings", *Review of Economics and Statistics*, 60, 47-57.

Ashenfelter, O. and Card, D. (1985), "Using the Longitudinal Structure of Earnings to Estimate the Effect of Training Programs", *Review of Economics and Statistics*, 67, 648-660.

Ashenfelter, O., Ashmore, D. and Dechenes, O. (1999) "Do Unemployment Insurance Recipients Actively Seek Work? Randomized trials in four U.S. states" National Bureau of Economic Research Working Paper No. 6982

Bassi, L. (1983), "The Effect of CETA on the Post-Program Earnings of Participants", *Journal of Human Resources*, Fall, 539-556.

- Bassi, L.(1984), “Estimating the Effects of Training Programs with Nonrandom Selection”, *Review of Economics and Statistics*, 66, 36-43.
- Bell, B., Blundell, R. and Van Reenen, J. (1999), “Getting the Unemployed Back to Work: An Evaluation of the New Deal Proposals”, *International Tax and Public Finance*, 6, 339-360.
- Blank, R., Card, D. and Robbins, P. (2000) “Financial Incentives for Increasing work and income among low income families” in Card, D. and Blank, R. (eds) *Finding Jobs*, New York: Russell Sage Foundation
- Bloom, D. and Michalopoulos, C. (2001) “How welfare and work policies affect employment and income: A Synthesis of Research”, MDRC, May
- Blundell, R. and M. Costa Dias (2000), “Evaluation Methods for Non-Experimental Data”, *Fiscal Studies*, March.
- Blundell, R., M. Costa Dias and Costas Meghir (2003), “The overall impact of wage subsidies under idiosyncratic uncertainty”, mimeo, Institute for Fiscal Studies.
- Blundell, R., Dearden, L. and Meghir, C. (1996), *The Determinants and Effects of Work-Related Training in Britain*, London: Institute for Fiscal Studies.
- Blundell, R., Dearden, L., Goodman, A. And Reed, H. (1997), *Higher Education, Employment and Earnings in Britain*, Institute for Fiscal Studies Monograph Series.
- Blundell, R., Duncan, A. and Meghir, C. (1998), “Estimating Labor Supply Responses using Tax Policy Reforms”, *Econometrica*, 66, 827-861.
- Burtless, G. (1995), “The Case for Randomised Field Trials in Economic and Policy Research”, *Journal of Economic Perspectives*, 9, 63-84.
- Burtless, G. (1985) “Are targeted wage subsidies harmful? Evidence from a wage voucher experiment” *Industrial and Labor Relations Review*, 39, 105-114
- Card, D. and Hyslop, D. (2002) “Estimating the dynamic effects of an earnings subsidy for welfare leavers”, mimeo, University of California, Berkeley

- Davidson, C. and Woodbury, S. (1993) "The displacement effects of reemployment bonus programs" *Journal of Labor Economics*, 11, 4, 575-605
- Dearden, L, C. Emmerson, C. Frayne, A. Goodman, H. Ichimura, C. Meghir (2001) Evaluating the Education Maintenance Allowance in the UK, mimeo Institute for Fiscal Studies, invited presentation Royal Economic Society conference 2001.
- Dehejia, R. and Wahba, S. (1998) "Propensity Score Matching Methods for non-experimental causal studies" National Bureau of Economic Research Working Paper No. 6829
- Dehejia, R. and Wahba, S. (1999) "Causal Effects in Non-experimental studies: Reevaluating the evaluation of training programs" *Journal of the American Statistical Association*, 94, 448, 1053-1062
- Dias, M. (2000), "Evaluating the Overall Effects of Active Labor Market Policies", mimeo, Institute for Fiscal Studies.
- Dickens, R., S. Machin and A. Manning (1999) "The Effects of Minimum Wages on Employment: Theory and Evidence from Britain", *Journal of Labor Economics*, 17, 1-22.
- Dolton, P., Makepeace, G. and Treble, J. (1992), "Public and Private Sector Training of Young People in Britain", in L.M. Lynch (ed.), *Training and the Public Sector*, Chicago: University of Chicago Press.
- Dubin, J. and Rivers, D. (1993) "Experimental estimates of the impact of wage subsidies" *Journal of Econometrics*, 56, 219-242
- Elissa, N. and Leibman, J. (1996) "Labor Supply response to the Earned Income Tax Credit" *Quarterly Journal of Economics*, 111 (May) 605-637
- Fraker, T. and Maynard, R. (1987) "The adequacy of comparison group designs for evaluations of employment related programs" *Journal of Human Resources*, 22, 194-227
- Hahn, J., Todd, P. and Van der Klaauw, W. (1999), "Identification and Estimation of Treatment Effects with regression Discontinuity Design", Working paper, UNC, November.

- Hales, J., Collins, D., Hasluck, C. and Woodland, S. (2000) "Mew Deals for the Young People and Long Term unemployed: Survey of Employers" Employment Service Report No. 58.
- Hausman, J., and Wise, D. (1985), *Social Experimentation*, NBER, Chicago: University of Chicago Press.
- Heckman, J. (1979), "Sample Selection Bias as a Specification Error", *Econometrica*, 47, 153-61.
- Heckman, J., Ichimura, H. And Todd, P. (1997), "Matching as an Econometric Evaluation Estimator: Evidence from Evaluating a Job Training Program", *Review of Economic Studies*, 64, 605-654.
- Heckman, J., R. LaLonde and J. Smith (1999) "The Economics and Econometrics of Active Labor Market Programs" in *Handbook of Labor Economics*, Volume 3 O. Ashenfelter and D. Card eds., 1865-2097
- Heckman, J., Lochner, L., and Taber, C. (1998) "Rising Wage Inequality: Explorations with a dynamic general equilibrium model of earnings with heterogeneous agents" *Review of Economic Dynamics*, 1, 1-58
- Heckman, J. And Robb, R. (1985), "Alternative methods for Evaluating the Impact of Interventions", in *Longitudinal Analysis of Labor market Data* (New York: Wiley).
- Heckman, J. And Robb, R. (1986), "Alternative methods for Solving the Problem of Selection Bias in Evaluating the Impact of Treatments on Outcomes", in Howard Wainer (ed.), *Drawing Inferences from Self-Selected Samples* (Berlin: Springer Verlag).
- Heckman, J. and Hotz, V. (1989) "Choosing among alternative nonexperimental estimators for estimating the impact of social programs" *Journal of the American Statistical Association*, 84, 862-874
- Heckman, J., Smith, J. And N. Clements, (1997), "Making the Most out of Program Evaluations and Social Experiments: Accounting for Heterogeneity in program Impacts", *Review of Economic Studies*, 64, 487-536.

- Knab, J. Bos, J., Friedlander, D. and Weissman (2000) "Do mandates work? The effects to enter a Welfare to Work Program" Manpower Development Research Corporation, November.
- Katz, L. (1998) "Wage Subsidies for the Disadvantaged." in *Generating Jobs*, Richard Freeman and Peter Gottschalk, eds., New York, NY: Russell Sage Foundation, pp. 21-53.
- Katz, L. and Meyer, B. (1990) "Unemployment Insurance, Recall Expectations and Unemployment Outcomes" *Quarterly Journal of Economics*, 105(4), 973-1002
- Lalonde, R. (1986), "Evaluating the Econometric Evaluations of Training Programs with Experimental Data", *American Economic Review*, 76, 604-620.
- Layard, R. (2000) "Welfare to work and the New Deal" *The Business Economist*, 31, 3, 28-40.
- Meyer, B. (1990) "Unemployment Insurance and Unemployment Spells" *Econometrica*, 58(4), 757-82
- Meyer, B. (1995) "Lessons from US Unemployment Insurance Experiments", *Journal of Economic Literature*, 33, 1, 91-131.
- Smith, J. and Todd, P. (2000) "Does matching overcome LaLonde's critique of Nonexperimental estimators" mimeo, University of Western Ontario
- Van Reenen, John (2001), "Active Labor Market Policies and the British New Deal for Unemployed Youth in Context" Institute for Fiscal Studies Working Paper No. 01/09 forthcoming in Richard Blundell, David Card and Richard Freeman (eds.) *Seeking a Premier League Economy*, University of Chicago Press.
- Woodbury, S. and Spiegelman, R. (1987) "Bonuses to Workers and Employers to reduce unemployment: randomized trials in Illinois" *American Economic Review*, 513-30

Endnotes

¹ LaLonde [1986] is perhaps the most influential paper expressing this view (see Heckman and Hotz, 1989, for an early riposte). Recently, Dehejia and Wahba [1998, 1999] have argued that careful matching using propensity score methods can overcome many of the problems with conventional non-experimental estimators and sought to demonstrate this using LaLonde's original data on the National Supported Work (NSW) program. Smith and Todd [2000], however, showed that such "success" came from discarding a large proportion of the original NSW data and that cross sectional matching estimators remained highly sensitive on the full sample. As with our own results presented here Smith and Todd found difference in differences estimators are the most robust.

² This is the main British form of unemployment insurance (see Appendix 4).

³ For more information about training programs in Britain and their effects see, for instance, Dolton, Makepeace and Treble [1992], Blundell, Dearden and Meghir [1996] and Blundell, Dearden, Goodman and Reed [1997].

⁴ See Heckman [1979], Heckman and Robb [1986], Blundell, Duncan and Meghir [1998], Bell, Blundell and Van Reenen [1999] and Blundell and Dias [2000] for precise descriptions of these conditions. Davidson and Woodbury [1993] is an example of an attempted calibration of substitution effects using data from the Illinois unemployment insurance (UI) experiments (see also Woodbury and Spiegelman, 1987, on this program).

⁵ See Card and Hyslop [2002] for evidence of the absence of dynamic effects in the Canadian Self Sufficiency Program.

⁶ For example, Knab, Bos, Friedlander and Weissman [2000] or Mofitt [1996].

⁷ On job assistance see the survey by Meyer [1995]; on wage subsidies see Katz [1998].

⁸ JSA is the main form of unemployment benefit in the UK. It is essentially a flat rate benefit paid every two weeks of about £40 (\$60) a week. Past work experience is not a condition of receipt of JSA and although there is a requirement to "actively seek employment". It is not time limited. See Appendix 4 for details.

⁹ Note that certain groups of especially disadvantaged individuals (e.g. the disabled, ex-convicts, those with basic skills problems, etc.) are allowed to enter the New Deal earlier than six months if they wish. Additionally, in the early stages of the program those individuals on JSA for over six months were only obliged to enter the New Deal as they reached their 12th, 18th, 24th month, etc of JSA (unless they choose to be early entrants). We are careful to control for these "early entrants" in the work below.

¹⁰ This is quite generous. Hales et al [2000] find that the mean starting wage for those on a subsidized job is £3.78 an hour, implying a forty per cent level of subsidy for a thirty seven hour week.

¹¹ The intention was that the treatments were staged. The employment service would seek to place an individual in an unsubsidized job in the first month of the program, a subsidized job in the second month, in education/training in the third month and the Environmental Taskforce in the fourth month. This guidance was not strictly enforced on the ground, however.

¹² See Anderson, Riley and Young [1999].

¹³ Our data currently ends in July 1999. Individuals entering the Gateway in April 1998 and joining the year-long education and training option after four months will only start job search in August 1999.

¹⁴ For example, Heckman, Lochner and Taber [1998].

¹⁵ See Hahn, Todd and Van der Klaauw [1999].

¹⁶ The matching method we use smoothes the counterfactual outcomes either with a Kernel based method or with splines (see, Heckman, Ichimura and Todd, 97). We also present results based on the nearest neighbour weighting scheme. These however turn out to be much less precise.

¹⁷ We also considered more finely disaggregated age groups – e.g. 24 vs. 25 year olds – which generates similar qualitative results, although with much less precision on account of the smaller sample size.

¹⁸ This analysis is also informative on whether the assumptions on the comparability between any two groups being used are valid. In fact, before the introduction of the New Deal the estimated impacts are expected to be zero given the absence of a policy that causes a differential behavior between any two groups being compared. If, however, a large number of point estimates are found to be significantly different from zero, one might suspect that the assumptions on the comparability of the two groups being used are not valid.

¹⁹ There is a code in the JUVOS data which purports to have New Deal destinations, but on investigation it proved to be unreliable.

²⁰ One could also worry about 18-22 year olds in college education. There is only a tiny fraction of this group in the unemployed pool, however.

²¹ Britain had never had a national minimum wage before this date. There was a system of Wages Councils that set minimum wages for certain groups of occupations in low wage industries. These only covered about two million of the approximately 30 million UK workforce when they were abolished in 1993 (see Dickens, Machin and Manning, 1999, for an analysis).

²² All regressions include a set of other controls, including age (when similar age groups are being compared), marital status, region, sought occupation and labor market history variables. All computations have been performed excluding these covariates as well. Given the similarity of the results, however, we skip their presentation.

²³ Appendix 1 presents some comparisons between treatments and controls with respect with some of the covariates being considered, including a few checks on the quality of the propensity score matching.

²⁴ See Van Reenen [2001] for discussion of Restart and the introduction of JSA.

²⁵ See Eissa and Leibman [1996] for an evaluation.

²⁶ See Blank, Card and Robins [2001] for example.

²⁷ Katz [1998]. See also Burtless [1985] and Dubin and Rivers [1993] for evaluations of wage subsidy programs.

²⁸ Other comparisons are available and can be provided under request.

Table 1 (Men): Program effect on employment by the end of the tenth month after starting an unemployment spell (conditional on being unemployed for six months); pilot period.

				(1)	(2)	(3)	(4)
				Estimates based on the Difference in Differences combined with			
Experi ment	Treatment group	Comparison group	Number of observa tions	Linear Matching (OLS/Linear probability model)	Non-linear matching with non-additive error term (Logit specification)	Propensity score matching using smoothing splines	Non-linear matching using smoothing splines (Logit specification)
(1)	19-24 year olds living in Pathfinder areas	19-24 year olds living in all non- Pathfinder areas	3,716	0.110** (0.039)	0.098** (0.039)	0.104** (0.046) (0.024;0.182)	0.098** (0.044) (0.015;0.176)
(2)	19-24 year olds living in Pathfinder areas	19-24 year olds living in matched non- Pathfinder areas	1,193	0.134** (0.053)	0.073 (0.060)	0.093 (0.073) (-0.015;0.226)	0.080 (0.063) (-0.018;0.190)
(3)	19-24 year olds living in Pathfinder areas	25-30 year olds living in Pathfinder areas	1,096	0.104* (0.055)	0.091 (0.057)	0.078 (0.079) (-0.050;0.195)	0.074 (0.069) (-0.068;0.182)
(4)	19-24 year olds living in Pathfinder areas	31-40 year olds living in Pathfinder areas	1,169	0.159** (0.050)	0.096 (0.062)	0.099* (0.078) (-0.015;0.231))	0.082 (0.082) (-0.063;0.205)
<i>Outflow into the employment option (affecting 19-24 year olds in Pathfinder areas)</i>			4,486	0.057			
(5)	25-30 year olds living in Pathfinder areas	25-30 year olds living in all other areas	3,180	0.016 (0.042)	-0.012 (0.043)	0.027 (0.049) (-0.058;0.107)	0.031 (0.050) (-0.052;0.109)
(6)	25-30 year olds living in Pathfinder areas	25-30 year olds living in matched non- Pathfinder areas	983	0.055 (0.058)	-0.027 (0.056)	-0.003 (0.066) (-0.107;0.112)	-0.018 (0.078) (-0.144;0.117)
(7)	19-30 year olds living in Pathfinder areas	19-30 year olds living in all other areas	6,896	0.066** (0.029)	0.052* (0.030)	0.058* (0.034) (0.004;0.114)	0.051 (0.034) (-0.004;0.109)
(8)	19-50 year olds living in Pathfinder areas	19-50 year olds living in all other areas	12,749	0.036* (0.021)	0.035* (0.021)	0.044* (0.023) (0.004;0.080)	0.042* (0.023) (0.004;0.078)

Notes to Table 1:

Each cell contains an estimate of the effects of the New Deal program using the JUVOS five per cent longitudinal sample of all unemployed (JSA claimants). The “dependent variable” in each regression is whether an individual left unemployment between the sixth and eighth month of an unemployment spell. The average values of these are in Table 2 below. Estimates of the outflows into the employment option are from the New Deal Evaluation Database (NDED). The selected observations are individuals completing a six month spell of unemployment which began over a predefined time interval – this table considers inflows in the first quarters of 1997 and 1998. These individuals are then followed up to the end of the tenth month on unemployment to check whether they have found a job. The eligible group (defined by the age and area criteria) is compared with the selected control group before and after the start of the program. All estimates are from regressions that include a set of other controls: marital

status, sought occupation, region and labor market history (the total number of JSA spells and the proportion of time on JSA over the two years preceding the start of the present spell). Age and the number of JSA spells since 1982 are also included when similar age groups are being compared. Propensity score matching is performed over the same covariates as the other estimates and the outcomes for the comparison groups are smoothed using cubic splines on the two propensity scores to achieve higher precision. Standard errors in parentheses: estimates for non-linear matching method (column 2) used the delta method and estimates for the propensity score matching (columns 3 and 4) used bootstrapping with 200 replications. Bias-corrected 90% confidence intervals in italics (estimation used the same bootstrap results).

** = significant at 0.05 level. * = significant at 0.10 level.

Table 2 (Men): Flows from the claimant count into employment by the end of the tenth month since starting an unemployment spell (conditional on being unemployed for six months)

	Flows by the end of the 10 th month on JSA		
	Before the program	After the program	Difference
<i>Pilot period</i>			
<i>Treatment group:</i> 19-24s year olds in Pathfinder areas	0.241	0.330	+0.089
<i>Comparison group:</i> 19-24 year olds in all other areas	0.271	0.250	-0.021
<i>Comparison group:</i> 19-24 year olds in matched non-Pathfinder areas	0.228	0.233	+0.005
<i>Comparison group:</i> 25-30 year olds in Pathfinder areas	0.276	0.260	-0.016
<i>National Roll Out</i>			
<i>Treatment group:</i> 19-24 year olds	0.258	0.281	+0.023
<i>Comparison group:</i> 25-30 year olds	0.230	0.199	-0.031

Notes to Table 2:

The data are taken from the JUVOS five per cent longitudinal sample of all unemployed (JSA claimants). Selected observations are those individuals completing a six month spell on JSA over a predefined time interval. Individuals satisfying this criterion are then followed up to the end of the eighth and tenth months of unemployment to check whether they have found a job. The present table considers the first quarters of 1997 and 1998 for the “Pilot period” estimates and the second to fourth quarters of 1997 and 1998 for the “National Roll Out” estimates. The eligible group (defined by the age and area criteria) is compared with the selected control group

Table 3 (Men): Program effects on employment by the end of the tenth month since starting an unemployment spell (conditional on being on unemployed for six months); comparing 19 to 24 year olds with 25 to 30 year olds living in the same areas; pilot period and National Roll Out

			(1)	(2)	(3)	(4)
			Estimates based on the Difference in Differences methodology combined with			
Experi ment	Type of estimate	Number of observa tions	Linear Matching	Non-linear matching with non-additive error term (Logit specification)	Propensity score matching using smoothing splines	Non-linear propensity score matching using smoothing splines (Logit specification)
(1)	Overall effect for the sample including the Pilot period and the National Roll Out (first three quarters the New Deal is operating in each region)	17,433	0.053** (0.013)	0.044** (0.015)	0.048** (0.015) <i>(0.020;0.069)</i>	0.049** (0.016) <i>(0.018;0.072)</i>
	<i>Outflows to subsidized jobs</i>	<i>55,051</i>	<i>0.039</i>			
(2)	Effect for the Pilot period – 1 st quarter the program operates in Pathfinder areas	1,096	0.104* (0.055)	0.091 (0.057)	0.078 (0.079) <i>(-0.050;0.195)</i>	0.074 (0.069) <i>(-0.068;0.182)</i>
	<i>Outflows to subsidized jobs</i>	<i>4,486</i>	<i>0.057</i>			
(3)	Effect for the 1 st quarter the program operates in non-Pathfinder areas	5,169	0.088** (0.025)	0.064** (0.027)	0.078** (0.031) <i>(0.021;0.131)</i>	0.075** (0.031) <i>(0.015;0.128)</i>
	<i>Outflows to subsidized jobs</i>	<i>20,331</i>	<i>0.039</i>			
(4)	Effect for the 2 nd and 3 rd quarters the program operates in all areas	11,161	0.031* (0.016)	0.023 (0.019)	0.024 (0.019) <i>(-0.008;0.051)</i>	0.027 (0.019) <i>(-0.005;0.057)</i>
	<i>Outflows to subsidized jobs</i>	<i>30,234</i>	<i>0.036</i>			

Notes to Table 3:

Estimates of the effects of the New Deal program used the JUVOS five per cent longitudinal sample of all unemployed (JSA claimants). Estimates of the outflows into employment option used the New Deal Evaluation Database (NDED). Selected observations are those completing a six month spell on JSA over a predefined time interval: the present table compares 1997 with 1998. These individuals are then followed up to the end of the tenth month of unemployment (JSA) to check whether they have found a job. The eligible group (defined by the age criterion) is compared with the control group before and after the start of the program. All the estimates from regressions including a set of other controls: marital status, sought occupation, region and some information on the labor market history (the number of unemployment spells and the proportion of time on unemployment over the two years that preceded the start of the present spell). Propensity score matching is performed over the same covariates as the other estimates and the outcomes for the comparison groups are smoothed using cubic splines on the two propensity scores to achieve higher precision. Standard errors in parentheses: estimates for non-linear matching method (column 2) used the delta method and estimates for the propensity score matching (columns 3 and 4) used bootstrapping with 200 replications. Bias-corrected 90% confidence intervals in italics - estimation used the same bootstrap results.

** = significant at 0.05 level. * = significant at 0.10 level.

Table 4 (Men): Robustness of the results.
Comparing 19-24 year olds with 25-30 year olds in the same areas.
Estimates for the first three quarters the program is operating in each area.

			(1)	(2)	(3)	(4)
			Estimates based on the Difference in Differences methodology combined with			
	Outcome variable	Number of observations	Linear Matching	Non-linear matching with non-additive error term (Logit specification)	Propensity score matching using smoothing splines	Non-linear propensity score matching using smoothing splines (Logit specification)
Panel A: Outflows to sustained jobs (conditional on being on JSA for 6 months)						
(1)	Estimates	17,433	0.045** (0.011)	0.031** (0.013)	0.035** (0.013) (0.013;0.055)	0.033** (0.016) (0.005;0.054)
	Outflows to sustained subsidized jobs (affecting 19 to 24 year olds)	55,051	0.031			
Panel B: Outflows to employment before the start of the Gateway (conditional on being on JSA for 4 or 5 months)						
(2)	Effect between months 5 and 6 of JSA	20,957	0.004 (0.008)	0.000 (0.010)	0.004 (0.009) (-0.011;0.019)	0.003 (0.010) (-0.013;0.020)
(3)	Effect between months 4 and 6 of JSA	25,510	0.009 (0.010)	0.001 (0.011)	0.009 (0.011) (-0.011;0.026)	0.009 (0.011) (-0.010;0.027)
Panel C: Outflows to all destinations (conditional on being on JSA for 6 months)						
(4)	Estimates	17,433	0.108** (0.015)	0.093** (0.016)	0.095** (0.018) (0.061;0.124)	0.095** (0.018) (0.060;0.123)
(5)	Lower bound		0.084** (0.019)	0.062** (0.020)	0.048** (0.023) (0.010;0.087)	0.046** (0.022) (0.010;0.084)
(6)	Upper bound		0.143** (0.019)	0.119** (0.020)	0.126** (0.024) (0.087;0.164)	0.133** (0.026) (0.091;0.175)
	Outflows to all ND options (affecting 19 to 24 year olds)	55,051	0.137			

Notes to Table 4:

Estimates of the effects of the New Deal used the JUVOS five per cent longitudinal sample of all unemployed (JSA claimants). Estimates of the outflows into employment option used the New Deal Evaluation Database. All estimates are based on the comparison between 1997 and 1998 and compare the eligible group (defined by the age criterion) with the selected control group before and after the start of the program to estimate its impact.

Panel A refers to the stock of individuals completing a six month unemployment spell and follows them up to the end of the tenth month to check whether they have found a “sustained” job. An exit into employment is classified as sustained if it takes more than thirteen weeks for the individual to return to the claimant count.

Panel B uses the stock of individuals completing either a four or a five month spell on JSA and follows them up to the end of the sixth month on JSA to check whether they have found a job.

Panel C uses the stock of individuals completing six months of unemployment and follows them up to the end of the tenth month on JSA to check whether they have left unemployment. Upper and lower bounds are presented in Panel C using historical series of a similar parameter (see text for details).

All estimates from regressions including a set of other controls: marital status, sought occupation, region and some information on the labor market history (the number of unemployment spells and the proportion of time in unemployment over the two years that precede the start of the present spell). Propensity score matching is done over the same covariates as the other estimates and the outcomes for the comparison groups are smoothed using cubic splines on the two propensity scores to achieve higher precision. Standard errors in parentheses: estimates for non-linear matching method (column 2) used the delta method and estimates for the propensity score matching (columns 3 and 4) used bootstrapping with 200 replications. Bias-corrected 90% confidence intervals in *italic* - estimation used the same bootstrap results.

** = significant at 0.05 level. * = significant at 0.10 level.

Table 5 (Women): Gateway employment effects by the end of the tenth month (conditional on being on JSA for six months); Pilot period.

				(1)	(2)	(3)	(4)
				Estimates based on the Difference in Differences methodology combined with			
Experi ment	Treatment group	Comparison group	Number of observation s	Linear Matching	Non-linear matching with non-additive error term (Logit specification)	Propensity score matching using smoothing splines	Non-linear propensity score matching using smoothing splines (Logit specification)
(1)	19-24 year olds living in Pathfinder areas	19-24 year olds living in all non- Pathfinder areas	1,592	0.061 (0.058)	0.026 (0.060)	0.057 (0.084) <i>(-0.073;0.219)</i>	0.051 (0.083) <i>(-0.096;0.19)</i>
(2)	19-24 year olds living in Pathfinder areas	19-24 year olds living in matched non- Pathfinder areas	596	0.025 (0.071)	0.013 (0.077)	0.136 (0.151) <i>(-0.106;0.374)</i>	0.113 (0.149) <i>(-0.162;0.334)</i>
(3)	19-24 year olds living in Pathfinder areas	25-30 year olds living in Pathfinder areas	400	-0.047 (0.100)	-0.057 (0.101)	-0.053 (0.213) <i>(-0.447;0.270)</i>	-0.080 (0.193) <i>(-0.449;0.219)</i>
<i>Outflow into the employment option (affecting 19-24 year olds living in Pathfinder areas)</i>			1,693	0.048			

Notes to Table 5:

Estimates of the effects of the New Deal used the JUVOS five per cent longitudinal sample of all unemployed (JSA claimants). Estimates of the outflows into the employment option used the New Deal Evaluation Database. Selected individuals are those completing a six month spell on unemployment (JSA) over a predefined time interval. The present table considers the first quarters of 1997 and 1998. These individuals are then followed up to the end of the tenth month of unemployment to check whether they have found a job. The eligible group (defined by the age and area criteria) is compared with the selected control group before and after the start of the program. All estimates from regressions including a set of other controls: marital status, sought occupation, region and some information on the labor market history (the number of unemployment spells and the proportion of time in unemployment over the two years that precede the start of the present spell). Age and the number of unemployment spells since 1982 are also included when similar age groups are being compared. Propensity score matching is performed over the same covariates as the other estimates and the outcomes for the comparison groups are smoothed using cubic splines on the two propensity scores to achieve higher precision. Standard errors in parentheses: estimates for non-linear matching method (column 2) used the delta method and estimates for the propensity score matching (columns 3 and 4) used bootstrapping with 200 replications. Bias-corrected 90% confidence intervals in italic - estimation used the same bootstrap results.

** = significant at 0.05 level. * = significant at 0.10 level.

Table 6: Evaluations of the employment impact of welfare to work programs with mandatory employment services (random assignment); proportion who were ever employed in first year after treatment

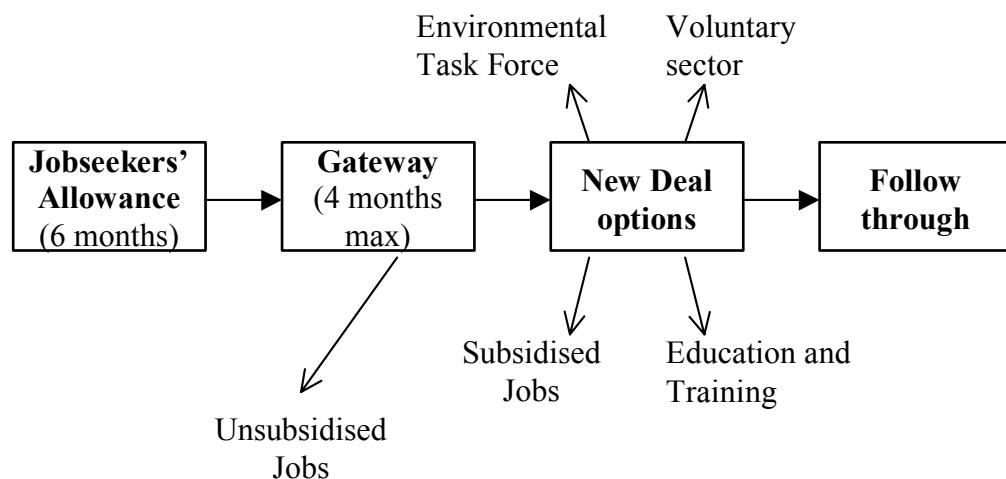
1. Study	2. Sample size	3. Control group outcome (% employed)	4. Impact of program on treatment group (additional % employed)	Ratio of impact effect to control group proportion (=column 4 divided by column 3)
Job-search first programs				
SWIM	2,850	39%	11%	0.28
Atlanta LFA	3,783	48%	5%	0.1
Grand Rapids LFA	3,010	53%	10%	0.19
Riverside LFA	6,611	35%	17%	0.48
LA Jobs First GAIN	15,122	47%	11%	0.23
Employment-focused programs with mixed initial activities				
Project Independence	9785	50%	4%	0.08
Riverside GAIN	4640	31%	20%	0.64
Portland NEWWS	5442	47%	11%	0.23

Source: Derived from Bloom and Michalopoulos (2001) Appendix Table C.1

Notes to Table 6:

These are all of the employment-focused programs evaluated by MDRC using random assignment. Education and training focused programs (MDRC's definition) are not included. The "impact" column (4) shows the difference in the proportion of the treatment group who got a job in the year after the program minus the same proportion in the control group. All impacts are statistically significant at the .05 level. The employment effect appears to diminish over time. With the exception of Portland, year three effects are all smaller than year one effect.

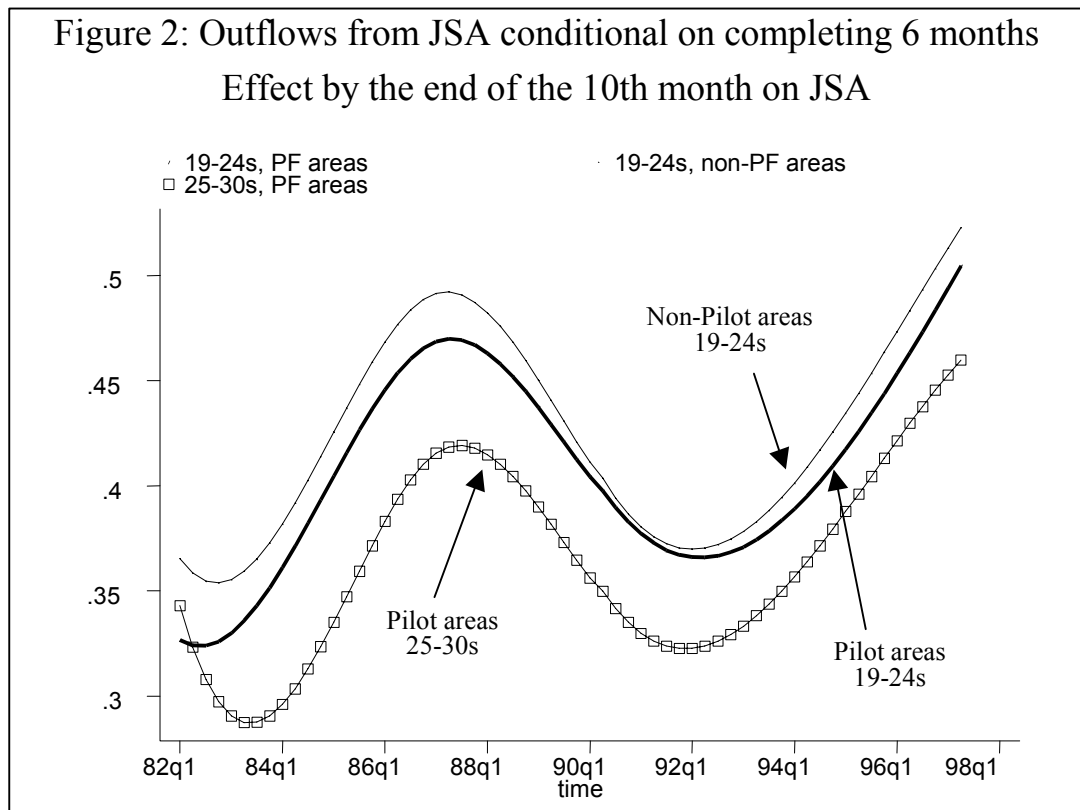
Figure 1: A Simplified Flow Diagram of the New Deal Program



Notes to Figure 1

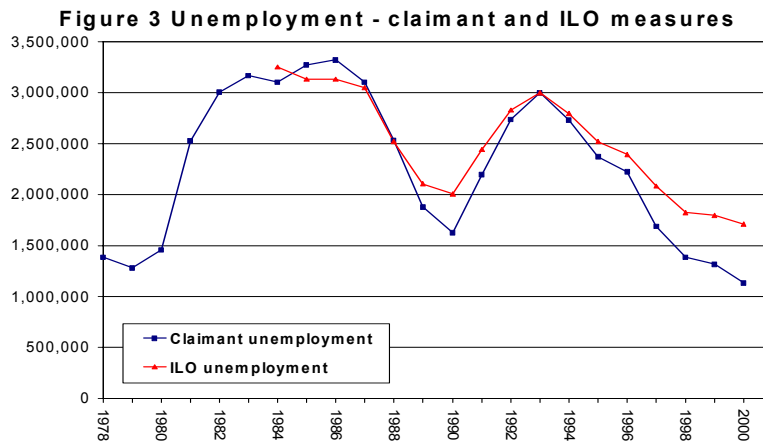
The New Deal for Young Unemployed is a mandatory welfare to work program. All young people (between the ages of 18 and 24) who had claimed unemployment insurance (JSA) for six months enter the program. During a "Gateway" period of at most four months participants are given extensive job search assistance. Those failing to find an unsubsidised job have four different options: entering employment with a six month wage subsidy to the employer, twelve months full time education or training, working in the environmental taskforce (a public

Figure 2: Outflows from JSA conditional on completing 6 months
Effect by the end of the 10th month on JSA



Notes to Figure 2:

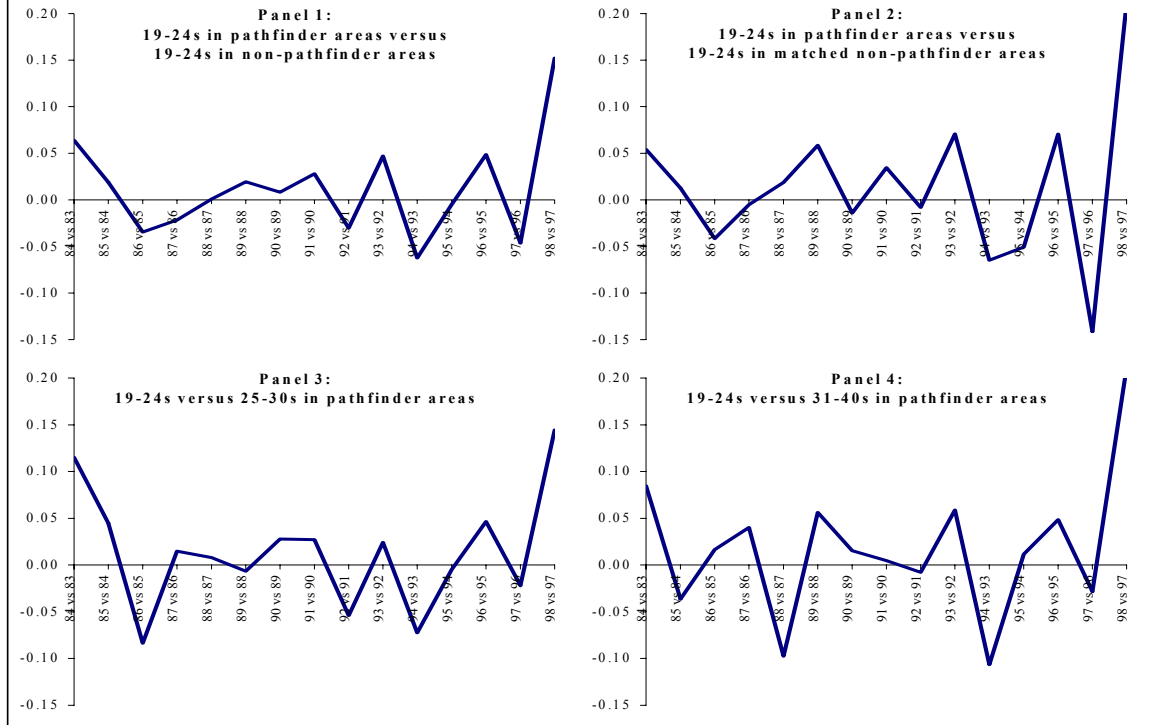
This graph illustrates the proportion of men leaving unemployment between the sixth and tenth months of unemployment 1982-1998. "PF" indicates that the men were living in a Pathfinder Pilot area (prior to New Deal introduction in 1998). The data have been smoothed by a cubic spline in time. Breakpoints were included at the first quarter of 1987 and the first quarter of 1990. No other covariates were considered.



Notes to Figure 3:

Data on ILO defined (International Labor Organization) unemployment were taken from the Labor Force Survey and claimant count unemployment taken from Labor Market Trends (various years). The ILO definition is based on asking out of work individuals whether they would be available and prepared to accept a job within two weeks. The claimant count is the number of people who are receiving unemployment benefit (called Job Seekers Allowance since 1994). Although the series track each other relatively well, there will be some people who are ILO unemployed who will not be in the claimant count (e.g. if they left their job voluntarily this will disqualify them for benefit receipt for a period of time). Similarly some individuals could be claiming unemployment benefit without genuinely searching for a job.

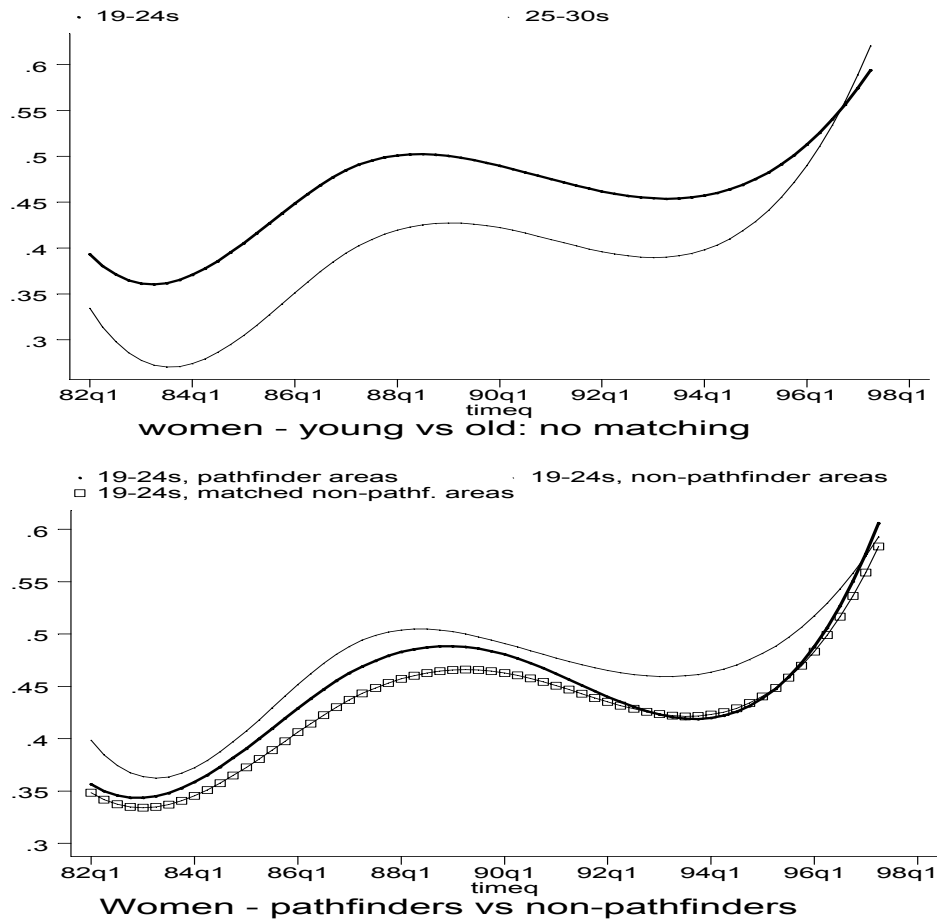
Figure 4: Difference in differences estimates over time.
Outflows to all destinations.



Notes to Figure 4:

Each panel presents the year-by-year difference in difference estimates of the impact of “fictional” programs on the total outflows from unemployment within four months of completion of the sixth month of unemployment. The total outflow is used because it is the only historic information available on a consistent basis for all years. The definition of the treatment and control groups follows the same rules as the ones used to estimate the New Deal program effect. the treatment group are all those aged 19 to 24 years old living in Pathfinder areas and are being compared with individuals of the same age group living in all other areas (Panel 1) or in matched areas (Panel 2), and with older groups in Pathfinder areas (Panel 3 for the 25 to 30 years old and Panel 4 for the 31 to 40 years old).

Figure 5: Outflows from JSA conditional on completing 6 months.
Effect by the end of month 10.



Notes to Figure 5:

This graph illustrates the proportion of women leaving unemployment between the sixth and tenth months of unemployment 1982-1998. "PF" indicates that the men were living in a Pathfinder Pilot area (prior to New Deal introduction in 1998). The data have been smoothed by a cubic spline in time. Breakpoints were included at the first quarter of 1987 and the first quarter of 1990. No other

**Table 1A (men): Descriptive statistics for different treatment and control groups.
Comparing the means of some variables used in the analysis.**

	19-24s in PF areas vs 19-24s in all other areas Pilot period				19-24s vs 25-30s in all areas First 3 quarters the program is operating			
	No matching		Matching on the propensity scores		No matching		Matching on the propensity scores	
	Treatment group	Control group	Treatment group	Control group	Treatment group	Control group	Treatment group	Control group
	(1)	(2)	(3)	(4)	(5)	(6)	(7)	(8)
Number of observations	273	1,306	264	264	4,377	4,086	4,359	4,359
Marital status								
Married	.08	.10	.06	.08	.10	.23*	.10	.10
Time unemployed over the last 2 years								
Less than 6 months	.46	.48	.46	.49	.43	.33*	.43	.46*
Less than 12 months	.64	.66	.64	.66	.64	.51*	.64	.64
Number of unemployment spells over the last two years								
0	.29	.26	.29	.31	.20	.16*	.20	.20
1 to 2	.59	.56	.58	.57	.58	.64*	.58	.59
3 to 5	.12	.17*	.12	.10	.21	.18*	.21	.19*
6 or more	.01	.01	.01	.01	.01	.01	.01	.01
Sought occupation								
Manager	.03	.02	.03	.04	.02	.02*	.02	.02
Professional	.01	.02	.01	.02	.01	.03*	.01	.01
Technical	.07	.07	.07	.11	.05	.07*	.05	.06
Clerical	.12	.17*	.12	.15	.18	.13*	.18	.18
Craft	.19	.12*	.19	.17	.14	.17*	.14	.14
Personal services	.11	.08	.11	.09	.07	.06*	.07	.06
Sales	.10	.10	.10	.10	.11	.07*	.10	.10
Machine operator	.07	.09	.07	.07	.10	.14*	.10	.11
Other	.29	.31	.28	.24	.31	.29*	.31	.32
Region								
South East	.19	.26*	.19	.19	.24	.30*	.24	.26*
East Anglia	.00	.00	.00	.00	.02	.02	.02	.02
South West	.08	.06*	.08	.09	.05	.05	.05	.05
West Midlands	.17	.09*	.17	.19	.10	.08*	.10	.09
East Midlands	.04	.06*	.04	.04	.07	.07	.07	.07
York	.12	.11	.12	.13	.12	.11	.12	.11
North West	.07	.17*	.06	.04	.15	.14	.15	.15
North	.16	.07*	.16	.11	.08	.07	.08	.08
Wales	.13	.06*	.13	.16	.06	.05	.06	.05
Scotland	.05	.11*	.05	.05	.12	.11*	.12	.11

* Estimated mean for treatments and controls are significantly different at a 5% level.

**Table 2A (men): Gateway employment effects by the end of the tenth month
(conditional on being on JSA for 6 months); pilot period.**

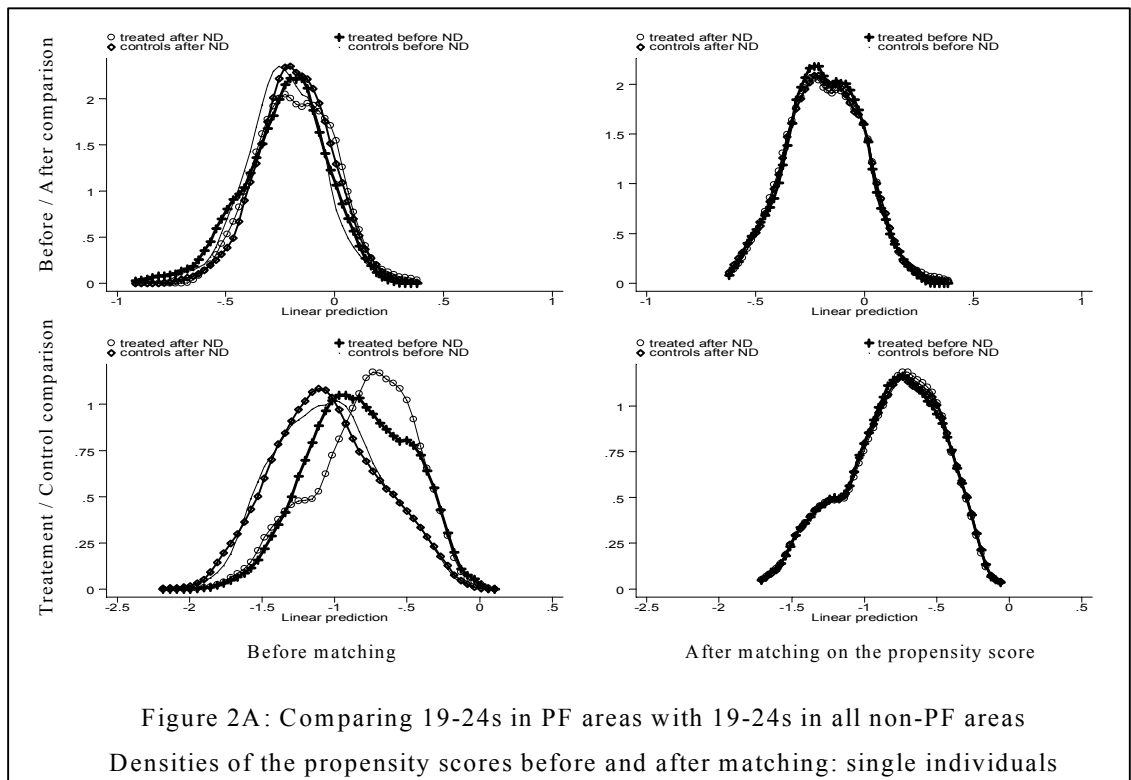
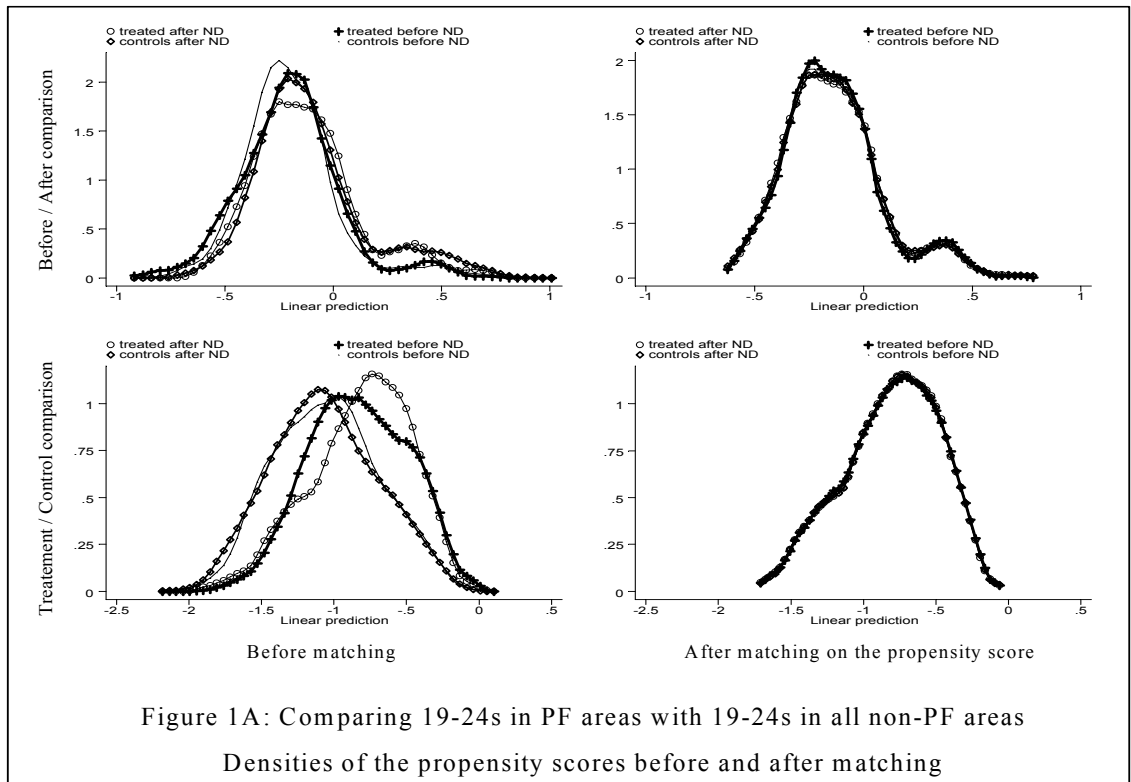
				Estimates based on the Difference in Differences methodology combined with		
				(1)	(2)	(3)
Experi- ment	Treatment group	Comparison group	Nr of observ.	Propensity score matching (nearest neighbor)	Propensity score matching using smoothing splines (nearest neighbor)	Propensity score matching (kernel weights)
(1)	19-24 year olds living in Pathfinder areas	19-24 year olds living in all non- Pathfinder areas	3,716	0.110 (0.083) (-0.028,0.238)	0.104** (0.046) (0.024;0.182)	0.078 (0.056) (-0.010,0.170)
(2)	19-24 year olds living in Pathfinder areas	19-24 year olds living in matched non- Pathfinder areas	1,193	0.084 (0.100) (-0.076,0.245)	0.093 (0.073) (-0.015;0.226)	0.070 (0.068) (-0.043,0.183)
(3)	19-24 year olds living in Pathfinder areas	25-30 year olds living in Pathfinder areas	1,096	0.069 (0.112) (-0.117,0.248)	0.078 (0.079) (-0.050;0.195)	0.054 (0.081) (-0.083,0.191)
(4)	19-24 year olds living in Pathfinder areas	31-40 year olds living in Pathfinder areas	1,169	0.089 (0.129) (-0.116,0.307)	0.099* (0.078) (-0.015;0.231)	0.094 (0.078) (-0.034,0.227)
(5)	25-30 year olds living in Pathfinder areas	25-30 year olds living in all other areas	3,180	0.016 (0.092) (-0.149,0.164)	0.027 (0.049) (-0.058;0.107)	0.015 (0.063) (-0.079,0.130)
(6)	25-30 year olds living in Pathfinder areas	25-30 year olds living in matched non- Pathfinder areas	983	-0.016 (0.126) (-0.220,0.185)	-0.003 (0.066) (-0.107;0.112)	-0.028 (0.081) (-0.167,0.105)
(7)	19-30 year olds living in Pathfinder areas	19-30 year olds living in all other areas	6,896	0.033 (0.058) (-0.058,0.132)	0.058* (0.034) (0.004;0.114)	0.051 (0.041) (-0.019,0.118)
(8)	19-50 year olds living in Pathfinder areas	19-50 year olds living in all other areas	12,749	0.025 (0.042) (-0.053,0.094)	0.044* (0.023) (0.004;0.080)	0.023 (0.026) (-0.025,0.063)

Notes to Table 2A:

Estimates of the employment effects of the New Deal program using the JUVOS five per cent longitudinal sample of all unemployed (JSA claimants). Selected individuals are those completing a six month unemployment spell over a predefined time interval. The present table considers the first quarters of 1997 and 1998. These individuals are then followed up to the end of the tenth month of unemployment to check whether

they have found a job. The eligible group (defined by the age and area criteria) is compared with the selected control group before and after the start of the program. Propensity score matching is performed over a set of controls: marital status, sought occupation, region and some information on the labor market history (the number of JSA spells and the proportion of time on JSA over the 2 years that precede the start of the present spell). Age and the number of JSA spells since 1982 are also included when similar age groups are being compared. Standard errors in parentheses: estimates for non-linear matching method (column 2) used the delta method and estimates for the propensity score matching (columns 3 and 4) used bootstrapping with 200 replications. Bias-corrected 90% confidence intervals in *italic* - estimation used the same bootstrap replications.

** = significant at 0.05 level. * = significant at 0.10 level.



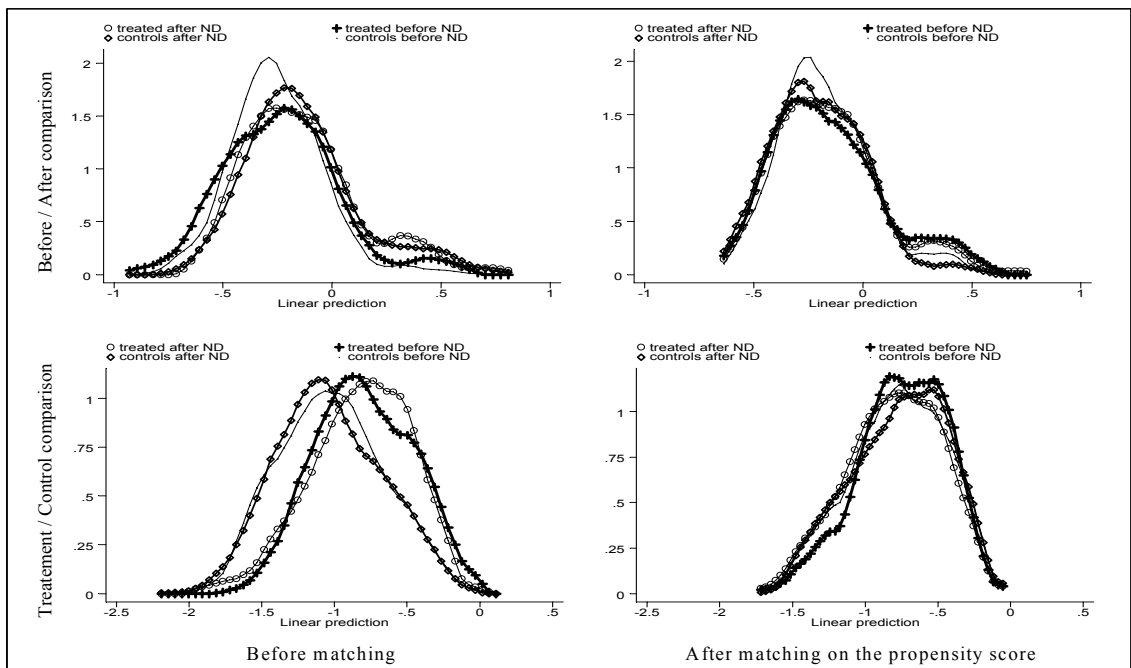


Figure 3A: Comparing 19-24s in PF areas with 19-24s in all non-PF areas
Densities of the propensity scores before and after matching: total time unemployed over the last 2 years is less than 6 months

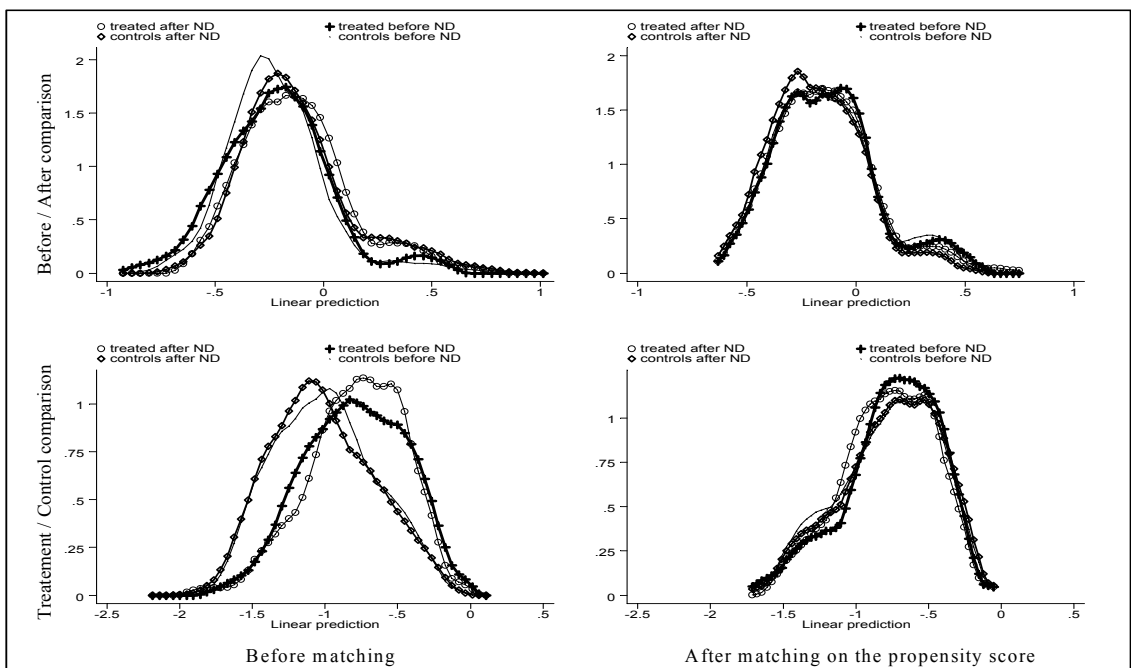


Figure 4A: Comparing 19-24s in PF areas with 19-24s in all non-PF areas
Densities of the propensity scores before and after matching: 1 or less unemployment spells over the last 2 years