

Pahlke, Julius; Strasser, Sebastian; Vieider, Ferdinand M.

**Working Paper**

## Responsibility effects in decision making under risk

WZB Discussion Paper, No. SP II 2012-402

**Provided in Cooperation with:**

WZB Berlin Social Science Center

*Suggested Citation:* Pahlke, Julius; Strasser, Sebastian; Vieider, Ferdinand M. (2012) :  
Responsibility effects in decision making under risk, WZB Discussion Paper, No. SP II 2012-402,  
Wissenschaftszentrum Berlin für Sozialforschung (WZB), Berlin

This Version is available at:

<https://hdl.handle.net/10419/71135>

**Standard-Nutzungsbedingungen:**

Die Dokumente auf EconStor dürfen zu eigenen wissenschaftlichen Zwecken und zum Privatgebrauch gespeichert und kopiert werden.

Sie dürfen die Dokumente nicht für öffentliche oder kommerzielle Zwecke vervielfältigen, öffentlich ausstellen, öffentlich zugänglich machen, vertreiben oder anderweitig nutzen.

Sofern die Verfasser die Dokumente unter Open-Content-Lizenzen (insbesondere CC-Lizenzen) zur Verfügung gestellt haben sollten, gelten abweichend von diesen Nutzungsbedingungen die in der dort genannten Lizenz gewährten Nutzungsrechte.

**Terms of use:**

*Documents in EconStor may be saved and copied for your personal and scholarly purposes.*

*You are not to copy documents for public or commercial purposes, to exhibit the documents publicly, to make them publicly available on the internet, or to distribute or otherwise use the documents in public.*

*If the documents have been made available under an Open Content Licence (especially Creative Commons Licences), you may exercise further usage rights as specified in the indicated licence.*

# WZB

Social Science Research Center  
Berlin



Julius Pahlke  
Sebastian Strasser  
Ferdinand M. Vieider

## **Responsibility Effects in Decision Making under Risk**

**Discussion Paper**

SP II 2012–402

October 2012

**Social Science Research Center Berlin (WZB)**

Research Area

**Markets and Politics**

WZB Junior Research Group

**Risk and Development**

Wissenschaftszentrum Berlin für Sozialforschung gGmbH  
Reichpietschufer 50  
10785 Berlin  
Germany  
[www.wzb.eu](http://www.wzb.eu)

Copyright remains with the author(s).

Discussion papers of the WZB serve to disseminate the research results of work in progress prior to publication to encourage the exchange of ideas and academic debate. Inclusion of a paper in the discussion paper series does not constitute publication and should not limit publication in any other venue. The discussion papers published by the WZB represent the views of the respective author(s) and not of the institute as a whole.

# Responsibility Effects in Decision Making under Risk

Julius Pahlke

Sebastian Strasser

Ferdinand M. Vieider\*

*Social Science Research Center (WZB), Berlin, Germany*

October 15<sup>th</sup>, 2012

## Abstract

We explore situations in which a decision-maker bears responsibility for somebody else's outcomes as well as for her own. For gains we confirm the intuition that being responsible for somebody else's payoffs increases risk aversion, while in the loss domain we find increased risk seeking. In a second experiment we replicate the finding of increased risk aversion for large probabilities of a gain, while for small probability gains we find an increase of risk seeking under conditions of responsibility. This discredits hypotheses of a 'cautious shift' under responsibility, and indicates an accentuation of the fourfold pattern of risk attitudes usually found for individual choices.

**JEL Codes:** D03, D81

**Keywords:** risk attitude; prospect theory; social norms; responsibility; other-regarding preferences

---

\*Corresponding author. Address: WZB, Reichpietschufer 50, 10785 Berlin. Tel. +49-(0)30-25491426. Email: fvieider@gmail.com.

## 1. Motivation

Economic situations in which an agent takes decisions that affect others' outcomes as well as her own constitute a common class of phenomena. For instance, they represent situations in which a decision maker's choices affect not only her own outcomes, but those of her family as well. Another common instance of such decision problems is the one of financial agency contracts in which the incentive structure of the agent coincides with the one of the principal. An example may be the one of executives that are compensated through company shares, or the one of a stock broker whose payoffs are determined by the outcomes of the investments she undertakes. Nevertheless, such different situations have generally been modeled with a single objective function treating all decisions like individual decisions.

There is an extensive literature on individual decision making under risk and uncertainty (Abdellaoui et al., 2011; Dohmen et al., 2011; Harbaugh et al., 2009, Maafi, 2011), as well as a substantial literature on risk attitude in agency problems and how to influence it through performance-contingent pay (Wiseman & Gomez-Mejia, 1998). There is however much less evidence on decisions under responsibility. To the extent that decisions under responsibility may differ from decisions commonly found in the individual decision making literature, findings from the latter will only constitute an imperfect predictor of attitudes under responsibility. In this paper, we therefore systematically explore the difference in risk attitudes between situations of decision-making for oneself and situations of *responsibility*, i.e. situations in which the decision maker decides for others as well as herself.

Several recent papers touch upon the issue of responsibility in risky decisions. Bolton & Ockenfels (2010) report results of decisions between payoff pairs in a dyad under payoff equality. The authors do not find statistically significant results, but speculate that risk aversion increases under responsibility. Sutter (2009) compares an individual investment task to a group investment task where group membership is made salient through payoff commonality, and finds risk aversion to decrease under payoff commonality. Although payoffs are symmetric, each member of the group makes decisions in sequence and all group members receive feedback about investment decisions and outcomes. Also, the investment task employed is such that maximum investment is the normatively optimal course of action (Gneezy & Potters, 1997). Reynolds et al. (2009) found risk aversion to increase relative to an individual benchmark when subjects were deciding only for somebody else, with no consequences for their own payoffs. Using a Holt & Laury (2002) choice list mechanism, Chakravarty et al. (2011) found risk aversion to *decrease* under conditions of responsibility, although again there were no costs connected to such decisions since they did not directly affect the decision maker. Using the same type of task, Humphrey & Renner (2011) found no effect of responsibility on risky choices. In a somewhat related study from the game-theoretic

literature, Charness & Jackson (2009) found that in a stag hunt game the efficient equilibrium obtained less frequently under responsibility for someone else than in an individual baseline, giving an indication of increased risk aversion under responsibility. However, in the latter study strategic concerns cannot be excluded.

The literature discussed above reaches widely different conclusions, ranging from increased risk aversion to increased risk seeking or null results. This may on the one hand be due to differences in how payoffs affect the decision makers and recipients. For instance, in Sutter's (2009) study all decisions affect everybody's payoffs symmetrically, while in Reynolds et al. (2009) and Chakravarty et al. (2011) the decisions affect only the recipient's payoffs, being inconsequential for the decision maker herself. This also means that the latter two studies cannot exclude inequality concerns. On the other hand, other factors such as payoff levels and probability levels are varied across the different tasks, so that it is very arduous to systematically organize the evidence. For instance, Sutter (2009) employs an investment task in which risky investments always have positive expected value with a constant probability of winning, while Chakravarty et al. (2011) employ a Holt & Laury task, in which the expected value of the two prospects between decisions makers are called to choose, as well as the probability levels with which the prizes obtain (and indeed the prizes themselves), change from decision to decision. Individual risk attitudes, however, have been found to differ systematically in the different domains and for different probability levels (Abdellaoui, 2000; Booij, van Praag, & van de Kuilen, 2010; Schoemaker, 1990). To the extent that individual risk attitudes have been found to differ systematically across the probability and outcome spaces, responsibility may well have different effects across those dimensions.

In to experiments, we explore risky decisions for situations in which an anonymous other (the *recipient*) is affected by any outcomes in exactly the same way as the decision maker herself. This allows us to study possible changes in behavior in a clean way, excluding issues deriving e.g. from preferences over outcome distributions that may cause inequality concerns. Also, by making both the decision maker's outcome and the recipient's outcome dependent on the decision makers' choice, the latter will bear an actual cost in terms of her own preferences by accommodating any presumed preferences of the recipient or by following some social norm. Any findings should thus constitute a lower bound on the effects we want to investigate.

We are the first to explore the issue systematically for risky choices in the gain domain, the loss domain, and the mixed domain, as well as for different probability levels. This allows us to adopt prospect theory (Kahneman & Tversky, 1979)—the prevalent descriptive theory of choice under risk and uncertainty today (Starmer, 1999, 2000; Wakker, 2010)—as a descriptive theory of choice and to systematically explore potential differences along the relevant dimensions. Under prospect theory, risk attitudes are described by utility curvature, loss aversion, and probability

weighting (Köbberling & Wakker, 2005). Since prospect theory is more general than other theories of decisions under risk such as expected utility theory, we can thus capture richer risk attitudes if present.

Relative to previous studies in the literature, our study thus presents a number of differences. As already mentioned, we have symmetric payoffs for the decision maker and the recipient, which are meant to exclude inequity concerns, as well as to impose a decision cost on a decision maker who wants to accommodate the (presumed) preferences of the recipient. In this respect our study differs from the designs used by Reynolds et al. (2009) and Chakravarty et al. (2011). Contrary to Sutter (2009), we use a choice task in which the riskier and safer options generally have equal expected value, or where we can control for differences in expected value if they do not. Furthermore, we explore the issue for different outcome levels, probability levels, and domains (gains versus losses), in which the different dimensions are varied orthogonally to each other to permit for a clear distinction of the determinants of any shifts in behavior. This distinguishes our study from previous investigations, in which probabilities were either kept constant (Sutter, 2009), or varied together with outcomes (Chakravarty et al., 2011; Humphrey & Renner, 2011). We are also the first to investigate the issue for losses.

We find that in the gain domain, being responsible for others as well as oneself does indeed increase risk aversion for medium to large probabilities, thus showing that Bolton & Ockenfels' (2010) intuition was correct. In addition, we show that for pure loss prospects, subjects become more *risk seeking* when responsible for others. Loss aversion on the other hand, being already very strong in individual decisions, does not seem to increase when subjects are responsible for others<sup>1</sup>. In a second experiment aimed at exploring social norms on risk taking in the gain domain in more detail, we replicate the finding that risk aversion increases under responsibility for large probabilities. When choices regard small probability prospects, however, we find increased *risk seeking* under conditions of responsibility. Overall, our results point to an accentuation of the fourfold pattern of risk attitudes typically found in individual decision making when subjects are responsible, with subjects thus becoming more risk averse for moderate to large probability gains and small probability losses, as well as more risk seeking for moderate to large probability losses and small probability gains when responsible for others.

The paper proceeds as follows. Section 2 describes the first experiment, with section 2.1 describing the methodology and section 2.2 presenting the results; section 2.3 discusses the result of experiment I and derives hypotheses for experiment II. Section 3 introduces experiment II, with section 3.1 describing the methodology and section 3.2 presenting the results. Section 3.3 discusses the results of experiment II as well as the overall results. Section 4 concludes this paper.

---

<sup>1</sup>Pahlke, Strasser, & Vieider (2012) found that adding an accountability mechanism to responsibility significantly reduced loss aversion, while leaving other elements of risk attitude unaffected.

## 2. Experiment I: Responsibility for gains, losses, and mixed prospects

### 2.1. Experimental Design

We designed a laboratory experiment in which we ask subjects to take binary decisions between two alternatives that are presented to them on a computer screen. Payoffs always affect the decision maker and the recipient in a perfectly parallel manner in the responsibility treatment, in order to avoid issues of payoff inequality (Bolton & Ockenfels, 2010; Rohde & Rohde, 2011). In what follows, a decision maker will be defined as risk averse whenever she prefers the expected value of a prospect to the prospect itself; conversely, she will be defined as risk seeking whenever she prefers the prospect to a sure amount equivalent to the prospect in terms of expected value (Wakker, 2010, p.52). Risk aversion and risk seeking are thus relative terms, such that a decrease in risk aversion can be seen as equivalent to an increase in risk seeking, regardless of absolute levels of risk taking<sup>2</sup>.

**Subjects.** Overall, 144 subjects were recruited at the experimental laboratory MELESSA at Ludwig-Maximilian's University in Munich, Germany, using ORSEE (Greiner, 2004). The experiment took roughly 1.5 hours, and average earnings were €22.49. The experiment was run on computers using zTree (Fischbacher, 2007). 46% of subjects were female, and the average age was 24.07 years.

**Task.** Subjects were asked to choose between a safe prospect and a risky prospect. The safe prospect usually consisted in a sure amount of money, and sometimes in a prospect with lower variance compared to the risky prospect. The risky prospect always gave a 50–50 chance to obtain one of two outcomes. The prospects could comprise only positive amounts, only negative amounts, or both positive and negative amounts (see below). Overall, subjects had to make 40 choices, with the order of presentation as well as the position of the two prospects randomized for each subject. Subjects took decisions sequentially and had no opportunity to return to an earlier decision to revise it. All of the above was explained in the instructions.

**Prospects.** The 40 choices to be made by all subjects in the experiment were constructed systematically in the following way: We chose five different stake levels that we denote henceforth by **b**, where  $\mathbf{b} = \{2,4,6,8,10\}$ . For every stake level, we let subjects choose between the following eight different prospect pairs:

---

<sup>2</sup>This means that saying that choices under condition A are more risk averse than under condition B is taken as equivalent to saying that they are less risk seeking under A than under B, regardless of the absolute level of risky or safe choices (i.e., regardless of whether safe choices are more or less than 50% in both cases, or whether they cross the 50% mark).



- *Base Case*: These prospect pairs offered a choice between the safe payment **b** and a prospect providing a 50% chance of winning twice the safe amount **b** or zero otherwise.
- *Sensitivity up*: Compared to the basic choice pair, the safe payment is increased by 25% to assess the degree of subjects' risk aversion. The risky option remained unchanged.
- *Sensitivity down*: Similar to "Sensitivity up", but the safe payment is reduced by 25%, again in order to measure the degree of risk aversion. The risky option remained unchanged.
- *Positive shift*: Every amount is increased by 50% of the safe payment in the base category. These choices were included to see how choices changed when shifting away from the €0 outcome.
- *Lottery choice*: The risky prospect now remains identical to the basic case, but the safe payment is replaced by a prospect with a lower variance (0.5 **b** and 1.5 **b**) than the risky prospect (0 and 2 **b**).
- *Mixed prospects*: To obtain these prospects, the safe amount in the base case was subtracted from all outcomes, thus obtaining a prospect with an expected value of €0. The safe amount was therefore always 0, the prospect always a lottery between **-b** and **b**.
- *Mean-preserving spread*: To obtain this prospect, the two risky outcomes of the base case were respectively increased and decreased by 50% of the sure amount. The expected value of the prospect thus remains the same; however, the variance of the prospect increases, and a loss equal to 50% of the sure amount is introduced into the prospect.
- *Loss Shift*: The mirror image of the base case where every amount was negative instead of positive. These prospects were inserted to directly compare risk taking behavior for gains and losses.<sup>3</sup>

The following table gives an overview of the eight different prospect pairs as a function of the stake level **b**. For a complete overview of all prospect pairs, see Table A1 in the Appendix.

Choice Type	Option A ("Safe")		Option B ("Risky")	
Base	b		0	2 b
Sensitivity Up	1.25 b		0	2 b
Sensitivity Down	0.75 b		0	2 b
Positive Shift	1.5 b		0.5 b	2.5 b
Lottery Choice	0.5 b	1.5 b	0	2b
Mixed Prospect	0		-b	b
MPS	b		-0.5 b	2.5 b
Loss Shift	-b		-2 b	0

<sup>3</sup>Additional prospect in the gain domain were not mirrored for ethical reasons—indeed, replicating all gain prospects for losses would have resulted in a high chance of overall losses during the experiment.

**Treatments.** Subjects were randomly assigned to one of two treatments, with two thirds of all subjects assigned to the responsibility treatment since only half of them would actively take decisions. In the *individual* treatment, subjects took their decisions only for themselves. In the *responsibility* treatment, half of the subjects were randomly assigned to the role of decision maker and the other half to the role of passive *recipient*. The decision maker was told that she had to take the decision on behalf of herself and another subject sitting in the laboratory, whose identity was not disclosed. All other subjects were told that they were in a passive role and that somebody else in the laboratory would take the decisions on their behalf. The matching remained fixed throughout the rounds. With a lag of one period, recipients were shown the decision problem and the choice of their corresponding decision maker. They could then indicate whether they were “satisfied” or “not satisfied” with the decision, but this did not affect payoffs nor was it shown to the decision maker. Decision makers knew about the satisfaction ratings, as well as about the fact that they would neither be communicated to them nor have any material consequences.

**Incentives.** 3 out of the 40 decisions were randomly drawn for every subject to be payoff relevant once the experiment was over. Subjects did not learn about any payoffs or extractions before the very end of the experiment. The random incentive system was chosen in order to avoid possible income effects, and because it is the standard procedure used in this kind of tasks. We extracted 3 out of the 40 choices in order to reduce the probability that subjects would actually lose money in the experiment. To make the random mechanism behind lotteries as transparent as possible, we had one participant throw a dice for every lottery that determined what outcome of the lottery obtained. In the responsibility treatment, we implemented the payout procedure such that three identical decisions were randomly chosen for the two paired subjects—a decision maker and her passive recipient would thus always obtain the same payoff from a choice. Subjects were told that it was possible—though unlikely—that they would lose money in the experiment. They could either pay such losses directly or work them off in the lab for a wage of €5 per half hour.<sup>4</sup>

## 2.2 Results

**Prospect Choices: Descriptive Analysis of General Choice Patterns.** We start with some general descriptives of choices in the individual treatment for the intermediate stake level of  $b=6$ <sup>5</sup>. Table 1 provides an overview of these choice patterns. In the base case we find a considerable degree of risk aversion across all stake levels, with about 75% of subjects choosing the sure amount over the

---

<sup>4</sup> 2 out of 144 participants ended up with an actual loss (€ -3.50 and € -2.00 €), both in the individual treatment. 3 further subjects earned less than their show-up fee of € 4.

<sup>5</sup> P-values reported are two-sided and refer to binomial tests for intermediate stakes, with a safe amount of  $b=€6$ , unless specified otherwise. Using one specific stake level allows for cleaner statistical tests. Results are qualitatively similar for other stake levels.

prospect with equal expected value ( $p < 0.001$ ). As one would expect, choices of the sure amount further increase when the sure amount is higher than the expected value of the prospect (Sensitivity Up), and decrease when the sure amount is lower (Sensitivity Down) in which case we observe a majority of choices for the prospect ( $p < 0.01$ ).

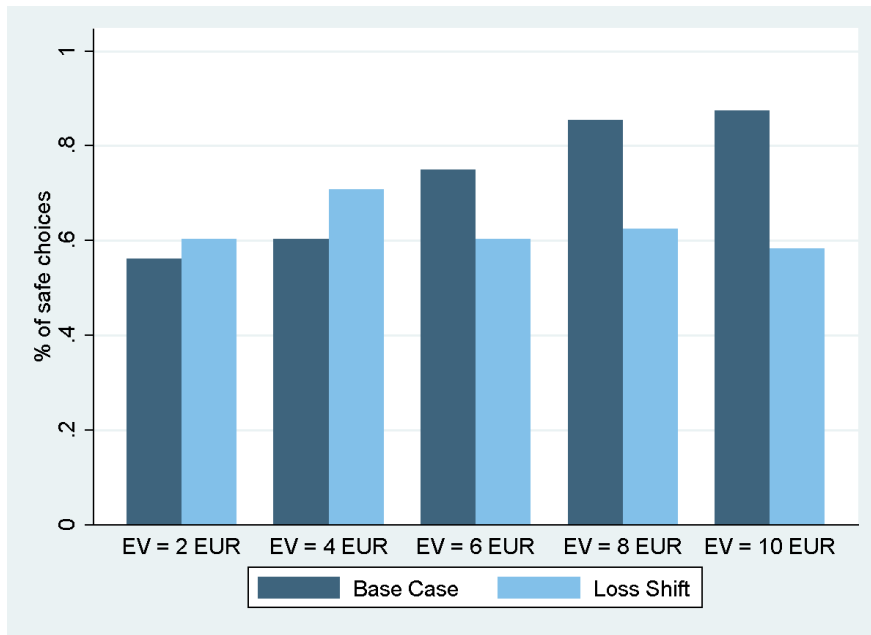
**Table 1:** Descriptive Statistics of Choice Behavior in the IND treatment for eight lottery types at intermediate stake levels ( $b = \text{€}6$ )

Lottery Type	Percentage of Safe Choice in IND treatment	
	(Intermediate Stake Level)	(All Stake Levels)
Base	75 %	73%
Sensitivity Up	92 %	91%
Sensitivity Down	29 %	32%
Positive Shift	77 %	57%
Lottery Choice	81 %	80%
Mixed Prospect	83 %	80%
MPS	75 %	67%
Loss Shift	60 %	63%
<b>Total</b>	<b>72 %</b>	<b>68%</b>
Observations	384	1920

When compared to the base case all outcomes are moved upward by 50% of the sure amount (Positive Shift), we observe increased choices of the prospect, although choices still display significant risk aversion ( $p < 0.01$ ). When the choice is between two non-degenerate prospects (Lottery Choice), choice frequencies of the safe prospect are further increased relative to the base case. For mixed prospects, the choice frequency of safe choices is only slightly increased compared to the base case (this however underestimates the effect given the lowering of the stake levels: see below as well as appendix A3 for a more nuanced discussion). For the mean-preserving spread, choices of the risky prospect increase, but risk aversion remains the dominant pattern ( $p < 0.001$ ). This may indicate that the increase in the good outcome more than makes up for the slight loss that has been introduced in the bad outcome.<sup>6</sup> Finally, for pure loss choices, subjects are considerably more risk seeking than for gains, and in absolute terms risk neutrality cannot be rejected ( $p = 0.19$ ).

It is also commonly found in the literature that risk attitudes are influenced by stake levels (Binswanger, 1980; Holt & Laury, 2002; Kachelmeier & Shehata, 1992). We thus take a look at the influence of the different stake levels on decisions. Figure 1 shows choices for the safe alternative separately for the basic prospect pairs and the pure loss pairs.

<sup>6</sup> Slovic et al. (2002) find a similar pattern for choices under risk with small negative and large positive outcomes, calling it the “contrast effect”.



**Fig. 1:** Choice frequency of the safe prospect - Stake effects for gains and losses

The stake effect is clearly visible for the basic gain prospects, with increasing expected values resulting in increased levels of risk aversion. Indeed, we cannot reject risk neutrality for the lowest stakes ( $p=0.47$ ), with risk aversion increasing with stake levels and being highly significant for the highest stake level ( $p<0.001$ ). For losses, on the other hand, there is no clear trend and risk aversion has only a very slight (and non-significant:  $p=0.31$  for the highest stake level) tendency to increase with absolute stake values.<sup>7</sup> A parametric analysis of these descriptive results can be found in appendix A3. We next turn to the differences between the individual and the responsibility treatment.

### ***Individual Decisions versus Responsibility***

Figure 2 shows choice frequencies for the safe prospect by treatment, for males and females respectively<sup>8</sup>. One can see how for the base case subjects are more risk averse under responsibility than in the individual decisions—this holds both for males and females. The same tendency is visible in almost all other positive prospect pairs, except for the upward sensitivity prospect pair, in which there is no difference. There is only a very slight indication of responsibility inducing more risk aversion in the mixed prospect pair, while this tendency is again more pronounced for the mean-preserving spread (*MPS*) pair. For pure loss choices, however, the tendency is inverted, with responsibility *decreasing* risk aversion.

<sup>7</sup> The Spearman correlation coefficient between the stake size  $b$  and choice for the safe option in the individual treatment is indeed significantly positive for the base lotteries ( $p<0.001$ ), but not different from zero for losses ( $p=0.57$ ).

<sup>8</sup>We display the effects by gender because of the large gender effects in risk taking typically found in the literature (Donkers et al. 2001; Eckel & Grossman, 2008), which are also present in our data.

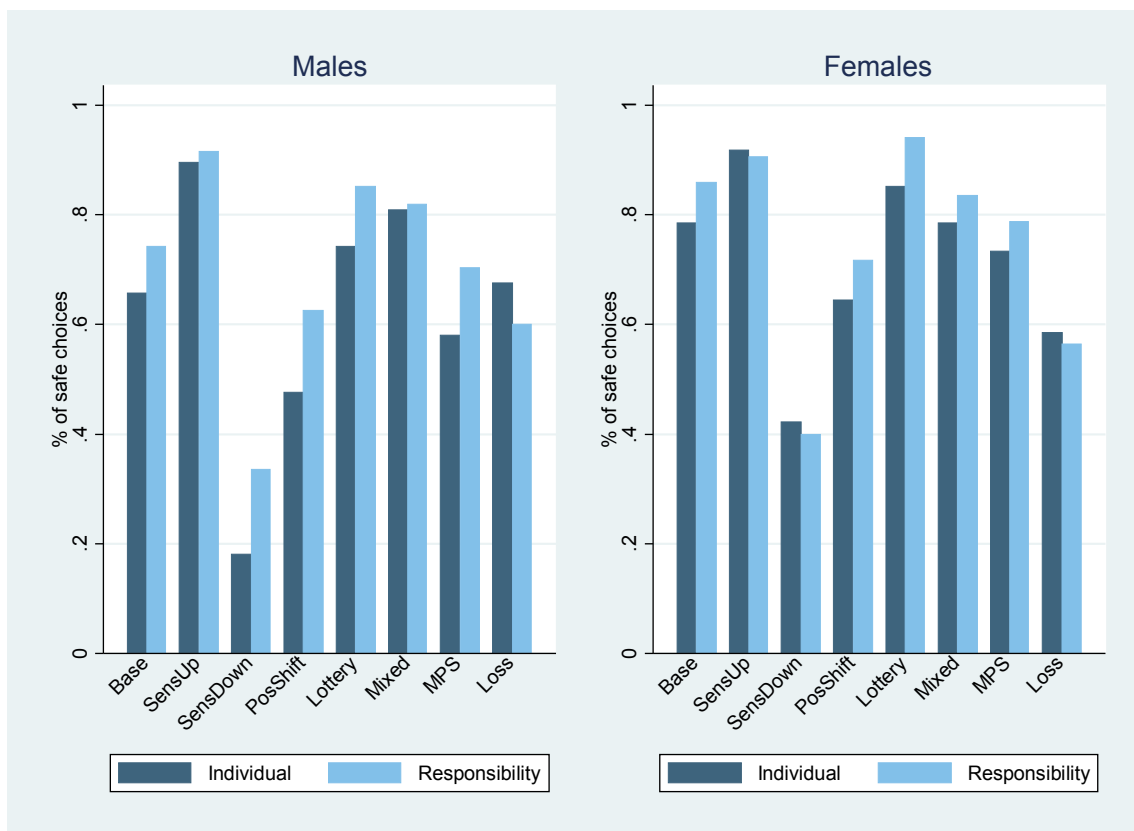


Fig. 2: Choice frequency of the safe prospect for different prospect pairs, by treatment, average over all stake levels

Table 2 presents a random effects Probit model regressing choices for the safe prospect on a variety of explanatory variables. Regression I regresses choices on the treatment dummy, a dummy variable indicating the pure loss prospects, a dummy indicating mixed lotteries (i.e. mean-preserving spread choice and the mixed prospect choice), and two interaction terms between the latter two and the treatment dummy.

Being responsible for somebody else's payoffs as well as one's own increases risk aversion relative to affecting only one's own payoff; the latter is a *simple main effect*, indicating the effect of responsibility for all prospects except the pure loss prospects (i.e., with the pure loss dummy held *constant at zero*) and the mixed prospect (i.e., with the mixed dummy held *constant at zero*). The effect of the pure loss dummy indicates that for pure loss prospects subjects are more risk seeking compared to all other gain prospects. The interaction between the treatment dummy and the one identifying pure loss prospects indicates that for pure loss prospects the effect of responsibility goes in the opposite direction compared to pure gain prospects, and thus shows that subjects in the responsibility treatment are *more risk seeking* (or *less risk averse*) for losses compared to subjects in the individual treatment. The significant effect of the mixed-lottery dummy shows that subjects choose the safe option significantly more often for mixed lotteries (i.e. "MPS" and "mixed") than for pure gain prospects. The insignificant interaction between the treatment dummy and the mixed dummy on the other hand indicates that there are no significant treatment effects for mixed lotteries,

with the effect thus going in the same direction as for gains. Finally, we also find that females are significantly more risk averse than males. Such an effect is commonly found for decision making under risk (Donkers et al. 2001; Eckel & Grossman, 2008).

**Table 2:** Random effects Probit Regression: coefficients show marginal effects relative to choices in the individual treatment; \*\*\* represents significance at  $p=0.01$ , \*\* at  $p=0.05$  and \* at  $p=0.10$

Dep. Var.: choice of safe prospect	I	II	III
responsibility	0.070** (0.036)	0.080** (0.037)	0.099** (0.049)
pure loss	-0.043** (0.033)	-0.067** (0.033)	-0.067** (0.033)
responsibility*pure loss	-0.098** (0.049)	-0.106** (0.049)	-0.106** (0.049)
mixed lotteries	0.131*** (0.027)	0.112*** (0.027)	0.112*** (0.027)
responsibility*mixed lotteries	-0.024 (0.051)	-0.032 (0.051)	-0.032 (0.051)
EV difference		0.196*** (0.012)	0.197*** (0.012)
SD difference		0.022*** (0.002)	0.022*** (0.002)
female	0.083** (0.033)	0.086** (0.036)	0.107** (0.049)
responsibility*female			-0.046 (0.076)
constant	✓	✓	✓
Nr. Observation (subjects)	3840 (96)	3840 (96)	3840 (96)
Wald Chi2	64.43	417.03	417.27

Regression II keeps the same independent variables as regression I, and adds the difference in expected value and the difference in standard deviations<sup>9</sup>. The higher the difference between the safe prospect and the risky prospect in terms of expected value, the more likely subjects will choose the safe prospect. Also, the larger the difference in terms of standard deviation, the more likely subjects are to choose the safer alternative. The main treatment effects discussed above are stable, indicating increased risk aversion under responsibility in the gain domain, increased risk seeking in the loss domain, and no treatment effect in the mixed domain.

Regression III further adds an interaction term between the gender dummy and the treatment dummy. The effect is not significant, which goes to show that being responsible for somebody else does affect males and females in the same way. Once again, all the effects previously discussed remain stable. We next turn to the analysis of the satisfaction ratings of recipients in the

<sup>9</sup> Expected value is defined as the expected value of the safe prospect minus the expected value of the risky prospect. Standard deviation is defined as the standard deviation of the risky prospect minus the standard deviation of the safe prospect, which is thus always positive

responsibility treatment.

### ***Choice Satisfaction of Recipients***

In the responsibility treatment, recipients saw the decision maker's choice with one period lag and indicated whether they were satisfied with the decision or not. Although this rating was not incentivized, it may nevertheless give an indication of the extent to which decision makers adapted their decision to the commonly acceptable one, or correctly intuited which decision would be deemed more acceptable while doing so. Since satisfaction ratings were not communicated to the decision maker and had no influence on payoffs whatsoever, recipients had indeed no reasons to strategically misrepresent their preferences. Also, the fact that providing such ratings was the only occupation of recipients during the experiments leads us to suspect that they took this task seriously.

Table 3 shows a random effects Probit model regressing the recipients' satisfaction with each choice on a number of independent variables. The highly significant effect of the safe prospect being chosen by the decision maker shows that safe choices are deemed more satisfactory in the gain domain (this being a simple main effect measuring the effect of safe choices with the pure-loss dummy held constant at *zero*). While the fact that a prospect offers only negative outcomes per se does not affect satisfaction ratings, choosing the safe amount in pure loss prospects is generally not perceived as satisfactory by recipients, as shown by the highly significant interaction effects of the pure loss and safe choice dummies. This finding confirms that risk seeking is deemed more acceptable than safe choices in the loss domain. There is no main gender effect for satisfaction ratings.

Regression II confirms the stability of the findings we have just discussed, and adds some more variables. The significantly negative main effect of the mixed prospect dummy indicates that choices of the prospect are considered even less satisfactory in the mixed domain as compared to the gain domain. In a parallel fashion, satisfaction increases relative to the pure gain domain when a safe amount is chosen, giving again an indication of loss aversion on the side of recipients. Choices are deemed more satisfactory the higher the difference in expected value, providing an indication that higher differences in expected value increase the agreement between decision makers and recipients on which choice is the best one. Finally, in keeping with previous findings on gender effects, women generally deem choices of the safe prospect as more satisfactory than choices of the risky prospect.

**Table 3:** Random Effects Probit Regression: coefficients indicate marginal changes in satisfaction levels relative to a choice of the risky prospect; \*\*\* represents significance at  $p=0.01$ , \*\* at  $p=0.05$  and \* at  $p=0.10$ .

Dep. Var.: satisfied with decision	I	II
Safe prospect chosen	0.346*** (0.028)	0.205*** (0.038)
Pure loss	0.046 (0.036)	-0.003 (0.040)
Pure loss * safe prospect chosen	-0.268*** (0.075)	-0.173** (0.072)
Mixed prospect		-0.225*** (0.080)
Mixed prospect * safe prospect chosen		0.186*** (0.029)
EV difference		0.069*** (0.013)
SD difference		-0.002 (0.003)
female	0.034 (0.032)	-0.016 (0.039)
female*safe choice		0.079** (0.037)
Constant	✓	✓
Nr. Observation (subjects)	1920 (48)	1920 (48)
Wald Chi2	196.08	230.85

At the end of the experiment we asked subjects to rate their degree of risk aversion on a scale from being very risk seeking (1) to being very risk averse (6). This self-declared risk aversion correlates strongly with the number of safe choices taken in non-negative prospect pairs during the experiment itself on the basis of the Spearman correlation coefficient ( $p=0.01$ ) across decision makers in both treatments. Self-declared risk attitudes are not significantly different between the two treatments ( $p=0.26$ ; Mann-Whitney test, two-sided), nor is there a significant difference between decision makers and recipients in the responsibility treatment ( $p=0.72$ ; Mann-Whitney test, two-sided). Finally, we also asked subjects to rate themselves according to their risk aversion relative to other participants in the experiment. The rating went from 1 (indicating that a subject considered herself to be amongst the four most risk-loving participants in the session of 24) to 6 (indicating that a subject considered herself to be amongst the four most risk averse participants in the session). On average, decision makers in the responsibility treatment had a rating of 4.17, indicating that they considered themselves more risk averse than the median participant in the experiment. This finding corresponds to existing evidence according to which subjects generally consider others as more risk loving than themselves (Hsee & Weber, 1997). Furthermore, this finding also rules out that decision makers may have considered recipients on average to be more risk averse than they are



themselves<sup>10</sup>. This indeed corresponds to a finding by Bateman & Munro (2008), who found that when partners take risky decision for each other, they sometimes end up choosing the less risky alternative even after correctly predicting the partner's preference for the riskier alternative—a finding that they attribute to 'fear of recrimination'.

### 2.3 Discussion

For gain prospects, we find responsibility to increase risk aversion. An account based on the assumption that decision makers consider others to be more risk averse than they are themselves seems to be ruled out by the answers to the relative risk attitude ranking questions discussed above. Also, Hsee & Weber (1997) found that in a series of different experimental designs subjects systematically predicted others to be less risk averse than themselves. We can thus conclude that subjects do not simply try to adapt their decisions to what they think may be others' risk attitudes.

A different possibility is that subjects comply to an implicit social rule dictating increased caution when responsible for somebody else as well as oneself, thus increasing their risk aversion when responsible for somebody else. This explanation is distinct from the argument discussed in the last paragraph, inasmuch as such a social norm may push subjects to be more risk averse when deciding for others even in cases where they expect that others would be more risk loving than themselves if left to decide for themselves. Such a *cautious shift* explanation, however, cannot explain our increased risk seeking for loss prospects. Arguably, different social rules dictating a cautious shift for gains and a 'risky shift' for losses could well exist, but such a hypothesis does have a distinctly *ad hoc* flavor. Given that individual risk attitudes have been established to be much richer than the simple risk-aversion/risk-seeking dichotomy implicit in such explanations (Abdellaoui, 2000; Abdellaoui et al. 2010; Bleichrodt & Pinto, 2000), we rather hypothesize that risk attitudes typically found in individual decision making are accentuated under conditions of responsibility.

Prospect theory would predict risk aversion to prevail for moderate to large probabilities. An account based on the amplification of the fourfold pattern of risk attitudes predicted by prospect theory can thus not be separated from an account based on a social rule favoring increased risk aversion under responsibility based solely on the evidence collected for gain prospects. Risk seeking, however, seems to appear more acceptable than risk aversion in the loss domain for the moderate probabilities used in our experiment. Evidence in this direction comes both from the behavior of decision makers, who under conditions of responsibility in the loss domain are induced to become more risk seeking rather than more risk averse; and from recipients, who are much more

---

<sup>10</sup>In the literature, self assessment on a risk attitude scale such as this have been found to be highly correlated with incentivized choices for 50-50 prospects in the gain domain (Dohmen et al., 2011). We thus also assume that such self-assessment should reflect choices for 50-50 choices in the *gain* domain.

likely to be dissatisfied with a decision in the loss domain when the decision maker chose the sure loss rather than the prospect. This, in turn, cannot be explained by a uniform social norm dictating increased caution under conditions of responsibility.

As an alternative hypothesis we thus propose that the fourfold pattern of risk attitudes predicted by prospect theory—risk aversion for moderate to large probability gains and small probability losses, risk seeking for moderate to large probability losses and small probability gains—is amplified by responsibility. The hypothesis of an accentuated fourfold pattern of risk attitudes as found in prospect theory and the social norm argument make very different predictions for different probability levels in the gain domain, which makes it easy to test them against each other. For large probabilities, both prospect theory and the social norm argument predict an increase in risk aversion under conditions of responsibility. For small probabilities, on the other hand, the social norm hypothesis still predicts an increase in risk aversion; quite to the contrary, however, prospect theory and the argument of an amplification of the fourfold pattern laid out above now predict an *increase in risk seeking* under conditions of responsibility.

The same test can also be adopted to rule out yet another alternative explanation that we cannot rule out on the basis of the results from above. When deciding for others as well as themselves—so the objection goes—decision makers effectively decide over twice the amount of money. Given the common finding that risk aversion increases in stake levels, the increased amounts over which decisions are taken may thus well be the factor underlying the finding of increased risk aversion in the responsibility treatment, rather than the responsibility effect itself. This explanation is indeed plausible for the medium probability gains used in experiment I (although it cannot account for the findings for loss prospects). Notice, however, that this explanation would again predict increased *risk aversion* for small probability gains under higher stakes, which has been found repeatedly (Kachelmaier & Shehata, 1992; Lefebvre et al. 2010). We thus now proceed to testing the effect of responsibility on decisions for different probability levels in the gain domain.

### 3. Experiment II: Disentangling social norm and amplification accounts

#### 3.1 Experimental Design

**Subjects.** 180 subjects were recruited at the experimental laboratory MELESSA at Ludwig-Maximilian's University in Munich, Germany, using ORSEE (Greiner, 2004). 59% of subjects were female, and the average age was 23.88 years.

**Task.** This task was run after another, unrelated experiment<sup>11</sup>. Subjects were asked to choose between a safe option and a risky option in a fashion similar to experiment I. Overall, subjects had to make 10 choices where the order of presentation was randomized for every subject. Subjects took decisions sequentially and had no opportunity to return to an earlier decision to revise it.

**Prospects.** The choice was always between a sure amount of money and a prospect – both in the gain domain. There were two prospects, one providing a 10% chance to win €10 and zero otherwise; and one providing a 90% chance to win €10 and zero otherwise. The sure amount could take one of five different amounts for each prospect: €0.8, €1, €1.2, €1.5 and €2 for the 10% prospect, and €7, €8, €8.5, €9, and €9.5 for the 90% prospect.

**Treatments.** Subjects were randomly assigned to one of two treatments that exactly replicated those of experiment I: an *individual* treatment in which subjects took their decisions only for themselves; or a *responsibility* treatment, in which half of the subjects were randomly assigned the role of decision maker and half the subjects were assigned the role of passive *recipient*.

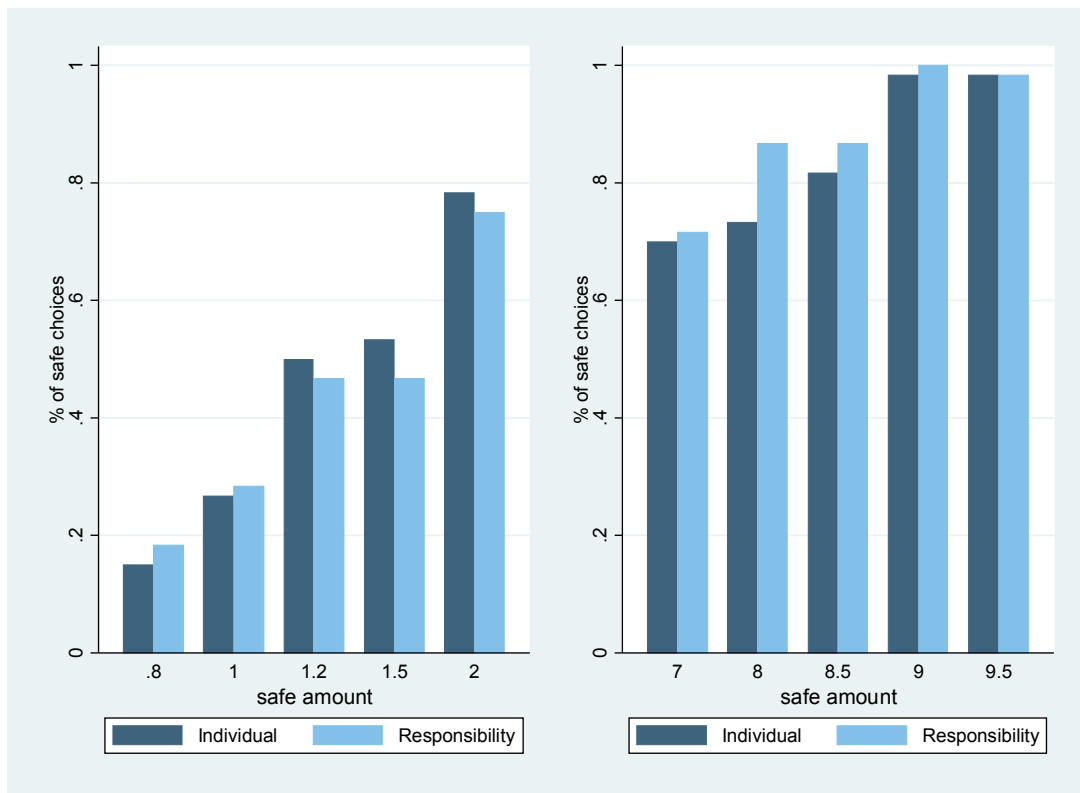
**Incentives.** One decision was randomly extracted to be played for real pay. Since in the unrelated experiment subjects could obtain at least an approximate knowledge about their payoffs, we decided to fully reveal earnings from the preceding, unrelated, experiment in order to be able to control for the exact income effect in a regression (rather than having unknown *perceptions* of earnings).

---

<sup>11</sup>Although the preceding experiment was unrelated, care was taken to distribute the treatments of this experiment orthogonally to the treatments in the other experiment.

### 3.2 Results

#### *Individual Decisions versus Decisions under Responsibility*



**Fig. 3:** Choices of safe amount by treatment for  $p=0.1$  (left) and for  $p=0.9$  (right)

We again start with some descriptive statistics. Figure 3 displays the choice frequencies by treatment separately for small and large probabilities. On average we find the typical pattern of risk seeking for small probabilities and risk aversion for large probabilities. Indeed, when the subjects face a choice between a prospect and a sure amount of equal expected value, only about 27% of subjects choose the sure amount for the 10% probability ( $p < 0.001$ , binomial test), while 99% of subjects do so for the 90% probability ( $p < 0.001$ , binomial test). For the 10% probability, subjects who are responsible for somebody else choose the sure amount *less often* for all but the smallest two certain amounts, where choices of the safe amount are generally low. For the 90% probability, responsible subjects always choose the sure amount at least as often as subjects who only decide for themselves.

Table 4 presents a random effects Probit model regressing choices of the safe alternative on a variety of explanatory variables. The effect of the responsibility treatment dummy now indicates the simple main effect of being responsible when probabilities are large (Jaccard & Turrisi, 2003). Subjects are thus more likely to choose the sure amount for a 90% probability of winning when responsible compared to the individual treatment. Under small probabilities, subjects are significantly more risk seeking than under large probabilities, as indicated by the highly significant

effect of the small probability dummy. More importantly, the interaction of the small-probability dummy with the treatment dummy indicates that this risk-seeking tendency is further enhanced relative to the individual treatment when subjects are responsible for somebody else. As may be expected, the difference in expected value between the sure amount and the prospect (defined as in experiment I) is also highly significant. Finally, we find a significant, if small, income effect, which goes as expected in the direction of increased risk seeking by subjects who have realized higher earnings from the previous experiment.

**Table 4:** Random Effects Probit Regression: coefficients show marginal effects relative to choices in the individual treatment; \*\*\* represents significance at  $p=0.01$ , \*\* at  $p=0.05$  and \* at  $p=0.10$ .

Dep. Var.: choice of safe prospect	I	II
responsibility	.107* (0.058)	0.148* (0.086)
Small probability	-0.666*** (0.036)	-0.589*** (0.047)
Small probability * responsibility	-0.135** (0.068)	-0.133** (0.068)
EV difference	0.295*** (0.025)	0.295*** (0.025)
female	0.071 (0.044)	0.197*** (0.061)
Past profit	-0.008*** (0.002)	-0.007** (0.003)
Female * small probability		-0.209*** (0.068)
Past profit * responsibility		-0.003 (0.005)
constant	✓	✓
Nr. Observation (subjects)	1200 (120)	1200 (120)
Wald Chi2	264.55	263.57

Regression II adds two further interaction terms. Almost all effects can be seen to be stable. The gender effect, which had not been significant in regression I, is now also significant: since this is a simple effect, the positive effect of the female dummy now indicates increased risk aversion by females relative to males for large probability prospects. This effect is qualified by the interaction of the female dummy with the small-probability dummy. The negative effect of that interaction shows that females are significantly *more risk seeking* relative to males for small probabilities. Past profits remain significant, though less so than in regression I. Most importantly, however, there is no interaction effect between past profits from the preceding experiment and our treatment manipulation, showing that this is not interfering with our results.

### *Satisfaction Ratings*

Exactly as in experiment I, recipients in experiment II saw the decisions of their assigned decision maker with a lag of one period, and had to indicate whether they were satisfied with the decision or not. Table 5 reports the results of a random effects Probit model regressing the satisfaction dummy on a number of explanatory variables.

**Table 5:** Random Effects Probit Regression: coefficients indicate marginal changes in satisfaction levels relative to a choice of the risky prospect; \*\*\* represents significance at  $p=0.01$ , \*\* at  $p=0.05$  and \* at  $p=0.10$ .

Dep. Var.: satisfied with choice	I	II
Safe Choice	0.530*** (0.119)	0.458*** (0.129)
Small probability (10%)	0.226** (0.113)	0.238** (0.113)
Safe choice * small probability	-0.658*** (0.130)	-0.680*** (0.126)
EV difference	-0.228*** (0.064)	-0.233*** (0.064)
EV difference * safe choice	0.341*** (0.072)	0.345*** (0.071)
female	0.124*** (0.044)	0.023 (0.060)
Female * safe choice		0.146** (0.064)
Past profit		-0.002 (0.003)
constant	✓	✓
Nr. Observation (subjects)	600 (60)	600 (60)
Wald Chi2	61.70	64.59

The first dummy shows the simple main effect of choosing the safe amounts over the large probability prospect: choosing the safe amount for large probability prospects is deemed much more satisfactory in general than choosing the prospect. The dummy indicating the simple main effect of a small probability choice is also positive, indicating considerable agreement with choices of the prospect in this instance<sup>12</sup>. Choosing the safe amount for small probability prospects, however, is considered to be very dissatisfying, as shown by the large negative coefficient of the interaction effect. Recipients are in general less satisfied with choices of the prospect the closer the safe amount is to the expected value of the prospect, which is indicated by the simple effect of the relative dummy. They are however more satisfied with a choice of the safe alternative for relatively small deviations in expected value. Females tend to be much more satisfied when the safe amount is

<sup>12</sup>Indeed, the dummy indicates the satisfaction levels for small probabilities with all interactions that include that dummy held constant *at zero* (Jaccard & Turrisi, 2003). This in turn means that the safe-choice dummy must be zero, thus resulting in the interpretation that the effect indicates satisfaction with choices of the prospect; this satisfaction in turn is measured relative to the (much fewer) choices of the prospect for the large probability prospect.

chosen for the large probability prospects, while past profits of the recipients have no influence on satisfaction ratings.

### 3.3 Discussion

The social norm hypothesis and the amplification of fourfold pattern hypothesis make very different predictions on behavior for small probabilities in the gain domain. While for large probabilities both theories predict an increase in risk aversion under responsibility, for small probabilities the social norm argument predicts a cautious shift towards increased risk aversion (or reduced risk seeking), whereas the amplification argument predicts *increased* risk seeking. Having directly tested these contradictory predictions in experiment II, we conclude that the social norm dictating a cautious shift under conditions of responsibility has been discredited as an explanation of the results: an increased fourfold pattern of risk attitudes explains our results well. At the same time, this finding also excludes explanations based on which our initial effects could have been due to stake effects rather than responsibility.

The effects we find are, while statistically significant, not very strong from a quantitative point of view. This is however not so surprising if one thinks how our study has been consciously designed in a way as to constitute a lower bound on responsibility effects. On the one hand, the recipient is an anonymous other about whom no information is disclosed to the decision maker, and who has no power to reward or punish the decision maker. On the other hand, the decision maker is affected by his decisions in a perfectly parallel way to the recipient, so that deciding in a way that is considered 'optimal' for a recipient carries costs in terms of the decision maker's own preferences. There may be different possibilities to increase the incidence of responsibility on decisions, including conveying personal information about the recipient, increasing the number of recipients for whom the decision maker is responsible, or reducing the stakes the decision maker herself has in the outcome. Such manipulations are left for future research.

While an accentuation of the fourfold pattern of risk attitudes is a good fit for our results, we have not fully proven that such an accentuation takes place. Indeed, we miss results for small probability losses. While such an additional result may seem desirable, our experiment was designed with the explicit purpose of testing two different predictions in the gain domain against each-other. While the fourfold-pattern hypothesis finds strong support in our data, it is not impossible that a different explanation could exist for our results. Indeed, even if the interpretation of an increase in the fourfold pattern of risk attitudes prevails—or at least an increase in typical risk attitudes found at the individual level—such an interpretation is merely descriptive in nature. The more fundamental question of *why* we observe such a shift in risk attitudes under responsibility remains to be answered.

The fact that typical individual risk attitudes are accentuated under conditions of responsibility provides an indication that increased responsibility does by no means push decisions closer to expected utility maximization—generally held to be normative—but rather farther away from it. There seems, however, to be general agreement on this tendency, as indicated by our satisfaction rating patterns. Indeed in experiment I, we found recipients to be generally satisfied with safe choices in the gain domain, but dissatisfied with such choices in the loss domain. Given that safe choices have already been found to decrease under conditions of responsibility in the loss domain, this is indeed a strong indication for the perceived social acceptance (or at least desirability) of such choices. A similar pattern can be seen in experiment II, where safe choices were deemed satisfactory for the large probability prospect, but very unsatisfactory for the small probability prospect. If anything, satisfaction ratings thus seem to indicate that the shift in choice behavior observed under responsibility was perceived as too weak by the recipients themselves.

Whatever the psychological reasons behind our findings may be, the mere economic fact of more extreme decision patterns obtaining under responsibility remains. Such factors may have important consequences for economic predictions and for policy design. Probability weighting—from which the fourfold pattern is thought to derive to a large extent—has been used to explain the simultaneous take-up of insurance and lottery play (Wakker, 2010). The fourfold pattern of risk attitudes has also been used to explain reference point effects that have been observed in financial markets (Baucells et al. 2011; Wiseman & Gomez-Mejia, 1998) and for investment behavior by firms (Fiegenbaum, 1990; Fiegenbaum & Thomas, 1988). Our results provide a further indication that typical risk attitudes found for individuals may not only generalize to professional agents or firms, but even be reinforced to some extent.

#### **4. Conclusion**

We systematically explore decision situations under risk in which a decision maker bears responsibility for somebody else's outcomes as well as for her own. In the gain domain, and for medium to large probabilities, we confirm the intuition that being responsible for somebody else's payoffs increases risk aversion. Looking at risk attitudes in the loss domain, however, we found an increase in risk seeking under conditions of responsibility.

This raises issues about the extent to which changed behavior under responsibility may depend on a social norm of caution in situations of responsibility, or to what extent pre-existing risk attitudes found at the individual level may simply be accentuated under responsibility. To further explore this issue, we design a second experiment to explore risk-taking behavior for gain prospects offering very small or very large probabilities of winning. For large probabilities, we find increased risk aversion, thus confirming our earlier finding. For small probabilities, on the other hand, we find



an increase of risk seeking under conditions of responsibility. The latter finding thus discredits hypotheses of a social rule dictating caution under responsibility, and points towards an amplification of the fourfold pattern of risk attitudes found for individual decisions.

At the present point we can only speculate on what may underlie such an amplification of individual risk attitudes. Additional evidence—possibly from neighboring disciplines such as neuroscience—will probably be needed to fully understand the underlying dynamics. Nevertheless, our findings point out how important and resilient to debiasing these risk attitudes are, and hence the importance of considering them in policy design or for the training and supervising of decision makers.

# Appendix

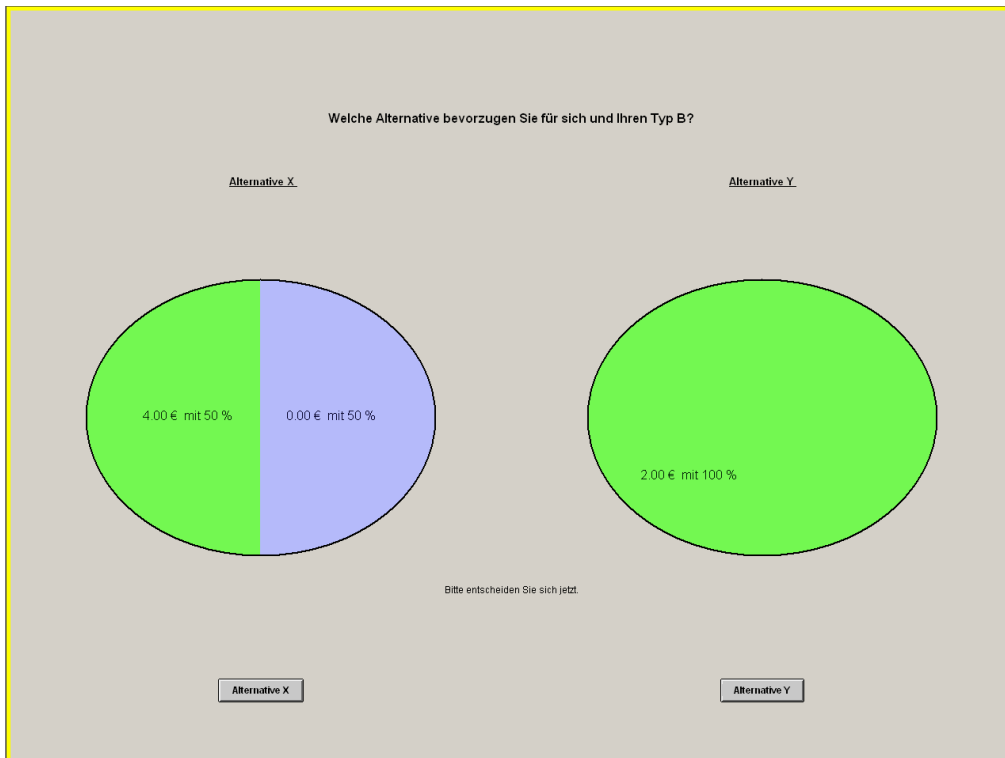
## A1. Tables

Table A1: Overview of Lotteries

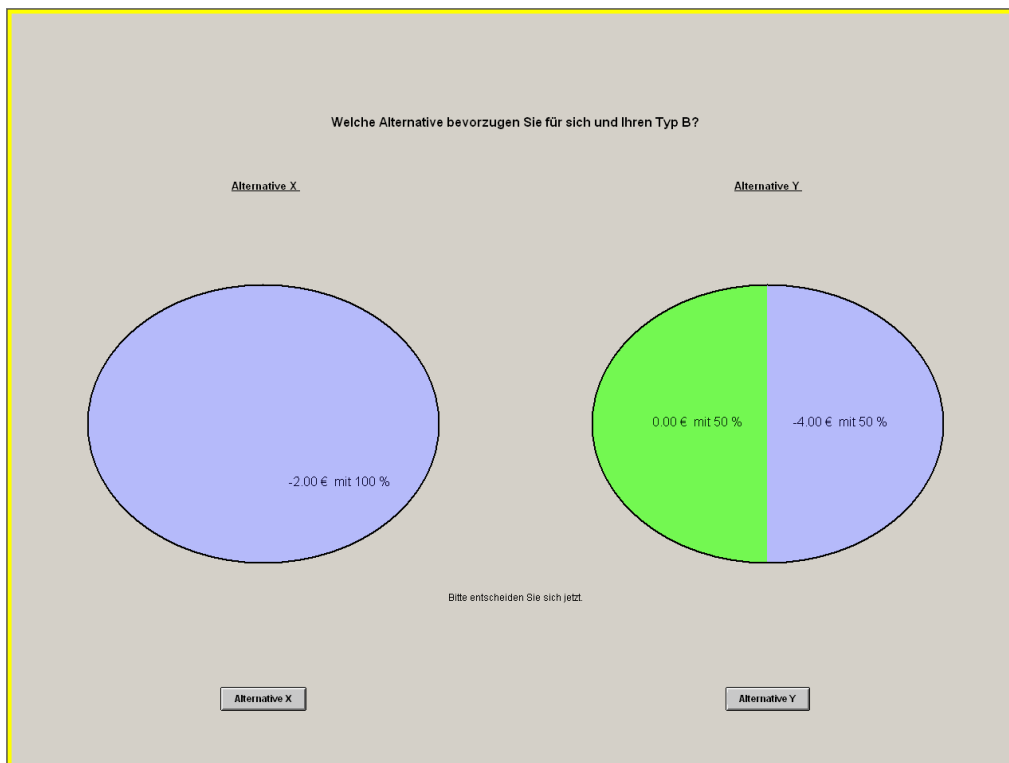
Lottery Number	Option A ("Safe")				Option B ("Risky")				Category
	Prob Left	Amount Left	Prob Right	Amount Right	Prob Left	Amount Left	Prob Right	Amount Right	
1	1	2	0	0	0.5	4	0.5	0	Base
2	1	2.5	0	0	0.5	4	0.5	0	Sensitivity Up
3	1	1.5	0	0	0.5	4	0.5	0	Sensitivity Down
4	1	3	0	0	0.5	5	0.5	1	Positive Shift
5	0.5	3	0.5	1	0.5	4	0.5	0	Lottery Choice
6	1	0	0	0	0.5	2	0.5	-2	Mixed Prospect
7	1	2	0	0	0.5	5	0.5	-1	MPS
8	0	0	1	-2	0.5	0	0.5	-4	Loss shift
9	1	4	0	0	0.5	8	0.5	0	Base
10	1	5	0	0	0.5	8	0.5	0	Sensitivity Up
11	1	3	0	0	0.5	8	0.5	0	Sensitivity Down
12	1	6	0	0	0.5	10	0.5	2	Positive Shift
13	0.5	6	0.5	2	0.5	8	0.5	0	Lottery Choice
14	1	0	0	0	0.5	4	0.5	-4	Mixed Prospect
15	1	4	0	0	0.5	10	0.5	-2	MPS
16	0	0	1	-4	0.5	0	0.5	-8	Loss shift
17	1	6	0	0	0.5	12	0.5	0	Base
18	1	7.5	0	0	0.5	12	0.5	0	Sensitivity Up
19	1	4.5	0	0	0.5	12	0.5	0	Sensitivity Down
20	1	9	0	0	0.5	15	0.5	3	Positive Shift
21	0.5	9	0.5	3	0.5	12	0.5	0	Lottery Choice
22	1	0	0	0	0.5	6	0.5	-6	Mixed Prospect
23	1	6	0	0	0.5	15	0.5	-3	MPS
24	0	0	1	-6	0.5	0	0.5	-12	Loss shift
25	1	8	0	0	0.5	16	0.5	0	Base
26	1	10	0	0	0.5	16	0.5	0	Sensitivity Up
27	1	6	0	0	0.5	16	0.5	0	Sensitivity Down
28	1	12	0	0	0.5	20	0.5	4	Positive Shift
29	0.5	12	0.5	4	0.5	16	0.5	0	Lottery Choice
30	1	0	0	0	0.5	8	0.5	-8	Mixed Prospect
31	1	8	0	0	0.5	20	0.5	-4	MPS
32	0	0	1	-8	0.5	0	0.5	-16	Loss shift
33	1	10	0	0	0.5	20	0.5	0	Base
34	1	12.5	0	0	0.5	20	0.5	0	Sensitivity Up
35	1	7.5	0	0	0.5	20	0.5	0	Sensitivity Down
36	1	15	0	0	0.5	25	0.5	5	Positive Shift
37	0.5	15	0.5	5	0.5	20	0.5	0	Lottery Choice
38	1	0	0	0	0.5	10	0.5	-10	Mixed Prospect
39	1	10	0	0	0.5	25	0.5	-5	MPS
40	0	0	1	-10	0.5	0	0.5	-20	Loss shift

## A2. Figures

### Figure A1: Screenshots



### Gain Lottery



### Loss Lottery

### A3. Prospect type regression

**Table A1:** Random Effects Probit Regression: coefficients show marginal effects relative to choices in the basic prospect pair; \*\*\* represents significance at  $p=0.01$ , \*\* at  $p=0.05$  and \* at  $p=0.10$ .

Dep. Var: choice of safe prospect	I	II	III
Sensitivity up	0.185*** (0.023)	0.185*** (0.023)	0.185*** (0.023)
Sensitivity down	-0.465*** (0.032)	-0.465*** (0.032)	-0.485*** (0.033)
Positive shift	-0.161*** (0.034)	-0.161*** (0.034)	-0.170*** (0.035)
Lottery choice	0.101*** (0.026)	0.101*** (0.026)	0.098*** (0.026)
Mixed Lottery	0.059** (0.028)	0.059** (0.028)	0.060** (0.028)
Mean-preserving	-0.065** (0.032)	-0.65** (0.032)	-0.069** (0.033)
Loss Shift	-0.171*** (0.034)	-0.172*** (0.032)	-0.183*** (0.035)
Female		0.080** (0.036)	0.080** (0.036)
Age		0.010** (0.005)	0.010** (0.005)
Stake size			0.064*** (0.006)
Nr. Observation (subjects)	3840 (96)	3840 (96)	3840 (96)
Wald Chi2	510.80	515.91	608.33

Table A1 shows a random effects Probit model, with coefficients indicating the deviation of choices with respect to the basic prospect pair. In addition to the effects already discussed in the main text, it shows that females are on average significantly more risk averse than males. Also, risk aversion increases with age. Both findings are commonly found in decision making under risk (Donkers, Melenberg, & Soest, 2001; Eckel & Grossman, 2008). More interestingly, we find an effect of stake size, represented by the expected value of the prospect (taken in absolute terms for the pure loss prospect). The higher the stakes of the decision, the more risk averse subjects become on average. This is in agreement with general findings in the literature (Binswanger, 1980; Kachelmeier & Shehata, 1992; Lefebvre, Vieider, & Villeval, 2010).

#### **A4. Instructions** (IND = Individual Treatment, RESP = Responsibility Treatment)

**Welcome to the experiment and many thanks for your participation!**

*Please stop talking to other participants of the experiment from now on*

#### **General rules concerning the procedure**

This experiment serves the investigation of economic decision making. You can earn money which will be paid to you in cash after the experiment.

During the experiment you and all other participants will be asked to make decisions.

In total, the experiment lasts for approximately **1 hour and 15 minutes**. Please raise your hand in case you have any questions during the experiment. One of the experimenters will then come to you and answer your questions in private. In the interest of clarity, we use male terms only in the instructions.

#### **Payment**

You receive 4 Euro for arriving in time in addition to your earnings from the experiment. There is a possibility that you suffer losses from specific decisions. Possible losses must be offset with your earnings from other decision situations and/or with your 4 Euro starting balance.

In (the very unlikely) case of an overall loss from the experiment, you may choose between paying it back in cash or by working as an assistant in the laboratory (5 Euro per half an hour).

#### **Support**

You are provided with a pen on your desk.

Please type your decisions into the computer. While making your decisions, there is a clock counting down in the right upper corner of your computer screen. This clock serves as a guide for how much time it should take for you to make your decisions. Of course, you are allowed to exceed the time; particularly in the beginning, this may be happening quite frequently. Once time has run out, it is only the pure information screens, which do not ask you to make any decisions that will be dismissed.

---

#### **Lottery decision making**

[IND: You do not interact with other participants of the experiment at any point during the experiment. Your final payment is determined exclusively by your own decisions and according to the rules explained in the following. Other participants do not find out about your decisions and about how much you have earned at any point during or after the experiment. In the same manner, you do not learn about other participants' decisions and their earnings at any point during or after the experiment.]

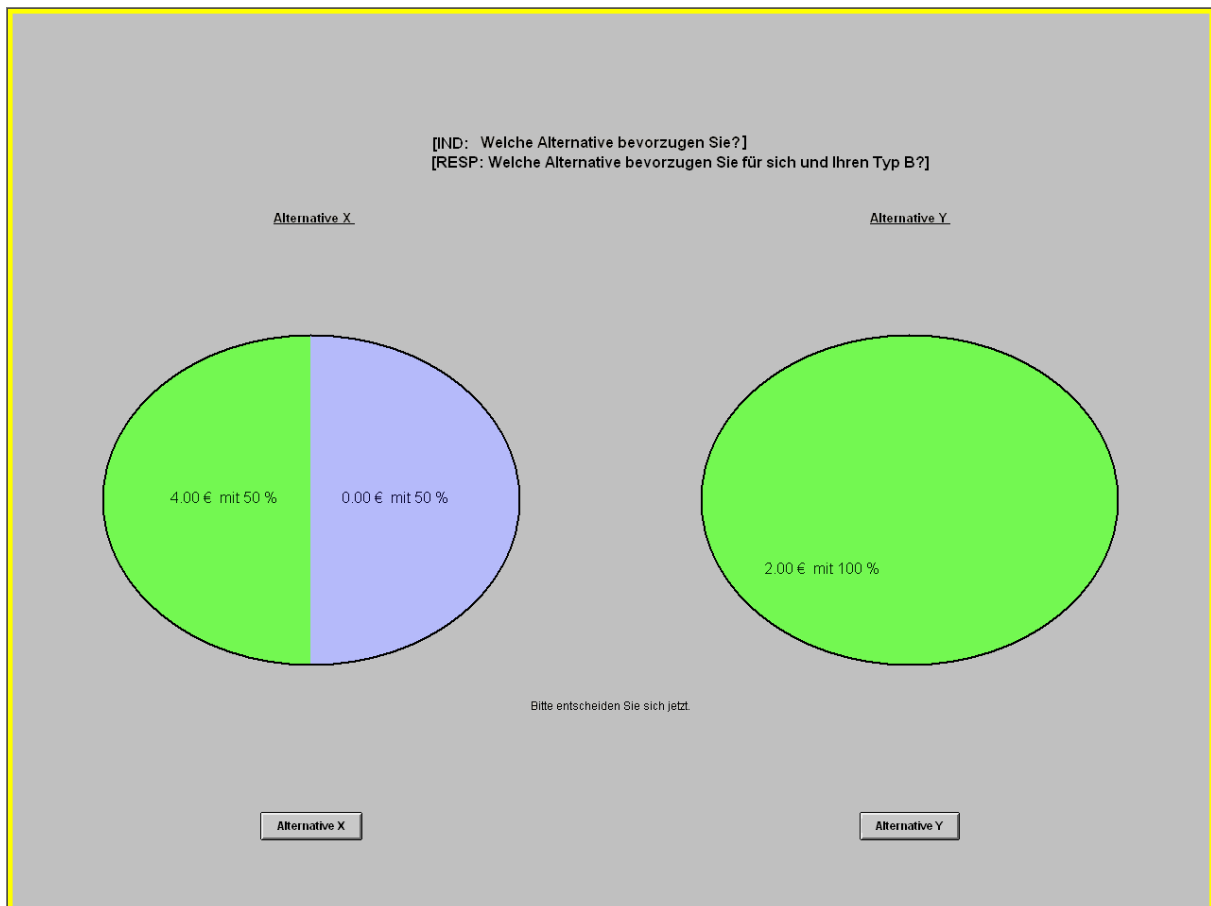
[RESP: You will be matched with another participant of the experiment. Your decisions or the decisions of the other participant determine your payment according to the rules explained in the following. At no point during or after the experiment other participants in the experiment learn your identity. In the same manner, you do not find out the identity of other participants at any point during or after the experiment.]

#### **Task**

[RESP: There are two types of participants, **type A and type B**. The matching is such that a type A person is always matched with a type B person. At the beginning your computer screen will tell you which type you are. **The decision on which type you are is made randomly by the computer**. You will remain the same type throughout the experiment.

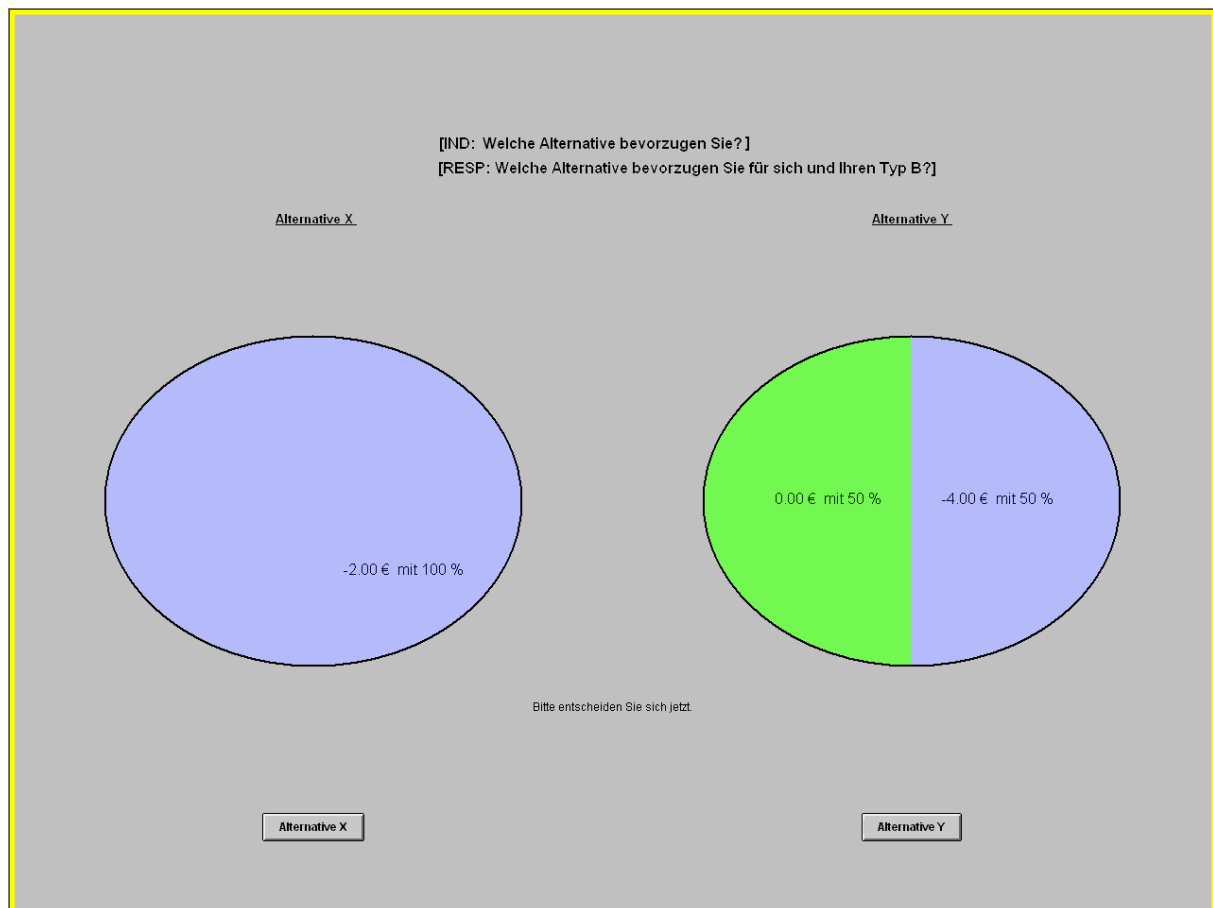
**Decisions are made by type A only.** Participants of type A make their decision **for themselves and at the same time for their matching partner of type B.** This means that **every decision that applies for type A applies to his matching partner of type B in exactly the same way.**]

**In total, there are 40 periods.** [IND: You] [RESP: Type A persons] have to make **one decision per period** for which [IND: you] [RESP: they] always have to choose between two alternatives. A representative decision scenario may look like the following:



In the above example, [IND: you have] [RESP: type A player has] a choice between **alternative X**, that yields **4 Euro** with a probability of **50%** and **0 Euro** with the complementary probability of **50%** [IND: to you] [RESP: to him and to his matching partner of type B], and **alternative Y**, that yields **2 Euro** with a probability of **100%** [IND: to you] [RESP: to him and to his matching partner of type B]. [IND: You decide] [RESP: Type A player decides] on one of the two alternatives by clicking on either the button “Alternative X” or the button “Alternative Y” below the pie charts. An alternative such as alternative Y from the above example is called a “**certain payment**” since it is paid out with a probability of 100%. An alternative such as alternative X is called “**lottery**” since one amount is paid out with a probability of 50 % and another amount is paid out with a probability of 50%. The alternatives between which [IND: you have] [RESP: type A has] to choose in each period either represent a **choice between a certain payment and a lottery**, or a **choice between two different lotteries**. In both alternatives there may be **positive as well as negative amounts** involved.

A decision scenario involving negative amounts may look like the following:



In this example, [IND: you have] [RESP: type A player has] a choice between **alternative X**, that yields **-2 Euro** (a loss of 2 Euro) with a probability of **100%** [IND: to you] [RESP: to him and to his matching partner of type B], and **alternative Y**, that yields **0 Euro** with a probability of **50%** and **-4 Euro** (a loss of 4 Euro) with a complementary probability of **50%** [IND: to you] [RESP: to him and his matching partner of type B].

[RESP: **Type B players are provided with the information on the decisions of their type A partner with a lag of one period.** This means that type B players see the decision scenario on their screens with which their type A partner was confronted in the previous period and are told the alternative which their type A partner chose. Finally, type B players can indicate whether they were “content” with the decision or “not content”. The statements of contentment do not influence type B’s earnings or the earnings of his type A partner. **The statements of contentment do not get passed on to type A.**]

**Please note:** Carefully check the alternatives that you can choose from. Pay attention to the corresponding **signs** of the amounts since they can be **negative or positive**.

---

## Payment

[IND: It is in your interest **to think thoroughly about each decision** because **each single decision may determine your payment** at the end of the experiment.]

---

[RESP: If you are a type A player, it is in your interest **to think thoroughly about each decision** because **each single decision may determine your payment as well as the payment of your type B partner** at the end of the experiment.]

---

This happens as follows:

To determine final payments the computer randomly selects **three different periods that are relevant for the payment at the end of the experiment**. Each period is **equally likely to be selected** by the computer. The sum of the earnings from the three selected periods determines [IND: your final payment] [RESP: the final payment for type A as well as for this type B partner].

[IND: On your screen you get told which periods got selected at random and how you chose in these periods.]

[RESP: All participants are told on their screens which periods got selected at random and how type A chose in these periods.]

In case [IND: you] [RESP: type A] chose a **certain payment** in a selected decision period, [IND: you] [RESP: type A and his type B partner] receive the amount of the certain payment as [IND: your] [RESP: their] earning from this selected period.

In case [IND: you] [RESP: type A] chose a **lottery**, the outcome of the lottery has to be determined first. To this end, lottery numbers from 1 to 6 get assigned to the possible earning amounts. As there are only lotteries involving probabilities of 50%, lottery numbers 1, 2 and 3 get assigned to one amount and lottery numbers 4, 5 and 6 get assigned to the other amount. The computer randomly determines which amount gets assigned to the low numbers and which amount gets assigned to the high numbers. Finally, a **randomly chosen participant is asked to roll a 6-sided die in public**. The amount corresponding to the lottery number that was rolled is then paid out for the selected period.

***Example 1:*** The computer selects a period in which [IND: you] [RESP: type A] chose alternative X which yields **4 Euro** with a probability of 50% and **0 Euro** with a probability of 50%. Lottery numbers **1, 2 and 3 were assigned to the amount of 4 Euro** and numbers **4, 5 and 6 were assigned to the amount of 0 Euro** by the computer. [IND: You] [RESP: Type A and his type B partner] thus have a 50% chance to receive 4 Euro and a 50% chance to receive 0 Euro. If, for example, the lottery number 1 is rolled, the earnings from this period amount to **4 Euro** [IND: for you] [RESP: for type A and for his type B partner]. If, for example, the lottery number 5 is rolled, the earnings from this period amount to **0 Euro** [IND: for you] [RESP: for type A and for his type B partner].

***Example 2:*** The computer selects a period in which [IND: you] [RESP: type A] chose alternative Y which yields **-4 Euro** (a loss of 4 Euro) with a probability of 50% and **0 Euro** with a probability of 50%. Lottery numbers **1, 2 and 3 were assigned to the amount of -4 Euro** and numbers **4, 5 and 6 were assigned to the amount of 0 Euro** by the computer. [IND: You] [RESP: Type A and his type B partner] thus have a 50% chance to receive **0 Euro** and a 50% chance to receive **-4 Euro** (a loss of 4 Euro). If, for example, the lottery number 4 is rolled, the earnings from this period amount to **0 Euro** [IND: for you] [RESP: for type A and for his type B partner]. If, for example, the lottery number 3 is rolled, the earnings from this period amount to **-4 Euro** [IND: for you] [RESP: for type A and for his type B partner]. This loss must be offset with earnings from other decisions and/or with your starting balance of 4 Euro.

Your payment is formed by the sum of your earnings in the three selected periods.

[RESP: **Two participants that are matched with each other** (type A and his type B partner) always have **identical earnings and thus final payments.**]



Please note that it is optimal [IND: for you] [RESP: for type A] to choose the alternative that [IND: you prefer for yourself] [RESP: he prefers for himself and for his type B partner].  
There is **no possibility to increase the final payment by adopting a different behavior.**

## References

- Abdellaoui, Mohammed (2000). Parameter-Free Elicitation of Utility and Probability Weighting Functions. *Management Science* 46(1), 1497-1512.
- Abdellaoui, Mohammed, Aurélien Baillon, Laetitia Placido, & Peter P. Wakker (2011). The Rich Domain of Uncertainty: Source Functions and Their Experimental Implementation. *American Economic Review* 101, 695-723
- Abdellaoui, Mohammed, Han Bleichrodt, & Corina Paraschiv (2007). Loss Aversion under Prospect Theory: A Parameter-Free Measurement. *Management Science* 53(10), 1659-1674.
- Abdellaoui, Mohammed, Olivier L'Haridon, & Horst Zank (2010). Separating Curvature and Elevation: A parametric Probability Weighting Function. *Journal of Risk and Uncertainty* 41(1), 39-65
- Bateman, Ian, & Alistair Munro (2008). An Experiment on Risky Choice Amongst Households. *Economic Journal* 115, C176-C189.
- Baucells, Manel, Martin Weber, & Frank Welfens (2011). Reference Point Formation and Updating. *Management Science* 57(3), 506-519.
- Binswanger, Hans P. (1980). Attitudes toward Risk: Experimental Measurement in Rural India. *American Journal of Agricultural Economics* 62(3), 395-407.
- Bleichrodt, Han, & José Luis Pinto (2000). A Parameter-Free Elicitation of the Probability Weighting Function in Medical Decision Analysis. *Management Science* 46(11), 1485-1496.
- Bolton Gary E., & Axel Ockenfels (2010). Risk Taking and Social Comparison.- A Comment on "Betrayal Aversion: Evidence from Brazil, China, Oman, Switzerland, Turkey, and the United States" *American Economic Review* 100(1), 628-633.
- Booij, Adam, Bernard M. S. van Praag, & Gijs van de Kuilen (2010). A Parametric Analysis of Prospect Theory's Functionals for the General Population. *Theory and Decision* 68(1-2), 115-148.
- Chakravarty, Sujoy, Glenn W. Harrison, Ernan E. Haruvy, & E. Elisabeth Rutström (2011). Are You Risk Averse over Other People's Money? *Southern Economic Journal*, forthcoming.
- Charness, Gary, & Matthew O. Jackson (2009). The Role of Responsibility in Strategic Risk Taking. *Journal of Economic Behavior and Organization* 69, 241-247.
- Dohmen, Thomas, Armin Falk, James Heckman, David Huffman, & Uwe Sunde, Jürgen Schupp, & Gert G. Wagner (2011). Individual Risk Attitudes: Measurement, Determinants, and Behavioral Consequences. *Journal of the European Economic Association* 9(3).
- Donkers, Bas, Bertrand Melenberg, & Arthur van Soest (2001) Estimating Risk Attitudes using

- Lotteries: A Large Sample Approach. *Journal of Risk and Uncertainty* 22(2), 165–195.
- Eckel, Catherine C., & Philip J. Grossman (2008). Men, Women, and Risk Aversion: Experimental Evidence. *Handbook of Experimental Economics Results*, Vol. 1, 1061–1073.
- Fiegenbaum, Avi (1990). Prospect Theory and the Risk-Return Association. *Journal of Economic Behavior and Organization* 14, 187–203.
- Fiegenbaum, Avi, & Howard Thomas (1988). Attitudes toward Risk and the Risk-Return Paradox: Prospect Theory Explanations. *Academy of Management Journal* 31(1), 85–106.
- Fischbacher, Urs (2007). z-Tree: Zurich Toolbox for Ready-made Economic Experiments. *Experimental Economics* 10(2), 171-178.
- Gneezy, Uri, & Jan Potters (1997). An Experiment on Risk-Taking and Evaluation Periods. *Quarterly Journal of Economics* 112, 631–646.
- Greiner, Ben (2004). The Online Recruitment System ORSEE 2.0 - A Guide for the Organization of Experiments in Economics. University of Cologne, Working Paper Series in Economics 10.
- Harbaugh, William T., Kate Krause, & Lise Vesterlund (2009). The Fourfold Pattern of Risk Attitudes in Choice and Pricing Tasks. *Economic Journal* 120(545), 595-611..
- Holt, Charles A., & Susan K. Laury (2002). Risk Aversion and Incentive Effects. *American Economic Review*, 1644-1655.
- Hsee, Christopher K., & Elke U. Weber (1997). A Fundamental Prediction Error: Self–Others Discrepancies in Risk Preference. *Journal of Experimental Psychology: General*, 146(1), 45–52.
- Humphrey, Steven J., & Elke Renner (2011). The Social Cost of Responsibility. Working Paper
- Jaccard, James, & Robert Turrisi (2003). *Interaction Effects in Multiple Regression*. Second Edition. Sage Publications, London.
- Kachelmeier, Steven J., & Mohamed Shehata (1992). Examining Risk Preferences under High Monetary Incentives: Experimental Evidence from the People’s Republic of China. *American Economic Review* 82(5), 1120-1141.
- Kahneman, Daniel, & Amos Tversky (1979). Prospect Theory: An Analysis of Decision under Risk. *Econometrica* 47(2), 263-291.
- Köbberling, Veronika, & Peter P. Wakker (2005). An Index of Loss Aversion. *Journal of Economic Theory* 122, 119-131.
- Lefebvre, Mathieu, Ferdinand M. Vieider, & Marie Claire Villeval (2010). Incentive Effects on Risk Attitude in Small Probability Prospects. *Economics Letters*, 109, 115–120.
- Maafi, Hela (2011). Preference Reversals under Ambiguity. *Management Science*, forthcoming.

- Pahlke, Julius, Sebastian Strasser, & Ferdinand M. Vieider (2012). Risk Taking for Others under Accountability. *Economics Letters* 114(1), 102-105.
- Payne, John W., Dan J. Laughhunn, & Roy Crum (1980). Translation of Gambles and Aspiration Level Effects in Risky Choice Behavior. *Management Science* 26(10), 1039–1060.
- Payne, John W., Dan J. Laughhunn, & Roy Crum (1981). Further Tests of Aspiration Level Effects in Risky Choice Behavior. *Management Science* 27(8), 953–958.
- Reynolds, Douglas B., Jacob Joseph, & Reuben Sherwood (2009). Risky Shift versus Cautious Shift: Determining Differences in Risk Taking between Private and Public Management Decision Making. *Journal of Business and Economics Research* 7(1), 63–77.
- Rohde, Ingrid M.T., & Kirsten I.M. Rohde (2011). Risk Attitudes in a Social Context. *Journal of Risk and Uncertainty* 43, 205-225.
- Schmidt, Ulrich, & Horst Zank (2005). What is Loss Aversion? *Journal of Risk and Uncertainty* 30(2), 157-167.
- Schoemaker, Paul J.H. (1990). Are Risk-Attitudes Related across Domains and Response Modes? *Management Science* 36(12), 1451-1463.
- Slovic, Paul, Melissa L. Finucane, Ellen Peters, & Donald G. MacGregor (2002). The affect heuristic, In *Heuristic and Biases: The Psychology of Intuitive Judgment*, Thomas Gilovich, Dale Griffin, and Daniel Kahneman (Eds.), 397-420. Cambridge University Press, New York
- Starmer, Chris (1999). Experimental Economics: Hard Science or Wasteful Tinkering? *Economic Journal* 109(453), 5-15
- Starmer, Chris (2000). Developments in Non-Expected Utility Theory: The Hunt for a Descriptive Theory of Choice under Risk. *Journal of Economic Literature*, vol. 38, 332-382.
- Sutter, Matthias (2009). Individual Behavior and Group Membership: Comment. *American Economic Review* 99(5), 2247–2257.
- Tversky, Amos, & Daniel Kahneman (1992). Advances in Prospect Theory: Cumulative Representation of Uncertainty. *Journal of Risk and Uncertainty* 5, 297-323.
- Wakker, Peter P. (2010). *Prospect Theory for Risk and Uncertainty*. Cambridge University Press, Cambridge.
- Wiseman, Robert M., & Luis R. Gomez-Mejia (1998). A Behavioral Agency Model of Managerial Risk Taking. *Academy of Management Review* 23(1), 133–153.

## Discussion Paper of the Research Area Markets and Politics 2012

### Research Professorship & Project: **The Future of Fiscal Federalism**

- Benny Geys** SP II 2012-101  
Association Membership and Generalised Trust:  
Are Connections Between Associations Losing their Value?
- Benny Geys** SP II 2012-102  
Success and Failure in Electoral Competition:  
Selective Issue Emphasis under Incomplete Issue Ownership
- Tim Lohse, Julio R. Robledo** SP II 2012-103  
Public Self-Insurance and the Samaritan's Dilemma in a Federation
- Changxia Ke, Kai A. Konrad, Florian Morath** SP II 2012-104  
Alliances in the Shadow of Conflict
- Benny Geys, Karsten Mause** SP II 2012-105  
Delegation, Accountability & Legislator Moonlighting:  
Agency Problems in Germany
- Zuzana Murdoch, Jarle Trondal** SP II 2012-106  
Contracted Government:  
Unveiling the European Commission's Contracted Staff
- Benny Geys, Jan Vermeir** SP II 2012-107  
Party Cues in Elections under Multilevel Governance:  
Theory and Evidence from US States
- Kristof De Witte, Benny Geys** SP II 2012-108  
Citizen Coproduction and Efficient Public Good Provision:  
Theory and Evidence from Local Public Libraries
- Emmanuel Dechenaux, Dan Kovenock, Roman M. Sheremeta** SP II 2012-109  
A Survey of Experimental Research on Contests, All-Pay Auctions  
and Tournaments

### Research Unit: **Market Behavior**

- Sebastian Braun, Nadja Dwenger, Dorothea Kübler, Alexander Westkamp** SP II 2012-201  
Implementing Quotas in University Admissions:  
An Experimental Analysis
- Onur Kesten, Morimitsu Kurino** SP II 2012-202  
On the (Im)possibility of Improving Upon the Student-Proposing  
Deferred Acceptance Mechanism

### Research Unit: **Economics of Change**

- Daniel Friedman, Steffen Huck, Ryan Oprea, Simon Weidenholzer** SP II 2012-301  
From Imitation to Collusion: Long-Run Learning in a Low-Information  
Environment

- Miguel A. Costa-Gomes, Steffen Huck, Georg Weizsäcker** SP II 2012-302  
Beliefs and Actions in the Trust Game: Creating Instrumental Variables to Estimate the Causal Effect
- Steffen Huck, Imran Rasul, Andrew Shephard** SP II 2012-303  
Comparing Charitable Fundraising Schemes: Evidence from a Field Experiment and a Structural Model
- Steffen Huck, Justin Mattias Valasek** SP II 2012-304  
Institutionalizing Eurozone Exit: A modified NEWNEY approach
- Jenny Simon, Justin Mattias Valasek** SP II 2012-305  
Efficient Fiscal Spending by Supranational Unions
- WZB Junior Research Group: **Risk and Development**
- Ferdinand M. Vieider, Thorsten Chmura, Peter Martinsson** SP II 2012-401  
Risk Attitudes, Development, and Growth
- Ferdinand M. Vieider, Julius Pahlke, Sebastian Strasser** SP II 2012-402  
Responsibility Effects in Decision Making under Risk