

Brown, J. David; Hotchkiss, Julie L.; Quispe-Agnoli, Myriam

Working Paper

Does employing undocumented workers give firms a competitive advantage?

Working Paper, No. 2012-2a

Provided in Cooperation with:

Federal Reserve Bank of Atlanta

Suggested Citation: Brown, J. David; Hotchkiss, Julie L.; Quispe-Agnoli, Myriam (2012) : Does employing undocumented workers give firms a competitive advantage?, Working Paper, No. 2012-2a, Federal Reserve Bank of Atlanta, Atlanta, GA

This Version is available at:

<https://hdl.handle.net/10419/70623>

Standard-Nutzungsbedingungen:

Die Dokumente auf EconStor dürfen zu eigenen wissenschaftlichen Zwecken und zum Privatgebrauch gespeichert und kopiert werden.

Sie dürfen die Dokumente nicht für öffentliche oder kommerzielle Zwecke vervielfältigen, öffentlich ausstellen, öffentlich zugänglich machen, vertreiben oder anderweitig nutzen.

Sofern die Verfasser die Dokumente unter Open-Content-Lizenzen (insbesondere CC-Lizenzen) zur Verfügung gestellt haben sollten, gelten abweichend von diesen Nutzungsbedingungen die in der dort genannten Lizenz gewährten Nutzungsrechte.

Terms of use:

Documents in EconStor may be saved and copied for your personal and scholarly purposes.

You are not to copy documents for public or commercial purposes, to exhibit the documents publicly, to make them publicly available on the internet, or to distribute or otherwise use the documents in public.

If the documents have been made available under an Open Content Licence (especially Creative Commons Licences), you may exercise further usage rights as specified in the indicated licence.

Does Employing Undocumented Workers Give Firms a Competitive Advantage?

J. David Brown, Julie L. Hotchkiss, and Myriam Quispe-Agnoli

Working Paper 2012-2a
November 2012

Abstract:

Using administrative data from the state of Georgia, this paper finds that, on average, across all firms, employing undocumented workers reduces a firm's hazard of exit by 19 percent. The advantage to firms from employing undocumented workers increases as more firms in the industry do so, decreases with the skill level of the firm's workers, increases with the breadth of a firm's market, and increases with the labor intensity of the firm's production process.

JEL classification: J15, C41, J42

Key words: firm survival, illegal immigrants, hazard rates, survival analysis

Valuable research assistance was provided by Nicole Baerg, Katharyn Rees, Navnita Sarma, and Menbere Shiferaw. The authors also benefited from consultations with Clark Burdick and Russell Hudson from the Social Security Administration and from discussions with participants at seminars at the Federal Reserve Bank of Atlanta, Oberlin College, and Heriot-Watt University. Additional helpful comments and suggestions were also received from Atanas Christev, Jacques Melitz, Giovanni Peri, and Mark Schaffer. The views expressed here are the authors' and not necessarily those of the Federal Reserve Bank of Atlanta or the Federal Reserve System. Any remaining errors are the authors' responsibility. This paper is forthcoming in the *Journal of Regional Science*.

Please address questions regarding content to J. David Brown, School of Management and Languages, Heriot-Watt University, Edinburgh EH14 4AS, United Kingdom, 44 131 451 3493, jdavidbrown68@gmail.com; Julie Hotchkiss, Research Department, Federal Reserve Bank of Atlanta, 1000 Peachtree Street, N.E., Atlanta, GA 30309, 404-498-8198, julie.l.hotchkiss@atl.frb.org; or Myriam Quispe-Agnoli, Community and Economic Development Department, Federal Reserve Bank of Atlanta, 1000 Peachtree Street, N.E., Atlanta, GA 30309, 404-498-8930, myriam.quispe-agnoli@atl.frb.org.

Federal Reserve Bank of Atlanta working papers, including revised versions, are available on the Atlanta Fed's website at www.frbatlanta.org. Click "Publications" and then "Working Papers." Use the WebScriber Service (at www.frbatlanta.org) to receive e-mail notifications about new papers.

DOES EMPLOYING UNDOCUMENTED WORKERS GIVE FIRMS A COMPETITIVE ADVANTAGE?

1. INTRODUCTION

The purpose of this paper is to determine whether firms that employ undocumented workers are at a competitive advantage when compared with identical firms that do not employ undocumented workers. A unique employer-employee matched data set from the state of Georgia is used to model the ultimate measure of competitive advantage -- firm survival. It has often been claimed in the immigration debate that firms employing undocumented workers have an advantage over their competitors (for example, see Subcommittee on Workforce Protections 2006, pp. 25-26), but this has never been empirically tested.¹ In addition, there is some evidence that firms enjoy monopsony power in the employment of undocumented workers (see Hotchkiss and Quispe-Agnoli, forthcoming), suggesting that firms that employ undocumented workers have a significant cost advantage, thus a competitive edge, even over firms employing immigrants in general. Further evidence that firms enjoy a competitive advantage might be found in the opposition from business that many states have faced in their efforts to enact immigration reform.² The results in this paper will provide insight as to the source of that opposition.

There is a large literature on undocumented workers (see Hanson 2006 for a review), but

¹ Røed and Schøne (2006) find that firms employing non-western immigrants have higher profits than firms employing western immigrants; they attribute this finding to discrimination. To be sure, firm survival is just one of many outcomes one might consider when thinking about the potential impact of undocumented worker employment on a firm's performance. Employment growth, profit, and productivity are all outcomes of interest whose investigation will have to wait for a later time.

² For example, see news reports of opposition from businesses in Indiana (<http://www.indianacompact.com/news/alliance-for-immigration-reform-in-indiana-releases-new-information-on-oppo/>), Oregon (http://videos.oregonlive.com/oregonian/2011/07/immigration_reform_proposal_me.html), and Florida (<http://www.nbcmiami.com/news/local/Is-opposition-building-to-Gov-Scotts-Arizona-style-immigration-reform-115251799.html>).

almost no prior studies have investigated undocumented worker employment at the firm level. One exception is Morales (1983), who conducts eight case studies of Los Angeles auto parts manufacturers. She finds that firms adapt to growing competition by employing undocumented workers, who are in plentiful supply in that area.³ The firms employing undocumented workers tend to be more labor intensive and face more variable demand (necessitating easily released labor). There is no previous work on the firm performance effects of employing undocumented workers. However, Champlin and Hake (2006) examine the increased need for short-term, low-skilled workers during the industrialization of the meatpacking industry from 1970-2002. They find that the presence of illegal immigrants within the factories reduced the bargaining power of shop workers and increased employer control.

This paper does not address the overall welfare impact of firms employing undocumented workers. For example, the potential for consumers to pay lower prices as a result of firms employing cheaper labor (Cortes 2008) or the possibility that documented workers may earn lower wages as a result of the presence of undocumented workers (Hotchkiss, et al. 2012) are issues not addressed here.

2. THEORETICAL FRAMEWORK

There is empirical evidence that firms pay undocumented workers lower wages than documented workers.⁴ Depending on the source of the wage gap, firms employing undocumented workers may or may not receive a competitive advantage. The wage gap could simply reflect lower undocumented worker productivity. Undocumented workers may be

³ Of course since there were hardly any sanctions in place for employing undocumented workers, the workers in Morales' study may be more reflective of the immigrants overall than undocumented workers specifically.

⁴ See Hotchkiss, et al. (2012), Kassoudji and Cobb-Clark (2002), and Rivera-Batiz (1999). We implicitly assume firms know whether a worker is documented or not, though in reality firms must conduct costly background checks to be sure. Among firms not wishing to employ undocumented workers, it is common practice to avoid workers with characteristics associated with undocumented status, such as English language ability and ethnicity rather than go to the trouble of doing a background check. It may thus be more accurate to label the two groups "suspected documented workers" and "suspected undocumented workers".

systematically less educated, have less work experience, and have poor English language skills (Borjas and Katz 2005). Firms may also incur additional expenses from employing undocumented workers, such as fines, a loss of reputation, and costs of avoiding prosecution, so they may be willing to employ undocumented workers only if the wage is lower so as to compensate for such costs. Thus, a wage gap is not necessarily inconsistent with workers being paid their marginal products, and in such a scenario firms employing undocumented workers should have no competitive advantage over firms not employing undocumented workers.

If, however, firms are able to exercise monopsony power over undocumented workers, then firms could pay these workers less than their marginal product and gain a competitive advantage. In order for firms to gain a competitive advantage undocumented workers only need to be willing to accept a wage that is lower than their marginal revenue product.⁵ The source of the firm's monopsonistic power in the labor market derives from the behavior of workers, not from the degree of competition in the firm's product market. In other words, the presence of a large number of competitive firms does not preclude monopsonistic discrimination. In fact, intense product market competition will put additional pressure on an employer to take advantage of differential labor supply elasticities across workers.

The labor market for undocumented workers meets the classic conditions in which employers can be successful in practicing monopsonistic discrimination -- identifiable characteristics on which groups of workers can be segmented, and one of the groups of workers being limited in their employment opportunities. First of all, documented and undocumented workers in the U.S. are believed to be distinguishable from one another without much effort. Data from the American Community Survey (ACS) and from the Department of Homeland

⁵ See Manning (2011) for a review of the empirical evidence of employer monopsony power in different labor markets.

Security (DHS) suggest that between 40 and 60 percent of Mexicans in the U.S. are undocumented.⁶ In the absence of time-consuming document verification, ethnicity and language proficiency may be used by employers as a proxy for their best guess of whether a worker is undocumented (Dávila, et al. 1993 find that merely an accent can lead employers to assume an English-proficient Mexican worker is undocumented).

Second, because of fear of being deported, undocumented workers are likely unwilling to complain about low wages or poor work environments, which necessarily limits employment opportunities (e.g., Stark 2007). Also, the more employers to which undocumented workers expose themselves, the higher the potential risk of deportation. And indeed, it is likely that there are many firms that will simply refuse to hire undocumented workers, or that undocumented workers are geographically constrained by the support (or lack) of social networks (e.g., Semple 2008). All of these factors reduce employment opportunities of undocumented workers, *ceteris paribus*, and they are why we would expect firms to be able to exercise monopsony power in their employment of undocumented workers.

The bottom line is that the ability for firms to exercise monopsony power in their employment of undocumented workers provides a mechanism through which firms gain a competitive advantage for doing so. This paper provides the first direct investigation of the existence of that competitive advantage.

3. DATA

The primary data used for the analyses in this paper are the Employer File and the Individual Wage File, compiled by the Georgia Department of Labor for the purposes of

⁶ The 2008 ACS estimates that 11.4 million people in the U.S. were born in Mexico (<http://www.census.gov/population/www/socdemo/hispanic/cps2008.html>). The DHS estimates that 7.03 million undocumented workers from Mexico were in the U.S. in 2008 (http://www.dhs.gov/xlibrary/assets/statistics/publications/ois_ill_pe_2008.pdf).

administering the state's Unemployment Insurance (UI) program. These data are highly confidential and strictly limited in their distribution. The data are available from the first quarter of 1990 through the fourth quarter of 2006. The Employer File provides an almost complete census of firms. In the U.S. as a whole, the Employer File covers approximately 99.7 percent of all wage and salary workers (Committee on Ways and Means 2004).⁷ The establishment-level information includes the number of employees, the total wage bill, and the NAICS classification of each establishment.⁸ The 6-digit NAICS industry code and the county of location allow us to construct or merge in various industry- and county-level indicators.

The Individual Wage File is used to construct workforce characteristics at the firm level. We take advantage of the longitudinal nature of the data to calculate the firm's age, employment variability, turnover rates, worker tenure, and most importantly, determination of when the firm ceases operation. Regrettably, the data set contains no information about workers' demographics or, more importantly, immigration status.

Using SSNs to Identify Undocumented Workers

Details of how the SSN is used to identify undocumented workers are contained in Appendix A. The abbreviated version is that there are some easily identifiable ways in which a SSN is determined to be invalid. We conclude that some of those reasons are either errors or the result of incomplete record keeping by the firm. We restrict our identification of undocumented workers to invalid SSN that are more likely to have been generated by the workers -- numbers that look valid, but are not. Robustness of the results to this restriction are tested and discussed

⁷ Certain jobs in agriculture (basically small farms), domestic services (paid less than a certain amount each quarter), and non-profit organizations are excluded from UI coverage; excluded workers are not represented in the data. A particularly clear list of excluded employment can be found on New York State's Department of Labor web site: <http://www.labor.ny.gov/ui/dande/covered1.shtm>

⁸ For multi-establishment firms, the NAICS code assigned to the firm is that code corresponding to its establishment employing the greatest number of workers.

in Appendix D. Workers with invalid SSNs for any other reason are considered neither undocumented nor documented and, thus, are excluded from the analysis; this will clearly undercount the actual number of undocumented workers. However, all workers, regardless of SSN classification, are included in counts of aggregate firm employment. Note that the identification process we use in this paper does not make any assumptions about whether the employer knows a worker is documented or undocumented, and that we are not after a count of the number of undocumented workers in Georgia, but merely a representation of a firm's hiring behavior. We estimate that our sample represents roughly 22 percent of all undocumented workers in the state of Georgia.

The relative share levels and rate of growth identified using these data closely matches the rate of growth identified using different data sources by other researchers (for example, see Fortuny, et al. 2007 and Pena 2010), suggesting that our sample is reflective of the overall distribution of undocumented workers in Georgia (see Appendix A for details). Furthermore, since the undocumented workers here are actually showing up on employers' payrolls, it's very likely they are among the higher paid undocumented workers (e.g., relative to day laborers paid in cash). The implication for the analysis here is that the results likely underestimate the impact of employing undocumented workers on firm survival.

Sample Means

Table 1 compares some sample means across firms that do and do not employ undocumented workers. Many of the differences are as expected. For example, among firms that employ undocumented workers, a greater share of firms in the industry do so, indicating industry clustering; average wages, education, and tenure are lower among firms that employ undocumented workers; and there is greater churning among employing firms.

[Table 1 here]

We also see from Table 1 that firms employing undocumented workers tend to be larger, have multiple establishments, and are younger. We might have thought that older firms would have better developed access to undocumented worker supplies and therefore be more likely to employ undocumented workers than younger firms. However, perhaps younger firms are more likely to take risks or face greater pressures to improve their bottom line. Greater incidence of employing of undocumented workers by larger firms may reflect a more sophisticated record keeping process that increases the likelihood that any undocumented worker who is employed is also reported.

4. METHODOLOGY

The goal of the empirical analysis is to determine whether the practice of employing undocumented workers improves a firm's chances of survival. At its most fundamental level, the more efficiently a business transforms inputs into outputs, the more successful it is -- greater efficiency, or productivity, translates into more profit for the owner(s). While the data at hand do not contain information about firms' profit levels, or even productivity, we are able to observe how long a firm survives. Firm survival has a well-established relationship with firm productivity. In his review of "What Determines Productivity?" Syverson (2011, p. 327) states, "Far more than bragging rights [about having figured out their business] is at stake here: another robust finding in the literature--virtually invariant to country, time period, or industry--is that higher productivity producers are more likely to survive than their less efficient industry competitors. Productivity is quite literally a matter of survival for businesses."

As was seen in Table 1, there are a number of systematic differences in the observable characteristics of firms employing undocumented workers compared to firms that do not. This

raises the possibility that the decision to employ undocumented workers is endogenous to a firm's survival; if not controlled, this classic self-selection in treatment will bias the estimated impact of employing undocumented workers on firms' survival. We employ standard matching techniques to construct a synthetic control group that will produce unbiased survival analysis estimates (see Rosenbaum and Rubin 1983 and Imbens 2004). Details of the matching methodology are found in Appendix C. Heckman and Navarro-Lozano (2004) detail the conditions under which conventional matching techniques eliminate treatment selection bias. Like all techniques designed to eliminate selection bias (e.g., matching, control functions, instrumental variables), matching depends on the success of observables to explain the treatment. Unlike the other techniques, however, there is no required relationship between observables and unobservables. However, there is always the possibility that additional unobservables exist which are correlated with both treatment and outcome. Two potential correlates, employment and wage growth, are investigated more fully in Appendix D, which contains a number of robustness tests. Results of those tests indicate that the impact reported here of employing undocumented workers on firm survival is robust to a number of different specifications and inclusion of additional regressors.

The Cox Proportional Hazard Model

A standard Cox proportional hazard model is estimated to determine the impact of employing undocumented workers on firm survivability. A hazard model framework allows us to quantify the timing of the exit, rather than the mere incidence, as would be the case in a simple probit or regression model (see Bhattacharjee, et al. 2002; also see Disney, et al. 2003).

Cox's regression does not require that a specific probability distribution for failure rates be assumed; it is a semi-parametric, generalized linear approach to survival analysis. The hazard

function takes on the following form:

$$h(t) = h_0(t) \exp(X_i \beta),$$

where $h_0(t)$ is the baseline hazard that corresponds to the case where $X = 0$. The impact of a one-unit change in X on the hazard of exiting (i.e., the probability of not surviving) is then calculated as:

$$\frac{\partial h(t)}{\partial X_k} = \exp[\partial(X_i \beta) / \partial X_k] - 1.$$

The estimates of β are obtained by maximizing the partial log likelihood function,

$$\ln[L(\beta)] = \sum_{j=1}^D \left[\sum_{k \in D_j} X_k \beta - d_j \ln \left\{ \sum_{i \in R_j} \exp(X_i \beta) \right\} \right],$$

where, for all distinct time periods D , d_j is the number of observations that fail at time $t_{(j)}$, given that they are at risk of failing at $t_{(j)}$; R_j is the set of observations k that are at risk at time $t_{(j)}$ -- all k such that they have survived at least until $t_{(j)}$; this form of the likelihood function incorporates Breslow's (1974) method for accommodating multiple observations exiting at the same time.⁹

Length of survival is calculated as the number of quarters a firm reports positive employment from the first quarter of treatment (first quarter employing undocumented workers), until the last quarter of existence (followed by four quarters of non-existence). Regressors include firm-specific characteristics, the firm's industry-specific characteristics, and whether or not the firm employs undocumented workers. We also include sector effects to control for sector-specific influences on firm performance (for example, see Samaniego 2009 and Cortes 2008). The firm's industry reflects the 2002 6-digit NAICS classification. The firm's sector is an aggregated grouping based on the NAICS. Appendix B contains a table of sector definitions as well as details of the control variables.

⁹ See Stata (2007, p. 151).

Defining Treatment

The most important characteristic of the firm for the purposes of this paper is whether or not the firm employs undocumented workers. A firm has to meet two criteria to be classified as "treated": (1) at least one worker with a worker-generated invalid SSN appears on the firm's payroll and (2) the firm has to employ at least one undocumented worker in at least 50 percent of the quarters observed in the data starting from the quarter the firm first employs undocumented workers. Firms employing undocumented workers in less than 20 percent of observed quarters in the period after first employing undocumented workers or that never employ them are qualified to be control candidates; firms employing undocumented workers between 20 and 50 percent of the quarters after first employing them are excluded from the analysis. This 20/50 delineation is clearly arbitrary, but we want to allow for some "accidental" hiring (i.e., measurement error) before classifying a firm as treated. However, any behavior that is observed at least half of the time is assumed to be an accurate portrayal of a firm's character.

While the share of a firm's workforce that is undocumented, as opposed to merely the incidence of employing, may also affect survival, we are much more confident in the reliability of measuring the incidence than in the exact number of undocumented workers being employed. In order to mitigate the effects of measurement error in identifying undocumented worker employment, we rely on the conservative measure of incidence described above as a treatment indicator, and confirm the robustness of the results to this definition in Appendix D.

5. RESULTS

Probability of Treatment and Matching

The purpose of the matching process is to construct a synthetic control group for firms that are "treated." Treated firms (firms that employ undocumented workers) are matched to

controls (firms that don't employ undocumented workers) based on their propensity score ratio. The propensity score ratio is determined from estimating the probability of employing undocumented workers. Details of this procedure and the results are reported in Appendix C but are summarized here. Some of the influences of regressors vary across sectors, but generally a firm's propensity to employ undocumented workers increases with firm size, churning, employment variability (more weakly), county-level population growth, per capita income, population density, and Hispanic enrollment. The increased propensity with churning suggests that employing undocumented workers may be born out of a need for flexibility in the firm's production process; this was also documented by Morales (1983). Also consistent with higher churning at firms that employ undocumented workers, firms whose workers have longer tenure are generally less likely to employ undocumented workers.

Survival Analysis

Table 2 contains parameter coefficients from the Cox proportional hazard estimation for two different specifications. The first set of estimates (A) does not include any interactions with the firm's undocumented worker hiring behavior (Undocumented Hiring Indicator). This specification gives us the overall, average impact across all firms employing undocumented workers. The second specification (B) interacts employing undocumented workers with a number of industry- and firm-specific characteristics in order to dissect the impact of employing undocumented workers across these characteristic differences. A negative coefficient indicates that the characteristic reduces a firm's hazard of exiting (increases survival); a positive coefficient indicates an increased hazard (reduced survival) associated with the characteristic.

[Table 2 about here]

Impact of Employing Undocumented Workers on Survival. Starting with the impact of employing undocumented workers on firm survival, specification (A) suggests that employing undocumented workers reduces an average firm's hazard of exit by 18.9 percent, taking the average hazard rate from 0.28 to 0.23.¹⁰ The interaction terms in specification (B) suggest how the different characteristics of firms and industry sectors might be contributing to the differences in the impact of employing undocumented workers. For example, the broader a firm's market (the more concentrated is employment in an industry by county), the greater advantage the firm has in employing undocumented workers. A one-standard-deviation increase in employment concentration decreases the hazard rate of a firm that employs undocumented workers by an additional 11.7 percent. This might be expected, since a firm serving a broader market may have to compete with firms from abroad that have access to even lower-cost labor; being able to employ lower paid undocumented workers in Georgia will have an even greater advantage for these firms, compared to firms that are only competing locally. This result could also arise if the concentration of many employers in close proximity allowed firms to benefit from an established supply chain of undocumented workers -- an agglomeration argument.

Additionally, the impact of *other* firms employing undocumented workers depends on the employment practice of the firm. If a firm does not employ undocumented workers, but others in the industry do, the firm's hazard of exit is higher as the share of employing firms increases. This is consistent with anecdotal evidence obtained from interviews with firms and from Congressional testimony, in which firms report that they feel a need to employ undocumented workers to stay competitive, because competitors employing undocumented workers are able to

¹⁰ The overall average impact of employing undocumented workers is calculated as $-0.189 = e^{-0.21} - 1$.

undercut their prices.¹¹

However, if the firm *does* employ undocumented workers, more other firms also employing reduces the firm's hazard even more. Among firms employing undocumented workers, a one percentage point increase in the share of firms in the industry employing undocumented workers lowers a firm's hazard rate an additional 3.6 percent. This suggests there may be fixed costs associated with bringing undocumented workers into an industry, either because of the costs associated with establishing a supply chain of undocumented workers from their home country to Georgia, or because the first firms to employ incur the costs of industry-specific training of workers. As more firms employ undocumented workers, the opportunities to piggyback on the established supply chain and training increase. It also may be the case that as more firms employ undocumented workers, the likelihood of any one firm getting caught declines, increasing survivability.

Firms in industries with more labor-intensive production processes appear to have a greater advantage to employing undocumented workers than those in industries with a less labor-intensive production process. This makes sense, as a more labor-intensive production process means that labor cost is a greater share of the total, and the firm stands to gain more by reducing that portion of the cost of production. A one percentage point increase in industry labor intensity decreases a firm's hazard of exiting when employing undocumented workers by an additional 2.6 percent.

It also stands to reason that firms with a lower skilled work force would gain the greatest advantage from employing undocumented workers, who tend to be among the lowest skilled in the labor market (for example see Borjas and Katz 2005). A one-percentage-point decrease in

¹¹ For example, see the testimony of Charles Shafer, carpenter from Lawrenceville, GA (Subcommittee on Workforce Protections of the Committee on Education and the Workforce, 2006, pp. 25-6).

the share of workers in the firm's industry with a college education decreases the firm's hazard by an additional 4.6 percent.

As Morales (1983) found in her case study of automobile manufacturers in Los Angeles, firms experiencing a high degree of workforce churning in this analysis benefit significantly from employing undocumented workers. Employing undocumented workers appears to offer firms needing to replace workers frequently a degree of employment flexibility that is highly beneficial. A one-standard-deviation increase in the rate of churning increases the advantage of employing undocumented workers by 28.6 percent; this is the most important firm characteristic modifying the impact of employing undocumented workers on the firm's hazard rate of exit.

Influence of Control Variables on Survival. Turning now to the impact of the various control variables on the determination of a firm's survival, larger firms (see coefficient on log employment) and firms with higher average wages (more skilled workers) and tenure among documented workers have a lower hazard of exiting; firms with high employment variability (holding churning constant) have a higher hazard of exiting; and firms with higher churning (holding employment variability constant) have a statistically insignificant increased hazard of exiting, suggesting that employment variability is more consistently costly to firms than churning. The insignificance of the influence of being a multi-establishment firm is a puzzle, as one typically finds that firms with multiple units are less likely to fail (for example, see Bernard and Jensen 2007, Disney, et al. 2003, and Dunne, et al. 1989). Perhaps this result is a consequence of having data on firms located in Georgia only. Multi-establishment firms are obviously more likely than single-establishment firms to have establishments outside of the state of Georgia and an exit of the Georgia establishment does not necessarily mean that the rest of the firm (those establishments outside of Georgia) has also failed. The higher exit rates among older

firms might also appear as a mystery, as older firms have learned how to survive. However, if we remove worker tenure from the estimation, the coefficient on age becomes negative, suggesting that worker tenure is picking up the productivity effects that would typically be captured by the firm's age. Firms located in more densely populated counties and counties that are faster growing are significantly less likely to exit. However, firms located in counties with higher per capita income or larger populations of Hispanics are more likely to exit. As a whole, the regressors appear to be explaining systematic differences in survival across firms in expected and predictable ways (see Appendix B for the literature with which these results are consistent).

Robustness and Extensions. As in any empirical analysis, several decisions have been made regarding specification and definitions, particularly as they relate to how one designates a "treated" firm and which workers with invalid SSNs are deemed "undocumented" while excluding the others. Appendix D contains the results of various exercises showing that the results here are robust. In addition, the baseline hazard functions found in Appendix B suggest that firms experience a higher hazard rate of exiting when they initially employ undocumented workers and that the advantage only appears after (a short) period of time. Appendix E presents further details of how the advantage to employing undocumented workers may vary over time.

What Does a Firm Know and Does it Matter?

The hypothesis that employing undocumented workers contributes positively to the economic performance of the firm requires three assumptions. The first is that the employer knows, or has an educated guess that, the worker being employed is undocumented. Second, the worker has limited employment opportunities and is thus likely to accept a wage below his marginal revenue product. And third, the expected benefit to the firm of such a hire exceeds the expected cost of breaking the law. Support for the first assumption comes from a number of

sources. Up to 60 percent of Mexicans in the U.S. are undocumented (see footnote 6), and thus ethnic Hispanic characteristics and limited English skills are features employers can use to identify which workers are likely undocumented; there is no need to carefully scrutinize the presented SSN to determine with a high degree of accuracy whether a worker is undocumented.¹²

There is a significant amount of evidence that undocumented workers have limited employment opportunities. For example, Bohon, et al. (2008) document the transportation difficulties of newly arriving Latinos to Georgia, many of whom are undocumented workers. In addition, Semple (2008) offers anecdotal evidence that undocumented workers are at the mercy of their employers. An undocumented worker reported to Semple that an employer refused to pay him about \$1,000 he was owed for work performed, but that, "fear [of being deported] kept my mouth shut." And, lastly, Hotchkiss and Quispe-Agnoli (forthcoming) provide empirical evidence that the labor supply of undocumented workers is, indeed, less sensitive to wages than that of documented workers.

The third assumption that the expected benefit from employing exceeds the expected cost of breaking the law is supported by evidence of low probabilities of an employer getting caught and of the low fines if they do get caught (at least prior to 2008). These probabilities are likely to vary by industry and firm characteristics (such as firm size), but on the whole are considered to be negligible, especially in a non-border state. For example, CBO (2010) reports that 91 percent of all apprehensions of unauthorized immigrants occur at the border. In addition, prior to 2006, workforce enforcement did not figure very large in efforts to combat unauthorized immigration (CBO 2006, also see Jordan 2011). A firm's decision to employ undocumented

¹² However, as pointed out by a referee, it may not be that a firm identifies an undocumented worker, but merely an immigrant when making the hiring decision, and employing immigrants in general increases firms' survival. If this is the case, our estimates of the impact of employing undocumented workers is likely to be underestimated since there will be documented immigrants employed by control firms, thus raising their survival and reducing the measured treatment effect.

workers would thus depend on the assessments of costs and benefits to their own economic outcome and the ethics of the person making the employment decision. There is a possibility that firms that employ undocumented workers also have a higher propensity to break other laws; it's unclear how this propensity might be expected to affect firm survival.

6. CONCLUSION

The results in this paper indicate that overall, firms employing undocumented workers experience a competitive advantage over firms that do not. On average, employing undocumented workers reduces a firm's hazard of exiting by 19 percent relative to the baseline exit rate. However, the impact varies across firm and sector characteristics. Firms with greater worker churning and in sectors with a greater share of other firms employing undocumented workers, a more geographically spread product market, a production process that is highly labor intensive, or in a sector with a greater share of lower skilled workers experience a greater advantage from employing undocumented workers.

The results presented in this paper are consistent with employers' ability to sustain monopsony power over undocumented workers. From a political perspective, the results suggest that resistance to tougher immigration laws is likely to come from employers where undocumented employment is most advantageous, such as those with high worker churning and belonging to industries where firms are geographically concentrated, labor intensity is high, and skill intensity is low. Of course, this resistance is reinforced by any industry-wide advantages firms might experience from employing undocumented workers. In addition, local initiatives to enforce immigration laws are likely to be more effective only if they are uniformly and consistently enforced, as the advantage to employing undocumented workers, and thus the incentive to do so, increases as other firms employ them.

REFERENCES

- Bernard, Andrew B. and J. Bradford Jensen. 2007. "Firm Structure, Multinationals, and Manufacturing Plant Deaths," *The Review of Economics and Statistics*, 89(2): 193-204.
- Bhattacharjee, A.; Chris Higson; Sean Holly; and Paul Kattuman. 2002. "Macro Economic Instability and Business Exit: Determinants of Failures and Acquisitions of Large UK Firms," Working Paper No. 02-034, London Business School (March).
- Bohon, Stephanie A.; Katherine Stamps; and Jorge H. Atilas. 2008. "Transportation and Migrant Adjustments in Georgia," *Population Research Policy Review*, 27, 273-91.
- Borjas, George J., and Lawrence F. Katz. 2005. "The Evolution of the Mexican-Born Workforce in the United States," Working Paper no. 11281, NBER, Cambridge, MA.
- Breslow, Norman E. 1974. "Covariance Analysis of Censored Survival Data," *Biometrics*, 30, 89-99.
- CBO. 2006. *Immigration Policy in the United States*, Pub. No. 2499 (February).
- CBO. 2010. *Immigration Policy in the United States: An Update*, Pub. No. 4160 (January).
- Champlin, Dell, and Eric Hake. 2006. "Immigration as Industrial Strategy in American Meatpacking," *Review of Political Economy*, 18(1), 49-70.
- Committee on Ways and Means, House of Representatives. 2004. *Greenbook*, WMCP 108-6, Section 4 (April), <http://www.gpo.gov/fdsys/pkg/GPO-CPRT-108WPRT108-6/content-detail.html> (accessed 28 May 2012).
- Cortes, Patricia. 2008. "The Effect of Low-skilled Immigration on U.S. Prices: Evidence from CPI Data," *Journal of Political Economy*, 116(3), 381-422.
- Dávila, Alberto E., Bohara, Alok K., & Saenz, Rogelio. 1993. "Accent Penalties and the Earnings of Mexican Americans," *Social Science Quarterly*, 74, 902-916.
- Disney, Richard; Jonathan Haske, and Ylva Hedan. 2003. "Entry, Exit, and Establishment Survival in UK Manufacturing," *Journal of Industrial Economics*, 51(1), 91-112.
- Dunne, Timothy; Mark J. Roberts; and Larry Samuelson. 1989. "The Growth and Failure of US Manufacturing Plants," *Quarterly Journal of Economics*, 104(4), 671-98.
- Fortuny, Karina, Randy Capps, and Jeffrey S. Passel. 2007. "The Characteristics of Unauthorized Immigrants in California, Los Angeles County, and the United States," Washington, D.C.: The Urban Institute (March).

- Hanson, Gordon H. 2006. "Illegal Migration from Mexico to the United States," *Journal of Economic Literature*, 44(4), 869-924.
- Heckman, James and Slavador Navarro-Lozano. 2004. "Using Matching, Instrumental Variables, and Control Functions to Estimate Economic Choice Models," *Review of Economic and Statistics*, 86(1), 30-57.
- Hotchkiss, Julie L., and Myriam Quispe-Agnoli. Forthcoming. "The Expected Impact of State Immigration Legislation on Labor Market Outcomes," *Journal of Policy Analysis and Management*.
- Hotchkiss, Julie L., Quispe, Myriam, & Rios-Avila, Fernando. 2012. "The Wage Impact of Undocumented Workers," Working Paper #2012-04, Federal Reserve Bank of Atlanta.
- Imbens, Guido W. 2004. "Nonparametric Estimation of Average Treatment Effects Under Exogeneity: A Review," *Review of Economics and Statistics*, 86(1), 4-29.
- Jordan, Miriam. 2011. "Crackdown on Illegal Workers Grows," *WSJ.com* (20 January), <http://online.wsj.com/article/SB10001424052748703951704576092381196958362.html> (accessed 1 April 2011).
- Kossoudji, Sherrie A. and Deborah A. Cobb-Clark. 2002. "Coming out of the Shadows: Learning about Legal Status and Wages from the Legalized Population," *Journal of Labor Economics*, 20(3), 598-628.
- Manning, Alan. 2011. "Imperfect Competition in the Labor Market," in O. Ashenfelter and D. Card (Eds.), *Handbook of Labor Economics*, Vol. 4.
- Morales, Rebecca. 1983. "Transitional Labor: Undocumented Workers in the Los Angeles Automobile Industry," *International Migration Review*, 17(4), 570-596.
- Pena, Anita Alves. 2010. "Legalization and Immigrants in U.S. Agriculture," *The B.E. Journal of Economic Analysis & Policy*, 10(1), Article 7.
- Rivera-Batiz, Francisco. 1999. "Undocumented Workers in the Labor Market: An Analysis of the Earnings of Legal and Illegal Mexican Immigrants in the United States," *Journal of Population Economics*, 12(1), 91-116.
- Røed, Marianne and Pål Schøne. 2006. "Does High Product Market Competition Benefit Immigrants?" Mimeo, Institute for Social Research (February).
- Rosenbaum, Paul R. and Donald B. Rubin. 1985. "Constructing a Control Group Using a Multivariate Matched Sampling Method that Incorporates the Propensity Score," *The American Statistician*, 39(1), 33-8.
- Samaniego, Roberto M. 2009. "Entry, Exit, and Investment-Specific Technical Change," *American Economic Review*, 100(1), 164-92.

- Semple, Kirk. 2008. "With Economy, Day Laborer Jobs Dwindle," *nytimes.com* (20 October), <http://www.nytimes.com/2008/10/20/nyregion/20laborers.html?partner=rssnyt>, (accessed 20 October 2008).
- Stark, Oded. 2007. "Work Effort, Moderation in Expulsion, and Illegal Migration," *Review of Development Economics*, 11(4), 585-90.
- Stata. 2007. *Survival Analysis and Epidemiological Tables*. College Station, TX: StataCorp.
- Subcommittee on Workforce Protections of the Committee on Education and the Workforce, U.S. House of Representatives, Field Hearing in Gainesville, Georgia. 2006. "Immigration: Economic Impact on American Workers and their Wages," Washington: U.S. Government Printing Office, Serial No. 109-52, (August 14), <http://bulk.resource.org/gpo.gov/hearings/109h/29475.txt>, (accessed 30 July 2008).
- Syverson, Chad. 2011. "What Determines Productivity?" *Journal of Economic Literature*, 49(2), 326-65.

TABLE 1: Select Sample Means

	Firms that do not employ undocumented workers	Firm that employ undocumented workers
Industry Undocumented Hiring Share $\in [0,1]$ (share of firm's industry that employs undocumented workers)	0.042 (0.058)	0.098 (0.090)
Broad Market $\in [0,1]$ (measure of employment concentration in firm's industry)	0.656 (0.134)	0.654 (0.136)
Higher Education $\in [0,1]$ (percent of workers in firm's 3-digit industry with college)	0.532 (0.163)	0.440 (0.134)
Labor Intensity $\in [0,1]$ (share of total wage bill in 3-digit industry output)	0.388 (0.158)	0.358 (0.113)
Employment	11.581 (51.632)	25.444 (78.200)
Wage (quarterly earnings)	\$8,223 (9,362)	\$6,037 (4,713.82)
Proportion of Documented Workers Earning < R\$3,000/quarter	0.323 (0.287)	0.397 (0.262)
Firm Age (quarters, starting in 1990, Q1)	26.120 (15.510)	21.838 (14.905)
Multi-Establishment = 0,1	0.011	0.026
Employment Churning	0.256 (0.671)	0.544 (0.739)
Employee Tenure (quarters, starting in 1990, Q1)	7.001 (4.711)	4.828 (3.548)
Employment Variability	178.116 (53,612)	319.490 (11,171)

Note: These are sample means and do not reflect treated and control groups created through the matching process. Standard deviations are in parentheses. Treated versus control group means are found in Table C7. Employment churning is constructed as the number of accessions plus separations minus the net employment change, all divided by average employment in the quarter, averaged over the period from the first quarter in the data set to four quarters ago. Employment variability is calculated as the variance in total employment levels from the first quarter in the data set to four quarters ago.

TABLE 2: Cox Proportional Hazard Regression Results; Marginal Effects Reported in Brackets

Specification:	(A)		(B)	
	Coef.	S.E.	Coef.	S.E.
Undocumented Hiring Indicator = 0,1	-0.210*** [-0.1893]	0.054	0.447 [-0.0034]	0.317
Industry Undocumented Hiring Share	0.132	0.300	1.694***	0.348
Hiring Indicator*Hiring Share			-3.706*** [-0.0364] ^b	0.500
Broad Market	1.091***	0.220	1.705***	0.278
Hiring Indicator*Broad Market			-1.488*** [-0.1166] ^a	0.407
Higher Education	-1.880***	0.322	-4.188***	0.328
Hiring Indicator*Higher Education			4.519*** [0.0462] ^b	0.426
Labor Intensity	1.571***	0.202	3.155***	0.276
Hiring Indicator*Labor Intensity			-2.645*** [-0.0261] ^b	0.350
Employment Churning	0.007	0.018	0.018	0.069
Hiring Indicator*Churning			-0.342*** [-0.2859] ^a	0.079
Log Employment	-0.921***	0.060	-0.887***	0.056
Log Employment squared	-0.026	0.017	-0.030**	0.015
Log Wage	-0.067***	0.011	-0.062***	0.012
Log Wage squared	0.001***	0.0002	0.001***	0.0002
Part-Time Employment	0.795***	0.121	0.911***	0.138
Firm Age	0.031***	0.010	0.035***	0.010
Firm Age squared	-0.001***	0.0002	-0.001***	0.0002
Multi-Establishment	0.192	0.275	0.313	0.252
Log Employee Tenure	-0.544***	0.085	-0.649***	0.093
Log Employment Variability	0.412***	0.037	0.404***	0.040
Log Industry Growth	-0.190	0.188	-0.207	0.180
County-sector Growth in employment	-0.046	0.116	-0.029	0.106
County Population Growth	-3.418***	1.137	-3.075***	1.089
Log per capita Income	1.237***	0.133	1.198***	0.133
Hispanic Enrollment	1.934***	0.502	1.887***	0.494
Log Population Density	-0.144***	0.024	-0.138***	0.025

Notes: Sector effects are also included. Undocumented Hiring Indicator=1 if a firm employs undocumented workers and is zero otherwise. The standard errors are bootstrapped using 200 repetitions. * = significant at the 90 percent level, ** = significant at the 95 percent level, and *** = significant at the 99 percent level. Number of observations is 365,497. Average baseline hazard across firms, across time is 0.289. Marginal effects are in brackets;

^a corresponds to the effect of a one percentage point change in the regressor, ^b corresponds to the effect of a one standard deviation change in the regressor. Marginal effects are calculated by taking the difference in hazard rates between the treated and non-treated average baselines in each sector.

Appendices for
Does Employing Undocumented Workers
Give Firms a Competitive Advantage?

J. David Brown
Institute for the Study of Labor
(IZA)
Schaumburg-Lippe-Strasse 5-9
53113 Bonn, Germany
jdavidbrown68@gmail.com

Julie L. Hotchkiss
Federal Reserve Bank of Atlanta
and Georgia State University,
Research Department, 1000
Peachtree St, NE, Atlanta, GA
30309
Julie.L.Hotchkiss@atl.frb.org
phone: 404-498-8198
fax: 404-498-8058

Myriam Quispe-Agnoli
Federal Reserve Bank of Atlanta,
Community and Economic
Development, 1000 Peachtree St,
NE, Atlanta, GA 30309
Myriam.Quispe-Agnoli@atl.frb.org
phone: 404-498-8198
fax: 404-498-8058

APPENDIX A: USING SSNs TO IDENTIFY UNDOCUMENTED WORKERS

A.1. IDENTIFYING INVALID SOCIAL SECURITY NUMBERS

Every quarter employers must file a report with their state's Department of Labor detailing all wages paid to workers who are covered under the Social Security Act of 1935. Each worker on this report is identified by his/her social security number (SSN). There are a number of ways in which one can establish that a reported social security number is invalid. The Social Security Administration provides a service by which an employer can upload a file of SSNs for checking, but one must register as an employer to obtain this service (see Social Security Number Verification Service <<http://www.ssa.gov/employer/ssnv.htm>>). In addition, there are several known limitations on what can be considered a valid social security number, so a simple algorithm is used to check whether each number conforms to the valid parameters.

There are three pieces to a SSN. Historical information and information about valid SSNs can be found at the Social Security Administration's web sites: <<http://www.ssa.gov/history/ssn/geocard.html>>, <<http://www.socialsecurity.gov/employer/stateweb.htm>>, and <<http://www.socialsecurity.gov/employer/ssnvhighgroup.htm>>. The first three numbers are referred to as the Area Number. This number is assigned based on the state in which the application for a SSN was made; it does not necessarily reflect the state of residence. The lowest Area Number possible is 001 and the highest Area Number ever issued, as of December 2006, is 772. Using information provided by the SSA, the dates at which area numbers between 691 and 772 are first assigned can be determined. Any SSN with an Area Number equal to 000, greater than 772, or which shows up before the officially assigned date, is considered invalid.

The second piece of a SSN consists of the two-digit Group Number. The lowest group

number is 01, and they are assigned in non-consecutive order. Any SSN with a Group Number equal to 00 or with a Group Number that appears in the data out of sequence with the Area Number is considered invalid.

The last four digits of a SSN are referred to as the Serial Number. These are assigned consecutively from 0001 to 9999. Any SSN with a Serial Number equal to 0000 is invalid.

In 1996 the Internal Revenue Service (IRS) introduced the Individual Tax Identification Number (ITIN) to allow individuals who had income from the U.S. to file a tax return (the first ITIN was issued in 1997). It is simply a "tax processing number," and does not authorize an individual to work in the U.S. Employers are instructed by the IRS to "not accept an ITIN in place of a SSN for employee identification for work. An ITIN is only available to resident and nonresident aliens who are not eligible for U.S. employment and need identification for other tax purposes" ("Hiring Employees,"

<http://www.irs.gov/businesses/small/article/0,,id=98164,00.html>). Also see, "Individual Taxpayer Identification Number (ITIN),"

<http://www.irs.gov/individuals/article/0,,id=96287,00.html>). ITIN numbers have a "9" in the first digit of the Area Number and a "7" or "8" in the first digit of the Group Number. Anyone with this numbering scheme will be identified as having an invalid Area Number; the percent of SSNs with high area numbers that also match the ITIN numbering scheme has risen from about one percent in 1997 to over 60 percent by the end of 2006.

A series of SSNs were de-commissioned by the Social Security Administration because they had been put on fake Social Security Cards used as props to sell wallets (see U.S. Department of Housing and Urban Development 1990). Apparently, some people who purchased the wallets thought the fake Social Security Cards were real and started using them as

their own. If any of these 21 "pocketbook" SSNs appear in the data, they are considered invalid, although their frequency is so low as to be inconsequential. In addition, a number of SSNs are exactly equal to the employer identification number. These are invalid, primarily because they have too few digits. In any instance where a SSN is used for more than one person on a firm's UI wage report or does not have the required number of digits (including zeros), the SSN is considered invalid.

The possibility that someone fraudulently uses a valid SSN assigned to someone else poses a special problem. First of all, the SSN will show up multiple times across firms in one quarter for workers with different surnames (the wage report includes the first three characters of the workers' surnames). With this information alone, it is not possible to know which worker is using the SSN fraudulently and who the valid owner of the number is. If one of the SSN/surname pairs shows up in the data initially in a quarter by itself, this is the pair that is considered valid and all other duplicates (with different surnames) are considered invalid.

A.2. DOES "INVALID" MEAN "UNDOCUMENTED?"

Not all invalid SSNs are classified as undocumented workers; examining the patterns of incidence of different types of invalid SSNs suggests that some types are firm generated rather than worker generated. Figure A1 illustrates the incidence patterns across types of invalid SSNs in construction. The percent of workers with SSNs having a high area number or out-of-sequence group number displays the expected growth in undocumented workers (see Hoefer, et al. 2007), whereas the incidence of SSNs for other reasons exhibits a flat to declining, highly seasonal pattern (this seasonality appears in all other sectors, as well). The strong seasonal nature of the other invalid reasons suggests that firms are temporarily assigning invalid SSN numbers to workers before having time to gather the information for the purpose of record

keeping/reporting. Or, firms may decide to not bother obtaining a SSN for workers who will only be employed a very short time. Indeed, a worker has 90 days to resolve a discrepancy that results in the receipt of a "no-match" letter from the Social Security Administration. The employee may be long gone before such a letter is even received. The high degree of churning observed among workers with invalid SSNs for these other reasons is consistent with either of these practices.

[Figure A1 here]

Since there is no way to know whether a temporary assignment by the firm of an invalid SSN is to merely cover for temporary employment of an undocumented worker or to allow the firm to file its wage report before having had a chance to record the worker's valid SSN, the analysis below takes the conservative tack by considering as undocumented only those workers whose SSNs are classified as invalid because the area number is too high or the group number is assigned out of sequence; workers with invalid SSNs for any other reason are considered neither undocumented nor documented and, thus, are excluded from the analysis. This will clearly undercount the actual number of undocumented workers. However, all workers, regardless of SSN classification, are included in counts of aggregate firm employment.

Figure A2 plots the prevalence of undocumented workers in the seven broadly defined sectors with the highest incidences. The concentration of workers in these sectors has also been identified nationally by Fortuny, et al. (2007). Fortuny, et al. (2007) estimate that nationally in 2004 the percent of workers in leisure and hospitality and construction that was undocumented was 10 percent each, nine percent of workers in agriculture, and six percent each in manufacturing, professional and business services, and other services. Also see Pena (2010). The pattern of growth is also consistent with Fortuny, et al., who estimate that 72 percent of

unauthorized immigrants in Georgia arrived in the last 10 years. Figure A3, showing the share of firms employing undocumented workers, reflects the same pattern of growth.

[Figures A2 and A3 here]

A.3. ARE UNDOCUMENTED WORKERS CORRECTLY IDENTIFIED?

There are several reasons we are confident that the sample of undocumented workers is representative. First of all, the rate of growth seen in both the number and percent of undocumented workers identified in Georgia matches closely the rate of growth in the Social Security Administration's (SSA) earnings suspense file (ESF). The ESF is a repository of social security taxes paid by employers that cannot be matched to a valid name or SSN. It is widely believed that this growth in the ESF reflects growing incidence of unauthorized work in the U.S. (Bovbjerg 2006).

Figure A4 plots the number of workers (panel a) and the percent of workers (panel b) identified as undocumented along with the size of the ESF. This figure shows a remarkable consistency between the growth seen in workers identified as undocumented and the ESF.

[Figure A4 here]

As mentioned in the text, data suggest that between 40 and 60 percent of Mexicans in the U.S. are undocumented, and that 61 percent of unauthorized immigrants come from Mexico. Clearly not all Hispanics are undocumented, or vice versa. However using weighted data from the Current Population Survey (CPS), we calculate the average annual growth in total workers and total number of foreign born, Hispanic workers in the U.S. and in Georgia in order to compare growth rates to those in our sample. These results are reported in Table A1. The workforce in GA grew faster over the period than the U.S. workforce (2.9 percent vs. 1.5 percent, respectively). In addition, the number of foreign born, Hispanic workers in the U.S.

grew faster (eight percent per year) than the overall workforce; this phenomenon has been documented by others (Passel and Cohn 2009). But most importantly for our purposes is that the growth rate of foreign-born, Hispanic workers in GA (roughly 27 percent per year), which is much larger than in the U.S. overall (also see Passel and Cohn 2009), is similar to the growth in the number of workers in GA classified here as undocumented. We also observe a similarly large growth rate in the number of foreign-born, Hispanic workers with less than a high school degree (21 percent), among whom we might expect a larger share of undocumented workers than among foreign-born Hispanics in general.

[Table A1 here]

The close match in growth rates in the number of workers classified as undocumented with that of the SSA ESF and with the number of foreign-born, Hispanic workers in Georgia as measured by the CPS, suggests that the mechanism employed in this paper to identify undocumented workers is accurate; it's clear that not all undocumented workers are being captured in the data, but likely those identified as undocumented are undocumented. Any remaining miss-classifications will show up in the error term and limit the ability of the estimation to identify any systematic relationships between wages and characteristics of documented workers and their employers. However, in spite of our confidence that we are correctly identifying undocumented workers in the state of Georgia, it must be stressed that this sample of undocumented workers may or may not be representative of the *average* undocumented worker in the state. Without an independent source of characteristics of undocumented workers in the state of Georgia, there is no way to establish that. Fortuny, et al. (2007) estimate that 4.5 percent of the workforce in Georgia was undocumented in 2004. In our sample 1.0 percent of workers are classified as undocumented in 2004, implying that the sample

used for the analysis in this paper is capturing about 22 percent of all undocumented workers in the state of Georgia.

Note that it is not essential for an employer to be able to distinguish between valid and invalid SSNs in order to practice monopsonistic discrimination. All that is necessary is that the employer can use some identifying characteristic(s) to distinguish between groups of workers. In this case, ethnic Hispanic characteristics and limited English skills are features that employers use to identify (within a certain degree of accuracy) which workers are likely undocumented. Furthermore, it is likely that the workers identified as undocumented within a particular firm represent merely the tip of the iceberg of that firm's hiring behavior regarding undocumented workers. In other words, it is probably more likely that the undocumented workers identified at any firm represent only a share of that firm's hiring than it is that there are a large number of firms employing undocumented workers and not including any of them on UI reports. From anecdotal evidence gleaned from an unscientific survey of employers, firms are more afraid of being caught not paying their appropriate taxes than they are in getting caught employing undocumented workers. This suggests that if a firm employs undocumented workers on a regular basis, they will make some effort to report them -- perhaps not all of them, but at least those employed on a longer term basis (the tip).

REFERENCES

- Bovbjerg, Barbara D. 2006. *Social Security Numbers: Coordinated Approach to SSN Data Could Help Reduce Unauthorized Work*, Testimony before the Subcommittees on Social Security and on Oversight, Committee on Ways and Means, House of Representatives, GAO-06-458T, <http://www.gao.gov/new.items/d06458t.pdf>, (accessed 15 December 2008).
- Fortuny, Karina, Randy Capps, and Jeffrey S. Passel. 2007. "The Characteristics of Unauthorized Immigrants in California, Los Angeles County, and the United States," Mimeo, Washington, D.C.: The Urban Institute (March).

- Hoefler, Michael, Nancy Rytina, and Christopher Campbell. 2007. "Estimates of the Unauthorized Immigrant Population Residing in the United States: January 2006," *Population Estimates*. Washington, D.C.: US Department of Homeland Security, Office of Immigration Statistics, (August).
- Huse, James G. 2002. *Congressional Response Report: Status of the Social Security Administration's Earnings Suspense File A-03-03-23038* (November), <http://www.ssa.gov/oig/ADOBEPDF/A-03-03-23038.pdf>, (accessed 11 December 2008).
- Johnson, Mary. 2007. "The Growing Cost of Illegal Immigrants to Social Security: Unprecedented Growth in Social Security's Earnings Suspense File." Mimeo (March) <<http://www.tscl.org/NewContent/102880.asp>> (accessed 11 December 2008).
- Passel, Jeffrey S. and D'Vera Cohn. 2009. *A Portrait of Unauthorized Immigrants in the United States*, Pew Hispanic Center: Washington, D.C. (April).
- Pena, Anita Alves. 2010. "Legalization and Immigrants in U.S. Agriculture," *The B.E. Journal of Economic Analysis & Policy*, 10(1), Article 7.
- U.S. Department of Housing and Urban Development. 1990. "Disclosure and Verification of Social Security Numbers (SSNs) for the Section 235 Program." Mortgagee Letter 90-39, (9 November), <http://209.85.165.104/search?q=cache:5VRIgv1oFQYJ:www.fha.gov/reference/ml1990/90-39ml.doc+pocketbook+social+security+numbers&hl=en&ct=clnk&cd=9&gl=us>, (accessed 20 September 2007).

FIGURE A1:

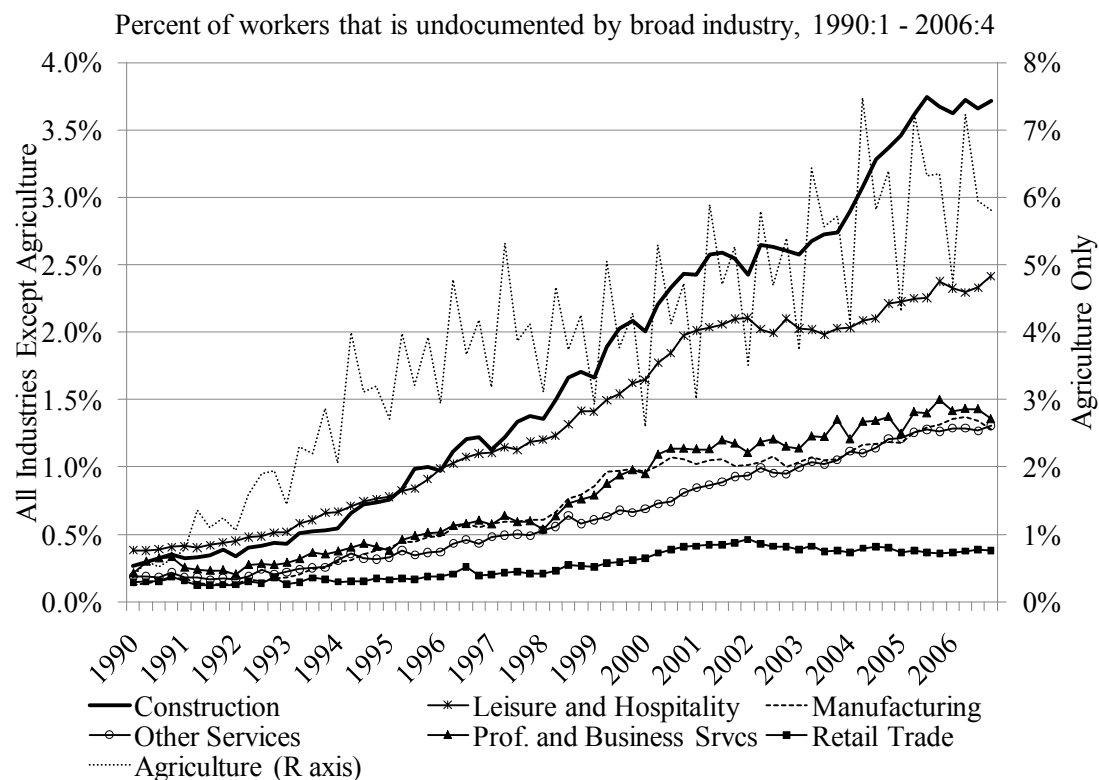


FIGURE A2:

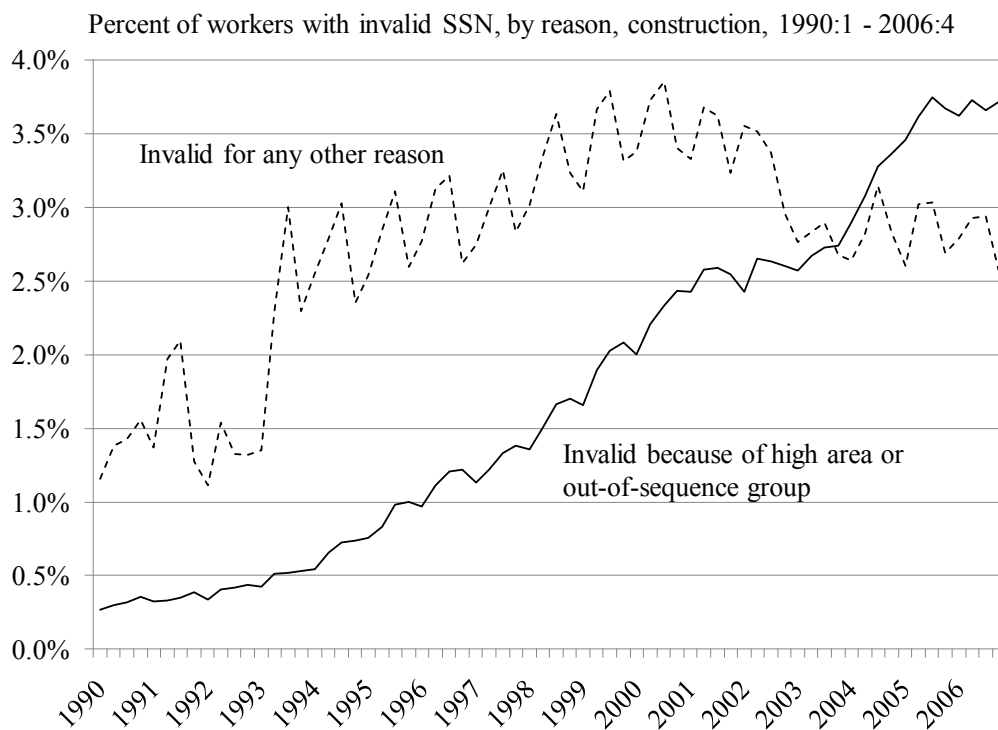


FIGURE A3:

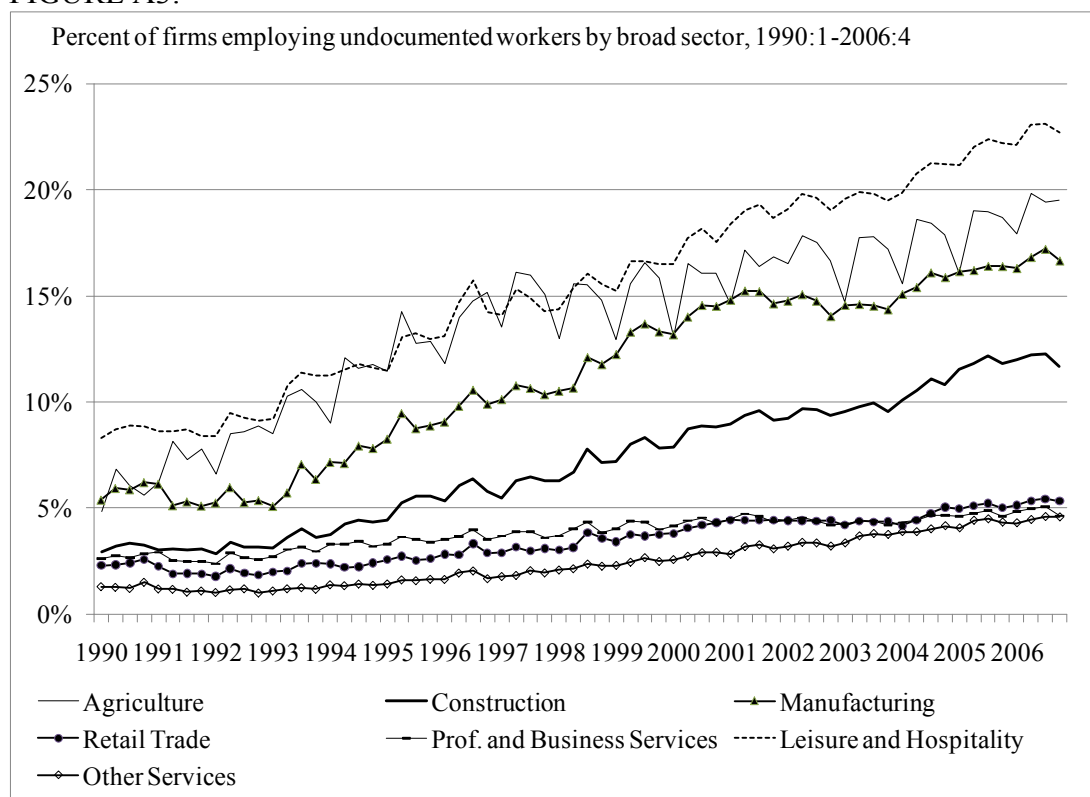
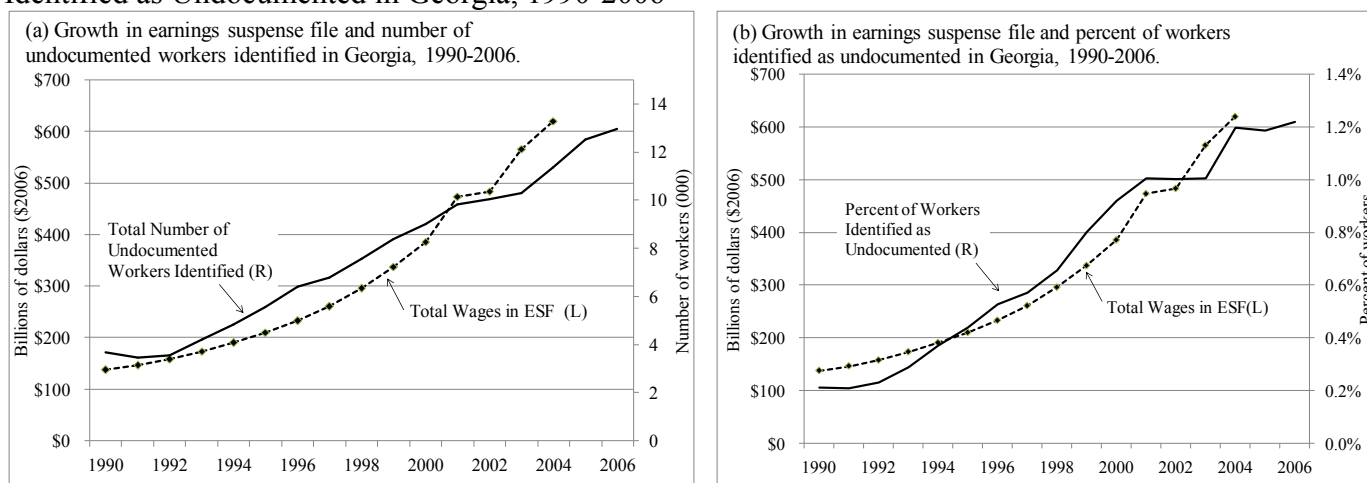


FIGURE A4: Growth in the Earnings Suspense File and the Total Number and Percent of Workers Identified as Undocumented in Georgia, 1990-2006



Source: Huse (2002) for estimates 1990-2000, Johnson (2007) for estimates 2001-2004, and authors' calculations. Dollar estimates reflect 2006 values, using the PCE chain-weighted deflator.

TABLE A1: Average Annual Growth, 1994-2006, in U.S. and GA Employment, Hispanic Workers, and Workers Identified as Undocumented

Average Annual Growth Rate of:	Percent
Total number of workers in the U.S.	1.48
Total number of foreign born, Hispanic workers in the U.S.	8.03
Total number of foreign born, Hispanic workers with less than a high school degree in U.S.	7.28
Total number of workers in Georgia	2.92
Total number of foreign born, Hispanic workers in Georgia	26.82
Total number of foreign born, Hispanic workers with less than a high school degree in Georgia	21.48
<i>Total number of workers in GA identified as undocumented</i>	<i>25.29</i>

Source: Current Population Survey, Basic Survey (March), 1994-2006; and authors' calculations.

Note: 1994 is used as the starting year, since it is the first year the Current Population Survey has a reliable indicator of Hispanic ethnicity.

APPENDIX B: DETAILS OF CONTROL VARIABLES INCLUDED AS REGRESSORS; DEFINITIONS OF BROAD SECTORS, INDUSTRY SKILL, AND INDUSTRY LABOR INTENSITY; AND BASELINE HAZARDS

B.1. FIRM-SPECIFIC CONTROL VARIABLES

Other firm characteristics include age (and its square); employment (lagged four quarters, and its square); average quarterly wage among documented workers from the first quarter in the data set until four quarters prior to treatment and its square; the share of documented workers earning less than \$3,000 (in real terms) in a given quarter (this is approximately the full-time minimum wage), lagged four quarters; a dummy equal to one if the firm has multiple establishments; the firm's average rate of worker churning (churning is accessions plus separations minus the absolute value of net employment change, all divided by average employment in the quarter) among its documented workforce from the first quarter in the data set until four quarters prior to treatment, and also interacted with the treatment dummy (the firm's undocumented worker hiring behavior); average log tenure among documented workers from the first quarter in the data set until four quarters prior to the treatment quarter; and log of cumulative employment variability, which is calculated as the variance in total employment levels from the first quarter in the data set to four quarters prior to treatment.

Older firms should be less likely to exit, as they tend to have high productivity--otherwise they would have already exited. In addition, large firms tend to be more productive, so they should also have a lower exit propensity. These relationships between firm age, size, and exit are predicted by the Jovanovic (1982) and Ericson and Pakes (1995) models of firm selection. Efficiency wage theory suggests that higher paying firms will also be more productive, thus less likely to exit (Akerlof and Yellen 1990), and a greater share of low-paid workers might be detrimental to performance because of greater wage dispersion within the firm (Winter-Ebmer

and Zweimüller 1999).

A multi-establishment firm may be less likely to shut down, since it can close individual establishments if necessary without shutting down completely. High worker churning is likely to add to the firm's labor costs, thus decreasing survivability. Including this churning variable at least partially controls for the possibility that not all firms report their undocumented workers to the Department of Labor. Firms may be less likely to include undocumented workers on their UI wage report if the firm's separation experience has resulted in a higher UI tax rate. Having a work force with higher human capital would also make a firm more productive, thus reducing exit propensity. Higher average worker tenure reflects a higher level of firm-specific human capital. High employment variability may reflect a degree of instability, and thus a higher propensity to exit, or a firm that is nimble in adjusting to product demand, reducing the propensity to exit.

B.2. INDUSTRY-, SECTOR-, AND COUNTY-SPECIFIC CONTROL VARIABLES

Growth of the firm's industry over the previous year and growth of the firm's sector in the firm's county, as measured by annual employment growth through the previous quarter (calculated using the Davis and Haltiwanger 1992 method), are included as measures of the strength in the firm's industry overall and in the firm's broader sector more geographically specific to the firm's location. We include industry-level growth, as opposed to firm growth since we expect firm growth is more likely endogenous. Industry growth should capture exogenous forces affecting all firms in the sector, although the robustness of the results to inclusion of firm-level growth is confirmed with specification test results found in Appendix D.

Regressors are also included to account for overall economic demand and consumption that the firm might face in its locality: county population growth (annual growth through the

preceding quarter); log county per-capita income (lagged one year); and population density (lagged one year). In addition, the proportion of total public school enrollment that is Hispanic (lagged one year) is included as a proxy for the availability of undocumented workers. Because of the strength of ethnic enclaves (Logan, et al. 2002), this regressor is also expected to capture the available supply of immigrants in general. A three-digit industry fixed effect is also included as a first-stage control. The county-level Hispanic enrollment variable is measured only in October in each year and is assigned to all quarters in the following calendar year (Hispanic enrollment is available starting in 1995, and thus 1995 values are used for each county for prior years.).

Just as a firm's own employment of undocumented workers could give it a comparative advantage, undocumented employment by competitors could place the firm at a disadvantage. To test this, we include a variable measuring the proportion of *other* firms in the firm's 6-digit NAICS industry that employ undocumented workers (lagged four quarters), as well as interacting this regressor with the treatment dummy.

The competitive advantage of employing undocumented workers may vary with the geographic size of the product market. In markets where firms supply a geographically broad product market, firms may have competitors with access to low-cost labor that is both legal and plentiful in developing countries (for example, see Preston 2007). In such cases, employing undocumented workers may be particularly important for keeping up with competitors. To measure geographic market size, we make use of a modified Duncan index of dissimilarity, lagged four quarters (Duncan and Duncan 1955):

$$D_i = \frac{1}{2} \sum_{c=1}^{N_C} \left| \frac{e_{ic}}{E_i} - \frac{1}{N_C} \right| ,$$

where N_C is the number of counties (159), e_{ic} is the number of workers in industry i that are in

county c , E_i is the total employment in industry i , $\frac{1}{N_c}$ is the share of workers that would need to be employed in each county for there to be an equal distribution of workers in the industry across counties. The closer D_i gets to 0 (more equally distributed workers), the more diversified the industry and the more local the market. The closer D gets to 1, the more concentrated is employment in that industry, and it is thus serving a broader market. This measure of dissimilarity is also interacted with the treatment dummy.

The skill level of workers in the firm's industry and the intensity with which firms employ workers in their production process may affect the importance of employing undocumented workers to the firm's survivability. Industry skill and labor intensity are included as additional regressors (lagged four quarters); their construction is described below. Both of these regressors are interacted with the treatment dummy to assess whether the impact of employing undocumented workers on firm survival varies by skill level or by labor intensity of the production process.

B.3. DEFINITIONS OF BROAD SECTORS

Throughout this paper, regressors are measured at different levels of industry aggregation. The process of matching is performed at the broad sector level, which is defined based on two-digit NAICS classifications. These classifications are designed to match as closely as possible the former SIC classifications and are reported in Table B1.

[Table B1 here]

B.4. CONSTRUCTION OF THE MEASURE OF INDUSTRY LABOR INTENSITY

Labor intensity for each industry is based on coefficients from the U.S. Input-Output (I-O) Benchmark Tables 2002 (http://www.bea.gov/industry/index.htm#benchmark_io). The labor intensity coefficient is defined as the share of compensation of employees (wage bill) in total

industry output. Compensation of employees includes wages and salaries and their supplements. Total industry output is the sum of the products consumed by the industry, compensation of employees, taxes on production and imports less subsidies, and gross operating surplus.

B.5. CONSTRUCTION OF INDUSTRY SKILL

Each industry is assigned a skill intensity based on the weighted average of educational attainment of workers in that industry, using the Current Population Survey for 1994. This year was chosen, since this is the first year in which the nativity (place of birth) of respondents is reported. For each industry, the percent of workers with less than a high school education (LTHS), a high school education (HS), some college (SCOLL), college degree (COLL), and graduate education (GRAD) is calculated. The regressor *HigherEducation* is the share of workers in the firm's industry with some college education or higher.

B.6. BASELINE HAZARDS

Figure B1 produces the baseline hazards for three groups of firms: the treated firms, all controls (all firms not employing undocumented workers), and the matched controls (firms not employing undocumented workers matched to treated firms). We learn two things from this figure. First, the baseline hazards of the matched controls are nearly identical to those of all controls. The second thing we learn is that the baseline hazards among treated firms are higher than those of the controls early in a firm's employing experience, but lower than that of controls after surviving about 28 quarters. In other words, without controlling for any characteristics, firms employing undocumented workers are more likely to exit, on average, soon after treatment and less likely to exit later on than firms not employing undocumented workers. This suggests that employing undocumented workers puts firms at a disadvantage early on, but eventually at an advantage.

[Figure B1 about here]

REFERENCES

- Akerlof, George A., and Janet L. Yellen. 1990. "The Fair Wage-Effort Hypothesis and Unemployment." *Quarterly Journal of Economics*, 105(2), 255-83.
- Davis, Steven J., and John C. Haltiwanger. 1992. "Gross Job Creation, Gross Job Destruction, and Employment Reallocation." *Quarterly Journal of Economics*, 107(3), 819-63.
- Duncan, Otis D. and Beverly Duncan. 1955. "A Methodological Analysis of Segregation Indexes," *American Sociological Review*, 20, 210-17.
- Ericson, Richard and Ariel Pakes. 1995. "Markov-Perfect Industry Dynamics: A Framework for Empirical Work," *Review of Economic Studies*, 62(1), 53-82.
- Jovanovic, Boyan. 1982. "Selection and Evolution of Industry." *Econometrica*, 50(3), 649-670.
- Logan, John R.; Richard D. Alba; and Wenquan Zhang. 2002. "Immigrant Enclaves and Ethnic Communities in New York and Los Angeles." *American Sociological Review* 67 (April), 299-322.
- Preston, Julia. 2007. "Short on Labor, Farmers in U.S. Shift to Mexico," *nytimes.com*, (5 September), <http://www.nytimes.com/2007/09/05/us/05export.htm>, (accessed 17 October 2008).
- Winter-Ebmer, Rudolf and Josef Zweimüller. 1999. "Intra-firm Wage Dispersion and Firm Performance," *Kyklos*, 52(4), 555-72.

FIGURE B1: Baseline Hazards for Treated Firms, Matched Controls, and All Controls

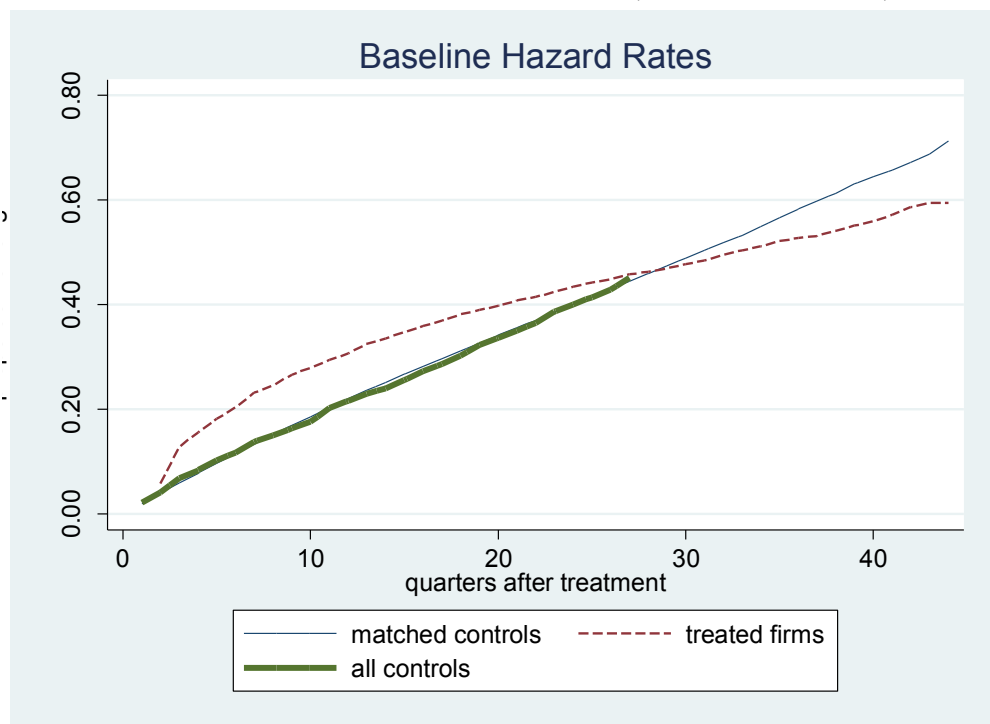


TABLE B1: Definitions of Broad Sectors Based on 2-digit NAICS Classifications

Sector	Included 2-digit NAICS
Agriculture and Natural Resources	11, 21
Construction	23
Manufacturing	31-33
Transportation and Utilities	22, 48-49
Wholesale Trade	42
Retail Trade	44-45
Financial Activities	52-53
Information	51
Professional and Business Services (includes temporary services)	54-56
Education and Health Services	61-62
Leisure and Hospitality	71-72
Other Services (includes private household, laundry, and repair and maintenance services)	81

APPENDIX C: MATCHING PROCESS

The goal of the matching methodology is to construct a synthetic control group for firms that are "treated" -- firms that employ undocumented workers. So for each firm that we observe employing undocumented workers, our goal is to find firms that look as much like that firm as possible, *except* not having employed undocumented workers. With a synthetic control group, we can interpret the effect of employing undocumented workers as we might if employment of undocumented workers had been assigned in a controlled experiment. It yields greater confidence in interpreting the results as causal (see Heckman and Navarro-Lozano 2004). Girma, et al. (2007) and Fajnzylber, et al. (2005) are other examples of analyses that make use of matching techniques to construct a control sample with which to estimate the impact of an event or "treatment" on firms' survival.

The matching procedure has four steps. The first is to determine more precisely how to define whether a firm systematically employs undocumented workers. Second, we impose some exact criteria within which we will consider possible matches. Third, we estimate the probability of employing undocumented workers. Last, we select matches within a propensity score bandwidth surrounding the employing firm's propensity score. In this context, employment of undocumented workers can be thought of as a "treatment" on a firm's performance.

Identification of a firm as one that employs undocumented workers is not a trivial matter; we distinguish treated and non-treated firms in the following way. A firm is considered an undocumented worker employer in a quarter if it has at least one worker-generated invalid SSN on its payroll during the quarter. We identify the first quarter when this occurs for a firm as the treatment quarter and count the number of quarters it exists in the data from that point on. A firm that is an undocumented worker employer in at least 50 percent of these quarters and begins

employing undocumented workers after 1990 but before 2006 is considered a treated firm. Firms that are undocumented worker employers in 20 percent or fewer of these quarters are in the non-treatment group. Firms that are undocumented worker employers in over 20 percent but less than 50 percent of these quarters or begin employing undocumented workers in 1990 or 2006 are excluded from the analysis. A robustness test, described and detailed in Appendix D, is performed to investigate the sensitivity of the results to this definition of treatment.

The more often a firm has worker-generated invalid SSNs on its payroll, the more confident we are that the SSNs are not invalid due to clerical error. Also, the more consistently a firm employs undocumented workers, the more likely this practice will have an effect on the firm's survivability. We thus impose the 50 percent and 20 percent cut-offs to compare firms consistently having invalid, worker-generated SSNs to ones having them infrequently or never. We are unable to observe the pre-treatment characteristics of firms employing undocumented workers in 1990, so we cannot conduct our matching procedure on them. We drop firms first employing undocumented workers in 2006, because we would like to observe whether firms consistently employ undocumented workers or not and whether they survive or die several quarters later.

We impose some exact criteria on which firms in the non-treated group can be in the matched comparison group. We require exact matches on 6-digit NAICS industry and on year and quarter (the treated firm's treatment quarter). Non-treated firms that do not meet these criteria for matching with any treated firms (and vice versa) are dropped from the analysis at this point.

We then estimate probit equations for the probability of treatment using these restricted samples, separately for each broad sector. In order to address potential concerns of endogeneity,

we employ a variety of lag structures, depending on the regressor; this is detailed below. Non-treated firms appear in the regression once for each potential match with a treated firm, and the regressors for that observation are also measured four quarters prior to the potentially matched treated firm's treatment quarter.

We impose a common support and a 0.9-1.1 bandwidth of the treated to non-treated propensity score ratio. Epanechnikov kernel weights are assigned to control firms within the bandwidth. The sampling is done with replacement, so if there is a non-treated firm with a propensity score within the bandwidth of x treated firms, this firm will be included as a control firm x times (each set of non-treated firm values in the probit and hazard regressions is specific to the treated firm to which it is matched).

C.1. FIRST-STAGE UNDOCUMENTED HIRING INDICATOR PROBIT RESULTS

In order to find a good control "match" for each firm that employs undocumented workers, a probit analysis is performed to determine each firm's propensity to employ undocumented workers. Using the coefficient estimates from this estimation, each firm will be assigned a probability of "treatment," or propensity to become a firm that consistently employs undocumented workers. These estimations were performed separately by broad sector, and the results are reported in Tables C1-C4. Table C5 tells us that there are sufficient numbers of treated and matched control firms in each quintile to produce reliable estimates. The distribution of treated firms across broad sectors is compared with the distribution of controls across sectors in Table B6. The regressors are described in the text.

[Tables C1-C4, C5, and C6 here]

C.2. MATCHING BALANCING TESTS

Table C7 reports kernel-weighted means of the independent variables in the probits (except log employment squared, wage squared, and three-digit industry and year-quarter dummies) for the matched comparison and treated groups, the Rosenbaum and Rubin (1985) test of standardized differences, and a t test for the difference in kernel-weighted means. Note that potential controls are limited to ones with exact matches on six-digit industry and year-quarter, so balance on these variables is already assured. We also run kernel-weighted regressions of the probit independent variables on a quartic of propensity scores and a quartic of propensity scores interacted with treatment dummies and show F tests for the joint significance of the interaction terms in the table. This test was performed in Smith and Todd (2005).

[Table C7 here]

The independent variable means for each propensity score quintile are shown in Table C8. The differences between treated and control firms are small in each quintile. C9 shows Hotelling T^2 tests of the joint null of equal means of all the probit independent variables included in Table C7, separately by propensity score quintile.

[Table C8 and C9 here]

The t test, F test, and Hotelling T^2 test values are statistically significant in most cases, suggesting some differences between the treated firms and matched controls prior to treatment. We have also conducted the t and F tests on the treated firms and non-treated firms after restricting the non-treated firm sample to those that are potential matches, but before imposing the 0.9-1.1 propensity score bandwidth and kernel weighting. With the exception of county-sector growth, the t and F test values are larger than those shown in Table C7 by orders of magnitude. And the matching and reweighting reduces the standardized differences by over 80

percent in most cases. The usual rule of thumb in the matching literature is that standardized difference values above 20 in absolute value are large (see Rosenbaum and Rubin 1985) – none of the values here are anywhere near that big. In sum, though some differences remain, the matching procedure has improved the balance of the samples considerably.

REFERENCES

- Fajnzylber, Pablo; William F. Maloney; and Gabriel V. Montes Rojas. 2005. "Releasing Constraints to Growth or Pushing on a String? The Impact of Credit, Training, Business Associations, and Taxes on the Performance of Mexican Micro-Firms," Working Paper No. 3807, World Bank Policy Research (December).
- Girma, Sourafel; Holger Gorg; and Eric Strobl. 2007. "The Effects of Government Grants on Plant Survival: A Micro-econometric Analysis," *International Journal of Industrial Organization*, 25(4), 701-20.
- Heckman, James and Slavador Navarro-Lozano. 2004. "Using Matching, Instrumental Variables, and Control Functions to Estimate Economic Choice Models," *Review of Economic and Statistics*, 86(1), 30-57.
- Rosenbaum, Paul R. and Donald B. Rubin. 1985. "Constructing a Control Group Using a Multivariate Matched Sampling Method that Incorporates the Propensity Score," *The American Statistician*, 39(1), 33-8.
- Smith, Jeffrey and Petra Todd. 2005. "Rejoinder," *Journal of Econometrics*, 125(1/2), 365-75.

TABLE C1: First-stage Undocumented Hiring probit results; Agriculture, Construction, and Manufacturing

	Agriculture		Construction		Manufacturing	
	dF/dx	S.E.	dF/dx	S.E.	dF/dx	S.E.
Broad Market	1.600***	0.278	0.774***	0.122	1.412***	0.115
Labor Intensity	0.377	0.696	0.622***	0.242	-0.308	0.331
Log Employment	0.168**	0.079	0.303***	0.029	0.311***	0.044
Log Employment Squared	0.008	0.021	-0.018**	0.006	-0.028***	0.007
Wage	-0.049**	0.023	-0.015***	0.004	-0.012*	0.007
Wage Squared	0.002***	0.0007	0.0002**	0.00008	0.00009***	0.00008
Part-Time Employment	-0.263	0.174	-0.023	0.059	-0.122	0.107
Firm Age	-0.005	0.008	-0.0003	0.003	0.0006	0.004
Firm Age Squared	0.0002	0.0001	-0.00002	0.00004	-0.000002	0.00005
Multi-Establishment	-0.089	0.267	-0.338	0.166	-0.041	0.094
Employment Churning	0.058	0.058	0.086***	0.020	0.139***	0.041
Log Employee Tenure	-0.391***	0.086	-0.208***	0.032	-0.238***	0.052
Log Employment Variability	-0.010	0.027	-0.016	0.013	-0.020	0.015
Industry Growth	-0.299	0.237	-0.031	0.103	-0.081	0.071
County-Sector Growth	-0.069	0.099	0.070	0.064	0.007	0.054
County Population Growth	2.392	1.609	2.595***	0.391	3.108***	0.602
Log Per Capita Income	0.180	0.242	0.186***	0.053	0.065	0.079
Log Population Density	-0.004	0.040	0.004	0.010	0.036**	0.015
Hispanic Enrollment	0.191	0.578	0.610***	0.172	0.770***	0.229
Pseudo R ²	0.398		0.240		0.306	
Number of Observations	37,071		716,140		93,760	

Notes: Year-quarter and three-digit NAICS industry effects are also included. These are robust standard errors. * = significant at the 90 percent level, ** = significant at the 95 percent level, and *** = significant at the 99 percent level.

TABLE C2.: First-stage Undocumented Hiring probit results; Transp. & Utilities, Wholesale Trd, and Retail Trd.

	Transport & Utilities		Wholesale Trade		Retail Trade	
	dF/dx	S.E.	dF/dx	S.E.	dF/dx	S.E.
Broad Market	0.830***	0.263	0.486***	0.160	0.758***	0.126
Labor Intensity	0.583	1.780				
Log Employment	0.110*	0.061	0.314***	0.036	0.138***	0.031
Log Employment Squared	-0.003	0.010	-0.021**	0.010	-0.007	0.007
Log Wage	0.038*	0.021	-0.031***	0.005	0.070***	0.020
Log Wage Squared	-0.001	0.0006	0.0002	0.00006	-0.005***	0.001
Part-Time Employment	0.508***	0.178	-0.249***	0.098	0.038	0.090
Firm Age	0.004	0.006	0.003	0.005	0.0009	0.003
Firm Age Squared	-0.00006	0.00008	-0.00008	0.00006	-0.00003	0.00005
Multi-Establishment	-0.195	0.165	0.039	0.092	-0.099	0.067
Employment Churning	-0.003	0.002	0.201***	0.045	0.098***	0.025
Log Employee Tenure	-0.371***	0.064	-0.184***	0.053	-0.207***	0.039
Log Employment Variability	0.036	0.029	-0.027	0.021	0.012	0.017
Industry Growth	0.219	0.208	0.052	0.123	0.133	0.144
County-Sector Growth	-0.010	0.074	0.016	0.076	-0.014	0.059
County Population Growth	2.287**	1.150	1.949***	0.739	0.252	0.646
Log Per Capita Income	0.031	0.113	0.080	0.080	0.196***	0.067
Log Population Density	0.007	0.024	-0.014	0.016	0.024*	0.013
Hispanic Enrollment	0.180	0.423	1.011***	0.263	0.758***	0.210
Pseudo R ²	0.306		0.370		0.196	
Number of Observations	94,554		347,601		515,717	

See notes to Table C1.

TABLE C3: First-stage Undocumented Hiring probit results; Financial Svcs, Information, and Prof. & Bus. Svcs.

	Financial Services		Information		Prof. & Business Svcs	
	dF/dx	S.E.	dF/dx	S.E.	dF/dx	S.E.
Broad Market	0.211	0.205	0.302	0.335	-0.036	0.141
Labor Intensity	-2.422***	1.238	-1.211	0.900	-0.593***	0.103
Log Employment	0.215***	0.050	0.310***	0.057	0.199***	0.024
Log Employment Squared	-0.006	0.011	-0.013	0.010	-0.019	0.005
Log Wage	-0.007	0.011	-0.035***	0.010	-0.014***	0.003
Log Wage Squared	-0.0002	0.0003	0.0005***	0.0002	0.00009***	0.00003
Part-Time Employment	-0.012	0.139	0.132	0.165	-0.099*	0.053
Firm Age	0.0004	0.005	0.004	0.010	-0.002	0.003
Firm Age Squared	-0.00001	0.00008	-0.0002	0.0001	-0.000001	0.00004
Multi-Establishment	-0.254**	0.109	-0.134	0.136	0.204**	0.082
Employment Churning	0.174***	0.055	-0.047	0.069	0.009	0.009
Log Employee Tenure	-0.129**	0.055	-0.294***	0.097	-0.215***	0.033
Log Employment Variability	-0.009	0.023	-0.035	0.029	0.019	0.013
Industry Growth	-0.220	0.194	0.152	0.195	-0.124	0.081
County-Sector Growth	-0.026	0.145	-0.104	0.092	-0.009	0.040
County Population Growth	0.149	1.112	-0.480	1.803	3.563***	0.562
Log Per Capita Income	0.137	0.097	0.045	0.161	0.060	0.060
Log Population Density	0.044**	0.021	0.109***	0.037	0.026*	0.014
Hispanic Enrollment	0.786***	0.384	-0.955	0.932	-0.051	0.283
Pseudo R ²	0.300		0.338		0.279	
Number of Observations	346,930		17,506		714,750	

See notes to Table C1.

TABLE C4: First-stage Undocumented Hiring probit results; Ed. & Health, Leisure & Hospitality, and Other Svcs.

	Education & Health		Leisure & Hospitality		Other Services	
	dF/dx	S.E.	dF/dx	S.E.	dF/dx	S.E.
Broad Market	1.151***	0.203	0.219	0.199	0.727***	0.216
Labor Intensity	1.137***	0.389	1.530	1.093	-0.587	0.402
Log Employment	0.228***	0.042	0.084***	0.032	0.100**	0.046
Log Employment Squared	-0.036***	0.009	0.011	0.008	0.009	0.014
Log Wage	-0.003	0.005	0.021	0.016	0.033	0.025
Log Wage Squared	-0.00004	0.00006	-0.0008	0.0006	-0.002*	0.001
Part-Time Employment	0.071	0.096	-0.191**	0.086	-0.040	0.102
Firm Age	0.0005	0.005	-0.012***	0.003	0.007*	0.004
Firm Age Squared	-0.00005	0.00006	0.00007	0.00005	-0.00007**	0.00006
Multi-Establishment	0.068	0.108	-0.161*	0.088	-0.234	0.220
Employment Churning	0.138***	0.047	0.033*	0.020	0.131***	0.032
Log Employee Tenure	-0.118**	0.060	-0.126***	0.036	-0.298***	0.040
Log Employment Variability	0.044**	0.022	0.019	0.013	0.031	0.024
Industry Growth	-0.142	0.208	-0.039	0.145	-0.770***	0.187
County-Sector Growth	-0.0005	0.115	0.078	0.051	-0.296***	0.117
County Population Growth	1.447*	0.885	1.990***	0.583	2.433***	0.781
Log Per Capita Income	-0.106	0.085	0.244***	0.060	0.144*	0.078
Log Population Density	0.071***	0.018	0.027***	0.012	0.059***	0.018
Hispanic Enrollment	0.640*	0.341	0.497**	0.223	0.520**	0.255
Pseudo R ²	0.272		0.202		0.320	
Number of Observations	482,341		362,827		562,005	

See notes to table C1.

TABLE C5: Frequency Distribution of Treated and Matched Control Firms by Propensity Score Quintile

Quintile	Treated	Matched Controls
First	222	14,217
Second	716	58,415
Third	1,254	93,952
Fourth	1,926	123,690
Fifth	1,991	69,114
Total	6,109	365,497

TABLE C6: Distribution of Treated and Control Firms Across Broad Sectors.

Sector	Treated Firms	Control Firms	Total
Agriculture	115	1,216	1,331
Construction	1,364	54,344	55,708
Manufacturing	587	3,784	4,371
Transport/Utilities	157	3,251	3,408
Wholesale Trade	466	15,788	16,254
Retail Trade	658	28,660	29,318
Financial Services	258	14,990	15,239
Information	58	512	570
Prof./Business Srves	855	65,884	66,739
Education/Health	327	46,964	47,291
Leisure/Hospitality	826	89,003	89,829
Other Services	447	34,992	35,439
Total	6,109	359,388	365,497

TABLE C7: Kernel matching balancing tests

	Means Before Matching		Means After Matching				t-test	Regression- based tests
	Treated	Control	Treated	Control	percent bias	percent bias reduction	t-stat (p-value)	F-stat (p-value)
Broad Market	0.646	0.657	0.643	0.643	0.00	100.00	0.00 (1.000)	0.00 (1.000)
Higher Education	0.438	0.533	0.443	0.443	0.00	100.00	0.00 (1.000)	0.00 (1.000)
Labor Intensity	0.362	0.388	0.360	0.360	0.00	100.00	0.00 (1.000)	0.00 (1.000)
Log Employment	1.672	0.867	2.283	2.239	4.10	94.58	11.08 (0.000)	122.82 (0.000)
Log Wage	4.854	4.977	6.340	6.228	3.43	8.90	7.28 (0.000)	52.97 (0.000)
Part-Time Employment	0.427	0.419	0.376	0.384	-2.54	-1.65	-9.20 (0.000)	84.58 (0.000)
Firm Age	19.698	28.160	24.421	25.580	-6.93	85.67	-21.65 (0.000)	468.61 (0.000)
Multi-Establishment	0.019	0.010	0.017	0.018	-1.15	86.45	-3.06 (0.002)	9.35 (0.002)
Employment Churning	0.598	0.200	0.468	0.494	-4.11	93.55	-8.33 (0.000)	69.35 (0.000)
Log Employee Tenure	1.341	1.934	1.551	1.578	-3.68	95.47	-13.31 (0.000)	177.18 (0.000)
Log Employment Variability	1.696	0.713	2.410	2.389	1.54	97.95	3.31 (0.001)	10.96 (0.001)
Industry Growth	0.034	0.028	0.031	0.031	0.00	100.00	0.00 (1.000)	0.00 (1.000)
County-Sector Growth	0.035	0.026	0.032	0.031	0.75	85.60	2.32 (0.020)	5.38 (0.020)
County Population Growth	0.026	0.022	0.025	0.025	-0.24	98.85	-0.72	0.52

Log Per Capita Income	3.337	3.297	3.334	3.330	1.54	93.10	(0.472)	(0.472)
							4.74	22.45
							(0.000)	(0.000)
Log Population Density	-0.576	-0.757	-0.595	-0.639	3.30	84.71	10.40	108.18
							(0.000)	(0.000)
Hispanic Enrollment	0.052	0.044	0.051	0.051	1.59	91.80	4.49	20.15
							(0.000)	(0.000)

TABLE C8: Kernel Matching Means by Propensity Score Quintile

	Quintile 1		Quintile 2		Quintile 3		Quintile 4		Quintile 5	
	Treated	Control	Treated	Control	Treated	Control	Treated	Control	Treated	Control
Broad Market	0.607	0.607	0.607	0.606	0.608	0.607	0.637	0.637	0.689	0.691
Higher Education	0.497	0.499	0.466	0.465	0.446	0.446	0.435	0.433	0.436	0.438
Labor Intensity	0.390	0.392	0.385	0.384	0.361	0.360	0.356	0.357	0.351	0.351
Log Employment	0.729	0.843	1.464	1.490	1.976	1.930	2.350	2.311	2.878	2.799
Log Wage	8.528	7.852	6.698	6.494	6.373	6.328	6.439	6.222	5.850	5.885
Part-Time Employment	0.317	0.311	0.359	0.371	0.364	0.364	0.370	0.382	0.402	0.412
Firm Age	35.716	35.319	32.116	31.399	29.070	28.396	23.718	24.366	18.147	21.757
Multi-Establishment	0.000	0.002	0.010	0.005	0.014	0.015	0.015	0.019	0.026	0.027
Employment Churning	0.195	0.143	0.286	0.279	0.363	0.389	0.477	0.500	0.622	0.675
Log Employee Tenure	2.205	2.279	1.959	1.928	1.758	1.738	1.518	1.513	1.234	1.334
Log Employment Variability	0.814	0.727	1.309	1.315	1.819	1.845	2.414	2.432	3.351	3.282
Industry Growth	0.018	0.017	0.023	0.021	0.030	0.030	0.035	0.034	0.032	0.034
County-Sector Growth	0.011	0.026	0.010	0.024	0.032	0.028	0.038	0.035	0.037	0.033
County Population Growth	0.019	0.019	0.021	0.021	0.023	0.024	0.026	0.026	0.029	0.028
Log Per Capita Income	3.262	3.249	3.280	3.262	3.300	3.303	3.339	3.336	3.377	3.374
Log Population Density	-1.245	-1.223	-0.866	-0.984	-0.775	-0.763	-0.501	-0.580	-0.404	-0.426
Hispanic Enrollment	0.039	0.041	0.045	0.043	0.049	0.048	0.053	0.051	0.055	0.056

TABLE C9: Hotelling T^2 Tests by Propensity Score Quintile

Quintile	T^2 statistics	F-test statistics	p-value
First	713.56	35.63	0.000
Second	429.27	21.46	0.000
Third	420.16	21.00	0.000
Fourth	853.77	42.68	0.000
Fifth	2,508.51	125.39	0.000
All	1,390.11	69.50	0.000

APPENDIX D: ROBUSTNESS ANALYSES

The purpose of this Appendix is to describe a number of alternative specifications that were estimated in order to test the robustness of the results discussed in the text. Row 1 of Table D1 contains the parameter estimate, standard error, and marginal effect on the firm's hazard that results from employing undocumented workers, based on specification (A) in Table 2 of the text.

Although we include some geographic indicators that might affect a firm's survival, such as population density and county population growth, there may be additional, unobserved geographic factors that affect a firm's performance, or where undocumented workers locate. The second row in Table D1 presents the effect of including county fixed effects to the estimation. The coefficient is within a standard deviation of the baseline, suggesting that the geographic-specific regressors included in the baseline estimation are sufficient to capture county-specific variations that might affect firm survival.

[Table D1 here]

The definition of treatment is arguably arbitrary. The third row of Table D1 contains the result from repeating the baseline analysis using a different, more restrictive, definition of treatment. In addition to requiring a firm to have employed undocumented workers at least fifty percent of the time after first employing undocumented workers to be considered "treated," we also require that when a firm does employ them, at least five percent of the firm's workforce is undocumented. The estimated marginal effect is slightly smaller, but not so much as to change the conclusions.

A subset of workers classified as undocumented for this analysis reports as their SSN what is known as an Individual Tax Identification Number (ITIN). The pattern of digits identifying a number as an ITIN is described in Appendix A, but suffice it to say that it is in

these numbers we have the strongest confidence in having identified an undocumented workers - workers who are clearly using an illegal form of work authorization. The fourth row in Table D1 restricts the identification of undocumented workers in a firm only to those using an ITIN number as their SSN. As might be expected, the results are stronger (more negative), but not materially different from the baseline estimates. The similarity in estimates further validates the identification of other workers using worker-generated invalid SSNs as "undocumented."

Recall that in the baseline estimation, we reject workers as undocumented if they had a SSN that looked like it was generated by the employer (e.g., all one number, repeated; equal to the employer ID; or the same for all workers in the firm). We speculate that these numbers were the result of sloppy or lazy bookkeeping. However, there is a possibility that firms resort to this type of record keeping when they employ undocumented workers as they expect the worker to stay only a short time and don't want to bother even asking for valid identification. If this were the case, workers using employer-generated invalid SSNs should also be included in the analysis as undocumented workers. The fifth row of Table D1 contains results when classifying treatment based on the presence of workers with employer-generated invalid SSNs. The coefficient is positive, increasing a firm's hazard. This is suggestive that the appearance of employer-generated SSNs is reflective of firm behavior correlated with bad performance, as these firms are much more likely to exit sooner, and that it is appropriate to exclude these workers from the analysis.

It was argued in the methodology section of the paper that there is a possibility of omitted variables biasing the results. Two characteristics in particular, employment growth and wage growth, are excluded from the main analysis because of their potential endogeneity with firm survival (see Audretsch 1999 and Phillips and Kirchhoff 1989). However, there is also the

possibility that these characteristics might be correlated with a firm's employment of undocumented workers. The results of including these regressors in the baseline model are found in sixth row of Table D1. The marginal effect of undocumented worker employment is even stronger (more negative), suggesting that employment and wage growth and undocumented worker employment are positively correlated and that their omission produces a marginal effect that is a slight under-estimate, although not materially different.

In order to test whether the results are being driven by one period of time over the other (as the growth in the number of undocumented was quite exponential over the time period), the baseline specification was re-estimated separately before 2000 and then between 2000 and 2005. The last two rows of Table D1 contain the parameter estimates and marginal effects showing that the effect appears to be stronger post 2000, but neither time period produces a marginal effect materially different from that estimated for the entire time period.

REFERENCES

- Audretsch, David B. 1995. "Innovation, Growth and Survival," *International Journal of Industrial Organization* 13(4) (December): 441-57.
- Phillips, Bruce D. and Bruce A. Kirchhoff. 1989. "Formation, Growth and Survival; Small Firm Dynamics in the U.S. Economy," *Small Business Economics* 1(1): 65-74.

TABLE D1: Baseline and Robustness Results for Overall Impact on Hazard (specification A)

Testing Various Specifications of the Cox Hazard Model:	Coefficient on Undocumented Hiring Indicator (standard error) [marg. effect on hazard]
(1) Baseline (see results in Table 2)	-0.210*** (0.054) [-0.1893]
(2) Baseline, including county fixed effects	-0.2418*** (0.0609) [-0.2147]
(3) Baseline, treated only if share of Undocumented Hiring \geq 5 percent in at least 50 percent of quarters observed	-0.1735*** (0.0559) [-0.1593]
(4) Baseline, undocumented worker designation limited to workers with invalid SSNs conforming to numeric pattern of an ITIN	-0.2345*** (0.0967) [-0.2346]
(5) Baseline, undocumented worker defined as one who has an invalid SSN that appears to be firm (rather than worker) generated	0.6100*** (0.0617) [0.8404]
(6) Baseline, restricted to treatments occurring before 2000	-0.1119*** (0.0721) [-0.1059]
(7) Baseline, restricted to treatments occurring between 2000-2005	-0.3346*** (0.0771) [-0.2844]
(8) Baseline, includes employment and wage growth within the firm between quarter t-5 and t-1 to treatment	-0.3700*** (0.0622) [-0.309]
(9) Baseline, includes employment and wage growth within the firm, restricted to treatments occurring before 2000	-0.2619*** (0.0639) [-0.2304]
(10) Baseline, includes employment and wage growth within the firm, restricted to treatments occurring between 2000-2005	-0.4826*** (0.0660) [-0.3828]

Note: The baseline specification is as follows: (1) an undocumented worker as one who has an invalid SSN that appears to be worker (rather than firm) generated; (2) a treated firm is one that employs at least one undocumented worker in at least 50 percent of the quarters observed after initial undocumented worker employment, 1990-2005; and, (3) a non-treated firm is one that employs an undocumented worker in fewer than 20 percent of the quarters observed.

APPENDIX E: TIME-VARYING TREATMENT EFFECT

The baseline estimations assume that the treatment effect, or impact of employing undocumented workers on the hazard of exit, is the same regardless of the time since treatment. However, the baseline hazard functions depicted in Appendix B suggest that firms experience a higher hazard rate of exiting when they initially employ undocumented workers and that the advantage only appears over time. Why would firms initially employ undocumented workers if it puts them at a disadvantage?

One possibility is found in the strategic management literature. Many studies document an advantage to firms being an early market entrant. Early entrants can pre-empt resources through geographic positioning, molding consumer perceptions, or cornering technology, for example (see Lieberman and Montgomery 1998). There is also a possibility that new entrants are willing to undertake short-term risk for longer-term payoff, or that later entrants can take advantage of supply networks and the availability of industry-specific human capital, as has been illustrated in the agglomeration literature (Kutzbach 2012, Helsley 1990, and Helsley and Strange 1990). We find some evidence that in the case of employing undocumented workers, being an early entrant (employing undocumented workers when few other competitors do so) is a risky endeavor, promises longer-term payoffs, and that later entrants benefit from "agglomeration" (other firms in the industry already employing undocumented workers).

The specifications in Table 2 in the text are re-estimated interacting the Undocumented Hiring Indicator (and its interactions) with time since treatment. A graphical presentation of these results is more informative than a tabular one. Figure E1 shows that, indeed, initially employing undocumented workers increases a firm's hazard, but then works to decrease it. The median firm with regard to the amount of time since first employing undocumented workers can

expect a statistically significant reduction in its exit hazard of about 27 percent. So, clearly, there is a significant longer-term payoff to that initial potentially risky decision to employ undocumented workers.

[Figure E1 about here]

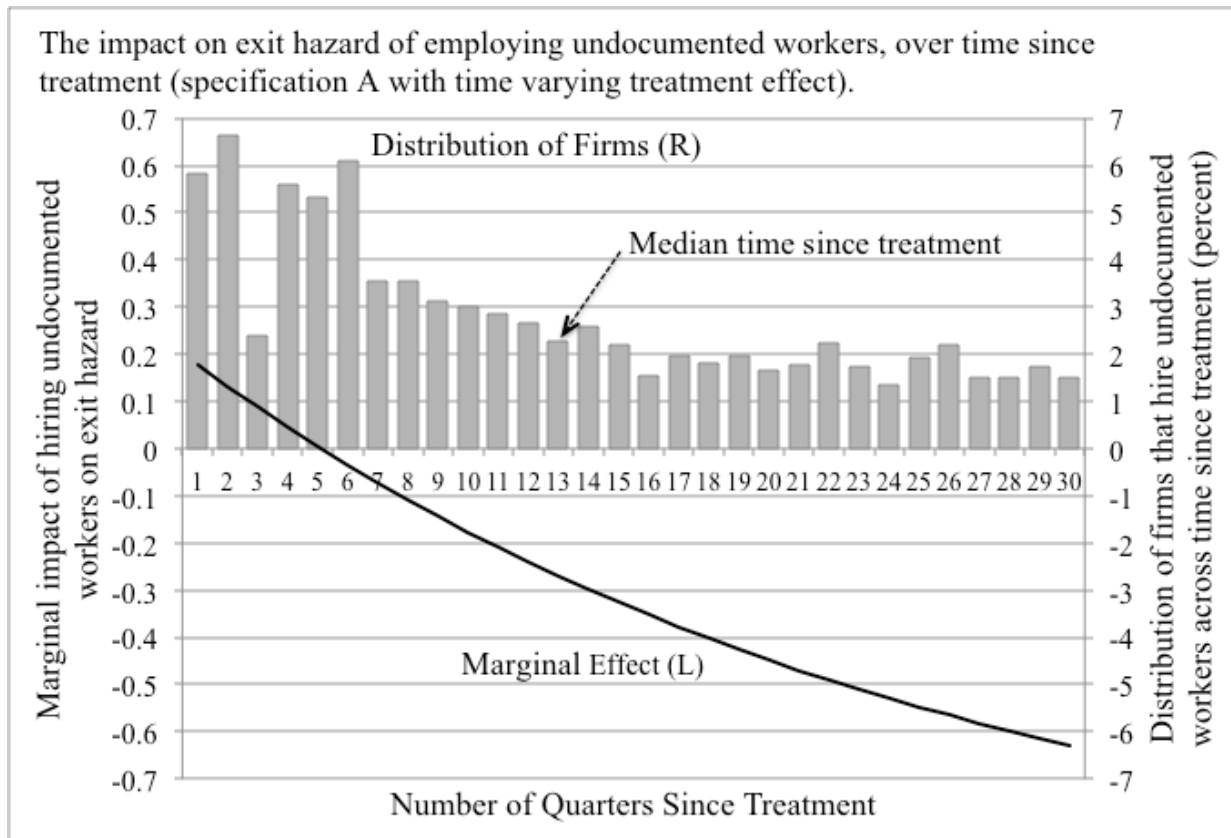
In addition, Figure E2 illustrates that once an industry has established supply lines and acquires the cultural and language knowledge required to manage an undocumented workforce, the benefit of a reduced hazard rate from employing undocumented workers is significant and immediate (the marginal effects in Figure E2 are as large as they are because we are illustrating the extreme cases of zero and one hundred percent employment of undocumented workers by other firms).

[Figure E2 about here]

REFERENCES

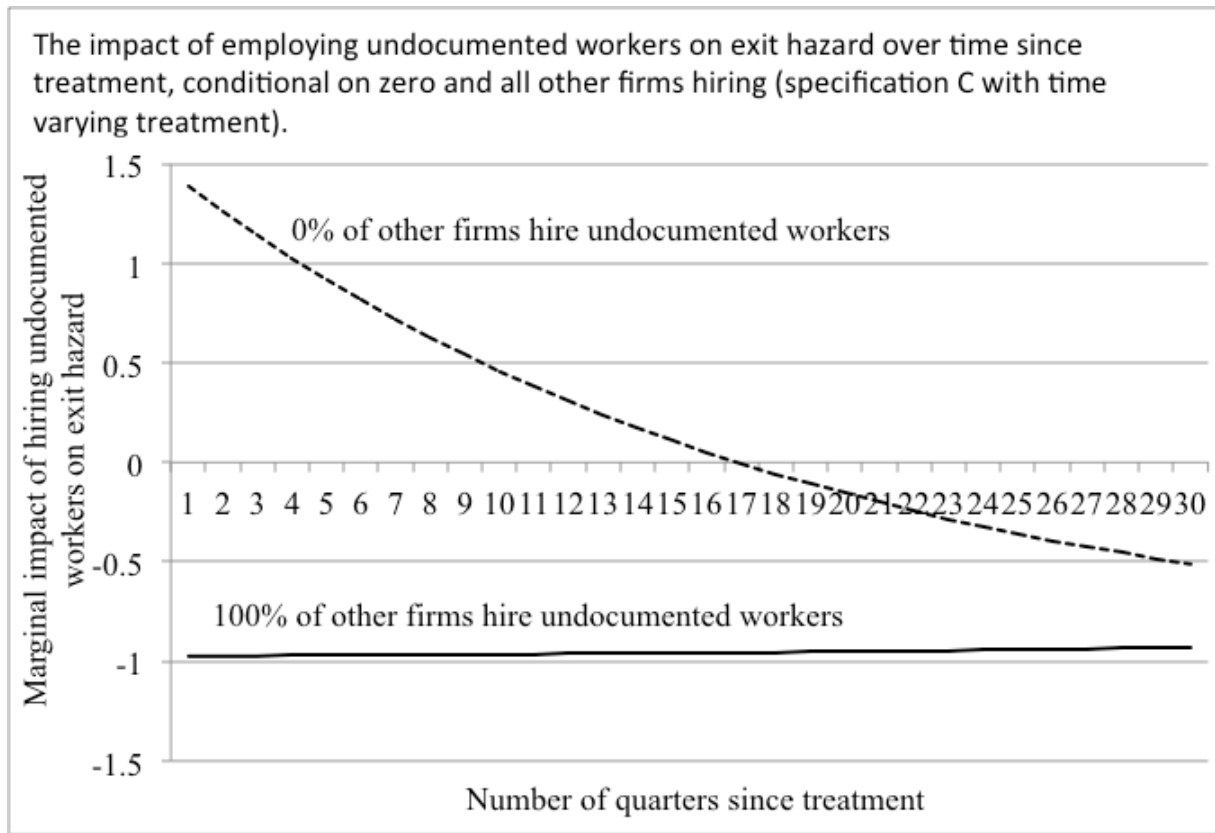
- Helsley, Robert W. 1990. "Knowledge Production in the CBD," *Journal of Urban Economics*, 28(3), 391-403.
- Helsley, Robert W. and William C. Strange.1990. "Matching and Agglomeration Economies in a System of Cities," *Regional Science and Urban Economics* 20(2), 189-212.
- Kutzbach, Mark J. 2012. "Access to Workers or Employers? An Intra-urban Analysis of Plant Location Decisions," Working Paper 10-21R, Center for Economic Studies.
- Lieberman, Marvin B. and David B. Montgomery. 1998. "First-mover (Dis)advantages: Retrospective and Link with the Resource-Based View," *Strategic Management Journal*, 19, 1111-25.

FIGURE E1:



Note: The last quarter of data is 2006 Q4; not all firms are observed for a full 30 quarters.

FIGURE E2:



Note: The last quarter of data is 2006 Q4; not all firms are observed for a full 30 quarters.