

Hatcher, Michael C.

Working Paper

Optimal indexation of government bonds and monetary policy

Cardiff Economics Working Papers, No. E2011/3

Provided in Cooperation with:

Cardiff Business School, Cardiff University

Suggested Citation: Hatcher, Michael C. (2011) : Optimal indexation of government bonds and monetary policy, Cardiff Economics Working Papers, No. E2011/3, Cardiff University, Cardiff Business School, Cardiff

This Version is available at:

<https://hdl.handle.net/10419/65774>

Standard-Nutzungsbedingungen:

Die Dokumente auf EconStor dürfen zu eigenen wissenschaftlichen Zwecken und zum Privatgebrauch gespeichert und kopiert werden.

Sie dürfen die Dokumente nicht für öffentliche oder kommerzielle Zwecke vervielfältigen, öffentlich ausstellen, öffentlich zugänglich machen, vertreiben oder anderweitig nutzen.

Sofern die Verfasser die Dokumente unter Open-Content-Lizenzen (insbesondere CC-Lizenzen) zur Verfügung gestellt haben sollten, gelten abweichend von diesen Nutzungsbedingungen die in der dort genannten Lizenz gewährten Nutzungsrechte.

Terms of use:

Documents in EconStor may be saved and copied for your personal and scholarly purposes.

You are not to copy documents for public or commercial purposes, to exhibit the documents publicly, to make them publicly available on the internet, or to distribute or otherwise use the documents in public.

If the documents have been made available under an Open Content Licence (especially Creative Commons Licences), you may exercise further usage rights as specified in the indicated licence.

**Cardiff Economics
Working Papers**

Michael Hatcher

Optimal indexation of government bonds and monetary policy

E2011/3

Cardiff Business School
Cardiff University
Colum Drive
Cardiff CF10 3EU
United Kingdom
t: +44 (0)29 2087 4000
f: +44 (0)29 2087 4419
www.cardiff.ac.uk/carbs

ISSN 1749-6101
January 2011

This working paper is produced for discussion purpose only. These working papers are expected to be published in due course, in revised form, and should not be quoted or cited without the author's written permission. Cardiff Economics Working Papers are available online from: <http://www.cardiff.ac.uk/carbs/econ/workingpapers>
Enquiries: EconWP@cardiff.ac.uk

Optimal indexation of government bonds and monetary policy¹

Michael Hatcher
PhD Student, Cardiff Business School, Cardiff University
Aberconway Drive, Cardiff CF10 3EU, UK.
Email: hatcherm@cf.ac.uk
Phone: +44 029 2087 6449

January 2011

Preliminary Draft:

Comments Welcome

Abstract

Using an overlapping generations model in which the young save for old age using indexed and nominal government bonds, this paper investigates how optimal indexation is influenced by monetary policy. In order to do so, two monetary policies with markedly different long run implications are examined: inflation targeting and price-level targeting. Optimal indexation differs significantly under the two regimes. Under inflation targeting, long-term inflation uncertainty is substantial due to base-level drift in the price level. Nominal bonds are thus a poor store of value and optimal indexation is relatively high (76 per cent). With price-level targeting, by contrast, long-term inflation uncertainty is minimal because the price level is trend-stationary. This makes nominal bonds a better store of value compared to indexed bonds, reducing optimal indexation somewhat (26 per cent). Importantly for these results, the model captures two imperfections of indexation (indexation bias and lagged indexation) that are calibrated to the UK case.

Keywords: optimal indexation, government bonds, inflation targeting, price-level targeting.

JEL Classification: E52, E58.

¹ The author gratefully acknowledges help and guidance from his supervisors, Professor Patrick Minford and Dr. Panayiotis Pourpourides.

1. Introduction

This paper investigates the link between optimal indexation and monetary policy. The motivation for studying this issue can be traced back to the seminal paper on wage indexation by Gray (1976). She showed that optimal indexation of wages depends crucially on the relative variances of real and nominal disturbances, increasing with the nominal-to-real volatility ratio. Therefore, indexation of wages should fall under monetary policy regimes that reduce nominal volatility, a prediction that appears to be borne out by the data.² Optimal indexation of wages has been investigated more recently by Minford, Nowell and Webb (2003) and Amano, Ambler and Ireland (2007), who examine inflation targeting (IT) and price-level targeting (PLT) monetary policies, motivated by their starkly different implications for nominal volatility at medium and long-term horizons. They find that a similar result holds when monetary policy is modelled explicitly and impacts endogenously upon the nominal-to-real volatility ratio: optimal indexation is lower under PLT because nominal volatility over the wage contracting horizon is reduced.

Meh, Quadrini and Terajima (2009) study optimal indexation of financial contracts. They develop a model of repeated moral hazard in which financial contracts are imperfectly indexed. In particular, financial contracts are not fully indexed to inflation because nominal prices are observed with delay, as in Jovanovic and Ueda (1997). Contracting in the model results from entrepreneurs entering into debt contracts with financial intermediaries so that they can finance investment. The extent of indexation is determined endogenously as part of an optimal and incentive-compatible contract. In concordance with findings from the wage indexation literature, optimal indexation of debt contracts in the model falls with the economy's nominal-to-real volatility ratio.

This paper contributes to the literature on optimal indexation by investigating the relationship between indexation of government bonds and monetary policy. The key feature of the model is that the extent of indexation of government bonds is determined endogenously in response to monetary policy as part of an optimal commitment Ramsey policy implemented by the government. Following recent literature in the area of optimal wage indexation, the alternative monetary policies are considered are IT and PLT. As in Meh, Quadrini and Terajima (2009) and Jovanovic and Ueda (1997), indexation to the price level is imperfect. In particular, indexation is subject to two distinct imperfections – indexation bias and lagged indexation – that are calibrated to the UK case.

The model consists of overlapping generations of consumers and an infinitely-lived government. Consumers hold money balances, productive capital and indexed and nominal

² For example, the proportion of wage settlements with cost-of-living clauses in Canada fell from 22 per cent between 1978 and 1989 to around 10 per cent between 1995 and 1999 (see Amano, Ambler and Ireland, 2007).

government bonds.³ Each period in the model lasts 30 years, and consumers live for only two periods, youth and old age. Monetary policy in the model takes the form of IT and PLT money supply rules, and aggregate uncertainty is introduced via real shocks to productivity and various nominal disturbances, including money supply shocks.

The government is the monopoly supplier of bonds and money and chooses the optimal degree of indexation in response to monetary policy, taking into account consumers' first-order optimality conditions for asset holdings. The government therefore solves an optimal commitment Ramsey problem in which its instrument is the share of indexed bonds in the government bond portfolio. The government is also required to meet a common long run government spending target under IT and PLT, which is achieved by taxing young consumers. Due to this constraint, optimal indexation is essentially chosen to minimise consumption volatility across old generations – an insurance motive. In order to capture risk-premia in asset returns, the model is solved numerically using a second-order perturbation method.

The main finding from the model is that optimal indexation is significantly lower under PLT. The reasoning is as follows. Long-term inflation uncertainty is substantial under IT because of base-level drift: even if the central bank misses its inflation target by only a small percentage in each year, these misses can accumulate and become quite large after 30 years. Consequently, nominal bonds are a poor store of value compared to indexed bonds and optimal indexation is relatively high. Under PLT, by contrast, the price level is returned to its target path following inflationary shocks. Past deviations from the inflation target therefore do not accumulate over the long-term. Inflation volatility is sharply reduced as a result, making nominal bonds a relatively better store of value and substantially reducing optimal indexation. The imperfections in indexation captured by the model are crucial for this result: if indexation is perfect, then full indexation of 100 per cent is optimal under both IT and PLT since indexed bonds are a perfect store of purchasing power.

In order to investigate the source of the reduction in optimal indexation under PLT, the indexation differential is decomposed into 'indexation bias' and 'indexation lag' components. This decomposition reveals that around nine-tenths of the reduction in indexation under PLT is due to the indexation lag. The substantive reduction due to the indexation lag arises because its contribution to real return volatility is common to both IT and PLT regimes; hence, with nominal volatility reduced under PLT, real return volatility falls more sharply on nominal bonds (whose return is certain but for inflation risk) than on indexed bonds, providing an incentive for consumers to substitute towards nominal bonds. The long-term contracting horizon in the model (30 years) is crucial for this result as inflation volatility falls markedly under PLT over a long horizon (Dittmar, Gavin and Kydland, 1999; Minford, 2004).

³ Productive capital was first introduced into the overlapping generations model by Diamond (1965), who extended the standard life-cycle model (see Samuelson, 1958) from partial to general equilibrium.

On the other hand, indexation bias plays a relatively small role in reducing optimal indexation. In fact, the impact from indexation bias arises only indirectly because it ensures that it is optimal for consumers to hold some nominal bonds in their portfolios, so that optimal indexation is partial. Conditional on nominal bonds being held, PLT reduces optimal indexation relative to IT because it dilutes the positive correlation between the real return on nominal bonds and the real return on money balances, thus reducing risk associated with holding nominal bonds. The real return correlation falls under PLT because expected inflation varies over time, and whilst a nominal bond compensates consumers for *anticipated* inflation fluctuations, money balances do not. This contrasts to the IT case when a nominal bond is effectively money plus a constant ‘mark-up’ for expected inflation, so that the real return correlation is perfect (i.e. +1).

The result that optimal indexation of government bonds can vary substantially across monetary policy regimes has potentially important policy implications. Firstly, models that do not endogenise the extent of indexation in response to monetary policy are potentially vulnerable to the Lucas critique and may give rise to seriously misleading results in forecasting or policy analysis. Secondly, as the result on optimal indexation in this paper arises from comparing IT and PLT policies, it has important implications for central banks like the Bank of Canada that are considering switching from IT to PLT and are interested in evaluating the performance of these two regimes in simulated models of the economy.⁴ Finally, the willingness of governments to issue indexed bonds may be influenced considerably by monetary policy, highlighting a potentially important interaction between fiscal policy and monetary policy. Whilst the results in this paper provides intuition for why governments might issue both indexed and nominal government bonds, they cannot fully explain the prevalence of low levels of indexation in developed economies.

The paper proceeds as follows. Section 2 sets out the model, including monetary policy rules under IT and PLT; Section 3 discusses model calibration and the stochastic simulation methodology employed; Section 4 discusses the optimal indexation problem; and Section 5 presents simulation results. Finally, Section 6 concludes and discusses policy implications.

2. The Model

The model is an overlapping generations (OLG) model of life-cycle saving in which consumers hold money balances, capital, and indexed and nominal government bonds. Consumers have homogenous preferences and live for two periods of 30 years: in the first they are ‘young’ and receive an exogenous endowment income; in the second they are the retired ‘old’ who receive the proceeds from their savings in youth. Population growth is set

⁴ The Bank of Canada is currently conducting a review of price-level targeting in anticipation of its next policy agreement with the government in 2011. The review was announced in Bank of Canada (2006).

equal to zero for simplicity⁵ and, without loss of generality, each generation is assumed to have a constant size of one.⁶

Aggregate uncertainty is introduced into the model via real productivity shocks and various nominal disturbances, including money supply shocks. Although ‘fiat money’ is a popular way of justifying money holdings in OLG models (see e.g. McCandless and Wallace, 1991), this approach is not theoretically convincing because fiat money must offer the same return as non-monetary assets to have value, implying deflation if such assets offer real returns. Money is instead introduced via a cash-in-advance constraint, an approach taken by a number of recent contributions that investigate optimal monetary policy in OLG economies (e.g. Michel and Wigniolle, 2005; Gahvari, 2007). Monetary policy takes the form of either an IT or PLT money supply rule. In response to monetary policy, young consumers demand indexed and nominal government bonds, money balances and capital. Capital is used as an input in production to produce output in old age. As such, capital is a hedge against inflation – a view that has long been held by theoretical economists and an implication of the celebrated Fisher equation (see Bodie, 1976).

The government implements monetary policy via money supply rules and also sets the total bond supply and the mix between indexed and nominal bonds (through individual bond supplies). The former is set to ensure optimal consumption smoothing (in expected terms) for each generation – along the lines of the standard OLG model where government bonds are ‘net wealth’ (see Barro, 1974; Minford and Peel, 2002). The mix between indexed and nominal bonds is chosen to maximise social welfare, subject to consumers’ first-order conditions for optimal saving and the money supply rule in place. Since indexed and nominal bonds are automatically priced to rule out arbitrage via consumers’ first-order conditions, all indexation shares in the range $[0,1]$ are feasible equilibria. In effect, the government’s problem is to select the equilibrium from this feasible set that maximises social welfare. The government’s behaviour is constrained by a long run target level of government spending, which is used up in projects that have no direct effect on consumers’ consumption or utility.

The model is solved using second-order approximation in Dynare++ (Julliard, 2001). This point is crucial since a linear approximation would ignore risk-premia in the returns on indexed and nominal bonds. More generally, it is well-known that linear approximation can lead to an inaccurate social welfare ranking of alternative policies (in this case, alternative indexation shares) because it ignores the impact of uncertainty on the stochastic means of endogenous variables (Kim and Kim, 2003; Schmitt-Grohé and Uribe, 2004).

⁵ Constant population growth would introduce an additional parameter (the population growth rate) but would not change model dynamics or, therefore, the optimal indexation results.

⁶ There is no loss of generality because the focus throughout is on per-capita values. All model equations would be left unchanged if generations had a constant size greater than one and were populated by homogenous consumers. The only difference is that per-capita values would need to be multiplied by the constant generation size in order to get economy-wide aggregates.

2.1 The consumer problem

Consumers live for two periods of 30 years and have constant relative risk aversion (CRRA) preferences over consumption:

$$u_t = u_{t,Y}(c_{t,Y}) + E_t u_{t+1,O}(c_{t+1,O}) \quad (1)$$

where $u_{t,Y}(c_{t,Y}) \equiv c_{t,Y}^{1-\delta} / (1-\delta)$ is utility in youth and $u_{t+1,O}(c_{t+1,O}) \equiv c_{t+1,O}^{1-\delta} / (1-\delta)$ is utility in old age. Consumption in period t when young is denoted $c_{t,Y}$ and consumption in period $t+1$ when old is denoted $c_{t+1,O}$.⁷

The budget constraint of young agents can be expressed in real terms as follows:

$$c_{t,Y} + b_t^{i,d} + b_t^{n,d} + m_t^d + k_t = \varpi(1 - \tau^j) \quad (2)$$

where ϖ is a young consumer's constant real endowment income;⁸ $b_t^{i,d} \equiv B_t^{i,d} / P_t$ is real demand for indexed bonds; $b_t^{n,d} \equiv B_t^{n,d} / P_t$ is real demand for nominal bonds; and $m_t^d \equiv M_t^d / P_t$ is real demand for money balances, where uppercase values are nominal and P_t is the aggregate price level. Capital holdings in real terms are given by k_t , and τ^j for $j \in (IT, PLT)$ is the constant rate of income tax.

Following Artus (1995), consumers' demand for money arises from a cash-in-advance (CIA) constraint which states that real monetary savings are a fraction $0 < \theta < 1$ of consumption when young:⁹

$$m_t^d \geq \theta \times c_{t,Y} \quad (3)$$

As is shown in Appendix A, the CIA constraint will bind with strict equality if the gross money return on nominal bonds exceeds one. Intuitively, since money is a perfect store of nominal value, an optimising consumer would not hold monetary savings in excess of the proportion θ required by the CIA constraint if nominal bonds paid a higher return. The money return on nominal bonds was greater than one in all numerical simulations of the

⁷ Consumers do not discount consumption in old age, as is often assumed in models with overlapping generations. Examples from the literature that use this assumption include Champ and Freeman (1990), Minford and Peel (2002), and Brazier, Harrison, King and Yates (2006).

⁸ A constant endowment is specified for simplicity. Including endowment shocks does not affect the optimal indexation results.

⁹ Cited by Crettez, Michel and Wigniolle (1999). This constraint is interpreted as a 'cash-in-advance' specification in the OLG literature.

model (based on *ex post* analysis of simulation results), so the CIA constraint is taken to be strictly binding, i.e. $m_t^d = \theta c_{t,Y}$.

The CIA constraint in Equation (3) provides a role for money without explicitly requiring that money offer transactions services. As such, it makes clear that the optimal indexation results that follow do not rely upon the impact of monetary policy on transactions costs or ease of exchange. Consequently, this CIA constraint emphasises the link between monetary policy and optimal indexation that is the main focus of the paper.

Capital is used to produce output in old age via a production function that exhibits diminishing returns. The depreciation rate on capital is 100 per cent; hence capital lasts for only one period.¹⁰ Since the amount of output produced using capital depends on the stochastic level of productivity, capital is a claim to an uncertain amount of real output in old age.

Output in old age is given by the following production function:

$$y_{t+1,O} = A_{t+1} k_t^\alpha \quad 0 < \alpha < 1 \quad (4)$$

where α is the elasticity of output with respect to capital.

Productivity A_t follows an AR(1) process in logs:

$$\ln A_t = (1 - \rho) \ln A_{mean} + \rho \ln A_{t-1} + e_t \quad 0 < \rho < 1 \quad (5)$$

where the productivity innovation e_t is an IID-Normal random variable with mean zero and variance σ_e^2 .

Consumption in old age consists of output produced using capital and savings income from holding money balances and bonds. Real consumption by old generations is therefore given by

$$\begin{aligned} c_{t+1,O} &= A_{t+1} k_t^\alpha + r_{t+1}^i b_t^{i,d} + r_{t+1}^n b_t^{n,d} + r_{t+1}^m m_t^d \\ &= A_{t+1} k_t^\alpha + (a r_{t+1}^i + (1-a) r_{t+1}^n) b_t^d + r_{t+1}^m m_t^d \end{aligned} \quad (6)$$

where $a \equiv b_t^{i,d} / b_t^d$ is the share of indexed bonds in consumers' bond portfolios; $b_t^d \equiv b_t^{i,d} + b_t^{n,d}$ is total demand for government bonds in real terms; $r_{t+1}^m \equiv 1 / (1 + \pi_{t+1})$ is the gross real return on money balances held from youth to old age; and $\pi_t \equiv (P_t / P_{t-1} - 1)$ is the

¹⁰ Given that each period lasts 30 years, the assumption of full depreciation is empirically plausible. See Nadiri and Prucha (1996) and studies cited therein.

rate of inflation in period t . The real returns on indexed and nominal bonds, r_{t+1}^i and r_{t+1}^n respectively, are explained in detail below.

Indexed bonds pay an *ex ante* riskless gross real return r_t that is endogenously determined.¹¹ However, due to indexation bias and lagged indexation, the *ex post* real return on an indexed bond will generally differ from the riskless return. The *ex post* real return on an indexed bond held from period t to period $t + 1$ is given by

$$r_{t+1}^i = r_t \times \left[\frac{(1 + \pi_{t+1}^i)}{(1 + \pi_{t+1})} + v_{t+1} \right] \quad (7)$$

where π_t^i is the biased rate of inflation to which indexed bonds are linked, π_t is the true rate of inflation, and v_t is a Gaussian white noise innovation whose variance σ_v^2 is based on the indexation lag length..

The first term in square brackets reflects indexation bias: its value will deviate from one if ‘true’ and ‘biased’ inflation differ. Indexation is biased because the price index used for indexation differs from the true one that defines consumers’ standard of living. In the UK case, for example, index-linked gilts are indexed to the Retail Prices Index (RPI), whereas the Retail Prices Index excluding mortgage interest payments (RPIX) may better reflect the inflation rate faced by the majority of pensioners (i.e. old generations) who do not make mortgage repayments (Leceister, O’Dea and Oldfield, 2008). The extent of indexation bias depends on the relative variances of true and biased inflation and the strength of the correlation between the two indices.

The second term in square brackets captures the impact of lagged indexation on the (*ex post*) real return received on indexed bonds. The indexation lag is motivated by the presence of data publication and collection lags, which are responsible for indexation occurring with a lag in practice. The magnitude of the indexation lag on government bonds differs across countries. For example, the large majority of outstanding index-linked gilts in the UK are indexed to the RPI with an 8-month lag (DMO, 2010), whereas indexed bonds in the US and Canada are linked to the Consumer Prices Index (CPI) with a 3-month lag. The indexation lag is modelled by a white noise innovation v_t because this approach provides a simple way to capture volatility arising from lagged indexation when the indexation lag length is small relative to the holding period. v_t is assumed to be exogenous and is therefore not influenced by monetary policy. The reasoning here is simple: since indexation lags are between 3 and 8

¹¹ The return r_t ensures that the market for indexed bonds clears.

months in developed economies, alternative monetary policies are unlikely to have a systematic impact upon this source of volatility.¹²

Nominal bonds pay a riskless nominal return R_t . The *ex post* real return on nominal bonds is certain but for inflation risk and is given by

$$r_{t+1}^n = R_t / (1 + \pi_{t+1}) = R_t \times r_{t+1}^m \quad (8)$$

where R_t is endogenously determined.¹³

Finally, the initial old are endowed with m_0 units of real money balances, an initial stock of government debt $b_0 = b_0^i + b_0^n$, and capital k_0 ; their corresponding level of consumption is $c_{1,O}$. Trivially, the utility of the initial old is given by

$$u_{1,O} = \frac{c_{1,O}^{1-\delta}}{1-\delta} \quad (9)$$

2.2 Consumers' first-order conditions

Consider the expected Lagrangian

$$L_t \equiv E_t \left[\frac{1}{1-\delta} (c_{t,Y}^{1-\delta} + c_{t+1,O}^{1-\delta}) + \lambda_{t,Y} (\varpi(1-\tau^j) - m_t^d - b_t^{i,d} - b_t^{n,d} - k_t - c_{t,Y}) \right. \\ \left. + \mu_t (m_t^d - \theta c_{t,Y}) + \lambda_{t+1,O} (A_{t+1} k_t^\alpha + r_{t+1}^i b_t^{i,d} + r_{t+1}^n b_t^{n,d} + r_{t+1}^m m_t^d - c_{t+1,O}) \right] \quad (10)$$

where $\lambda_{t,Y}$ ($\lambda_{t+1,O}$) is the Lagrange multiplier on young (old) consumers' budget constraints, and μ_t is the Lagrange multiplier on the CIA constraint.

First-order conditions are as follows:

$$c_{t,Y} : c_{t,Y}^{-\delta} = \lambda_{t,Y} + \theta \mu_t \quad (11)$$

$$c_{t+1,O} : \lambda_{t+1,O} = c_{t+1,O}^{-\delta} \quad (12)$$

$$b_t^{i,d} : \lambda_{t,Y} = E_t (\lambda_{t+1,O} r_{t+1}^i) \quad (13)$$

$$b_t^{n,d} : \lambda_{t,Y} = E_t (\lambda_{t+1,O} r_{t+1}^n) \quad (14)$$

$$m_t^d : \lambda_{t,Y} = E_t (\lambda_{t+1,O} r_{t+1}^m) + \mu_t \quad (15)$$

$$k_t : \lambda_{t,Y} = E_t (\lambda_{t+1,O} \alpha A_{t+1} k_t^{\alpha-1}) \quad (16)$$

¹² It is assumed (see Section 2.4) that inflation shocks occur at a yearly horizon.

¹³ The nominal return R_t ensures that the market for nominal bonds clears.

Substituting out the Lagrange multipliers on budget constraints when young and old gives the following consumption Euler equations for nominal bonds, indexed bonds, and capital respectively:

$$c_{t,Y}^{-\delta} = E_t(c_{t+1,O}^{-\delta} r_{t+1}^i) + \theta \mu_t \quad (17)$$

$$c_{t,Y}^{-\delta} = E_t(c_{t+1,O}^{-\delta} r_{t+1}^n) + \theta \mu_t \quad (18)$$

$$c_{t,Y}^{-\delta} = E_t(c_{t+1,O}^{-\delta} r_{t+1}^k) + \theta \mu_t \quad (19)$$

where $r_{t+1}^k \equiv \alpha A_{t+1} k_t^{\alpha-1}$ is the real return on capital.

The Lagrange multiplier on the cash-in-advance constraint is given by

$$\mu_t = E_t(c_{t+1,O}^{-\delta} (r_{t+1}^i - r_{t+1}^m)) = E_t(c_{t+1,O}^{-\delta} (r_{t+1}^n - r_{t+1}^m)) = E_t(c_{t+1,O}^{-\delta} (r_{t+1}^k - r_{t+1}^m)) \quad (20)$$

where the second and third equalities follow from the absence of arbitrage opportunities across assets due to *ex ante* returns being endogenously determined. Intuitively, Equation (20) states that, absent uncertainty, a sufficient condition for the CIA constraint to be strictly binding (i.e. $\mu_t > 0$ for all t)¹⁴ is that money be rate of return dominated by other assets.

Substituting out for the Lagrange multiplier, the consumption Euler equations for indexed bonds, nominal bonds, and capital can be written in the following form:

$$c_{t,Y}^{-\delta} = E_t(c_{t+1,O}^{-\delta} ((1 + \theta)r_{t+1}^i - \theta r_{t+1}^m)) \quad (21)$$

$$c_{t,Y}^{-\delta} = E_t(c_{t+1,O}^{-\delta} ((1 + \theta)r_{t+1}^n - \theta r_{t+1}^m)) \quad (22)$$

$$c_{t,Y}^{-\delta} = E_t(c_{t+1,O}^{-\delta} ((1 + \theta)r_{t+1}^k - \theta r_{t+1}^m)) \quad (23)$$

Equations (21) to (23) show that the CIA constraint gives rise to an additional term $\theta(r_{t+1}^h - r_{t+1}^m)$, for $h \in \{i, n, k\}$, on the right hand side of the consumption Euler equations for asset holdings. The intuition behind this additional term is that reducing consumption when young by one unit has a knock-on effect via the CIA constraint of reducing money holdings by θ units, because money holdings are proportional to consumption. This reduction in money holdings makes available an extra θ units of endowment income for purchases of indexed bonds, nominal bonds, or capital (young consumers are indifferent between all three at the margin in terms of expected utility). Consequently, consumers receive an additional return $\theta \times r_{t+1}^h$ in old age whilst losing $\theta \times r_{t+1}^m$ from the reduction in money balances.

¹⁴ See Hodrick, Kocherlakota and Lucas (1991).

2.3 Government

The government finances real spending g_t by taxing young consumers, printing money and issuing indexed and nominal government bonds. The government budget constraint is thus given by

$$g_t = \tau^j \varpi + m_t^s - r_t^m m_{t-1}^s + b_t^{i,s} - r_t^i b_{t-1}^{i,s} + b_t^{n,s} - r_t^n b_{t-1}^{n,s} \quad (24)$$

where $\tau^j \varpi$ is revenue from taxing young consumers' endowment incomes, $b_t^{i,s}$ ($b_t^{n,s}$) is the real supply of indexed (nominal) bonds issued by the government in period t , and m_t^s is the real money supply in circulation in period t .

The government sets the income tax rate on young consumers' endowment incomes τ^j (where $j \in (IT, PLT)$) in order to achieve a long run target level of government spending of $E(g_t) = g^*$ and controls the money supply in the economy via money supply rules. The total bond supply $b_t^s \equiv b_t^{i,s} + b_t^{n,s}$ is set to ensure that the marginal utility of consumption in youth is equated with the expected marginal utility of consumption in old age, or $c_{t,Y}^{-\delta} = E_t(c_{t+1,O}^{-\delta})$. This policy ensures perfect consumption-smoothing in expected terms for each generation, thereby increasing lifetime utility as in the standard OLG model in which government bonds are 'net wealth' (Barro, 1974).¹⁵¹⁶ Individual bond supplies are constrained to be non-negative, i.e. $b_t^{i,s} \geq 0$ and $b_t^{n,s} \geq 0$ for all t .

The division of the total bond supply between indexed and nominal bonds, as defined by the indexation share $a \in [0, 1]$, is chosen by the government to maximise social welfare, taking into account consumers' first-order conditions and the necessity of meeting the long run government spending target. The optimal indexation decision faced by the government is thus an example of a Ramsey policy under commitment (see Ljungqvist and Sargent, 2000). The optimal indexation problem is dealt with formally in Section 4.

2.4 Monetary Policy

The major difference between IT and PLT is that the former implies base-level drift in the price level, whilst the latter prevents nominal drift. To allow for this difference, the 30-year (i.e. one period) money supply rules under IT and PLT are derived from a *yearly horizon*. With this approach, equilibrium inflation in the model reflects the presence of base-level drift

¹⁵ The 'net wealth' result was first demonstrated formally by Barro, but he argues against government bonds being net wealth because introducing a bequest motive into the OLG model resurrects the Ricardian equivalence proposition.

¹⁶ In a model without uncertainty, the government can set the total bond supply so that all generations enjoy perfect consumption smoothing *ex post*, thereby maximising lifetime utility for all generations. See Minford and Peel (2002) for a simple example.

under IT, and its absence under PLT. Since the derivation of 30-year money supply rules from yearly ones is long-winded, the details are presented in Appendix B.

Given the 30-year horizon embedded in the model, it is assumed that monetary policy does not respond directly to a measure of output. Furthermore, since the government can commit to money supply rules, no time-inconsistency or credibility issues arise in relation to monetary policy. The money supply rules given below are stated in terms of the nominal money supply (which is non-stationary), but the money supply is converted back into real terms in order to solve the model in Dynare++.

The IT money supply rule

The nominal money supply rule under IT takes the following form:¹⁷

$$\ln(M_t^{s,IT} / M_{t-1}^{s,IT}) = 30 \times \pi + \sum_{i=1}^{30} \varepsilon_{i,t} + \ln(c_{t,Y} / c_{t-1,Y}) \quad (25)$$

where π is the annual inflation target and the $\varepsilon_{i,t}$ s are Gaussian white noise money supply innovations in year i of period t with variance σ^2 . Notice that the aggregate money supply innovation is simply the sum of the yearly money supply innovations that accumulate due to base-level drift.

Money market equilibrium (i.e. $M_t^d = M_t^s$, where $M_t^d \equiv P_t m_t^d$) implies that inflation under IT is given by¹⁸

$$\pi_t^{IT} = 30 \times \pi + \sum_{i=1}^{30} \varepsilon_{i,t} \quad (26)$$

Therefore, expected inflation is equal to the 30-year inflation target, and the 30-year inflation variance is thirty times the yearly money supply variance:

$$E_t \pi_{t+1}^{IT} = 30 \times \pi \quad (27)$$

$$\text{var}(\pi_t^{IT}) = 30 \sigma^2 \quad (28)$$

¹⁷ In the absence of money supply innovations, Equation (25) implies perfect stabilisation of inflation at the inflation target.

¹⁸ To arrive at this expression for inflation, take the first difference of the natural log of (nominal) money demand and use the approximation $\pi_t \approx \ln P_t - \ln P_{t-1}$. Then set money demand equal to money supply and solve for inflation.

Intuitively, expected inflation is equal to the inflation target because the government makes a fully credible commitment to an IT money supply rule. The inflation variance is thirty times the yearly money supply innovation variance because of base-level drift: money supply innovations cause inflation to deviate from target in each year, and over thirty years these innovations accumulate, with each one adding to long-term inflation uncertainty.

The PLT money supply rule

The nominal money supply rule under PLT is given by

$$\ln(M_t^{s,PLT} / M_{t-1}^{s,PLT}) = \ln(P_t^* / P_{t-1}^*) + \varepsilon_{30,t} - \varepsilon_{30,t-1} + \ln(c_{t,Y} / c_{t-1,Y}) \quad (29)$$

where P_t^* is the target price level and ε_t^{PLT} is the aggregate money supply innovation in period t .

In the absence of money supply innovations, Equation (29) would imply perfect stabilisation of the price level at target in each period. However, the price level will deviate from its target value when there are money supply innovations. The presence of a lagged money supply innovation reflects the response of the PLT money supply rule to the price-level deviation in the previous period, which is necessary to return the price level to its target path.

It is assumed that the target log price level under PLT increases at the target rate of inflation under IT:¹⁹

$$\ln P_t^* = p_0 + (30 \times \pi)t \quad (30)$$

where p_0 is the initial target price level.

The money supply rule in Equation (30) can therefore be written as follows:

$$\ln(M_t^{s,PLT} / M_{t-1}^{s,PLT}) = 30 \times \pi + \varepsilon_{30,t} - \varepsilon_{30,t-1} + \ln(c_{t,Y} / c_{t-1,Y}) \quad (31)$$

As in the IT case, the aggregate 30-year money supply innovation is derived from a yearly money supply rule that is subject to exogenous monetary innovations.

In contrast to the IT case, the 30-year money supply rule contains only two yearly money supply innovations, which are spaced apart by 30 years. The reasoning is as follows: innovations that occur in years 1-29 are offset in the following year in order to bring the price

¹⁹ The rate of inflation implied by the target price path is assumed to be equal to the inflation target to ensure direct comparability of IT and PLT. With this assumption, IT and PLT are identical in the absence of money supply innovations, and PLT can be interpreted as ‘average inflation targeting’.

level back to its target path. For instance, a shock in year 29 will be offset in year 30, the last year of the current period. However, the innovation in year 30 of each period cannot be offset until year 1 of the next period. Hence the innovations $\varepsilon_{30,t}$ and $\varepsilon_{30,t-1}$ enter the money supply rule. The first is the innovation in year 30 of the current period, and the second is the innovation from year 30 of the previous period, which is offset in year 1 of the current period.

Money market equilibrium implies that inflation under PLT is given by

$$\pi_t^{PLT} = 30 \times \pi + \varepsilon_{30,t} - \varepsilon_{30,t-1} \quad (32)$$

Hence expected inflation is time-varying, and the 30-year inflation variance is twice the yearly money innovation variance:

$$E_t \pi_{t+1}^{PLT} = 30 \times \pi - \varepsilon_{30,t-1} \quad (33)$$

$$\text{var}(\pi_t^{PLT}) = 2\sigma^2 \quad (34)$$

Both of these results have been discussed in the PLT literature (see e.g. Svensson, 1999; Minford, 2004). First, expected inflation varies because past deviations from the target price path are subsequently offset, and rational agents take this into account when forming their inflation expectations. Second, the 30-year inflation variance is 15 times lower under PLT since inflation depends on only 2 yearly money supply innovations, compared to 30 under IT. The reason is that, as PLT precludes base-level drift, yearly deviations from the inflation target do not accumulate to increase uncertainty over a 30-year horizon.

In order to make the difference between IT and PLT concrete, Panels (a) and (b) of Figure 1 show impulse responses of inflation to a period- t money supply innovation under IT and PLT. As the yearly money supply innovation variance has not yet been calibrated, the innovation was normalised to one in the IT case and scaled accordingly in the PLT case. The differences between IT and PLT are clear: the initial impact is somewhat smaller under PLT because of the lower (30-year) money supply innovation variance; and the inflationary shock is reversed in the following period under PLT but is treated as a bygone under IT.

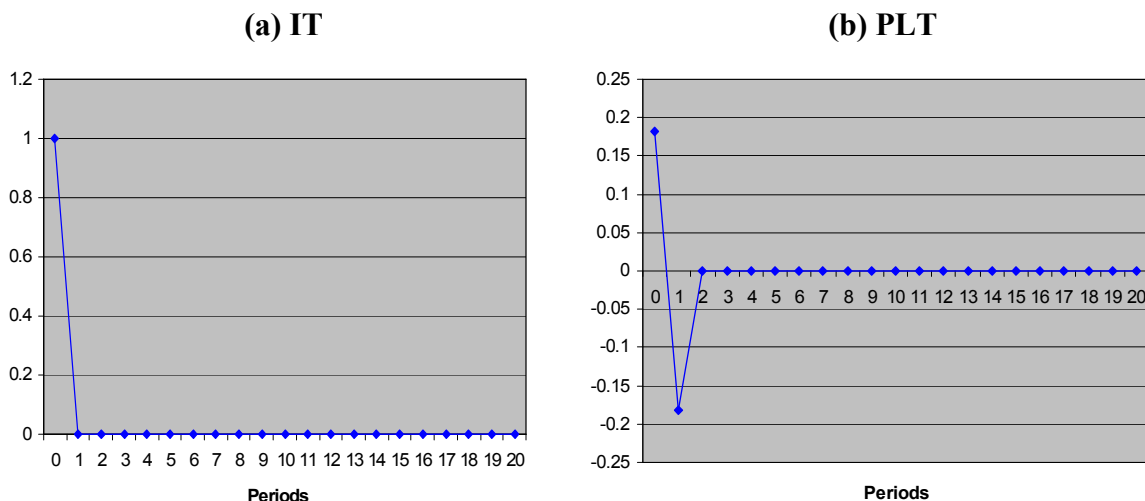


Fig. 1 – Inflation impulse responses to a money supply innovation

Finally, the biased inflation rate to which indexed bonds are linked, π_t^i , is given by an exogenous process that has the same functional form as true inflation. In particular, the long run mean is set equal to the 30-year inflation target,²⁰ and inflation responds only to current innovations under IT but to current and past innovations under PLT. As a result, the 30-year innovation variance for biased inflation is also 30 times lower under PLT than IT.

The biased inflation rate used for indexation is given by

$$\left. \begin{aligned} \pi_t^{i,IT} &= 30 \times \pi + \sum_{j=1}^{30} \varepsilon_{j,t}^i \\ \pi_t^{i,PLT} &= 30 \times \pi + \varepsilon_{30,t}^i - \varepsilon_{30,t-1}^i \end{aligned} \right\} \begin{array}{l} \text{under IT} \\ \text{under PLT} \end{array} \quad (35)$$

where, $\varepsilon_{j,t}^i \sim N(0, \sigma_i^2)$, and σ_i^2 is the yearly innovation variance to biased inflation. The $\varepsilon_{j,t}^i$ s are serially-uncorrelated but are cross-correlated with innovations to true inflation (under IT and PLT respectively), with the strength of the correlation reflecting the extent of indexation bias. Both the cross-correlation between innovations and innovation variances (for true and biased inflation) are estimated using UK data (see Section 3).

2.5 Social welfare

The government maximises the unconditional expectation of social welfare, that is, the average across all possible histories of shocks. The unconditional welfare criterion was first proposed by Taylor (1979) and has been used in numerous papers in the monetary policy literature, including Rotemberg and Woodford (1998), Clarida, Gali and Gertler (1999), Schmitt-Grohé and Uribe (2007), Damjanovic, Damjanovic and Nolan (2008).²¹

Given consumers' lifetime utility function and the utility of the initial old, average lifetime utility across T generations is given by

$$\begin{aligned} U^T &= \frac{1}{T} \left[u_{1,O}(c_{1,O}) + \sum_{t=1}^{T-1} (u_{t,Y}(c_{t,Y}) + E_t u_{t+1,O}(c_{t+1,O})) + u_{T,Y}(c_{T,Y}) \right] \\ &= \frac{1}{T} \left[\sum_{t=1}^T u_{t,Y}(c_{t,Y}) + u_{1,O}(c_{1,O}) + \sum_{t=1}^{T-1} E_t u_{t+1,O}(c_{t+1,O}) \right] \end{aligned} \quad (36)$$

The social welfare criterion is the unconditional expectation of this expression, or

²⁰ Steady-state real returns on indexed and nominal bonds are not equalised unless actual and biased inflation are equal at steady-state.

²¹ Examples of OLG models in which monetary policy is evaluated using an unconditional social welfare criterion include Brazier, Harrison, King and Yates (2006) and Kryvtsov, Shukayev and Ueberfeldt (2007).

$$EU^T = \frac{1}{T} E \left[\sum_{t=1}^T (u_{t,Y}(c_{t,Y}) + u_{t,O}(c_{t,O})) \right] \quad (37)$$

Hence, if the number of generations T is large, social welfare, denoted $U^{society}$, can be expressed as the expected utility of a representative unborn generation in youth and old age:

$$U^{society} = E(u_{t,Y}(c_{t,Y}) + u_{t,O}(c_{t,O})) \quad (38)$$

2.6 Steady state and market-clearing conditions

The model's deterministic steady state and market-clearing conditions are presented in Appendix C, and Appendix D gives a full listing of the model equations.

3. Model calibration

3.1 Money supply rules and biased inflation

In order to make the money supply rules operational, the yearly inflation target and money supply innovation variance were estimated using UK inflation data over the IT period. The stochastic process for biased inflation was also calibrated in the same way. The Retail Prices Index excluding mortgage interest payments (RPIX) was chosen as the measure of true inflation and the Retail Prices Index (RPI) as the biased measure, with the sample period running from 1997Q3 to 2010Q2.²² The RPIX was chosen as the measure of true inflation because it excludes mortgage interest payments, which are not faced by the majority of pensioners in the UK (Leicester, O'Dea and Oldfield, 2008). It also includes council tax and housing costs, both of which are relatively more important costs for pensioners that are excluded from the Consumer Prices Index (CPI). Given that indexed bonds in the UK are linked to the Retail Prices Index (RPI), the process for biased inflation was calibrated using the RPI.

Although the inflation target in the UK was changed from 2.5 per cent for the RPIX to a 2 per cent target for the CPI in December 2003, the adjustment was based on historical experience with the intention of ensuring that there was no material change in monetary policy strategy (King, 2004).²³ As such, this event was not treated as a structural break in the sample. In concordance with this treatment, the Quandt-Andrews and Chow breakpoint tests were unable to reject the null hypothesis of no breakpoint. Figure 2 shows quarterly RPI and RPIX inflation over the sample period. The RPI and RPIX track each other well, but there are some non-trivial deviations in the first half of the sample period and also in the last eight quarters.

²² The Bank of England was assigned an inflation target soon after 'Black Wednesday' in 1992, but was not given full operational independence until May 1997.

²³ The main argument cited in favour of the shift to the CPI was international comparability.

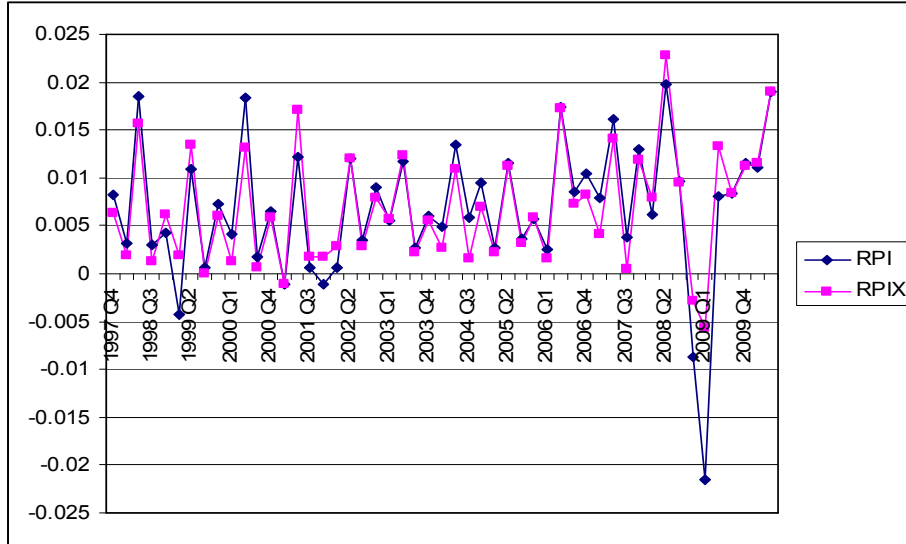


Fig. 2 – RPI and RPIX over the sample period

The following regression was estimated at a quarterly frequency q :

$$\pi_q^l = c + \varepsilon_q^l \quad (39)$$

where π_q^l , $l \in \{RPIX, RPI\}$, is inflation in quarter q , defined as the log first difference, and ε_q^l is the regression residual to inflation.

The estimation results from this regression and test statistics are shown in Table 1. The estimate for constant term c gives the mean quarterly rate of inflation over the sample period. The value of 0.007 for both the RPIX and RPI implies mean annual inflation of 0.028 ($= 4 \times 0.007$), or 2.8 per cent, which is close to the annual RPIX target of 2.5 per cent that was the focus of UK monetary policy from March 1997 until December 2003. The difference between mean quarterly inflation and the quarterly rate implied by the annual target of 2.5 per cent was not statistically significant at the 5 per cent level. Therefore, the yearly inflation target was set at $\pi = 0.025$, or 2.5 per cent per year.

The variances of yearly innovations to the money supply and biased inflation were estimated using the regression residuals. In particular, based on the estimated quarterly innovation variances, yearly innovation variances were calculated under the assumption that there is a unit root in the price level – as is implied Dickey-Fuller unit root tests on the RPIX and RPI (see Table 1).^{24 25} These yearly variances are used in money supply rules and the stochastic processes for biased inflation in simulation. Notably, the null hypothesis that the money RPIX innovation is normally distributed could not be rejected by the Jarque-Bera test (see penultimate row of Table 1). However, normality of the RPI innovation was rejected.

²⁴ An intercept and trend were included in the test regression.

²⁵ PLT is assumed to offset inflationary shocks at a yearly horizon. Hence, the quarterly (but not yearly) price level should follow a random walk.

Table 1 – RPIX and RPI regression results, 1997Q3-2010Q2

Parameter/test	RPIX	RPI
c (s.e.)	0.007 (0.001)	0.007 (0.001)
Quarterly inflation standard deviation, $sd(\varepsilon_q^l)$	0.0060	0.0073
Implied yearly standard deviation	0.012 $(\sqrt{4} \times 0.006)$	0.015 $(\sqrt{4} \times 0.0073)$
Dickey-Fuller unit-root test on log price index (prob. value)	-1.706 (0.73)	-1.380 (0.85)
Jarque-Bera test on ε_q^l (prob. value)	1.837 (0.40)	30.58 (0.00)
RPI-RPIX inflation correlation, i.e. $corr(\pi_q^{RPI}, \pi_q^{RPIX}) = corr(\varepsilon_q^{RPI}, \varepsilon_q^{RPIX})$	0.89	

RPI and RPIX inflation are strongly positively correlated, with a correlation coefficient of 0.89. This correlation was taken as the contemporaneous correlation between innovations to true inflation and biased inflation, and was therefore used as a basis for calibrating the covariances between innovations to actual and biased inflation (under both IT and PLT).²⁶ Overall, the results suggest a relatively small indexation bias: innovations to RPIX and RPI inflation are closely correlated and their variances are similar. For completeness, Table 2 lists calibrated values in the money supply rules and the stochastic processes for biased inflation.

Table 2 – Calibrated values in money supply rules and biased inflation

Model parameter	Role in the model	Calibrated value
$30 \times \pi$	Inflation target over 30 years	0.75
$\text{var}(\varepsilon_{i,t})$	Yearly money supply innovation variance	1.44×10^{-4}
$\text{var}(\varepsilon_{j,t}^i)$	Yearly biased inflation innovation variance	2.13×10^{-4}
$\text{cov}(\varepsilon_{i,t}, \varepsilon_{j,t}^i)$	Biased inflation innovation at a 30-year horizon under IT	1.56×10^{-4} $(= 0.89 \times sd(\varepsilon_{i,t}) \times sd(\varepsilon_{j,t}^i))$

3.2 Calibrating stochastic productivity

When calibrating the stochastic process for productivity, it is important to take into account the 30-year horizon of the OLG model. In order to do so, a typical quarterly calibration from the real business cycle (RBC) literature is extended over a 30-year horizon.

²⁶ Note that for correlated random variables X and Y , $\text{cov}(X, Y) = \text{corr}(X, Y) \times sd(X) \times sd(Y)$.

Consider an AR(1) process for log productivity at a quarterly horizon q :

$$\ln A_q = (1 - \rho_q) \ln A_{q,mean} + \rho_q \ln A_{q-1} + e_q \quad 0 < \rho_q < 1 \quad (40)$$

where e_q is an IID-Normal productivity innovation with mean zero and variance σ_q^2 .

By substituting repeatedly for lagged productivity terms, productivity over a 30-year (i.e. 120 quarters) horizon can be obtained as follows:

$$\ln A_q = (1 - \rho_q^{120}) \ln A_{q,mean} + \rho_q^{120} \ln A_{q-120} + \sum_{j=0}^{119} \rho_q^j e_{q-j} \quad (41)$$

Therefore, productivity in the OLG model is given by

$$\ln A_t = (1 - \rho) \ln A_{mean} + \rho \ln A_{t-1} + e_t \quad (42)$$

where $\ln A_{mean} \equiv (1 - \rho_q^{120}) \ln A_{q,mean} / (1 - \rho)$, $\rho \equiv \rho_q^{120}$ and $e_t \equiv \sum_{j=0}^{119} \rho_q^j e_{q-j}$.

Equation (42) is used as basis for calibrating the stochastic productivity process in the OLG model, with calibrated values summarised in Table 3. Many papers in the RBC literature (e.g. King and Rebelo, 2000) use quarterly calibrations of productivity in which the autoregressive parameter is slightly below one and the innovation standard deviation is less than 0.008. Gavin, Keen and Pakko (2009) set the quarterly first-order autocorrelation at 0.95 and the innovation standard deviation at 0.005, consistent with the lower volatility of output in the ‘Great Moderation’ period. The calibration used here is based on the same standard deviation as in their paper (i.e. $\sigma_q = 0.005$) but a higher autocorrelation coefficient of $\rho_q = 0.996$ that is more consistent with the bulk of the RBC literature. Consequently, the calibrated 30-year productivity process has a first-order correlation of $\rho = \rho_q^{120} = 0.618$ and an innovation standard deviation of $\sigma_e = 0.04398$.²⁷ Steady-state productivity was set equal to 0.75.

Table 3 – Calibration of stochastic productivity

Model parameter	Role in the model	Calibrated value
ρ	Persistence in productivity at a 30-year horizon	0.618
σ_e	Productivity innovation standard deviation (at a 30-year horizon)	0.04398
A_{mean}	Steady-state level of productivity	0.75

²⁷ In particular, $\sigma_e = \sqrt{(1 - 0.996^{240})(1 - 0.996^2)^{-1}} \times 0.005$. This expression uses the fact that $\text{var}(e_t) = (1 + \rho_q^2 + \rho_q^4 + \dots + \rho_q^{238}) \sigma_q^2 = (1 - \rho_q^{240}) \sigma_q^2 / (1 - \rho_q^2)$.

3.3 Calibrating the indexation lag

The random innovation v_t is used to proxy for the impact of an indexation lag on the *ex post* real return on indexed bonds. In order to calibrate its variance, a number of points should be considered. First, given the specification of the real return on indexed bonds, it should have the same units as the term $(1 + \pi_t^i)/(1 + \pi_t)$ which it appears in brackets alongside. Hence v_t is interpreted as the impact of the indexation lag, in percentage points, on the inflation-indexed component of an indexed bond. Second, the variance of v_t should reflect the volatility of the inflation rate to which indexed bonds are linked, measured over a horizon by defined the length of the indexation lag. Given that the indexation lag on the majority of outstanding index-linked gilts in the UK is 8 months, this variance was estimated using the rate of RPI inflation over a three-quarter horizon.²⁸

The following regression was estimated:

$$\Delta\pi_{q;q-3} = c + \varepsilon_{q;q-3} \quad (43)$$

where $\Delta\pi_{q;q-3}$ is the differential between RPI inflation in quarter q and RPI inflation in quarter $q-3$, and $\varepsilon_{q;q-3}$ is a regression residual and the empirical counterpart to v_t .

Table 4 shows the regression results. The constant term is insignificant, offering support to the assumption that v_t is mean zero, but the Jarque-Bera test marginally rejects the assumption that the residual is normally-distributed at the 1 per cent significance level. The regression residual standard deviation was 0.0121, or 1.2 per cent. The variance for v_t was therefore calibrated at $\sigma_v^2 = 0.0121^2 = 0.000146$.

Table 4 – RPI indexation lag regression results

Parameter/test	Result
c (s.e.)	0.0002 (0.0017)
Standard deviation of the residual, i.e. $sd(\varepsilon_{q;q-3})$	0.0121
Jarque-Bera test on $\varepsilon_{q;q-3}$ (prob. value)	10.80 (0.005)

3.4 Model parameter calibration

Table 5 summarises the calibration of the remaining parameters in the model. The CIA coefficient θ , the share of money holdings in consumption when young, was calibrated to roughly match UK data. In particular, notes and coins in circulation amounted to 3 to 4 per

²⁸ Using 3 quarters (9 months) meant that the same quarterly RPI data could be used in estimation throughout the paper.

cent of annual UK GDP over the past decade (ONS Financial Statistics, 2010), with total household consumption accounting for around 65 per cent of GDP (ONS Blue Book, 2010). Therefore, with aggregate steady-state consumption split equally between young and old agents by the government bond supply rule, holdings of notes and coins would need to account for around one-tenth of young agents' consumption to match the data. On this basis, θ was set equal to 0.10.

The coefficient of relative risk aversion was set equal to 3. This value lies in the mid-range of calibrated values considered plausible in the literature. It is higher than a standard RBC calibration of unity, but somewhat lower than values typically used in the open-economy literature that attempts to match exchange rate volatility and persistence (e.g. Chari, Kehoe and McGrattan, 2002; Kocherlakota and Pistaferri, 2007), or the literature that attempts to resolve asset-pricing puzzles by appealing to relatively high levels of risk aversion (e.g. Bansal and Yaron, 2004). The value of 3 is also close to the estimate of 3.5 reached by Tödter (2008) using US stock return data from 1926 to 2002.

The long run target level of government spending was set equal to 20 per cent of steady-state GDP. This long run target is similar to the level of UK government expenditure as a percentage of GDP (ONS Blue Book, 2010). The parameter α , the elasticity of output with respect to capital, was set at 0.375, which lies in the mid-range of calibrated values in the RBC literature.²⁹ Young consumers' endowment income was set so that steady-state GDP (or aggregate income) was equal to 2. As a result, consumption levels, government spending and asset holdings can be interpreted as proportions of GDP after division by 2.

Table 5 – Calibration of model parameters

Model parameter	Role in the model	Calibrated value
θ	Proportion of consumption when young held as money balances	0.10
δ	Coefficient of relative risk aversion	3
ϖ	Endowment income of young consumers	1.641
g^*	Long run government spending target	0.40
α	Elasticity of output produced in old age with respect to capital	0.375

²⁹ Papers in the RBC literature typically combine both capital and labour in a Cobb-Douglas production function, so that α is the share of capital income in output. Many papers in this literature set $\alpha \approx 1/3$, but some papers use somewhat higher calibrations (e.g. Perli and Sakelleris, 1998; King, Plosser and Rebelo, 1988).

3.5 Deterministic steady-state

The deterministic steady-state values of key variables under the baseline calibration are shown in Table 6.³⁰

Table 6 – Key variables at steady-state

Model variable	Steady-state value
$c_{t,Y}$	0.730
$c_{t,O}$	0.730
$b_t^d (= b_t^s)$	0.343
$m_t^d (= m_t^s)$	0.073
k_t	0.140
π_t	0.75

Note: Steady-state GDP is equal to 2

Aggregate consumption accounts for 73 per cent of steady-state GDP (which approximately matches developed economies) and is split equally between consumption by young and old generations by the government's total bond supply rule. Money holdings are approximately 3.7 per cent of GDP (i.e. $0.073/2$), which is similar to the UK share of notes and coins in GDP over the past decade. Steady-state inflation is equal to the 30-year inflation target of 0.75, or a 75 per cent increase in prices over a 30-year horizon. Since there is full depreciation of capital, investment is given by the level of capital holdings. Steady-state investment is thus 7 per cent of GDP, with the remaining 20 per cent of GDP accounted for by government spending. Steady-state capital holdings are 41 per cent of bond holdings, which is similar to the average ratio of investment to government bonds in the UK over the past decade (ONS Blue Book, 2010; ONS Financial Statistics, 2010).

3.6 Stochastic simulation methodology

The model is solved using second-order approximation in Dynare++ (Julliard, 2001). It is important to use non-linear approximation methods for two reasons. First, linearizing the model would eliminate covariance risk, thus ignoring risk-premia in the returns on indexed and nominal bonds. Second, when comparing social welfare across alternative monetary policy regimes, linear approximation can easily lead to an inaccurate ranking of policies because it neglects the impact of second-order terms on the stochastic means of endogenous variables in the model. For instance, Kim and Kim (2003) present a simple two-agent economy in which linearization leads to the spurious conclusion that autarky delivers higher social welfare than full risk sharing. In the model at hand, spurious conclusions regarding optimal indexation could be drawn if linear approximation methods were employed.

³⁰ Since steady-state returns are equalised across indexed and nominal bonds, the deterministic steady-state is invariant to the indexation share a .

In order to solve for the optimal indexation shares under IT and PLT, a method akin to grid search was employed. The model was first simulated for indexation shares from 0 to 1, with social welfare recorded for each simulation. Based on preliminary analysis, the searchable range was then narrowed down in order to identify the optimal indexation shares exactly. For each indexation share, social welfare was calculated using 1000 simulations of 5000 periods each, with the simulation seed chosen randomly in each simulation.

4. Optimal indexation

The government chooses the mix of indexed and nominal bonds to maximise social welfare subject to its budget constraint, its long run target for government spending, consumers' first-order conditions for optimal saving, the money supply rule, and the model's other equilibrium conditions. Consequently, the policy being studied is a Ramsey policy: the government can commit and takes into account the optimal reactions of consumers when making its optimal indexation choice.

Given that the model is solved using a second-order perturbation method, the optimal indexation problem faced by the government can be formulated using a second-order Taylor expansion of social welfare around (unconditional) mean consumption levels.

In particular, the optimal indexation problem can be stated as follows:

$$\max_a U^{society} \approx \left(\frac{(Ec_{t,Y})^{1-\delta} + (Ec_{t,O})^{1-\delta}}{1-\delta} \right) - \frac{1}{2} \left(|U_{c_Y c_Y}^{society}| \text{var}(c_{t,Y}) + |U_{c_O c_O}^{society}| \text{var}(c_{t,O}) \right) \quad (44)$$

subject to

$$E(g_t) = g^* \quad \text{and} \quad g_t = \tau^j \varpi + m_t^s - r_t^m m_{t-1}^s + b_t^{i,s} - r_t^i b_{t-1}^{i,s} + b_t^{n,s} - r_t^n b_{t-1}^{n,s},$$

the IT or PLT money supply rule,

and equations (2) to (9), (21) to (23), and (35),³¹

where $U_{c_Y c_Y}^{society} = -\delta (Ec_{t,Y})^{-(1+\delta)}$ ($U_{c_O c_O}^{society} = -\delta (Ec_{t,O})^{-(1+\delta)}$) is the second derivative of the social welfare function with respect to $c_{t,Y}$ ($c_{t,O}$), evaluated at $Ec_{t,Y}$ ($Ec_{t,O}$).

In order to gain some intuition for the factors driving optimal indexation, consider a first-order Taylor expansion of the first term on the right hand side of Equation (44) around the deterministic steady-state.³²

³¹ Note that the specification of Equation (35) differs under IT and PLT.

³² This approximation is employed only to provide intuition for the results that follow. When the model is simulated, the full expression for social welfare is evaluated.

Using this approximation results in the following social welfare criterion:

$$\max_a U^{society} \approx c_O^{1-\delta} \left(Ec_{t,Y} + Ec_{t,O} + \frac{2\delta \times c_O}{1-\delta} \right) - \frac{1}{2} \left(|U_{c_Y c_Y}^{society}| \text{var}(c_{t,Y}) + |U_{c_O c_O}^{society}| \text{var}(c_{t,O}) \right) \quad (45)$$

where $Ec_{t,Y} + Ec_{t,O}$ is the average level of aggregate consumption.³³

Summing the budget constraints of young and old generations gives the goods market-clearing condition, or $c_{t,Y} + c_{t,O} + k_t + g_t = \varpi + A_t k_{t-1}^\alpha$. Taking the unconditional expectations operator through this condition gives $Ec_{t,Y} + Ec_{t,O} = \varpi - g^* + E(A_t k_{t-1}^\alpha - k_t)$, which is approximately invariant to the indexation share a .³⁴ The indexation choice does not affect the average level of aggregate consumption because the government must meet its long run government spending target g^* . For example, supposing nominal bonds have a higher expected return than indexed bonds, a marginal reduction in indexation would (*ceteris paribus*) increase average consumption by old generations. However, reducing indexation would also reduce average government spending (by exactly the same amount), because average cost of issuing government debt has risen. Therefore, in order to meet the long run government spending target g^* , the income tax rate on young generations would need to increase, reducing their average consumption and offsetting the increase that accrued to old generations.

Given that the first term on the right hand side of Equation (45) is approximately invariant to the indexation share, the government is effectively minimising a loss function in consumption volatility – that is, optimal indexation will be driven by a consumption insurance motive. Thus, using notation employed by Woodford (2003), the optimal indexation problem can be expressed as follows:

$$\min_a U^{society} \approx \frac{1}{2} \left(|U_{c_Y c_Y}^{society}| \text{var}(c_{t,Y}) + |U_{c_O c_O}^{society}| \text{var}(c_{t,O}) \right) + t.i.p. \quad (46)$$

where *t.i.p.* stands for ‘terms independent of policy’.

The key term in Equation (46) is given by $(1/2)|U_{c_O c_O}^{society}| \text{var}(c_{t,O})$. The reasoning is as follows. First, the consumption variance across young generations will be much smaller than the consumption variance across old generations, since consumption volatility for the young arises only indirectly through small portfolio substitution effects due to fluctuations in assets’ expected returns, whilst consumption by the old is impacted directly by *ex post* shocks to

³³ Importantly, mean consumption levels remain second-order accurate in this expression because the expectations and not the level is linearized.

³⁴ The last term is approximately invariant to the indexation share because capital is a pure real asset whose return is uncorrelated with bond returns.

asset returns. Second, consumption volatility across old generations depends directly on the indexation share, whilst the indexation share has minimal impact on consumption volatility across young generations.³⁵

In Appendix E it is shown that under reasonably general conditions (which are satisfied by the baseline calibration), the term $(1/2) \left| U_{c_o c_o}^{society} \right| \text{var}(c_{t,o})$ will be minimised by choosing the indexation share so that the consumption variance across old generations is (approximately) minimised, or

$$\frac{\partial \text{var}(c_{t,o})}{\partial a} \approx 0 \quad (47)$$

which can be used to derive an approximate expression for the optimal indexation share.

The key terms in the consumption variance across old generations are given by³⁶

$$\text{var}(c_{t,o}) \approx \text{var}(y_{t,o}) + \text{var}(r_t b_{t-1}^s) + \text{var}(r_t^m m_{t-1}^d) + 2 \text{cov}(r_t b_{t-1}^s, r_t^m m_{t-1}^d) \quad (48)$$

where $y_{t,o} \equiv A_t k_{t-1}^\alpha$ is output produced by old generations and $r_t \equiv a r_t^i + (1-a) r_t^n$ is the overall return on old generations' bond portfolio.

Differentiating Equation (48) with respect to the indexation share and setting the result equal to zero gives an approximate expression for the optimal indexation share a^* . Appendix F shows that this expression is as follows:

$$a^* \approx \frac{\text{var}(r_t^n b_{t-1}^s) + \text{cov}(r_t^n b_{t-1}^s, r_t^m m_{t-1}^d) - \text{cov}(r_t^i b_{t-1}^s, r_t^m m_{t-1}^d) - \text{cov}(r_t^i b_{t-1}^s, r_t^n b_{t-1}^s)}{\text{var}(r_t^i b_{t-1}^s) + \text{var}(r_t^n b_{t-1}^s) - 2 \text{cov}(r_t^i b_{t-1}^s, r_t^n b_{t-1}^s)} \quad (49)$$

Intuitively, the optimal indexation share is (i) increasing in the return variance on nominal bonds, (ii) decreasing in return variance on indexed bonds, and (iii) increasing (decreasing) in the extent to which the real returns on nominal (indexed) bonds and money balances covary. Notice also that full indexation will not, in general, be optimal (unless real returns on indexed and nominal bonds are themselves strongly positively correlated), since holding nominal

³⁵ Under IT, consumption volatility across young generations is independent of the indexation share because expected inflation is constant. Under PLT, however, expected inflation is time-varying, so there are small variations in the expected returns on indexed and nominal bonds. As a result, consumption volatility across young generations is not independent of the indexation share, though the impact of the indexation share on volatility is extremely small.

³⁶ Note that since capital is a claim to real output, its return is uncorrelated with indexed and nominal bond returns, and the real return on money balances.

bonds will diversity consumption risk in old age.³⁷ All four of these predictions are confirmed by the simulation results in the next section.

5. Simulation results

Panel (a) of Figure 3 shows how social welfare varies with the indexation share under IT, and Panel (b) shows the corresponding variation in consumption volatility across old generations. An indexation share of 76 per cent maximises social welfare. As expected, this result is driven primarily by consumption volatility across old generations, which is approximately minimised at this indexation share. A relatively high indexation share is optimal under IT because long-term inflation volatility is substantial, so that nominal bonds are a relatively poor store of value compared to indexed bonds. Indeed, the simulated real return volatility on nominal bonds is almost two-and-a-half times as high as on indexed bonds (see Table 6).

Despite this substantial return volatility differential, it is optimal for consumers to hold some nominal bonds in their portfolios for diversification reasons, as there is only a weak correlation between real returns on indexed and nominal bonds.³⁸ The result that optimal indexation is relatively high under IT is consistent with the findings of Minford, Nowell and Webb (2003) and Amano, Ambler and Ireland (2007), who study optimal wage indexation.

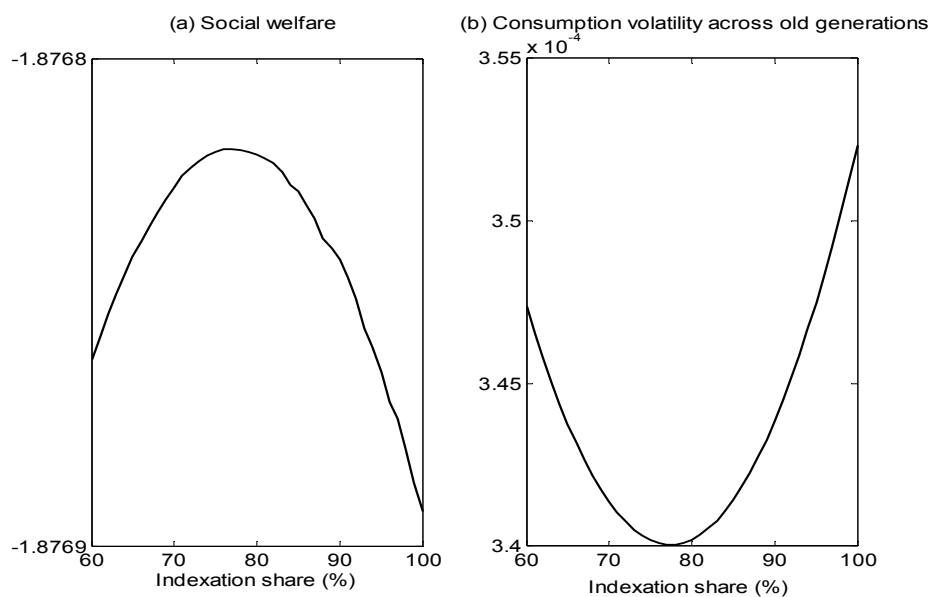


Fig. 3 – Optimal indexation under IT

³⁷ For instance, the variance-minimising shares in a portfolio of two assets (A and B) whose returns are uncorrelated are given by $v_A = \sigma_B^2 / (\sigma_A^2 + \sigma_B^2)$ and $v_B = \sigma_A^2 / (\sigma_A^2 + \sigma_B^2)$. Hence, the optimal share in asset B will be positive unless the variance of asset A is zero (i.e. $\sigma_A^2 = 0$) or the variance of asset B tends to infinity (i.e. $\sigma_B^2 \rightarrow \infty$). When returns are positively correlated, the optimal shares will lie between zero and one if the correlation between returns is sufficiently small.

³⁸ In fact, there is a slightly negative correlation between bond returns. The reason is that unanticipated inflation will tend to reduce the real return on nominal bonds but increase the real return on indexed bonds, since biased inflation will typically ‘overshoot’ true inflation due to its higher variance.

Figure 4 shows the impact of the indexation share on social welfare and consumption volatility under PLT. Optimal indexation is somewhat lower than under IT at 26 per cent (see Panel (a)), indicating that it is optimal for consumers to hold almost three quarters of their bond portfolios as nominal bonds. The reasoning for this result can be seen from Panel (b), which shows that consumption volatility across old generations is minimised at an indexation share close to 26 per cent. Hence nominal bonds become a relatively better store of value than in the IT case, enabling old generations to reduce their exposure to real consumption risk by substituting towards nominal bonds and away from indexed bonds.

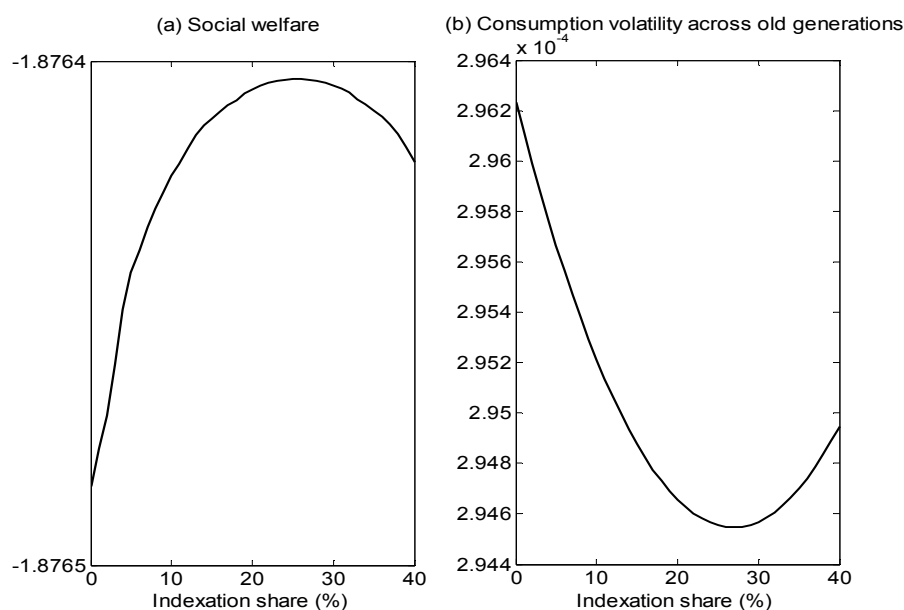


Fig. 4 – Optimal indexation under PLT

The IT and PLT optimal indexation results are summarised in Table 5, which reports the indexation shares that maximise social welfare, and also the indexation shares at which consumption volatility is minimised.³⁹

Table 5 – Optimal indexation shares under IT and PLT

Monetary policy	Optimal indexation share	Indexation share at which $\text{var}(c_{t,O})$ is minimised
IT	76%	77%
PLT	26%	27%

There are two reasons behind the substantial reduction in optimal indexation under PLT. Firstly, the reduction in (long-term) inflation uncertainty under PLT benefits holders of nominal bonds disproportionately, because real return volatility on nominal bonds is driven

³⁹ The optimal indexation shares do not coincide exactly with the ones that minimise consumption volatility across old agents. The reason is that the condition that the indexation share should be chosen to minimise consumption volatility across old generations is an approximation (see Section 4 and Appendix E). The simulation results suggest, however, that the approximation is a reasonably good one.

purely by inflation risk, whereas indexed bonds are also impacted by the indexation lag – a source of real return volatility that remains unchanged under PLT. As a result, real return volatility falls more sharply on nominal bonds than indexed bonds, giving consumers a consumption insurance incentive to substitute towards nominal bonds. The approximate formula for the optimal indexation share in Equation (49) indicates that a reduction in the nominal-to-indexed return variance ratio will reduce optimal indexation.⁴⁰ The marked the reduction in this ratio under PLT can be seen clearly from Table 6. The standard deviation on indexed bonds is approximately halved from 230 basis points under IT to 120 under PLT, but the standard deviation of the return on nominal bonds falls to less than one-fifth of its IT value, from 360 to 70 basis points.

Table 6 – Real return standard deviations

Monetary policy	Indexed Bonds	Nominal bonds
IT	230	360
PLT	120	70

Notes: Figures are in basis points and are rounded

Secondly, the lower indexation share under PLT is driven by indexation bias. Even in the absence of an indexation lag, this bias works to reduce the optimal indexation share. The reasoning is as follows. With consumers holding both indexed and nominal bonds in their portfolios for diversification reasons, covariance risk between bond returns and the real return on money affects consumption volatility in old age, and hence optimal indexation. Nominal bonds perform relatively better under PLT in terms of this cross-covariance risk, because the real return on nominal bonds is strongly positively correlated with the real return on money balances under IT, but only weakly so under PLT. Thus there is an additional diversification motive for holding nominal bonds under PLT: nominal bonds will tend to pay a relatively low return when the real return on money is high, thus stabilising consumption in old age.

Table 7 – Real return correlations between assets

Monetary policy	$corr(r^i, r^n)$	$corr(r^i, r^m)$	$corr(r^n, r^m)$	$corr(r^i, r^k)$	$corr(r^n, r^k)$
IT	-0.11	-0.11	1.00	0	0
PLT	-0.03	-0.04	0.08	0	0

Notes: Figures are rounded to two decimal places

Table 7 shows formally that the nominal bonds-money real return correlation falls substantially from a perfect positive correlation of 1 under IT to only 0.08 under PLT, while

⁴⁰ The easiest way to obtain this result is to divide the numerator and denominator of Equation (49) by $\text{var}(r_t^n b_{t-1}^s)$ and then solve for the optimal share of nominal bonds, $1 - a^*$.

other return correlations are largely unchanged.⁴¹ That a lower correlation between the real return on nominal bonds and the real return on money will reduce optimal indexation can be seen formally from the approximate expression in Equation (49). The lower correlation under PLT can be explained by the fact that expected inflation becomes time-varying. This has the effect of ‘diluting’ the positive correlation between nominal bond returns and the real return on money balances, because nominal bonds provide insurance against *anticipated fluctuations* in inflation, whilst holding money does not.⁴²

In order to investigate the source of the reduction in optimal indexation under PLT, the indexation differential was decomposed into indexation bias and lagged indexation components:

$$a^{IT} - a^{PLT} = \underbrace{\Delta a^{IT} - \Delta a^{PLT}}_{\text{Indexation lag diff.}} + \underbrace{a_{\text{no lag}}^{IT} - a_{\text{no lag}}^{PLT}}_{\text{Indexation bias diff.}} \quad (50)$$

where a^j is the fully optimal indexation share; $a_{\text{no lag}}^j$ is the optimal indexation share in the absence of lagged indexation; and $\Delta a^j \equiv a^j - a_{\text{no lag}}^j$ is change in optimal indexation due solely to the presence of lagged indexation, for $j \in (IT, PLT)$.

Table 8 reports the results from the IT-PLT indexation differential decomposition.

Table 8 – Decomposition of the indexation differential

Indexation share/differential	IT	PLT
Optimal indexation share, a^j	76	26
IT-PLT differential, $a^{IT} - a^{PLT}$	50	
Optimal with biased indexation only, $a_{\text{no lag}}^j$	82	76
IT-PLT indexation bias differential	6	
IT-PLT indexation lag differential	44	

Only 6 per cent of the indexation differential between IT and PLT is due to indexation bias, with the remaining 44 per cent due to lagged indexation. The impact of the indexation lag is substantial because long-term inflation risk is drastically reduced under PLT. This has the effect of reducing return volatility on nominal bonds disproportionately because real return risk on nominal bonds results solely from inflation risk, whilst indexed bonds are also subject to risk resulting from the indexation lag (which is unchanged under PLT). On the other hand, the role played by indexation bias in the IT-PLT indexation differential is relatively small. Intuitively, as money holdings are small under the baseline calibration, the reduced

⁴¹ There is a perfect positive correlation under IT because expected inflation is constant; this means that a nominal bond is equivalent to money plus a constant nominal ‘mark-up’ for expected inflation.

⁴² Under PLT, a nominal bond is equivalent to money plus a time-varying nominal ‘mark-up’ that captures fluctuations in expected inflation. Since innovations to inflation are serially uncorrelated, the latter need not be strongly correlated with actual inflation – hence explaining the relatively weak positive correlation.

correlation between nominal bond returns and the return on money balances has relatively little impact on consumption volatility or, therefore, on the optimal indexation share. Moreover, the extent of indexation bias captured in the model is relatively small since, under the baseline calibration, true and biased inflation are strongly positively correlated and have similar variances.

6. Conclusions and policy implications

An important finding from past literature is that optimal indexation of wage and financial contracts depends on the extent of nominal volatility over the contracting horizon. Motivated by this literature, this paper investigated the link between optimal indexation of government bonds and monetary policy, with a focus on long-term nominal volatility. In order to do so, the paper set out an overlapping generations model in which young consumers save for old age using indexed and nominal government bonds. Each period in the model lasts 30 years, and consumers hold other assets in their portfolios, namely, money and capital. The key feature of the model is that indexation of bonds is determined endogenously in response to monetary policy as part of an optimal commitment Ramsey policy implemented by the government.

In terms of monetary policy, two policies with drastically different long-term implications were considered, namely, inflation targeting and price-level targeting. Under inflation targeting monetary policy is characterised by a large degree of long-term nominal uncertainty, whilst there is minimal nominal uncertainty at a long-term horizon under price-level targeting. Past literature in the area of optimal wage indexation, and more recently in the area of optimal indexation of financial contracts, reached the conclusion that optimal indexation increases with the extent of nominal volatility (e.g. Gray, 1976; Minford, Nowell and Webb, 2003; Meh, Quadrini and Terajima, 2009). This literature predicts that optimal indexation will be lower under price-level targeting than inflation targeting. The main aim of the paper was determine whether this same conclusion holds with respect to indexation of government bonds.

The main finding from the model was that optimal bond indexation does vary substantially with monetary policy, falling substantially under price-level targeting when long-term nominal volatility is reduced. The reasoning runs as follows. Long-term inflation uncertainty is substantial under inflation targeting because of base-level drift: even if the central bank misses its inflation target by only a small percentage in each year, these misses can accumulate and become large after 30 years. Consequently, nominal bonds are a relatively poor store of value as compared to indexed bonds. Optimal indexation is therefore relatively high under inflation targeting at 76 per cent, consistent with past results from the optimal indexation literature. Under price-level targeting, by contrast, past deviations from the inflation target do not accumulate over time, with the result that long-term inflation volatility is sharply reduced. Nominal bonds therefore become a relatively better store of value as

compared to indexed bonds, allowing consumers to reduce consumption risk in old age by substituting towards nominal bonds. Optimal indexation thus falls to 26 per cent. Crucially for these results, the model captures two imperfections in indexation that are calibrated to the UK case: indexation bias and lagged indexation.

In order to investigate the source of the reduction in optimal indexation under price-level targeting, the indexation differential was decomposed into indexation bias and lagged indexation components. This decomposition revealed that most of the reduction in optimal indexation under price-level targeting is due to the indexation lag, with only around one-tenth due to indexation bias. The substantial reduction due to the indexation lag arises because its impact on real return volatility is common to both monetary policy regimes; hence, with nominal volatility reduced under price-level targeting, real return volatility on nominal bonds falls disproportionately compared to indexed bonds, causing consumers to substitute from indexed bonds to nominal bonds. The reduction due to the indexation lag is so substantial because inflation volatility falls markedly under price-level targeting as a consequence of the long-term contracting horizon captured by the model.

Indexation bias plays a relatively small role in reducing optimal indexation. Indeed, the impact from indexation bias arises only indirectly through money – the other nominal asset in consumers’ portfolios. Specifically, price-level targeting dilutes the positive correlation between nominal bond returns and the real return on money because, in contrast to inflation targeting, expected inflation fluctuates in response to past shocks, and nominal bonds protect consumers’ wealth from such fluctuations whilst money does not. As a result, consumption risk in old age is reduced when consumers hold a higher proportion of their bond portfolio in nominal bonds. The small reduction in optimal indexation due to indexation bias can be explained in part by the relatively low holdings of money balances in consumers’ portfolios.

The result that optimal indexation of government bonds can vary substantially with monetary policy regime has a number of important policy implications. Firstly, models that do not endogenise indexation in response to monetary policy are potentially vulnerable to the Lucas critique and may give rise to seriously misleading results. As such, endogenising indexation in a microfounded way is an important task for future research (Ambler, 2009). Secondly, as the results in this paper arise from comparing inflation and price-level targeting policies, there are potential implications for central banks like the Bank of Canada that are considering switching from inflation targeting to price-level targeting in the future. Most notably, endogenising indexation in quantitative models used for policy analysis may make price-level targeting more or less desirable vis-à-vis inflation targeting. Last but not least, the extent to which governments are prepared to offer indexed bonds may be influenced considerably by monetary policy. The model in this paper can explain why it might be optimal for governments to issue both indexed and nominal government bonds, but cannot explain fully the current low levels of indexation in developed economies.

References

- Amano, R., Ambler, S. and P. Ireland (2007), Price-level targeting, indexation and welfare, Bank of Canada, Ottawa, Draft.
- Ambler, S. (2009), Price-level targeting and stabilisation policy: A survey, *Journal of Economic Surveys*, 23, 5, 974-997.
- Artus, P. (1995), Macro Economie (collection *Economica Poche*), Economica, Paris.
- Bank of Canada (2006), Renewal of the inflation-control target: Background information, Bank of Canada: Ottawa.
- Bansal, R. and Yaron, A. (2004), Risks for the long run: A potential resolution of asset pricing puzzles, *Journal of Finance* 59, 1481-1509.
- Barro, R.J. (1974), Are government bonds net wealth? *Journal of Political Economy* 82, 1095-1117.
- Bodie, Z. (1976), Common stocks as a hedge against inflation, *The Journal of Finance* 31, 459-470.
- Brazier, A., Harrison, R., King, M. and Yates, T. (2006), The danger of inflating expectations of macroeconomic stability: heuristic switching in an overlapping generations monetary model, Bank of England Working Paper No. 303.
- Champ, B. and Freeman, S. (1990), Money, output and the nominal national debt, *American Economic Review* 80, 390-97.
- Chari, V.V., Kehoe, P.J. and McGrattan, E.R. (2002), Can sticky price model generate volatile and persistent real exchange rates?, *Review of Economic Studies* 69, 533-563.
- Clarida, R., Gali, J. and Gertler, M (1999), The science of monetary policy: A New Keynesian perspective, *Journal of Economic Literature*, 37, 1661-1707.
- Crettez, B., Michel, P. and Wigniolle, B. (1999), Cash-in-advance constraints in the Diamond overlapping generations model: Neutrality and optimality of monetary policies, *Oxford Economic Papers* 51, 431-52.
- Damjanovic, T. and Damjanovic, V. and Nolan, C. (2008), Unconditionally optimal monetary policy, *Journal of Monetary Economics* 55, 491-500.
- Diamond, P.A. (1965), National debt in a neoclassical growth model, *American Economic Review* 55, 1126-1150.
- Dittmar, R., Gavin, W.T. and Kydland, F.E. (1999), Price-level uncertainty and inflation targeting, Federal Reserve Bank of St. Louis *Review*, July/August 1999, 23-33.
- DMO (2010), Annual Review 2009-10, Debt Management Office, UK.

- Gahvari, F. (2007), The Friedman rule: Old and new, *Journal of Monetary Economics* 54, 581-589.
- Gavin, W.T., Keen, B.D. and Pakko, M.R. (2009), Inflation risk and optimal monetary policy, *Macroeconomic Dynamics* 13, 58-75.
- Gray, J.A. (1976), Wage indexation: A macroeconomic approach, *Journal of Monetary Economics*, 2, 221-235.
- Hodrick, R.J., Kocherlakota, N. and Lucas, D. (1991), The variability of velocity in cash-in-advance models, *Journal of Political Economy* 99, 358-384.
- Julliard, M. (2001), Dynare: A program for the simulation of rational expectations models, *Computing in Economics and Finance* 213, Society for Computational Economics.
- Jovanovic, B. and Ueda, M. (1997), Contracts and money, *Journal of Political Economy*, 105, 700-708.
- King, M. (2004), Highlights of the new inflation target, Speech given at the Annual Birmingham Forward/CBI Business Luncheon on January 20, 2004.
- King, R.G. and Rebelo, S.T. (2000), Resuscitating real business cycles, NBER Working Paper No. 7534.
- King, R.G., Plosser, C.I. and Rebelo, S.T. (1988), Production, growth and business cycles: I The basic neoclassical model, *Journal of Monetary Economics*, 21, 195-232.
- Kocherlakota, N.R. and Pistaferri, L. (2007), Household heterogeneity and real exchange rates, *Economic Journal* 117, C1-C25.
- Kryvtsov, O., Shukayev, M. and Ueberfeldt (2007), Optimal monetary policy and price stability over the long run, Bank of Canada Working Paper No. 2007-26.
- Leceister, A., O'Dea, C. and Oldfield, Z. (2008), The inflation experience of older households, Commentary No. 106, Institute for Fiscal Studies, London.
- Ljungqvist, L. and Sargent, T.J. (2000), Recursive macroeconomic theory, The MIT Press: Cambridge.
- Lungu, L. and Minford, P. (2006), Explaining the equity risk premium, *Manchester School* 74, 670-700.
- McCandless, G.T. and Wallace, N. (1991), Introduction to dynamic macroeconomic theory: An overlapping generations approach, Harvard University Press: Cambridge.
- Meh, C.A., Quadriini, V. and Terajima, Y. (2009), Real effects of price stability with endogenous nominal indexation, Bank of Canada Working Paper 2009-16..
- Michel, P. and Wigniolle, B. (2005), Cash-in advance constraints, bubbles and monetary policy, *Macroeconomic Dynamics* 9, 28-56.

- Minford, P. (2004), Monetary Policy – Should it Move to a Price Level Target? The A.W. Phillips memorial lecture to the New Zealand Association of Economists.
- Minford, P., Nowell, E, and Webb, B. (2003), Nominal contracting and monetary targets – drifting into indexation, *Economic Journal*, 113, 65-100.
- Minford, P. and Peel, D. (2002), *Advanced macroeconomics: A primer*, Blackwell: London.
- Nadiri, M.I. and Prucha, I.R. (1996), Estimation of the depreciation rate of physical and R&D capital in the US total manufacturing sector, *Economic Inquiry* 34, 43-56.
- ONS Blue Book (2010), *The UK National Accounts*, Palgrave Macmillan: Office for National Statistics.
- ONS Financial Statistics (2010), Oct 2010, Palgrave Macmillan: Office for National Statistics.
- Perli, R. and Sakelleris, P. (1998), Human capital formation and business cycle persistence, *Journal of Monetary Economics* 42, 67-92.
- Rotemberg, J.J. and Woodford, M. (1998), An optimization-based econometric framework for the evaluation of monetary policy, NBER Technical Working Paper No. 233.
- Samuelson, P.A. (1958), An exact consumption-loan model of interest with or without the social contrivance of money, *Journal of Political Economy*, 66, 6, 467-482.
- Schmitt-Grohé, S. and Uribe, M. (2007), Optimal simple and implementable monetary and fiscal rules, *Journal of Monetary Economics* 54, 1702-1725.
- Schmitt-Grohé, S., Uribe, M. (2004), Solving dynamic general equilibrium models using a second-order approximation to the policy function, *Journal of Economic Dynamics and Control* 28, 755-775.
- Svensson, L.E.O. (1999), Price-level targeting versus inflation targeting: A free lunch? *Journal of Money, Credit and Banking* 31, 277-295.
- Taylor, J.B. (1979), Estimation and control of a macroeconomic model with rational expectations, *Econometrica* 47, 1267-1286.
- Tödter, K.-H. (2008), Estimating the uncertainty of relative risk aversion, *Applied Financial Economics Letters* 4, 25-27.
- Woodford, M. (2003), *Interest and prices: Foundations of theory of monetary policy*, Princeton University Press: Princeton, NJ.

Appendix A – Proof that the CIA constraint binds with strict equality when $R_t > 1$

In this appendix it is shown that the CIA constraint is strictly binding if the gross money return on a nominal bond exceeds the gross return on money of one. The Lagrangian from the main text can be used to derive this result, with allowance made for the possibility that the CIA constraint may not hold with strict equality. Consequently, the Lagrangian will additionally give rise to Kuhn-Tucker conditions relating to the Lagrange multiplier on the CIA constraint.

Proposition: The CIA constraint binds with strict equality when $R_t > 1$

Proof.

From the main text the first-order conditions for indexed bonds, nominal bonds and money holdings are as follows:

$$c_{t,Y}^{-\delta} = E_t(c_{t+1,O}^{-\delta} r_{t+1}^i) + \theta \mu_t \quad (\text{A1})$$

$$c_{t,Y}^{-\delta} = E_t(c_{t+1,O}^{-\delta} r_{t+1}^n) + \theta \mu_t \quad (\text{A2})$$

$$c_{t,Y}^{-\delta} = E_t(c_{t+1,O}^{-\delta} r_{t+1}^m) + (1 + \theta) \mu_t \quad (\text{A3})$$

where μ_t is the Lagrange multiplier on the CIA constraint.

The Kuhn-Tucker conditions associated with μ_t are summarised in the following equation:

$$\{\mu_t \geq 0 \quad \text{and} \quad \mu_t (m_t - \theta c_{t,Y}) = 0\} \quad (\text{A4})$$

where the second equation, the complementary slackness condition, implies that the CIA constraint will be strictly binding if $\mu_t > 0$ for all t .

Using Equations (A2) and (A3), the Lagrange multiplier μ_t will strictly positive iff

$$E_t(c_{t+1,O}^{-\delta} r_{t+1}^n) > E_t(c_{t+1,O}^{-\delta} r_{t+1}^m) \quad \forall t \quad (\text{A5})$$

Substitution of the real return on nominal bonds into Equation (A5) gives

$$R_t \times E_t(c_{t+1,O}^{-\delta} r_{t+1}^m) > E_t(c_{t+1,O}^{-\delta} r_{t+1}^m) \quad \forall t \quad (\text{A6})$$

Dividing Inequality (A6) by $E_t(c_{t+1,O}^{-\delta} r_{t+1}^m)$ yields the necessary condition for Inequality (A5) to hold, or

$$R_t > 1, \quad \forall t \quad (\text{A7})$$

Finally, notice that $E_t(c_{t+1,O}^{-\delta} r_{t+1}^n) = E_t(c_{t+1,O}^{-\delta} r_{t+1}^i)$, where $r_{t+1}^i = r_t \times (1 + \pi_{t+1}^i) r_{t+1}^m$, so Inequality (A7) ensures that holding indexed bonds is also strictly preferred to holding money, i.e.

$$E_t(c_{t+1,O}^{-\delta} r_{t+1}^i) > E_t(c_{t+1,O}^{-\delta} r_{t+1}^m), \quad \forall t \quad \text{iff } R_t > 1 \quad \mathbf{Q.E.D.} \quad (\text{A8})$$

Appendix B – Derivations of the IT and PLT money supply rules from a yearly horizon

Inflation targeting

Consider the following *yearly IT money supply rule* that aims at a constant inflation target and is subject to exogenous monetary innovations at a yearly horizon i :

$$\ln M_i^{s,IT} = \ln M_{i-1}^{s,IT} + \pi + \varepsilon_i + \ln c_{i,Y} - \ln c_{i-1,Y} \quad (B1)$$

where π is the yearly inflation target and ε_i is an IID-normal money supply innovation with mean zero and variance σ^2 .

To derive a 30-year money supply rule from this yearly specification, substitute repeatedly for the lagged money supply term on the right-hand side of Equation (B1) until the following 30-year money supply rule is reached:

$$\ln M_i^{s,IT} = \ln M_{i-30}^{s,IT} + 30 \times \pi + \sum_{j=0}^{29} \varepsilon_{i-j} + \ln c_{i,Y} - \ln c_{i-30,Y} \quad (B2)$$

This equation states that the 30-year growth rate of the nominal money supply has three components: a 30-year inflation target $30 \times \pi$; the sum-total of 30 separate yearly money supply innovations; and the 30-year rate of growth of consumption by the young.

Given that each period t lasts 30 years, Equation (B2) implies that the money supply rule in any period t can be represented in the following form

$$\ln M_t^{s,IT} - \ln M_{t-1}^{s,IT} = 30 \times \pi + \sum_{i=1}^{30} \varepsilon_{i,t} + \ln c_{t,Y} - \ln c_{t-1,Y} \quad (B3)$$

where, for ease of exposition, the Gaussian white noise money supply innovations have been indexed from years 1 to 30, and the time subscript indicates that all 30 innovations belong to period t .

Price-level targeting

Consider the following *yearly PLT money supply rule* that aims at a target yearly (log) price level of $\ln P_i^* = p_0 + \pi \times i$ in each year i :

$$\ln M_i^{s,PLT} = \ln M_{i-1}^{s,PLT} + \pi + \varepsilon_i - \varepsilon_{i-1} + \ln c_{i,Y} - \ln c_{i-1,Y} \quad (B4)$$

where π is the constant yearly inflation target that is consistent with the target price path, and ε_i is an IID-Normal innovation with mean zero and variance σ^2 (exactly as in the IT case).

To derive the implied money supply rule over a 30-year horizon, substitute for the lagged money supply term on the right hand side of Equation (B4) until the following expression is reached:

$$\ln M_i^{s,PLT} = \ln M_{i-30}^{s,PLT} + 30 \times \pi + \varepsilon_i - \varepsilon_{i-30} + \ln c_{i,Y} - \ln c_{i-30,Y} \quad (\text{B5})$$

Given that each period t lasts 30 years, Equation (B5) implies a period t money supply rule of the form

$$\ln M_t^{s,IT} - M_{t-1}^{s,IT} = 30 \times \pi + \varepsilon_{30,t} - \varepsilon_{30,t-1} + \ln c_{t,Y} - \ln c_{t-1,Y} \quad (\text{B6})$$

where again the money supply innovations have been indexed to reflect the year in which they occur, and the t subscript indicates the period to which innovations belong.

Appendix C: Deterministic steady-state and market-clearing conditions

Deterministic steady state

The deterministic steady state is given by the following set of equations:

$$c_Y + b^{i,d} + b^{n,d} + m^d + k = \varpi(1 - \tau^j), \quad \text{for } j \in (IT, PLT) \quad (C1)$$

$$c_O = Ak^\alpha + r^i b^{i,d} + r^n b^{n,d} + r^m m \quad (C2)$$

$$R = (1 + \pi)r^n \quad (C3)$$

$$r^i = \frac{(1 + \pi^i)}{(1 + \pi)} r \quad (C4)$$

$$r^m = 1/(1 + \pi) \quad (C5)$$

$$g = \tau^j \varpi + (1 - r^i)b^{i,s} + (1 - r^n)b^{n,s} + m^d \pi / (1 + \pi) \quad (C6)$$

$$\pi = \pi^* \quad (C7)$$

$$\pi^i = \pi^* \quad (C8)$$

$$m^s = m^d \quad (C9)$$

$$m^d = \theta c_Y \quad (C10)$$

$$b^{i,d} = b^{i,s} = a \times b^s \quad (C11)$$

$$b^{n,d} = b^{n,s} = (1 - a) \times b^s \quad (C12)$$

$$b^d = b^{i,d} + b^{n,d} = b^s = \frac{\varpi(1 - \tau^j) - (1 + r^m)m^d - (1 + Ak^\alpha)k}{1 + r} \quad (C13)$$

(from bond supply rule, $c_Y^{-\delta} = c_O^{-\delta}$)

$$c_Y^{-\delta} = c_O^{-\delta} \left((1 + \theta)r^i - \frac{\theta}{1 + \pi} \right) \quad (C14)$$

$$c_Y^{-\delta} = c_O^{-\delta} \left((1 + \theta)r^n - \frac{\theta}{1 + \pi} \right) \quad (C15)$$

$$r^i = r^n = r = \frac{1 + \theta + \pi}{(1 + \pi)(1 + \theta)} \quad (\text{implied by the previous two equations}) \quad (C16)$$

$$\alpha Ak^{\alpha-1} = r^n \quad (\text{implied by Euler equations for capital and bonds}) \quad (C17)$$

$$A = A_{mean} \quad (C18)$$

Market-clearing conditions

A monetary equilibrium in the OLG economy is a set of allocations $\{c_{t,Y}, c_{t,O}, b_t^{n,d}, b_t^{n,s}, k_t, m_t^d, m_t^s, g_t, \pi_t, r_t^n, R_t, r_t^m, \tau^j\}_{t=1}^T$ with the following properties for all t :

(1) Allocations $\{c_{t,Y}, c_{t+1,O}, b_t^{i,d}, b_t^{n,d}, k_t, m_t^d\}_{t=1}^T$ solve the maximisation problem of a young consumer born at time t ;

(2) The goods, money and bond markets clear:

$$\varpi + A_t k_{t-1}^\alpha = c_{t,Y} + c_{t,O} + g_t + k_t \quad (\text{C19})$$

$$m_t^d = m_t^s \quad (\text{C20})$$

$$b_t^{i,d} = b_t^{i,s} \quad (\text{C21})$$

$$b_t^{n,d} = b_t^{n,s} \quad (\text{C22})$$

(3) The government's budget constraint and long run government spending target are satisfied:

$$g_t = \tau^j \varpi + m_t^s - r_t^m m_{t-1}^s + b_t^{i,s} - r_t^i b_{t-1}^{i,s} + b_t^{n,s} - r_t^n b_{t-1}^{n,s} \quad (\text{C23})$$

$$E(g_t) = g^* \quad (\text{C24})$$

Appendix D: Full model listing

$$u_t = \frac{c_{t,Y}^{1-\delta}}{1-\delta} + E_t \frac{c_{t+1,O}^{1-\delta}}{1-\delta} \quad \text{Lifetime utility of generation } t \quad (\text{D1})$$

$$c_{t,Y} + b_t^{n,d} + b_t^{i,d} + m_t^d + k_t = \varpi(1 - \tau^j) \quad \text{Budget constraint when young} \quad (\text{D2})$$

$$c_{t+1,O} = A_{t+1} k_t^\alpha + r_{t+1}^i b_t^{i,d} + r_{t+1}^n b_t^{n,d} + r_{t+1}^m m_t^d \quad \text{Budget constraint when old} \quad (\text{D3})$$

$$\ln A_t = (1 - \rho) \ln A_{mean} + \rho \ln A_{t-1} + e_t \quad \text{Productivity} \quad (\text{D4})$$

$$m_t^d = \theta c_{t,Y} \quad \text{CIA constraint} \quad (\text{D5})$$

$$r_{t+1}^m \equiv 1 / (1 + \pi_{t+1}) \quad \text{Real return on money balances} \quad (\text{D6})$$

$$r_{t+1}^n = R_t r_{t+1}^m \quad \text{Real return on nominal bonds} \quad (\text{D7})$$

$$r_{t+1}^i = r_t \times \left[\frac{(1 + \pi_{t+1}^i)}{(1 + \pi_{t+1})} + v_{t+1} \right] \quad \text{Real return on indexed bonds} \quad (\text{D8})$$

$$c_{t,Y}^{-\delta} = E_t \left(c_{t+1,O}^{-\delta} \left((1 + \theta) r_{t+1}^n - \theta r_{t+1}^m \right) \right) \quad \text{Euler equation for nominal bonds} \quad (\text{D9})$$

$$c_{t,Y}^{-\delta} = E_t \left(c_{t+1,O}^{-\delta} \left((1 + \theta) r_{t+1}^i - \theta r_{t+1}^m \right) \right) \quad \text{Euler equation for indexed bonds} \quad (\text{D10})$$

$$c_{t,Y}^{-\delta} = E_t \left(c_{t+1,O}^{-\delta} \left((1 + \theta) \alpha A_{t+1} k_t^{\alpha-1} - \theta r_{t+1}^m \right) \right) \quad \text{Euler equation for capital} \quad (\text{D11})$$

$$g_t = \tau^j \varpi + m_t^s - r_t^m m_{t-1}^s + b_t^{i,s} - r_t^i b_{t-1}^{i,s} + b_t^{n,s} - r_t^n b_{t-1}^{n,s} \quad \text{Government budget constraint} \quad (\text{D12})$$

$$E(g_t) = g^* \quad \text{Long run government spending target (implies } \tau^j \text{)} \quad (\text{D13})$$

$$\ln(m_t^{s,IT} / m_{t-1}^{s,IT}) = 30 \times \pi + \sum_{i=1}^{30} \varepsilon_{i,t} + \ln(c_{t,Y} / c_{t-1,Y}) - \pi_t \quad \text{IT money rule} \quad (\text{D14})$$

$$\ln(m_t^{s,PLT} / m_{t-1}^{s,PLT}) = 30 \times \pi + \varepsilon_{30,t} - \varepsilon_{30,t-1} + \ln(c_{t,Y} / c_{t-1,Y}) - \pi_t \quad \text{PLT money rule} \quad (\text{D15})$$

$$U^{society} = E(u_{t,Y}(c_{t,Y}) + u_{t,O}(c_{t,O})) \quad \text{Social welfare} \quad (\text{D16})$$

$$\pi_t^{i,IT} = 30 \times \pi + \sum_{j=1}^{30} \varepsilon_{j,t}^i \quad \text{Inflation rate to which index bonds are linked (IT)} \quad (\text{D17})$$

$$\pi_t^{i,PLT} = 30 \times \pi + \varepsilon_{30,t}^i - \varepsilon_{30,t-1}^i \quad \text{Inflation to which index bonds are linked (PLT)} \quad (\text{D18})$$

$$c_{t,Y}^{-\delta} = E_t(c_{t+1}^{-\delta}) \quad \text{Total bond supply rule (determines } b_t^s \text{)} \quad (\text{D19})$$

$$b_t^s = b_t^{i,s} + b_t^{n,s} \quad \text{Total bond supply} \quad (\text{D20})$$

$$m_t^d = m_t^s \quad \text{Money market equilibrium} \quad (\text{D21})$$

$$b_t^{n,d} = b_t^{n,s} = (1-a)b_t^s \quad \text{Market-clearing in nominal bonds} \quad (\text{D22})$$

$$b_t^{i,d} = b_t^{i,s} = ab_t^s \quad \text{Market-clearing in indexed bonds} \quad (\text{D23})$$

$$c_{t,Y} + c_{t,O} + k_t + g_t = \varpi + A_t k_{t-1}^\alpha \quad \text{Market-clearing in goods} \quad (\text{D24})$$

Appendix E – An approximate first-order condition for the optimal indexation problem

In the main text it is argued that the indexation share a will be chosen to approximately solve the following problem:

$$\min_a \frac{1}{2} \left| U_{c_o c_o}^{society} \right| \text{var}(c_{t,o}) + t.i.p. \quad (E1)$$

where $\left| U_{c_o c_o}^{society} \right| \equiv \delta (Ec_{t,o})^{-(1+\delta)}$ is the absolute value of the second derivative of the social welfare function with respect to $c_{t,o}$ (evaluated at its unconditional mean) and *t.i.p.* stands for ‘terms independent of policy’.

The first-order condition for this problem is given by

$$\frac{1}{2} (Ec_{t,o})^{-2(1+\delta)} \left[\frac{\partial \text{var}(c_{t,o})}{\partial a} \times (Ec_{t,o})^{1+\delta} - (1+\delta)(Ec_{t,o})^\delta \text{var}(c_{t,o}) \times \frac{\partial Ec_{t,o}}{\partial a} \right] = 0 \quad (E2)$$

Hence the optimal indexation share will satisfy the following equation:

$$\frac{\partial \text{var}(c_{t,o})}{\partial a} \times (Ec_{t,o})^{1+\delta} = (1+\delta)(Ec_{t,o})^\delta \text{var}(c_{t,o}) \times \frac{\partial Ec_{t,o}}{\partial a} \quad (E3)$$

Rearranging Equation (E3) for $\partial \text{var}(c_{t,o}) / \partial a$ yields

$$\frac{\partial \text{var}(c_{t,o})}{\partial a} = (1+\delta) \left[\frac{\text{var}(c_{t,o})}{Ec_{t,o}} \right] \times \frac{\partial Ec_{t,o}}{\partial a} \quad (E4)$$

Hence iff $\text{var}(c_{t,o}) / Ec_{t,o} \approx 0$, the first-order condition for the optimal indexation share can be approximated by⁴³

$$\frac{\partial \text{var}(c_{t,o})}{\partial a} \approx 0 \quad (E5)$$

That is, the indexation share will be chosen to minimise consumption volatility across old generations, provided that the variance of consumption is small relative to its mean.

⁴³ Note that $\partial Ec_{t,o} / \partial a = E[(r_t^i - r_t^n) b_{t-1}^s]$, which will be close to zero given that indexed and nominal bonds are priced to give equivalent expected utility.

Appendix F – Deriving an approximate expression for the optimal indexation share

In this appendix, an approximate expression for the optimal indexation share is derived by minimising the consumption variance across old generations. As noted in the main text, the key terms in the consumption variance are given by

$$\text{var}(c_{t,o}) \approx \text{var}(y_{t,o}) + \text{var}(r_t b_{t-1}^s) + \text{var}(r_t^m m_{t-1}^d) + 2 \text{cov}(r_t b_{t-1}^s, r_t^m m_{t-1}^d) \quad (\text{F1})$$

where $y_{t,o} \equiv A_t k_{t-1}^\alpha$ is output produced by old generations and $r_t \equiv ar_t^i + (1-a)r_t^n$ is the overall return on old generations' bond portfolios.

Using $r_t \equiv ar_t^i + (1-a)r_t^n$, Equation (F1) can be written in terms of the indexation share as follows:

$$\begin{aligned} \text{var}(c_{t,o}) \approx & \text{var}(y_{t,o}) + a^2 \text{var}(r_t^i b_{t-1}^s) + (1-a)^2 \text{var}(r_t^n b_{t-1}^s) + \text{var}(r_t^m m_{t-1}^d) \\ & 2a(1-a) \text{cov}(r_t^i b_{t-1}^s, r_t^n b_{t-1}^s) + 2a \text{cov}(r_t^i b_{t-1}^s, r_t^m m_{t-1}^d) + 2(1-a) \text{cov}(r_t^n b_{t-1}^s, r_t^m m_{t-1}^d) \end{aligned} \quad (\text{F2})$$

Minimising Equation (F2) with respect to the indexation share a gives following first-order condition:

$$\frac{\partial \text{var}(c_{t,o})}{\partial a} = 2 \left[\begin{aligned} & a \text{var}(r_t^i b_{t-1}^s) - (1-a) \text{var}(r_t^n b_{t-1}^s) + (1-2a) \text{cov}(r_t^i b_{t-1}^s, r_t^n b_{t-1}^s) \\ & + \text{cov}(r_t^i b_{t-1}^s, r_t^m m_{t-1}^d) - \text{cov}(r_t^n b_{t-1}^s, r_t^m m_{t-1}^d) \end{aligned} \right] = 0 \quad (\text{F3})$$

Solving Equation (F3) for the optimal indexation share a^* gives the expression reported in the main text, i.e.

$$a^* \approx \frac{\text{var}(r_t^n b_{t-1}^s) + \text{cov}(r_t^n b_{t-1}^s, r_t^m m_{t-1}^d) - \text{cov}(r_t^i b_{t-1}^s, r_t^m m_{t-1}^d) - \text{cov}(r_t^i b_{t-1}^s, r_t^n b_{t-1}^s)}{\text{var}(r_t^i b_{t-1}^s) + \text{var}(r_t^n b_{t-1}^s) - 2 \text{cov}(r_t^i b_{t-1}^s, r_t^n b_{t-1}^s)} \quad (\text{F4})$$