

Hutchison, Michael; Sushko, Vladyslav

**Working Paper**

## Impact of macroeconomic surprises on carry trade activity

Working Paper, No. 10-10

**Provided in Cooperation with:**

University of California Santa Cruz, Santa Cruz Institute for International Economics (SCIE)

*Suggested Citation:* Hutchison, Michael; Sushko, Vladyslav (2010) : Impact of macroeconomic surprises on carry trade activity, Working Paper, No. 10-10, University of California, Santa Cruz Institute for International Economics (SCIE), Santa Cruz, CA

This Version is available at:

<https://hdl.handle.net/10419/64070>

**Standard-Nutzungsbedingungen:**

Die Dokumente auf EconStor dürfen zu eigenen wissenschaftlichen Zwecken und zum Privatgebrauch gespeichert und kopiert werden.

Sie dürfen die Dokumente nicht für öffentliche oder kommerzielle Zwecke vervielfältigen, öffentlich ausstellen, öffentlich zugänglich machen, vertreiben oder anderweitig nutzen.

Sofern die Verfasser die Dokumente unter Open-Content-Lizenzen (insbesondere CC-Lizenzen) zur Verfügung gestellt haben sollten, gelten abweichend von diesen Nutzungsbedingungen die in der dort genannten Lizenz gewährten Nutzungsrechte.

**Terms of use:**

*Documents in EconStor may be saved and copied for your personal and scholarly purposes.*

*You are not to copy documents for public or commercial purposes, to exhibit the documents publicly, to make them publicly available on the internet, or to distribute or otherwise use the documents in public.*

*If the documents have been made available under an Open Content Licence (especially Creative Commons Licences), you may exercise further usage rights as specified in the indicated licence.*

## Impact of Macroeconomic Surprises on Carry Trade Activity

Michael Hutchison  
Department of Economics, E2  
University of California, Santa Cruz  
Santa Cruz, CA 95064 USA

Vladyslav Sushko  
Department of Economics, E2  
University of California, Santa Cruz  
Santa Cruz, CA 95064 USA

September 2010

### Abstract

This paper investigates market perceptions of the risk of large exchange rate movements by using information gleaned from risk reversal contracts and macroeconomic news surprises. We focus on the height of the carry trade period in Japan (March 2004 through December 2006). Concerns about sharp yen appreciation were particularly evident during the period of heavy carry trade activity and are more likely to show up in the price of risk. We focus on “big” news surprises that are more likely to convey information about the risk of large changes in the exchange rate, consider a broad set of news, and investigate the direct impact of news on the value of dollar yen risk reversals. We also consider the effect of the value of risk reversals on the yen carry trade, using (non-commercial) open interest positions in futures markets as a proxy for carry trade activity. Overall, we find that macroeconomic news is an important determinant of risk reversals during periods of heavy carry trade volume, particularly when the cost of hedging against large yen appreciation is increasing. Moreover, there is a close link between risk reversals and non-commercial futures positions. We calculate a substantial effect of macroeconomic news on carry trade activity, with risk reversals (the cost of hedging) as the transmission mechanism.

*JEL classification:* C22, F31, G14

*Keywords:* Macroeconomic News, Risk Reversals, Foreign Exchange Futures, Carry Trade

## Introduction

One of the consequences of the zero-interest rate policy in Japan was the emergence of massive yen currency carry trade activity where investors borrowed in yen (funding currency) and bought higher-yield assets in other currencies (target or investment currency). Specifically, carry trade is a foreign exchange arbitrage strategy in which an investor borrows in a low interest rate currency and takes a long position in a higher interest rate currency betting that the exchange rate will not change so as to offset the profits made on the yield differential. For example, an investor can fund higher yielding deposits in the U.S. by borrowing from commercial banks in Japan at low interest. This strategy will necessitate a foreign exchange transaction to sell yen for U.S. dollars in order to convert yen liabilities into dollar assets. In addition to issuing liabilities in low-interest currencies, carry trade can be conducted using currency forwards and futures on the margin (Gagnon and Chaboud 2007). For example, a hedge fund could enter a forward contract to sell yen for dollar at some future date. Such carry trade strategies generated persistent excess returns (e.g. Burnside et al., 2007; Darvas, 2009; Hichradl and Wagner, 2010), but also exposed carry traders to substantial currency risk and large losses if the yen were to appreciate substantially (Gyntelberg and Remolona, 2007).

Figure 1 shows the U.S.-Japan interest differential and the JPY/USD exchange rate during 2004-06 when the yen carry trade was at its height. The prolonged low interest policy and weak economy in Japan, during which short-term money market rates were continuously near zero, combined with a strong economy and rising interest rates in the U.S., led to a rising, large and persistent interest differential. The figure also shows that the JPY/USD depreciated on average over this period, but that trend depreciation was interrupted by several episodes of sharp appreciation and considerable volatility. This seeming violation of uncovered interest parity (UIP)<sup>1, 2</sup> allowed profit opportunities (ex post) for carry traders, but the riskiness of this strategy was also exposed during the bouts of large yen appreciation.

One way to hedge against the risk of substantial yen appreciation is to enter into a risk reversal contract. A risk reversal contract is the simultaneous purchase of a deep out-of-money

---

<sup>1</sup> An appreciation of the high yield currency is an example of the forward premium puzzle and the violation of the uncovered interest parity (UIP) well documented by Hansen and Hodrick (1980) and Engel (1996).

<sup>2</sup> Ichiue and Koyama (2008) estimate the UIP regression coefficient as low as -2.79 for the yen.

(OTM) call option and the sale of a deep OTM put option<sup>3</sup>. The holder of the risk reversal is hedging against sharp yen appreciation and accepting (unlikely) downside risk of sharp yen depreciation, taking on a one-sided bet. If yen (funding currency) appreciates sharply, the payoff is positive for the risk reversal. The opposite is true for sharp yen depreciation. Carry traders would lose on this risk reversal contract if the yen depreciates sharply, but this loss is more than offset by gains from holding an open yen carry-trade position. As such, the value of risk reversals are frequently treated as a proxy of expectations about the risk of very large changes in exchange rates<sup>4</sup>. During the “carry trade” period in Japan, when financial institutions were borrowing heavily in yen and investing in assets denominated in U.S. dollar and other currencies, the value of the risk reversal was always negative. This indicates a market hedge against sharp appreciation of the JPY/USD exchange rate.

Two studies of which we are aware have investigated the empirical links between risk reversals<sup>5</sup> and official foreign exchange market intervention, using macroeconomic news in one case as control variables. Galati et al. (2006) estimate the effect of Japanese foreign exchange market intervention on the value of JPY/USD risk reversals along with other measures of dispersion in exchange rate expectations.<sup>6</sup> They consider daily data over January 1996 – November 2005 and find weak evidence that intervention operations impacts risk reversals. Disyatat and Galati (2007) study the impact of official intervention on the value of risk reversals in the Czech Koruna – Euro, using daily data over September 2001 to September 2002. They also find that intervention has a limited impact on risk reversals, but that macroeconomic news is not significant. (They consider several measures of price, output and unemployment surprises for the Czech Republic and Germany).

---

<sup>3</sup> A risk reversal is a directional bet on (or hedge against) a large price movement constructed by a simultaneous purchase of out-of-the-money call and sale of out-of-the-money put option (usually 25 or 10 delta) of the same maturity. The value itself is the implied volatility for the call minus the implied volatility of the put.

<sup>4</sup> Brunnermeier et al. (2009) interpret such persistent UIP violations as a compensation to carry traders for the downside risk of sharp funding currency appreciation.

<sup>5</sup> Several related studies including Beber and Brandt (2006), and Aïjo (2008) investigate the impact of macroeconomic surprises on options implied higher moments, including option implied skewness, while Lahaye et al. (2010) study the effects macro announcements on jump components in realized volatility.

<sup>6</sup> Galati et al. (2005) consider the effect of intervention and macroeconomic news on several measures of expectations regarding exchange rate movements, one of which (skewness) is derived from the value of risk reversals.

This paper similarly investigates market perceptions of the risk of large exchange rate movements by using information gleaned from risk reversal contracts and macroeconomic news surprises<sup>7</sup> but departs from previous work in several important ways. Firstly, we focus on the height of the carry trade period in Japan (March 2004 through December 2006), where the sample is delimited at the beginning by the cessation of the Bank of Japan large-scale intervention operations and ends before the financial crisis emerged. Our view is that concerns about sharp yen appreciation were particularly evident during the period of heavy carry trade activity and are more likely to show up in the price of risk. Secondly, we focus on “big” news surprises (greater than one standard deviation movements) that are more likely to convey information about the risk of large changes in the exchange rate. Thirdly, we consider a broader set of news than previous work—thirty three sources (18 U.S. series and 15 Japan series) -- and the only study that investigates the direct impact of news other than intervention for the value of JPY/USD risk reversals. Fourthly, we consider the asymmetric impact of news possibly stemming from loss aversion when the cost of hedging yen appreciation is increasing. Finally, we consider the indirect effect of news through the value of risk reversals on the yen carry trade, using (non-commercial) open interest positions in future markets as a proxy for carry trade activity. The investigation of the link between macroeconomic news and futures positions through the risk-reversals channel may provide an explanation, based on carry trade activity, of the finding by Chen and Gau (2010) that the contribution of futures prices to overall price discovery in foreign exchange markets increases markedly around the times of macroeconomic announcements.

The paper is organized as follows. Section 2 describes the data and institutional features of the carry trade and market for risk reversals. Section 3 presents the main empirical analysis and results. This section establishes a link between macroeconomic surprises and the value of risk reversals which is robust to a number of empirical model specifications. Unlike several previous studies that do not find a significant impact of macro surprises on risk reversals, we consider a larger sample of news types and, given that risk reversals price the probability of *extreme* exchange rate fluctuations, we identify large surprises. Section 4 investigates the link between

---

<sup>7</sup> Evans and Lyons (2008) investigate the impact of macro news on order flow, while Ito and Hashimoto (2009) and Fatum, Hutchison, and Wu (2010) investigate high frequency responses to macro surprises in JPY/USD exchange rate.

risk reversals and carry-trade activity where, as a proxy for the latter, we use open interest non-commercial short futures positions (NCMS) in yen on the Chicago Mercantile Exchange (NCMS increased from 40,000 to over 160,000 during our sample period). By examining the correlations and through Granger-causality tests we establish a robust link between risk reversals and net NCMS showing that the short positions in yen decline (rise) following an increase (decrease) in the cost of insurance against a substantial yen appreciation. The empirical link between non-commercial futures and risk-reversals may help explain the recent finding by Chen and Gau (2010) that the share of the contribution to the price discovery in the JPY/USD markets of futures rates rises relative to spot rates during the times surrounding the macroeconomic announcements. The Granger-causal relationship between risk reversals and NCMS allows us to obtain an estimate of the impact of macroeconomic news surprises on the risk-sensitive carry trade activity.

Overall, we find that macroeconomic news are an important determinant of risk reversals during periods of heavy carry trade volume. Moreover, investors appear to be more responsive to macroeconomic news during periods when the cost of hedging yen appreciation risk is increasing. Estimates using predicted values based regression coefficients show that the cumulative impact of macroeconomic surprises can account for more than a third of the total change in risk reversals during particularly dramatic episodes of changing risk perceptions in the JPY/USD market. Moreover, there is a close link between risk reversals and NCMS positions (a proxy for carry trade activity), and this link is borne out in Granger causality tests. Using this metric, we are able to calculate the effect of macroeconomic news on carry trade activity, with risk reversals (the cost of hedging) as the transmission mechanism. Depending on the subsample and calculation method macroeconomic news surprises can translate into more than one third of the total adjustment in yen speculative positions.

## 2. Data and Risk Reversals

### 2.1 Institutional Features

A risk reversal is a directional bet (or hedge) against large price swings. It is a contract long one unit out-of-the-money (OTM) (typically 25-delta<sup>8</sup>) FX call option and short one unit OTM FX put option. In other words it is the cost of buying insurance against large foreign currency appreciation, financed by providing insurance against large foreign currency depreciation. The value of a risk reversal is equal to the implied volatility of an out-of-the-money call minus the implied volatility of an out-of-the-money put of the same moneyness and maturity. Garman and Kohlhagen (1983) applied the original Black and Scholes (1973) framework to foreign exchange options. We following Galati and Humpage (2006) with the following representation of a price of a European foreign exchange call option:

$$C(X, \sigma) = \frac{1}{(1+i)T} (F \cdot \Phi(d_1(X, \sigma)) - X \cdot \Phi(d_2(X, \sigma))) \quad (1)$$

where,

$$d_1 = \frac{\ln(F / X) + (\sigma^2 / 2)T}{\sigma\sqrt{T}}, d_2 = d_1 - \sigma\sqrt{T} \quad (2)$$

$X$  is the strike price,  $F = e^{(i-i^*)T}S$  represent the forward rate,  $i$  and  $i^*$  are domestic and foreign interest rates,  $S$  is the spot exchange rate and  $\Phi$  is the cumulative distribution of a standard normal. An option's delta represent is sensitivity to the changes in the exercise price. Risk reversals are constructed from out-of-the-money options with only 25% sensitivity to changes in the strike price. Then the call price has the following property:

$$\frac{\partial C(X, \sigma)}{\partial X} = 0.25 \quad (3)$$

Finally, a 25-delta risk reversal is the difference in the implied volatility of a 25-delta call and put option:

$$RR25 = \sigma_c^{25\delta} - \sigma_p^{25\delta} \quad (4)$$

Under a symmetric risk-neutral distribution the value of risk reversal should be zero since both OTM call and put will have the same probability of landing at-the-money by the expiration date. Therefore, risk reversals only take on non-zero values if the risk-neutral distribution of

---

<sup>8</sup> The delta of an FX option measures its sensitivity to the spot exchange rate. The strike price of a 25-delta option is far enough from the spot price such that the option premium exhibits only a 0.25 correlation with changes in the strike price.

foreign exchange returns is skewed, their value conveying the combined effect of expected skewness and skewness risk premium. This case is depicted by the asymmetric volatility smirk in Figure 2. A thick left tail (negative skewness) of return distribution is equivalent to a correlation between spot levels and implied volatilities (volatility smile). Negative values of risk reversals imply that out-of-the-money dollar puts have a higher probability of being exercised than out-of-the-money dollar calls indicating a market hedge against large yen appreciation (U.S. dollar depreciation).

Jain and Stafford (2006) find that yen rallies, carry trade unwinding, and bouts of risk aversion are correlated. Hence, risk reversals likely capture risk appetites of carry traders during the times of high cost of insurance against yen appreciation. Whether risk reversals are forward looking is still uncertain. Jain and Stafford (2006) find that sharp movements in spot are usually followed by risk reversal overvaluation as risk premium increases and implied skew in the following period is higher than the realized skewness of the return distribution. Examining data at daily frequency, Chaboud and Gagnon (2007) argue that during periods of high volatility movements in risk reversals postdate movements in exchange rates. At weekly frequency Carr and Wu (2007) find that JPY/USD and GBP/USD returns show positive correlations with changes in risk reversals. Farhi et al. (2009) find that monthly changes in nominal interest rates and risk reversals exhibit strong contemporaneous link. The same authors also find some evidence of exchange rate excess returns (relative to UIP) predictability with risk reversals – very high levels of risk reversals may predict currency appreciation.

Unlike the implied skewness of at-the-money options, risk reversals provide potentially useful information on market pricing of extremely large events<sup>9</sup>. Farhi and Gabaix (2008) formulate a general equilibrium model in which they show that under certain conditions risk reversals depict the difference in the resilience of the two country's export sector productivities to aggregate shocks.

---

<sup>9</sup> Risk reversals are also used indirectly along with other option derivatives to derive higher moments of risk neutral distributions. Galati et al. (2005) and Morel and Teiletche (2008) study the relationship between official interventions in foreign exchange and market uncertainty. They use FX strangle and risk reversal prices to recover option implied higher moments of the risk-neutral FX return distribution.



## 2.2 Data

We obtain daily data on 1-month and 1-year 25-delta risk reversals from Bloomberg. We confine our sample to the tranquil period of active carry trade after the last episode Japanese official interventions that ended in March 2004 and before the beginnings of the emerging financial crisis in the middle of 2007. In all we end up with 715 daily observations excluding weekends from 03/18/2004 through 12/31/2006.

Our news data consists of a large number of time-stamped Japanese and U.S. macroeconomic announcements and preceding survey expectations of Fatum, Hutchison and Wu (2010) obtained from Bloomberg News Service.<sup>10</sup> Japanese news variables are chosen which are largely comparable to the U.S. news variables which in turn are significant in either the time-series analysis or the event study analysis of Andersen, Bollerslev, Diebold and Vega (2003) in their investigation of the JPY/USD exchange rate. Japanese news of particular interest, e.g. surprises regarding the Bank of Japan's TANKAN survey variables, are also considered.<sup>11</sup> In addition to the U.S. news variables suggested by Andersen, Bollerslev, Diebold and Vega (2003), and we also consider news surprises regarding U.S. consumer and producer price indices. In total, the data includes announcements and survey expectations regarding 15 types of Japanese macro news and 18 types of U.S. macro news. The Japanese news variables are GDP (quarterly), Industrial Production, Capacity Utilization, Construction Orders, Overall Spending, Large Retail Sales, Trade Balance, Current Account, Retail Trade, Consumer Price Index, Consumer Confidence Index, TANKAN Large Manufacturing Index, TANKAN Non-Manufacturing Index, Leading Economic Index, and Monetary Base. The U.S. news variables are GDP, Non-Farm Payroll Employment, Industrial Production, Capacity Utilization, Personal Income, Consumer Credit, Consumer Spending, New Home Sales, Durable Goods Orders, Factory Orders, Business Inventories, Trade Balance, Producer Price Index, Consumer Price Index, Consumer Confidence Index, NAPM Index, Housing Starts, and Index of Leading Indicators.

---

<sup>10</sup> Japanese macro announcements are available from Bloomberg News Service as well as from the data banks of the Bank of Japan and the Japanese Cabinet Office.

<sup>11</sup> The Bank of Japan website at [www.boj.or.jp/en/theme/research/stat/tk/index.htm](http://www.boj.or.jp/en/theme/research/stat/tk/index.htm) provides details (in English) regarding the TANKAN survey variables.

Consistent with the recent literature on exchange rates and news, for each of the macroeconomic announcements in our data we follow Fatum, Hutchison and Wu (2010) and the broader literature in defining news surprises as the difference between the macroeconomic announcement and the preceding survey expectation of that announcement. Subsequently, we standardize each news surprise series in order to allow for a comparison of the relative influences of different types of news.<sup>12</sup>

In addition we construct a daily series of interest rate spread between U.S. and Japan as the difference between the effective federal funds rate and Japan's uncollateralized overnight call rate. Both are publicly available from the Federal Reserve Bank of New York and Bank of Japan respectively.

We obtain the weekly futures positions data from the Commodity Futures Trading Commission (CFTC)'s Commitment of Traders (COT) report which is released at weekly frequency and reflects positions at the close of every business Tuesday. Among other variables, the COT reports include weekly times-series of non-commercial trader long and short positions in yen as a percentage of total open interest. The CFTC defines open interest as the sum total of all futures contracts not yet offset by transaction, delivery or exercise. We construct the measure of CME net non-commercial short positions (NCMS) as a percentage of open interest (% O.I.) by subtracting non-commercial long from non-commercial short positions divided by total open interest in yen futures.

### 3 Empirical Results: Macro News and Risk Reversals

#### 3.1 Preliminaries

The upper panel of Table 1 reports summary statistics for the 1-month and 1-year risk reversal series in levels and in first differences. The maximum and minimum are (-0.05, -2.45)

---

<sup>12</sup> A standardized news surprise is given by the unexpected component of the macroeconomic announcement divided by the associated sample standard deviation. Let  $A_{q,t}$  denote the value of a given macroeconomic fundamental  $q$ , announced at time (minute)  $t$ . Let  $E_{q,t}$  refer to the median value of the preceding market expectations for the given fundamental at announcement time  $t$ , and let  $\hat{\sigma}_q$  denote the sample standard deviation of all the surprise components associated with fundamental  $q$ . The standardized surprise of macroeconomic fundamental  $q$  announced at time  $t$  is then defined as  $S_{q,t} = (A_{q,t} - E_{q,t}) / \hat{\sigma}_q$ .

and  $(-0.725, -2.75)$  for 1-month and 1-year risk reversals respectively indicating that both series have remained negative throughout the sample period consistent with market hedge against sharp yen appreciation.

Augmented Dickey Fuller (ADF) and Phillips-Peron unit root tests are shown in the lower panel of Table 1. These tests indicate that the log levels were not stationary. The null hypothesis is that there exists a unit root. The first column shows the unit root test on the value of a one-year 25 delta risk reversal. The second column is the corresponding tests on first differences of the values. Both tests fail to reject the null hypothesis of a unit root in levels, but reject the null in first differences by a large margin (greater than 99% level of confidence). We therefore proceed to estimate our empirical model with the dependent variable in first difference form.

### 3.2 Estimation Results

Tables 2 and 3 report the results. We focus in our formal empirical analysis on one-year risk reversals, the longer maturity options, in order to capture the hedging horizons of carry traders<sup>13</sup>. Table 2 shows the baseline results where the regressions are estimated using OLS and all the macroeconomic surprises are included in the data set, i.e. we do not drop “small” surprises from the sample. Table 3 focuses on whether “large” changes affect the value of risk reversals, as would be expected since risk reversals reflect the risk of very large exchange rate changes. We use two criteria to select “large” surprises. The first approach is to consider only surprises outside “narrow bounds,” i.e. exclude all surprises less than one standard deviation from the series specific mean value. The standard deviation is calculated based on all observations of the surprise variables, including days with no surprises. The second approach, which denote as “wide bounds,” is a stricter criteria whereby the standard deviation is calculated on non-zero observations only, thus effectively making the exclusion bounds wider. The results reported in the two tables are similar and most of the discussion will focus on our preferred equation reported in Table 3.

---

<sup>13</sup> The one-month results are available upon request. These are generally weaker than the one-year results, consistent with the view that the carry trader horizon is for hedges of longer maturity.

The two panels of Table 2 include the same news surprises, while the right-hand-side panel also controls for the exchange rate and the interest rate differential. The point estimates for those coefficient values which are significant are virtually identical in the two regressions, but controlling for exchange rates and the interest rate differential (right panel) give substantially higher explanatory power (higher  $R^2$ ) and a better fit of the equation based on a large (absolute value) AIC statistic. Two U.S. news surprises (GDP and Consumer Credit) and three Japanese news surprises are significant (Trade Balance, Consumer Confidence and Overall Household Spending), in addition to the exchange rate and interest rate differential.

The value of including the exchange rate and interest rate differential is evident from the estimates in Table 2, so we include these variables in Table 3 where we focus on “large” news surprises. The left-hand-side panel is estimated using OLS and the right-hand-side is estimated using an ARMA(4,4) process, for both “large” surprise selection criteria. In particular, closer analysis of the errors of the initial estimation suggested both AR(4) and MA(4) terms were appropriate—based on a significant lag in the autocorrelation function and partial autocorrelation function, respectively—in the estimation. This model was chosen, relative to a simple OLS estimation, given the Akaike information criteria.<sup>14</sup>

The right-hand-side panel of Table 3 shows that the same explanatory variables remain significant (U.S. GDP and Consumer Credit and Japan’s Trade Balance, Consumer Confidence and Overall Household Spending) when only “large” surprises are considered. In addition, U.S. Personal Income and Japan’s TANKAN Non-Manufacturing Index are highly significant under the “wide bounds” selection criteria. In all, three U.S. macro news surprises and four Japanese macro news surprises have a statistically significant impact on the value of risk reversals during our sample period.

How may the significant estimates be interpreted economically? Recall that the value of risk reversals remained negative throughout the carry trade sample we are investigating, indicating a market hedge against sharp yen appreciation. A negative (positive) coefficient value indicates

---

<sup>14</sup> These results are omitted for brevity but are available from the authors upon request. Monday and Friday dummies were also included in the initial estimation but were not statistically significant. Various values of  $p, q$  in the ARMA ( $p, q$ ) process were considered and the  $p=4$  and  $q=4$  were selected based on the AIC criteria.

higher (lower) risk of large yen appreciation. (A more negative value of risk reversals indicates greater combined effect of expected probability of sudden yen appreciation and of the associated risk premium.) It is perhaps easiest to interpret coefficients in terms of an exchange rate/balance-of-payments nexus. Higher U.S. GDP and U.S. Consumer Credit growth reduce the value of risk reversals, perhaps by increasing the expected size of the U.S. trade deficit and increasing the perceived risk of sharp yen appreciation against the dollar. A rise in Japan's Trade Balance also reduces the value of risk reversals and may be interpreted similarly in that it is an indication of a worsening U.S. external balance. On the other hand, the positive coefficients on the Japanese Consumer Confidence Index and Overall Household Spending, indicating less risk of major yen appreciation (a lower risk reversal in absolute terms), may be associated with expectations of a stronger Japanese economy and reduced trade surplus. U.S. Personal Income (positive coefficient) and TANKAN Non-Manufacturing Index (negative coefficient) indicate expectations of smaller U.S. and Japanese trade imbalances, respectively.

The standardization of the macro news surprises allows a comparison of the relative sizes of the coefficients. Consumer Credit has the highest coefficient in absolute value among U.S. surprises at -7.0 compared to -3.9 for U.S. GDP and 1.2 for Personal Income. Among the Japanese macro surprises Trade Balance has the highest coefficient in absolute value of -6.4 followed by Overall Household Spending with 4.8.

### 3.3 Conditional Regressions

Next we examine the possibility that surprise macroeconomic announcements may have an asymmetric impact on risk reversals during periods of increasing risk of a large yen appreciation compared to periods of decreasing risk of a large yen appreciation. We construct an increasing-risk-dummy variable that takes on a value of 1 on day when risk reversals rise in absolute value and a value of 0 otherwise. Then we repeat the regression of LARGE macroeconomic surprise announcements using the ARMA (4, 4) specification interacting each news surprise with the lagged rising-risk dummy. Table 4 shows the results for both "narrow bounds" and "wide bounds" regressions. An estimate is missing (indicated with "--") if no LARGE surprise announcement for a particular news type was preceded by an increase in the absolute value of risk reversals during our sample period.

The regression results in Table 4 indicate that the set of significant macroeconomic surprises, when an announcement is preceded with an increase in the cost of hedging yen appreciation risk, is not the same as the unconditional specification. Moreover, under the stricter “wide bounds” selection criteria for LARGE surprises, more types of macroeconomic news surprises have a statistically significant impact on risk reversals. The difference is especially stark for news emanating from the U.S. Both conditional regressions exhibit higher R-squared, Durbin-Watson, and Akaike information criterion than unconditional regressions reported in Table 2 and Table 3 indicating that most of the explanatory power of macroeconomic news surprises is higher during periods of increasing risk aversion.

Focusing on the “narrow bounds” regression (left panel of Table 4) first, different U.S. news surprises are significant when conditioning on periods of rising risk aversion towards yen appreciation. A positive surprise on Capacity Utilization and Housing Starts tend to increase the value of risk reversals (reduce the perceived risk of yen appreciation) in times when that risk was rising. In terms of the exchange rate/balance-of-payments nexus, a rise in these variables may indicate greater U.S. demand for domestic intermediate goods relative to Japanese imports. This represents a reduced trade surplus of Japan and may lower the risk of sharp yen appreciation.

Among Japanese macroeconomic news, large surprises to the Leading Economic Index, quarterly GDP, and Retail Trade exhibit significant negative coefficients while Overall Household Spending remains positive and significant as was also the case in the unconditional regressions.

Next we focus on the “wide bounds” regression (right panel of Table 4). Under this specification 8 U.S macro and 5 Japanese macro surprise announcements are statistically significant. Most notably, U.S. and Japanese Trade Balance surprises have the largest coefficients in absolute value and are both statistically significant at the 1% level. Consistent with the exchange rate/balance-of-payment nexus interpretation a surprise improvement in U.S. Trade Balance is also associated with a reduction in the absolute value of risk reversals while the surprise improvement in Japan’s Trade balance makes sharp yen appreciation more likely to increase risk reversals in absolute value.

Among other U.S. news, the coefficients on Capacity Utilization and Housing starts remain positive and the coefficient on Personal Income is positive and significant as was also the case in the unconditional regressions. On the other hand, higher values of Consumer Credit, Consumer Price Index, and Index of Leading Indicators increase the perceived risk of yen appreciation (reduce the value of risk reversals), with the latter two variables having an impact only under the current specification conditioning on the environment of rising risk aversion. As for the rest of the Japanese macroeconomic surprises, a positive surprise to TANKAN large manufacturing index and construction orders mitigate the perceived risk of yen appreciation whereas large surprises to Japanese Retail Trade and Consumer Price Index are associated with a further increase in the absolute value of risk reversals.

### 3.4 Assessment of Economic Impact of Macro Surprises on Risk Reversals

We conduct a rough assessment of the cumulative impact of macroeconomic surprises on the value of risk reversals. In this section and the next, we focus on two subsamples of particularly dramatic changes in the value of risk reversals. The first period, 01/07/2005 through 03/13/2006, corresponds to a substantive reduction in the absolute value of risk reversals from about -2.4 to -1.0. The second, 04/12/2006 through 05/17/2006, corresponds to a substantial increase in the absolute value of risk reversals from -1.0 to -2.0. The impact of each type of macro news is calculated by multiplying the regression coefficient by the value of the standardized surprise.

Table 5 shows the results for the two subsamples. The first two columns show the cumulative impact from surprise macro announcements for the first subsample, using both the “narrow band” for upper bound and the “wide band” for the lower bound regressions from Table 3. The cumulative impact of macroeconomic surprises ranges from 0.32 to 0.37, accounting for 25-30% of the total change in the value of risk reversals over this episode. In particular, the net negative GDP and consumer credit news in the U.S., combined with negative trade balance news in Japan, led to a sharp reduction in the perceived risk of large yen appreciation. Recall that the  $R^2$  in the baseline regression not controlling for exchange rate or interest rate was approximately 0.03 indicating that over the entire sample period surprise macro announcements explain approximately 3% of the variation in the value of risk reversals. However, focusing on a

subsample of dramatic decline in the market value of risk we see that macro surprise announcements can account for over 30% of the cumulative change in the value of risk reversals.

The third and fourth columns of Table 5 report the cumulative impact for the second subsample when the perceived risk of major yen appreciation jumped markedly. The rise in absolute value of risk reversals (rise in perceived risk of large yen appreciation) during this episode is associated with several surprise announcements, namely a sharp unanticipated rise in the Japanese Trade Balance and fall in Japanese Household Spending. These announcements accounted for approximately 10% of the total rise in absolute value of risk reversals during this episode.

#### 4 Link to Carry Trade Activity

Despite the well-documented profitability of carry trade activity, aggregate flow volumes are difficult to measure because of diverse carry trade strategies<sup>15</sup> and data limitations. Following Klitgaard and Weir (2004), Galati et al. (2007) and Brunnermeier et al. (2009) we proxy for carry trade activity with futures positions of non-commercial traders on the Chicago Mercantile Exchange (CME), which is the largest exchange for foreign exchange futures by volume<sup>16</sup>. The Commodity Futures Trading Commission (CFTC) usually releases its Commitments of Traders report (COT) on Fridays after the bell, but it reflects the position at the close of previous business Tuesday. CFTC classifies traders as non-commercial if they have no foreign exchange exposure to hedge and therefore presumably trade to make profit<sup>17</sup>. These traders on average

---

<sup>15</sup> For instance Hattori and Shin (2009) argue that carry trade can be accomplished through inter-office loans of multinational investment banks.

<sup>16</sup> Galati et al. (2007) also examine the currency denominations of international assets and liabilities of commercial banks available to the Bank of International Settlements (BIS). Focusing on Japan, Gagnon and Chaboud (2007) trace the balance sheets of not only the banking sector, but also Japan's official sector and private non-banking sector.

<sup>17</sup> A trader is classified as "commercial" or "non-commercial" by filing the Statement of Reporting Trader (CFTC Form 40). The CFTC staff may re-classify the trader if they possess additional information about the trader's use of the futures market. Furthermore, each trader receives a separate classification for each commodity depending on the traders' use of each market. In 2009 the CFTC began published the Disaggregated COT with more detailed trader classifications. Its own historical comparison between the two reports finds that historically the "non-commercial" category included professional money managers (such as hedge funds and commodity trading advisers) and other "speculative" traders while the "commercial" category has included producers, merchants, processors, and swap dealers who use futures markets to offset risks incurred in over-the-counter markets. For further details see <http://www.cftc.gov/MarketReports/CommitmentsofTraders/>.



hold approximately 20 percent of total open interest positions in major currencies (Sun (2010)). While CME non-commercial futures can only serve as a proxy for the broader yen carry trade, Cecchetti et al. (2010) show that this metric shows close association to a novel BIS measure of carry trade activity based on the BIS banking statistics, foreign exchange swap data, and stock of yen-denominated international bonds. As a way to check the consistency of CME non-commercial short positions in yen with the broader carry trade Figure 3 plots the time series of non-commercial short positions and a simple rate of return to carry trade (following Hochradl and Wagner (2010)):

$$CR_{t+k} = (1 + i_{k,t}^{US})S_{t+k} / S_t - (1 + i_{k,t}^{JP}) \quad (6)$$

where  $i_{k,t}$  denote the effective k-period deposit rates available in Japan and U.S. at a given Tuesday of the same week,  $t$ . We use 1-month deposit rates. This trend is consistent with the expected behavior of carry traders increasingly going short Yen and long USD during the period of rising ex-ante returns to carry trade.

Figure 4 shows the time-series of net non-commercial short positions (NCMS) as percentage of total open interest (% O.I) (left) against 1-year risk reversals (right), where the frequency of 1-year risk reversals has been converted from daily to weekly (Tuesdays of each week to conform with NCMS data). The series exhibit co-movement indicating that an increase in risk reversals towards smaller negative value (lower cost of insurance against Yen appreciation) is associated with an increase in speculative Yen short positions as proxied by CME non-commercial futures. The pair wise correlations between the weekly changes in non-commercial futures and weekly changes in 1-month and 1-year risk reversals are 0.58 and 0.73, respectively. We conduct Granger-causality tests to examine whether risk reversals lead (predict) speculative futures positions or vice-versa:

$$\Delta NCM_t = \sum_{j=1}^2 \alpha_j \Delta NCM_{t-j} + \sum_{j=1}^2 \beta_{t-j} \Delta RR_{t-j} + \sum_{j=1}^2 \delta_{t-j} \Delta r_{t-j} + \varepsilon_t \quad (7)$$

$$\Delta RR_t = \sum_{j=1}^2 \alpha_j \Delta NCM_{t-j} + \sum_{j=1}^2 \beta_{t-j} \Delta RR_{t-j} + \sum_{j=1}^2 \delta_{t-j} \Delta r_{t-j} + \varepsilon_t \quad (8)$$

The Granger causality results, reported in Table 6, indicate that risk reversals lead (Granger-cause) net non-commercial yen short positions but that positions do not lead risk

reversals. The results are robust to the inclusion of the lagged (log changes) exchange rate as a control, indicating that past values of risk reversals have informational content in excess of that of the lagged exchange rate returns. While all statistics are significant at the 1% level, the test-statistics are higher for 1-year risk reversals. For example, the cumulative effect (sum of the coefficients) of the 2-lag specification for 1-year risk reversals controlling for the exchange rate, is 30.38. A 100 basis point decrease in the absolute value of risk reversals over a two-week period is followed by a 30.4% increase in the net NCMS as a fraction of total open interest positions, i.e. a sharp reduction in the perceived risk of large yen appreciation leads to substantially more carry trade activity. Overall, Granger-causality results indicate that risk reversals convey important information on currency risk in excess of the exchange rate itself that is taken into account by non-commercial traders when deciding to take on an open interest futures position. Our findings are consistent with Brunnermeier et al. (2009) who find that the value of risk reversals tends to decline together with carry trade activity when financial markets in the U.S. become unstable suggesting that it is mainly carry traders who rely on risk reversals to ensure their portfolios.

A simple “back of the envelope” calculation measuring the impact of macroeconomic surprises emanating from U.S. and Japan on carry trade activity transmitted during the two episodes of wide swings in risk reversals (a reduction in perceived risk and a rise in perceived risk) discussed in the previous section is informative. As Figure 4 shows, the first episode (1/07/2005 through 03/13/2006), when perceived risk declined (-2.5 to -1.0), was accompanied by a switch from a 20% net long position to a 40% net short open position of non-commercial traders, indicating a sharp rise in carry trade activity. The second episode (04/12/2006 through 05/17/2006), when perceived risk increased sharply (-1.0 to -2.0), was accompanied by a large unwinding of short yen open positions—a switch from a 30% net short position to a 10% net long position for non-commercial traders.

The cumulative impact of news surprises on risk reversals is multiplied by the sum of the coefficients on  $\Delta RR_{t-j}$  in the Granger-causality equation (7) in Table 6. Table 7 shows the results. The first column of each panel corresponds to the conservative estimate obtained by multiplying the cumulative impact of macro surprises in excess of “wide bands” by the coefficient on  $\Delta RR_{t-j}$

in the specification of (7) with 1-lag. The second column yields a higher estimate by multiplying the cumulative impact of macro surprises in excess of “narrow bands” by the sum of the coefficients in the 2-lag Granger causality specification in equation (7).

Based on these calculations, during the first episode U.S. GDP and Consumer Credit surprises had the effect of increasing net NCMS share of total open interest by 2.9 and 6.0 percentage points, respectively, while Japan’s Trade Balance surprises accounted for another 2.8 percentage point rise. In total, our estimates suggest that macroeconomic surprises account for 38% (11.2 percentage points) of the rise in NCMS positions as a share of total open interest in the first episode. During the second episode, the fall in NCMS positions is mainly attributable to Japanese news. Japan’s trade balance contributing about -1.7 percentage points to the reduction in speculative positions on CME, while Japan’s Overall Household Spending and Japan’s Consumer Confidence surprises contributed around -0.9 and -0.3 percentage points, respectively. Overall, macroeconomic surprises emanating from U.S. and Japan accounted about 10% (-2.67 percentage points) of the fall in NCMS positions during this episode.

## 5 Conclusion

This paper investigates market perceptions of the risk of large exchange rate movements by using information gleaned from risk reversal contracts and macroeconomic news. We focus on the height of the carry trade period in Japan (March 2004 through December 2006), where the sample is delimited at the beginning by the cessation of the Bank of Japan large-scale intervention operations and ends before the financial crisis emerged. Concerns about sharp yen appreciation were particularly evident during the period of heavy carry trade activity and are more likely to show up in the price of risk.

We focus on “big” news surprises (greater than one standard deviation movements) that are more likely to convey information about the risk of large changes in the exchange rate, and consider a broad set of news—thirty three sources (18 U.S. series and 15 Japan series) -- and the investigate the direct impact of news other than intervention for the value of JPY/USD yen risk reversals. We also consider the effect of the value of risk reversals on the yen carry trade, using (non-commercial) open interest positions in future markets as a proxy for carry trade activity.

Overall, we find that macroeconomic news is an important determinant of risk reversals during periods of heavy carry trade volume. U.S. GDP, Personal Income, and Consumer Credit and Japanese Trade Balance, TANKAN non-manufacturing index, Consumer Confidence, and Overall Household Spending have a statistically significant impact on risk reversals. Estimates using predicted values based on regression coefficients show that the cumulative impact of macroeconomic surprises can account for a significant portion of the total change in risk reversals during episodes of changing risk perceptions in the JPY/USD market.

In addition, as larger number of news surprises has greater statistical impact and explanatory power when conditioned on times of rising risk aversion (as proxied by past period increase in the absolute value of risk reversals). U.S. Trade Balance, Capacity Utilization, Housing Starts, Personal Income, Consumer Credit, Consumer Price Index, and Index of Leading Indicators and Japanese Trade Balance, Leading Economic Index, TANKAN large manufacturing survey, GDP, Construction Orders, Retail Trade, Consumer Price Index, and Overall Household Spending have a statistically significant impact on risk reversals when conditioned on risking absolute value of risk reversals in the previous day.

Moreover, there is a close link between risk reversals and net non-commercial futures positions (a proxy for carry trade activity), and this link is borne out in Granger causality tests. Using this metric, we are able to calculate the effect of macroeconomic news on carry trade activity, with risk reversals (the cost of hedging) as the transmission mechanism. Depending on the subsample and calculation method, macroeconomic news surprises can translate into more than one third of the total adjustment in yen speculative positions.

## References

Aijo, J. (2008), "Impact of US and UK macroeconomic news announcements on the return distribution implied by ftse-100 index options", *International Review of Financial Analysis* , Vol. 17, pp. 242-258.

Andersen, T. G., Bollerslev, T., Diebold, F. X. and Vega, C. (2003), "Micro effects of macro announcements: Real-time price discovery in foreign exchange", *American Economic Review* , Vol. 93, pp. 38-62.

Beber, A. and Brandt, M. W. (2006), "The effect of macroeconomic news on beliefs and preferences: Evidence from the options market", *Journal of Monetary Economics* , Vol. 53, pp. 1997 - 2039.

Black, F. and Scholes, M. S. (1973), "The pricing of options and corporate liabilities", *Journal of Political Economy* , Vol. 81, pp. 637-54.

Brunnermeier, M. K., Nagel, S. and Pedersen, L. H. (2009), "Carry trades and currency crashes", *NBER Macroeconomics Annual* , Vol. 23, pp. 313-348.

Burnside, C., Eichenbaum, M. and Rebelo, S. (2007), "The returns to currency speculation in emerging markets", *American Economic Review*, Vol. 97, pp. 333-338.

Carr, P. and Wu, L. (2007), "Stochastic skew in currency options", *Journal of Financial Economics*, Vol. 86, pp. 213-247.

Cecchetti, S. G., Fender, I., McGuire, P. (2010) "Toward a global risk map", *BIS Working Papers*, no 309, May.

Chen, Y.-L. and Gau, Y.-F. (2010), "News announcements and price discovery in foreign exchange spot and futures markets", *Journal of Banking & Finance*, Vol. 34, pp. 1628 -1636.

Darvas, Z. (2009), "Leveraged carry trade portfolios", *Journal of Banking & Finance*, Vol. 33, pp. 944-957.

Disyatat, P. and Galati, G. (2007), "The effectiveness of foreign exchange intervention in emerging market countries: Evidence from the czech koruna", *Journal of International Money and Finance*, Vol. 26, pp. 383-402.

Engel, C. (1996), "The forward discount anomaly and the risk premium: A survey of recent evidence", *Journal of Empirical Finance*, Vol. 3, pp. 123-192.

Evans, M. D. and Lyons, R. K. (2008), "How is macro news transmitted to exchange rates?", *Journal of Financial Economics*, Vol. 88, pp. 26-50.

Farhi, E., Fraiberger, S. P., Gabaix, X., Ranciere, R. and Verdelhan, A. (2009), Crash risk in

currency markets, NBER Working Papers 15062, National Bureau of Economic Research, Inc.

Farhi, E. and Gabaix, X. (2008), Rare disasters and exchange rates, NBER Working Papers 13805, National Bureau of Economic Research, Inc.

Fatum, R., Hutchison, M. M. and Wu, T. (2010), Asymmetries and state dependence: The impact of macro surprises on intraday exchange rates, SCCIE Working Paper.

Gagnon, J. E. and Chaboud, A. P. (2007), What can the data tell us about carry trades in Japanese yen?, International Finance Discussion Papers No. 899, Board of Governors of the Federal Reserve System

Galati, G., Heath, A. and McGuire, P. (2007), "Evidence of carry trade activity", *BIS Quarterly Review*.

Galati, G., Higgins, P., Humpage, O. and Melick, W. (2007), "Option prices, exchange market intervention, and the higher moment expectations channel: a user's guide", *International Journal of Finance & Economics*, Vol. 12, pp. 225-247.

Galati, G., Melick, W. and Micu, M. (2005), "Foreign exchange market intervention and expectations: The yen/dollar exchange rate", *Journal of International Money and Finance*, Vol. 24, pp. 982-1011.

Garman, M. B. and Kohlhagen, S. W. (1983), "Foreign currency option values", *Journal of International Money and Finance*, Vol. 2, pp. 231-237.

Gyntelberg, J. and Remolona, E. M. (2007), "Risk in carry trades: a look at target currencies in asia and the pacific", *BIS Quarterly Review*.

Hansen, L. P. and Hodrick, R. J. (1980), "Forward exchange rates as optimal predictors of future spot rates: An econometric analysis", *Journal of Political Economy*, Vol. 88, pp. 829-53.

Hashimoto, Y. and Ito, T. (2009), Effects of Japanese macroeconomic announcements on the Dollar/Yen exchange rate: High-resolution picture, NBER Working Papers 15020, National Bureau of Economic Research, Inc.

Hattori, M. and Shin, H. S. (2009), Yen carry trade and the subprime crisis", IMF Staff Papers, Vol. 56, pp. 384-409.

Hochradl, M. and Wagner, C. (2010), "Trading the forward bias: Are there limits to speculation?", *Journal of International Money and Finance*, Vol. 29, pp. 423 - 441.

Ichiue, H. and Koyama, K. (2008), Regime switches in exchange rate volatility and uncovered interest rate parity, Working paper series, Bank of Japan.

Jain, A. and Stafford, M. (2006), DB guide to risk reversals, Global markets; FX Relative Value, Deutsche Bank.

Klitgaard, T. and Weir, L. (2004), "Exchange rate changes and net positions of speculators in the futures market", *Economic Policy Review* Vol. 10 (1), pp. 17-28.

Lahaye, J., Laurent, S. and Neely, C. J. (2010), "Jumps, cojumps and macro announcements", *Journal of Applied Econometrics*, forthcoming

Morel, C. and Teletche, J. (2008), "Do interventions in foreign exchange markets modify investors' expectations? The experience of Japan between 1992 and 2004", *Journal of Empirical Finance*, Vol. 15, pp. 211-231.

Sun, Y. (2009), Open interest positions and foreign exchange futures price prediction, an application of TVTP Markov Switching Model, UCSC Working Paper.

Table 1: Summary statistics and unit root tests for risk reversal series

	<b>1-month</b>		<b>1-year</b>	
	<b>(Levels)</b>	<b>(1st Differences)</b>	<b>(Levels)</b>	<b>(1st Differences)</b>
	<b>Summary Statistics</b>			
<b>Mean</b>	-0.717	0.000	-1.375	0.000
<b>Median</b>	-0.650	0.000	-1.250	0.000
<b>Maximum</b>	-0.050	0.525	-0.725	0.250
<b>Minimum</b>	-2.450	-1.450	-2.750	-0.900
<b>Std. Dev.</b>	0.357	0.144	0.440	0.071
<b>Skewness</b>	-1.137	-1.693	-0.595	-3.169
<b>Kurtosis</b>	4.826	19.921	2.439	41.925
	<b>Unit Root Tests</b>			
<b>Aug. Dickey-Fuller</b>	-4.763***	-30.984***	-2.159	-26.808***
<b>Phillips-Perron</b>	-5.436***	-31.203***	-2.216	-26.815***
<b>Observations</b>	715	715	715	715

Note: 3/18/2004 to 12/29/2006 sample period. Unit root test 10%, 5%, and 1% critical values for 1-month are -2.568888, -2.865412, and -3.439371 respectively. Unit root test 10%, 5%, and 1% critical values for 1-year are -2.568864, -2.865366, and -3.439268. \*, \*\*, and \*\*\* indicate coefficients significant at 10%, 5%, and 1% level respectively.



Table 2: Regression results of ALL macroeconomic announcement surprises on risk reversals

ALL Macro Surprises	Baseline(1)		Baseline(2)	
U.S. Announcements	Coef.	S.E.	Coef.	S.E.
GDP	-5.517 **	(2.653)	-4.259 **	(1.768)
Nonfarm payroll employment	4.679 *	(2.468)	0.616	(2.314)
Industrial production	-2.341	(3.396)	-2.679	(3.154)
Capacity utilization	-0.970	(3.025)	-1.853	(3.034)
Personal income	0.766	(1.507)	1.661	(1.295)
Consumer credit	-4.293 *	(2.550)	-4.858 *	(2.619)
Consumer spending	-1.961	(3.582)	-2.553	(3.604)
New home sales	0.840	(2.728)	1.669	(2.473)
Durable goods orders	0.084	(2.387)	1.240	(2.567)
Factory orders	1.353	(1.650)	-1.471	(1.607)
Business inventories	3.646	(2.673)	1.781	(2.277)
Trade balance	0.175	(3.476)	-2.756	(2.406)
Producer price index	-2.826	(3.080)	-2.867	(2.720)
Consumer price index	-1.654	(4.822)	-0.687	(4.003)
Consumer confidence index	2.241	(3.747)	0.317	(3.788)
NAPM index	2.181	(1.975)	-0.096	(2.271)
Housing starts	-0.040	(2.218)	-0.703	(2.123)
Index of leading indicators	-2.248	(7.118)	-0.775	(4.959)
Japanese Announcements	Coef.	S.E.	Coef.	S.E.
Trade balance	-5.553 *	(2.857)	-5.452 **	(2.796)
Current account	-1.648	(1.782)	-0.632	(1.760)
Leading economic index	2.220	(1.982)	0.752	(1.626)
Consumer confidence index	3.660 **	(1.865)	3.517 *	(1.859)
TANKAN large manufacturing index	0.317	(3.915)	4.810	(3.647)
TANKAN non-manufacturing index	2.639	(5.011)	-2.026	(3.856)
Monetary base	-2.744	(4.125)	-2.265	(4.115)
Capacity utilization	-7.503	(13.797)	-5.090	(9.934)
GDP (quarterly)	-2.258	(3.118)	-3.249	(2.366)
Large retail sales	-5.532	(3.595)	-5.086	(3.388)
Construction orders	-0.019	(1.150)	1.326	(1.858)
Industrial production	0.434	(2.123)	1.683	(2.367)
Retail trade	0.386	(3.218)	0.097	(3.309)
Consumer price index	-3.304	(2.229)	0.158	(2.951)
Overall household spending	5.738 **	(2.485)	5.558 ***	(1.530)
Exchange rate			5.239 ***	(1.256)
Interest rate differential			-0.067 *	(0.041)
Lag dependent variable	0.008	(0.052)	0.003	(0.044)
<b>R-squared</b>	0.033		0.211	
<b>Durbin-Watson</b>	1.814		2.085	
<b>Akaike info criterion</b>	-2.402		-2.600	

Note: 3/18/2004 12/29/2006 sample, 715 observations. Standard errors in parentheses; \*, \*\*, and \*\*\* indicate coefficients significant at 10%, 5%, and 1% level respectively. Constant and day of the week omitted because of insignificant coefficient.

Table 3: Regression results of LARGE macroeconomic announcement surprises on risk reversals

LARGE Macro Surprises	Baseline(2)				ARMA(4,4)			
	Narrow Bounds		Wide Bounds		Narrow Bounds		Wide Bounds	
U.S. Announcements	Coef.	S.E.	Coef.	S.E.	Coef.	S.E.	Coef.	S.E.
GDP	-4.219 **	(1.747)	-3.557 *	(2.043)	-4.327 **	(1.841)	-3.959 **	(1.982)
Nonfarm payroll empl.	0.661	(2.317)	1.663	(2.388)	0.583	(2.110)	1.567	(2.214)
Industrial production	-2.744	(3.166)	0.354	(5.383)	-2.517	(3.244)	0.897	(5.315)
Capacity utilization	-1.784	(3.024)	-3.847	(5.701)	-1.289	(3.041)	-3.186	(5.544)
Personal income	1.658	(1.293)	1.082 **	(0.421)	1.569	(1.168)	1.211 ***	(0.374)
Consumer credit	-4.873 *	(2.635)	-6.478 *	(3.441)	-5.518 **	(2.726)	-7.033 **	(3.567)
Consumer spending	-2.522	(3.603)	-2.284	(4.088)	-2.289	(3.257)	-2.430	(3.688)
New home sales	1.620	(2.481)	2.850	(2.617)	0.666	(2.539)	2.717	(2.582)
Durable goods orders	1.190	(2.576)	1.221	(1.842)	0.788	(2.485)	1.511	(1.751)
Factory orders	-1.488	(1.612)	-1.512	(1.567)	-0.900	(1.509)	-0.762	(1.461)
Business inventories	1.786	(2.278)	1.949	(2.844)	1.613	(2.245)	1.781	(2.788)
Trade balance	-2.850	(2.396)	-1.254	(2.825)	-1.924	(2.379)	-0.069	(2.867)
Producer price index	-3.049	(2.771)	-0.751	(1.060)	-2.227	(2.164)	-0.659	(1.010)
Consumer price index	-0.717	(4.008)	1.308	(3.540)	-0.263	(4.031)	1.826	(3.593)
Consumer confidence index	0.406	(3.800)	1.052	(4.317)	1.149	(3.635)	0.139	(4.335)
NAPM index	-0.064	(2.263)	-0.456	(2.179)	0.163	(2.169)	-0.399	(2.067)
Housing starts	-0.612	(2.127)	0.602	(2.020)	-0.936	(2.262)	0.244	(2.179)
Index of leading indicators	-0.774	(4.958)	-4.849	(3.602)	-2.628	(3.934)	-5.116	(3.891)
Japanese Announcements	Coef.	S.E.	Coef.	S.E.	Coef.	S.E.	Coef.	S.E.
Trade balance	-5.526 **	(2.793)	-6.396 *	(3.448)	-5.620 **	(2.788)	-6.436 *	(3.512)
Current account	-0.622	(1.774)	-0.762	(1.951)	-0.696	(1.716)	-0.868	(1.916)
Leading economic index	0.758	(1.634)	0.393	(1.753)	0.303	(1.723)	-0.322	(1.762)
Consumer confidence index	3.513 *	(1.855)	1.812	(1.569)	3.538 *	(1.939)	1.680	(1.765)
TANKAN large manuf. index	4.823	(3.650)	4.440	(4.463)	3.874	(3.346)	3.640	(3.857)
TANKAN non-manuf. index	-1.946	(3.904)	-3.702 *	(2.100)	-2.765	(3.764)	-3.017 *	(1.658)
Monetary base	-2.209	(4.111)	-2.144	(4.271)	-1.551	(3.607)	-1.062	(3.776)
Capacity utilization	-4.751	(9.922)	-6.452	(8.678)	-7.923	(10.476)	-10.506	(9.524)
GDP (quarterly)	-3.205	(2.355)	-3.261	(2.410)	-2.948	(2.396)	-2.828	(2.480)
Large retail sales	-5.197	(3.399)	-5.197	(3.495)	-4.110	(3.578)	-4.798	(3.739)
Construction orders	1.365	(1.898)	0.736	(2.112)	1.321	(1.698)	1.007	(2.126)
Industrial production	1.565	(2.379)	0.987	(2.583)	0.726	(2.205)	0.648	(2.576)
Retail trade	0.064	(3.353)	1.833	(3.692)	-0.102	(3.277)	1.304	(3.672)
Consumer price index	0.114	(2.972)	2.747	(3.460)	0.644	(2.616)	2.765	(2.995)
Overall household spending	5.583 ***	(1.478)	4.389 ***	(0.928)	5.903 ***	(1.948)	4.794 ***	(1.573)
Exchange rate	5.237 ***	(1.256)	5.193 ***	(1.249)	4.593 ***	(0.705)	4.539 ***	(0.691)
Interest rate differential	-0.068 *	(0.041)	-0.065	(0.041)	-0.076 **	(0.037)	-0.074 **	(0.037)
Lag dependent variable	0.003	(0.044)	0.002	(0.045)				
AR(4)					-0.658 ***	(0.164)	-0.653 ***	(0.169)
MA(4)					0.726 ***	(0.148)	0.724 ***	(0.152)
R-squared	0.212		0.211		0.286		0.286	
Durbin-Watson	2.084		2.078		2.129		2.126	
Akaike info criterion	-2.600		-2.599		-2.696		-2.696	

Note: 3/18/2004 12/29/2006 sample, 715 observations. Standard errors in parentheses; \*, \*\*, and \*\*\* indicate coefficients significant at 10%, 5%, and 1% level respectively. Constant and day of the week omitted because of insignificant coefficient.

*Table 4: Regression results of LARGE macroeconomic surprise announcements conditional on increasing risk of sharp yen appreciation*

U.S. Announcements	ARMA(4,4)			
	Narrow Bounds		Wide Bounds	
	Coef.	S.E.	Coef.	S.E.
GDP	-1.829	(3.887)	-6.944	(4.935)
Nonfarm payroll employment	-6.419	(8.050)	-	-
Industrial production	4.807	(3.080)	-	-
Capacity utilization	10.679 **	(5.199)	8.407 **	(3.549)
Personal income	1.126	(0.867)	1.046 ***	(0.349)
Consumer credit	-5.076	(10.597)	-26.313 ***	(2.157)
Consumer spending	9.139	(8.657)	-	-
New home sales	-2.690	(1.903)	-1.290 *	(0.742)
Durable goods orders	0.620	(2.836)	2.182	(3.035)
Factory orders	1.156	(3.350)	-0.596	(1.306)
Business inventories	5.263	(9.269)	-	-
Trade balance	5.558	(6.012)	11.443 ***	(2.736)
Producer price index	-5.381	(5.865)	-1.152	(1.263)
Consumer price index	2.762	(5.401)	-8.416 ***	(1.208)
Consumer confidence index	-4.303	(5.117)	-2.432	(7.176)
NAPM index	5.185	(6.617)	-2.551	(5.271)
Housing starts	7.819 **	(3.871)	9.241 **	(4.276)
Index of leading indicators	1.432	(10.992)	-10.328 **	(4.480)
<b>Japanese Announcements</b>	<b>Coef.</b>	<b>S.E.</b>	<b>Coef.</b>	<b>S.E.</b>
Trade balance	-8.472	(10.264)	-20.050 ***	(0.998)
Current account	-6.551	(6.680)	-	-
Leading economic index	-9.856 *	(5.380)	-	-
Consumer confidence index	5.028	(5.800)	2.619	(3.428)
TANKAN large manufacturing index	-3.593	(5.969)	3.060 **	(1.286)
TANKAN non-manufacturing index	-4.587	(16.470)	-	-
Monetary base	30.400	(21.217)	-	-
Capacity utilization	-	-	-	-
GDP (quarterly)	-13.323 ***	(5.117)	-	-
Large retail sales	-8.823	(8.179)	-15.629	(13.881)
Construction orders	3.788	(3.257)	6.030 ***	(1.224)
Industrial production	-5.762	(5.312)	-6.696	(5.504)
Retail trade	-12.474 ***	(3.797)	-9.351 ***	(0.776)
Consumer price index	-0.669	(4.440)	-10.530 *	(6.064)
Overall household spending	10.630 **	(5.148)	4.097	(4.127)
Exchange rate	4.479 ***	(0.659)	4.443 ***	(0.695)
Interest rate differential	-0.062 *	(0.034)	-0.065 *	(0.034)
AR(4)	-0.647 ***	(0.164)	-0.648 ***	(0.161)
MA(4)	0.728 ***	(0.144)	0.728 ***	(0.142)
<b>R-squared</b>	0.287		0.290	
<b>Durbin-Watson</b>	2.189		2.160	
<b>Akaike info criterion</b>	-2.701		-2.730	

Notes: All news announcement surprises have been interacted with a lagged dummy variable that takes on a value of 1 if the cost of hedging against sharp yen appreciation rose between day  $t$  and  $t-1$ . 3/18/2004 12/29/2006 sample period, 715 observations. Standard errors in parentheses; \*, \*\*, and \*\*\* indicate coefficients significant at 10%, 5%, and 1% level respectively. Constant and day of the week omitted because of insignificant coefficient.

Table5: Impact of significant news surprises on the value of 1-year risk reversals

Subsample Period:		01/07/2005-03/13/2006		04/12/2006-05/17/2006	
Surprise	Announcement	Narrow Bands	Wide Bands	Narrow Bands	Wide Bands
US GDP		0.096	0.070	0.000	0.000
US Personal income		0.000	0.014	0.000	0.000
US Consumer credit		0.198	0.143	0.009	0.000
JP Trade balance		0.091	0.106	-0.058	-0.058
JP Consumer confidence index		-0.012	0.000	-0.009	0.000
TANKAN non-manufacturing index		0.000	-0.016	0.000	0.000
JP Overall household spending		0.000	0.000	-0.029	-0.024
Total		0.373	0.317	-0.088	-0.081
% of Change in 1-Year Risk Reversal		29.84%	25.34%	9.24%	8.56%

Note: The impact is calculated by multiplying the standardized value of the news surprise component relative to the Bloomberg survey of market expectation by the regression coefficient. The bottom row reports the cumulative impact of news surprises during each subsample period as a percentage of change in the value of 1-year risk reversal during the same time period.

Table 6: Granger causality tests between risk-reversals and net non-commercial short positions (% O.I.)

	Baseline				Controlling for exchange rate			
	1-lag		2-lag		1-lag		2-lag	
	risk rersals cause positions	positions cause risk reversals	risk rersals cause positions	positions cause risk reversals	risk rersals cause positions	positions cause risk reversals	risk rersals cause positions	positions cause risk reversals
<b>1-Month Risk Reversals</b>								
F-Statistic	<b>3.837**</b>	0.483	<b>8.832***</b>	2.213	<b>4.326**</b>	0.362	<b>8.374***</b>	1.409
Probability	0.052	0.488	0.000	0.113	0.039	0.548	0.000	0.248
Coeff. Sum	6.042	0.002	21.439	0.000	7.683	0.002	24.116	0.004
Obs.	146		143		146		143	
<b>1-Year Risk Reversals</b>								
F-Statistic	<b>9.023***</b>	0.521	<b>9.611***</b>	<b>2.570*</b>	<b>7.720***</b>	0.022	<b>6.924***</b>	1.798
Probability	0.003	0.471	0.000	0.080	0.006	0.882	0.001	0.169
Coeff. Sum	14.491	0.001	29.964	-0.003	15.495	0.000	30.388	-0.005
Obs.	151		150		151		150	

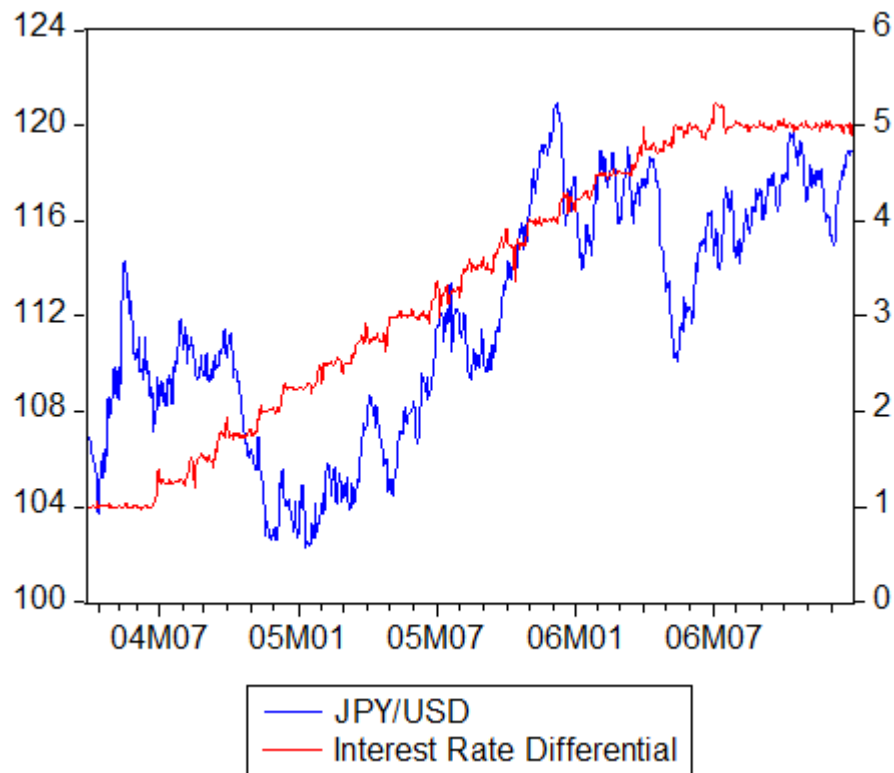
Note: \*, \*\*, and \*\*\* indicate the null hypothesis of no Granger-causality is rejected at significant at 10%, 5%, and 1% level respectively.

*Table 7: Approximate cumulative impact of macro surprises on CME net non-commercial futures short positions through Risk Reversal valuation.*

Subsample Period:		01/07/2005-03/13/2006		04/12/2006-05/17/2006	
Calculation Method:	Surprise Announcement	Wide Bounds	Narrow Bounds	Wide Bounds	Narrow Bounds
		1-Lag Coeff.	2-Lag Coeff.	1-Lag Coeff.	2-Lag Coeff.
		$\Delta NCMS (\% O.I.)$	$\Delta NCMS (\% O.I.)$	$\Delta NCMS (\% O.I.)$	$\Delta NCMS (\% O.I.)$
	US GDP	1.08	2.92	0.00	0.00
	US Personal income	0.22	0.00	0.00	0.00
	US Consumer credit	2.22	6.01	0.00	0.27
	JP Trade balance	1.64	2.76	-0.89	-1.77
	JP Consumer confidence index	0.00	-0.37	0.00	-0.28
	TANKAN non-manufacturing index	-0.25	0.00	0.00	0.00
	JP Overall household spending	0.00	0.00	-0.37	-0.89
	Total	4.91	11.33	-1.26	-2.67
	% of Total $\Delta NCMS(\% O.I.)$	16.47%	38.03%	4.79%	10.14%

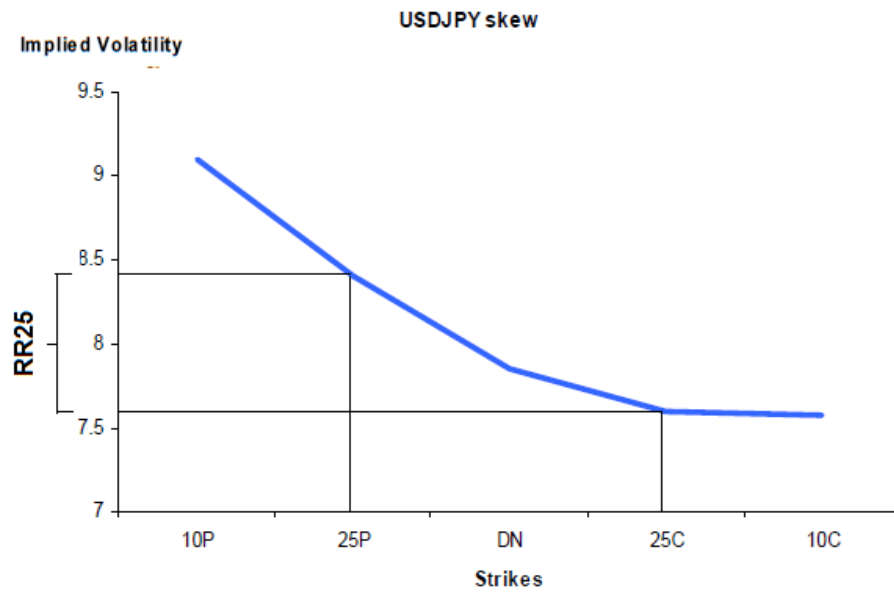
Note: The table shows the estimated cumulative impact over the sample period of macroeconomic news surprises on net non-commercial short positions (NCMS) as a percentage of total open interest (% O.I.) on the Chicago Mercantile Exchange (CME). The impact is calculated by multiplying the cumulative impact of news surprises on risk-reversals by the Granger-causality coefficients of risk-reversals on NCMS (% O.I.).

Figure 1: U.S.-Japan interest rate differential and JPY/USD exchange rate.



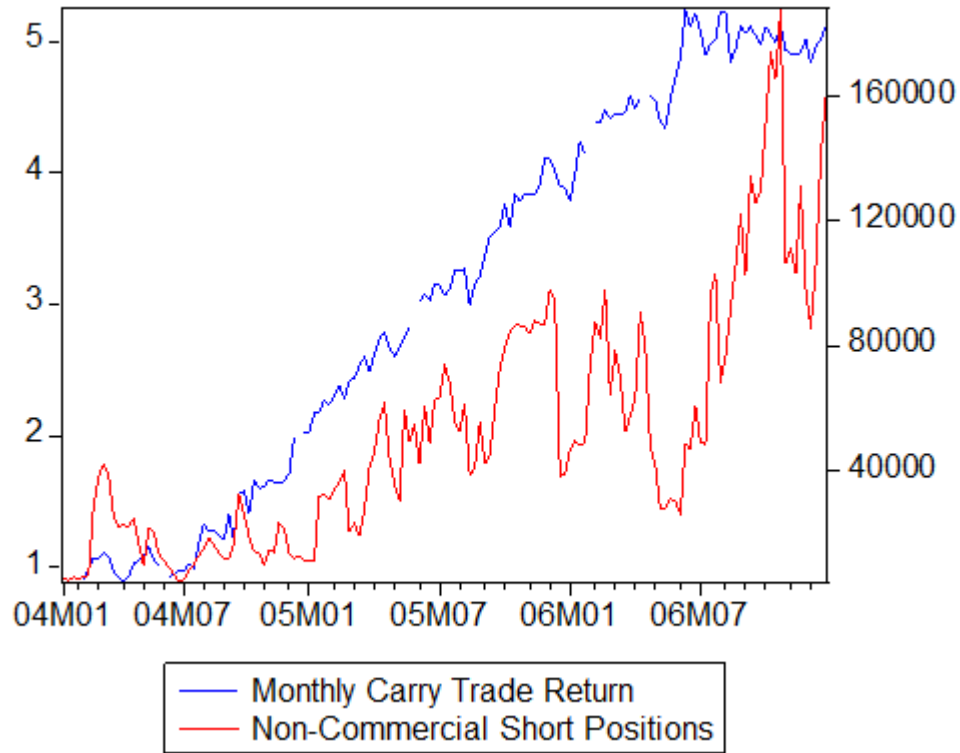
Note: An appreciation of the high yield currency is an example of the forward premium puzzle and the violation of the uncovered interest parity (UIP). The UIP regression coefficient has been estimated as low as -2.79 for the yen (Ichiue and Koyama , 2008).

Figure 2: JPY/USD implied volatility smirk means yen calls/dollar puts are more expensive.



Notes: The vertical distance indicates the absolute value of 25-delta risk reversal:  $RR^{25\delta} = \sigma_c^{25\delta} - \sigma_p^{25\delta}$   
 (Source: Bloomberg, DB FX Research and Authors' Edits)

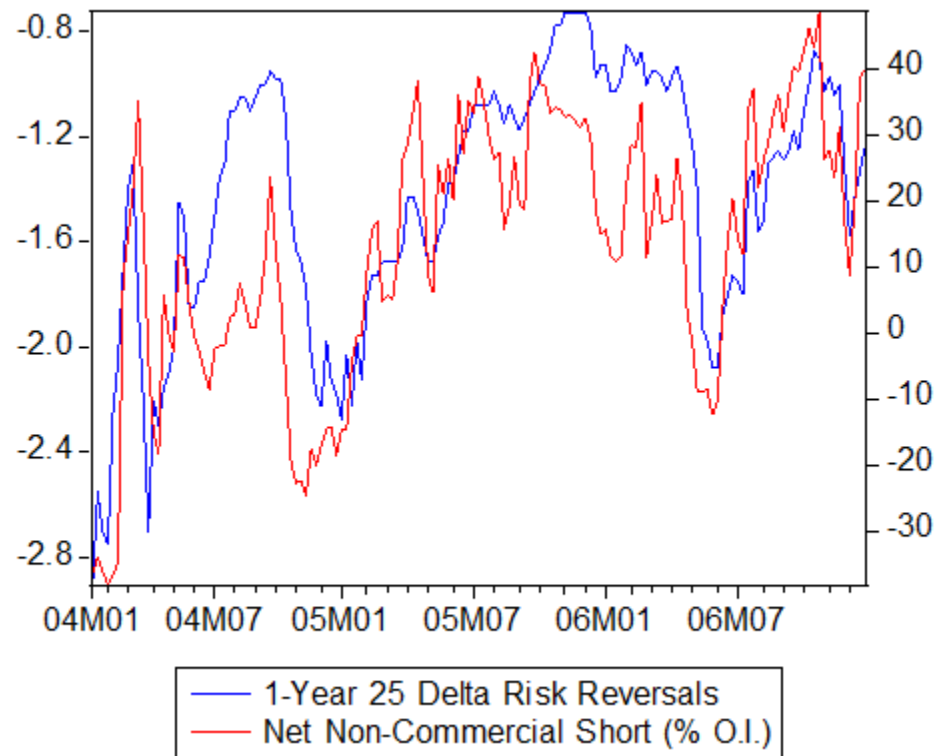
Figure 3: Carry trade return and total CME non-commercial short positions.



Note: We calculate carry trade return as  $CR_{t+k} = (1 + i_{k,t}^{US})S_{t+k} / S_t - (1 + i_{k,t}^{JP})$  where  $i_{k,t}$  denote the effective k-period deposit rates available in Japan and U.S. at time  $t$ . CFTC classifies traders as non-commercial if they have no foreign exchange exposure to hedge. A position corresponds to a contract value of 2.5 million yen (CFTC Explanatory Notes, <http://www.cftc.gov/>).



Figure 4: Risk reversals and CME net non-commercial Yen short futures positions.



Notes: We construct the measure of CME net non-commercial short positions (NCMS) as a percentage of open interest (% O.I.) by subtracting non-commercial long from non-commercial short positions divided by total open interest in yen futures.