

Pannenberg, Markus

Working Paper

Documentation of Sample Sizes and Panel Attrition in the German Socio Economic Panel (GSOEP) (1984 until 1996)

DIW Discussion Papers, No. 150

Provided in Cooperation with:

German Institute for Economic Research (DIW Berlin)

Suggested Citation: Pannenberg, Markus (1997) : Documentation of Sample Sizes and Panel Attrition in the German Socio Economic Panel (GSOEP) (1984 until 1996), DIW Discussion Papers, No. 150, Deutsches Institut für Wirtschaftsforschung (DIW), Berlin

This Version is available at:

<https://hdl.handle.net/10419/61541>

Standard-Nutzungsbedingungen:

Die Dokumente auf EconStor dürfen zu eigenen wissenschaftlichen Zwecken und zum Privatgebrauch gespeichert und kopiert werden.

Sie dürfen die Dokumente nicht für öffentliche oder kommerzielle Zwecke vervielfältigen, öffentlich ausstellen, öffentlich zugänglich machen, vertreiben oder anderweitig nutzen.

Sofern die Verfasser die Dokumente unter Open-Content-Lizenzen (insbesondere CC-Lizenzen) zur Verfügung gestellt haben sollten, gelten abweichend von diesen Nutzungsbedingungen die in der dort genannten Lizenz gewährten Nutzungsrechte.

Terms of use:

Documents in EconStor may be saved and copied for your personal and scholarly purposes.

You are not to copy documents for public or commercial purposes, to exhibit the documents publicly, to make them publicly available on the internet, or to distribute or otherwise use the documents in public.

If the documents have been made available under an Open Content Licence (especially Creative Commons Licences), you may exercise further usage rights as specified in the indicated licence.

Deutsches Institut für Wirtschaftsforschung

Discussion Paper No. 150

**Documentation of Sample Sizes
and Panel Attrition in the
German Socio Economic Panel (GSOEP)
(1984 until 1996)**

by
Markus Pannenberg

Bibliothek
des
Deutschen Instituts für Wirtschaftsforschung

97. 1653

Berlin, July 1997

Deutsches Institut für Wirtschaftsforschung, Berlin
Königin-Luise-Str. 5, D-14191 Berlin
Telefon: 49-30 - 89 7 89-0
Telefax: 49-30 - 89 7 89-200
ISSN 1433-0210

56. 89 Discuss. Nr. 150

Contents

1 Development of sample sizes

- 1.1 Development of the number of successful interviews by cross-section
- 1.2 Longitudinal development of losses due to panel attrition
- 1.3 Entrants by birth or move-ins and their participation behavior

2 Losses due to unsuccessful follow-up

- 2.1 Drop-out rates by mobility behavior
- 2.2 Definition of the covariates for a Logit analysis
- 2.3 Estimated coefficients of the Logit model

3 Losses due to refusals

- 3.1 Drop out rates by different household characteristics
- 3.2 Definition of the covariates for a Logit analysis
- 3.3 Estimated coefficients of the Logit model

4 References

1 Development of sample sizes

General comment: The sample sizes of the English public use version of the GSOEP and the German DIW version differ by approximately five percent. The exclusion of 5 percent of the original data from the GSOEP was necessary to fulfill the requirements of the German data protection laws. Technically, this was done by dropping randomly 5 percent of the original wave 1 households. All persons and households which stem from these root households are excluded from the English public use version. As a consequence the difference in sample sizes is not always exactly 5 percent. The sample sizes documented below refer to the original DIW data base version.

With respect to the development of the sample sizes our focus is on:

- Comparison of the number of successful interviews by cross-section.
- Longitudinal development of panel attrition.
- Entrants by birth or move-ins and their participation behavior.

1.1 Development of the number of successful interviews by cross-section

The following figures display the number of successful interviews considering different aspects:

Figure 1 Comparison for individuals and households (subsamples A and B), wave 1 (1984) to 13 (1996).

Figure 2 Comparison between subsamples A and B on the individual level, wave 1 (1984) to 13 (1996).

Figure 3 Comparison between the subsamples A, B and C on the individual level, wave 1 to 7.

Figure 4 Comparison for individuals and households in Subsample D, wave 1 and 2.

Figure 1: Comparison of successful interviews with persons and households (subsample A and B), waves 1 to 13.

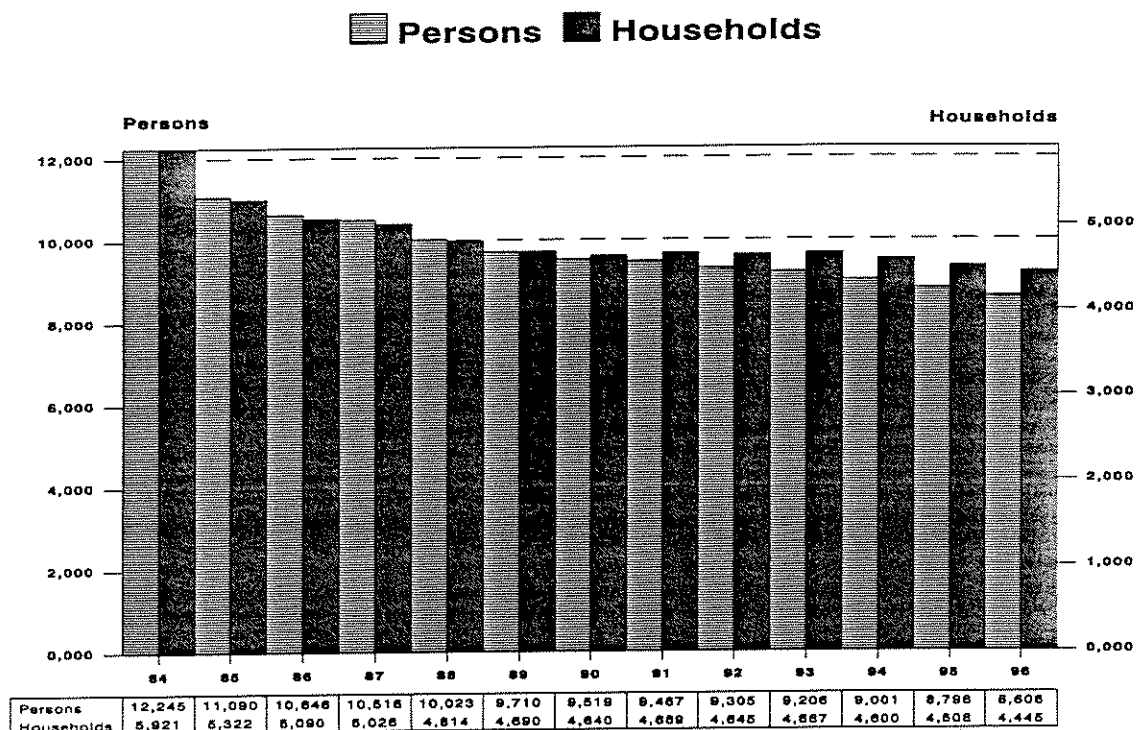


Figure 2: Comparison of successful interviews between subsamples A and B (individual level), waves 1 to 13.

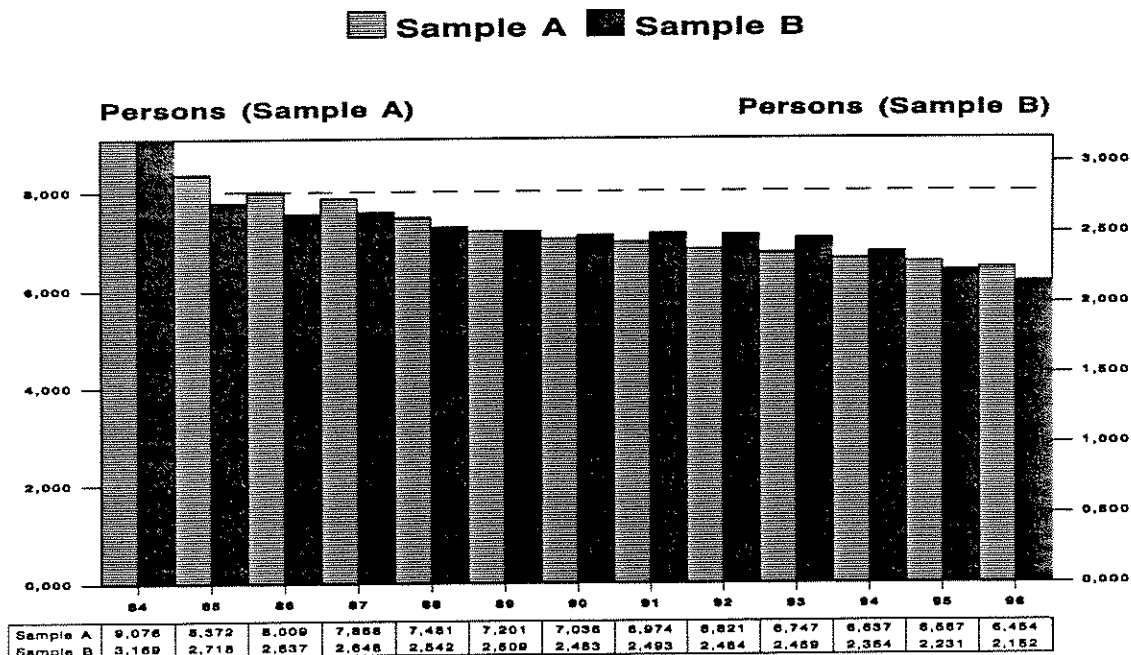


Figure 3: Comparison of successful interviews between subsamples A and B vs. subsample C (individuals), waves 1 to 7.

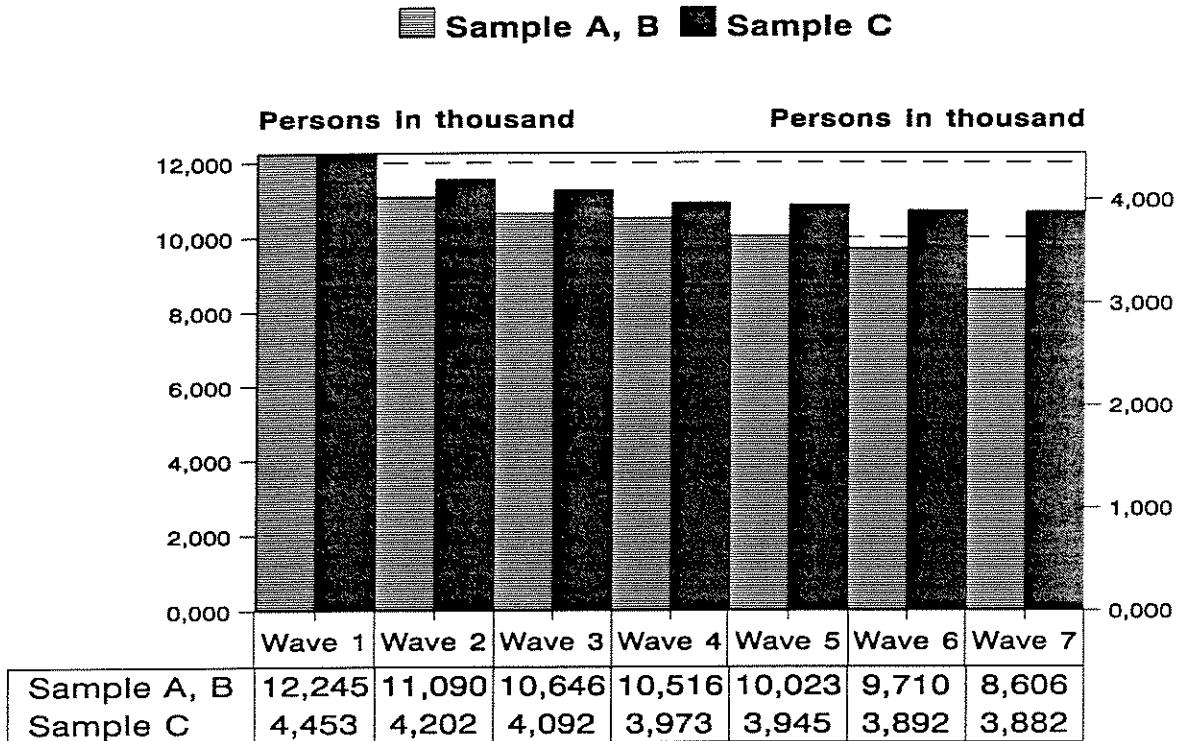
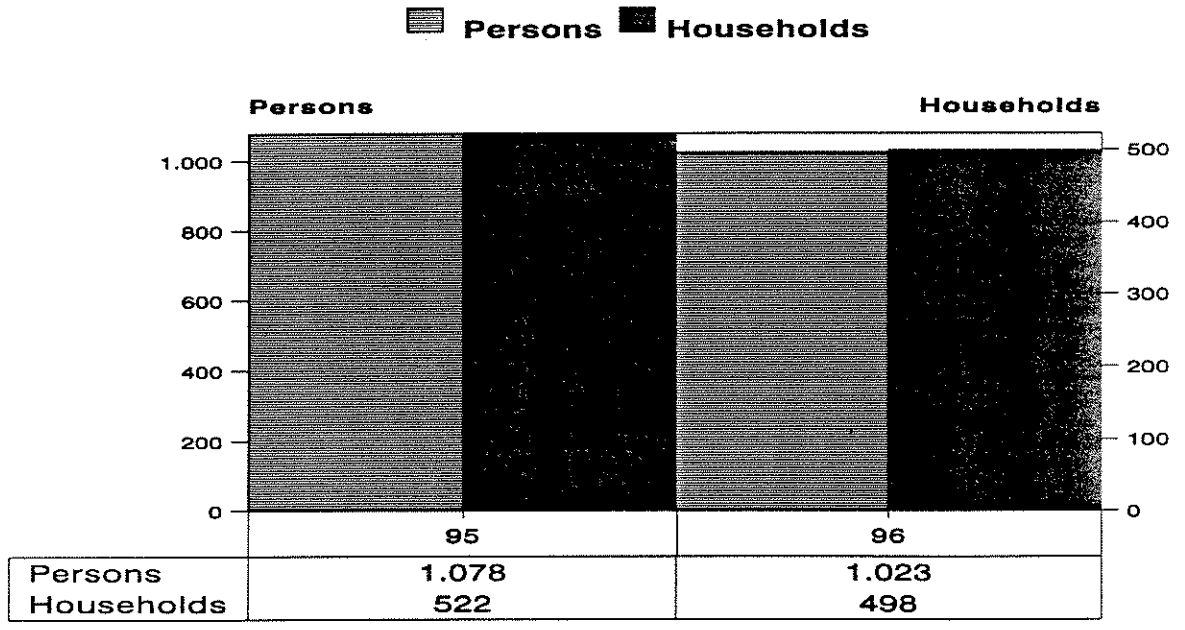


Figure 4: Comparison of successful interviews with individuals and households (subsample D), wave 1 and wave 2.



In course of time of the GSOEP-Study the initial subsample indicator loses the power to predict the actual sampling region; i.e. members of subsample C (East-Germany) move to West-Germany and members of the subsample A, B and D (West-Germany) move to East-Germany. Table 1a displays the actual sampling region of the GSOEP households since 1990 for subsample A, B and C. Table 1b shows the same information for the immigrant sample since 1995.

Table 1a: **Development of sample sizes (sample A, B, C) by sampling region and institutional status 1990 to 1996.** n=Number of successful interviews, N=Estimated population total in thousands. Population margins for the number of households and individuals living in private households by sampling region are taken from the German microcensus. Figures for 1996 are provisional. Because of the different definitorial concepts the figures for the institutional population are not comparable to the microcensus.

Survey year		Sampling region							
		West				East			
		Sample A+B		Sample C		Sample C		Sample A+B	
		1*	2*	1*	2*	1*	2*	1*	2*
Households									
1990	n	4592	48	-	-	2158	21	-	-
	N	28173	417	-	-	6703	90	-	-
1991	n	4620	49	22	-	1988	20	-	-
	N	28466	408	117	-	6672	108	-	-
1992	n	4598	46	58	3	1946	13	1	-
	N	28776	387	266	18	6654	71	2	-
1993	n	4609	53	78	5	1878	9	5	-
	N	29310	436	399	28	6615	50	40	-
1994	n	4545	47	93	5	1850	11	8	-
	N	29542	430	457	24	6706	77	103	-
1995	n	4451	45	111	3	1814	10	12	-
	N	28093	450	531	9	6621	73	164	-
1996	n	4383	48	118	3	1820	10	14	-
	N	28248	545	573	7	6616	74	159	-

Table 1a: continued

Survey year		Sampling region							
		West				East			
		Sample A+B		Sample C		Sample C		Sample A+B	
		1*	2*	1*	2*	1*	2*	1*	2*
Persons (including children)									
1990	n	12151	59	-	-	6014	30	-	-
	N	62380	471	-	-	16313	120	-	-
1991	n	12100	61	44	-	5613	26	-	-
	N	62971	455	236	-	15808	128	-	-
1992	n	11884	58	133	3	5331	18	2	-
	N	63441	434	559	18	15618	84	4	-
1993	n	11724	63	182	5	5078	11	7	-
	N	63934	464	836	24	15501	54	44	-
1994	n	11468	55	225	5	4938	13	11	-
	N	64342	437	1058	17	15349	82	151	-
1995	n	11194	54	277	3	4769	12	23	-
	N	59492	480	1197	10	15066	80	291	-
1996	n	10952	55	291	3	4670	12	29	-
	N	59721	591	1280	7	14976	81	321	-

1*: Private households
2*: Institutionalized population

Table 1b: **Development of sample sizes by sampling region and institutional status 1995 to 1996 for Sample D.** n= Number of successful interviews with weighting factor greater than zero (**hrf * > 0). N=Estimated population total in thousands¹.

Survey year		Sampling region							
		West				East			
		Standard Weights		D-specific Weights		Standard Weights		D-specific Weights	
		1*	2*	1*	2*	1*	2*	1*	2*
Households									
1995	n	307	13	362	14	2	0	2	0
	N	1518	88	1874	96	9	0	9	0
1996	n	291	7	347	8	4	0	4	0
	N	1477	55	1920	63	21	0	22	0
Persons (including children)									
1995	n	977	30	1139	32	6	0	6	0
	N	4712	194	5772	211	27	0	27	0
1996	n	908	12	1068	14	9	0	9	0
	N	4448	97	5702	113	47	0	49	0

1*: Private households
2*: Institutionalized population

¹ see Rendtel, Ulrich / Pannenberg, Markus / Daschke, Stefan (1997) for further details.

Considering the estimated population for sample A and B in 1995 and 1996 (West) at a household and a personal level, we have to take into account that beginning with wave 12 (1995), the A and B weights are reduced to reflect the fact that immigrants are contained now in sample D (see Rendtel/Pannenberg/Daschke 1997 for details).

1.2 Longitudinal development of losses due to panel attrition

The following figures display the development of the number of losses due to panel attrition considering different aspects:

Figure 5: All first wave persons of subsamples A and B. Whereabout until wave 13.

Figure 6: All first wave persons of subsample A. Whereabout until wave 13.

Figure 7: All first wave persons of subsample B. Whereabout until wave 13.

Figure 8: All first wave persons of subsample C. Whereabout until wave 7.

Figure 9: Comparison of attrition rates between subsamples A, B and C in wave 7.

Figure 10: All first wave persons of subsample D. Whereabout until wave 2.

The figures in the center display the percentage of records that are without survey related attrition until the corresponding wave. These percentages may be taken as a mark for panel stability.

Figure 5: All first wave persons (subsample A+B). Development until wave 13.

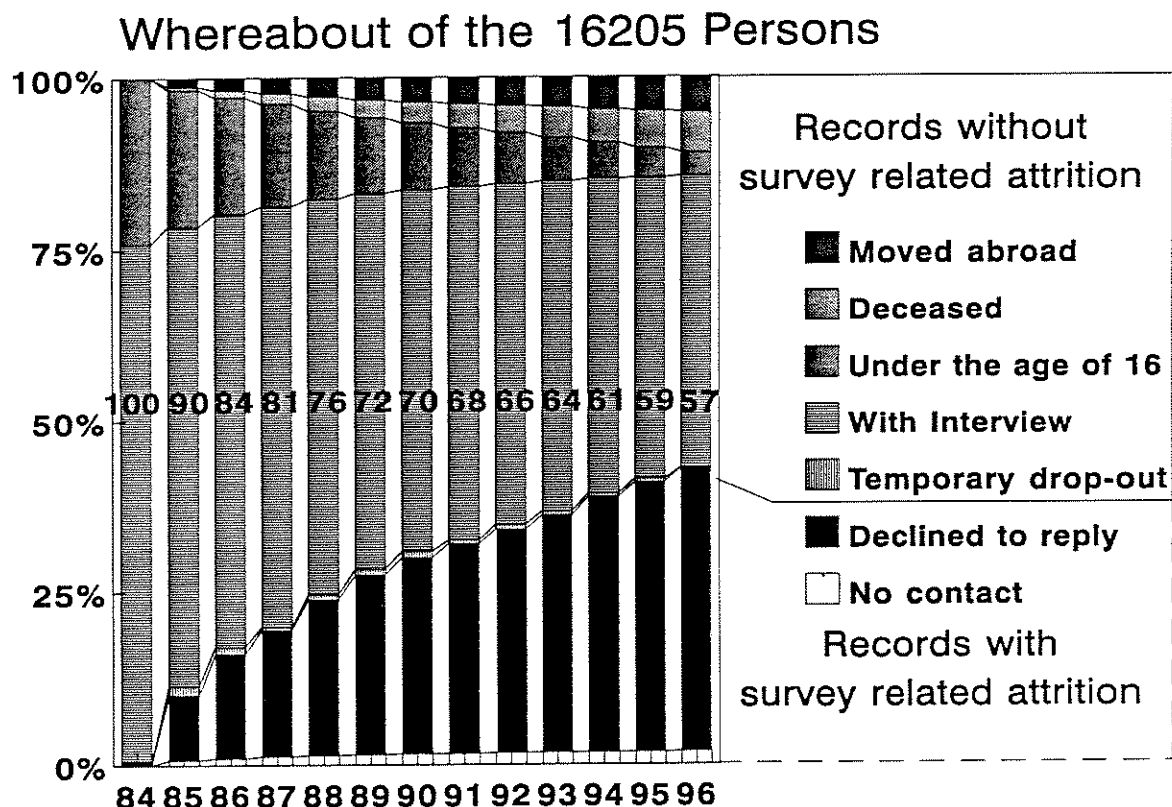


Figure 6: All first wave persons (subsample A). Development until wave 13.

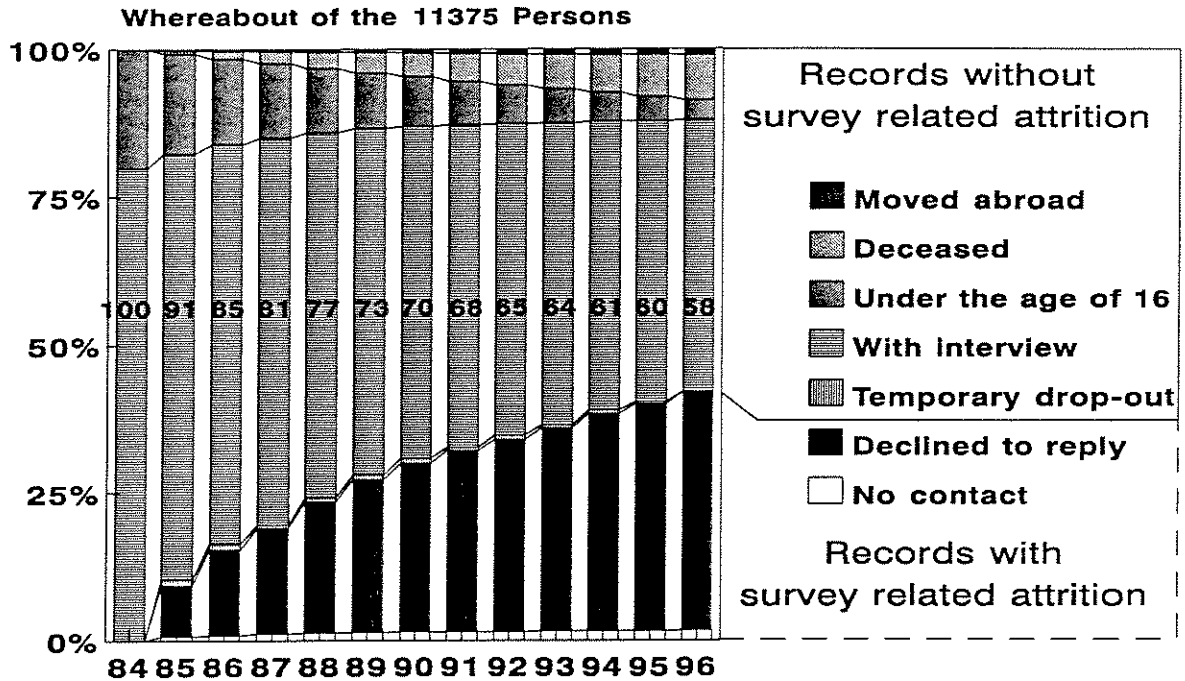


Figure 7: All first wave persons (subsample B). Development until wave 13.

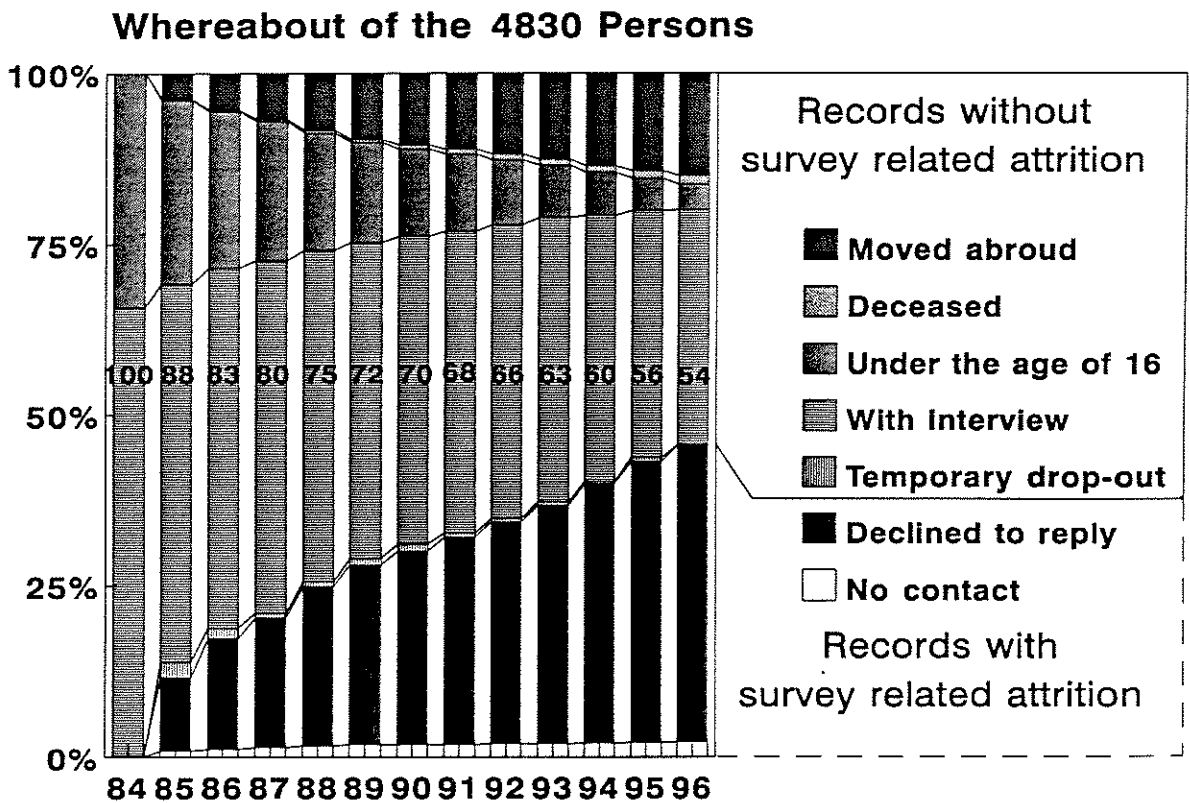


Figure 8: All first wave persons of the subsample C. Development until wave 7 (East).

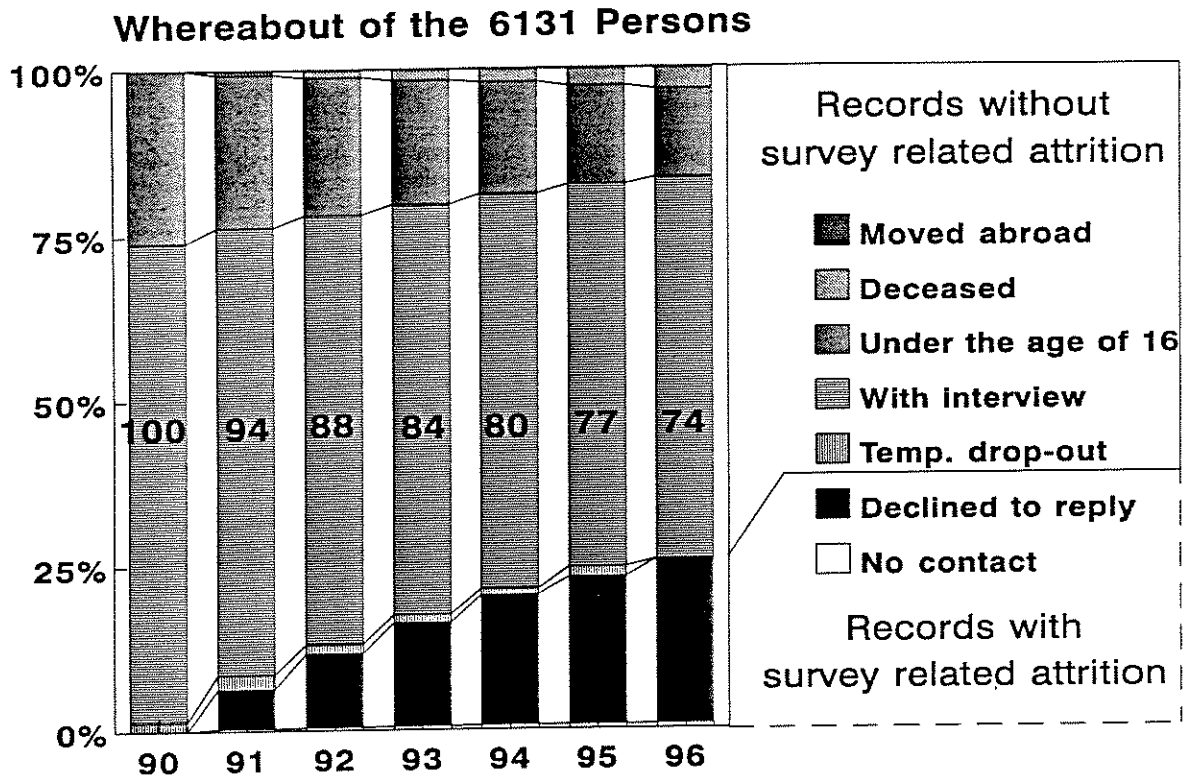


Figure 9: All first wave persons (A,B, C). Comparison of the development until wave 7.

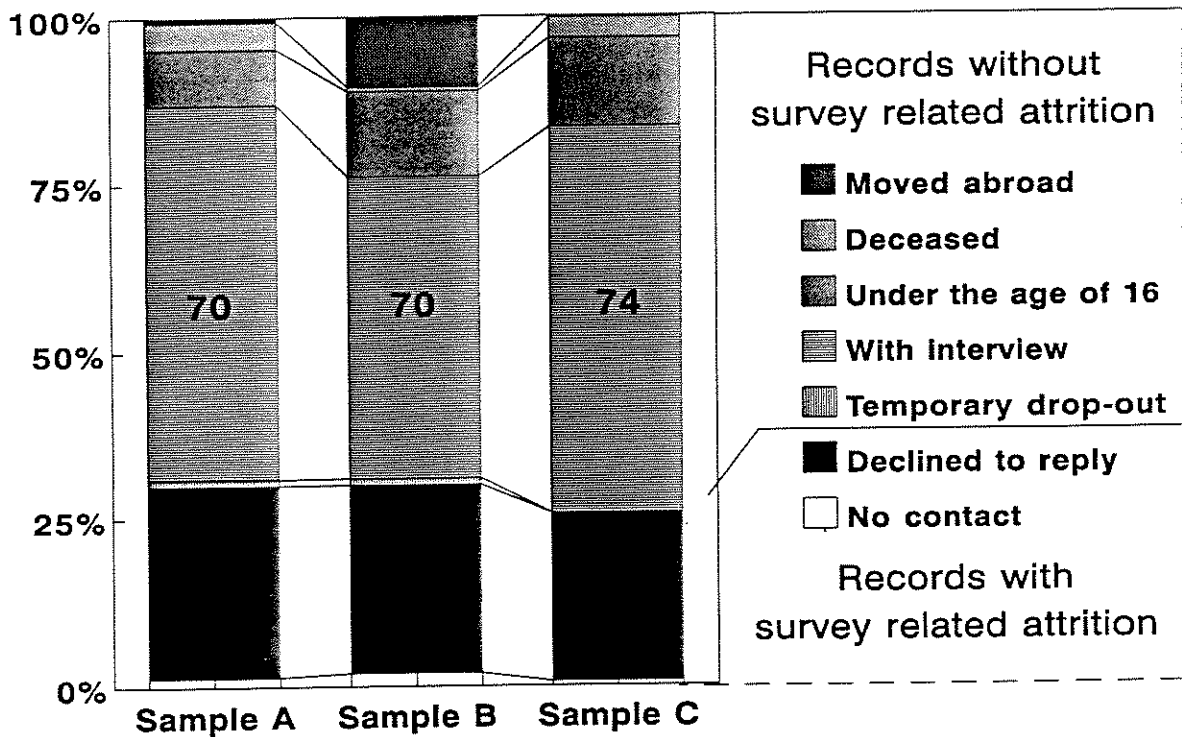
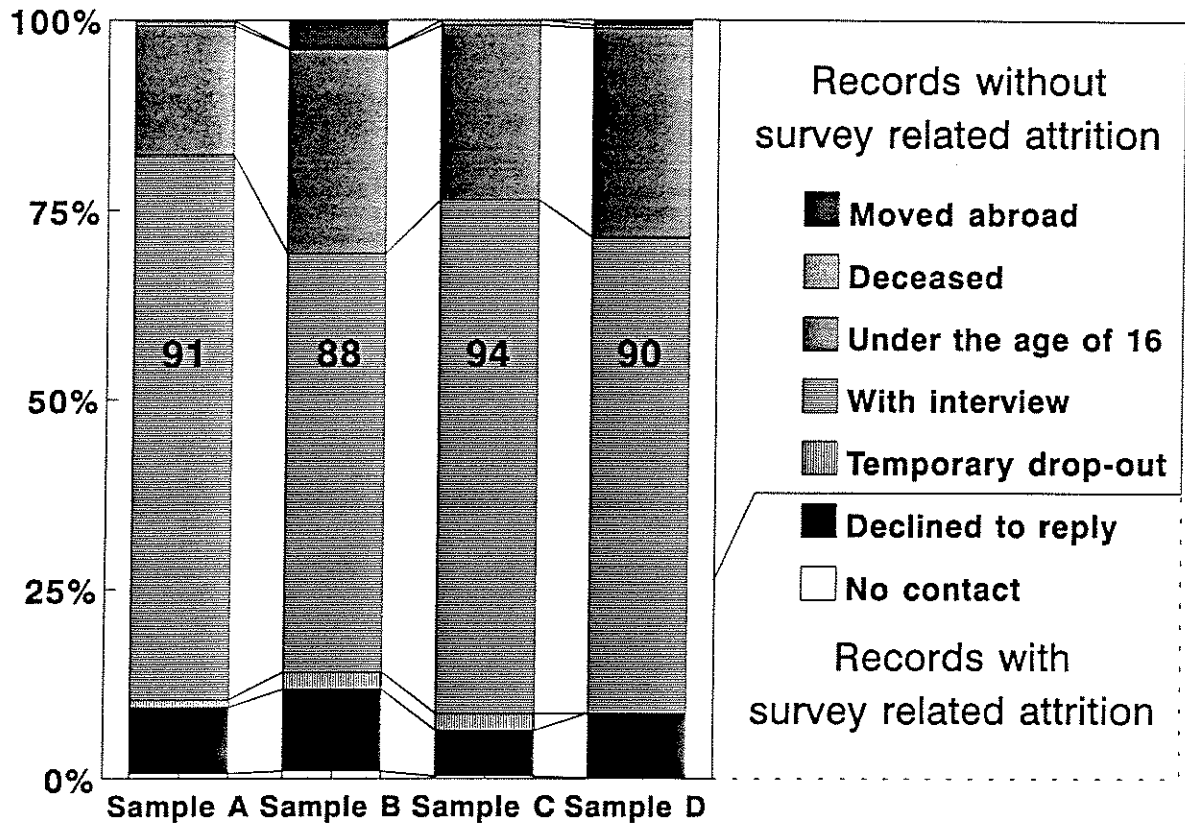
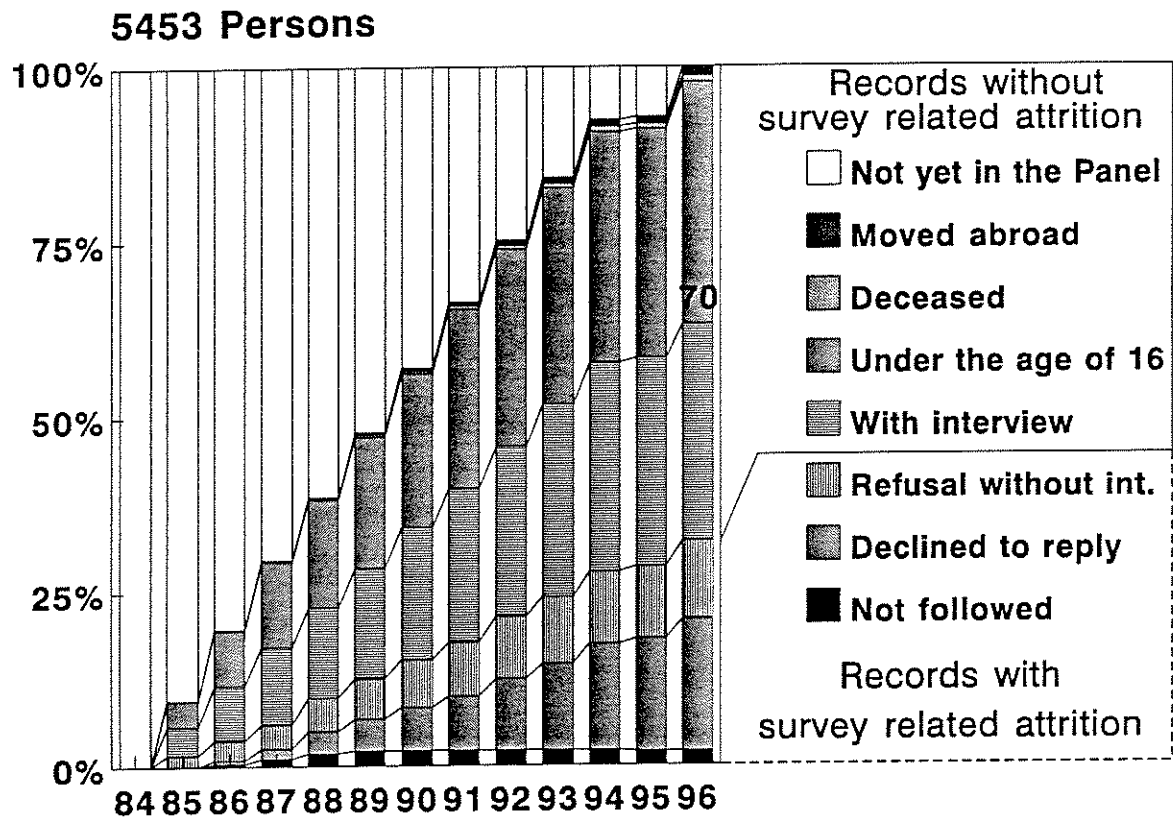


Figure 10: All first wave persons (A, B, C, D). Comparison of the development until wave 2.



1.3 Entrants by birth or move-ins and their participation behavior

Figure 11: Entrants by birth or move-in and their participation behavior (subsamples A, B).



2 Losses due to unsuccessful follow-up

In each panel wave it is necessary to re-contact the households of the proceeding wave. Therefor we have to check, wether:

- the household still lives at the old address.
- the entire household has moved.
- all household members deceased.
- all household members left the sampling area.
- all household members returned into an existing panel household.

2.1 Drop-out rates by mobility behavior

Table 2 displays the success of the field work with respect to the recontacting of households for Sample A and B. The drop-out rates refer to all households of the previous wave that still exist in the sampling area plus split-off households. A contact is regarded to be successfully established if the interviewer recorded an interview or a refusal in the address protocol. Also the detection that the household members returned into an existing panel household is taken as a successful follow-up.

Table 2: **Drop-out rates due to unsuccessful follow-up in the GSOEP subsamples A and B.** N= Number of households to be recontacted; %= percentage of households without contact.

Wave:	2	3	4	5	6	7	8	9	10	11	12	13
	Total											
N	6051	5814	5465	5342	5156	5044	5029	5006	5049	5008	4900	4821
%	1.9	1.4	1.0	0.9	0.9	0.9	0.5	0.4	0.9	0.8	0.6	0.4
	Households without move											
N	5413	5039	4808	4683	4545	4472	4448	4447	4395	4359	4292	4178
%	0.8	0.4	0.1	0.1	0.2	0.0	0.04	0.0	0.02	0.1	0.07	0.02
	Moved multi-person households											
N	298	307	272	274	228	186	197	195	231	239	264	301
%	7.4	3.6	4.0	5.5	0.5	1.6	0.5	0.5	0.9	0.0	1.9	1.7
	Moved single-person households											
N	119	180	142	143	126	122	94	90	105	146	127	120
%	21.0	14.4	7.7	5.6	4.7	5.7	1.1	0.0	7.6	6.2	0.8	0.0
	Split-off households											
N	221	295	242	242	246	263	290	273	317	264	217	218
%	11.7	8.4	10.4	7.4	11.8	12.9	7.6	7.3	10.7	9.9	9.2	6.9

Table 3: **Drop-out rates due to unsuccessful follow-up in the GSOEP subsample C.** N= Number of households to be recontacted; %= percentage of households without contact.

Characteristic	Wave 2		Wave 3		Wave 4		Wave 5		Wave 6		Wave 7	
	N	%	N	%	N	%	N	%	N	%	N	%
Total	2246	1.5	2304	0.5	2227	0.9	2136	0.6	2113	0.4	2104	0.5
Households with move	2062	0.0	2043	0.05	2021	0.05	1904	0.0	1862	0.1	1796	0.0
Moved multi-person households	81	11.1	106	0.0	82	3.7	92	2.2	119	0.0	142	1.4
Moved single-person households	21	14.3	43	9.3	14	0.0	39	2.6	30	3.3	45	4.4
Split-off households	82	25.6	112	6.3	110	13.6	104	8.6	102	6.9	121	5.8

Table 4: **Drop-out rates due to unsuccessful follow-up in the GSOEP subsample D.** N= Number of households to be recontacted; %= percentage of households without contact.

Characteristic	Wave	
	N	%
Total	544	0.4
Households with move	431	0.0
Moved multi-person households	74	0.0
Moved single-person households	16	6.3
Split-off households	23	4.4

2.2 Definition of the covariates for a Logit analysis

The estimation of the probability that a household is lost by unsuccessful follow-up is done by using a Logit model with the following characteristics:

Characteristic	Abbreviation	Code	Values
Moved	MOVE	1	household, not moved
		2	Moved multi-person household
		3	Moved single-person household
		4	Split-off household
Large City	LARGE	0	Else
		1	More than 500 thousand inhabitants
Household size	SIZE	1	Single-person household
		2	2 person household
		3	3 person household
		4	4 or more persons household
Single-person household	SINGLE	0	Else
		1	Single-person household
Typ of house	TYP	1	Single house or rural area
		2	Multi storey house
		3	Else
Split-off household	SPLIT	1	Moved multi-person household
		2	Moved single-person household
		3	Split-off household

2.3 Estimated coefficients of the Logit model

The covariates defined in the previous section were employed in a multiple Logit analysis. The model estimates the probability $P_c = (\text{contact} = \text{no})$. For the computation of the GSOEP weighting schemes only model specifications with all covariates being significant were used.

The specification is:
$$\ln \frac{P_{c,i}}{1 - P_{c,i}} = \text{const} + X' \beta$$

Thus, positive coefficients indicate an increased drop-out rate compared to the sample average.

Table 4 uses a simple symbolic notation for the models and their estimated coefficients. Here “+” means the addition of a main effect, an “*” indicates an interaction term. Variable 1 (Variable 2 = c) symbolizes a conditional main effect which is linked to cases where variable 2 = c. The estimated coefficients are displayed under the model equation. The notation uses the convention: variable (value 1: coefficient 1/value 2: coefficient 2/...).

The estimated drop out rates due to unsuccessful follow-up may be easily calculated from table 5. For example: In wave 2, subsample A, we find for a multiple-person household, that moved (MOVE=2) from a large city (LARGE=1) the logit value $-2.87 + 0.24 + 0.11 = -2.52$.

Thus we have $\Pr(\text{contact} = \text{no}) = \frac{e^{-2.52}}{1 + e^{-2.52}} = 0.074$.

Table 5: The estimates of a Logit model for the probability of a drop-out due to unsuccessful follow-up in the GSOEP. Representation of coefficients: variable (value 1: coefficient 1/value 2: coefficient 2/...).

Subsample A (West-Germans)	
Wave	Model and coefficients
2	Model = CONST + LARGE + MOVE CONST (-2.87), LARGE (0: -0.24 / 1: 0.24) MOVE (1: -2.52 / 2: 0.11 / 3: 1.53 / 4: 0.84)
3	Model = CONST + LARGE + MOVE CONST (-3.62), LARGE (0: -0.36 / 1: 0.36), MOVE (1: -1.79 / 2: -0.49 / 3: 1.48 / 4: 0.80)
4	Model = CONST + MOVE CONST (-3.42), MOVE (1: -3.01 / 2: 0.78 / 3: 0.98 / 4: 1.35)
5	Model = CONST + MOVE + SINGLE (MOVE) CONST (-3.76), MOVE (1: -3.09 / 2,3: 1.34 / 4: 1.75) SINGLE (MOVE = 1) (0: -1.35 / 1: 1.35) SINGLE (MOVE = 2,3) 0: -0.28 / 1: 0.28) SINGLE (MOVE = 4) (0: -0.63 / 1: 0.63)
6	Model = CONST + MOVE + SINGLE (MOVE) CONST (-3.48), MOVE (1: -2.33 / 2,3: 0.64 / 4: 1.69) SINGLE (MOVE = 1) (0: -0.75 / 1: 0.75) SINGLE (MOVE = 2,3) (0: -0.76 / 1: 0.76) SINGLE (MOVE = 4) (0: -0.26 / 1: 0.26)
7*	Model = CONST + LARGE + SPLIT CONST (-2.97), LARGE (0: -0.39 / 1: 0.39), SPLIT (1: -1.10 / 2: -0.07 / 3: 1.17)
8	Model = CONST + MOVE CONST (-5.03) MOVE 1: -2.79 / 2: -0.24 / 3: 0.50 / 4: 2.53)
9	Pr (contact = no) = 0 if MOVE = 1,2,3 / =0.06 if MOVE =4
10	Model = CONST + LARGE + MOVE CONST (-4.44), LARGE (0: -0.44 / 1: 0.44), MOVE (1: -3.65 / 2: 0.10 / 3: 1.12 / 4: 2.42)
11	Model = CONST + SINGLE + MOVE CONST (-6.01), SINGLE (0: -1.06 / 1: 1.06) MOVE (1: -0.99 / 2: -5.13 / 3: 1.84 / 4: 4.28)
12	Model = CONST + SINGLE + MOVE CONST (-4.61), SINGLE (0: -0.72 / 1: 0.72) MOVE (1: -2.68 / 2: 0.78 / 3: -0.83 / 4: 2.73)
13	Model = CONST + MOVE CONST (-6.89) MOVE (1: -1.21 / 2: 2.30 / 3: -5.31 / 4: 4.22)
* In wave 7 all households that did not move were successfully re-contact. The drop-out analysis therefore based only on households that moved.	

Table 5: continued

Subsample B (Foreigners)	
2	Model = CONST + LARGE + MOVE + SIZE CONST (-2.28), LARGE (0: -0.50 / 1: 0.50), MOVE (1: -1.66 / 2: 0.69 / 3: -0.07 / 4: 1.04) SIZE (1: 1.23 / 2: 0.26 / 3: -0.82 / 4: -0.67)
3	Model = CONST + LARGE + MOVE CONST (-2.65), LARGE (0: -0.72 / 1: 0.72), MOVE (1: -3.06 / 2: 0.16 / 3: 1.64 / 4: 1.26)
4	CONST (-3.34), MOVE (1: -3.60 / 2: -0.46 / 3: 2.19 / 4: 1.87)
5	like Subsample A
6	like Subsample A
7*	Model = CONST + LARGE + SPLIT + TYPE CONST (-2.93), LARGE (0: 0.064 / 1: -0.64), SPLIT (1: -1.65 / 2: 0.58 / 3: 1.07), TYPE (1: -0.73 / 2: 1.32 / 3: -0.59)
8	like Subsample A
9	Pr (contact = no) = 0 if MOVE = 1,2,3 / = 0.10 if MOVE = 4
10	Model = CONST + LARGE + MOVE CONST (-7.98), LARGE (0: -0.81 / 1: 0.81), MOVE (1: -7.63 / 2: -4.69 / 3: 6.50 / 4: -5.82)
11	Model = CONST + SINGLE + MOVE CONST (-5.39), SINGLE (0: -1.5 / 1: 1.54), MOVE (1: -1.19 / 2: -4.26 / 3: 2.07 / 4: 3.39)
12	Model = CONST + MOVE CONST (-5.34), MOVE (1: -1.52 / 2: 2.21 / 3: -3.86 / 4: 3.17)
13	Model = CONST + MOVE CONST (-8.32), MOVE (1: -7.08 / 2: 4.83 / 3: -3.61 / 4: 5.86)
* In wave 7 all households that did not move were successfully re-contact. The drop-out analysis therefore based only on households that moved.	
Subsample C (East-Germans)	
Wave	Model and coefficients
2 East	Pr(contact=no) = MOVE (1: 0.0 / 2: 0.11 / 3: 0.14 / 4: 0.25)
3 East	Pr(contact=no) = MOVE (1,2: 0.0 / 3: 0.09 / 4: 0.07)
4 East	Pr(contact=no) = MOVE (1: 0.0 / 2: 0.04 / 3: 0.0 / 4: 0.14)
5 East	Pr(contact=no) = MOVE (1: 0.0 / 2: 0.02 / 3: 0.03 / 4: 0.09)
6 East	Pr(contact=no) = MOVE (1: 0.0 / 2: 0.0 / 3: 0.03 / 4: 0.07)
7 East	Pr(contact=no) = MOVE (1: 0.0 / 2: 0.01 / 3: 0.04 / 4: 0.06)
Subsample D	
Wave	Model and coefficients*
2	Pr(contact=no) = MOVE (1: 0.0 / 2: 0.0 / 3: 0.07 / 4: 0.05)
* excluding snowball and I1 households from D1	

3 Losses due to refusals

3.1 Drop-out rates by different household characteristics

The subsequent tables display the drop-out rates due to refusal by different household characteristics. In general the characteristics refer to their status at the previous interview. However, the survey related characteristics refer to the actual sampling wave.

The person related characteristics refer to the head of the household in the previous wave. However, for split-off households the person related characteristics refer to the person that moved from the panel household (In case of several persons that moved from a panel household: the person first mentioned in the address protocol).

For households which were successfully re-contacted two alternative outcomes were considered:

- an interview is achieved at the household level.
- the household interview was not achieved.

No differences were made between various reasons for the refusal like explicit denial or refusal because of lack of time, bad health conditions, etc..

Table 6: Participation behavior of re-contacted households by socio demographic characteristics of the head of the household. N = Number of eligible households. % = Percentage of households without interview (SOEP Sample A, B).

		Wave											
		2	3	4	5	6	7	8	9	10	11	12	13
All households	N	5937	5732	5398	5285	5095	4982	4985	4977	4994	4960	4863	4795
	%	10.4	11.2	6.9	8.9	7.9	6.9	6.3	6.7	6.6	7.3	7.3	7.3
Drop-out in pervious wave	N	-	259	197	154	169	154	183	145	164	146	150	153
	%	-	59.5	52.8	71.6	57.4	49.3	48.1	62.1	50.6	54.1	60.7	68.6
		Households with participation in previous wave											
All	N	5937	5473	5201	5131	4926	4828	4802	4832	4830	4814	4713	4642
	%	10.4	8.9	5.1	7.0	6.2	5.5	4.7	5.0	5.1	5.8	5.6	5.3
		Sample											
A West-Germans	N	4611	4275	4058	3993	3834	3755	3716	3724	3718	3713	3661	3630
	%	10.2	8.7	5.2	7.1	6.2	5.3	4.6	4.9	5.1	5.3	5.0	5.0
B Foreigners	N	1326	1198	1143	1138	1092	1073	1086	1108	1112	1101	1052	1011
	%	10.9	9.6	5.0	6.9	6.4	6.1	5.3	5.5	6.2	7.7	7.6	6.7
		Gender											
Male	N	4664	4226	3951	3840	3624	3486	3413	3372	3340	3286	3173	3061
	%	9.8	8.3	4.7	6.7	6.2	5.0	4.2	4.9	4.5	5.5	5.1	5.0
Female	N	1273	1247	1250	1291	1303	1342	1389	1460	1490	1528	1540	1581
	%	12.2	11.0	6.5	7.9	6.5	6.9	6.1	5.3	6.3	6.6	6.6	5.8
		Age											
75 +	N	448	394	374	386	381	380	371	367	353	340	344	335
	%	18.3	13.7	6.7	6.5	6.8	5.0	3.0	5.2	6.2	5.0	9.8	6.0
65-74	N	562	513	487	480	465	462	477	503	527	550	554	547
	%	10.1	9.4	2.9	5.4	6.0	3.0	2.9	3.2	2.9	4.2	3.4	2.7
55-64	N	947	860	809	803	798	783	782	811	821	832	857	849
	%	9.8	8.7	4.2	4.7	5.9	5.5	3.8	3.4	3.4	4.7	3.6	6.0
35-54	N	2621	2401	2272	2226	2112	2017	1970	1899	1851	1797	1675	1624
	%	9.2	7.8	4.3	6.3	6.1	4.9	4.7	4.1	3.6	5.8	5.3	4.1
25-34	N	1116	1034	976	963	904	926	957	983	1020	1077	1107	1115
	%	8.9	8.0	6.1	9.9	6.1	7.7	6.1	6.2	7.7	6.3	6.1	6.7
16-24	N	243	271	283	273	266	260	245	269	258	218	176	172
	%	17.3	15.1	13.4	13.2	9.0	8.1	8.9	14.8	13.2	13.3	13.6	9.9

Table 6: continued

		Wave											
		2	3	4	5	6	7	8	9	10	11	12	13
		Households with participation in previous wave											
		Marital status											
Married, living together	N %	3893 9.6	3600 8.0	3366 4.4	3301 6.2	3144 6.2	3029 4.6	3015 3.4	3008 4.9	2990 4.3	2949 5.2	2869 4.6	2820 4.8
Married, living separate	N %	104 7.7	157 12.1	119 5.9	97 13.4	120 6.7	110 8.2	96 12.5	102 6.9	102 8.8	106 9.4	106 6.6	86 5.8
Single	N %	836 12.6	811 9.6	802 9.4	783 11.5	764 6.8	764 8.6	782 9.1	797 9.7	824 8.3	846 7.9	837 7.7	845 7.6
Divorced	N %	349 10.3	345 10.4	328 4.6	347 6.3	327 7.0	351 7.1	356 4.8	369 4.9	353 3.4	364 6.0	380 7.9	378 5.0
Widowed	N %	671 12.6	560 11.9	533 3.9	542 5.1	534 4.7	532 4.5	518 4.4	515 3.9	523 4.8	514 4.9	500 6.0	492 4.5
		School degree											
Without exam	N %	493 10.9	445 11.0	411 6.3	407 8.8	376 6.7	373 5.6	380 5.8	379 5.5	380 5.0	379 6.3	367 8.7	345 7.0
Lower secondary school	N %	2952 11.8	2669 9.8	2493 4.7	2488 6.2	2405 6.3	2340 5.2	2314 4.6	2296 4.6	2272 4.8	2240 5.6	2190 4.6	2168 5.3
Intermed. secondary school	N %	852 6.8	849 8.8	818 5.6	805 8.3	798 8.0	780 6.3	784 4.9	812 4.7	835 4.4	846 5.7	856 6.3	867 5.3
Technical school	N %	223 9.4	205 6.8	205 6.3	201 9.5	183 5.5	180 5.6	184 7.6	188 4.8	199 5.0	212 7.1	212 5.7	204 2.9
Upper secondary school	N %	601 7.5	588 6.0	582 5.5	569 7.6	542 4.2	552 7.4	533 5.1	557 7.0	564 6.2	580 5.5	572 5.1	582 4.5
		Occupational status											
Not gainfully employed	N %	1527 13.9	1325 10.1	1290 5.5	1302 6.9	1276 6.4	1329 5.2	1339 4.3	1279 4.9	1314 4.4	1320 4.5	1349 6.2	1303 4.8
Jobless	N %	206 9.7	297 10.7	260 7.7	258 8.5	265 4.9	193 2.6	199 6.0	215 6.5	197 6.6	239 8.4	285 4.9	292 5.1
Hight status	N %	585 7.9	578 6.2	522 4.4	530 7.7	519 7.1	511 8.4	496 5.9	518 5.6	531 4.7	557 6.3	524 4.4	535 4.5
Middle status	N %	2248 8.8	2202 8.1	2053 5.3	1982 6.6	1911 6.2	1803 5.1	1857 4.7	1932 5.1	1989 5.5	1855 5.7	1878 5.2	1853 5.5
Low status	N %	1364 11.2	1071 10.0	1076 4.3	1059 7.4	954 6.2	992 5.9	911 4.6	888 4.3	799 5.0	843 7.2	677 6.7	659 6.4

Table 7: **Participation behavior of re-contacted households by survey related characteristics.** N = Number of eligible households. % = Percentage of households without interview (SOEP A, B).

		Wave											
		2	3	4	5	6	7	8	9	10	11	12	13
		Households with participation in previous wave											
		Type of household											
Household, not moved	N	5372	4810	4646	4567	4421	4353	4313	4379	4285	4242	4182	4050
	%	9.6	8.0	4.2	5.8	5.6	4.6	3.6	3.9	4.0	5.8	4.7	5.3
Household which moved	N	370	425	373	370	322	277	274	275	309	362	367	4010
	%	11.6	12.7	10.7	14.1	9.0	7.6	9.9	9.5	8.4	7.7	8.7	9.8
Split-off household	N	195	238	182	194	183	198	215	208	235	204	164	181
	%	29.2	21.4	17.6	23.7	16.9	23.2	21.4	22.1	20.4	17.2	22.0	18.2
		Change of interviewer											
Yes	N	2041	1203	816	715	826	742	717	751	340	385	199	169
	%	14.9	17.5	12.5	19.0	12.9	14.4	10.7	12.1	8.2	8.6	9.6	18.6
No	N	3896	4265	4385	4416	4100	4086	4085	4081	3879	3824	3888	3886
	%	7.9	6.5	3.8	5.1	4.9	3.9	3.7	3.7	3.3	3.4	3.2	3.7
Special cases	N									611	605	626	587
	%									14.6	19.3	19.0	14.0
		Number of interviews with the head											
Complete from first wave	N	-	5419	5018	4826	4600	4384	4225	4060	3856	3693	3520	3344
	%	-	8.7	4.7	5.9	5.6	4.4	3.6	3.3	3.4	3.9	4.1	3.7
1 interview missing	N	-	-	161	246	253	294	346	389	399	416	412	409
	%	-	-	16.7	23.1	14.6	13.9	13.8	10.8	10.3	11.1	10.4	8.6
2 interviews missing	N	-	-	-	46	43	73	93	127	163	173	174	175
	%	-	-	-	43.5	16.2	23.2	12.9	18.9	14.7	17.3	8.6	9.7
3 interviews missing	N	-	-	-	-	24	49	63	104	137	164	168	170
	%	-	-	-	-	12.5	14.3	9.5	10.6	8.0	8.5	9.5	10.6
		New entrant living in the household											
Yes	N	257	243	218	211	209	220	198	210	197	197	168	182
	%	9.0	11.1	6.4	6.6	4.8	6.4	6.6	2.4	3.6	4.0	3.0	3.3
No	N	5680	5230	4983	4920	4717	4608	4604	4622	4633	4616	4545	4460
	%	10.4	8.8	5.1	7.1	6.3	5.5	4.7	5.1	5.2	5.9	5.7	5.4
		A respondent person left the household											
Yes	N								209	243	201	168	193
	%								7.2	6.3	5.0	1.2	4.2
		Household without telephone											
Yes	N									248	253	-	220
	%									9.7	7.9	-	7.7
		Households with a separation of a couple											
All	N								94	116	103	83	109
	%								24.5	20.7	9.7	19.3	13.8
Old household	N								47	60	52	43	61
	%								14.6	16.7	7.7	4.7	11.5
Split-off household	N								47	56	51	40	48
	%								34.8	25.0	11.7	35.0	16.7

Table 7: continued

		Wave											
		2	3	4	5	6	7	8	9	10	11	12	13
Subjective characteristics													
General life satisfaction													
More or less dissatisfied (≤ 4)	N									302	380	393	382
	%									7.3	7.6	6.9	5.8
More or less satisfied (≥ 5)	N									4528	4434	4320	4260
	%									4.9	5.7	5.5	5.2

Table 8: **Participation of re-contacted households by household income and the number of different assets.** N = Number of eligible households. % = Percentage of households without (SOEP A, B).

		Welle											
		2	3	4	5	6	7	8	9	10	11	12	13
		Households with participation in previous wave											
		Household income not reported											
	N	335	310	272	237	210	203	197	226	193	220	199	266
	%	17.9	18.4	12.9	16.9	11.4	15.2	12.7	10.6	7.8	15.0	12.6	10.5
		Household income in DM											
≤ 1000	N	456	368	293	270	241	213	182	165	157	151	137	102
	%	13.8	10.1	5.5	9.3	7.1	6.1	6.6	8.5	7.0	6.6	8.8	11.8
1000-2000	N	1816	1521	1383	1243	1140	995	870	802	721	665	651	564
	%	11.2	9.7	5.3	6.6	6.2	4.8	5.1	4.5	5.0	7.2	6.5	5.0
2000-3000	N	1713	1572	1469	1404	1354	1329	1260	1202	1129	1063	1040	1023
	%	8.3	7.6	4.2	6.5	6.6	4.6	4.0	5.1	4.4	4.9	5.3	5.8
3000-4000	N	992	996	1008	1087	1060	1073	1069	1085	1103	1039	1045	998
	%	9.6	6.4	4.3	6.1	5.0	4.7	3.7	4.4	5.4	4.9	5.7	3.8
≥ 4000	N	625	706	776	890	921	1015	1224	1352	1527	1676	1641	1689
	%	8.2	8.9	5.0	6.4	5.9	6.2	4.7	4.4	4.8	5.2	4.3	4.7
		Number of different assets in the household											
0	N	823	769	743	735	578	661	573	604	567	563	541	592
	%	12.5	12.3	6.9	11.3	8.3	8.8	6.6	9.9	6.5	10.7	7.8	8.8
1	N	1714	1561	1468	1429	1431	1262	1256	1191	1140	1197	1149	1068
	%	13.2	10.4	5.1	6.8	6.7	5.5	4.4	4.5	5.3	5.7	6.0	5.3
2	N	1709	1549	1427	1449	1444	1310	1350	1367	1412	1277	1278	1260
	%	8.3	8.2	5.6	5.8	5.9	5.2	5.0	4.1	5.5	5.6	5.8	5.5
3	N	1224	1161	1134	1122	1107	1152	1201	1180	1210	1250	1180	1236
	%	8.7	6.7	3.9	5.9	5.7	4.1	3.7	4.2	4.3	4.1	4.4	4.0
4	N	403	388	374	343	326	377	375	447	451	476	489	446
	%	7.7	5.9	3.7	7.0	4.6	5.3	4.5	4.5	3.8	5.9	3.5	3.6
5	N	64	45	55	53	40	66	47	43	50	51	52	40
	%	9.4	6.7	9.1	11.3	2.5	7.5	14.9	4.7	0.0	3.9	11.5	5.0
		Drawing of social aid payments											
Yes	N								133	133	135	143	148
	%								6.8	8.3	6.7	8.4	5.4

Table 9: Comparison of drop-out rates between Subsamples A/yB, Subsample C and Subsample D until wave 2. % = Percentage of households without interview.

Characteristic	Wave 2		
	A, B %	C %	D %
All re-contacted households	10.4	8.3	7.1
	Households with participation in previous wave		
	Age of the head of household		
75+	17.5	18.1	0.0
65-74	9.9	8.0	0.0
55-64	9.7	7.0	7.0
35-54	9.3	6.3	7.8
25-34	8.9	9.2	7.7
-25	19.9	13.4	5.3
	Gender of the head of the household		
Male	9.8	7.6	7.3
Female	12.4	8.9	6.3
	Occupational status of the head		
Not gainfully employed	12.9	10.8	8.7
Jobless	9.8	14.3	10.9
Highest status	7.9	5.5	2.9
Lowest status	10.6	9.4	7.7
Else	9.1	7.8	5.3
	Highest school degree		
Upper secondary school	7.5	7.1	6.7
Intermediate secondary school	6.8	7.0	-
Lower secondary school	11.8	9.9	3.0
Without exam	10.9	-	12.0
	Net household income		
Not reported	17.9	9.4	21.7
A, B, D		C	
<1000	<800		
1000-2000	800-1200	13.8	14.3
2000-3000	1200-1800	11.2	8.7
3000-4000	1800-2500	8.3	8.1
>4000	>2500	9.6	6.2
		5.8	5.8
		8.2	6.5
		4.2	4.2
	Type of household		
Old household not moved	9.6	7.7	4.3
Old household moved	11.6	8.9	9.8
Split-off household	29.2	24.6	18.2
	Interviewer has changed		
Yes	14.9	8.4	10.7
No	7.9	5.5	3.7
Special cases	-	13.6	14.0

3.2 Definition of the covariates for a Logit analysis

The characteristics used in the tabulations of the preceding section were employed as covariates in a multiple Logit analysis of the refusal rate. However, estimating the drop-out probabilities we used only model specification where all included covariates have significant coefficients. Thus, one may conclude that the omitted variables (or some differences between its values) do not have a systematic influence on the participation behavior of re-contacted households. The definition of the covariates that were finally used is given in the list below:

Characteristic	Abbreviation	Code	Values
Age of the head of household	ALTHV	1	Older than 75 years
		2	65-74 years
		3	55-64 years
		4	35-54 years
		5	25-34 years
		6	Younger than 25 years
Gender of the head	SEX	0	Male
		1	Female
Typ of the household	HTYP	1	Old household without move
		2	Old household moved
		3	Split-off household
Change of interviewer	INTW	0	No change
		1	Change since previous wave
		2	Not regular interviewer number
Number of interviews	BETREUUNG		Number of interviews with the interviewer of the present wave
Starting from the beginning	BEGINN	0	Else
		1	Heads participation since wave 1
Person moving out	AUSZUG	0	Else
		1	A respondent left the household since the previous wave
Separation of a couple	PAAR	0	Else
		1	The head or the spouse (cohabitor) of the previous wave left the household
Interaction of household type and separation of the couple	TYP	0	HH Typ = 1,2 and Paar = 1
		1	HH Typ = 1 and Paar = 0
		2	HH-Typ = 2 and Paar = 0
		3	HH-Typ = 3 and Paar = 0
East-Berlin	OSTB	0	Else
		1	household is located in East-Berlin
Marital status	FAMSTD	1	Married living together
		2	Married living separately
		3	Single
		4	Divoreed
		5	Widowed

List: continued

Characteristic	Abbreviation	Code	Values
Jobless	ALOS	0	Else
		1	Head is jobless
Loss of job (subjective notion)	VERLUST	0	Else
		1	Loss expected or probable
Occupational status of the head	STATUSH	0	Else
		1	High status
Social aid	SOZH	0	Else
		1	Household is recipient of social aid payments
Household income West-Germany	EINKW	1	Income not reported
		2	≤ 2000 DM
		3	2000 - 4000 DM
		4	≥ 4000 DM
Household income (East-Germany)	EINKO	1	Income not reported
		2	≤ 800 DM
		3	800-1200 DM
		4	1200-1800 DM
		5	1800-2500 DM
		6	≥ 2500 DM
Household income not reported	KAEINK	0	Else
		1	Income not reported
Balance of assets not reported	KAVB	0	Else
		1	Balance not reported in wave 5
Number of different kinds of assets in the households	ANZAHL	1	Number = 0
		2	Number = 5 (Maximum)
		3	Else
No assets reported	ANZO	0	Else
		1	Number of reported assets = 0
Firm assets	BETRIEB	0	Else
		1	Household owns firm assets
Savings reported as one kind of assets	SPAR	0	No
		1	Yes
Household migrated from East to West Germany	OSTWEST	0	No
		1	Yes
Member of D-Subsamples	MIGRANT	1	Subsample D1
		2	Subsample D2

3.3 Estimated coefficients of the Logit model

The covariates defined above were used in a multiple Logit analysis. The model estimates the probability $P_R = P(\text{Response=no})$. For the computation of the GSOEP weighting schemes only model specifications with all covariates being significant were used. The specification is:

$$\ln \frac{P_{R,i}}{1 - P_{R,i}} = \text{const} + X' \beta$$

Thus, positive coefficients indicate an increased drop-out rate compared to the sample average.

Table 9 uses a simple symbolic notation for models and their coefficients. Here “+” means the addition of a main effect an “*” indicates an interaction term. Variable 1 (Variable 2 = c) symbolizes a conditional main effect which is linked to cases where variable 2 = c. The estimated coefficients are displayed under the model equation. The notation uses the convention: variable (value 1: coefficient 1/value 2: coefficient 2).

The estimated drop-out rates due to refusals may be easily calculated from the coefficients displayed in table 9. For example: In wave 2, subsample A, we find for a household with no change of the interviewer (INTW = 0) and age of the head between 35 and 74 years (ALTHV = 2,3,4) and the reported household income below 2000 DM (EINKW = 2), which did not move (HTYP = 1) the logit value $-1.53 - 0.25 + 0.03 - 0.68 + 0.12 = -2.31$. Thus we have Pr

$$(\text{Response=no}) = \frac{e^{-2.31}}{1 + e^{-2.31}} = 0.09.$$

Table 10: The estimates of a Logit model for the probability of a drop-out due to refusal in the GSOEP. Representation of coefficients: variable (value 1: coefficient 1/value 2: coefficient 2/...).

Subsample A (West-Germans)	
Wave	Model and coefficients
2	Model = CONST + INTW + ALTHV + HTYP + EINKW CONST (-1.53), INTW (0: -0.25 / 1: 0.25), ALTHV (1: 0.66 / 2,3,4: 0.03 / 5: -0.39 / 6: -0.30), HTYP (1: -0.68 / 2: -0.19 / 3: 0.87), EINKW (1: 0.61 / 2: 0.12 / 3: -0.35 / 4: -0.38)
3	Model = CONST + INTW + ALTHV + INTW * ALTHV + HTYP + ALOS + KAEINK CONST (-1.22), INTW (0: -0.39 / 1: 0.39), ALTHV * (INTW =0) (1: -0.13 / 2: -0.11 / 3,4: -0.39 / 5: 0.26 / 6: 0.37), ALTHV * (INTW =1) (1: 0.13 / 2: 0.11 / 3,4: 0.39 / 5: -0.26 / 6: -0.37), ALTHV (1: 0.59 / 2: 0.16 / 3,4: -0.06 / 5: -0.53 / 6: -0.16) HTYP (1: -0.52 / 2: 0.10 / 3: 0.42), ALOS (0: -0.21 / 1: 0.21), KAEINK (0: -0.39 / 1: 0.39)
4	Model = CONST + ALTHV + INTW (ALTHV) + HTYP + KAEINK CONST (-1.83), INTW (ALTHV = 1) (0: -0.44 / 1: 0.44), INTW (ALTHV =2) (0: -0.74 / 1: 0.74), INTW (ALTHV =3,4) (0: -0.59 / 1: 0.59), INTW (ALTHV =5) (0: -0.41 / 1: 0.41), INTW (ALTHV =6) (0: -0.32 / 1: 0.32), ALTHV (1: 0.21 / 2: -0.38 / 3,4: -0.24 / 5: 0.06 / 6: 0.35), HTYP (1: -0.45 / 2: 0.29 / 3: 0.19), KAEINK (0: -0.39 / 1: 0.39)
5	Model = CONST + BETREUUNG + ALTHV (INTW =1) + HTYP + KAEINK + ANZO CONST (-1.60), BETREUUNG (1: 1.15 / 2: 0.41 / 3: 0.18 / 4: -0.71 / 5: -1.03), ALTHV (INTW = 1) (1,2: 0.52 / 3,4,5: -0.11 / 6: -0.40), HTYP (1: -0.49 / 2: 0.11 / 3: 0.38), KAEINK (0: -0.45 / 1: 0.45), ANZO (0: -0.38 / 1: 0.38)

Table 10: continued

Subsample A (West-Germans)	
Wave	Model and coefficients
6	<p>Model = CONST + BETREUUNG + ALTHV (INTW = 1) + HTYP + KAEINK + KAVB + BETRIEB</p> <p>CONST (-2.44), BETREUUNG (1: 0.75 / 2: 0.58 / 3: 0.21 / 4: -0.59 / 5: -0.43 / 6: -0.52), ALTHV (INTW = 1) (1,2: 0.26 / 3,4,5: 0.05 / 6: -0.31), HTYP (1: -0.32 / 2: -0.04 / 3: 0.37), KAEINK (0: -0.26 / 1: 0.26), BETRIEB (0: 0.41 / 1: -0.41)</p>
7	<p>Model = CONST + HTYP + INTW (HTYP) + KAEINK + STATUSH</p> <p>CONST (-1.34), INTW (HTYP = 1) (0: -0.75 / 1: 0.75), INTW (HTYP = 2) (0: -0.56 / 1: 0.56), INTW (HTYP = 3) (0: -0.12 / 1: 0.12), HTYP (1: -0.66 / 2: -0.24 / 3: 0.90), KAEINK (0: -0.58 / 1: 0.58) STATUSH (0: -0.30 / 1: 0.30)</p>
8	<p>Model = CONST + INTW + HTYP + KAEINK + ANZAHL</p> <p>CONST (-1.15), INTW (=: -0.55 / 1: 0.55), HTYP (1: -0.83 / 2: -0.14 / 3: 0.97), KAEINK (0: -0.57 / 1: 0.57), ANZAHL (1: -0.08 / 2: 0.70 / 3: -0.62)</p>
9	<p>Model = CONST + INTW (BEGINN) + BEGINN (ALTHV) + HTYP + AUSZUG (HTYP=1) + KAEINK + ANZO + SEX</p> <p>CONST (-1.31), INTW (BEGINN = 0) (0: -0.17 / 1: 0.17), INTW (BEGINN = 1) (0: -0.68 / 1: 0.68), BEGINN (ALTHV = 1) (0: -0.09 / 1: 0.09), BEGINN (ALTHV = 2) (0: 0.70 / 1: -0.70), BEGINN (ALTHV = 3) (0: 1.20 / 1: -1.20), BEGINN (ALTHV = 4) (0: 0.49 / 1: -0.49), BEGINN (ALTHV = 5) (0: 0.48 / 1: -0.48), BEGINN (ALTHV = 6) (0: 0.10 / 1: -0.10), HTYP (1: -0.53 / 2: 0.07 / 3: 0.46), AUSZUG (HTYP=1) (0: -0.47 / 1: 0.47), KAEINK (0: -0.25 / 1: 0.25), ANZO (0: -0.29 / 1: 0.29), SEX (0: 0.15 / 1: -0.15)</p>

Table 10: continued

Wave	Model and Coefficients
10	<p>Model = CONST + HTYP + BEGINN (HTYP) + INTW (HTYP) + PAAR (HTYP=1) + ALTHV (HTYP=1) CONST (-1.89), HTYP (1: -0.12 / 2: -0.39 / 3: 0.51), INTW (HTYP=1) (0: -0.95 / 1: -0.08 / 2: 0.88), INTW (HTYP=2) (0: -0.24 / 1: -0.06 / 2: 0.30), INTW (HTYP=3) (0: 0.16 / 1: -0.47 / 2: 0.31), BEGINN (HTYP=1) (0: 0.43 / 1: -0.43), BEGINN (HTYP=2) (0: 0.21 / 1: -0.21), BEGINN (HTYP=3) (0: -0.07 / 1: 0.07), PAAR (HTYP=1) (0: -0.58 / 1: 0.58), ALTHV (HTYP=1) (1: 0.41 / 2: -0.26 / 3: -0.08 / 4: -0.50 / 5: 0.01 / 6: 0.42)</p>
11	<p>Model = CONST + HYTP + BEGINN + INTW + KAEINK + TELEPHON (INTW=1) CONST (-1.68) HTYP (1: -0.39 / 2: -0.09 / 3: 0.48) BEGINN (0: 0.27 / 1: -0.27) INTW (0: -0.63 / 1: -0.10 / 2: 0.73) KAEINK (0: -0.35 / 1: 0.35) TELEPHON (INTW=1) (0: 0.49 / 1: -0.49)</p>
12	<p>Model = CONST + HTYP + INTW + ALTHV (HTYP = 1) CONST (-1.92) HTYP (1: -0.36 / 2: -0.52 / 3: 0.88) INTW (0: -1.10 / 1: 0.03 / 2: 1.07) ALTHV (HTYP =1) (1: 0.57 / 2,3,4,5,6: -0.57)</p>
13	<p>Model = CONST + HTYP + INTW + BEGINN + ALTHV + KAEINK + PAAR (HTYP = 1) CONST (-1.42) HTYP (1: 0.39) / 2: -0.23 / 3: 0.62) INTW: (0: -0.75 / 1: 0.25 / 2: 0.5) BEGINN (0: 0.35 / 1: -0.35) ALTHV (1: 0.61 / 2: -0.29 / 3: 0.42 / 4: -0.20 / 5: -0.15 / 6: -0.39) KAEINK (0: -0.26 / 1: 0.26) PAAR (HTYP = 1) (0: -0.64 / 1: 0.64)</p>

Table 10: continued

Subsample B (Foreigners)	
Wave	Model and coefficients
2	Model = CONST + INTW + HTYP CONST (-1.96), INTW (0: -0.55 / 1: 0.55) HTYP (1: -0.03 / 2: -0.58 / 3: 0.62)
3	Model = CONST + SEX + HTYP CONST (-1.60), SEX (0: -0.31 / 1: 0.31), HTYP (1,2: -0.46 / 3: 0.46)
4	Model = CONST + INTW (ALTHV) + HTYP + EINKW CONST (-1.69), INTW (ALTHV =1,2,3) (0: -0.47 / 1: 0.47), INTW (ALTHV =4) (0: -0.73 / 1: 0.73), INTW (ALTHV =5) (0: -0.60 / 1: 0.60), INTW (ALTHV =6) (0: -0.26 / 1: 0.26), HTYP (1: -0.34 / 2: 0.46 / 3: -0.12), EINKW (1: 0.75 / 2: 0.10 / 3: -0.85)
5	Model = CONST + BETREUUNG + HTYP + KAEINK CONST (-1.87), BETREUUNG (1: 1.26 / 2: 0.14 / 3: -0.21 / 4: -0.70 / 5: -0.50), HTYP (1: -0.47 / 2: 0.89 / 3: -0.42), KAEINK (0: -0.43 / 1: 0.43)
6	Model = CONST + BETREUUNG + HTYP + KAEINK CONST (-1.89), BETREUUNG (1: 0.83 / 2: 0.37 / 3: -0.31 / 4: -0.55 / 5: 0.04 / 6: -0.37), HTYP (1: -0.41 / 2: 0.22 / 3: 0.19), KAEINK (0: -0.54 / 1: 0.54)
7	Model = CONST + HTYP + INTW (HTYP) + KAEINK CONST (-1.50), INTW (HTYP=1) (0: -0.55 / 1: 0.55), INTW (HTYP=2) (0: -0.98 / 1: 0.98), INTW (HTYP=3) (0: -1.06 / 1: 1.06), HTYP (1: -0.50 / 2: -0.88 / 3: 1.38), KAEINK (0: -0.66 / 1: 0.66)
8	Model = CONST + INTW + HTYP CONST (-2.05), INTW (0: -0.48 / 1: 0.48), HTYP (1: -0.85 / 2: 0.22 / 3: 0.63)

Table 10: continued

Wave	Subsample B (Foreigners)
9	Model = CONST + INTW + BEGINN + TYP + ALTHV + KAEINK + ANZO + SOZH CONST (-1.79), INTW (0: -0.50 / 1: 0.50), BEGINN (0: 0.39 / 1: -0.39), TYP (0: 0.16 / 1: -0.59 / 2: -1.90 / 3: -0.03 / 4: 2.36), ALTHV 1,2,3: 0.28 / 4: -0.10 / 5: -0.65 / 6: 0.47), KAEINK (0: -0.66 / 1: 0.66), ANZO (0: -0.53 / 1: 0.53), SOZH (0: 0.73 / 1: -0.73)
10	Model = CONST + HTYP + PAAR + ALTHV + INTW (ALTHV) CONST (-1.58) HTYP (1: -0.44 / 2: -0.11 / 3: 0.55), PAAR (0: -0.63 / 1: 0.63), ALTHV (1,2,3: -0.79 / 4: -0.04 / 5: 0.77 / 6: -0.05), INTW (ALTHV = 4) (0: -1.11 / 1: -0.10 / 2: 1.21), INTW (ALTHV = 5) (0: -0.79 / 1: -0.22 / 2: 1.01)
11	Model = CONST + BEGINN + HTYP + INTW + ANZO + FAMSTD CONST (-1.43), INTW (0: -0.69 / 1: 0.01 / 2: 0.70), BEGINN (= 0.33 / 1: -0.33), HTYP (1,2: -0.48 / 3: 0.48), ANZO (0: -0.31 / 1: 0.31), FAMSTD (1: 0.25 / 2,3,4,5: -0.25)
12	Model = CONST + HTYP + INTW + PAAR + ALTHV CONST (-0.88) HTYP (1: -0.97 / 2: 0.36 / 3: 0.61) INTW (0: -0.67 / 1: -0.45 / 2: 1.12) PAAR (0: -0.84 / 1: 0.84) ALTHV (1,2,3: -0.35 / 4,5,6: 0.35)
13	Modell = CONST + HTYP + INTW CONST (-1.73) CONST (1: -0.66 / 2: 0.12 / 3: 0.54) INTW (0: -0.82 / 1: -0.02 / 2: 0.84).

Table 10: continued

Subsample C (East-Germans)	
Wave	Model and coefficients
2 East	Model = CONST + HTYP + INTW + ALTHV + EINKO + VERLUST + OSTB CONST (-0.91), INTW (0: -0.47 / 1: -0.04 / 2: 0.51), ALTHV (1: 0.41 / 2,3,4,5,6: -0.41), HTYP (1,2: -0.84 / 3: 0.84), EINKO (1: 0.24 / 2: 0.44 / 3: 0.12 / 4: 0.00 / 5: -0.37 / 6: -0.44), VERLUST (0: -0.17 / 1: 0.17), OSTB (0: -0.29 / 1: 0.29)
3 East	Model = CONST + HTYP + INTW (HTYP) + ALTHV + SPAR CONST (-1.36), HTYP (1: -0.39 / 2: 0.08 / 3: 0.31), INTW (HTYP=1) (0: -0.28 / 1,2: 0.28), INTW (HTYP=2) (0: 0.42 / 1,2: -0.42), INTW (HTYP=3) (0: -0.36 / 1,2: 0.36), ALTHV (1: 0.02 / 2,3,4: -0.38 / 5: -0.20 / 6: 0.56), SPAR (0: 0.35 / 1: -0.35)
4 East	Model = CONST + HTYP + INTW + ALTHV + KAEINK + FAMSTD CONST (0: -0.62), HTYP (1: -0.47 / 2: 0.25 / 3: 0.12), INTW (0: -0.78 / 1: -0.04 / 2: 0.82), ALTHV (1: 0.47 / 2,3,4,5,6: -0.47), KAEINK (0: -0.54 / 1: 0.54), FAMSTD (1: -0.12 / 2: 1.13 / 3: 0.24 / 4: -0.73 / 5: -0.51),
5 East	Model = CONST + HTYP + INTW + KAEINK + VANZAHL + VERLUST CONST (-0.82), HTYP (1: -0.45 / 2: -0.32 / 3: 0.77), INTW (0: -0.67 / 1: -0.18 / 2: 0.84), KAEINK (0: -0.49 / 1: 0.49), VANZAHL (0: 0.0 / 1: -0.31 / 2: -0.62 / 3: -0.93 / 4: -1.24 / 5: -1.51), VERLUST (=: -0.19 / 1: 0.19)
6 East	Model = CONST + HTYP + KAEINK + INTW (OSTWEST = 0) + BEGINN (OSTWEST = 0) CONST (-1.33); HTYP (1: -0.65 / 2: -0.32 / 3: 0.97); KAEINK (0: -0.66 / 1: 0.66); INTW (OSTWEST = 0) (0: -0.46 / 1: -0.31 / 2: 0.47); BEGINN (OSTWEST = 0) (0: 0.31 / 1: -0.31)
7 East	Modell = CONST + HTYP + INTW + ALTHV + PAAR + EINKO CONST (-2.12) HTYP (1: -0.39 / 2: -0.35 / 3: 0.74) INTW (0: -0.68 / 1: 0.19 / 2: 0.49) ALTHV (1,2: 0.12 / 3: -1.25 / 4,5: 0.33 / 6: 0.8) PAAR (0: -0.42 / 1: 0.42) EINKO (1,2,3,4,5: 0.32 / 6: -0.32)

Table 10: continued

Subsample D	
Wave	Model and coefficients
2	Model = CONST + HTYP (MIGRANT = 1) + ALTHV (MIGRANT = 2) + KAEINK CONST (-1.08) HTYP (MIGRANT = 1) (0: -1.41 / 1,2: 1.41) ALTHV (MIGRANT = 2) (1,2,3: -0.93 / 4,5,6: 0.93) KAEINK ((0: -0.72 / 1: 0.72)

4 References

- Arbeitsgemeinschaft ADM-Stichproben und Bureau Wendt* 1994: Das ADM-Stichproben - System (Stand 1993). In: Gabler, S.; Hoffmeyer-Zlotnik, J.; Krebs, D. (Hg): Gewichtung in der Umfragepraxis. Westdeutscher Verlag, Opladen, S. 188-203.
- Kirschner, Hans-Peter* 1984: ALLBUS 1980: Stichprobenplan und Gewichtung. In: Mayer, K.-U.; Schmidt, P. (Hrsg): Allgemeine Bevölkerungsumfrage Sozialwissenschaften, Frankfurt/M., S. 114-182.
- Projektgruppe "Das Sozio-ökonomische Panel"* 1990: Das Sozio-ökonomische Panel für die Bundesrepublik Deutschland nach fünf Wellen. Vierteljahrshefte zur Wirtschaftsforschung, Heft 2, S. 141-151.
- Projektgruppe "Das Sozio-ökonomische Panel"* 1991: Das Sozio-ökonomische Panel (SOEP) im Jahre 1990/91. Vierteljahrshefte zur Wirtschaftsforschung, Heft 3/4, S. 146-155.
- Projektgruppe "Das Sozio-ökonomische Panel"* 1993: 10 Jahre Sozio-oekonomisches Panel (SOEP). Vierteljahrshefte zur Wirtschaftsforschung, Heft 1/2, S. 141-151.
- Projektgruppe "Das Sozio-ökonomische Panel"* 1995: Das Sozio-oekonomische Panel (SOEP) im Jahre 1994. Vierteljahrshefte zur Wirtschaftsforschung, Heft 1.
- Pischner, Rainer* 1994: Die Quer- und Laengschnittgewichtung des Sozio-oekonomischen Panels (SOEP). In: Gabler, S.; Hoffmeyer-Zlotnik, J.; Krebs, D. (Hg): Gewichtung in der Umfragepraxis. Westdeutscher Verlag, Opladen, S. 166-187.
- Rendtel, Ulrich* 1990: Teilnahmebereitschaft in Panelstudien: Zwischen Beeinflussung, Vertrauen und Sozialer Selektion. Kölner Zeitschrift für Soziologie und Sozialpsychologie, 42, S. 280-299.
- Rendtel, Ulrich* 1991: Die Schätzung von Populationswerten in Panelerhebungen. Allgemeines Statistisches Archiv, 75, S. 225-244.
- Rendtel, Ulrich* 1995: Panelausfälle und Panelrepräsentativität, Campus Verlag, Frankfurt/M.-New York.
- Rendtel, Ulrich; Pannenberg, Markus; Daschke, Stefan* 1997: Die Gewichtung der Zuwanderer-Stichprobe des Sozio-ökonomischen Panels (SOEP), in: Vierteljahrshefte zur Wirtschaftsforschung, Heft 2 (forthcoming).