

Lohse, Tim; Robledo, Julio R.

Working Paper

Public Self-Insurance and the Samaritan's Dilemma in a Federation

Ruhr Economic Papers, No. 330

Provided in Cooperation with:

RWI – Leibniz-Institut für Wirtschaftsforschung, Essen

Suggested Citation: Lohse, Tim; Robledo, Julio R. (2012) : Public Self-Insurance and the Samaritan's Dilemma in a Federation, Ruhr Economic Papers, No. 330, ISBN 978-3-86788-379-5, Rheinisch-Westfälisches Institut für Wirtschaftsforschung (RWI), Essen, <https://doi.org/10.4419/86788379>

This Version is available at:

<https://hdl.handle.net/10419/61360>

Standard-Nutzungsbedingungen:

Die Dokumente auf EconStor dürfen zu eigenen wissenschaftlichen Zwecken und zum Privatgebrauch gespeichert und kopiert werden.

Sie dürfen die Dokumente nicht für öffentliche oder kommerzielle Zwecke vervielfältigen, öffentlich ausstellen, öffentlich zugänglich machen, vertreiben oder anderweitig nutzen.

Sofern die Verfasser die Dokumente unter Open-Content-Lizenzen (insbesondere CC-Lizenzen) zur Verfügung gestellt haben sollten, gelten abweichend von diesen Nutzungsbedingungen die in der dort genannten Lizenz gewährten Nutzungsrechte.

Terms of use:

Documents in EconStor may be saved and copied for your personal and scholarly purposes.

You are not to copy documents for public or commercial purposes, to exhibit the documents publicly, to make them publicly available on the internet, or to distribute or otherwise use the documents in public.

If the documents have been made available under an Open Content Licence (especially Creative Commons Licences), you may exercise further usage rights as specified in the indicated licence.



RUHR

ECONOMIC PAPERS

Tim Lohse
Julio R. Robledo

Public Self-Insurance and the Samaritan's Dilemma in a Federation

Imprint

Ruhr Economic Papers

Published by

Ruhr-Universität Bochum (RUB), Department of Economics
Universitätsstr. 150, 44801 Bochum, Germany

Technische Universität Dortmund, Department of Economic and Social Sciences
Vogelpothsweg 87, 44227 Dortmund, Germany

Universität Duisburg-Essen, Department of Economics
Universitätsstr. 12, 45117 Essen, Germany

Rheinisch-Westfälisches Institut für Wirtschaftsforschung (RWI)
Hohenzollernstr. 1-3, 45128 Essen, Germany

Editors

Prof. Dr. Thomas K. Bauer
RUB, Department of Economics, Empirical Economics
Phone: +49 (0) 234/3 22 83 41, e-mail: thomas.bauer@rub.de

Prof. Dr. Wolfgang Leininger
Technische Universität Dortmund, Department of Economic and Social Sciences
Economics – Microeconomics
Phone: +49 (0) 231/7 55-3297, email: W.Leininger@wiso.uni-dortmund.de

Prof. Dr. Volker Clausen
University of Duisburg-Essen, Department of Economics
International Economics
Phone: +49 (0) 201/1 83-3655, e-mail: vclausen@vwl.uni-due.de

Prof. Dr. Christoph M. Schmidt
RWI, Phone: +49 (0) 201/81 49-227, e-mail: christoph.schmidt@rwi-essen.de

Editorial Office

Joachim Schmidt
RWI, Phone: +49 (0) 201/81 49-292, e-mail: joachim.schmidt@rwi-essen.de

Ruhr Economic Papers #330

Responsible Editor: Thomas K. Bauer

All rights reserved. Bochum, Dortmund, Duisburg, Essen, Germany, 2012

ISSN 1864-4872 (online) – ISBN 978-3-86788-379-5

The working papers published in the Series constitute work in progress circulated to stimulate discussion and critical comments. Views expressed represent exclusively the authors' own opinions and do not necessarily reflect those of the editors.

Ruhr Economic Papers #330

Tim Lohse and Julio R. Robledo

**Public Self-Insurance and the
Samaritan's Dilemma in a Federation**

Bibliografische Informationen der Deutschen Nationalbibliothek

Die Deutsche Bibliothek verzeichnet diese Publikation in der deutschen Nationalbibliografie; detaillierte bibliografische Daten sind im Internet über:

<http://dnb.d-nb.de> abrufbar.

<http://dx.doi.org/10.4419/86788379>

ISSN 1864-4872 (online)

ISBN 978-3-86788-379-5

Tim Lohse and Julio R. Robledo¹

Public Self-Insurance and the Samaritan's Dilemma in a Federation

Abstract

Motivated by recent disasters, this paper analyzes the risk sharing aspect in a federation. The regions can be hit by a shock leading to losses that occur with an exogenous probability and in a stochastically independent way. The regions can spend effort on self-insurance to reduce the size of the loss. Being part of a federation has two countervailing welfare effects. On the one hand, there is the well known welfare increase due to risk pooling. On the other hand, the self-insurance effort is a public good, because all regions benefit from the reduction of the loss. There exists a Samaritan's dilemma kind of effect whereby regions reduce their selfinsurance effort potentially leading to an overall welfare decrease. The central government can solve this dilemma by committing to fixed rather than to variable transfers. This induces regions that behave noncooperatively to choose the efficient level of self-insurance effort.

JEL Classification: H77, H41, H72

Keywords: Intergovernmental transfers; self-insurance; disaster policy

April 2012

¹ Tim Lohse, Berlin School of Economics and Law, Social Science Research Center Berlin; Julio R. Robledo, Ruhr-Universität Bochum. – The authors thank Timm Böhnke, Benny Geys, and seminar participants at APET 2011 and at the 10th Journées Louis-André Gérard-Varet 2011 for valuable comments. All errors and omissions are our own. Tim Lohse gratefully acknowledges financial support by the Deutsche Forschungsgemeinschaft (DFG 1142). – All correspondence to: Julio R. Robledo, Ruhr-Universität Bochum, Faculty of Business and Economics, 44780 Bochum, Germany, E-mail. julio.robledo@rub.de.

1 INTRODUCTION

Disasters like the 9/11 terrorist attacks, the 2005 hurricane Katrina or the earthquake and subsequent nuclear catastrophe in Japan in 2011 caused huge financial losses in a specific geographic area of the U.S. and Japan, respectively. These disasters have revealed an hitherto implicit underlying insurance structure of fiscal federations. Being part of a bigger country or federation allowed the regions to share risk and to shift (partially) the financial burden of the losses. Consider as an example hurricane Katrina. According to Wildasin (2008a, 510), total federal relief might have approached or even exceeded the total sum of losses. Conditioning relief transfers generously on the occurred losses mitigates incentives for ex ante disaster avoidance and preparation and thereby causes a Samaritan's dilemma (Buchanan (1975)). Samaritan's dilemmas in a federation are also present with questions such as fighting unemployment and poverty. A U.S. state e.g. could stimulate its economy by appropriate local investments. However, to achieve a certain level of income for all its citizens, such a state could alternatively rely on federally administrated unemployment benefits for the jobless and federal payments for the poor - and not invest in its economy.

This paper analyzes risk sharing in a federation, takes into account this Samaritan's dilemma and proposes a potential solution.³ We consider a model of two regions and a central government. The regions can be hit by a shock leading to losses that occur with an exogenous probability and in a stochastically independent way. The regions can reduce the size of the loss (with the probability of the loss remaining constant) by spending effort in damage prevention. In the case of an earthquake, the region can impose appropriately stable building regulations. For flood protection, the region can build levees to prevent flooding. To prevent poverty, investments in education and infrastructure could be done. Since the regions are part of a superior jurisdiction, risk is pooled on an aggregate level. So the investment in the reduction of the size of the loss is a public good that has a positive effect on all regions' expected payoff, if the regions are risk averse.

However, being part of a federation, there is a double incentive not to invest in self-insurance. First, in case a disaster strikes, the affected region can rely on support from the central government, which redistributes income from the region not being hit by a shock to the region hit by a shock. So investing in self-insurance effort in effect reduces potential future support. Second, due to the insurance effect within the federation, the investment in self-insurance becomes a public good and the regions contribute to this public good privately. In general, we would expect underprovision of this public good. Sovereign countries and supra-national organizations face a similar situation. If all countries may suffer a loss, the countries are better off if they pool the risk. However, independent countries face the same incentive problem as dependent regions within a federation. Individually, each country has an incentive to minimize its own

³ Throughout the paper, we will focus without loss of generality on regions within a federation, but our analysis also applies to boroughs joining a city or to sovereign countries joining a supra-national organization.

investment in loss reduction, while from a joint perspective it would still be efficient to invest in the public insurance good. The problem is exacerbated here because the individual sovereign countries cannot in principle be coerced to contribute to the public good, so participation in the insurance scheme must be ex ante voluntary. One can think of international agreements as delivering a self-commitment device that ex-ante makes all individual countries better off.⁴

To sharpen the focus of our analysis, we do not consider explicitly public goods and related direct spillover effect. Our model has no taxation and no redistribution. The purely selfish regions can mitigate uncertainty by self-insurance investment, and it is this self-insurance effort which has the character of a public good. In order to study the interaction between this public self-insurance and central government's transfers, we derive first the optimal level of regional self-insurance effort in case of autarky, as a benchmark case. This situation is compared to the first-best federation equilibrium where the central government can determine regions' self-insurance effort as well as an equalizing transfer scheme. The first-best self-insurance level of such federation equilibrium turns out to be smaller than the level under autarky which shows the risk consolidation effect of the federation. In the case of non-cooperative regions, the first-best outcome is not feasible any more. If the central government implements the first-best transfer scheme, this leads to a time inconsistency problem, because the individual regions have an incentive to free-ride on the contributions of the other regions. In the case of a second-best setting, the central government first designs and commits to a transfer scheme, and then the regions decide about their self-insurance effort. In equilibrium, second-best transfers are higher than first-best ones, whereas the regions' self-insurance levels are comparatively lower.

A core finding of our analysis is the following: Despite the widely held belief that joining a federation increases a region's welfare, this is not necessarily the case - Oates' (1972) well-known decentralization theorem seems to return through the back door. In fact, the welfare increase due to pooling risks in a federation may be partially or even fully outweighed by a Samaritan's dilemma kind of effect since regions in a federation reduce their self-insurance effort.⁵ As a solution to overcome the Samaritan's dilemma, the central government should commit to fixed (rather than variable) transfers at the first-best level. Even if regions behave in a non-cooperative way, with fixed transfers, they choose the first-best level of self-insurance. This finding has far reaching economic policy implications and provides e. g. an economic rationale for the 1996 U.S. welfare reform under which block grants were introduced.

The remainder of the paper is organized as follows. The next section reviews the related

⁴ An analysis of self-enforcing risk sharing arrangements without commitment is provided by Kocherlakota (1996) and Genicot and Ray (2003).

⁵ Konrad (1994) presents a model where individuals know that a public good is to be privately provided in the future. This distorts effort incentives, because the individuals aim to reduce their disposable income to shift the burden of the public good provision to the other individuals. Similarly, Coate (1995) argues that unconditional transfers to the poor by the altruistic rich have negative efficiency effects. However, in our setting there is no altruism. By providing a federal insurance mechanism, the federal government sets the wrong incentives for the regions to choose the efficient self-insurance level. This leads to an inefficiently low level of self-insurance and to an inefficiently large loss.

literature whereas section 3 sketches the model's benchmark case of autarky. In the following sections 4 and 5 we derive the first-best and second-best federation equilibriums, respectively, and provide a welfare analysis. Section 6 concludes.

2 RELATED LITERATURE

The general issue of risk sharing in a federation has been addressed prominently by Persson and Tabellini (1996a, 1996b). They study risk sharing arrangements in a political economy setting with a local and a national government. The local policy redistributes across individuals and affects the probability of aggregate shocks, whereas the federal policy shares international risk. Their results indicate a trade off between federal risk sharing and moral hazard and federal risk sharing and redistribution, respectively. Both papers focus on political economy outcomes under alternative fiscal constitutions. Lockwood (1999) considers the fact that local public goods may give rise to spill over effects. He studies the central government's trade off between providing insurance and offering direct corrective incentives for local public goods. His approach focuses on insurance through the provision of a public good, while in our setting, insurance itself is the public good. Mansoorian (2000) considers risk sharing among individuals within and across regions in a federation with population mobility and infinite horizons. He finds that the regional authorities will not fully exploit gains from interregional risk sharing when population mobility is imperfect. In the Nash equilibrium there is complete risk sharing among the individuals within each region. Regional authorities that care about their reputation may be able to commit to an efficient allocation.

Even though problems like soft budget constraints and bailouts in a federation have been addressed previously (e.g. by Inman 2003; Oates 2005), due to the disasters mentioned above, the more specific question of how to deal with catastrophes and the related losses in a federation has recently drawn much attention. Wildasin (2008a) discusses implications of hurricane Katrina for public finance in the U.S. He suggests establishing mandatory disaster reserves, i.e. each state should be required to contribute to a fund out of which he could get relief in case of disaster. Although being controlled by federal regulations the funds would remain property of each state and would not provide relief for other states. Of course, the potential fund of Delaware, where annual flood losses, expressed as a proportion of state personal income, were on average in the last 50 years than 0.01 percent would be able to cover financial losses of floods much easier than the potential fund of North Dakota with a 0.89 percent (Wildasin 2007). Therefore, even with these funds existing, transfers from the federal government would still be required and the question how to design them would still be relevant.

In a general equilibrium model Wildasin (2008b) investigates who should finally pay for the loss of a disaster. His model consists of a federation with a central government which cannot commit to any ex post policy and two regions out of which just one is in danger and which are populated by mobile households. The probability of a disaster can be reduced by appropriate

investments which influence households in their decision where to reside. It turns out that the disaster relief should fully be financed by risk-neutral owners of immobile resources.

In a recent paper, closest to ours, Goodspeed and Haughwout (2012) apply the Persson and Tabellini setting to a situation where the regions may influence the probability of the related loss. This is, in essence, a moral hazard situation, where the regions spend effort to reduce the probability of the loss and the size of the loss is taken as fixed. In line with Bordignon et al. (2001) they show that when the federal government is committed to full insurance against disasters, the individual regions have an incentive to underinvest in costly protective measures since the benefit of a reduction of the probability of the loss is shared by all. Compared to a first-best setting, second-best transfer levels (and the corresponding local investment levels) can be greater or smaller depending on the relative probability of a disaster.

Goodspeed and Haughwout's (2012) framework only considers the probability of the loss. But prevention effort can also reduce the size of the loss. Think, e.g., of hurricane Katrina: The more dikes there were around each single neighbourhood of New Orleans, the lower the total loss from the disaster. This approach is, in essence, an insurance situation, where the risk averse agents (in our setting, the regions) spend effort to reduce the size of the loss and the probability of the loss is taken as fixed (building a dike does not change the probability for such a hurricane).

The difference of prevention technologies of reducing either the probability of a loss or its size was pointed out first by Ehrlich and Becker (1972) in a setting of private goods. They coined the terms of *self-protection* for reducing the probability of a loss and *self-insurance* for reducing the size of a loss.⁶ Using Ehrlich and Becker's terminology, Goodspeed and Haughwout (2012) analyse the case of public self-protection whereas we focus on the public self-insurance setting.

3 THE CASE OF AUTARKY

Consider two isolated regions indexed by $i=1,2$, each of them ruled by its own government.⁷ In every period, region i earns from its citizens a constant tax revenue given by R . The regions are assumed to be symmetric in the sense that their tax revenue R is equal. This allows focusing entirely on insurance incentives and rules out redistribution motives. The time structure comprises two periods. In each period $j=1,2$ region i has income Y_{ij} , where the first index refers to the region $i=1,2$ and the second index stands for the period $j=1,2$.

In the first period, income is certain. Income in the second period is uncertain, because with probability p there occurs a loss L . Such a situation will be referred to as a loss situation L

⁶ Newer contributions in the insurance literature (Kunreuther and Heal 2003; Muermann and Kunreuther 2008; Lohse et al. 2012) and the public economics literature (Ihori and McGuire 2007; Ihori and McGuire 2010) have extended the analysis of self-insurance and self-protection to the case where they are the outcome of a collective effort.

⁷ In the following, we will always speak of regions and of a central government, but our model applies to any pairing of hierarchical administrative institutions, e. g. countries and supra-national organization like the EU, or villages within larger regions. By considering only two entities, there are no problems of subgroup formations that may destabilize risk sharing arrangements as in Genicot and Ray (2003).

leading to low future income. In contrast, with probability $1-p$ the regions end in a high income situation H with no loss. What is crucial is that each region may influence the size of the loss L by investing I_i (at a normalized price of one per unit of I) to reduce the size of the potential loss L in the second period, $L(I_i)$. We assume $I < L(I_i)$ to avoid a corner solution $I = 0$.

The income level in period 1 is given by

$$Y_{i1} = R - I_i, \quad i = 1, 2. \quad (1)$$

Utility from this income is derived from a strictly monotonically increasing and strictly concave utility function $u(Y_{i1}) = u(R - I_i)$. The uncertain income in period 2 is

$$Y_{i2} = \begin{cases} R - L(I_i) & \text{with probability } p, \\ R & \text{with probability } 1-p. \end{cases} \quad (2)$$

Utility from second period income stems from a strictly monotonically increasing and strictly concave utility function $v(\cdot)$.⁸ The loss probabilities of the two regions are stochastically independent from each other.⁹ Realistically, we assume that the loss is decreasing in the self-insurance investment with diminishing returns, e.g., $\partial L(I) / \partial I < 0$ and $\partial^2 L(I) / \partial I^2 > 0$. For the sake of simplicity and without loss of generality, we assume that there is no borrowing and no discounting.

In the case of isolated and independent regions, which we will call autarky, each regional government chooses its level of self-insurance investment I_i to maximize the sum of utilities in periods 1 and 2

$$\max_{I_i} U_i := u(R - I_i) + pv(R - L(I_i)) + (1-p)v(R), \quad (3)$$

where the first summand is the first period utility, and the other two summands are the expected utility in the second period. U_i denotes the total intertemporal utility of region i .

The condition that implicitly describes the payoff maximizing self-insurance level under autarky (denoted by superscript A) is¹⁰

$$\frac{\partial u(R - I_i^A)}{\partial Y_{i1}} \frac{\partial Y_{i1}}{\partial I_i} = -p \frac{\partial v(R - L(I_i^A))}{\partial Y_{i2}} \frac{\partial Y_{i2}}{\partial L} \frac{\partial L(I_i^A)}{\partial I_i}, \quad (4)$$

By the symmetry of the regions we obtain $I_1^A = I_2^A = I^A$. The left hand side (LHS) is the marginal cost of loss reduction in units of marginal utility in period one. The right hand side (RHS) gives the marginal benefit of loss reduction, i.e., the expected decrease of the loss, in units of marginal utility in period two. Hence, regional governments optimally choose the self-insurance effort to equalize probability adjusted marginal utilities over time. To allow an easy comparison with later

⁸ By denoting second-period utility differently than the first-period one, we just want to avoid confusion in the analysis, but we do not make any assumption on different degrees of risk aversion etc.

⁹ Here we make the usual assumption in the literature that the risks are not correlated across the regions. If they were, then insurance would lose much of its appeal since a loss would affect all regions more or less equally and there would be no true risk consolidation. Kunreuther and Heal (2003) analyze the case of interdependent risks in a static setting.

¹⁰ This payoff function is strictly concave in I , see Appendix.

conditions, we will use condition (4) rearranged as follows:

$$\frac{\frac{\partial u(R - I_i^A)}{\partial Y_{i1}} \cdot \frac{\partial Y_{i1}}{\partial I_i}}{\frac{\partial L(I_i^A)}{\partial I_i}} = -\rho \frac{\partial v(R - L(I_i^A))}{\partial Y_{i2}} \frac{\partial Y_{i2}}{\partial L}, \quad (5)$$

and prove the following lemma that will be used frequently in our analysis:

Lemma 1

The marginal utility cost of self-insurance, measured in units of marginal loss reduction, i.e., the LHS of equation (5), is an increasing function of self-insurance investment. The marginal benefit of loss reduction, measured in units of marginal utility in period two, i.e., the RHS of equation (5), is a decreasing function of self-insurance investment.

Proof. See Appendix.

Lemma 1 is also related to the concavity of the payoff function (3) in I . The latter proves that condition (5) describes a utility maximum.

4 THE FIRST-BEST FEDERATION EQUILIBRIUM

4.1 THE TIME STRUCTURE

Suppose now that both regions are part of a broader unit or country ruled by a benevolent central government. This central authority is able to implement and enforce an income transfer mechanism between the regions after a loss has occurred. This redistribution scheme is described by transfers T_{MN}^i , $M, N \in \{H, L\}$. The superscript i denotes the region. The index MN denotes the state of region 1 (M) and region 2 (N), where M and N can both be equal to L (region has been hit by a loss and has a low income) and H (region is in a high income situation). We assume that the transfers are self-financing and that the central government does not profit from its efforts. For a given outcome MN we obtain:

$$T_{MN}^1 + T_{MN}^2 = 0, \quad M, N \in \{H, L\}. \quad (6)$$

This assumption means that $T_{MN}^1 = -T_{MN}^2$ always holds. This allows us to drop the superscripts and to simplify our notation, since the transfer received by region M will always equal the transfer paid by region N and vice versa. Without loss of generality, we will adopt the perspective of region 1, i.e., we will add the transfer to the payoff of region 1 and subtract it from the payoff of region 2. This is just a notation issue, since transfers can be either positive or negative.

The transfers T_{MN} can be fixed to a specific amount \hat{T} , or they can be conditional on the size of the loss L . The realization of the loss is not known yet when the transfer scheme is designed. When the transfer payments are calculated, the loss will have occurred or not, and so the size of the loss can be used to compute the transfer payments according to the central government's scheme.

The time structure of our model is as follows:¹¹

1. In the first stage, the central government designs and commits to a redistribution scheme for the regions.
2. In the second stage, regional governments choose an investment level l_1 and l_2 taking into account the scheme announced by the central government.
3. In the third and final stage, income is realized and the regions have suffered a loss or not. Transfers are realized according to the scheme chosen in Stage 1.

In our game, the central government moves first and behaves as a Stackelberg leader. By taking into account the reactions of the regions, the Stackelberg leader is the powerful player in our game. In real world federations, the central government is usually the more powerful player. After all, the central government must be powerful enough to coerce the regions to pay into the redistribution scheme, even when it is not in the individual interest of a region. If the central government implements a redistribution scheme, income in the second period for region 1 is given as

$$Y_{12} = \begin{cases} R - L(l_1) + T_{LL} & \text{with probability } p^2, \\ R - L(l_1) + T_{LH} & \text{with probability } p(1-p), \\ R + T_{HL} & \text{with probability } (1-p)p, \\ R + T_{HH} & \text{with probability } (1-p)^2, \end{cases} \quad (7)$$

and for region 2:

$$Y_{22} = \begin{cases} R - L(l_2) - T_{LL} & \text{with probability } p^2, \\ R - T_{LH} & \text{with probability } p(1-p), \\ R - L(l_2) - T_{HL} & \text{with probability } (1-p)p, \\ R - T_{HH} & \text{with probability } (1-p)^2, \end{cases} \quad (8)$$

We assume throughout the paper that the self-insurance investment levels l_1 and l_2 are not observable. If the self-insurance investment l was observable, a central government aiming to implement an investment level \hat{l} could simply setup the following transfer scheme:

$$T = \begin{cases} \hat{T} & \text{for } \hat{l} \\ 0 & \text{else} \end{cases} \quad (9)$$

and in effect coerce the regions to choose \hat{l} .¹²

¹¹ The central government moves first since her redistribution scheme is basically the insurance framework within which regional governments act.

¹² One may argue that self-insurance is observable. For our results it is sufficient to assume that the investment level l is not verifiable. Consequently, the central government cannot implement a transfer scheme directly dependent on the self-insurance level. In practice, we hold this assumption to be realistic.

4.2 FIRST-BEST TRANSFERS

First, as a benchmark case, let us analyze the case of an economic federation with a benevolent central government that has the power to choose both the transfer scheme and the self-insurance effort levels of the regions. Alternatively, such a scenario could resemble a centralized country in which regional governments have no decision power. For this first-best outcome where the central government is able to dictate both the transfer scheme and the self-insurance effort choices, we can analyze the decisions one after the other as follows. Since the central government controls every decision, it does not matter whether the regional transfers are fixed or conditional on the size of the loss. The benevolent central government will always maximize the joint welfare of its regions.

The central government's first-best welfare maximization problem with respect to the efficient transfers T_{MN} is:

$$\begin{aligned} \max_{T_{MN}^{M,N \in \{H,L\}}} W = & U_1 + U_2 = u(R - l_1) + u(R - l_2) \\ & + p^2(v(R - L(l_1) + T_{LL}) + v(R - L(l_2) - T_{LL})) + (1 - p)^2(v(R + T_{HH}) + v(R - T_{HH})) \\ & + (1 - p)p(v(R + T_{HL}) + v(R - L(l_2) - T_{HL})) + p(1 - p)(v(R - L(l_1) + T_{LH}) + v(R - T_{LH})), \end{aligned} \quad (10)$$

where we have already used that transfers are self-funding. The first order conditions are:¹³

$$\frac{\partial v(R - L(l_1) + T_{LL})}{\partial Y_{12}} = \frac{\partial v(R - L(l_2) - T_{LL})}{\partial Y_{22}}, \quad (11)$$

$$\frac{\partial v(R + T_{HH})}{\partial Y_{12}} = \frac{\partial v(R - T_{HH})}{\partial Y_{22}}, \quad (12)$$

$$\frac{\partial v(R + T_{HL})}{\partial Y_{12}} = \frac{\partial v(R - L(l_2) - T_{HL})}{\partial Y_{22}}, \quad (13)$$

$$\frac{\partial v(R - L(l_1) + T_{LH})}{\partial Y_{12}} = \frac{\partial v(R - T_{LH})}{\partial Y_{22}}. \quad (14)$$

Transfers are chosen such that second-period marginal utilities are equalized. This requires that second-period income is identical across regions, implying complete income equalization. If none of the regions has suffered a loss, there is no reason for redistribution and transfers will be zero, $T_{HH} = 0$. In the case only one region is affected by a loss, the efficient transfer scheme entails a transfer from the region H that is not affected by a loss to the region L being affected by the loss. Full risk-sharing leads to $R + T_{HL} = R - L(l_2) - T_{HL}$ and $R - L(l_1) + T_{LH} = R - T_{LH}$, respectively. It follows that $T_{HL} = -0.5 L(l_2)$ and $T_{LH} = 0.5 L(l_1)$. If both regions have experienced a loss, there may be a transfer if the regions have chosen different self-insurance levels. However, we will see below

¹³ The second order condition holds because the cross partial derivatives are zero and the Hessian matrix is a diagonal matrix. The diagonal elements are the second order derivatives of the objective function (10) with respect to T_{LL} , T_{HH} , T_{HL} , and T_{LH} , which are negative by the concavity of u and v . Thus the Hessian matrix is negative definite.

that the first-best entails equal self-insurance investment levels also leading to zero transfers, $T_{LL} = 0$, for this case.

The central government sets the first-best regional government's investment level in loss reduction $l_i, i=1,2$ by maximizing the joint payoff of the regions, for given ex-post equalization of income levels:

$$\begin{aligned} \max_{l_1, l_2} W = & u(R - l_1) + u(R - l_2) \\ & + p^2(v(R - L(l_1) + T_{LL}) + v(R - L(l_2) - T_{LL})) + (1 - p)^2(v(R) + v(R)) \\ & + (1 - p)p2v(R - \frac{1}{2}L(l_2)) + p(1 - p)2v(R - \frac{1}{2}L(l_1)) \end{aligned} \quad (15)$$

where we have already inserted first-best income equalizing transfers. The first order conditions with respect to $l_i, i=1,2$ are¹⁴

$$\frac{\frac{\partial u(R - l_1)}{\partial l_1} \frac{\partial Y_{11}}{\partial l_1}}{\frac{\partial L(l_1)}{\partial l_1}} = -p^2 \frac{\partial v(R - L(l_1) + T_{LL})}{\partial Y_{12}} \frac{\partial Y_{12}}{\partial L} - p(1 - p) \frac{\partial v(R - \frac{1}{2}L(l_1))}{\partial Y_{12}} \frac{\partial Y_{12}}{\partial L} \quad (16)$$

$$\frac{\frac{\partial u(R - l_2)}{\partial l_2} \frac{\partial Y_{21}}{\partial l_2}}{\frac{\partial L(l_2)}{\partial l_2}} = -p^2 \frac{\partial v(R - L(l_2) - T_{LL})}{\partial Y_{22}} \frac{\partial Y_{22}}{\partial L} - p(1 - p) \frac{\partial v(R - \frac{1}{2}L(l_2))}{\partial Y_{22}} \frac{\partial Y_{22}}{\partial L} \quad (17)$$

Conditions (16) and (17) are symmetric. It follows that $l_1 = l_2$, and $T_{LL} = 0$ is a solution to the maximization problem. For $l_1 = l_2$, conditions (16) and (17) are identical and collapse to the single condition

$$\frac{\frac{\partial u(R - l^*)}{\partial l} \frac{\partial Y_{11}}{\partial l}}{\frac{\partial L(l^*)}{\partial l}} = -p^2 \frac{\partial v(R - L(l^*))}{\partial Y_{12}} \frac{\partial Y_{12}}{\partial L} - p(1 - p) \frac{\partial v(R - \frac{1}{2}L(l^*))}{\partial Y_{12}} \frac{\partial Y_{12}}{\partial L}. \quad (18)$$

which implicitly defines the first-best level of self-insurance l^* . To sum up, $l_1 = l_2 = l^*$ and $T_{LL} = 0$, $T_{HL} = -T_{LH} = T^* = -0.5 L(l^*)$ are a solution to the first-best problem. It is the only solution, because the objective function (15) is strictly concave and continuously differentiable, so the optimization problem has only one local maximum. This local maximum is also the global maximum because $T_{LL} = 0$ and $T_{HH} = 0$ are already at the boundary and because T_{HL} and T_{LH} cannot be at the border given that the autarky solution is an interior solution.

The LHS of equation (18) represents the marginal cost of self-insurance due to an income decrease in the first period. The RHS displays the marginal benefit from such self-insurance,

¹⁴ Again, the Hessian matrix is a diagonal, negative definite matrix, see Appendix, so the payoff function is concave in l_1 and l_2 .

given by the marginal expected increase in period 2 utility. In contrast to the case of autarky, the presence of the transfers has inserted an externality because now one region's investment affects the other region's utility. Investments in self-insurance in region i also benefit region j ($i \neq j$), because the utility and income equalizing transfer is smaller. This marginal benefit only accrues in the situation where one region suffers a loss and the other region is spared. Therefore, the positive externality is weighted with the probability $p(1-p)$ for this case. The first-best transfer $T^* = -0.5 L(I^*)$ ensures that the ex-post income levels are equalized.

As a means of comparing the self-insurance effort level under autarky with the first-best level in a federation, we have to compare the self-insurance levels I^A and I^* resulting from conditions (5) and (18), for which we will use the shorthand notation $LHS^A(I^A) = RHS^A(I^A)$ and $LHS^*(I^*) = RHS^*(I^*)$, respectively.

Proposition 1 [*First-best federation equilibrium*]

The first-best self-insurance level in a federation is smaller than the efficient level under autarky,

$$I^* < I^A, \quad (19)$$

and a region's utility in a federation is higher than under autarky,

$$U^* > U^A, \quad (20)$$

where U^ and U^A denote the intertemporal utility of each individual region in a first-best federation situation and under autarky, respectively.*

Proof. In order to compare the self-insurance effort level under autarky with the first-best level in a federation, we have to compare the self-insurance levels I^A and I^* resulting from conditions (5) and (18). The LHS of both conditions are equal, so any difference in I will result from the RHS. For a given self-insurance level \hat{I} , the RHS^* is smaller than the RHS^A , since the transfer T^* increases the argument and decreases marginal utility in the case where one region is hit by a loss and the other region is not. It follows that the LHS must be smaller, too, which by Lemma 1 means that the self-insurance investment level I is smaller. Thus, the I^* that solves condition (18) is smaller than the I^A that solves condition (5). To compare the utility levels, consider the levels under autarky U^A with first-best self-insurance level in a federation U^* :

$$U^A(I^A) = u(R - I^A) + pv(R - L(I^A)) + (1-p)v(R) \quad (21)$$

$$U^*(I^*) = u(R - I^*) + p^2v(R - L(I^*)) + (1-p)^2v(R) + 2(1-p)pv(R - \frac{1}{2}L(I^*)). \quad (22)$$

It follows that

$$\begin{aligned} U^A(I^A) &< u(R - I^A) + p \left(pv(R - L(I^A)) + (1-p)v(R - \frac{1}{2}L(I^A)) \right) + (1-p) \left((1-p)v(R) + pv(R - \frac{1}{2}L(I^A)) \right) \\ &= u(R - I^A) + p^2v(R - L(I^A)) + (1-p)^2v(R) + 2(1-p)pv(R - \frac{1}{2}L(I^A)) = U^*(I^A) < U^*(I^*), \end{aligned}$$

where the first inequality follows by the concavity of v (see Figure 1) and the second inequality follows from the fact that I^* maximizes W which given the definition of W in (15) implies I^* maximizes U^* . QED.

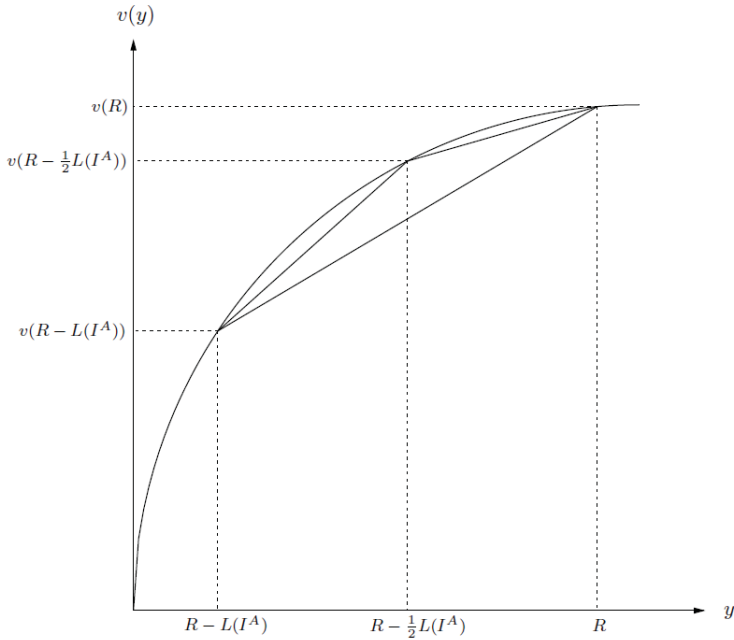


Figure 1: The concavity of the payoff function ensures that the first best payoff in a federation is higher than under autarky (insurance effect).

The main point of Proposition 1 is not that the regions prefer to join the federal insurance scheme (risk averse players always want to buy fair insurance), but that in doing so they *reduce* the investment I in self-insurance. The intuition behind this behavior is clear. In autarky, a region earns the full marginal benefit of its self-insurance effort. In contrast, in a federation, with a probability $p(1-p)$ one region is affected by a loss and the other region is not, in which case the ex-post rich region pays a transfer to the ex-post poor region. This redistribution reduces the marginal benefit of self-insurance. The regions have an incentive to build a federation and to consolidate the risk, but this risk consolidation reduces the efficient level first-best level of self-insurance. However, their welfare level increases, since they have an additional instrument to consolidate the risk, namely the insurance in the federation.

4.3 FIRST-BEST AND NON-COOPERATIVE REGIONS FOR A VARIABLE TRANSFER SCHEME

Consider now the situation in which the central government is not able to impose a self-insurance level on the regions and the two regions act non-cooperatively for a given transfer scheme announced by the central government. Is the first-best outcome feasible? Each region maximizes its own regional payoff in a non-cooperative way, taking the central governments' transfer scheme and the behavior of the other region as given (Nash behavior). First, we look at the case where the central government has chosen a variable transfer conditional on the size of the loss. The first-best transfer is $T_{LH} = 0.5 L(l_1)$ and $T_{HL} = -0.5 L(l_2)$ if one of the regions suffers a loss and the other does not. If both regions end up in the same state, transfers are zero, $T_{HH} = T_{LL} = 0$. This transfer scheme is taken into account by region 1 when calculating its payoff

$$U_1^* = u(R - l_1) + p^2 v(R - L(l_1)) + p(1-p)v(R - \frac{1}{2}L(l_1)) + (1-p)p v(R - \frac{1}{2}L(l_2)) + (1-p)^2 v(R). \quad (23)$$

Region 2's payoff is analogous. Since both regions are symmetric and the transfer scheme is also symmetric, the interior payoff maximizing solution is identical for both regions. It follows that both regions will choose the same self-insurance effort and will have the same income before the possible realization of the loss. If both regions end up in the same state, transfers are zero, $T_{HH} = T_{LL} = 0$. Consider w.l.o.g. region 1. It chooses the investment level to maximize the payoff given by (23). The FOC implicitly describing the non-cooperative choice l_1^N is:

$$\frac{\frac{\partial u(R - l_1^N)}{\partial l_1} \frac{\partial Y_{11}}{\partial l_1}}{\frac{\partial L(l_1^N)}{\partial l_1}} = -p^2 \frac{\partial v(R - L(l_1^N))}{\partial Y_{12}} \frac{\partial Y_{12}}{\partial L} - \frac{1}{2} p(1-p) \frac{\partial v(R - 1/2L(l_1^N))}{\partial Y_{12}} \frac{\partial Y_{12}}{\partial L}, \quad (24)$$

where the superscript N denotes the self-insurance effort in the non-cooperative Nash behavior setting. The second-order conditions hold again due to the concavity of u and v and the assumptions about $L(l)$.

The structure of condition (24) is similar to the structure of the first-best condition (18) and the terms can be interpreted in a similar way. However, when choosing the self-insurance effort level, region 1 only takes into account the effect on its utility in stage 2 and disregards the positive externality on region 2. Therefore, the marginal benefit for the situation when there is an income transfer (for which the probability is $p(1-p)$) is half as big as in the first-best situation.

Proposition 2 [Free-riding incentive]

Suppose the central government designs a transfer scheme with a variable transfer that depends on the loss and that equalizes ex-post income levels. If the regions choose their self-insurance effort non-cooperatively in a Nash way, both regions choose the same self-insurance level $l_1^N(T^) = l_2^N(T^*) = l^N(T^*)$ which is smaller than the first-best level l^* in a federation:*

$$I^N(T^*) < I^*. \quad (25)$$

Proof. To establish (25), we compare the non-cooperative self-insurance level I^N with the first-best level I^* , and thus use conditions (24) and (18). The $RHS^N(I)$ for the non-cooperative equilibrium with first-best transfers (24) is smaller than the $RHS^*(I)$ for the first-best condition (18), $RHS^N(I) < RHS^*(I)$, because the former non-cooperative condition does not include the positive externality of the self-insurance investment. Analogous to the proof of Proposition 1 it follows that $I^N(T^*) < I^*$. QED.

The intuition for Proposition 2 is that in the second stage, regional governments take the transfers set by the central government into account. Thus, when they make the non-cooperative decision in the first period on how much to invest in loss reduction, they invest too little in self-insurance effort. If the self-insurance effort levels I_1 and I_2 are not observable and not verifiable and/or the central government has no power to coordinate the regional governments towards the first-best outcome, the first-best outcome is not feasible. It follows that the central government has to take into account the behavior of the regions and when designing a second-best transfer scheme in Stage 1. Our finding from Proposition 2, derived for public self-insurance, parallels Goodspeed's and Haughwout's (2012) Proposition 3 from a public self-protection setting: For both ways of modelling loss prevention the superiority of the first-best outcome holds.

5 THE SECOND-BEST FEDERATION EQUILIBRIUM

5.1 THE SECOND-BEST TRANSFERS

We solve the game backwards and start from Stage 2, the last stage where an action is taken. Without loss of generality we consider region 1. Its payoff maximizing non-cooperative choice for a given transfer scheme is:

$$U_1 = u(R - I_1) + p^2 v(R - L(I_1)) + p(1-p)v(R - L(I_1) + T_{LH}) + (1-p)p v(R - T_{HL}) + (1-p)^2 v(R). \quad (26)$$

It chooses the investment level I_1 to maximize the payoff given by (26). The FOC implicitly describing the non-cooperative choice I_1^N is:

$$\frac{\frac{\partial u(R - I_1^N)}{\partial I_1} \frac{\partial Y_{11}}{\partial L(I_1^N)}}{\frac{\partial L(I_1^N)}{\partial I_1}} + p^2 \frac{\frac{\partial v(R - L(I_1^N))}{\partial Y_{12}} \frac{\partial Y_{12}}{\partial L}}{\frac{\partial Y_{12}}{\partial L}} + p(1-p) \frac{\frac{\partial v(R - L(I_1^N) + T_{LH})}{\partial Y_{12}} \frac{\partial Y_{12}}{\partial L}}{\frac{\partial Y_{12}}{\partial L}} = 0, \quad (27)$$

where the superscript N denotes the self-insurance effort in the non-cooperative Nash behavior setting. The second-order conditions hold again due to the concavity of u and v and the assumptions about $L(I)$. This FOC defines a reaction function $I_1^N(T_{LH})$ for region 1. Lemma 2 shows that this reaction function has a strictly negative slope.

Lemma 2

Consider a Nash non-cooperative setting where one region suffers a loss and the other

does not. If the central government increases (in absolute terms) the ex-post transfer from the richer, no loss region to the poorer, loss affected region, the regions have an incentive to decrease their investment in self-insurance, i.e.

$$\partial I_1^N / \partial T_{LH} < 0 \quad \text{and} \quad \partial I_2^N / \partial T_{HL} > 0. \quad (28)$$

Proof. See Appendix.

These reaction functions from Lemma 2 represent the individual non-cooperative response of the regions for a given transfer scheme of the central government. Intuitively, the self-insurance efforts in a non-cooperative situation decrease if the ex-post transfers increase because self-insurance is a public good and the regions contribute to it privately. In such contribution games, the individual agents do not take into account the positive externality on the other players and thus reduce their effort compared with the first-best level.

In Stage 1, the central government designs a transfer scheme to maximize the joint payoff of the regions, taking into account the regions' reaction functions $I_1^N(T_{LH})$ and $I_2^N(T_{HL})$. The second-best maximization problem

$$\begin{aligned} \max_{T_{LH}, T_{HL}} W^{SB} = & u(R - I_1^N(T_{LH})) + u(R - I_2^N(T_{HL})) + p^2 \left(v(R - L(I_1^N(T_{LH}))) + v(R - L(I_2^N(T_{HL}))) \right) + (1-p)^2 2v(R) \\ & + (1-p)p \left(v(R + T_{HL}) + v(R - L(I_2^N(T_{HL})) - T_{HL}) \right) + p(1-p) \left(v(R - L(I_1^N(T_{LH})) + T_{LH}) + v(R - T_{LH}) \right). \end{aligned} \quad (29)$$

has the first order conditions with respect to T_{LH} (SB denotes second-best)

$$\begin{aligned} p(1-p) \frac{\partial v(R - T_{LH}^{SB})}{\partial Y_{22}} = & p(1-p) \frac{\partial v(R - L(I_1^N(T_{LH}^{SB})) + T_{LH}^{SB})}{\partial Y_{12}} + \frac{\partial I_1^N}{\partial T_{LH}} \cdot \left[\frac{\partial u(R - I_1^N(T_{LH}^{SB}))}{\partial Y_{11}} \frac{\partial Y_{11}}{\partial I_1^N} \right. \\ & \left. + p^2 \frac{\partial v(R - L(I_1^N(T_{LH}^{SB})))}{\partial Y_{12}} \frac{\partial Y_{12}}{\partial L} \cdot \frac{\partial L}{\partial I_1^N} + p(1-p) \frac{\partial v(R - L(I_1^N(T_{LH}^{SB})) + T_{LH}^{SB})}{\partial Y_{12}} \frac{\partial Y_{12}}{\partial L} \cdot \frac{\partial L}{\partial I_1^N} \right] \end{aligned} \quad (30)$$

The analogous symmetric condition, obtained from the derivative with respect to T_{HL} , has been omitted for the sake of brevity.¹⁵ The last three lines contain the individual maximization of a region and are equal to zero following FOC (27), such that (30) simplifies to¹⁶

$$p(1-p) \frac{\partial v(R - T_{LH}^{SB})}{\partial Y_{22}} = p(1-p) \frac{\partial v(R - L(I_1^N(T_{LH}^{SB})) + T_{LH}^{SB})}{\partial Y_{12}} \quad (31)$$

Proposition 3 [Second-best federation equilibrium]

If the central government designs a second-best transfer scheme with variable transfers that takes into account the regions' best-response behavior to the announced transfer scheme,

1. the second-best transfers are always strictly greater in absolute terms than the corresponding first-best transfers, $T_{LH}^{SB} = -T_{HL}^{SB} =: T^{SB} > T^*$,

¹⁵ The second order condition holds if W^{SB} is a concave function in T_{LH} and T_{HL} . A sufficient condition for concavity of the second best maximization problem is $\partial L / \partial I_1^N \cdot \partial I_1^N / \partial T_{LH} < 1$, which holds in the present model, see Appendix.

¹⁶ Alternatively, we could have applied the envelope theorem to obtain (31) directly.

2. the self-insurance level in the second-best non-cooperative setting is smaller than in the first-best situation, $I^N(T^{SB}) < I^*$,
3. and the second-best transfers are structurally similar to the corresponding first-best transfers, i. e. in both situations the transfers are equal to half the loss, $T^{SB} = 0.5L(I^N(T^{SB}))$.

Proof. To prove the first part, consider the simplified second best condition (31), which we repeat here for the sake of clarity and to introduce the notation LHS^{SB} and RHS^{SB} :

$$LHS^{SB} := \frac{\partial v(R - T^{SB})}{\partial Y_{22}} = \frac{\partial v(R - L(I_1^N(T^{SB})) + T^{SB})}{\partial Y_{12}} =: RHS^{SB}. \quad (32)$$

LHS^{SB} is increasing in T^{SB} , while RHS^{SB} is decreasing in T^{SB} . This second result follows from $\partial I_1^N / \partial T_{LH} \cdot \partial L / \partial I_1^N < 1$ (see Appendix). The corresponding FOC for the first best transfer T^* is condition (14):

$$LHS^* := \frac{\partial v(R - T^*)}{\partial Y_{22}} = \frac{\partial v(R - L(I^*) + T^*)}{\partial Y_{12}} =: RHS^*. \quad (33)$$

Now substitute T^* for T^{SB} in RHS^{SB} and let us compare the resulting $RHS^{SB}(T^*)$ to $RHS^*(T^*)$. By Proposition 2, $I^N(T^*) < I^*$, such that $L(I^N(T^*)) > L(I^*)$. The loss becomes larger and the argument smaller, so marginal utility increases and we obtain $RHS^*(T^*) < RHS^{SB}(T^*)$. Suppose now $T^{SB} < T^*$. Then, it follows that

$$LHS^*(T^*) = RHS^*(T^*) < RHS^{SB}(T^*) < RHS^{SB}(T^{SB}) = LHS^{SB}(T^{SB}) = LHS^*(T^{SB}). \quad (34)$$

The first inequality follows from the result above, the second inequality from our assumption $T^{SB} < T^*$ and from the fact that RHS^{SB} is decreasing in T since $\partial L / \partial I_1^N \cdot \partial I_1^N / \partial T_{LH} < 1$. The inequality chain above means

$$LHS^*(T^*) < LHS^*(T^{SB}), \quad (35)$$

which is equivalent to $T^* < T^{SB}$, since the LHS of both first best and second best conditions are increasing in the transfer T . This contradicts the assumption $T^{SB} < T^*$ and proves $T^{SB} > T^*$.

The second part follows from $I_1^N(T^{SB}) < I_1^N(T^*) < I^*$, where the first inequality is due to the fact that $T^{SB} > T^*$ by part 3 and that I^N is decreasing in T by Lemma 2, while the second inequality is due to Proposition 2.

To show the third and last part of the proposition, consider again the FOC (31). By the concavity of the maximization program, if the marginal utilities in LHS^{SB} and RHS^{SB} are equal, the arguments must be equal, too:

$$R - T_{LH}^{SB} = R - L(I_1^N(T_{LH}^{SB})) + T_{LH}^{SB} \quad (36)$$

Rearranging leads to the third part of the proposition. QED.

Since the loss is always greater, the insurance transfers are also larger. Ex post, the central government always aims to equalize income levels across regions and it has no instrument to induce the individual regions to increase their self-insurance efforts I_N^{SB} , which depend negatively

on the transfer level. Although the second-best transfers are structurally similar to the corresponding first-best transfers (i.e., relative to the realized loss), $T^{SB} = 0.5 L(I^N(T^{SB}))$, due to the insurance pooling in the federation the second-best self-insurance levels are always smaller in absolute terms than in the first-best situation: $I^N(T^{SB}) < I^*$. Notice that in our self-insurance setting we are able to provide a clear-cut result as stated in the first item of Proposition 3. In contrast, in the self-protection setting analyzed by Goodspeed and Haughwout (2012) the relationship between first- and second-best transfers is ambiguous (see their Proposition 4).

5.2 WELFARE ANALYSIS

A regions' utility level in the second-best outcome is

$$U^{SB}(I^N(T^{SB})) = u(R - I^N(T^{SB})) + p^2 v(R - L(I^N(T^{SB}))) + (1-p)^2 v(R) + 2(1-p)p v(R - \frac{1}{2}L(I^N(T^{SB}))). \quad (37)$$

This utility level is always strictly smaller than the first-best level in a federation, since according to Proposition 3, the second-best self-insurance effort is smaller than the first-best, $I^{SB} = I^N(T^{SB}) < I^*$. By Proposition 1, this also means that the self-insurance effect is smaller than in autarky, $I^N(T^{SB}) < I^A$. It remains to establish whether the regions' payoff is smaller in the second-best situation or under autarky. Two effects are at work. Under autarky, each region chooses the individually efficient self-insurance level. However, there is no pooling of the risk like in a federation. Being risk averse, this non-pooled risk carries a greater risk premium than in a federation. Joining a federation means that the risks are pooled (positive effect). However, it introduces a Samaritan's dilemma kind of effect and leads the regions to reduce their self-insurance effort (negative effect). It turns out that, depending on the parameters, each effect may dominate. In other words, joining a federation may increase, but also decrease the individual region's welfare.

Proposition 4 [Utility in the second-best federation equilibrium]

Utility of a region in the second-best federation equilibrium can be smaller, equal or greater than welfare under autarky:

$$U^{SB}(I^N(T^{SB})) \begin{matrix} > \\ = \\ < \end{matrix} U^A(I^A), \quad (38)$$

depending on the preferences of the regions and specially depending on the probability p of the loss outcome.

Proof. Remember from (21) that $U^A(I^A) = u(R - I^A) + p v(R - L(I^A)) + (1-p)v(R)$. It suffices to show by construction that depending on the probability p , sometimes welfare is higher under a second-best federation and sometimes under autarky. Suppose $p = 0$. Then we obtain

$$U^{SB}(I^{SB}) = u(R - I^{SB}) + v(R) > u(R - I^A) + v(R) = U^A(I^A), \quad (39)$$

because $I^{SB} < I^A$. By continuity, there exists an $\varepsilon > 0$ such that $p = \varepsilon$ and the inequality (39) still holds. Suppose now $p = 1$. It follows

$$U^{SB}(I^{SB}) = u(R - I^{SB}) + v(R - L(I^{SB})) < u(R - I^A) + v(R - L(I^A)) = U^A(I^A) \quad (40)$$

$$\Leftrightarrow u(R - I^{SB}) - u(R - I^A) < v(R - L(I^A)) - v(R - L(I^{SB})) \quad (41)$$

$$(R - I^{SB} - R + I^A) \cdot u'(\hat{y}) < (R - L(I^A) - R + L(I^{SB})) \cdot v'(\tilde{y}) \quad (42)$$

$$\text{with } \hat{y} \in [R - I^{SB}, R - I^A] \text{ and } \tilde{y} \in [R - L(I^A), R - L(I^{SB})]$$

$$\Leftrightarrow (I^A - I^{SB}) \cdot u'(\hat{y}) < (L(I^{SB}) - L(I^A)) \cdot v'(\tilde{y}), \quad (43)$$

where the step with \hat{y} and \tilde{y} follows from the Mean Value Theorem and the last inequality holds because $I^A - I^{SB} < L(I^{SB}) - L(I^A)$ by our assumptions regarding the loss function L and $u'(\hat{y}) < u'(\tilde{y})$ by the concavity of the payoff functions $u(\cdot) = v(\cdot)$. Figure 2 illustrates this second case, the distance Δ_1 is always smaller than Δ_2 . Again, by continuity, there exists an $\varepsilon > 0$ such that for $p = 1 - \varepsilon$ the inequality (40) still holds. This proves that welfare can be higher under autarky or in the second best equilibrium. QED.

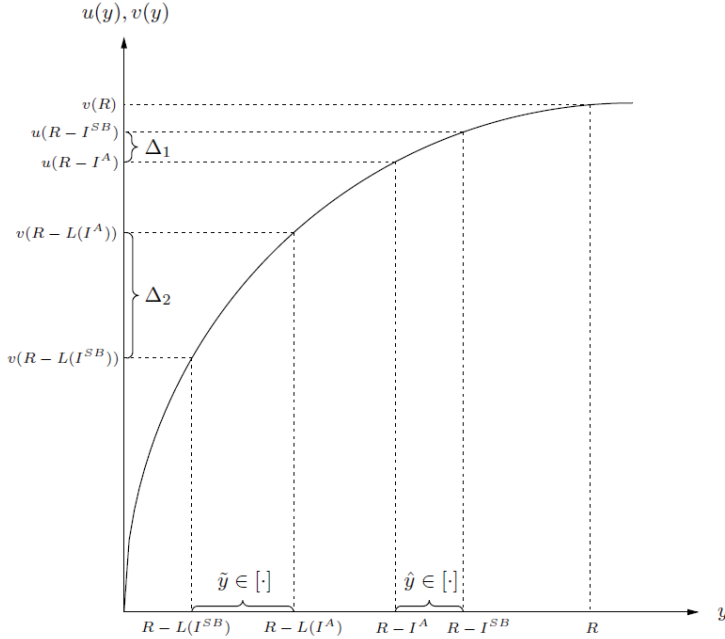


Figure 2: If the loss is sufficiently likely, the concavity of the payoff function ensures that the payoff in a federation is higher than under autarky, i.e. that the insurance effect dominates the disincentive effect.

The ambiguity of Proposition 4 reflects the countervailing effects at work. The first effect is the consolidation of risk, which increases the welfare of the individual regions. The second effect is the time inconsistency that leads to the Samaritan's dilemma, decreases the incentive to spend the first-best level of self-insurance effort, and decreases the regions' welfare. Under autarky, there is no risk consolidation (the first effect is zero), but each region has the right incentive to choose the efficient self-insurance level (so the second effect is zero, too). Under a federation,

both effects are different from zero but move in opposite directions. Whether the autarky situation or the federation setting leads to a higher payoff for the regions, depends on the specific parameters of the payoff function and on the distribution of the probability of loss. For example, suppose that the probability p of the loss is very small or that the regions are almost risk neutral. In this case, risk pooling does not increase welfare by a lot, but the Samaritan's dilemma reduces welfare. So joining a federation would decrease welfare. On the contrary, assume that the probability p of the loss is large or that the regions are very risk averse. In this case joining a federation is welfare enhancing, because the positive effect of risk pooling overcompensates the loss due to the second best self-insurance effort choice caused by the Samaritan's dilemma.

5.3 THE SUPERIORITY OF BLOCK GRANTS

Until now, we have assumed a variable transfer in the second-best setting. In the first-best full information situation, it does not matter whether the central government implements a variable transfer (which varies with the loss to equalize ex-post income levels across the regions) or whether the central government implements a fixed transfer, which in the following we will denote with an upper bar. Both transfers lead to the same first-best self-insurance effort levels. However, in a second-best non-cooperative setting, the design of the transfer scheme has a big effect and fixed and variable transfers do not lead to the same second-best outcome.

In the previous sections, we have analyzed the case of a variable transfer. Suppose that the central government has chosen a fixed transfer given by $\bar{T}_{HL} = -\bar{T}_{LH} = \bar{T}^* = -0.5 L(I^*)$. Then, the payoff for region 1 is

$$U_1^* = u(R - I_1) + p^2 v(R - L(I_1)) + p(1-p)v(R - L(I_1) + \bar{T}_{LH}^*) + (1-p)p v(R + \bar{T}_{HL}^*) + (1-p)^2 v(R). \quad (44)$$

Region 1 chooses the investment level I_1 to maximize the payoff (44). The region's FOC implicitly describing the non-cooperative choice I_1^N is:

$$\frac{\frac{\partial u(R - I_1^N)}{\partial I_1} \frac{\partial Y_{11}}{\partial I_1}}{\frac{\partial L(I_1^N)}{\partial I_1}} = -p^2 \frac{\partial v(R - L(I_1^N))}{\partial Y_{12}} \frac{\partial Y_{12}}{\partial L} - p(1-p) \frac{\partial v(R - L(I_1^N) + \frac{1}{2} L(I_1^*))}{\partial Y_{12}} \frac{\partial Y_{12}}{\partial L}, \quad (45)$$

Proposition 5

Consider a federation where the central government designs and implements a transfer scheme with fixed transfers given by the first-best transfer levels $\bar{T}_{HL} = -\bar{T}_{LH} = \bar{T}^ = -0.5 L(I^*)$. If the regions choose their self-insurance effort non-cooperatively in a Nash way, both regions choose the same self-insurance level $I_1^N(\bar{T}^*) = I_2^N(\bar{T}^*) = I^N(\bar{T}^*)$ which coincides with the first-best level I^* :*

$$I^N(\bar{T}^*) = I^*. \quad (46)$$

Proof. For $I_1^N = I^*$, the first-order conditions (18) and (45) are identical and are equal to

zero at $I_1^N = I^*$. By the concavity of the objective function, this must be the only maximum of the function. QED.

Proposition 5 shows that implementing fixed transfers leads to the first-best outcome while variable transfers that depend on the size of the loss set the wrong incentives. Proposition 5 is rather intuitive and straightforward, and yet many times it is not observed in practice. Within our setting, central governments should not aim to equalize income levels across regions by granting variable transfers, but establish fixed transfer payments. This insight may provide an economic rationale for the (widely criticized, e.g. by Brueckner 2000) U.S. welfare reform of 1996 under which the existing matching grants were replaced by block grants. The states thus have an incentive to invest the first-best effort level given the fixed transfer. Further examples are the fiscal equalization scheme across regions in Germany. By law, the aim of the transfers is to "equalize living standards" across the Bundesländer. Not surprisingly, the richer states criticize that the poorer states invest too little in their well-being and rely too much in the intra-federal transfers, since the receiving states get a higher transfer the poorer they are.¹⁷ The theoretically derived superiority of block grants is also supported by Wildasin's observation that matching-grants "fail completely to induce efficient disaster-avoidance policies on the part of subnational governments" (Wildasin 2008b, 3). Sticking with a variable transfer scheme rather than switching to a system with fixed transfers must therefore be due to political rather than economic reasons.

6 CONCLUSION

This paper analyzes the risk sharing aspect in a federation consisting of two regions and a central government. The regions can be hit by a uniform shock leading to losses that occur with an exogenous probability and in a stochastically independent way. To reduce the size of the loss, the regions can invest in a public good that serves as a self-insurance device, i.e. it reduces the size of the loss for both regions at the same time.

Given the insurance effect in a federation due to risk consolidation, in a federation the first-best self-insurance level will always be smaller than in an autarky situation. Since the cost of the loss is shared, risk averse regions are willing to take bigger risks, i.e., they reduce their self-insurance efforts. However, given the federal transfer mechanism, the individual regions have an incentive to further reduce the self-insurance effort suboptimally if there is no central government with full information and coercive power. The Nash equilibrium of the private contributions to public self-insurance in a non-cooperative setting is always smaller than the first-best equilibrium level. If the central government takes this incentive situation into account, it will redesign the regional insurance mechanism with the aim of increasing the self-insurance effort choice of the individual regions. The resulting second-best self-insurance efforts in the non-cooperative setting will still be lower than the first-best effort level, leading to second-best redistribution

¹⁷ Rodden (2003) finds that under the German fiscal equalization scheme poor fiscal performance was even rewarded.

transfers that are always larger (in absolute terms) than the corresponding first-best transfers.

Despite the widely held belief, that joining a federation increases a region's welfare, we show that this is not necessarily the case. The welfare increase due to pooling risks in a federation may be partially or even fully outweighed by a Samaritan's dilemma kind of effect which encourages regions in a federation to reduce their self-insurance effort. This theoretical warning about the potential welfare reduction for an increase in centralization is empirically somewhat affirmed by Toya and Skidmore (2010). According to their results, more decentralized countries have fewer disaster-induced deaths. A potential solution to overcome the Samaritan's dilemma is a central government's commitment to fixed rather than variable transfers at the first-best level. This will internalize the public goods and induce the non-cooperatively behaving regions to choose an efficient level of self-insurance effort. This insight implies that fixed block grants are welfare superior to grants depending on some economic developments in a region which the region could influence by its own investments.

Some caveats may apply. First, our analysis depends on the timing of the stages. We have argued why in our model the central government is more powerful, so it moves first. If the regions move first, the outcome would be very different. Second, our setting focuses on public goods with self-insurance character. The related case of public goods that serve as a public self-protection device is studied by Goodspeed and Haughwout (2012).

7 APPENDIX

7.1 CONCAVITY OF PAYOFF (3) UNDER AUTARKY

The FOC (4) with respect to l_i is

$$\frac{\partial u(R - I_i^A)}{\partial Y_{i1}} \cdot \underbrace{\frac{\partial Y_{i1}}{\partial l_i}}_{-1} + \frac{\partial v(R - L(I_i^A))}{\partial Y_{i2}} \cdot \underbrace{\frac{\partial Y_{i2}}{\partial L}}_{-1} \cdot p \cdot \frac{\partial L(I_i^A)}{\partial l_i} = 0 \quad (47)$$

$$\Leftrightarrow -\frac{\partial u(R - I_i^A)}{\partial Y_{i1}} - \frac{\partial v(R - L(I_i^A))}{\partial Y_{i2}} \cdot p \cdot \frac{\partial L(I_i^A)}{\partial l_i} = 0. \quad (48)$$

Taking the derivative with respect to l_i results in the following SOC, which is negative:

$$-\frac{\partial^2 u(R - I_i^A)}{\partial Y_{i1}^2} \cdot \underbrace{\frac{\partial Y_{i1}}{\partial l_i}}_{-1} - \frac{\partial^2 v(R - L(I_i^A))}{\partial Y_{i2}^2} \cdot \underbrace{\frac{\partial Y_{i2}}{\partial L}}_{-1} \cdot \left(\frac{\partial L(I_i^A)}{\partial l_i} \right)^2 p - \frac{\partial v(R - L(I_i^A))}{\partial Y_{i2}} p \frac{\partial^2 L(I_i^A)}{\partial l_i^2} \quad (49)$$

$$= \underbrace{\frac{\partial^2 u(R - I_i^A)}{\partial Y_{i1}^2}}_{-} + p \cdot \underbrace{\frac{\partial^2 v(R - L(I_i^A))}{\partial Y_{i2}^2}}_{-} \left(\frac{\partial L(I_i^A)}{\partial l_i} \right)^2 - \underbrace{p \cdot \frac{\partial v(R - L(I_i^A))}{\partial Y_{i2}}}_{+} \cdot \underbrace{\frac{\partial^2 L(I_i^A)}{\partial l_i^2}}_{+} \quad (50)$$

7.2 PROOF OF LEMMA 1

Remember the FOC under autarky,

$$\frac{\frac{\partial u(R - I_i^A)}{\partial Y_{i1}} \cdot \frac{\partial Y_{i1}}{\partial I_i}}{\frac{\partial L(I_i^A)}{\partial I_i}} = -\rho \frac{\partial v(R - L(I_i^A))}{\partial Y_{i2}} \frac{\partial Y_{i2}}{\partial L}.$$

The derivative of the LHS of (5) with respect to I_i is (using $\partial Y_{i1} / \partial I_i = -1$ and $\partial Y_{i2} / \partial L = -1$):

$$\frac{\frac{\partial L(I_i^A)}{\partial I_i} \cdot (-1) \cdot \frac{\partial^2 u(R - I_i^A)}{\partial Y_{i1}^2} \cdot (-1) - (-1) \cdot \frac{\partial u(R - I_i^A)}{\partial Y_{i1}} \cdot \frac{\partial^2 L(I_i^A)}{\partial I_i^2}}{\left(\frac{\partial L(I_i^A)}{\partial I_i} \right)^2} > 0. \quad (51)$$

The derivative of the RHS of (5) is:

$$-\rho \cdot (-1) \cdot \frac{\partial^2 v(R - L(I_i^A))}{\partial Y_{i2}^2} \cdot (-1) \cdot \frac{\partial L(I_i^A)}{\partial I_i} < 0. \quad (52)$$

7.3 CONCAVITY OF FIRST-BEST PAYOFF (10) IN A FIRST-BEST SETTING

To calculate the Hessian matrix of the payoff function (10) we look at the derivatives with respect to the four variables T_{LL} , T_{HH} , T_{HL} , and T_{LH} . Consider first the derivatives with respect to T_{LL}

$$\begin{aligned} \frac{\partial(10)}{\partial T_{LL}} &= p^2 \frac{\partial v(R - L(I_1) + T_{LL})}{\partial Y_{1L}} \cdot \frac{\partial Y_{1L}}{\partial T_{LL}} + p^2 \frac{\partial v(R - L(I_2) - T_{LL})}{\partial Y_{2L}} \cdot \frac{\partial Y_{2L}}{\partial T_{LL}} \\ &= p^2 \frac{\partial v(R - L(I_2) - T_{LL})}{\partial Y_{1L}} - p^2 \frac{\partial v(R - L(I_2) - T_{LL})}{\partial Y_{2L}} \end{aligned} \quad (53)$$

$$\begin{aligned} \frac{\partial^2(10)}{\partial T_{LL}^2} &= p^2 \cdot \frac{\partial^2 v(R - L(I_1) + T_{LL})}{\partial Y_{1L}^2} \cdot \frac{\partial Y_{1L}}{\partial T_{LL}} - p^2 \frac{\partial^2 v(R - L(I_2) - T_{LL})}{\partial Y_{2L}^2} \cdot \frac{\partial Y_{2L}}{\partial T_{LL}} \\ &= p^2 \frac{\partial^2 v(R - L(I_1) + T_{LL})}{\partial Y_{1L}^2} + p^2 \frac{\partial^2 v(R - L(I_2) - T_{LL})}{\partial Y_{2L}^2} < 0 \end{aligned} \quad (54)$$

$$\frac{\partial^2(10)}{\partial T_{LL} \partial x} = 0, \quad \text{where } x \text{ means any other variable.} \quad (55)$$

An analogous result obtains for the variable T_{HH} : the second derivative is negative and the cross partial derivative is zero. Consider now the derivative with respect to T_{HL} :

$$\frac{\partial(10)}{\partial T_{HL}} = (1-p)p \frac{\partial v(R + T_{HL})}{\partial Y_{1H}} \cdot \frac{\partial Y_{1H}}{\partial T_{HL}} + (1-p)p \frac{\partial v(R - L(I_2) - T_{HL})}{\partial Y_{2L}} \cdot \frac{\partial Y_{2L}}{\partial T_{HL}} \quad (56)$$

$$= (1-p)p \frac{\partial v(R+T_{HL})}{\partial Y_{1H}} - (1-p)p \frac{\partial v(R-L(I_2)-T_{HL})}{\partial Y_{2L}} \quad (57)$$

$$\frac{\partial^2(10)}{\partial T_{HL}^2} = (1-p)p \frac{\partial^2 v(R+T_{HL})}{\partial Y_{1H}^2} + (1-p)p \frac{\partial^2 v(R-L(I_2)-T_{HL})}{\partial Y_{2L}^2} < 0 \quad (58)$$

$$\frac{\partial^2(10)}{\partial T_{HL} \partial X} = 0, \quad \text{where again } x \text{ means any other variable.} \quad (59)$$

Again, we obtain for T_{LH} an analogous result with a negative second derivative is and a zero cross partial derivative. The Hessian matrix of the first-best maximization problem (10) is

$$\begin{pmatrix} \frac{\partial^2(10)}{\partial T_{LL}^2} & 0 & 0 & 0 \\ 0 & \frac{\partial^2(10)}{\partial T_{HH}^2} & 0 & 0 \\ 0 & 0 & \frac{\partial^2(10)}{\partial T_{HL}^2} & 0 \\ 0 & 0 & 0 & \frac{\partial^2(10)}{\partial T_{LH}^2} \end{pmatrix} \quad (60)$$

This is a diagonal matrix where all the elements in the diagonal are negative. Thus, the matrix is negative definite and the solution described by the FOCs is a local maximum.

In a similar way, the Hessian matrix of the payoff function (15) with respect to I_1 and I_2 is also a diagonal, negative definite matrix, since

$$\begin{aligned} \frac{\partial(16)}{\partial I_1} &= \frac{\partial^2 u(\cdot)}{\partial Y_{11}^2} \left(\frac{\partial Y_{11}}{\partial L} \right)^2 + p^2 \frac{\partial^2 v(\cdot)}{\partial Y_{12}^2} \left(\frac{\partial Y_{12}}{\partial L} \right)^2 \left(\frac{\partial L}{\partial I_1} \right)^2 + p^2 \frac{\partial v(\cdot)}{\partial Y_{12}} \frac{\partial Y_{12}}{\partial L} \frac{\partial^2 L}{\partial I_1^2} \\ &+ p(1-p) \frac{\partial^2 v(\cdot)}{\partial Y_{12}^2} \frac{\partial Y_{12}}{\partial L} \left(-\frac{1}{2} \right) \left(\frac{\partial L}{\partial I_1} \right)^2 + p(1-p) \frac{\partial v(\cdot)}{\partial Y_{12}} \frac{\partial Y_{12}}{\partial L} \frac{\partial^2 L}{\partial I_1^2} < 0, \end{aligned}$$

$$\begin{aligned} \frac{\partial(17)}{\partial I_2} &= \frac{\partial^2 u(\cdot)}{\partial Y_{11}^2} \left(\frac{\partial Y_{11}}{\partial L} \right)^2 + p^2 \frac{\partial^2 v(\cdot)}{\partial Y_{12}^2} \left(\frac{\partial Y_{12}}{\partial L} \right)^2 \left(\frac{\partial L}{\partial I_2} \right)^2 + p^2 \frac{\partial v(\cdot)}{\partial Y_{12}} \frac{\partial Y_{12}}{\partial L} \frac{\partial^2 L}{\partial I_2^2} \\ &+ p(1-p) \frac{\partial^2 v(\cdot)}{\partial Y_{12}^2} \frac{\partial Y_{12}}{\partial L} \left(-\frac{1}{2} \right) \left(\frac{\partial L}{\partial I_2} \right)^2 + p(1-p) \frac{\partial v(\cdot)}{\partial Y_{12}} \frac{\partial Y_{12}}{\partial L} \frac{\partial^2 L}{\partial I_2^2} < 0, \end{aligned}$$

$$\frac{\partial(16)}{\partial I_2} = \frac{\partial(17)}{\partial I_1} = 0.$$

This proves that the solutions to the FOC of (15) correspond to maxima of the payoff (10).

7.4 PROOF OF LEMMA 2

To show the first result, consider the FOC corresponding to the maximization of (26),

$$\frac{\partial u(R - I_1^N)}{\partial Y_{11}} \frac{\partial Y_{11}}{\partial I_1} + p^2 \frac{\partial v(R - L(I_1^N))}{\partial Y_{12}} \frac{\partial Y_{12}}{\partial L} \frac{\partial L(I_1^N)}{\partial I_1} + p(1-p) \frac{\partial v(R - L(I_1^N) + T_{LH})}{\partial Y_{12}} \frac{\partial Y_{12}}{\partial L} \frac{\partial L(I_1^N)}{\partial I_1} = 0, \quad (61)$$

Apply the implicit function theorem to obtain

$$\frac{\partial I_1^N}{\partial T_{LH}} = - \frac{\frac{\partial FOC(61)}{\partial T_{LH}}}{\frac{\partial FOC(61)}{\partial I_1^N}}. \quad (62)$$

The denominator is negative due to the concavity of the objective function, so the sign of the reaction function depends solely on the sign of $\partial FOC(61) / \partial T_{LH}$, which is negative since

$$p(1-p) \underbrace{\frac{\partial^2 v(R - L(I_1^N) + T_{LH})}{\partial Y_{12}^2}}_{-} \underbrace{\frac{\partial Y_{12}}{\partial L}}_{-} \underbrace{\frac{\partial L}{\partial I_1^N}}_{-} \underbrace{\frac{\partial I_1^N}{\partial T_{LH}}}_{+} < 0. \quad (63)$$

This establishes $\partial I_1^N / \partial T_{LH} < 0$. The second result follows in an analogous way using the analogous reaction function $I_2^N(T_{HL})$ that describes the individual payoff maximizing behavior for region 2.¹⁸

7.5 CONCAVITY OF PAYOFF (29) IN A SECOND-BEST SETTING

The FOC of (29) with respect to T_{LH} is (31). The SOC of (29) with respect to T_{LH} is given by

$$p(1-p) \frac{\partial^2 v(R - L(I_1^N(T_{LH}^{SB})) + T_{LH}^{SB})}{\partial Y_{12}^2} \left(1 - \frac{\partial L}{\partial I_1^N} \cdot \frac{\partial I_1^N}{\partial T_{LH}} \right) + p(1-p) \frac{\partial^2 v(R - T_{LH}^{SB})}{\partial Y_{22}^2},$$

which is negative if $1 - \frac{\partial L}{\partial I_1^N} \cdot \frac{\partial I_1^N}{\partial T_{LH}} > 0$. We can verify this using the results above:

$$\begin{aligned} \frac{\partial I_1^N}{\partial T_{LH}} \cdot \frac{\partial L}{\partial I_1^N} &= - \frac{\frac{\partial FOC(61)}{\partial T_{LH}}}{\frac{\partial FOC(61)}{\partial I_1^N}} \cdot \frac{\partial L}{\partial I_1^N} \\ &= - \frac{p(1-p) \frac{\partial^2 v(R - L(I_1^N) + T_{LH})}{\partial Y_{12}^2} \frac{\partial Y_{12}}{\partial L} \frac{\partial L}{\partial I_1^N} \frac{\partial Y_{12}}{\partial T_{LH}}}{\frac{\partial^2 u(R - I_1^N)}{\partial Y_{11}^2} + p^2 \frac{\partial^2 v(R - L(I_1^N))}{\partial Y_{12}^2} \left(\frac{\partial L(I_1^N)}{\partial I_1} \right)^2 - p^2 \frac{\partial v(R - L(I_1^N))}{\partial Y_{12}} \frac{\partial^2 L(I_1^N)}{\partial I_1^2}} \end{aligned}$$

¹⁸ Note that, since the transfers are defined from the perspective of region 1, a positive transfer to region 1 when it has been hit by a loss is given when $T_{LH} > 0$. Conversely, a positive transfer for region 2 arises when $T_{HL} < 0$. So both results mean that the self-insurance effort level decreases, the greater the absolute transfer to a region when it is the only region affected by a loss.

$$\begin{aligned}
& + p(1-p) \frac{\partial^2 v(R - L(I_1^N) + T_{LH})}{\partial Y_{12}^2} \left(\frac{\partial L(I^N)}{\partial I_1} \right)^2 - p(1-p) \frac{\partial v(R - L(I_1^N) + T_{LH})}{\partial Y_{12}} \frac{\partial^2 L(I^N)}{\partial I_1^2} \cdot \frac{\partial L}{\partial I_1^N} \\
& = \frac{\left(p(1-p) \frac{\partial^2 v(R - L(I_1^N) + T_{LH})}{\partial Y_{12}^2} \frac{\partial Y_{12}}{\partial L} \frac{\partial L}{\partial I_1^N} \frac{\partial Y_{12}}{\partial T_{LH}} \right) \frac{\partial L}{\partial I_1^N}}{\frac{\partial^2 u(R - I_1^N)}{\partial Y_{11}^2} - p^2 \frac{\partial^2 v(R - L(I_1^N))}{\partial Y_{12}^2} \left(\frac{\partial L(I^N)}{\partial I_1} \right)^2 + p^2 \frac{\partial v(R - L(I_1^N))}{\partial Y_{12}} \frac{\partial^2 L(I^N)}{\partial I_1^2}}{-p(1-p) \frac{\partial^2 v(R - L(I_1^N) + T_{LH})}{\partial Y_{12}^2} \left(\frac{\partial L(I^N)}{\partial I_1} \right)^2 + p(1-p) \frac{\partial v(R - L(I_1^N) + T_{LH})}{\partial Y_{12}} \frac{\partial^2 L(I^N)}{\partial I_1^2}},
\end{aligned}$$

where $\frac{\partial I_1^N}{\partial T_{LH}} \cdot \frac{\partial L}{\partial I_1^N} \in (0,1)$ follows because the denominator is greater than the numerator.

REFERENCES

- Bordignon, Massimo, Paolo Manasse, and Guido Tabellini. 2001. Optimal regional redistribution under asymmetric information. *American Economic Review* 91(3): 709-723.
- Brueckner, Jan K. 2000. Welfare reform and the race to the bottom: Theory and evidence. *Southern Economic Journal* 66(3): 505-525.
- Buchanan, James M. 1975. The samaritan's dilemma. In *Altruism, Morality and Economic Theory*, E. S. Phelps, ed., pp. 71-85, New York: Russell Sage Foundation.
- Coate, Stephen 1995. Altruism, the samaritan's dilemma, and government transfer policy. *American Economic Review*, 85(1): 46-57.
- Ehrlich, Isaac, and Gary S. Becker. 1972. Market insurance, self-insurance, and self-protection. *Journal of Political Economy* 80(4): 623-648.
- Genicot, Garance, and Debraj Ray. 2003. Group formation in risk-sharing arrangements. *Review of Economic Studies* 70(1): 87-113.
- Goodspeed, Timothy J., and Andrew F. Haughwout. 2012. On the optimal design of disaster insurance in a federation. *Economics of Governance* 13(1): 1-27.
- Ihori, Toshihiro, and Martin C. McGuire. 2007. Collective risk control and group security: The unexpected consequences of differential risk aversion. *Journal of Public Economic Theory* 9(2): 231-263.
- Ihori, Toshihiro, and Martin C. McGuire. 2010. National self-insurance and self-protection against adversity: Bureaucratic management of security and moral hazard. *Economics of Governance* 11(2): 103-122.
- Inman, Robert P. 2003. Transfers and bailouts: Enforcing local fiscal discipline with lessons from U.S. federalism. In *Fiscal Decentralization and the Challenge of Hard Budget Constraints*, Jonathan A. Rodden, Gunnar S. Eskeland, and Jennie Litvack, eds., 35-83., Cambridge: MIT Press.
- Kocherlakota, Narayana R. 1996. Implications of efficient risk sharing without commitment. *Re-*

view of Economic Studies 63(4): 595-609.

Konrad, Kai A. 1994. The strategic advantage of being poor: Private and public provision of public goods. *Economica* 61(241): 79-92.

Kunreuther, Howard, and Geoffrey Heal. 2003. Interdependent security. *Journal of Risk and Uncertainty* 26(2-3): 231-249.

Lockwood, Ben 1999. Inter-regional insurance. *Journal of Public Economics* 72(1): 1-37.

Lohse, Tim, Julio R. Robledo, and Ulrich Schmidt. 2012. Self-insurance and self-protection as public goods. *Journal of Risk and Insurance* 79(1): 57-76.

Mansoorian, Arman 2000. Risk sharing in a federation with population mobility and long horizons. *Canadian Journal of Economics* 33(3): 662-676.

Muermann, Alexander, and Howard Kunreuther. 2008. Self-protection and insurance with interdependencies. *Journal of Risk and Uncertainty* 36:103-123.

Oates, Wallace E. 1972. *Fiscal Federalism*. New York: Harcourt Brace Jovanovich.

Oates, Wallace E. 2005. Toward a second-generation theory of fiscal federalism. *International Tax and Public Finance* 12(4): 349-373.

Persson, Torsten, and Guido Tabellini. 1996a. Federal fiscal constitutions: Risk sharing and moral hazard. *Econometrica* 64(3): 623-646.

Persson, Torsten, and Guido Tabellini. 1996b. Federal fiscal constitutions: Risk sharing and redistribution. *Journal of Political Economy* 104(5): 979-1009.

Rodden, Jonathan A. 2003. Soft budget constraints and German federalism. In *Fiscal Decentralization and the Challenge of Hard Budget Constraints*, Jonathan A. Rodden, Gunnar S. Eskeland, and Jennie Litvack, eds., 161-186, Cambridge: MIT Press.

Toya, Hideki and Mark Skidmore. 2010. Natural disaster impacts and fiscal decentralization. *CE-Sifo Forum* 2/2010: 43-55.

Wildasin, David E. 2007. Disaster policy in the U.S. federation: Intergovernmental incentives and institutional reform. *Proceedings of the 99th Annual Conference of the National Tax Association*, 171-178.

Wildasin, David E. 2008a. Disaster avoidance, disaster relief, and policy coordination in a federation. *mimeo*.

Wildasin, David E. 2008b. Disaster policies. *Public Finance Review* 36(4): 497-518.