

Afonso, Gara; Lagos, Ricardo

**Working Paper**

## An empirical study of trade dynamics in the fed funds market

Staff Report, No. 550

**Provided in Cooperation with:**  
Federal Reserve Bank of New York

*Suggested Citation:* Afonso, Gara; Lagos, Ricardo (2012) : An empirical study of trade dynamics in the fed funds market, Staff Report, No. 550, Federal Reserve Bank of New York, New York, NY

This Version is available at:

<https://hdl.handle.net/10419/60726>

**Standard-Nutzungsbedingungen:**

Die Dokumente auf EconStor dürfen zu eigenen wissenschaftlichen Zwecken und zum Privatgebrauch gespeichert und kopiert werden.

Sie dürfen die Dokumente nicht für öffentliche oder kommerzielle Zwecke vervielfältigen, öffentlich ausstellen, öffentlich zugänglich machen, vertreiben oder anderweitig nutzen.

Sofern die Verfasser die Dokumente unter Open-Content-Lizenzen (insbesondere CC-Lizenzen) zur Verfügung gestellt haben sollten, gelten abweichend von diesen Nutzungsbedingungen die in der dort genannten Lizenz gewährten Nutzungsrechte.

**Terms of use:**

*Documents in EconStor may be saved and copied for your personal and scholarly purposes.*

*You are not to copy documents for public or commercial purposes, to exhibit the documents publicly, to make them publicly available on the internet, or to distribute or otherwise use the documents in public.*

*If the documents have been made available under an Open Content Licence (especially Creative Commons Licences), you may exercise further usage rights as specified in the indicated licence.*

Federal Reserve Bank of New York  
Staff Reports

An Empirical Study of Trade Dynamics in the Fed Funds Market

Gara Afonso  
Ricardo Lagos

Staff Report No. 550  
February 2012

This paper presents preliminary findings and is being distributed to economists and other interested readers solely to stimulate discussion and elicit comments. The views expressed in this paper are those of the authors and are not necessarily reflective of views at the Federal Reserve Bank of New York or the Federal Reserve System. Any errors or omissions are the responsibility of the authors.

# **An Empirical Study of Trade Dynamics in the Fed Funds Market**

Gara Afonso and Ricardo Lagos

Federal Reserve Bank of New York Staff Reports, no. 550

February 2012

JEL classification: E42, E44, G21

## **Abstract**

We use minute-by-minute daily transaction-level payments data to document the cross-sectional and time-series behavior of the estimated prices and quantities negotiated by commercial banks in the fed funds market. We study the frequency and volume of trade, the size distribution of loans, the distribution of bilateral fed funds rates, and the intraday dynamics of the reserve balances held by commercial banks. We find evidence of the importance of the liquidity provision achieved by commercial banks that act as de facto intermediaries of fed funds.

Key words: monetary policy, fed funds market, fed funds rate

---

Afonso: Federal Reserve Bank of New York (e-mail: gara.afonso@ny.frb.org). Lagos: New York University (e-mail: ricardo.lagos@nyu.edu). The authors thank Andrew Howland and David Lou for excellent research assistance. The views expressed in this paper are those of the authors and do not necessarily reflect the position of the Federal Reserve Bank of New York or the Federal Reserve System.

# 1 Introduction

In the United States, financial institutions keep reserve balances at the Federal Reserve Banks to meet requirements, earn interest, or to clear financial transactions. The *market for federal funds* is an interbank over-the-counter market for unsecured, mostly overnight loans of dollar reserves held at Federal Reserve Banks. The *fed funds rate* is an average measure of the market interest rate on these loans.

The fed funds market is primarily a mechanism that reallocates reserves among banks: it allows institutions with excess reserve balances to lend reserves to institutions with reserve deficiencies, and therefore helps participants manage reserves and offset liquidity or payment shocks. The fed funds market is also the epicenter of monetary policy implementation, since the Federal Open Market Committee (FOMC) periodically chooses a fed funds rate target, and implements monetary policy by instructing the trading desk at the Federal Reserve Bank of New York to create conditions in reserve markets that will encourage fed funds to trade at the target level. In this paper we pry into the micro mechanics of trade in the market for federal funds in order to understand the process of reallocation of liquidity among banks, and the determination of the market price for this liquidity provision—the fed funds rate.

We use minute-by-minute daily transaction-level payments data to provide a quantitative analysis of the cross-sectional and time-series behavior of the estimated prices (fed funds rates) and quantities (frequency and volume of trade, size distribution of loans) negotiated by commercial banks in the fed funds market. Specifically, we study trade volume, the intraday dynamics of the reserve balances held by commercial banks, the importance of the role of commercial banks in the intermediation of funds, and the resulting fed funds rates.

The rest of the paper is organized as follows. Section 2 provides the necessary institutional background. Section 3 describes the data. Section 4 focuses on the dynamics of the reserve balances held by commercial banks. We find that the distribution of commercial banks' reserve balances follows a clear pattern of daily convergence during the last 2.5 hours of a typical trading day during 2005-2008. We interpret this as evidence that commercial banks actively trade fed funds in a way that achieves a reallocation of funds from institutions with excess balances towards those in need of funds. This pattern of intraday dynamic convergence in reserve balances is absent in 2009 and 2010.

Section 5 analyzes trade volume. Along the time-series dimension, we document that during

2005-2008, the annual dollar volume of funds traded in the last 2.5 hours of a typical fed funds trading day was in the order of magnitude of two annual U.S. GDPs, and that this volume roughly halved during 2009-2010. The extensive margin of trade volume measured by the daily number of transactions between 16:00 and 18:30 exhibits a similar pattern: the high average number of trades per bank was oscillating around 870 during 2005-2007 and dropped to about 200 by the end of 2008. The average loan size was about 100 million during 2005-2007 and increased to about 200 million during 2009-2010, indicating that the drop in overall trade volume since 2008 was driven by a reduction in the frequency of trade. Along the cross-sectional dimension, we find that trading activity across banks is very skewed: a few banks trade most loans while most banks participate in few trades. For example, the mean number of transactions per bank during the last 2.5 hours of the trading day is typically above the 75th percentile throughout the sample. We document that other measures of the distribution of trading activity across banks, such as the number of counterparties that a bank trades with, the number of counterparties that a bank lends to, and the number of counterparties that a bank borrows from, exhibit similar skewness. The size distribution of loans across banks is also very skewed (albeit less so than the extensive margins). As for the intraday dynamics of trading activity, the frequency of trade (measured by the number of transactions) and overall dollar trade volume tend to decline over the last 90 minutes of the trading session. The pattern for average transaction sizes is similar but milder, and the decline occurs during the last 60 minutes of the trading day.

Section 6 documents that some commercial banks, by purchasing funds earlier in the day and reselling them later, play a critical role as *de facto* intermediaries in the fed funds market. Funds intermediated by commercial banks accounted for about 40 percent of the dollar volume traded between 16:00 and 18:30 during an average day during 2005, 2006, 2007 and 2010 (the figure is about 30 percent for 2009). Our estimates seem to confirm a striking aspect of intermediation in this market, namely that a significant number of loans are made by lenders who, based on their balances at the time of the loan, would appear to be themselves in need of funds. We also find that conversely, banks that would appear to be looking to lend, in fact borrow significant amounts of reserves. The distribution of intermediation activity across banks is very skewed, with most banks not intermediating very much.<sup>1</sup>

---

<sup>1</sup>According to our estimates, the mean of the daily distribution of excess funds reallocation is typically well above the 90th percentile on most days, with 90 percent of commercial banks churning less than 14 percent of the funds they traded in the last 2.5 hours of the trading day, on average, during 2005-2008.

Section 7 focuses on the time-series and the cross-sectional behavior of the distribution of fed funds rates negotiated between pairs of fed funds participants. We find that value-weighted fed funds rate calculated from Fedwire payments data was very close to the FOMC target during 2005-2006. The deviations from target appear larger and more frequent during the financial turmoil of 2007-2008. Dispersion in the daily distribution of fed funds rates increased significantly during the second half of 2007 and remained high by historical standards through 2008. During 2005-2008, the dispersion in fed funds rates was increasing during the last 2.5 hours of the trading session, but this pattern appears to have been reversed during 2009-2010.

In Section 8 we document that throughout 2009-2010, the value-weighted fed funds rate computed from Fedwire data has been consistently below 25 basis points, and moreover, that a large proportion of all loans (typically more than 90 percent) often traded below 25 basis points. These observations are puzzling because since late 2008, commercial banks can earn 25 risk-free basis points from the Fed simply by holding reserves overnight.<sup>2</sup> Section 9 concludes.

Our paper contributes to the empirical literature that analyzes various aspects of trade in the fed funds market, which includes Afonso et al. (2011), Ashcraft and Duffie (2007), Ashcraft et al. (2009), Bartolini et al. (2010), Bech and Atalay (2008), Hamilton (1996), Hamilton and Jordà (2002), Furfine (1999, 2000), Meulendyke (1998), and Stigum (1990), among others. While purely empirical, the data analysis in this paper is guided by theory: At each step we have let our background model of fed funds trade (Afonso and Lagos, 2012) dictate which empirical relationships are critical to understanding trade dynamics in the fed funds market.

## 2 Institutional considerations

The market for federal funds is a market for unsecured loans of reserve balances at the Federal Reserve Banks. These loans, commonly referred to as *fed(eral) funds*, are delivered on the same day and their duration is typically overnight.<sup>3</sup> The interest rate on these loans is known as the *fed funds rate*. Participants in the fed funds market include commercial banks, thrift institutions, agencies and branches of foreign banks in the United States, government securities

---

<sup>2</sup>A similar observation but for the *effective fed funds rate* published daily by the Federal Reserve Bank of New York has been discussed by Hamilton (2008) and studied by Bech and Klee (2011).

<sup>3</sup>There is a *term* federal funds market where maturities range from a few days to more than a year, with most loans having a maturity of no more than six months. The amount of term federal funds outstanding has been estimated to be on the order of one-tenth to one half of the amount of overnight loans traded on a given day (see Meulendyke, 1998, and Kuo et al., 2010).

dealers, government agencies such as federal or state governments, and GSEs (e.g., Freddie Mac, Fannie Mae, and Federal Home Loan Banks). The market for fed funds is a textbook example of an over-the-counter market: in order to trade, a financial institution must first find a willing counterparty, and then bilaterally negotiate the size of the loan and the interest rate.

In practice, there are two ways of trading federal funds. Participants can contact each other directly or they can be matched by a fed funds broker. Non-brokered transactions represent the bulk of the volume of fed funds loans.<sup>4</sup> Most fed funds loans are settled through *Fedwire Funds Services* (Fedwire), a large-value real-time gross settlement system operated by the Federal Reserve Banks. More than 7,000 Fedwire participants can borrow and lend (or *buy* and *sell*, according to traditional terminology) in the fed funds market.

Fedwire operates 21.5 hours each business day, from 21:00 Eastern Time on the preceding calendar day, until 18:30. On a typical day, institutions receive the repayments corresponding to the fed funds sold on the previous day, before they send out the new loans. In 2006, the average value-weighted time of repayment was 15:09  $\pm$  9 minutes, while the average time of delivery was 16:30  $\pm$  7 minutes. The average duration of a loan was 22 hours and 39 minutes.<sup>5</sup>

Fed funds activity is concentrated in the last two hours of the operating day. For a typical bank until mid afternoon, Fedwire transactions reflect its primary business activities. Later in the day, the trading and payment activity is orchestrated by the fed funds trading desk and aimed at achieving a target reserve balance. In 2008, more than 75 percent of the value of fed funds traded among banks was traded after 16:00.<sup>6</sup>

The motives for trading federal funds vary across participants and their specific circumstances on any given day, but there are two main reasons in general. First, some institutions such as commercial banks use the fed funds market to offset the effects on their reserve balances of transactions (either initiated by their clients or by profit centers within the banks themselves) that would otherwise leave them with a reserve position that does not meet Federal Reserve regulations.<sup>7</sup> Also, some participants regard fed funds as an investment vehicle; an interest-yielding asset that can be used to “deposit” large balances overnight.

---

<sup>4</sup>Ashcraft and Duffie (2007) report that non-brokered transactions represented 73 percent of the volume of federal funds traded in 2005. Fed funds brokers do not take positions themselves; they only act as matchmakers, bringing buyers and sellers together.

<sup>5</sup>This is documented in Bech and Atalay (2008).

<sup>6</sup>In line with this observation, Bartolini et al. (2005) report very high fed funds loan activity during the latter part of the trading session. See also the illustrations of intraday loan networks for each half hour in a trading day in Figure 6 of Bech and Atalay (2008).

<sup>7</sup>Fed funds borrowings are exempt from reserve requirements.

### 3 Data

Data for this study are constructed from a proprietary transactions-level data set that contains all transfers made through Fedwire. A Fedwire transaction is executed with an electronic request made by a financial institution (sent to the Federal Reserve Banks via Fedwire) to debit its reserve account by a stipulated amount in favor of the account of another institution. Such a transaction may occur for many reasons (e.g., to settle an asset purchase), so not all Fedwire transactions are associated to fed funds loans. In order to identify the likely fed funds transactions from the universe of Fedwire transactions, we use an algorithm supplied by the Money and Payments Studies Function at the Federal Reserve Bank of New York, similar to the algorithm proposed by Furfine (1999).<sup>8</sup> The algorithm can be summarized as follows. First, Fedwire transactions involving settlement institutions are screened out.<sup>9</sup> Second, overnight loans are identified as those transactions between a pair of counterparties  $i$  and  $j$  that involve a Fedwire send from  $i$  to  $j$  in denominations equal to or greater than \$1 million and ending in five zeros, which can be matched to a send from  $j$  to  $i$  on the following business day for an amount that is higher than the original send by an amount that could represent plausible fed funds interest. The difference between the two payments is interpreted as the interest rate on the loan.<sup>10</sup> Third, the set of potential fed funds loans is refined further by limiting the range of “plausible” fed funds rates: only those transactions with implied rates no lower than the lowest brokered fed funds rate minus 50 basis points, and no larger than the highest brokered fed funds rate plus 50 basis points, are kept as plausible fed funds transactions.<sup>11</sup> Fourth, if multiple repayments could match one outgoing payment, the median rate is identified as the rate on the loan. Finally, candidate Eurodollar loans are identified and eliminated.<sup>12</sup>

---

<sup>8</sup>Fed funds transactions cannot be observed directly because the field that specifies the reason for the Fedwire payment is coded voluntarily by the sender, and typically left unspecified. For this reason, Afonso et al. (2011), Ashcraft and Bleakley (2006), Ashcraft and Duffie (2007), Bech and Atalay (2008), Bartolini et al. (2010), and Furfine (2001, 2002), among others, all use essentially the same algorithm to identify fed funds transactions from Fedwire data. A detailed description of the algorithm can be found in Furfine (1999) or Afonso et al. (2011).

<sup>9</sup>Examples of such settlement institutions are the Depository Trust Company (a securities settlement system), or the Clearing House Interbank Payments System (a private large-value U.S. dollar payment system).

<sup>10</sup>For example, consider a \$100 million loan sent from bank  $i$  to bank  $j$  on Tuesday, matched to a \$100.02 million send from bank  $j$  to bank  $i$  on the following Wednesday. Since  $100.02/100 = 1 + 0.02/100$ , this transaction is interpreted as a \$100 million overnight loan from  $i$  to  $j$  with a 0.02 percent (annualized) interest rate.

<sup>11</sup>The brokered data is from a daily survey of the four largest fed funds brokers published by the Markets Group of the Federal Reserve Bank of New York.

<sup>12</sup>Eurodollar loans are identified by using as a proxy the customer code that a sending bank enters on the payment message indicating that the payment is made on behalf of a customer. McAndrews (2009) tests the predictive power of the customer code as a proxy for a Eurodollar loan by matching brokered trades provided by



In this paper, whenever we refer to any aspect of fed funds transactions, we are actually referring to the subset of Fedwire transactions that were identified as fed funds loans by the algorithm described above. Despite its widespread use and general appeal, the algorithm may keep transactions that are not fed funds trades, or may discard transactions that are fed funds trades. Transactions identified as overnight fed funds loans by the algorithm may include other kinds of overnight loans settled over Fedwire, such as Eurodollar, tri-party repos, correspondent lending, and term fed funds, among others. Fed funds loans with unusually high or low rates relative to the daily effective brokered rates, and loans not settled through Fedwire may be missed by the algorithm. The algorithm will miss loans between correspondent banks and their client banks. It may also misidentify counterparties. For example, an overnight loan made by some firm  $A$  who is a client of bank  $i$ , to a firm  $B$  who is a client of bank  $j$ , could be misclassified as a fed funds loan from bank  $i$  to bank  $j$ . With Fedwire data it is not possible to identify which loans are brokered.<sup>13</sup>

Subject to these caveats, the data set we study includes information on the amount of the loan, implicit interest rate, date, time of delivery and time of return, as well as the identity of the borrower and lender for every transaction executed over Fedwire. The borrower and lender are identified at the lead American Banking Association level, which corresponds to a unique identifier assigned to institutions by the Federal Reserve. The fed funds data are aggregated at the bank holding company level, dropping transactions between entities of the same bank holding company. Unless otherwise specified, we restrict our sample to transactions in which at least one of the institutions is a commercial bank, and specialize the analysis to transactions that occur in the last 2.5 hours of the Fedwire business day, between 16:00 and 18:30.<sup>14</sup>

In addition to Fedwire data, we use an independent data set available to the Federal Reserve Bank of New York, that documents the reserve balance of each account at the end of every minute during every daily Fedwire trading session in our sample. These balances are aggregated

---

BGC Brokers with Fedwire settlement data. By using the absence of a customer code as a proxy for fed funds, the probability of correctly identifying fed funds loans is 89%, with an 11% chance of counting Eurodollars as fed funds (Type I error) and a 4% chance of incorrectly excluding fed funds (Type II error).

<sup>13</sup>The Federal Reserve Bank of New York is currently concerned about the accuracy of the Furfine estimates; efforts to assess how large are the Type I and Type II errors resulting from the application of this algorithm are currently underway.

<sup>14</sup>Fed funds activity is concentrated in the last two hours of the operating day, e.g., in 2008 more than 75 percent of the value of fed funds traded among banks was traded after 4pm. For this reason, it is standard to focus on the last segment of the trading session. Ashcraft and Duffie (2007), for example, restrict their empirical analysis to the last 1.5 hours of the business day.

across all accounts for each institution to construct each institution’s real-time account balance for each of the last 180 minutes of every business day in our sample.

Our sample covers the period 2005-2010, so we are able to document the salient features of the fed funds market during “normal times” (roughly 2005-2007), as well as during 2008-2010, when the performance of the market reflects the effects of the Federal Reserve responses to the financial crisis. Of particular importance is the Emergency Economic Stabilization Act of 2008 that allowed the Treasury to establish the Troubled Asset Relief Program (TARP), and authorized the Federal Reserve to begin paying interest on reserve balances held by or on behalf of depository institutions.<sup>15</sup>

## 4 Reserve balances

Let  $a_{sty}^h$  denote the reserve balance held by bank  $h \in \mathbb{H}$  at time  $s \in \mathbb{S}$ , on trading day  $t \in \mathbb{T}_y$  of year  $y$ , where  $\mathbb{H}$  is the set of banks in the sample,  $\mathbb{T}_y = \{1, \dots, T_y\}$  the set of trading days in year  $y$ , and  $\mathbb{S} = \{16:00, 16:05, 16:10, \dots, 18:30\}$  is a set of times-of-day. Let  $f_{ty}^h$  denote the total amount of reserves recorded as sent over Fedwire by bank  $h$  on trading day  $t$  of year  $y$ . Let  $f_y^h$  be the average for year  $y$  of the total daily amount of reserves sent by bank  $h$ , i.e.,  $f_y^h = \frac{1}{T_y} \sum_{t=1}^{T_y} f_{ty}^h$ , where  $T_y$  is the number of trading days in year  $y$ .<sup>16</sup> Define the *normalized (reserve) balance* of bank  $h$  at time  $s$ , on trading day  $t$  of year  $y$ , as

$$\tilde{a}_{sty}^h = \frac{a_{sty}^h}{f_y^h}.$$

This normalization controls for bank size.<sup>17</sup>

The fed funds market is primarily a mechanism that reallocates dollar funds (in the form of reserve balances at Federal Reserve Banks) among financial institutions. Figure 1 illustrates this view succinctly. Figure 1 shows thirty one box plots (each corresponding to a given time-of-day) of the normalized balances,  $\tilde{a}_{sty}^h$ , at five-minute intervals from 16:00 until 18:30, throughout

<sup>15</sup>With this authority, the Federal Reserve Board approved a rule to amend its Regulation D (Reserve Requirements of Depository Institutions) to direct the Federal Reserve Banks to pay interest both on required reserve balances and on excess reserve balances. The Financial Services Regulatory Relief Act of 2006 had originally authorized the Federal Reserve to begin paying interest on reserves held by or on behalf of depository institutions beginning October 1, 2011. The Emergency Economic Stabilization Act of 2008 accelerated the effective date to October 1, 2008. The Federal Reserve began paying interest on reserves on October 9, 2008.

<sup>16</sup>By “total daily amount of reserves sent” we mean over the whole trading day, not just the last 2.5 hours. Also, notice that  $f_{ty}^h$  includes all Fedwire sends, not just fed funds.

<sup>17</sup>This is the same normalization used by Ashcraft and Duffie (2007), and Ashcraft et al. (2009).

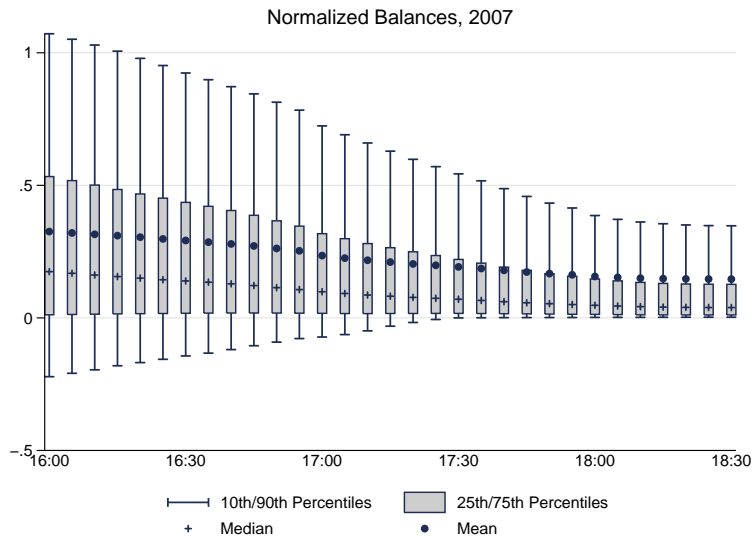


Figure 1: Intraday dynamics of the distribution of normalized reserve balances among commercial banks during 2007

the year 2007. Specifically, each box plot shows, for a given time-of-day  $s \in \mathbb{S}$  and year  $y$ , the distribution of observations,  $\{\tilde{a}_{sty}^h\}_{h \in \mathbb{H}, t \in \mathbb{T}_y}$ . By pooling all trading days in the year, Figure 1 provides a picture of the intraday dynamics of the distribution of reserve balances among commercial banks. From this figure emerges a clear pattern of daily convergence of normalized balances during the last 2.5 hours of the trading session.<sup>18</sup> Relatively early in the trading session (e.g., from 16:00 until about 17:30) only about 75 percent of banks are holding positive balances, while 90 percent or more are holding positive balances after 17:30. The 90th and the 10th percentiles of the distribution of normalized balances decrease and increase, respectively, throughout the last 2.5 hours of the trading session. Figure 1 illustrates the fed funds market at work: commercial banks actively trade fed funds in a way that achieves a reallocation of funds from institutions with excess balances towards those in need of funds.

Figure 17 shows the intraday dynamics of the distribution of normalized balances for each year in our sample period 2005-2010. The pattern of daily convergence of normalized balances during the last 2.5 hours of the trading session is evident in the panels corresponding to 2005-

<sup>18</sup>This dynamic intraday pattern is consistent with the findings reported by Ashcraft and Duffie (2007) who construct a similar plot for the 100 largest commercial banks (ranked monthly by the total dollar volume sent over Fedwire) during 2005.

2008. Interestingly, this distinctive pattern of intraday dynamic convergence in reserve balances changes drastically in 2009 and 2010. At least 90 percent of all banks hold positive balances throughout the last 2.5 hours of the trading session during 2009-2010. Moreover, the distribution of normalized balances is essentially constant throughout the session (notice that the mean, the 90th, 75th, 50th, and 10th percentiles barely move). This is the micro-level manifestation of the large levels of excess reserves held by the banking sector since the third quarter of 2008.<sup>19</sup>

Each panel in Figure 17 illustrates the evolution of the distribution of reserve balances for a “synthetic day” corresponding to each of the six years in our sample. To get a sense of how representative these “synthetic days” are, we have generated the intraday box plots for actual trading days drawn at random from each year in our sample, and typically found the same patterns that we emphasized when discussing Figure 17. Figure 18 shows six of these random days, 3/29/2005, 10/4/2006, 4/26/2007, 8/7/2008, 9/2/2009, 2/10/2010.

Because the box plots in Figure 17 pool together different trading days in a year, the pure time-series dimension is somewhat muddled in Figure 17. To provide a clearer time-series perspective we turn to Figure 2. The left panel displays the 90th percentile of the distribution of normalized balances across banks, at two times-of-day, 16:15, and 18:15, for every trading day in 2005-2010. The right panel plots the 10th percentile at 16:15, and 18:15. During 2005-2008, it is clear that the 90th percentile at 16:15 is larger than at 18:15, while the 10th percentile at 16:15 is smaller than at 18:15, hence the 90-10 measure of dispersion of the cross-sectional distribution of normalized balances was larger at 16:15 than at 18:15, in every trading session during 2005-2008. This regularity disappears during 2008. Note how the 10th percentile was consistently negative through 2008, but tends to remain nonnegative during 2010 and part of 2009. All this is consistent with the picture that emerged from Figure 17.

To conclude the analysis of the intraday dynamics of the distribution of balances, Figure 3 displays the standard deviation of the distribution of normalized balances across banks, at three times-of-day, 16:15, 17:15, and 18:15, for every trading session in 2005-2010. As is clear from the first part of the sample (2005 through the third quarter of 2008), the standard deviation of normalized balances is larger at 16:15 than at 17:15, and larger at 17:15 than at 18:15, virtually every day. This clear ordering is no longer discernible in the last part of the sample. Again, this

---

<sup>19</sup>Recall that two important policy actions were taken during that period: the Federal Reserve began paying interest on reserve balances held by depository institutions, and introduced new liquidity facilities (e.g., the Term Auction Facility, Primary Dealer Credit Facility, Term Securities Lending Facility) and asset purchase programs (e.g., the Troubled Asset Relief Program) that injected large amounts of reserves into the banking system.

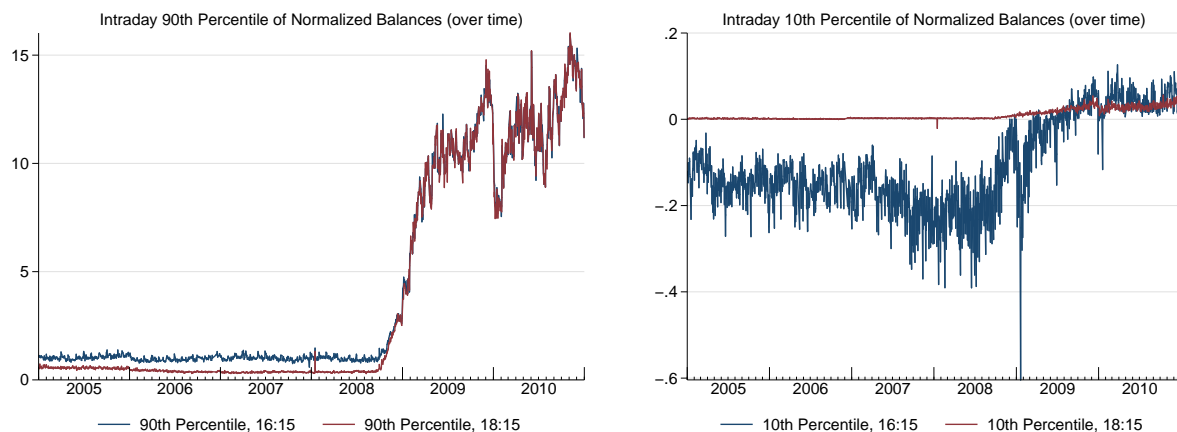


Figure 2: Daily time series of summary statistics of the distribution of normalized balances across banks (at 16:15 and at 18:15)

figure confirms the conclusions drawn from Figure 17: for the period 2005-2008, on a typical day, the dispersion in the distribution of normalized balances shrinks during the last 2.5 hours as the trading session progresses, while for the period 2009-2010, there is not much variation in this dispersion over the last 2.5 hours of the typical trading session. To conclude, it is worth pointing out that the magnitude of the standard deviation of normalized balances at a given time-of-day is dramatically larger during 2009-2010 than during 2005-2008. That is, even though most institutions tend to hold large positive normalized balances during 2009-2010, the dispersion in these balances is roughly more than seven times what it was in the 2005-2008 period. (Notice the size of the vertical scale in the first two panels of Figure 17 compared to the last two panels.)

## 5 Trade volume

In this section we document the time-series and cross-sectional behavior of the volume of trade in the fed funds market. Figure 4 shows the daily volume of trade in our sample during 2005-2010, i.e., the dollar amount of all fed funds traded by commercial banks daily, between 16:00 and 18:30. (The horizontal lines indicate the yearly means.) The volume traded by commercial banks in the last 2.5 hours of the trading session on a typical day, was hovering around 89 billion in 2005, 100 billion in 2006, and 117 billion in 2007. Trade volume in the fed funds market is large: Even restricting the sample as we do, to transactions involving only commercial banks

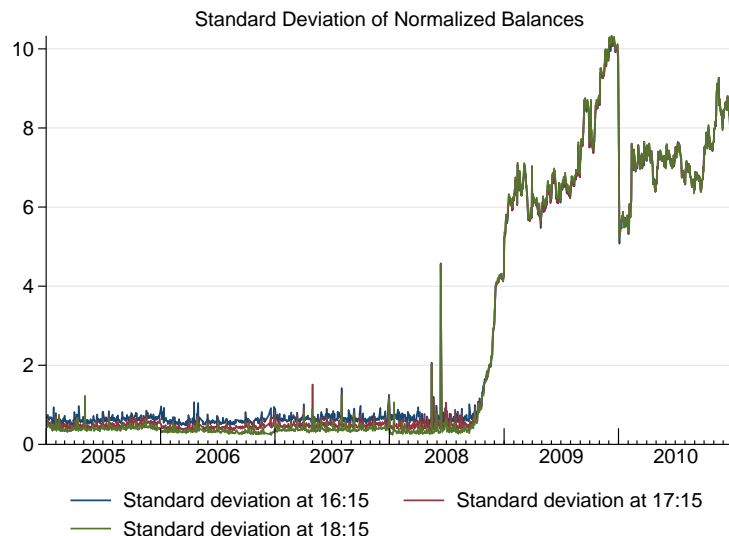


Figure 3: Daily time series of the standard deviation of normalized balances (at 16:15, 17:15, and 18:15)

between 16:00 and 18:30, the annual volume of funds traded during normal times (e.g., 2005-2007) is in the order of magnitude of two times annual GDP in the United States. Figure 4 shows that daily trade volume in our sample begins to drop in 2008, and was around 53 billion in 2009, and 40 billion in 2010. The reduction in trade volume begins roughly at the time the Federal Reserve began paying interest on reserves, and coincides with the onset of the build-up of excess reserves in the commercial banking sector.

## 5.1 Extensive margin

Figure 5 shows the time series behavior of the extensive margin of trade volume, i.e., the daily number of transactions that took place between 16:00 and 18:30 for the period 2005-2010, and for which either the borrower or the lender was a commercial bank. (The horizontal lines indicate the yearly means.) The overall pattern is similar to that of Figure 4: trading activity is high during 2005-2007, with an average number of trades oscillating above 860, and drops by the end of 2008 to about 240 during 2009.<sup>20</sup>

To get a sense of how the total number of transactions plotted in Figure 5 is distributed

<sup>20</sup>The mean daily number of transactions between 16:00 and 18:30, was 862.67 in 2005, 878.37 in 2006, 905.14 in 2007, 739.79 in 2008, 244.72 in 2009, and 196.95 in 2010.

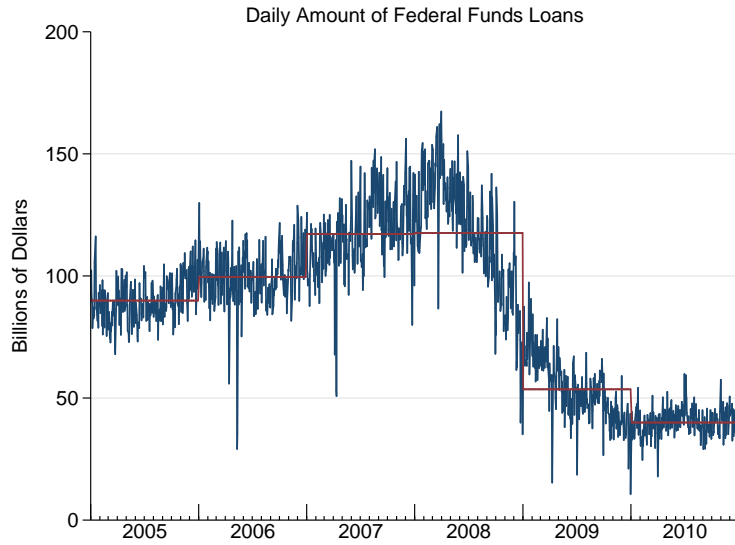


Figure 4: Daily trade volume

across banks, Figure 6 plots the mean, the 75th, 50th, and 25th percentiles of the daily (between 16:00 and 18:30) distribution of transactions across banks. On average, a bank traded 5.01 loans in 2009, 5.72 loans in 2010, and slightly more than 6 loans during 2005-2008 (6.16 in 2005, 6.29 in 2006, 6.55 in 2007, and 6.35 in 2008). The median number of loans has been quite stable and roughly equal to 2 throughout. The fact that the mean is typically above the 75th percentile indicates that the distribution of transactions is very skewed on any given day: a few banks trade (make or receive) most loans while most banks participate in few trades.

Figure 19 conveys similar information to Figure 6. The difference is that Figure 19 measures the extensive margin of trading activity in terms of the number of *counterparties* (instead of the number of transactions used in Figure 6). The left panel plots the mean, the 75th, 50th, and 25th percentiles of the daily (between 16:00 and 18:30) distribution of counterparties per bank. On average, a bank traded with about 4.5 counterparties during 2005-2008, and a bit more than 3 in 2009-2010.<sup>21</sup> The median number of counterparties has been quite stable and roughly equal to 2 throughout. The fact that the mean tends to be very close to the 75th percentile indicates that the distribution of counterparties is very skewed on any given day: a few banks have many counterparties while most banks have only a few. A comparison of Figure

<sup>21</sup>The exact average numbers of counterparties for each year 2005-2010, are 4.24, 4.39, 4.59, 4.34, 3.24, and 3.11, respectively.

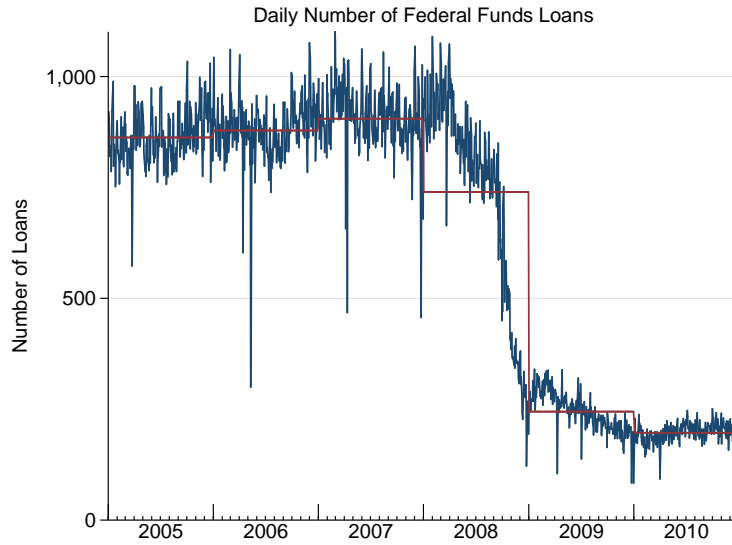


Figure 5: Daily number of loans

6 with the left panel of Figure 19 reveals that some banks trade with the same counterparty multiple times in the same day. For example, during a typical day in 2007 the average bank traded 6.55 times but had an average number of 4.59 counterparties. The middle panel plots the mean, the 75th, 50th, and 25th percentiles of the daily (between 16:00 and 18:30) distribution of the number of counterparties that a bank lends to. A bank lent to an average of about 3 banks during 2005-2008, and about 2.5 during 2009-2010.<sup>22</sup> This distribution is considerably skewed, with a few banks lending to many institutions and most banks lending to a few. The right panel plots the mean, the 75th, 50th, and 25th percentiles of the daily (between 16:00 and 18:30) distribution of the number of counterparties that a bank borrows from. A bank borrowed from an average of about 7 banks during 2005-2008, and about 4 during 2009-2010.<sup>23</sup> This distribution is also considerably skewed: a few banks borrow from many institutions and most banks borrow from a few institutions. The mean in the right panel is higher than in the middle panel indicating that on average, the typical bank tends to borrow from more banks than it lends to.<sup>24</sup>

<sup>22</sup>The exact average numbers of counterparties that a bank lends to, for each year 2005-2010, are 2.8, 2.91, 3.03, 3.11, 2.61, and 2.31, respectively.

<sup>23</sup>The exact average numbers of counterparties that a bank borrows from, for each year 2005-2010, are 6.57, 6.65, 7.02, 5.59, 3.54, and 3.74, respectively.

<sup>24</sup>This observation is consistent with the conventional wisdom that many small banks mostly sell fed funds to



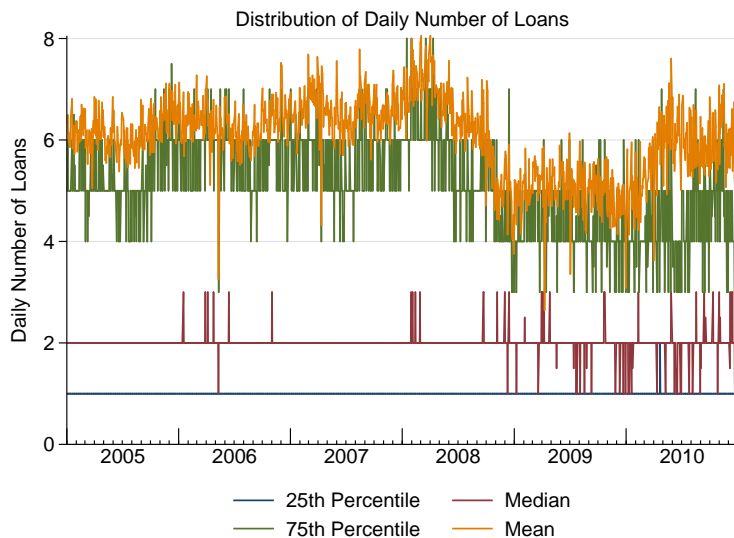


Figure 6: Summary statistics of the daily distribution of transactions across banks

## 5.2 Intensive margin

Figure 7 shows the time series behavior of the mean, the 75th, 50th, and 25th percentiles of the daily (between 16:00 and 18:30) distribution of loan sizes. The average loan size was about 100 million during 2005-2007, and increased to about 200 million during 2009-2010.<sup>25</sup> The size distribution of loans is skewed (albeit less so than those of the extensive margins), and the dispersion in trade sizes, e.g., as measured by the 90-10 percentile ratio is very large. Taken together, Figure 5 and Figure 7 reveal that the reduction in trade volume documented in Figure 4 was driven mainly by a reduction in the frequency of trade, rather than in trade sizes (in fact, trade sizes tended to be larger during 2009-2010 than during 2005-2008).

## 5.3 Intraday dynamics of trading activity

In this section we document how trading activity, as measured by the various dimensions of trade volume, is distributed throughout the trading day. We begin with Figure 8 that shows, for every day during the period 2005-2010, the proportion of the total daily volume that was traded by 16:15, 17:15, and 18:15. (By *total daily volume* here we mean the volume traded during the

a few big banks, see e.g., Stigum (1990).

<sup>25</sup>The exact figures for 2005-2010 are 104, 113, 130, 171, 218, and 203 million, respectively.

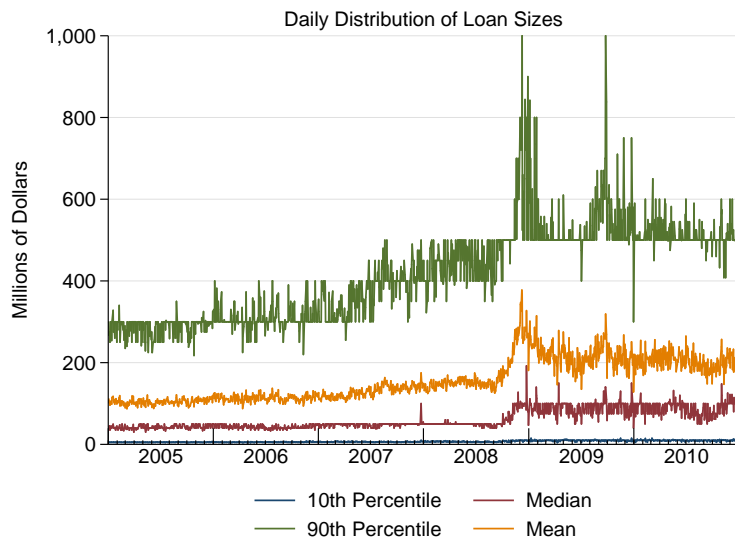


Figure 7: Summary statistics of the daily distribution of loan sizes

whole trading day, not just during the last 2.5 hours.) For example, during 2005-2007, about 65 percent of the daily dollar volume was traded after 16:15, and close to 70 percent was traded by 17:15. Notice the change between the 2005-2007 and the 2009-2010 periods. After 2007, trading activity tends to be concentrated earlier in the day, for example, about 60 percent of total daily volume was traded by 16:15 on a typical day during 2010, versus roughly 35 percent on a typical day during 2006.

Each panel in Figure 20 shows box plots of the volume traded from 16:00 until 18:30, at five minute-intervals, throughout each year in our sample period. The unit of observation is the total dollar value of all transactions recorded at time  $s$  on day  $t$ . Each box plot shows, for a given time-of-day, the distribution of observations across all the trading days in the year. By pooling all trading days in a given year, Figure 20 provides a more detailed picture of the intraday pattern of trade volume. For every year in the sample, trade volume tended to peak between 17:00 and 17:30.

Next, we document the intraday pattern of the extensive (trade frequency) and intensive margin (trade sizes) of trade volume. We begin with the extensive margin. Figure 9 displays the proportion of the total daily number of loans traded by all commercial banks by 16:15, 17:15,

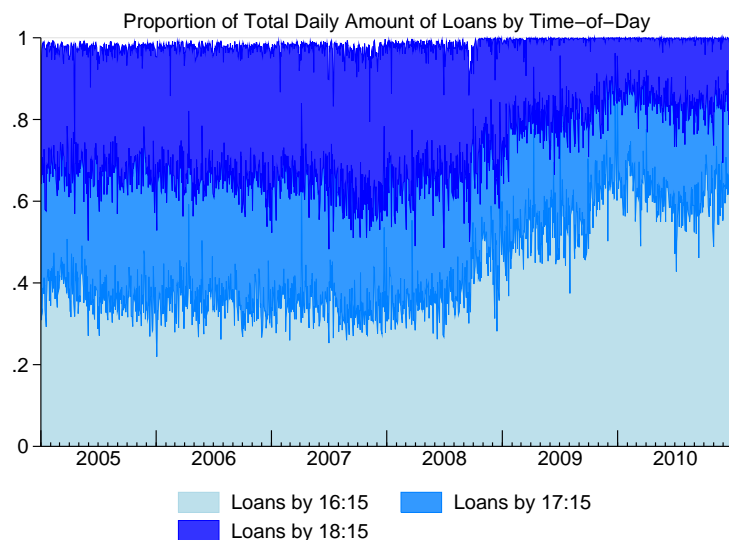


Figure 8: Intraday cumulative trade volume

and 18:15.<sup>26</sup> During 2005-2007, a bit more than sixty percent of the total daily number of loans was traded after 16:15, and about 75 percent was traded by 17:15. The change in intraday trading pattern observed between the 2005-2007 and the 2009-2010 periods is similar to the one displayed in Figure 8. In the period 2009-2010, trading activity tends to be concentrated earlier in the day, for example, about 60 percent of all daily trades were recorded by 16:15 on a typical day during 2010, versus roughly 35 percent on a typical day during 2006. A comparison with Figure 8 also reveals that throughout the whole sample, there tends to be a concentration of larger loans toward the end of the day. For example, in 2007 about 75 percent of all daily loans were traded by 17:15, but these loans only accounted for about 60 percent of the total dollar volume traded during the day.<sup>27</sup>

Figure 21 provides year-by-year information about how trading activity (as measured by the number of loans) tends to be distributed over the last 2.5 hours of the trading day (this figure is the extensive-margin analogue of Figure 20). Each panel in Figure 21 shows box plots of the total number of loans traded daily from 16:00 until 18:30, at five minute-intervals,

<sup>26</sup>As in Figure 8, here the total daily number of loans is based on all trades throughout the whole trading day, not just during the last 2.5 hours.

<sup>27</sup>This pattern is consistent with the general pattern of the timing of Fedwire payments documented in Ar-mantier et al. (2008).

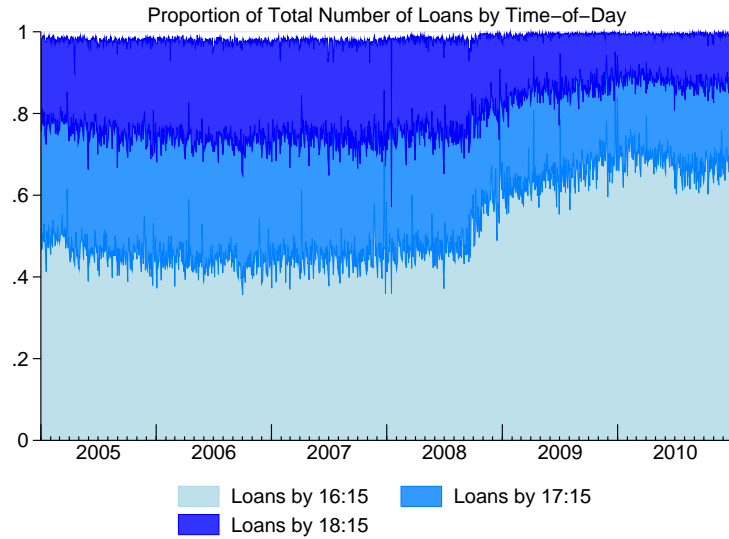


Figure 9: Intraday cumulative number of loans

throughout each year in our sample period. The unit of observation is the total number of transactions recorded on day  $t$  at time-of-day  $s$ . Each box plot shows, for a given time-of-day, the distribution of observations across all the trading days in the year. Except possibly for 2010, for every year in the sample the number of trades tended to peak roughly between 17:00 and 17:30, as was the case for trade volume in dollars (Figure 20).

Each panel in Figure 22 displays thirty one box plots, one every five minutes from 16:00 until 18:30, of the recorded trade sizes at a given time-of-day throughout each year in our sample period. The unit of observation is the individual size of each loan at time  $s$  on day  $t$ . Each box plot shows the distribution of observations across all days of the year, for a given time. In other words, each box plot shows the size distribution of all trades that took place throughout the year, at a given time-of-day  $s$ . During 2008-2010 the average transaction size declines mildly over the last hour of the trading day, and also peaks between 17:00 and 17:30. This pattern is less evident during 2005-2007 (the decline in average transaction size occurs only after 18:00, and when it exists, the peak between 17:00 and 17:30 is less pronounced).

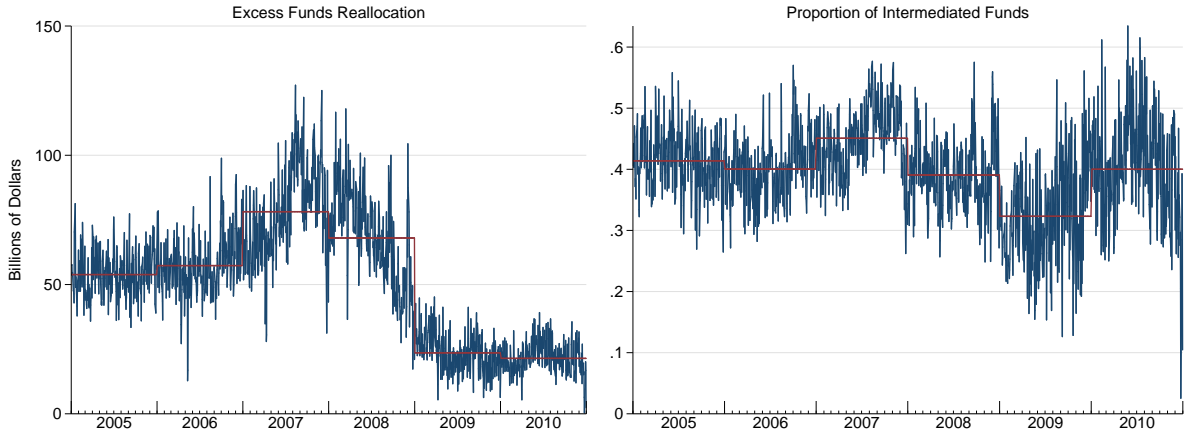


Figure 10: Measures of intermediation (daily)

## 6 Intermediation

The fed funds market reallocates reserves among financial institutions. How is this reallocation actually achieved? In practice, it can occur in two ways. A pair of participants can contact each other directly, or they can be matched by a fed funds broker. Non-brokered transactions represent the bulk of the volume of fed funds loans.<sup>28</sup> In this section we investigate the extent to which commercial banks, by purchasing funds earlier in the day and reselling later, act as *de facto* intermediaries in the fed funds market.

Let  $O_{it}^p$  denote the cumulative dollar amount of fed funds purchases by bank  $i$  on trading day  $t$ , between 16:00 and 18:30. Similarly, let  $O_{it}^s$  denote the cumulative dollar amount of fed funds sold by bank  $i$  on day  $t$  (also between 16:00 and 18:30). Then define  $X_{it} = O_{it}^p + O_{it}^s - |O_{it}^p - O_{it}^s|$ , and  $X_t = \sum_i X_{it}$ . This is the measure of *excess funds reallocation* proposed in Afonso and Lagos (2012). It quantifies the daily amount of funds traded in excess of what would be required to accommodate each commercial bank's net change in balance between 16:00 and 18:30. The left panel of Figure 10 shows the daily time-series of marketwide excess funds reallocation, i.e.,  $\{X_t\}$ . The dollar volume of funds churned by commercial banks during the last 2.5 hours of the trading session was 54 billion in 2005, and 57 billion in 2006, even larger in 2007 and 2008 (78 and 68 billion, respectively), and dropped to 24 billion in 2009 and to 21 billion in 2010.

The right panel of Figure 10 shows the proportion of intermediated funds in the aggregate

<sup>28</sup>Ashcraft and Duffie (2007), for instance, report that non-brokered transactions represented 73 percent of the volume of fed funds traded in 2005.

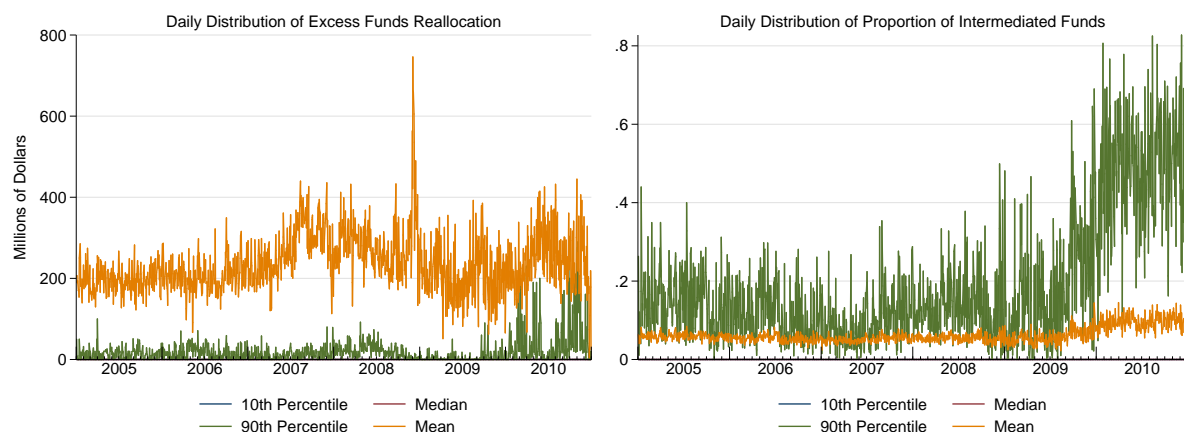


Figure 11: Daily time series of summary statistics of the distribution of intermediation activity across banks

daily volume of traded funds, i.e., it plots the daily time series  $\{\iota_t\}$ , where  $\iota_t = X_t / \sum_i (O_{it}^p + O_{it}^s)$ . The proportion of funds intermediated by commercial banks in the last 2.5 hours of the trading session has been relatively stable at about 40 percent throughout 2005-2010 (there was a slight increase to 45 percent in 2007, and a slight reduction to about 32 percent in 2009).<sup>29</sup>

Figure 10 documents the prevalence of intermediation activities of the consolidated commercial banking sector in the market for fed funds. To get a sense of how this intermediation activity is distributed across institutions, in Figure 11 we plot the daily time series of some key summary statistics of the distribution of intermediation activity across commercial banks. The left panel of Figure 11 plots the mean, the median, the 10th and the 90th percentiles of the daily distribution of excess funds reallocation across banks. The distribution is extremely skewed (the mean is well above the 90th percentile). The right panel plots the mean, the median, the 10th and the 90th percentiles of the daily distribution of the proportion of intermediated funds across banks. This distribution is also very skewed. The median is 0 and the mean is about 0.05, i.e., the average commercial bank churns about 5 percent of the fed funds it trades between 16:00 and 18:30. The 90th percentile of this distribution varies quite a bit from day to day. On average, during 2005-2008, 90 percent of commercial banks churned less than 15 percent of the funds they traded in the last 2.5 hours of the trading day.<sup>30</sup>

<sup>29</sup>The exact figures for 2005-2010 are 0.41, 0.40, 0.45, 0.39, 0.32 and 0.40, respectively.

<sup>30</sup>The 90th percentile of the distribution of the proportion of intermediated funds during 2005-2010 was 0.14, 0.11, 0.09, 0.14, 0.18, and 0.48, respectively.

In the remainder of the section we document a striking aspect of intermediation in this market, namely that a significant number of loans are made by lenders who, based on their balances at the time of the loan, would appear to be themselves in need of funds.<sup>31</sup> In addition, we find that banks who would appear to be looking to lend (based on their balances at the time of the transaction), in fact sometimes borrow significant amounts of reserves. To this end, as in Section 4, let  $a_{sty}^h$  denote the reserve balance held by bank  $h$  at time  $s$ , on trading day  $t$  of year  $y$ . Also let  $f_{ty}^h$  denote the amount of reserves recorded as sent over Fedwire by bank  $h$  on trading day  $t$  of year  $y$ , and let  $f_y^h$  be the average for year  $y$  of the total daily amount of reserves sent by bank  $h$ , i.e.,  $f_y^h = \frac{1}{T_y} \sum_{t=1}^{T_y} f_{ty}^h$ , where  $T_y$  is the number of trading days in year  $y$ .<sup>32</sup> For given  $h$ ,  $s$ , and  $y$ , let  $\bar{a}_{sy}^h$  denote the median of  $\{a_{sty}^h\}_{t=1}^{T_y}$ , i.e., the median daily reserve balance held by bank  $h$  at time-of-day  $s$  during year  $y$ . Define the *adjusted (reserve) balance* of bank  $h$  at time  $s$ , on trading day  $t$  of year  $y$ , as

$$\hat{a}_{sty}^h = \frac{a_{sty}^h - \bar{a}_{sy}^h}{f_y^h}.$$

We follow Ashcraft and Duffie (2007), and interpret a bank  $h$  with  $\hat{a}_{sty}^h < 0$  as being *short of funds*, in the sense that bank  $h$ 's reserve balance at time  $s$  on day  $t$  of year  $y$  is lower than it normally is at that time. Similarly, we interpret a bank with  $\hat{a}_{sty}^h > 0$  as being *long of funds*.

For a given year  $y$ , consider the sample of adjusted balances,  $\{\hat{a}_{sty}^h\}_{h \in \mathbb{H}, s \in \mathbb{S}, t \in \mathbb{T}_y}$ , where  $\mathbb{H}$  is the set of banks in the sample,  $\mathbb{T}_y = \{1, \dots, T_y\}$  is the set of trading days in year  $y$ , and  $\mathbb{S} = \{16:00, 16:05, 16:10, \dots, 18:30\}$  is a set of times-of-day we will consider. For each time-of-day  $s \in \mathbb{S}$ , we have a subsample  $\{\hat{a}_{sty}^h\}_{h \in \mathbb{H}, t \in \mathbb{T}_y}$ . Create a subsample  $\{\hat{a}_{sty}^h\}_{h \in \mathbb{H}_s^-}$ , where  $\mathbb{H}_s^-$  denotes the subset of banks whose adjusted balances at time  $s$ , are negative. Let  $\mathbb{H}_{s10}^-$  denote the 10 percent of banks in  $\mathbb{H}_s^-$  whose adjusted balances are *most negative*, and construct the subsample  $\{\hat{a}_{sty}^h\}_{h \in \mathbb{H}_{s10}^-, t \in \mathbb{T}_y}$ . Let  $\tilde{\mathbb{H}}_{s10}^-$  denote the subset of banks in  $\mathbb{H}_{s10}^-$  who *lend* at time  $s$ , and construct the subsample  $\{\hat{a}_{sty}^h\}_{h \in \tilde{\mathbb{H}}_{s10}^-, t \in \mathbb{T}_y}$ . For each year in our sample, each panel in Figure 23 shows thirty one box plots (each corresponding to a given time-of-day in  $\mathbb{S}$ ) of the

<sup>31</sup>This fact was also pointed out by Ashcraft and Duffie (2007), who report: “A significant number of loans in our data are made by lenders in the lower deciles by relative balances. Many of these lenders are presumably themselves in relative need of funds but agree to lend at a sufficiently high rate, planning to borrow later in the day at a lower rate. In any OTC market, the borrower does not generally know the most attractive rates available from other counterparties, or which counterparties are offering them, and may have an incentive to accept the rate offered by such a lender.” See Afonso and Lagos (2012) for a theory of trade in the fed funds market in which these types of loans arise naturally in equilibrium.

<sup>32</sup>By “total daily amount of reserves sent” we mean over the whole trading day, not just the last 2.5 hours of the trading session. Also, notice that  $f_{th}^h$  includes all Fedwire sends, not just fed funds.

dollar value of the fed funds sales by banks in  $\tilde{\mathbb{H}}_{s10}^-$ . Specifically, let  $l_{sty}^h$  denote the size of the loan extended by bank  $h$  at time  $s$  on day  $t$  of year  $y$ , then each box plot shows, for a given time  $s$  and year  $y$ , the distribution of observations,  $l_{sty}^h$ , for all  $(h, t) \in \tilde{\mathbb{H}}_{s10}^- \times \mathbb{T}_y$ . The striking finding is that during normal times (e.g., 2005-2007) even those banks who are most short of funds, routinely sell funds.

Similarly, let  $\mathbb{H}_s^+$  be the subset of banks  $h$  whose adjusted balances at time  $s$  are nonnegative, let  $\mathbb{H}_{s90}^+$  denote the 10 percent of banks in  $\mathbb{H}_s^+$  whose adjusted balances are *largest*, and let  $\tilde{\mathbb{H}}_{s90}^+$  be the subset of banks in  $\mathbb{H}_{s90}^+$  who *borrow* at time  $s$ . For each year in our sample period, each panel in Figure 24 shows thirty one box plots (each corresponding to a given time-of-day in  $\mathbb{S}$ ) of the dollar value of the fed funds sales by banks in  $\tilde{\mathbb{H}}_{s90}^+$ . Let  $b_{sty}^h$  denote the amount of reserves borrowed by bank  $h$  at time  $s$  on day  $t$  of year  $y$ . Then each box plot in Figure 24 shows, for a given time  $s$  and year  $y$ , the distribution of observations,  $b_{sty}^h$ , for all  $(h, t) \in \tilde{\mathbb{H}}_{s90}^+ \times \mathbb{T}_y$ . The striking finding is that during normal times (e.g., 2005-2007) even those banks who are most long of funds, routinely buy funds.

## 7 Fed funds rates

There is no such thing as *the* fed funds rate. Rather, in any small interval of time during a fed funds trading session, there is a *distribution of fed funds rates* being agreed upon in bilateral transactions between borrowers and lenders. In this section we document both the time-series and the cross sectional behavior of these bilateral rates.

The left panel of Figure 12 plots the daily average value-weighted fed funds rate calculated from Fedwire data, and the FOMC target for 2005-2010.<sup>33</sup> The value-weighted fed funds rate was very close to the FOMC target during 2005-2006. The deviations from target appear larger and more common during the financial turmoil of 2007-2008. In order to illustrate the heterogeneity of rates within a trading day, the right panel of Figure 12 plots the 90th and 10th percentiles of the daily distribution of fed funds rates for 2005-2010, also against the background of the FOMC target. Even in normal times there tends to be significant dispersion in the distribution of rates agreed upon on a given day. This dispersion increased significantly during the second half of 2007 through 2008.

To offer another angle on the volatility of the fed funds rate, let  $\bar{\rho}_t$  denote the value-weighted

---

<sup>33</sup>The fed funds rates used in this section were constructed using *all* fed funds loans, i.e., for transactions executed at any time-of-day, and between any pair of institutions, even if neither is a commercial bank.



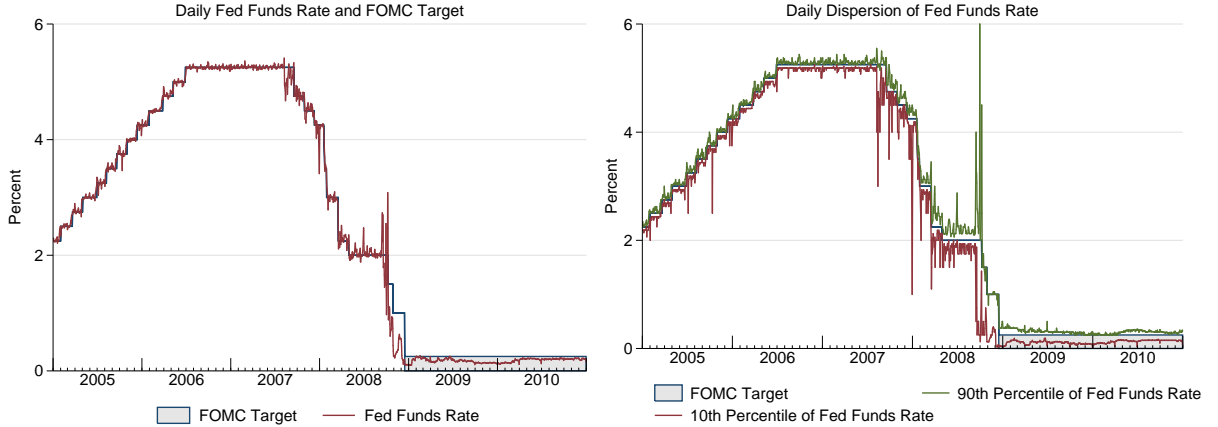


Figure 12: FOMC target and summary statistics of the daily distribution of fed funds rates (on all loans)

fed funds rate (average for day  $t$ ). Let  $\rho_t^{\max}$  be the upper bound for the FOMC policy target band for day  $t$ , and let  $\rho_t^{\min}$  be the lower bound of the band. Define the deviation from target on day  $t$ , denoted  $D_t$ , as

$$D_t = \begin{cases} \bar{\rho}_t - \rho_t^{\max} & \text{if } \rho_t^{\max} < \bar{\rho}_t \\ 0 & \text{if } \rho_t^{\min} \leq \bar{\rho}_t \leq \rho_t^{\max} \\ \bar{\rho}_t - \rho_t^{\min} & \text{if } \bar{\rho}_t < \rho_t^{\min}. \end{cases}$$

The left panel of Figure 13 plots the daily value of  $D_t$ , i.e., the deviations between value-weighted daily fed funds rate and FOMC target, for 2005-2010. This panel suggests that hitting the policy target may have become more challenging during the period of financial turmoil that began in 2007. The value-weighted average measure of the fed funds rate reported on the left panel is obtained from our transactions data. In order to give a sense of how the value-weighted fed funds rate we constructed compares with the actual policy target (the *effective fed funds rate* published by the Federal Reserve Bank of New York), the daily spread between these two rates for 2005-2010 is reported in the right panel of Figure 13.<sup>34</sup> Both rates tend to be quite close; the largest disparities occurred during the 2007-2008 turmoil, and even then this spread was typically less than a tenth of one percent.

<sup>34</sup>The *effective federal funds rate* is a volume-weighted average of rates on trades arranged by major brokers. The Federal Reserve Bank of New York receives summary reports from the brokers, and every morning publishes the effective federal funds rate for the previous day.

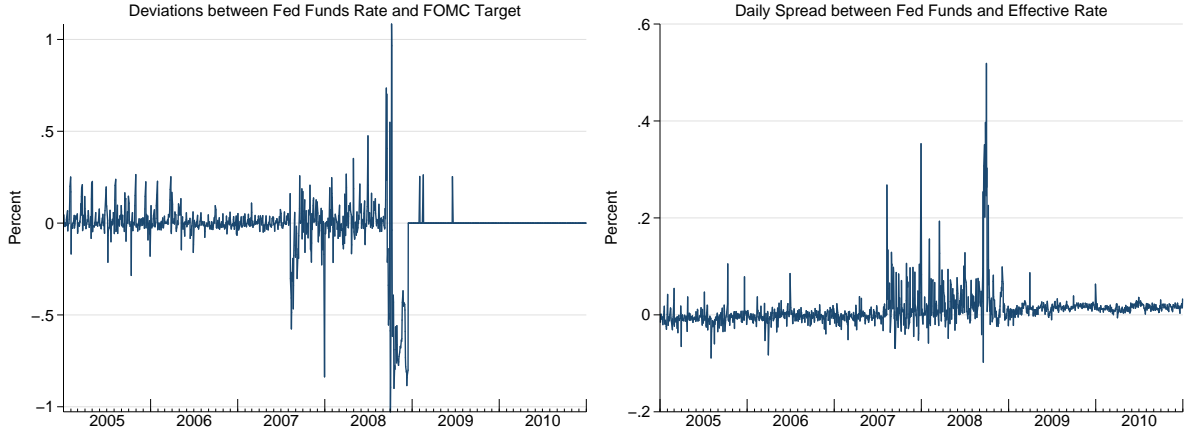


Figure 13: Daily spreads of the FOMC target and the effective fed funds rate, to the value-weighted fed funds rate

### 7.1 Intraday dynamics of the distribution of fed fund rates

Let  $\rho_{sty}^i$  be the rate on loan  $i$  extended at time  $s$ , on day  $t$  of year  $y$ . Define  $\bar{\rho}_{sty} = \sum_{i=1}^{I_{sty}} \omega_{sty}^i \rho_{sty}^i$ , where  $I_{sty}$  is the number of transactions at time  $s$  on day  $t$  of year  $y$ , and  $\omega_{sty}^i$  is the ratio of the value of loan  $i$  to the total value of all loans traded at time  $s$  during day  $t$  of year  $y$ . Intuitively,  $\bar{\rho}_{sty}$  is the average value-weighted fed funds rate at time  $s$  of day  $t$  in year  $y$ . For each year in our sample period, each panel in Figure 25 shows thirty one box plots (each corresponding to a given time-of-day) of the spread,  $\sigma_{sty}^i \equiv \rho_{sty}^i - \bar{\rho}_{sty}$ , at five-minute intervals from 16:00 until 18:30, throughout the year. Specifically, each box plot shows, for a given time-of-day  $s$  and year  $y$ , the distribution of observations,  $\{\sigma_{sty}^i\}$ , for all  $(i, t)$  pairs, i.e., for all loans and trading days in the year. By pooling all trading days in a given year, Figure 25 provides a clear picture of the intraday dynamics of the distribution of fed funds spreads. The dispersion in spreads increases toward the end of the trading session in 2005-2008, but decreases toward the end of the trading session in 2009-2010.

Since the box plots pool together different trading days in a year, the pure time-series dimension of the intraday distribution of spreads may not be so evident in Figure 25. To provide a clearer time-series perspective, Figure 14 displays the 90th and the 10th percentiles of the daily distribution of fed funds spreads, at two times-of-day (16:15, and 18:15), for every trading day in 2005-2010. Figure 14 confirms the picture painted by Figure 25: During 2005-2008, the 10th percentile at 18:15 tends to be below the 10th percentile at 16:15, and the 90th

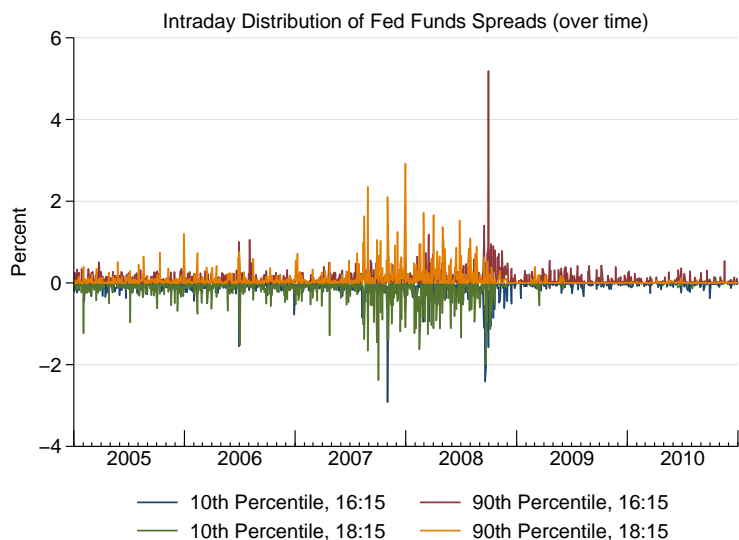


Figure 14: Daily time series of summary statistics of the distribution of fed fund spreads across loans (at 16:15 and 18:15)

percentile at 18:15 above the 90th percentile at 16:15, indicating that the dispersion in spreads is widening as the trading session progresses. Notice that this pattern is reversed during 2009-2010. It is also interesting to notice the widening in daily spreads both at 16:15 and at 18:15 during the end of 2007 and most of 2008. This observation is in line with the increase in the distance between the 90th percentile and the 10th percentile of the distribution of all daily rates illustrated on the right panel of Figure 12.

## 8 Interest on reserves

The Emergency Economic Stabilization Act of 2008 authorized the Federal Reserve to begin paying interest on reserve balances held by or on behalf of depository institutions beginning October 1, 2008. The interest on reserves has been at 25 basis points since December 18, 2008.

Figure 15 shows the *effective fed funds rate*.<sup>35</sup> Strikingly, the effective fed funds rate has been consistently lower than the 25 basis points that the Federal Reserve pays on reserves held by commercial banks.<sup>36</sup> The left panel of Figure 16 shows the average value-weighted fed funds rate

<sup>35</sup>These data are available at <http://www.newyorkfed.org/markets/omo/dmm/fedfundsdata.cfm>.

<sup>36</sup>Some large lenders in the federal funds market which are non-depository institutions, such as the GSEs, do not receive interest on their reserve balances. It has been argued (see Bech and Klee, 2011) that such institutions

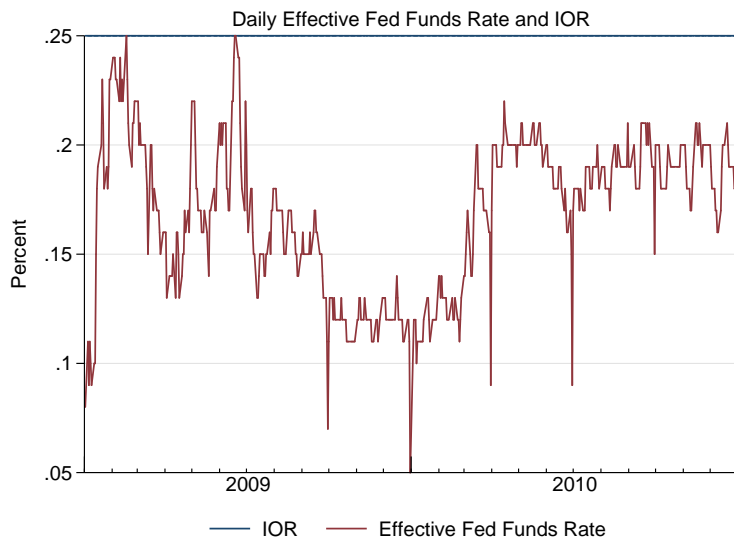


Figure 15: Daily effective fed funds rate during the IOR regime

from Fedwire data for each day during 2009-2010. The value-weighted fed funds rate from our transactions is very close to the effective fed funds rates, and therefore is also consistently below 25 basis points throughout 2009-2010. The right panel shows the 10th and 90th percentiles of the daily distribution of fed funds rates calculated from Fedwire data, again against the interest on reserves (IOR). This panel shows that for extended periods of time during 2009 and 2010, not only was the average value-weighted fed funds rate below 25 basis points, but moreover, a large proportion of all loans traded below 25 basis points. These observations are puzzling: Given that commercial banks can earn 25 risk-free basis points from the Fed overnight, why are there commercial banks lending reserves at rates lower than 25 basis points?

## 9 Concluding remarks

In the previous sections we used Fedwire transactions data filtered by a standard Furfine algorithm to document some key stylized facts of the interbank overnight loan market in the United States. Our empirical analysis has been guided by theory in that the variables we have chosen to study are the ones that the model developed in Afonso and Lagos (2012) identifies as being

---

may have an incentive to lend at rates below the rate that banks receive on reserve balances, which might have contributed to the effective federal funds rate being lower than the rate of interest banks earn on reserve balances.

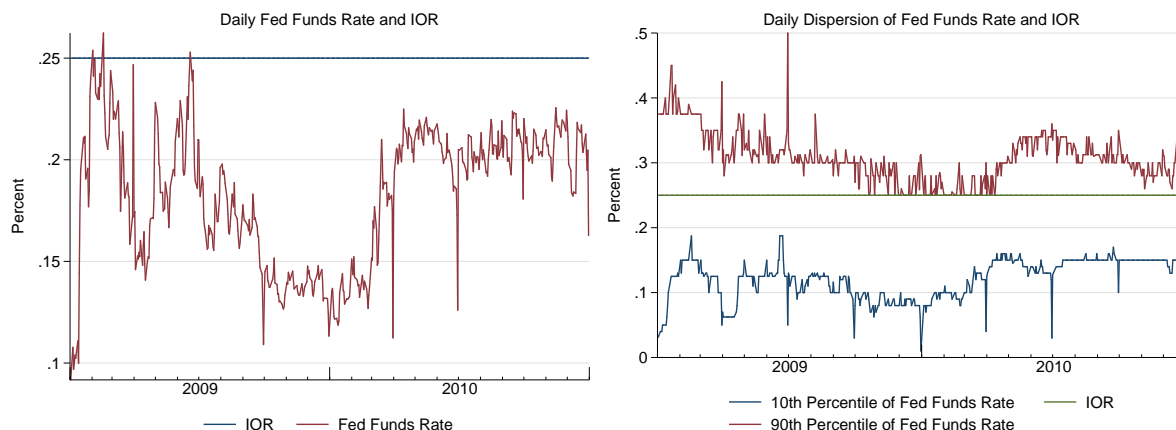


Figure 16: Daily fed funds rate during the IOR regime

important to understand the functioning of this market. We summarize our findings as follows.

First, trade volume is large (about two GDPs are traded over the course of a year in the last 90 minutes of the typical day), and the distribution of trading activity across commercial banks is very skewed. Second, we have documented dispersion in fed funds rates during normal times. This dispersion increased significantly during the second half of 2007 and remained high by historical standards through 2008. Third, the distribution of commercial banks' reserve balances follows a clear pattern of daily convergence during the last 2.5 hours of a typical trading day during normal times (e.g., 2005-2008), and guided by theory, we interpret this finding as evidence that commercial banks actively trade fed funds in a way that achieves a reallocation of funds from institutions with excess balances towards those in need of funds. Fourth, we have found that commercial banks, by purchasing funds earlier in the day and reselling them later in the day, play a critical role as *de facto* intermediaries in the fed funds market: this intermediation accounts for about 40 percent of the dollar volume traded between 16:00 and 18:30 during an average trading day. Fifth, our analysis is consistent with a striking aspect of intermediation in this market: a significant number of loans are made by lenders who based on their balances at the time of the loan would appear to be themselves in need of funds, and conversely, some banks that would appear to be looking to lend in fact borrow significant amounts of reserves.

The theoretical framework that economists use to frame and organize policy discussions about the fed funds market is the static competitive model of Poole (1968). Recent empirical

studies (e.g., Ashcraft and Duffie, 2007) have suggested, however, that a dynamic search-based theory may be a more useful framework to interpret the wealth of available price and quantity estimates of fed funds transactions.<sup>37</sup> Our findings lend support to this view. The prevalence of price dispersion, the pervasiveness of intermediation among commercial banks, and the daily pattern of gradual convergence of reserve balances, are hallmarks of a trading process mediated by search. We interpret these findings as *prima facie* evidence in favor of the usefulness of a search-based theory of the fed funds market.

---

<sup>37</sup>Ashcraft and Duffie (2007) focus on two variables: transaction pairing likelihood, and the fed funds rate negotiated between two commercial banks. They analyze the determinants of the likelihood of a loan by institution  $i$  to institution  $j$  in minute  $t$  of the trading day. They find a strong relationship between counterparty balances and the probability of a fed funds loan, specifically, that a high balance (relative to normal for that minute) increases the probability of being a lender, while a low balance increases the probability of being a borrower. As for the fed funds rates, they study the determinants of the cross-sectional spread (at a given minute  $s$ ) of the rate negotiated by a particular lender  $i$  and borrower  $j$ , net of the current minute, dollar weighted average rate negotiated elsewhere in the market. Let this spread be denoted by  $\hat{\sigma}_s^{ij}$ . As explanatory variables they consider: (a) the cross-sectional deciles  $d_i^b$  and  $d_j^b$  of the lender's and the borrower's *normalized balance* (measures similar to the  $\hat{a}_{sty}^i$  and  $\hat{a}_{sty}^j$  that we introduced in Section 6), and (b) the cross-sectional deciles  $d_i^v$  and  $d_j^v$  of the lender's and the borrower's transaction volume (measured by the total dollar amount of fed funds sent by the institution over the last 90 minutes of the trading session in the current month), and find that, on average,  $\hat{\sigma}_s^{ij}$  decreases with  $d_i^b + d_j^b$  and increases with  $d_i^v - d_j^v$ . These effects are stronger during the last 60 minutes of the trading session, and apply after controlling for prior lending relationships between  $i$  and  $j$ . The search-based model of the fed funds market developed in Afonso and Lajos (2012) can account for this findings, and provides a theoretical framework to interpret them.

## References

- [1] Afonso, Gara, Anna Kovner, and Antoinette Schoar. 2011. “Stressed, not Frozen: The Federal Funds Market in the Financial Crisis.” *Journal of Finance* 66 (4) (August): 1109–1139.
- [2] Afonso, Gara, and Ricardo Lagos. 2012. “Trade Dynamics in the Market for Federal Funds.” Manuscript.
- [3] Armantier, O., J. Arnold, and J. McAndrews. 2008. “Changes in the Timing Distribution of Fedwire Funds Transfers.” Federal Reserve Bank of New York *Economic Policy Review* 14(2) (September): 83–112.
- [4] Ashcraft, Adam B., and C. Hoyt Bleakley Jr. 2006. “On the Market Discipline of Informationally-Opaque Firms: Evidence from Bank Borrowers in the Federal Funds Market.” FDIC Center for Financial Research Working Paper No. 2006-09.
- [5] Ashcraft, Adam B., and Darrell Duffie. 2007. “Systemic Illiquidity in the Federal Funds Market.” *American Economic Review* 97(2) (May): 221–25.
- [6] Ashcraft, Adam B., James McAndrews, and David Skeie. 2009. “Precautionary Reserves and the Interbank Market.” Federal Reserve Bank of New York, Staff Report 370.
- [7] Bartolini, Leonardo, Spence Hilton, and James J. McAndrews. 2010. “Settlement Delays in the Money Market.” *Journal of Banking and Finance* 34(5) (May): 934–945.
- [8] Bech, Morten L., and Enghin Atalay. 2008. “The Topology of the Federal Funds Market.” Federal Reserve Bank of New York Staff Report 354.
- [9] Bech, Morten L., and Elizabeth Klee. 2011. “The Mechanics of a Graceful Exit: Interest on Reserves and Segmentation in the Federal Funds Market.” *Journal of Monetary Economics* 58(5) (July): 415–431.
- [10] Furfine, Craig H. 1999. “The Microstructure of the Federal Funds Market.” *Financial Markets, Institutions and Instruments* 8(5) (December): 24–44.
- [11] Furfine, Craig H. 2000. “Interbank Payments and the Daily Federal Funds Rate.” *Journal of Monetary Economics* 46(2) (October): 535–553.

- [12] Furfine, Craig H. 2001. "Banks Monitoring Banks: Evidence from the Overnight Federal Funds Market." *Journal of Business* 74(1) (January) 33-57.
- [13] Furfine, Craig H. 2002. "Interbank Markets in a Crisis." *European Economic Review* 46(4-5) (May) 809-820.
- [14] Hamilton, James D. 1996. "The Daily Market for Federal Funds." *Journal of Political Economy* 104(1) (February): 26-56.
- [15] Hamilton, James D., and Òscar Jordà. (2002) "A Model of the Federal Funds Target." *Journal of Political Economy* 110(5) (October): 1135-1167.
- [16] Hamilton, James D. 2008. "The Anomalous Fed Funds Market." [http://www.econbrowser.com/archives/2008/11/the\\_anomalous\\_f.html](http://www.econbrowser.com/archives/2008/11/the_anomalous_f.html)
- [17] Kuo, Dennis, David Skeie, and James Vickery. 2010. "How well did Libor measure bank wholesale funding rates during the crisis?" Manuscript.
- [18] McAndrews, James J. 2009. "Segmentation in the U.S. dollar money markets during the financial crisis." Manuscript.
- [19] Meulendyke, Anne-Marie. 1998. *U.S. Monetary Policy and Financial Markets*. Federal Reserve Bank of New York.
- [20] Poole, William. 1968. "Commercial Bank Reserve Management in a Stochastic Model: Implications for Monetary Policy." *Journal of Finance* 23(5) (December): 769-791.
- [21] Stigum, Marcia. 1990. *The Money Market*. New York: McGraw-Hill.



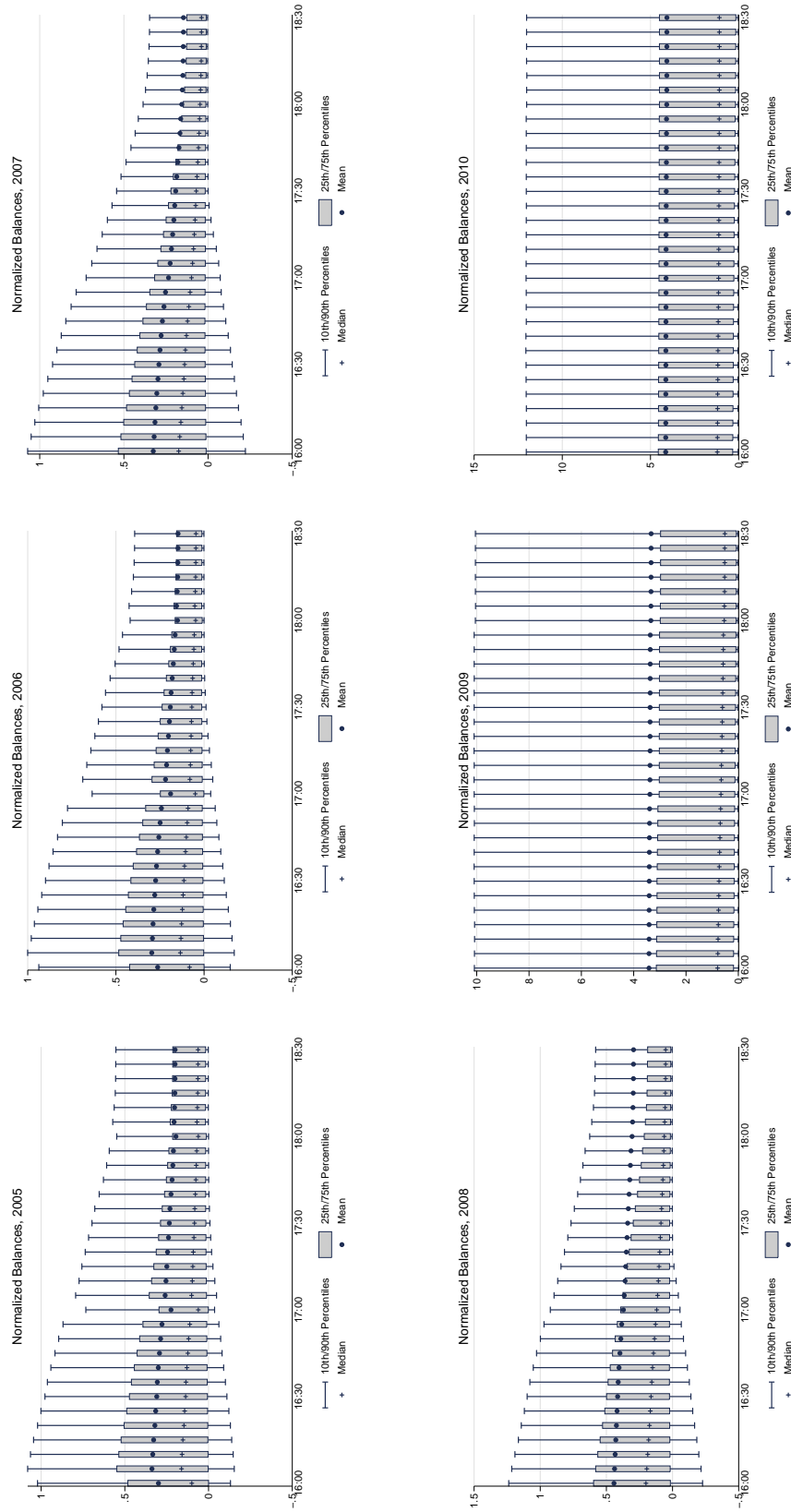


Figure 17: Intraday dynamics of the distribution of normalized reserve balances among commercial banks

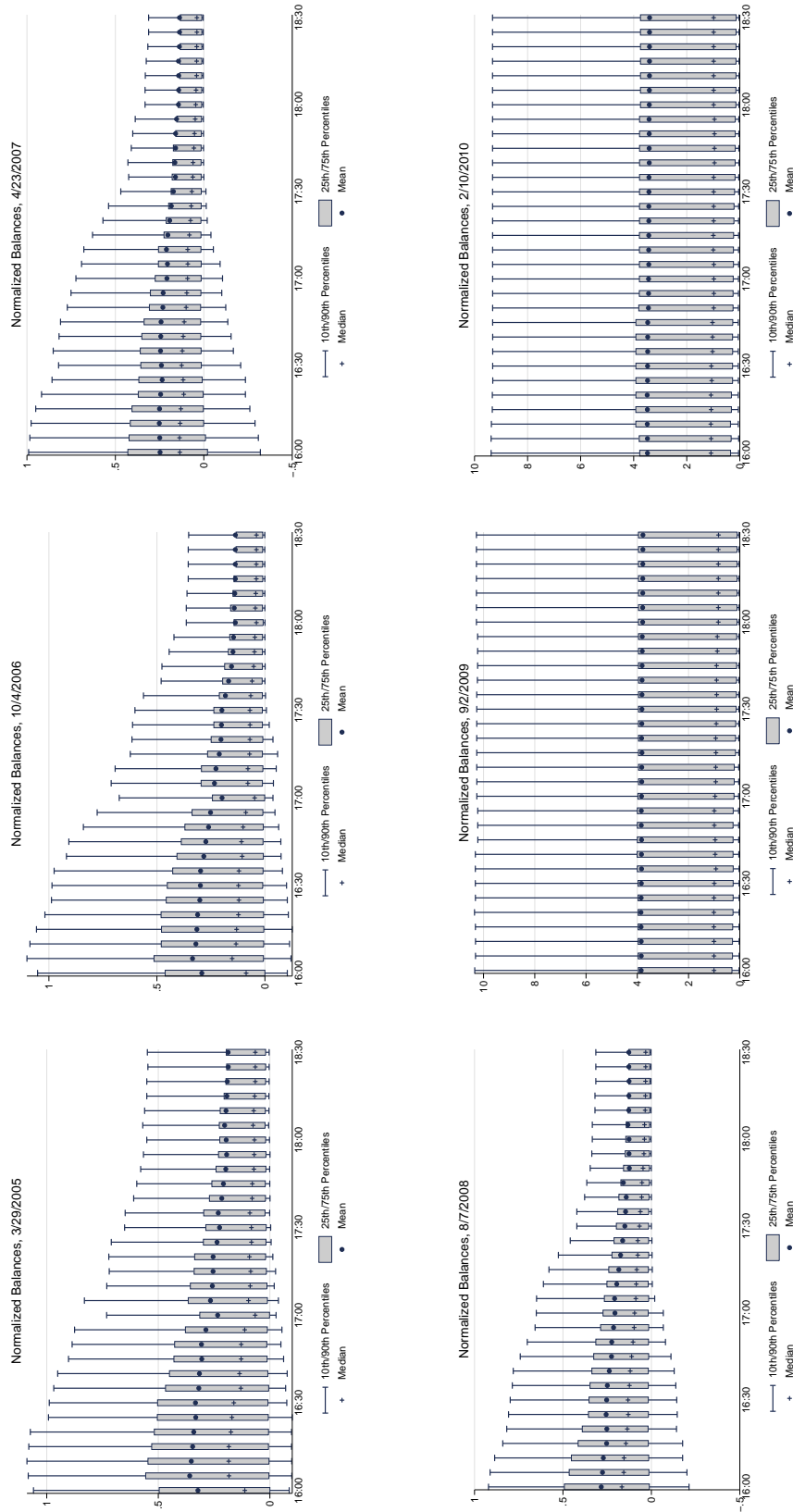


Figure 18: Intraday dynamics of the distribution of reserve balances among commercial banks (random days)

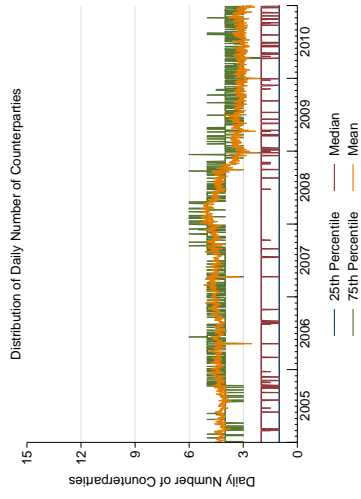
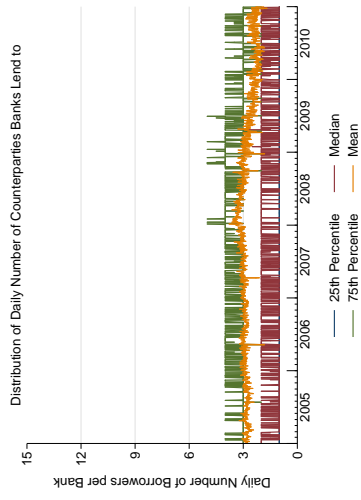
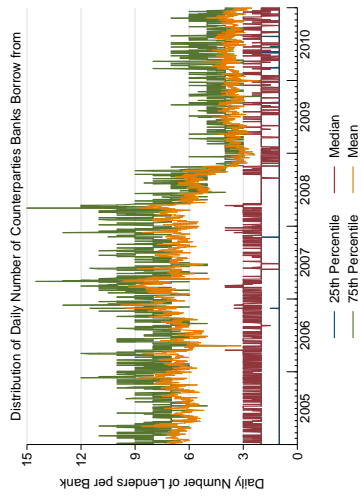


Figure 19: Summary statistics of the daily distribution of counterparties across banks

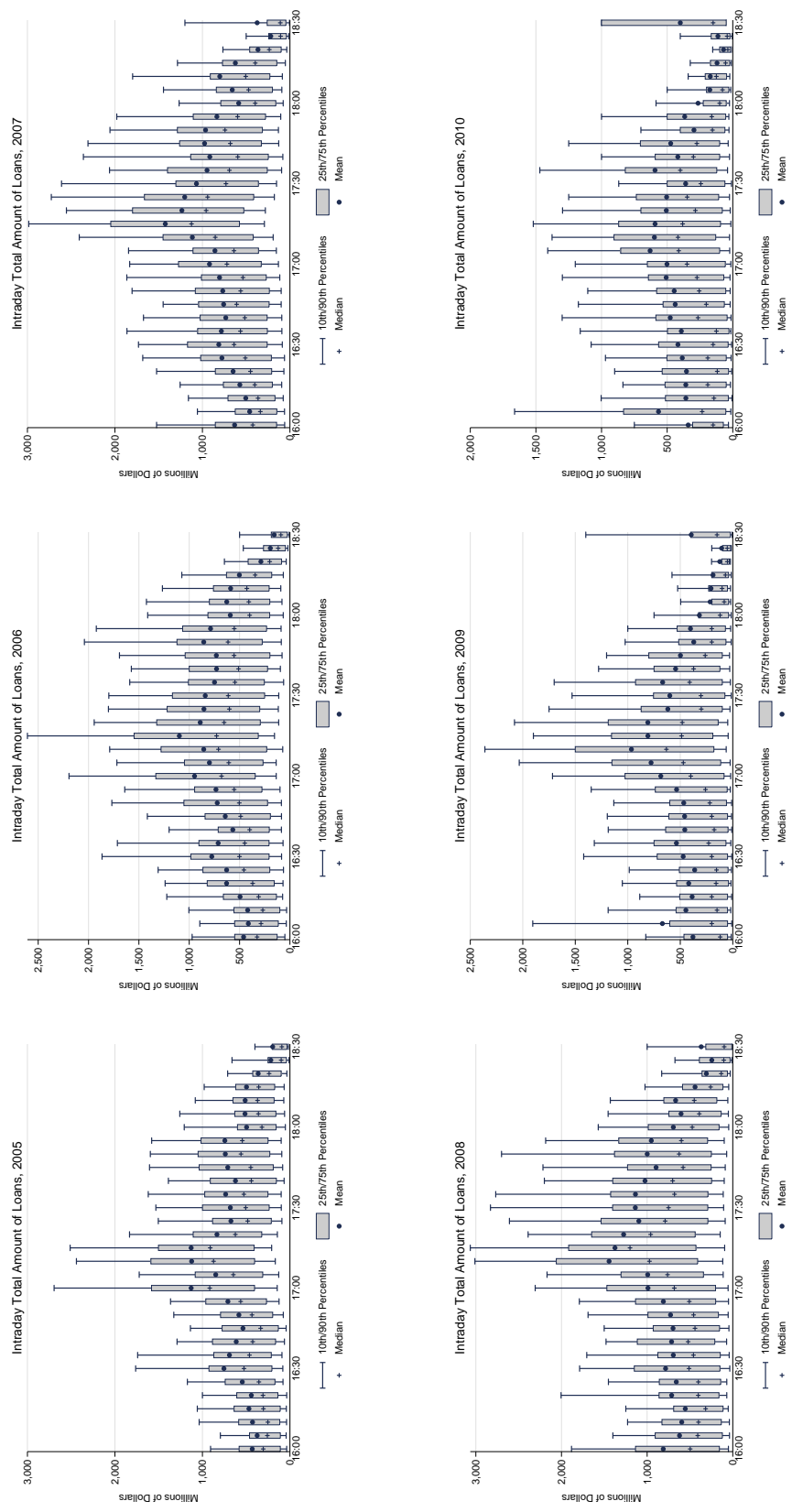


Figure 20: Distribution of trade volume by time-of-day throughout the year

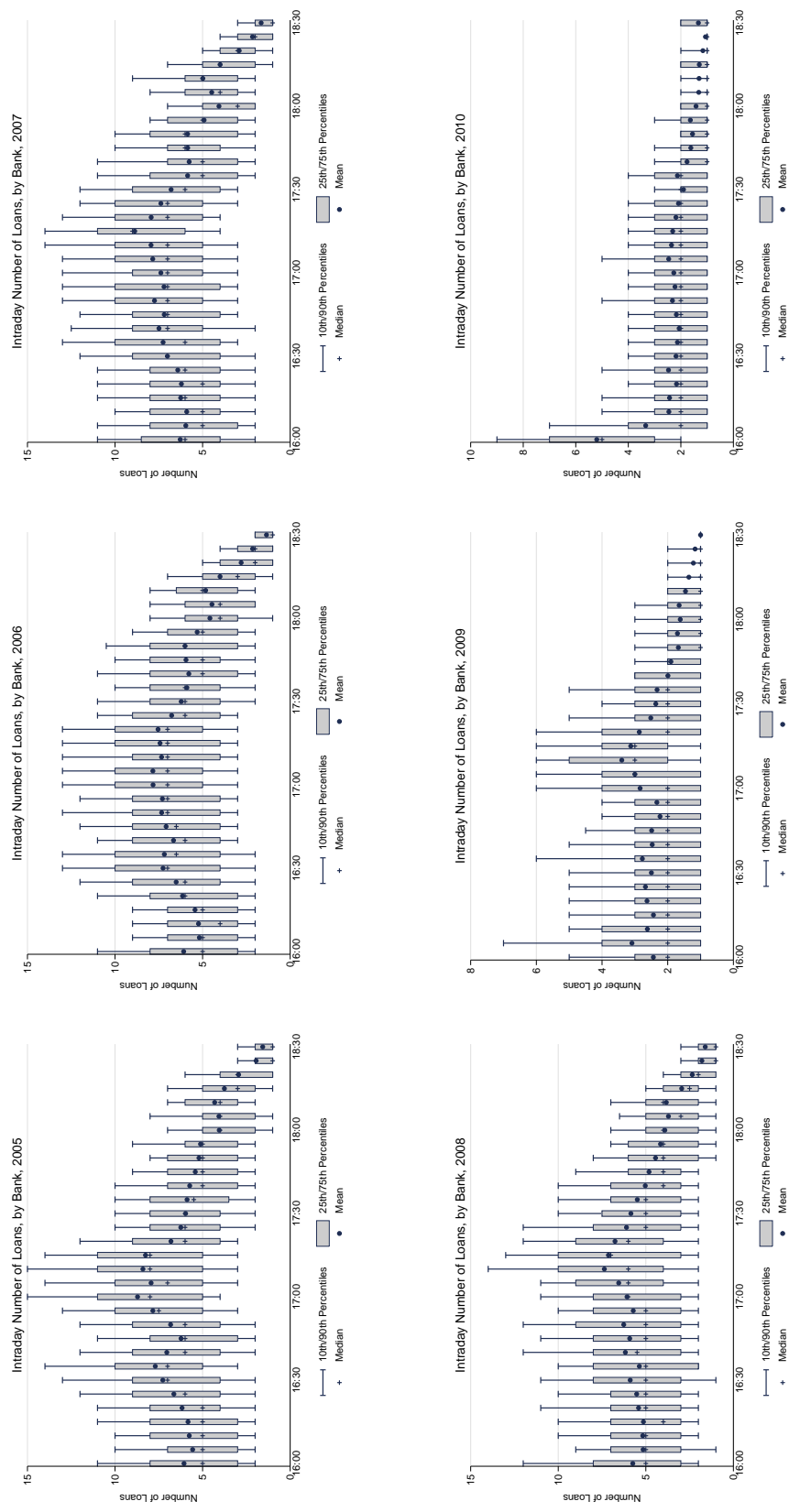


Figure 21: Distribution of the number of loans by time-of-day throughout the year

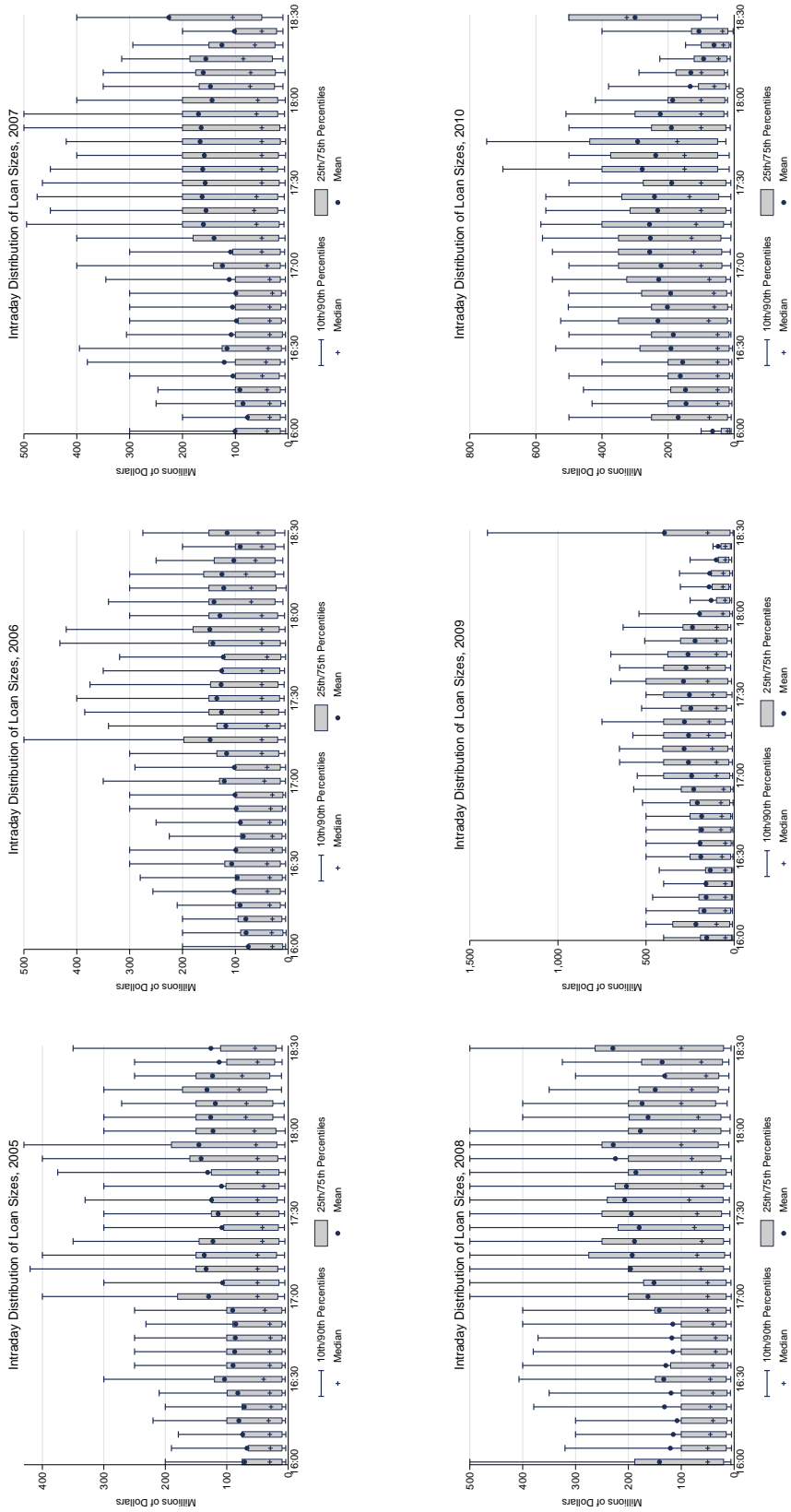


Figure 22: Distribution of loan sizes by time-of-day throughout the year

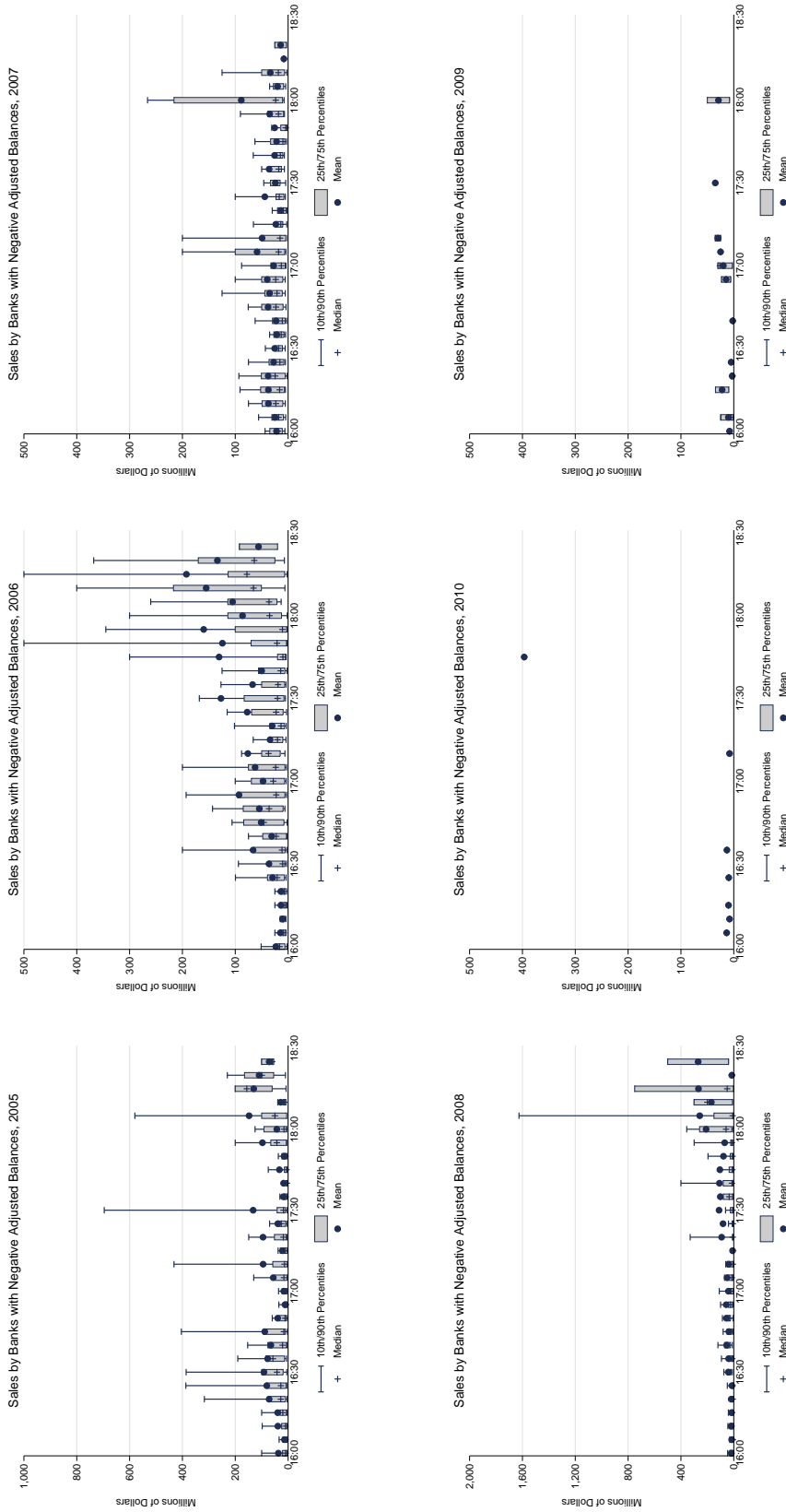


Figure 23: Intraday fed funds sales by commercial banks with very low reserve balances

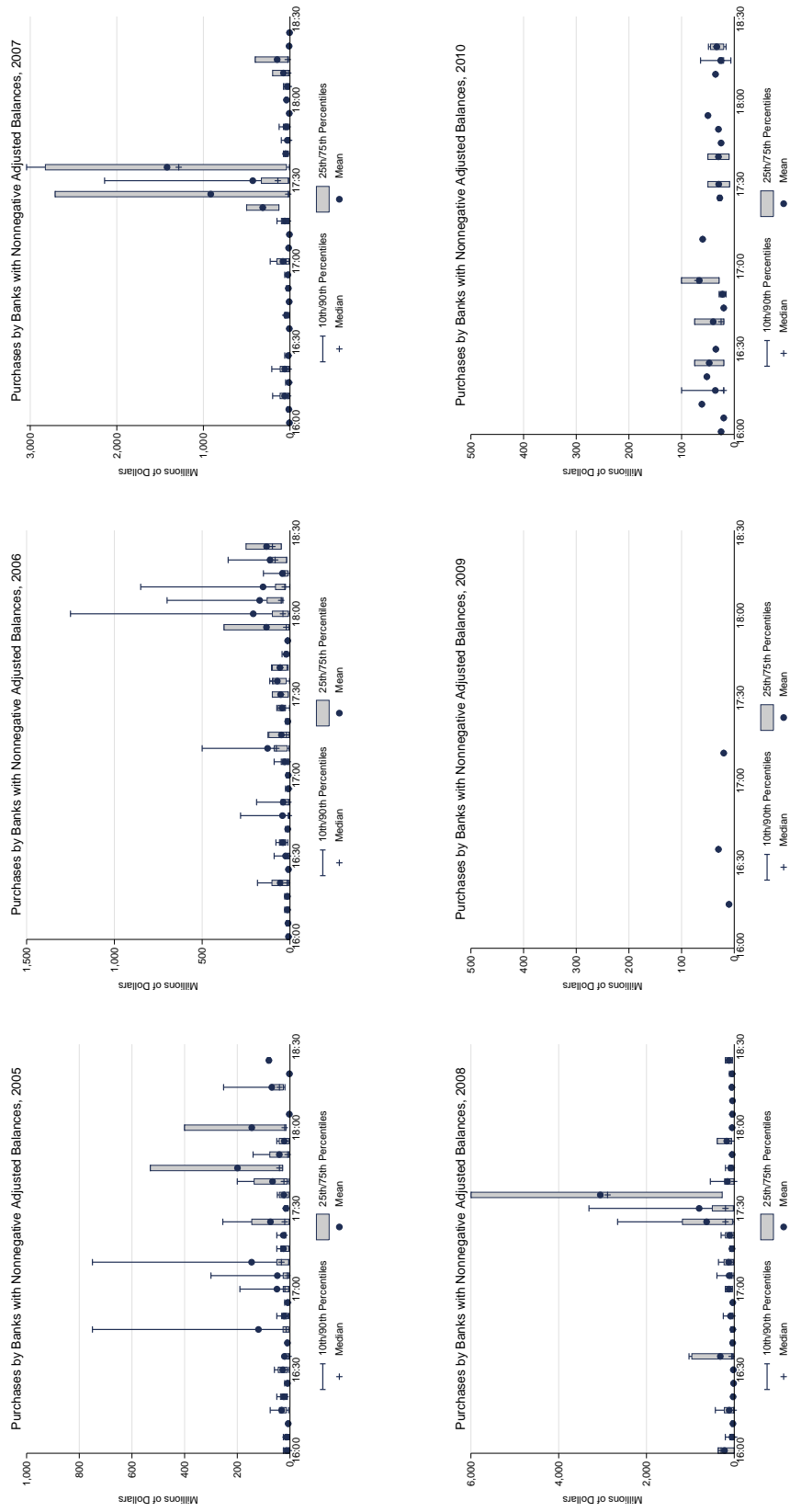


Figure 24: Intraday fed funds purchases by commercial banks with very high reserve balances



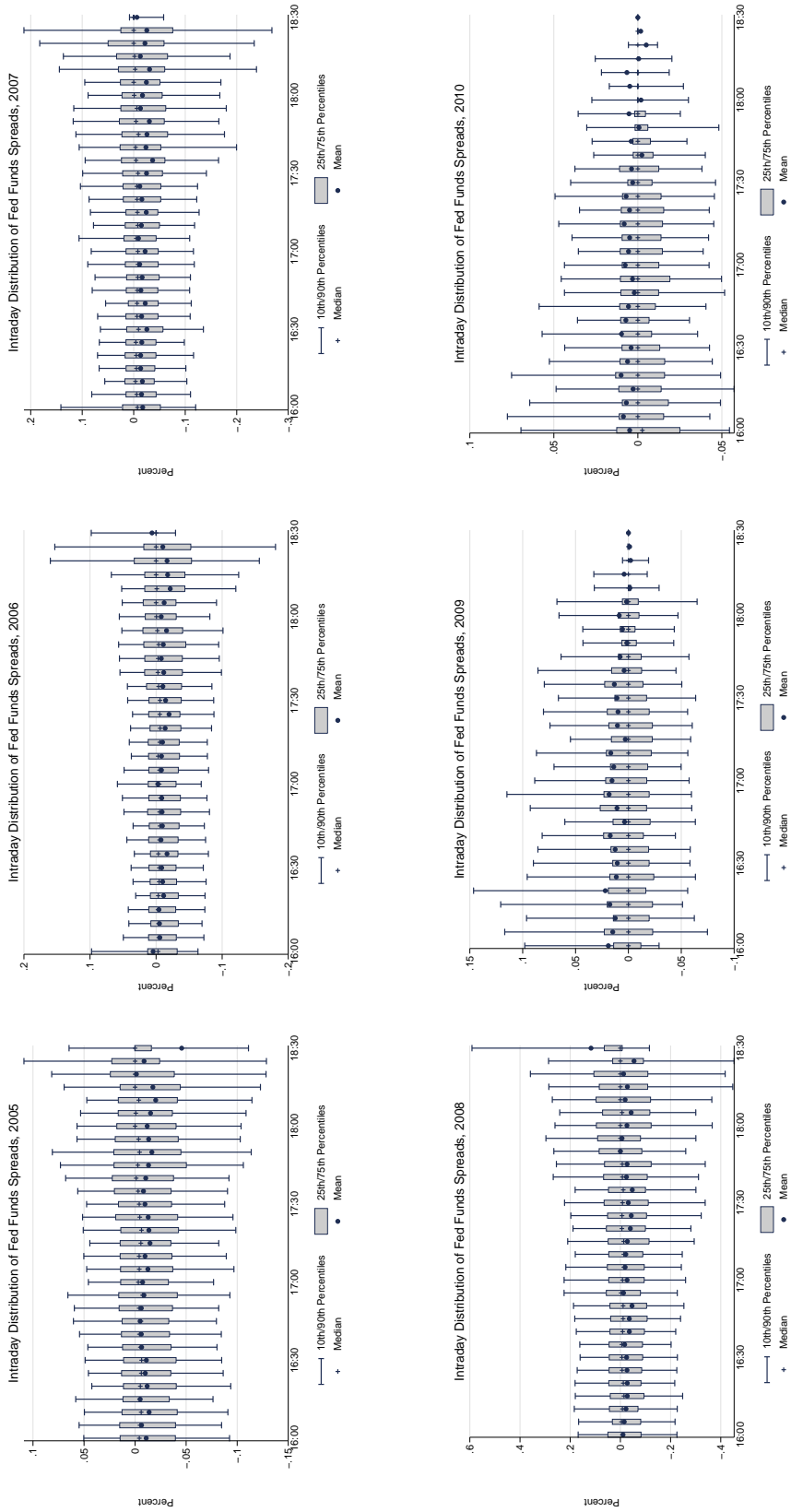


Figure 25: Distribution of Fed Funds spreads by time-of-day throughout the year