

Ohinata, Asako; van Ours, Jan C.

Working Paper

How immigrant children affect the academic achievement of native Dutch children

IZA Discussion Papers, No. 6212

Provided in Cooperation with:

IZA – Institute of Labor Economics

Suggested Citation: Ohinata, Asako; van Ours, Jan C. (2011) : How immigrant children affect the academic achievement of native Dutch children, IZA Discussion Papers, No. 6212, Institute for the Study of Labor (IZA), Bonn,
<https://nbn-resolving.de/urn:nbn:de:101:1-201201113729>

This Version is available at:

<https://hdl.handle.net/10419/58841>

Standard-Nutzungsbedingungen:

Die Dokumente auf EconStor dürfen zu eigenen wissenschaftlichen Zwecken und zum Privatgebrauch gespeichert und kopiert werden.

Sie dürfen die Dokumente nicht für öffentliche oder kommerzielle Zwecke vervielfältigen, öffentlich ausstellen, öffentlich zugänglich machen, vertreiben oder anderweitig nutzen.

Sofern die Verfasser die Dokumente unter Open-Content-Lizenzen (insbesondere CC-Lizenzen) zur Verfügung gestellt haben sollten, gelten abweichend von diesen Nutzungsbedingungen die in der dort genannten Lizenz gewährten Nutzungsrechte.

Terms of use:

Documents in EconStor may be saved and copied for your personal and scholarly purposes.

You are not to copy documents for public or commercial purposes, to exhibit the documents publicly, to make them publicly available on the internet, or to distribute or otherwise use the documents in public.

If the documents have been made available under an Open Content Licence (especially Creative Commons Licences), you may exercise further usage rights as specified in the indicated licence.

IZA DP No. 6212

How Immigrant Children Affect the Academic Achievement of Native Dutch Children

Asako Ohinata
Jan C. van Ours

December 2011

How Immigrant Children Affect the Academic Achievement of Native Dutch Children

Asako Ohinata
CentER, Tilburg University

Jan C. van Ours
*CentER, Tilburg University,
University of Melbourne, CESifo, CEPR and IZA*

Discussion Paper No. 6212
December 2011

IZA

P.O. Box 7240
53072 Bonn
Germany

Phone: +49-228-3894-0
Fax: +49-228-3894-180
E-mail: iza@iza.org

Any opinions expressed here are those of the author(s) and not those of IZA. Research published in this series may include views on policy, but the institute itself takes no institutional policy positions.

The Institute for the Study of Labor (IZA) in Bonn is a local and virtual international research center and a place of communication between science, politics and business. IZA is an independent nonprofit organization supported by Deutsche Post Foundation. The center is associated with the University of Bonn and offers a stimulating research environment through its international network, workshops and conferences, data service, project support, research visits and doctoral program. IZA engages in (i) original and internationally competitive research in all fields of labor economics, (ii) development of policy concepts, and (iii) dissemination of research results and concepts to the interested public.

IZA Discussion Papers often represent preliminary work and are circulated to encourage discussion. Citation of such a paper should account for its provisional character. A revised version may be available directly from the author.

ABSTRACT

How Immigrant Children Affect the Academic Achievement of Native Dutch Children^{*}

In this paper, we analyze how the share of immigrant children in the classroom affects the educational attainment of native Dutch children. Our analysis uses data from various sources, which allow us to characterize educational attainment in terms of reading literacy, mathematical skills and science skills. We do not find strong evidence of negative spill-over effects from immigrant children to native Dutch children. Immigrant children themselves experience negative language spill-over effects from a high share of immigrant children in the classroom but no spill-over effects on maths and science skills.

JEL Classification: I21, J15

Keywords: immigrant children, peer effects, educational attainment

Corresponding author:

Jan C. van Ours
CentER
Tilburg University
P.O. Box 90153
5000 LE Tilburg
The Netherlands
E-mail: vanours@uvt.nl

^{*} The authors gratefully acknowledge financial support from the NORFACE research program on Migration in Europe – Social, Economic, Cultural and Policy Dynamics.

1 Introduction

The large inflow of immigrants to Europe in past decades has drawn considerable attention to the issue of the impact of immigrants on the labor market outcomes of both the immigrants as well as the natives. Now that immigrants are a substantial part of the population, research is shifting towards assessing educational performance of first and second-generation immigrant children sometimes in comparison to the native children. However, the question of whether immigrant children affect native children's educational outcomes remains largely unanswered. Our paper aims to fill this gap by analyzing whether the presence of immigrant children in the classroom affects the educational attainment of native Dutch children. In particular, this paper analyses the impacts on the reading/science/maths test scores as well as students' learning experiences at school (e.g. whether bullied by other students).

Studying the impacts on multiple subjects separately allows us to measure potentially differential impacts of immigrant students across these three subjects. The theory of multiple intelligences proposed by Gardner (1983) highlights eight types of intelligences, three of which are likely to be of particular importance for the analysis in the present paper. These three include linguistic, spatial, and logical-mathematical intelligences. The linguistic intelligence concerns with the skill to handle speaking, writing and reading activities. The spatial intelligence, on the other hand, is the ability to process incoming information visually. Lastly, the logic-mathematical intelligence is regarding the ability to use logic, abstractions, reasoning, and numbers. Provided that the style of the reading test involves reading a long text and answering in writings, the reading test is likely to mainly measure the first type of intelligence. The science and maths tests are likely to measure all three combined abilities. Although students are typically required to read much shorter phrases in these subjects, answering the questions correctly involve understanding them in the first place. To what extent the linguistic intelligence is required for solving the problems depends on each question as some of them are presented with visual aids.

The Dutch experience presents an interesting case study, since the immigrant students in the Netherlands generally come from families with lower education. This is a feature shared by most European countries and as a result, this paper presents relevant findings to a wider European audience. Studying immigrant spill-over effects is helpful when exploring policy implications on how to allocate immigrant students to minimize negative impacts or maximize positive impacts of immigrant children on the educational attainment of native children. Similarly, results may highlight the potential importance of providing additional resources to schools or classes with large numbers of immigrant children.

Moreover, in contrast to the existing literature that focus on students in high-schools and above, our paper studies the spill-over effects among primary school children, i.e. 4th graders (mostly 9 year old children). Investigating the impact among younger students is of an interest, since it allows us to evaluate how native students respond to an exposure to immigrants at a younger age. Moreover, immigrant students may find it easier to assimilate when faced with a new environment at a younger age. If this were the case, we may find a smaller effect compared to those reported in the existing studies. Moreover, the existing evidence is likely to reflect the accumulated impact from the exposure to the immigrant students in the past years. Studying young students allows us to reduce the extent of such an effect.

According to Manski (1993), association in behavior between two groups may come from exogenous, endogenous, and correlated effects. When we apply this to immigrant children and native Dutch students, we get the following possible associations. Firstly, immigrant students in the Netherlands typically come from families with lower socioeconomic and educational backgrounds (Van Ours and Veenman, 2003). Dutch students, who are studying with immigrant students, may be negatively affected by the presence of such peers in the same classroom. Secondly, coming from such a disadvantaged background, immigrant students may be more or less motivated to acquire education. Studying with highly motivated peers would positively affect

Dutch students, whereas studying with less motivated peers would have a negative effect. Lastly, being exposed to the same studying environment may lead to similar educational outcomes. For example, students are taught by the same teachers and have access to the same resources within the school. Our paper attempts to isolate the correlated effect from the exogenous and endogenous effects but does not attempt to establish the contribution of latter effects separately. Instead, it presents evidence of the combined effects.

Our empirical analysis is based on two waves from two datasets. We use the 2001 and 2006 Progress in International Reading Literacy Study (PIRLS) for information on the reading abilities of children in the Netherlands. And we use the 1995 and 2007 Trends in International Mathematics and Science Study (TIMSS), which provide information on the maths and science abilities of students in the Netherlands.¹ The outcomes of all three subjects are studied, since differential levels of linguistic requirements across these subjects may lead us to observe varying degrees of peer effects if linguistic barriers experienced among the immigrant students are the cause of the negative peer effects.

If immigrant children are randomly allocated to schools across the country, the peer effects can be identified by exploiting the variation in the proportion of immigrant students across schools and classes. However, immigrant families are likely to settle in areas with more immigrants. In fact, Ladd and Fiske (2009) report a high concentration of immigrant students in the four large cities (i.e. Amsterdam, The Hague, Rotterdam, and Utrecht). Furthermore, parents of the native Dutch students are reported to choose schools with limited numbers of immigrant students (Ladd, Fiske, and Ruijs, 2010). Since immigrant households in the Netherlands typically suffer from lower socioeconomic and educational backgrounds, estimates of negative impacts of immigrants on native students may simply reflect selective school enrollment of both immigrant and native students. To avoid this selectivity problem, our paper identifies the peer effects by controlling for the unobserved school characteristics by estimating a school fixed effects

¹See the Appendix for details; the 2003 TIMSS data contain too few observations of schools for the purpose of our analysis.

model. This identification strategy assumes that once school specific characteristics are controlled for, students are randomly allocated to a particular class within a school.

The remainder of this paper is organized as follows. Section 2 gives an overview of previous studies. Section 3 gives an overview of immigration into the Netherlands and discusses characteristics of the Dutch educational system in relation to immigrant children. Section 4 presents the data used for the analysis and discusses the set-up of the analysis. Section 5 describes the parameter estimates. Section 6 concludes.

2 Previous studies

There are several papers on the topic of educational spill-over effects between immigrant children and native children. Hoxby (1998) and Borjas (2004) present US evidence of immigrant crowding out effects on the native students in the graduate and postgraduate schools finding significant reductions in the native students' college and graduate school enrollment. Both studies investigate the influence of the immigrant students on the native students through increased competition for places in further education.

Other US studies focus on peer effects due to interactions with immigrant students in the neighborhood and their impact on academic performance of native students (Betts, 1998; Betts and Lofstrom, 2000). Using the 1980 and 1990 US Census data, Betts (1998) estimates the effect of immigrant students on the probability of high school graduation of American born minorities aged between 19 and 25. A related paper by Betts and Lofstrom (2000) studies the impacts on total years of schooling among both minority and native individuals aged 24 and 30. In addition to the 1980 and 1990 Census data, Betts and Lofstrom (2000) also include 1970 Census data to study a longer time span. In both papers, the impact of immigrants is estimated using the proportion of immigrants in each state at the time when the census was carried out.² After controlling for state and year fixed effects,

²Betts (1998) also uses the share of immigrants in metropolitan area for a robustness check reaching similar conclusions.

these papers each report a significantly negative impact of immigrants on the high school completion probability and the years of education, respectively. Betts and Lofstrom (2000) address the potential problem of the measurement error caused by individuals moving across states after completing education by only using a subsample of individuals who claim to have stayed in the same state five years prior to the Census. Since their identification strategy exploits the exposure to the immigrant students within the state of residence, this is a valid concern. However, both Betts (1998) and Betts and Lofstrom (2000) are likely to face an additional measurement error. In particular, due to the choice of the age groups in these papers, American individuals are likely to have completed high school or college education up to 7 years prior to the selected Census years. Using the proportion of immigrants at the time of the Census involve making an implicit assumption that the proportion of immigrants in each state is fixed and relevant even for the periods prior to the Census years.

There are three papers from outside the US (Gould, Lavy, and Daniele Paserman, 2009; Brunello and Rocco, 2011; Jensen and Rasmussen, 2011). Gould, Lavy, and Daniele Paserman (2009) use the large influx of Jewish immigrants from the former Soviet Union to investigate peer effects on the native Israeli students. They evaluate the impact of exposure to immigrants in the 5th grade on the final matriculation exam pass rate, which is a prerequisite for proceeding to the university level. They, therefore, study the long-term peer effects of immigrants on the native students. Although these immigrant students come from relatively highly educated families, they faced economic difficulties. As a result, they may have chosen a particular region for settling down where the living expenses were low. In order to combat the potential selection bias stemming from such self-selection of immigrants to particular regions of Israel, they exploit the random allocation of students to the 5th grade once the numbers of immigrants in the 4th and 6th grades are controlled for. They find that the strong negative impact of the exposure to the immigrant students diminishes once they address the selection bias, although the results remain marginally significant. Moreover, they show

that the negative impact is strongest among students attending in classes with lower concentration of immigrant students and attribute this result to potential ease that the teachers face in assisting immigrant assimilation once there are more immigrant students in the class.

Brunello and Rocco (2011) present cross country evidence from 27 European and Anglo-Saxon countries by using the 2000, 2003, 2006 and 2009 Program for International Student Assessment (PISA). PISA assesses the cognitive abilities (reading, mathematics, and science) of the 15 year old students in OECD member countries. They aggregate the micro-level data to the country level in order to avoid the selection bias. They also include the country fixed effect to control for the selection bias at the country level. They find a significant but small negative impact of immigrant students on native students. The main problem they face is the small sample size as a result of the data aggregation. Therefore, they pool test results from all three subjects. This requires an assumption that the test scores from all three subjects are comparable. However, such an assumption is unlikely to hold due to differential skills required in solving questions from the three subjects.

Finally, one piece of evidence from Europe is given by Jensen and Rasmussen (2011). They study the immigrant peer effects in Denmark using the 2000 and 2005 PISA and Danish administrative register data. They address the non-random allocation of immigrant families to certain regions by using the population size of the residence of children as an IV. They find that a high concentration of immigrant students in school negatively affect the reading and maths test scores of native Danish students even after controlling for the potential selection of immigrants to certain regions.

Our paper contributes to the existing literature on immigrant spill-over effect on the educational attainment of native children in three ways. Firstly, we contribute to the relatively scarce European evidence on the issue. Unlike the Israeli experience presented by Gould et al. (2009), the immigrant students in the Netherlands generally come from families with lower education. This is a feature shared by most European countries and as a result,

may provide more relevant findings for the European situation. Secondly, our paper uses two micro-level data, the Progress in International Reading Literacy Study (PIRLS) and Trends in International Mathematics and Science Study (TIMSS) in order to study the peer impacts on various subjects. Our paper addresses the endogenous selection problem of immigrant students by exploiting the data availability of multiple classes within the same school. In doing so, our paper avoids the small sample problem faced by Brunello and Rocco (2011). Thirdly, in contrast to the existing literature, our paper investigates the peer effects among young students (i.e. fourth graders). Studying the impact among younger students is of an interest, since it allows us to evaluate how the native students respond to exposures to immigrants early on. Moreover, immigrant students may find it easier to assimilate when exposed to the native environment at a younger age. If this were the case, we may find smaller effect compared to those reported in the existing studies. Moreover, aside from the results in Gould et al.(2009), estimates in all the other papers are likely to reflect the accumulated impact from the exposure to the immigrant students in the past years. Studying young students allow us to reduce such influences.

3 Background information

3.1 Immigrants in the Netherlands

After the second World War, migrants to the Netherlands moved broadly for the following three reasons. Firstly, large groups of immigrants came from the former Dutch colonies between the middle of 1940s to 1970s. These include migrants from Indonesia and Molucca, Surinam, and Antilles. Secondly, foreign workers were recruited in the 1960s and 1970s as guest workers to combat the shortages of labor in the Netherlands. Lastly, in recent years, some entered as asylum seekers.

The independence of Indonesia in 1949 led to large influxes of Dutch-Indonesian repatriates and Moluccans to the Netherlands. Approximately 300,000 repatriates, half of which were Eurasians, and 12,500 Moluccans mi-

grated to the Netherlands during the two decades. Moreover, approximately 40,000 Surinamese moved to the Netherlands in 1975 when Surinam was decolonized and became independent. Another large flow of migration occurred around 1979 and 1980 when the mandatory entry visa for Surinamese was introduced, since many feared that entry to the Netherlands would become more restricted (Ersanilli, 2007; Lucassen and Penninx, 1997). Finally, there has been a continuous flow of immigrants from the Netherlands Antilles over the past years.

The major hiring of guest workers from Southern Europe, Yugoslavia, and particularly from Morocco and Turkey started as a result of the boom of the Dutch economy in the 1960s and its subsequent shortages of unskilled workers in the labor market (Van Ours and Veenman, 1999). The number of these immigrants reached up to approximately 235,000 in 1970 (Penninx, Schoorl, and Van Praag, 1994). The recruitment stopped in 1973, but further migration from Morocco and Turkey continued even in 1980s, which were mainly for the purpose of family formation or unification (Ersanilli, 2007).

In addition, political refugees and asylum seekers are another group of immigrants. After the fall of the Soviet Union, many immigrants from the eastern Europe moved to the Netherlands. In the more recent years, economic and political crisis has increased immigrants from diverse backgrounds such as Iraq, Iran, Afghanistan, and Somalia.

The number of immigrants in the Netherlands by country of origin in 1996 and 2011 is given in Table 1. As shown, the 1996 Dutch population of 15.5 million consisted of 13 million native Dutch and 2.5 million immigrants while in 2011 the population of 16.7 million consisted of 13.3 million native Dutch and 3.4 million immigrants. Among these immigrants, Western immigrants come from countries in Europe (excluding Turkey), North-America, Oceania, Indonesia or Japan. Non-Western immigrants come from countries in Africa, Latin-America and Asia (excluding Indonesia and Japan) or Turkey. Over the period 1996-2011 especially the number of non-Western immigrants increased substantially.

An important distinction for the purpose of this paper is between first-generation and second-generation immigrants. First-generation immigrants include those who were born outside of the Netherlands with at least one parent also born abroad. Second-generation immigrants are those who were born in the Netherlands with at least one of the parents born outside the Netherlands. Among the non-Western immigrants both the number of first-generation immigrants as well as the number of second-generation immigrants increased substantially. Although Indonesians are one of the major groups of immigrants in the Netherlands, they are unlikely to represent a significant portion of the students in this paper. Due to their entry mainly in the 1950s and 1960s, the Indonesian and Moluccan first and second-generation immigrants are likely to be too old to be in primary schools.

3.2 The Dutch educational system

The highest concentration of immigrant households are found in the four largest cities, i.e. Amsterdam, the Hague, Rotterdam, and Utrecht. This has two important implications for the purpose of the analysis in this paper. Firstly, Dutch parents in large cities have more schools from which to choose. This implies that there is a higher probability of racial and socioeconomic segregations in these cities. Secondly, schools located in the four large cities were likely to have received more funding from the Dutch government, at least until 2006. The Weighted Student Funding (WSF) was in operation between 1985 until 2006 in order to promote equal educational quality among schools and also to assist schools with a larger number of disadvantaged students (Ladd and Fiske, 2009). The scheme calculates a weighting index for each school by taking account of the number of immigrant students as well as disadvantaged Dutch students. This index ranges between 1 and 1.9, where schools with an index of 1 until 1.09 were not given any extra funding. Schools with the index above 1.09 were offered the extra funding, whose amount reflected the index. For example, those with 1.9 received 90 percent more funding per student. The system is made slightly more complex by the fact that money was not directly paid to each school but rather was

given to school boards that had the control over the distribution of the allocated funding across the schools. Nonetheless, Ladd and Fiske (2009) show evidence that extra funding was allocated mainly to schools in the four largest cities. The implication of such a treatment is that school principals may have allocated additional resources towards classes with larger numbers of immigrant students. If this is the case, and classes with a high share of immigrant children were being taught by more able teachers or if these classes had better teaching resources, the size of the potentially negative peer effects of immigrant students may have been reduced. Below, we investigate to what extent the allocation of educational resources is correlated with the share of immigrant children in a classroom.

4 Data and set-up of the analysis

4.1 Data

The datasets employed in this paper are the 2001 and 2006 Progress in International Reading Literacy Study (PIRLS) and the 1995 and 2007 Trends in International Mathematics and Science Study (TIMSS). They share similar characteristics, since both types of surveys were designed and conducted by the International Association for the Evaluation of Educational Achievement (IEA). PIRLS assesses the reading abilities of 9 year olds (4th graders in elementary schools) in 35 countries. Similarly, TIMSS collects information on the mathematics and science abilities of 4th graders in approximately 40 countries.³ Unfortunately, both datasets do not provide information on the ethnic background of the students.

The samples of students in both surveys were selected using a two-stage sampling design. In the first stage, at least 150 schools were selected from each country using a probability-proportional-to-size sampling scheme. In the second stage, one or multiple fourth grade classes were randomly sampled from each of the selected schools.

³TIMSS also collects information from the 8th graders. However, for the purpose of comparison with the results from PIRLS, only the data on the 4th graders are used for the analysis.

The dependent variable is the measure of students' abilities to read or solve mathematical and scientific questions. To ensure that the tests assess the students' full abilities without overburdening the participating students, IEA designed the test materials for all three subjects in the following manner. Firstly, the material was divided into 8 blocks. Each of these blocks lasted 40 minutes and they were distributed across ten test booklets. Every student was asked to complete one of these test booklets within 80 minutes. Due to the design of these tests, each student only completes a fraction of the assessment materials. As a result, the raw scores do not measure the full ability of the students. Instead, plausible values are reported in PIRLS and TIMSS, which use multiple imputation to reveal how the students would have performed should they complete the entire tests (see, for example, Gonzalez and Kennedy (2003) for more details on the calculation of the plausible values).

A similar set of covariates are available from both PIRLS and TIMSS. For example, available school characteristics from these two datasets include class sizes and the number of days spent for instructions of each subject, and the sizes of population of the regions in which schools are located. Teachers' years of experience and their age and gender are also available from both datasets. At the individual student level, PIRLS and TIMSS also hold information on age and gender of students and the number of books at home.

There are two differences in the information available from these datasets, however. More specifically, the highest educational qualifications of parents are only available in PIRLS. As a result, the information on the number of books at home is used as a proxy for the parental educational background.⁴ Another concern with both datasets is that the participating schools were allowed to exclude some students with severe linguistic problems. Although they are asked to include at least 95 percent of the students in the survey, this selection is likely to eliminate the group of students who are most likely

⁴In PIRLS this variable is reported by parents whereas this variable is reported by students in TIMSS. As a result, the information available in TIMSS is more prone to measurement errors (Ammermueller and Pischke, 2009).

to negatively influence their peers. Our estimates are, therefore, likely to be positively biased. Additional estimates are presented as a sensitivity check to investigate the extent of this problem.

4.2 Preliminary analysis

Table 2 presents the percentage of the first and second-generation immigrant students in classrooms by the population size of the geographical areas where schools are located. The statistics are calculated using the 2001 and 2006 PIRLS. Table 2 highlights very high concentrations of both first and second-generation immigrant students in schools located in large cities (column (4)). Table 2 also shows the socioeconomic backgrounds of Dutch students by the proportion of immigrant students in the same classroom. The first four columns indicate that the Dutch students who attend schools with a limited number of first-generation immigrant students come from households with higher levels of education. This is reflected in all three measures of the socioeconomic characteristics (i.e. parental education, number of books at home, and percentage of disadvantaged students in each school). As the proportion of immigrant students increases, however, the educational attainments of Dutch households decline. Interestingly, such socioeconomic segregation is not observed among the second-generation immigrant students (columns (5)-(8)).

To investigate whether there is a relationship between the share of immigrant children in a classroom and the educational attainment of Dutch children the graphs on the left-hand side in Figure 1 each present a scatter plot of reading, mathematics, and science test scores against the percentages of immigrant students in each class. Clearly for each of the educational skills there is a negative correlation with the share of immigrant children. However, this negative correlation may be driven by selective choice. It could be that parents of children with higher educational skills have their children going to schools with a low percentage of immigrants.

The identification strategy employed in our paper assumes that the allocation of students is random once school specific characteristics are con-

trolled for. The graphs on the right-hand side of Figure 1 plot the differences in the relevant test scores against the percentage point differences of immigrant students across classes within the same school. Comparing the left-hand side plots to the corresponding plots on the right hand side of Figure 1 reveal that the negative spill-over effects of the first-generation immigrant students disappear once percentages of immigrant students are differenced across classes. This conclusion applies to all subjects and suggests that once school differences are taken into account there is no longer a correlation between educational skills and the share of immigrant children in the classroom.

4.3 Set-up of the analysis

If students are randomly allocated to schools, we can identify spill-over effects of immigrant studies by estimating the following equation using Ordinary Least Squares:

$$y_{ics} = \beta x_{ics} + \gamma C_{cs} + \delta M_{cs} + \epsilon_{ics} \quad (1)$$

where y_{ics} denotes the test score for the i th Dutch student in c th class and s th school, x_{ics} captures the Dutch students' individual and family characteristics and C_{cs} represent classroom characteristics. The key variable for the identification of the spill-over effects is the M_{cs} , which is the percentage of first or second-generation immigrant students in each class. The coefficient δ would capture both the immigrant students' influence on the native students due to the immigrant students' potentially unfavorable family background as well as their better/worse effort to learn during the class. $\epsilon_{ics} = \alpha_s + \mu_{cs} + u_{ics}$, the error term is composed of three terms: α_s reflects the school specific effect, μ_{cs} captures any classroom specific characteristics that are not controlled in the model and u_{ics} is the random error term.

Investigation of the immigrant spill-over effects, however, is more complex in the absence of the random student allocation assumption. As indicated before, immigrants in the Netherlands settle mainly in the four large

cities. Moreover, native Dutch parents are also observed to place their children in schools with low concentration of immigrant children (Ladd, Fiske, and Ruijs, 2010). These pieces of information suggest that the students are selectively allocated to schools. As a result, both α_s and μ_{cs} are likely to be correlated with the immigrant proportion variable M_{cs} , leading the OLS estimator to be biased and inconsistent.

In order to overcome this endogeneity problem, the present paper controls for the school fixed effect. The main identification assumption requires that once school specific characteristics are controlled for, students are allocated to each class randomly within a school (i.e. $\mu_{cs} = 0$). The identification strategy used in this paper closely follows that of Ammermueller and Pischke (2009).⁵ This assumption, however, may be violated if school principals allocate more funding and resources to classes with large numbers of immigrant students. In such cases, the estimated impact will not only reflect the exogenous and endogenous effect but also part of the correlated effect.

Section 5.2 conducts a sensitivity analysis that addresses the issue of the ability based class formation of students. However, before we move on to the main analysis, Table 3 presents evidence in order to test if the teaching resources are indeed allocated randomly across classes. The dependent variable in these regressions is the percentage of immigrants in class and it is regressed against class and teacher-level characteristics. If resources are non-randomly allocated, we should observe strong correlations between the share of immigrants in classes and these class-level characteristics. The last row of the table reports F-statistics from the joint significance tests. In all years of data, we do not find any evidence that teaching resources are allocated favorably to classes with high shares of immigrant students.

⁵Although the focus of Ammermueller and Pischke (2009) is not on the impact of immigrant students, they investigate the effects of student on the peers' reading plausible scores by using the same identification strategy.

5 Parameter estimates

5.1 Baseline estimates

Table 4 presents the estimates from the school fixed effect model of the immigrant spill-over effects on Dutch students' various plausible test scores. Since datasets employed are collected from two rather distant years, separate regressions are estimated for each year in order to detect potential disparities in results across the observation years.⁶ The results in columns (1) and (2) show the impact on PIRLS reading test scores whereas the columns (3)-(4) and (5)-(6) each present evidence on the science and maths test scores. In each column, the immigrant students peer effects are captured by the variable "the percentage of immigrant children in each class".⁷ At the bottom of Table 4, as an indication of the magnitude of the spillover effects, standardized coefficients are also reported. These standardized coefficients express the effect as a fraction of the standard deviation of the percentage of immigrant students in each class.

The presented estimates suggest that the presence of immigrant students in the same learning environment has very limited and insignificant impacts on the Dutch students' academic achievements. For example, 1 percent increase in the proportion of immigrant students in class positively affects the average Dutch students' reading plausible score by 0.4 point (column (1)). This is approximately a 0.012 standard deviation increase for one standard deviation increase in the percentage of immigrant students in the classroom. The only exception is the impact on the 1995 maths scores, where the estimated peer effect is positive and significant, although the reported standardized coefficients are still fairly small.

Turning to the rest of the estimates in Table 4, female students perform better in reading tests and worse in maths and science. The "number of

⁶Since there are at most 12 years differences between two years of datasets, the characteristics or the composition of immigrants may have changed over time.

⁷The impact on the reading test scores is estimated using 2001 and 2006 PIRLS data whereas 1995 and 2007 TIMSS datasets are employed for the estimation of the peer effects on the maths and science scores. Only the 2007 TIMSS datasets contain similar and more detailed school, and class-level characteristics.

books at home” variables, on the other hand, seems to capture the education background of parents rather well. More specifically, the more books they have at home, students perform better in their tests. The rest of the estimates generally present mixed results and are mainly insignificant. For example, older students sometimes perform better than their younger peers, and at other times, they perform worse. Teachers’ teaching experiences seem to matter little in most years but for 2006 reading and 2007 science test scores. Older teachers enhance students’ reading scores, but younger teachers seem to be better at teaching maths and science classes.

5.2 Sensitivity analysis

Table 5 reports results from various sensitivity analyses. Row (a) presents the baseline estimates, which are taken from the first row of Table 4 for the purpose of comparison with the rest of the estimates.

The results in row (b) help us to check the importance of controlling for the unobserved school characteristics. The results indicate that not controlling for the unobserved heterogeneity at the school level leads the estimates to be negative and significant. However, the sizes of the estimates for Science and Maths estimates in 2007 are similar to the baseline results. So, the introduction of school fixed effects increases the standard errors for the share of immigrants but hardly affects the magnitude of the estimated effect.

The first sensitivity check in row (c) is to investigate if the first-generation immigrant students have differential impacts on the Dutch students compared to the second-generation immigrant students. The first-generation immigrant students may suffer from more severe linguistic barriers. As a result, this group of students are more likely to influence Dutch students’ achievements. The estimated results, however, are all insignificant and the sizes of the estimates are similar to the baseline estimates in row (a).

This conclusion is unaltered even when we change the definition of the first-generation immigrants. In row (c), those who are born outside of the Netherlands with at least one parent born abroad are considered as the

first-generation immigrants. Such a definition does not differentiate those who arrived in the Netherlands at a very early age from those who came later on. However, a very early exposure to the Dutch culture and language may help immigrant children to assimilate better. In such a case, those who arrived early would not face the same difficulties as other first-generation immigrants. In order to see the peer effect of immigrants who are least likely to have been assimilated, the definition of the first-generation immigrants in row *(d)* only includes those who moved to the Netherlands after the age of 5. The estimates reported in row *(d)* show no negative impact of first-generation immigrant students on the native Dutch students.

Table 1 suggests that there are equal numbers of immigrants from western and non-western countries. Since the group of immigrants that are likely to possess lower socioeconomic backgrounds are those from non-western countries in the Netherlands, we may observe stronger peer effects of non-western immigrants. Row *(e)*, therefore, estimates the effect of the share of non-western immigrant students in classrooms on the reading test scores. The estimated effects remain insignificant.

In the baseline regressions, “the number of books at home” variables are proxies for the parental educational background. This is because the parental education variables are only available in PIRLS. The underlying assumption is that highly educated parents are likely to possess relatively more books at home compared to those with less education. To see if, indeed, these variables proxy for parental education, additional school fixed effects regressions are estimated with the parental educational background variables. The estimates presented in row *(f)* illustrate a similar story as the baseline estimates in row *(a)*.

One of the concerns discussed in Section 4.1 is that the immigrant students may be underrepresented in both PIRLS and TIMSS, since schools were allowed to exclude students who suffer from severe linguistic problems. Although 95 percent of students from each school were requested to take parts in these surveys, such a measurement error problem is likely to cause the estimates to be positively biased. To check if this poses a severe prob-

lem, an additional measure of immigrant proportion is calculated. More specifically, using the ‘class size’ variable available in PIRLS, the number of immigrant students are calculated to be the difference between the class size and the number of Dutch students in each class.⁸ The estimates from row (g) suggest that the immigrant students positively and significantly affect Dutch students’ reading scores in 2001, but not in 2006. The estimates, therefore, suggest a similar conclusion to that of the baseline estimates.

The potential grouping of classes by ability is another concern. This is likely to undermine the identification strategy employed in this paper, which requires that the students are randomly allocated to classes once the school fixed effects are controlled for. The 2001 PIRLS and the 2007 TIMSS both report whether the classes are grouped according to ability. The estimates reported in row (h), therefore, only use the sample of schools that report random allocation of students across classes. The reported estimate on the reading test scores is larger and statistically significant compared to the baseline estimates. The results for the science and maths test scores, on the other hand, are similar to the baseline estimates, but they are smaller.

The discussion in Section 3.2 highlights severer segregations of Dutch students from immigrants in larger cities. Row (i), therefore, presents estimates without schools located in cities with more than 500,000 residents to limit the size of the bias stemming from the segregation of students. The presented results, however, do not alter our conclusions from earlier estimates.

Finally, row (j) reports the peer effects of immigrant students on themselves. The results for the reading test scores indicate significant negative impacts of immigrant students on themselves. However, the same conclusion does not hold for the science and maths test scores. For these two subjects, more immigrant students have positive and sometimes significant impacts.

So far, we have focused on the test scores impact of studying with immigrant students in the same classroom finding no significant effects. Our data also allow us to investigate whether immigrant students affect school learn-

⁸This new measure of immigrant proportion is calculated only for PIRLS, since TIMSS reports the maths and science class sizes in categories.

ing environment of native students. Table 6 presents evidence on whether students encounter difficulties in learning places by looking at how the incidence of bullying is influenced by the share of immigrant students in a classroom. The dependent variables are dummy variables that denote negative experiences at schools reported by students. These experiences include whether students were ever bullied at school, if their possessions were ever stolen, if the students ever felt left out or made fun of, and if they were ever hit by other students. The estimates from the linear probability models show that the native Dutch students do not experience any influences of immigrant students, which is in line with the effects on test scores.

6 Conclusions

Many immigrants have entered European countries in the past decades. Initially, most immigrants were workers attracted by the favorable economic circumstance, entering the labor markets to fill vacancies that were difficult to fill by native workers. Later on, immigrants entered Europe because of family reunion, family formation or because they were seeking asylum. Nowadays immigration is on top of the political agenda in many European countries. From an economic point of view an important question is how immigrants affect the economy, in particular the functioning of the labor market. However, now that the immigrants have become a substantial part of the population the focus of research shifts to questions like the integration of immigrants in the society. Research in the area has been done on educational attainment of children showing for example that second-generation immigrants do much better than first-generation immigrants thus closing the educational gap between immigrant children and native children.

A relatively new area of research concerns the presence of educational spill-over effects from immigrant children to native children. This is the main topic of the current paper. We analyze how the share of immigrant children in the classroom affects the educational attainment of native Dutch children in the same classroom. In our analysis we use data from various sources which allow us to characterize educational attainment in terms of

reading literacy, mathematical skills and science skills.

A major identification problem when establishing potential educational spill-over effects is related to student selection into schools. If schools with a relatively high share of immigrant children attract Dutch children of which the educational skills are different from schools with a relatively low share of immigrant children, we might erroneously conclude that the presence of immigrant children has negative spill-over effects on Dutch children. We solve this potential selectivity by investigating within school variation. We compare the educational attainment of Dutch children with different shares of immigrant children in classrooms within the same school. Although within the same school there may still be a selectivity issue because resource allocation across classes may depend on the share of immigrant children within each class, we do not find evidence for such within school resource allocation.

Overall, we do not find strong evidence of significant negative spill-over effects on the test scores from immigrant children to native Dutch children. Immigrant children themselves experience negative language spill-over effects from a high share of immigrant children in the classroom but no spill-over effects on maths and science skills. From our findings we conclude that for native Dutch students there is no urgent need to redistribute immigrant children more evenly across classrooms as their educational attainment is not affected by the presence of these children. However, immigrant children themselves might benefit from such reallocation as their language skills might improve once they can interact more intensely with the native Dutch children. Alternatively, more education resources might be used to stimulate language skills development among immigrant children.

References

- AMMERMUELLER, A., AND J. PISCHKE (2009): “Peer effects in European primary schools: Evidence from the Progress in International Reading Literacy Study,” *Journal of Labor Economics*, 27(3), 315–348.
- BETTS, J. R. (1998): “Educational crowding out: do immigrants affect the educational attainment of American minorities?,” in *Help or Hindrance: The Economic Implications of Immigration for African Americans*, ed. by D. Hammermesh, and F. Bean. Russell Sage Foundation.
- BETTS, J. R., AND M. LOFSTROM (2000): “The Educational Attainment of Immigrants,” in *Issues in the Economics of Immigration*, ed. by G. Borjas. University Of Chicago Press.
- BORJAS, G. J. (2004): “Do Foreign Students Crowd Out Native Students from Graduate Programs?,” National Bureau of Economic Research working paper series.
- BRUNELLO, G., AND L. ROCCO (2011): “The Effect of Immigration on the School Performance of Natives: Cross Country Evidence Using PISA Test Scores,” IZA Discussion Papers.
- ERSANILLI, E. (2007): “Focus migration-Country Profile:The Netherlands,” Hamburg Institute of International Economics (HWWI).
- GARDNER, H. (1983): *Frames of mind: The theory of multiple intelligences*. Basic books.
- GONZALEZ, E. J., AND A. M. KENNEDY (2003): “PIRLS 2001 user guide for the international database,” International Study Center, Lynch School of Education, Boston College, Boston.
- GOULD, E. D., V. LAVY, AND M. DANIELE PASERMAN (2009): “Does Immigration Affect the Long-Term Educational Outcomes of Natives? Quasi-Experimental Evidence*,” *Economic Journal*, 119(540), 1243–1269.
- HOXBY, C. M. (1998): “Do immigrants crowd disadvantaged American natives out of higher education,” in *Help or Hindrance: The Economic Implications of Immigration for African Americans*, pp. 282–321. New York: Russell Sage Foundation.
- JENSEN, P., AND A. RASMUSSEN (2011): “The Effect of Immigrant Concentration in Schools on Native and Immigrant Children’s Reading and Math Skills,” *Economics of Education Review*.

- LADD, H. F., AND E. B. FISKE (2009): “Weighted student funding for primary schools: An analysis of the Dutch experience,” Sanford School of Public Policy Working Paper (Duke University), SAN09-02.
- LADD, H. F., E. B. FISKE, AND N. RUIJS (2010): “Parental Choice in the Netherlands: Growing Concerns about Segregation.,” Stanford Working Paper Series SAN10-02.
- LUCASSEN, J., AND R. PENNINX (1997): *Newcomers: Immigrants and their descendants in the Netherlands 1550-1995*. Aksant Academic Pub.
- MANSKI, C. F. (1993): “Identification of endogenous social effects: The reflection problem,” *Review of Economic Studies*, 60(3), 531.
- PENNINX, R., J. SCHOORL, AND C. VAN PRAAG (1994): *The impact of international migration on receiving countries: the case of the Netherlands*. Netherlands Interdisciplinary Demographic Institute.
- VAN OURS, J. C., AND J. VEENMAN (1999): “The Netherlands: Old emigrants-young immigrant country,” presented at the conference on “European Migration: What Do We Know? Muenchen 14/15 November 1997.
- (2003): “The educational attainment of second-generation immigrants in The Netherland,” *Journal of Population Economics*, 16(4), 739–753.

Appendix: Details on the data

The two datasets employed in this paper are the 2001 and 2006 Progress in International Reading Literacy Study (PIRLS) and the 1995 and 2007 Trends in International Mathematics and Science Study (TIMSS). They were both designed and conducted by the International Association for the Evaluation of Educational Achievement (IEA) to study the reading, maths and science achievements of the 4th grade students.

The samples of students in both surveys were selected using a two-stage sampling design. In the first stage, at least 150 schools were selected from each country using a probability-proportional-to-size sampling scheme. In the second stage, one or multiple fourth grade classes were randomly sampled from each of the selected schools.

Tables 7 and 8 each presents summary statistics for the observations from the Netherlands. Table 7 was calculated using the 2001 and 2006 PIRLS and provides mixed evidence on the potential impact of the extra funding for the immigrant students. On the one hand, schools with a large proportion of first-generation immigrant students have smaller reading class sizes and receive slightly more reading instructions. However, school libraries do not have as many books compared to the other schools and teachers are less experienced. On the other hand, the statistics from TIMSS presented in Table 8 do not reveal any systematic differences across schools with different proportions of first-generation immigrant students. Although evidence is somewhat mixed, further analysis is conducted in Section 5 by excluding schools from the large cities in order to eliminate the effect of a potentially greater degree of segregation as well as differential allocations of teaching resources.

Table 1: Dutch population by immigrant status; January 1, 1996 and 2011 (1000)

	1996			2011		
	Total	First gen	Second gen	Total	First gen	Second gen
Total	15,493			16,656		
of which:						
Native Dutch	12,955			13,229		
Immigrants	2,498	1,283	1,215	3,427	1,735	1,692
of which:						
Western immigrants	1,327	522	805	1,528	666	862
Non-western immigrants	1,171	761	410	1,899	1,069	830
of which:						
Indonesians	412	149	263	380	117	263
Moroccans	225	141	84	356	168	188
Antilleans	87	56	31	141	82	59
Surinamese	281	179	102	345	185	160
Turkish	271	167	104	389	197	192

Note: A first-generation immigrant is born outside the Netherlands with at least one parent born outside the Netherlands; a second-generation immigrant is born in the Netherlands with at least one parent born outside the Netherlands.

Source: Statistics Netherlands

Table 2: Percentage of first and second-generation immigrant students in class by the population size of the school location

	Population size (1000)			
	< 3	3 - 100	100 - 500	> 500
Immigrants (%)				
0-4	0.53	0.21	0.07	0.00
5-9	0.18	0.24	0.10	0.00
10-19	0.22	0.25	0.34	0.19
≥ 20	0.07	0.30	0.49	0.81
First-generation (%)				
0-5	0.88	0.76	0.70	0.48
5-10	0.11	0.15	0.07	0.00
10-20	0.00	0.07	0.04	0.52
≥ 20	0.02	0.02	0.19	0.00

Note: This table shows the average proportion of first and second-generation immigrant students in class by the population size of the school location. The 2001 and 2006 PIRLS datasets are employed.

Table 3: Relating the percentage of immigrants students in the classroom to classroom characteristics

	(1)	(2)	(3)	(4)
VARIABLES	Reading		Maths/Science	
	2001	2006	1995	2007
Class size	-0.37 (0.58)	0.25 (0.26)		
Teaching experience (in years)	0.28 (0.22)	-0.44 (0.27)	-0.08 (0.10)	0.53 (0.33)
1 if teacher is female	3.76 (3.25)	3.34 (2.95)	-1.46 (1.85)	-1.14 (5.11)
Teachers' age 3039	-2.89 (5.61)	4.14 (4.05)		-4.18 (4.15)
Teachers' age 4049	-8.85 (7.83)	5.31 (6.79)		-4.71 (7.74)
Teachers' age 50 and more	-18.48 (12.46)	8.84 (8.44)		-15.42** (7.44)
Observations	55	68	245	64
Number of schools	25	32	105	27
F-test	1.000	1.732	0.429	1.981

Note: This table presents results that tests the random allocation of teaching resources across classes within the same school. The dependent variable is the % of immigrant students in each class. Data employed for columns (1) and (2) is the 2001 and 2006 PIRLS for reading test scores. The 1995 and 2007 TIMSS for maths and science test scores are used to calculate results presented in columns (3) and (4). The last row of this table presents the results from joint significance tests. Only teachers' teaching experience and the gender are available in TIMSS 1995. Moreover, the class size variable is also missing column (4) due to data limitations in TIMSS. Robust standard errors are presented in parentheses. *** $p < 0.01$, ** $p < 0.05$, * $p < 0.10$.

Table 4: Baseline results: School fixed effect estimates

VARIABLES	(1)	(2)	(3)	(4)	(5)	(6)
	Reading 2001	2006	Science 1995	2007	Maths 1995	2007
% of immigrants in class	0.40 (0.29)	-0.13 (0.28)	0.24 (0.38)	-0.31 (0.33)	1.54*** (0.58)	-0.23 (0.47)
Age of student	-4.37 (4.94)	-9.77*** (2.69)	22.60*** (1.70)	-2.87 (3.44)	30.17*** (2.29)	-7.57* (3.69)
Gender of student: 1 if female	13.14** (5.96)	3.29 (4.06)	-20.98*** (2.20)	-13.15*** (3.81)	-10.78*** (2.38)	-14.15*** (3.44)
Books at home:11-25	-6.17 (7.07)	5.99 (7.00)	18.67*** (5.85)	10.38 (14.72)	14.03** (6.77)	34.29** (12.89)
Books at home:26-100	17.71** (8.49)	11.51 (7.36)	36.12*** (6.16)	21.70 (14.23)	37.69*** (6.95)	42.25*** (12.43)
Books at home:101-200	9.79 (8.30)	19.98*** (6.44)	48.77*** (5.57)	44.53*** (15.71)	50.81*** (7.39)	52.18*** (14.15)
Books at home:More than 200	27.83*** (9.20)	27.94*** (7.52)	52.71*** (5.75)	49.56*** (15.50)	49.70*** (7.39)	58.64*** (15.59)
Teaching experience (in years)	0.62 (0.63)	-1.02** (0.50)	-0.26 (0.41)	0.96* (0.56)	-0.24 (0.59)	0.91 (0.66)
1 if teacher is female	7.08 (8.76)	3.81 (5.00)	-17.11*** (6.46)	12.71 (9.08)	-30.76*** (10.15)	4.07 (10.48)
Teacher aged 30-39	19.92 (12.59)	1.92 (13.12)		-16.74* (8.22)		-22.43* (11.44)
Teacher aged 40-49	32.62** (13.22)	3.59 (12.37)		-15.27* (8.38)		-17.08 (11.35)
Teacher aged 50 and above	34.27* (19.17)	11.44 (15.86)		-16.85 (14.82)		-20.88 (17.48)
Class size	-0.32 (1.10)	-0.62 (0.79)				
Standardized coefficients on the “% of immigrants in class” variable	0.012	-0.003	0.003	-0.01	0.023	-0.007
Observations	513	810	3,107	557	3,107	557
R-squared	0.123	0.079	0.161	0.135	0.181	0.086
Number of schools	24	32	103	26	103	26

Note: This table presents baseline regressions with school fixed effects. The dependent variables are the test scores on reading/science/math. The datasets employed are the 2001 and 2006 PIRLS for reading test scores and 1995 and 2007 TIMSS for maths and science test scores. See main text for more details. Robust standard errors are presented in parentheses *** p<0.01, ** p<0.05, * p<0.10.

Table 5: Regression estimates from various sensitivity analyses

VARIABLES	(1)	(2)	(3)	(4)	(5)	(6)
	Reading2001	Reading2006	Science1995	Science2007	Maths1995	Maths2007
(a) % of immigrants in class	0.40 (0.29)	-0.13 (0.28)	0.24 (0.38)	-0.31 (0.33)	1.54*** (0.58)	-0.23 (0.47)
(b) OLS estimates with school characteristics	-0.95*** (0.16)	0.00 (0.14)	0.03 (0.12)	-0.33** (0.14)	-0.01 (0.13)	-0.29* (0.16)
(c) % of first-generation immigrants in class	0.98 (0.60)	-0.27 (0.66)	-0.59 (0.63)	-0.17 (0.38)	1.19 (1.07)	0.06 (0.46)
(d) % of first-generation immigrants (arrived after age of 5) in class			-0.46 (1.02)	0.75 (0.82)	1.69 (1.82)	1.45 (0.93)
(e) % of non-western immigrants in class	0.17 (0.64)	-1.03 (0.64)				
(f) School fixed effect with parental education	0.64** (0.29)	-0.29 (0.35)				
(g) % of immigrants=Classsize-Dutch students	0.58*** (0.20)	0.15 (0.13)				
(h) Exclude schools that group classes according to ability	0.80*** (0.24)					0.13 (0.69)
(i) Without schools situated in large cities	0.31 (0.32)	-0.2 -0.28			0.06 (0.41)	0.54 (0.53)
(j) Peer effects on immigrant students	-1.47* (0.73)	-2.08** (0.90)	0.93** (0.41)	0.13 (0.39)	1.28** (0.61)	0.02 (0.52)

Note: This table presents estimates from various sensitivity analyses. The datasets employed are the 2001 and 2006 PIRLS for reading test scores and 1995 and 2007 TIMSS for maths and science test scores. For rows (a), (b), (c), (d) and (e), the number of observations are identical to the corresponding values in Table 4. The numbers of observations for row (f) are 499 and 760 and (g) are 513, and 810. Since only limited numbers of parents responded to the parental education question, the numbers of observations for row(e) is 160 and 154. Similarly, each of the number of observations for the row (h) is 344, 516 and 357, respectively. In Row (i), the number of observations are 429, 595 and 435. Finally, in row (j), the corresponding number of observations are 160, 154, 751, 306, 751 and 306. The dependent variables for each of the columns are the standardized test scores on reading/science/maths. Results for some cells are missing due to lack of information in those particular years. Robust standard errors are presented in parentheses. *** p<0.01, ** p<0.05, * p<0.10.

Table 6: The peer effect of immigrant students on the school learning environment of Dutch and immigrant students

	(1)	(2)	(3)	(4)	(5)	(6)	(7)	(8)
Impact on Dutch students	Reading2001 Stolen	Reading2006 Stolen	Reading2001 Bullied	Reading2006 Bullied	Maths/Science2007 Stolen	Maths/Science2007 Leftout	Maths/Science2007 Made fun of	Maths/Science2007 Hit
% immigrants in class	0.00 (0.00)	-0.00 (0.00)	0.01* (0.00)	0.00 (0.00)	-0.00 (0.00)	0.00 (0.00)	0.00 (0.00)	0.01 (0.00)
Observations	513	810	502	797	548	546	548	546
Number of schools	24	32	24	32	26	26	26	26

Note: This table presents the estimated peer effects of immigrant students on the school learning environment. Columns (1)-(8) show the impacts on the Dutch students whilst columns (9)-(16) illustrate the effect on the immigrant students. The dependent variables are the variables that capture negative school experiences. The independent variables included are identical to those in Table 4. Data employed for this table is the 2001 and 2006 PIRLS for reading test scores as well as the 2007 TIMSS for maths and science test scores. Robust standard errors are presented in parentheses. ***, ** p<0.01, * p<0.05, * p<0.10.

Table 7: Summary statistics of the 2001 and 2006 PIRLS

	Proportion of immigrant students in class (%)							
	(a) Total				(b) First-generation			
	0-4	5-9	10-19	≥20	0-4	5-9	10-19	≥20
Student/family characteristics								
Age of student	9.7	9.7	9.8	9.8	9.7	9.7	9.8	9.8
Gender of student: 1 if female	0.50	0.51	0.49	0.51	0.52	0.50	0.51	0.49
Highest parental education								
University	0.31	0.29	0.37	0.29	0.25	0.29	0.33	0.33
Post-secondary but no university	0.15	0.16	0.14	0.16	0.14	0.17	0.15	0.12
Upper secondary	0.27	0.25	0.27	0.26	0.27	0.26	0.25	0.29
Lower secondary	0.26	0.29	0.22	0.29	0.33	0.26	0.26	0.25
Books at home:0-10	0.08	0.09	0.10	0.07	0.10	0.10	0.08	0.06
Books at home:11-25	0.13	0.12	0.09	0.13	0.15	0.12	0.10	0.15
Books at home:26-100	0.30	0.31	0.28	0.29	0.32	0.27	0.30	0.30
Books at home:101-200	0.19	0.19	0.20	0.21	0.19	0.19	0.20	0.21
Books at home:More than 200	0.30	0.29	0.33	0.30	0.25	0.33	0.32	0.29
School/class characteristics								
Econ disadvantaged home: 0-10%	0.67	0.80	0.76	0.39	0.59	0.80	0.67	0.35
Econ disadvantaged home: 11-25%	0.25	0.15	0.19	0.34	0.35	0.10	0.27	0.29
Econ disadvantaged home: 26-50%	0.05	0.01	0.05	0.10	0.05	0.05	0.03	0.13
Econ disadvantaged home: > 50%	0.03	0.04	0.00	0.17	0.01	0.05	0.03	0.22
4th grade class size	24.1	25.2	24.1	22.6	22.8	26.1	25.1	20.5
School size	311	311	322	319	285	313	324	326
Days spent for reading instruction	198	201	199	199	198	202	200	197
Books in the library: below 250	0.10	0.06	0.21	0.08	0.11	0.11	0.12	0.12
Books in the library: 251-500	0.36	0.36	0.26	0.45	0.37	0.32	0.35	0.48
Books in the library: 501-2,000	0.43	0.48	0.44	0.37	0.44	0.41	0.49	0.27
Books in the library: 2,001-5,000	0.11	0.10	0.09	0.11	0.09	0.16	0.04	0.13
Teaching experience (in years)	18.5	17.4	18.8	16.9	15.5	21.2	17.8	17.5
1 if female teacher	0.68	0.75	0.64	0.68	0.64	0.86	0.60	0.68
Teacher aged less than 30	0.26	0.33	0.22	0.32	0.37	0.18	0.26	0.30
Teacher aged 30-39	0.14	0.12	0.20	0.08	0.11	0.20	0.14	0.09
Teacher aged 40-49	0.22	0.13	0.23	0.25	0.24	0.13	0.27	0.23
Teacher aged 50 and above	0.38	0.42	0.35	0.35	0.29	0.49	0.33	0.37

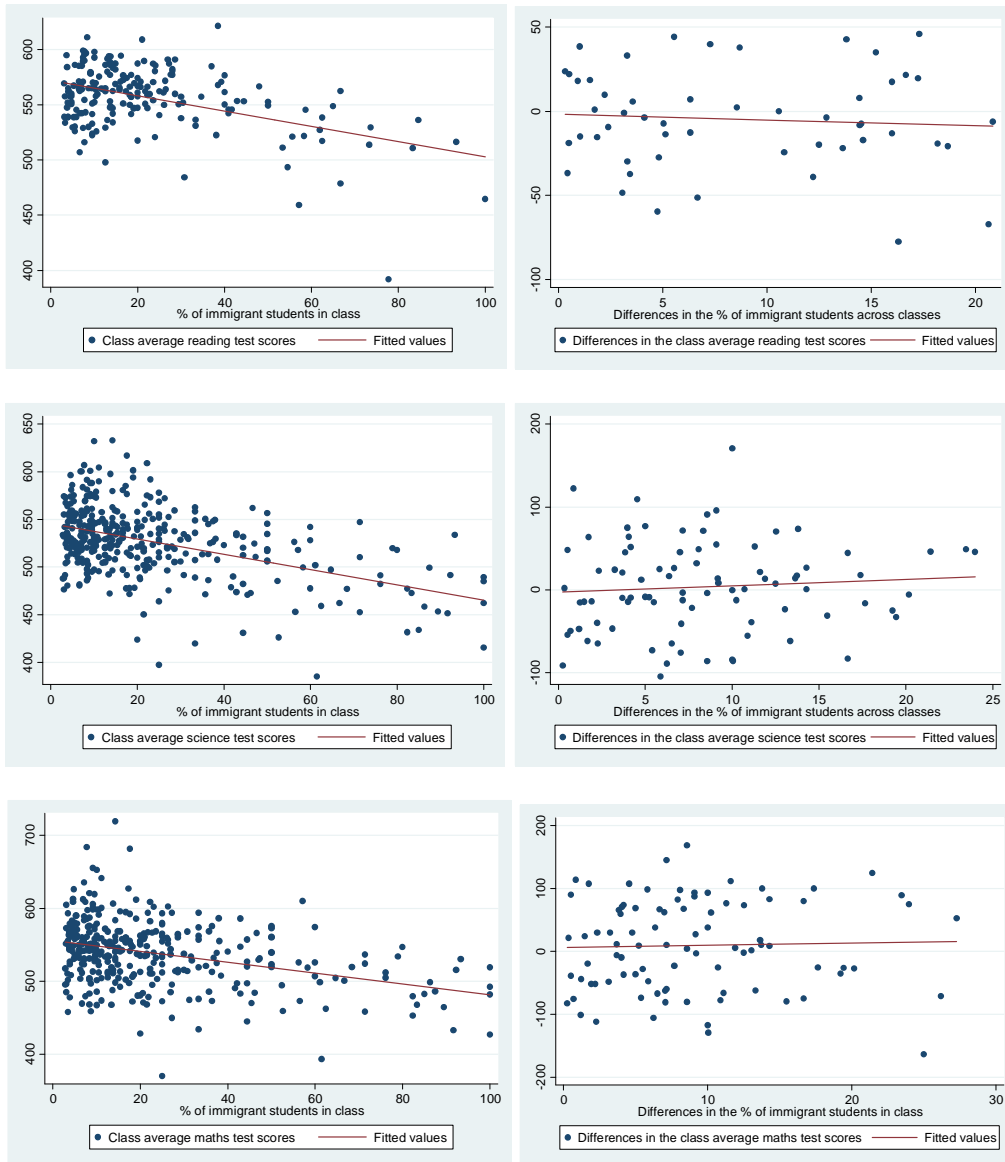
Note: This table presents the school level characteristics by immigrant proportion using the 2001 and 2006 PIRLS datasets.

Table 8: Summary statistics of the 1995 and 2007 TIMSS

	Proportion of immigrant students in class (%)							
	(a) Total				(b) First-generation			
	0-4	5-9	10-19	≥20	0-4	5-9	10-19	≥20
Student/family characteristics								
Age of student	9.7	9.7	9.8	9.7	9.8	9.7	9.7	9.8
Gender of student: 1 if female	0.49	0.50	0.49	0.56	0.49	0.52	0.49	0.54
Books at home: 0-10	0.06	0.08	0.03	0.05	0.05	0.07	0.04	0.05
Books at home: 11-25	0.23	0.26	0.29	0.26	0.23	0.24	0.27	0.28
Books at home: 26-100	0.47	0.39	0.44	0.42	0.39	0.49	0.40	0.44
Books at home: 101-200	0.15	0.15	0.15	0.15	0.16	0.12	0.19	0.13
Books at home: > 200	0.10	0.13	0.08	0.12	0.17	0.07	0.10	0.10
School/class characteristics								
Econ disadvantaged home: 0-10%	0.83	0.88	0.75	0.48	0.79	0.80	0.87	0.36
Econ disadvantaged home: 11-25%	0.09	0.00	0.25	0.26	0.04	0.17	0.09	0.31
Econ disadvantaged home: 26-50%	0.08	0.12	0.00	0.24	0.17	0.04	0.04	0.30
Econ disadvantaged home: > 50%	0.00	0.00	0.00	0.02	0.00	0.00	0.00	0.04
Maths class size: 1-19	0.22	0.20	0.38	0.26	0.41	0.00	0.36	0.27
Maths class size: 20-26	0.75	0.80	0.53	0.74	0.59	1.00	0.56	0.73
Maths class size: ≥27	0.03	0.00	0.09	0.00	0.00	0.00	0.09	0.00
Maths class size: 27-32	0.03	0.00	0.09	0.00	0.00	0.00	0.09	0.00
Maths class size: ≥33	0.00	0.00	0.00	0.00	0.00	0.00	0.00	0.00
Science class size: 1-19	0.22	0.20	0.38	0.26	0.41	0.00	0.36	0.27
Science class size: 20-26	0.75	0.80	0.53	0.74	0.59	1.00	0.56	0.73
Science class size: ≥27	0.03	0.00	0.09	0.00	0.00	0.00	0.09	0.00
Science class size: 27-32	0.03	0.00	0.09	0.00	0.00	0.00	0.09	0.00
Science class size: ≥33	0.00	0.00	0.00	0.00	0.00	0.00	0.00	0.00
School size	274	280	283	303	247	306	295.1	305.2
Instructional days per year	197	195	196	196	196	196	196	196.4
Teaching experience (in years)	22.2	20.5	19.6	18	19.1	22.8	20.5	19.4
1 if teacher is female	0.53	0.46	0.50	0.57	0.54	0.45	0.49	0.60
Teacher aged less than 30	0.16	0.30	0.23	0.24	0.30	0.20	0.18	0.15
Teacher aged 30-39	0.11	0.09	0.12	0.19	0.16	0.10	0.15	0.16
Teacher aged 40-49	0.14	0.10	0.12	0.20	0.08	0.09	0.10	0.31
Teacher aged 50 and above	0.59	0.51	0.53	0.38	0.46	0.61	0.58	0.39

Note: This table presents the school level characteristics by immigrant proportion using the 1995 and 2007 TIMSS datasets.

Figure 1: Graphical evaluation of the potential usefulness of controlling school fixed effect



Note: The left figures present scatter plots for test scores between % of immigrant students in classes and the class average plausible test scores. The right figures, on the other hand, show scatter plots of the differences in the % of immigrant students across classes within the same school and the differences in the class average test scores. The top, middle and bottom figures each show the scatter plots of reading, science and maths test scores. The data employed are the 2001 and 2006 PIRLS (reading) and the 1995 and 2007 TIMSS (science and maths).